

Village of the mind

A proposal for a psychiatric care hospital in Tirana
MSc Thesis P5 Presentation
Design for Health and Care Studio
Martina Gjermeni 5878487

Located in the vibrant Qyteti Studenti area of Tirana, “Fshati i Mendjes” (Village of the Mind) is envisioned as a pioneering psychiatric hospital that challenges traditional perceptions of mental health facilities. Inspired by Goffman’s stigma theory, the design aims to transform these spaces from places of constraint into welcoming environments that prioritize healing, dignity, and community integration.

Central to the concept is the creation of a therapeutic environment that promotes well-being and autonomy for patients. Each ward is meticulously designed with courtyard gardens and natural light, offering serene outdoor spaces and fostering a connection with nature. The interior spaces accommodate various therapeutic activities, ensuring a personalized and supportive experience for patients of different needs, from calm to acute.

Beyond providing exceptional care, “Fshati i Mendjes” seeks to educate and engage the city of Tirana. The hospital serves as a center for mental health education, hosting workshops, seminars, and community events aimed at raising awareness and reducing stigma surrounding mental illness. By opening its doors to the public, the hospital fosters understanding and empathy, promoting a culture of acceptance and support.

Environmental stewardship is also a cornerstone of the design. “Fshati i Mendjes” integrates local materials and enhances biodiversity within its grounds. Native plantings, green roofs, and rainwater harvesting systems not only contribute to the hospital’s aesthetic appeal but also support local ecosystems and mitigate environmental impact.

In essence, “Fshati i Mendjes” represents a holistic approach to mental health care, blending therapeutic architecture with community engagement and environmental sustainability. It stands as a beacon of hope and progress, advocating for the well-being of its patients, the education of its community, and the conservation of its natural surroundings.



Map of Tirana
1:10000

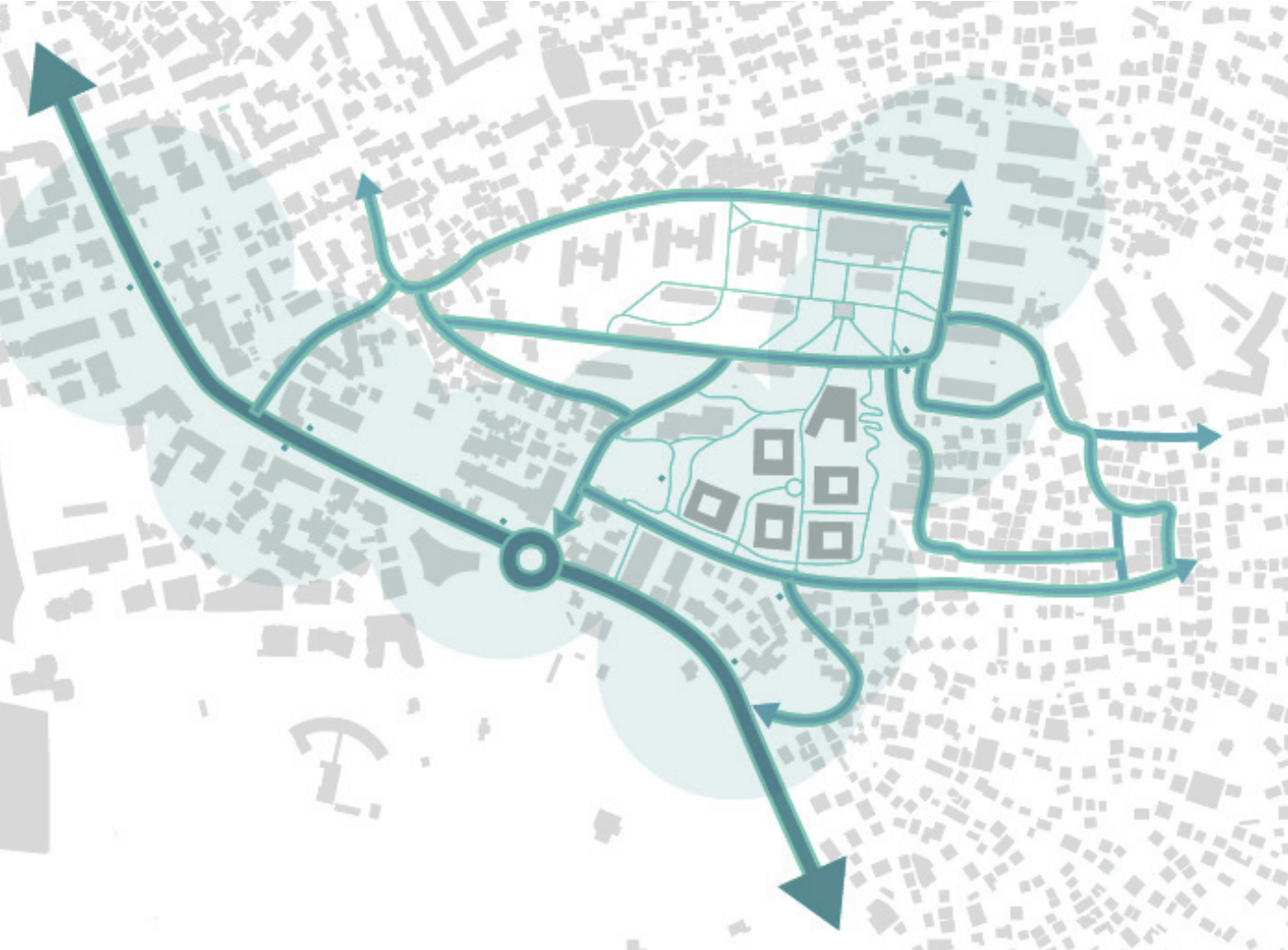
Creating green bridges



Strategic Location

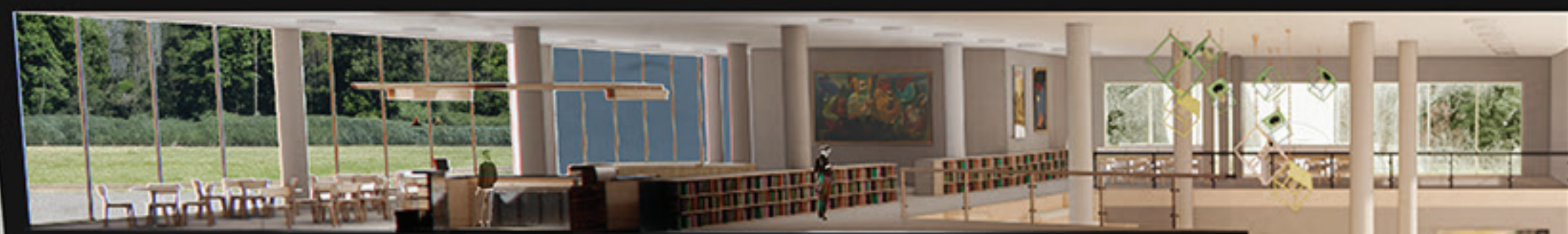


Accessibility

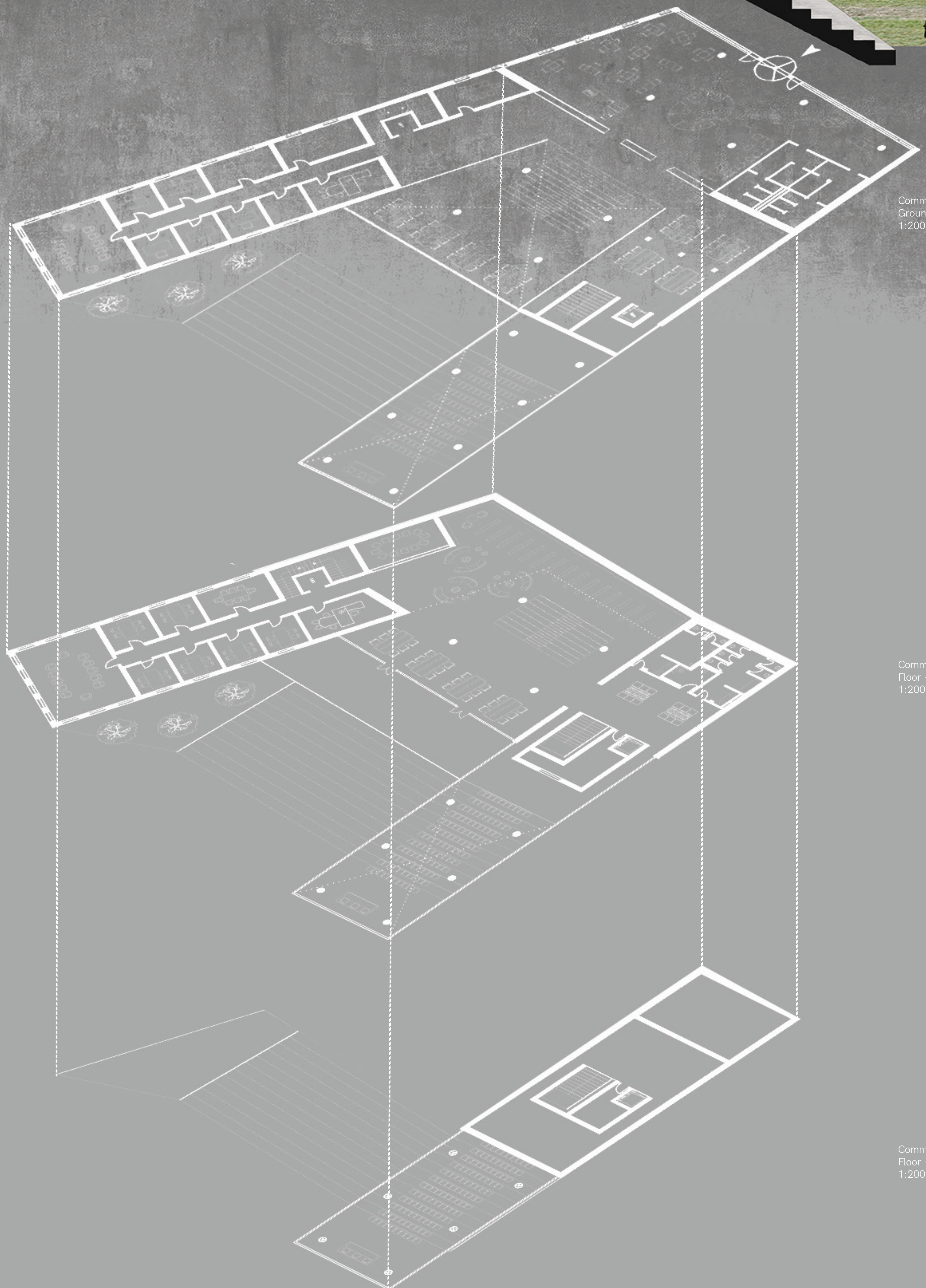
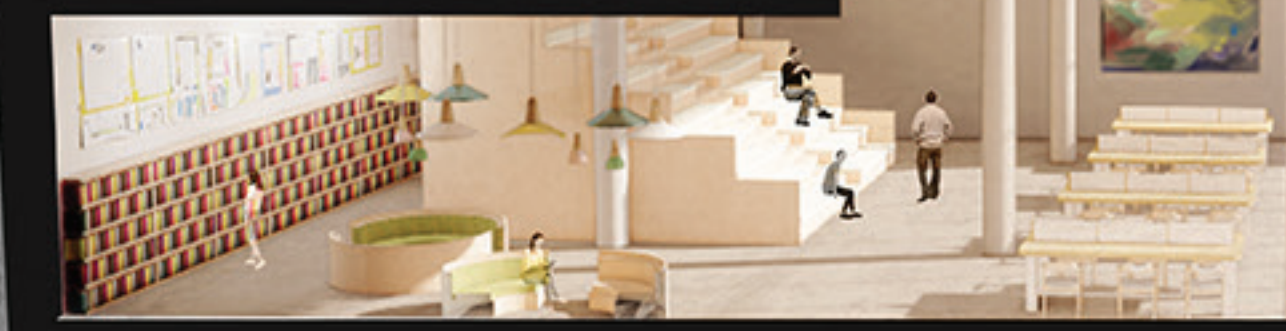


Axonomic Drawing
Masterplan





Community Building
East Section



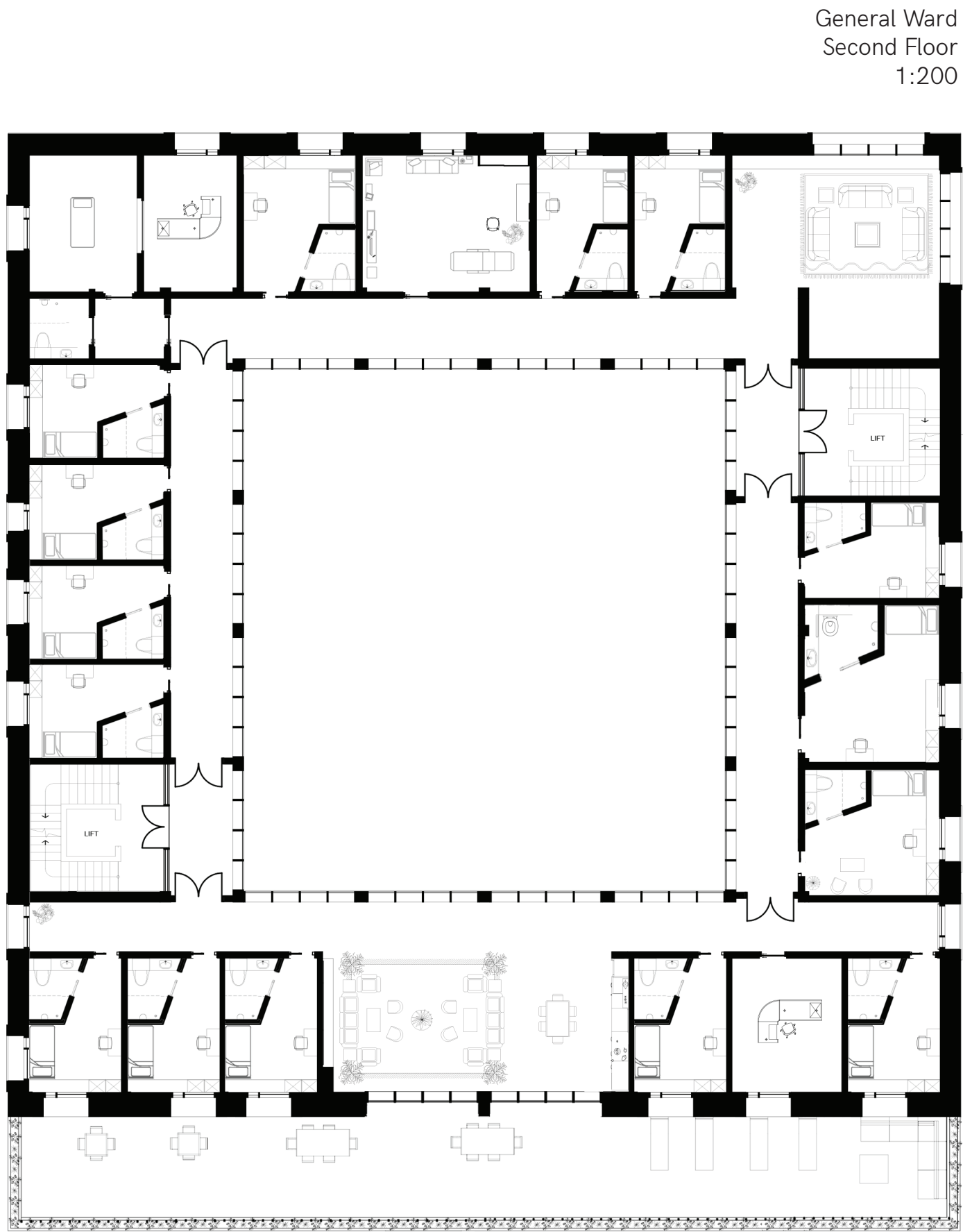
Community Building
Ground Floor
1:200

Community Building
Floor -1
1:200

Community Building
Floor -2
1:200



Masterplan Map
Groundfloor
1:1000



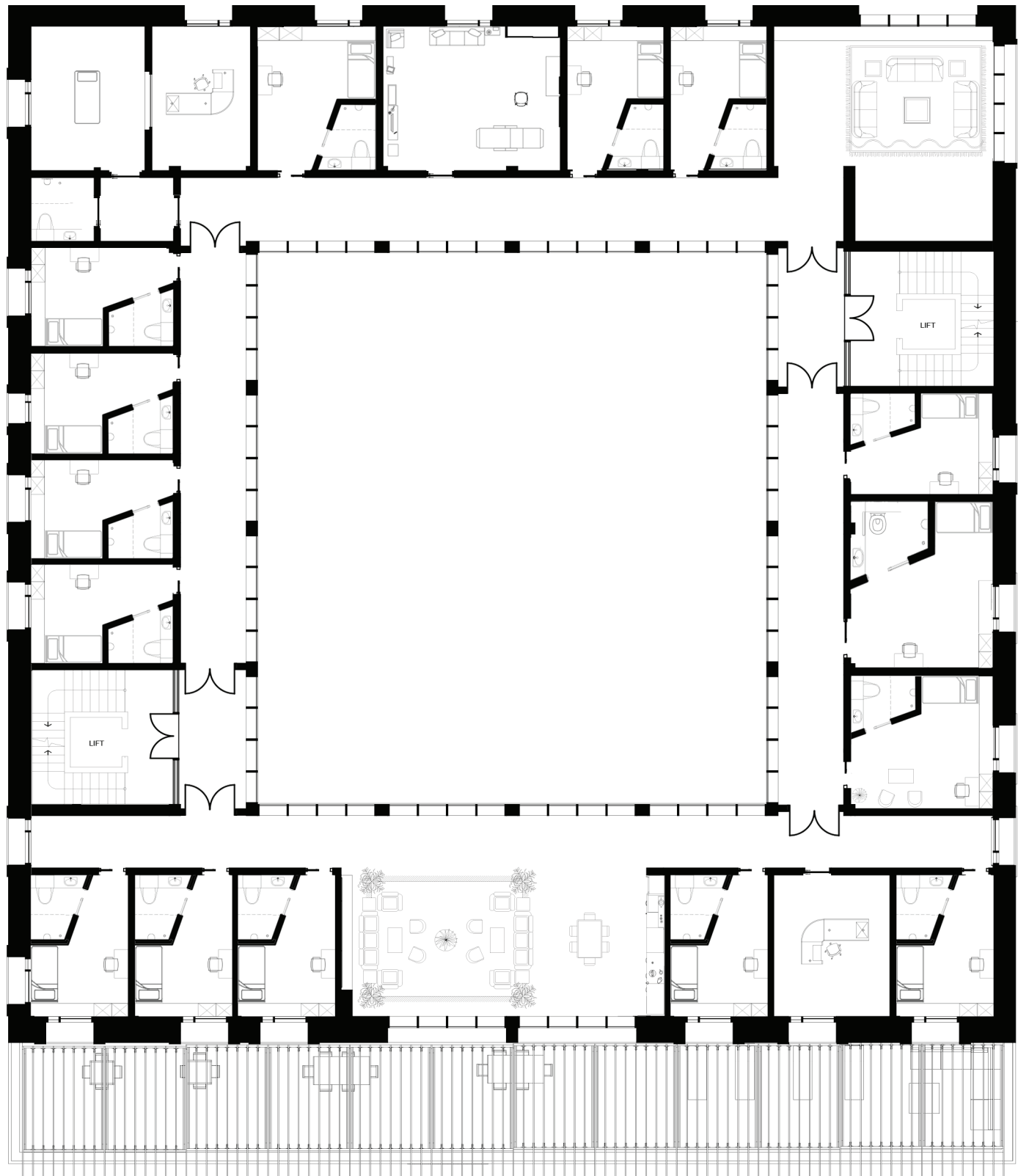
General Ward
Second Floor
1:200



View of the exterior of the wards



View of the exterior of the wards



General Ward
First Floor
1:200



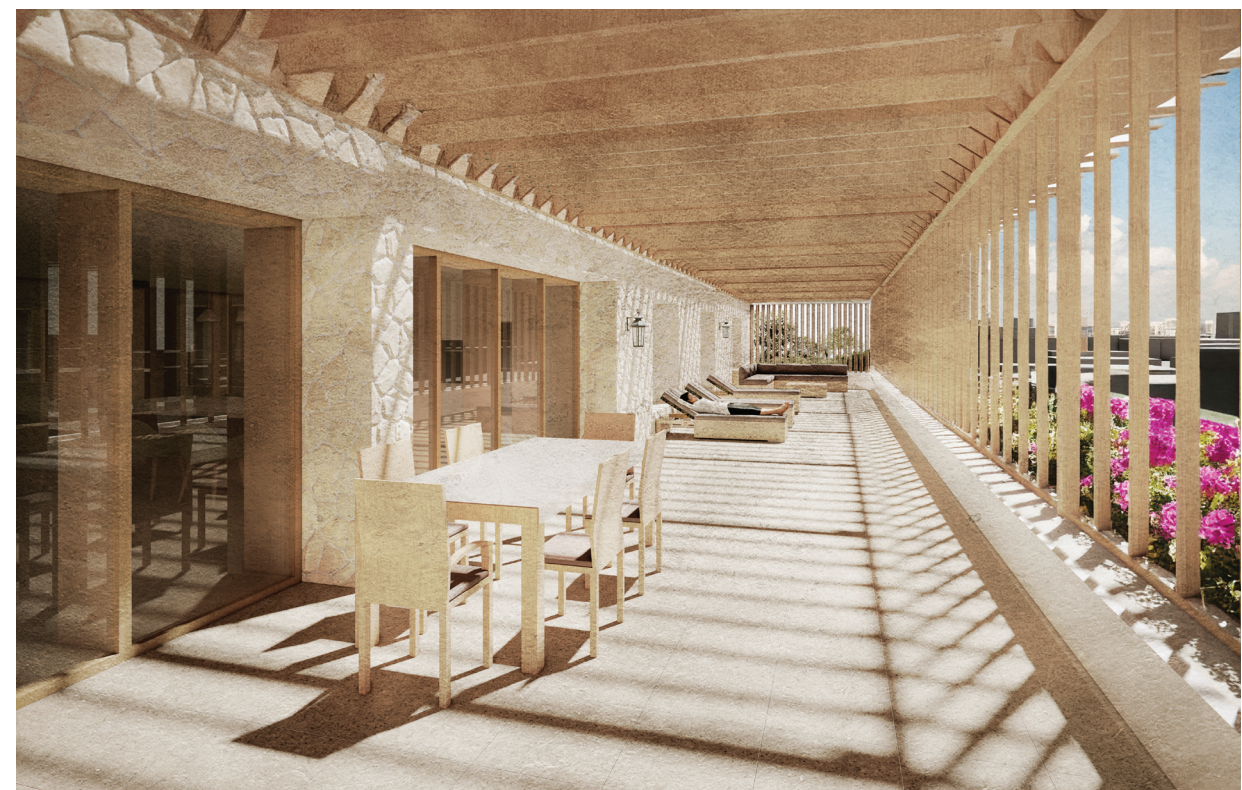
View of the Bazaar



Interior view of the reception



Perspective of the ward's corridors



View of the balcony



General Ward
Ground Floor
1:200



Perspective view of the Common Space



Perspective of the caregiver supervision

Buffer Belt

Location: Surrounding the plot



- 1. European Ash: 15-30 m
- 2. Turkey Oak: 20-30 m
- 3. Stone Pine: 12-25 m
- 4. Forsythia europaea: 2-3 m
- 5. Goldenrod: 0.5-1.5 m
- 6. Bush Germander: 1-1.5 m
- 7. Krokus: 0.1-0.2 m
- 8. Common Juniper: 0.5-3 m

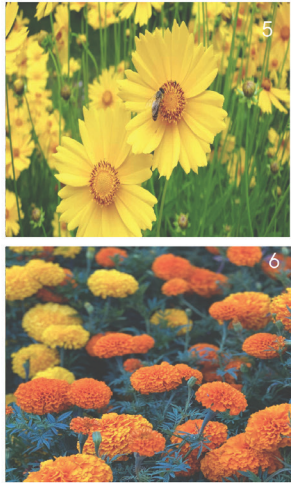
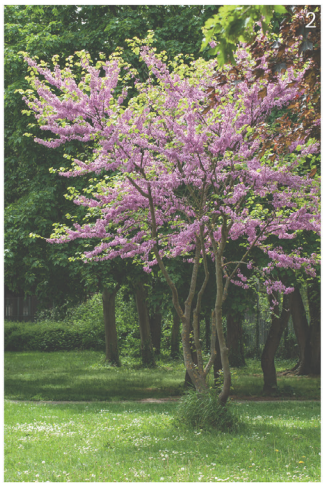
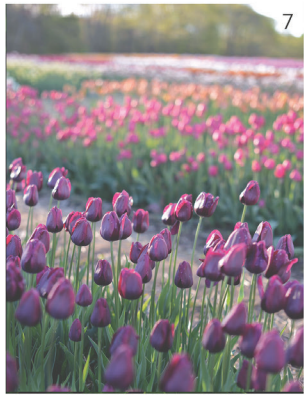


Pollinator Haven

Location: Multiple Spots



- 1. Turkey Oak: 15-30 m
- 2. Judas Tree: 6-10 m
- 3. Stone Pine: 12-25 m
- 4. Lavender: 0.5-1 m
- 5. Marigold: 0.3-0.6m
- 6. Bush Germander: 1-1.5 m
- 7. Tulips: 0.2-0.6 m
- 8. Common Juniper: 0.5-3 m

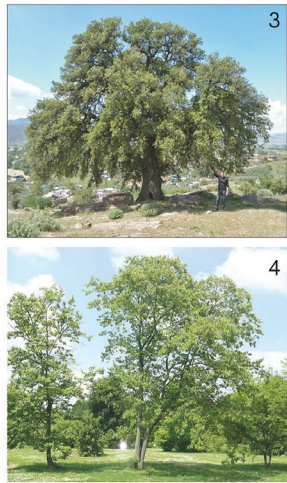


Playground Oasis

Location: Children's playground

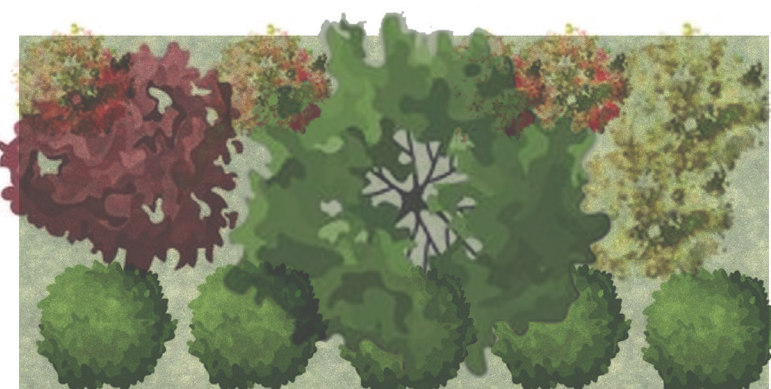


- 1. European Ash: 15-30 m
- 2. Stone Pine: 12-25 m
- 3. Turkey Oak: 20-30 m
- 4. Date Plum: 5-15 m
- 5. Holm Oak: 10-25 m
- 6. Chicory: 0.3-1.5 m
- 7. Daisy: 0.1-0.2 m
- 8. Dandelion: 0.1-0.3 m



Shade and Privacy Coat

Location: Around the Wards



- 1. European Ash: 15-30 m
- 2. Smoke Tree: 5-10 m
- 3. Common Box: 1-5 m
- 4. Common Myrtle: 1-5 m
- 5. White Clover: 0.15m
- 6. Indian Grass: 1-2 m
- 7. Achilla Millefolium: 0.5-1 m
- 8. Poppy: 0.4-0.6 m



Sensory Delight Garden

Location: Courtyards

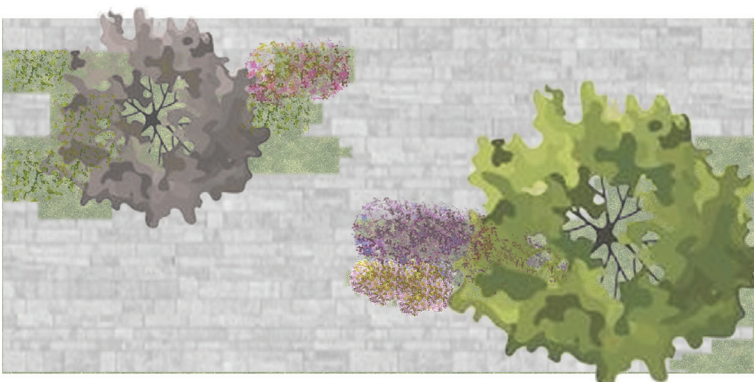


- 1. Mimosa: 4-10 m
- 2. Gardenia: 1-2 m
- 3. Common Sage: 0.3-0.8 m
- 4. Rosemary: 1-2 m
- 5. Jerusalem Sage: 0.5 m
- 6. Marigold: 0.3-0.6 m
- 7. Lavender: 0.5-1 m
- 8. Spearmint: 0.3-0.9 m



Urban Shade Grove

Location: Public Square



- 1. Field Maple: 12 m
- 2. Wild Cherry: 10 m
- 3. Thyme: 0.2 m
- 4. Coneflower: 1 m
- 5. Periwinkle: 0.15m
- 6. Yarrow
- 7. Dog Rose: 1.5 m
- 8. Spiny Bear's Breech

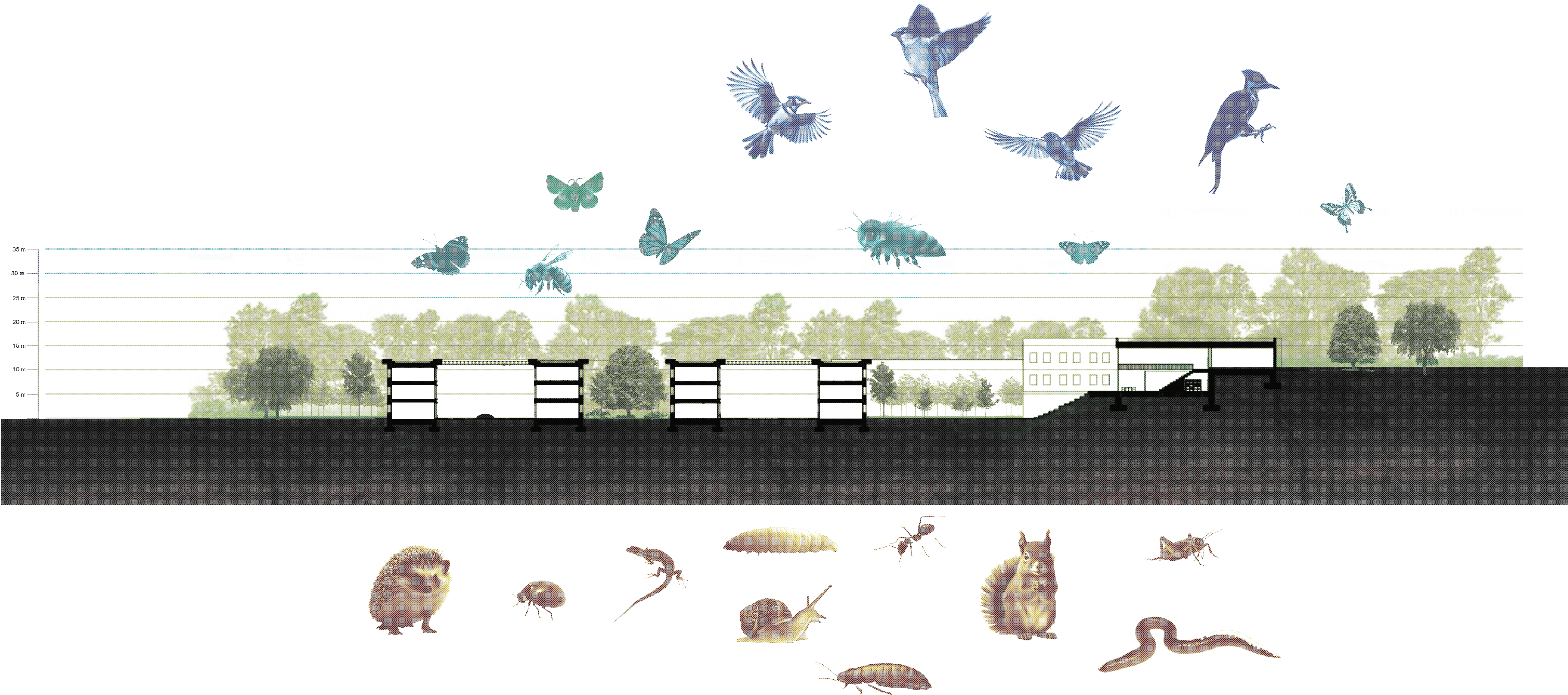
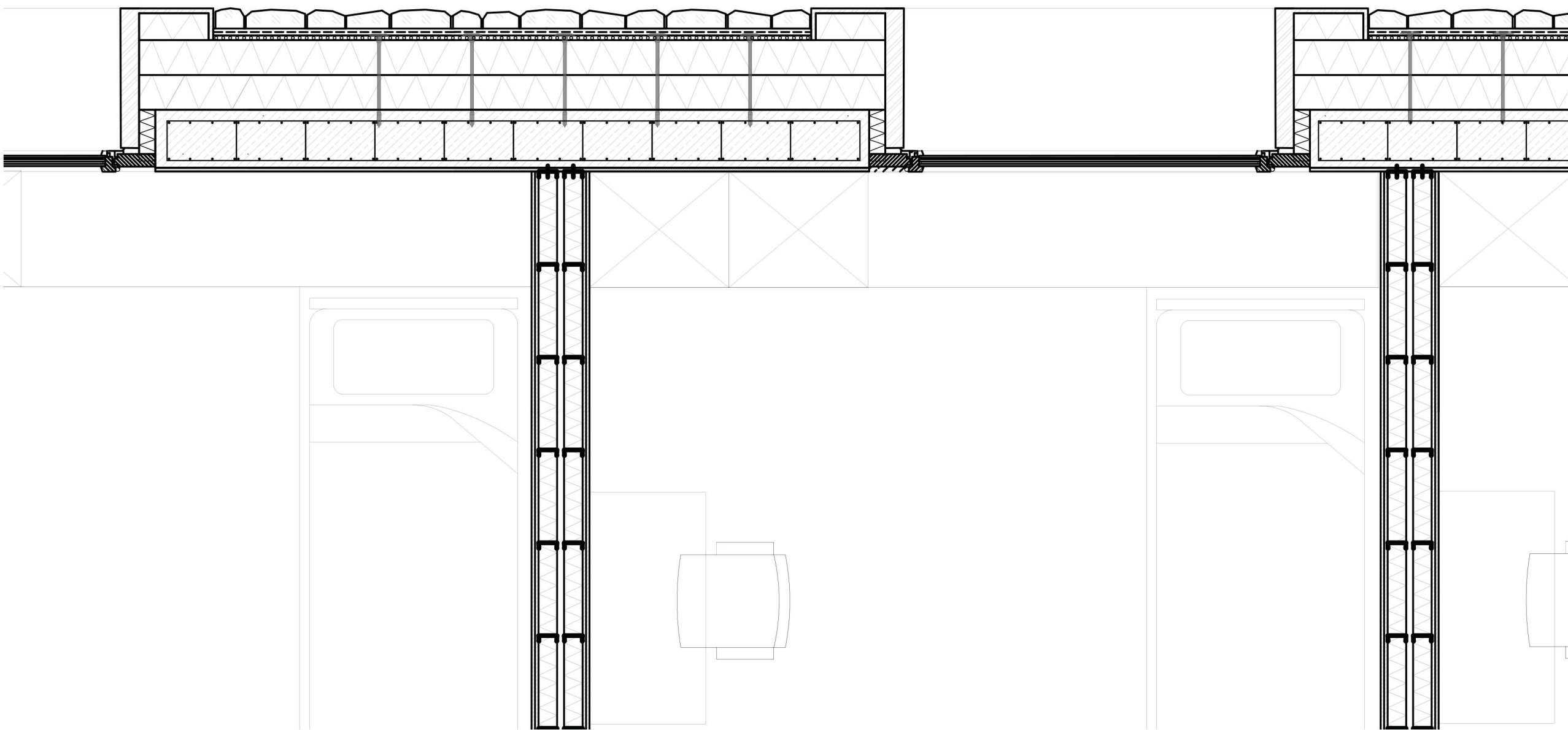


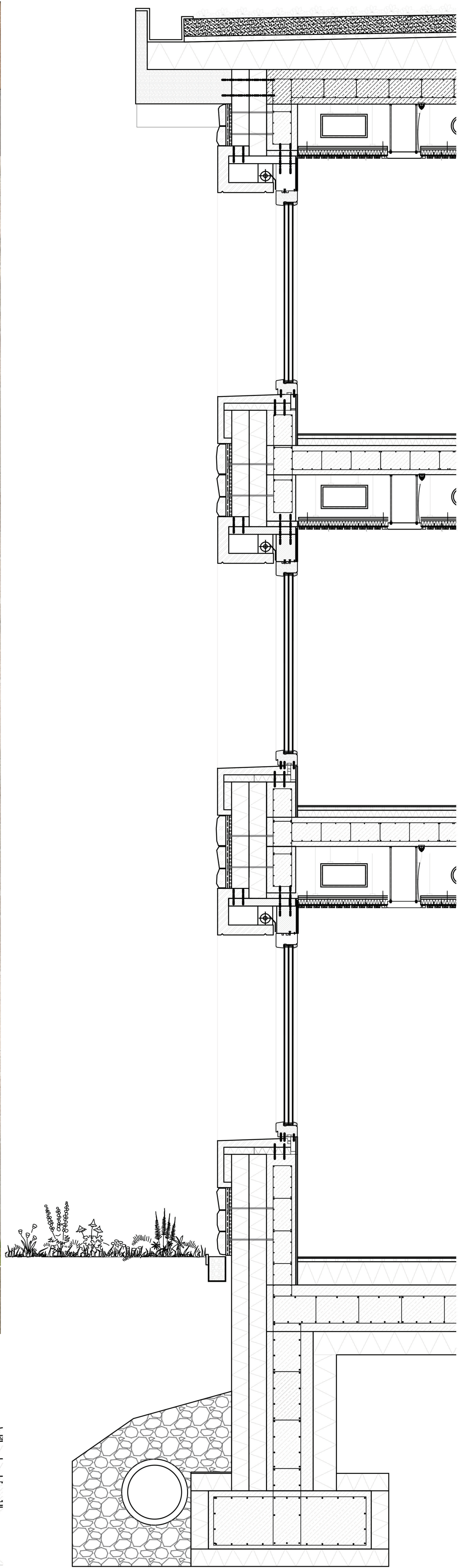
Image showing the targeted fauna and the heightmap of the vegetation.



Elevation of the facade
1:20



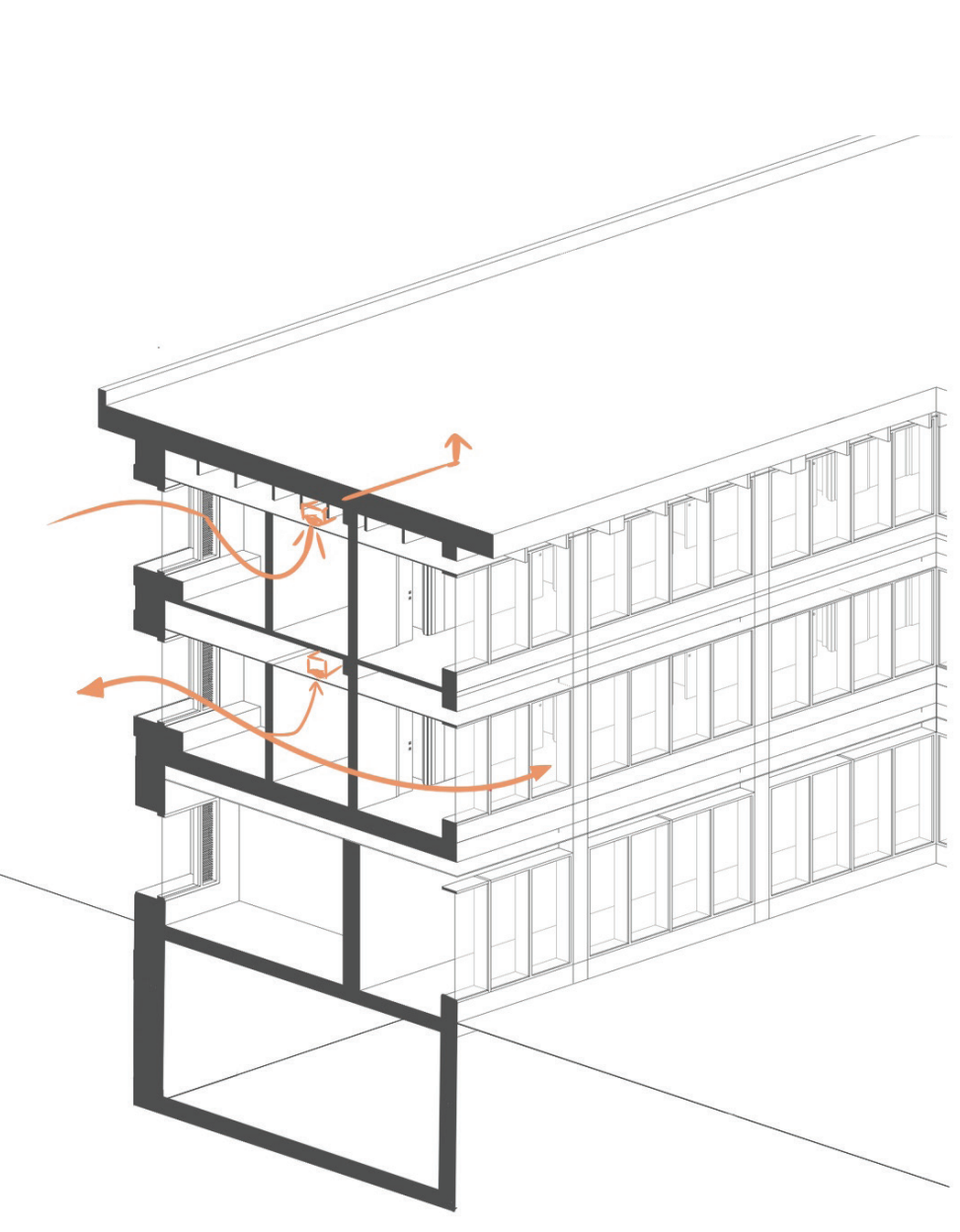
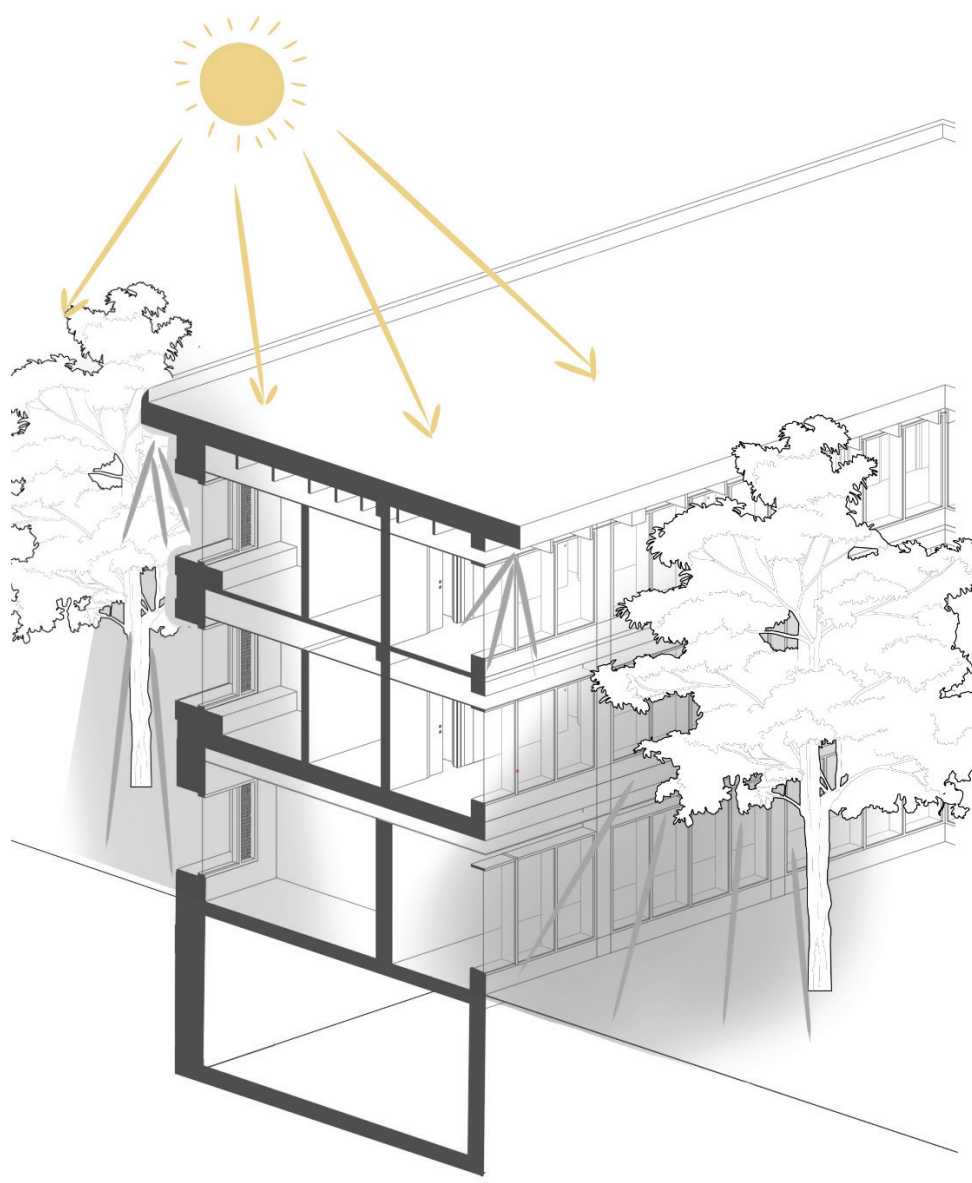
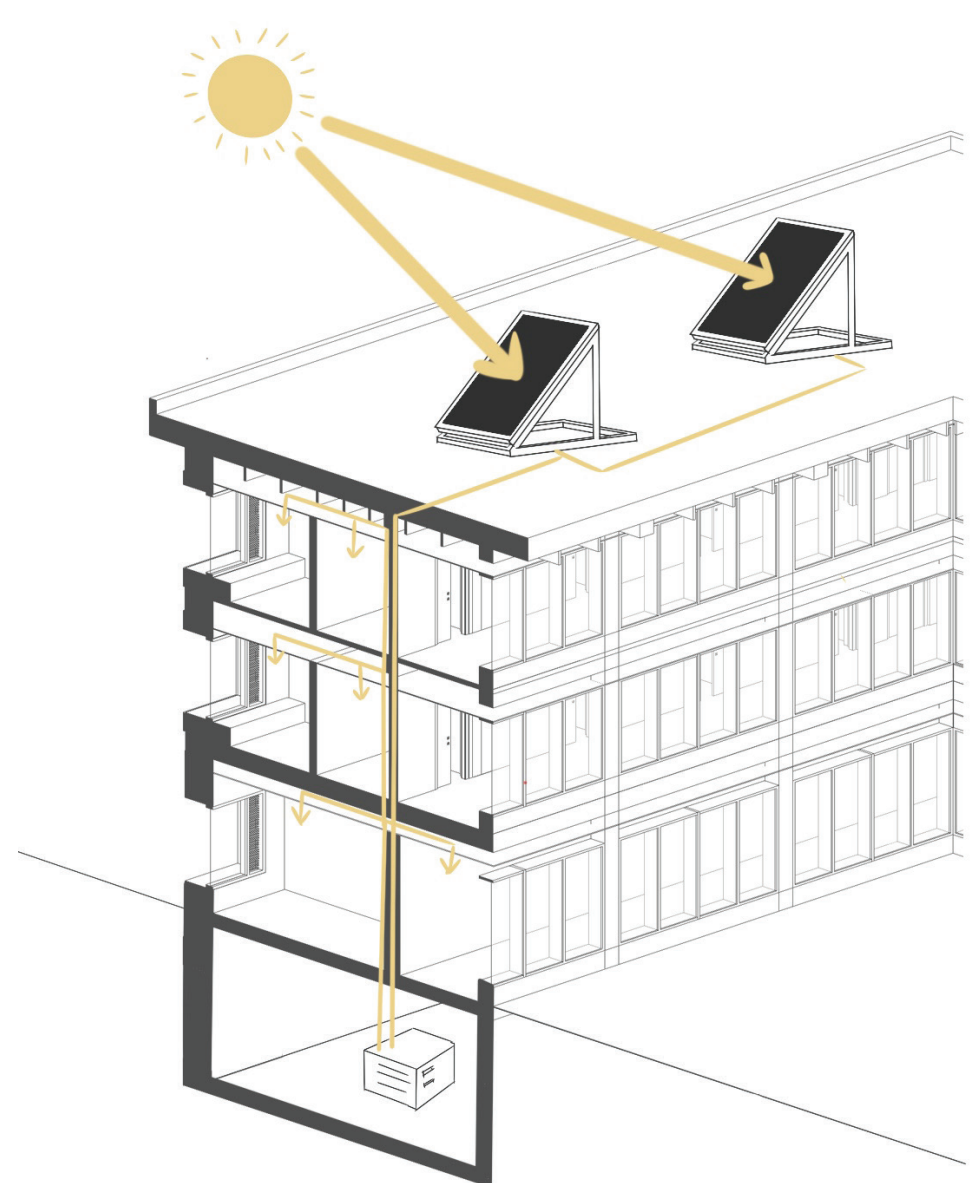
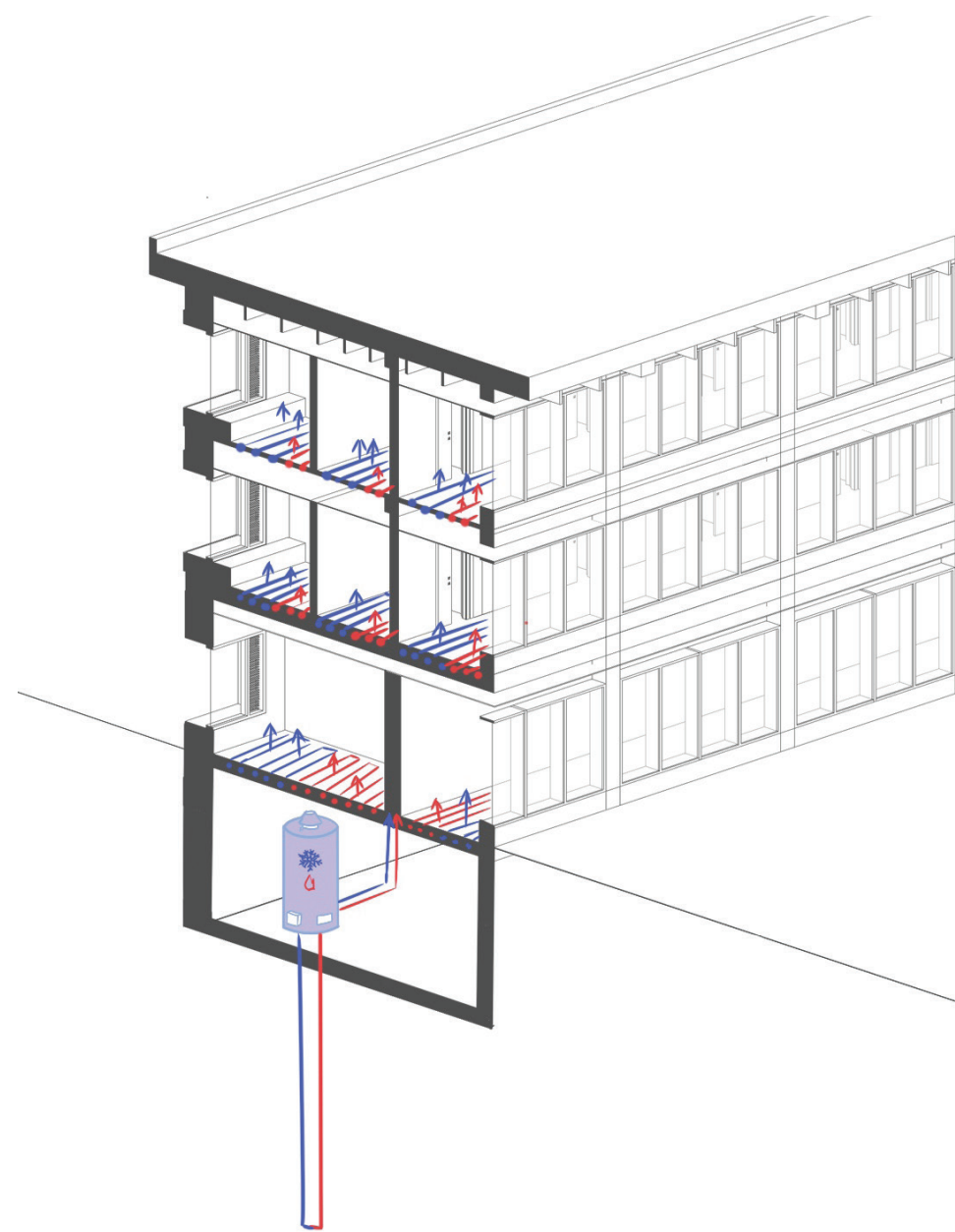
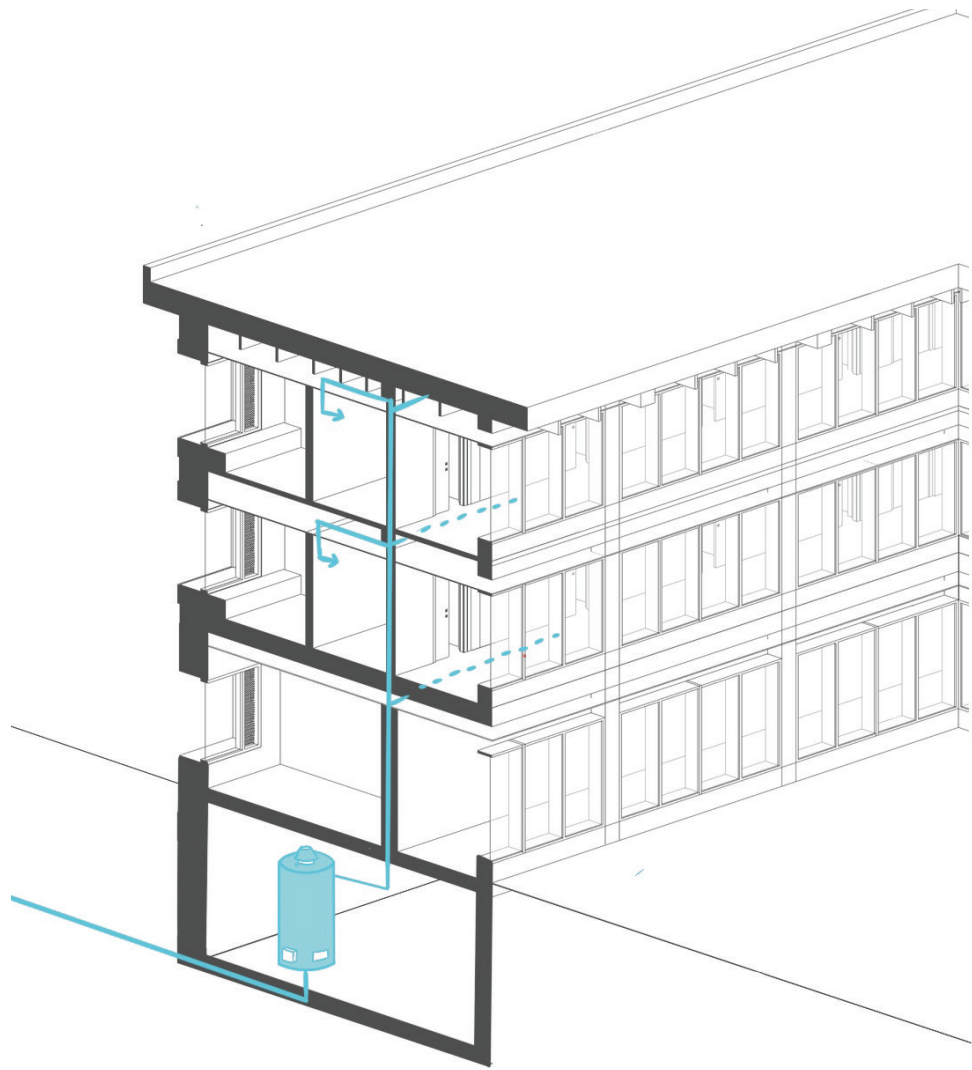
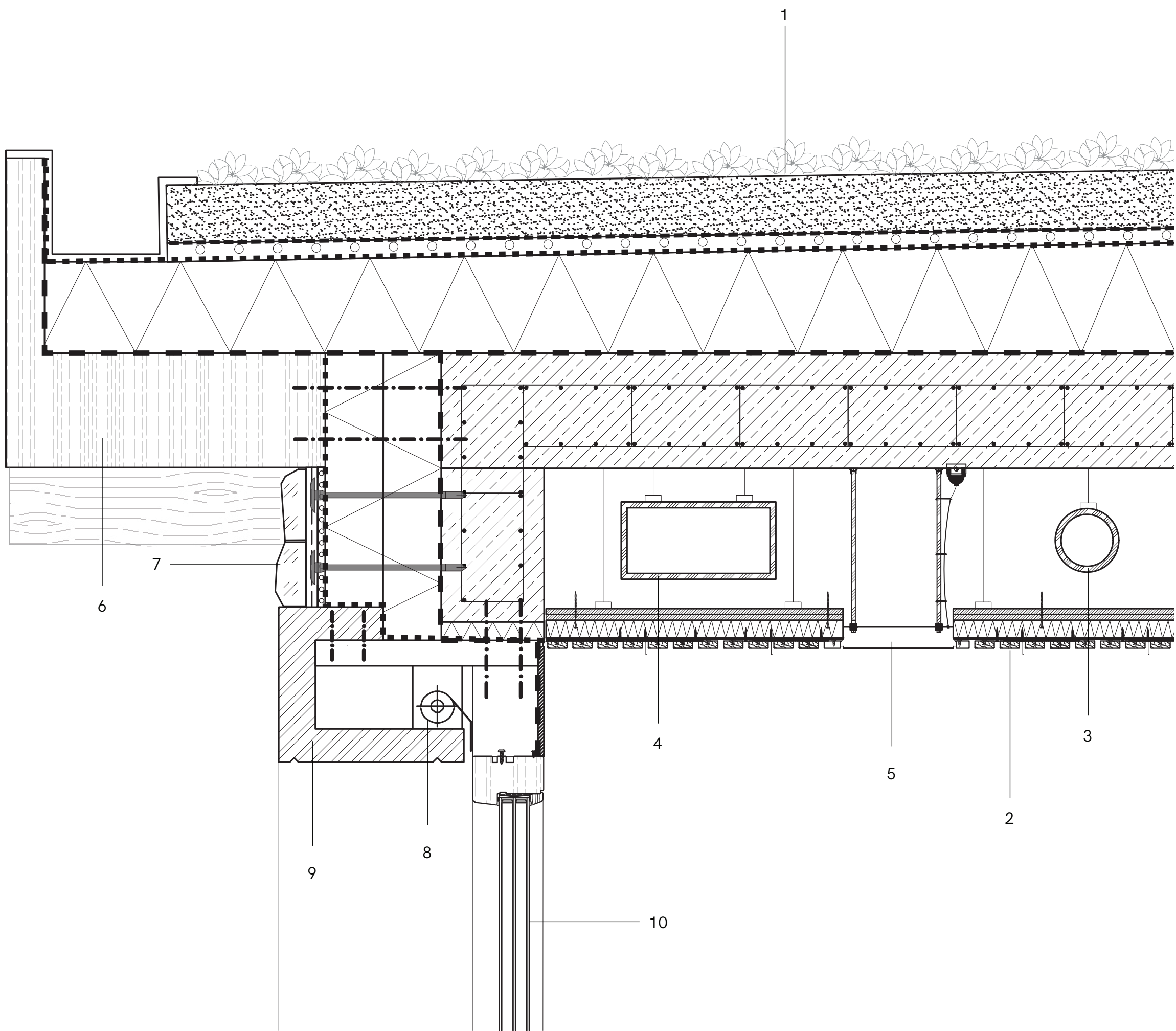
Plan section
1:20



Full Section of the facade
1:20

Combination Detail
Facade of the psychiatric wards
1:20

- 1 Greenery
150 mm soil
20 mm Filtration layer
Drainage and retention layer
Waterproof layer
260 mm insulation
Root barrier
VCL Layer
300 mm reinforced concrete base
- 2 Vertival wooden slat
Acousitc Fleece
Panels screwed to softwood battens
Hozizontal softwood battens and insulation
- 3 Waterpipe
- 4 40x20cm air duct
- 5 Lighting fixture
- 6 Wooden beams (shading)
- 7 Sandstone veneer stone with two component grouting mortar
Supporting mesh embedded in glue layer
Reinforcing mesh embedded in the glue layer
TOPFix screw wall plug with cap
Waterproof layer
2x 150 mm stone wool insulation
VCL layer
250mm Reinforced concrete beam
- 8 Roll-down shading system
- 9 Fiber cement frame
- 10 Tirpple glazed, fixed wooden frame window



- 1 15mm floor covering tiles
Vapor barrier
Concrete layer with hydronic system
200 mm stone wool insulation
250 mm reinforced concrete slab
Vapor barrier layer
Foundation insulation
Waterproof layer
- 2 Cement finishing
250mm Reinforced concrete beam
Vapor barrier layer
2x 150 mm stone wool insulation
Waterproof layer
TOPFix screw wall plug with cap
Reinforcing mesh embedded in the glue layer
Supporting mesh embedded in glue layer
Sandstone veneer stone with two component grouting mortar
- 3 Fiber cement frame
- 4 Tirpple glazed, fixed wooden frame window
- 5 Gravel barrier
- 6 Grass and greenery
- 7 Gravel drainage system

