

place & memory

---





place & memory

---





place & memory

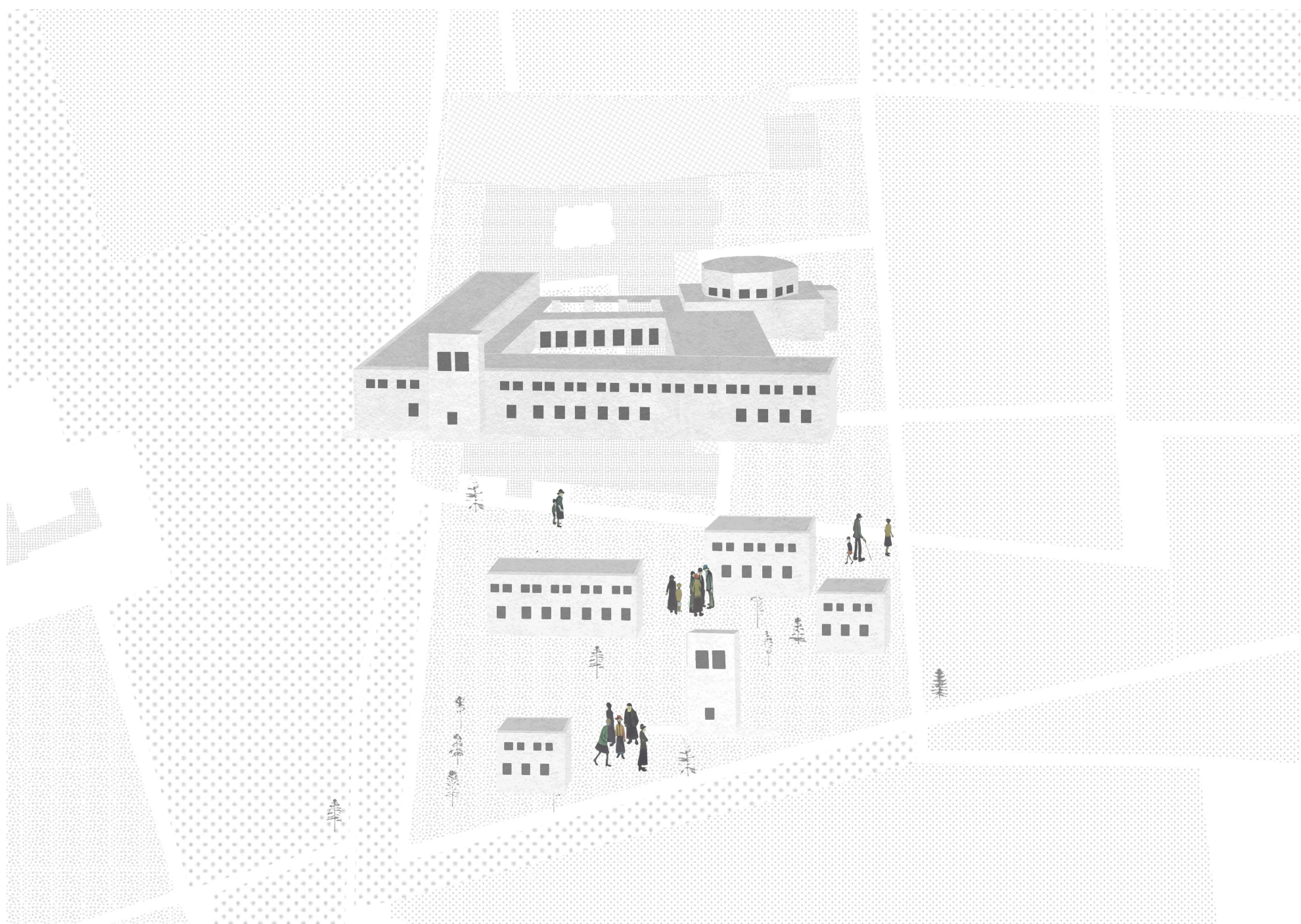
---





settlement

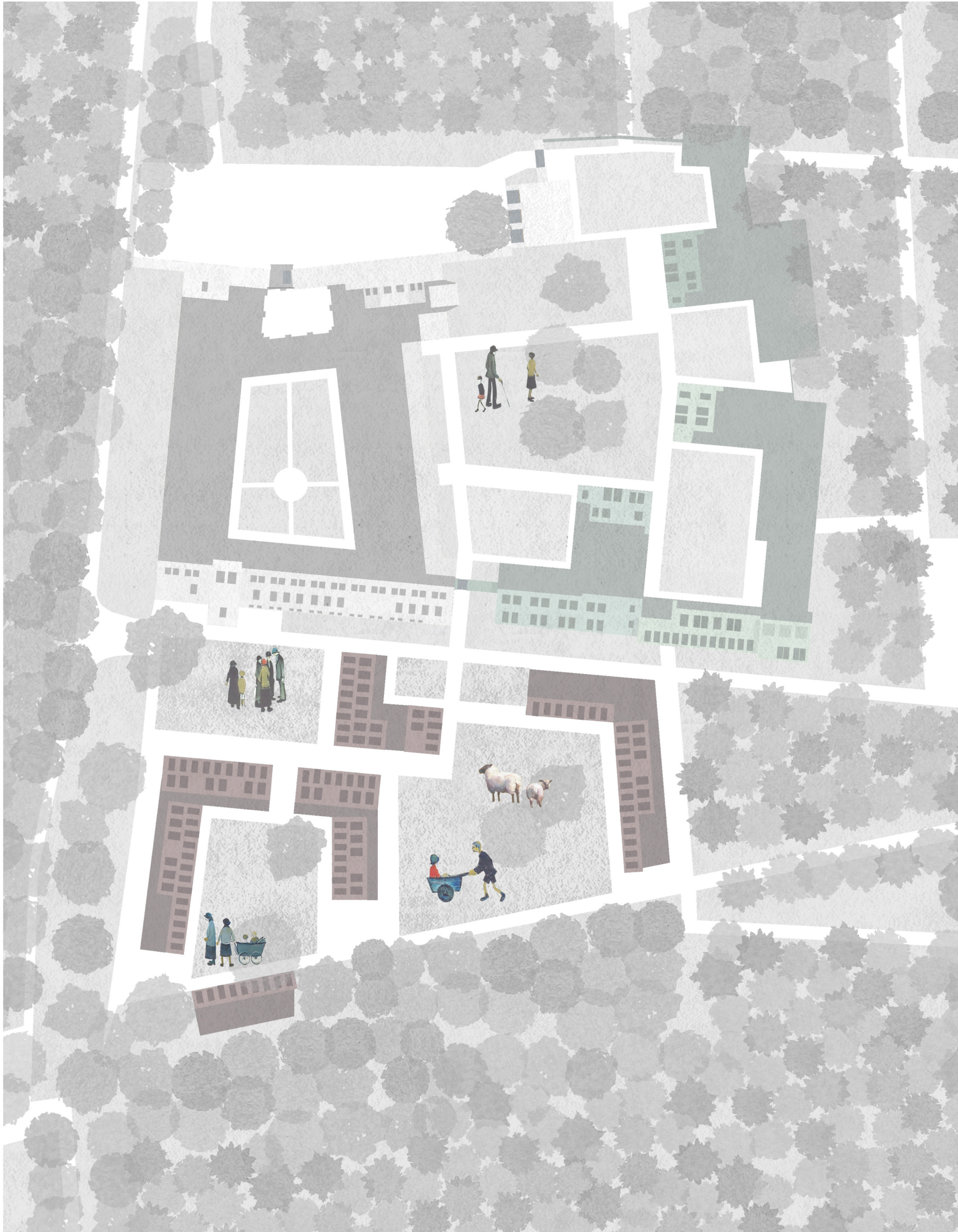
---





## settlement

---



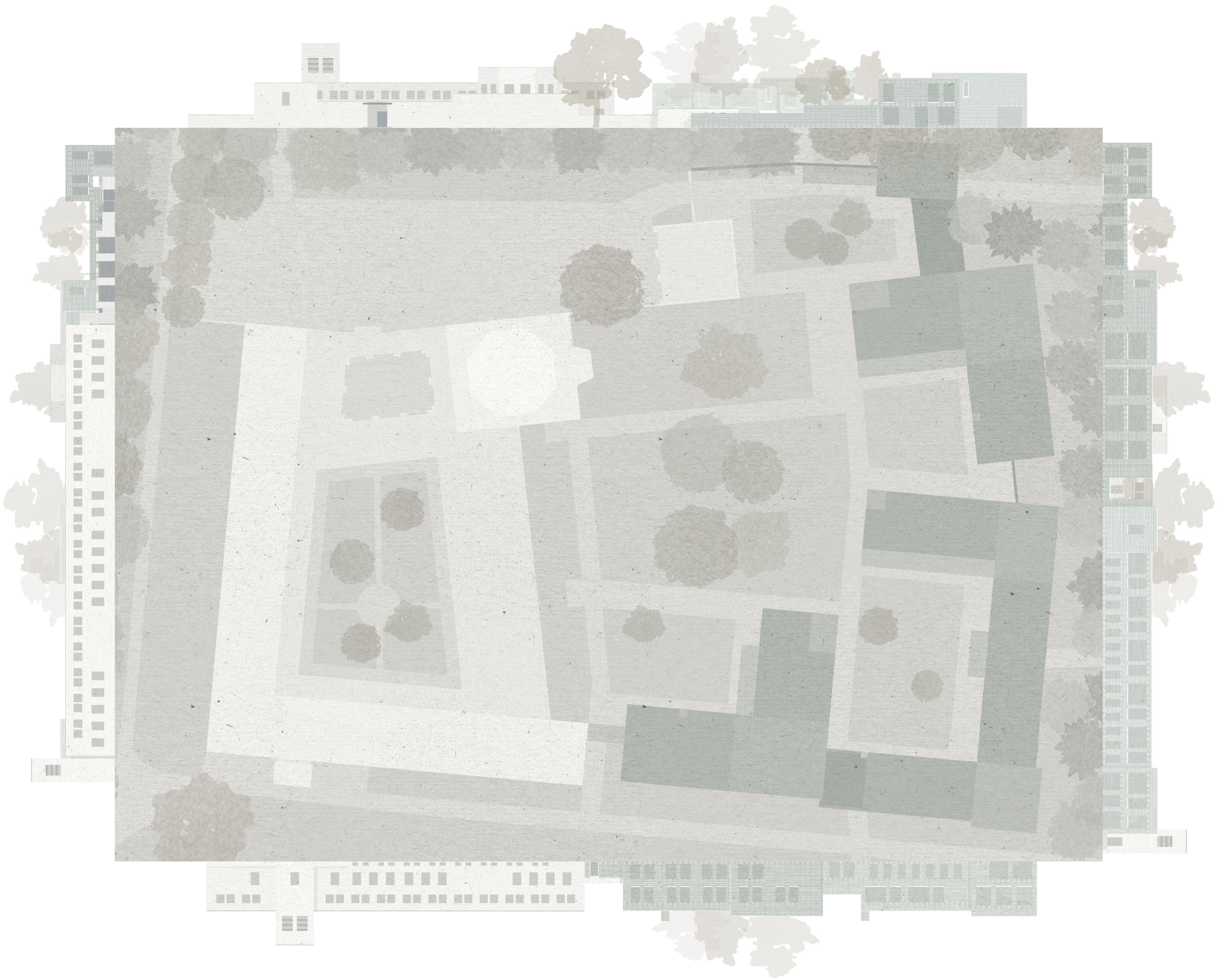
*It comes from Latin communis “in common, public, shared by all or many;  
general, not specific; familiar, not pretentious,”  
But, it comes originally from the Proto Indo-European word \*ko-moin-i-  
“held in common,”... hence it means literally “shared by all”.*

*Acts of ‘commoning’, of re-appropriation of the commons are needed,  
use not property is what counts.*



enclosure

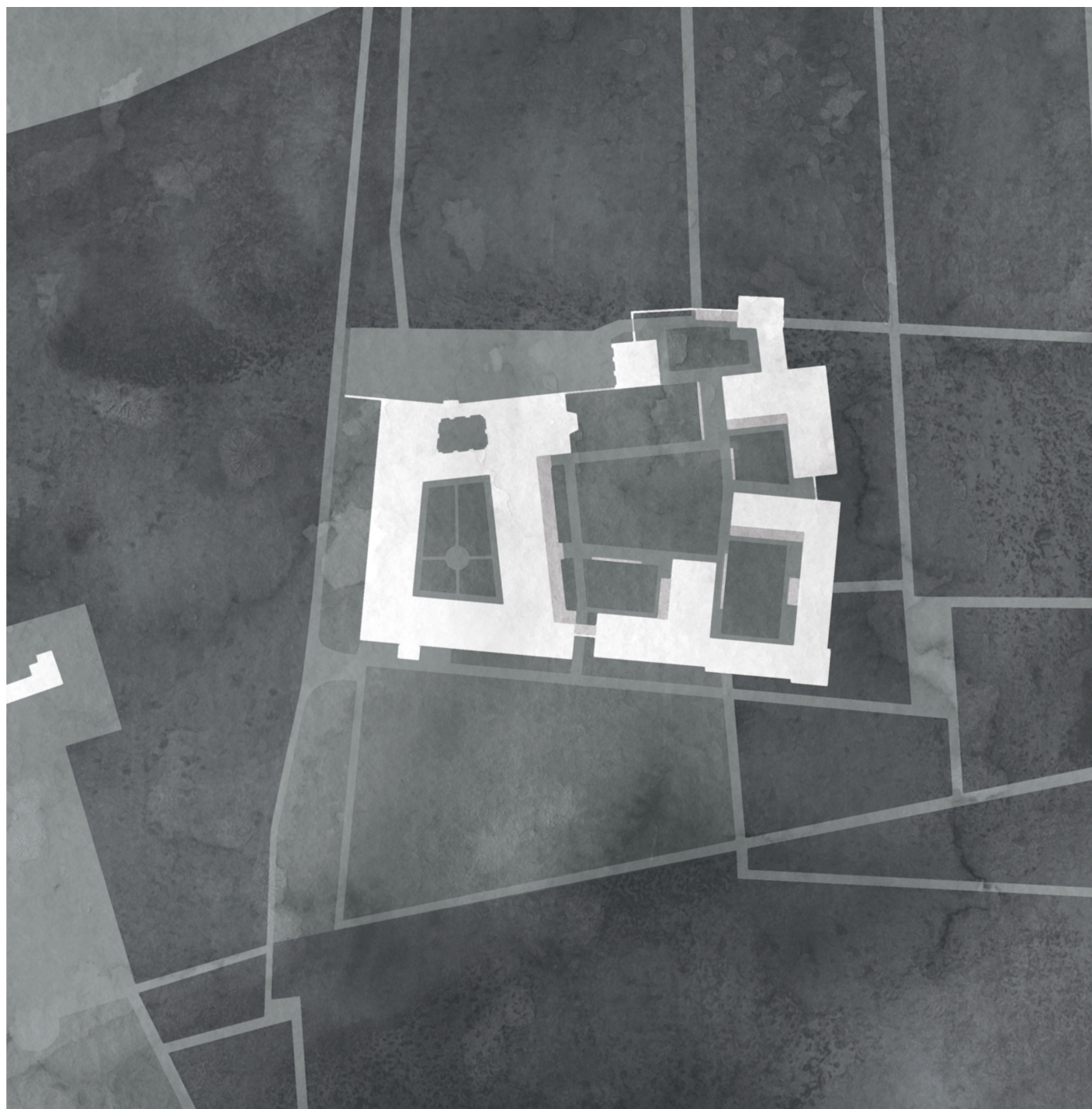
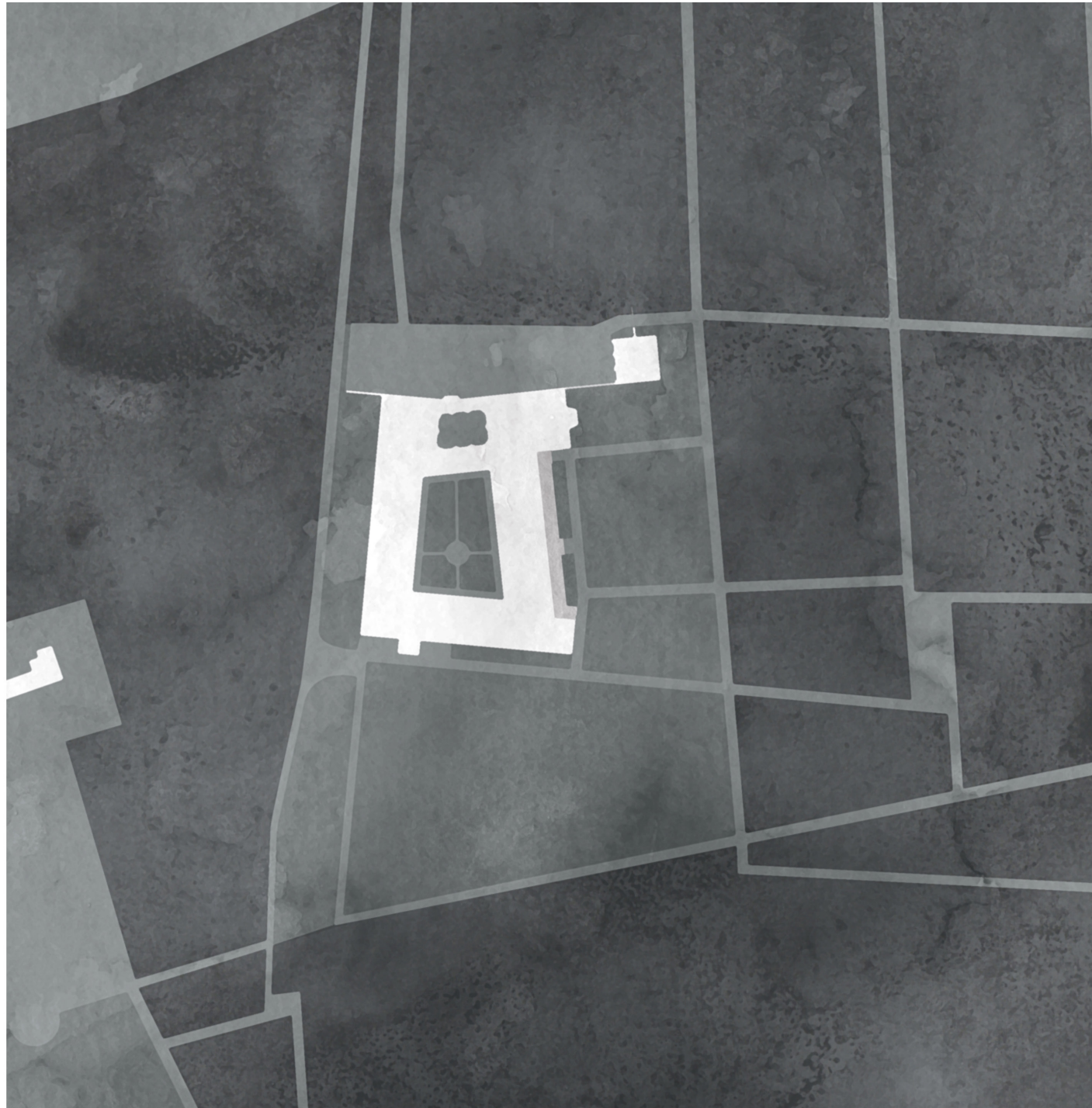
---





enclosure

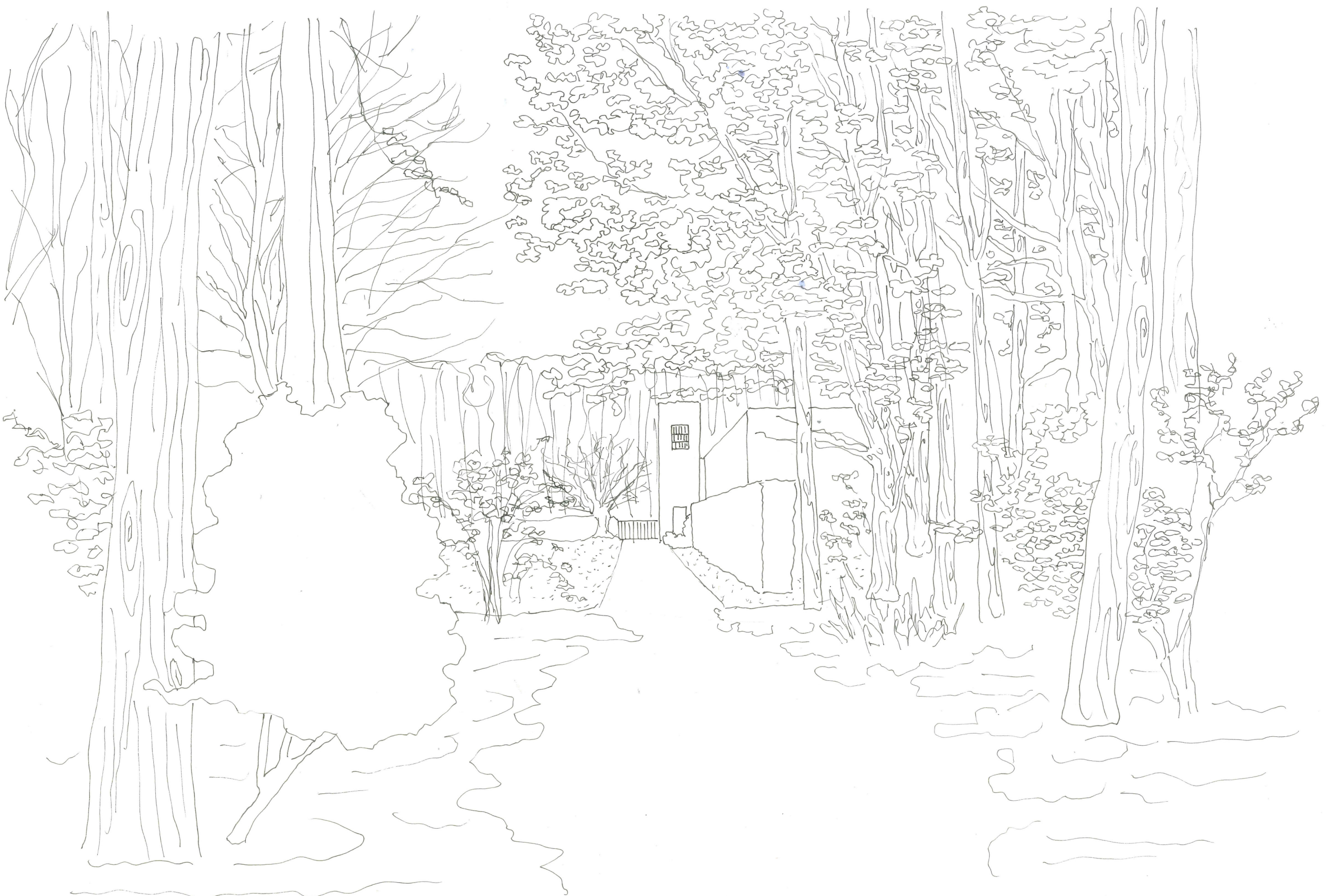
---





building landscape

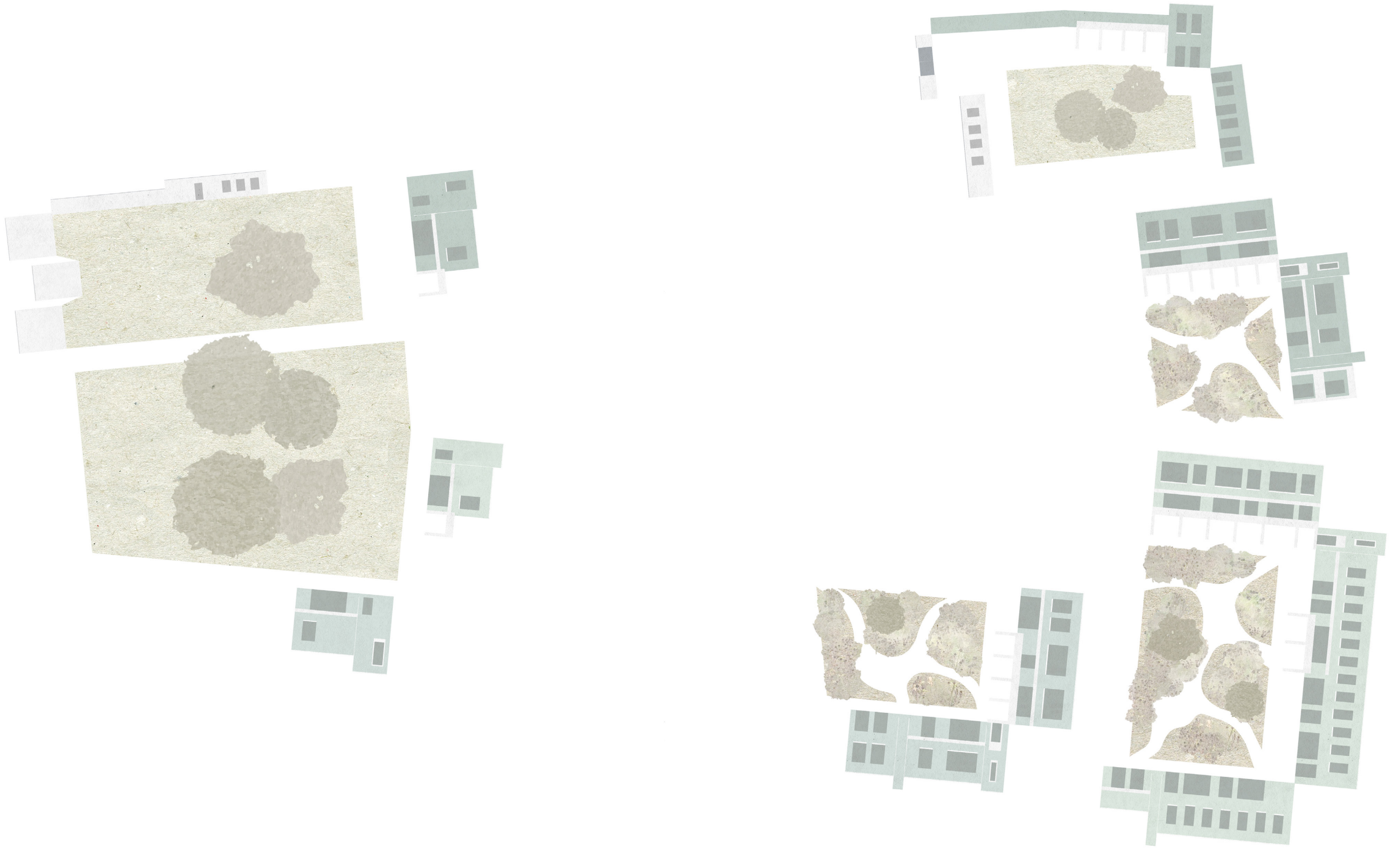
---





building landscape

---





building landscape

---





a care home

---





a care home

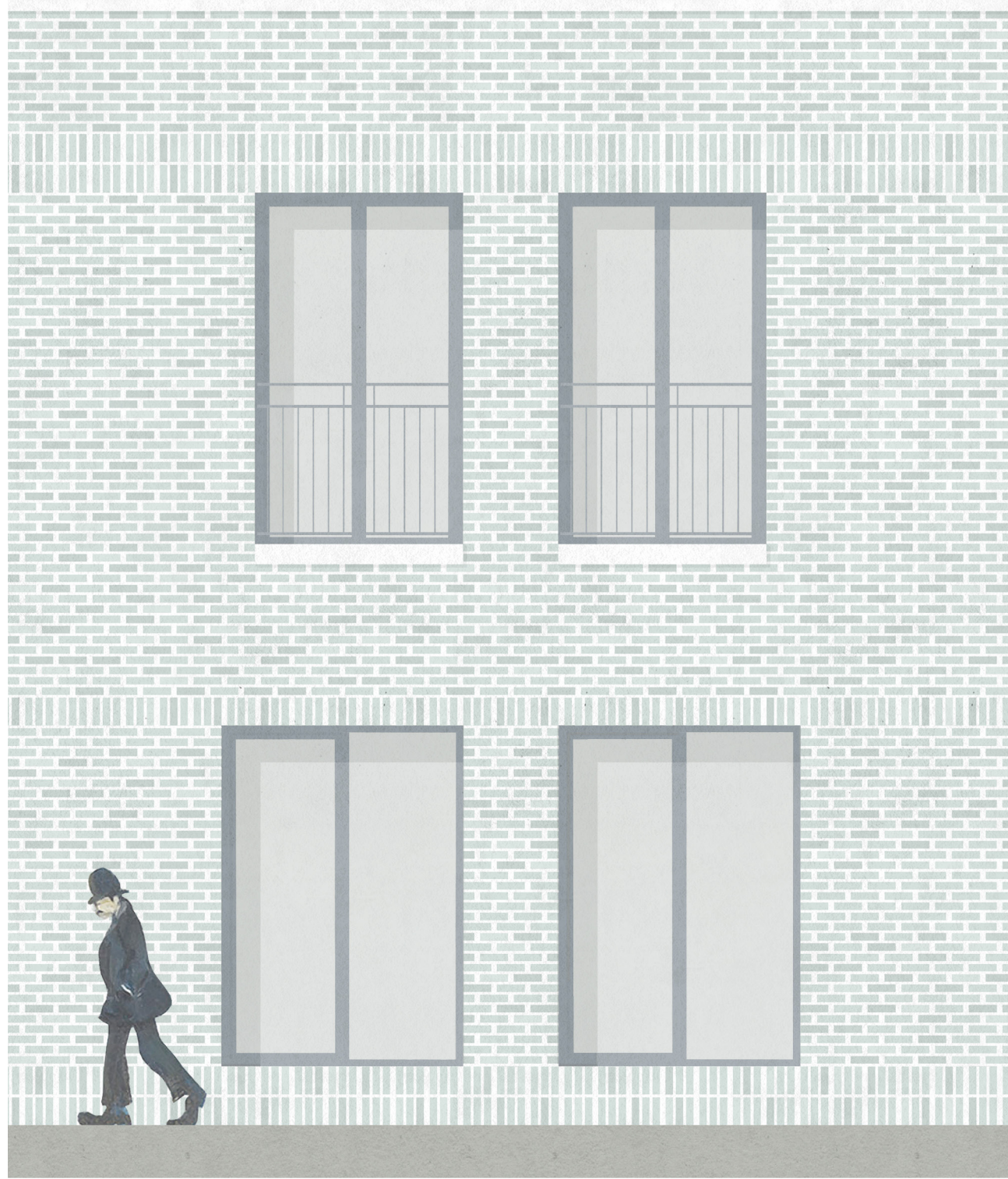
---





a care home

---

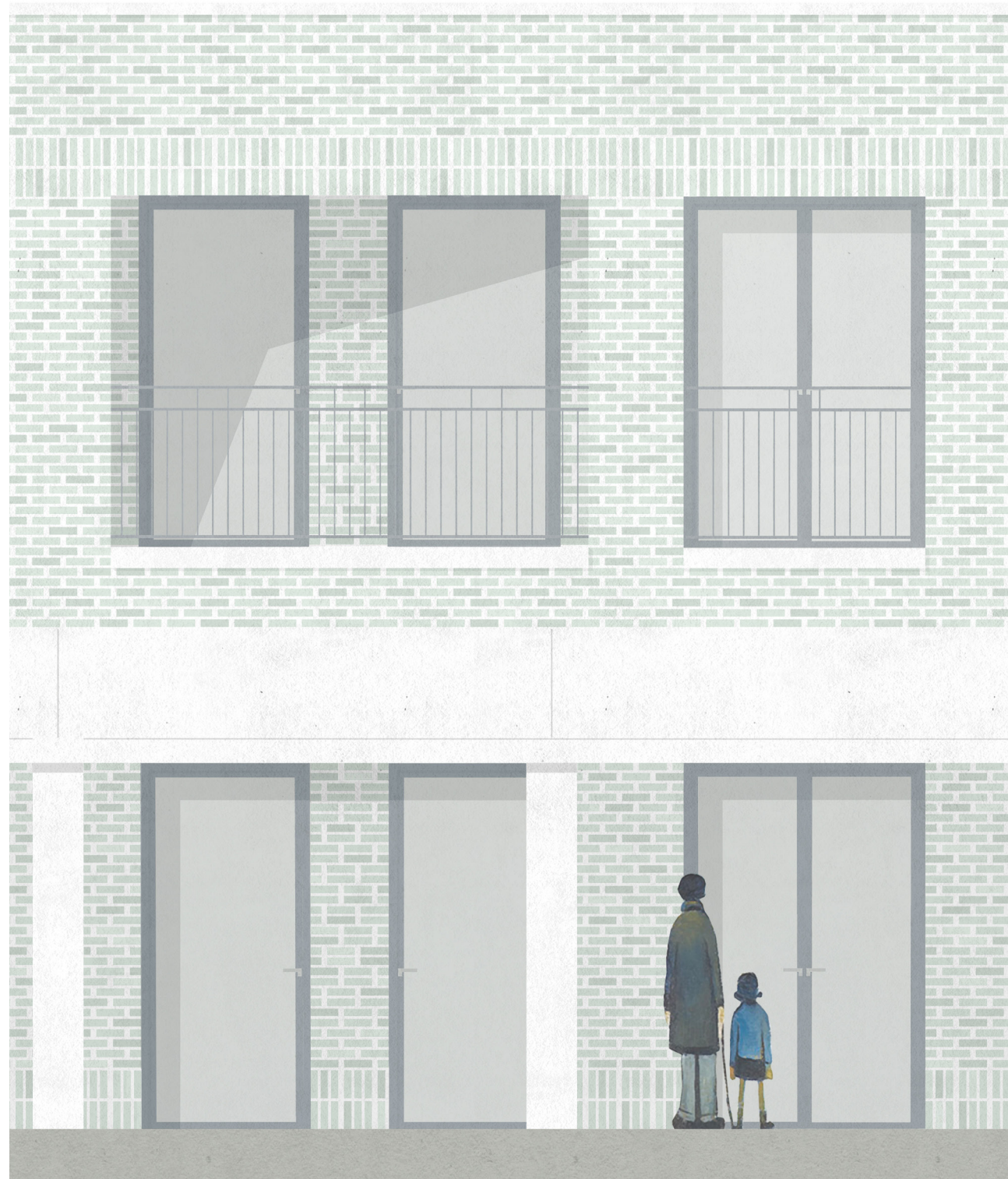


1to40 fragment of the facade and impression of a standard care room on the first floor



a care home

---

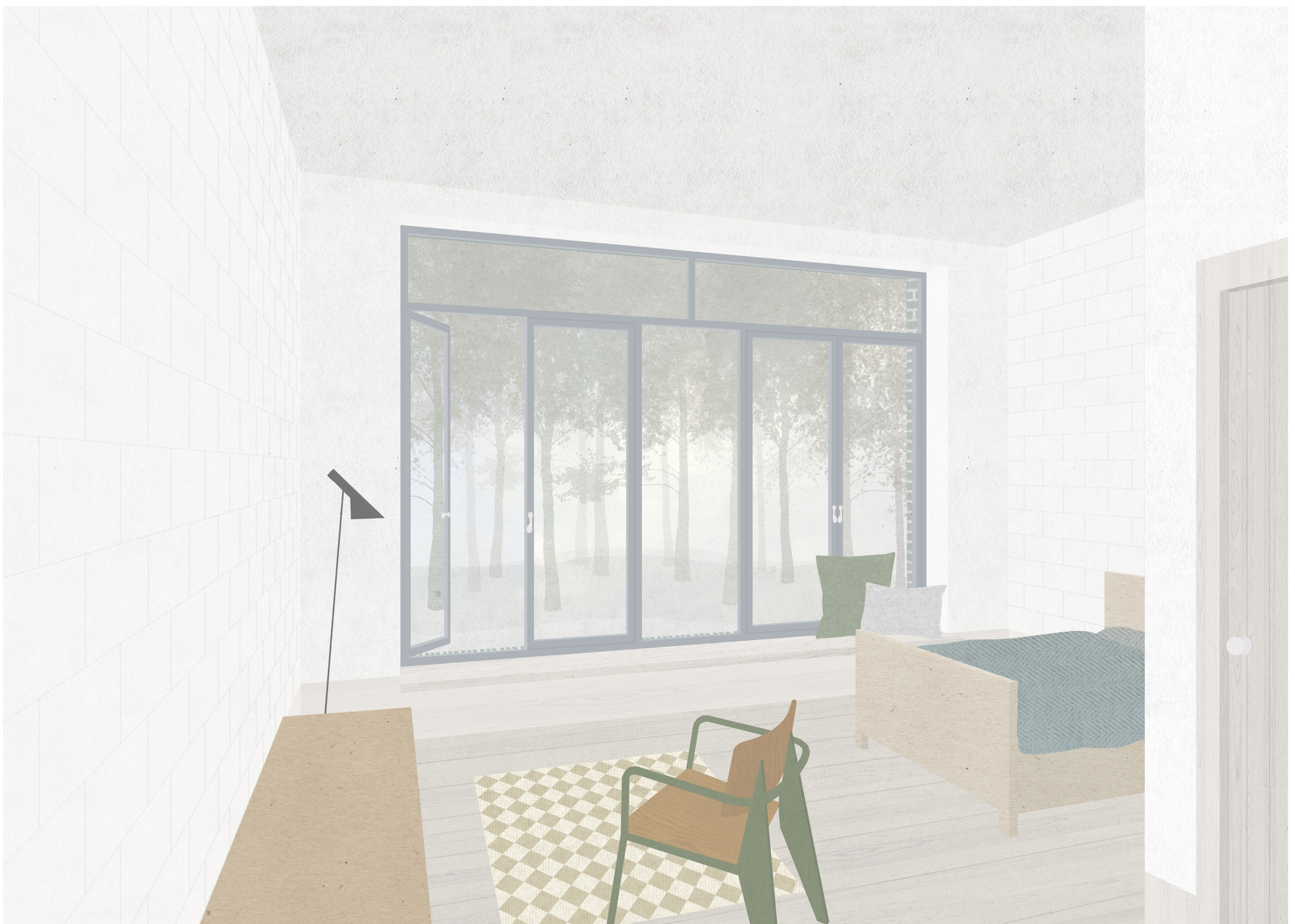


1to40 fragment of the facade and impression of the bigger rooms with a kitchenette and private exterior space



a care home

---



1to40 fragment of the facade and impression of a care room neighbouring the woods



a care home

---



1to40 fragment of the facade and impression of a corner room neighboring the shared exterior space



a care home

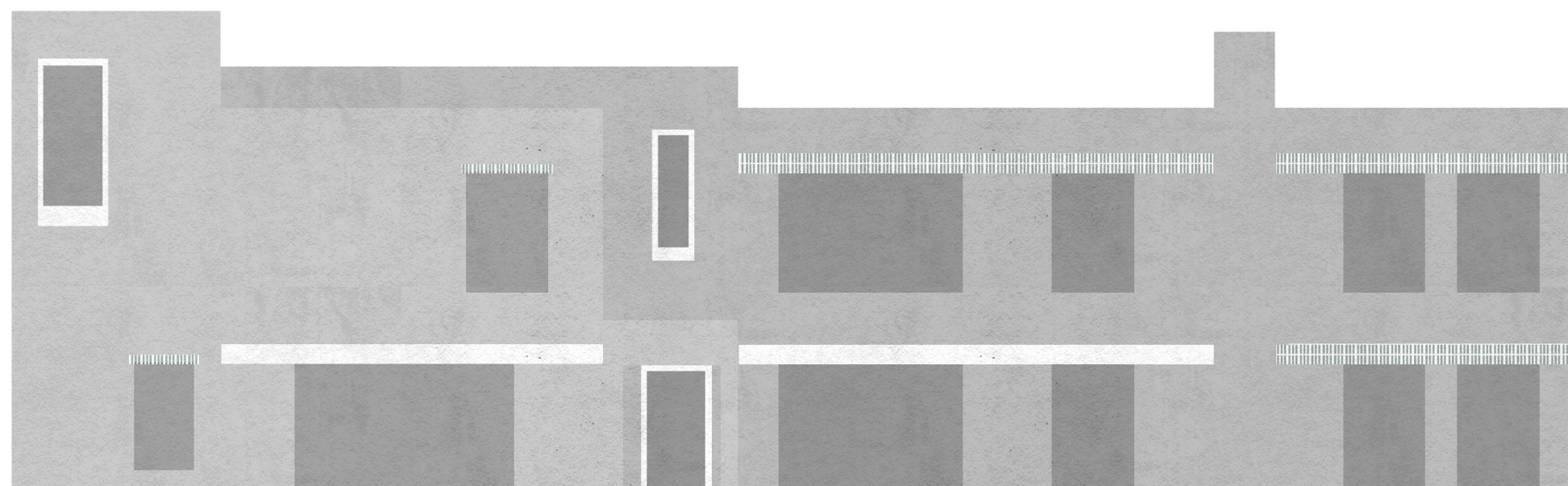
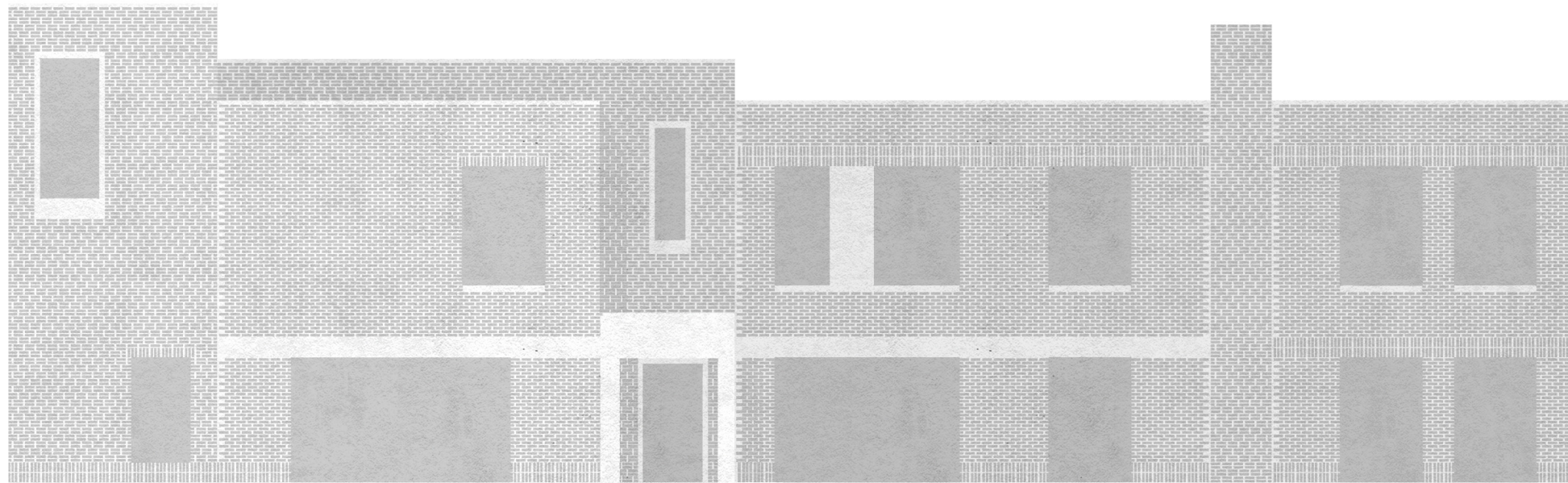
---





material culture

---





material culture

---





material culture

---





identity

---





identity

---





identity

---

