

Mesh adaptation using adjoint methods and reduced-order models for large eddy simulation

Li, Xiaodong; Hulshoff, Steven; Hickel, Stefan

DOI

[10.23967/wccm-eccomas.2020.196](https://doi.org/10.23967/wccm-eccomas.2020.196)

Publication date

2021

Document Version

Final published version

Published in

World Congress in Computational Mechanics and ECCOMAS Congress

Citation (APA)

Li, X., Hulshoff, S., & Hickel, S. (2021). Mesh adaptation using adjoint methods and reduced-order models for large eddy simulation. *World Congress in Computational Mechanics and ECCOMAS Congress, 800*, 1-11. <https://doi.org/10.23967/wccm-eccomas.2020.196>

Important note

To cite this publication, please use the final published version (if applicable). Please check the document version above.

Copyright

Other than for strictly personal use, it is not permitted to download, forward or distribute the text or part of it, without the consent of the author(s) and/or copyright holder(s), unless the work is under an open content license such as Creative Commons.

Takedown policy

Please contact us and provide details if you believe this document breaches copyrights. We will remove access to the work immediately and investigate your claim.



SCIPEDIA

Mesh Adaptation Using Adjoint Methods and Reduced-Order Models for Large Eddy Simulation

Xiaodong Li, Steven John Hulshoff, Stefan Hickel

iacm



14th WCCM

Eccomas Congress 2020

Virtual Congress 11-15 January, 2021

INFORMATION

Keywords:

Computational Fluid Dynamics
Large Eddy Simulation
Adaptive Mesh Refinement
Adjoint Method
Posterior Error Estimation
Reduced-Order Model

DOI: 10.23967/wccm-eccomas.2020.196

Published: 11/03/2021

MESH ADAPTATION USING ADJOINT METHODS AND REDUCED-ORDER MODELS FOR LARGE EDDY SIMULATION

Xiaodong Li¹, Steven Hulshoff² and Stefan Hickel³

Delft University of Technology, Kluyverweg 2, 2629 HS Delft, Netherlands

¹ X.Li-12@tudelft.nl, ² SJHulshoff@tudelft.nl, ³ S.Hickel@tudelft.nl

Key words: Computational Fluid Dynamics, Large Eddy Simulation, Adaptive Mesh Refinement, Adjoint Method, Posterior Error Estimation, Reduced-Order Model

Abstract. Adaptive mesh refinement (AMR) is potentially an effective way to automatically generate computational meshes for high-fidelity simulations such as Large Eddy Simulation (LES). Adjoint methods, which are able to localize error contributions, can be used to optimize the mesh for computing a physical quantity of interest (e.g. lift, drag) during AMR. When adjoint-based AMR techniques are applied to LES, primal flow solutions are needed to solve the adjoint problem backward in time due to the nonlinearity of Navier-Stokes equations. However, the resources required to store primal flow solutions can be huge, even prohibitive, in practical problems because of the long averaging time for computing statistical quantities. In this paper, a Reduced-Order Model (ROM) based upon Proper Orthogonal Decomposition (POD) is introduced to circumvent this issue. First, an adjoint-based error estimation procedure is verified using a manufactured solution. Then a ROM-driven AMR strategy is studied using a LES model problem based on the 1D unsteady Burgers equation. Numerical results demonstrate that using ROMs not only lowers storage requirements, but also has no impact on the effectiveness of adjoint-based AMR.

1 INTRODUCTION

Large Eddy Simulation (LES), in which one resolves large-scale turbulent structures while modelling the impact from smaller turbulent scales, has the potential to deliver reliable flow predictions for many applications, such as those involving flow separation from a smooth surface or the analysis of acoustic sources [1]. LES has been shown to be highly successful in situations where the computational mesh is fine enough to resolve an appropriate range of large scales [2]. Nonetheless, defining such a computational mesh for obtaining an accurate solution with tractable computing cost is a challenging task, particularly in practical applications with complex geometries and unknown physical features.

In practice, the construction of such meshes usually involves trial and error, even for engineering experts. It is thus natural to consider Adaptive Mesh Refinement (AMR) techniques [3] in order to automatically construct the computational mesh. Physical features, such as wall distance, vorticity or shocks, have been widely used to guide AMR. However, local features are not necessarily related to the physical quantity of interest (QoI). Consequently, adjoint methods have been proposed to connect the local mesh contribution with the error in a chosen QoI, so that the adapted mesh can provide the highest accuracy per degree of freedom. This approach has been successfully used in both steady laminar and turbulent

flow problems [4].

When adjoint-based AMR is employed for LES, there are complications. In unsteady simulations, the primal flow problem is advanced forward in time while the adjoint problem needs to be solved backward in time. Due to the non-linearity of Navier-Stokes equations, flow states from the primal LES are required for solving the adjoint problem. For small problems, we can store complete primal flow solutions in memory and then use this data to solve the adjoint problem. For practical problems, however, we are normally interested in QoIs computed over long averaging times, leading to prohibitive memory requirements. In order to handle this difficulty, some researchers choose to store the primal solution on hard disks [5, 6, 7, 8]. However, the speed of data communication between hard disk and solver is much slower than the access to main memory. Others choose to store flow solution snapshots at a prescribed frequency and interpolate intermediate values in time [9, 10], which has also been employed in high-Re number problems [11]. Another solution is to apply the checkpointing technique [12] in which optimal-selected primal states are stored and then used to re-solve the primal problem locally. Such techniques have been employed to solve unsteady adjoint problem in sensitivity analyses of dynamical systems [13], cylinder flows [14], and tonal noise [15]. However, this requires significant computational effort due to the re-computation. In order to make adjoint-based AMR affordable and efficient for LES, we consider a reduced-order model (ROM), based on proper orthogonal decomposition (POD), to circumvent these difficulties.

This paper is organized as follows. After a problem formulation in Section 2, on which the variational multiscale method and numerical discretization of LES are presented, the associated adjoint equation is derived in Section 3 and then a posteriori error estimation is formulated. Section 4 states the strategy and procedure of mesh adaptation, and the POD-based ROM with its application on stationary mesh is described in Section 5. After the validation of error estimation on a Burgers problem with manufactured solutions in Section 6, we present the numerical experiments of the proposed AMR approach on an unsteady viscous Burgers problem with a multi-frequency forcing term. Concluding remarks appear in Section 7.

2 PROBLEM FORMULATION

We consider the one-dimensional (1D) Burgers equation over a space-time domain $\Omega : [0, 1] \times I : [0, T]$. The Burgers equation is often used as a mathematical model for the applications which involve shock wave propagation in viscous flows and turbulence [16]. The Burgers equation is expressed as

$$\mathcal{N}(u) = \frac{\partial u}{\partial t} + u \frac{\partial u}{\partial x} - \nu \frac{\partial^2 u}{\partial x^2} = f, \quad (1)$$

where $\mathcal{N}(\cdot)$ is a nonlinear operator, and u is the solution with the boundary conditions $u(0, t) = u(1, t) = 0$ and initial condition $u(x, 0) = u_0$. ν is the viscosity coefficient and $f \in \mathbb{R}$ is a given forcing term. Note that we use a 1D problem here to explore the methodology. However, approaches considered can be directly extended to multi-dimensional flow problems.

2.1 Variational multiscale method

We employ the Finite Element Method (FEM) to solve the flow problem in weak form

$$\mathcal{R}(u, \omega) = (u_t, \omega) - (uu/2, \omega_x) + (\nu u_x, \omega_x) - (f, \omega) = 0, \quad (2)$$

for $\forall \omega \in \mathcal{V}$, where $\mathcal{R}(\cdot, \cdot)$ is the residual operator in weak form. $\omega \in \mathcal{V}$ represents the weighting functions and $\mathcal{V} = \mathcal{V}(\Omega)$ denotes both the solution space and weighting space. (\cdot, \cdot) is the L_2 inner product. The inner product used in this paper is defined on the spatial domain Ω by default.

The Variational Multiscale Method (VMM) is utilized as a sub-grid model for LES. In VMM, the flow solution is split into two components, the resolved scales \bar{u} and the unresolved scales u' . The unresolved scale equations are driven by the strong residual, i.e. $R(\bar{u}) = \mathcal{N}(\bar{u}) - f$. The simplest algebraic model for u' uses a volume-averaged Green's function to write $u' = -\tau R(\bar{u})$. For this problem, we use an expression for τ from Z. Wang and Oberai [17], viz. $\tau = [\frac{4}{h^2}u^2 + 3\pi\nu^2(\frac{4}{h^2})^2]^{-1/2}$. Substituting $u = \bar{u} + u'$ into Equation (2), the expression of weak form is stated as

$$\mathcal{A}(\bar{u}, \omega) = (\bar{u}_t, \omega) - (\frac{1}{2}\bar{u}\bar{u}, \omega_x) + (\nu\bar{u}_x, \omega_x) - (f, \omega) - (\bar{u}u', \omega_x) - (\frac{1}{2}u'^2, \omega_x) - (\nu u', \omega_{xx}) = 0. \quad (3)$$

By virtue of $u' = -\tau R(\bar{u})$, the \bar{u} is exclusively determined from Equation (3).

2.2 Discretization

When numerically solving the flow problem, we replace \bar{u} by \bar{u}_h , leading to the discrete system

$$\mathcal{A}_h(\bar{u}_h, \omega_h) = 0, \forall \omega_h \in \mathcal{V}_h, \quad (4)$$

where the subscript h denotes the grid size of computational mesh with N degree of freedom. $\bar{u}_h \in \mathcal{V}_h$ is abbreviated to u_h in the subsequent content if there is no conflict. The semi-discrete technique is utilized to discretize this unsteady model problem. Specifically, we use piecewise linear basis functions for spatial discretization and the four-stage Runge-Kutta scheme to advance the flow problem in time from $t = 0$ to $t = T$.

3 ADJOINT-BASED ERROR ESTIMATION

The adjoint method is used to provide estimates of local contributions to the error in a chosen QoI, allowing for the construction of goal-oriented adapted mesh. In unsteady simulations, the QoI is often a statistical function of flow solutions. In this paper, we consider the volume-integrated statistical function $\bar{J}(u) = \int_1 J(u) dt/T = \int_1 (g, u)_\Omega dt/T$, where $g, \bar{J}(u) \in \mathbb{R}$. After the formulation of adjoint equations is given in this section, a framework to a posteriori error estimation is obtained, which will be used to guide the mesh refinement in Section 4.

3.1 Adjoint formulation

By virtue of a Lagrange function, the adjoint equation is derived for the Burgers problem as follows

$$\mathcal{L}_u^* v = -\frac{\partial v}{\partial t} - u \frac{\partial v}{\partial x} - \nu \frac{\partial^2 v}{\partial x^2} = g_u, \quad (5)$$

where v is the Lagrange multiplier or adjoint variable with homogeneous boundary conditions $v_{x=0} = v_{x=1} = 0$ and initial condition $v_{t=T} = 0$. $\mathcal{L}_u^*(\cdot)$ is a linear adjoint operator which relies on the primal flow solution u . g_u is a Fréchet derivative of $J(u)$, defined as

$$(g_u, \tilde{u})_\Omega := \lim_{\epsilon \rightarrow 0} \frac{J(u + \epsilon \tilde{u}) - J(u)}{\epsilon}, \quad \forall u, \tilde{u} \in \mathcal{V}. \quad (6)$$

The adjoint residual operator is expressed as $R_{[u]}^*(\cdot) = \mathcal{L}_u^*(\cdot) - g_u$. We solve the adjoint problem using the same VMM used for the primal flow problem.

3.2 A posteriori error estimation framework

Before developing a posteriori error estimation, we consider the adjoint identity and averaging operator. The adjoint identity, which can be easily verified by partial integration, is

$$(\mathcal{L}_u^* v, \tilde{u})_{\Omega \times I} = (v, \mathcal{L}_u \tilde{u})_{\Omega \times I} + (v, \tilde{u})_{\Omega} |_{t=t_0}, \quad (7)$$

for $\forall v, u, \tilde{u} \in \mathcal{V}$. The last term is the contribution of non-zero values at starting time t_0 . \mathcal{L}_u is the Fréchet derivative of $\mathcal{N}(u)$

$$\mathcal{L}_u \tilde{u} := \lim_{\epsilon \rightarrow 0} \frac{\mathcal{N}(u + \epsilon \tilde{u}) - \mathcal{N}(u)}{\epsilon}, \quad \forall u, \tilde{u} \in \mathcal{V}. \quad (8)$$

We can formulate the averaging differential operator, $\bar{\mathcal{L}}_{(u_1, u_2)}^*(\cdot)$, by integrating the adjoint equation (5), enabling us to estimate the error for nonlinear problems. By defining $u = u_1 + \theta(u_2 - u_1)$, the adjoint governing equation is integrated from u_1 to u_2

$$\bar{\mathcal{L}}_{(u_1, u_2)}^* v \equiv \int_0^1 \mathcal{L}_{u=u_1+\theta(u_2-u_1)}^* v d\theta \stackrel{\text{Equation (5)}}{=} \int_0^1 g_{u=u_1+\theta(u_2-u_1)} d\theta \equiv \bar{g}_{(u_1, u_2)}, \quad (9)$$

where the subscript denotes the integration domain and $\bar{g}_{(u_1, u_2)}$ is averaged value of g_u . Then we can have the weak form as $(\bar{\mathcal{L}}_{(u, u_h)}^* v, \omega) = (\bar{g}_{(u, u_h)}, \omega)$, $\forall \omega \in \mathcal{V}$.

Likewise, the average linearized operator in Equation (9) maintains the same property of adjoint identity as follows

$$(\bar{\mathcal{L}}_{(u_1, u_2)}^* v, u)_{\Omega \times I} = (v, \bar{\mathcal{L}}_{(u_1, u_2)} u)_{\Omega \times I} + (v, u)_{\Omega} |_{t=t_0}, \quad (10)$$

where $v, \bar{u}, u_1, u_2 \in \mathcal{V}$.

Based on the definition in Equation (6), we have

$$J(u_1) - J(u_2) = (\bar{g}_{(u_1, u_2)}, u_1 - u_2). \quad (11)$$

Substituting $u_1 = u$ and $u_2 = u_h$ into Equations (9) to (11), we introduce an expression for estimating the error ϵ of the QoI

$$\epsilon = \bar{J}(u) - \bar{J}(u_h) = \underbrace{-\frac{1}{T}(v_h, R(u_h))_{\Omega \times I}}_{\text{Adjoint correction}} + \underbrace{\frac{1}{T}(R_{[\frac{u+u_h}{2}]}^*(v_h), u_h - u)_{\Omega \times I}}_{\text{Remaining error}} - \frac{1}{T}(v_h, u_h - u)_{\Omega} |_{t=t_0} = \sum_e^N \epsilon_e. \quad (12)$$

The error estimation is expressed as an adjoint correction, remaining error and temporal contribution. The temporal contribution is due to the non-zero value of the initial condition during the statistical time period, which disappears in steady problems. In practice, $R_{[\frac{u+u_h}{2}]}^*(v_h)$ is replaced by $R_{[u_h]}^*(v_h)$, where u_h is the discrete flow solution. Here, the VMM is used to evaluate the exact solution u as $u_h + u'_h$. Note that the error estimation can be constrained to each element as shown in the last part of the equation, which is expressed in terms of elemental error estimators ϵ_e .

4 MESH ADAPTATION

To facilitate mesh adaptation, an error indicator η_e is determined from the elemental error estimator as $\eta_e = |\epsilon_e|$. Different refinement strategies [4] can be formulated based on η_e . We employ a prescribed percentage (10%) of mesh elements with largest errors as the criterion for mesh refinement. The resulting procedure of adjoint-based AMR is presented in Figure 1. In each AMR loop, the error estimation and adaptation strategy are executed to generate a new computational mesh for the next AMR level.

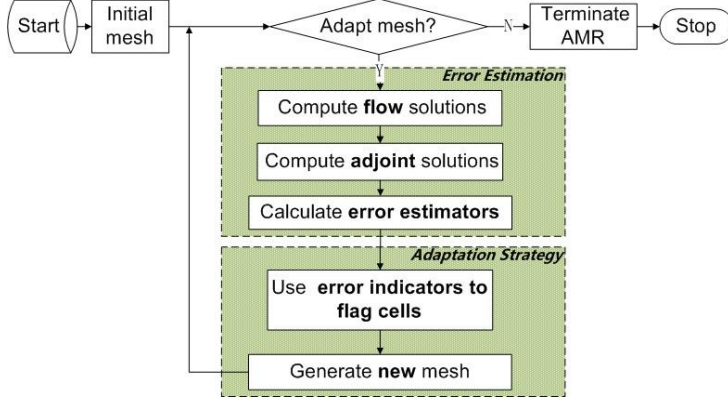


Figure 1: A general procedure of mesh adaptation based on adjoint method for unsteady simulations

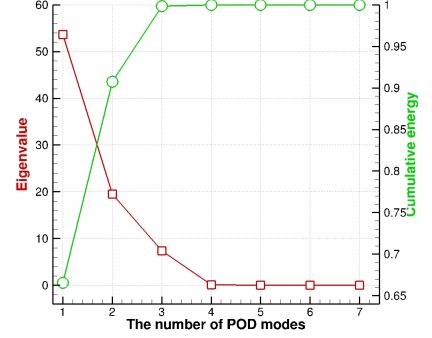


Figure 2: POD analyses of a Burgers problem solved with a stationary mesh

Without additional treatment, the smoothness of computing mesh can deteriorate during AMR. Thus a balancing stage is introduced to improve mesh smoothness. The basic principle is that the adjacent cell will be flagged if the ratio of these two elements is out of the range $[0.5, 2]$. This balancing stage is executed until there are no more elements that need to be refined.

5 POD-BASED REDUCED-ORDER MODEL

In order to make the adjoint-based AMR affordable for LES, a reduced-order model is introduced to represent the flow solution in a low-order space, which can be solved and accessed efficiently. Generally, there are different types of ROMs in literature, including interpolated ROM and projected ROM. We consider the former type because it is unnecessary to predict the future solution in this case. The ROM is constructed using proper orthogonal decomposition (POD), which is achieved by singular value decomposition (SVD) implemented using the LAPACK library package [18]. Figure 2 presents the eigenvalues and cumulative energy of the solutions to a Burgers problem. In this case, the first mode represents a significant part of the instantaneous solution as it accounts for 66.5% of the total energy.

6 NUMERICAL EXPERIMENTS

6.1 Verification in a manufactured solution

First of all, the error estimation procedure is verified using a manufactured solution, $u(x, t) = \sin^2(\pi t) \sin(\pi x)$. This exact solution is used to compute the actual value of the QoI in different AMR levels, so that the error estimates based on VMM and adjoint solutions can be evaluated. The discrete solutions of

primal and adjoint problems are shown for $\nu = 0.01$ in Figure 3(a). Figure 3(b) depicts the approximation of the QoI and corresponding error. The computed QoI converges to the exact one as the mesh is uniformly refined, and the error estimation has a good agreement with the actual value.

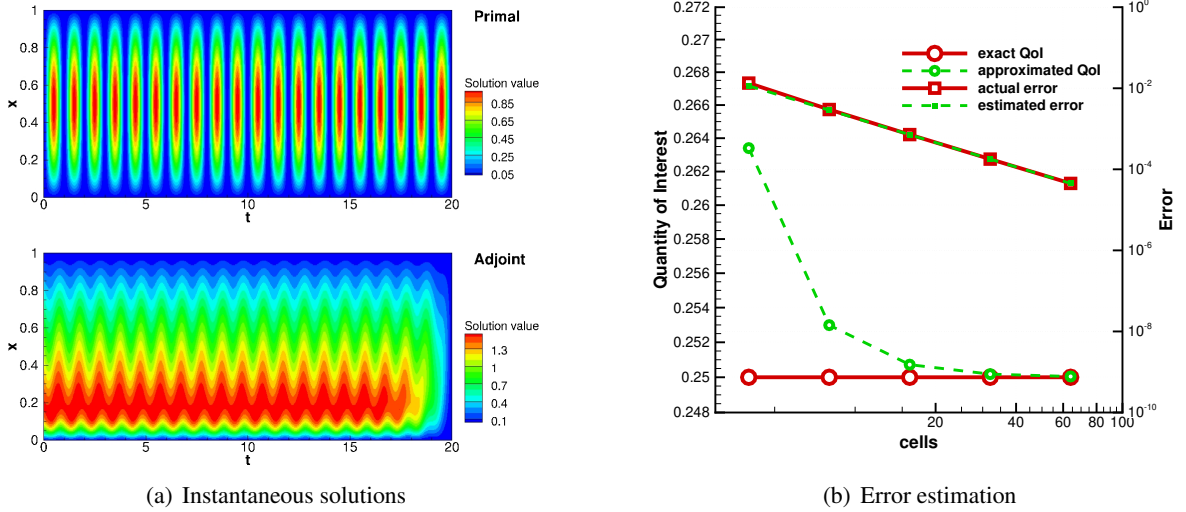


Figure 3: Instantaneous solutions for a manufactured Burgers problem and associated error analysis of a volume-integrated output on uniform refined meshes. Solid lines denote the values computed from analytical solutions while dash lines are the approximation from numerical solutions and the adjoint-based error estimation with VMM.

6.2 Validation of the proposed adaptive strategy

We now introduce a forcing term f for $\nu = 0.01$ to produce the solution with large fluctuations and strong flow gradients near the right boundary

$$f(x, t) = 1 + q(x) * \sum_{i=1}^N g_i(t) \sin(k_i x), \quad (13)$$

where $N = 3$ and the $g_i(t)$ are chosen so $|g_i(t)| \leq 1$

$$g_1(t) = \sin(\pi t), k_1 = \pi, g_2(t) = \sin(2\pi t), k_2 = 2\pi, g_3(t) = \sin(3\pi t), k_3 = 3\pi. \quad (14)$$

$q(x) = 5/30$ is a coefficient used to tune the amplitude of the forcing term at various wave numbers so that the flow fluctuations can be controlled independently. The primal problem is advanced forward from $t = 0$ to $t = 20$ while the adjoint problems is solved backward from $t = 20$ to $t = 10$. This temporal interval $([0, 10])$ is sufficient long to allow the primal flow problem to arrive to a statistically steady state. Instantaneous solutions are shown in Figure 4.

The mesh adaptation strategy in Section 4 is compared with traditional uniform mesh refinement for this case. The reference value of the QoI is calculated on a fine mesh with 256 elements as there is no analytical solution. Figure 5(a) presents the computation of QoI from different methods and their associated errors. The QoI's computation from proposed AMR technique is clearly more accurate than

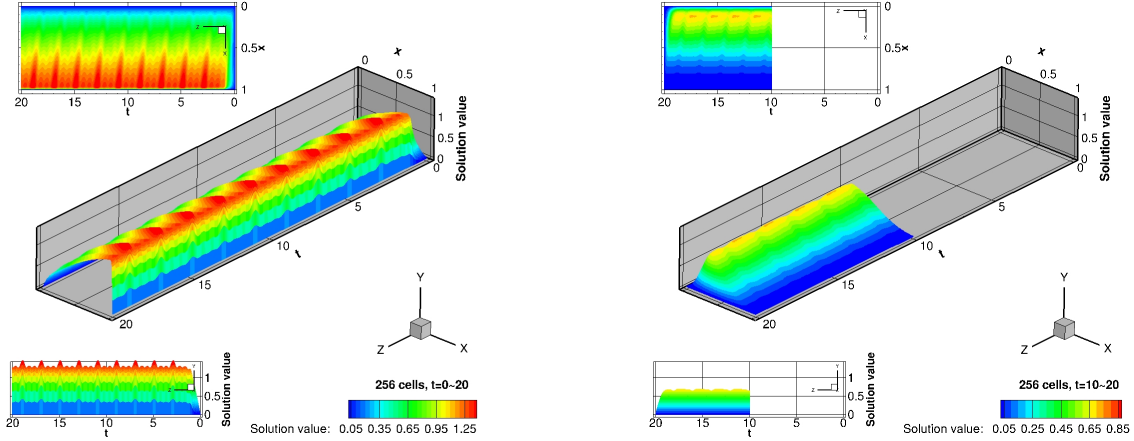


Figure 4: The distribution of (a) primal and (b) adjoint solutions from Burgers problems with a forcing term

uniform enrichment for a given number of degrees of freedom and the corresponding error also converges faster.

6.3 ROM-driven mesh refinement

We consider the same problem used in Section 6.2 to investigate how the ROM influences the performance of adjoint-based AMR. Two ROMs are considered, one with four POD modes and the other with one POD mode. Naturally, a ROM will produce a precise presentation for the primal solution if the most significant POD modes are included. Thus, we use four POD modes first since it accounts for 99.9% of total energy (shown in Figure 2). In contrast, the one-mode ROM is an extreme case, with a less accurate reconstruction of the primal solution but still able to reproduce its dominant features. The mesh adaptation starts with a coarse mesh of 6 cells and is terminated after ten refinement levels with the aforementioned AMR strategy.

6.3.1 ROM with four POD modes

The computation of the QoI from ROM-driven AMR compared to full-order AMR is shown in Figure 5(a). They converge to the actual value in a quantitatively similar way, as does their approximating error as shown in Figure 5(b). Figure 6 demonstrates that the mesh refinement patterns computed based on the four-mode ROM agree well with those from full-order primal flow solutions.

Figure 7(a) depicts the development of cumulative energy within various AMR levels. Most notably from the standpoint of POD analysis, four POD modes can still capture more than 99.9% of the total energy even for the fine meshes, which are obtained during later process of AMR. Thus four-mode ROM-driven AMR does not behave differently from the standard AMR employing the full-order u_h .

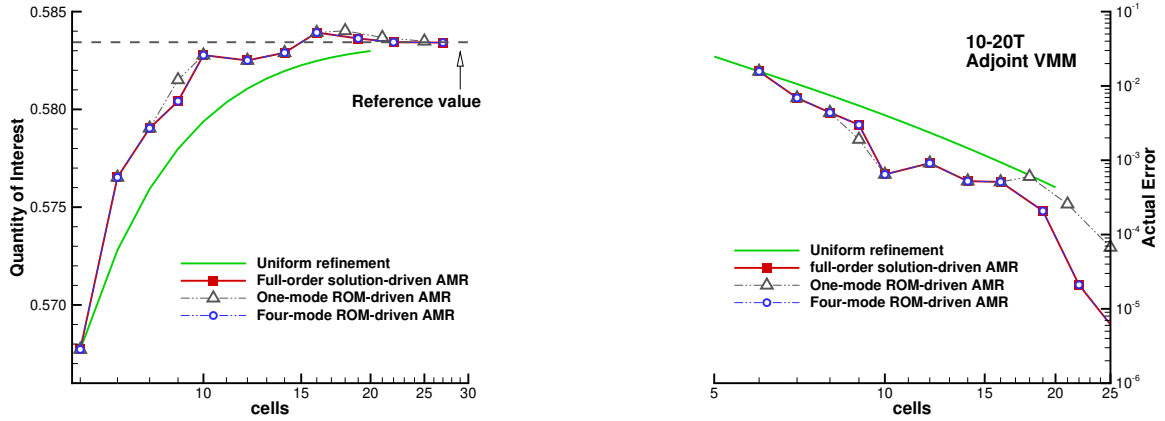


Figure 5: Comparisons of (a) the approximation of QoI and (b) associated approximating error between uniform refinement (—), and AMR based on full-order flow solutions (—■—), four-mode ROM (---○---) and one-mode ROM (---△---), respectively.

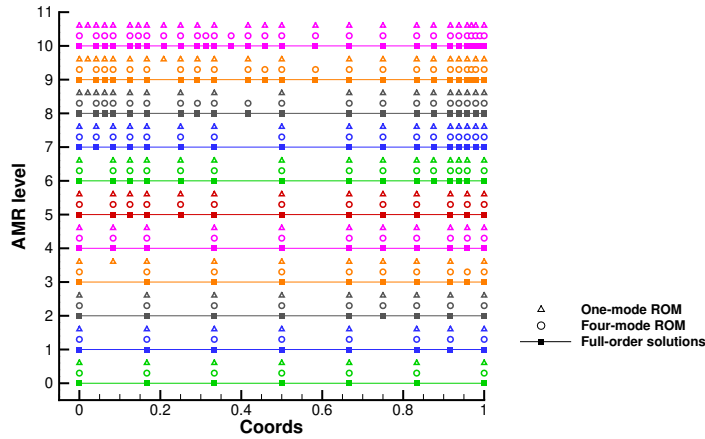


Figure 6: Comparisons of mesh refinement patterns from AMR based on flow solution (—■—), four-mode ROM (○) and one-mode ROM (△), respectively. Each color denotes one AMR level.

6.3.2 ROM with one POD mode

We now study an extreme situation with only one mode to construct a ROM. As before, Figure 5 shows the convergence of QoI and their corresponding errors using a one-mode ROM. The QoI's convergence from a one-mode ROM is quite similar to those from full-order primal solutions although there are differences at some AMR levels. But it is still much better than uniform refinement. From the mesh refinement patterns shown in Figure 6, we can observe that the mesh refined from a one-mode ROM is not completely the same as those based on full-order primal solutions. When comparing different

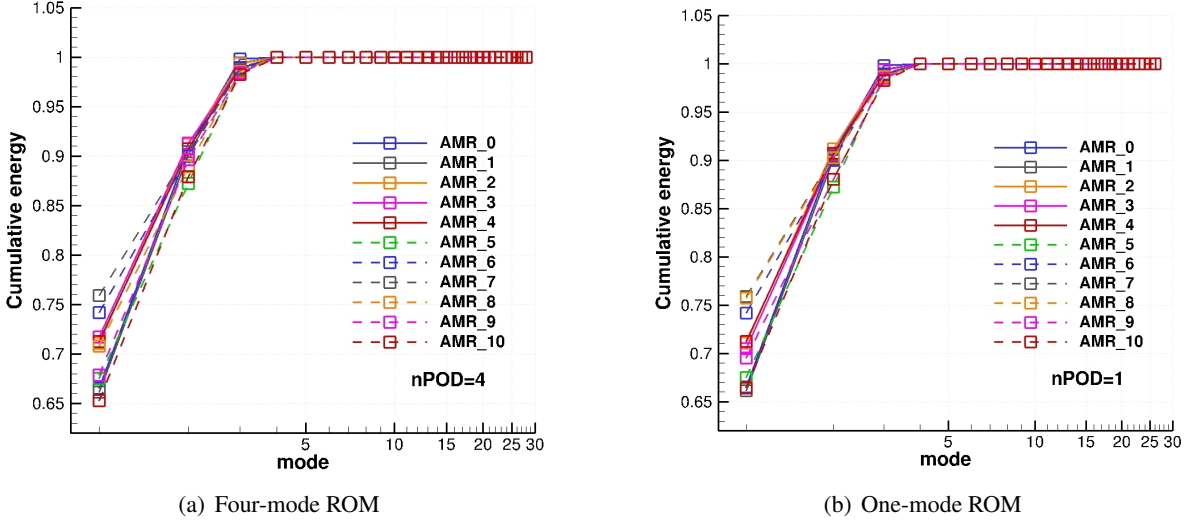


Figure 7: Comparisons of cumulative energy during different AMR levels computed with (a) four-mode ROM and (b) one-mode ROM, respectively.

adapted meshes, we can note that the low-order ROM changes the AMR order in coarse mesh regions (e.g. 3rd AMR level) but can reach the same computing mesh later (e.g. 4th AMR level). On the other hand, the approximating error in later AMR stages is affected by using only one mode when the mesh becomes fine in space (see Figure 5(b)). Finally, the cumulative energy for this one-mode ROM is shown in Figure 7(b) and the first POD mode describes much of the primal solution over all AMR levels.

Figure 8 presents discrete adjoint solutions on two different computational meshes encountered during AMR, a coarse mesh in Figure 8(a) and a fine mesh in Figure 8(b). The adjoint solutions are calculated based on the full-order primal solution, a four-mode ROM and a one-mode ROM, respectively. On the coarse mesh, the one-mode ROM is able to produce adjoint solutions with both features and magnitudes similar to those obtained using full-order primal solutions. This implies good error estimates. As the AMR proceeds to finer meshes, the one-mode ROM is unable to present high-frequency information and thus produces relative smooth adjoint solutions. The high-frequency components of primal flow solutions, however, become increasingly important for obtaining precise error estimates on fine meshes. This leads to deterioration in the error estimate from the one-mode ROM. Conversely, the four-mode ROM includes both low and high frequency information and provides good estimates on both computational meshes.

Overall, the ROM-driven AMR can preserve the efficiency of solution-driven adjoint-based AMR in the current case even with only a single POD mode. This may be due to a relative insensitivity of the chosen QoI to high-frequency solution components, which tend to be smaller magnitudes in the current problem. However, this is not necessarily constrictive for LES applications, where large scales contain the majority of the flows' energy, and we are often interested in the relatively smooth QoIs such as mean profiles.

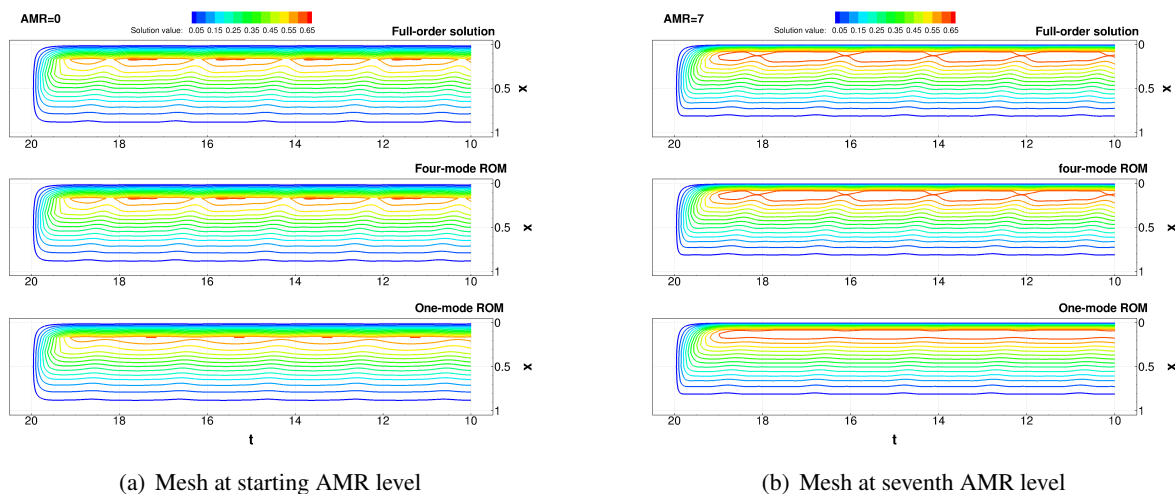


Figure 8: Comparisons of discrete adjoint solutions at two different AMR meshes, computed based on full-order flow solution, four-mode ROM and one-mode ROM, respectively.

7 CONCLUSIONS

We have developed a ROM-driven adjoint-based mesh adaptation strategy for unsteady problems. The effectiveness of the error estimation based on the adjoint solution and the VMM has been verified using an unsteady Burgers problem with a manufactured solution. In order to overcome the storage difficulties encountered when solving the adjoint problem in nonlinear unsteady simulations, a POD-based ROM is introduced to represent the primal solution by means of a low-order model. The procedure is evaluated using a Burgers problem with a multiple-frequency forcing term. First, adjoint-based AMR using the full-order primal solution is shown to be more efficient than traditional uniform refinement. Then we demonstrate that using the ROM for the primal solution does not significantly affect the performance of AMR. Specifically, the adaptive results from a four-mode ROM have good agreement with ones from a full-order solution-driven AMR where these modes capture 99.9% of total energy. The calculation from a one-mode ROM still considerably outperforms uniform refinement as the first POD mode accounts for 65-75% of total energy during AMR. Furthermore, a one-mode ROM is able to capture the essential part of the solution on coarse meshes. As expected, using a ROM with sufficient modes does not affect the adjoint-based AMR. Using a very low-order ROM, however, can still be effective as least when the calculation of the QoI is not dependent on the smaller scales of primal solutions. These results indicate that the proposed AMR strategy will likely be useful for more challenging problems.

ACKNOWLEDGEMENTS

The authors would like to thank the financial support by China Scholarship Council.

REFERENCES

- [1] Georgiadis, N.J., Rizzetta, D.P., and Fureby, C. Large-Eddy Simulation: Current Capabilities, Recommended Practices, and Future Research. *AIAA Journal*. (2010) **48** (8):1772–1784.

- [2] Larsson, J. and Wang, Q. The prospect of using large eddy and detached eddy simulations in engineering design, and the research required to get there. *Philosophical Transactions of the Royal Society A: Mathematical, Physical and Engineering Sciences*. (2014) **372** (2022):20130329–20130329.
- [3] Slotnick, J. et al. *CFD vision 2030 study: a path to revolutionary computational aerosciences*. Technical Report NASA/CR–2014-218178. Washington, DC 20546-0001: National Aeronautics and Space Administration, (2014), p. 58.
- [4] Fidkowski, K.J. and Darmofal, D.L. Review of Output-Based Error Estimation and Mesh Adaptation in Computational Fluid Dynamics. *AIAA Journal*. (2011) **49** (4):673–694.
- [5] Besier, M. and Rannacher, R. Goal-oriented space-time adaptivity in the finite element Galerkin method for the computation of nonstationary incompressible flow. *International Journal for Numerical Methods in Fluids*. (2012) **70** (9):1139–1166.
- [6] Fidkowski, K.J. and Luo, Y. Output-based space–time mesh adaptation for the compressible Navier-Stokes equations. *Journal of Computational Physics*. (2011) **230** (14):5753–5773.
- [7] Schmich, M. and Vexler, B. Adaptivity with Dynamic Meshes for Space-Time Finite Element Discretizations of Parabolic Equations. *SIAM Journal on Scientific Computing*. (2008) **30** (1):369–393.
- [8] Flynt, B. and Mavriplis, D. Discrete Adjoint Based Adaptive Error Control in Unsteady Flow Problems. *50th AIAA Aerospace Sciences Meeting including the New Horizons Forum and Aerospace Exposition*. 50th AIAA Aerospace Sciences Meeting including the New Horizons Forum and Aerospace Exposition. Nashville, Tennessee: American Institute of Aeronautics and Astronautics, (2012).
- [9] Hoffman, J. et al. Towards a parameter-free method for high Reynolds number turbulent flow simulation based on adaptive finite element approximation. *Computer Methods in Applied Mechanics and Engineering*. (2015) **288**:60–74.
- [10] Hoffman, J. and Johnson, C. A new approach to computational turbulence modeling. *Computer Methods in Applied Mechanics and Engineering*. (2006) **195** (23):2865–2880.
- [11] Jansson, J. et al. Time-Resolved Adaptive Direct FEM Simulation of High-Lift Aircraft Configurations. *Numerical Simulation of the Aerodynamics of High-Lift Configurations*. Ed. by O.D. López Mejia and J.A. Escobar Gomez. Cham: Springer International Publishing, (2018), p. 67–92.
- [12] Wang, Q., Moin, P., and Iaccarino, G. Minimal Repetition Dynamic Checkpointing Algorithm for Unsteady Adjoint Calculation. *SIAM Journal on Scientific Computing*. (2009) **31** (4):2549–2567.
- [13] Wang, Q. Forward and adjoint sensitivity computation of chaotic dynamical systems. *Journal of Computational Physics*. (2013) **235**:1–13.
- [14] Wang, Q. and Gao, J.-H. The drag-adjoint field of a circular cylinder wake at Reynolds numbers 20, 100 and 500. *Journal of Fluid Mechanics*. (2013) **730**:145–161.
- [15] Fosas de Pando, M., Schmid, P.J., and Sipp, D. On the receptivity of aerofoil tonal noise: an adjoint analysis. *Journal of Fluid Mechanics*. (2017) **812**:771–791.
- [16] Caldwell, J., Wanless, P., and Cook, A.E. A finite element approach to Burgers’ equation. *Applied Mathematical Modelling*. (1981) **5** (3):189–193.
- [17] Wang, Z. and Oberai, A. Spectral analysis of the dissipation of the residual-based variational multiscale method. *Computer Methods in Applied Mechanics and Engineering*. (2010) **199** (13):810–818.

- [18] Taira, K. et al. Modal Analysis of Fluid Flows: An Overview. *AIAA Journal*. (2017) **55** (12):4013–4041.