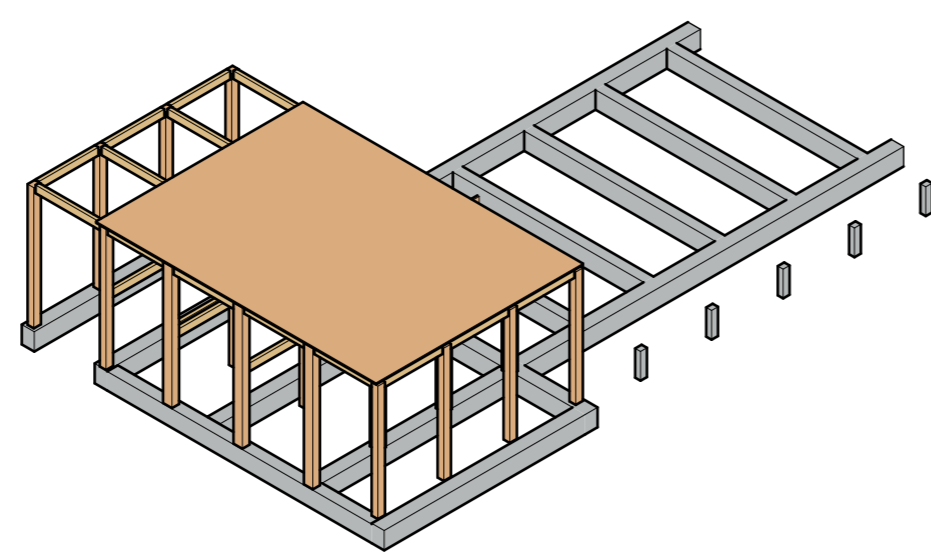
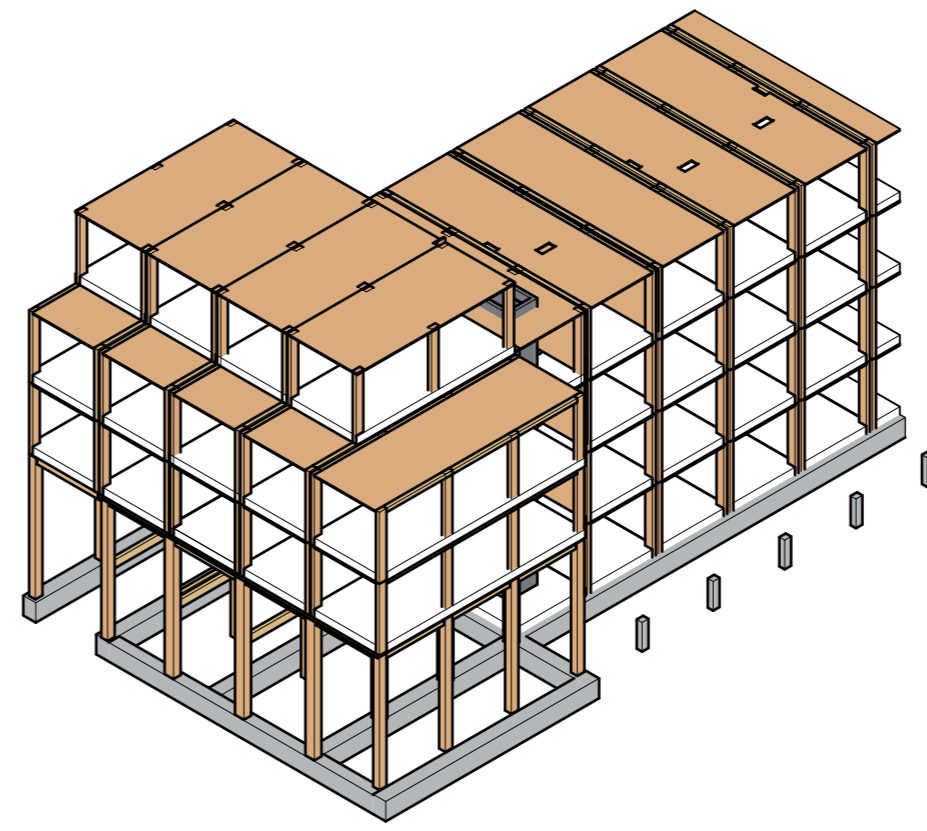


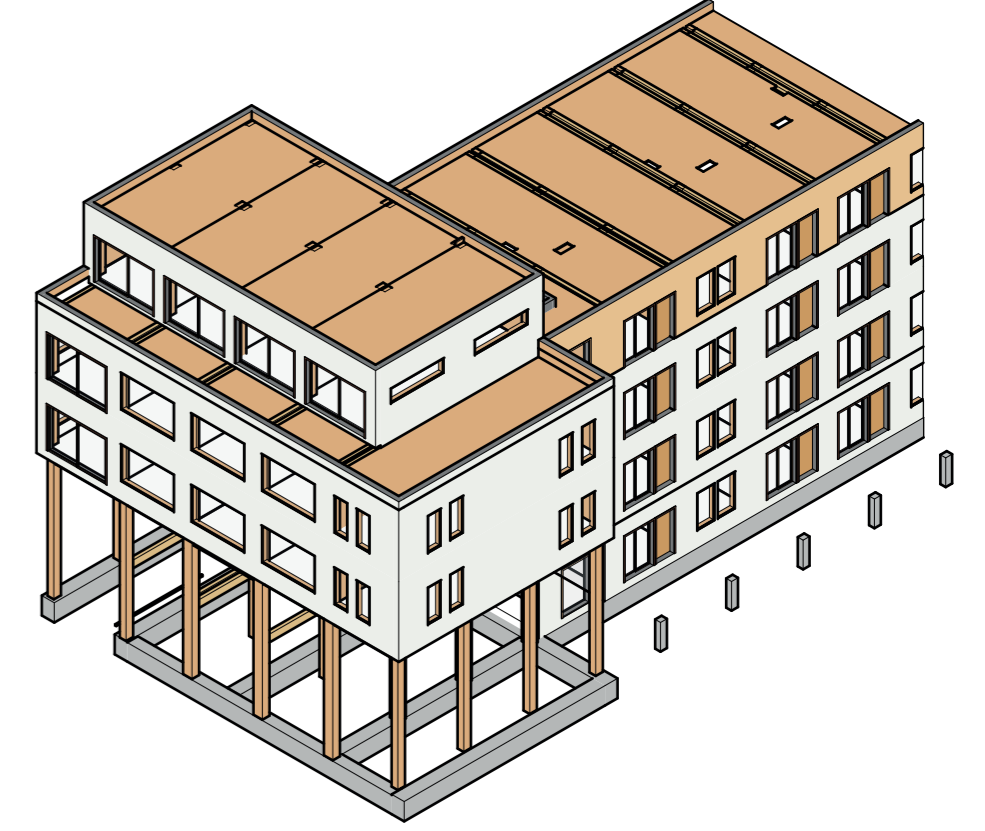
Lightweight concrete foundation



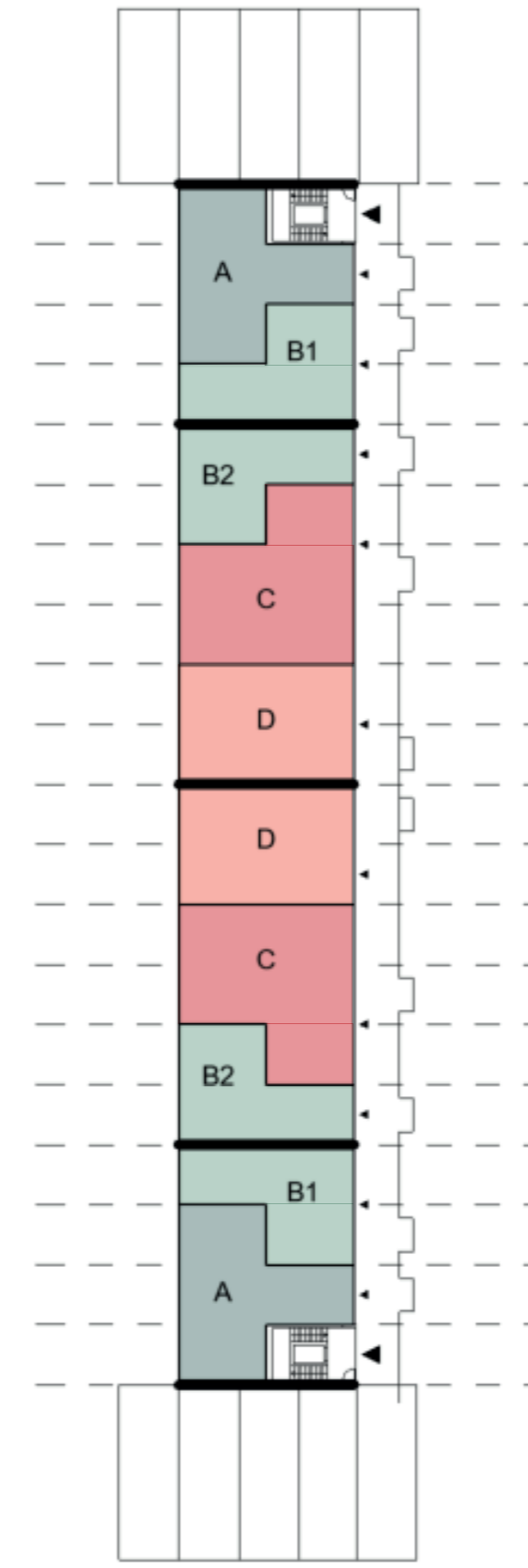
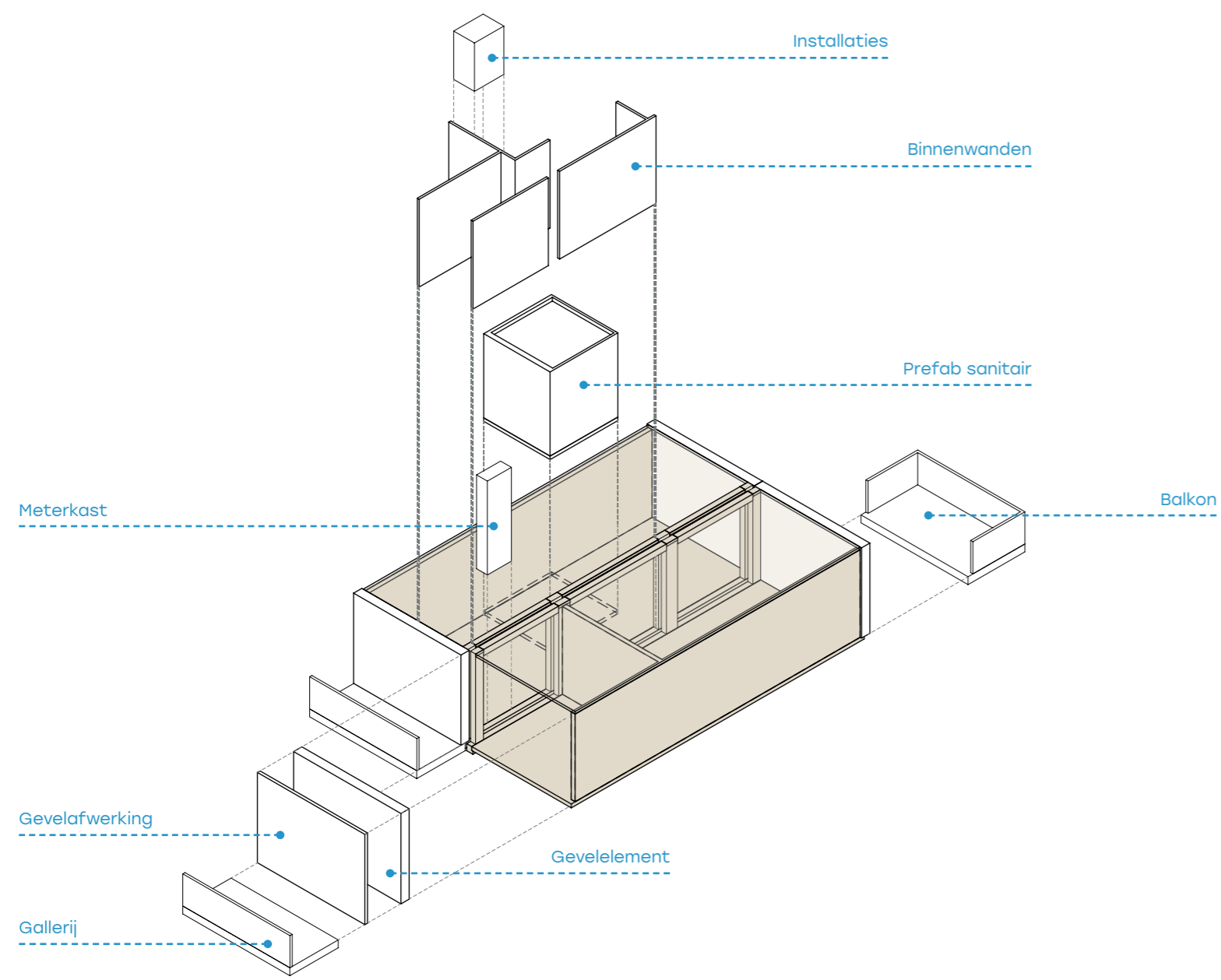
Glulam table construction with Finch module dimensions



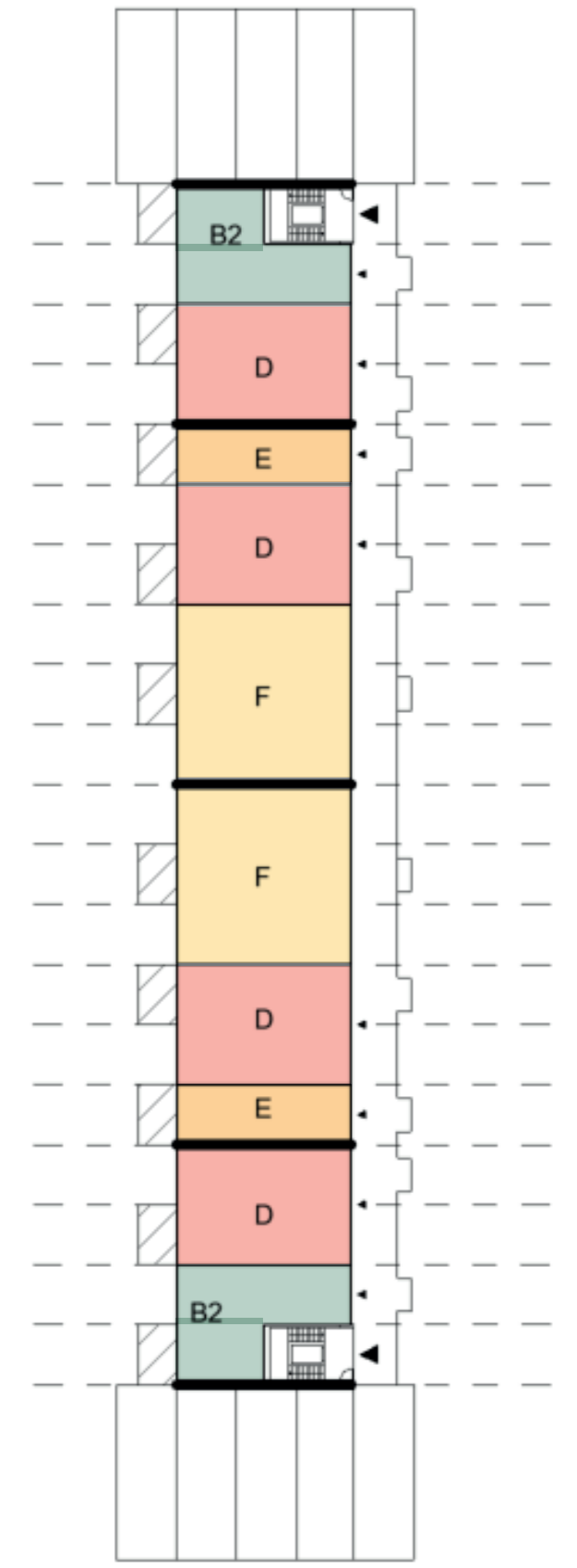
Finch module added



Prefab facade systems applied



BGV2



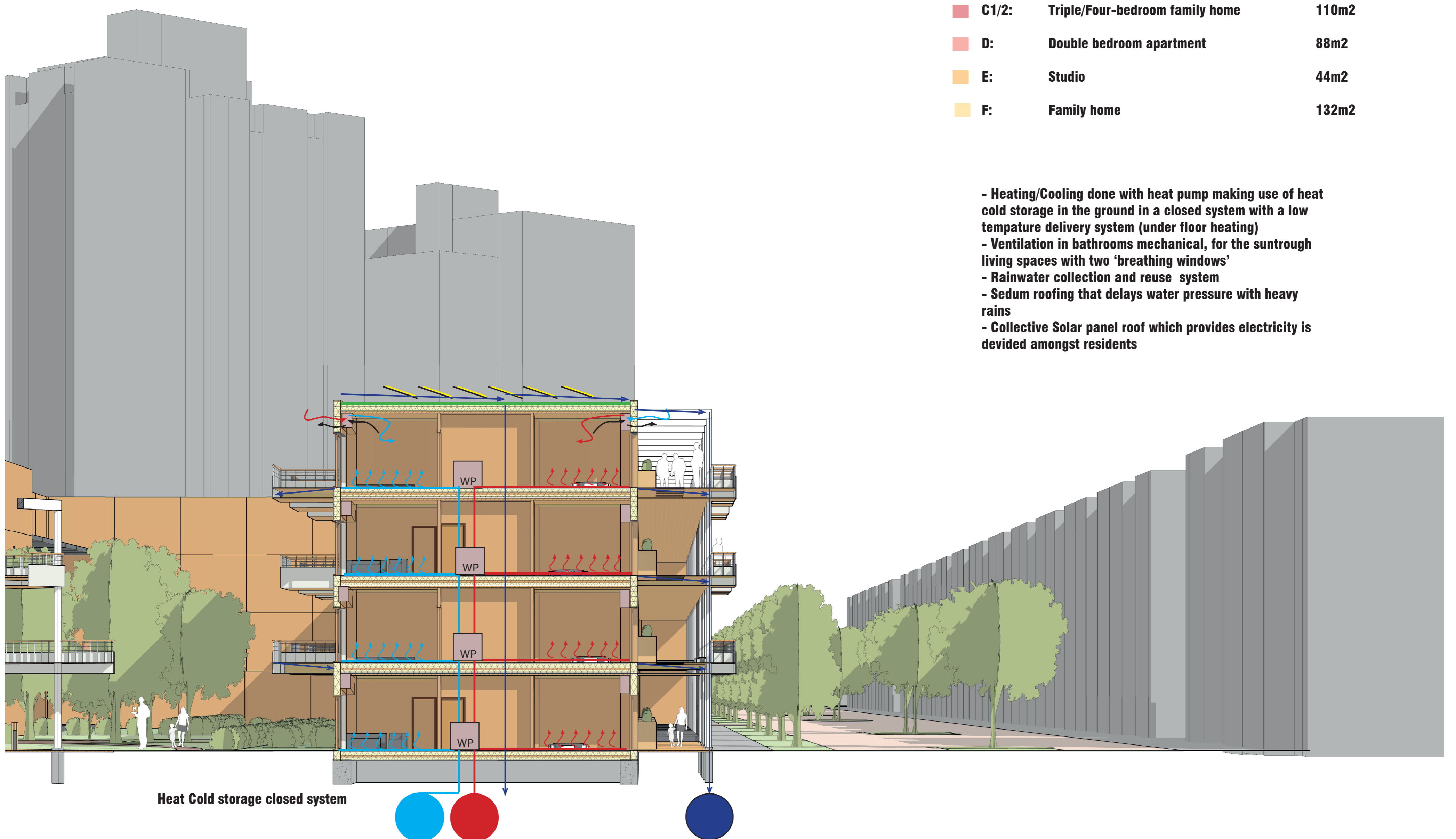
V1/V3

The applied 3D building module: Finch building

Housing type distribution 1:500

A:	Friends Apartment	88m ²
B1/2:	Couple apartment	66m ²
C1/2:	Triple/Four-bedroom family home	110m ²
D:	Double bedroom apartment	88m ²
E:	Studio	44m ²
F:	Family home	132m ²

- Heating/Cooling done with heat pump making use of heat cold storage in the ground in a closed system with a low temperature delivery system (under floor heating)
- Ventilation in bathrooms mechanical, for the suntrough living spaces with two 'breathing windows'
- Rainwater collection and reuse system
- Sedum roofing that delays water pressure with heavy rains
- Collective Solar panel roof which provides electricity is divided amongst residents



Heat Cold storage closed system