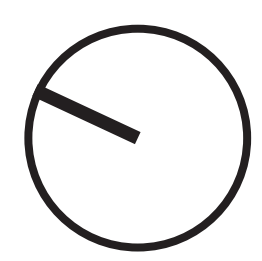
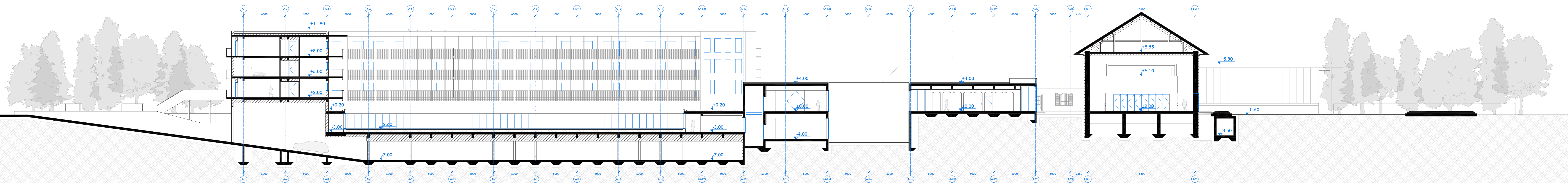
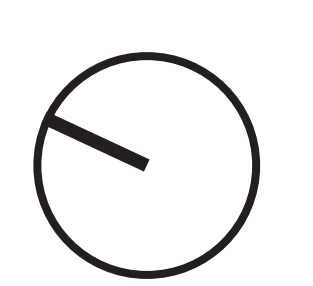
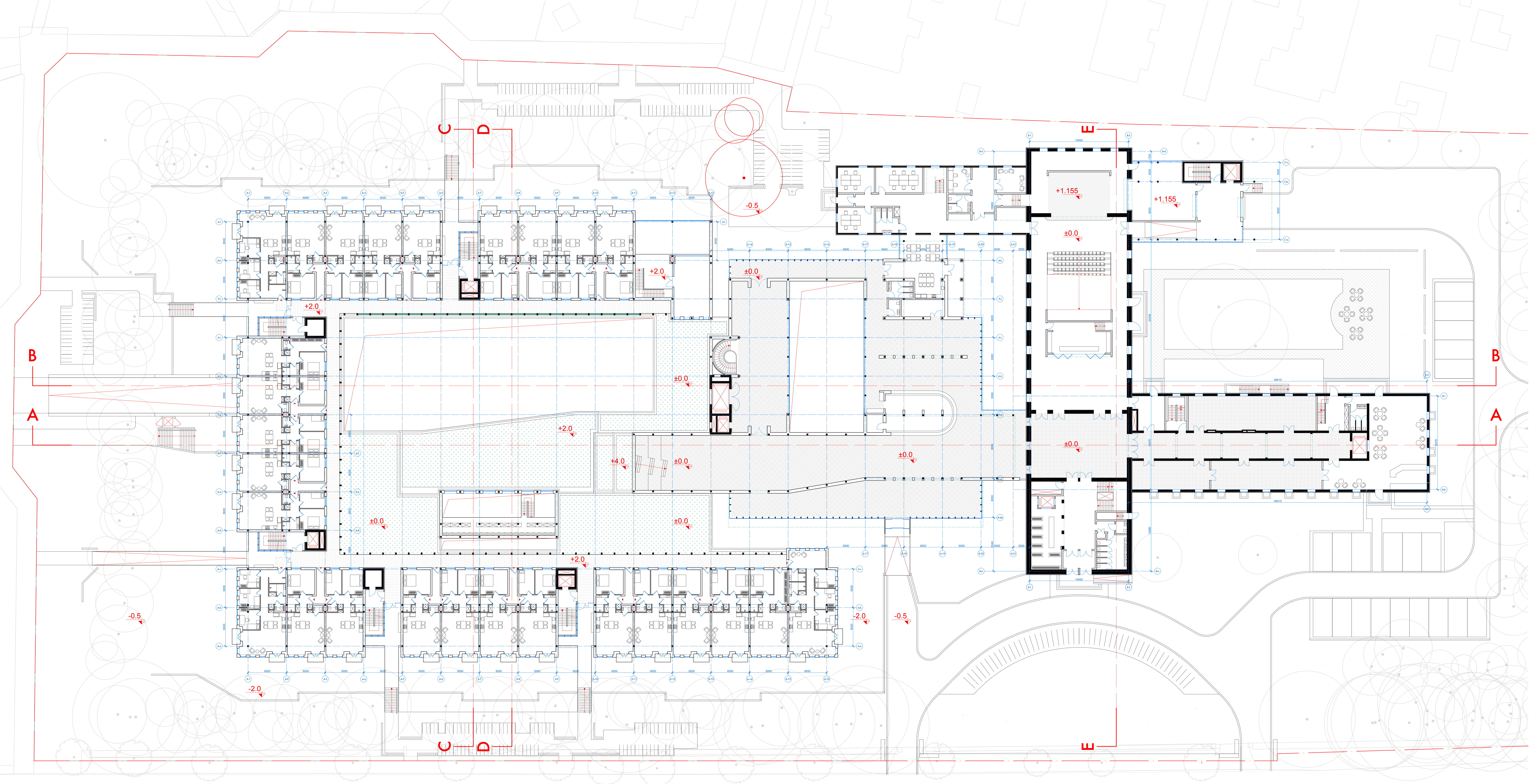


B1 Floor Plan



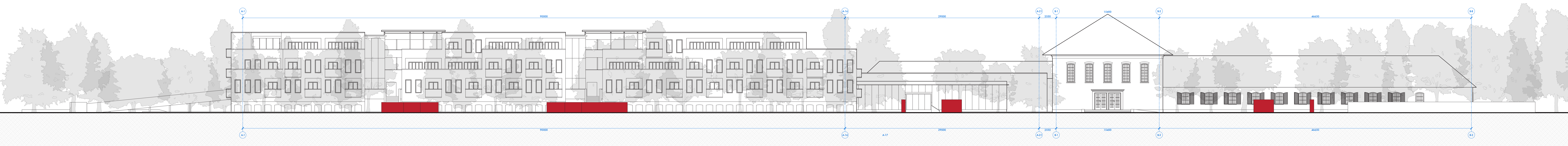
Section B-B

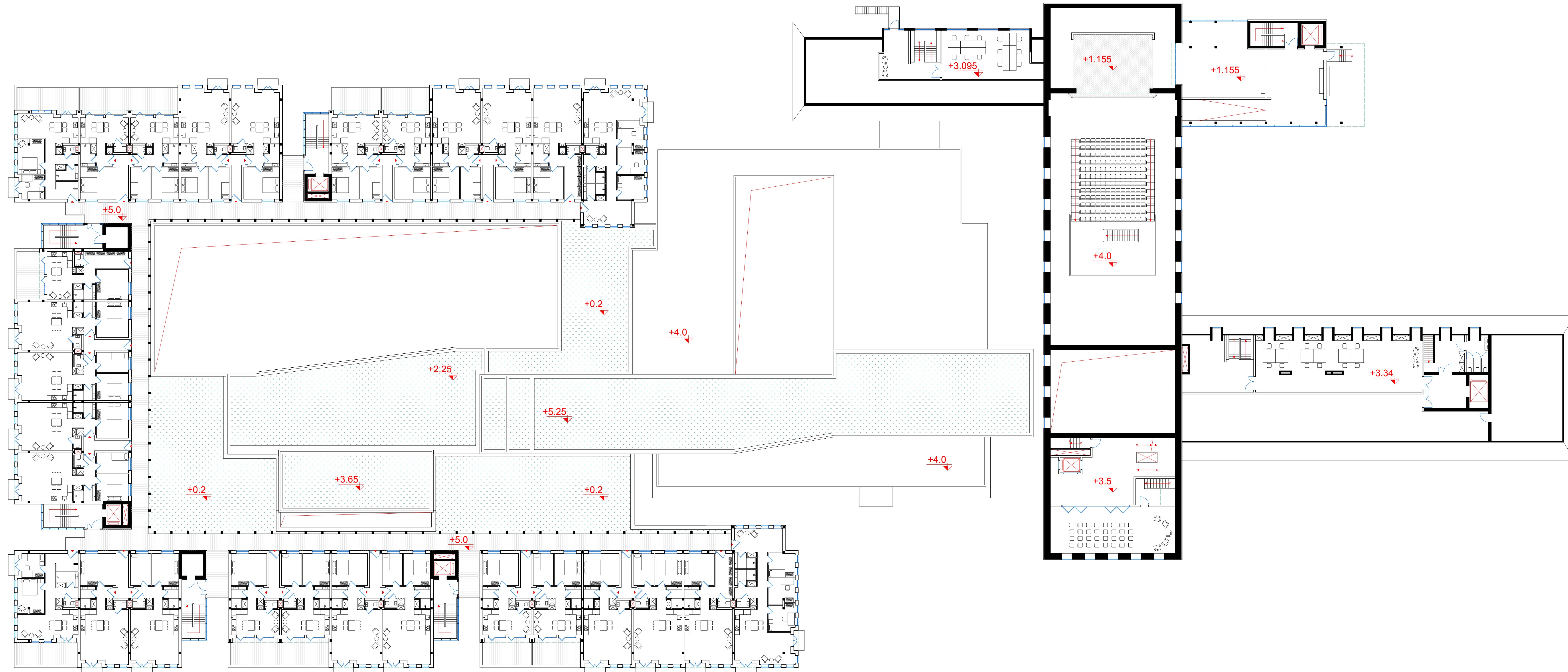




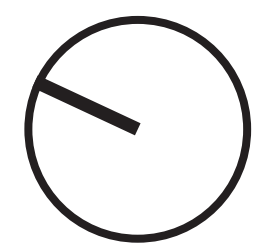
G Floor Plan

Ease Elevation

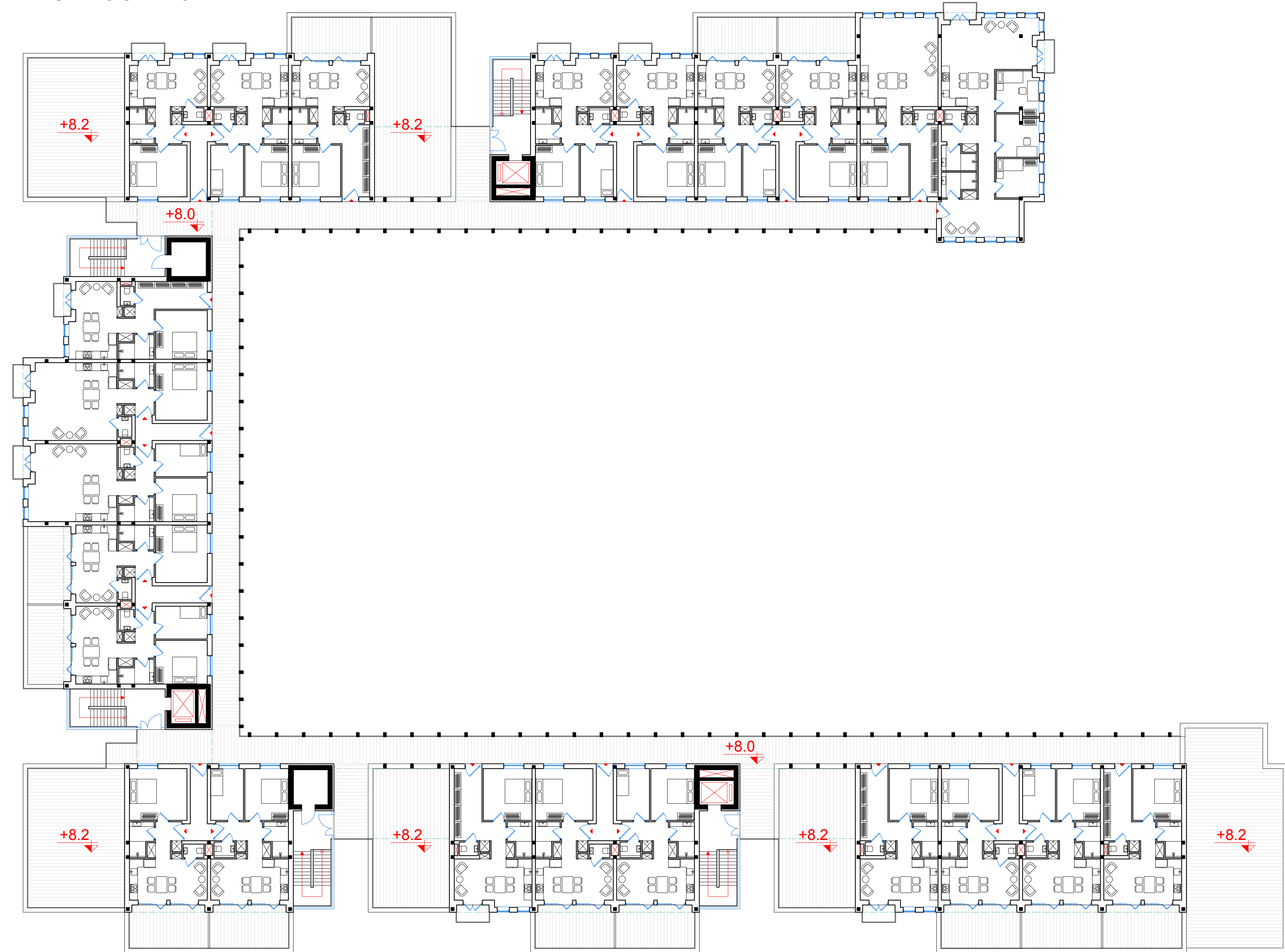




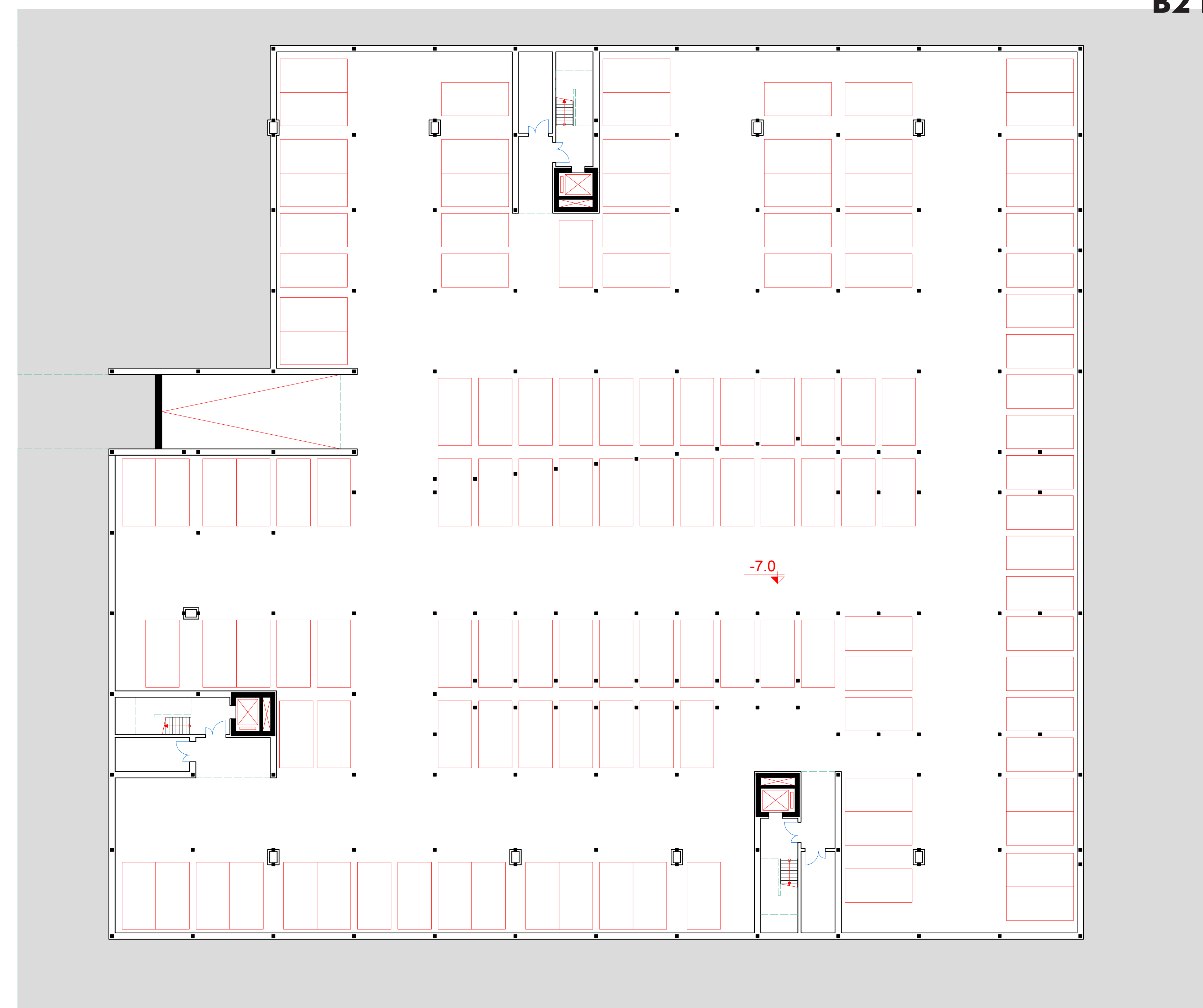
1st Floor Plan

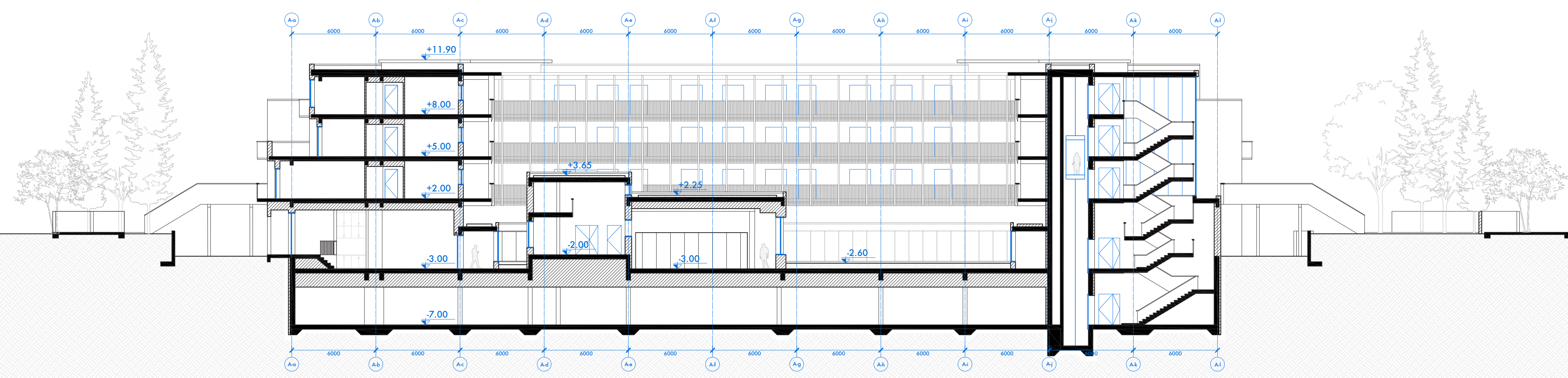


2nd Floor Plan

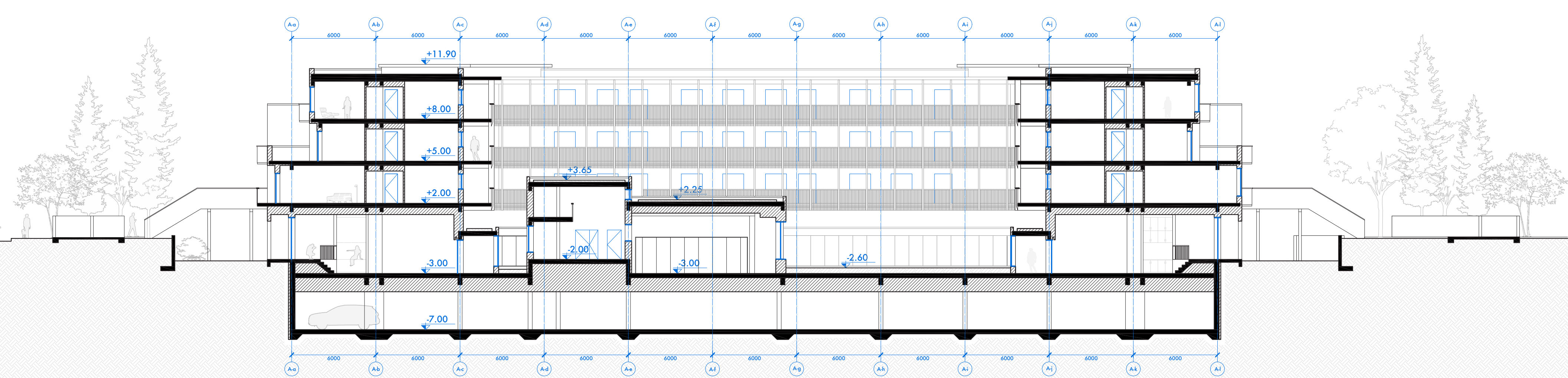


B2 Floor Plan

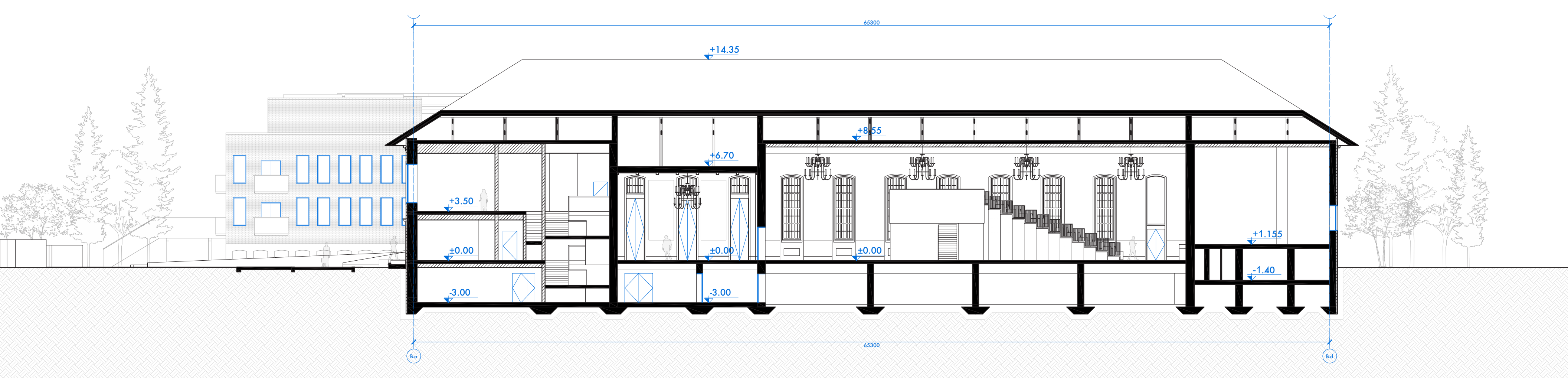




Section C-C

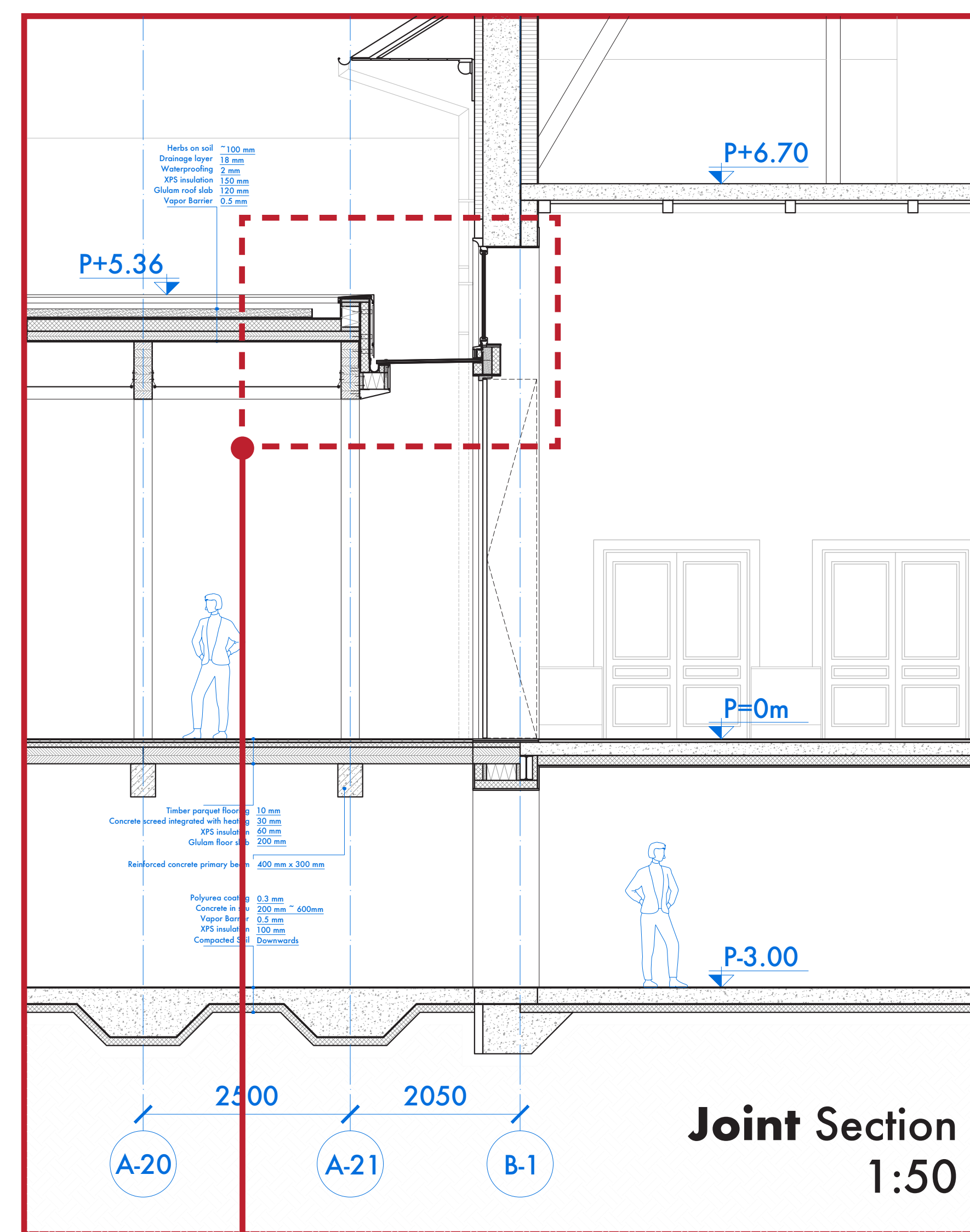
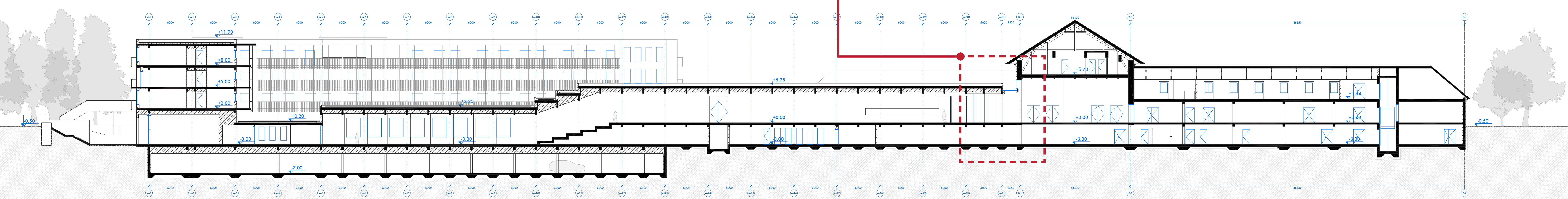


Section D-D



Section E-E

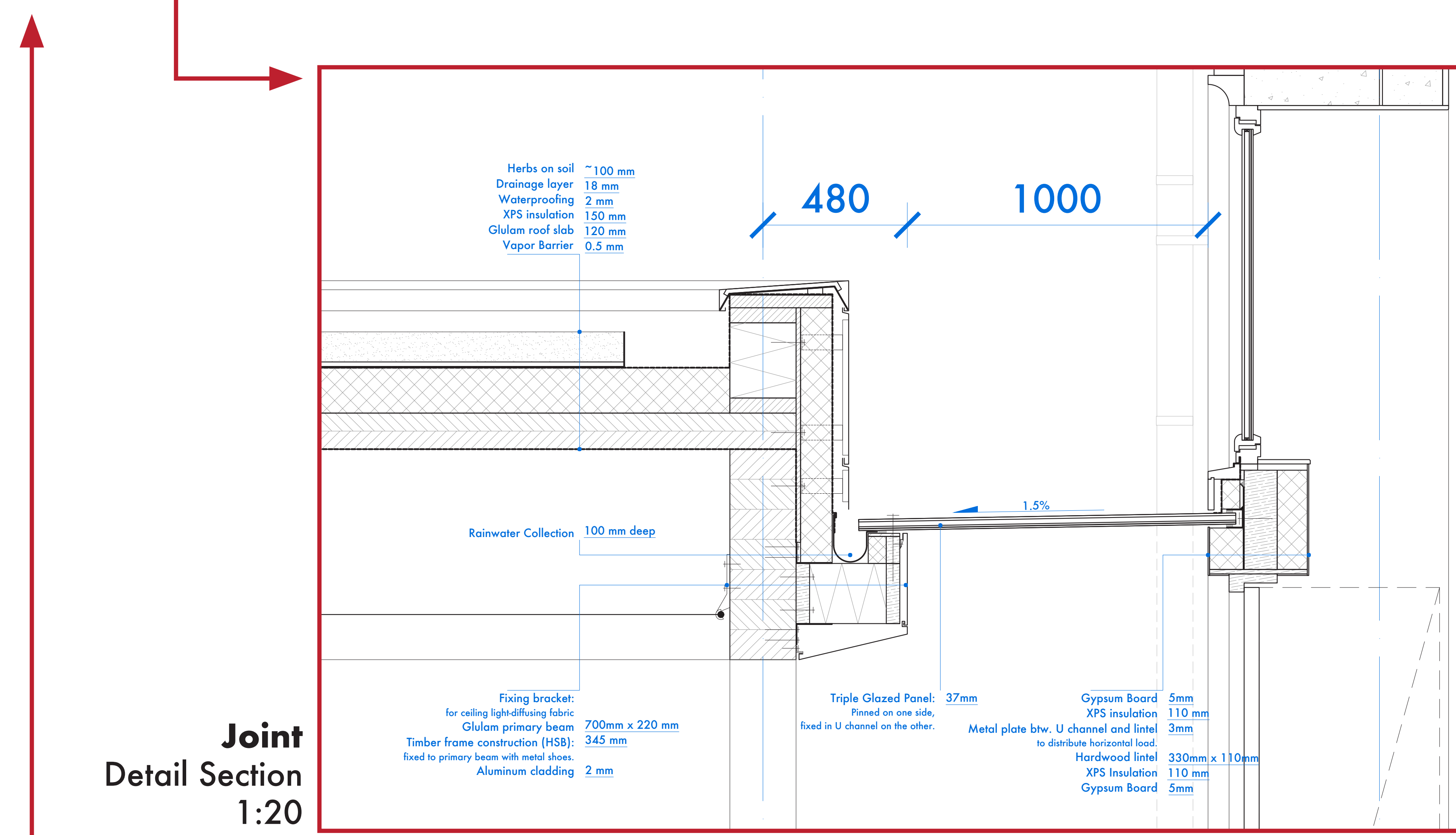
Section A-A



Joint Section
1:50



Joint Impression



Joint
Detail Section
1:20

- Herbs on soil 100 mm
 - Drainage layer 18 mm
 - Waterproofing 2 mm
 - XPS insulation 150 mm
 - Glulam roof slab 120 mm
 - Vapor Barrier 0.5 mm
- Rainwater Collection 100 mm deep
 - 1.5%
- Fixing bracket:
for ceiling light-diffusing fabric
Glulam primary beam 700mm x 220 mm
Timber frame construction (HSB) 345 mm
fixed to primary beam with metal shoes
Aluminum cladding 2 mm
 - Triple Glazed Panel: 37mm
Pinned on one side,
fixed in U channel on the other.
 - Gypsum Board 5mm
XPS insulation 110 mm
3mm
Metal plate btw. U channel and lintel
to distribute horizontal load.
Hardwood lintel 330mm x 110mm
XPS insulation 110 mm
Gypsum Board 5mm