

The Impacts of Automated Driving (PPT)

van Arem, Bart

Publication date

2016

Document Version

Final published version

Citation (APA)

van Arem, B. (2016). *The Impacts of Automated Driving (PPT)*. 1-19. Workshop Sino-Dutch Cooperation In Transport, Beijing, China.

Important note

To cite this publication, please use the final published version (if applicable).
Please check the document version above.

Copyright

Other than for strictly personal use, it is not permitted to download, forward or distribute the text or part of it, without the consent of the author(s) and/or copyright holder(s), unless the work is under an open content license such as Creative Commons.

Takedown policy

Please contact us and provide details if you believe this document breaches copyrights.
We will remove access to the work immediately and investigate your claim.



The Impacts of Automated Driving
自动驾驶的影响

Bart van Arem

TU Delft

The Impacts of Automated Driving
Workshop Sino-Dutch Cooperation in Transport, Beijing, 21-22 April 2016

DAVI
ON THEROAD

INTEREST IN AUTOMATED DRIVING

TU Delft

The Impacts of Automated Driving
Workshop Sino-Dutch Cooperation in Transport, Beijing, 21-22 April 2016

DAVI
ON THEROAD

A first drive with fully automated vehicle...



The Impacts of Automated Driving
Workshop Sino-Dutch Cooperation in Transport, Beijing, 21-22 April 2016



The Impacts of Automated Driving
Workshop Sino-Dutch Cooperation in Transport, Beijing, 21-22 April 2016









Dutch minister of
Infrastructure & Environment
Mrs Melanie Schultz

Self driving cars can improve
traffic efficiency and safety

Netherlands to facilitate large
scale testing of self driving
vehicles

© PressVisuals.com

 **The Impacts of Automated Driving**
Workshop Sino-Dutch Cooperation in Transport, Beijing, 21-22 April 2016 

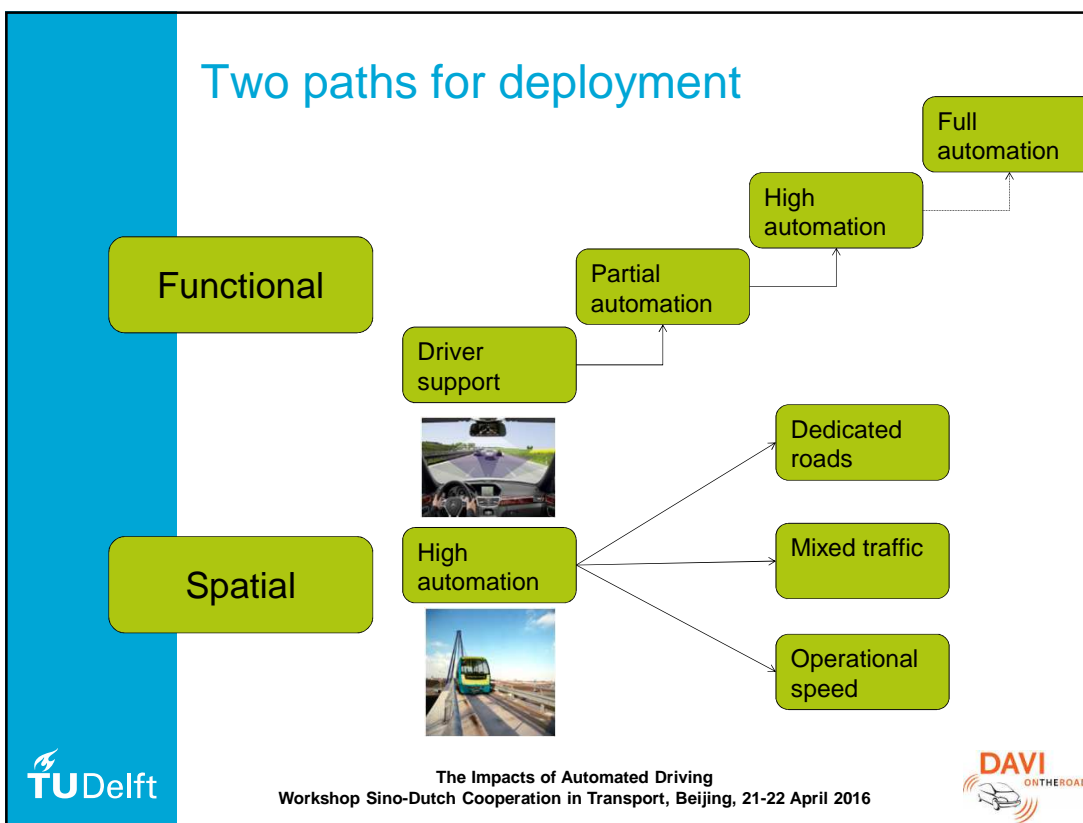
 **DEFINITIONS AND SCENARIOS**
The Impacts of Automated Driving
Workshop Sino-Dutch Cooperation in Transport, Beijing, 21-22 April 2016 

SAE level	Name	Narrative Definition	Execution of Steering and Acceleration/Deceleration	Monitoring of Driving Environment	Fallback Performance of Dynamic Driving Task	System Capability (Driving Modes)
Human driver monitors the driving environment						
0	No Automation	the full-time performance by the <i>human driver</i> of all aspects of the <i>dynamic driving task</i> , even when enhanced by warning or intervention systems	Human driver	Human driver	Human driver	n/a
1	Driver Assistance	the <i>driving mode</i> -specific execution by a driver assistance system of either steering or acceleration/deceleration using information about the driving environment and with the expectation that the <i>human driver</i> perform all remaining aspects of the <i>dynamic driving task</i>	Human driver and system	Human driver	Human driver	Some driving modes
2	Partial Automation	the <i>driving mode</i> -specific execution by one or more driver assistance systems of both steering and acceleration/deceleration using information about the driving environment and with the expectation that the <i>human driver</i> perform all remaining aspects of the <i>dynamic driving task</i>	System	Human driver	Human driver	Some driving modes
Automated driving system ("system") monitors the driving environment						
3	Conditional Automation	the <i>driving mode</i> -specific performance by an <i>automated driving system</i> of all aspects of the <i>dynamic driving task</i> with the expectation that the <i>human driver</i> will respond appropriately to a <i>request to intervene</i>	System	System	Human driver	Some driving modes
4	High Automation	the <i>driving mode</i> -specific performance by an automated driving system of all aspects of the <i>dynamic driving task</i> , even if a <i>human driver</i> does not respond appropriately to a <i>request to intervene</i>	System	System	System	Some driving modes
5	Full Automation	the full-time performance by an <i>automated driving system</i> of all aspects of the <i>dynamic driving task</i> under all roadway and environmental conditions that can be managed by a <i>human driver</i>	System	System	System	All driving modes

Copyright © 2014 SAE International. The summary table may be freely copied and distributed provided SAE International and J3016 are acknowledged as the source and must be reproduced AS-IS.

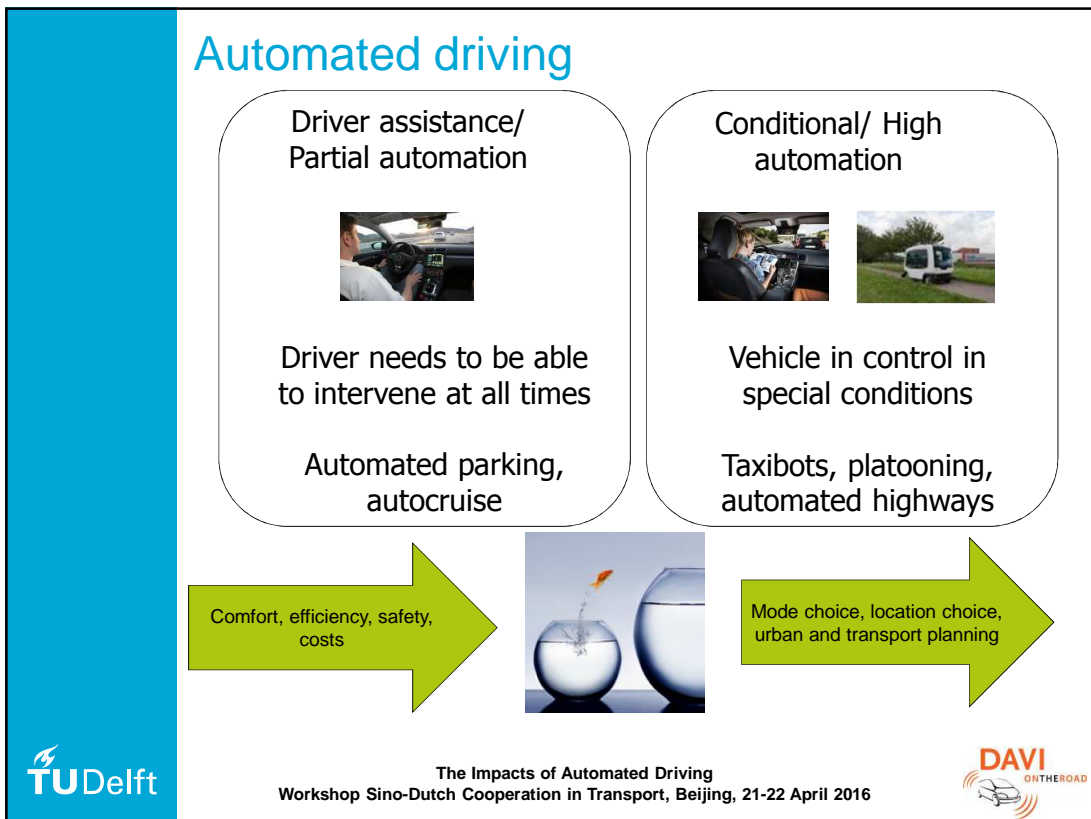
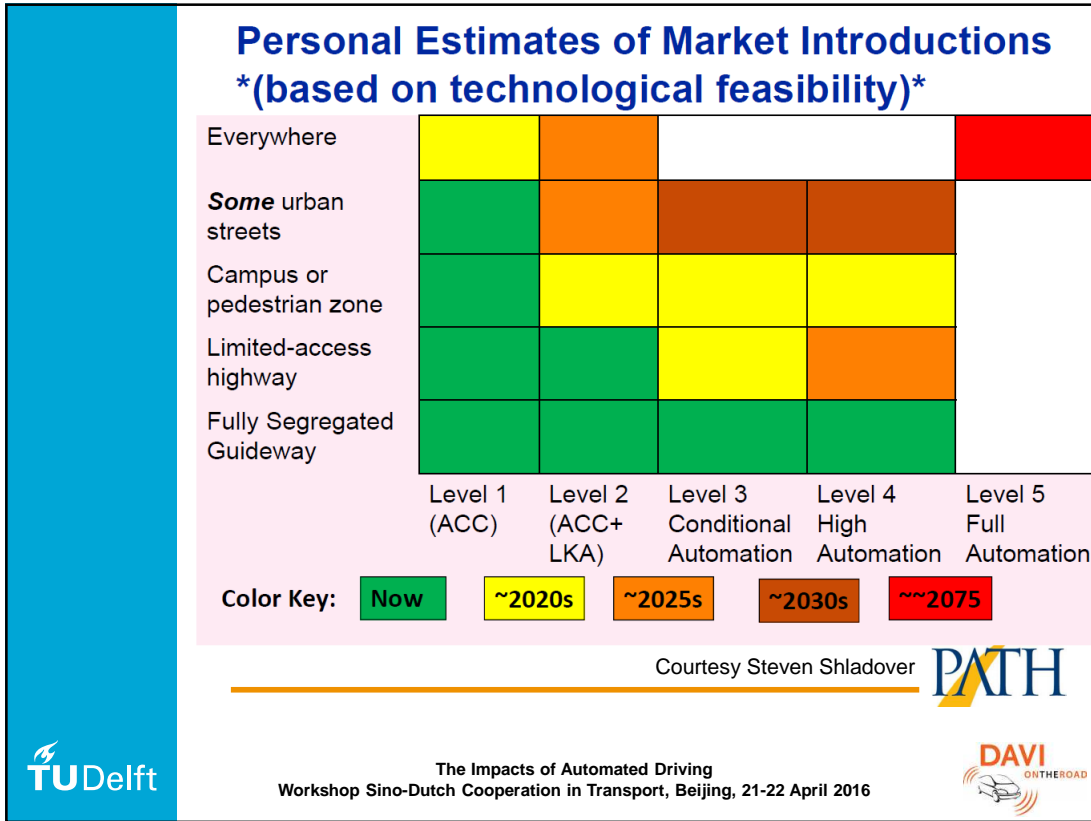


The Impacts of Automated Driving
Workshop Sino-Dutch Cooperation in Transport, Beijing, 21-22 April 2016



The Impacts of Automated Driving
Workshop Sino-Dutch Cooperation in Transport, Beijing, 21-22 April 2016

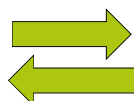




DRIVER BEHAVIOUR

Fundamental changes in driving behaviour

Driver in control



Vehicle in control
Driver supervision

Workload,
driving performance,
attention,
situation awareness
risk compensation,
Driver Vehicle Interface,
acceptance,
mode transition,
purchase and use



The congestion assistant

- Detects downstream congestion
- Visual and auditive warning starting at 5 km before congestion
- Active gas pedal at 1,5 km to smoothly slow down
- Takes over longitudinal driving task during congestion

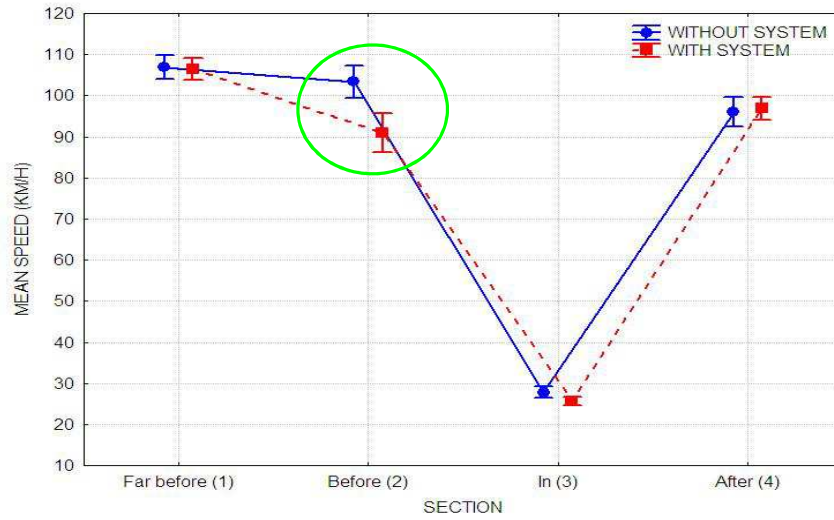


Impacts on driving behaviour

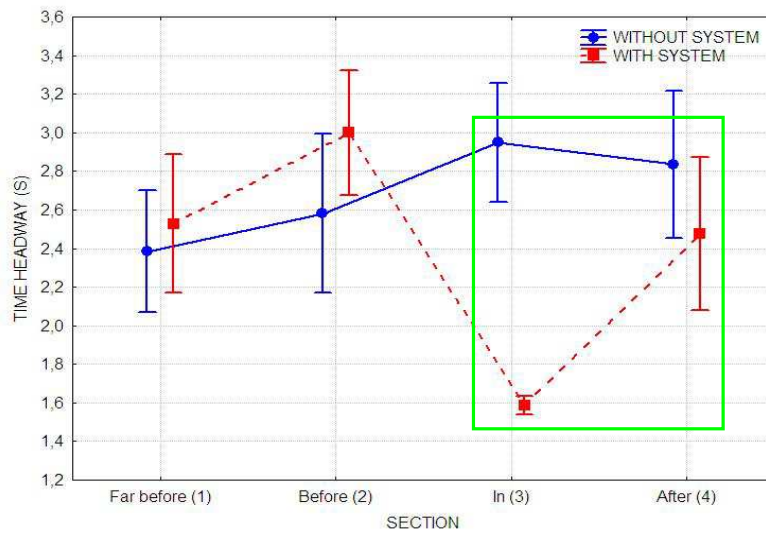


Motorway scenario with congestion
Impacts on driving behaviour
Acceptance

Effects on mean speed



Effects on time headway



TRAFFIC FLOW BEHAVIOUR

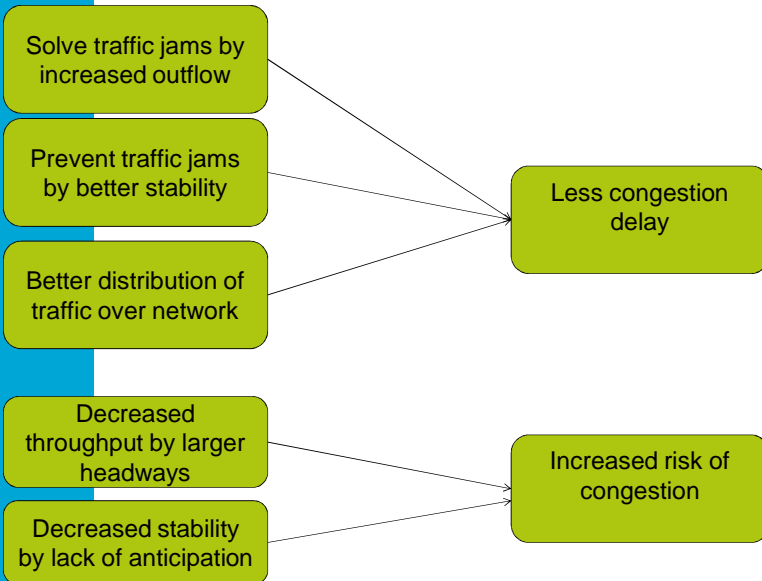


The Impacts of Automated Driving
Workshop Sino-Dutch Cooperation in Transport, Beijing, 21-22 April 2016



Potential impacts on traffic

Non connected
Large penetration



The Impacts of Automated Driving
Workshop Sino-Dutch Cooperation in Transport, Beijing, 21-22 April 2016



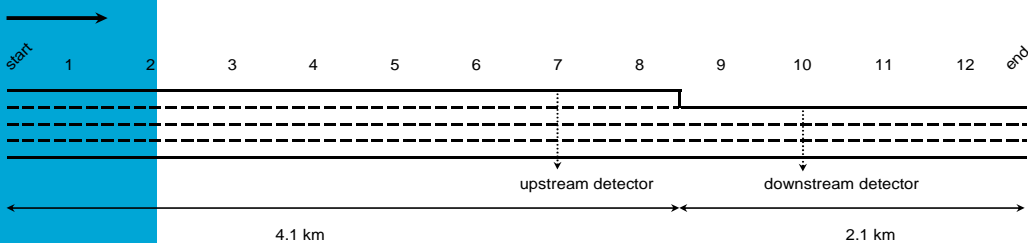
The congestion assistant

- Detects downstream congestion
- Visual and auditive warning starting at 5 km before congestion
- Active gas pedal at 1,5 km to smoothly slow down
- Takes over longitudinal driving task during congestion

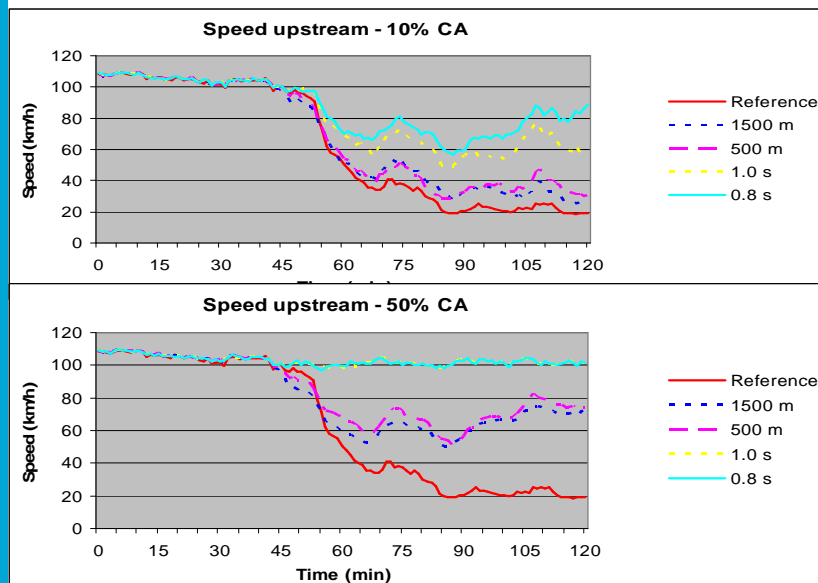


FILE over
1.0 km
00:35 min

Traffic flow simulation: merging area A12 motorway, Woerden, the Netherlands



Results

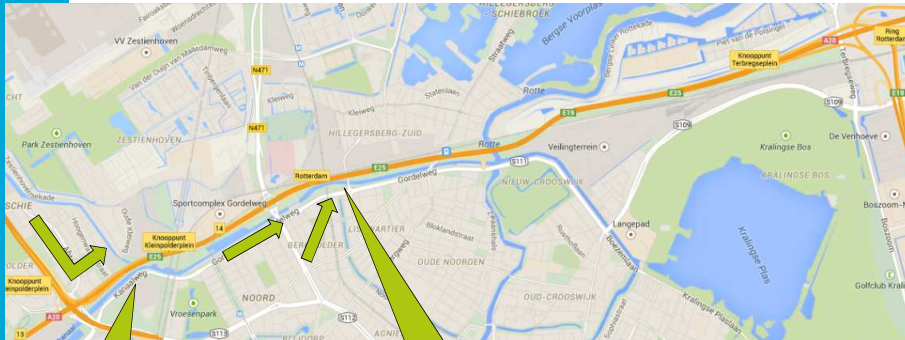


General findings on motorway capacity

- Many micro simulation studies
- Difficult to compare
- Focus on ACC and CACC
- Hardly any bottlenecks

- ACC can either have a small negative or a small positive effect on capacity (~ -5% to +10%)
- Bottlenecks: increase <10%
- Positive effect stability and capacity drop
- Lower level roads?

A20: bottleneck motorway, no more space to expand



3+2 cross weaving

Short on-ramp

How can AVs relieve congestion here?



The Impacts of Automated Driving
Workshop Sino-Dutch Cooperation in Transport, Beijing, 21-22 April 2016



ACCEPTANCE AND DEPLOYMENT



The Impacts of Automated Driving
Workshop Sino-Dutch Cooperation in Transport, Beijing, 21-22 April 2016



Acceptance

- Drivers state that they prefer warnings over control
- Control could be acceptable in special conditions such as congestion driving
- Acceptance of (different levels of) automation increases after (positive) experience
- Scepticism is declining



The Impacts of Automated Driving
Workshop Sino-Dutch Cooperation in Transport, Beijing, 21-22 April 2016

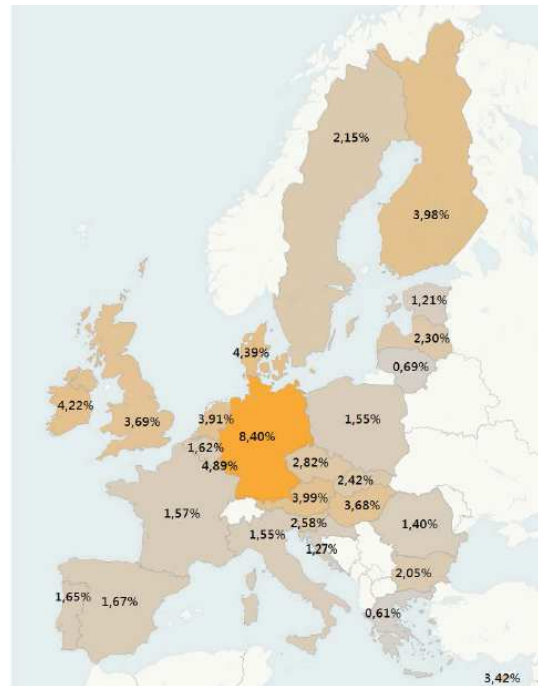


DEPLOYMENT RATES - EU27 BY MEMBER STATE

**PS3
OBSTACLE &
COLLISION
WARNING**



**PASSENGER CARS
NEW REG. IN 2012**



The Impacts of Automated Driving
Workshop Sino-Dutch Cooperation in Transport, Beijing, 21-22 April 2016



Car driving more attractive!

Partial automation



Better comfort,
Less accidents
Less congestion

High automation



Travel time can partially be
used for other purpose

Full automation



Travel time can fully be used
for other purposes

IMPACTS ON STRATEGIC DECISION MAKING

Policy relevance

- Congestion and accessibility
- Safety
- Travel patterns
- Freight transport
- Public transport
- Socio-economic development
- Urban design
- Spatial structure
- Investment policies

National, regional, city authorities,
public transport operators, Multimodal
hubs (ports, airports)



Automated cars can improve
traffic efficiency and safety

Netherlands to facilitate large
scale testing of automated cars

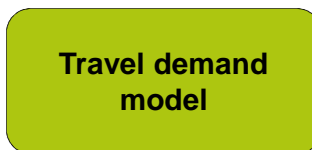
Automated roads?

- Implication of changes in traffic load? Platoons, bridges, rutting?
- Automated driving under adverse roadway and weather conditions?
- Implications for traffic management? Opportunity or threat?
- eHorizon: automated driving cloud for real-time positioning, manoeuvring and safety?
- Level 4 certified roads?
- Geometric design, transition zones?



Automated Driving

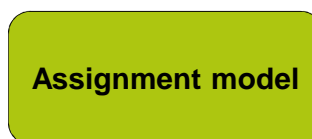
Spatial structure
Economy
Demography
Policy measures



Trips (car, train,
cycling, walking)

Flows, travel times,
congestion

Transport network,
Capacities,
Passenger car
equivalent,
Value of time



Iterate until
equilibrium

Prediction horizon reference scenario 2030

How can this model represent the impacts of Automated Driving?



The Impacts of Automated Driving
Workshop Sino-Dutch Cooperation in Transport, Beijing, 21-22 April 2016



Exploration using LMS

Automated Autonomous

5% capacity decrease on primary road network

	Index km travelled
Train	100.3
Car driver	99.8
Car passenger	99.7
Bus, tram, metro	100.2
Cycling	100.1
Walking	100.1
Total	99.98

Index congestion
115.7

Automated Cooperative

15% capacity increase primary road network
10% capacity increase secondary road network
10% decrease value of time commuting and business car trips

	Index km travelled
Train	98.8
Car driver	100.8
Car passenger	101.4
Bus, tram, metro	99.2
Cycling	99.3
Walking	99.4
Total	100.10

Index congestion
69.1

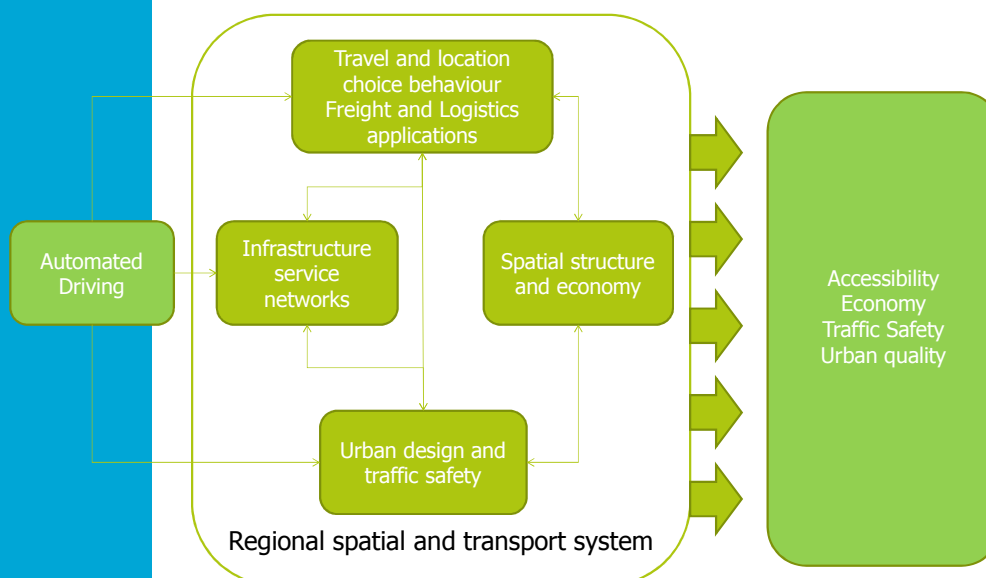


The Impacts of Automated Driving
Workshop Sino-Dutch Cooperation in Transport, Beijing, 21-22 April 2016

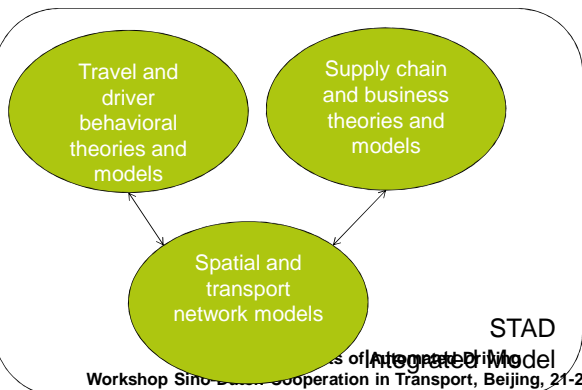
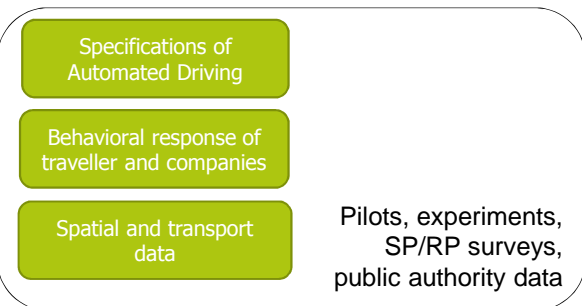


IMPACTS ON STRATEGIC DECISION MAKING

Scientific challenges: understanding the spatial and transport changes



Data, theories and models



.. and others

Scientific partners,
Consultancy firms
Public authorities



Workshop Sino-Dutch Cooperation in Transport, Beijing, 21-22 April 2016



STAD: Spatial and Transport Impacts of Automated Driving



016



WRAP UP...



The Impacts of Automated Driving
Workshop Sino-Dutch Cooperation in Transport, Beijing, 21-22 April 2016



The road to automated driving...

Develop efficient and reliable technology

Collect, analyse and publish large scale real-world experience

Study spatial, transport and societal impacts

Regulations, type approval

Awareness, ambitions, expectations, reality checks

International cooperation



The Impacts of Automated Driving
Workshop Sino-Dutch Cooperation in Transport, Beijing, 21-22 April 2016

