

# DRAWING SET

Hotel New York



**Lotte Souren, 4217071**

complex projects

25/02/2021

fall semester

Group Site Plan 1:10.000

Site Plan 1:1000

Urban Implementation 1:500

Floorplans 1: 200

Cross Sections 1:200

Interior fragments 1:50

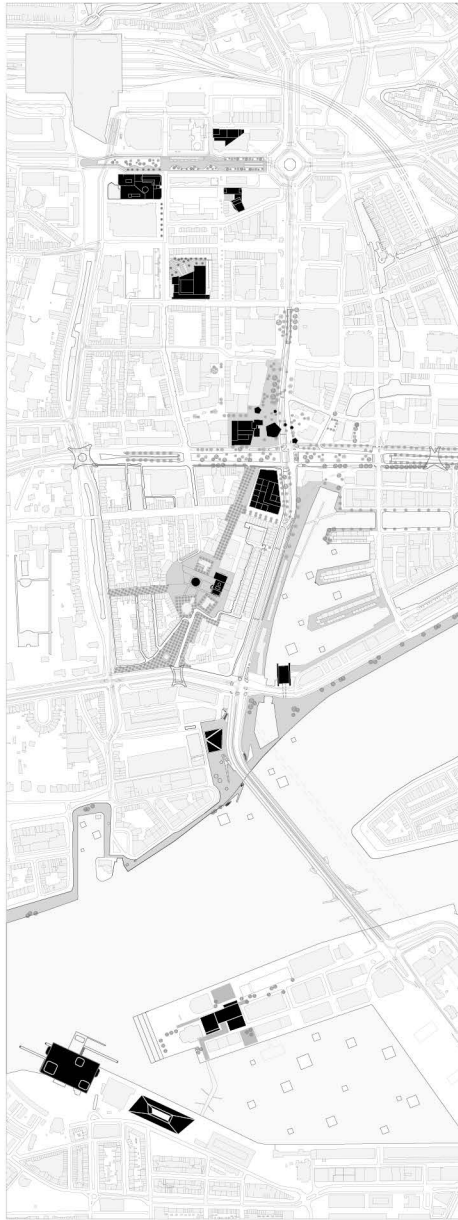
Detail overview

Envelop Fragment 1:20

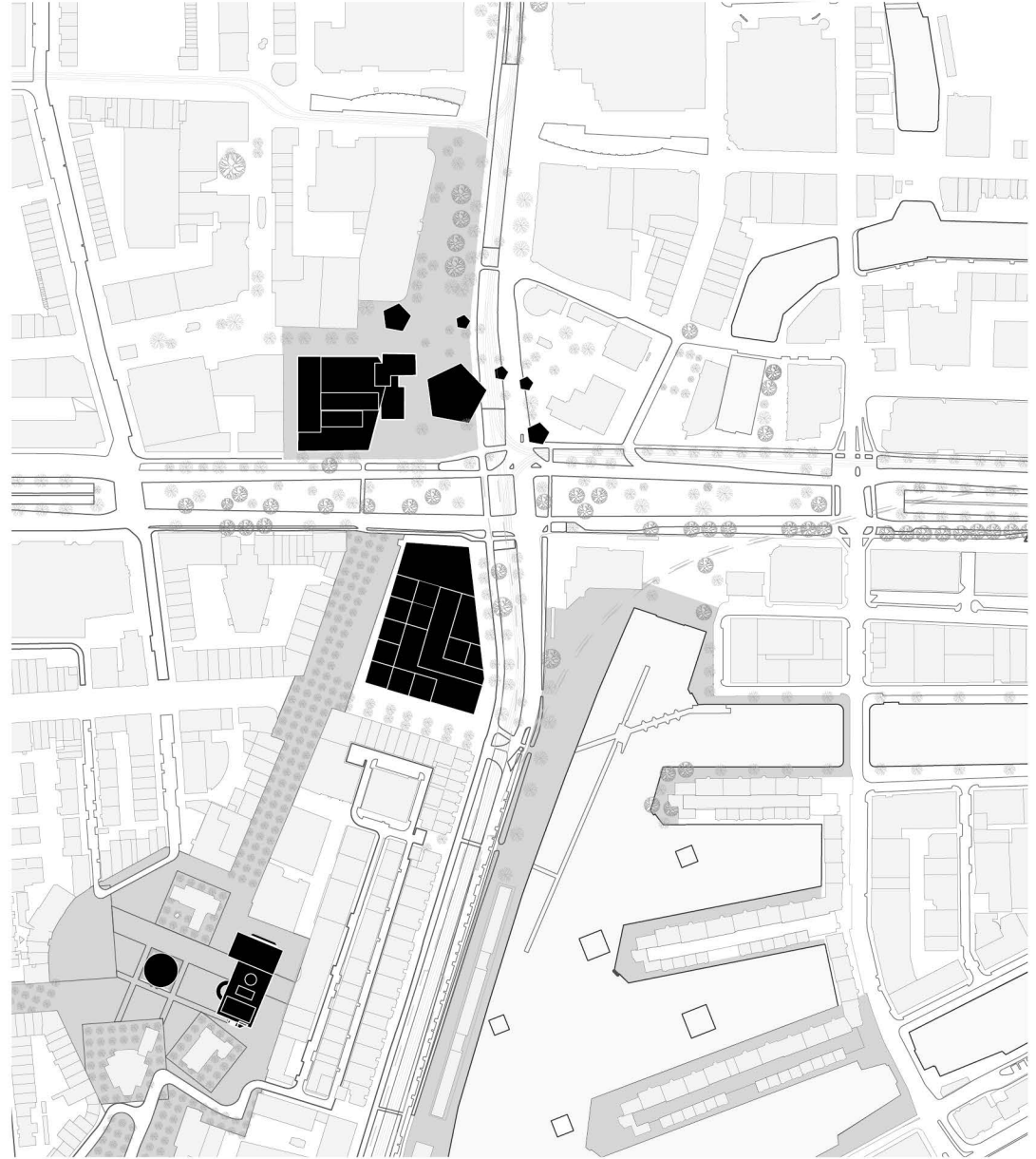
Details 1:10/5

# INDEX

## The Unfinished City

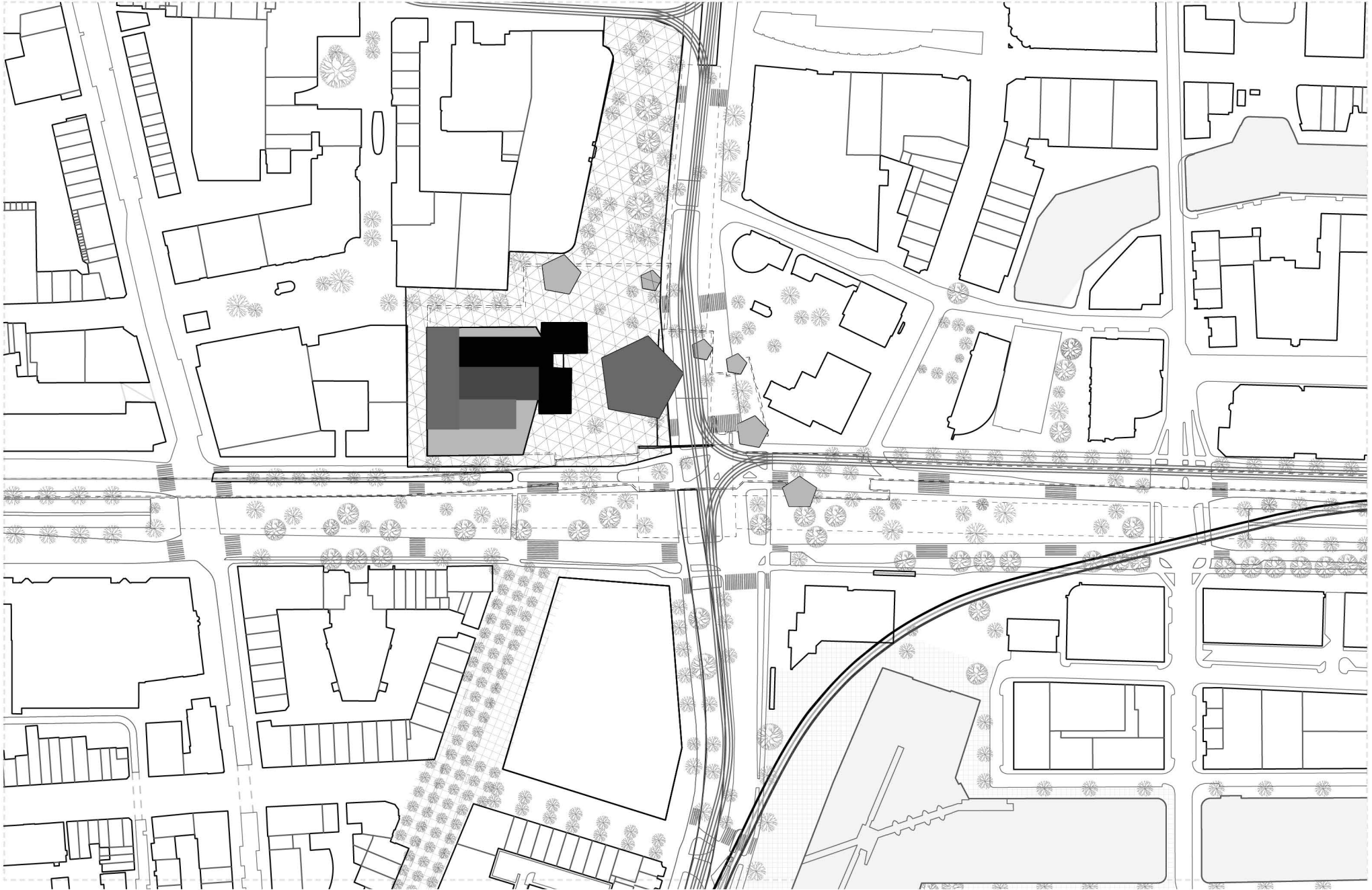


**Beurs as kickstart for new amenities**



**The Node Beurs in the CND (Cool New District)**

# Transit Hub Beurs



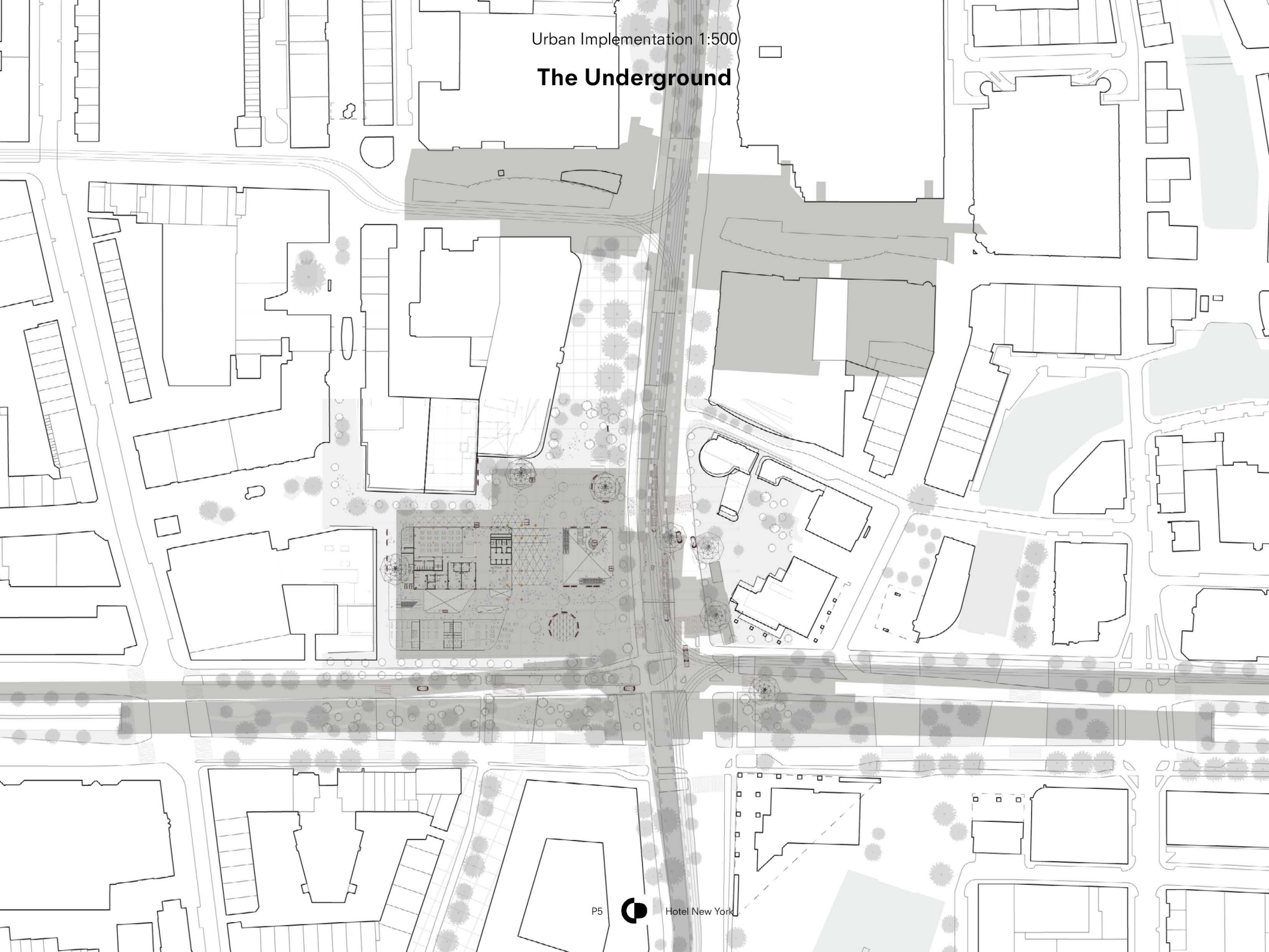
Urban Implementation 1:500

# Cool Square

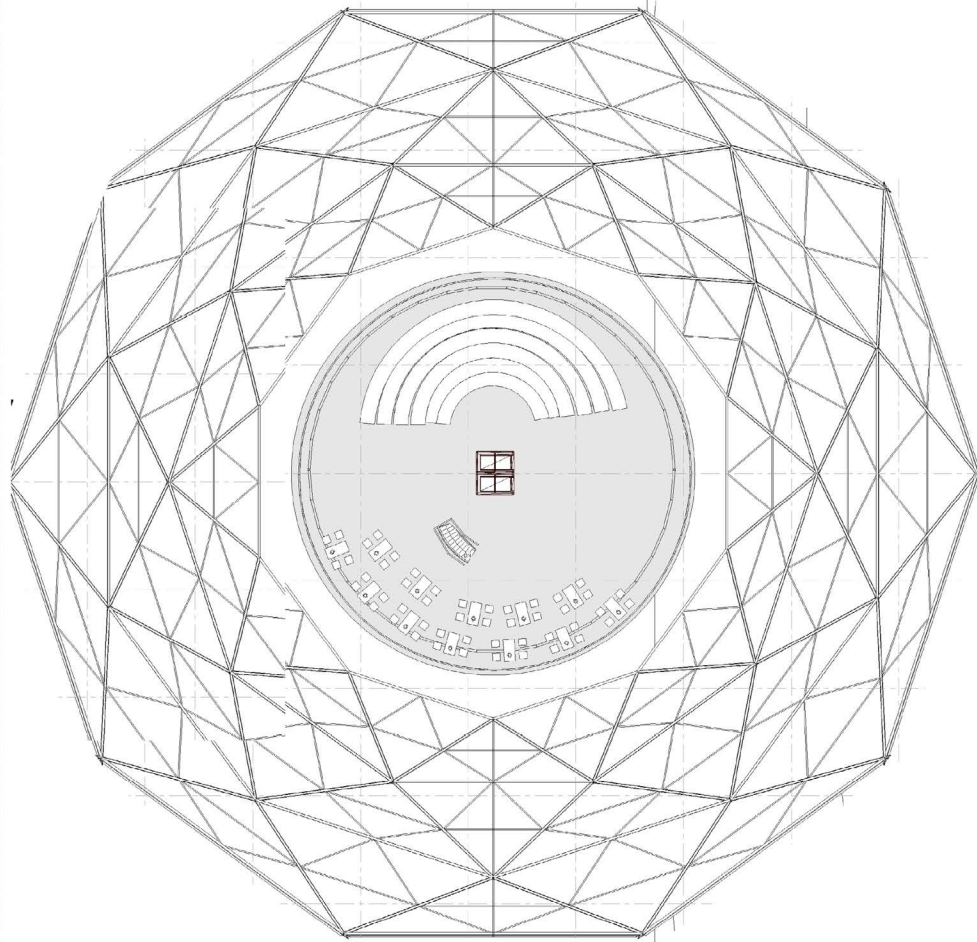


Urban Implementation 1:500

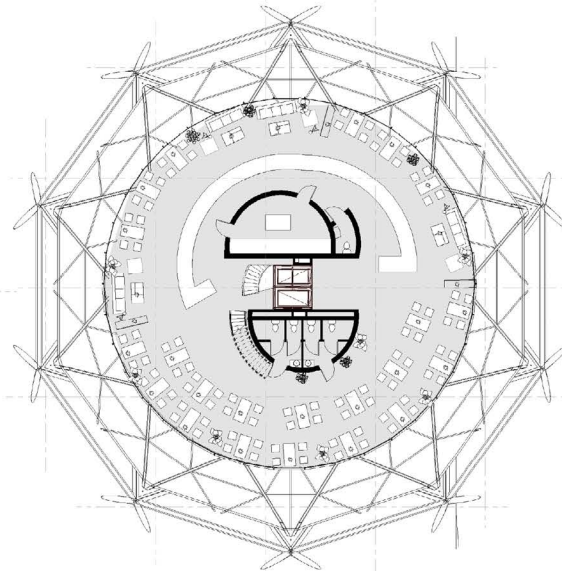
# The Underground



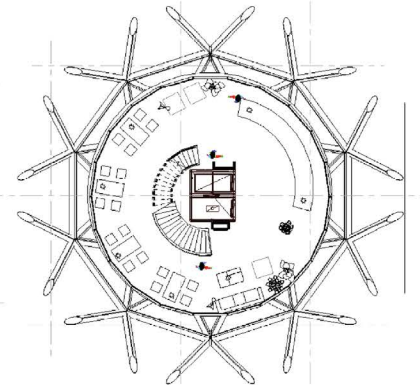
# URBAN FLOWER



+11 m

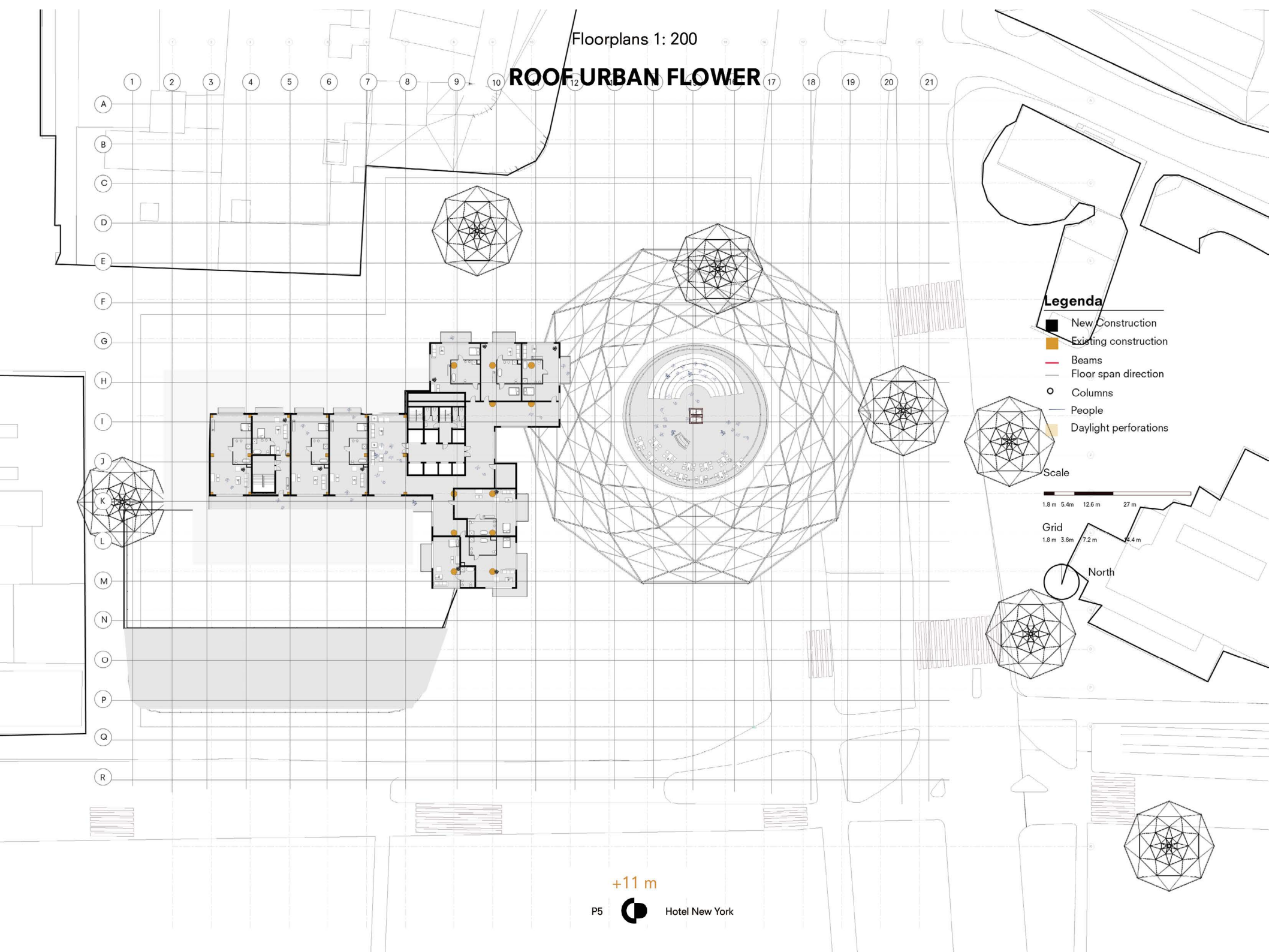


+6.5 m



+3 m

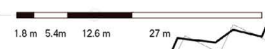
# ROOF URBAN FLOWER



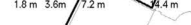
### Legend

- New Construction
- Existing construction
- Beams
- Floor span direction
- Columns
- People
- Daylight perforations

### Scale



### Grid



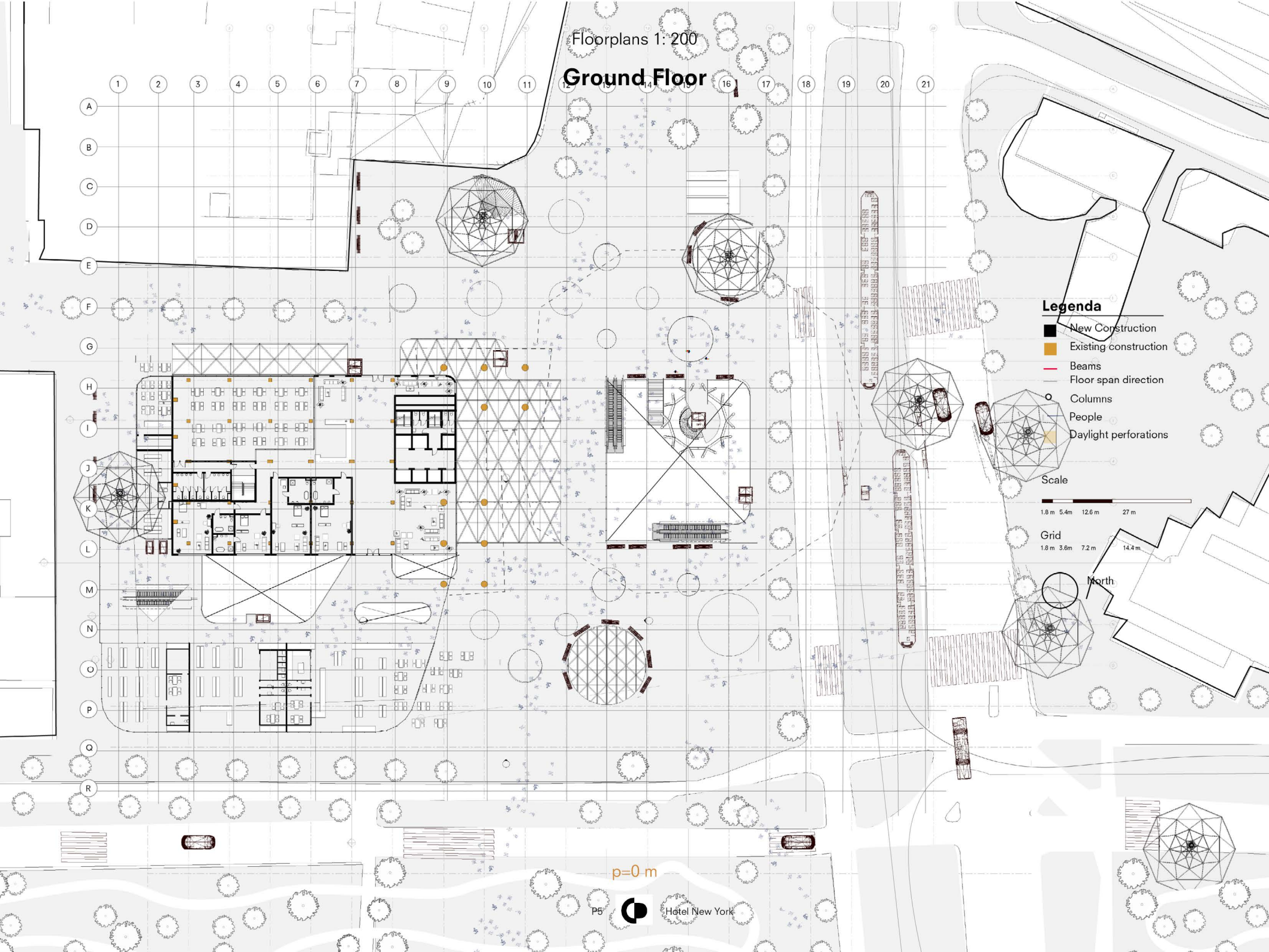
### North

+11 m



Floorplans 1:200

# Ground Floor



## Legenda

- New Construction
- Existing construction
- Beams
- Floor span direction
- Columns
- People
- Daylight perforations

Scale

1.8 m 5.4 m 12.6 m 27 m

Grid

1.8 m 3.6 m 7.2 m 14.4 m

North

p=0 m

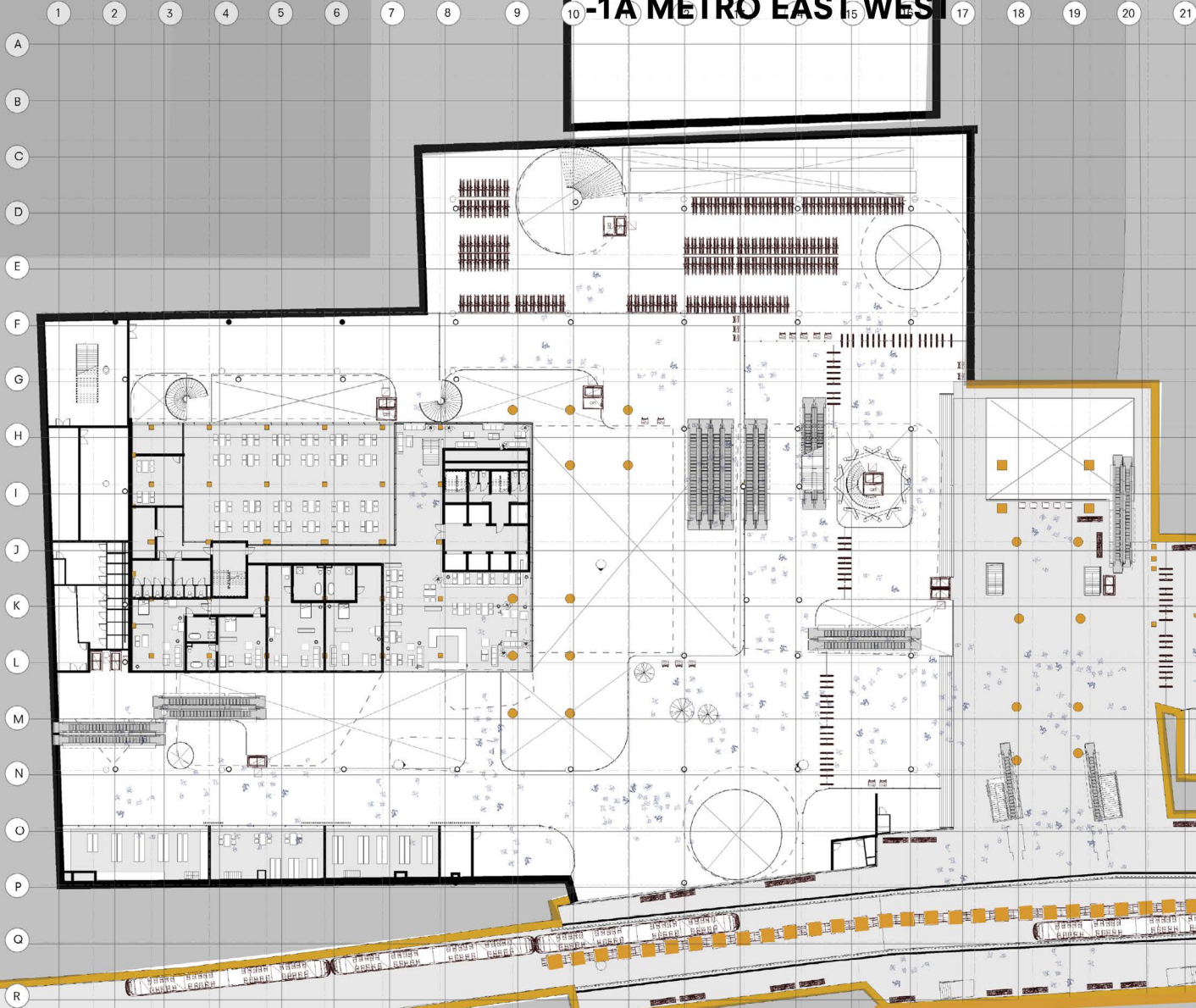
P5



Hotel New York

Floorplans 1: 200

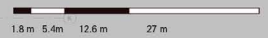
# -1A METRO EAST WEST



### Legenda

- New Construction
- Existing construction
- Beams
- Floor span direction
- Columns
- People
- Daylight perforations

### Scale



### Grid

1.8 m 3.6 m 7.2 m 14.4 m



Hotel - 3 m

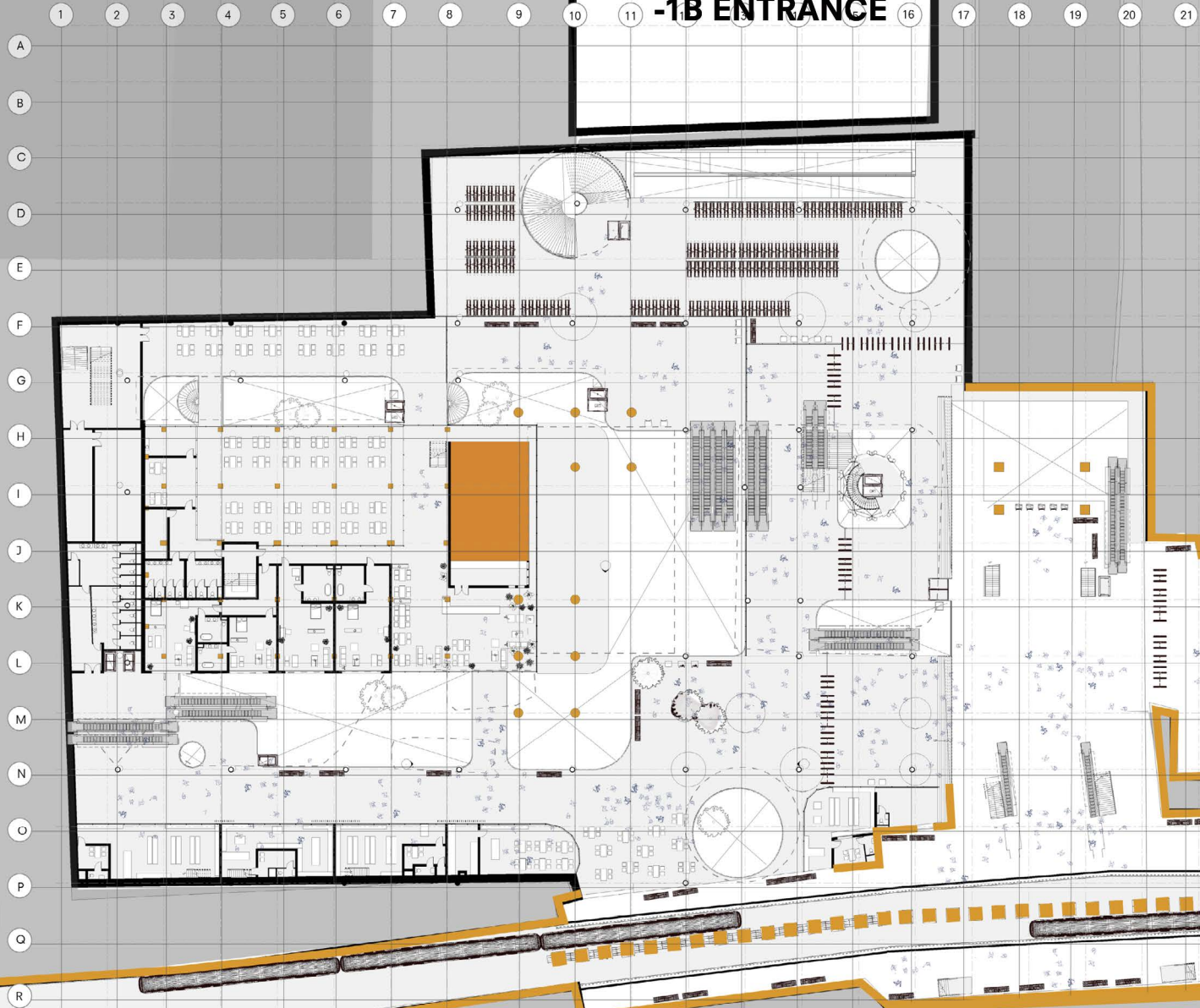
Entrance - 6.0 m

Metro - 4.5m



Floorplans 1: 200

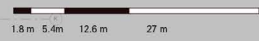
# -1B ENTRANCE



## Legenda

- New Construction
- Existing construction
- Beams
- Floor span direction
- Columns
- People
- Daylight perforations

## Scale



## Grid

1.8 m 3.6m 7.2 m 14.4 m



Hotel - 6 m

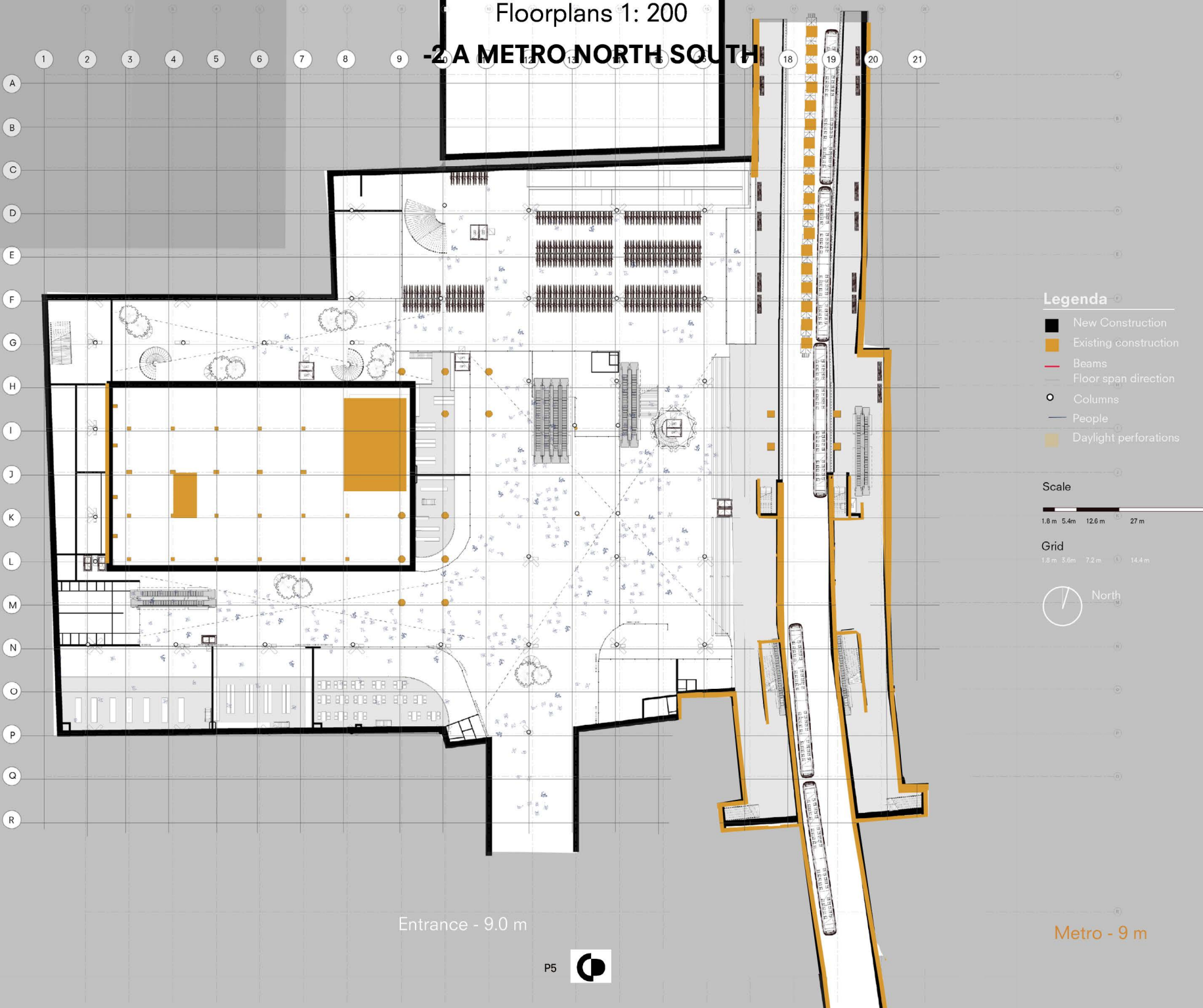
Entrance - 6.0 m

Metro - 4.5 m



Floorplans 1: 200

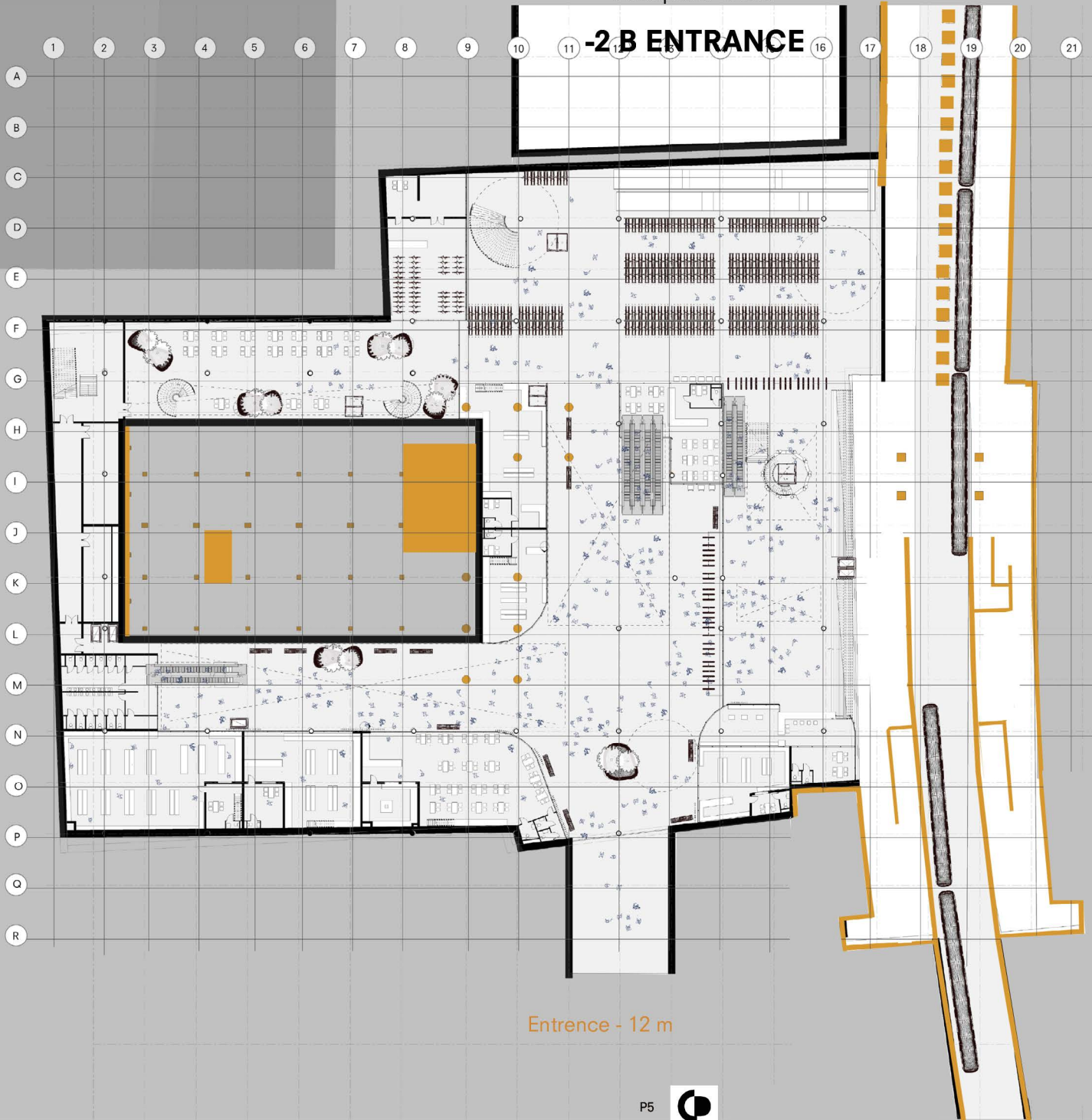
# -2 A METRO NORTH SOUTH



Entrance - 9.0 m

Metro - 9 m

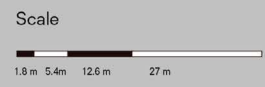




**-2 B ENTRANCE**

Entrance - 12 m

- Legenda**
- New Construction
  - Existing construction
  - Beams
  - Floor span direction
  - Columns
  - People
  - Daylight perforations

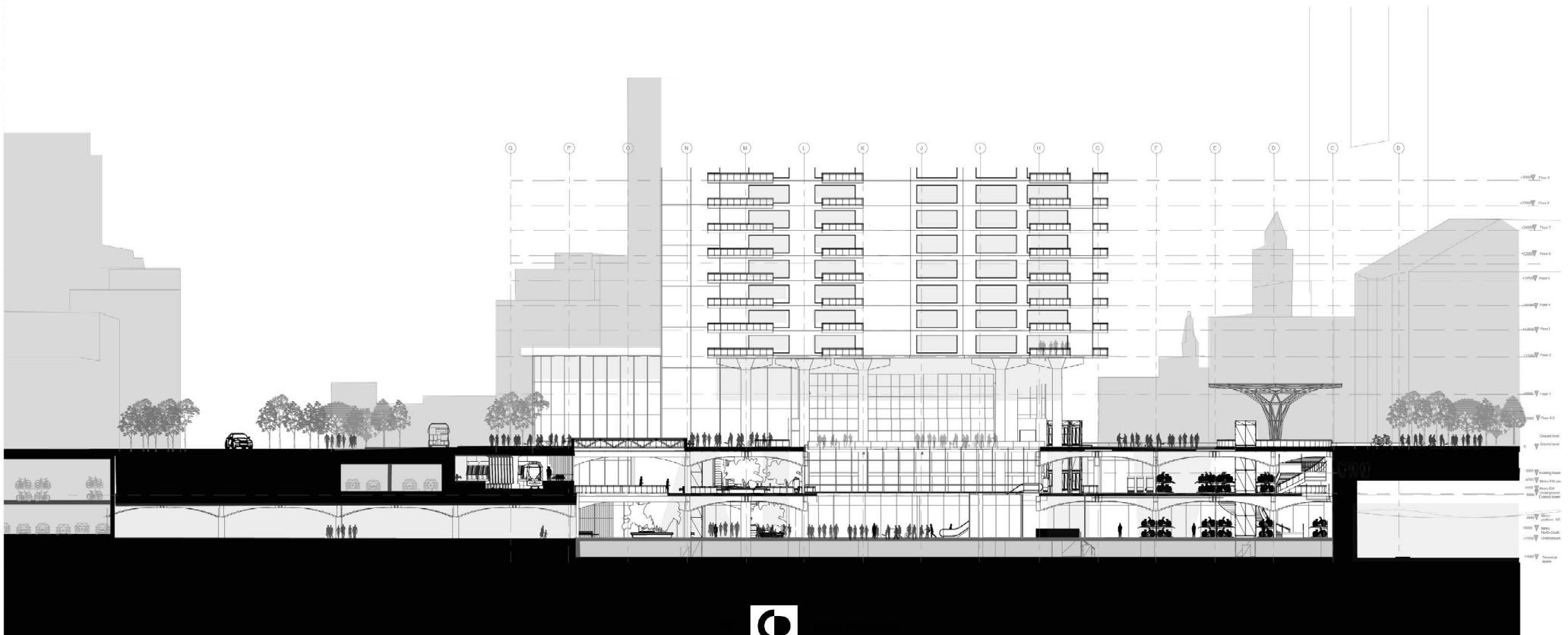
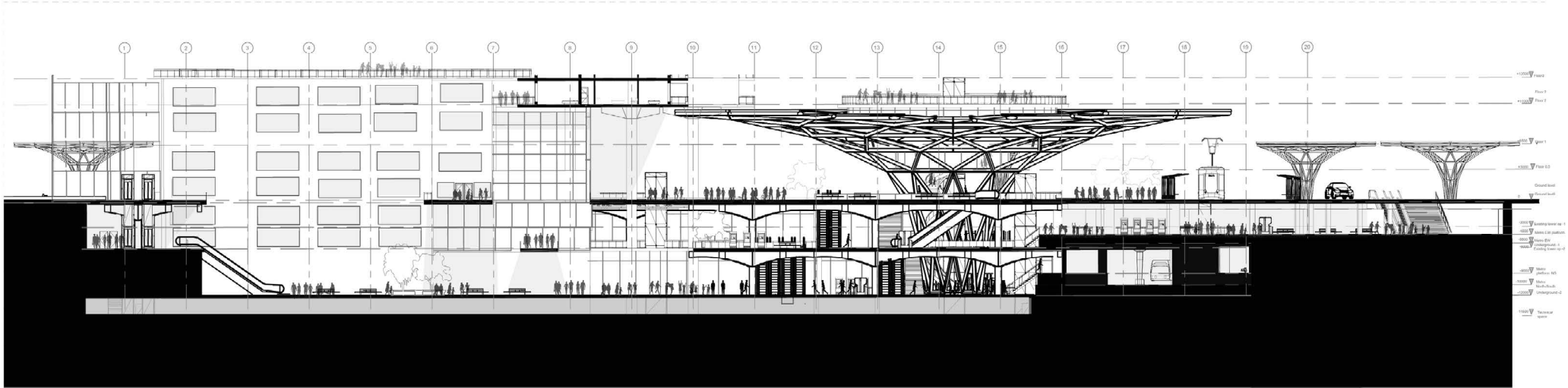


Metro --10.5m



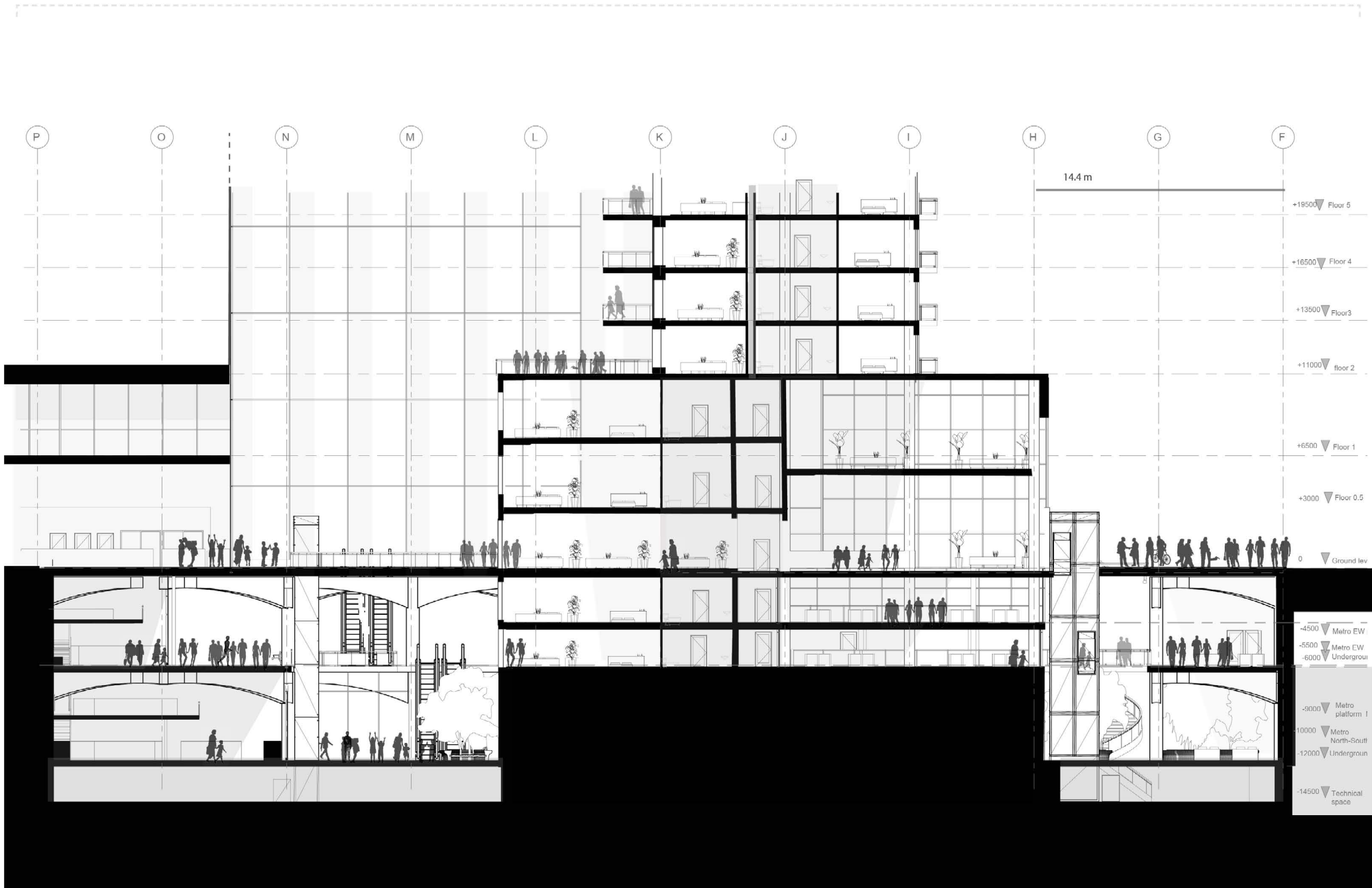
Section 1:200

# Long Section



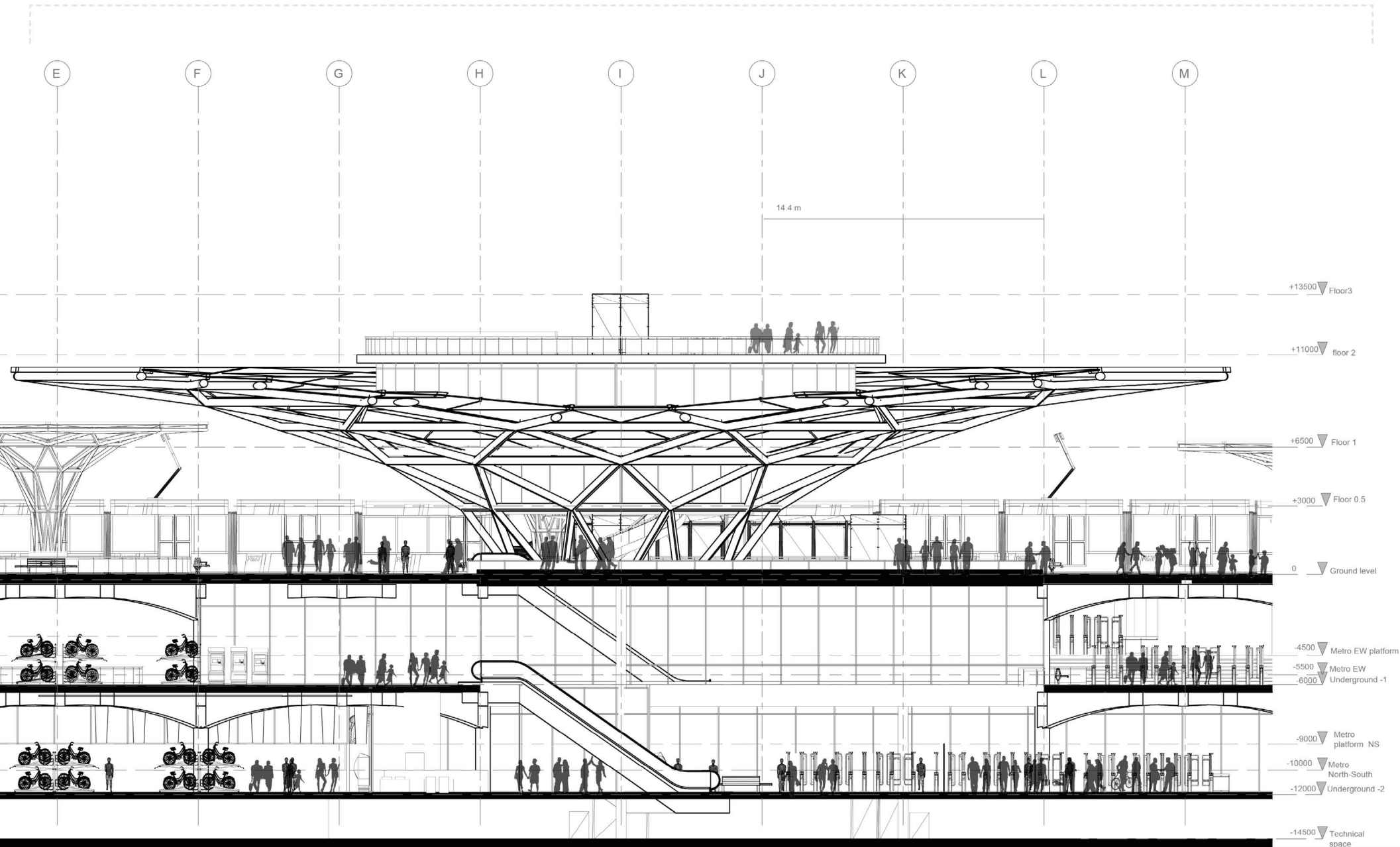
Section 1:200

# Cross Section



Section 1:50

# Section Entrance hall



Section 1:50

# Section Entrance

9

10

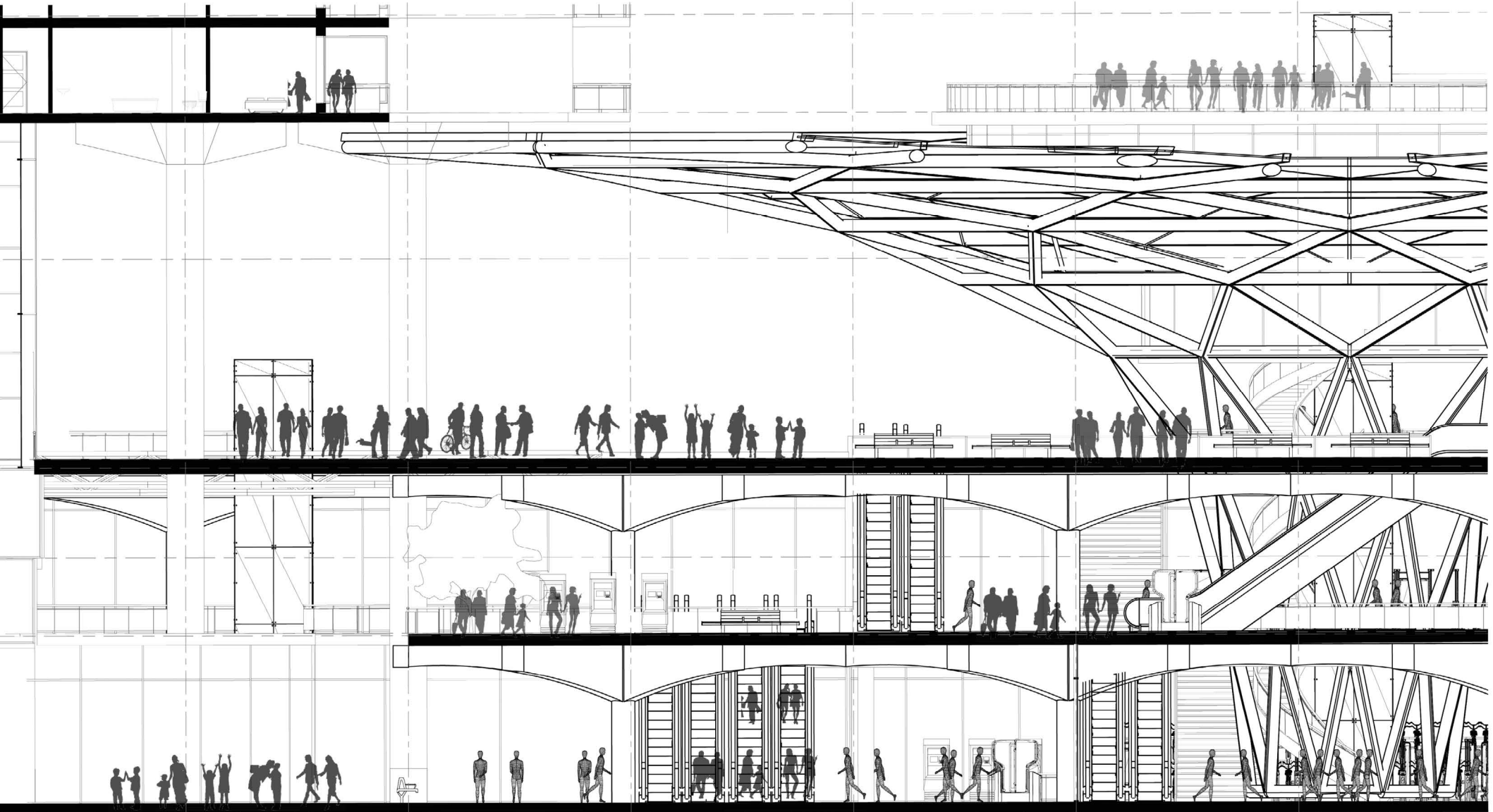
11

12

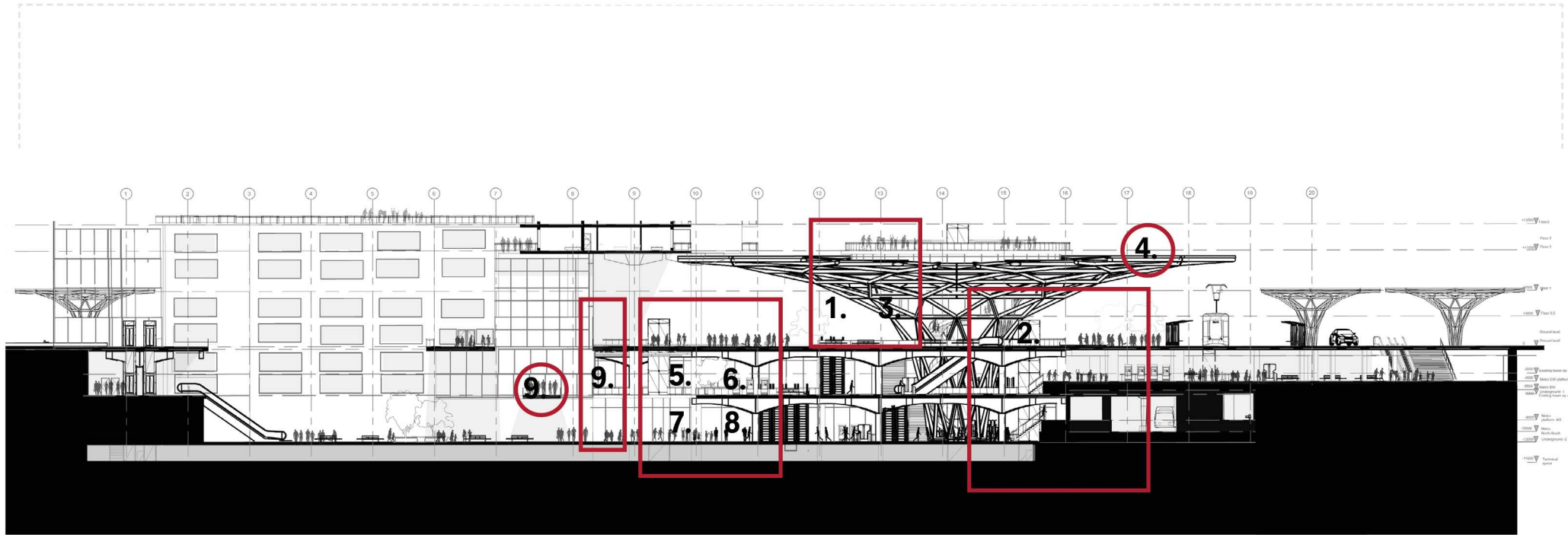
13

14

14.4 m



## The Tower, Underground, Sqaure and Metro

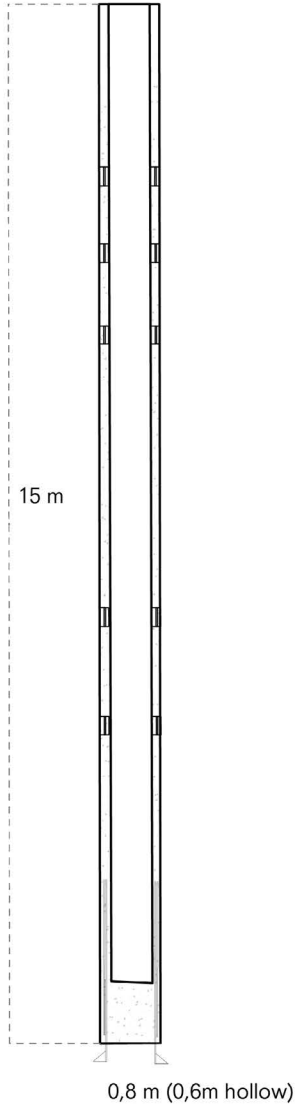


1. Paviljoen Main Entrance, Envelope Fragment
2. Transition existing metrostation & new entrance, Interior fragment
3. Urban-Flower Interior Fragment
4. Entrance Cannopy, Detail
5. Underground & Coolplein, Interior Fragment & Climate
6. Precast Construction & joint, structural detail
7. BSF connection precast columns & Beams, structural detail
8. The Square 'Coolplein', Roof Detail
9. Transition Hotel & Walking bridge

# Easy and fast Assembling

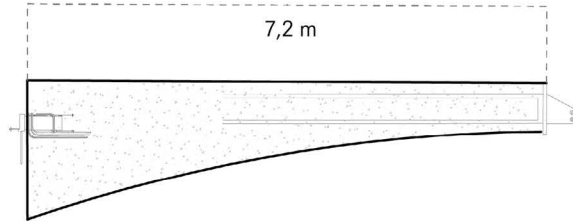
## Precast Column,

Diffrent ones: 1. Light 2. Ventilation supply 3. Ventilation drain



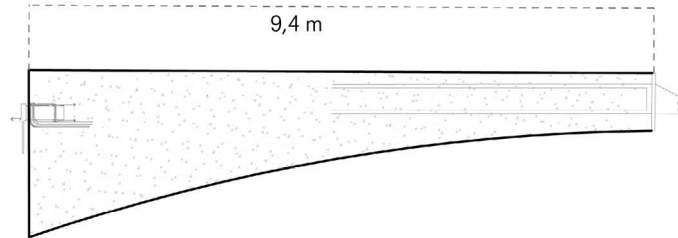
## Precast Beam, cast in joints

2x / column/ floor



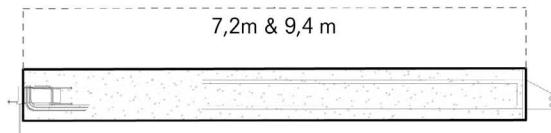
## Precast Beam, cast in joints

4x / column/ floor

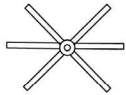


## Precast Beam, Technical Floor

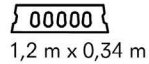
4x & 2x / column/ floor



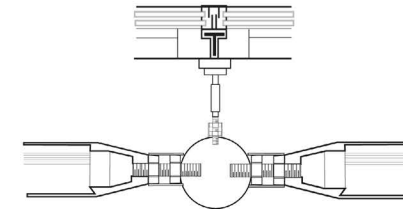
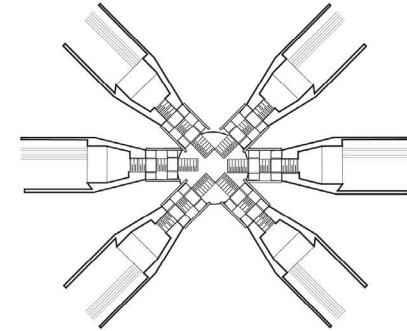
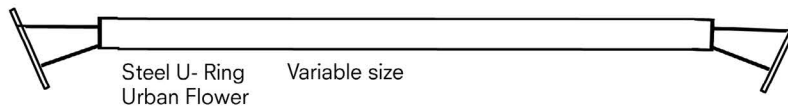
Beam Joint,  
Steel



Hollow slab floor,  
Concrete



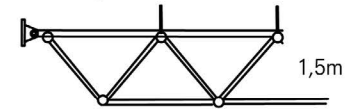
Steel T -Beam  
circle  
for walkglass



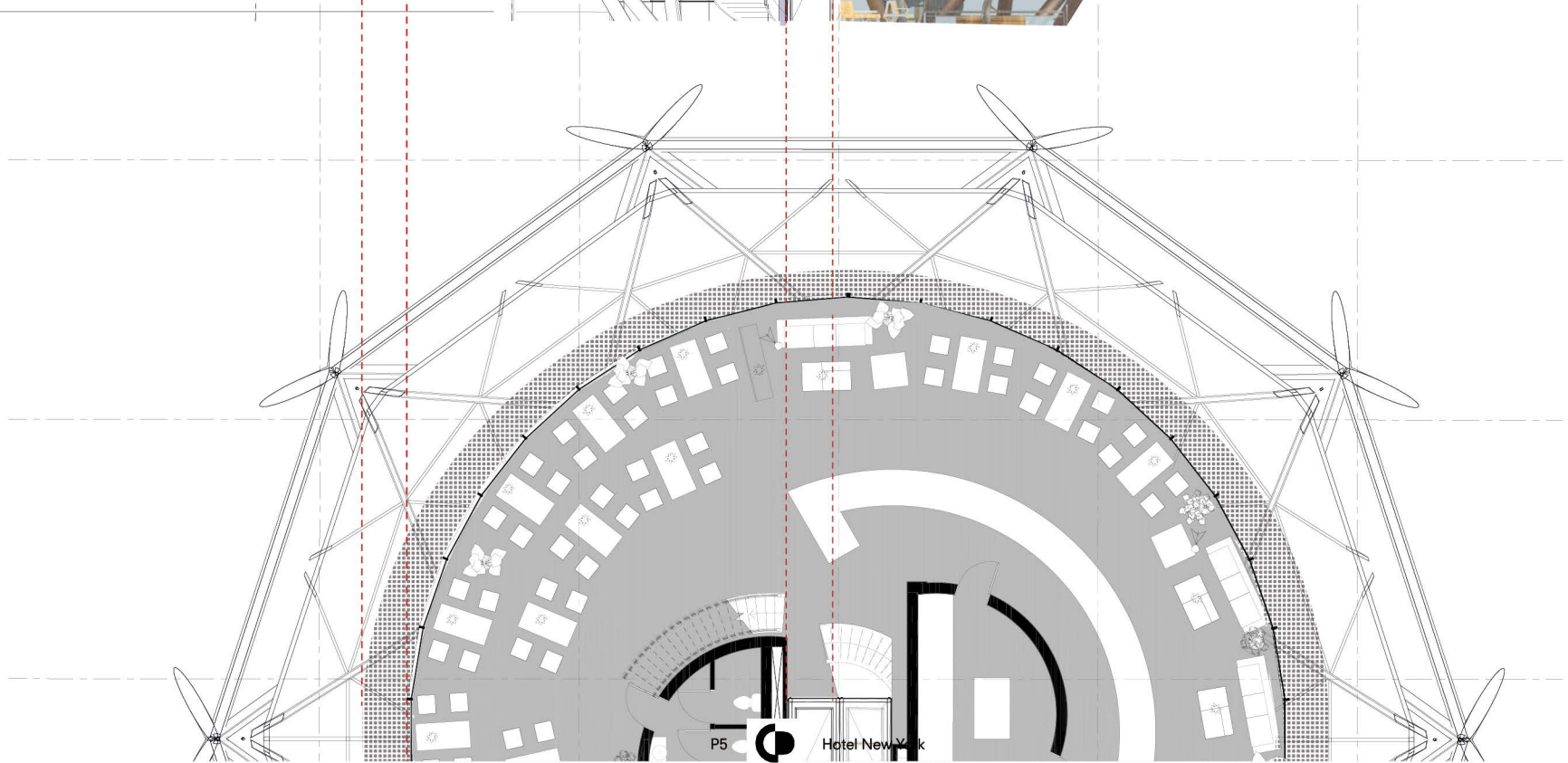
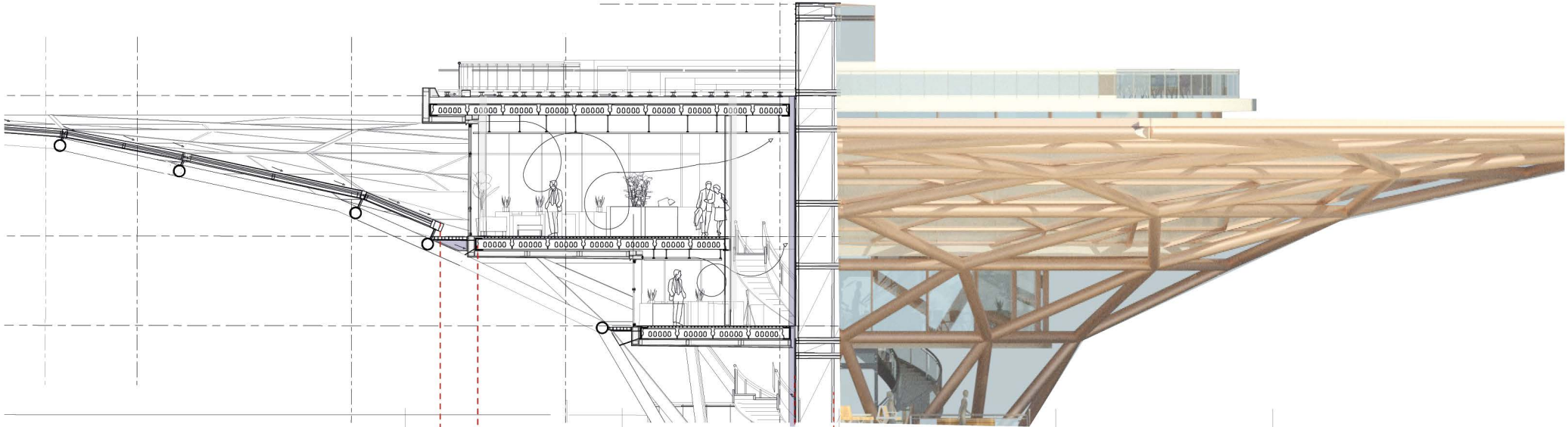
## Steel Space Frame

Urban Flower - variable sizes

Steel Space Frame  
with hinge

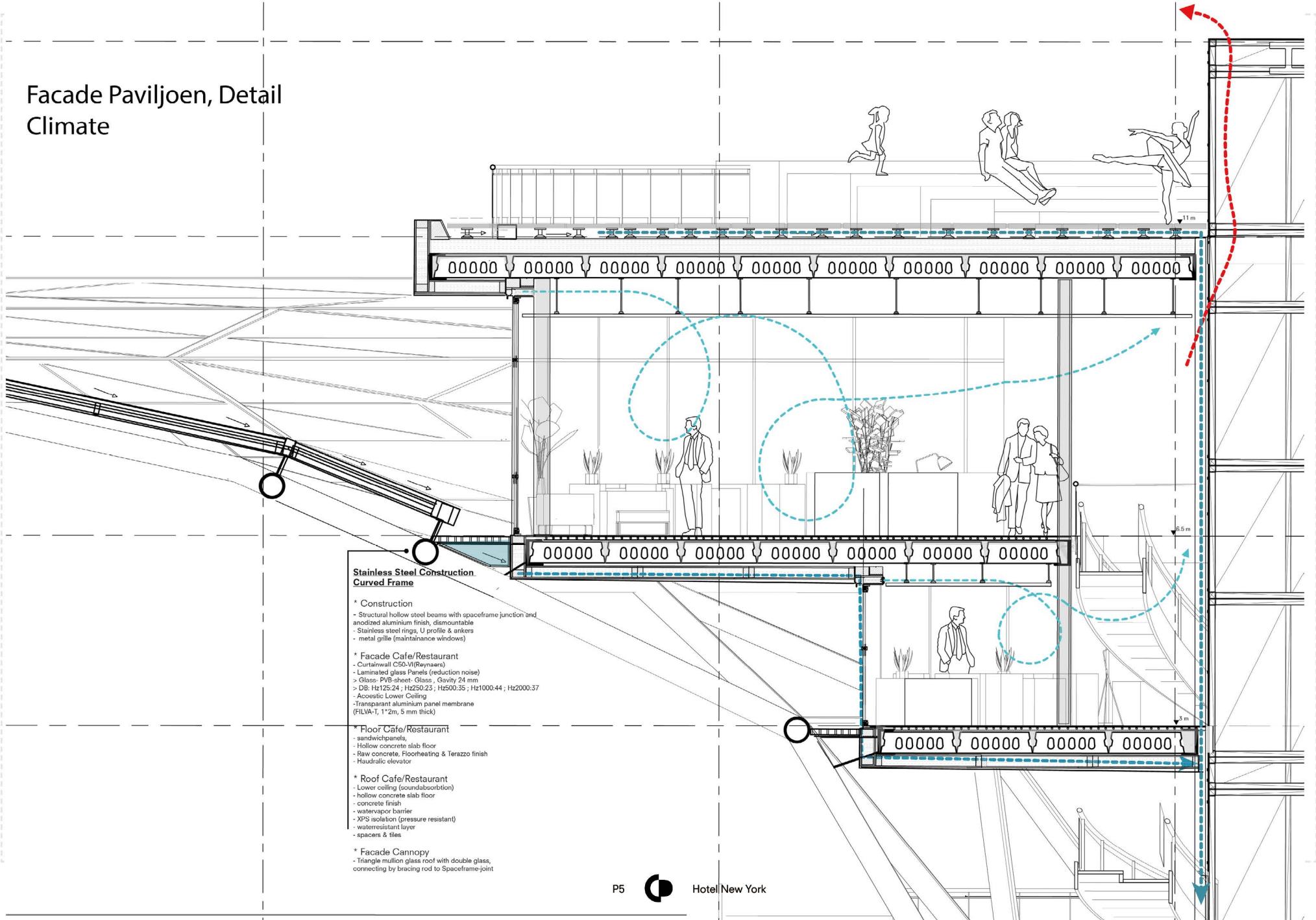


Envelope Fragment 1:20  
**Paviljoen - Main Entrance**



# Cafe/Roofstage & terrace - Urban Flower

Facade Paviljoen, Detail  
Climate



Detail 1:5

# Entrance Canopy

Rose Gold Anodized  
aluminum cap

Translucent  
double glass  
with transparent  
solar panels

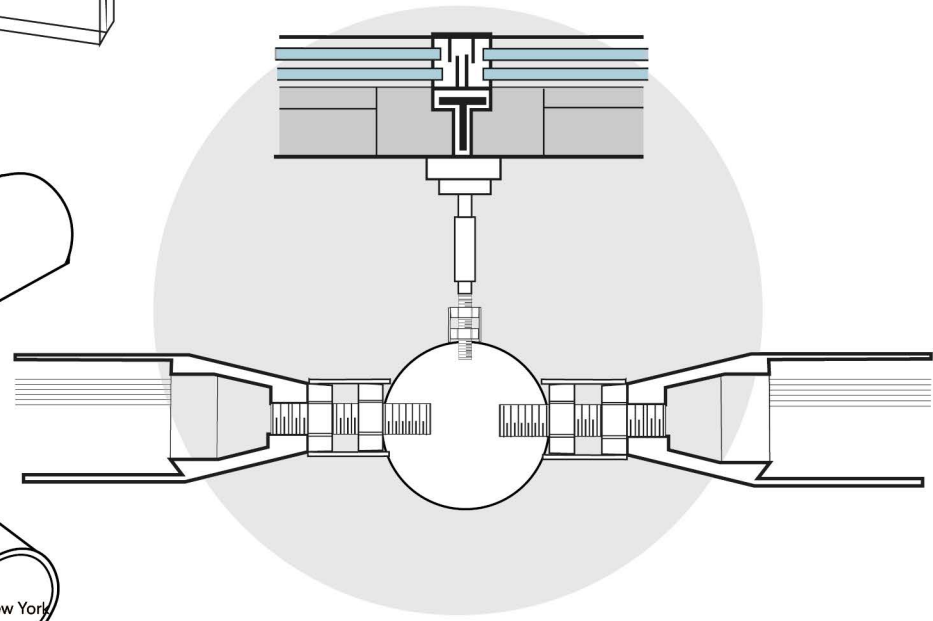
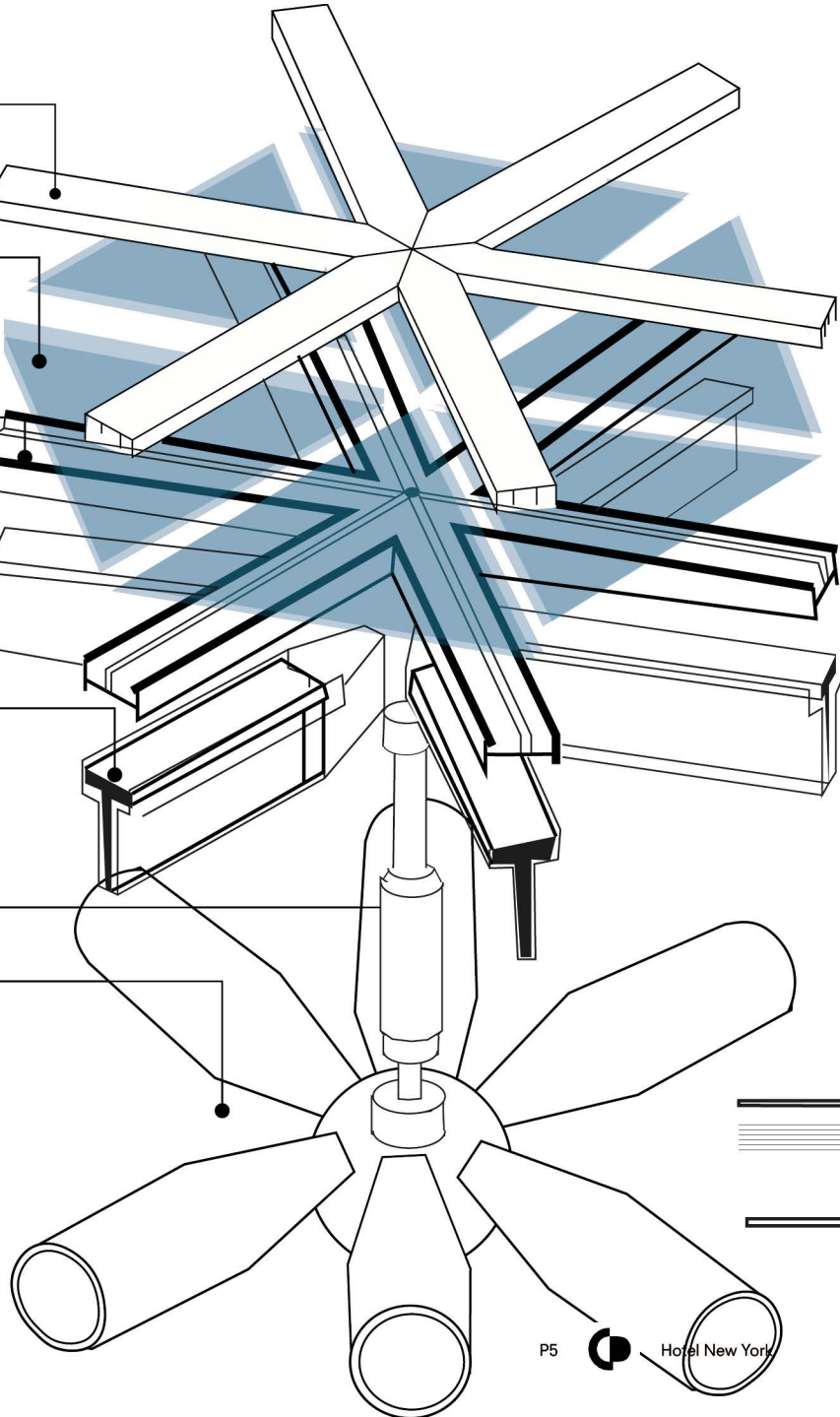
Rubber sealing

Stainless steel T-profile  
with millon cover

Stainless steel bracing rod

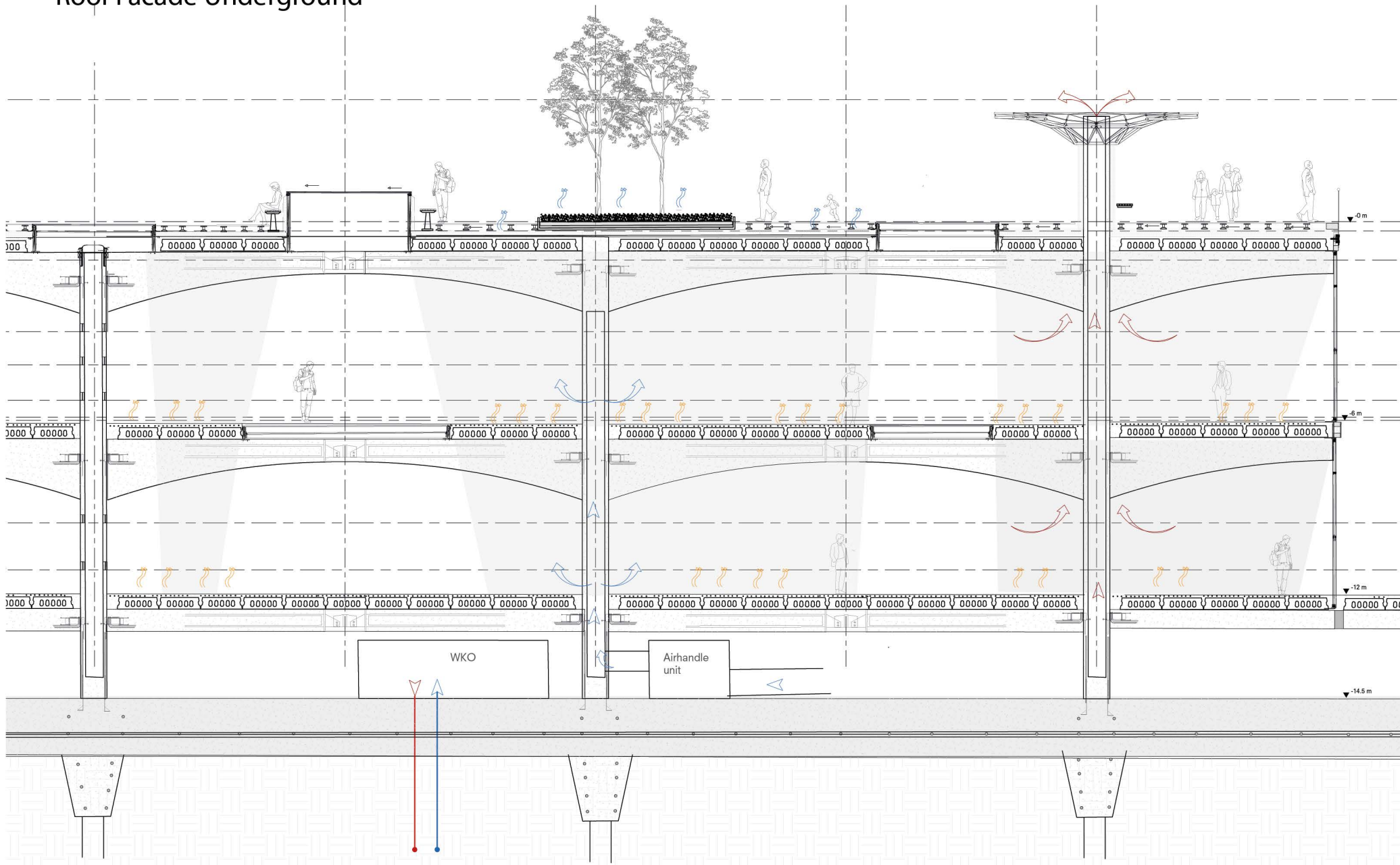
Hollow circular stainless steel  
triangle framework conncted  
by spaceframe joint, finished  
with rose gold anodized  
aluminium

\* Detail inspired on  
Zaha Hadid Guangzhou  
Opera House and King  
Cross station

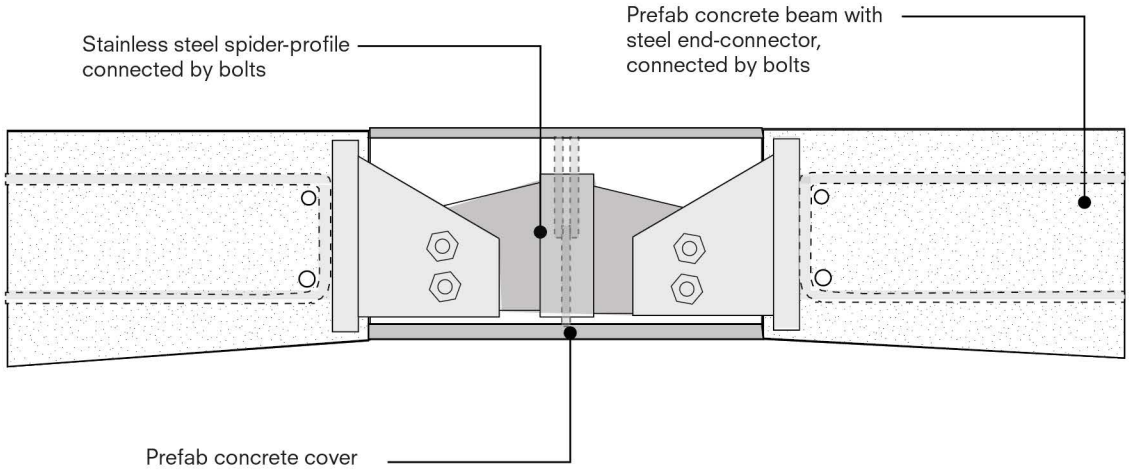
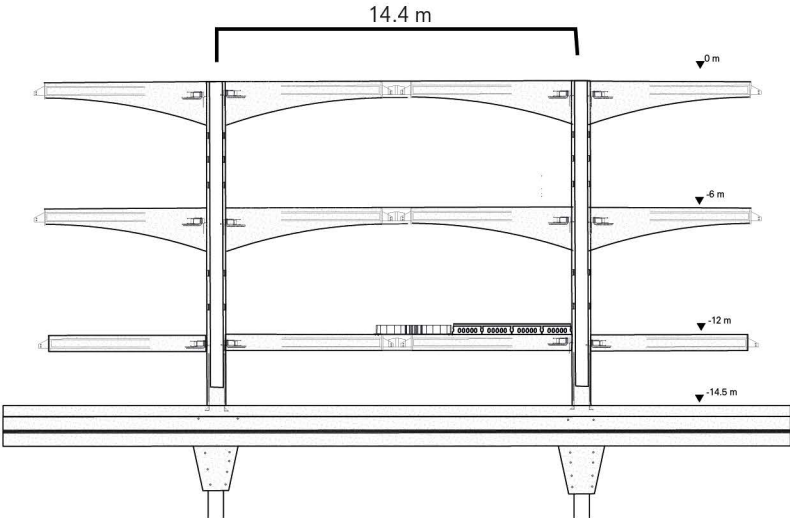
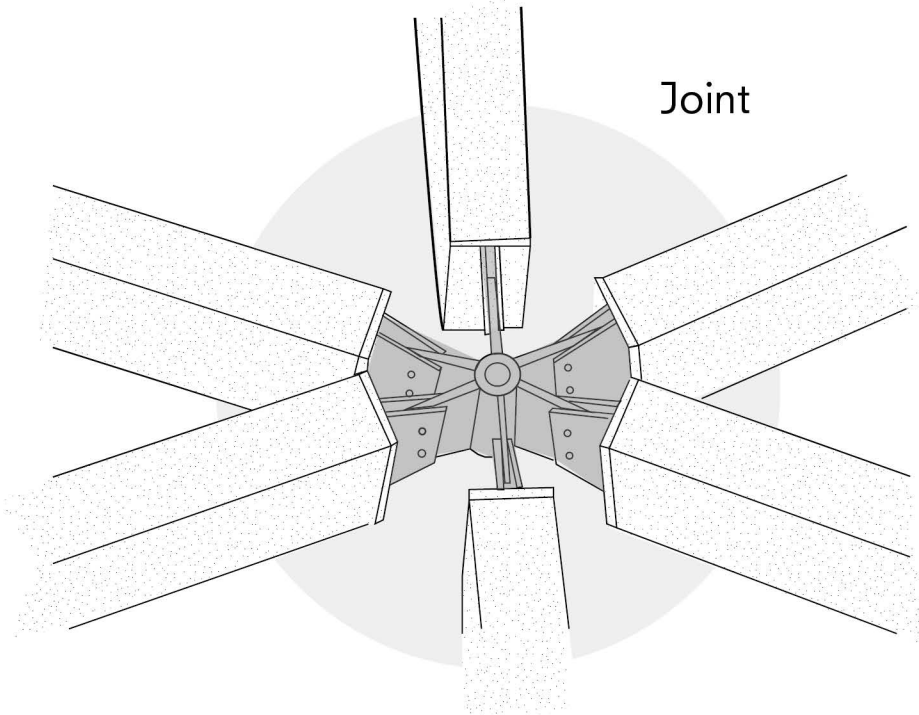
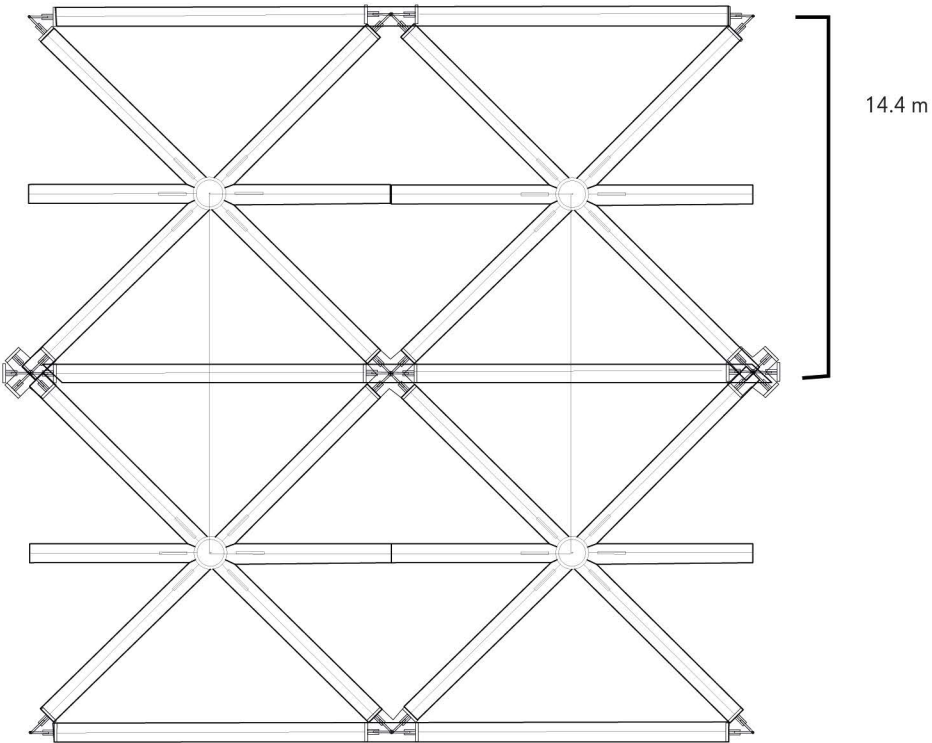


# The Underground, CoolPlein & Climate

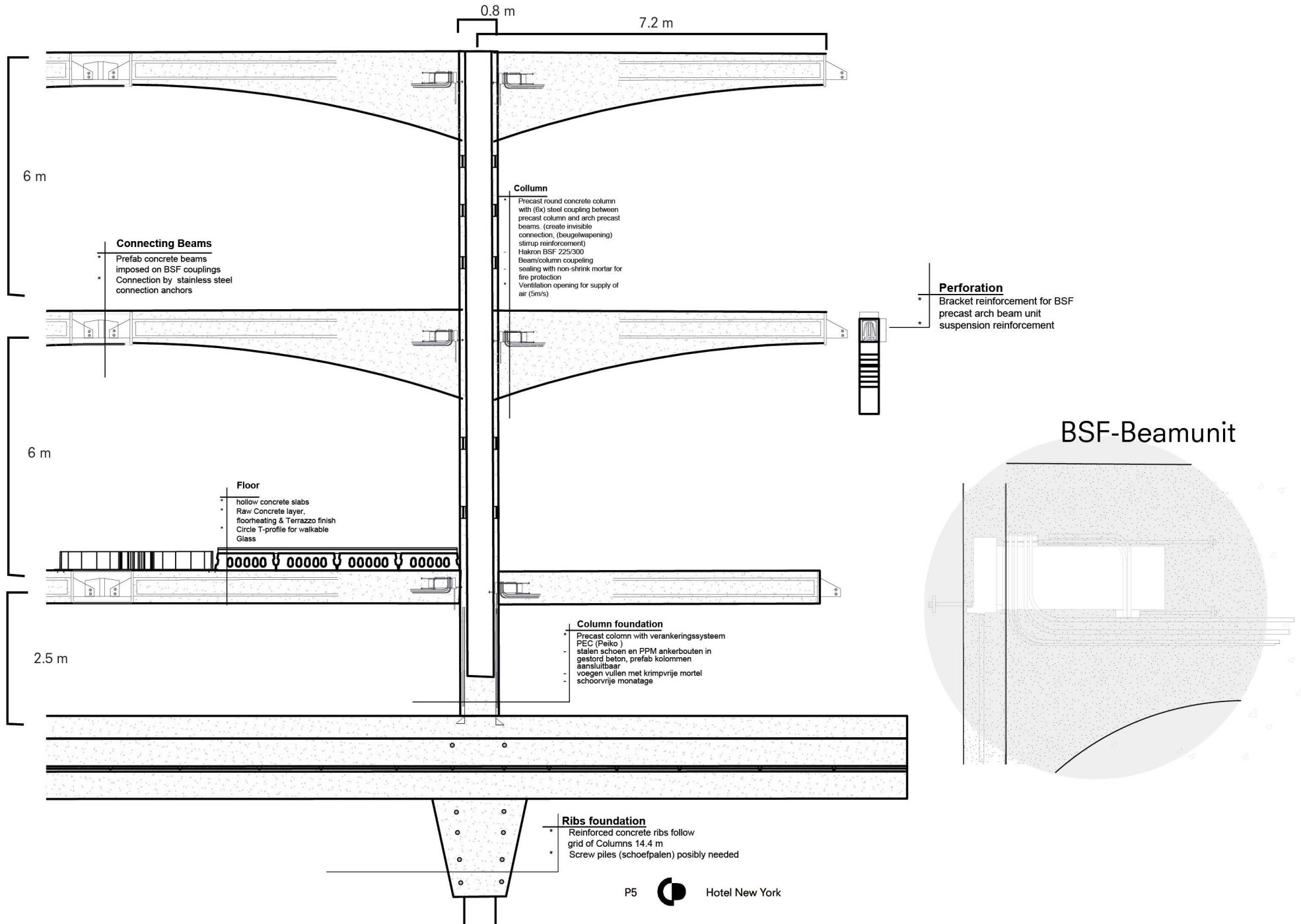
## Roof Facade Underground



# Precast Concrete Construction Joint

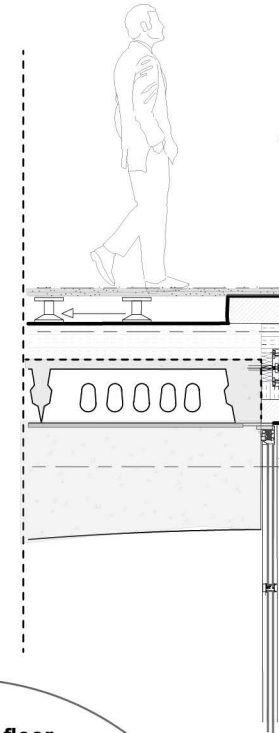
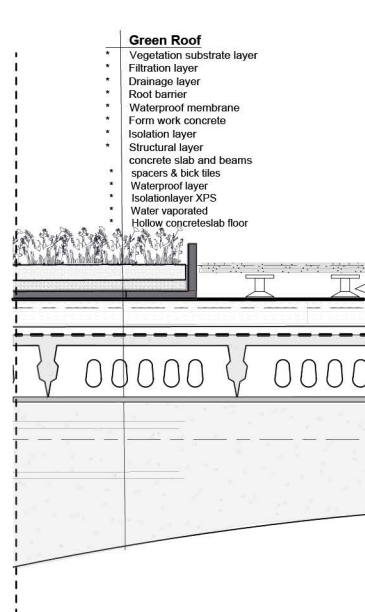
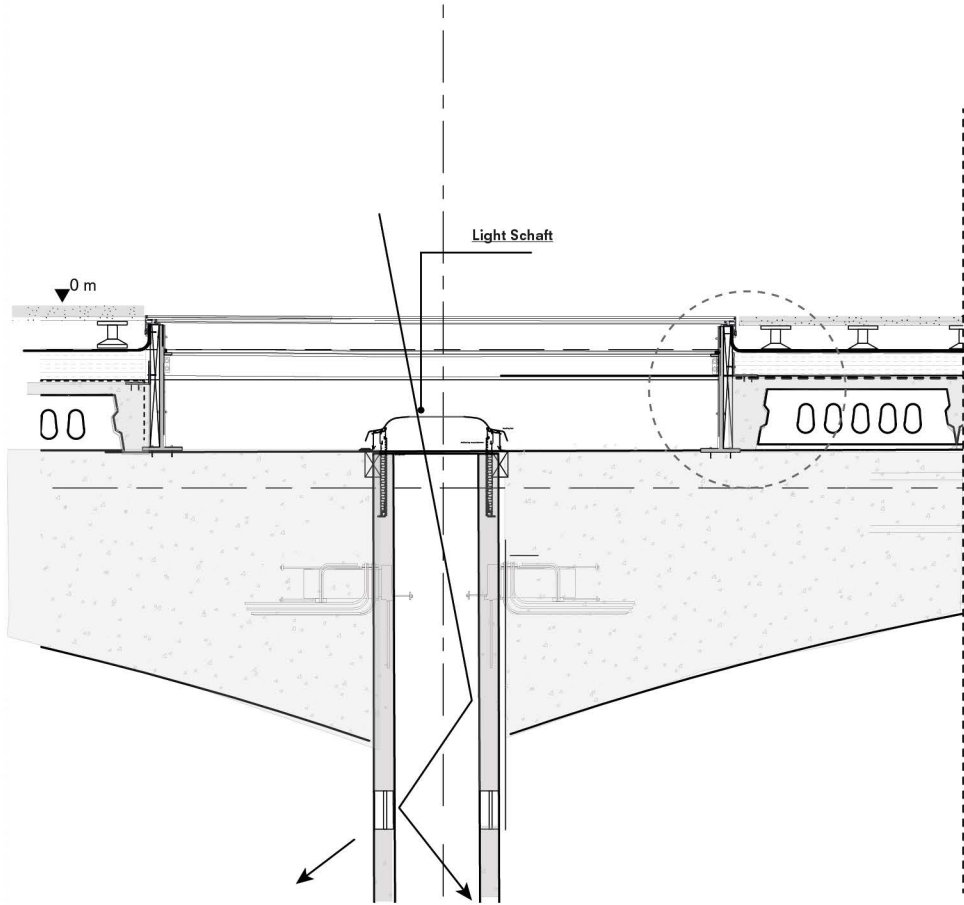


# BSF connection precast columns & Beams

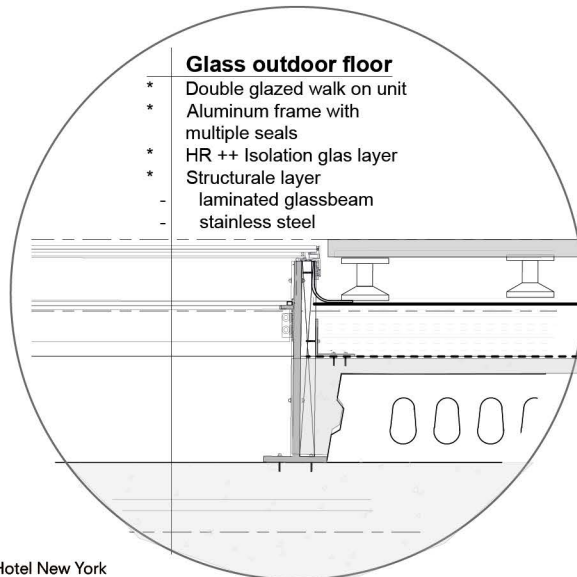


# The Square, CoolPlein

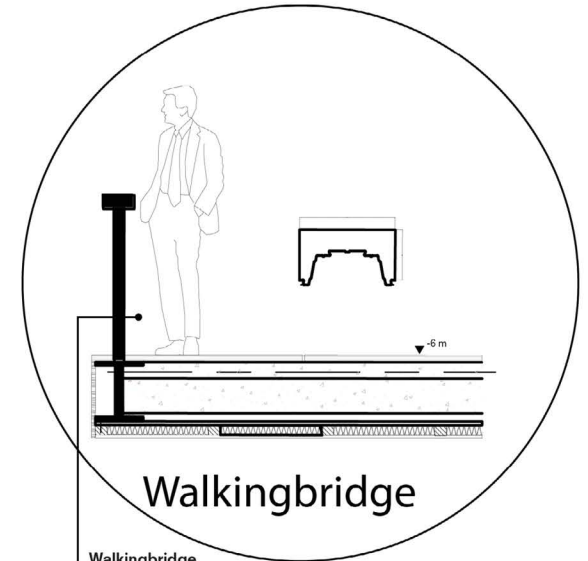
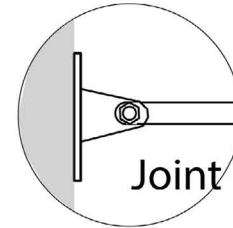
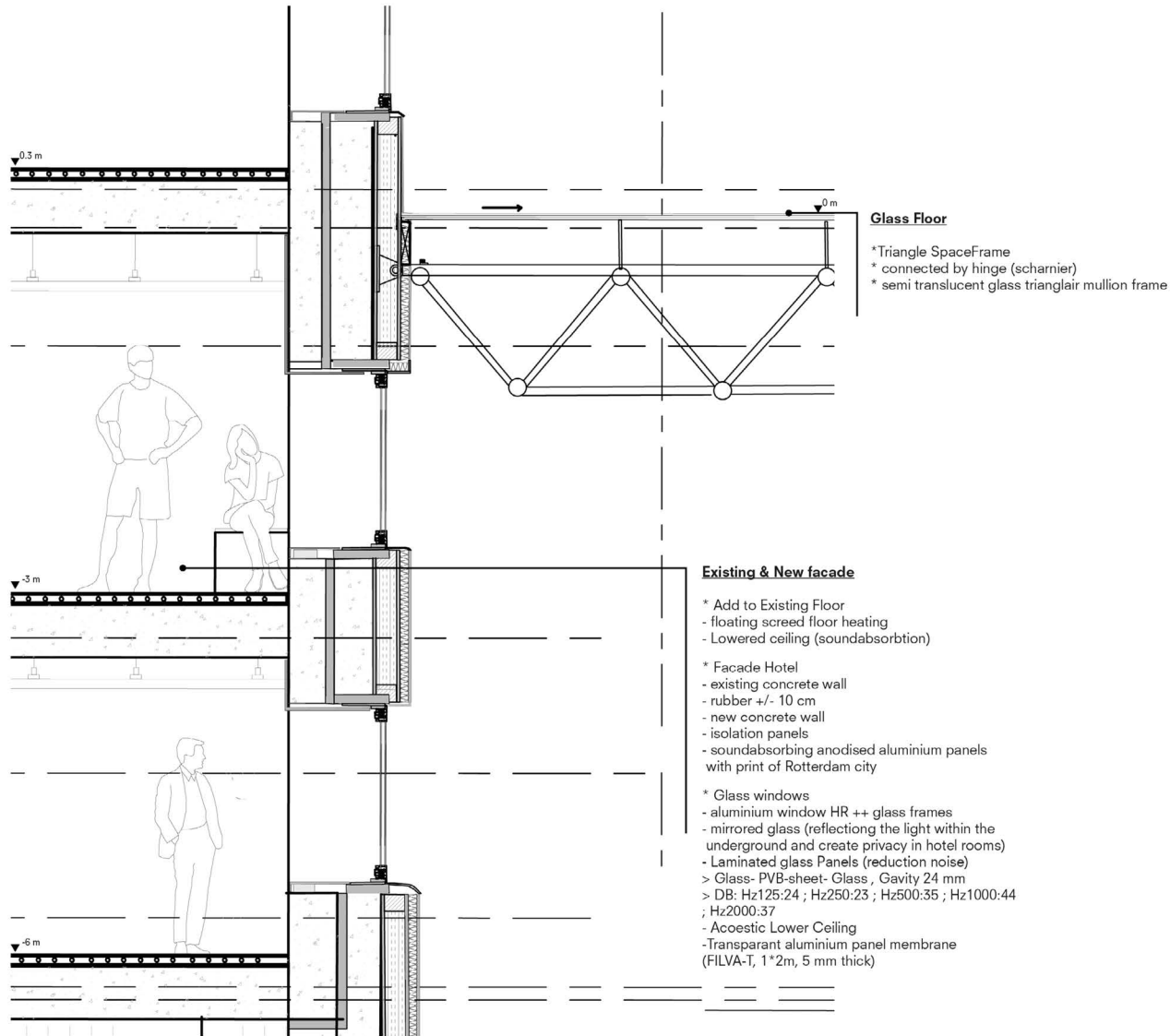
## Roof Facade Underground, Coolplein



- (Semi) Indoor space**
- Laminated glass panel 8-24-12  
DB > Hz125:24 Hz250:23 Hz500:35  
Hz1000:44 Hz2000:37
  - Laminated: Glass-pvb sheet-Glass
  - Cavity 24mm with Glass  
viesgevel C50-vi (Reynaers)
  - Acoustic sound absorbing  
transparent aluminium panels  
- aluminium-membrane-aluminium  
- FILVA-T, 51,5mm thick, 1x2 m
- > Sound reduction metro & increase light



# Transition Hotel & Walking bridge



- Walkingbridge**
- \* Framework as Railing
  - \* Concrete steel Floor, Terazzo finish
  - \* soundabsorbing panel finishceiling

Vakwerk with H-beam HEA 340 as bottom beam, the rest is koker profiel, covered with fire resistant paint  
 Staalplaatbetonvloer( ComFlor 225)  
 overspant tussen onderregel van vakwerk (gestempeld, enkelvelds, 90 min brandwerend) 330mm

**THANK YOU.**



complex projects