



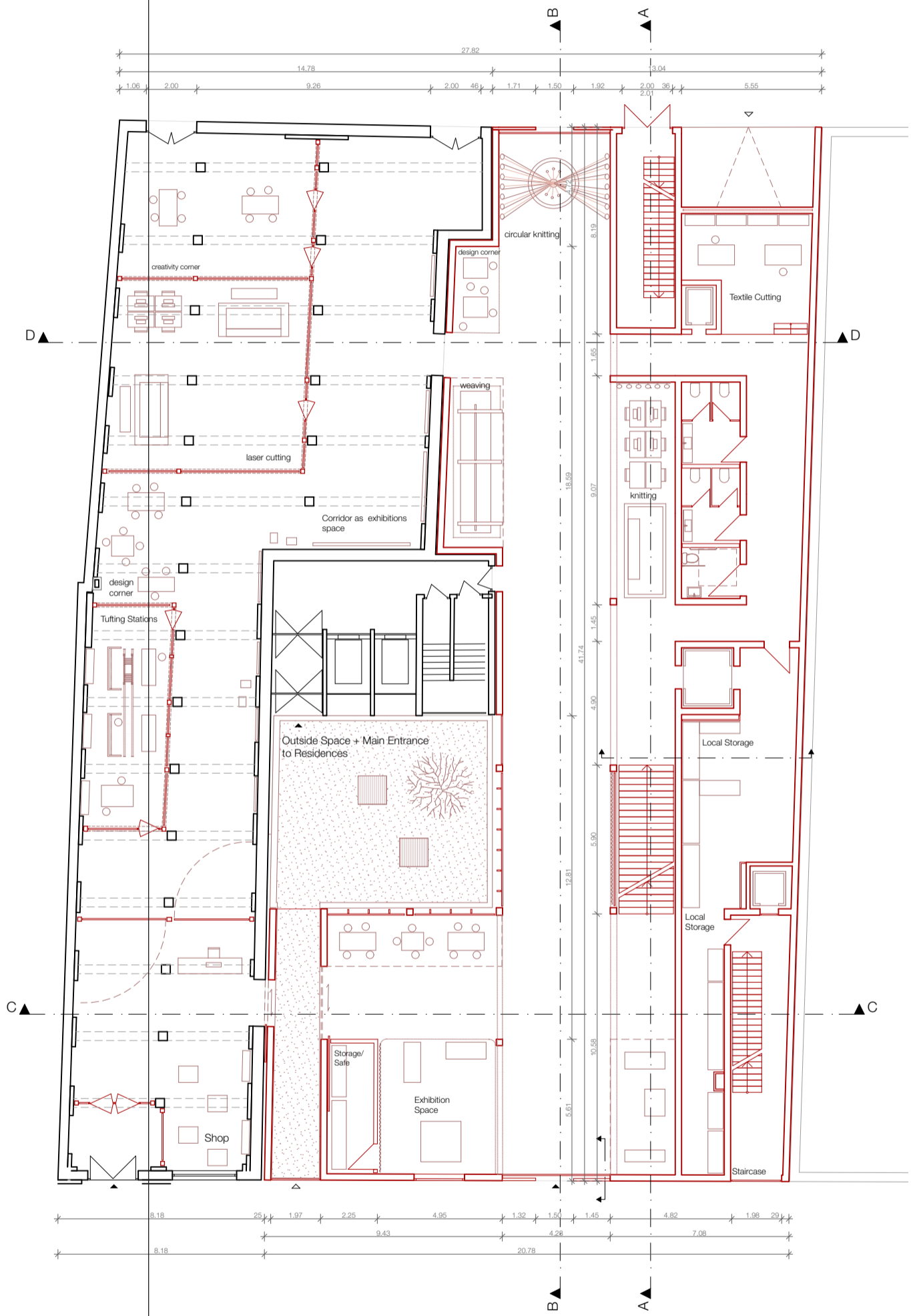
De Wever - A Textile Community Lab

Material research and textile production laboratory with integrated residence

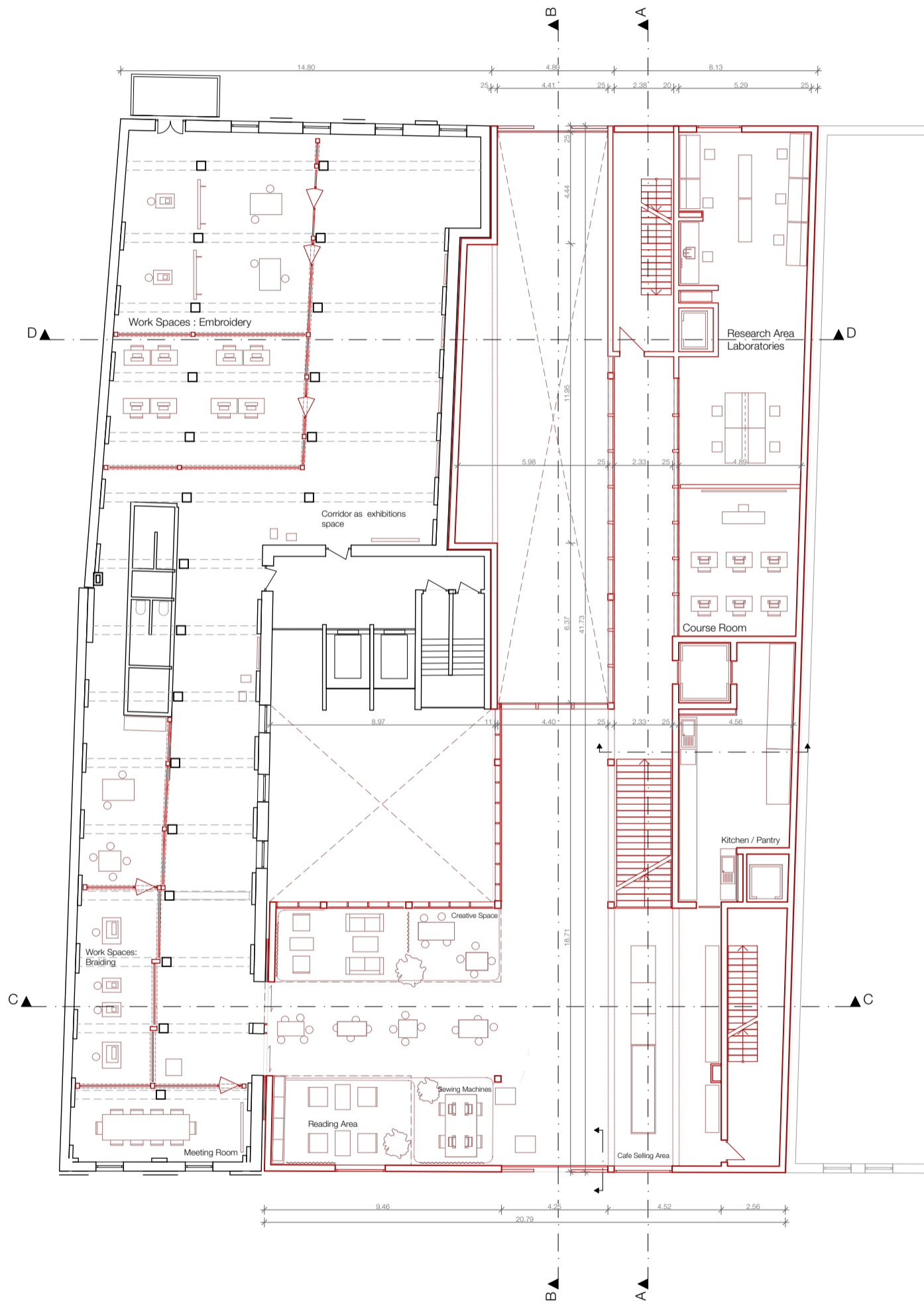
Set of Drawings | Lea Scholze



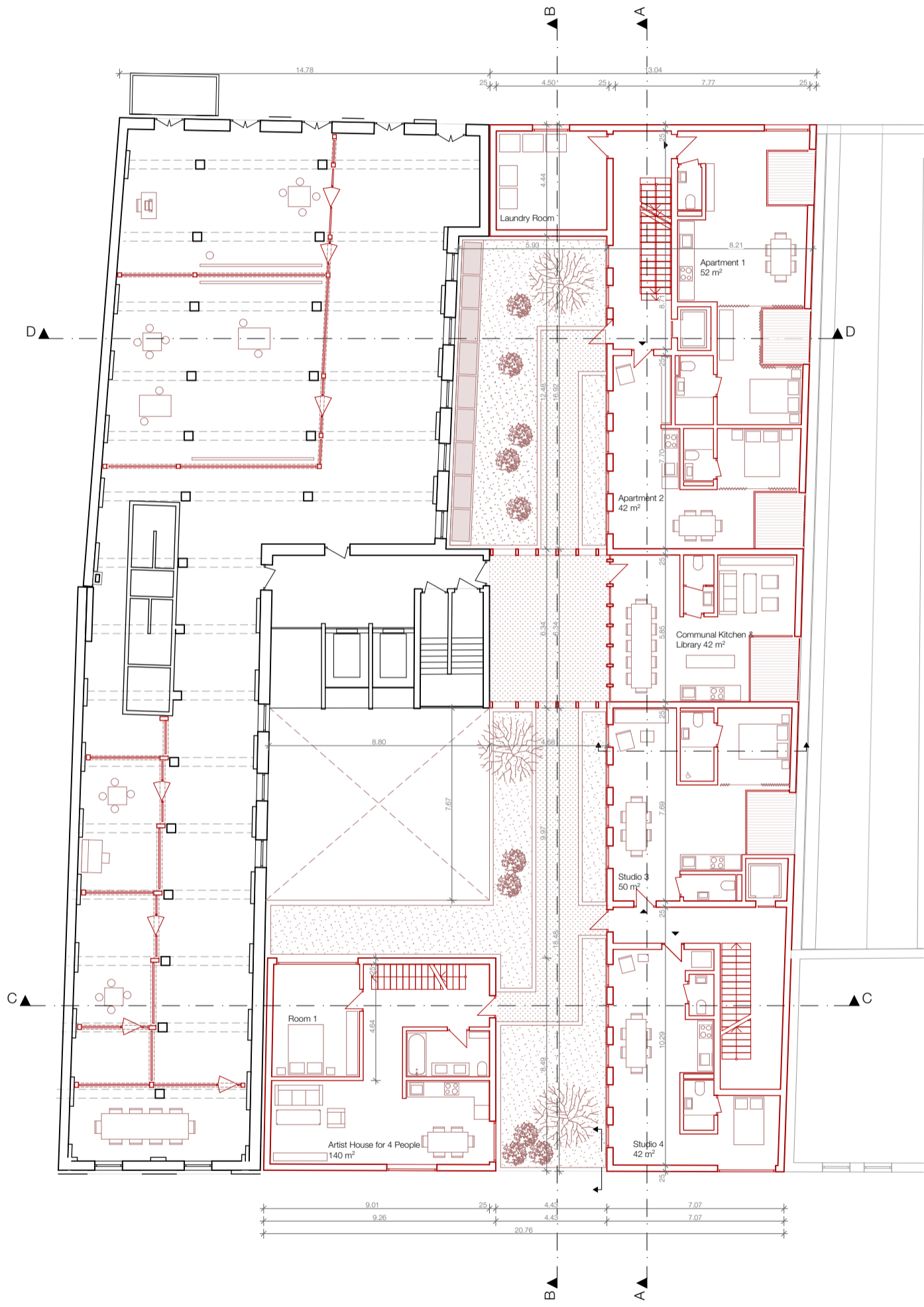
Site Plan 5m



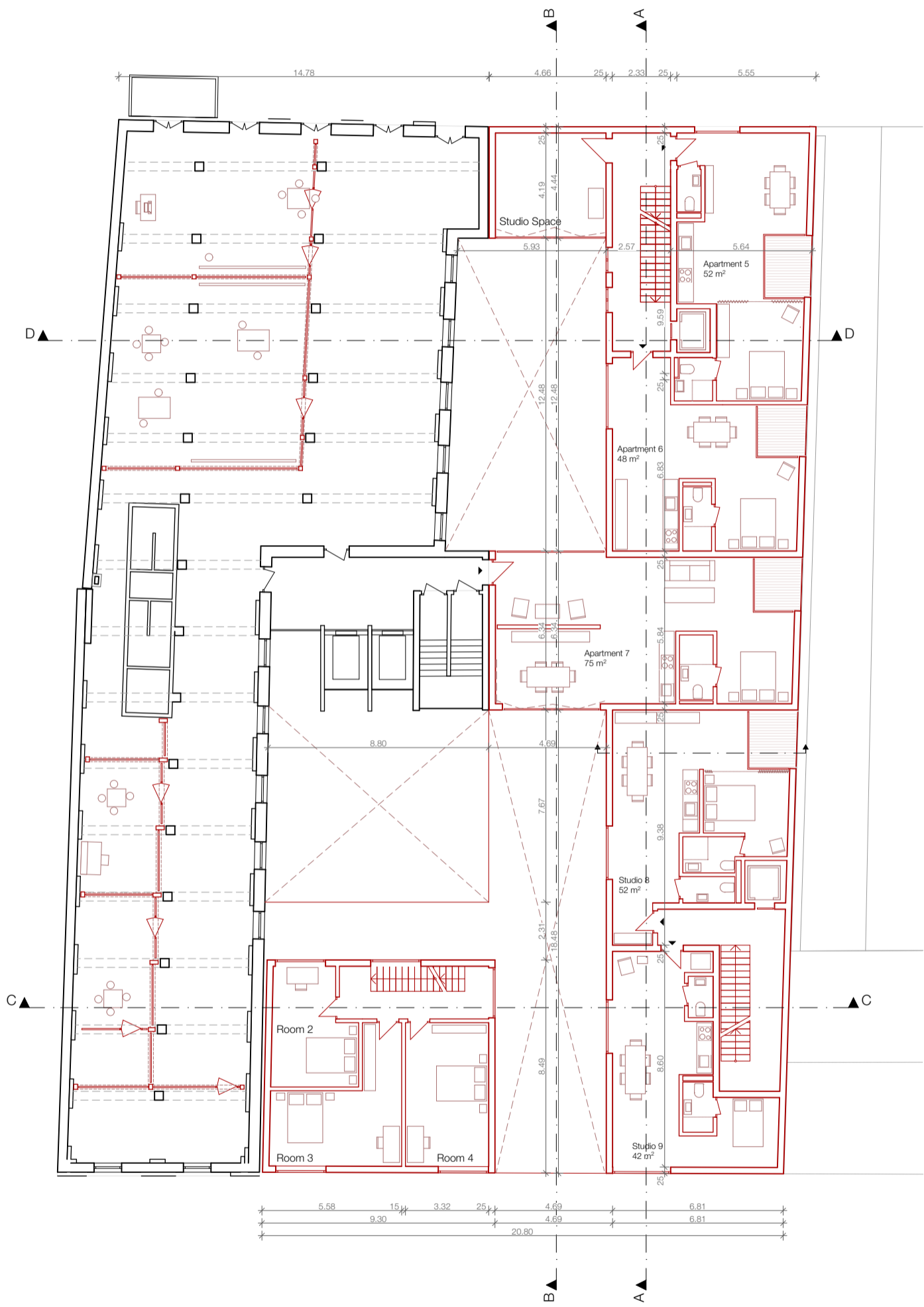
Ground Floor 1m



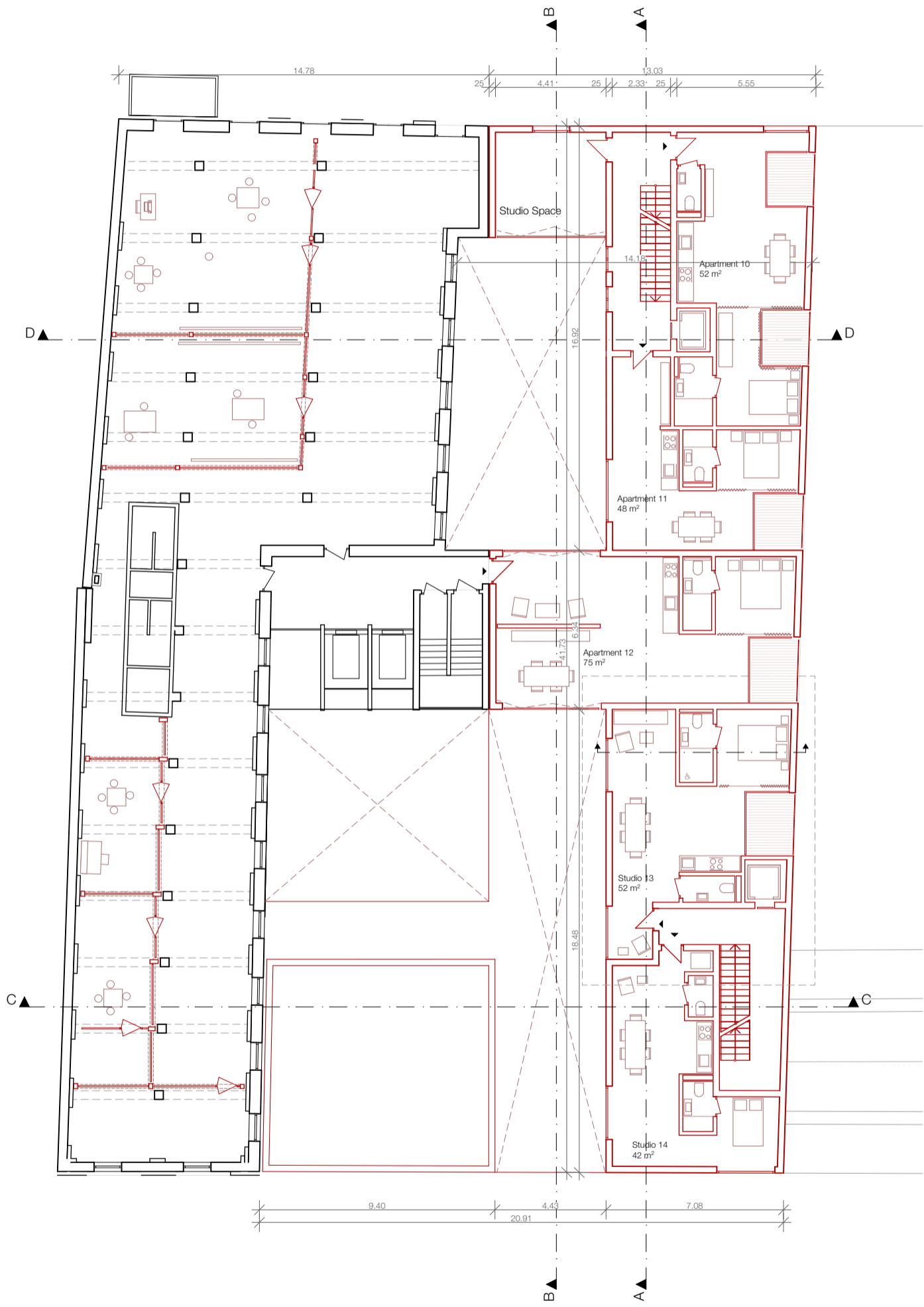
Floor 01 1m



Floor 02 | Communal Spaces Residential 1m



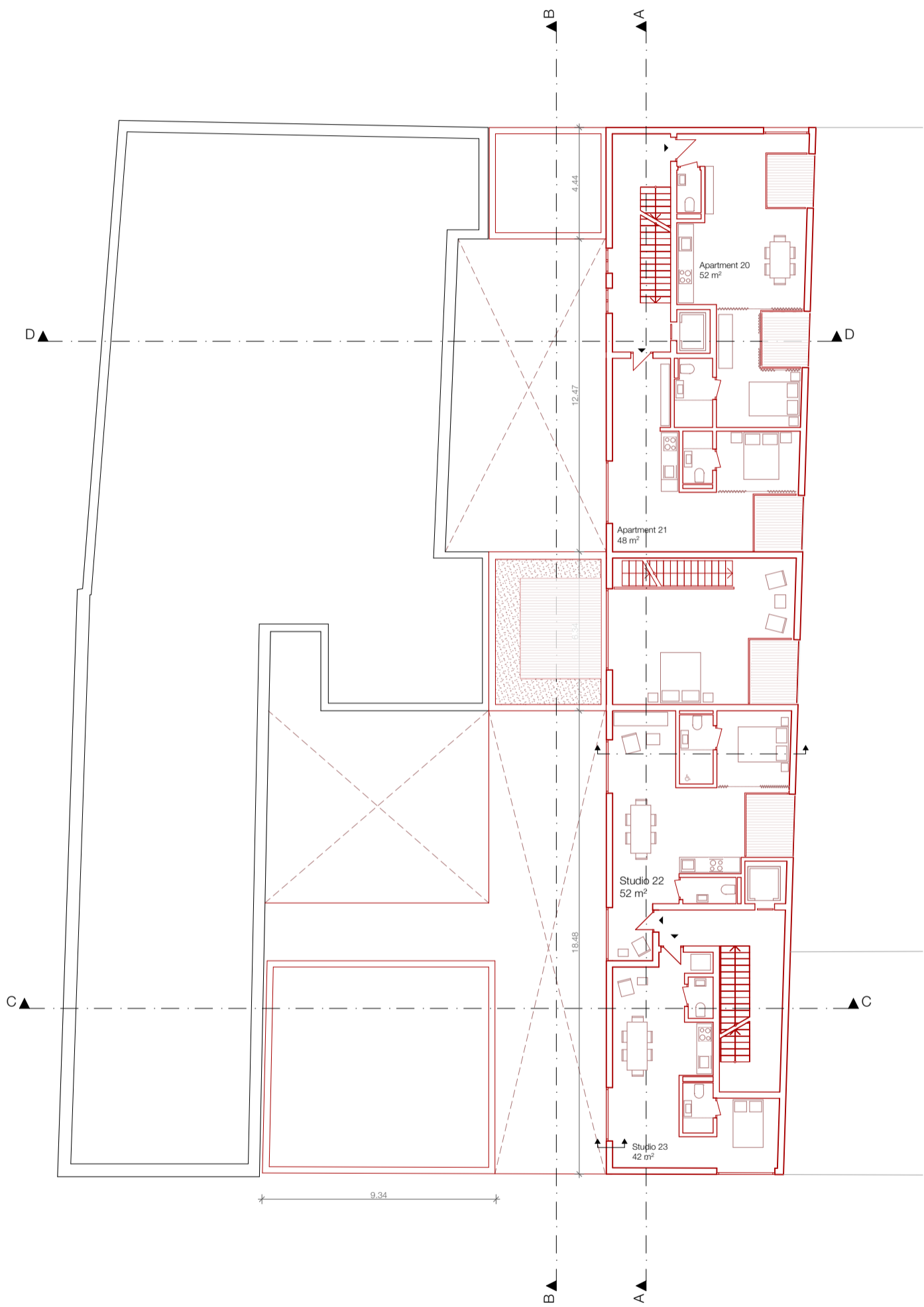
Floor 03 | Residential 1m



Floor 04 | Residential 1m



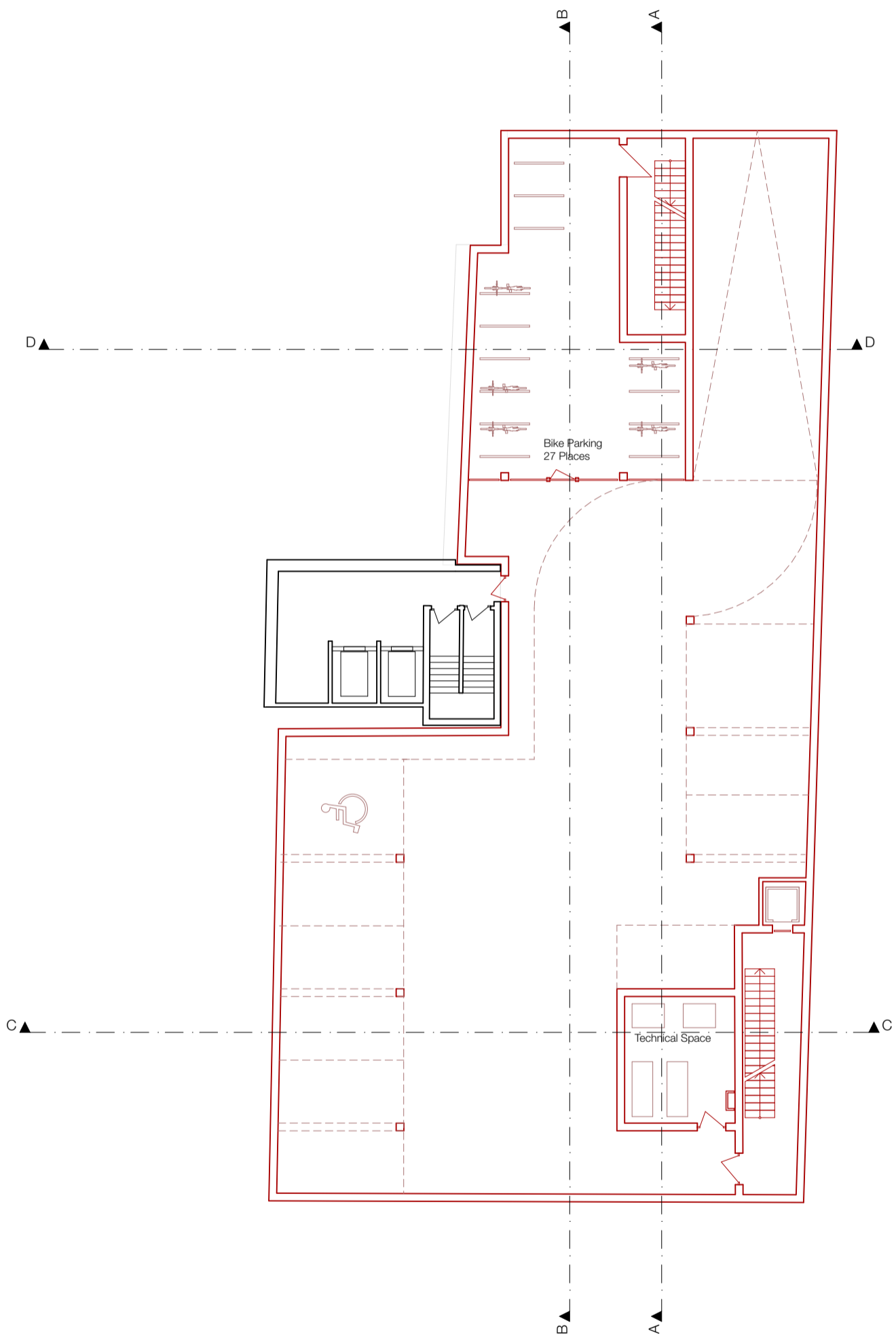
Floor 05 | Residential 1m



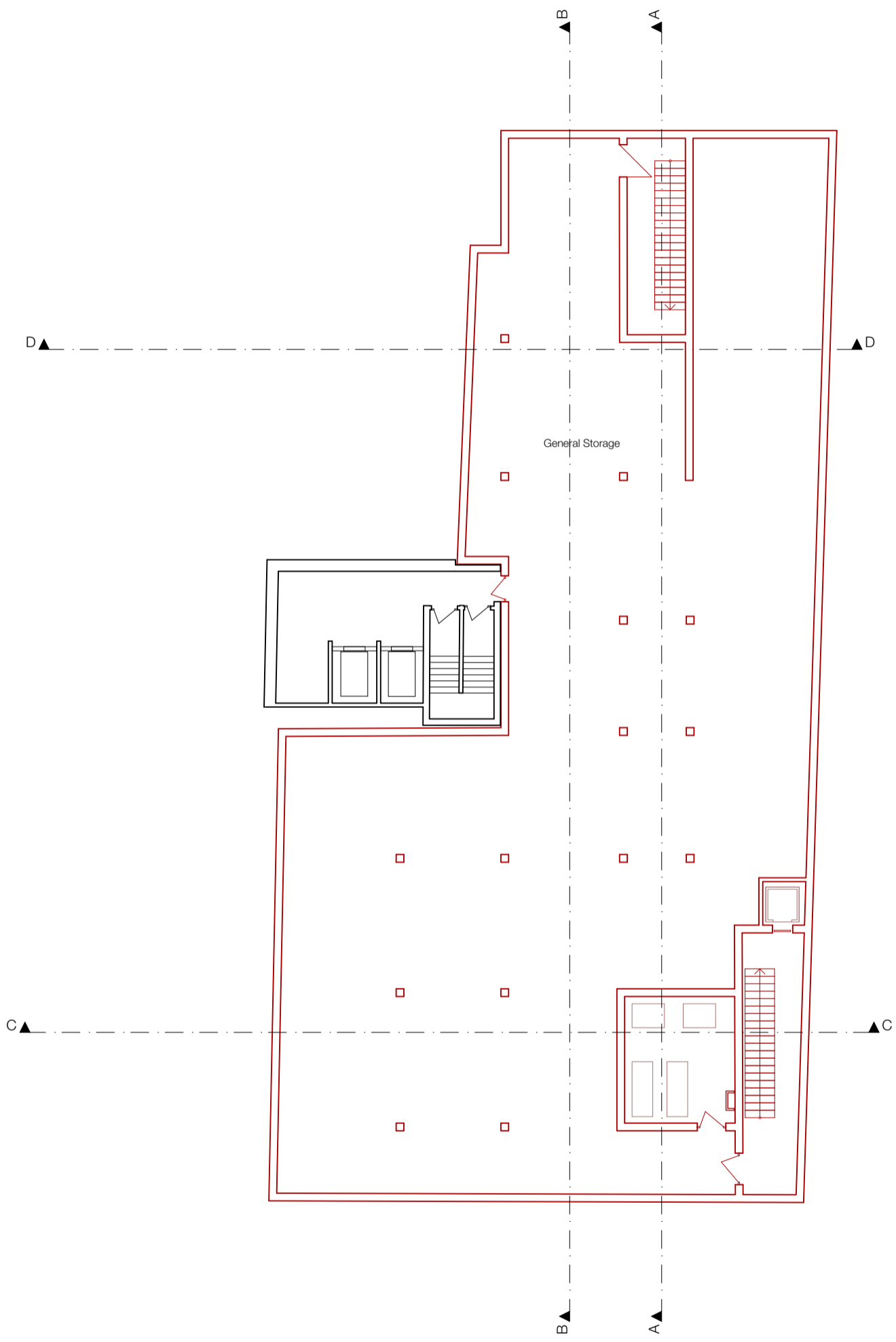
Floor 06 | Residential 1m



Top View 



Floor -01 | Parking 



Floor -02 | Storage 



Northern Facade 1m



Western Facade 



Eastern Facade





Southern Facade 1m



Section D 



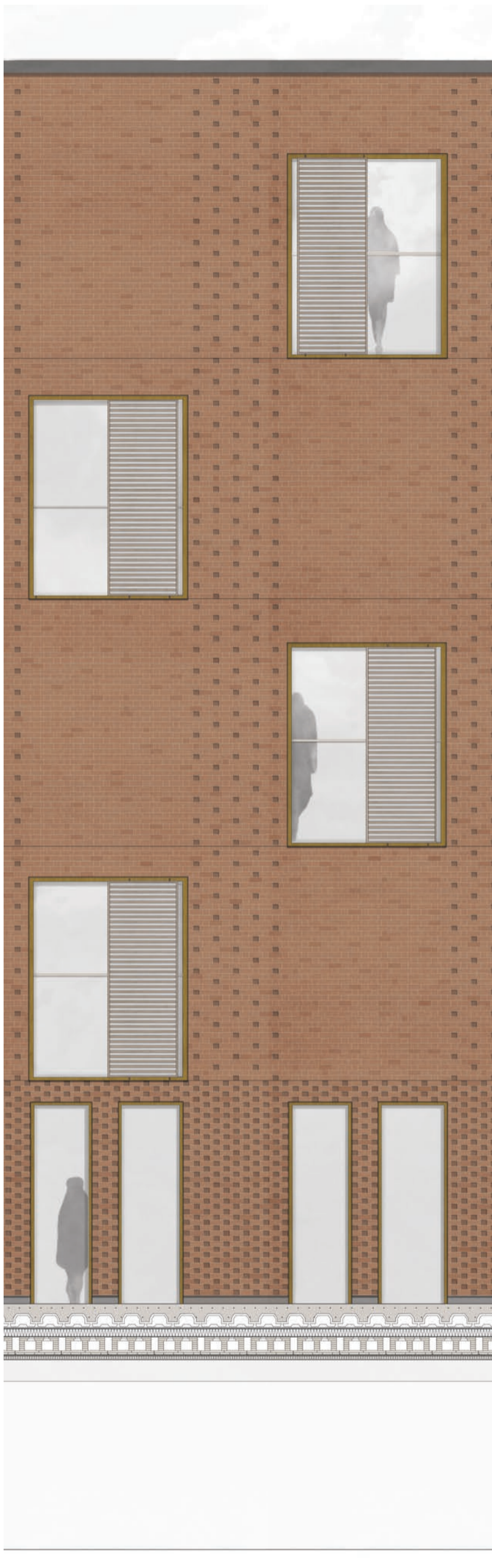
Section B 



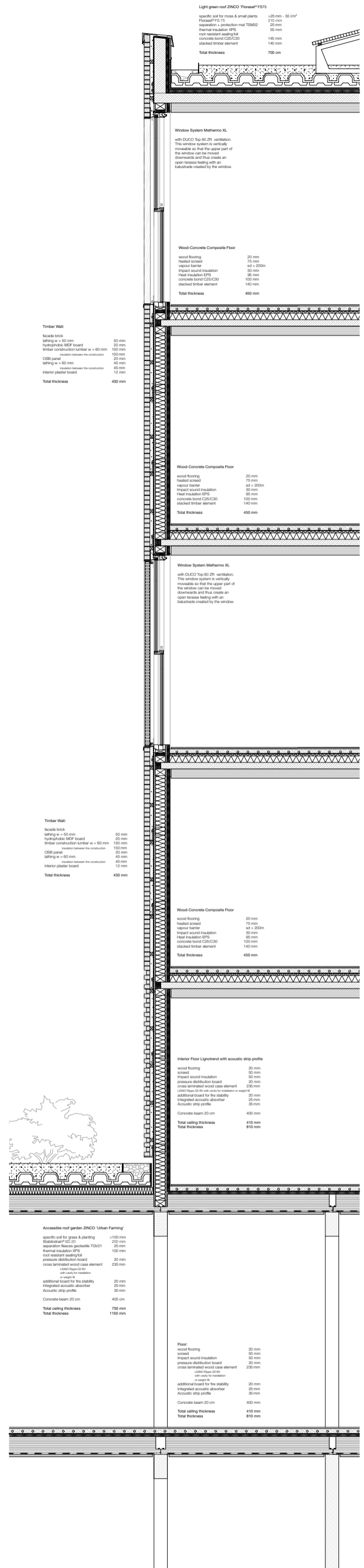
Section C 1m



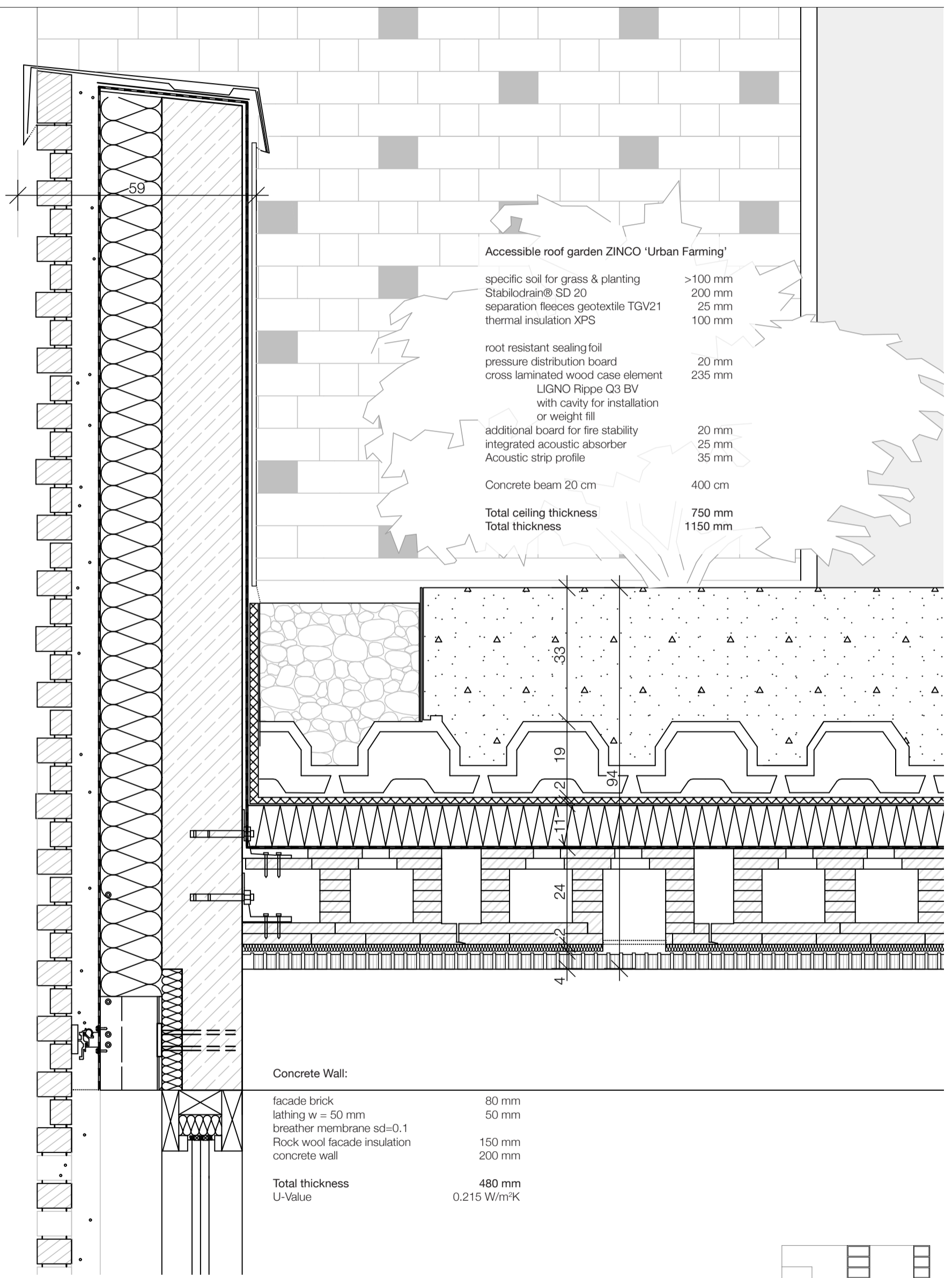
Section A 



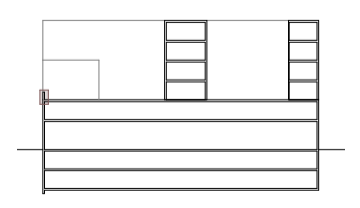
Elevation Section West | 1:20



Facade Section A | 1:20

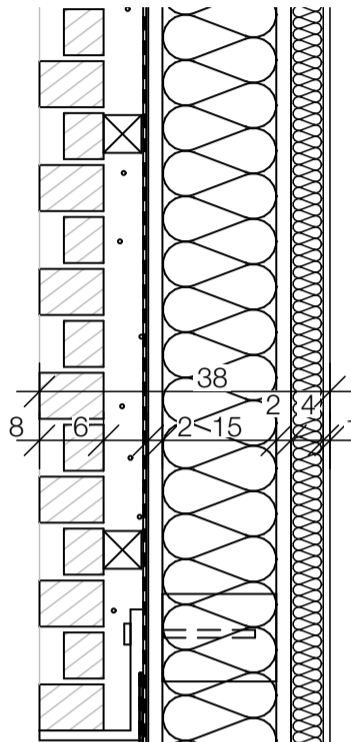


Detail 1:10 | Wall to Roof connection



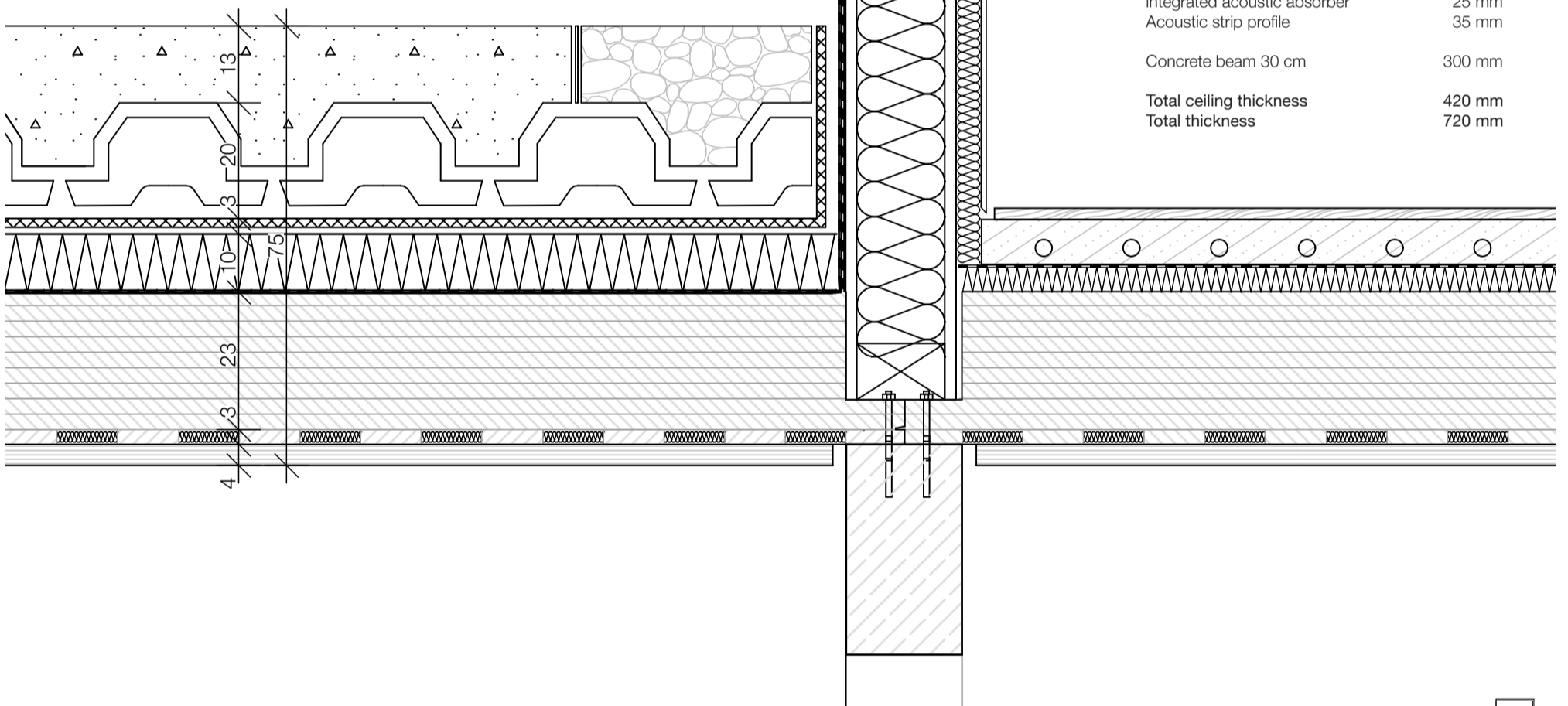
Timber Wall:

facade brick		
lathing w = 50 mm	50 mm	
hydrophobic MDF board	20 mm	
timber construction lumber w = 60 mm	150 mm	150 mm
insulation between the construction		
OSB panel	20 mm	
lathing w = 60 mm	45 mm	
insulation between the construction	45 mm	
interior plaster board	12 mm	
Total thickness	430 mm	

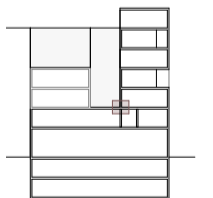


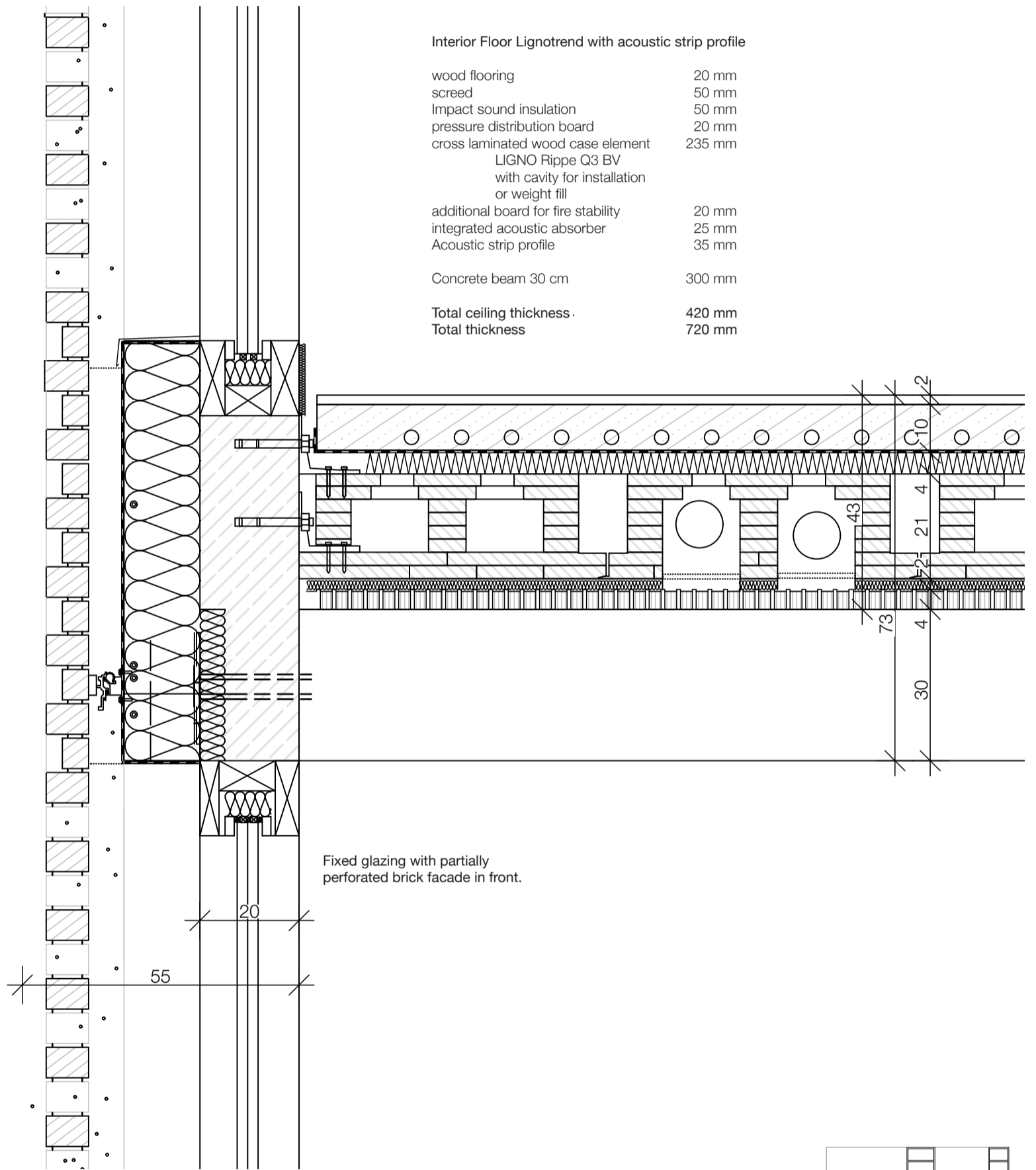
Interior Floor Lignotrend with acoustic strip profile

wood flooring	20 mm
screed	50 mm
Impact sound insulation	50 mm
pressure distribution board	20 mm
cross laminated wood case element LIGNO Rippe Q3 BV with cavity for installation or weight fill	235 mm
additional board for fire stability	20 mm
integrated acoustic absorber	25 mm
Acoustic strip profile	35 mm
Concrete beam 30 cm	300 mm
Total ceiling thickness	420 mm
Total thickness	720 mm



Detail 1:10 | Lignotrend ceiling with Zinco 'Urban Farming' roof connecting to timber wall





Concrete Wall:

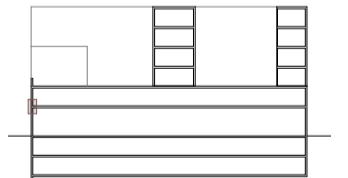
facade brick	80 mm
lathing w = 50 mm	50 mm
breather membrane sd=0.1	
Rock wool facade insulation	150 mm
concrete wall	200 mm
Total thickness	480 mm
U-Value	0.215 W/m ² K

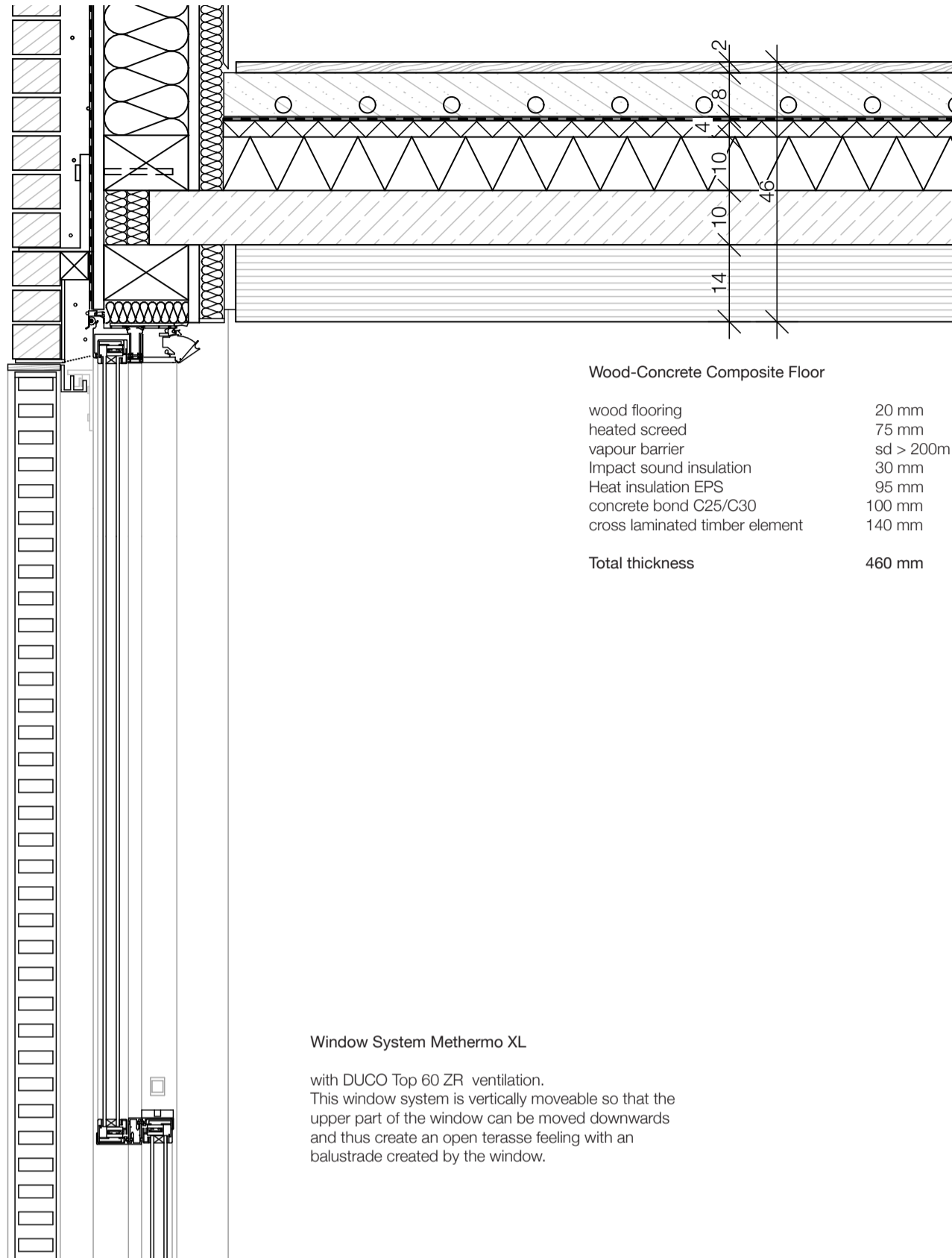
Interior Floor Lignotrend with acoustic strip profile

wood flooring	20 mm
screed	50 mm
Impact sound insulation	50 mm
pressure distribution board	20 mm
cross laminated wood case element	235 mm
LIGNO Rippe Q3 BV	
with cavity for installation	
or weight fill	
additional board for fire stability	20 mm
integrated acoustic absorber	25 mm
Acoustic strip profile	35 mm
Concrete beam 30 cm	300 mm
Total ceiling thickness	420 mm
Total thickness	720 mm

Fixed glazing with partially perforated brick facade in front.

Detail 1:10 | Exterior concrete wall with perforated brick facade connecting to lignotrend ceiling



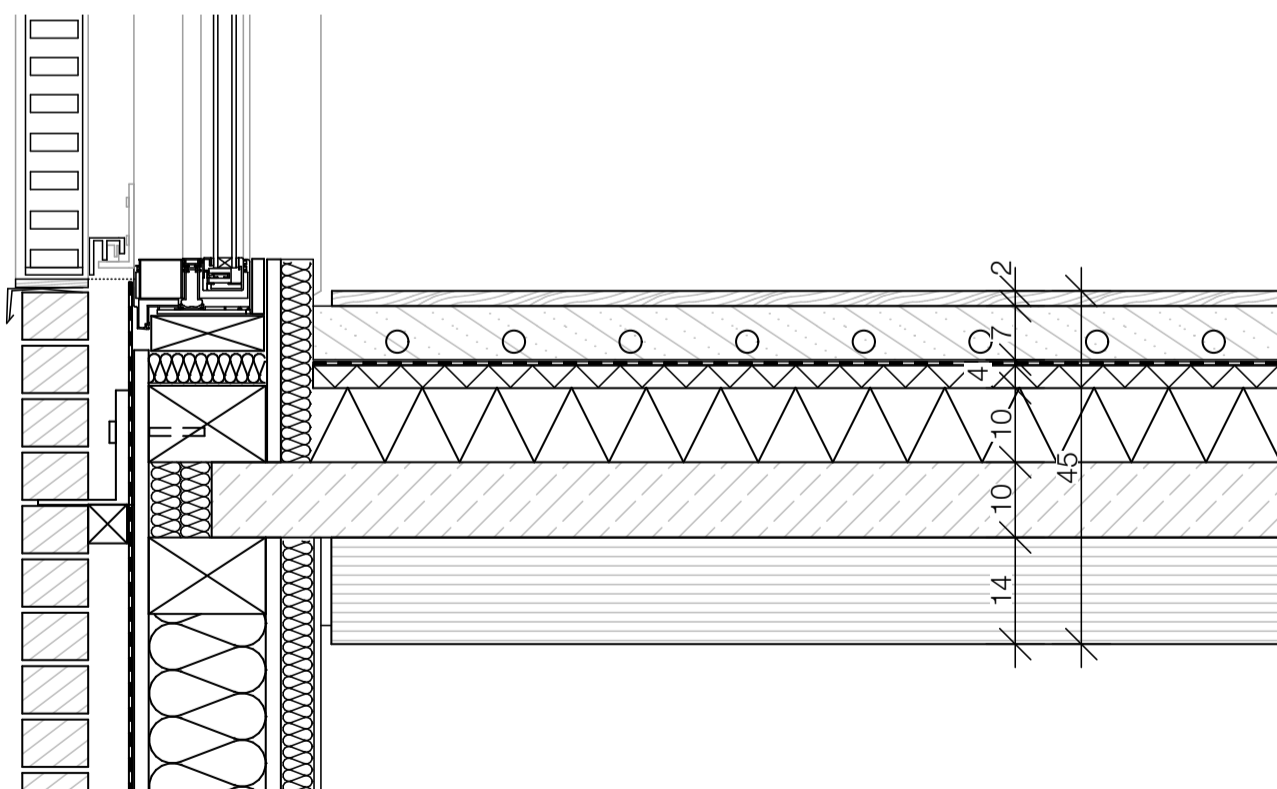


Wood-Concrete Composite Floor

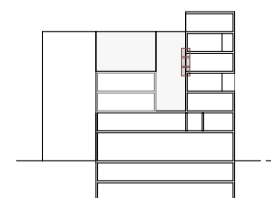
wood flooring	20 mm
heated screed	75 mm
vapour barrier	sd > 200m
Impact sound insulation	30 mm
Heat insulation EPS	95 mm
concrete bond C25/C30	100 mm
cross laminated timber element	140 mm
Total thickness	460 mm

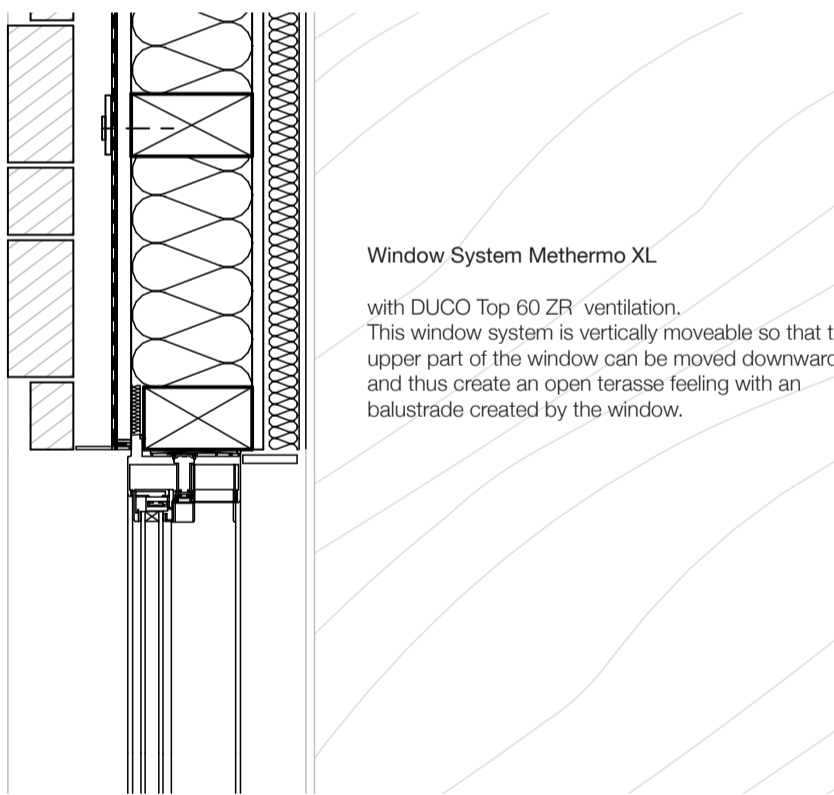
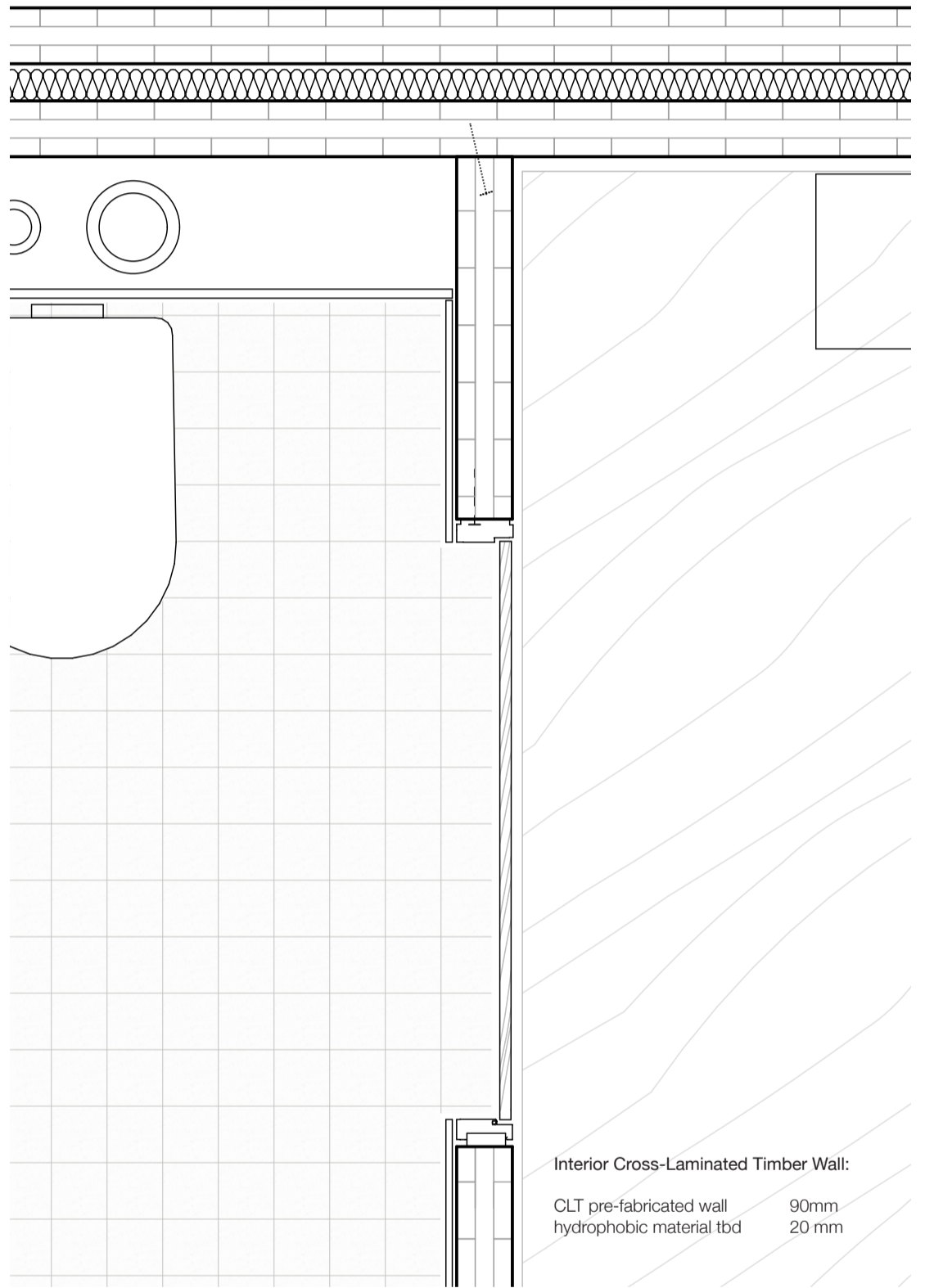
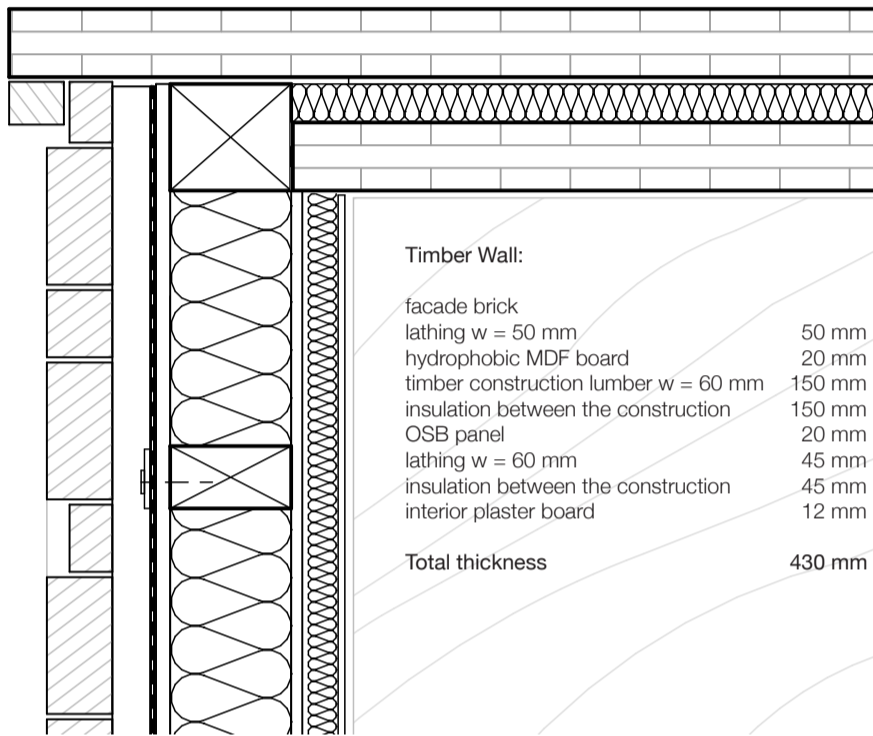
Window System Methermo XL

with DUCO Top 60 ZR ventilation.
 This window system is vertically moveable so that the upper part of the window can be moved downwards and thus create an open terrace feeling with an balustrade created by the window.



Detail 1:10 | Metatherm vertical sliding window system in timber facade connecting to wood-concrete composite floor





Detail 1:10 | Horizontal | Apartment Methermo Window System + bathrooms 4th Floor

