

# TURNING THE CHURCH INSIDE OUT

Lisa Noorman  
the Netherlands

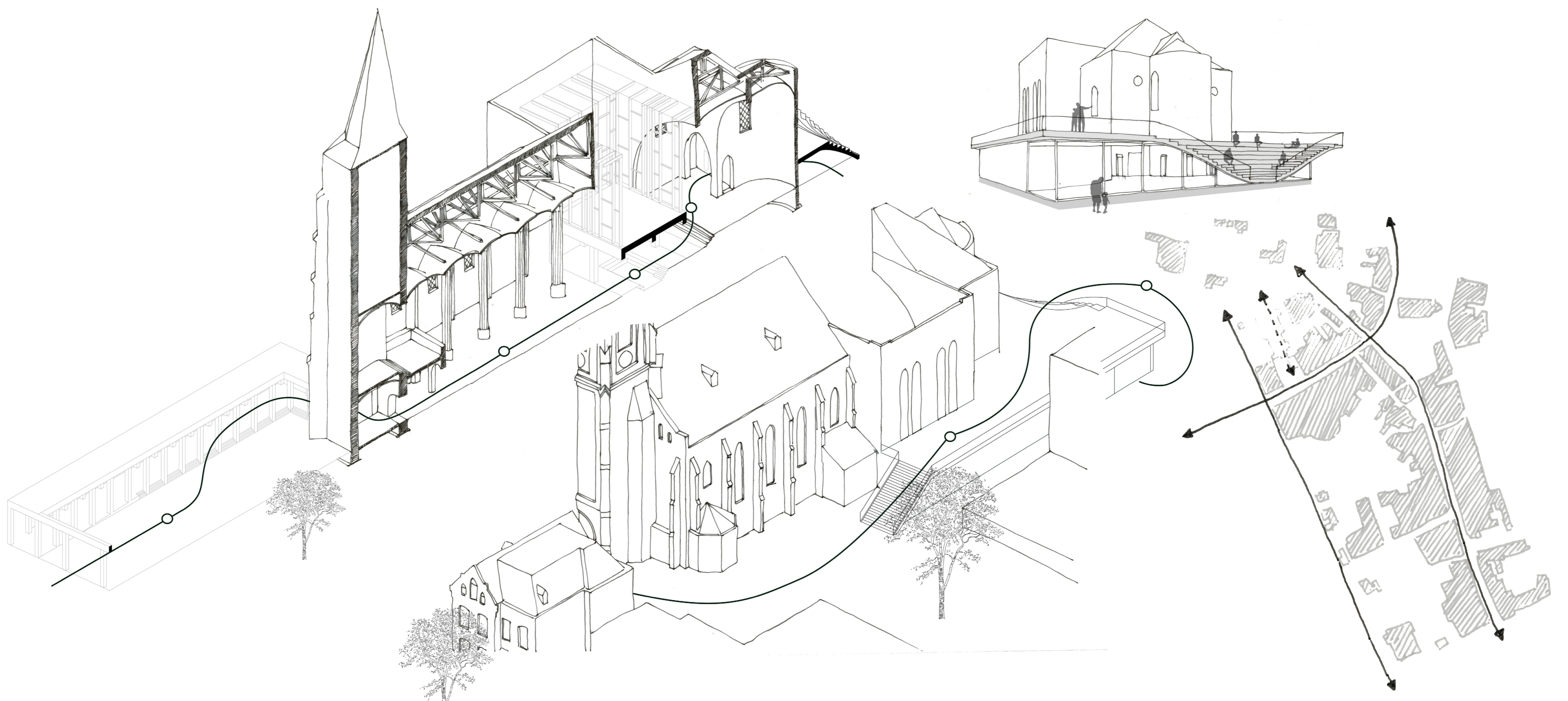
## revitalizing the Jacobuskerk

The Jacobuskerk is currently the Catholic church of Winterswijk. Because of the outflow of churchgoers, there is a high probability it will lose this function in the future. Therefore, the challenge is to find a new purpose. There is an opportunity to create a public space in the church which can act as a meeting place for the whole community. The function that has been chosen is a library and community center. This communal function continues the social aspect of church buildings. As the new function requires a more open appearance, several transformations will be made. The values of the church serve as a starting point for these transformations. Firstly, the front and the back of the church are better connected to the surroundings. The church is located in between a shopping street and a park. At the front of the church this is done through a colonnade, connecting the shopping street with the entrance of the church. At the back of the

church an extension is made in the form of a public stairs and tribune looking over the park. The roof of the extension forms an elevated walkway, connecting the park and the shopping street.

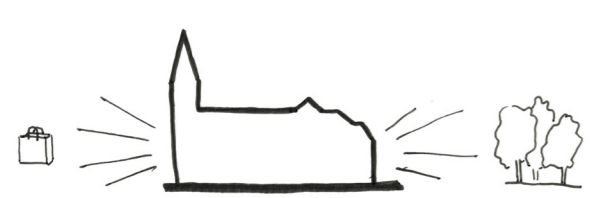
Secondly, the nave is transformed into a library space. The existing building is adapted to meet the new requirements. A bookcase with three floors is placed in the aisle of the church. A curtain is applied as a room dividing and acoustic element to transform the space into an event space.

Thirdly, an element is placed in the transept of the church. This will create an interior garden inside the church space. The facade of this element is inspired by stained glass windows. The coloured glass creates an interesting play with colours in the interior of the church. The interior garden is accessible from the elevated walkway. Underneath the element, a sheltered reading room is created.

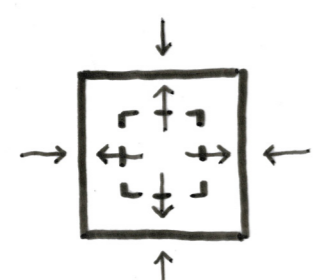


section in parallel view

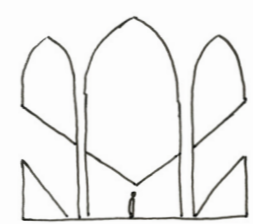
situation



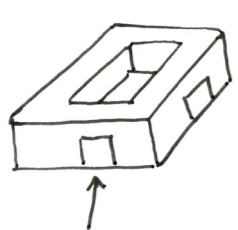
connection with the surroundings  
Become the connecting element between the shopping street and the park.



define public space  
By making the space around the church more defined, the church becomes more anchored in its surroundings



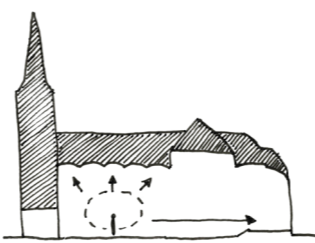
atmosphere  
Preserve the church atmosphere and use it in the design.



the church as public square  
The church becomes a public square, the meeting place for the whole community.



wander  
From a linear routing to strolling through the church.



sightlines  
Preserve the sightlines in the church.



### design principles



# TURNING THE CHURCH INSIDE OUT

Lisa Noorman  
the Netherlands

revitalizing the Jacobuskerk

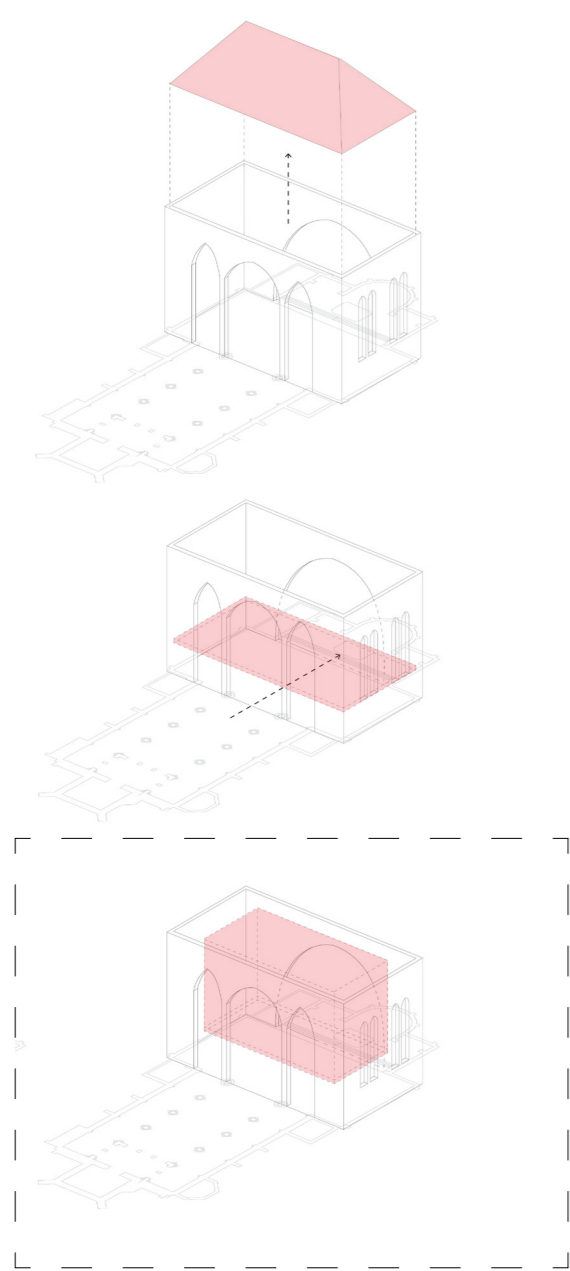


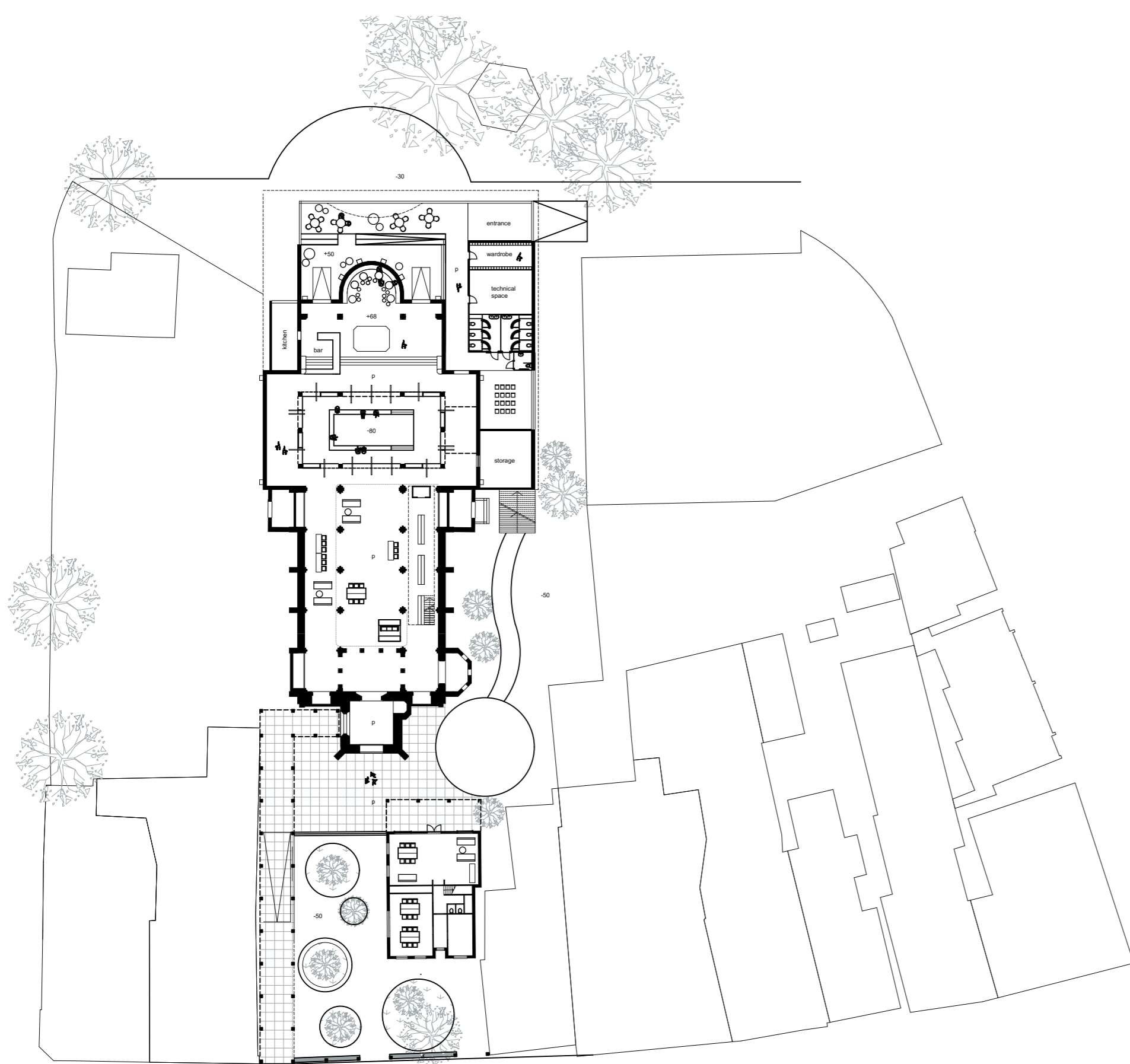
diagram element



view on the new element



model of the new element in the transept



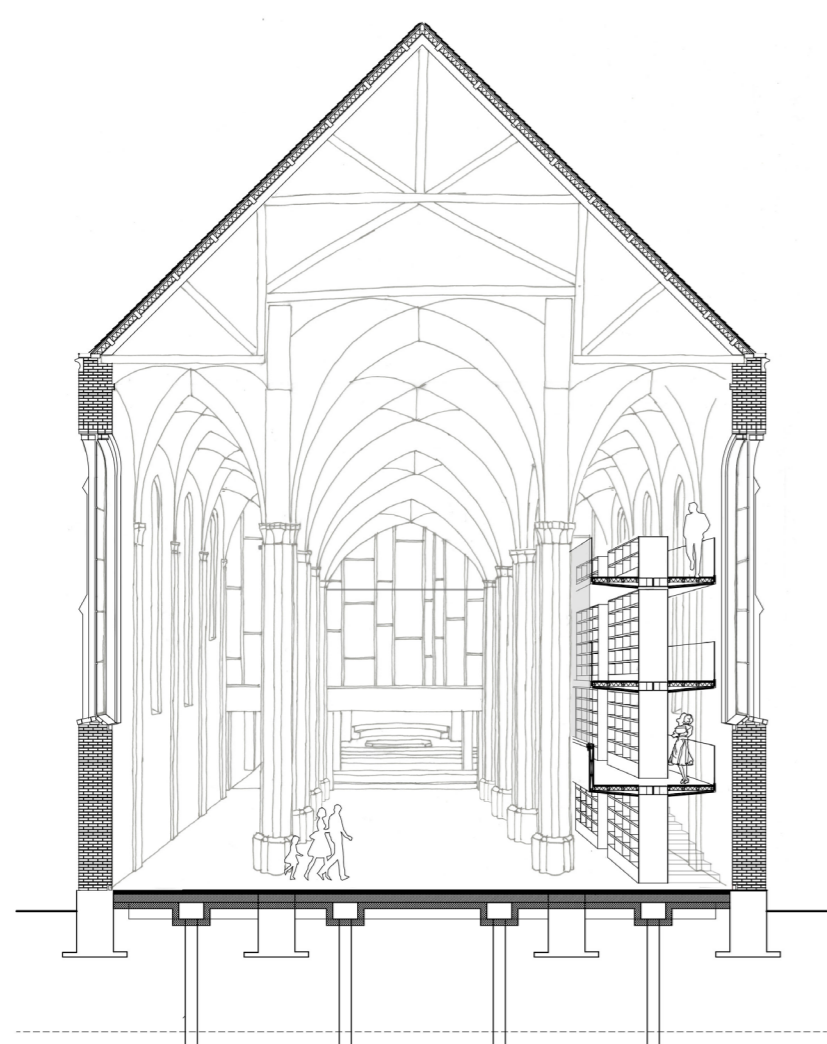
ground floor 1:500



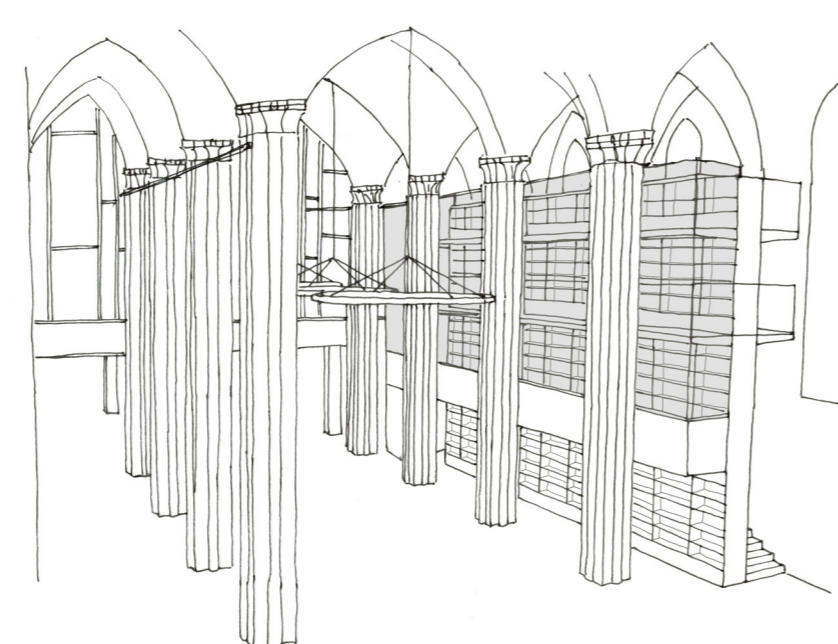
the choir



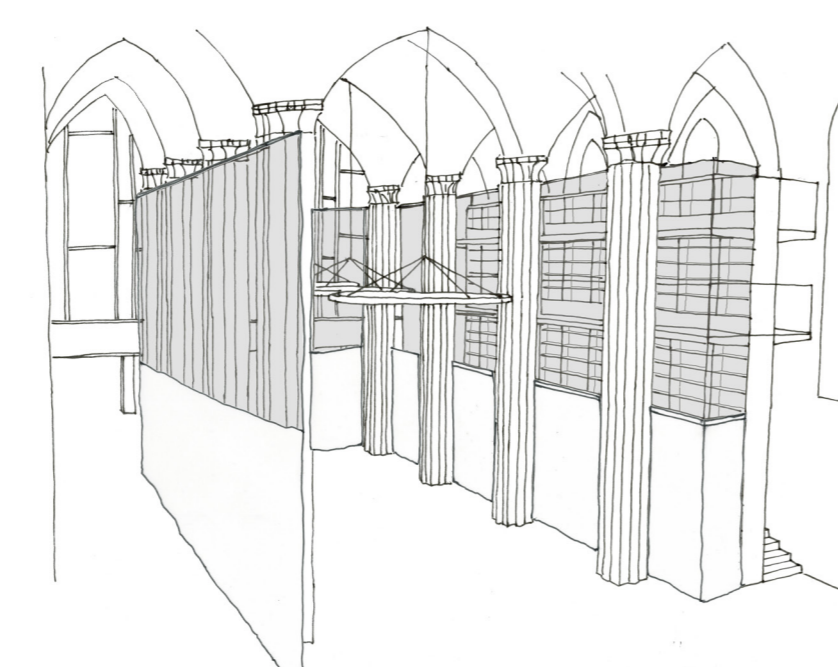
inside the new element



cross section 1:200



nave during the day



nave as event space



public stairs