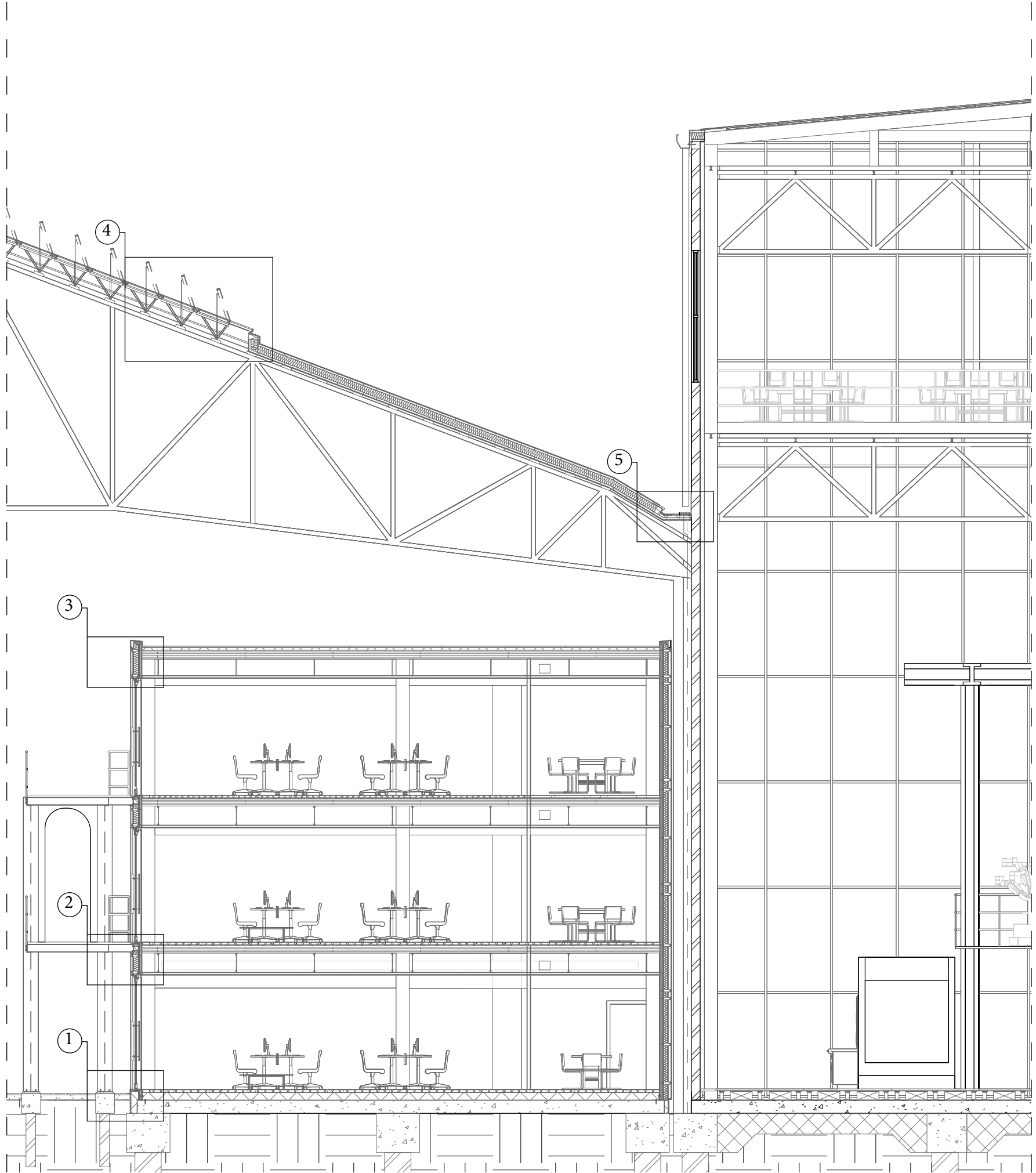


Detail section overview 1:100



1. Startup cubicles and steel gallery

Foundation 1:5

1.1 Ground built-up  
*(from bottom to top)*

- Earth
- Compressed sand
- Asphalt

1.2 Steel gallery; I-profile steel column  
*(from bottom to top)*

- Concrete pile support
- Base plate connection: double row
- I-profile steel colum 340mm x 240mm

1.3 Foundation wall  
*(from inside to outside)*

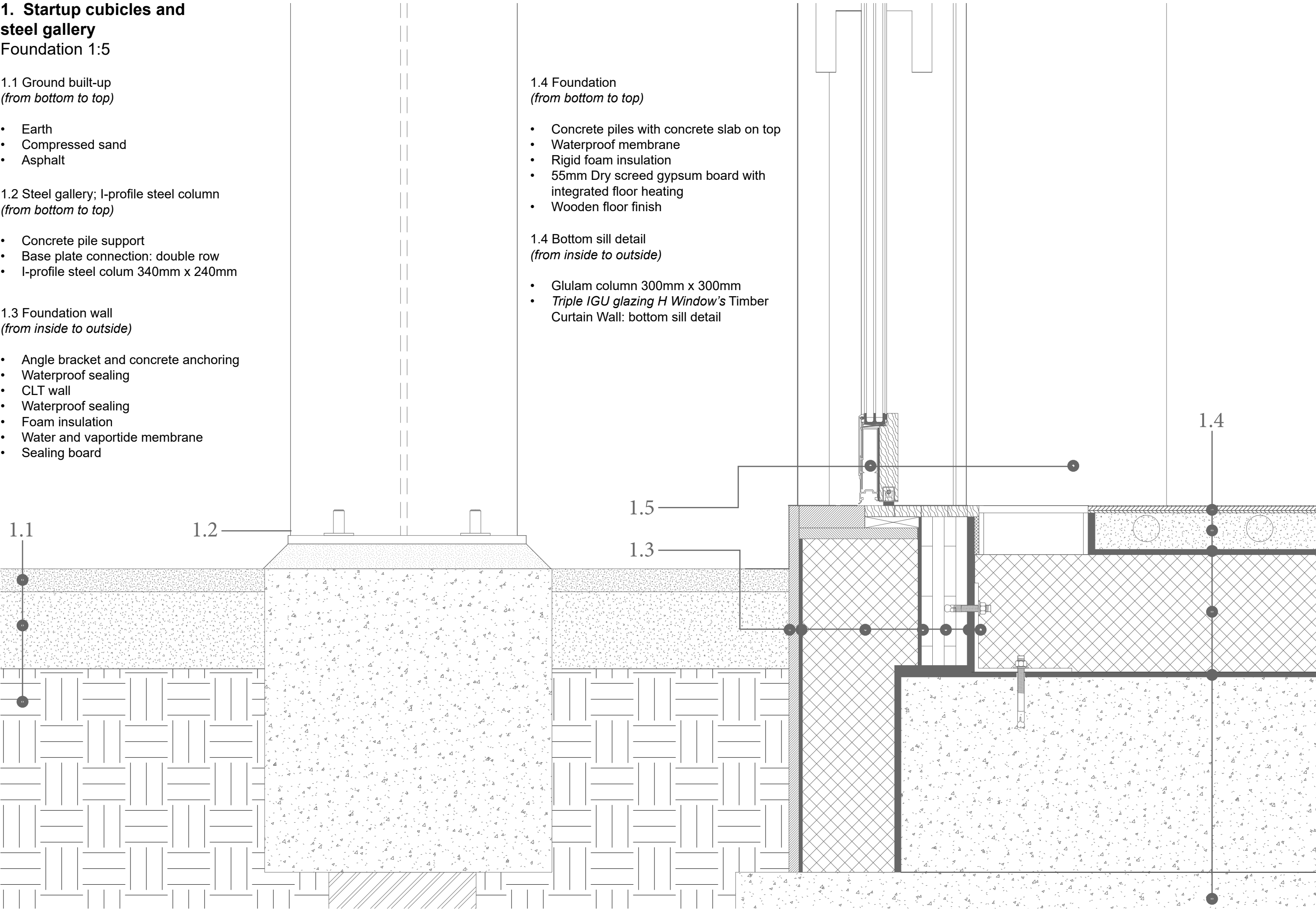
- Angle bracket and concrete anchoring
- Waterproof sealing
- CLT wall
- Waterproof sealing
- Foam insulation
- Water and vaportide membrane
- Sealing board

1.4 Foundation  
*(from bottom to top)*

- Concrete piles with concrete slab on top
- Waterproof membrane
- Rigid foam insulation
- 55mm Dry screed gypsum board with integrated floor heating
- Wooden floor finish

1.4 Bottom sill detail  
*(from inside to outside)*

- Glulam column 300mm x 300mm
- Triple IGU glazing H Window's Timber Curtain Wall: bottom sill detail



**2. Startup cubicles and steel gallery**  
Steel gallery to facade detail 1:5

**2.1 Steel gallery components**  
*(from bottom to top)*

- I-profile beam 105mm x 180mm
- Press-locked metal grating 50mm
- Reused metal arc component
- I-profile steel colum 340mm x 240mm
- Railing

**2.2 Floor detail**  
*(from bottom to top)*

- CLT floor slab 165mm
- Thermal & impact sound insulation
- Grid foil
- 55mm Dry screed gypsum board with integrated floor heating
- Wooden floor finish

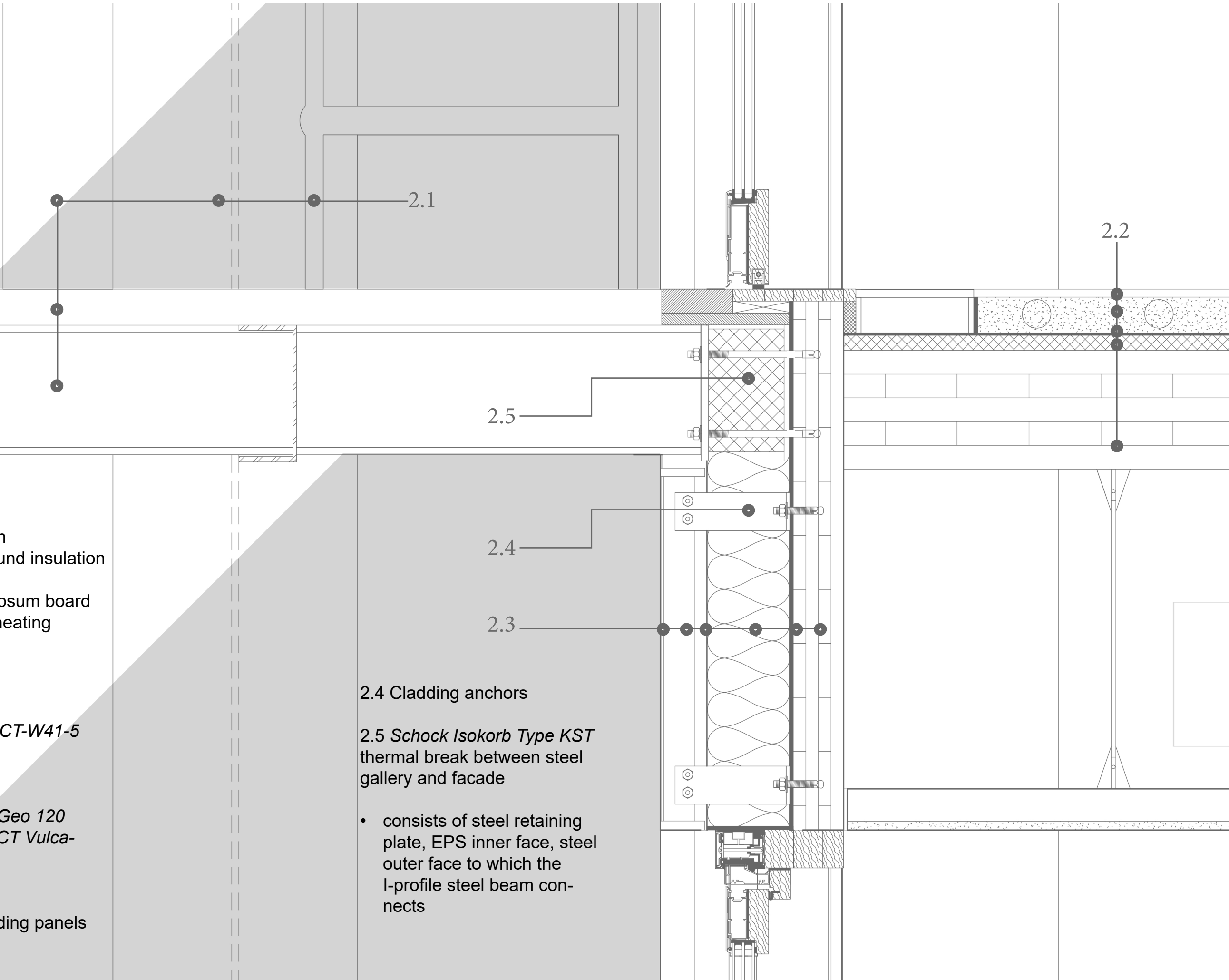
**2.3 Ventilated facade: DCT-W41-5**  
*(from inside to outside)*

- CLT wall
- Vapor barrier: *ProctoGeo 120*
- Insulation: 150mm *DCT VulcanWool*
- Air cavity 18mm
- Cladding battens
- Perforated steel cladding panels

**2.4 Cladding anchors**

**2.5 Schock Isokorb Type KST**  
thermal break between steel gallery and facade

- consists of steel retaining plate, EPS inner face, steel outer face to which the I-profile steel beam connects



3. Startup cubicles and steel gallery

Roof detail 1:5

3.1 Roof detail  
(from bottom to top)

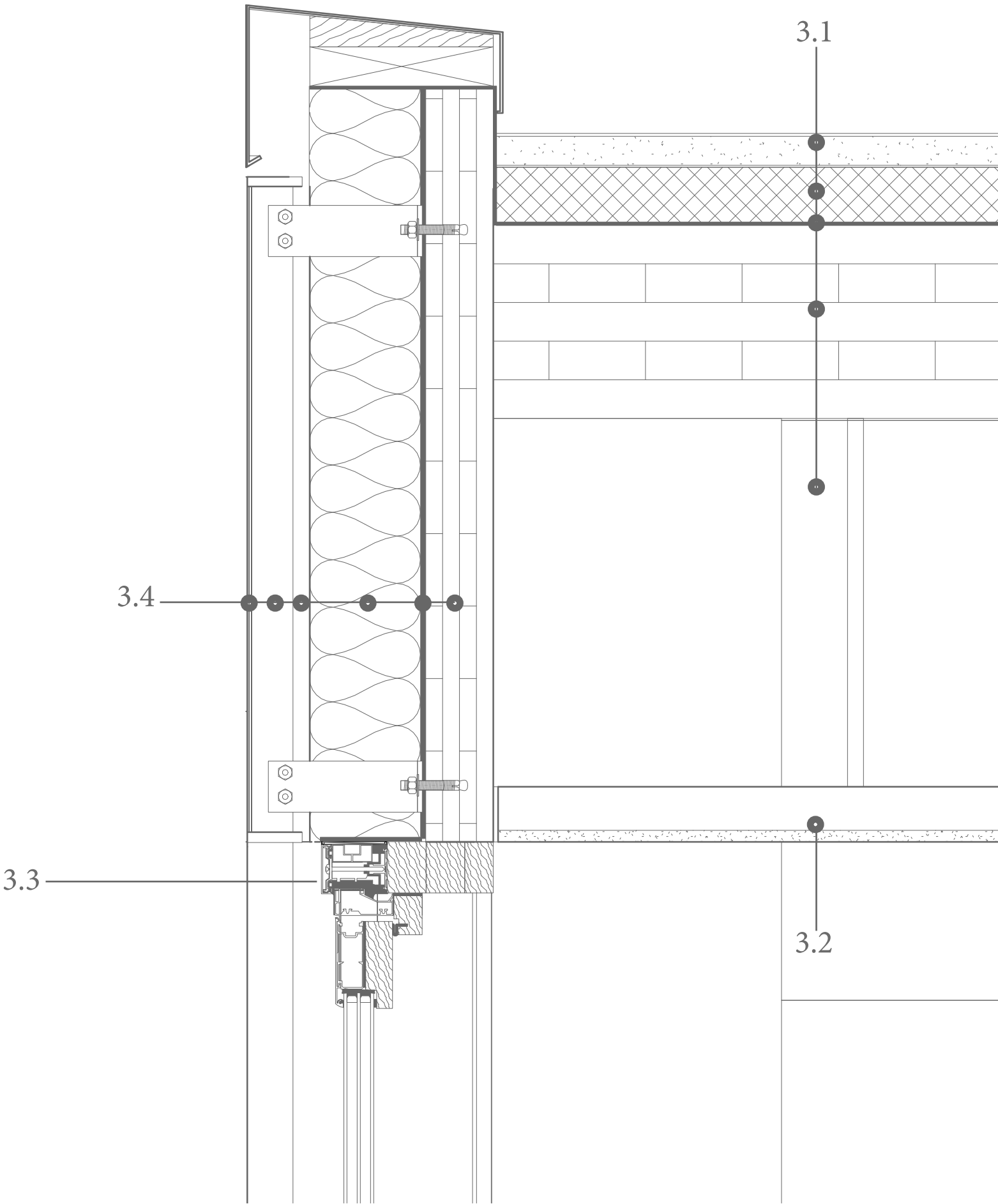
- Glulam beam 200mm x 600mm
- CLT slab 200mm
- Moisture barrier membrane
- Roof insulation 60mm
- Fire-rated roof finish

3.2 Suspended ceiling in-between glulam beams where the ventilation ducts are located

3.3 H Window’s Timber Curtain Wall: top sill detail

3.4 Ventilated facade: *DCT-W41-5*  
(from inside to outside)

- CLT wall
- Vapor barrier: *ProctoGeo 120*
- Insulation: 150mm *DCT VulcanWool*
- Air cavity 18mm
- Cladding battens
- Perforated steel cladding panels



4. New glazed ventilation roof ttached to existing truss

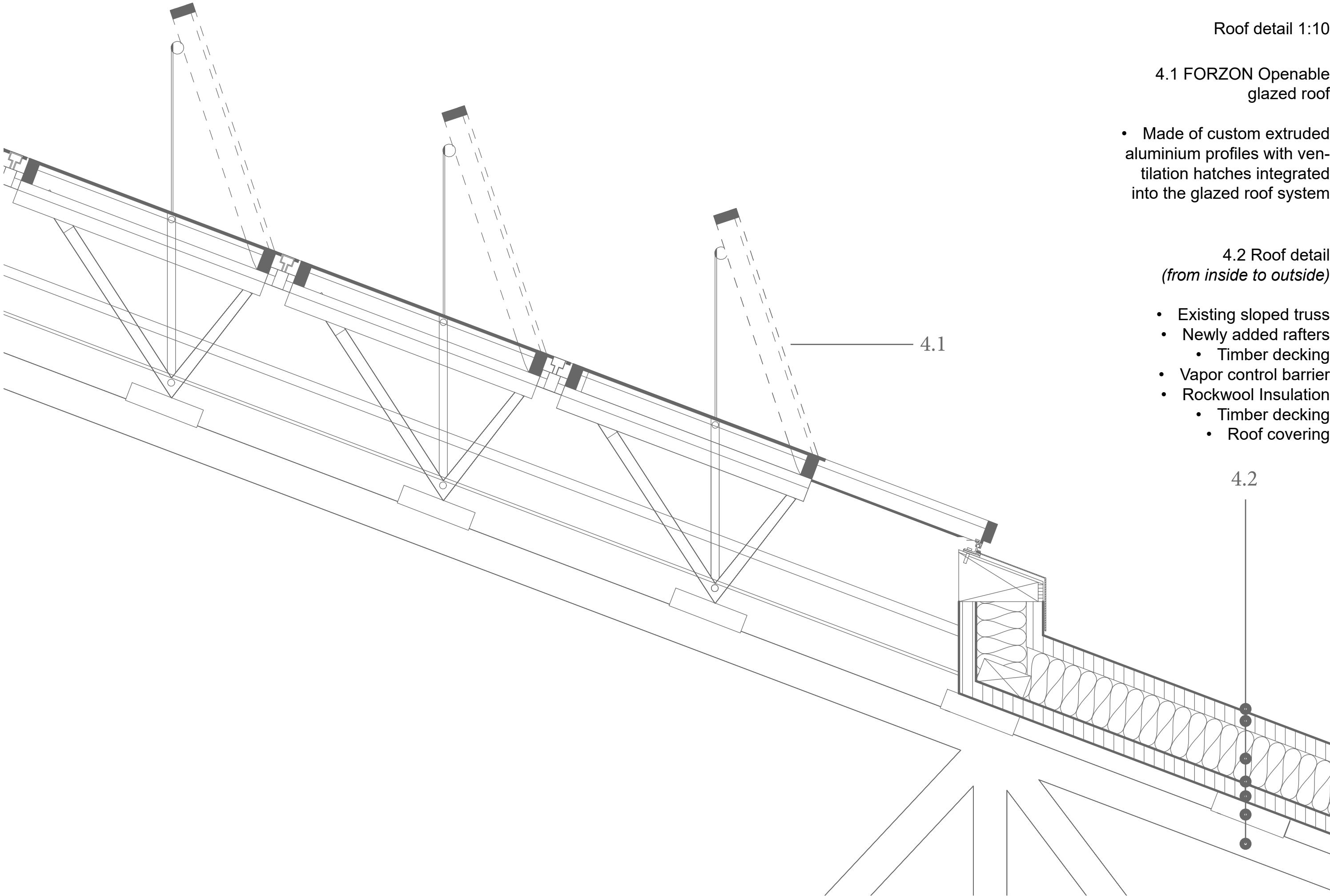
Roof detail 1:10

4.1 FORZON Openable glazed roof

- Made of custom extruded aluminium profiles with ventilation hatches integrated into the glazed roof system

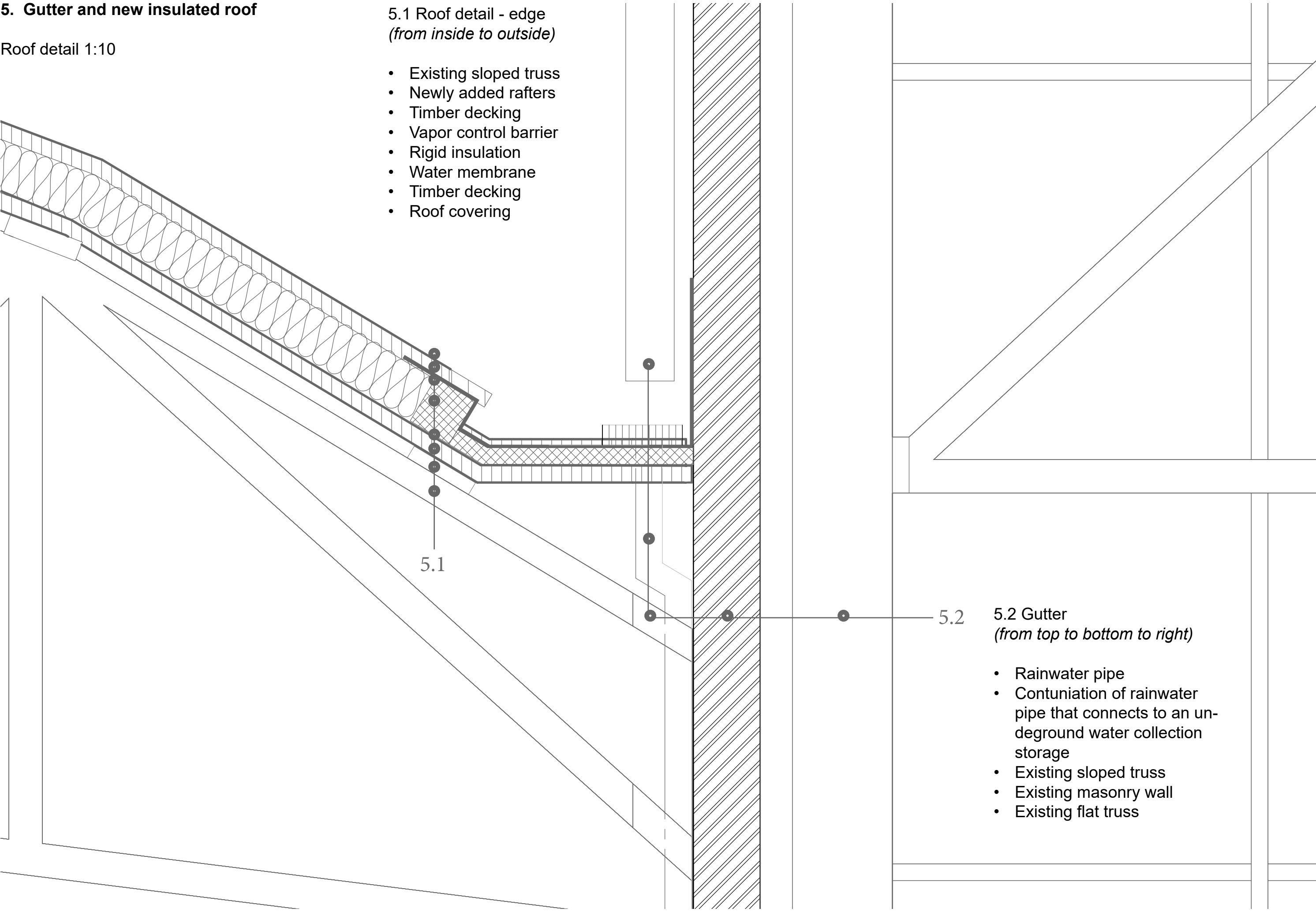
4.2 Roof detail  
*(from inside to outside)*

- Existing sloped truss
- Newly added rafters
  - Timber decking
- Vapor control barrier
- Rockwool Insulation
  - Timber decking
  - Roof covering



5. Gutter and new insulated roof

Roof detail 1:10



5.1 Roof detail - edge  
*(from inside to outside)*

- Existing sloped truss
- Newly added rafters
- Timber decking
- Vapor control barrier
- Rigid insulation
- Water membrane
- Timber decking
- Roof covering

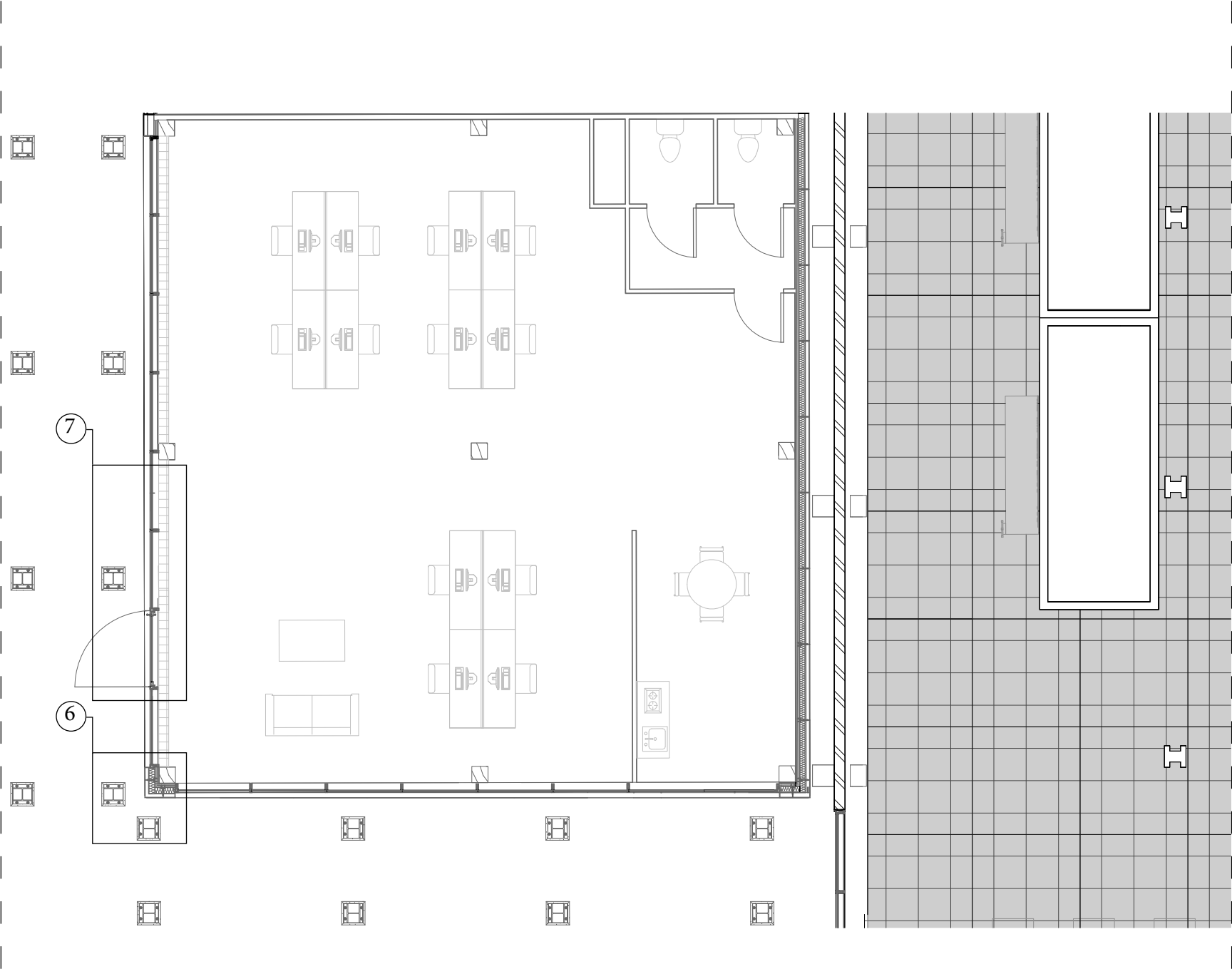
5.1

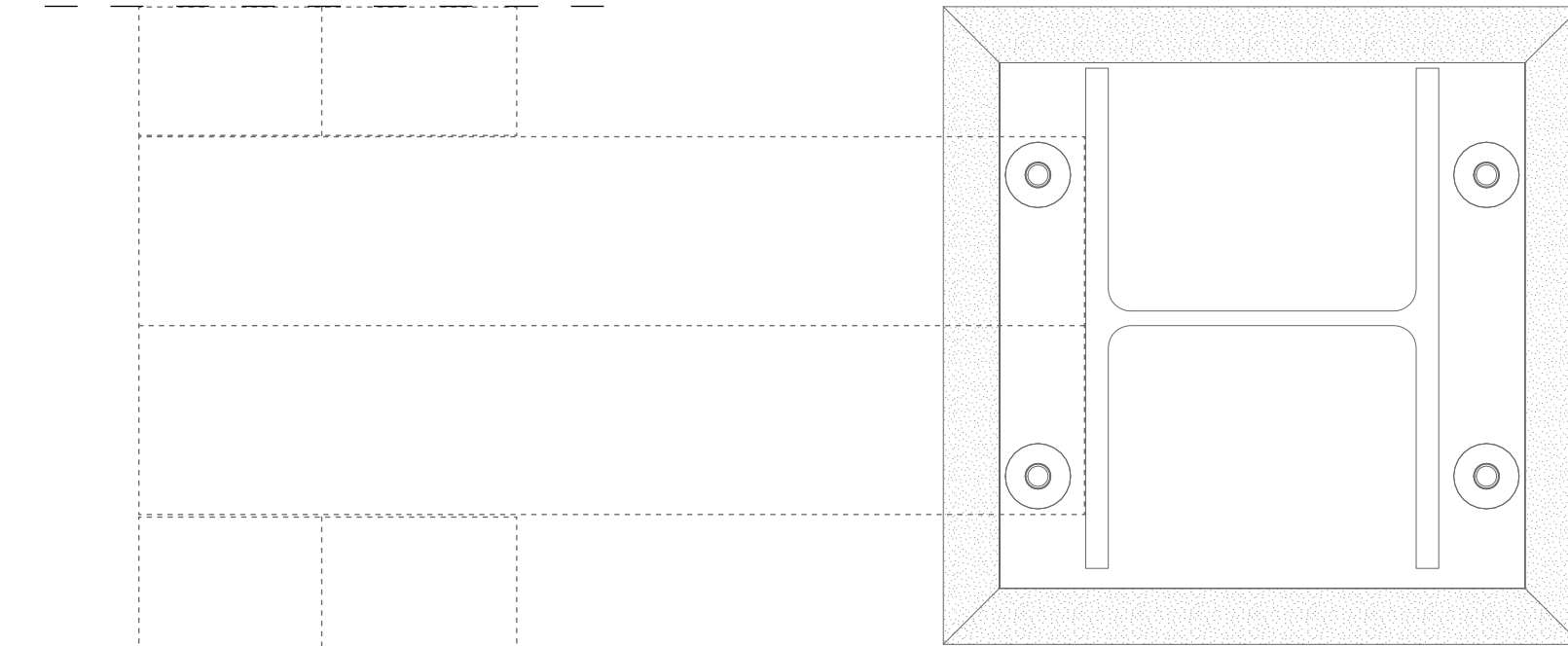
5.2

5.2 Gutter  
*(from top to bottom to right)*

- Rainwater pipe
- Continuation of rainwater pipe that connects to an underground water collection storage
- Existing sloped truss
- Existing masonry wall
- Existing flat truss

Detail plan overview 1:100



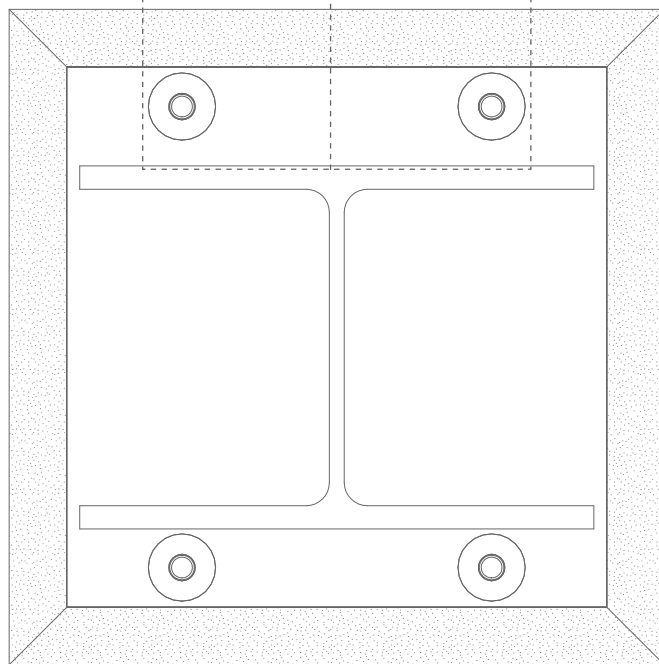


## 6. Corner detail: ground floor

Detail 1:5

6.1 Ventilated facade: *DCT-W41-5*  
(from inside to outside)

- Glulam column 300mm x 300mm
- CLT wall
- Vapor barrier: *ProctoGeo 120*
- Insulation: 150mm *DCT VulcanWool*
- Air cavity 18mm
- Cladding mullion
- Perforated steel cladding panels

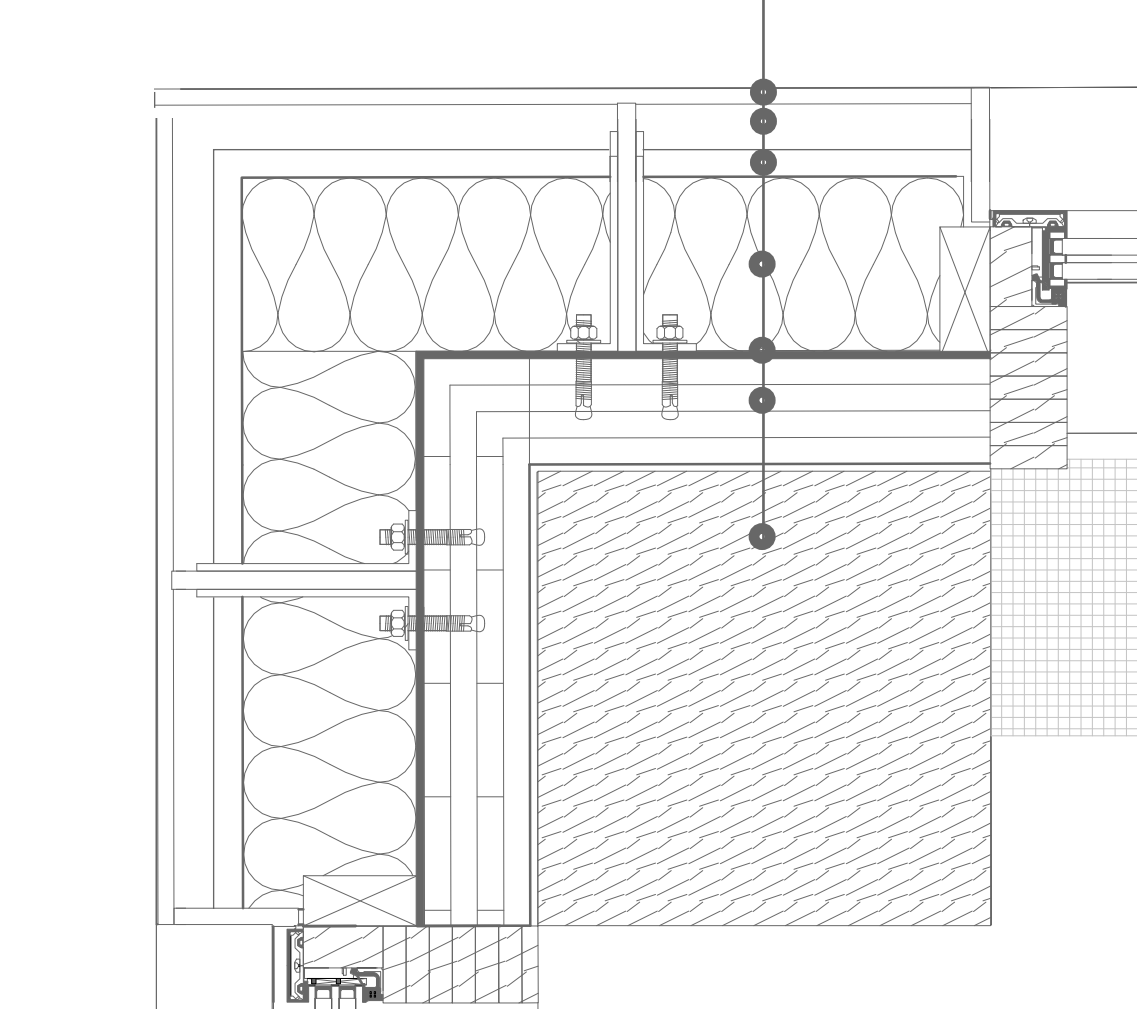


6.2

6.1

6.2 Steel gallery; I-profile steal column  
(from bottom to top)

- Concrete pile support
- Base plate connection: double row
- I-profile steel colum 340mm x 240mm

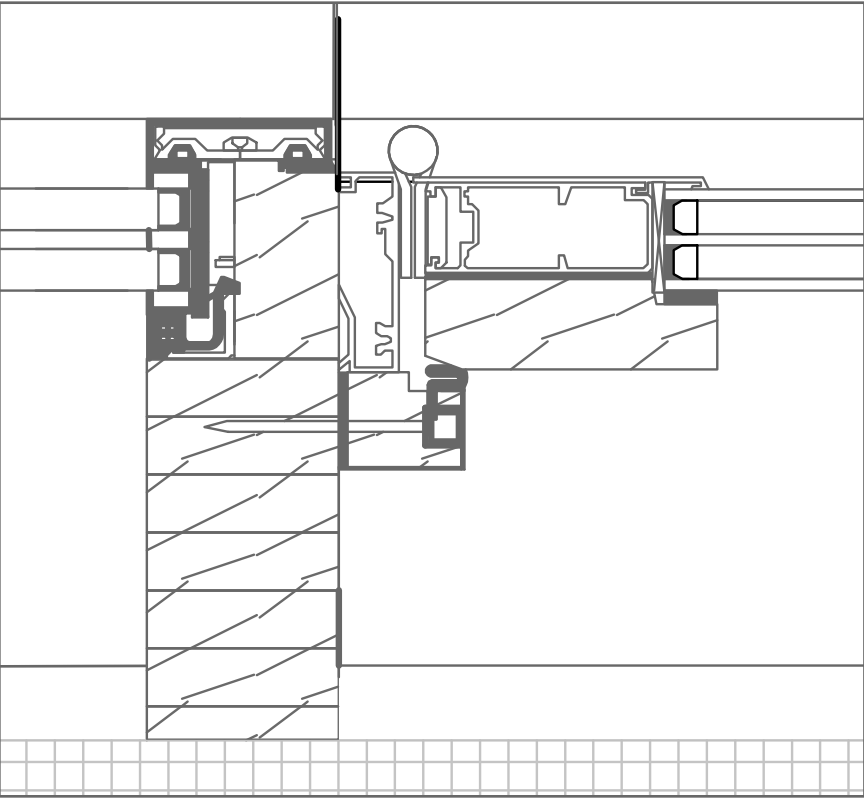
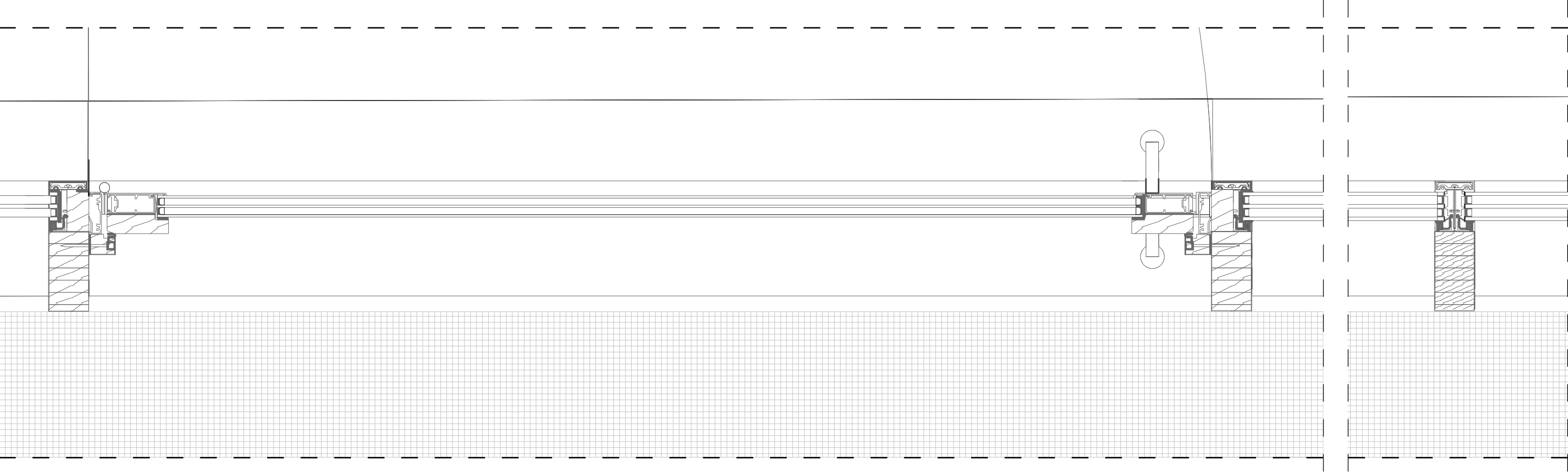




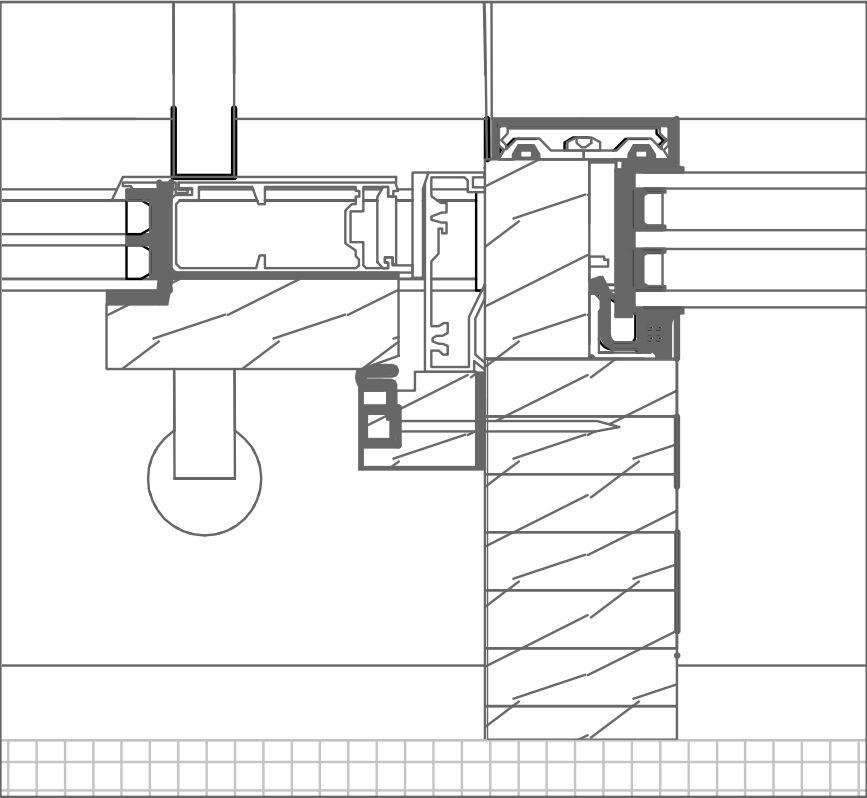
7. H Window's Timber Curtain Wall: Door and mullion detail

Mullion with Nordic Door Jamb Detail and triple glazed IGU

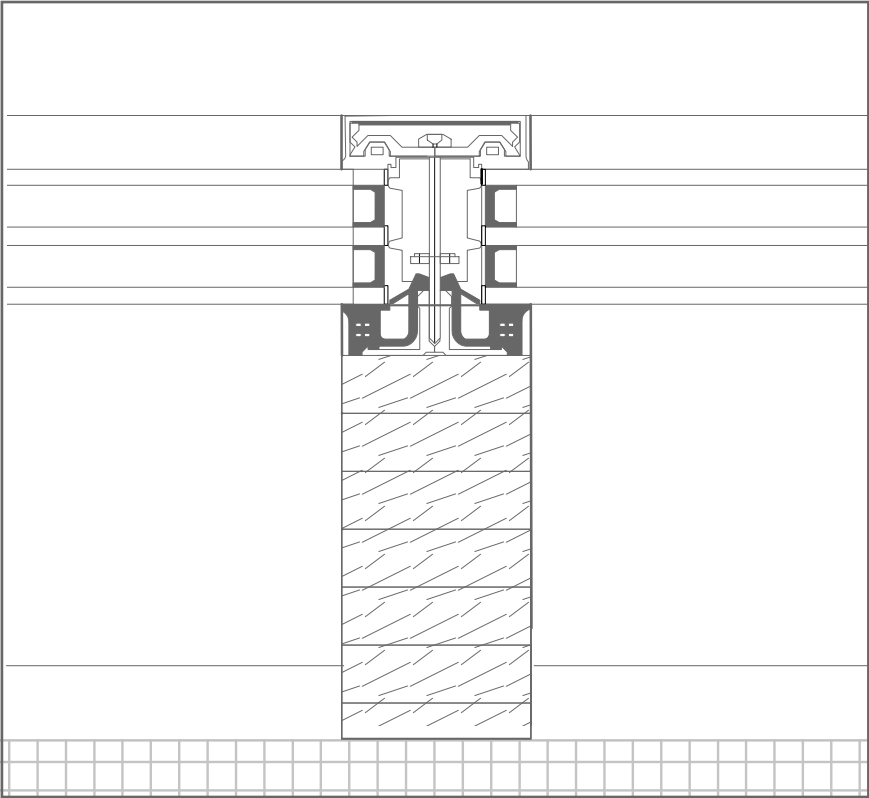
Detail 1:5



7.1 Jamb Detail 1:2



7.2 Jamb Detail 1:2



7.3 Mullion Detail 1:2