

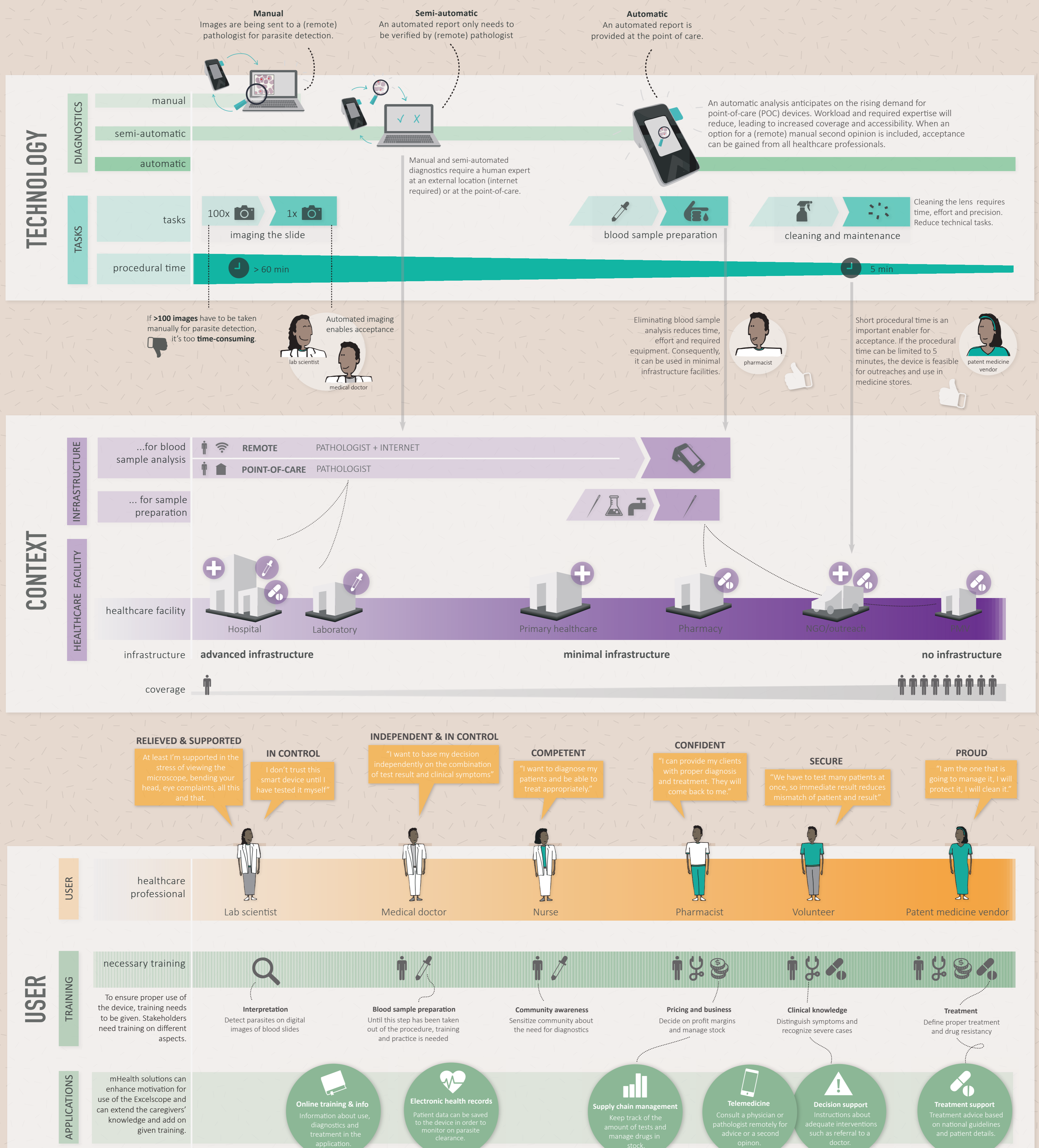
# A ROADMAP FOR DEVELOPMENT OF THE EXCELSCOPE

Use and acceptance of a smart malaria diagnostic device by healthcare professionals in Nigeria

In Nigeria, over 90% of the population is at risk of malaria infection, leading to 60% of the outpatient visits in Nigerian healthcare facilities. Accurate diagnostics are not available for the mass and drugs can be bought without prescription, leading to misdiagnosis, overtreatment and drug resistance.

The Excelscope is a smart malaria diagnostic device that leverages the functionalities of a smartphone to capture magnified images of a blood smear and provide a remote or automated diagnosis. For parasite detection and the provision of a diagnosis, different

scenarios are possible. These scenarios were discussed with healthcare professionals in Nigeria to get insights in barriers and enablers for acceptance of a smart device. Technology, context and user are connected in the roadmap that shows the recommended development of the device.



Julia Stoevelaar  
Roadmap for development of the Excelscope  
21-11-2017  
Design for Interaction (Medisign)

**Committee** Dr. ir. J.C. Diehl  
B.S. Groeneveld

