

AR3AP100 | Public Condenser, Copenhagen

# Two public faces. Sundholm association centre



# Contents

001	Research & design assignment
002	Design site & concepts
003	Building spaces & functions
004	Technical details & design

001

# Research & design assignment

# The public condenser



Streets and urban fabric of the city.



The private living room.

In the Fall of public man, Sennett explains that the public realm has been replaced by the private living room. The public condenser aims to reclaim the function of the public realm (Sennett, 1977)(Gehl & Svarre, 2013).



The public condenser.

# The public condenser



Lochal Tilburg.

- + Study & workplaces
- + Library
- + Café
- + Central staircase separating between anonymous & intimate spaces



Forum Groningen.

- + Study & workplaces
- + Library
- + Film & videostore
- + Café & foodcourt
- + Central vertical void reaching between floor and upper roof

# The public condenser



Public life in the city: the place for meeting strangers.

I. Streets and urban fabric of the city.



II. The private living room.

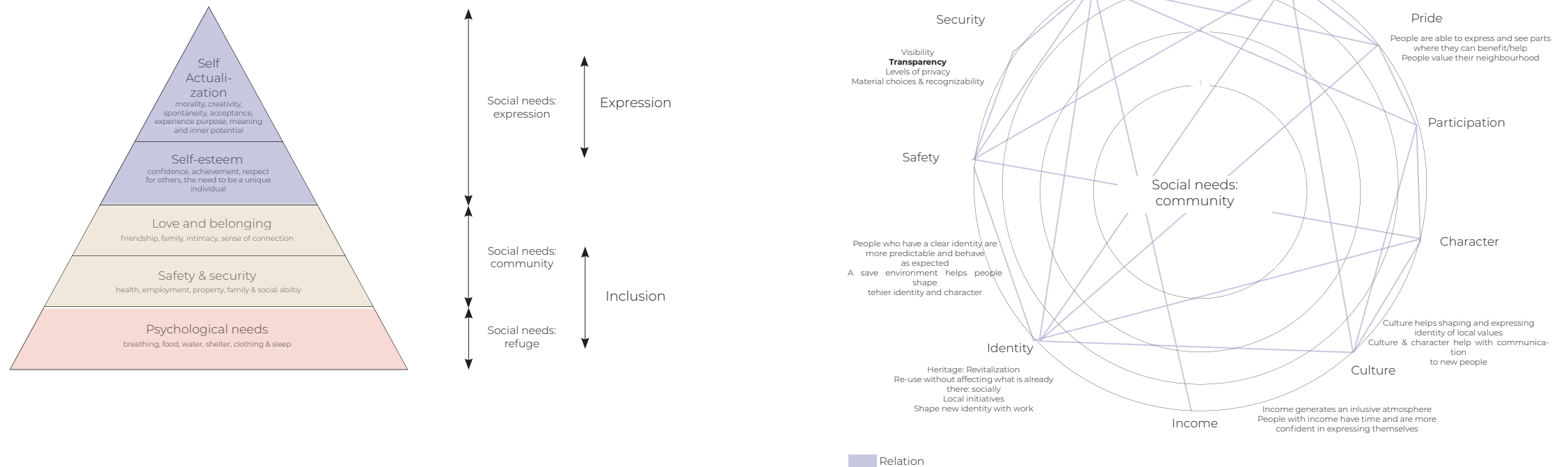


III. The public condenser.

How could the Public Condenser be designed to establish an atmosphere of an inclusive, modern public life?

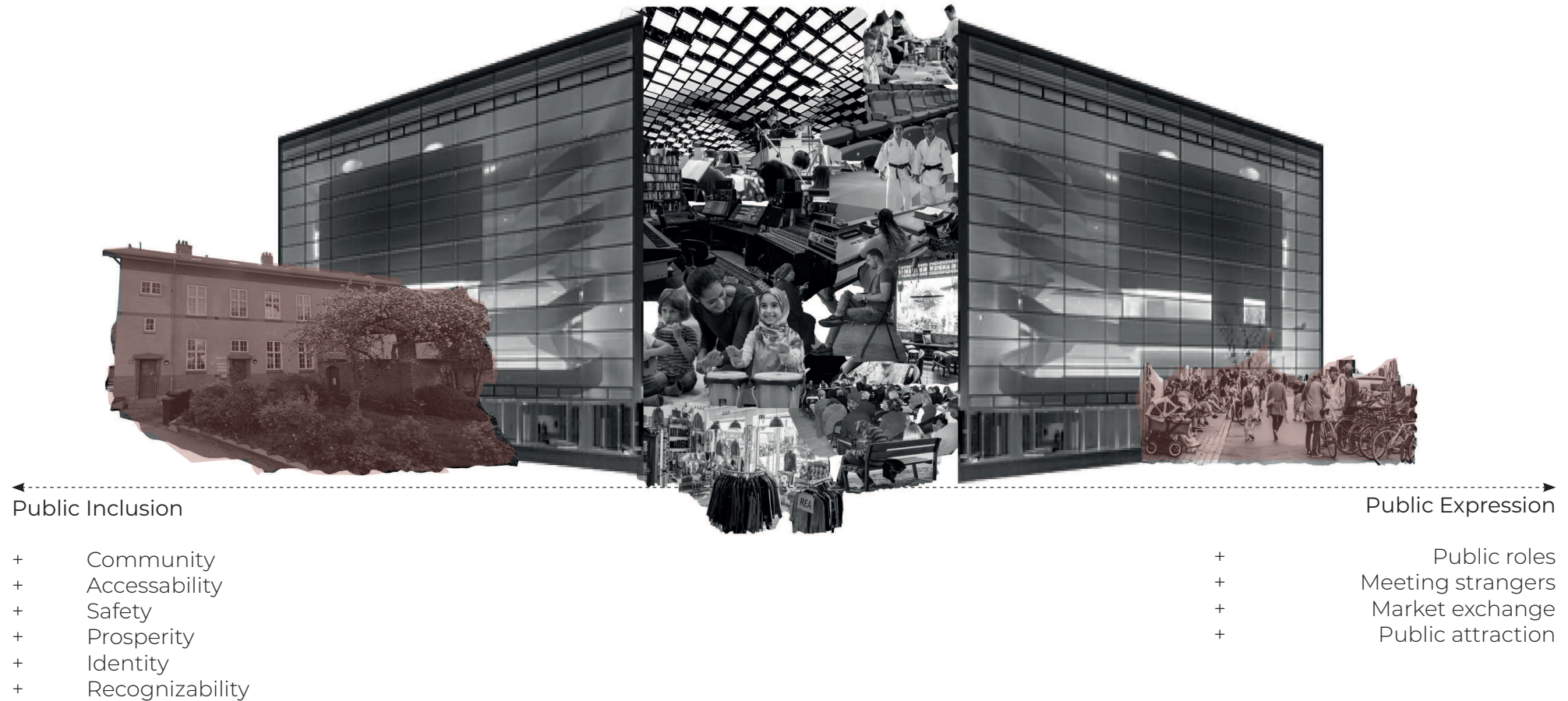
1. How could the Public Condenser be designed so that it meets current social needs as well as being flexible for possible other future use?
2. How can literal, phenomenal and experiential transparency be used to morph and combine spaces and functions within the design of the public condenser?
3. How could sustainable measures be incorporated in the design for the Public Condenser and its surrounding urban fabric, to create an inclusive public network?

# Social inclusion & social attraction

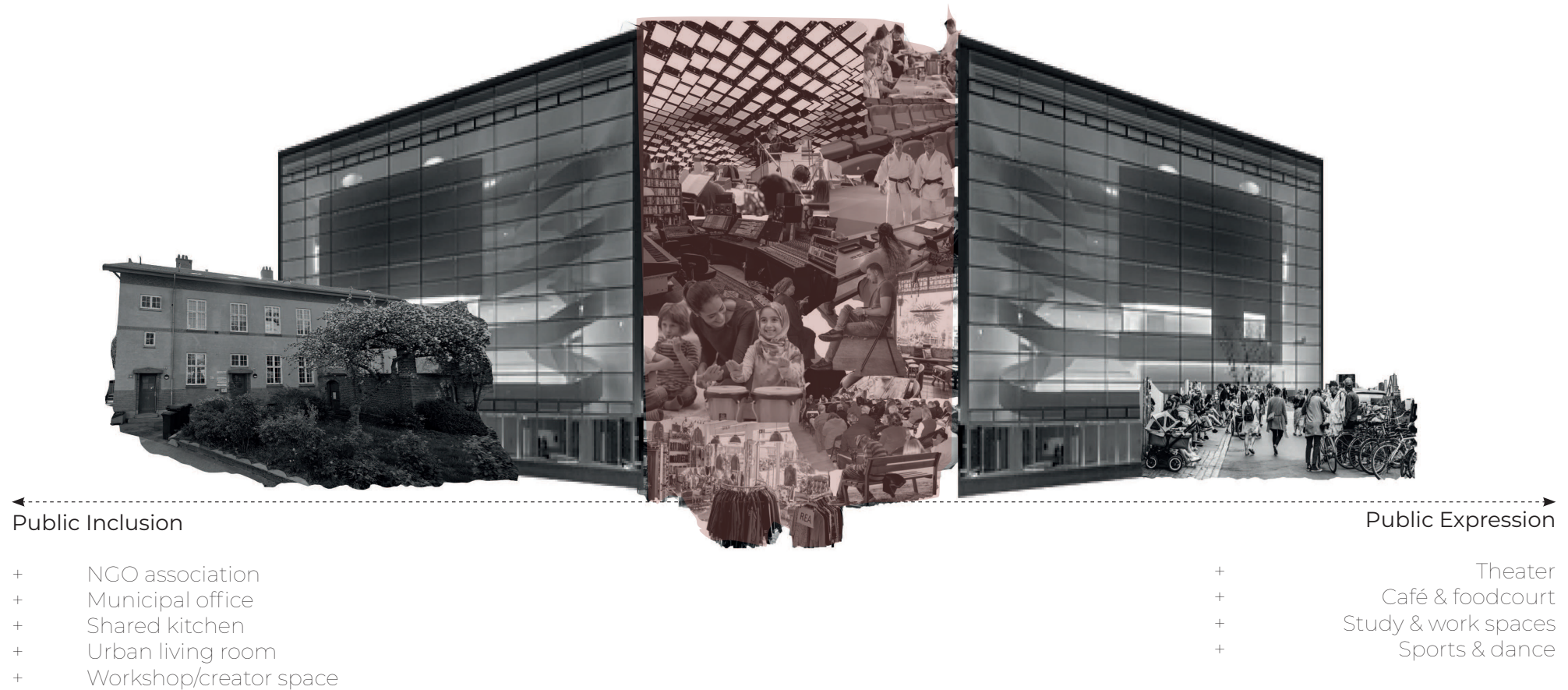


Classification of two public functions or a distinction between two reasons for being public. The public realm between social inclusion: safety & prosperity and social expression: self-actualization together with the attributes that contribute to a community (Maslow, 1943)(Akcelik et al., 2024).

# Social inclusion & social expression



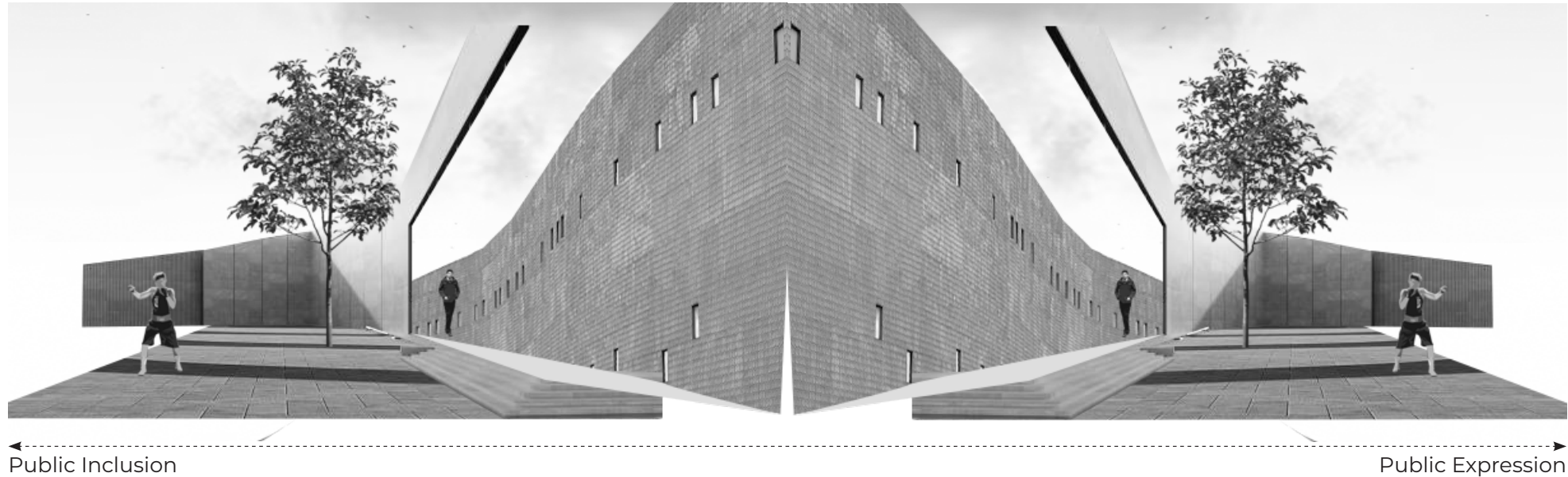
# The public condenser



# Phenomenal & literal transparency



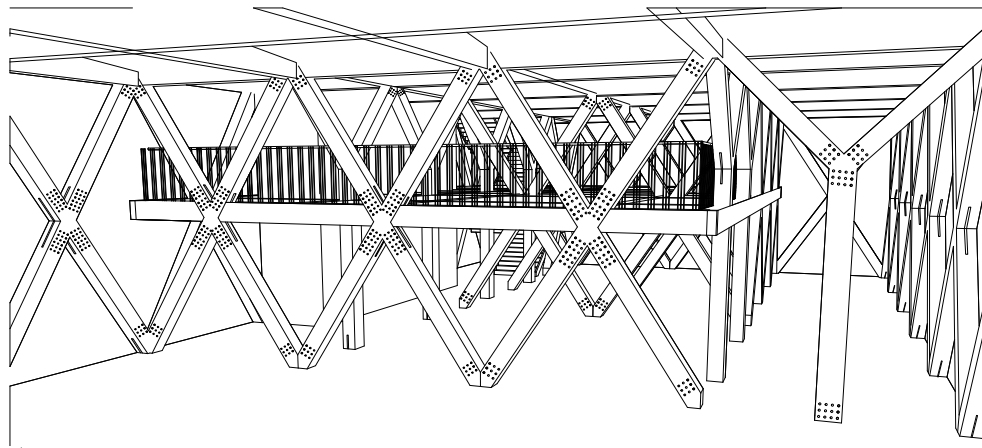
Transparency describes the degree of relation between spaces. Literal transparency is open and interpretable, phenomenal transparency offers the possibility of emotion and invites for exploration (Ekartal et al, 2019).



# Phenomenal & literal transparency



The interior space are constructed through X and Y-shaped columns shaping the spaces of the building with the supposed outcome of connecting functions indirectly.



Public Inclusion

Public Expression

002

# **Design location & building concepts**

# Urban relation Copenhagen & Amager



Copenhagen, in red Amager and Sundholm. To the right a zoomed in version of Sundholm (red) and the central axis dividing the south of Copenhagen.



# Design location



Loneliness (elderly and youth)



Active barriers



Remainders of institution



Architecture relates to reputation



Horizontal network



Broader representation



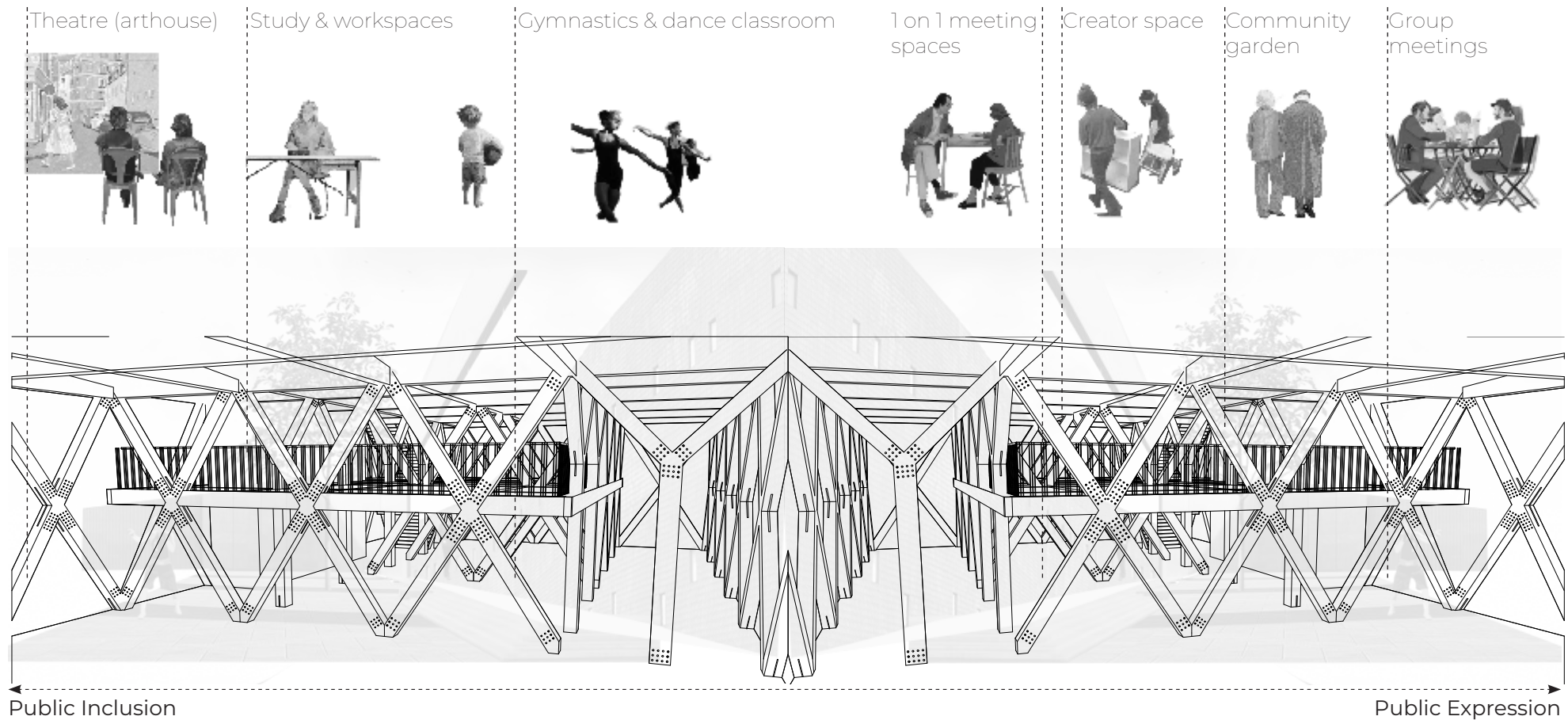
## Sundholm house 8



Two faces of sundholm house 8: the representative public side is shielded by a gatehouse and fence.



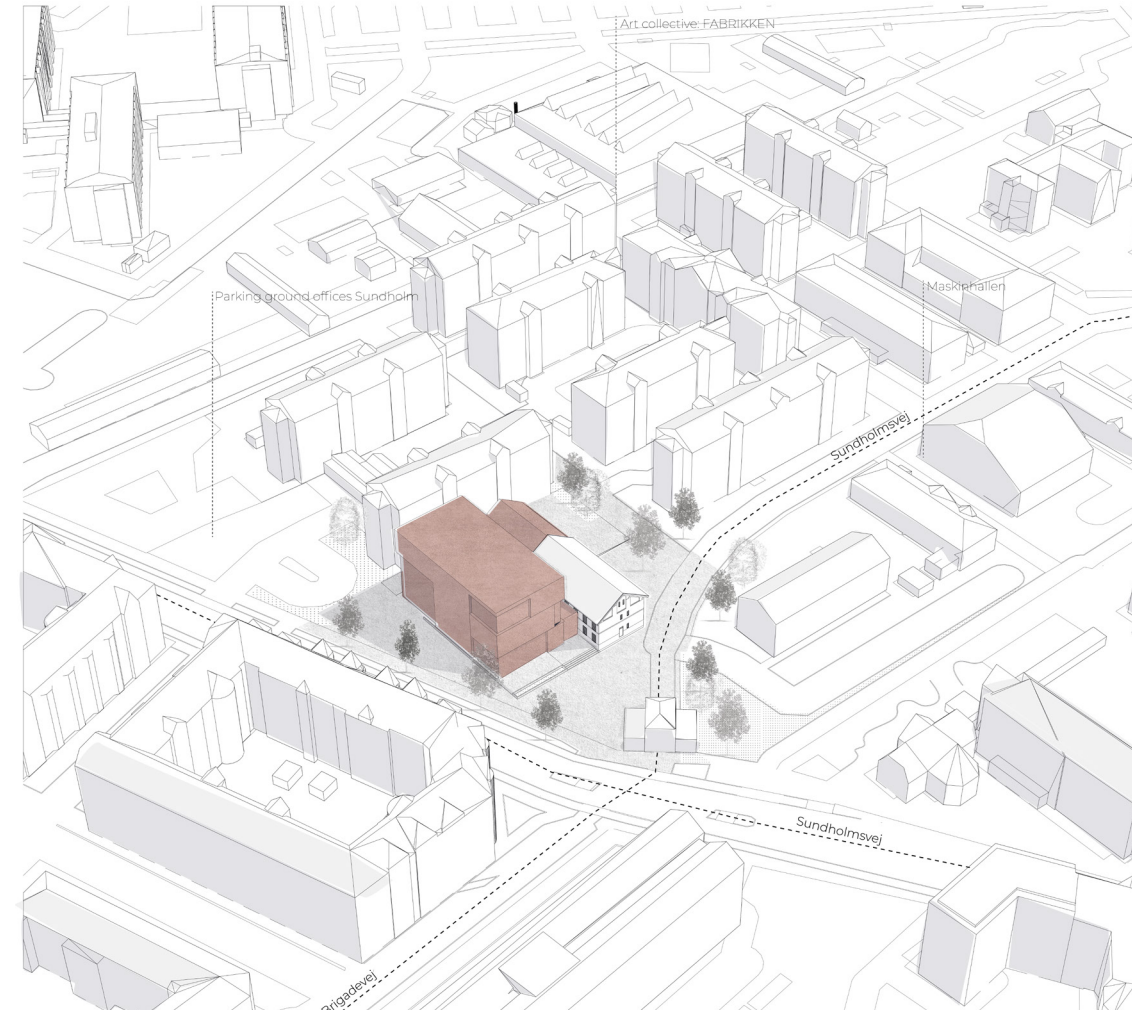
## Functions between transparency



# Transform boundaries



Two faces of sundholm house 8: the representative public side is shielded by a gatehouse and fence.



# Enhance local identity



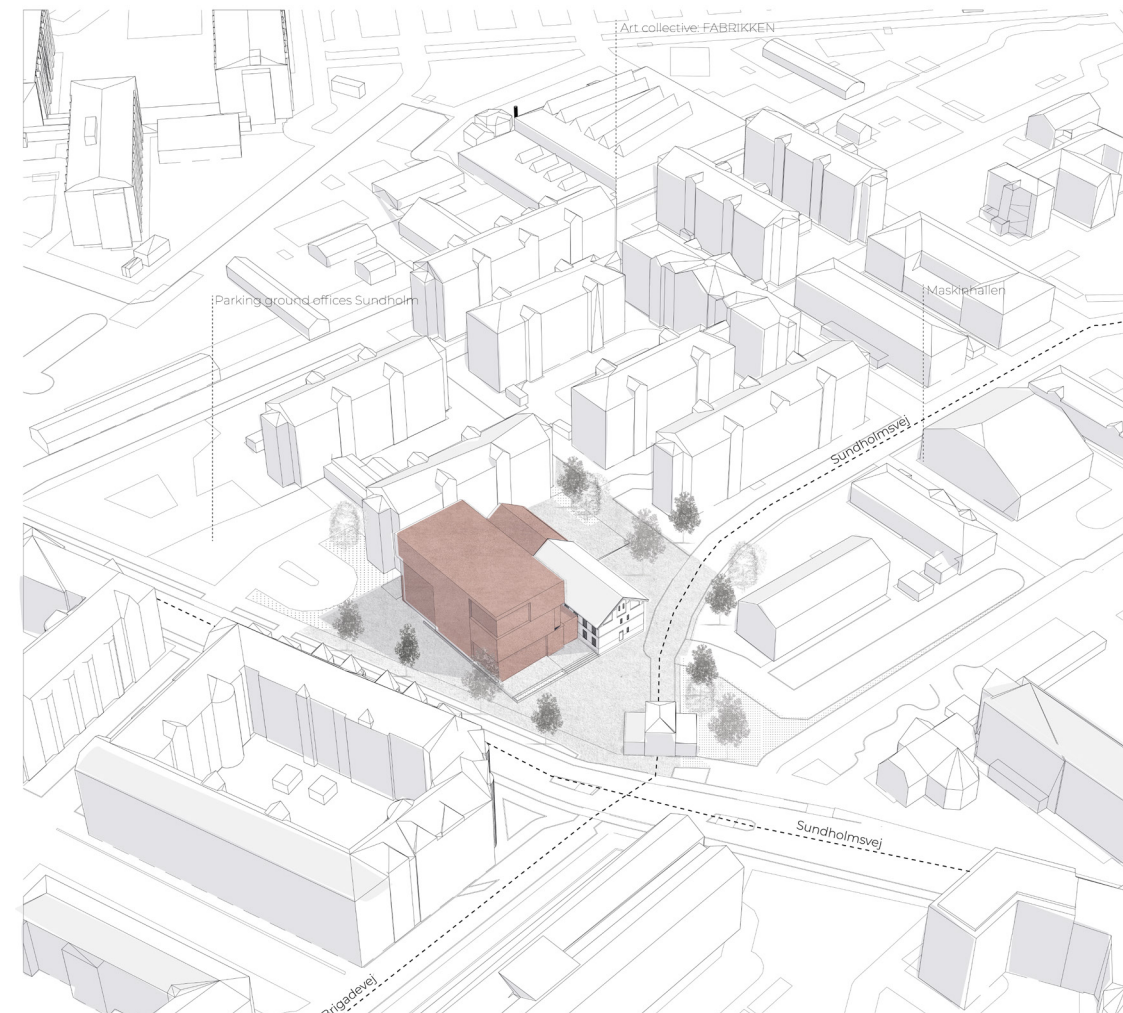
First addition follows form and location of existing municipal office.



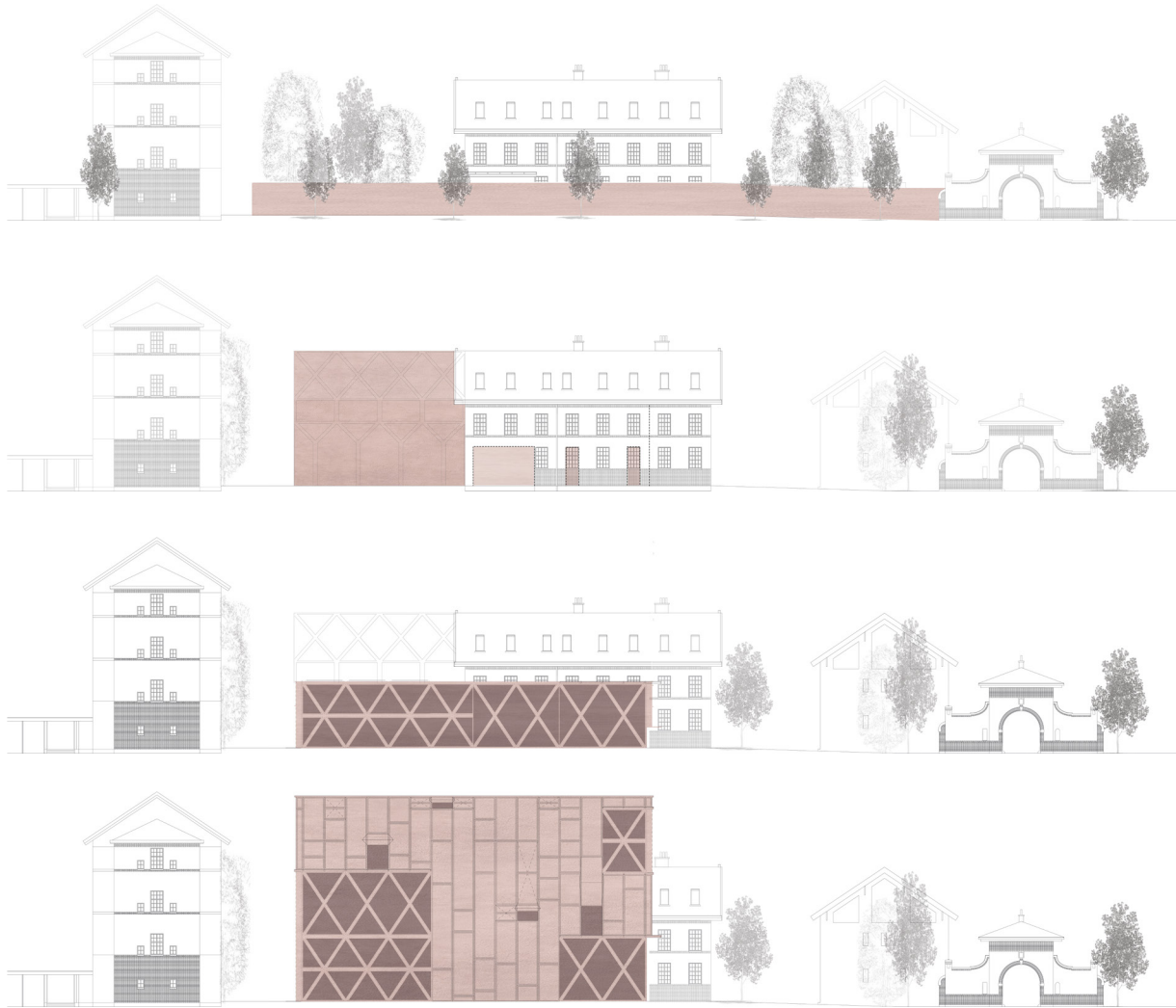
# Invite for a horizontal network



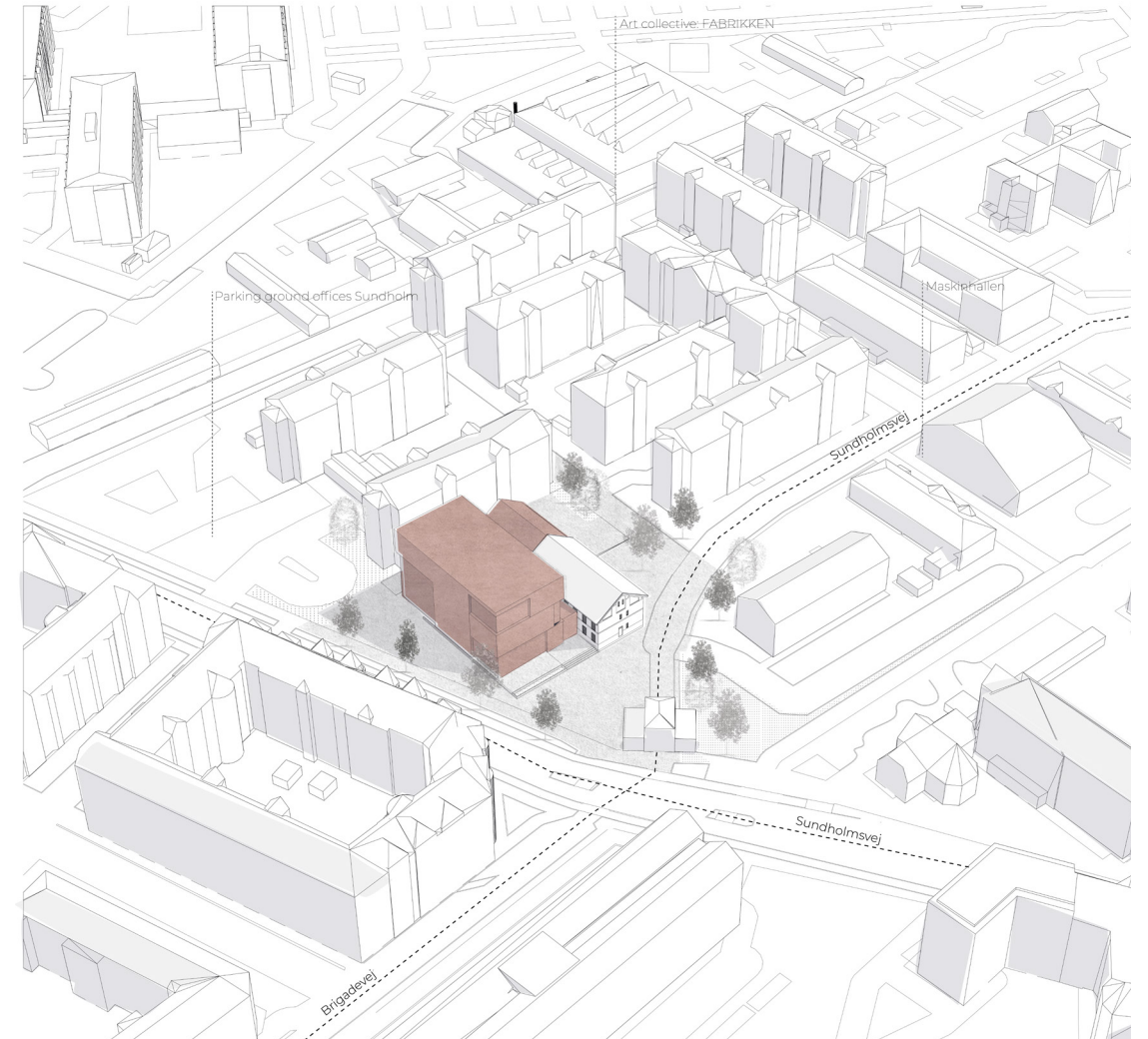
Additional volume dictates space into two directions. Orientation on two public faces.



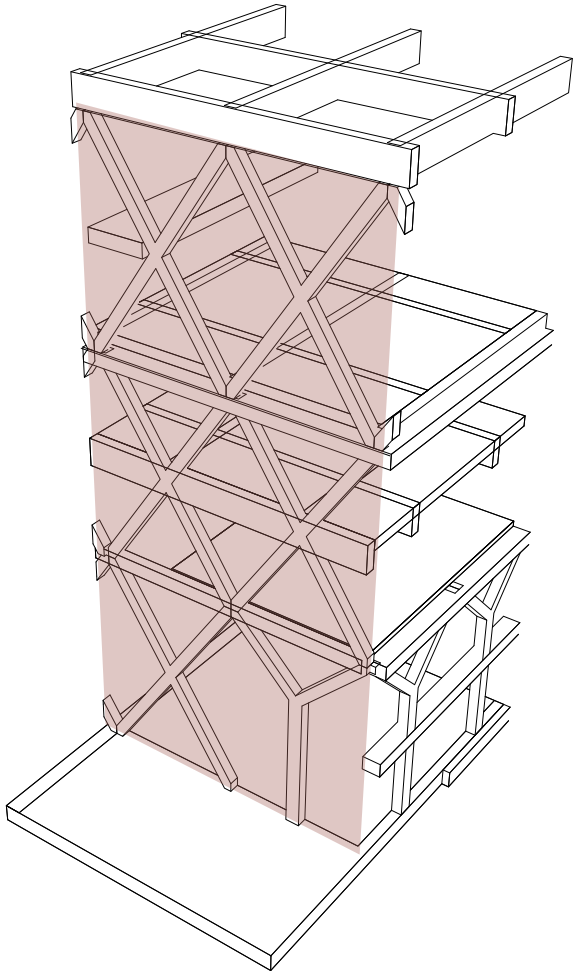
## Broaden local recognition



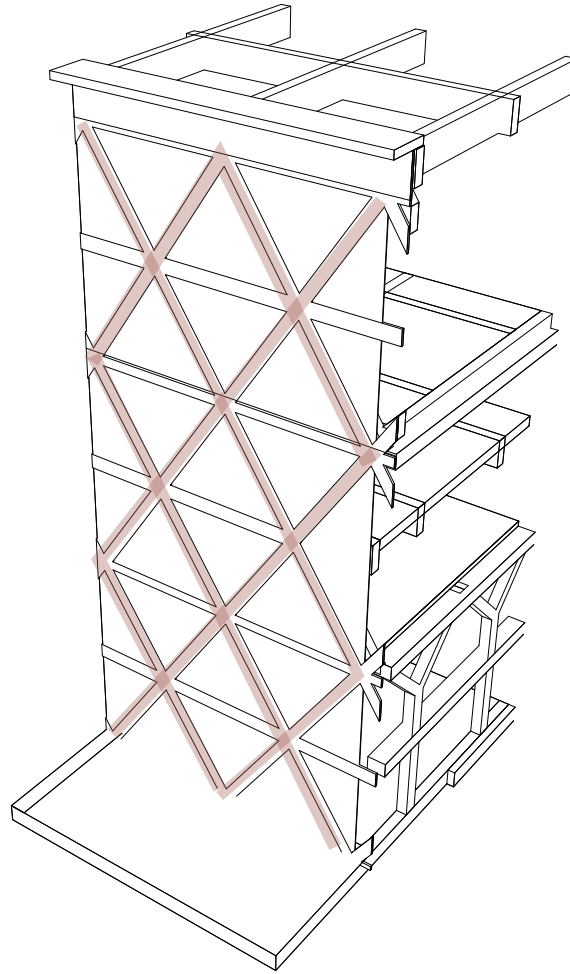
Finally the condenser dictates literal & phenomenal transparency between interior and exterior spaces.



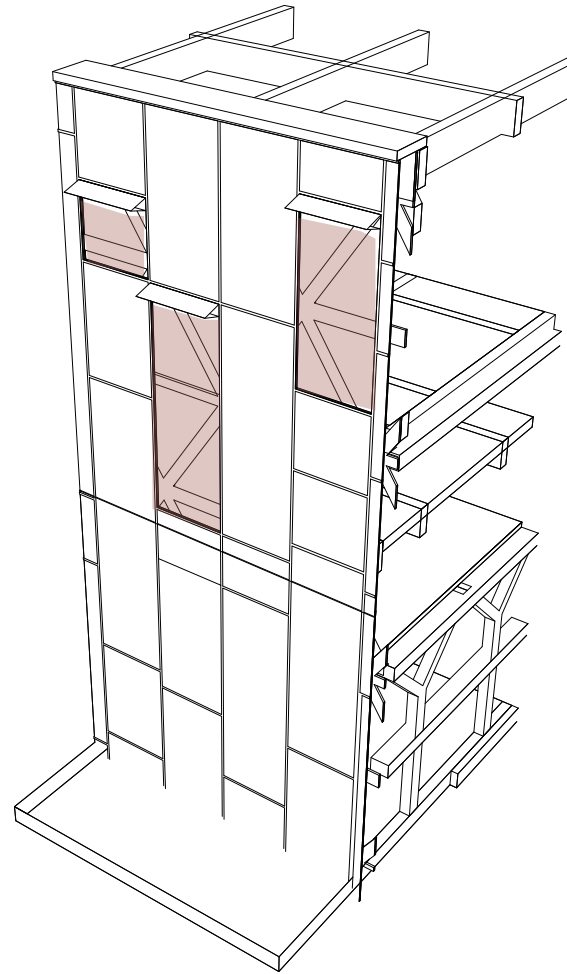
## Exterior façade construction



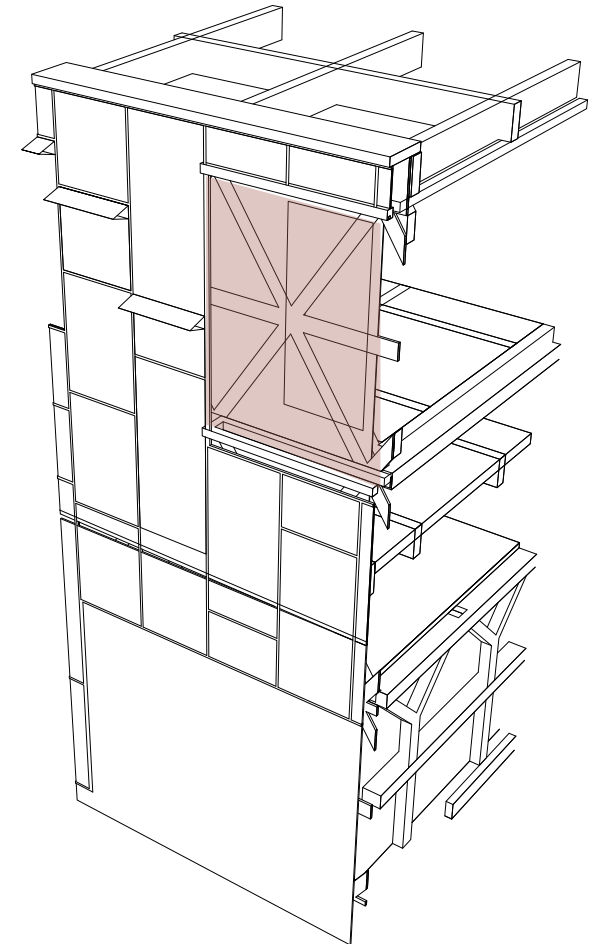
Construction of façade. X & Y-shaped columns.



Glass & windowframes follow pattern of X-shaped columns.

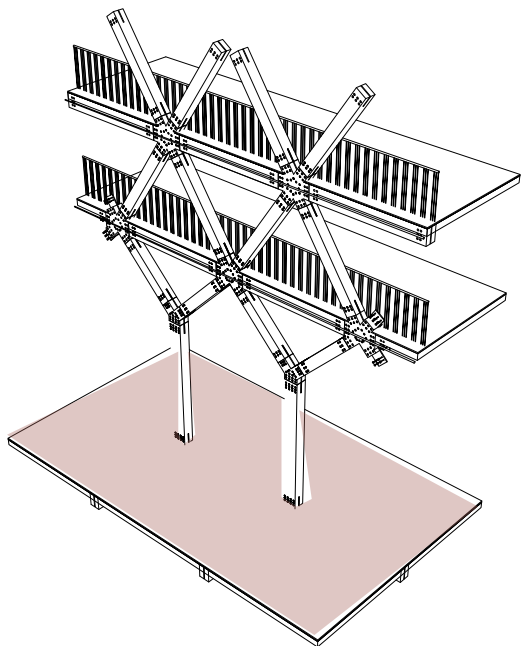


Second skin shields façade and can be opened on certain locations.

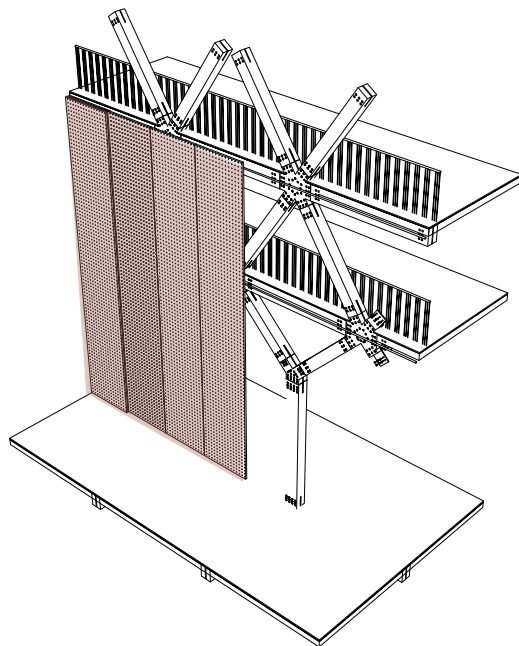


Direct openings enhance the dynamic between literal and phenomenal transparency.

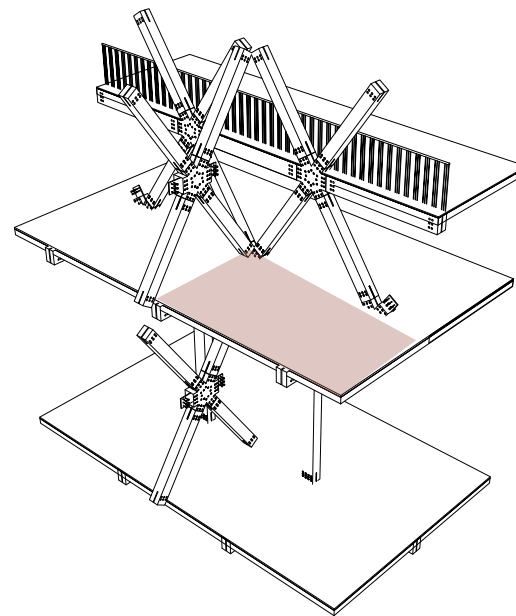
# Interior wall construction



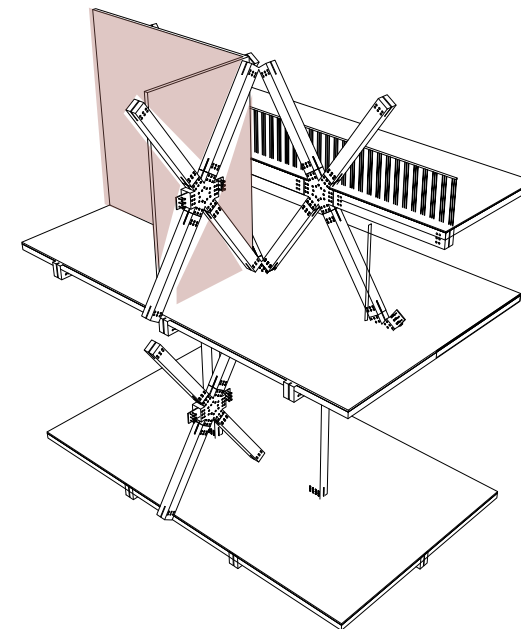
Multiple floors connected through one void.



Addition of demountable soundboards entertain the ability of changing spaces.



Turned crosses shape the variety of spaces.



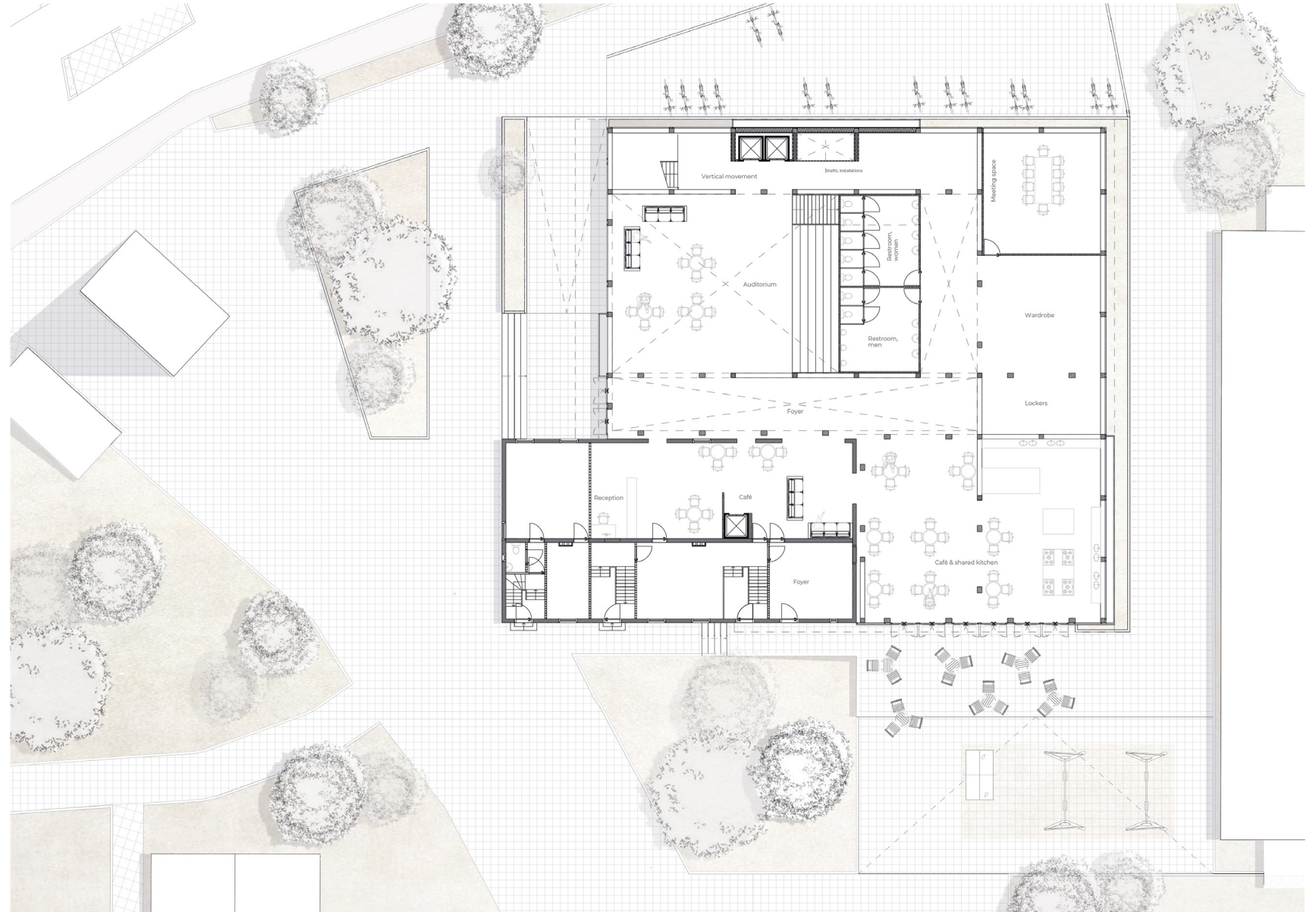
Interior walls are places, only when needed, to the least continuous spaces.

003

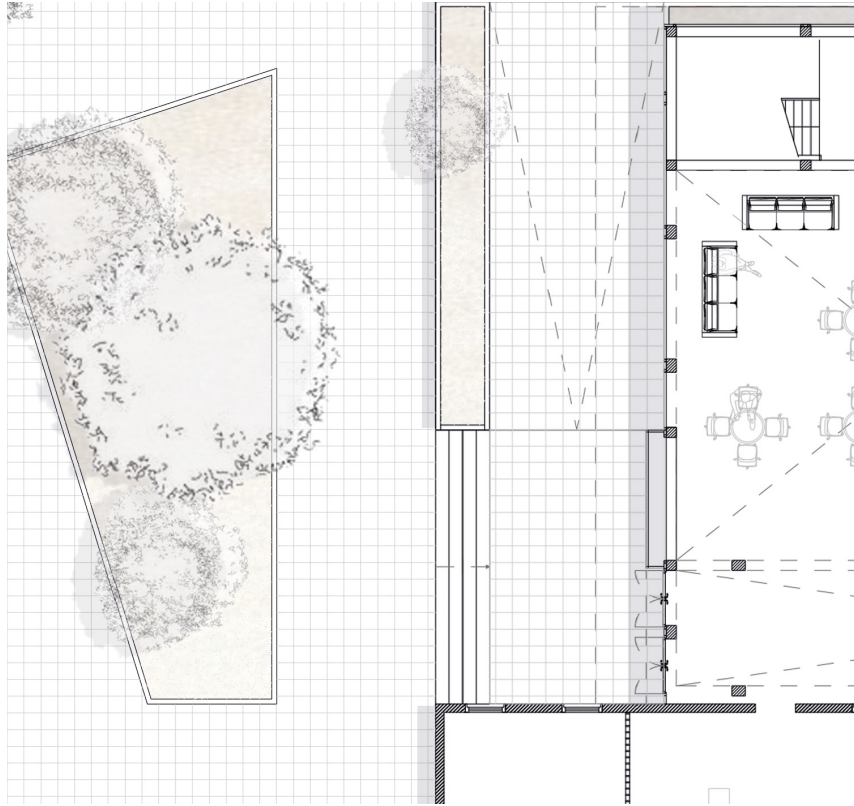
# **Building spaces & functions**

## Site map

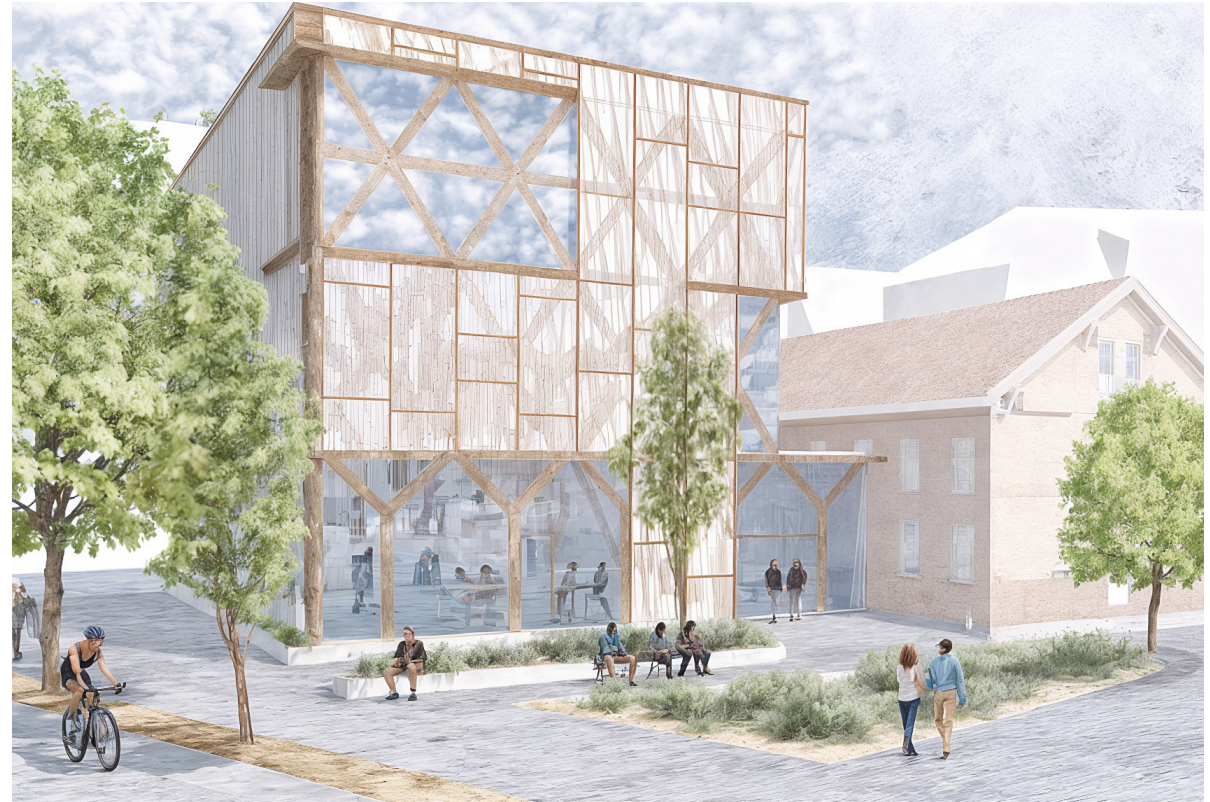
The public condenser forms an addition to the program of Sundholm house 8. The orientation of the new building is also based on this previous settlement. The two hearts of the building: the café/shared kitchen and the theater hall are central in this plan.



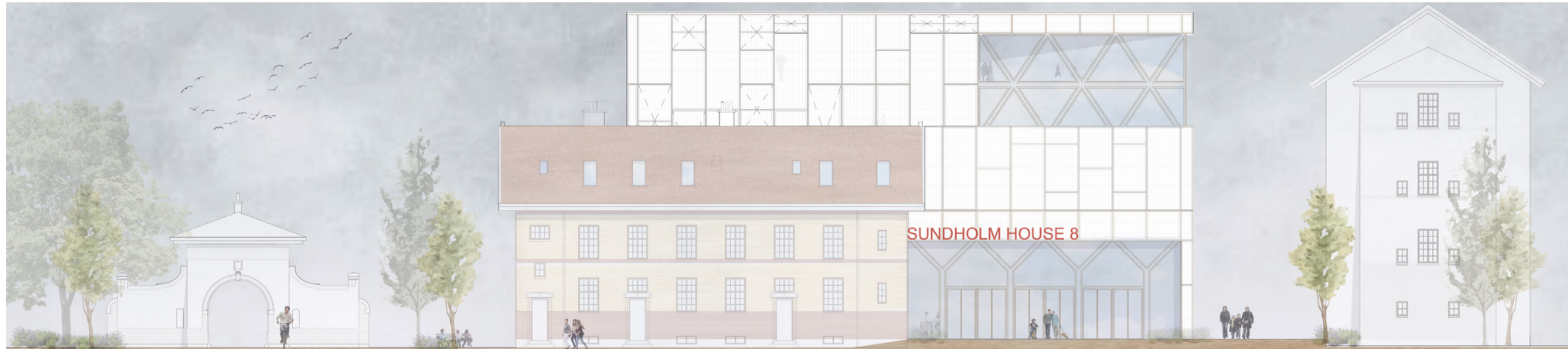
## Public face



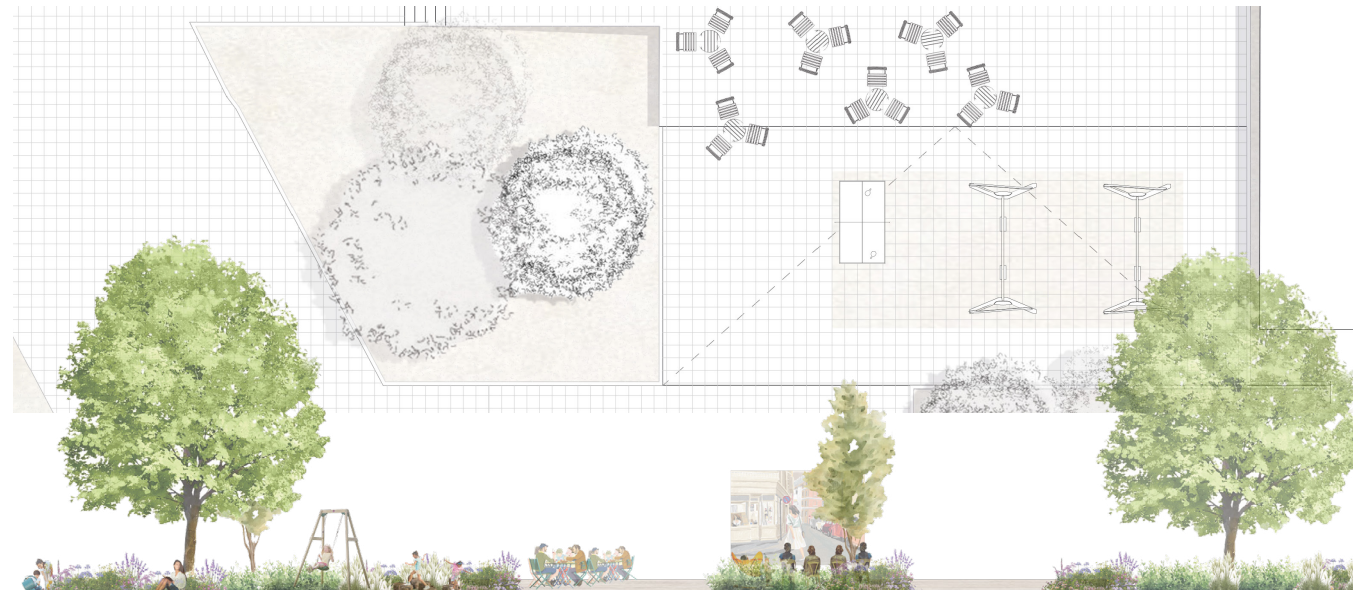
The entrance of Sundholm is elevated into a more formal, public space.



## Local face



The local identity revolves around a meeting garden that is connected to other public facilities within Sundholm creating a green, walkable, public neighbourhood.

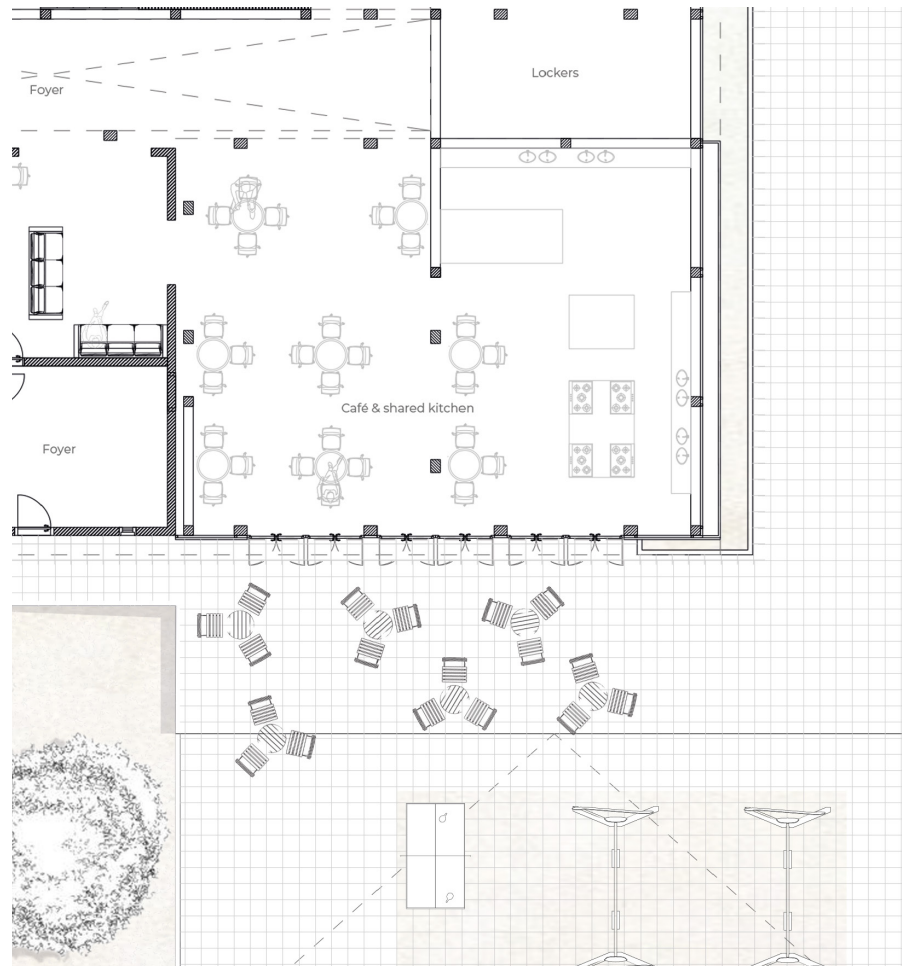


## Local face of 3 volumes



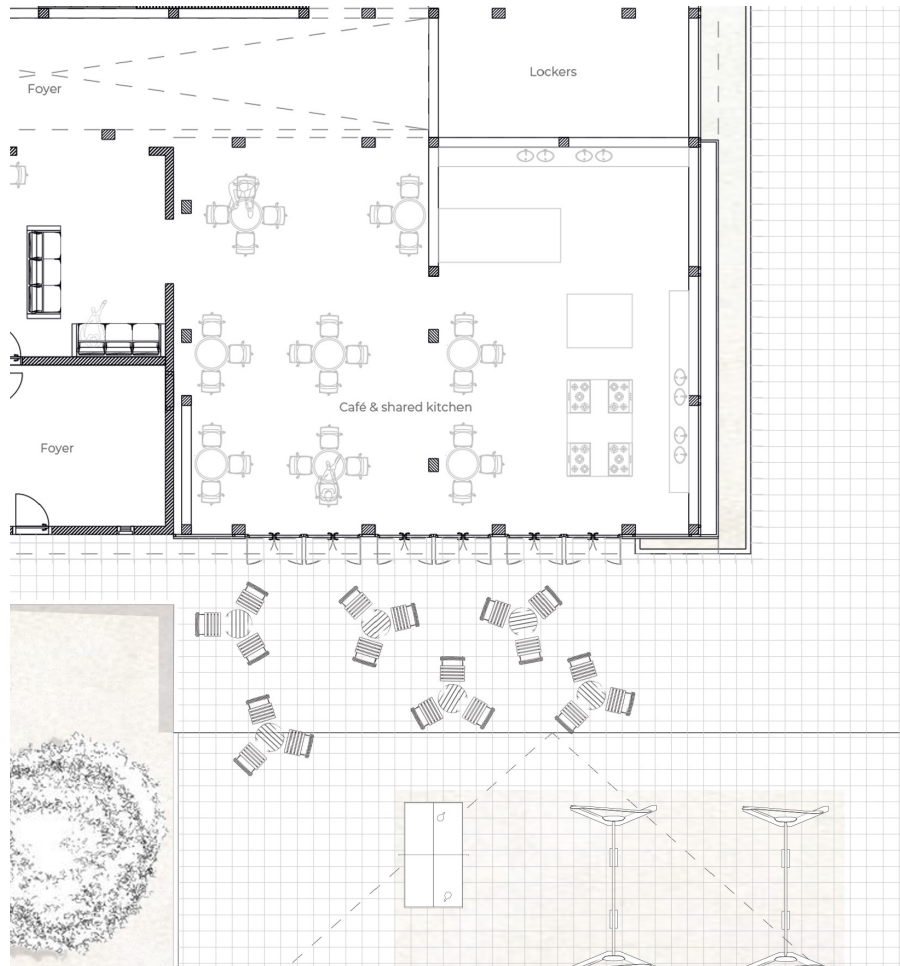
Three stages of public relation between Amager and Sundholm

## Local face



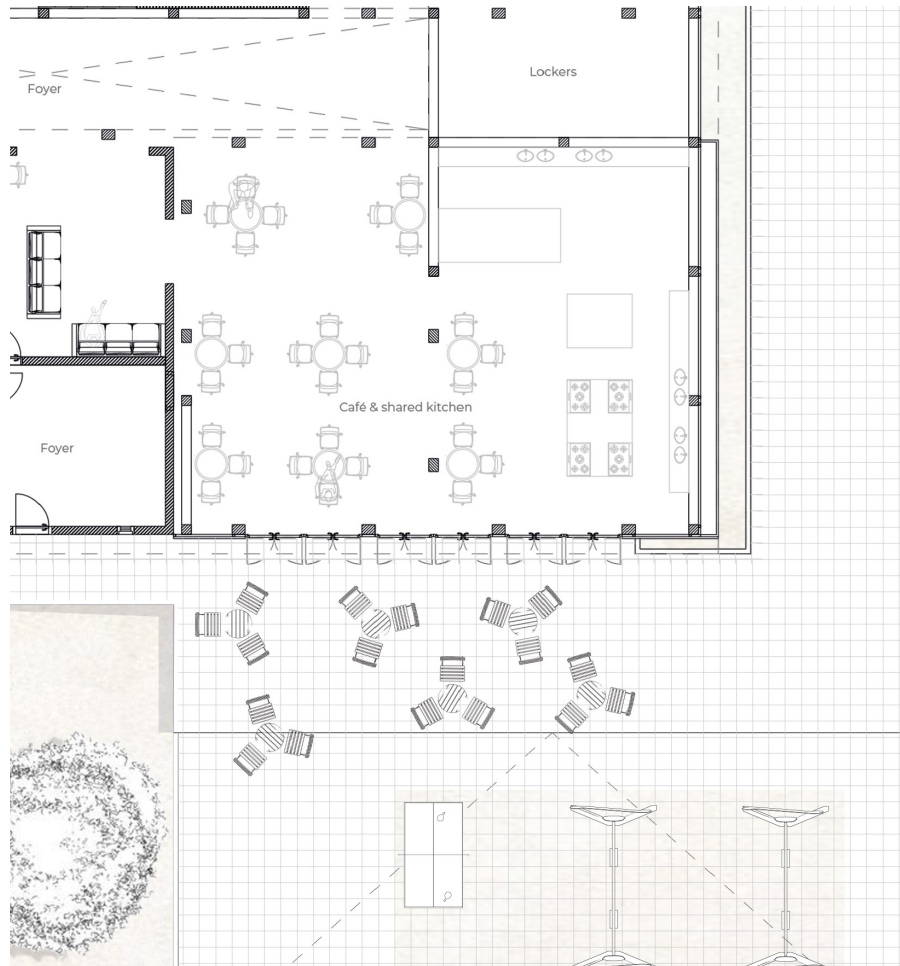
Local café, shared kitchen, playground and meeting garden. The construction and volume are shaped after the existing Sundholm house 8.

## Local face



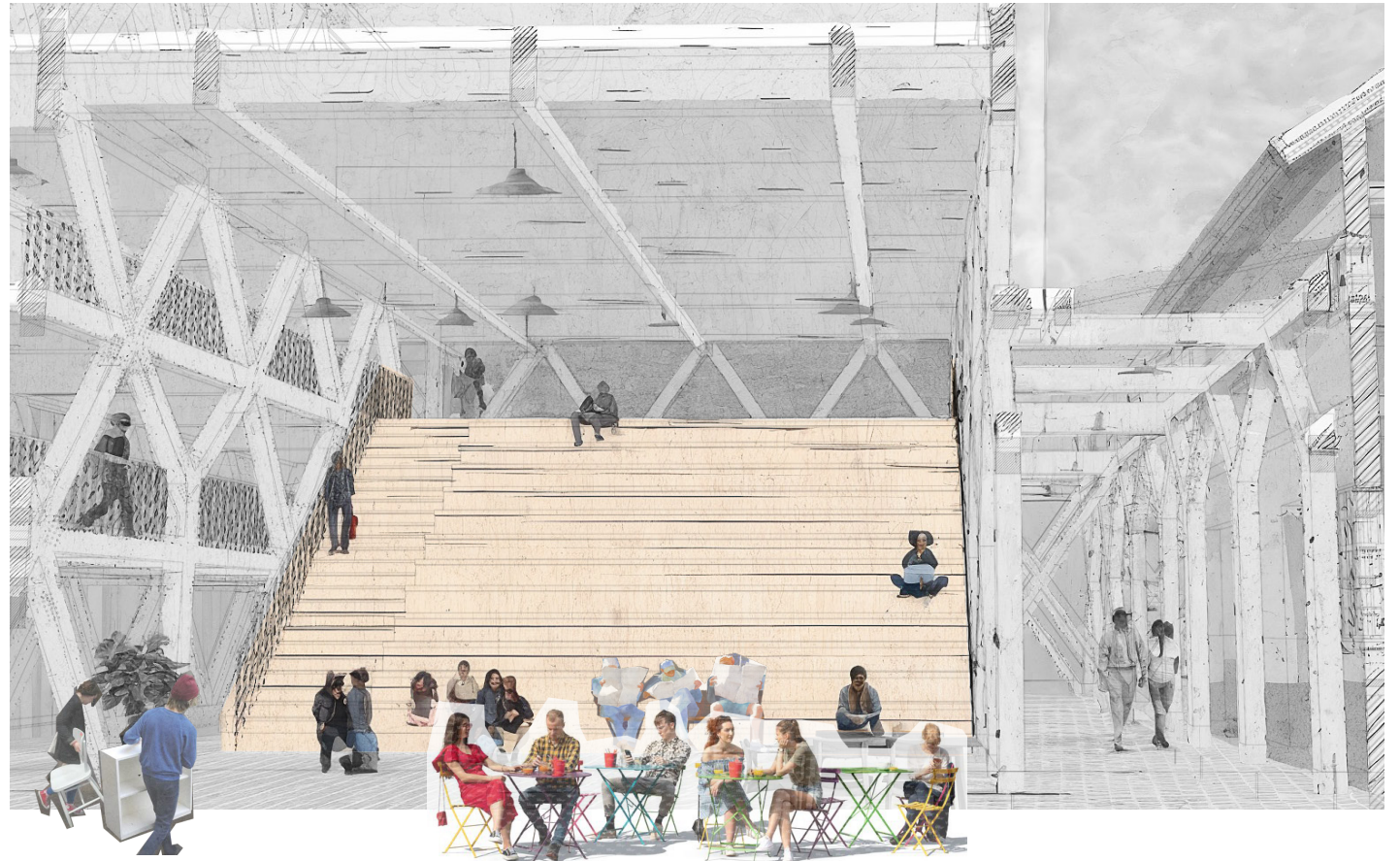
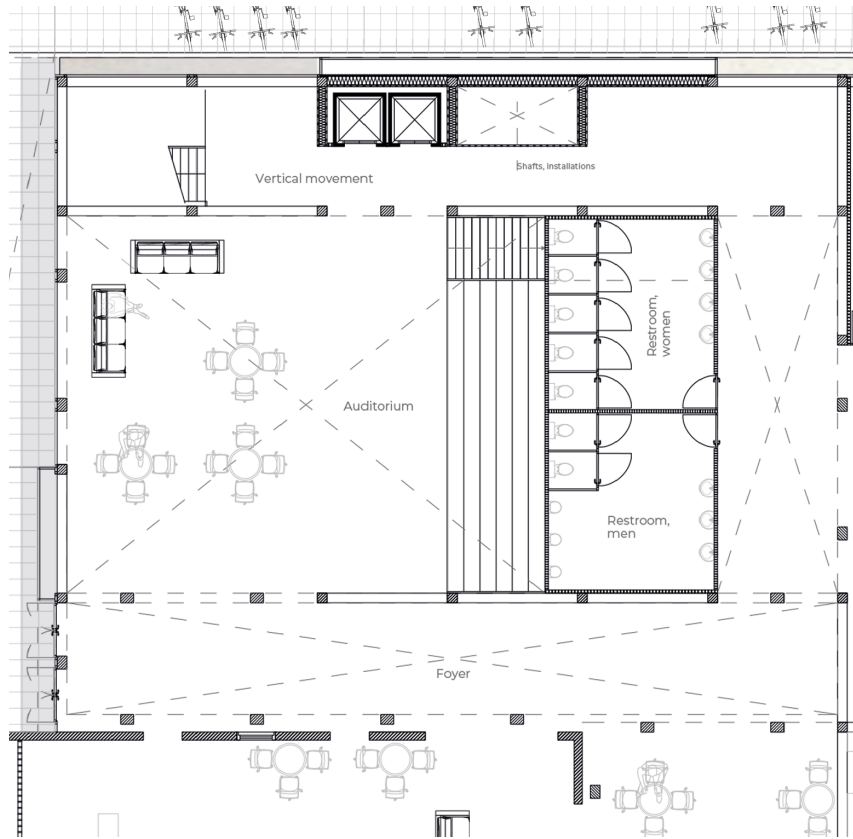
Creating a continuous public space between the café and meeting garden through the literal openness of the Y-shaped columns.

## Local face



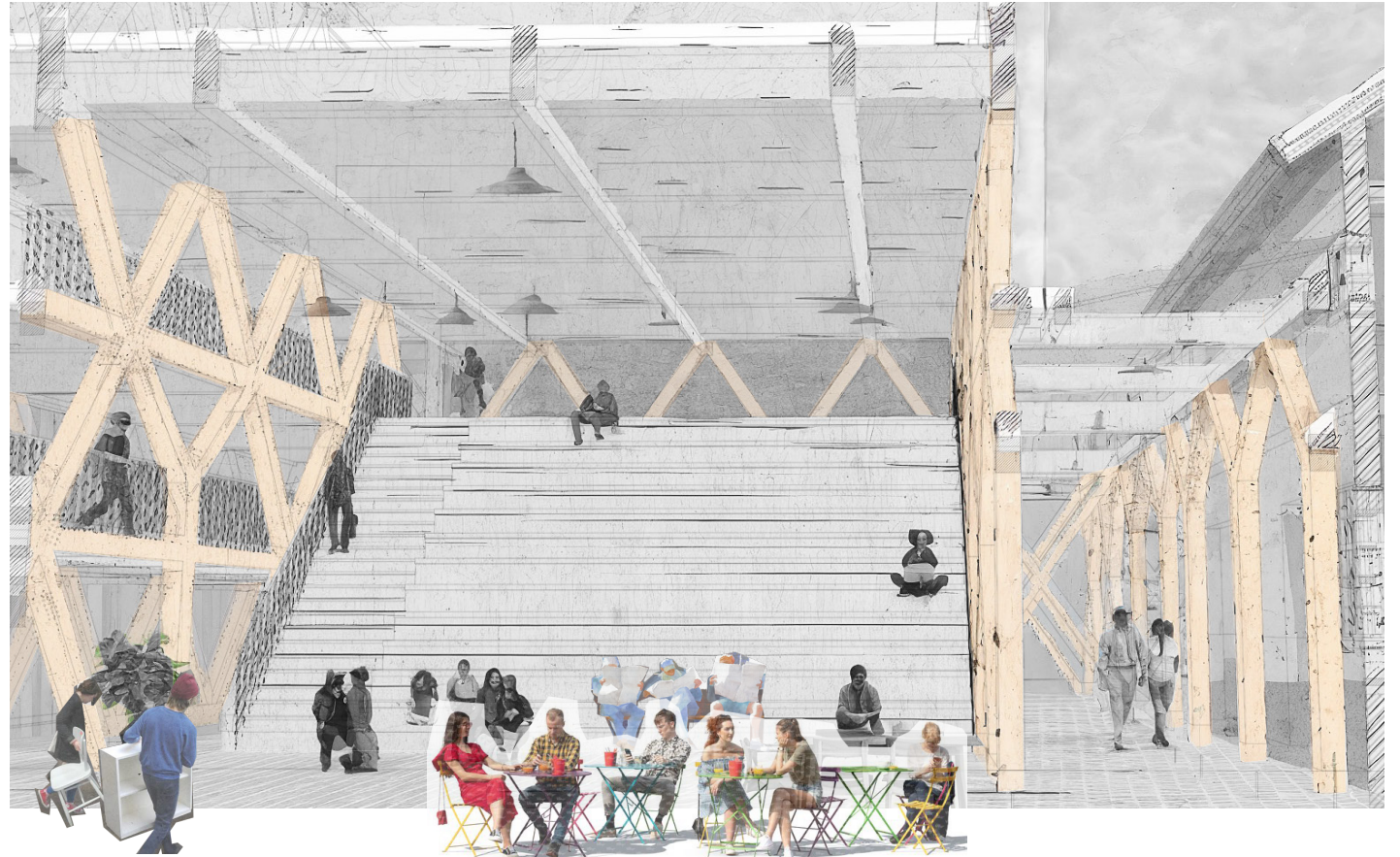
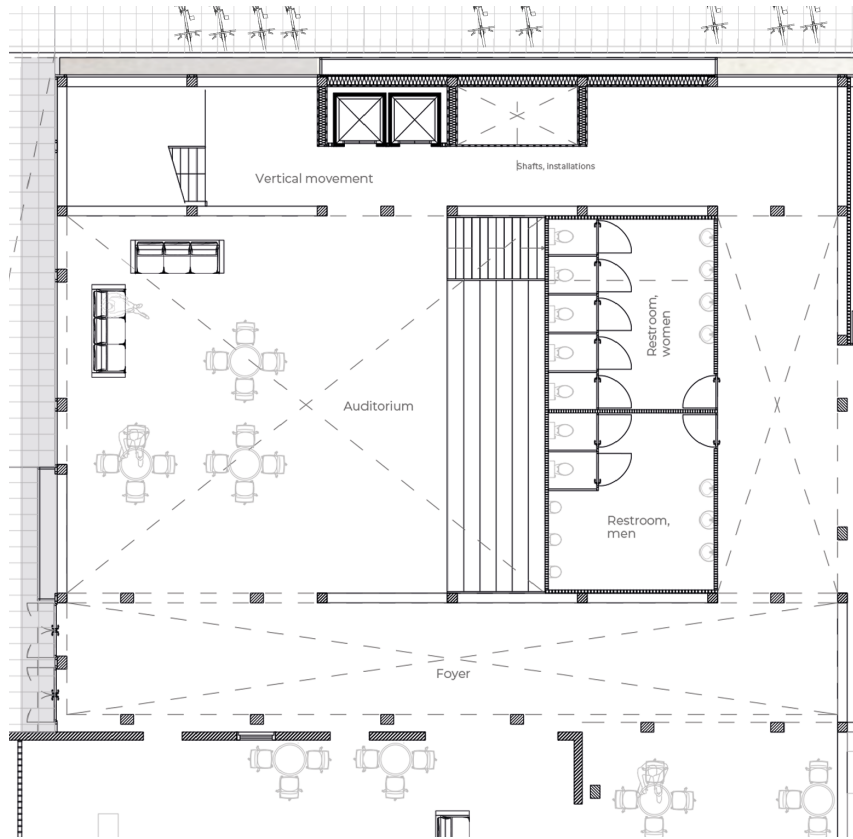
Replacing the playground in the open urban structure of Sundholm under control of a nearby public program.

# Auditorium



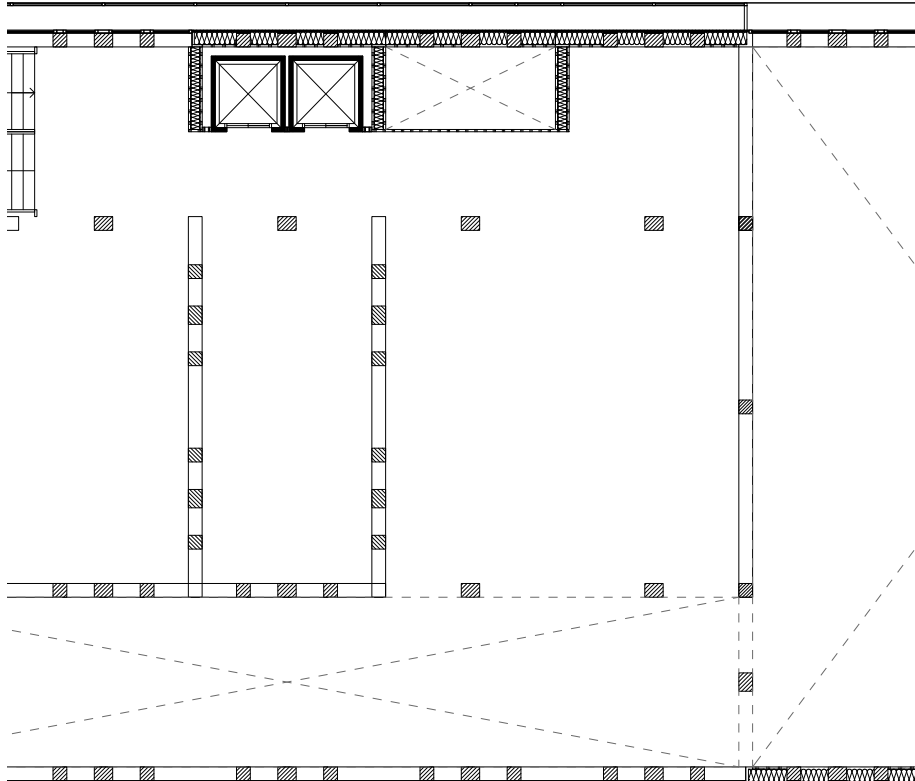
The auditorium aligns the public façade and welcomes newcomers between a grand void and the existing Sundholm house 8.

# Auditorium



The crosses and Y's direct the attention of the buildings users upwards and is orientated into the direction of the two public faces.

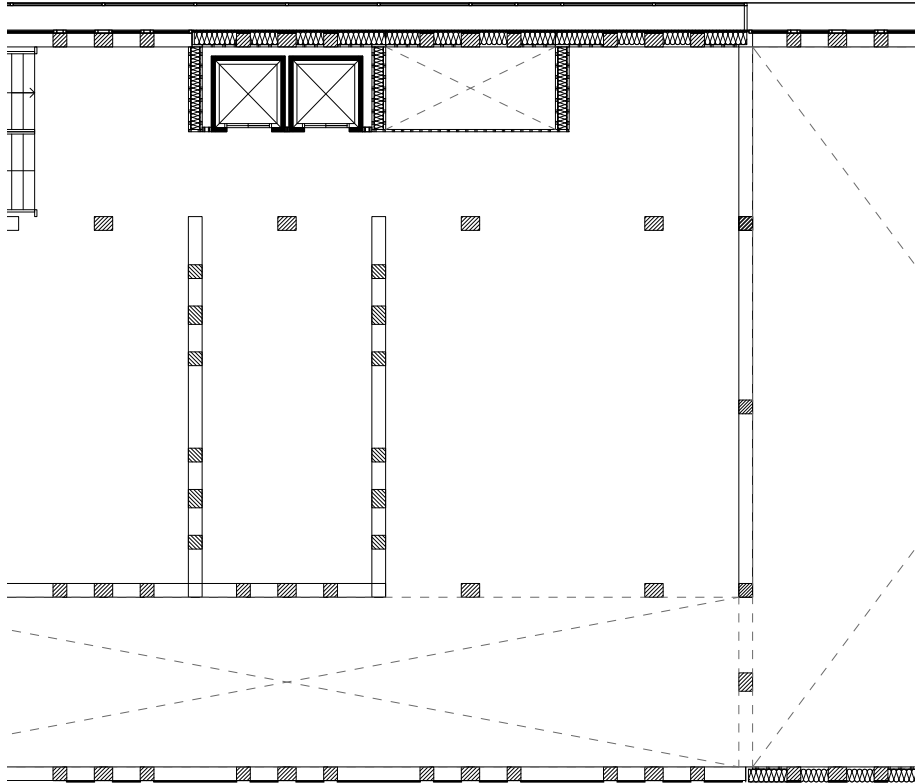
## Gymnasium & study spaces



On the 3d and 4th floor the program forms one continuous space.



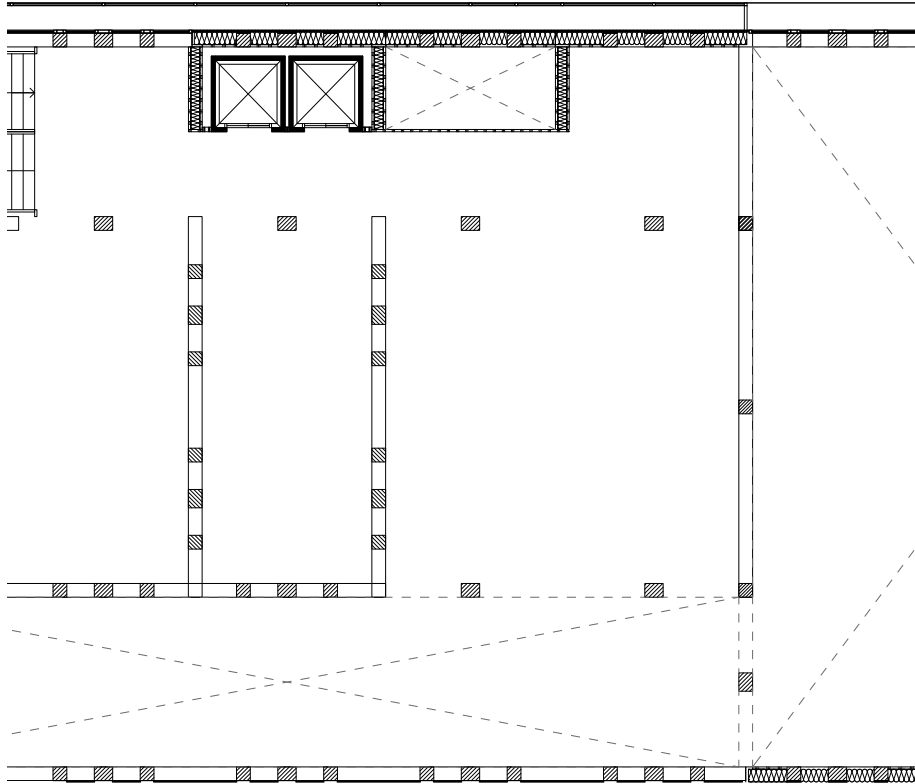
## Gymnasium & study spaces



Demountable panels offer the possibility of seclusion.

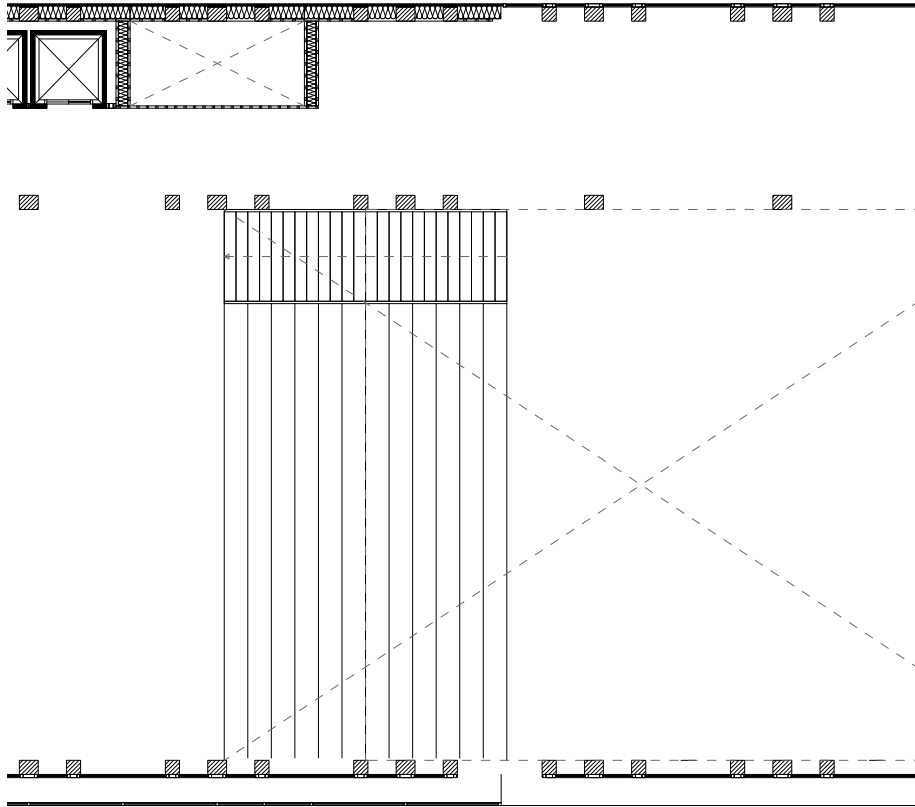


## Gymnasium & study spaces



The double skin of polycarbonate determine the possibility of relation between interior and exterior spaces.

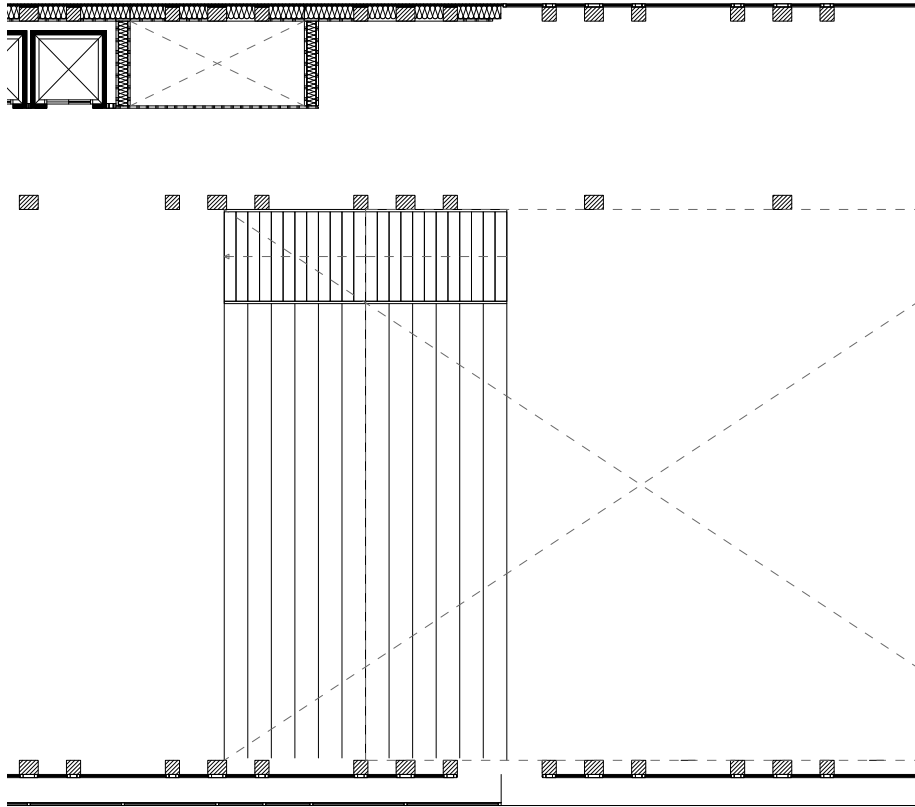
# Music school



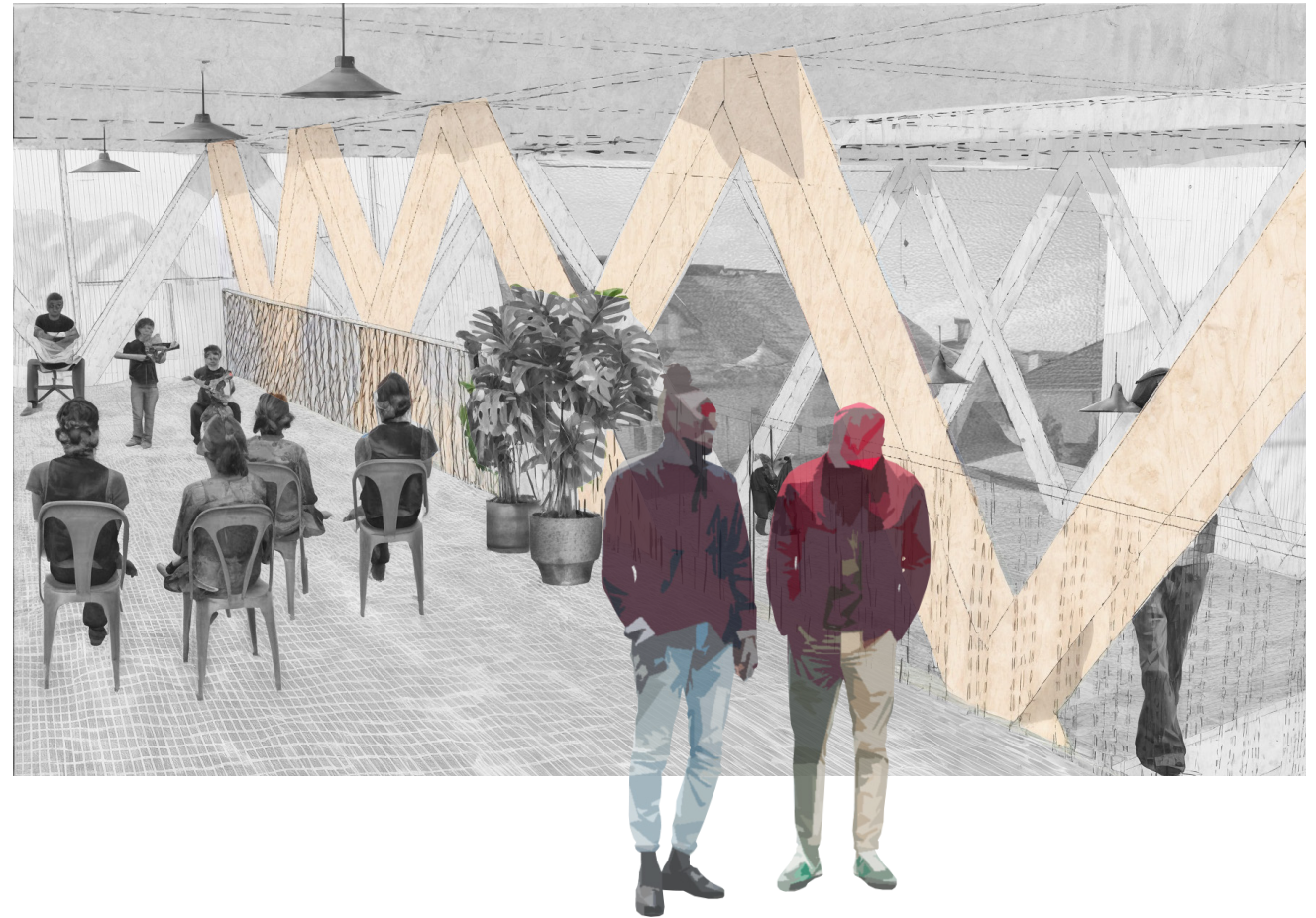
On the last floors a larger void and meeting stairs form the heart of the music school.



# Music school



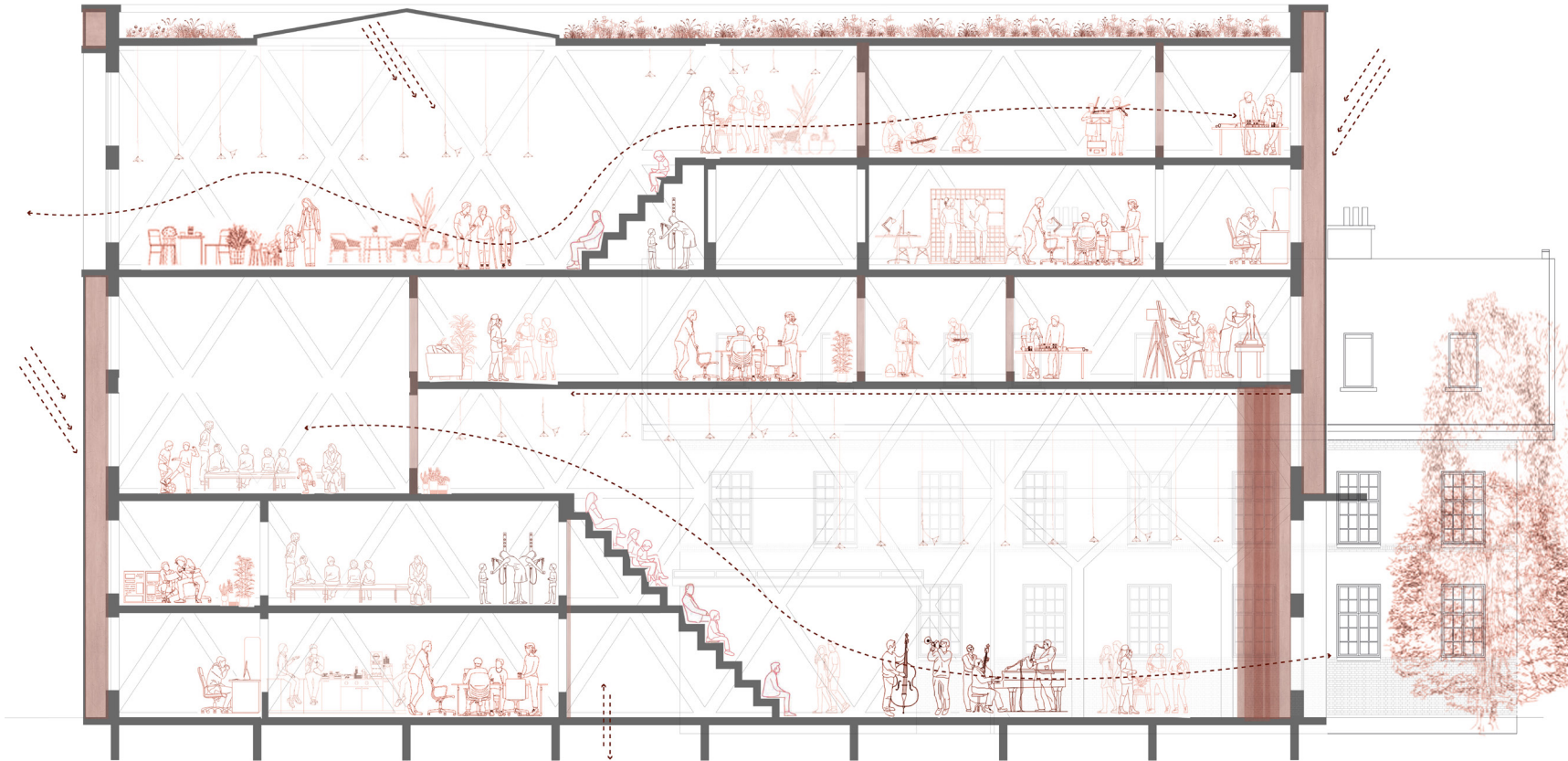
Upper crosses or V-shaped barrier between void and spaces.



004

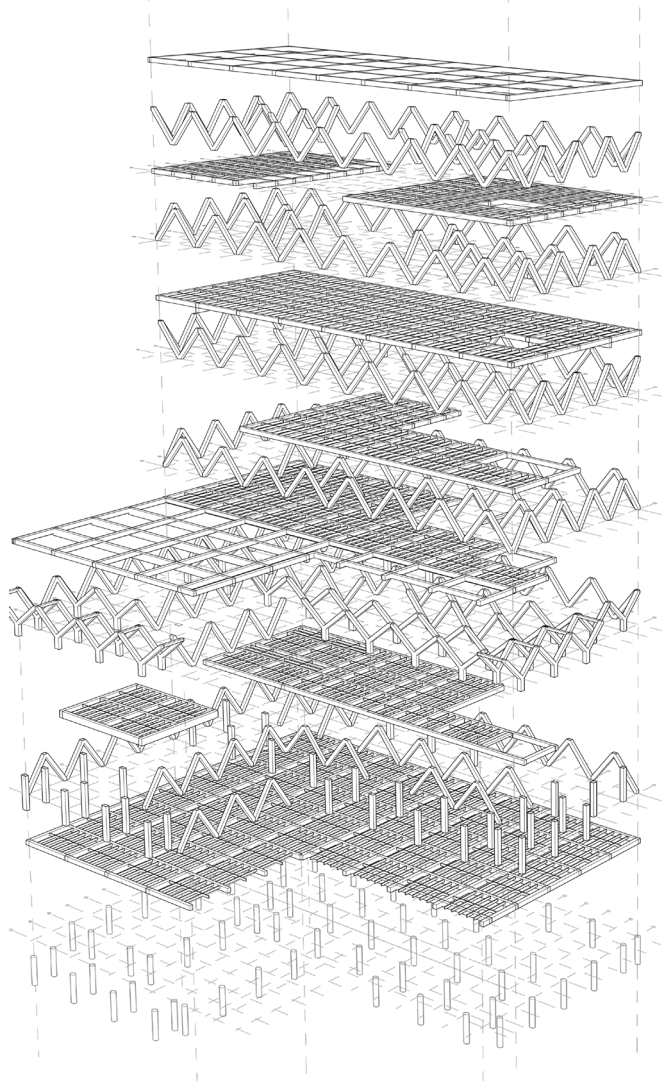
# Technical details & design

## Functions in building: climate design



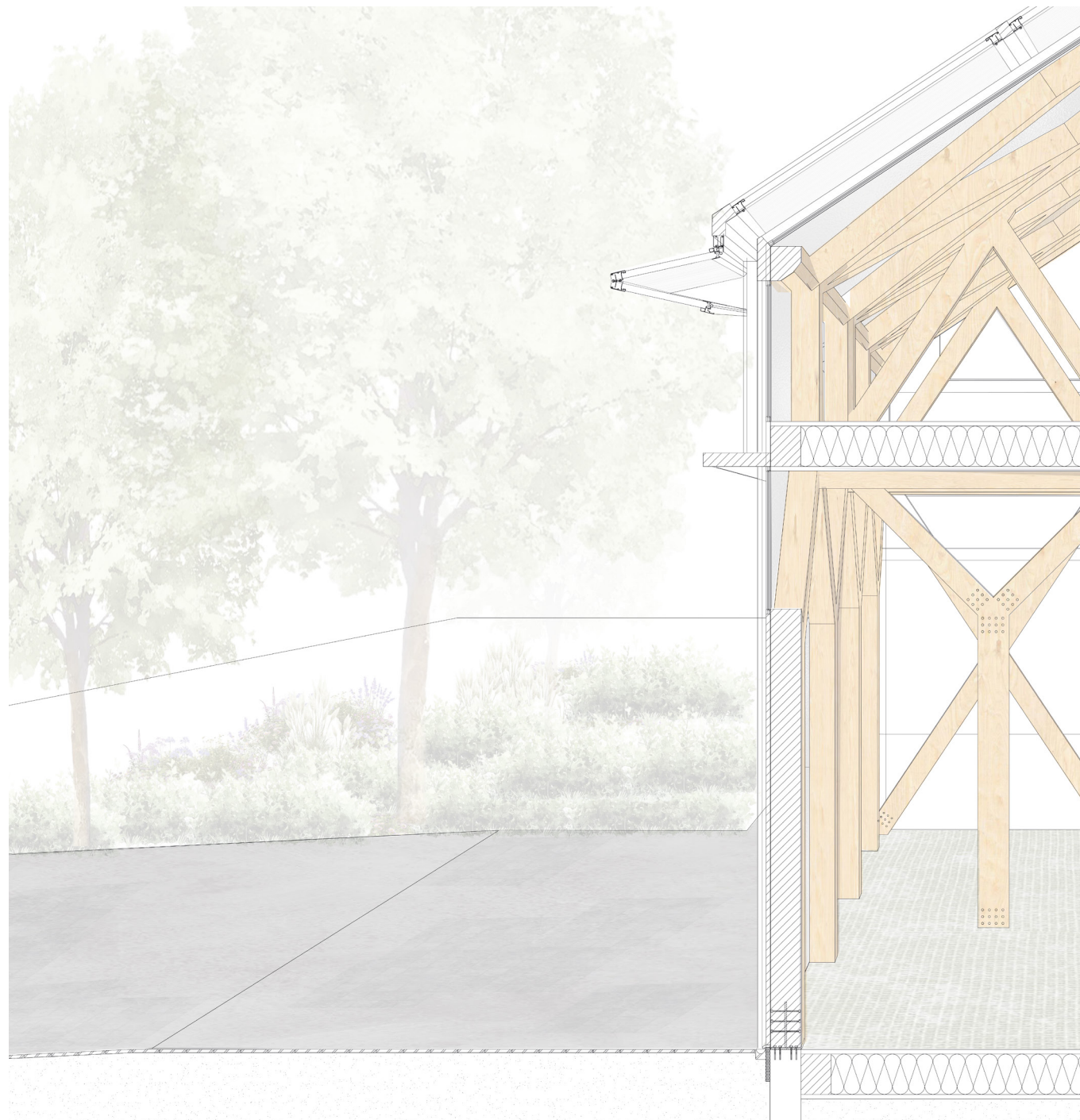
The building combines installations as much as possible, which is determined by the many spaces that are continuously connected. The double skin offers a warm jacket in winter and through its openable panels a ventilation zone in summer.

## The public condenser & the local meeting garden

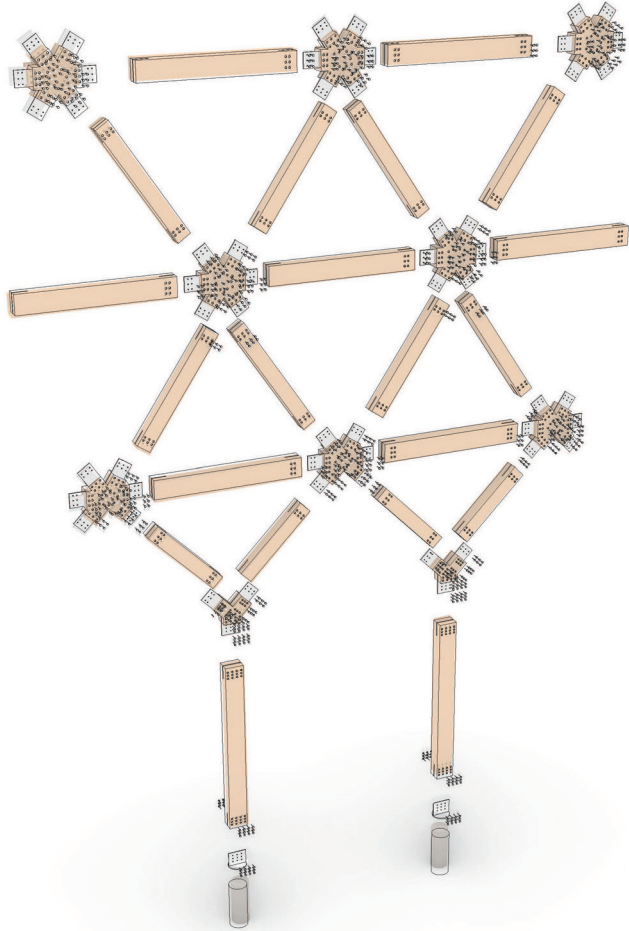


The construction is build up out of straight timber beams and custom, pre-fab joints. The DSF offers a transparent solution for ventilation.

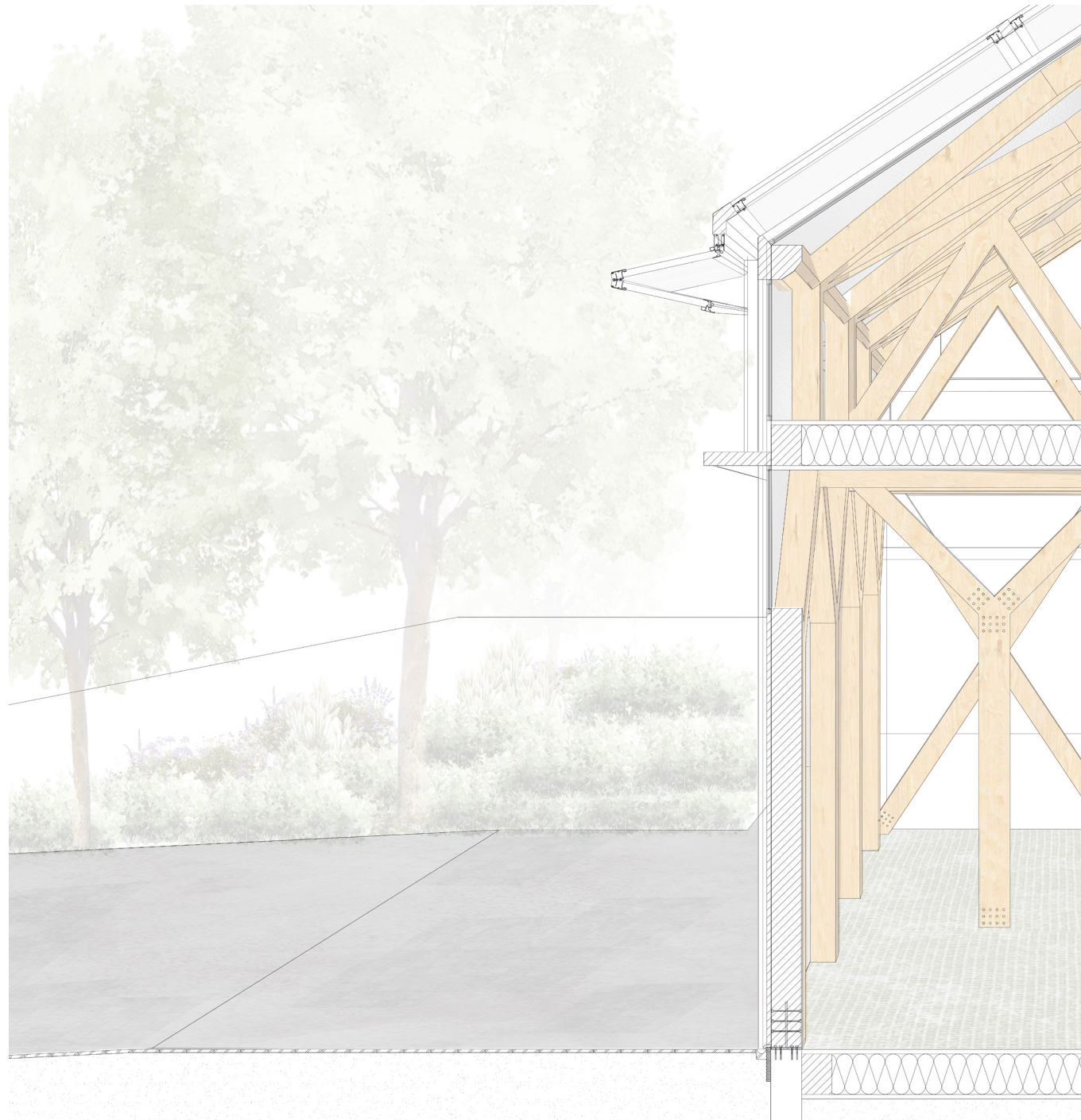
Research & Design Assignment | Concepts & site | Spaces & functions | **Technical details & design**



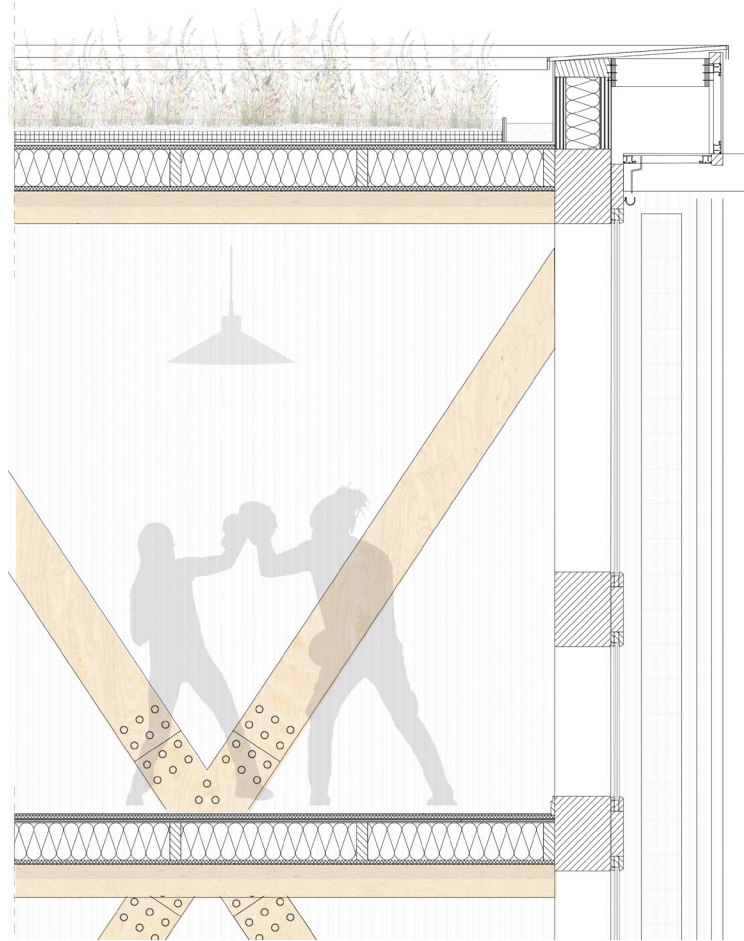
## The public condenser & the local meeting garden



Prefab joints and formation of X & Y-shaped columns.



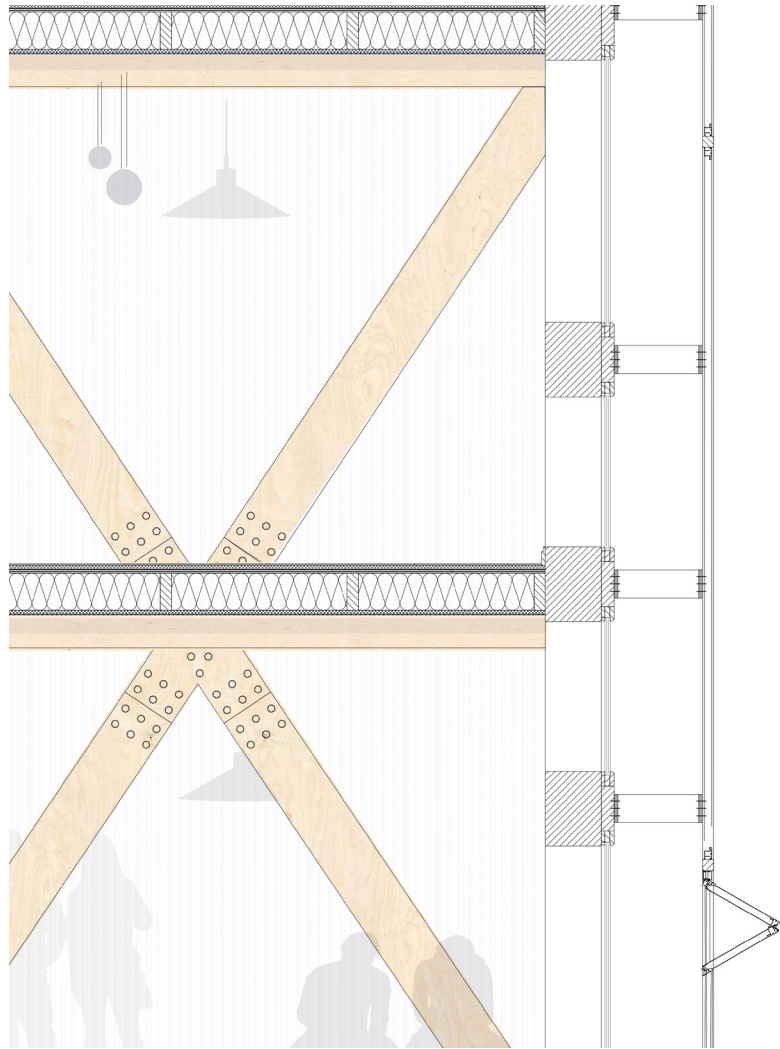
## The public condenser & the public entrance



Upper detail of teh public condenser. Disruption between literal & phenomonal transparency.



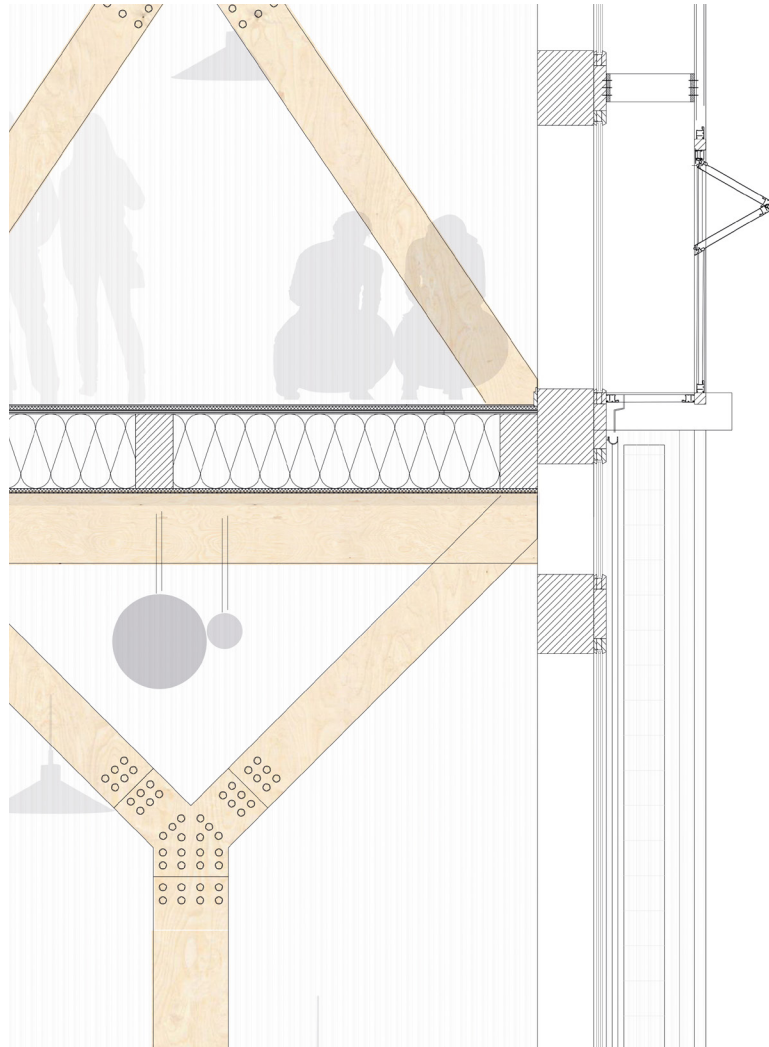
## The public condenser & the public entrance



Openable panels and polycarbonate,



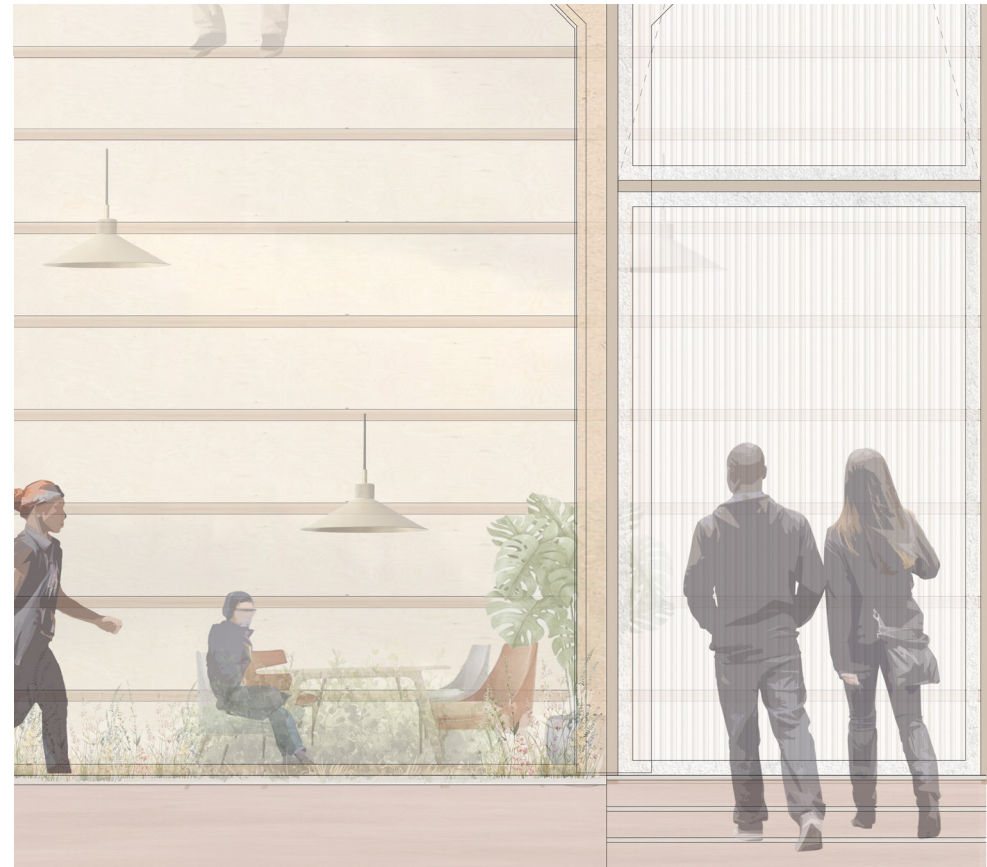
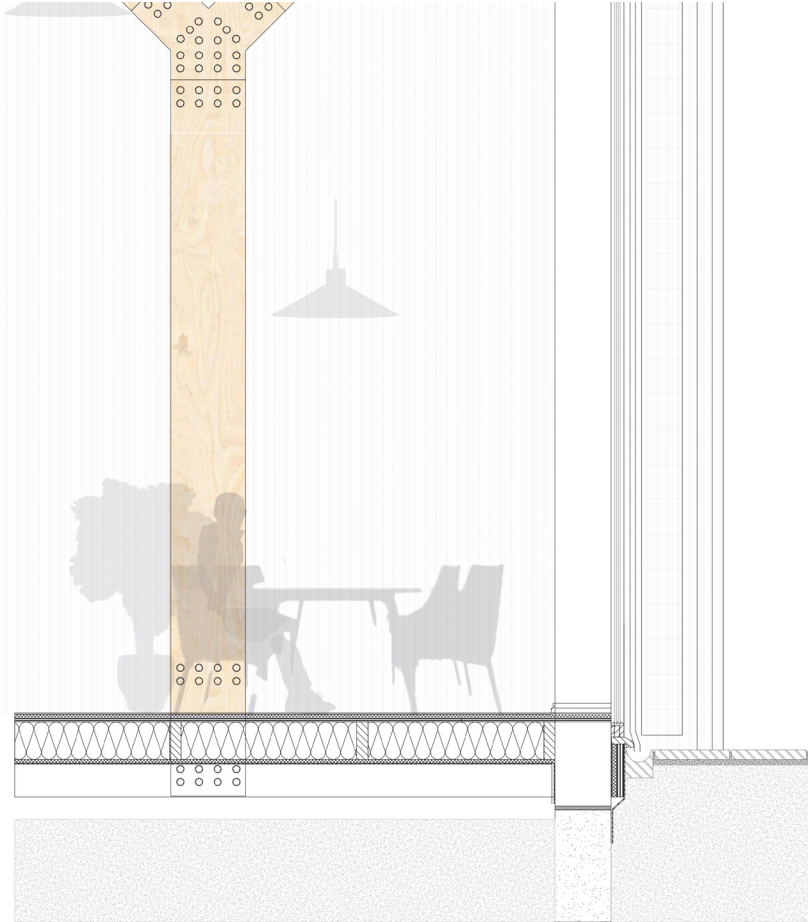
## The public condenser & the public entrance



Combination of Y & X-shaped columns



## The public condenser & the public entrance



Steel parts of the columns are shown but are covered by windowframes in the façade.

# Two Public Faces. Sundholm association centre

