

THE FESTIVE CITY



FACILITATING A FESTIVE COMMUNITY

STEPHANIE CIJNTJE

28-06-2018 P5 PRESENTATION

GRADUATION - AFTER THE PARTY - INTERIORS, BUILDINGS, CITIES

TU DELFT

PRESENTATION STRUCTURE





BRIEF

AFTER THE PARTY: MAASTRICHT AS THE FESTIVE CITY

“The studio will examine the potential of the festival as a means to transform and enrich public spaces and buildings.

Which ideas and specific qualities are embodied in these ancient urban rituals that are still relevant today? How is the ephemeral, the festive, represented in daily life? With the knowledge obtained, can we design buildings and structures that will enrich the city in a more permanent way?”

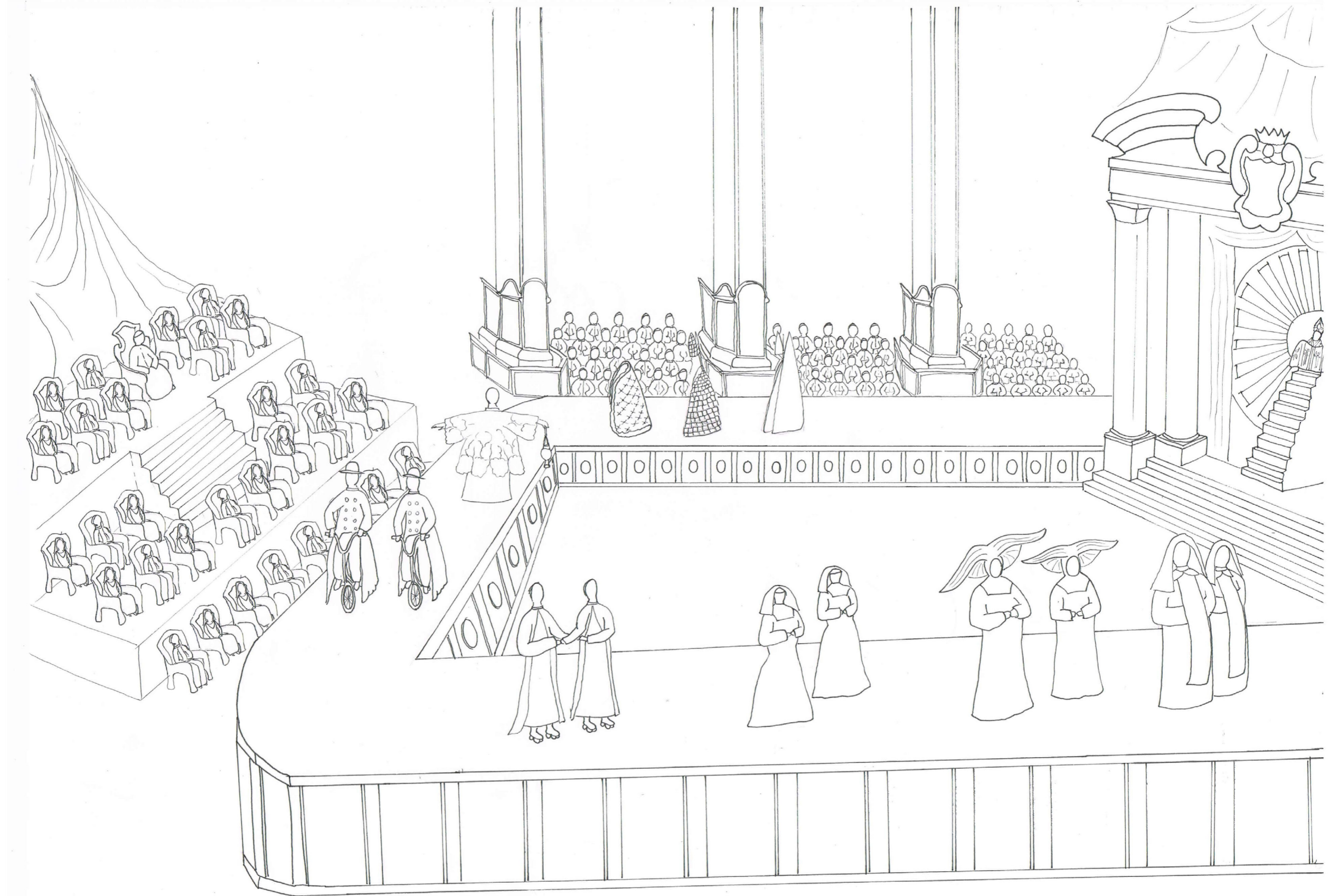
- Introduction lecture graduation studio After The Party, 08-09-2017





WHAT IS THE FESTIVE?

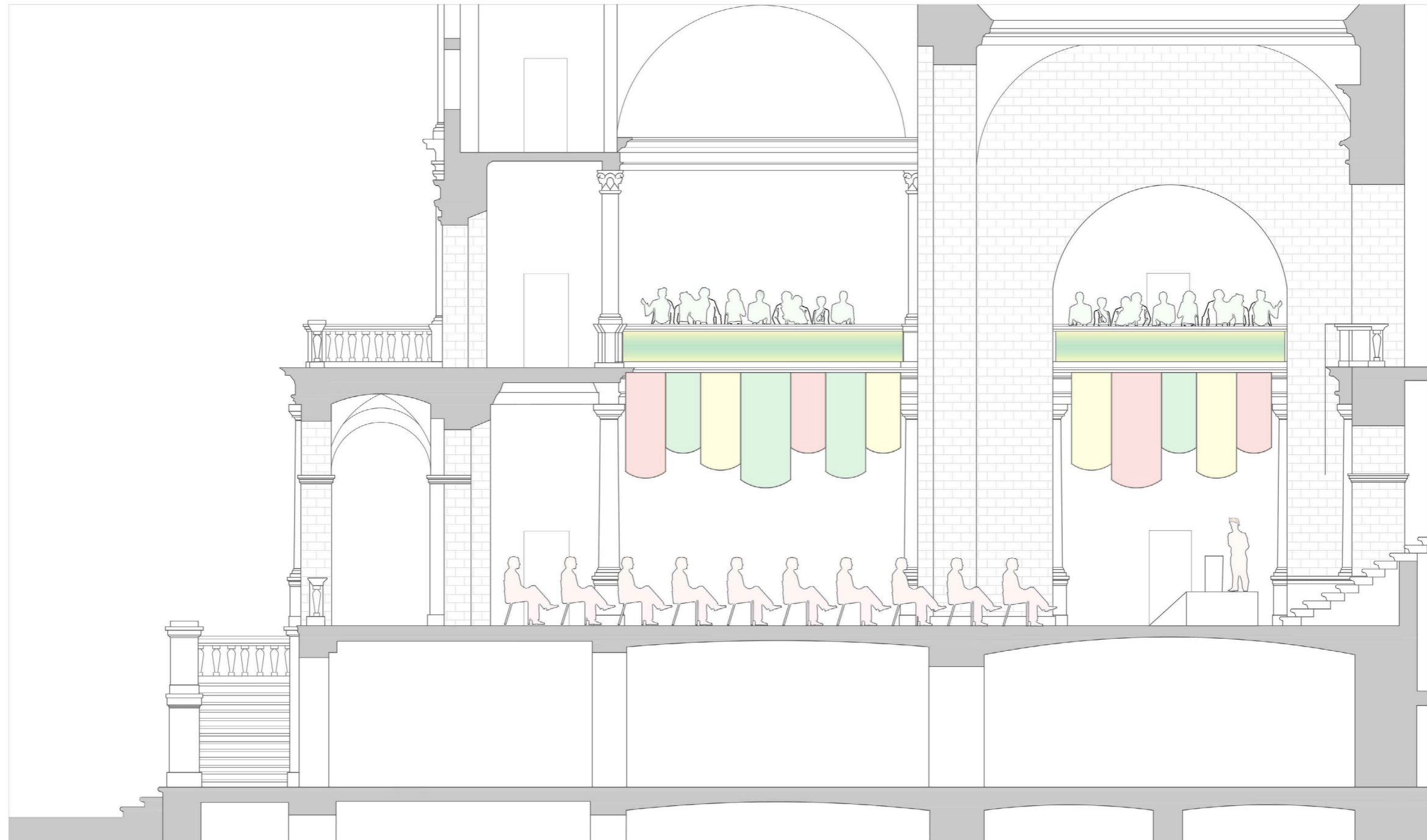
ROMA - FELLINI



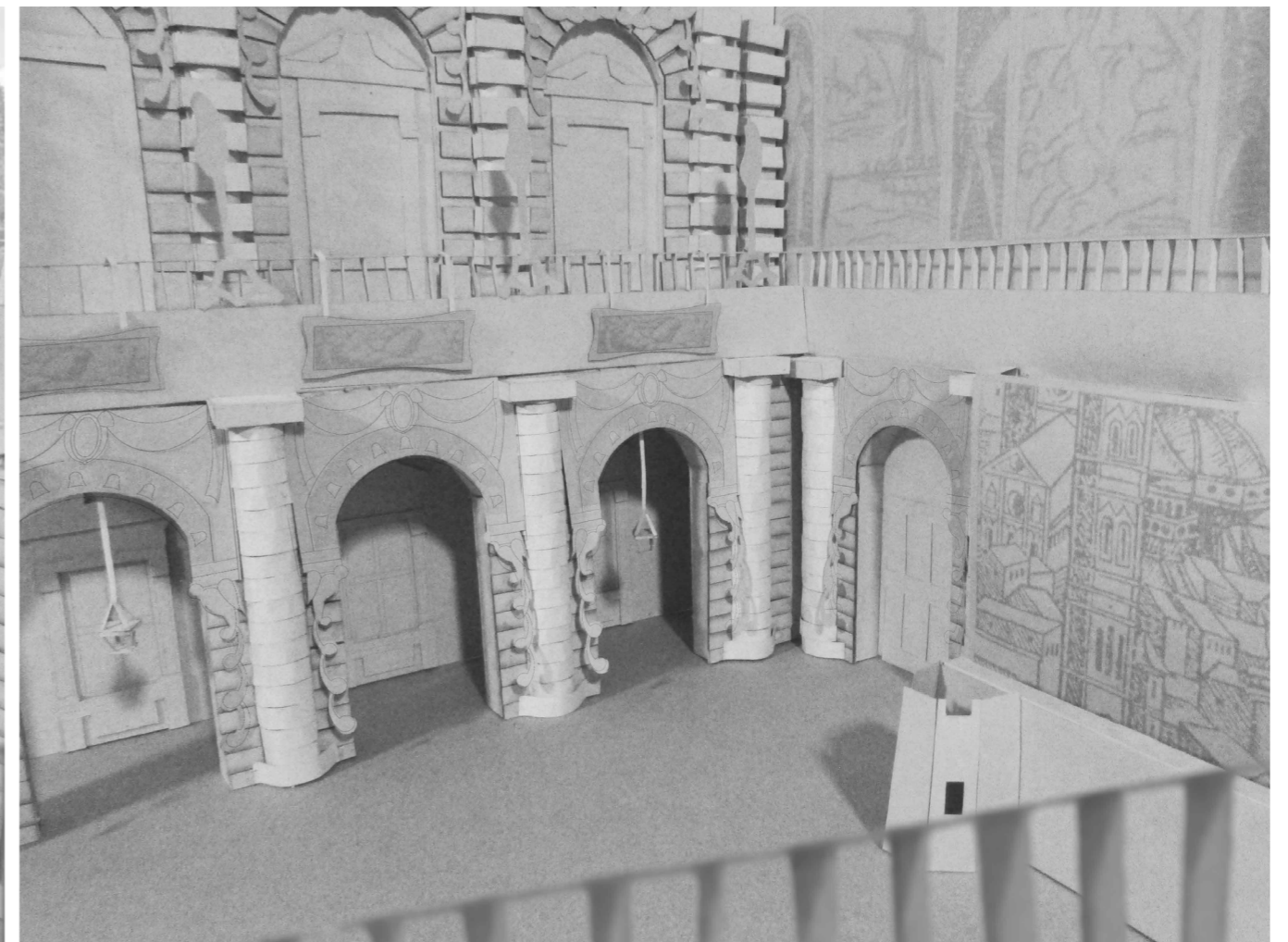
MAASTRICHT DIORAMA



THE ARCHITECTURE OF CARNIVAL



PALAZZO PITTI - FESTIVE ARCHITECTURE RESEARCH



LITERATURE RESEARCH

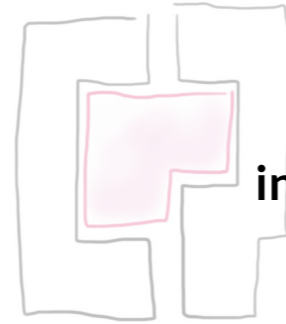
Festivals and communities

How festive events impact social life and interaction in a city

“Both the social function and the symbolic meaning of festival are closely related to a series of overt values that the community recognizes as essential to its ideology and worldview, to its social identity, its historical continuity, and to its physical survival, which is ultimately what festivals celebrates.”

- Falassi, Alessandro. 1987. “Festival: Definition and morphology.” *Time out of Time: Essays on the Festival*:1-10.

FESTIVE STARTING POINT



intimacy of an interior space



dynamic experience



inclusiveness and social interaction

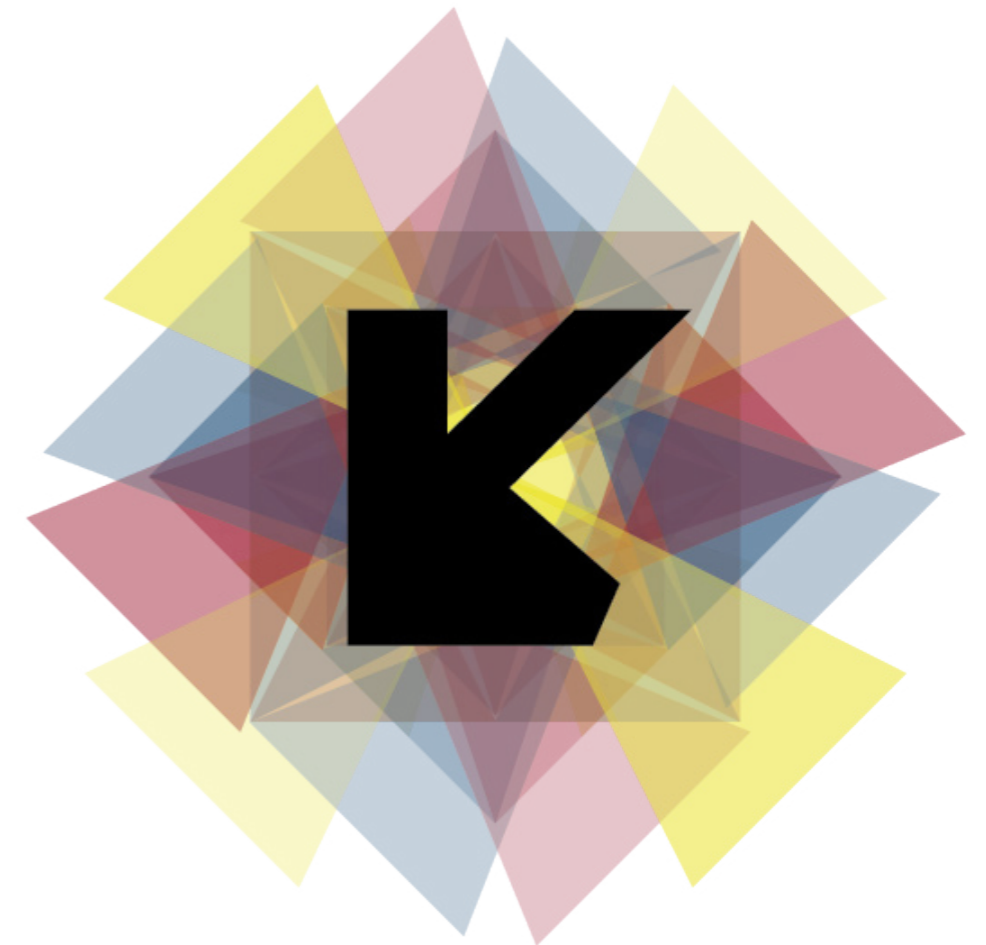
**interaction in the community is central
and can be facilitated**





PROJECT NARRATIVE

USERS



USERS



MAASTRICHT



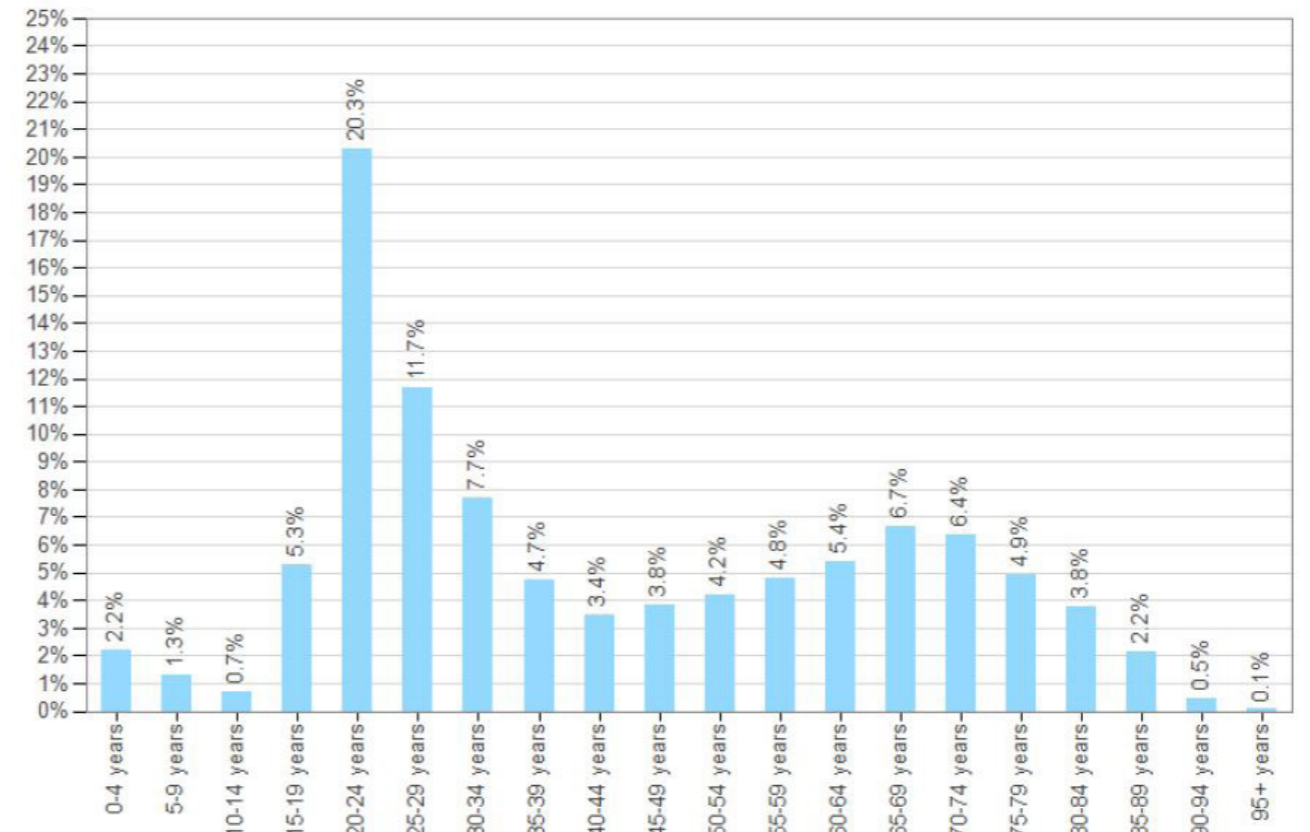
PROJECT LOCATION



PROJECT LOCATION

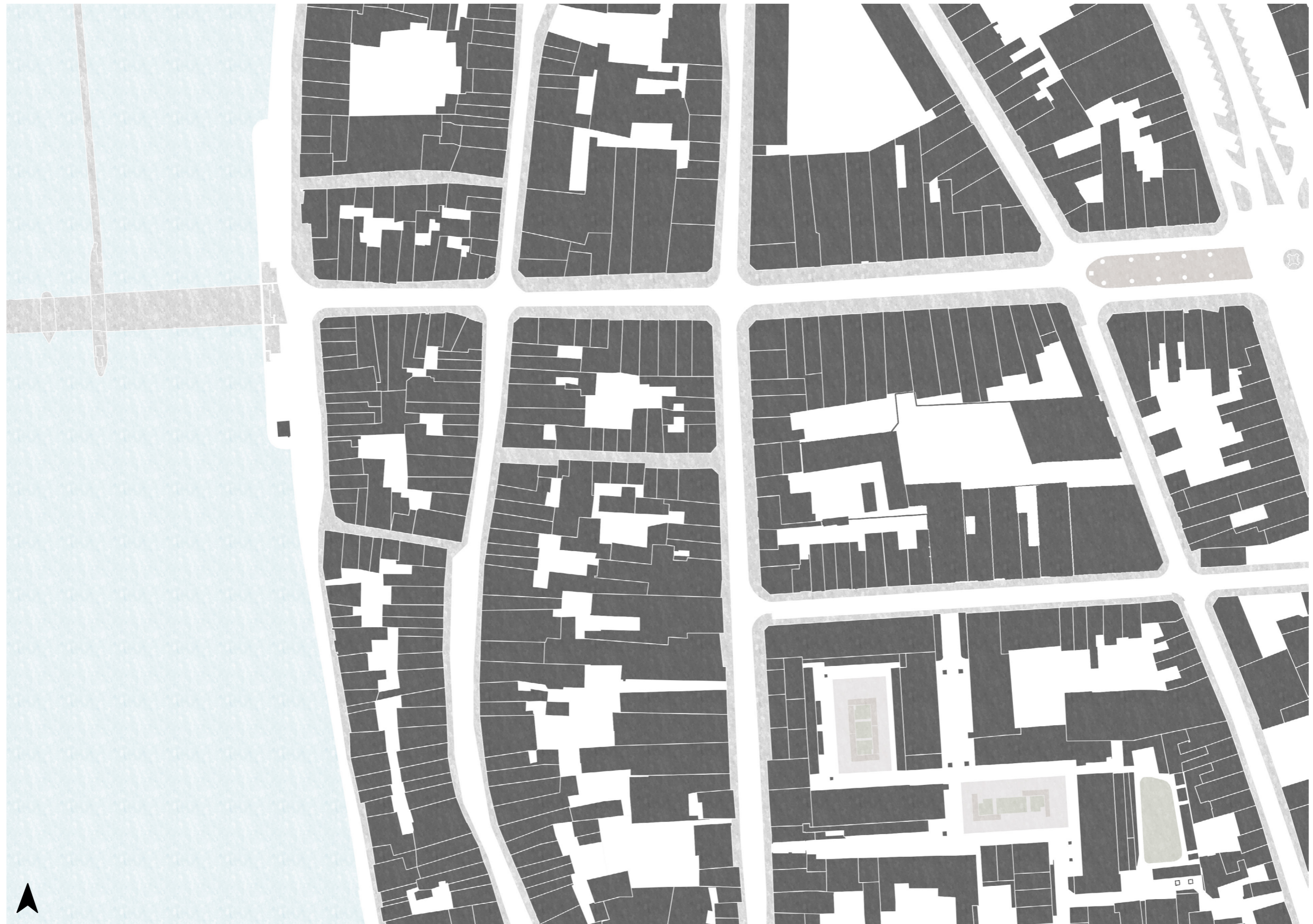


Population, numbers 2017 - Wyck

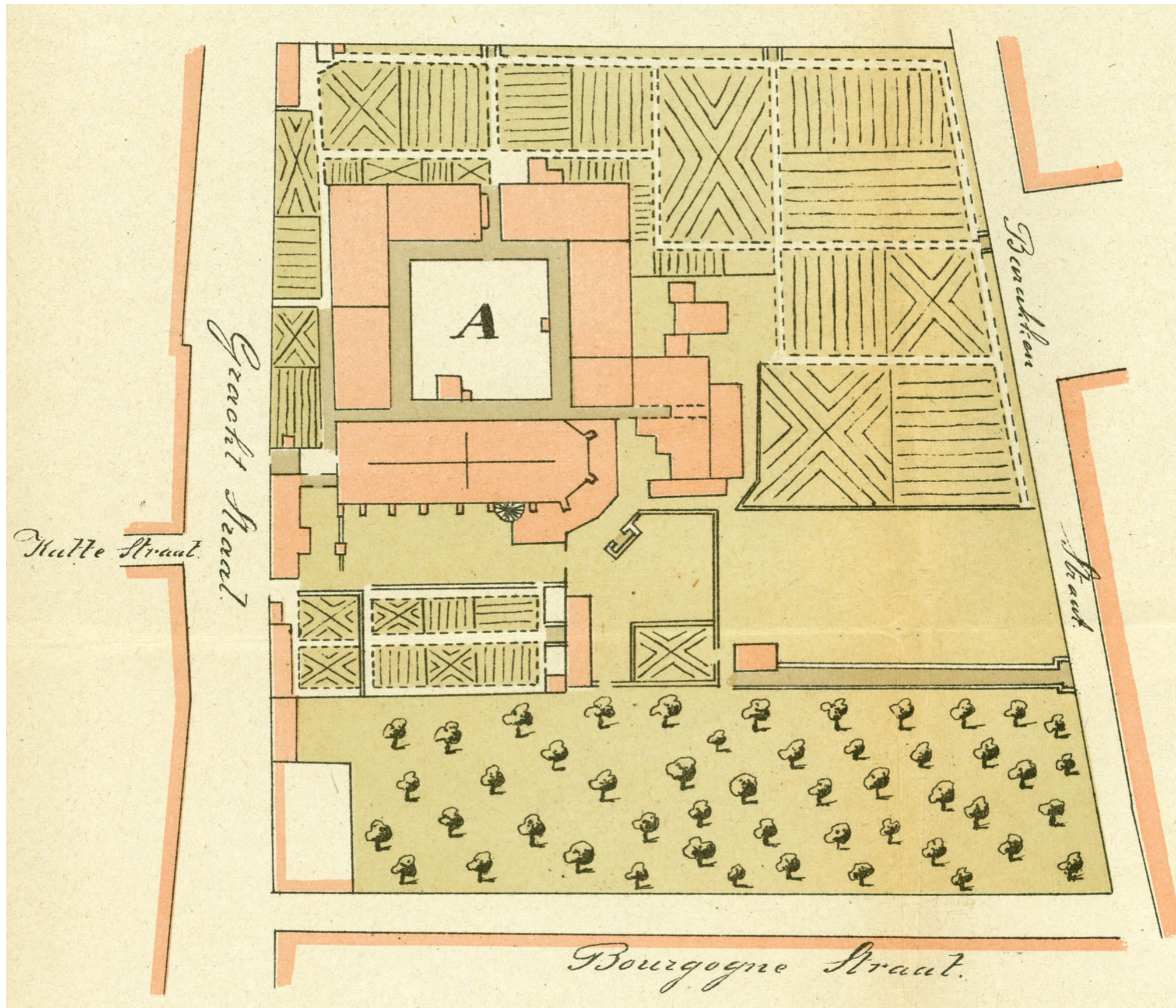


Statistics Netherlands (CBS)

PROJECT LOCATION



PROJECT LOCATION



PROJECT LOCATION



PROJECT LOCATION



URBAN AMBITION



URBAN AMBITION



SITE ANALYSIS

FESTIVE BUILDINGS

Leisure and study

Mostly not publicly accessible

Individual experiences

One type of program

PUBLIC SPACES

Green present at most squares

Large and public

vs.

Very small and more private

Open spaces but not very dynamic

Seating either commercial or not ideal for interaction



PROGRAM



FESTIVE HALL

Parties
Exhibitions
Larger gatherings



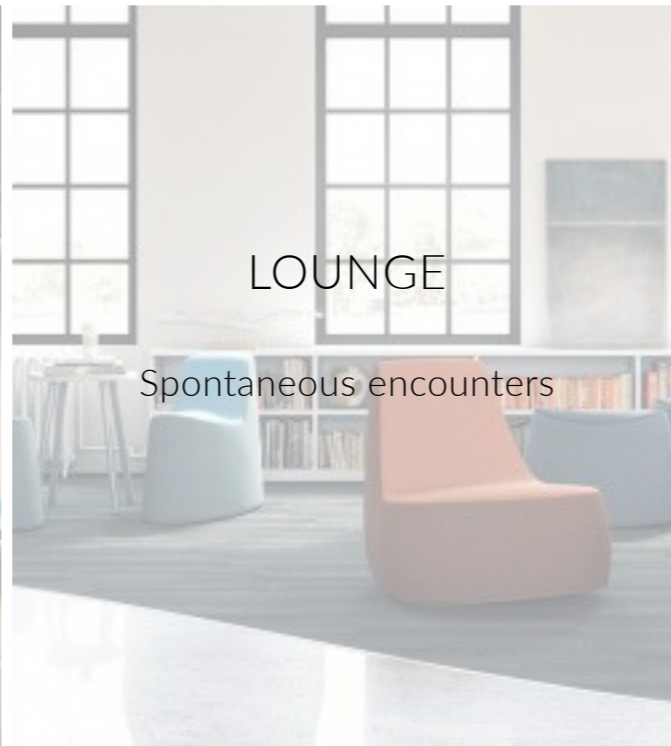
SMALLER SPACES

Smaller activities
Office space



CAFÉ/BAR

Personal social encounters



LOUNGE

Spontaneous encounters



OUTDOOR SPACE

Courtyard
Events
Dynamic space

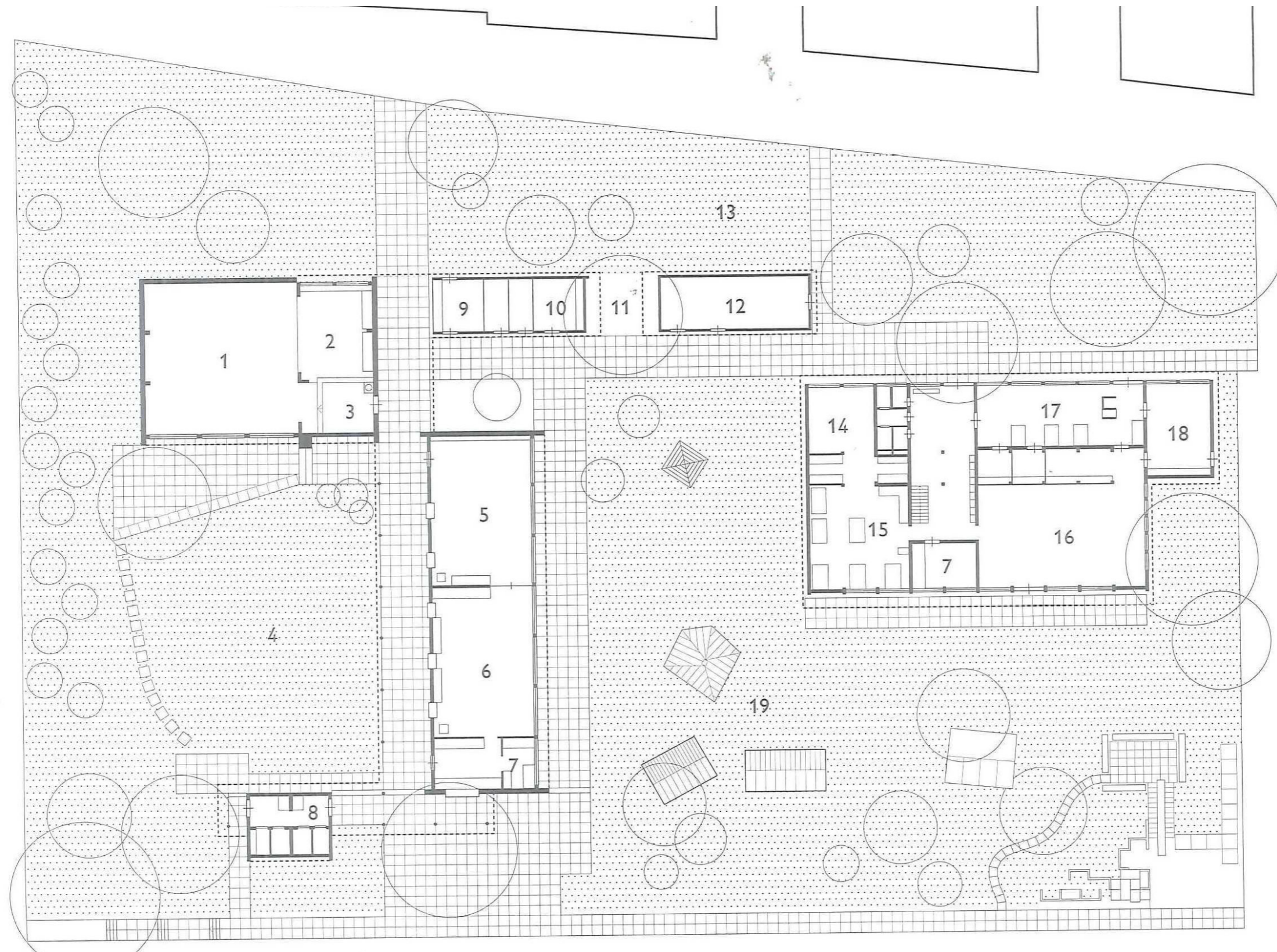
PROJECT SITE



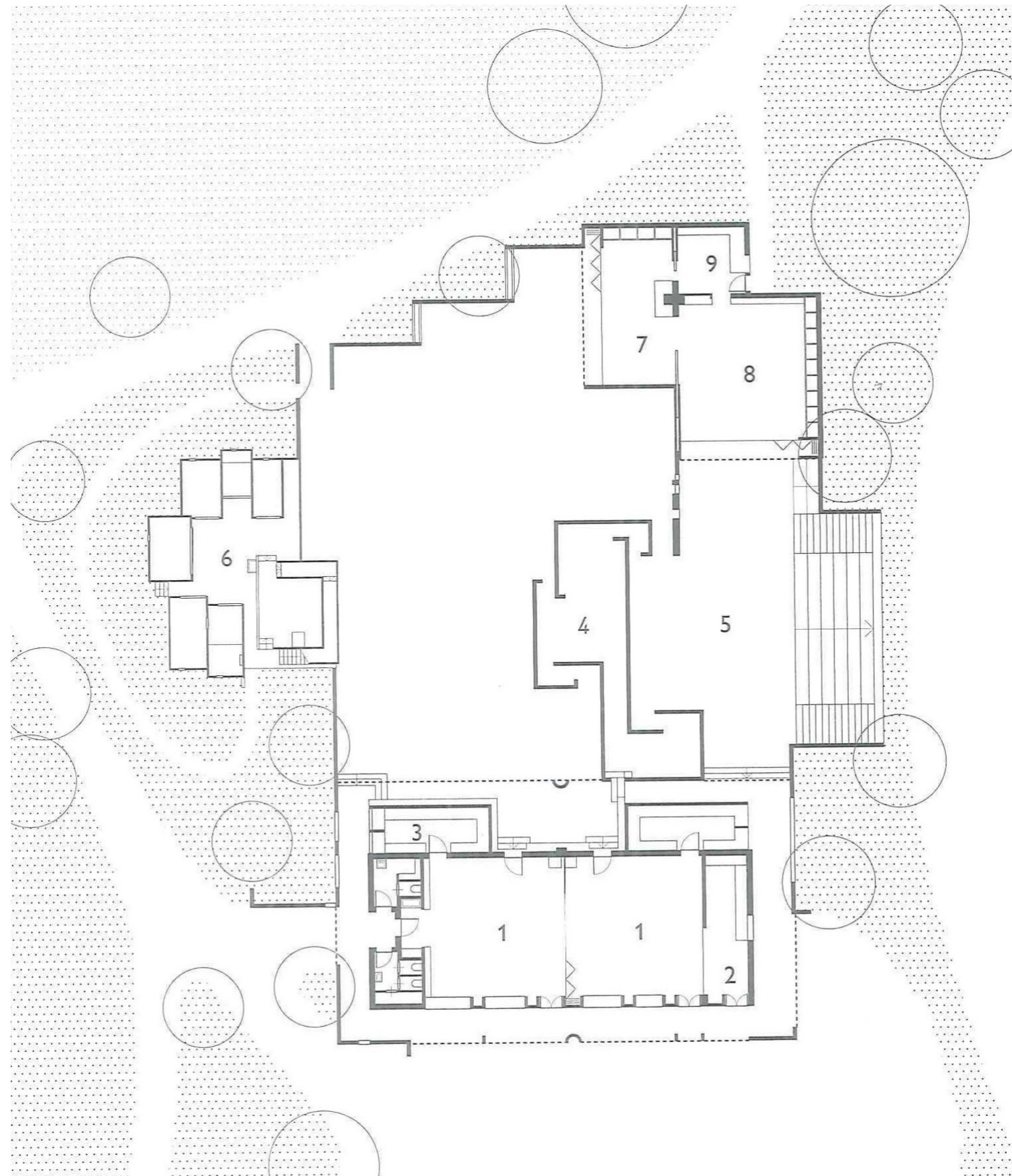
YOUTH CENTRES - JEUGDGEBOUW NOORD AMSTERDAM



YOUTH CENTRES - GEMEINSCHAFTSZENTRUM WIPKINGEN



YOUTH CENTRES - FREIZEITCENTRUM BUCHEGG

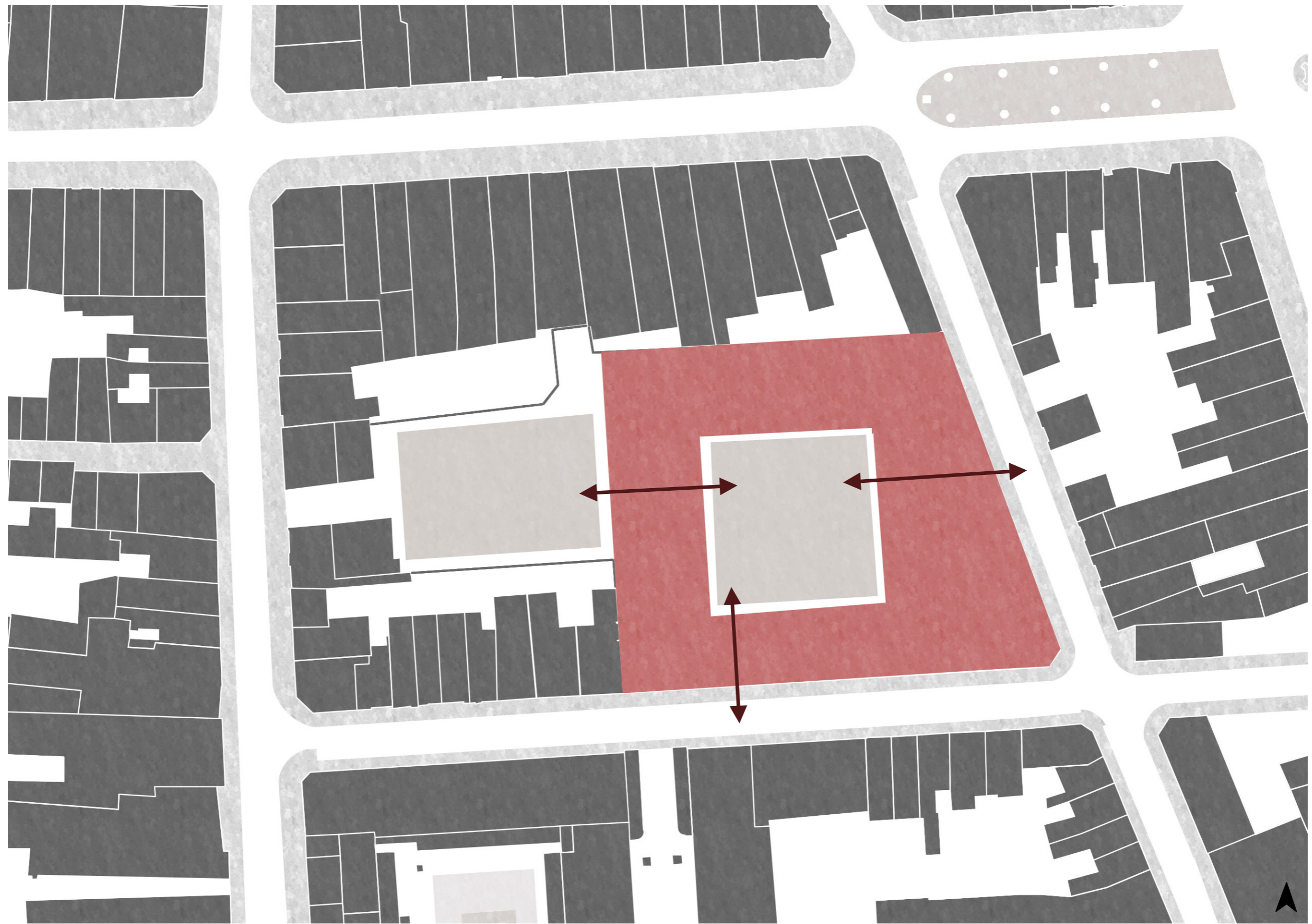




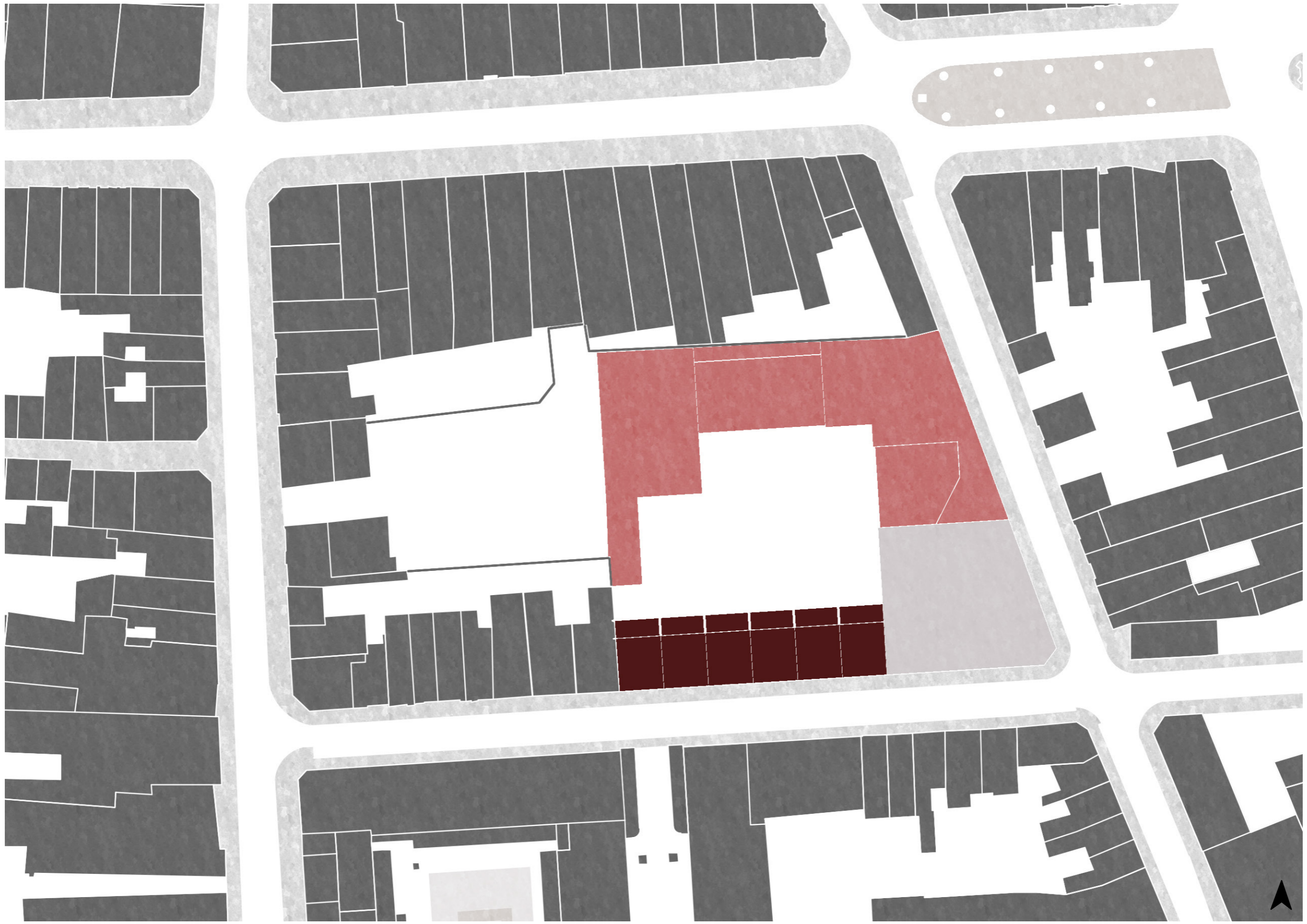


DESIGN

DESIGN TYPOLOGY



DESIGN VOLUMES



DESIGN IN CONTEXT



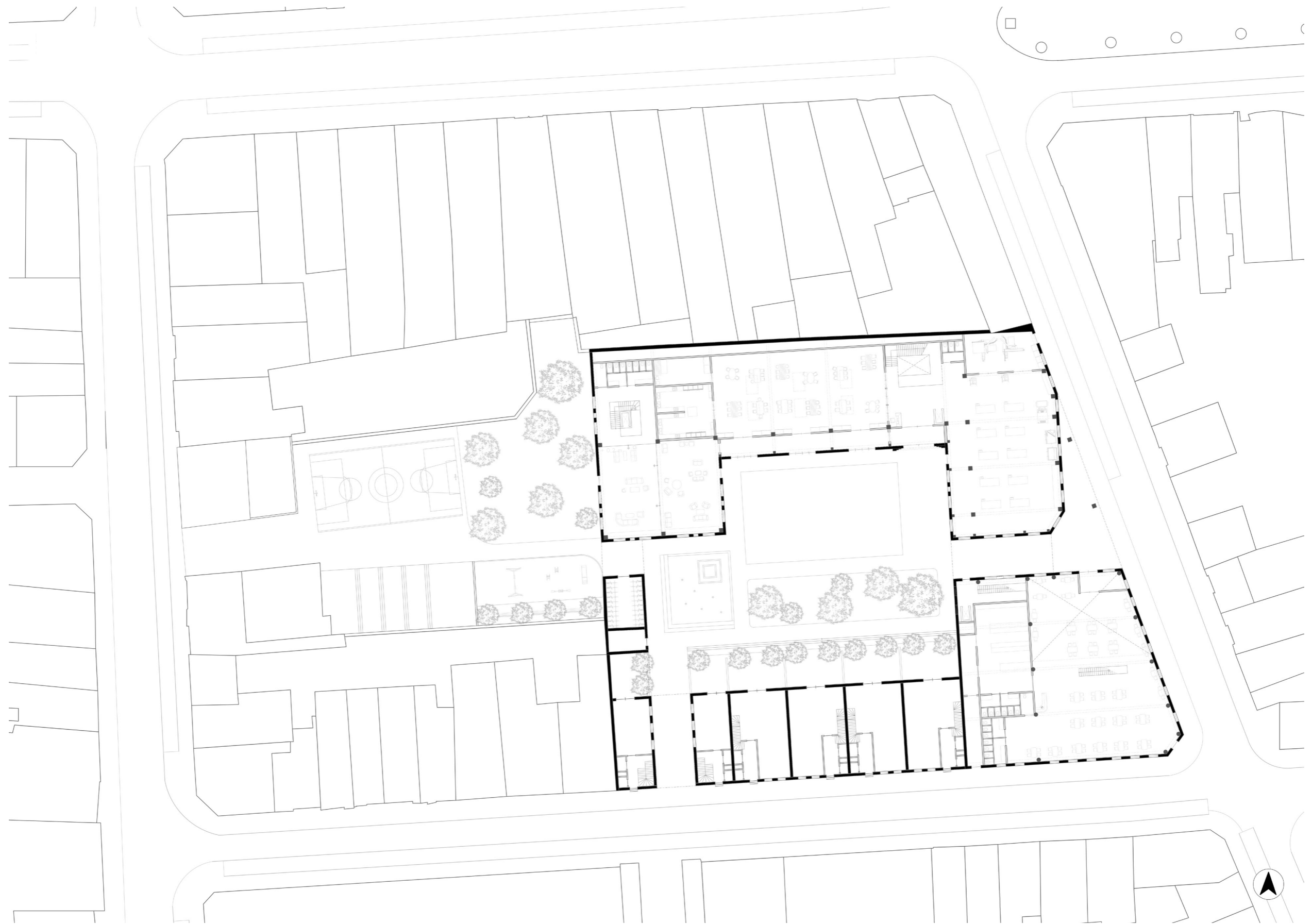
COURTYARD



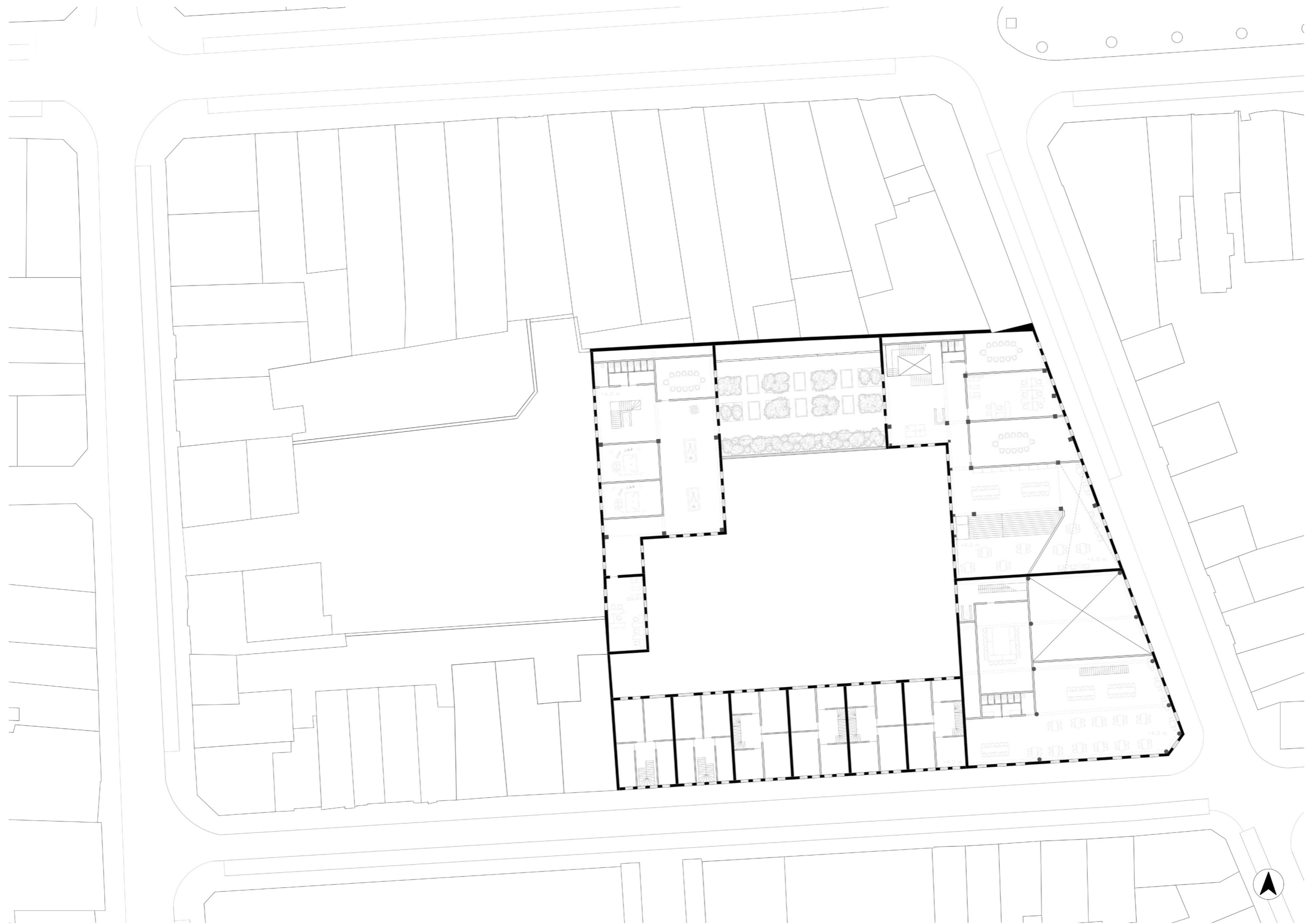
'BACKYARD'



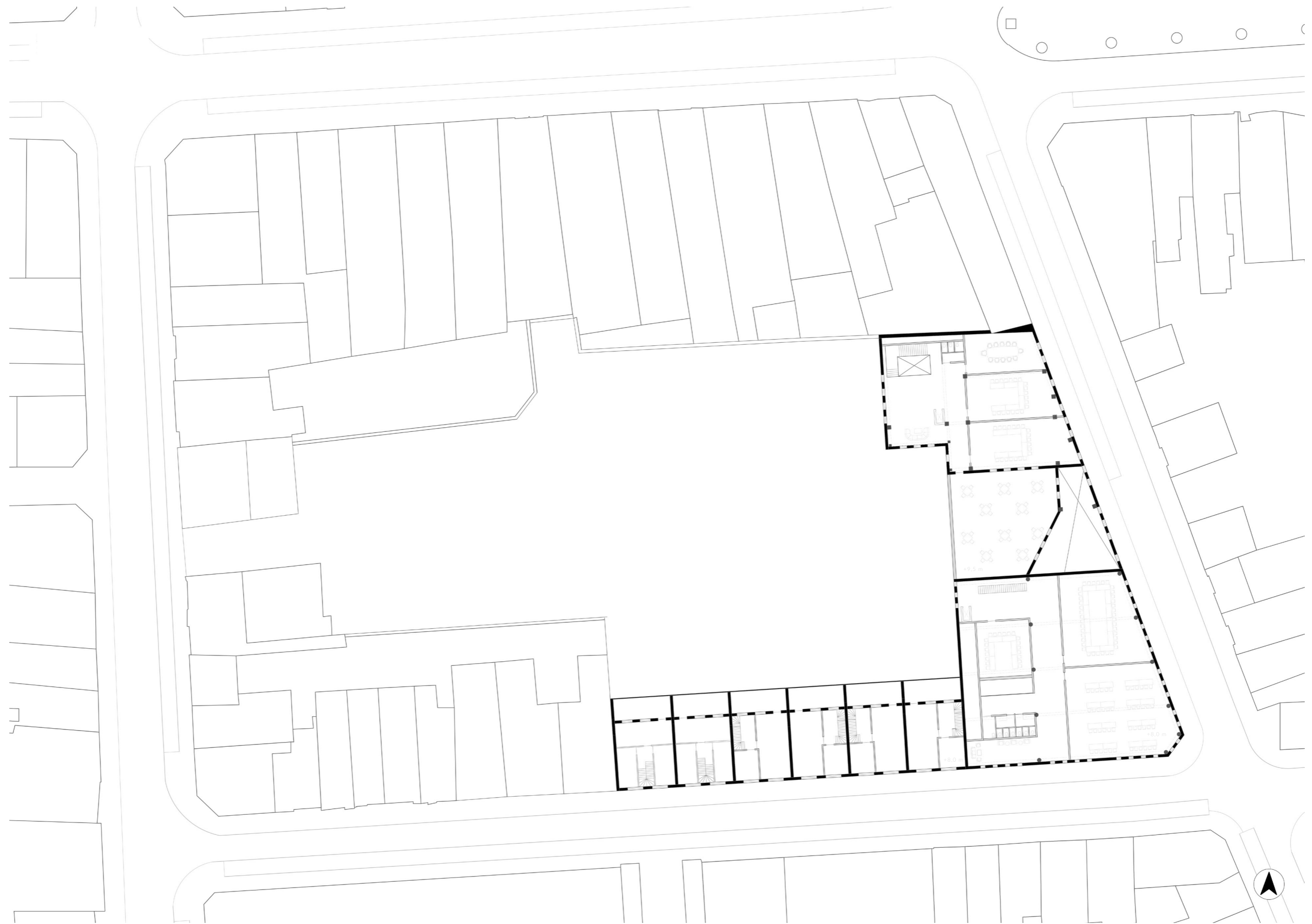
PLAN - GROUND FLOOR



PLAN - FIRST FLOOR



PLAN - SECOND FLOOR

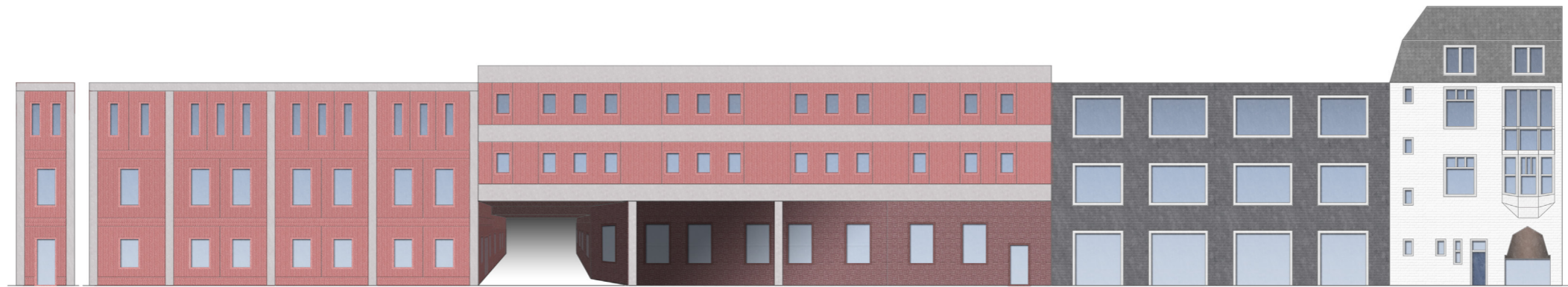


ELEVATIONS

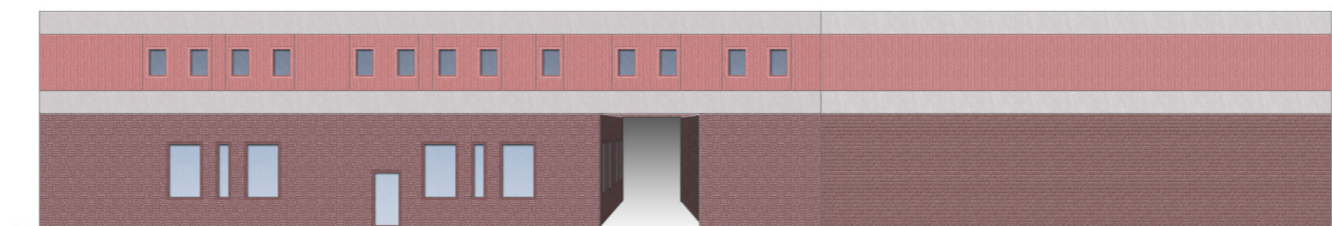
BOURGOGNESTRAAT



LAGE BARAKKEN



BACKSIDE



ELEVATIONS

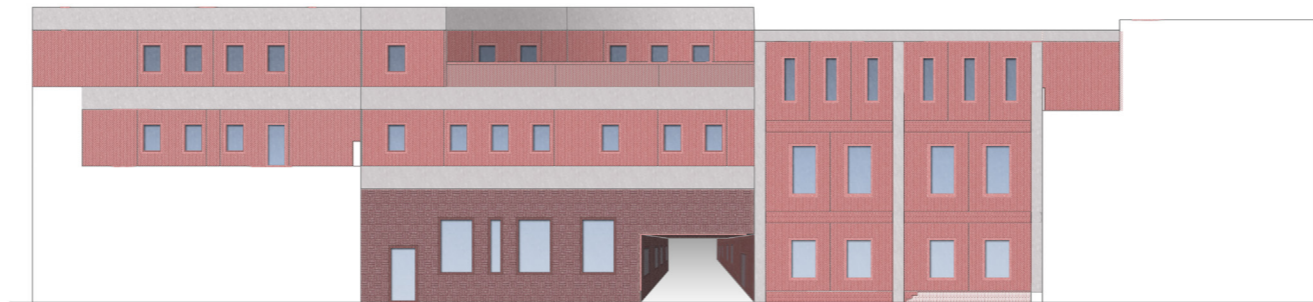
COURTYARD - NORTH



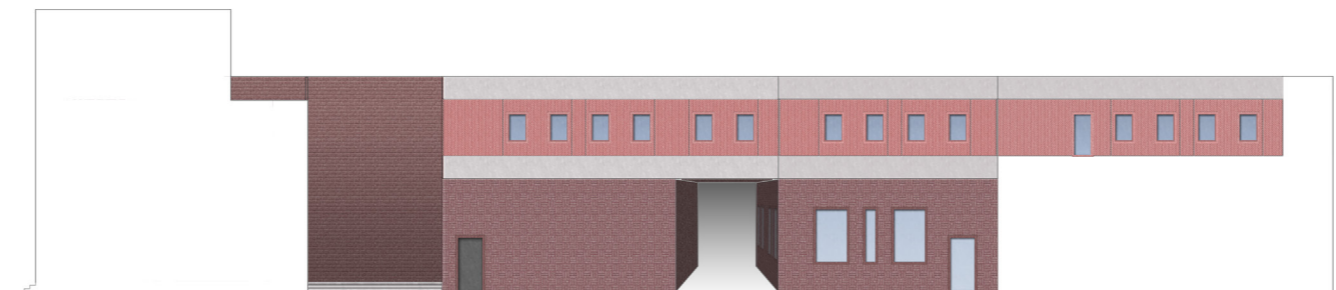
COURTYARD - SOUTH



COURTYARD - EAST



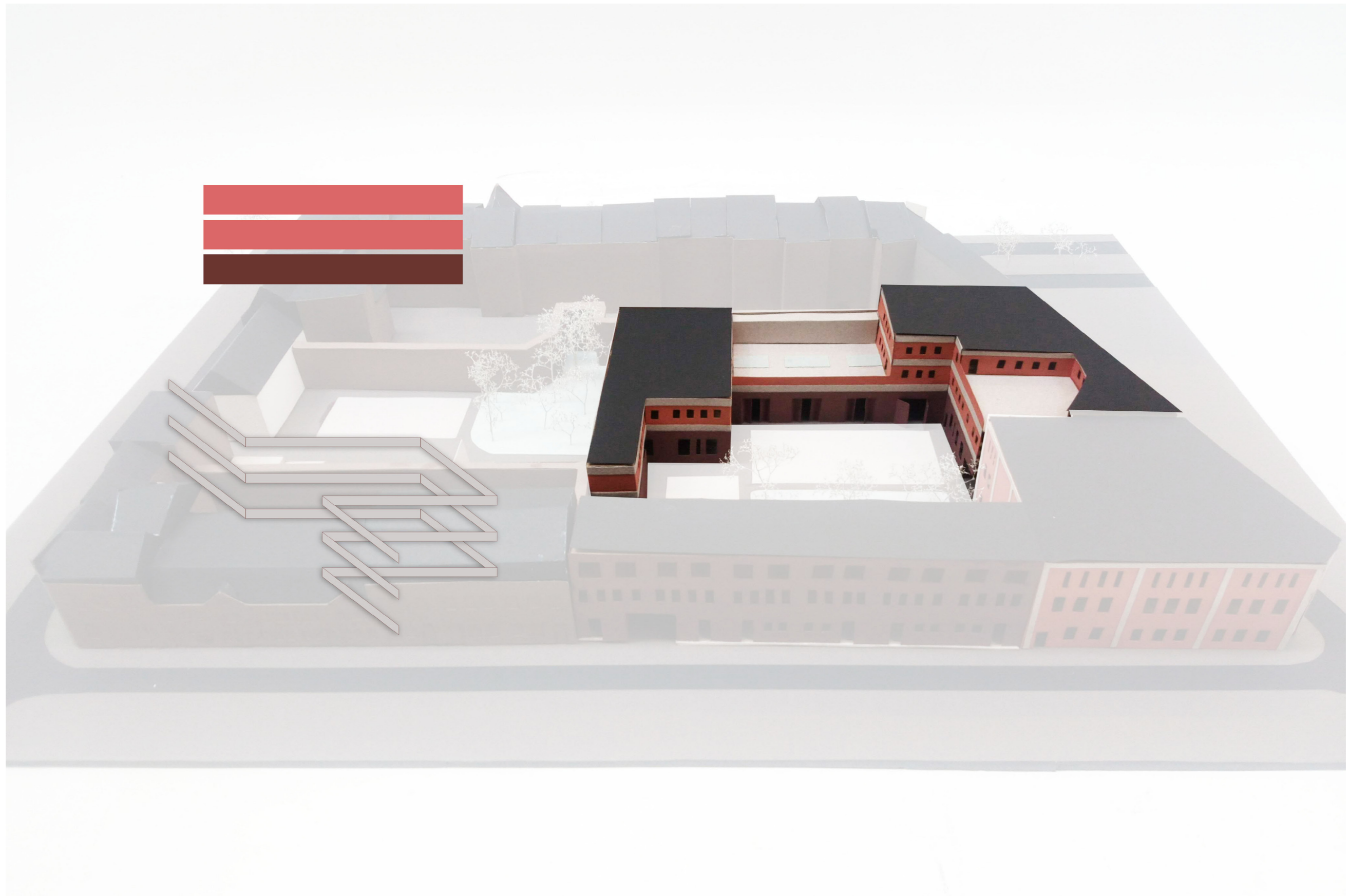
COURTYARD - WEST



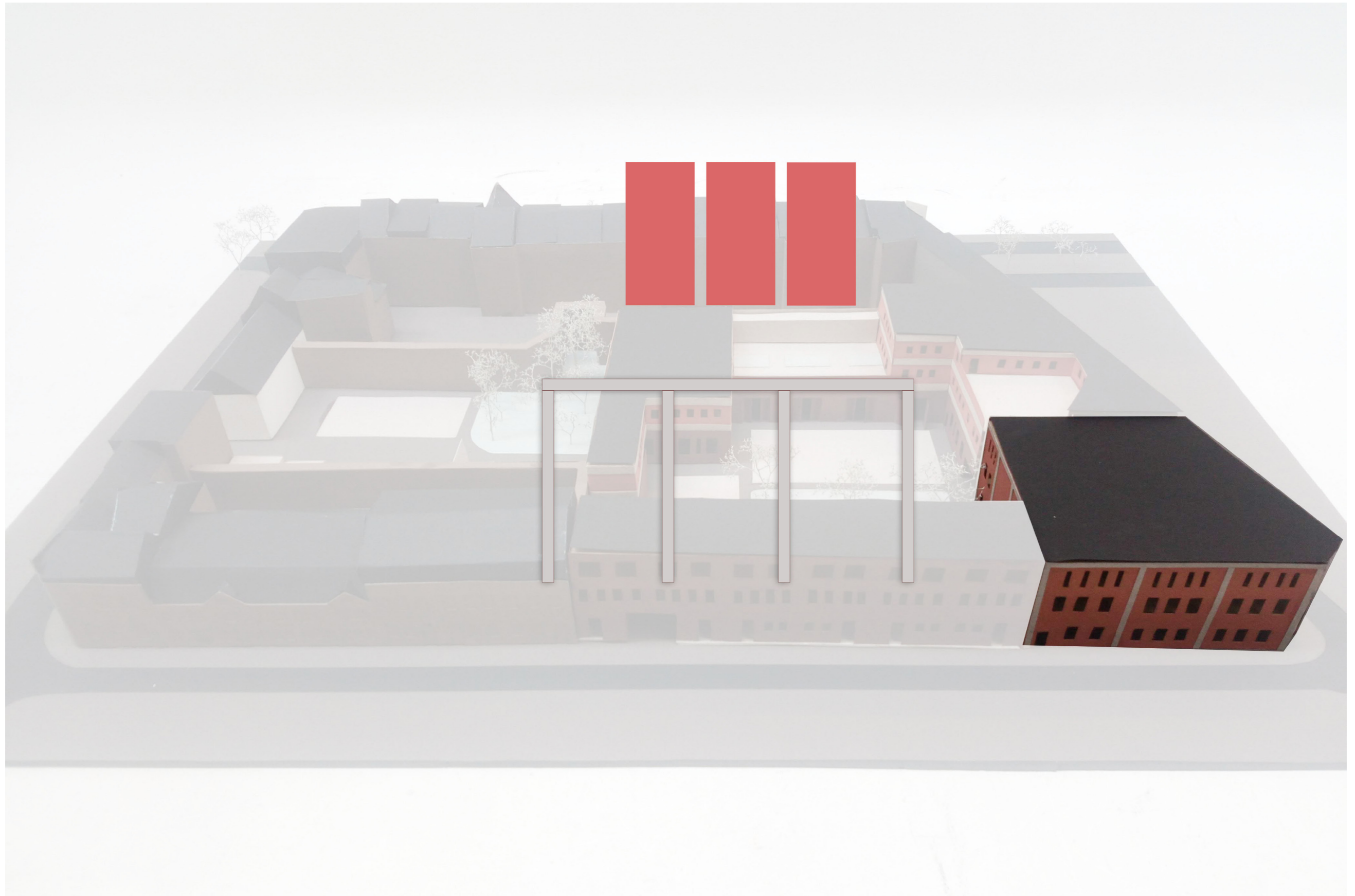
COURTYARD



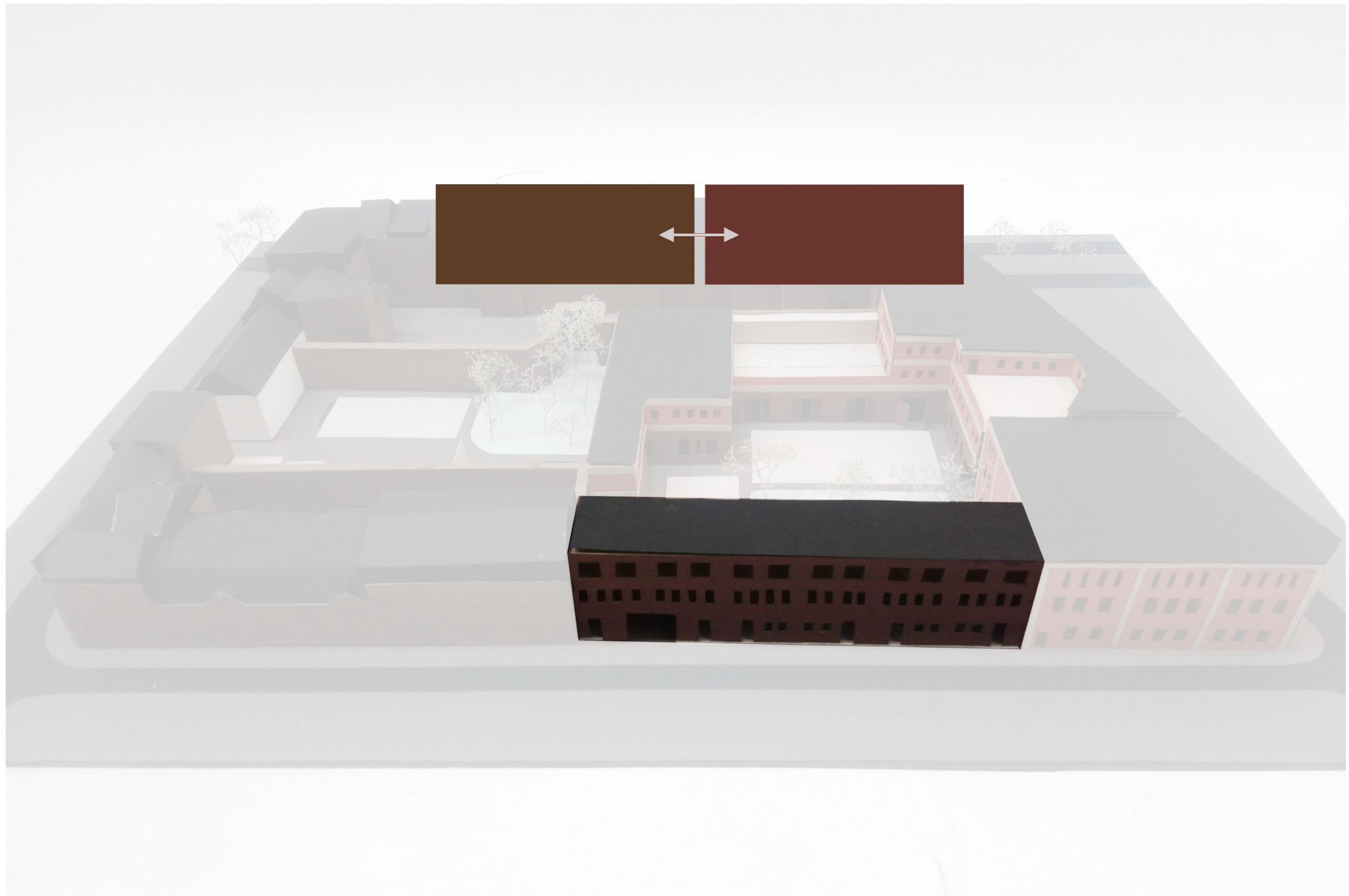
ARCHITECTURAL LANGUAGE



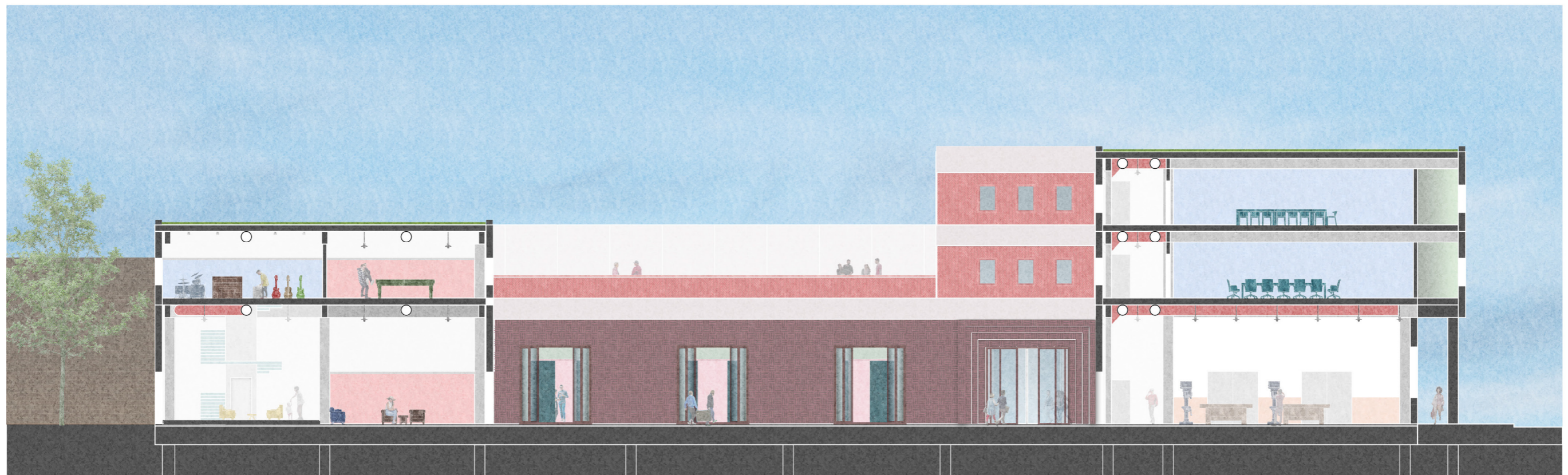
ARCHITECTURAL LANGUAGE



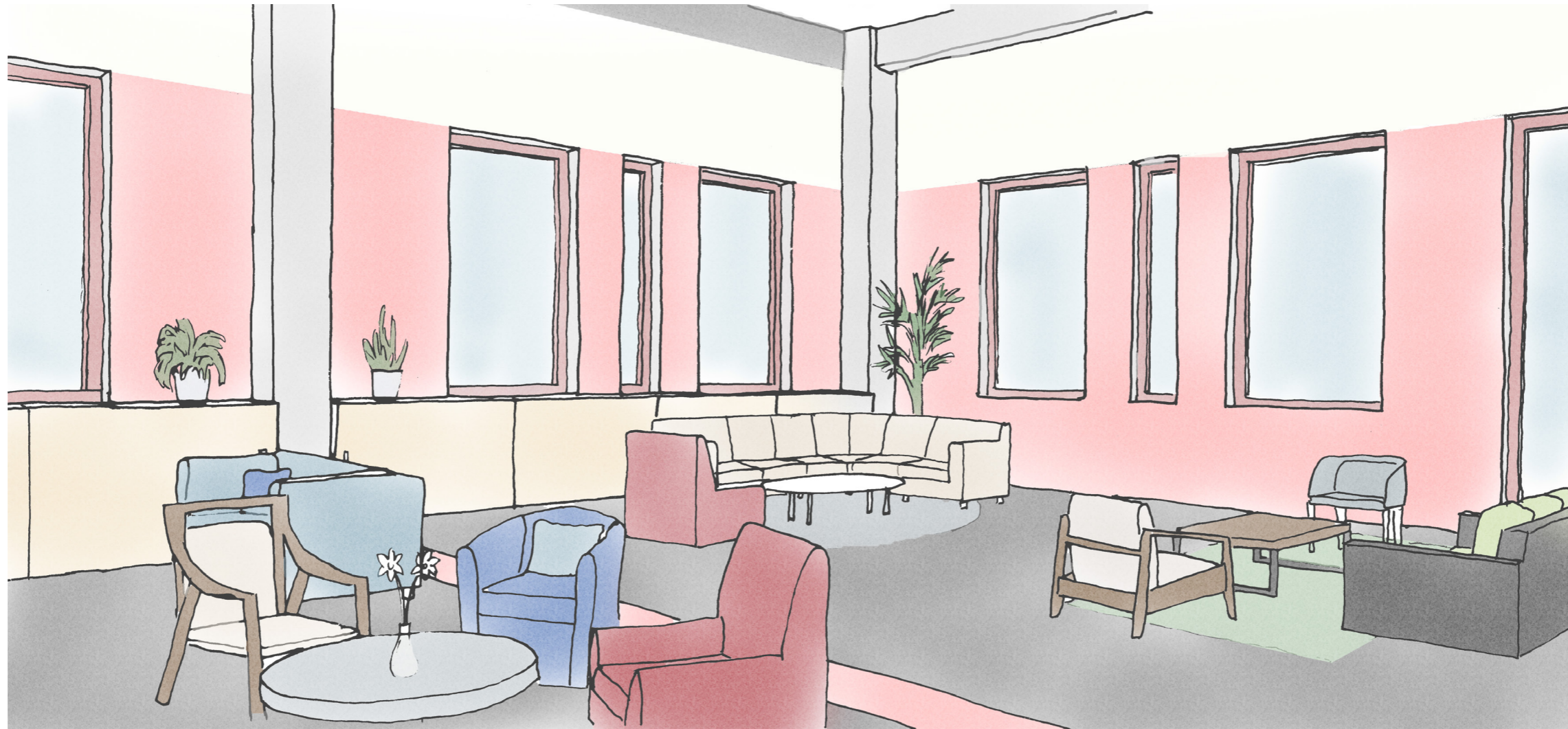
ARCHITECTURAL LANGUAGE



SECTION



COMMUNITY LIVING ROOM



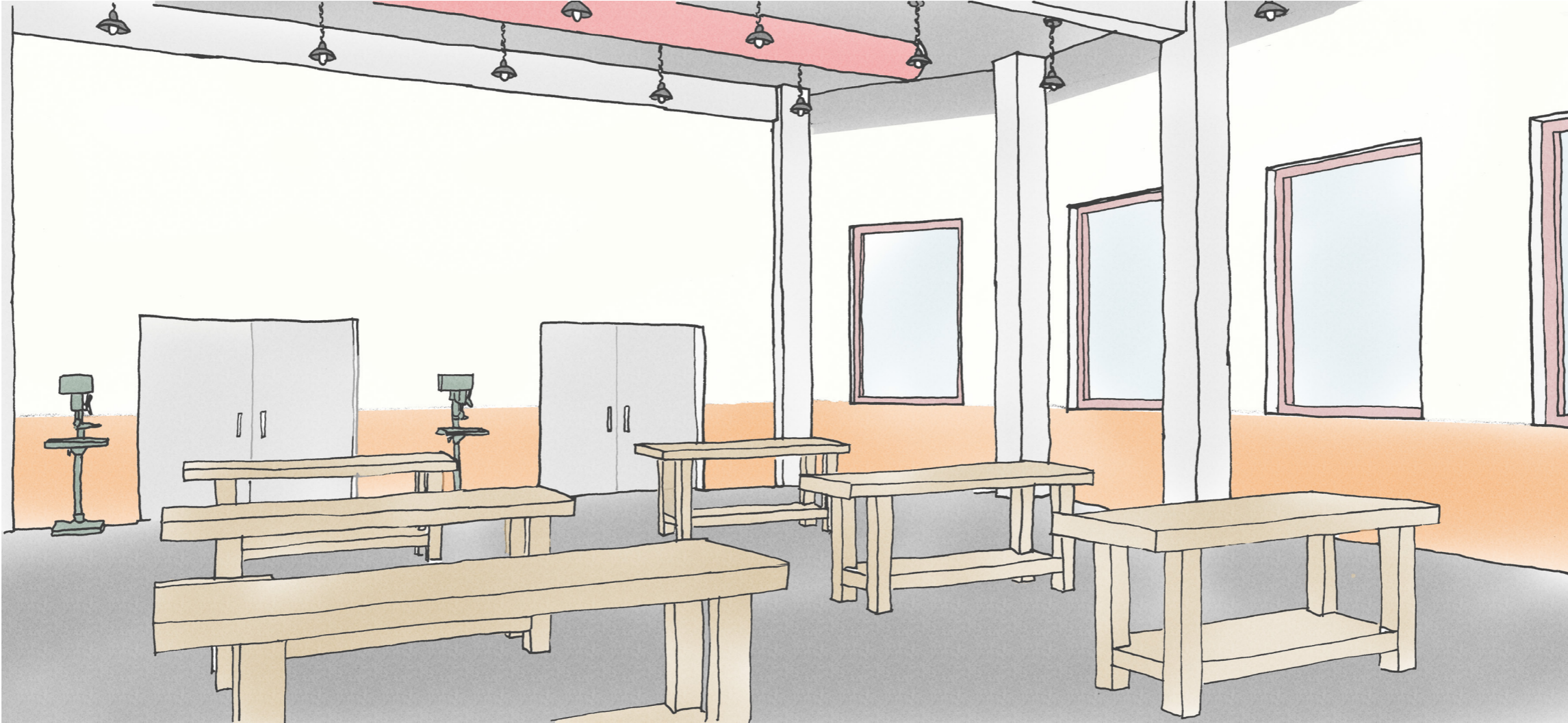
SECTION



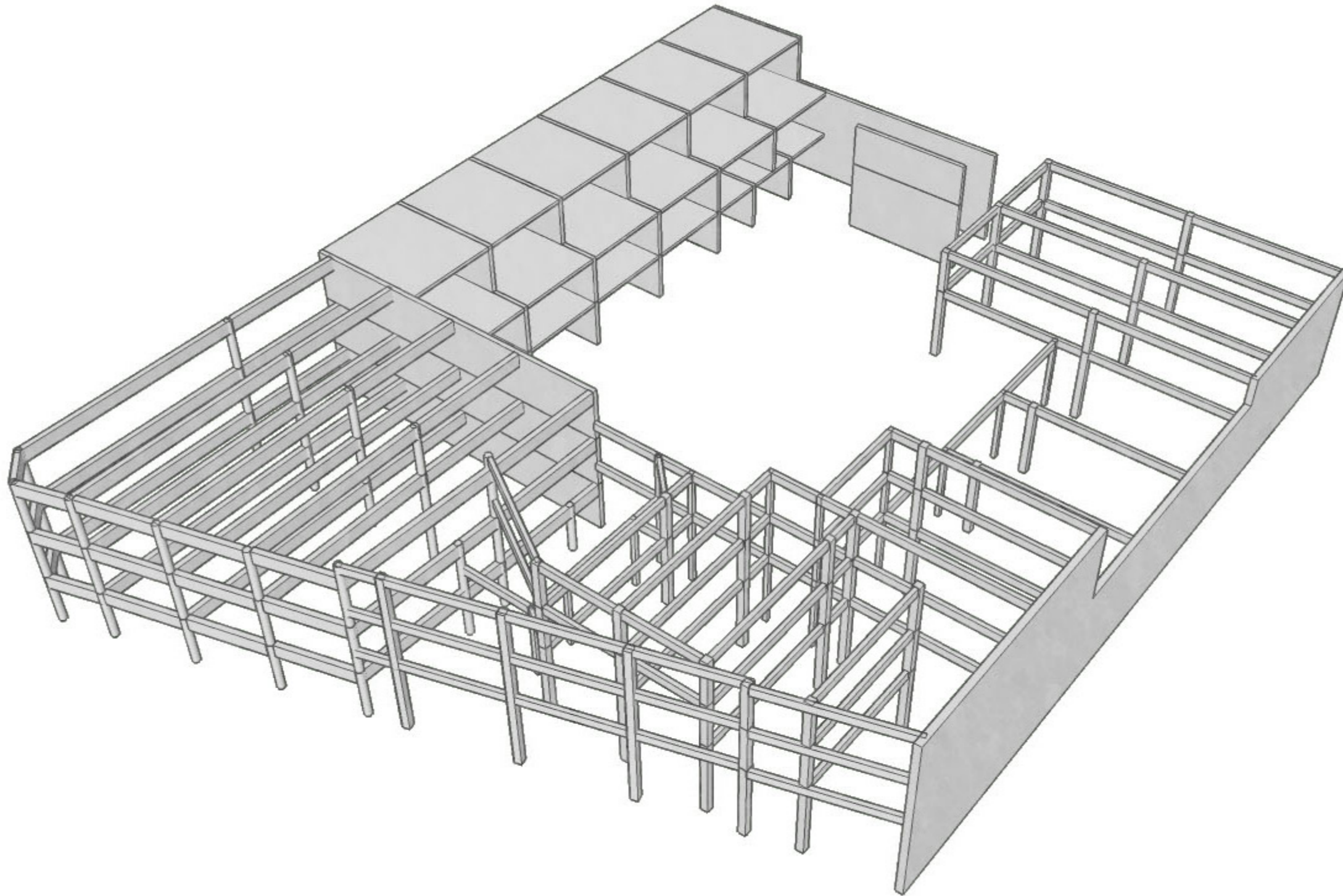
SOCIAL LIBRARY



COMMUNITY WORKSHOP



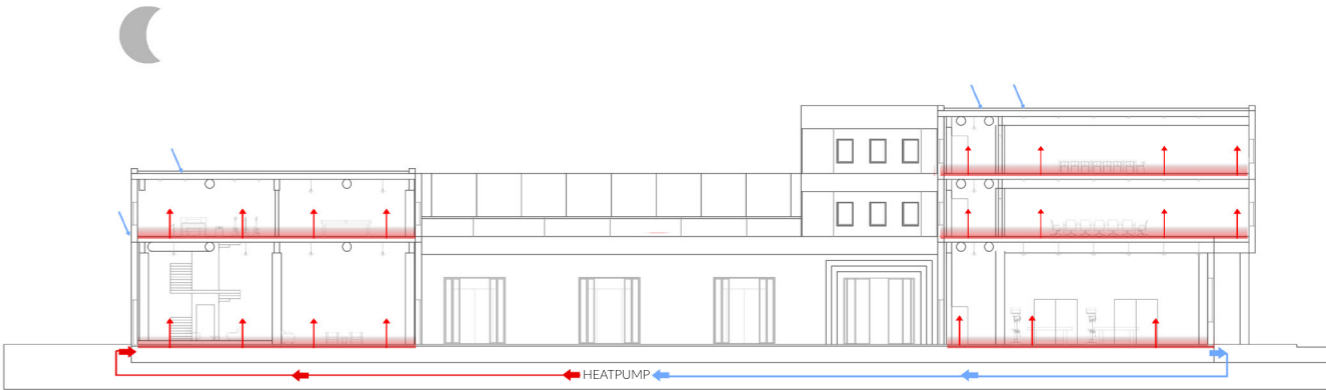
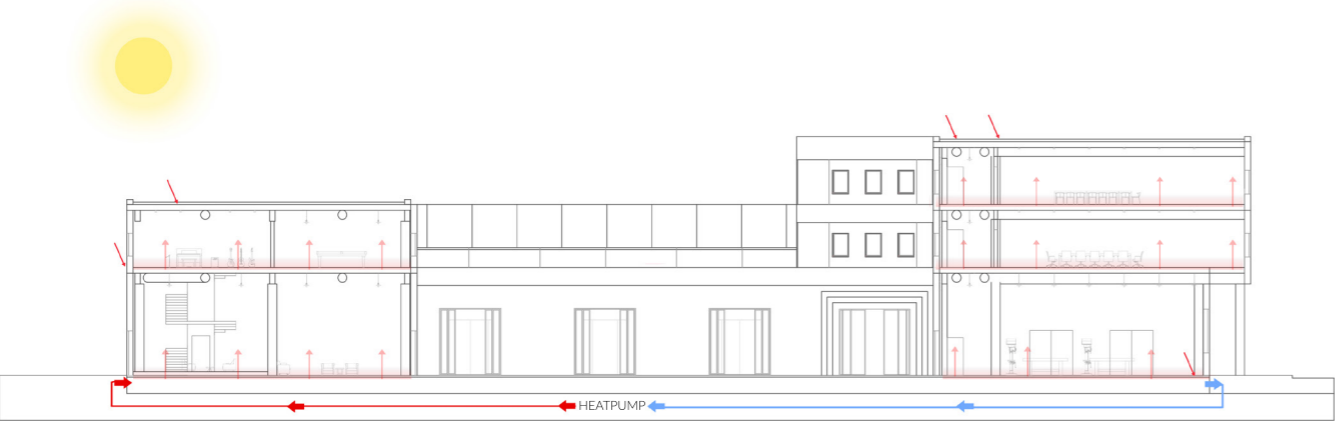
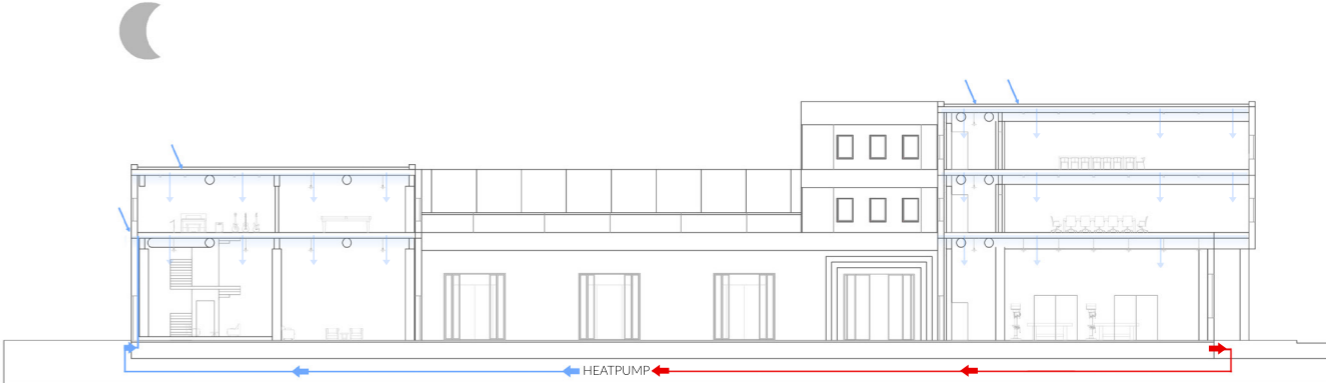
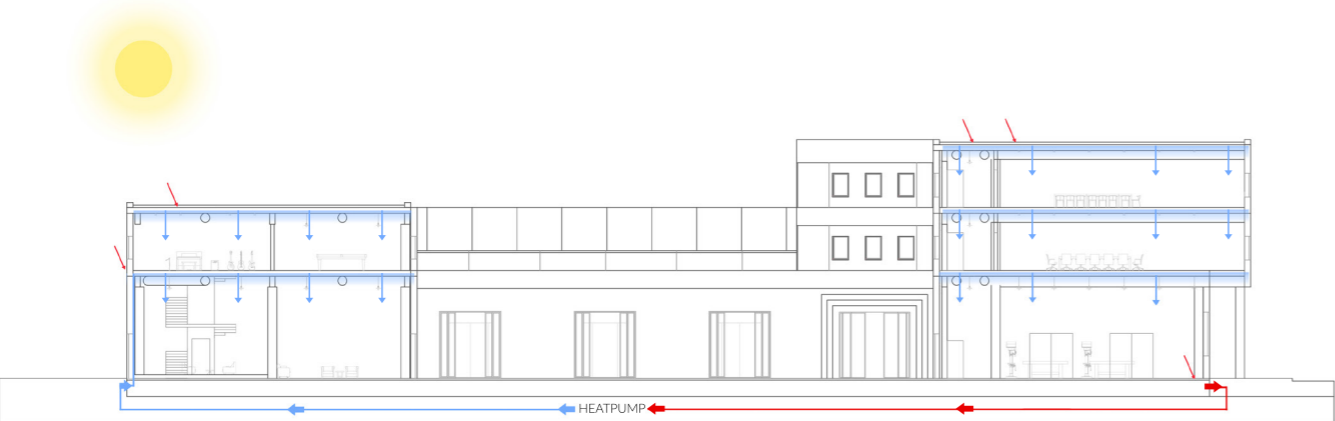
STRUCTURAL DESIGN



CLIMATE DESIGN - VENTILAION DUCTS



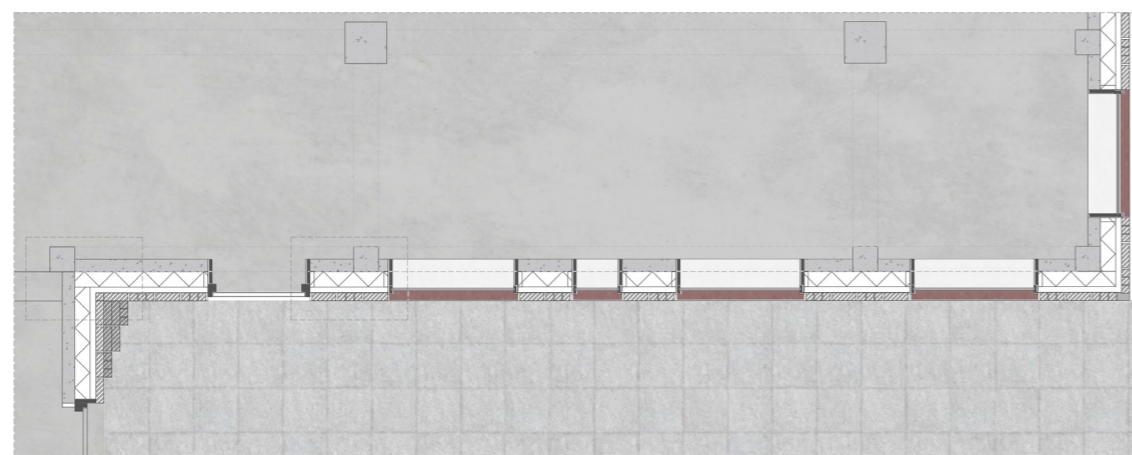
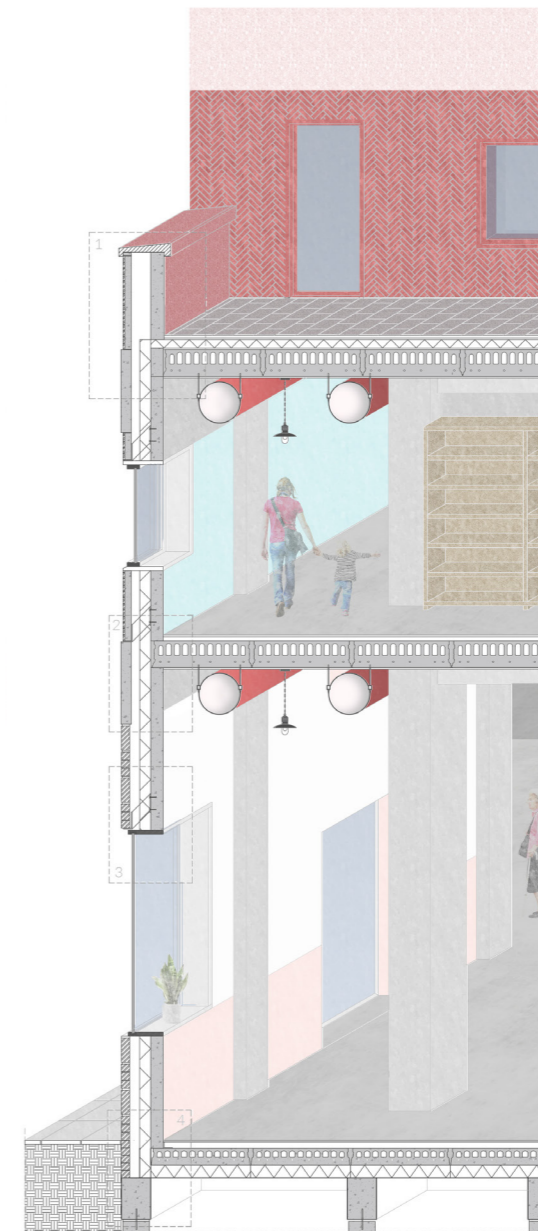
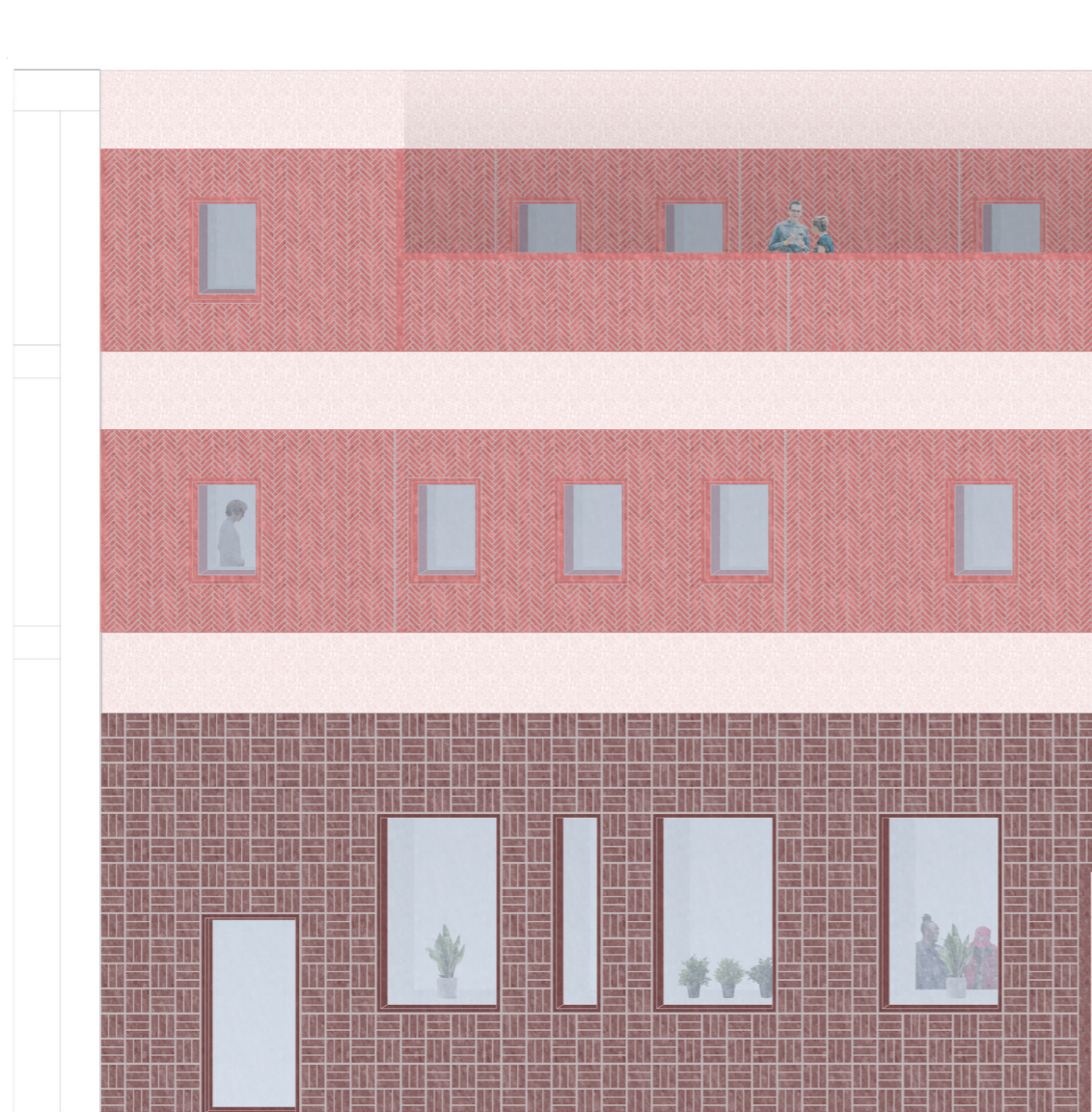
CLIMATE DESIGN - HEATING AND COOLING



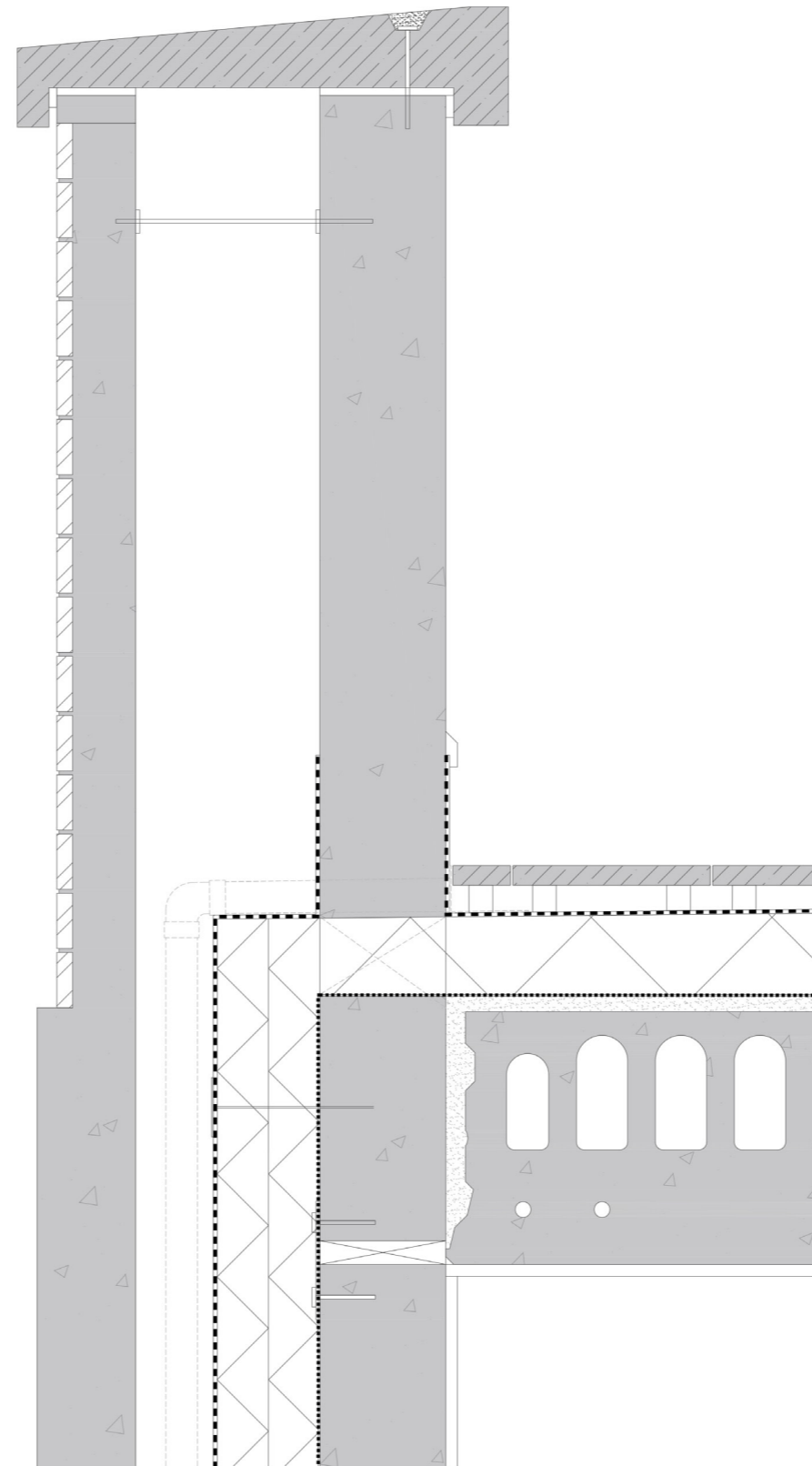
MATERIALIZATION



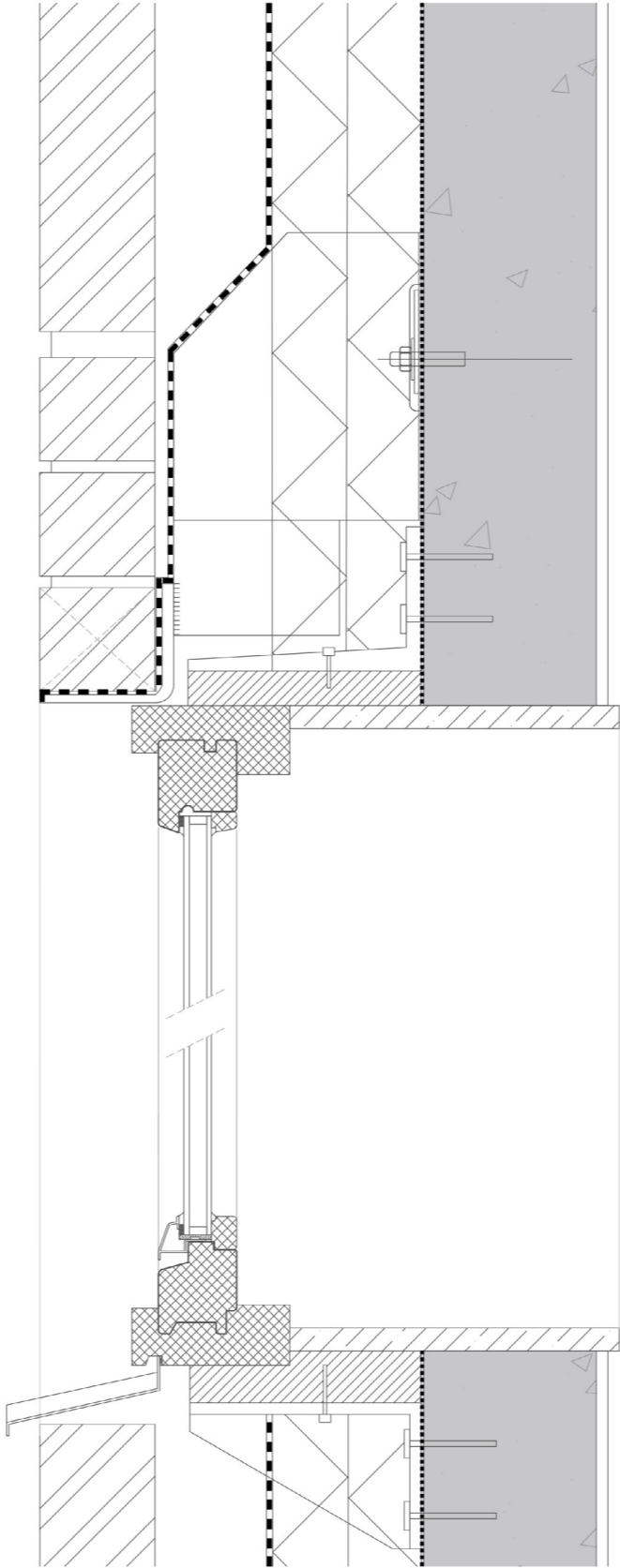
FACADE ELEMENT



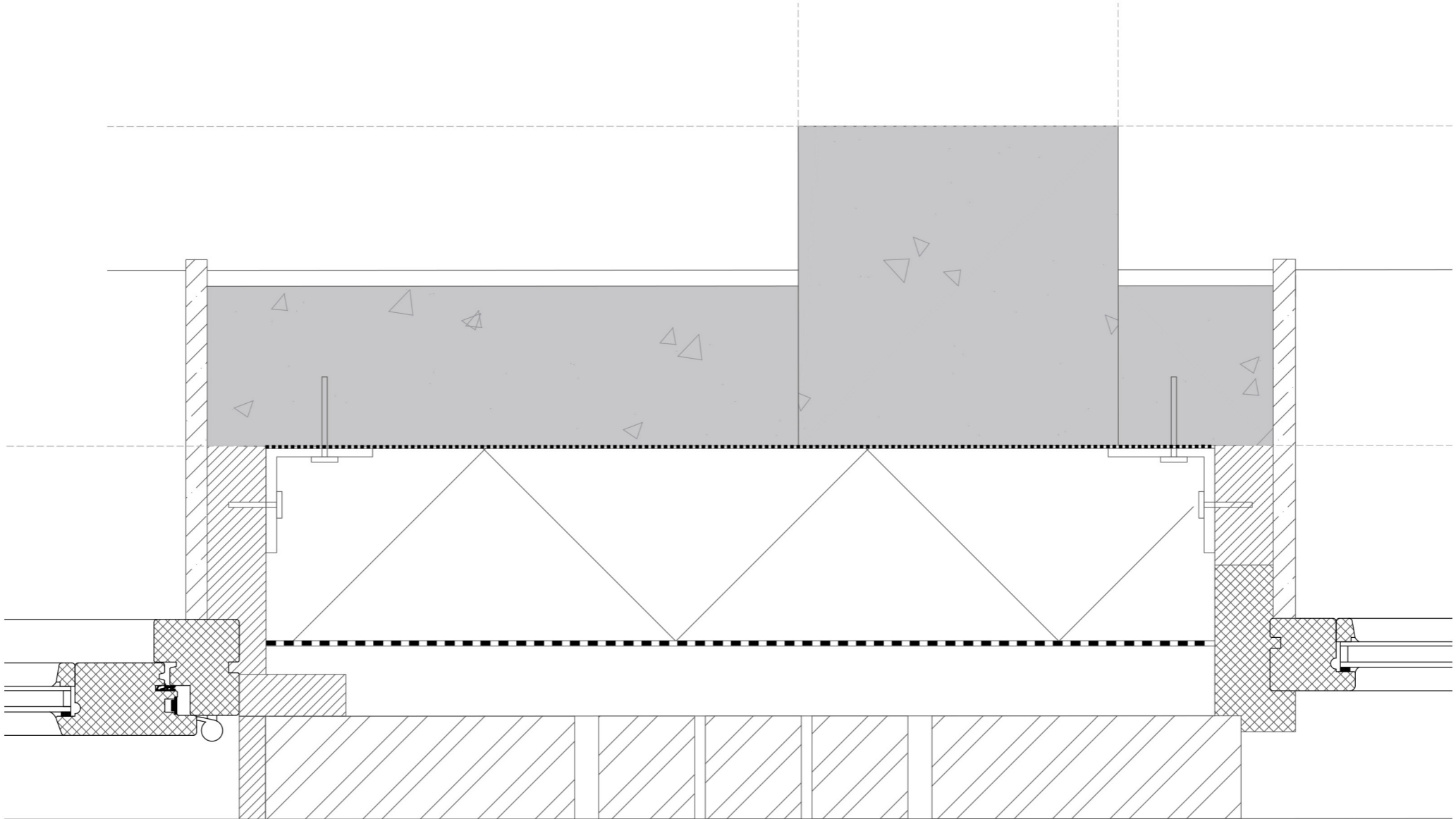
DETAILS



DETAILS



DETAILS



ENTRANCE HALL



OPEN STAIRWAY



FIRST FLOOR



SECOND FLOOR



ENTRANCE HALL



MAIN FESTIVE SPACE



MAIN FESTIVE SPACE



CONCLUSION





THANK YOU!