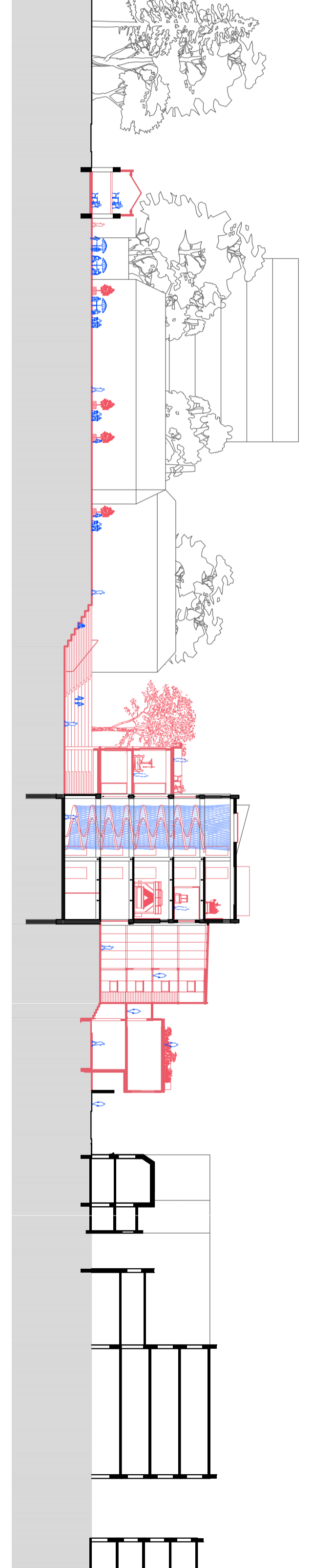
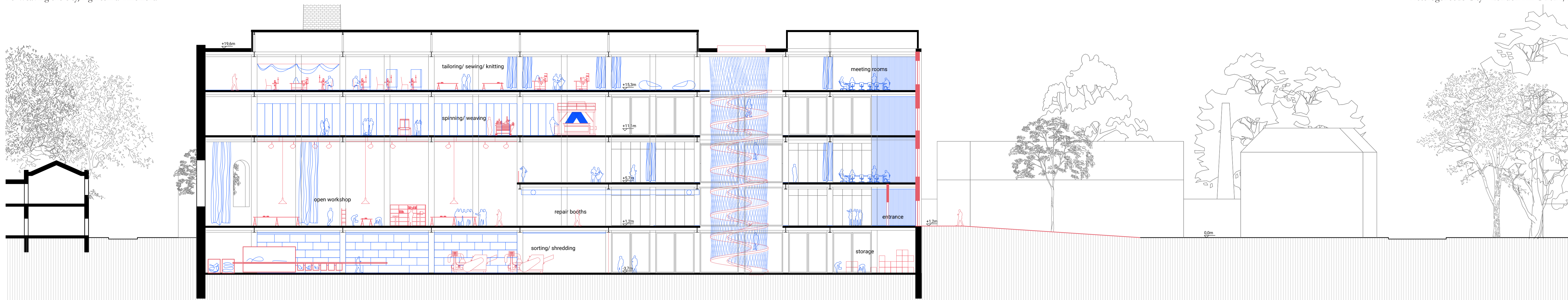


Urban longitudinal section A-A 1:500

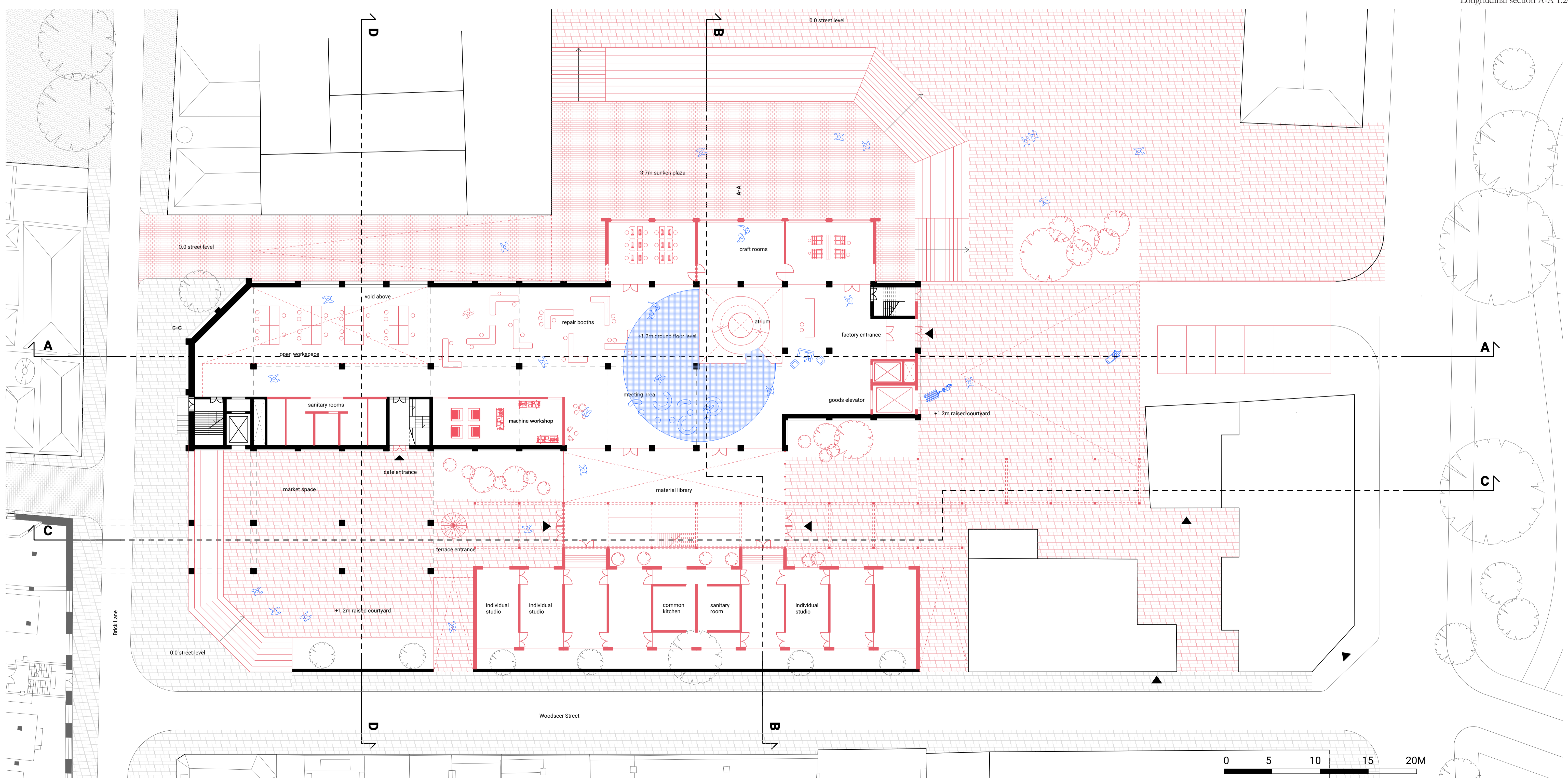


Siteplan 1:500

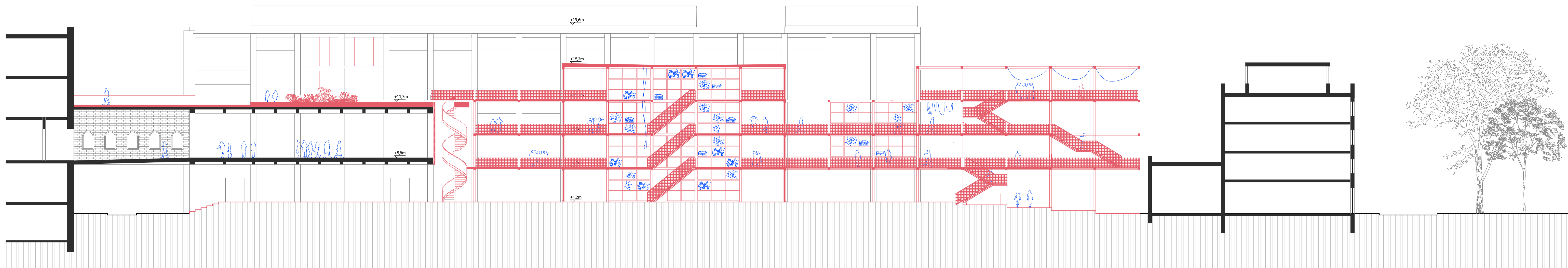
Urban cross section B-B 1:500



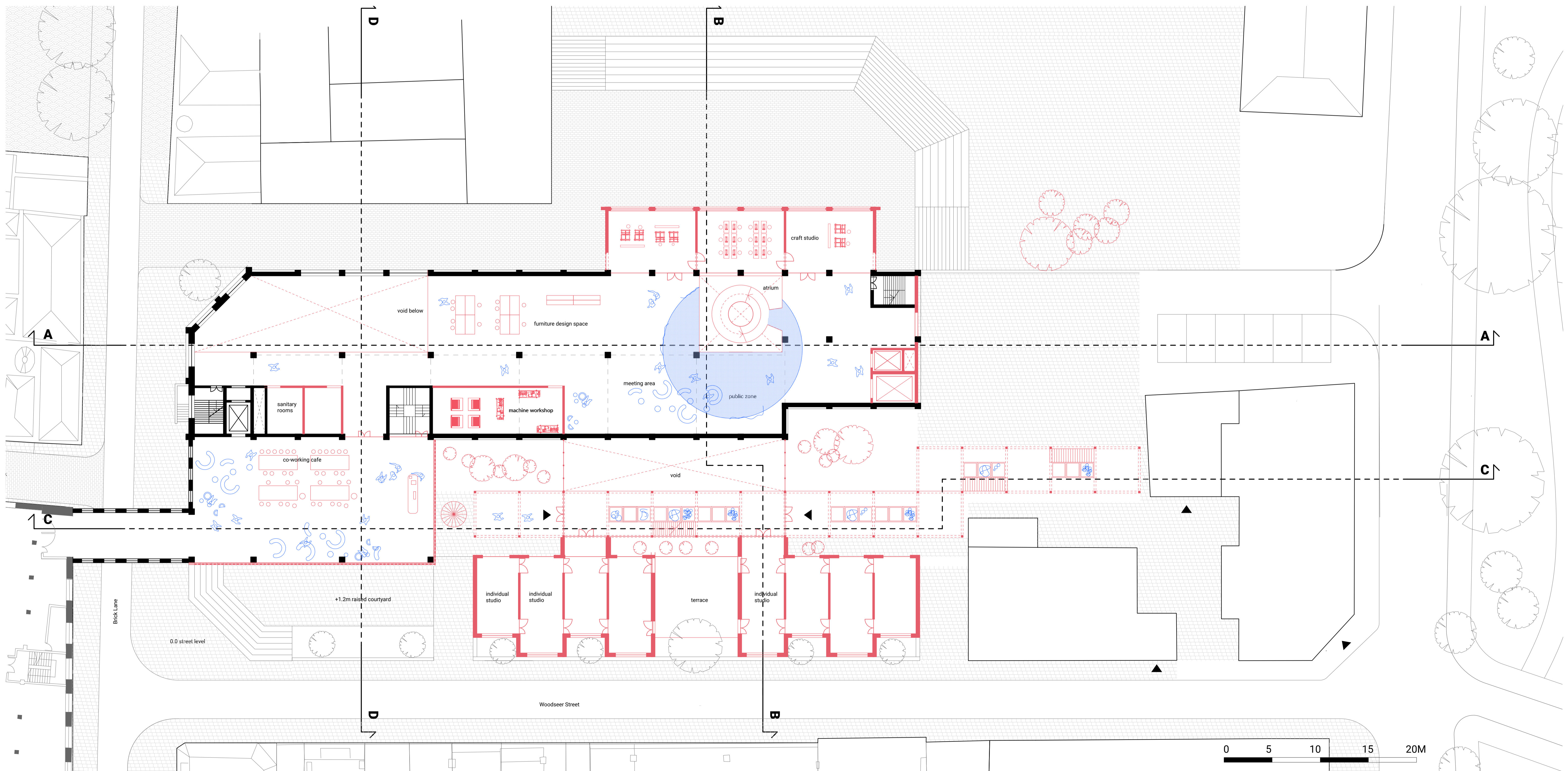
Longitudinal section A-A 1:200



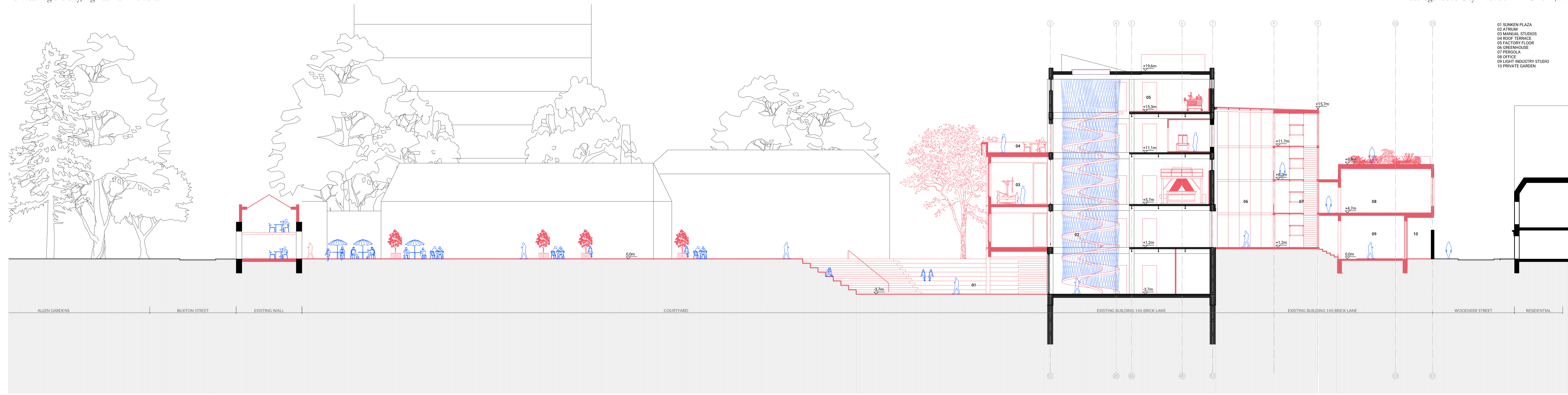
Ground floor plan 1:500



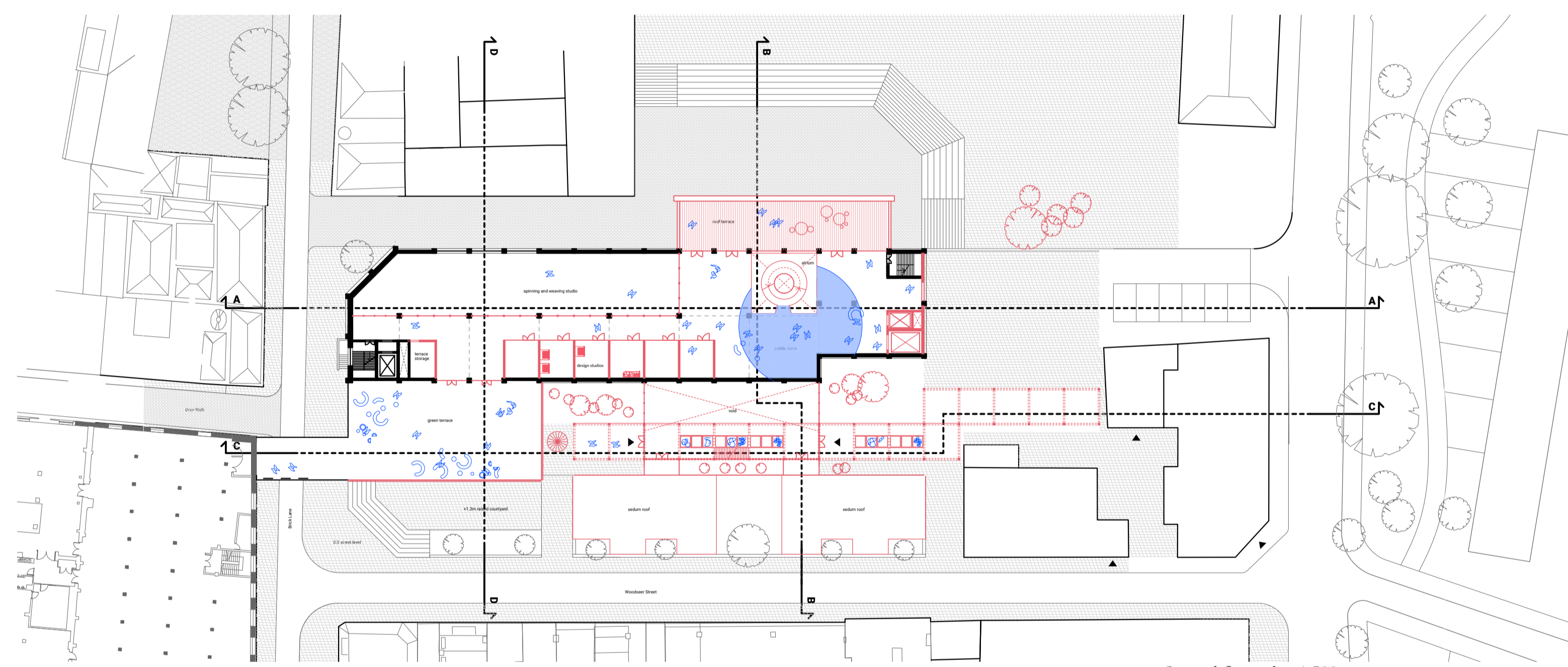
Longitudinal section C-C 1:200



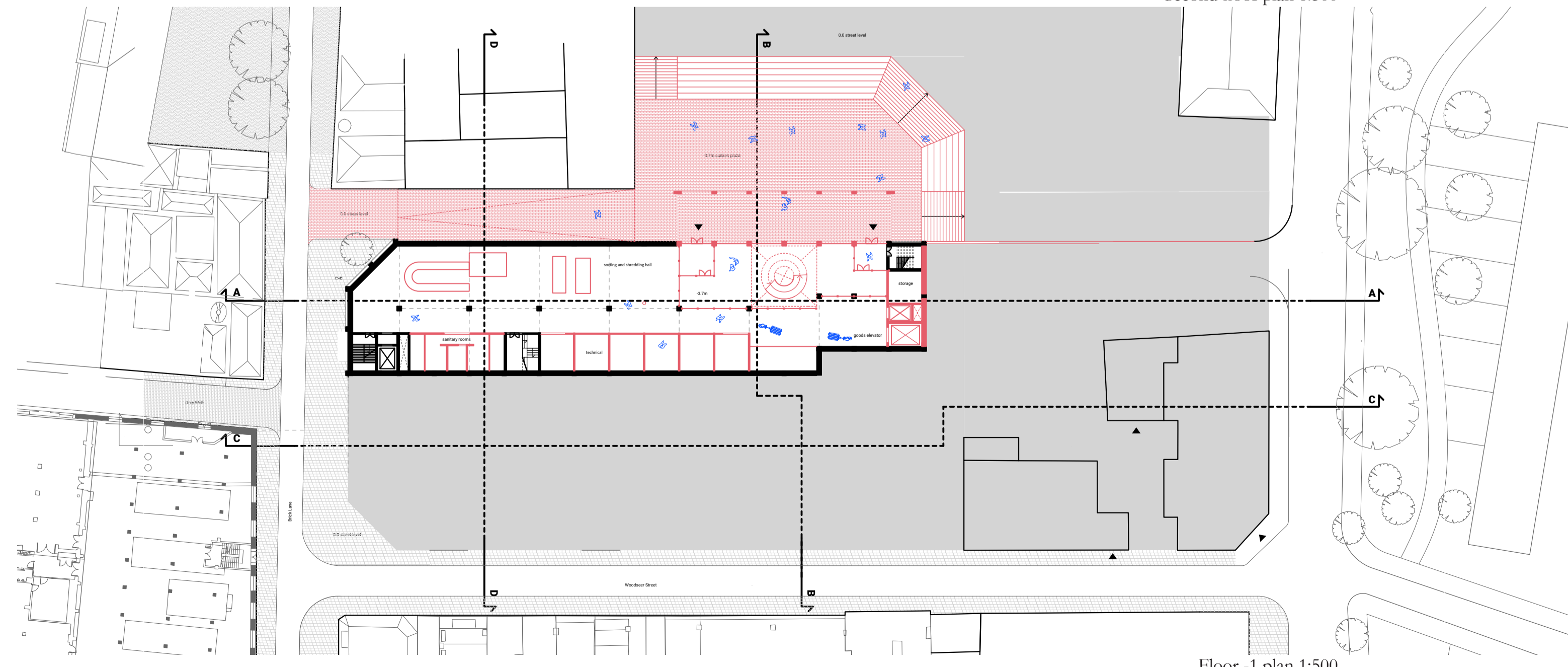
First floor plan 1:200



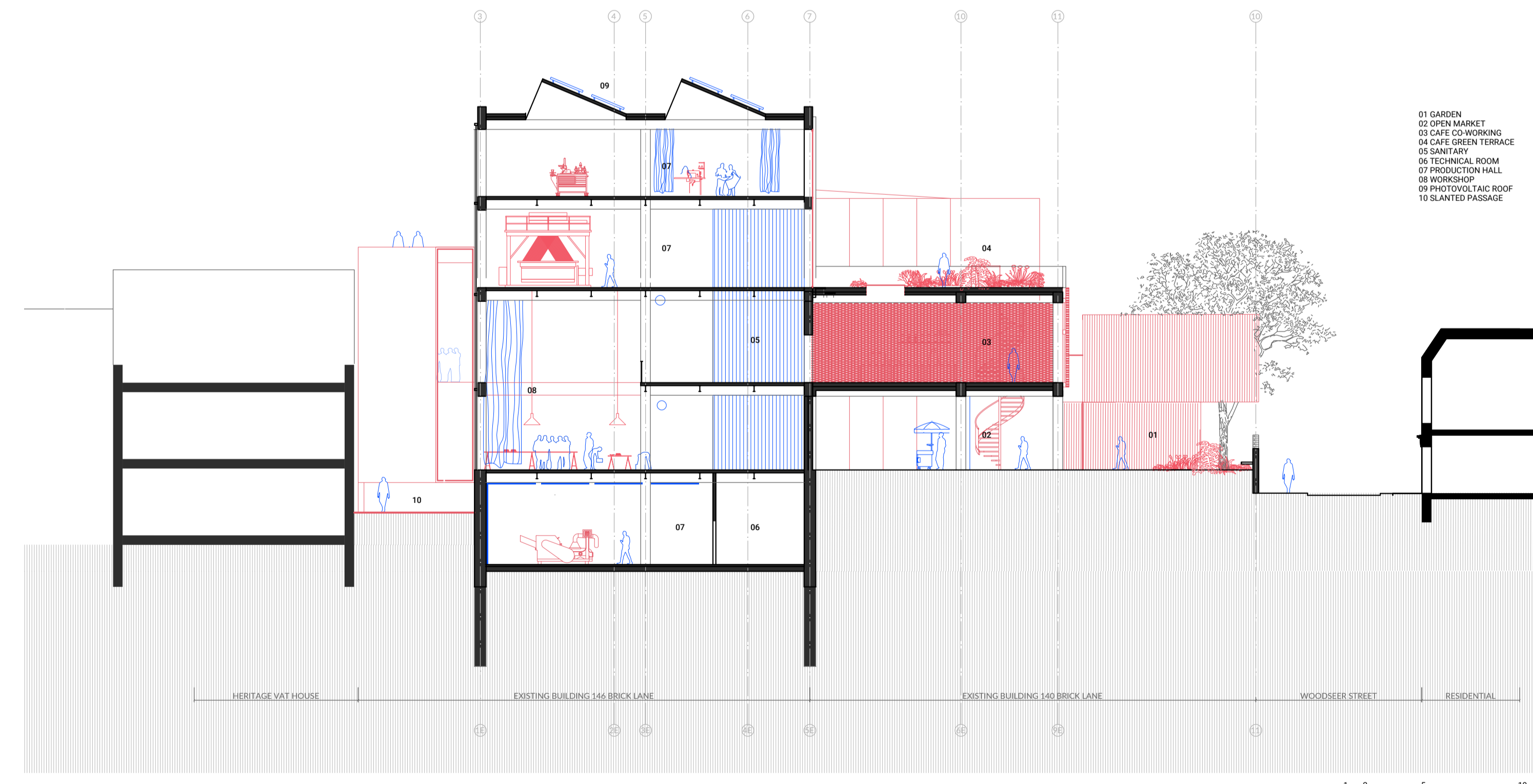
1 2 5 10
Cross section B-B 1:200



Second floor plan 1:500



Floor -1 plan 1:500



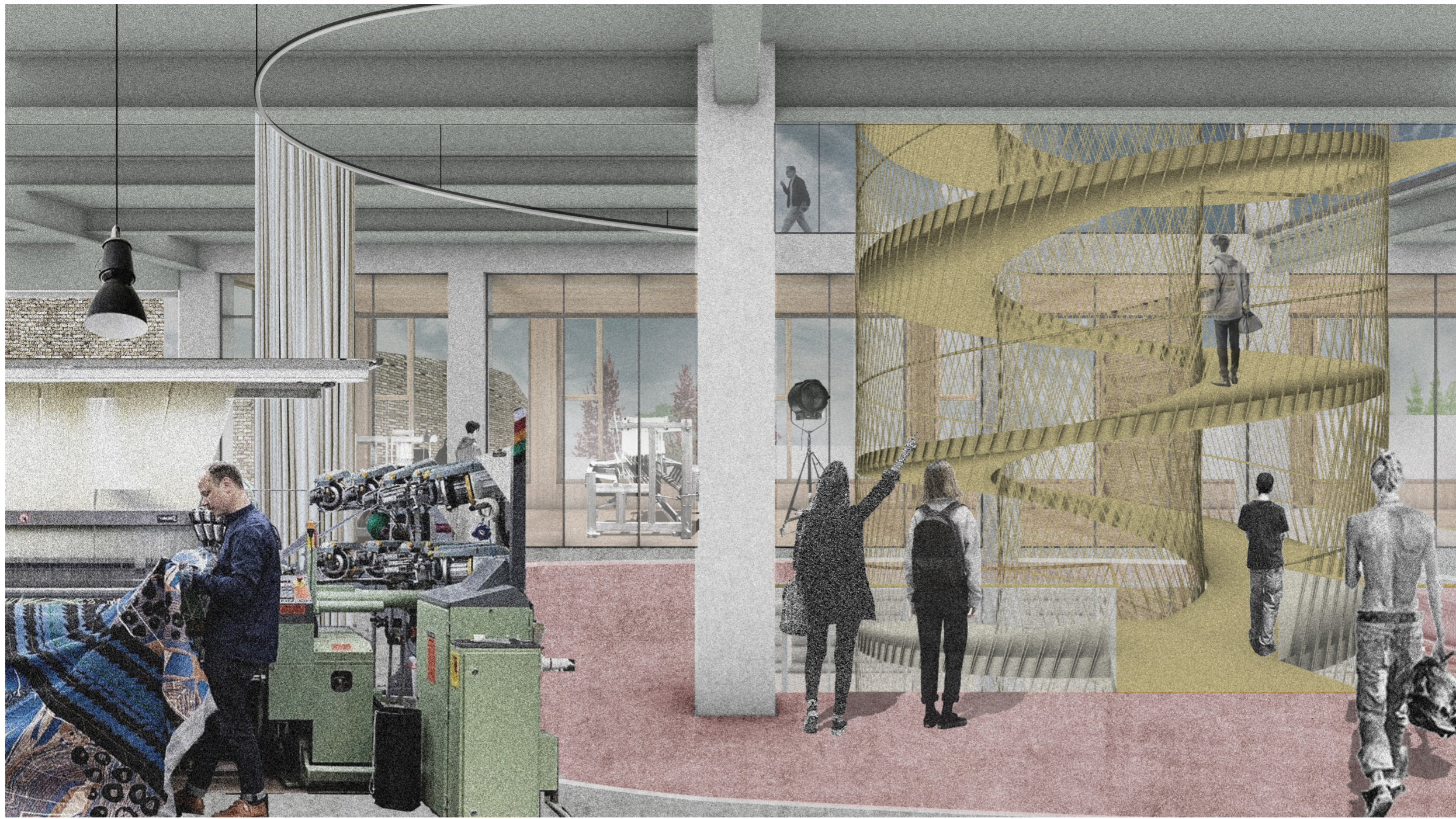
1 2 5 10
Cross section D-D 1:200



South facade 1:200



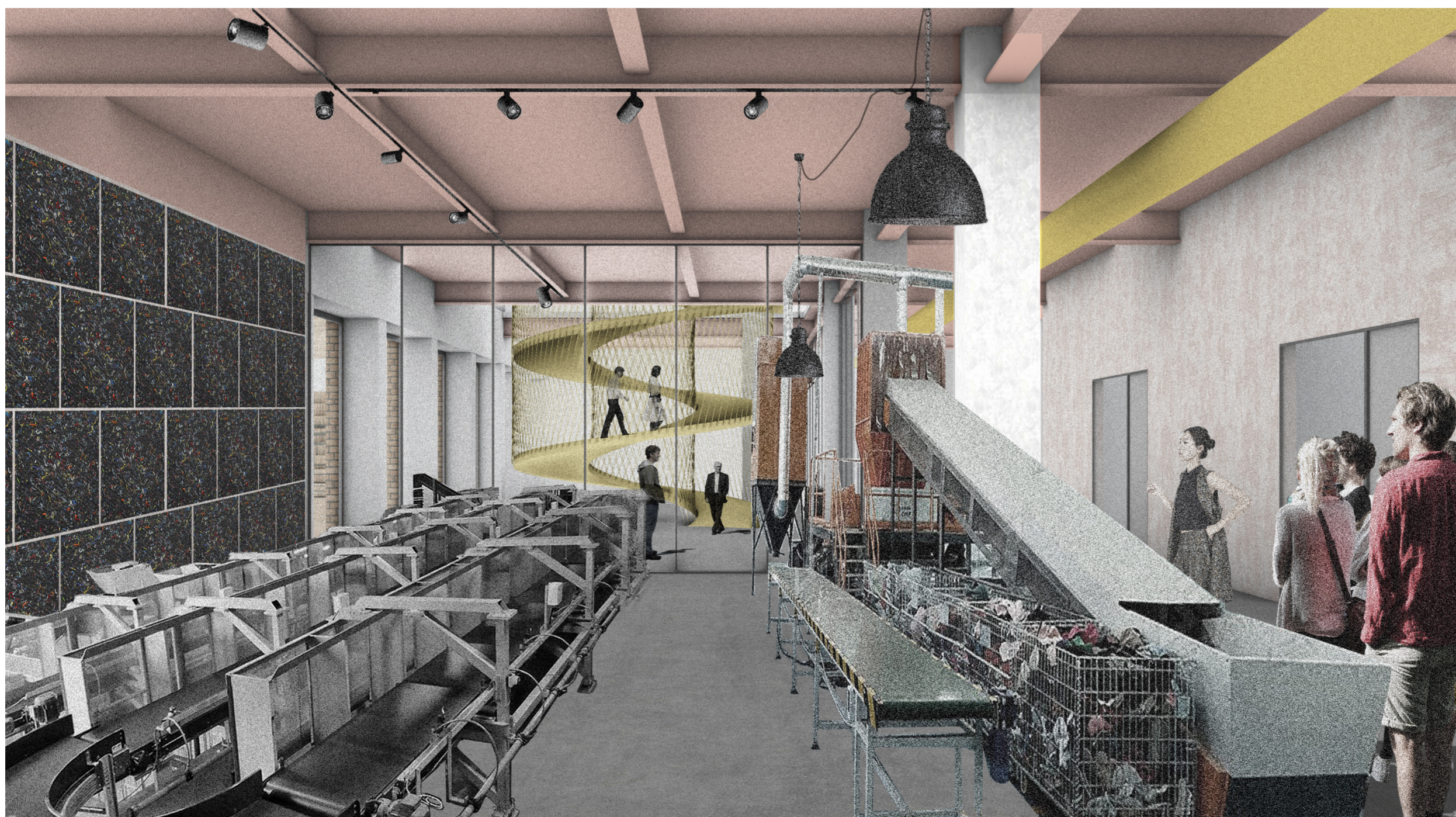
North facade 1:200



Second floor - weaving



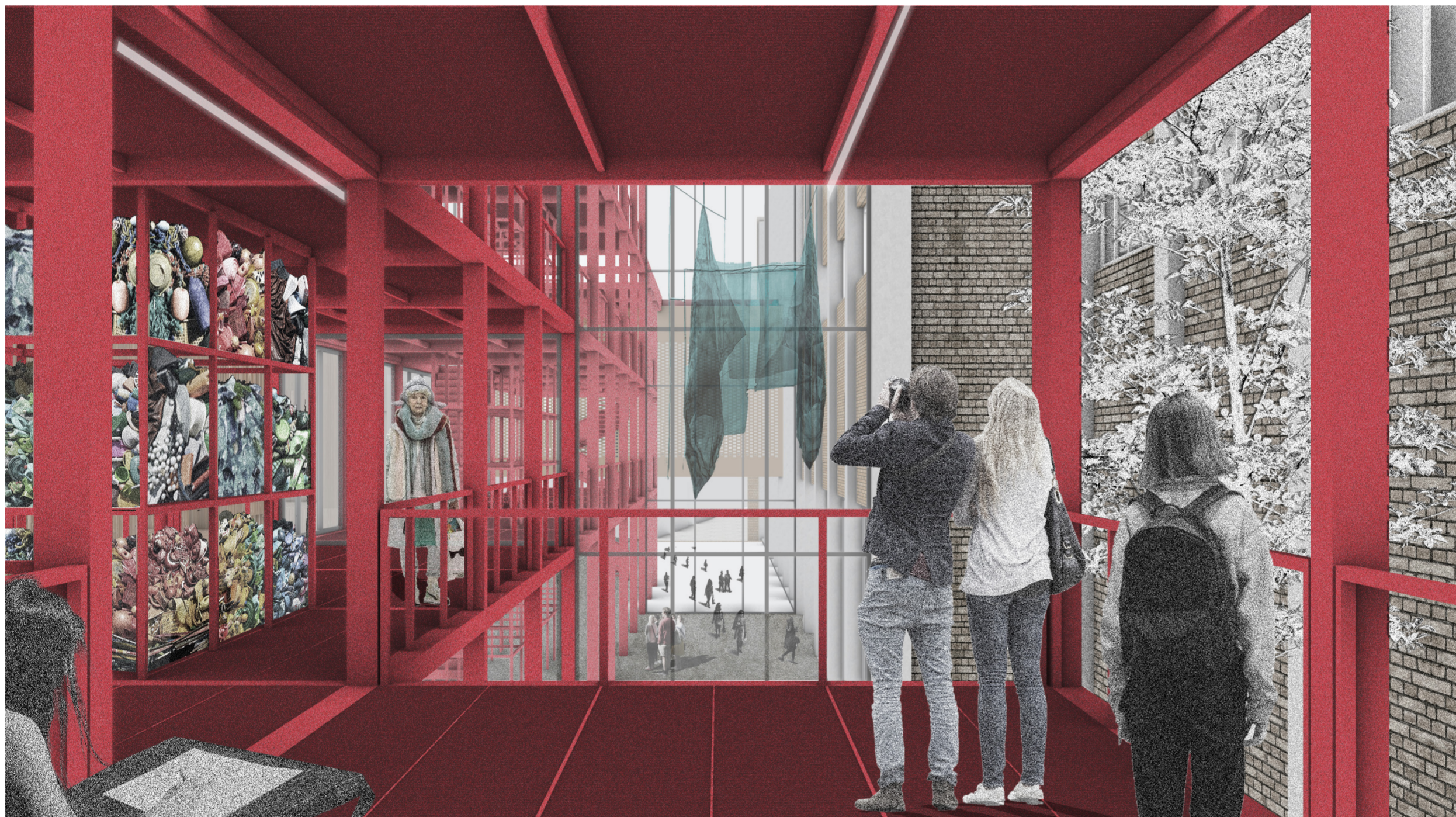
First floor - upcycling



Basement - sorting



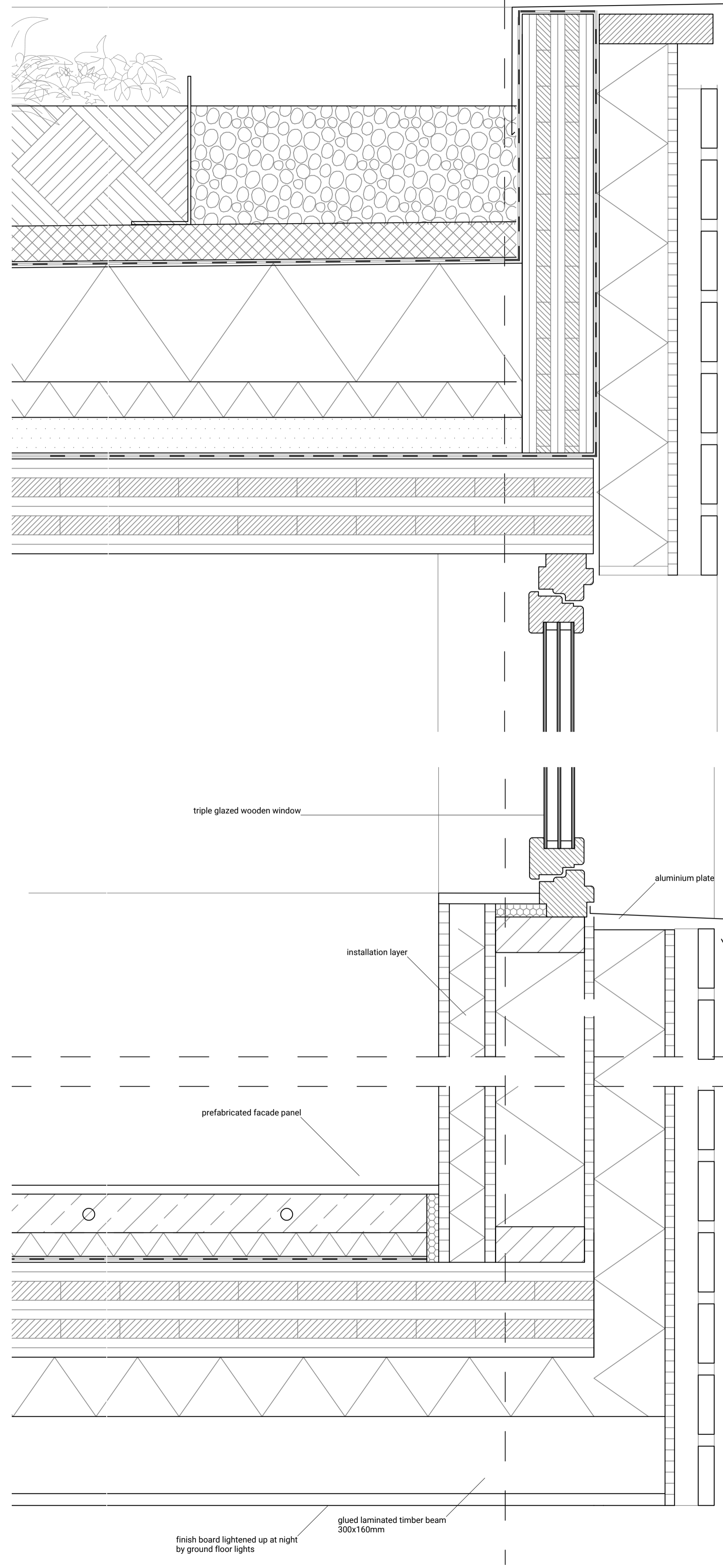
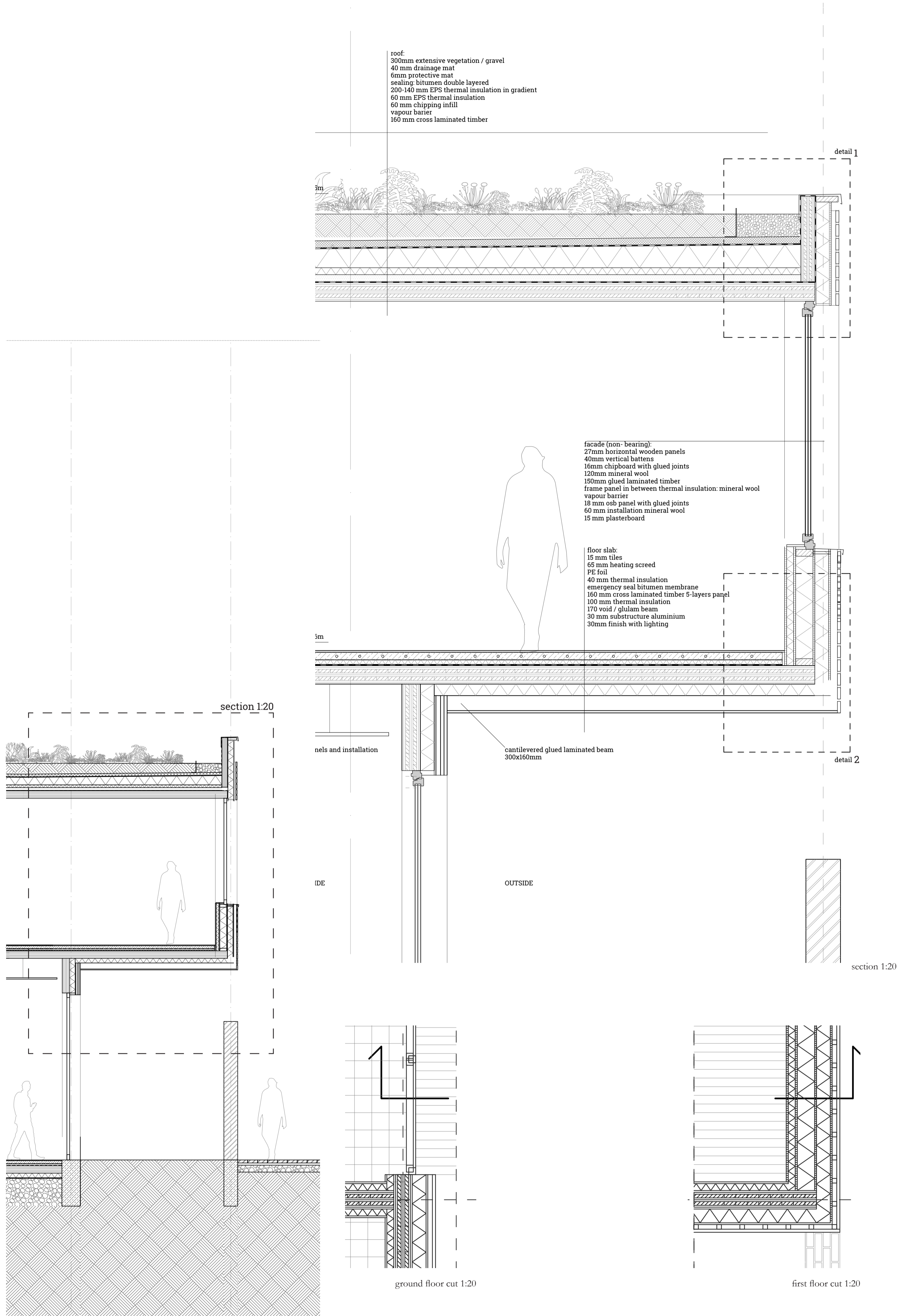
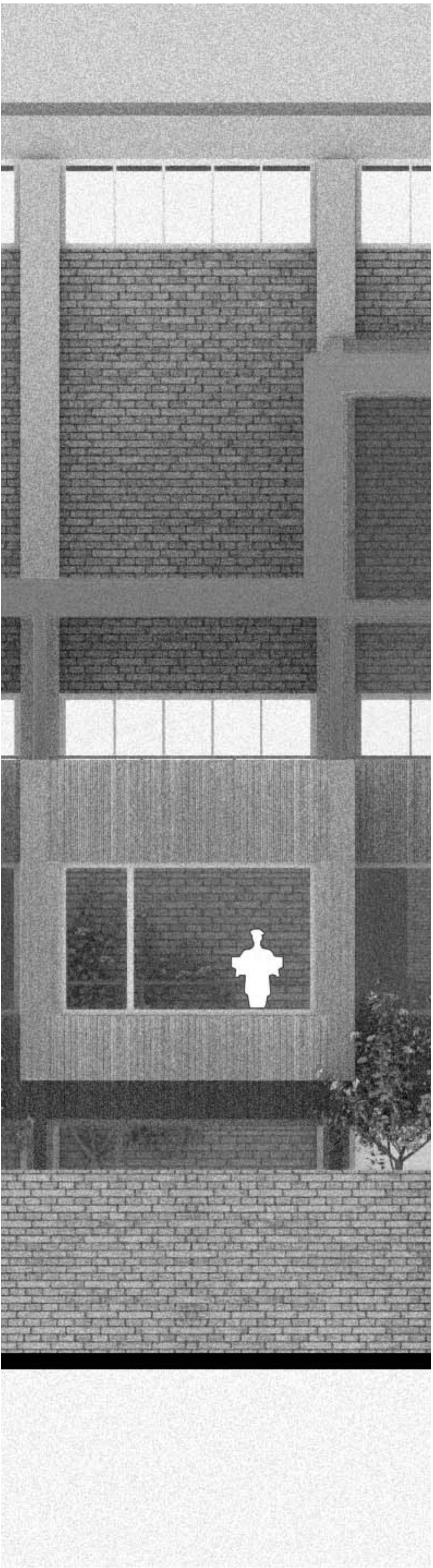
Brick Lane



Dray Walk

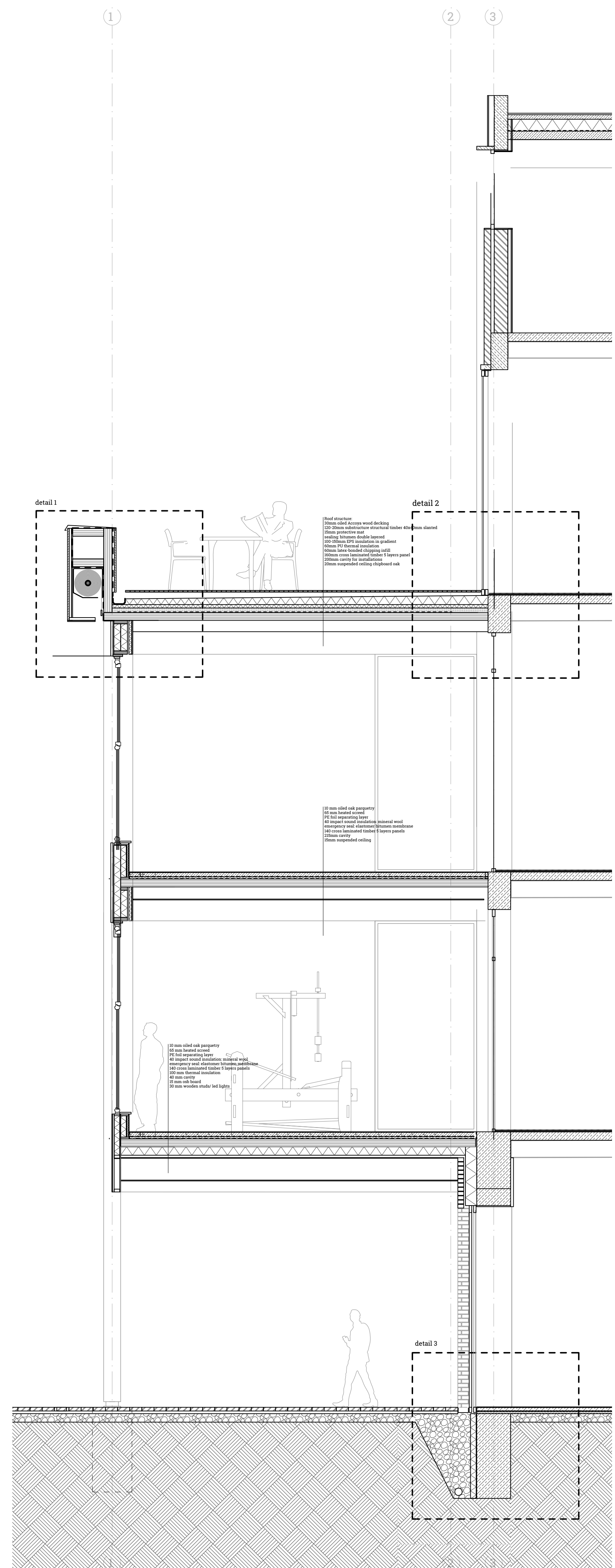


Cooperage Yard

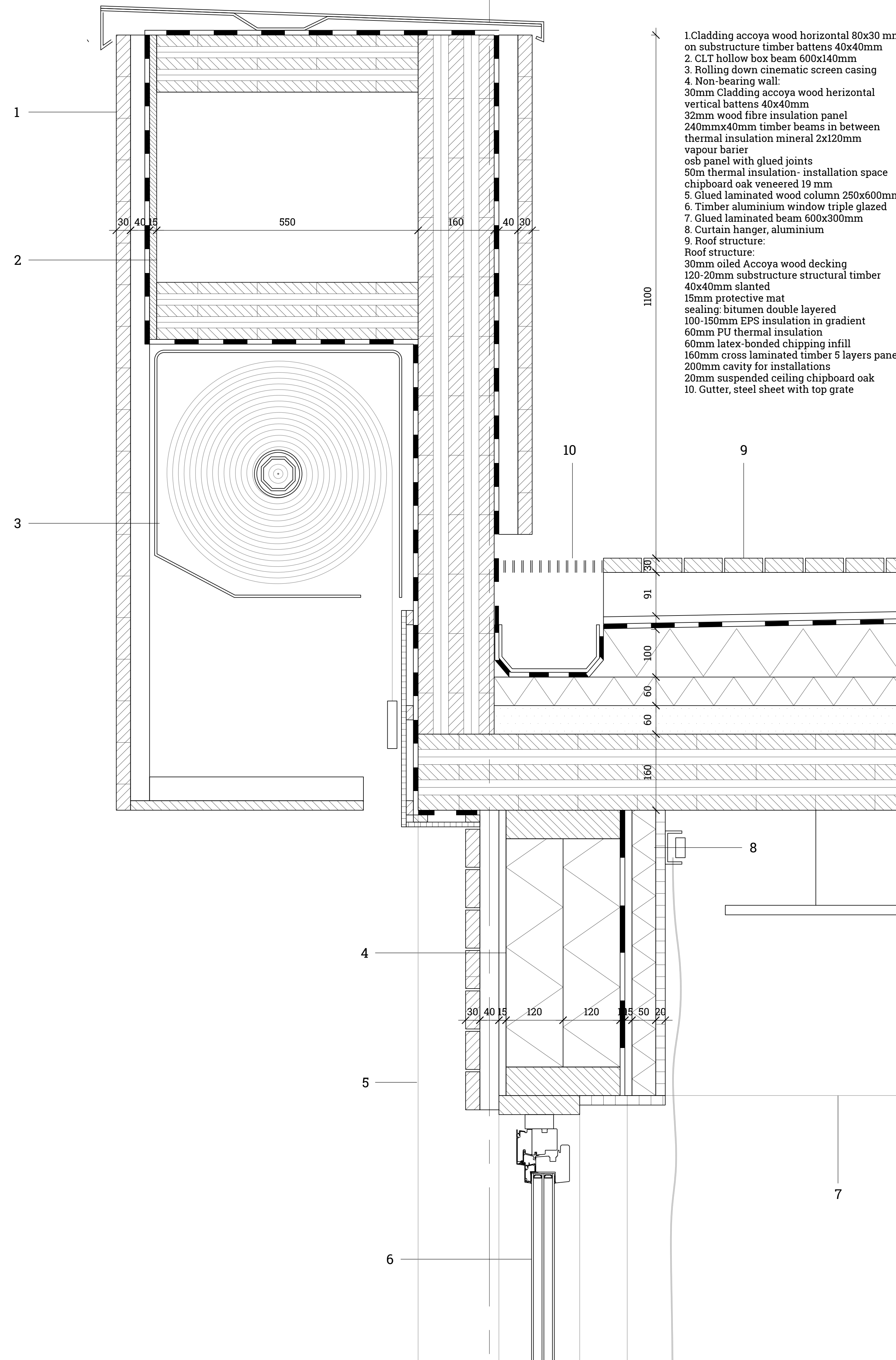




Facade 1:50

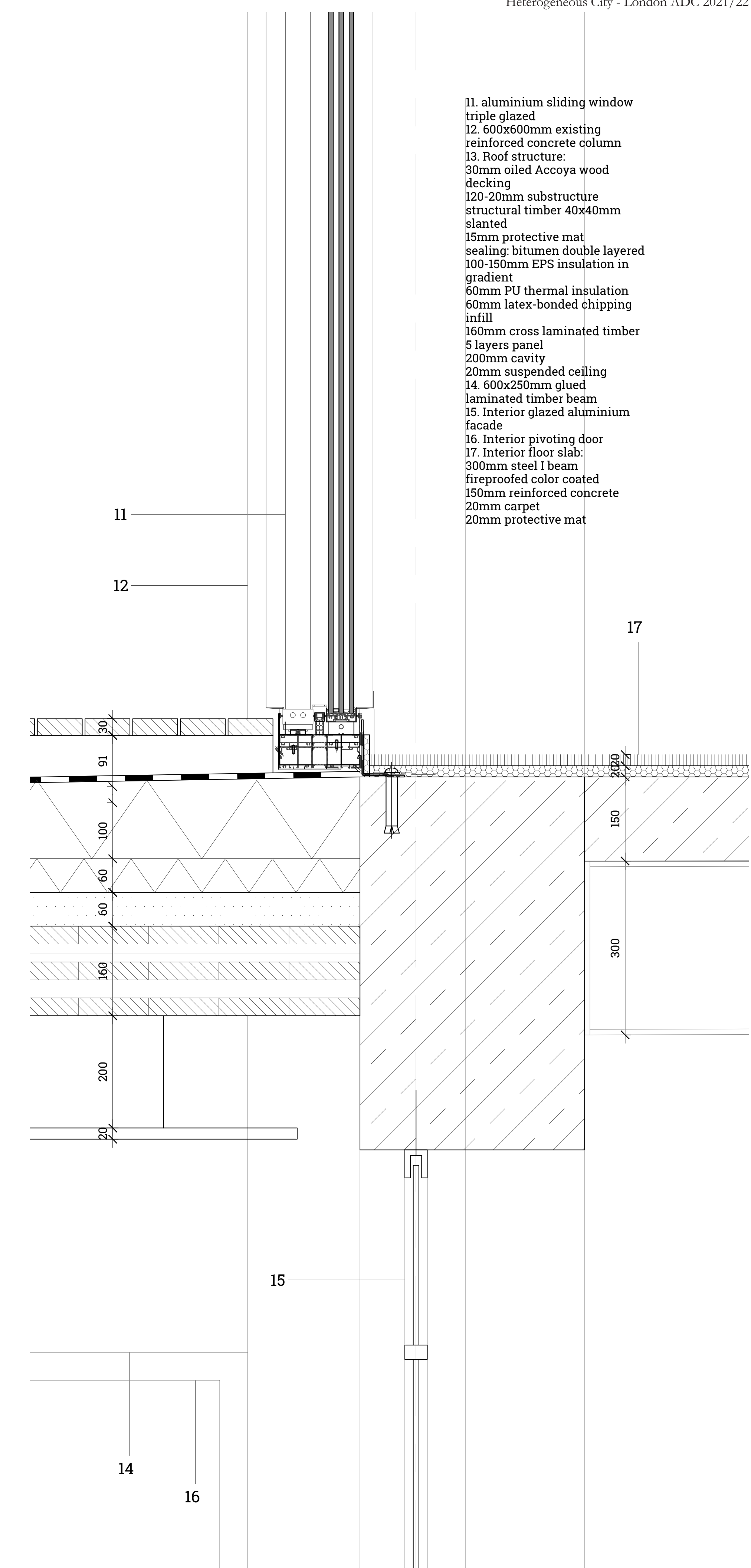


Section 1:50



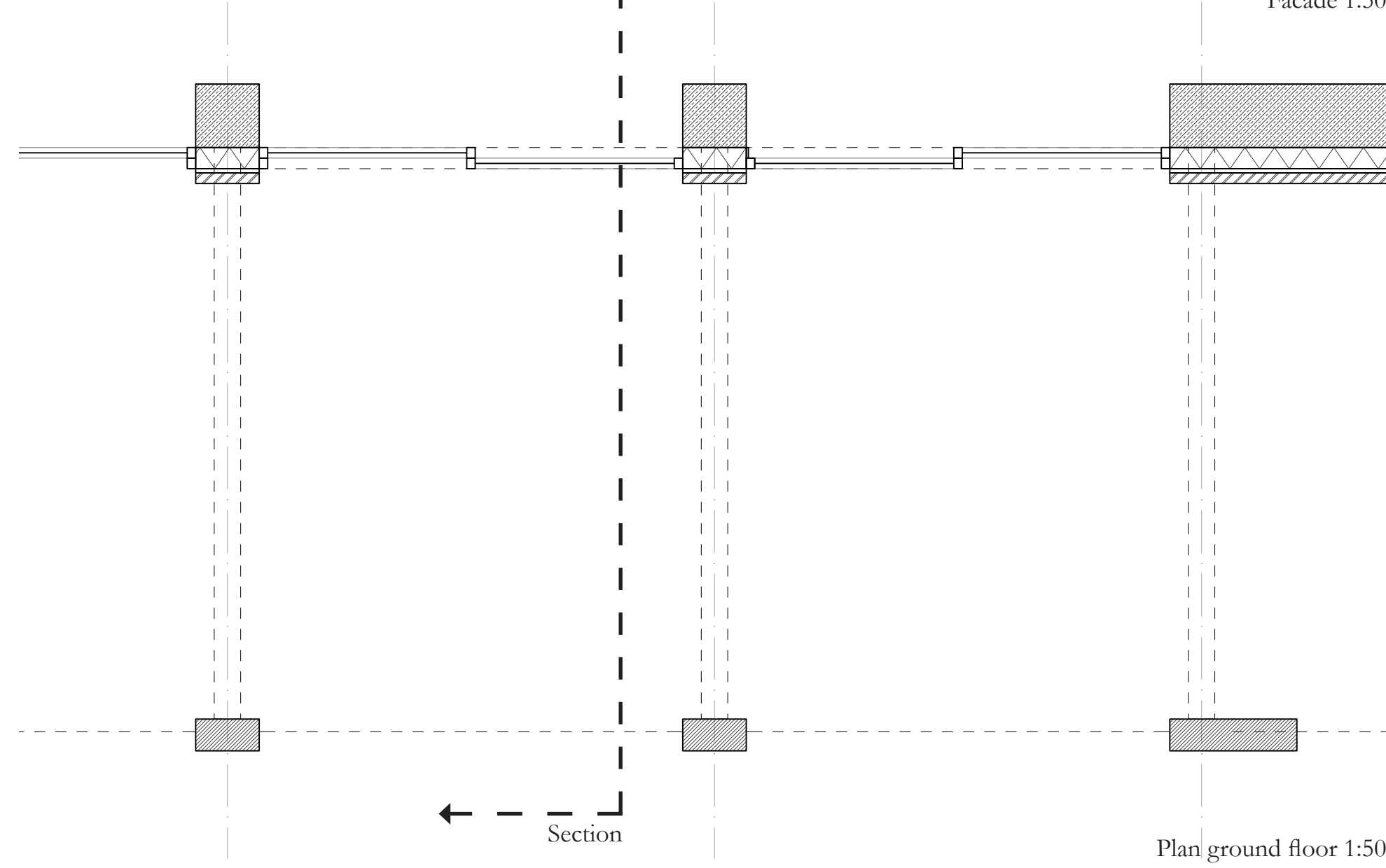
- 1 Cladding accoya wood horizontal 80x30 mm on substructure timber battens 40x40mm
- 2 CLT hollow box beam 600x140mm
- 3 Rolling down cinematic screen casing
- 4 Non-bearing wall
- 30mm Cladding accoya wood horizontal vertical battens 40x40mm
- 32mm wood fibre insulation panel
- 240mmx40mm timber beams in between thermal insulation mineral 2x120mm vapour barrier
- osb panel with glued joints
- 50m thermal insulation - installation space chipboard oak veneered 19 mm
- 5 Glued laminated wood column 250x600mm
- 6 Timber aluminium window triple glazed
- 7 Glued laminated beam 600x300mm
- 8 Curtain hanger, aluminium
- 9 Roof structure:
- 30mm oiled Accoya wood decking
- 120-20mm substructure structural timber 40x40mm slanted
- 15mm protective mat
- sealing: bitumen double layered
- 100-150mm EPS insulation in gradient
- 60mm PU thermal insulation
- 60mm latex-bonded chipping infill
- 160mm cross laminated timber 5 layers panel
- 200mm cavity for installations
- 20mm suspended ceiling chipboard oak
- 10. Gutter, steel sheet with top grate

Detail 1 1:5

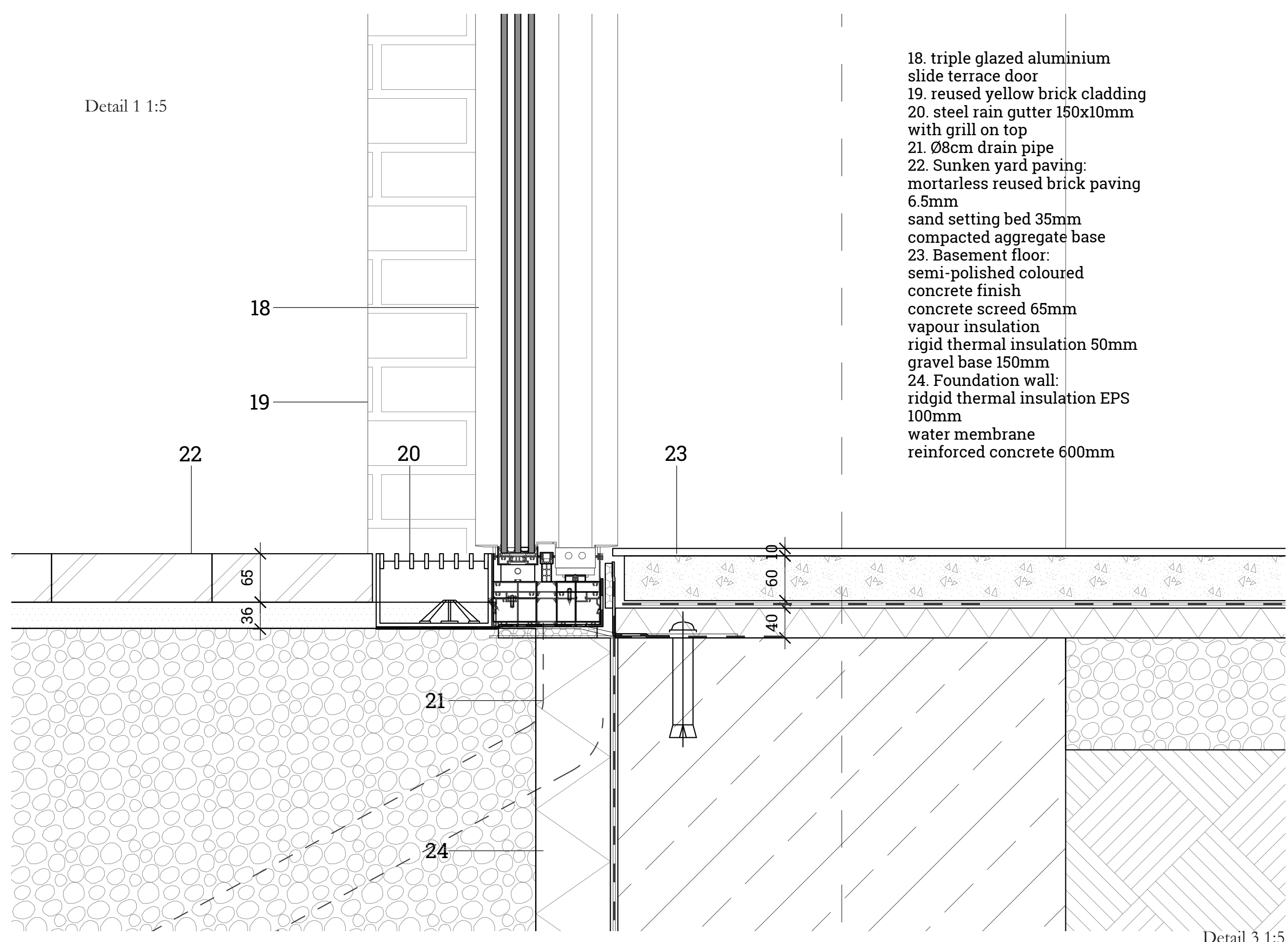


- 11 aluminium sliding window triple glazed
- 12. 600x600mm existing reinforced concrete column
- 13. Roof structure:
- 30mm oiled Accoya wood decking
- 120-20mm substructure structural timber 40x40mm slanted
- 15mm protective mat
- sealing: bitumen double layered
- 100-150mm EPS insulation in gradient
- 60mm PU thermal insulation
- 60mm latex-bonded chipping infill
- 160mm cross laminated timber 5 layers panel
- 20mm cavity
- 20mm suspended ceiling
- 14 60x250mm glued laminated timber beam
- 15. Interior glazed aluminium facade
- 16 Interior pivoting door
- 17. Interior floor slab:
- 300mm steel I beam
- fireproofed color coated
- 150mm reinforced concrete
- 20mm carpet
- 20mm protective mat

Detail 2 1:5



Plan ground floor 1:50



- 18 triple glazed aluminium slide terrace door
- 19 reused yellow brick cladding
- 20. steel rain gutter 150x10mm with grill on top
- 21. Ø8cm drain pipe
- 22. Sunken yard paving: mortarless reused brick paving 6.5mm sand setting bed 35mm compacted aggregate base
- 23. Basement floor: semi-polished coloured concrete finish concrete screed 65mm vapour insulation rigid thermal insulation 50mm gravel base 150mm
- 24. Foundation wall: rigid thermal insulation EPS 100mm water membrane reinforced concrete 600mm

Detail 3 1:5