

Paraná Delta

New scenarios to link the delta dynamics with a sustainable development of the Lower Parana Delta

P5 presentation

Ana Paula Amieva Gomez

What is going on in the Paraná Delta?



Why is this happening?



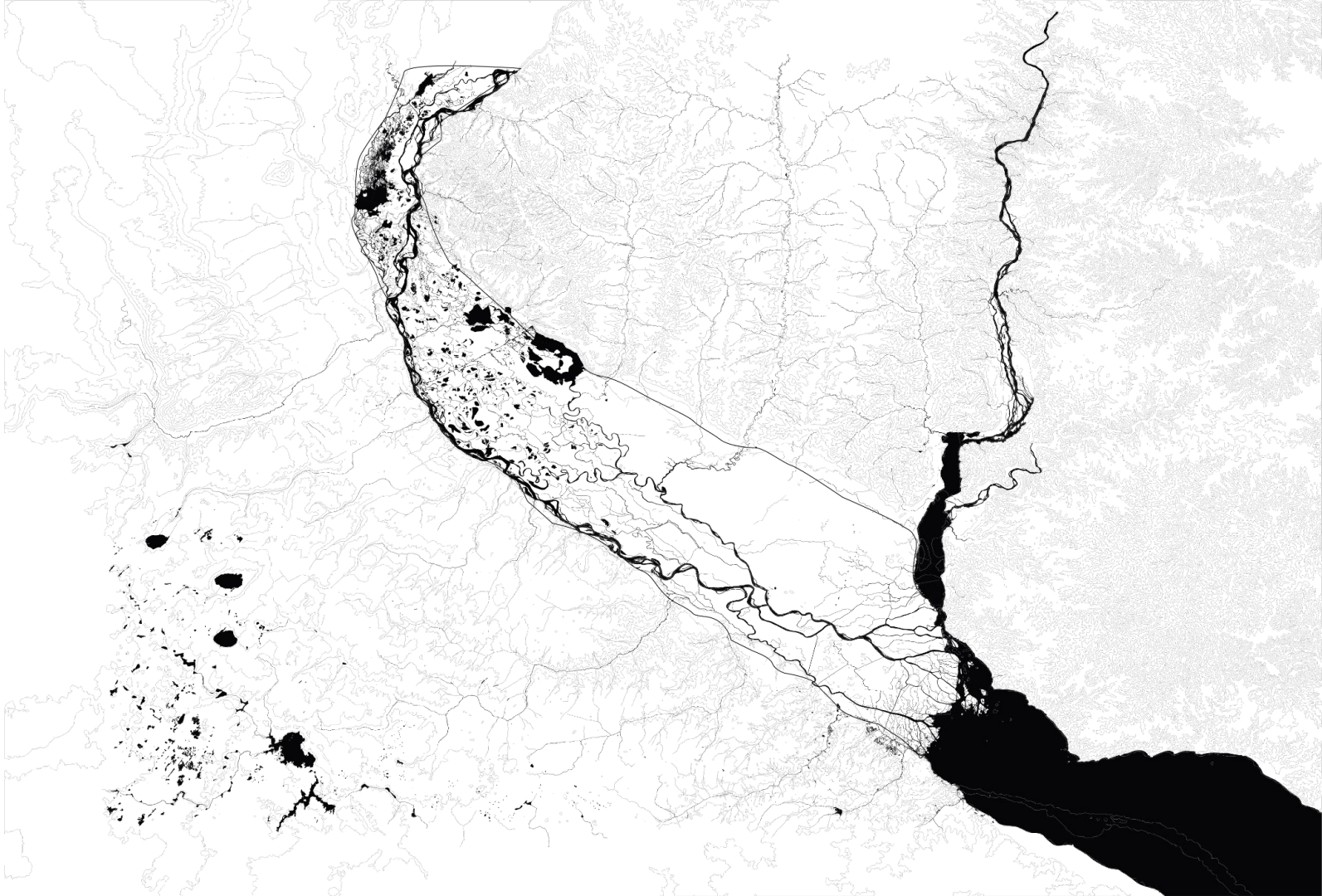
Paraná Delta



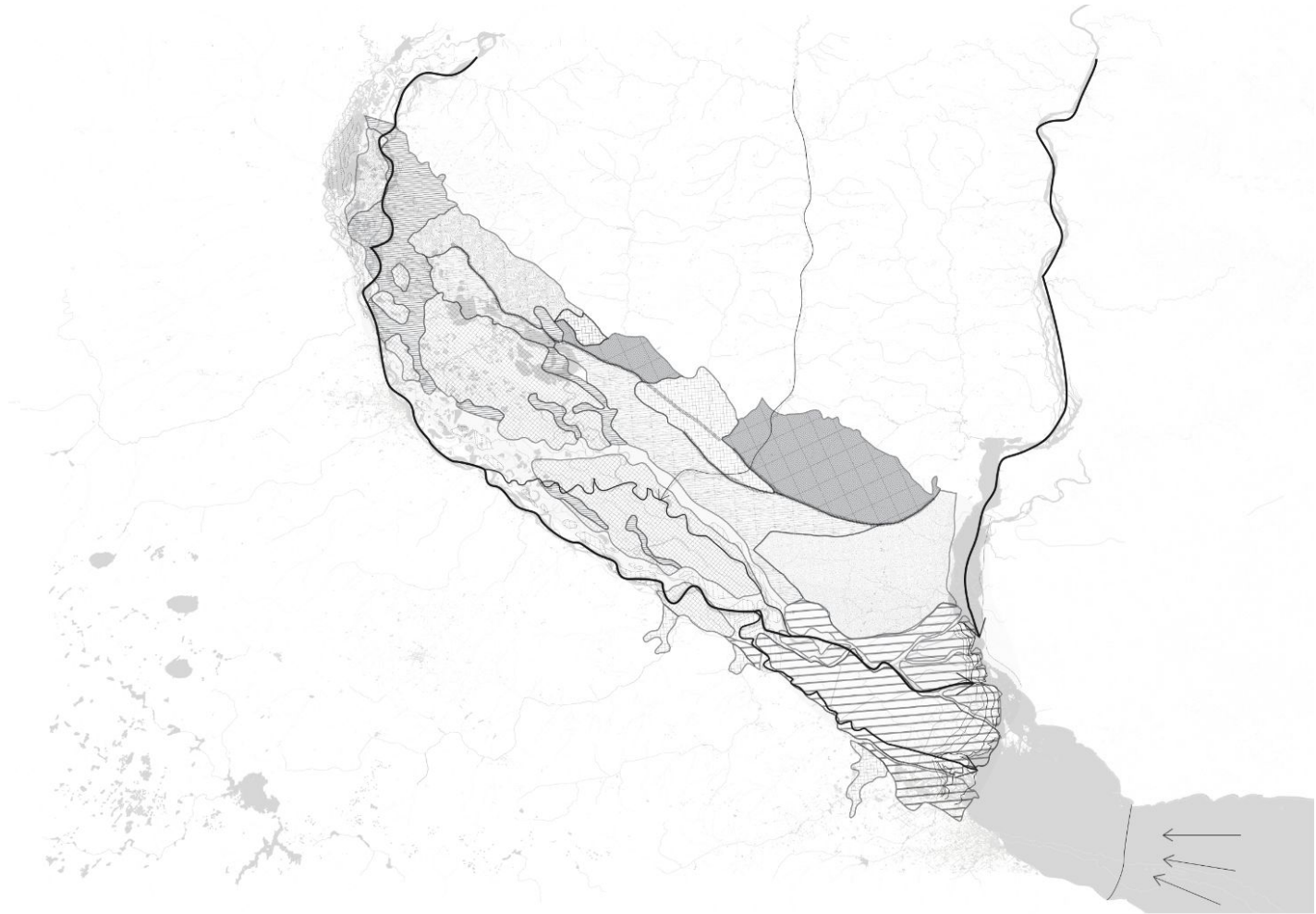
Paraná Delta



Paraná Delta

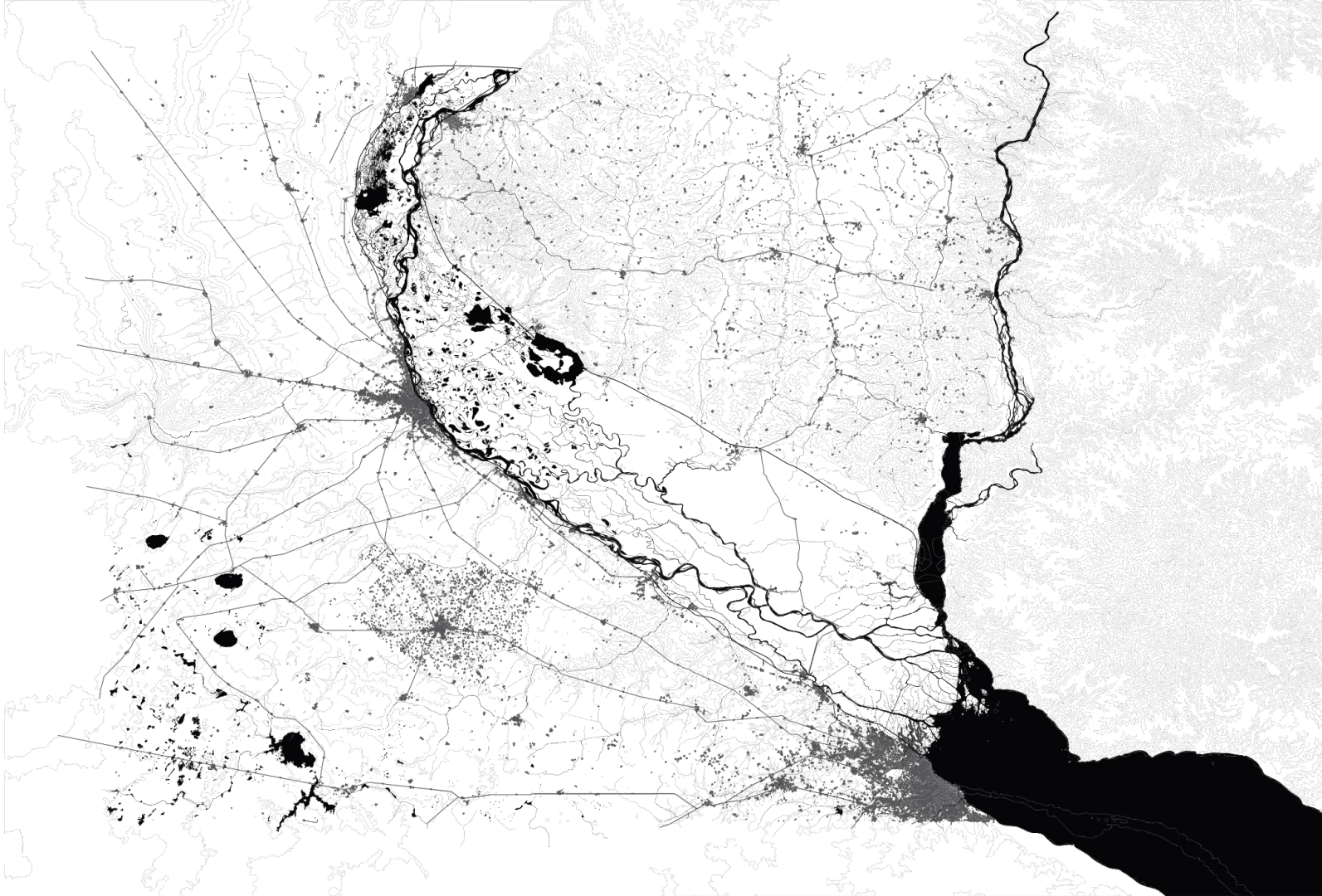




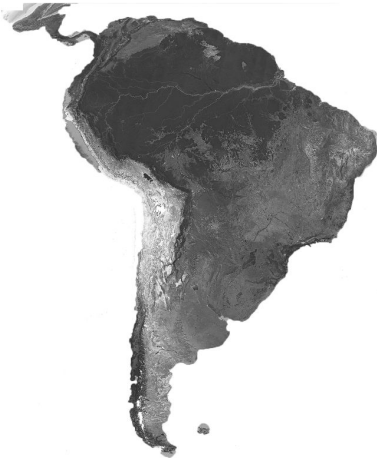


VIDEO DE WETLANDS

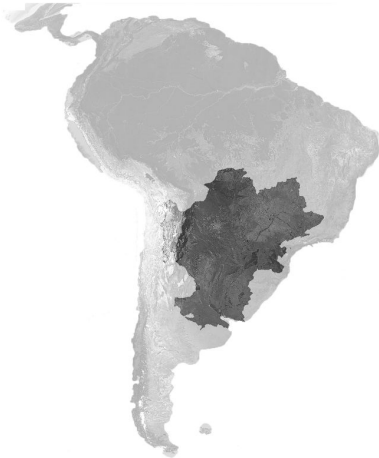
Paraná Delta





















La Plata River Basin

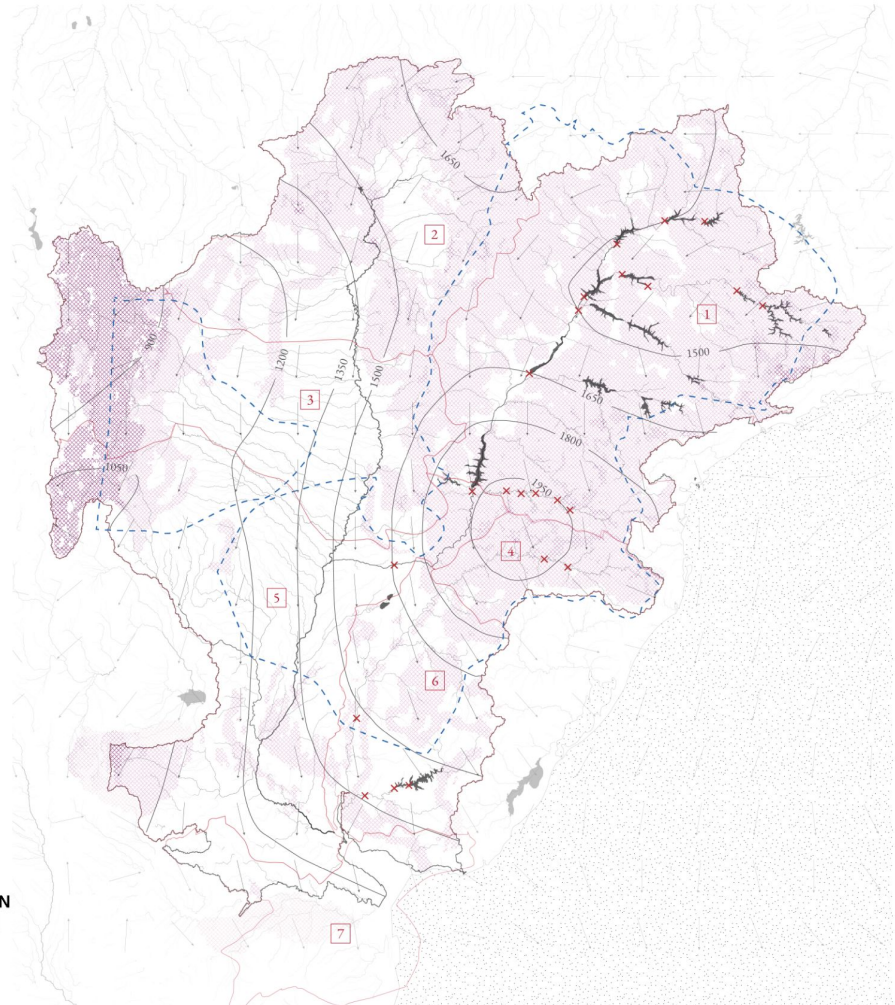


La Plata River Basin



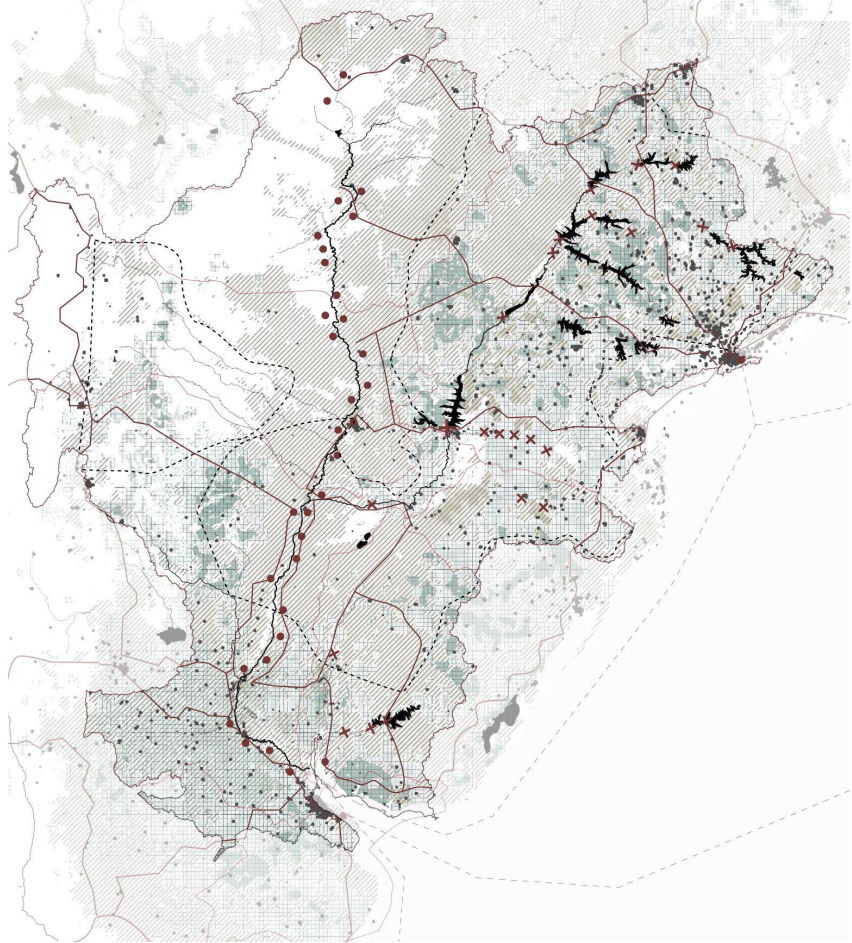
La Plata River Basin - matter

-  Atlantic sea
-  Aquifers
-  Water flow
-  Reservoirs
-  Annual Precipitations lines
-  Wind flow
-  Hydropower plants
-  Medium Erosion
-  Intense Erosion
-  Excessive Erosion
-  Watershed
-  1 Alto Paraná
-  2 Alto Paraguay
-  3 Medio y bajo Paraguay
-  4 Alto Uruguay
-  5 Medio y bajo Paraná
-  6 Bajo Uruguay
-  7 Río de la Plata



La Plata River Basin - geopolitics

- Soy crops
- Cattle farming
- Urbanization
- Aquifers
- Reservoirs
- River Basins borders
- Main road connections
- Trade water network
- Hydropower power plants
- Ports and harbours- Hidrovia

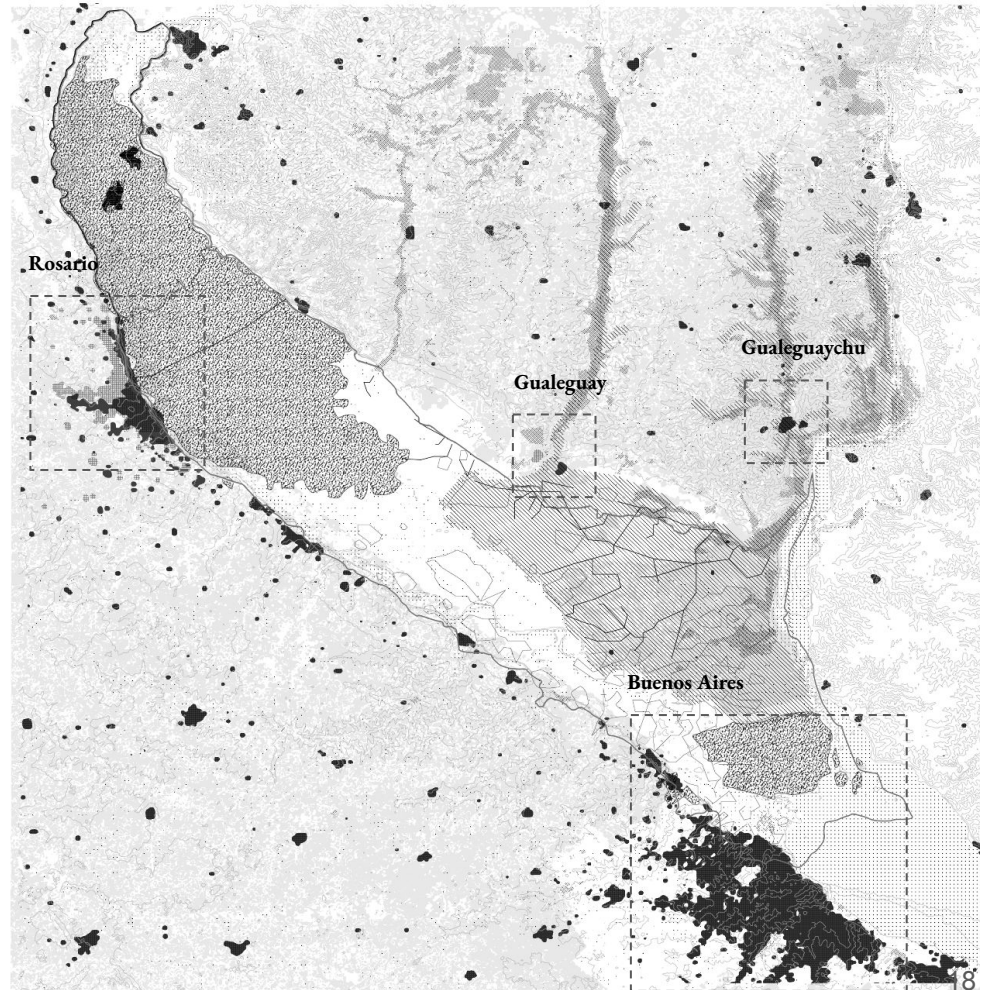






Paraná Delta

Buenos Aires	17.000.000 inhabitants
Rosario	1.400.000 inhabitants
Guaeguay	40.000 inhabitants
Guaeguaychu	90.000 inhabitants

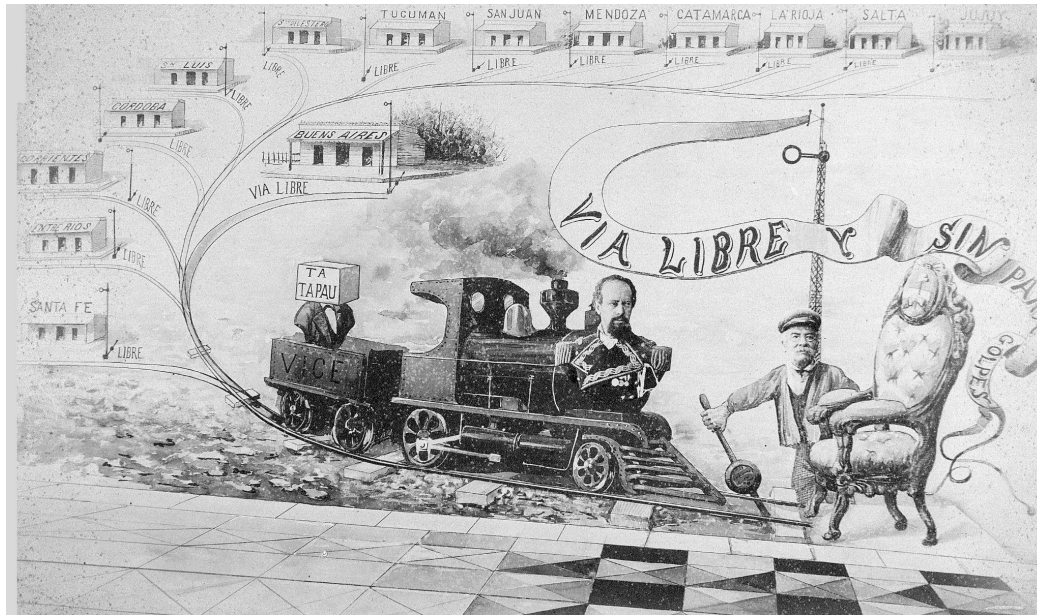


Spanish invasion



A Guarani family captured by slave hunters. By Jean Baptiste

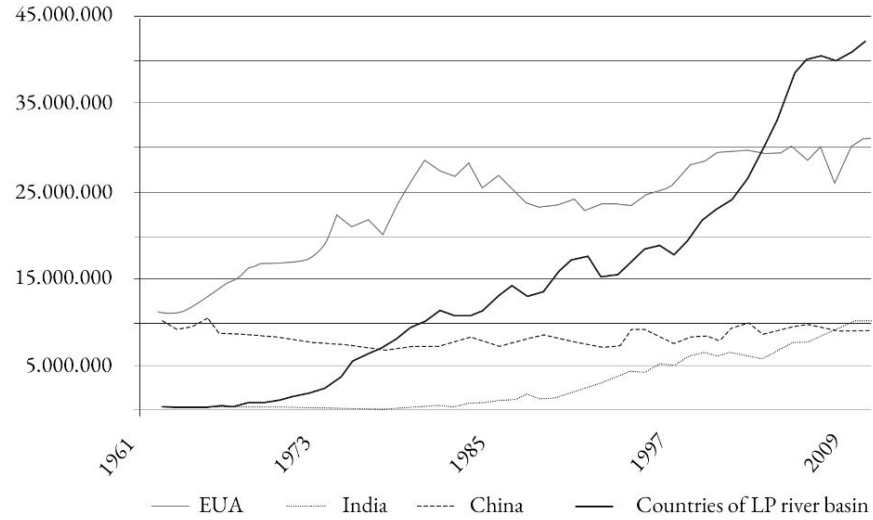
Agro-exportation model



Caricatura de Roca llegando a la presidencia. Año 1879

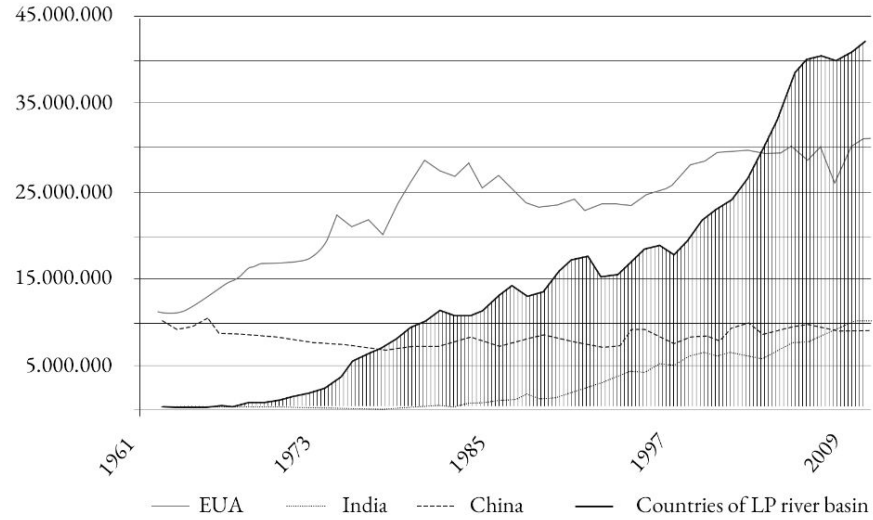


Evolution of soybean harvested area by region



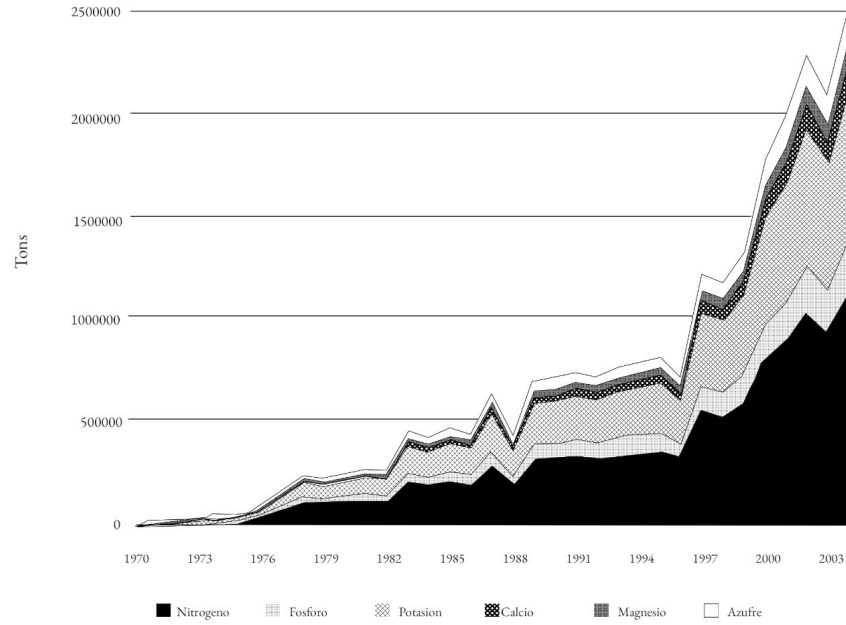
FAO (Faostat,2011)

Evolution of soybean harvested area by region



FAO (Faostat,2011)

Estimated extraction of the main nutrients for the 1970 to 2005 soybean cropping seasons in Argentina



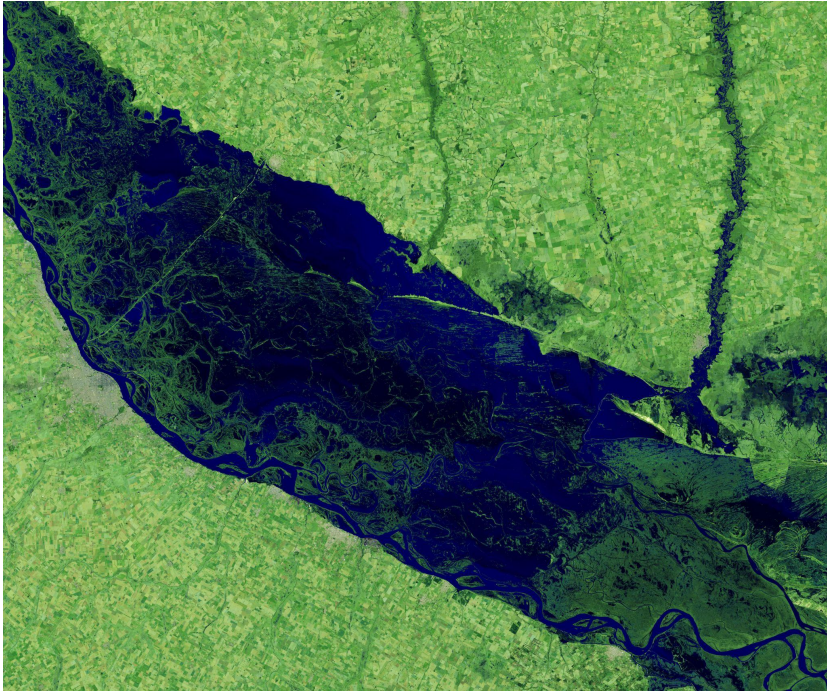
Fuente: Pengue, 2006



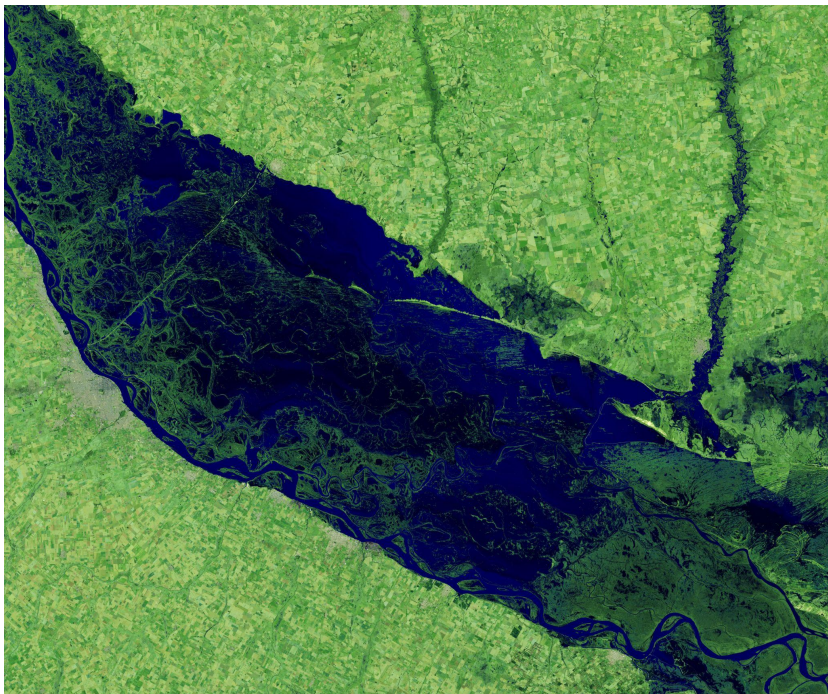




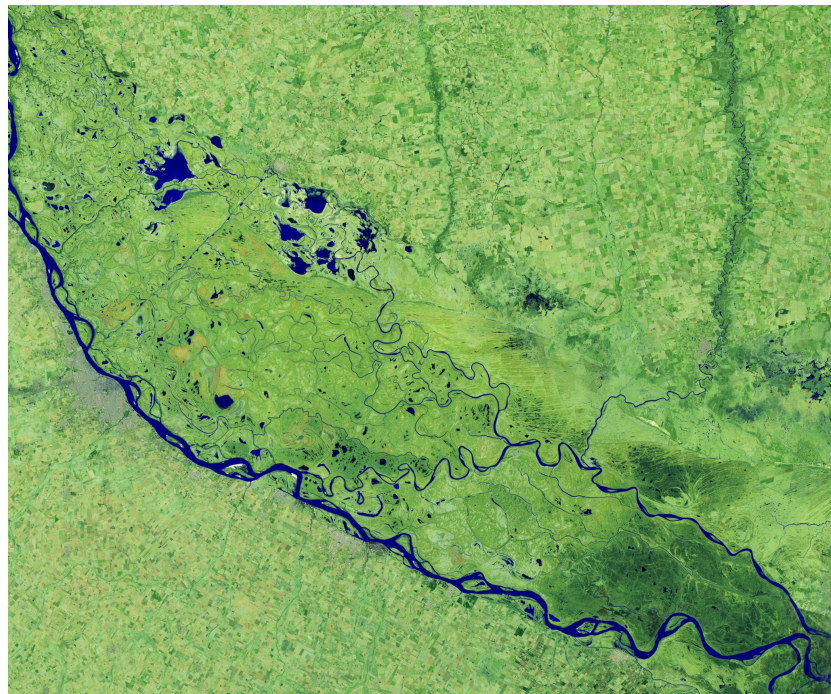




July 2019



July 2019



July 2020

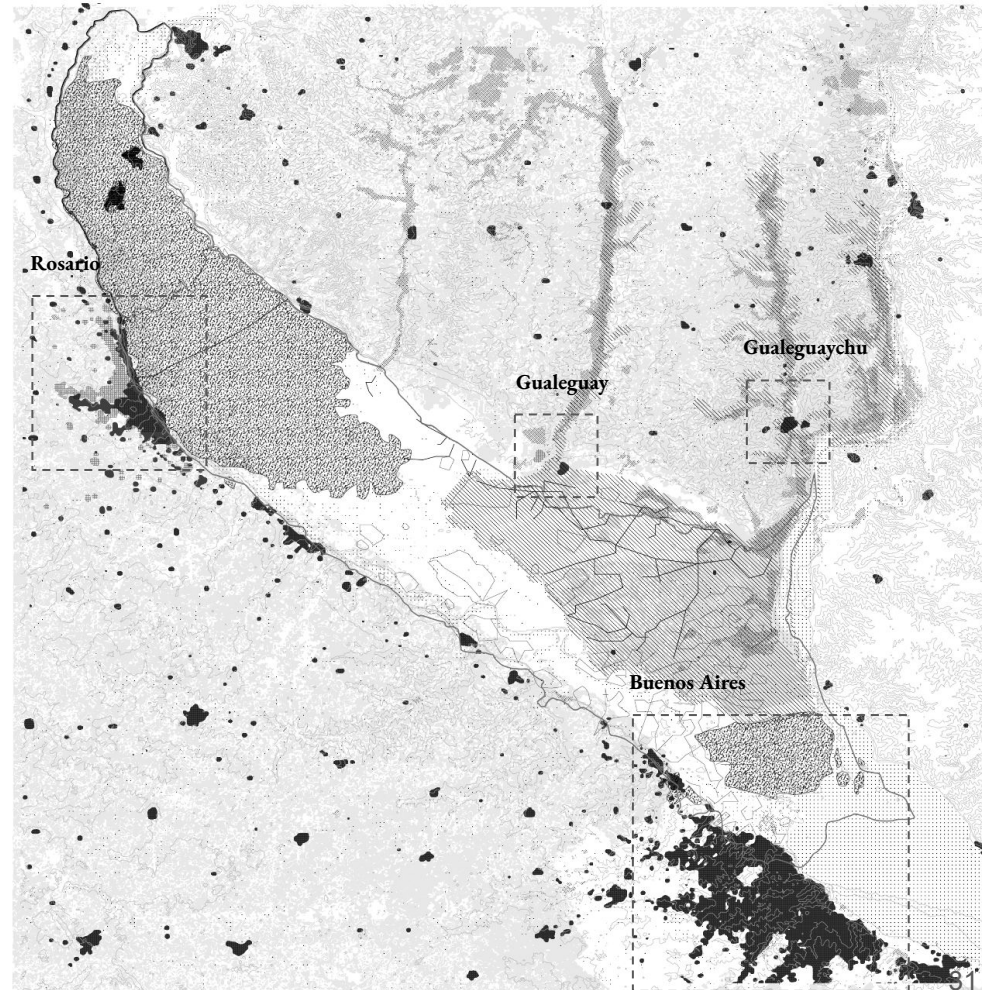
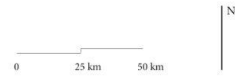
(NASA image)

Paraná Delta

Buenos Aires	17.000.000 inhabitants
Rosario	1.400.000 inhabitants
Guaeguay	40.000 inhabitants
Guaeguaychu	90.000 inhabitants



- Dikes
- Delta
- Productive landscape
- ▨ Forest
- ▨ Natural Reserveclos Dijarow sus Pueblos Libre
- ▨ RAMSAR sites
- National Parks
- Urban Areas



Contrast in development

Western Side



Matanza River, Buenos Aires



*Gated communities, San Fernando,
Buenos Aires*

Eastern Side

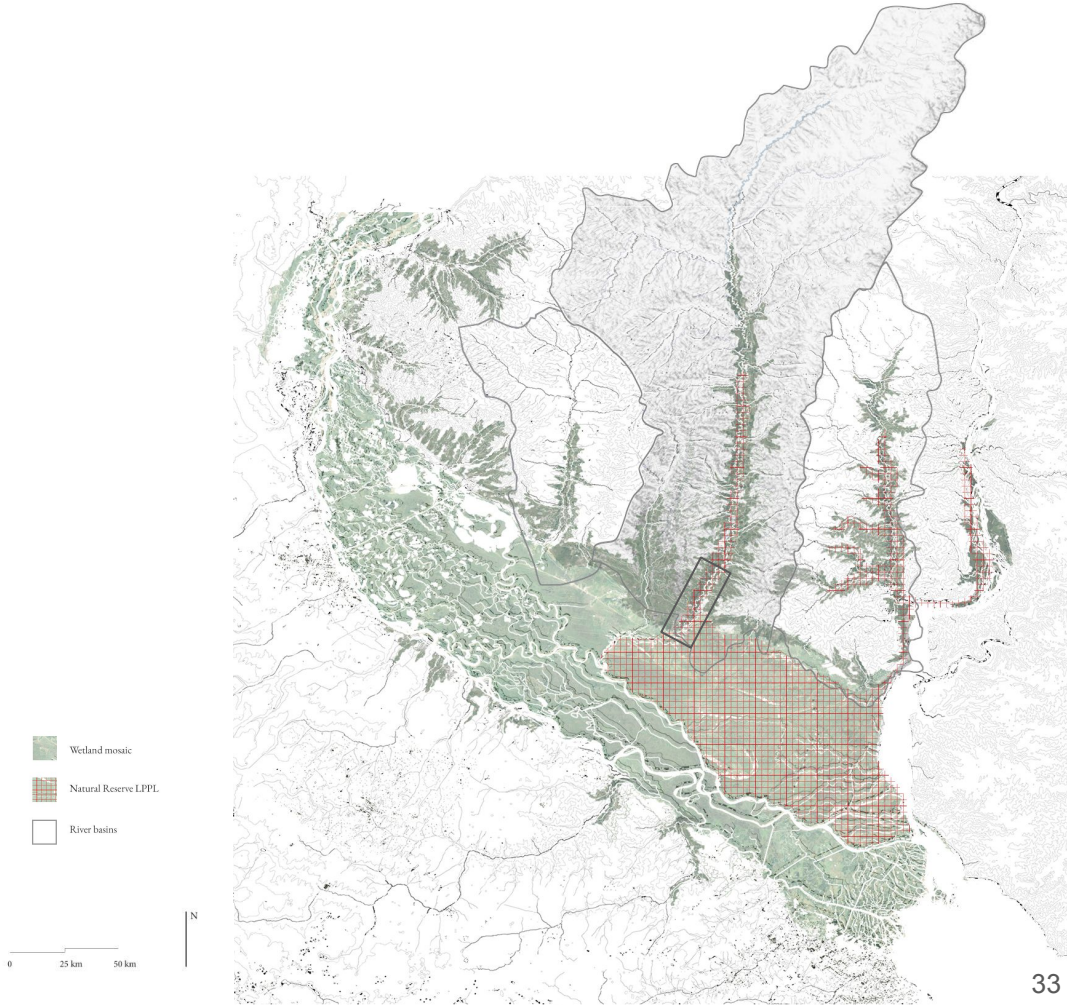


*Guleguay Urban area, Guleguay
River*



Wetlands Guleguay River

Paraná Delta and Natural Reserve LPPL









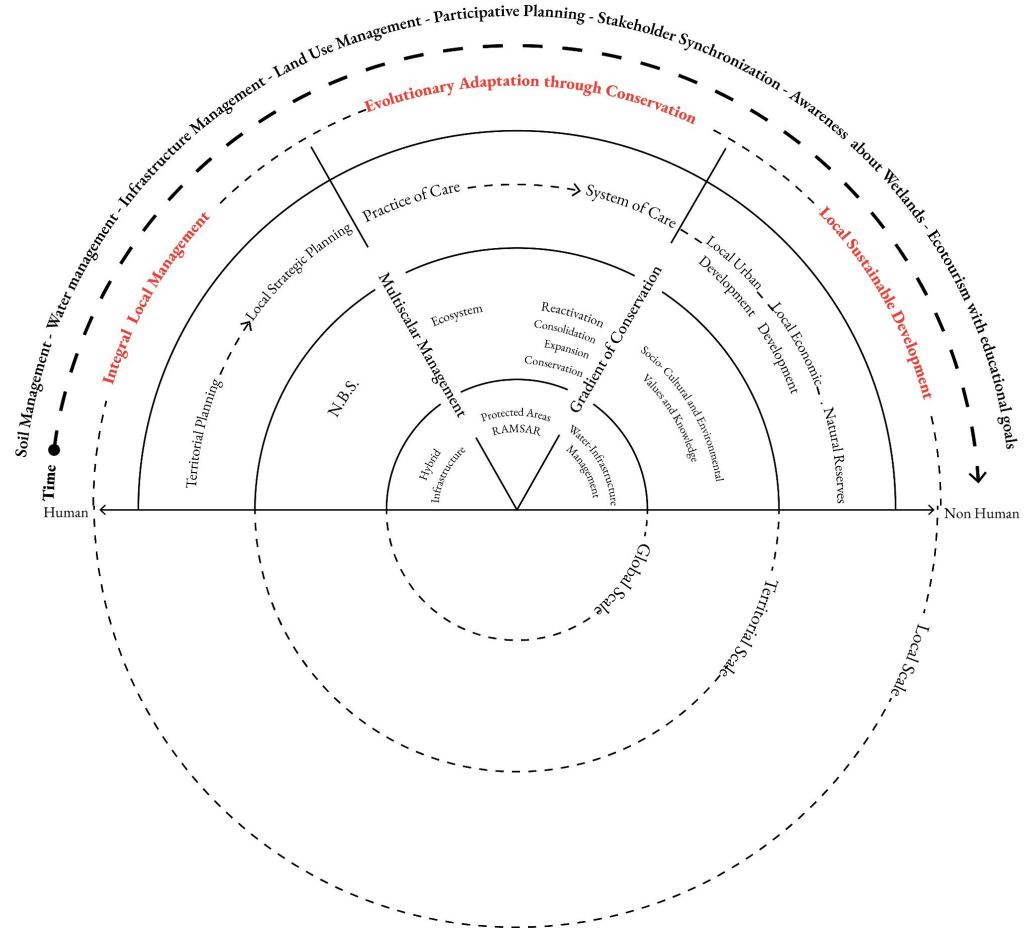


Research framework

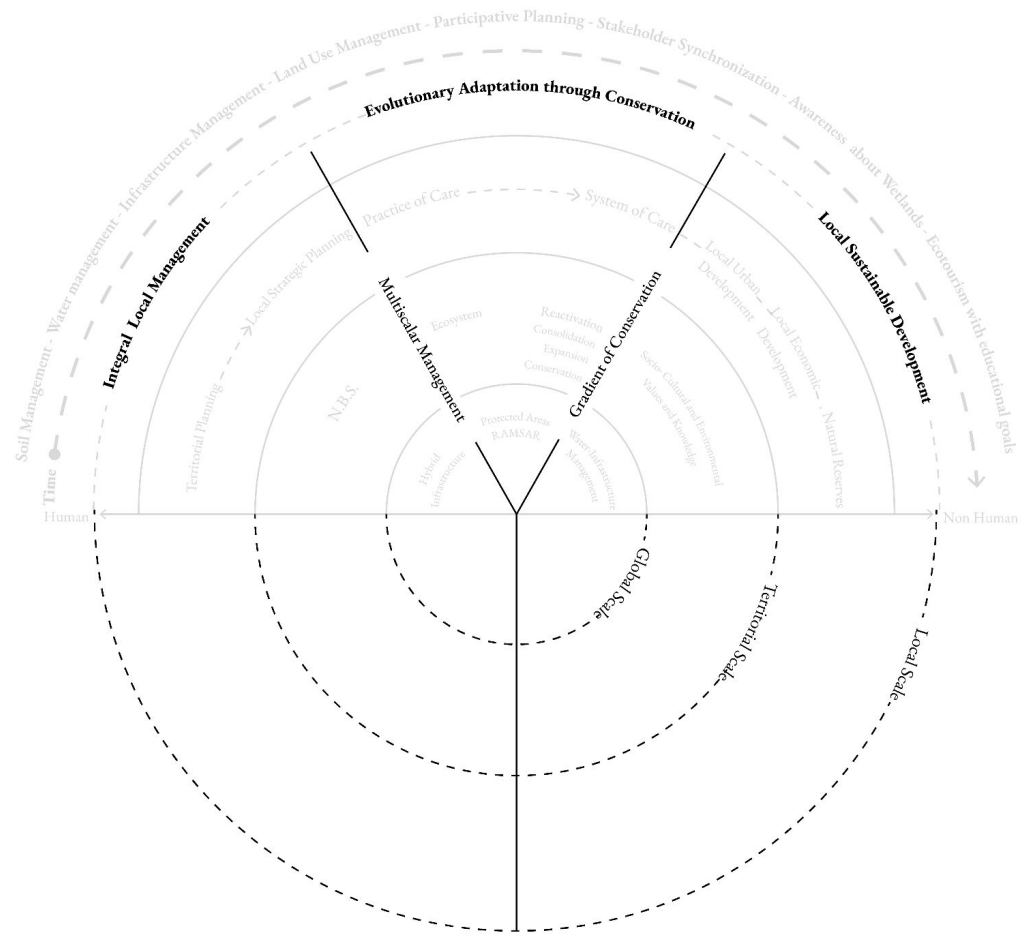
Research question

How to counteract the anthropogenic disruption upon the wetlands, taking the natural reserve Los Pájaros y sus Pueblos Libres as a biophysical unit of design and expand the adaptive capacity of its system and stakeholders within the delta dynamics?

Conceptual framework

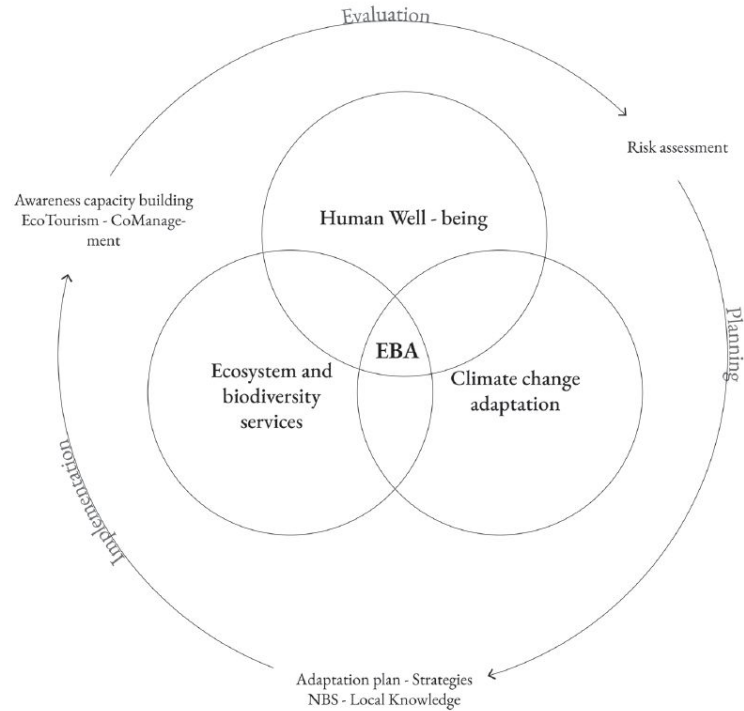


Conceptual framework

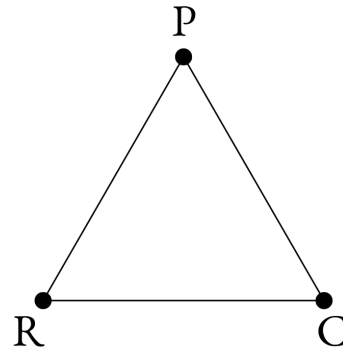


Approach

Ecosystem based adaptation



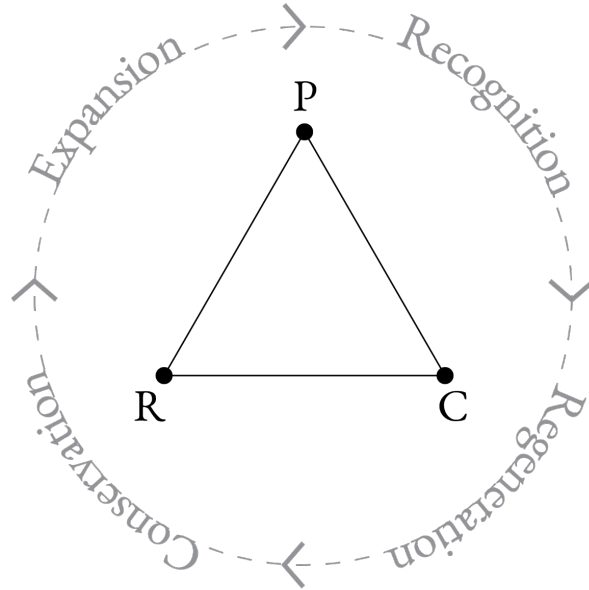
Balancing ecosystem services



P = Provisioning services
R = Regulating and supporting services
C = Cultural, spiritual and recreational services

Based on McMichael et al. (2005)

Towards a new system of care

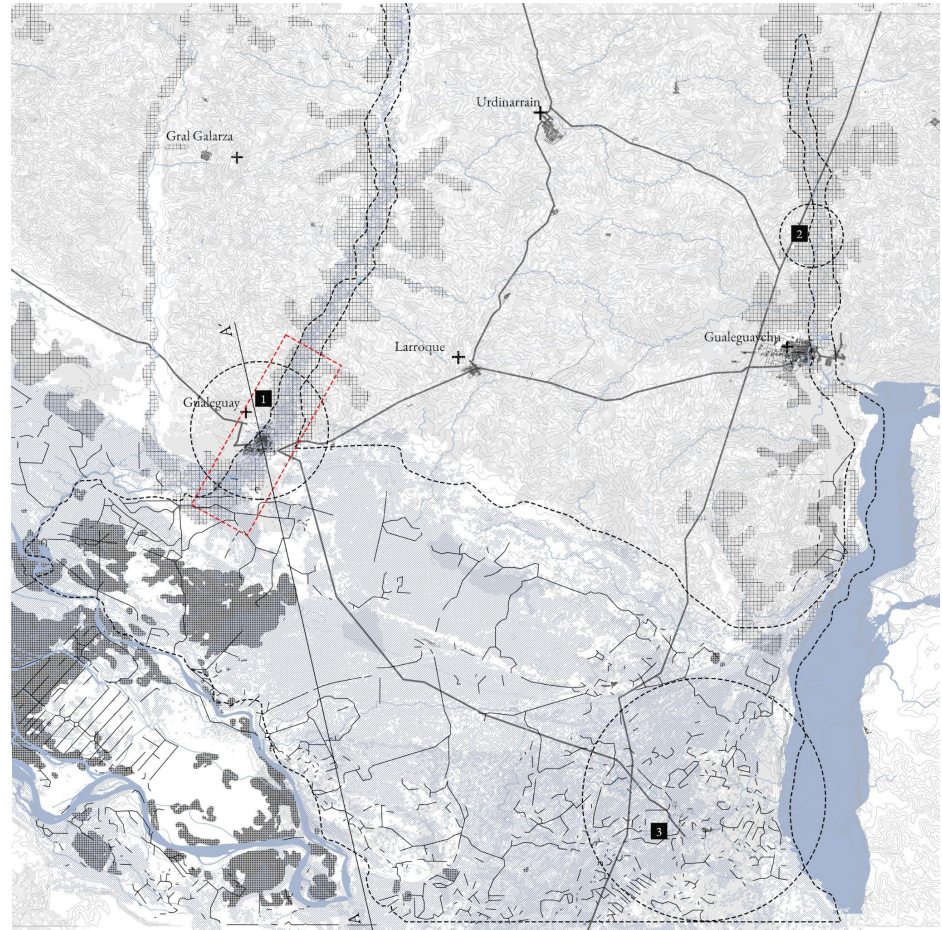


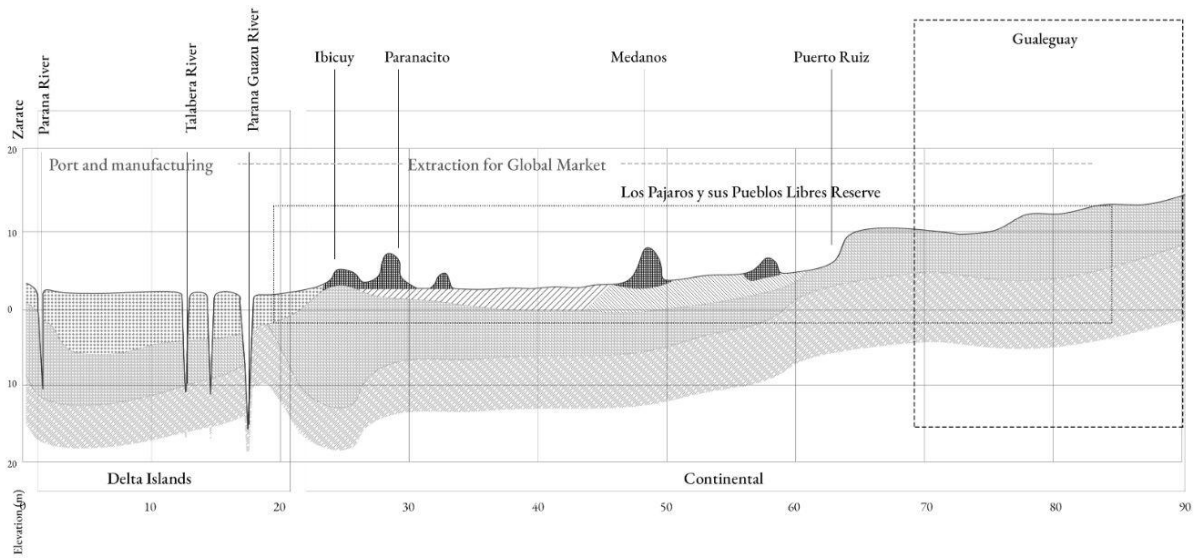
P = Provisioning services
R = Regulating and supporting services
C = Cultural, spiritual and recreational services

Based on McMichael et al. (2005)

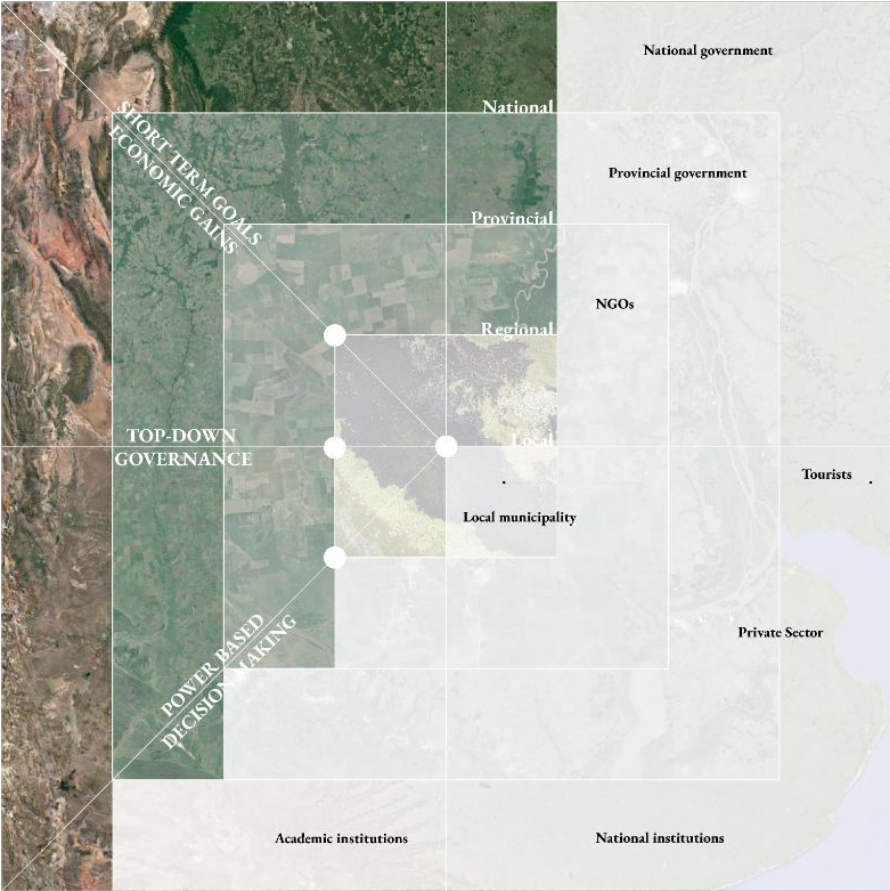
Context

- Floodplain
- Agriculture
- Areas affected by fires
- Native
- Natural Reserve LPPL
- Dikes
- Routes





Current stakeholder system



Vernacular knowledge

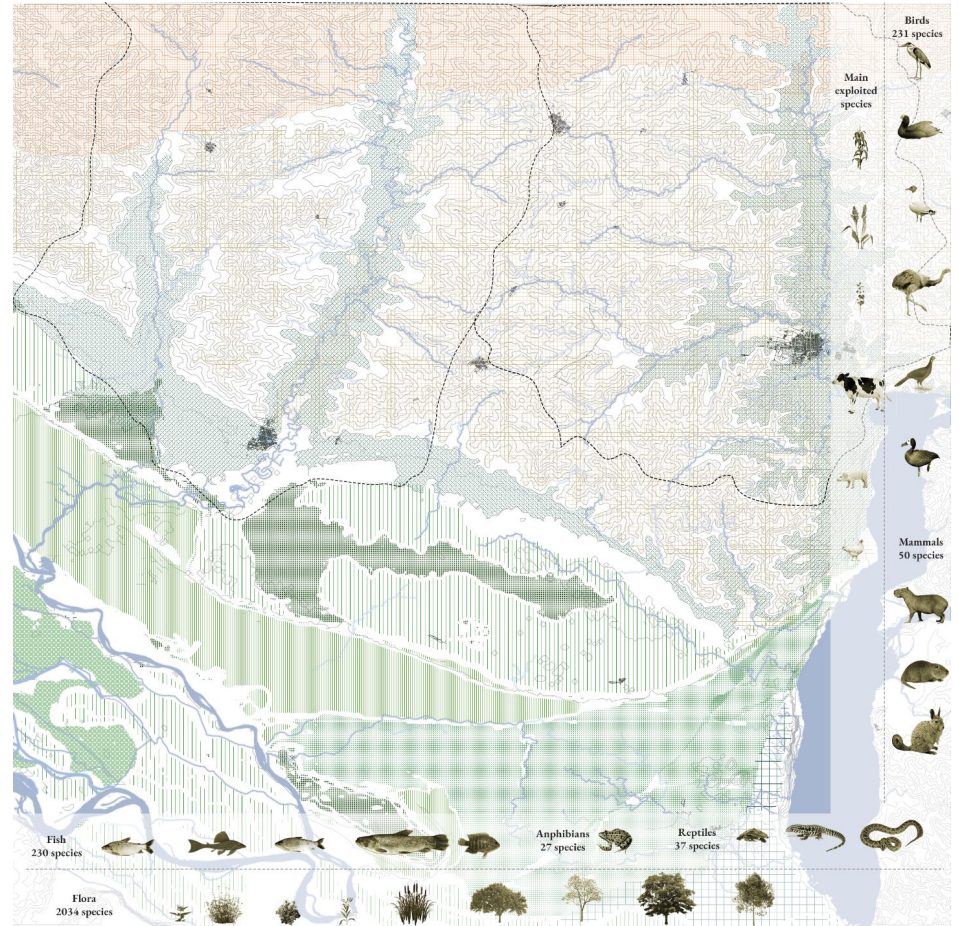




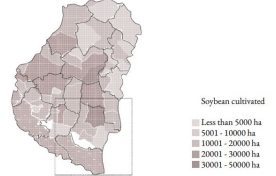
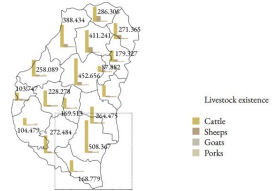
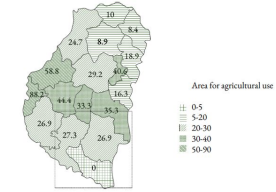


Biodiversity and landscape units

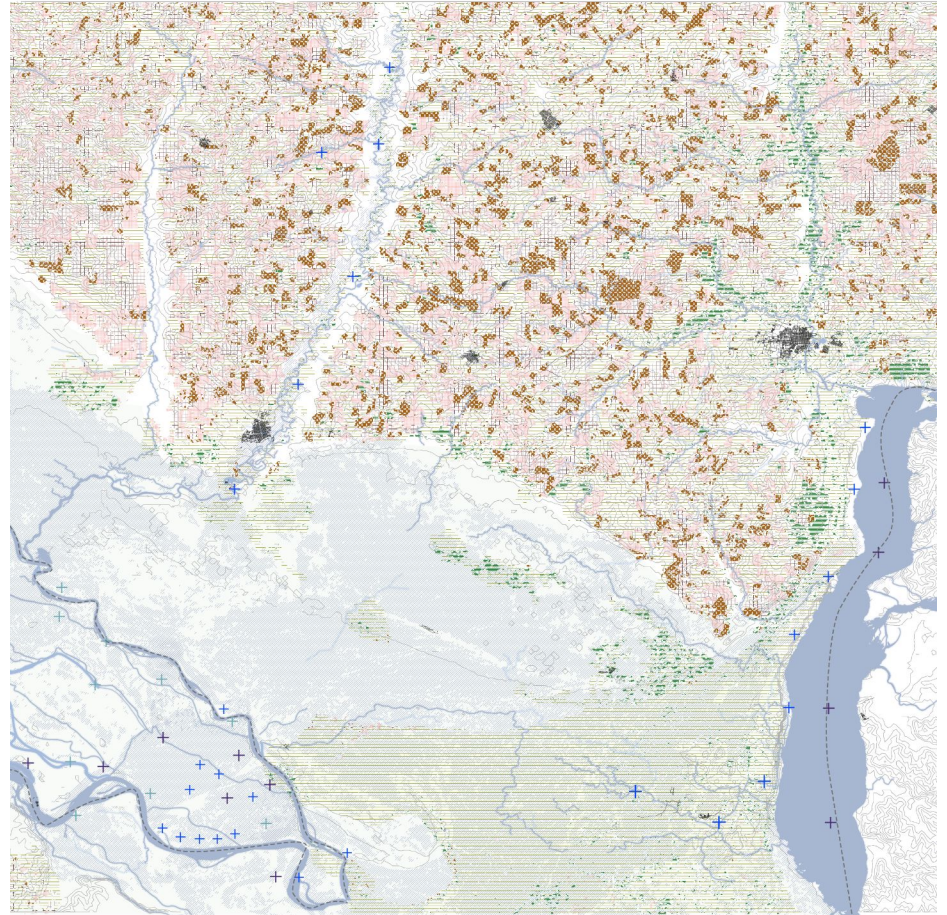
- River Basin
- Flooding forest
- Front delta wetlands
- Relief wetlands of the former lagoon
- Wetlands of the ancient reliefs of the river of Entre Ríos at their mouth
- Upper Dealtaic plain
- Beach crest wetlands
- Delta wetlands under formation
- Espinal
- Pampa húmeda



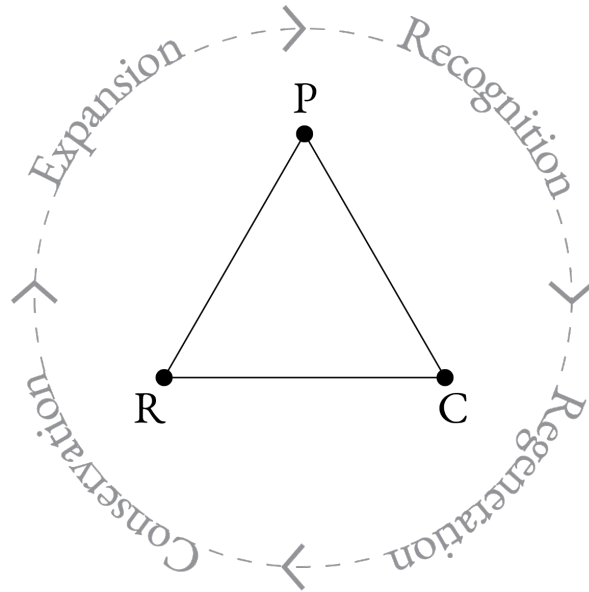
Agricultural capacity



- Ligneous vegetation
- Cattle Farming
- Soy Crops
- Winter Soy Crops
- Corn crops
- Floodplain
- Urban settlements
- + Surubi
- + Dorado
- + Pejerrey



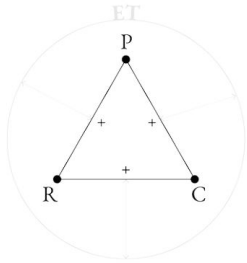
Balancing ecosystem services



P = Provisioning services
R = Regulating and supporting services
C = Cultural, spiritual and recreational services

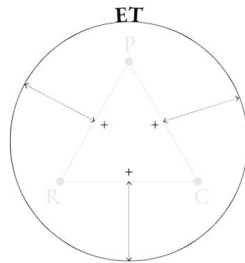
Based on McMichael et al. (2005)

Towards a system of care - Strategies



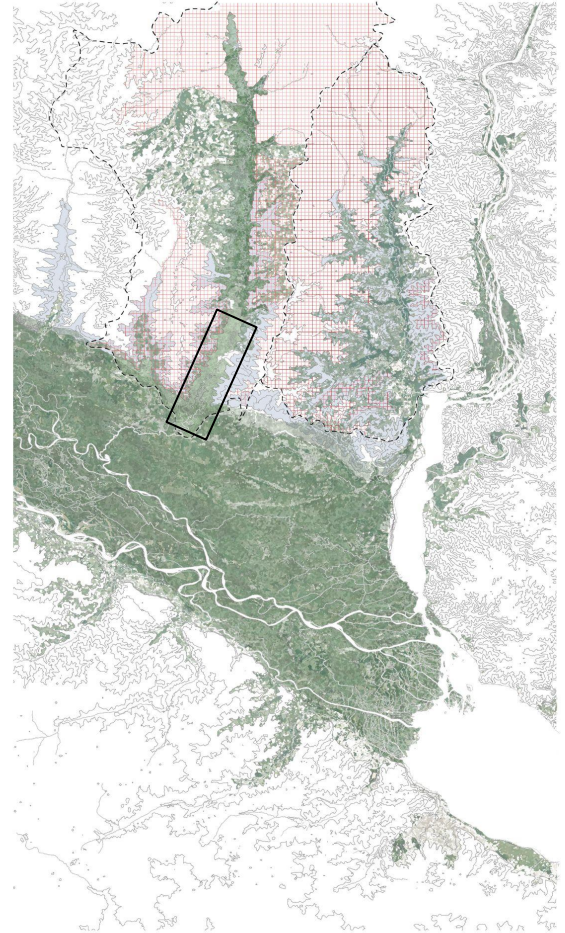
Strategy A:

Transitioning from a mono and extensive agricultural practices towards agro-ecology practices

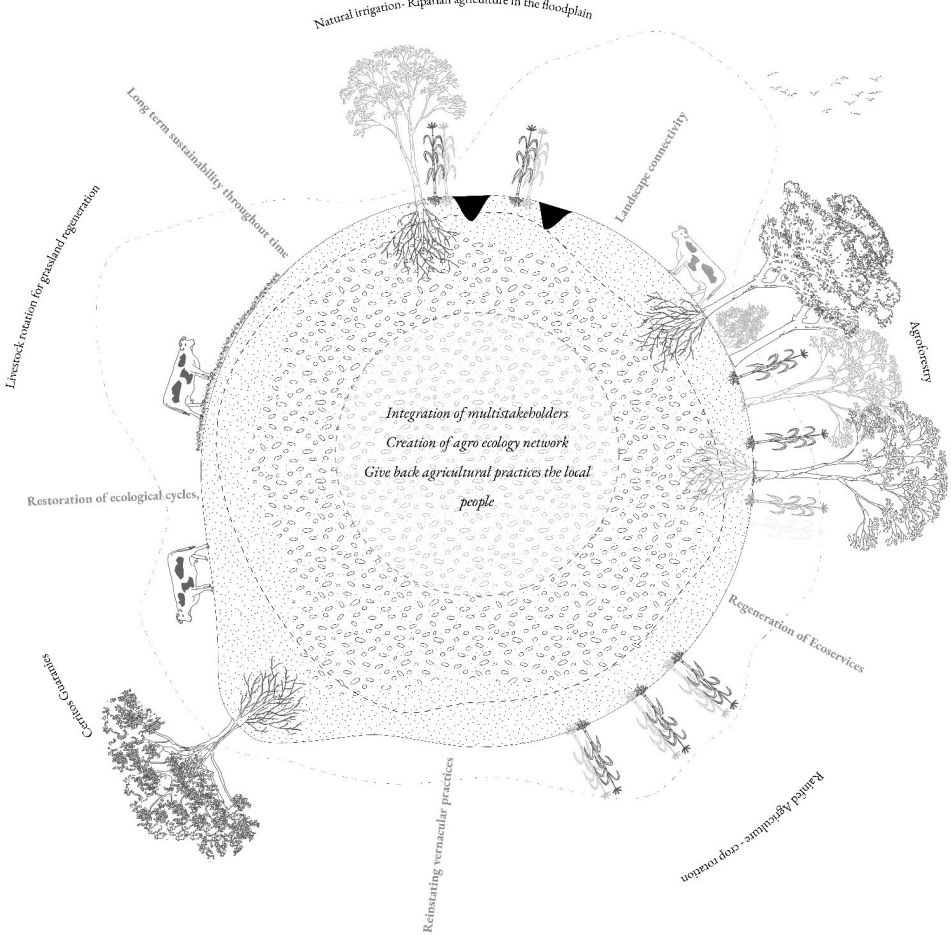
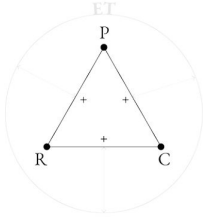


Strategy B:

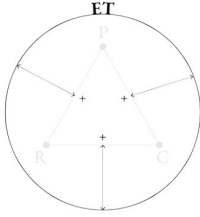
Leveraging ecotourism as a way of diversifying the economic model, fostering a sense of ownership and care.

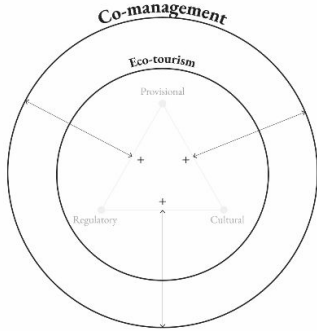


A: Rethinking the productive system

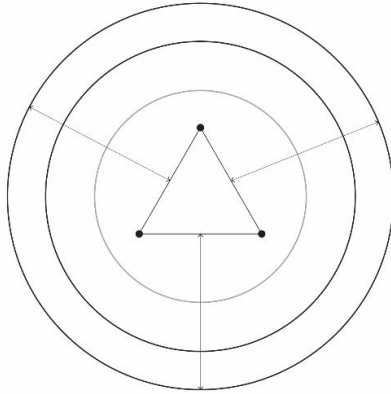


B: Knowing is caring

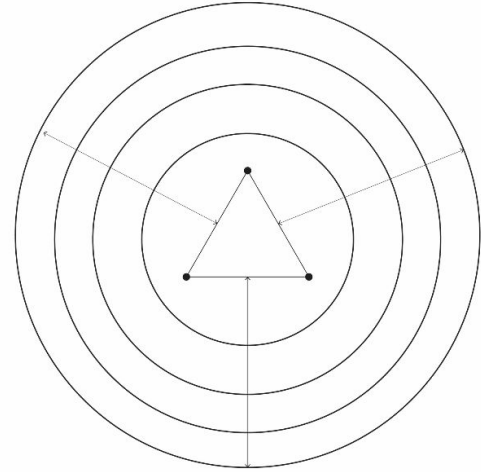




Gualaguay River Basin



Los Pajaros y sus Pueblos Libres Reserve



Deltaic Region

Area of intervention

Multiscalar

Lower Parana Delta
Expansion of the
Adaptive Capacity from
Bottom-Top



Multiscalar

Guauguay Corridor

Blue green corridor

Protected Area LPP

Connectivity of tributaries and Delta

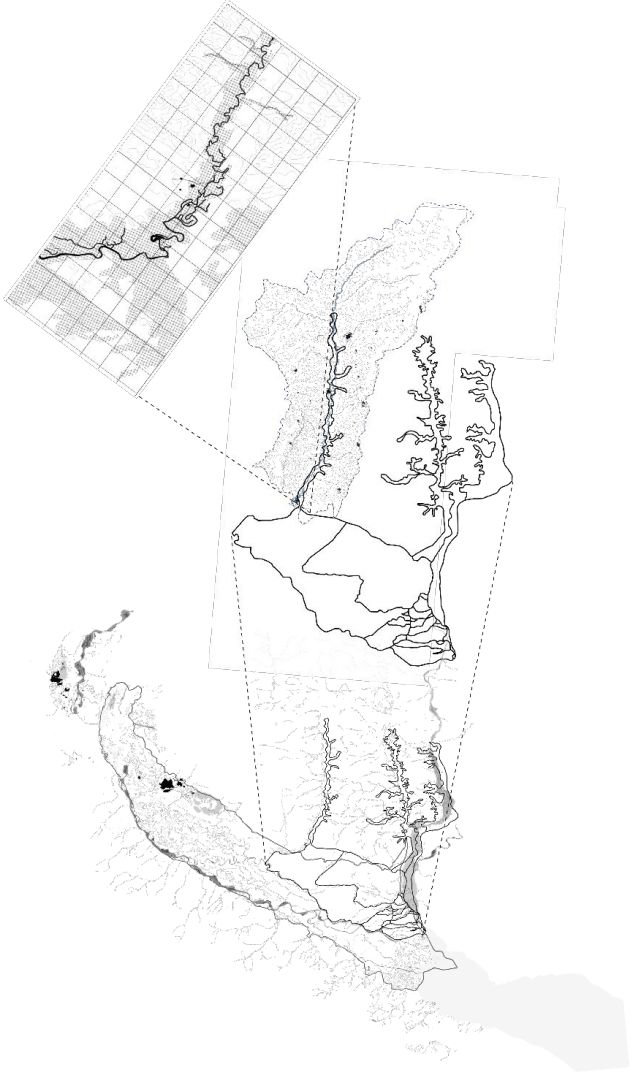
Lower Parana Delta

Expansion of the Adaptive Capacity from Bottom-Top



Multiscalar

Area of intervention



Guauguay Corridor

Blue green corridor

Protected Area LPPPL

Connectivity of tributaries and Delta

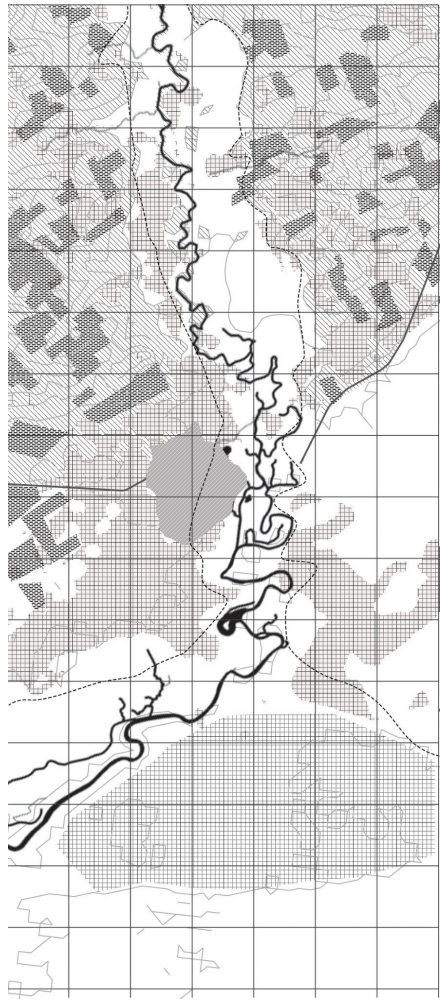
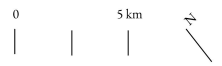
Lower Parana Delta

Expansion of the Adaptive Capacity from Bottom-Top

Area of intervention, city of Gualeguay

Land uses

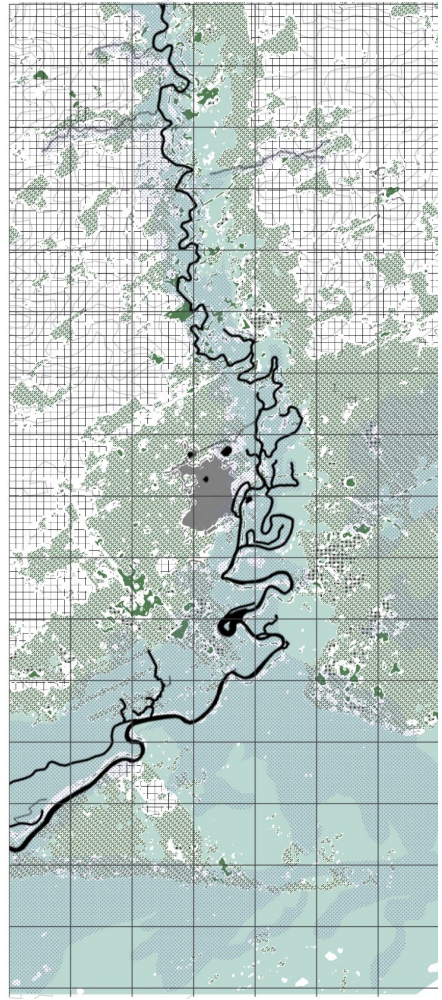
- ▣ Cattle
- ▨ Soy crop
- ▩ Corn crop
- Urban area



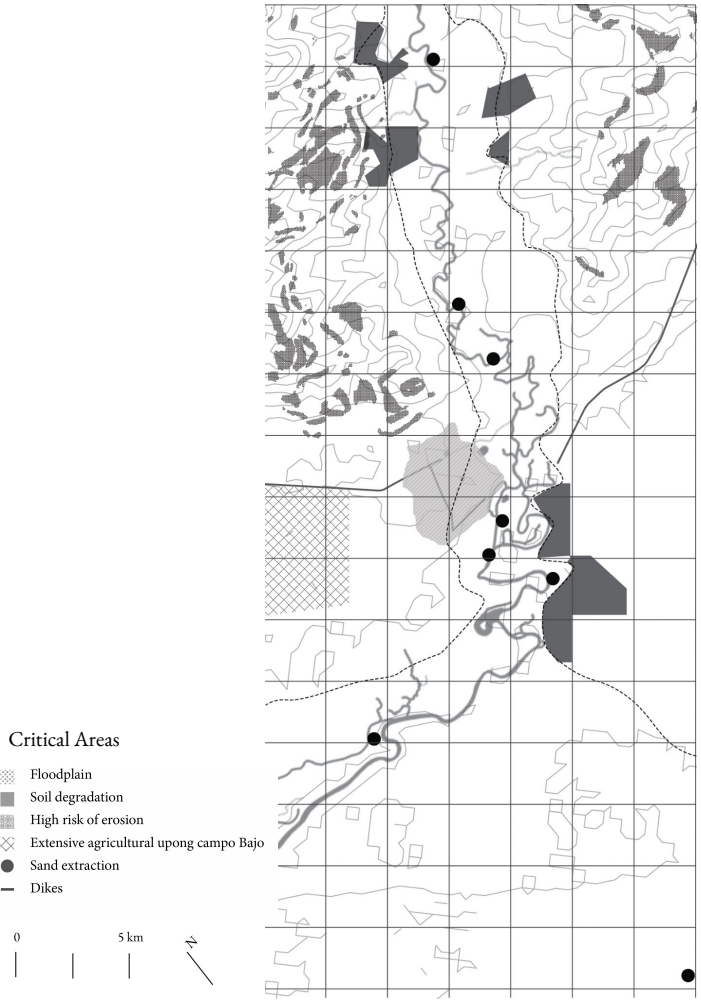
Area of intervention, city of Gualeguay

Vegetation coverage

- ▨ Floodplain
- ▨ Cropland
- ▨ Wetland
- ▨ Herbaceous vegetation
- ▨ Forest
- ▨ Urban area



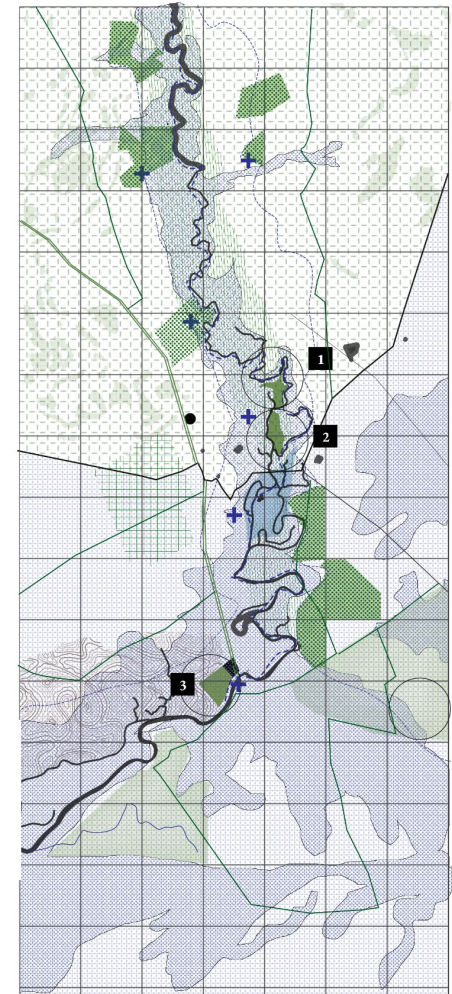
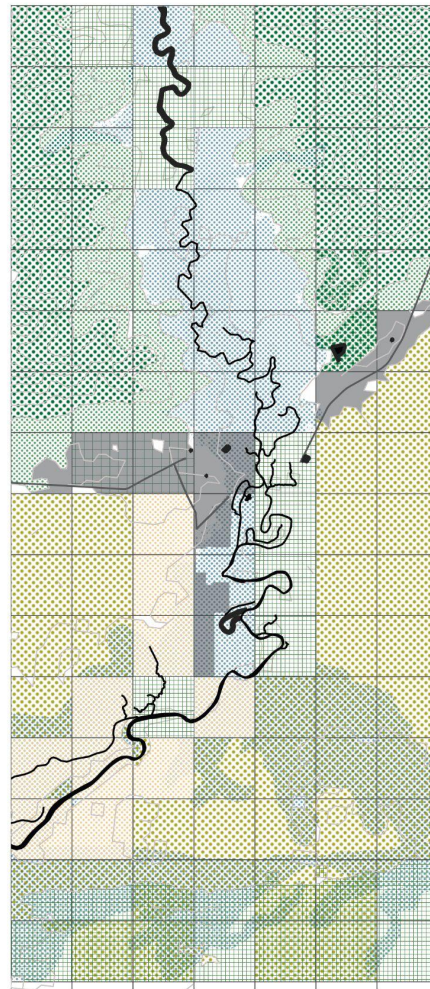
Area of intervention, city of Gualeguay



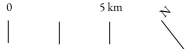
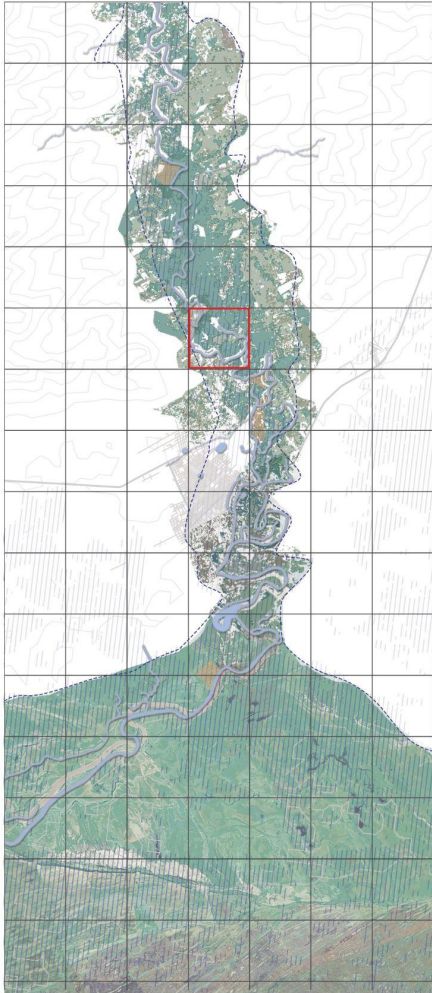
Towards a system of care

Rethinking the productive system

Ideal levels of sensitivity

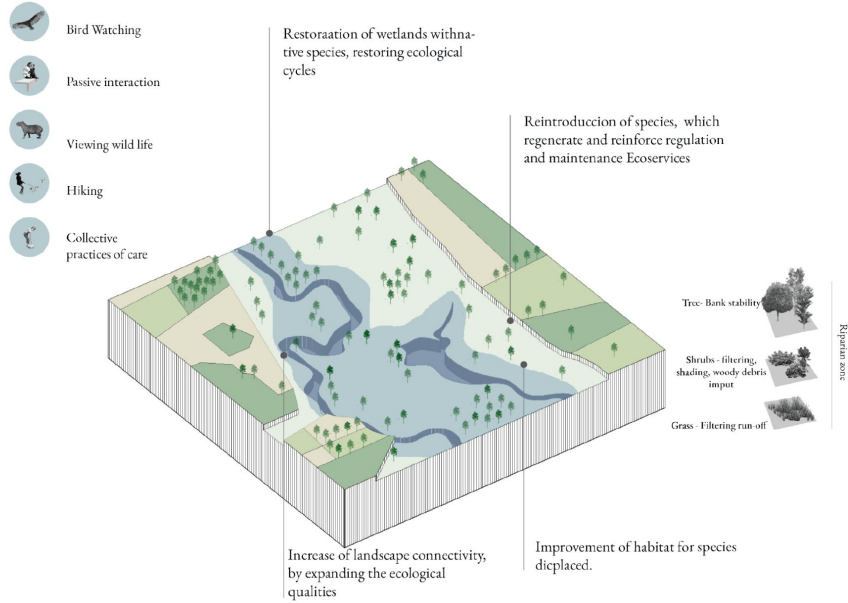


Floodplain riparian zone: “Ñemity”

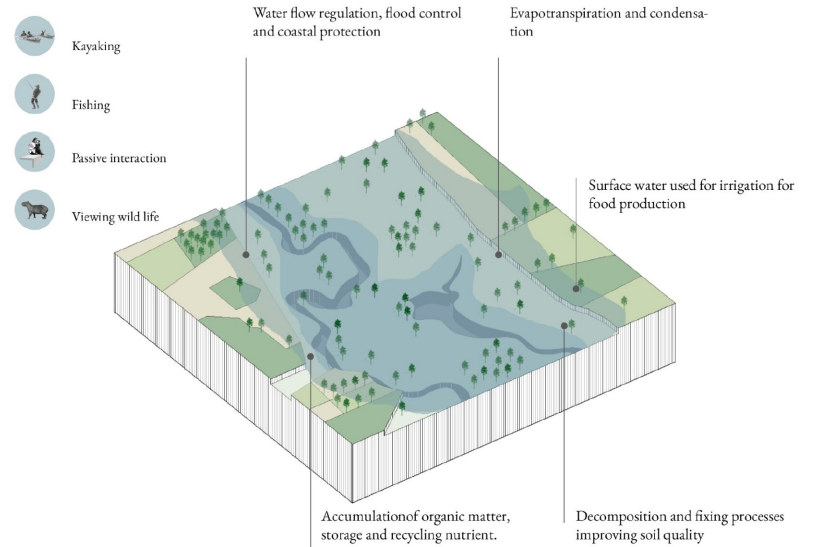


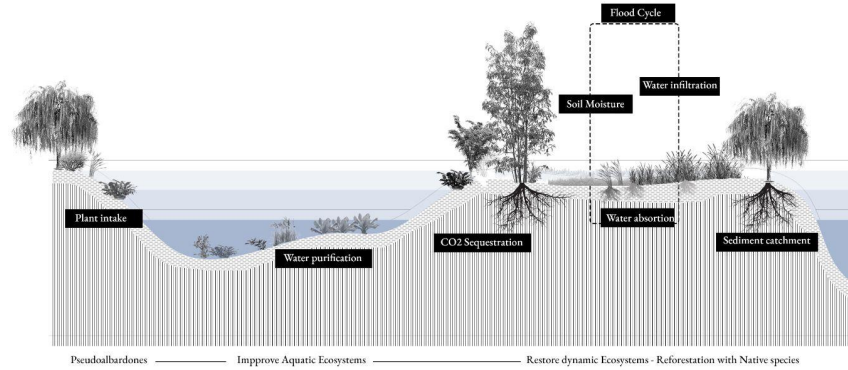
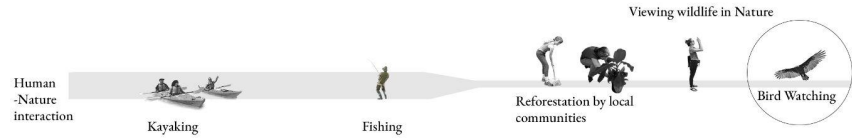


Dry season

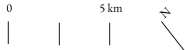
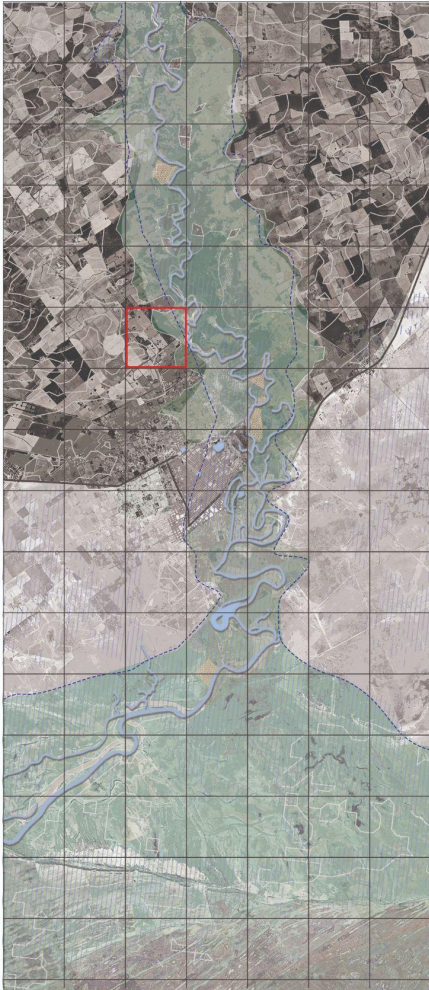


Rainy season



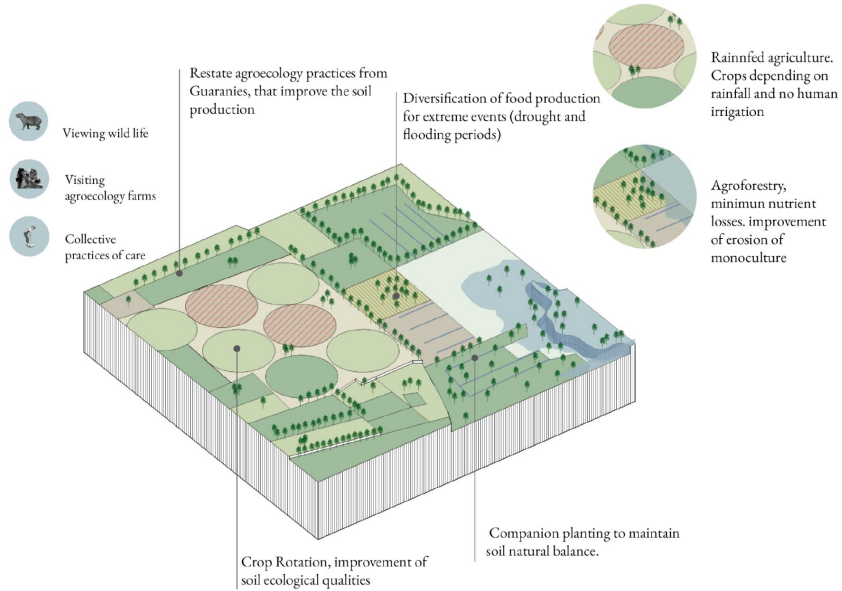


Agriculture Activities - Campo Alto: “Ka’aguy rupi”

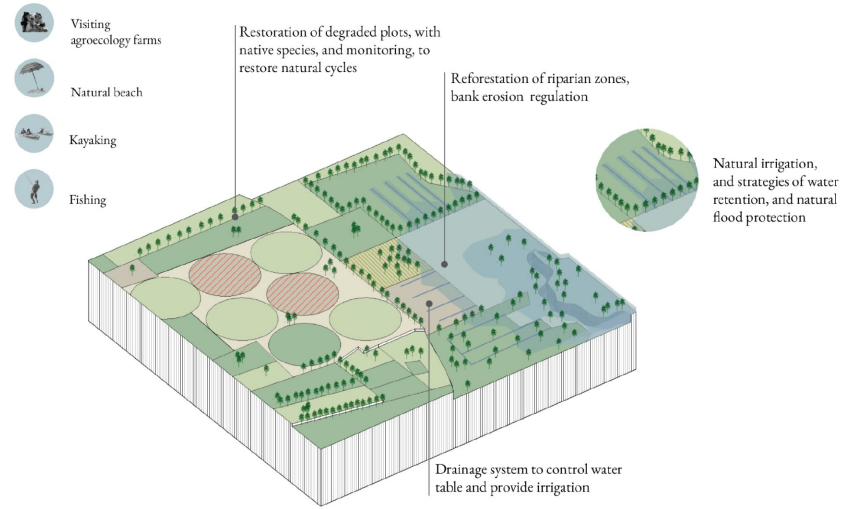


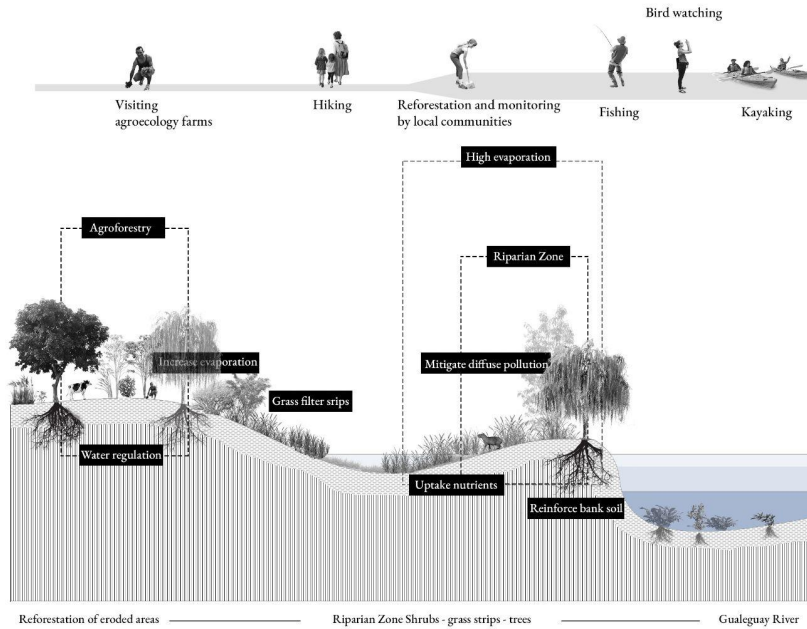


Dry season



Rainy season

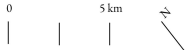
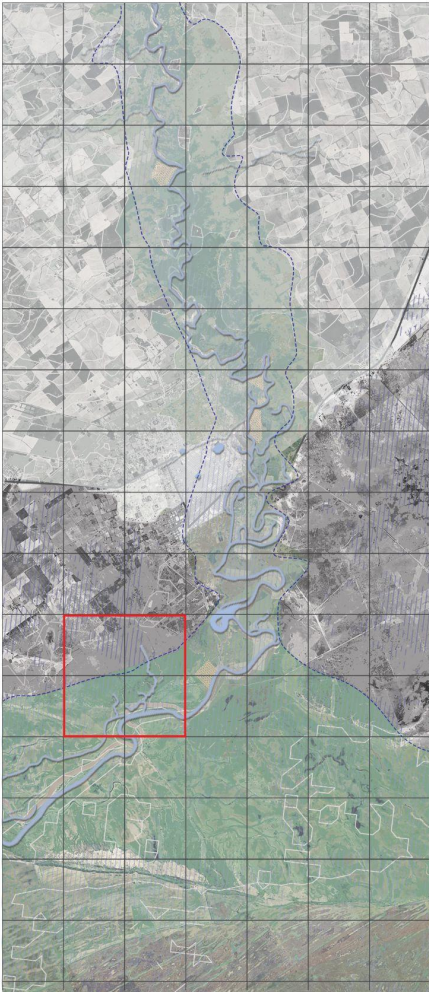




- | | | | | | | | | |
|---|---|---|---|--|---|---|---|---|
|  |  |  |  |  |  |  |  |  |
| Luziola peruviana | Hymenocle peruvianense | Ludwigia peruviana | Paspalum vaginatum | Solanum glaucophyllum | Baccharis salicifolia | Sobania sp | Salix humboldtiana | Schoenoplectus californicus |



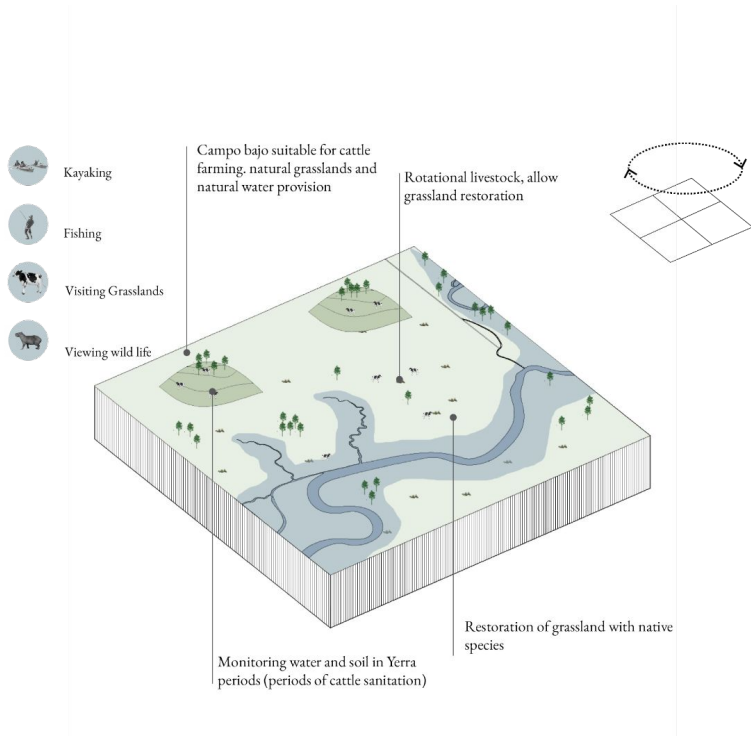
Cattle farming - Campo Bajo: 'Ka'aguy ndive'



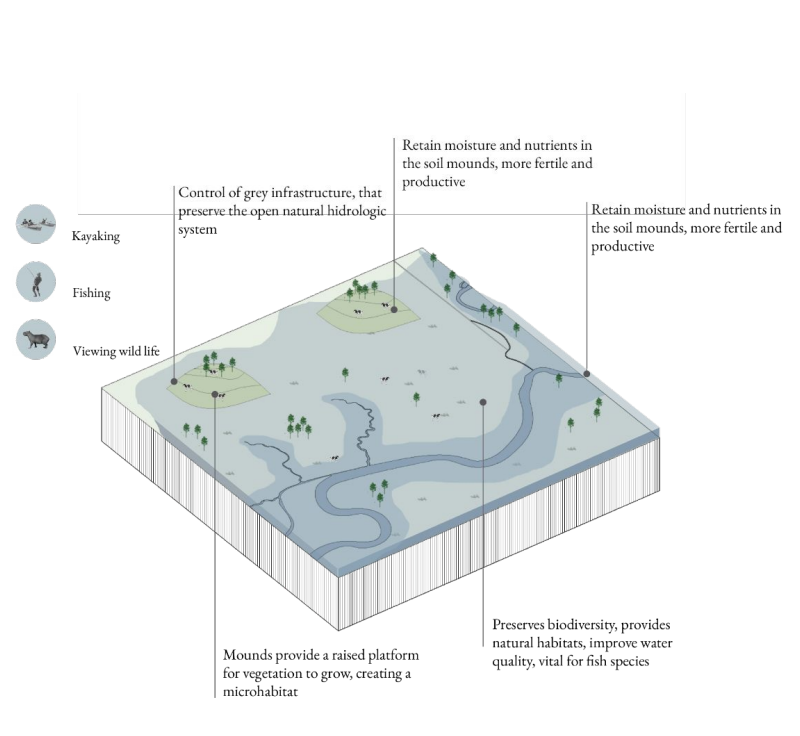


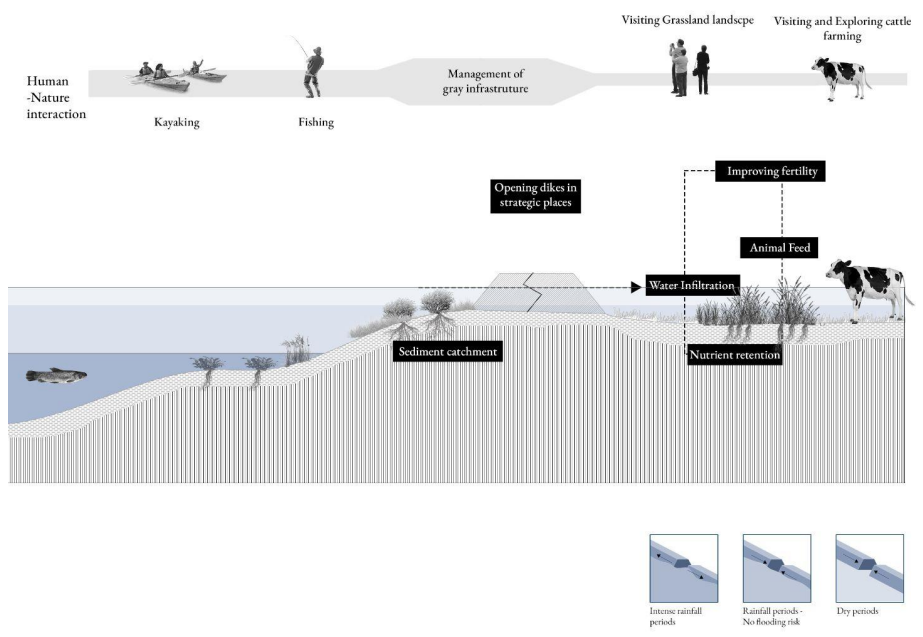


Dry season

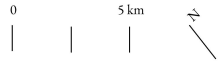
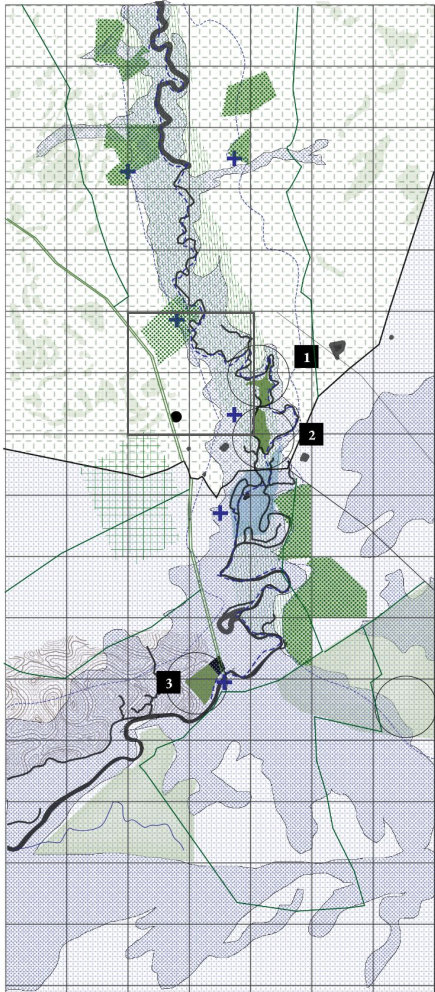


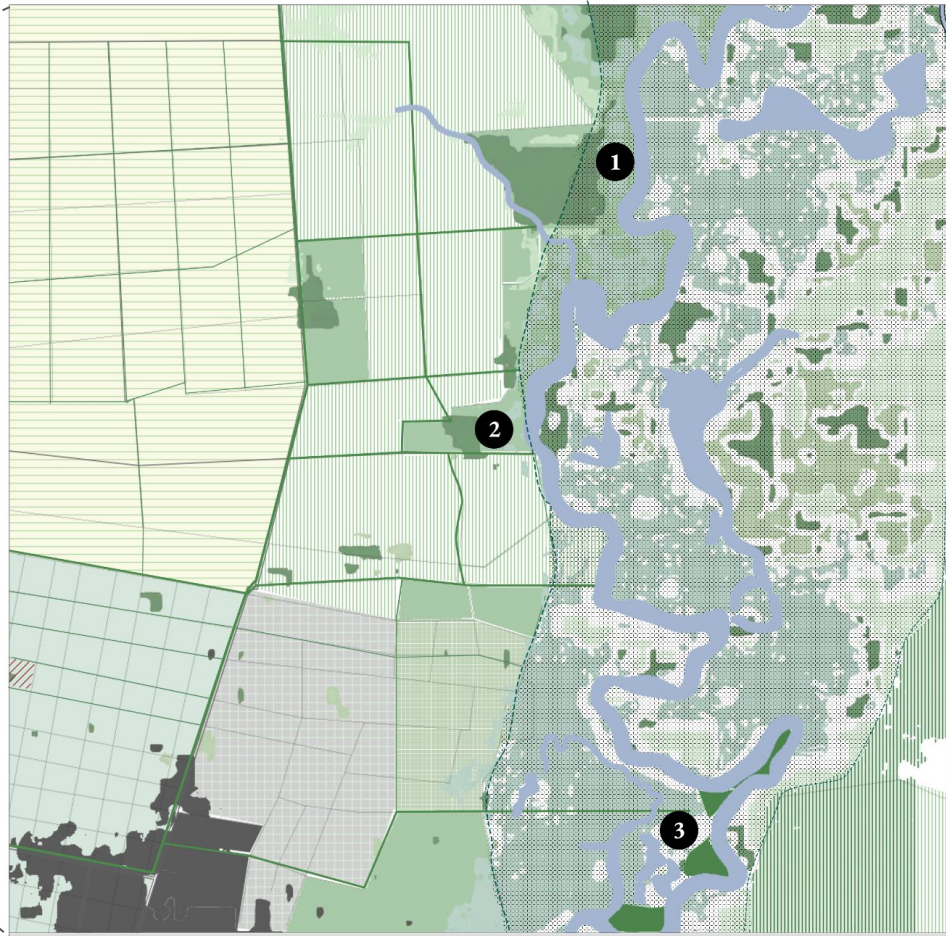
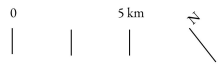
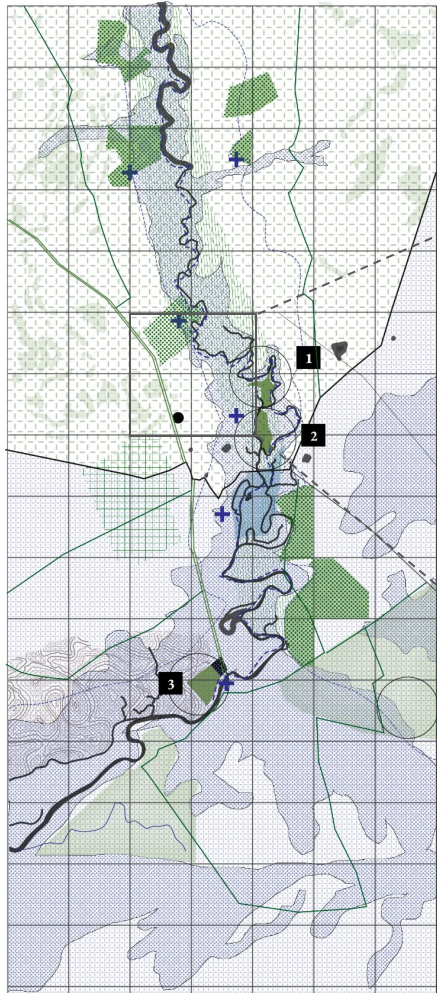
Rainy season














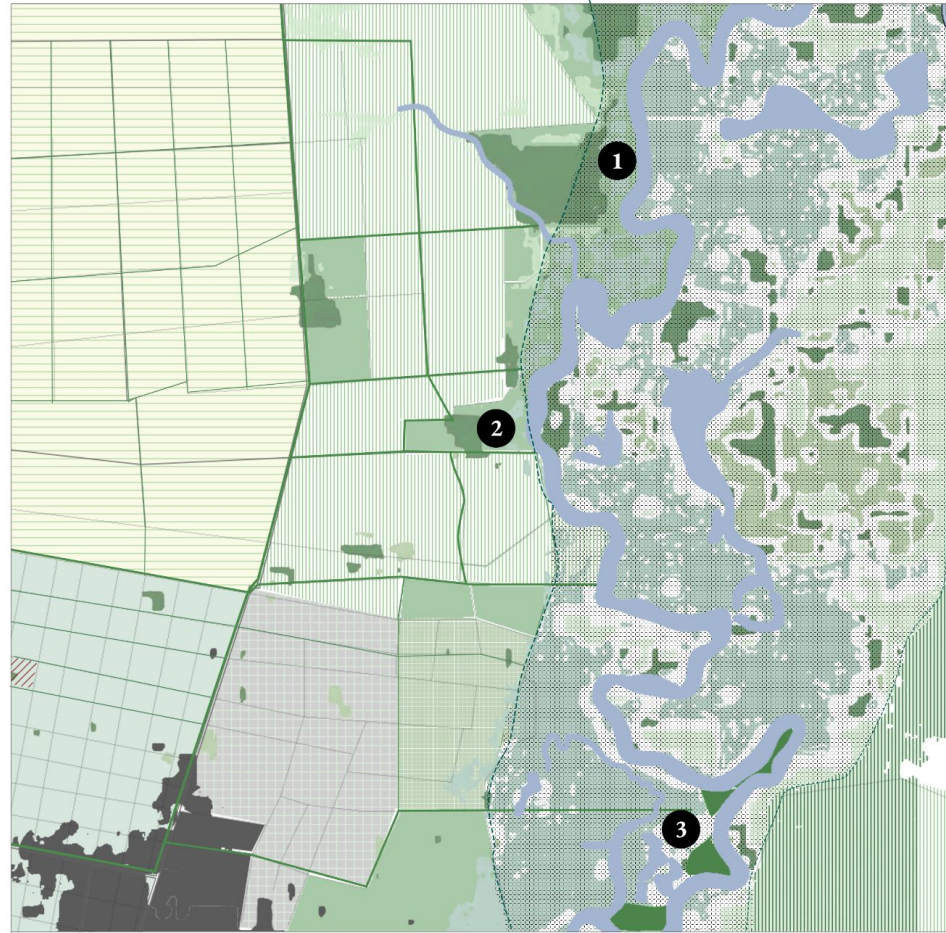


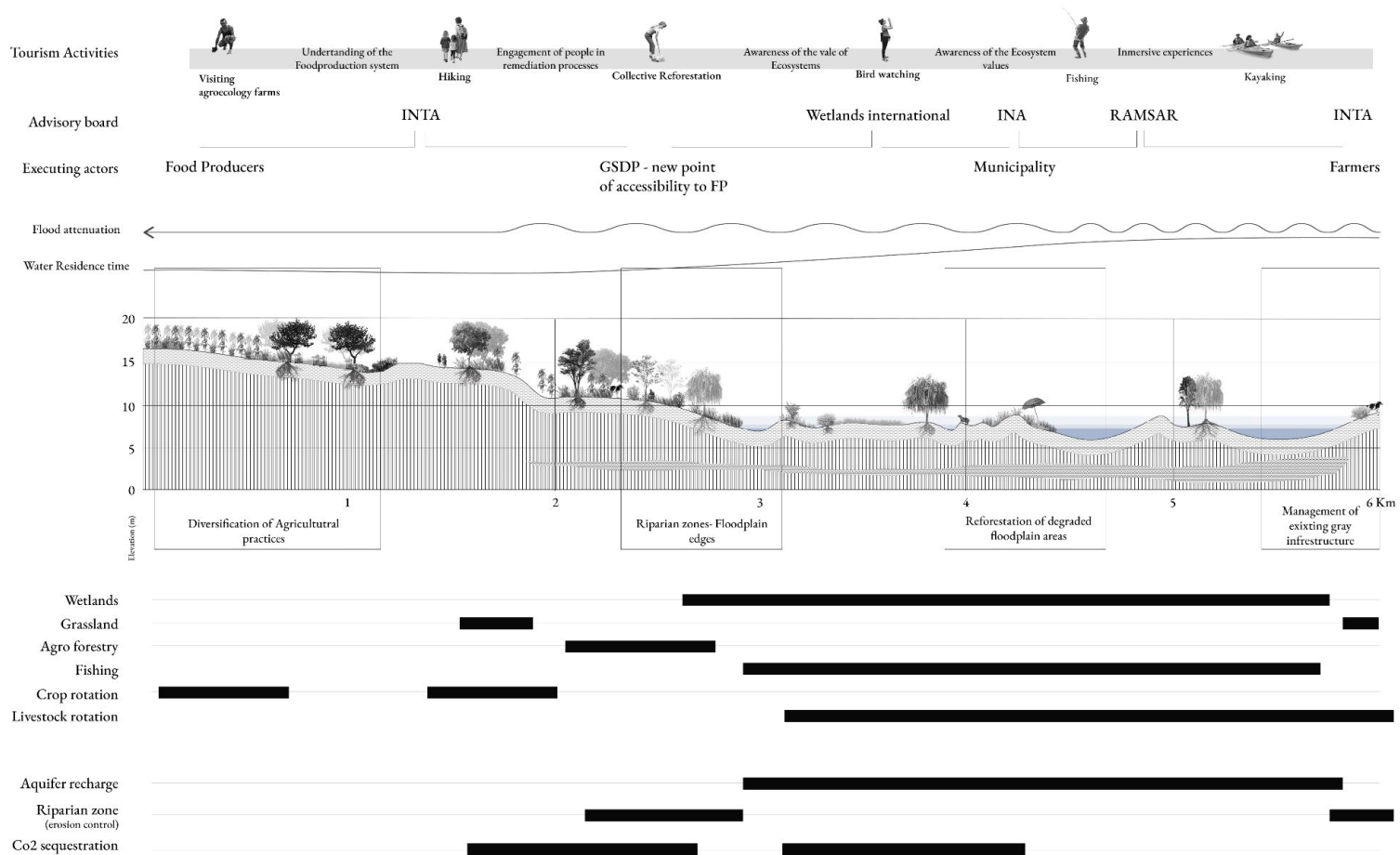
New order

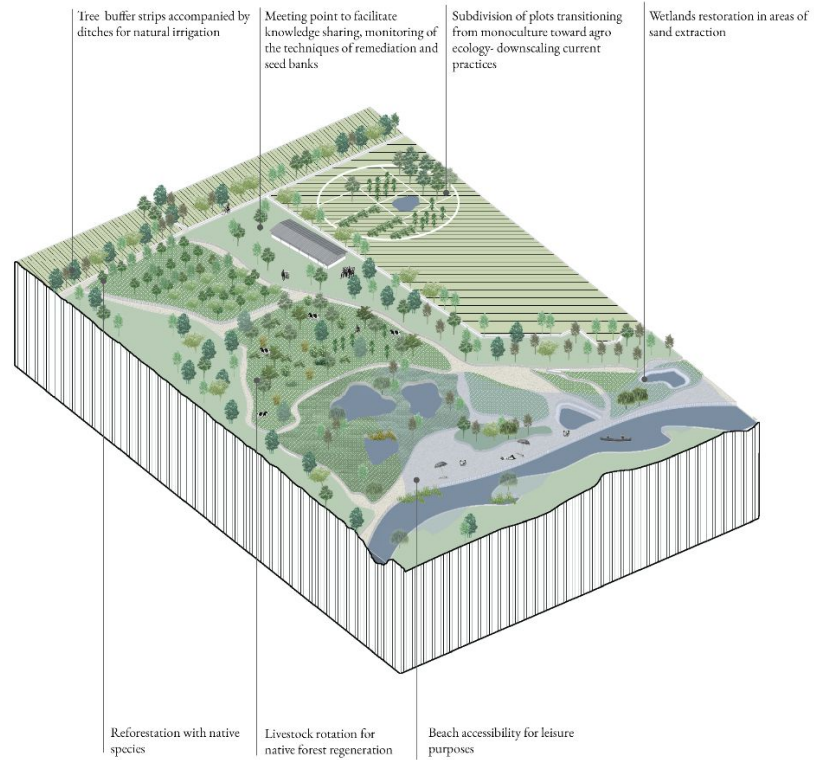


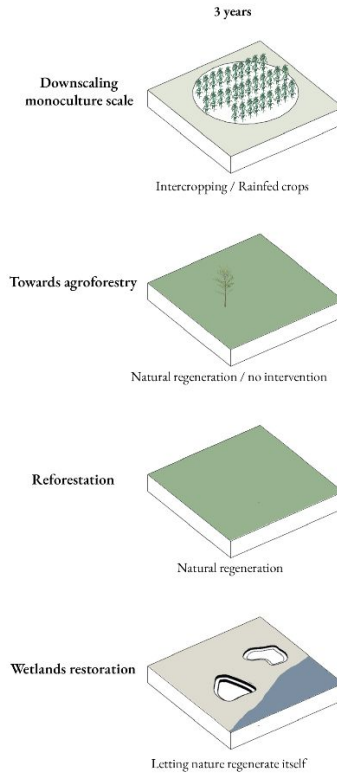
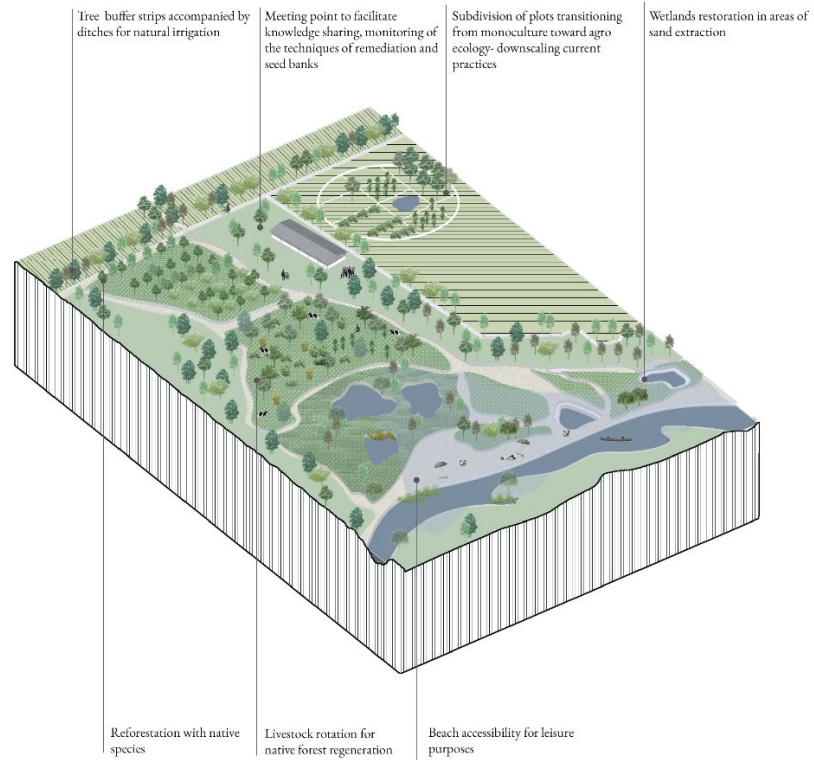


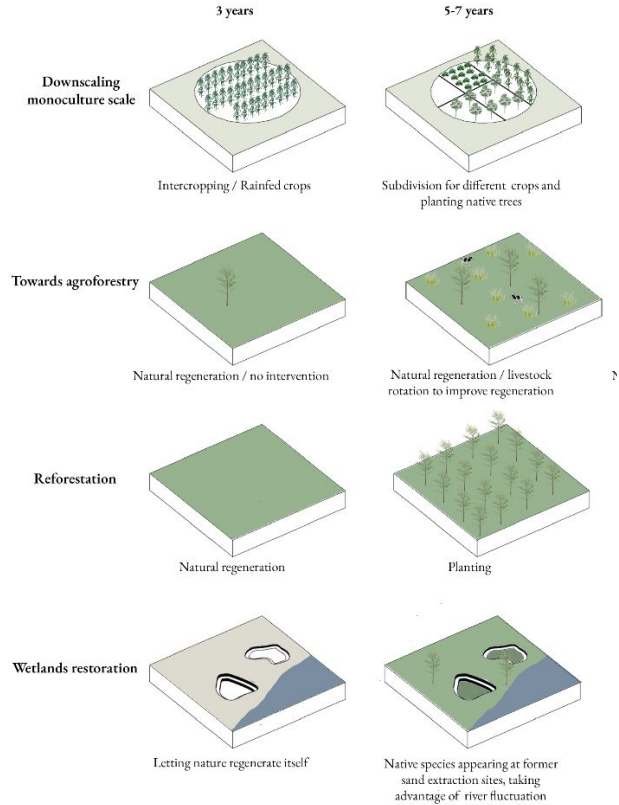
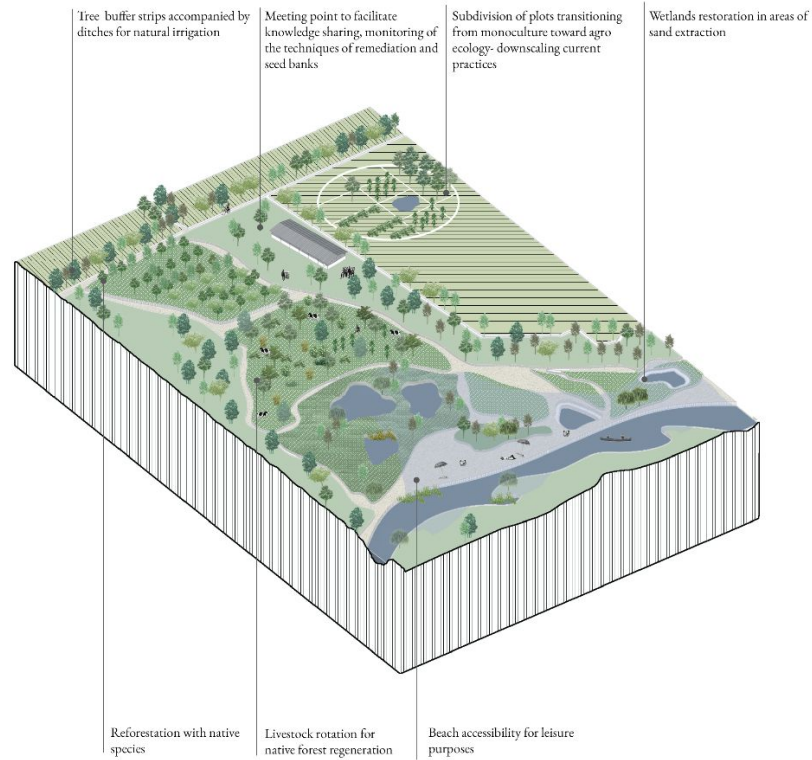
-  Agroecology - Rainfed and crop rotation
-  Riparian agriculture - agroforestry - natural irrigation
-  Flooding area
-  Reforestation and regeneration of native fores
-  Urban area
-  Gualeguay River
-  Area of orchards
-  Protected mature forest
-  Restoration centre
-  Natural reserve. Mingueri, Bolson, Boqueron
-  Green corridors along rural pathways

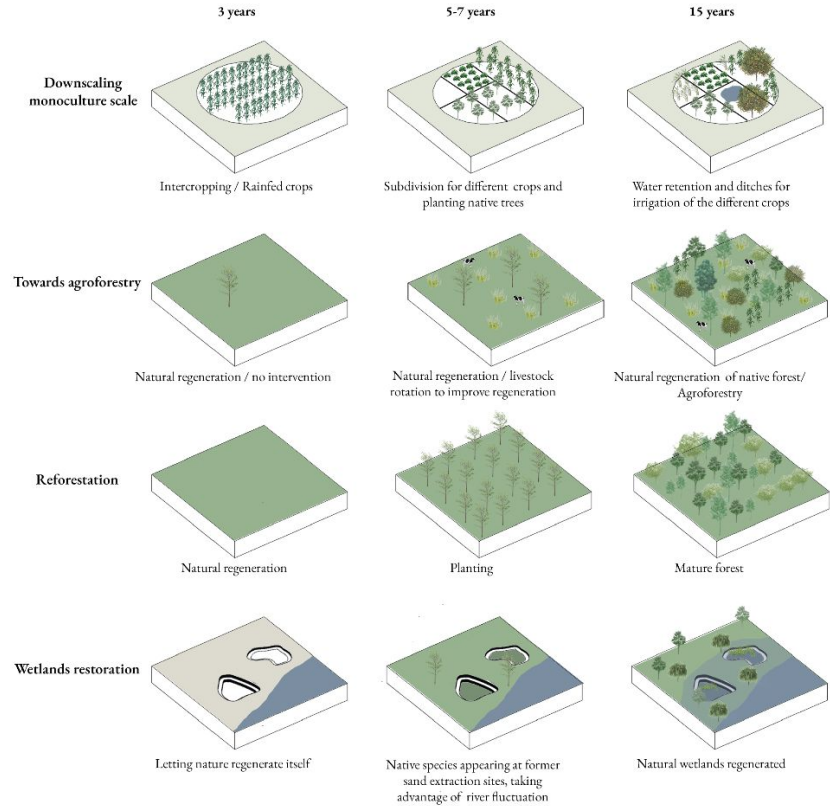
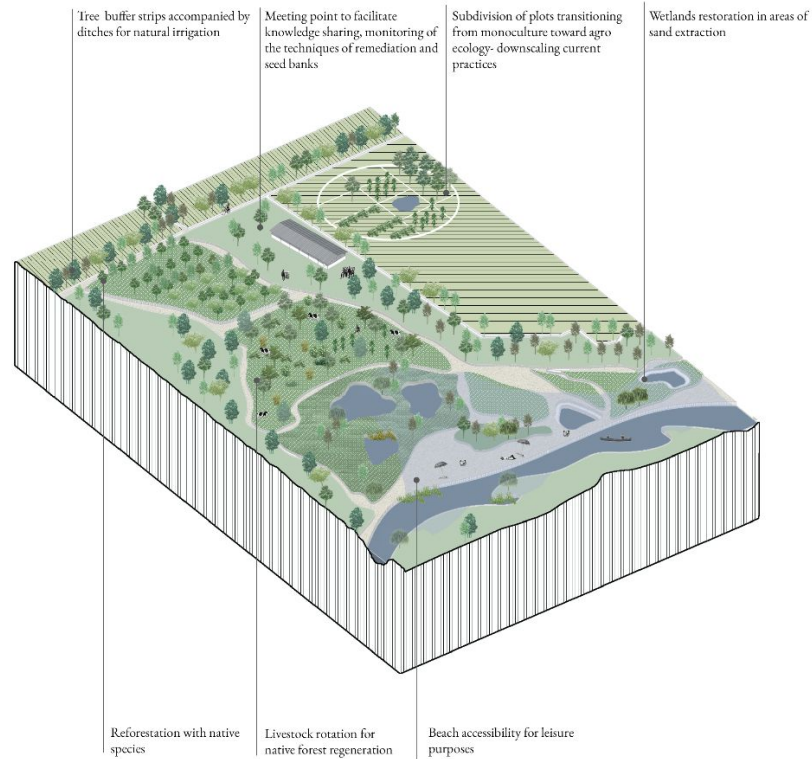










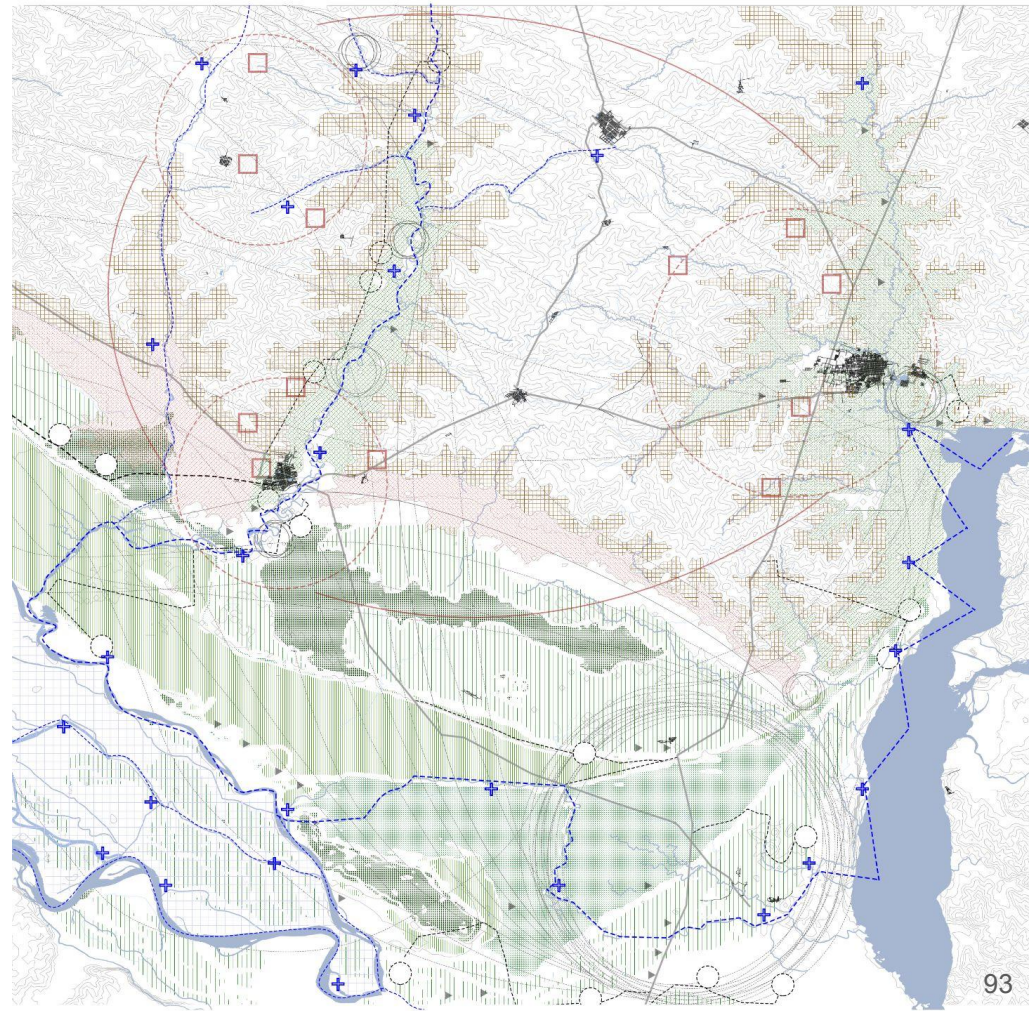
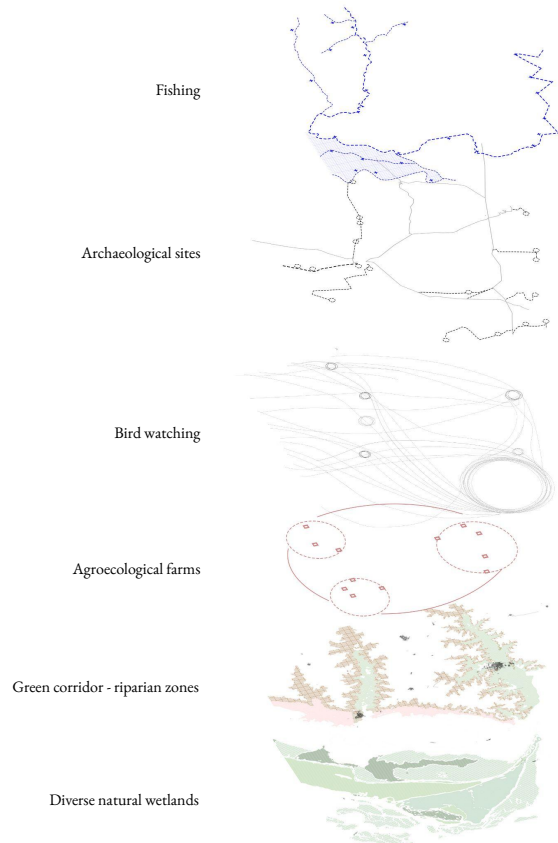




Towards an interrelated and multi-dimensional system of care

Rising awareness, fostering sense of care and ownership and diversifying economic model

Ecotourism Routing













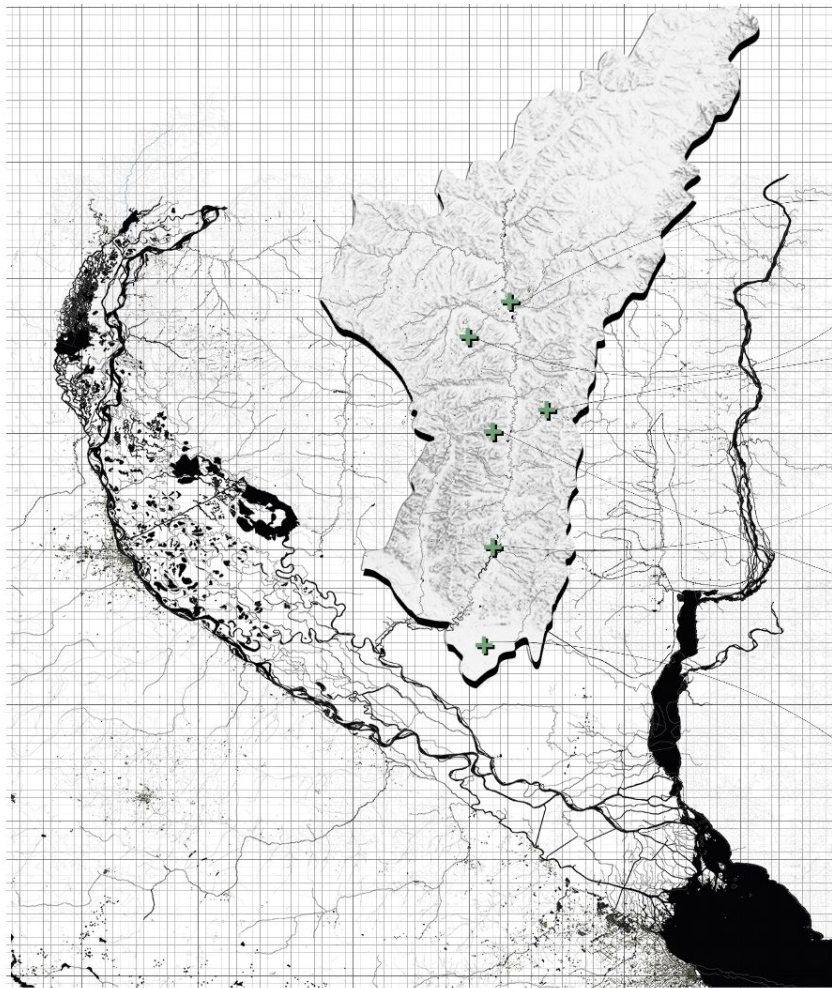


OMAG

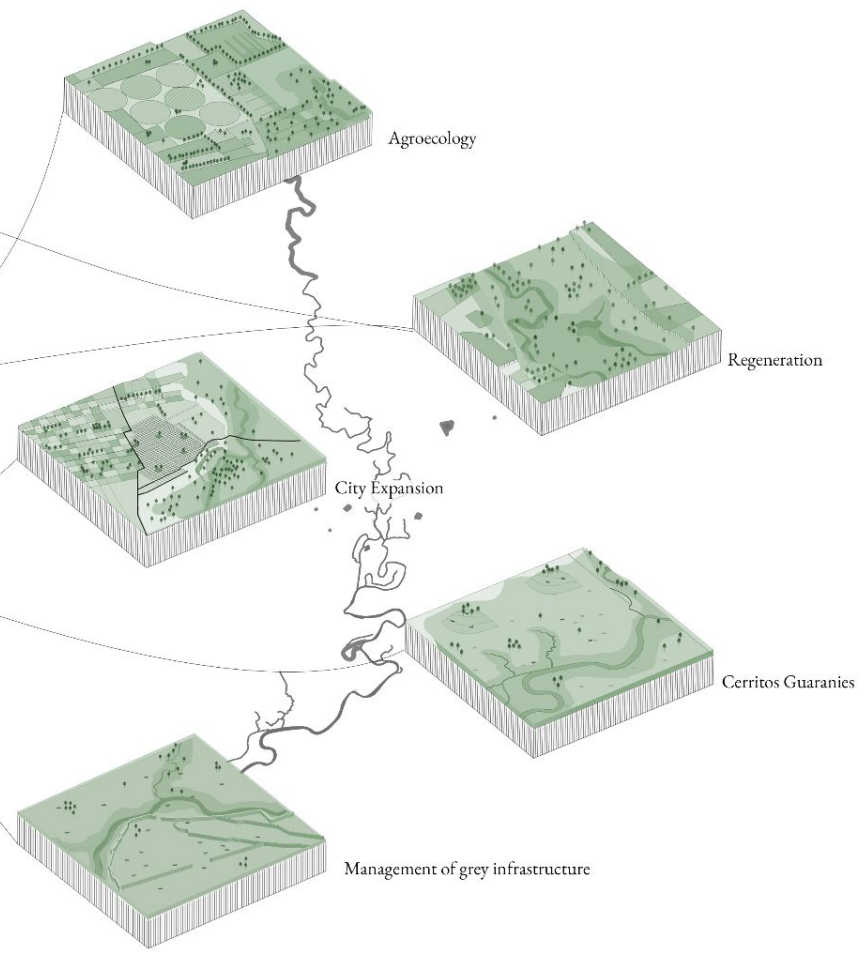
1971-01

Alignment of different cycles



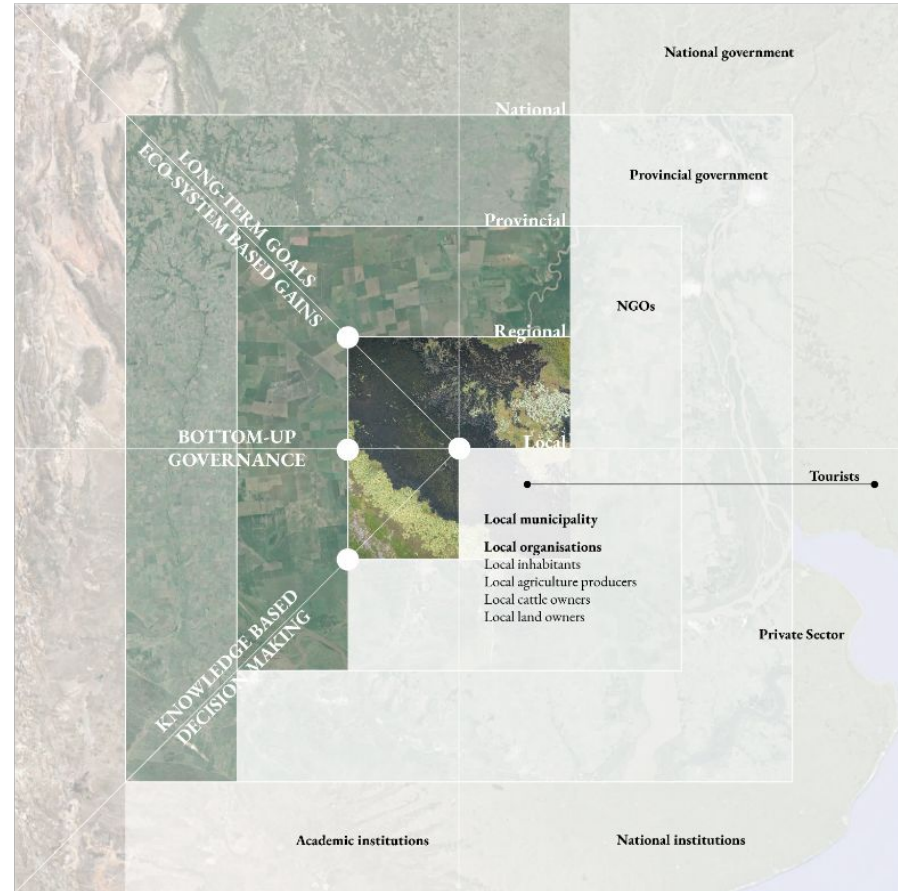


Upstream
Parana Delta



Stakeholder management

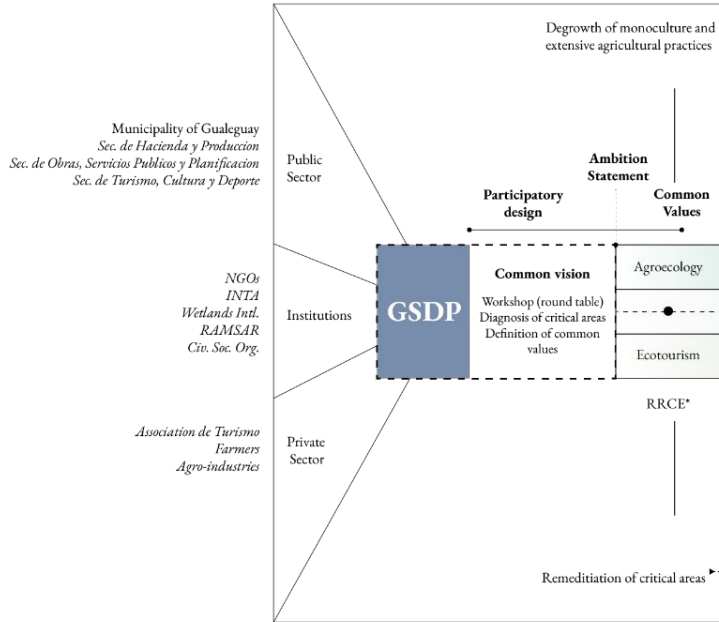
Proposed stakeholder system



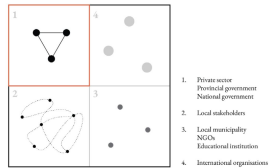
Transition phases

Phase 1

Recognition & Implementation

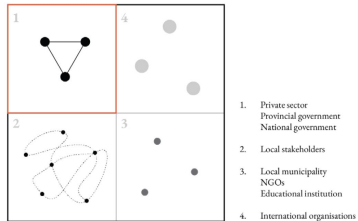


*Regeneration-Remediation-Conservation-Expansion

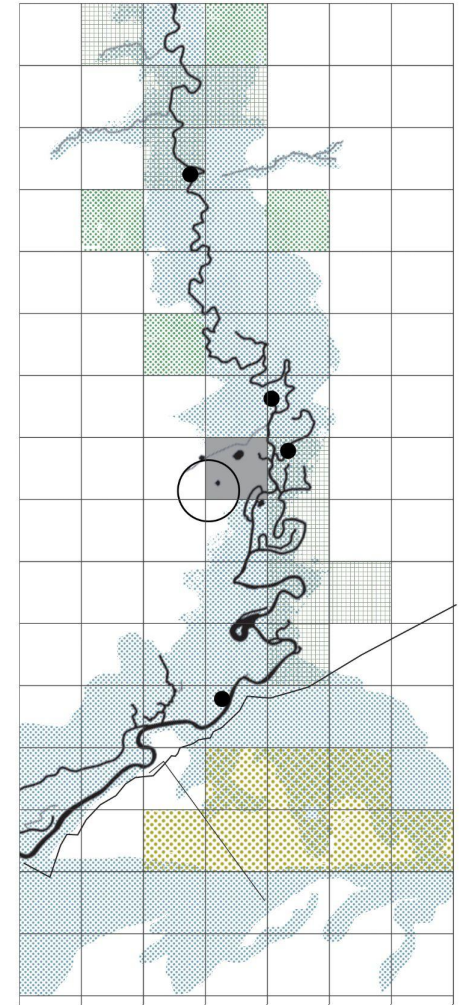


Phase 1 - Recognition and implementation

- Consolidating Los Pájaros y sus Pueblos Libres as a RAMSAR site for ecosystem conservation.
- Recognition of critical zones, and plans for remediation
- Promoting sustainable agriculture and responsible land management for long-term ecosystem health.
- Reinstating Guaraní knowledge and practices of care and diffusion among actors
- Enhancing and promoting eco-touristic sites in the area



0 | | 5 km

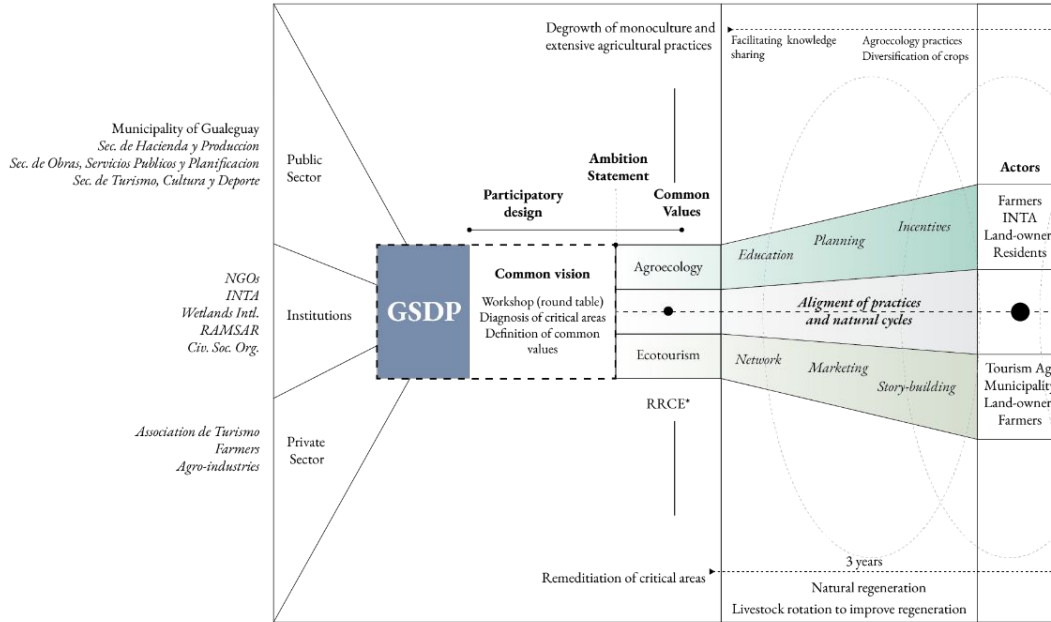


Phase 1

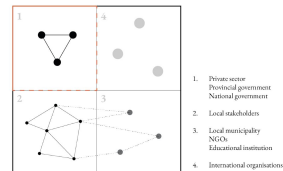
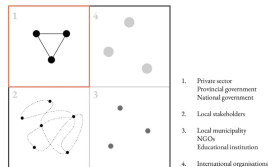
Recognition & Implementation

Phase 2

Activation & Regeneration

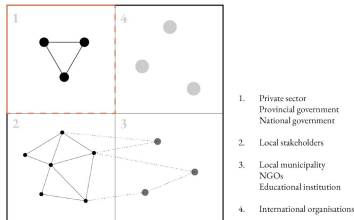


*Regeneration-Remediation-Conservation-Expansion



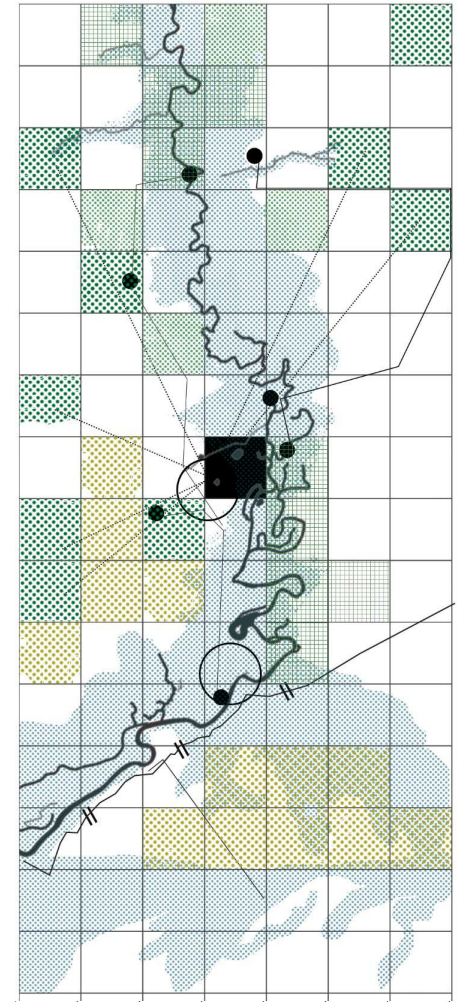
Phase 2 - Activation and Regeneration

- Reforestation, regeneration and strong monitoring of critical areas along the floodplain.
- Regeneration of natural grasslands affected by fires to restore soil structure and sedimentation processes.
- Establishing agro-ecological network into the city's food system.



- Agroecology market Co
- Water way
- \ Dikes interventions
- Agro Ecology farms
- High level of erosion
- New natural reserves
- Agro ecology
- Riparian agriculture
- Remediation of critical a
- Sustainable cattle farmir
- Cattle farming - cerritos
- Expansion
- Gualeguay

0 5 km



Phase 1

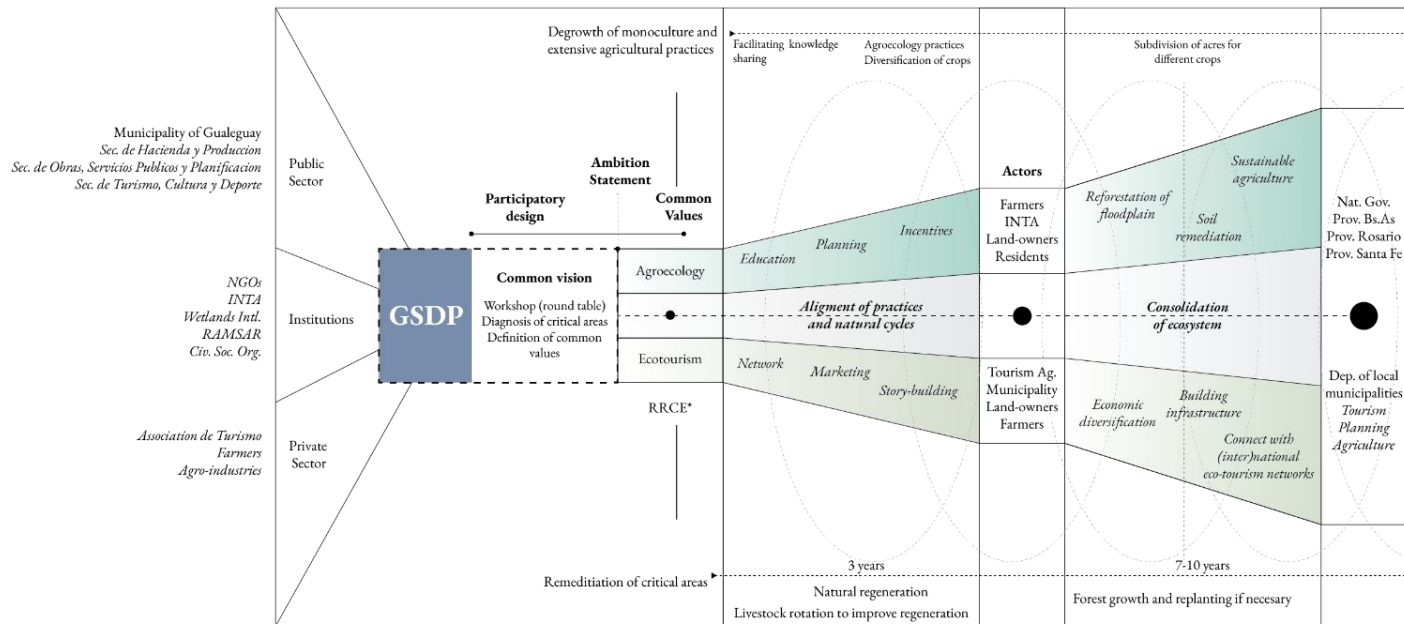
Recognition & Implementation

Phase 2

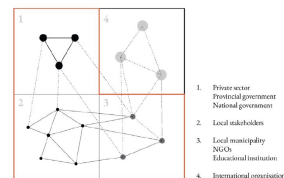
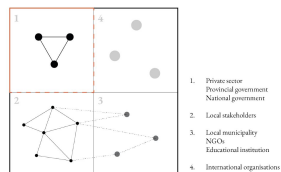
Activation & Regeneration

Phase 3

Consolidation & Conservation

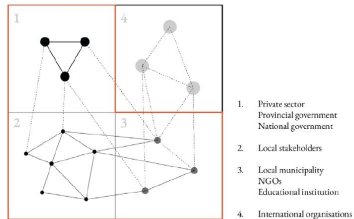


*Regeneration-Remediation-Conservation-Expansion

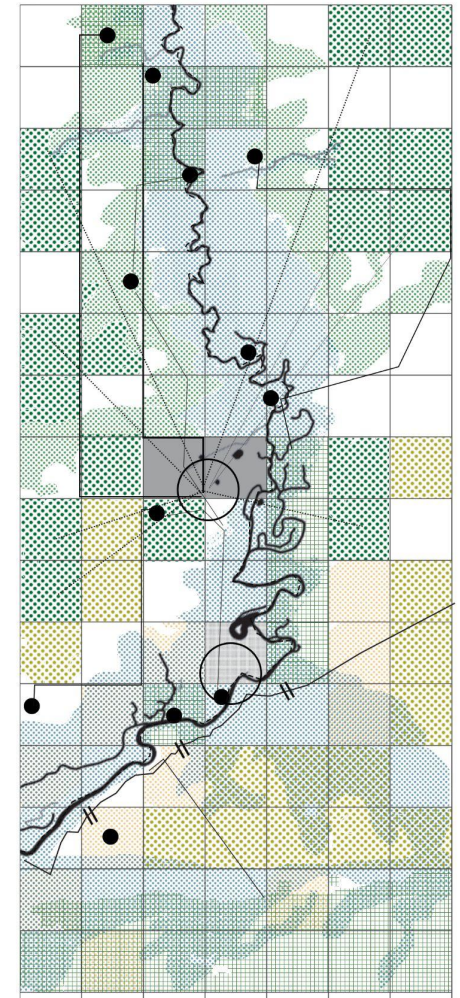


Phase 3 - Consolidation and conservation

- Reforestation and ecological remediation efforts are prioritized, resulting in successful restoration, increased biodiversity, and improved soil quality.
- Eco-tourism activities expand to include new private reserves, offering immersive experiences and diversifying the local economic model.
- Soil remediation through agroecology practices improve soil fertility and productivity and incorporating organic farming methods and natural fertilizers.



- Agroecology market Connection
- Water way
- \\ Dikes interventions
- Agro Ecology farms
- ⚡ High level of erosion
- New natural reserves
- Agro escology
- Riparian agriculture
- Remediation of critical areas
- Sustainable cattle farming
- Cattle farming - cerritos
- Expansion
- Gualeguay



Phase 1

Recognition & Implementation

Phase 2

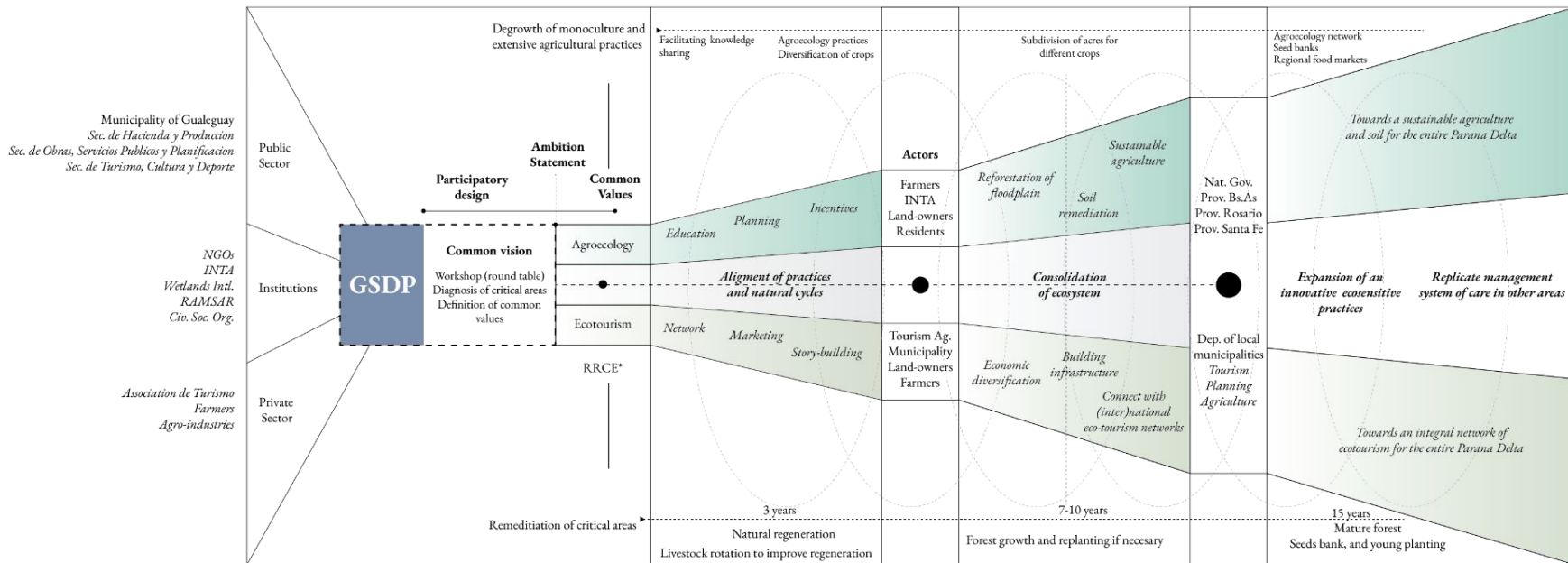
Activation & Regeneration

Phase 3

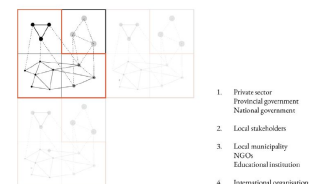
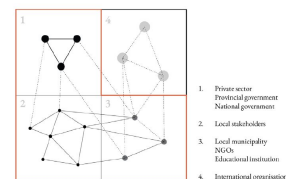
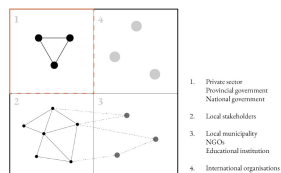
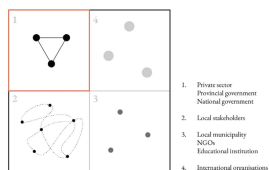
Consolidation & Conservation

Phase 4

Expansion

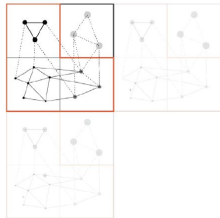


*Regeneration-Remediation-Conservation-Expansion

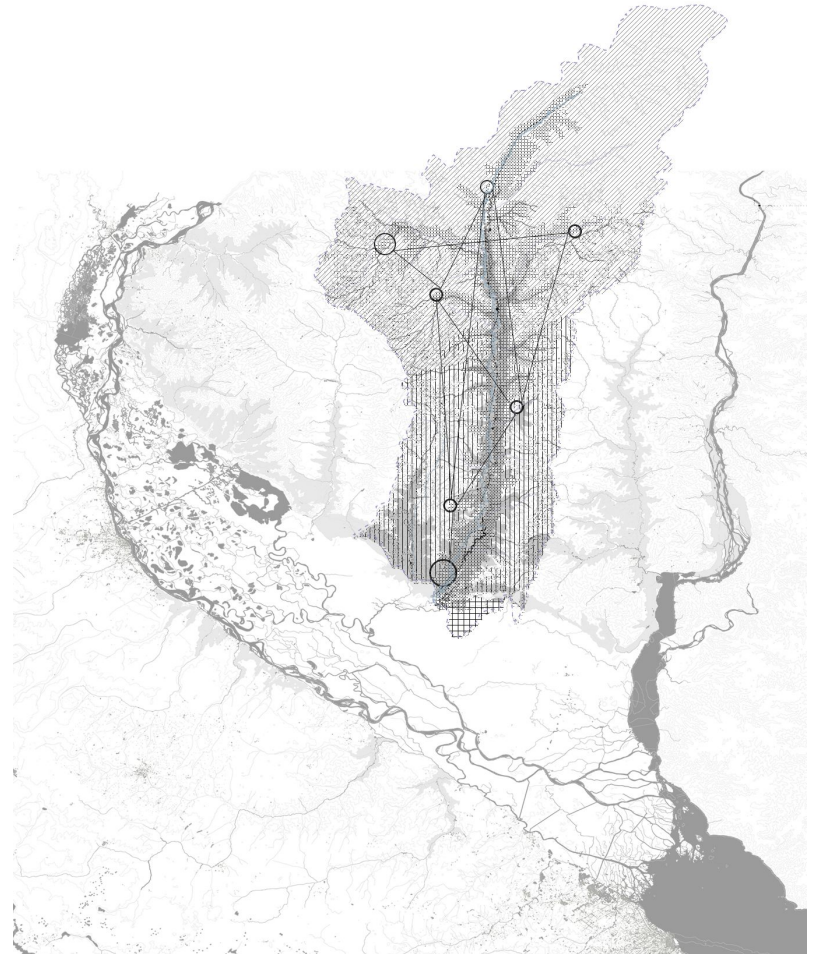


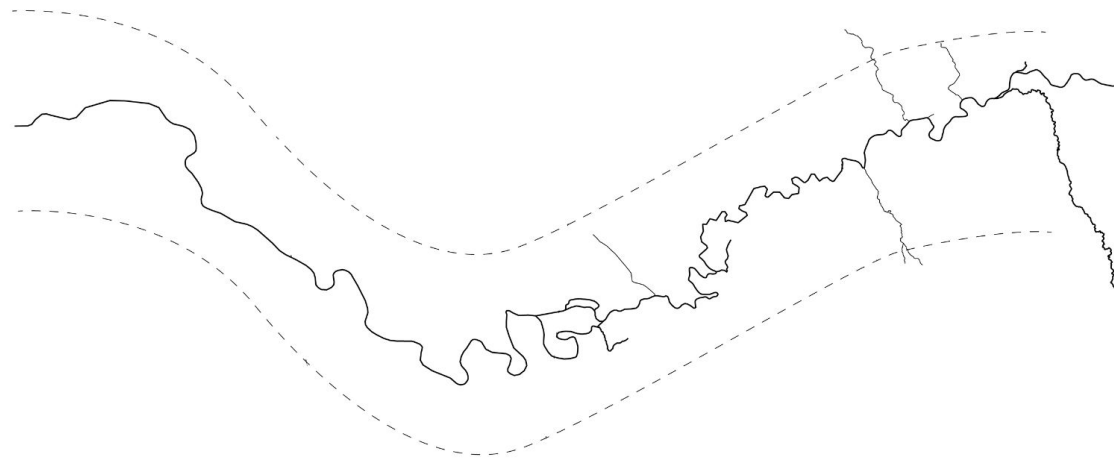
Phase 4 - Expansion

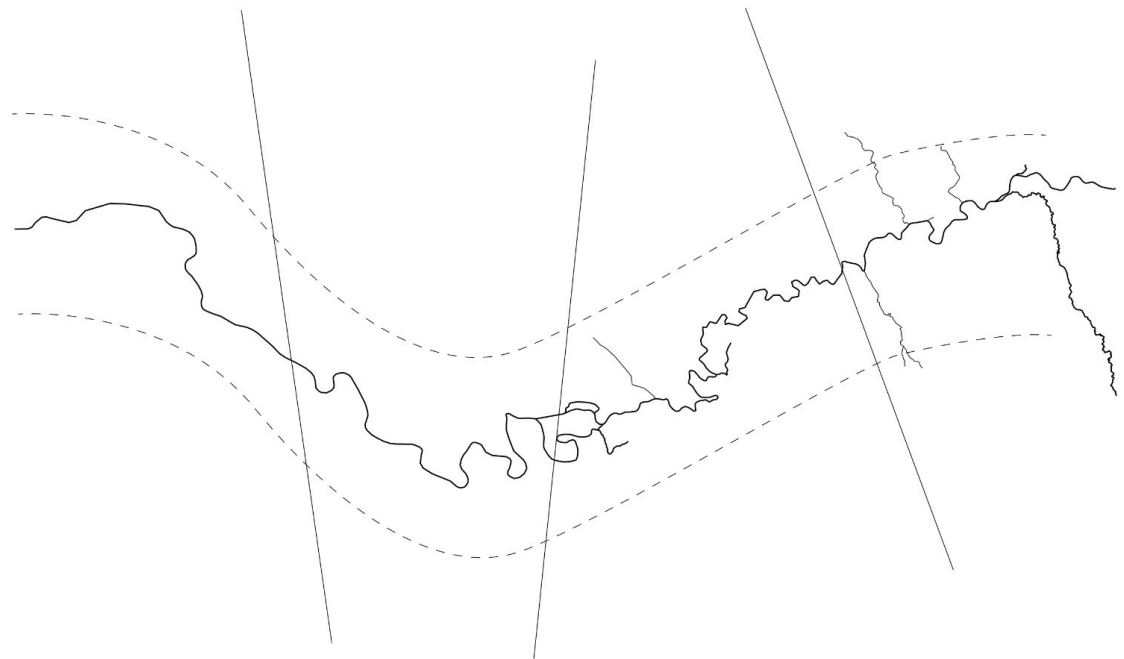
- The successful model established in Gualeguay is adaptively replicated on a larger scale, encompassing the entire delta.
- Integration of other communities and stakeholders into the common system of care, considering the unique characteristics of each tributary.
- Collaboration, knowledge exchange, and partnerships are emphasized to create a network of stakeholders dedicated to delta preservation and enhancement.
- The expanded system promotes ecological connectivity, resilience, and coordinated action for long-term sustainability.

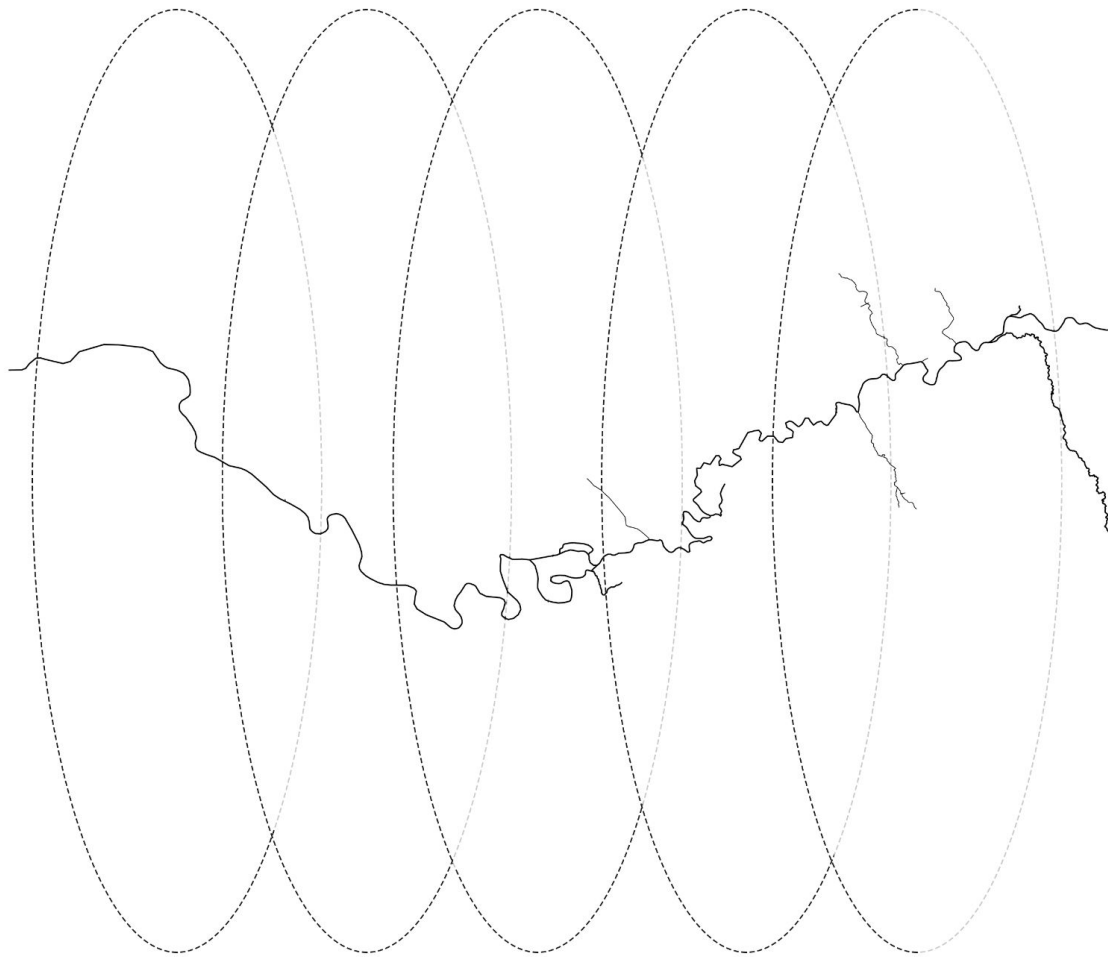


1. Private sector
Provincial government
National government
2. Local stakeholders
3. Local municipality
NGOs
Educational institutions
4. International organisations









Are you conscious of where is the smoke is really coming from?

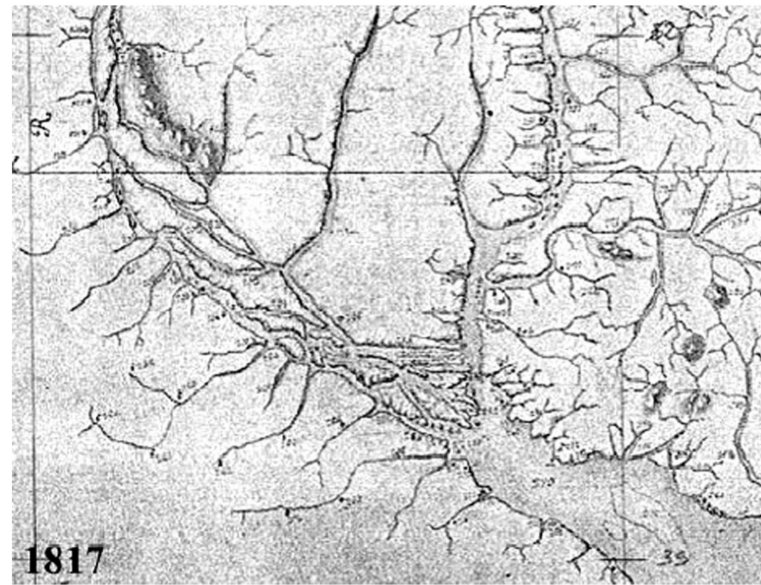
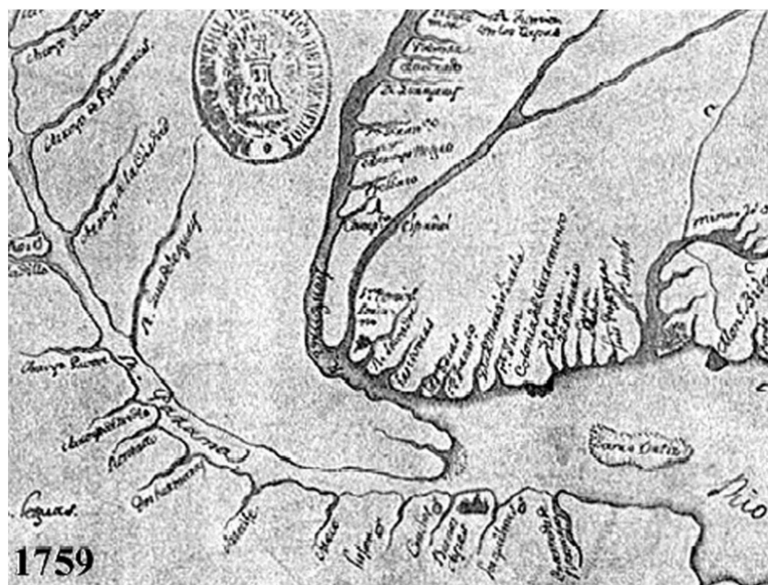
¿Sos consciente de dónde viene el humo realmente?



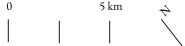
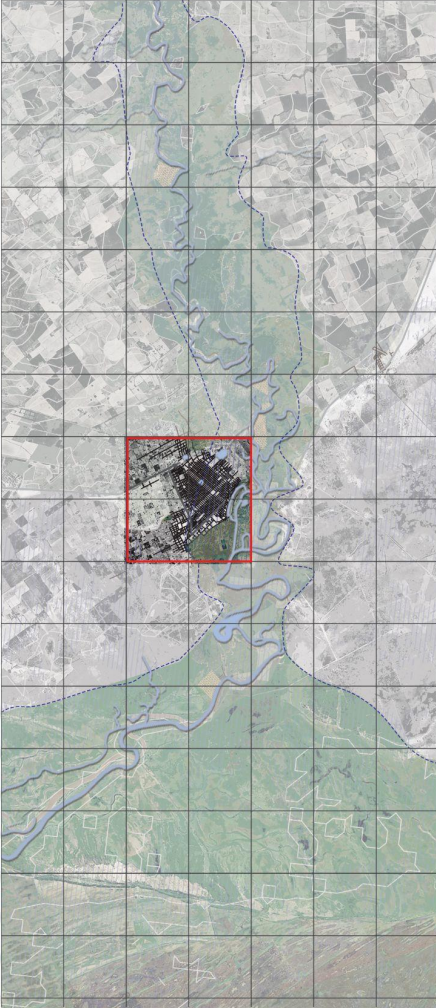
Thanks for
listening

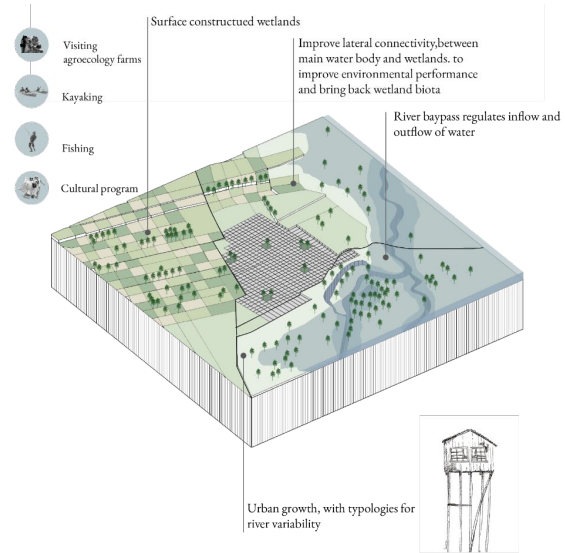
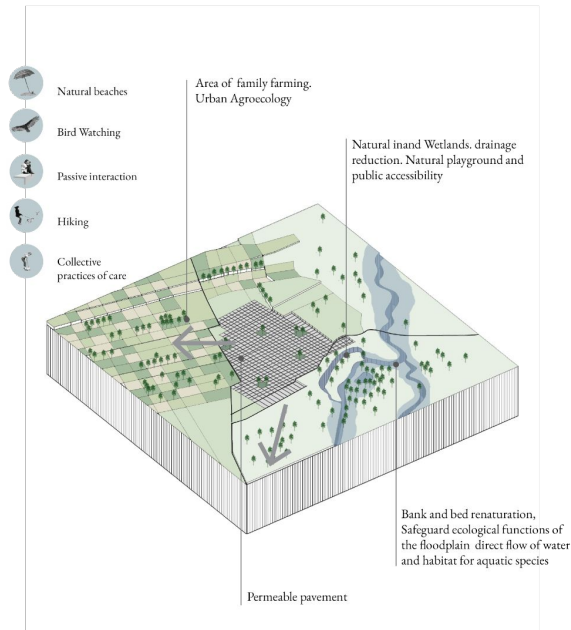


Annex



Gualeguay City





Gray Infrastructure

