



This discussion paper is/has been under review for the journal Atmospheric Measurement Techniques (AMT). Please refer to the corresponding final paper in AMT if available.

A depolarisation lidar based method for the determination of liquid-cloud microphysical properties

D. P. Donovan¹, H. Klein Baltink¹, J. S. Henzing², S. R. de Roode³, and A. P. Siebesma^{1,3}

¹Royal Netherlands Meteorological Institute (KNMI), P.O. Box 201, 3730 AE, De Bilt, the Netherlands

²Netherlands Organisation for Applied Scientific Research (TNO), Princetonlaan 6, Utrecht, the Netherlands

³Technical University of Delft (TUD), Delft, the Netherlands

Received: 14 July 2014 – Accepted: 2 September 2014 – Published: 24 September 2014

Correspondence to: D. P. Donovan (donovan@knmi.nl)

Published by Copernicus Publications on behalf of the European Geosciences Union.

Depol.-lidar determination of liquid cloud properties

D. P. Donovan et al.

Title Page

Abstract

Introduction

Conclusions

References

Tables

Figures



[Back](#)

Close

Full Screen / Esc

[Printer-friendly Version](#)

Interactive Discussion



Abstract

The fact that polarisation lidars measure a depolarisation signal in liquid clouds due to the occurrence of multiple-scattering is well-known. The degree of measured depolarisation depends on the lidar characteristics (e.g. wavelength and receiver field-of-view) as well as the cloud macrophysical (e.g. liquid water content) and microphysical (e.g. effective radius) properties. Efforts seeking to use depolarisation information in a quantitative manner to retrieve cloud properties have been undertaken with, arguably, limited practical success. In this work we present a retrieval procedure applicable to clouds with (quasi-)linear liquid water content (LWC) profiles and (quasi-)constant cloud droplet number density in the cloud base region. Thus limiting the applicability of the procedure allows us to reduce the cloud variables to two parameters (namely the derivative of the liquid water content with height and the extinction at a fixed distance above cloud-base). This simplification, in turn, allows us to employ a fast and robust optimal-estimation inversion using pre-computed look-up-tables produced using extensive lidar Monte-Carlo multiple-scattering simulations. In this paper, we describe the theory behind the inversion procedure and successfully apply it to simulated observations based on large-eddy simulation model output. The inversion procedure is then applied to actual depolarisation lidar data corresponding to a range of cases taken from the Cabauw measurement site in the central Netherlands. The lidar results were then used to predict the corresponding cloud-base region radar reflectivities. In non-drizzling condition, it was found that the lidar inversion results can be used to predict the observed radar reflectivities with an accuracy within the radar calibration uncertainty (2–3 dBZ). This result strongly supports the accuracy of the lidar inversion results. Results of a comparison between ground-based aerosol number concentration and lidar-derived cloud droplet number densities are also presented and discussed. The observed relationship between the two quantities is seen to be consistent with the results of previous studies based on aircraft-based in situ measurements.

AMTD

7, 9917–9992, 2014

Depol.-lidar determination of liquid cloud properties

D. P. Donovan et al.

Title Page

Abstract

Introduction

Conclusions

References

Tables

Figures

◀

▶

◀

▶

Back

Close

Full Screen / Esc

Printer-friendly Version

Interactive Discussion



1 Introduction

The fact that a linear polarisation lidar will detect a cross-polarised signal due to the occurrence of multiple-scattering in liquid water clouds has been recognised since at least 1970 (Liou and Schotland, 1971). Extensive field and laboratory observations (Sassen, 2005) of the depolarisation of laser radiation in water clouds have been made and various theoretical approaches have been developed ranging from Monte-Carlo (MC) based models to semi-analytic approaches; see (Chaikovskaya, 2008) for a review.

The penetration depth of lidars into water clouds (100–300 m) is limited to what may be considered the cloud-base region thus limiting the region of the cloud where information can be directly retrieved. However, for semi-adiabatic cloud layers, number concentration at cloud base and the rate of increase of the liquid water content (LWC) strongly constrain the structure of the cloud as a whole. The region of maximum super saturation (above which no new Cloud-Condensation-Nuclei (CCN) are activated) is typically only a few tens of cm to a few tens of meters above cloud base (Pinsky et al., 2012) and thus accessible, in general, to probing by lidars. Thus any microphysical information potentially provided by lidar observations will be of value for e.g. process studies involving the quantification of aerosol-cloud interactions (Lohmann and Feichter, 2005; McComiskey et al., 2009).

The general idea of using the depolarised return as a means to determine water cloud microphysical properties, such as number density, is not new and has been raised by several authors. Liou and Schotland (1971) briefly raised the possibility and presented the results of a double-scattering lidar model applied to homogeneous (i.e. constant LWC and number density) clouds. More recently, Roy et al. (1999) developed an inversion procedure based on the constrained linear inversion of a double-scattering model of the cross-polarised return applied to homogeneous clouds. Using observations and MC models which include higher-order scattering, it has also been noted that a tight correspondence exists between the layer accumulated depolarisation ratio, layer

Depol.-lidar determination of liquid cloud properties

D. P. Donovan et al.

Title Page

Abstract

Introduction

Conclusions

References

Tables

Figures



Back

Close

Full Screen / Esc

Printer-friendly Version

Interactive Discussion



integrated backscatter (Cao et al., 2009) and multiple-scattering factor (Roy and Cao, 2010). An approach using (single field-of-view) depolarisation lidar has been suggested by Kim et al. (2010) who, based on MC model results, noted that for homogeneous water clouds that the depolarisation observed by a lidar with a suitably large field-of-view (FOV) is expected to be, to a good approximation, only a function of the optical depth.

In spite of the long history and the increasing understanding of the relevant phenomenon, the use of depolarisation measurements to retrieve cloud extinction and microphysical information appears to not have seen widespread implementation. This may be due to the fact that much of the theoretical work has focused on homogeneous clouds (i.e. LWC and effective radius being constant with height) which are not necessarily suitable models of actual clouds (Sassen and Zhao, 1995). Another reason is the fact that while fast models limited to second-order scattering are well-established (Roy et al., 1999), that highly accurate general approaches taking into account higher-order scattering and applicable to inhomogeneous clouds are mainly limited to computationally costly MC approaches (although some exceptions may exist e.g., Chaikovskaya and Zege, 2004). Yet another, perhaps primary, reason may be the shift in attention towards using multiple FOV lidar observations (e.g., Bissonnette et al., 2005; Pounder et al., 2012; Schmidt et al., 2013) for which fast and accurate forward models that treat scattering orders above 2 have emerged in the past few years (e.g., Bissonnette et al., 2005; Hogan, 2006; Malinka and Zege, 2007). In spite of the their apparent under-utilisation, the potential advantages of using the depolarised lidar return in the context of water cloud lidar sensing have been previously noted (Roy et al., 1999; Veselovskii et al., 2006) and it should be noted that (single-view) depolarisation lidars, being of generally simpler design, are much more common than multiple-FOV systems. Thus, a practical accurate depolarisation lidar water cloud microphysical inversion scheme could potentially yield a large amount of valuable data.

In this work we present a retrieval procedure using single FOV¹ depolarisation lidars. The retrieval is based on assuming that the cloud base region can be characterised by

¹Note that in this work FOV refers to the *full-angle*.

Depol.-lidar determination of liquid cloud properties

D. P. Donovan et al.

Title Page

Abstract

Introduction

Conclusions

References

Tables

Figures

◀

▶

◀

▶

Back

Close

Full Screen / Esc

Printer-friendly Version

Interactive Discussion



a quasi-linear (with height) LWC profile (i.e. constant LWC lapse-rate) and constant cloud particle number density. This set of assumptions allows us to reduce the cloud variables to two parameters. In turn, this enables the development of a fast and robust inversion procedure using a look-up-table approach based on stored results from lidar Monte-Carlo simulations.

The outline of the remainder of this paper follows; in Sect. 2 we present the cloud representation(model) we employ and present and discuss the results of lidar multiple-scattering Monte-Carlo calculations applied to our cloud model. The lidar Monte-Carlo model is discussed in more detail in Appendix A. In Sect. 3 we first describe the basic inversion scheme based on the MC calculations and then describe the extension of the scheme in order to include non-ideal effects such as imperfect knowledge of lidar polarisation cross-talk. We then proceed to demonstrate the function of the inversion scheme using simulated lidar data based on Large-Eddy-Simulation (LES) cloud fields which include areas of drizzle (Sect. 3.1) and exhibit realistic (e.g. variable) cloud structure. In Sect. 4 we demonstrate the application of the inversion scheme to various case studies. The measurements in question were obtained at the Cabauw CESAR multi-sensor atmospheric observatory in the central Netherlands (www.cesar-observatory.nl). In particular, we present evidence to support the accuracy of the inversion results by demonstrating the consistency between observed values of cloud-base region radar reflectivity compared with values of the reflectivity forward modelled using the corresponding lidar derived cloud parameters (Sect. 4.3). In Sect. 4.4, we examine the values of the LWC produced by the lidar inversion procedure and compare them with the corresponding adiabatic values. Further, the results of a preliminary comparison between lidar derived cloud-base droplet number densities and ground-based aerosol number density values are presented and discussed in Sect. 4.5. The paper concludes with a summary of the main points and findings.

Depol.-lidar determination of liquid cloud properties

D. P. Donovan et al.

Title Page

Abstract

Introduction

Conclusions

References

Tables

Figures

◀

▶

◀

▶

Back

Close

Full Screen / Esc

Printer-friendly Version

Interactive Discussion



2 Theory

2.1 Cloud model

The cloud model (i.e. representation) used in this work is a simple but still useful model of cloud-base conditions (de Roode and Los, 2008). In particular, we assume that cloud droplet number density is constant as is the altitude derivative (or lapse-rate) of the liquid water content ² (Γ_l) i.e.

$$N(z) = N : z \geq z_b \quad (1)$$

and

$$LWC(z) = \frac{dLWC}{dz}(z - z_b) = \Gamma_l(z - z_b) : z \geq z_b \quad (2)$$

where z is altitude and z_b is the cloud base. Noting that for droplets whose size is large compared to the wavelength of light involved, that $\alpha = 2\pi\langle r^2 \rangle$ where α is the extinction coefficient we have

$$R_{\text{eff}} = \frac{\langle r^3 \rangle}{\langle r^2 \rangle} = \frac{3}{2\rho_l} \frac{LWC}{\alpha} \quad (3)$$

where ρ_l is the density of liquid water and the brackets denote averaging over the cloud particle size distribution.

If the LWC increases linearly with height above cloud base while the number density remains constant, then the cloud droplet effective radius profile has the following form

$$R_{\text{eff}}(z) = \frac{R_{\text{eff},100}}{0.1^{1/3}}(z - z_b)^{1/3} \quad (4)$$

²Lapse-rates, in general, are usually defined to be the negative of derivatives of different quantities with respect to height. Note that in this work, for convenience, the LWC lapse-rate (Γ_l) is defined to be positive.

where z is in km and $R_{\text{eff},100}$ is the value of the effective radius 100 m above cloud base (note that the choice of 100 m is arbitrary). The extinction coefficient profile can be found using Eqs. (4)–(2) leading to

$$\alpha(z) = \frac{3}{2} \frac{(0.1)^{1/3}}{\rho_l} \frac{\Gamma_l}{R_{\text{eff},100}} (z - z_b)^{2/3} \quad (5)$$

In order to link the effective radius and liquid water content to cloud number concentration it is necessary to specify the droplet size distribution. Here we model the size distribution of the droplets using a single-mode modified gamma distribution (Miles et al., 2000) i.e.

$$\frac{dN(r)}{dr} = \frac{N_o}{R_m} \frac{1}{(\gamma - 1)!} \left(\frac{r}{R_m} \right)^{\gamma-1} \exp[-r/R_m] \quad (6)$$

where R_m is the so-called mode radius, N_o is the total number of particles in the distribution and γ is the shape parameter. For this type of distribution

$$\langle r^n \rangle = \frac{(\gamma + n - 1)!}{(\gamma - 1)!} R_m^n \quad (7)$$

where the brackets denote averaging over the size distribution. Thus, the relationship between the effective radius (R_{eff}) and R_m is given by

$$R_{\text{eff}} = \frac{\langle r^3 \rangle}{\langle r^2 \rangle} = R_m(\gamma + 2). \quad (8)$$

with the LWC is given by

$$\text{LWC} = N_o \frac{4}{3} \pi \rho_l \frac{(\gamma + 2)!}{(\gamma - 1)!} R_m^3 = N_o \frac{4}{3} \pi \rho_l R_v^3 \quad (9)$$

**Depol.-lidar
determination of
liquid cloud
properties**

D. P. Donovan et al.

Title Page

Abstract

Introduction

Conclusions

References

Tables

Figures

◀

▶

◀

▶

Back

Close

Full Screen / Esc

Printer-friendly Version

Interactive Discussion



leading to

$$R_v = \left(\frac{(\gamma + 2)!}{(\gamma - 1)!} \right)^{1/3} R_m \quad (10)$$

where R_v is the volume mean radius.

5 The ratio between the volume mean radius and the effective radius (k) is an important parameter for linking the cloud physical and optical properties Martin et al. (1994). From the preceding equations it can be seen that

$$k = \frac{R_v^3}{R_{\text{eff}}^3} = \frac{(\gamma + 1)\gamma}{(\gamma + 2)^2}. \quad (11)$$

10 Based on the results of large-eddy simulations of stratocumulus (Lu and Seinfeld, 2006) in this work we adopt a value of k equal to 0.75 ± 0.15 . Using 11 this corresponds to a range of γ values between 5–14 with a $k = 0.75$ corresponding to $\gamma = 9$. Once k has been specified N_o can be then be predicted from Γ_1 and $R_{\text{eff},100}$ using Eqs. (2) and (9), i.e.

$$15 \quad N_o = 10^6 \alpha_{100} \frac{1}{2\pi} R_{\text{eff},100}^{-2} \frac{1}{k} \quad (12)$$

where α_{100} is the extinction 100 m from cloud base in units of $[\text{m}^{-1}]$ and $R_{\text{eff},100}$ is in units of $[\mu\text{m}]$ so that N_o is in units of $[\text{cm}^{-3}]$.

2.2 Lidar Monte-Carlo calculations

20 Lidars (like radars) are time-of-flight active measurement techniques. Pulses of laser light are transmitted into the atmosphere and the backscattered signal is detected as a function of time after each pulse has been launched. If only single-scattering is considered, the relationship between the detected linearly polarised backscattered powers

can be written directly as

$$P_{\parallel} \left(z = \frac{ct}{2} \right) = \frac{C_{\parallel, \parallel}}{z^2} \beta_{\parallel}(z) \exp \left[-2 \int_0^z \alpha(z') dz' \right] \quad (13)$$

and

$$P_{\perp} \left(z = \frac{ct}{2} \right) = \frac{C_{\perp, \perp}}{z^2} \beta_{\perp}(z) \exp \left[-2 \int_0^z \alpha(z') dz' \right], \quad (14)$$

where z is the range from the lidar, c is the speed of light, t is the time-of-flight (so that $z = ct/2$), β_{\parallel} is the range-dependent total (molecular + cloud + aerosol) parallel polarised backscatter coefficient, β_{\perp} is the corresponding coefficient for the perpendicular polarisation state, $C_{\parallel, \parallel}$ and $C_{\perp, \perp}$ the polarisation channel dependent lidar instrument constants and α is the range dependent extinction coefficient. The backscatter coefficients can be further decomposed into the components corresponding to the molecular, aerosol and cloud components e.g.

$$\beta_{\parallel} = \beta_{\parallel, m} + \beta_{\parallel, a} + \beta_{\parallel, c} \quad (15)$$

and

$$\beta_{\perp} = \beta_{\perp, m} + \beta_{\perp, a} + \beta_{\perp, c} \quad (16)$$

where the m subscripts denote the molecular contribution, a denotes the aerosol contribution and c is used for the cloud contribution. If the aerosols and cloud droplets being probed are spherical then $\beta_{\perp, a} = \beta_{\perp, c} = 0$ and

$$\beta_{\perp} = \beta_{\perp, m} = \delta_m \beta_{\parallel, m} \quad (17)$$

Depol.-lidar determination of liquid cloud properties

D. P. Donovan et al.

Title Page

Abstract

Introduction

Conclusions

References

Tables

Figures

◀

▶

◀

▶

Back

Close

Full Screen / Esc

Printer-friendly Version

Interactive Discussion



Depol.-lidar determination of liquid cloud properties

D. P. Donovan et al.

Title Page

Abstract

Introduction

Conclusions

References

Tables

Figures

◀

▶

◀

▶

Back

Close

Full Screen / Esc

Printer-friendly Version

Interactive Discussion



where δ_m is the molecular scattering linear depolarisation ratio which mainly depends on the wavelength and spectral passband of the lidar and is on the order of 0.2–0.4 % for typical passband widths (Behrendt and Nakamura, 2002) in the UV/VIS/NIR wavelength range. Thus, under single-scattering conditions in water clouds, $\beta_{\perp} \ll \beta_{\parallel}$. However, with respect to lidar cloud measurements, the multiple-scattering (MS) contribution to the signal can be many times the single-scattering contribution. The occurrence of multiple-scattering, in turn, may give rise to a perpendicularly polarised return from clouds which is many order of magnitude greater than that predicted from single-scattering theory (Sassen, 2005; Chaikovskaya, 2008).

In order to calculate the polarised lidar backscatter, the EarthCARE-simulator (ECSIM) lidar-specific Monte-Carlo forward model was used. ECSIM is a modular multi-sensor simulation framework original developed in support of the Earth Clouds and Aerosol Radiation Explorer (EarthCARE) but is flexible enough to be applied to other instruments and platforms (Voors et al., 2007) including upward looking ground-based simulations. More information regarding the ECSIM lidar MC model is given in Appendix A.

Using our cloud model, MC runs were performed for various values of Γ_l , $R_{\text{eff},100}$, different cloud-base heights and different lidar field-of-views. The range of parameters used is given in Table 1. Example results are shown in Figs. 1 and 2 for a lidar receiver field-of-view (FOV) of 0.5 mrad and 2.0 mrad respectively. The laser divergence was fixed at 0.1 mrad and the wavelength is 355 nm. The results were not found to be sensitive (above the 1–2 % level) to the laser divergence so long as the laser divergence was less than about half the receiver FOV. The MC calculations were run until the estimated error level in the calculated depolarisation ratio was below 5 % for ranges below where attenuation has reduced the normalised parallel return to a value below about 0.01, which, for a homogeneous cloud, corresponds to an apparent OD of 2.3. Beyond this point it was judged that the signal-to-noise (SNR) ratios of practical lidar measurements would be too unfavourable to be exploitable. Results are shown for both

a peak (Sassen and Petrilla, 1986) which is associated with the penetration of the lidar signal to the cloud-top region or beyond (Sun and Li, 1989).

Figures 1–3 are informative and show that the shape of the return signals and the associated depolarisation ratio is a well-defined function of the LWC and effective radius profile. However, since the extinction profile itself is a function of both the LWC and R_{eff} profiles, the variations shown in Figs. 1–3 are the result of changes in both the single-scattering return and the associated multiple-scattering contributions. Using Eq. (5) it is possible to interpolate between the MC look-up table entries to examine how the signal and depolarisation ratio profiles behave as a function of $R_{\text{eff},100}$ while the extinction profile is held constant, thus isolating the effects of MS. Such an example is shown in Fig. 4 where the para., perp. and depolarisation profiles are shown for values of $\alpha_{100} = 5 \text{ km}^{-1}$ and 10 km^{-1} (the extinction coefficient at 100 m from cloud-base) as a function of $R_{\text{eff},100}$. If MS was not occurring, there would be no variation present in the para profile as $R_{\text{eff},100}$ changes and practically no perp. signal would exist at all. As it is, a clear dependence on $R_{\text{eff},100}$ is present in the para. and perp. attenuated backscatters and in the depolarisation ratios.

A fixed value of $\gamma = 9$ was used to generate the results shown in Figs. 1–4. Other simulations (not shown) conducted with $\gamma = 2$ indicate that for FOVs ranging from 0.5 to 2.0 mrad, that the values of the para. and perp. signals and the associated depolarisation ratio change less than 10 % so long as $R_{\text{eff},100}$ is greater than $3 \mu\text{m}$. For values of $R_{\text{eff},100}$ of $2 \mu\text{m}$ the depolarisation ratio profile remains the same within better than 10 %, however, the shape of the normalised para and perp returns past the peak para signal altitude can change by up to 0.1 in absolute terms. This is likely not entirely due to changes in the relative MS contribution but more to do with the fact that for small effective radius values that the details of the phase function itself becomes sensitive to the width of the distribution and that even the approximate that $\alpha = 2\pi\langle r^2 \rangle$ itself starts to break down.

Depol.-lidar determination of liquid cloud properties

D. P. Donovan et al.

Title Page

Abstract

Introduction

Conclusions

References

Tables

Figures

◀

▶

◀

▶

Back

Close

Full Screen / Esc

Printer-friendly Version

Interactive Discussion



Depol.-lidar determination of liquid cloud properties

D. P. Donovan et al.

Title Page

Abstract

Introduction

Conclusions

References

Tables

Figures

◀

▶

◀

▶

Back

Close

Full Screen / Esc

Printer-friendly Version

Interactive Discussion



and the σ terms in Eq. (20) represent the respective uncertainties, which in relative terms for actual measurements, will be in the range of a few percent above the immediate cloud bottom region and increasing to a few ten's of percent with increasing penetration into the cloud past the altitude of maximum return. Note also that there is

5 a implicit dependence of χ^2 , B_{\parallel} and B_{\perp} on the cloud-base altitude and the lidar FOV.

Using B_{\parallel} and B_{\perp} avoids the need for an absolute calibration of the lidar and accounting for the transmission between the lidar and cloud base. It is also useful to consider the altitude range to consider. Taking into account that, with actual observations, the below cloud return will vary according to the possible presence of below-cloud drizzle and varying aerosol loads together with the finite SNR levels achievable as the lidar signal becomes attenuated as it penetrates into the cloud, we limit the altitude range to consider ($z_{i_b} - z_{i_t}$) according to the following criteria:

- $z_i \geq z_b$
- $B_{\parallel}(z_i) \geq 10^{-2}$.

15 where here the value of the cloud-base (z_b) is known precisely.

Clearly Eq. (20) achieves its global minimum at the point where the tabulated extinction and effective radius values match the specified values of α_{100} and $R_{\text{eff},100}$ (i.e. $\chi^2 = 0$ at the point where $\alpha_{100,j} = \alpha_{100}$ and $R_{\text{eff},100,k} = R_{\text{eff},100}$). How well-defined the global minimum Eq. (20) is and if other local minima exist, strongly indicates the accuracy and precision we may expect in any inversion procedure based on minimising Eq. (20) or similar function. Normalized values of Eq. (20) (with $\sigma_{B_{\parallel}}$ and $\sigma_{B_{\perp}}$ proportional to B_{\parallel} and B_{\perp} respectively) for a lidar FOV of 1 mrad are presented in Fig. 5. Here it can be seen that, as expected, a well defined global minimum exists where $\alpha_{100,j} = \alpha_{100}$ and $R_{\text{eff},100,k} = R_{\text{eff},100}$ and that the minimum is sharper for the smaller particle size cases. It can also be seen that, in spite of the unique global minimum, that the topology is complicated and that local minima exist. This indicates that in any eventual practical inversion scheme that care must be taken so that the inversion scheme converges to the global minimum rather than one of the local minima. It

Depol.-lidar determination of liquid cloud properties

D. P. Donovan et al.

Title Page

Abstract

Introduction

Conclusions

References

Tables

Figures

◀

▶

◀

▶

Back

Close

Full Screen / Esc

Printer-friendly Version

Interactive Discussion



can also be seen that the minima are less elongated along the effective radius axis for the $R_{\text{eff},100} = 3\mu\text{m}$ than the $R_{\text{eff},100} = 9\mu\text{m}$ cases. This is expected, since as the particle sizes increase, the associated forward scattering lobe (which in the large particle limit contains 1/2 the scattered energy) will eventually become much smaller than the lidar FOV leading to the decreased ability to distinguish between different particle sizes since practically all the forward scattered light will remain within the FOV. Results similar to those shown in Fig. 5 for a different FOV of 0.5 mrad are shown in Fig. 6. Here it can be seen that, when compared to the 1.0 mrad case, that the minima associated with the $R_{\text{eff}} = 9.0\mu\text{m}$ cases are less elongated along the effective radius axis when compared to the FOV = 1.0 mrad case. This is a demonstration of the fact that smaller field-of-views allow more sensitivity at larger particle sizes. The reason for this is similar to the reason for the reduced sensitivity to larger particle sizes discussed above in relation to Fig. 5.

2.3.1 Effect of depolarisation calibration and FOV uncertainty

Our prototype cost function (Eq. 20) does not depend on the lidar backscatter signals being calibrated in an absolute sense, however, the para. and perp. channels must be calibrated in a relative sense. Further, for many practical depolarisation lidars, a degree of cross-talk between the two channels exist so that in practice one can write

$$\text{ATB}_{\parallel} = z^2 \left[(1 - \delta^C) P_{\parallel} + \delta^C P_{\perp} \right] \quad (23)$$

and

$$\text{ATB}_{\perp} = C_r z^2 \left[(1 - \delta^C) P_{\perp} + \delta^C P_{\parallel} \right] \quad (24)$$

where δ^C is the polarisation cross-talk parameter and C_r is the inter-channel depolarisation calibration constant (Donovan and Apituley, 2013a, b).

Example results of a simulated 20 % error in the value of C_r are shown in Fig. 7. Here it can be seen that the location of the minimum can be shifted substantially by

Depol.-lidar determination of liquid cloud properties

D. P. Donovan et al.

Title Page

Abstract

Introduction

Conclusions

References

Tables

Figures

◀

▶

◀

▶

Back

Close

Full Screen / Esc

Printer-friendly Version

Interactive Discussion



an error in C_r with the effect being generally felt more by the effective radius values. For practical lidar systems δ_c may be on the order of a few percent or less, thus, for example even a 50 % error in the value of δ_c only produces a much smaller relative effect than a 20 % miss-specification of C_r . Roughly speaking, we conclude that, in order to be able retrieve $R_{\text{eff},100}$ to within 10 % that C_r should be known to better than 5 % while, for typical cross-talk values, δ^c should be known to within about 50 %.

A similar exercise was carried out to examine the sensitivity of the results to the lidar FOV. It was found that, in general, a 15 % error in the assumed lidar FOV leads to less than a 5 % error in the extinction and/or effective radius. Since, the FOV of lidar systems are generally known better than a few percent we consider this error will generally be a secondary source of error in comparison with the errors associated with the depolarisation calibration.

3 Inversion scheme

On the basis of the results presented in the previous section we conclude that a practical inversion scheme is possible. That is, given a measurement of B_{\parallel} and B_{\perp} , useful estimates of α_{100} and $R_{\text{eff},100}$ can, in principle, be produced by finding the global minimum of Eq. (20) or similar function. However, on a practical level care should be taken in the initialisation of the inversion scheme (due to the presence of multiple local minima) and errors in the depolarisation calibration (e.g. C_r and δ_c) should be taken into account. Further, since the prototype cost function uses normalised attenuated backscatters, the error in the normalisation should also be accounted for. Accordingly, our practical inversion scheme requires a more flexible functional form for our cost-function. In particular, we will use the following optimal estimation (Rodgers, 2000) cost-function

$$\chi^2(\mathbf{x}; \mathbf{x}_a, \mathbf{S}_e, \mathbf{S}_a) = [\mathbf{y} - F(\mathbf{x})]^T \mathbf{S}_e^{-1} [\mathbf{y} - F(\mathbf{x})] + [\mathbf{x} - \mathbf{x}_a]^T \mathbf{S}_a^{-1} [\mathbf{x} - \mathbf{x}_a], \quad (25)$$

where \mathbf{x} is the state vector, \mathbf{y} is the observation vector and $F(\mathbf{x})$ is the forward model estimate of the observations, \mathbf{S}_e is the error covariance matrix, \mathbf{x}_a is a vector containing

an a priori estimate of the state vector and the a-priori error covariance matrix is denoted by \mathbf{S}_a . As with the case with Eq. (20), the altitude limits of the summation are subject to the same conditions as listed with Eq. (20) with the additional constraint that altitudes past the maximum of the observed depolarisation profile are not considered.

This is due to the fact that a sustained drop in the depolarisation profile is expected to be associated with penetration into the cloud-top region or beyond.

The observation vector (\mathbf{y}) is composed of the observed elements of B_{\parallel} and B_{\perp} as defined by Eqs. (21) and (22), i.e.

$$\mathbf{y} = [B_{\parallel,1}, B_{\parallel,2}, \dots, B_{\parallel,n_z}, \dots, B_{\perp,1}, \dots, B_{\perp,n_z}]. \quad (26)$$

The state-vector (\mathbf{x}) is defined as

$$\mathbf{x} = [\ln(C_N), \Delta z \sin(\phi_{z_p}), \ln(C_r), \ln(\delta_c), \ln(R_{\text{eff},100}), \ln(\alpha_{100})] \quad (27)$$

where C_N is a factor introduced to account for any error in the signal normalisation process, Δz is the range resolution of the observations and $\sin(\phi_{z_p})$ is a factor (constrained by the use of the sine function to be between -1 and 1) used to account for the uncertainty in assigning the altitude of the peak return (see **Step 1** in Sect. 3.1.1) due to the finite vertical resolution of the measurements.

The forward model vector ($F(\mathbf{x})$) is defined as

$$F(\mathbf{x}) = \frac{C_N}{\max(\text{ATB}_{\parallel})} [\text{ATB}_{\parallel,1}, \dots, \text{ATB}_{\parallel,n_z}, \text{ATB}_{\perp,1}, \dots, \text{ATB}_{\perp,n_z}] \quad (28)$$

where ATB_{\parallel} and ATB_{\perp} given by Eqs. (23) and (24) respectively, with P_{\parallel} and P_{\perp} determined by interpolation using the pre-computed look-up-tables. Before interpolation in α_{100} and $R_{\text{eff},100}$, the profiles are shifted in altitude by an distance given by $\Delta z \sin(\phi_{z_p})$ and then binned to a vertical resolution matching the observations. The look-up tables have been computed at a resolution of 5 m while, in this work, the observations we will consider are at a resolution of 15 m.

Depol.-lidar determination of liquid cloud properties

D. P. Donovan et al.

Title Page

Abstract

Introduction

Conclusions

References

Tables

Figures

◀

▶

◀

▶

Back

Close

Full Screen / Esc

Printer-friendly Version

Interactive Discussion



The elements of the error covariance matrix (S_e) can be found by calculating the expectation value of the difference between the observations and the optimal forward model fits i.e.

$$S_{e,i,j} = E [(y_i - F_i)(y_j - F_j)] . \quad (29)$$

Accordingly, for simplicity if we ignore the correlation in the para. and perp. signals due to δ^C , it can be shown that

$$\begin{aligned} S_{e,i,j} &= \sigma_{C_N}^2 y_i y_j : 1 \leq i \leq n_z, 1 \leq j \leq n_z, i \neq j \\ &= \sigma_{y_i}^2 + \sigma_{C_N}^2 y_i^2 : 1 \leq i \leq n_z, i = j \\ &= (\sigma_{C_r}^2 + \sigma_{C_N}^2) y_i y_j : n_z < i \leq 2n_z, n_z < j \leq 2n_z, i \neq j \\ &= \sigma_{y_i}^2 + (\sigma_{C_r}^2 + \sigma_{C_N}^2) y_i^2 : n_z < i \leq 2n_z, i = j \end{aligned} \quad (30)$$

where $\sigma_{y_i}^2$ is the variance assigned to y_i which is estimated by averaging the observations themselves in time as a function of altitude and $\sigma_{C_N}^2$ is the estimated variance of C_N which is similarly estimated from the observations. σ_{C_r} is the a priori uncertainty in the depolarisation inter-channel calibration factor.

In our procedure, we assign a priori estimates to the depolarisation calibration parameters (C_r and δ^C) and the normalisation factor C_N , all other factors are unconstrained by any explicit a priori. Thus, non-zero elements of the inverse of the a priori

**Depol.-lidar
determination of
liquid cloud
properties**

D. P. Donovan et al.

Title Page

Abstract

Introduction

Conclusions

References

Tables

Figures

◀

▶

◀

▶

Back

Close

Full Screen / Esc

Printer-friendly Version

Interactive Discussion



error covariance matrix are given by

$$\begin{aligned}
 S_{a,1,1}^{-1} &= \left(\frac{\sigma_{C_N}}{C_N} \right)^{-2} \\
 S_{a,3,3}^{-1} &= \left(\frac{\sigma_{C_r}}{C_r} \right)^{-2} \\
 S_{a,4,4}^{-1} &= \left(\frac{\sigma_{\delta^C}}{\delta^C} \right)^{-2}
 \end{aligned} \tag{31}$$

where we have assumed that the a priori estimates are all uncorrelated. Here σ_{δ^C} is the assumed a priori uncertainty in the depolarisation cross-talk factor. The $S_{a,2,2}$ term is zero since no a priori knowledge is assumed for the ϕ_{z_p} term in the state vector, however, the term $\sin(\phi_{z_p})$ is still constrained by its very nature to be between -1 and $+1$.

Once the cost function is minimised, the retrieved values of α_{100} and $R_{\text{eff},100}$ can be used along with Eq. (5) to find Γ_l , while N_o can be found via Eq. (12). The covariance matrix of the retrieved parameters ($C_N, C_r, \delta^C, \alpha_{100}, R_{\text{eff},100}$) are found using standard approaches (e.g., Press et al., 2007) and standard error propagation techniques are then used to find the resulting error estimates for Γ_l and N_o including the effects of the uncertainty in k .

3.1 Simulations: application to LES data fields

In order to further develop and test the inversion procedure in a manner which includes the effects of realistic cloud structure, end-to-end simulations were conducted based on results from Large Eddy Simulation model runs. In particular, output from the Dutch Atmospheric LES model (DALES) (Heus et al., 2010) was used. DALES uses a bulk-scheme for precipitating liquid-phase clouds. Condensed water is separated into cloud water and precipitation. Cloud droplet number density is a prescribed parameter while

Depol.-lidar determination of liquid cloud properties

D. P. Donovan et al.

Title Page

Abstract

Introduction

Conclusions

References

Tables

Figures

◀

▶

◀

▶

Back

Close

Full Screen / Esc

Printer-friendly Version

Interactive Discussion



much lower the cloud water content and contributes little to the extinction. However, the presence of drizzle is clear in the effective radius panel particularly, below the cloud base.

Virtual lidar and radar measurements corresponding to the track shown in Fig. 8 are show in Fig. 9. Here a 355 nm depolarisation lidar with a field-of-view of 1 mrad was simulated along with the observed radar reflectivity corresponding to a 35 GHz cloud-profiling radar with a pulse length of 20 m and a simulated antenna diameter of 1.25 m. It can be seen that the depolarisation ratio increases from cloud-base and decreases sharply above cloud-top, although it is quite noisy in this region. It can also be seen that while the lidar measurements are apparently not strongly influenced by the presence of drizzle, that the simulated radar signals are. This is, of course, expected since the radar reflectivity is proportional to the sixth moment of the hydrometer size distribution so that the radar reflectivity is strongly impacted by the presence of even small numbers of drizzle-sized droplets (see Eq. 35).

3.1.1 Inversion procedure

An inversion procedure based on the minimisation of Eq. (25) was developed and tested using the scene described above and other similar DALES derived scenes. The steps of the full procedure are outlined below.

Step 1: Averaging and binning of data

The altitude of the peak observed parallel lidar attenuated backscatter is found for each profile. Each profile is shifted in altitude so that the peaks match and then the desired number of profiles are averaged. The uncertainties (the $\sigma_{y_i}^2$ s) are estimated by evaluating the corresponding variance profiles.

The logic behind this averaging strategy can be illustrated as follows. In Fig. 9 it can be seen that the altitude of the peak return is not constant. Further, even in these simulations the cloud base can be difficult to unambiguously define due to the variations

Depol.-lidar determination of liquid cloud properties

D. P. Donovan et al.

Title Page

Abstract

Introduction

Conclusions

References

Tables

Figures

◀

▶

◀

▶

Back

Close

Full Screen / Esc

Printer-friendly Version

Interactive Discussion



Depol.-lidar determination of liquid cloud properties

D. P. Donovan et al.

Title Page

Abstract

Introduction

Conclusions

References

Tables

Figures

◀

▶

◀

▶

Back

Close

Full Screen / Esc

Printer-friendly Version

Interactive Discussion



in cloud altitude and the presence of sub-cloud drizzle. When dealing with real obser-
vation the additional complicating factor of the presence of growing aerosol particles
may also complicate the determination of the effective cloud base. In our procedure,
we largely avoid the need to very accurately identify cloud-based directly from the ob-
servation by using the peak of the observed parallel lidar attenuated backscatter as
our reference. The minimum altitude considered in the inversion procedure is based on
a threshold of $B_{\text{para}} = 0.05$ (which likely overestimates the true cloud base but largely
avoids drizzle and aerosol effects) while an estimate of the true cloud-base can be
produced as a by-product of the fitting procedure determined by the optimal fit to the
observations.

Step 2: Initialisation of minimisation procedure

From the investigations into the structure of Eq. (20) we know that spurious local min-
ima in our cost function likely exist. For this reason it is necessary to specify an ap-
propriately close initial guess when numerically minimising Eq. (25). It was found that
a simple grid search of 10–15 values of α_{100} between 1 km^{-1} – 30 km^{-1} and $R_{\text{eff},100}$
between 3 and 12 microns with the values of C_N, C_r, δ^C set to their respective a pri-
ori values was appropriate in order to find a suitable initial guess for the minimisation
procedure.

Step 3: Minimisation of Eq. (25)

A two step method to minimise the cost-function was implemented in a robust manner.
First we apply the gradient-free Nelder–Mead Simplex algorithm (Press et al., 2007).
Then, as an additional convergence check and to improve the accuracy of the minimisa-
tion, the simplex algorithm results was followed by an application of Powell's algorithm
(Press et al., 2007). Finally, as described in Press et al. (2007) the curvature matrix
around the minimisation point was evaluated as well as the resulting covariance matrix
of the retrieved parameters.

3.1.2 Inversion results

Two sample inversion results corresponding to x equal to 2.0 and 2.5 km are shown in Fig. 10. Here it can be seen that a very good match between the simulated observations and the results of the retrieval procedure are obtained. The results shown here correspond to a horizontal averaging of 0.2 km which corresponds to averaging across 5 consecutive simulated lidar profiles. It is interesting to note that the simulated signals bear a striking similarity to actual observations extending even to the qualitative appearance of the signals above cloud top (Sassen and Petrilla, 1986).

Time series of inversion results as well as the true model values are shown in Fig. 11. In this set of trials (which contain the results presented in Fig. 10) the assumed error in C_r was set to 5 % and for δ^C 20 % and the a priori values were set to match the true values. The SNR of the lidar signals themselves are functions of the signal strength but are generally in the range of 20 to 40 for the case depicted here. It can be seen that the agreement between the retrieval results for α_{100} and $R_{\text{eff},100}$ as well as the derived variables Γ_1 and N are generally within 10 % or better on a profile-by-profile basis.

The bottom-panel of Fig. 11 shows the radar reflectivity corresponding to a level 100 m above the retrieved cloud-base. In order to predict the radar reflectivities corresponding to the lidar retrieval results we note that the relationship between radar equivalent reflectivity (Z_e) and LWC can, by rearranging Eq. (22) of (Donovan and van Lammeren, 2001), be written as,

$$Z_e = \frac{\text{LWC}}{\rho_l} \frac{48}{\pi} \left(\frac{|K|}{|K_w|} \right)^2 \frac{R_{\text{eff}}}{R'_{\text{eff}}{}^4} \quad (32)$$

where $|K|$ is the dielectric factor for water which is temperature and frequency dependent and $|K_w|$ is a reference value of $|K|$ corresponding to a fixed reference temperature. For our purposes at 35 GHz $|K_w|$ is fixed to a value 0.964. R'_{eff} is the so-called lidar/radar

effective radius and for spheres is defined as

$$R'_{\text{eff}} = \left(\frac{\langle r^6 \rangle}{\langle r^2 \rangle} \right)^{1/4}. \quad (33)$$

Equation (32) can be re-written to emphasise the role played by the ratio of R'_{eff} to R_{eff} .

If we define

$$R_r \equiv \frac{R'_{\text{eff}}}{R_{\text{eff}}}, \quad (34)$$

then we have

$$Z_e = \frac{\text{LWC}}{\rho_l} \frac{48}{\pi} \left(\frac{|K|}{K_w} \right)^2 R_r^4 R_{\text{eff}}^3 \quad (35)$$

For uni-modal size distributions of the type described by Eq. (6) the ratio of the lidar/radar effective radius to the normal effective radius is given by

$$R_r = \left[\frac{(\gamma + 5)(\gamma + 4)(\gamma + 3)}{(\gamma + 2)^3} \right]^{1/4} \quad (36)$$

which varies between 1.13 for $\gamma = 9$ to 1.28 corresponding to $\gamma = 3$. Thus, for uni-modal distributions there is a well-constrained relationship between reflectivity and the product of the water content and the cube of the effective radius. However, it is well-known that this is not the case in general if even small amounts of drizzle are present (e.g., Fox and Illingworth, 1997a). In particular, the value of R_r yielded by Eq. (34) represents a lower-limit and multi-modal distributions can yield much higher values (Donovan and van Lammeren, 2001). This will be considered in more detail in Sect. 4.3 and Appendix B.

The continuous Red lines in the bottom-panel of Fig. 11 show the true total reflectivity of the drizzle and cloud droplets combined, while the light-Blue line shows the contribution of just the cloud droplets. It can be seen that the reflectivity predicted by the

Depol.-lidar determination of liquid cloud properties

D. P. Donovan et al.

Title Page

Abstract

Introduction

Conclusions

References

Tables

Figures

◀

▶

◀

▶

Back

Close

Full Screen / Esc

Printer-friendly Version

Interactive Discussion



Depol.-lidar determination of liquid cloud properties

D. P. Donovan et al.

Title Page

Abstract

Introduction

Conclusions

References

Tables

Figures

◀

▶

◀

▶

Back

Close

Full Screen / Esc

Printer-friendly Version

Interactive Discussion



lidar results is a consistently better match to the cloud-only reflectivity. This is expected due to the lack of sensitivity of the lidar signals to the presence of optical thin drizzle. This result implies that it will be useful to compare the radar reflectivity derived from the lidar inversion results to actual observation (as will be done in Sect. 4.2). Agreement, however, can only be expected in non-drizzling conditions. Cases where the observed Z_e is greater than the predicted reflectivity levels may indicate the presence of drizzle. However, cases where the observed Z_e are less than the reflectivity levels predicted on the basis of the lidar inversion results via Eq. (35) are not physical and would indicate a problem with the observations or the inversion procedure (e.g. convergence to the wrong minimum) or with the radar calibration.

As well as the results directly presented here, several other trials were conducted using the same scene but with the fixed cloud-number density set to lower and higher values as well as trials where the a priori values of C_r and δ^C were perturbed. It was generally found that the results were largely insensitive to errors in δ^C but errors in C_r were important. For example, it was found that a 5 % error in C_r coupled to a similar a priori error estimate couple lead to errors in R_{eff} , Γ_l and N of 10–15 %. Runs were also conducted where the assumed lidar FOV was changed from the true value. For example if the true FOV was 1 mrad but the look-up-tables corresponding the 0.5 mrad then it was found that R_{eff} was overestimated by a factor of about 20–25 % while Γ_l was overestimated by about a factor of 27–30 % leading to an underestimation of N by close to a factor of 2.

4 Application to Cabauw observations

In this section, we describe the application of the depolarisation lidar inverse procedure to a substantial number of instances of actual observations. The inversion procedure was applied to about 150 selected periods ranging in time from a few 10's on minutes to several hours of boundary layer (BL) stratus clouds observed at the Cabauw/CESAR measurement site in the central Netherlands using a depolarisation lidar operating at

355 nm. In particular, cases from May 2008 (coinciding with the EUCARI impact campaign, www.atm.helsinki.fi/eucaari/.) as well as cases from January and July 2010 were selected. The observational data used in this study are freely available from the CESAR database (<http://www.cesar-database.nl/>).

The actual data record of UV-depolarisation lidar observations is much more extensive than the limited number of cases presented here, however, the immediate aim here is not to conduct an exhaustive analysis of the results but to demonstrate the consistency and realism of the depolarisation inversion results. A more extensive application and analysis is intended to be the focus of future work.

4.1 Measurements and case selection

The UV-depolarisation lidar at Cabauw is a commercial Leosphere ALS-450 lidar operating at 355 nm which has separate parallel and perpendicular channels. The system has been in operation at Cabauw since mid-2007 with breaks in the record ranging from weeks to several months. The data was acquired with a vertical resolution of 15 m and a temporal resolution of about 30 s. The depolarisation inter-channel calibration factor and the corresponding cross-talk parameters were estimated using the method described in Donovan and Apituley (2013a, b). The values of C_r and δ^C were found to be stable between instrument servicing which occurred between intervals ranging from a few months to a year. However, within certain periods the cross-talk (δ^C) appeared to vary quasi-diurnally by up to 50 % (possibly linked to the temperature of the unit). The field-of-view of the lidar was found to be stable between servicing. The FOV of the lidar system was estimated by fitting an overlap function to lidar signals acquired during selected cloudless periods with low well-mixed BL aerosol burdens in a procedure similar in nature to those described in Guerrero-Rascado et al. (2010). The overlap model used was produced by convolving Eq. (7.72) of Measures (1984) with a Gaussian function in order to model the effects of an divergent emitted laser beam. The resulting overlap model is a function of the separation of the transmitter

Depol.-lidar determination of liquid cloud properties

D. P. Donovan et al.

Title Page

Abstract

Introduction

Conclusions

References

Tables

Figures



Back

Close

Full Screen / Esc

Printer-friendly Version

Interactive Discussion



Depol.-lidar determination of liquid cloud properties

D. P. Donovan et al.

Title Page

Abstract

Introduction

Conclusions

References

Tables

Figures

◀

▶

◀

▶

Back

Close

Full Screen / Esc

Printer-friendly Version

Interactive Discussion



and receiver optical axes, the effective beam and receiver diameters as well as the effective beam divergence and receiver FOV. The separation between the emission and receiver optical axes and the beam and receiver diameters were found by physically making measurements on the device itself. The fits then yielded estimates of the effective beam divergence and the receiver FOV. As was the case with the C_r parameter, The FOV was found to be stable between instrument services and depending on the particular time interval, the FOV was found to vary between about 0.5 to 1.5 mrad.

An example of the type of observation that was selected for analysis is presented in Fig. 12. It is our intention to focus on well-defined warm cloud layers. Further, as will be presented and discussed later in Sect. 4.5, we wish to compare our derived cloud number density estimates to aerosol number concentration measurements made near the surface. Thus, we further limit our focus to layers that appear to be physically linked to well-mixed boundary layers. In Fig. 12 all three of the boxed regions are well-defined stratus layers. However, the higher altitude regions are clearly above the top of the boundary layer as indicated by the sharp gradient in lidar signal present at about 2.4 km.

As well as the lidar measurements, we also make use of the 35 GHz lidar observations at Cabauw. The cloud radar is a vertically pointing Doppler radar with a vertical resolution of 89 m and a temporal resolution of approximately 15 s. Further details of this system are given in Leijnse et al. (2010). For the periods involved in this study the radar reflectivity calibration uncertainty is thought to be in the range of 2–3 dBZ.

4.2 Examples

Sample lidar and radar data as a function of altitude and time are shown in Fig. 13 for 15 January 2011 from 16 to 18 h UTC. Here a stratus layer is present with the cloud base varying between 0.75 to 0.85 km. The lidar data has a vertical resolution of 15 m and a temporal resolution of 30 s. The corresponding normalised attenuated backscatter as a function of distance from the altitude of the peak parallel return (binned to a temporal resolution of 3 min) as well as two sample inversion results are shown in

Depol.-lidar determination of liquid cloud properties

D. P. Donovan et al.

Title Page

Abstract

Introduction

Conclusions

References

Tables

Figures

◀

▶

◀

▶

Back

Close

Full Screen / Esc

Printer-friendly Version

Interactive Discussion



Fig. 14. By comparing the lidar data shown in Fig. 14 against that shown in Fig. 13 it can be seen that the profile-to-profile variation is indeed reduced. The sample fit results indicate that the observed signal profiles largely conform to our expectations based on the look-up-table values themselves and the LES simulation based results discussed earlier (e.g. those presented in Fig. 10), however, some differences may be noted. Firstly, the cloud-base is generally not as sharply defined in the actual measurements as in the LES based simulations. One possible reason for this is presence of drizzle, especially likely in the earlier profile which is below an areas of elevated radar reflectivity. Another likely factor is the existence of small-scale variability at scales finer than the resolution of the LES simulations. Still another reason may be due to the presence of *not-quite* activated but still strongly growing aerosol present just below cloud base. Another notable difference between the LES simulation based results and the observation is that the observed depolarisation ratio above 100–150 m from cloud base is often (but not always) less than expected on the basis of the look-up-table calculations and the LES based simulations. This is presumably due to the departure of the real cloud structure from our assumption of constant LWC slope and constant N (due to e.g. the effects of mixing at cloud-top). That this observed behaviour is linked to slight non-linear effects in the lidar signal detection can also not be strictly ruled out.

In spite of these two main differences, generally very good fits for the first 100–150 m from cloud-base are found. Time series of the inversion results corresponding to Fig. 14 are shown in Fig. 15. Here it can be seen that $R'_{\text{eff},100}$ appears to have been fairly constant at about $4 \mu\text{m}$ and is retrieved with an estimated error of about 30 % while the Γ_1 values are generally about 40 % of the adiabatic value. The cloud number concentration values are fairly constant with an average value of about 400 cm^{-3} and an estimated uncertainty on the order of 25 %. A comparison between the reflectivity predicted using the lidar inversion results using Eq. (35) and the observed values is shown in the Middle-Right panel of Fig. 15. In order to conduct the comparison, the radar data were binned to the same time resolution as the lidar inversion results. To avoid the effects of partially filled radar bins near cloud base, for each inversion time-step, the altitude

Depol.-lidar determination of liquid cloud properties

D. P. Donovan et al.

Title Page

Abstract

Introduction

Conclusions

References

Tables

Figures

◀

▶

◀

▶

Back

Close

Full Screen / Esc

Printer-friendly Version

Interactive Discussion



limits corresponding to the first radar height bin fully above the cloud based returned by the inversion procedure were found. These altitude limits were then used to average the lidar predicted Z_e . Here it can be seen that, similar to the LES based results e.g. Bottom-Panel of Fig. 11 that the results are generally within a few dBZ of each other with the observations higher by about 2–3 dBZ. This bias is consistent with the presence of low amounts of drizzle. Given the uncertainty in the radar calibration one can not be conclusive but the fact that the agreement between 16.9 and 17.0 UTC is in the region with the lowest reflectivities is also suggestive of drizzle being the cause of the offset. Past 17.0 UTC, the lidar results predict more reflectivity than was observed. This is not physical and points either to a problem in the lidar retrieval for this time period or, which is considered more likely in this case, that here partially filled radar bins likely could not be avoided. This is based on the fact that for this time period the cloud was likely physically thinner than 200 m which is equivalent to about 2 radar pixels in height.

Results from a second example time period corresponding to 4 January, 2011 between about 18 and 19.7 h UTC are shown in Fig. 16. Here it can be seen that retrieved parameters are roughly in the same range as the results shown in the previous figure, however, in general the estimated uncertainties in the retrieved quantities are more variable and generally larger. This may be linked to the fact that the lidar observations contain more profile-to-profile variability than the previous case or the fact that drizzle is more prevalent in this case. This is evident by examining the reflectivity panel along with the panel in which the comparison between the lidar derived and observed Z_e is shown. The regions of detectable reflectivity present below the lidar derived cloud base and the occurrence of reflectivities values above -25 dBZ are both indicative of the presence of drizzle.

By comparing the predicted and observed Z_e values for this case it can be seen that good agreement between the lidar derived Z_e values and the actual radar observations is present past about 11.25 UTC. with is associated with cloud-base region reflectivities below about -35 dBZ. For earlier time periods the observed radar reflectivity is substantially higher than the lidar predicted values. These periods are associated with

4.4 LWC near cloud base

In addition to the comparison with the radar observations, an other independent evaluation criteria to judge the realism of the lidar results is the comparison of the lidar derived Γ_l values with the corresponding adiabatic values (Γ_a). Using temperature and pressure data for Cabauw extracted from atmospheric analyses, the adiabatic liquid water mixing ratio lapse-rate was calculated for the times and cloud-base altitudes of the lidar observations. A comparison between the adiabatic values and the observed values are shown in Fig. 17. Here it can be seen that the lidar observations imply a cloud-based adiabatic fraction of 0.451 ± 0.007 . Only a few observations approach the adiabatic limit and none exceed it in a statistically significant manner. It can be noted that the sub-adiabatic fraction values seen here are within the range of previous in-situ based observations (e.g., Arabas et al., 2009; Pawlowska et al., 2006; Szczodrak et al., 2001) which were interpreted to be largely the result of entrainment at cloud base. Further, it is interesting to note that, recently a new method of calculating droplet concentration near cloud based was proposed by Pinsky et al. (2012). This lead to the finding that the ratio of supersaturation to the liquid water mixing ratio at the altitude of maximum super-saturation should be universal. That is, at the height of maximum supersaturation, which for stratus clouds is reached within a few 10's of meters from cloud base, the adiabatic fraction should be independent of updraught velocity or number density. Pinsky et al. (2012) predicted that this universal value should be equal to 0.44 (see Eq. (11) of Pinsky et al., 2012). The value of 0.44 compares very favourably with our finding of 0.451 ± 0.007 , although more work and consideration would have to be done to properly judge the significance of this result.

4.5 Comparison with SMPS aerosol measurements

At this point we feel that enough confidence in the depolarisation lidar derived products has been accumulated so that a preliminary comparison between aerosol number concentrations and lidar-derived cloud-base number concentrations is feasible. As well

Depol.-lidar determination of liquid cloud properties

D. P. Donovan et al.

Title Page

Abstract

Introduction

Conclusions

References

Tables

Figures

◀

▶

◀

▶

Back

Close

Full Screen / Esc

Printer-friendly Version

Interactive Discussion



as the remote sensing equipment, Cabauw also hosts a number of in-situ probes including a Scanning Mobility Particle Sizer (SMPS) instrument which measures aerosol size distributions between diameters of 10 to 470 nm. As described in Mensah et al. (2012), the SMPS instrument is housed in the basement of the Cabauw meteorological tower but the instrument is connected to a laminar flow sampling tube with an inlet at 60 m elevation so that the sampled air is expected to be more representative of the BL as a whole. Loss of some particles on the sampling tube walls does occur but this has been corrected for and, for the measurements used here, is not expected to be a significant source of uncertainty.

Previous aircraft based studies have found correlations between aerosol number density and cloud-droplet number concentration. For example, by using number concentrations of aerosols measured with an Passive Cavity Aerosol Spectrometer Probe (PCASP) (which measures particles with diameter between 0.13 and 2 μm) and co-mounted Forward Scattering Spectrometer Probe (FSSP) cloud-droplet measurements, Gultepe and Isaac (1996) were able to demonstrate statistically significant relationships between the aerosol and cloud droplet measurements. The observed relationship between the lidar-derived cloud number densities N_d and the tower-based SMPS measurements is shown in Fig. 18. Here, following Pringle et al. (2009), the aerosol number concentrations shown are representative of particles with diameter greater than 50 nm. This was done to be consistent with the earlier data upon which the previous empirical relationship are based. The aerosol concentrations were also adjusted for the difference in air density between the ground and cloud base by assuming that the aerosol number density mixing ratio is conserved.

A number of empirical relationships relating aerosol number concentration to cloud droplet number density for warm stratus clouds under different conditions was compiled by Gultepe and Isaac (1996) and Pringle et al. (2009). In Fig. 18 lines 1–5 represent independent relationships drawn from previous aircraft based work and are listed in Gultepe and Isaac (1996). Here line 1 corresponds to

$$\log_{10}(N_d) = 0.257 \log_{10}(1.22 N_a) + 1.95, \quad (37)$$

5 Conclusions

In this work a novel method for determining cloud base properties by exploiting the signature of multiple-scattering on depolarisation lidar signal was developed. The method is novel yet firmly based on older established ideas and principles. The inversion procedure has not been evaluated against direct measurements (e.g. coincident in-situ measurements). However, even at this arguably preliminary stage, we have a high degree of confidence in the results. This confidence is based on the following considerations:

1. There is a rather direct connection between the variables determining the relevant lidar radiative transfer (e.g. α and R_{eff}) and the cloud physical parameters of interest (e.g. LWC, N). This is unlike the case with, say radar reflectivity observations.
2. Application of the method to LES generated clouds shows that, within reasonable limits, the method is robust to deviations from strict adiabatic cloud structure, the presence of drizzle, and variations in cloud-base altitude.
3. Under low reflectivity conditions, where the reflectivity contribution of the drizzle droplets can be neglected, it has been demonstrated that lidar results can be used to predict the observed radar reflectivity within the uncertainty of the radar calibration. Under general circumstances, where drizzle is present the range of bi-modal size distribution parameters required for consistency between the lidar and radar measurements are well within the range of accepted values.
4. Cloud-base LWC values were found to never exceed the adiabatic limit by an amount outside of the respective error estimates. Further, the observed average cloud-base adiabatic fraction is consistent with the range of previous observations.
5. The results obtained by comparing the polarisation lidar derived cloud-base cloud droplet number concentrations with tower-based aerosol number concentrations

Depol.-lidar determination of liquid cloud properties

D. P. Donovan et al.

Title Page

Abstract

Introduction

Conclusions

References

Tables

Figures



Back

Close

Full Screen / Esc

Printer-friendly Version

Interactive Discussion



yields a relationship consistent with completely independently derived relationships based on previous in-situ aircraft-based measurements.

The evaluation examples presented in this work represent a small fraction of the data available from the Cabauw site. A more extensive application of the method to the Cabauw data should be conducted. Additional, further validation work (possibly involving the use of in-situ cloud measurements from e.g. the EUCARI/IMPACT (Kulmala et al., 2011) campaign) should be carried out. In this work, we have used results from a commercial UV depolarisation lidar that was not developed with this application in mind. Future developments could be imagined involving the optimisation of instrument parameters (e.g. wavelength, FOV, dynamic range) directed towards the implementation of the method developed here including the possible integration of multiple fields-of-views. Further, it should be noted that, depending mainly on the instrument FOVs, the methods described in this work may be applicable to a large body of existing lidar measurements made by depolarisation lidars operating in the UV as well as in the visible (e.g. 532 nm) wavelength ranges.

A key variable lacking in the examination of the relationship between the cloud droplet number concentrations and the aerosol number concentrations is knowledge of the characteristics of the vertical velocities at cloud base. Such information may be difficult to reliably extract from radar Doppler observations (as indicated by the almost constant presence of drizzle at cloud base) but could be reliably supplied by Doppler lidar measurements. Future studies involving paired Doppler and depolarisation lidars are thus recommended.

Appendix A: Lidar MC model

The ECSIM lidar MC model is similar in principle to the MC model described by Hu et al. (2001) but, in addition, it is fully 3-D and can calculate the spectral-polarisation state of the lidar signal and employs a number of variance reduction techniques in order to

Depol.-lidar determination of liquid cloud properties

D. P. Donovan et al.

Title Page

Abstract

Introduction

Conclusions

References

Tables

Figures



Back

Close

Full Screen / Esc

Printer-friendly Version

Interactive Discussion



increase the computational efficiency. Here a brief overview of the model is given along with a number of validation examples focusing on the depolarisation. The spectral state of the return (e.g. Doppler shifting and molecular thermal spectral broadening of the lidar signal under multiple-scattering conditions) is not relevant for this present work and its calculation is not discussed here. For more information see the description of the `lid_filter` and `lidar` program descriptions within the ECSIM Models and Algorithm Document (Donovan et al., 2010).

A1 Polarisation

In order to accurately model the behaviour of the lidar depolarisation signal under multiple scattering conditions it is not sufficient to specify the phase functions and polarisation dependent backscatter coefficient. It is necessary to specify the full scattering matrix. The relationship between the Stokes vectors of the scattered and incident electromagnetic fields (with respect to the scattering plane) can be written as

$$\begin{pmatrix} I \\ Q \\ U \\ V \end{pmatrix} = \begin{pmatrix} P_{11} & P_{12} & P_{13} & P_{14} \\ P_{21} & P_{22} & P_{23} & P_{24} \\ P_{31} & P_{32} & P_{33} & P_{34} \\ P_{41} & P_{42} & P_{43} & P_{44} \end{pmatrix} \begin{pmatrix} I_o \\ Q_o \\ U_o \\ V_o \end{pmatrix} \quad (\text{A1})$$

If the target scatterers are rotationally symmetric or randomly oriented then this relationship is reduced to

$$\begin{pmatrix} I \\ Q \\ U \\ V \end{pmatrix} = \begin{pmatrix} P_{11} & P_{12} & 0 & 0 \\ P_{12} & P_{22} & 0 & 0 \\ 0 & 0 & P_{33} & P_{34} \\ 0 & 0 & -P_{34} & P_{44} \end{pmatrix} \begin{pmatrix} I_o \\ Q_o \\ U_o \\ V_o \end{pmatrix} \quad (\text{A2})$$

The phase matrix is defined in terms of the scattering plane (i.e. the plane defined by the incoming and outgoing scattered photon paths). Thus, the Stokes vector of the

incoming radiation and the resulting vector describing the scattered radiation must be rotated with respect to the scattering plane. The Stokes vector resulting from a photon scattered through an angle (Θ) is given by

$$\mathbf{S} = \mathbf{L}(\pi - i_2)\mathbf{P}(\Theta)\mathbf{L}(-i_1)\mathbf{S}_o \quad (\text{A3})$$

where \mathbf{S}_o is the incoming Stokes vector and \mathbf{S} is the Stokes vector associated with the scattered radiation. $\mathbf{P}(\Theta)$ is the scattering phase matrix and \mathbf{L} is the transformation matrix for the Stokes parameters (Liou, 2002)

$$\mathbf{L}(\chi) = \begin{pmatrix} 1 & 0 & 0 & 0 \\ 0 & \cos(2\chi) & \sin(2\chi) & 0 \\ 0 & -\sin(2\chi) & \cos(2\chi) & 0 \\ 0 & 0 & 0 & 1 \end{pmatrix}. \quad (\text{A4})$$

The angles i_1 and i_2 in Eq. (A3) are given by

$$\cos(i_1) = \frac{-\mu + \mu' \cos(\Theta)}{\pm(1 - \cos(\Theta)^2)^{1/2}(1 - \mu'^2)^{1/2}} \quad (\text{A5})$$

and

$$\cos(i_2) = \frac{-\mu' + \mu' \cos(\Theta)}{\pm(1 - \cos(\Theta)^2)^{1/2}(1 - \mu^2)^{1/2}} \quad (\text{A6})$$

where μ' is the z component of the direction cosine of the incoming photon and μ is the z component of the direction cosine of the scattered photon. The plus sign is to be used when $\pi < \phi - \phi' < 2\pi$ and the minus sign is to be used otherwise.

A2 MC model

A Monte-Carlo approach models the propagation of the laser photons in a stochastic manner. Photons are, in effect, launched and propagated within a graded extinction

Depol.-lidar determination of liquid cloud properties

D. P. Donovan et al.

Title Page

Abstract

Introduction

Conclusions

References

Tables

Figures

◀

▶

◀

▶

Back

Close

Full Screen / Esc

Printer-friendly Version

Interactive Discussion



field. In a pure Monte-Carlo procedure, photons are launched from their source (in this case the laser) with an initial direction vector. The photon then travels a distance Δs before interacting with a scatterer or absorber. The probability density function for the step size (Δs) follows Beer's law, i.e.

$$\mathcal{P}(\Delta s \leq r) = 1.0 - \exp \left[- \int_0^r \alpha(r') dr' \right] \quad (\text{A7})$$

where α is the total extinction coefficient. For each photon packet Δs is determined stochastically using a suitable pseudo-random number generator according to Eq. (A7). Once an interaction has occurred the type and size of particle encountered is determined stochastically according to the contribution each particle present at that grid point makes to the total attenuation. At each event a particle may be scattered or absorbed. This too is determined stochastically according to the single-scatter albedo of the appropriate interacting particle. If it has been determined that a scattering event (rather than an absorption event) has taken place then the direction of the photon packet is changed according to its phase function. The polarisation state of the return signal is accounted by keeping track of the Stokes vector of the scattered photons (see Sect. A1). The measured linear depolarisation ratio corresponds to

$$\delta_{\text{lin}} = \frac{(I - Q)}{(I + Q)} \quad (\text{A8})$$

A2.1 Variance reduction

In a pure Monte-Carlo approach photons are tracked until they are absorbed, detected, or exit the simulation area. This approach is simple and accurate. However, it is not very efficient as any given photon has a very small chance of being scattered back to the lidar receiver. Thus, it is desirable to modify the basic Monte-Carlo approach to increase its computational efficiency.

Depol.-lidar determination of liquid cloud properties

D. P. Donovan et al.

Title Page

Abstract

Introduction

Conclusions

References

Tables

Figures

◀

▶

◀

▶

Back

Close

Full Screen / Esc

Printer-friendly Version

Interactive Discussion



Depol.-lidar determination of liquid cloud properties

D. P. Donovan et al.

Title Page

Abstract

Introduction

Conclusions

References

Tables

Figures

◀

▶

◀

▶

Back

Close

Full Screen / Esc

Printer-friendly Version

Interactive Discussion



In order to increase the efficiency of the calculation, the ECSIM Monte-Carlo model analytically calculates the amount of unscattered energy transmitted from the lidar present at each altitude and then proceeds to calculate the higher order scattering by launching a number of appropriately weighted photon packets from each altitude bin (here 2000–5000 photons per altitude bin where are typically used). As the photon packets propagate and scatter, for each scattering event, the relative amount of signal received by the lidar is analytically calculated based on the packet weight, the optical thickness and distance between the event and receiver and the phase function of the scatterer in question together with the scattering-angle back to the receiver. This contribution to the detected power is stored and in order to conserve energy the same amount of energy is then removed from the packet by appropriately reducing its weight.

In order to further increase the efficiency of the calculation, the well-know technique of forcing scattering of the photon packets to occur within a specified distance from the receiver axis (in this case 5 times the receiver field-of-view footprint) was implemented (Platt, 1981).

The just-described approach is exact and orders of magnitude faster than a pure Monte-Carlo approach. However, by invoking an approximation concerning the contribution of different photon packet paths, the computational efficiency may be improved further still.

Since cloud particles are usually large compared to visible wavelengths their phase function is strongly peaked in the forward direction (Eloranta, 1998). Hence, the most probable MC photon packet paths involve multiple forward scatters. However, rare events, but with very large relative contributions, will happen when a backscatter occurs in the determination of the packet path so that the packet now travels towards the receiver and thus, the calculation of the direct contribution for the subsequent scattering order to the received signal involves a forward scatter. These contributions can lead to *spikes* in the modelled detected signal and adversely increase the variance (Barker et al., 2003). It is possible to eliminate the contribution of these events by only explicitly counting the contribution to the return signal in the case where the scattering

A3.1 Comparison with independent model results

Simulated linear and circular lidar depolarisation ($\delta_c = (I + V)/(I - V)$) profiles in a C1 cloud ($R_{\text{eff}} = 6 \mu\text{m}$) (Deirmendjian, 1969) at a distance of 2 km for a FOV of 1.75 mrad and a wavelength of 700 nm are shown in Fig. A2. Here both results generated by the ECSIM model and an approximate analytical approach due to Chaikovskaya (2008) are shown. The agreement between the ECSIM MC results and analytical approach is seen to be good, although differences at the 10 % level are seen near the leading edge of the cloud, and is similar to the level of agreement seen with comparisons between the analytical approach and other MC models (Chaikovskaya, 2008).

A3.2 Comparison with CALIPSO lidar observations

It has been previously noted that a robust and tight relationship between layer integrated attenuated backscatter and layer integrated multiple-scattering depolarisation ratio for water layers exists, particularly in the case of space-based lidar (Hu et al., 2007). The relationship between these two quantities for a range of different idealised homogeneous water clouds as calculated by the ECSIM MC lidar model for the CALIPSO lidar instrument parameters along with the actual approximate range observed by CALIPSO are shown in Fig. A3. It can be seen that a very good correspondence between the simulation and observations exists. We regard this result as good evidence of the accuracy of the ECSIM MC lidar results even in the case of large instrument footprints.

A3.3 Summary

Based on the comparisons with other MC codes and independent analytical calculations the ECSIM lidar MC calculations are robust for both ground-based and space-based simulations of lidar multiple-scattering in water clouds. The ability of the ECSIM model to replicate the relationship between integrated depolarisation ratio and

Title Page

Abstract

Introduction

Conclusions

References

Tables

Figures

◀

▶

◀

▶

Back

Close

Full Screen / Esc

Printer-friendly Version

Interactive Discussion



integrated backscatter as observed by the CALIPSO lidar, in particular, is regarded as a strong “stress-test” of the code since it involves a much wider range of angles and higher orders of scattering compared to ground-based simulations.

Appendix B: Comparison with radar reflectivity observations

5 The good agreement between the observed cloud-base reflectivity values and those predicted on the basis of the lidar inversion results under apparently non-drizzling conditions is qualitatively supportive of the lidar results being accurate. In order to assess the realism of the lidar results in a more quantitative manner, we will examine the relationship between the observed cloud-base reflectivities and the values predicted on
10 the basis of the lidar inversion results in more detail.

As a starting point, we will assume that for the cases we have selected that the lidar results are representative of the cloud properties and that the drizzle water contents and number densities are small compared to the cloud water content and number densities so that the lidar derived LWC is approximately equal to the total water content. This allows us to compare the lidar derived cloud-based LWC values with those
15 estimated using the radar reflectivity alone. A comparison between the cloud-base liquid water contents retrieved by the application of the lidar inversion procedure for the entirety of our data set and the corresponding observed reflectivities is presented in Fig. B1. Each data point corresponds to a average over a half-hour of continuous measurements. For comparison, three different relationships for “non-drizzling” clouds
20 taken from Fox and Illingworth (1997b) are shown. As described in Fox and Illingworth (1997b) the line labelled “ATLAS (1954)” is described by

$$Z_e = 0.048LWC^2, \quad (B1)$$

25 the line labelled “Savageot and Omar (1987)” is given by

$$Z_e = 0.03LWC^{1.31}, \quad (B2)$$

Depol.-lidar determination of liquid cloud properties

D. P. Donovan et al.

Title Page

Abstract

Introduction

Conclusions

References

Tables

Figures

◀

▶

◀

▶

Back

Close

Full Screen / Esc

Printer-friendly Version

Interactive Discussion



and the line labelled “Fox and Illingworth 1997” is described by

$$Z_e = 0.031 \text{LWC}^{1.56}, \quad (\text{B3})$$

where for all three relationships Z_e is in units of $\text{mm}^6 \text{m}^{-3}$ and LWC is in units of g m^{-3} .

Here it can be seen that if we assume that observed values of reflectivity over about -30 dBZ indicate the presence of drizzle, then the range of the data is plausibly consistent with Eqs. (B1)–(B3) but it is difficult to say anything more conclusive than this.

If we assume a model that takes into account the bi-modal structure of the cloud droplets together with the drizzle droplets, then we can carry out a more quantitative evaluation. Following Baedi et al. (2000), if we model a water cloud size distribution as the sum of a modified gamma distribution together with an exponential distribution to describe the drizzle mode we can write

$$\begin{aligned} \frac{dN(r)}{dr} = & \frac{N_{o,1}}{R_m} \frac{1}{(\gamma - 1)!} \left(\frac{r}{R_{m,1}} \right)^{\gamma-1} \exp[-r/R_m] \\ & + N_{o,2} \frac{1}{R_{m,2}} \exp[-r/R_{m,2}]. \end{aligned} \quad (\text{B4})$$

For this type of bimodal distribution, R_{eff} is given by

$$R_{\text{eff}} = \frac{N_{o,1}(\gamma + 2)!R_{m,1}^3 + N_{o,2}R_{m,2}^3 3!}{N_{o,1}(\gamma + 1)!R_{m,1}^2 + N_{o,2}R_{m,2}^2 2!}, \quad (\text{B5})$$

while R'_{eff} is given by

$$R'_{\text{eff}} = \left[\frac{N_{o,1}(\gamma + 5)!R_{m,1}^6 + N_{o,2}R_{m,2}^6 6!}{N_{o,1}(\gamma + 1)!R_{m,1}^2 + N_{o,2}R_{m,2}^2 2!} \right]^{0.25}. \quad (\text{B6})$$

If $R_{m,1} = R_{\text{eff},1}/(\gamma + 2)$ is specified along with the ratio $N_{o,2}/N_{o,1}$ and the cloud water content, Eqs. (B5) and (B6) can then be used together with Eq. (35) to model the relationship between R_r (Eq. 34) and Z_e . If we assume that the drizzle number densities are low enough such that $R_{\text{eff}} = R_{\text{eff},1}$ the observed value of cloud-base region Z_e along with the lidar derived R_{eff} and LWC values can be used along with Eq. (35) to generate observed estimates of R_r . A scatter plot of the values of R_r derived from the lidar inversion results together with the radar observations and those generated using Eqs. (B5) and (B6) is shown in Fig. B2. Each data point corresponds to a maximum of a half-hour average of continuous measurements. The estimated variation of the mean of the observed Z_e and the corresponding variance of the mean of the lidar-based results (and accounting for the errors that are expected to be correlated in time and thus not reduced by short-term averaging e.g. the error due to the uncertainty in k) were used to generate uncertainty estimates for each point.

In order to generate the theoretical R_r relationships, $N_{0,2}/N_{0,1}$, LWC and $R_{\text{eff},1}$ were fixed as indicated within the figure. $R_{\text{m},2}$ was then varied between 1 and 80 μm . The ranges of LWC and $R_{\text{eff},1}$ used were found by using the respective mean and standard deviations of the lidar based inversion results. By looking at the Light-Blue lines in Fig. B2 it can be seen that as $R_{\text{eff},1}$ and LWC increase, the resulting R_r values shift to higher values. The behaviour of the Dashed-Red-lines illustrate the effect of changing the value of $N_{0,2}/N_{0,1}$. Here it can be seen that the lower value of $N_{0,2}/N_{0,1}$ does not change the shape of the R_v -vs- Z_e relationship but it does limit the maximum extent of the relationship in terms of the maximum Z_e than can be reached for a given maximum value of $R_{\text{m},2}$ (here fixed at 80 μm for all the shown curves). Larger values of $N_{0,2}/N_{0,1}$ enable larger values of Z_e to be reached, however, the drizzle mode will start dominate the total LWC and R_{eff} and this leads to a slight flattening out of the R_v -vs- Z_e curve.

In general, a good match between the observed and theoretical R_v -vs- Z_e relationship can be made using the observed ranges of LWC and R_{eff} . If an upper limit of $R_{m,2}$ of $80\text{ }\mu\text{m}$ is imposed then the observations are consistent with $N_{0,2}/N_{0,1}$ being in roughly in the range of 0.01–0.001. A smaller/larger imposed maximum value of $R_{m,2}$ would

Depol.-lidar determination of liquid cloud properties

Title Page

Abstract Introduction

Conclusions References

Tables Figures

◀ ▶

◀ ▶

Back Close

Full Screen / Esc

Printer-friendly Version

Interactive Discussion



Depol.-lidar determination of liquid cloud properties

D. P. Donovan et al.

Title Page

Abstract

Introduction

Conclusions

References

Tables

Figures

◀

▶

◀

▶

Back

Close

Full Screen / Esc

Printer-friendly Version

Interactive Discussion



lead to correspondingly larger/smaller $N_{0,2}/N_{0,1}$ values. There is not enough information to retrieve separate $N_{0,2}/N_{0,1}$ and $R_{m,2}$ values, but it can be concluded that the ranges of these parameters implied by the observations are consistent with the range of values expected from earlier in-situ investigations of cloud-base conditions (Tonttila et al., 2011; Wang and Geerts, 2003; Liu et al., 2008). It is interesting to note that strictly uni-modal behaviour appears to be associated with only very low reflectivities (less than -35 – -40 dBZ). This “drizzle threshold” is much lower than some thresholds employed in earlier studies (e.g. the threshold for the presence of drizzle of -15 dBZ used in by Sauvageot and Omar (1987). However, as discussed in Wang and Geerts (2003) and Liu et al. (2008), the idea of a threshold is a subjective one and different drizzle thresholds are based on different metrics (e.g. reflectivity, LWC, or number density fraction) appropriate to different applications. Further it can be stated the results presented here are consistent with previous studies which have indeed noted the increasing relative influence of drizzle mode droplets to the total radar reflectivity as cloud-base is approached (e.g., Wang and Geerts, 2003).

**The Supplement related to this article is available online at
doi:10.5194/amtd-7-9917-2014-supplement.**

Acknowledgements. The aerosol size distribution measurements used in this paper were partly funded by European Union Seventh Framework Program (FP7/2007–2013) under grant agreement No:262254.

The LES simulations used in work were sponsored by the Dutch National Computing Facilities Foundation (NCF) who provided the use of supercomputer facilities.

References

- Arabas, S., Pawlowska, H., and Grabowski, W. W.: Effective radius and droplet spectral width from in-situ aircraft observations in trade-wind cumuli during RICO, *Geophys. Res. Letts.*, 36, L11803+, doi:10.1029/2009gl038257, 2009. 9947
- 5 Baedi, R., Dewit, J., Russchenberg, H., Erkelens, J., and Poiares-Baptista, J.: Estimating effective radius and liquid water content from radar and lidar based on the CLARE98 data-set, *Phys. Chem. Earth*, 25, 1057–1062, doi:10.1016/s1464-1909(00)00152-0, 2000. 9959
- Barker, H. W., Goldstein, R. K., and Stevens, D. E.: Monte Carlo Simulation of Solar Reflectances for Cloudy Atmospheres, *J. Atmos. Sci.*, 60, 1881–1894, doi:10.1175/1520-0469(2003)060<1881:MCSOSR>2.0.CO;2, 2003. 9955
- 10 Behrendt, A. and Nakamura, T.: Calculation of the calibration constant of polarization lidar and its dependency on atmospheric temperature, *Opt. Express*, 10, 805–817, 2002. 9926
- Bissonnette, L. R., Roy, G., and Roy, N.: Multiple-scattering-based lidar retrieval: method and results of cloud probings, *Appl. Optics*, 44, 5565–5581, 2005. 9920
- 15 Buras, R. and Mayer, B.: Efficient unbiased variance reduction techniques for Monte Carlo simulations of radiative transfer in cloudy atmospheres: the solution, *J. Quant. Spectrosc. Ra.*, 112, 434–447, doi:10.1016/j.jqsrt.2010.10.005, 2011. 9956
- Cao, X., Roy, G., Roy, N., and Bernier, R.: Comparison of the relationships between lidar integrated backscattered light and accumulated depolarization ratios for linear and circular polarization for water droplets, fog oil, and dust, *Appl. Optics*, 48, 4130–4141, 2009. 9920
- 20 Chaikovskaya, L.: Remote sensing of clouds using linearly and circularly polarized laser beams: techniques to compute signal polarization, in: *Light Scattering Reviews 3*, edited by: Kokhanovsky, A. A., Springer Praxis Books, 191–228, Springer, Berlin Heidelberg, doi:10.1007/978-3-540-48546-9_6, 2008. 9919, 9926, 9957, 9989
- 25 Chaikovskaya, L. I. and Zege, E. P.: Theory of polarized lidar sounding including multiple scattering, *J. Quant. Spectrosc. Ra.*, 88, 21–35, doi:10.1016/j.jqsrt.2004.01.002, 2004. 9920
- de Roode, S. R. and Los, A.: The effect of temperature and humidity fluctuations on the liquid water path of non-precipitating closed-cell stratocumulus clouds, *Q. J. Roy. Meteor. Soc.*, 134, 403–416, doi:10.1002/qj.222, 2008. 9922
- 30 Deirmendjian, D.: *Electromagnetic scattering on spherical polydispersions*, R (Rand Corporation), American Elsevier Pub. Co., 1969. 9957

Depol.-lidar determination of liquid cloud properties

D. P. Donovan et al.

Title Page

Abstract

Introduction

Conclusions

References

Tables

Figures

◀

▶

◀

▶

Back

Close

Full Screen / Esc

Printer-friendly Version

Interactive Discussion



Depol.-lidar determination of liquid cloud properties

D. P. Donovan et al.

Title Page

Abstract

Introduction

Conclusions

References

Tables

Figures

[Back](#)

Close

Full Screen / Esc

[Printer-friendly Version](#)

Interactive Discussion



- Donovan, D., Voors, R., van Zadelhoff, G.-J., and Acarreta, J.-R.: ECSIM Model and Algorithms Document, KNMI Tech. Rep.: ECSIM-KNMI-TEC-MAD01-R, available at: <http://www.knmi.nl/~zadelhof/file/ECSIM-KNMI-TEC-MAD01-122-R.pdf> (last access: 23 September 2014), 2010. 9936, 9952
- 5 Donovan, D. P. and Apituley, A.: Practical depolarization-ratio-based inversion procedure: lidar measurements of the Eyjafjallajökull ash cloud over the Netherlands, *Appl. Optics*, 52, 2394–2415, 2013a. 9931, 9942
- Donovan, D. P. and Apituley, A.: Practical depolarization-ratio-based inversion procedure: lidar measurements of the Eyjafjallajökull ash cloud over the Netherlands: erratum, *Appl. Optics*, 52, 4062–4062, 2013b. 9931, 9942
- 10 Donovan, D. P. and van Lammeren, A. C. A. P.: Cloud effective particle size and water content profile retrievals using combined lidar and radar observations – 1. Theory and examples, *J. Geophys. Res.*, 106, 27425–27448, 2001. 9939, 9940
- Dusek, U., Frank, G. P., Hildebrandt, L., Curtius, J., Schneider, J., Walter, S., Chand, D., 15 Drewnick, F., Hings, S., Jung, D., Borrmann, S., and Andreae, M. O.: Size matters more than chemistry for cloud-nucleating ability of aerosol particles., *Science*, 312, 1375–8, 2006. 9949
- Eloranta, E. W.: Practical Model for the Calculation of Multiply Scattered Lidar Returns, *Appl. Optics*, 37, 2464–2472, 1998. 9955
- 20 Fox, N. I. and Illingworth, A. J.: The potential of a spaceborne cloud radar for the detection of stratocumulus clouds, *J. Appl. Meteorol.*, 36, 676–687, doi:10.1175/1520-0450-36.6.676, 1997a. 9940
- Fox, N. I. and Illingworth, A. J.: The retrieval of stratocumulus cloud properties by ground-based cloud radar, *J. Appl. Meteorol.*, 36, 485–492, doi:10.1175/1520-0450(1997)036<0485:TROSCP>2.0.CO;2, 1997b. 9958
- 25 Guerrero-Rascado, J. L., ao Costa, M. J., Bortoli, D., Silva, A. M., Lyamani, H., and Alados-Arboledas, L.: Infrared lidar overlap function: an experimental determination, *Opt. Express*, 18, 20350–20359, 2010. 9942
- Gultepe, I. and Isaac, G. A.: The relationship between cloud droplet and aerosol number concentrations for climate models, *Int. J. Climatol.*, 16, 941–946, doi:10.1002/(SICI)1097-0088(199608)16:8<941::AID-JOC57>3.0.CO;2-O, 1996. 9948, 9949
- 30 Heus, T., van Heerwaarden, C. C., Jonker, H. J. J., Pier Siebesma, A., Axelsen, S., van den Dries, K., Geoffroy, O., Moene, A. F., Pino, D., de Roode, S. R., and Vilà-Guerau de Arellano,

Depol.-lidar determination of liquid cloud properties

D. P. Donovan et al.

Title Page

Abstract

Introduction

Conclusions

References

Tables

Figures

◀

▶

◀

▶

Back

Close

Full Screen / Esc

Printer-friendly Version

Interactive Discussion



- J.: Formulation of the Dutch Atmospheric Large-Eddy Simulation (DALES) and overview of its applications, *Geosci. Model Dev.*, 3, 415–444, doi:10.5194/gmd-3-415-2010, 2010. 9935
- Hogan, R. J.: Fast approximate calculation of multiply scattered lidar returns, *Appl. Optics*, 45, 5984–5992, 2006. 9920
- 5 Hu, Y., Vaughan, M., Liu, Z., Lin, B., Yang, P., Flittner, D., Hunt, B., Kuehn, R., Huang, J., Wu, D., Rodier, S., Powell, K., Trepte, C., and Winker, D.: The depolarization – attenuated backscatter relation: CALIPSO lidar measurements vs. theory, *Opt. Express*, 15, 5327–5332, 2007. 9957, 9990
- Hu, Y.-X., Winker, D., Yang, P., Baum, B., Poole, L., and Vann, L.: Identification of cloud phase from PICASSO-CENA lidar depolarization: a multiple scattering sensitivity study, *J. Quant. Spectrosc. Ra.*, 70, 569–579, doi:10.1016/S0022-4073(01)00030-9, 2001. 9951
- 10 Jacobs, A., Barkmeijer, J., Siebesma, A., van der Plas, E., Wichers Schreur, B., Roozkrans, J., Holtslag, A., Steeneveld, G., Ronda, R., de Roode, S. R., Mendez Gomez, R., van den Brink, P., Haanstra, J., and Smit, L.: The Impact of Climate Change on the Critical Weather Conditions at Schiphol Airport (Impact), Dutch Knowledge for Climate Programme Office, ISBN 9789490070571, 76 pp., 2012. 9936
- 15 Khairoutdinov, M. and Kogan, Y.: A new cloud physics parameterization in a large-eddy simulation model of marine stratocumulus, *Mon. Weather Rev.*, 128, 229–243, 2000. 9936
- Kim, D., Cheong, H., Kim, Y., Volkov, S., and Lee, J.: Optical depth and multiple scattering depolarization in liquid clouds, *Opt. Rev.*, 17, 507–512, doi:10.1007/s10043-010-0091-7, 2010. 9920
- 20 Kulmala, M., Asmi, A., Lappalainen, H. K., Baltensperger, U., Brenguier, J.-L., Facchini, M. C., Hansson, H.-C., Hov, Ø., O'Dowd, C. D., Pöschl, U., Wiedensohler, A., Boers, R., Boucher, O., de Leeuw, G., Denier van der Gon, H. A. C., Feichter, J., Krejci, R., Laj, P., Lihavainen, H., Lohmann, U., McFiggans, G., Mentel, T., Pilinis, C., Riipinen, I., Schulz, M., Stohl, A., Swietlicki, E., Vignati, E., Alves, C., Amann, M., Ammann, M., Arabas, S., Artaxo, P., Baars, H., Beddows, D. C. S., Bergström, R., Beukes, J. P., Bilde, M., Burkhardt, J. F., Canonaco, F., Clegg, S. L., Coe, H., Crumeyrolle, S., D'Anna, B., Decesari, S., Gilar-
doni, S., Fischer, M., Fjaeraa, A. M., Fountoukis, C., George, C., Gomes, L., Halloran, P., Hamburger, T., Harrison, R. M., Herrmann, H., Hoffmann, T., Hoose, C., Hu, M.,
25 Hyvärinen, A., Hörrak, U., Iinuma, Y., Iversen, T., Josipovic, M., Kanakidou, M., Kiendler-Scharr, A., Kirkevåg, A., Kiss, G., Klimont, Z., Kolmonen, P., Komppula, M., Kristjánsson, J.-E., Laakso, L., Laaksonen, A., Labonnote, L., Lanz, V. A., Lehtinen, K. E. J., Rizzo, L. V.,

Depol.-lidar determination of liquid cloud properties

D. P. Donovan et al.

Title Page

Abstract

Introduction

Conclusions

References

Tables

Figures



Back

Close

Full Screen / Esc

Printer-friendly Version

Interactive Discussion



Makkonen, R., Manninen, H. E., McMeeking, G., Merikanto, J., Minikin, A., Mirme, S., Morgan, W. T., Nemitz, E., O'Donnell, D., Panwar, T. S., Pawlowska, H., Petzold, A., Pienaar, J. J., Pio, C., Plass-Duelmer, C., Prévôt, A. S. H., Pryor, S., Reddington, C. L., Roberts, G., Rosenfeld, D., Schwarz, J., Seland, Ø., Sellegri, K., Shen, X. J., Shiraiwa, M., Siebert, H., Sierau, B., Simpson, D., Sun, J. Y., Topping, D., Tunved, P., Vaattovaara, P., Vakkari, V., Veeffkind, J. P., Visschedijk, A., Vuollekoski, H., Vuolo, R., Wehner, B., Wildt, J., Woodward, S., Worsnop, D. R., van Zadelhoff, G.-J., Zardini, A. A., Zhang, K., van Zyl, P. G., Kerminen, V.-M., Carslaw, K., and Pandis, S. N.: General overview: European Integrated project on Aerosol Cloud Climate and Air Quality interactions (EUCAARI) – integrating aerosol research from nano to global scales, *Atmos. Chem. Phys.*, 11, 13061–13143, doi:10.5194/acp-11-13061-2011, 2011. 9951

Leaitch, W. R., Isaac, G. A., Strapp, J. W., Banic, C. M., and Wiebe, H. A.: The relationship between cloud droplet number concentrations and anthropogenic pollution: observations and climatic implications, *J. Geophys. Res.*, 97, 2463–2474, doi:10.1029/91JD02739, 1992. 9949

Leijnse, H., Uijlenhoet, R., van de Beek, C. Z., Overeem, A., Otto, T., Unal, C. M. H., Dufournet, Y., Russchenberg, H. W. J., Figueras i Ventura, J., Klein Baltink, H., and Holleman, I.: Precipitation measurement at CESAR, the Netherlands, *J. Hydrometeorol.*, 11, 1322–1329, doi:10.1175/2010JHM1245.1, 2010. 9936, 9943

Liou, K.: Preface, in: *An Introduction to Atmospheric Radiation*, edited by: Liou, K., vol. 84 of *International Geophysics*, xiii–xiv, Academic Press, doi:10.1016/S0074-6142(02)80015-8, 2002. 9953

Liou, K.-N. and Schotland, R. M.: Multiple backscattering and depolarization from water clouds for a pulsed lidar system, *J. Atmos. Sci.*, 28, 772–784, doi:10.1175/1520-0469(1971)028<0772:MBADFW>2.0.CO;2, 1971. 9919

Liu, Y., Geerts, B., Miller, M., Daum, P., and McGraw, R.: Threshold radar reflectivity for drizzling clouds, *Geophys. Res. Lett.*, 35, L03807, doi:10.1029/2007GL031201, 2008. 9961

Lohmann, U. and Feichter, J.: Global indirect aerosol effects: a review, *Atmos. Chem. Phys.*, 5, 715–737, doi:10.5194/acp-5-715-2005, 2005. 9919

Lu, M.-L. and Seinfeld, J. H.: Effect of aerosol number concentration on cloud droplet dispersion: a large-eddy simulation study and implications for aerosol indirect forcing, *J. Geophys. Res.*, 111, D02207, doi:10.1029/2005JD006419, 2006. 9924

Malinka, A. V. and Zege, E. P.: Possibilities of warm cloud microstructure profiling with multiple-field-of-view Raman lidar, *Appl. Optics*, 46, 8419–8427, 2007. 9920

Depol.-lidar determination of liquid cloud properties

D. P. Donovan et al.

Title Page

Abstract

Introduction

Conclusions

References

Tables

Figures

◀

▶

◀

▶

Back

Close

Full Screen / Esc

Printer-friendly Version

Interactive Discussion



- Martin, G. M., Johnson, D. W., and Spice, A.: The measurement and parameterization of effective radius of droplets in warm stratocumulus clouds, *J. Atmos. Sci.*, 51, 1823–1842, doi:10.1175/1520-0469(1994)051<1823:TMAPOE>2.0.CO;2, 1994. 9924, 9949
- McComiskey, A., Feingold, G., Shelby Frisch, A., Turner, D. D., Miller, M. A., Chiu, J. C., Min, Q., and Ogren, J. A.: An assessment of aerosol-cloud interactions in marine stratus clouds based on surface remote sensing, *J. Geophys. Res.*, 114, D09203, doi:10.1029/2008JD011006, 2009. 9919
- Measures, R.: *Laser Remote Sensing: Fundamentals and Applications*, Krieger Publishing Company, ISBN 9780894646195, 510 pp., 1984. 9942
- Mensah, A. A., Holzinger, R., Otjes, R., Trimborn, A., Mentel, Th. F., ten Brink, H., Henzing, B., and Kiendler-Scharr, A.: Aerosol chemical composition at Cabauw, The Netherlands as observed in two intensive periods in May 2008 and March 2009, *Atmos. Chem. Phys.*, 12, 4723–4742, doi:10.5194/acp-12-4723-2012, 2012. 9948
- Miles, N. L., Verlinde, J., and Clothiaux, E. E.: Cloud droplet size distributions in low-level stratiform clouds, *J. Atmos. Sci.*, 57, 295–311, doi:10.1175/1520-0469(2000)057<0295:CDSIL>2.0.CO;2, 2000. 9923
- Pal, S. R. and Carswell, A. I.: Polarization Properties of Lidar Backscattering from Clouds, *Appl. Optics*, 12, 1530–1535, 1973. 9927
- Pawlowska, H., Grabowski, W. W., and Brenguier, J.-L.: Observations of the width of cloud droplet spectra in stratocumulus, *Geophys. Res. Lett.*, 33, L19810, doi:10.1029/2006GL026841, 2006. 9947
- Petzold, A., Esselborn, M., Weinzierl, B., Ehret, G., Ansmann, A., Müller, D., Donovan, D., van Zadelhoff, G.-J., Berthier, S., Wiegner, M., Gasteiger, J., Buras, R., Mayer, B., Lajas, D., and Wehr, T.: ICAROHS – Inter-Comparison of Aerosol Retrievals and Observational Requirements for Multi-Wavelength HSRL Systems, Final Report, Tech. Rep. 22169/NL/CT-STSE-ICAROHS TN1, ESA, 2011. 9956
- Pinsky, M., Khain, A., Mazin, I., and Korolev, A.: Analytical estimation of droplet concentration at cloud base, *J. Geophys. Res.*, 117, D18211, doi:10.1029/2012JD017753, 2012. 9919, 9947
- Platt, C. M. R.: Remote sounding of high clouds. III: Monte Carlo calculations of multiple-scattered lidar returns, *J. Atmos. Sci.*, 38, 156–167, doi:10.1175/1520-0469(1981)038<0156:RSOHC>2.0.CO;2, 1981. 9955

Depol.-lidar determination of liquid cloud properties

D. P. Donovan et al.

Title Page

Abstract

Introduction

Conclusions

References

Tables

Figures

◀

▶

◀

▶

Back

Close

Full Screen / Esc

Printer-friendly Version

Interactive Discussion



- Pounder, N. L., Hogan, R. J., Várnai, T., Battaglia, A., and Cahalan, R. F.: A variational method to retrieve the extinction profile in liquid clouds using multiple-field-of-view lidar, *J. Appl. Meteorol. Clim.*, 51, 350–365, doi:10.1175/JAMC-D-10-05007.1, 2012. 9920
- Press, W. H., Teukolsky, S. A., Vetterling, W. T., and Flannery, B. P.: Numerical Recipes 3rd Edition: The Art of Scientific Computing, Cambridge University Press, New York, NY, USA, 3 edn., 2007. 9935, 9938, 9949
- Pringle, K. J., Carslaw, K. S., Spracklen, D. V., Mann, G. M., and Chipperfield, M. P.: The relationship between aerosol and cloud drop number concentrations in a global aerosol microphysics model, *Atmos. Chem. Phys.*, 9, 4131–4144, doi:10.5194/acp-9-4131-2009, 2009. 9948
- Rodgers, C.: Inverse Methods for Atmospheric Sounding: Theory and Practice, Series on Atmospheric Oceanic and Planetary Physics, Volume 2, World Scientific Publishing Company Inc., Incorporated, ISBN 9789810227401, 238 pp., 2000. 9932
- Roy, G. and Cao, X.: Inversion of water cloud lidar signals based on accumulated depolarization ratio, *Appl. Optics*, 49, 1630–1635, 2010. 9920
- Roy, G., Bissonnette, L., Bastille, C., and Vallée, G.: Retrieval of Droplet-Size Density Distribution from Multiple-Field-of-View Cross-Polarized Lidar Signals: Theory and Experimental Validation, *Appl. Optics*, 38, 5202–5211, 1999. 9919, 9920
- Sassen, K.: Polarization in lidar, in: Lidar, edited by: Weitkamp, C., vol. 102 of Springer Series in Optical Sciences, 19–42, Springer, New York, doi:10.1007/0-387-25101-4_2, 2005. 9919, 9926
- Sassen, K. and Petrilla, R. L.: Lidar depolarization from multiple scattering in marine stratus clouds, *Appl. Optics*, 25, 1450–1459, 1986. 9928, 9939
- Sassen, K. and Zhao, H.: Lidar multiple scattering in water droplet clouds: toward an improved treatment, *Opt. Rev.*, 2, 394–400, doi:10.1007/s10043-995-0394-2, 1995. 9920
- Sauvageot, H. and Omar, J.: Radar reflectivity of cumulus clouds, *J. Atmos. Ocean. Tech.*, 4, 264–272, doi:10.1175/1520-0426(1987)004<0264:RROCC>2.0.CO;2, 1987. 9961
- Schmidt, J., Wandinger, U., and Malinka, A.: Dual-field-of-view Raman lidar measurements for the retrieval of cloud microphysical properties, *Appl. Optics*, 52, 2235–2247, 2013. 9920
- Sun, Y.-Y. and Li, Z.-P.: Depolarization of polarized light caused by high altitude clouds. 2: Depolarization of lidar induced by water clouds, *Appl. Optics*, 28, 3633–3638, 1989. 9928

**Depol.-lidar
determination of
liquid cloud
properties**

D. P. Donovan et al.

Title Page

Abstract

Introduction

Conclusions

References

Tables

Figures

◀

▶

◀

▶

Back

Close

Full Screen / Esc

Printer-friendly Version

Interactive Discussion



Szczodrak, M., Austin, P. H., and Krummel, P. B.: Variability of optical depth and effective radius in marine stratocumulus clouds, *J. Atmos. Sci.*, 58, 2912–2926, doi:10.1175/1520-0469(2001)058<2912:VOODAE>2.0.CO;2, 2001. 9947

5 Tonttila, J., O'Connor, E. J., Niemelä, S., Räisänen, P., and Järvinen, H.: Cloud base vertical velocity statistics: a comparison between an atmospheric mesoscale model and remote sensing observations, *Atmos. Chem. Phys.*, 11, 9207–9218, doi:10.5194/acp-11-9207-2011, 2011. 9946, 9961

10 Veselovskii, I., Korenskii, M., Griaznov, V., Whiteman, D. N., McGill, M., Roy, G., and Bissonnette, L.: Information content of data measured with a multiple-field-of-view lidar, *Appl. Optics*, 45, 6839–6848, 2006. 9920

Voors, R., Donovan, D., Acarreta, J., Eisinger, M., Franco, R., Lajas, D., Moyano, R., Piron-dini, F., Ramos, J., and Wehr, T.: ECSIM: the simulator framework for EarthCARE, *Proc. SPIE*, 6744, 67441Y–67441Y–11, doi:10.1117/12.737738, 2007. 9926

15 Wang, J. and Geerts, B.: Identifying drizzle within marine stratus with W-band radar reflectivity, *Atmos. Res.*, 69, 1–27, doi:10.1016/j.atmosres.2003.08.001, 2003. 9946, 9961

**Depol.-lidar
determination of
liquid cloud
properties**

D. P. Donovan et al.

Table 1. Range of parameters used in the MC calculations.

Parameter	Values
Cloud-base [km]	0.5, 1.0, 2.0, 4.0
FOV [mrads]	0.5, 1.0, 2.0, 4.0
$R_{\text{eff},100}$ [μm]	2.0, 2.6, 3.3, 4.3, 5.6, 7.2, 9.3, 12.0
Γ_l [$\text{g m}^{-3} \text{ km}^{-1}$]	0.1, 0.2, 0.4, 0.6, 0.8, 1.0, 1.2, 1.4, 1.6, 1.8, 2.0

Title Page

Abstract

Introduction

Conclusions

References

Tables

Figures



Back

Close

Full Screen / Esc

Printer-friendly Version

Interactive Discussion



Depol.-lidar
determination of
liquid cloud
properties

D. P. Donovan et al.

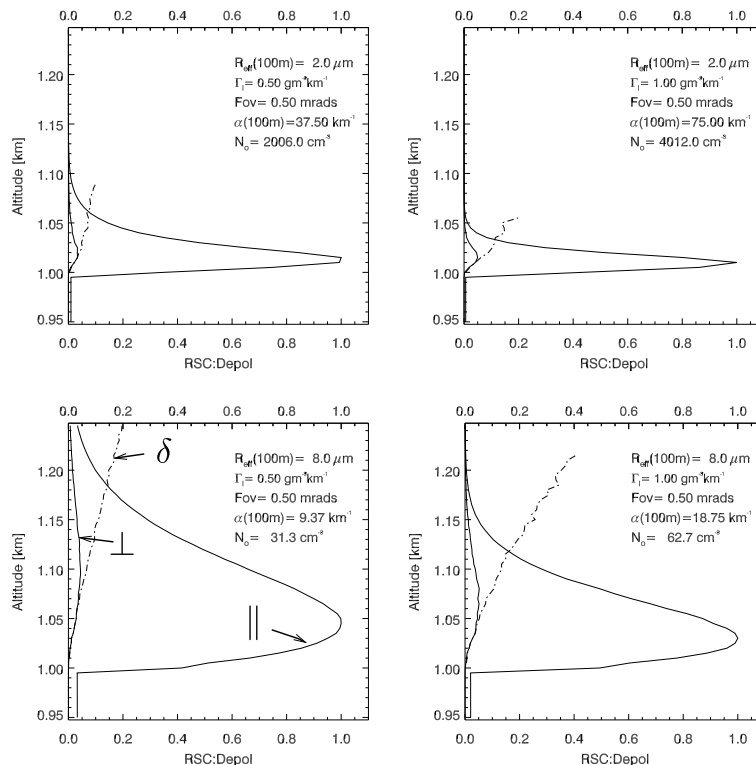


Figure 1. Example results MC calculations for a lidar wavelength of 355 nm corresponding to semi-infinite clouds with a cloud-base of 1.0 km with the values of Γ_1 and R_{eff} at 100 m as indicated in the top-right of each panel while $\gamma = 9$. Here the lidar FOV is 0.5 mrad. As labelled in the Bottom-Left Panel, the right-most solid-line in each plot shows the parallel (para) range-corrected-signal (RCS). The other solid line shows the corresponding perpendicular (perp) RCS and the dashed-dotted line shows the depolarisation ratio. Both the para and perp-RCS profiles have been normalised by the maximum para return.

Title Page

Abstract

Introduction

Conclusions

References

Tables

Figures

◀

▶

◀

▶

Back

Close

Full Screen / Esc

Printer-friendly Version

Interactive Discussion

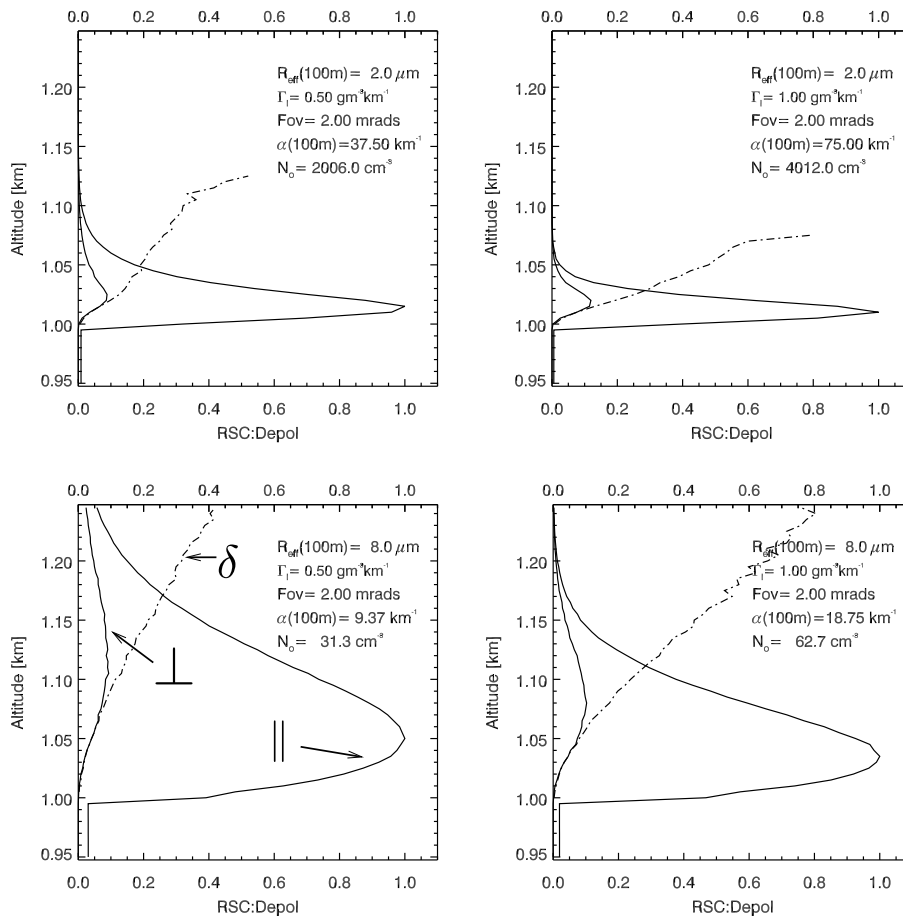


Figure 2. As Fig. 1 except for a lidar FOV of 2 mrad.

Depol.-lidar determination of liquid cloud properties

D. P. Donovan et al.

Title Page

Abstract

Introduction

Conclusions

References

Tables

Figures

◀

▶

◀

▶

Back

Close

Full Screen / Esc

Printer-friendly Version

Interactive Discussion



Depol.-lidar
determination of
liquid cloud
properties

D. P. Donovan et al.

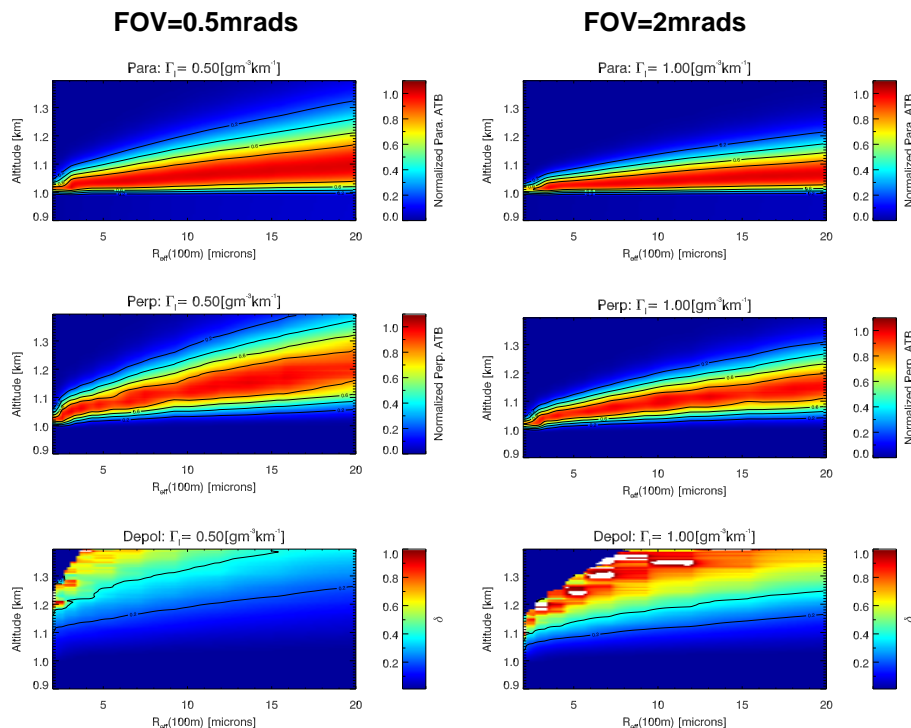


Figure 3. Example results of MC calculations for a lidar wavelength of 355 nm corresponding to semi-infinite clouds with a cloud-base of 1.0 km for two values of Γ_l as a function of $R_{\text{eff},100}$ for lidar FOVs of 0.5 and 2.0 mrad. Here, for each value of $R_{\text{eff},100}$, the para and perp attenuated backscatter (ATB) values have been normalised by the maximum para return.

Title Page

Abstract

Introduction

Conclusions

References

Tables

Figures

◀

▶

◀

▶

Back

Close

Full Screen / Esc

Printer-friendly Version

Interactive Discussion

Depol.-lidar
determination of
liquid cloud
properties

D. P. Donovan et al.

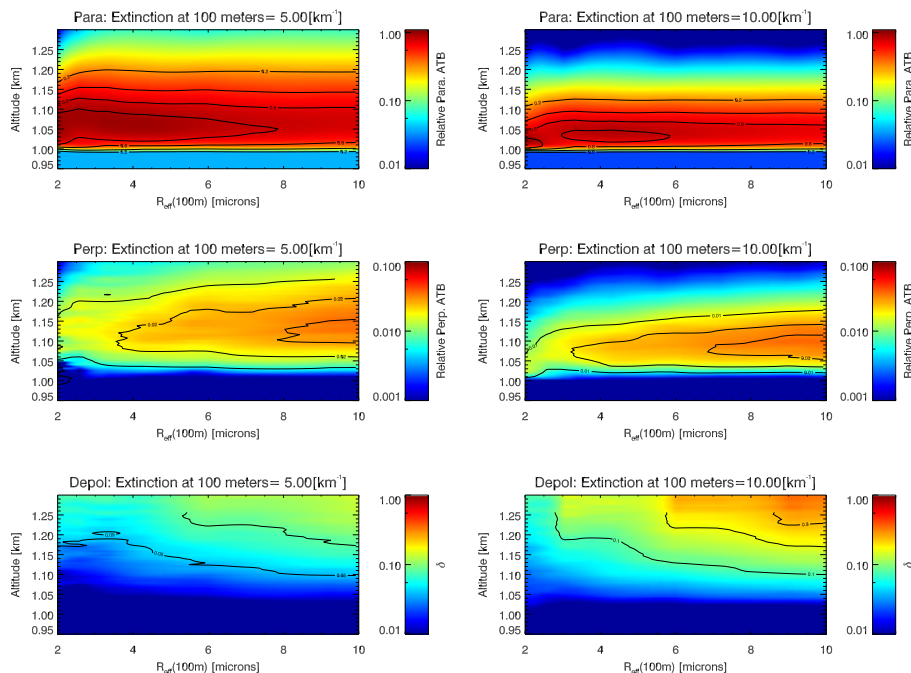


Figure 4. Example results of MC calculations for a lidar wavelength of 355 nm corresponding to semi-infinite clouds with a cloud-base of 1.0 km for two values of α_{100} as a function of $R_{\text{eff},100}$ for a lidar FOV of 1.0 mrad.

Title Page

Abstract

Introduction

Conclusions

References

Tables

Figures

◀

▶

◀

▶

Back

Close

Full Screen / Esc

Printer-friendly Version

Interactive Discussion



Depol.-lidar
determination of
liquid cloud
properties

D. P. Donovan et al.

Title Page

Abstract

Introduction

Conclusions

References

Tables

Figures

◀

▶

◀

▶

Back

Close

Full Screen / Esc

Printer-friendly Version

Interactive Discussion

FOV=1.0 mrad

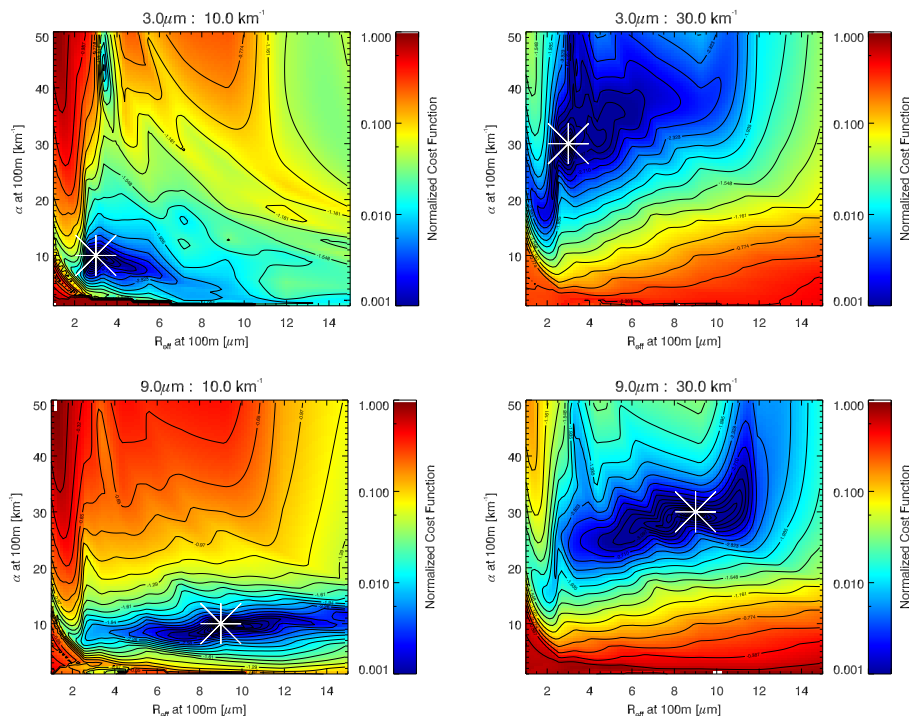


Figure 5. Normalised results from the application of Eq. (20) for a lidar wavelength of 355 nm for two values of α_{100} and of $R_{\text{eff},100}$ (as indicated) for a lidar FOV of 1.0 mrad and a cloud base of 1 km. The symbol is used to mark the location of the minimum of the cost function.

Depol.-lidar
determination of
liquid cloud
properties

D. P. Donovan et al.

Title Page

Abstract

Introduction

Conclusions

References

Tables

Figures



Back

Close

Full Screen / Esc

Printer-friendly Version

Interactive Discussion



FOV=0.5 mrad

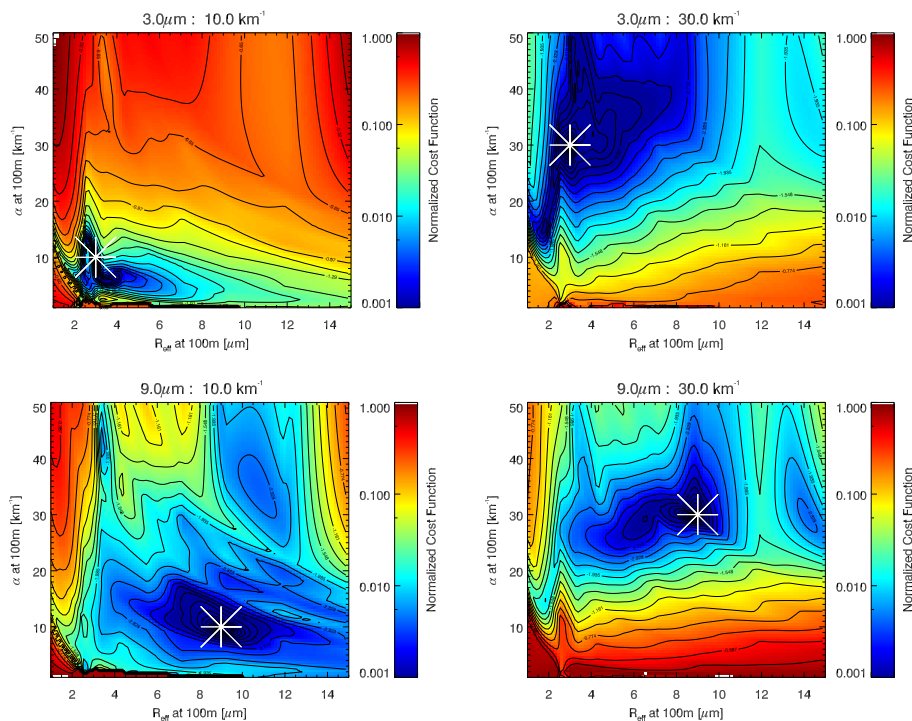


Figure 6. As Fig. 5 except for a receiver FOV of 0.5 mrad.

Depol.-lidar
determination of
liquid cloud
properties

D. P. Donovan et al.

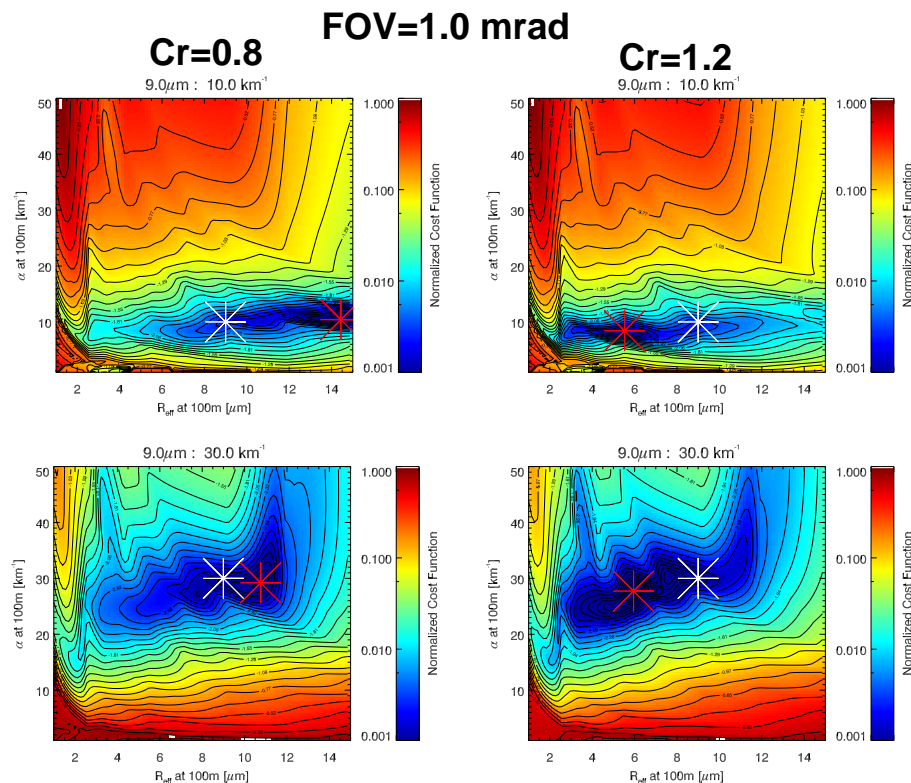


Figure 7. Normalized results from the application of Eq. (20) for $\alpha_{100} = 10$ and 30 km^{-1} and $R_{\text{eff},100} = 9 \mu\text{m}$ with perturbed values of C_r . For the Left-Panels C_r has been set 20 % too low while in the Right-Panels C_r has been set 20 % too high. The White symbols show the location of the true values of $R_{\text{eff},100}$ and α_{100} while the Red symbols mark the position of the actual cost-function minimum in each case.

Title Page

Abstract

Introduction

Conclusions

References

Tables

Figures



Back

Close

Full Screen / Esc

Printer-friendly Version

Interactive Discussion



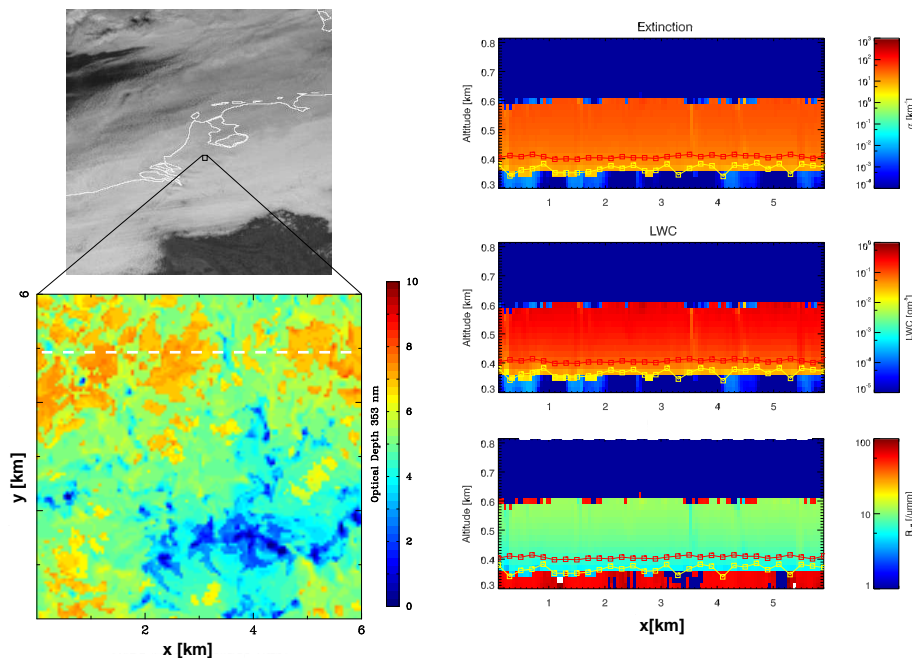


Figure 8. Visible MetoSat-SG Satellite image (Top-Left) Cloud optical thickness (COT) field for an DALES simulation for the Cabauw measurement site (Bottom-Left) for the afternoon of 30 January 2011. Vertical extinction, LWC and effective radius slices corresponding to the “cross-track” = 5 km line indicated on the COT plot (Right-Panels). The Red lines in the Right-Panels indicate the peak of the simulated lidar parallel attenuated backscatter while the yellow lines indicate the cloud-base returned by the retrieval procedure.

Depol.-lidar determination of liquid cloud properties

D. P. Donovan et al.

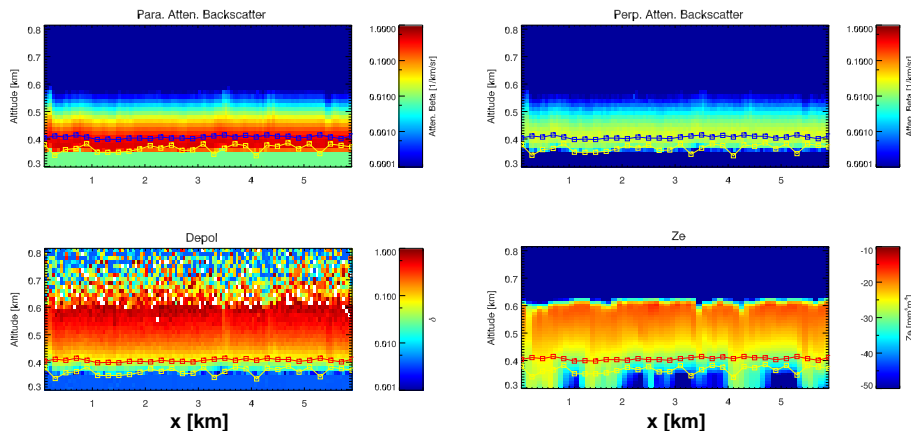


Figure 9. Simulated parallel and perpendicular attenuated backscatter signals for a 355 nm depolarisation lidar with a FOV of 1 mrad. Also shown are the corresponding linear depolarisation ratio and the radar reflectivity (Z_e).

[Title Page](#)[Abstract](#)[Introduction](#)[Conclusions](#)[References](#)[Tables](#)[Figures](#)[◀](#)[▶](#)[◀](#)[▶](#)[Back](#)[Close](#)[Full Screen / Esc](#)[Printer-friendly Version](#)[Interactive Discussion](#)

Depol.-lidar
determination of
liquid cloud
properties

D. P. Donovan et al.

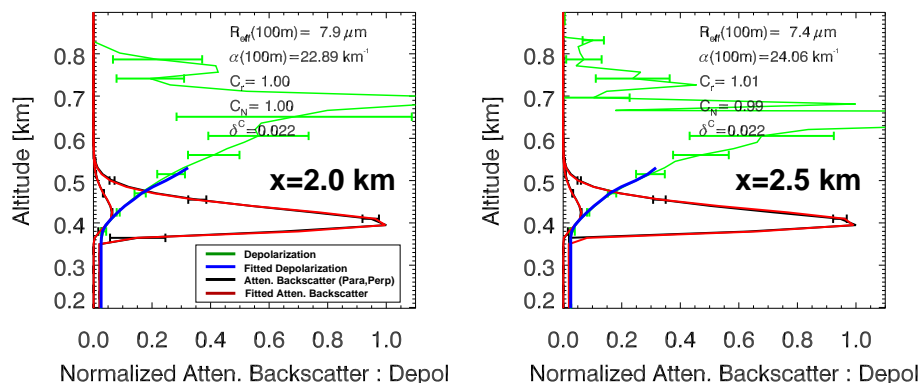


Figure 10. Results of the retrieval applied to the simulated lidar data along for two columns (corresponding to $x = 2.0$ and 2.5 km). Here the Black-lines are the simulated observations at a vertical resolution of 15 m and a horizontal resolution of 400 m while the corresponding depolarisation ratio is given by the Green-line. Here C_r was set to 1.0 and the depolarisation cross-talk parameter (δ^C) was set to 0.3. The Red-lines are the fits to the parallel and perpendicular attenuated backscatter and the Blue-line is the corresponding fit depolarisation ratio.

Title Page

Abstract

Introduction

Conclusions

References

Tables

Figures

◀

▶

◀

▶

Back

Close

Full Screen / Esc

Printer-friendly Version

Interactive Discussion



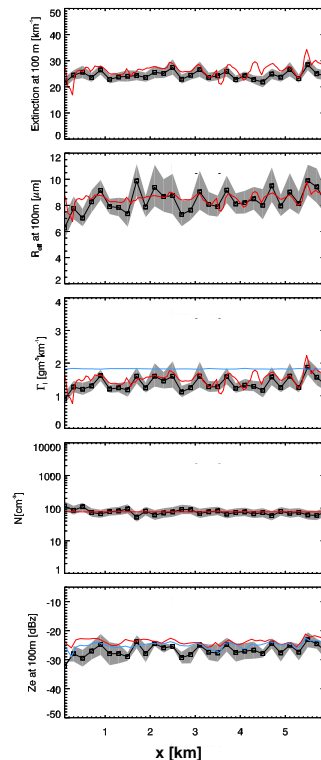


Figure 11. Results of the retrieval applied to the simulated lidar data along with the radar reflectivity simulated using the lidar results. Here the Black-lines show the retrieval results with the Grey-bands indicating the estimated 1-sigma uncertainty range. The Red-lines show the true values extracted directly from the LES derived model fields. The light-Blue line in the LWC panel indicates the value of the adiabatic (Γ_1) slope at cloud base. The light-Blue line in the reflectivity panel indicates the true reflectivity levels if the contribution of the drizzle mode is removed.

Depol.-lidar determination of liquid cloud properties

D. P. Donovan et al.

Title Page

Abstract

Introduction

Conclusions

References

Tables

Figures

◀

▶

◀

▶

Back

Close

Full Screen / Esc

Printer-friendly Version

Interactive Discussion



**Depol.-lidar
determination of
liquid cloud
properties**

D. P. Donovan et al.

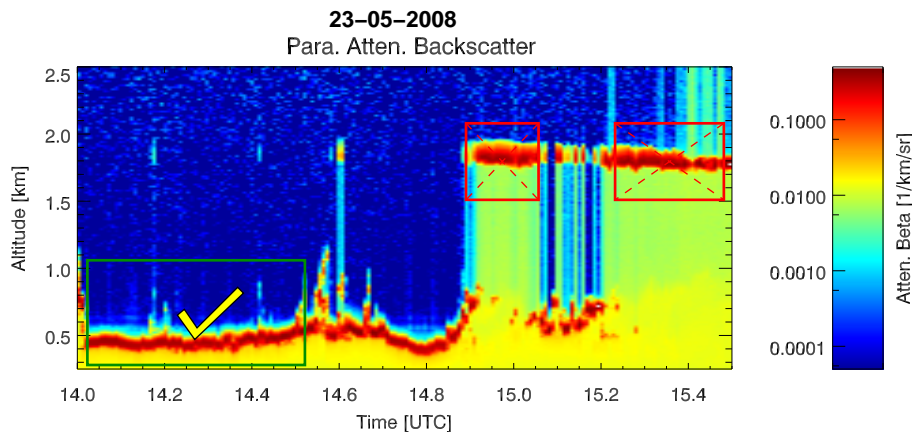


Figure 12. Illustration of the case selection criteria. Here all three of the boxed areas satisfy the conditions of being well-defined stratus water layers. However, only the Green outlined region appears to be “connected” to the surface.

Title Page

Abstract

Introduction

Conclusions

References

Tables

Figures

◀

▶

◀

▶

Back

Close

Full Screen / Esc

Printer-friendly Version

Interactive Discussion



**Depol.-lidar
determination of
liquid cloud
properties**

D. P. Donovan et al.

Title Page

Abstract

Introduction

Conclusions

References

Tables

Figures



Back

Close

Full Screen / Esc

Printer-friendly Version

Interactive Discussion



15–01–2011

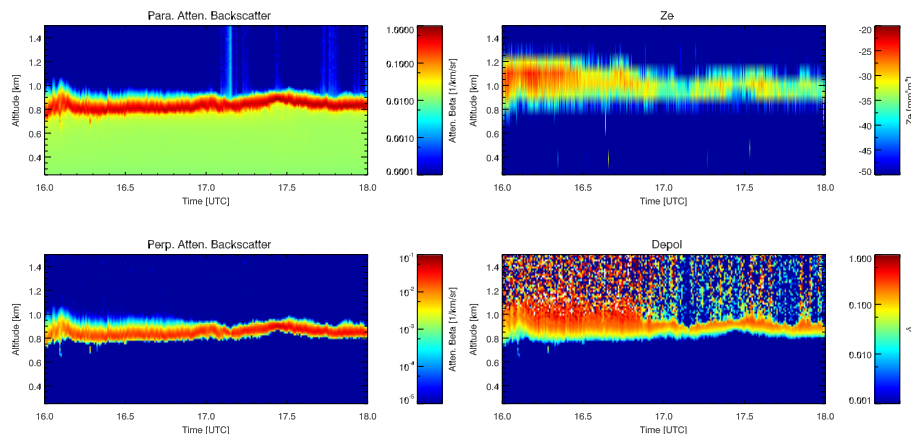


Figure 13. Observed lidar and radar signals for 15 January 2011 at Cabauw from 16:00 UTC to 18:00 UTC.

Depol.-lidar determination of liquid cloud properties

D. P. Donovan et al.

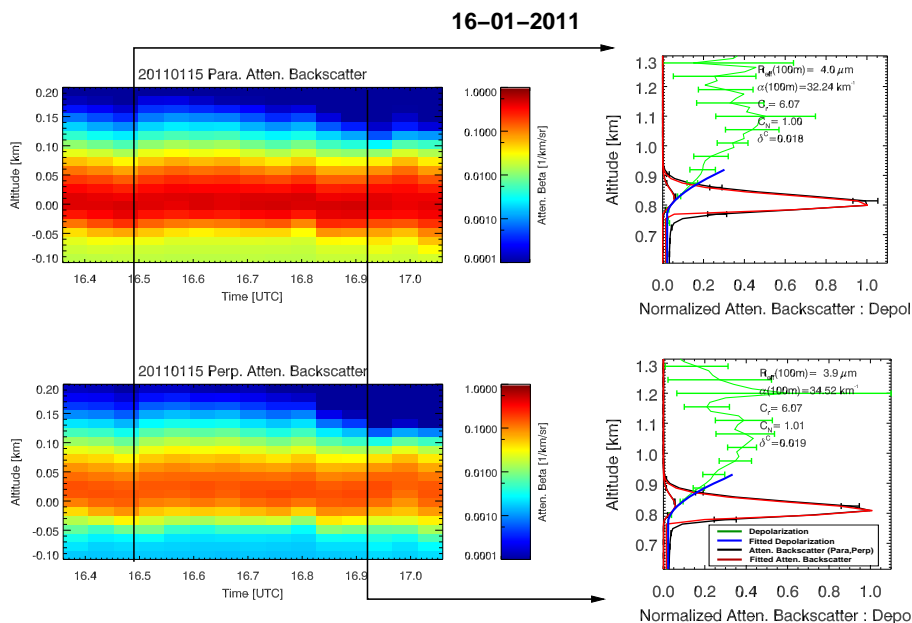


Figure 14. Normalized parallel and perpendicular attenuated backscatters as a function of altitude from the peak of the observed parallel backscatter profile (Left-Panels) corresponding to the data shown in Fig. 13. Example fit results are shown on the Right for 16.49 and 16.92 UTC.

Title Page

Abstract

Introduction

Conclusions

References

Tables

Figures



Back

Close

Full Screen / Esc

Printer-friendly Version

Interactive Discussion



Depol.-lidar
determination of
liquid cloud
properties

D. P. Donovan et al.

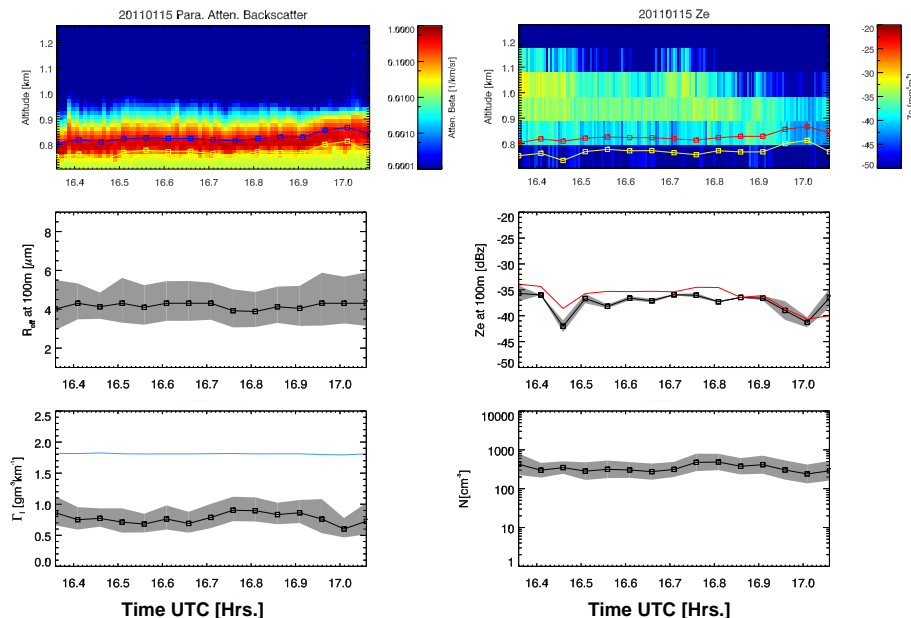


Figure 15. Retrieved time series of $R_{\text{eff},100}$, Γ_l and N for 15 January 2011 from about 16.4 to 17.1 h UTC. The Light-Blue line in the Γ_l plot indicates the adiabatic limit at cloud base. The Black-Line in the Z_e panel shows the reflectivity predicted by Eq. (35) corresponding to the first 100 m radar-bin fully above the estimated cloud-base while the Red-Line shows the corresponding actual radar observed value. The radar calibration uncertainty (not indicated) is thought to be in the range of 3 dBZ.

Title Page

Abstract

Introduction

Conclusions

References

Tables

Figures



Back

Close

Full Screen / Esc

Printer-friendly Version

Interactive Discussion



Depol.-lidar determination of liquid cloud properties

D. P. Donovan et al.

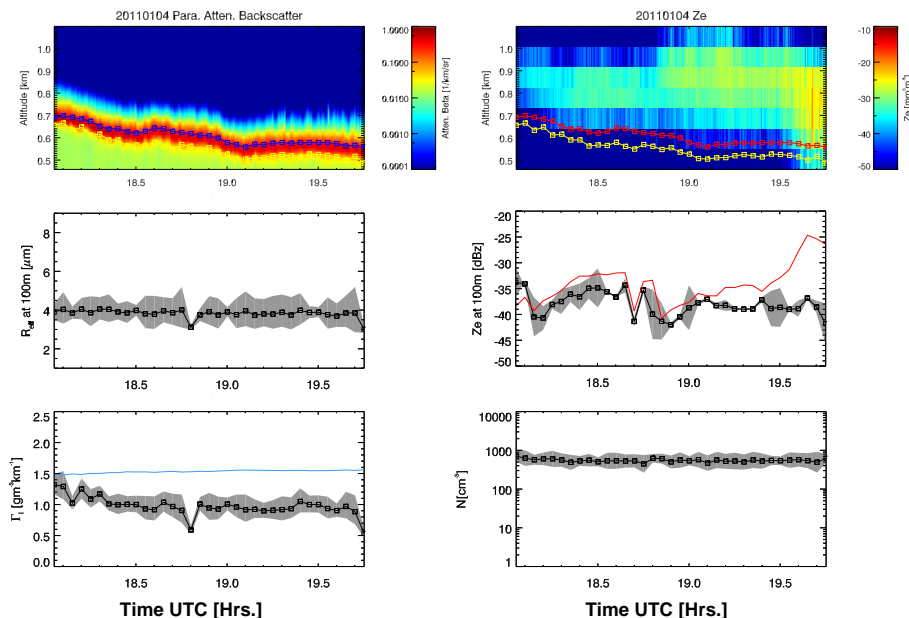


Figure 16. As Fig. 15 except for data corresponding to 4 January 2011.

Title Page

Abstract

Introduction

Conclusions

References

Tables

Figures



Back

Close

Full Screen / Esc

Printer-friendly Version

Interactive Discussion



Depol.-lidar
determination of
liquid cloud
properties

D. P. Donovan et al.

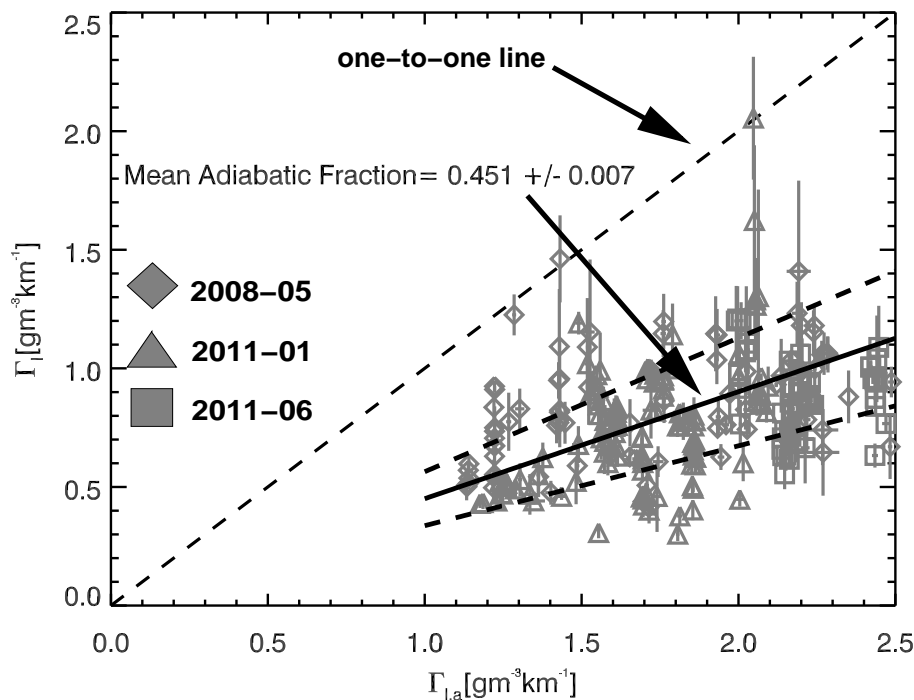


Figure 17. Adiabatic cloud-base liquid water lapse-rate values ($\Gamma_{l,a}$) and the corresponding lidar-derived values (Γ_l). The thin-dashed line represents the one-to-one line (Adiabatic fraction = 1) while the thicker solid and dashed lines show the observed relationship based on the chi-square mean observed fraction and corresponding uncertainty.

Title Page

Abstract

Introduction

Conclusions

References

Tables

Figures

◀

▶

◀

▶

Back

Close

Full Screen / Esc

Printer-friendly Version

Interactive Discussion



Depol.-lidar
determination of
liquid cloud
properties

D. P. Donovan et al.

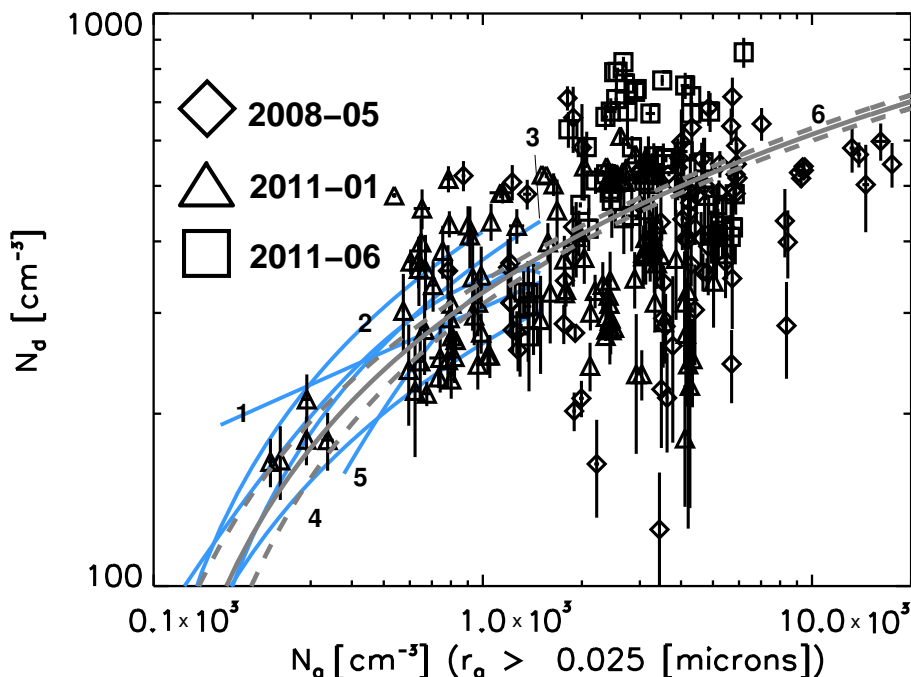


Figure 18. Lidar-derived cloud-base number density (N_d) and SMPS ground-based number density of aerosols with radii greater than $0.025\mu\text{m}$ adjusted for density at the cloud-base altitude (N_a). The symbols follow the same conventions as Fig. B1. The Light-Blue lines (labelled 1–5) represent previously defined independent empirical relationships based on in-situ measurements made with the aid of aircraft. Line-1 corresponds to Eq. (37), 2 corresponds to Eq. (38), 3 corresponds to Eq. (39), 4 corresponds to Eq. (40) and 5 corresponds to Eq. (41). The Grey-Lines (6) show the fit to the points produced using Eq. (42) along with the 1-sigma error bands.

Title Page

Abstract

Introduction

Conclusions

References

Tables

Figures

◀

▶

◀

▶

Back

Close

Full Screen / Esc

Printer-friendly Version

Interactive Discussion



Depol.-lidar determination of liquid cloud properties

D. P. Donovan et al.

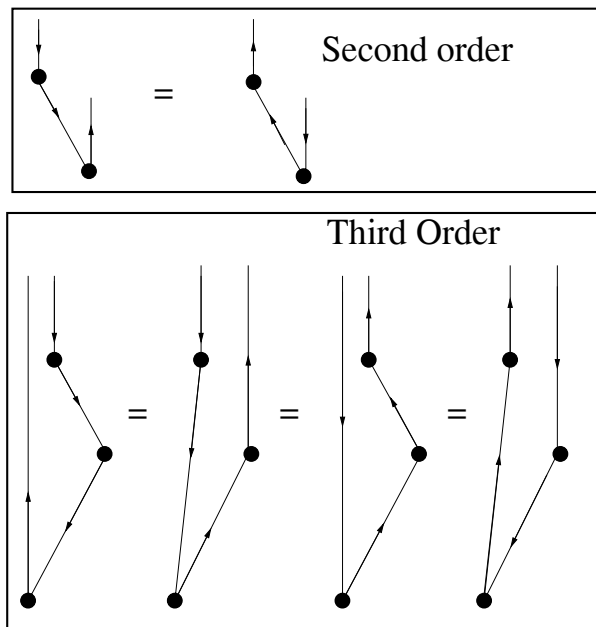


Figure A1. Schematic representation of the various types of paths involving forward and backscatter events for second and third order scattering.

Title Page

Abstract

Introduction

Conclusions

References

Tables

Figures

◀

▶

◀

▶

Back

Close

Full Screen / Esc

Printer-friendly Version

Interactive Discussion



**Depol.-lidar
determination of
liquid cloud
properties**

D. P. Donovan et al.

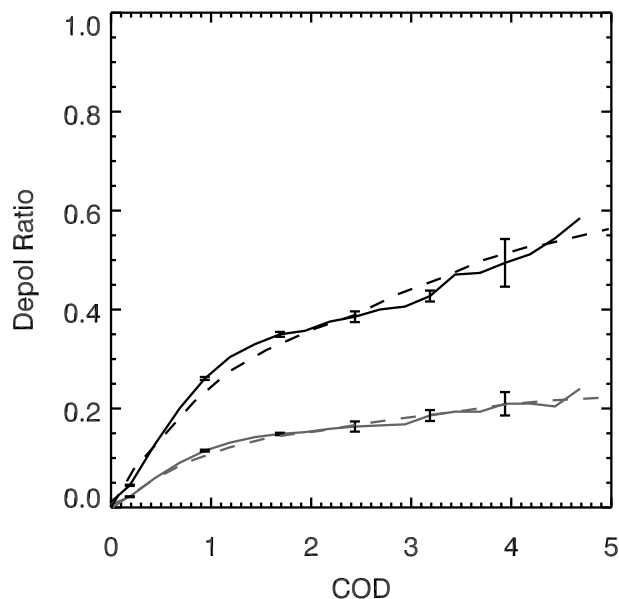


Figure A2. Linear and circular depolarisation profiles in a C1 cloud at a distance of 2 km for a FOV of 1.75 mrad and a wavelength of 700 nm as a function of Cloud Optical Depth (COD). The solid-line shows the ECSIM results while the dashed-lines shown the results calculated using an approximate analytical approach (Chaikovskaya, 2008).

Title Page

Abstract

Introduction

Conclusions

References

Tables

Figures

◀

▶

◀

▶

Back

Close

Full Screen / Esc

Printer-friendly Version

Interactive Discussion



Depol.-lidar
determination of
liquid cloud
properties

D. P. Donovan et al.

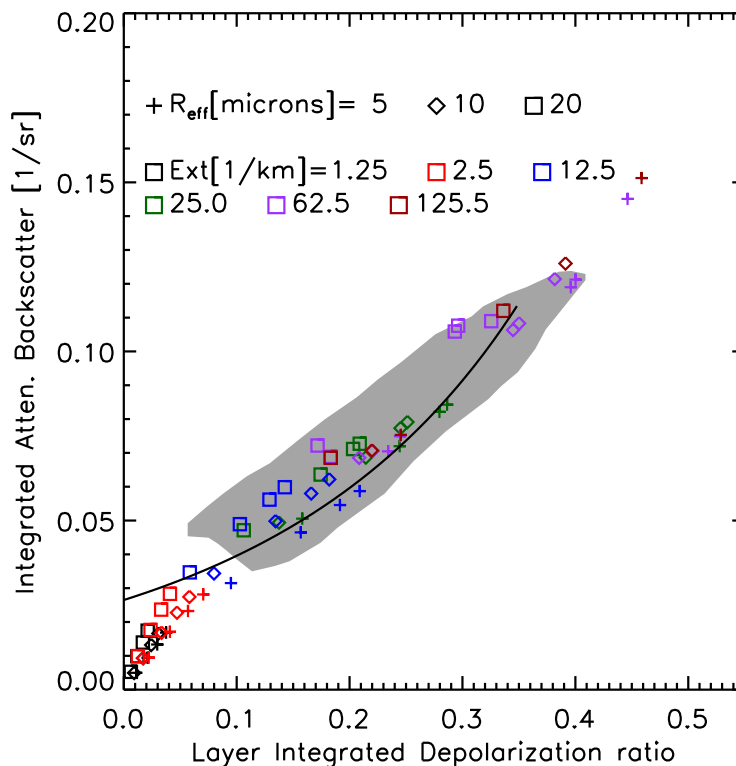


Figure A3. Layer integrated integrated backscatter vs. layer integrated depolarisation ratio. The symbols show the results of 532 nm CALIPSO ECSIM simulations for different layer effective radii and extinction coefficients as indicated in the figure legend. The Grey-shaded area represents the area within the “frequency-of-occurrence = 20” level shown in Fig. 3 of Hu et al. (2007) for actual CALIPSO observations. The line denotes $\gamma = \frac{1}{2S_c} \frac{(1+\delta)^2}{(1-\delta)^2} (S_c = 18 \text{ Sr})$ following and using the notation of Hu et al. (2007).

Title Page

Abstract

Introduction

Conclusions

References

Tables

Figures

◀

▶

◀

▶

Back

Close

Full Screen / Esc

Printer-friendly Version

Interactive Discussion



Depol.-lidar
determination of
liquid cloud
properties

D. P. Donovan et al.

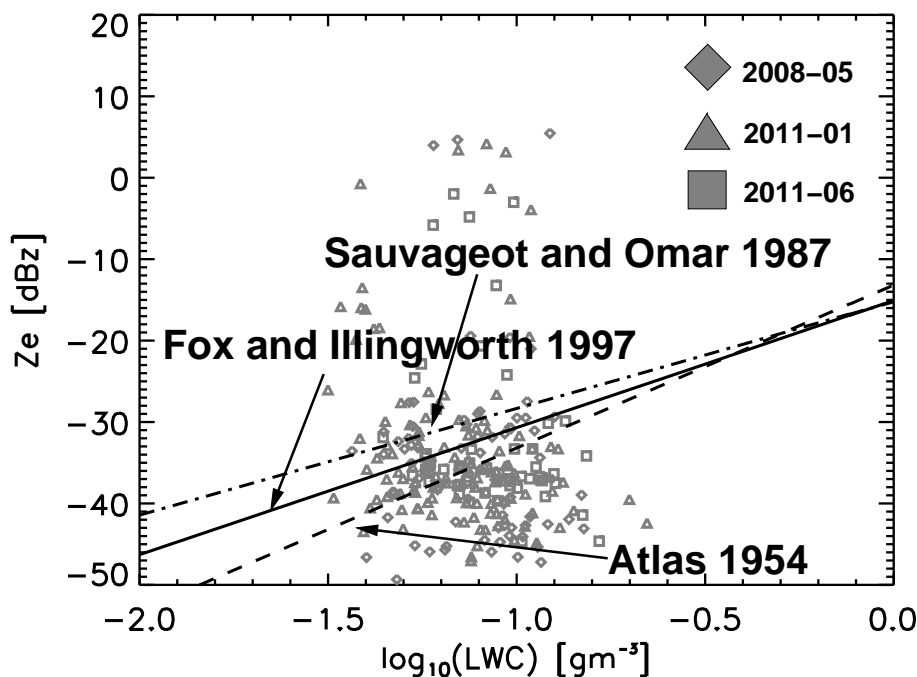


Figure B1. Relationship between observed cloud base reflectivity and corresponding cloud base reflectivity predicted from the depolarisation lidar inversion results. The lines correspond to three different Z_e vs. LWC relationships as labelled, for details consult the text.

Title Page

Abstract

Introduction

Conclusions

References

Tables

Figures

◀

▶

◀

▶

Back

Close

Full Screen / Esc

Printer-friendly Version

Interactive Discussion



Depol.-lidar
determination of
liquid cloud
properties

D. P. Donovan et al.

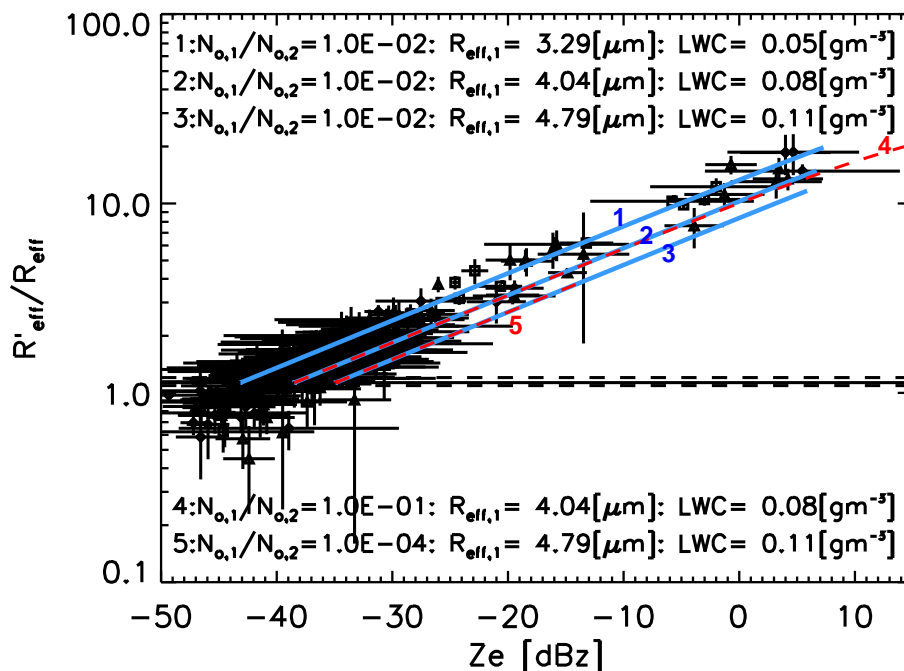


Figure B2. Values of $R'_{\text{eff}}/R_{\text{eff}}$ obtained by combining the lidar inversion results and the observed cloud-base reflectivities. The different symbol types correspond to different time periods as described in Fig. B1. The horizontal lines correspond to the uni-modal limit (Eq. 8) with $\gamma = 9 \pm 4$. The Light-Blue lines correspond to the relationships predicted using Eqs. (B5) and (B6) found by varying $R_{m,2}$ with the other parameters fixed to their indicated respective values.

Title Page

Abstract

Introduction

Conclusions

References

Tables

Figures

◀

▶

◀

▶

Back

Close

Full Screen / Esc

Printer-friendly Version

Interactive Discussion

