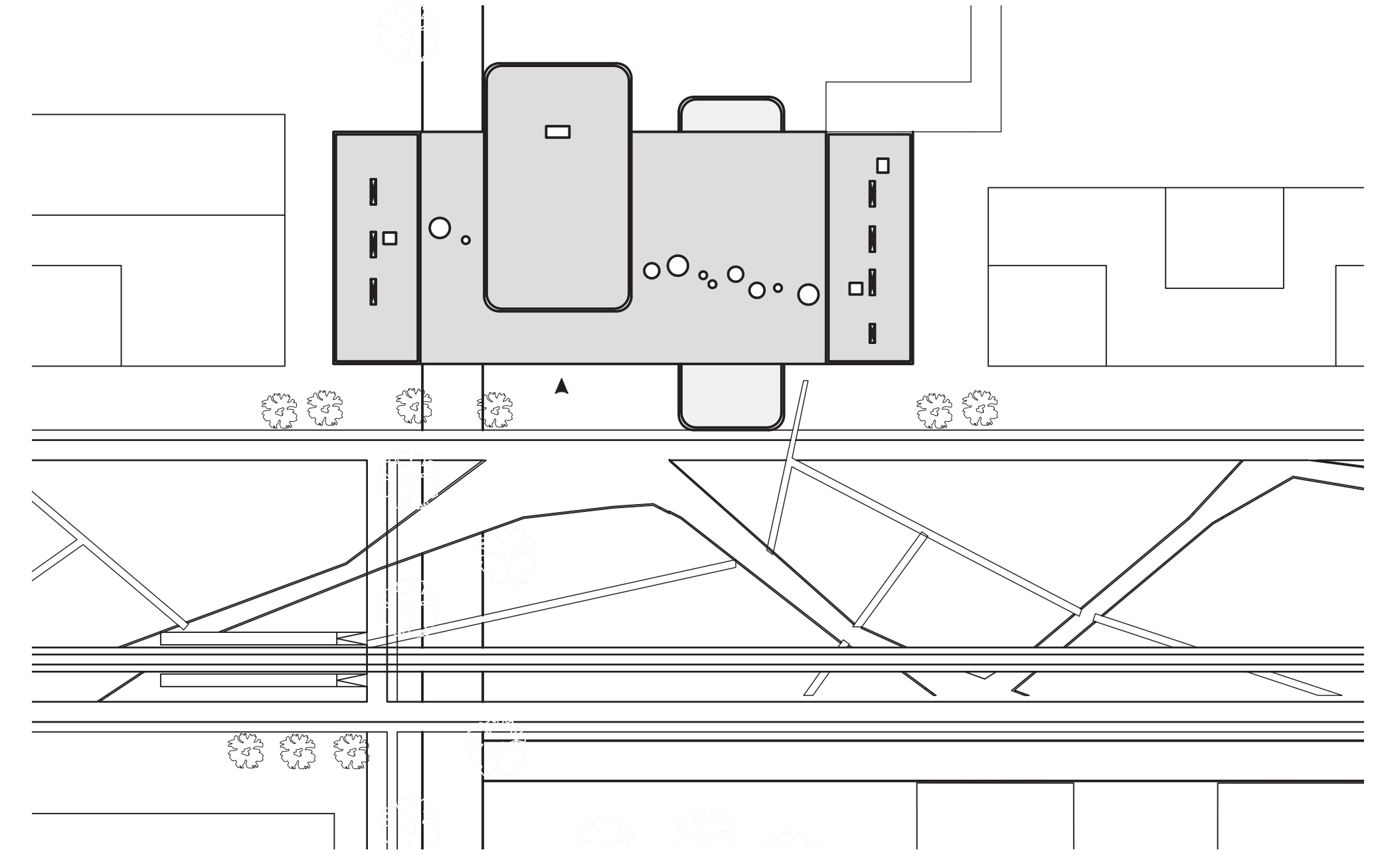




master plan

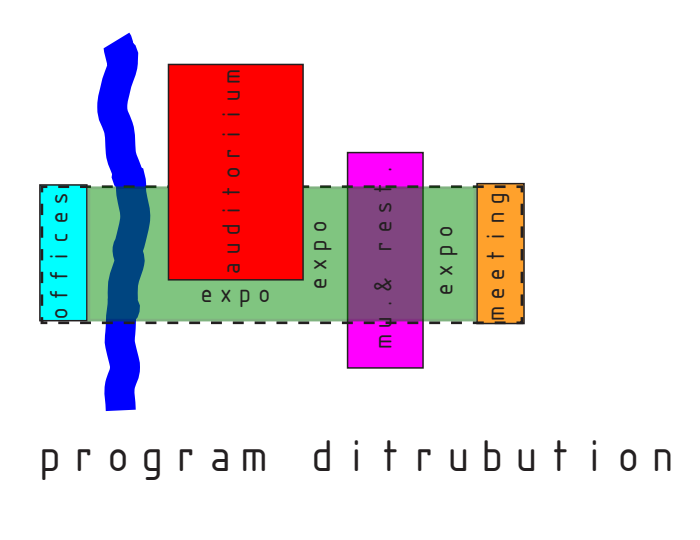
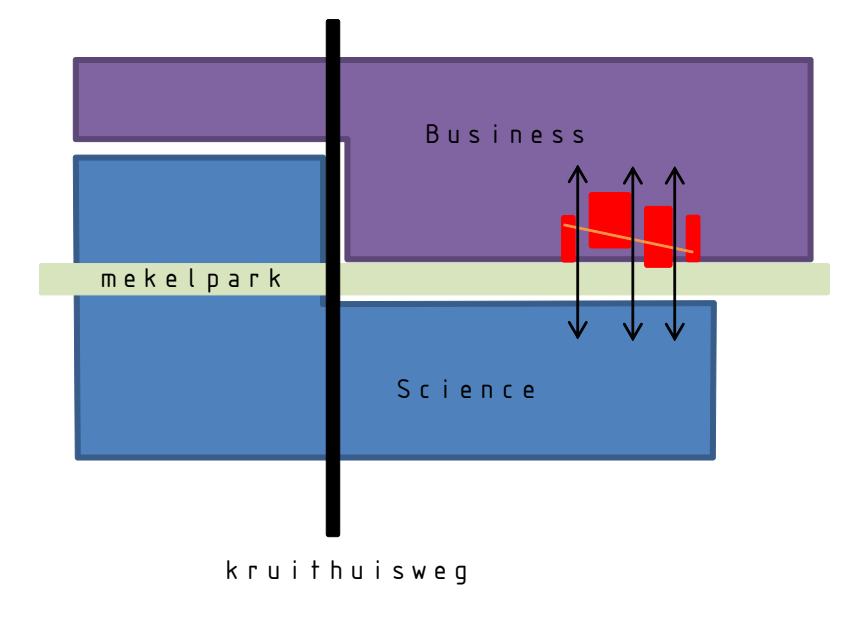
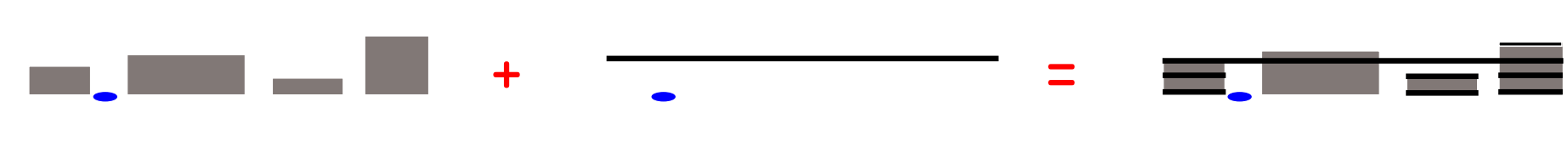


situation

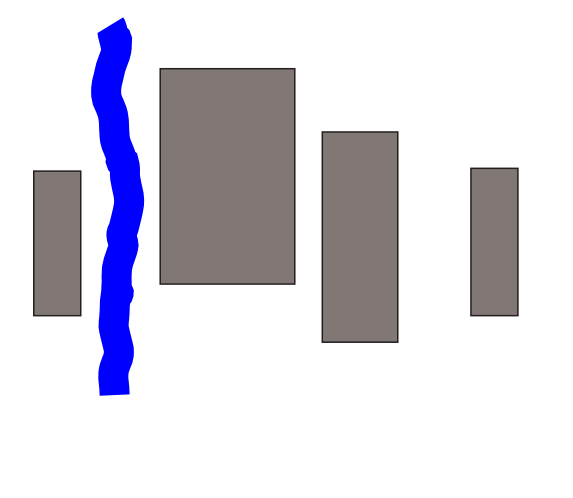


historical map

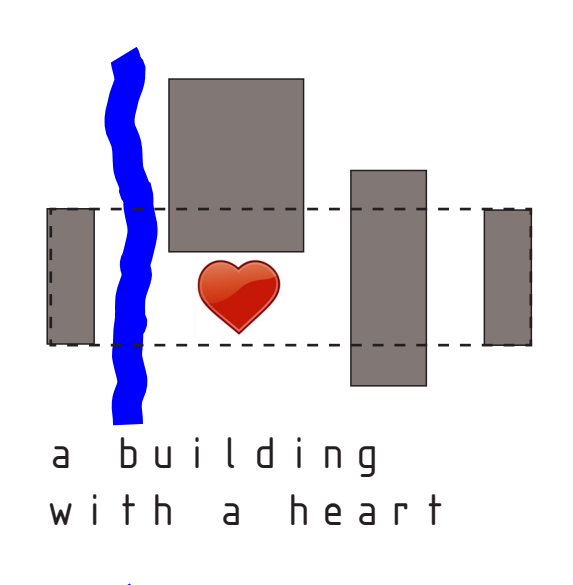
The location is characterized by the polder landscape, this is used as an inspiration for the building.
In the city of Delft there is an intimate relation with the "grachten", this quality can be found inside the building



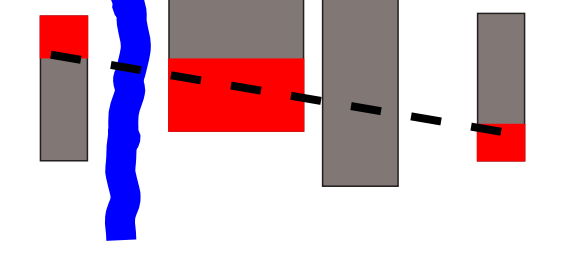
program distribution



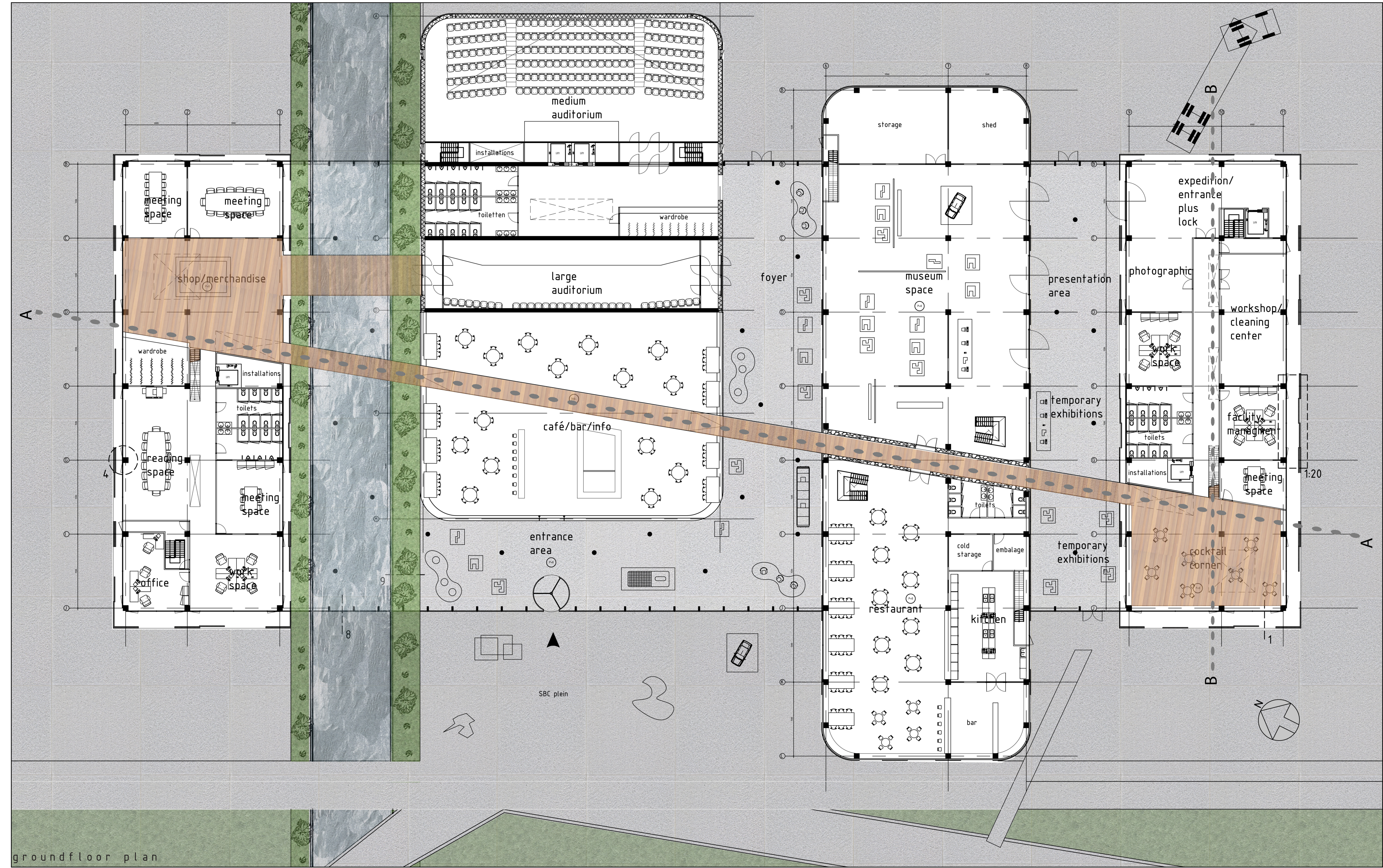
integration with the Thijssenvaart



a building with a heart



diagonal connection with different "squares"



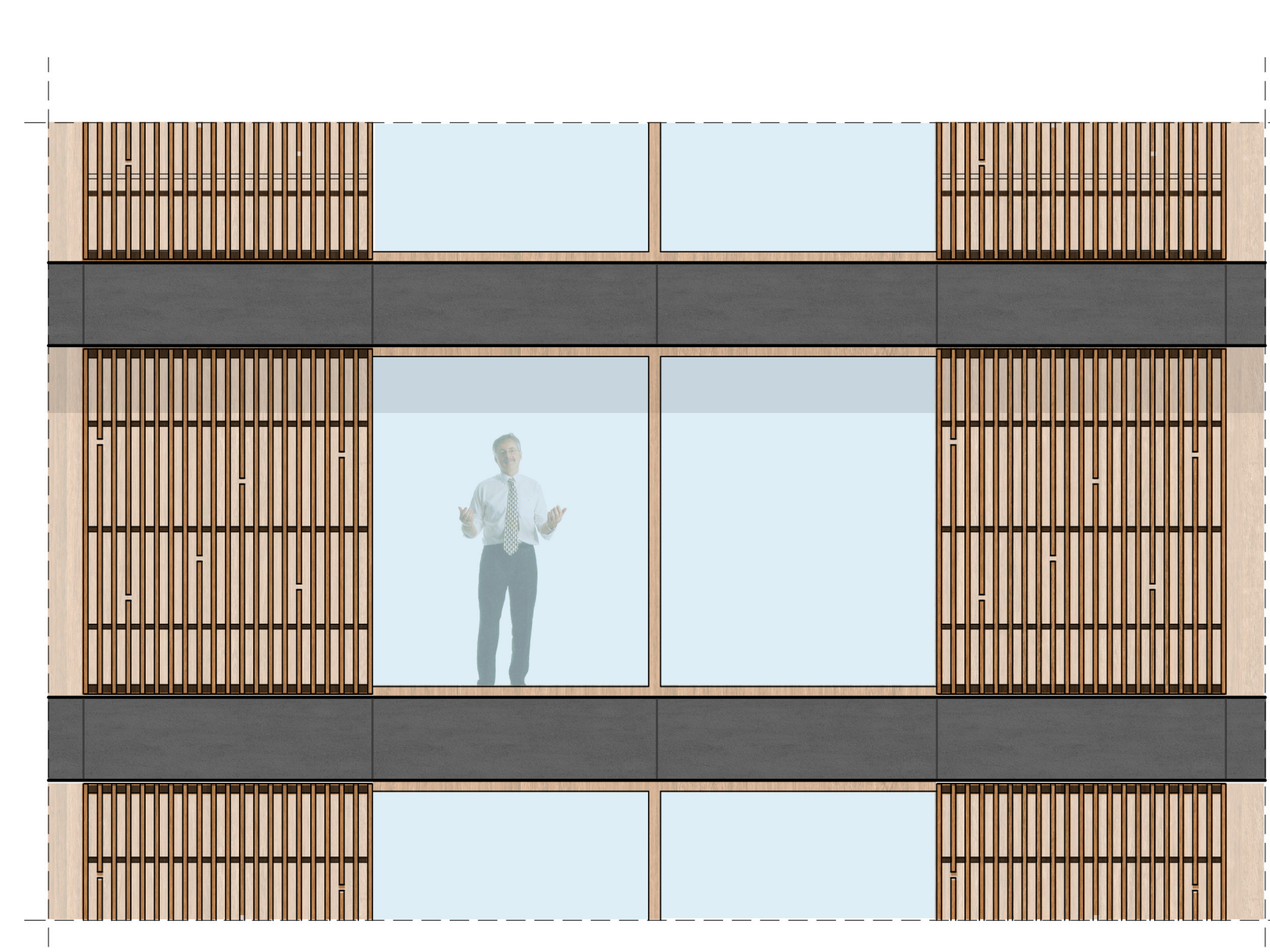
ground floor plan



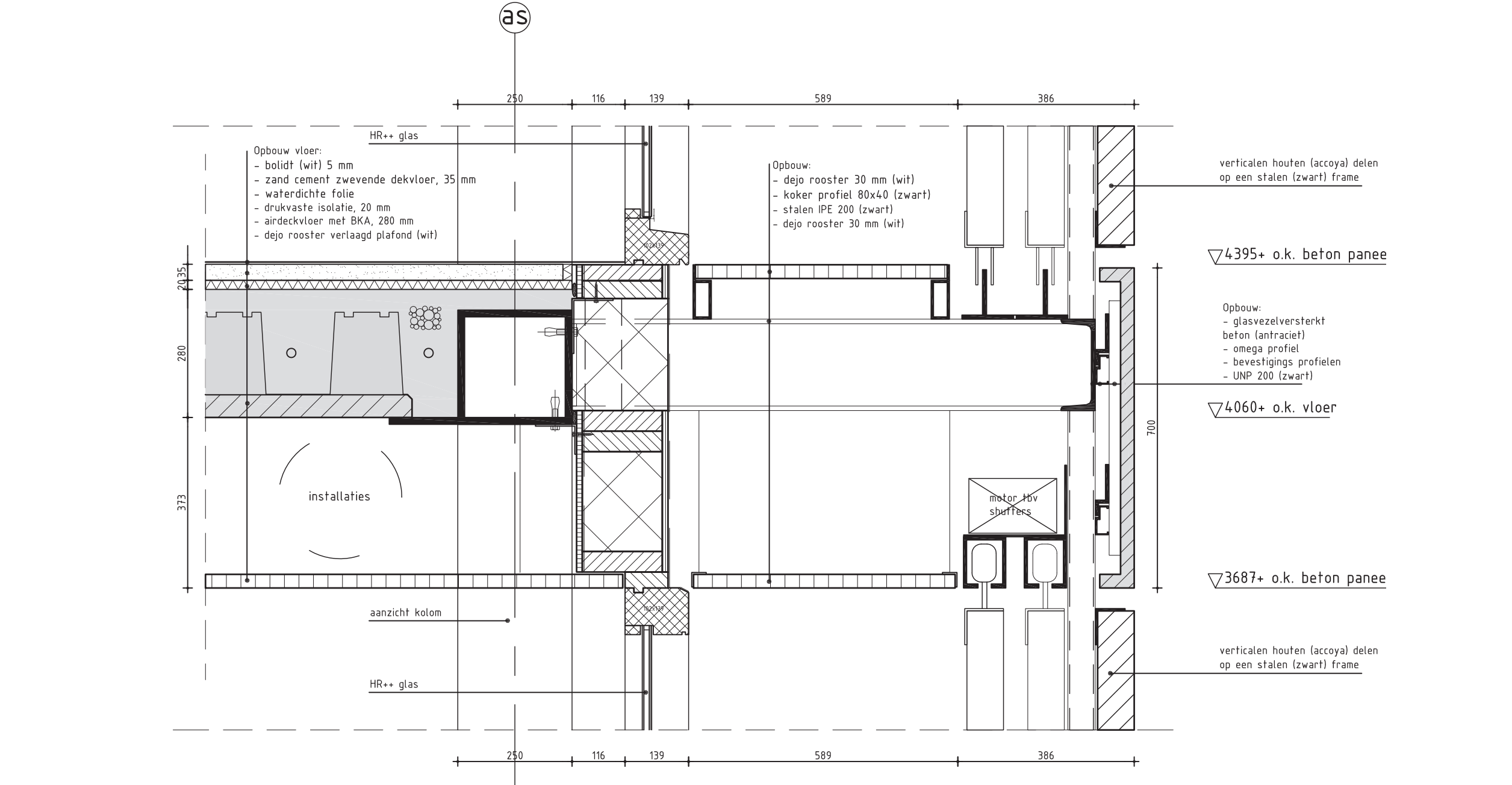
section A-A



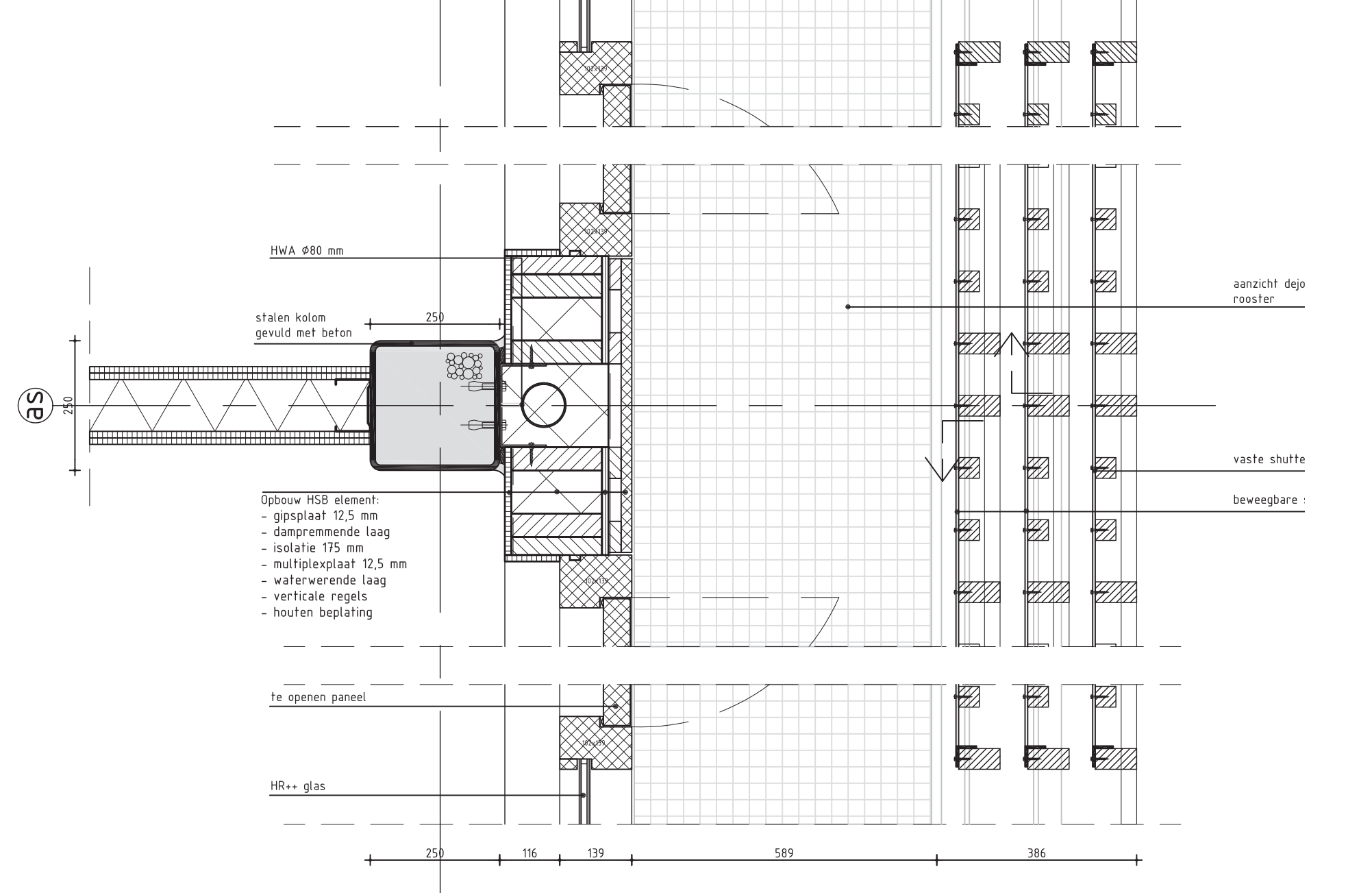
section B-B



facade fragment



vertical facade detail



horizontal facade detail



Science Business Center Delft
Rigobert Nivillac (1346946)
www.rigobertnivillac.com
info@rigobertnivillac.com
Architecture
Materialisation Chair
Strategic Architectural Design Development
Tutors: Ir. R. Bollen
Ir. J. van de Voort

