

Decking boards (silver fir, pressure-treated, sanded),  
Timber battens & substructure,  
20mm Elastomer bed (impact sound),  
Waterproofing plastic membrane,  
Rigid insulation in gradient 1.5%,  
Glued laminated timber board

Eaves board & bearer (silver fir, pressure treated)  
Glue-laminated beams

Glue-laminated timber column (silver fir, pressure treated, double-oiled) with varied dimensions: G-4th floor Ø 350mm, 5th-9th floor Ø300mm, 10th-15th floor Ø 250mm

Timber balustrade (double-oiled)

Doubled-laminated tempered low-e glass window with timber frame

160mm Untreated reed-thatch fixed on stainless steel threaded screw @280mm interval with stainless steel wired, Debricoat Lapfix self-adhesive membrane, Promatech-H fire class A calcium silicate board, 120mm Rigid insulation



Engawa



Engawa

Engawa Section Detail. Scale 1:25



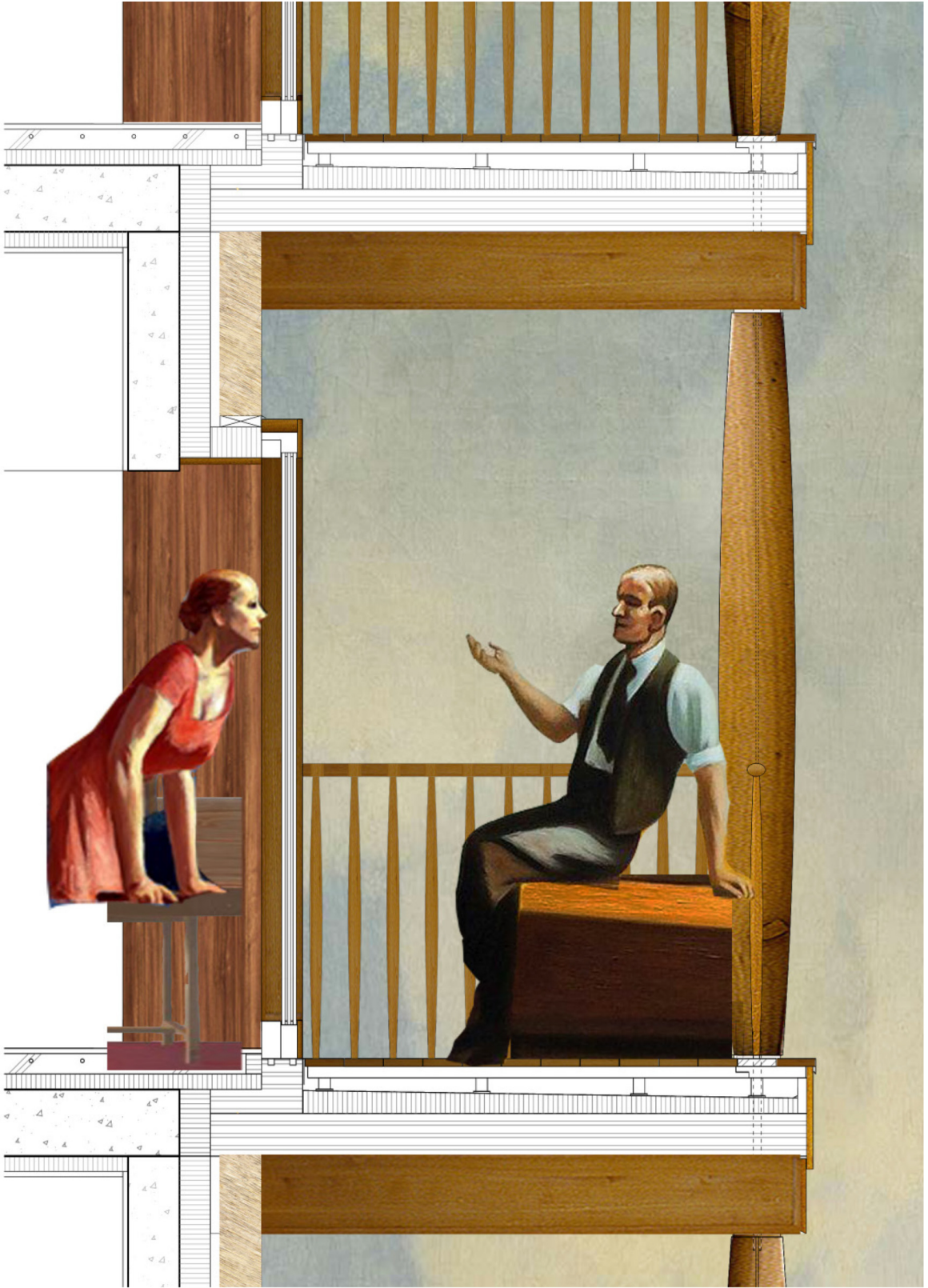
Decking boards (silver fir, pressure-treated, sanded),  
Timber battens & substructure,  
20mm Elastomer bed (impact sound),  
Waterproofing plastic membrane,  
Rigid insulation in gradient 1.5%

160mm Untreated reed-thatch fixed on stainless steel threaded screw @280mm interval with stainless steel wired, Debricoat Lapfix self-adhesive membrane, Promatech-H fire class A calcium silicate board, 150mm light earth wall, 50mm reed board, 20mm reed clay render

40mm reed-clay render (double layer), 60mm rigid insulation layer, Existing beam



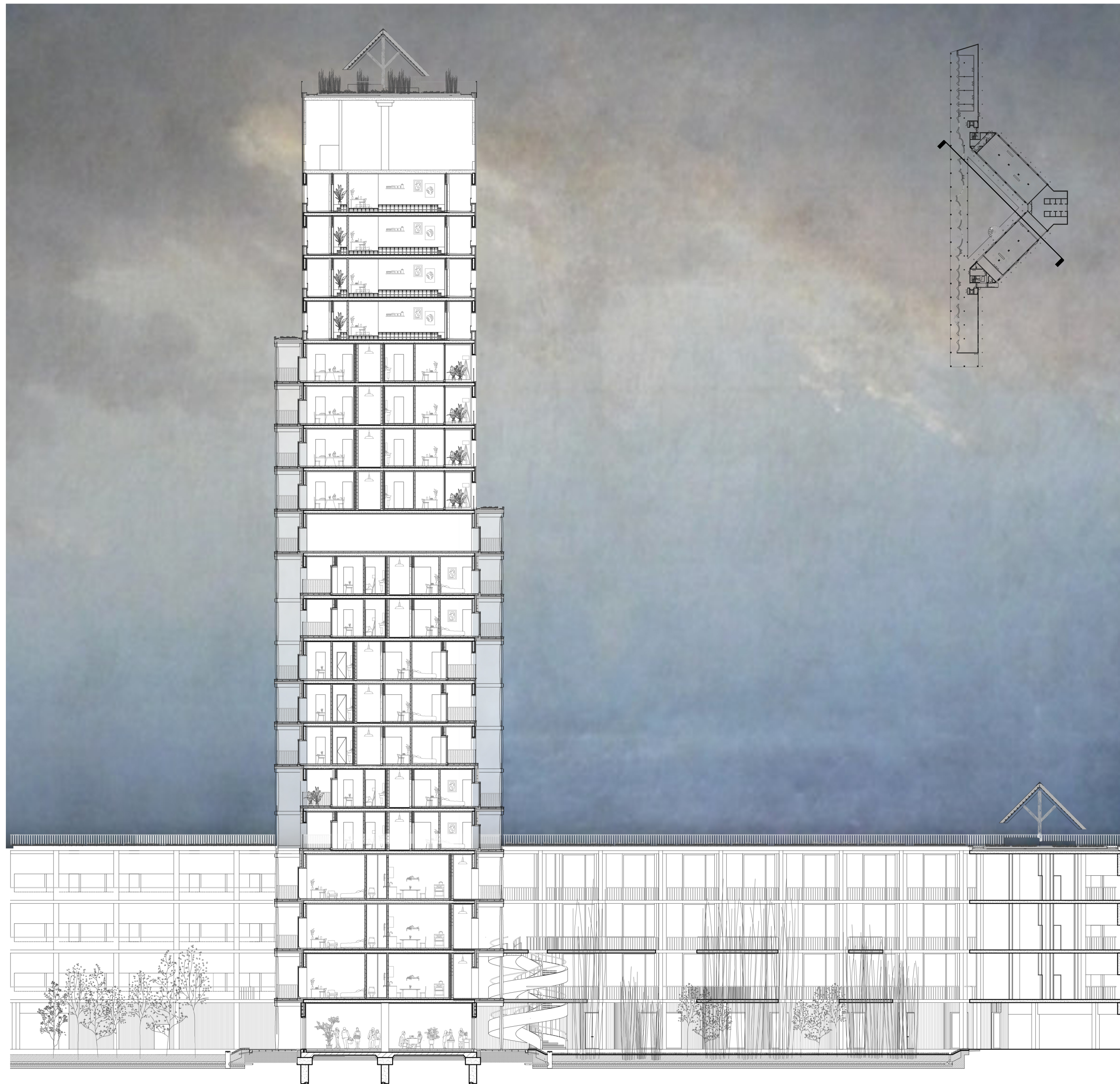
Engawa



Engawa

Engawa Section Detail. Scale 1:25





Section A-A. Scale 1:250