

AEROPORTO FIERA MILANO LINATE

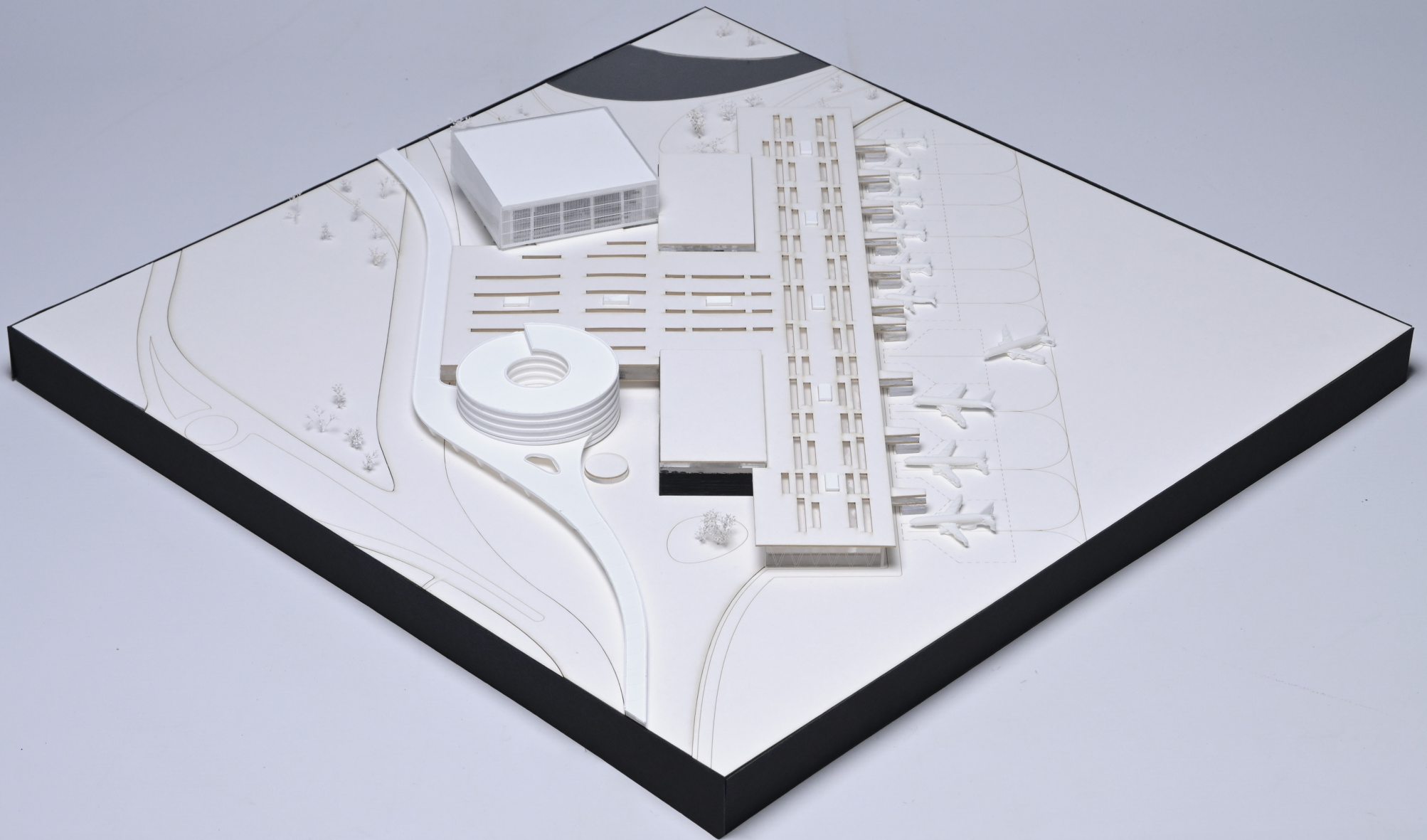
The Airport as an 'Experience Machine'

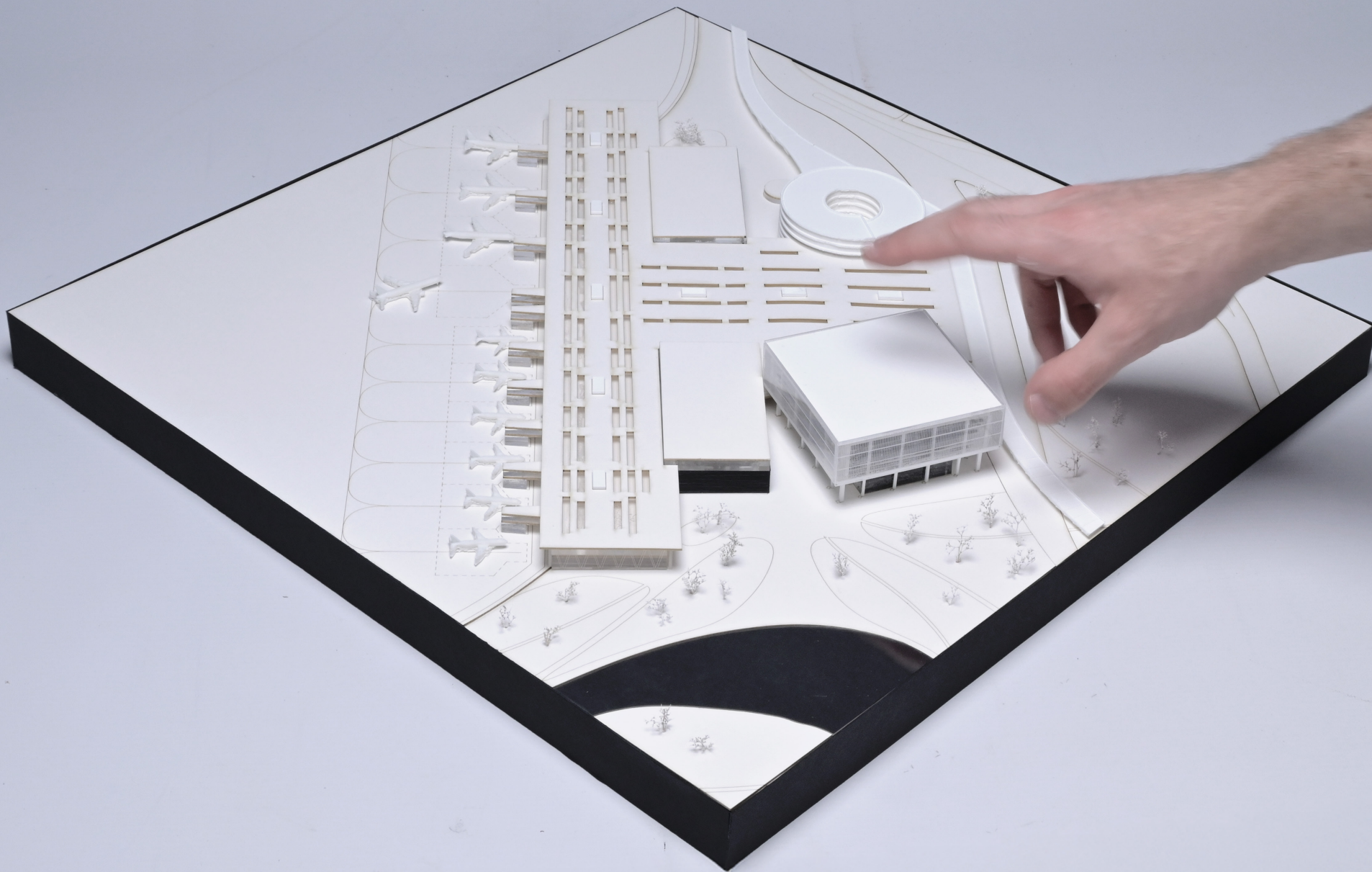
P5 DRAWING SET

Geert Reinders Muñoz

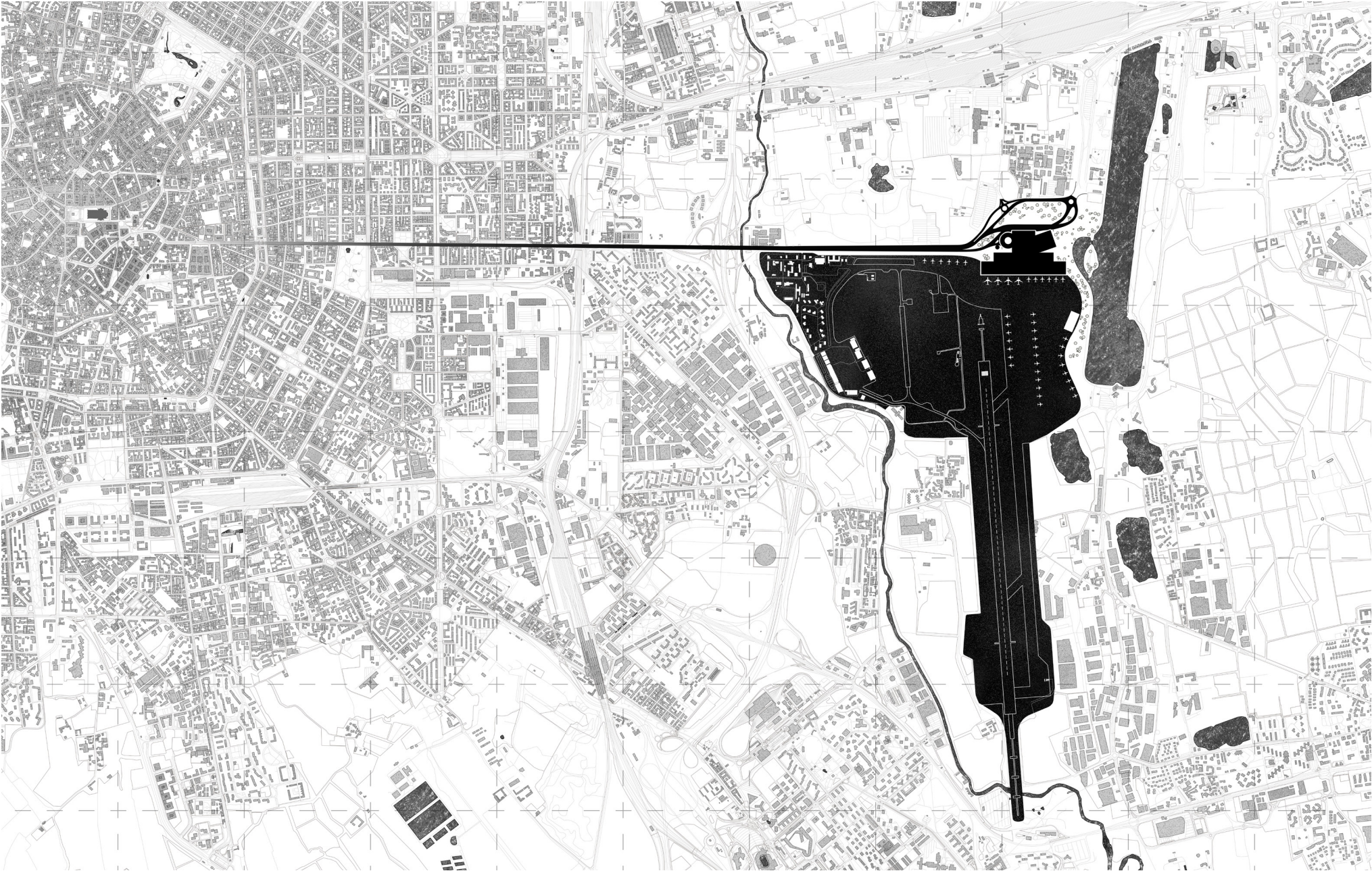
Milan Studio

03.07.2025

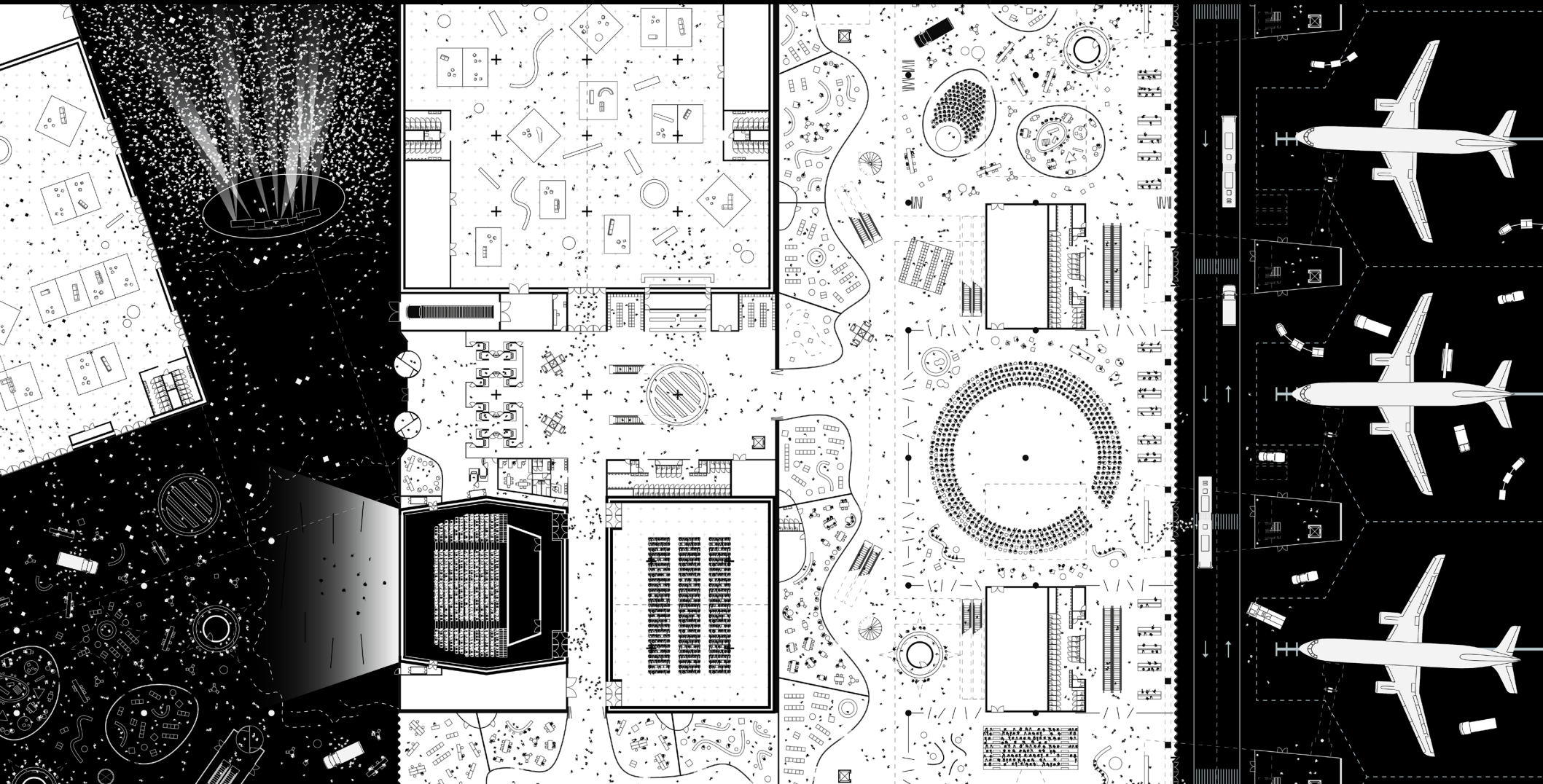


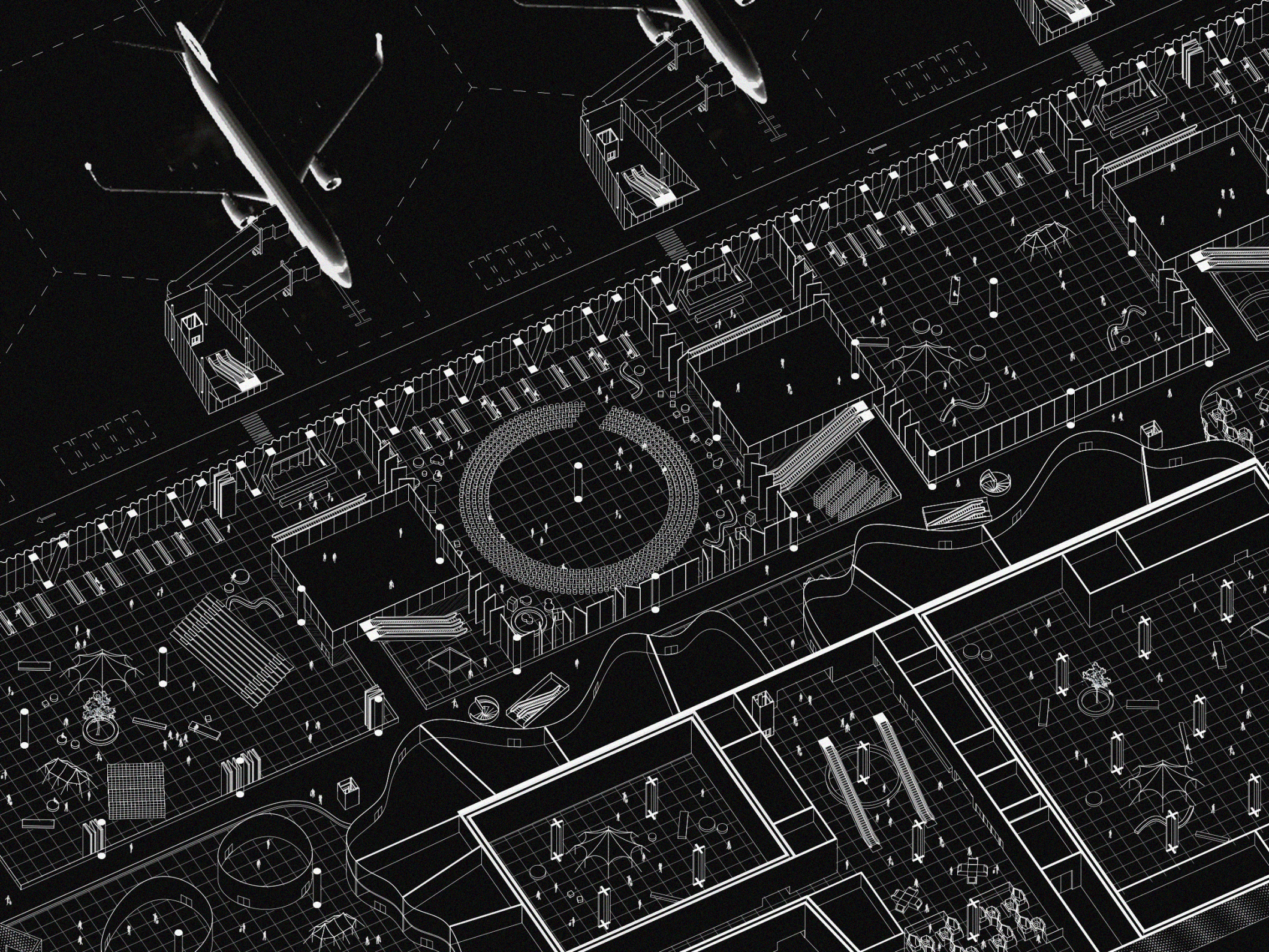


URBAN CONTEXT



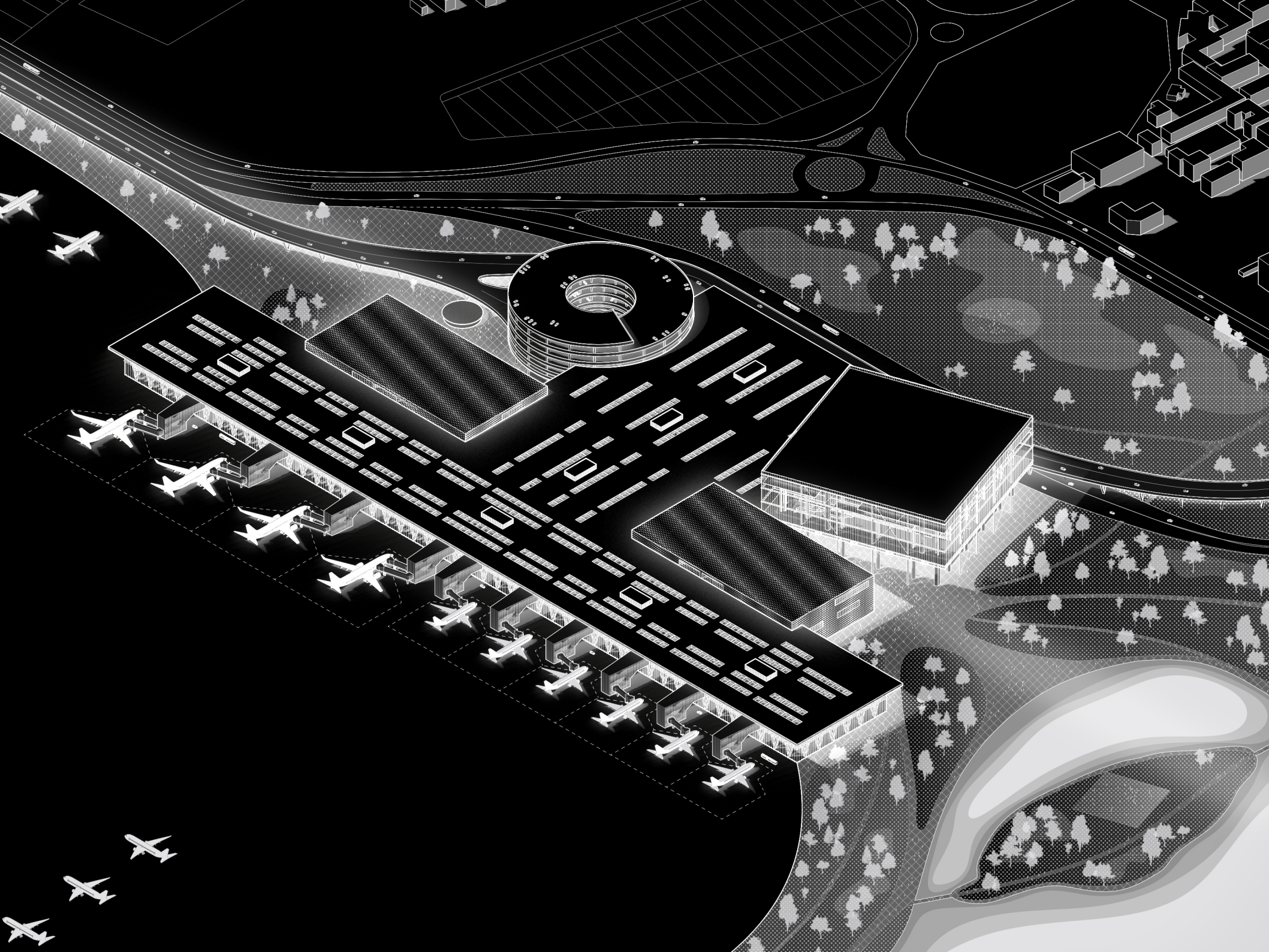
AIRPORT EXPERIENCE MACHINE



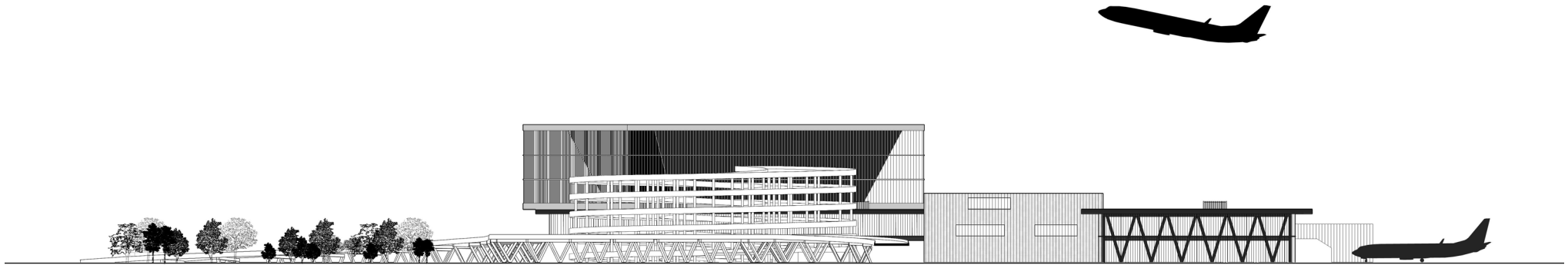
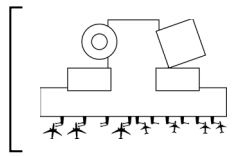


SITE

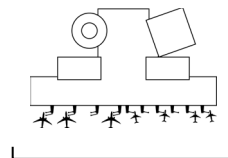




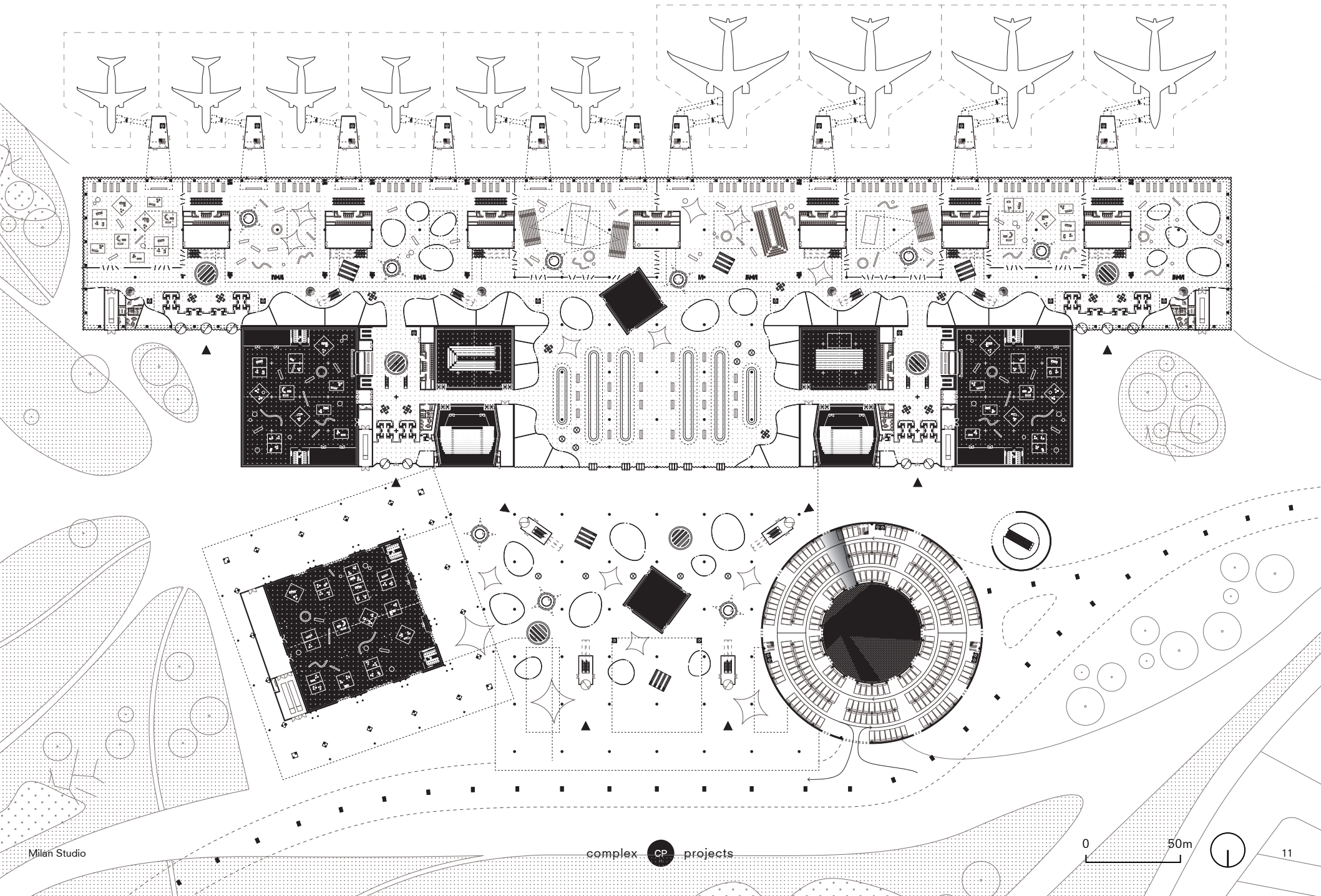
WEST



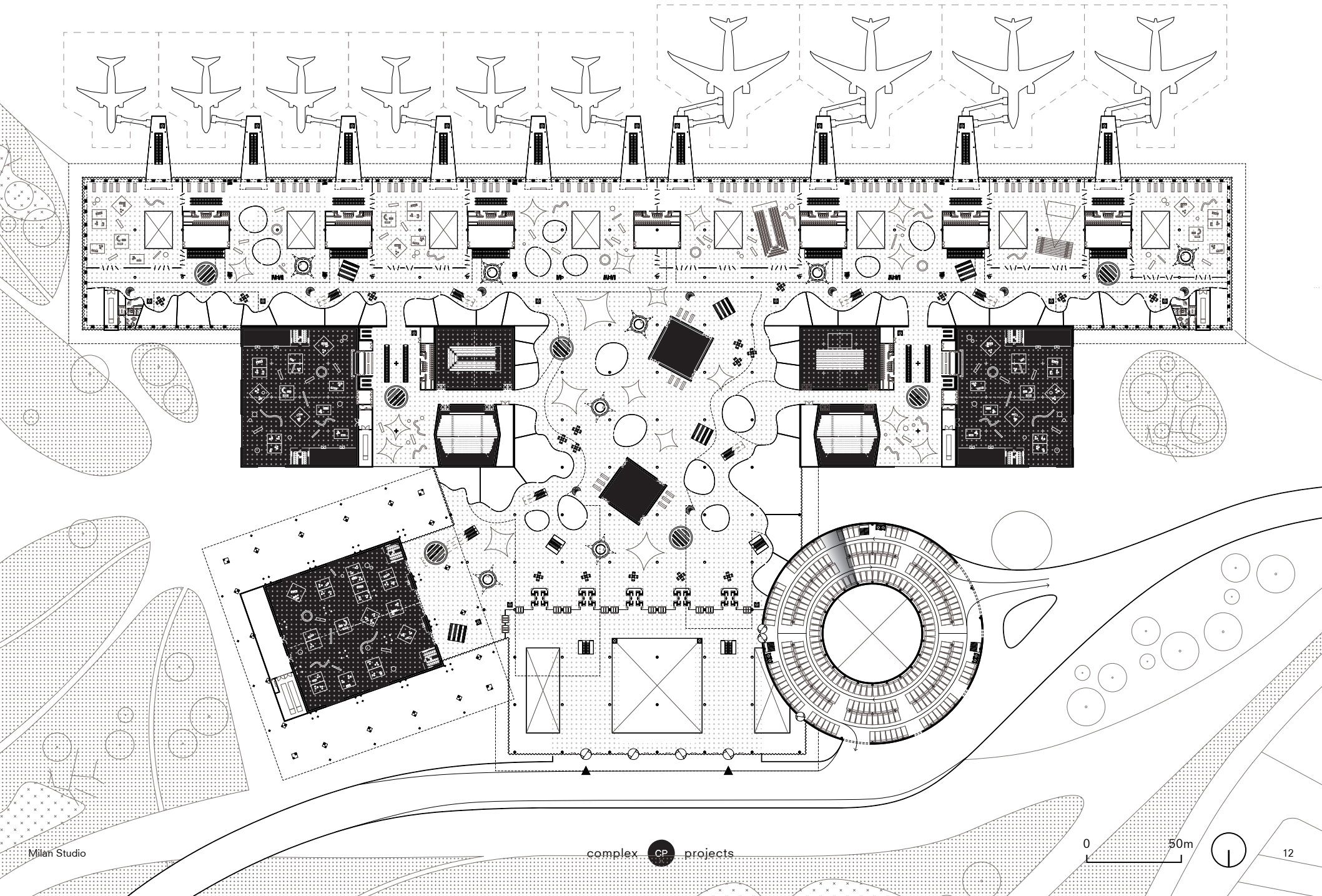
SOUTH



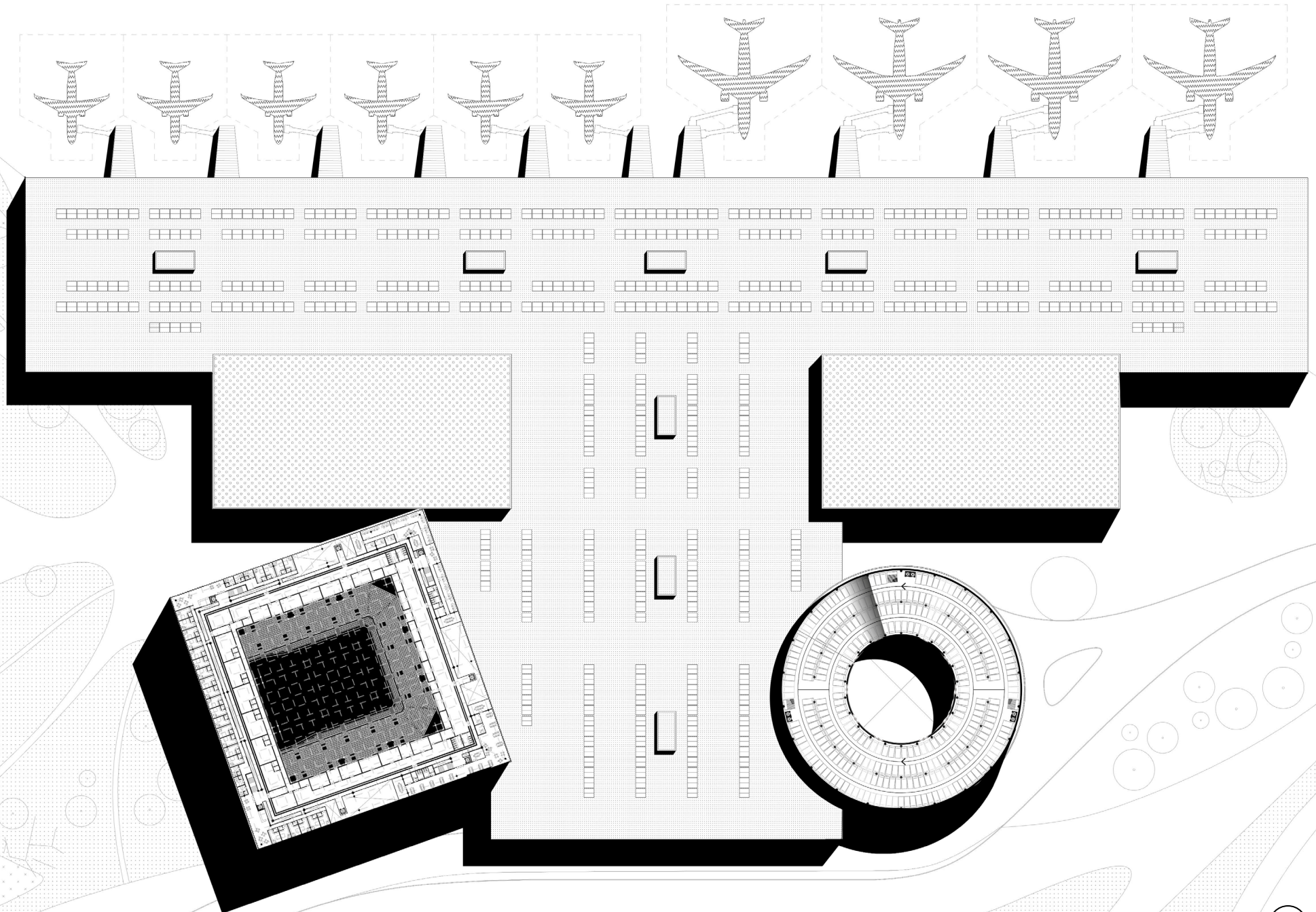
GROUND FLOOR



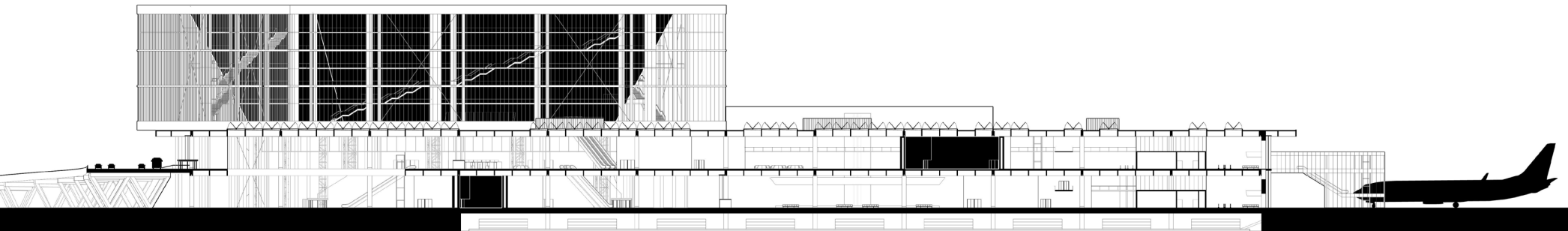
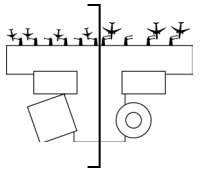
FIRST FLOOR



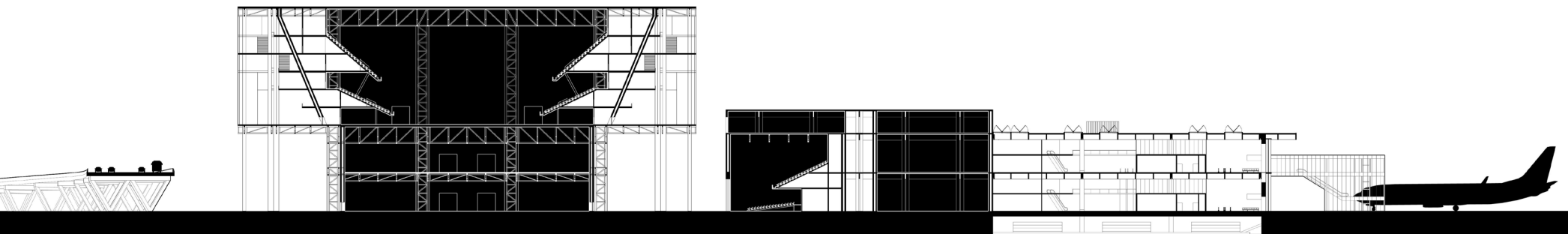
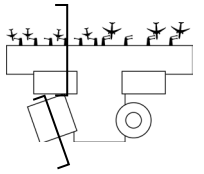
ROOF



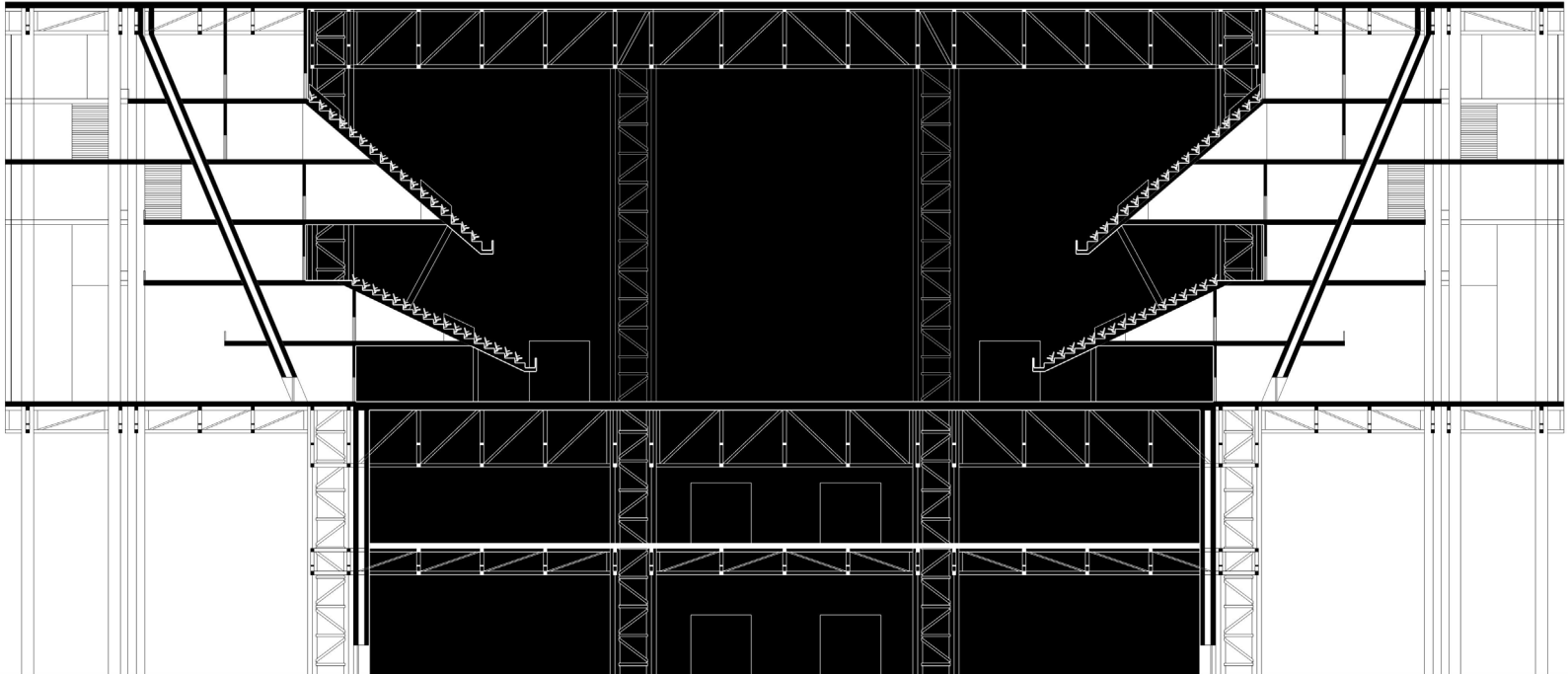
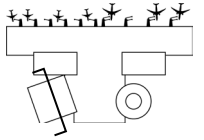
SECTION AA'



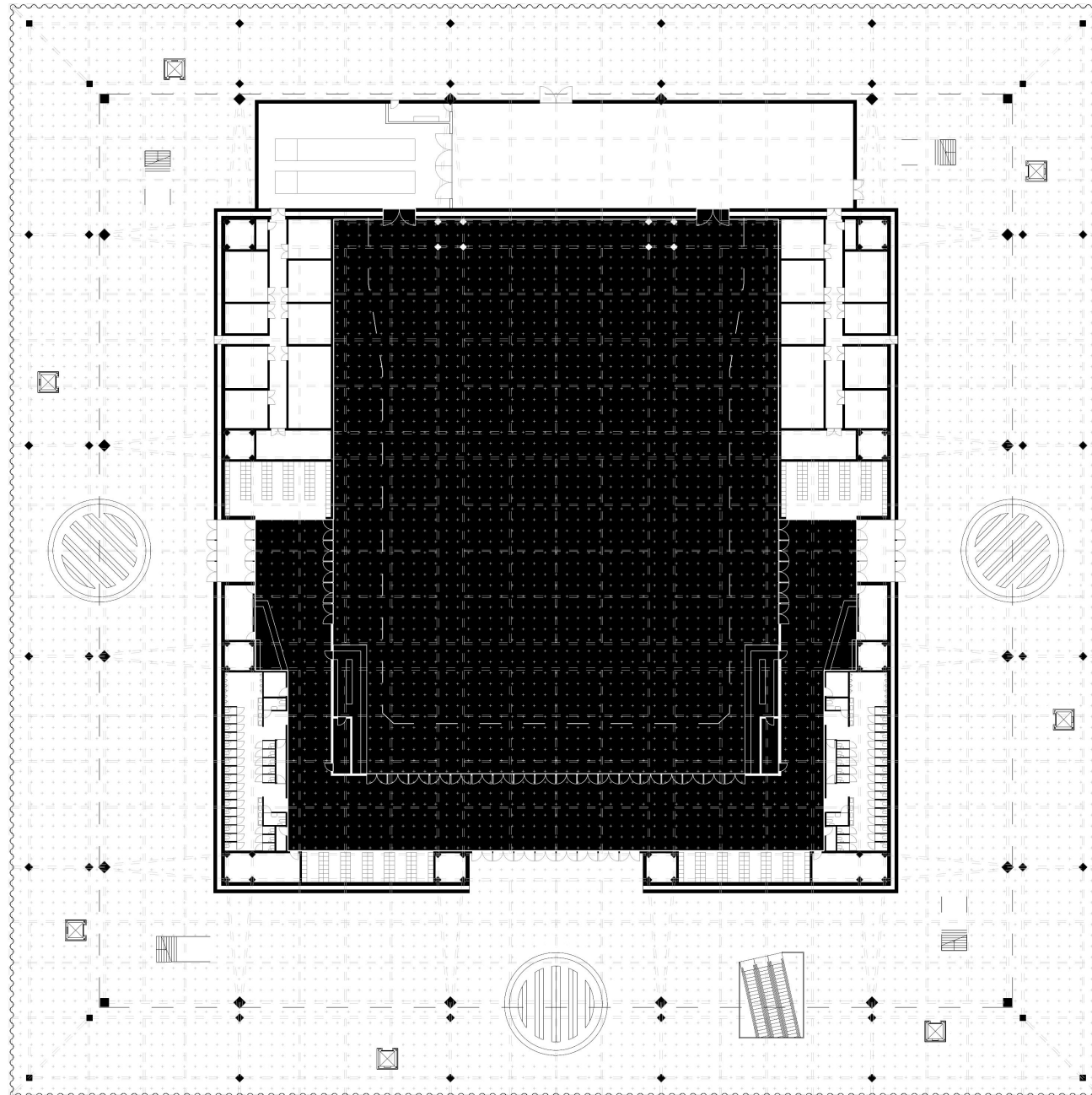
SECTION BB'



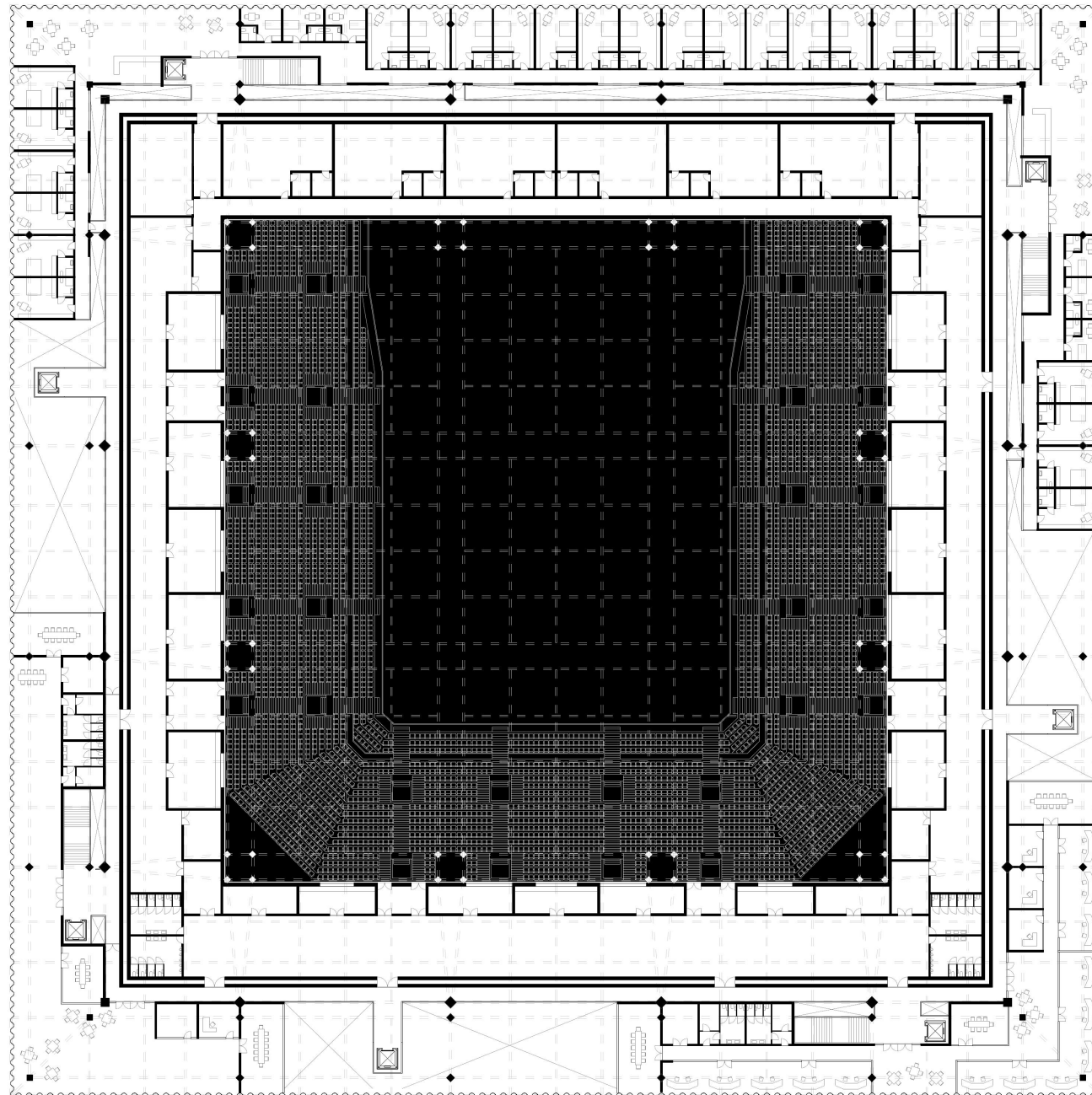
BOX SECTION



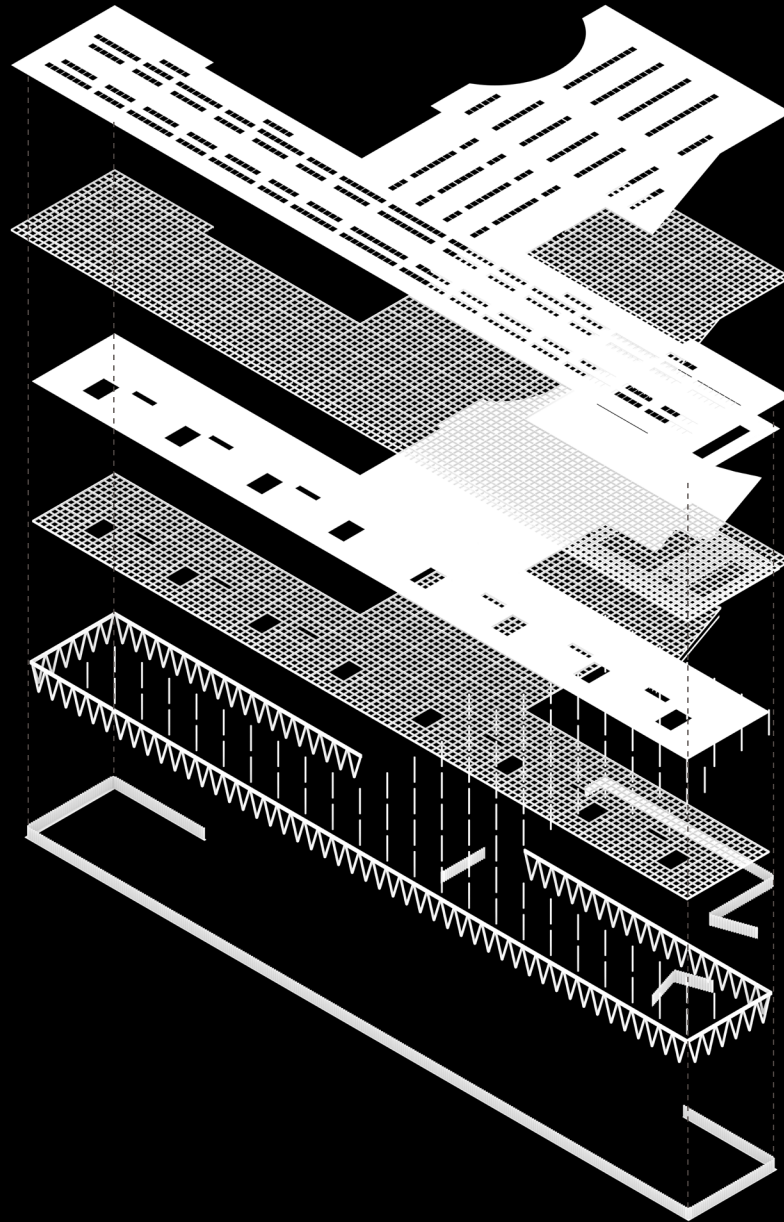
BOX +5



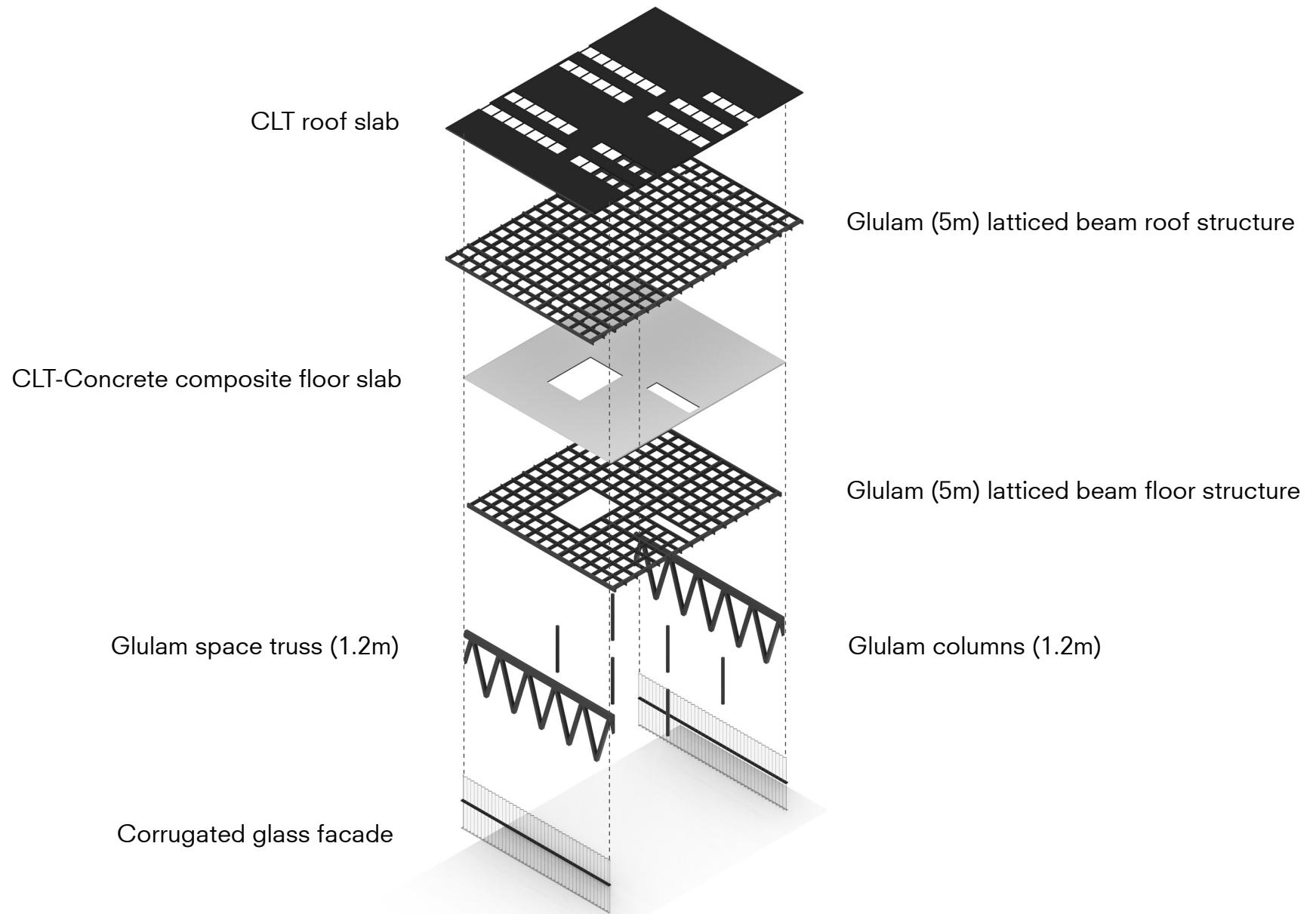
BOX +10



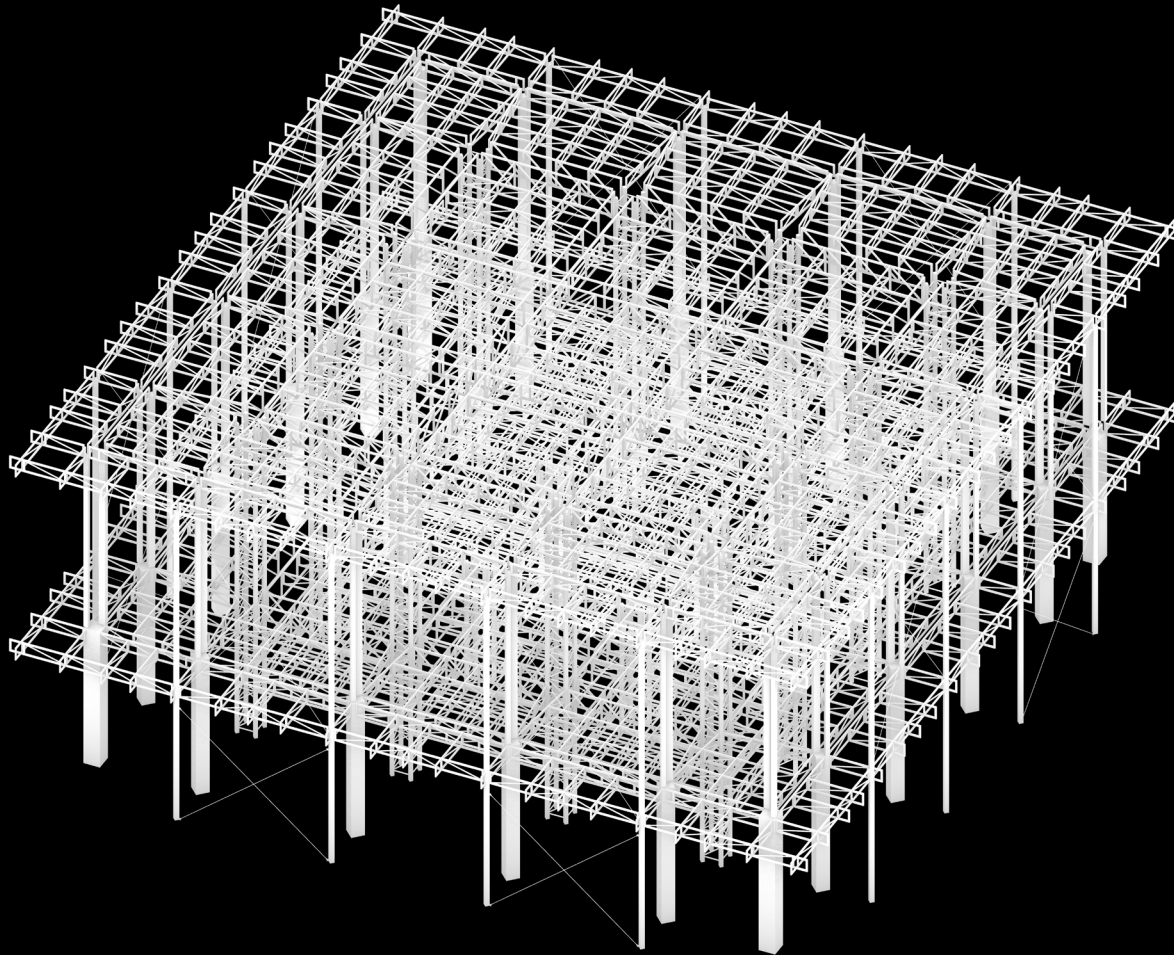
CONCOURSE CONSTRUCTION



CONCOURSE CONSTRUCTION



BOX CONSTRUCTION



BOX CONSTRUCTION

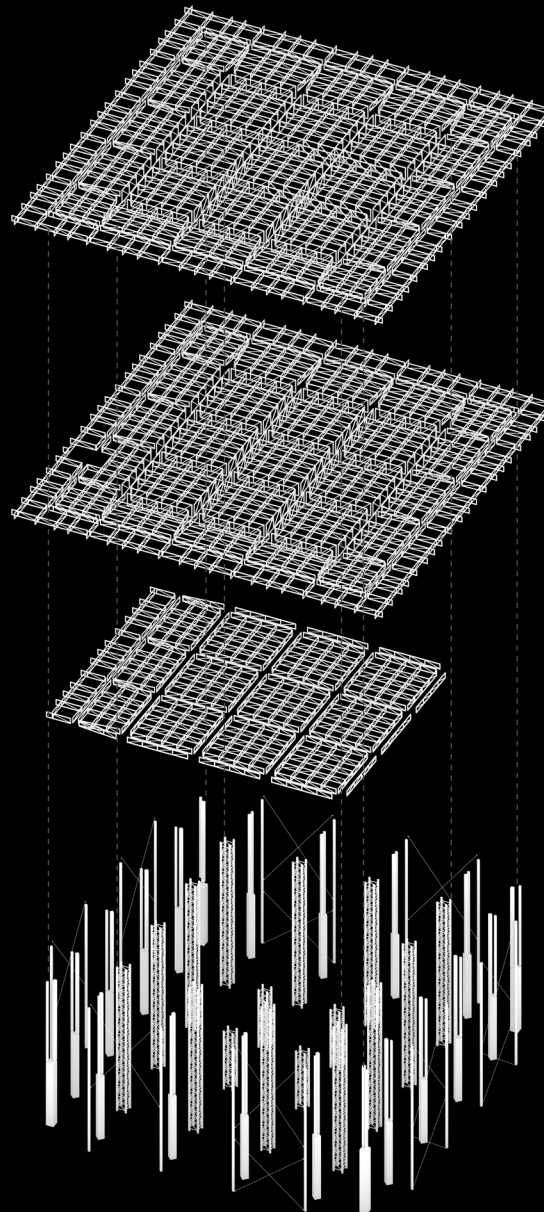
Large steel truss systems
6m - 1.5m height

Main and sub beam system

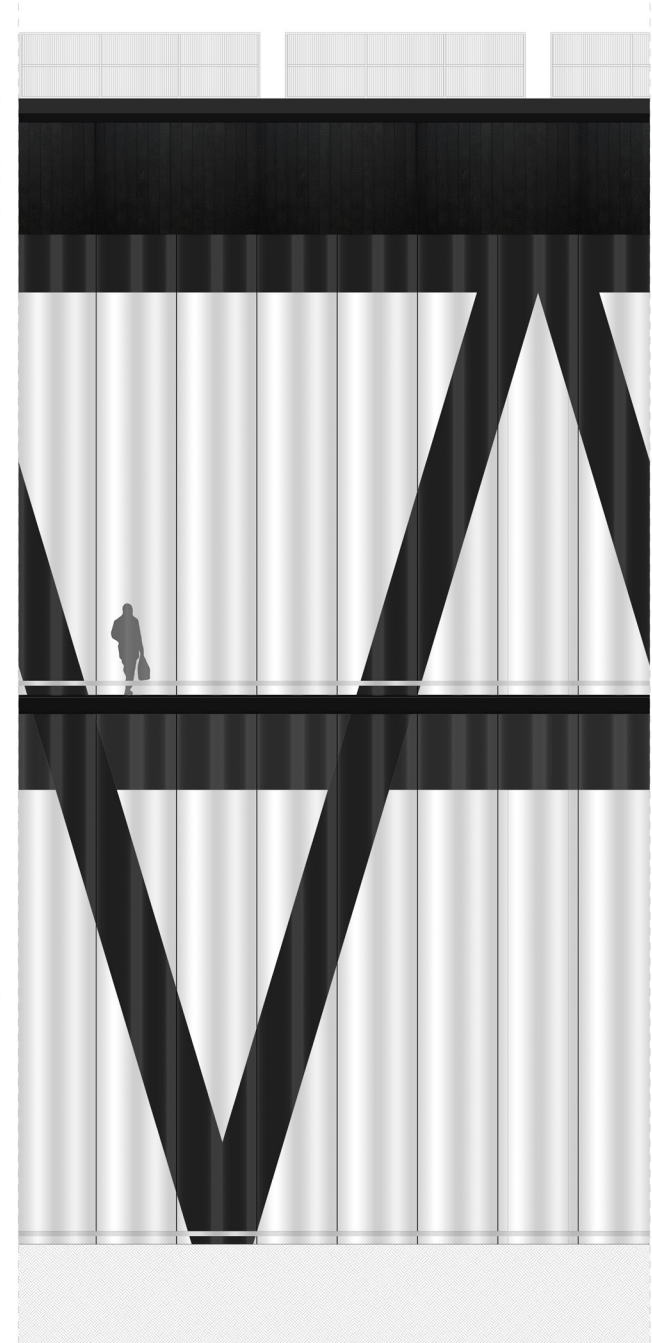
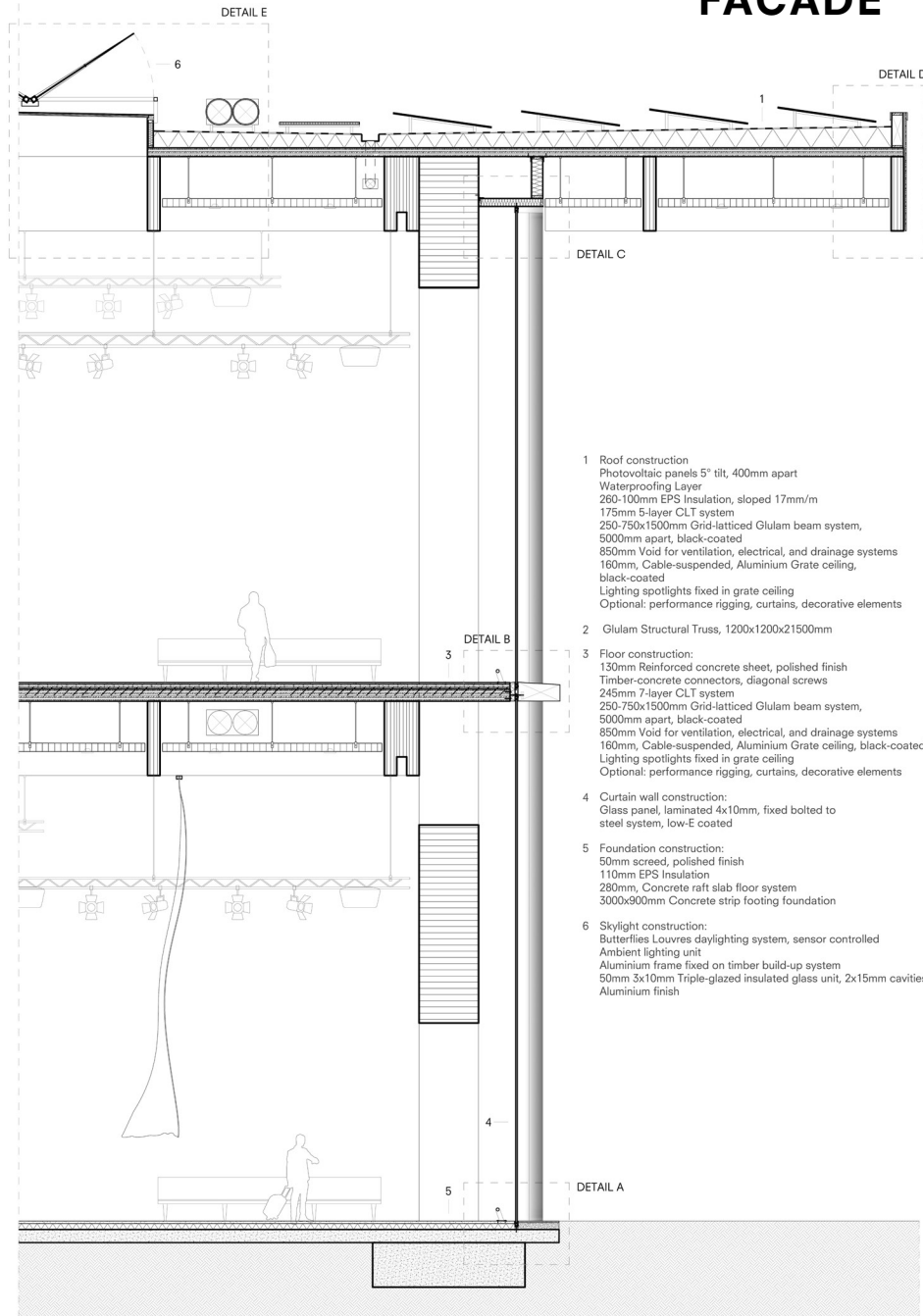
Steel cable cross-bracing

Self-standing concrete
outhern structure

4-legged steel core columns



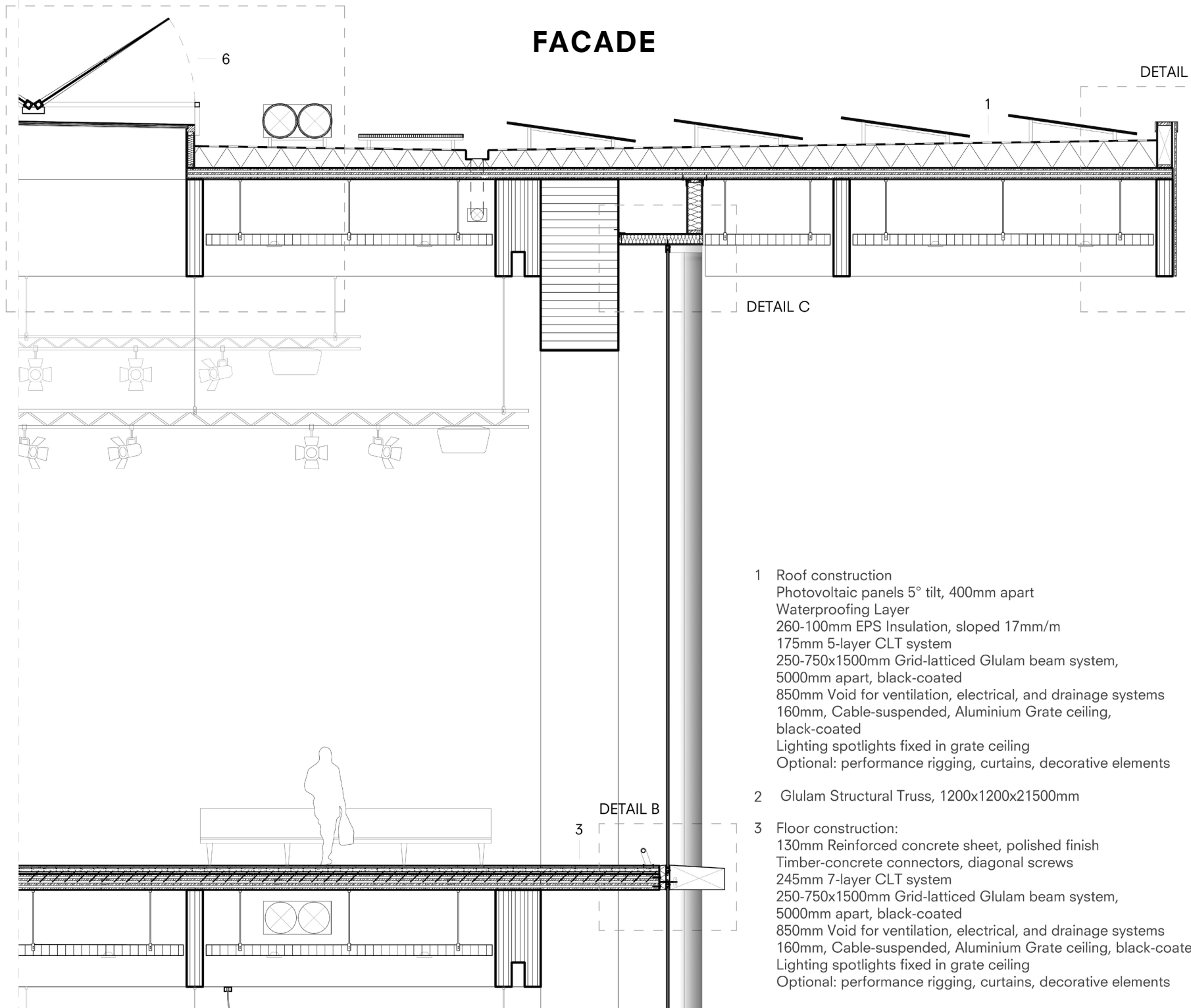
FACADE



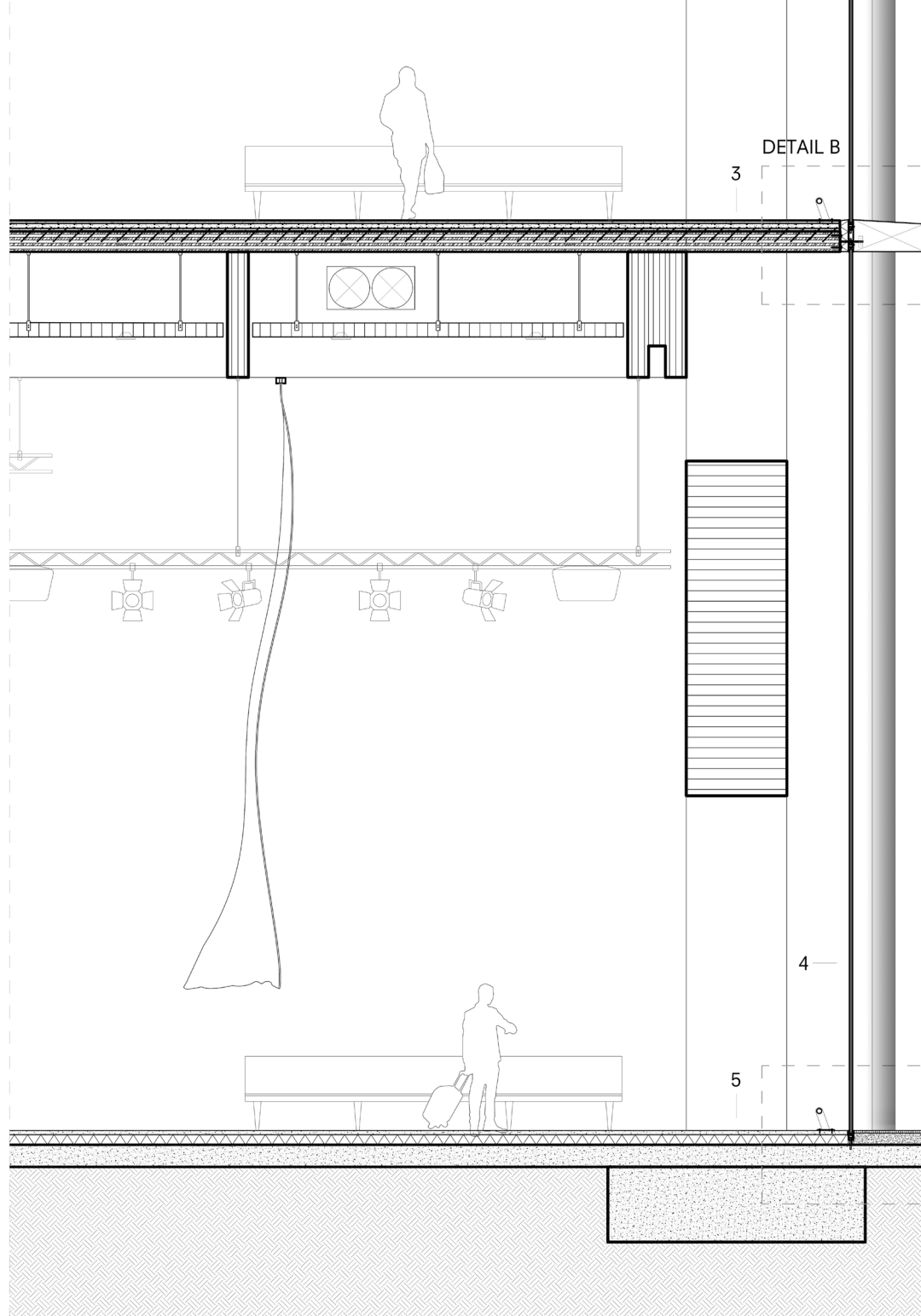
DETAIL E

FACADE

DETAIL I



- 1 Roof construction
Photovoltaic panels 5° tilt, 400mm apart
Waterproofing Layer
260-100mm EPS Insulation, sloped 17mm/m
175mm 5-layer CLT system
250-750x1500mm Grid-latticed Glulam beam system,
5000mm apart, black-coated
850mm Void for ventilation, electrical, and drainage systems
160mm, Cable-suspended, Aluminium Grate ceiling,
black-coated
Lighting spotlights fixed in grate ceiling
Optional: performance rigging, curtains, decorative elements
- 2 Glulam Structural Truss, 1200x1200x21500mm
- 3 Floor construction:
130mm Reinforced concrete sheet, polished finish
Timber-concrete connectors, diagonal screws
245mm 7-layer CLT system
250-750x1500mm Grid-latticed Glulam beam system,
5000mm apart, black-coated
850mm Void for ventilation, electrical, and drainage systems
160mm, Cable-suspended, Aluminium Grate ceiling, black-coated
Lighting spotlights fixed in grate ceiling
Optional: performance rigging, curtains, decorative elements



850mm void for ventilation, electrical, and drainage systems
 160mm, Cable-suspended, Aluminium Grate ceiling, black-coated
 Lighting spotlights fixed in grate ceiling
 Optional: performance rigging, curtains, decorative elements

2 Glulam Structural Truss, 1200x1200x21500mm

3 Floor construction:
 130mm Reinforced concrete sheet, polished finish
 Timber-concrete connectors, diagonal screws
 245mm 7-layer CLT system
 250-750x1500mm Grid-latticed Glulam beam system, 5000mm apart, black-coated
 850mm Void for ventilation, electrical, and drainage systems
 160mm, Cable-suspended, Aluminium Grate ceiling, black-coated
 Lighting spotlights fixed in grate ceiling
 Optional: performance rigging, curtains, decorative elements

4 Curtain wall construction:
 Glass panel, laminated 4x10mm, fixed bolted to steel system, low-E coated

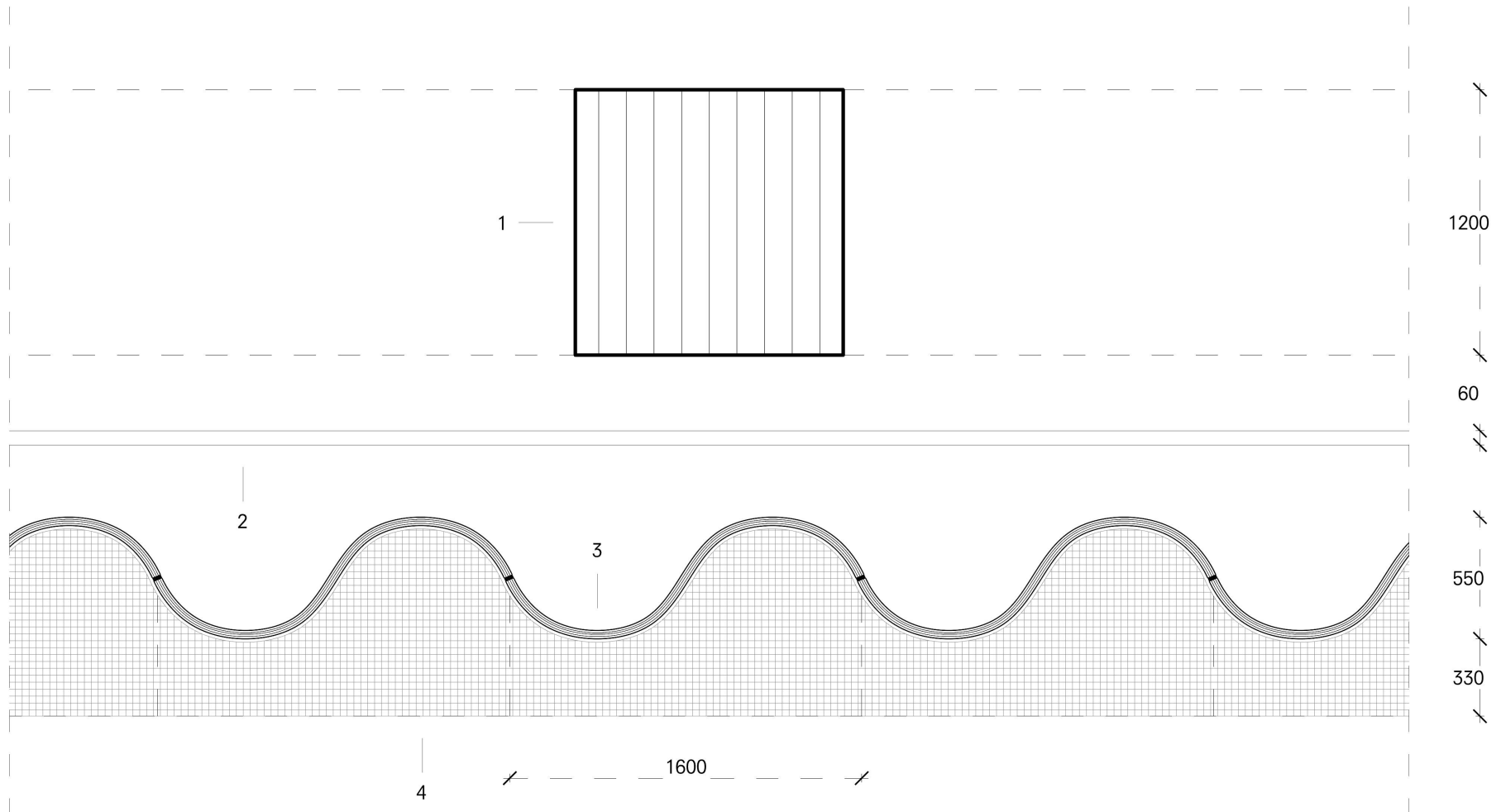
5 Foundation construction:
 50mm screed, polished finish
 110mm EPS Insulation
 280mm, Concrete raft slab floor system
 3000x900mm Concrete strip footing foundation

6 Skylight construction:
 Butterflies Louvres daylighting system, sensor controlled
 Ambient lighting unit
 Aluminium frame fixed on timber build-up system
 50mm 3x10mm Triple-glazed insulated glass unit, 2x15mm cavities
 Aluminium finish

PLAN SECTION 1.20

- 1 Construction:
Glulam Structural Truss, 1200x1200x21500mm
- 2 Ø60mm Stainless steel bump rail

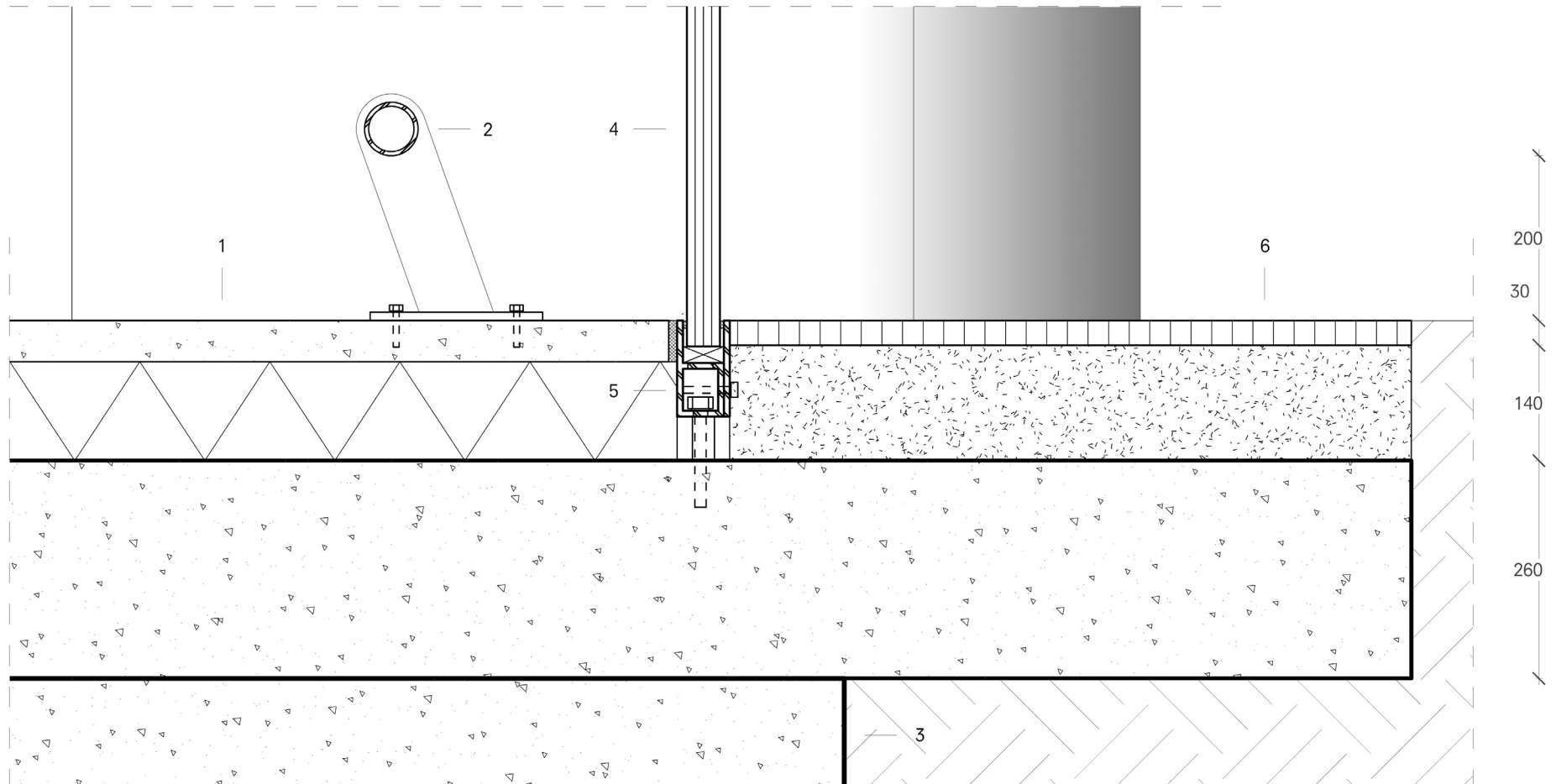
- 3 Curtain wall construction:
Corrugated glass panel, 4x10mm annealed, fixed bolted to steel system, low-E coated
- 4 Steel grating, grout



FOUNDATION DETAIL 1.5

- 1 Foundation construction:
50mm screed, polished finish
110mm EPS Insulation
280mm, Concrete raft slab floor system
- 2 Stainless steel bump rail Ø60mm
- 3 3000x900mm Concrete strip footing foundation

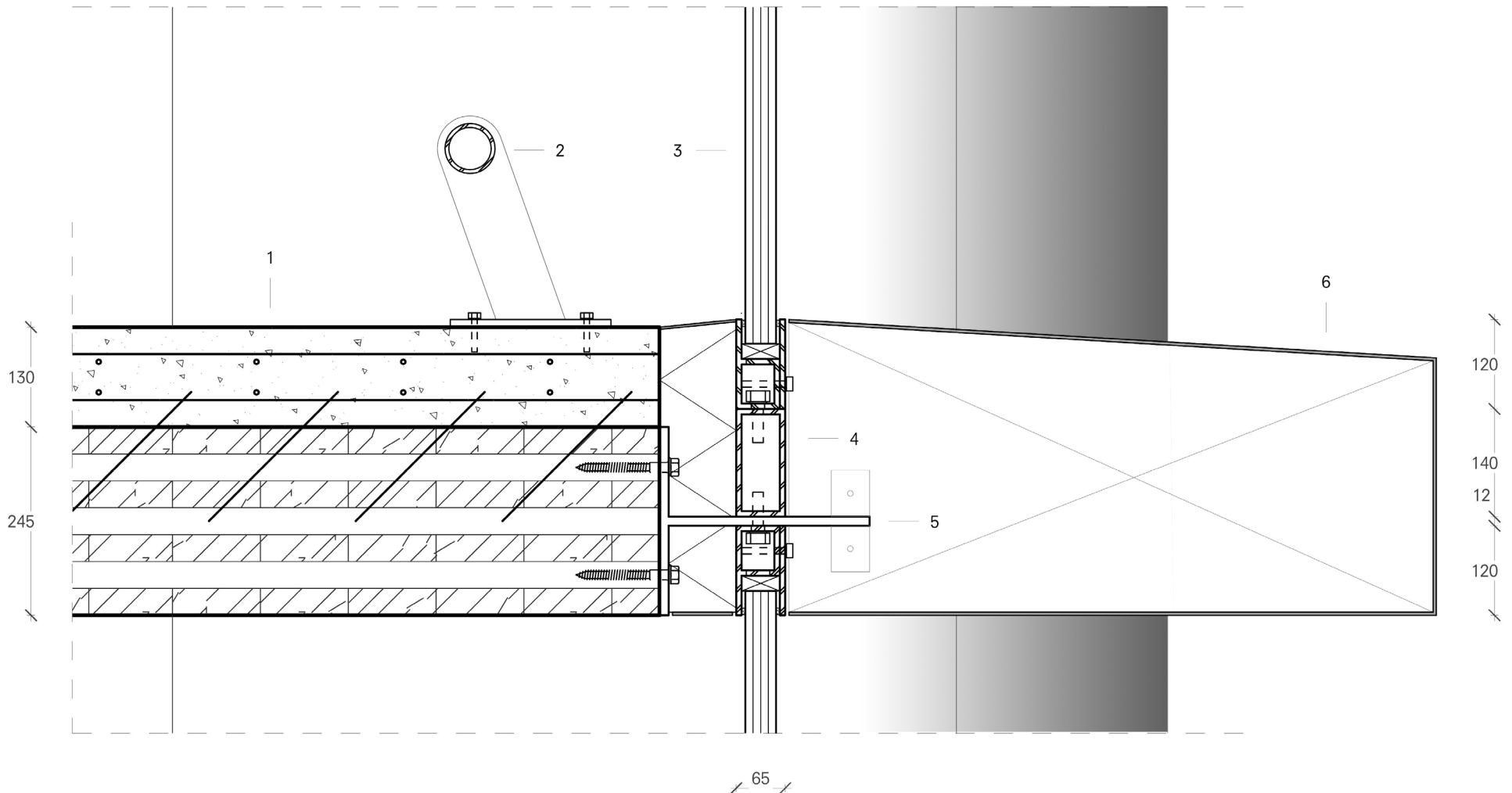
- 4 Curtain wall construction:
Corrugated glass panel, 4x10mm annealed, fixed bolted to steel system, low-E coated
- 5 Stainless steel glass frame system, on mounting frame
- 6 Steel grating, grout



FLOOR DETAIL 1.5

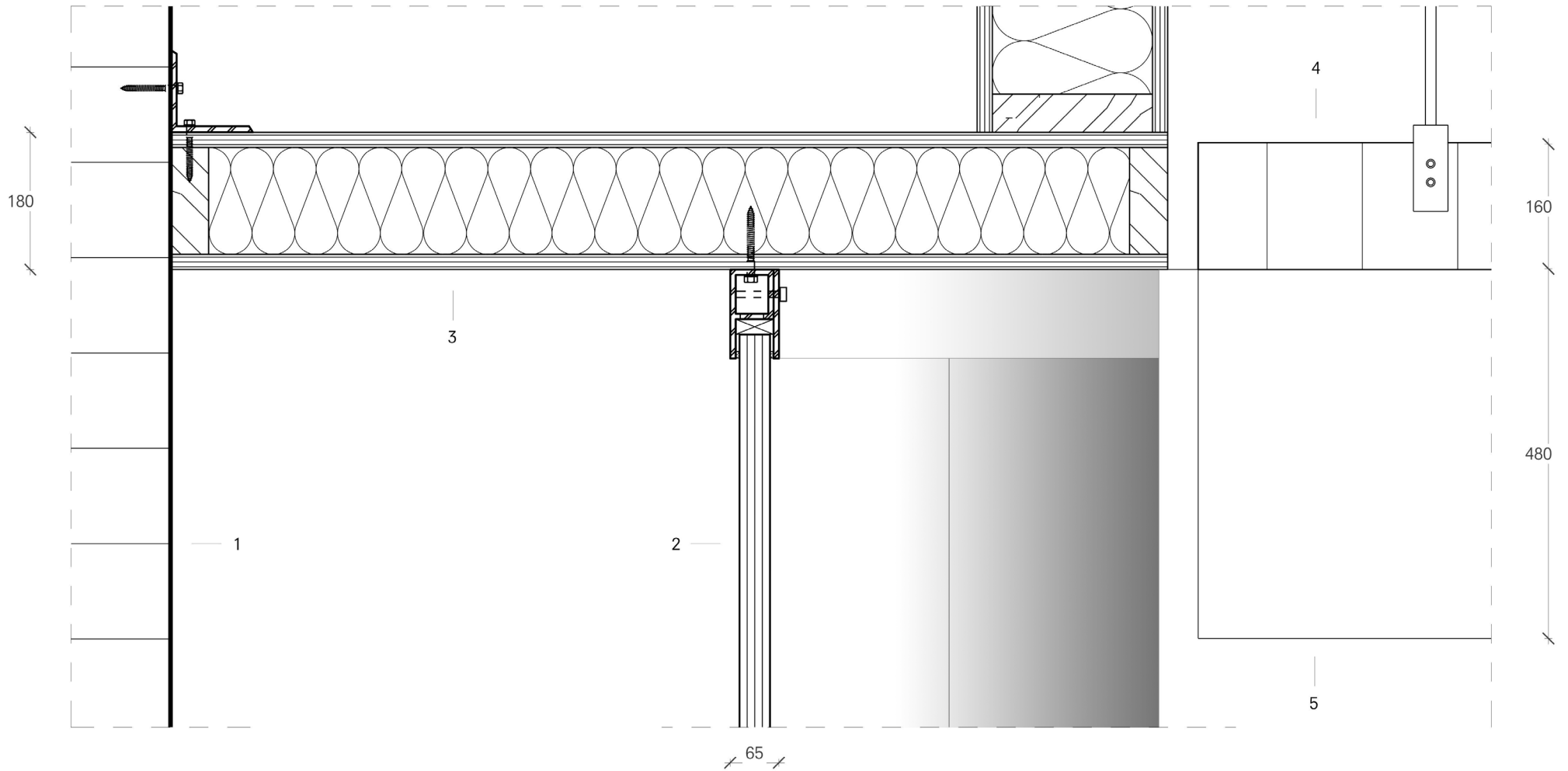
- 1 Floor construction:
130mm Reinforced concrete sheet, polished finish
Timber-concrete composite connectors, diagonal screws
245mm 7-layer CLT system
250-750x1500mm Grid-latticed Glulam beams, 5000mm apart, black-coated
- 2 Stainless steel bump rail Ø60mm
- 3 Curtain wall construction:
Corrugated glass panel, 4x10mm annealed, fixed bolted to steel system, low-E coated

- 4 Corrugated steel glass mounting system, bolted on steel t-profile
- 5 Recurring stainless steel t-profile, attached on CLT floor using screws
- 6 Aluminium finish profile, attached on T-profile



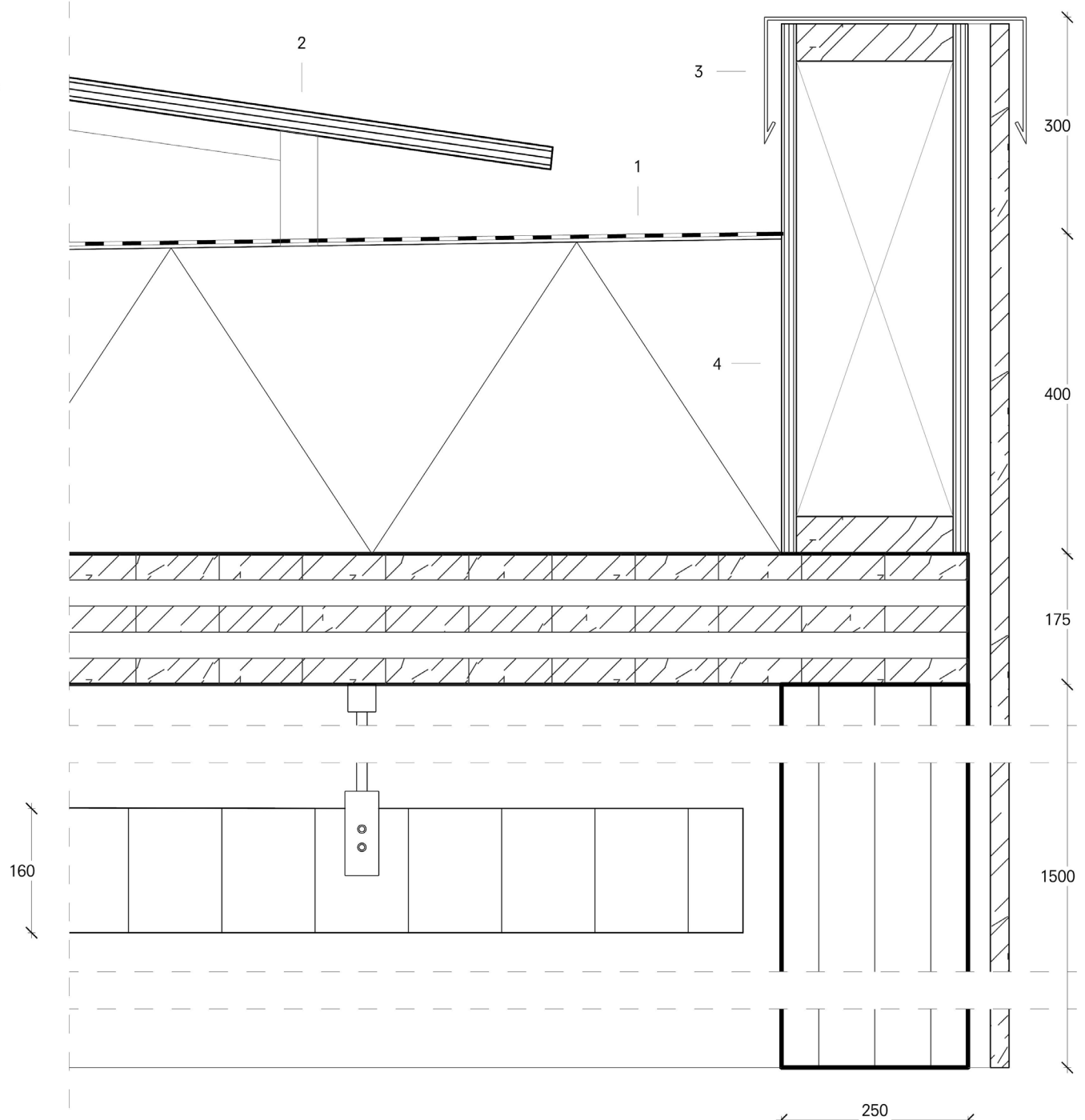
ROOF DETAIL 1.5

- | | |
|---|---|
| <p>1 Construction:
Glulam Structural Truss, 1200x1200x21500mm</p> <p>2 Curtain wall construction:
Corrugated glass panel, 4x10mm annealed, fixed bolted to steel system, low-E coated</p> <p>3 Insolated timber frame construction, attached to truss system and clt roof</p> | <p>4 160mm, Cable-suspended, Aluminium Grate ceiling, black-coated
Lighting spotlights fixed in grate ceiling</p> <p>5 Construction:
250-750x1500mm Grid-latticed Glulam beam system, 5000mm apart, black-coated, cut to seamlessly attach curtain wall</p> |
|---|---|



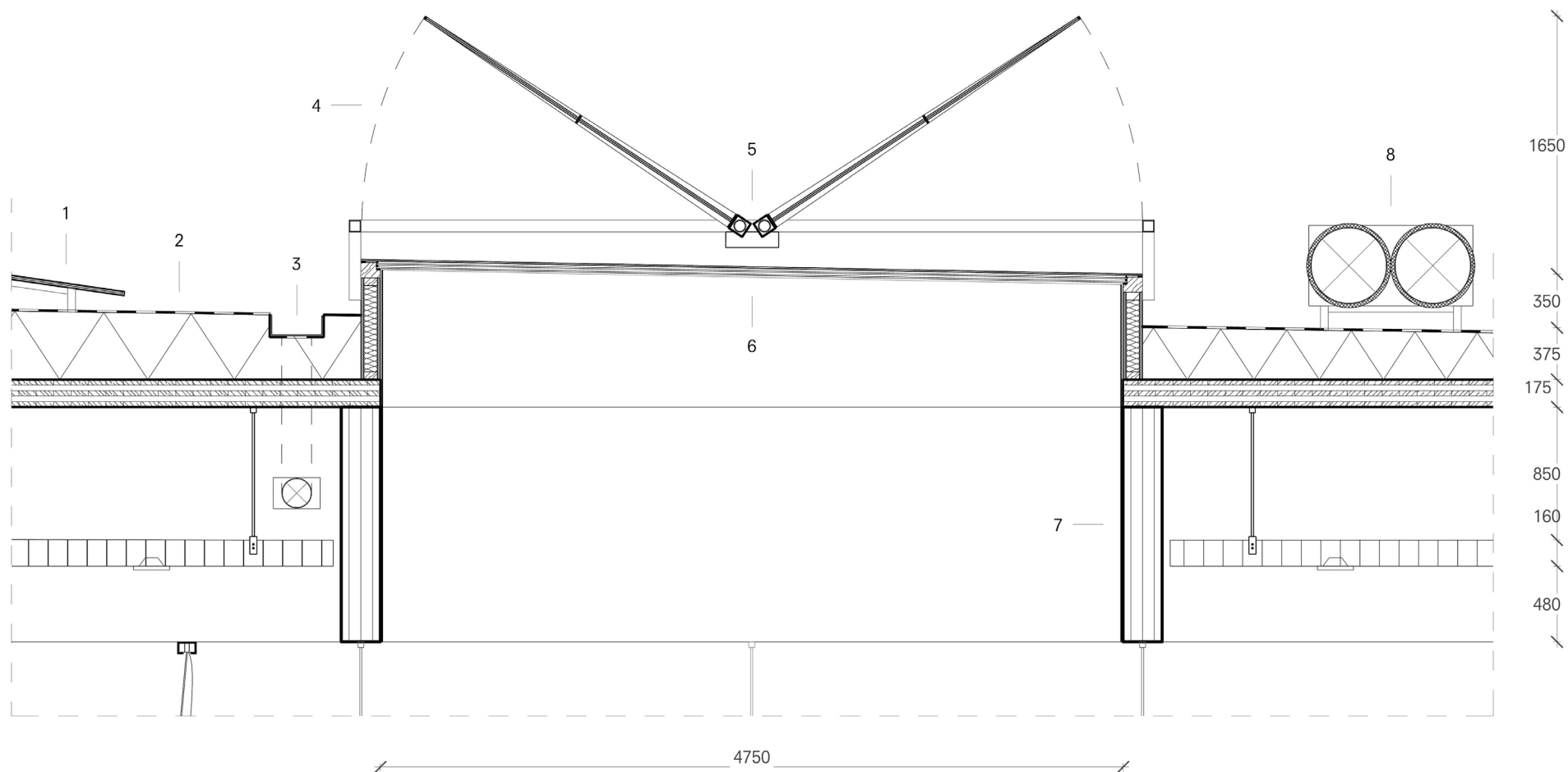
ROOF DETAIL 1.5

- 1 Roof construction:
Waterproofing Layer
260-100mm EPS Insulation, sloped 15mm/m
175mm 5-layer CLT system
250-750x1500mm Grid-latticed Glulam beam system, 5000mm apart, black-coated
160mm, Cable-suspended, Aluminium Grate ceiling, black-coated
Lighting spotlights fixed in grate ceiling
- 2 Photovoltaic panels 8° tilt, 600mm apart
- 3 Aluminium, roof trim, black coated
- 4 Douglas Fir cladding, black coated



SKYLIGHT DETAIL 1.25

- | | | | |
|---|--|---|---|
| 1 | Photovoltaic panels 8° tilt, 600mm apart | 4 | Skylight construction:
Butterflies Louvres daylighting system, AI & sensor controlled
Aluminium frame fixed on timber build-up system |
| 2 | Roof construction:
Waterproofing Layer
260-100mm EPS Insulation, sloped 15mm/m
175mm 5-layer CLT system
250-750x1500mm Grid-latticed Glulam beam
system, 5000mm apart, black-coated
160mm, Cable-suspended, Aluminium Grate
ceiling, black-coated
Lighting spotlights fixed in grate ceiling | 5 | Ambient lighting unit |
| 3 | 320x120mm Aluminium drainage system | 6 | 50mm 3x10mm Triple-glazed insulated glass unit, 2x15mm cavities |
| | | 7 | Aluminium reflecting finish |
| | | 8 | Ø500mm Insulated mechanical ventilation vents |



SPACE FRAGMENT 1.100

