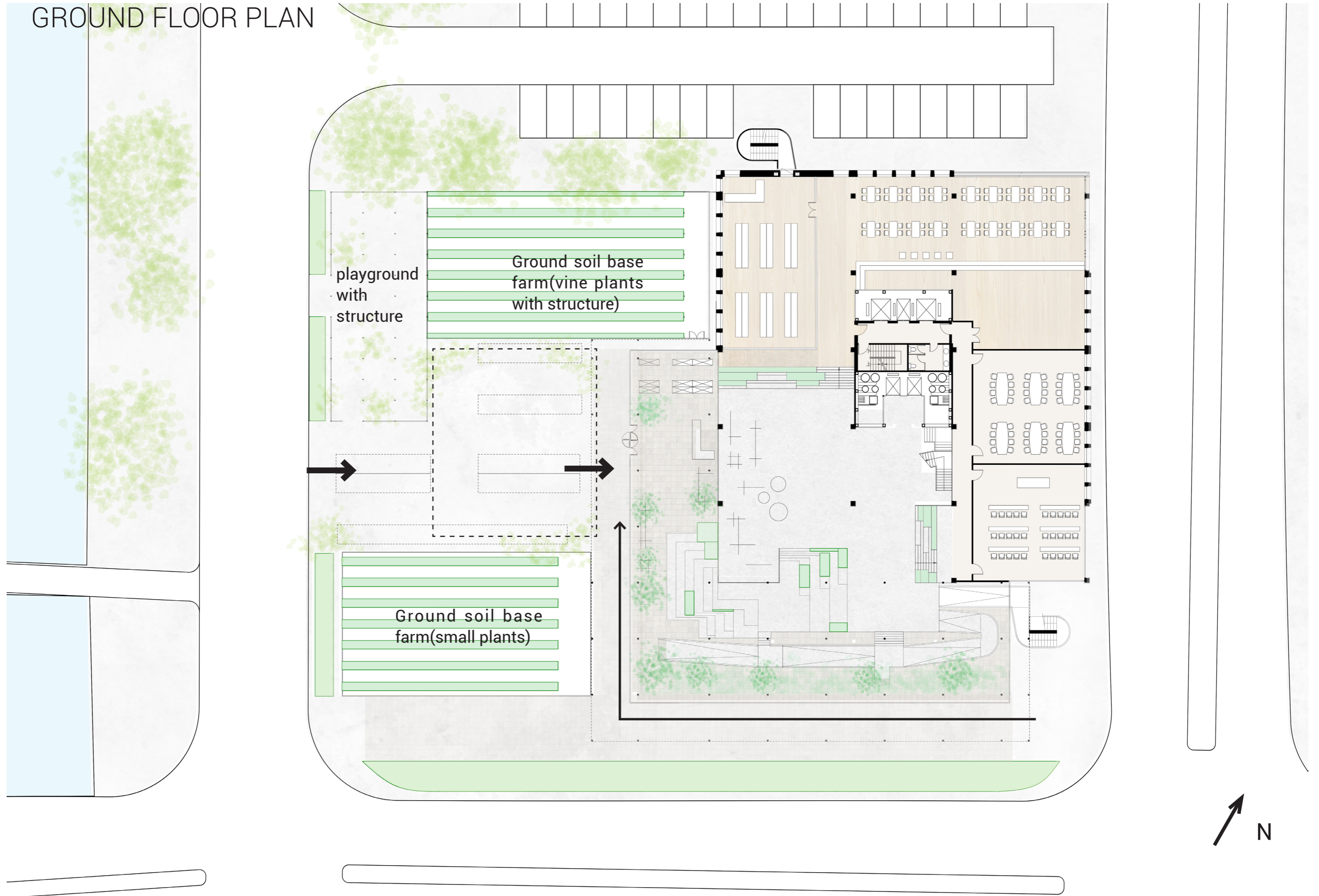
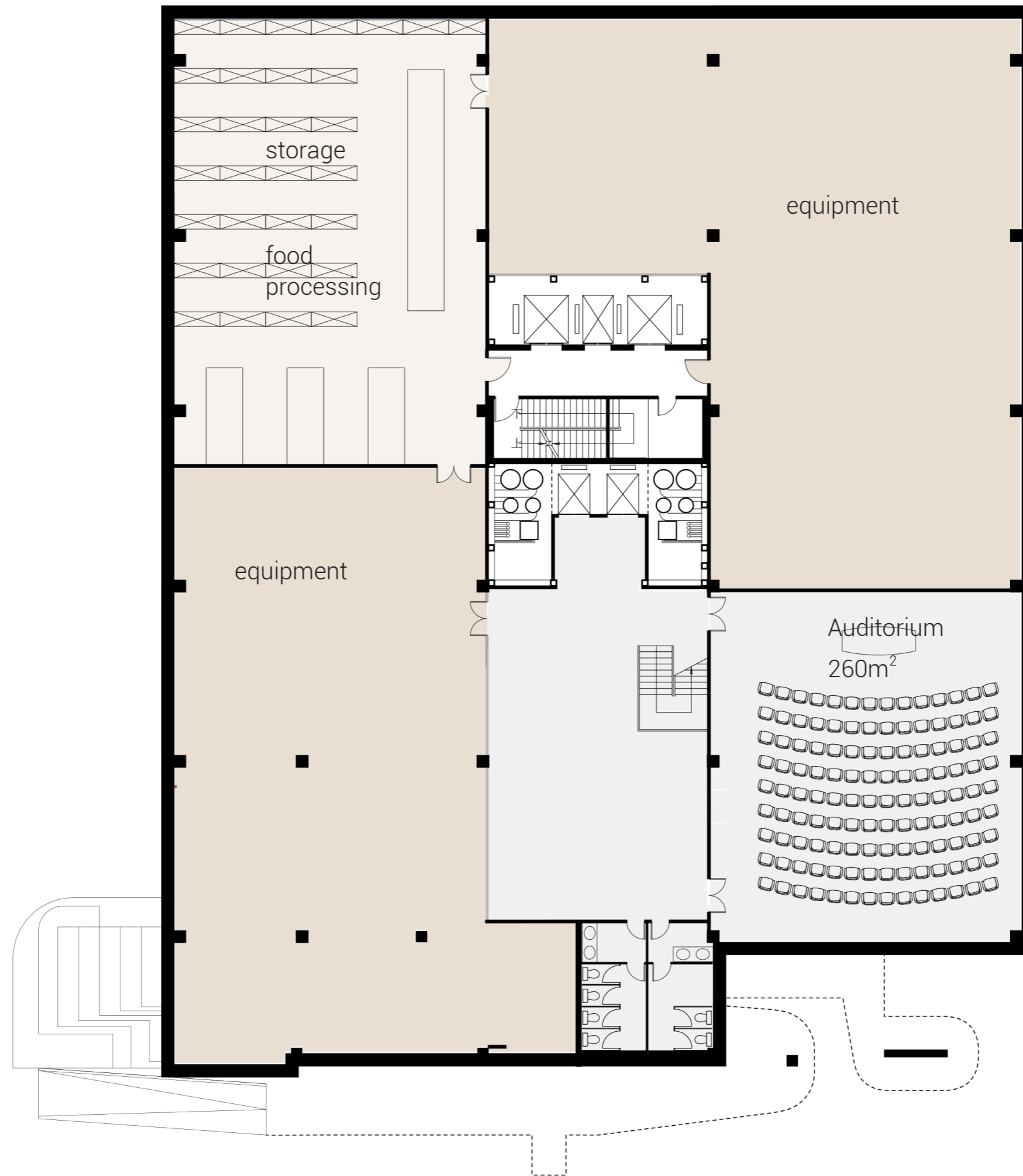


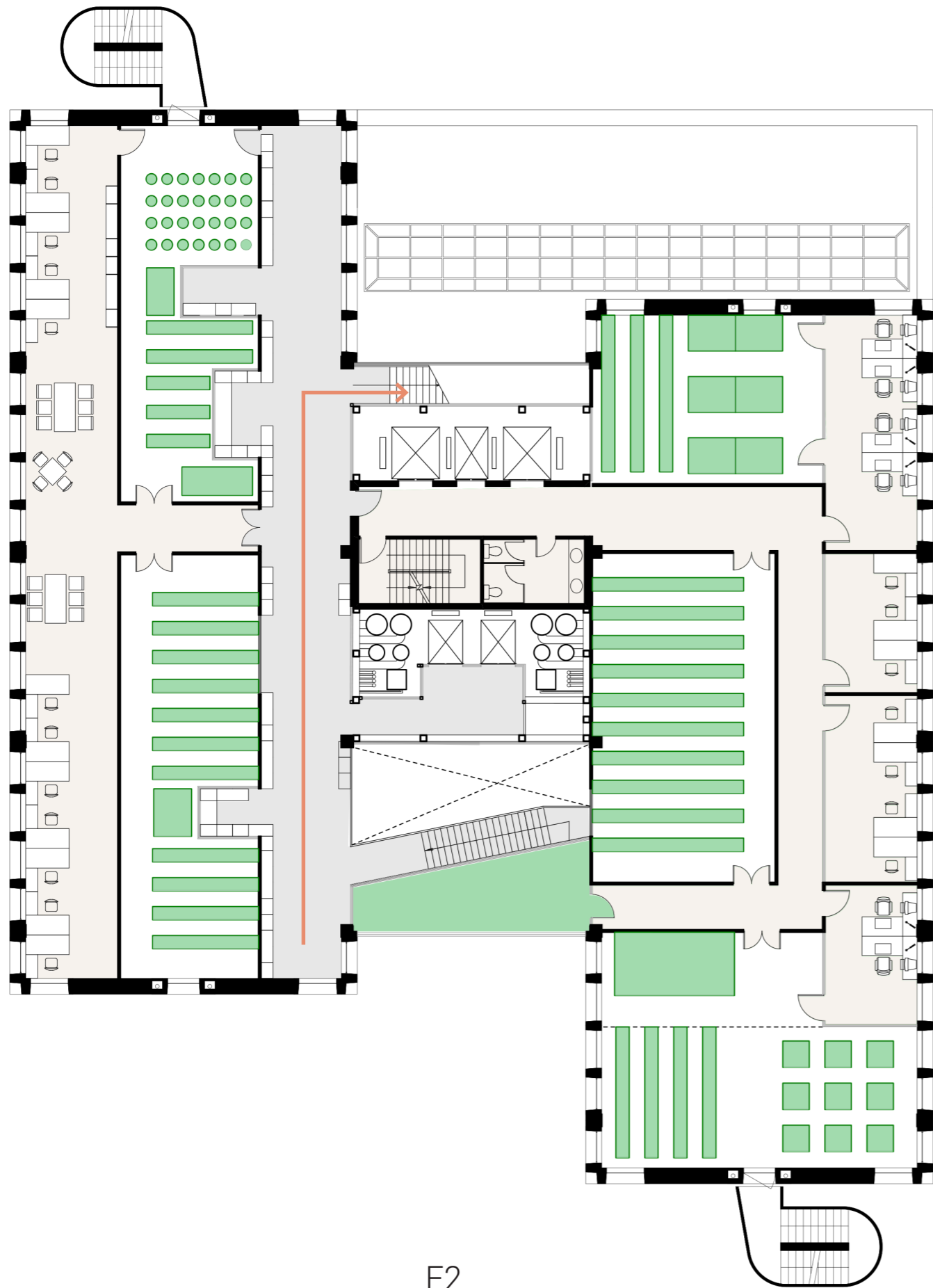
DRAWINGS

GROUND FLOOR PLAN

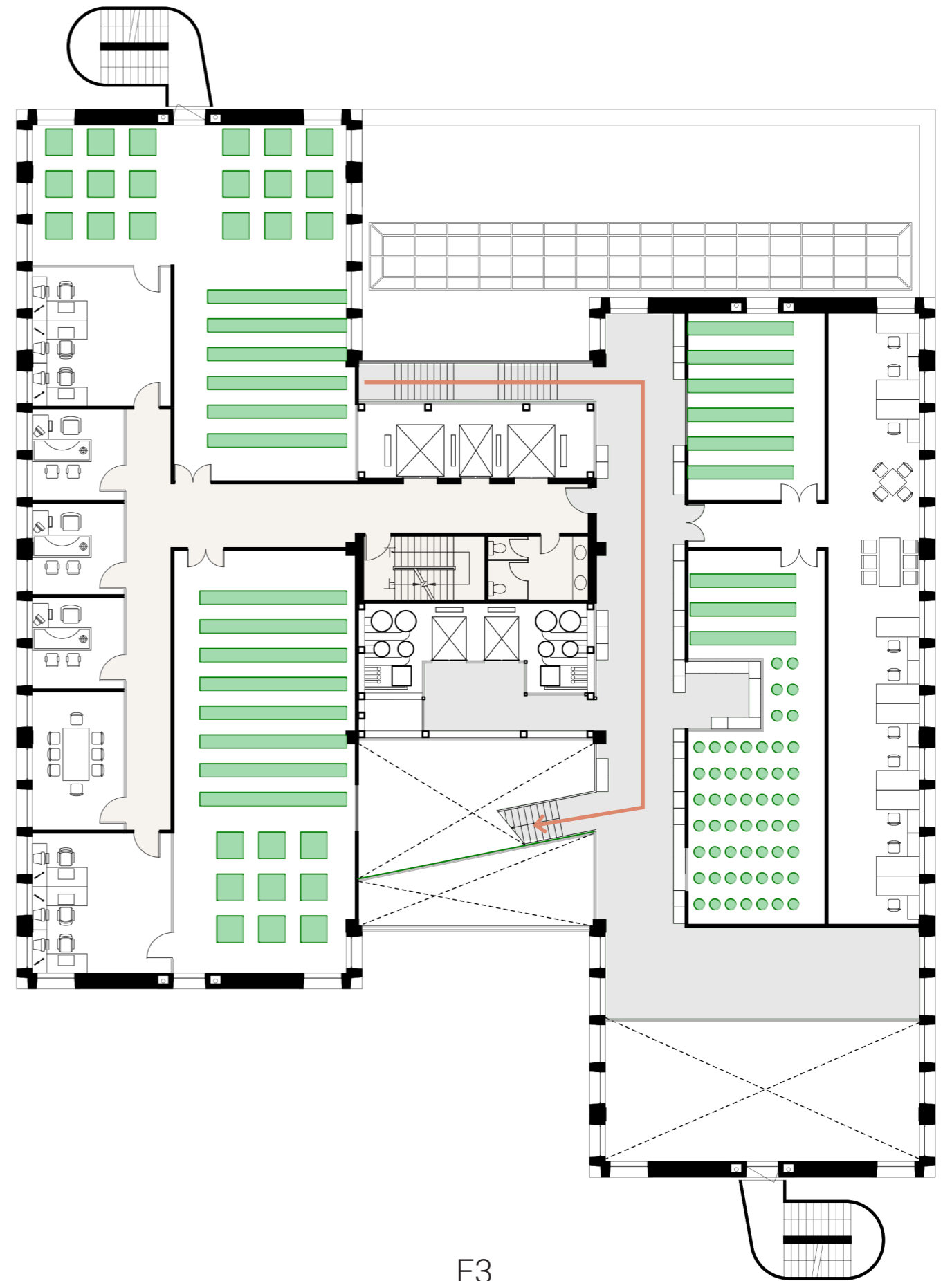


UNDERGROUND LEVEL PLAN

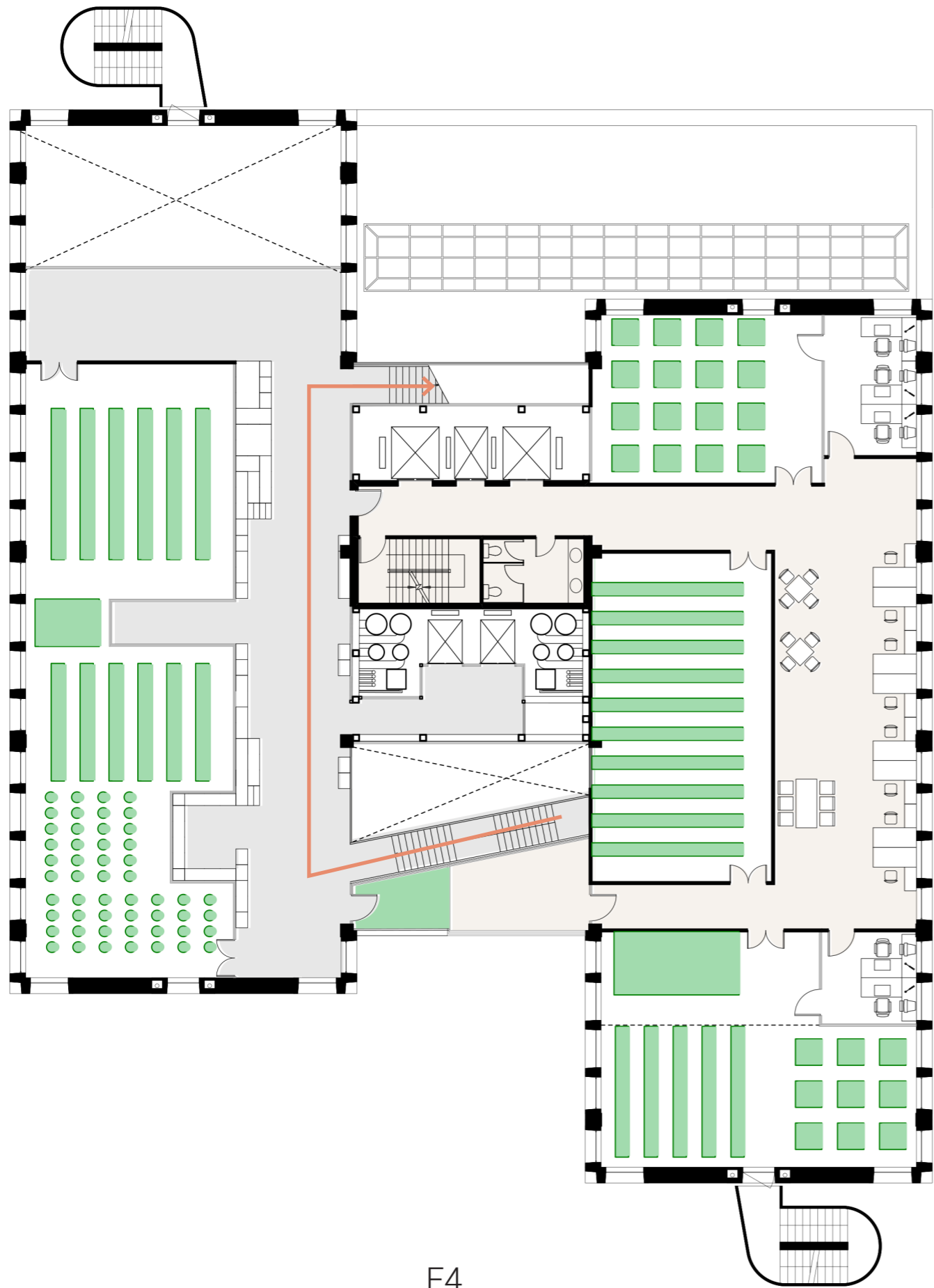




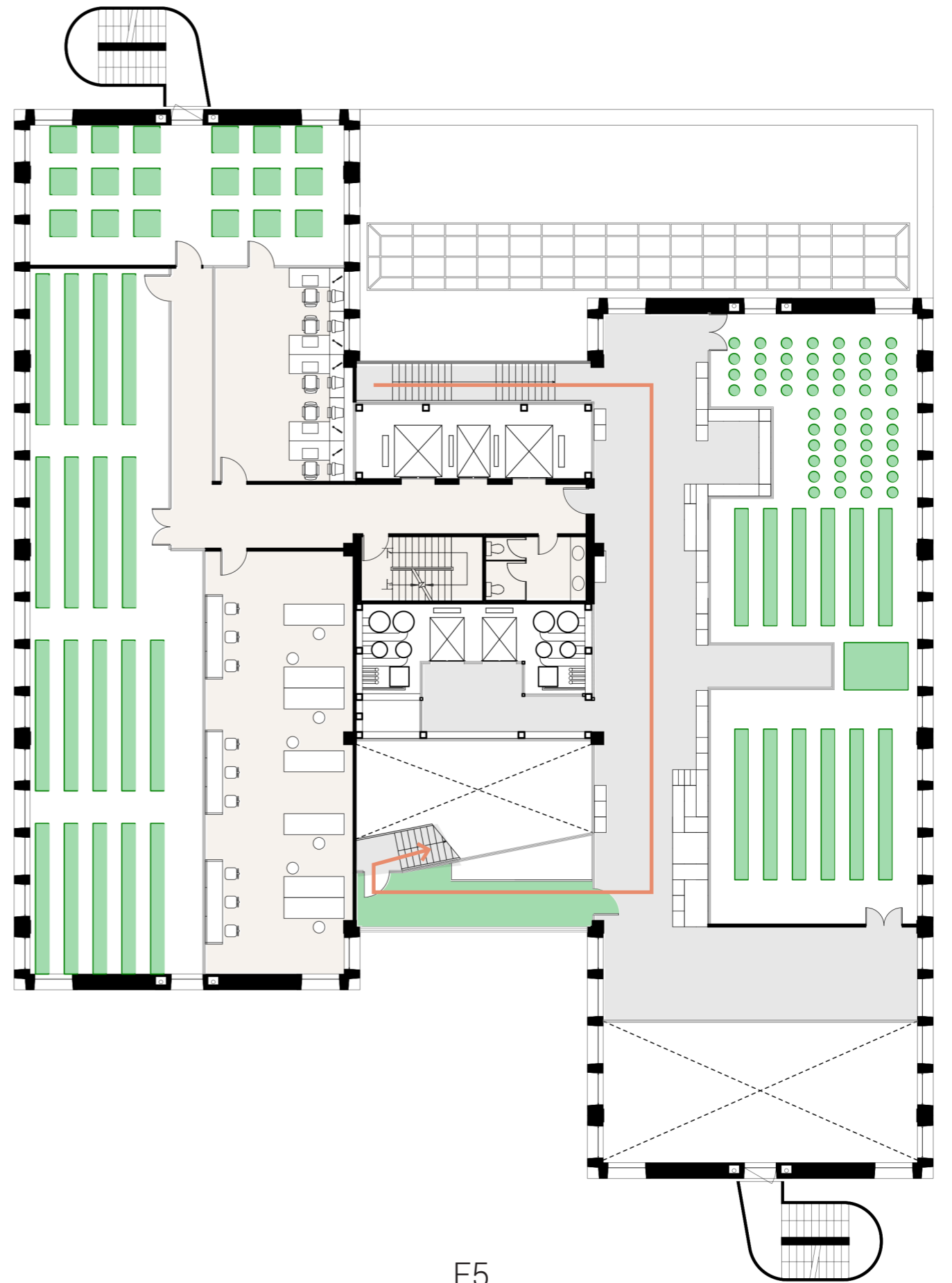
F2



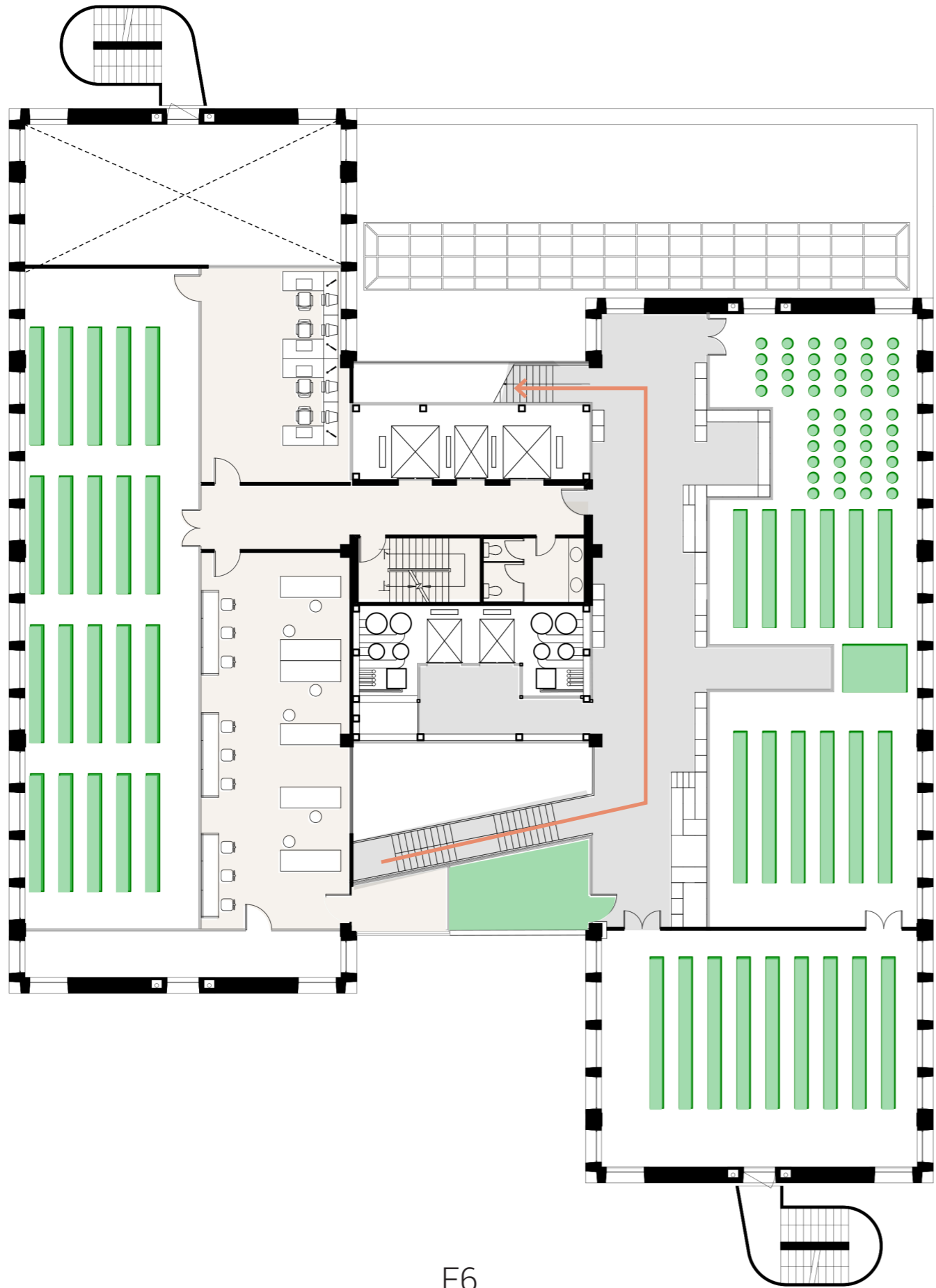
F3



F4



F5

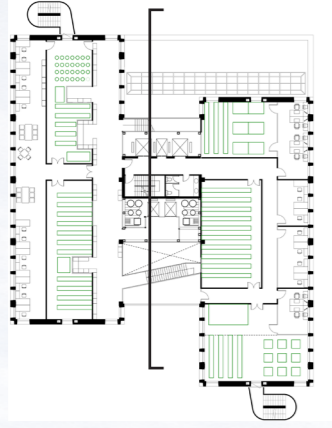


F6

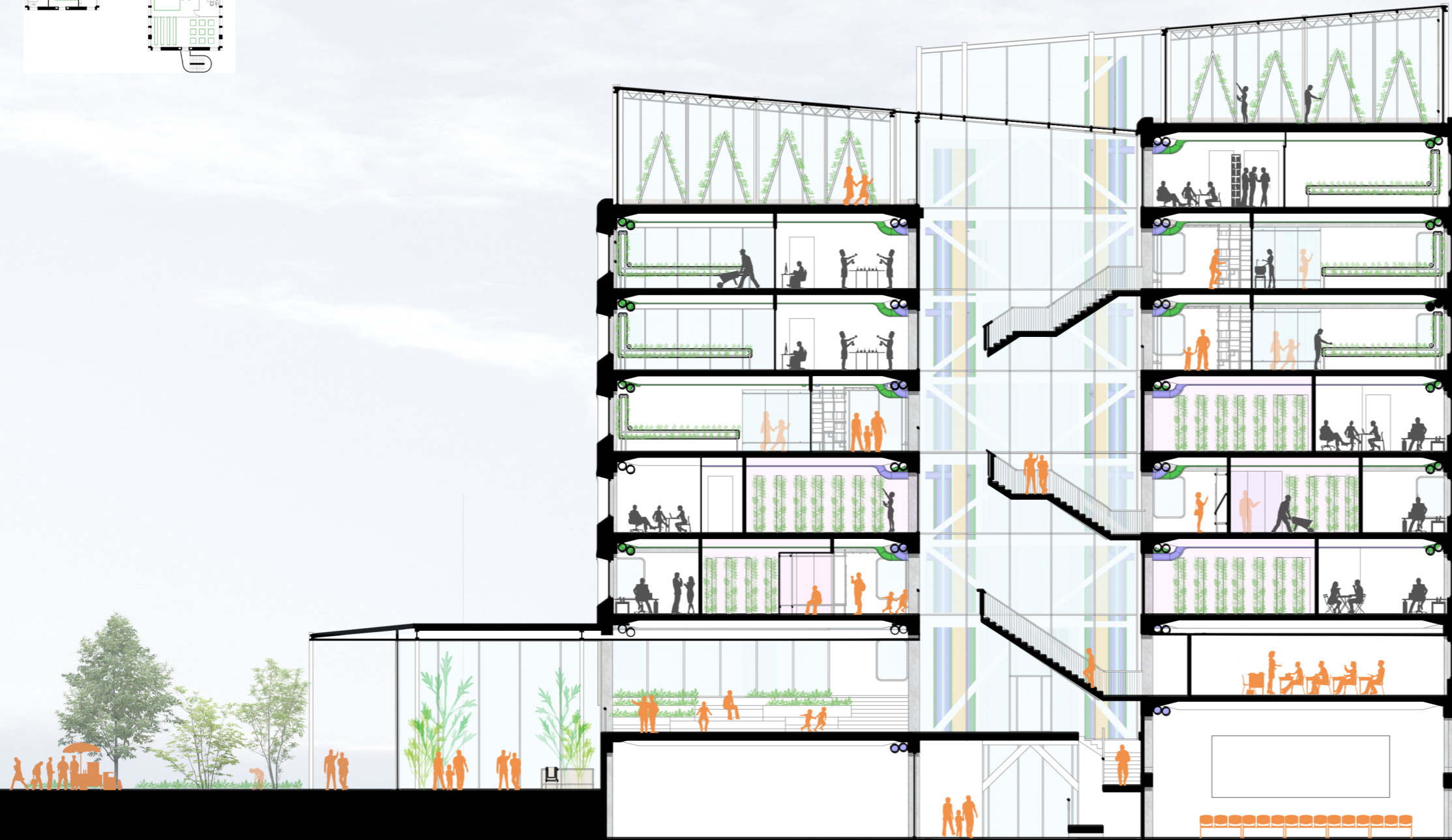
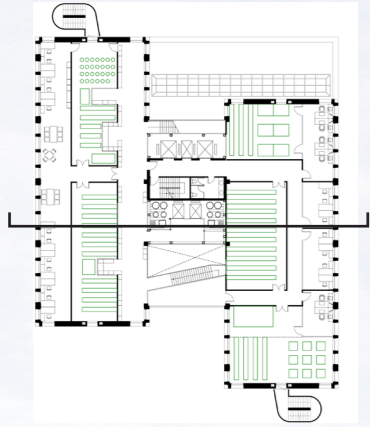


F7

SECTION



SECTION



FACADE DESIGN

SOUTH ELEVATION



FACADE DESIGN

WEST ELEVATION



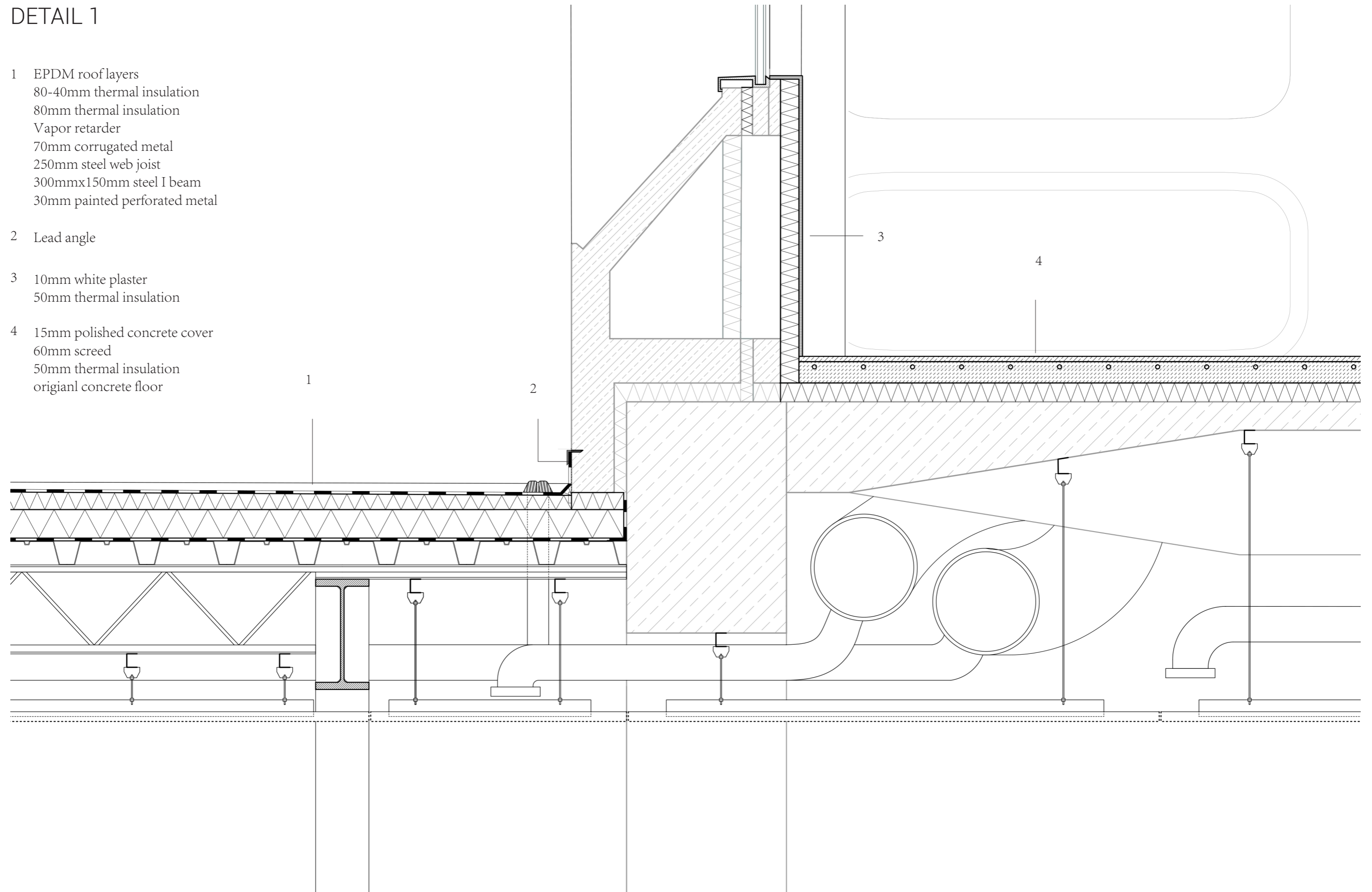
DETAIL 1

- 1 EPDM roof layers
80-40mm thermal insulation
80mm thermal insulation
Vapor retarder
70mm corrugated metal
250mm steel web joist
300mmx150mm steel I beam
30mm painted perforated metal

- 2 Lead angle

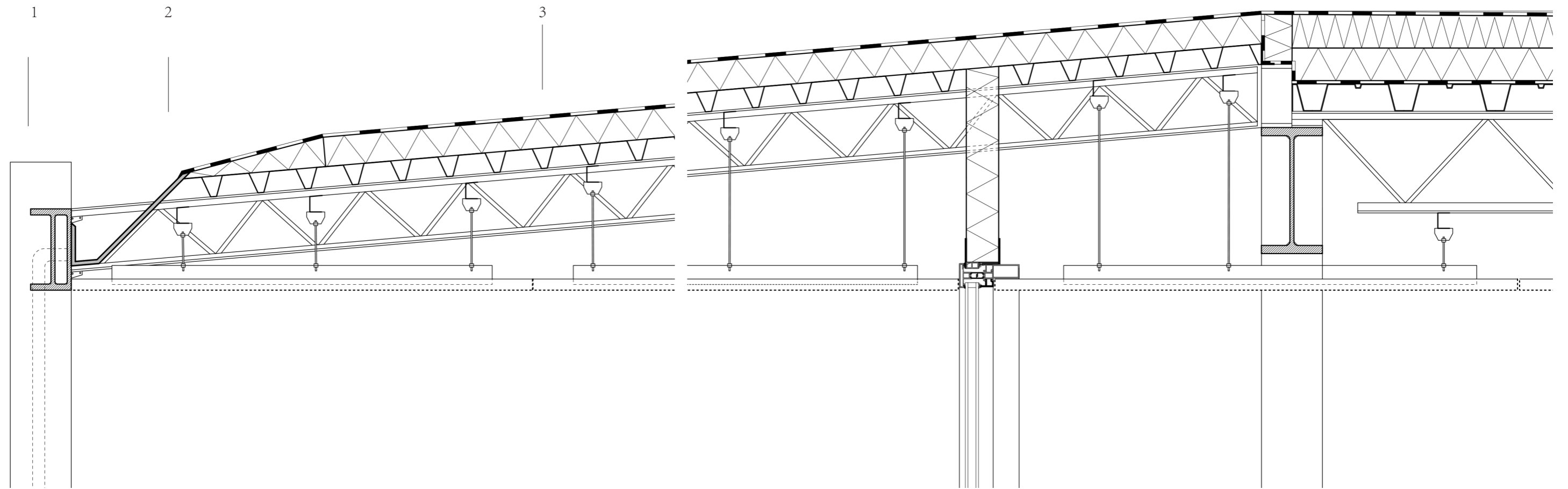
- 3 10mm white plaster
50mm thermal insulation

- 4 15mm polished concrete cover
60mm screed
50mm thermal insulation
original concrete floor



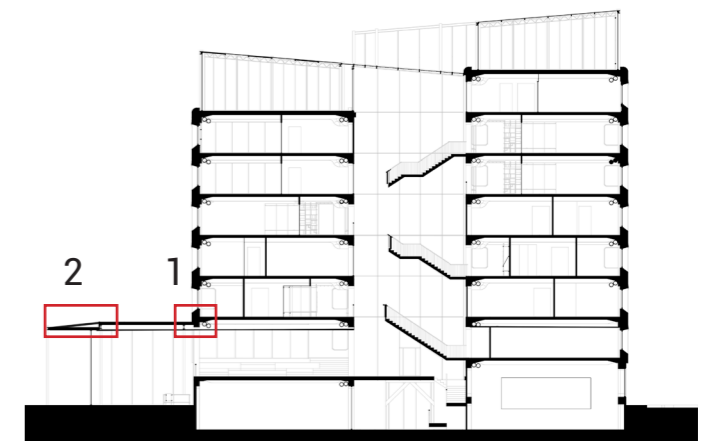
1: 10

DETAIL 2

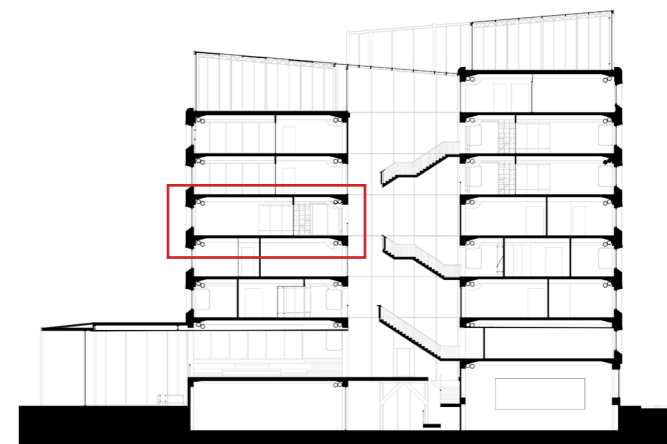
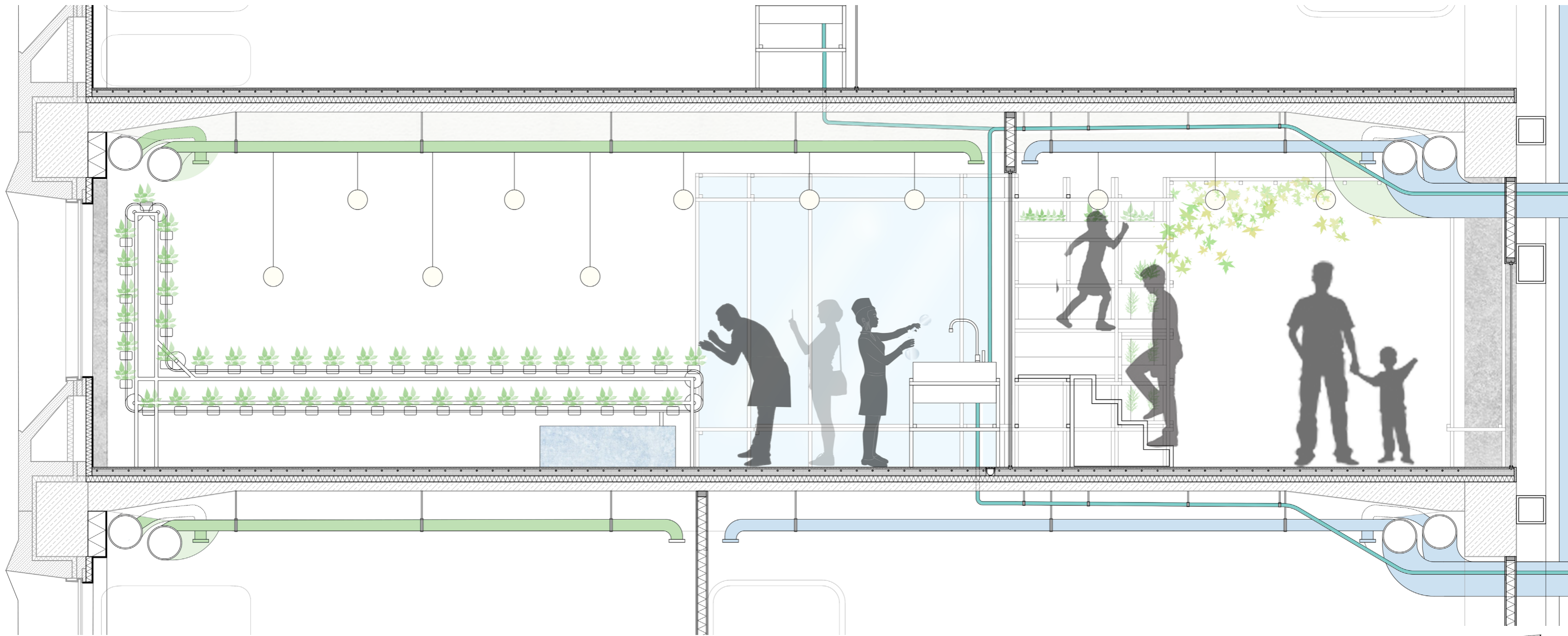


- 1 200mmx100mm I beam
- 2 gutter
- 3 EPDM roof layer
80mm insulation panel
50mm corrugated metal
200mm steel truss beam
150mm steel web joist
30mm painted perforated metal

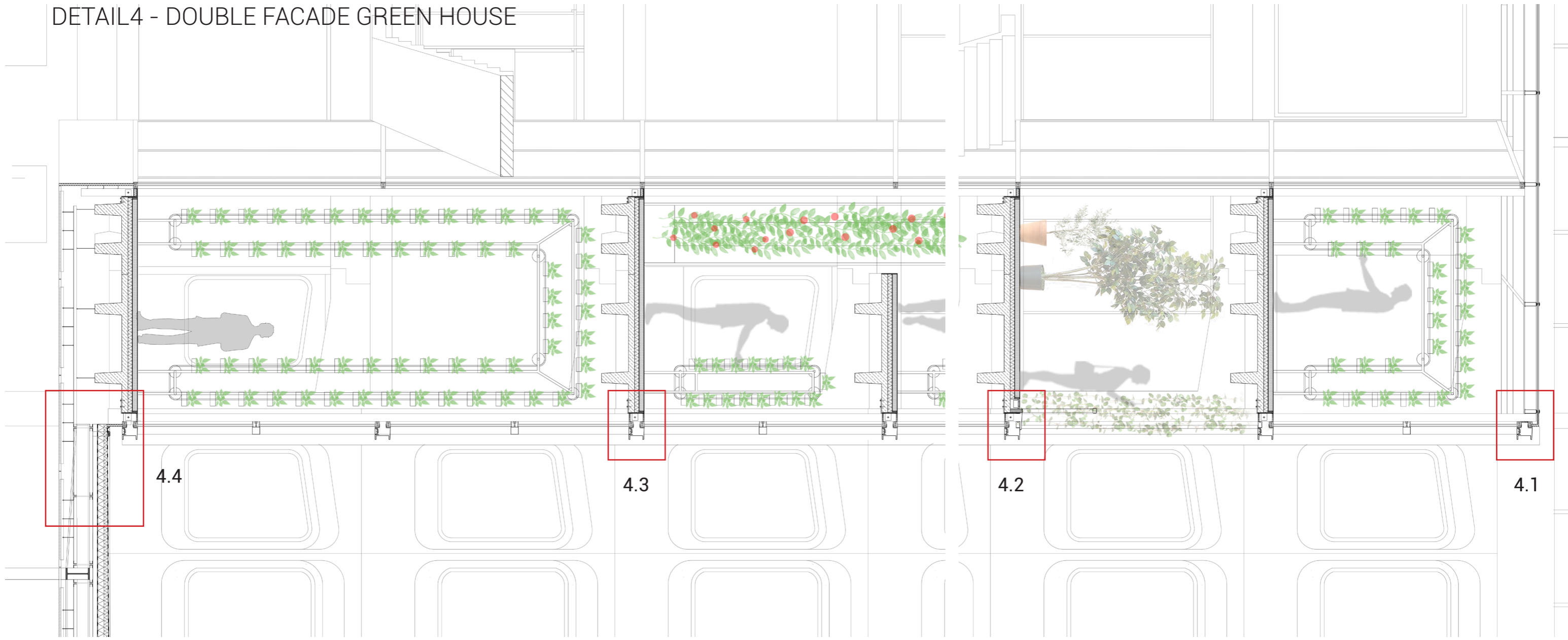
1: 10



DETAIL3 - URBAN FARM EXHIBITION



DETAIL4 - DOUBLE FACADE GREEN HOUSE



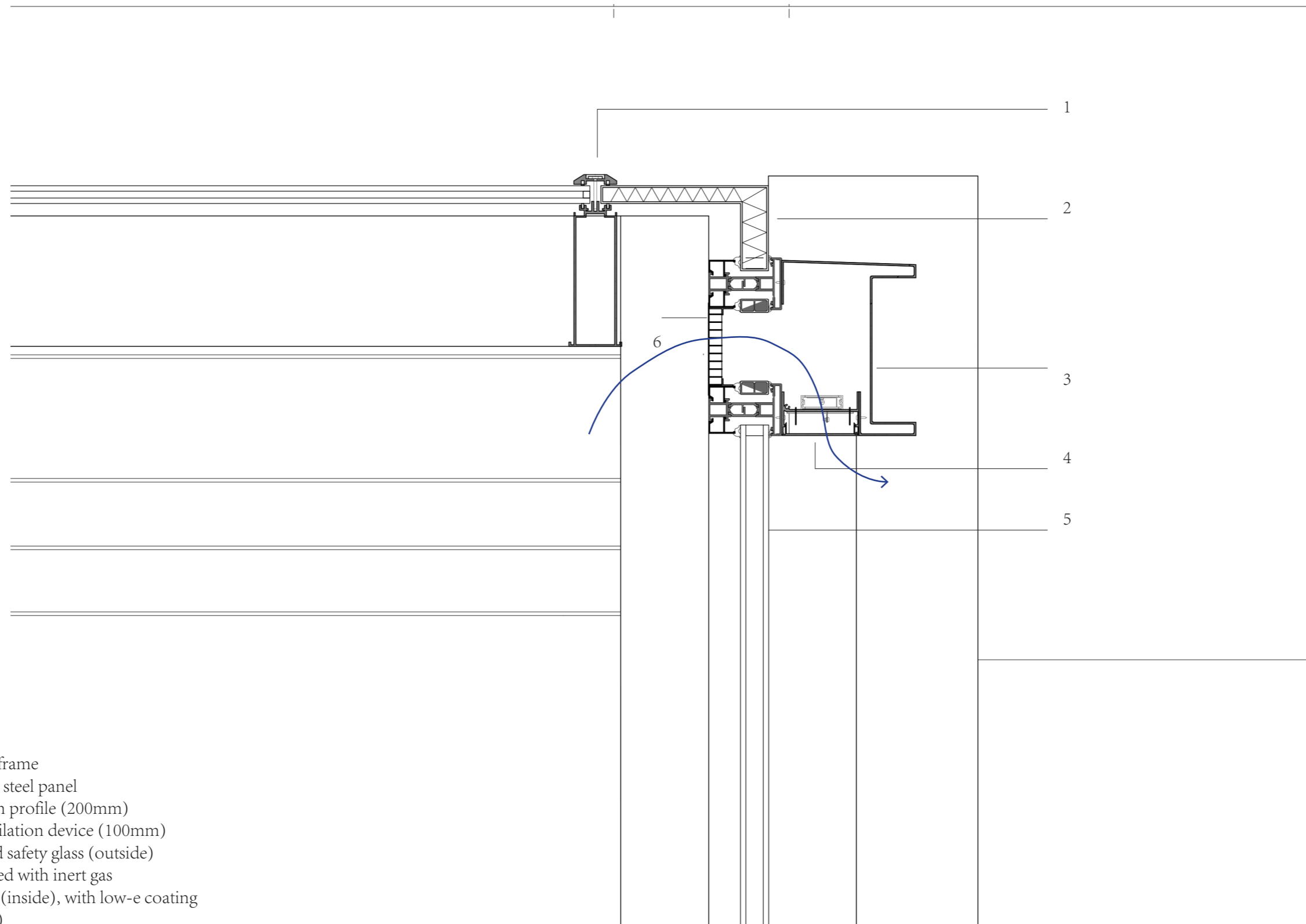
- 1 structure for ivy
- 2 200mm x 240mm curtain wall mullion aluminum profile
- 3 Hand Railing
- 4 100mm grating
- 5 100mm x 100mm curtain wall mullion aluminum profile
- 6 60mm x 12mm curtain wall mullion aluminum profile



4.5

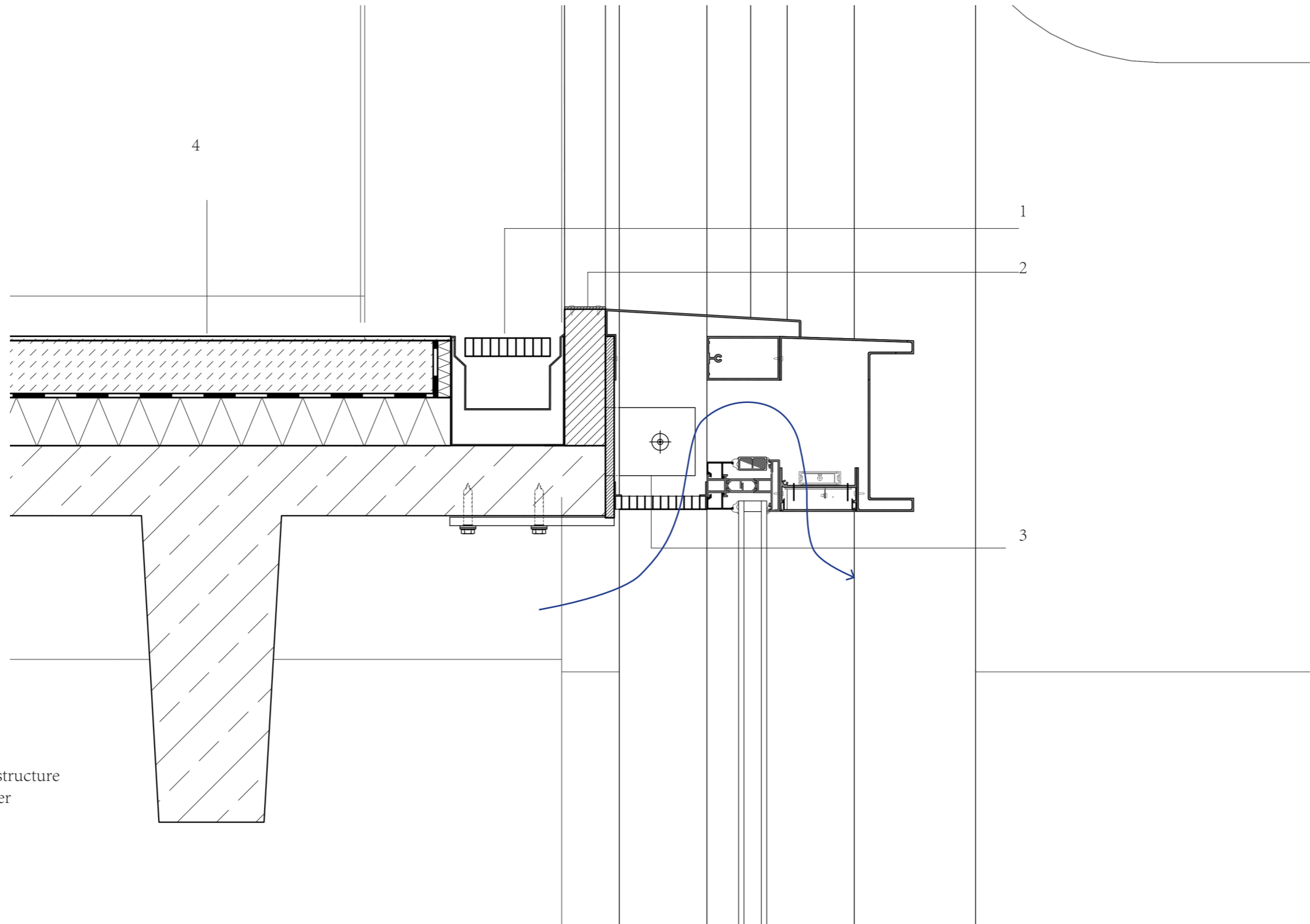
1: 50

DETAIL4.1



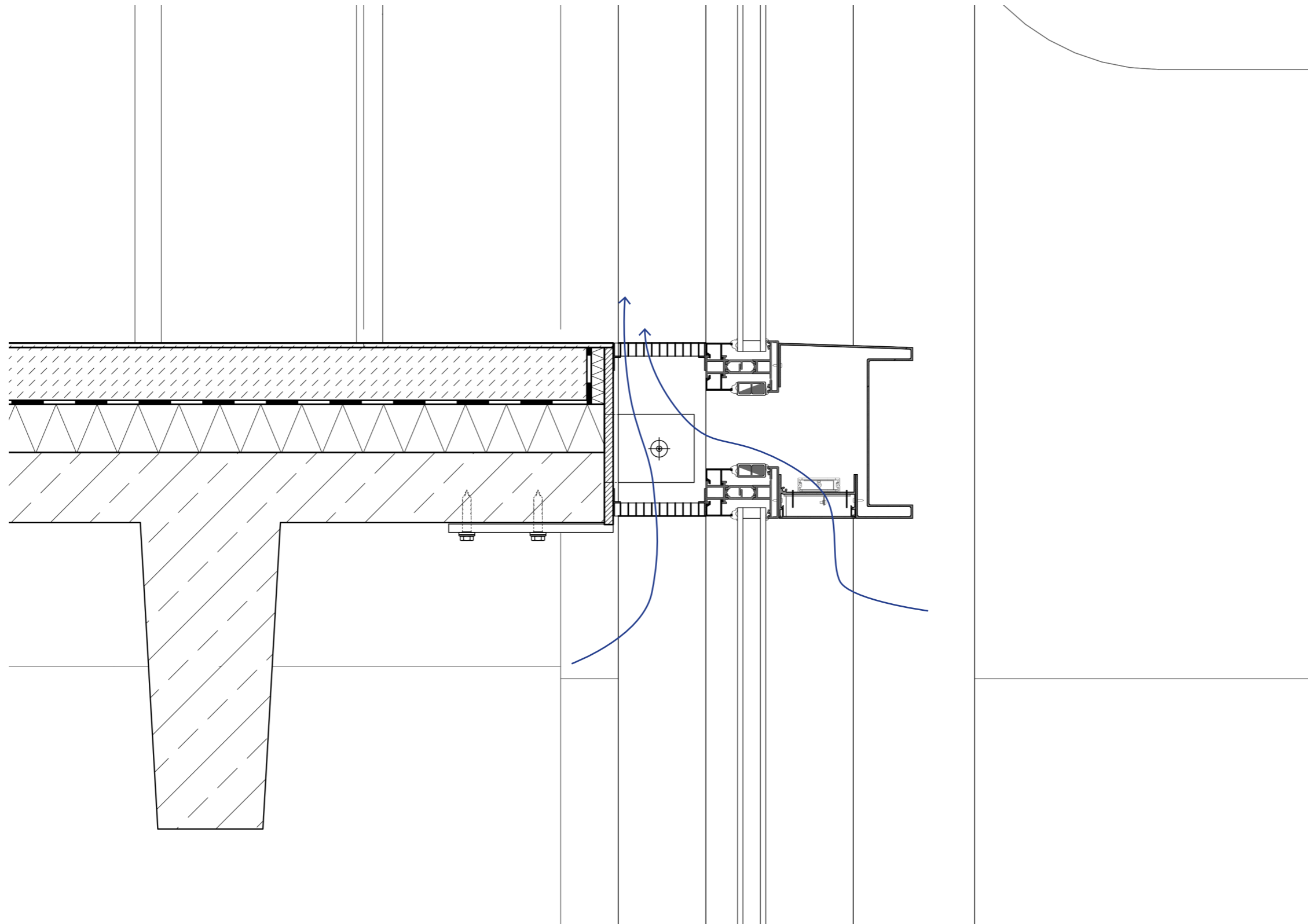
1: 5

DETAIL4.2

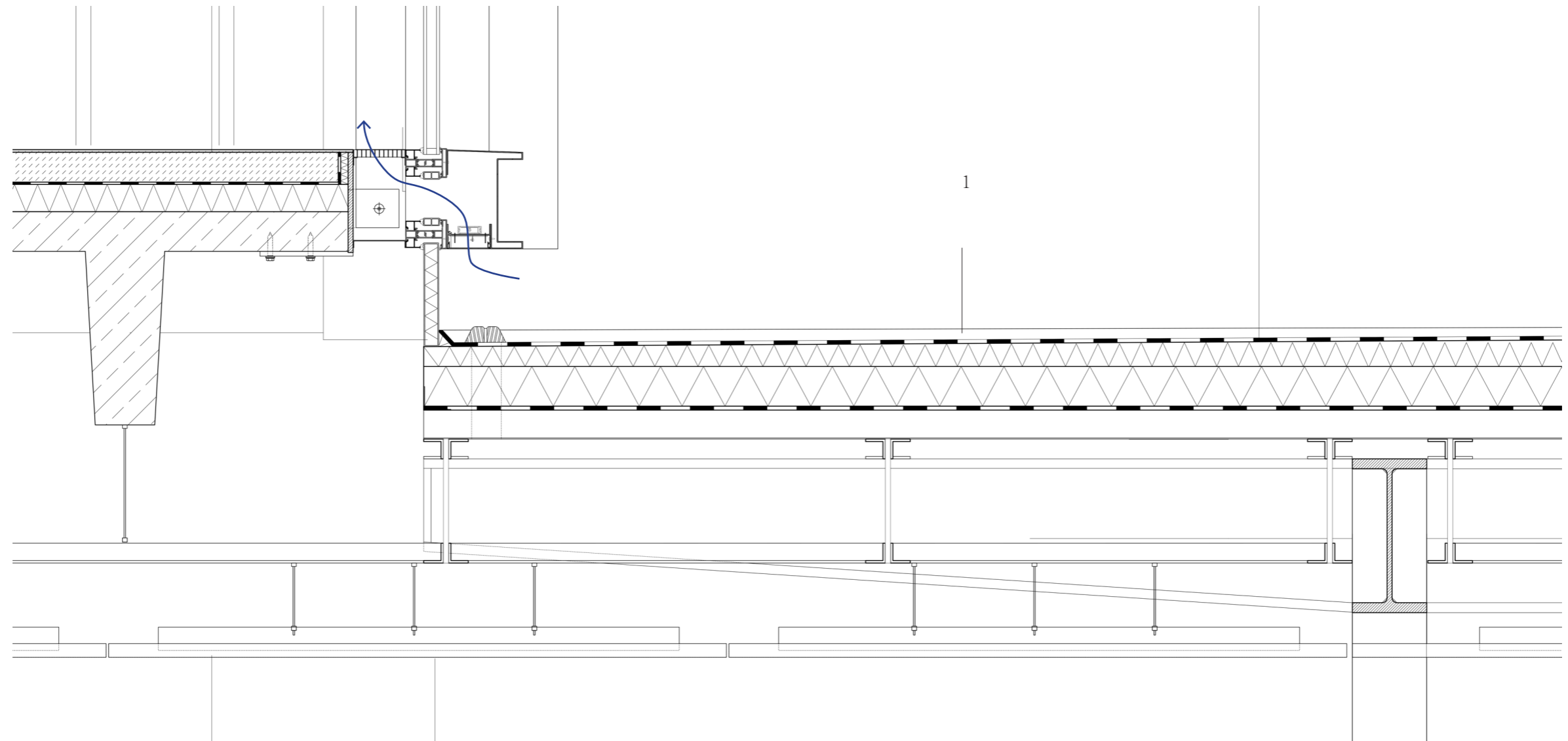


- 1. 120mmx130mm Gutter
 - 2. 50x160mm wood block
 - 3. 100x55mm steel hollow substructure
 - 4. 5mm polished concrete cover
- 60mm screed
Vapor barrier
55mm thermal insulation
Original concrete floor

DETAIL4.3



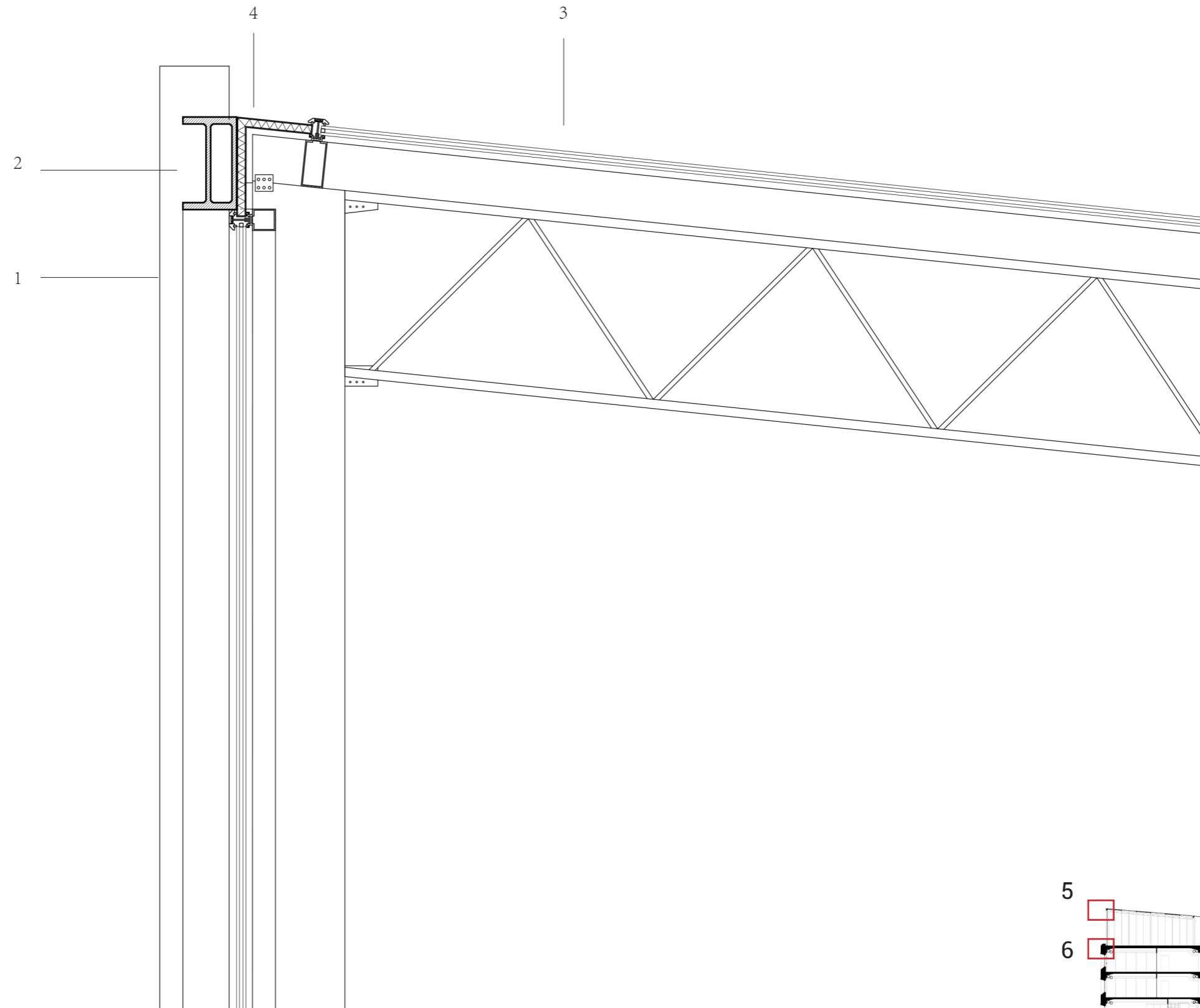
DETAIL4.4



- 1 EPDM roof layers
- 80-40mm thermal insulation
- 80mm thermal insulation
- Vapor retarder
- 70mm corrugated metal
- 250mm steel web joist
- 300mmx150mm steel I beam
- 30mm painted perforated metal

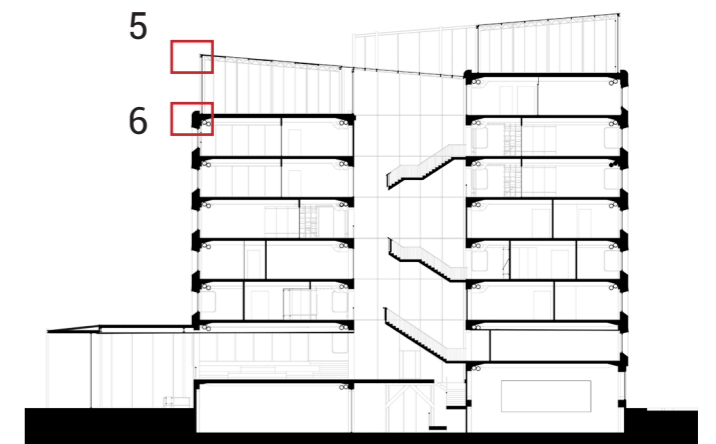
1: 5

DETAIL5

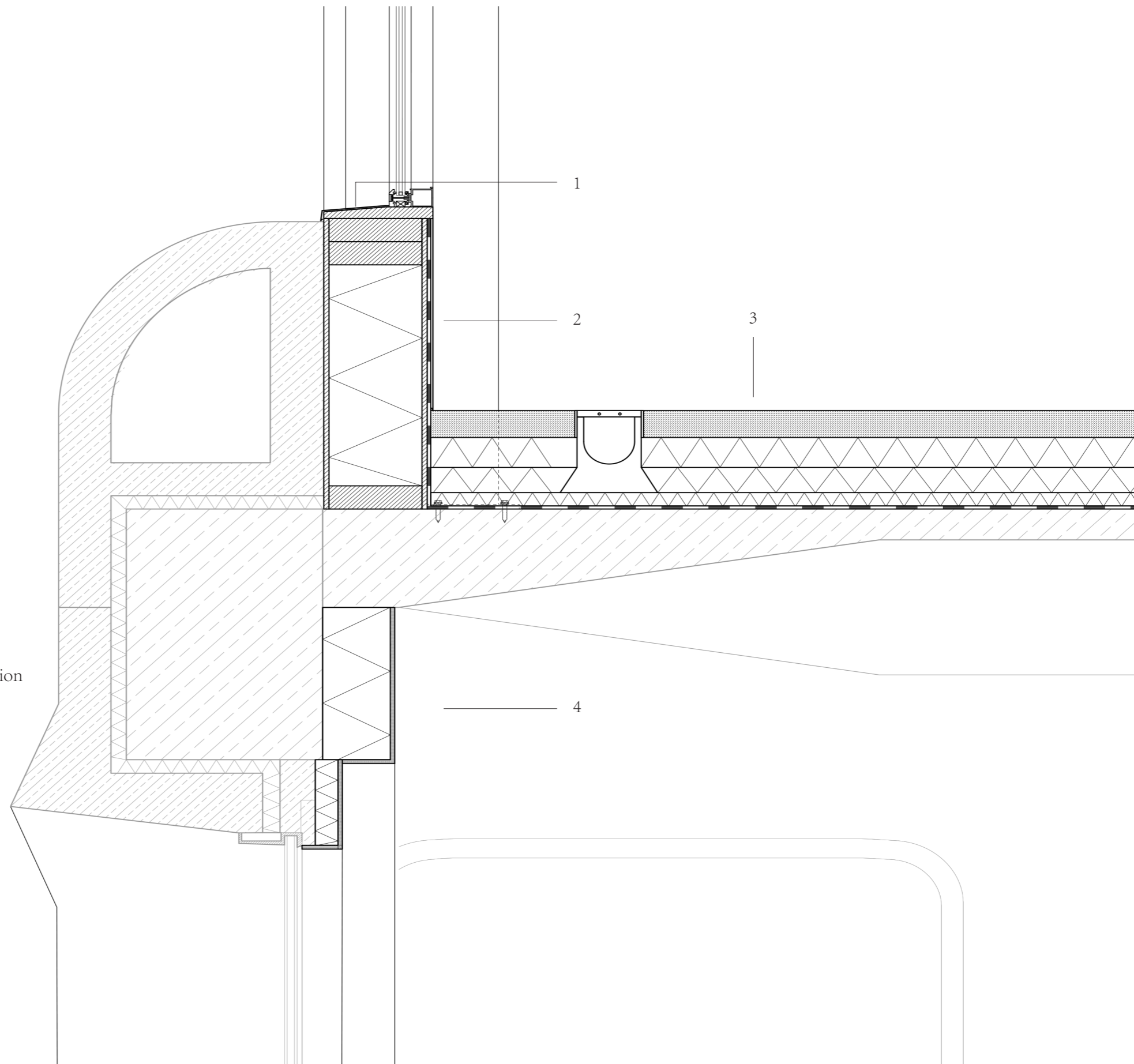


- 1 150mmx150mm curtain wall mullion aluminum profile
100mmx100mm curtain wall mullion aluminum profile
50mmx 100mm glazing frame
20mm double glazing
150mmx150mm steel column
- 2 200X150mm I Beam
- 3 20mm double glazing
150mmX50mm glazing frame
400mm steel web joist
- 4 30mm insulated steel panel
steel connection between column and exterior beam

1: 10



DETAIL6



- 1 Sheet stainless steel capping
Wood capping
- 2 12mm fibre cement panel
60mmx200mm wood stud with thermal insulation
12mm fibre cement panel
Sealing membrane
Sheet metal
- 3 80mm+100mm XPS thermal insulation
Laminated bitumen sealing layer
Double-t floor slab
- 4 150mm insulation
12mm grey plaster
80mm insulation
12mm white plaster

1: 10