

UP

THERE

THE TRAIL TOWARDS A MORE SUSTAINABLE ALPINE HUT.

A RENOVATION PROJECT FOR RIFUGIO CARDUCCI, 2297 MT., ALTA VAL GIRALBA, DOLOMITI.

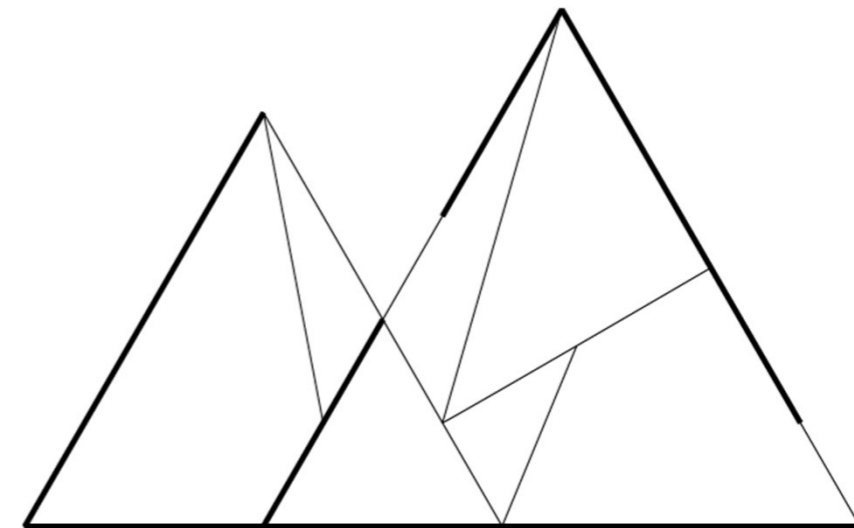
Explorelab 31

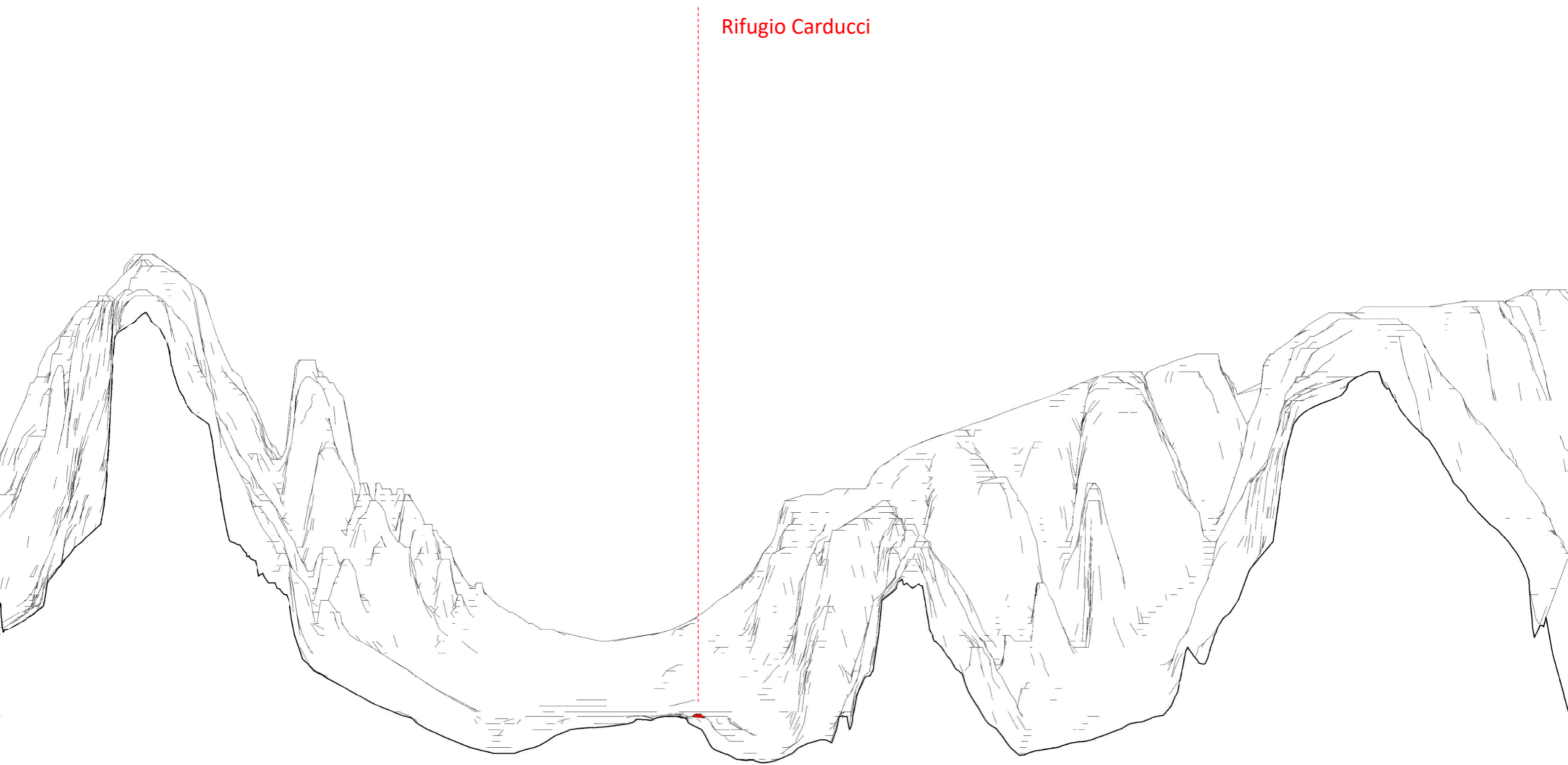
P5 Drawing-set | 13-09-2021

Francesco Longo - 4726579

Mentoring team: Henri van Bennekom | Andy van den Dobbelssteen | Gilbert Koskamp

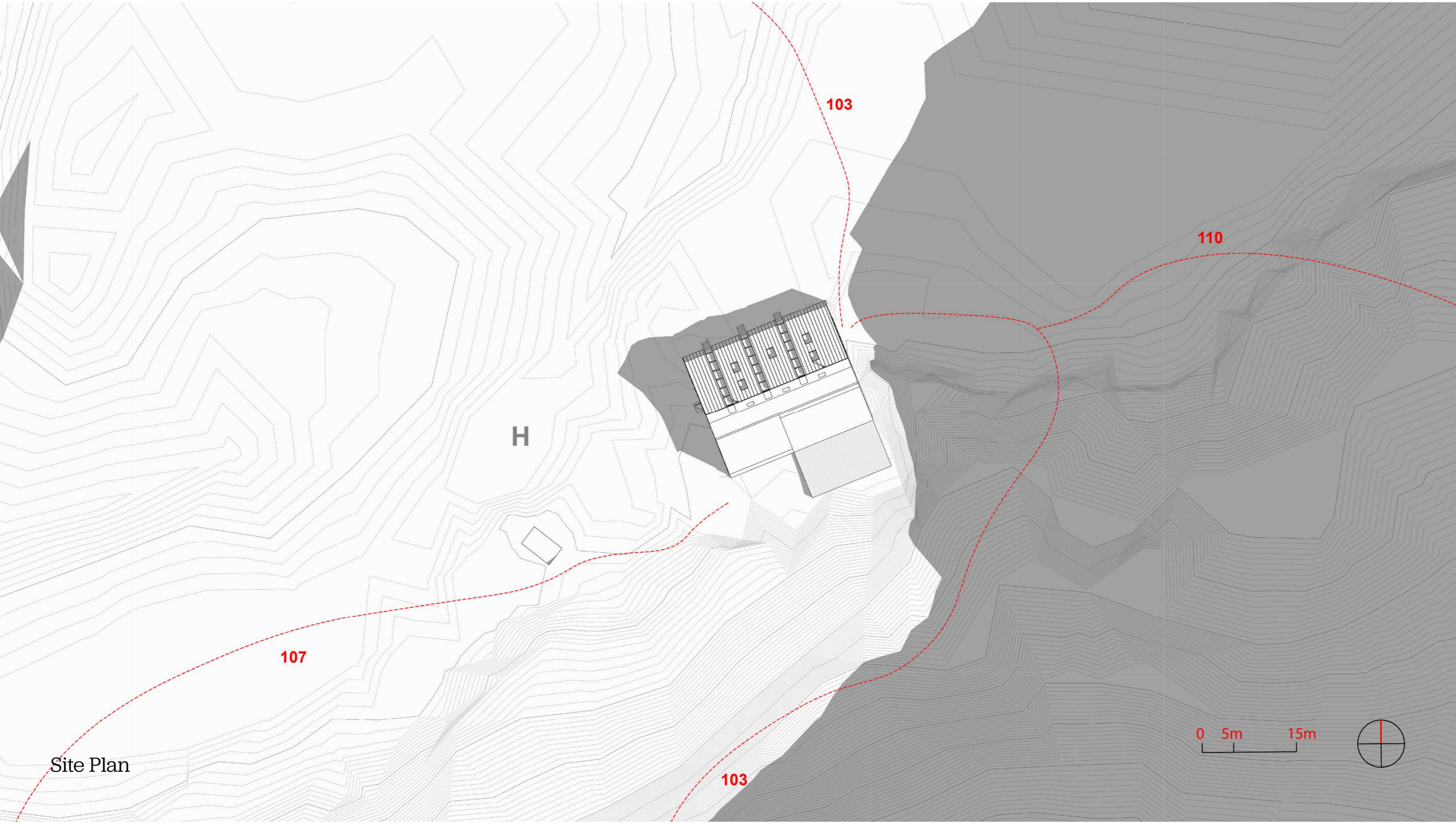
Board of Examiner's delegate: Ronald van Warmerdam





Rifugio Carducci

Site Section



H

103

110

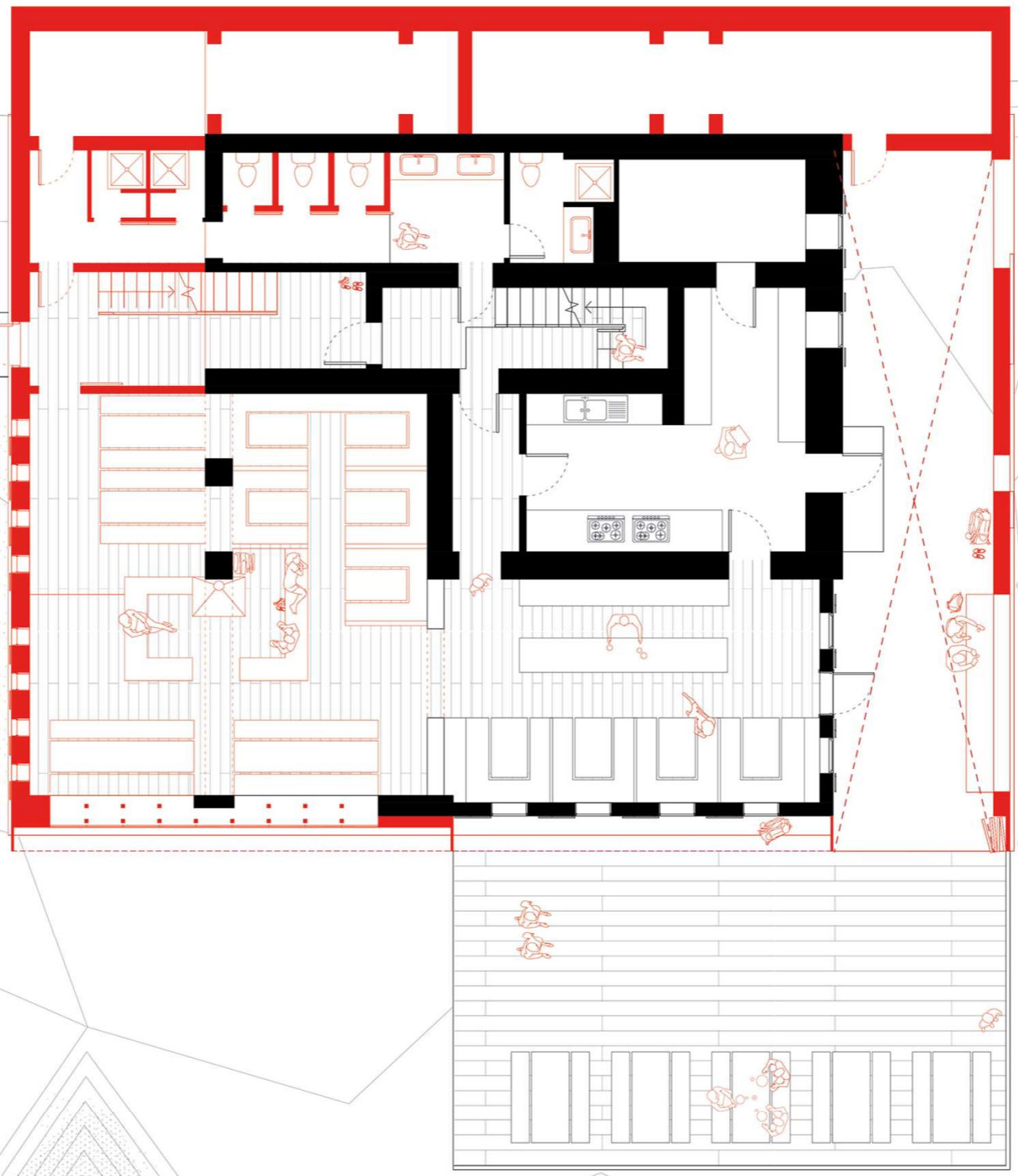
107

103

Site Plan

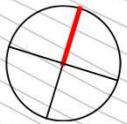
0 5m 15m

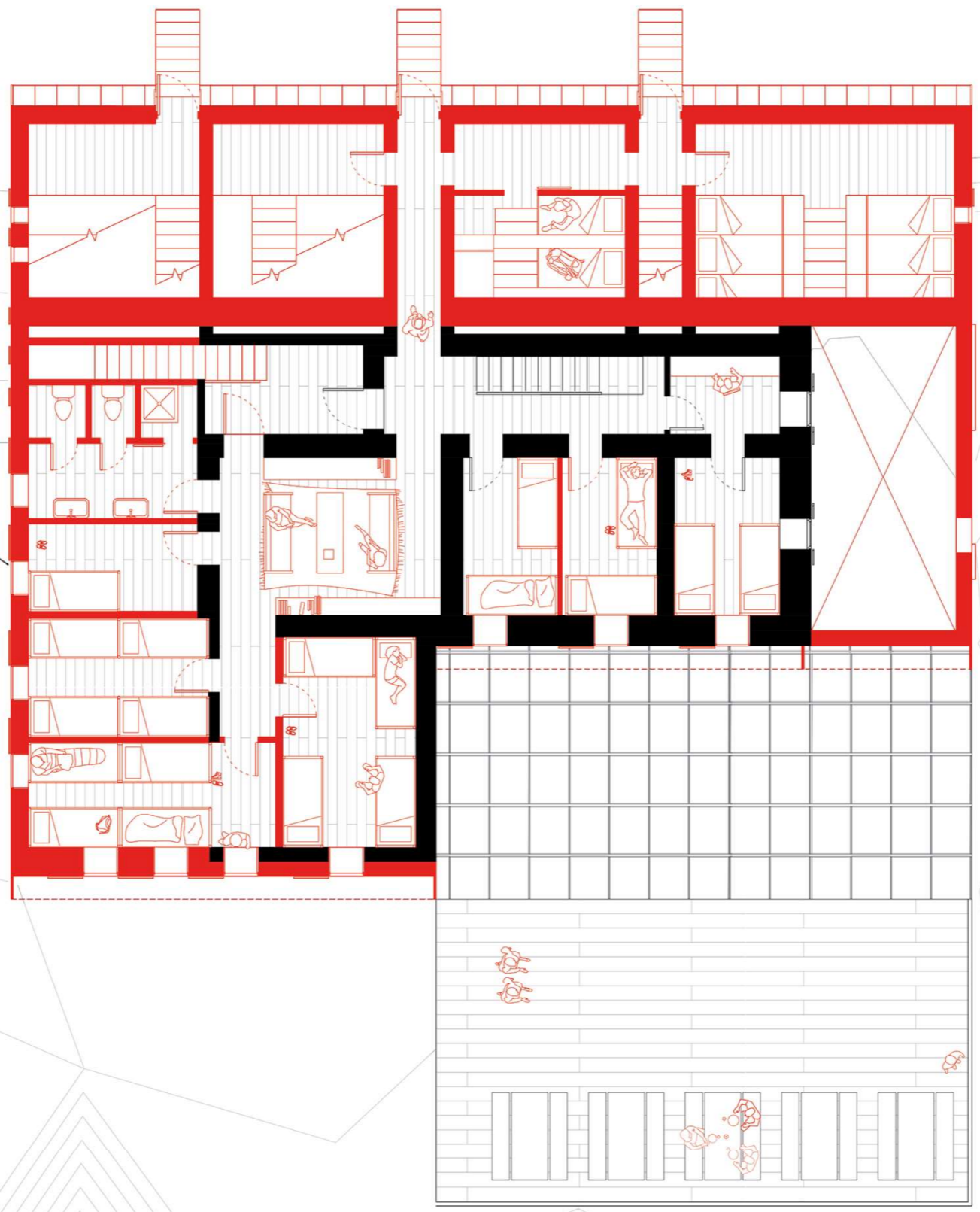




Ground Floor

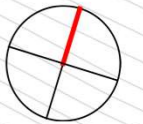
0 100cm 300cm

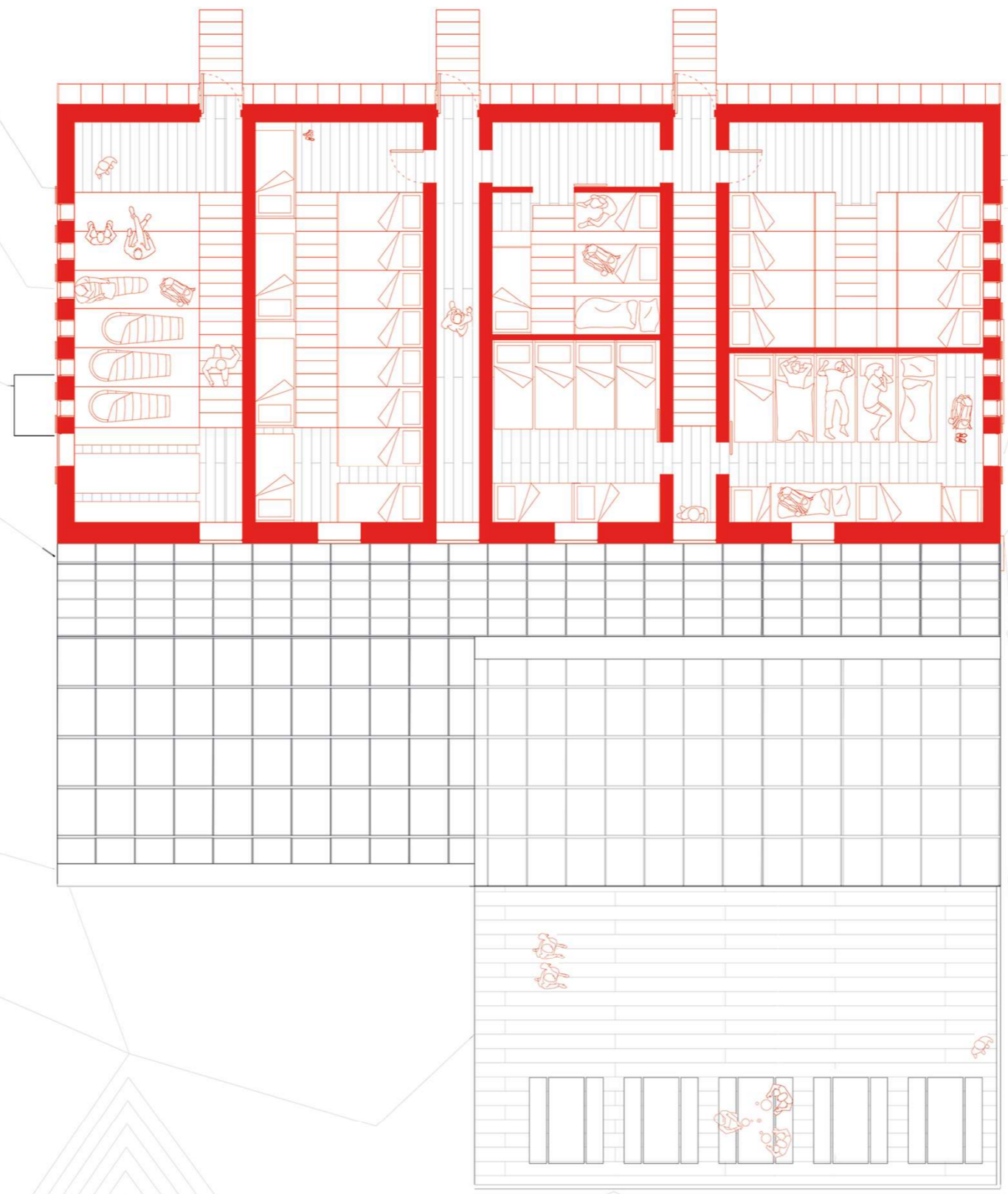




First Floor

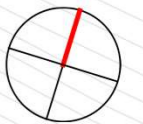
0 100cm 300cm

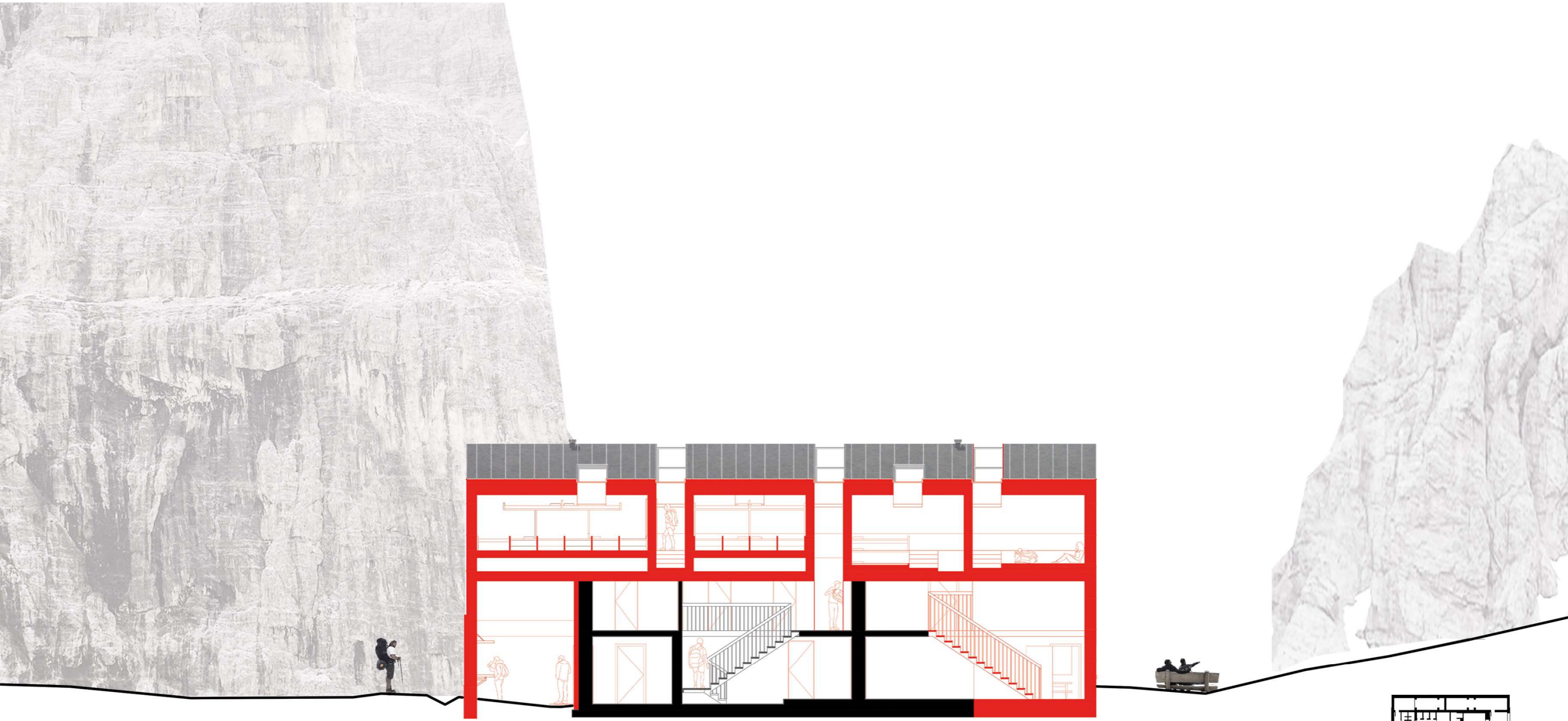




Second Floor

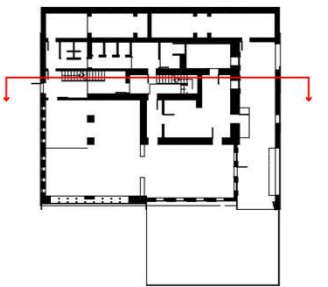
0 100cm 300cm





Longitudinal Section

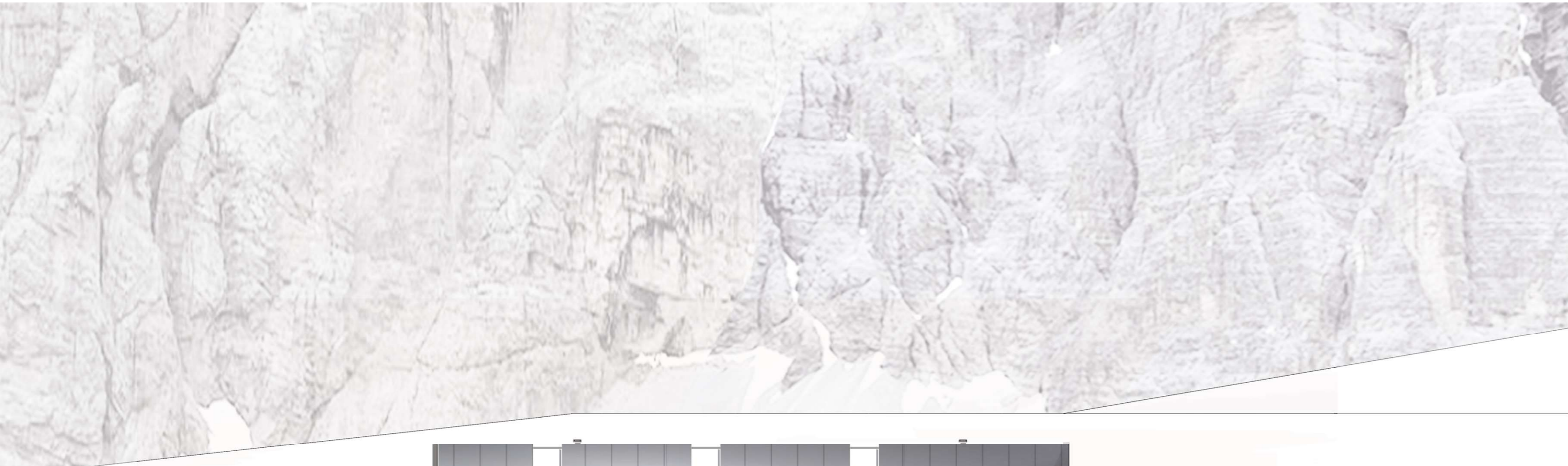
0 100cm 300cm





West Elevation

0 100cm 300cm



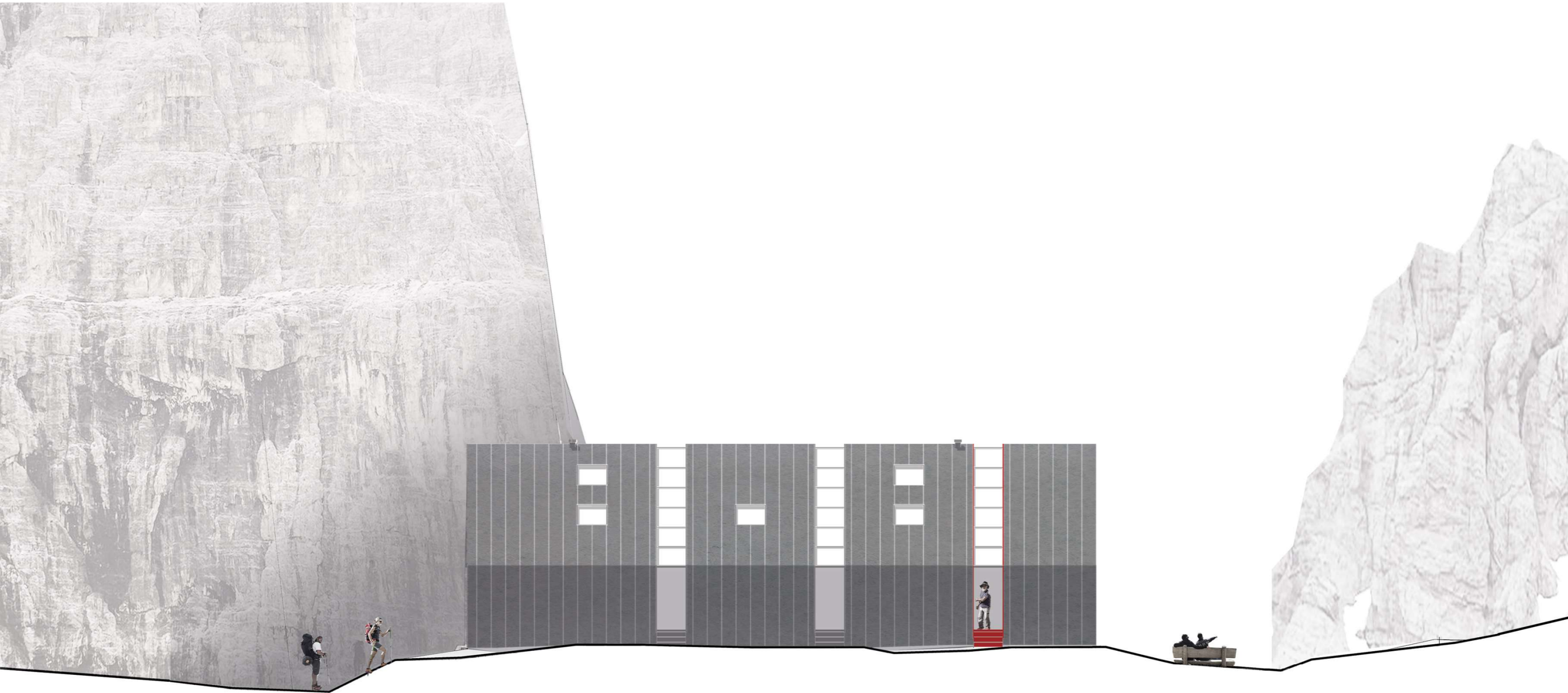
South Elevation

0 100cm 300cm



East Elevation

0 100cm 300cm



North Elevation

0 100cm 300cm

1:50

Full Section Detail.

1 In-roof sonal panels on renovated roof. 120mm natural wool insulation; 200mm Lignatur geometry surface elements.

2 Existing natural stone wall.

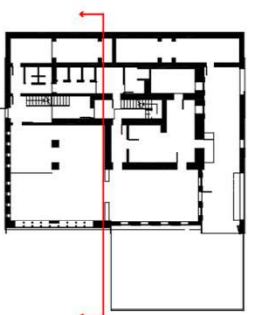
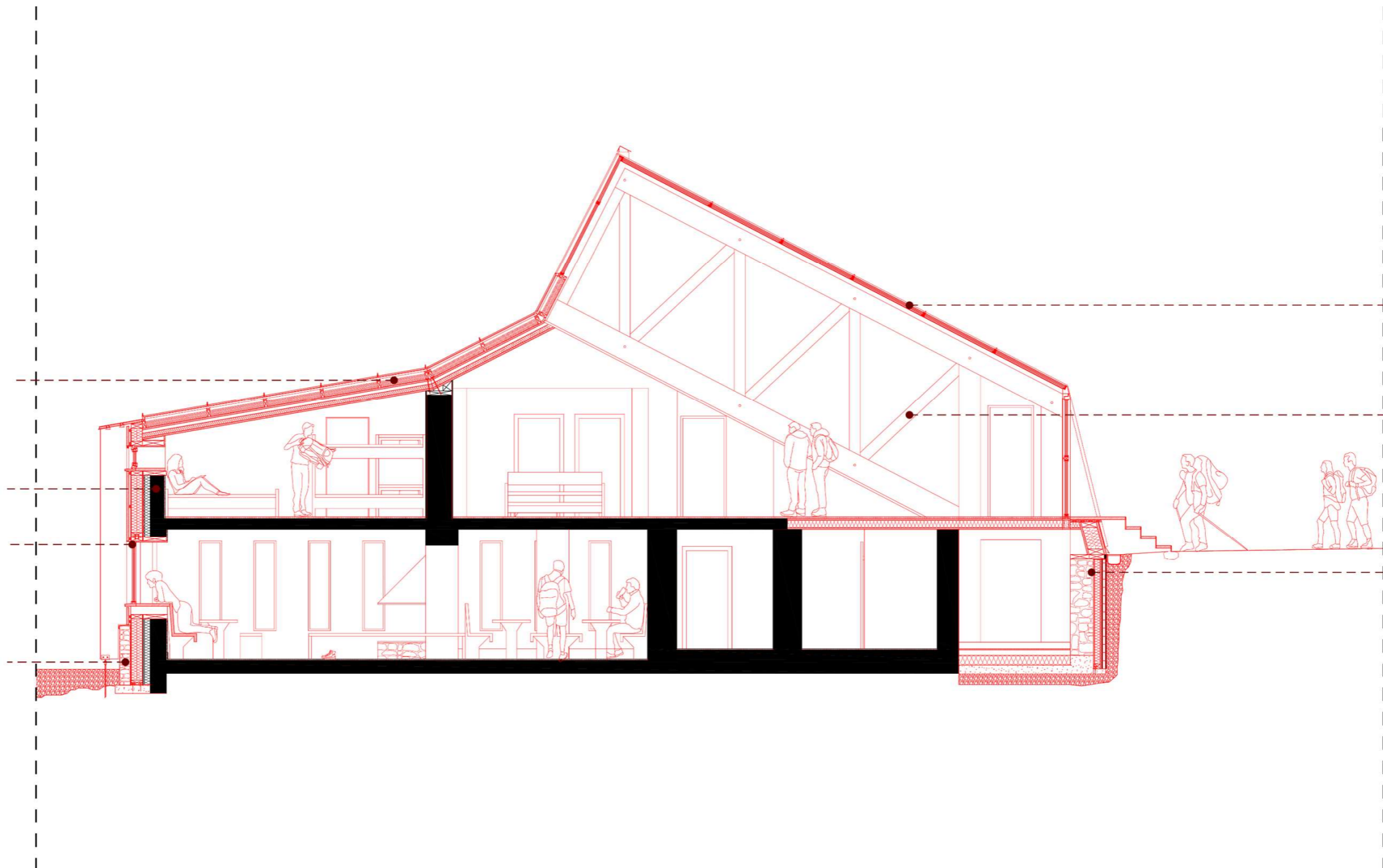
3 Prefabricated wall elements with Triple glazing windows and larch battens cladding.

4 Natural stone wall with metal coping for protection from melting snow.

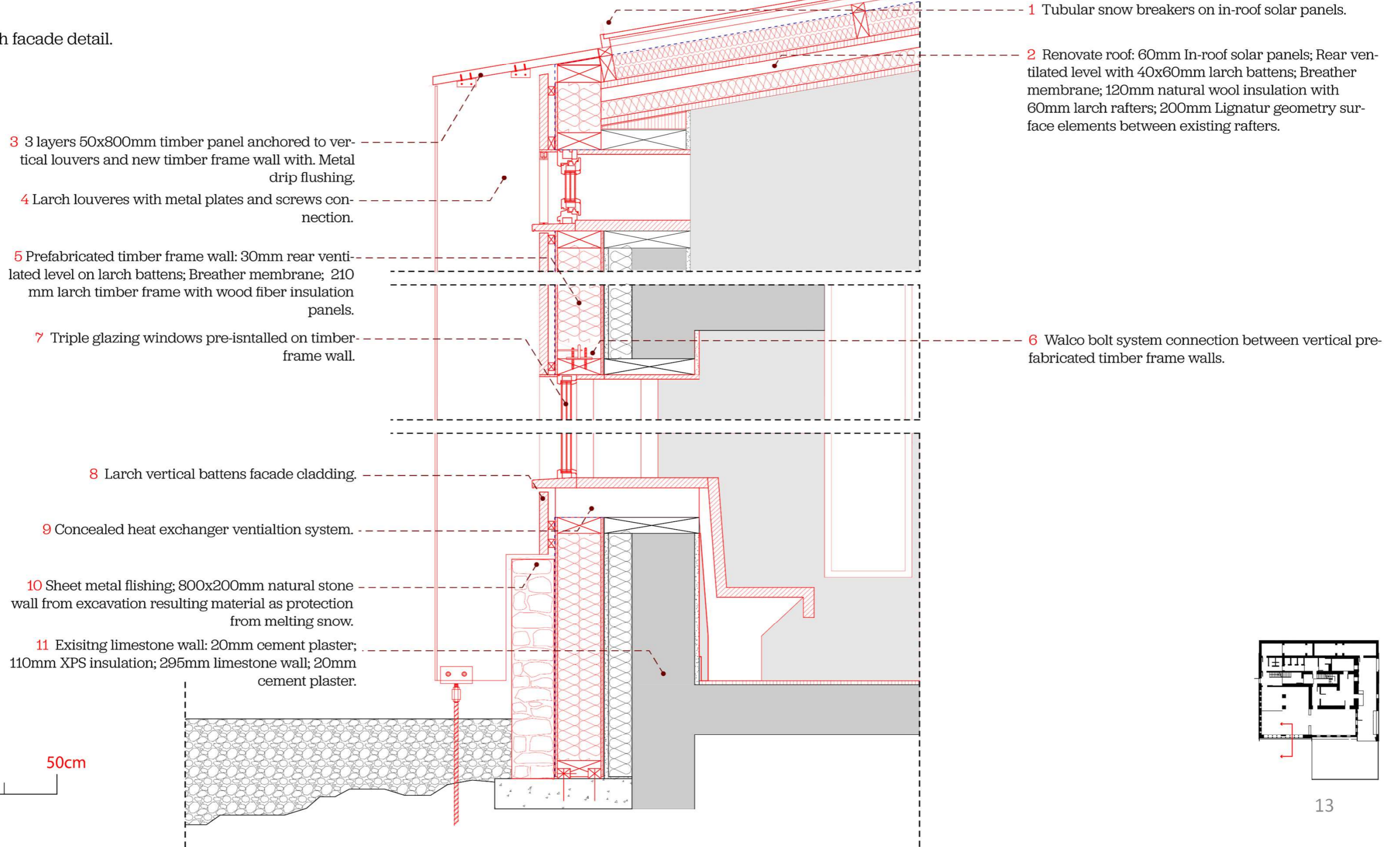
5 1000mm triple glazing elements on circulation spaces.

6 180mm GLT Truss Frame Superstructure.

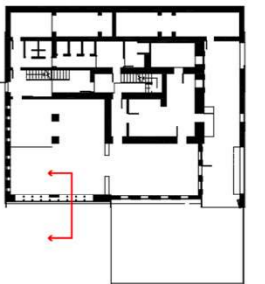
6 Insulated exterior wall built with excavation resulting material.



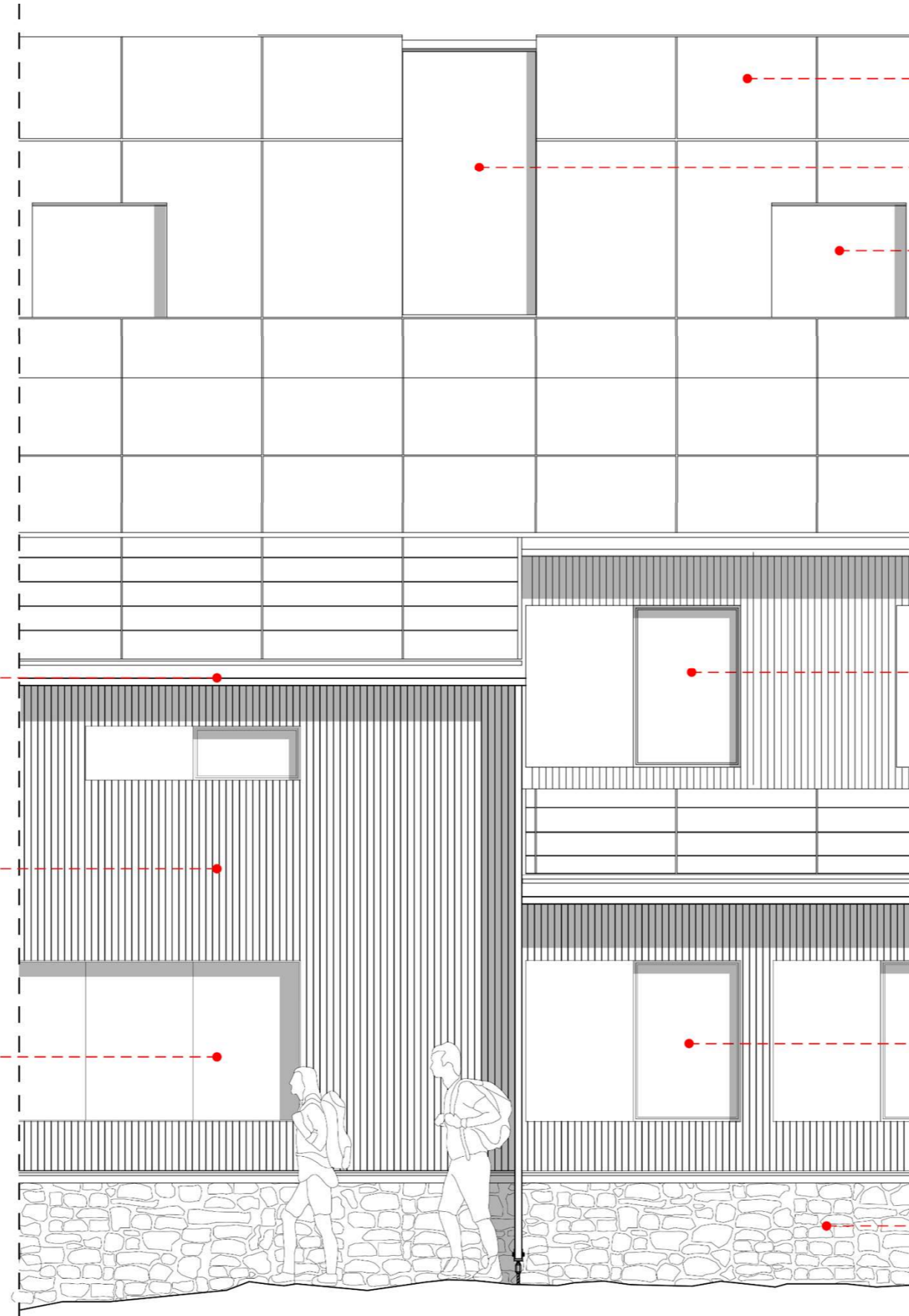
1:10
South facade detail.



0 50cm



1:20
Elevation Section Detail.



1 Metal drip flushing.

2 Vertical cladding of 5cm wide raw-cut larch battens.

3 720x80cm Triple glazing landscape window. 12x80cm glazing elements. Behind the glazing the wall is supported by 2 8x8cm timber columns with 80cm spacing.

0 50cm 100cm

4 In-roof intergated PV surface integrated with snow breakers.

5 100cm Triple galzing. Corridor skylights.

6 100cm triple glazing. Dorm windows.

7 80x120cm Triple glazing windows on prefabricated wall elements. Larch sliding shutter.

8 80x120cm Triple glazing existing windows. Added larch sliding shutter.

9 85cm Natural stone wall with metal coping for protection from melting snow.

1:5

Roof-Superstructure-Corridor Glazing-Interior
boxes Detail.

1 Standing seam metal roofing 500mm wide panels; waterproof membrane; 18mm paneling; 50x30mm larch battens (85mm) ventilated layer.

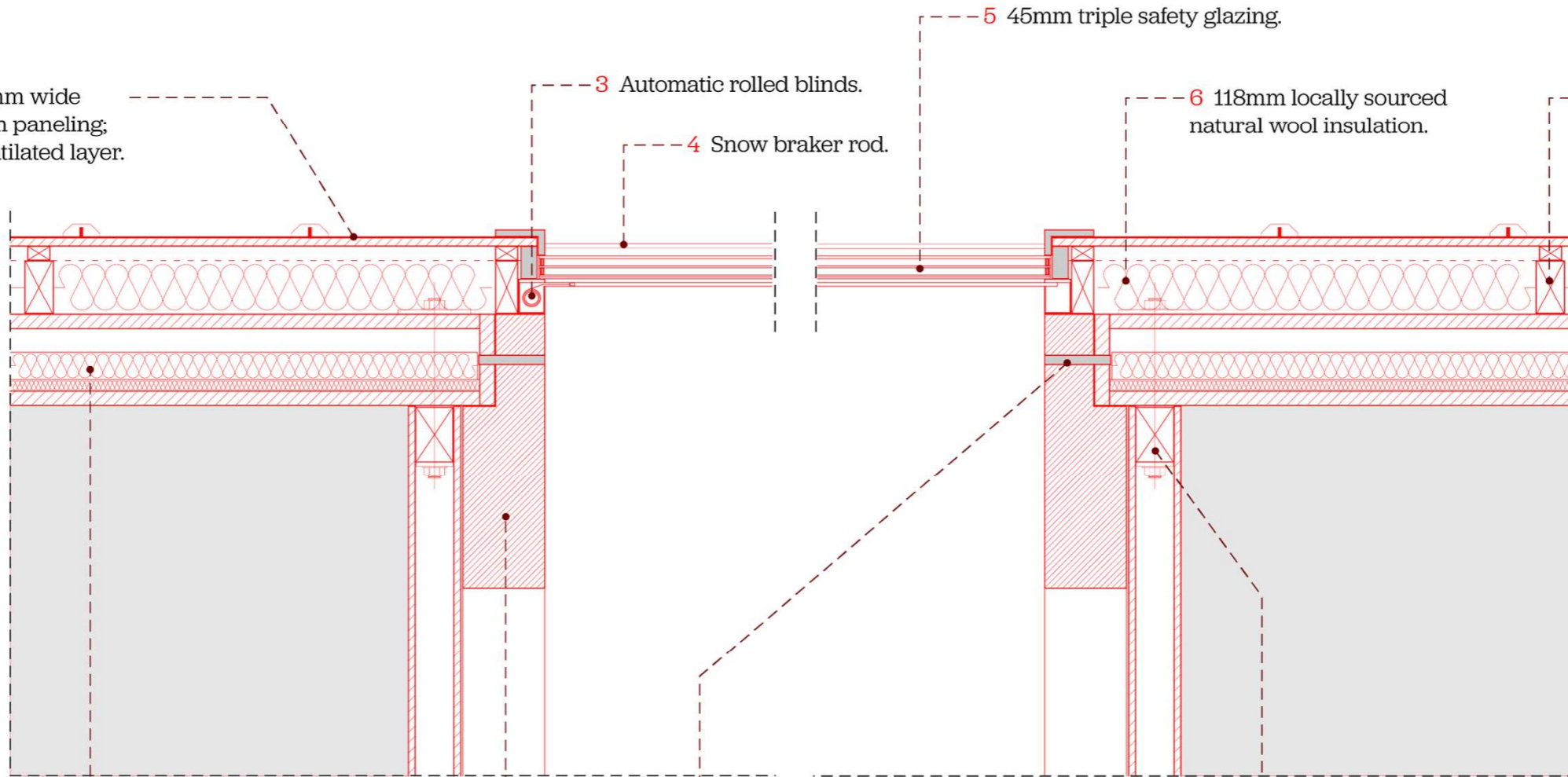
3 Automatic rolled blinds.

4 Snow braker rod.

5 45mm triple safety glazing.

6 118mm locally sourced natural wool insulation.

7 118x60mm larch battens. 950mm spacing.

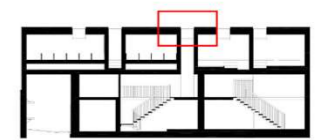


8 200mm Lignatur Surface element.

9 Superstructure:500x180mm Larch GLT Truss Frame.

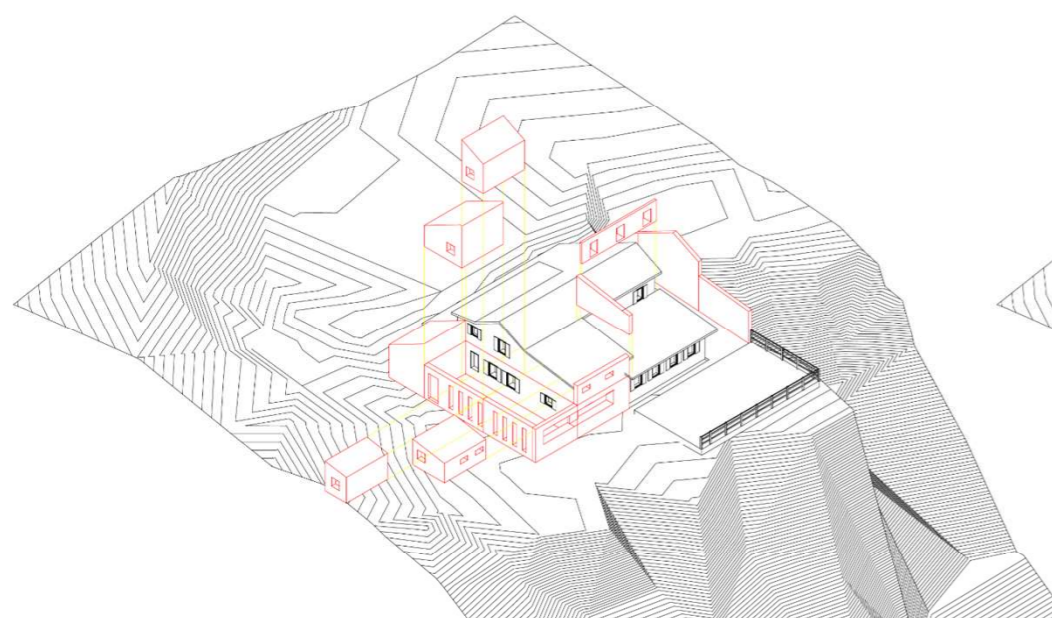
10 20mm diameter larch dowel. Locking airlifted boxes to GLT timber frame.

11 Through bolted box structure.

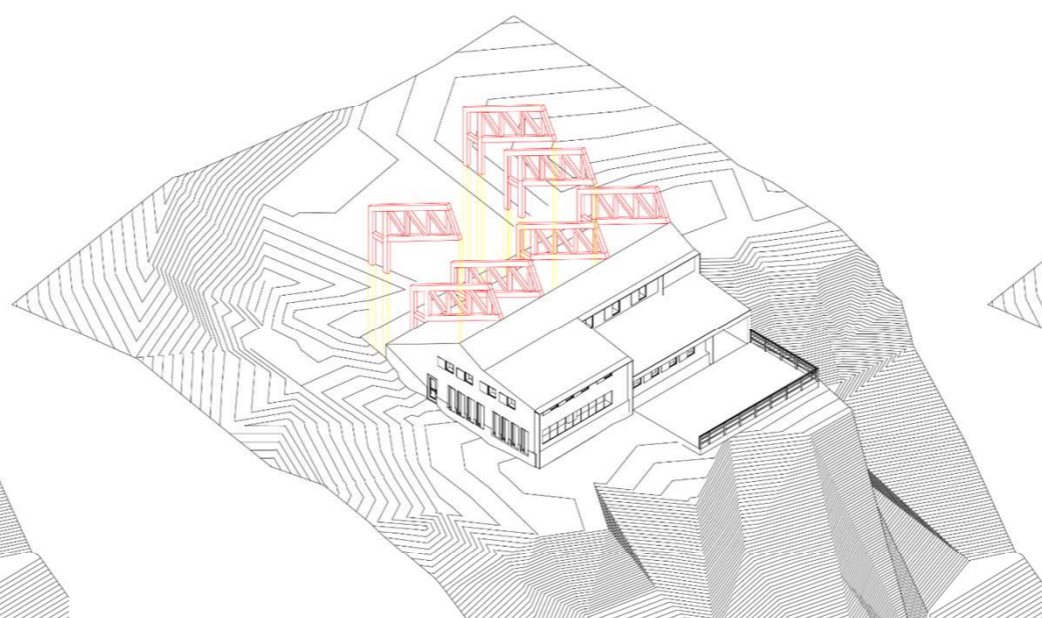


Assembly

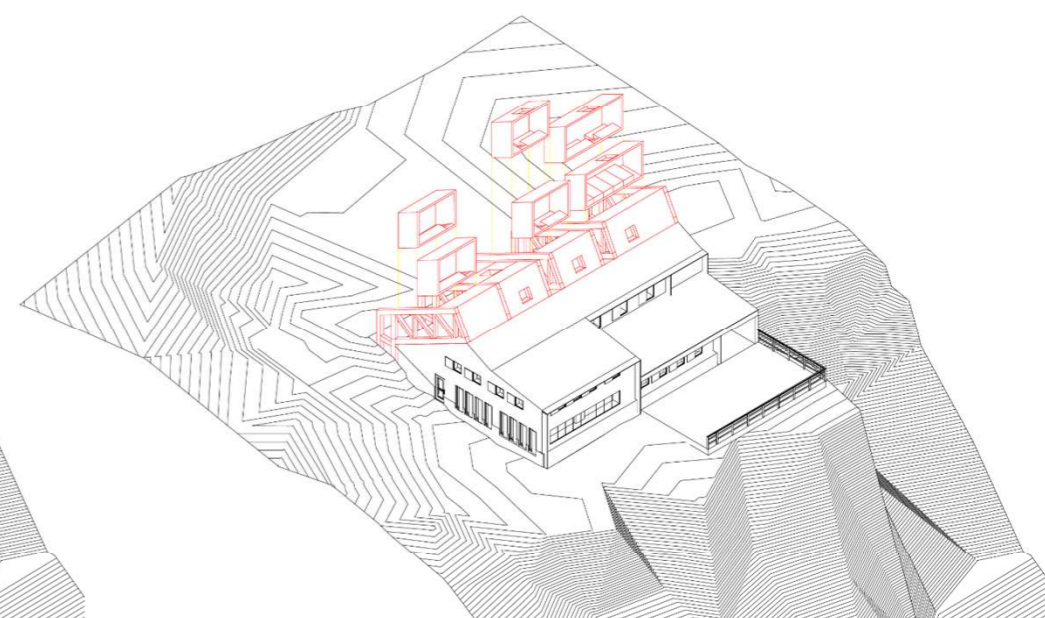
Renovation, Superstructure, Boxes assembly.



Prefabricated elements are used for the expansion and insulation of the existing refuge.



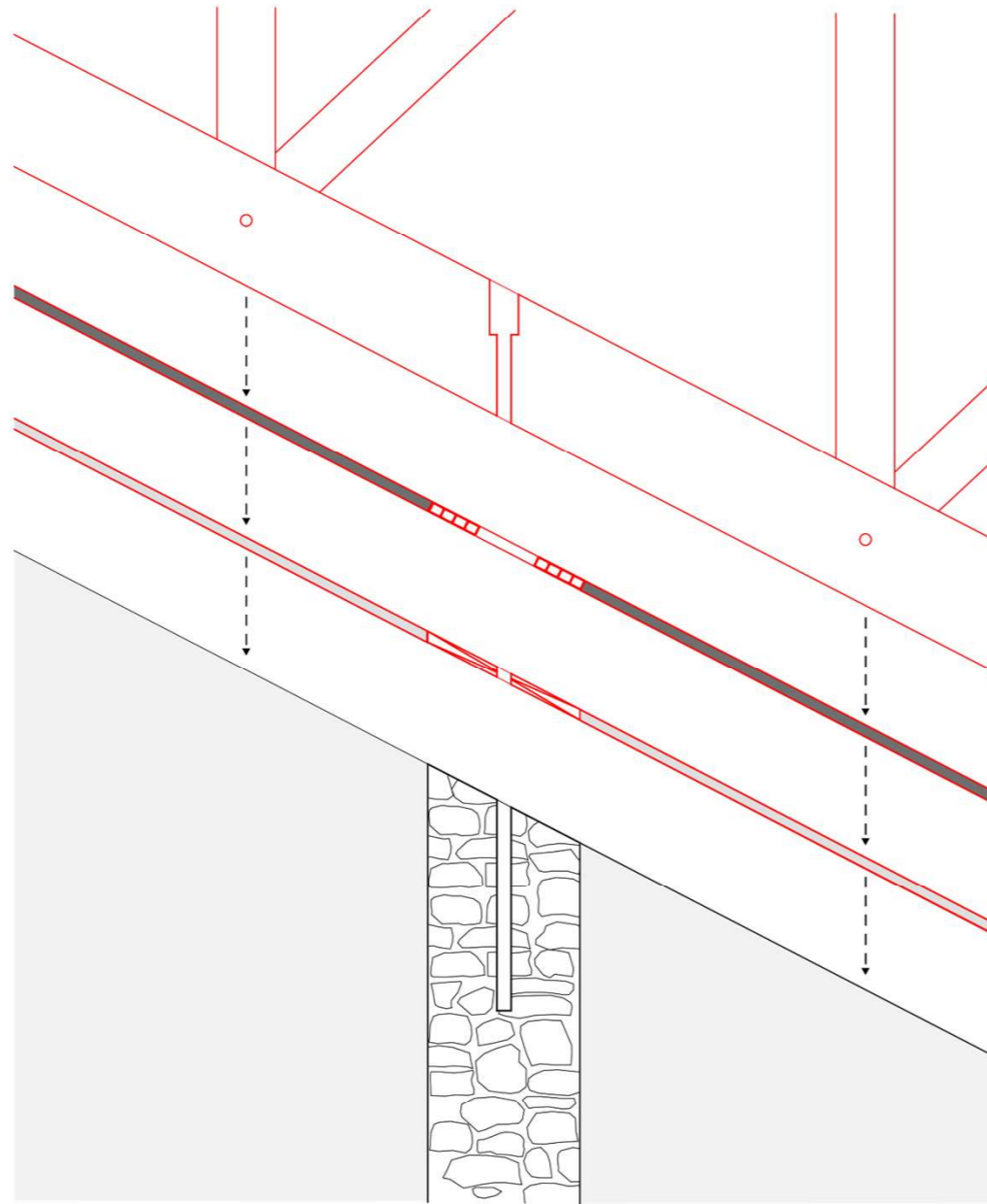
The superstructure is airlifted on-site.



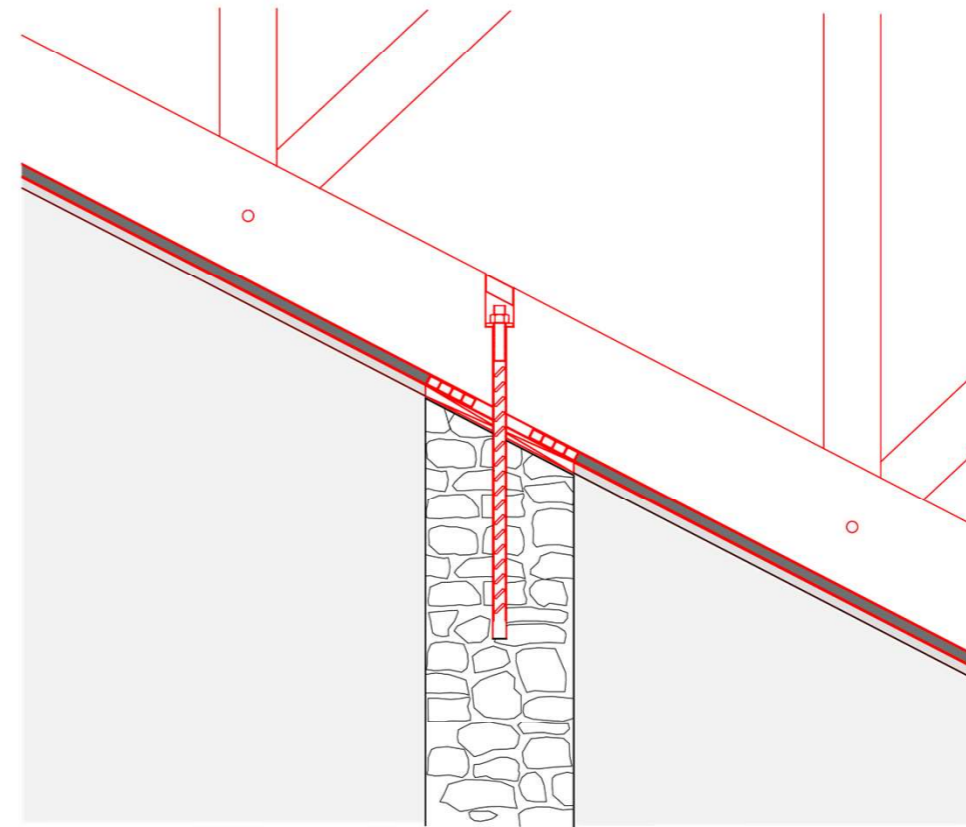
The prefabricated boxes are airlifted and anchored to the Superstructure

Assembly

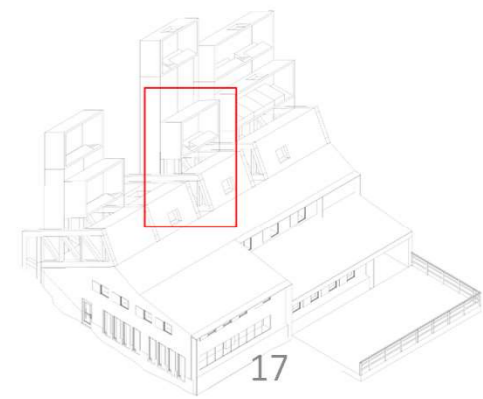
Superstructure-boxes assembly.



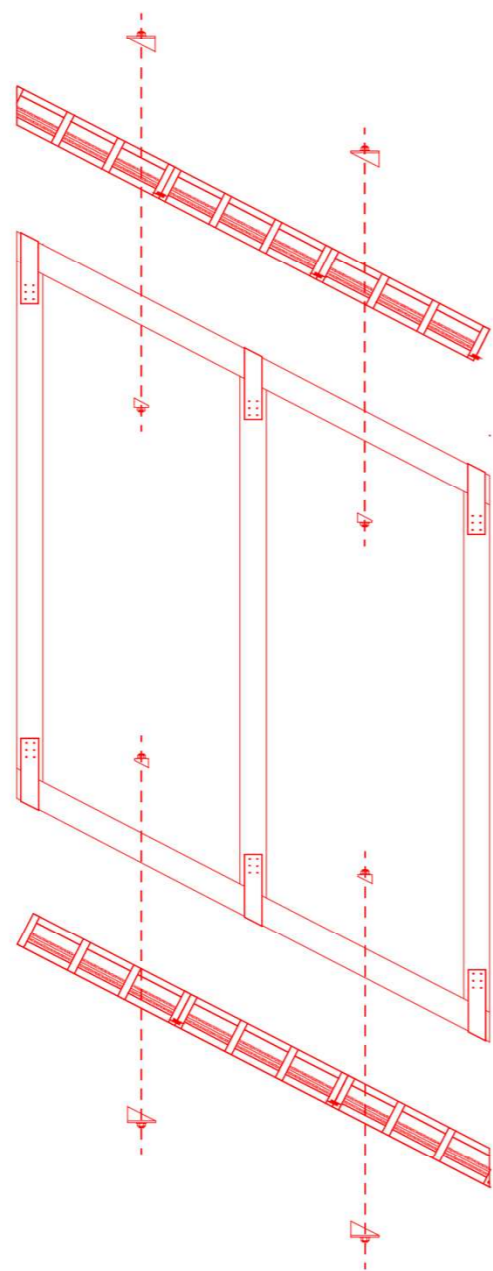
The superstructure is positioned above the existing walls and sealed with rubber gaskets.



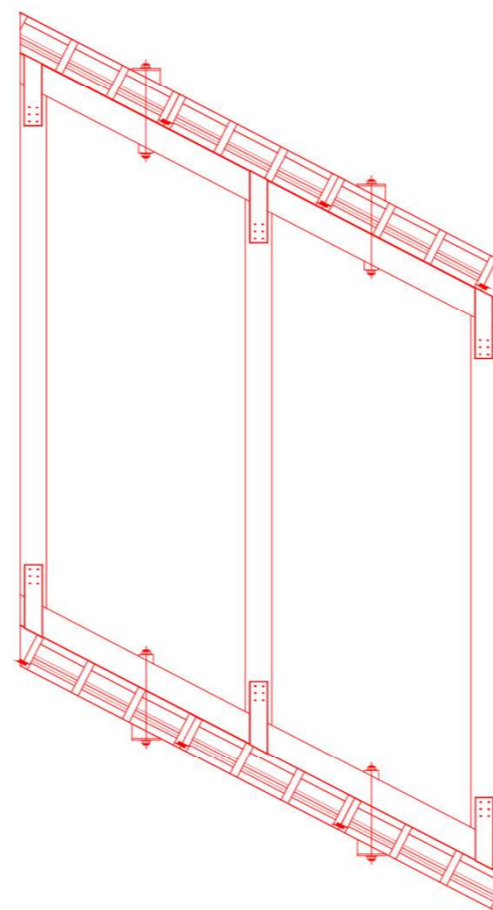
Superstructure and existing structure are connected through rebars and throughbolted.



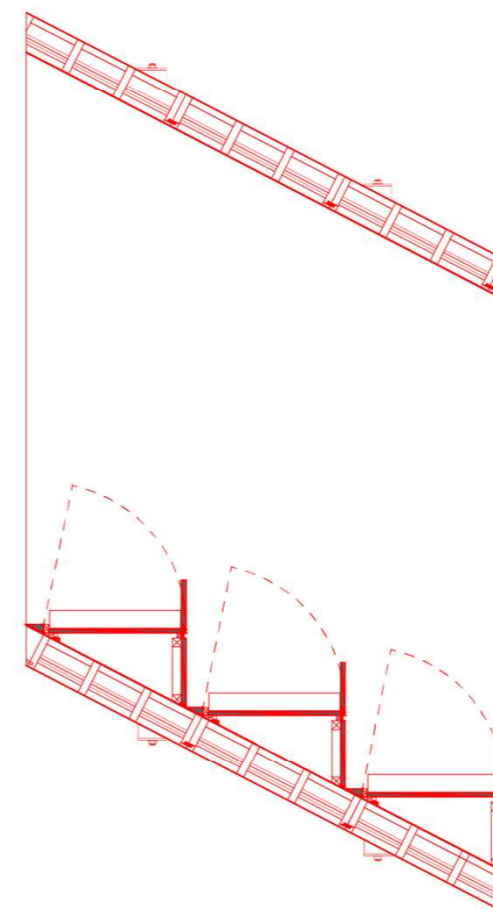
Assembly
Boxes assembly.



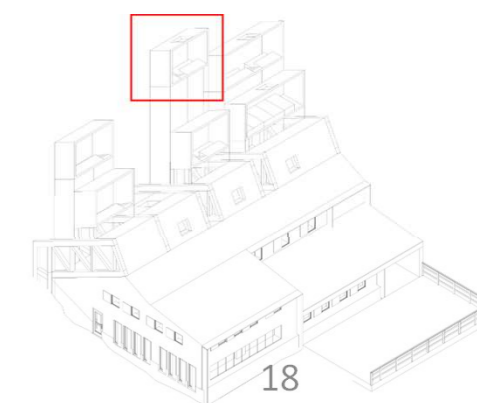
Lignatur and timber frame wall pre-assembled.



Through-bolted boxes delivered on-site.

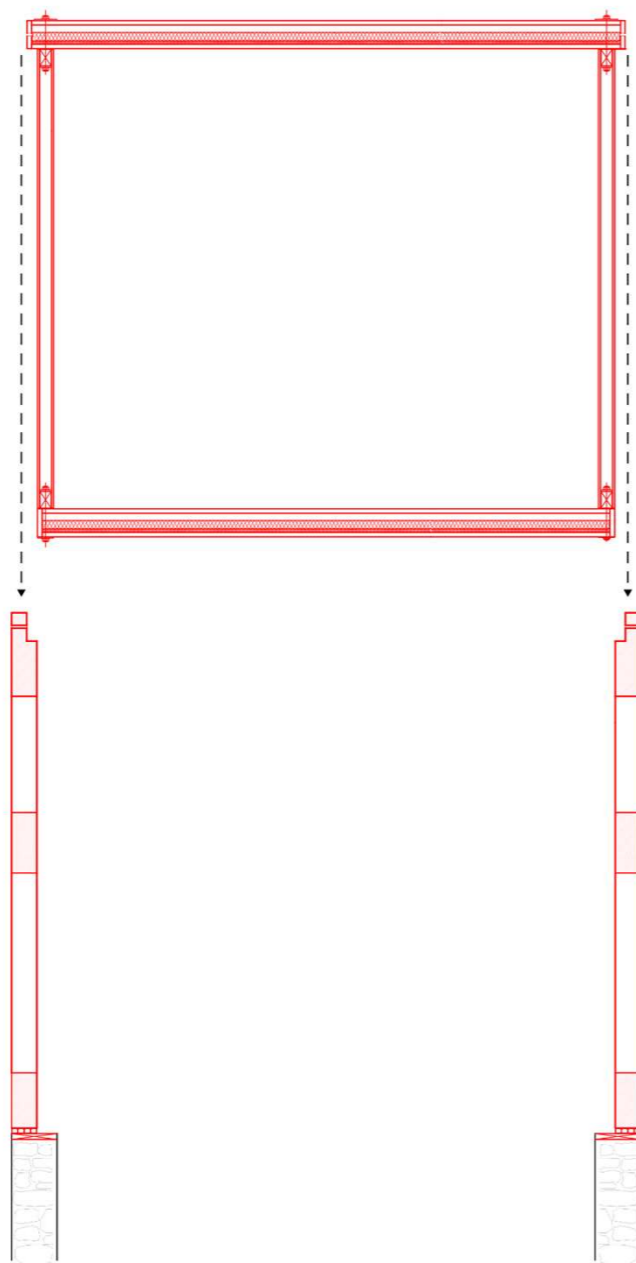


Interior space with sleeping berths and storage space for each guest.-

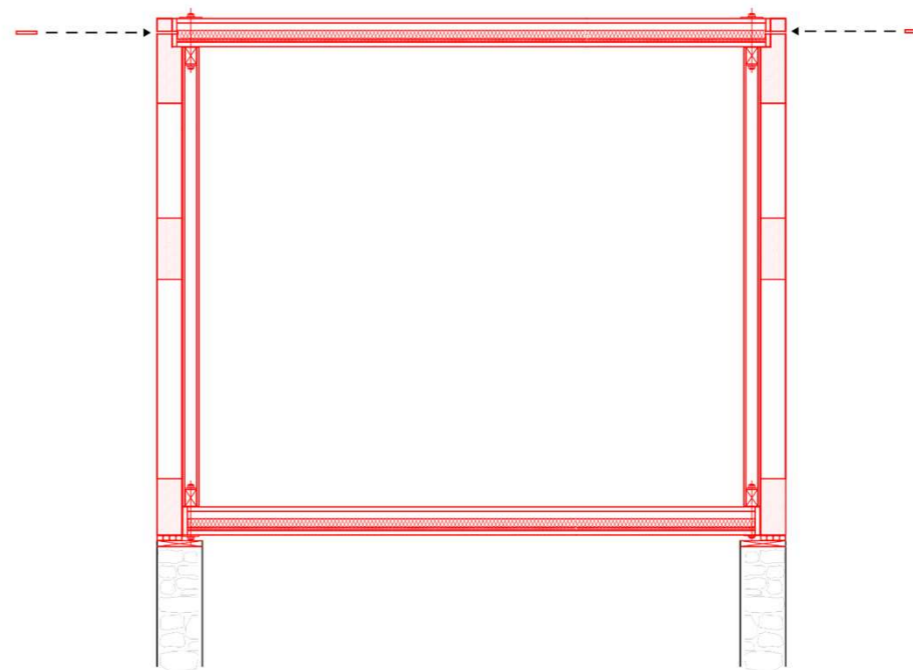


Assembly

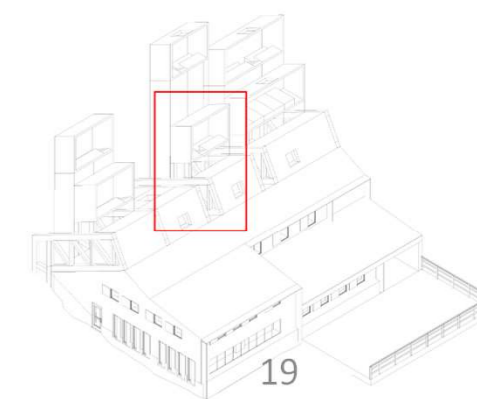
Superstructure-boxes assembly.



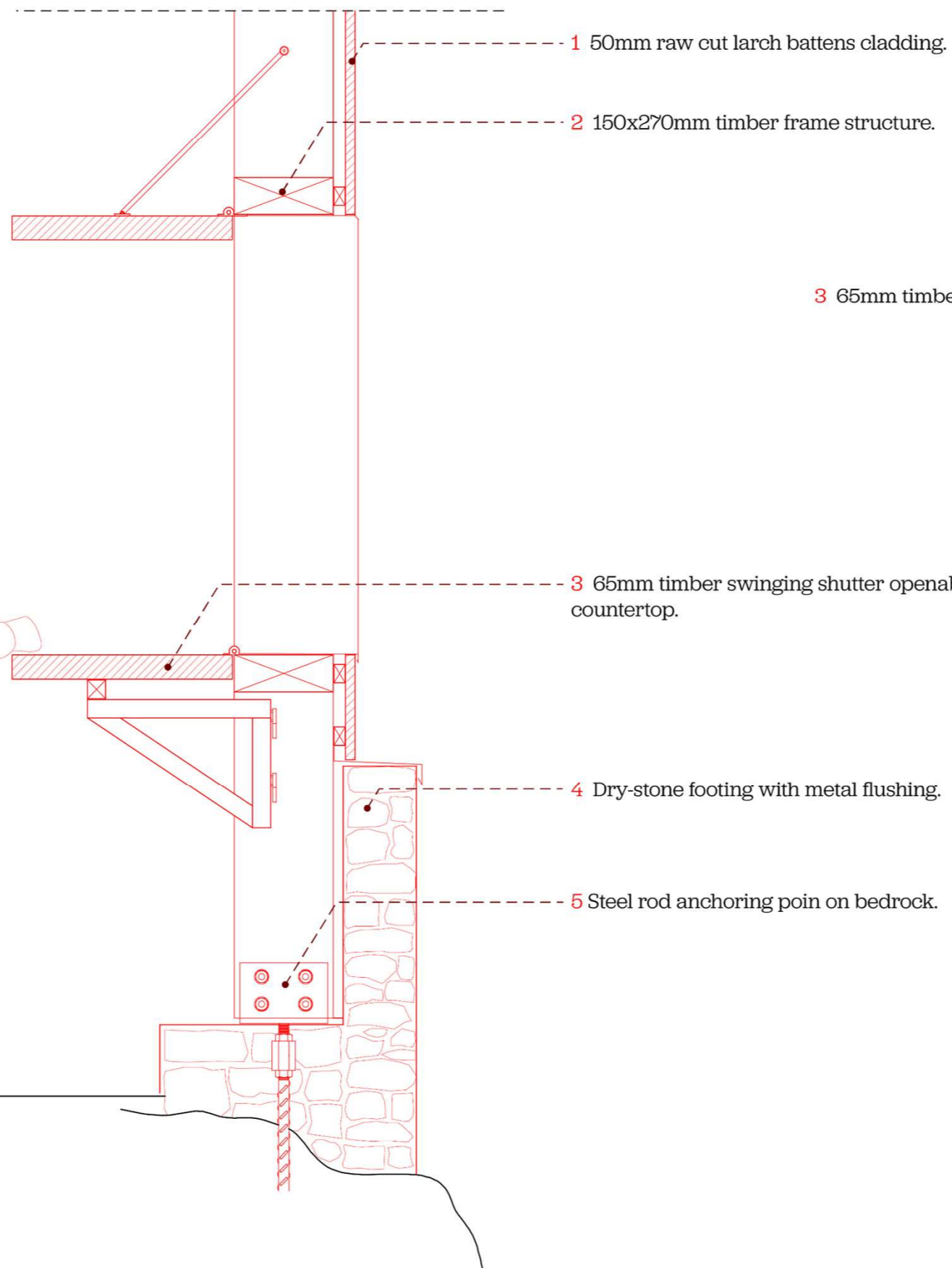
The pre-assembled boxes are lowered between the superstructure.



Boxes and superstructure are locked together through wooden dowels.



1:10
East wall Detail.



0 50cm

3 65mm timber swinging shutter openable as countertop.

2 150x270mm timber frame structure.

4 Dry-stone footing with metal flushing.

