

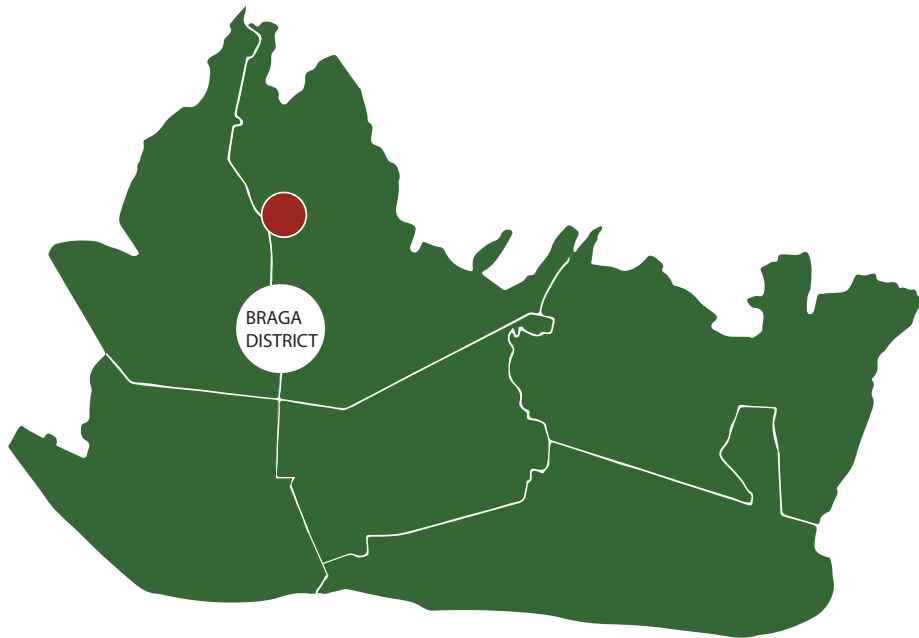
TWO WORLDS

RISE OF THE KAMPUNG

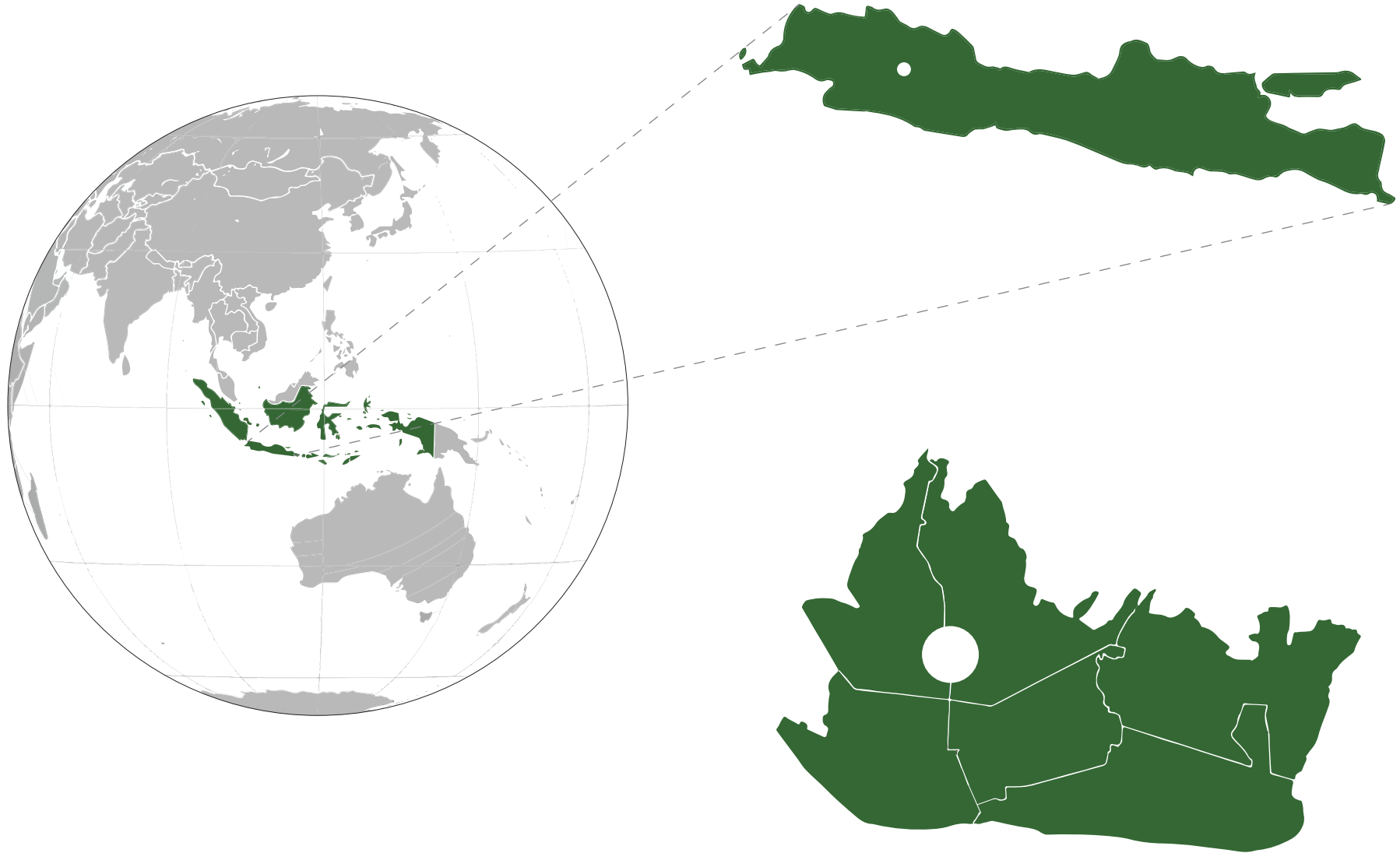


Family History

Carla with Baboe



Bandung



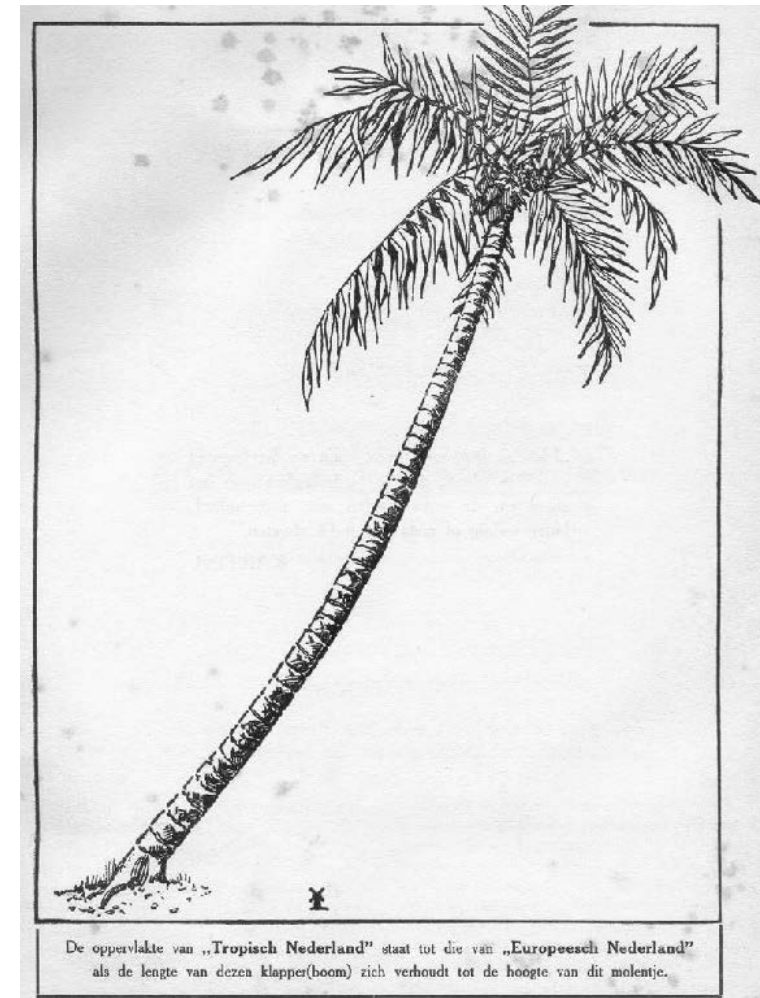
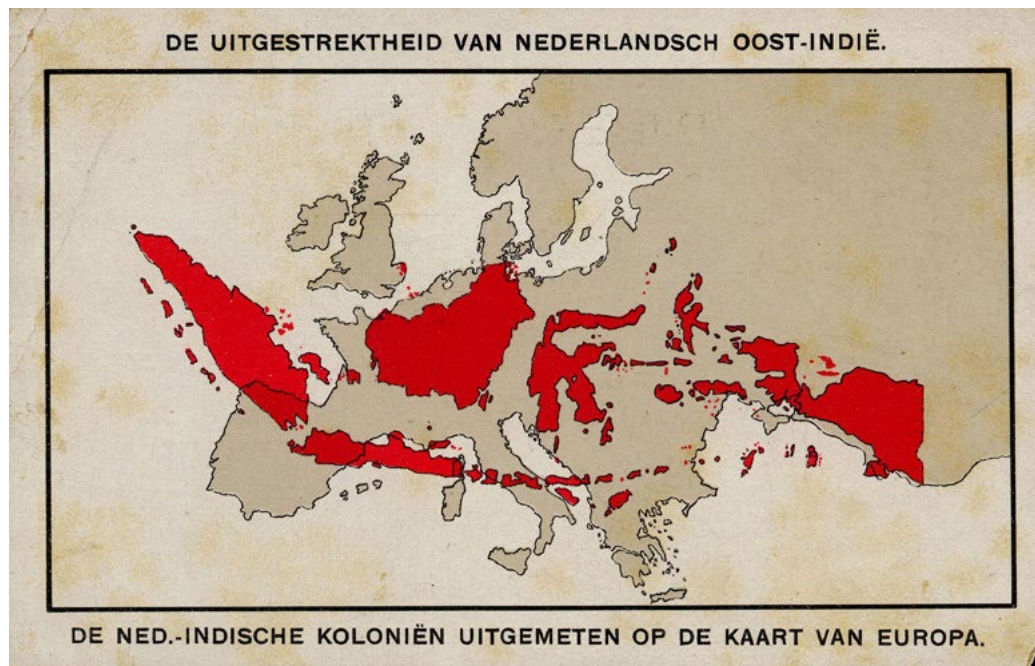
Fertile lands

Popular due to climate



Source: Google Maps

Matter of scale



Source: Cluysenaer, Historisch Onderzoek en Communicatie.

Storyline

INTRODUCTION	2	AMBITIONS	45
QUALITIES	16	DESIGN QUESTION	48
PROBLEMS	19	NEEDS	49
OPPORTUNITIES	26	INTERVENTION	50
CREATIVITY	27	USE	53
SITE	33	CONSTRUCTION	71
BUILDING	34	IMPACT AND MEANING	89
CULTURAL VALUES	39		

Braga District



Evolution of Braga Street



1910



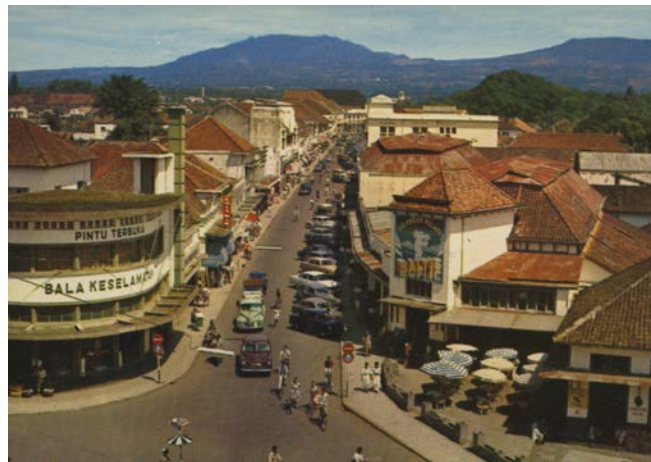
1915



1920



1925



1960



2018

Source: University Leiden

Discovering the area



Busy Braga Street

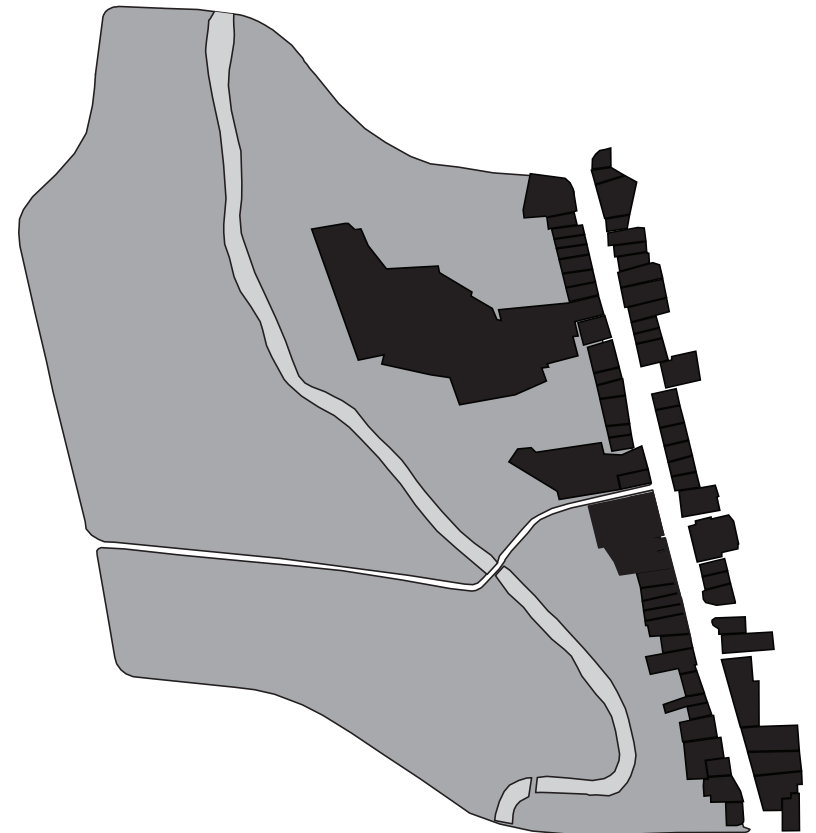


Calm Kampung

Two worlds



Separation of two area's

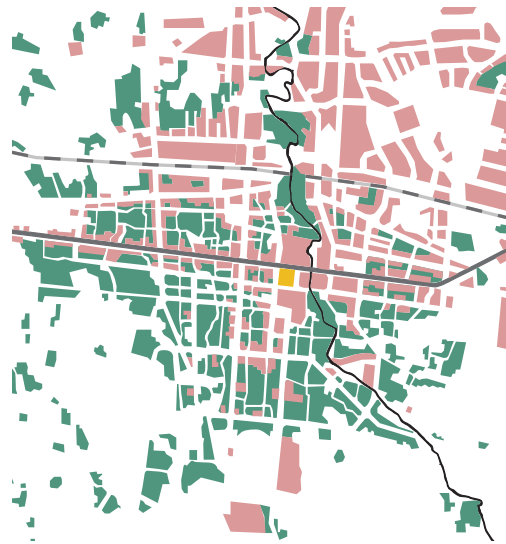


History of the Bandung

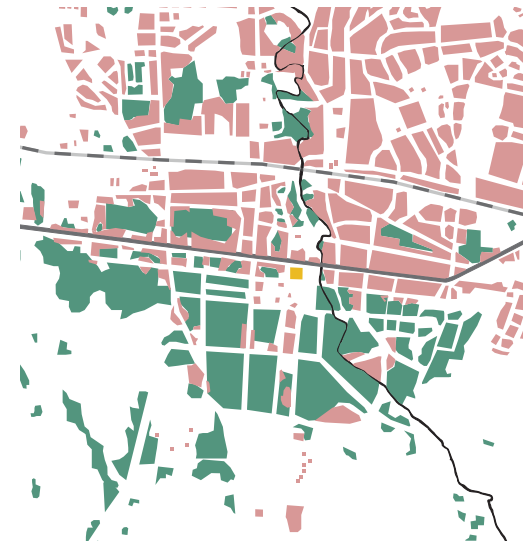
Enclosed by Colonial



1825



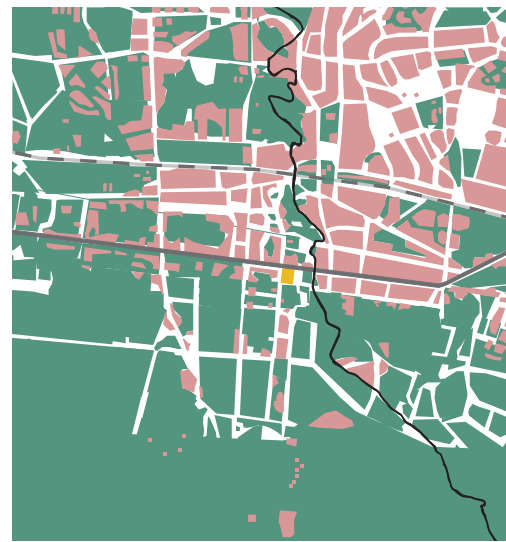
1924



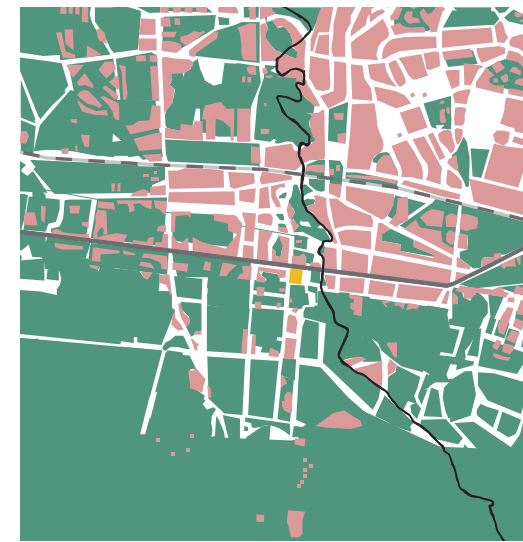
1946



1953



1989



2018

Rise of the Kampung

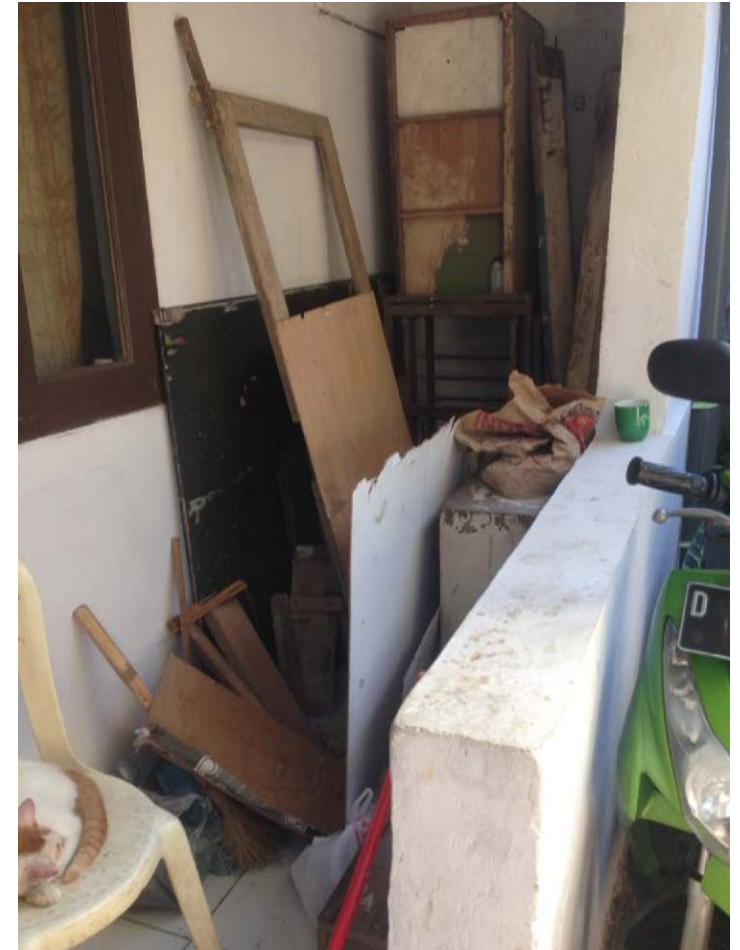
Fascination

Contradiction



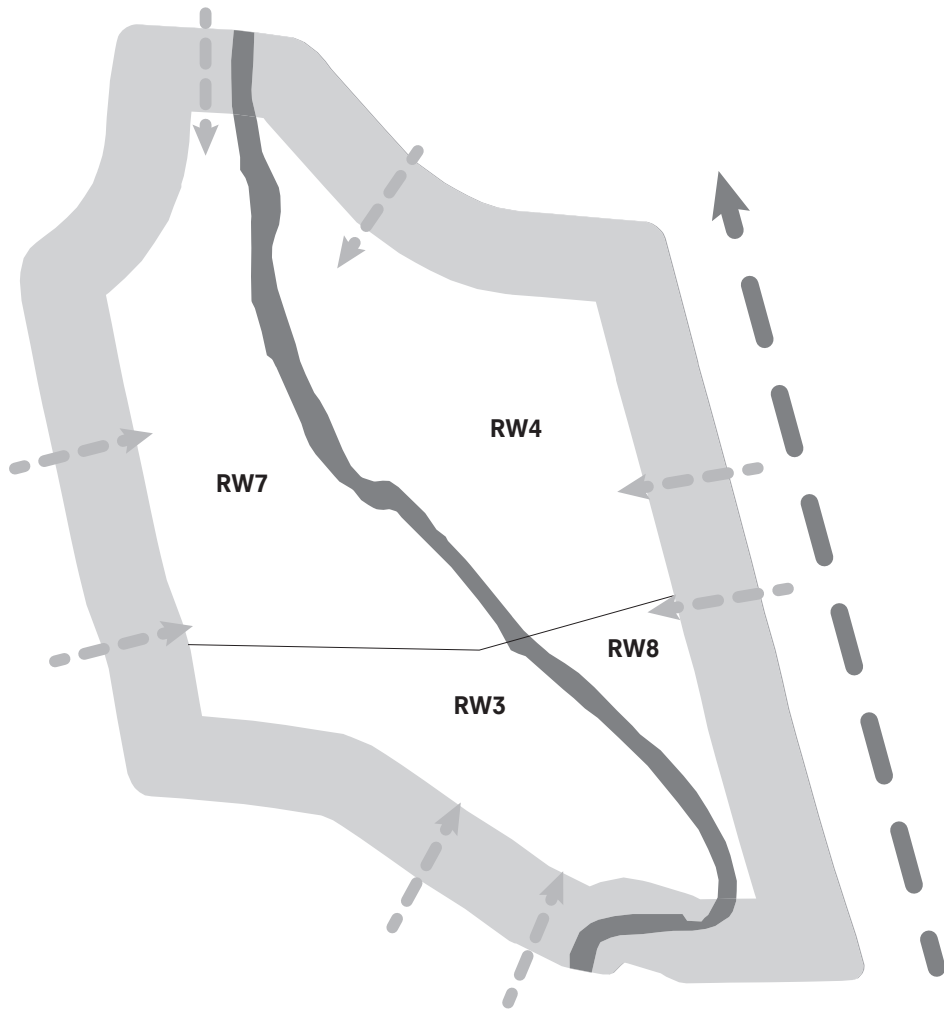
Kampung Braga

Workspaces in living room



Characteristics of Kampung Braga

Enclosure as quality



Qualities of Kampung Braga

Starting points for research



Creativity



Community



Calmness due to enclosure

Characteristics of Braga Street

Closed street facade
Low rise



Qualities of Braga Street

Starting points for research



Intangible aspects



Many typologies



Lively street

Research Question

How could both Braga Street and Kampung Braga profit economically, socially, culturally and environmentally from each other thus strengthening their own identity?

Complexity of the city

Illustration of the many problems



Decaying buildings



Monumental fear



Heritage replaced by high rise



Empty buildings



Poor housing construction



Gentrification

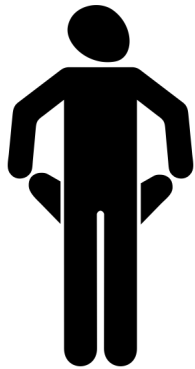


River as sewage



Kampung demolished

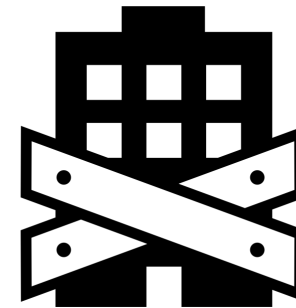
Focussing on specific problems related to fascination



Low income in the Kampung



No space for the Kampung in Braga Street



Empty buildings, needs in Kampung

Low income in Kampung



Lack of means to repair homes



Small shops trying to generate income



Trying to sell products as close as possible to Braga St.

Kampung not welcome in Braga Street



Vast areas destroyed



Build a wall to keep away

Contradiction



Empty decaying buildings



Over 30% empty buildings

Gentrification and demolition



Heritage destroyed



Gentrification

The Kampung community has no space to grow in creativity nor in starting a business.



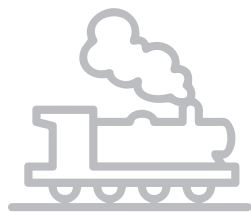
Creativity as catalyst for change



Creativity can bring worlds together

Overview of creative industry in Bandung

'Creativity has always been an important character of Bandung.'



1888

First railroad between Jakarta and Bandung, stimulating the city in growth.



1910

Europeans open fashion shops, theaters and hotels.



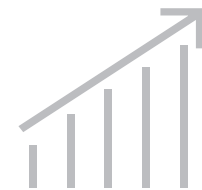
1980's

Economic growth of Bandung attracts entrepreneurs mainly from Jakarta.



2000's

Cultural movement of the government, turning Bandung into 'Bandung Creative City'



2010's

Growth of creative Industry in the city.

Braga street with creative history

Fashion shops
Furniture shops
Great diversity
Paris of Java

De Grand Prix-sensatie van 1906
 De P.K. HONGKONG, 4 cyl., en overal leverbaar
 FUCHS & RENS
 Bandoeng

Nieuw goud en min maken?
 Het gaat niet om de
 SVELKOU
 Bandoeng

AUG. SVELKOU
 Bandoeng

Au Bon Marché
 BANDOENG

Voor Bergsport

Shirts khaki	f 4.50
Shirts khaki & wit	f 2.75
Sportkousen khaki & wit	vaand f 1.75

Bergstokken

Houten	f 1.00 - 1.25
Metalen	vaand f 3.00
Handtag Soak Sticks	f 10.00
Verhoeren SPIRIT-SCHOENEN met Utsakda Zool (wielvleed)	f 10.00
Fax Pallies	f 5.00
Broekjes Zwart & Bruin	f 7.50
Luchtkoudde Matrasen voor Pic-Nic en Zwerftoeren	vaand f 12.50
Vraag onze gulle Sport-Prijzenaant	

Sport Afdeling
Au Bon Marché

KONST BUREAU
 SLECHTS BIJ DEN VAKMAN
 NIET OVERBETW. MAAR BETW.
Stoeker
 HORLOGERIE
 Bandoeng 33

HET LAMPENHUIS „BRAGA“
 Grootste keuze-Concurrerende prijzen.
 Bandoeng 70 - Tel. 998

ZEISS IKON
 CAMERA'S BIJ
Fotohuis „Braga“
 GEROUW D.E.N.I.S.
 BANDOENG.

DIERENVRIENDEN!
 APOTHEEK RABEHAM
 Bandoeng 3, Tel. 557-2333

APOTHEEK BAYOSTA
 Bandoeng 51, Tel. 557-2322

Change of use

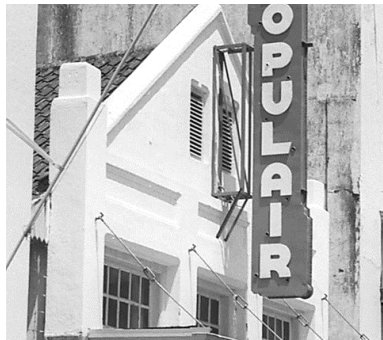
Car shop



Fastfood



Fashion store



Warung



Tailor

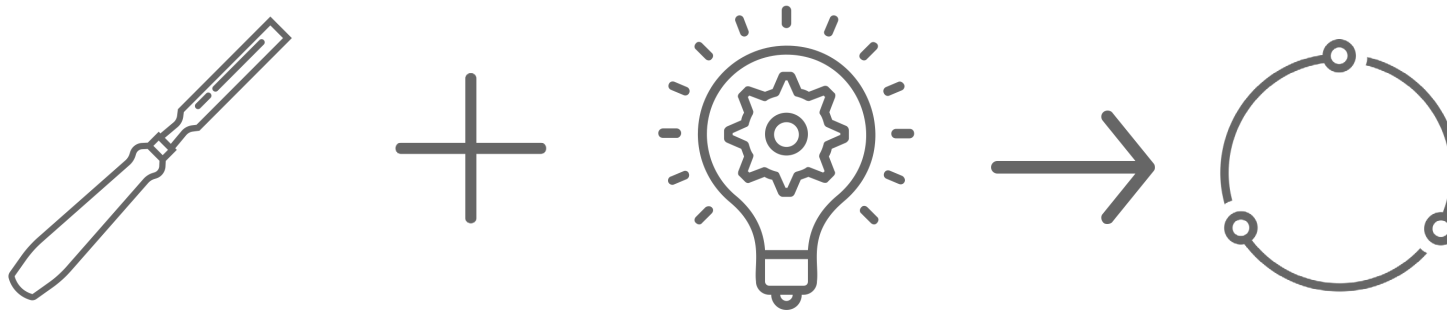


Warung



Creativity as connector of worlds

Tradition of crafts
Reinforcing both identities
Creative Kampung



Creative Kampung Dago Pojok

Joins communities
Strengthens identity
Education



(A) Music workshop (B) Playing music with Calung, (C) show the process to pound rice.

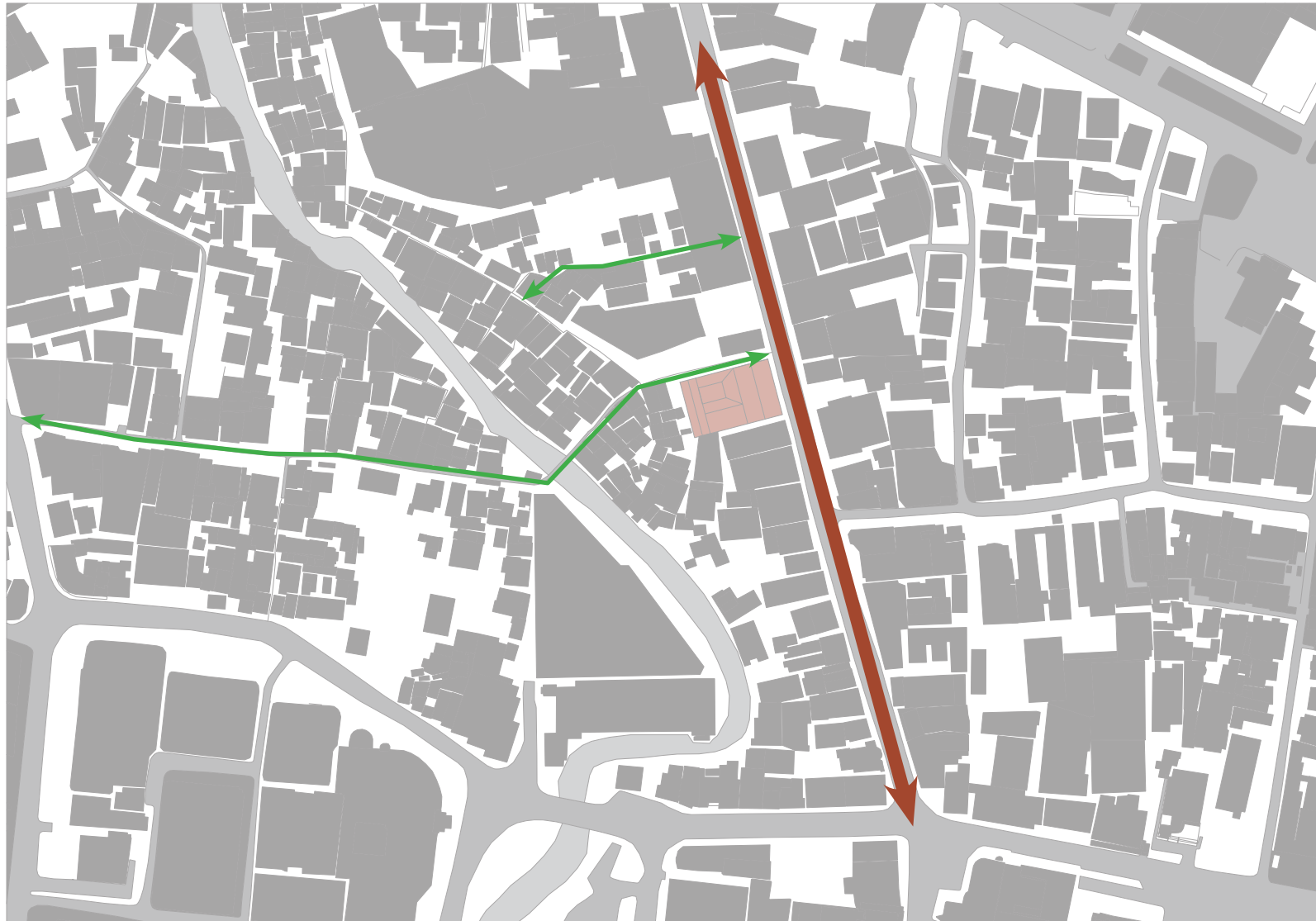


(A) Wokshop handcrafted Jewelry, (B) craft jewelry, (C) craft puppet show

Source: Prasetyo, 2013, Art, activism and the 'Creative Kampong': A case study from Dago Pojok, Bandung, Indonesia

Chosen site

Where? Why?



Evolution of the site & building

Density increased
Kampung grows towards Braga Street
Building develops
Heritage destroyed



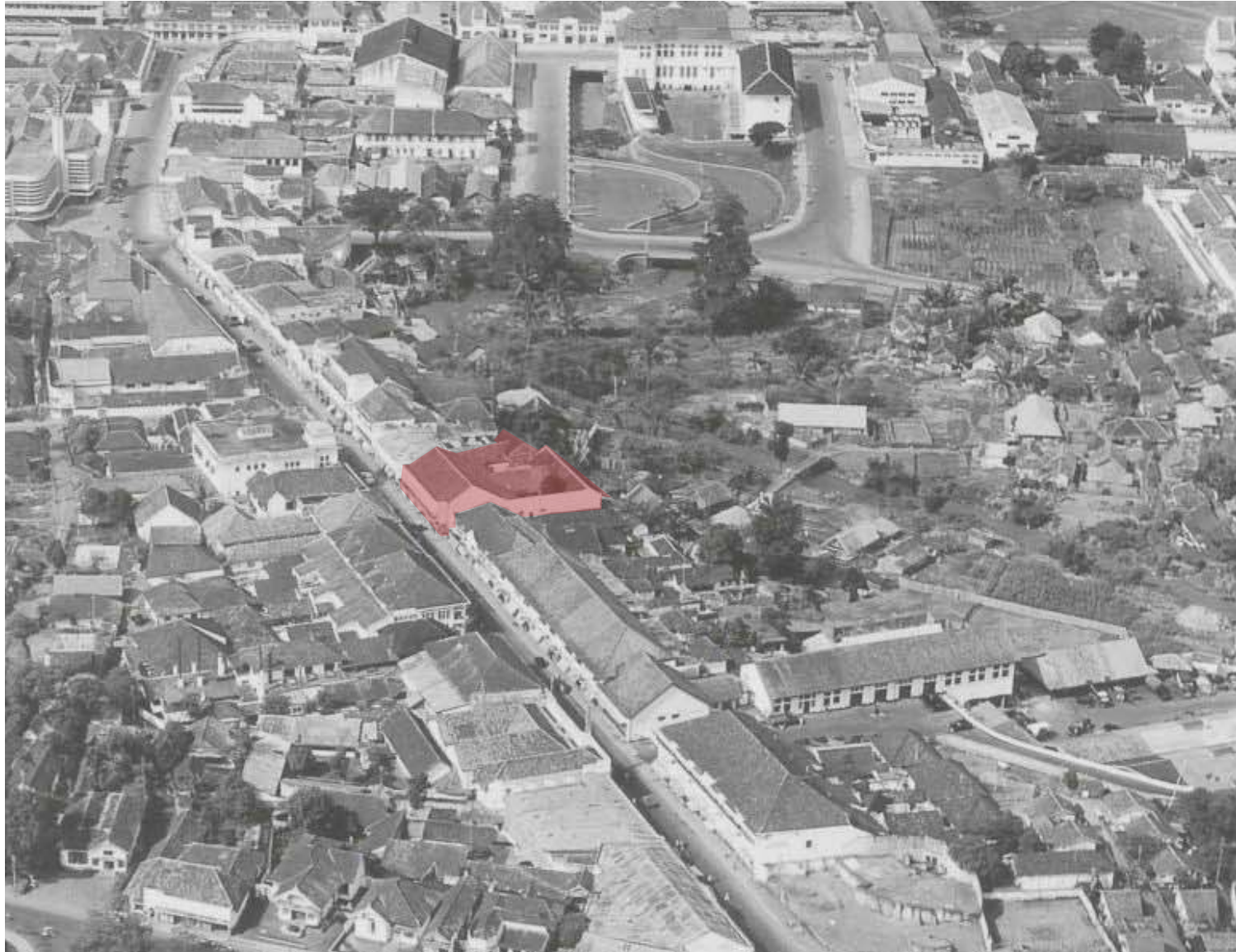
Building

Why this building?
Demolish?



History of the building

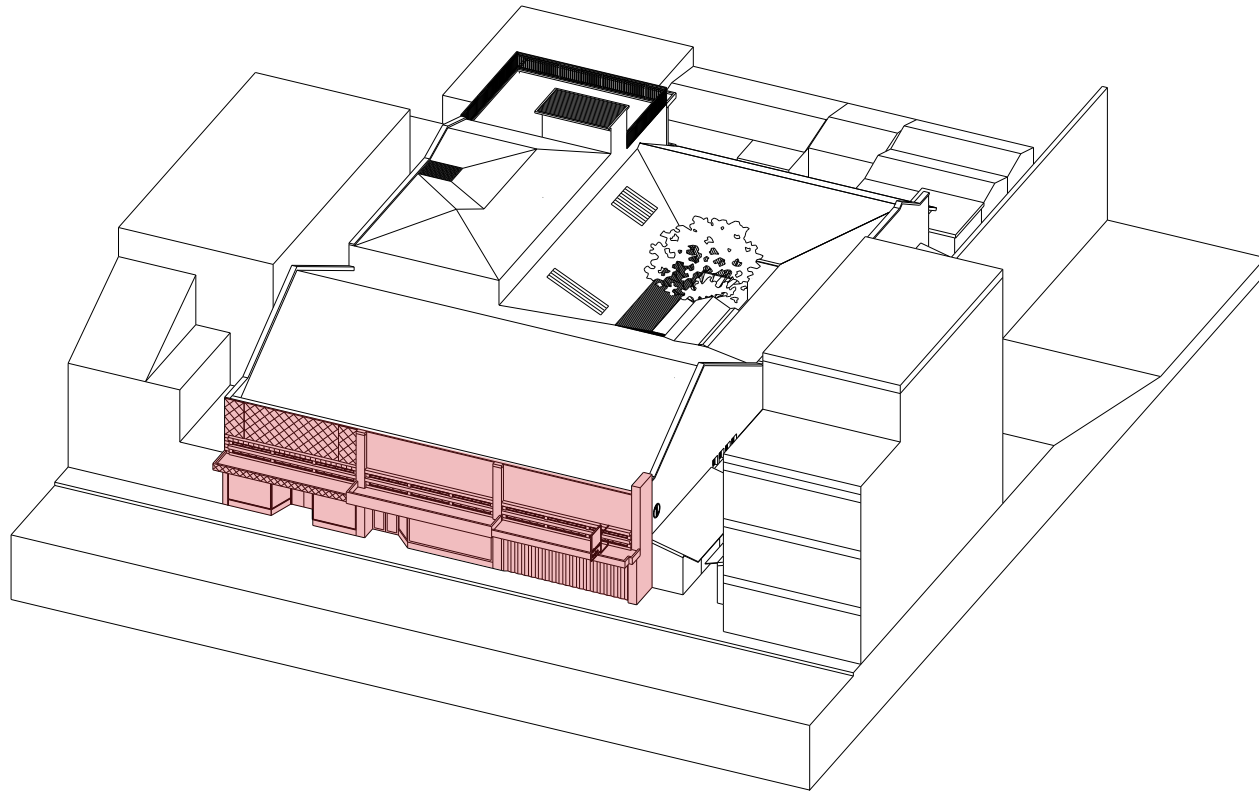
Alley next to building
Low density Kampung
Closed street facade



Urban Sprawl



Cultural Values



Original shop-window

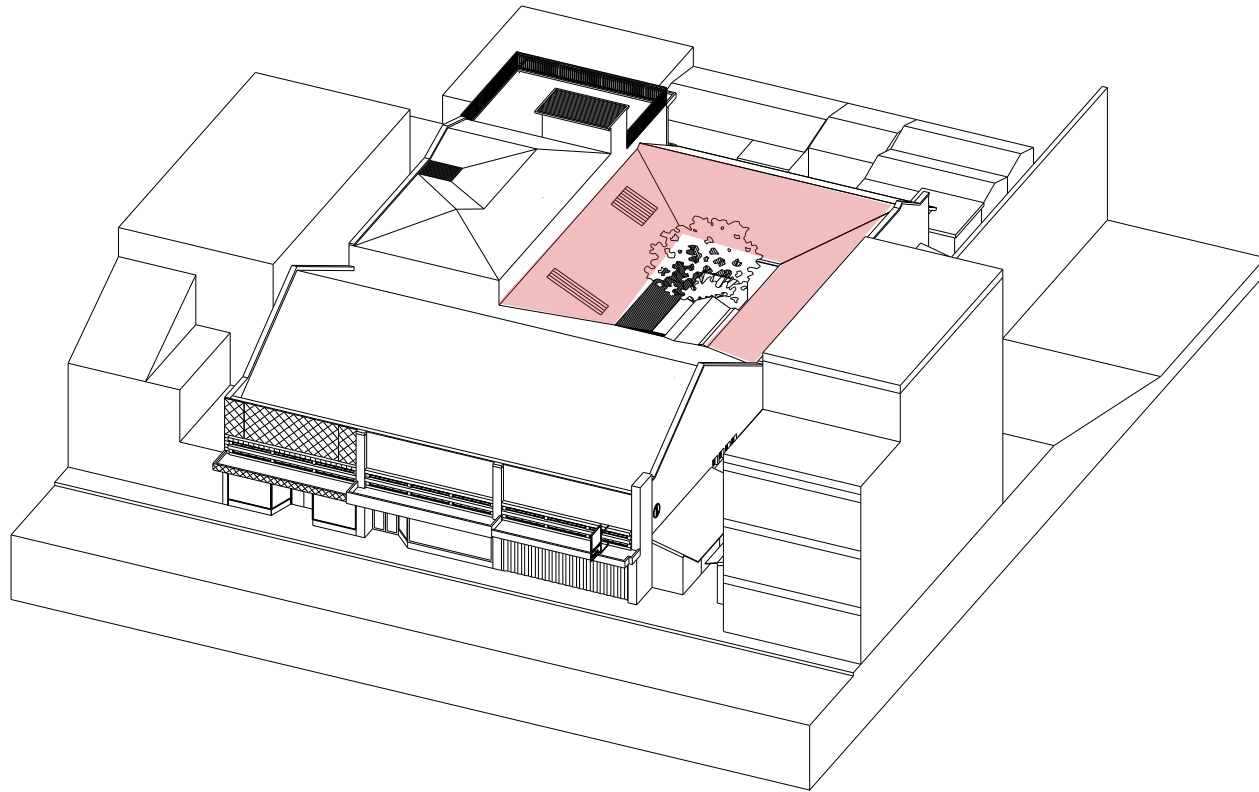


Stained glass



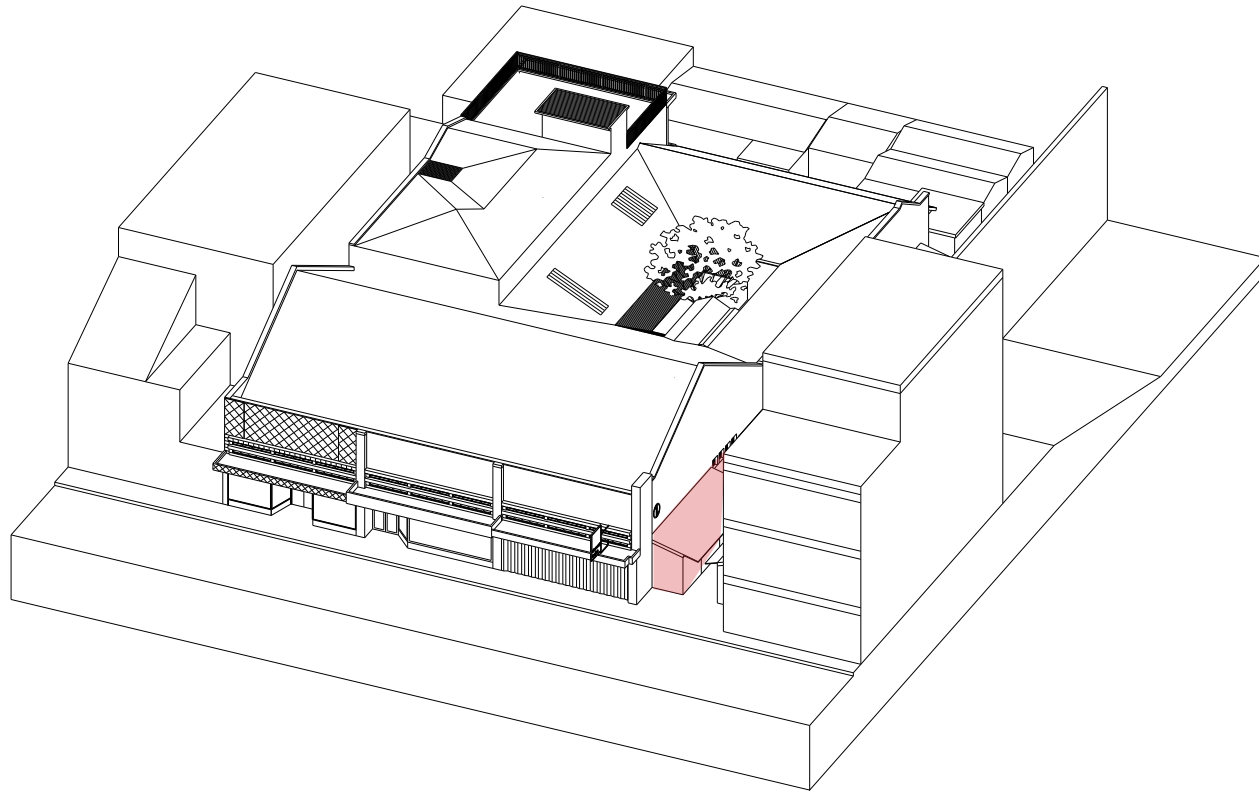
Original flooring

Cultural Values



Enclosed character

Cultural Values



Kampung shopping street

Current state

Why keep it?



Closed courtyard

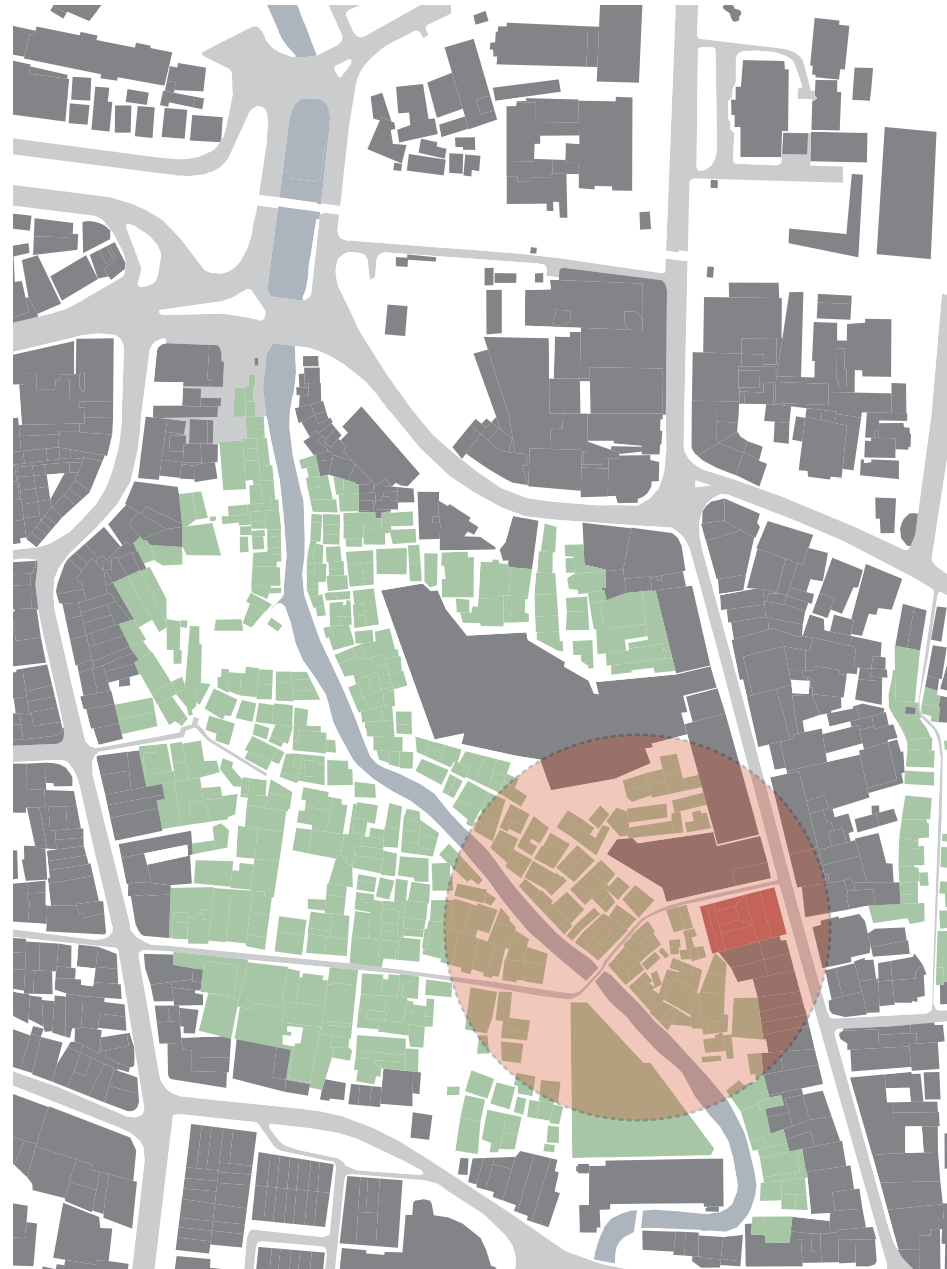


Crumbling walls



Not used

What if?



Ambition of the site

'Creating business opportunities for Kampung Braga and Braga Street thus strengthen both identities.'



Creative industries

'56% of Bandung's economic activities are design-related.'

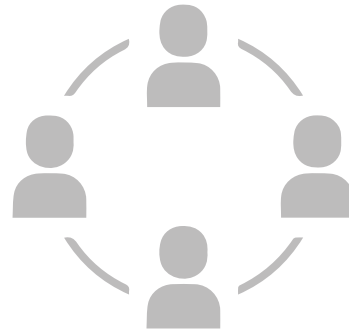


Based on: Mayangsari, R (2017). The Identification and Distribution Patterns of Creative Hubs in Bandung. International Journal of Cultural and Creative Industries.

Why crafts?



Showcasing what the Kampung can do, offering possibilities for the community.



Community of Kampung Braga that contains potential in creativity. Creative Kampung Dago.



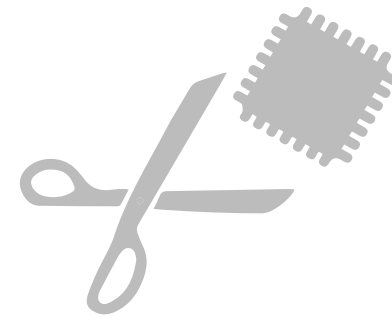
Supporting role of the local government and organisations like BCCF.



Many schools and universities that train students in design related fields.

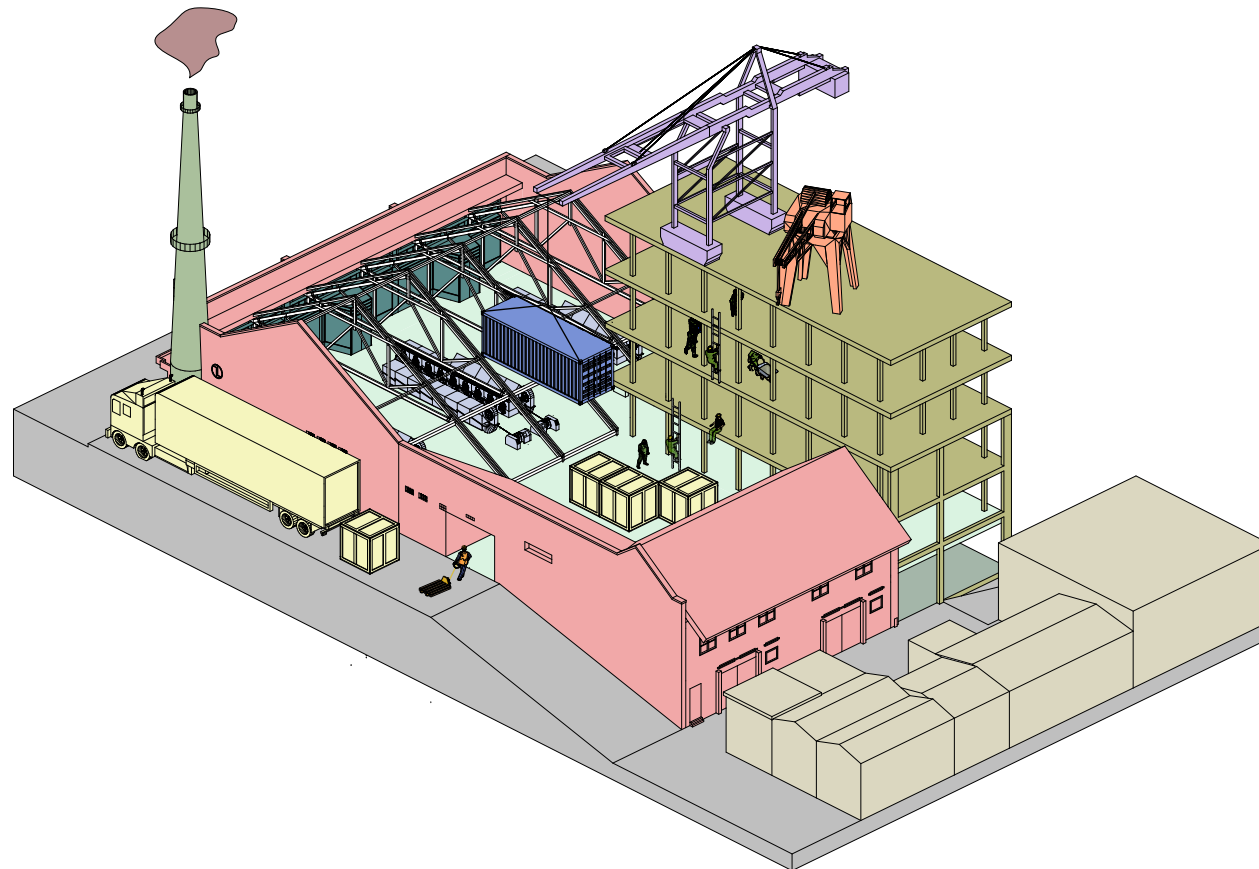


Located within major commercial district Braga with an eye on potential customers.



Encourages making, learning, and commerce. Preserving the values of craftsmanship and handicraft skills that otherwise would go lost.

Ambition

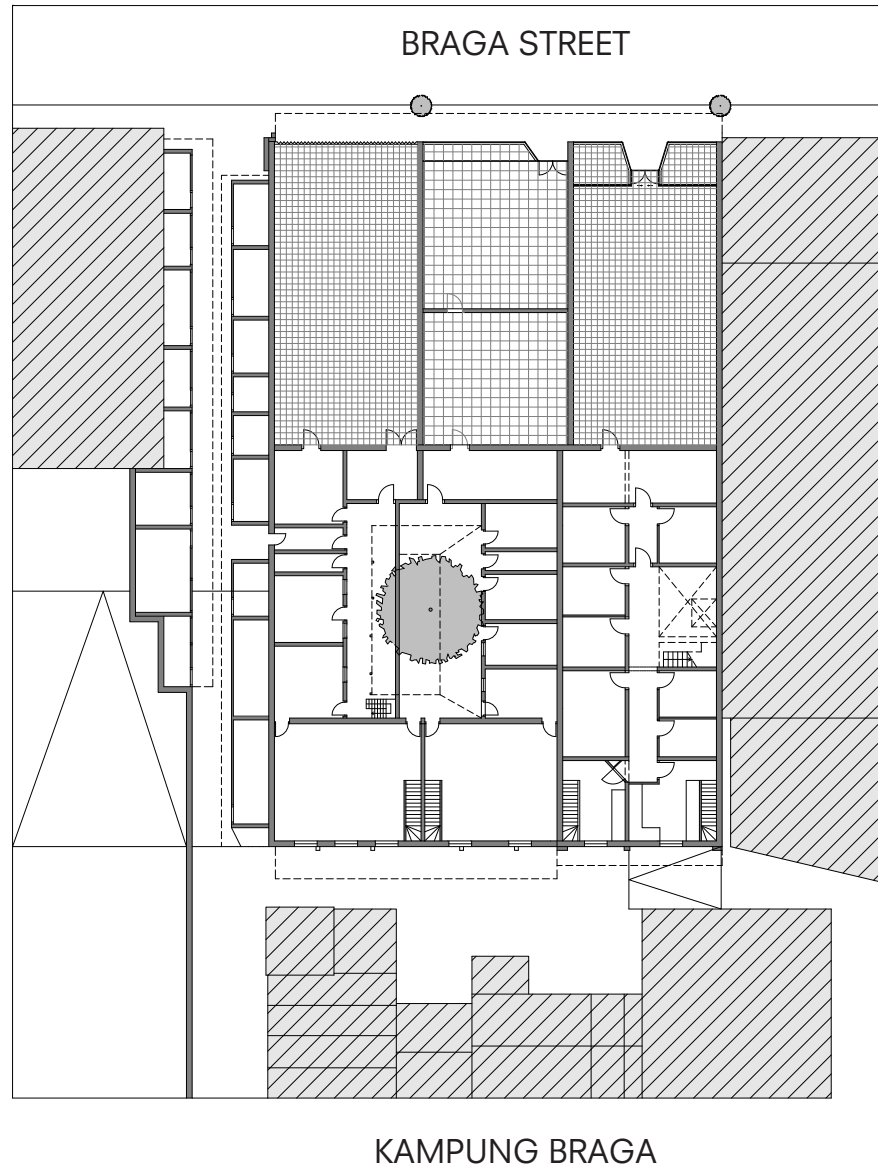


Design Question

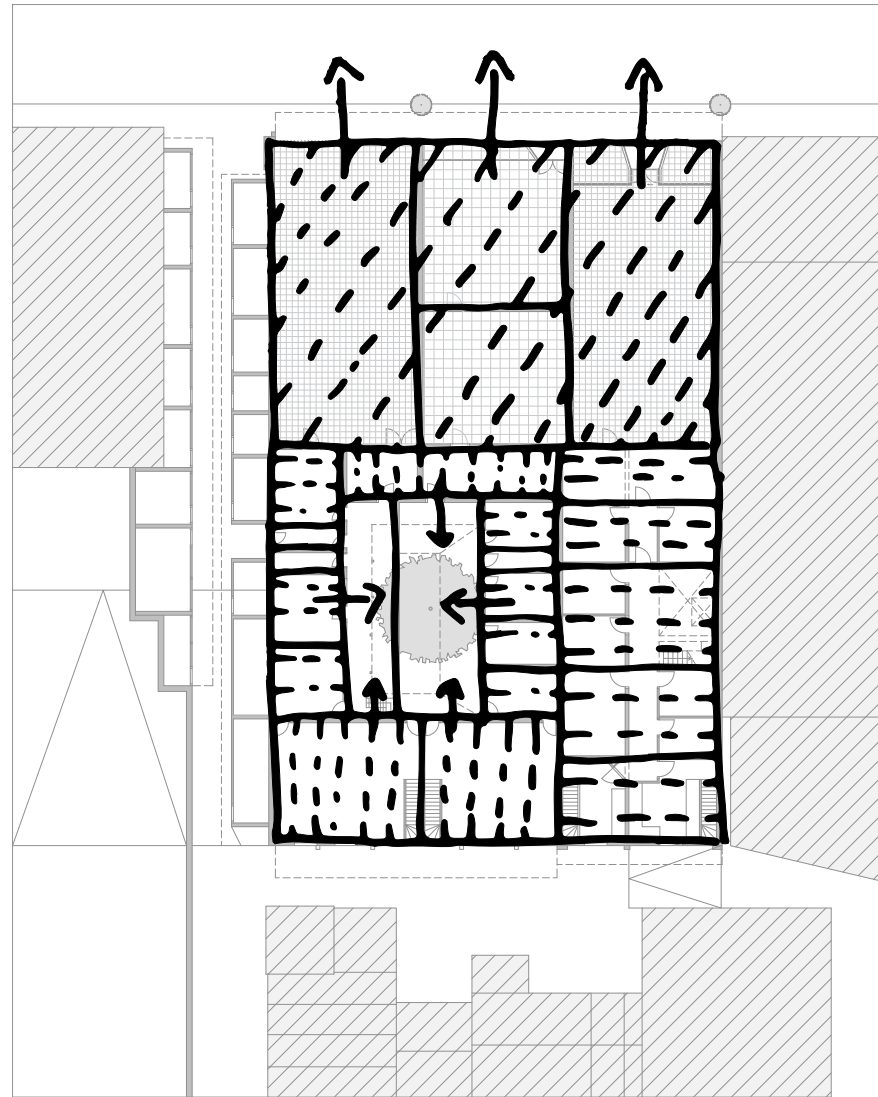
'How can the building be spatially designed so it facilitates the needs of the two worlds?'



Current layout building

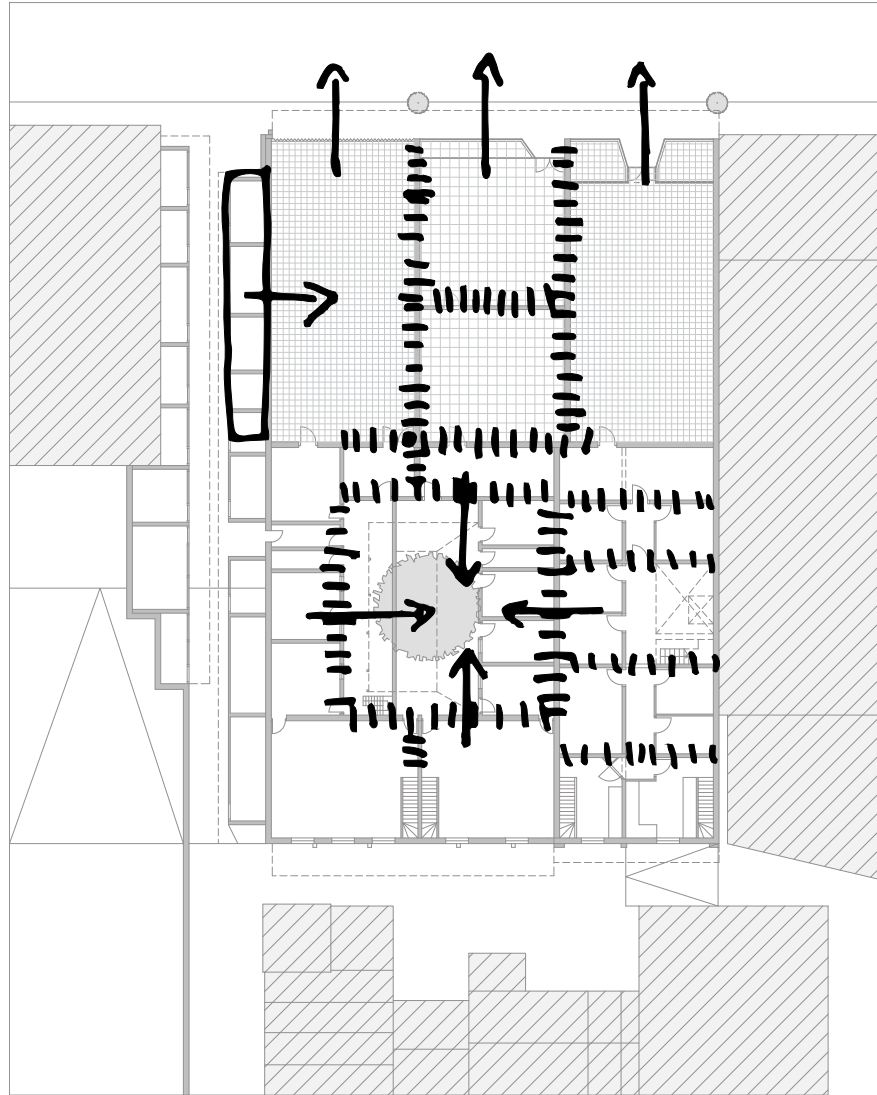


Segmented structure

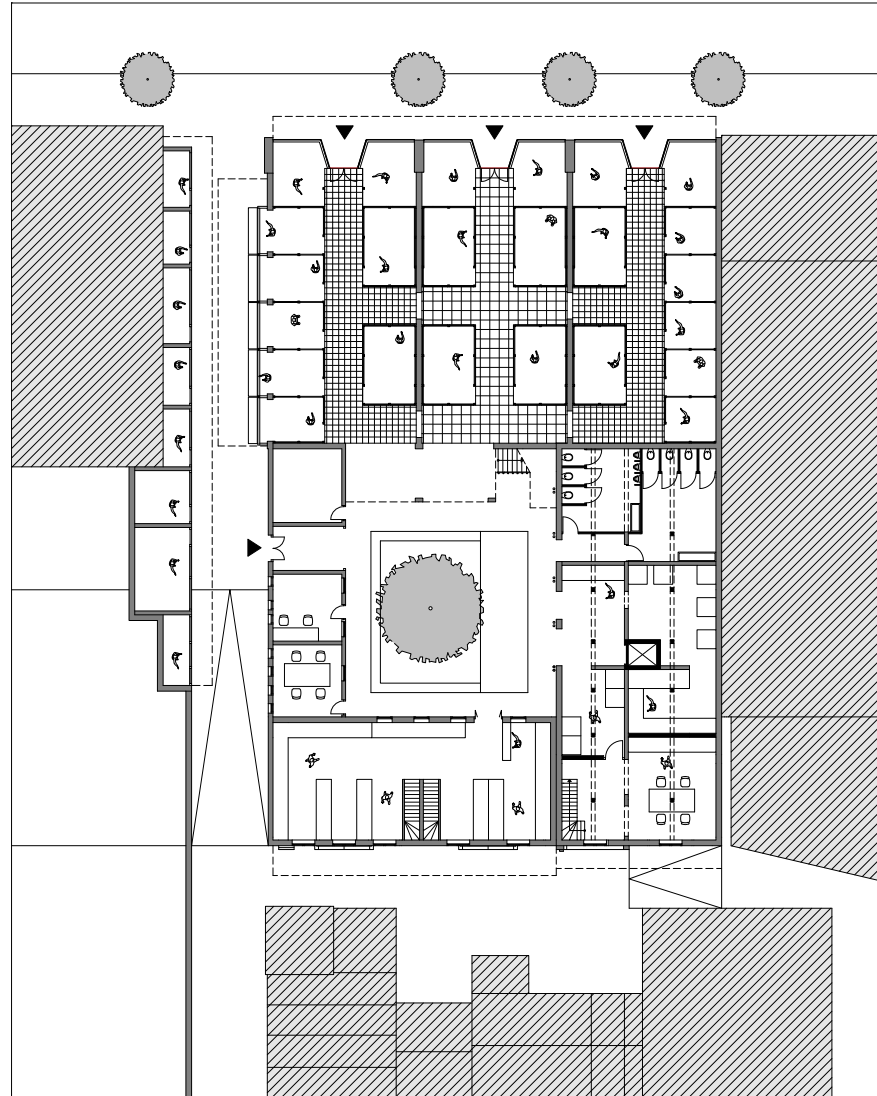


Breaking open structure

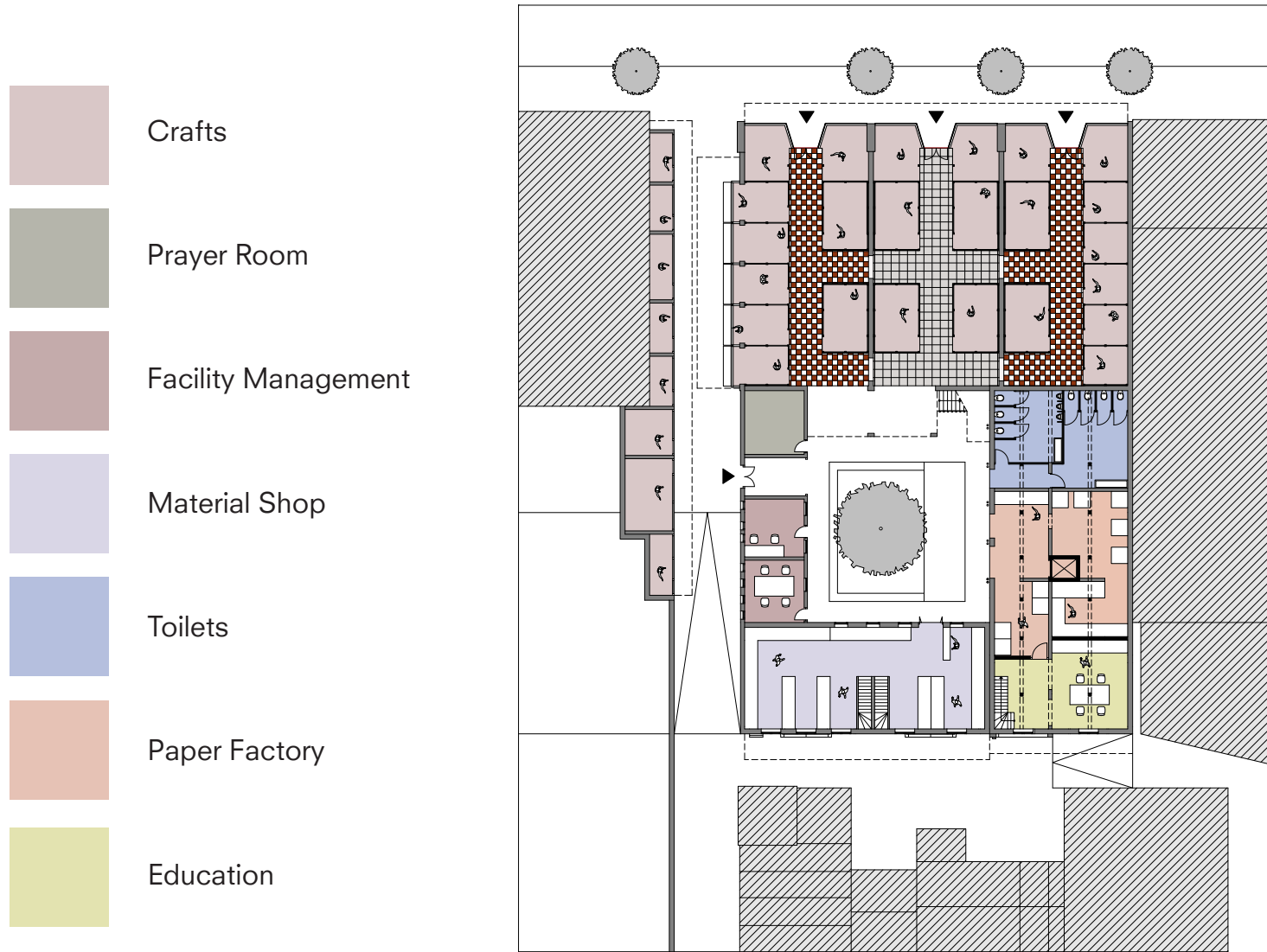
Create Air & Light



New Use

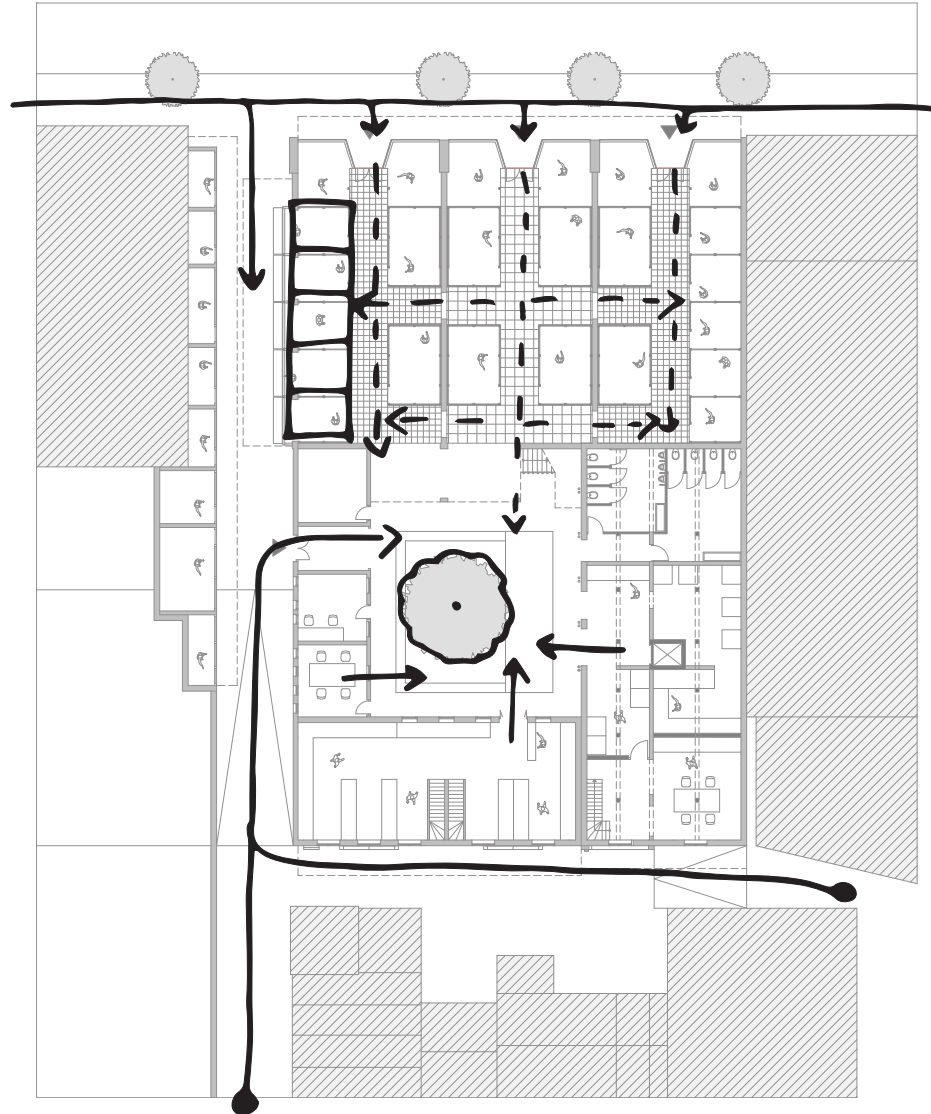


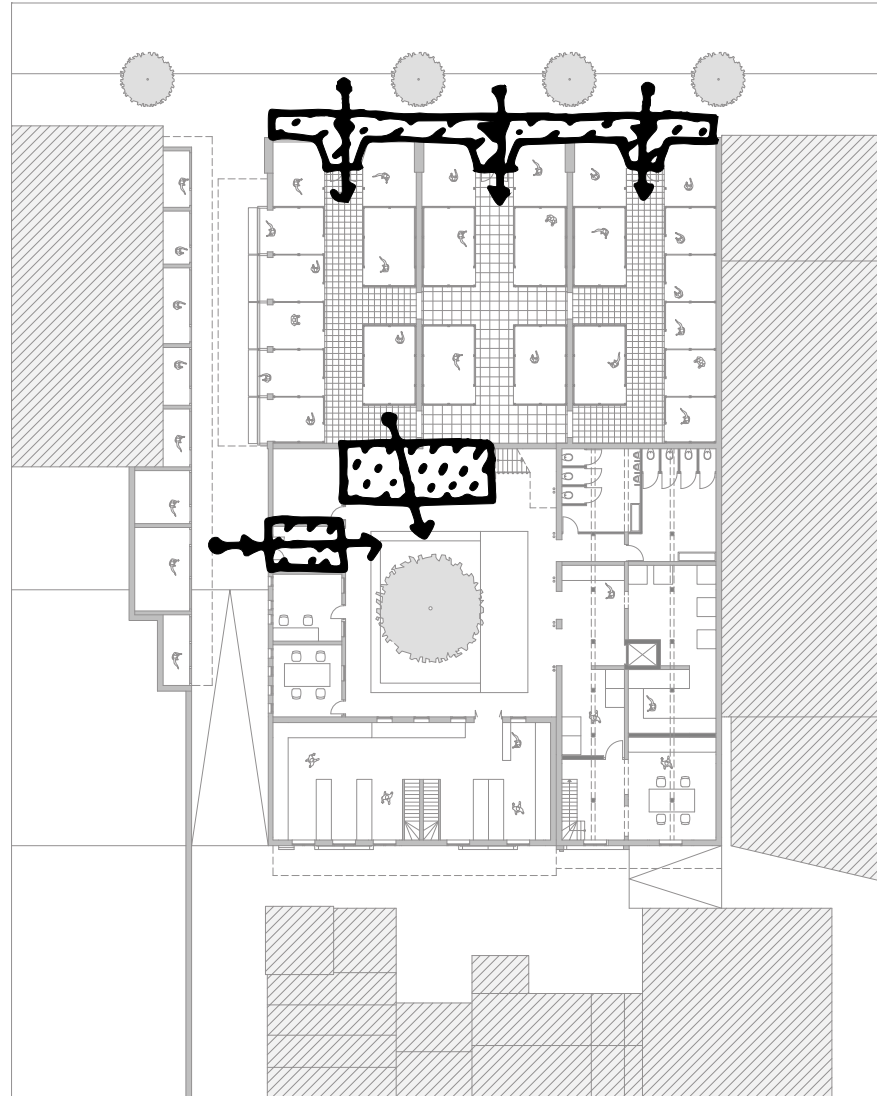
New Use



Connecting the building parts

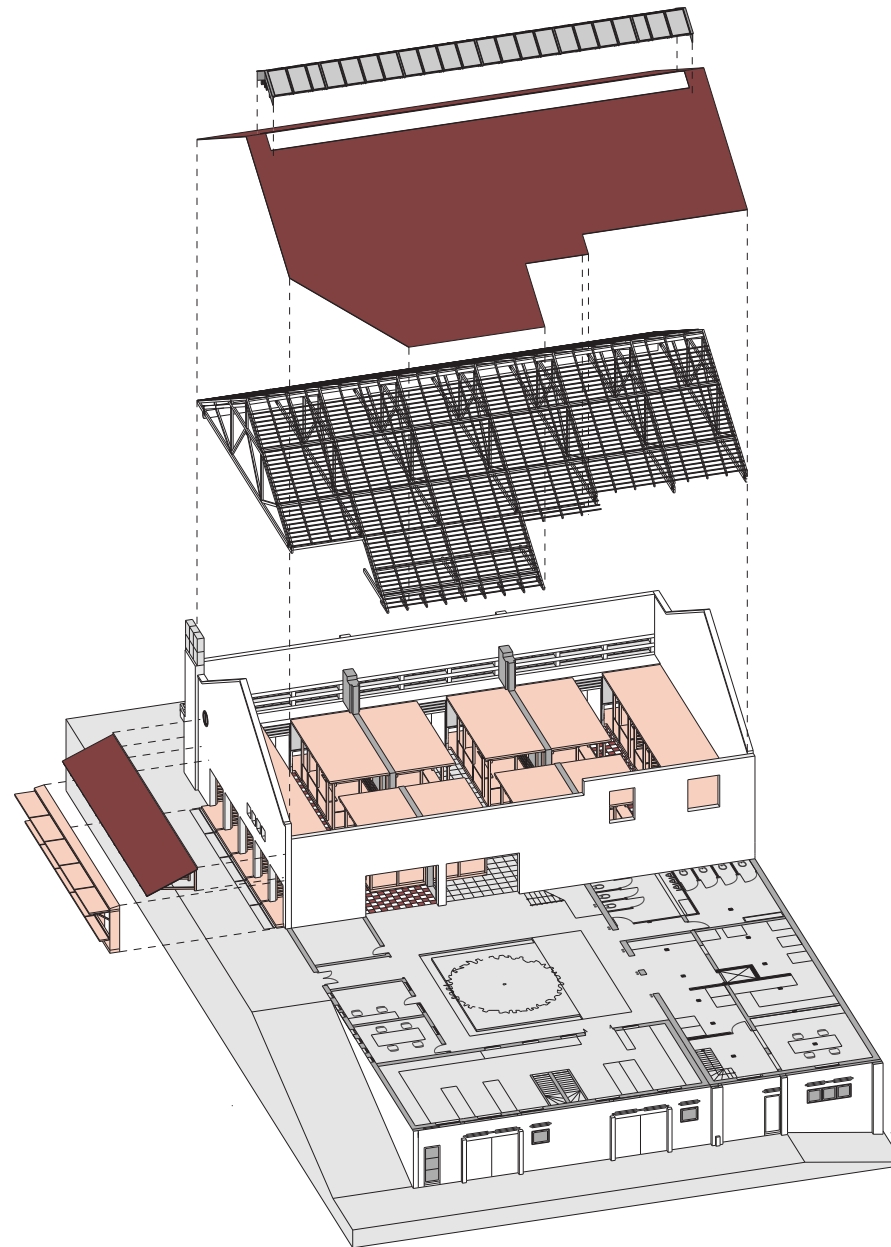
Shops pushed inside
Creating visual connections





Crafts market

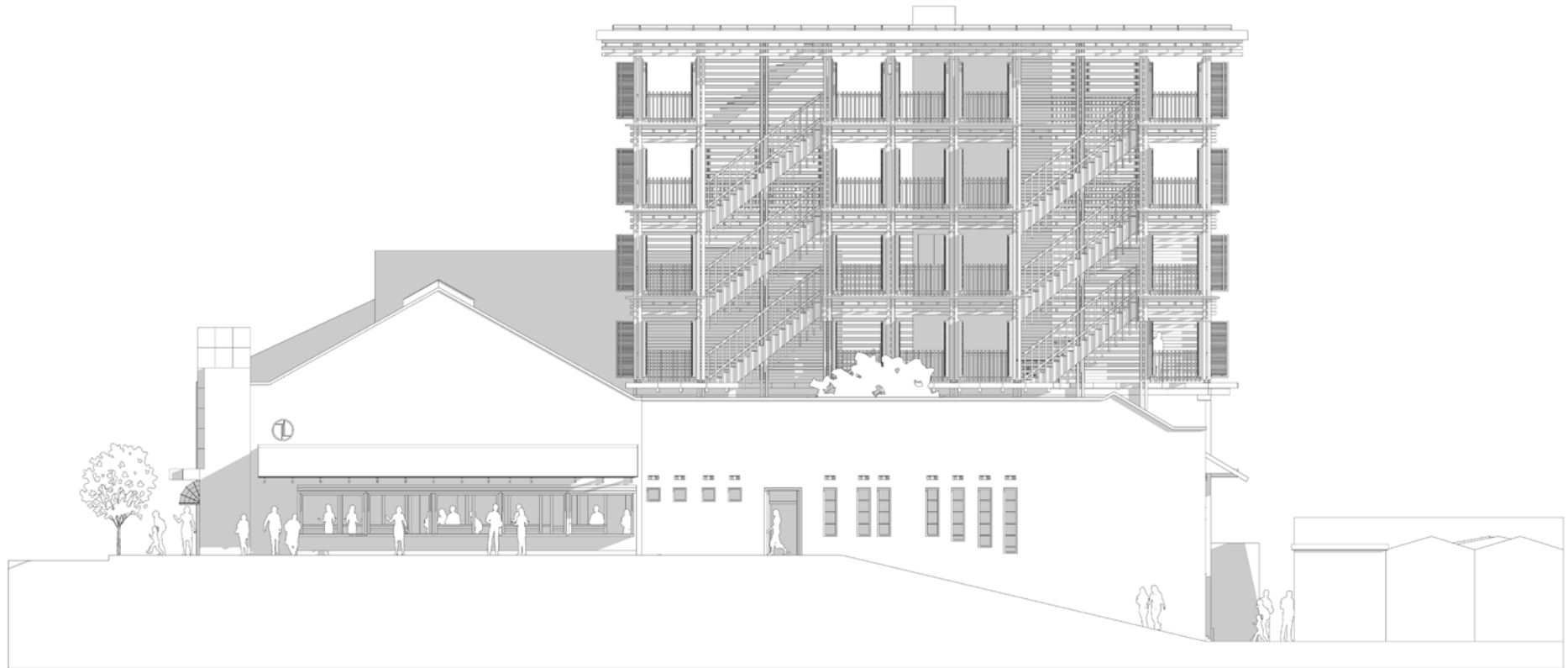
Pushing shops in
Adding daylight
Showing construction



Impression of Kampung shopping street

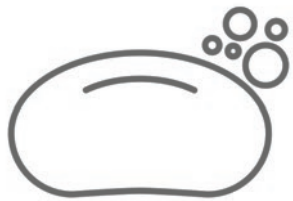


Facade of Gang Cikapundung



Crafts market use

Sell to other shops in Braga St.



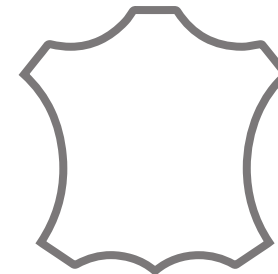
Soap



Textiles



Painting

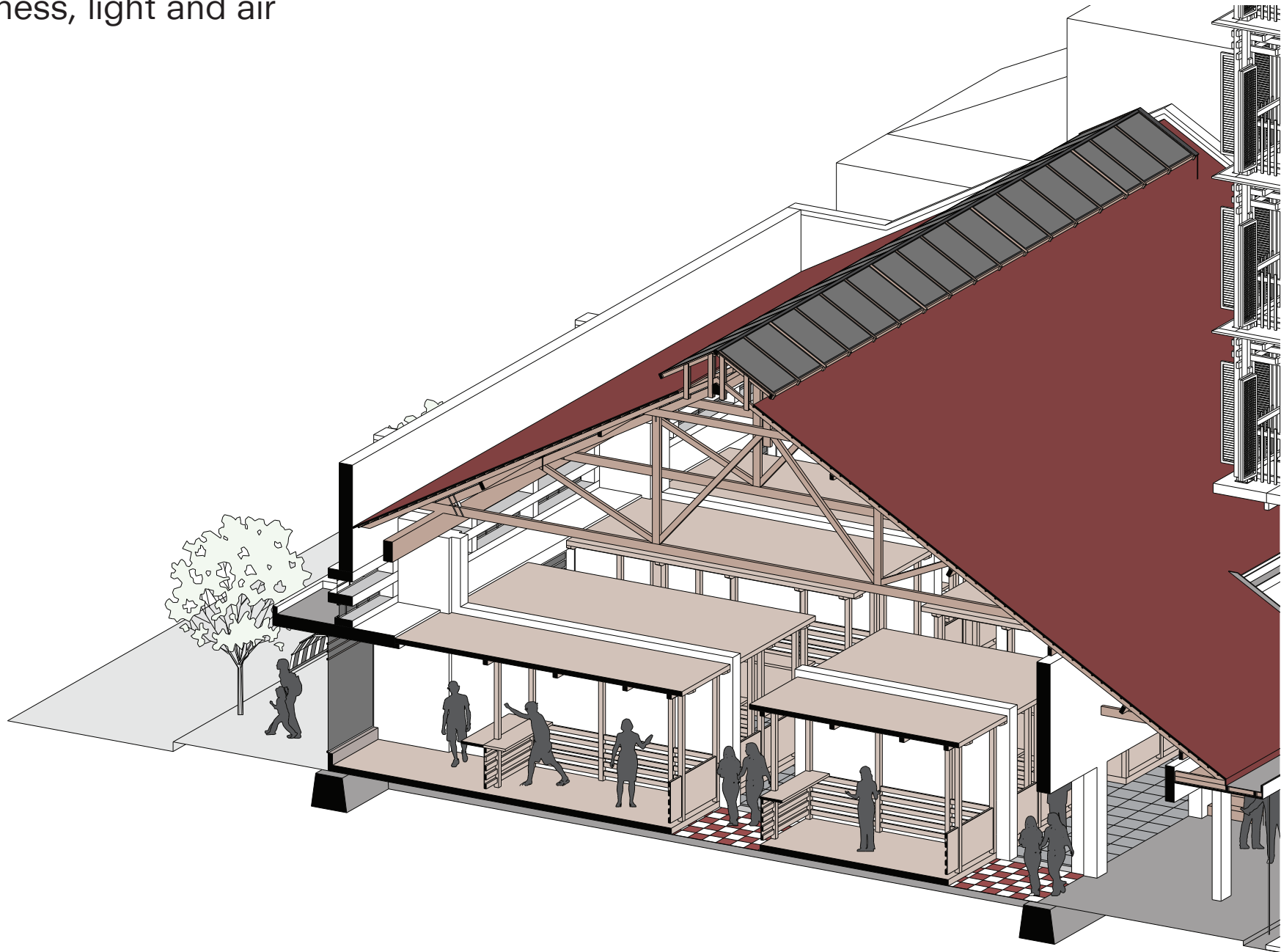


Leather crafts

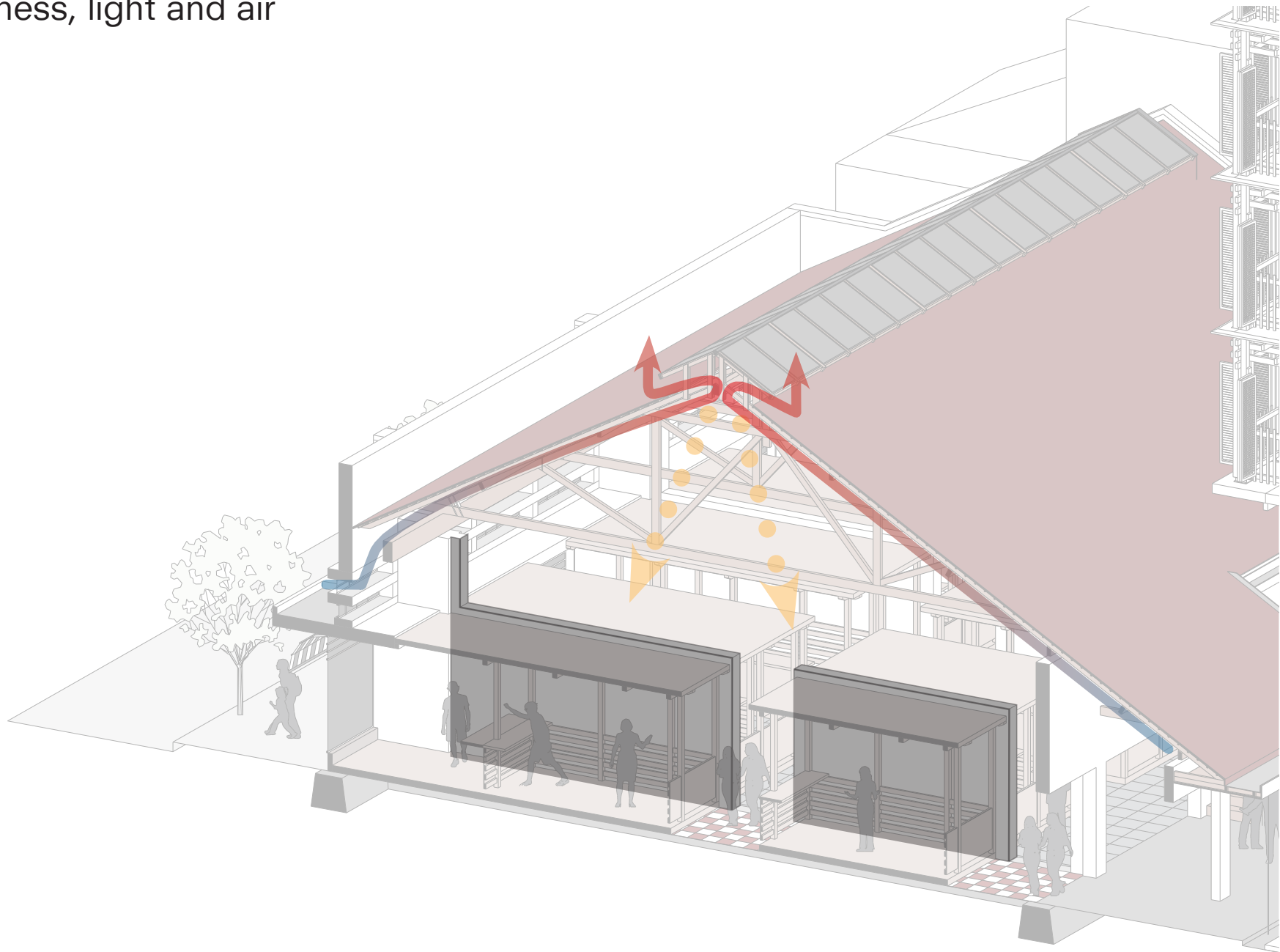


Ceramics

Openness, light and air



Openness, light and air



Impression sketch

Sensing the entire space
Three shops still recognisable
Light emphasizes construction

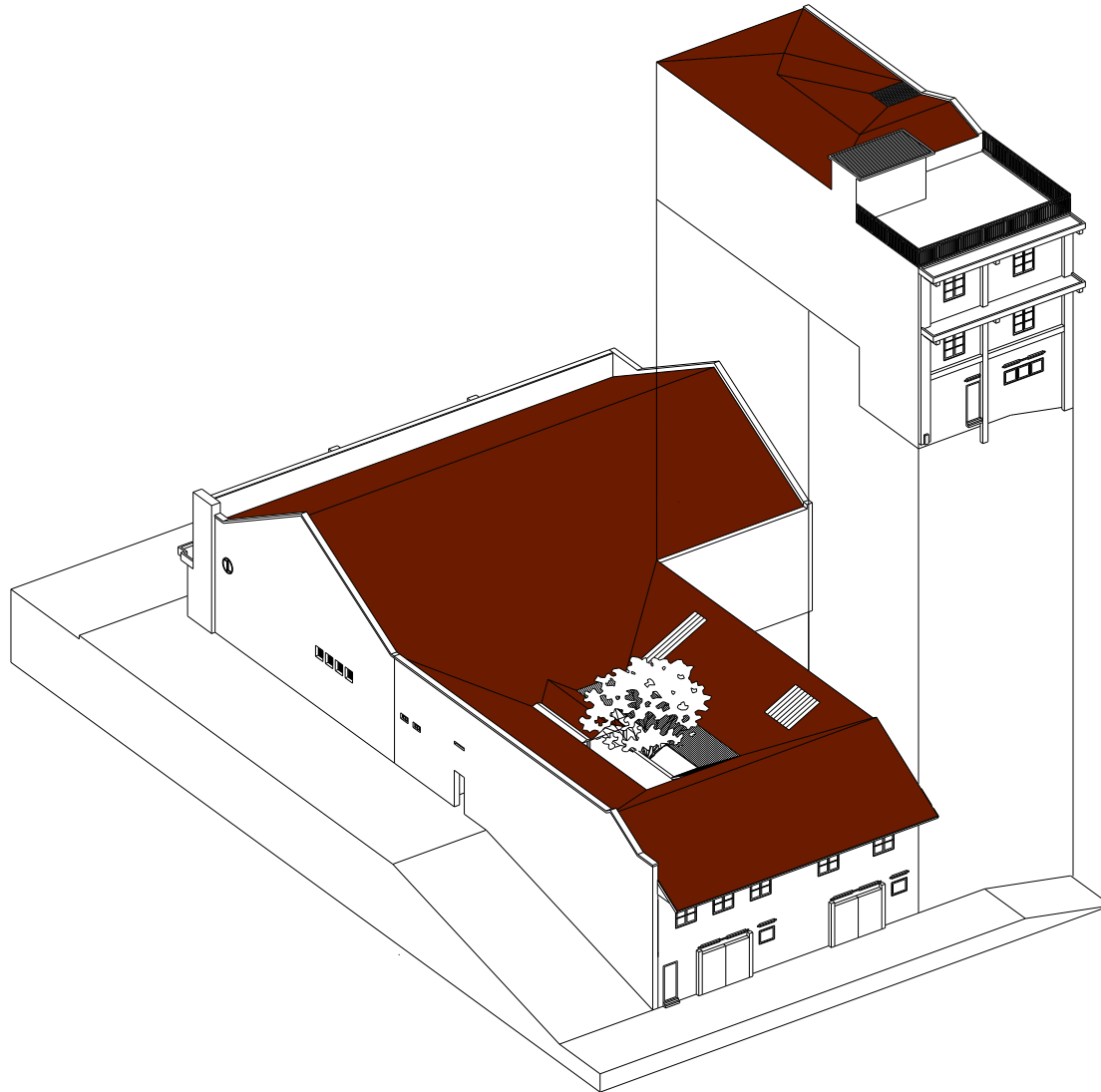


Impression sketch



Need for more space

Why?
Have a larger affect on the Kampung
Creating a place for larger objects
Making wood-works for own use
Current 50s structure as alien, incentive to change



Offering space to create larger crafts, also for own use.

Bottom up approach for Kampung
Lack of material in Kampung



Kampung improvements by the
community themselves

Generating income



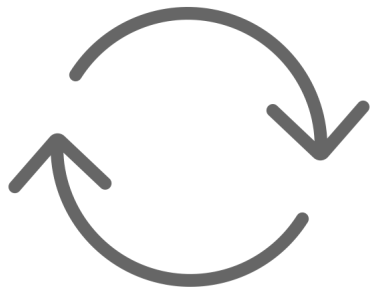
Stimulating creativity



Preserving knowledge

Process

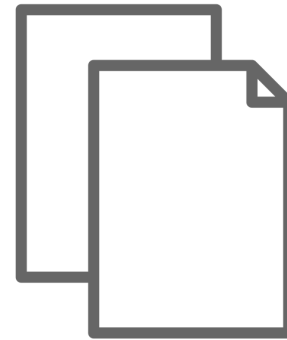
Painters use paper as canvas



Circularity of waste



Wood chips



Paper production



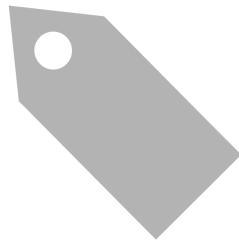
Recycling paper

Programme

Workspace wood crafts



Exhibition space to display crafts and sell



Coffee corner with viewpoint



Paper facility



Process of paper making

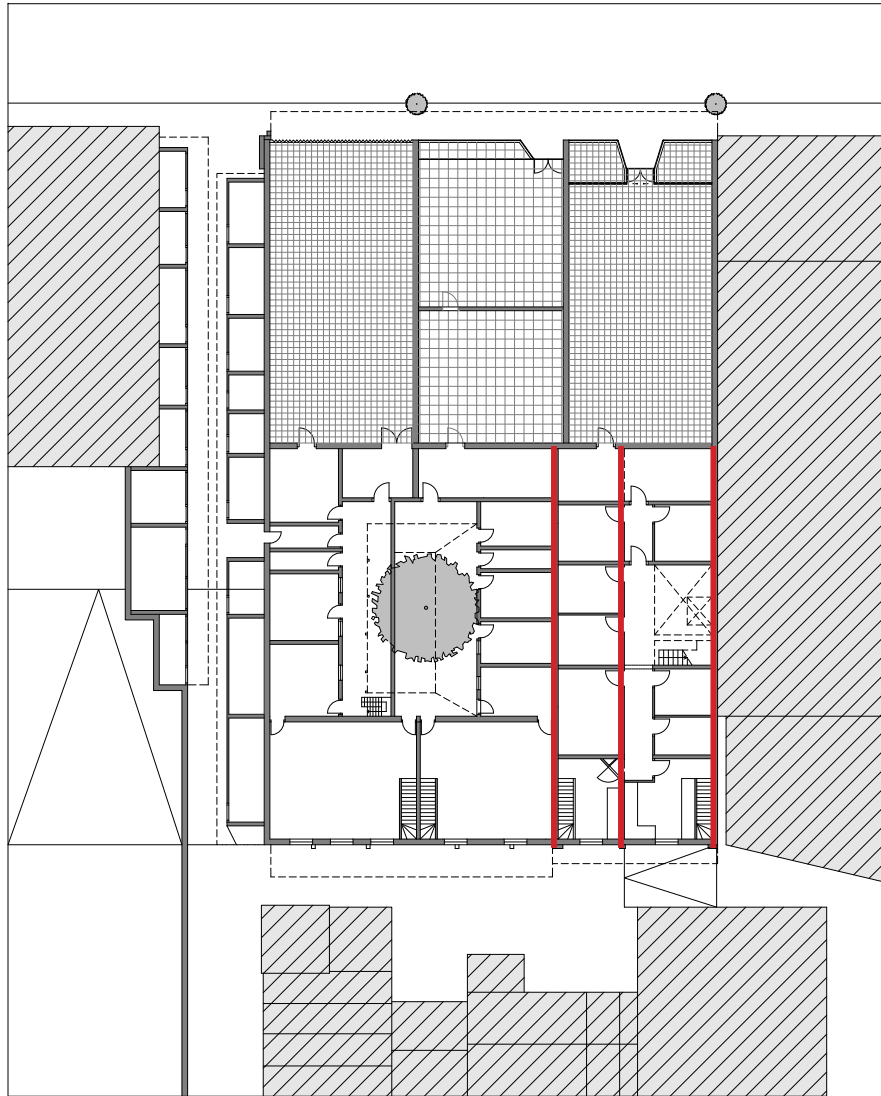


Process of paper making



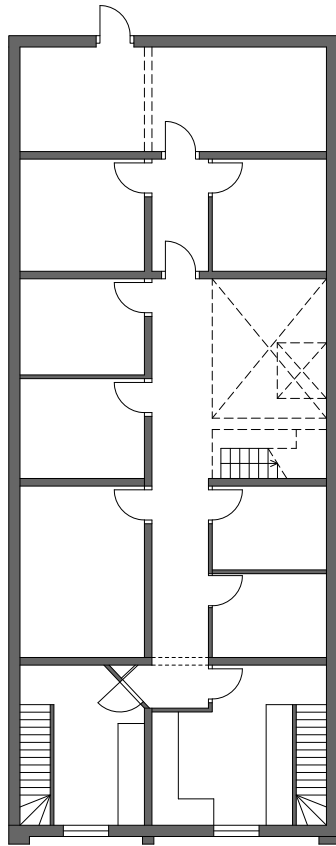
Existing structure

Why keep the structure?
Valuable
Embodied energy in existing structure
Difficult to remove, dense area

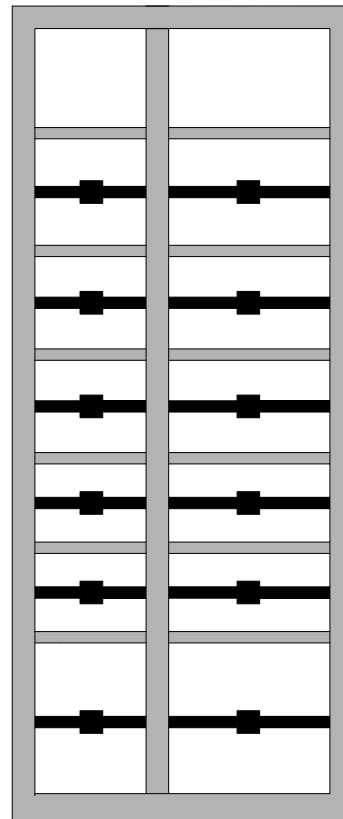


Construction

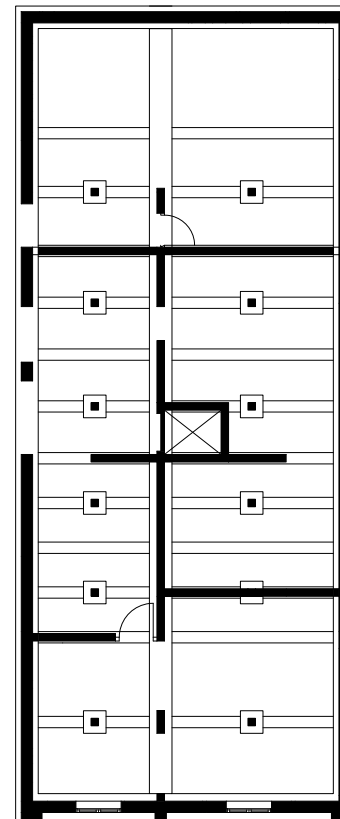
Spreading the weight
Reinforcing floors
Following existing construction



Existing Floorplan

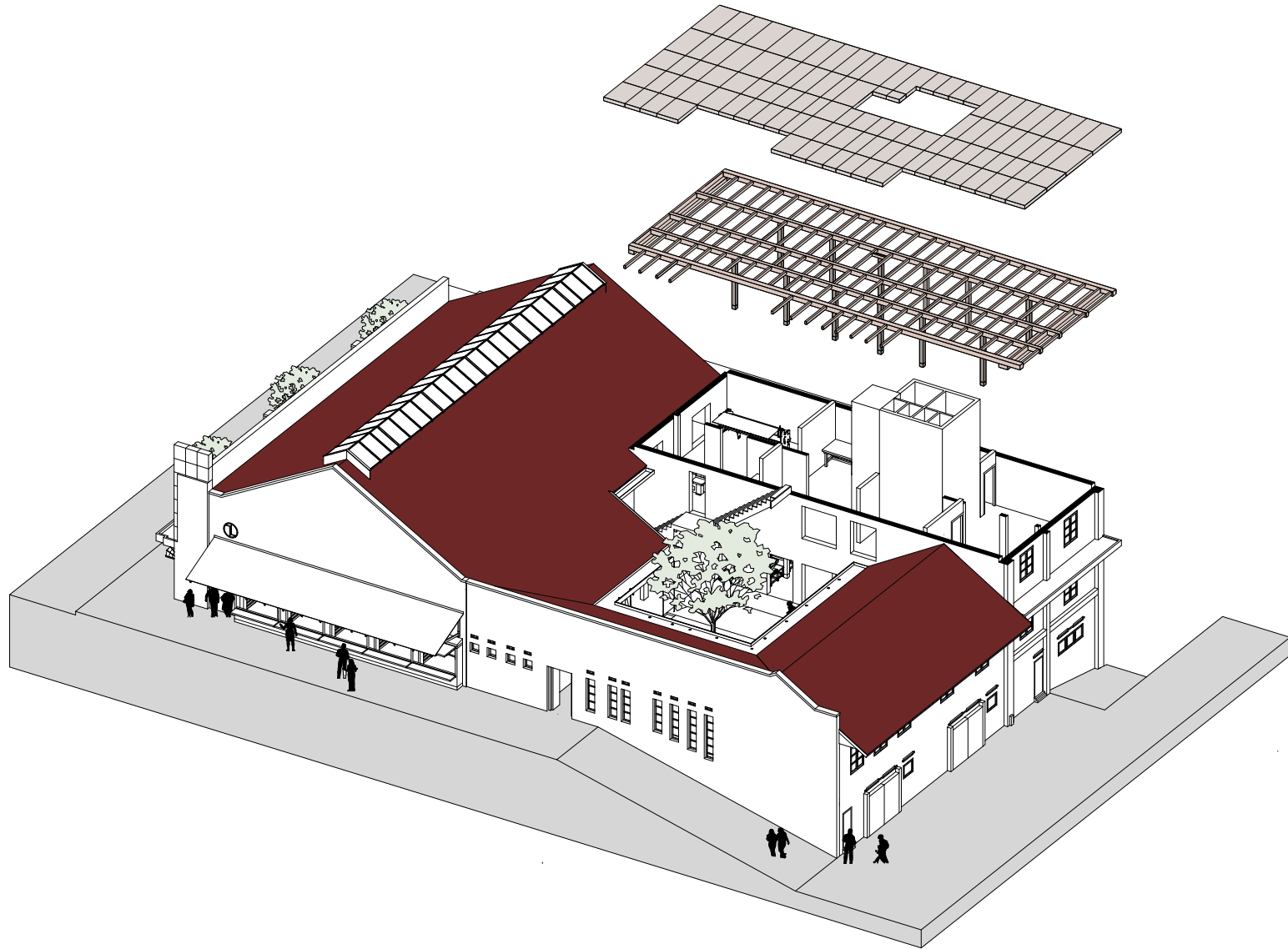


Foundation with new elements

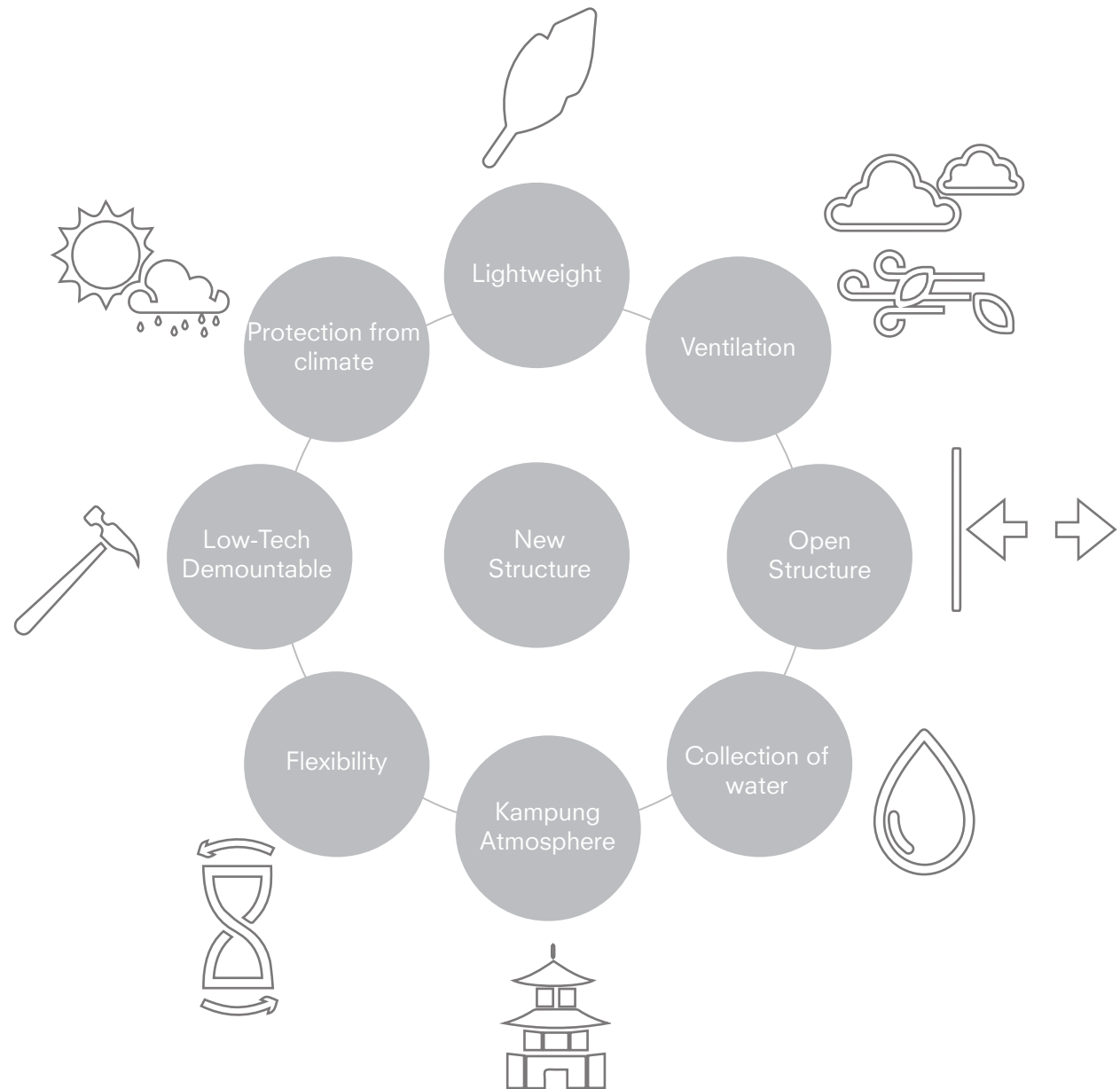


New Floorplan

Supporting Structure



Approach



Inspiration



Vernacular Javanese
'Pendopo' & 'Joglo'



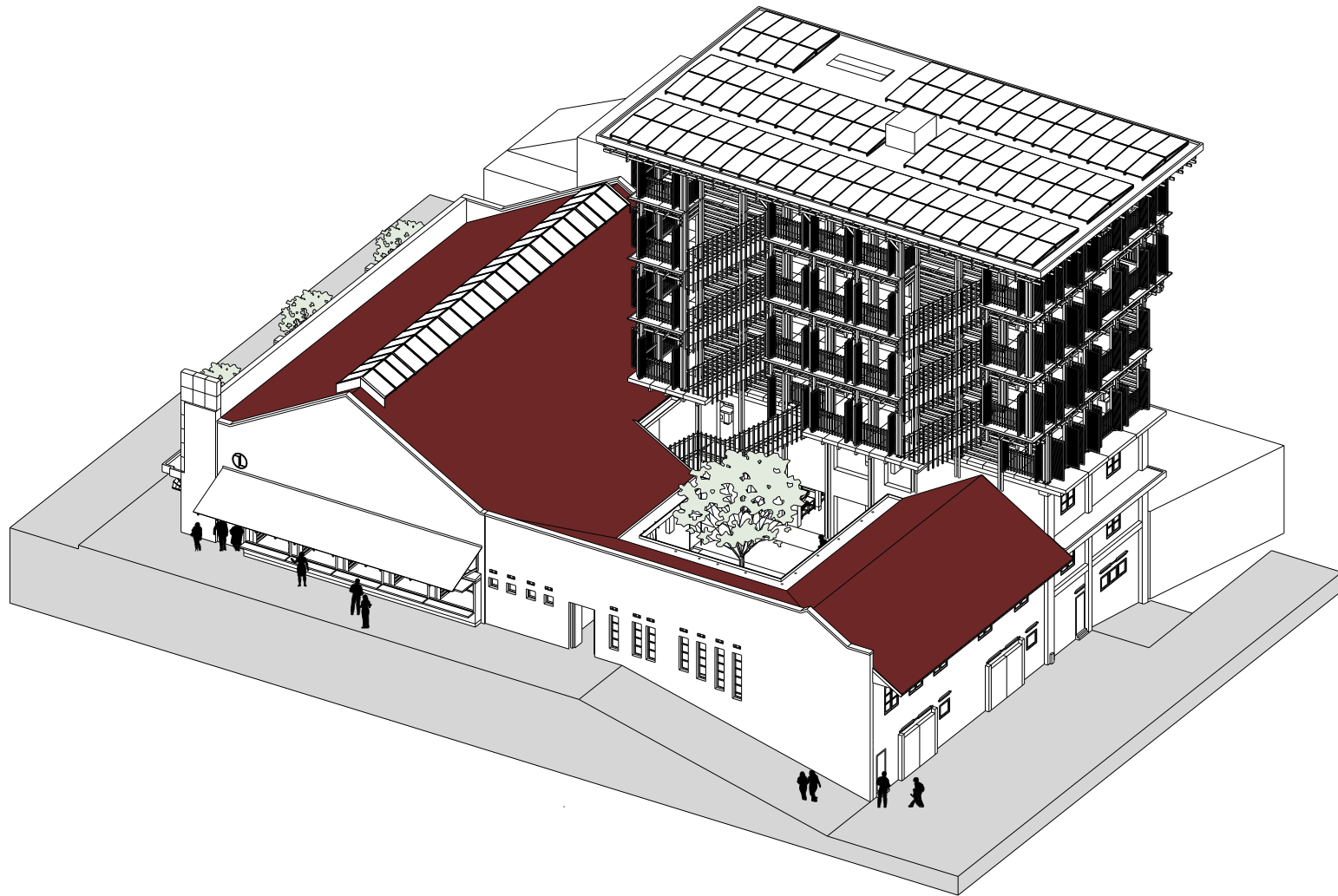
Modern Vernacular in Kampung
Braga



Open structure
Kengo Kuma | Wooden bridge museum

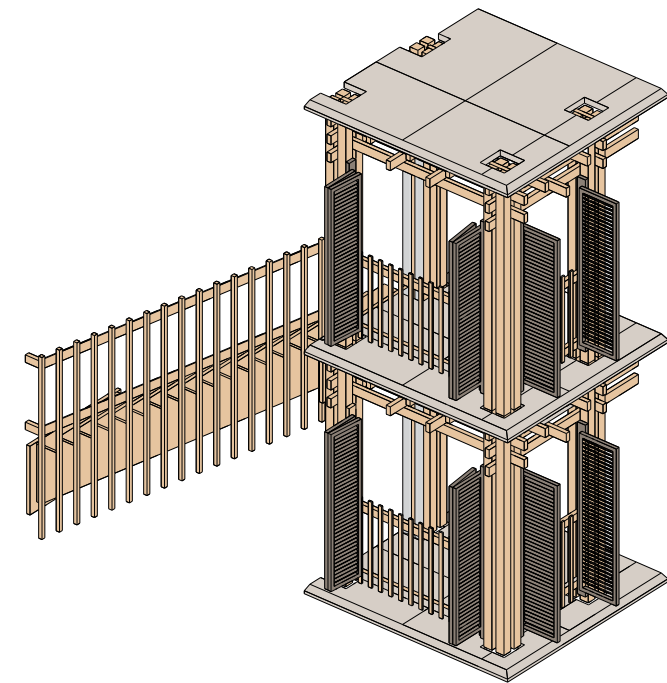
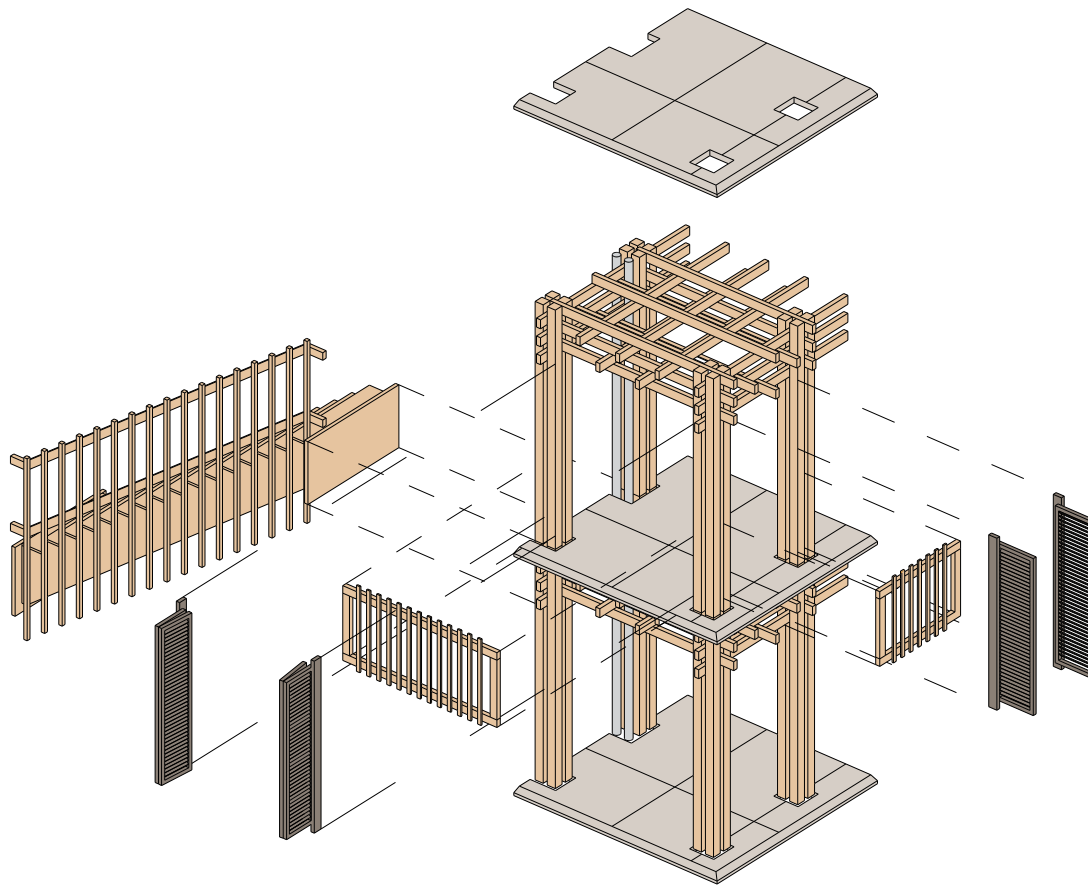
Showing the Two Worlds

Rise of the Kampung



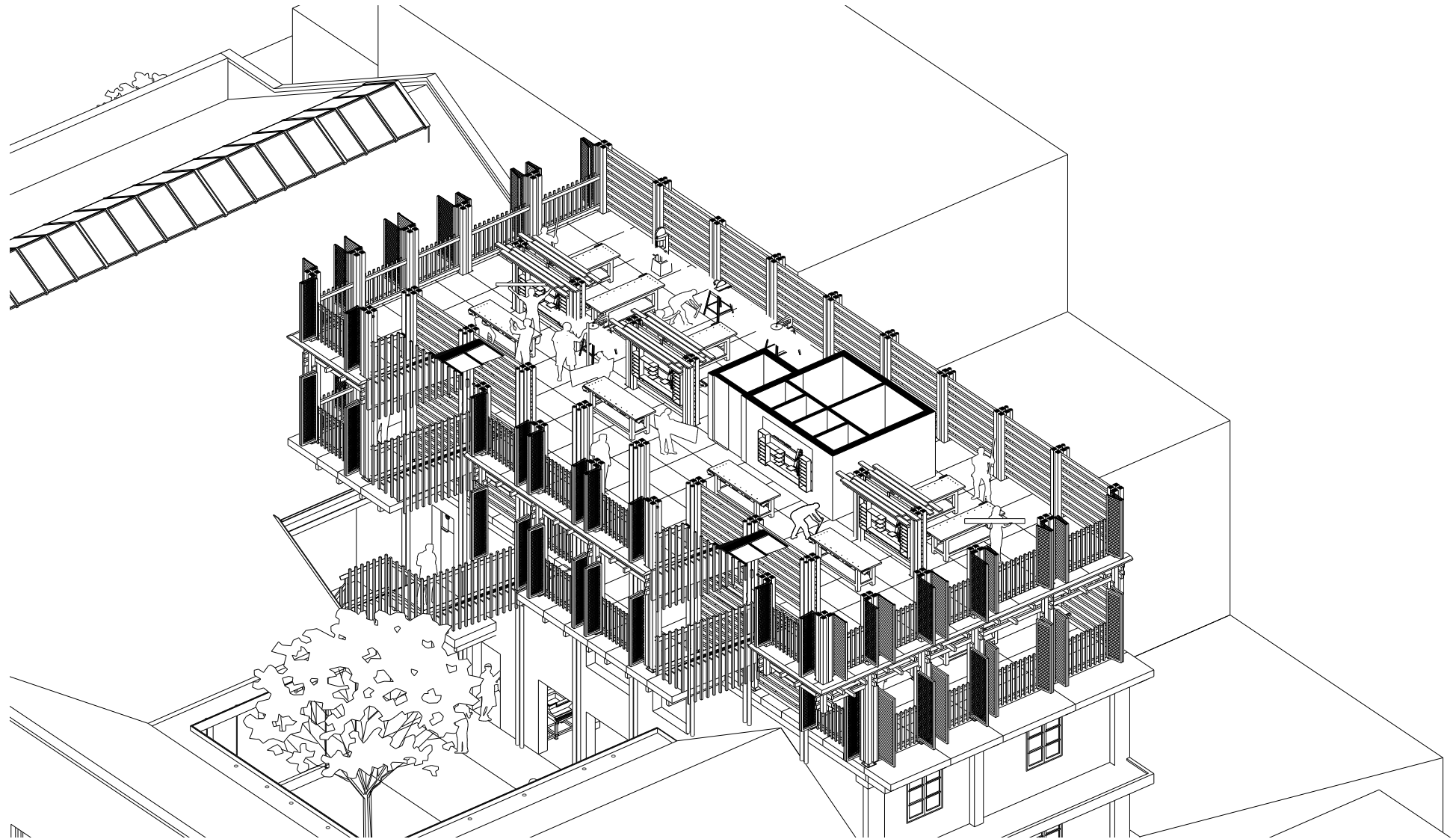
Stacking of construction

Open structure, views on Braga District
Connecting elements to column
Creating shade through overhang
Balustrades, Shutter closable in case of storms



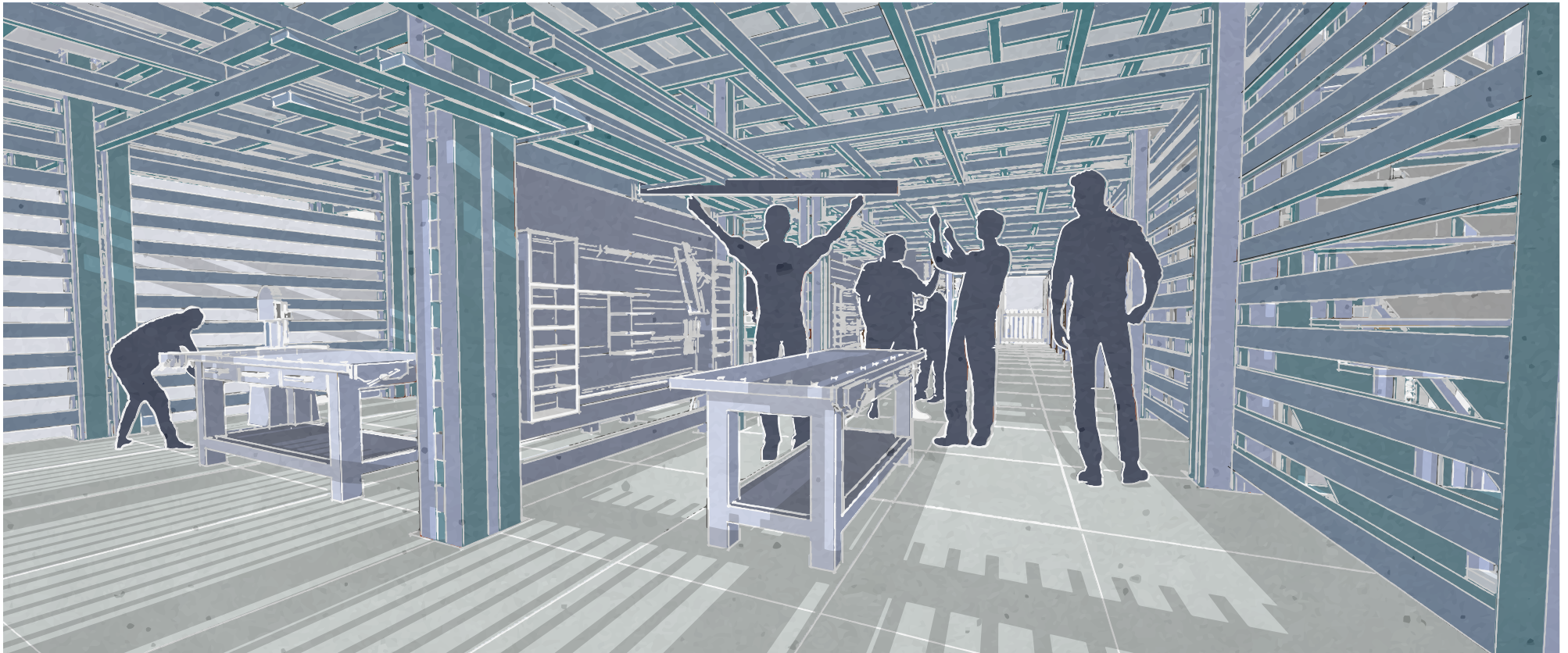
Use of the stacked floors

Flexible use of space, using the columns for tools
Adaptive, adding partition walls

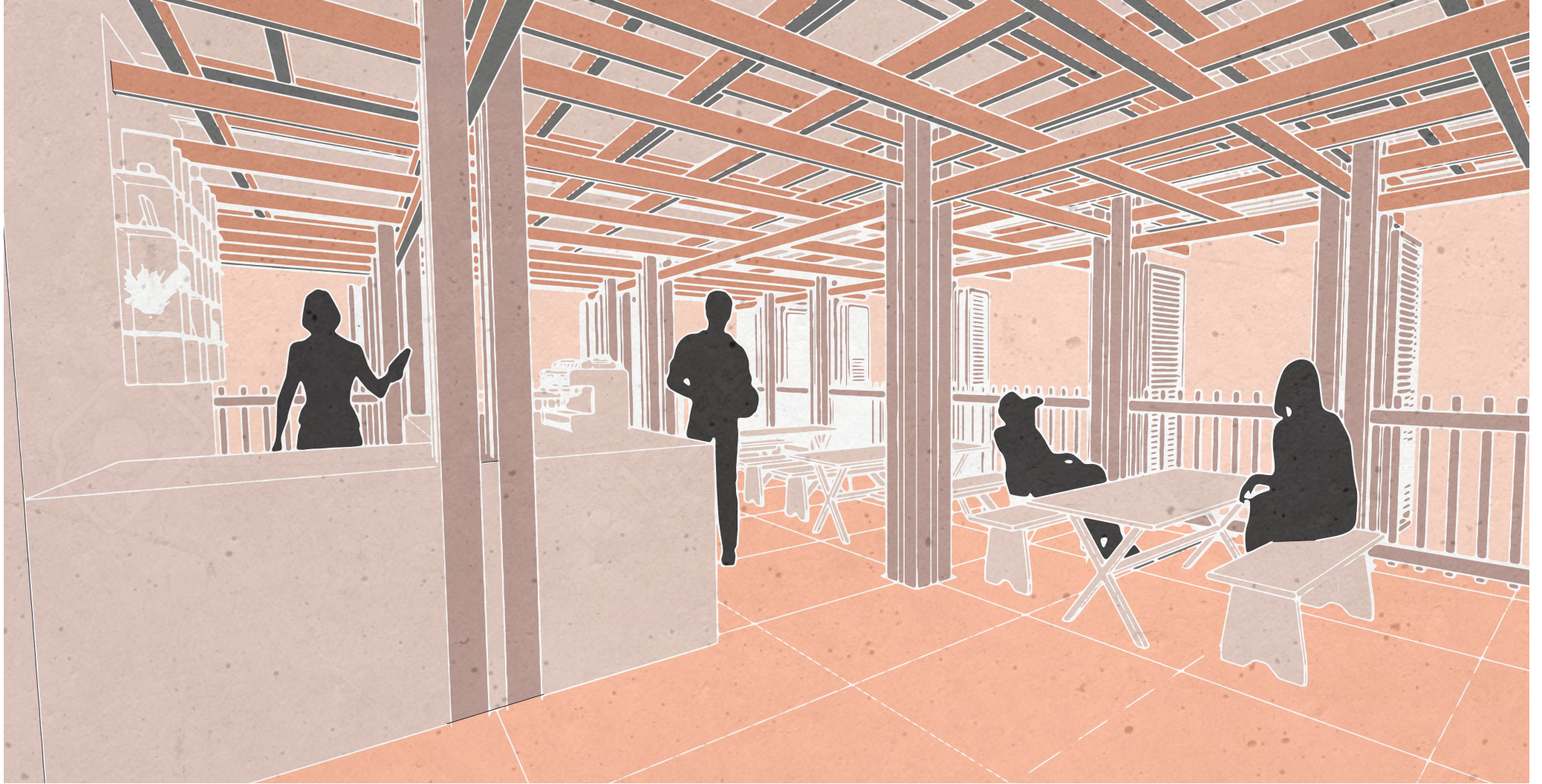


Impression of workspaces

Create but also display



Public Space

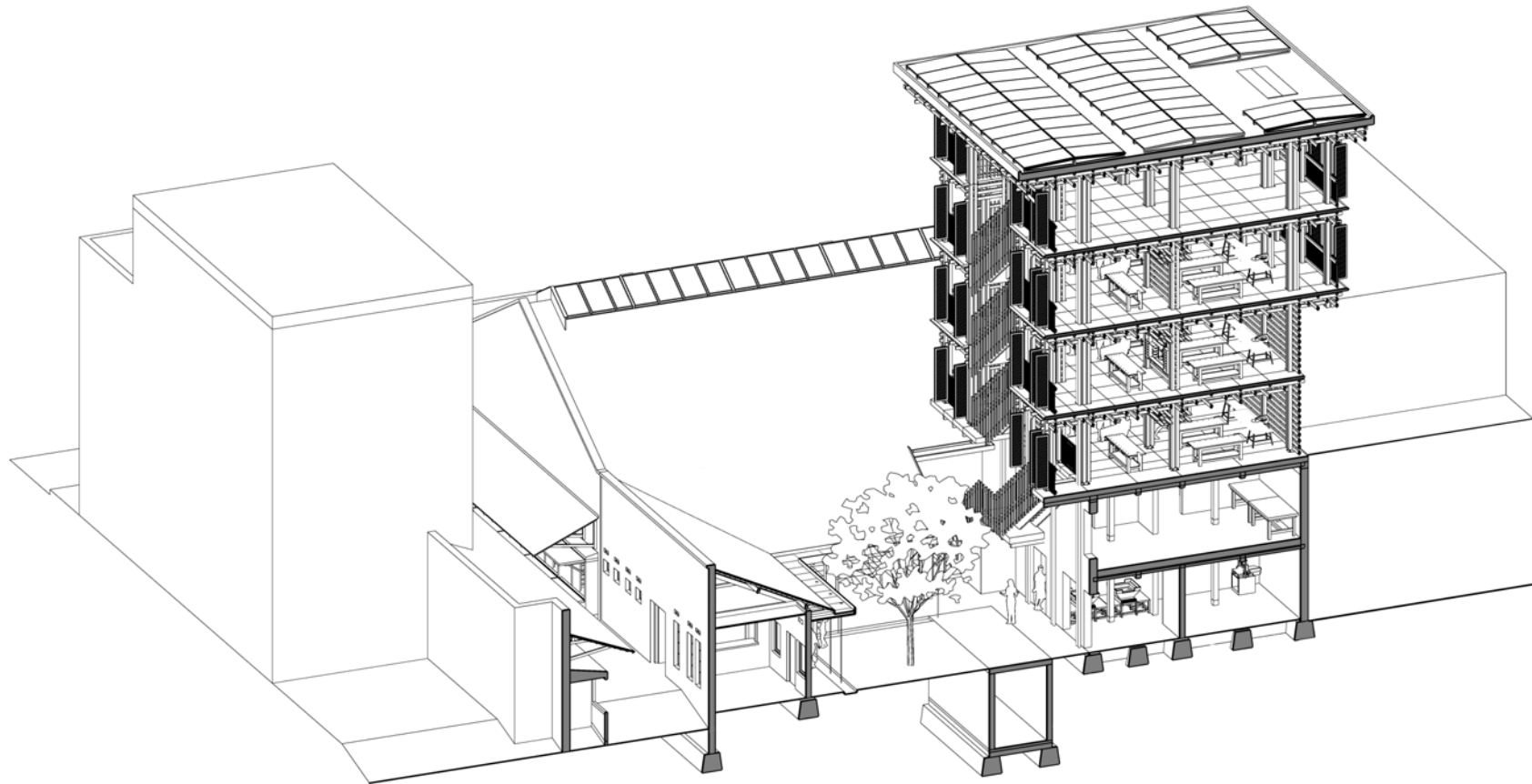


Possibilities for large objects

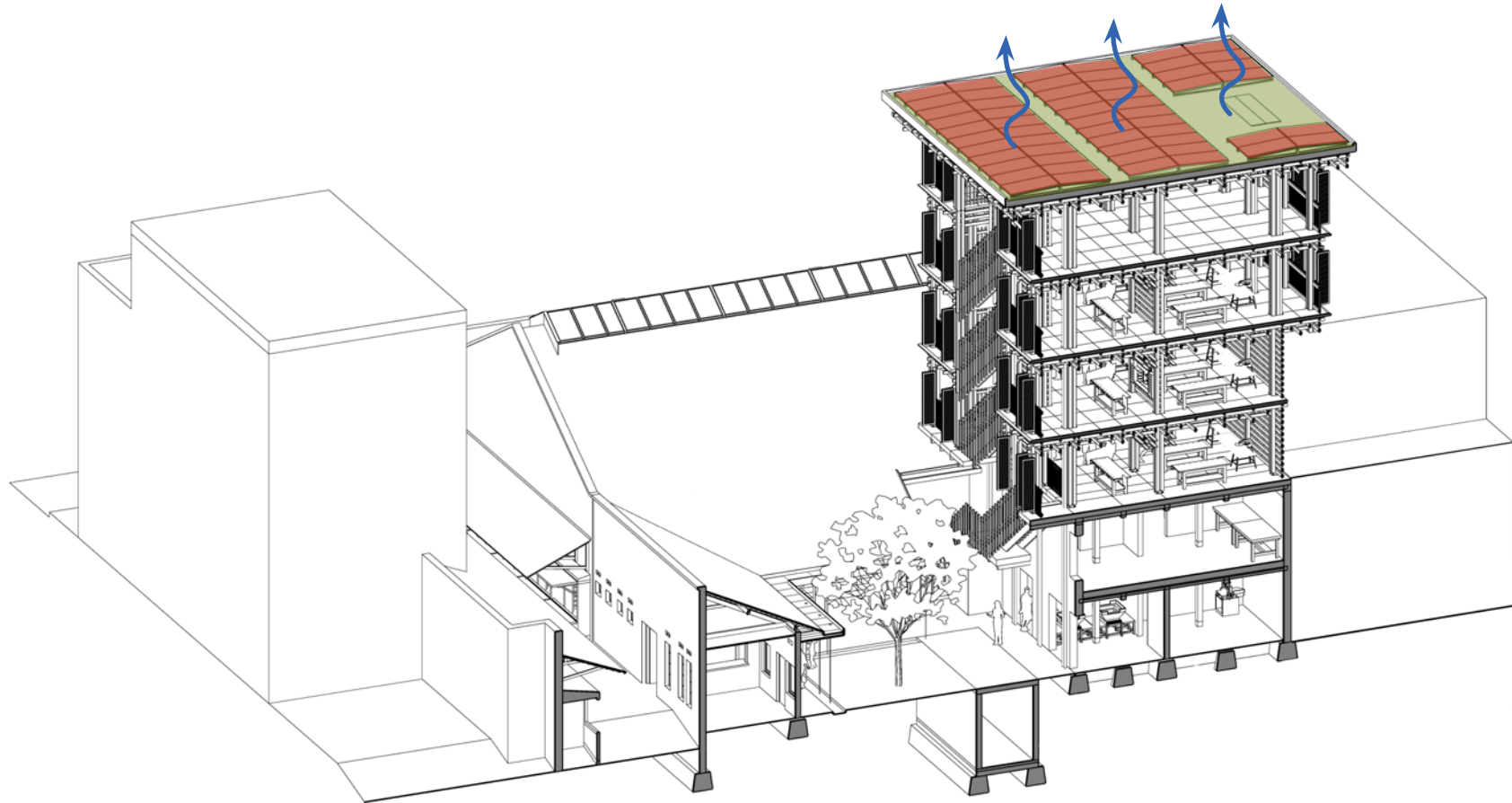
Creating furniture for entire Braga Street



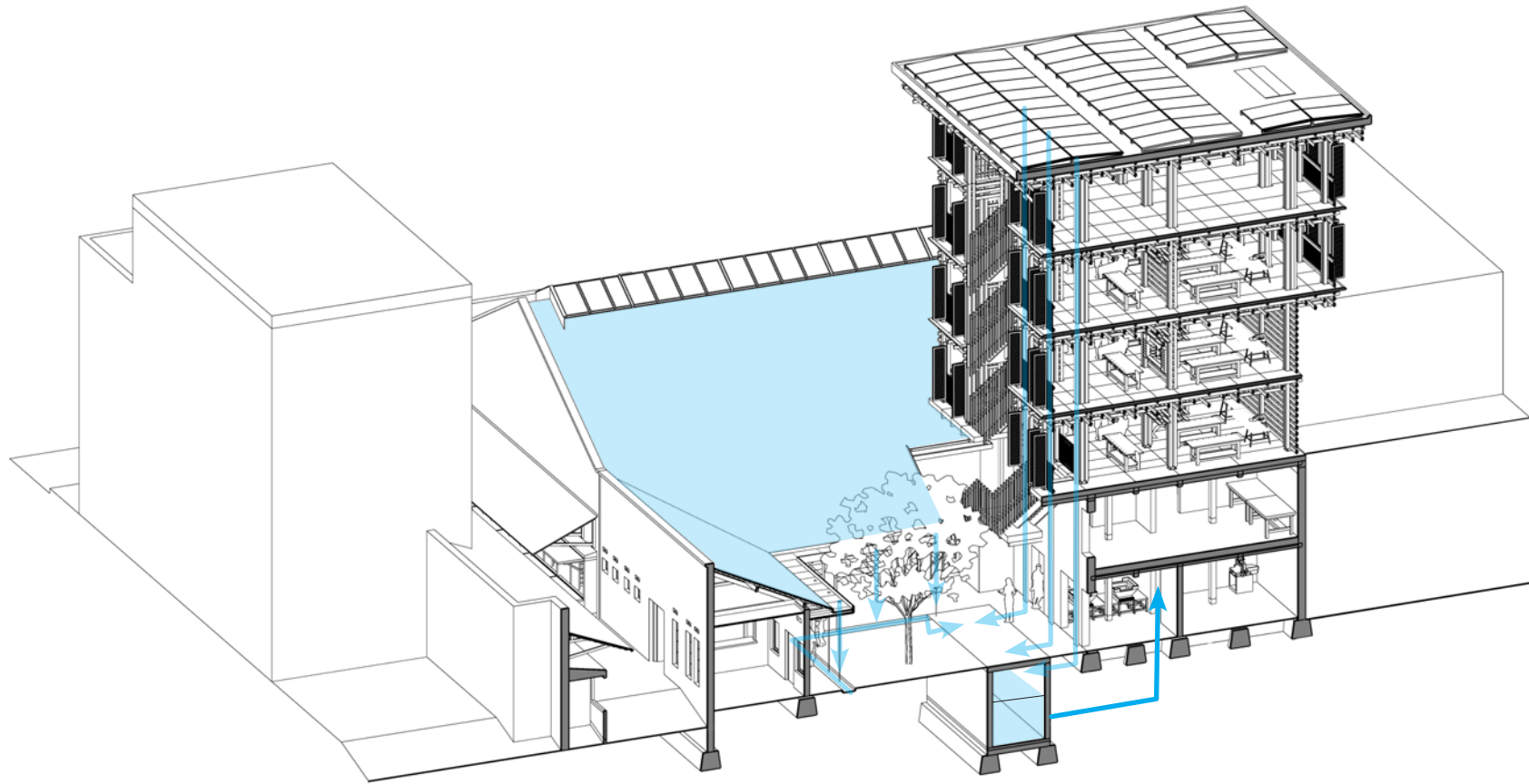
Section Courtyard



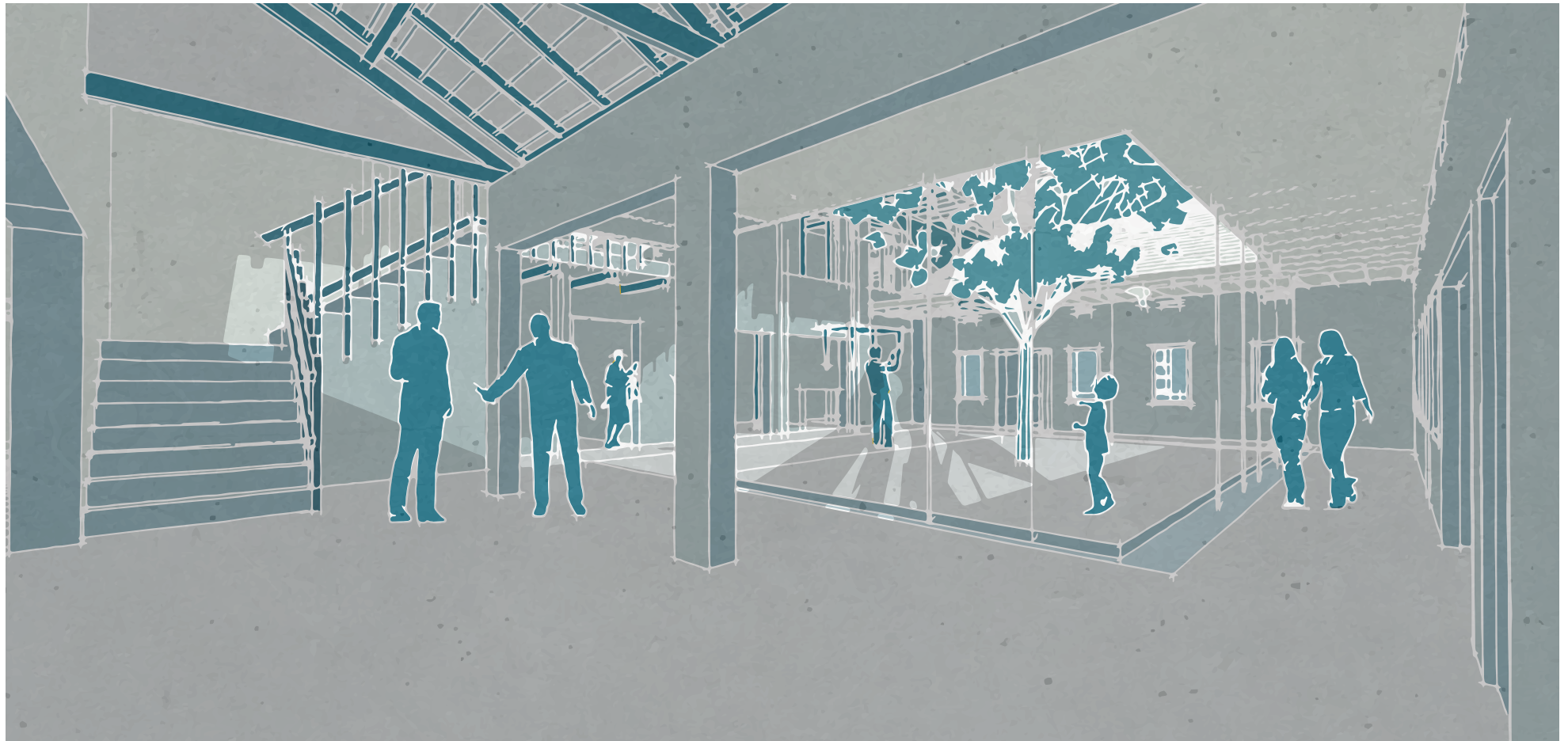
Energy Roof



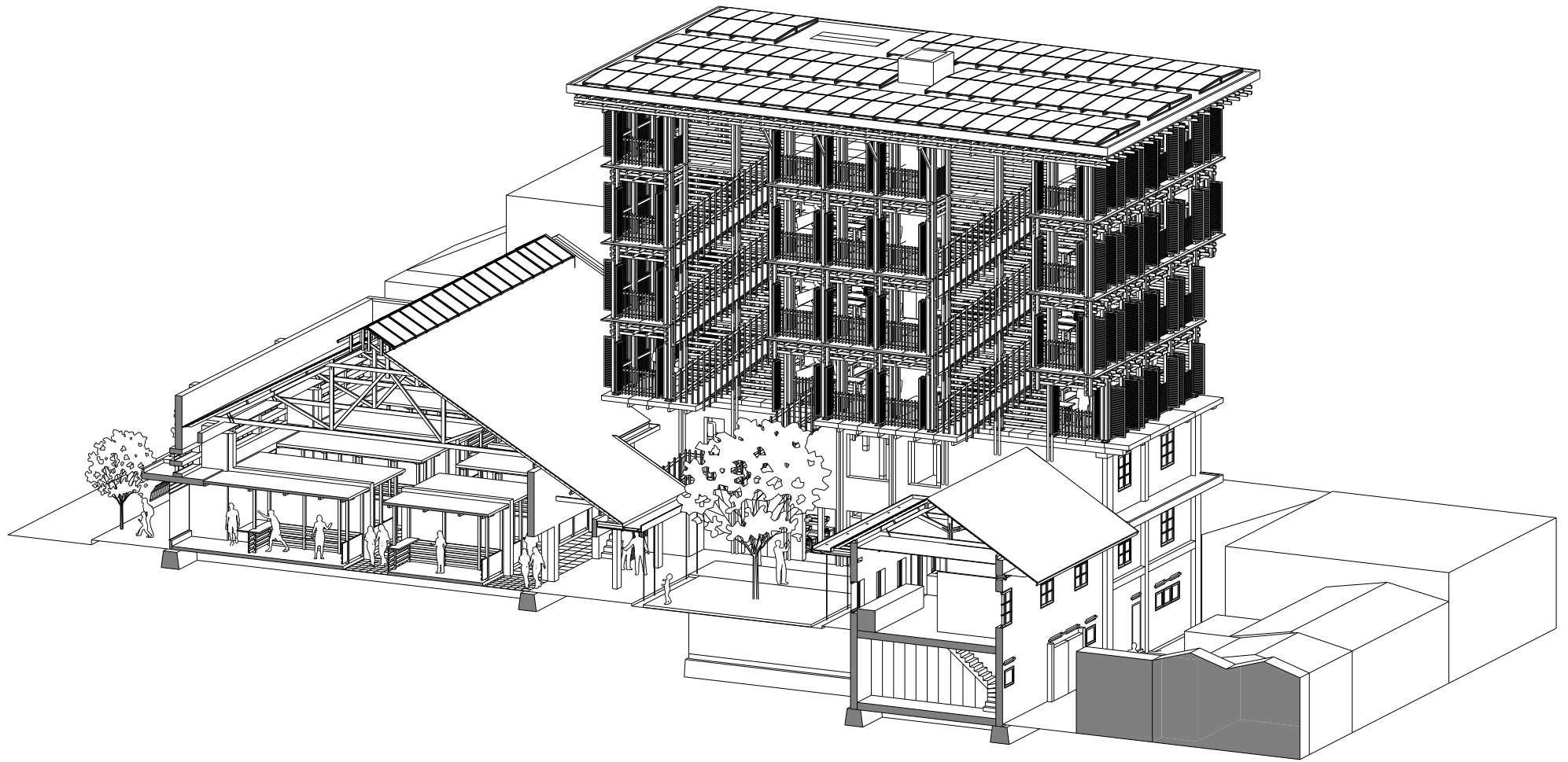
Water-collection for paper fabrication



Impression Courtyard

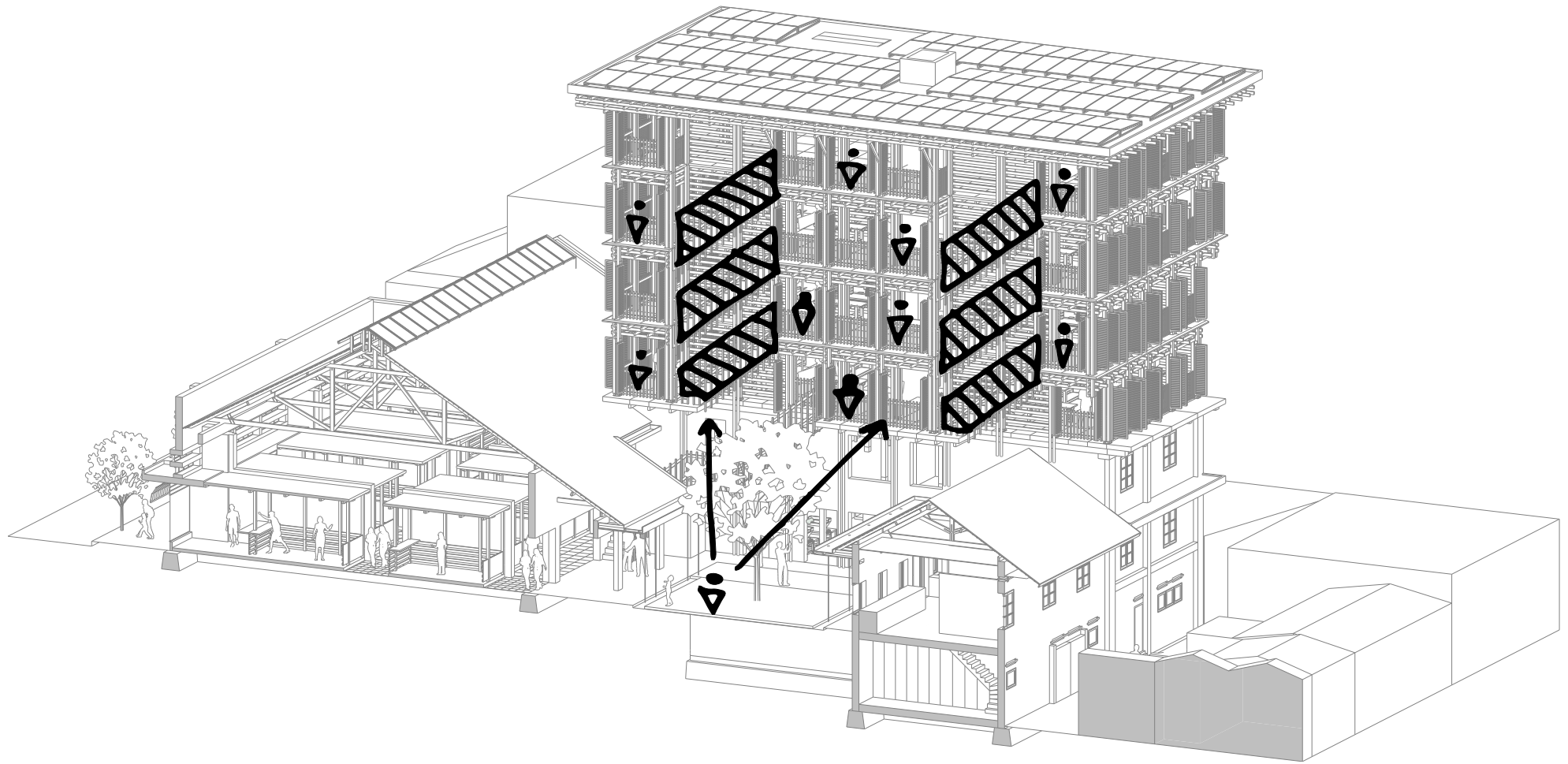


Section Courtyard



Section Courtyard

Visual connection
Lively facade
Two worlds visible



Impact and meaning



Terima Kasih!
Thank You!

