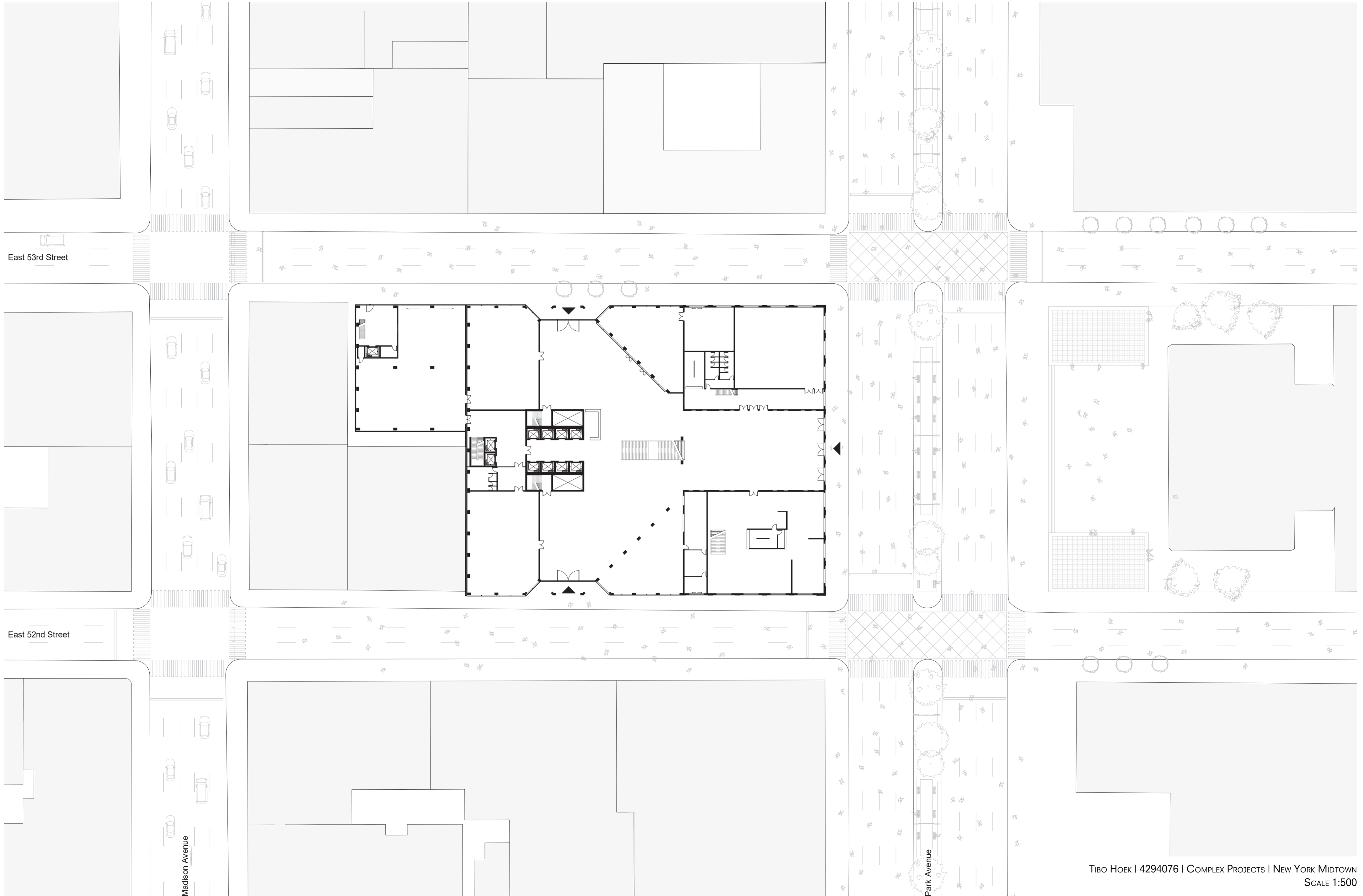


LI-SCI CENTER
ROOF PLAN



LI-SCI CENTER
URBAN IMPLEMENTATION



East 53rd Street

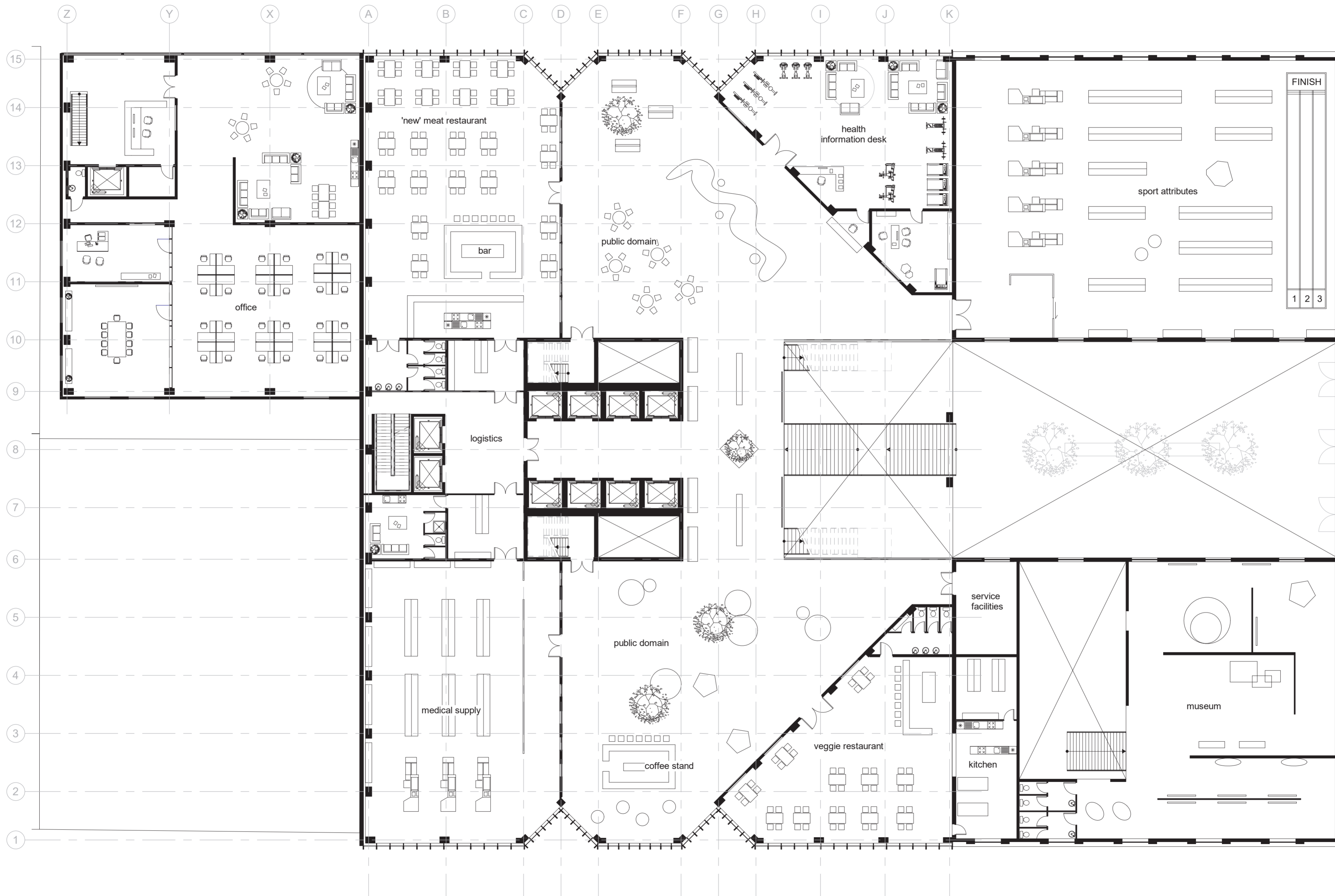
East 52nd Street

Madison Avenue

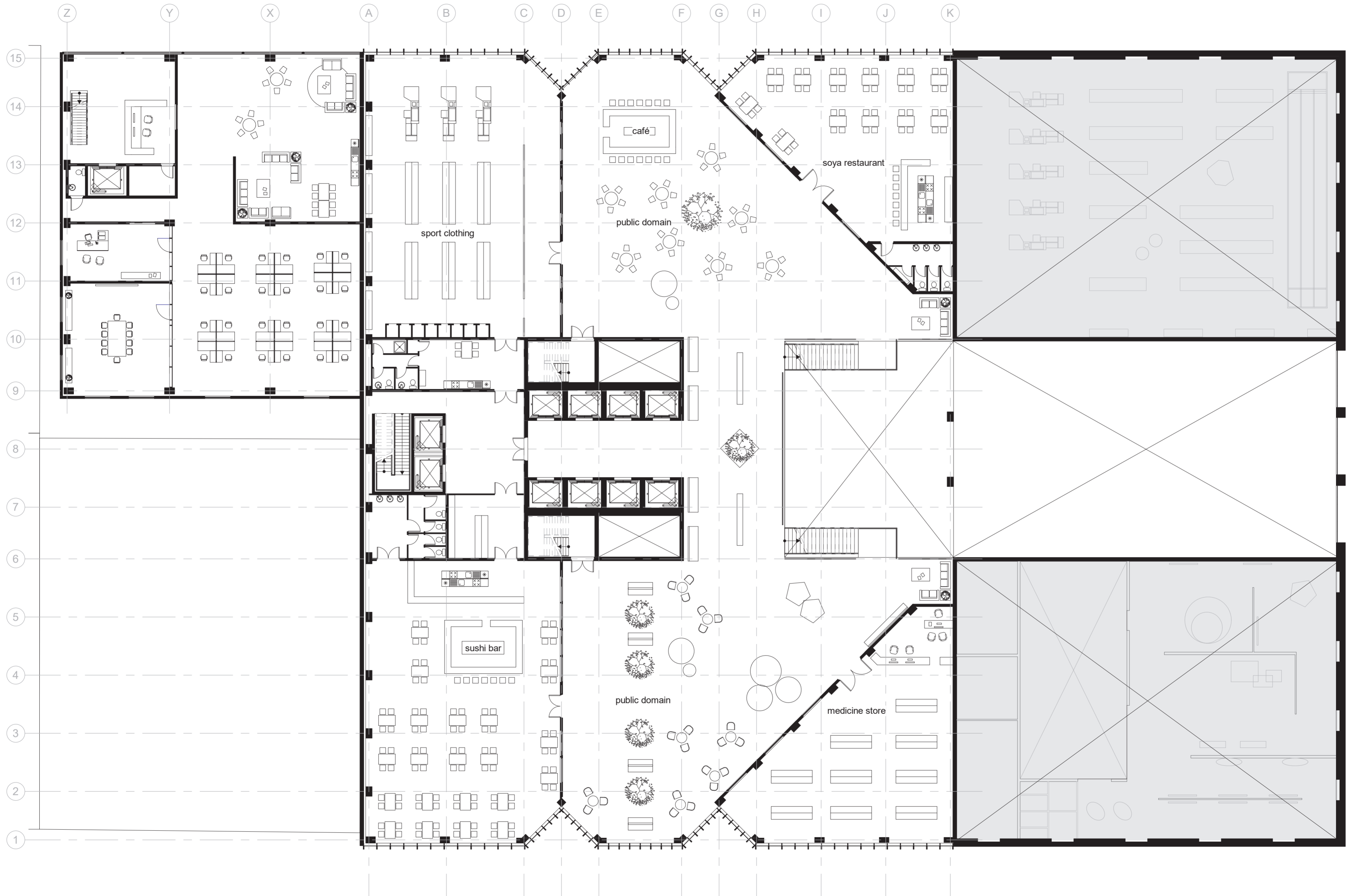
Park Avenue



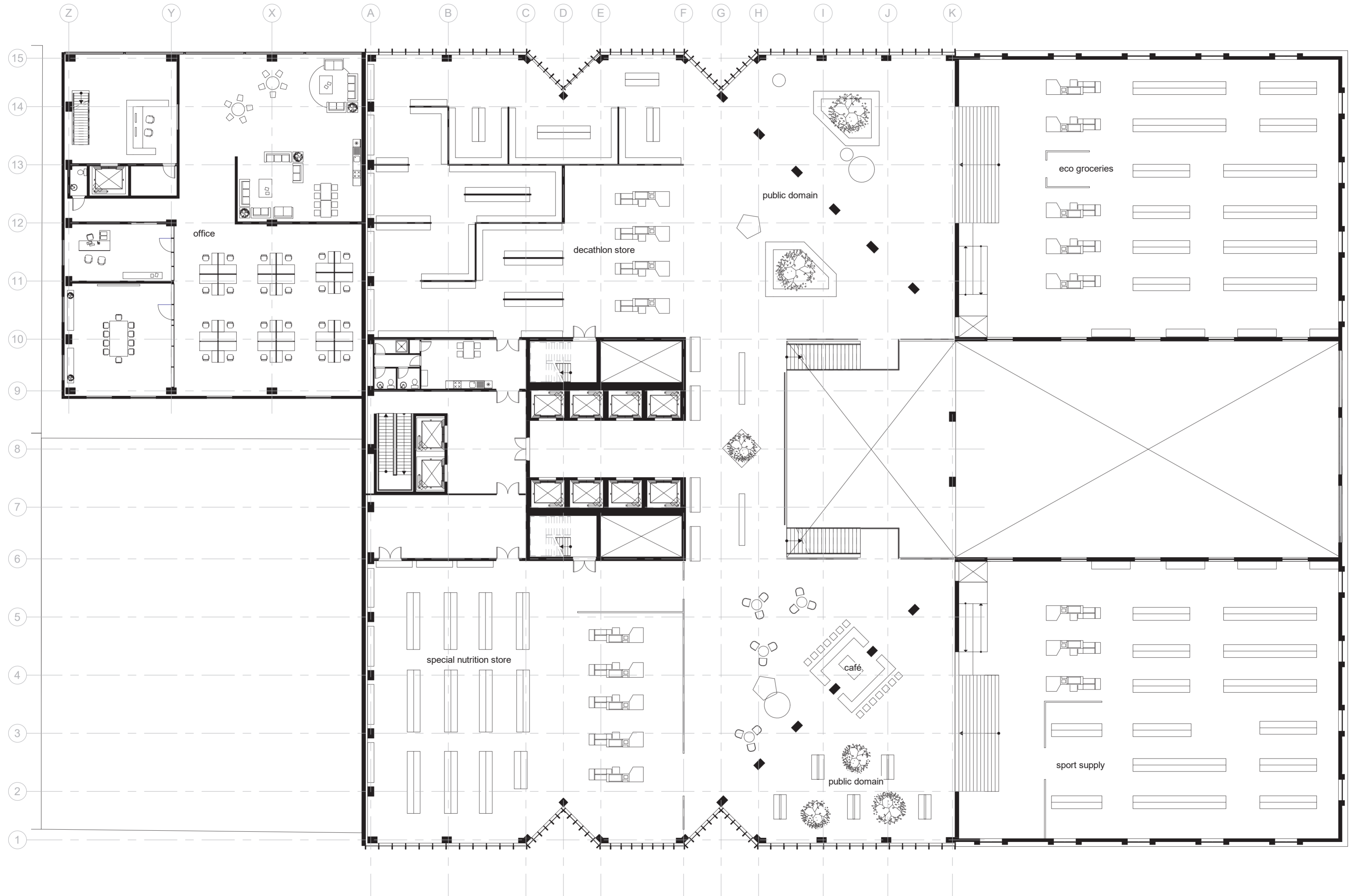
LI-SCI CENTER
COMMERCE - 1ST FLOOR



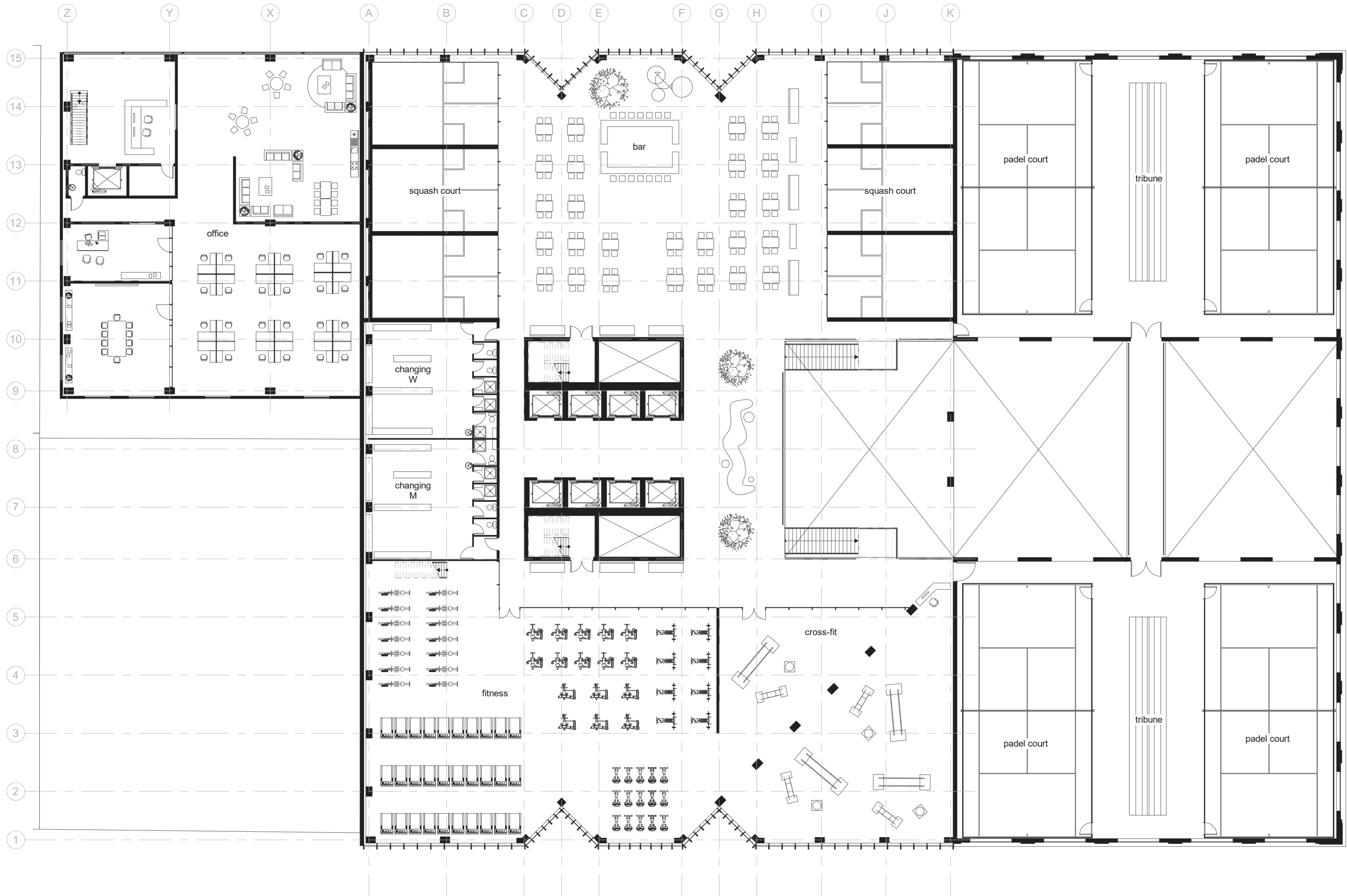
LI-SCI CENTER
COMMERCE - 2ND FLOOR



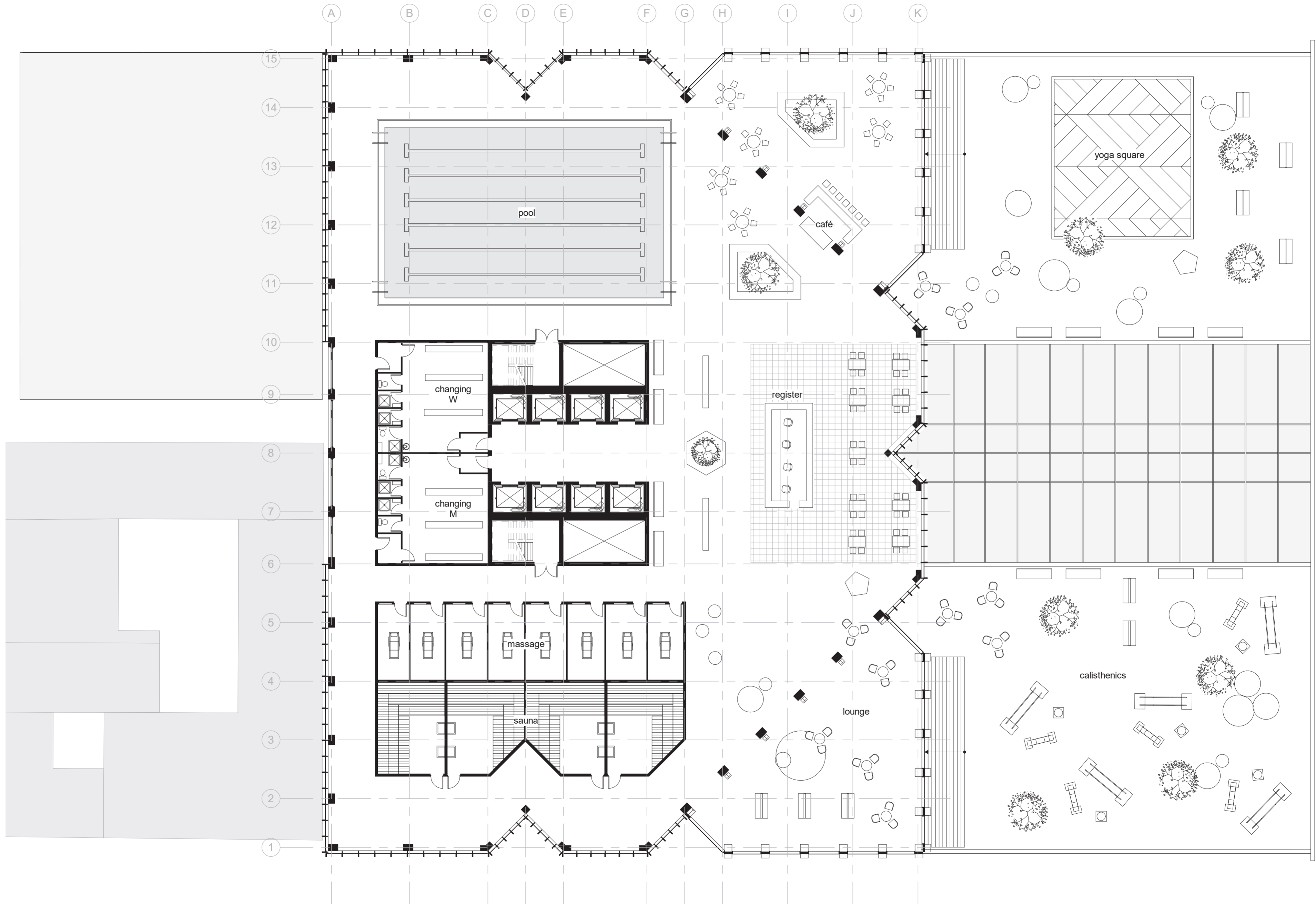
LI-SCI CENTER
COMMERCE - 4TH FLOOR



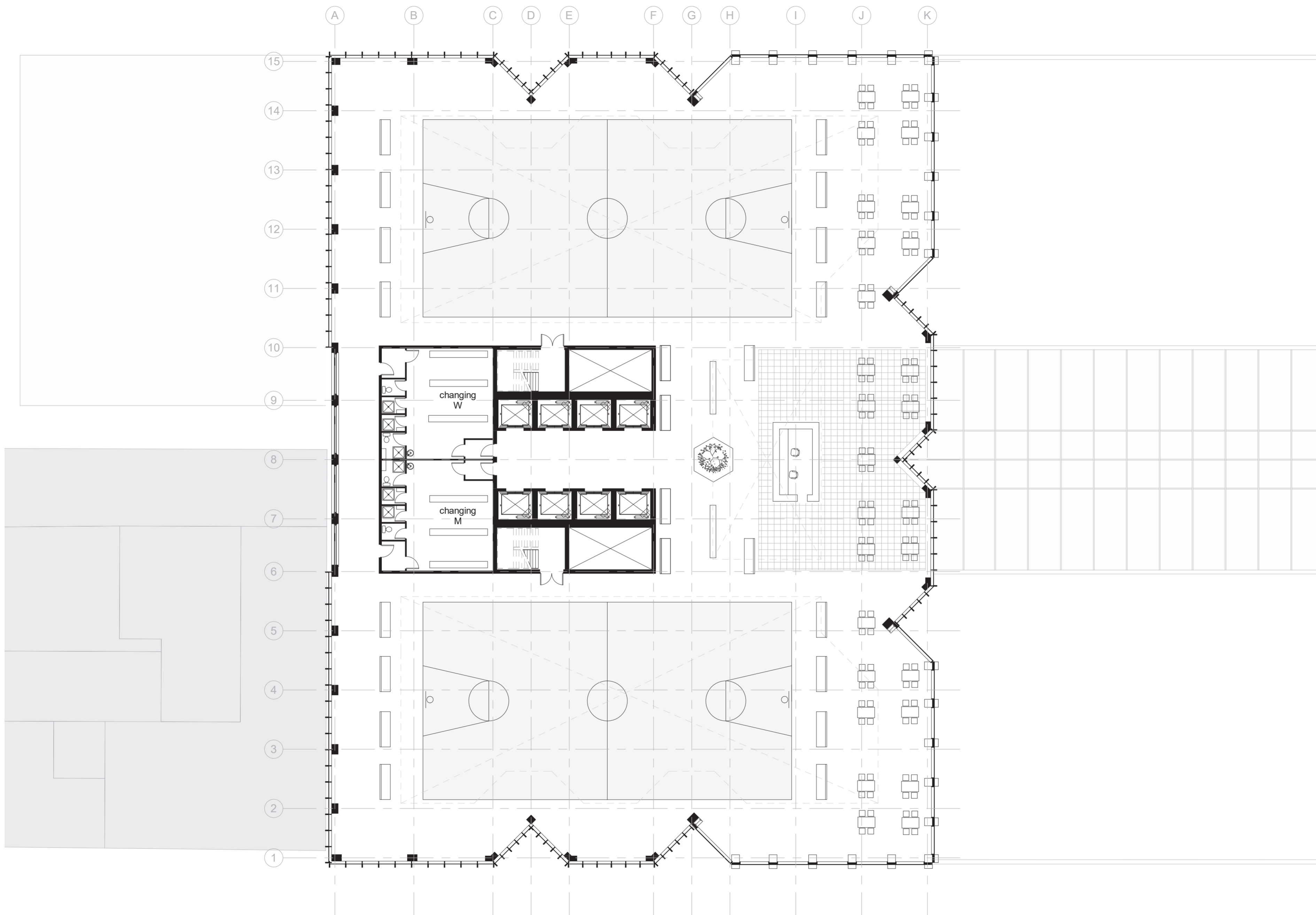
LI-SCI CENTER
SPORTS - 5TH FLOOR



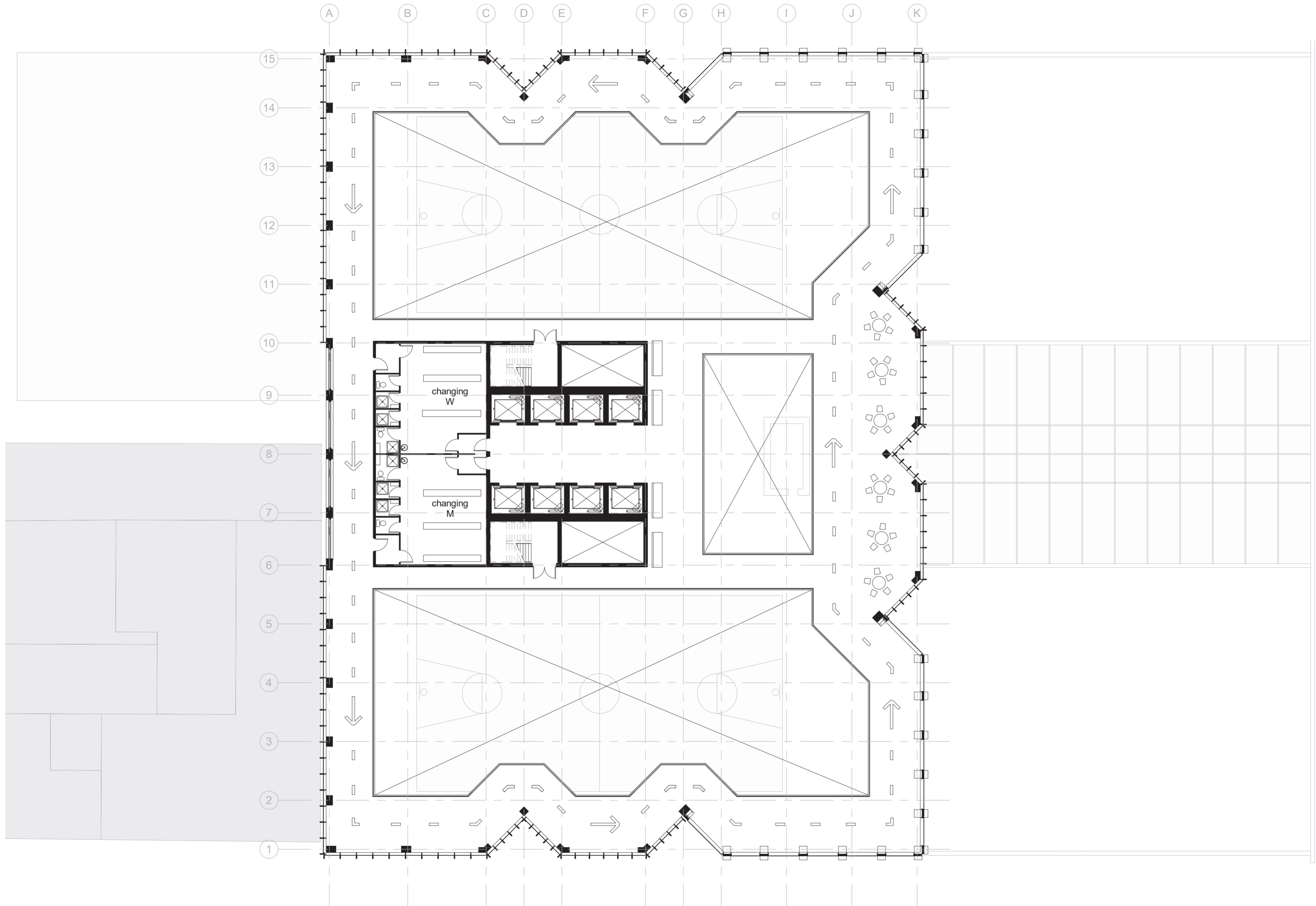
LI-SCI CENTER
SPA - 8TH FLOOR



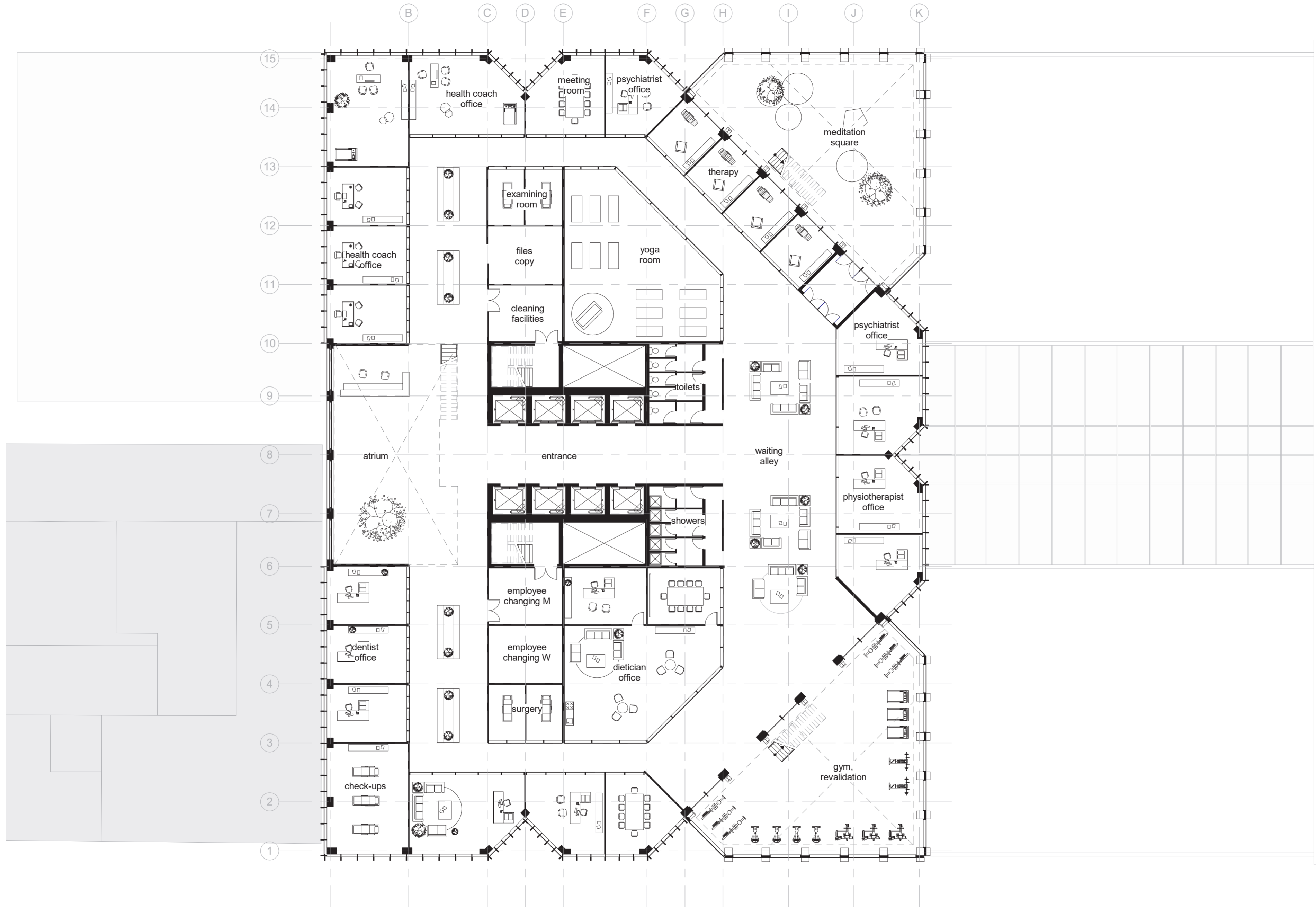
LI-SCI CENTER
BASKETBALL - 10TH FLOOR



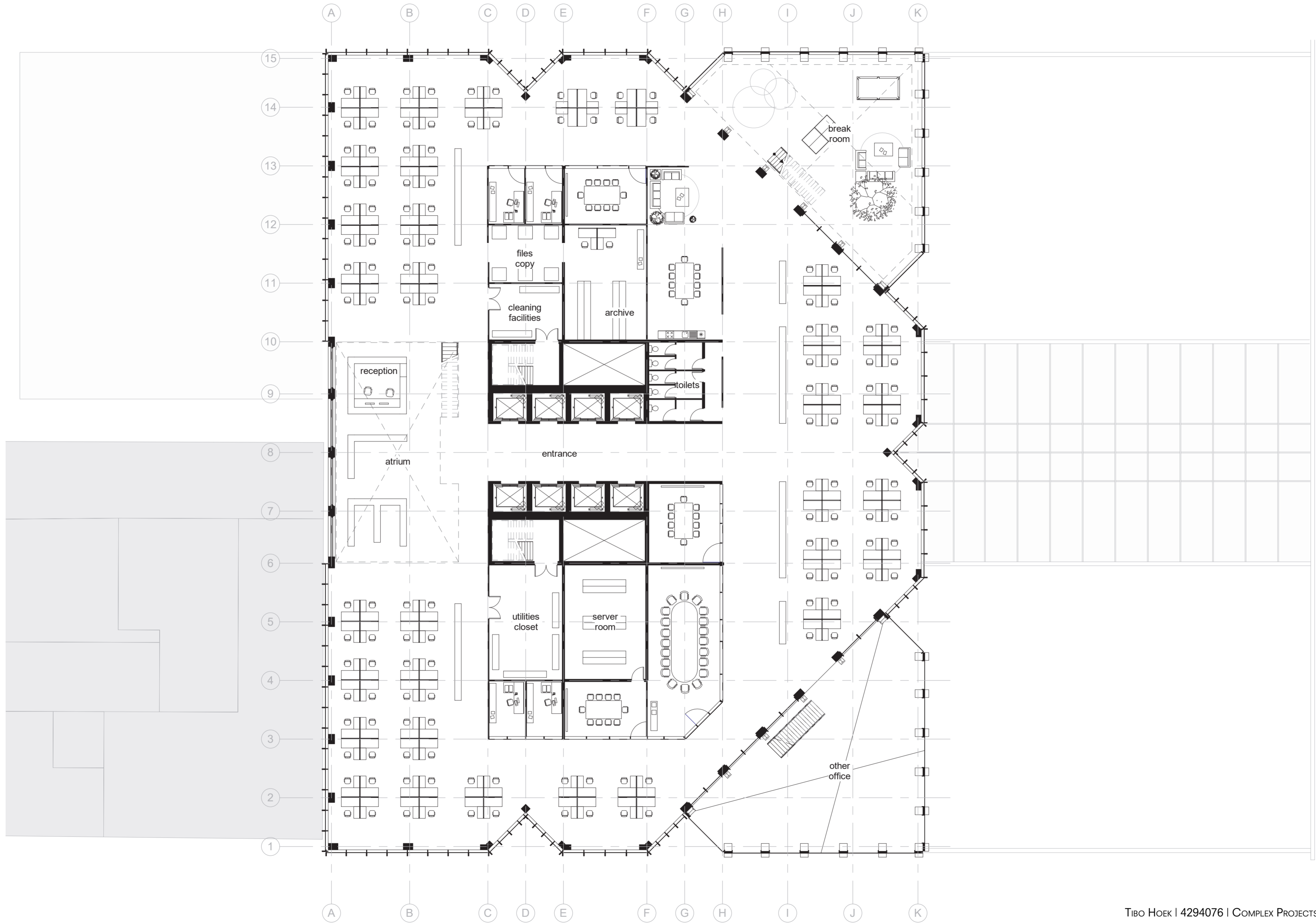
LI-SCI CENTER
RUNNING TRACK - 11TH FLOOR



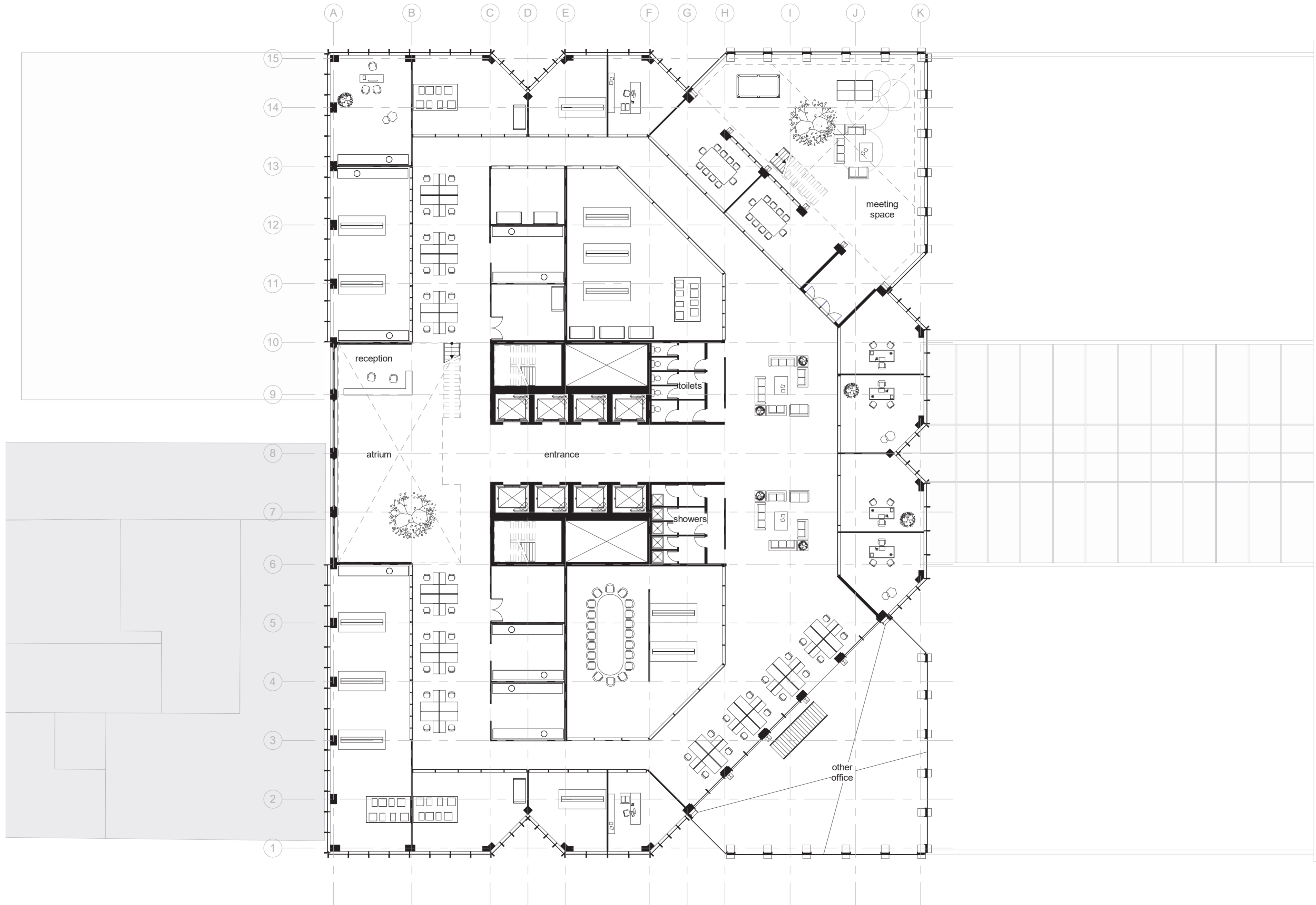
LI-SCI CENTER
PRACTICES - 15TH FLOOR



LI-SCI CENTER
OPEN OFFICE - 26TH FLOOR



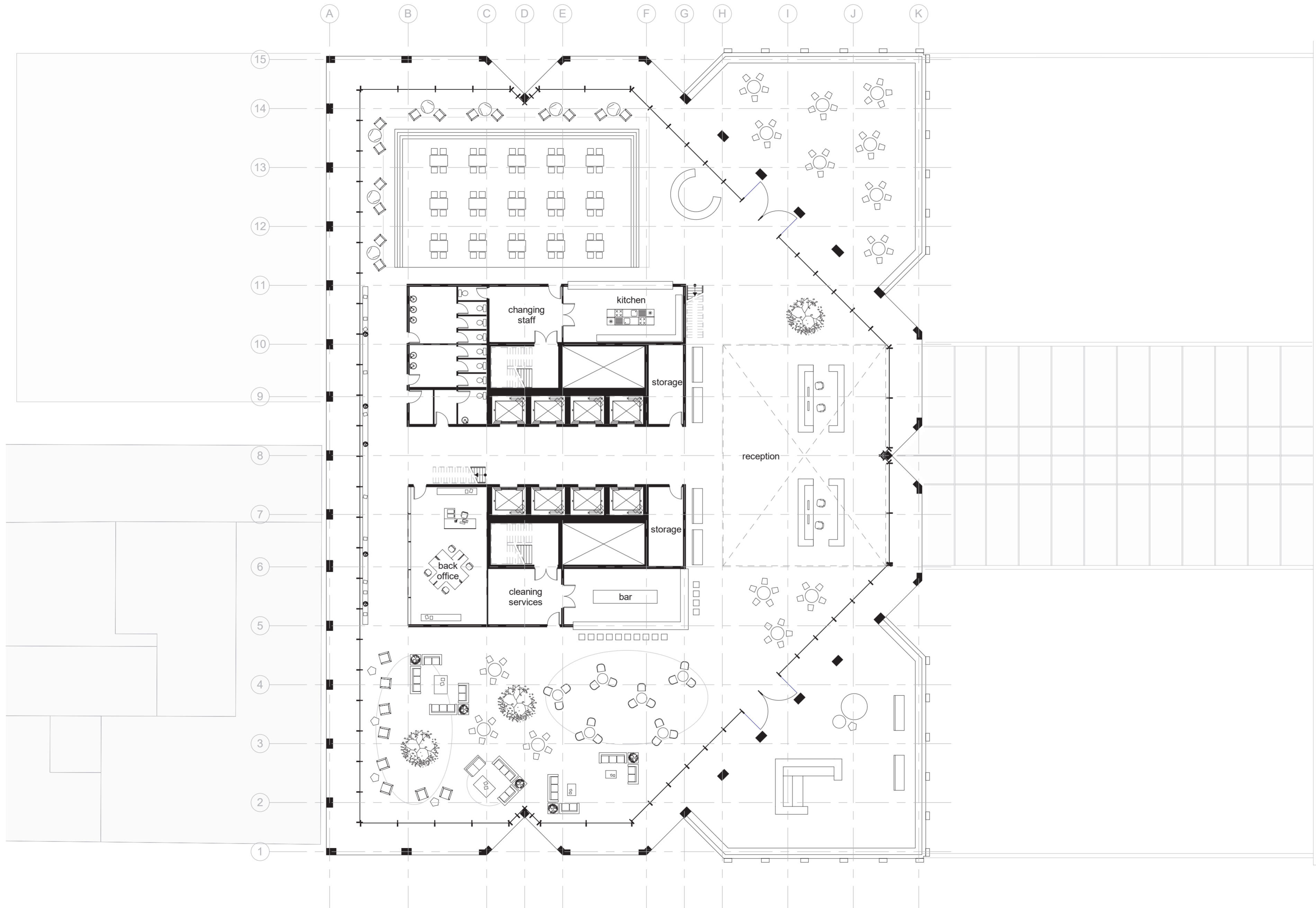
LI-SCI CENTER
RESEARCH LABS - 32ND FLOOR



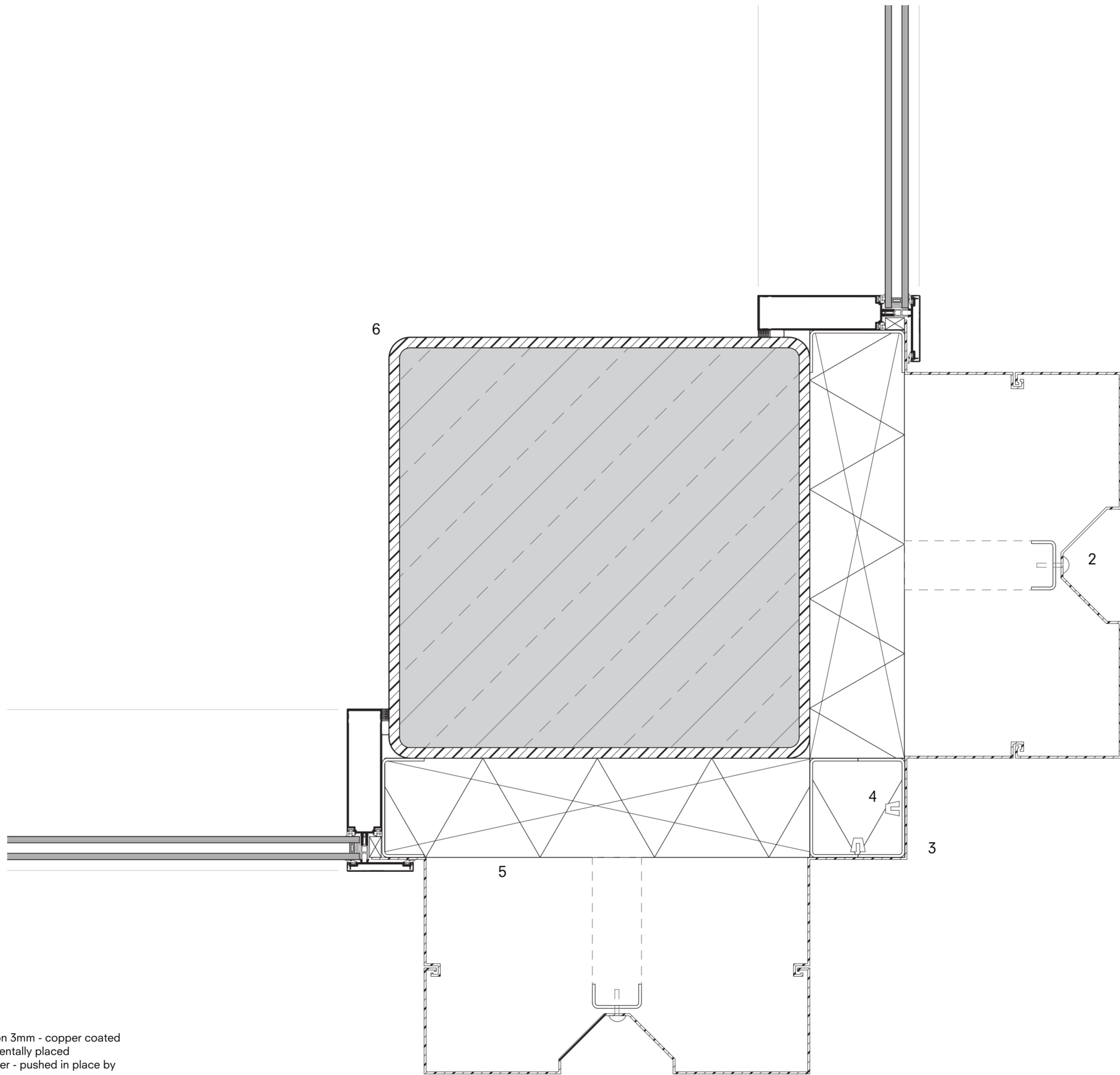
LI-SCI CENTER
CARE HOTEL - 36TH FLOOR



LI-SCI CENTER
LOBBY - 32ND FLOOR

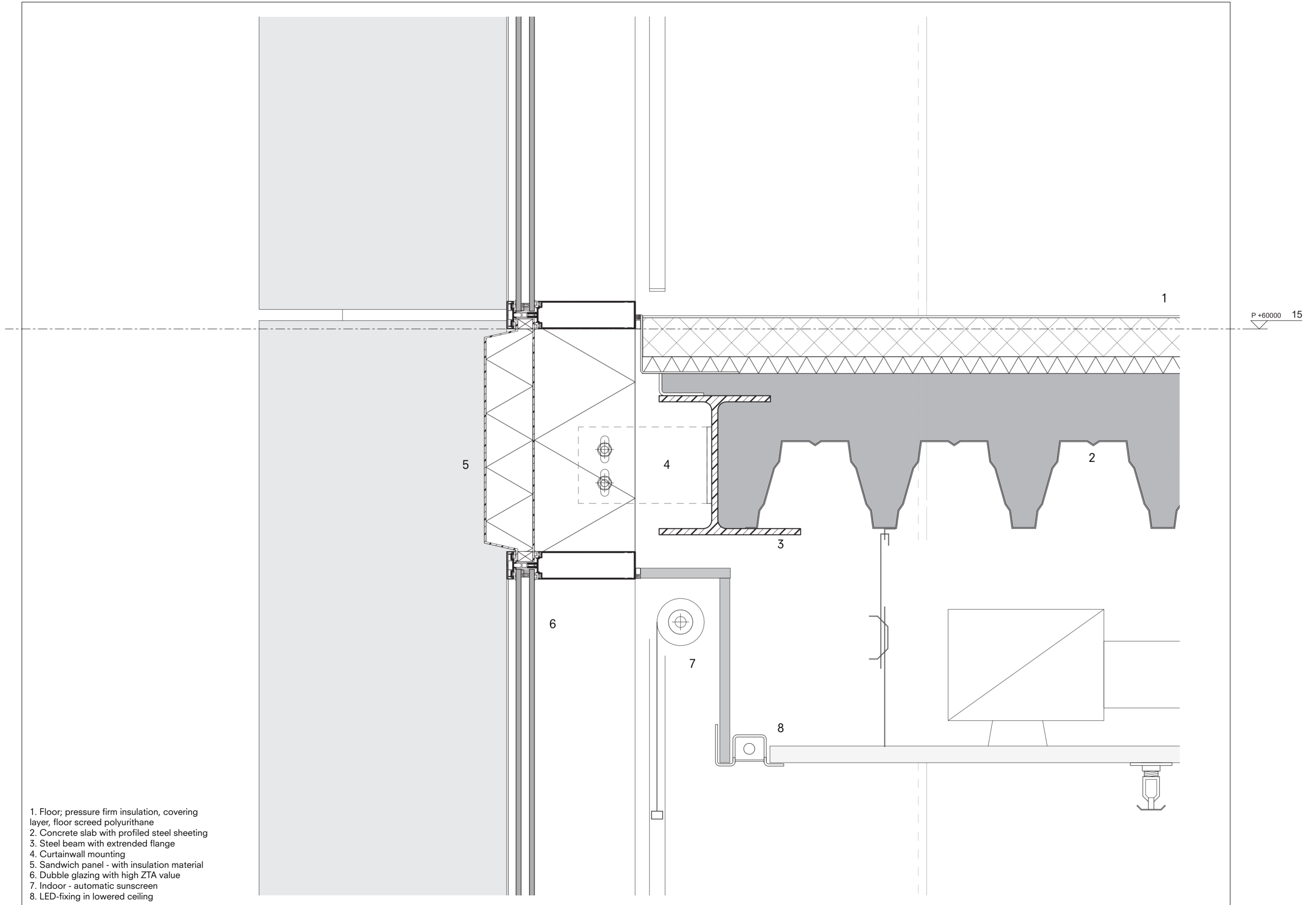


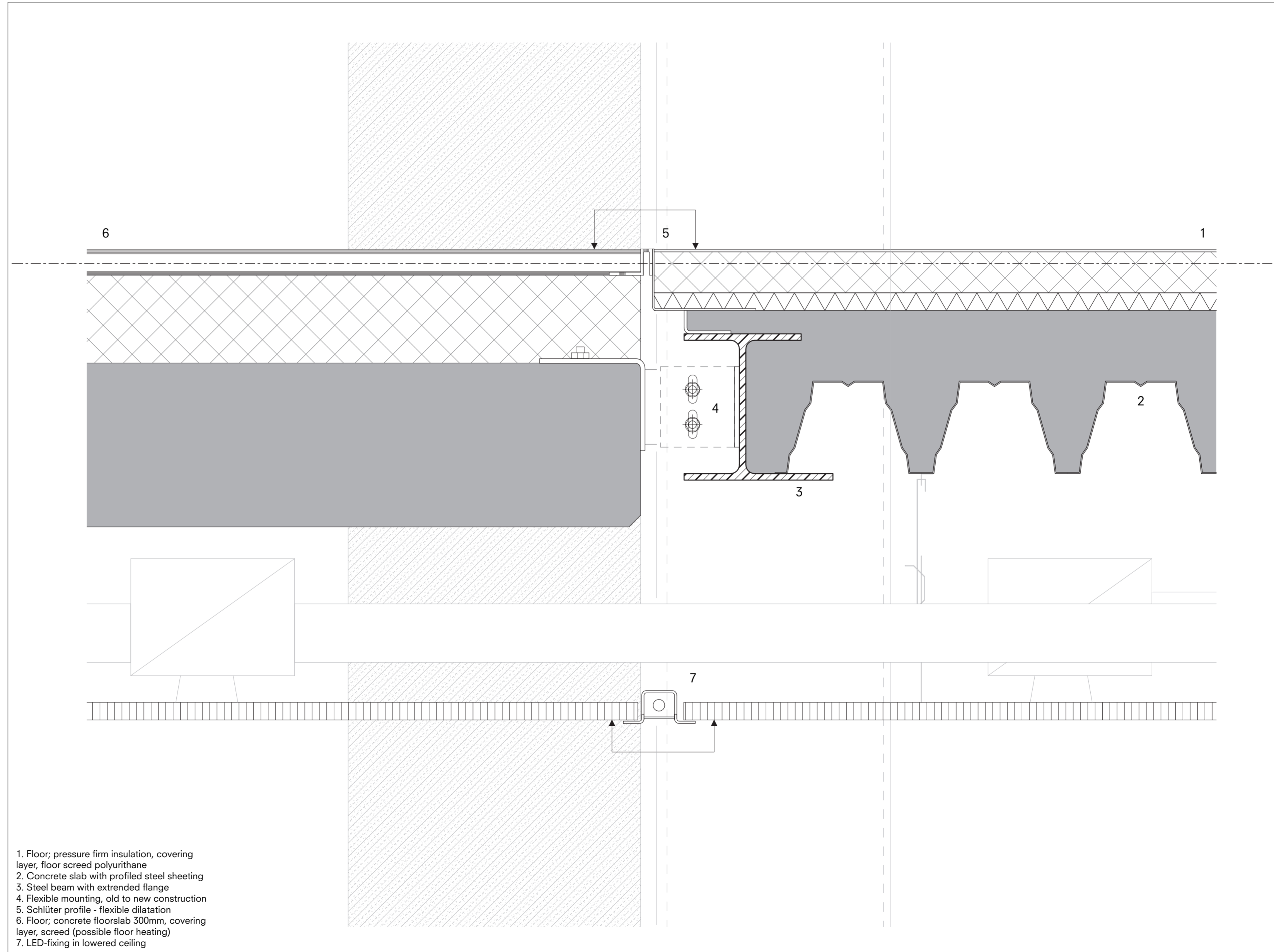
LI-SCI CENTER
DETAIL // 201



- 1. Aluminium section 3mm - copper coated
- 2. Blind rivet - incidentally placed
- 3. Corner hood cover - pushed in place by
- 4. Rubber nipples
- 5. Insulation material
- 6. Steel column 10x600x600mm

LI-SCI CENTER
DETAIL // 202





LI-SCI CENTER
DETAIL // 204

