

BOOKLET

Argument - Why do we need such a large buidling.



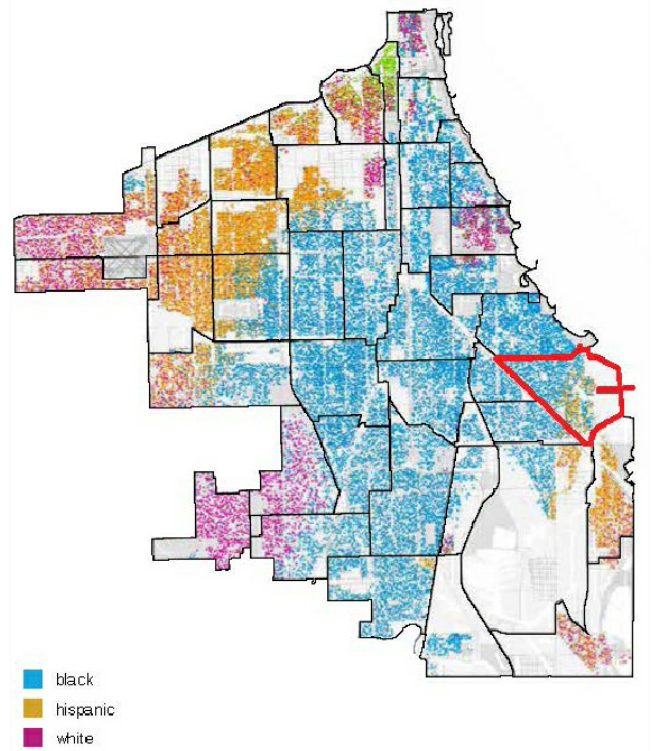
THE WALL

Argument - Why do we need such a large building.

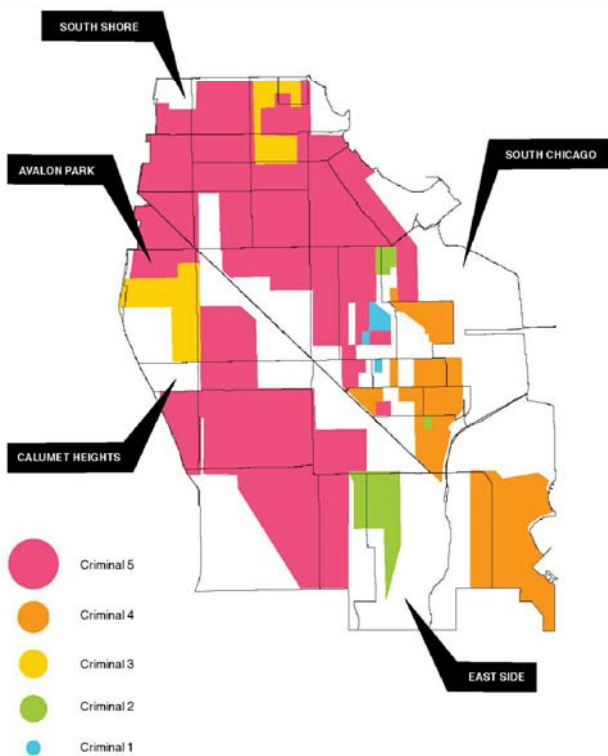
South Chicago is facing a lot of problem today. The problem listed here has been going on for decades. It derived from a general economical and political background on a much larger scale. Some of it is old habit. The situation is driven by some myth inertia and could be very difficult be changed.

Thus this new land, this new project needs a strong statement of itself, and a clear cut from the old obit.

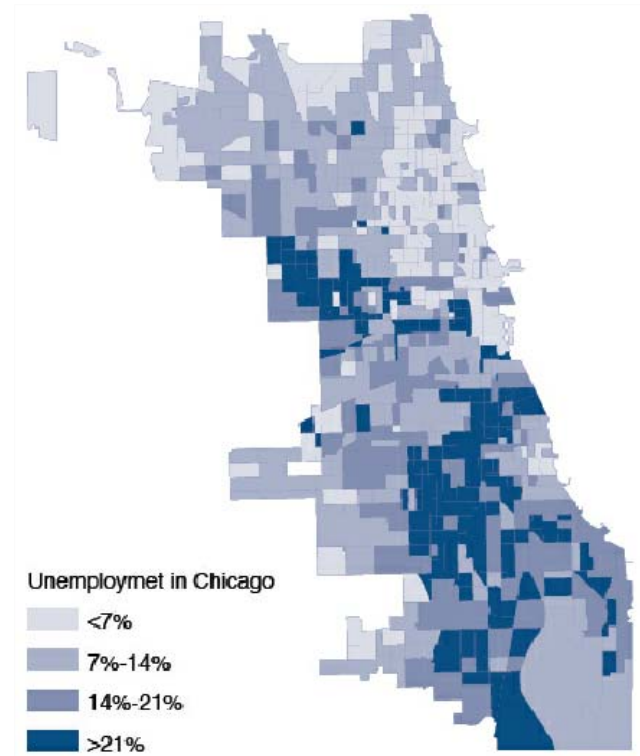
In this condition, size is everything.



Segregation

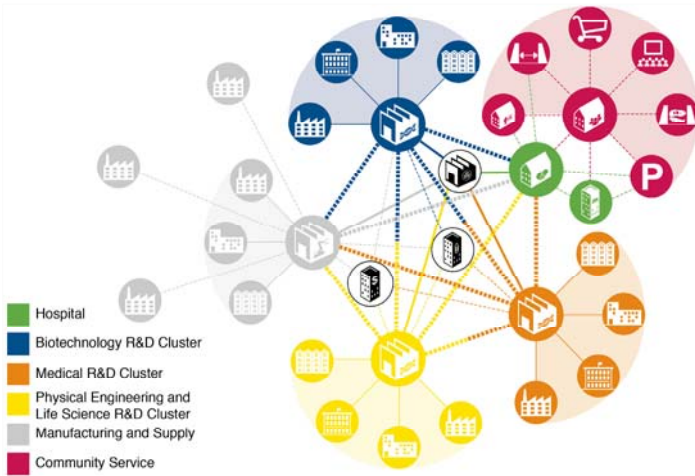


Crime



Unemployment

Argument - Why do we need such a large building.

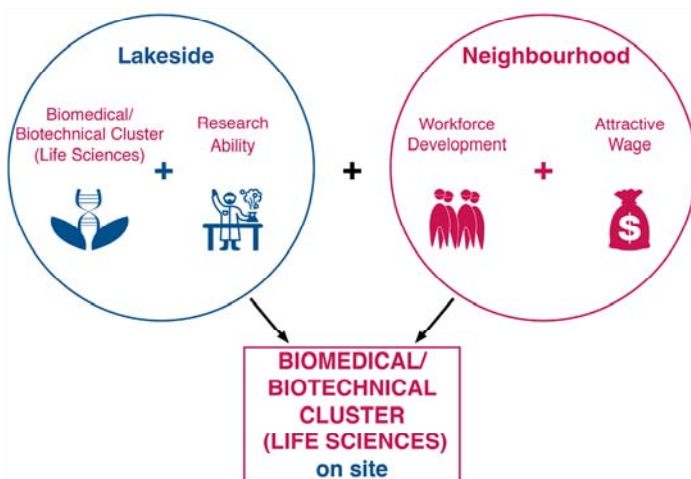


In order to activate South Chicago, we introduce a new industry cluster here, a Bio-chemical Research and Life Science cluster. In the larger picture, this move will be able to ease the unemployment issue of South Chicago.

Also, inside this system there is a mutual-improving mechanism on building up personnel in nursing and healthcare profession. This could be one of the most effective path towards the promoting of South Chicago.

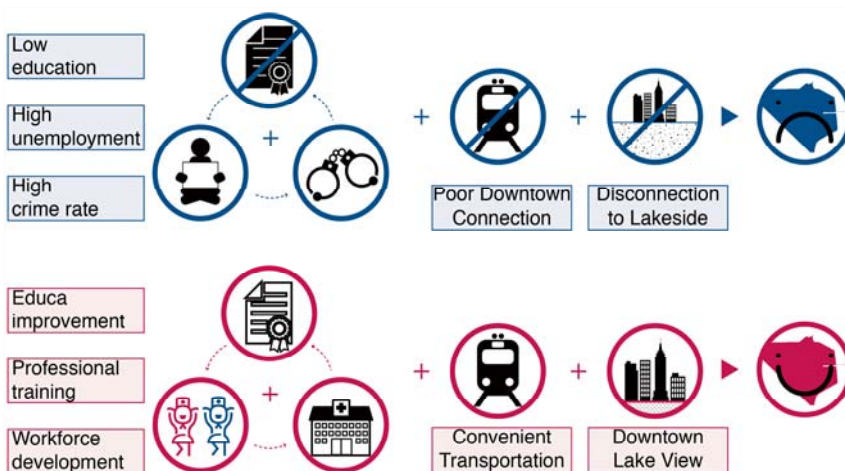
But, everything result in education.

A new industry cluster



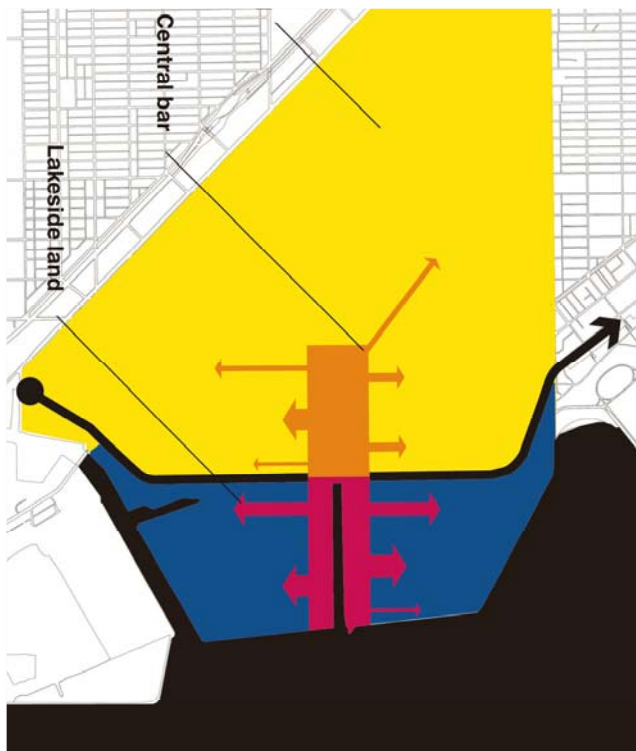
To cut from the past, to look towards the new future, education is the path.

Ambition



Through Education

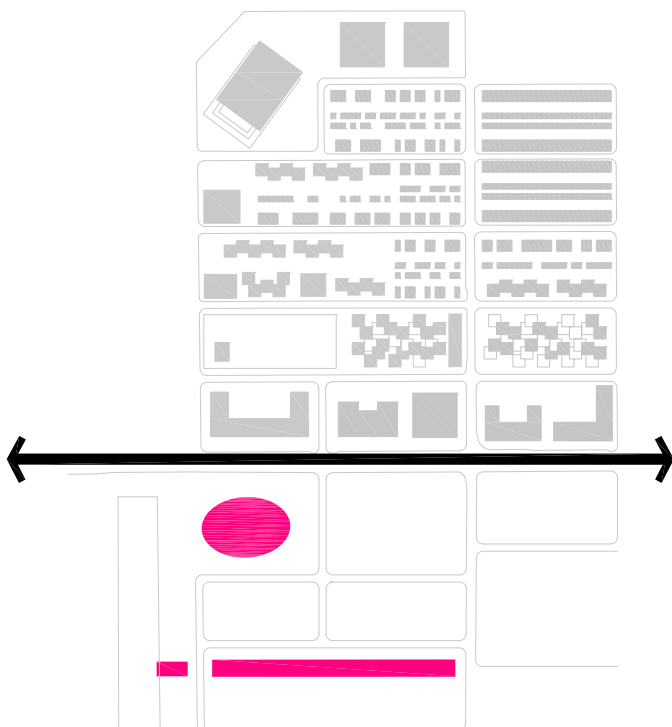
Argument - Why do we need such a large building.



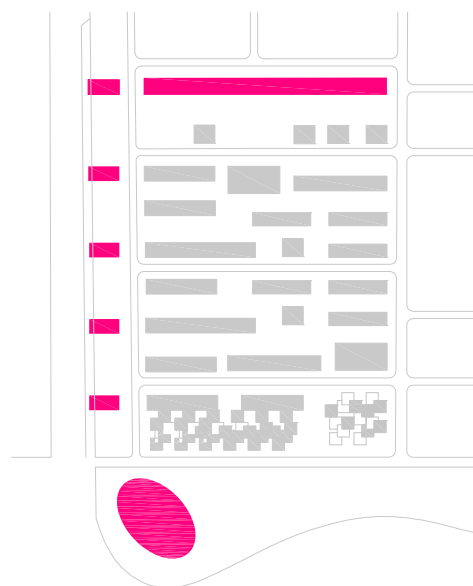
Master plan Strategy

There is a tension between the new developing area and the neighborhood. We are bringing the city a new breath, but it doesn't mean the locals should be excluded from this future.

In the masterplan, we are aiming at connecting the new area and the neighborhood. When it comes to this new striking landmark, position and approach are very important.

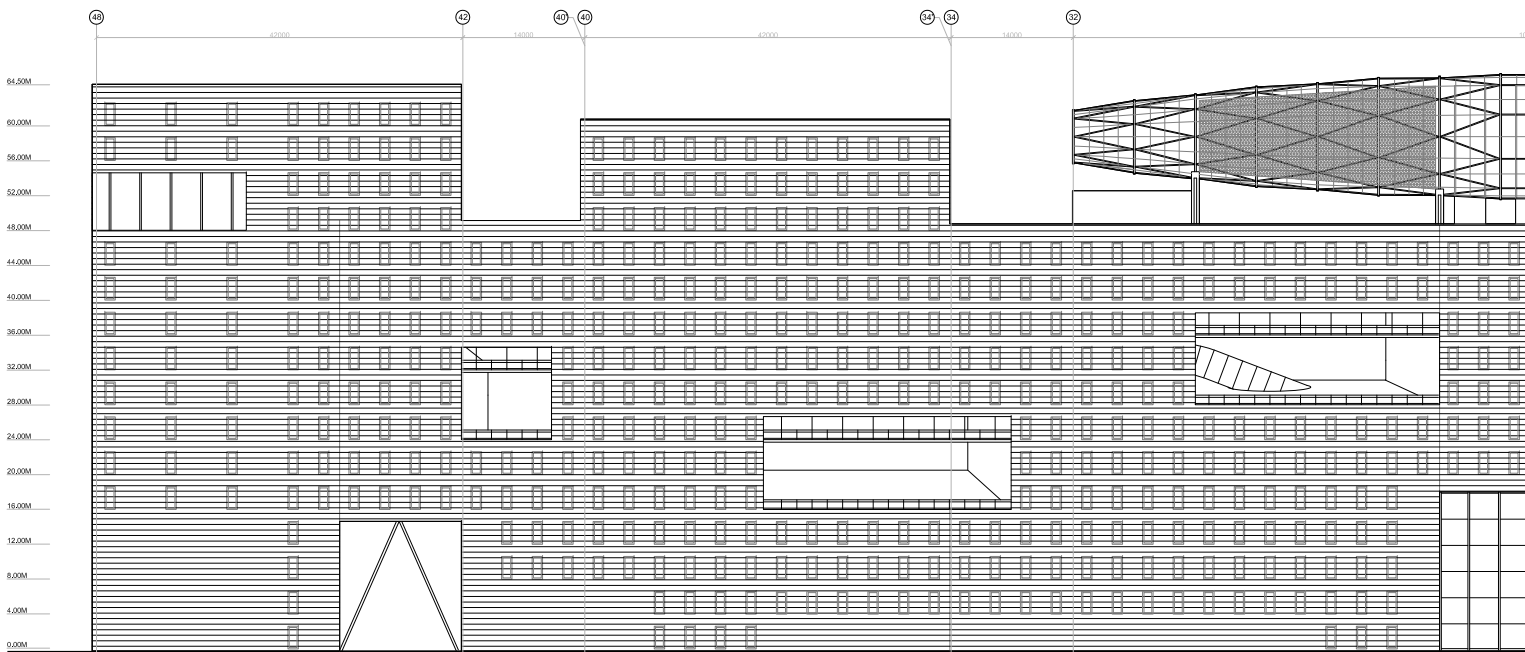
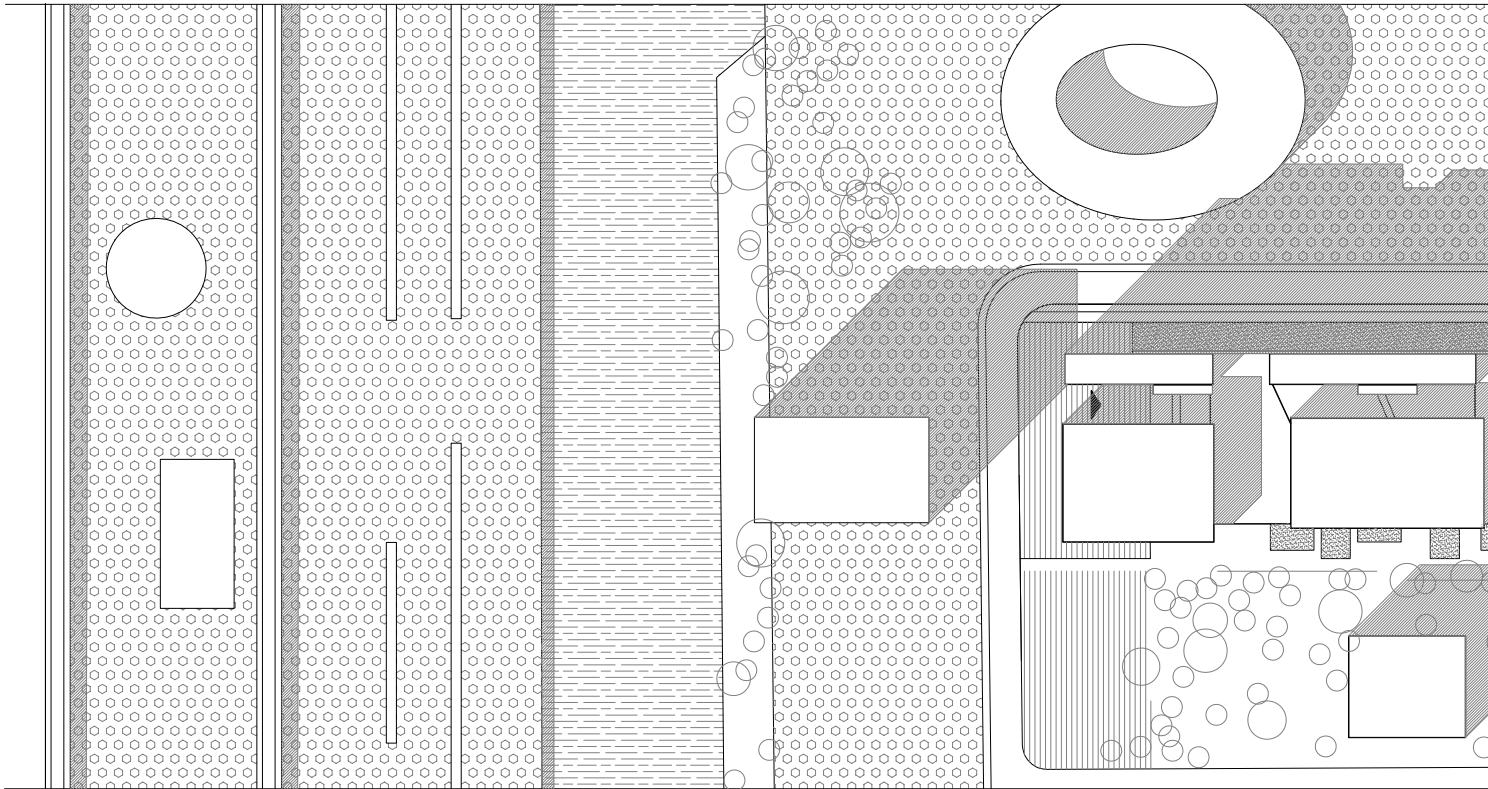


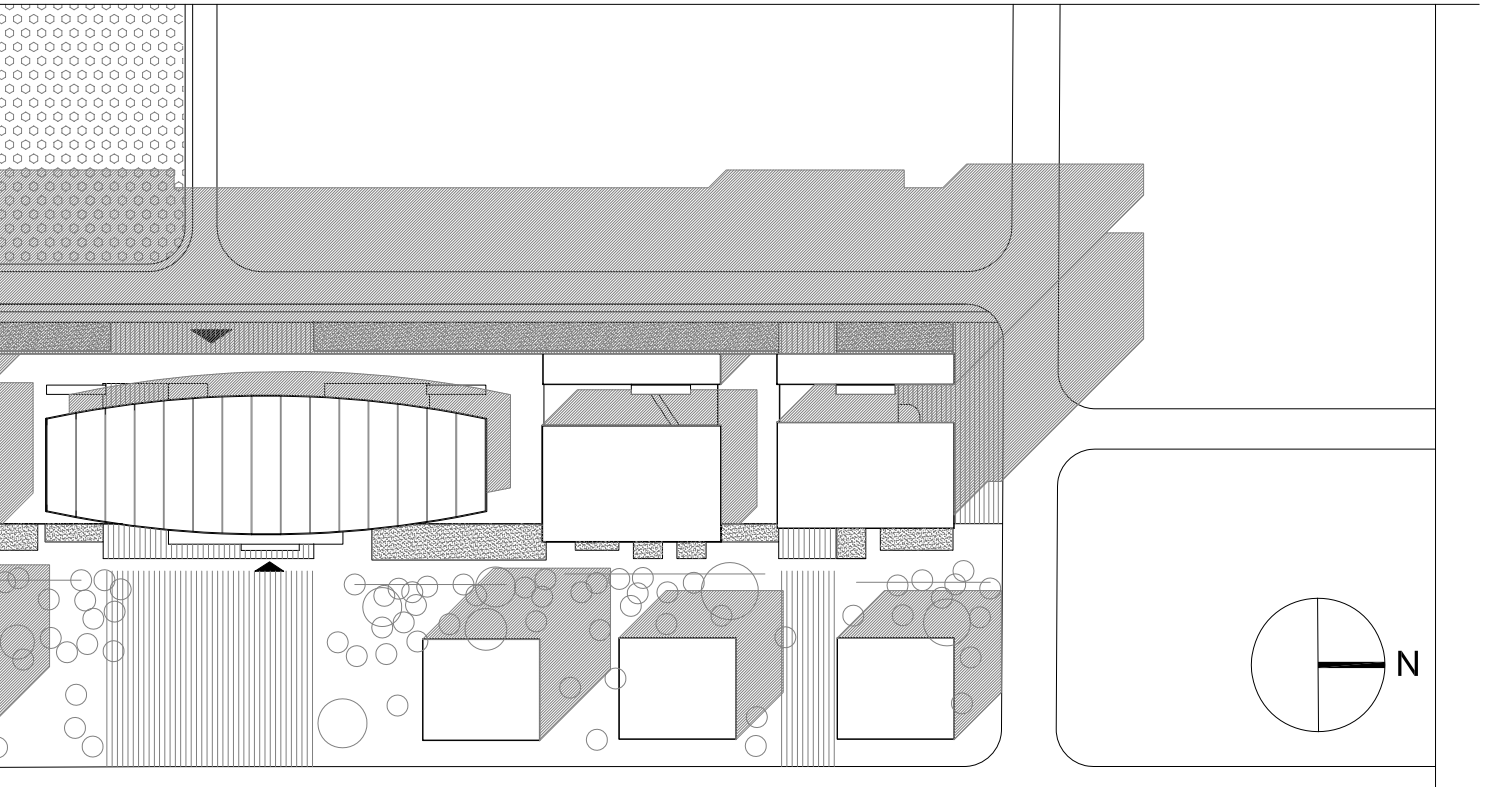
An interface to city



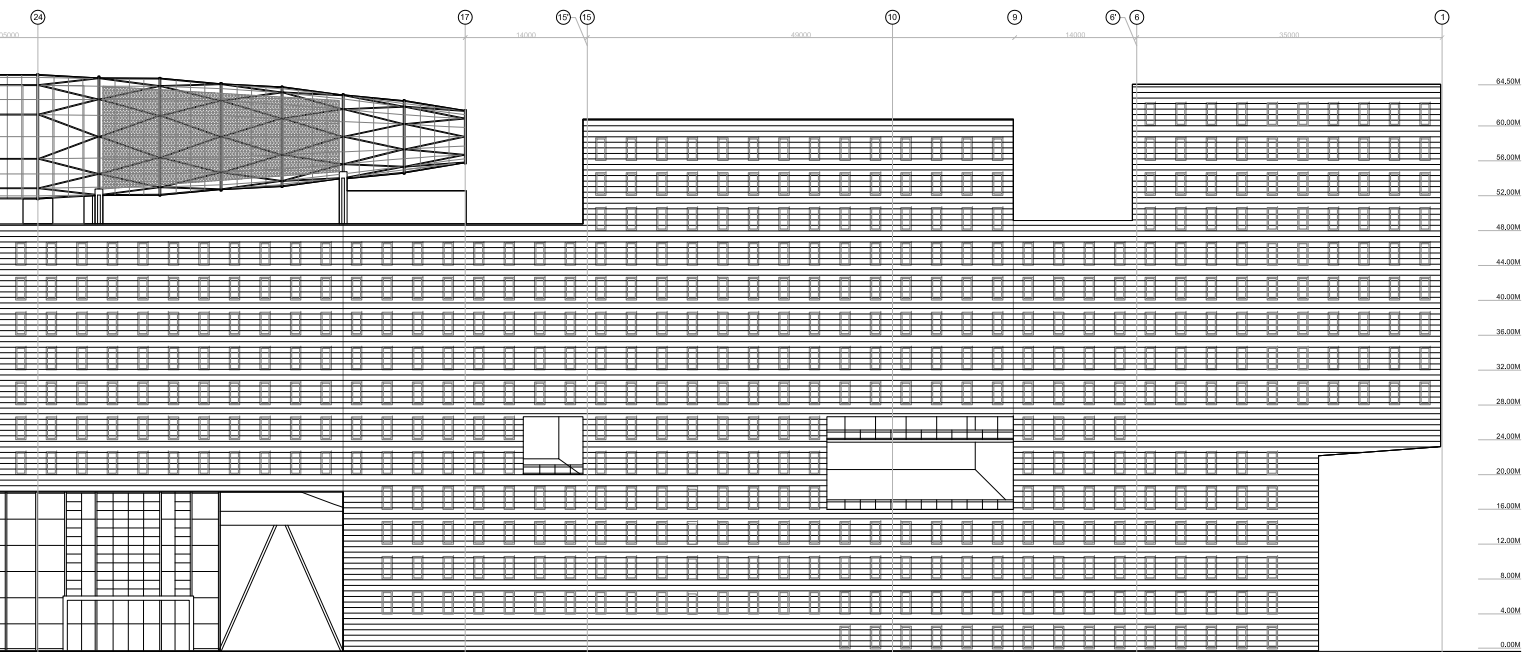
A delimitation of the New

Urban Attributes - two faces



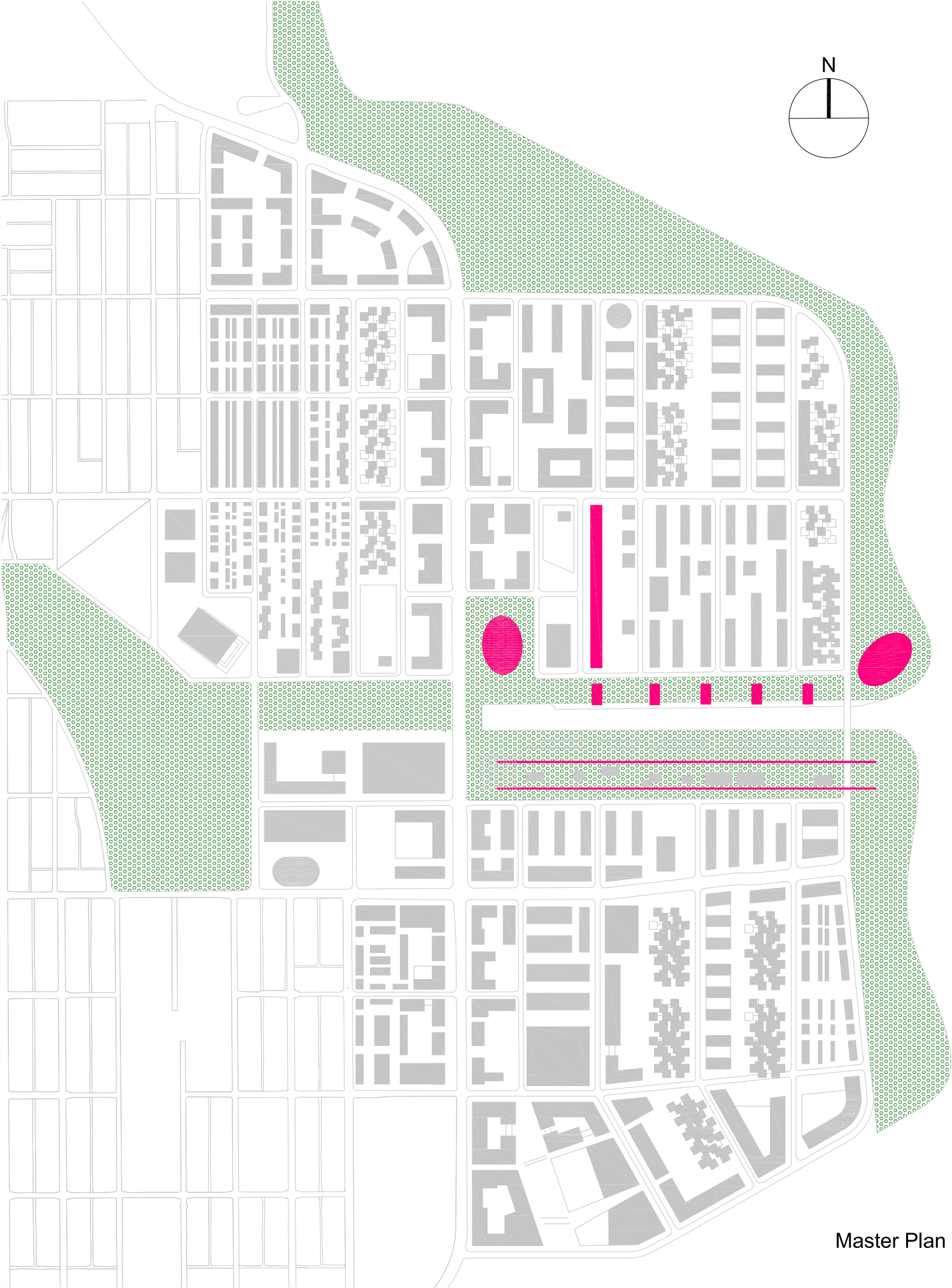


Site Plan

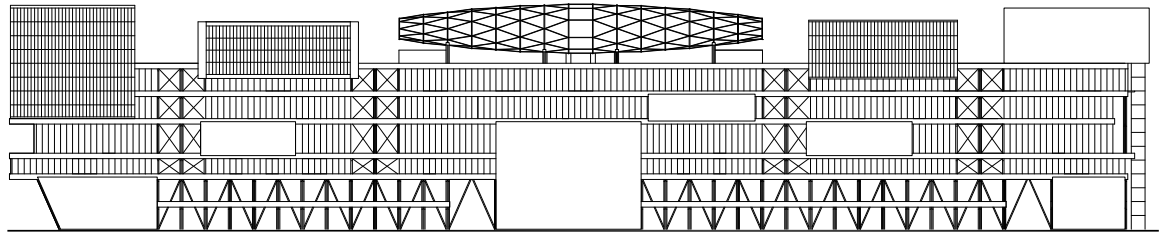


1:200 West Facade - The Wall

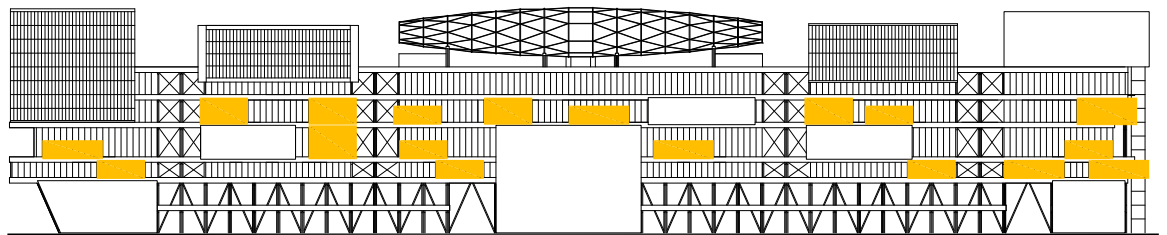
Argument - Why do we need such a large building.



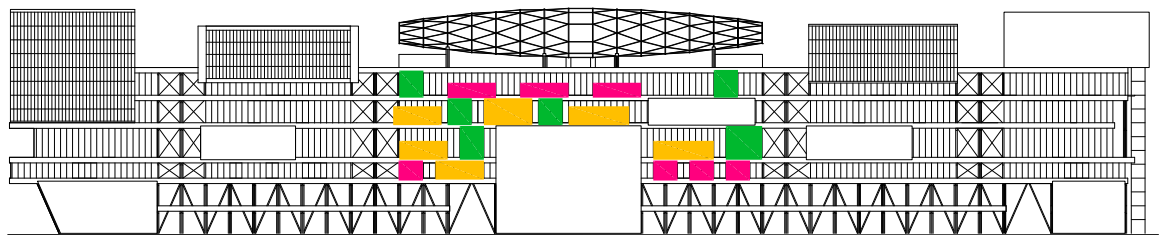
Urban Attributes - two faces



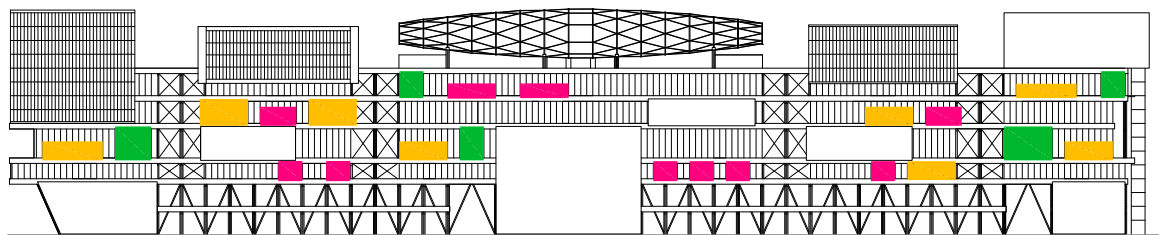
basic facade



when in short of large rooms



during events in special sections



function in small groups



larger rooms

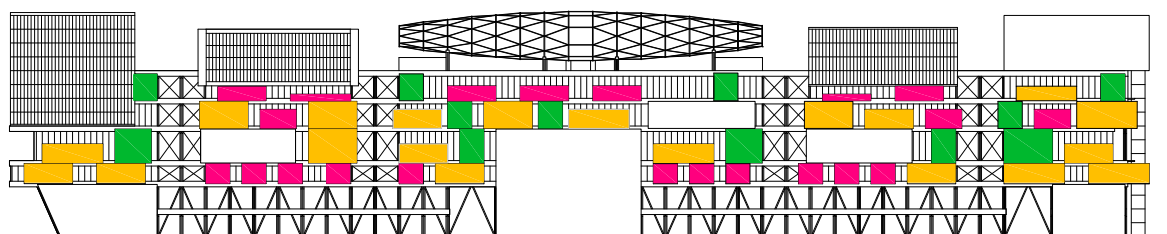


smaller rooms



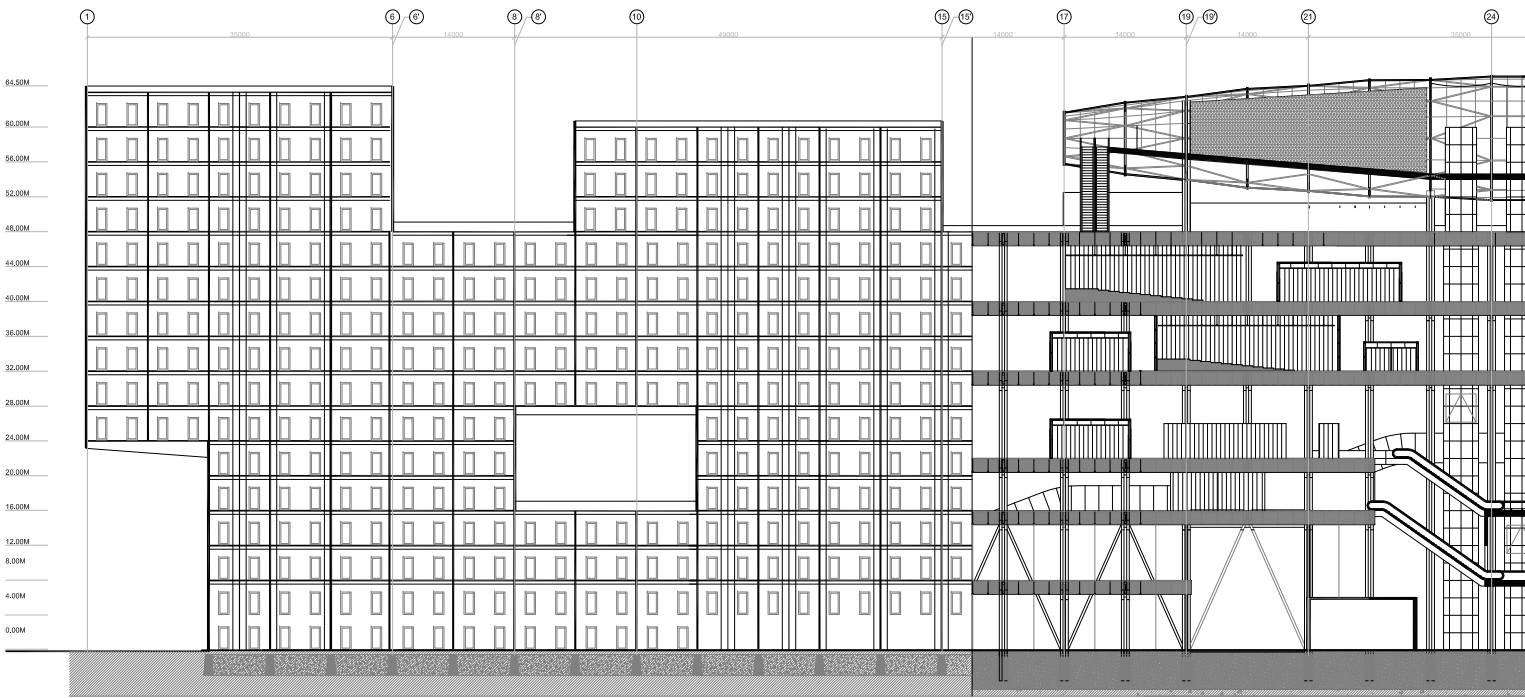
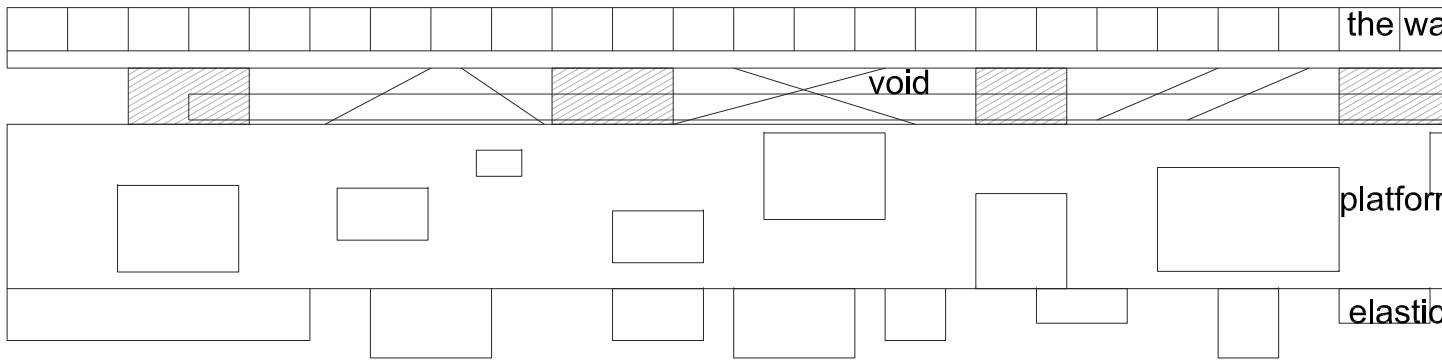
pavilions

semi climatical
controlled

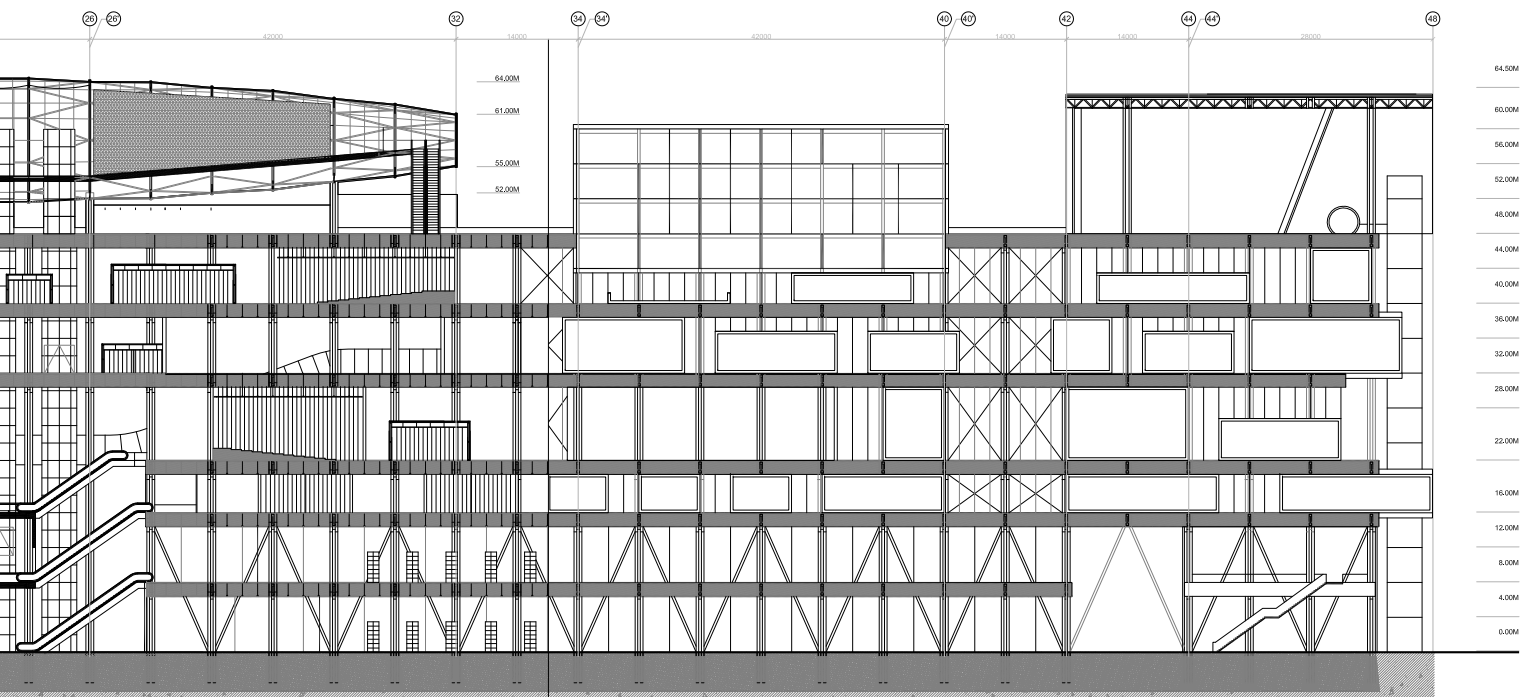
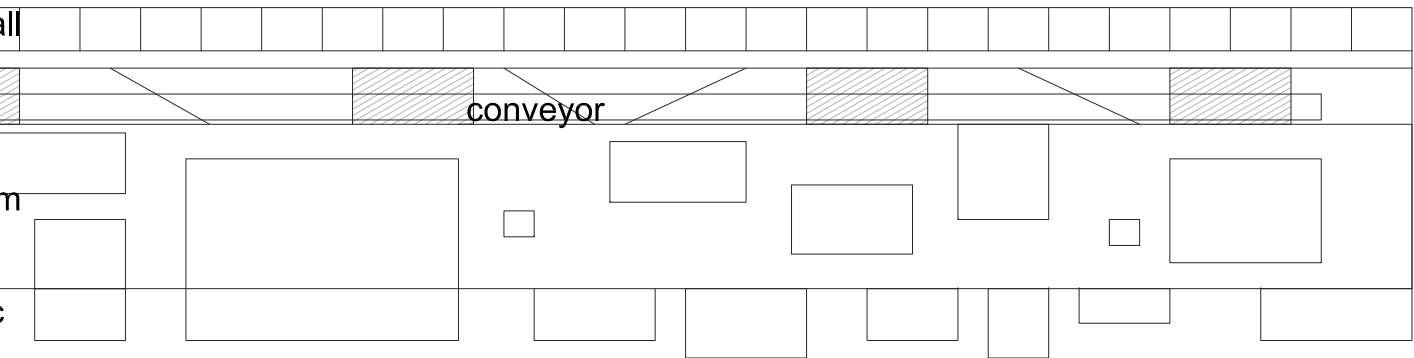


fully installed

Composition - different feature belts



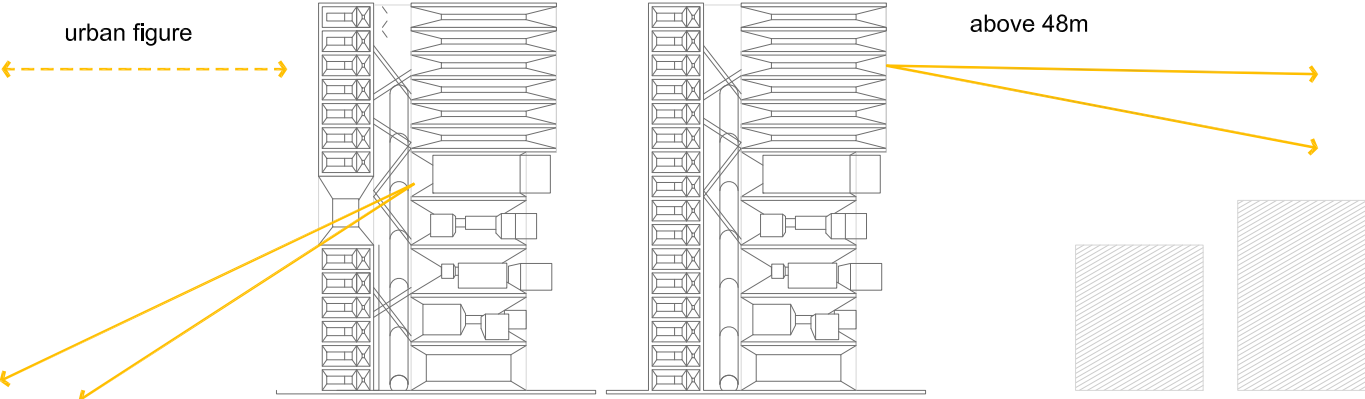
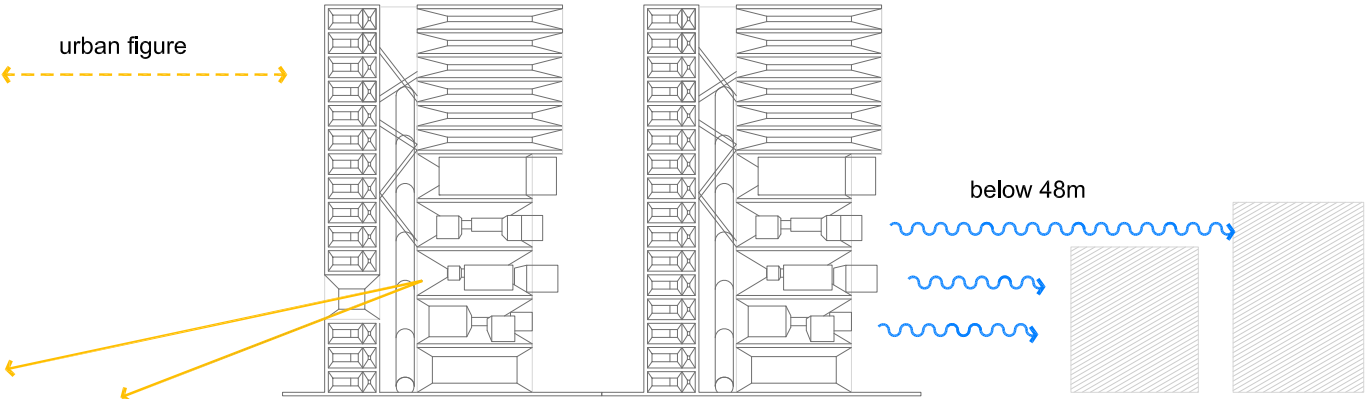
Long Section 2-2 the wall



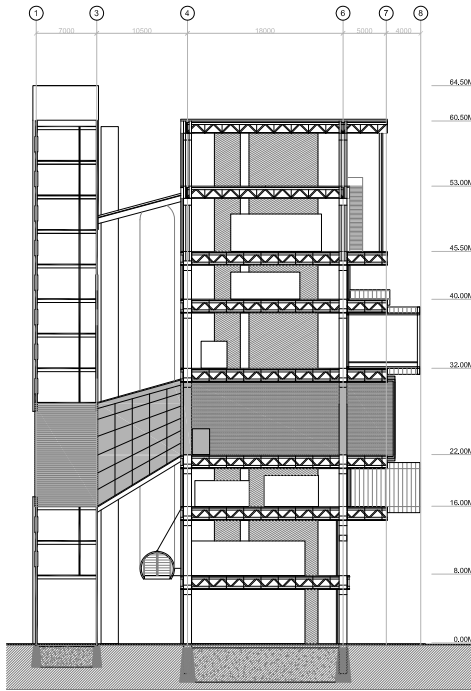
Long Section 5-5 the platform

Long Section 6-6 the elastic

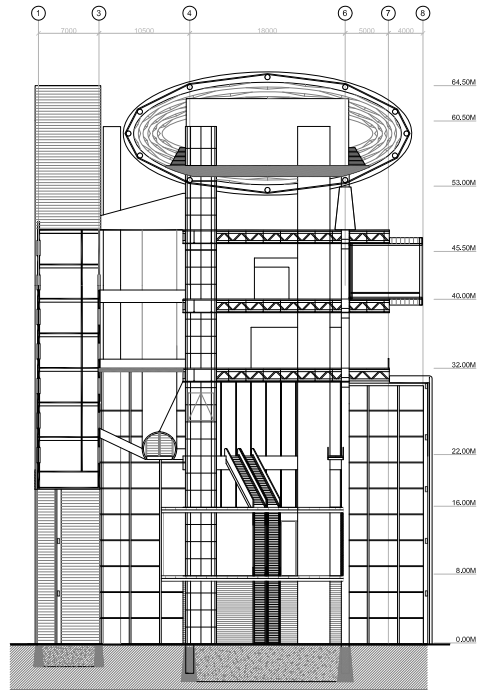
Composition - different feature levels



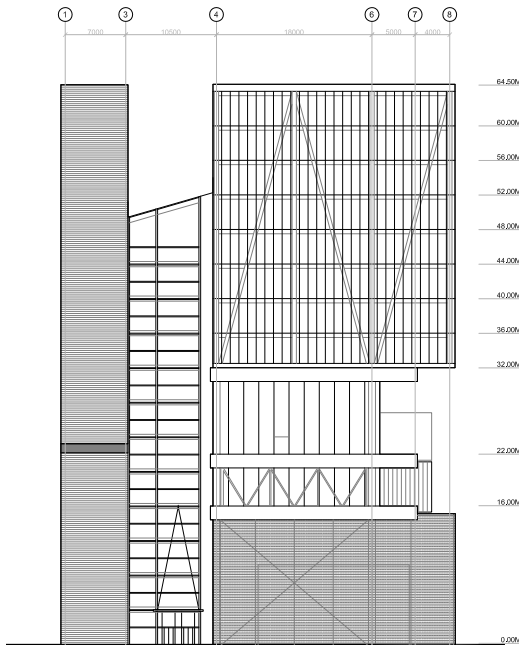
Composition - different feature levels



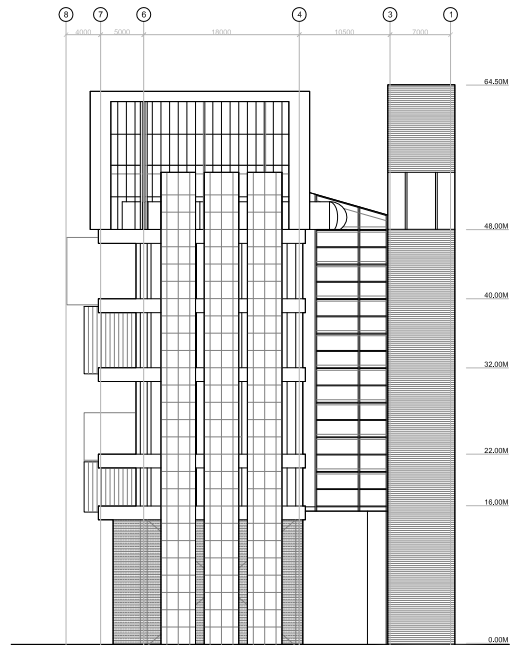
10-10 Section



24-24 Section

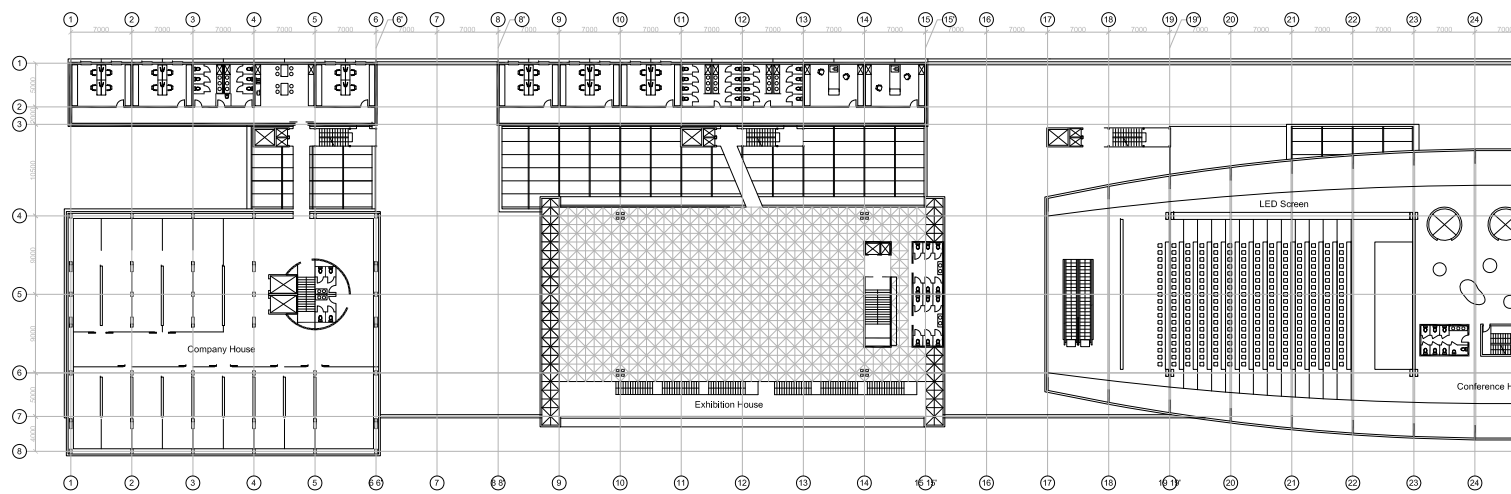
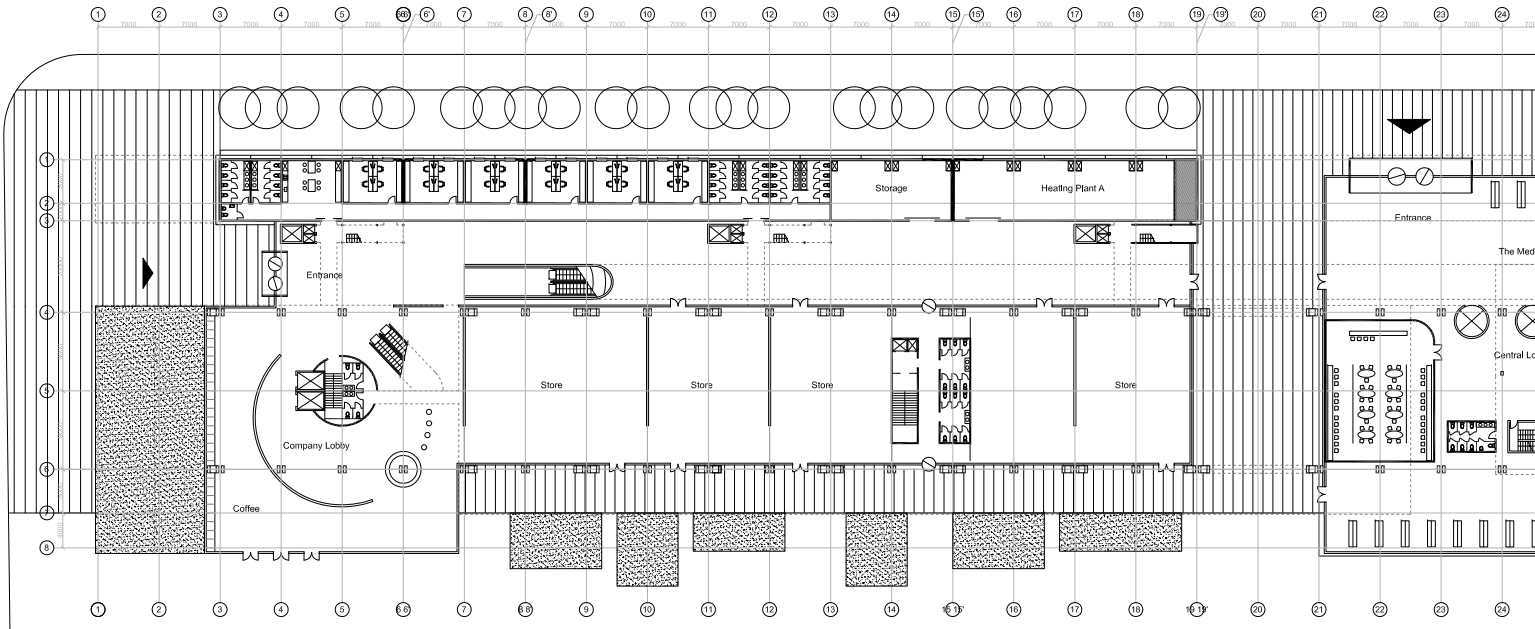


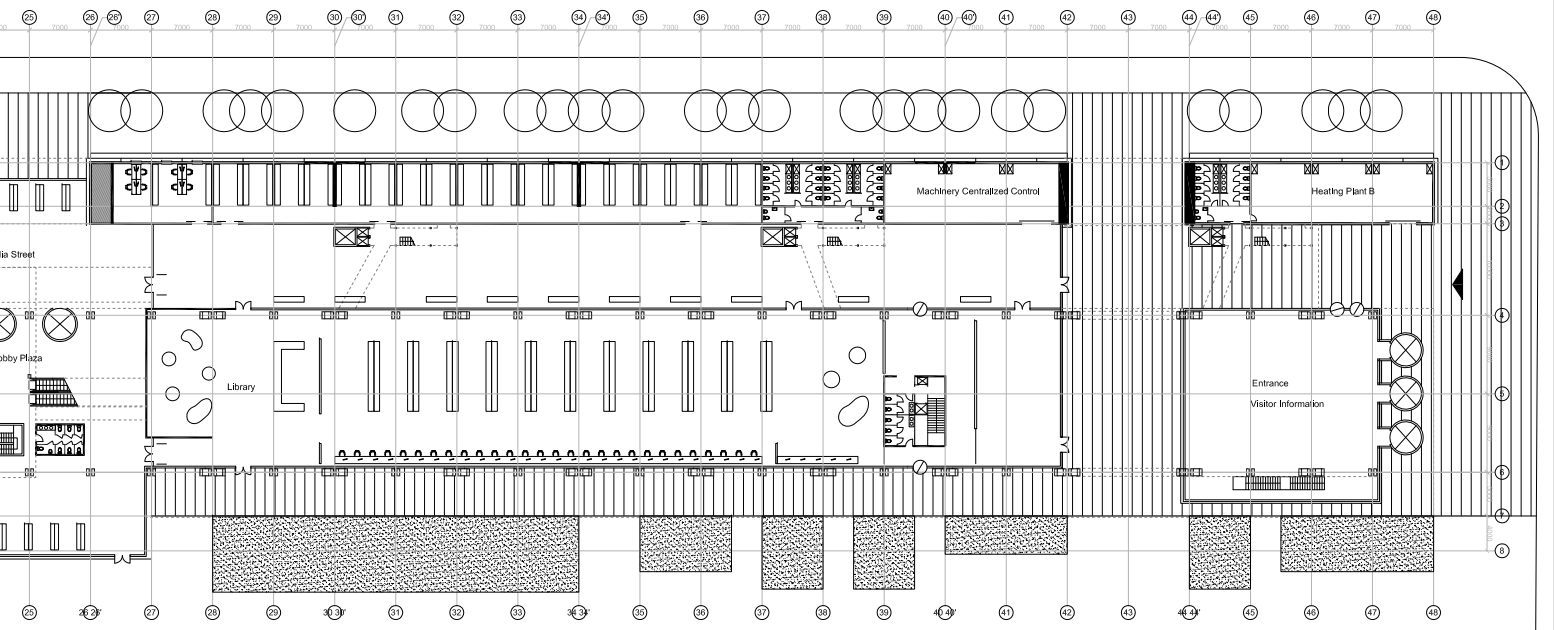
South Facade



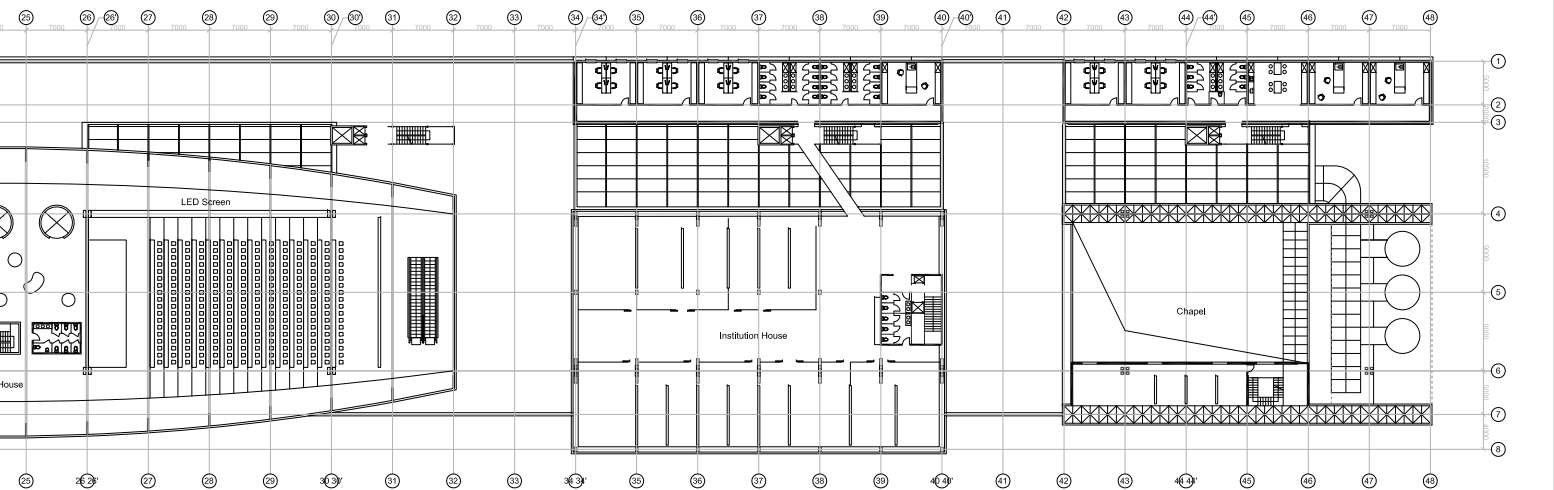
North Facade

Composition - different feature levels





Ground Floor Level +0.00



Plan on +56.00

Composition - the routing

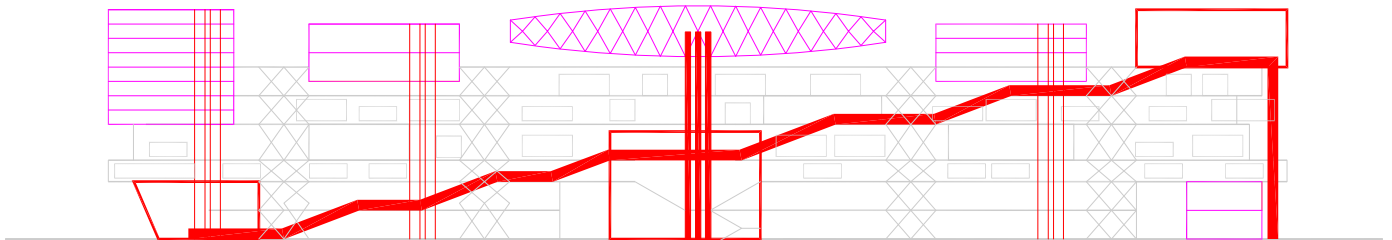
Company House

Exhibition House

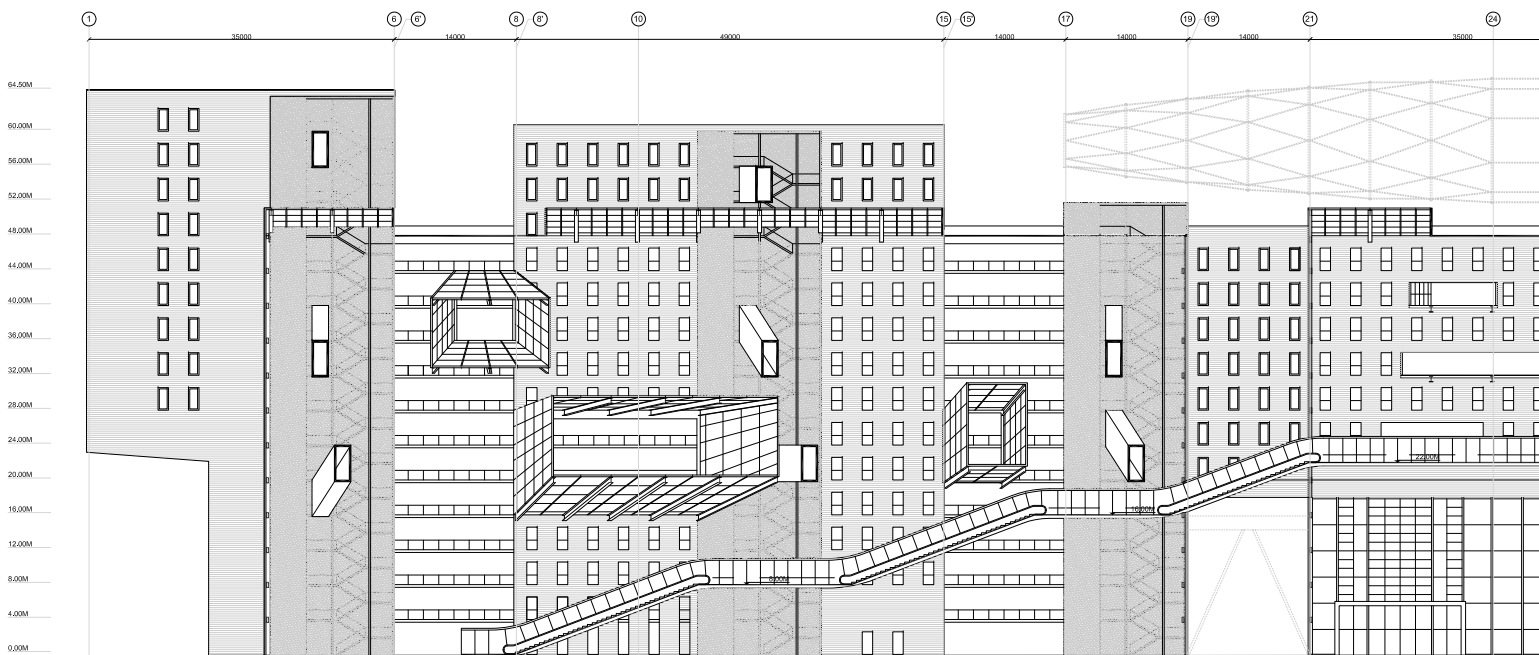
Conference House

Institution House

Chapel



routing with entrance & special programs



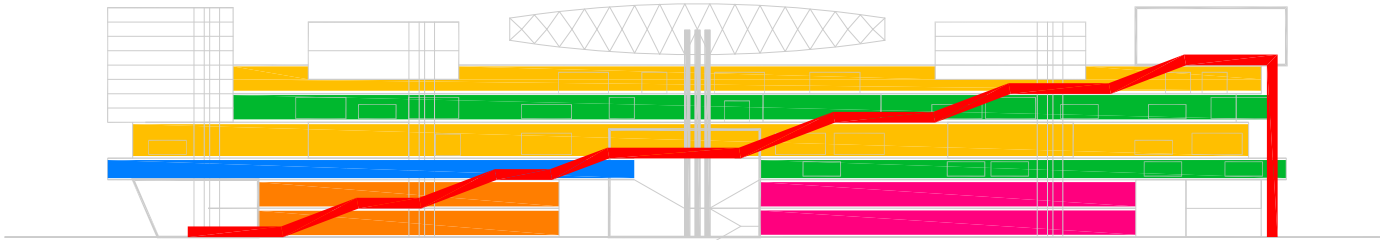
education platform

activity platform

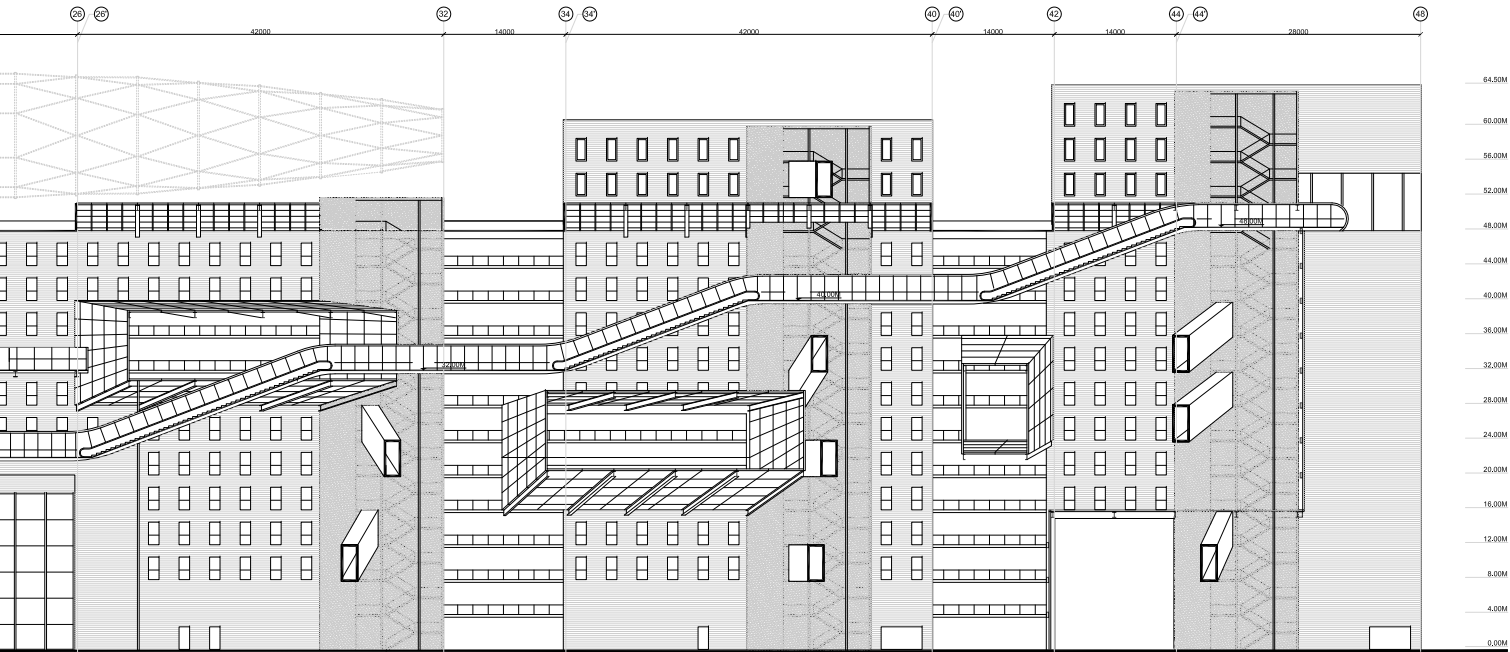
healthcare experiencing platform

commercial platform

library platform

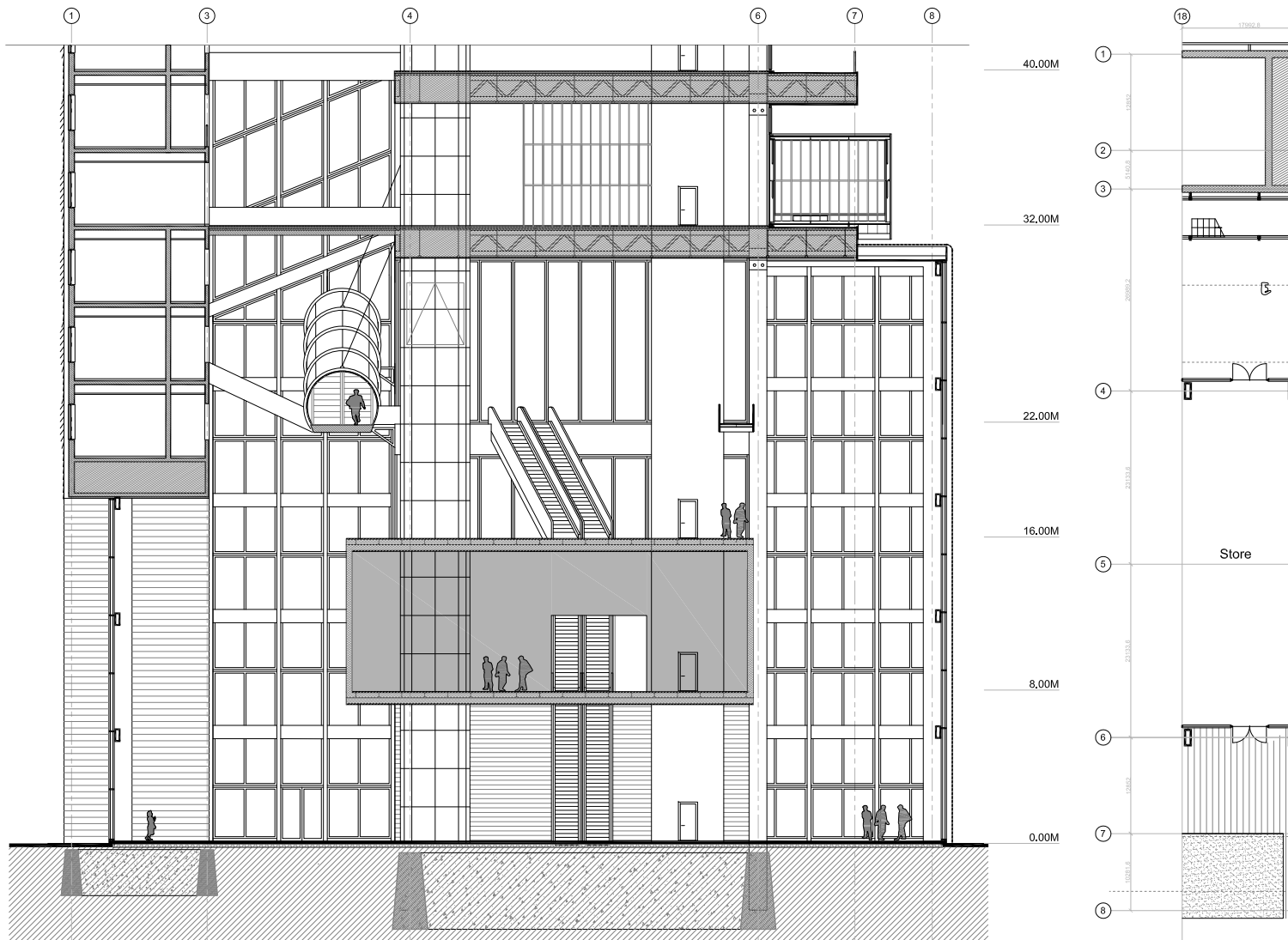


routing with different platforms

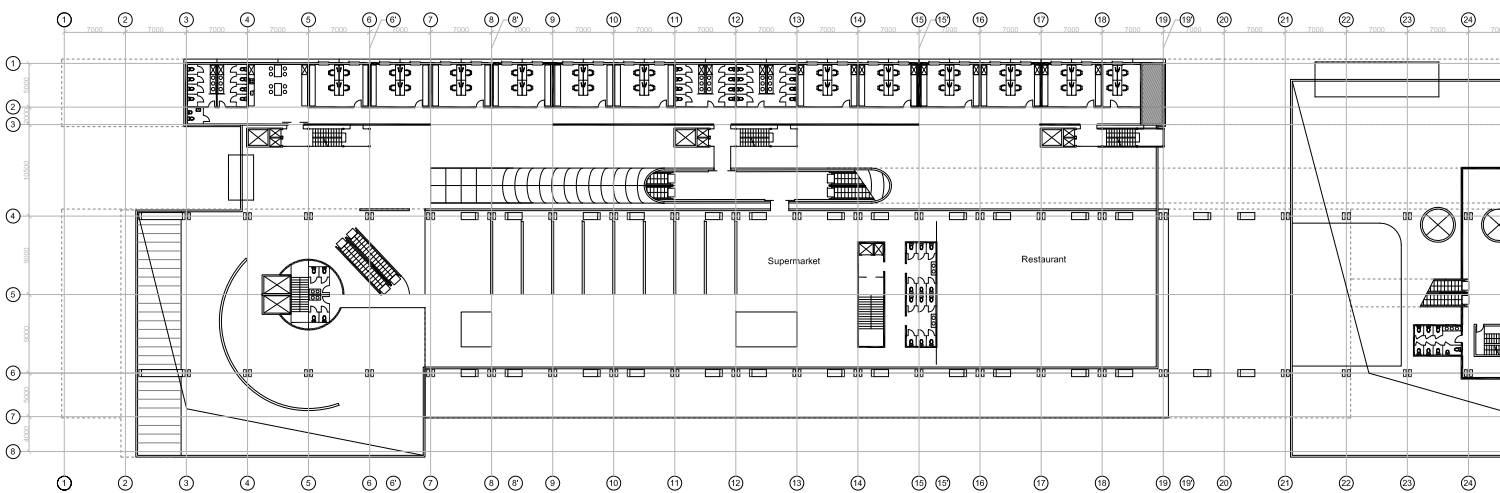


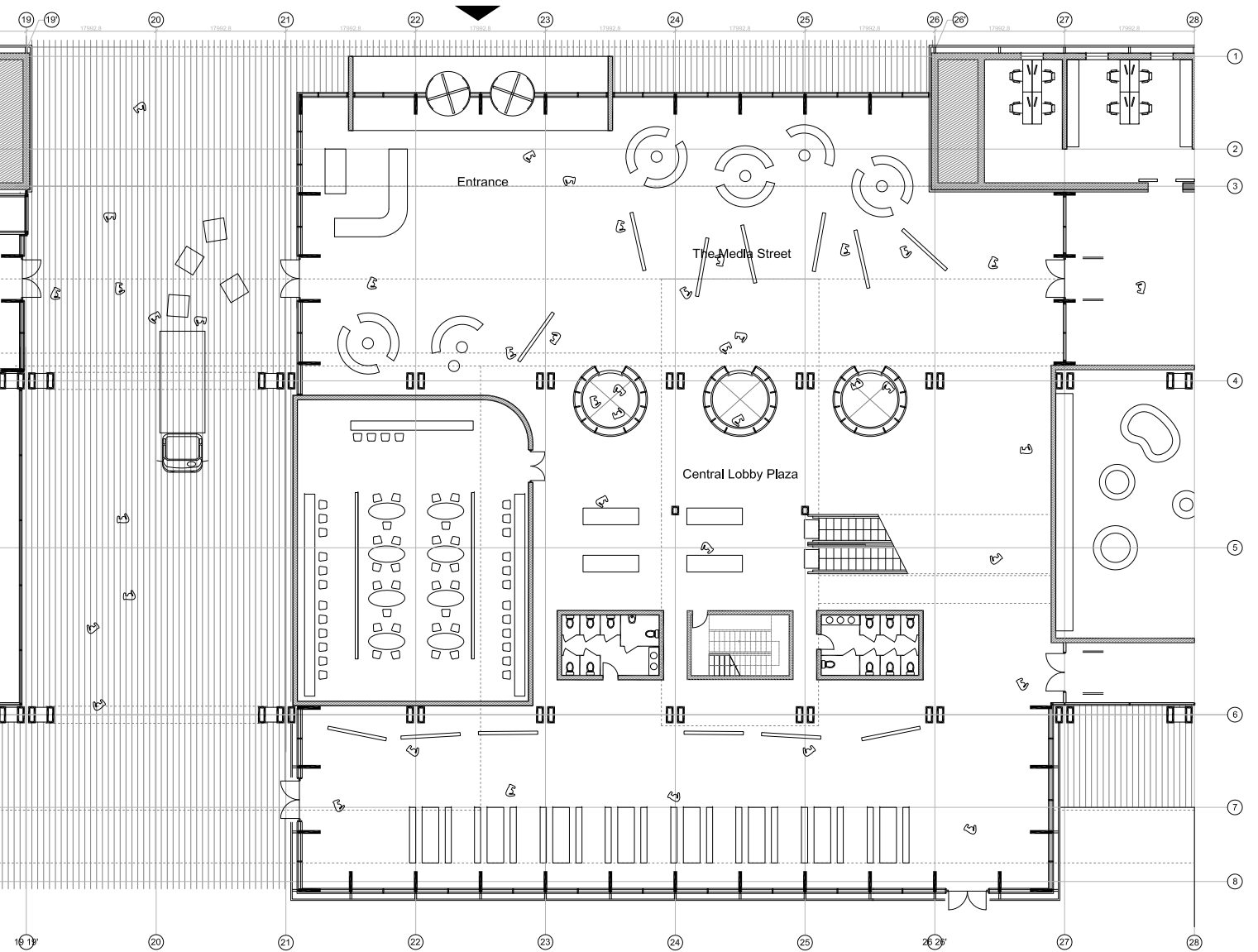
Long Section in the Void

Composition - the routing

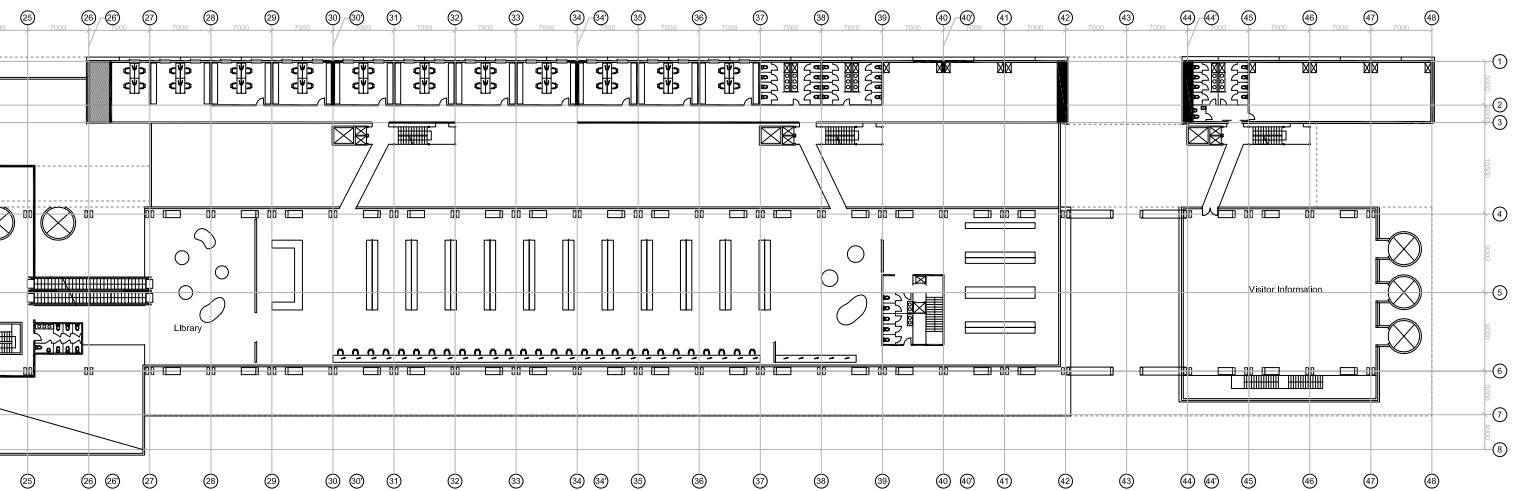


Cross Section 25-25 / Entrance Hall





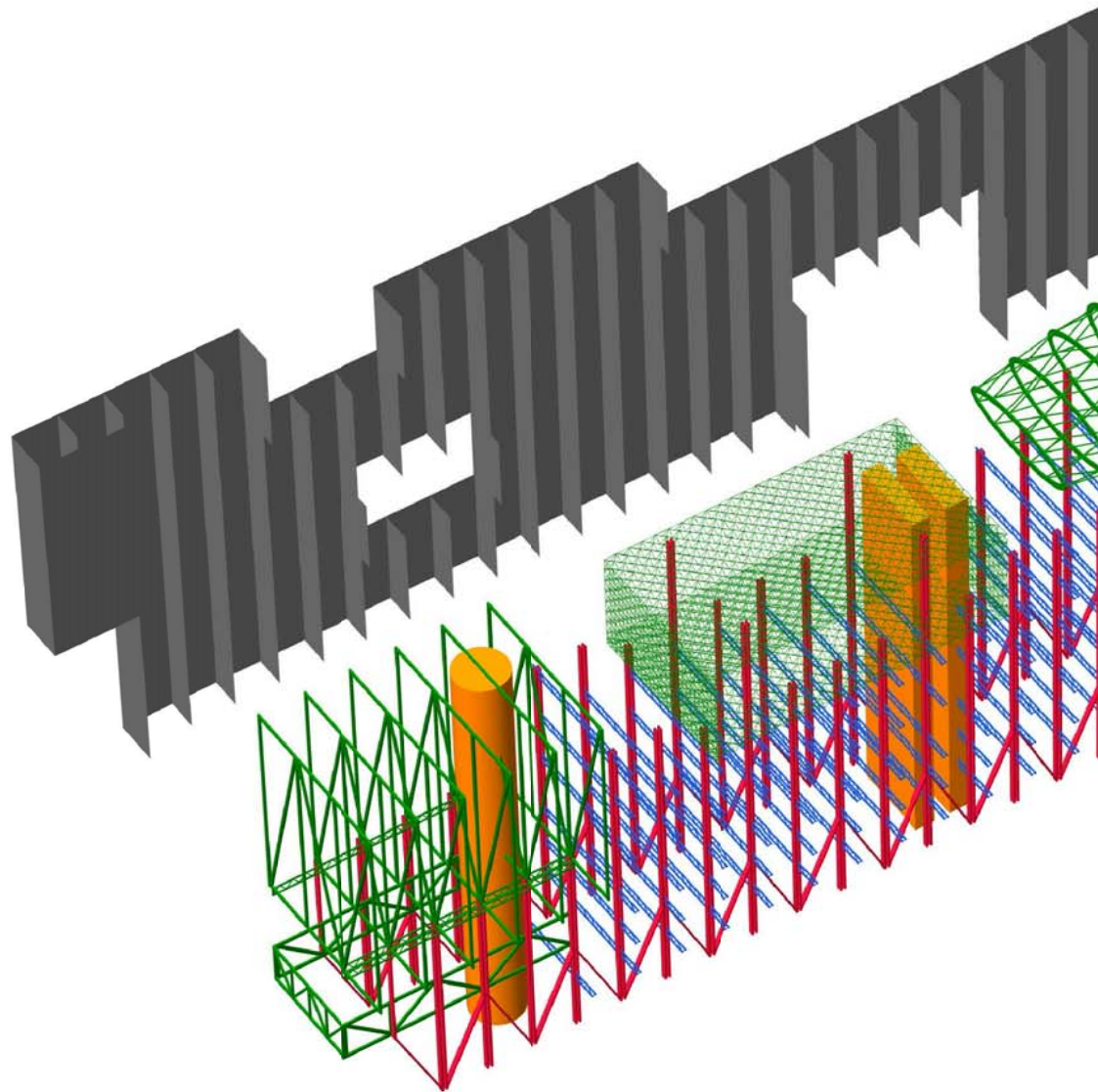
Ground Floor Plan / Entrance Hall

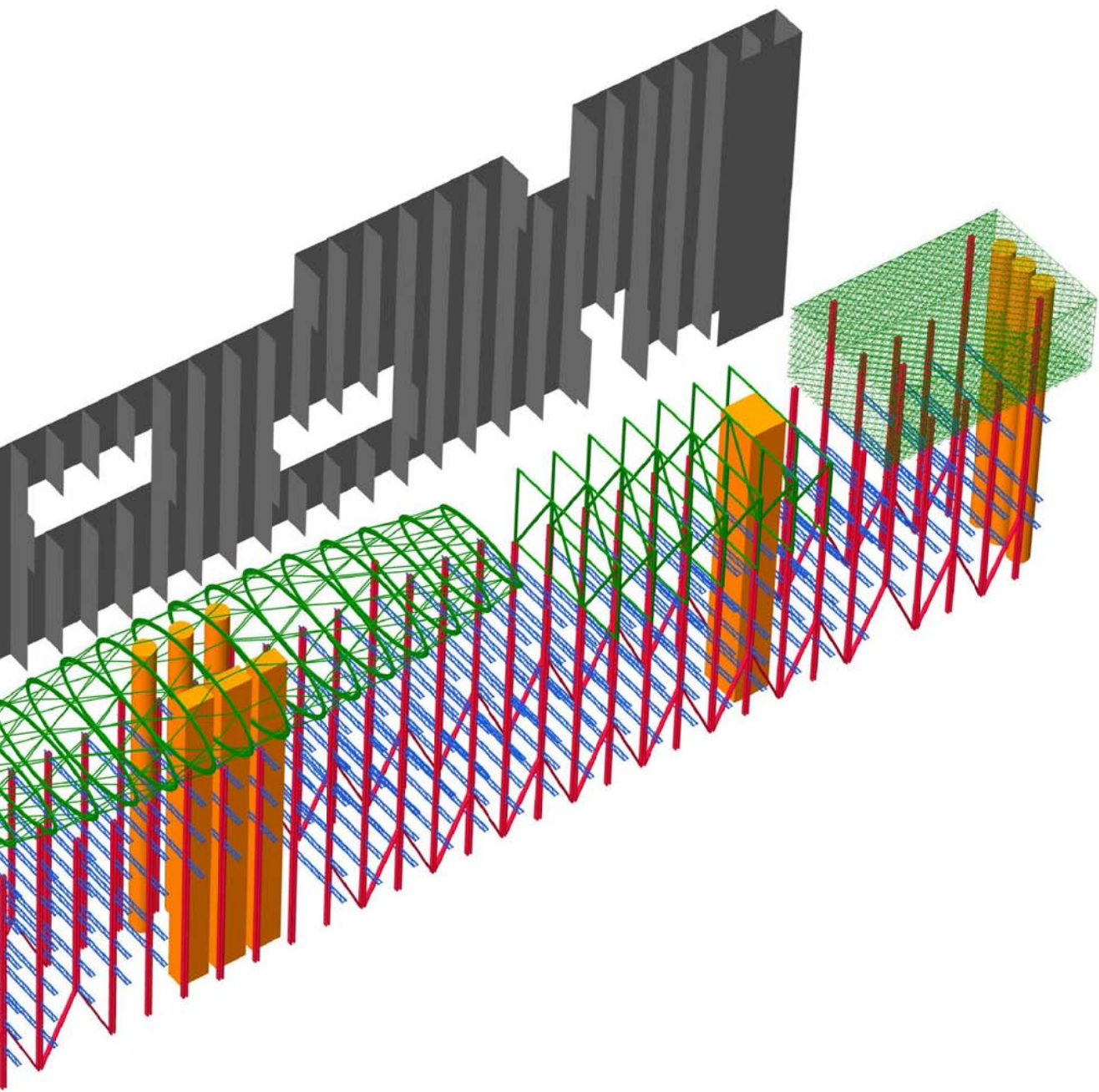


Plan on +8.00

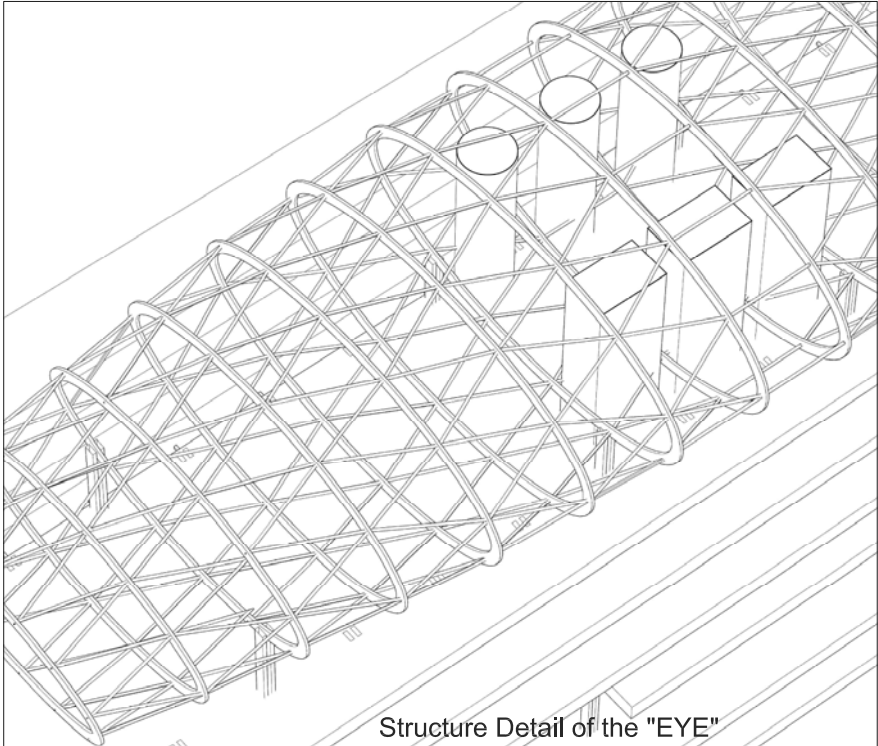
Structure System

- concrete load bearing wall system
- steel column
- warren truss
- multiple structure system
- concrete load bearing block

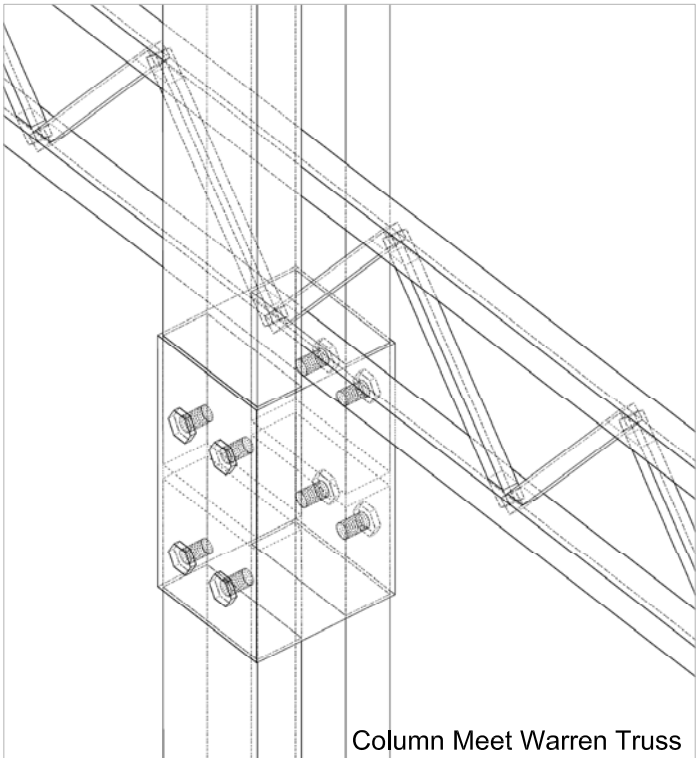




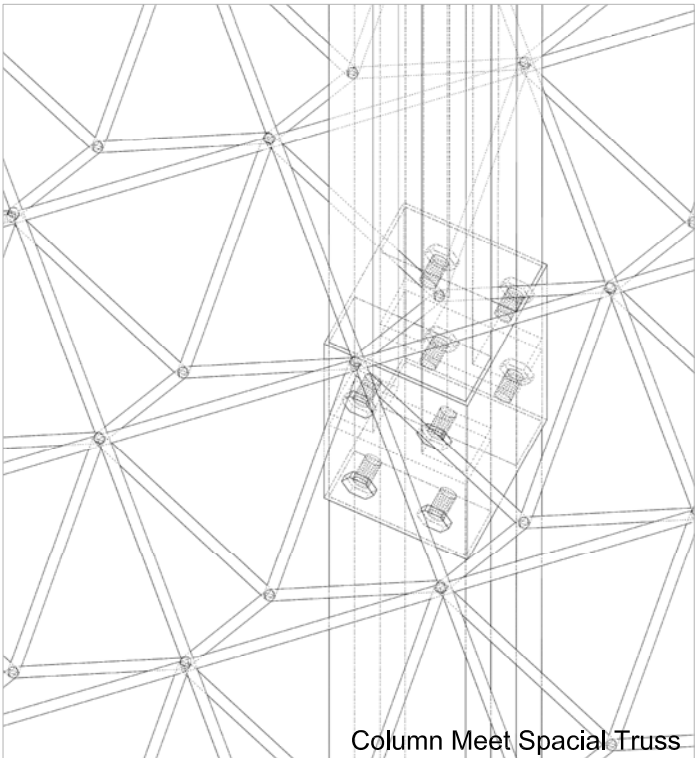
Structure System



Structure Detail of the "EYE"



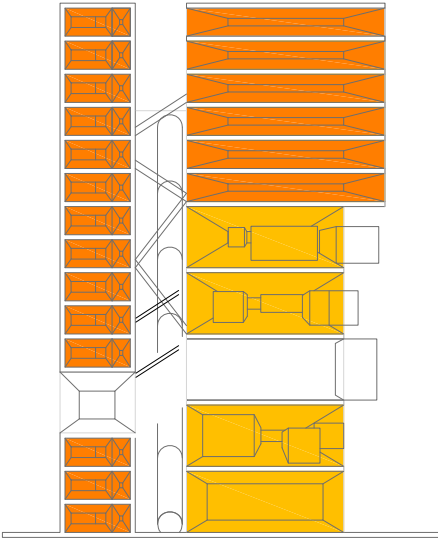
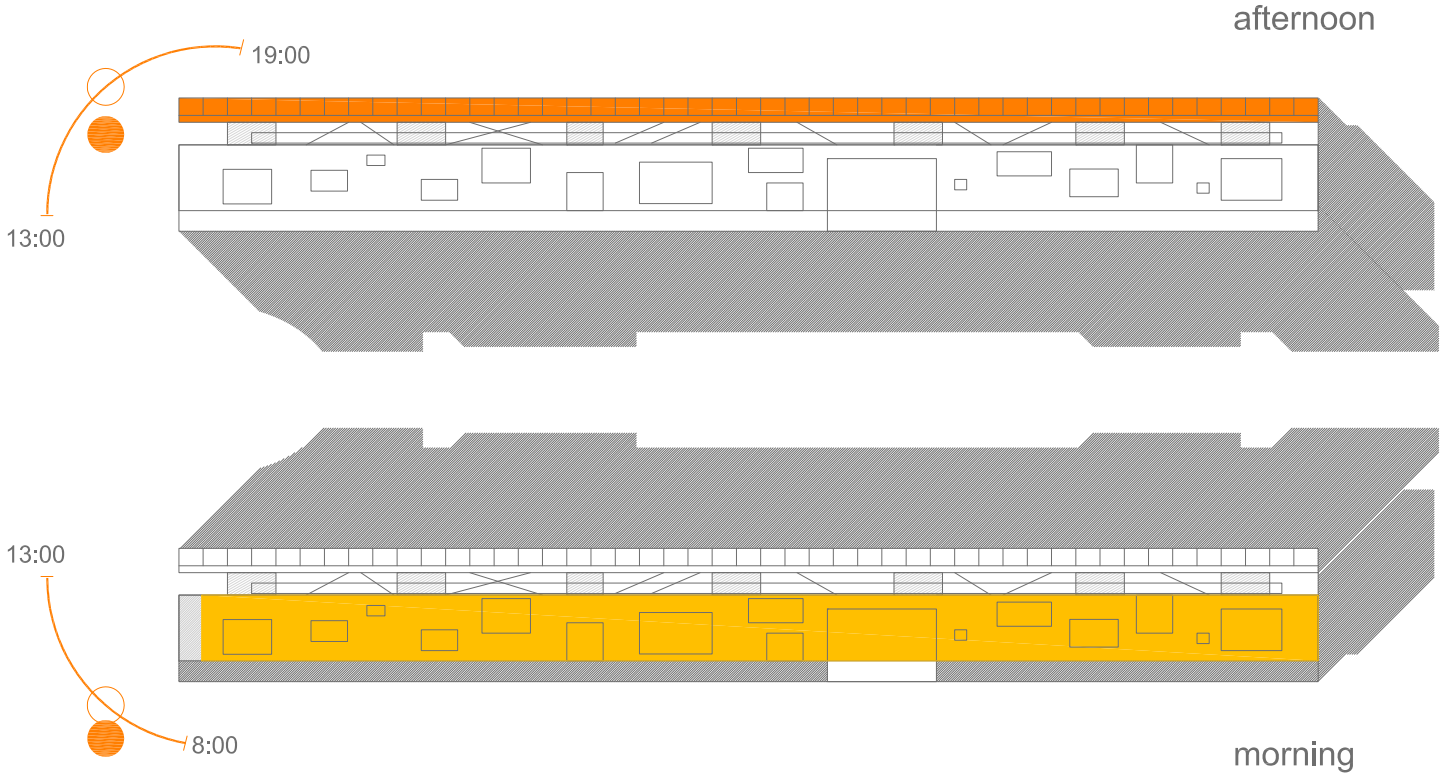
Column Meet Warren Truss



Column Meet Spatial Truss

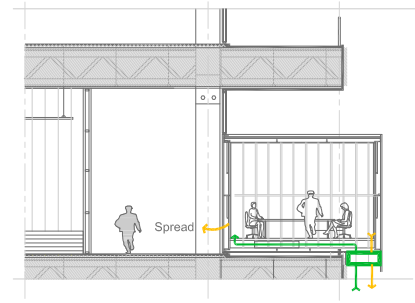
Climate Design and Installations

Sunlight & Radiation

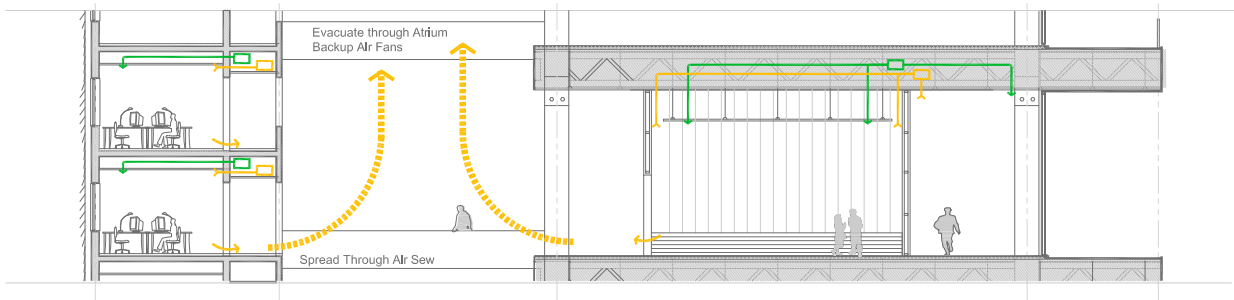


Climate Design and Installations

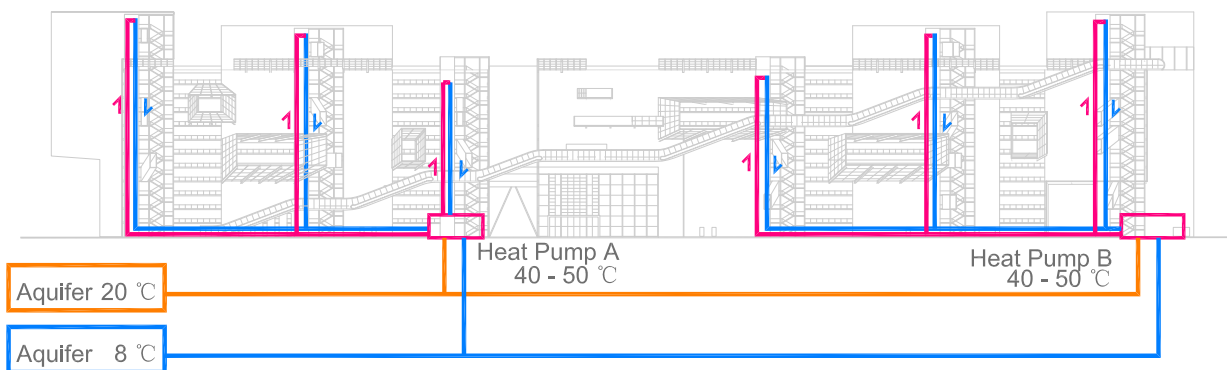
Mechanical Ventilation Detail



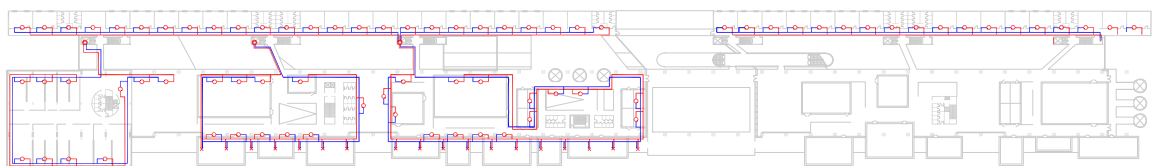
exhausted air pre-heated/cooled air evacuation&heat recovery



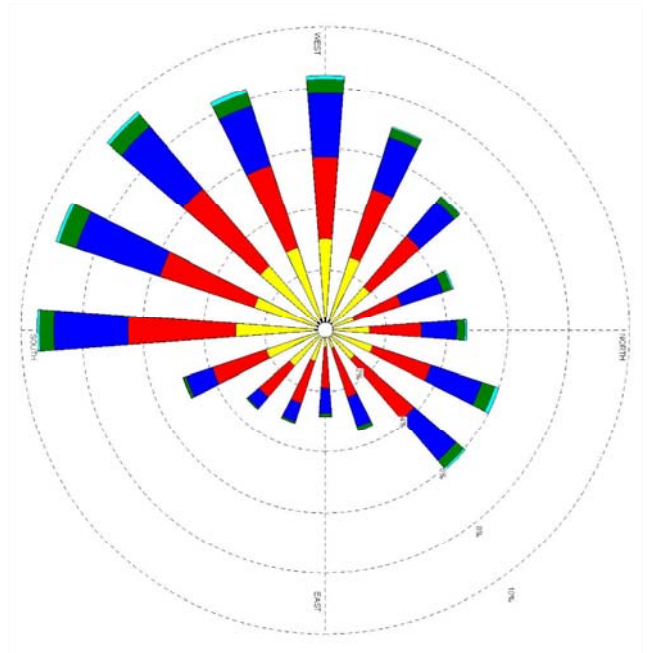
Generation&Transport System



Supply System - Heat Radiators



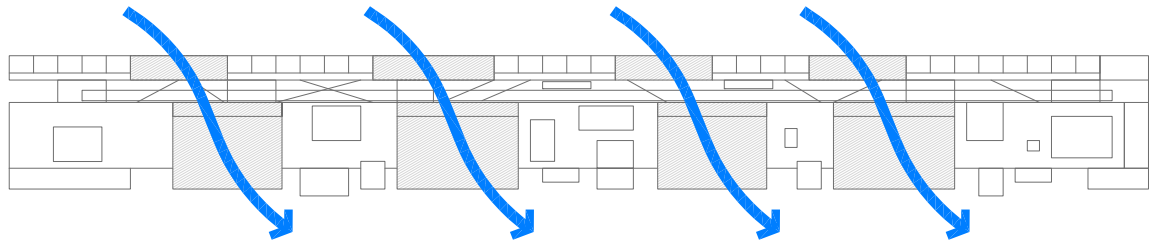
Climate Design and Installations



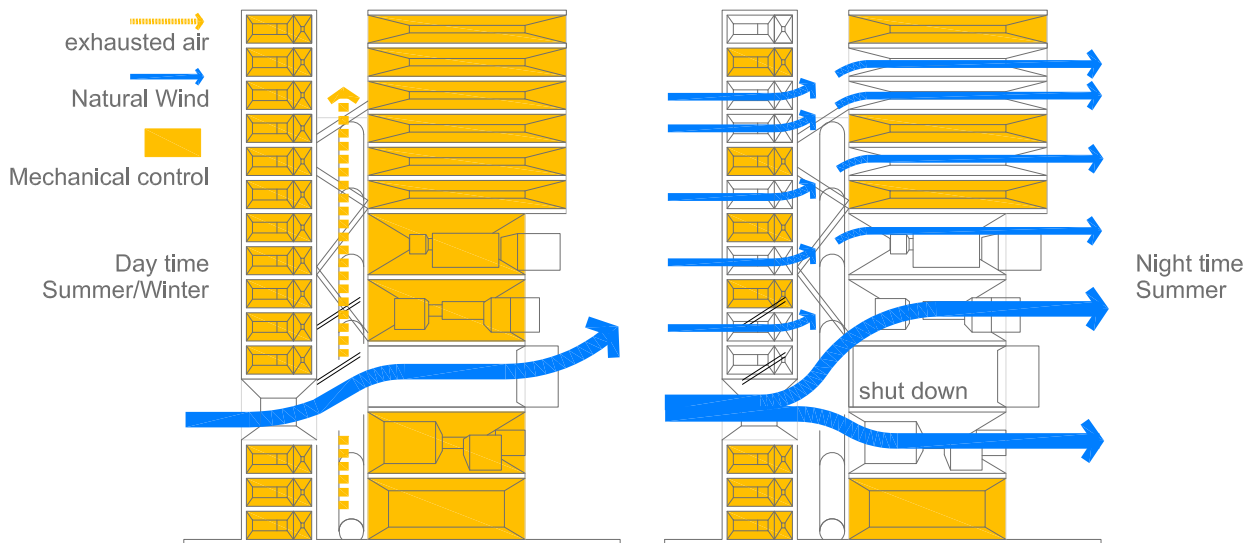
Natural Ventilation

Wind Tunnels

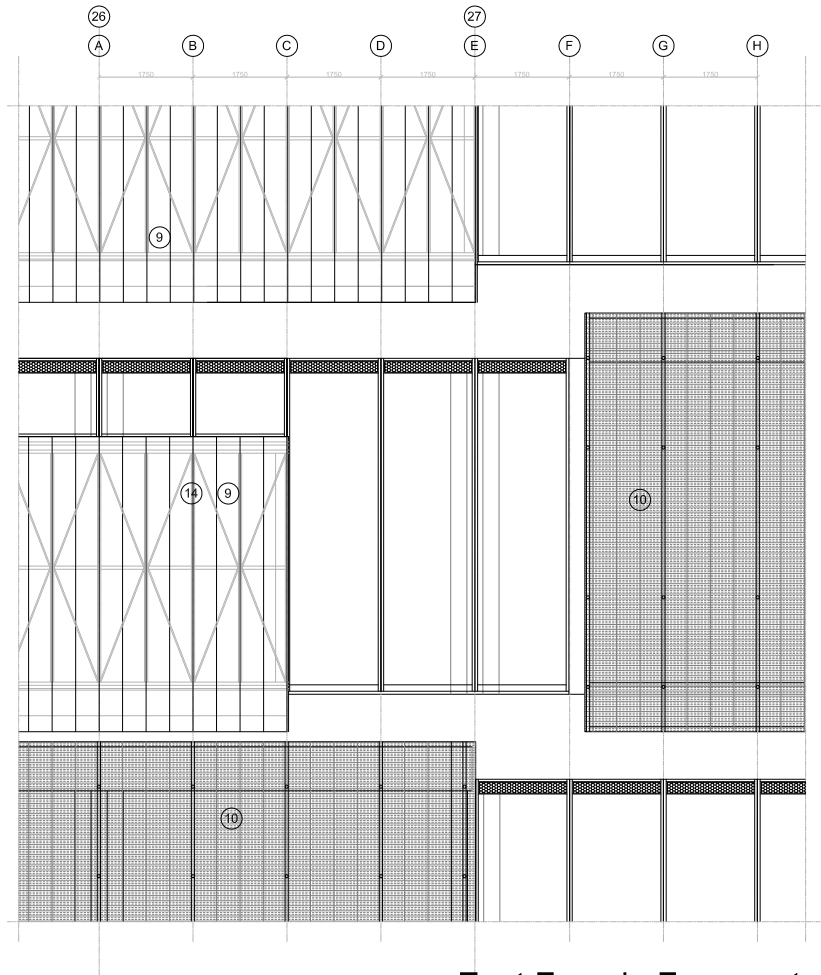
Wind Rose of Chicago



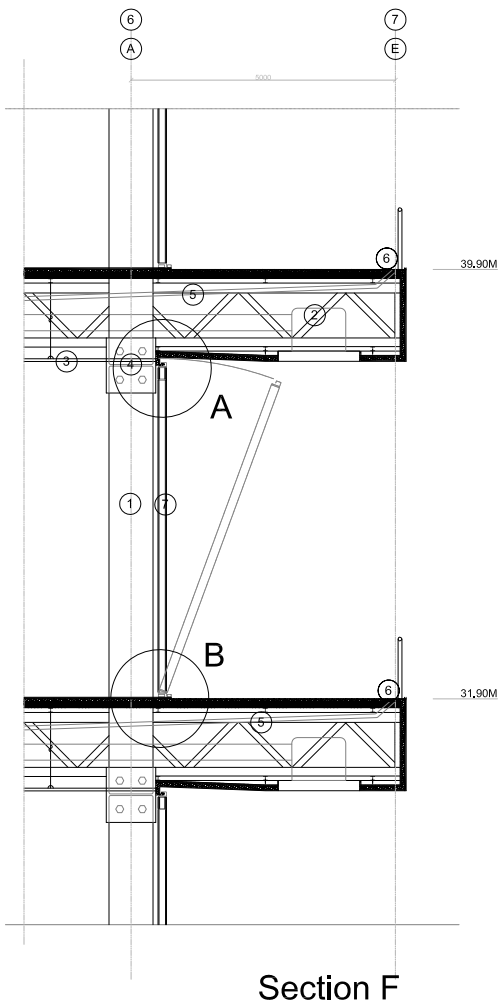
||



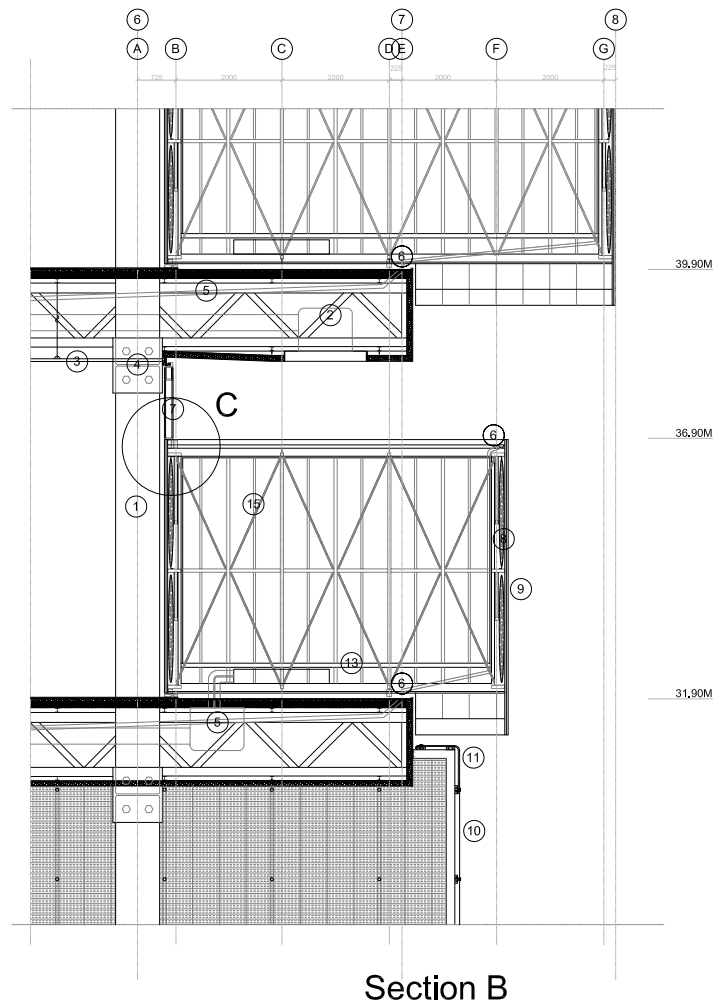
Facade Detail



East Facade Fragment

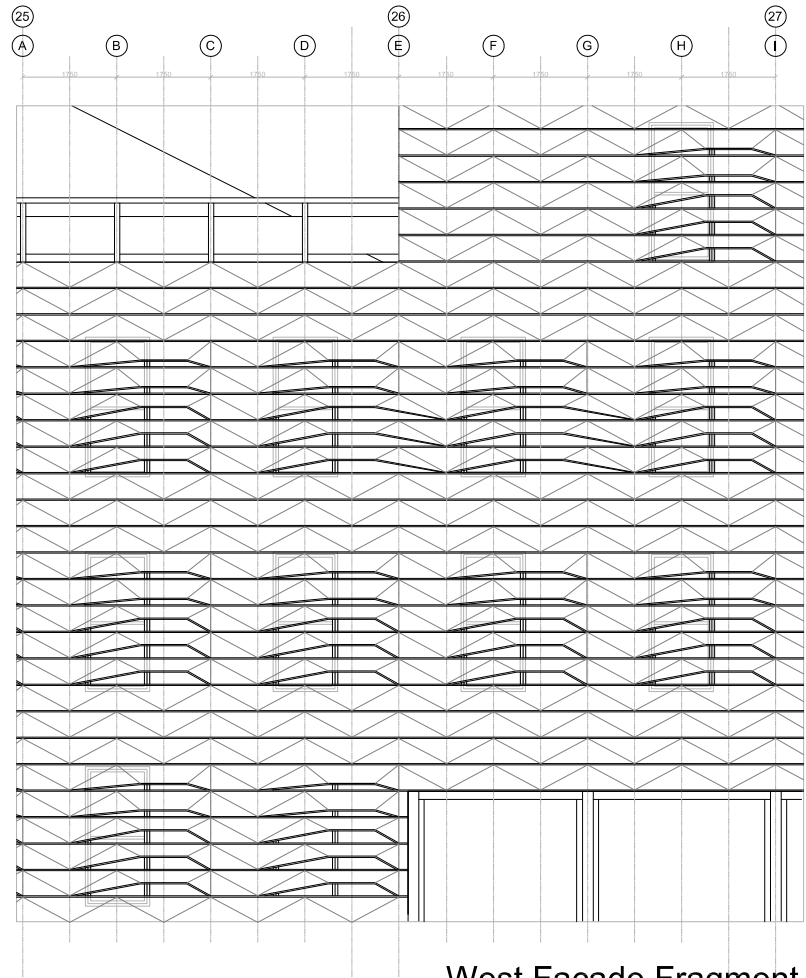


Section F

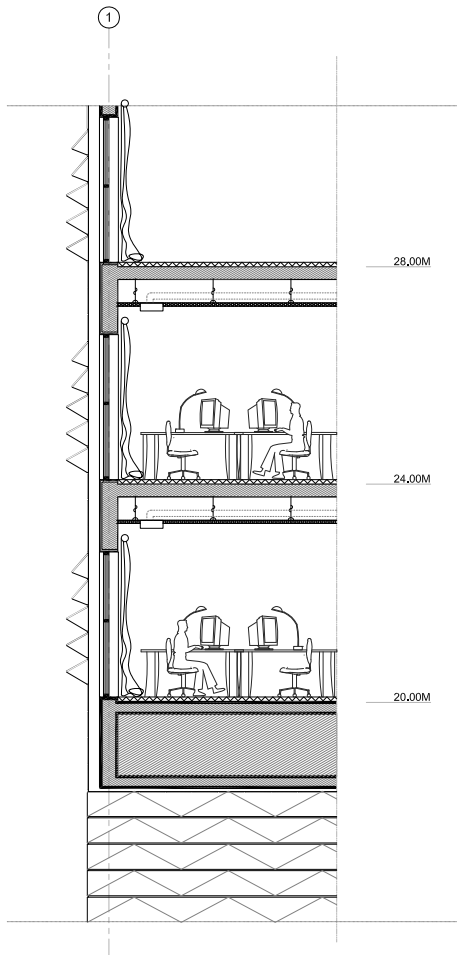


Section B

Facade Detail



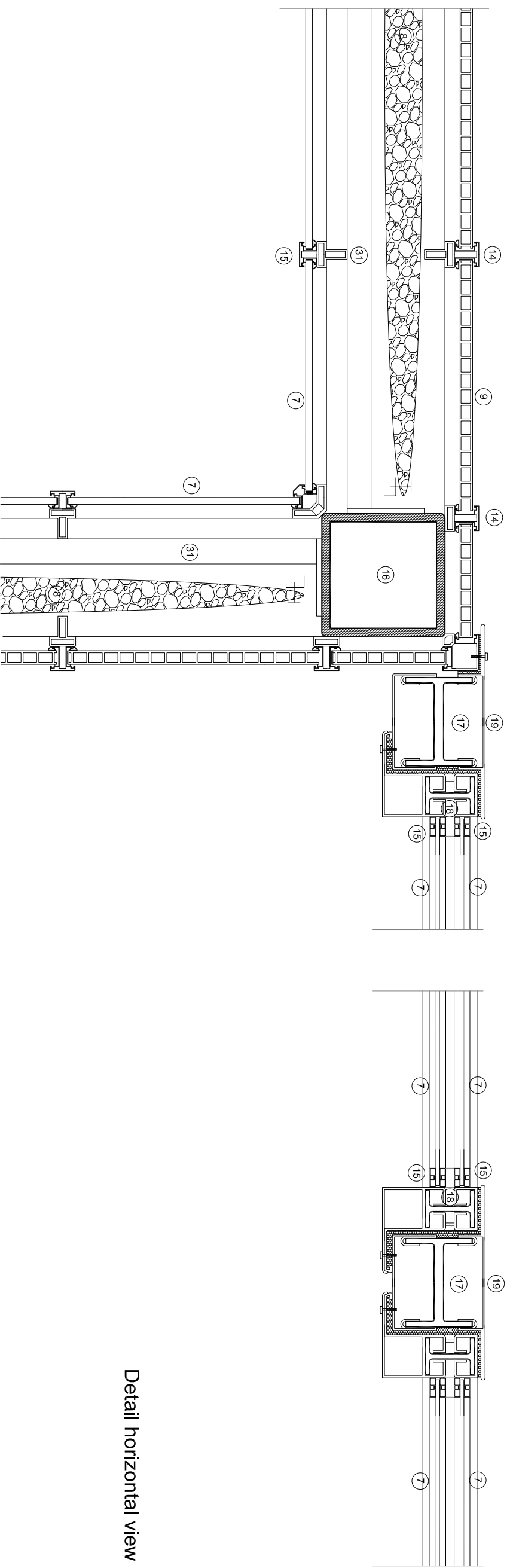
West Facade Fragment



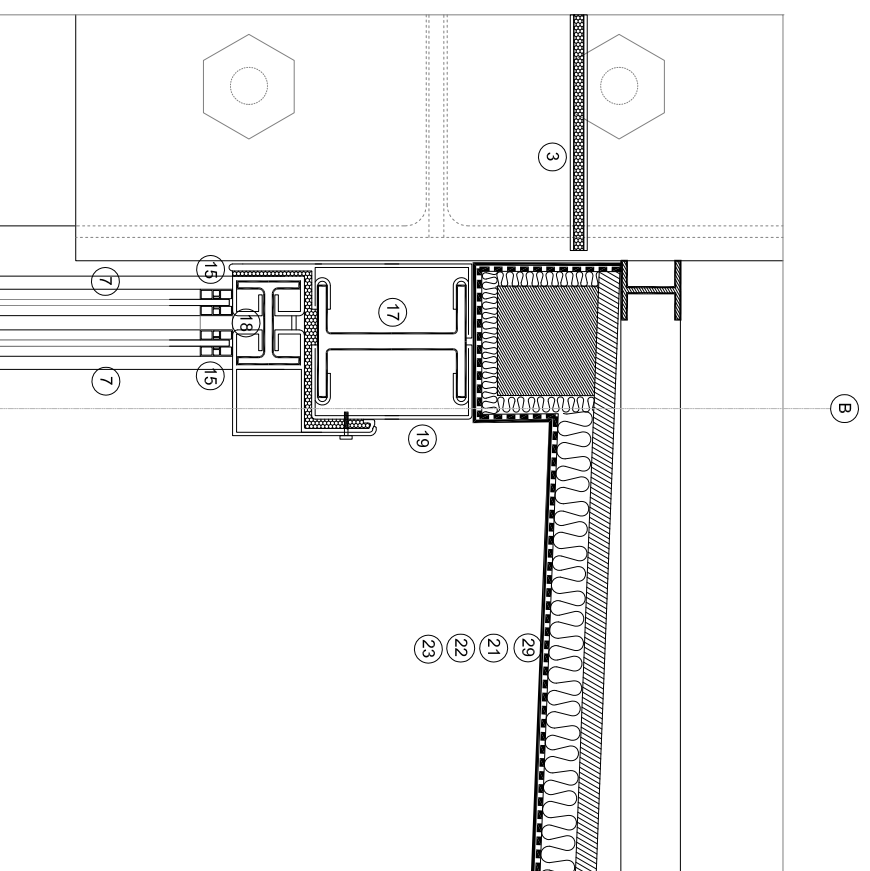
Section H

- | | |
|------------------------------|-----------------------------|
| 1 steel column | 18 I beam steel 125X150 |
| 2 warren truss | 19 steel veneer |
| 3 gypsum ceiling board | 20 round steel d 100 |
| 4 column joint | 21 insulation foam |
| 5 drain pipe | 22 water proof layer |
| 6 floor drain | 23 surface layer |
| 7 tempered glass | 24 plastic ceiling panel |
| 8 polymer insulation filling | 25 preshaped steel panel |
| 9 polyester board | cast concrete on site |
| 10 wire netting | 26 self-leveling insulation |
| 11 preshaped steel panel | 27 damping layer |
| 12 steel beam | 28 floor surface layer |
| 13 secondary polywood deck | 29 polywood board |
| 14 aluminum panel track | 30 rectangular steel beam |
| 15 aluminum glazing frame | 240X150 |
| 16 rectangular steel beam | 31 diagonal bracing beam |
| 240X240 | 60X60 |
| 17 I beam steel 195X165 | |

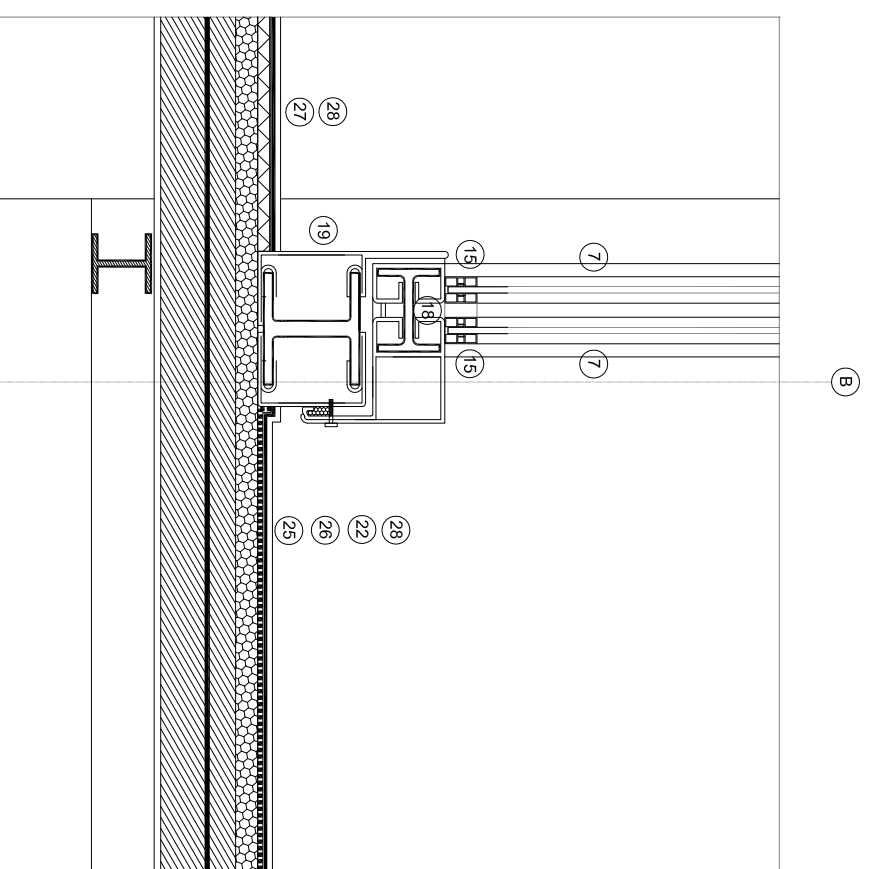
Facade Detail



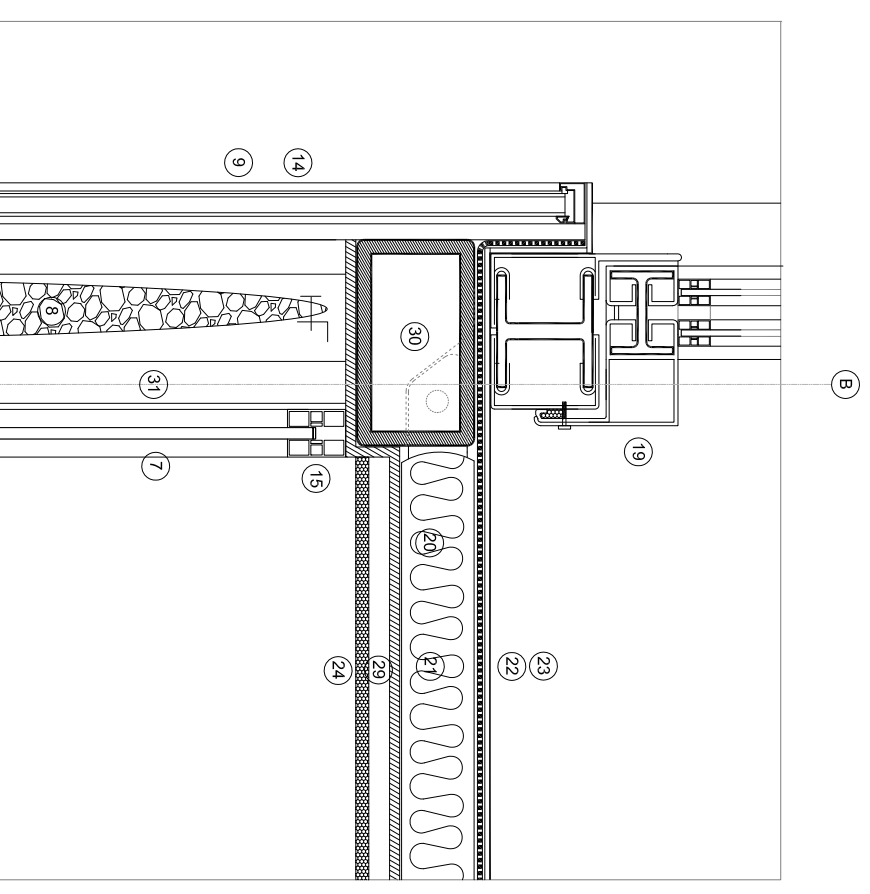
Detail horizontal view



Detail A



Detail B



Detail C