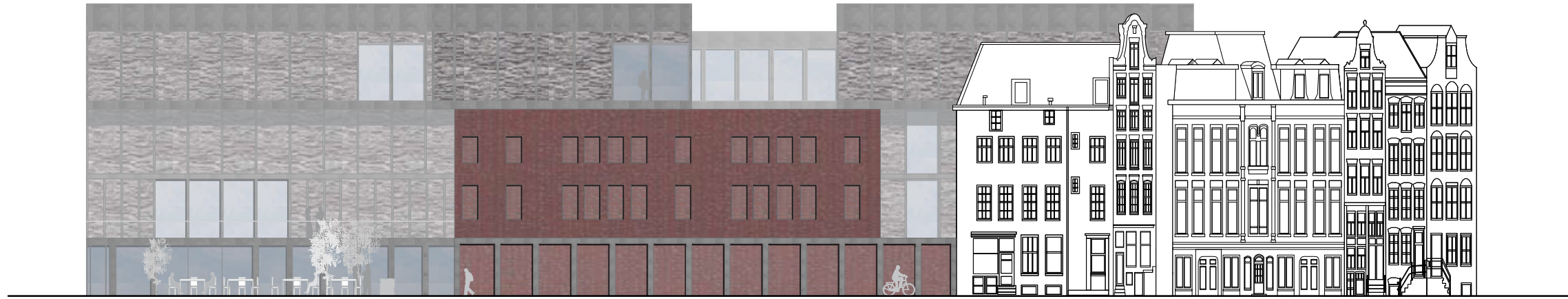


“A public lounge with Flemish roots..”



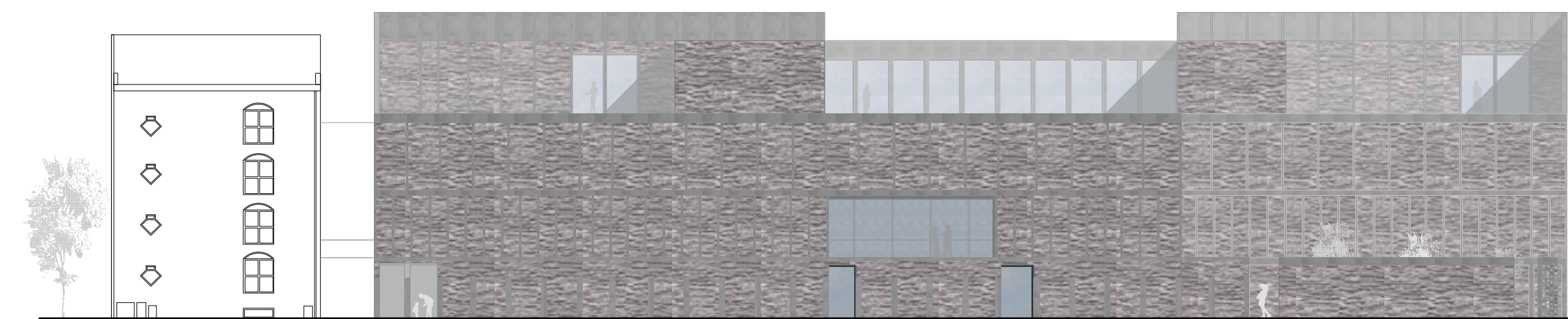
Facade - de Nes



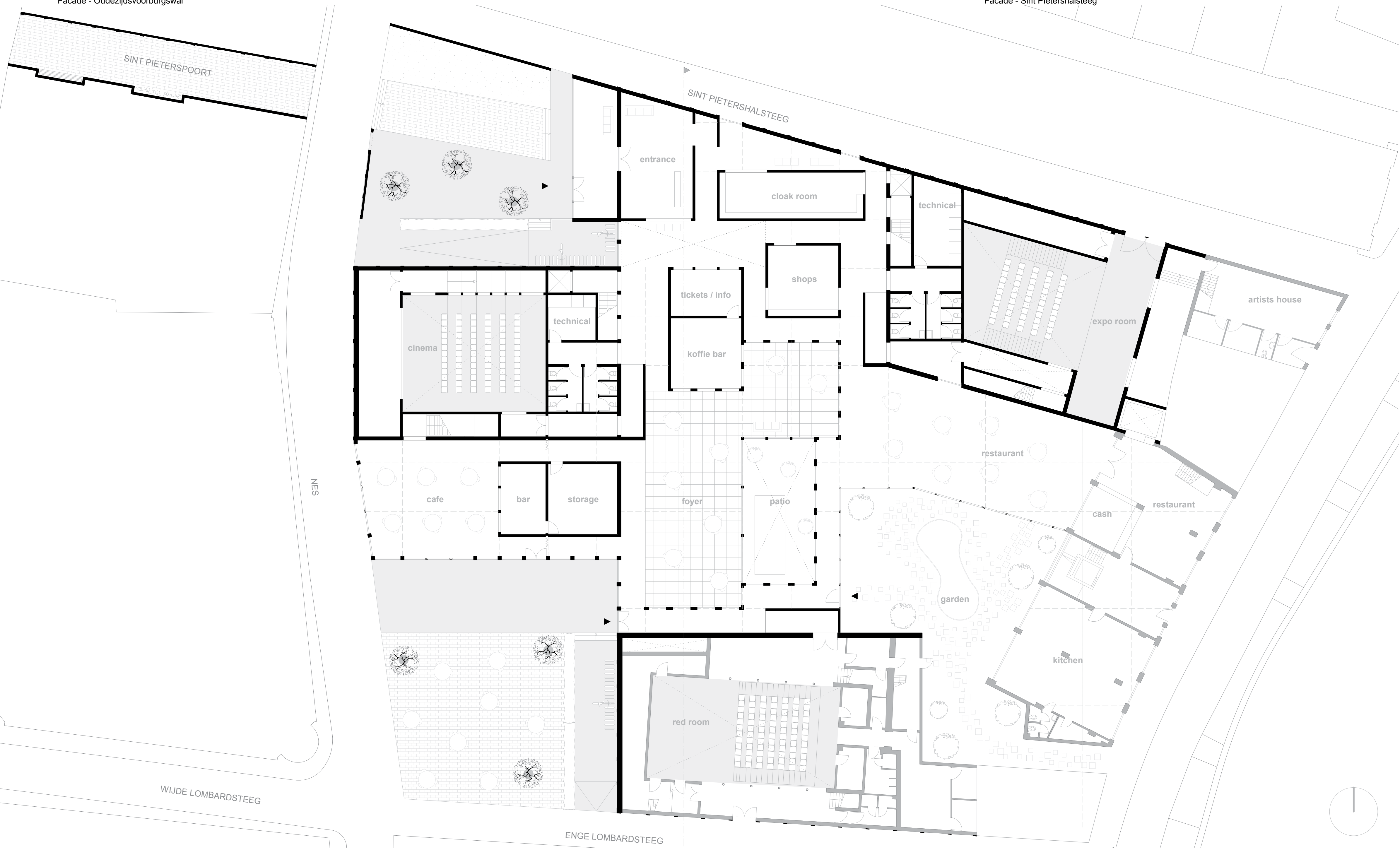
Facade - Enge lombardsteeg



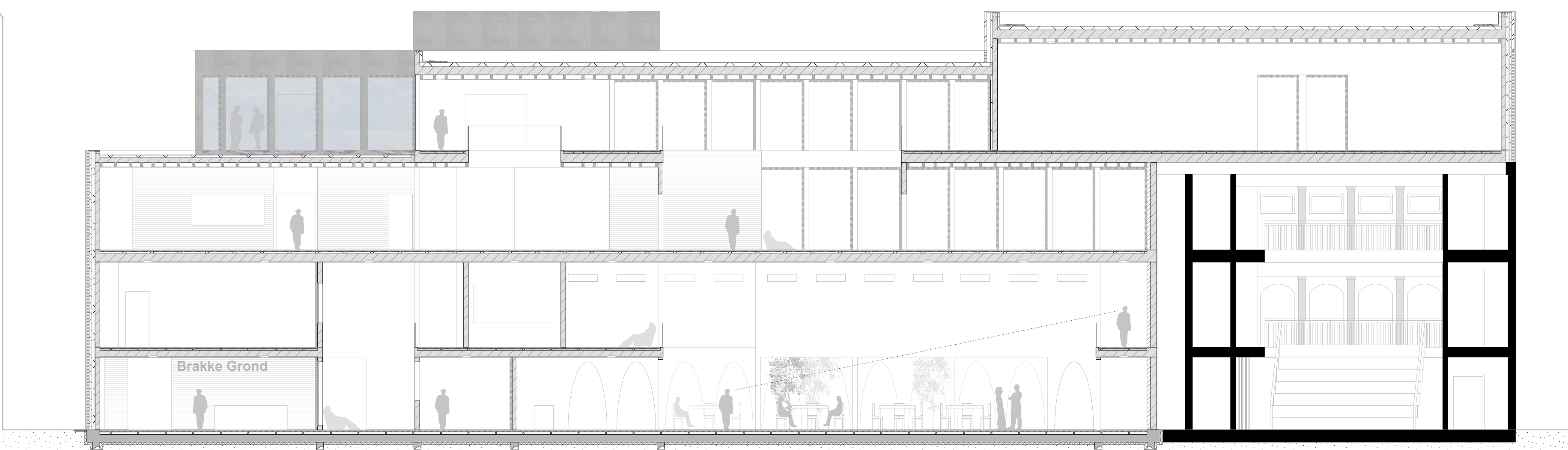
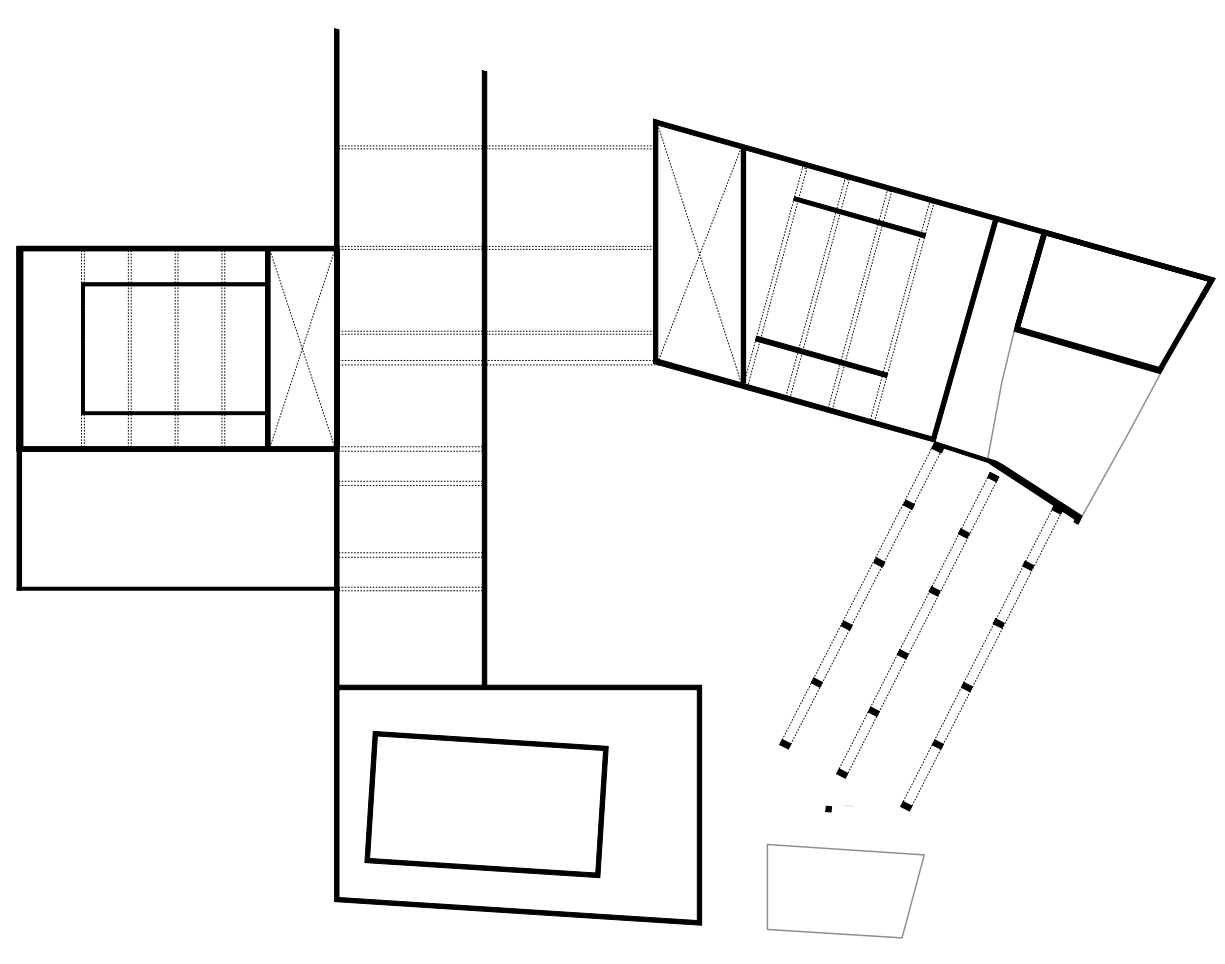
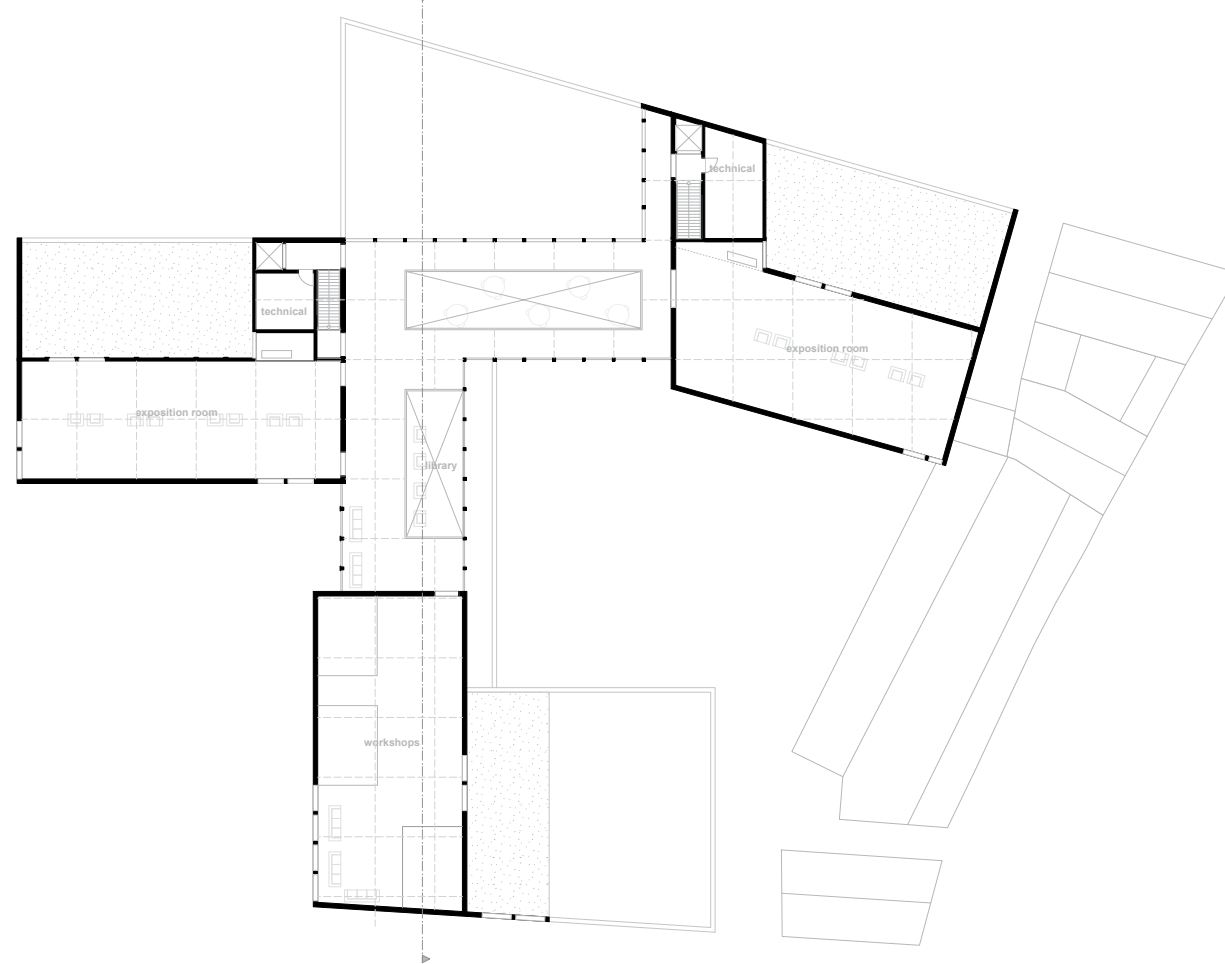
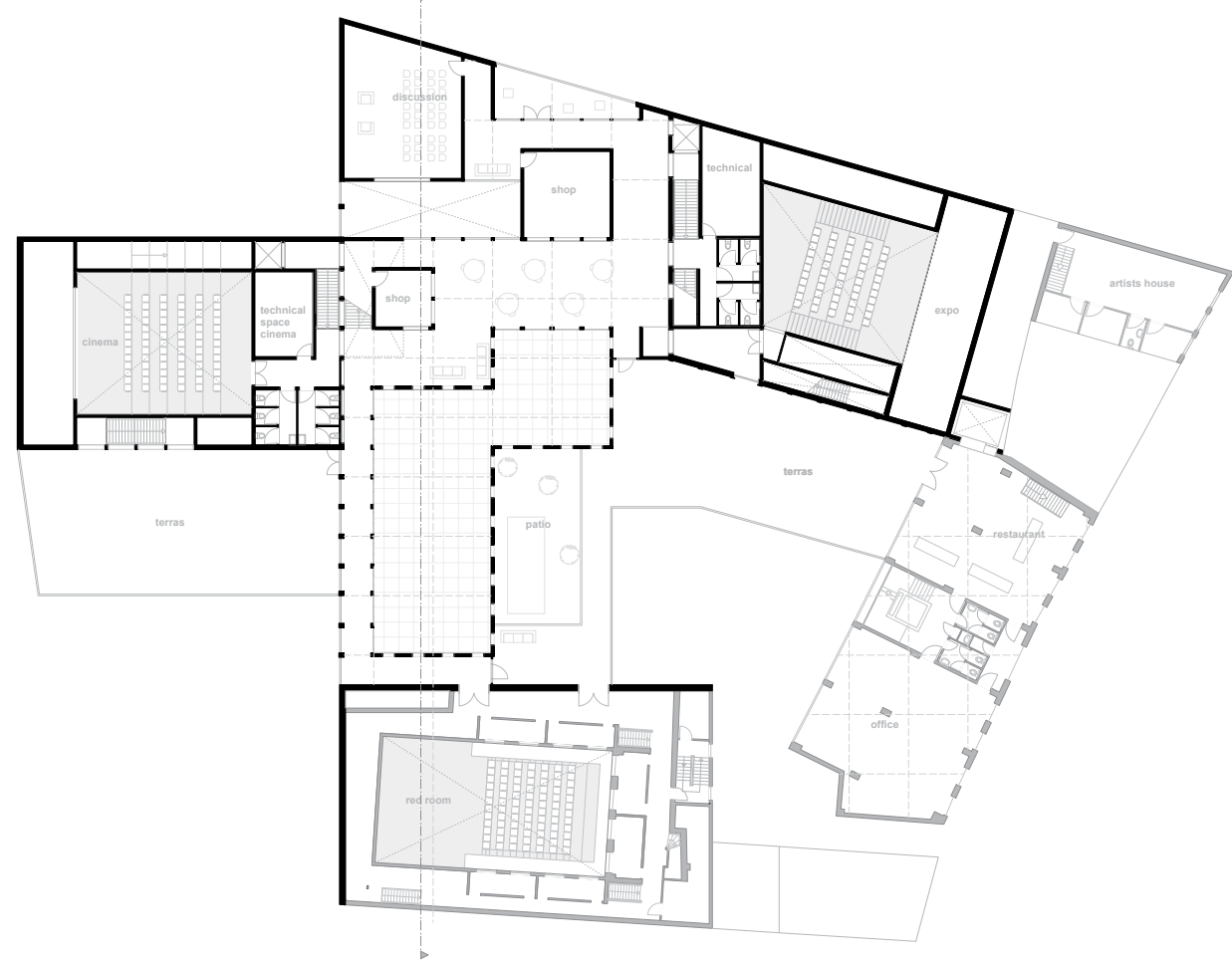
Facade - Oudezijds Voorburgwal



Facade - Sint Pietershalsteeg



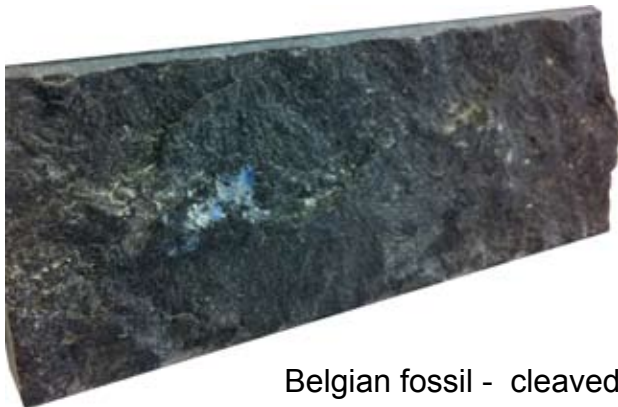
Ground floor - 1/200



Materialization

The design is partial new and partial existing. This contrast between the existing and the new is very interesting to my opinion and therefore each should have there own character and preserve it. Both should not be forced to become “one” building by using the same material.

Belgian fossil is a material that comes from the region of Solignies, Belgium. This material has been chosen for the new parts of the design in contrast with the brick of the existing part. The reason of this choice is because it reacts with the Flemish cultural center and the different treatments of the surface boosts the design.



Amsterdam

In a contested urban setting as that of Amsterdam, there was a need for a solution that reacts towards several matters such as the typology, morphology, sociology and even history.

Taking this notion under consideration, the design reacts on several levels towards the city. Such as the level of the street and the level of the facades and the dynamism that the facades create with the spaces surrounding it.

Ambitions - “a public lounge for Amsterdam with Flemish roots..”

The design reacts on several levels towards the city and its surroundings. Certain existing buildings of Brakke Grond are being reused because the visitor trusts the existing programme and they know that it possesses quality.

The addition of the programme will be theaters, cinema, visual arts spaces and work-shops. But also places that could be used has public lounges of the city. All these ambitions are combined in a design that reacts towards the city not only on the level of the street but also on the level of the facades.



Structure

The structure of the design is divided in two kinds of structure. First of all there are three box within a box constructions. The Red room, expo room and cinema are all box within a box constructions. Therefore all of the beams are arranged by the walls. The second part of the structure is the center part of the design which is the connection of the three parts. This part is separated in two parts. The beams are all upon the center wall and the walls at the sides.

The design possesses a variety of walls and columns for the construction of the design. There are behind the two new boxes installations spaces from where the stability of the design is retained.