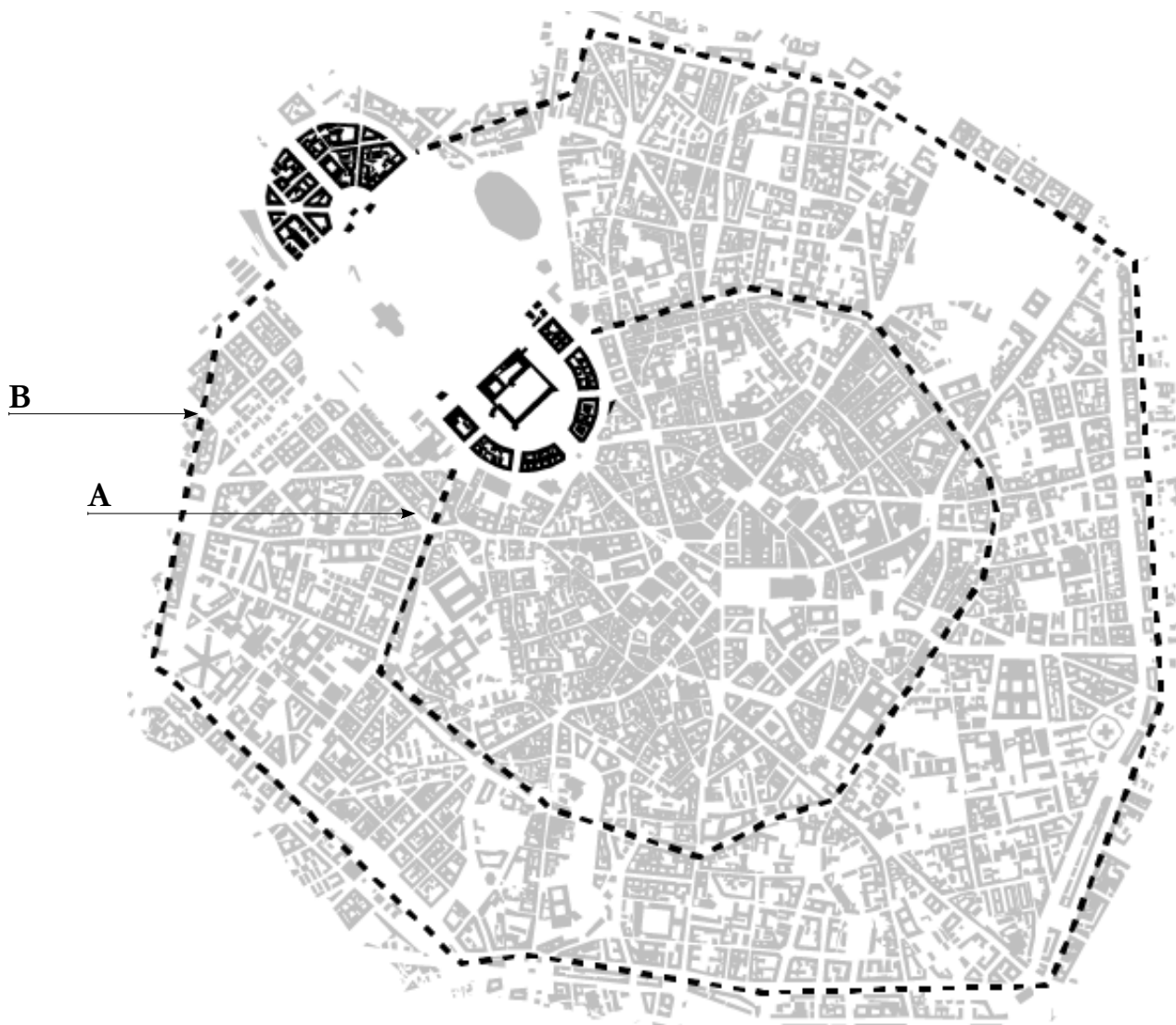


I SETTE SCALI FERROVIARI
A repetitive pattern surrounding Milano

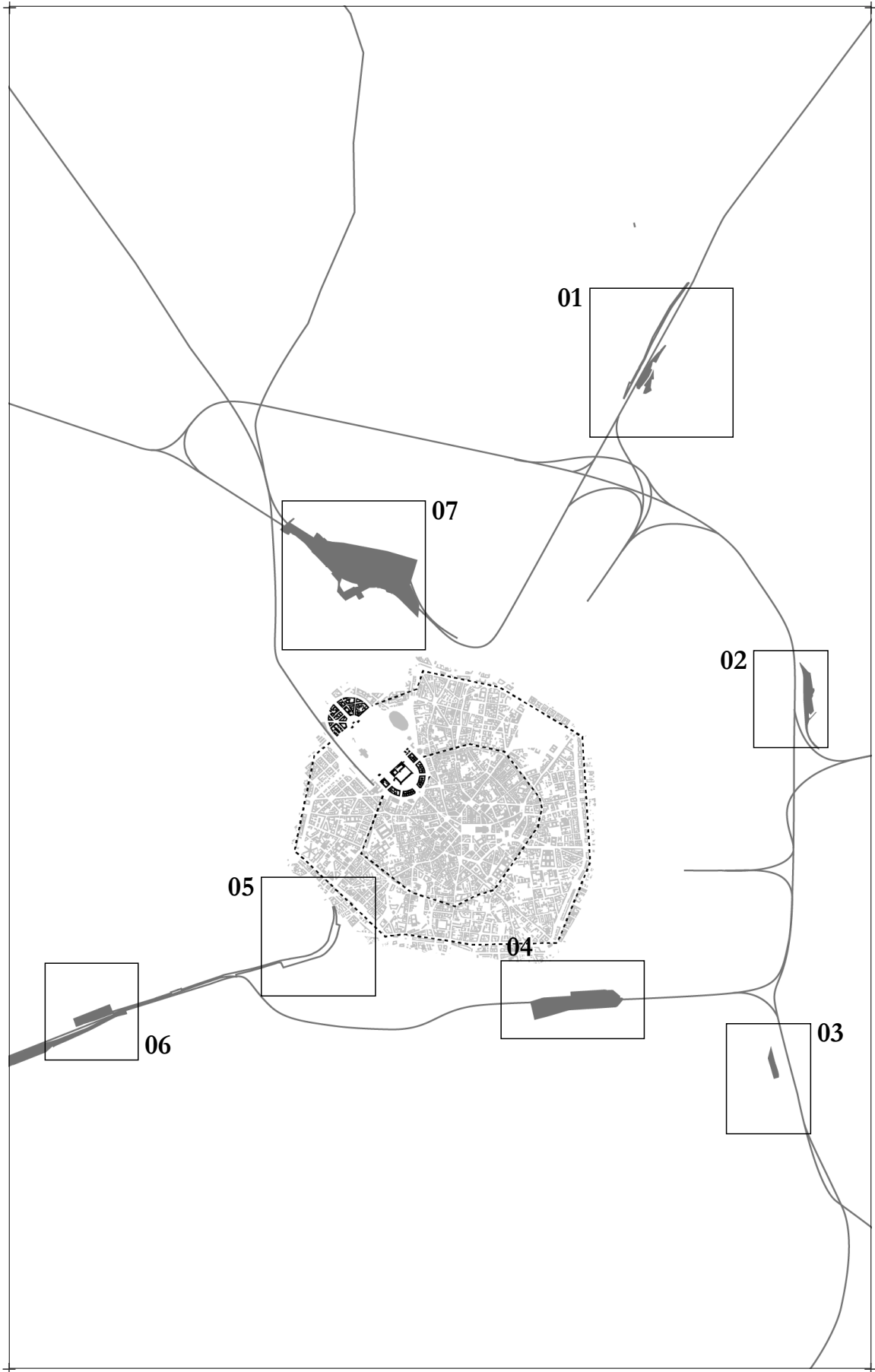
The city of Milan is historically characterized by a series of fortifications that framed the city during the different empire and dominations. Initially as part of the Roman empire and later, under the Spanish dominion, you can see the fragments of the walls as you move through the city. The same remissness are not left behind by the ring of infrastructural railing which surrounds the city.

...Once again trying to expand out of its 'boundaries'



The Seven Scali of Milan.

- 01** Greco
- 02** Lambrate
- 03** **Rogoredo**
- 04** Porta Romana
- 05** Porta Genova
- 06** San Cristoforo
- 07** Farini



Map of the Railing system of the city of Milan and its 7 dismissed rail terminals



07



01





02



04



05



03

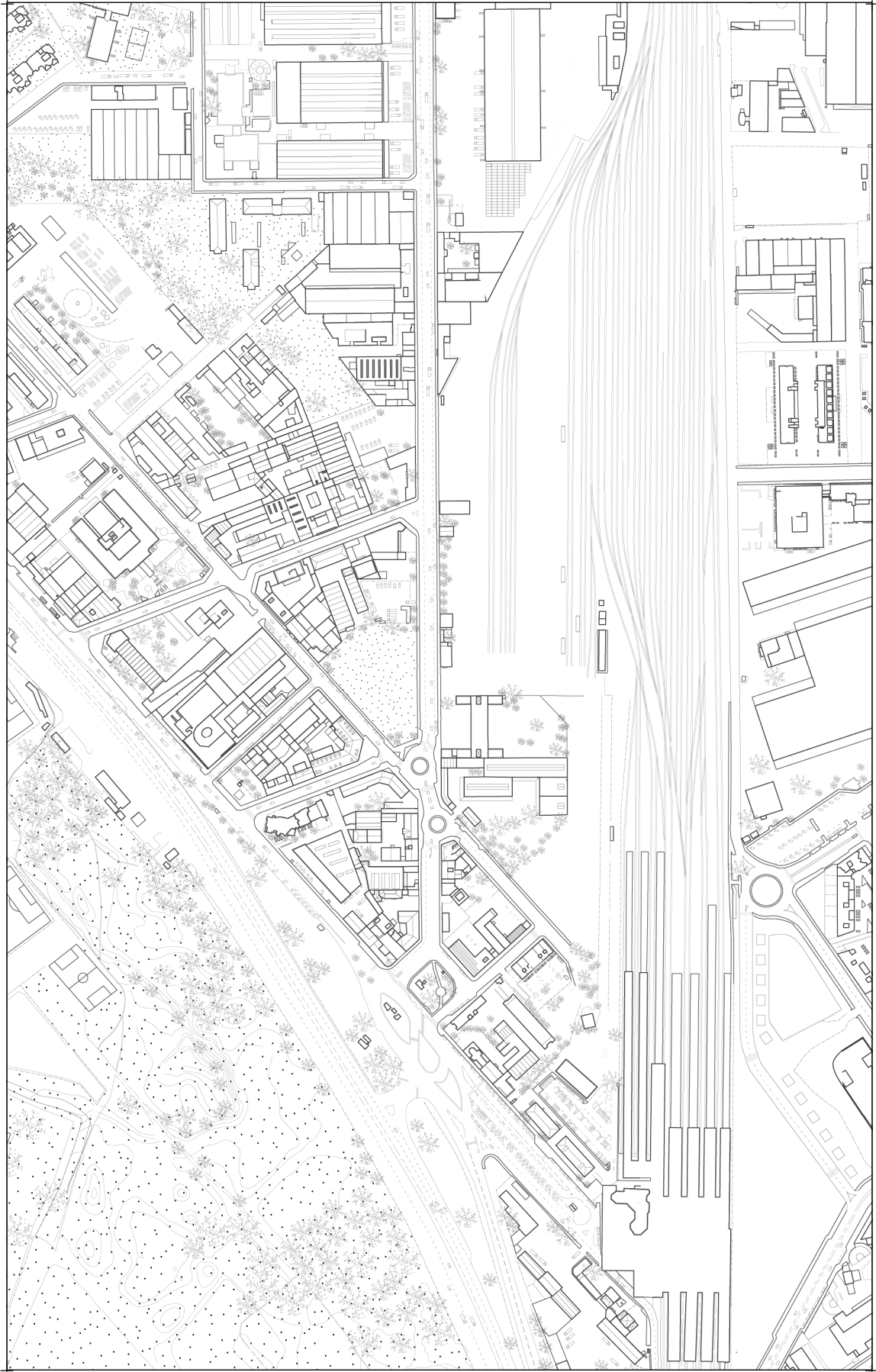
LIFE AROUND THE NODE

Analysis of the different neighborhoods surrounding the Scalo

A

Scalo Ferrofiario Rogoredo is one of the Seven railing nodes that compose this infrastructural ring surrounding surround the city of Milan. One of the recent goals of the local municipality is to transform these series of outdated infrastructural voids into new valuable and highly connected public spaces that will unlock the growth and the porosity of the constantly growing city.

A



Scalo Ferroviario Rogoredo Site plan.
Scale 1 : 5000

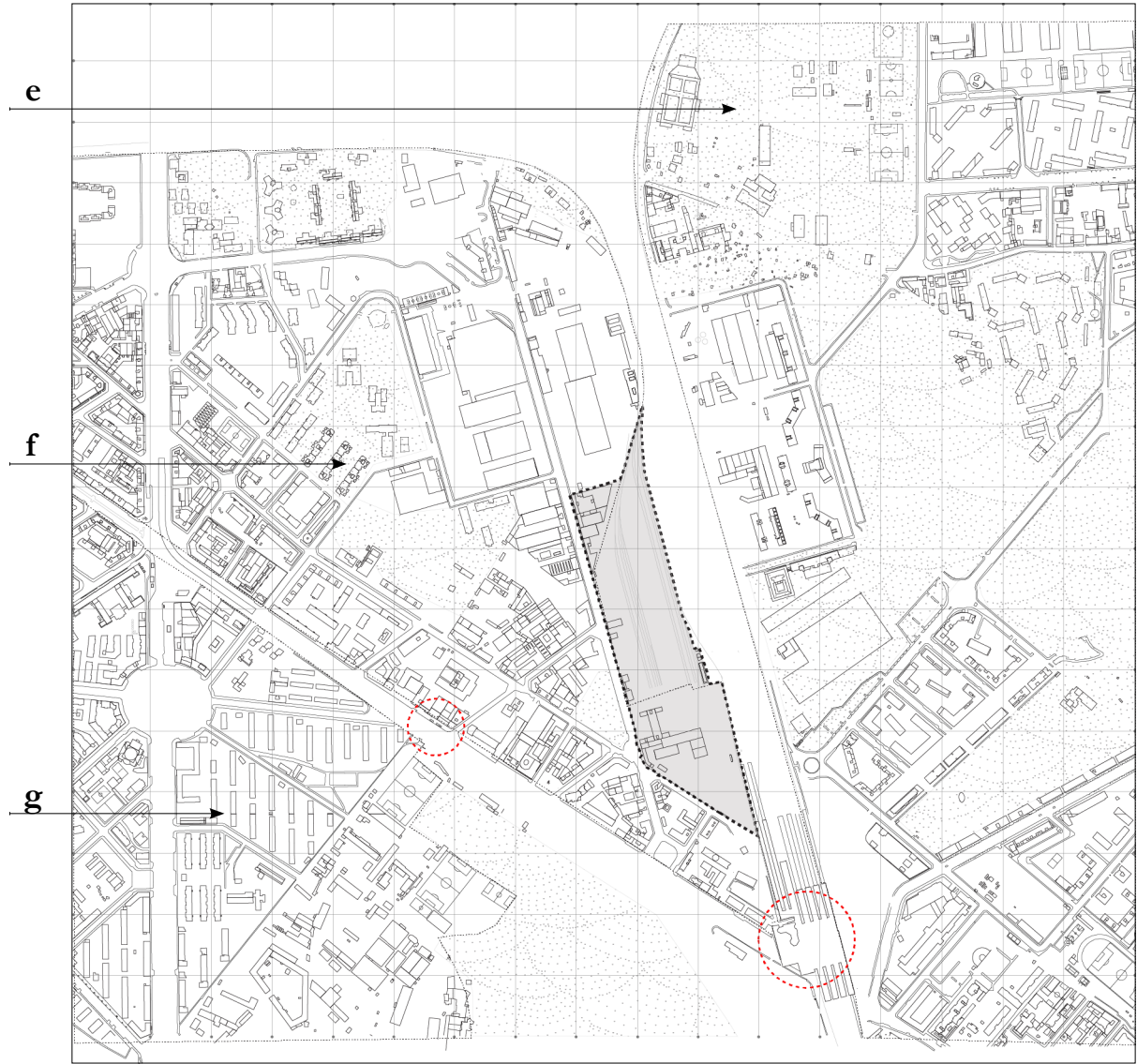


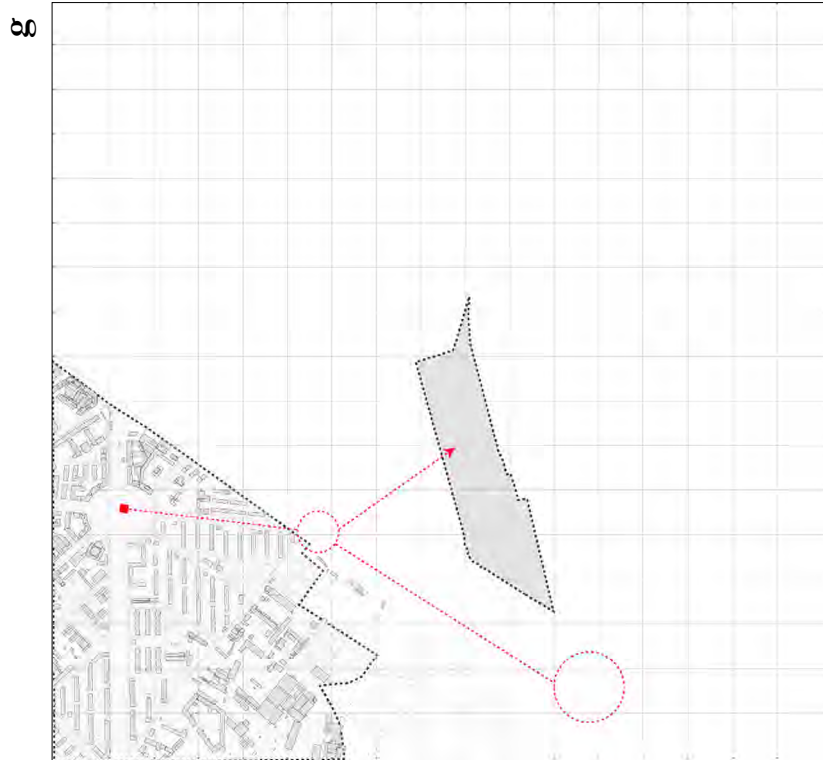


a Metro station Porto di mare **b** Highway to Linate Airport **c** Scalo Ferroviario **d** Rogoredo HS station node

The Scalo Rogoredo responds to a much wider area than just its immediate surrounding. Its location puts it at the crossover of three neighborhoods.

- e** St. Giulia
- f** Rogoredo
- g** Mazzini





d
Quartiere Mazzini.
Located on the South West side of the Scalo.

e
Quartiere Santa Giulia .
Located on the South / East side of the Scalo.



The Neighborhood of Mazzini is characterized by a high density of residential blocks. There is great presence of outdoor parks and playgrounds, and educational buildings.

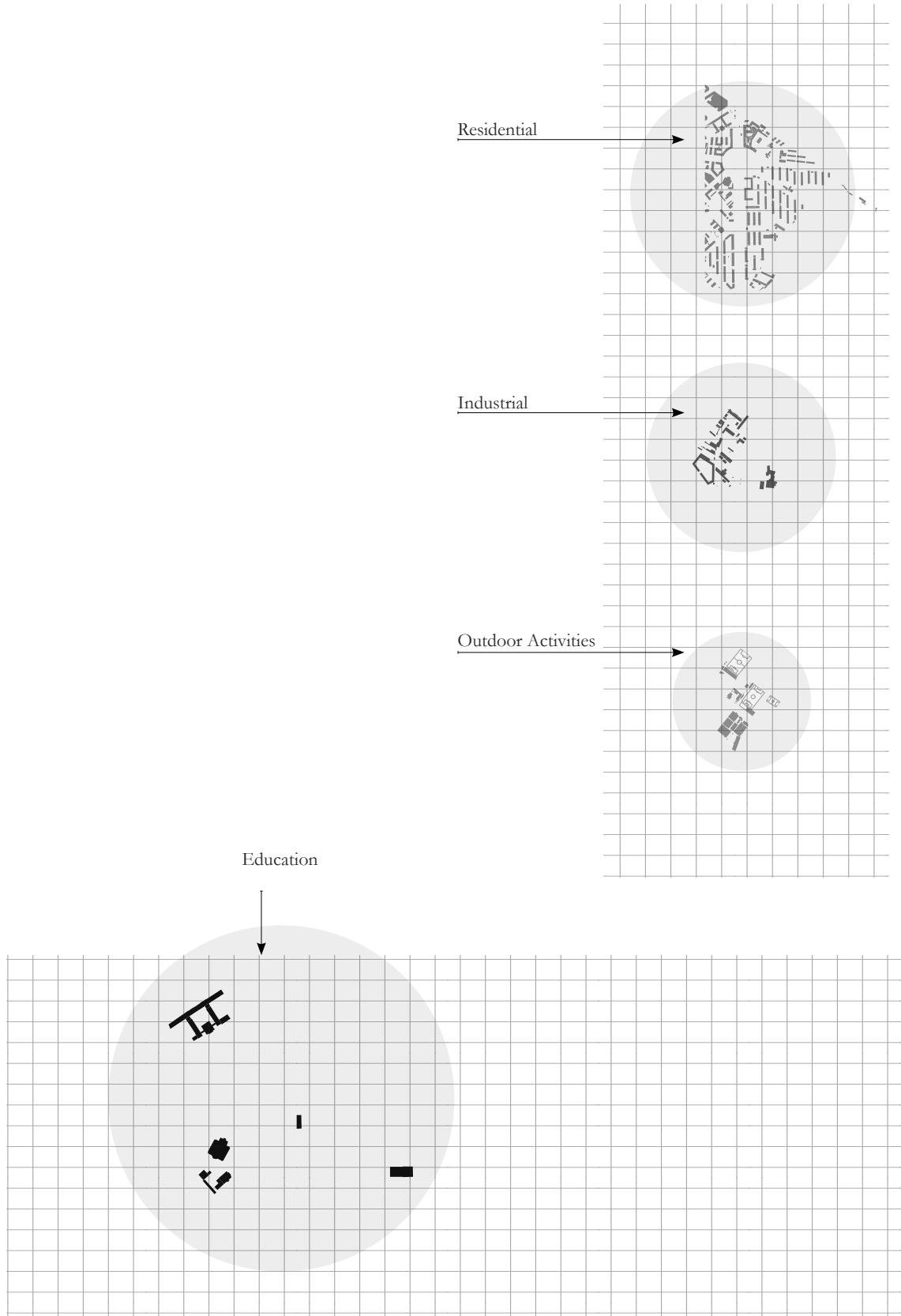
However, the area lacks of amenities and public spaces that relate to culture and entertainment.

On the South side, closer to the Park area, there are several sport related facilities sitting next to industrial clusters mainly related to transportation and construction.



+

+

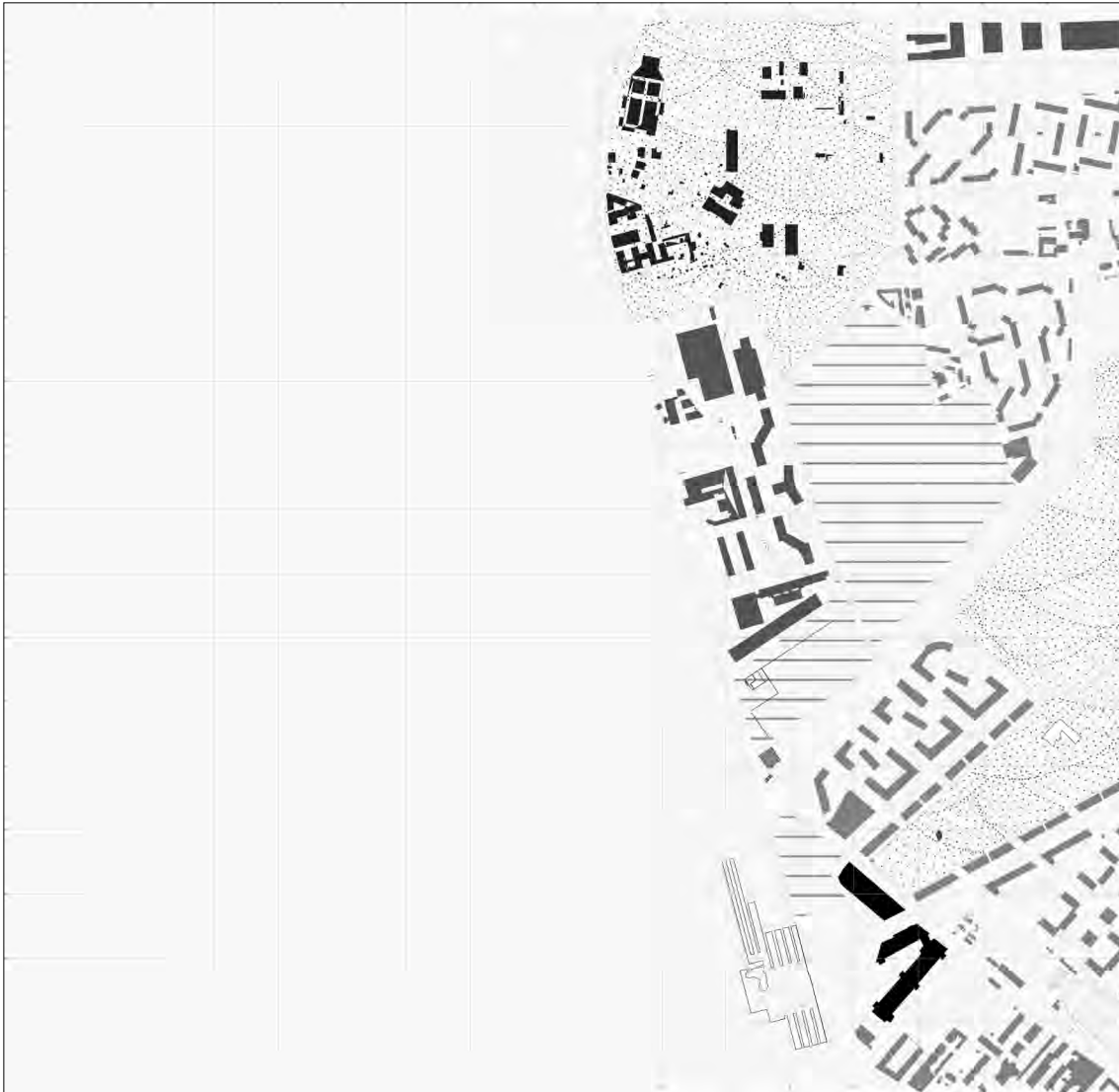


+

+

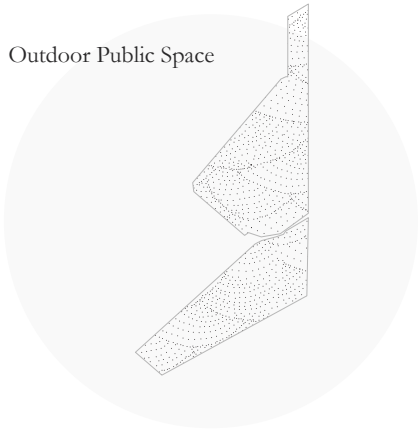
The Neighborhood of St. Giulia presents a large number of new residential development, both, under construction of recently built. This area present a vast public park, however, this vast green void is very underused given the lack of local activities in the neighborhood. This space acts as a outdoor space for locals to run, walk dogs or as an open playground for kids. The Headquarter of Sky is also located in this area, that as you can still see in the north side, it is heavily populated by industries

The area lacks of that necessary vibrant atmosphere due to the lack of cultural activities, indoor public spaces and spaces that can elevate St. Giulia to more than a housing neighborhood.



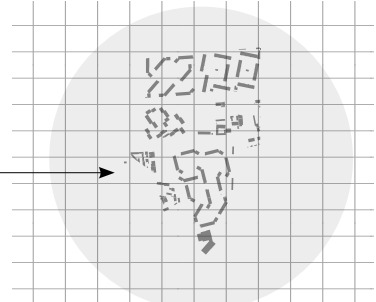
+

+

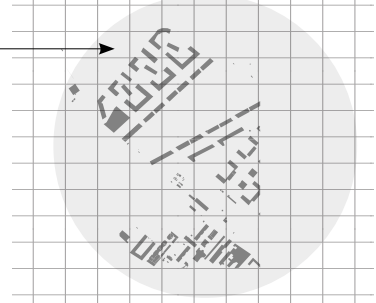


Outdoor Public Space

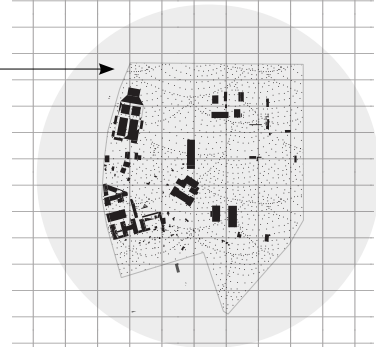
Residential



Residential

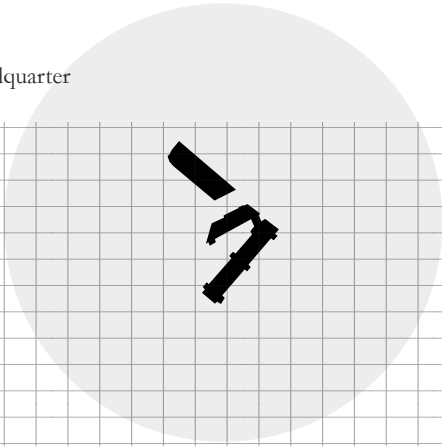


Industrial



New Development sites

Sky Headquarter



+

+

The Neighborhood of Rogoredo is this area in-between two heavy infrastructural barriers, the railway and the highway. The site appears as a kind of mosaic of different layers that appropriated this abandoned area throughout the years.

Such diversity and necessary coexistence of different programs has created a series of well defined clusters. Each plot is very well defined and self-isolated by high walls.

As you walk around the neighborhood you can truly navigate through this **random ensemble** which actually add a very strong character to the site. **High diversity of materiality, shapes, sizes, functions and unusual settings.**



+

+

+

+

THE LAYERS OF ROGOREDO
Analysis of the different clusters of Rogoredo

Roofscapes of local warehouses & the different materiality add complexity and curiosity as you lose yourself wondering around the site







The Wall. Most of the area's plots are fortified by barriers, preventing views and containing the activities within its boundaries



h

Layering & appropriation of abandoned structures has led to this unique juxtaposition of program vs typology.

A clash between the building appearance (container) and its content (activity)



i



l



The way-finders or Landmarks help the individual to move through this urban labyrinth. A few **monumental and iconic** architectural elements act as a compass in an hostile site characterized by high walls and boundaries.

Looking up, **visually searching** for coordinates in the hostile site of Rogoredo. As you would look up to the stars to find your way through darkness, the only visual escape to the strong barriers is to tilt your eyes up in search of **recognizable** elements





The wall frames the roofscape of an old factory turned into a design cluster. Creativities and your entrepreneurs are the first pioneers of such dismissed areas, planting the first seed towards revitalization of the neighborhood.

III
01

THE BACKSTAGE
Logistics - Transport - Construction

+



+

+

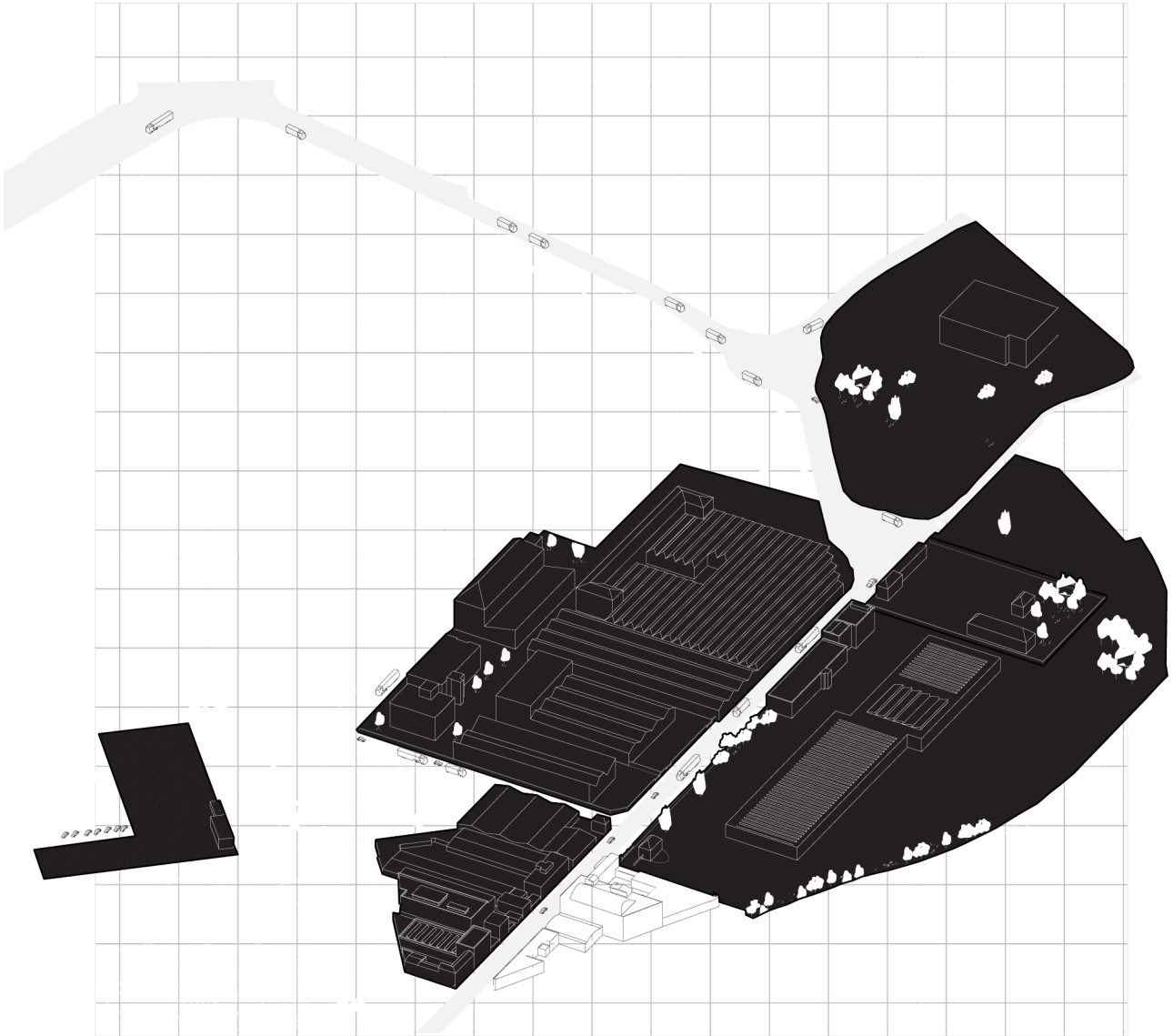


Deconstruction of the Site

+

The area of Rogoredo is characterised by a series of coexisting clusters which compose the diverse mosaic of this outskirts of Milan.

The majority of the Area in the proximity of the site is composed by a series of industries of different kind: From logistic, to construction, distribution and production of goods. Such condition calls for a involvement of this strong identity into the design strategy of the project.



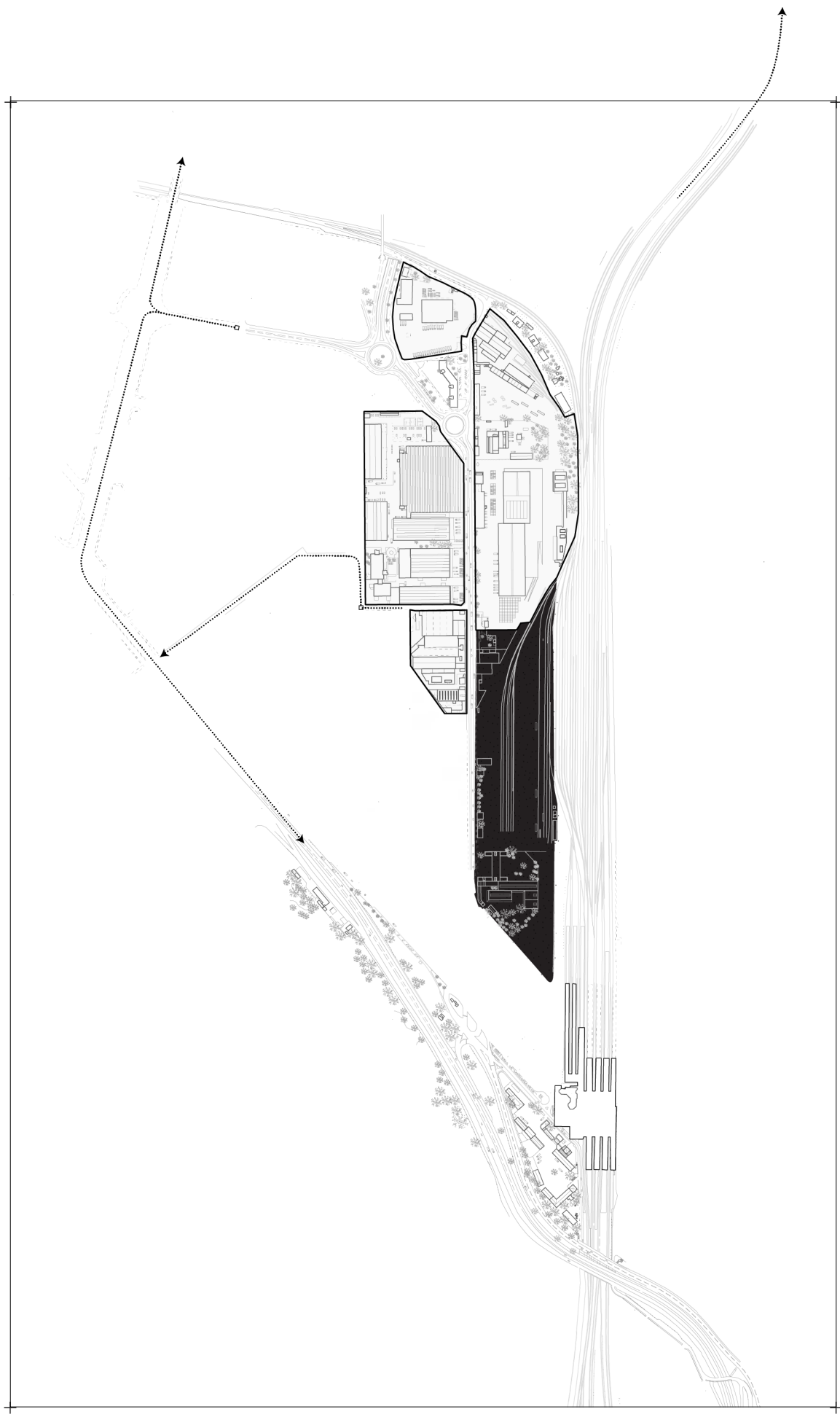
.The arteries

This important local cluster relies on the heavy infrastructural network. Its location between the Railway and the Highway is vital in order to maintain and facilitate the activities of these industries. This becomes a crucial factor involved in the design strategy of the proposal.

.BACKSTAGE

The goal is to involve these industries, making sure they become part of the motor of the project. The ephemeral essence of part of the programme implies a tight link with these clusters.

Assemblage - Transportation - Disassembly of goods, temporary elements and people creates this urban theatrical backstage that orchestrates the



Fragments of Rogredo - Industrial and Logistics cluster
Scale 1 : 10 000

ockcokskokoko
joskepkskes
ocdpoddkdpk
okdcokcokdke
dcokokcdokke

A

ockcokskokoko
joskepkskes
ocdpoddkdpk
okdcokcokdke
dcokokcdokke

A

ockcokskokoko
joskepkskes
ocdpoddkdpk
okdcokcokdke
dcokokcdokke

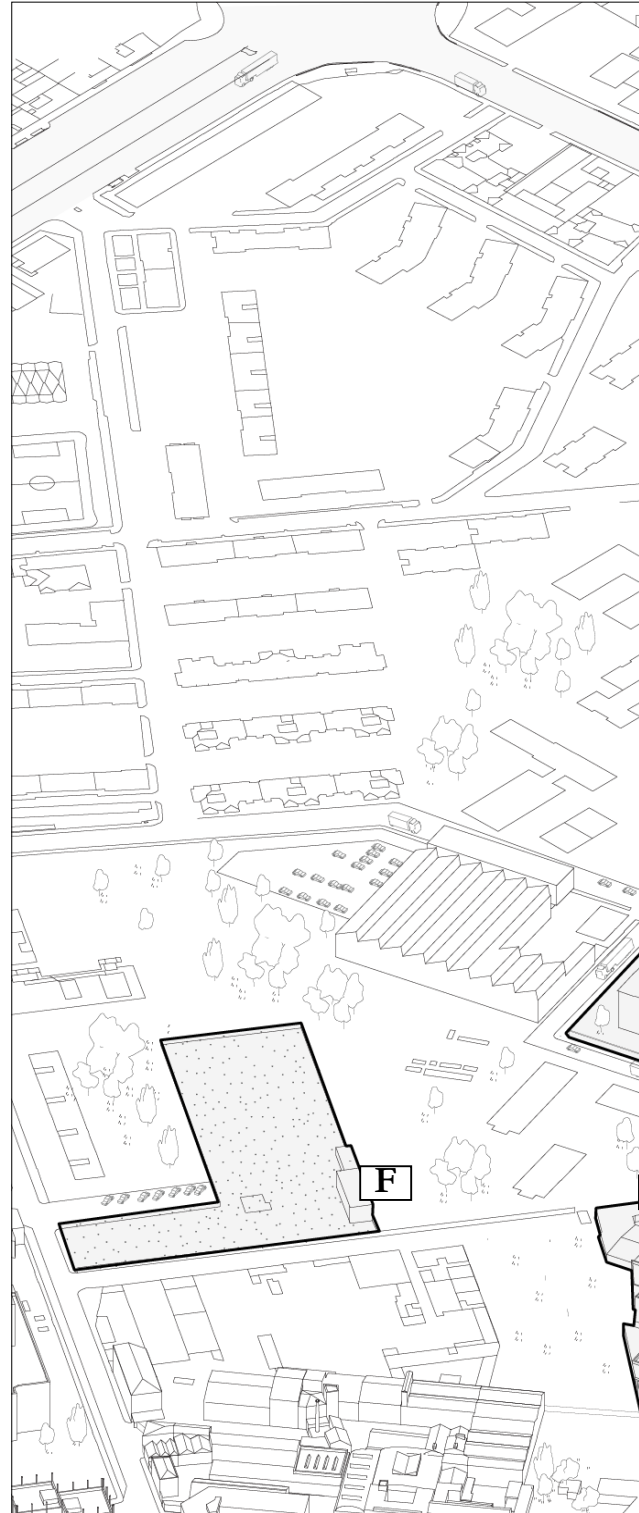
A

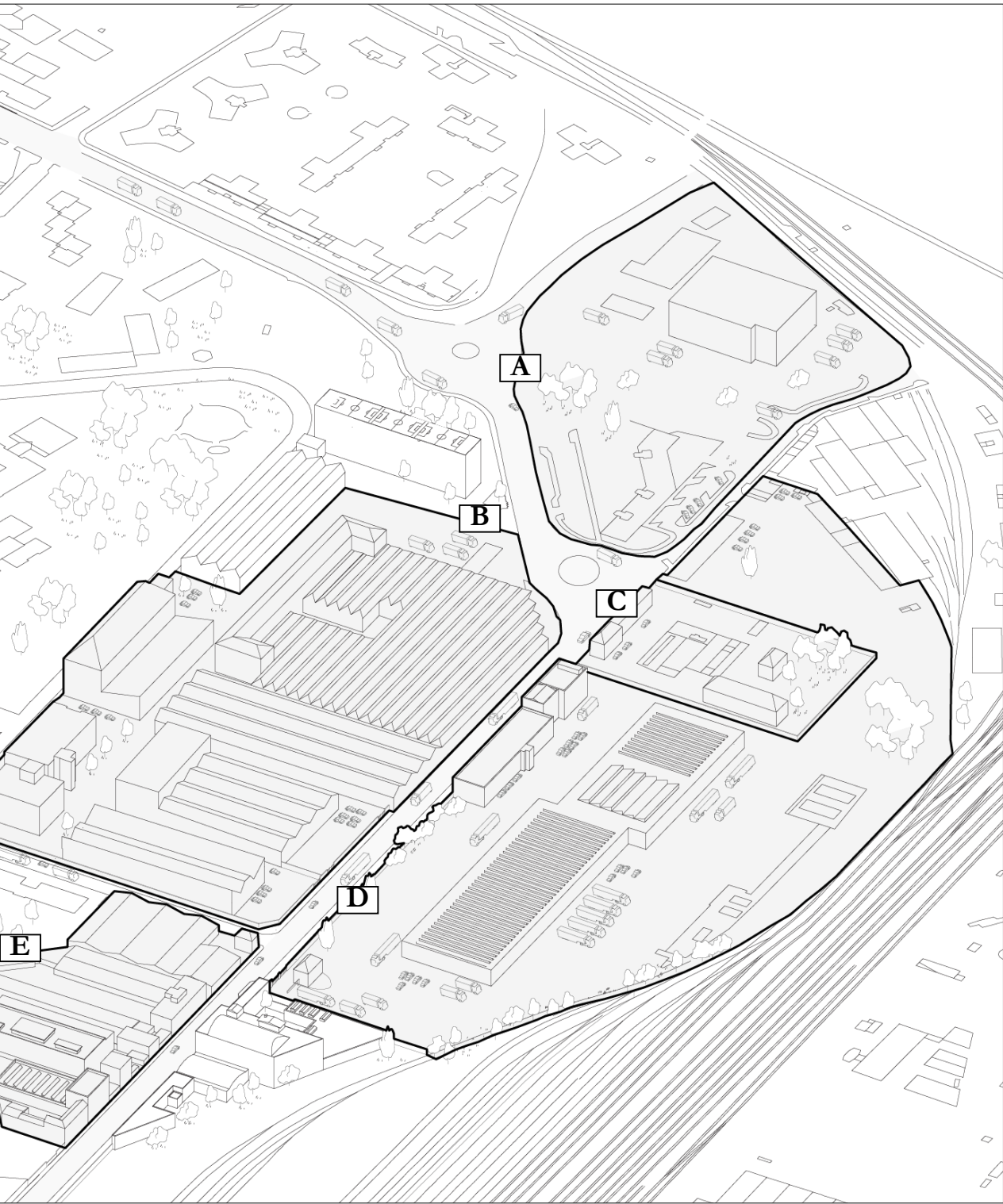
ockcokskokoko
joskepkskes
ocdpoddkdpk
okdcokcokdke
dcokokcdokke

A

ockcokskokoko
joskepkskes
ocdpoddkdpk
okdcokcokdke
dcokokcdokke

A





THE EXISTING PERFORMANCES
Local creative clusters



P q



r

.The Local creativities

The Area of Rogoredo hides a series of creative small clusters, hidden behind these walls and secretly popping up in very unexpected places. Places you can only be aware of, if you are part of this reality.

.Stimulating local cultural identity

Among the series of industrial clusters, I have highlighted a series of local cultural spots that compose this unique mosaic. These are the key elements and pillars driving my design strategy. Aiming to facilitate and cultivate a strong cultural identity of Rogoredo.

X
Photography

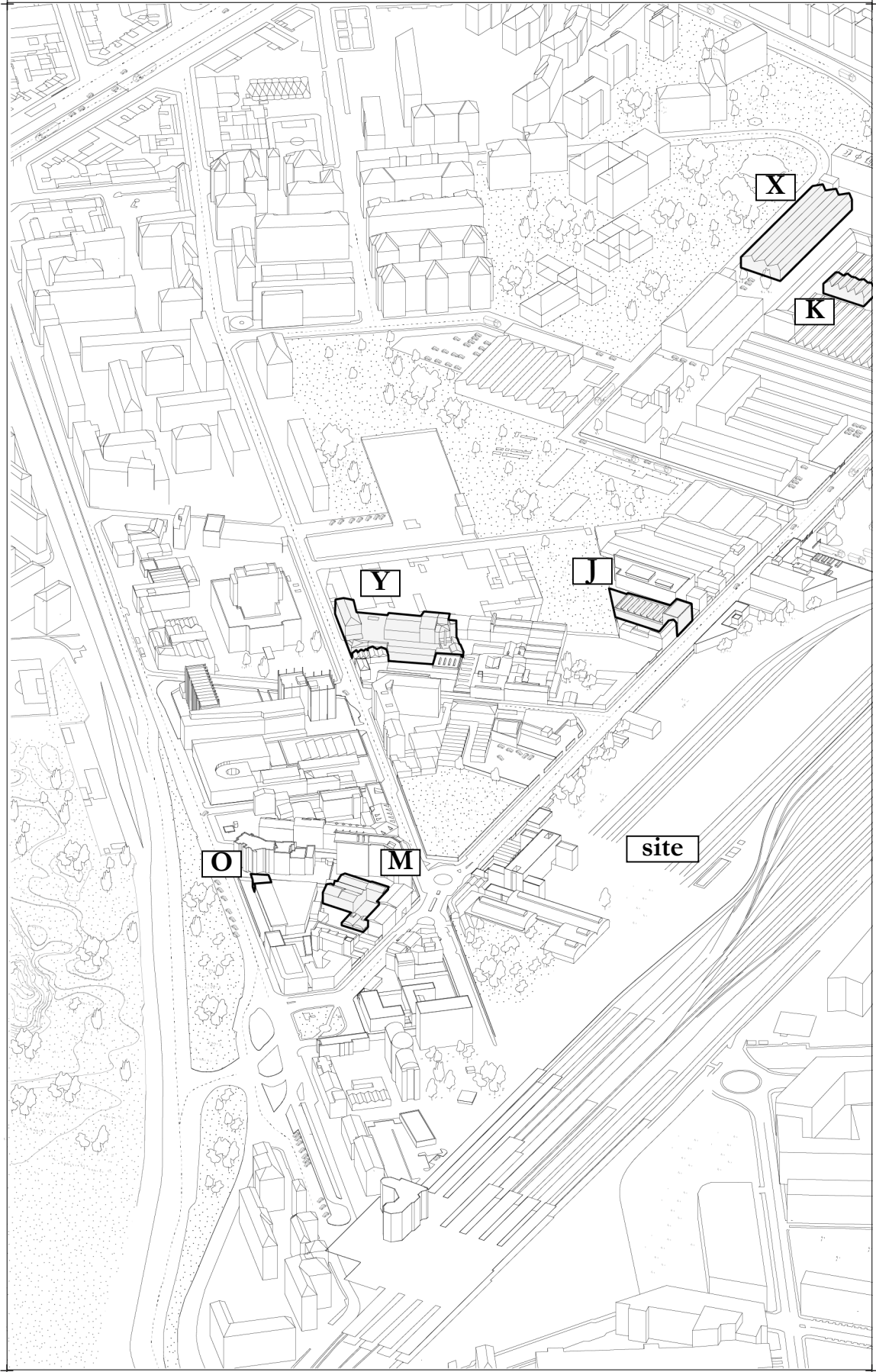
K
Music

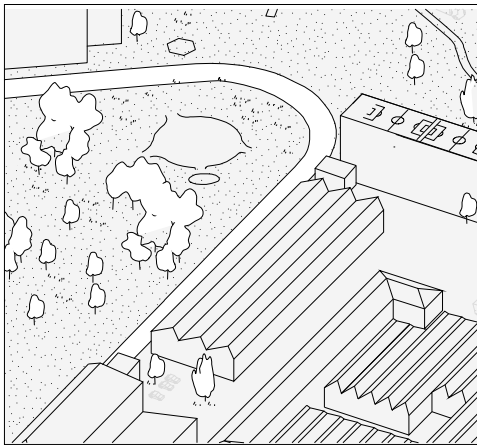
J
Music

Y
Art & Design

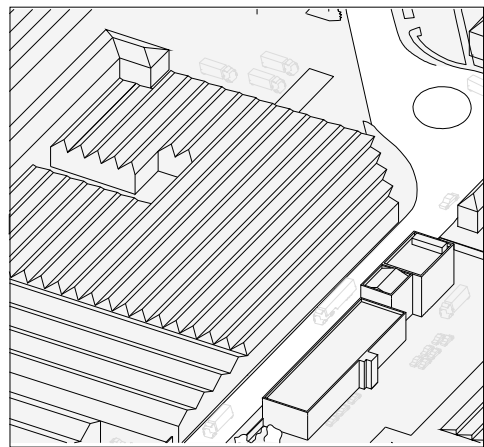
M
Fashion

O
Dance





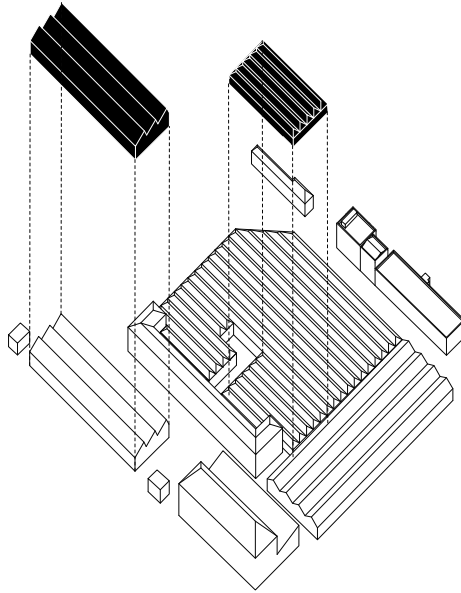
X
Photography



K
Music

+

+



Axonometric drawing of local creative & cultural activities

+

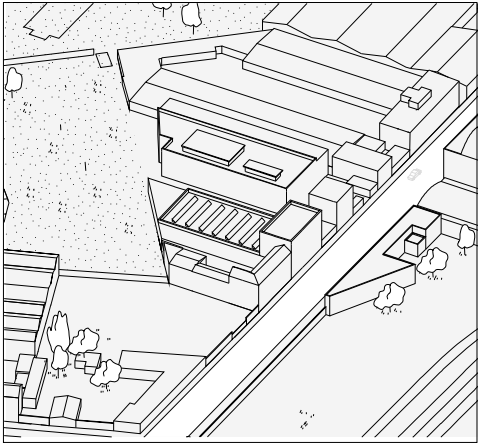
+

x

Italian institute of Photography

k

Local disco club



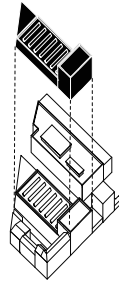
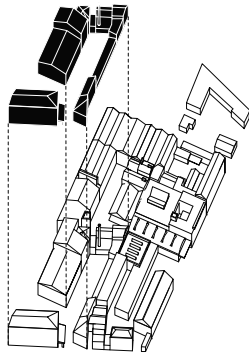
J
Music



Y
Art & Design

+

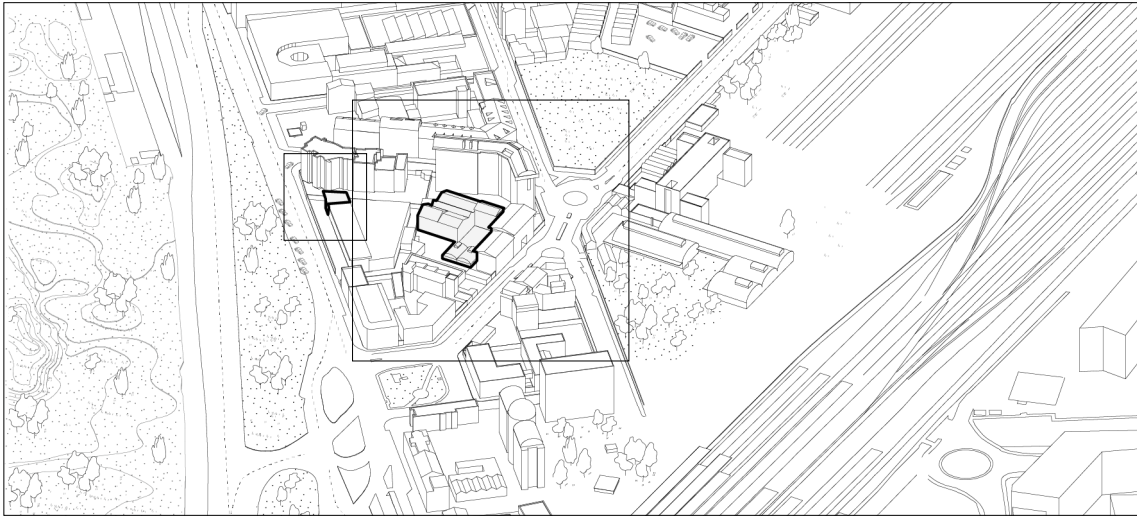
+



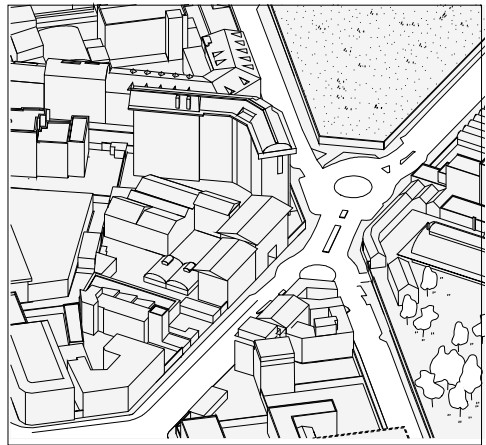
Axonometric drawing of local creative & cultural activities

+

+



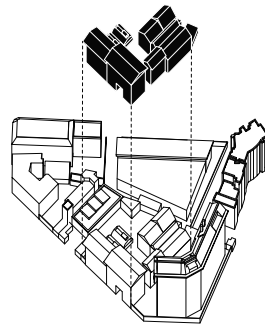
O
Dance



Y
Fashion

+

+



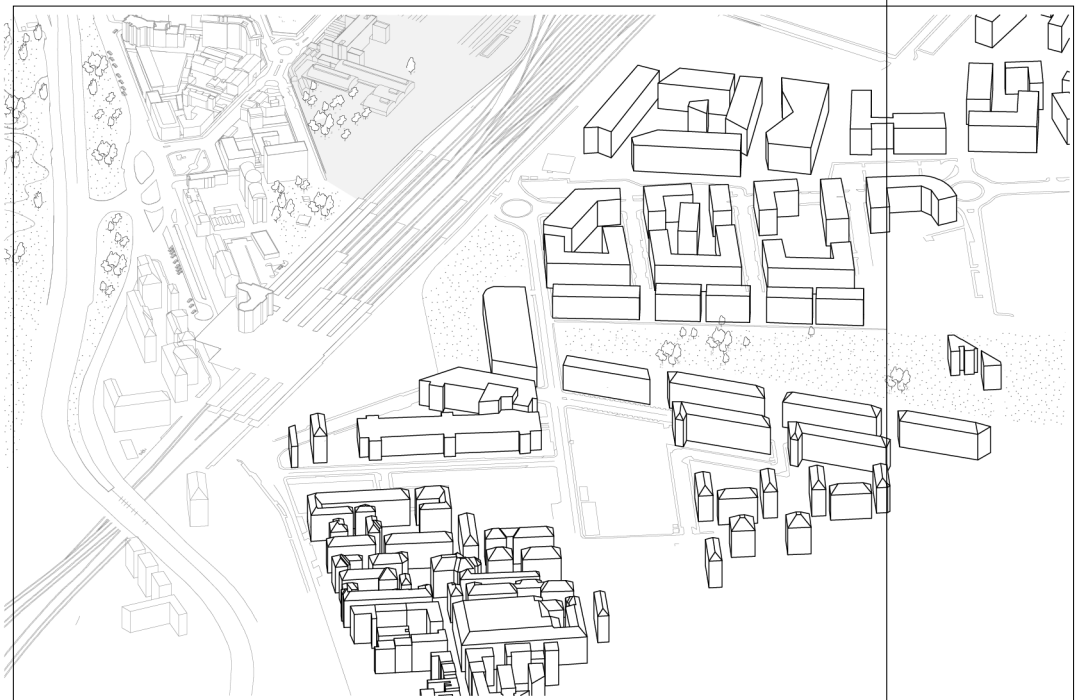
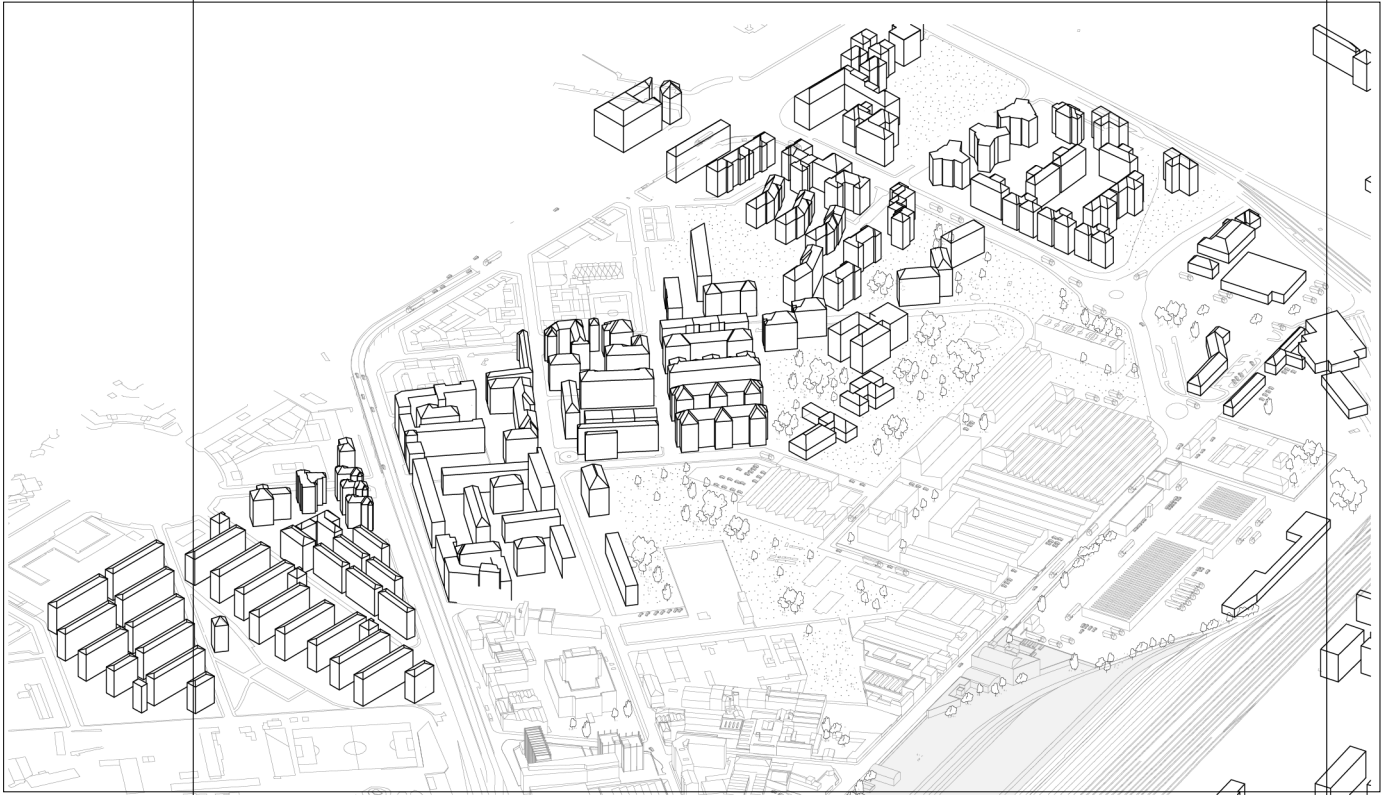
Axonometric drawing of local creative & cultural activities

+

+

~~M~~ONOFUNCTIONAL NEIGHBOURHOODS
U Reinvestigation of the ratio public-private
L
T
I

The neighborhoods of Santa Giulia, Rogoredo and Mazzini are characterized by a high density housing blocks. These areas present a high variety of inhabitants, with emphasis in families and young people given the high number of educational institutions. Such density requires an appropriate number of public and cultural amenities that are currently lacking. The strategic positioning of the Scalo Rogoredo for both its global function and its local centrality, becomes the ideal site for the design of public cultural facilities that can improve the livability of the three neighborhoods.



HOW TO ENHANCE A LOCAL CULTURAL IDENTITY?

Facilitate this local creative reality, stimulate new interest for other local inhabitants by the design of architectural and urban spaces. Provide cultural spatial alternatives for the inhabitants of the three neighborhoods surrounding the site.

WHILE ALSO RESPONDING TO A GLOBAL AUDIENCE

In order to justify such a big new development, (both financially and architecturally), it is mandatory that the project addresses the high flux of event-driven global audience that travels to Milan throughout the year. By integrating the municipality goal of promoting culture as an economic tool, the project requires a certain degree of flexibility in order to serve this two group of users into a GLOCAL design.

DICHOTOMY ¹
Between Global demand and Local needs

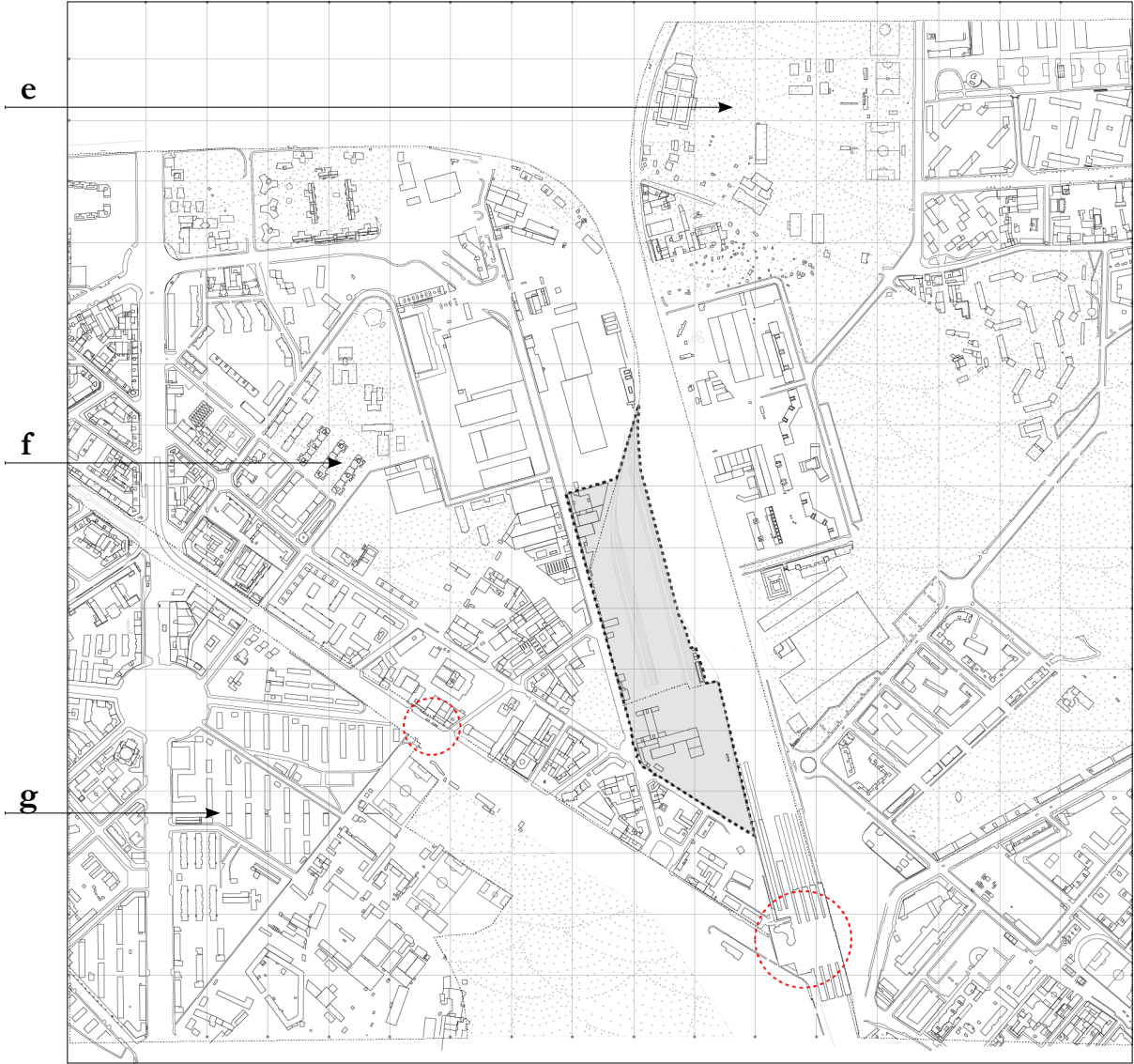
¹ a division or contrast between two things that are or are represented as being opposed or entirely different.

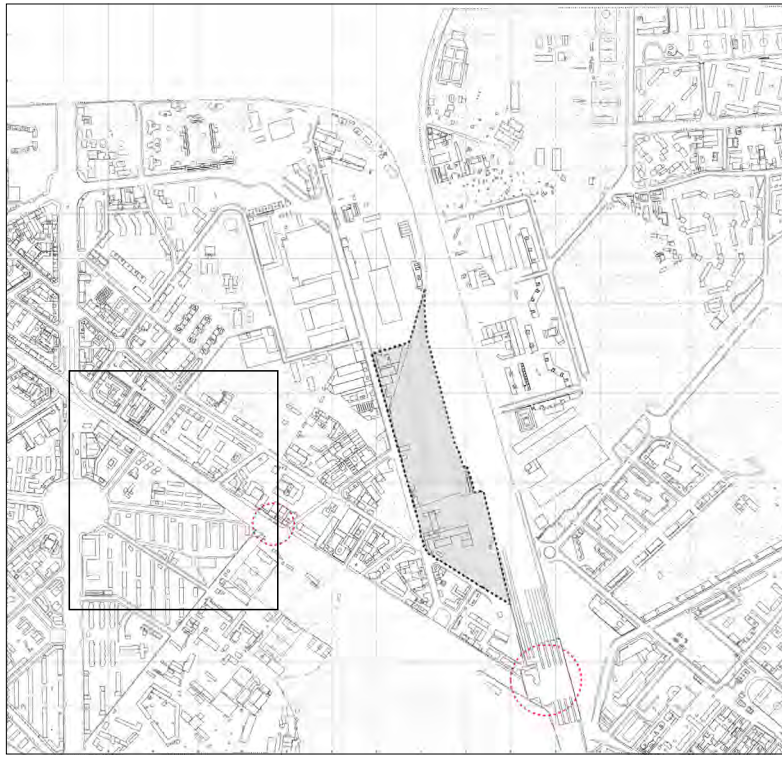
(g)LOCAL

Analysis of Local morphology in relation to the site

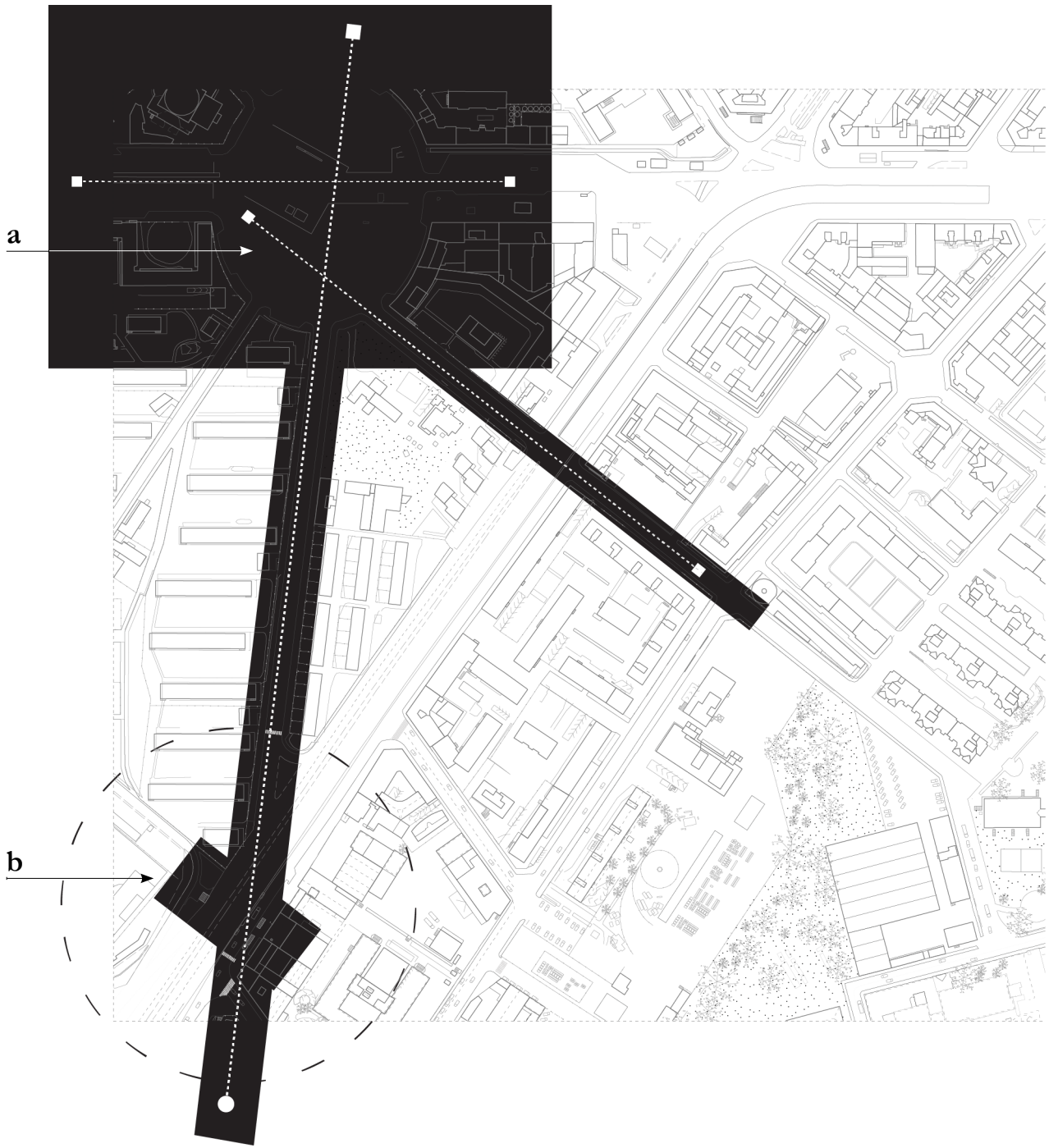
The Scalo Rogoredo responds to a much wider area than just its immediate surrounding. Its location puts it at the crossover of three neighborhoods.

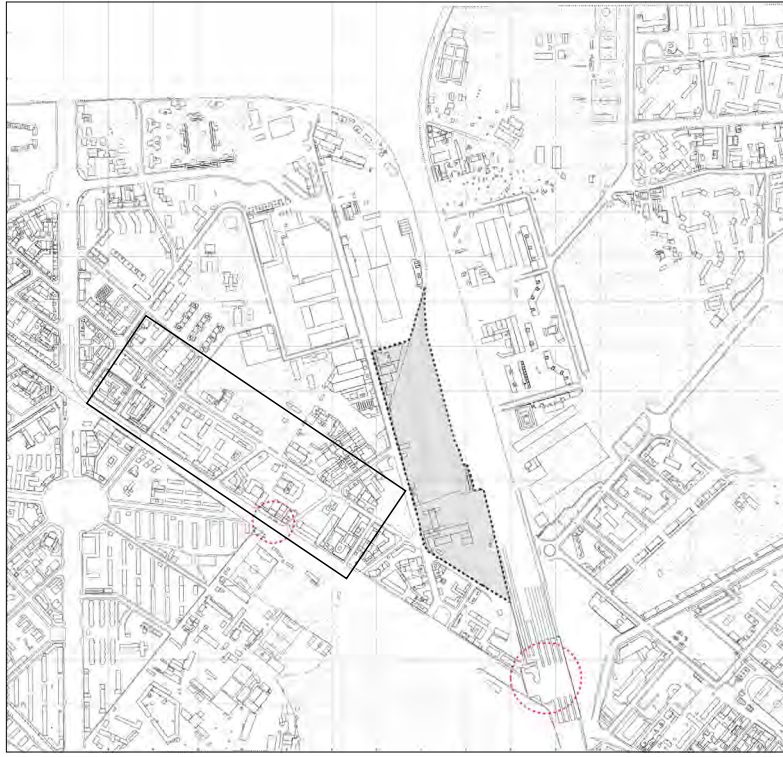
- e** St. Giulia
- f** Rogoredo
- g** Mazzini





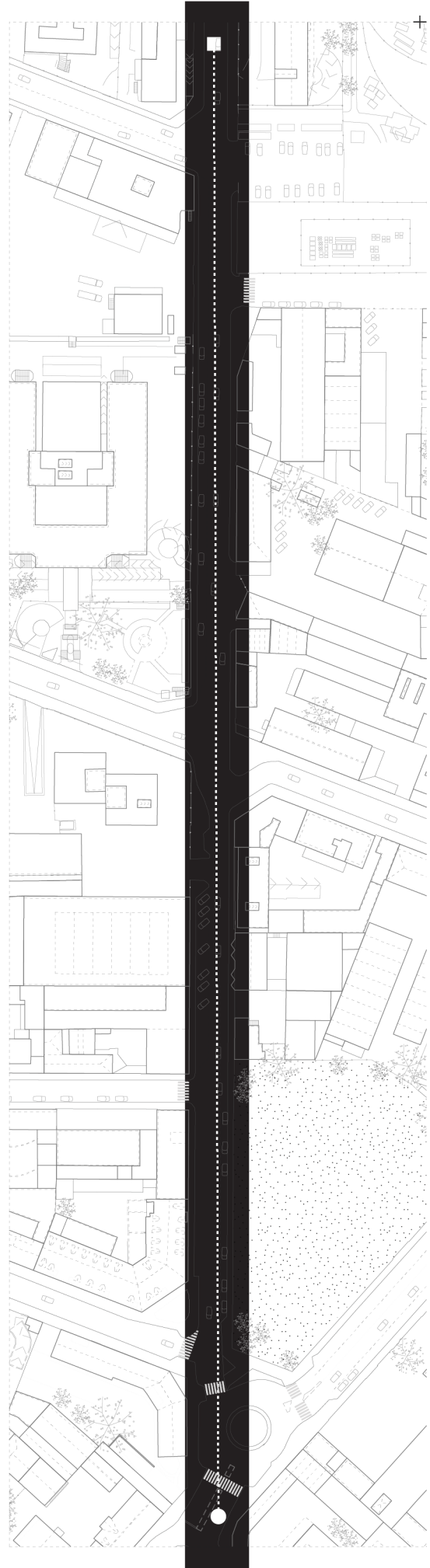
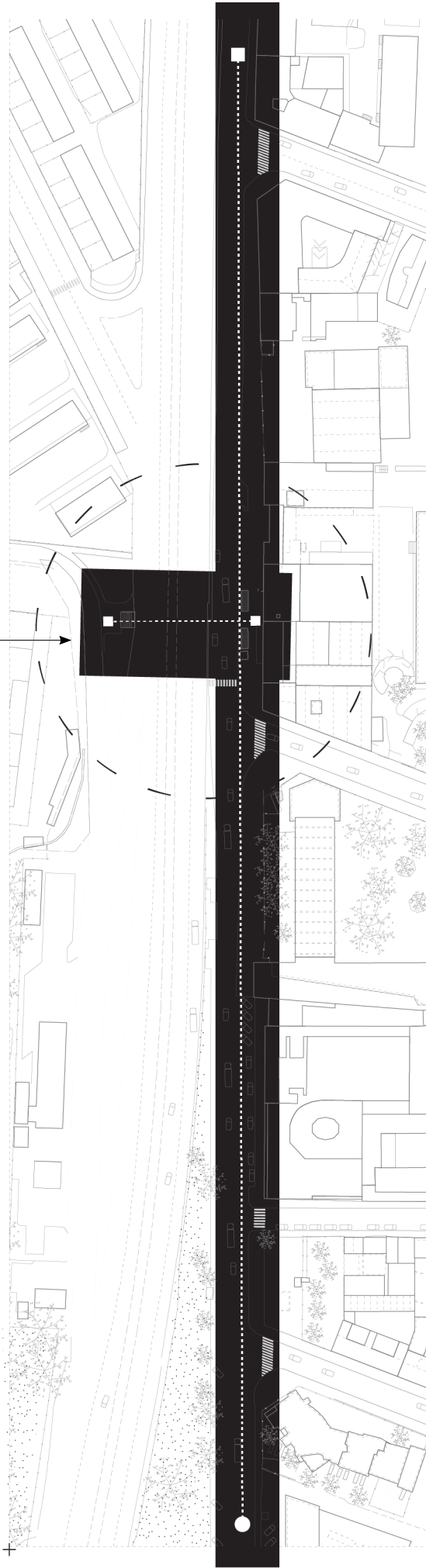
a Main square of Mazzini Neighborhood **b** Porto di Mare metro station (yellow line)





b Porto di Mare metro station (yellow line)

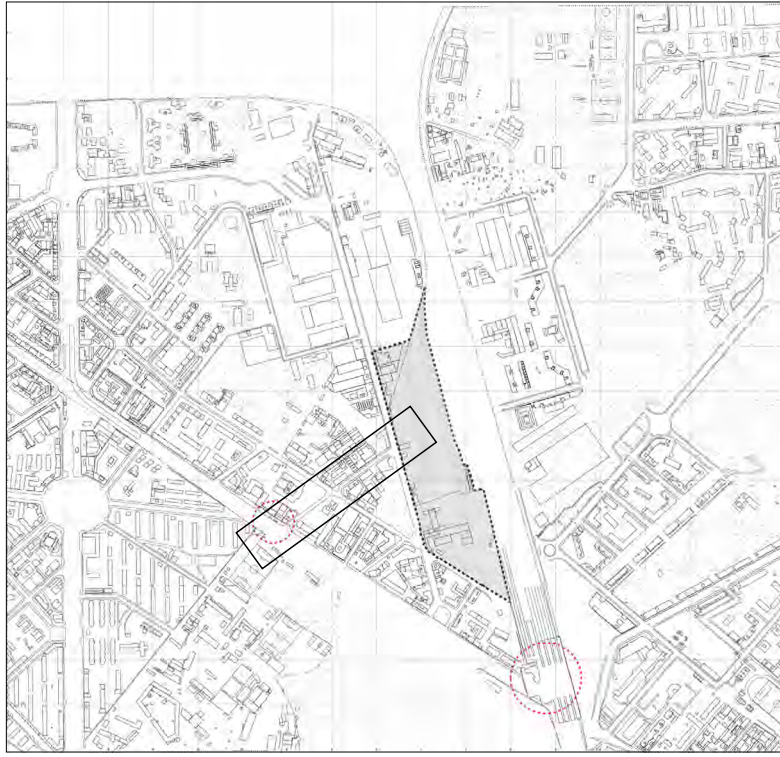
b

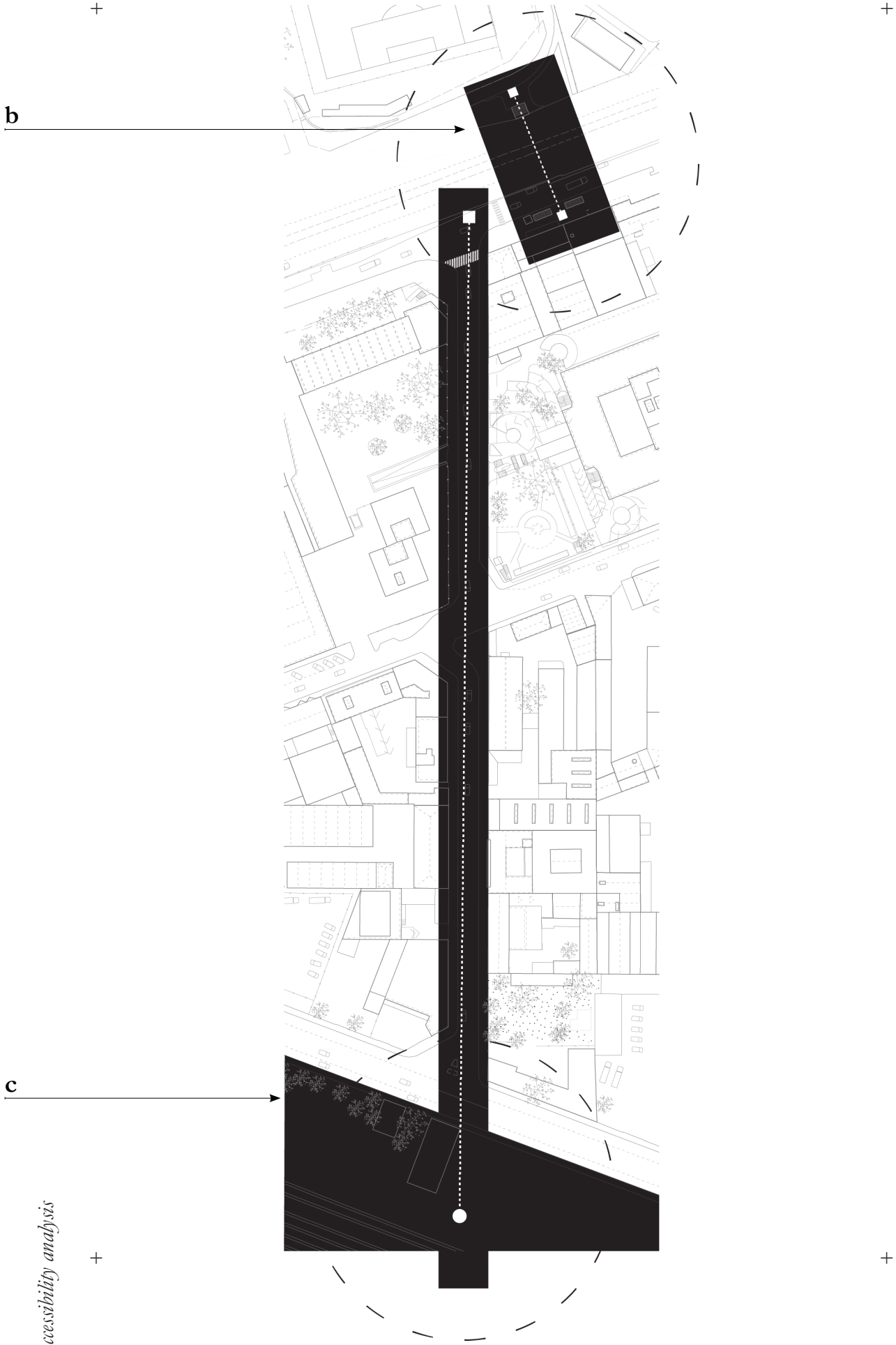


Accessibility plan of the main vertical axes of Rogoredo

c Scal Rogoredo (site)

b Porto di Mare metro station (yellow line)





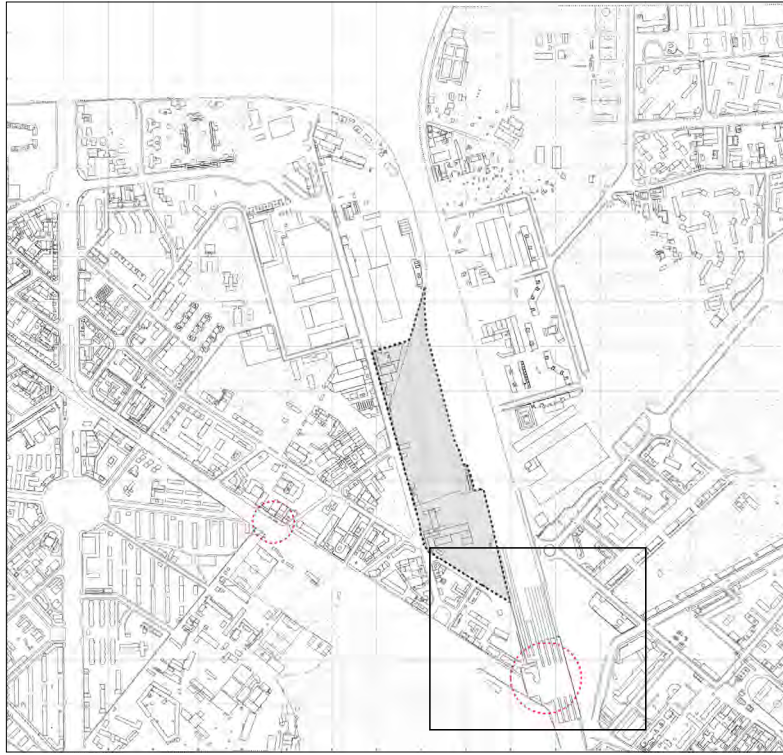
Accessibility analysis

Accessibility Plan of the main Grand access to the site

c Scal Rogoredo (site)

d Main square of Santa Giulia

e Rogordo Station

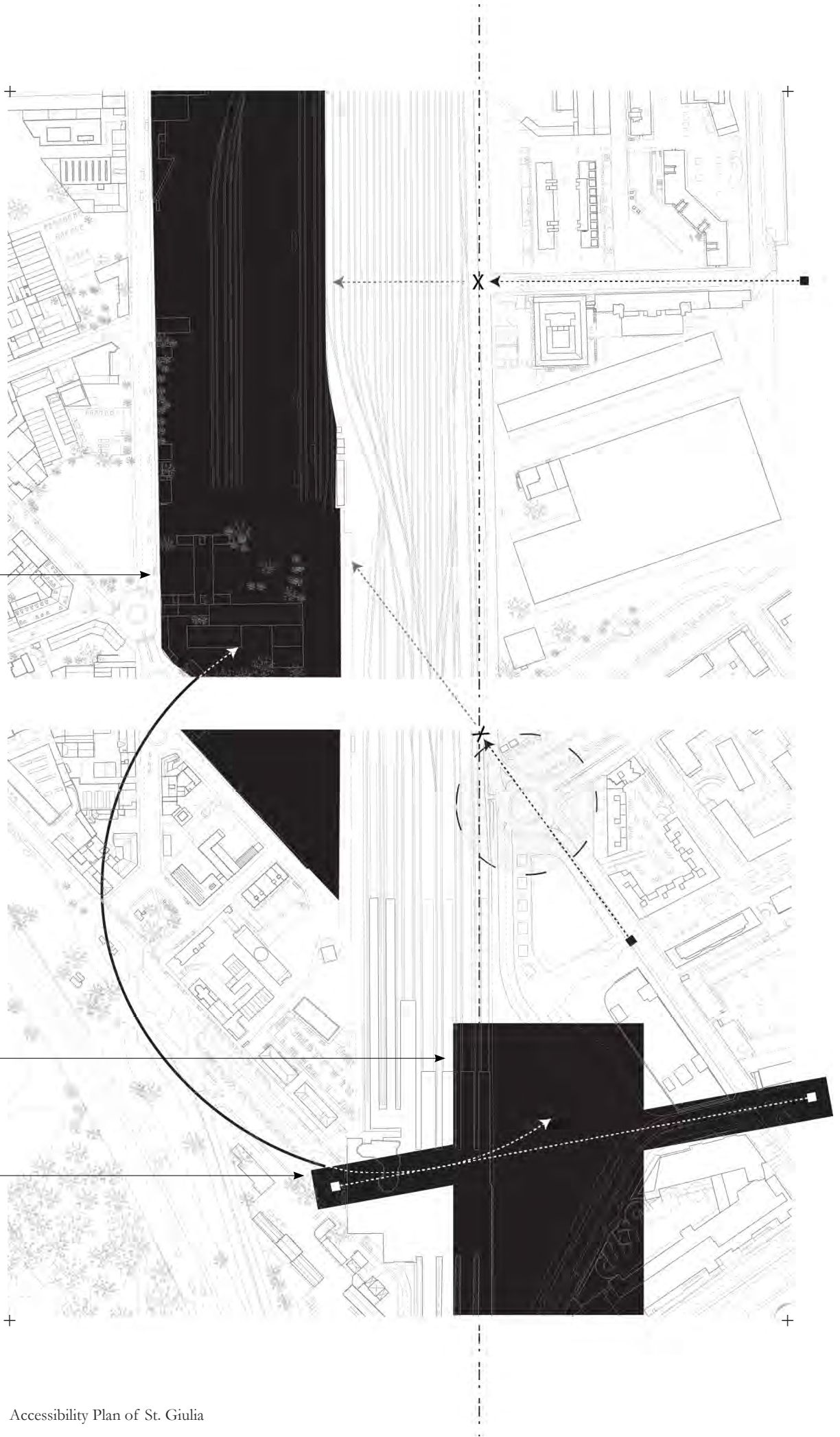


c

d

e

Accessibility analysis



Accessibility Plan of St. Giulia

Re-territorialisation

The site presents itself as an urban void. This vast piece of land which has been detached from its urban context for the past years serving as a raiing terminal deposit it now represents a new opportunity to be transformed into the cultural epicenter and reopen up to its surroundings and act as key area for the cultural thematic schedule of the city of Milan.

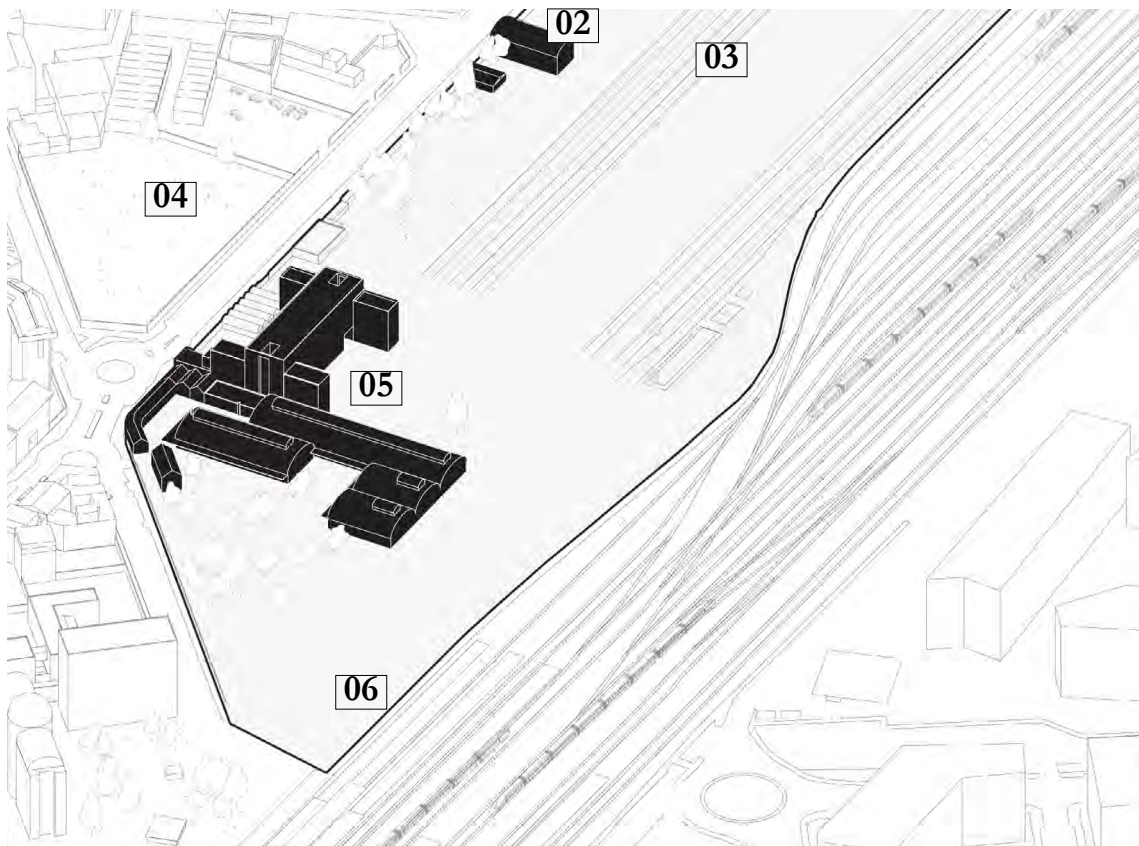
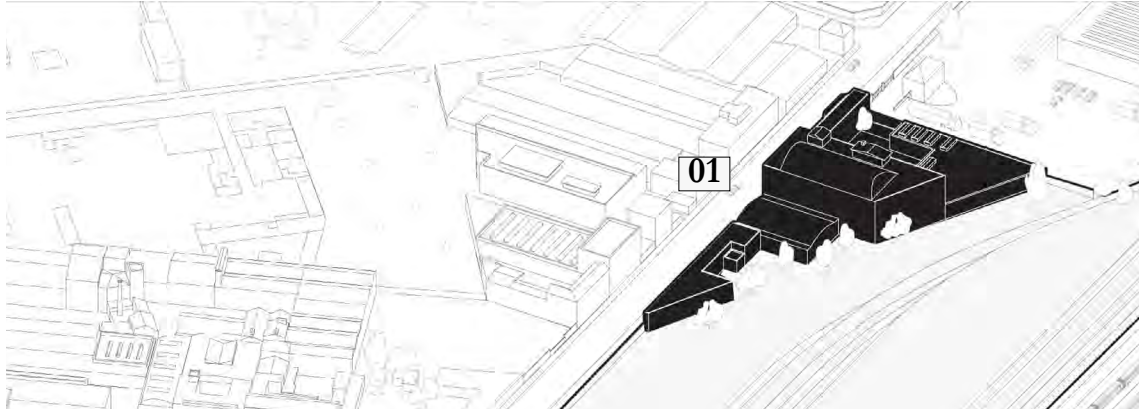
Tabula Rasa

Despite its emptiness, the site shows few interesting elements that can be implemented and integrated in the design, from the train tracks to a sequence of abandoned industrial buildings.

- 01 Abandoned building complex
Logistics
- 02 Abandoned hanger facing a key access
Landmark
- 03 Train tracks
Flexibility
- 04 Smaller fenced void
Extension
- 05 Abandoned building complex
Re-use
- 06 Potential new Event- Station exit
Global gate



Backstage



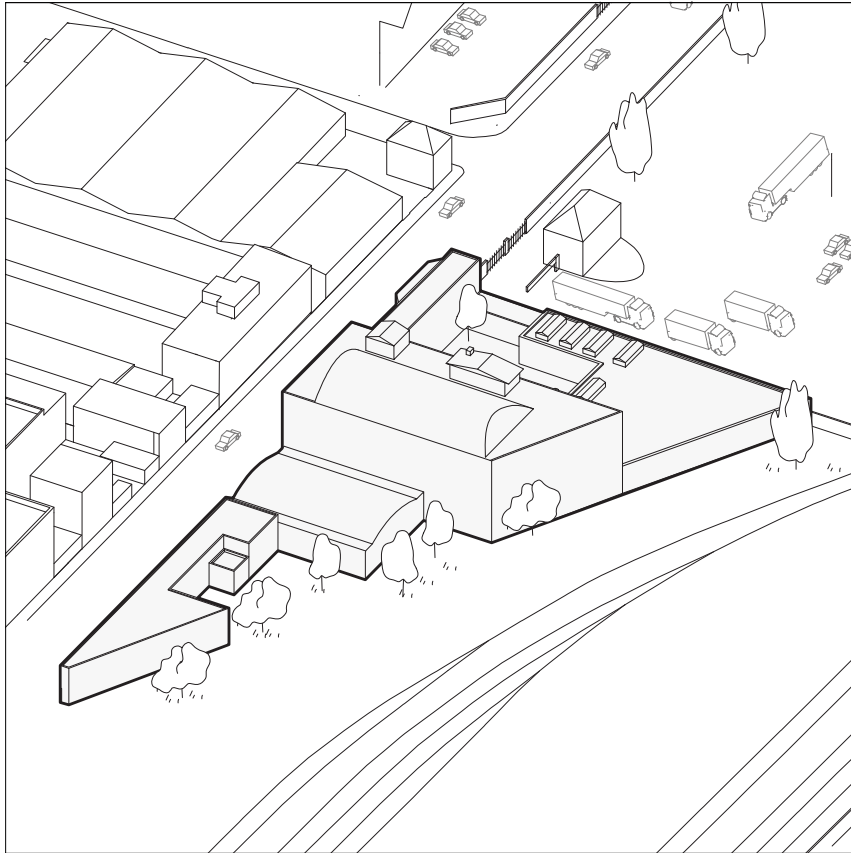
Stage



01. The Logistics

This complex of abandoned warehouses can be rehabilitated into the backstage of the design.....

+

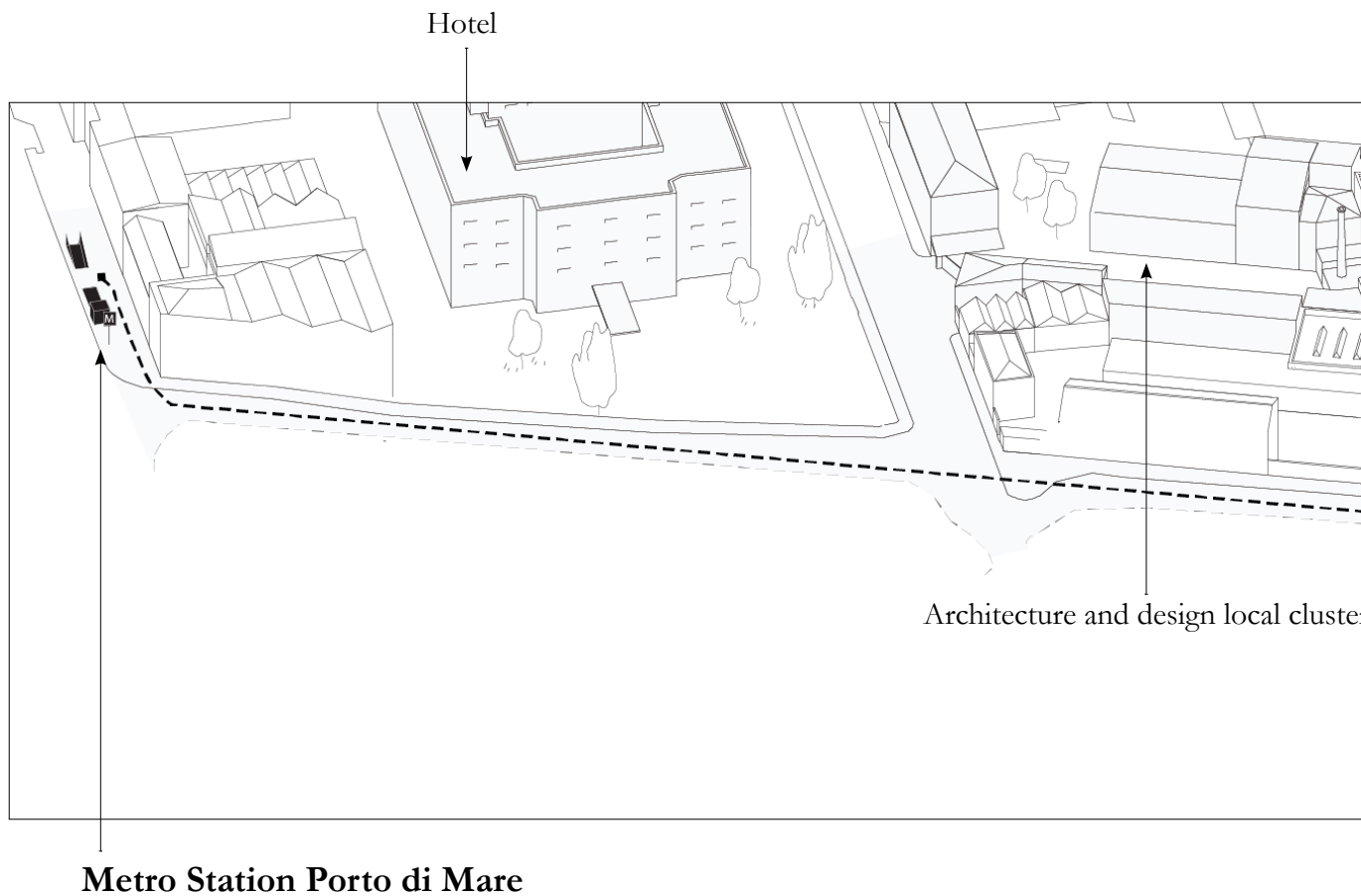


+

02. The Landmark

The morphology of the area highlight a clear main entrance from the metro station down to the site. A direct straight alley cutting through Rogoredo .

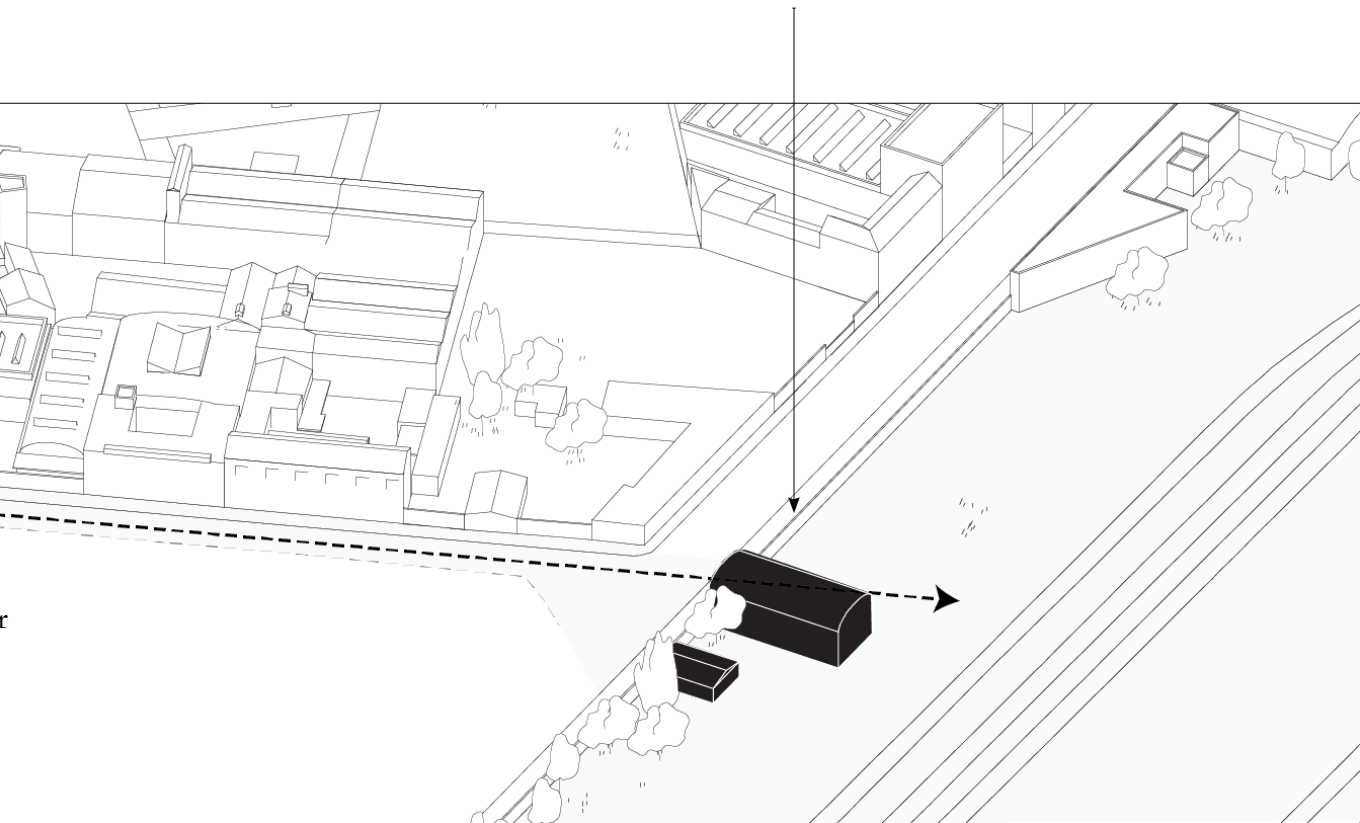
+



+



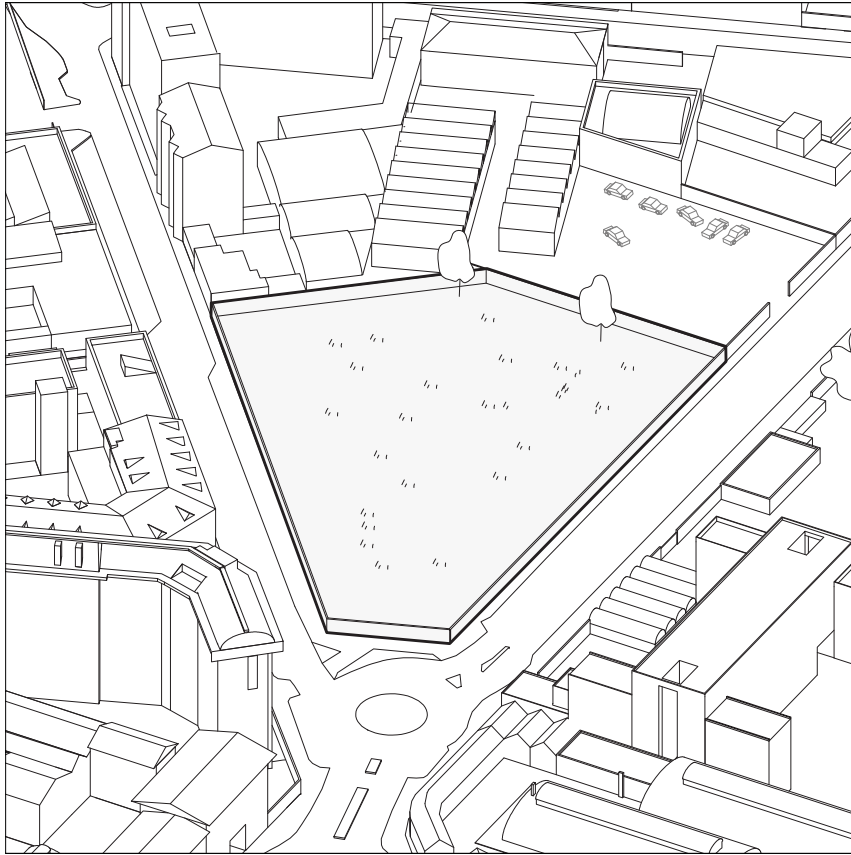
Landmark/Gate/ Entrance



04. The Void

Thi ijdofoiwfwjfwofjofnofnwopnwofnonojwofjojfofncmweono

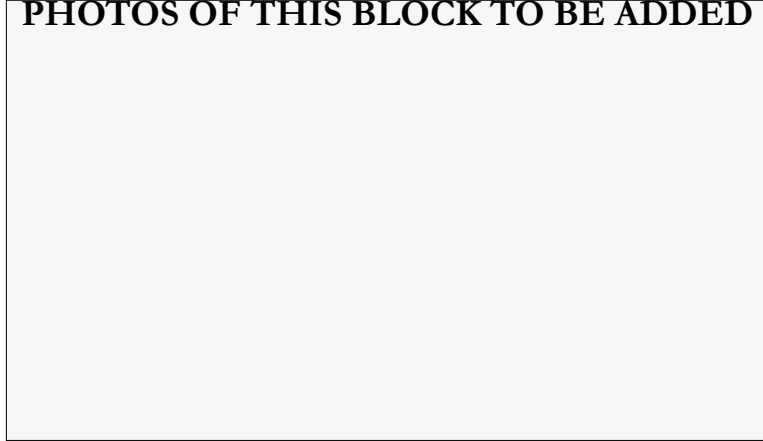
+



+

+

PHOTOS OF THIS BLOCK TO BE ADDED

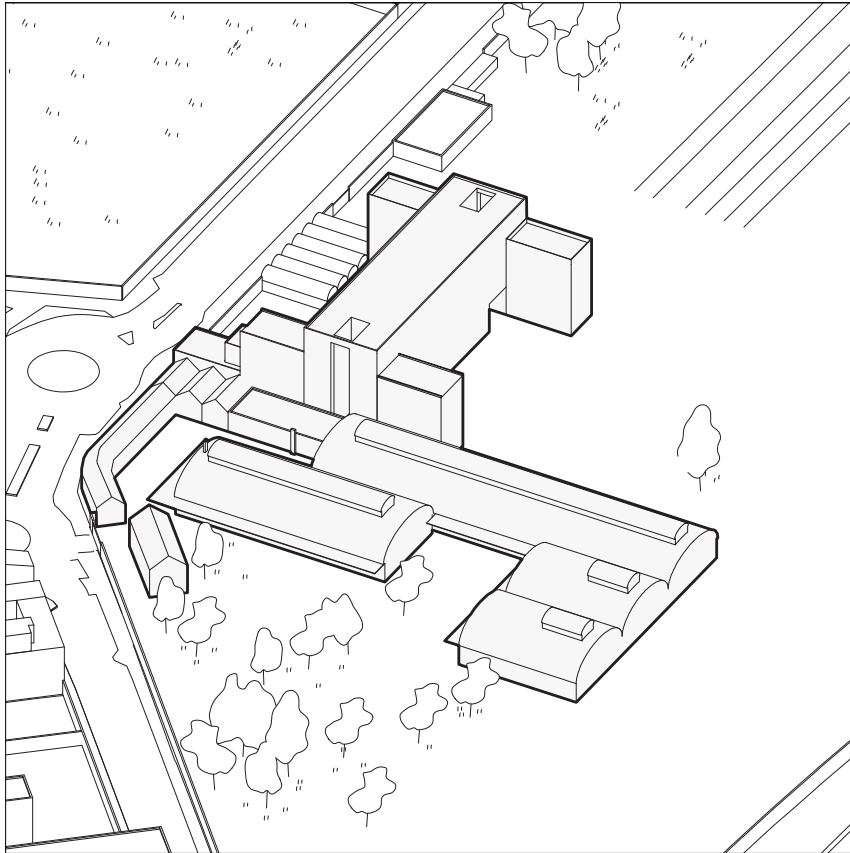


+

05. Abandoned block (interesting typology)

Thi ijdofoiwfwjfwofjofnofnwopnwofnonojwofjojfofncmweono

+



+

+

PHOTOS OF THIS BLOCK TO BE ADDED

FLOOR PLAN OF THIS EXHISTING BUILDINGS?

+

The context analysis starts to dictate the location and volume of the first element composing this 'urban stage' and re-inhabiting the void.

Parallel informed by the programmatic request of both, local and global agenda.

New elements that interact and respond to its surrounding, while re-purposing abandoned existing ones.

Programme

Context

Music

a

360 circular element to respond and engage with the surrounding voids

Art & Design

b

The typology of the existing complex sets the precondition for artistic programme.

A mix between gallery spaces for exhibitions and standard spaces for workshops

Digital/tech

c

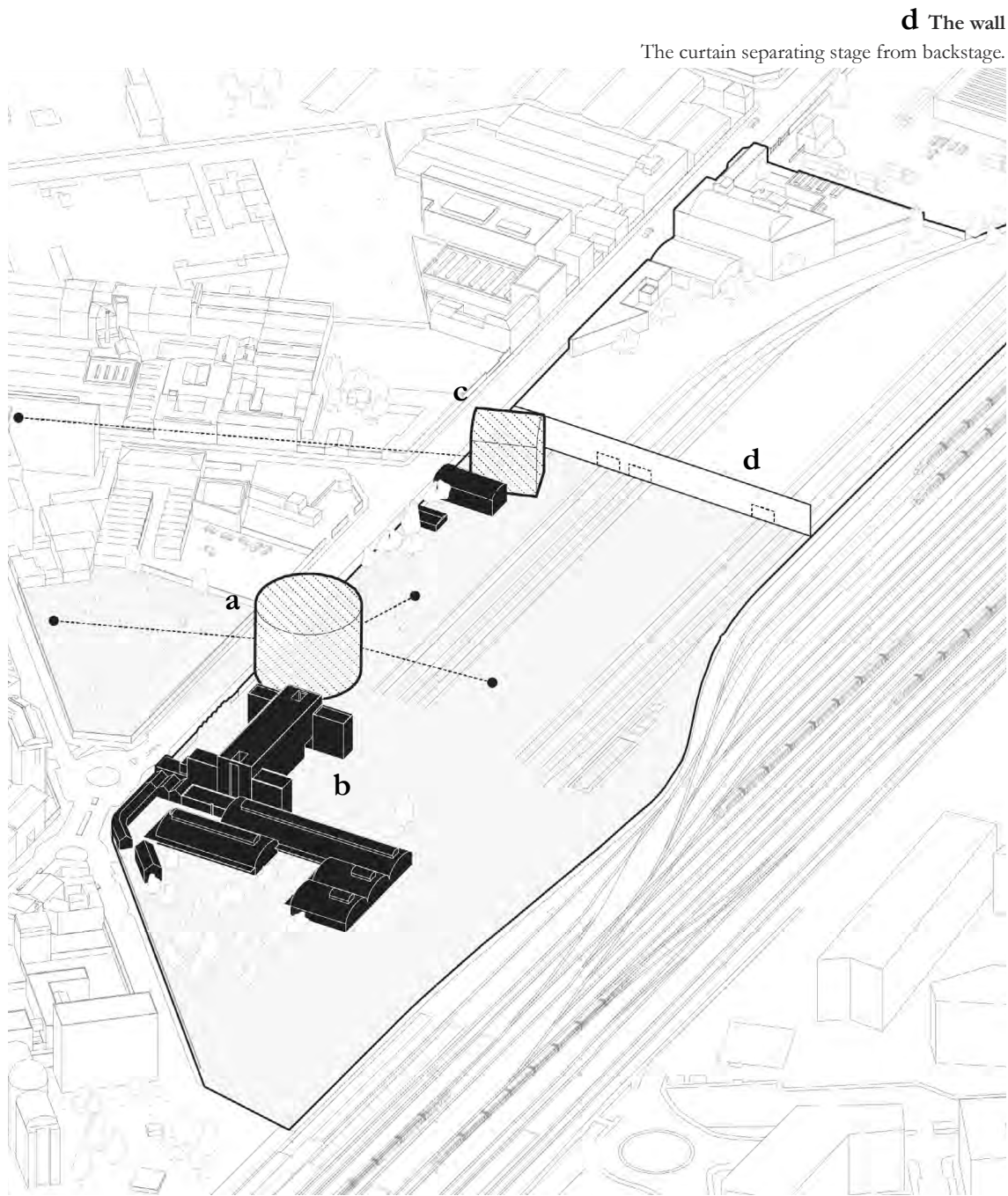
Its proximity to the backstage, an indoor oriented programme and the standard spatial requirements allow the shape to be freed from its content and act as a landmark at the end of the boulevard.

Photography

Cinema / Theater

+

+



d The wall

The curtain separating stage from backstage.

Stage

+

+

The context analysis starts to dictate the location and volume of the first element composing this 'urban stage' and re-inhabiting the void.

Parallel informed by the programmatic request of both, local and global agenda.

New elements that interact and respond to its surrounding, while re-purposing abandoned existing ones.

Cinema / Theater & Photography

f

Warehouse which reuses the existing railing to assemble and create the props for the theater and the cinema studio

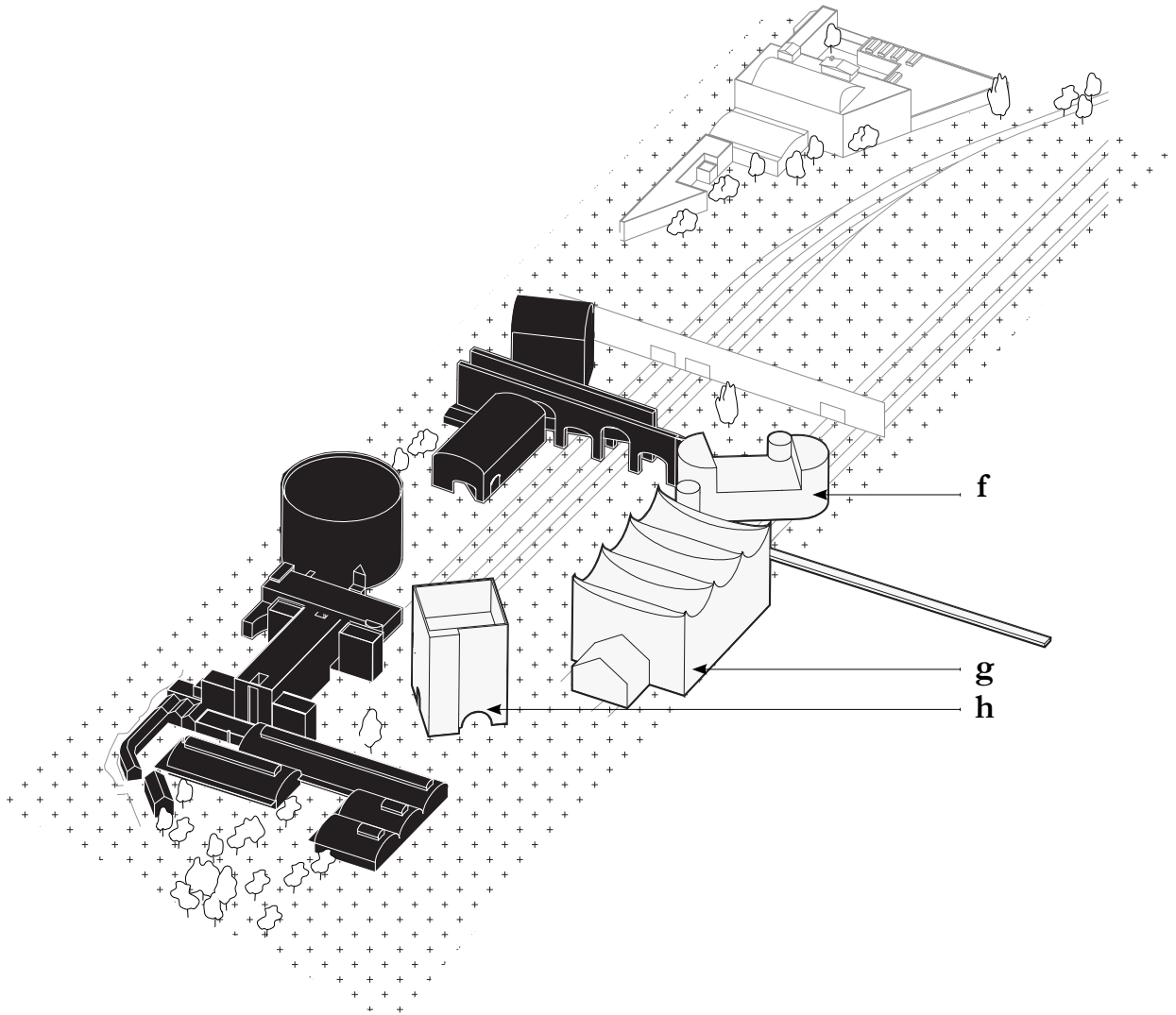
g

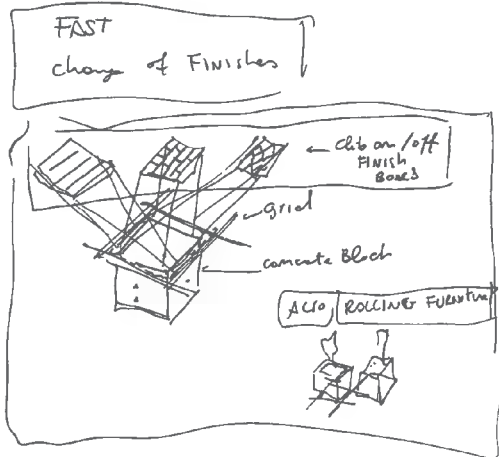
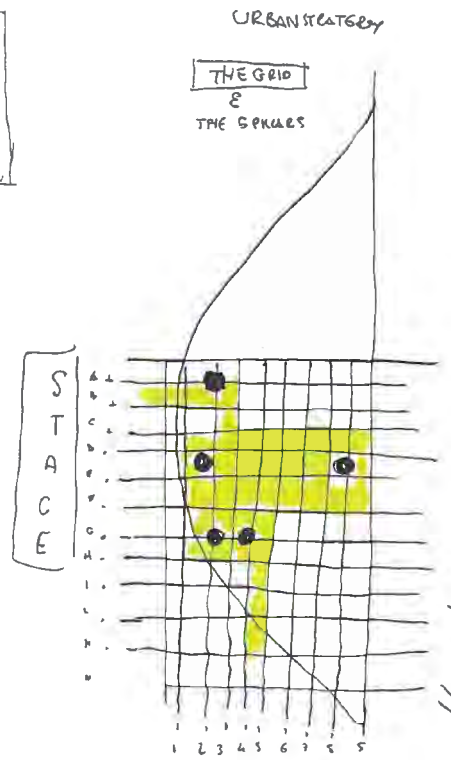
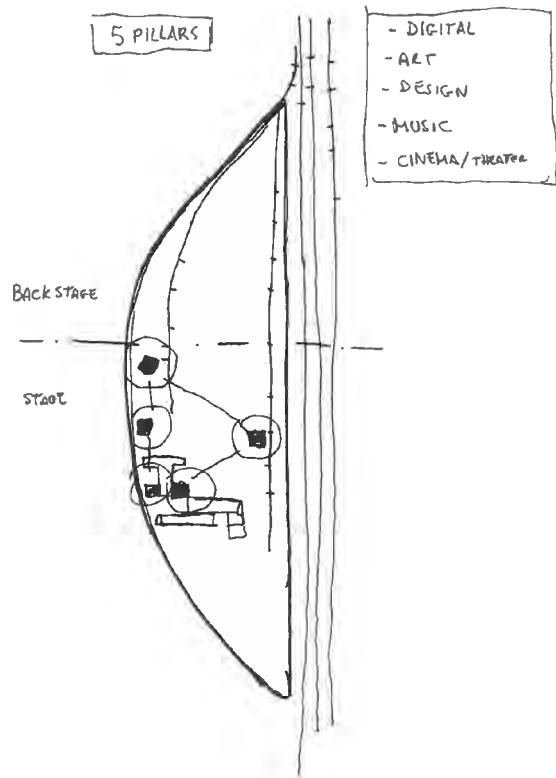
Cinema Studios.

This building typology follows the requirements analyses in the research of Cinecitta studios. Creating a possibility to only play with the envelope of the building

h

Theater Halls, Cinema hall and Photography rooms and all other facilities to support and perform these three creative arts.





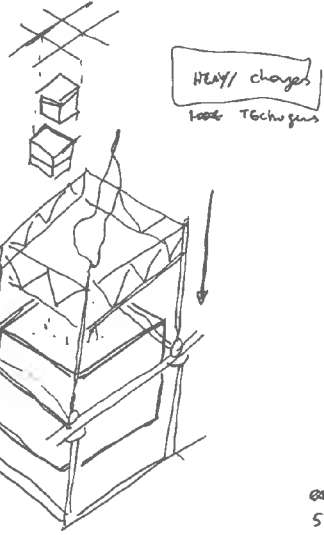
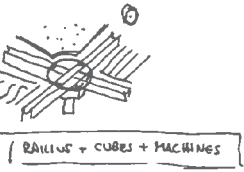
The URBAN CHEST BOXES allows to RECONF AND quickly change the urban pattern according to the necessities.

It allows to know all materials and Finishes necessary that can be stored in the ball stage.

Xm of trees

Xm of stone paving

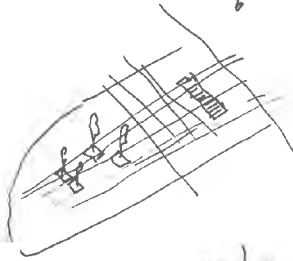
Xm of Bench



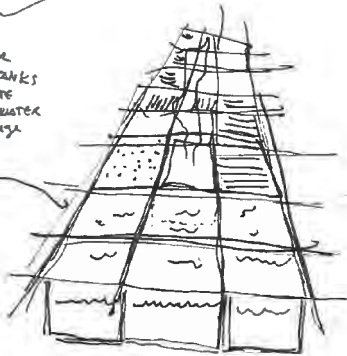
RE CONFIGURING URBAN FURNITURE
USING THE RAILING GRID
(SIMILAR TO AUTOMATED WAREHOUSE)



- TREES
- FINISHES
- FURNITURES
- MULTISPACES

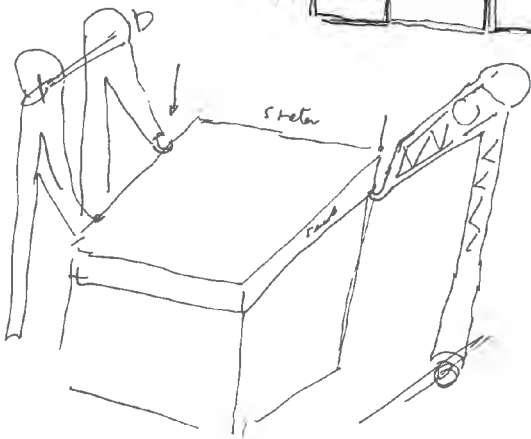


MODULAR
WATER TANKS
TO CREATE
URBAN WATER
STORAGE



CALLING DIMENSION?
5x5?

FIGURE
what
and
red and



URBAN
DYNAMIC
BLOCK
BLOCK