

# Graduation studio HA Revitalising Heritage Retreat Estates Reuversweerd P5 - technical drawings booklet

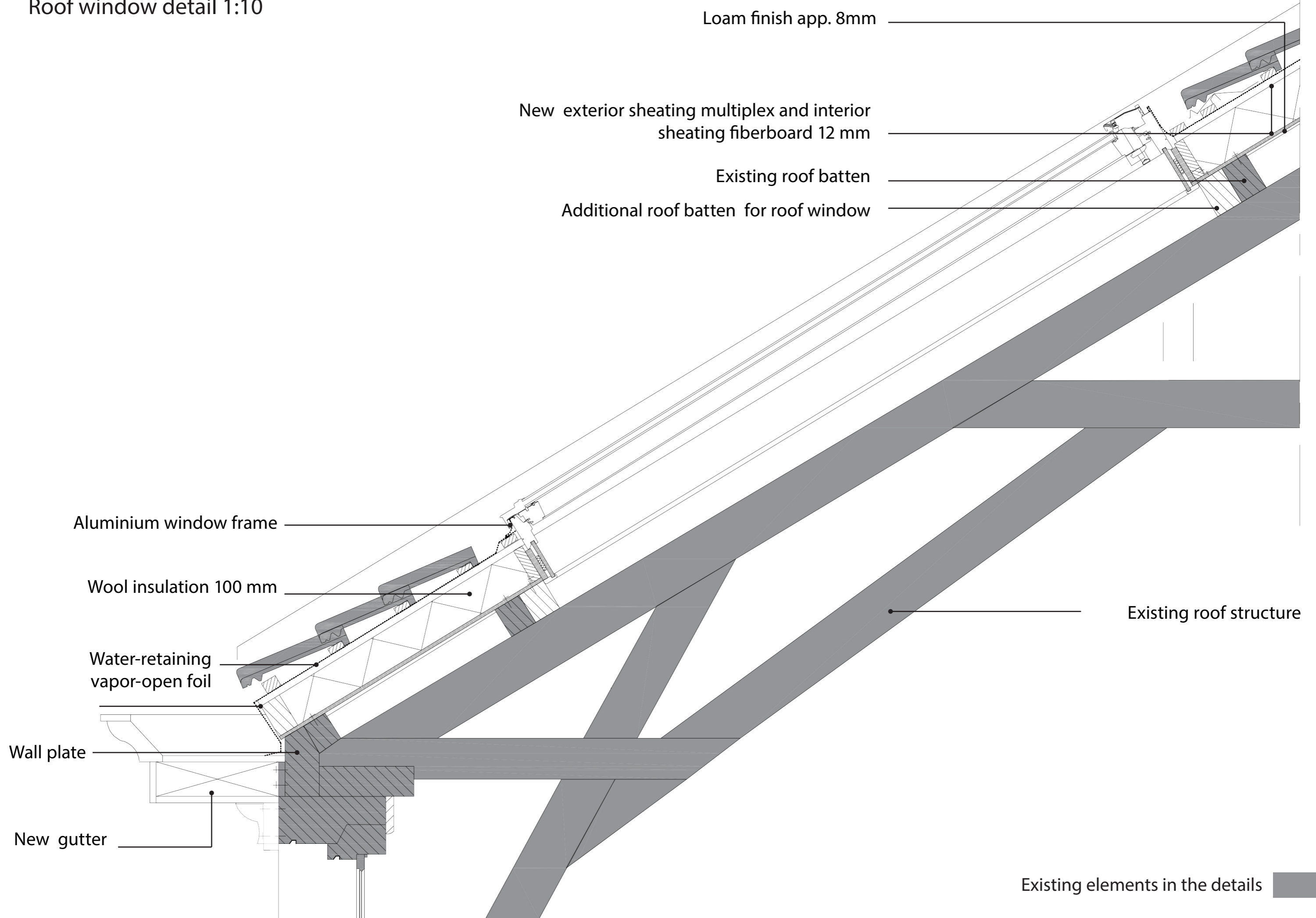
G.I.Galeno  
4737555



# Main house

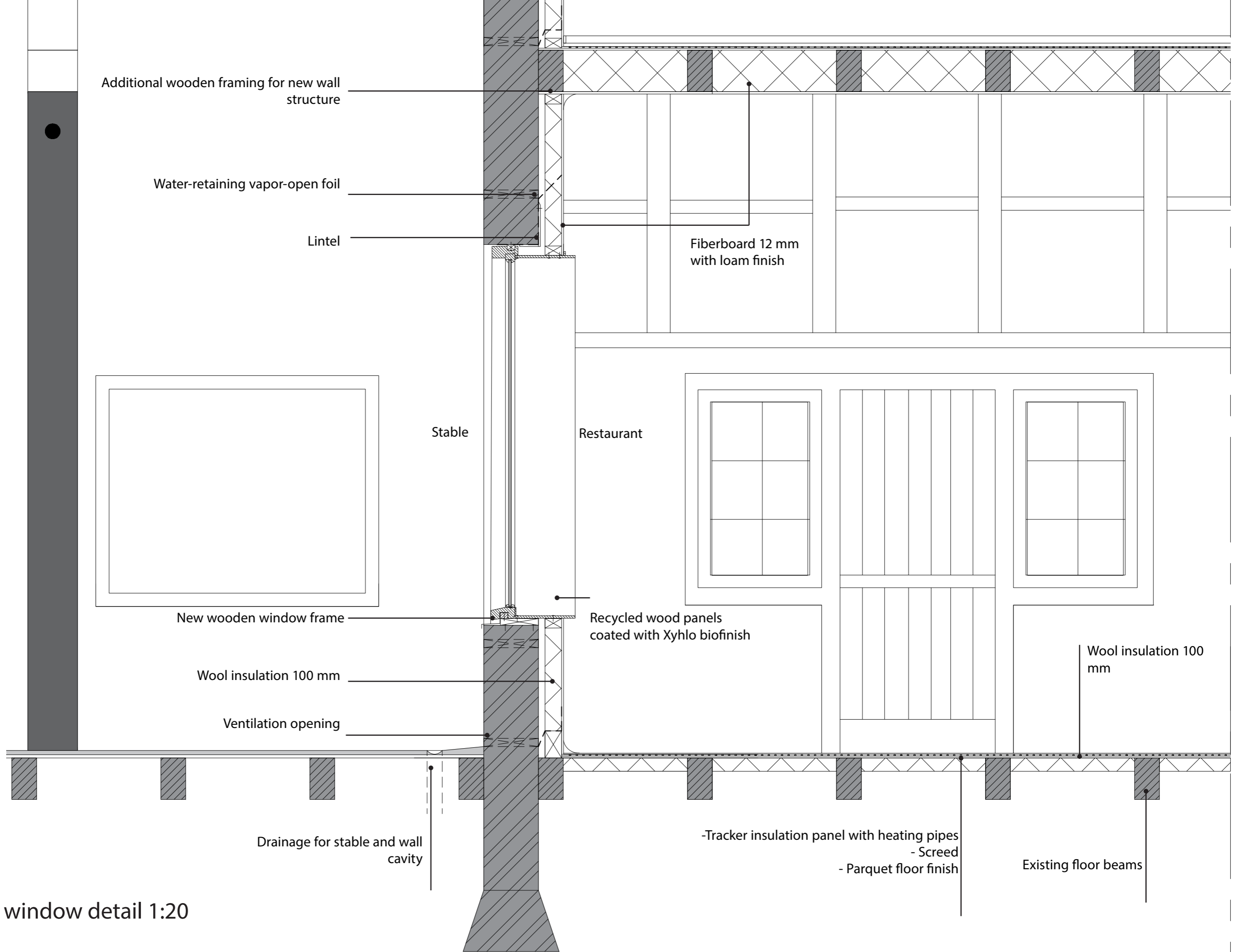


# Roof window detail 1:10



# Farm house





Additional wooden framing for new wall structure

Water-retaining vapor-open foil

Lintel

Fiberboard 12 mm with loam finish

Stable

Restaurant

New wooden window frame

Recycled wood panels coated with Xyhlo biofinish

Wool insulation 100 mm

Wool insulation 100 mm

Ventilation opening

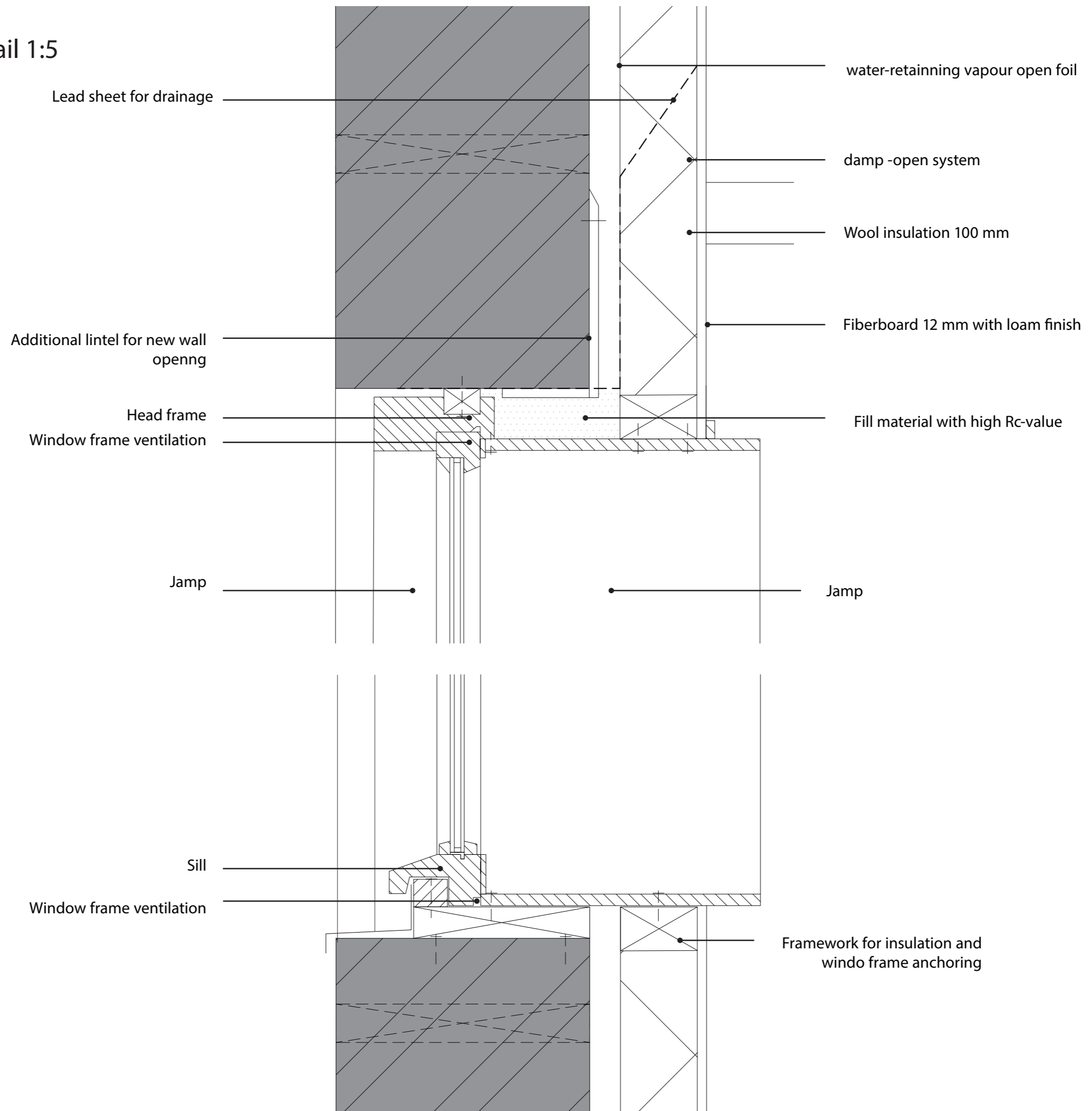
Drainage for stable and wall cavity

-Tracker insulation panel with heating pipes  
- Screed  
- Parquet floor finish

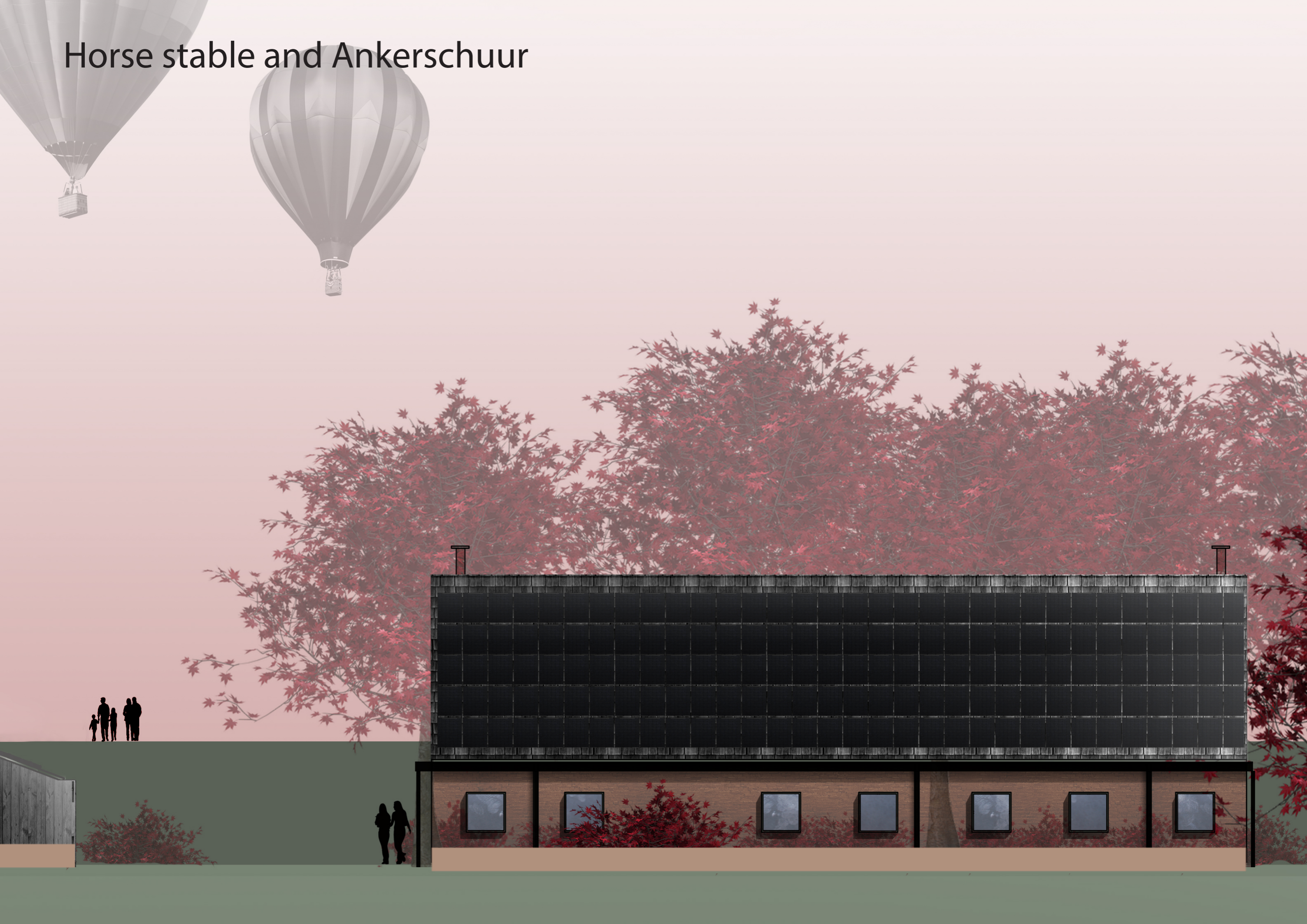
Existing floor beams

New window detail 1:20

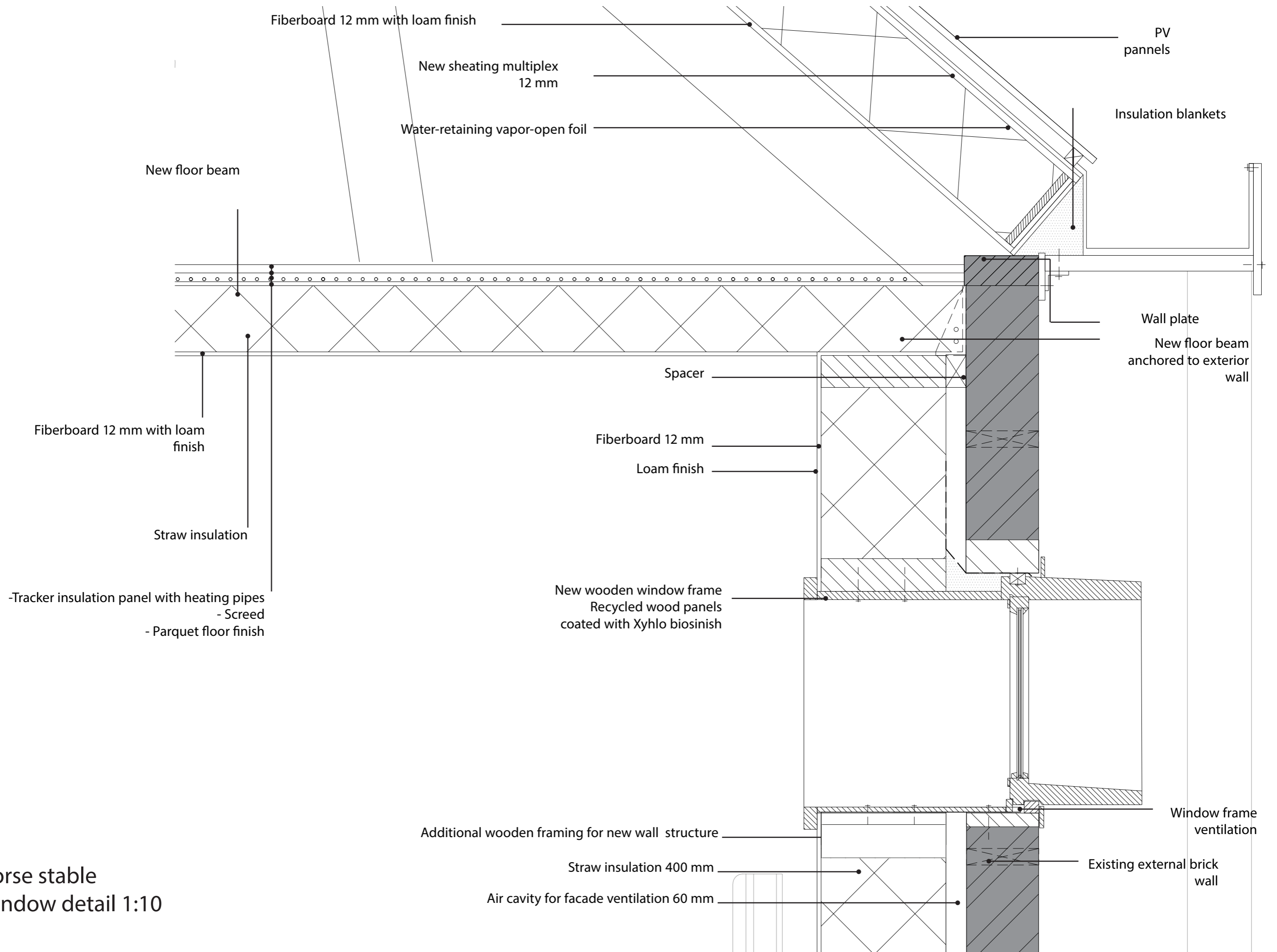
# New window frame detail 1:5



# Horse stable and Ankerschuur



Horse stable  
Window detail 1:10





Ankerschuur  
Window detail 1:10

