

Transient Liquidities  
along the New Silk Road II  
GRADUATION STUDIO

## **A WORKERS' ENCLAVE**

Dongyan Chen  
5502152





entrance of the Black Sea



## 1.RESEARCH QUESTION

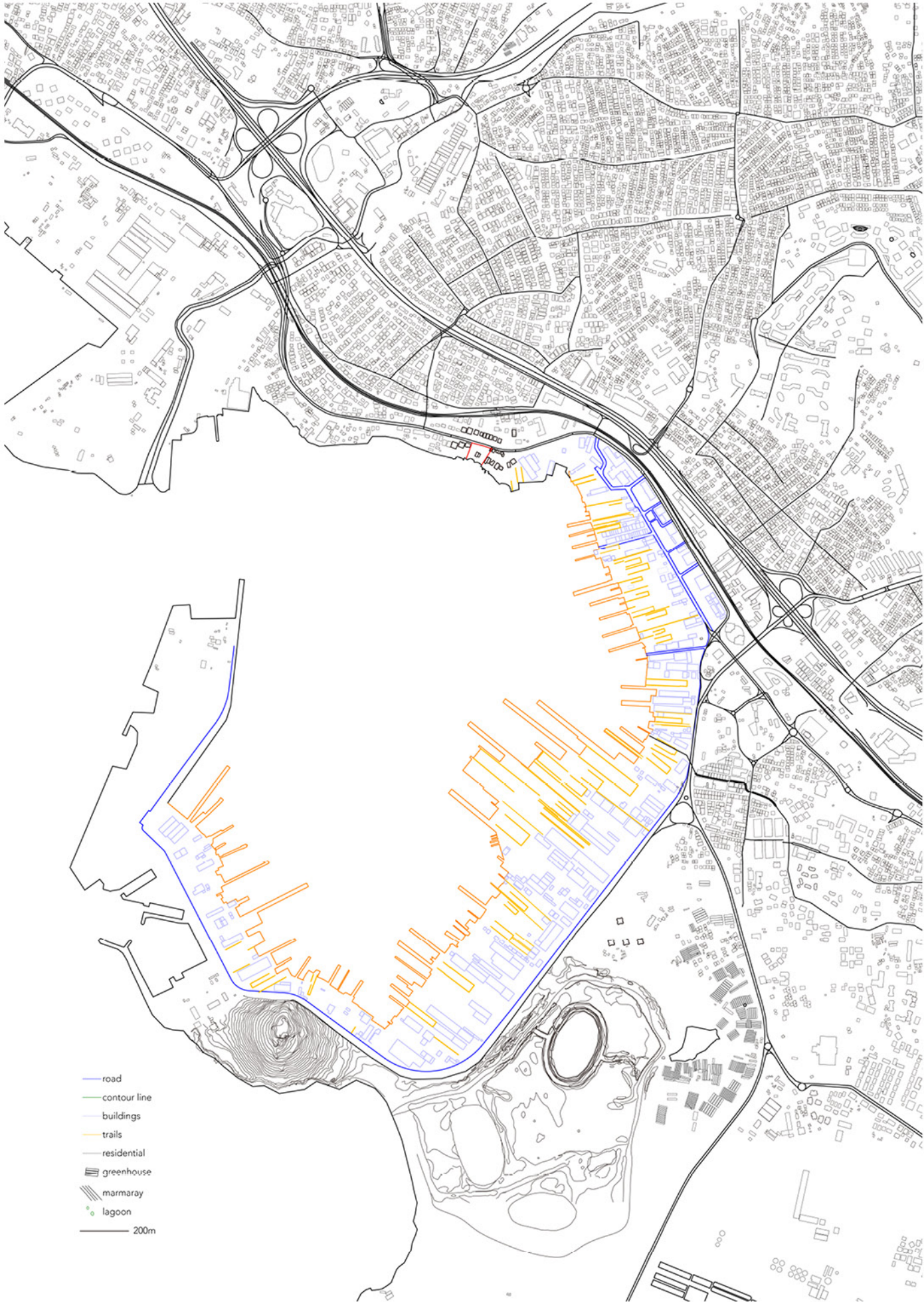


source:  
//Understanding class from Tuzla Shipyards Region in Turkey  
Nevra Akdemir





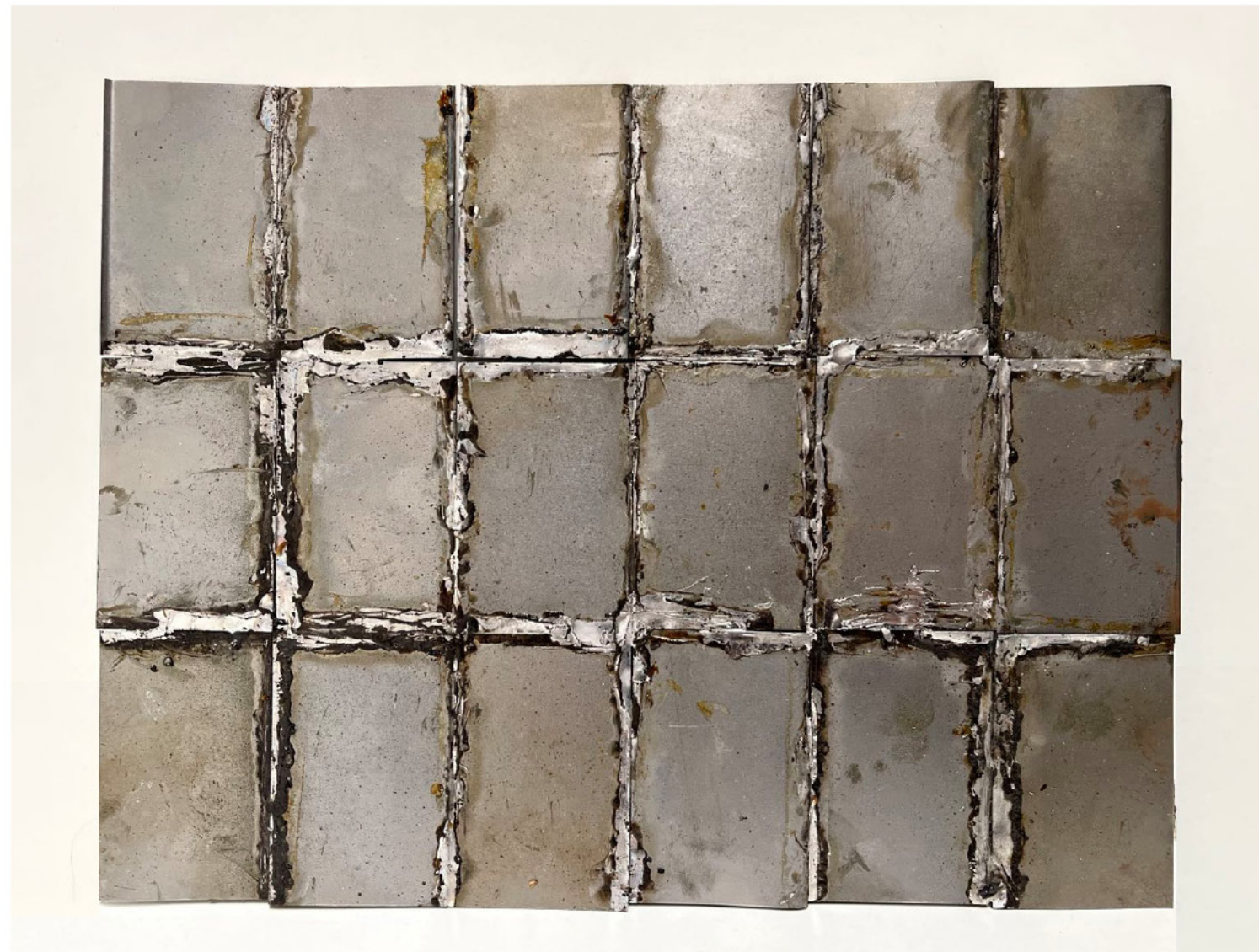
1.RESEARCH QUESTION





## 1. RESEARCH QUESTION

1. characteristics of the field  
materials  
elements  
movement













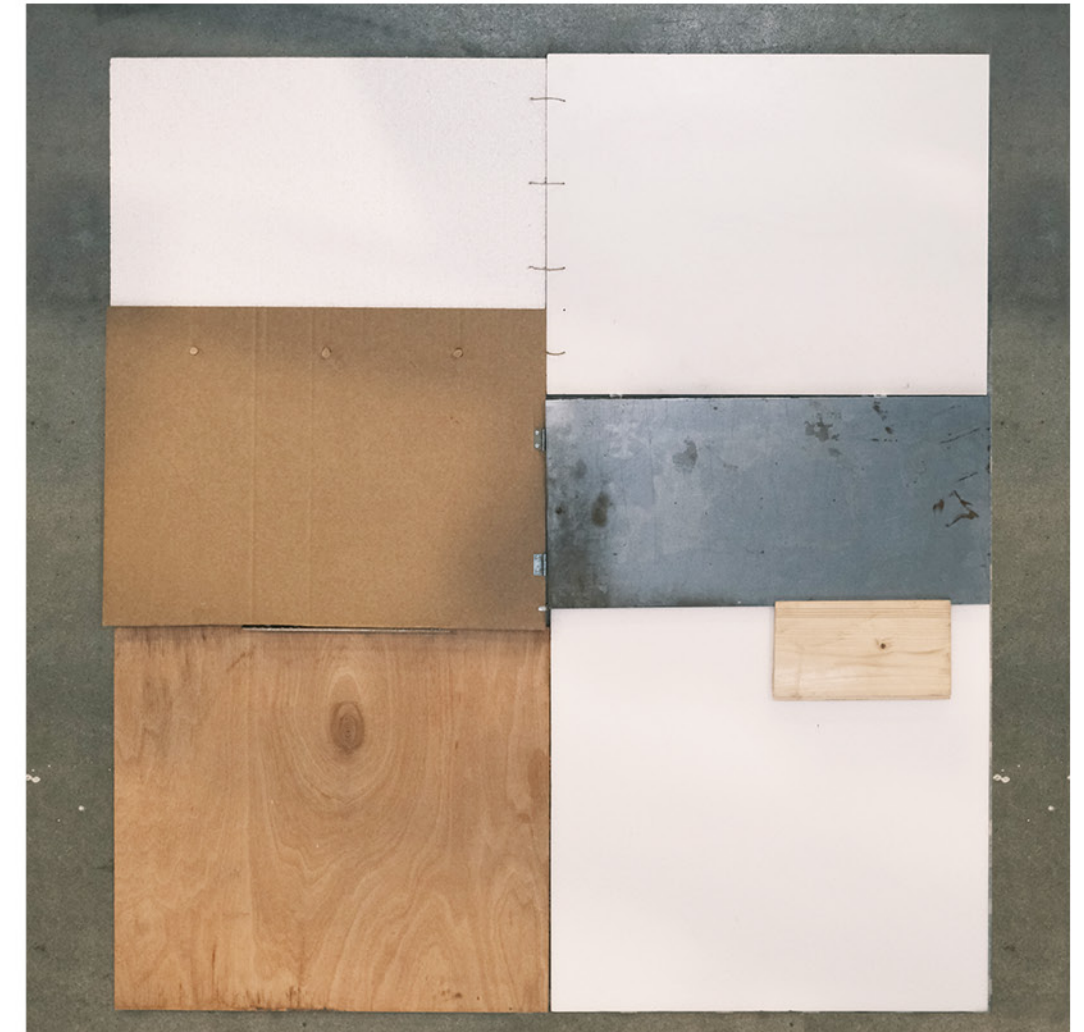
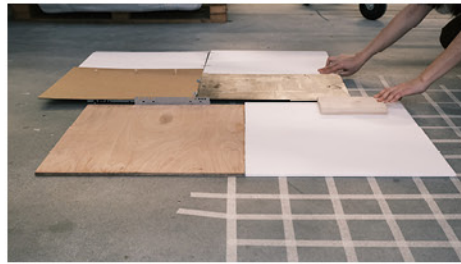
## 1. RESEARCH QUESTION



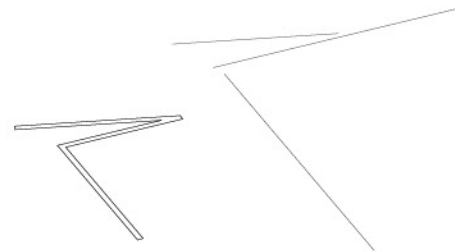
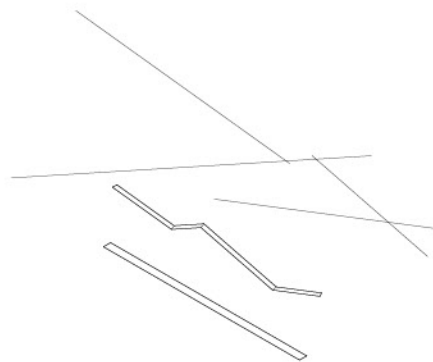
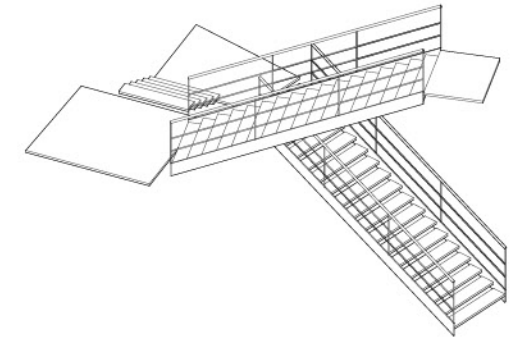
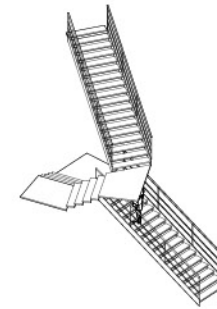
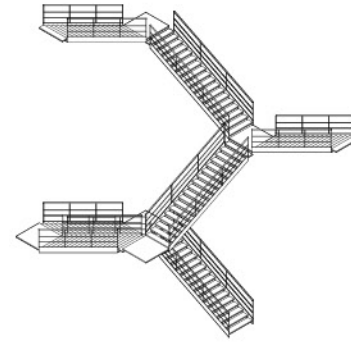
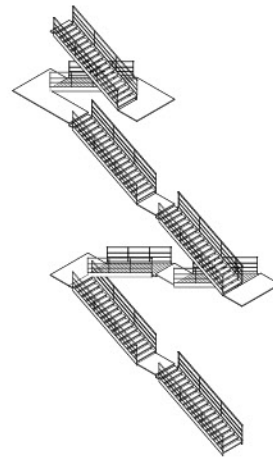
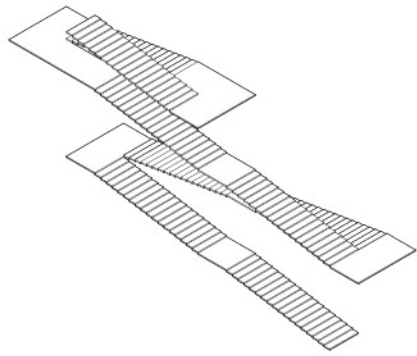
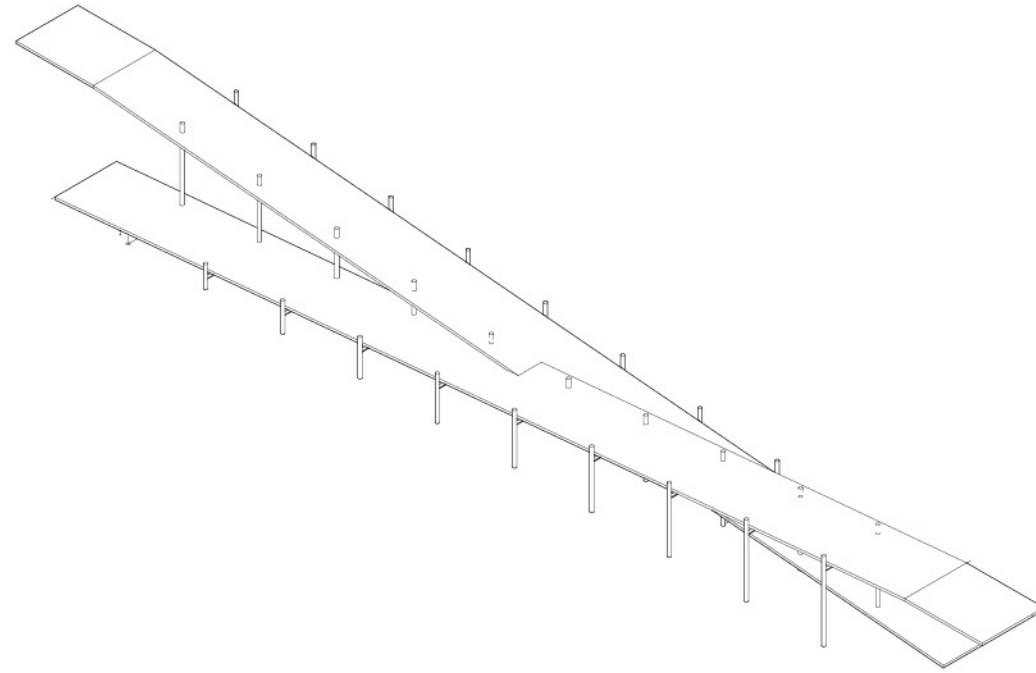
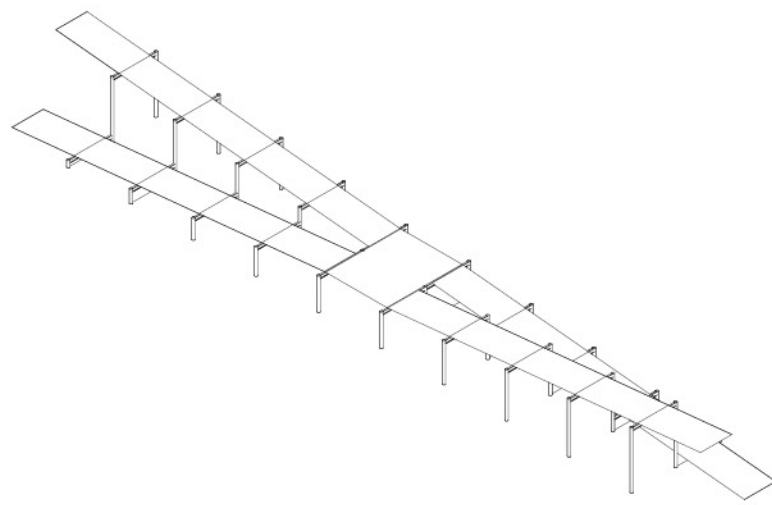


## 1. RESEARCH QUESTION

1. characteristics of the field  
materials  
elements  
movement







"connector" - physical component of connection  
to connect workers who are coming from different areas of Turkey  
enhance connection for collective activities



## 2.DESIGN INTENTION

Responding to research questions

How can architecture be a medium to reveal the status of workers?

How to appropriate a place offering them a sense of belonging?

Responding to working and living condition from the aspect of spatial feature investigation,  
the project offers a collective space to workers in positions of insecure employment, safety, long work hours

It is a place for relaxation, culture, a workers' club

introduce the spatial condition acquired in research to the site of intervention



## 2.DESIGN INTENTION

site of intervention

for workplace

. accessibility:location

for leisure

. open land, park

. the entrance

for workers

. in terms of mass group of people, crowd distribution  
and collection

. step/walk out of workplace





3.CURRENT CONDITION ON SITE

detached from the heavy industrial district by main street

lagoon

park under preservation





### 3.CURRENT CONDITION ON SITE



ground, vegetation, grassy

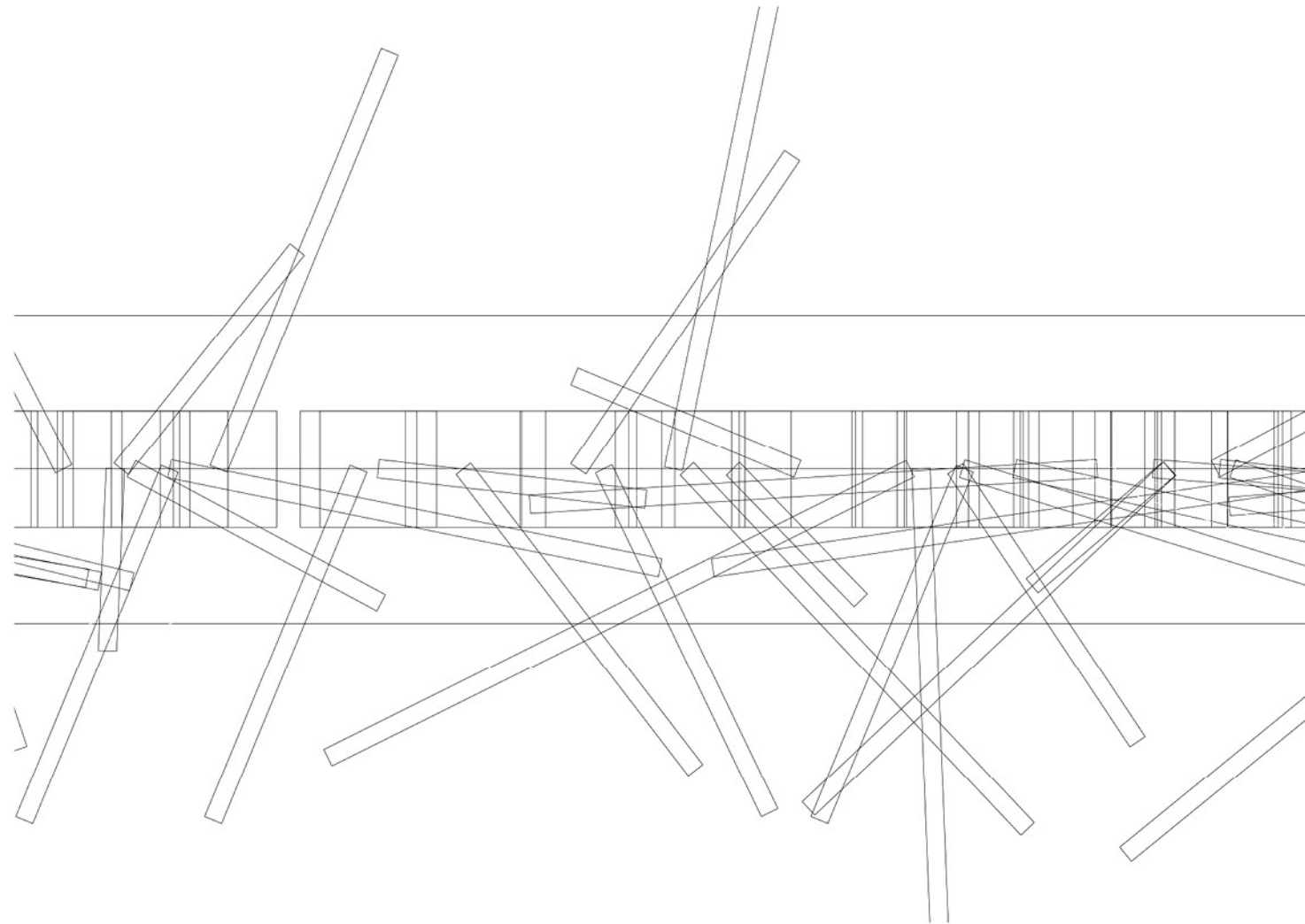
view: water / mountain / industry



### 3.CURRENT CONDITION ON SITE







scale (of the whole and fragment)  
from drawing of movement to thematic space

the characteristics of the field is concluded with  
spatial dynamics, marginal space, and materialised

heavy industrial district

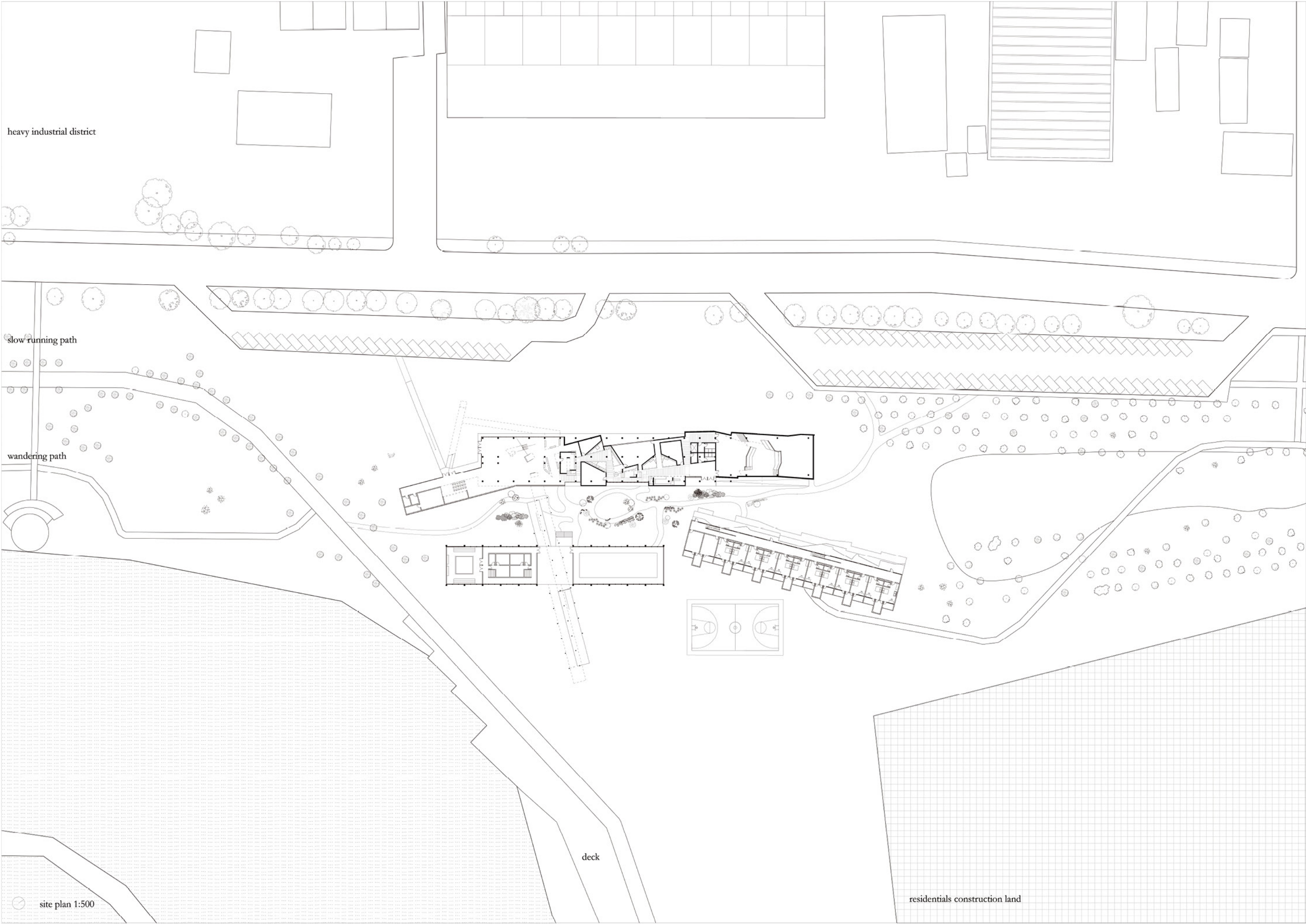
slow running path

wandering path

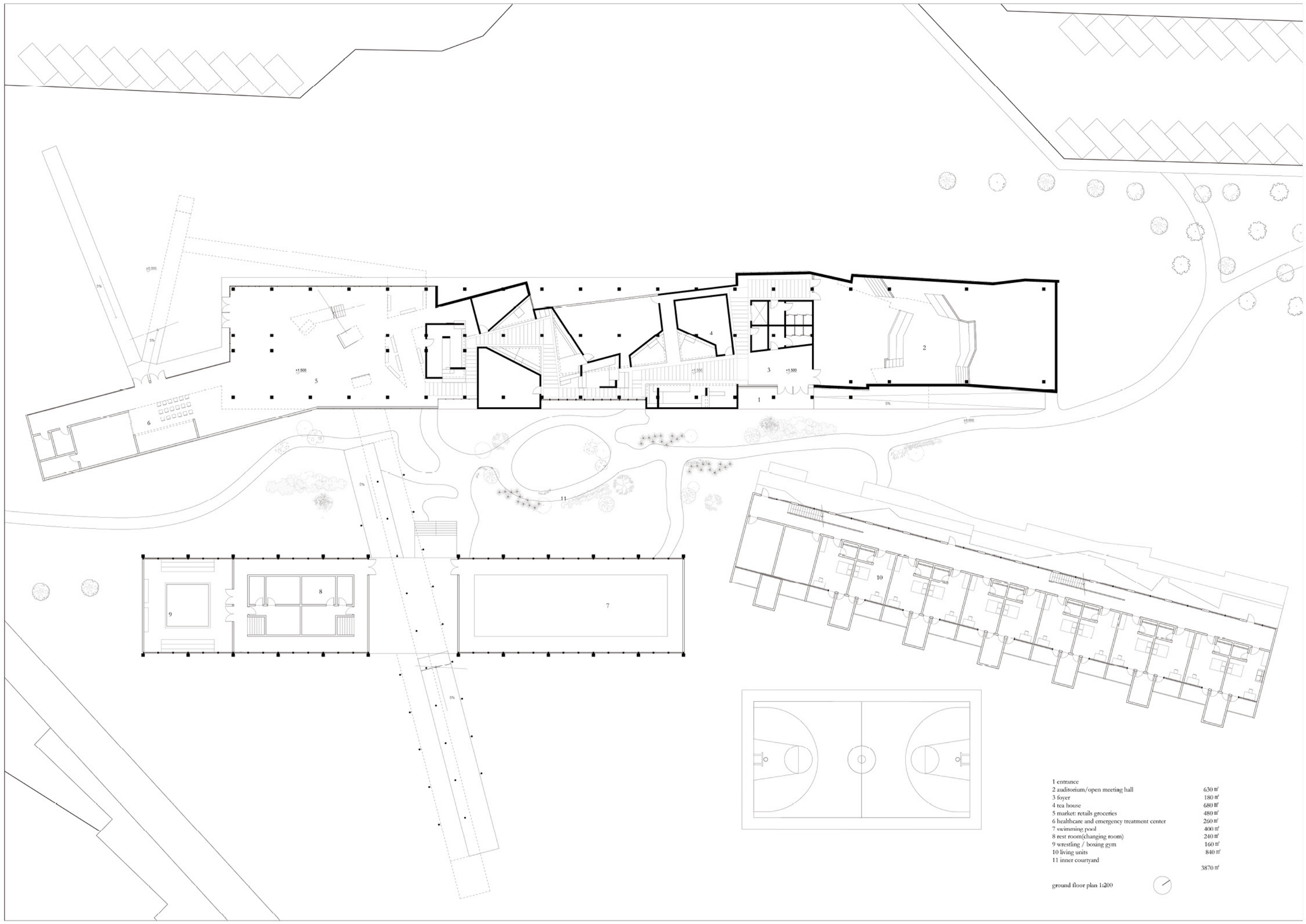
deck

site plan 1:500

residential construction land



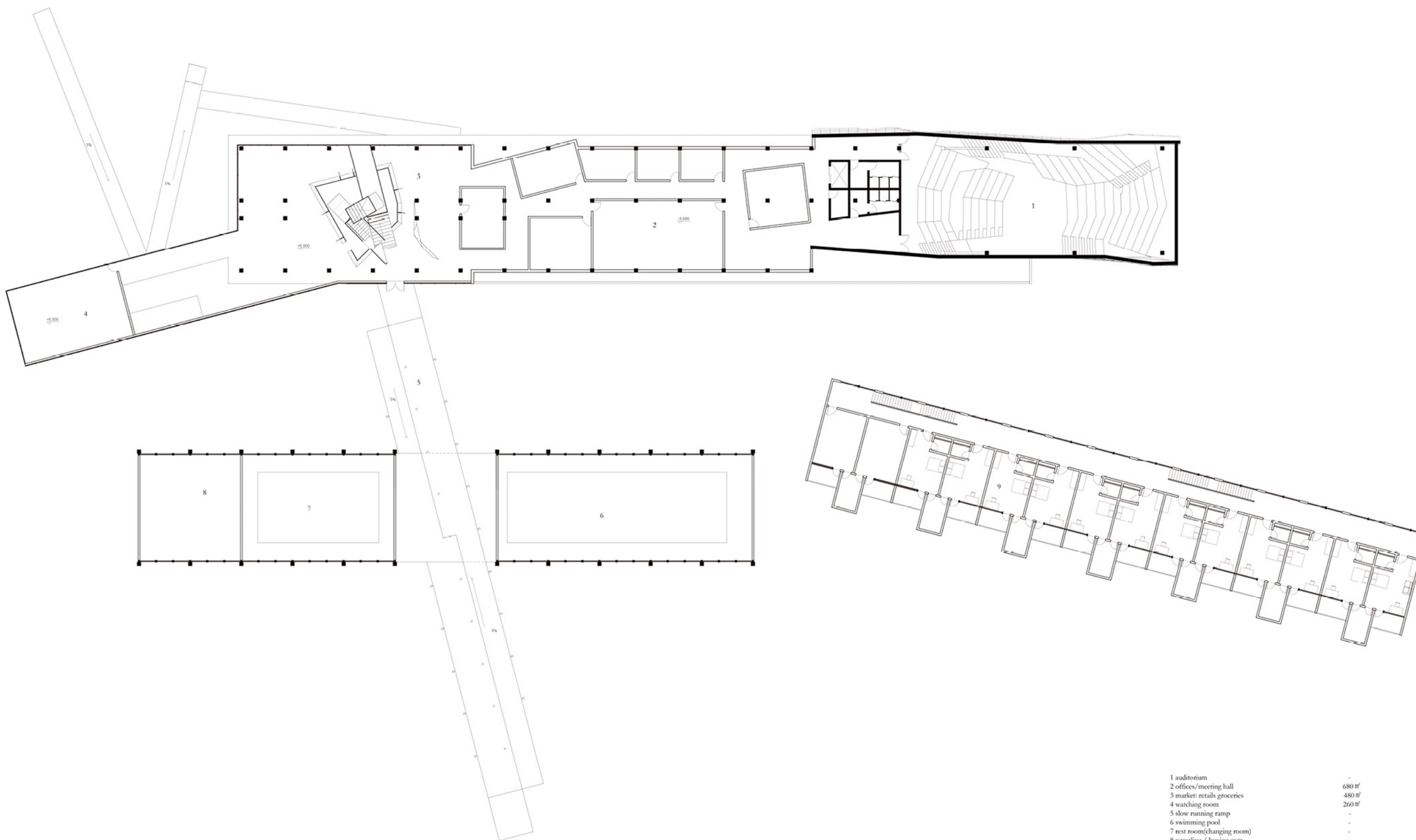




1 entrance	630 m <sup>2</sup>
2 auditorium/open meeting hall	180 m <sup>2</sup>
3 foyer	680 m <sup>2</sup>
4 tea house	480 m <sup>2</sup>
5 market: retails groceries	260 m <sup>2</sup>
6 healthcare and emergency treatment center	400 m <sup>2</sup>
7 swimming pool	240 m <sup>2</sup>
8 rest room(changing room)	160 m <sup>2</sup>
9 wrestling / boxing gym	840 m <sup>2</sup>
10 living units	3870 m <sup>2</sup>
11 inner courtyard	

ground floor plan 1:200





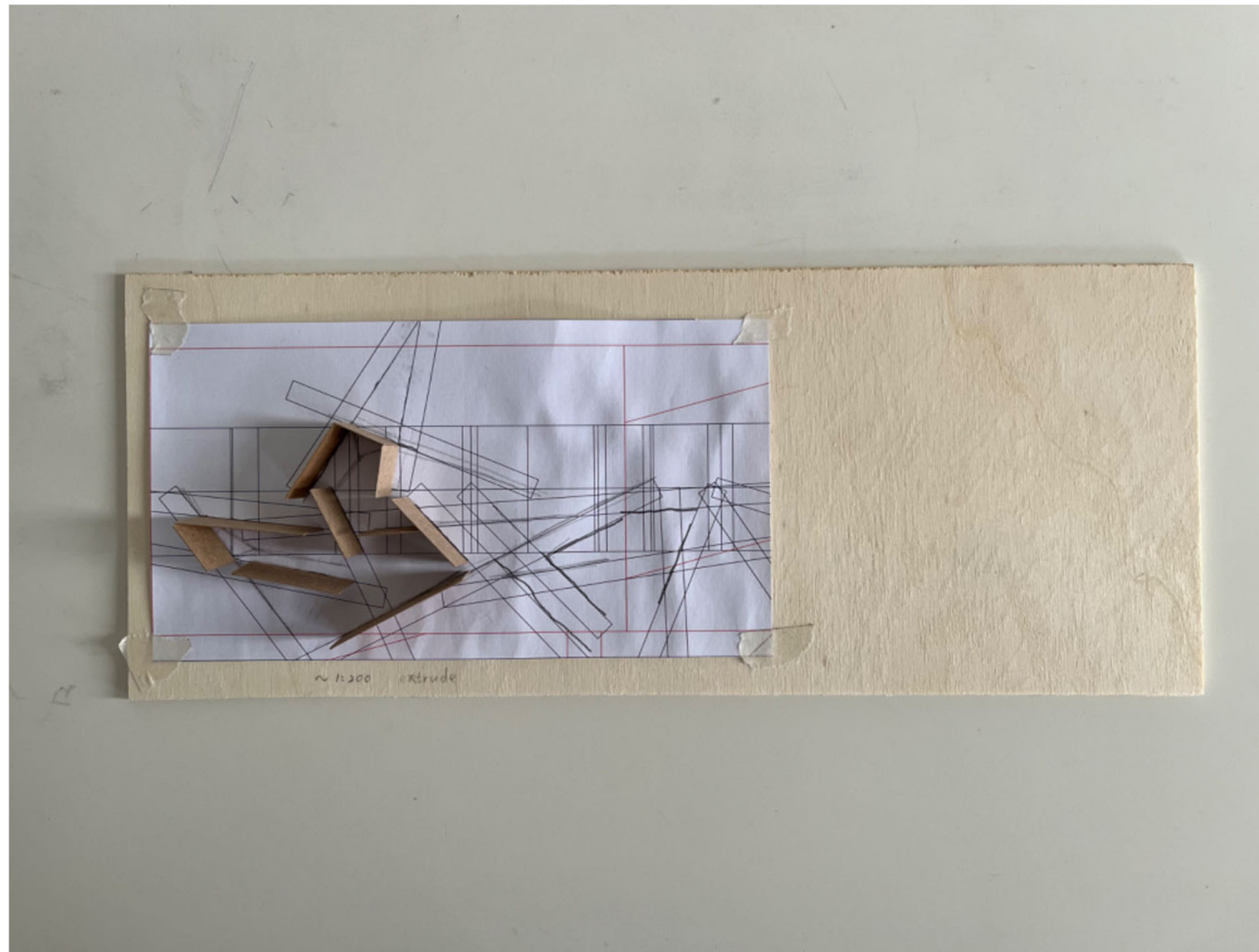
1 auditorium	-
2 offices/meeting hall	680 m <sup>2</sup>
3 market: retails groceries	480 m <sup>2</sup>
4 watching room	260 m <sup>2</sup>
5 slow running ramp	-
6 swimming pool	-
7 rest room(changing room)	-
8 wrestling / boxing gym	-
9 living units	840 m <sup>2</sup>
	2260 m <sup>2</sup>

first floor plan 1:200





site and configuration  
east entrance from the courtyard



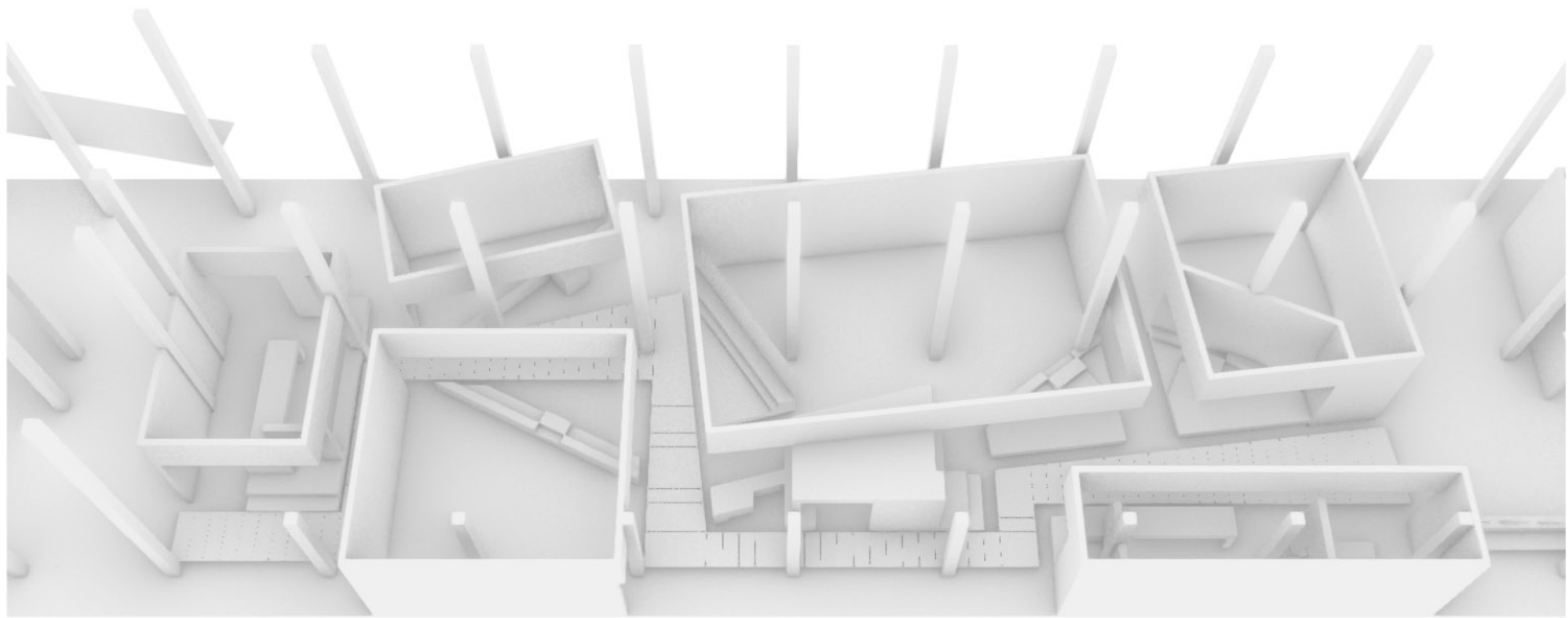
experiment/spatialize method 1:extrude



programatic utilization - tea space

scale - human body size,  
small groups

provide the opposite of their workplace, possessing the quality of privacy, quietness

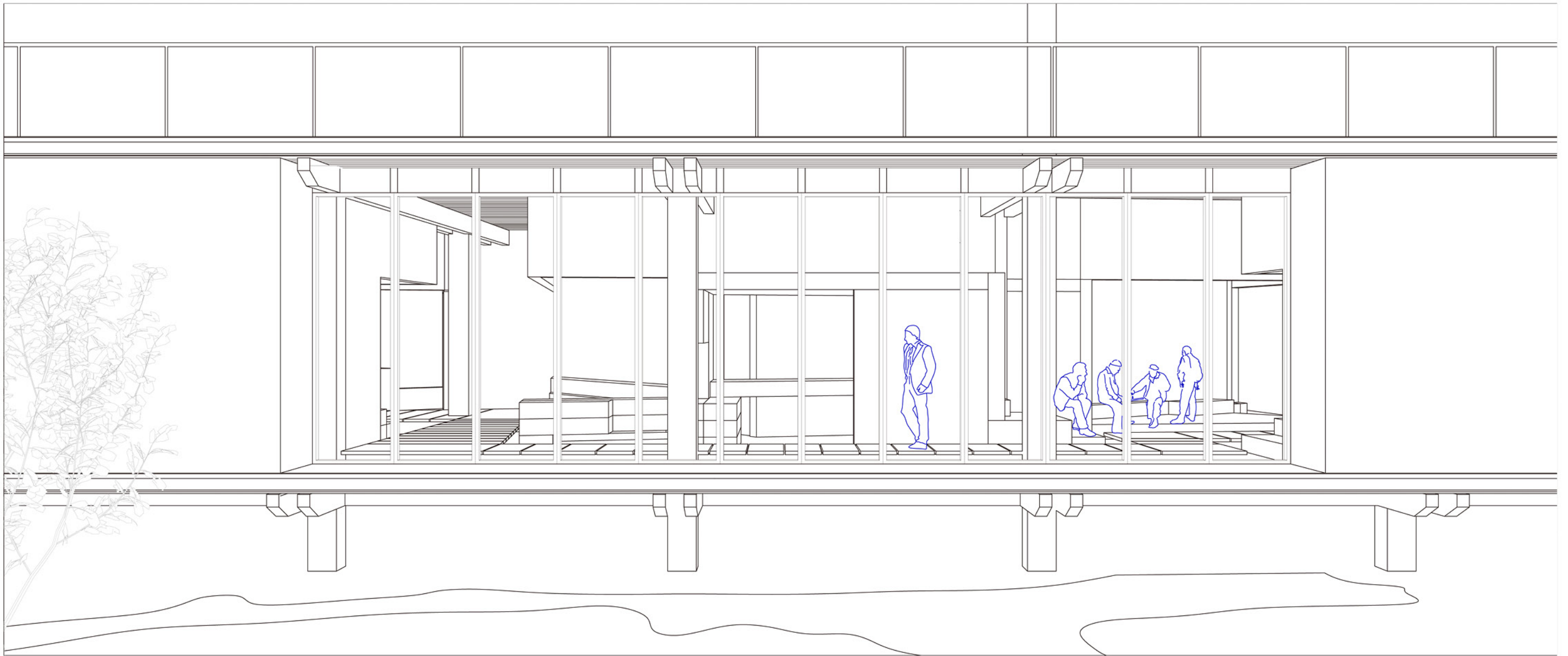




#### 4.THEMATIC SPACE

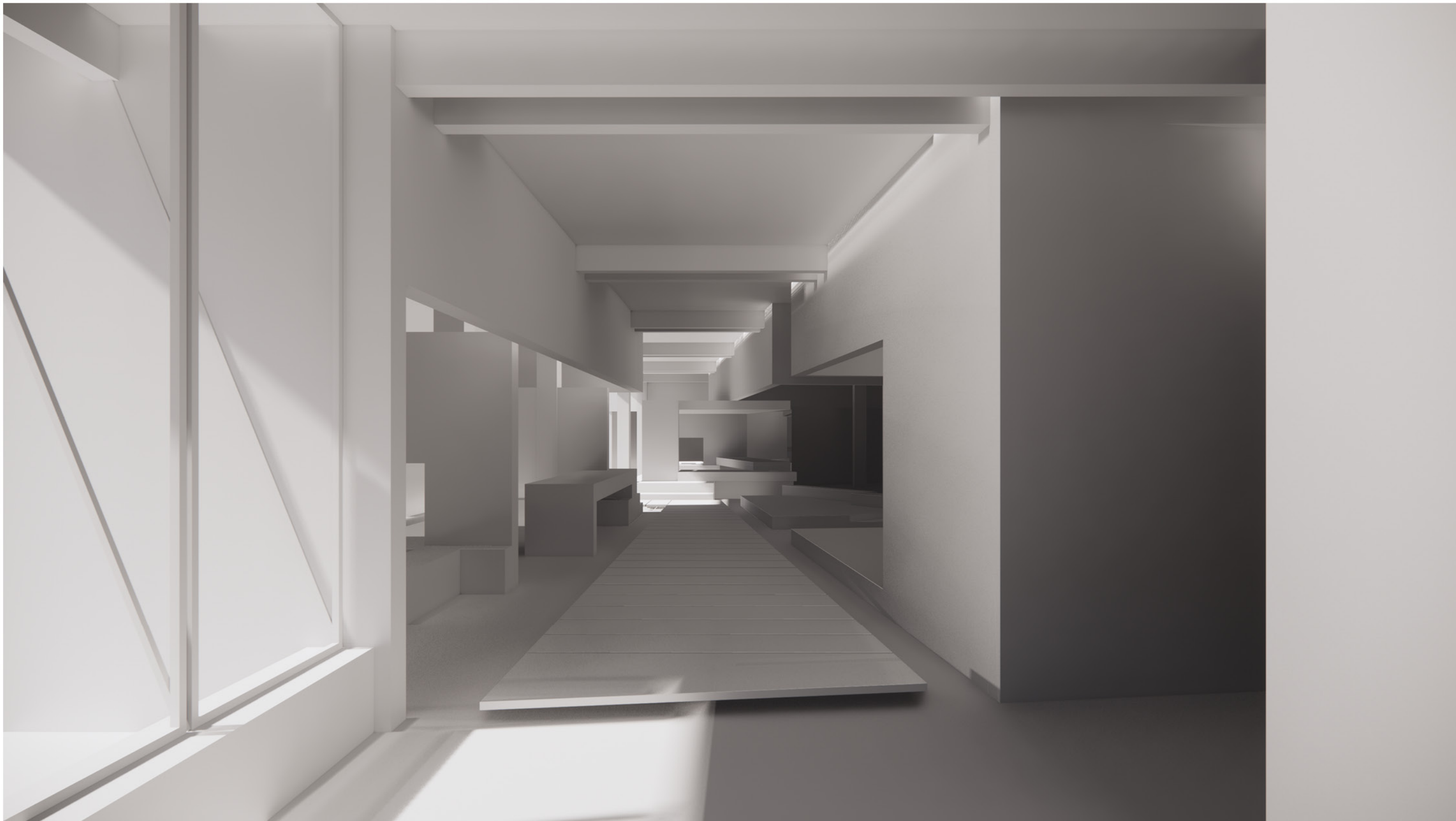






view from courtyard toward teahouse  
play cards, chess





reception



movement and static

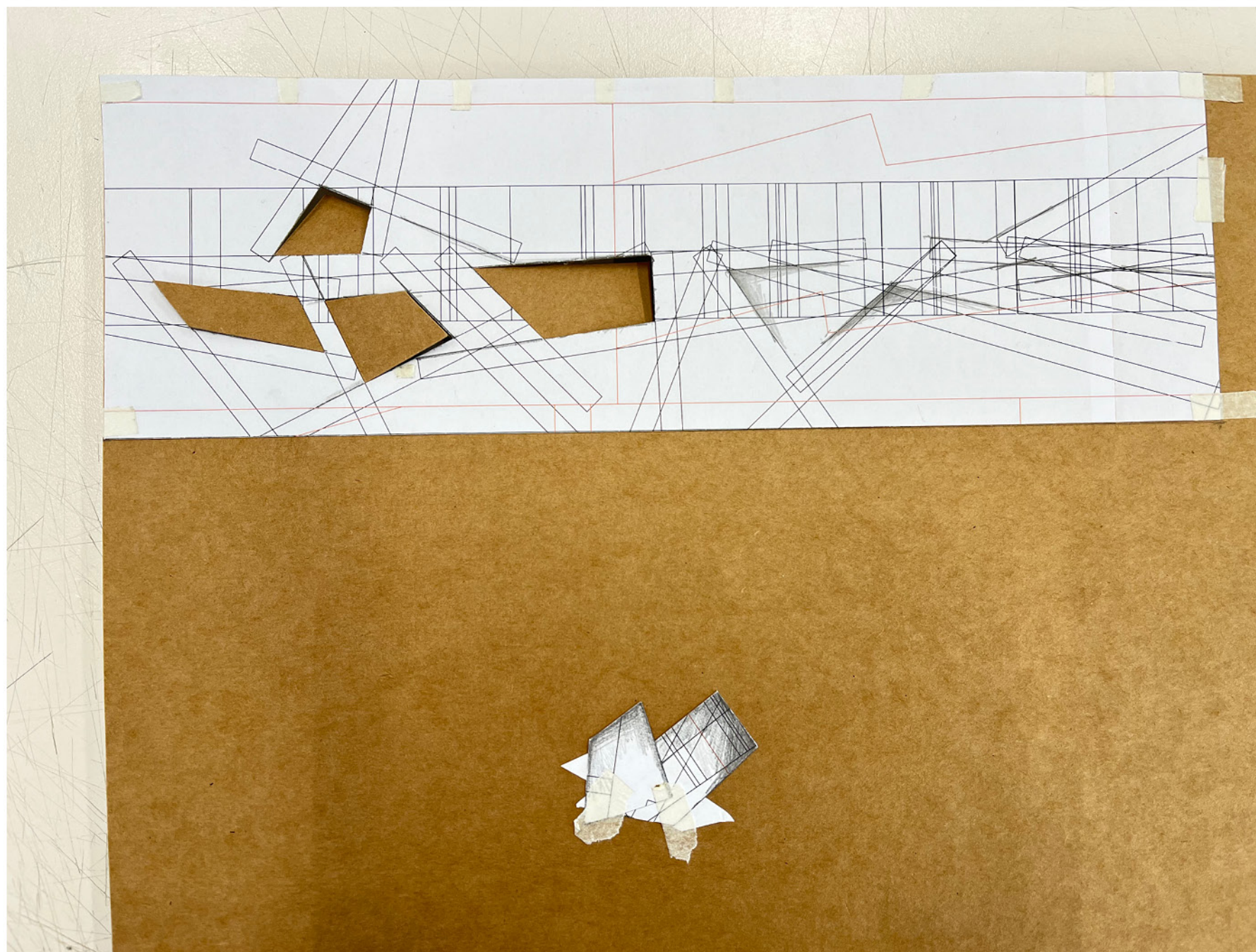




interior pavilion



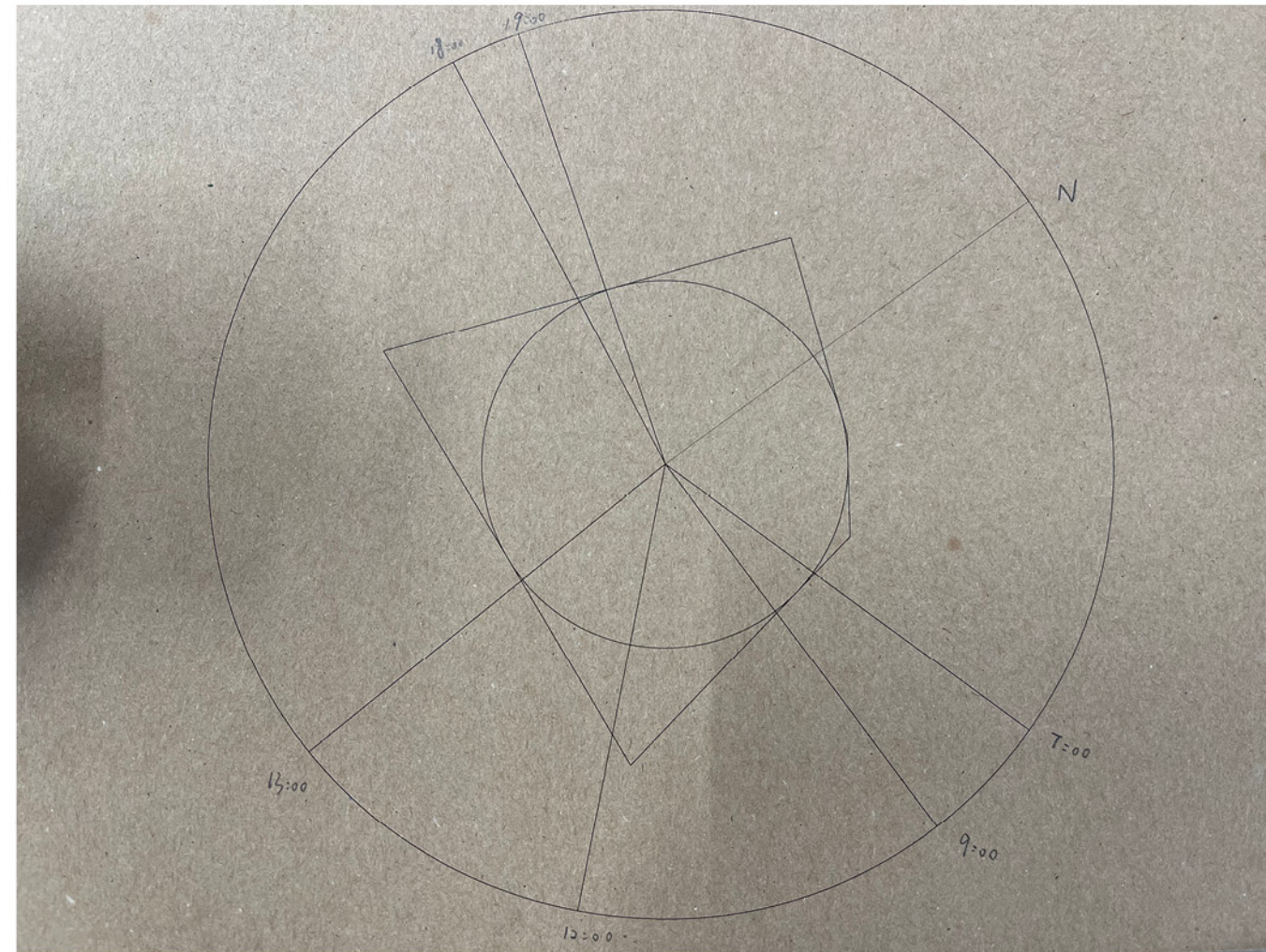




experiment/spatialize method 2:cut, lift, relocate,reorganise with new relation

daily routine celebration - programatic utilization - market, retails selling tools, clothes





solstice and workers' daily routine

7:00 - 9:00 : time for workers going to work

12:00 - 13:00 : shift and short break in the noon

18:00 - 19:00 : off - work time





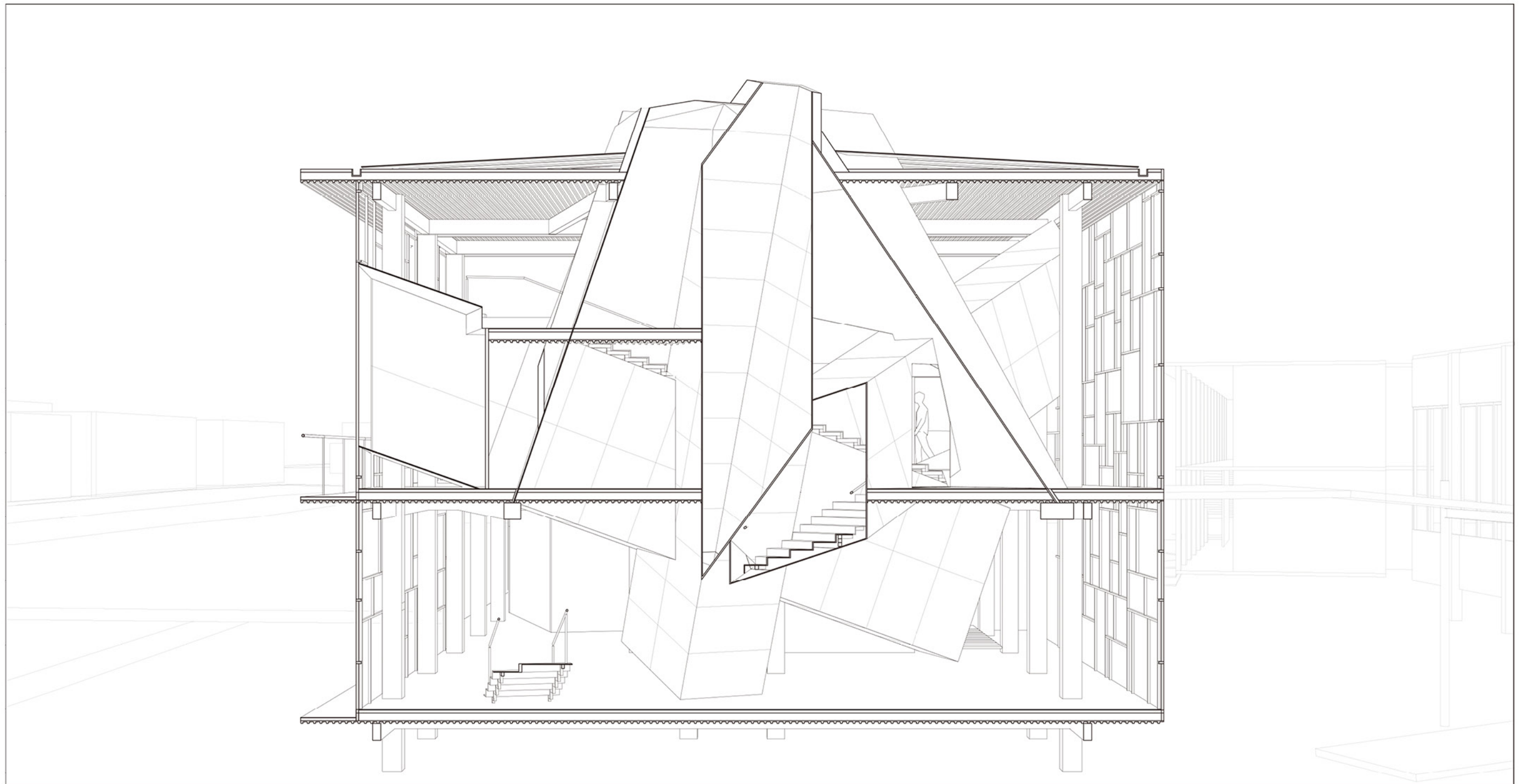
workers' daily routine  
would be physical  
shape in relation to  
sun light  
architectural forms  
are taken shape from  
workers' daily routine  
and sun movement  
path

in order to introduce  
light a cone is shaped  
to render the space  
darker

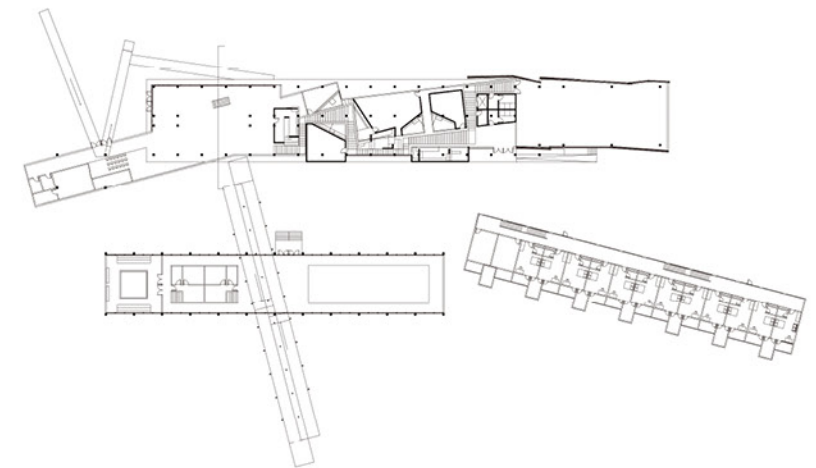




light tunnel and stairs  
movement of sun  
is combined with  
program/ movement  
of people



Grocery/Retail  
perspective section 1:50





+12.000

Roof  
1 galvanized steel sheet  
2 gullies  
3 40mm insulation  
4 3mm vapourproof  
5 100mm rigid insulation  
6 steel decking  
7 330X180mm glulam timber beam

Wall  
1 glass  
2 window frame  
3 15mm cotton steel plate

+6.000

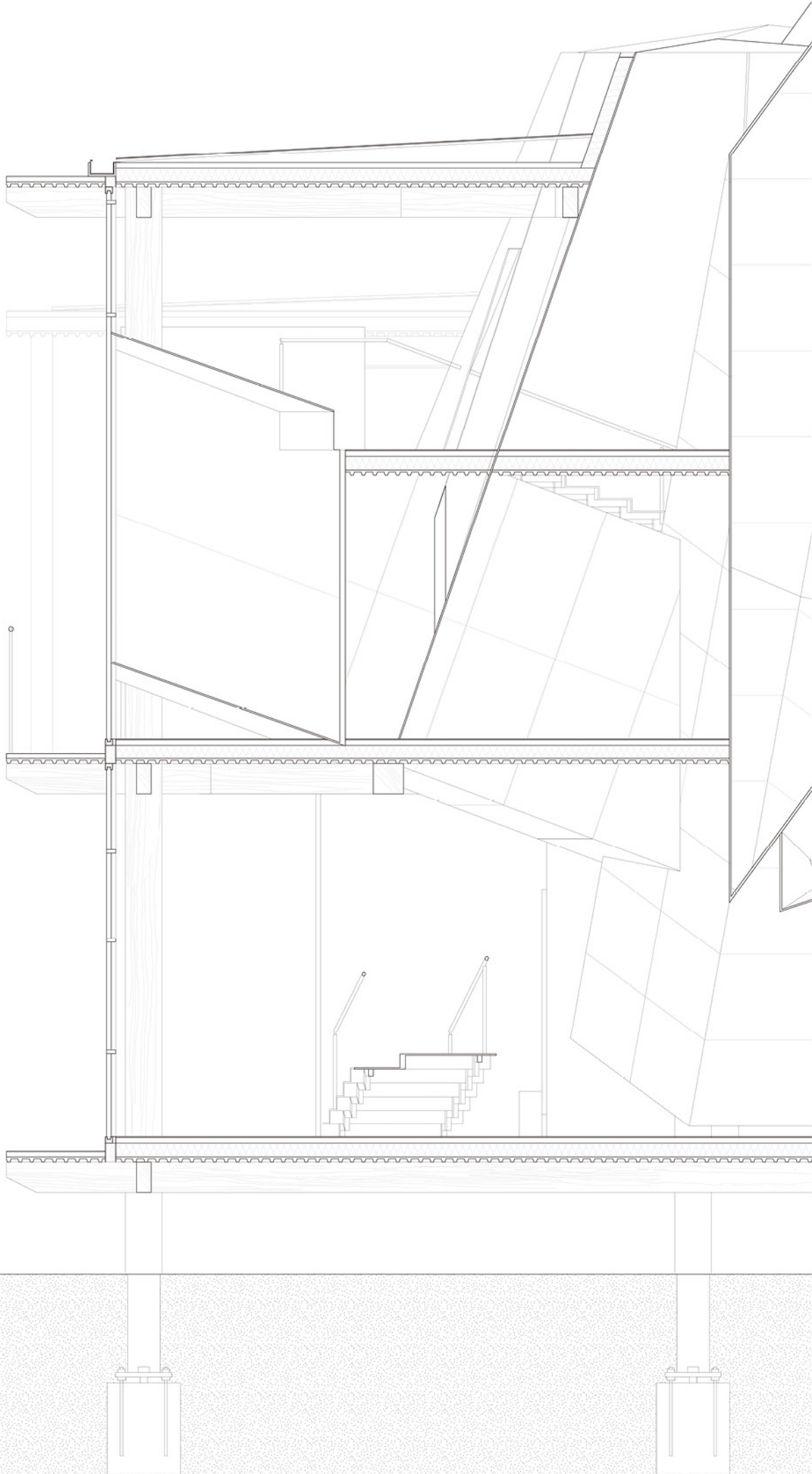
First floor  
1 150mm cement finish  
2 concrete floor with heating  
3 150mm rigid insulation  
4 steel decking  
5 330X180mm glulam timber beam

+1.500

Foundation - Ground floor  
1 cement finish  
2 concrete floor with floor heating  
3 150mm insulation  
4 3mm vapourproof  
5 steel decking  
6 330X180mm glulam timber beam

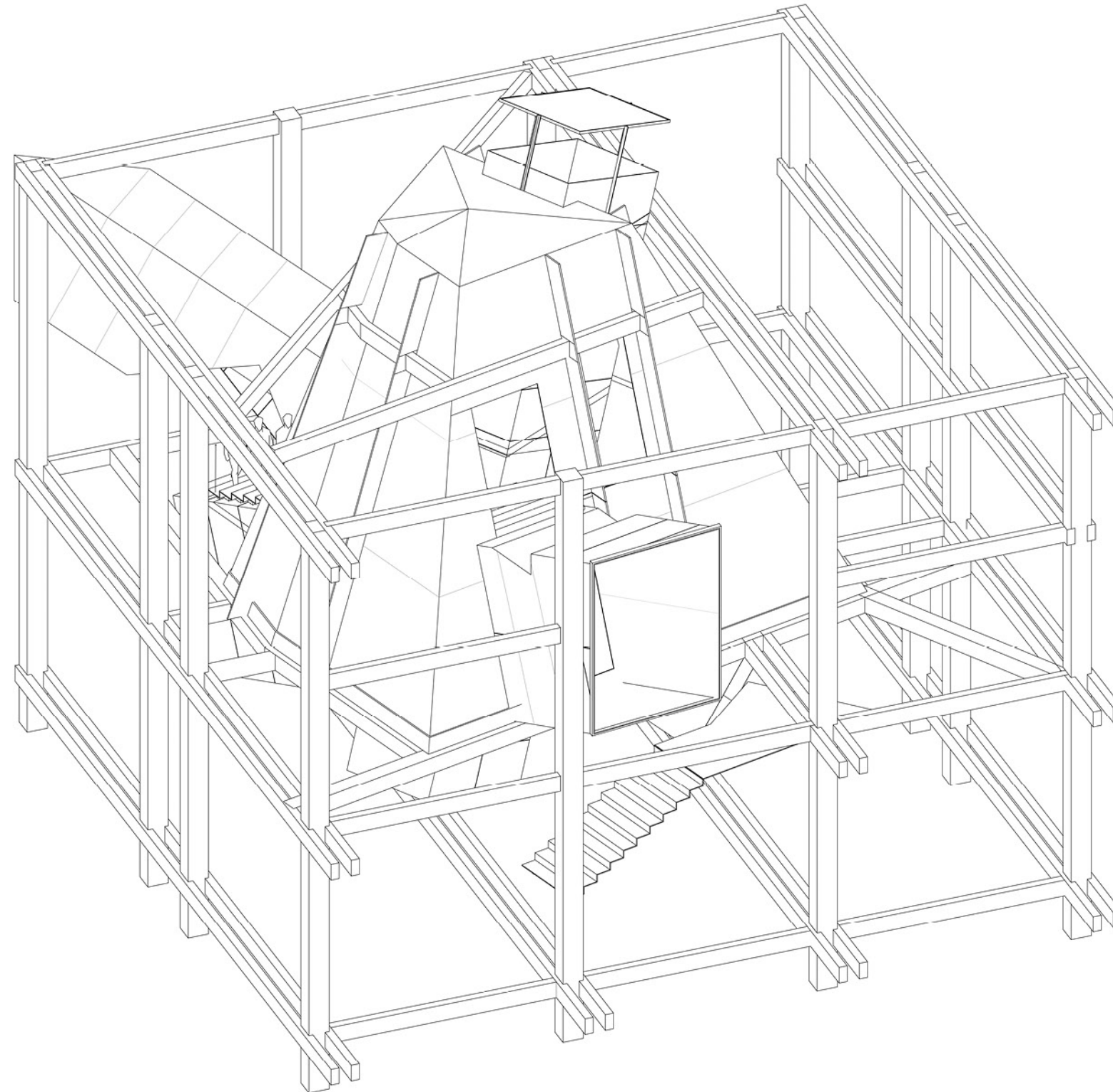
+0.000

Grocery/Retail  
section 1:20



#### 4.THEMATIC SPACE

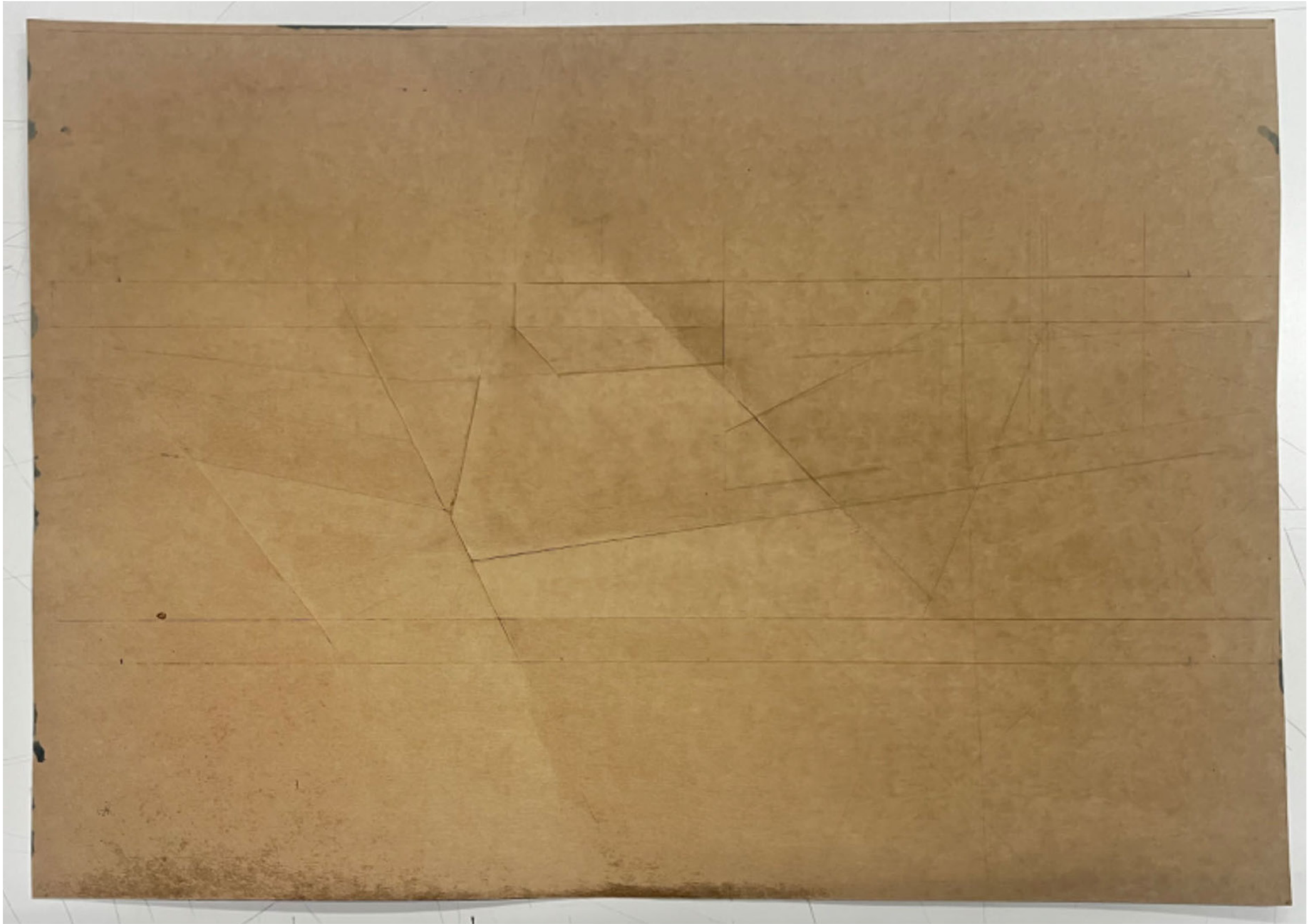
structural diagram





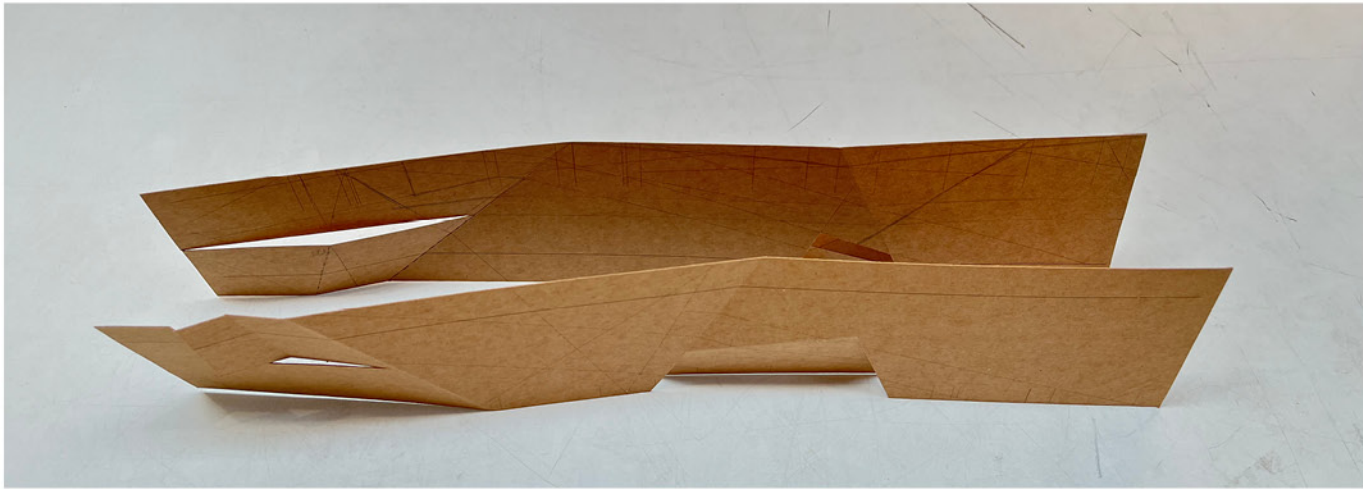


7:00 - 9:00 : morning shift



experiment/spatialize method 3:fold  
594 X 420 mm, cardboard





programatic utilization - auditorium

audience and self-expression  
form of performance belonging to workers





in the early development of a city, people from different parts of the country to come here to have a job and build this city.

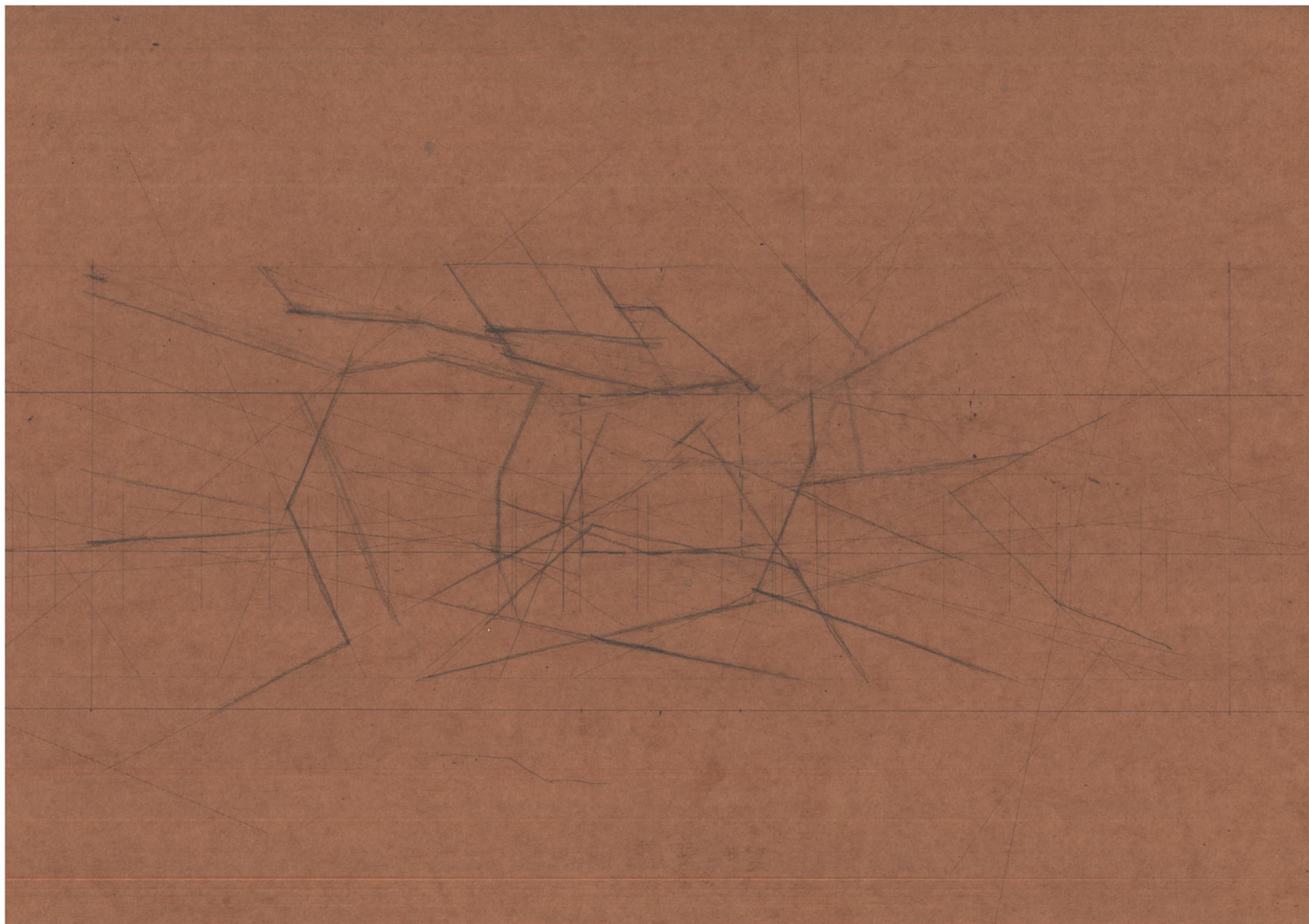
after work they have this kind of recreational activity - to watch a show, as their way to have collective life

it's similar to the situation of the heavy industrial district, workers from different provinces

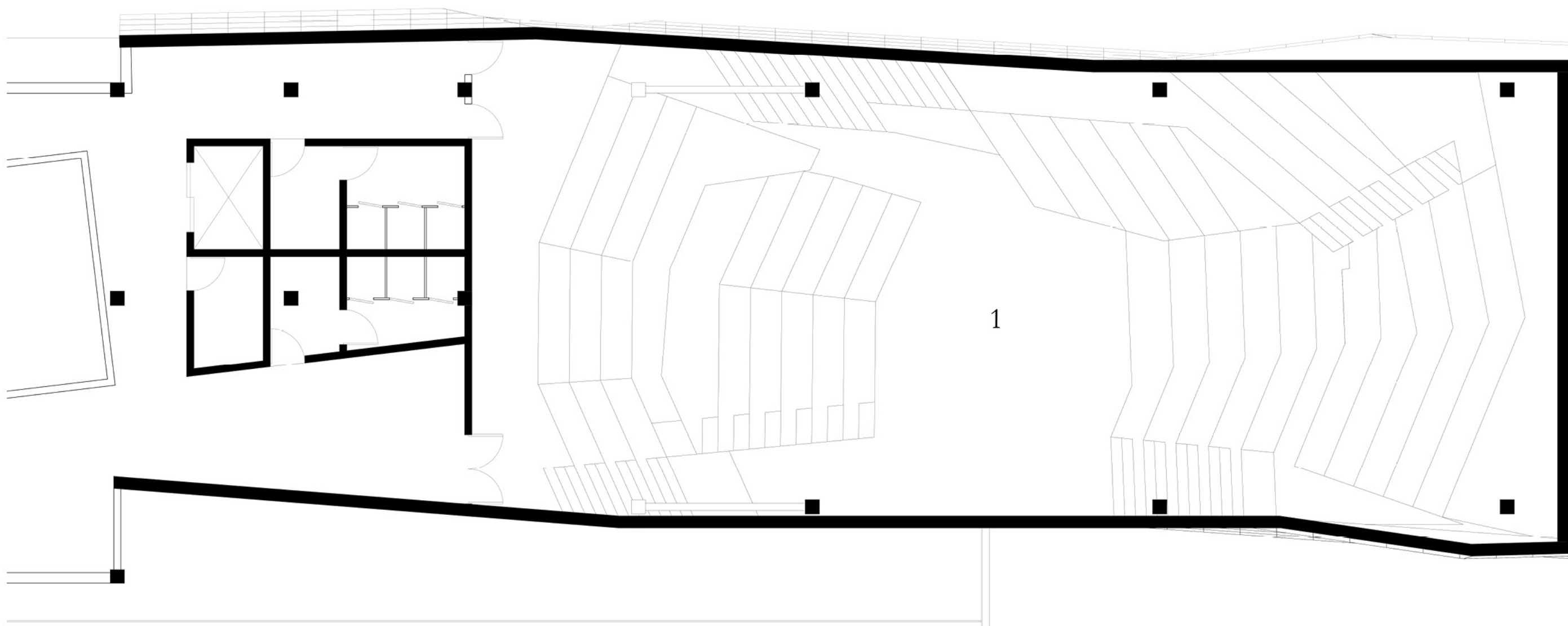
workers could also be the performers and have the opportunity for self-expression

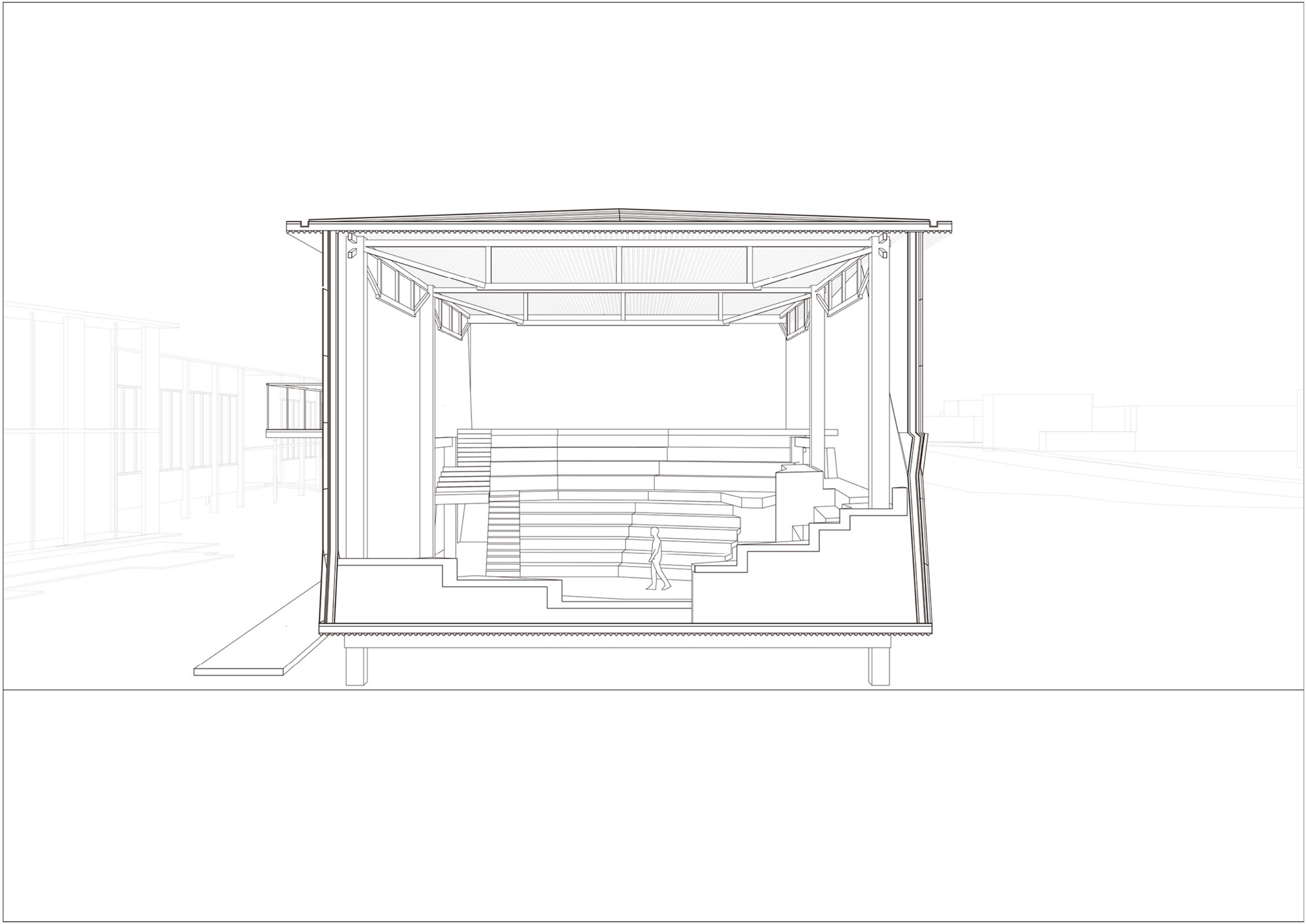
procedury of movement has the feature of occasional and applying it into the space could make it informal and flexible for changing its use, events and scenes/occasions





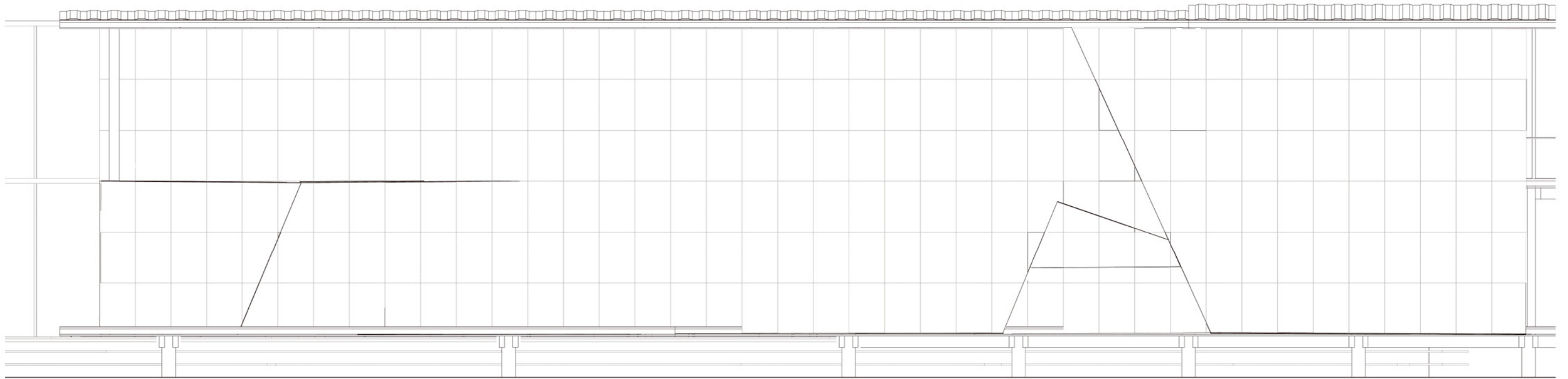














## 5.MATERIALISATION



metal sheet  
cone



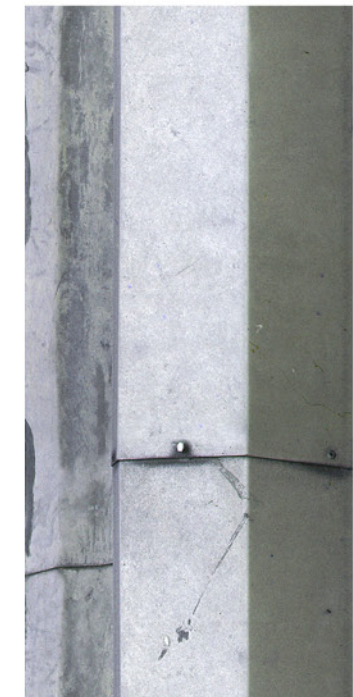
glued laminated wood  
structural members



marble - travertine  
tea space



galvanized metal sheet  
roof



galvanized metal sheet  
roof