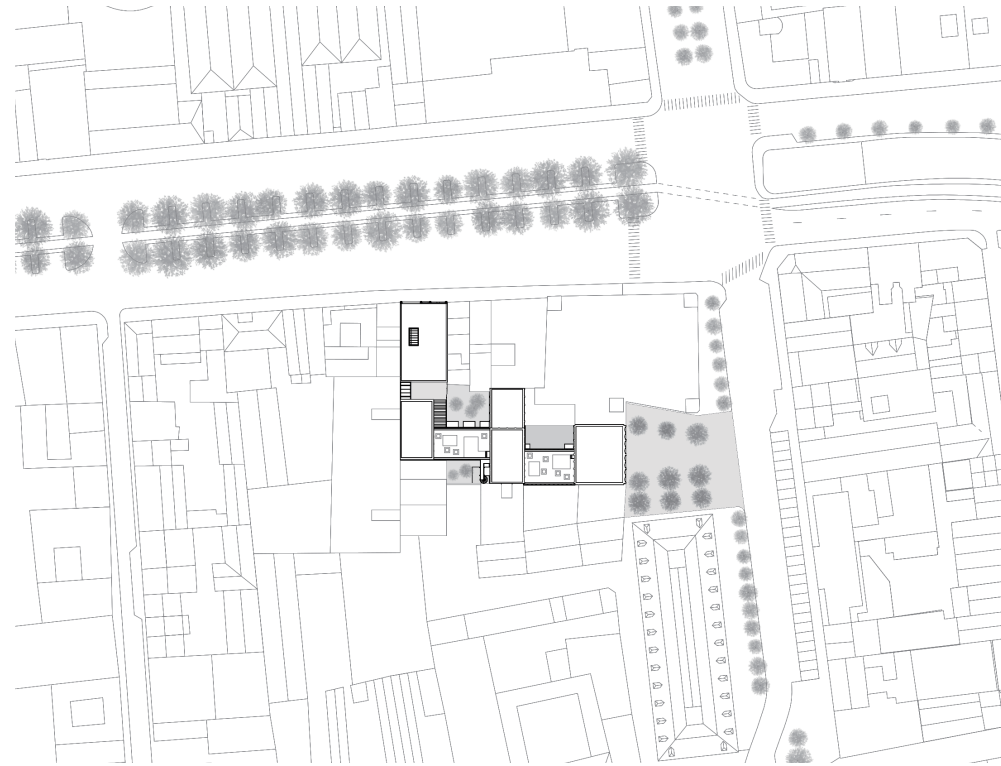


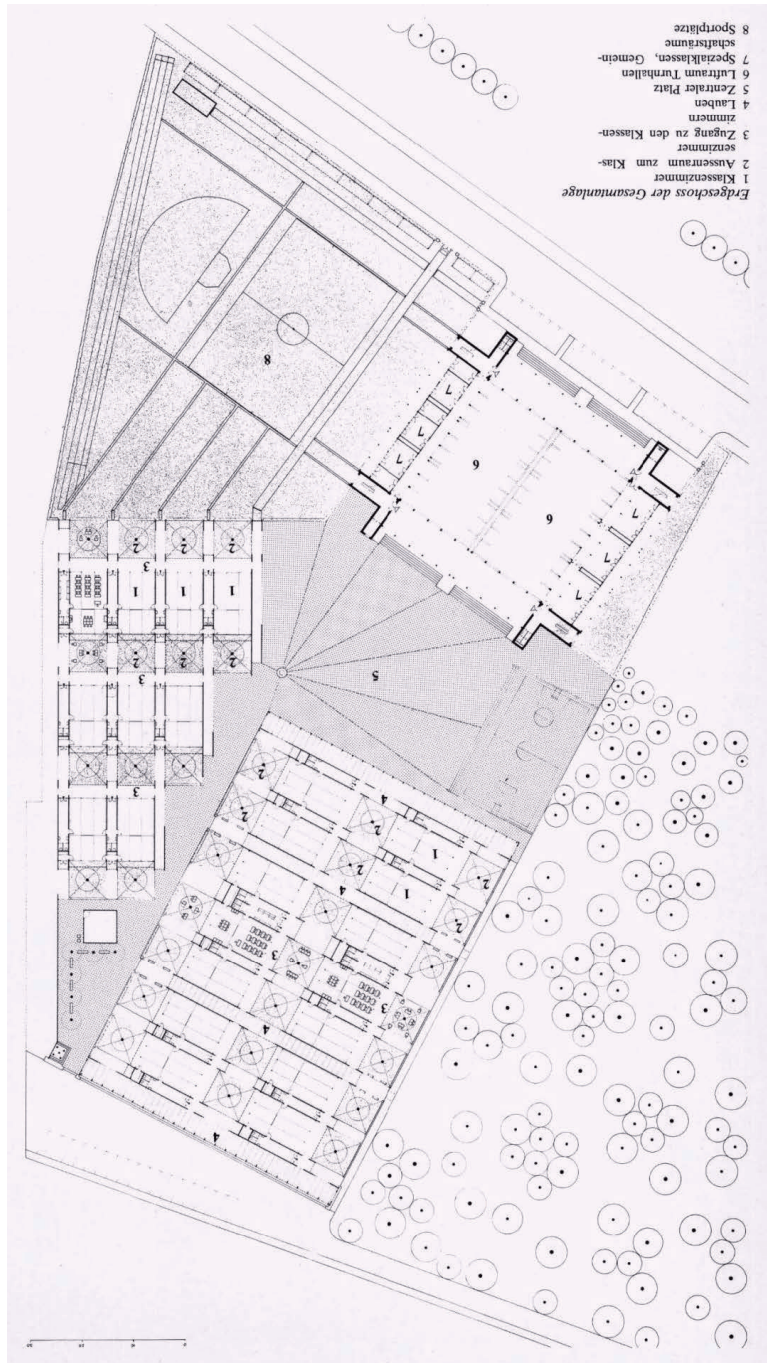
P5 Presentation

Jing Yuanjie
4718925

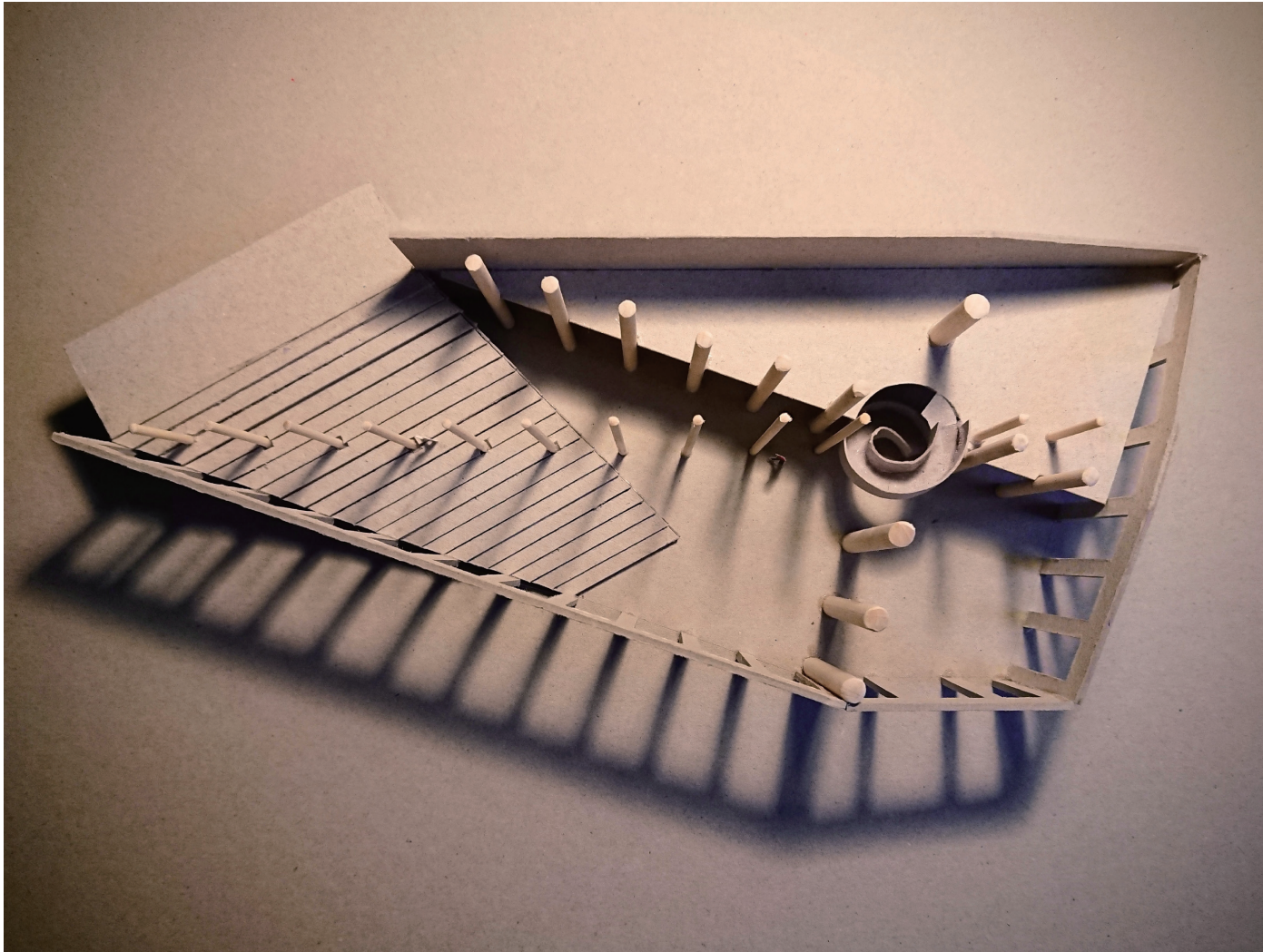


' Engaging while Escaping '

Before Start



Primary School
Lucarno, Switzerland
Livio Vacchini

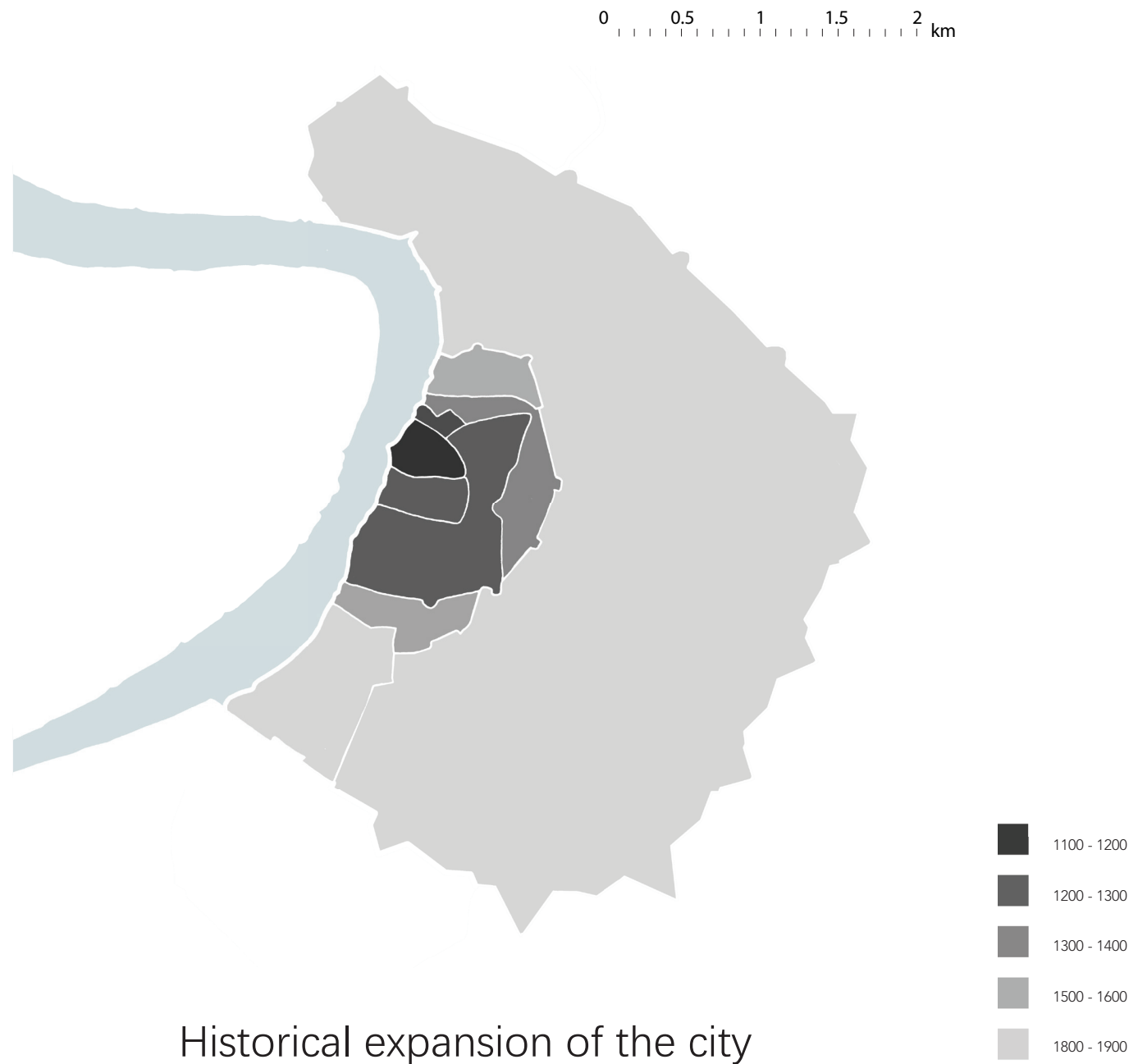


Draft Model of the Spatial Exercise



Spatial Exercise for P1

Research of Antwerp



Historical expansion of the city

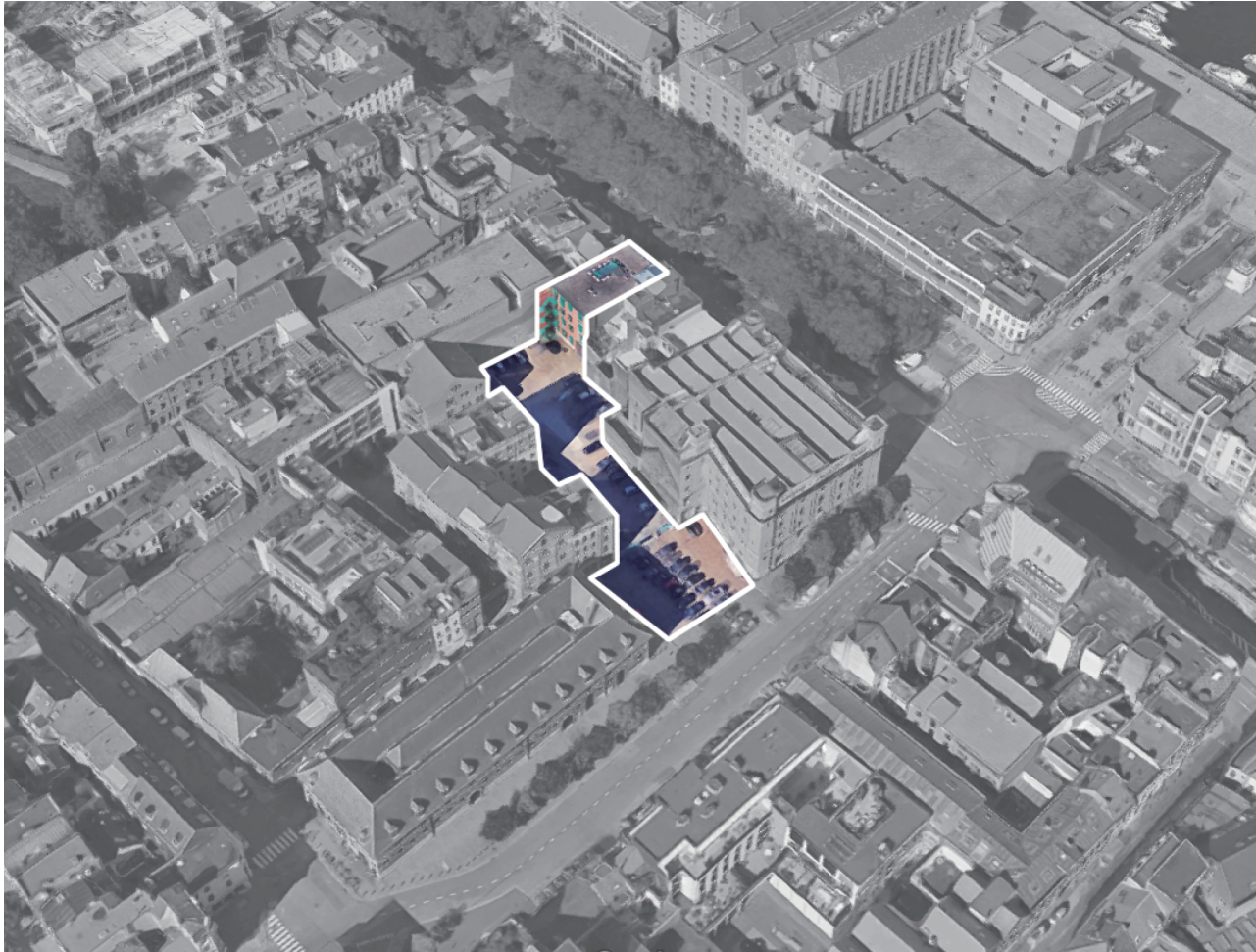


Nolli Map of one part of Antwerp





Site Location



Site 1600 m²



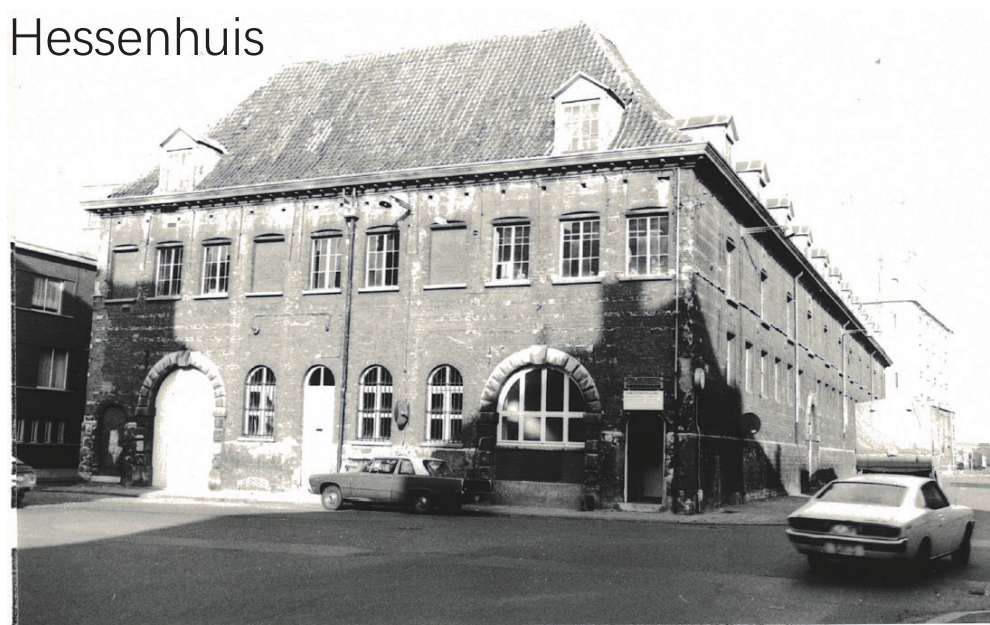




De Klok

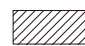







Hessenhuis

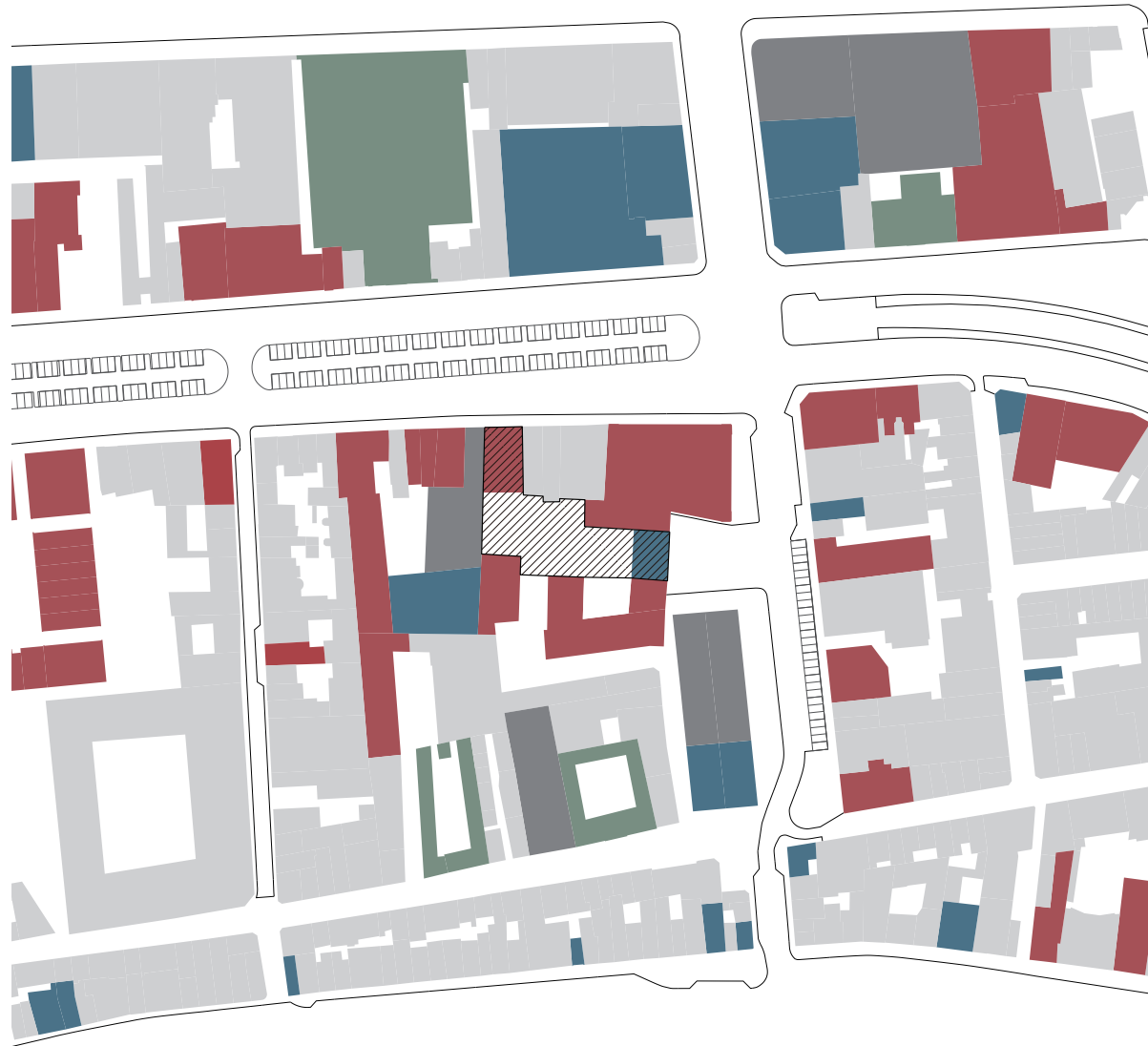


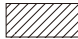









-  Site (1600 m²)
-  Public Room
-  Office

-  Commercial
-  Residence
-  Garage & Warehouse



-  Site (1600 m²)
-  Public Room
-  Office

-  Commercial
-  Residence
-  Garage & Warehouse

The belgian nerves, the most stretched in Europe

by Raffaele Padovano - 2011.09.13



Attachments

STEPSTONE - PRESS RELEASE -

54% of Belgians suffer from work-related stress. A higher percentage of 10 points to the European average. Data that let earns the subjects of King Albert II the title of "most stressed in Europe." The figure emerges from an investigation Stepstone.

Published in Stress and depression.

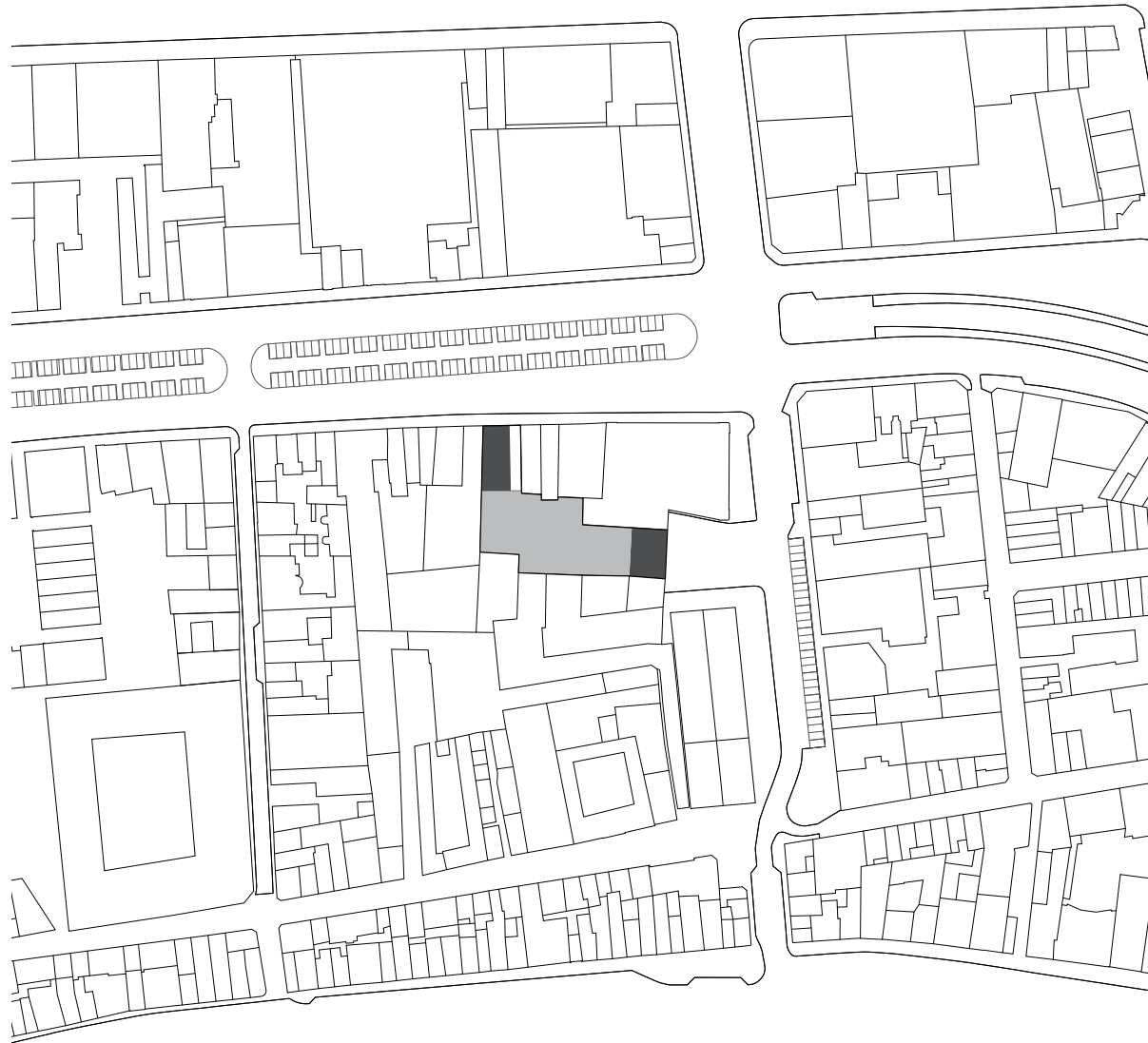
Related:

- **How to provide relief to sufferers of obsessive compulsive disorder**

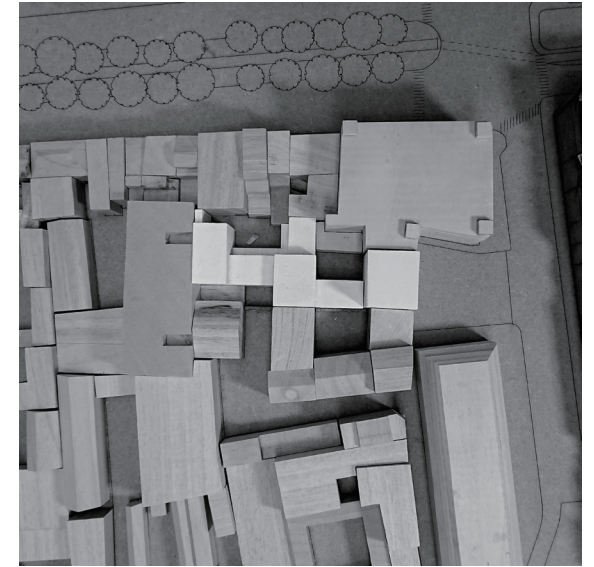
Just watching other people wash their hands provides relief to sufferers of obsessive compulsive disorder and might be enough to reduce the urge to perform the action in real life. The findings, led by Cambridge University scientists, could lead to video-based apps designed solely for sufferers. If proven in further [Read More](#).

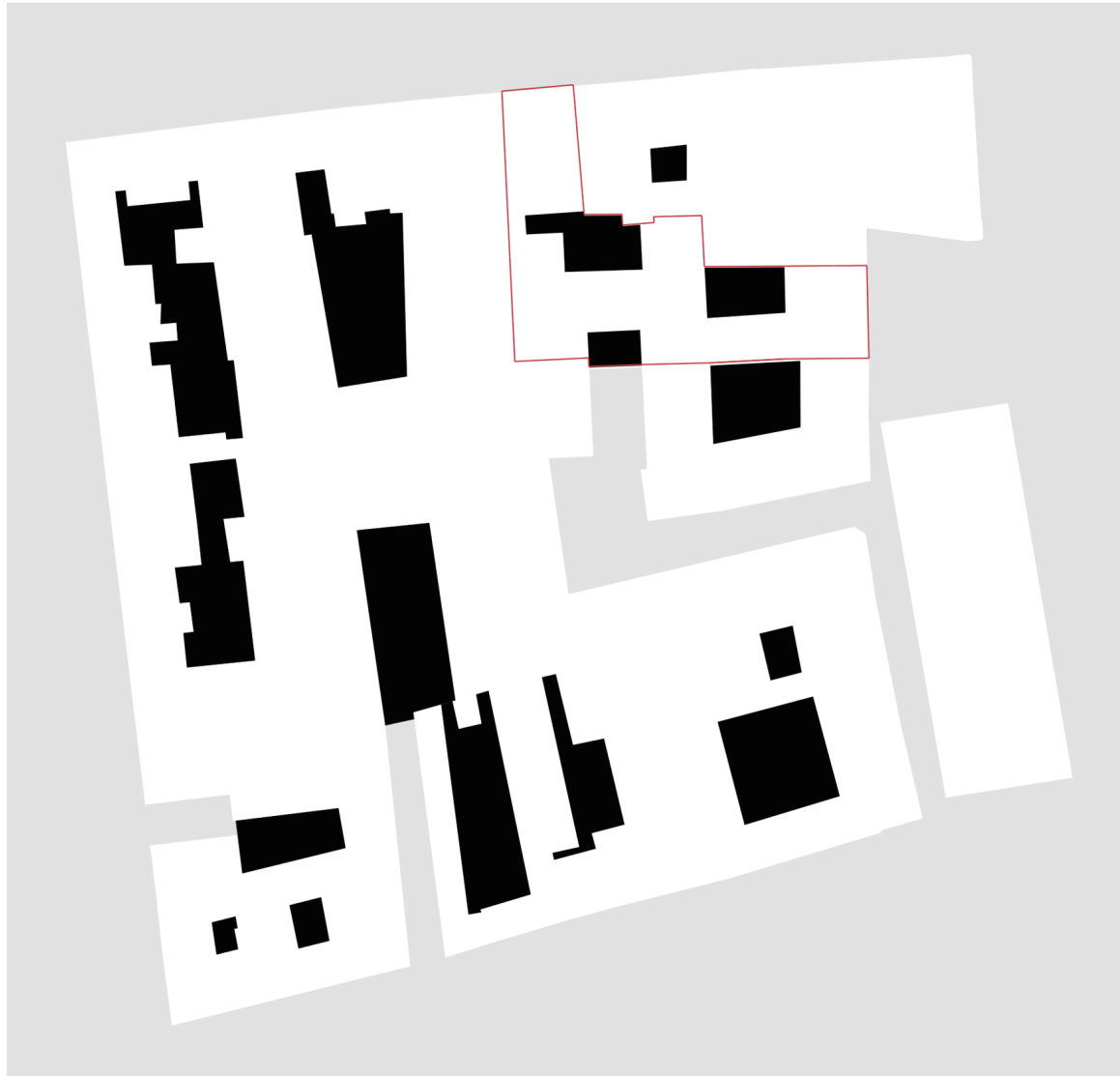
- **Pet-therapy in Milan airports to reduce stress**

Pet-therapy in Milan airports to help the small and big passengers relax before takeoff. This is the initiative launched by SEA together with the association Amici Terapeuti Onlus. In fact, for the entire summer, in the boarding areas of Linate and Malpensa,



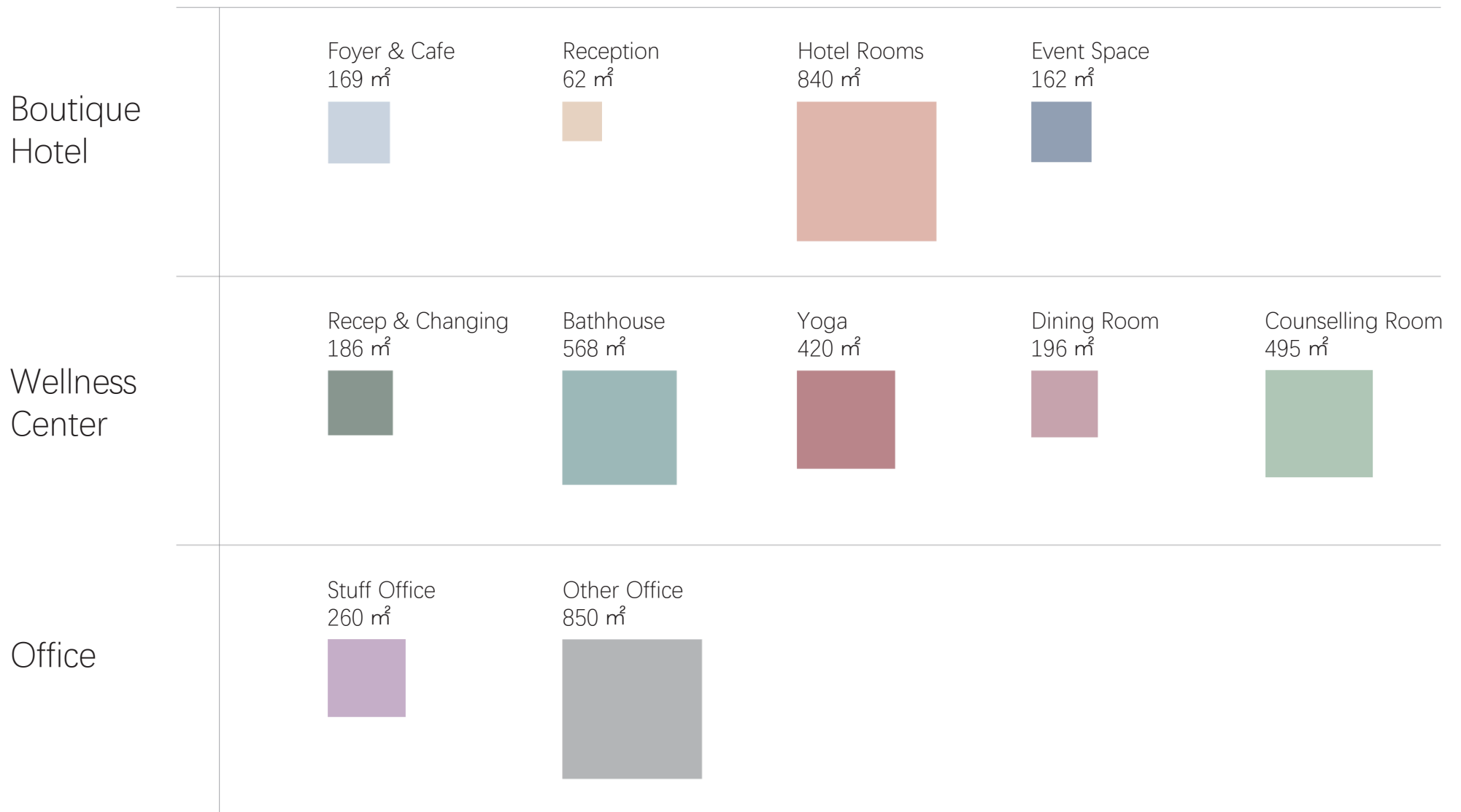
Architectural Massing



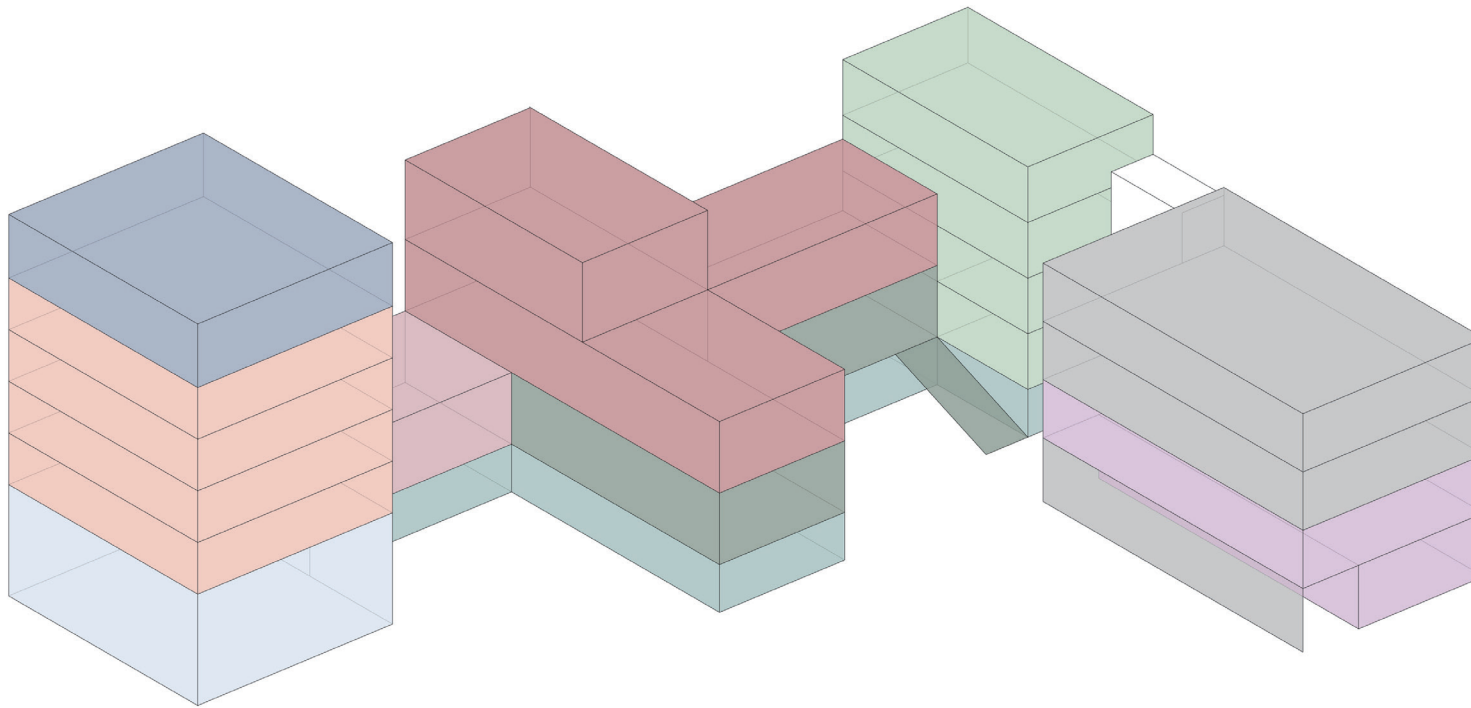


Courtyards within the Block

Architectural Design



Programme



Foyer & Cafe



Hotet Room



Event Space



Reception & Changing



Bathroom



Yoga



Dining Room



Counselling Room

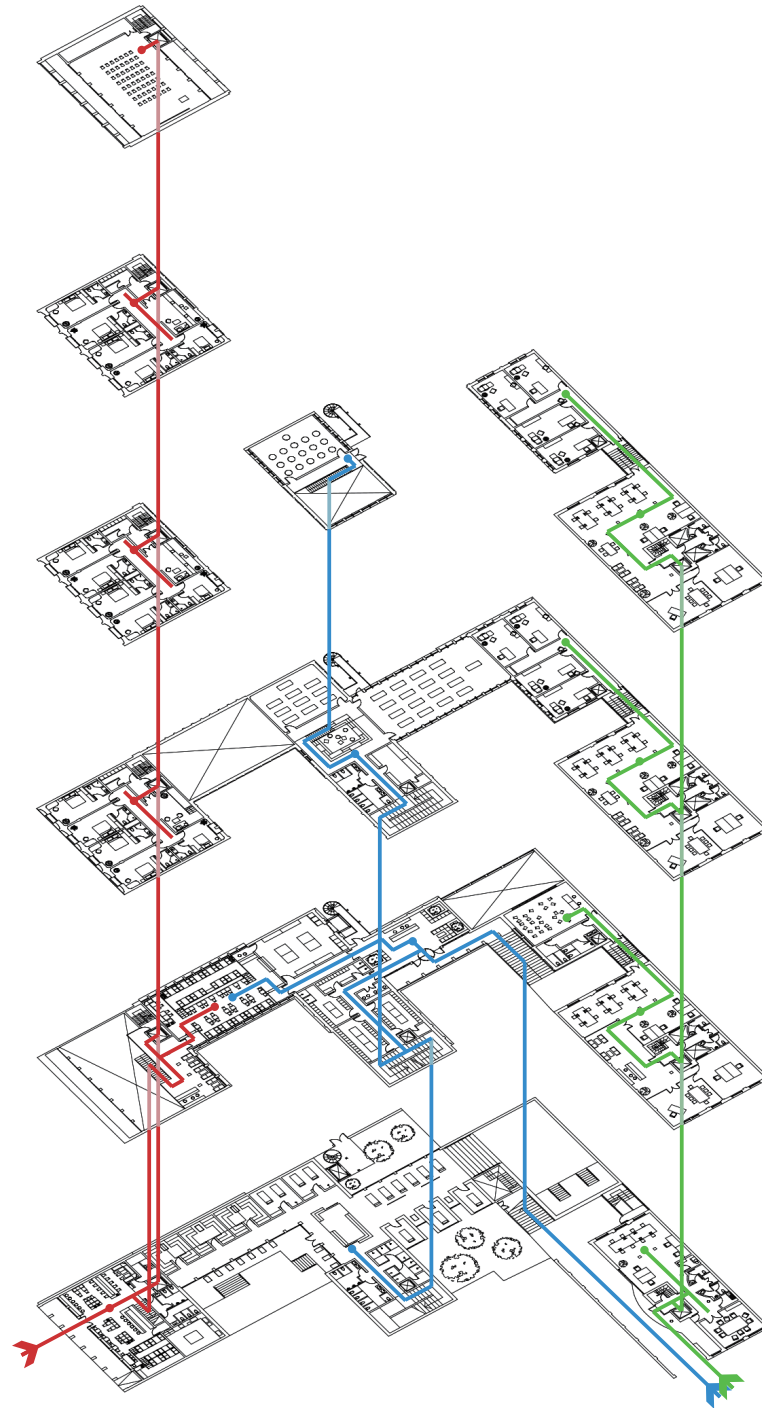


Stuff Office



Other Office

- Boutique Hotel
- Wellness Center
- Office and Institution



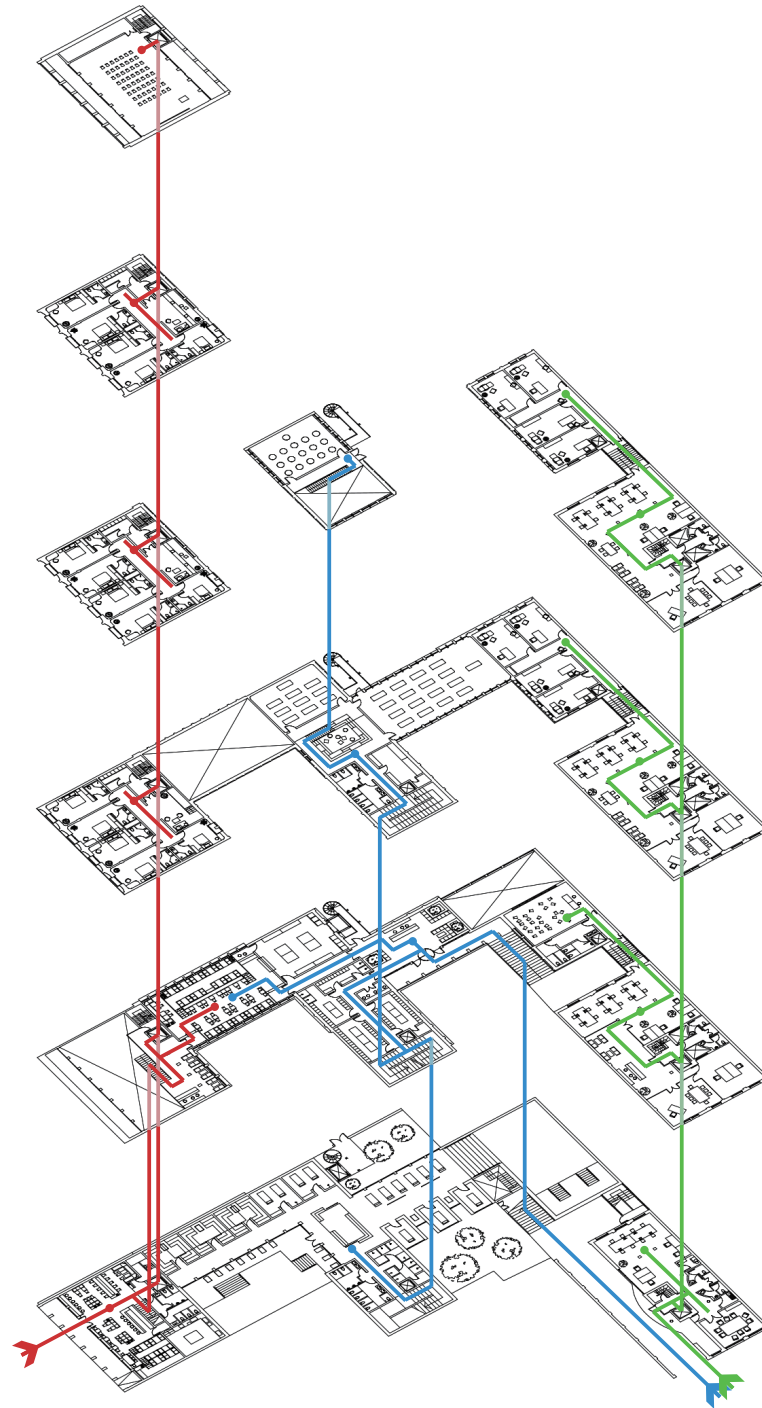


Ground Floor Plan



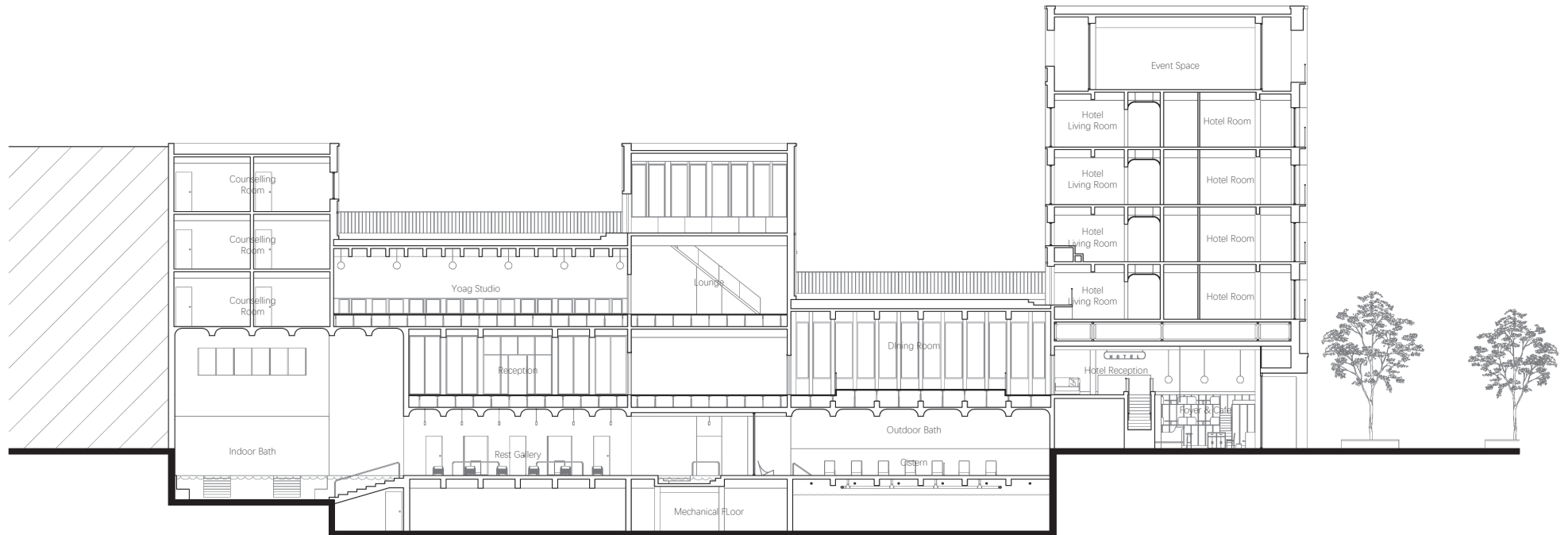
1st Floor Plan

- Boutique Hotel
- Wellness Center
- Office and Institution



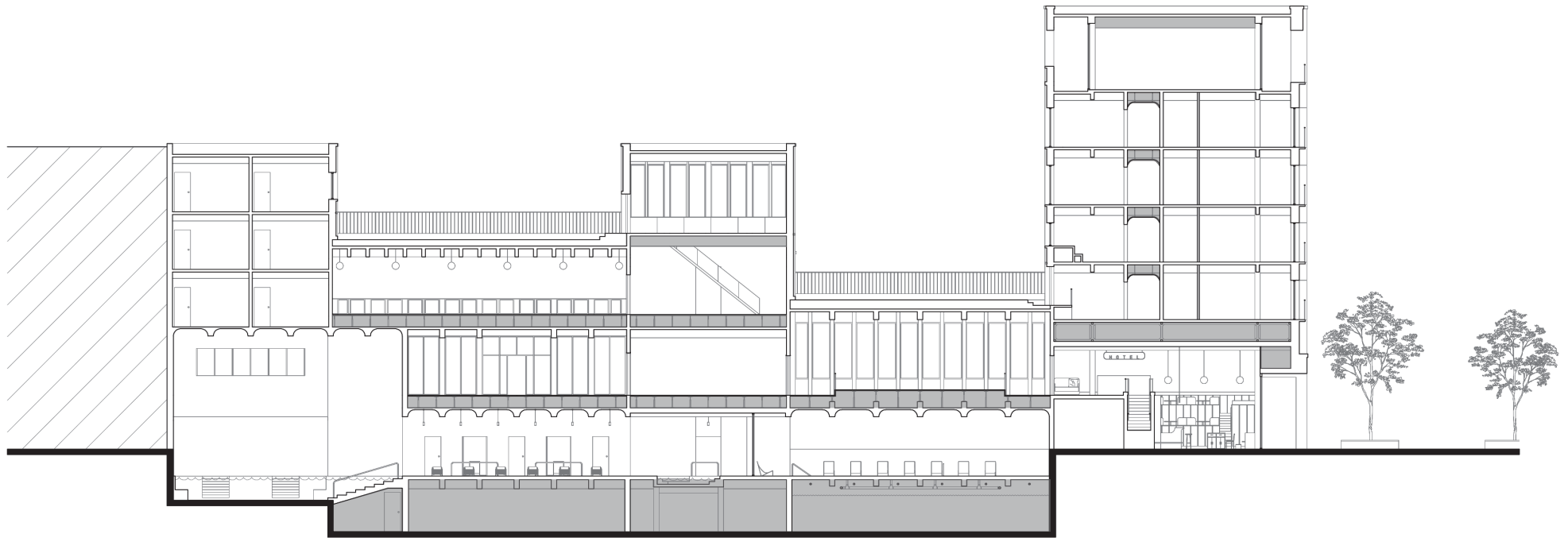


1st Floor Plan



0 200 400 800

Section A-A



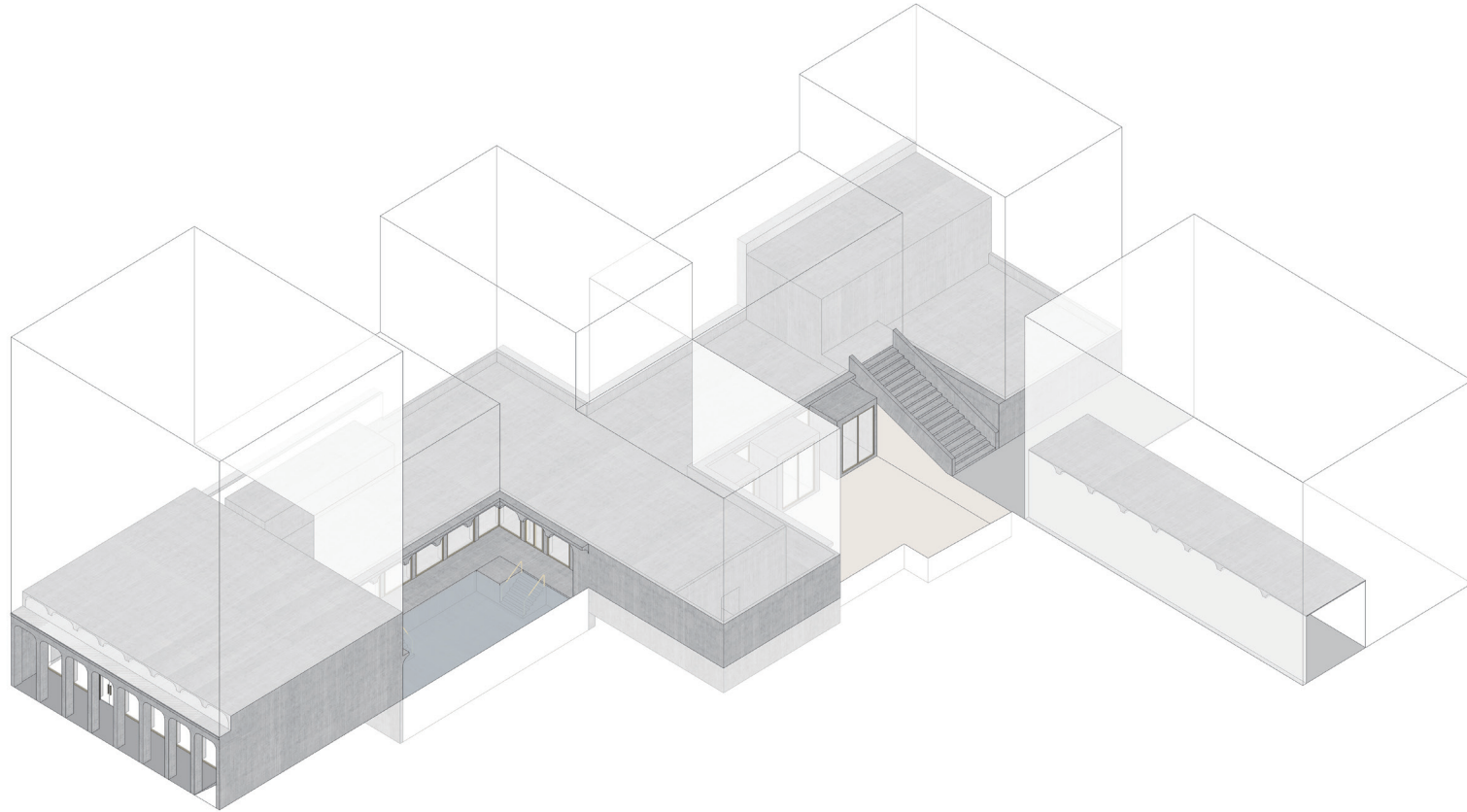
0 200 400 800

Section A-A

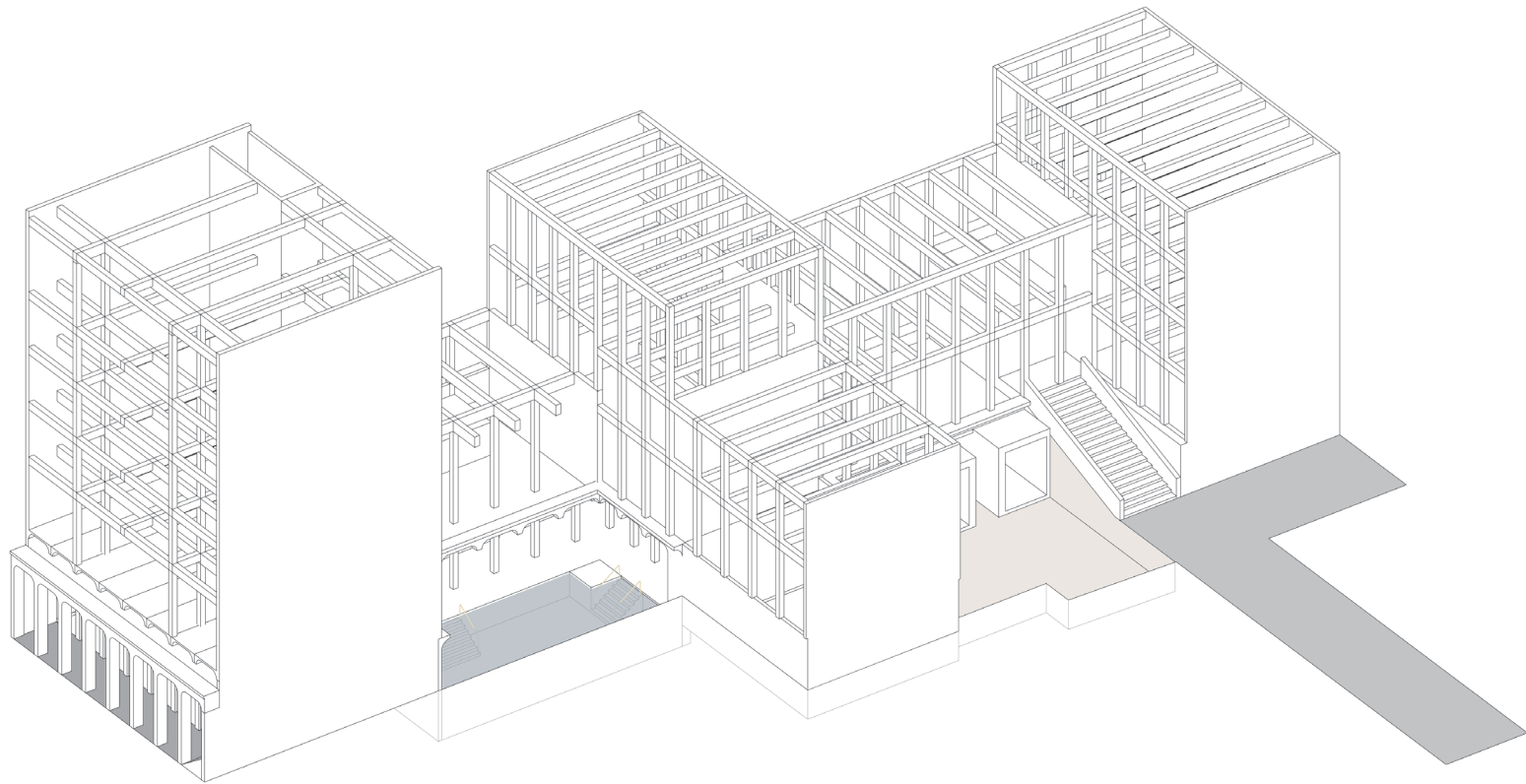
Structure



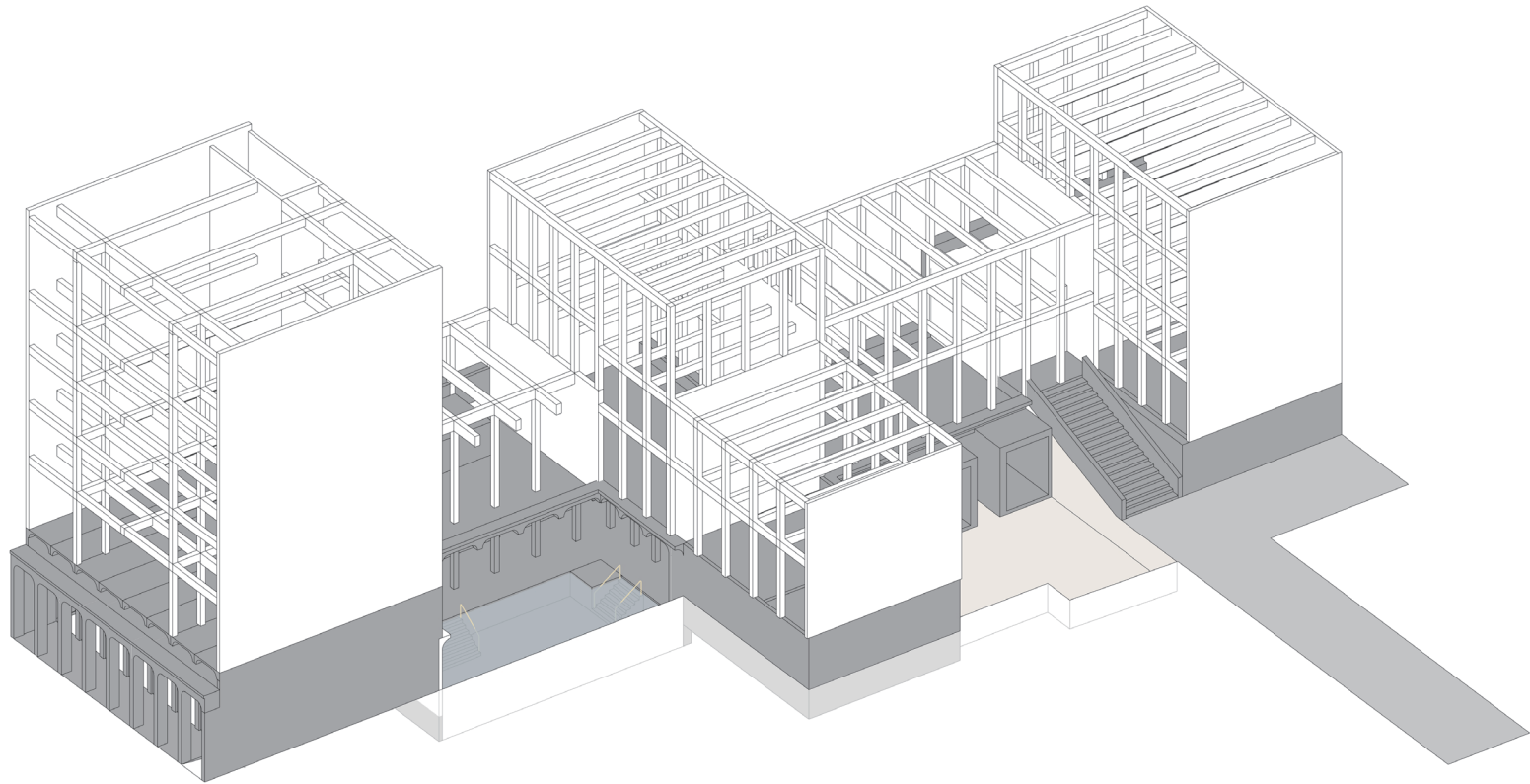
The passage of Zuidnatie

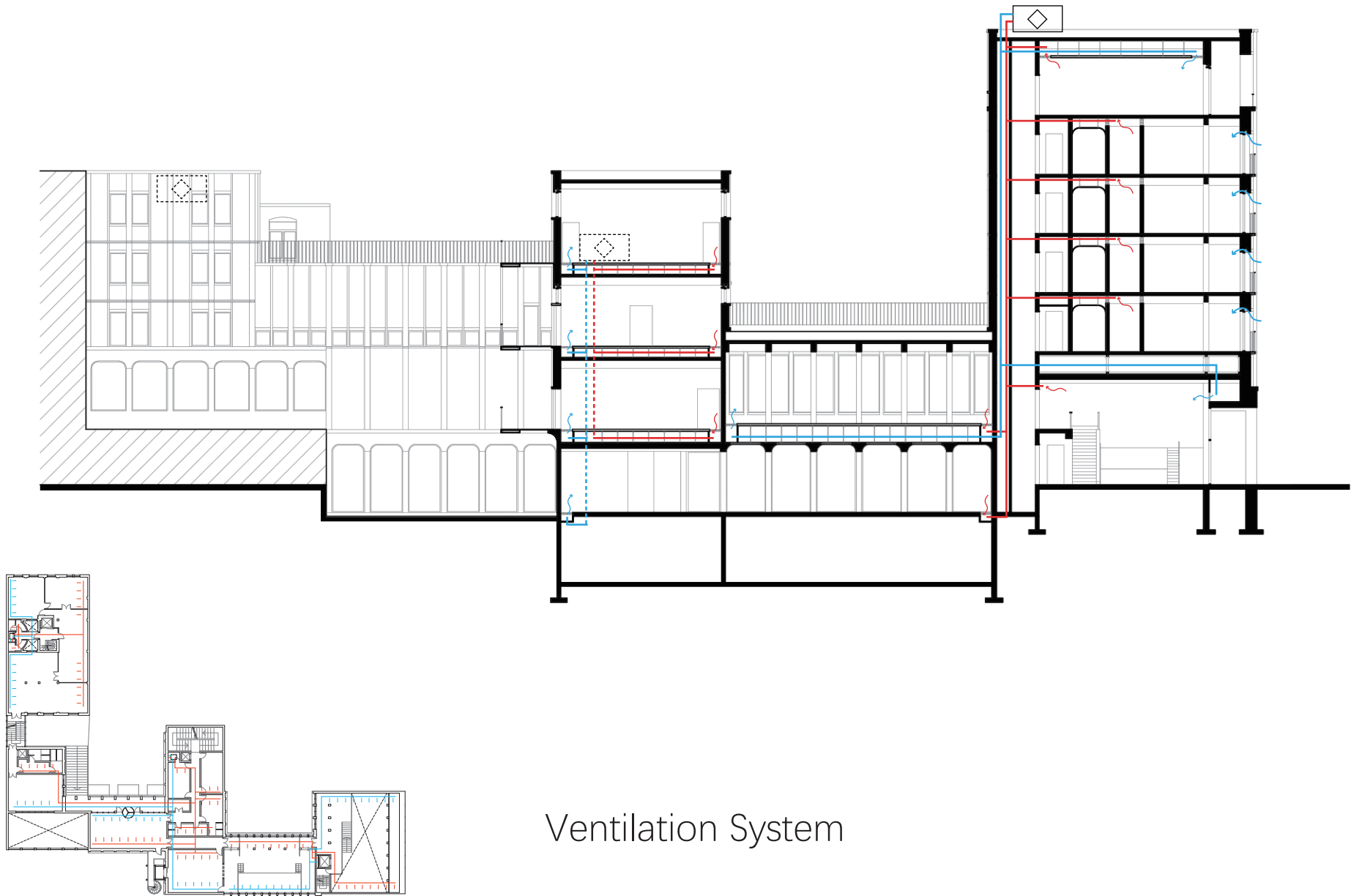


Structure Landscape

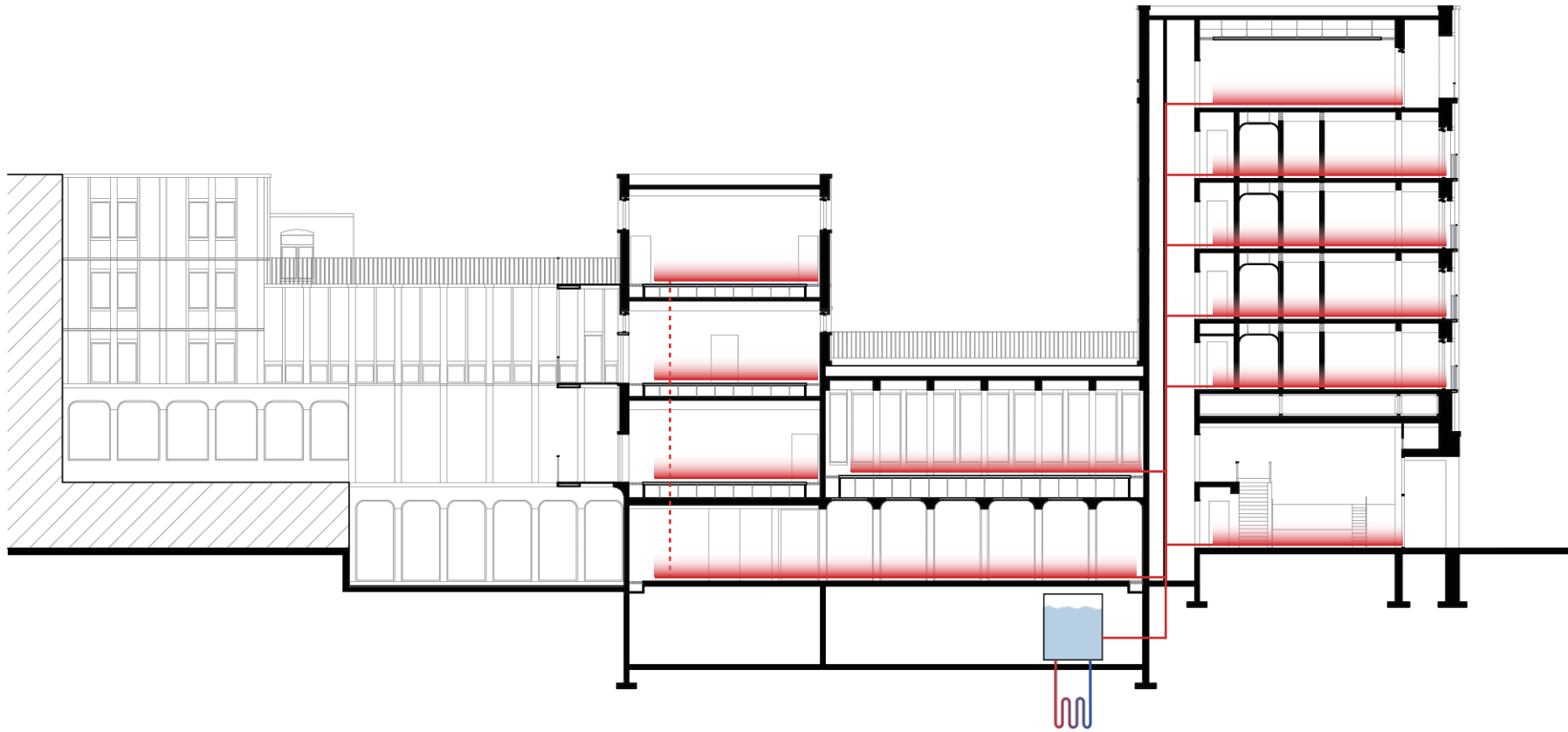


Structure System

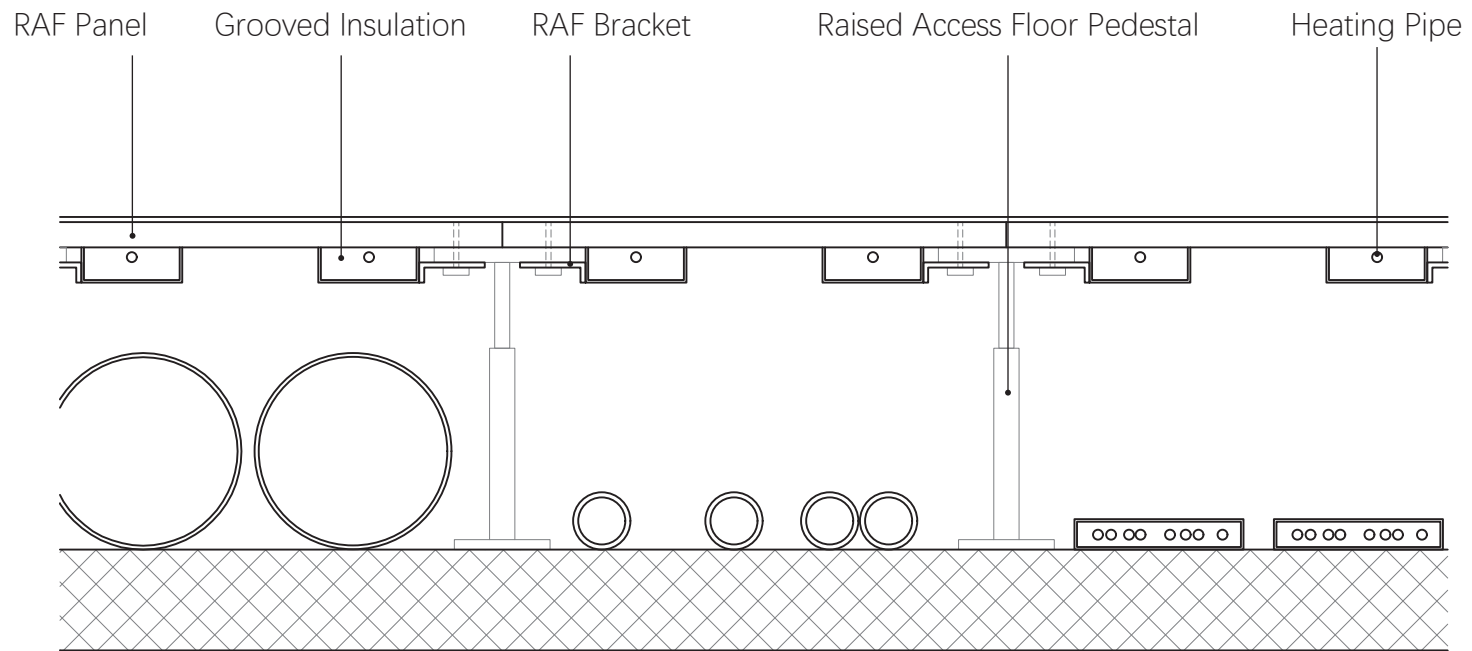




Ventilation System



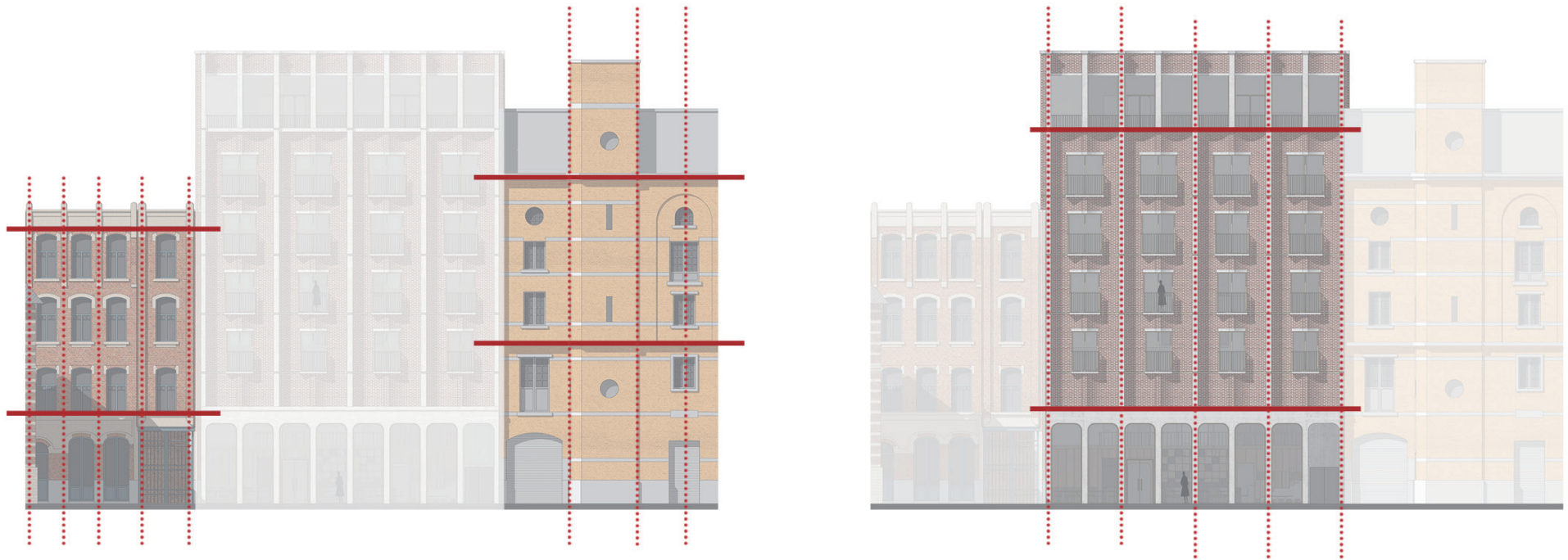
Underfloor Heating System



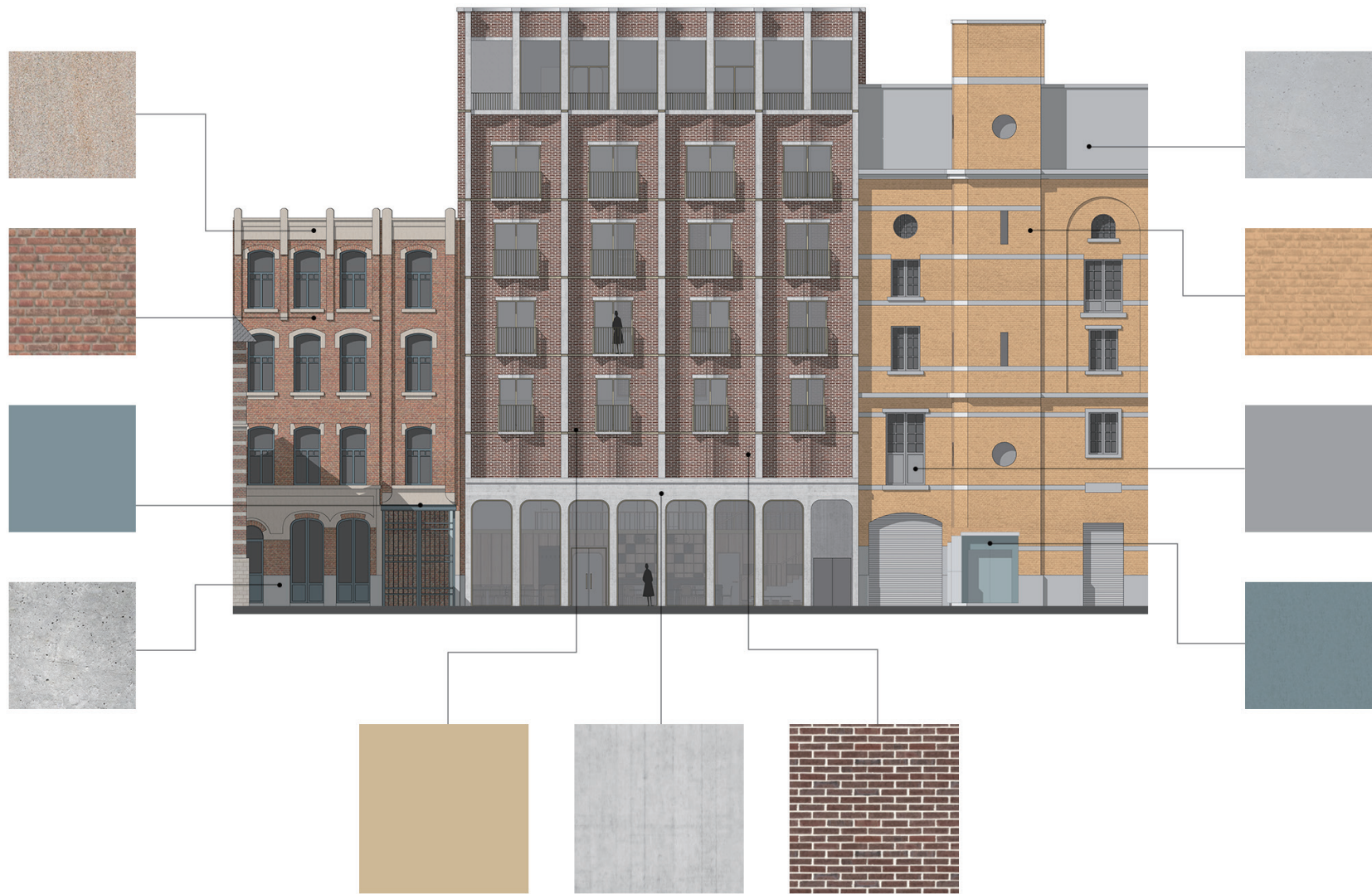
Raised Access Floor and Heating pipes

Facades

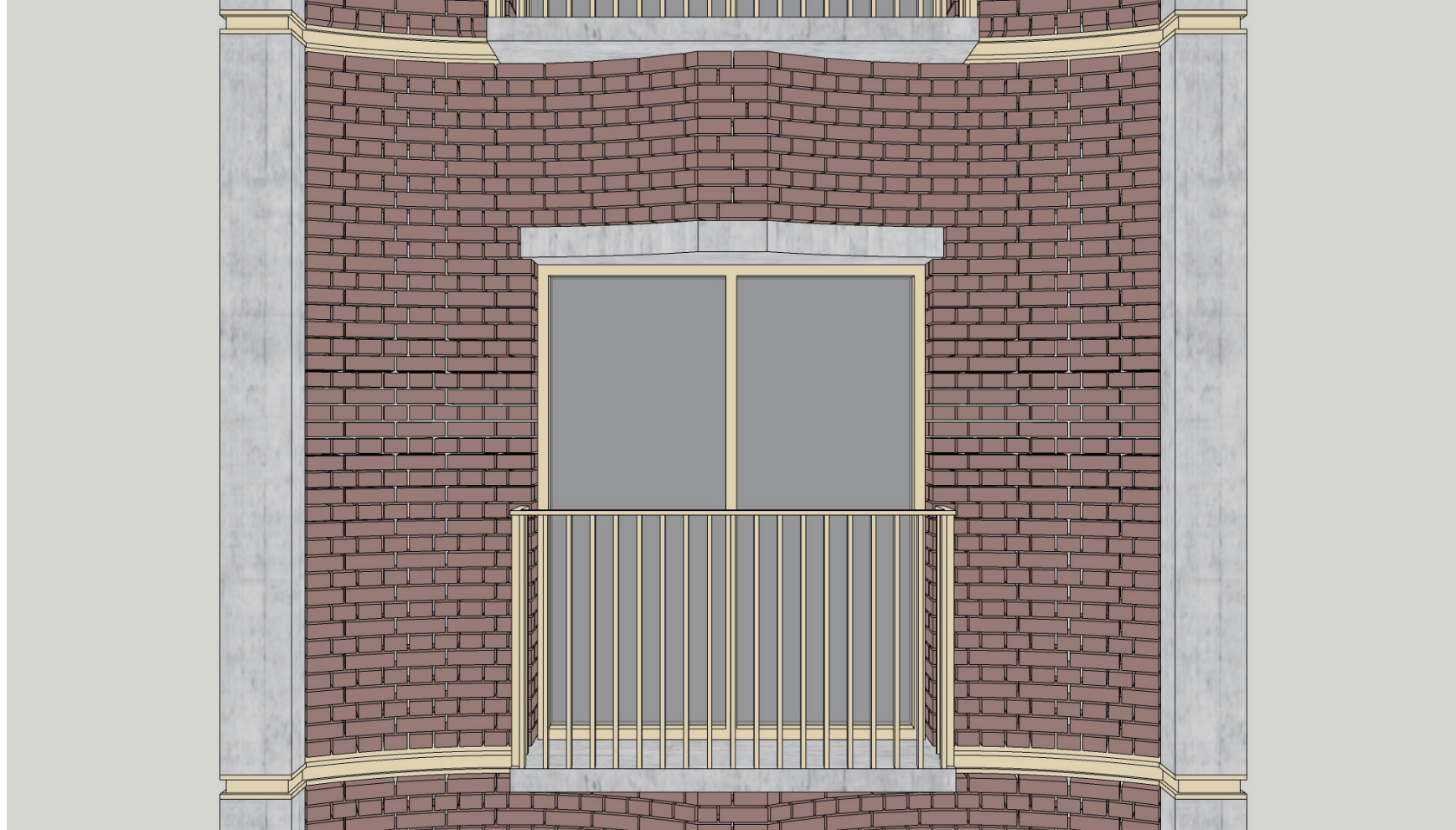


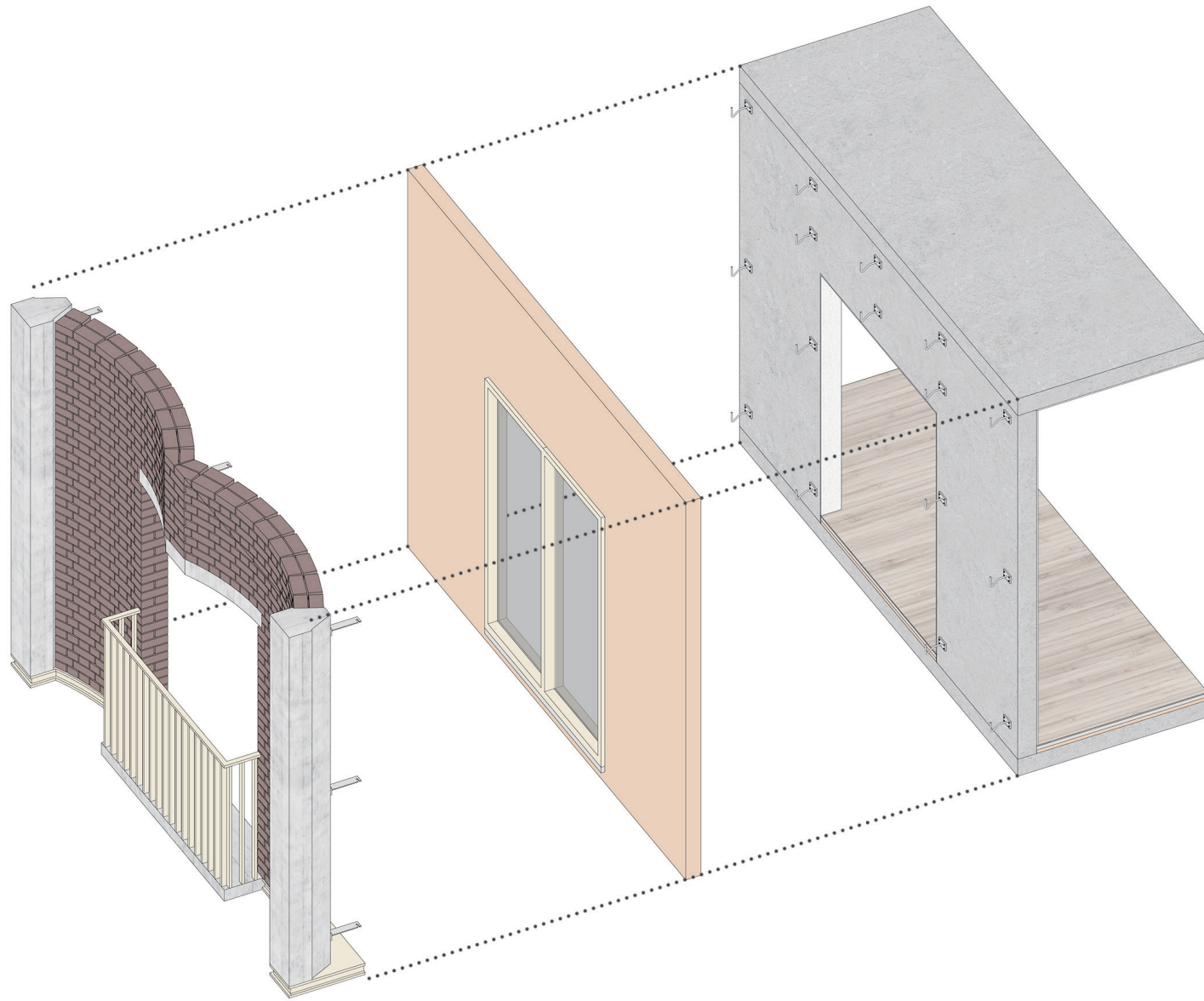


Proportion

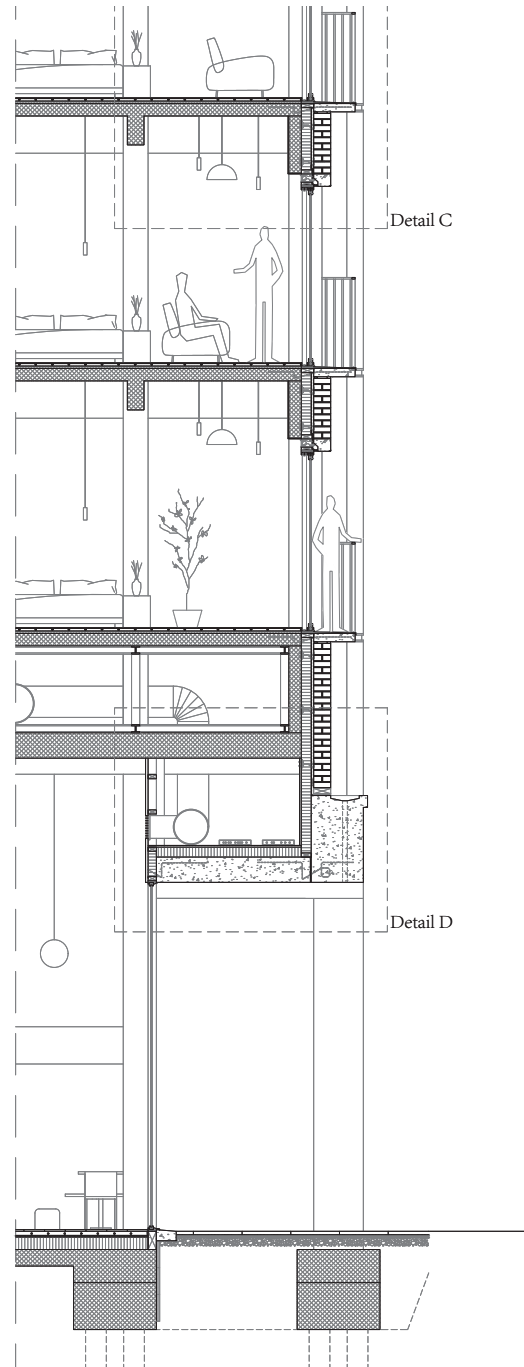


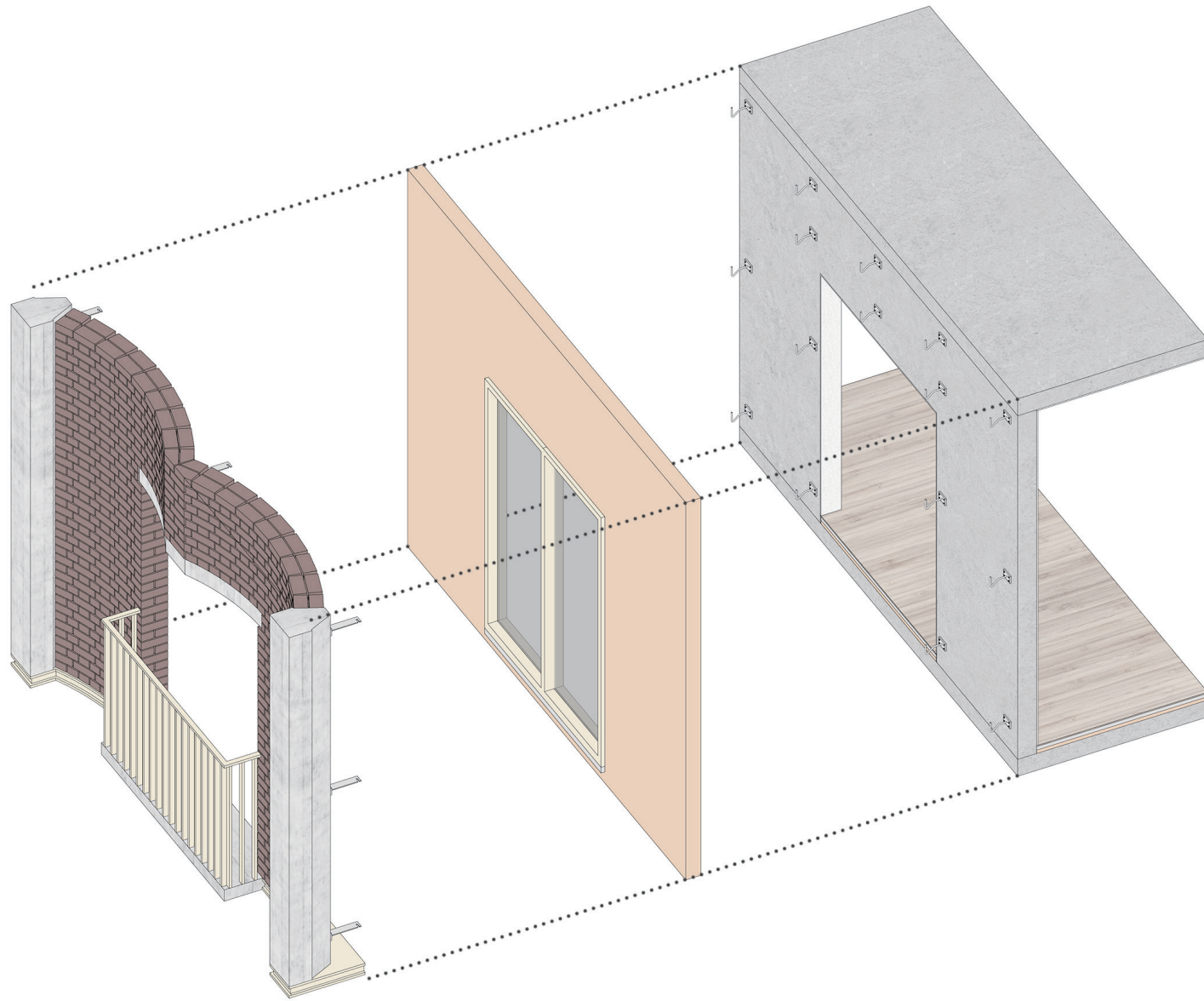
Materiality



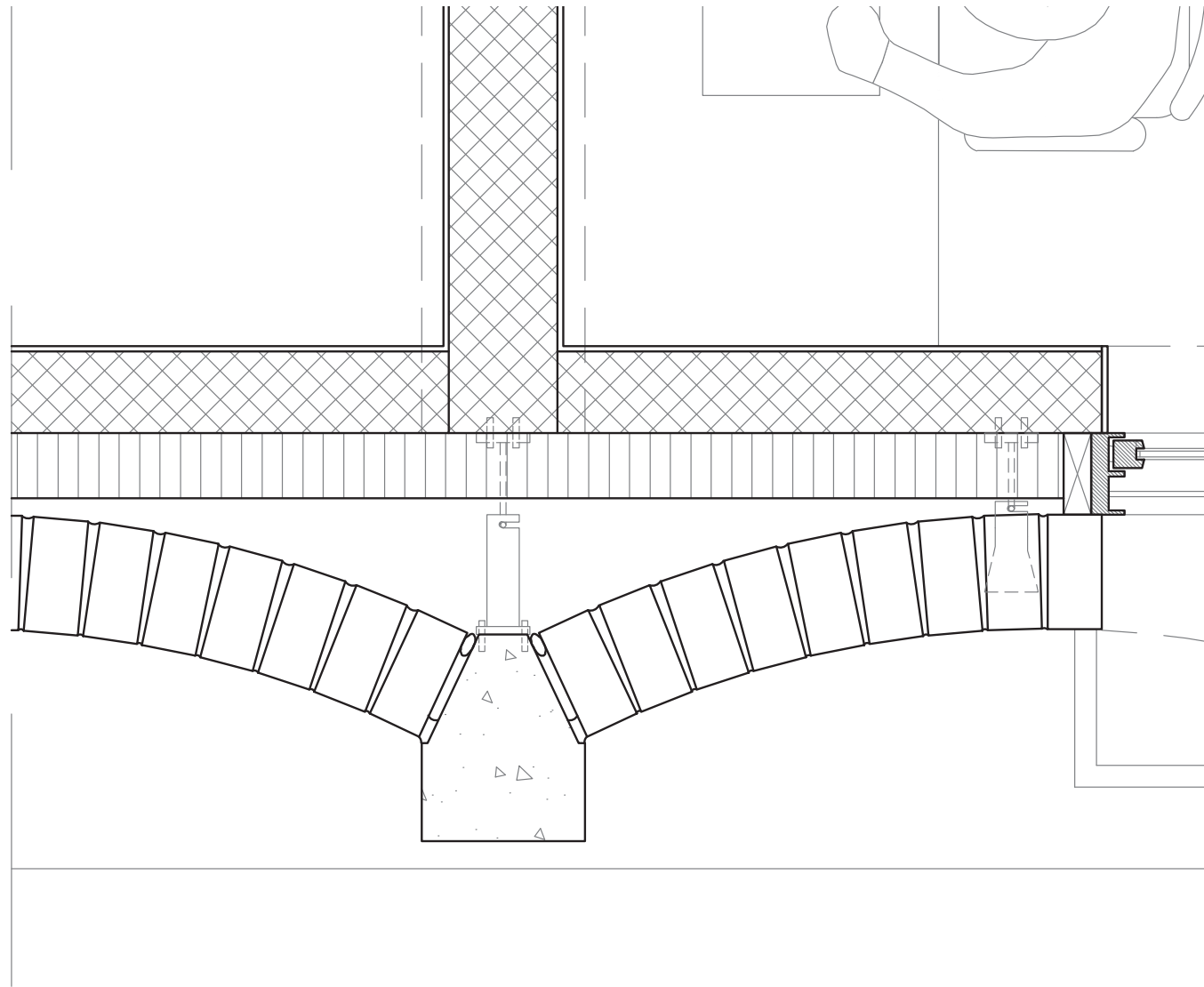


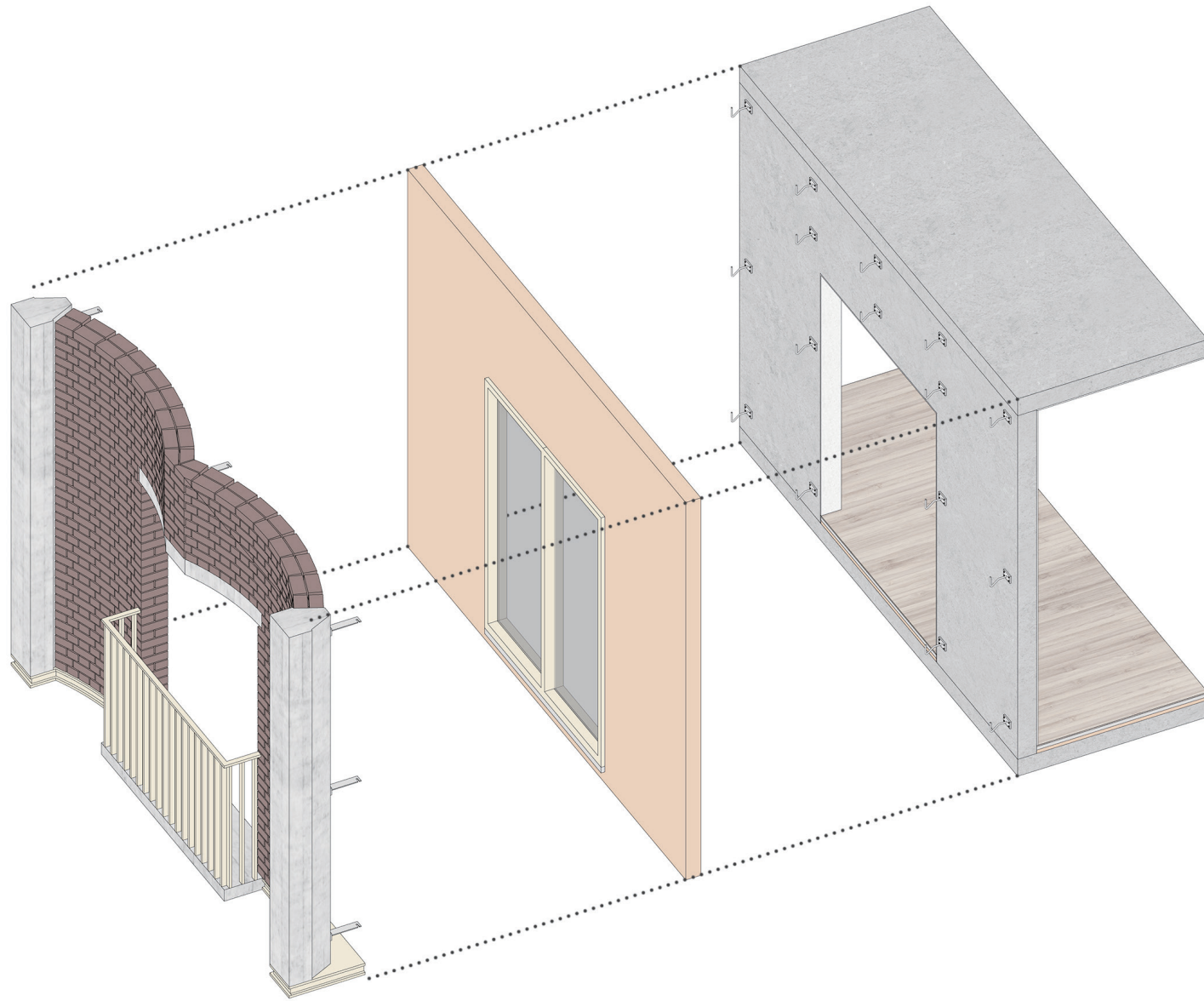
Facade System



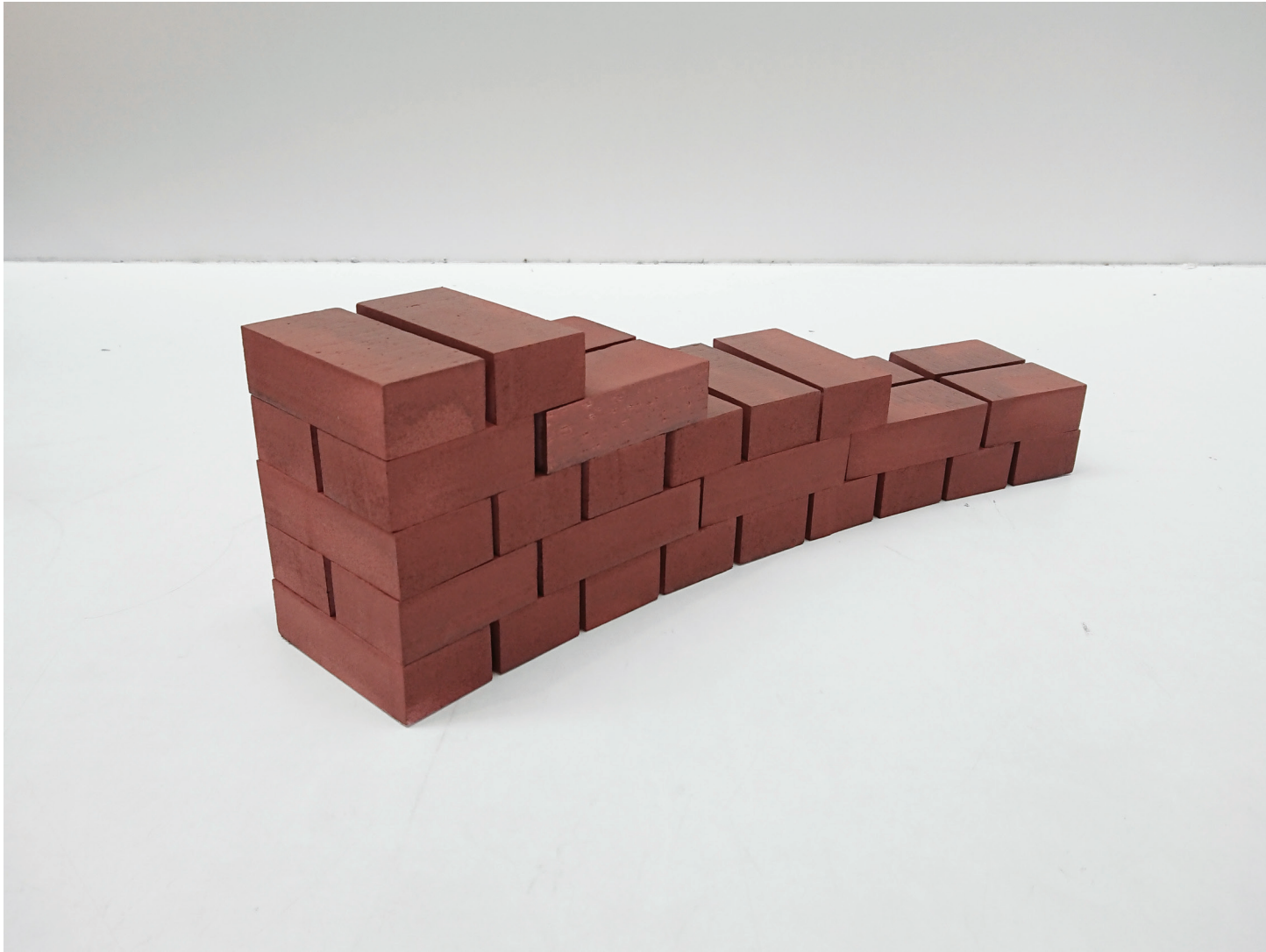


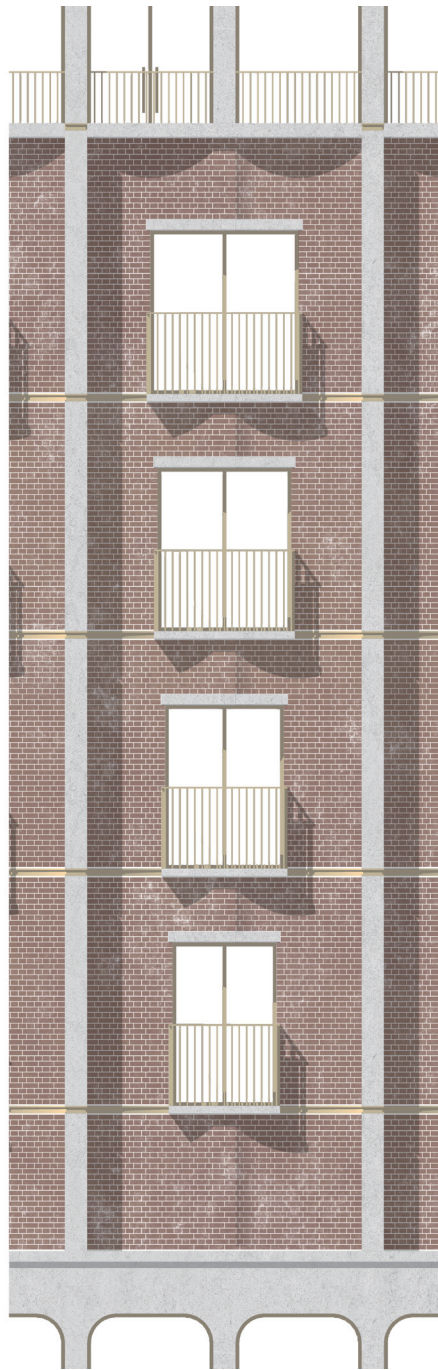
Facade System

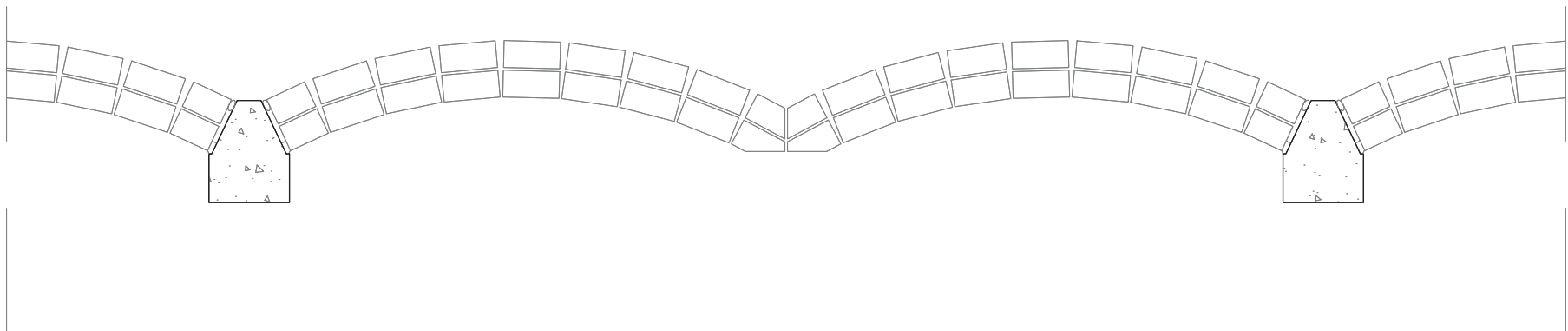
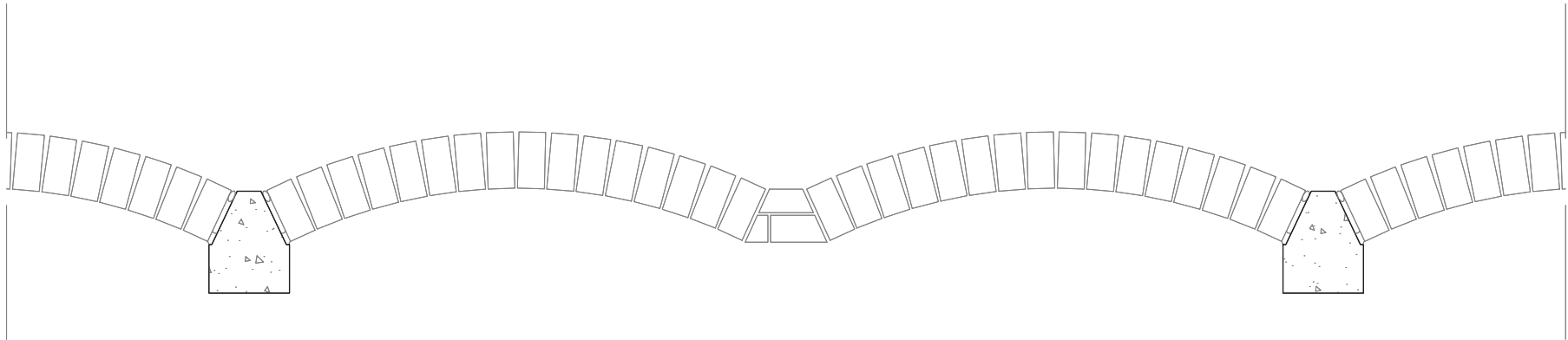


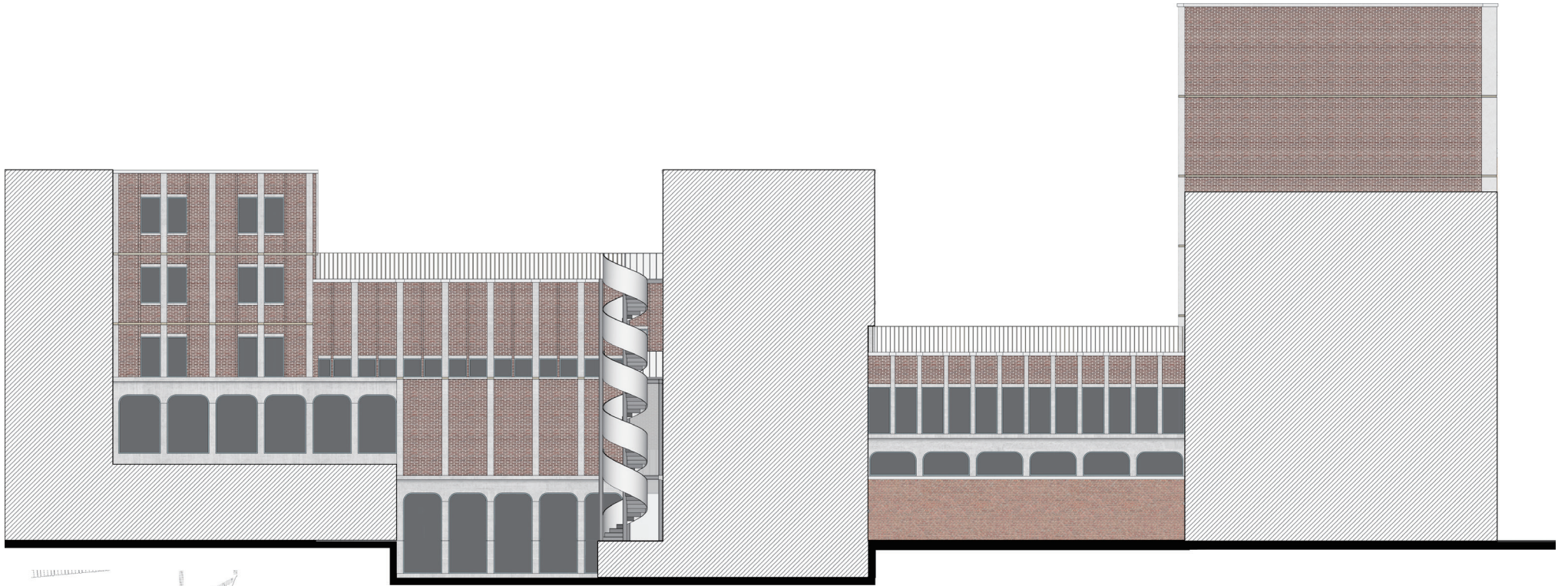


Facade System









South Facade

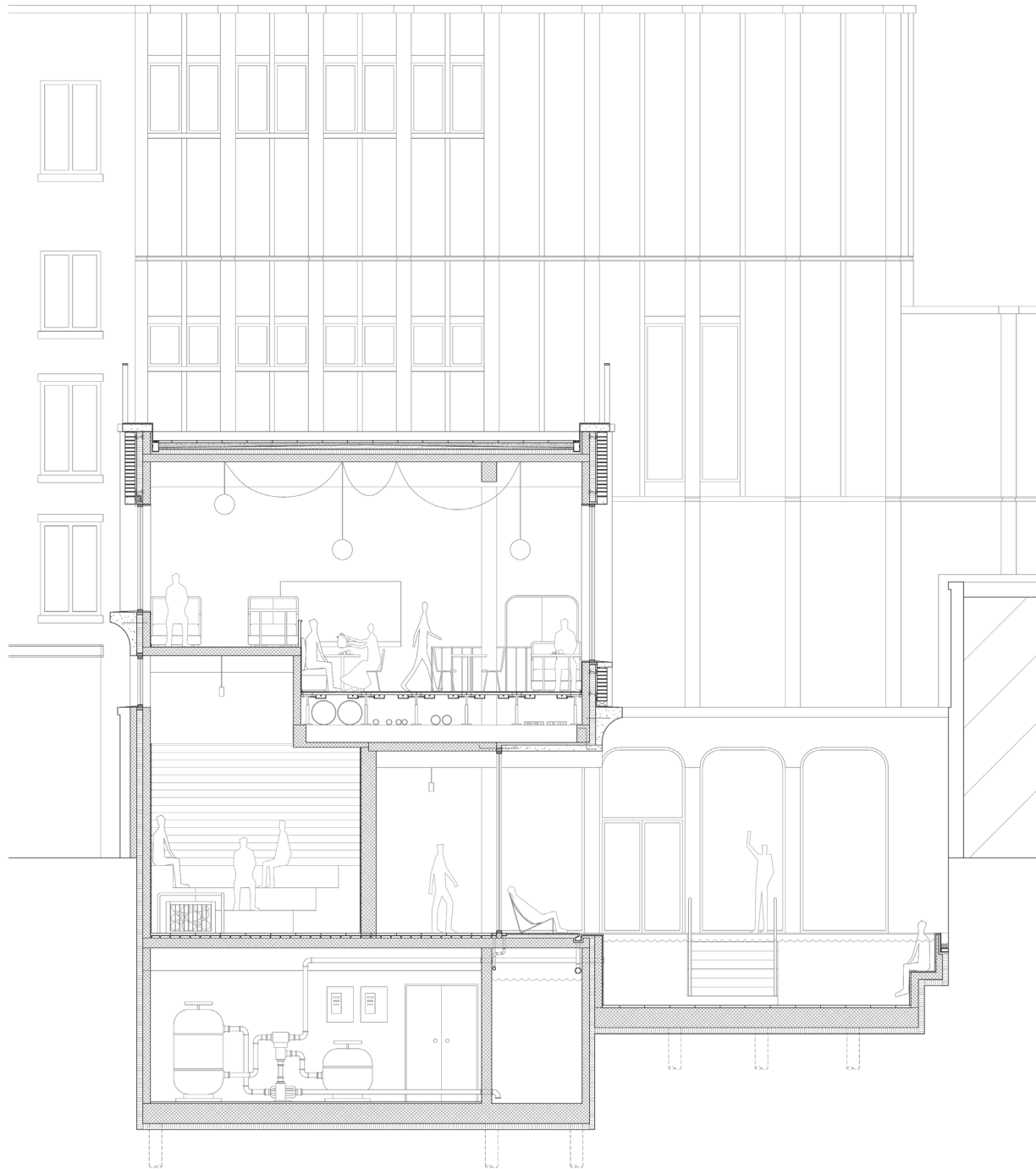




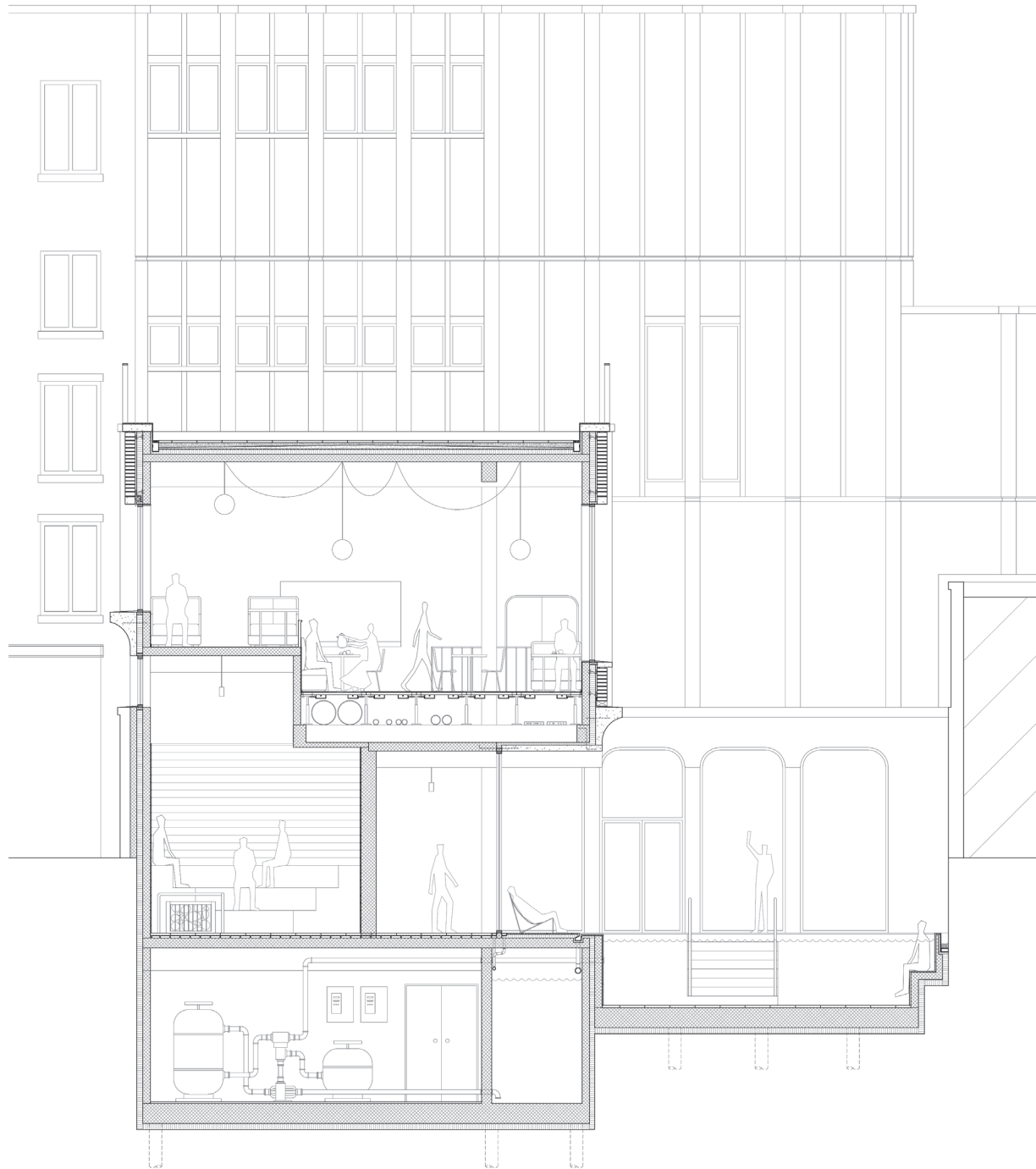


North Facade

Outdoor Spaces











Public Interiors















Thank You