

**Document Version**

Final published version

**Licence**

CC BY

**Citation (APA)**

Hoogervorst, C. D., Antolínez, J. A. A., Portilla-Yandún, J., Lavidas, G., Tissier, M., & Aarninkhof, S. (2023). Unraveling Multimodal Nearshore Wind-wave Fields On The Dutch Shoreface. In D. Cox (Ed.), *Coastal Engineering 2022: Proceedings of 37th International Conference* (Vol. 37). (Proceedings of the Coastal Engineering Conference; No. 37). American Society of Civil Engineers (ASCE). <https://doi.org/10.9753/icce.v37.waves.35>

**Important note**

To cite this publication, please use the final published version (if applicable).  
Please check the document version above.

**Copyright**

In case the licence states “Dutch Copyright Act (Article 25fa)”, this publication was made available Green Open Access via the TU Delft Institutional Repository pursuant to Dutch Copyright Act (Article 25fa, the Taverne amendment). This provision does not affect copyright ownership.  
Unless copyright is transferred by contract or statute, it remains with the copyright holder.

**Sharing and reuse**

Other than for strictly personal use, it is not permitted to download, forward or distribute the text or part of it, without the consent of the author(s) and/or copyright holder(s), unless the work is under an open content license such as Creative Commons.

**Takedown policy**

Please contact us and provide details if you believe this document breaches copyrights.  
We will remove access to the work immediately and investigate your claim.

# UNRAVELING MULTIMODAL NEARSHORE WIND-WAVE FIELDS ON THE DUTCH SHOREFACE

Christiaan D. Hoogervorst, Delft University of Technology, [c.d.hoogervorst@outlook.com](mailto:c.d.hoogervorst@outlook.com)  
 José A. A. Antolínez, Delft University of Technology, [j.a.a.antolinez@tudelft.nl](mailto:j.a.a.antolinez@tudelft.nl)  
 Jesús Portilla-Yandún, Escuela Politécnica Nacional de Quito, [jportilla@ymail.com](mailto:jportilla@ymail.com)  
 George Lavidas, Delft University of Technology, [G.Lavidas@tudelft.nl](mailto:G.Lavidas@tudelft.nl)  
 Marion Tissier, Delft University of Technology, [M.F.S.Tissier@tudelft.nl](mailto:M.F.S.Tissier@tudelft.nl)  
 Stefan Aarninkhof, Delft University of Technology, [s.g.j.aarninkhof@tudelft.nl](mailto:s.g.j.aarninkhof@tudelft.nl)

## INTRODUCTION

Changing (wind) climate might influence the magnitude, direction, and frequency of wave systems (Lobeto et al., 2021). However, in coastal engineering applications, generalized wave parameters are commonly used in climate change assessments with the risk of, for example, misrepresenting the nearshore transformation of wind-driven wave climates (Hegermiller et al., 2017). In consequence, these uncertainties in the nearshore (wind) climate will affect, amongst others, ship navigation, the implementation of marine renewable energy farms, the feasibility of coastal infrastructure and defences, or the efficiency of sandy coastal maintenance, and thus the decision-making of long-term, multidecadal coastal strategies (Rijksoverheid, 2013), especially when they are designed accounting for the Building with Nature concept (de Vriend et al., 2015).

## THE GOAL AND THE APPROACH

This study analyses the importance and application of considering multiple coexisting wave trains on the Dutch shoreface. The wave trains at offshore and nearshore locations are analysed by spectral wave partitions (Portilla et al., 2009). Their temporal statistics are used to obtain wave families and get into wave systems (Portilla et al., 2015). In parallel, the spatio-temporal wave spectrum field in the North Sea and the Dutch shoreface is investigated using statistics and machine learning to spatially group wave families and to analyse the wave spectrum climate spatio-temporal variability. Finally, the wave families and characteristic wave spectrum are linked with atmospheric patterns, drivers of wind-waves in the North Sea.

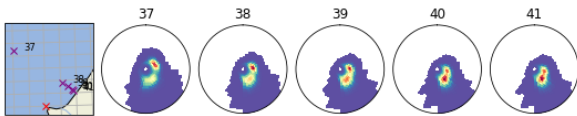


Figure 1 - Averaged nearshore wave spectrum from 2012 to 2016 for the Hoek van Holland, (representative for the Port of Rotterdam and the Sand Motor). Locations 37 to 41 are at 25, 20, 15, 10, and 5m depth respectively.

## WAVE FREQUENCY-DIRECTIONAL SPECTRUM AVERAGED TEMPORAL AND SPATIAL ANALYSIS

For a first impression, the seasonality, multidecadal trends and the nearshore development of the wave energy within each frequency-directional bin of the wave spectrum averaged at all locations are investigated. The averaged spectrum shows energy peaks that are related to consistently occurring waves. When comparing adjacent locations, the nearshore processes on the wave propagation can be recognized, it results in a

deflection of waves in cross-shore direction. The seasonally averaged spectrums and their anomaly to the long-term averaged wave spectrum show that, in general, winter (DJF) and spring (MAM) are the most and less energetic seasons, respectively; summer (JJA) shows an increase in southerly propagating waves with a period of 5 to 10 seconds and long period (15 sec) offshore directed waves; autumn (SON) shows an increase in short period waves in all directions, related to an increase in stormy local conditions. Finally, no multidecadal significant trends can be recognized.

## OCCURRENCE OF MULTIMODAL SPECTRUMS

The wave partitions show that a unimodal wave spectrum occurs 35% of the time at the coast of North Holland, The Netherlands. Hence, an error might be introduced 65% of the time. Only 39% of the time is the angle between a wave train and the most energetic wave train smaller than 60 degrees. 43% of the time between 60 and 120 degrees. And 17% of the time in opposite directions. The difference in wave angle is half of the time larger than 50° when a threshold of one meter of deepwater significant wave height is used, as defined by Holthuijsen (2007).

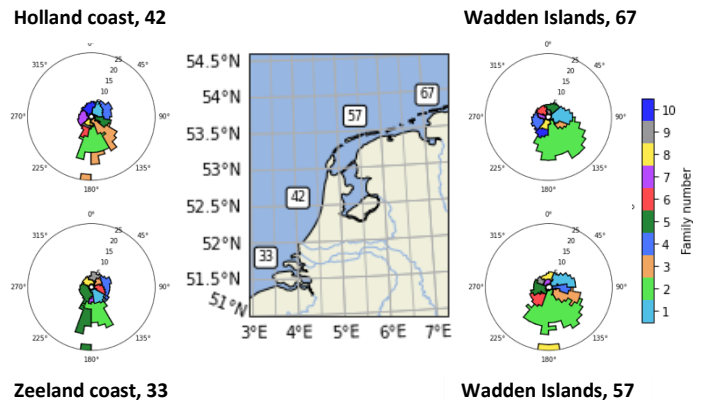


Figure 2. Wave families at Zeeland coast (33), Holland coast (42), and Wadden Islands (57 and 67).

## NEARSHORE WAVE FAMILIES

Consistently occurring wave trains are analysed with wave families. The wave families give more detailed information about the nearshore wave transformation compared to an averaged frequency-directional spectrum. The cross-shore variation of the wave families shows that waves directed towards the coast, slightly decrease the relative angle between waves and shore.

Also, offshore wave development can be recognized in these wave families.

A challenge is that wave families are defined at each location independently. Relating wave families at different locations can give insight into the spatial extent and development of wave systems, for example shown in Figure 1. Manual relating wave families is possible but time-consuming. Here, we grouped the wave families through machine-learning techniques, showing that the results are most consistent in small spatial domains (Hoogervorst, 2022). Seemingly inconsistent labelling of wave families might occur when the spatial domain is increased in this automated process.

**CHARACTERISTIC WAVE SPECTRUMS**

An additional method is used for a more detailed temporal-spatial analysis of the wave spectral data, where the wave spectral data is classified and analysed through a sequence of machine learning techniques. The formed so-called Sea States describe the spatial and temporal variability of various wave conditions, both calm weather and stormy conditions. Spatial variability can give insight into the wave propagation, spatial extent, and influences of forcing conditions; and temporal statistics can be used for extreme value analysis. Wave partitions and wave families give additional insight into the number of coexisting waves and their propagation direction, which is usually narrowly distributed for each Sea State. A Sea State therefore describes a specific direction of following, crossing, and opposing waves, or a combination of them. For example, the representative spectrum at each offshore location of Sea State 59 is depicted in figure 3.

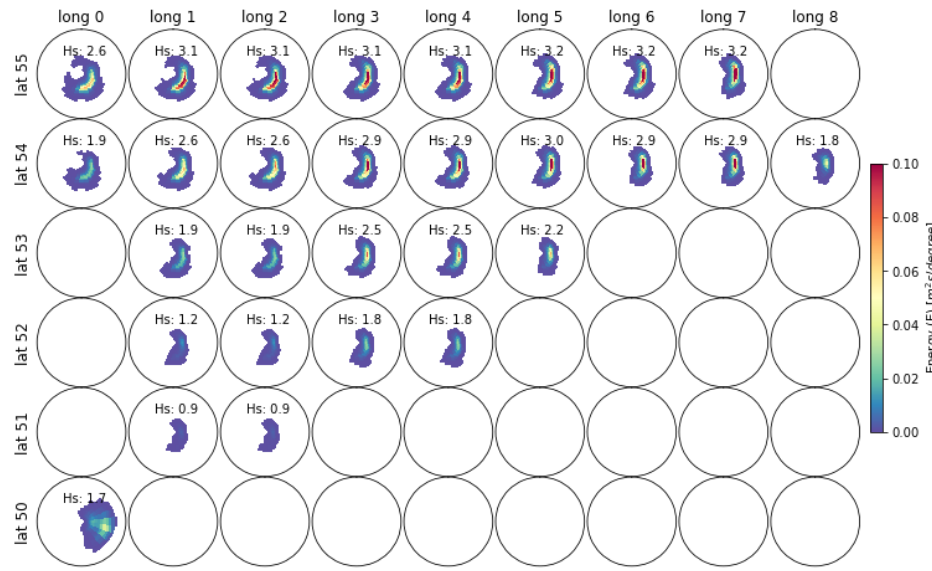


Figure 3: The representative frequency-directional spectrum at the offshore locations of Sea State 59, indicated by the latitudinal and coordinial coordinates. The radial axis describes the wave period from 0 to 22 seconds. The wave propagation direction is the bin position compared to the center.

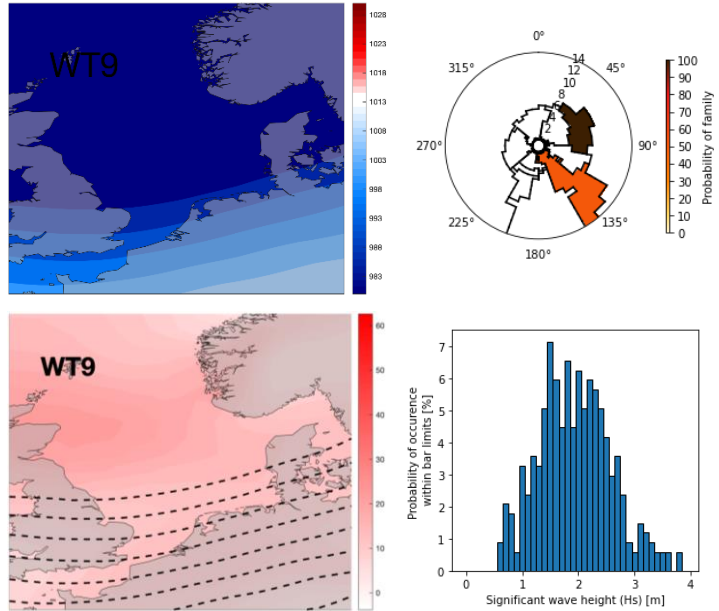


Figure 4: The sea level pressure and its gradient of Weather type 9 on the top left and bottom left, respectively. The top right shows the probability that a wave family at location 42 has energy when Weather Type 9 is occurring. A histogram of the Significant wave height, related to all the energy within the spectrum, during the occurrence of Weather Type 9 is depicted in the bottom right.

**RELATIONSHIP BETWEEN WIND AND WAVES**

The wave propagation direction has a strong correlation with the weather conditions. The statistics show that larger sea level pressure gradients lead to a more energetic wave field and that one high or low-pressure system can generate multimodal wave conditions with crossing waves. These multimodal wave fields do therefore also occur during high energetic wave conditions. One exemplary condition shown in figure 4 is Weather Type 9, which describes a low-pressure system with its pivot point at the northeastern tip of Great

Brittann. During this weather condition at location 42, waves with a period of around 6 seconds, propagate in a north-easterly direction. About 70% of the time, there are additional waves propagating from the center of the low-pressure system in a south-easterly direction, resulting in a bimodal wave spectrum. The energy within the spectrum is expressed as one significant wave height at the bottom right corner, showing waves traditionally would vary from 0.5 to 4 meters.

## REFERENCES

- Hegermiller, Rueda, Erikson, Barnard, Antolinez & Holthuijsen & Booij (2003). Phase-decoupled refraction-diffraction for spectral wave models. *Coastal Engineering*, 49(4), 291-305
- Hoogervorst. (2022). Unravelling sediment transport driven by a multimodal wind-wave spectrum. In TU Delft.  
<https://repository.tudelft.nl/islandora/object/uuid:fa4d3279-3443-41bc-a995-6d81f34d6936?collection=education>
- Lobeto, Menendez & Losada (2021). Projections of Directional Spectra Help to Unravel the Future Behavior of Wind Waves. *Frontiers in Marine Science*, 8.
- Mendez. (2017). Controls of Multimodal Wave Conditions in a Complex Coastal Setting. *Geophysical Research Letters*, 44(24).
- Portilla, Ocampo-Torres, & Monbaliu (2009). Spectral Partitioning and Identification of Wind Sea and Swell. *Journal of Atmospheric and Oceanic Technology*, 26(1), 107-122.
- Portilla-Yandún, Cavaleri & van Vledder (2015). Wave spectra partitioning and long term statistical distribution. *Ocean Modelling*, 96, 148-160.
- Rijksoverheid. (2013). National Coastal Strategy Compass for the Coast. <https://rijksoverheid.minienm.nl/nvk/NationalCoastalStrategy.pdf>
- de Vriend, van Koningsveld, Aarninkhof, de Vries, & Baptist (2015). Sustainable hydraulic engineering through building with nature. *Journal of Hydro-environment Research*, 9(2), 159-171.