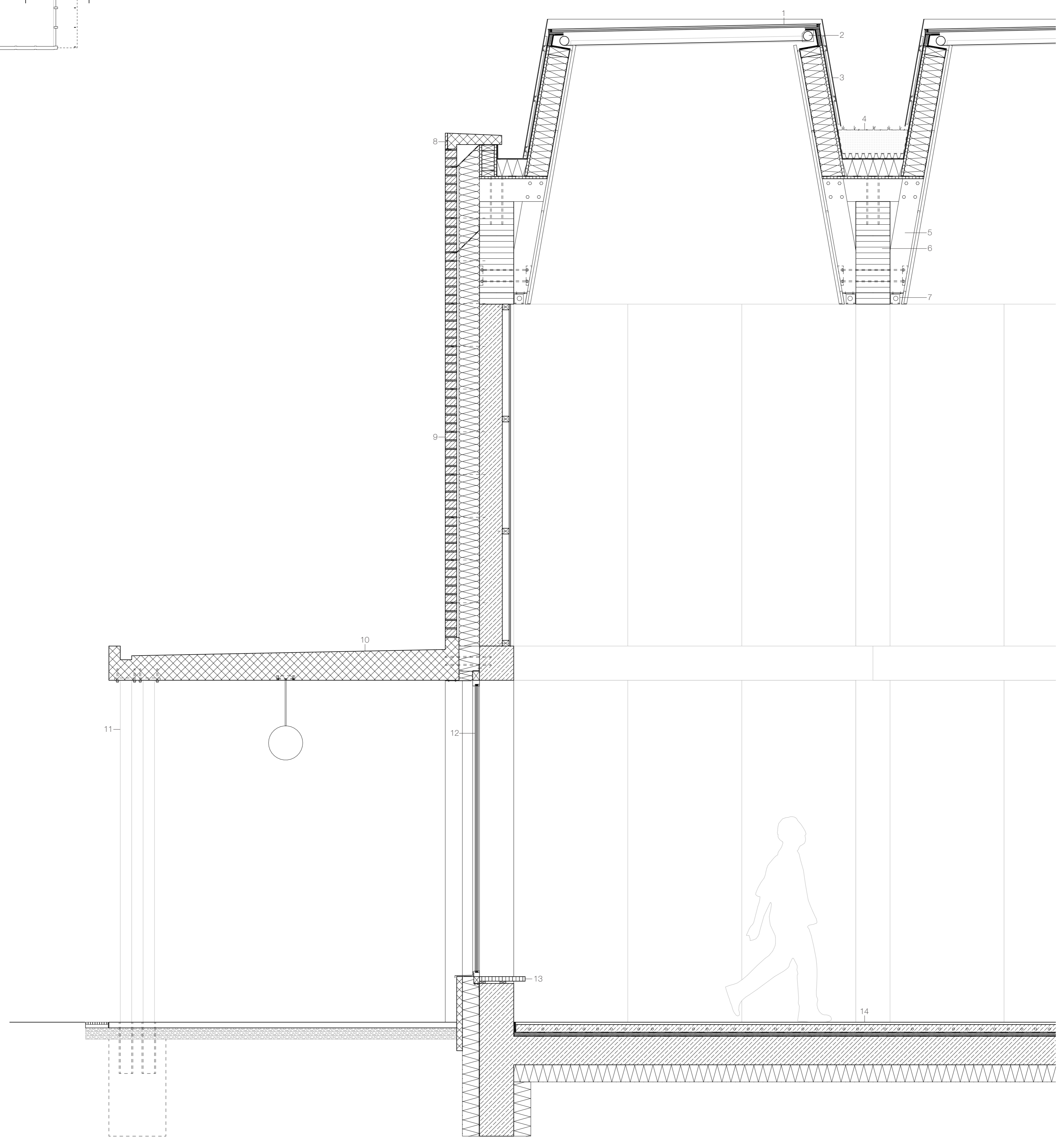
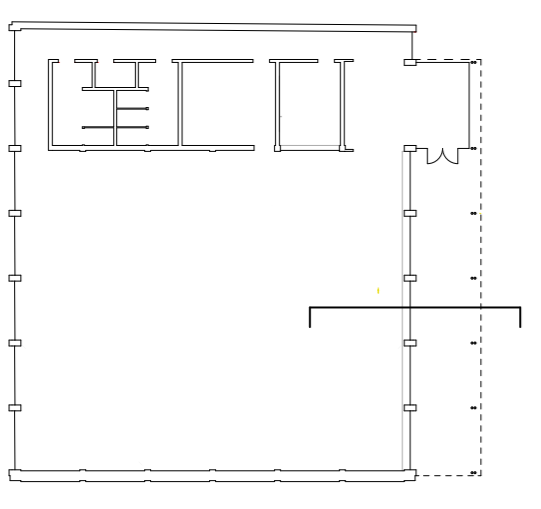
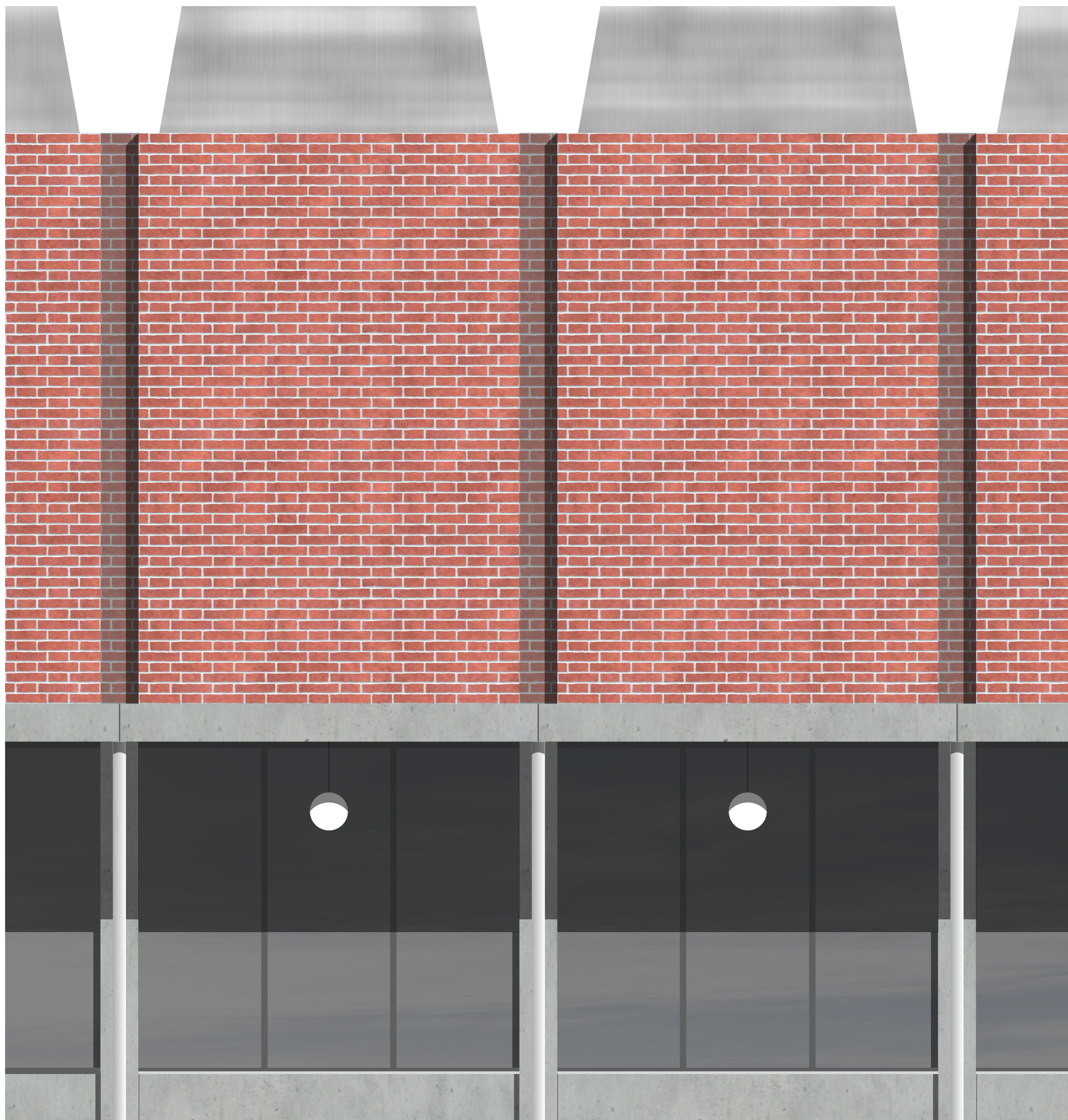
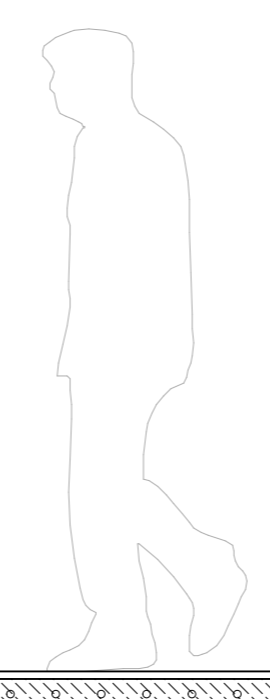
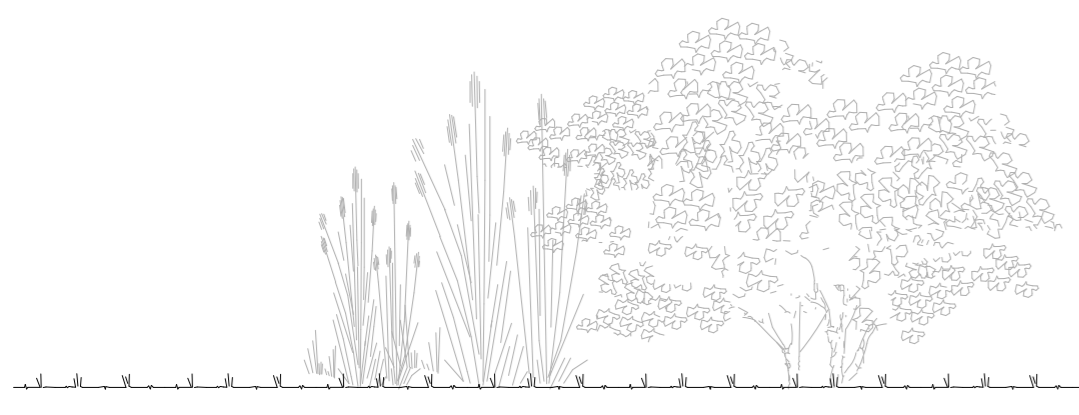
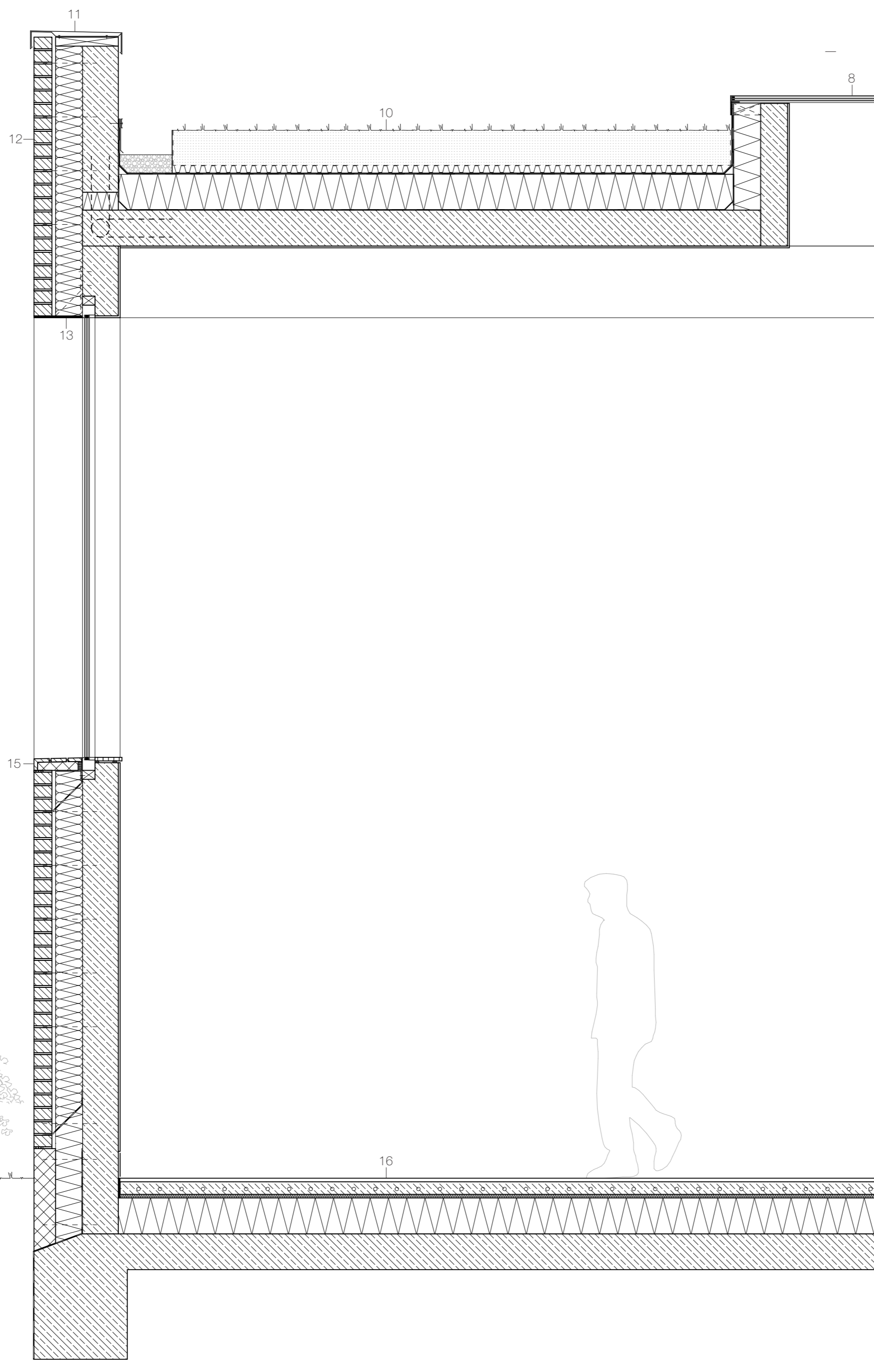
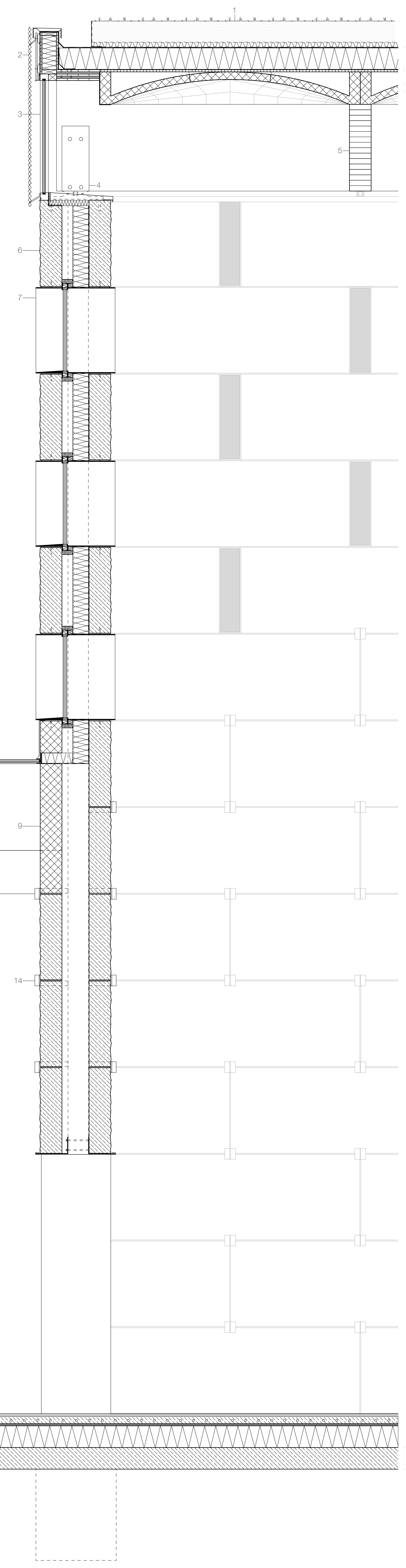
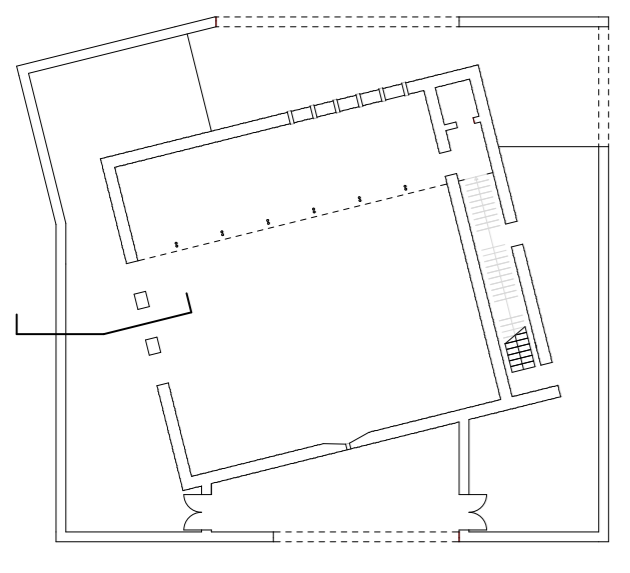


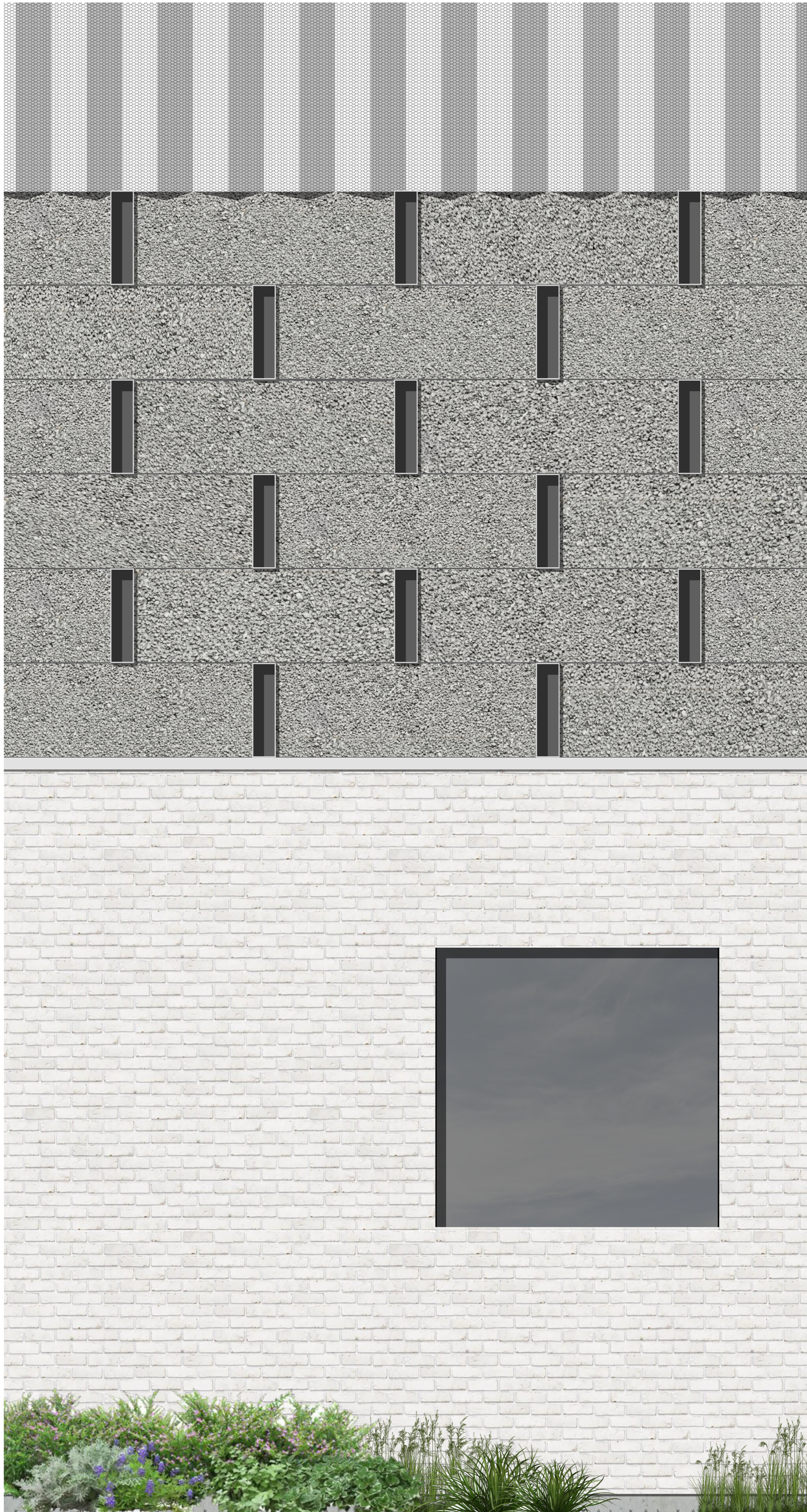
- 1 insulation glazing in stainless steel frame
- 2 blackout and shading roller blind
- 3 4 mm composite aluminum sheeting / 2-ply bituminous water proofing membrane / 19 mm three-layer panel / 180 mm inlaid wood fibre insulation / vapor barrier / 15 mm plaster board
- 4 extensive vegetation / 200 mm substrate layer / 1 mm geotextile filter / 40 mm drainage mat / 4 mm fibre protection mat / 2-ply bituminous water proofing membrane / 150 mm fiberglass thermal insulation / 19 mm three-layer panel
- 5 40 x 180 mm timber subframe for roof window
- 6 300 x 900 mm glulam beam
- 7 recessed LED strip light
- 8 475 x 140 mm precast concrete parapet with brick facing
- 9 100 mm solid facing brick / 20 mm cavity / 180 mm phenolic resin thermal insulation / 200 mm reinforced concrete wall / 60 x 50 mm battens / 12 mm wood panelling
- 10 prefab concrete roof
- 11 2x steel column r=50 mm, painted white
- 12 insulation glazing
- 13 40 mm birch-veneered plywood bench
- 14 20 mm terrazzo flooring / 70 mm cement screed with underfloor heating / PE film separation layer / 30 mm impact sound insulation / polymer modified bitumen waterproofing membrane / 200 mm reinforced concrete floor slab / 200 mm fiberglass thermal insulation

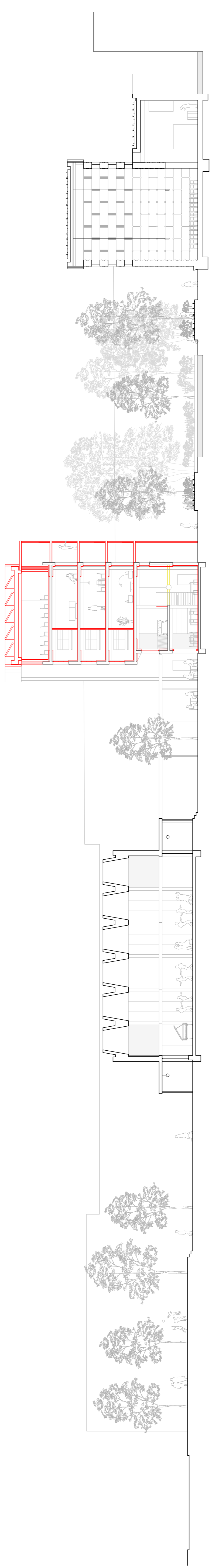




- 1 extensive vegetation / 200 mm substrate layer / 1 mm geotextile filter / 40 mm drainage mat / 4 mm fibre protection mat / 2-ply bituminous water proofing membrane / 150 mm fiberglass thermal insulation / 19 mm three-layer panel / 300 mm precast concrete Ripman floor system
- 2 3 mm anodized-aluminium expanded-metal-mesh panels fixed with stain-less-steel clips / 13 mm extruded ribbed-aluminium sheeting / 24 mm ventilated cavity / moisture-diffusing windbreak / 19 mm three-layer panel / 150 mm wood fiber thermal insulation / 150 x 200 mm steel profile / vapour barrier
- 3 insulation glazing in stainless steel frame
- 4 pinned steel rocker support
- 5 200 x 800 mm glulam beam
- 6 200 mm reused concrete block / 100 mm ventilated cavity / 150 mm wood fiber thermal insulation / vapor barrier / 200 mm reused concrete block
- 7 steel window frame (outside)
- 8 Insulation glazing
- 9 200 mm precast concrete block
- 10 extensive vegetation / 200 mm substrate layer / 1 mm geotextile filter / 40 mm drainage mat / 4 mm fibre protection mat / 2-ply bituminous water proofing membrane / 150 mm fiberglass thermal insulation / vapor barrier / 200 mm concrete ceiling / 10 mm plaster finish
- 11 brushed stainless steel parapet coping
- 12 100 mm solid whitewashed facing brick / 20 mm cavity / 150 mm wood fiber thermal insulation / 200 mm reinforced concrete wall
- 13 concealed steel angle lintel, bolted to concrete wall
- 14 steel bracket
- 15 475 x 140 mm precast concrete window sill with brick facing
- 16 20 mm terrazzo flooring flooring / 70 mm cement screed with underfloor heating / PE film separation layer / 30 mm impact sound insulation / polymer modified bitumen waterproofing membrane / 200 mm fiberglass thermal insulation / 200 mm reinforced concrete floor slab



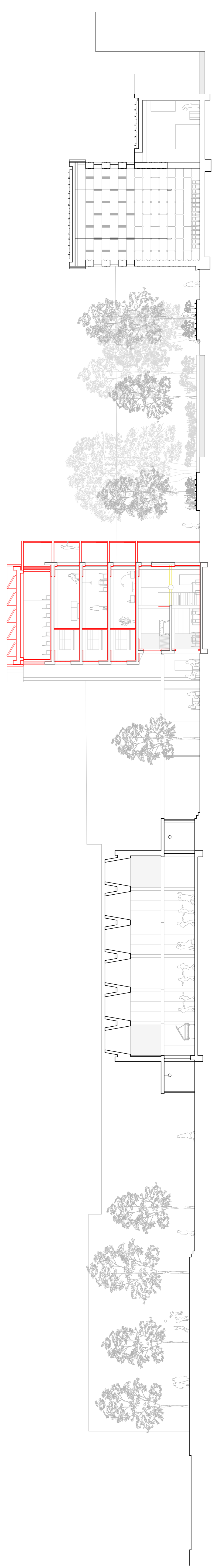




0 5 10 20

Section // Sequence

1:200



0 5 10 20

Section // Sequence

1:200