

THE GATEWAY TO MMC
Meanings of narrative and aging in Beato, Lisbon

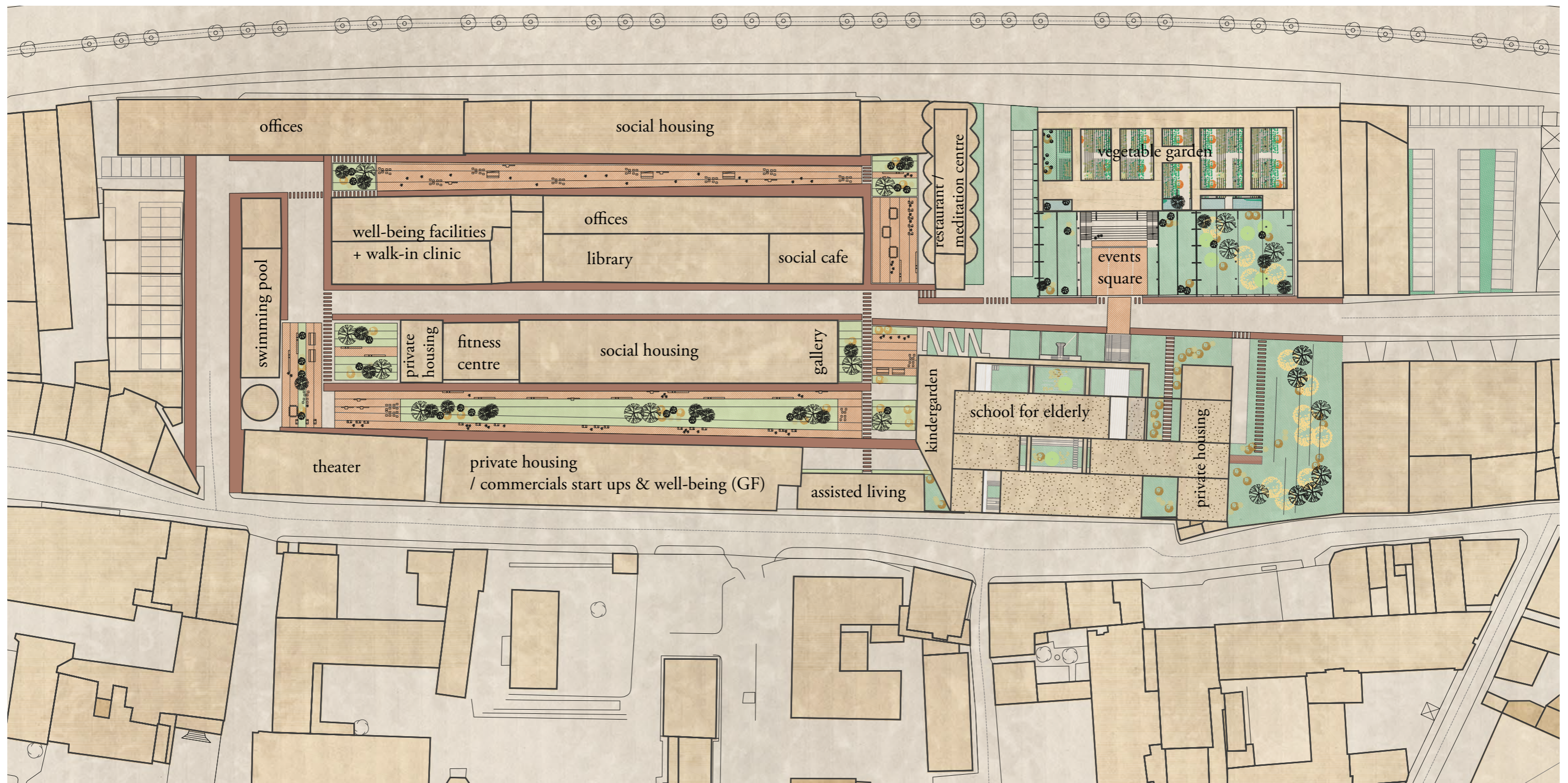
SET OF DRAWINGS

AUTHOR

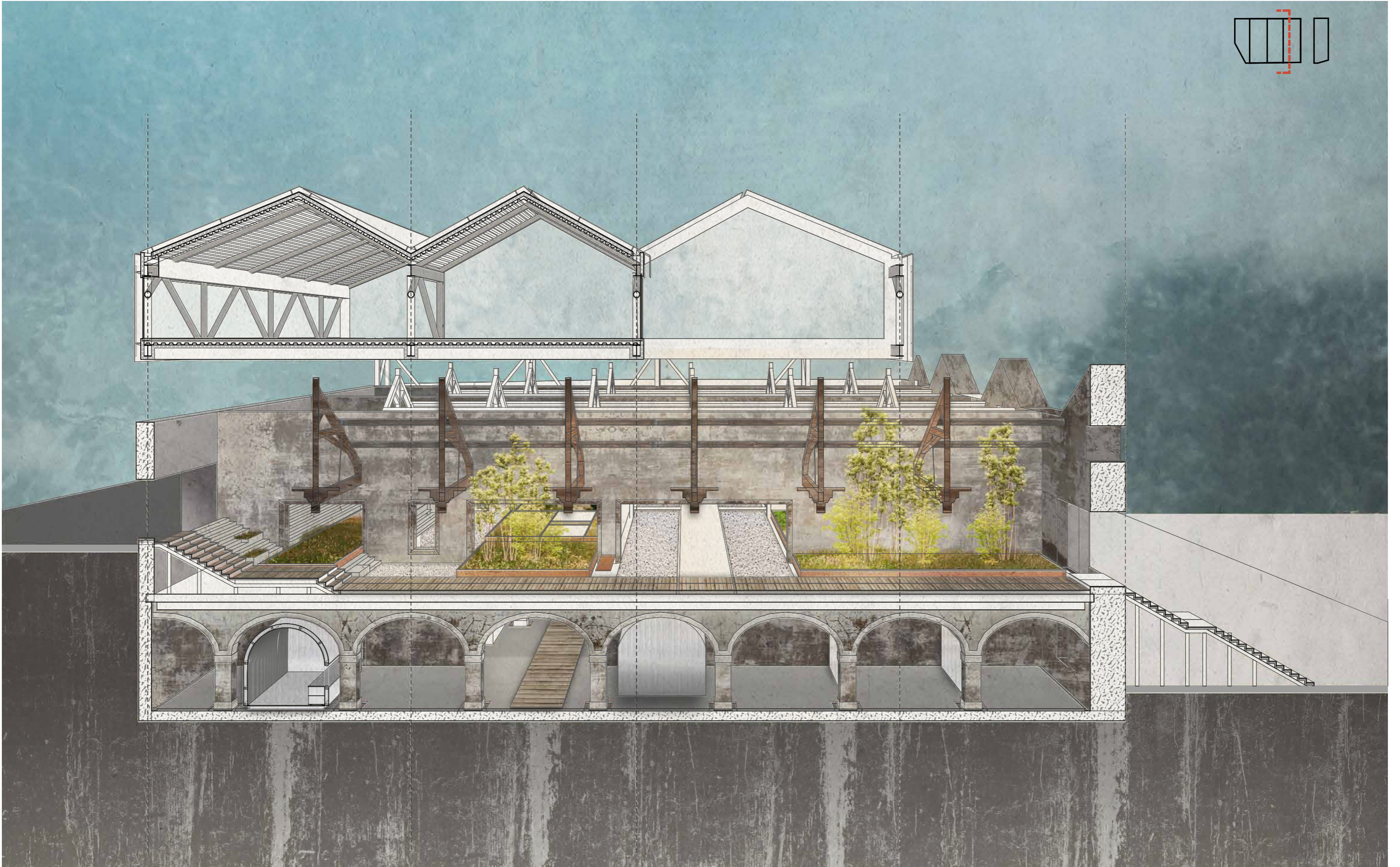
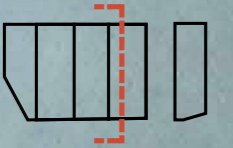
Monika Byra, 4520424

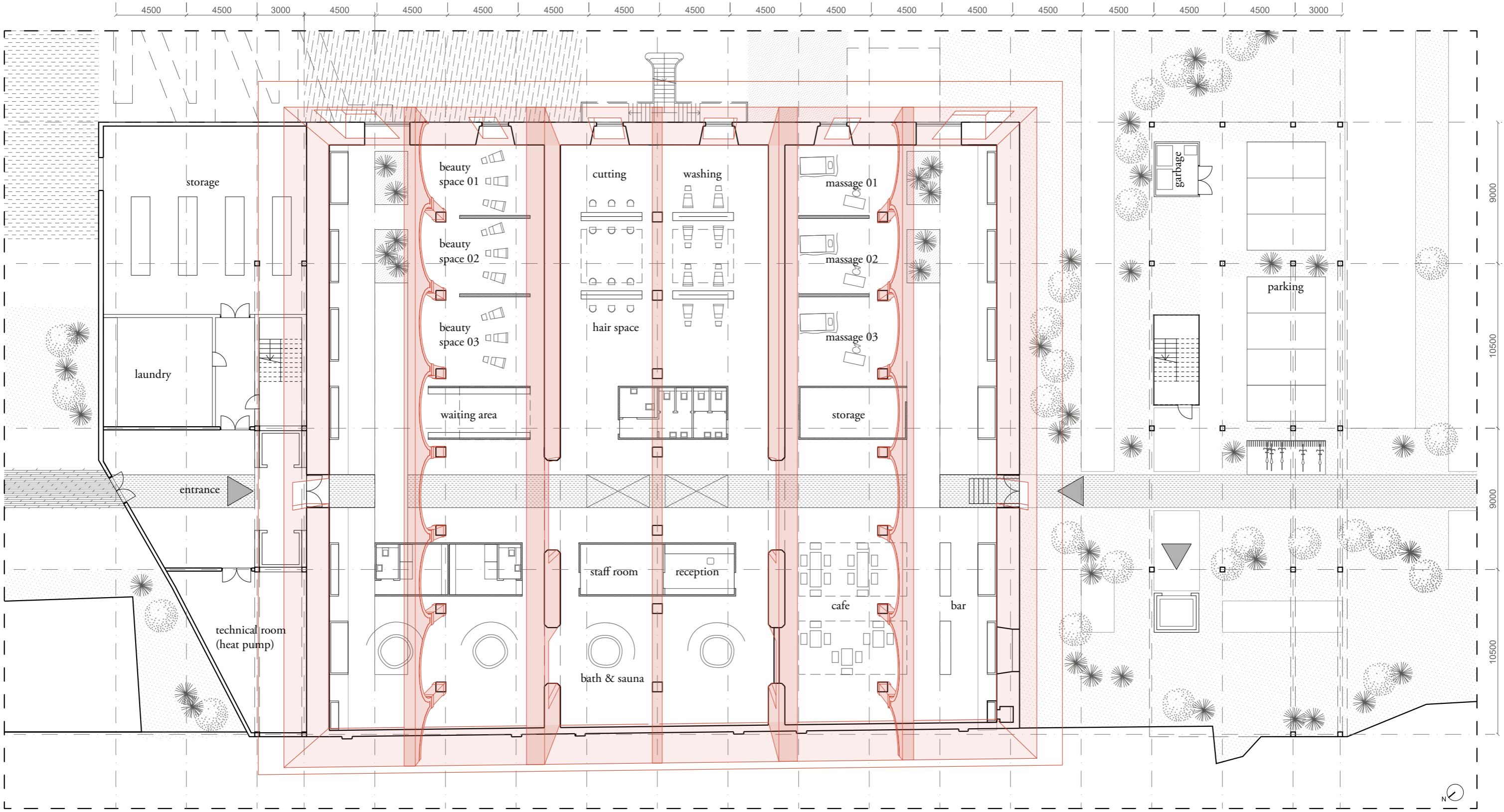
MENTORS

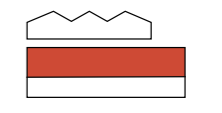
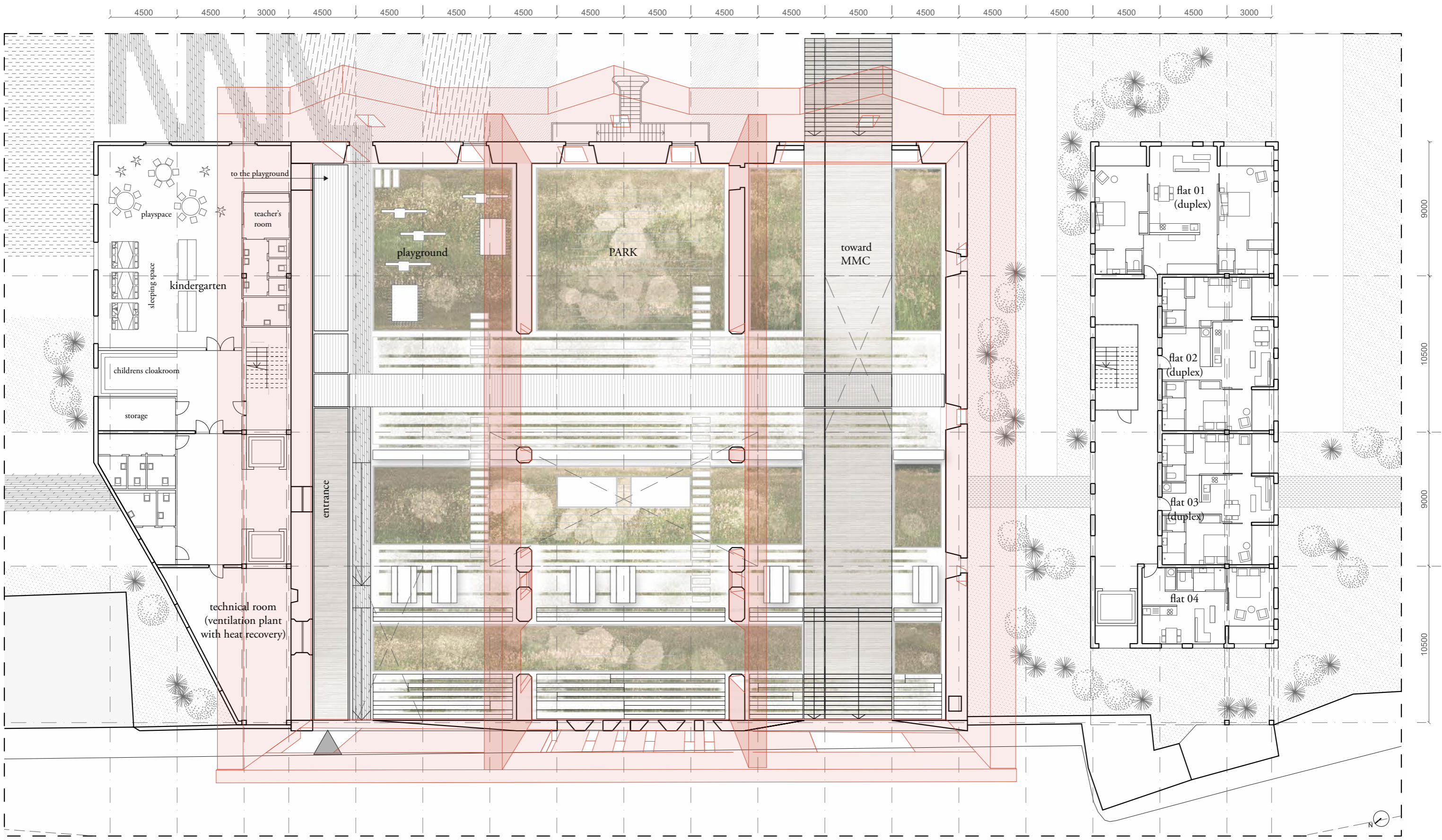
Architecture Design:	Job Roos
Building Technology:	Wido Quist
Cultural Value:	Marieke Kuipers





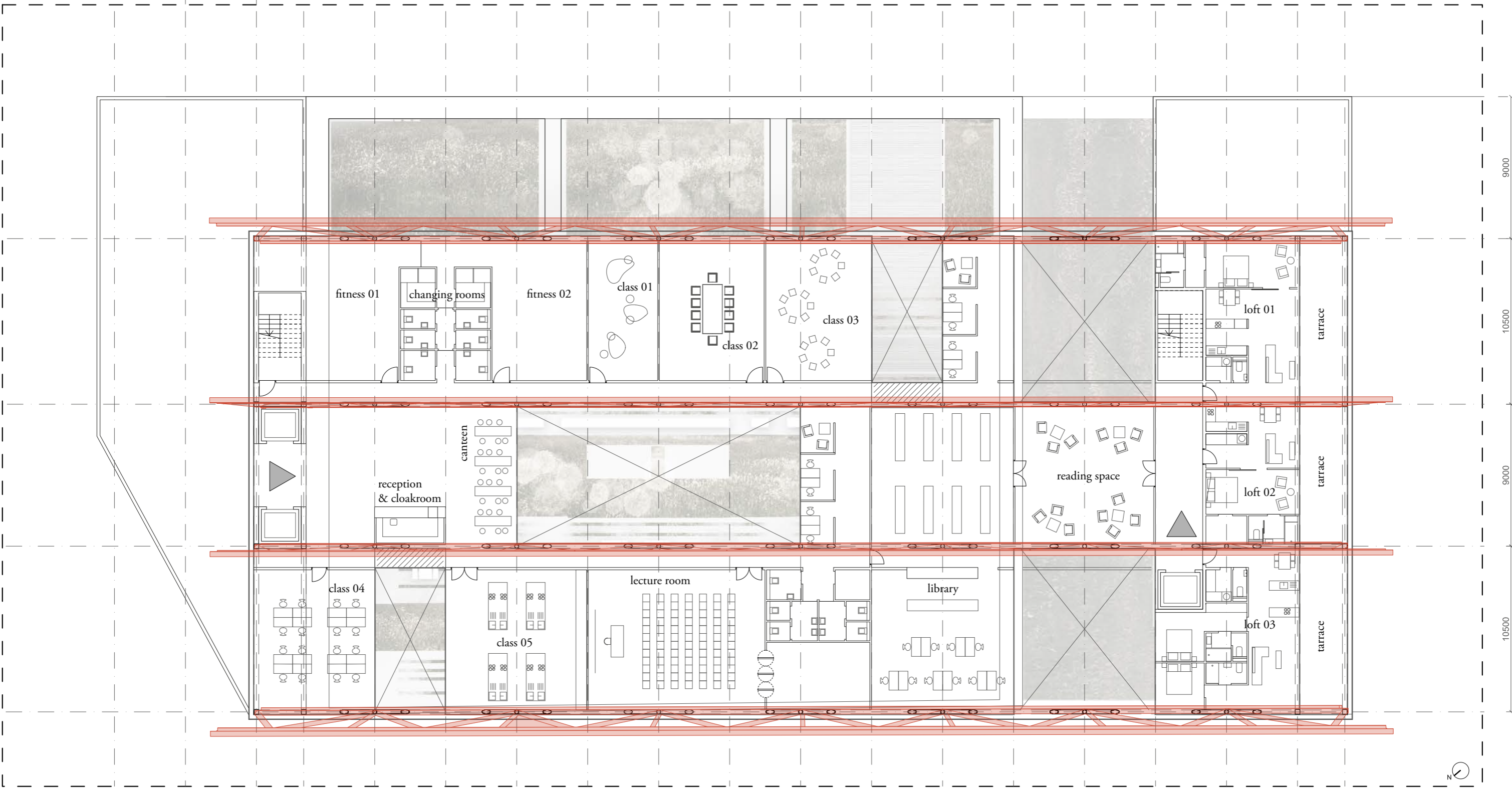








4500 4500 3000 4500 4500 4500 4500 4500 4500 4500 4500 4500 4500 4500 4500 4500 4500 4500 3000

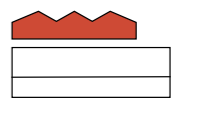


9000

10500

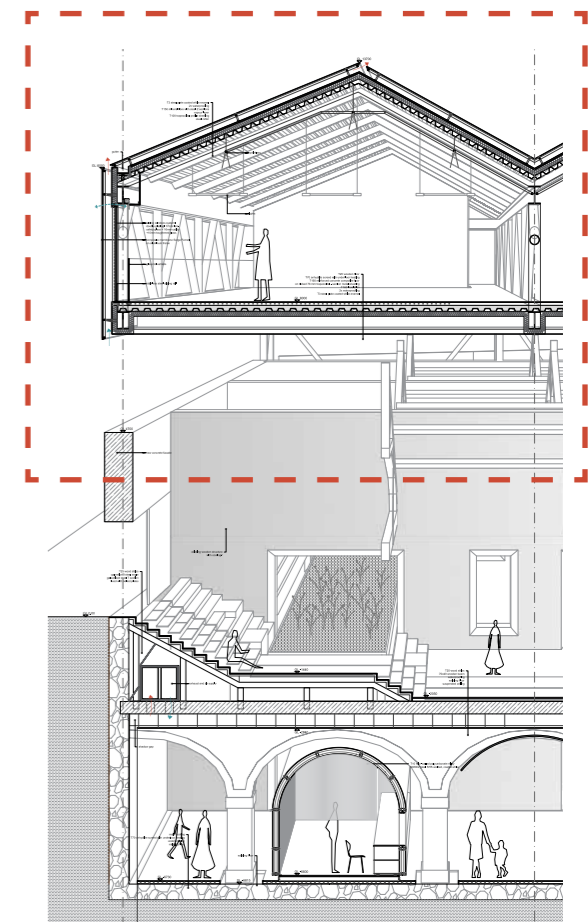
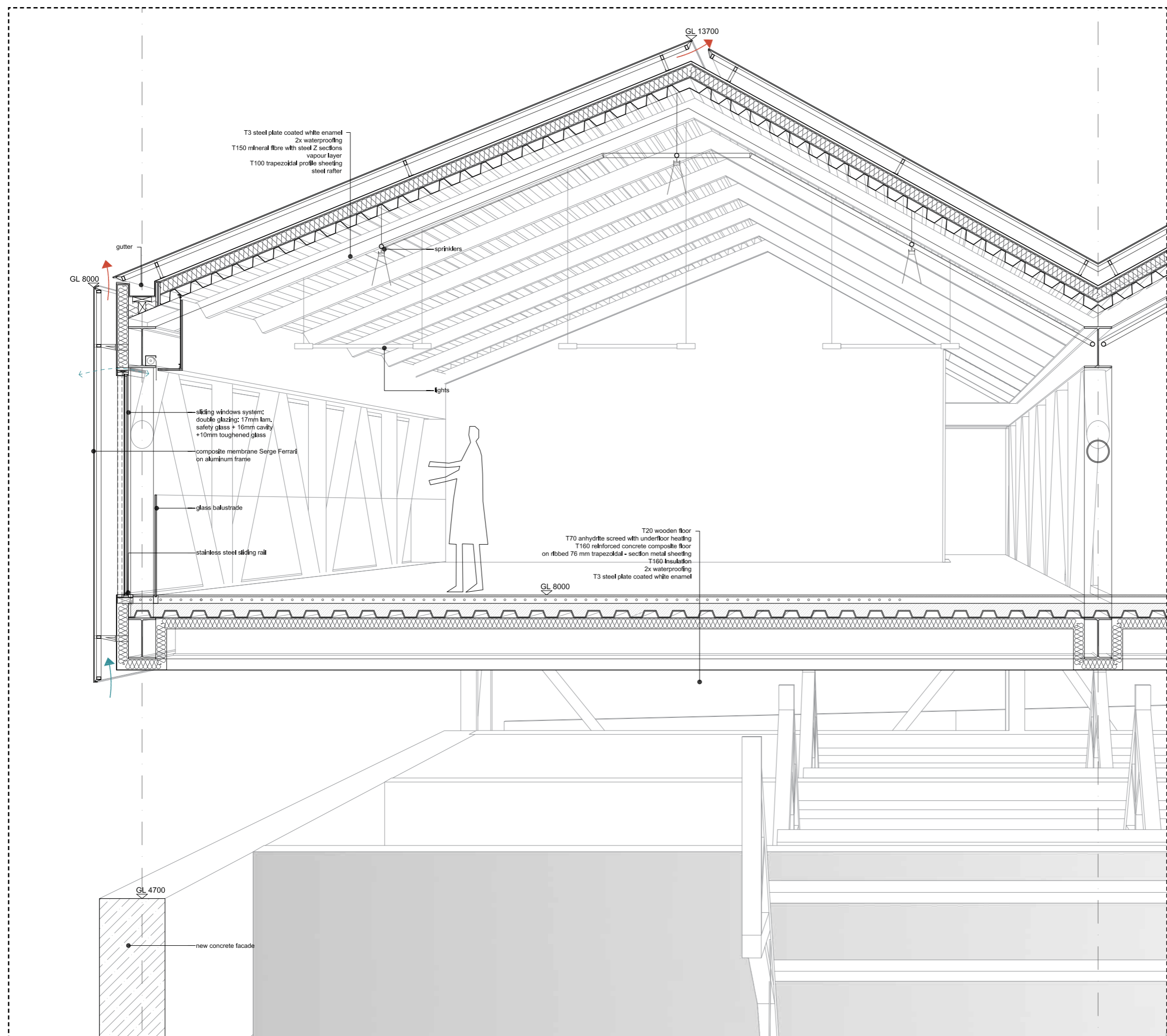
9000

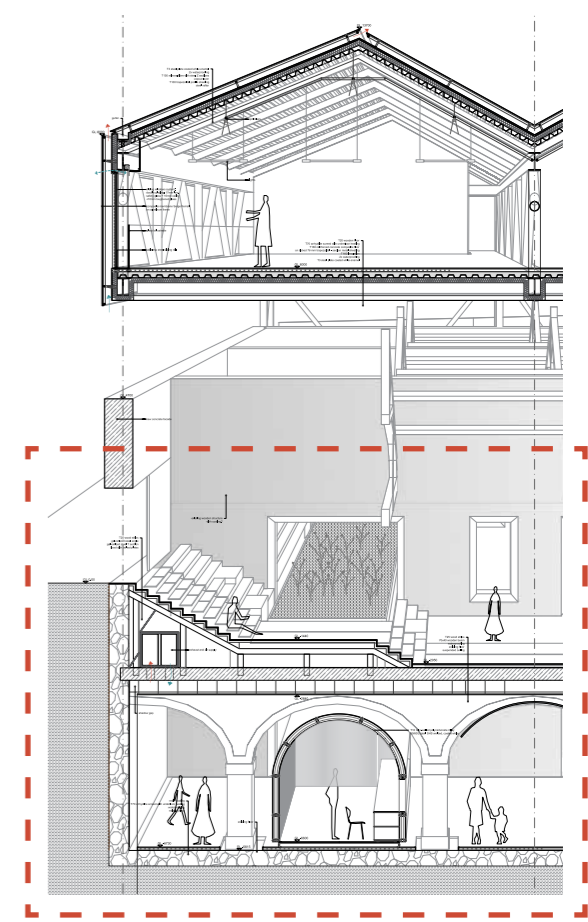
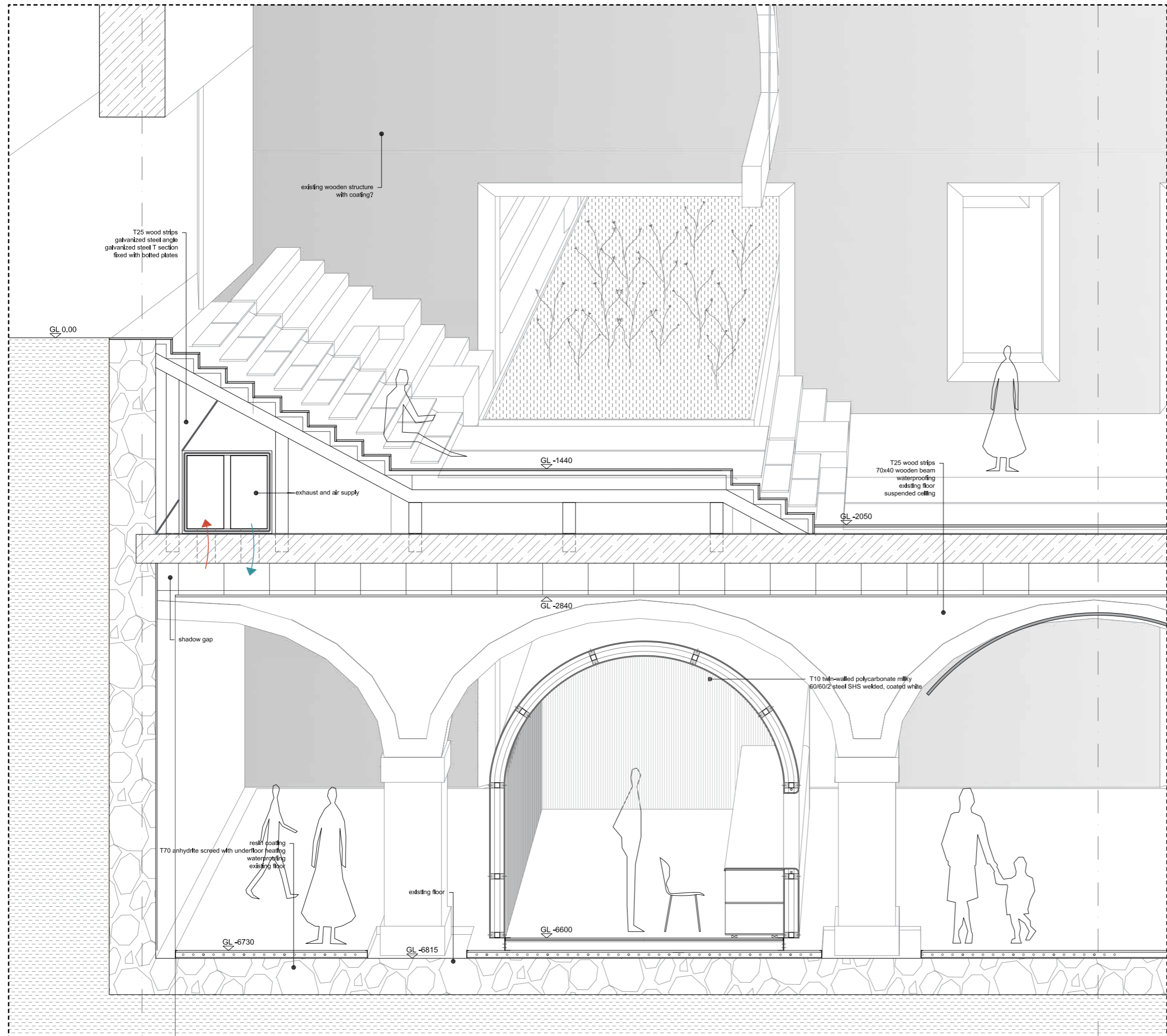
10500

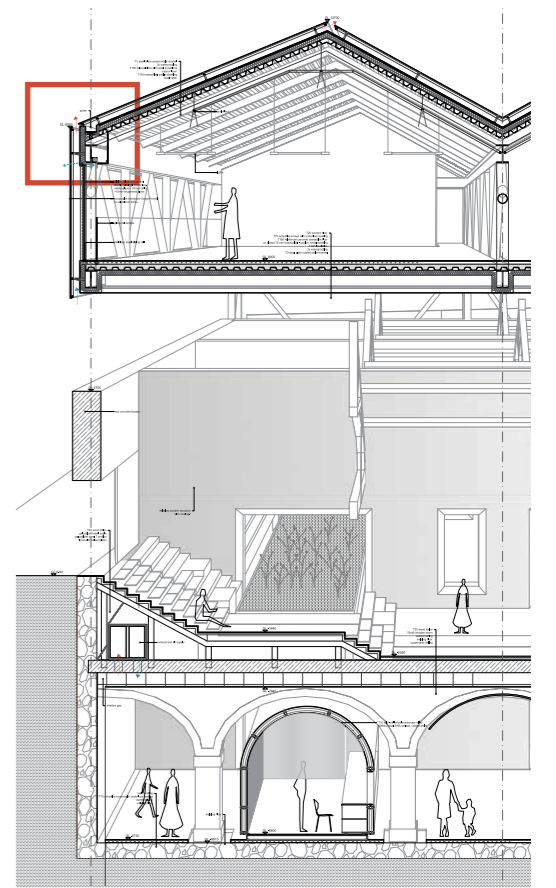
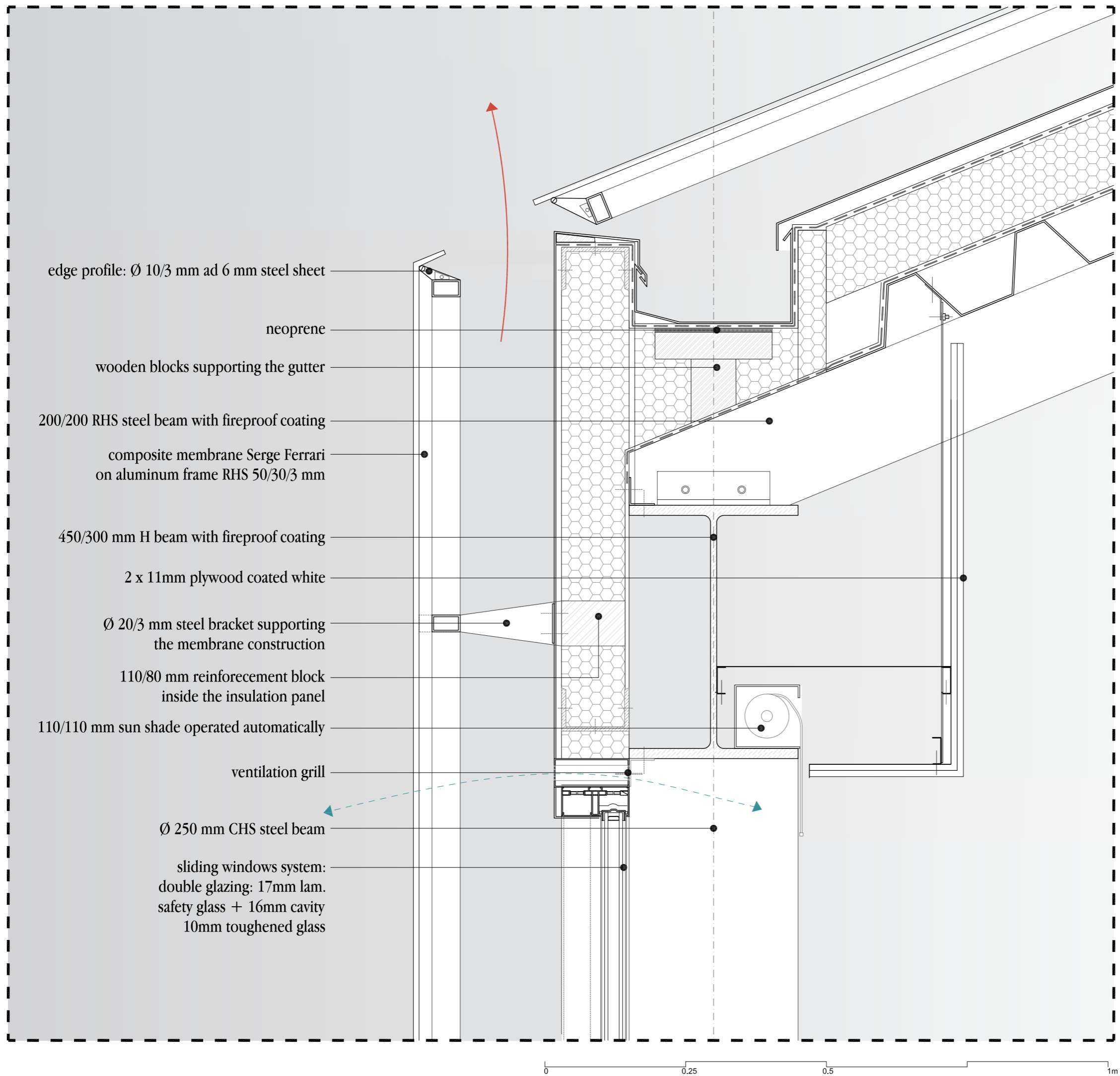


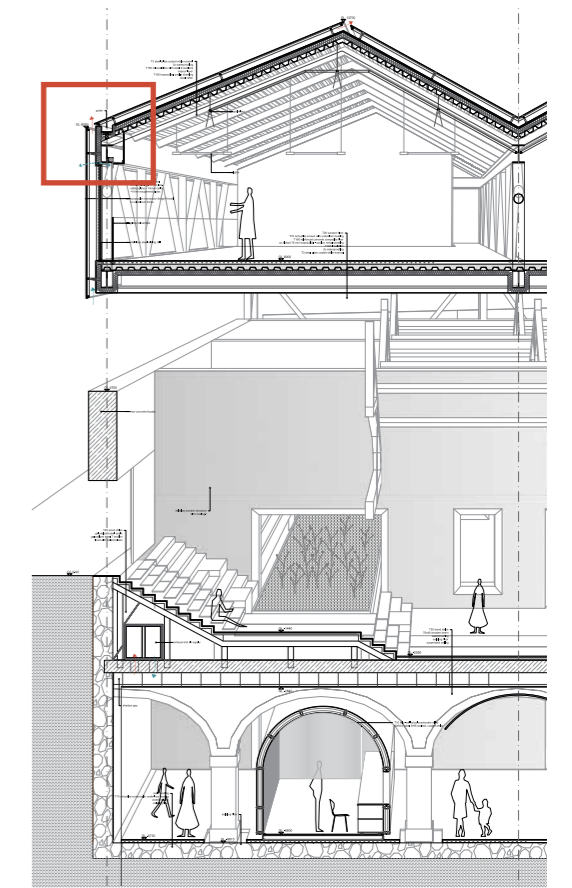
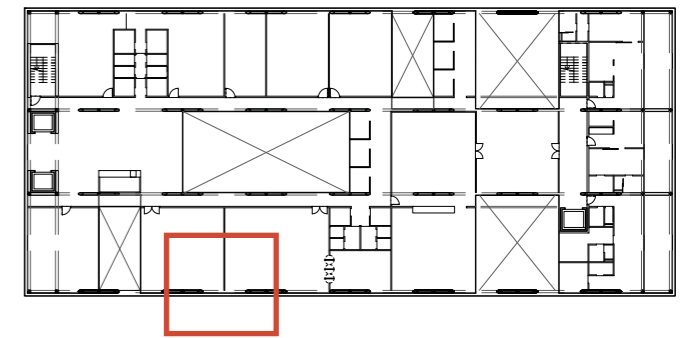
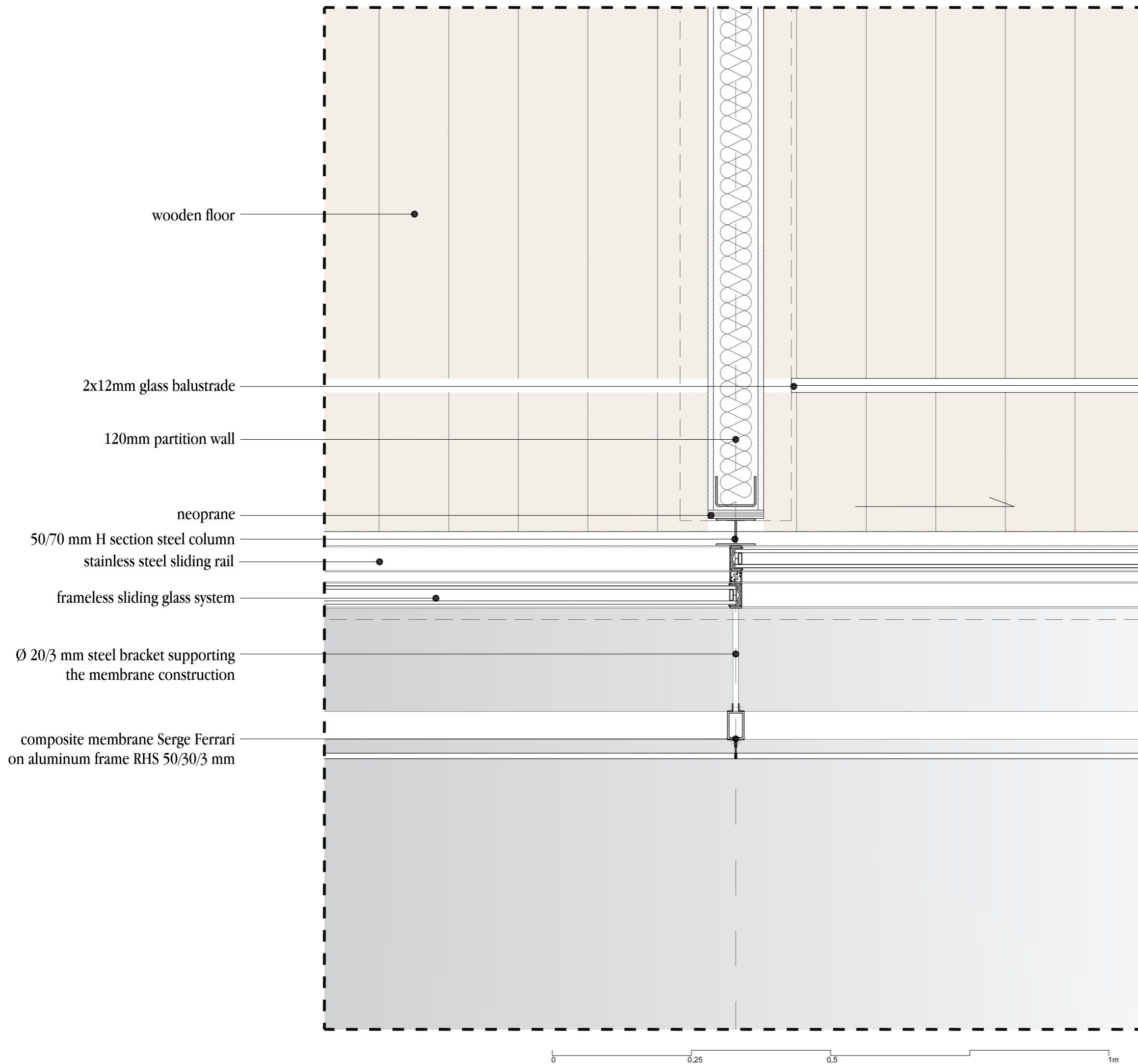


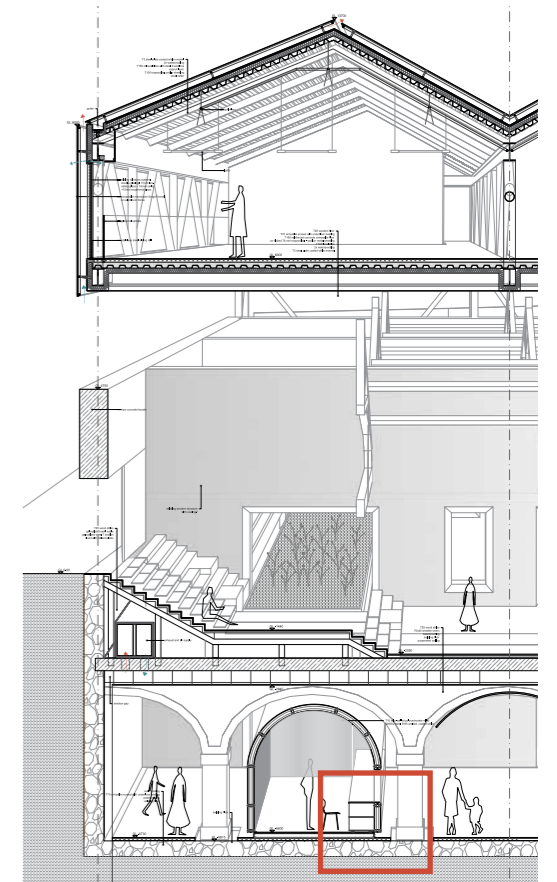
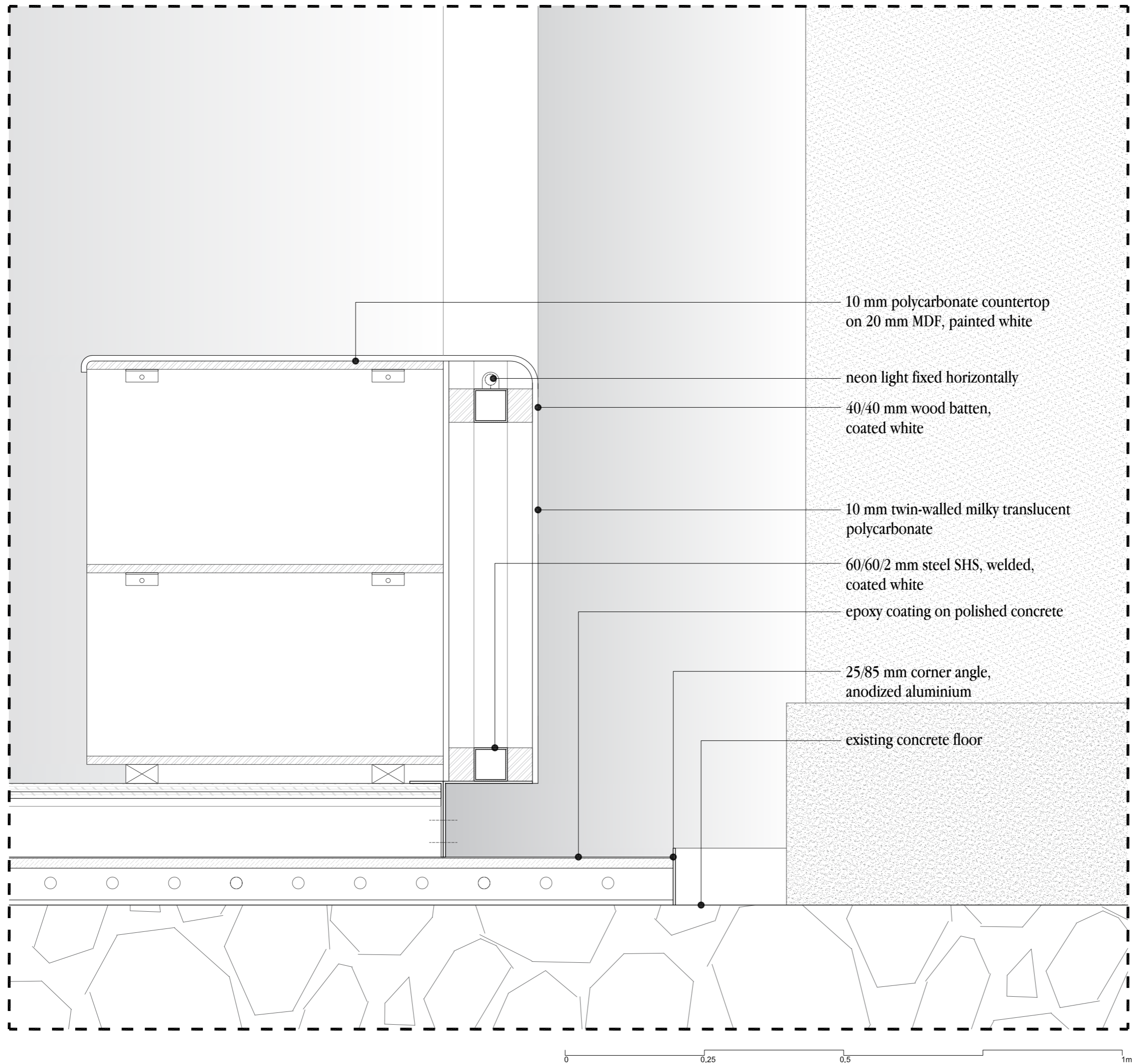












25 mm azobe wood strips on 25 mm bearers

50/50 mm galvanized steel angle
welded to H section

galvanized steel H section 140 mm deep
fixed with bolted plates

galvanized steel H section 140 mm deep
fixed with bolted plates

waterproofing

existing floor slab

