



een stad bestaat uit een verzameling van publieke en private ruimtes





de Brakke Grond* Vlaams cultureel centrum

P5 Presentatie 4 november 2010 - Afstudeerstudio Interiors, Buildings and Cities: culture, identity and sociability - Monique Philippo

plein in de Nes

een stad bestaat uit een verzameling van activiteiten



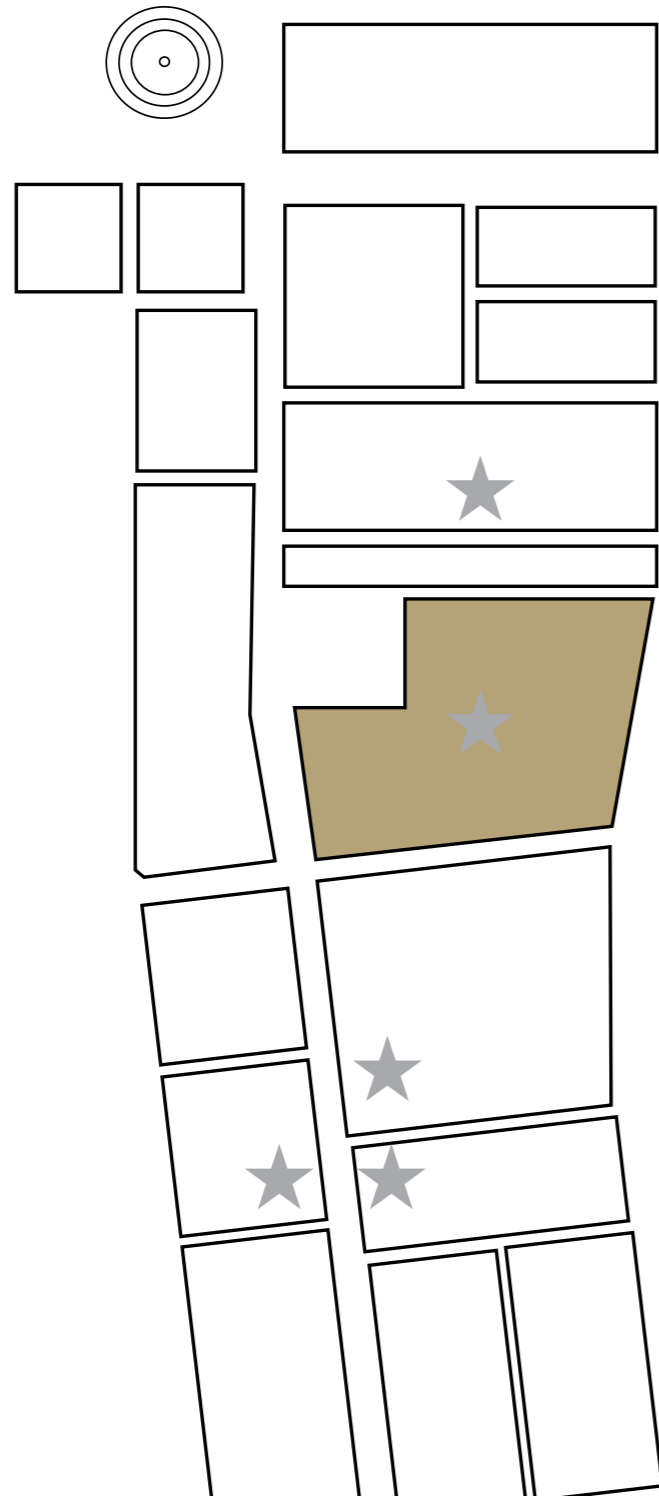
een stad bestaat uit een verzameling gebouwen



de Brakke Grond * Vlaams cultuurhuis

P5 Presentatie 4 november 2010 - Afstudeerstudio Interiors, Buildings and Cities: culture, identity and sociability - Monique Philippo

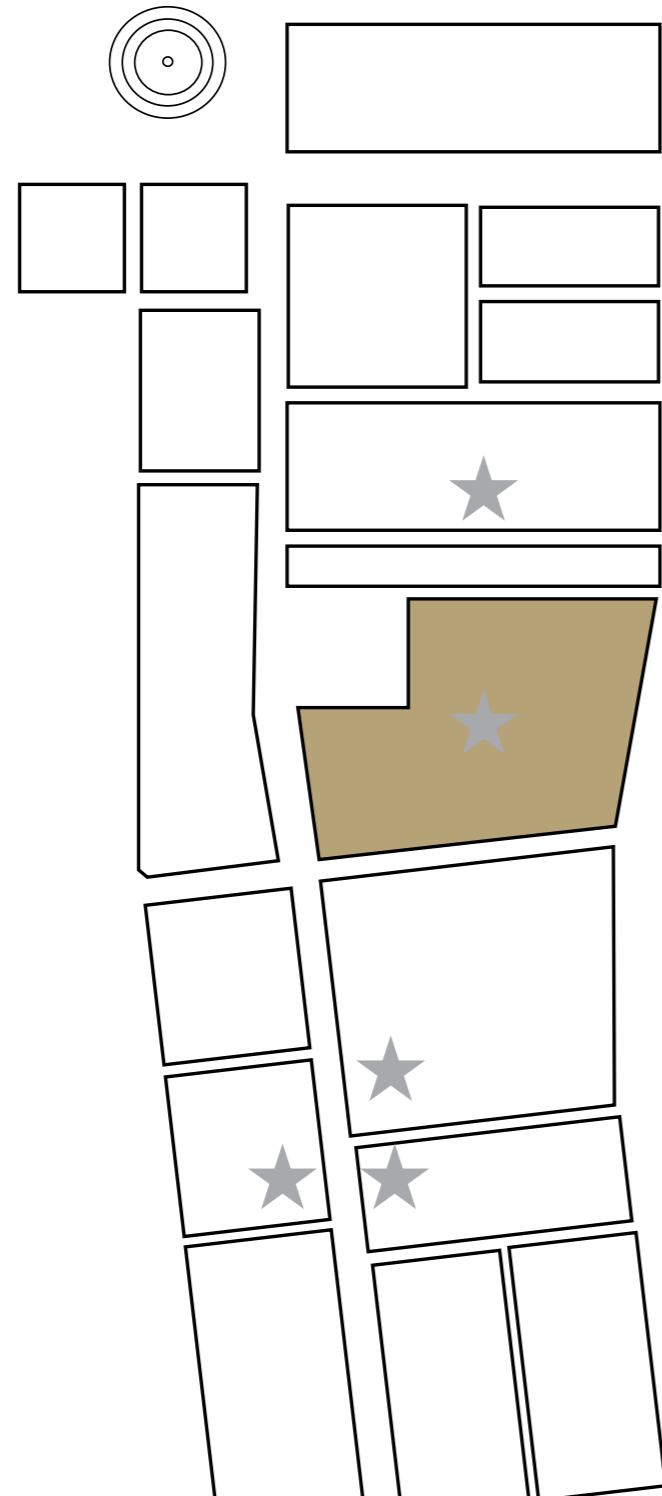
maquette Amsterdam











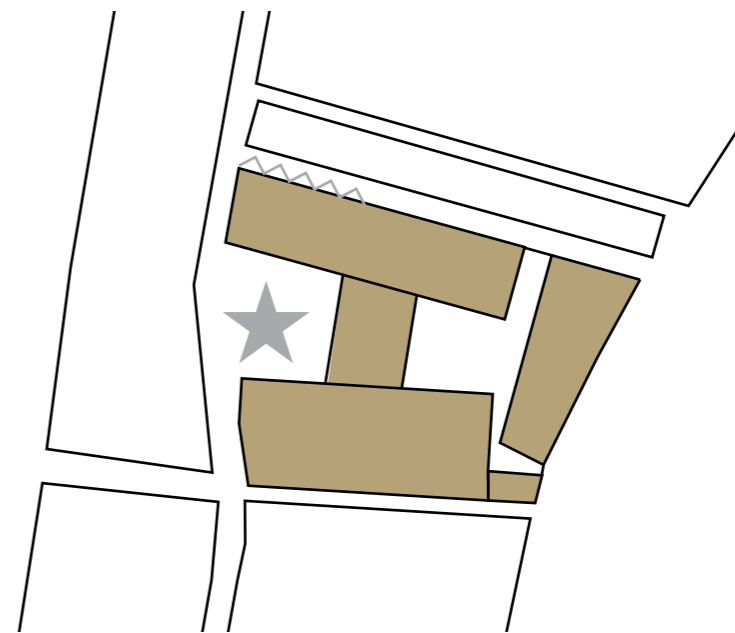
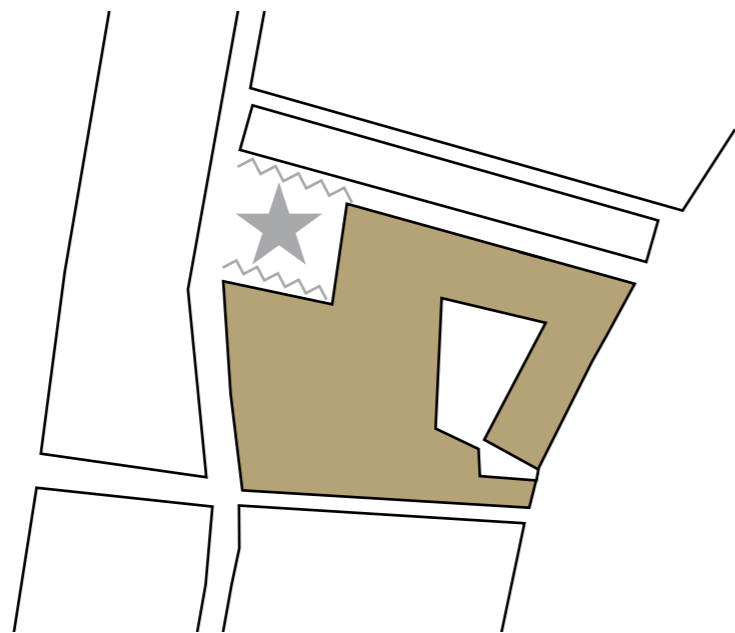


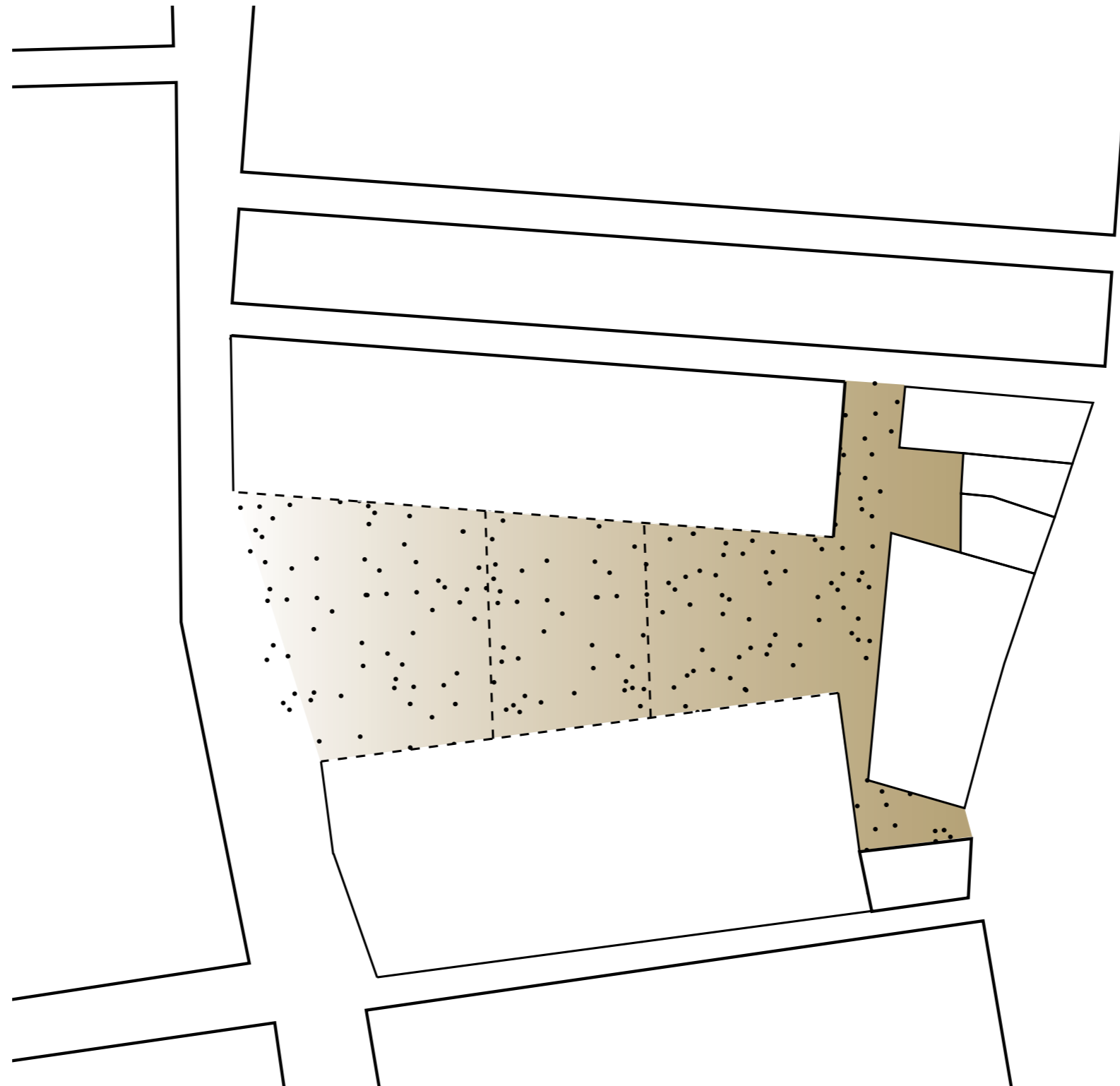


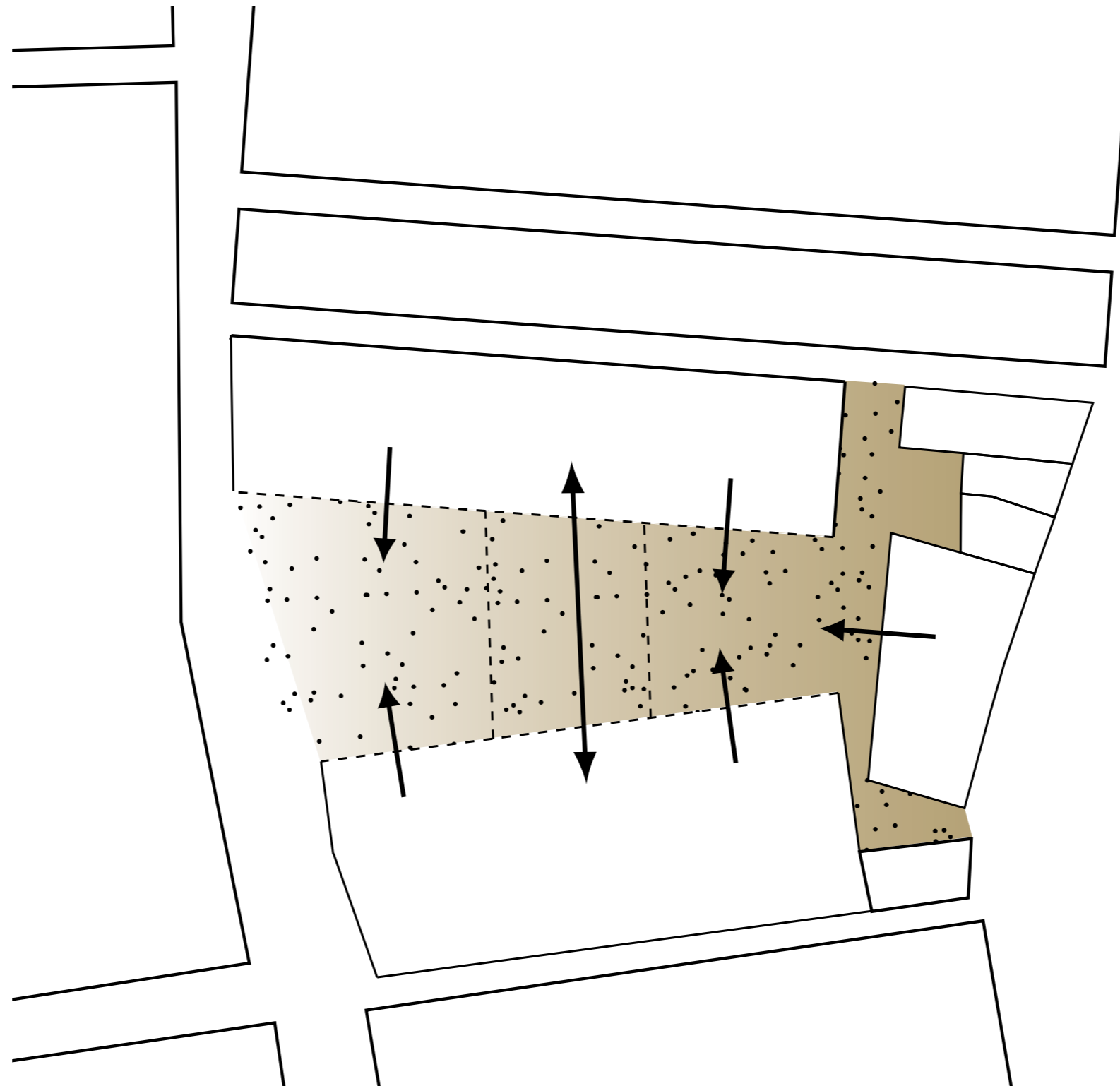














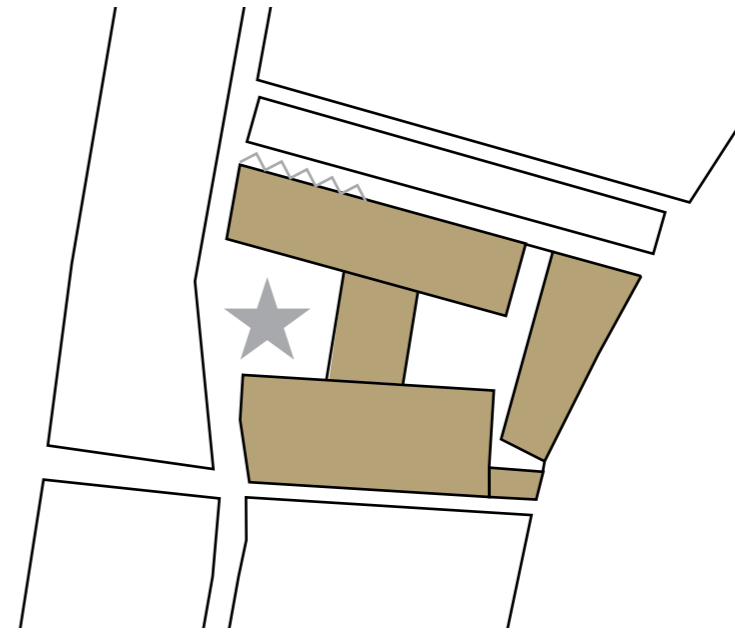
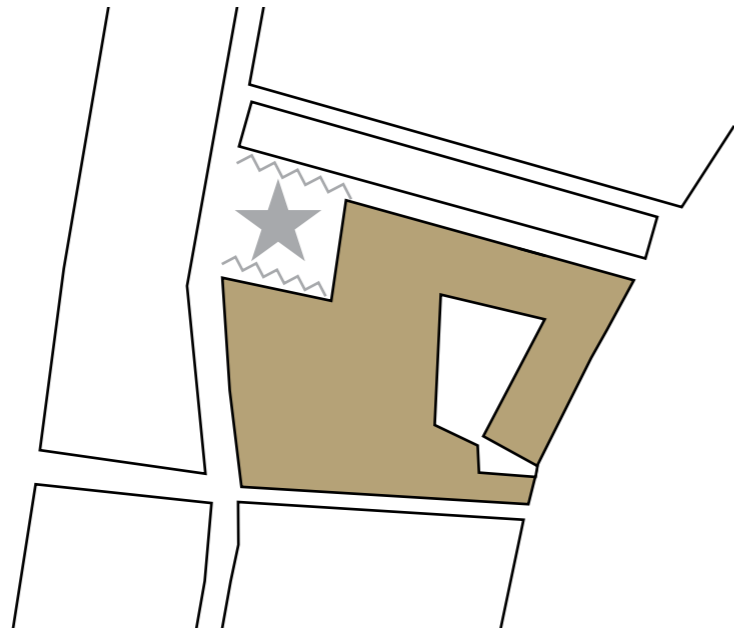
de Brakke Grond* Vlaams cultureel centrum

P5 Presentatie 4 november 2010 - Afstudeerstudio Interiors, Buildings and Cities: culture, identity and sociability - Monique Philippo

plein impressie





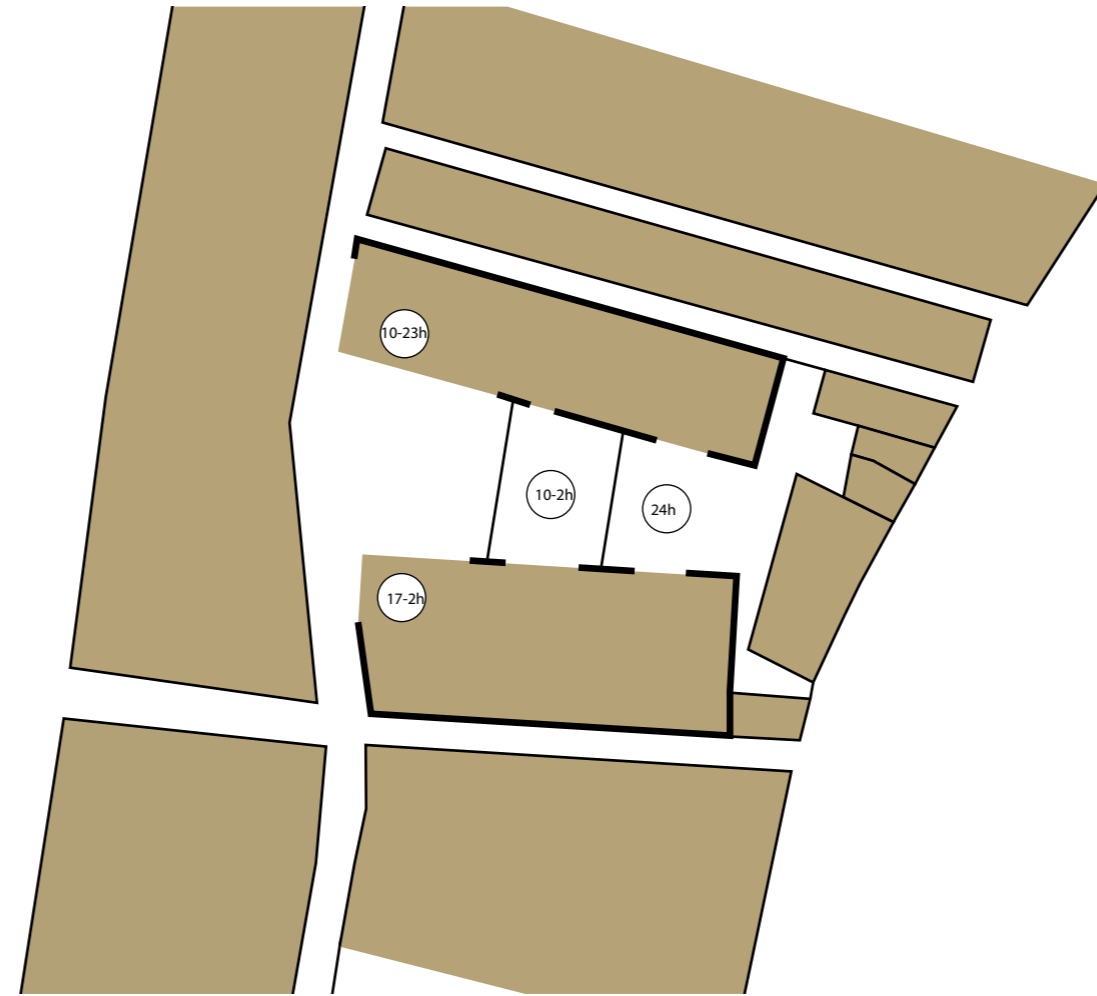




de Brakke Grond* Vlaams cultureel centrum

P5 Presentatie 4 november 2010 - Afstudeerstudio Interiors, Buildings and Cities: culture, identity and sociability - Monique Philippo

bestaand plein





de Brakke Grond* Vlaams cultuurhuis

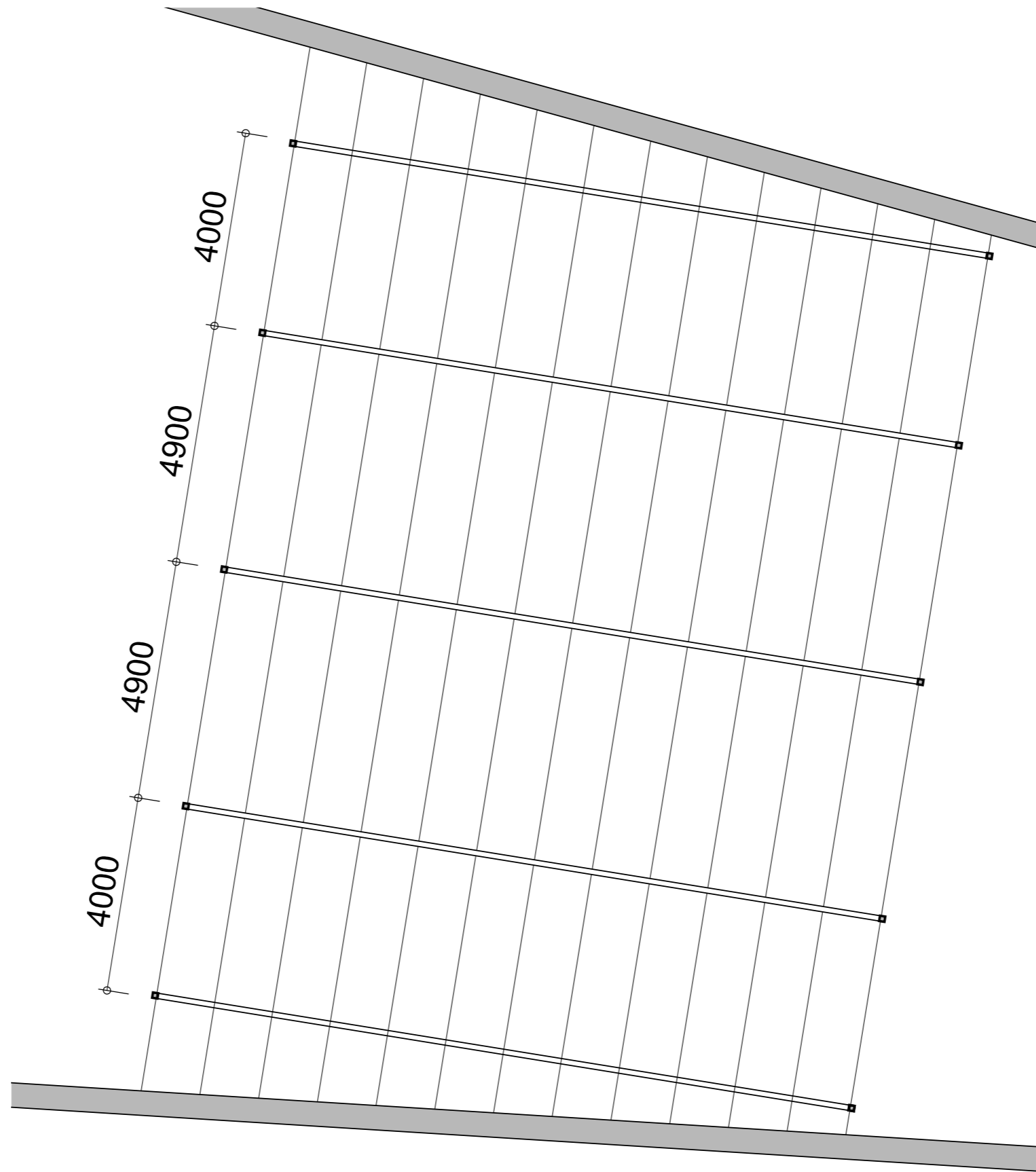
P5 Presentatie 4 november 2010 - Afstudeerstudio Interiors, Buildings and Cities: culture, identity and sociability - Monique Philippo

impressie vanuit de Nes



de Brakke Grond* Vlaams cultureel centrum

P5 Presentatie 4 november 2010 - Afstudeerstudio Interiors, Buildings and Cities: culture, identity and sociability - Monique Philippo







de Brakke Grond* Vlaams cultureel centrum

P5 Presentatie 4 november 2010 - Afstudeerstudio Interiors, Buildings and Cities: culture, identity and sociability - Monique Philippo



de Brakke Grond* Vlaams cultuurhuis

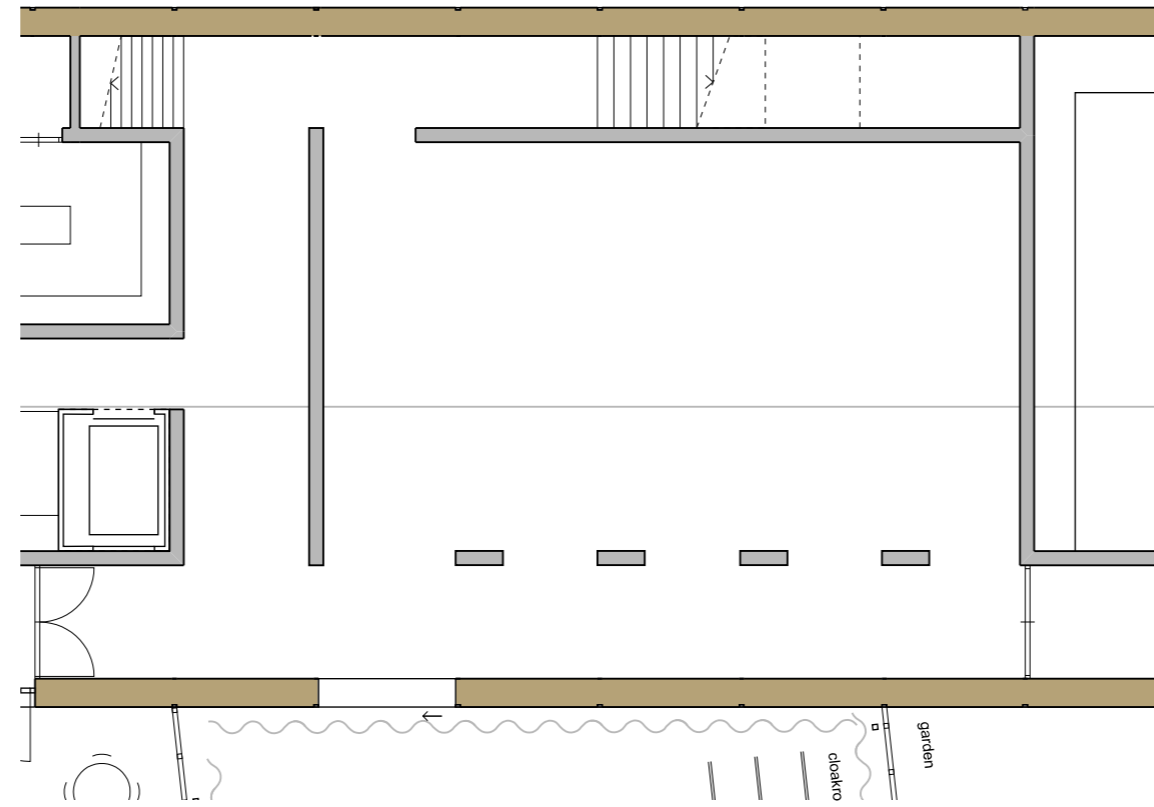
P5 Presentatie 4 november 2010 - Afstudeerstudio Interiors, Buildings and Cities: culture, identity and sociability - Monique Philippo

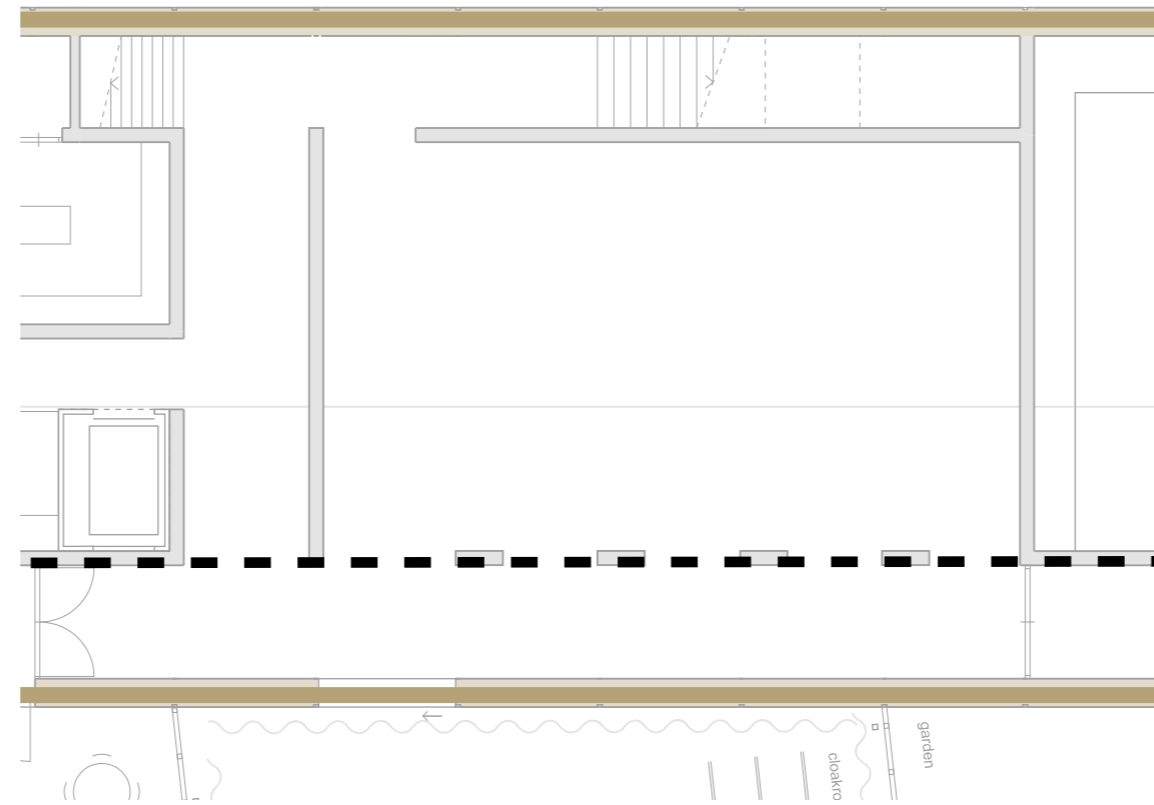


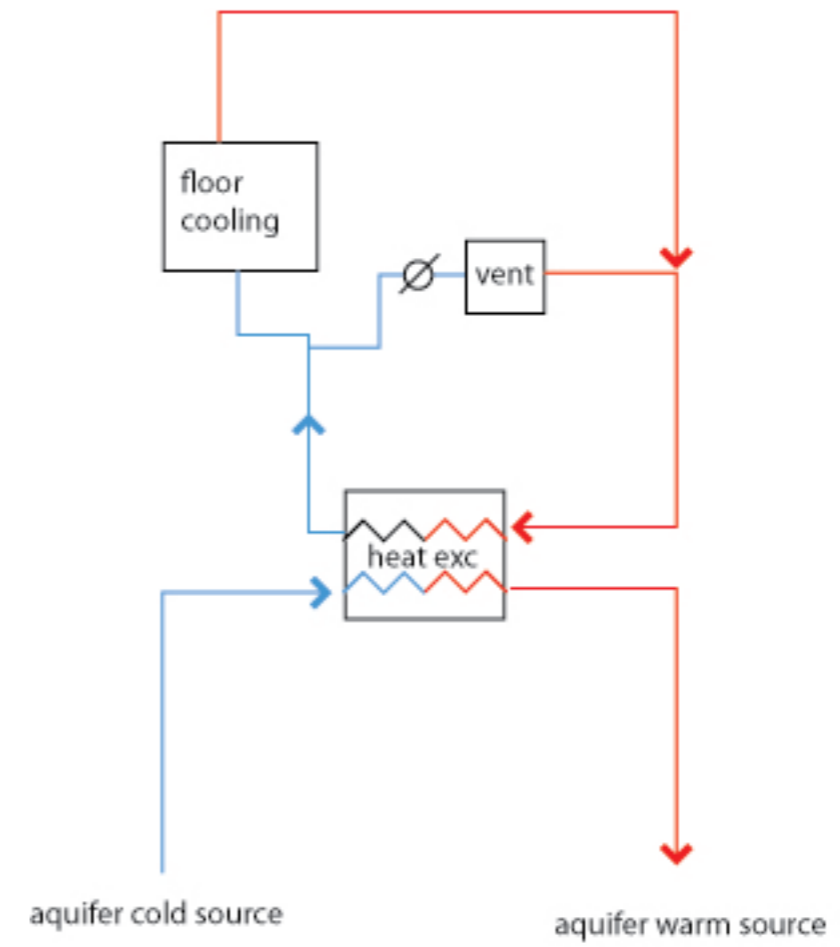
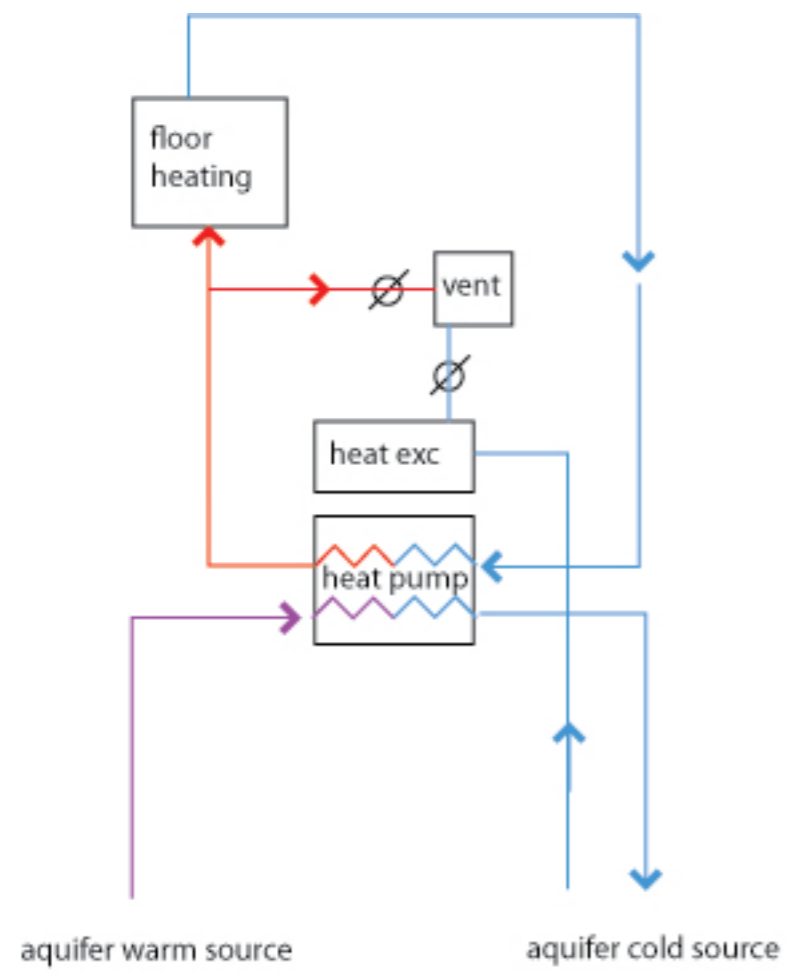


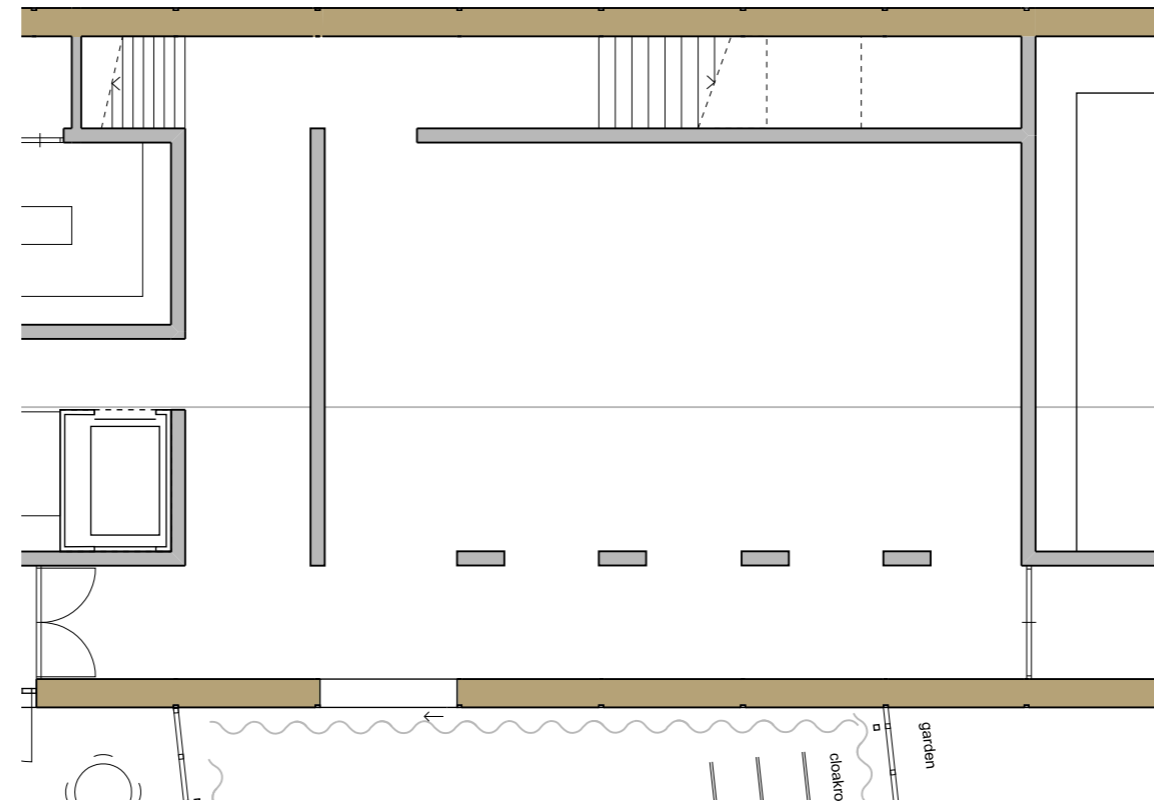








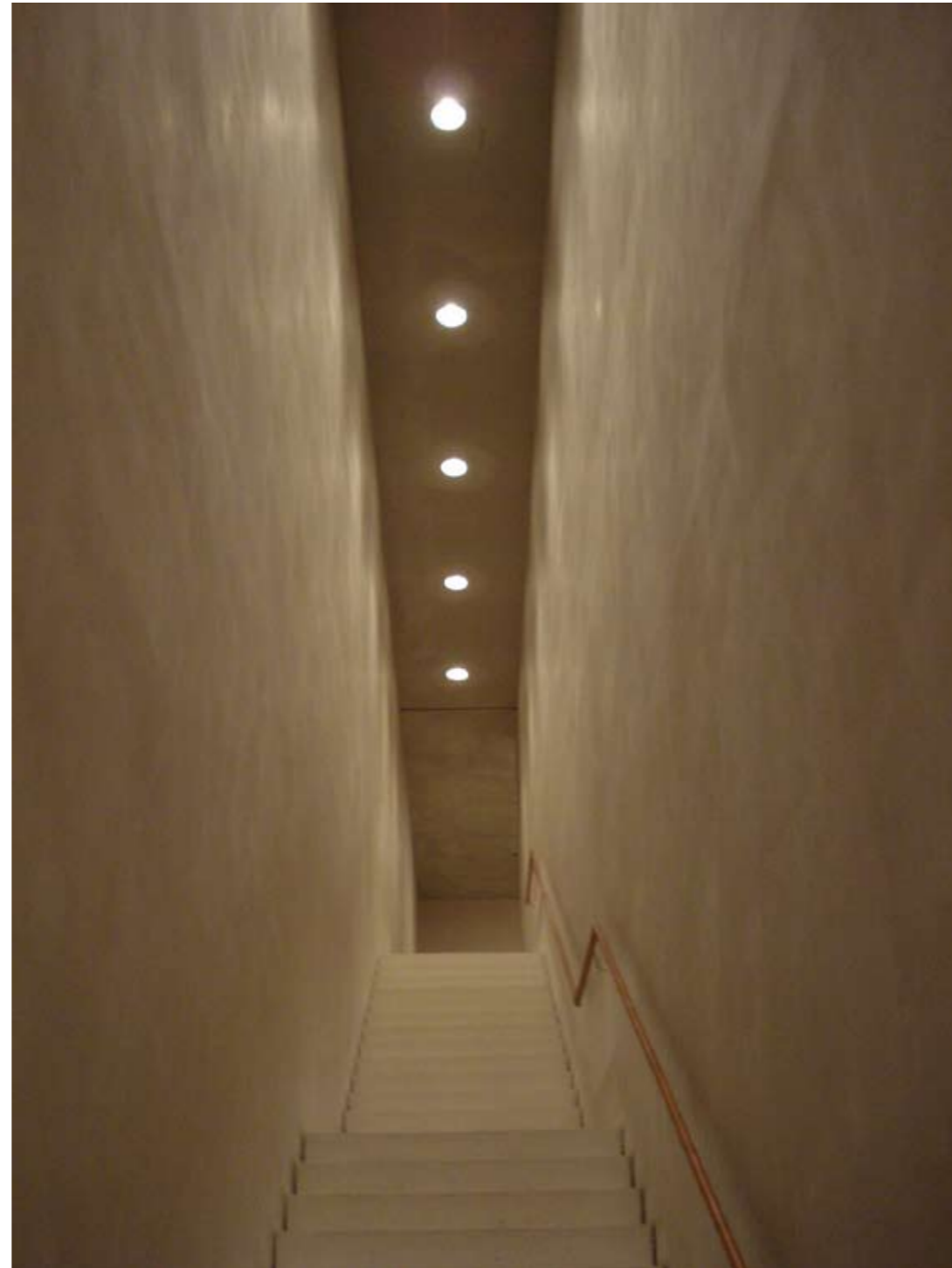


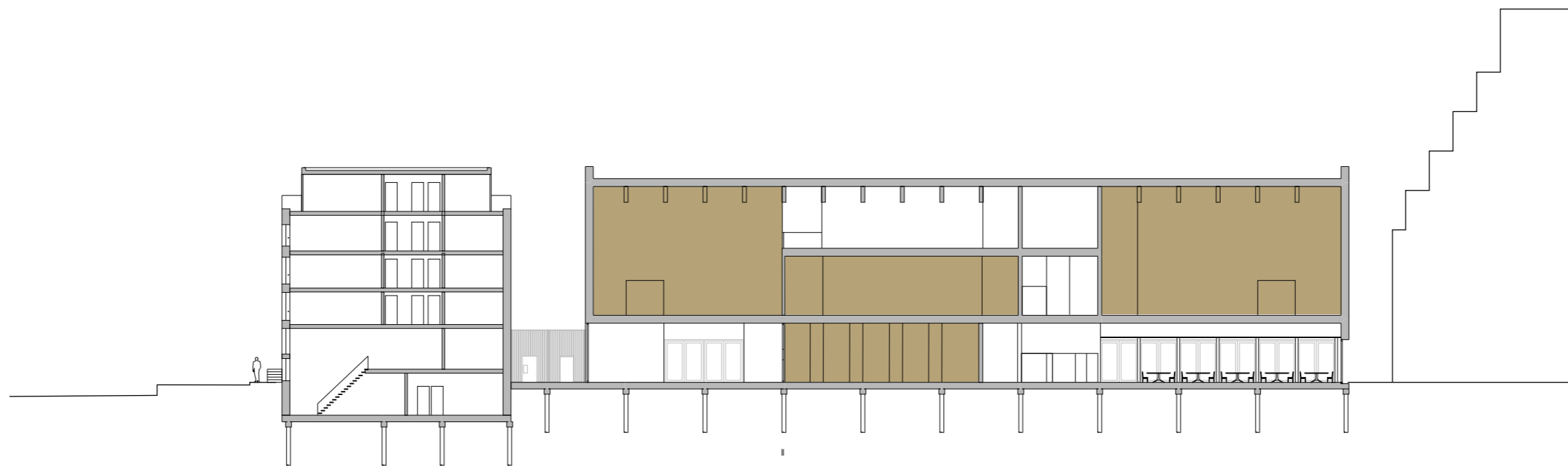






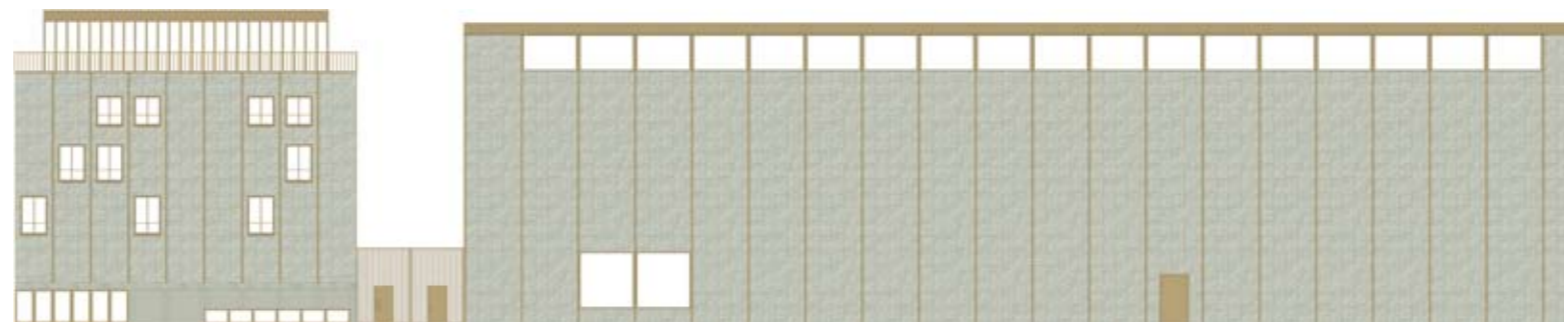
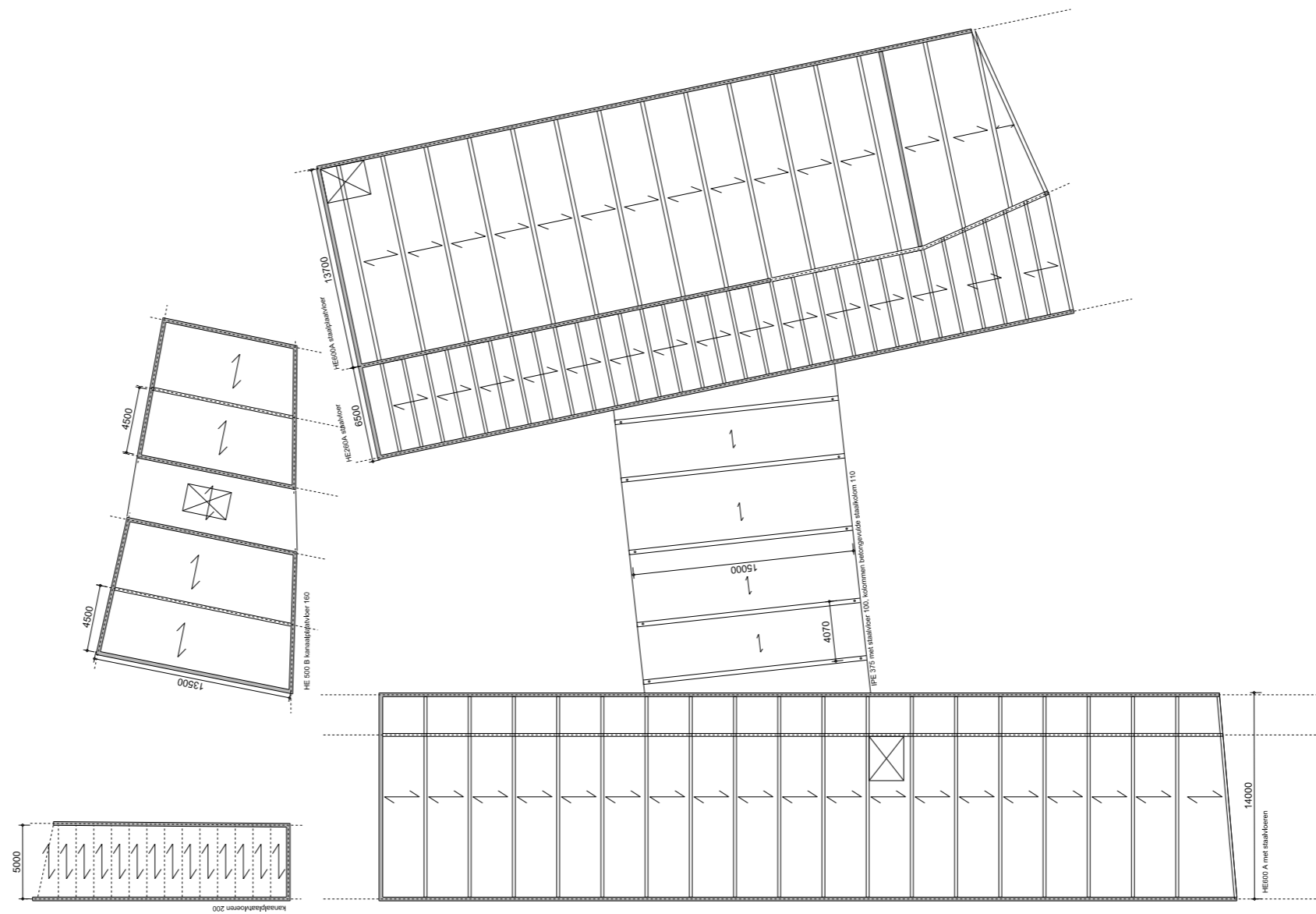


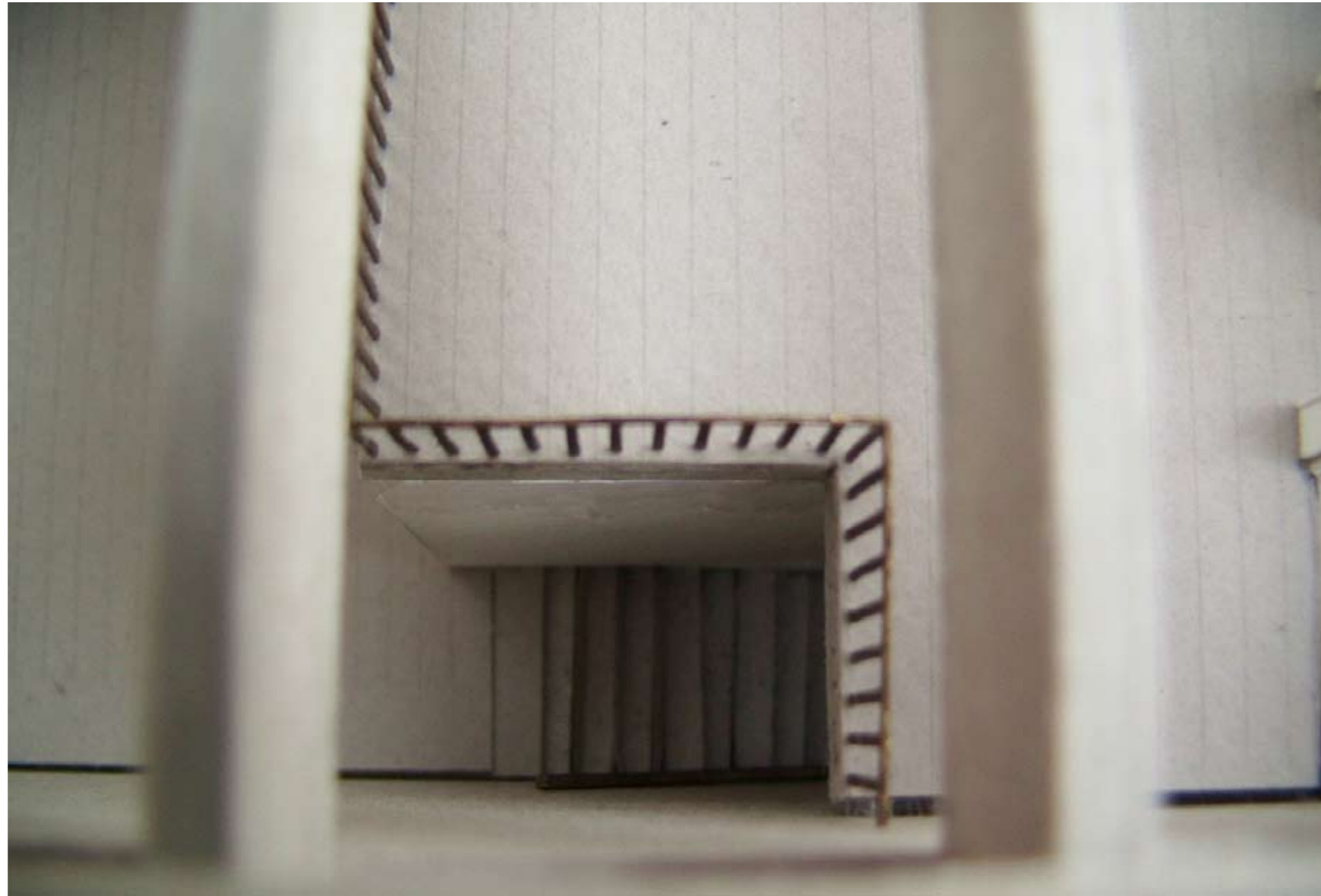




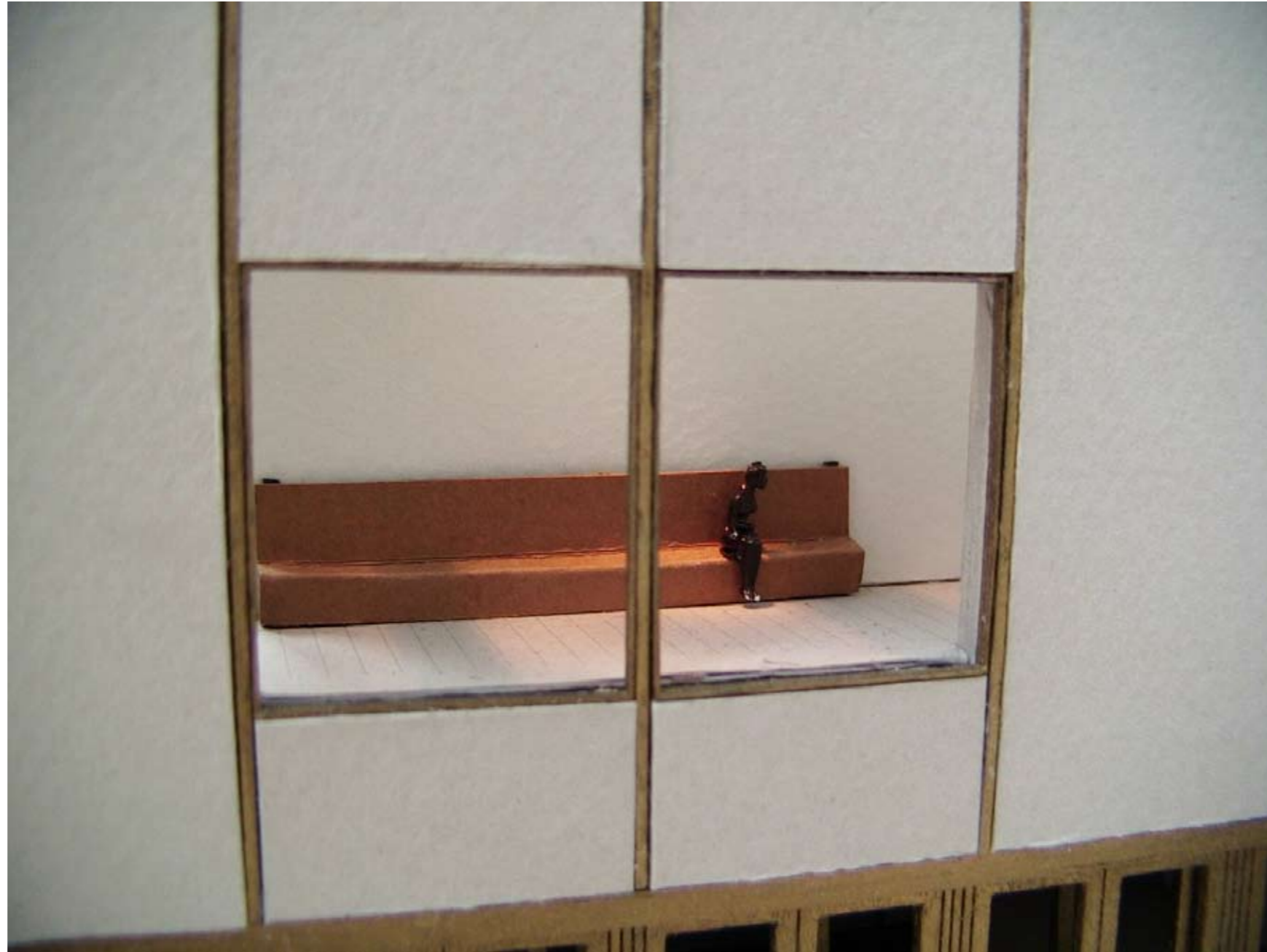


















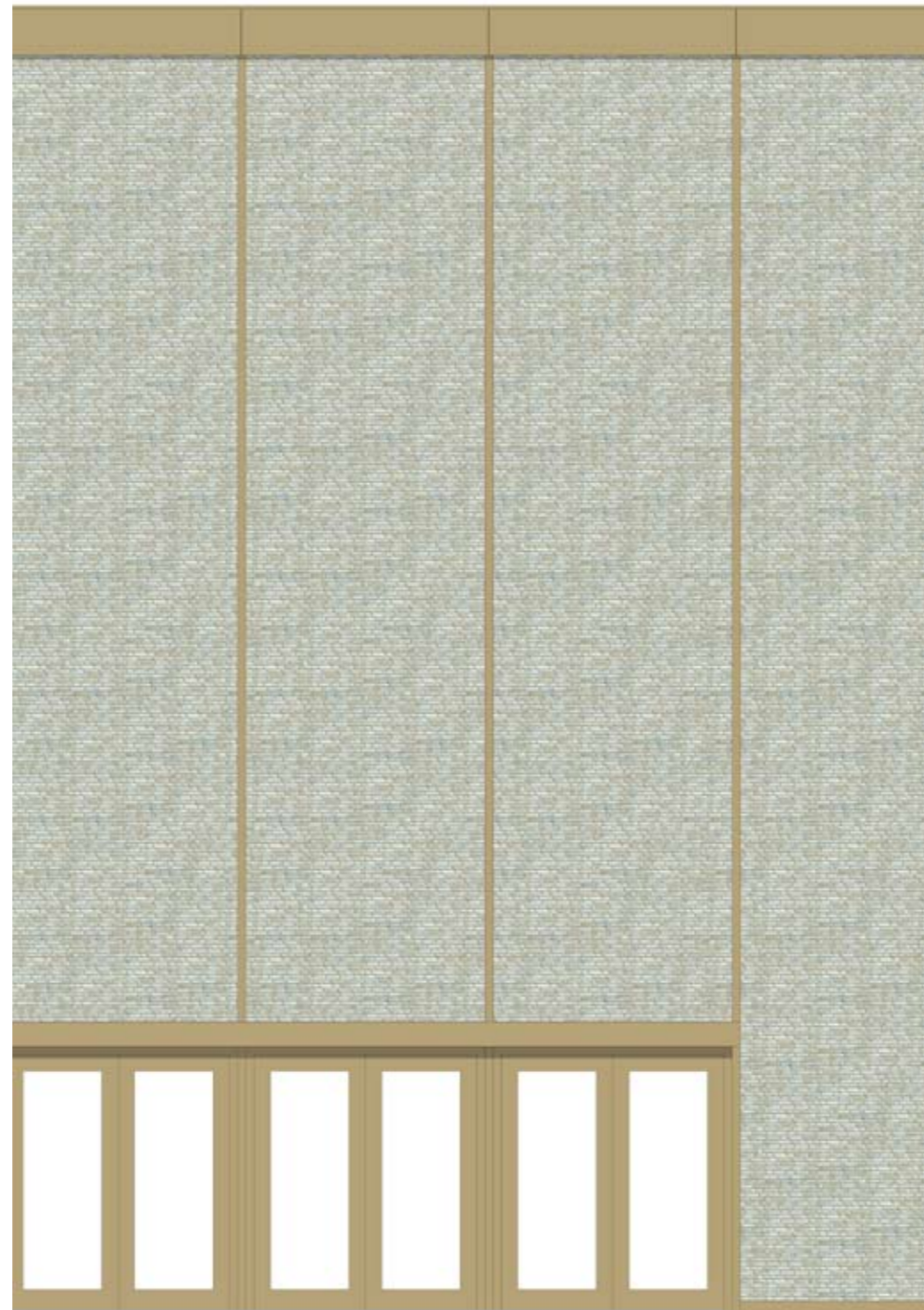
de Brakke Grond* Vlaams cultuurhuis

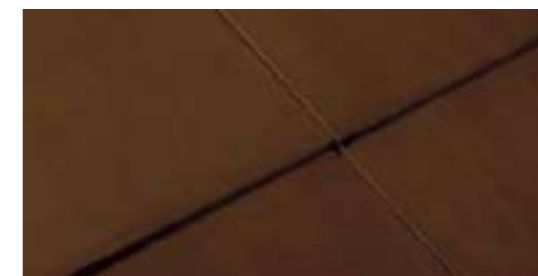
P5 Presentatie 4 november 2010 - Afstudeerstudio Interiors, Buildings and Cities: culture, identity and sociability - Monique Philippo

artists in residence

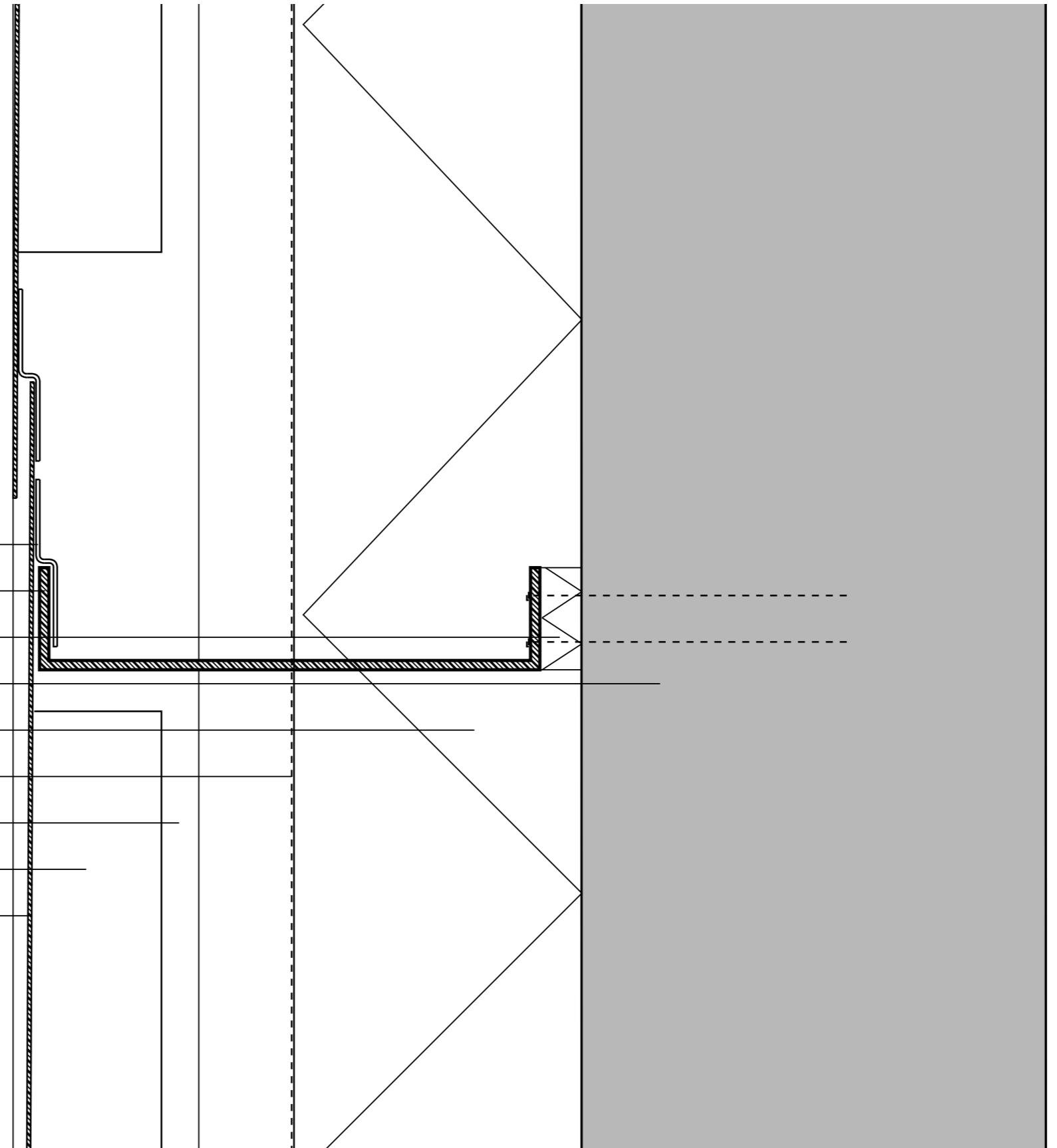








- aangelast stuk Brass tbv bevestiging o
- stalen hoekprofiel o
- neopreen o
- ihwg beton 250 mm o
- EPS isolatie 150 mm o
- waterwerende folie o
- aanzicht baksteenmuur o
- aanzicht flank u profiel Brass o
- Tecu Brass 2 mm o

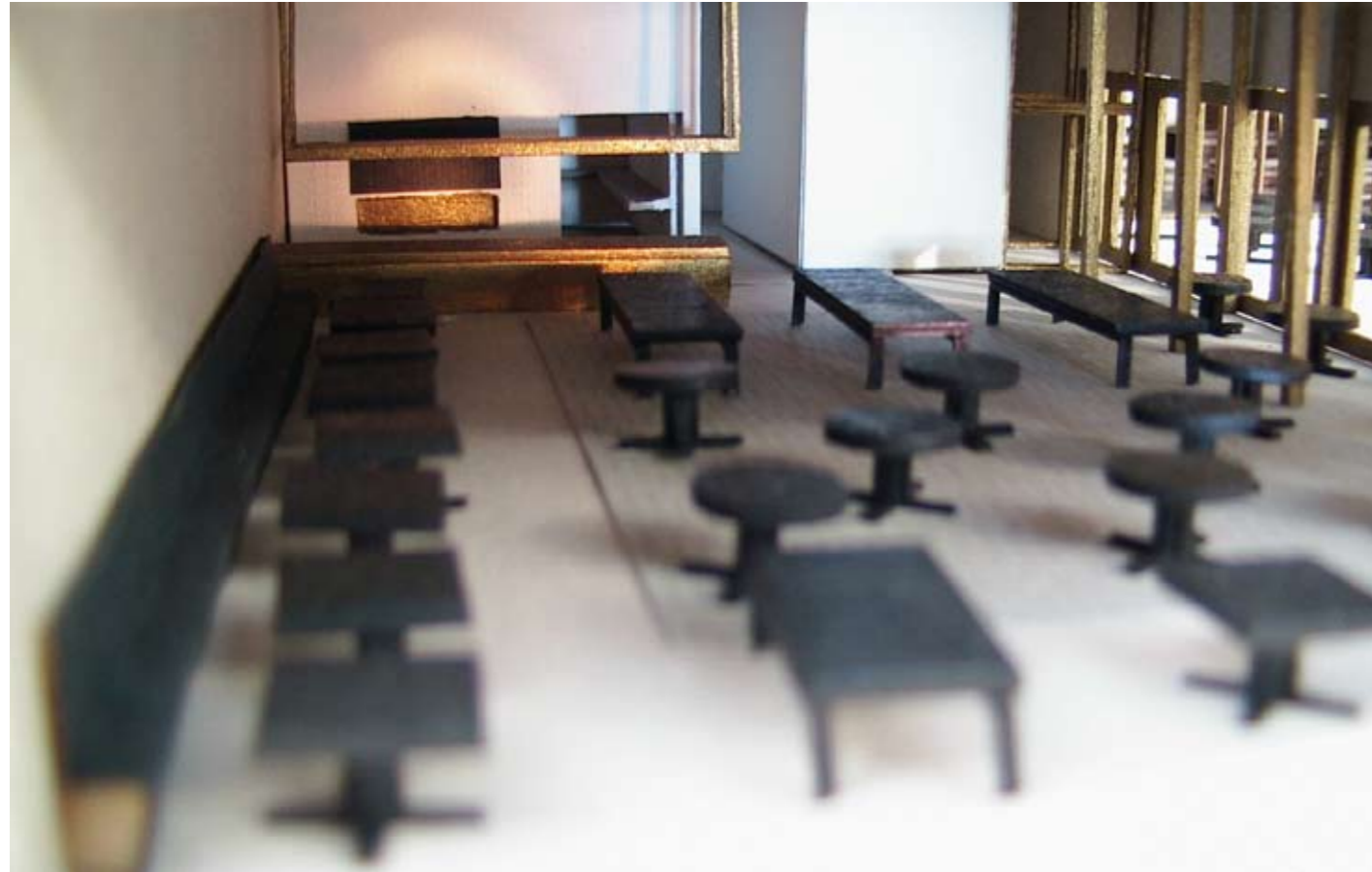




de Brakke Grond* Vlaams cultuurhuis

P5 Presentatie 4 november 2010 - Afstudeerstudio Interiors, Buildings and Cities: culture, identity and sociability - Monique Philippo

ritme verschillen







de Brakke Grond* Vlaams cultuurhuis

P5 Presentatie 4 november 2010 - Afstudeerstudio Interiors, Buildings and Cities: culture, identity and sociability - Monique Philippo

entree volume



