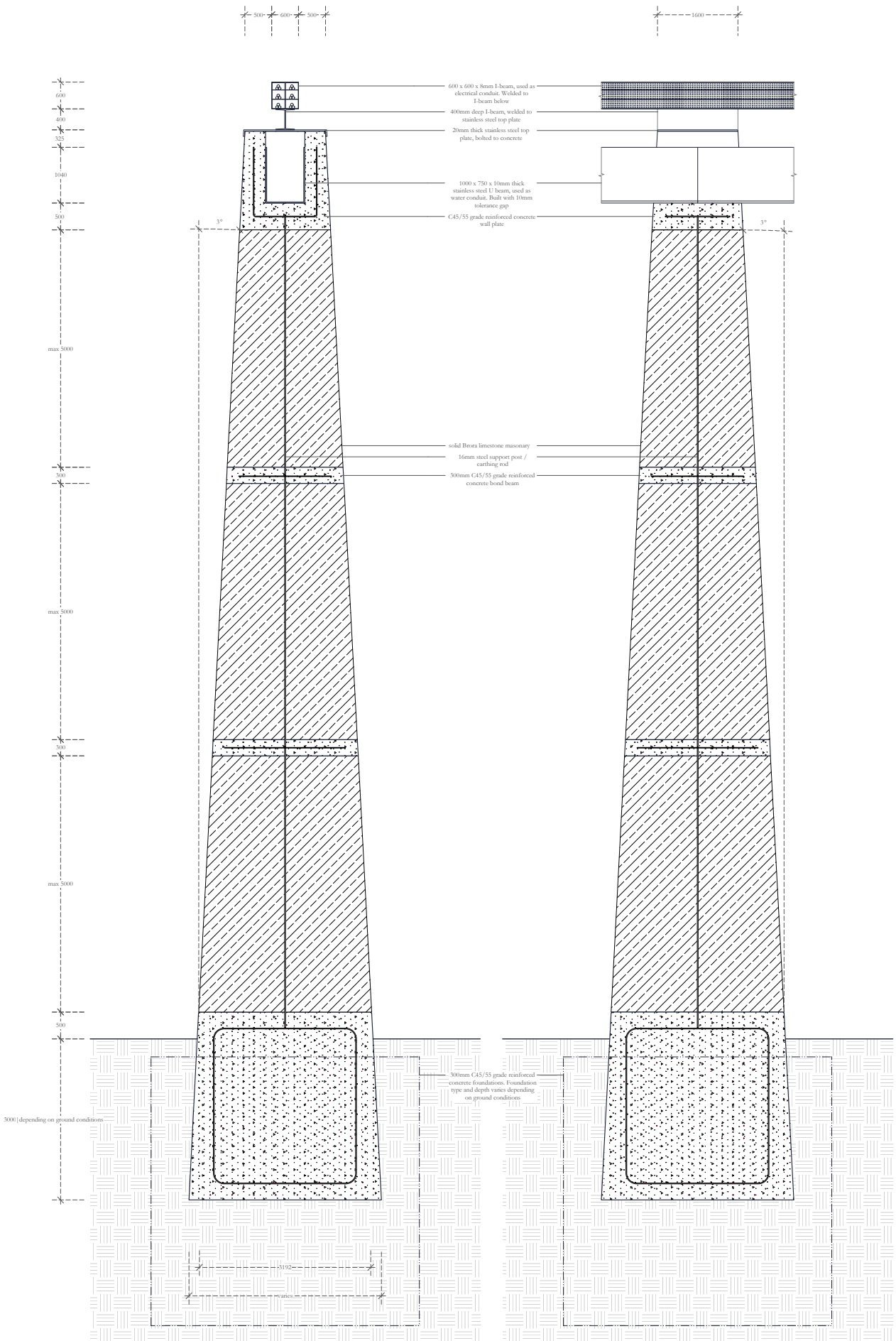
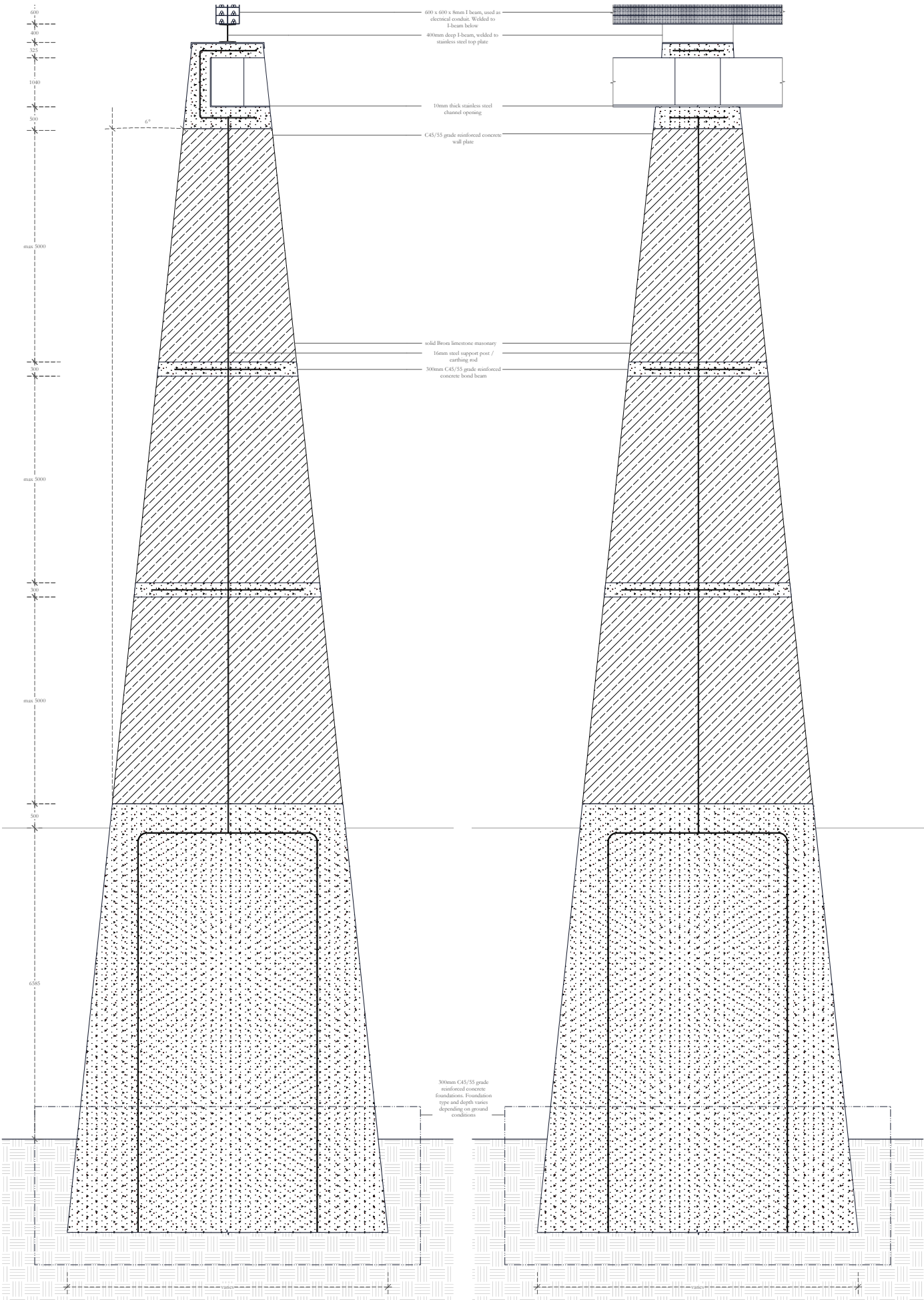


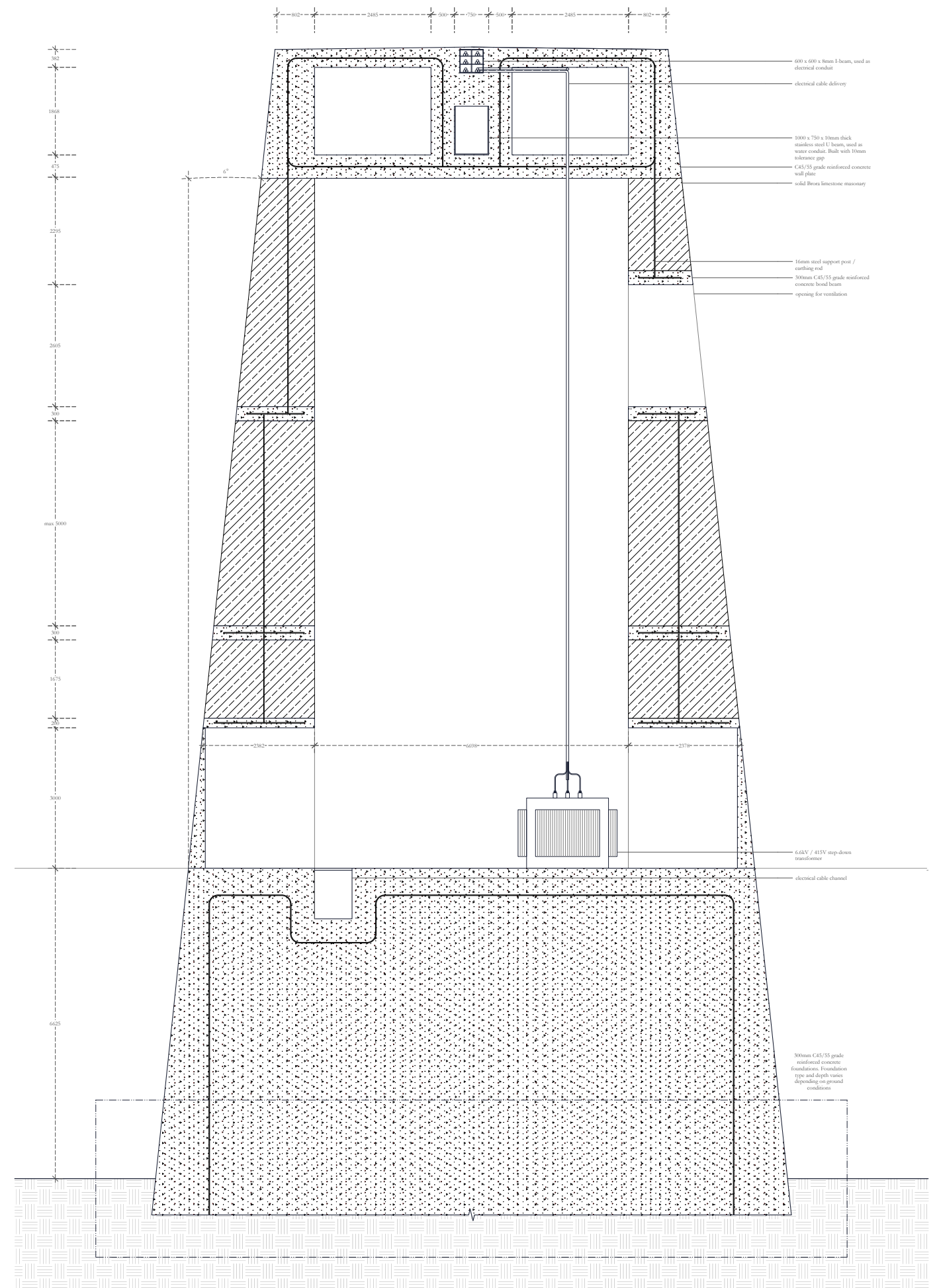
Typical aqueduct column
1:100



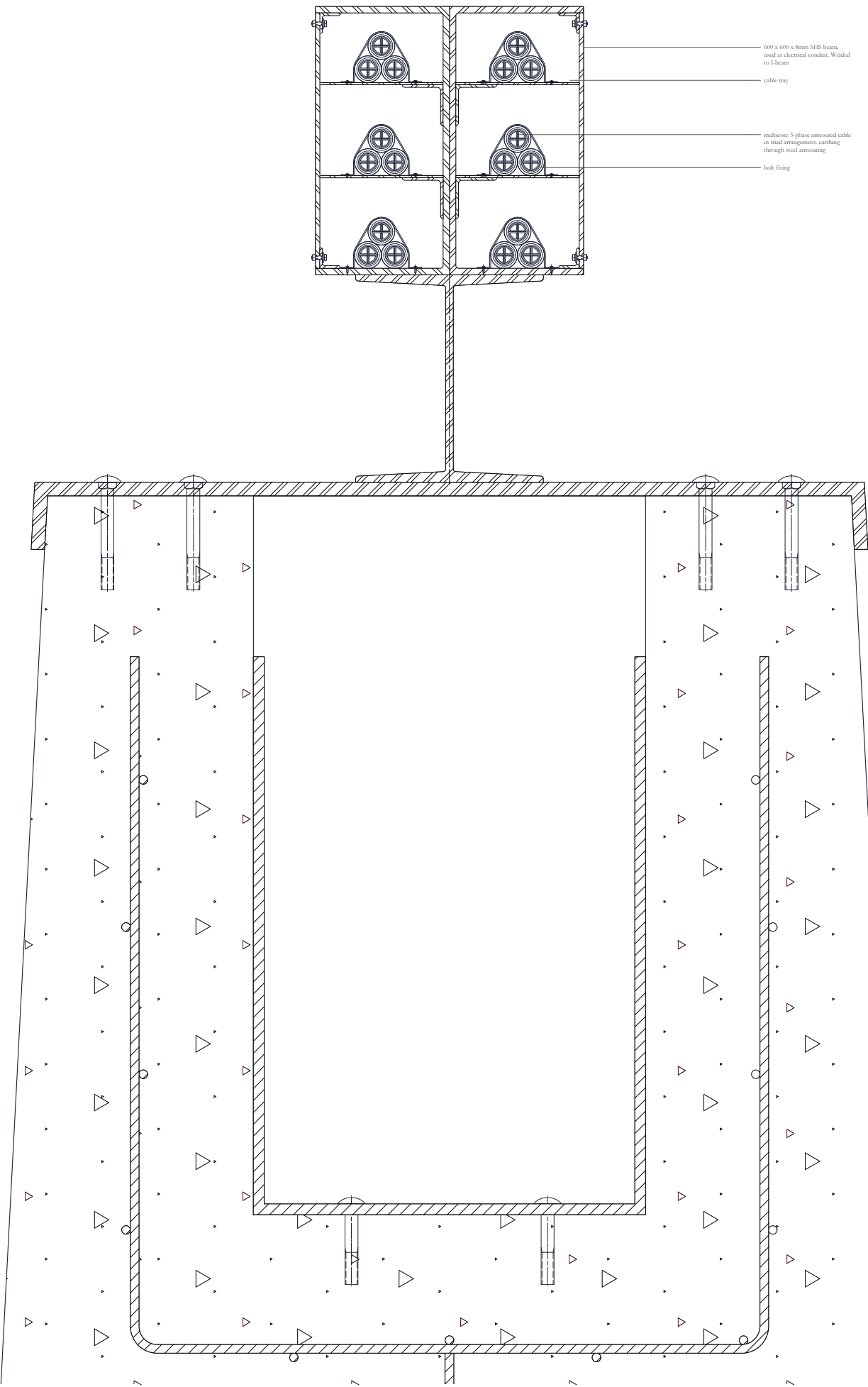
Water delivery aqueduct column
1:100



1:100

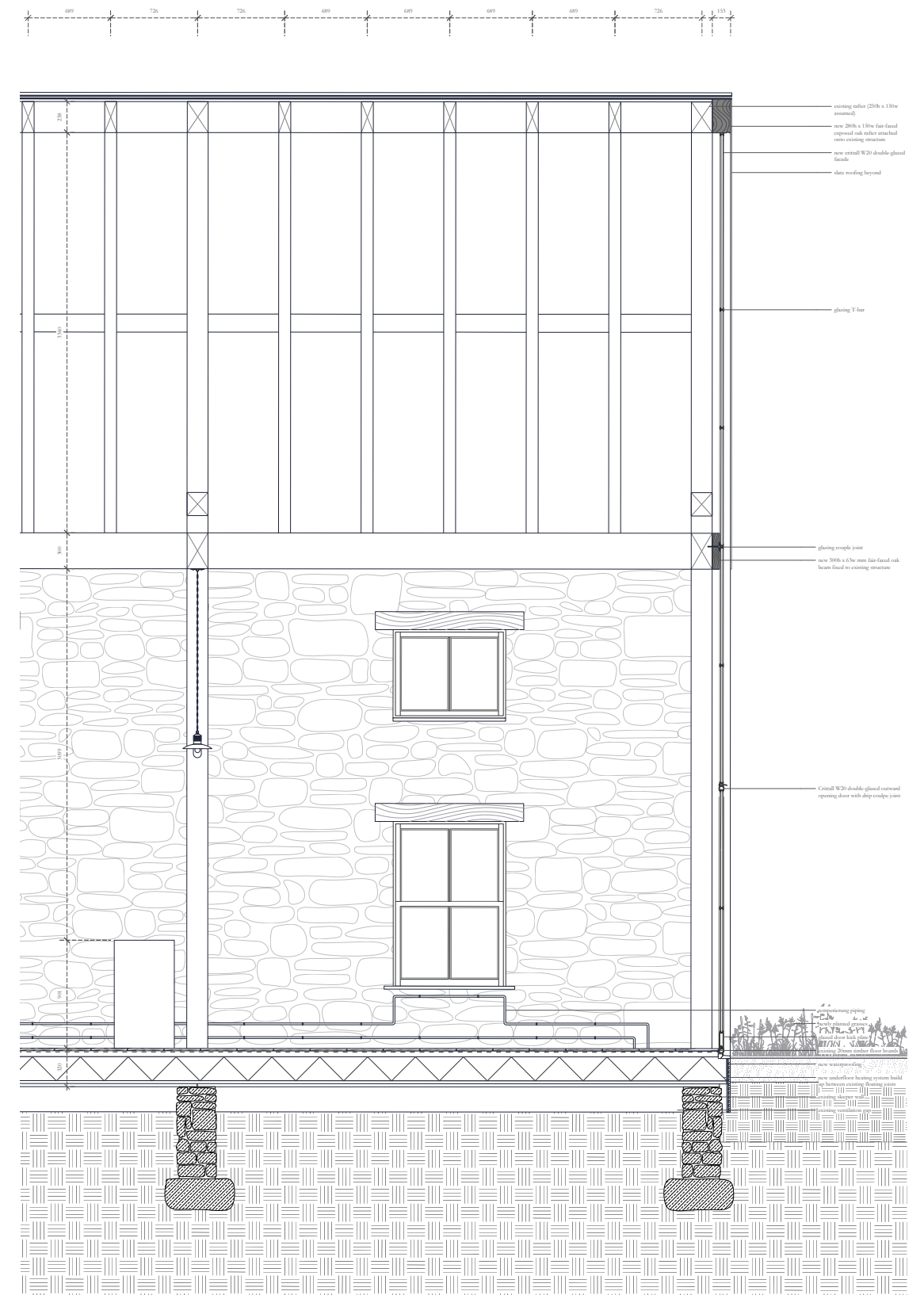


Typical column head detail
1:10

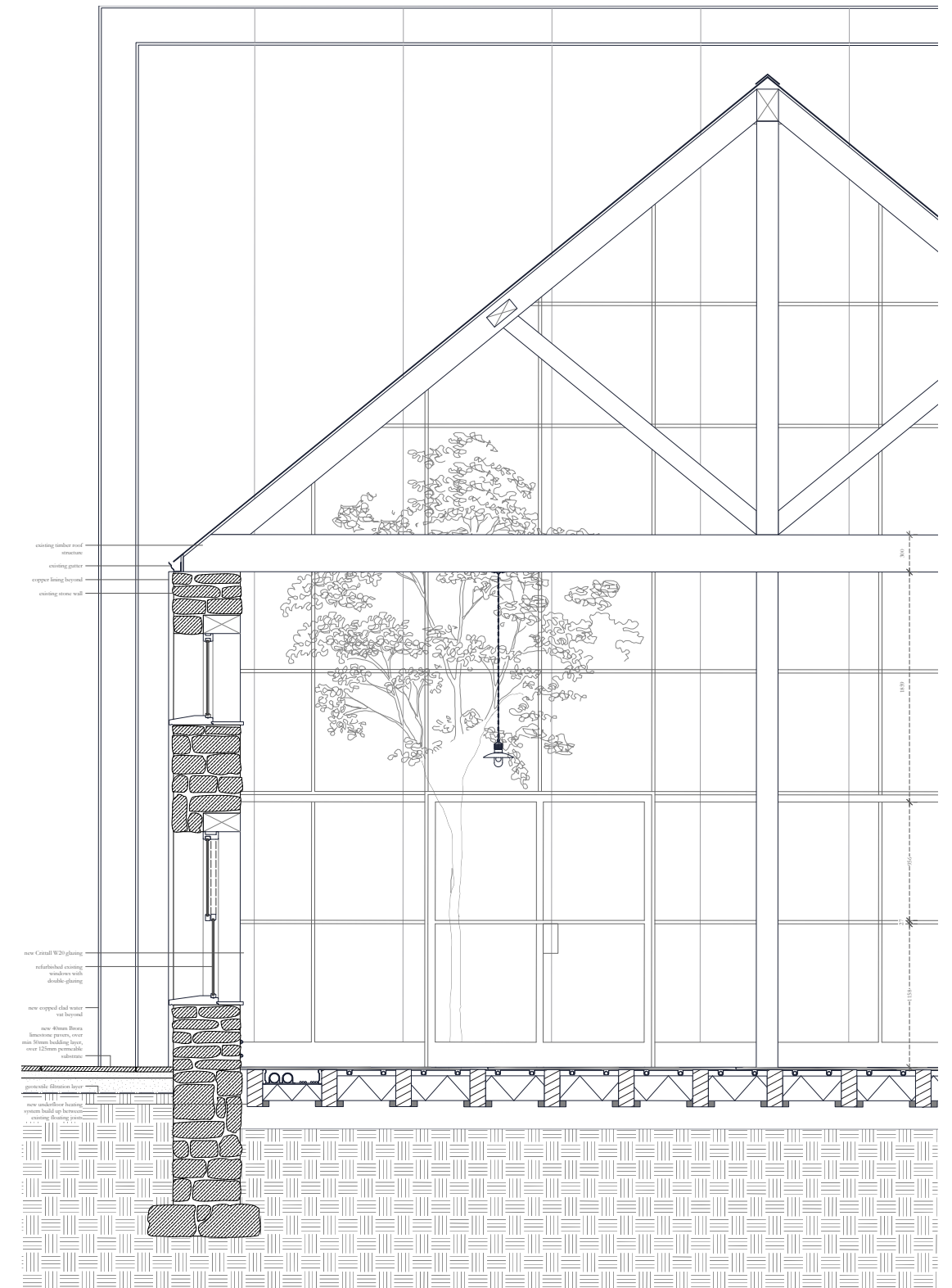


B Distillery Intervention Structure

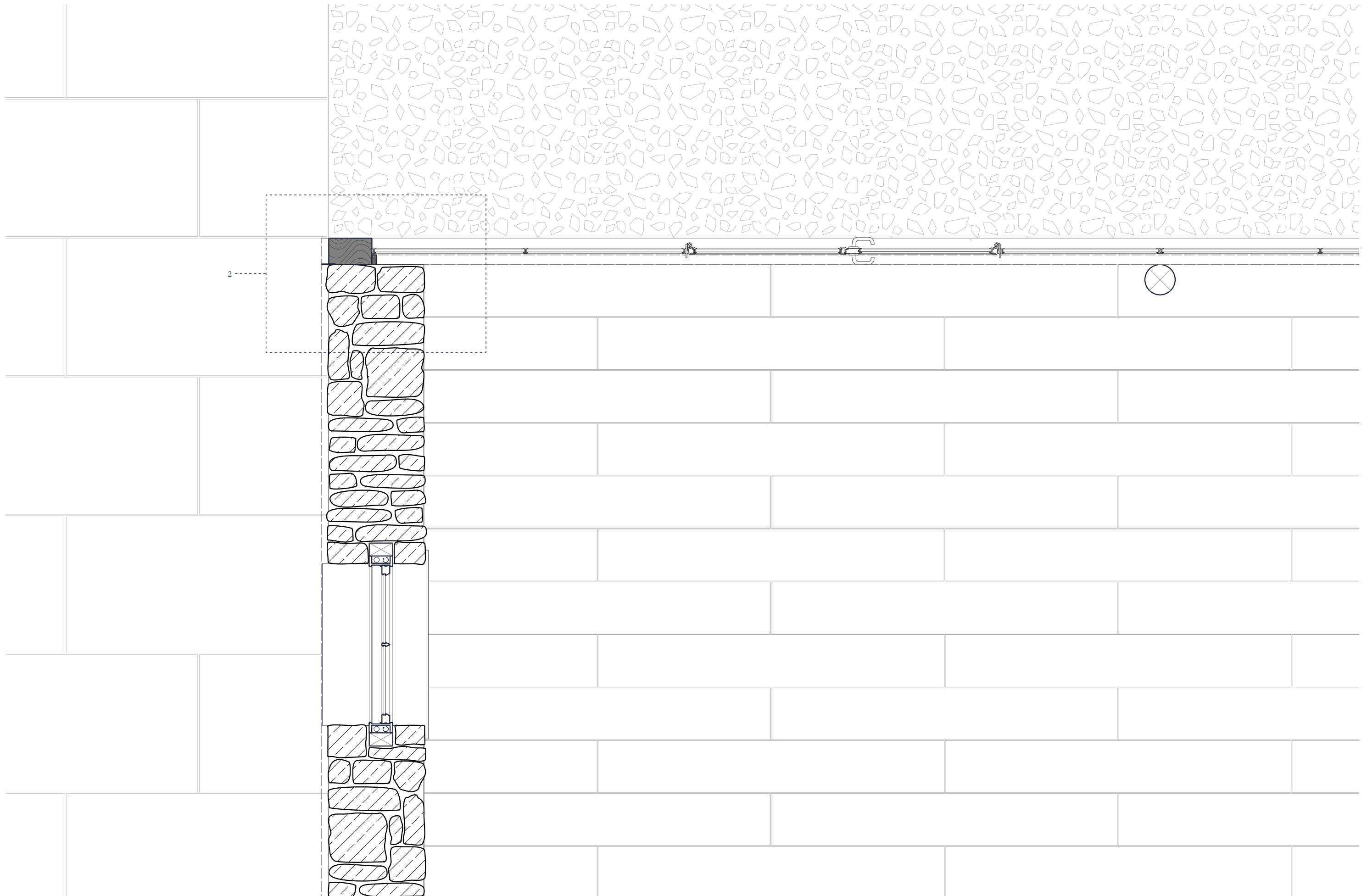
1:50



1:50



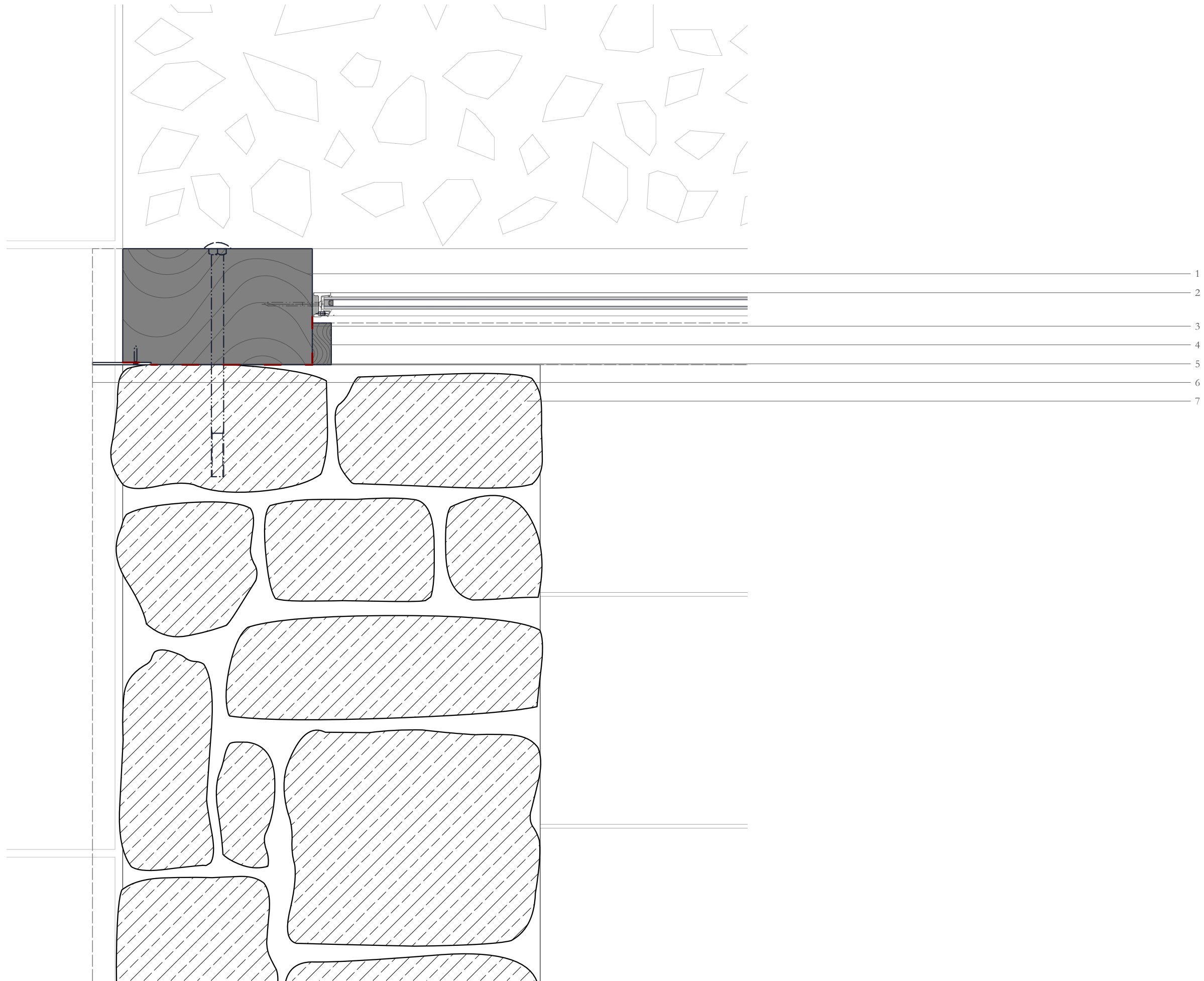
Distillery visitor centre | west + north facade | corner plan detail
1:20



Distillery visitor centre | west + north facade | corner plan detail

1:5

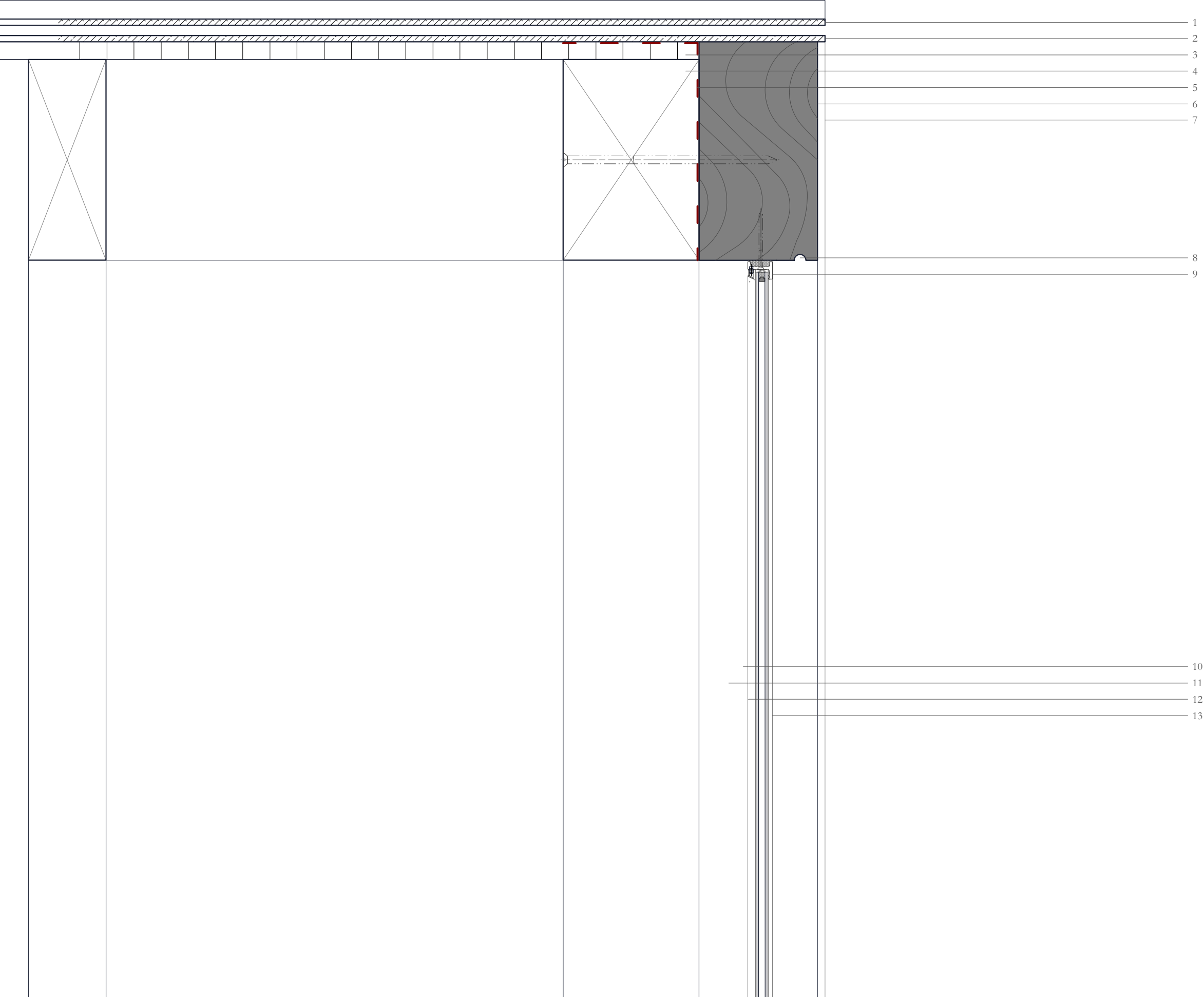
- 1 new 250 x 150 mm fair-faced oak column, fixed to existing masonry wall using exposed carriage bolts
- 2 Crittall W20 double-glazed fixed light jamb profile, internally glazed. Fixed to timber
- 3 DPM
- 4 fair-faced oak blocking piece
- 5 15mm copper plate between existing masonry wall and timber column
- 6 existing gutter above
- 7 existing masonry wall



Distillery visitor centre | glazed north facade | head and coupling joint details

1:5

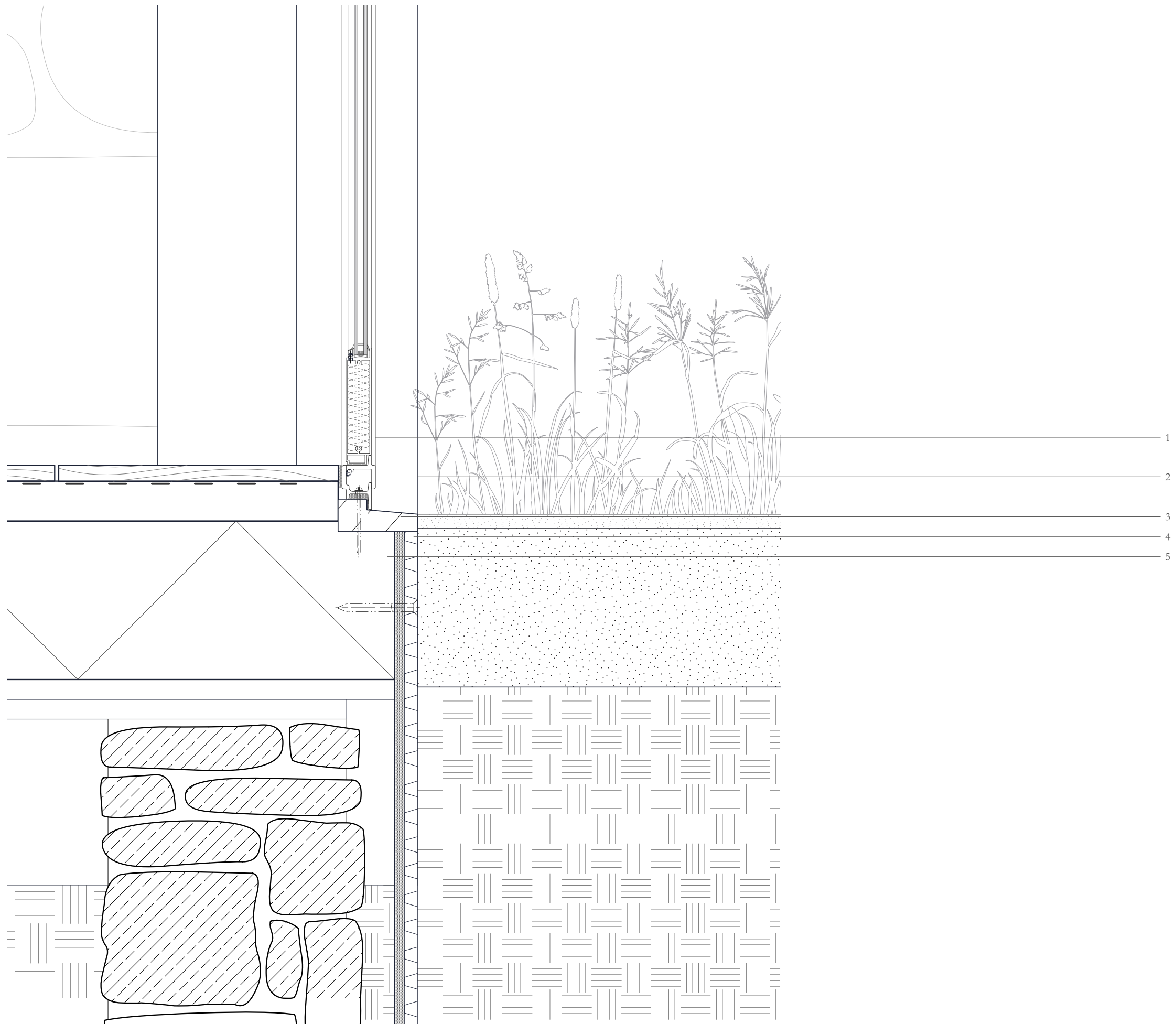
- 1 existing ridge cap
- 2 existing roof slate tiles
- 3 existing sarking board
- 4 existing 250h x 150w rafter
- 5 DPM
- 6 280h x 150w mm fair-faced oak rafter fixed, to existing structure using M10 wood screws
- 7 roof tiles beyond
- 8 drip detail
- 9 Crittall W20 fixed light head steel profile, fixed to new rafter. Internally glazed
- 10 300h x 62w mm fair-faced oak plate fixed, to existing beam using M10 wood screws
- 11 M10 wood screw
- 12 6mm thick steel T-bar, fixed to wood plate using M4 fixings
- 13 Crittall W20 direct coupling joint, welded to T-bar. Internally glazed



Distillery visitor centre | glazed north facade | sill detail

1:5

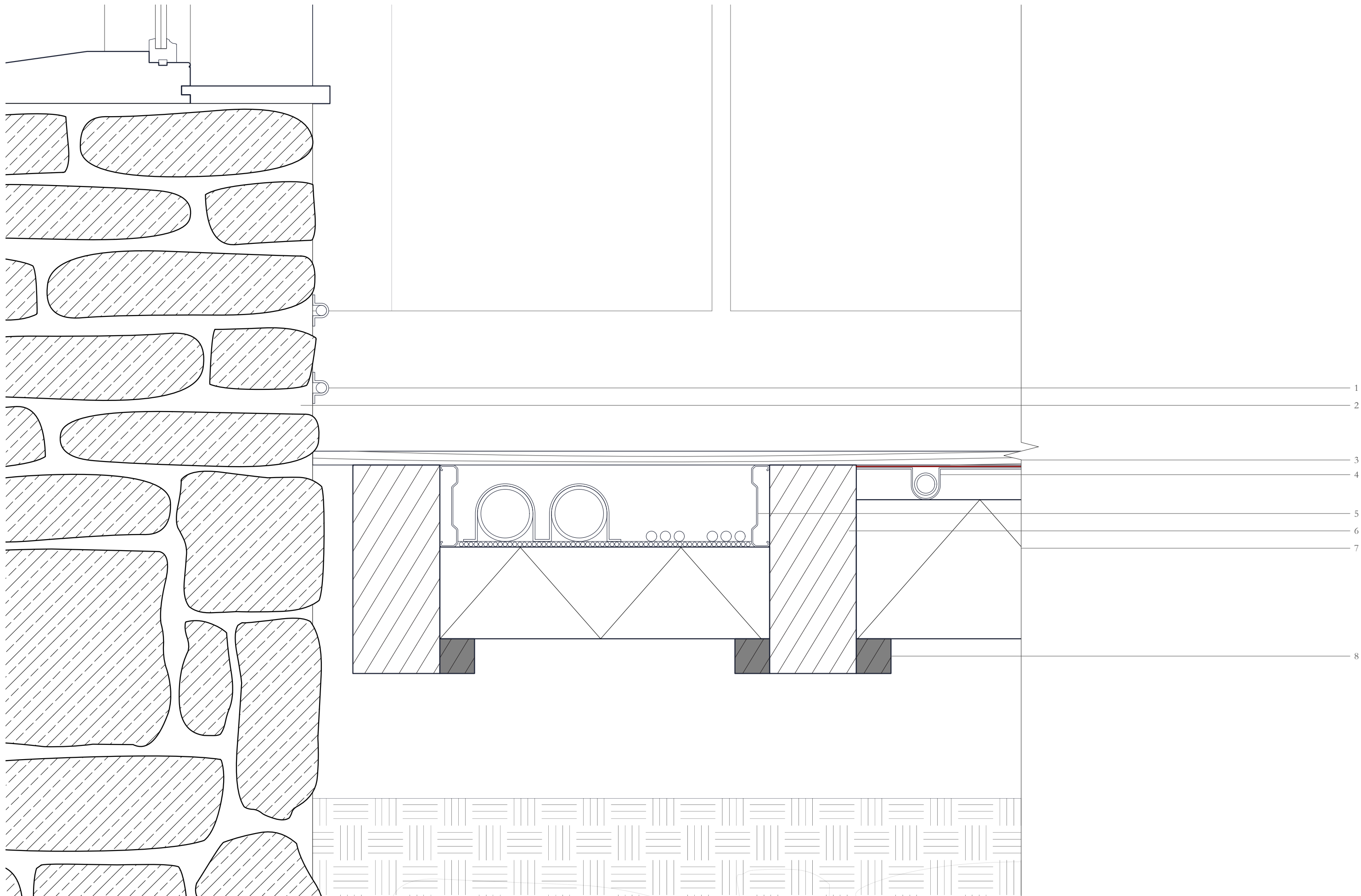
- 1 Crittall W20 double door with insulated steel profile kick plate
- 2 new timber sill, nominal size 44h x 150w mm. Fixed to timber joists with M6 wood screws
- 3 200mm rigid insulation between existing timber joists
- 4 12mm cement fibre boarding
- 5 16mm nophradrain capillary surface drainage membrane, or similar
- 6 200mm rigid insulation between existing timber joists

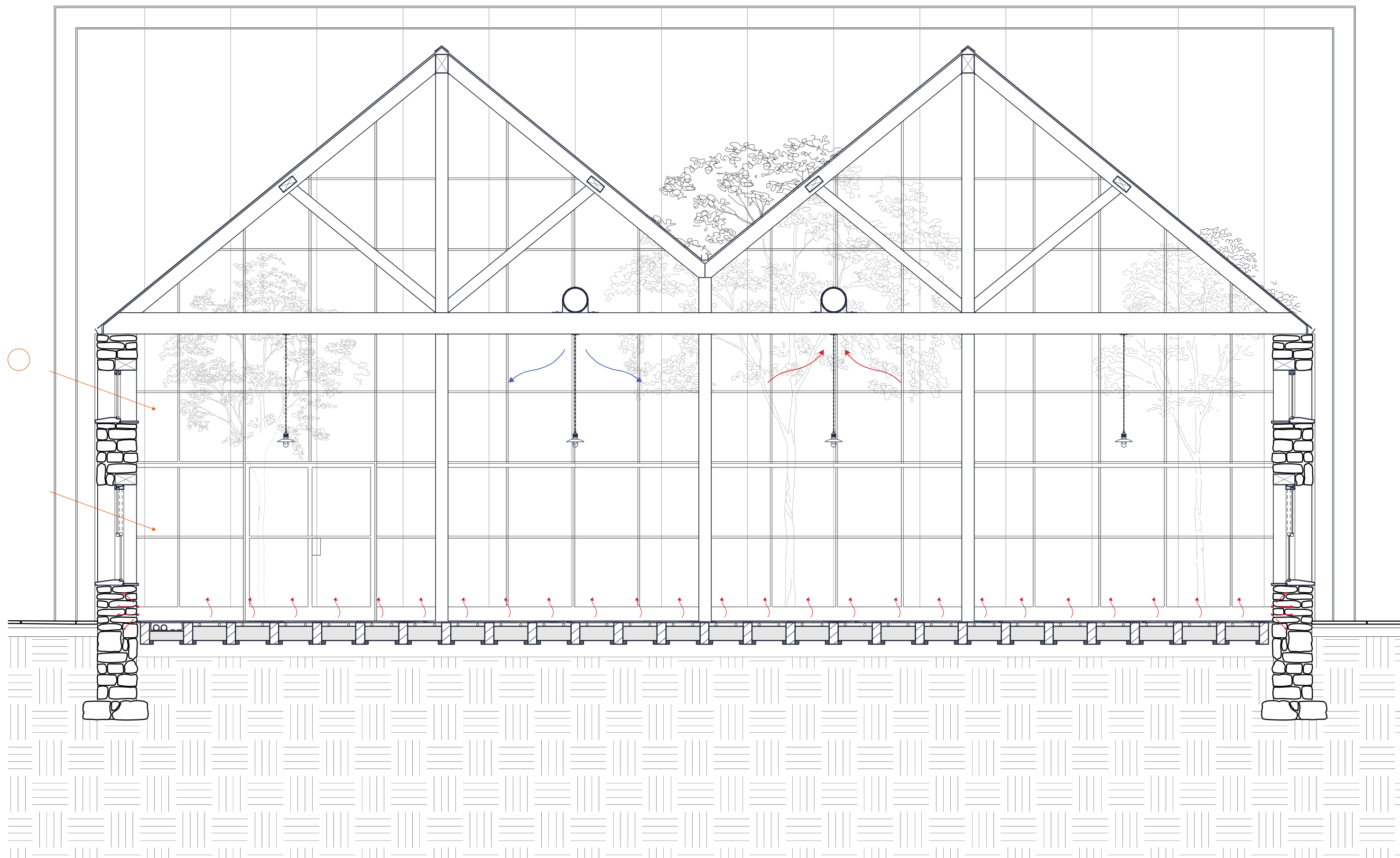


Distillery visitor centre | masonry west facade | wall/floor detail

1:5

- 1 temperierung 'on-wall' anti-condensation system
- 2 existing Brora limestone masonry wall
- 3 existing timber floor boards
- 4 wet underfloor heating, installed from below. From top to bottom, consists of: 1mm
- 5 polyethylene foam; 16mm pipework; and diffusion plates.
- 6 cable tray, carrying pipework, electrical cables and comms to office and plant room
- 6 existing floor joists
- 7 200mm rigid insulation
- 8 50 x 50 mm timber battens





Distillery visitor centre | climate strategy | summer day
1:50

