

## Aquaporin based biomimetic membrane in forward osmosis: Chemical cleaning resistance and practical operation

Li, Zhenyu; Valladares Linares, Rodrigo; Bucs, Szilárd; Fortunato, Luca; Hélix-Nielsen, Claus; Vrouwenvelder, Johannes S.; Ghaffour, Noredine; Leiknes, Tor Ove; Amy, Gary L.

**DOI**

[10.1016/j.desal.2017.07.015](https://doi.org/10.1016/j.desal.2017.07.015)

**Publication date**

2017

**Document Version**

Final published version

**Published in**

Desalination

**Citation (APA)**

Li, Z., Valladares Linares, R., Bucs, S., Fortunato, L., Hélix-Nielsen, C., Vrouwenvelder, J. S., Ghaffour, N., Leiknes, T. O., & Amy, G. L. (2017). Aquaporin based biomimetic membrane in forward osmosis: Chemical cleaning resistance and practical operation. *Desalination*, 420, 208-215.  
<https://doi.org/10.1016/j.desal.2017.07.015>

**Important note**

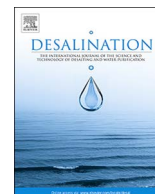
To cite this publication, please use the final published version (if applicable).  
Please check the document version above.

**Copyright**

Other than for strictly personal use, it is not permitted to download, forward or distribute the text or part of it, without the consent of the author(s) and/or copyright holder(s), unless the work is under an open content license such as Creative Commons.

**Takedown policy**

Please contact us and provide details if you believe this document breaches copyrights.  
We will remove access to the work immediately and investigate your claim.



## Aquaporin based biomimetic membrane in forward osmosis: Chemical cleaning resistance and practical operation



Zhenyu Li<sup>a,\*</sup>, Rodrigo Valladares Linares<sup>b,\*</sup>, Szilárd Bucs<sup>b</sup>, Luca Fortunato<sup>b</sup>,  
Claus Hélix-Nielsen<sup>c,d,e</sup>, Johannes S. Vrouwenvelder<sup>b,f,g</sup>, Noredine Ghaffour<sup>b</sup>, TorOve Leiknes<sup>b</sup>,  
Gary Amy<sup>h,i</sup>

<sup>a</sup> College of Food Science and Engineering, Northwest A & F University, Yangling, Shaanxi 712100, China

<sup>b</sup> Water Desalination and Reuse Center, Division of Biological and Environmental Science and Engineering, King Abdullah University of Science and Technology, Thuwal 23955-6900, Saudi Arabia

<sup>c</sup> Department of Environmental Engineering, Technical University of Denmark, Bygningstorvet 115, DK2800 Kgs. Lyngby, Denmark

<sup>d</sup> Laboratory for Water Biophysics and Membrane Technology, Faculty of Chemistry and Chemical Engineering, University of Maribor, Maribor, Slovenia

<sup>e</sup> Aquaporin A/S, Ole Maaløes Vej 3, DK2200 Copenhagen, Denmark

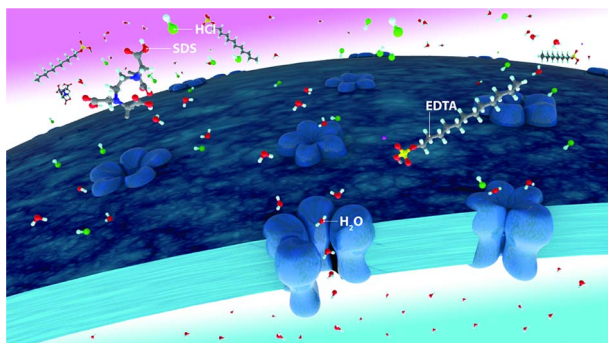
<sup>f</sup> Delft University of Technology, Faculty of Applied Sciences, Department of Biotechnology, Delft, The Netherlands

<sup>g</sup> Wetsus, European Centre of Excellence for Sustainable Water Technology, Leeuwarden, The Netherlands

<sup>h</sup> College of Engineering, Computing and Applied Sciences, Clemson University, Clemson, SC 29634, USA

<sup>i</sup> Department of Chemical and Biomolecular Engineering, National University of Singapore, 119077, Singapore

### GRAPHICAL ABSTRACT



### ARTICLE INFO

#### Keywords:

Biomimetic membrane  
Aquaporin  
Desalination  
Forward osmosis  
Chemical stability

### ABSTRACT

Aquaporin plays a promising role in fabricating high performance biomimetic forward osmosis (FO) membranes. However, aquaporin as a protein also has a risk of denaturation caused by various chemicals, resulting in a possible decay of membrane performance. The present study tested a novel aquaporin based biomimetic membrane in simulated membrane cleaning processes. The effects of cleaning agents on water flux and salt rejection were evaluated. The membrane showed a good resistance to the chemical agents. The water flux after chemical cleaning showed significant increases, particularly after cleaning with NaOCl and Alconox. Changes in the membrane structure and increased hydrophilicity in the surrounding areas of the aquaporin may be accountable for the increase in water permeability. The membrane shows stable salt rejection up to 99% after all cleaning agents were tested. A 15-day experiment with secondary wastewater effluent as the feed solution and seawater as the draw solution showed a stable flux and high salt rejection. The average rejection of the dissolved organic carbon from wastewater after the 15-day test was 90%. The results demonstrated that the aquaporin

\* Corresponding authors.

E-mail addresses: [lizhenyu@nwafu.edu.cn](mailto:lizhenyu@nwafu.edu.cn) (Z. Li), [rvalladares@rotoplas.com](mailto:rvalladares@rotoplas.com) (R. Valladares Linares).

<http://dx.doi.org/10.1016/j.desal.2017.07.015>

Received 7 April 2017; Received in revised form 3 July 2017; Accepted 20 July 2017

Available online 27 July 2017

0011-9164/ © 2017 Elsevier B.V. All rights reserved.

based biomimetic FO membrane exhibits chemical resistance for most agents used in membrane cleaning procedures, maintaining a stable flux and high salt rejection.

## 1. Introduction

With a scarcity of clean water in many regions of the world, sea-water and brackish water desalination will play a crucial role for future water supplies. The current leading membrane desalination technology by reverse osmosis (RO) is an energy intensive process. Forward osmosis (FO) is a novel membrane-based process that can potentially reduce the cost in conventional water treatment and desalination [1]. In FO process, water is extracted from a lower-concentration feed solution (FS) into a higher-concentration draw solution (DS), driven by the osmotic pressure difference and consequently resulting in concentration of the FS and dilution of the DS.

Aquaporins are pore-forming transmembrane proteins in living cells. Under the suitable conditions, aquaporins are able to form ‘water channels’ and facilitate selective water transport through a membrane of cell while the ionic species are excluded [2,3]. The water transport capacity of aquaporins can reach up to one billion water molecules per second [4,5]. This property of facilitating a high water permeability while maintaining an excellent solute selectivity is a feature that cannot

be found in any artificial polymeric membrane and has thus served as inspiration for designing biomimetic membranes [6,7].

Aquaporin protein has been recently embedded into the active layer of thin-film composite (TFC) membranes [8]. Aquaporin serves as pore-forming protein in the thin film layer of the membrane and facilitates water diffusion. With the passive facilitated transport, the protein has a stable geometrical structure during operation and can achieve 5 to 1000 times higher selective water transport than those of conventional membranes [4,9]. Therefore, aquaporin-assisted membranes potentially have much higher permeability than conventional membranes [10]. Aquaporin based biomimetic membranes have been shown to provide a potential benefit for water purification and desalination [11]. However, as a protein, aquaporin can be affected by environmental conditions such as temperature, pH and the presence of chemicals that may impact its water transport properties. Thus it is becoming important to examine how an aquaporin membrane functions under ‘realistic’ conditions.

A literature review shows that few studies have been conducted in terms of practical applications of aquaporin based membranes. The rejection of small neutral organic compounds in water has been tested

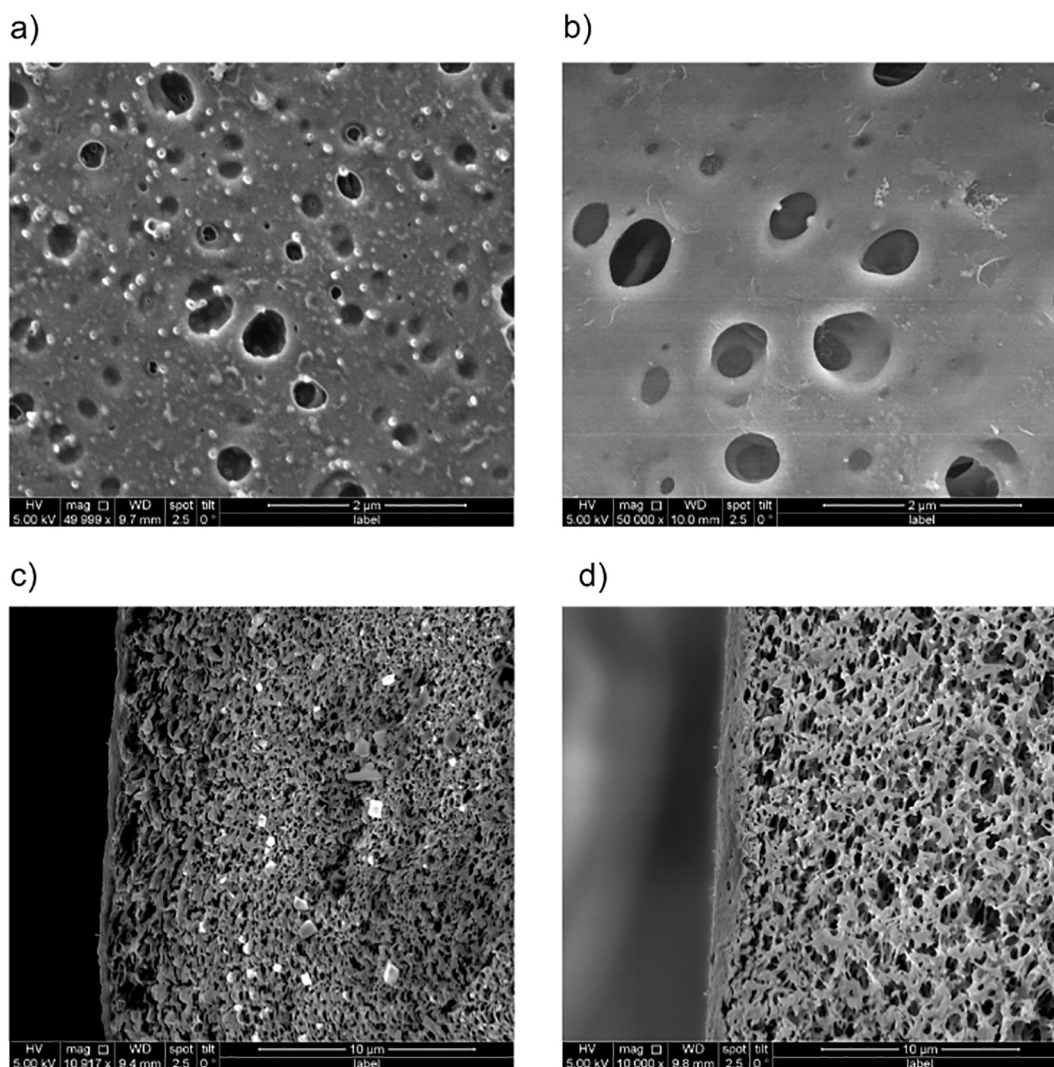


Fig. 1. SEM images of a) top surface, b) support layer, c) cross-section on the active layer side and d) cross-section on the support layer of aquaporin based biomimetic membrane. Aquaporin vesicles can be observed in a) and c).

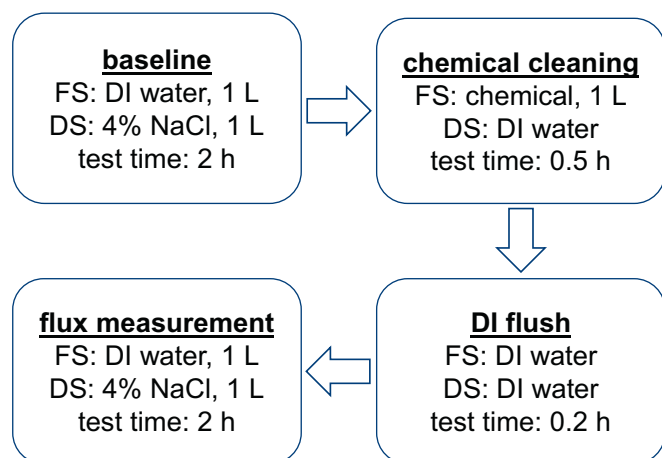


Fig. 2. Testing protocol for evaluating chemical resistance of aquaporin based biomimetic membrane in FO process.

using aquaporin based biomimetic membranes [12]. The performance of this membrane was compared with a cellulose triacetate (CTA) FO membrane, showing that the biomimetic membranes have rejection values higher than those from the CTA membrane. The application of aquaporin based biomimetic membranes has shown promising results in the various applications including FO processes [2,11]. Nevertheless, the stability of membranes during practical conditions (i.e. the use of real wastewater and seawater in the FO process) and after chemical cleaning procedures has not been addressed.

In the present study, a novel aquaporin based biomimetic membrane was tested with different agents to simulate membrane chemical cleaning and aging. The stability of the membrane was evaluated by water flux measured before and after simulated membrane cleaning processes. A long-term experiment lasting 15 days was also conducted with secondary wastewater effluent as the FS and Red Sea water as the DS to test the membrane under realistic conditions.

## 2. Materials and methods

### 2.1. Forward osmosis (FO) membranes

The aquaporin based biomimetic membrane was provided by Aquaporin A/S (Copenhagen, Denmark) and it was fabricated by interfacial polymerization method which has been widely used to prepare the conventional TFC membrane. Aquaporin-based proteoliposomes are added to the aqueous solution of monomer (*m*-phenylene-diamine, MPD) and processed for the interfacial polymerization. The aquaporin based membrane has a similar porous substrate (support layer) as the conventional TFC membrane, but the proteoliposomes with incorporated aquaporin channels are embedded and stabilized in the polyamide thin film (i.e. active layer) on the surface of a porous polysulfone support layer [8]. Fig. 1 shows scanning electron microscope (SEM) images of the top surface, bottom surface and a cross-section of the aquaporin based biomimetic membrane. More details on the membrane fabrication procedure can be found elsewhere [8].

An equivalent TFC FO membrane without aquaporin proteins was provided by Woongjin Chemicals (Korea). Details on the structure and characteristics of the membrane can be found in literature [13].

### 2.2. FO experimental setup

A bench-scale FO system was used in this study. The system consisted of a cross-flow FO cell using a 2 cm × 10 cm flat-sheet membrane. Experiments were operated at a flow rate of 0.2 L·min<sup>-1</sup>, (i.e. a cross-flow velocity of 0.084 m·s<sup>-1</sup>) at both FS and DS sides. 1 L of the FS and 1 L of the DS were used for each test. Details of the system

configuration has been described in previous FO studies [14,15]. All experiments were performed at a temperature of 21 ± 1 °C. The conductivity of the FS and DS was monitored by a conductivity meter (WTW, Germany). All water permeation tests were performed under a pH range between 5.3 and 6.5. The FS was deionized (DI) water and the DS was a 4% NaCl solution that simulates the salinity of Red Sea water.

The effect of membrane chemical cleaning in the FO process was tested by using analog chemical agents. All chemicals used were purchased from Sigma Aldrich (Germany). Five chemical cleaning solutions were used independently in this study: acid cleaning with 0.1% hydrochloric acid (HCl) at a pH of 1.4, biocide cleaning with 0.5% sodium hypochlorite (NaOCl) at a pH of 11.6, chelating-agent cleaning of 5 mM disodium ethylenediaminetetraacetic acid (EDTA) at a pH of 8.2, anionic surfactant cleaning consisting of 2 mM sodium dodecyl sulfate (SDS) at a pH of 9.1, and a commercial anionic detergent solution (Alconox) of 1% at a pH of 9.3, composed of sodium dodecylbenzenesulfonate (10–30%) commonly known as linear alkylbenzene sulfonate (LAS), sodium carbonate (7–13%), tetrasodium pyrophosphate (10–30%) and sodium phosphate (10–30%). These cleaning methods were chosen as they are the most common techniques used to clean reverse osmosis (RO) membranes in seawater desalination and wastewater recovery processes [16–20].

For the long-term experiment, the FS was secondary wastewater effluent collected from the Al-Ruwais wastewater treatment plant in the city of Jeddah, Saudi Arabia, with a dissolved organic carbon (DOC) of 4.95 ± 0.20 mg·L<sup>-1</sup>, conductivity of 3.3 mS·cm<sup>-1</sup> and a pH of 7.5. The DS was raw seawater from the Red Sea with a DOC of 0.98 ± 0.07 mg·L<sup>-1</sup>, calcium concentration of 108 mg·L<sup>-1</sup>, conductivity of 59.7 mS·cm<sup>-1</sup> and a pH of 7.8.

### 2.3. Testing protocol of chemical cleaning and evaluation of membrane performance

The testing protocol of chemical cleaning assessment is described in Fig. 2. The baseline flux and salt rejection were determined for each membrane coupon used in the experiments. These experiments used DI water as the FS and 4% NaCl as the DS. Afterwards, chemical cleaning was performed for 0.5 h at the FS side (active layer) of the membrane; DI water was recirculated at the DS side (support layer). Immediately after cleaning, the membrane was flushed with DI water to remove the remaining chemical agent. Finally, the average flux and salt rejection were determined for a period of 2 h to study the effect of each cleaning solution on the membrane performance. Results presented in this study show the average value of three independent tests for each condition.

As membrane orientation plays a crucial role impacting the propensity of fouling during FO process, each cleaning experiment was conducted with two membrane orientations: AL-FS (the membrane active layer facing the FS) and AL-DS (the active layer facing the DS). It should be noted that the standard orientation for FO is the active layer facing the FS where for pressure retarded osmosis (PRO) mode, the opposite orientation is true [21,22].

A long-term experimental running for 15 days was also conducted with secondary wastewater effluent as the FS and Red Sea water as the DS under a semi-batch mode. Each batch was operated for 24 h. Then concentrated FS and diluted DS were replaced by fresh aliquots and operation continued to the next batch. The long-term process was operated under AL-FS mode which has been proven to be the most effective in preventing fouling of an FO membrane [17,23,24]. DOC was measured by an Organic Carbon Analyzer (TOC-VCPh, Shimadzu, Japan) after 0.45 μm filtration.

The salt rejection from the DS to the FS side was estimated by the conductivity measured in the DS and FS reservoir, which was converted to salt concentration. Eq. (1) was used to calculate salt rejection considering that the dilution of the DS in each experiment is negligible:

$$\text{Salt rejection (\%)} = \left(1 - \frac{C_{\text{FS}}}{C_{\text{DS}}}\right) \times 100 \quad (1)$$

where  $C_{\text{FS}}$  is the calculated salt concentration in the FS reservoir after each experiment, and  $C_{\text{DS}}$  is the calculated salt concentration in the DS reservoir at the beginning of each experiment. The initial conductivity of the FS reservoir is lower than  $1.0 \mu\text{S}\cdot\text{cm}^{-1}$  which is negligible.

Eq. (2) was used to calculate the salt rejection for the long-term experiment, where a secondary wastewater was used as FS and seawater as DS. The salt rejection was determined by the conductivity in the DS reservoir, and relating it to the loss of salt in each batch to the feed side:

$$\text{Salt rejection (\%)} = 1 - \left(1 - \frac{C_{\text{DS2}} \times V_{\text{DS2}}}{C_{\text{DS1}} \times V_{\text{DS1}}}\right) \times 100 \quad (2)$$

where  $C_{\text{DS1}}$  and  $C_{\text{DS2}}$  are the salt concentration of DS before and after each cycle respectively, and  $V_{\text{DS1}}$  and  $V_{\text{DS2}}$  are the bulk volumes of DS before and after each cycle, respectively.

#### 2.4. Characterization of membrane surface

The surfaces of the FO membrane specimens before and after chemical cleaning were characterized by Fourier Transform Infrared Spectroscopy in the attenuated total reflectance mode (ATR-FTIR, Perkin Elmer Spectrum 100). An electrokinetic analyzer for solid surface analysis (Anton Paar, Austria) was used to determine the zeta potential of the membrane surface using 10 mM NaCl solution as electrolyte. The results were calculated by the Helmholtz-Smoluchowski equation [25].

### 3. Results and discussion

Experiments were conducted to determine the stability of an aquaporin based biomimetic membrane, evaluating water flux and salt rejection before and after various chemical cleanings. Surface characterization was performed afterwards to study the effects of each chemical on the composition and charge of the membrane active layer. Each chemical cleaning solution was shown to have a different effect on the performance of the biomimetic membrane.

#### 3.1. Water flux and salt rejection

The normalized water flux for the baseline experiment is shown as 1.0 in Fig. 3 for both AL-FS and AL-DS membrane orientations. Similarly, the normalized water flux after each test of chemical cleaning is also shown for both membrane orientations. It can be seen that for all the cleaning agents the flux was either similar or higher to the baseline flux. The HCl cleaning increased the flux by 9.8% in AL-FS mode and 20% in AL-DS mode. Cleaning with NaOCl showed the highest water flux increase among all cleaning agents, with a 66% and 100% increase compared to the baseline value. A slight increase was found with sodium EDTA solution, achieving an increase in flux of 1.5% and 5.1% for AL-FS and AL-DS mode, respectively. After the SDS cleaning, the water flux increased 28% and 6.5% for each membrane orientation. After cleaning the membrane with Alconox detergent, the water flux showed an increase of 75% in AL-FS mode and 31% in AL-DS mode.

The rejection to the back diffused NaCl from the DS to FS was above 98% for all the tests done as baseline (before chemical cleaning) as shown in Fig. 4a (AL-FS mode) and Fig. 4b (AL-DS mode). Salt rejection was not affected by any chemical cleaning as described by the values of rejection measured after chemical cleaning, with the largest difference being lower than 0.5%. These tests reveal the performance stability of aquaporin based biomimetic membranes to reject NaCl even after chemical cleaning. The aquaporin based biomimetic membrane is comparable in the rejection of back diffused salt to the classic FO

membranes. The commercial CTA and TFC FO membranes showed a 90–99% rejection to the back diffused NaCl when DI water was the FS and 1.8–4% NaCl solutions were used as the DS [15,26].

#### 3.2. Mechanisms related to membrane performance change

HCl and NaOCl cleaning had a higher impact on the membrane support layer side. Compared with the flux increase when the active layer was chemically cleaned, an increase of 10% in the water flux was achieved after the support layer was cleaned by HCl solution. In the case of NaOCl, the increase was 35%. These results indicate that the impact on the membrane structure might be more significant than the impact on the embedded aquaporin proteins in the AL surface when HCl and NaOCl were used as cleaning agents.

Generally, TFC membranes have minimum degradation and good chemical stability toward pH, hydrolysis and biodegradation [27–29]. HCl can induce a physical change of the polysulfone support and open the pore of support layer while the chemical degradation of polyamide active layer by HCl is negligible [30]. The change of porosity in support layer can reduce internal concentration polarization (ICP) during FO process, consequently increased flux. During NaOCl chemical cleaning, N–H hydrogen of membrane material is replaced by chlorine while the hydrogen bonds between C=O and N–H are weakened or even destroyed. The flexibility and rotational freedom of the crosslinked polymer chains are increased [31,32]. Meanwhile, chlorination promotes the amide C–N bond hydrolysis and makes the membrane more hydrophilic [31–33]. As a consequence of these structural changes and enhanced hydrophilicity of the membrane after chemical cleaning by NaOCl solution, the restrictions of water passage through the membrane is decreased, resulting in an improved water permeability [34]. In addition, NaOCl can cause C–S bond scission in polysulfone molecules, thus resulting in larger pore size in the polysulfone porous support, which can improve flux of FO process by reducing ICP [35,36].

The nodule-like structure is the feature of dense layer formed by interfacial polymerization. During chemical cleaning, the size of nodules in the polyamide layer of the membrane decreases and the inter-nodular spaces is filled by the arisen polymer chains from adjacent nodules because of the interaction between chemical cleaning agents and polymer chains in the polyamide layer of TFC membrane [37]. The polyamide composite membrane may have been transformed into more homogeneous membrane, explaining the changes in water permeability during FO filtration.

Related to the embedded aquaporin modification, it has been

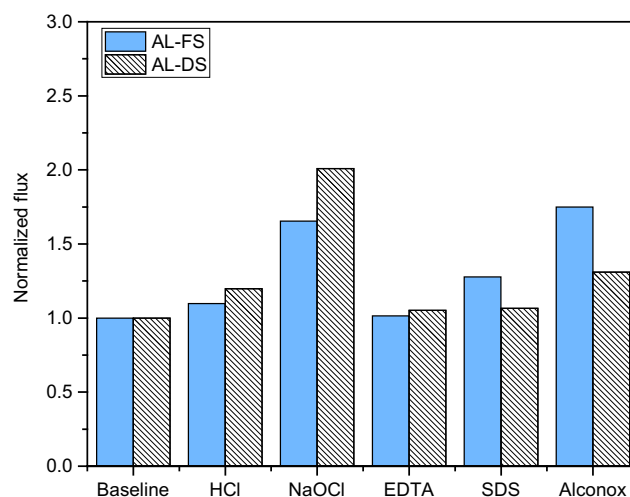


Fig. 3. Normalized water flux of aquaporin based biomimetic membrane before (baseline) and after chemical cleaning for active layer facing feed solution (AL-FS) and active layer facing draw solution (AL-DS) modes. Feed water was deionized water and draw solution was 4% NaCl.

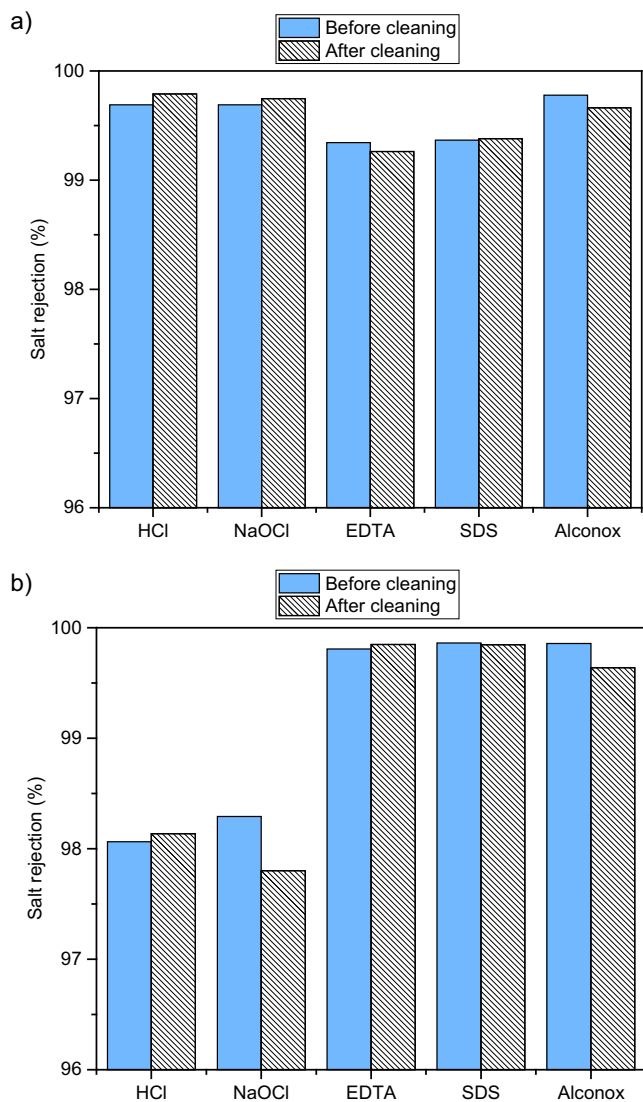


Fig. 4. Salt rejection of aquaporin based biomimetic membrane before (baseline) and after detergent flushing a) in AL-FS mode and b) AL-DS mode.

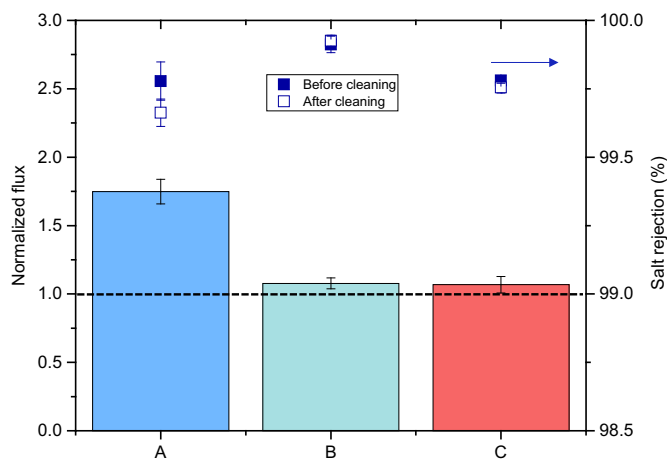


Fig. 5. Normalized flux after chemical cleaning with Alconox for A) an aquaporin based biomimetic membrane and B) a thin-film composite membrane without aquaporin modification; C) an aquaporin based biomimetic membrane cleaned with sodium phosphate. Baseline flux is defined as the dashed line. Salt rejection is shown for the experiments before and after cleaning.

reported that aquaporin proteins show a variation in water permeability in relation to the pH of the solution, depending on the type of structure of the proteins [38]. During NaOCl (oxidizing and basic pH) and acid (low pH) cleaning, the position of histidines which is a  $\alpha$ -amino acid with an imidazole functional group in the aquaporin protein might be responsible of the changes in water permeability. Histidines can “tune” the pH sensitivity of different aquaporin proteins toward acid or alkaline ranges [39].

For the cleaning solutions containing SDS and Alconox, the impact was higher on the membrane active layer. When the active layer of the membrane was cleaned by SDS solution, it showed an 21% increase of water flux compared to cleaning the support layer. The increase of flux was 44% when comparing both membrane orientations with the Alconox cleaning. These results suggest that these cleaning agents have an effect on the active layer and possibly on the aquaporin proteins embedded in it. It has been shown that SDS can remove the residual water-soluble monomers, thus increase the size of fractional free volume in the membrane active layer and improve the water flux [40].

A test was made to compare the effect of Alconox cleaning solution on an unmodified TFC FO membrane without aquaporin and the aquaporin based biomimetic membrane. Results are shown in Fig. 5. Cleaning an unmodified TFC membrane by Alconox has almost no effect on the water flux. When the membrane modified with aquaporin proteins is cleaned, the water flux increases 75% compared to the baseline test, which could suggest that the proteins are being affected by the cleaning agent. It should be noted that Alconox detergent can cause the enlargement of pore size in the polysulfone support of a TFC FO membrane after a long-term (144 h) exposure which results in an increase of FO flux [41]. The negligible effect on the water flux of unmodified TFC FO membrane in the present study could be attributed to the short exposure time.

Alconox is a detergent composed mainly of phosphates and LAS. The effect of sodium phosphate on the aquaporin based biomimetic membrane was tested as well and compared to the results with Alconox cleaning (Fig. 5). The water flux after cleaning with sodium phosphate did not change significantly compared to the baseline, showing that phosphates have almost no effect on the aquaporin protein embedded in the membrane surface. Still surfactants (i.e. LAS) present in the Alconox detergent could be responsible for the aquaporin protein modification, resulting in a change on the water flux of the membrane.

Studies for the conformation of protein in SDS complex showed that the molecules of SDS have marginal effect on the conformation of aquaporin including the structure of the water channel. However, Borgnia et al. [42] reported that longer incubation time (> 24 h) in 1% SDS-containing sample buffer caused the dissociation of the tetramer forming the aquaporin protein in *E. coli* even without reducing agents. Even though SDS is a denaturing anionic detergent, it is not able to change the aquaporin secondary structure [43]. Also Hansen et al. [44] found that SDS solution can induce the reconstitution and helical rearrangements of aquaporins into large lipid vesicles, but the secondary structure of the protein is not affected and the aquaporin vesicles can work as a promising procedure to stabilize the protein in membrane surfaces.

In principle aquaporins could lose water permeability when single SDS molecules or structures attach to the hydrophilic ends of the water pore, surrounding areas or even inside the channels, consequently blocking the water channel of aquaporins [43]. Single SDS molecules were present under our experimental conditions as SDS is not forming micelles at 2 mM concentration since the critical micelle concentration of SDS is 8.2 mM. However, decrease in water flux before and after cleaning was not observed (see Fig. 3), thus indicating that this effect is negligible.

LAS in the Alconox detergent forms micelles at lower concentrations than SDS. The average concentration of LAS in the solution was 2.5 mM, and the critical micelle concentration of LAS is around 1.1 mM [45]. Due to this effect, chemical cleaning with Alconox showed a

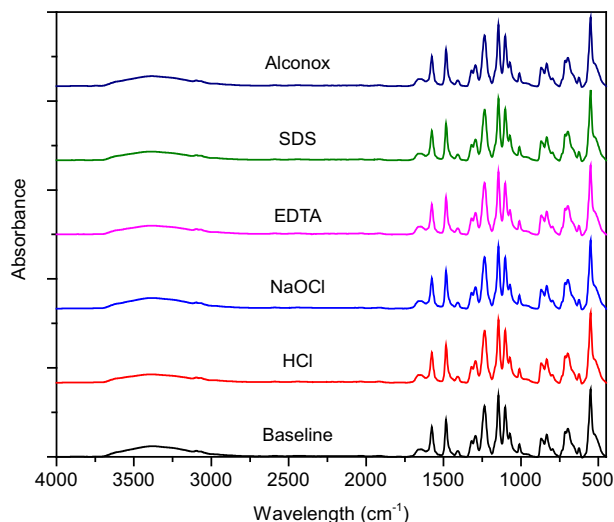


Fig. 6. ATR-FTIR spectra of membrane surface (active layer) after flushing by different detergents.

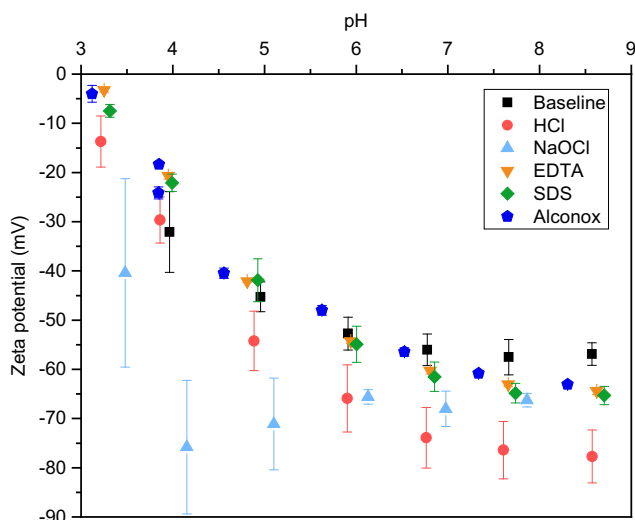


Fig. 7. Zeta potential of the active layer of aquaporin based biomimetic membrane before and after chemical cleaning for each method.

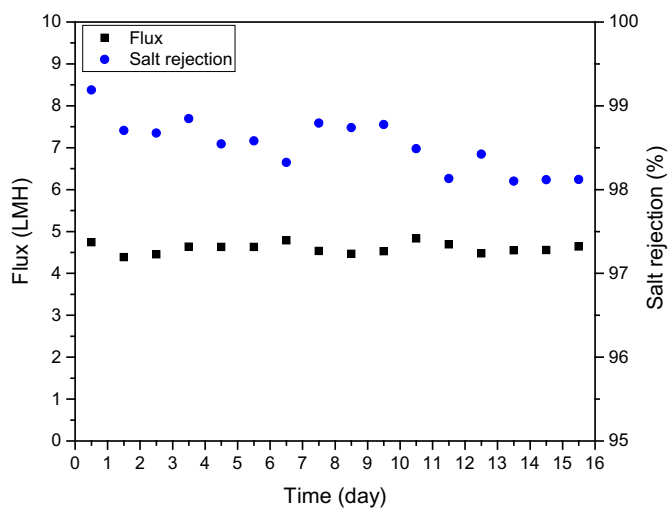


Fig. 8. Water flux and salt rejection of the aquaporin based biomimetic membrane in a long-term forward osmosis process using municipal secondary wastewater effluent as feed water and seawater as draw solution.

higher positive impact on water flux compared to SDS cleaning.

The reduction of membrane surface tension caused by detergents may also be responsible for the higher water flux obtained after cleaning. Along with the reduced surface tension, detergents increase the hydrophilicity of neighboring areas of aquaporin structures, thereby possibly increasing the local water permeability. This result may not be observed in the TFC membrane without aquaporin modification because the membrane structure is different when the vesicles are present.

Although the dissociation of aquaporin protein may influence the water transport across the modified membrane, our results suggest that there is no denaturation process occurring since the protein functionality was not significantly affected. The water flux increased and salt rejection was stable. The higher flux observed after cleaning may be attributed to a surface tension reduction.

### 3.3. Membrane surface characterization after chemical cleaning

To determine if the membrane surface underwent modification due to the chemical cleaning, its composition and charge were analyzed by FTIR and zeta potential measurements. No structural changes on the surface of the aquaporin based biomimetic membrane could be observed by SEM imaging after each chemical cleaning experiment (data not shown).

Fig. 6 shows ATR-FTIR spectra of the active layer of a new aquaporin modified membrane and following each chemical cleaning procedure. No significant change in the chemical structure (i.e. functional groups) was observed, confirming that the biomimetic membrane was chemically stable after the cleaning procedures. Generally, the amide groups on the TFC membrane are resistant to hydrolysis [46].

The zeta potentials of a virgin aquaporin based biomimetic membrane as the baseline and the chemically cleaned samples were calculated by streaming potential. Results are shown in Fig. 7. At the pH range from 5.3 to 6.5, zeta potential is considerably more negatively charged when the membrane was cleaned with acid (HCl) and NaOCl. Increase of water flux after chemical cleaning can be explained by the changes of streaming potential and enhanced hydrophilicity of membranes after hypochlorite and acid cleaning [47,48].

The membrane surface charge plays a significant role in membrane performance. The negatively charged surface of aquaporin based biomimetic membrane provides an electrostatic repulsive force on anions. Cations are also rejected in order to maintain the electroneutrality. The change of zeta potential can illustrate the trend of solute rejection by electrostatic repulsive force and explain the variation of flux and rejection [49]. Since the negative charge of membranes is enhanced after chemical cleaning with acid and NaOCl, electrostatic repulsion increases between  $\text{Na}^+$  and the membrane with a more hydrophilic surface. Particularly, chlorination in hypochlorite treatment can cause N-chlorination consumption of terminal amino groups, consequently, increased negative charge and improved flux and salt rejection [50,51].

For the cleaning experiments using EDTA, Alconox and SDS, a slight decrease in the charge can be observed at the pH range used. In the case of the anionic surfactants (Alconox and SDS), the decrease is an expected effect due to the binding of molecules on the surface of membrane with the negatively charged hydrophilic tail exposed to the water. Salt rejection, thus, remains very high (> 98%) after chemical cleaning.

### 3.4. Seawater desalination and wastewater recovery by forward osmosis process

All of the previous results evaluated the effects of various chemical cleaning agents on the FO membrane in the absence of fouling. In order to consider actual fouling, we performed a 15-day FO process simulation with secondary wastewater effluent as the FS and seawater as the DS. Over the 15-day period, both water flux and salt rejection were observed to be stable with an average water flux of  $4.6 \text{ L} \cdot \text{m}^{-2} \cdot \text{h}^{-1}$  and

an average salt rejection of 98.5% (Fig. 8). However, both water flux and salt rejection in this test was lower than those observed for the conditions used in the cleaning solutions tests in the absence of foulants. The reduction of water flux was due to the formation of a fouling layer on the membrane surface at the FS side when secondary wastewater effluent was used as the FS. During the 15-day period, there was no significant flux decline that would necessitate a cleaning intervention. However, the lower flux consequently resulted in an increased back diffusion of salt from the DS [26] and, therefore a decrease in salt rejection was also observed. The average DOC rejection from wastewater over 15 days was 90.7%.

CTA FO membranes have been a benchmark for several years. Compared to previous experiments using a CTA membrane where a secondary wastewater effluent was the FS and seawater was the DS, the water flux values using an aquaporin based biomimetic membrane was found to be higher and more stable [17,52]. The average flux was  $3.4 \text{ L}\cdot\text{m}^{-2}\cdot\text{h}^{-1}$  for the CTA membrane and  $4.6 \text{ L}\cdot\text{m}^{-2}\cdot\text{h}^{-1}$  in this study under similar testing conditions. In terms of salt rejection, the aquaporin based biomimetic membrane also showed a higher rejection than CTA membranes, due to the ability of aquaporin proteins to selectively reject salt ions and allow water passage through the aquaporin water channel.

### 3.5. Implications

The present study indicates that aquaporin based biomimetic membrane appears to have a superior performance in FO processes for seawater desalination and wastewater recovery compared to conventional CTA FO membranes. However, more tests using real conditions are required for a full assessment. The results found in this study suggest that an increase in water flux of biomimetic membranes may be feasible by appropriate chemical cleaning agent treatment prior to its use. The chemical cleaning agents used in this study are beneficial in conditioning the aquaporin based biomimetic membrane to provide better performance. For example, a quick flush with a cleaning agent such as SDS or LAS may improve the performance of aquaporin proteins to transport water, without compromising salt rejection. Results from the cleaning tests suggest that cleaning steps required, as per system operation, will not adversely affect an aquaporin based biomimetic membrane, where a selective water flux with high salt rejection are expected to be maintained. In the future study, it is necessary to investigate the further changes of membrane after more cycles of cleaning with chemical agents. Verification is also required in cleaning tests conducted under operation with real solutions (i.e. real wastewater and seawater).

## 4. Conclusions

An aquaporin based biomimetic membrane was tested by using different cleaning agents to simulate membrane chemical cleaning processes. The stability of the membranes was evaluated. The membrane showed a good chemical stability when tested with different chemical cleaning agents over a wide pH range (1.4 to 11.7). EDTA showed a negligible effect on the water flux of the membrane. HCl, NaOCl, SDS and Alconox cleaning showed an increase in the water flux of aquaporin based biomimetic membranes. The variation of flux was mainly attributed to the change of TFC membrane properties when HCl, NaOCl and SDS were used as the chemical cleaning agents while Alconox showed more impact on aquaporins. Very high salt rejection (> 98%) even after chemical cleaning was observed for all tested cleaning agents. However, the significant change of flux caused by the chemical cleaning agents could be a potential challenge for membrane aging in future long-term implementation.

Initial tests with secondary wastewater effluent as the FS and natural seawater as the DS demonstrated a stable operation (i.e. water flux and salt rejection) and higher performance compared to a CTA

membrane under similar testing conditions. A fouling layer formed at the FS side caused a minor water flux reduction. More tests are necessary to validate these results for long-term operation and possible effects that cleaning protocols may have on the process under real fouling conditions.

## Acknowledgements

We thank Aquaporin A/S for the valuable discussions and providing us with the aquaporin based biomimetic membranes.

## References

- [1] D.L. Shaffer, J.R. Werber, H. Jaramillo, S. Lin, M. Elimelech, Forward osmosis: where are we now? *Desalination* 356 (2015) 271–284.
- [2] C. Tang, Z. Wang, I. Petrić, A.G. Fane, C. Hélix-Nielsen, Biomimetic aquaporin membranes coming of age, *Desalination* 368 (2015) 89–105.
- [3] H. Ma, C. Burger, B.S. Hsiao, B. Chu, Highly permeable polymer membranes containing directed channels for water purification, *ACS Macro Lett.* 1 (2012) 723–726.
- [4] A. Giwa, S.W. Hasan, A. Yousuf, S. Chakraborty, D.J. Johnson, N. Hilal, Biomimetic membranes: a critical review of recent progress, *Desalination* (2017) (in press).
- [5] S. Phongphananee, N. Yoshida, F. Hirata, On the proton exclusion of aquaporins: a statistical mechanics study, *J. Am. Chem. Soc.* 130 (2008) 1540–1541.
- [6] P. Agre, G.M. Preston, B.L. Smith, J.S. Jung, S. Raina, C. Moon, W.B. Guggino, S. Nielsen, Aquaporin CHIP: the archetypal molecular water channel, *Am. J. Phys.* 265 (1993) 463–476.
- [7] F. Wicaksana, A.G. Fane, C. Tang, R. Wang, Nature meets technology: forward osmosis membrane technology, in: C. Hélix-Nielsen (Ed.), *Biomimetic Membranes for Sensor and Separation Applications*, Springer, 2012, pp. 21–42.
- [8] Y. Zhao, C. Qiu, X. Li, A. Vararattanavech, W. Shen, J. Torres, C. Hélix-Nielsen, R. Wang, X. Hu, A.G. Fane, C.Y. Tang, Synthesis of robust and high-performance aquaporin-based biomimetic membranes by interfacial polymerization-membrane preparation and RO performance characterization, *J. Membr. Sci.* 423–424 (2012) 422–428.
- [9] M.Ø. Jensen, O.G. Mouritsen, Single-channel water permeabilities of *Escherichia coli* aquaporins AqpZ and GlpF, *Biophys. J.* 90 (2006) 2270–2284.
- [10] M. Kumar, M. Grzelakowski, J. Zilles, M. Clark, W. Meier, Highly permeable polymeric membranes based on the incorporation of the functional water channel protein Aquaporin Z, *Proc. Natl. Acad. Sci. U. S. A.* 104 (2007) 20719–20724.
- [11] C.Y. Tang, Y. Zhao, R. Wang, C. Hélix-Nielsen, A.G. Fane, Desalination by biomimetic aquaporin membranes: review of status and prospects, *Desalination* 308 (2013) 34–40.
- [12] H.T. Madsen, N. Bajraktari, C. Hélix-Nielsen, B. Van der Bruggen, E.G. Søgaard, Use of biomimetic forward osmosis membrane for trace organics removal, *J. Membr. Sci.* 476 (2015) 469–474.
- [13] W. Fam, S. Phuntsho, J.H. Lee, H.K. Shon, Performance comparison of thin-film composite forward osmosis membranes, *Desalin. Water Treat.* 51 (2013) 6274–6280.
- [14] Z.Y. Li, V. Yangali-Quintanilla, R. Valladares-Linares, Q. Li, T. Zhan, G. Amy, Flux patterns and membrane fouling propensity during desalination of seawater by forward osmosis, *Water Res.* 46 (2012) 195–204.
- [15] R. Valladares Linares, Z.Y. Li, S. Sarp, Y.G.G. Park, G. Amy, J.S. Vrouwenvelder, Higher boron rejection with a new TFC forward osmosis membrane, *Desalin. Water Treat.* (2014) 1–7.
- [16] R. Valladares Linares, Z.Y. Li, V. Yangali-Quintanilla, Q. Li, G. Amy, Cleaning protocol for a FO membrane fouled in wastewater reuse, *Desalin. Water Treat.* 51 (2013) 4821–4824.
- [17] R. Valladares Linares, V. Yangali-Quintanilla, Z. Li, G. Amy, NOM and TEP fouling of a forward osmosis (FO) membrane: foulant identification and cleaning, *J. Membr. Sci.* 421–422 (2012) 217–224.
- [18] S. West, H. Horn, W.A.M. Hijnen, C. Castillo, M. Wagner, Confocal laser scanning microscopy as a tool to validate the efficiency of membrane cleaning procedures to remove biofilms, *Sep. Purif. Technol.* 122 (2014) 402–411.
- [19] K.J. Varin, N.H. Lin, Y. Cohen, Biofouling and cleaning effectiveness of surface nanostructured reverse osmosis membranes, *J. Membr. Sci.* 446 (2013) 472–481.
- [20] B.P. Espinasse, S.R. Chae, C. Marconnet, C. Coulombel, C. Mizutani, M. Djafer, et al., Comparison of chemical cleaning reagents and characterization of foulants of nanofiltration membranes used in surface water treatment, *Desalination* 296 (2012) 1–6.
- [21] E. Arkhangelsky, S.S. Lay, F. Wicaksana, A.A. Al-Rabiah, S.M. Al-Zahrani, R. Wang, Impact of intrinsic properties of foulants on membrane performance in osmotic desalination applications, *Sep. Purif. Technol.* 123 (2014) 87–95.
- [22] M. Zhang, D. Hou, Q. She, C. Tang, Gypsum scaling in pressure retarded osmosis: experiments, mechanisms and implications, *Water Res.* 48 (2014) 387–395.
- [23] B. Mi, M. Elimelech, Chemical and physical aspects of organic fouling of forward osmosis membranes, *J. Membr. Sci.* 320 (2008) 292–302.
- [24] E.R. Cornelissen, D. Harmsen, K.F. de Korte, C.J. Ruijken, J.-J. Qin, H. Oo, et al., Membrane fouling and process performance of forward osmosis membranes on activated sludge, *J. Membr. Sci.* 319 (2008) 158–168.
- [25] R. Valladares Linares, V. Yangali-Quintanilla, Z. Li, G. Amy, Rejection of micro-pollutants by clean and fouled forward osmosis membrane, *Water Res.* 45 (2011) 6737–6744.



- [26] R. Valladares Linares, Z. Li, M. Abu-Ghdaib, C.H. Wei, G. Amy, J.S. Vrouwenvelder, Water harvesting from municipal wastewater via osmotic gradient: an evaluation of process performance, *J. Membr. Sci.* 447 (2013) 50–56.
- [27] M. Qasim, N.A. Darwish, S. Sarp, N. Hilal, Water desalination by forward (direct) osmosis phenomenon: a comprehensive review, *Desalination* 374 (2015) 47–69.
- [28] N.Y. Yip, A. Tiraferri, W.A. Phillip, J.D. Schiffman, M. Elimelech, High performance thin-film composite forward osmosis membrane, *Environ. Sci. Technol.* 44 (2010) 3812–3818.
- [29] J. Wei, C. Qiu, C.Y. Tang, R. Wang, A.G. Fane, Synthesis and characterization of flat-sheet thin film composite forward osmosis membranes, *J. Membr. Sci.* 372 (2011) 292–302.
- [30] J. Benavente, M.I. Vázquez, Effect of age and chemical treatments on characteristic parameters for active and porous sublayers of polymeric composite membranes, *J. Colloid Interface Sci.* 273 (2004) 547–555.
- [31] X. Zhai, J. Meng, R. Li, L. Ni, Y. Zhang, Hypochlorite treatment on thin film composite RO membrane to improve boron removal performance, *Desalination* 274 (2011) 136–143.
- [32] Y.N. Kwon, J.O. Leckie, Hypochlorite degradation of crosslinked polyamide membranes. II. Changes in hydrogen bonding behavior and performance, *J. Membr. Sci.* 282 (2006) 456–464.
- [33] V.T. Do, C.Y. Tang, M. Reinhard, J.O. Leckie, Degradation of polyamide nanofiltration and reverse osmosis membranes by hypochlorite, *Environ. Sci. Technol.* 46 (2012) 852–859.
- [34] B. Jung, J.K. Yoon, B. Kim, H.W. Rhee, Effect of molecular weight of polymeric additives on formation, permeation properties and hypochlorite treatment of asymmetric polyacrylonitrile membranes, *J. Membr. Sci.* 243 (2004) 45–57.
- [35] S. Rouaix, C. Causserand, P. Aimar, Experimental study of the effects of hypochlorite on polysulfone membrane properties, *J. Membr. Sci.* 277 (2006) 137–147.
- [36] Y. Zhang, J. Wang, F. Gao, H. Tao, Y. Chen, H. Zhang, Impact of sodium hypochlorite (NaClO) on polysulfone (PSF) ultrafiltration membranes: the evolution of membrane performance and fouling behavior, *Sep. Purif. Technol.* 175 (2017) 238–247.
- [37] B.X. Cai, Permselectivity of polyamide composite membrane modified by solvent, *J. Appl. Polym. Sci.* 92 (2004) 1005–1010.
- [38] K.L. Németh-Cahalan, K. Kalman, J.E. Hall, Molecular basis of pH and  $\text{Ca}^{2+}$  regulation of aquaporin water permeability, *J. Gen. Physiol.* 123 (2004) 573–580.
- [39] C.X. Zhao, H.-B. Shao, L.Y. Chu, Aquaporin structure-function relationships: water flow through plant living cells, *Colloids Surf. B: Biointerfaces* 62 (2008) 163–172.
- [40] R.C. Ong, T.S. Chung, J.S. de Wit, B.J. Helmer, Novel cellulose ester substrates for high performance flat-sheet thin-film composite (TFC) forward osmosis (FO) membranes, *J. Membr. Sci.* 473 (2015) 63–71.
- [41] Z. Wang, J. Tang, C. Zhu, Y. Dong, Q. Wang, Z. Wu, Chemical cleaning protocols for thin film composite (TFC) polyamide forward osmosis membranes used for municipal wastewater treatment, *J. Membr. Sci.* 475 (2015) 184–192.
- [42] M.J. Borgnia, D. Kozono, G. Calamita, P.C. Maloney, P. Agre, Functional reconstitution and characterization of AqpZ, the *E. coli* water channel protein, *J. Mol. Biol.* 291 (1999) 1169–1179.
- [43] X. Kong, Z. Li, D. Lu, Z. Liu, J. Wu, Multiscale simulation of surfactant–aquaporin complex formation and water permeability, *RSC Adv.* 4 (2014) 375–392.
- [44] J.S. Hansen, A. Vararattanavech, I. Plasencia, P.J. Greisen, J. Bomholt, J. Torres, J. Emneus, C. Hélix-Nielsen, Interaction between sodium dodecyl sulfate and membrane reconstituted aquaporins: a comparative study of spinach SoPIP2;1 and *E. coli* AqpZ, *Biochim. Biophys. Acta* 1808 (2011) 2600–2607.
- [45] K. Ohki, F. Tokiwa, Physicochemical properties of alpha-olefin n-sulfonate sodium salts, *J. Chem. Soc. Japan.* (1970), <https://scholar.google.com/scholar?hl=es&q=Physicochemical+properties+of++++alpha-olefin-sulfonate+sodium+salts&btnG=&lr=#0> (accessed June 8, 2015).
- [46] D. Nanda, K.L. Tung, Y.L. Li, N.J. Lin, C.J. Chuang, Effect of pH on membrane morphology, fouling potential, and filtration performance of nanofiltration membrane for water softening, *J. Membr. Sci.* 349 (2010) 411–420.
- [47] H. Zhu, M. Nyström, Cleaning results characterized by flux, streaming potential and FTIR measurements, *Colloids Surf. A Physicochem. Eng. Asp.* 138 (1998) 309–321.
- [48] M. Nyström, H. Zhu, Characterization of cleaning results using combined flux and streaming potential methods, *J. Membr. Sci.* 131 (1997) 195–205.
- [49] M.H. Oo, S.L. Ong, Implication of zeta potential at different salinities on boron removal by RO membranes, *J. Membr. Sci.* 352 (2010) 1–6.
- [50] Y.N. Kwon, J.O. Leckie, Hypochlorite degradation of crosslinked polyamide membranes: I. Changes in chemical/morphological properties, *J. Membr. Sci.* 283 (2006) 21–26.
- [51] N.P. Soice, A.C. Maladono, D.Y. Takigawa, A.D. Norman, W.B. Krantz, A.R. Greenberg, Oxidative degradation of polyamide reverse osmosis membranes: studies of molecular model compounds and selected membranes, *J. Appl. Polym. Sci.* 90 (2003) 1173–1184.
- [52] V. Yangali-Quintanilla, Z. Li, R. Valladares, Q. Li, G. Amy, Indirect desalination of Red Sea water with forward osmosis and low pressure reverse osmosis for water reuse, *Desalination* 280 (2011) 160–166.