



FRONT COURTYARD



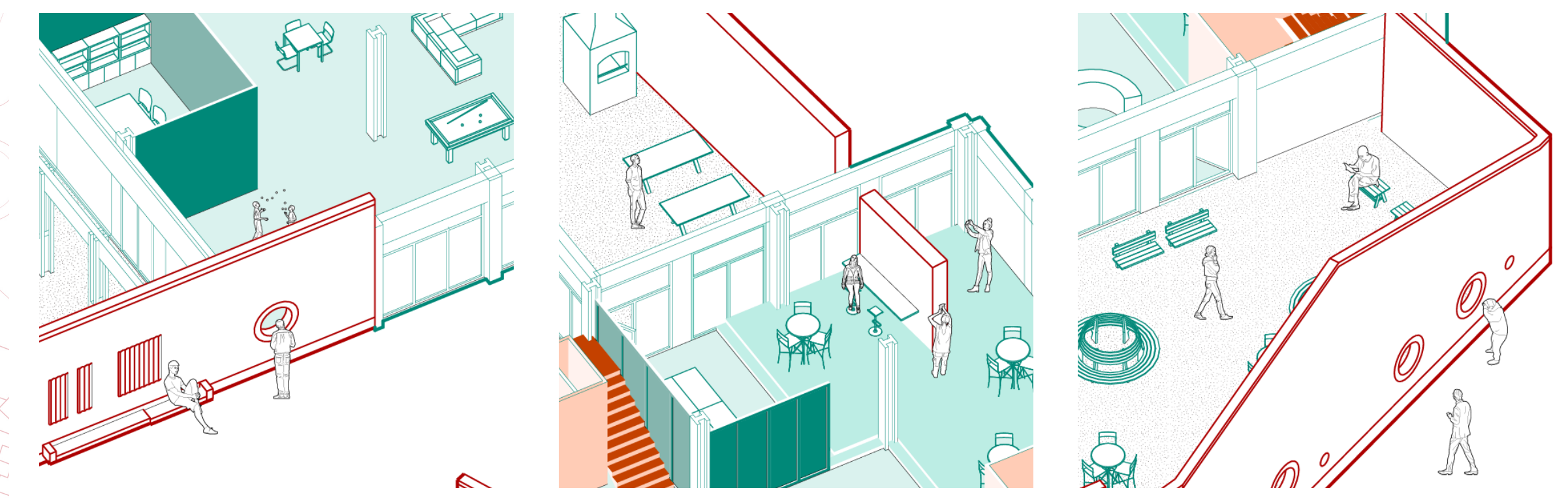
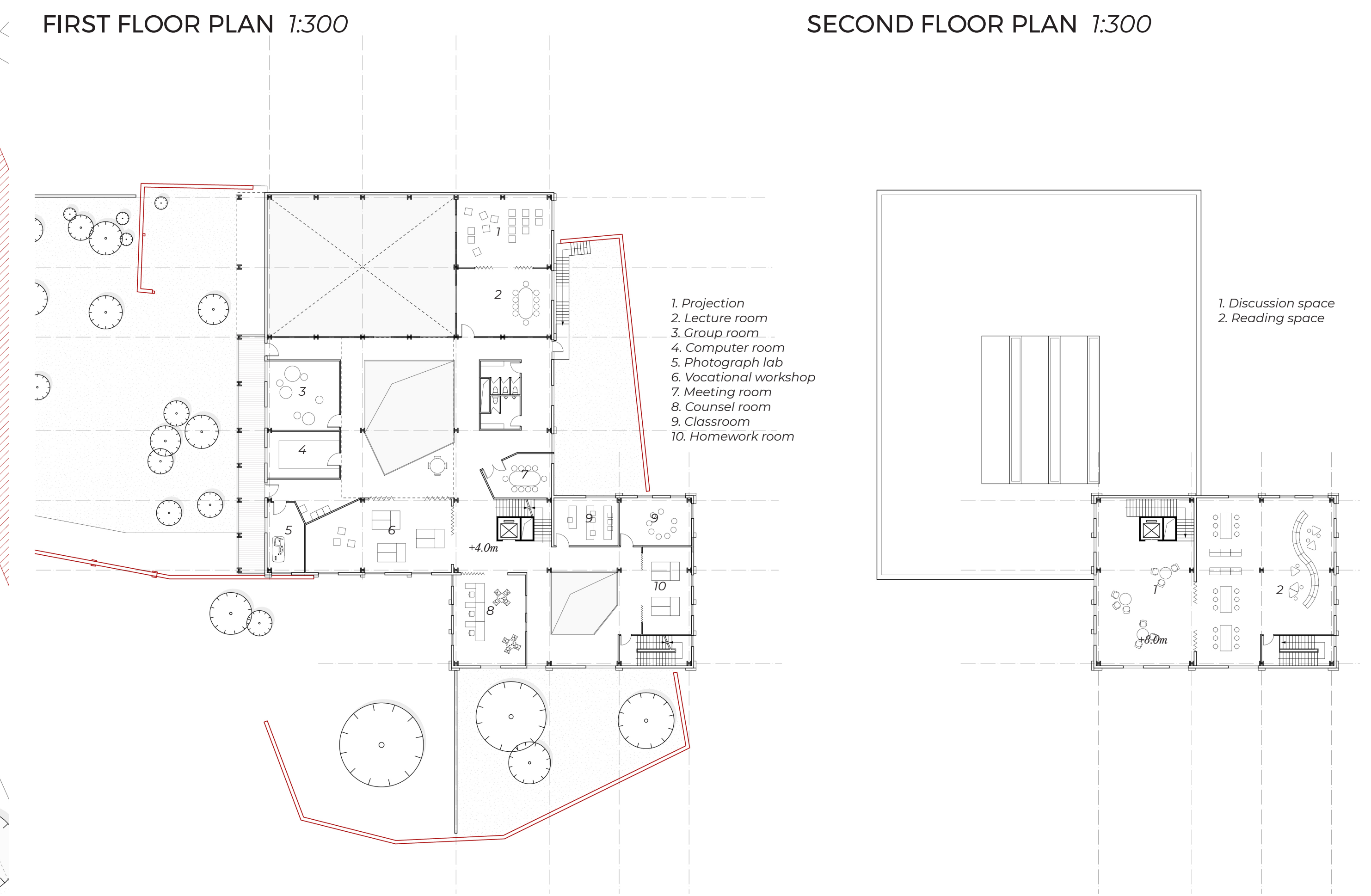
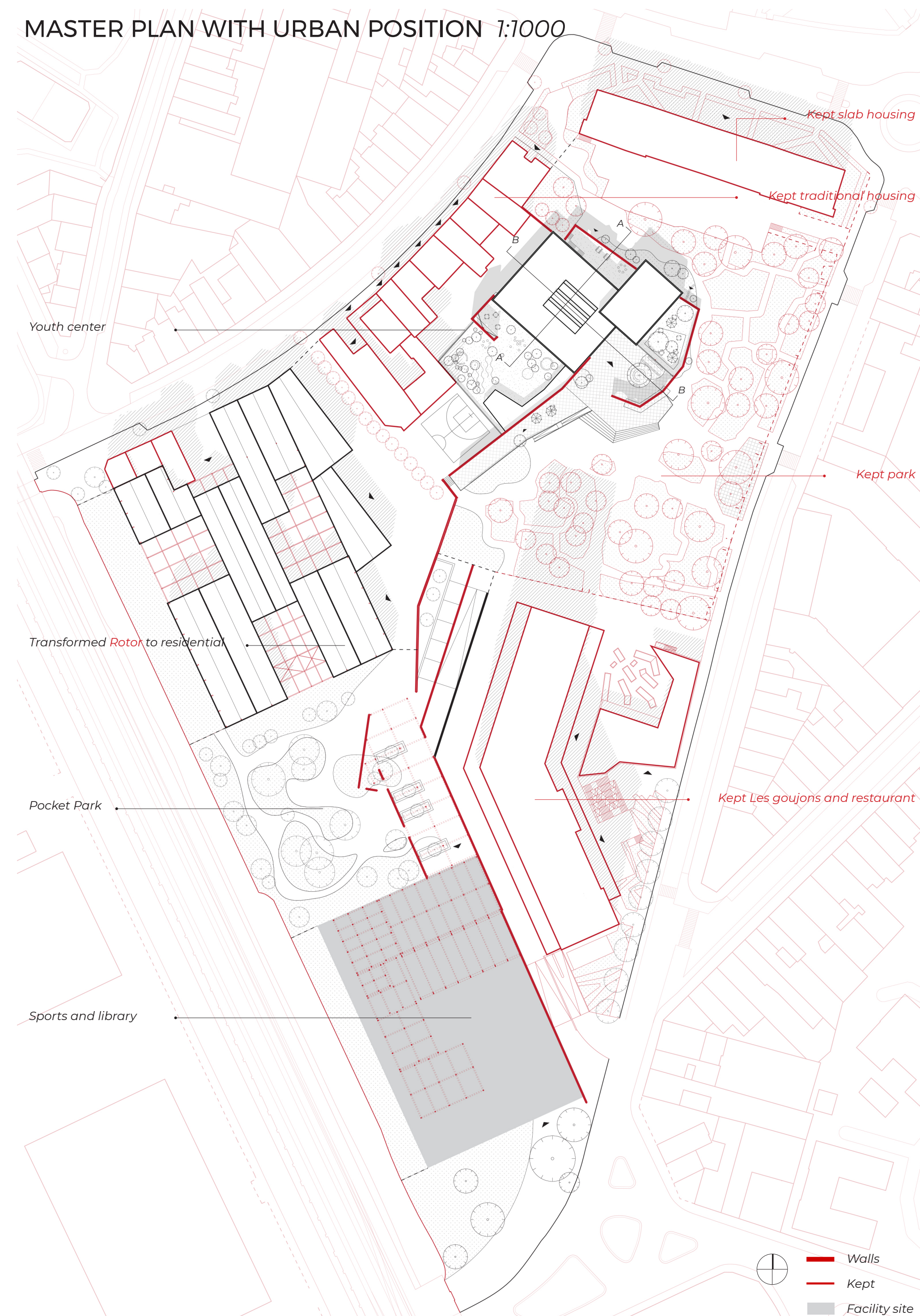
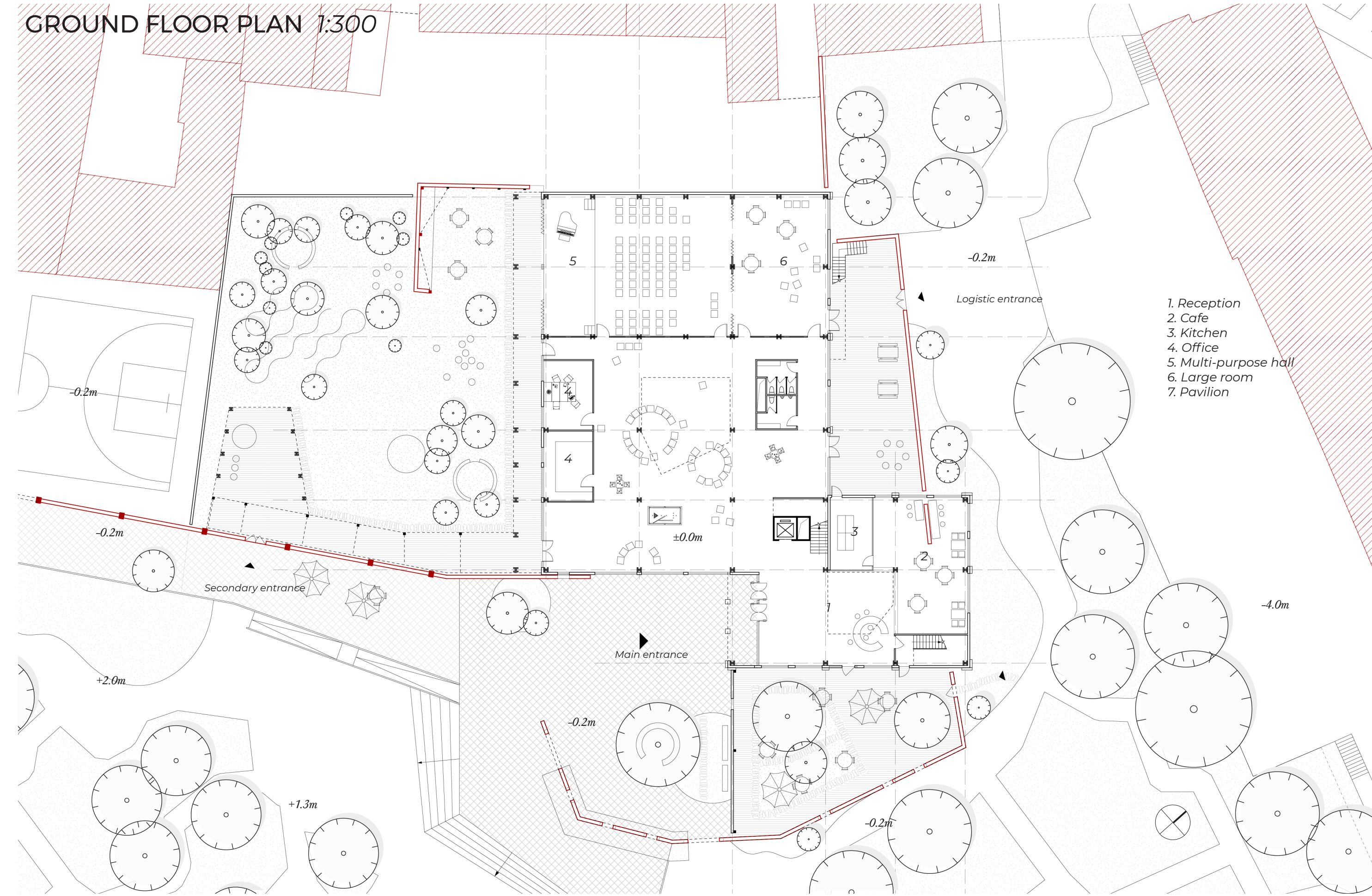
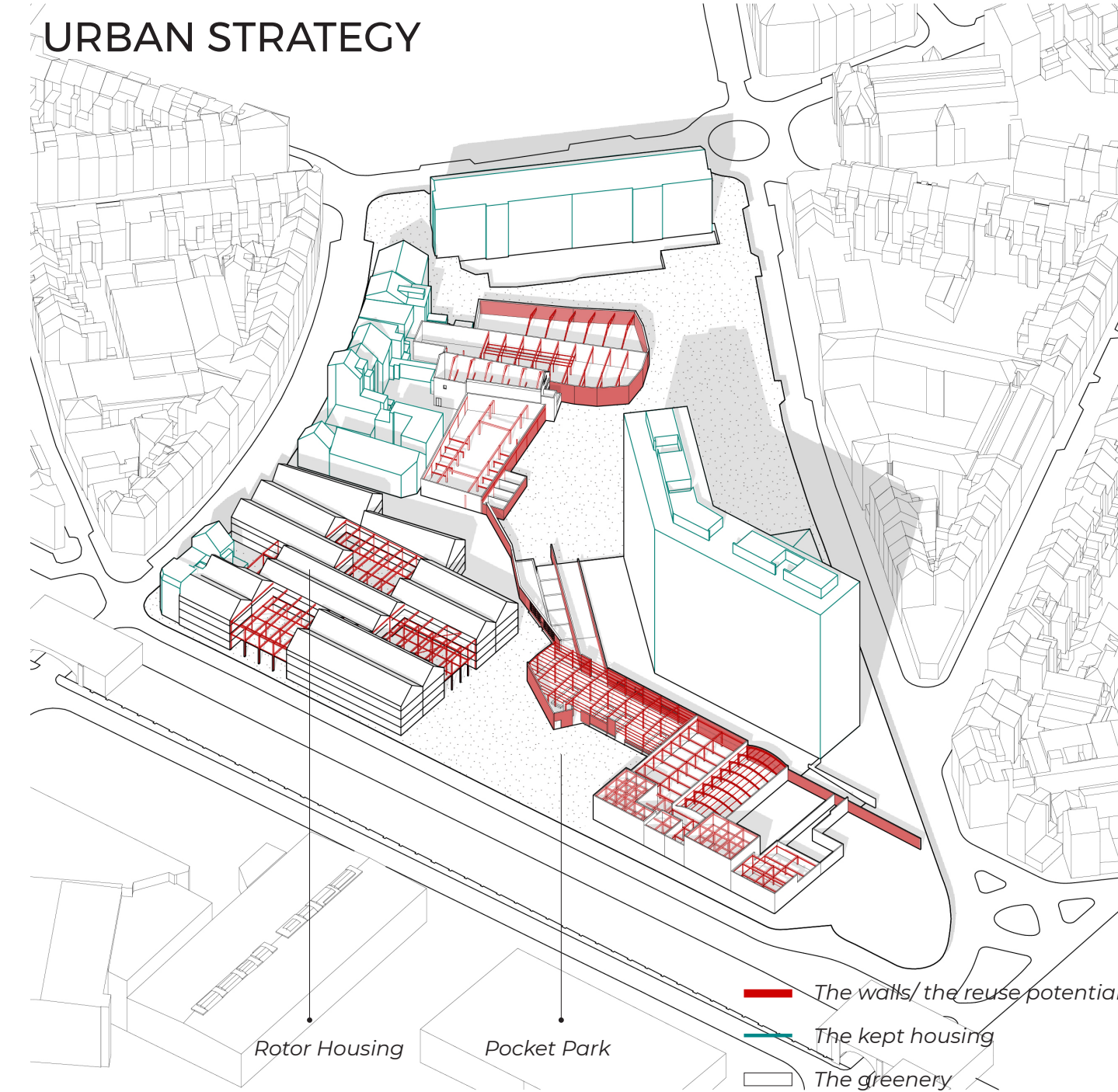
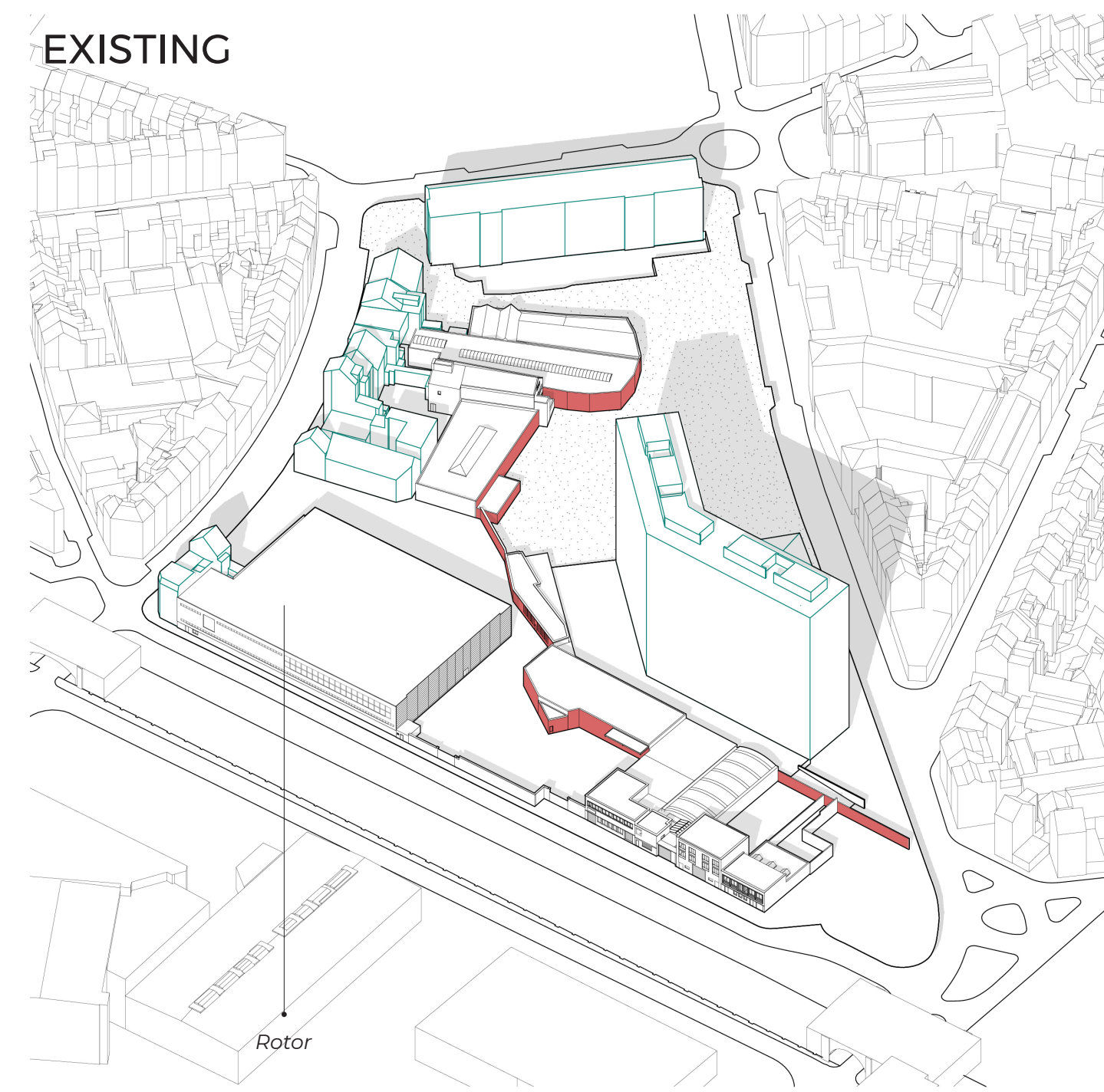
BACKYARD



PLAYGROUND



ATRIUM



The story started from the invisible river on the urban scale, concentrating on the wall which is both spolia on site and the identity of my youth center. The archaeological idea of Spolia keeps me discovering the existing value, then constantly thinking of collecting, composing and re-using. Once existing fragments collide with new ones, the process of bricolage comes up. The old wall owns the collective memory, speaks for the space. That's why the walls teach.

SECTION A-A 1:200

SECTION B-B 1:200

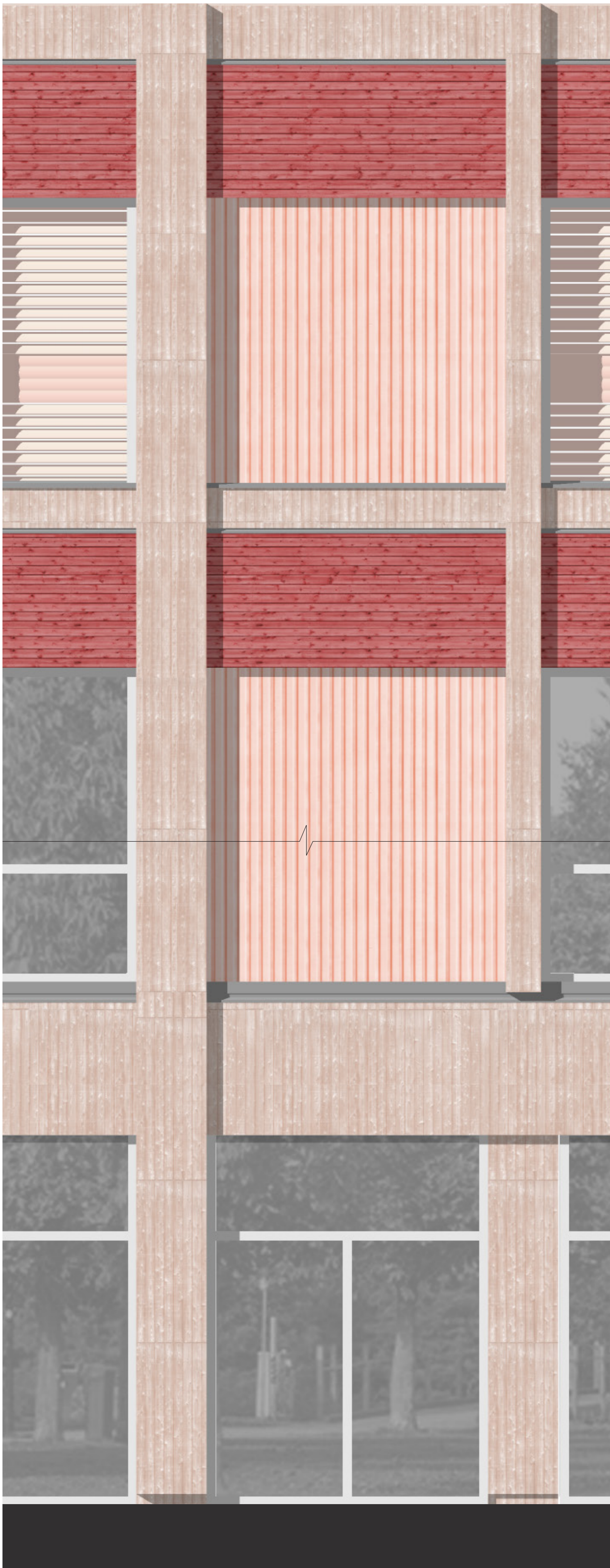
GROUND FLOOR PLAN 1:300

FIRST FLOOR PLAN 1:300

SECOND FLOOR PLAN 1:300

EAST ELEVATION

SOUTH ELEVATION



Green roof

1. Vegetation
2. Substrate (and room for water storage) 140mm
3. Filter
4. Drainage 50mm
5. Root barrier and mechanical protection
6. Waterproof membrane
7. Thermal insulation 150mm
8. Vapour barrier
9. Sloping layer 60mm
10. CLT 90mm
11. Bearing structure

Prefabricated facade

12. Painted larch 20 mm
13. Horizontal battens 25x60 mm
14. Vertical battens 13x60 mm
15. Thermal insulation 50 mm
16. Waterproof layer
17. Plasterboard 15 mm
18. Rigid insulation 150 mm

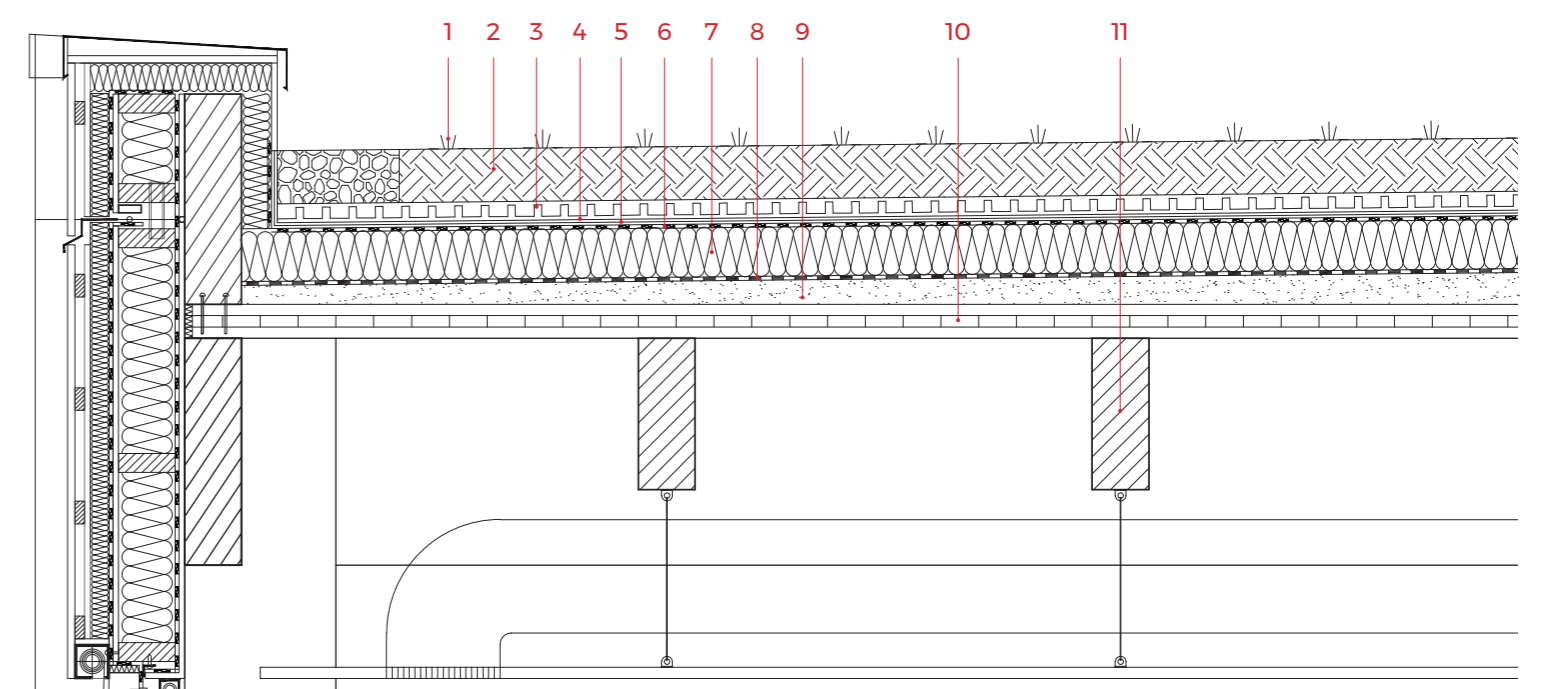
*Added on site:
 Vapour barrier
 15 mm Plasterboard
 Interior paint

Floor system

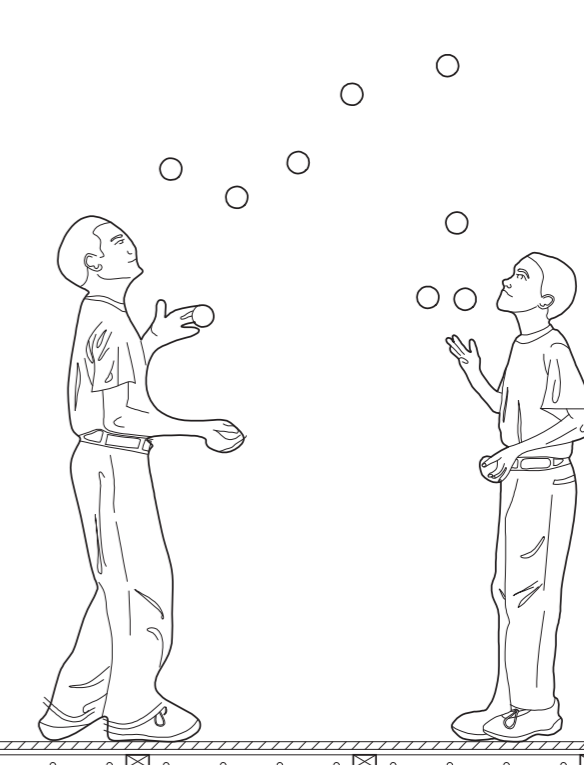
19. Oak flooring 20mm
20. Aluminum conduct sheeting 15mm
21. Installation void with under floor heating
22. Noise insulation 100mm
23. CLT 90mm
24. Bearing structure

Ground Floor

25. Oak flooring 20mm
26. Leveling layer 15mm
27. Screed with underfloor heating 55mm
28. Vapour barrier
29. Noise insulation 100mm
30. Reinforced concrete slab 300mm
31. Rigid insulation 200mm
32. Binding layer 150mm
33. Bed of gravel 150mm
34. Soil layer



- 12
- 13
- 14
- 15
- 16
- 17
- 18



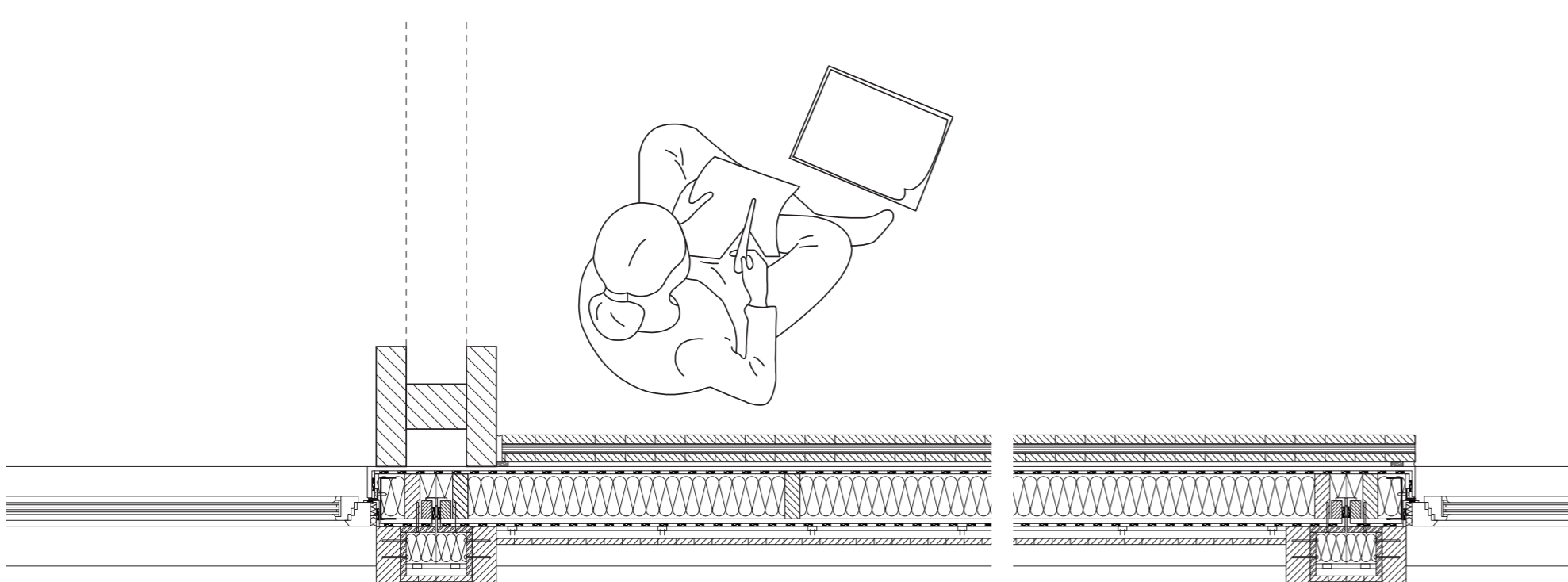
Detail - 1

- 19
- 20
- 21
- 22
- 23
- 24

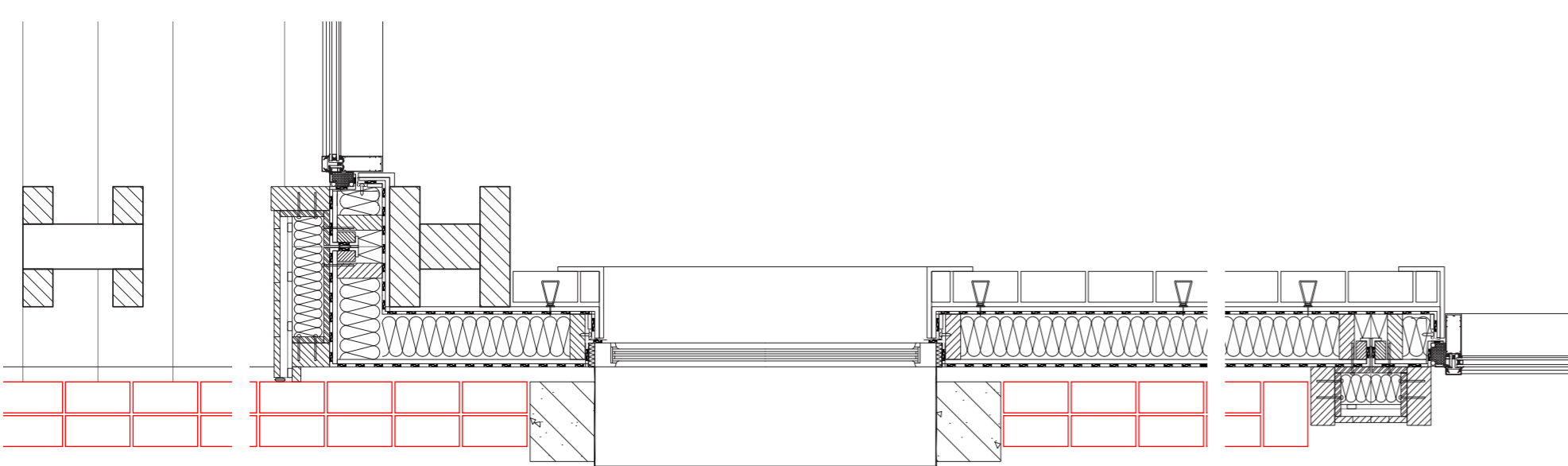
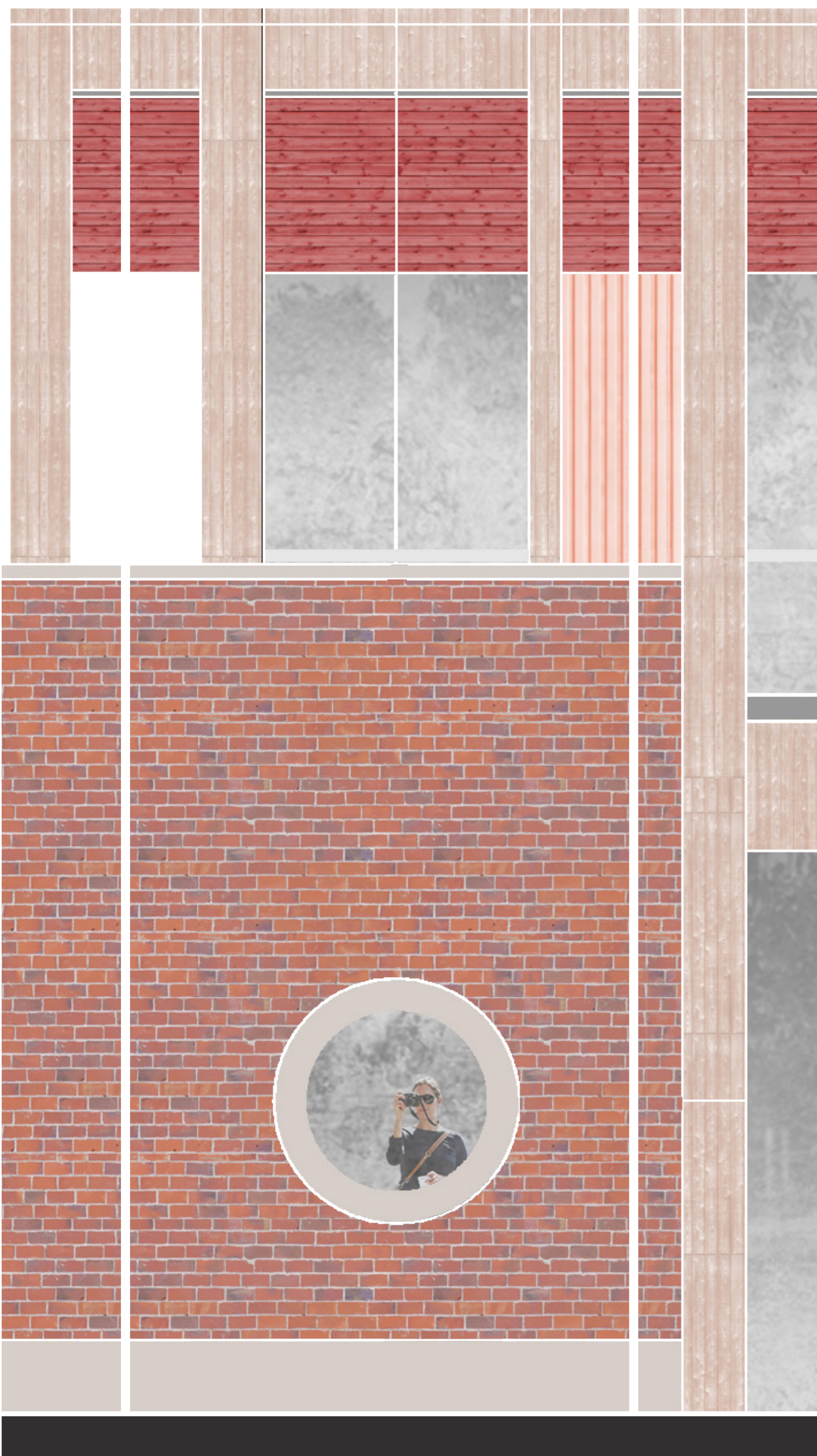


- 25
- 26
- 27
- 28
- 29

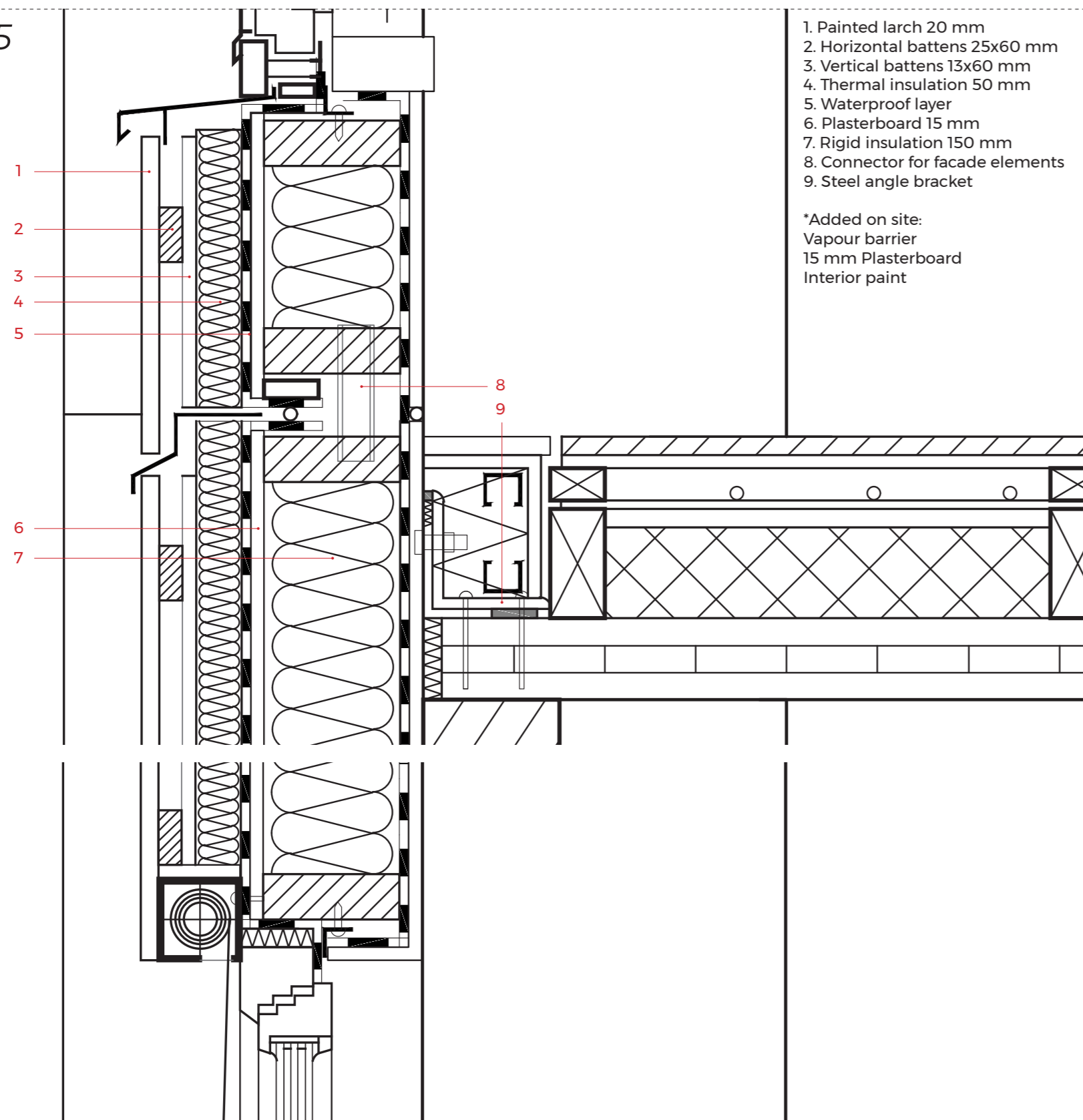
- 30
- 31
- 32
- 33
- 34



TYPICAL SECTION DETAIL 1:20



DETAIL - 1 1:5



1. Painted larch 20 mm
2. Horizontal battens 25x60 mm
3. Vertical battens 13x60 mm
4. Thermal insulation 50 mm
5. Waterproof layer
6. Plasterboard 15 mm
7. Rigid insulation 150 mm
8. Connector for facade elements
9. Steel angle bracket

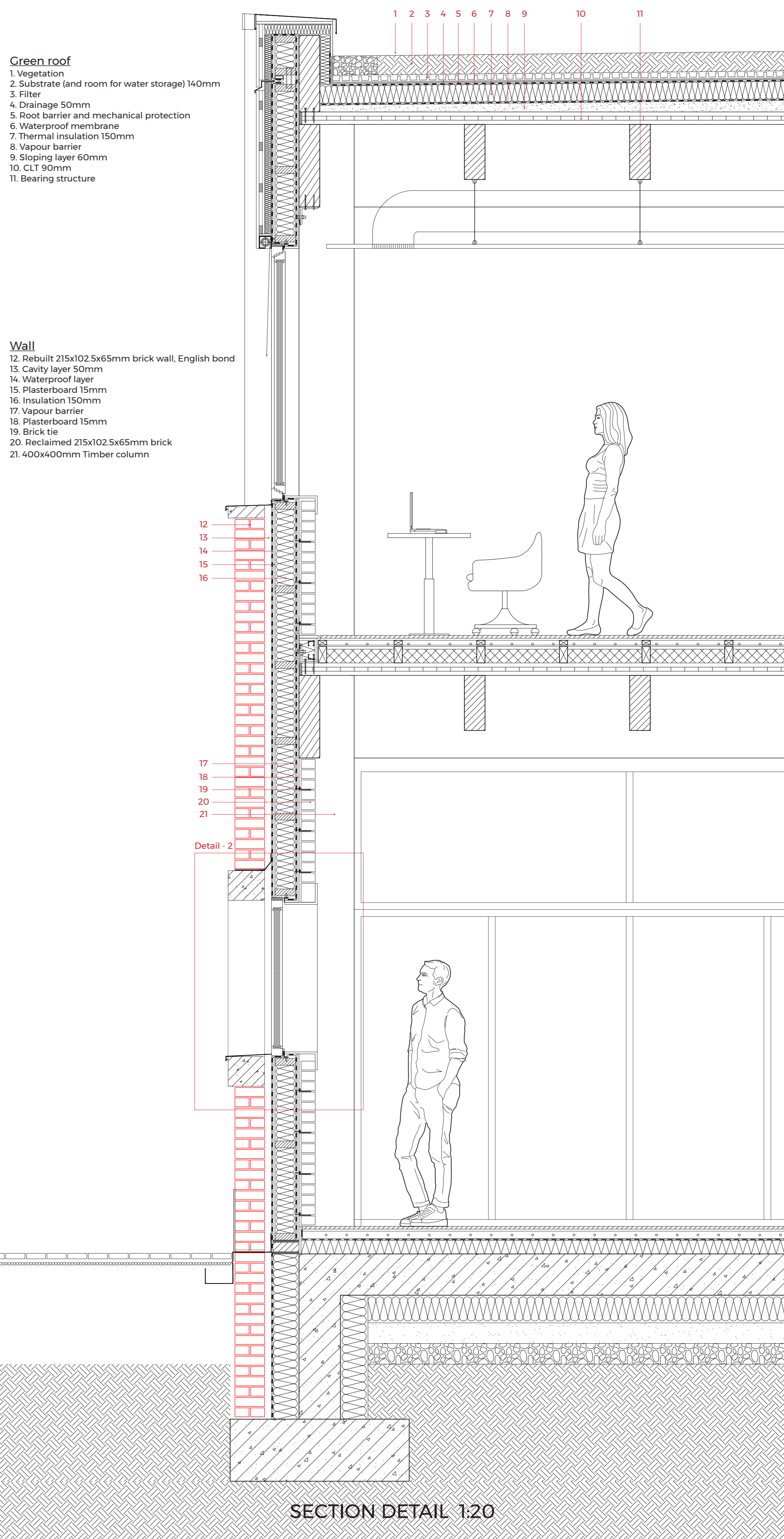
*Added on site:
Vapour barrier
15 mm Plasterboard
Interior paint

Green roof

1. Vegetation
2. Substrate (and room for water storage) 140mm
3. Filter
4. Drainage 50mm
5. Root barrier and mechanical protection
6. Waterproof membrane
7. Thermal insulation 150mm
8. Vapour barrier
9. Sloping layer 60mm
10. CLT 90mm
11. Bearing structure

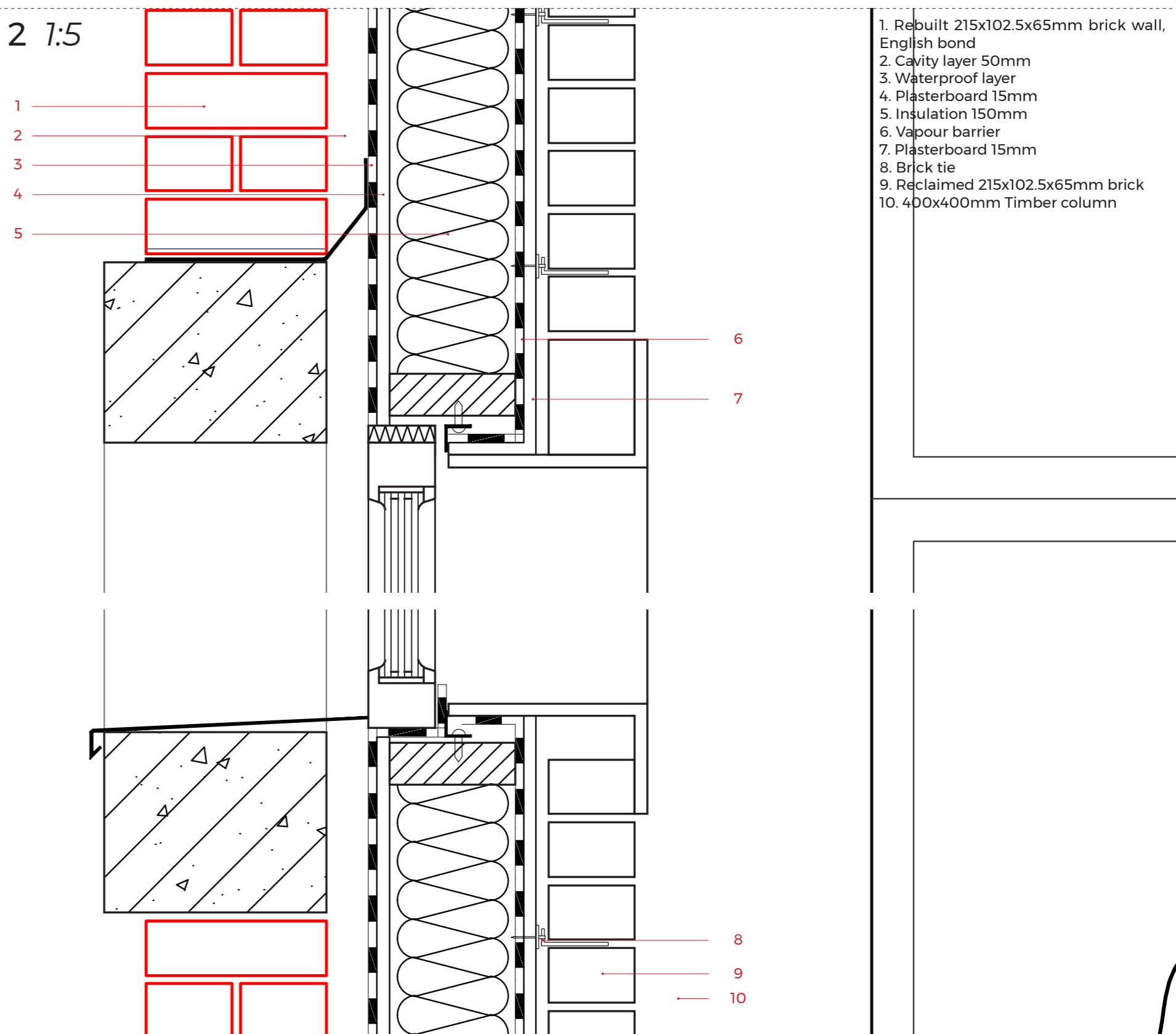
Wall

12. Rebuilt 215x102.5x65mm brick wall, English bond
13. Cavity layer 50mm
14. Waterproof layer
15. Plasterboard 15mm
16. Insulation 150mm
17. Vapour barrier
18. Plasterboard 15mm
19. Brick tie
20. Reclaimed 215x102.5x65mm brick
21. 400x400mm Timber column



SECTION DETAIL 1:20

DETAIL - 2 1:5



1. Rebuilt 215x102.5x65mm brick wall, English bond
2. Cavity layer 50mm
3. Waterproof layer
4. Plasterboard 15mm
5. Insulation 150mm
6. Vapour barrier
7. Plasterboard 15mm
8. Brick tie
9. Reclaimed 215x102.5x65mm brick
10. 400x400mm Timber column