

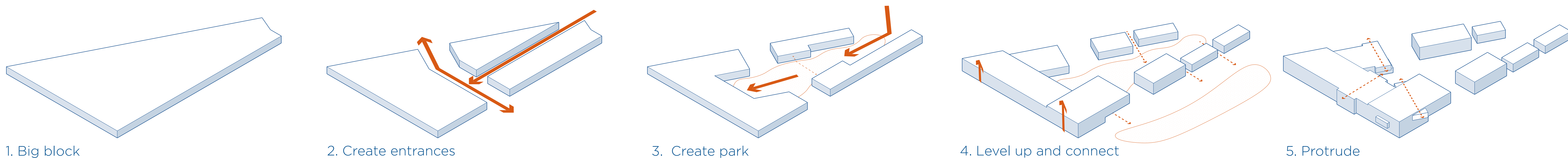


# HEALING IN SIGHT

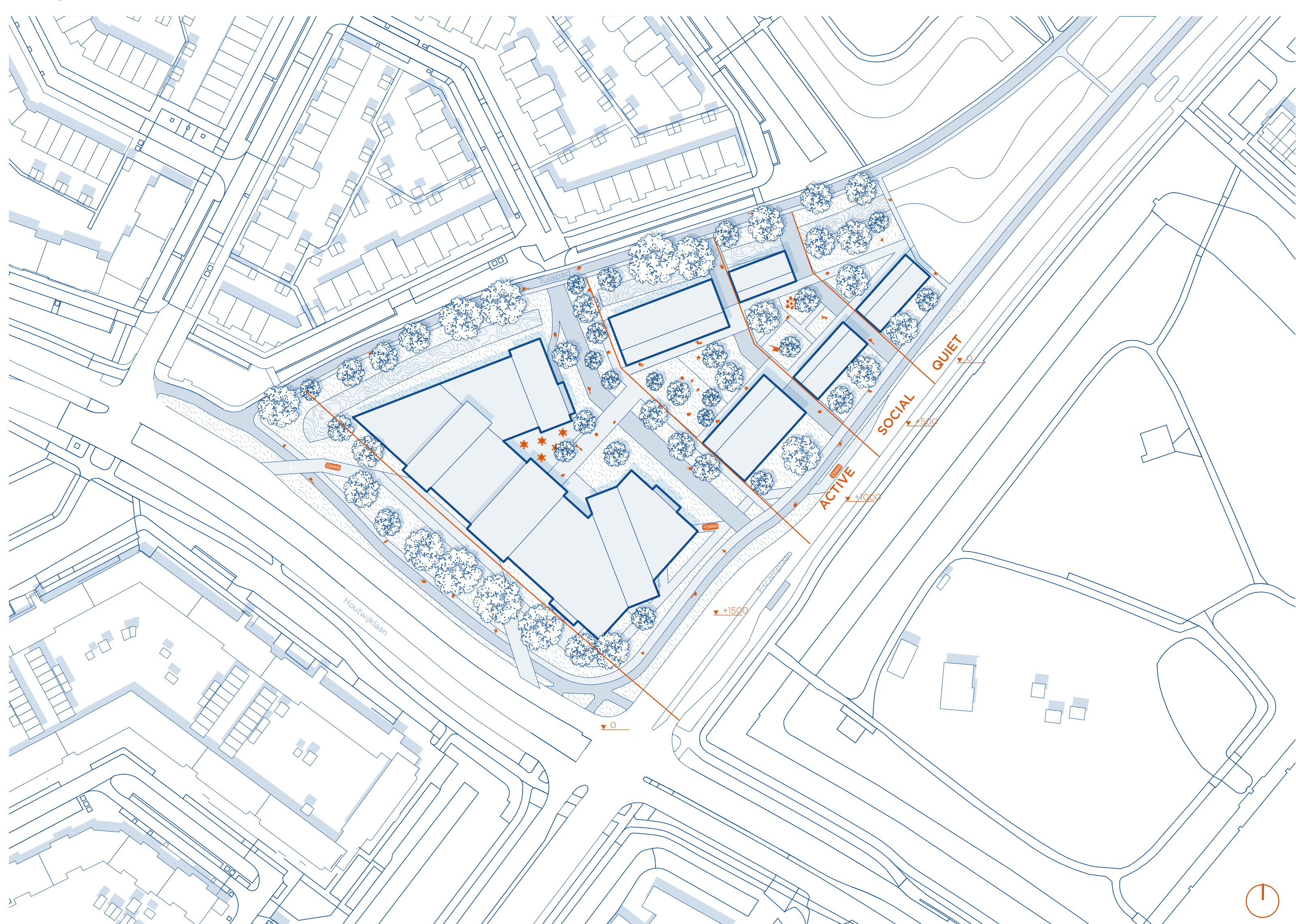
Where **transparent** design inspires you to **recover** and **grow**



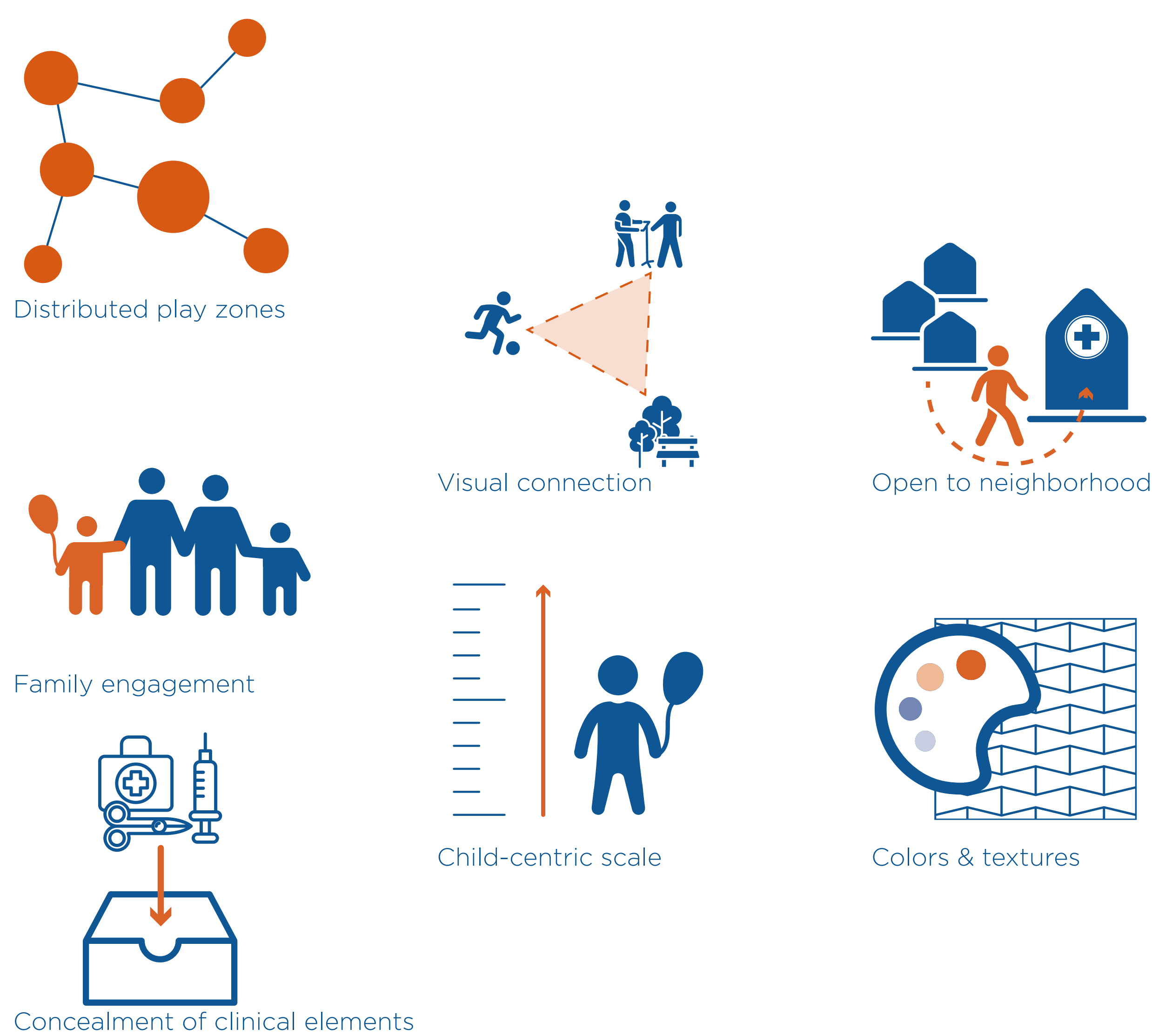
## Mass Development



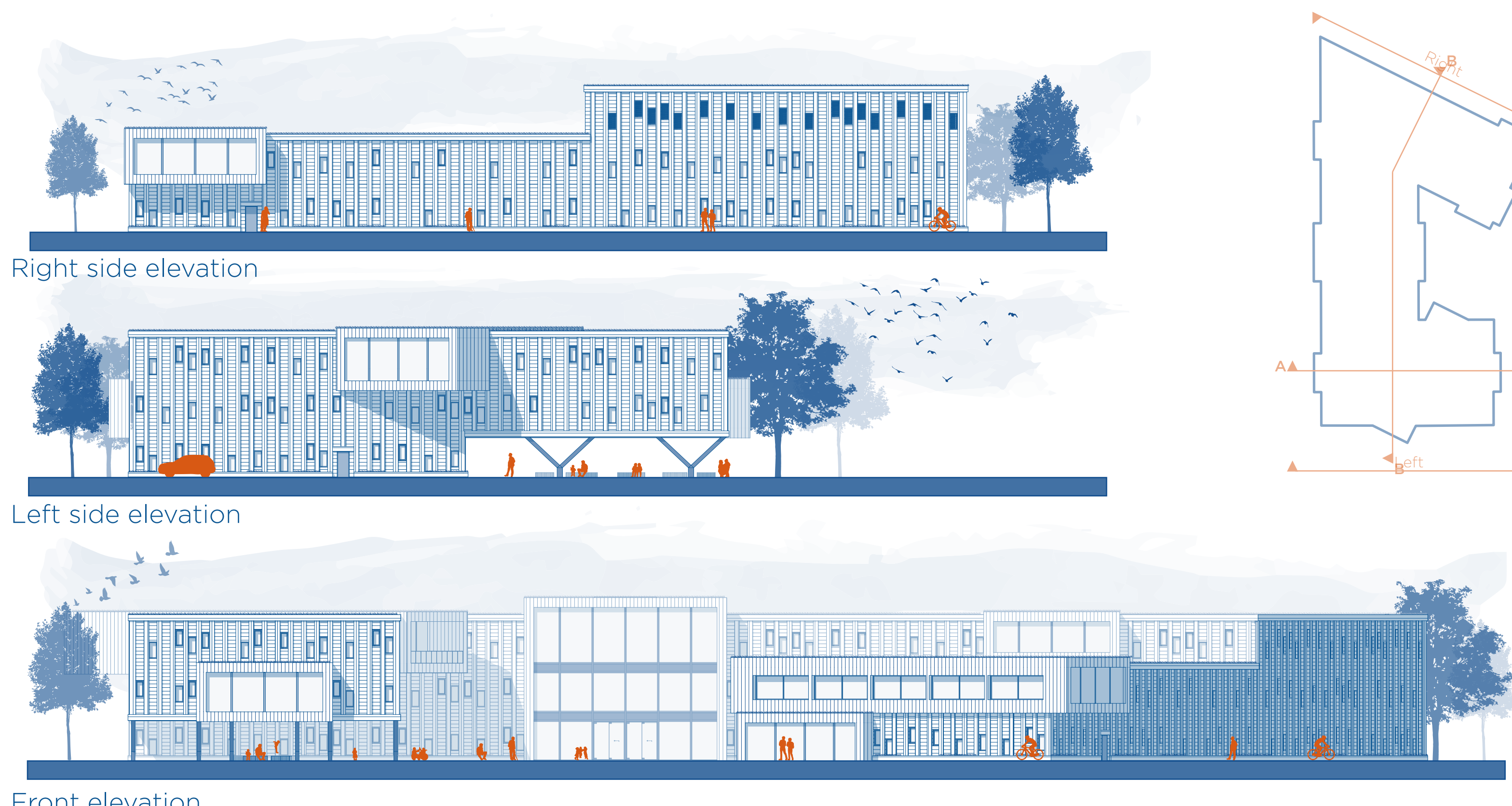
## Site plan 1:1000



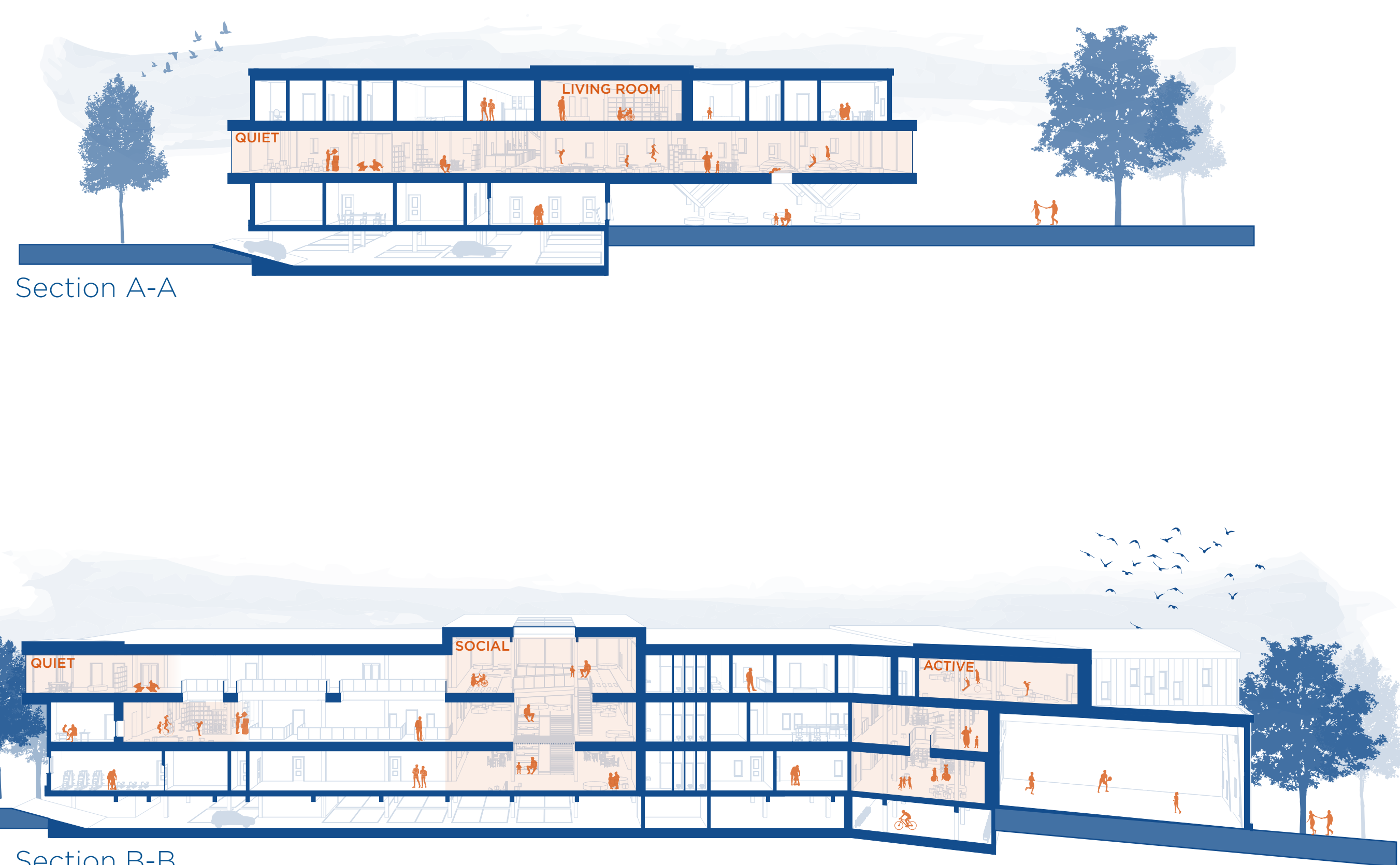
## Design principles



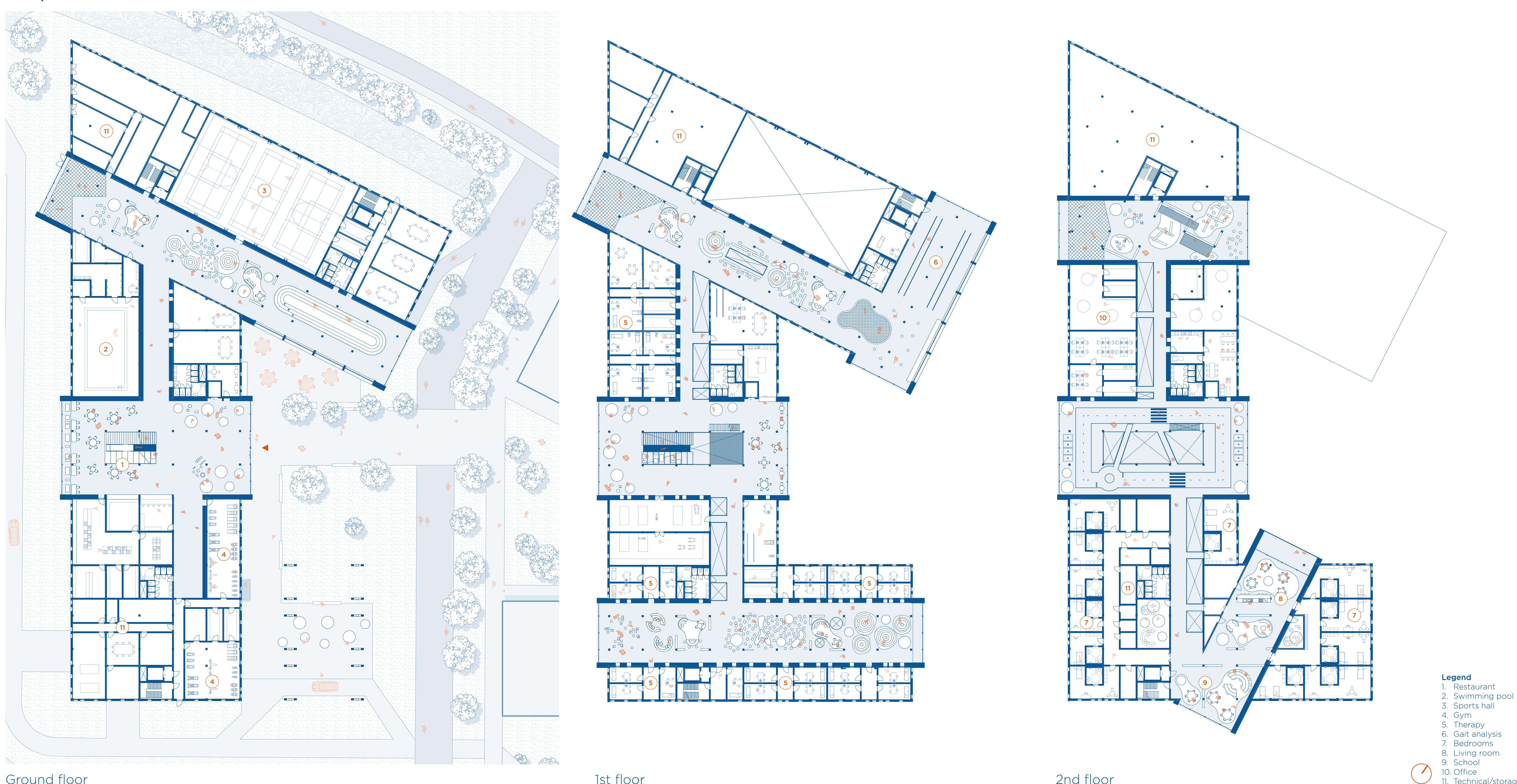
## Elevations 1:300

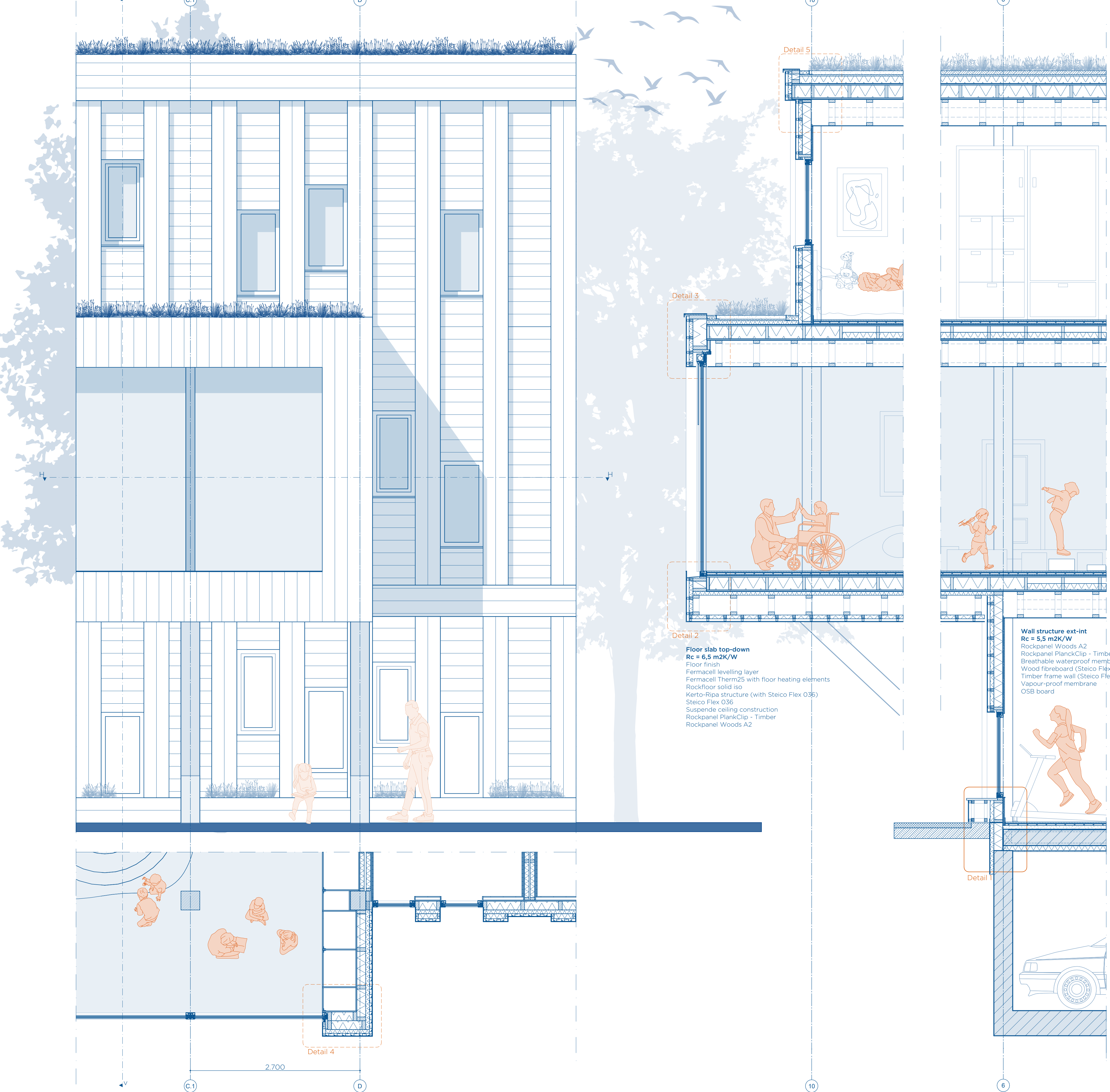


## Section 1:300



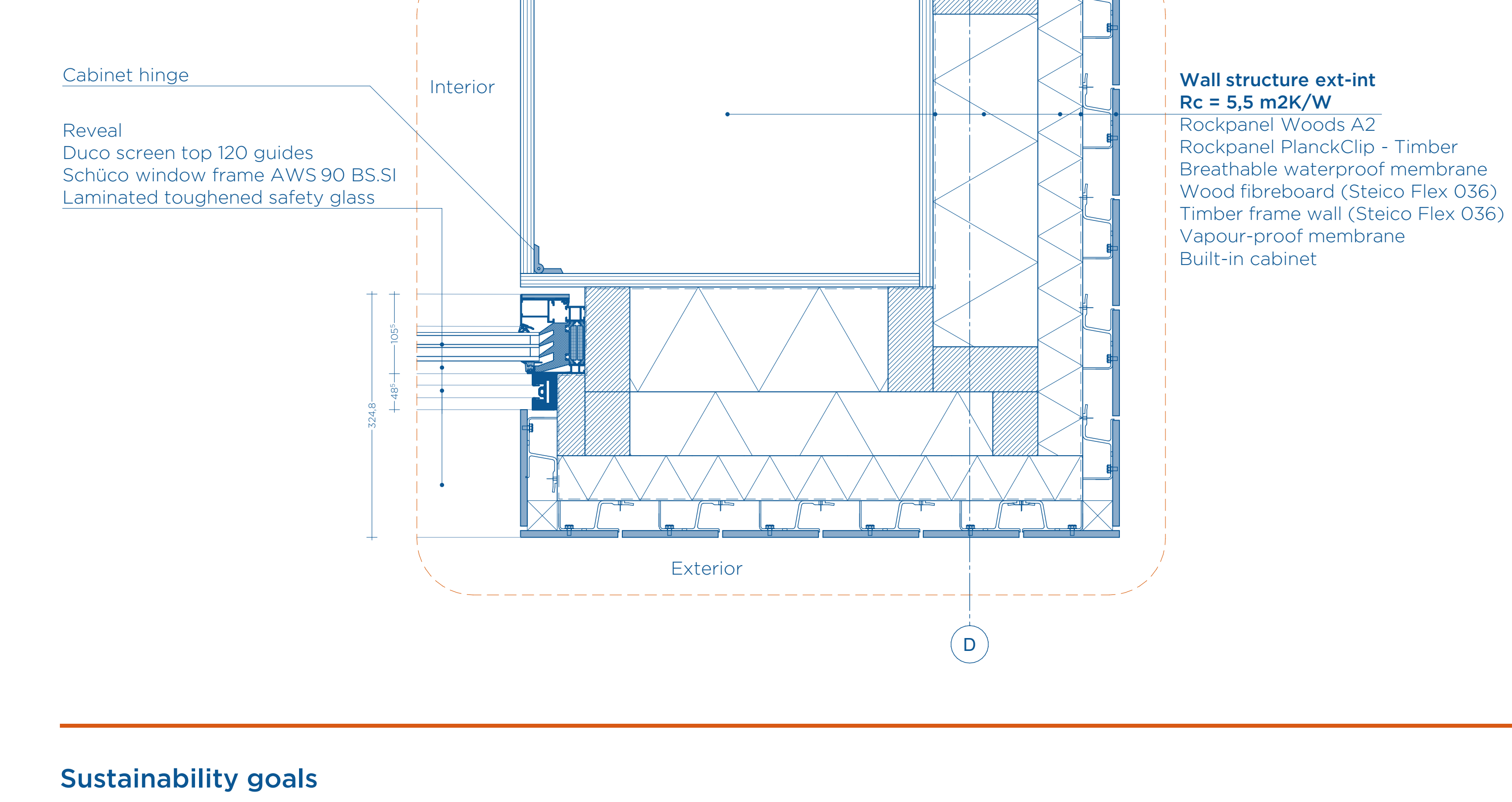
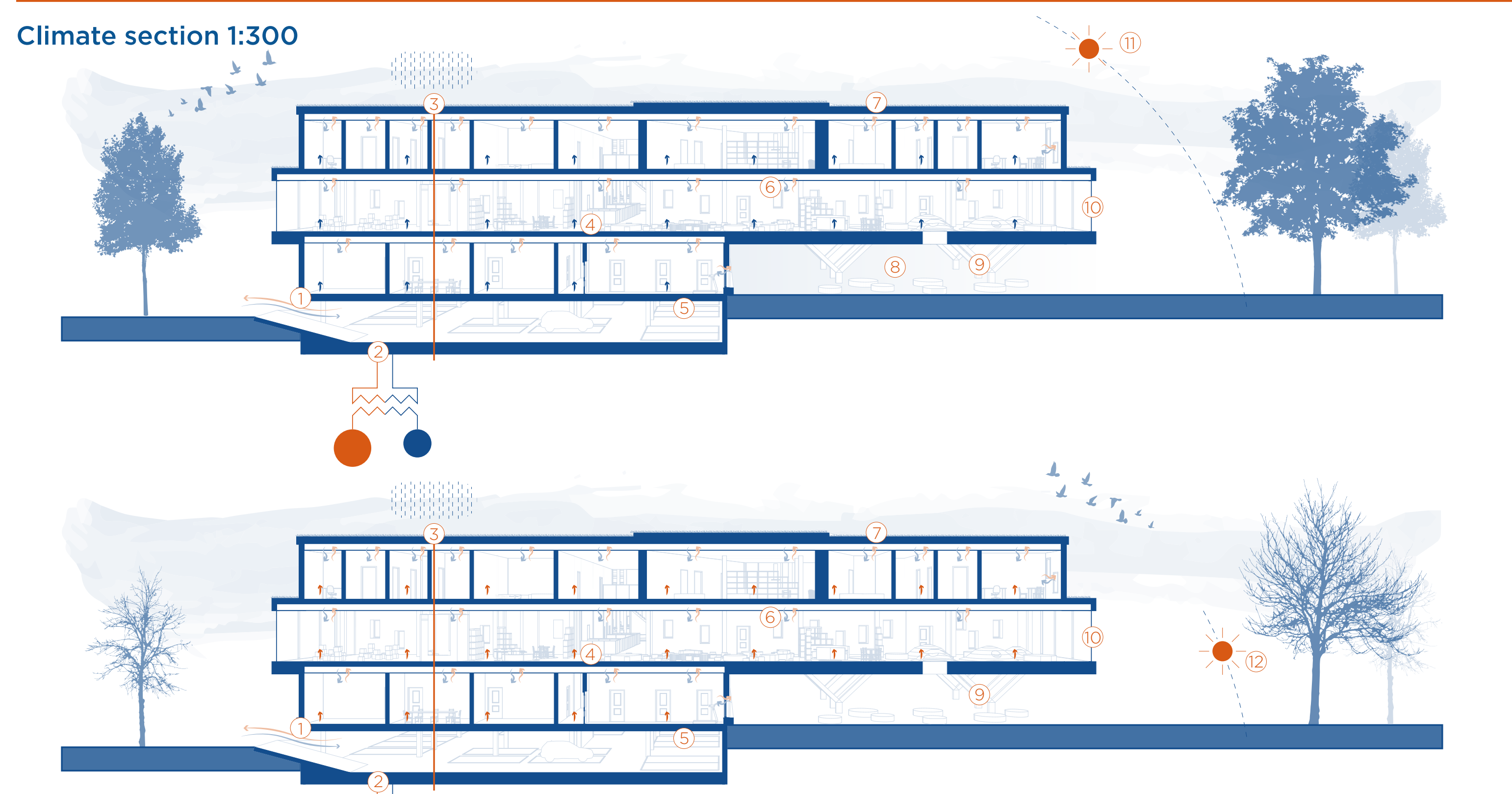
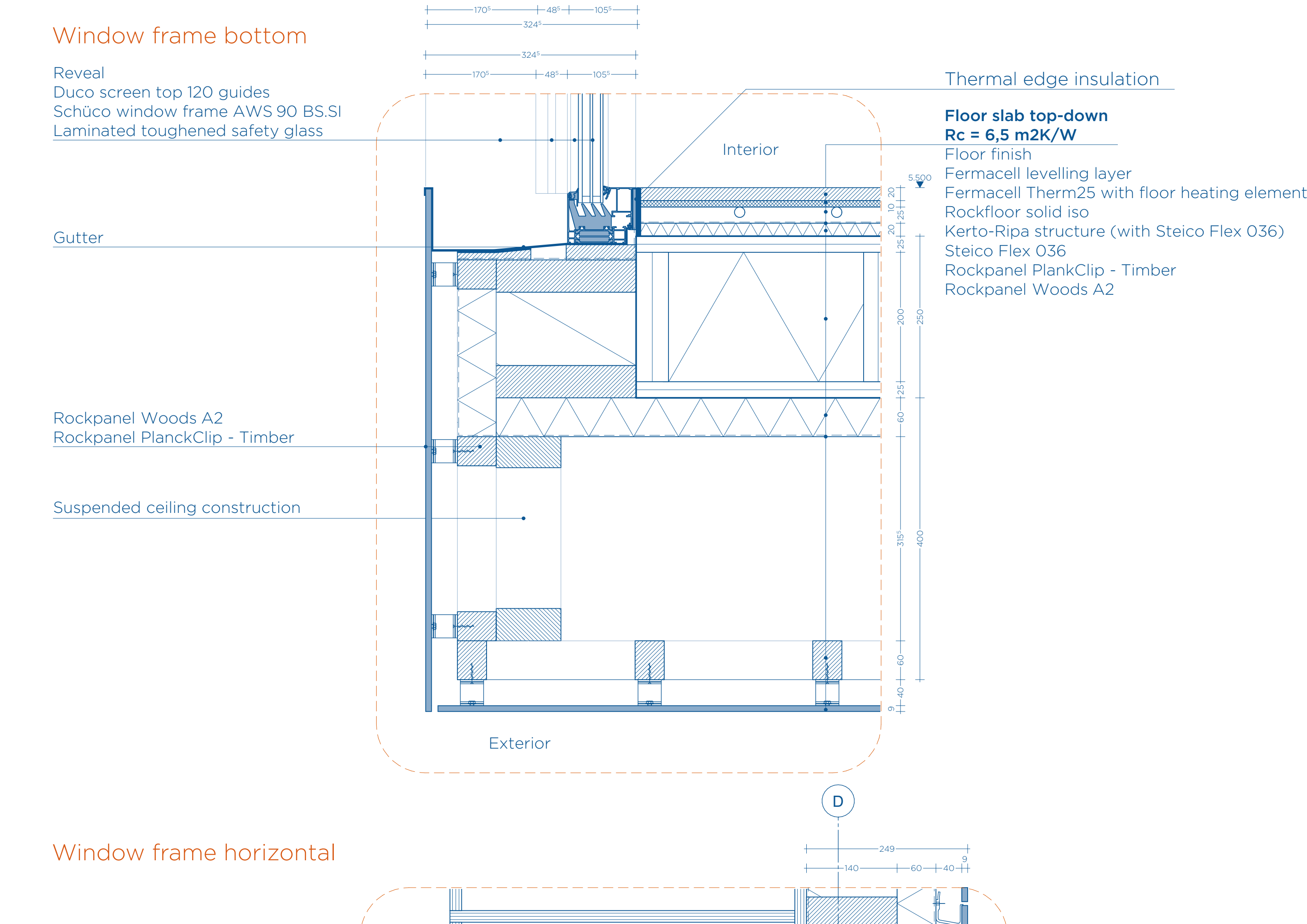
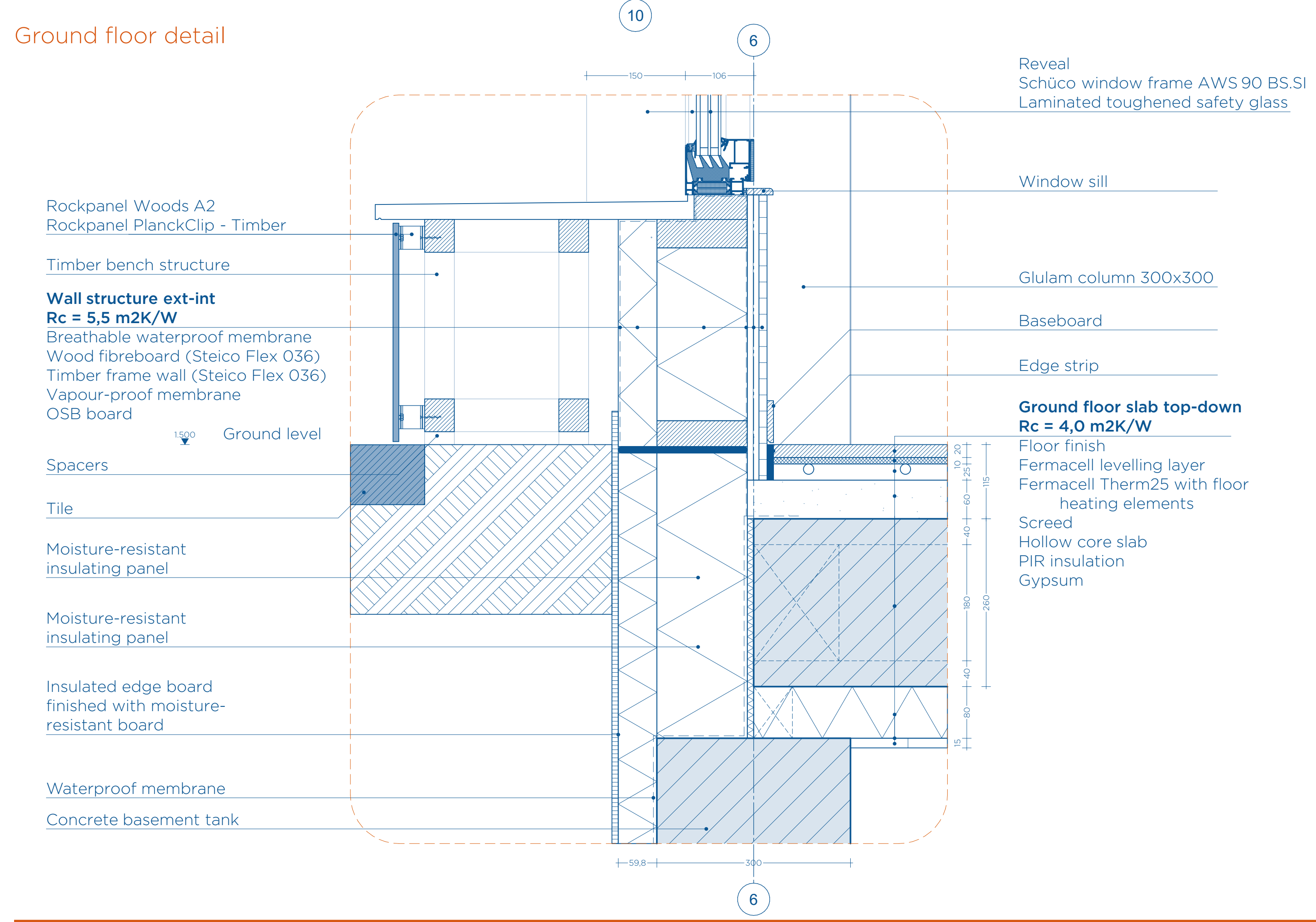
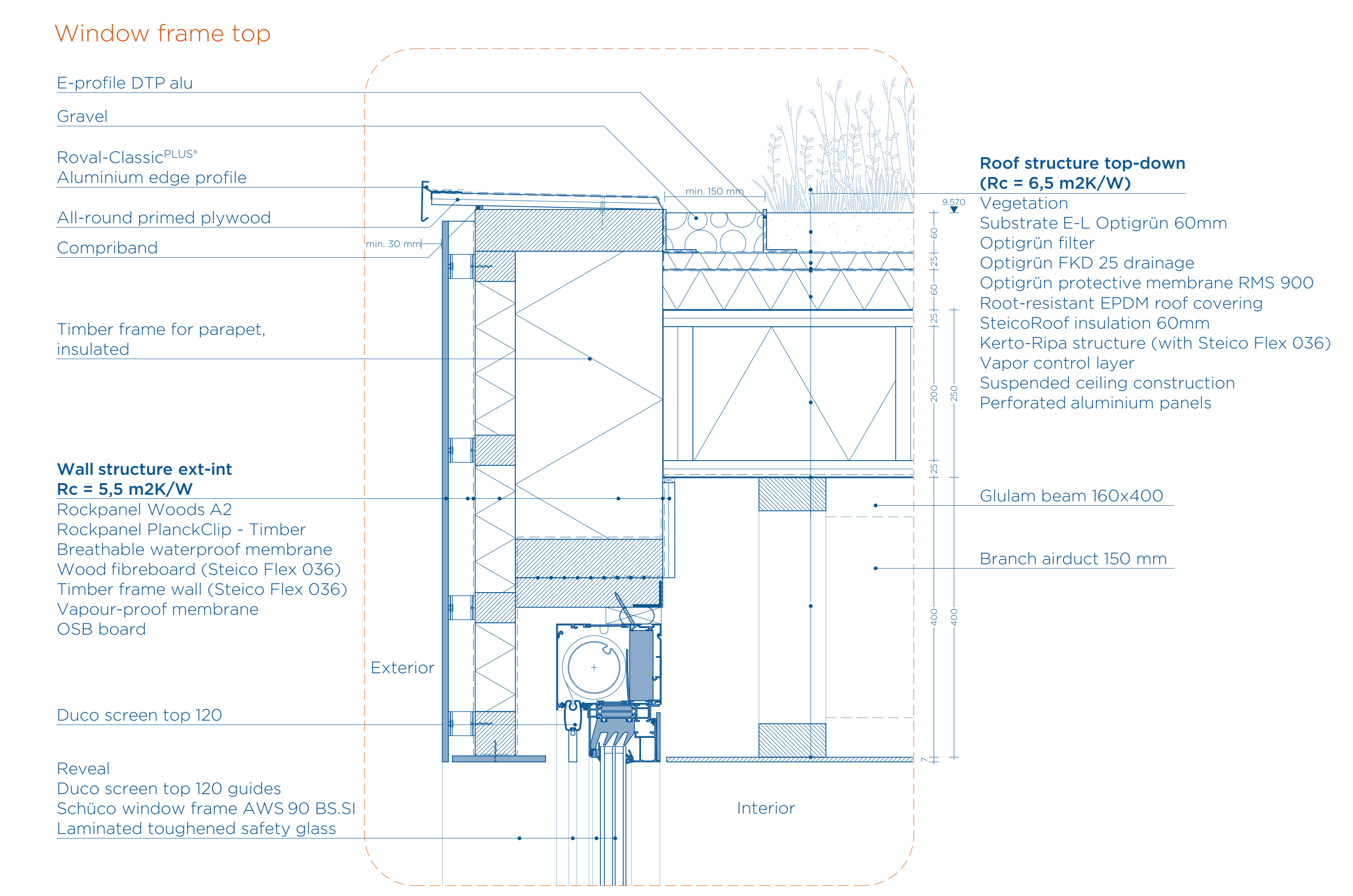
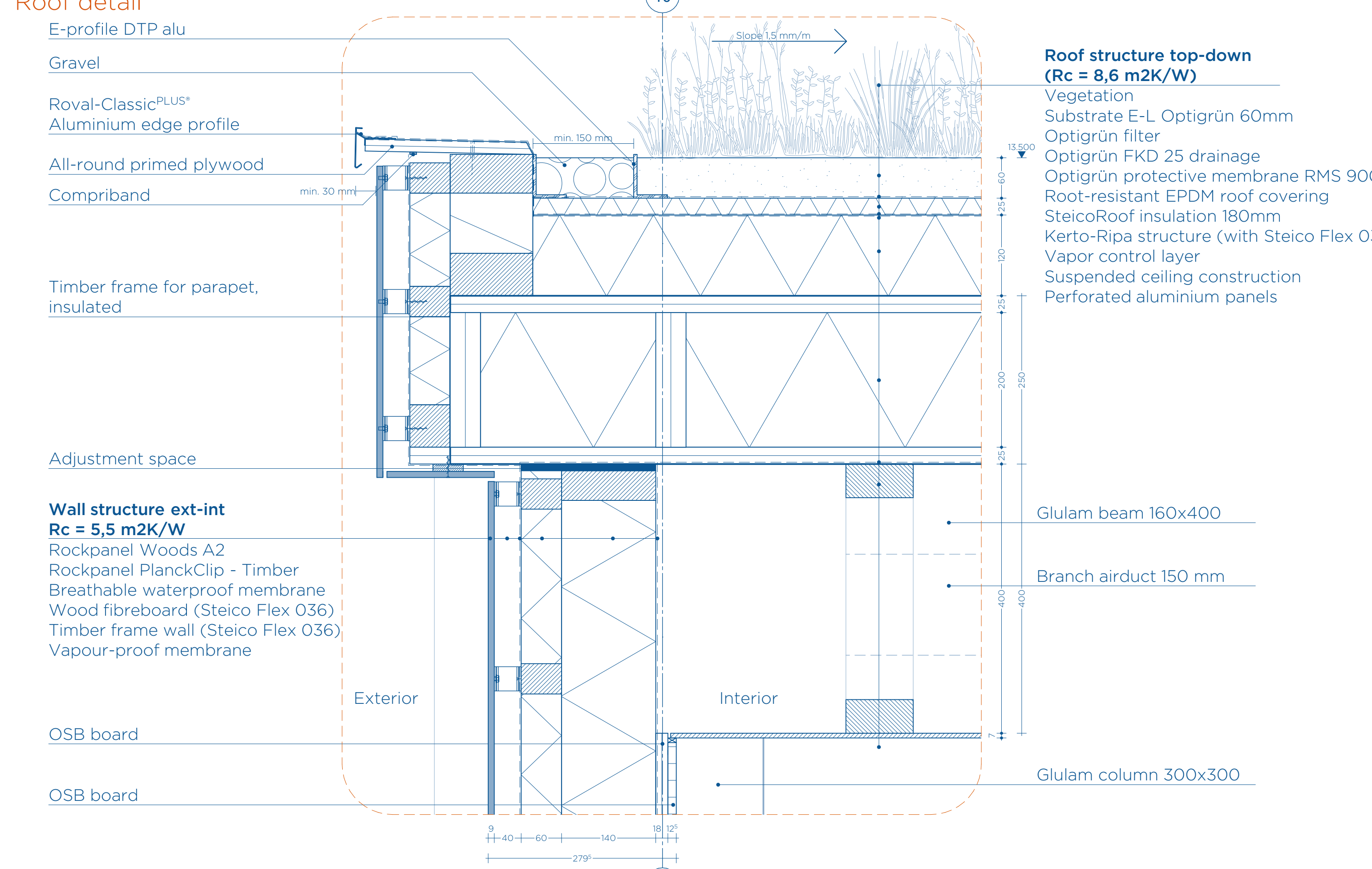
## Floorplans 1:300





- Roof structure top-down**  
Rc = 8,6 m2K/W  
Vegetation  
Substrate E-L, Optigrün 60mm  
Optigrün filter  
Optigrün FKD 25 drainage  
Optigrün protective membrane RMS 900  
Root-resistant EPDM roof covering  
SteicoRoof insulation 180mm  
Kerto-Ripa structure (with Steico Flex 036)  
Vapor control layer  
Suspended ceiling construction  
Perforated aluminum panels
- Floor slab top-down**  
Rc = 6,5 m2K/W  
Floor finish  
Fermacell levelling layer  
Fermacell Therm25 with floor heating elements  
Rockpanel solid iso  
Kerto-Ripa structure (with Steico Flex 036)  
Steico Flex 036  
Rockpanel PlankClip - Timber  
Rockpanel Woods A2
- Wall structure ext-int**  
Rc = 5,5 m2K/W  
Rockpanel Woods A2  
Rockpanel PlankClip - Timber  
Breathable waterproof membrane  
Wood fibreboard (Steico Flex 036)  
Timber frame wall (Steico Flex 036)  
Vapour-proof membrane  
OSB board
- Ground floor slab top-down**  
Rc = 4,0 m2K/W  
Floor finish  
Fermacell levelling layer  
Fermacell Therm25 with floor heating elements  
Screed  
Hollow core slab  
PIR insulation  
Gypsum
- Basement**  
Concrete basement tank

Details 1:5



- Legend**
- 1. Naturally ventilated parking
  - 2. Thermal Energy Storage system
  - 3. Pluvia
  - 4. Floor heating and cooling
  - 5. Impulse fan
  - 6. Mechanical supply and exhaust
  - 7. Green roof
  - 8. Shade area
  - 9. Wooden structure
  - 10. Automatic sunshading
  - 11. Summer sun
  - 12. Winter sun

- Sustainability goals**
- Climate adaptation
  - Flexibel lay-out
  - Low maintenance materials
  - Long life span
  - Circular/biobased materials

Construction axonometric

