



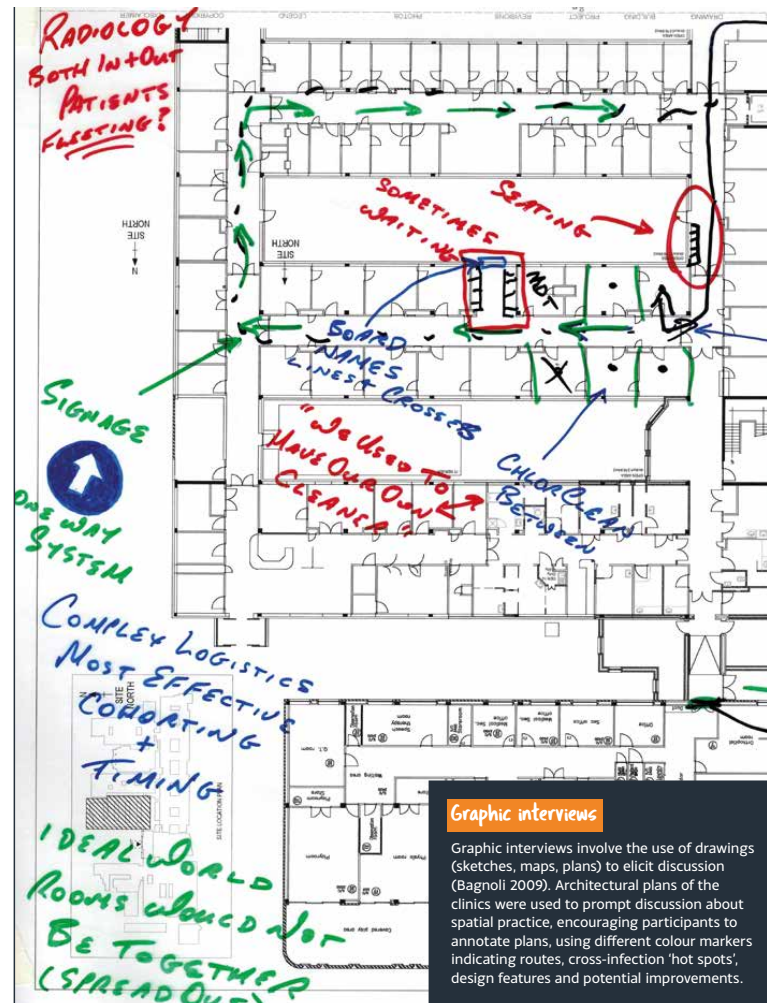
EXPLORE
PIET'S CENTRE

A hospital for immunocompromised patients

Lotte Schut

05/06/2026

PROBLEM STATEMENT

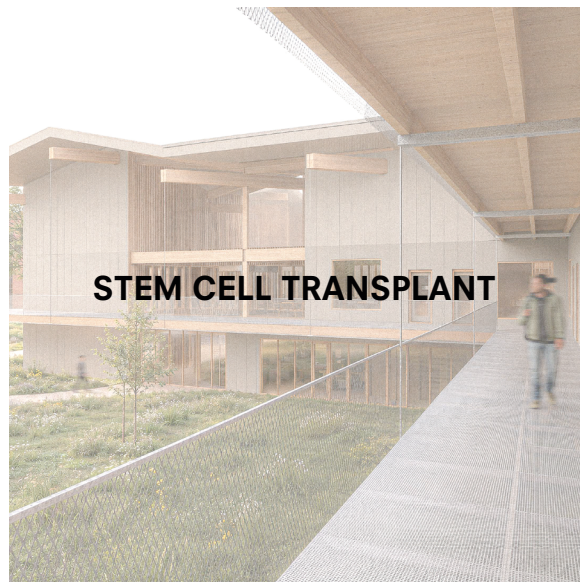


(Brown et al., 2020).

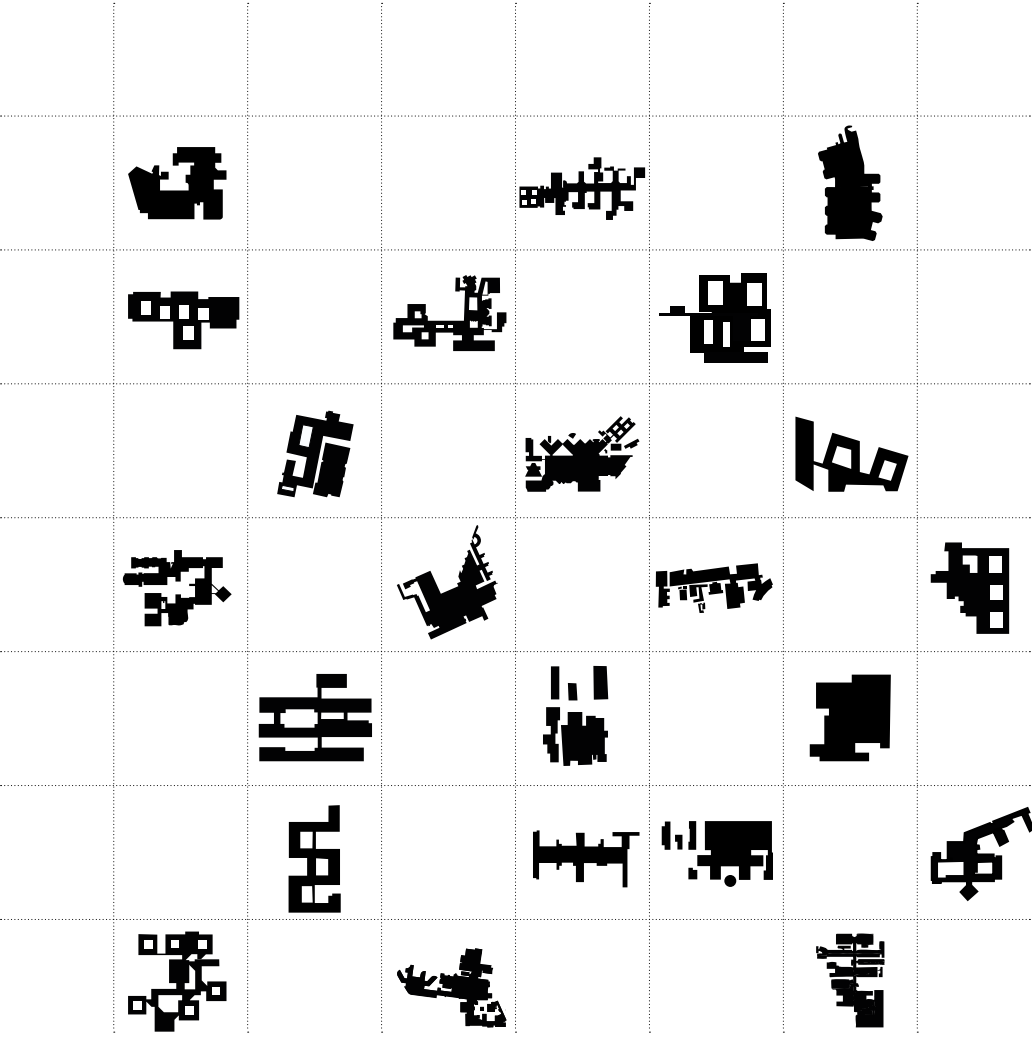
DESIGN QUESTION

How can architectural design contribute to
Infection safety and overall well-being for
immunocompromised patients within the
Hospital environment?

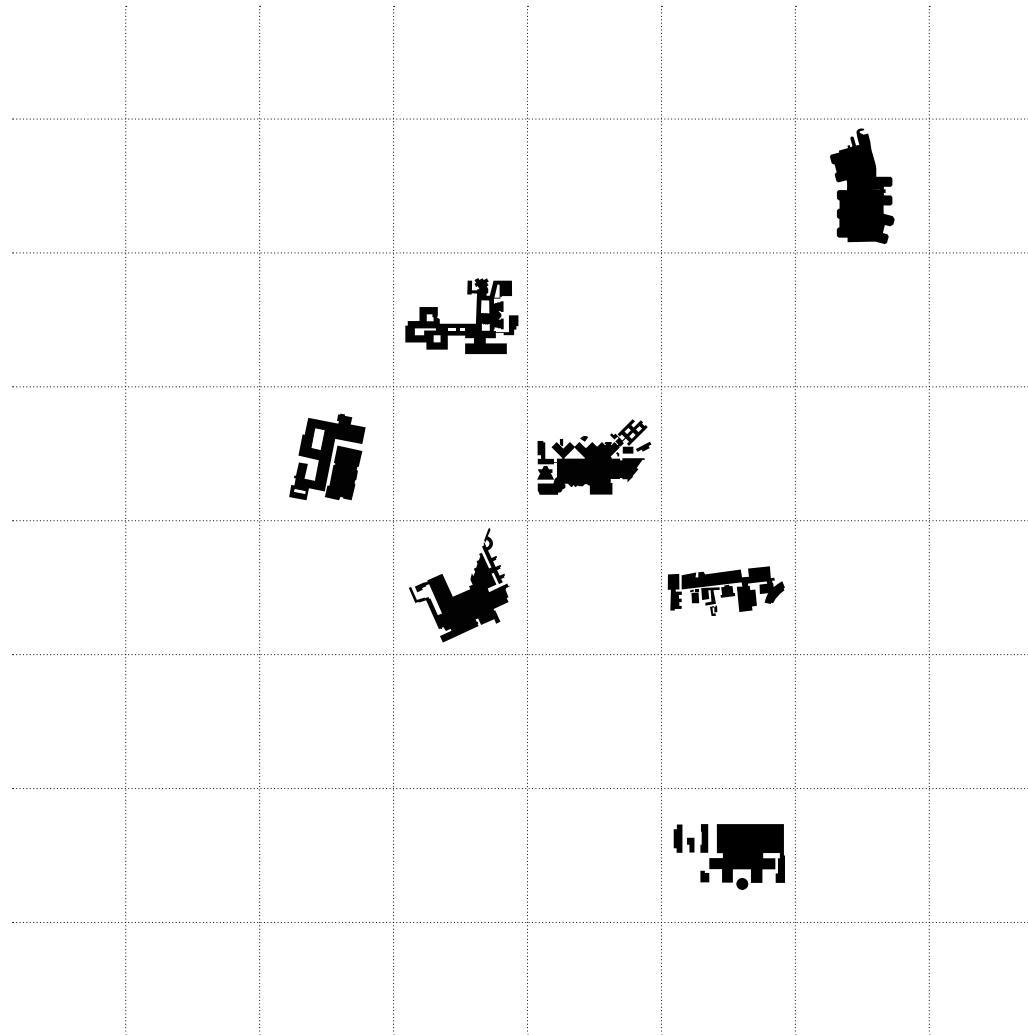
USERS



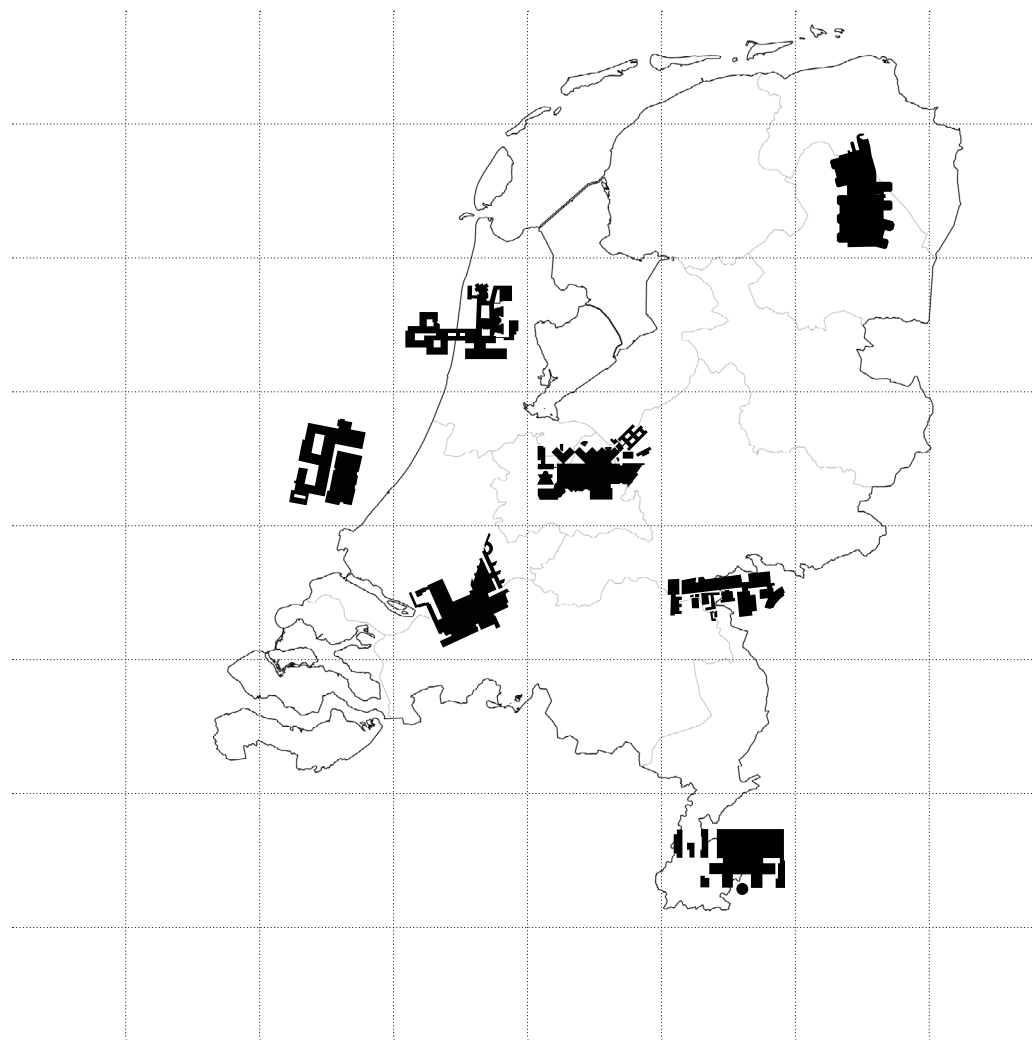
ATTACH TO EXISTING STRUCTURE



ONLY 7 MC'S TREAT CF IN NL



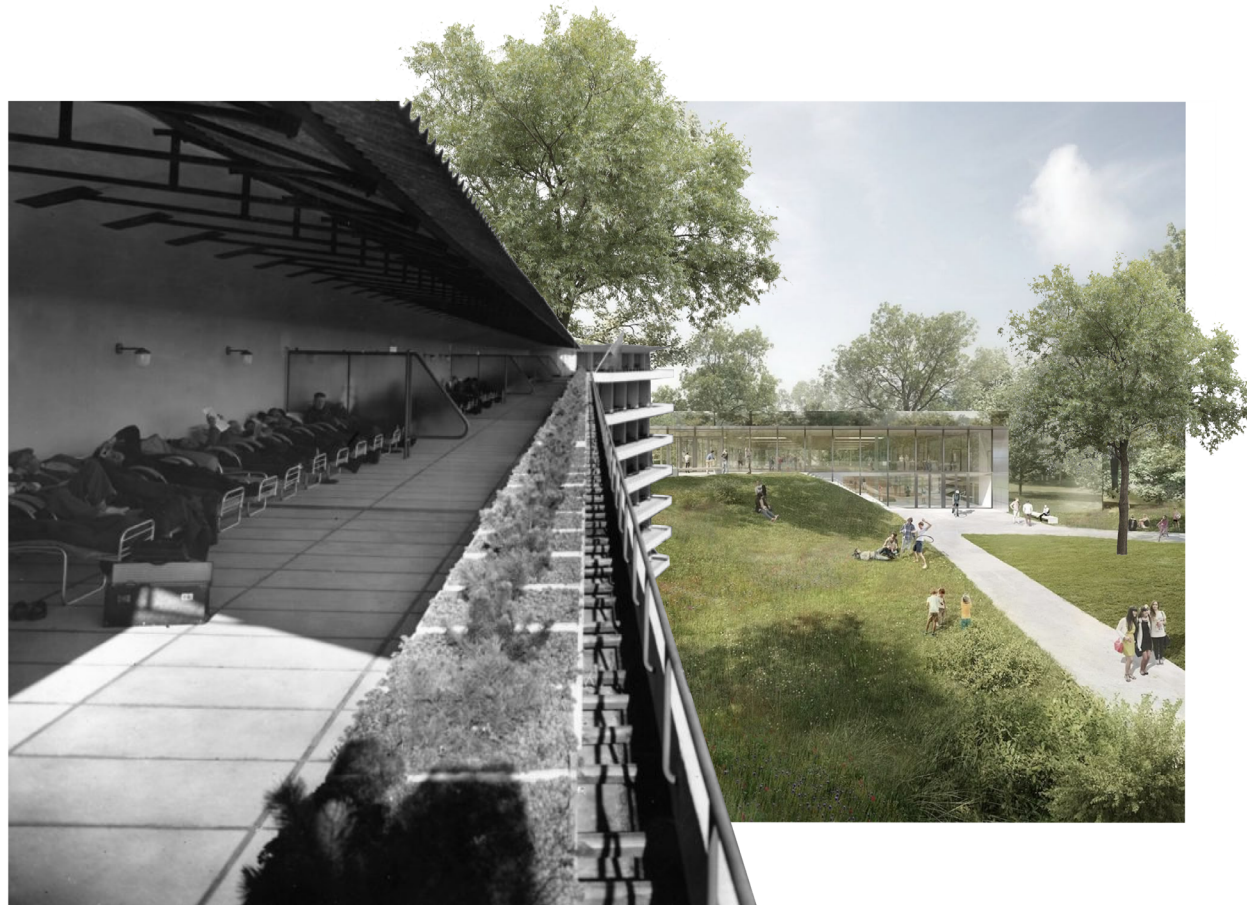
ONLY 7 MC'S TREAT CF IN NL



BIGGEST & MOST CENTRAL



NATURE INCLUSIVE HEALING



(Colomina & Wigley, 2025; Miola et al., 2025)

ROTTERDAM VERSUS UTRECHT

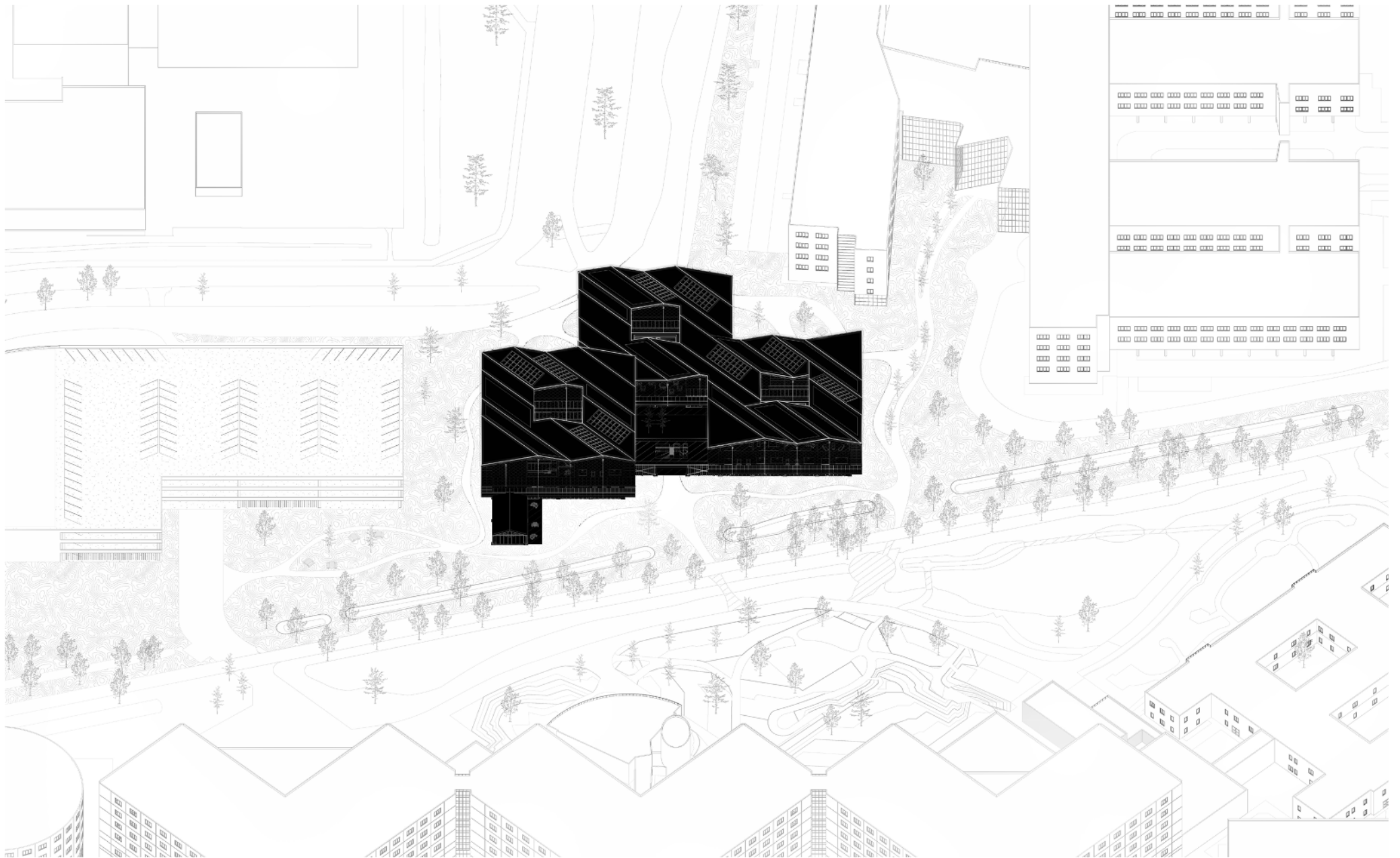


UTRECHT MEDICAL CENTRE

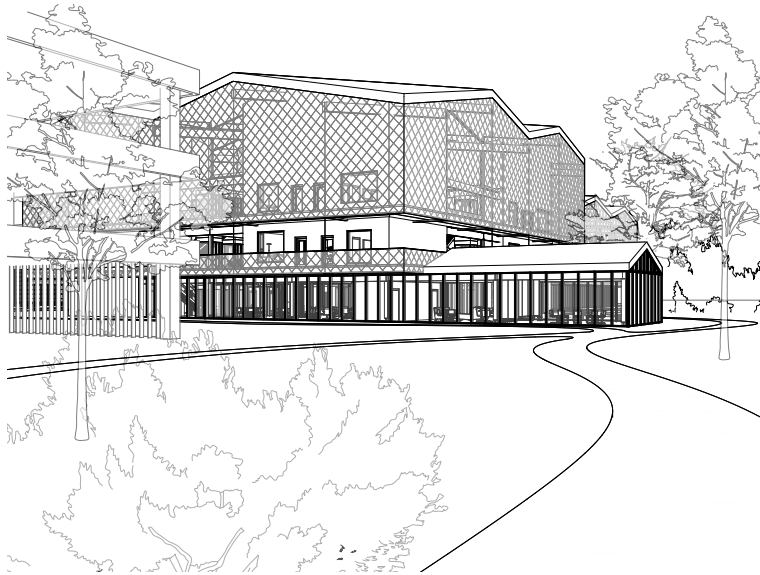


ERASMUS MEDICAL CENTRE

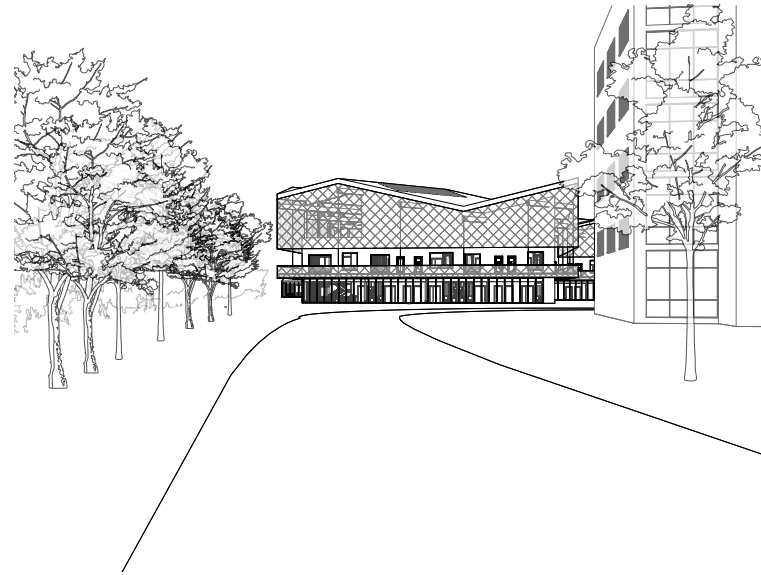
1.500 SITE



SITE QUALITY



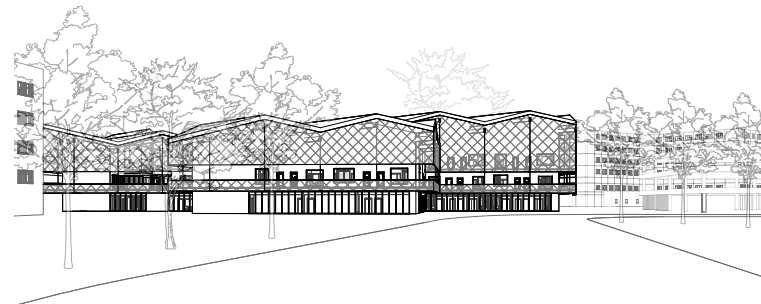
PARKING GARAGE



PUBLIC TRANSPORT



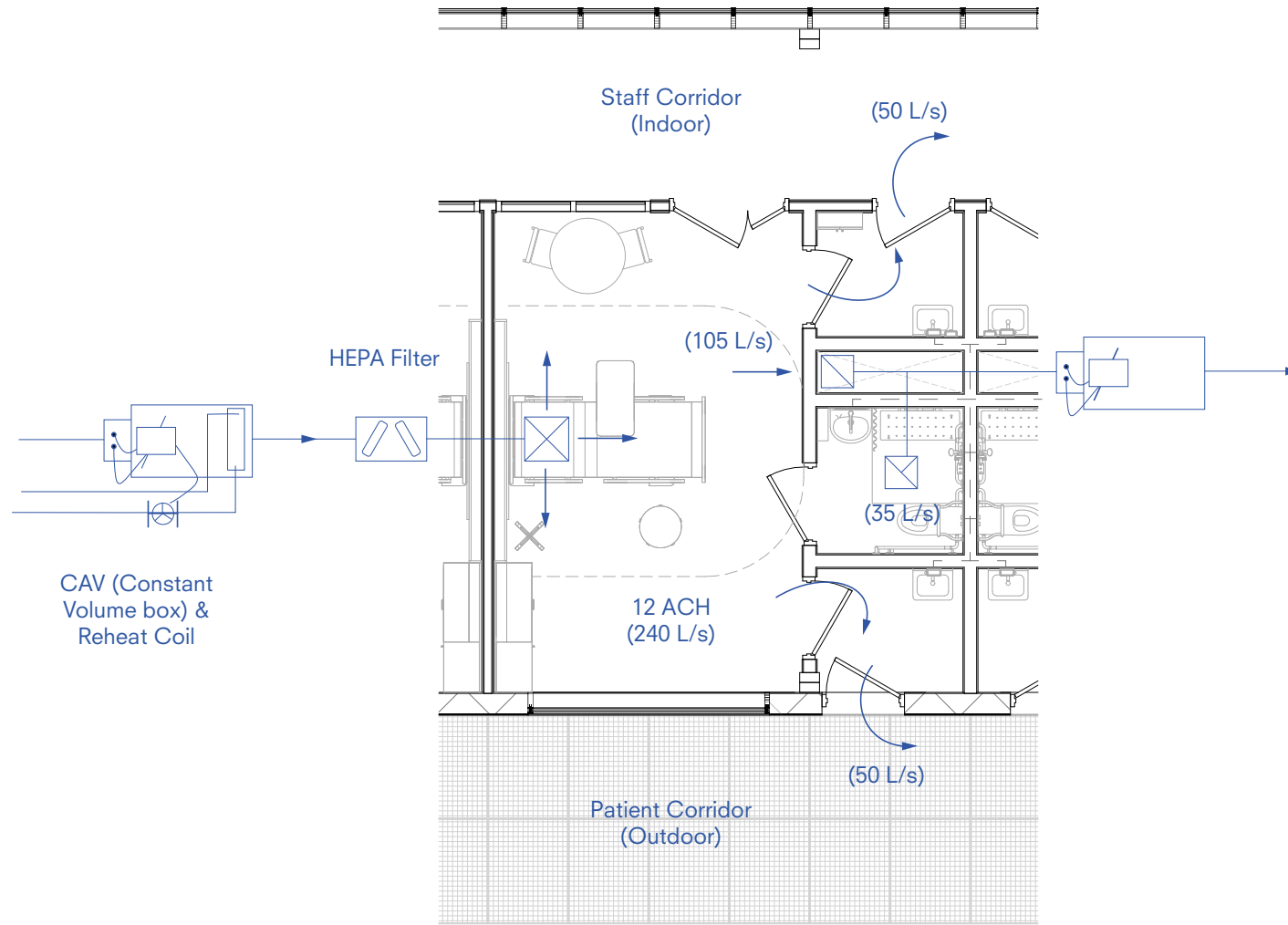
BICYCLE



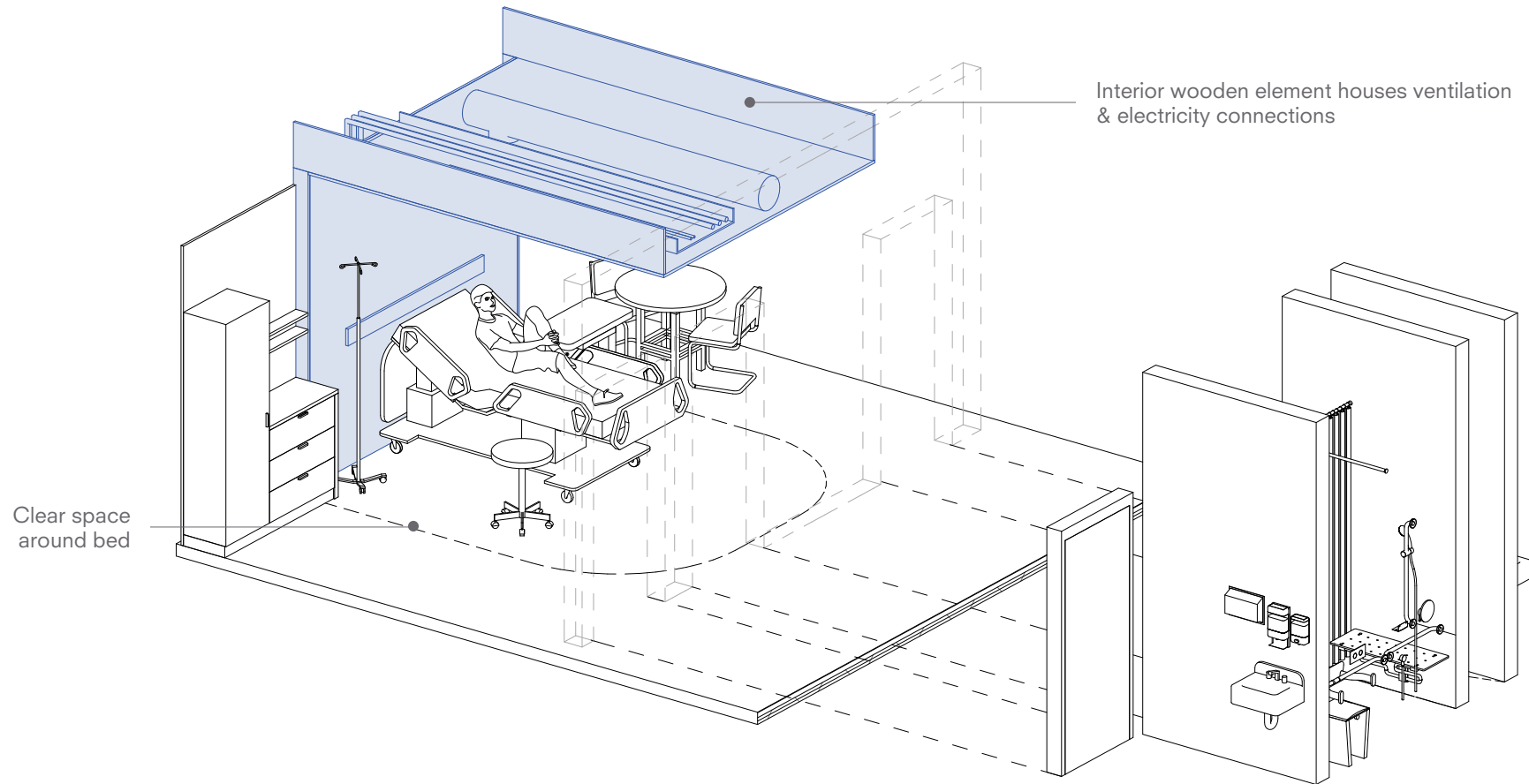
KISS & RIDE

EXISTING METHODS

POSITIVE PRESSURE ROOMS



POSITIVE PRESSURE ROOMS

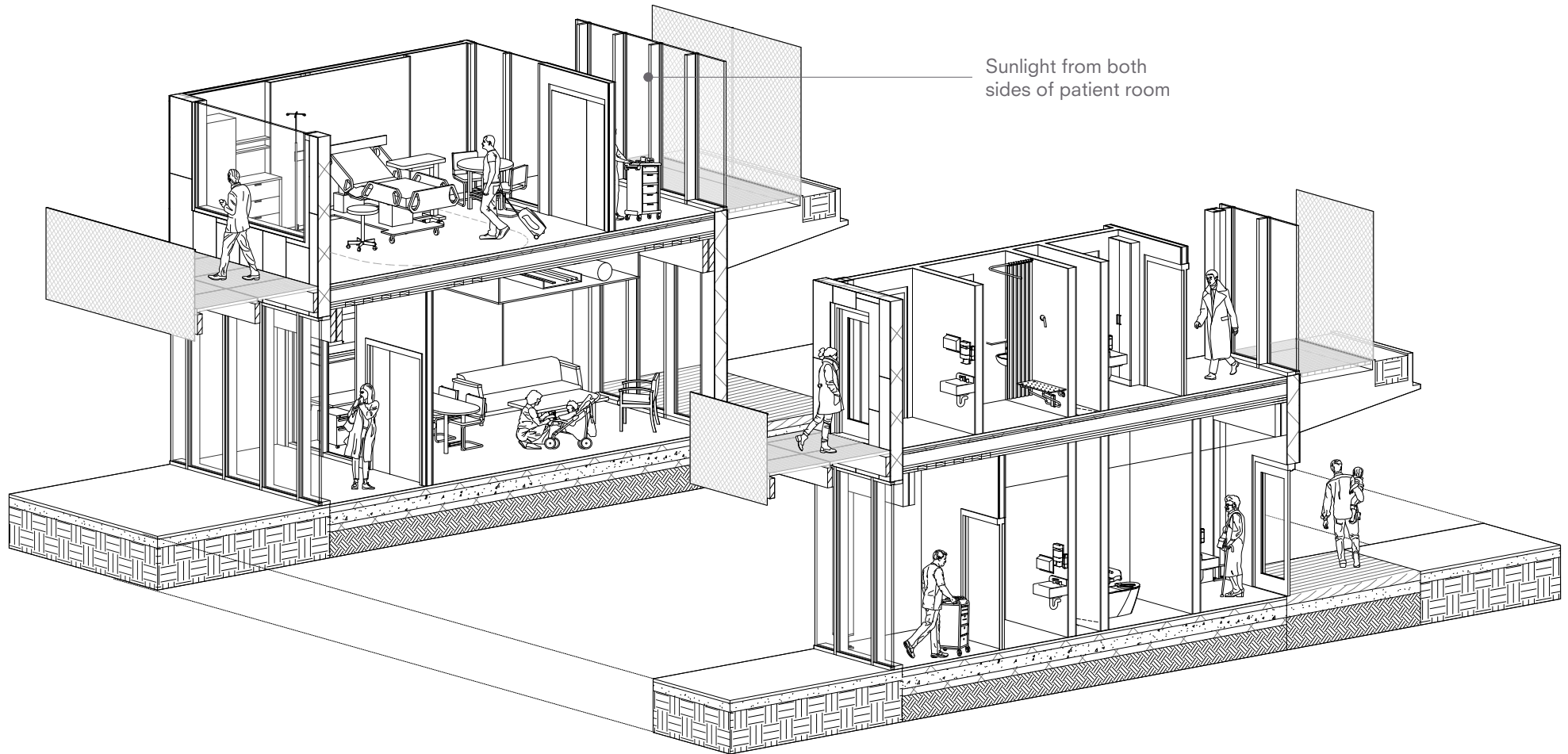


POSITIVE PRESSURE ROOMS

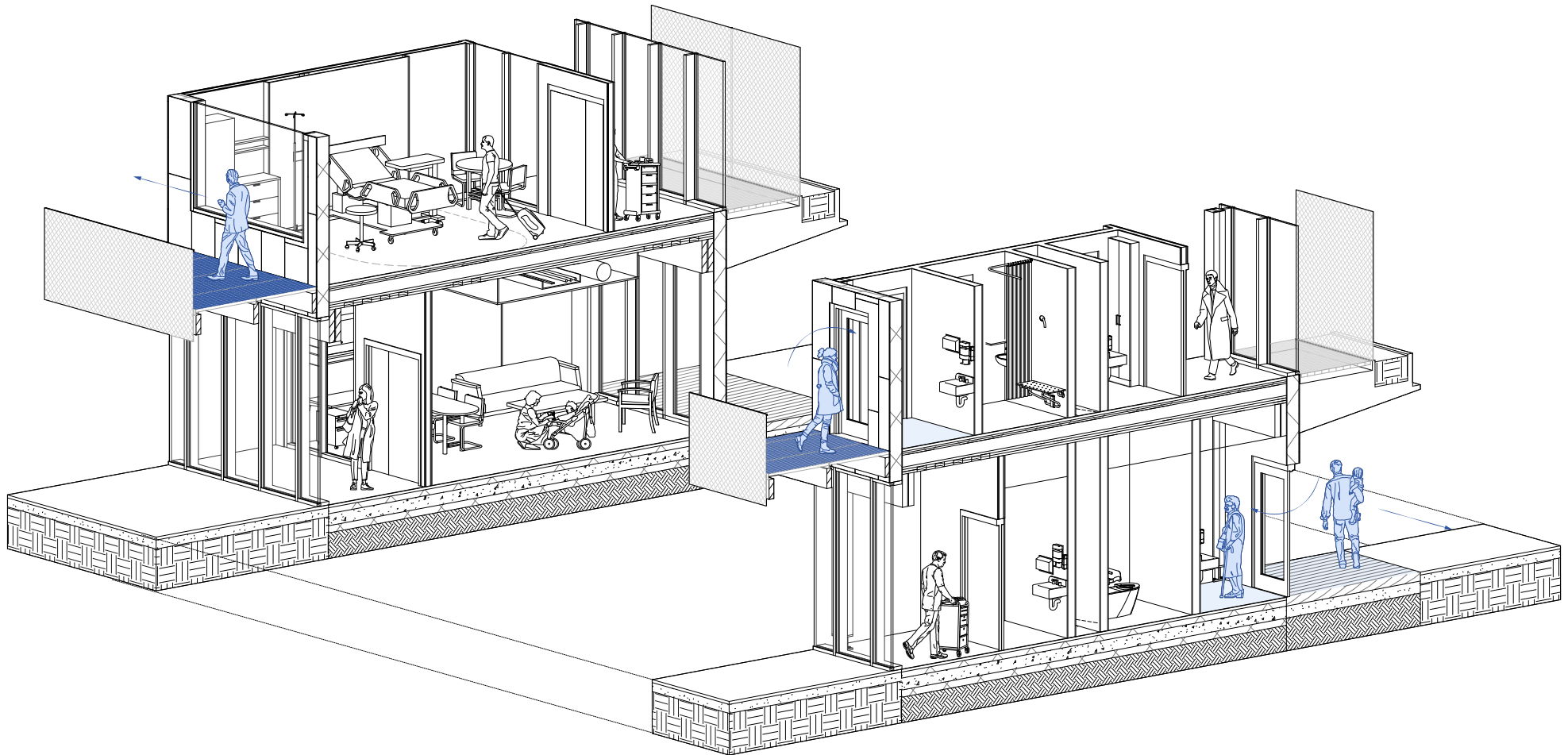
Air supply above the patients head



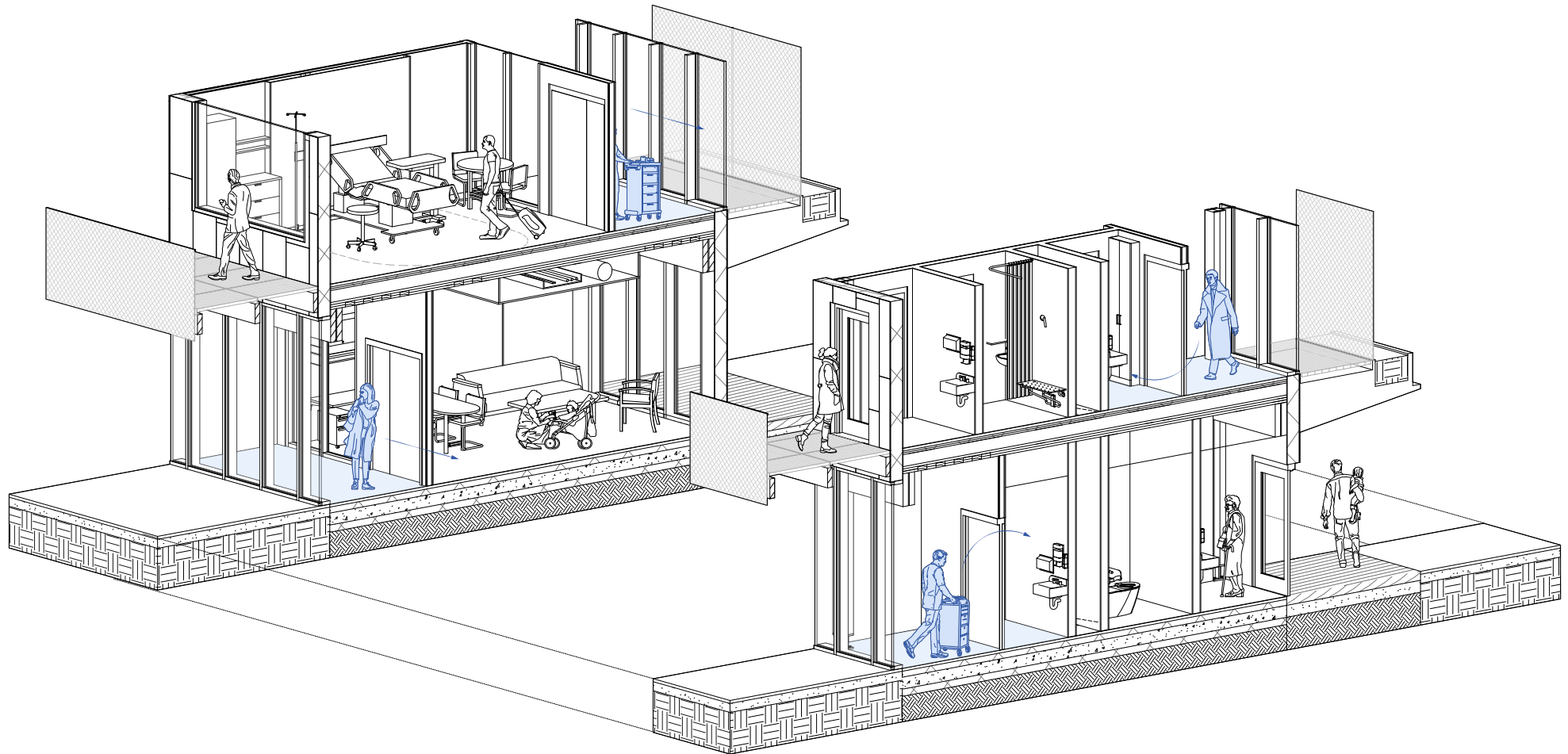
PATHWAYS



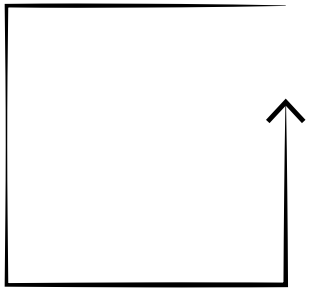
PATHWAYS: PATIENT



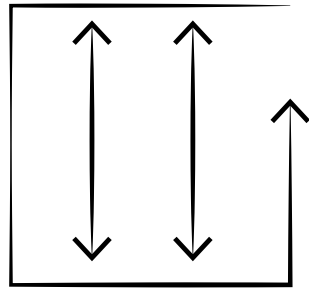
PATHWAYS: STAFF



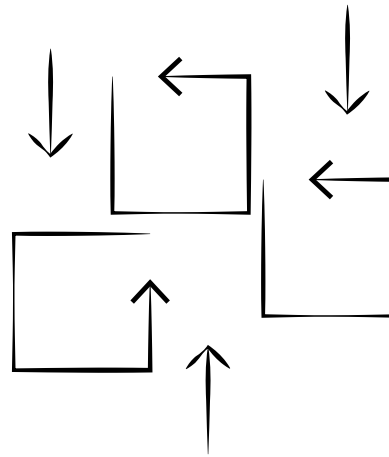
CONCEPT



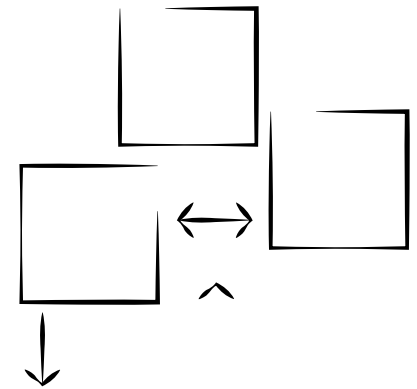
LOOP



SHORT CUTS

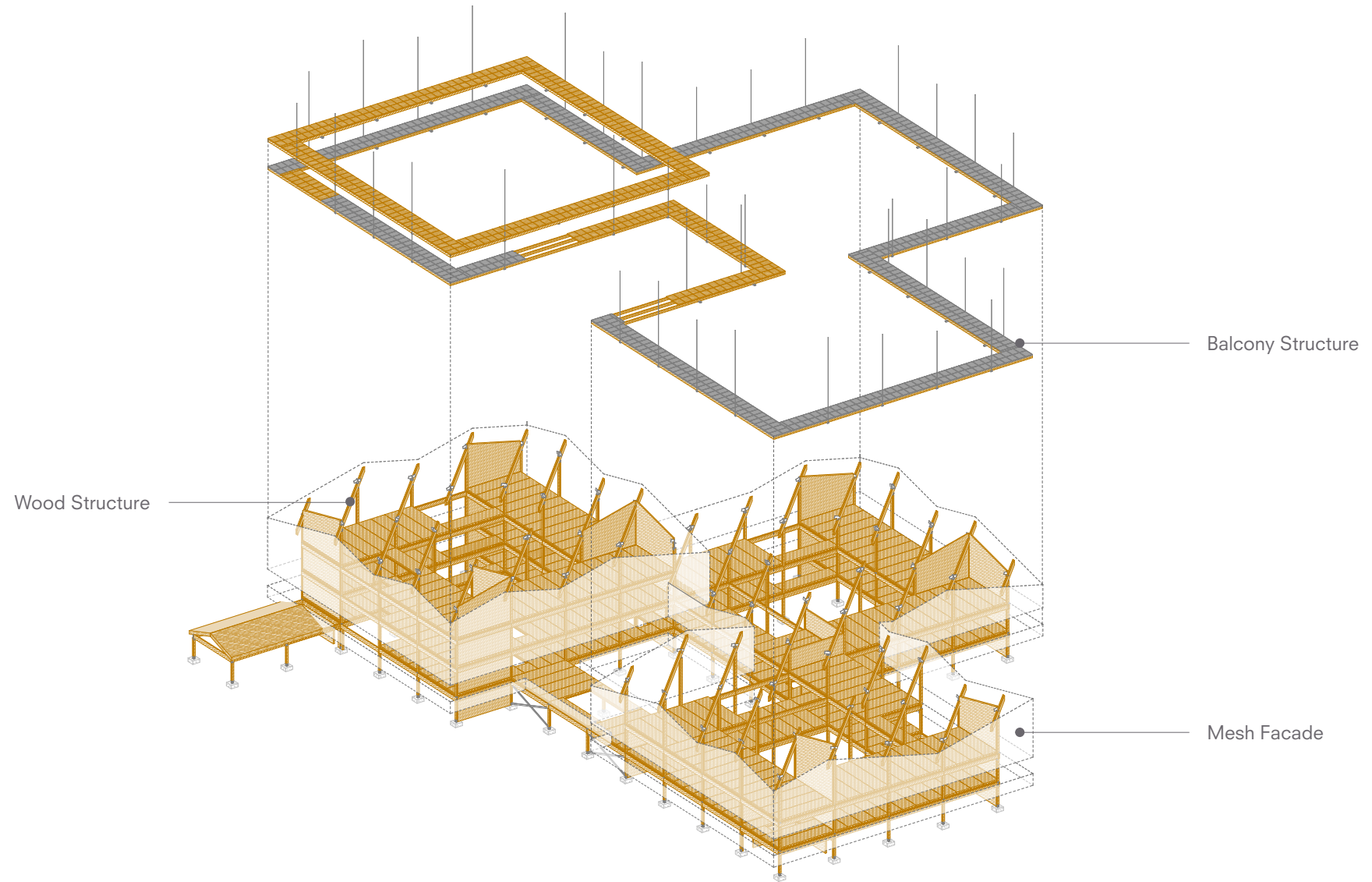


VOLUME



ADDITIONAL
VOLUMES

SUSPENDED BALCONIES

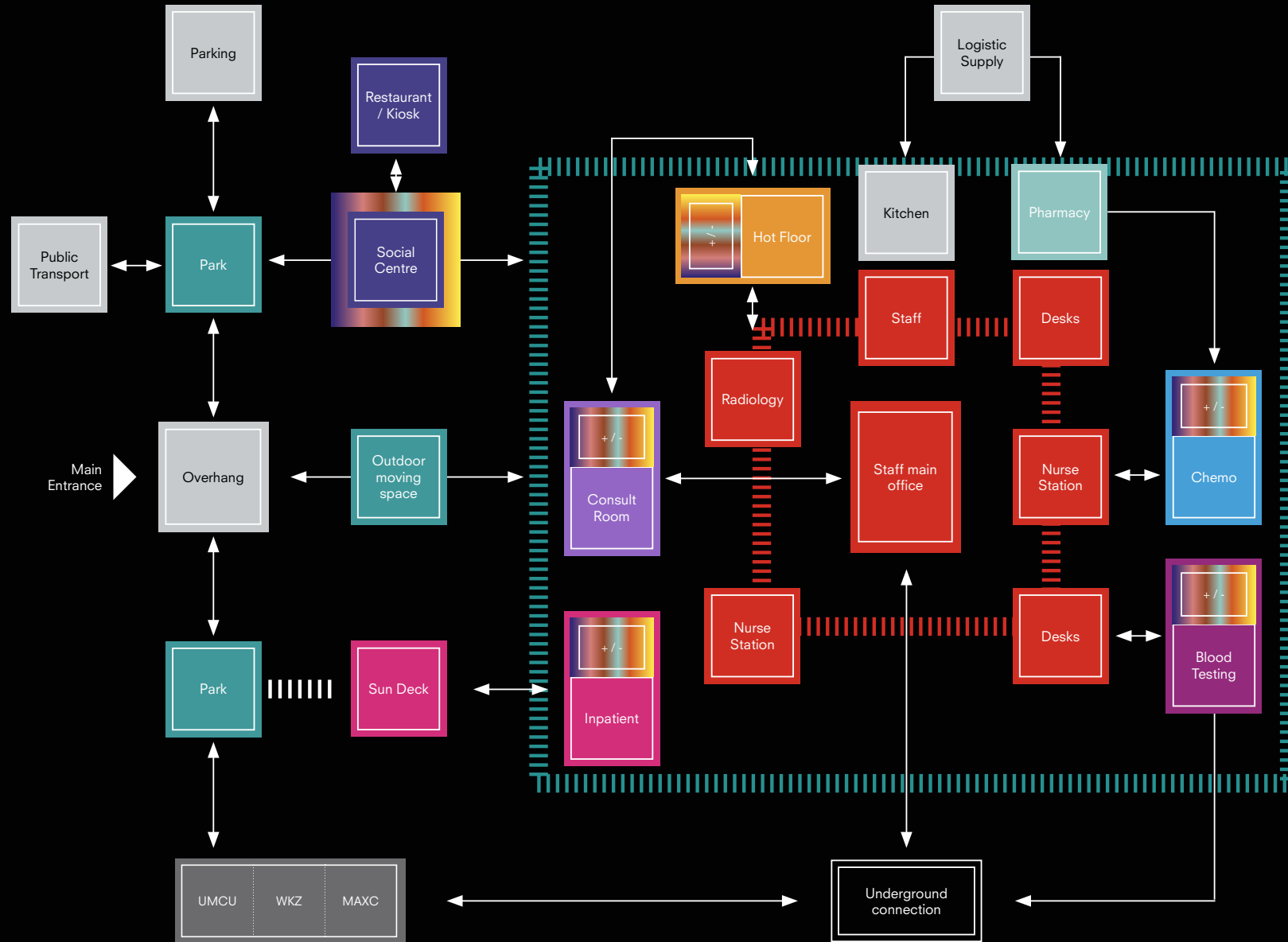


FORM

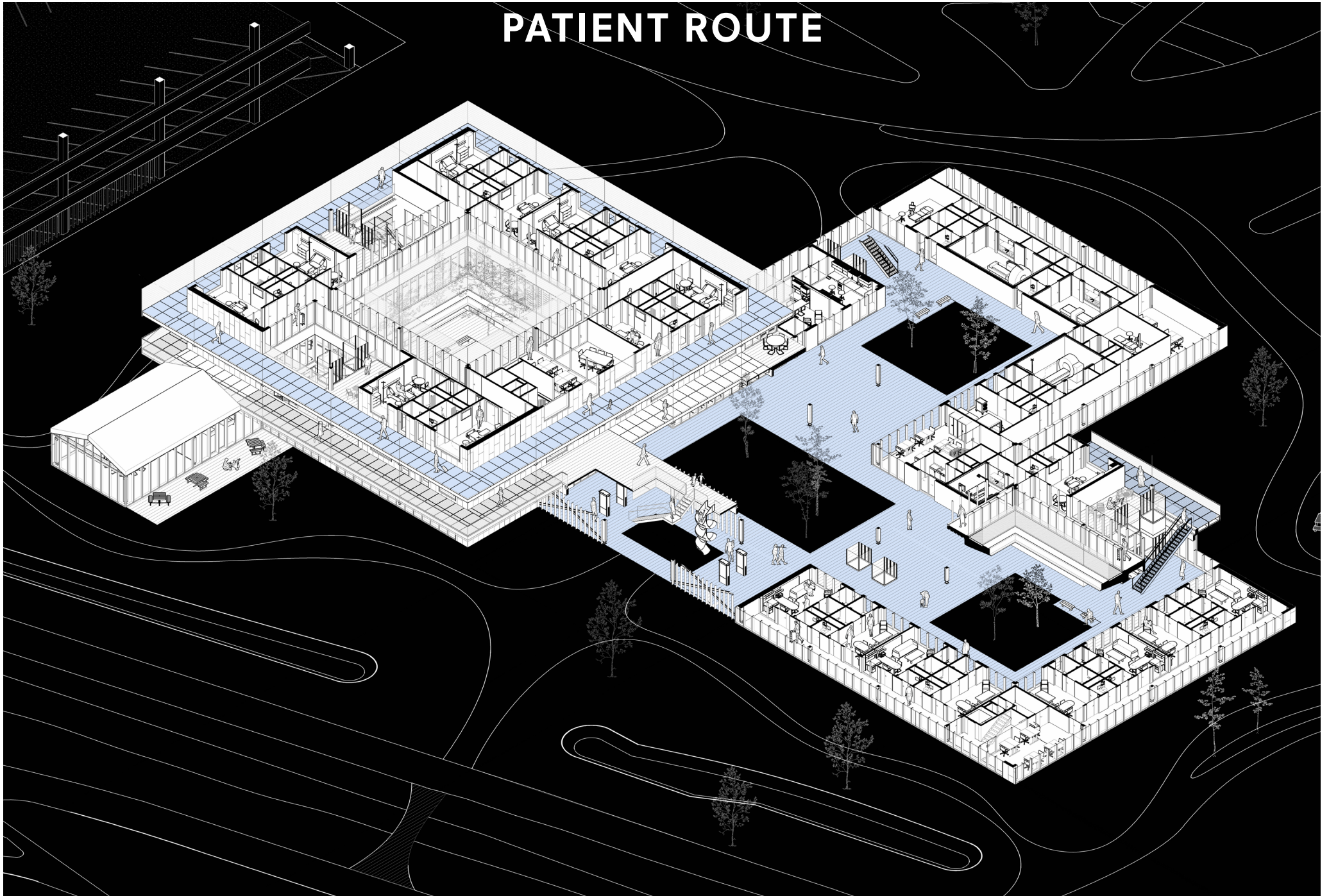


Blue supports a calm healthcare environment (Pulmonology Advisor, 2024).

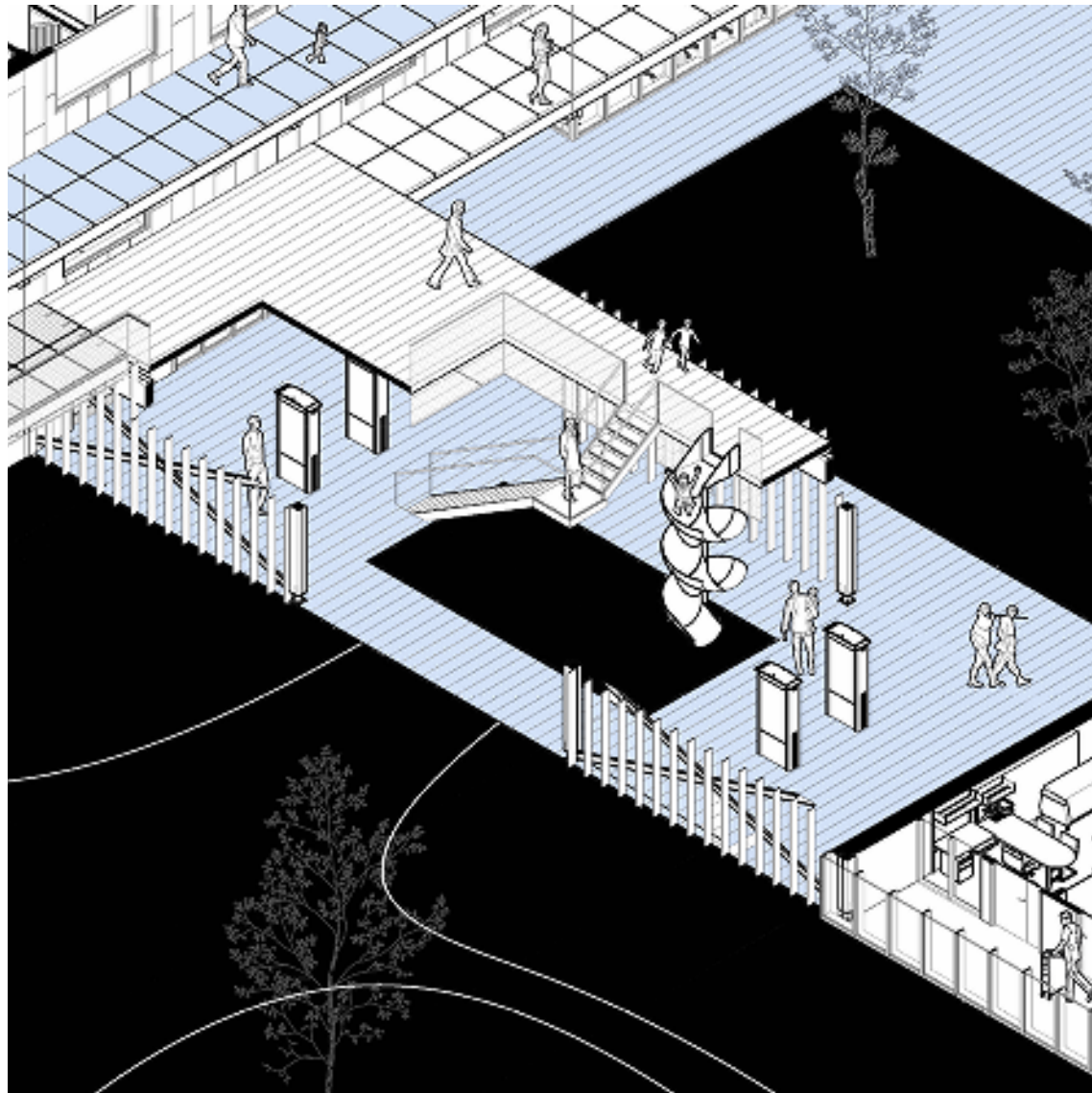
PROGRAM



PATIENT ROUTE



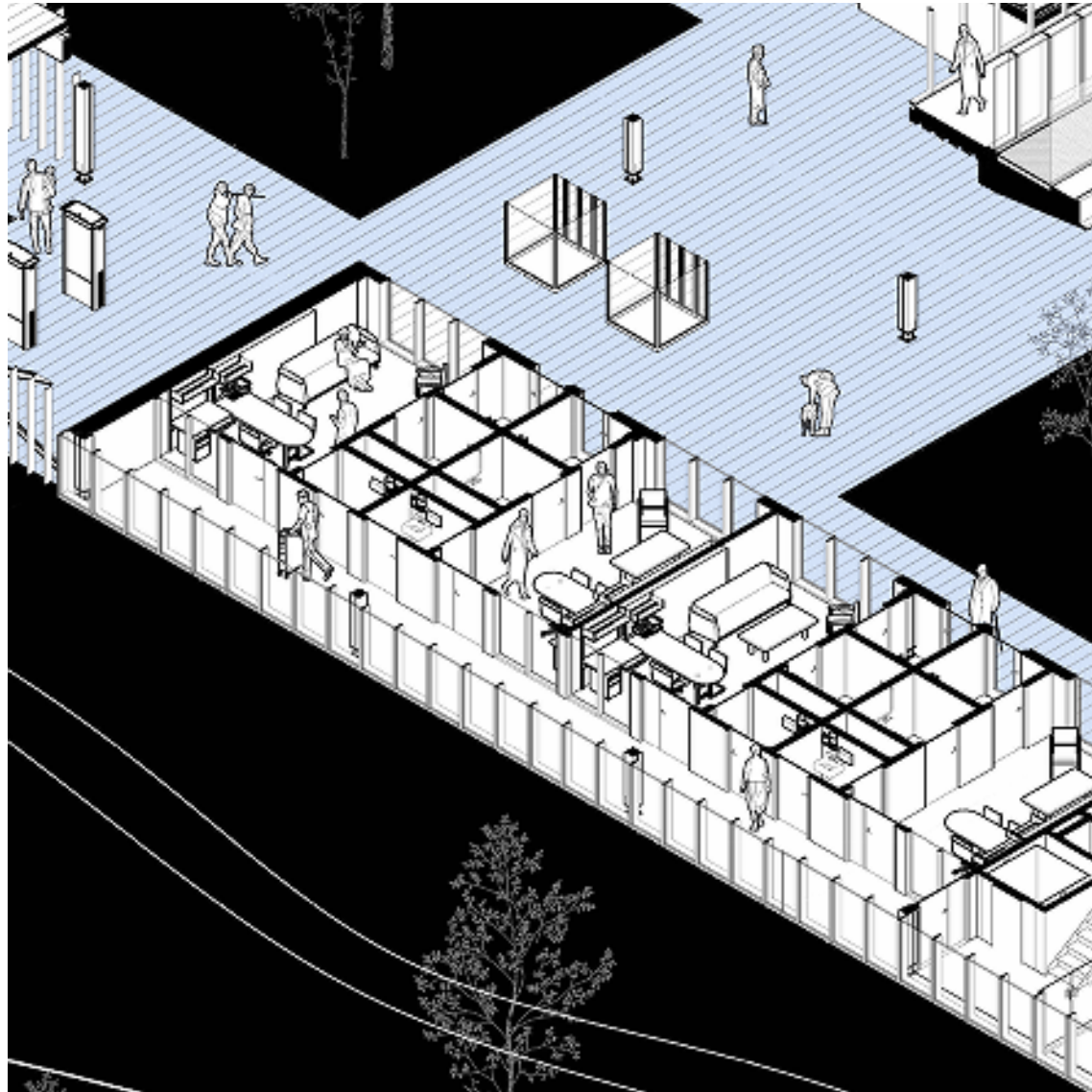
ENTRANCE



ENTRANCE



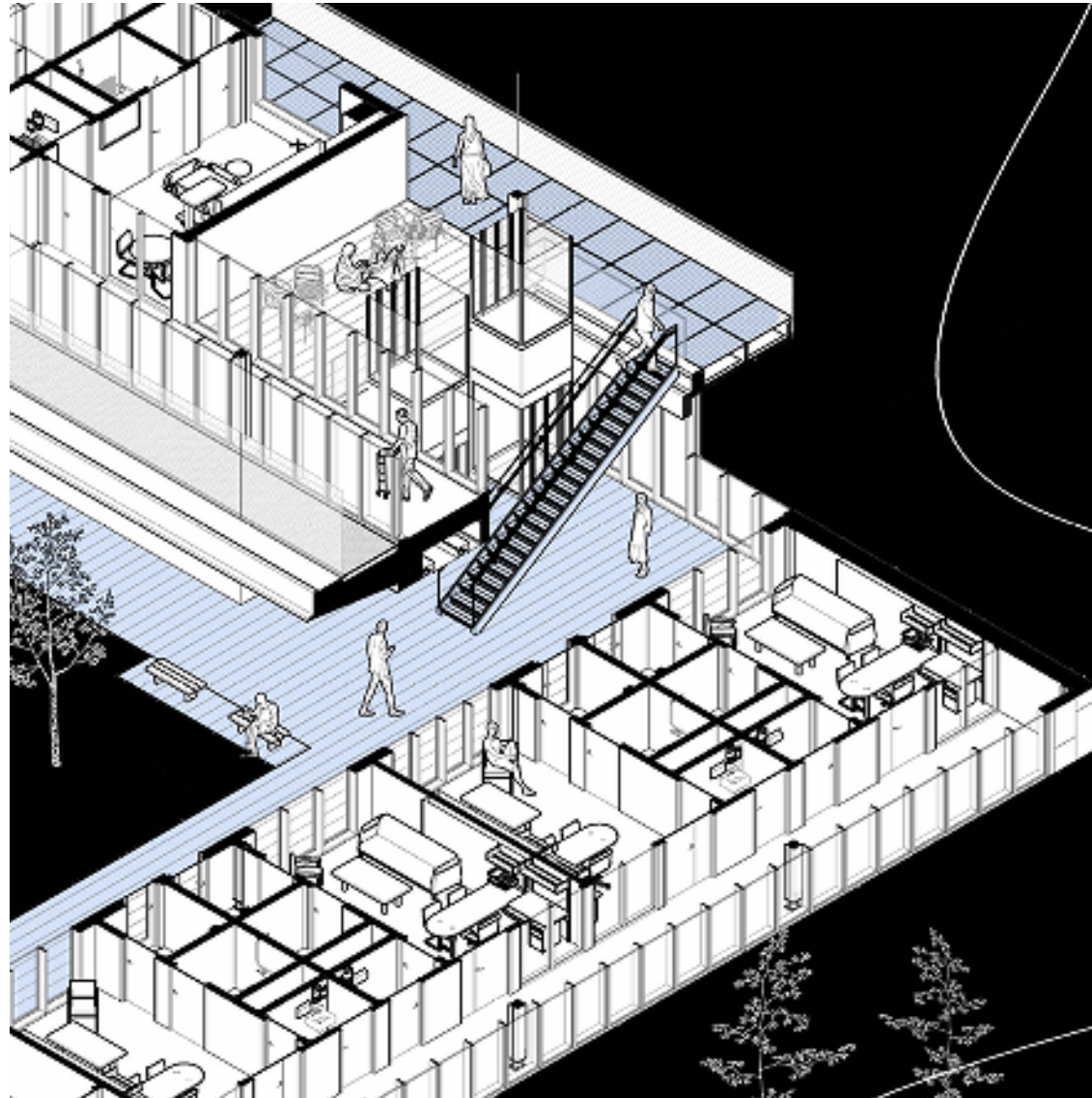
GROUND FLOOR



GROUND FLOOR



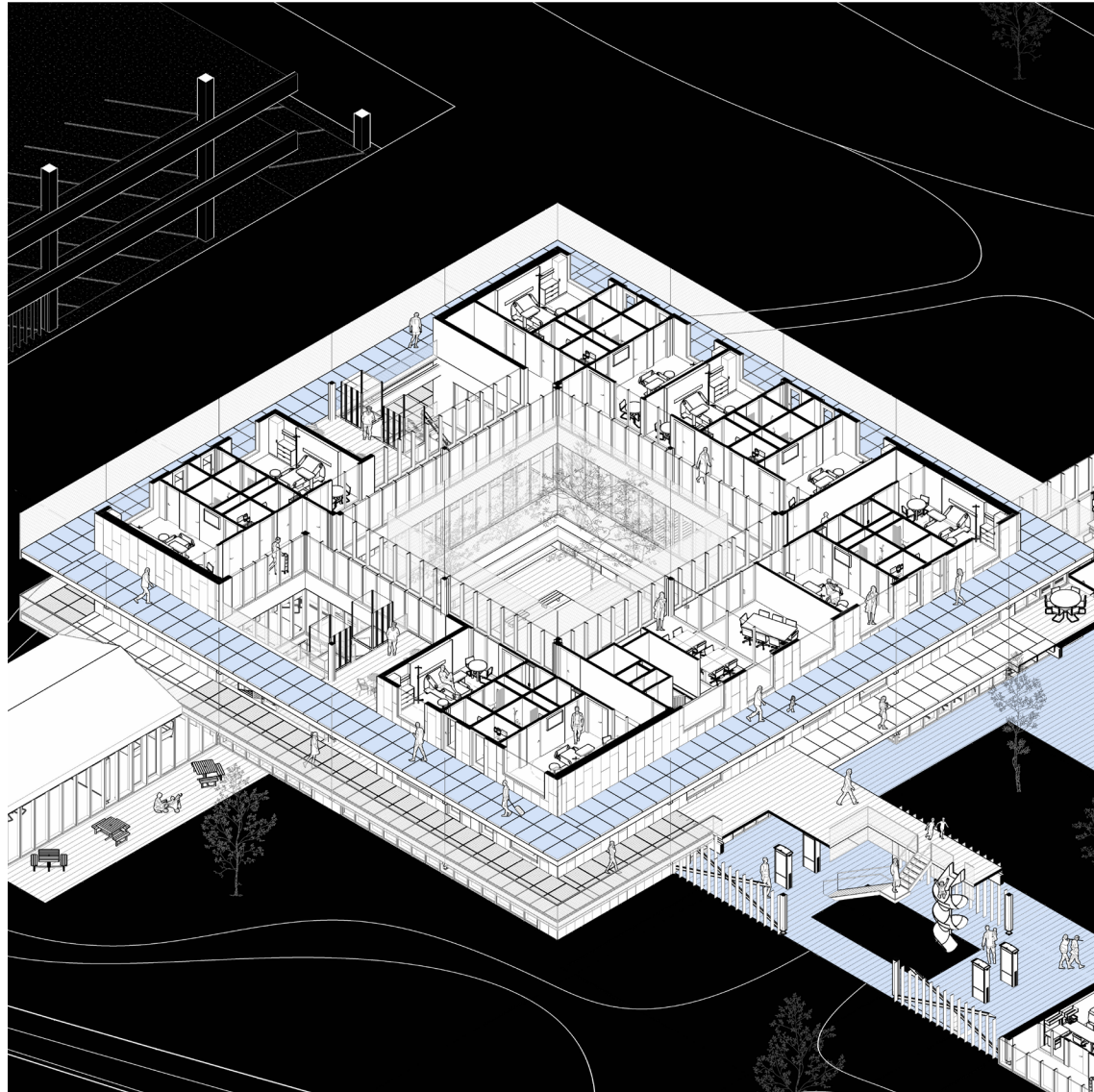
VERTICAL MOVEMENT



VERTICAL MOVEMENT



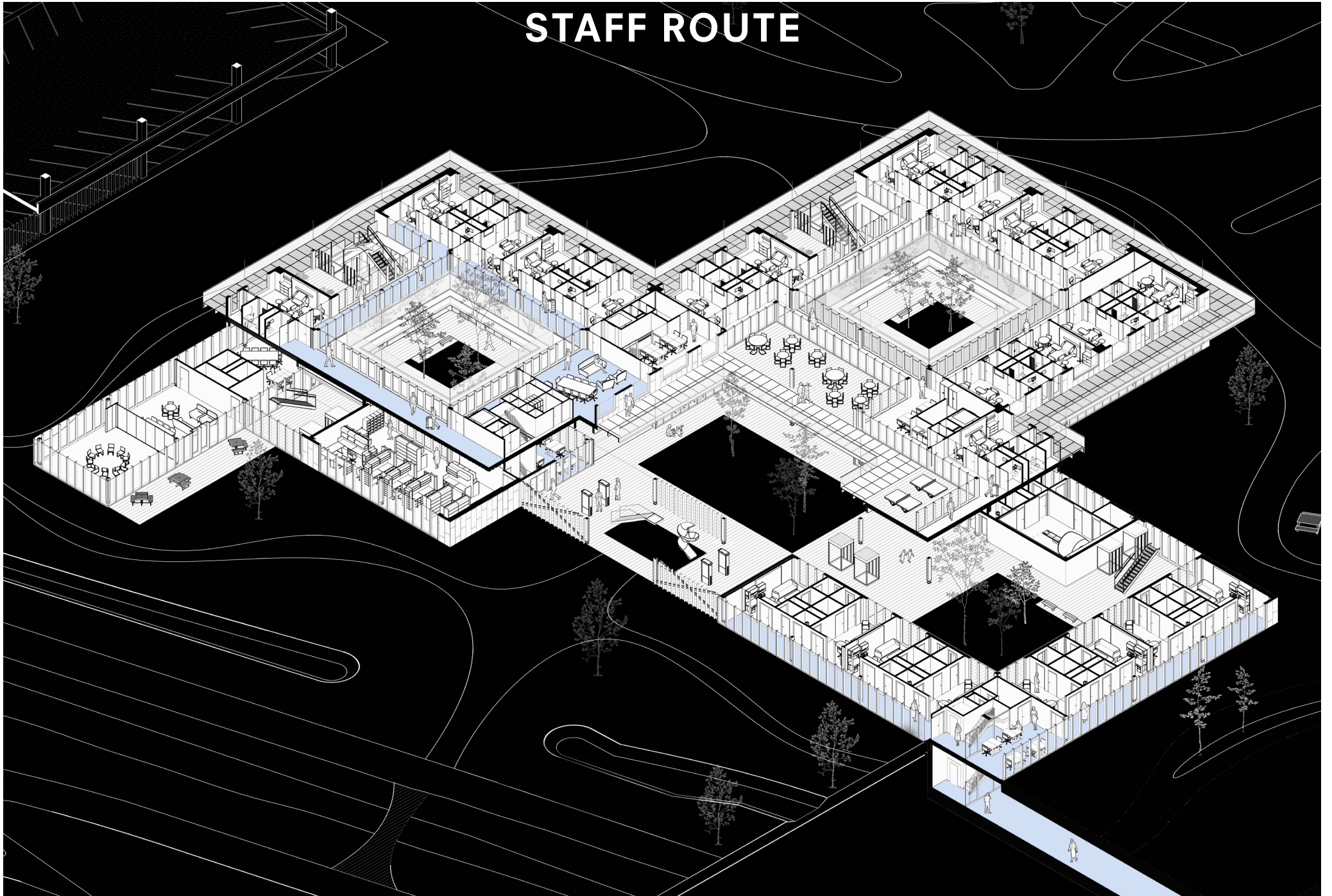
BALCONY LOOP LVL 1&2



BALCONY LOOP LVL 1&2



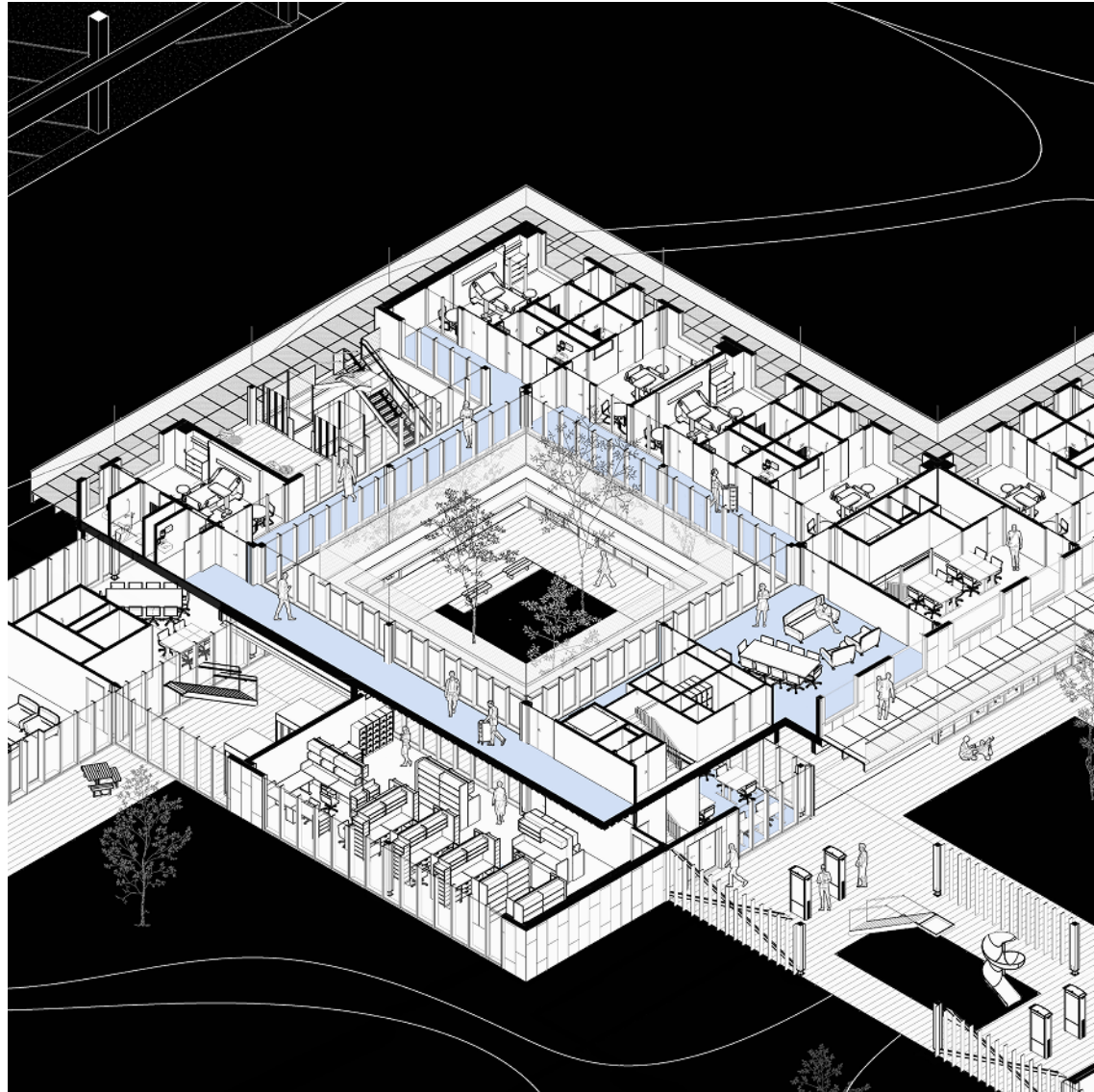
STAFF ROUTE



STAFF ROUTE



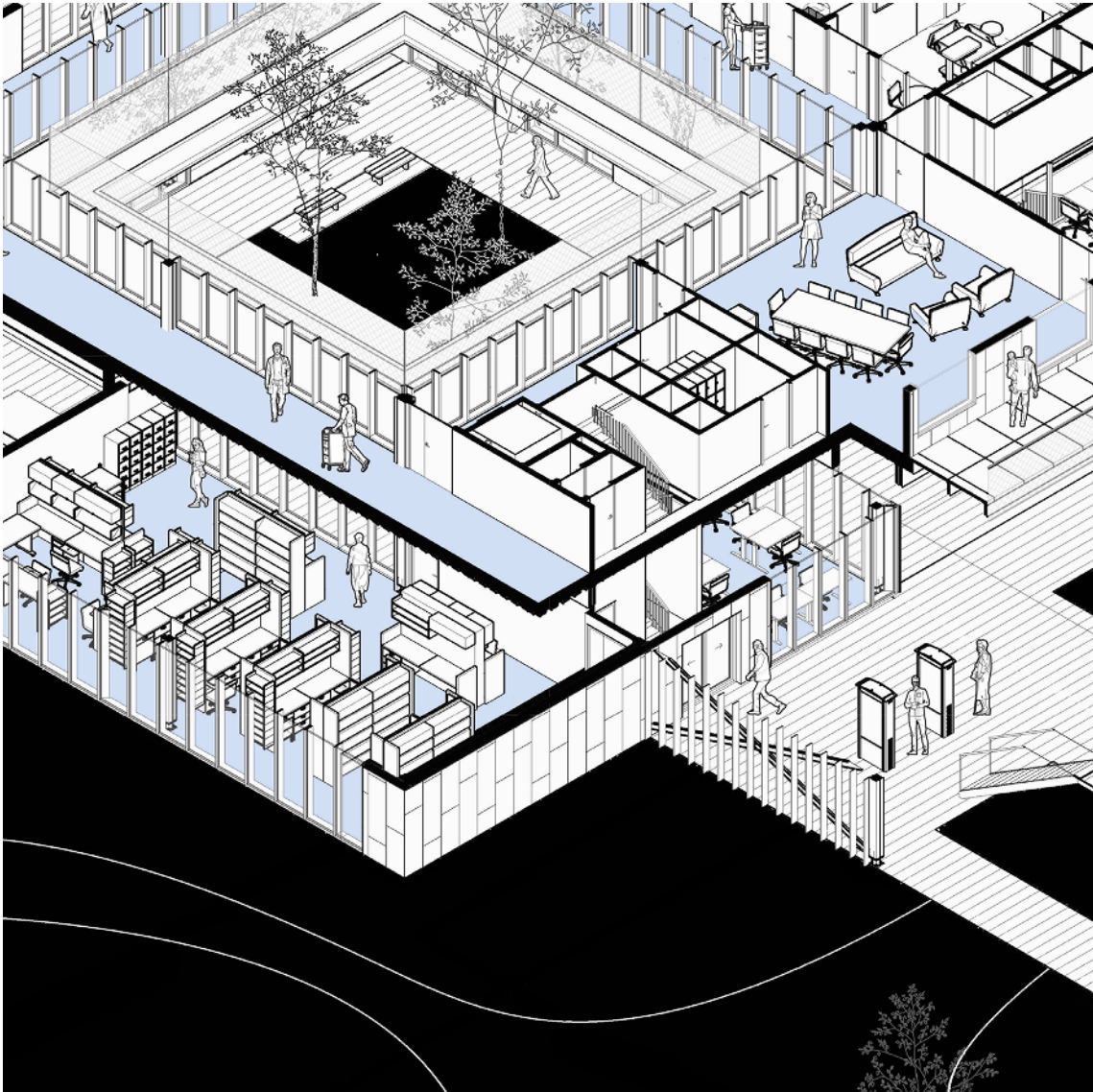
INNER LOOP - EFFICIENT



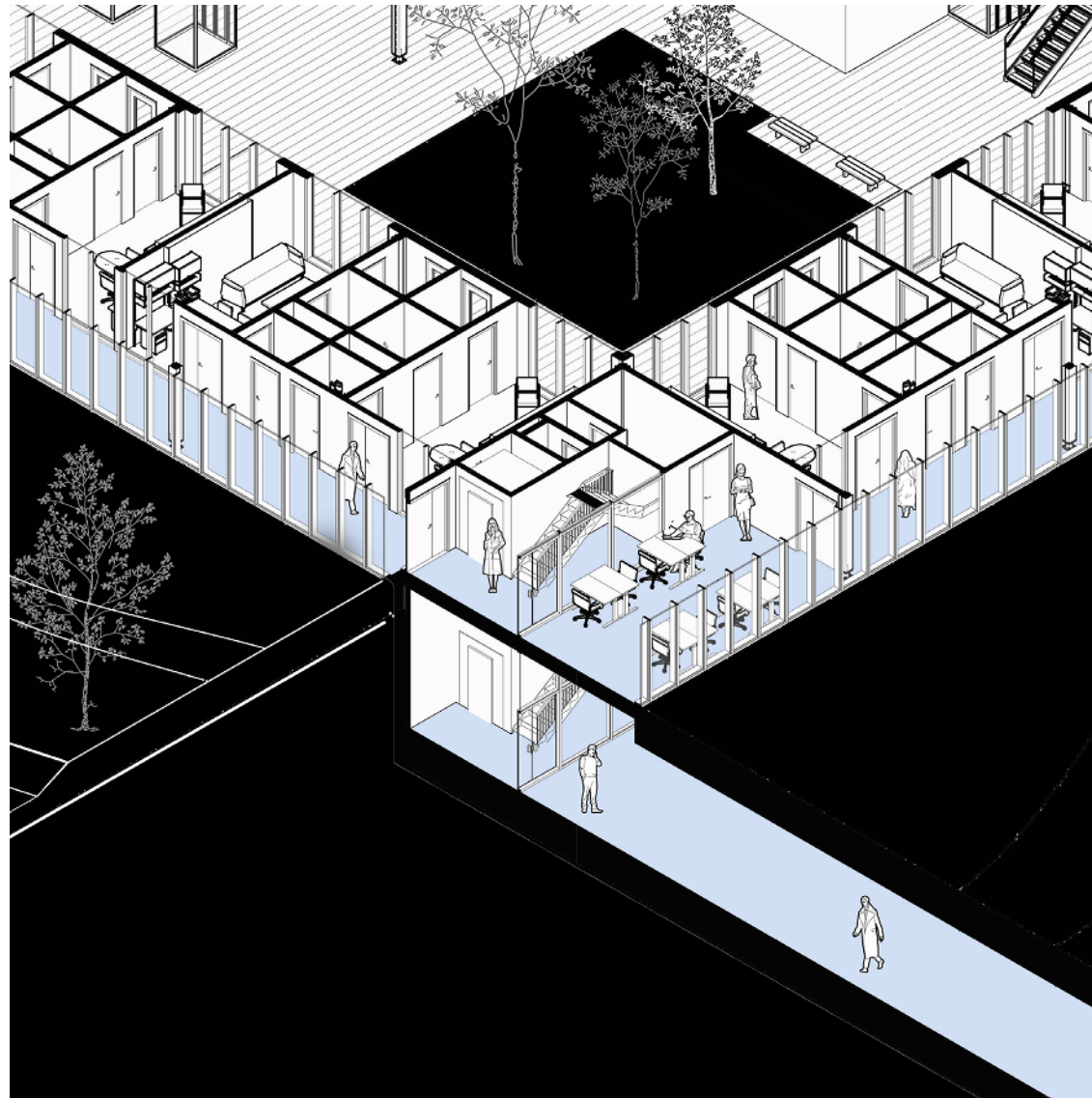
INNER LOOP - COURTYARD



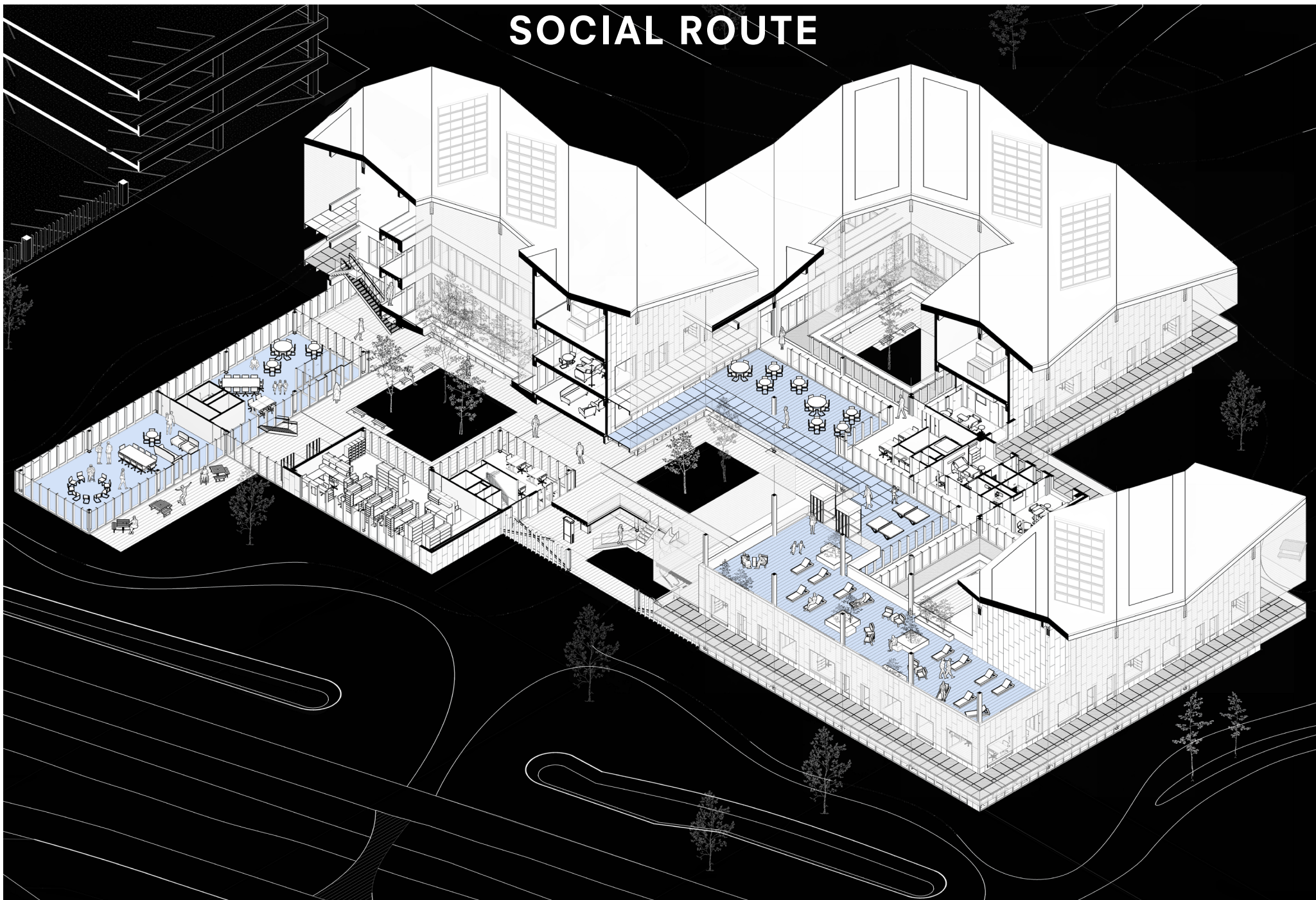
HOT AREA



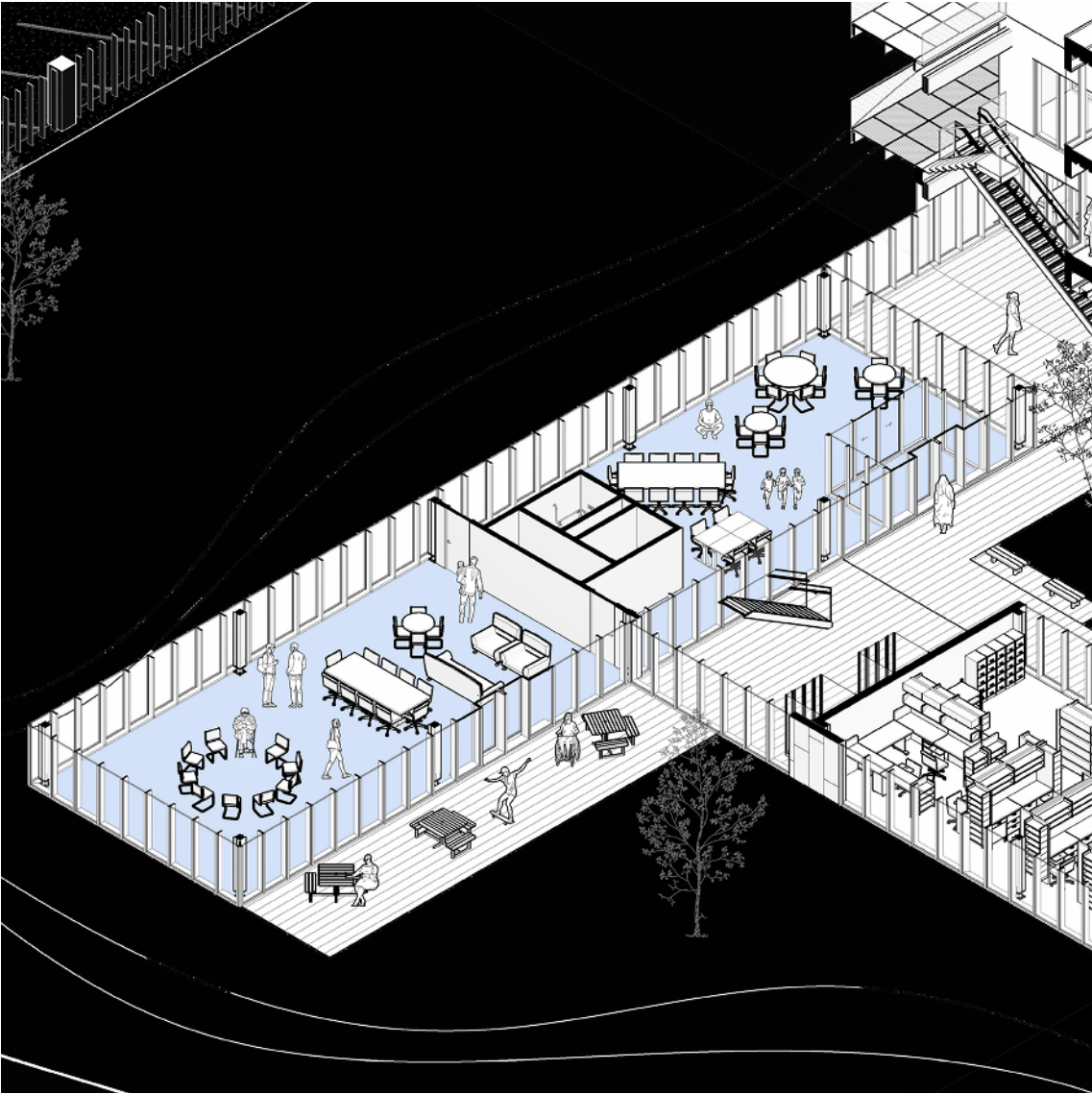
CONNECTION UMC & WKZ



SOCIAL ROUTE



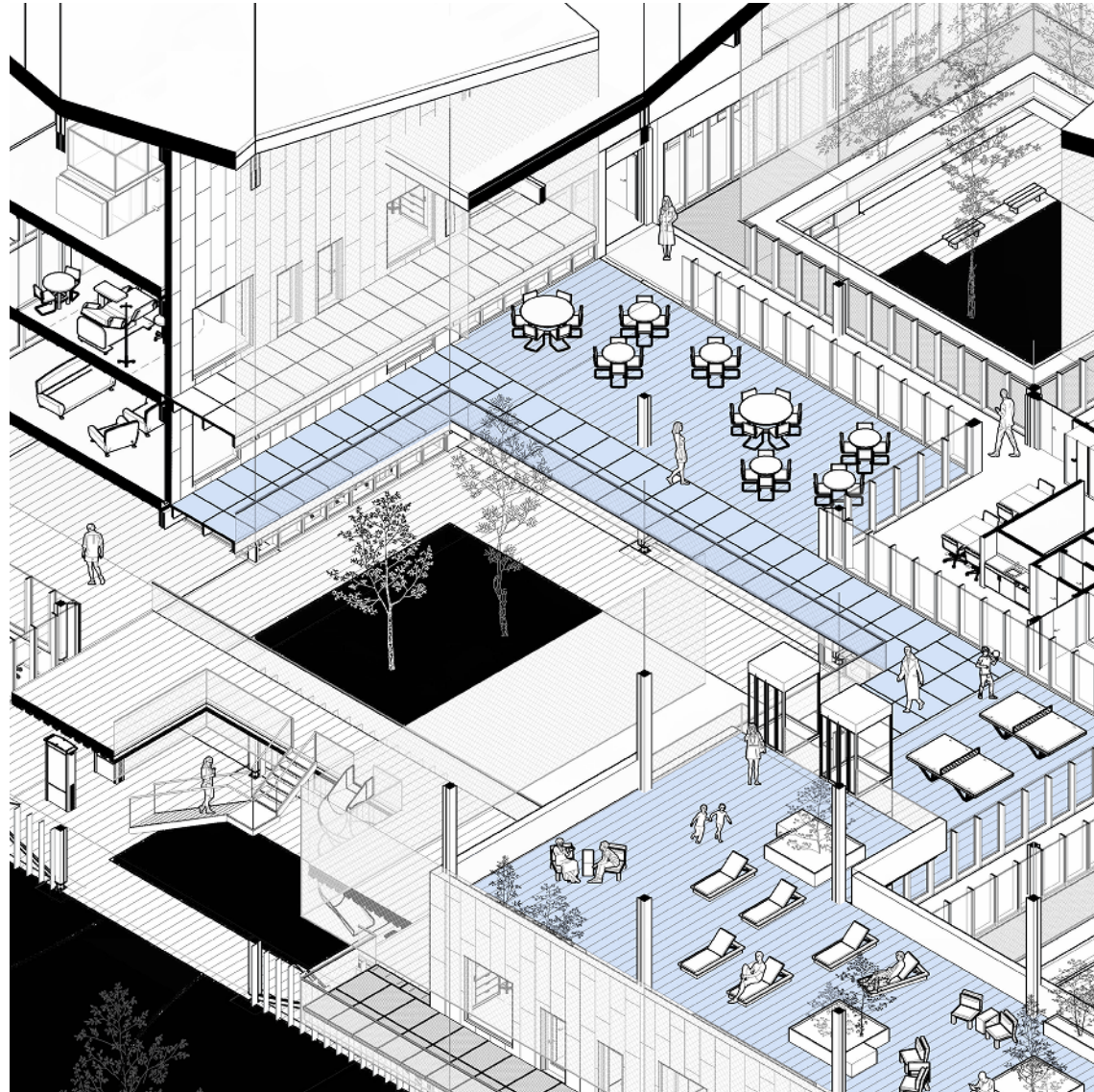
SOCIAL CENTRE - PPE



SOCIAL CENTRE



CAFETERIA & PLAY



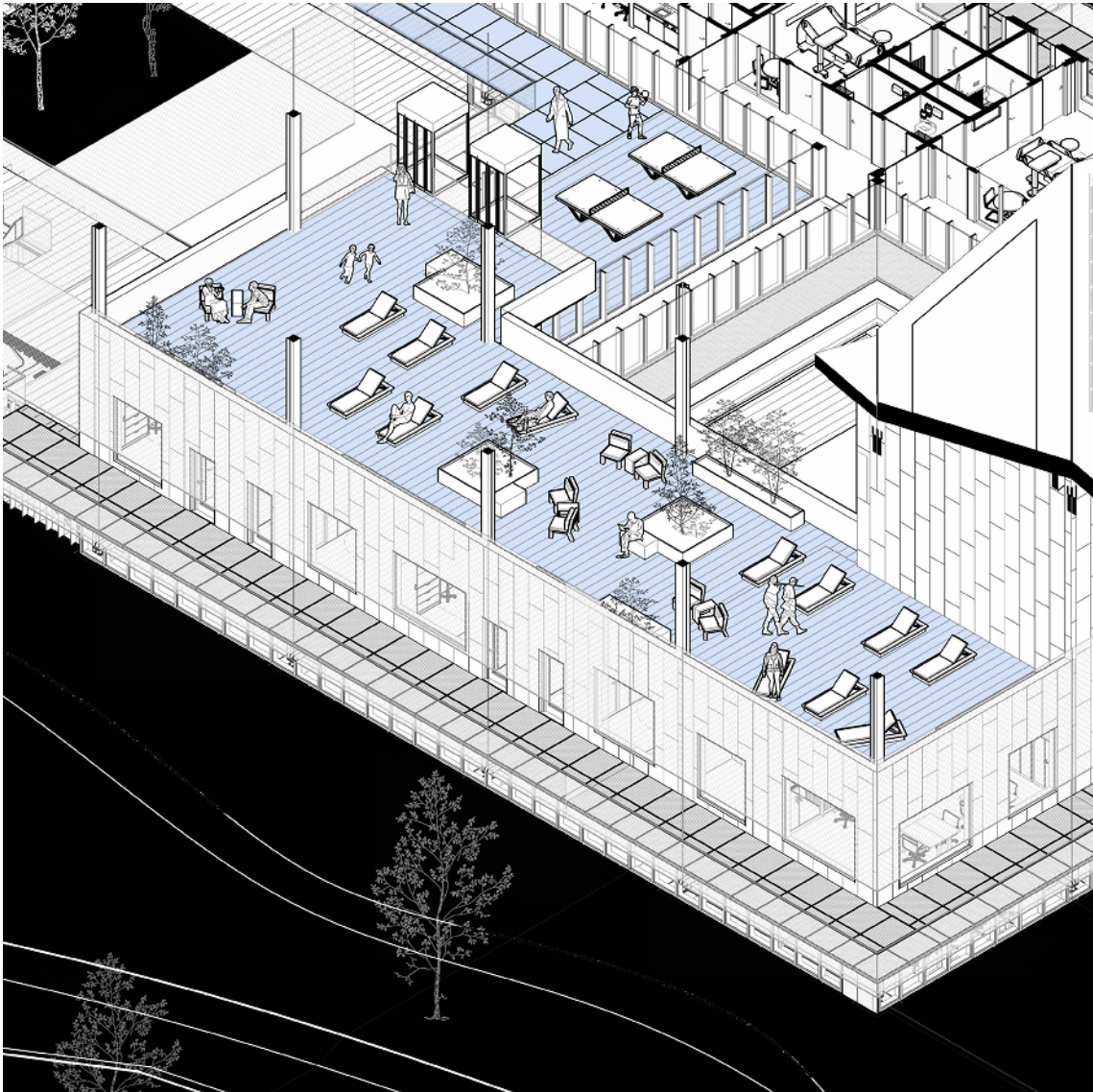
CAFETERIA



CAFETERIA & PLAY



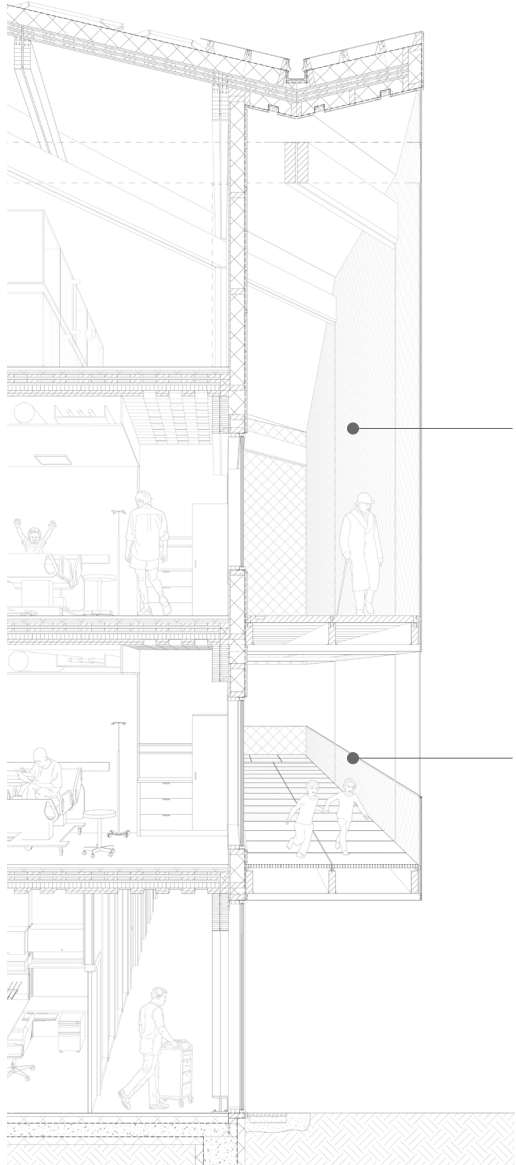
SUN DECK



SUN DECK



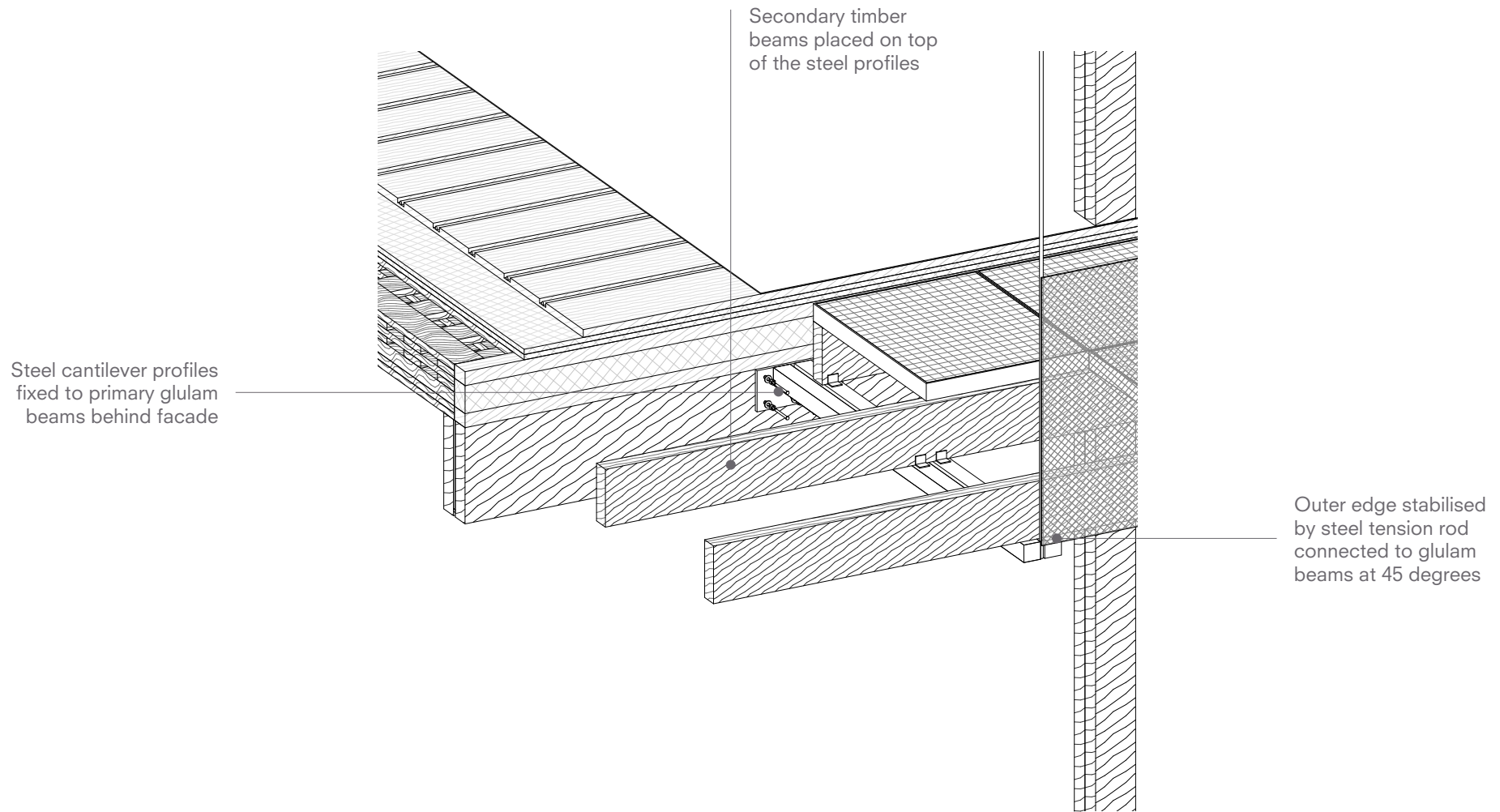
FRAGMENT BLUE FACADE 1.20



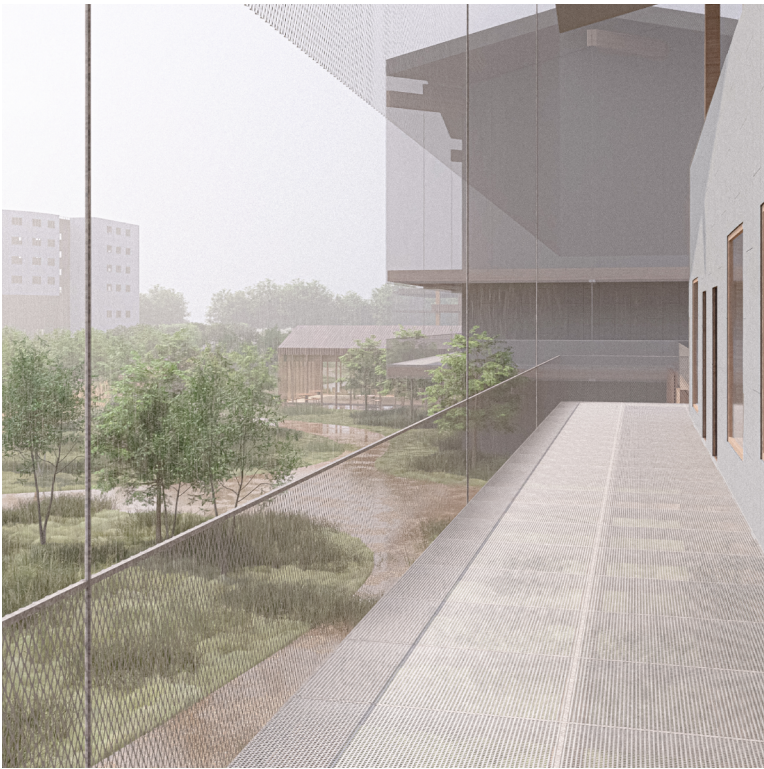
Full height mesh screen on lvl 2; wind and rain buffer.

Stainless steel mesh as railing is see through for patients of all heights and ages

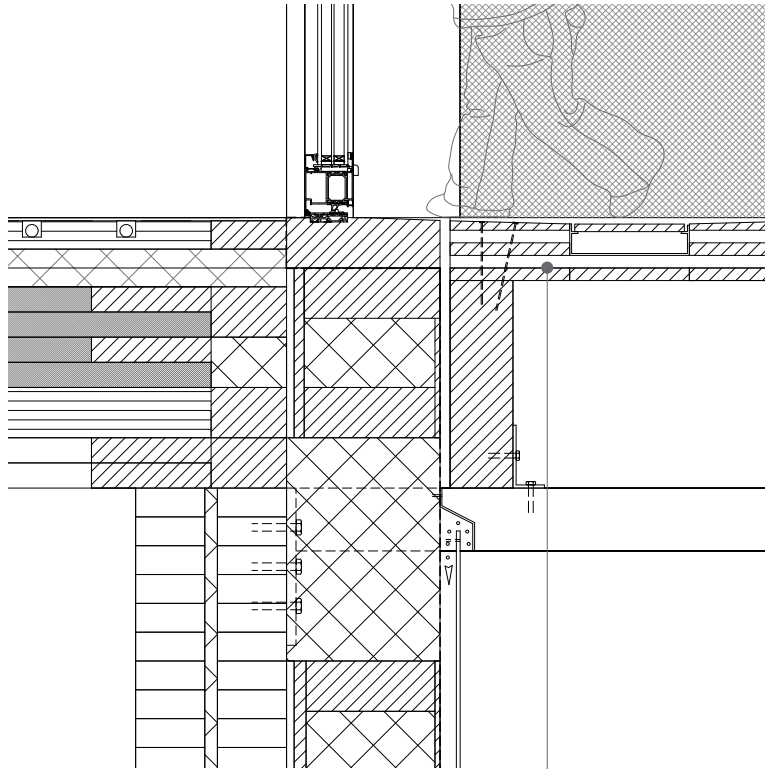
CONNECTION



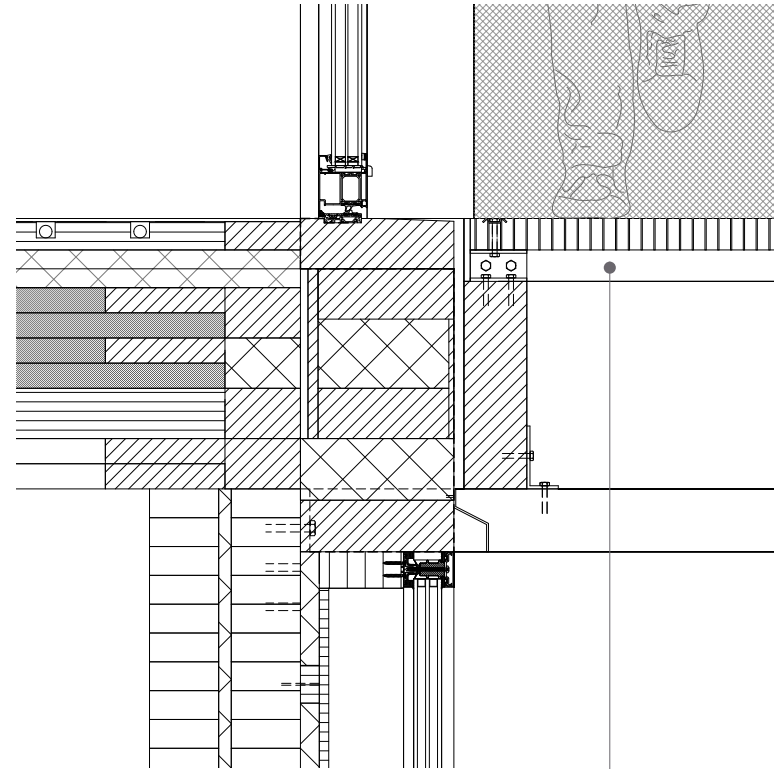
MATERIALITY



MATERIALITY

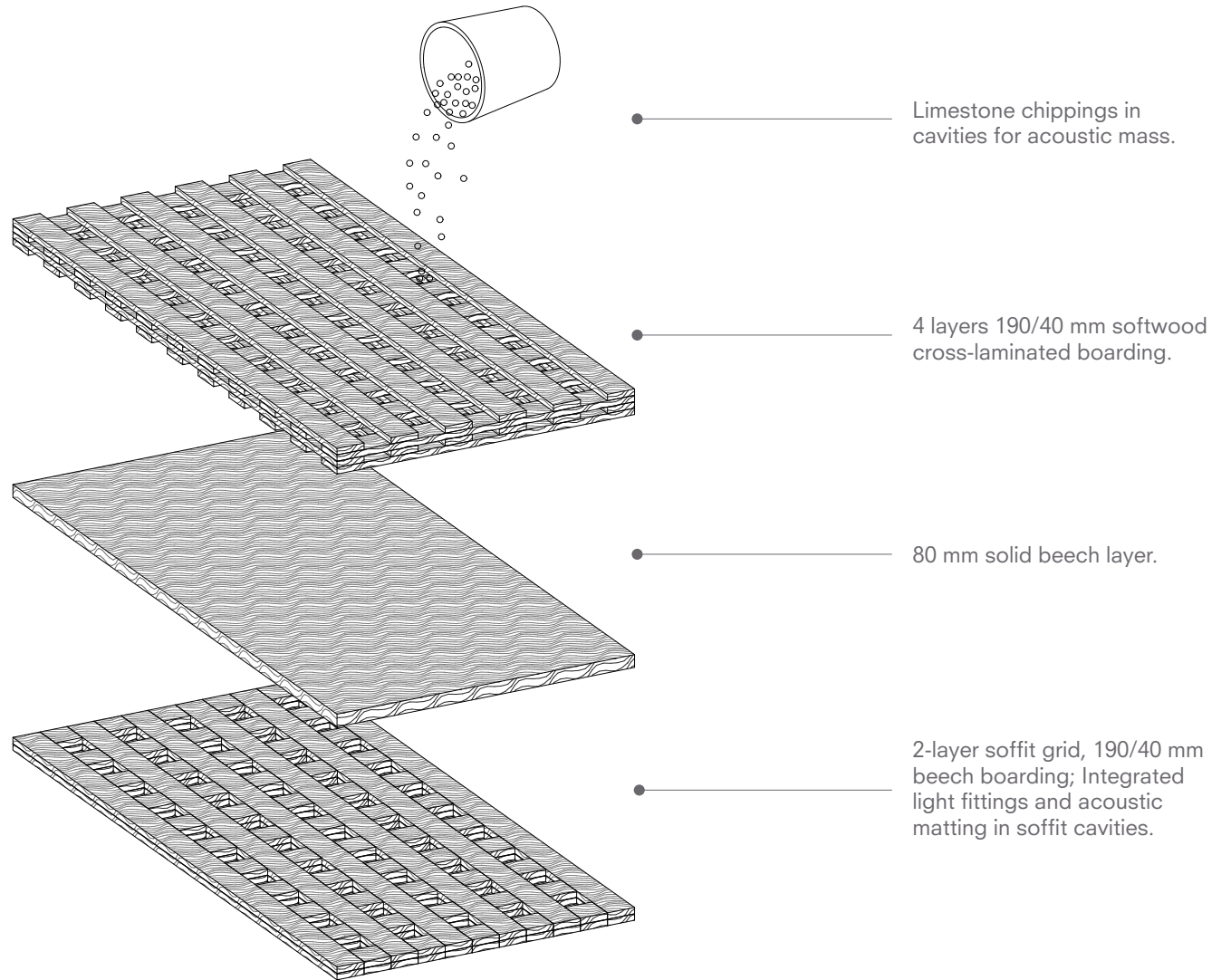


100 mm CLT deck panel;
Nailed to timber balcony
beams; Closed walking
surface.

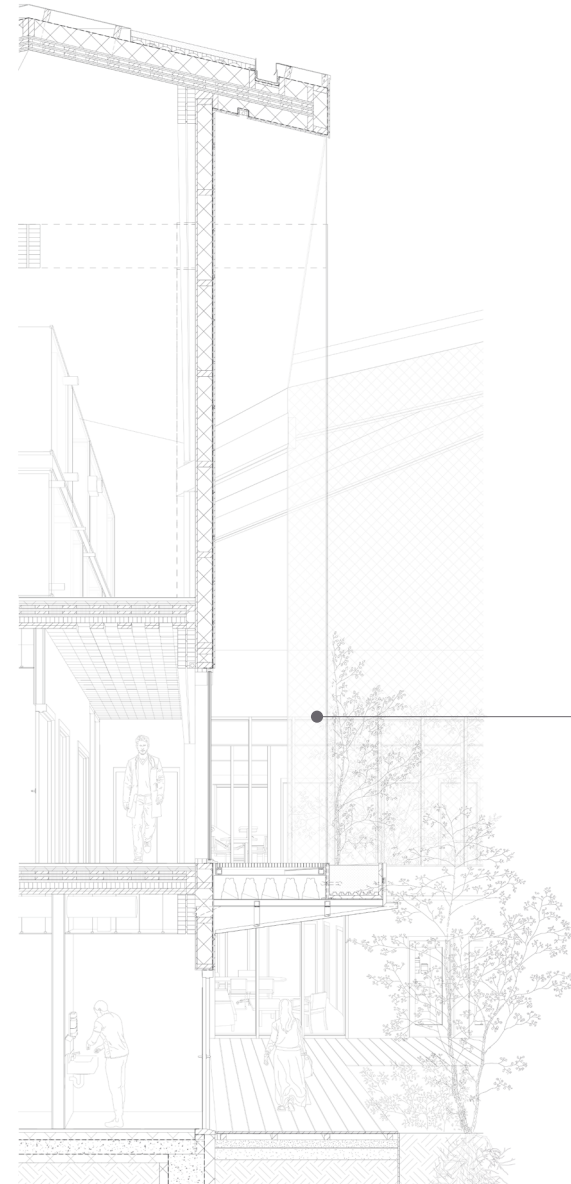


Steel grating on timber
balcony beams; Repeated
steel hold-down plates; Open
walking surface.

FLOOR

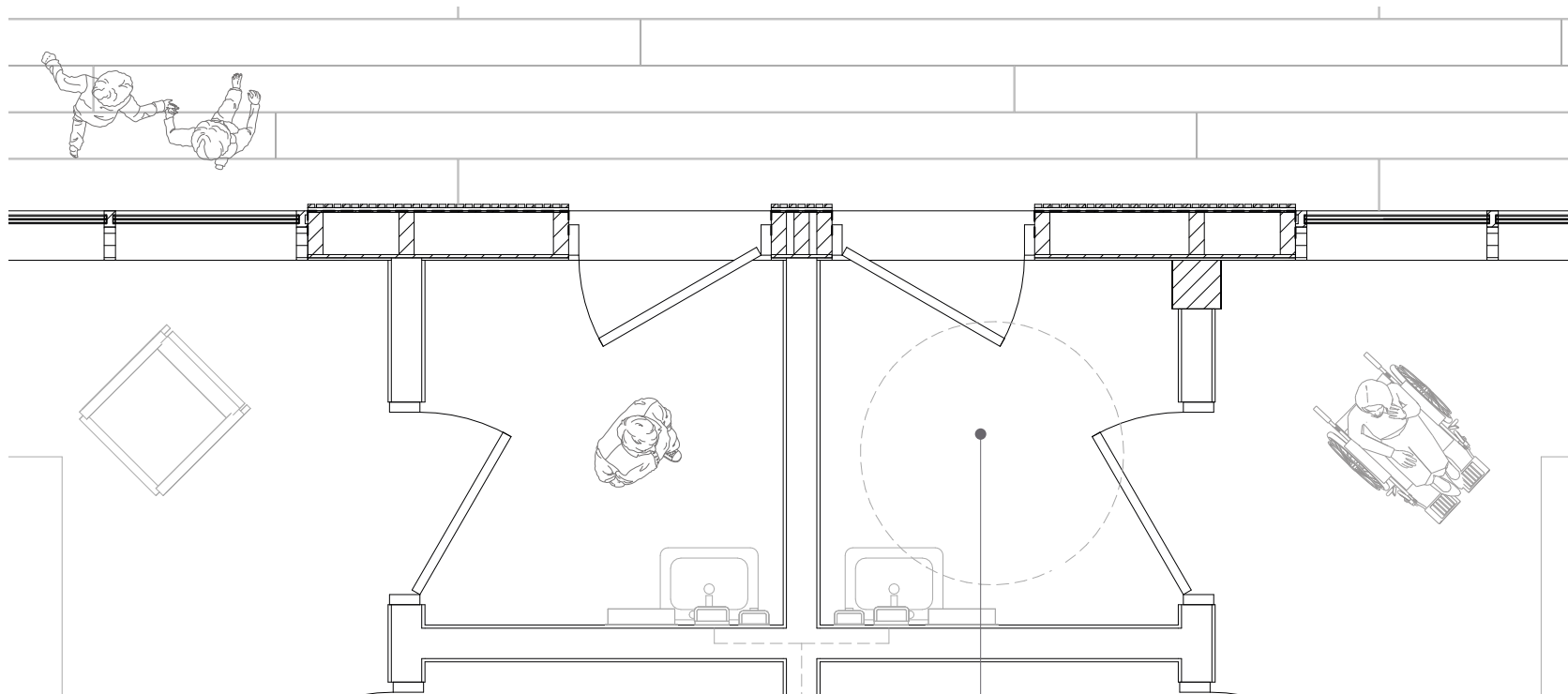


FRAGMENT WOOD FACADE 1.20



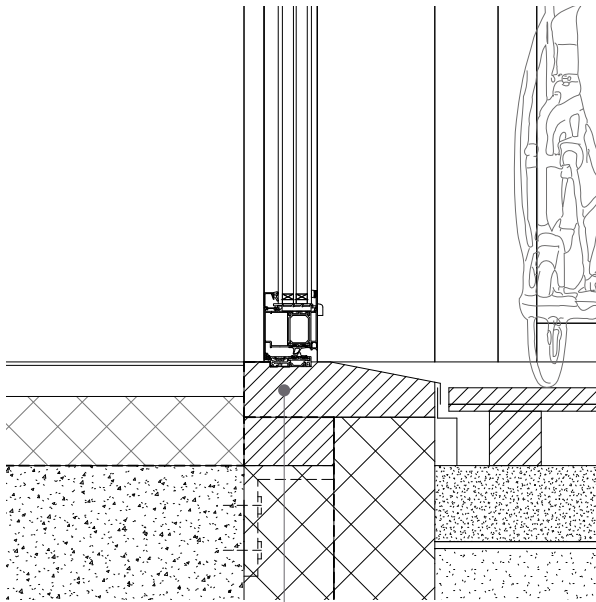
Full height mesh screen;
support for climbing plants
that provide shading

ACCESSIBILITY 1.20

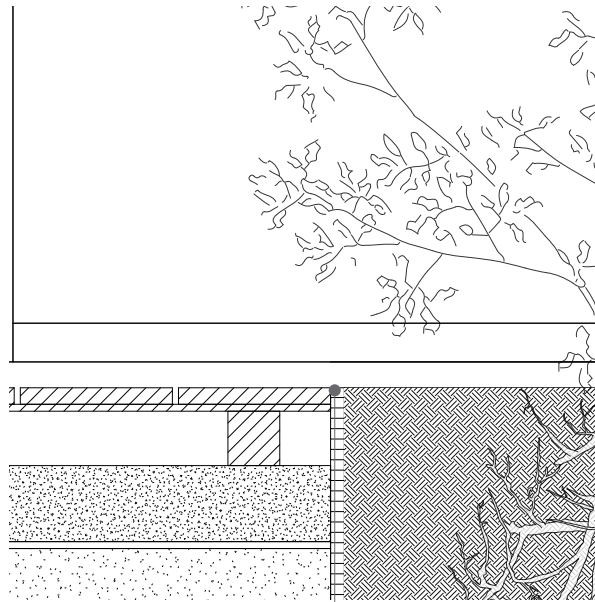


Antechamber
dimensioned for
wheelchair patient
access.

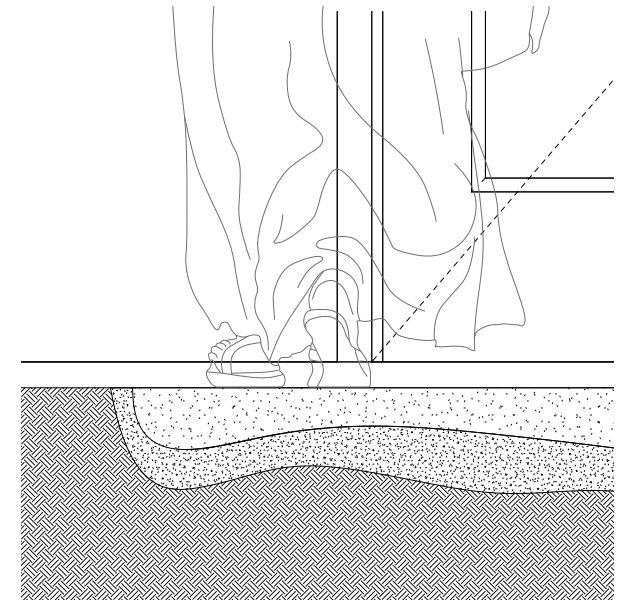
ACCESSIBILITY 1.20



Recessed door threshold; Door frame set into grooved timber floor element.



Root protection membrane; Prevents lifting and shifting of the walking surface.

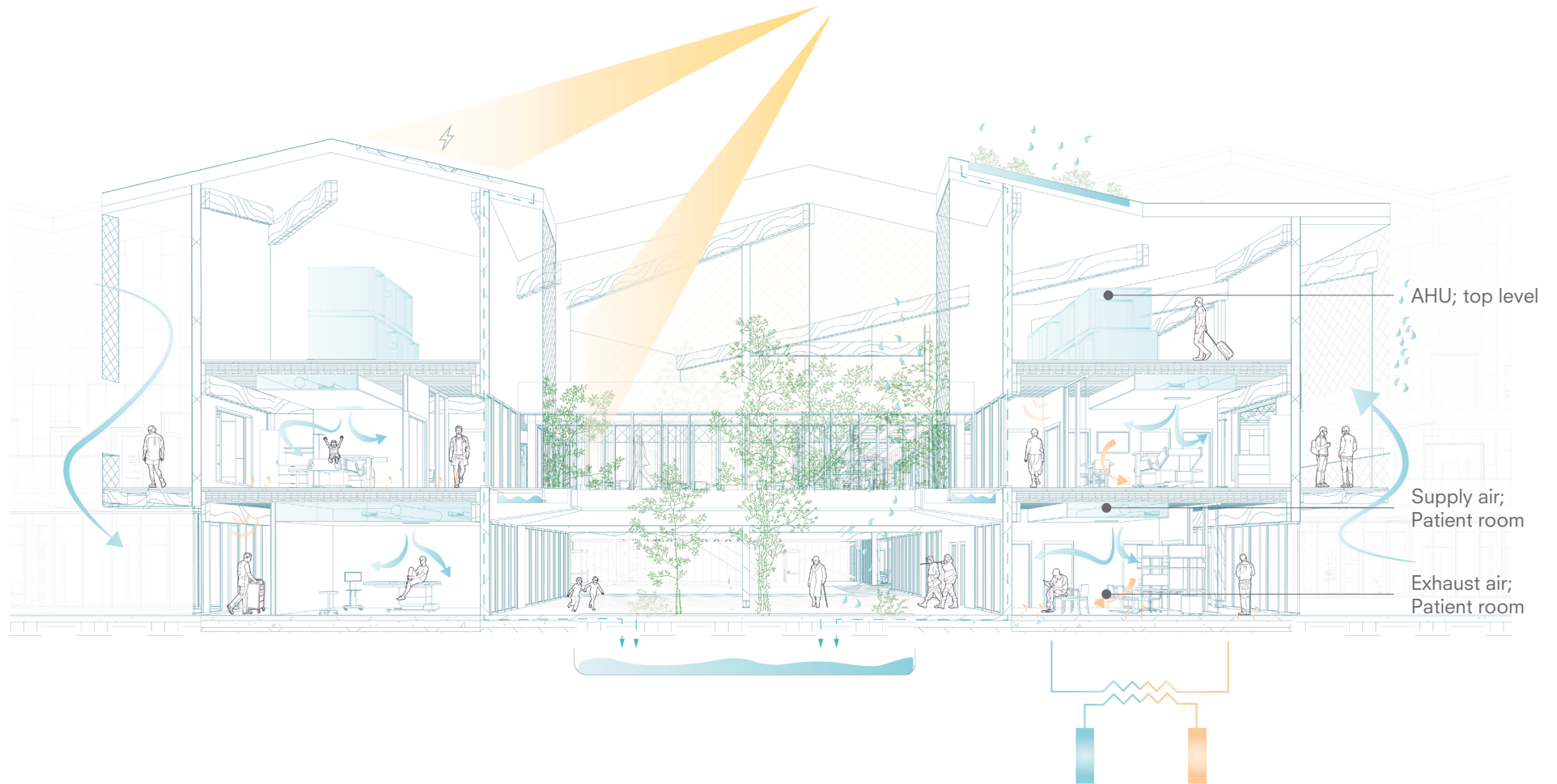


INNER COURTYARD

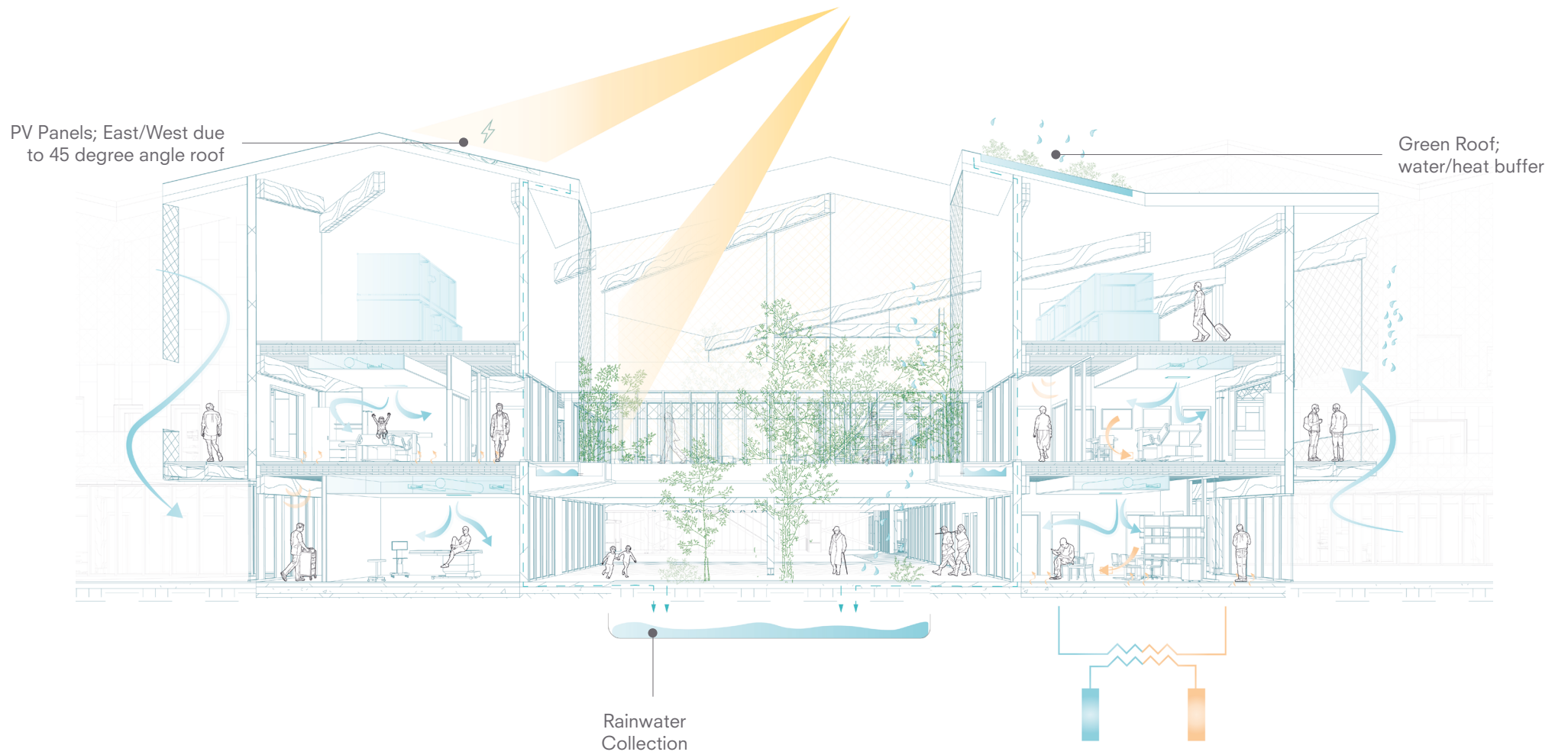
Stairs / Elevator to the
higher level



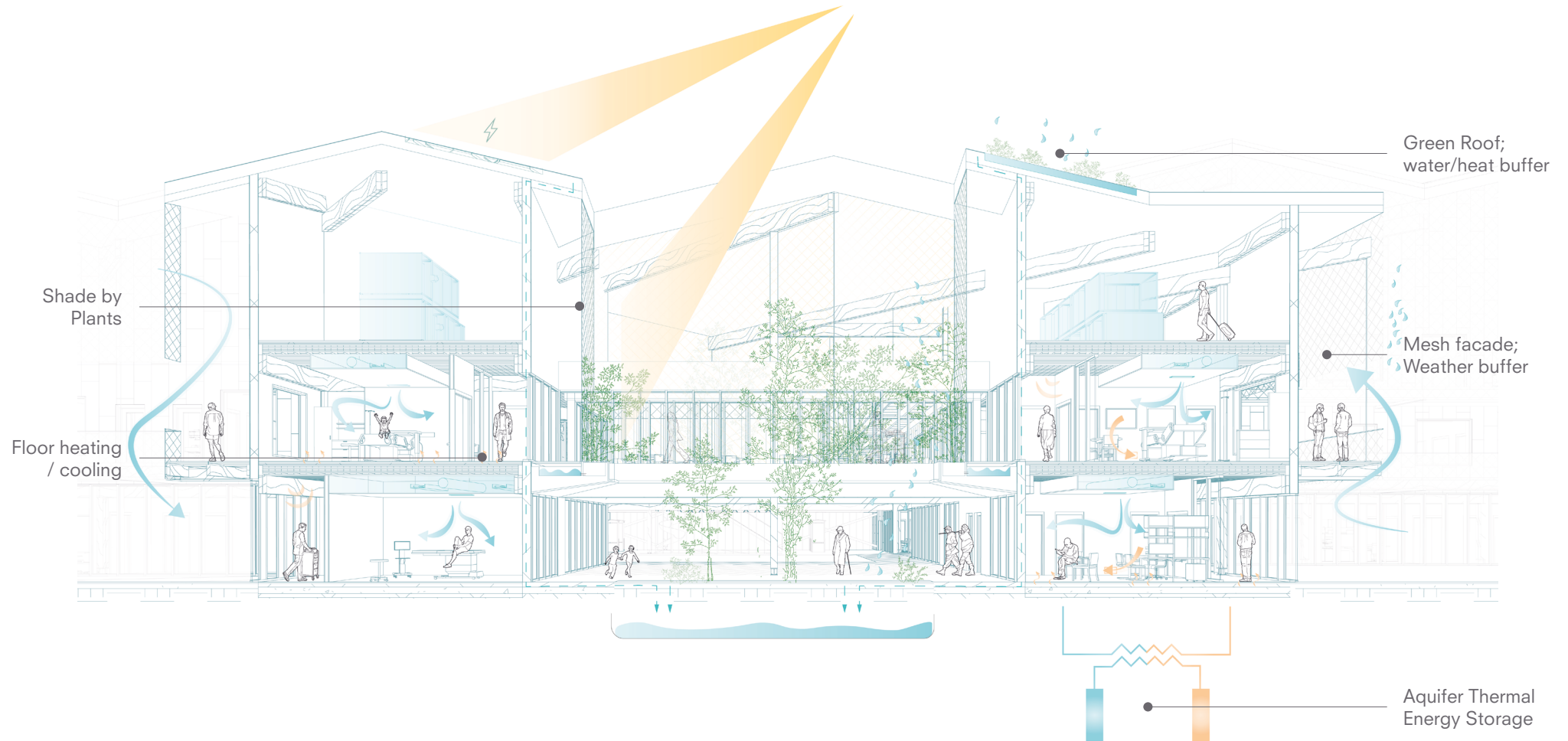
CLIMATE SECTION



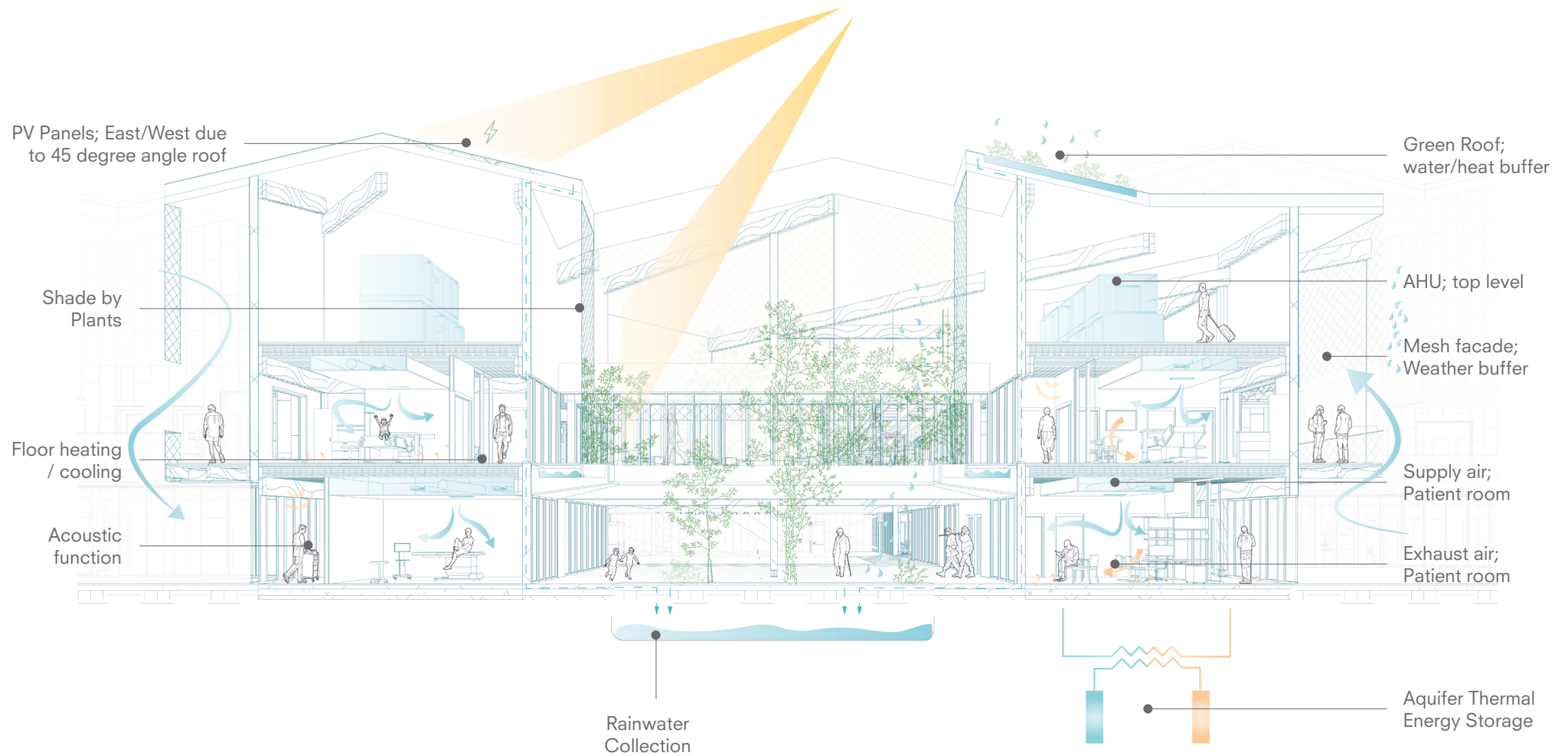
CLIMATE SECTION



CLIMATE SECTION



CLIMATE SECTION



Technical room:
Heat pump and hot / cold buffer tank

REFLECTION

