

The Common Ground

Towards the City of Empathy

Hanna Adamczyk
Last Green in Town
Urban Architecture
Graduation Studio
2023 - 2024





MANIFESTO

To Empathize

Common Ground

Embracing our connection with all species



*I am presupposing that we are part of nature and not individual creatures
separated from her or in the midst of her, in a superior position ruling the world.
My hypothesis is rather that we are in state of immersion.*

- Gilles Clement

View on Nature

From Garden City to current time



Front and Back Gardens of the Garden City in Terdel, Brussels

The focus on creating aesthetically pleasing and functional green spaces for humans

About the space

Brussels



About the space

Friche Josaphat



A home for rare flora and fauna

About humans

Hearing different voices



"Empathy challenges us to sharpen our awareness, and to listen deeply to the words and experience of others"

Susane Lanzoni, *Empathy*

About humans

Friche voices



"Now, Friche is quite exclusive, and it's not good. We are in the city, we need to make a space for people."



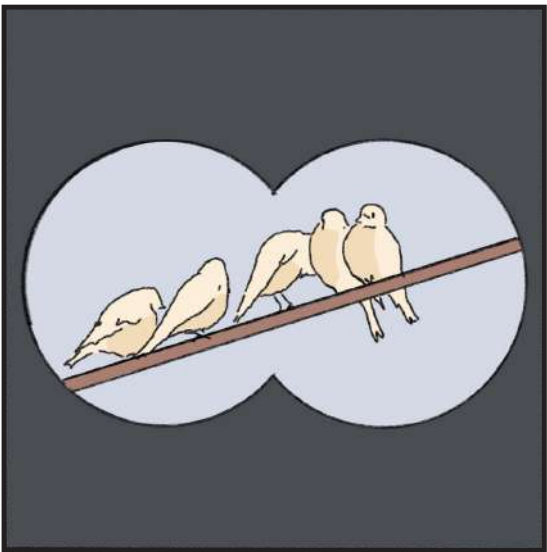
"When people entered the Friche, they created a meaning for this place. Friche was a place to gather. It was hard to close it again after covid..."



"If I don't fight for this wasteland, what will I leave to my children?"



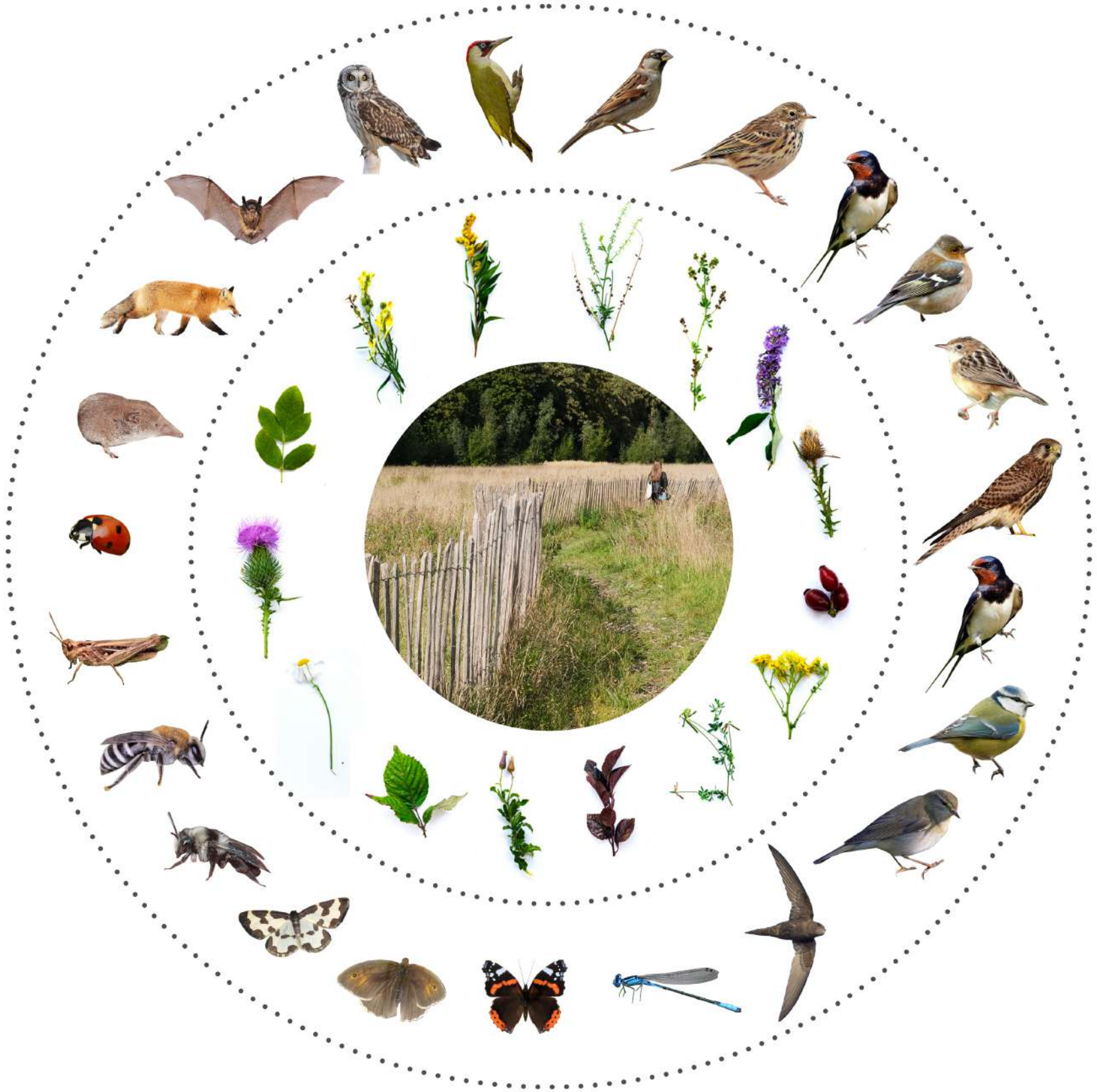
"We need to teach children what insects are. We should give people a chance to visit the Friche."



"I come here almost every day. I love observing and documenting plants and animals."

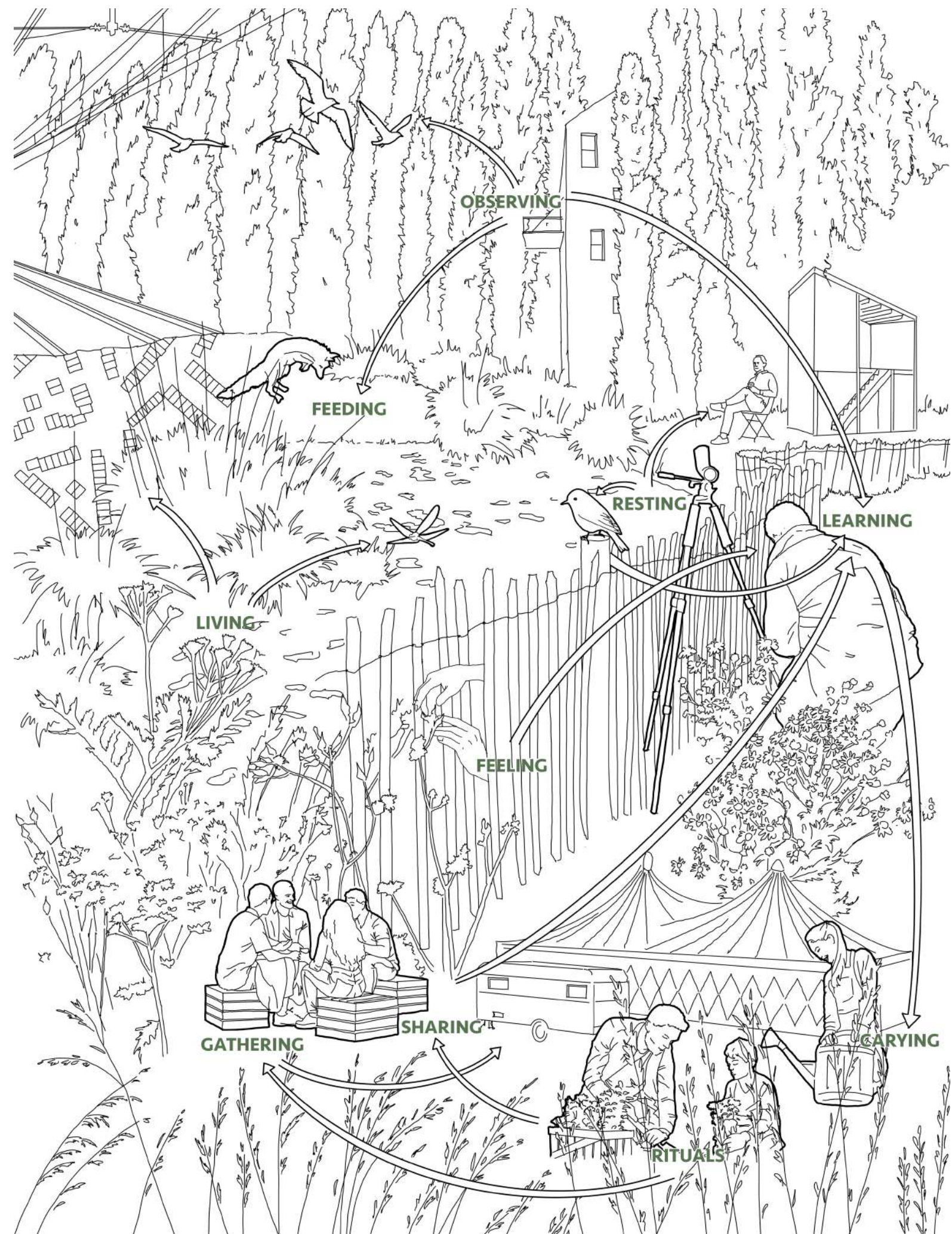
About non-humans

Unfold unheard voices



About non-humans

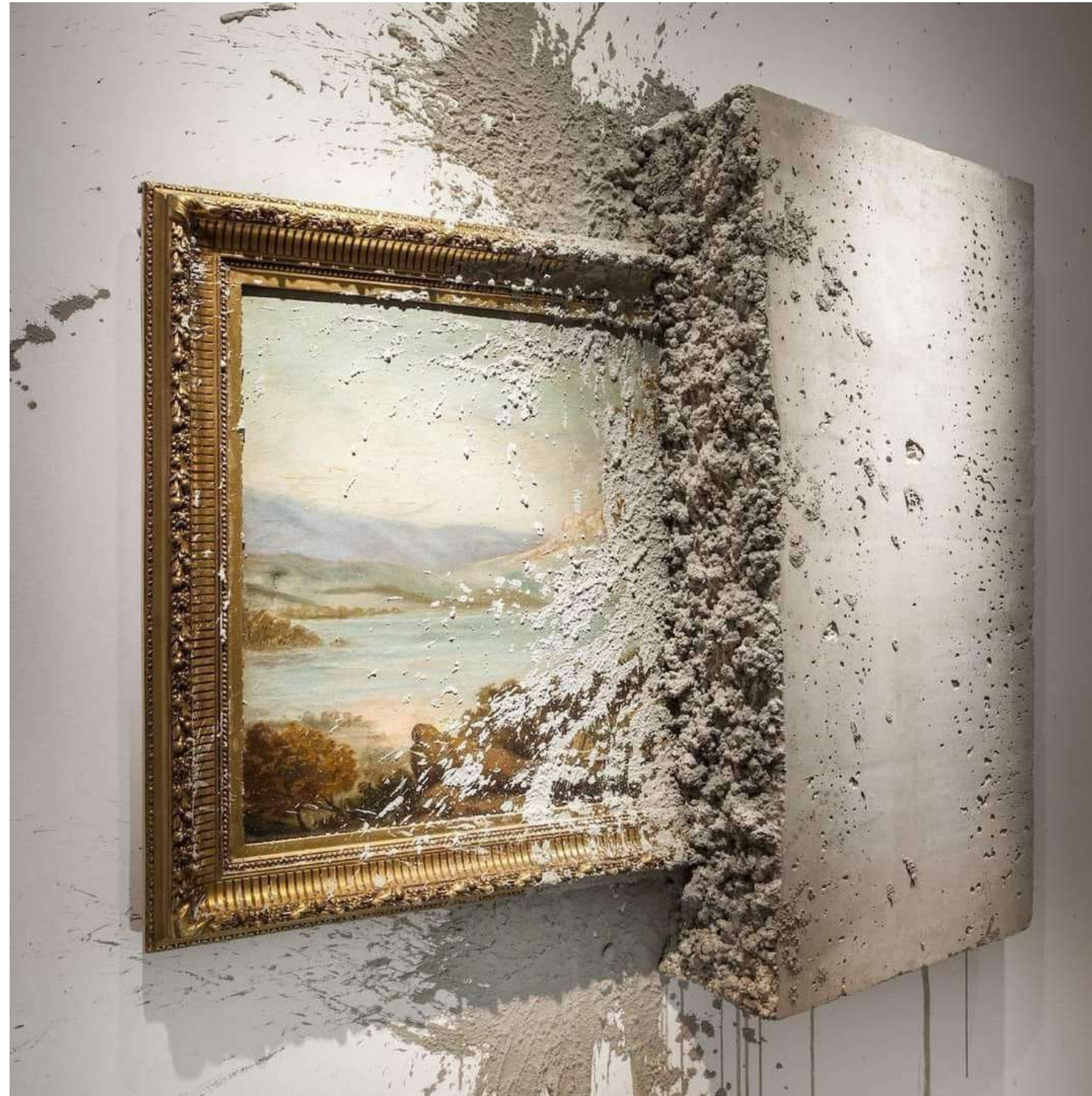
What do we have in common?



What strategies can enhance the existing natural values of Friche Josaphat while creating the space where humans and non-humans can meet, coexist and learn from each other?

Friche and the clash of visions

An urge to become a mediator



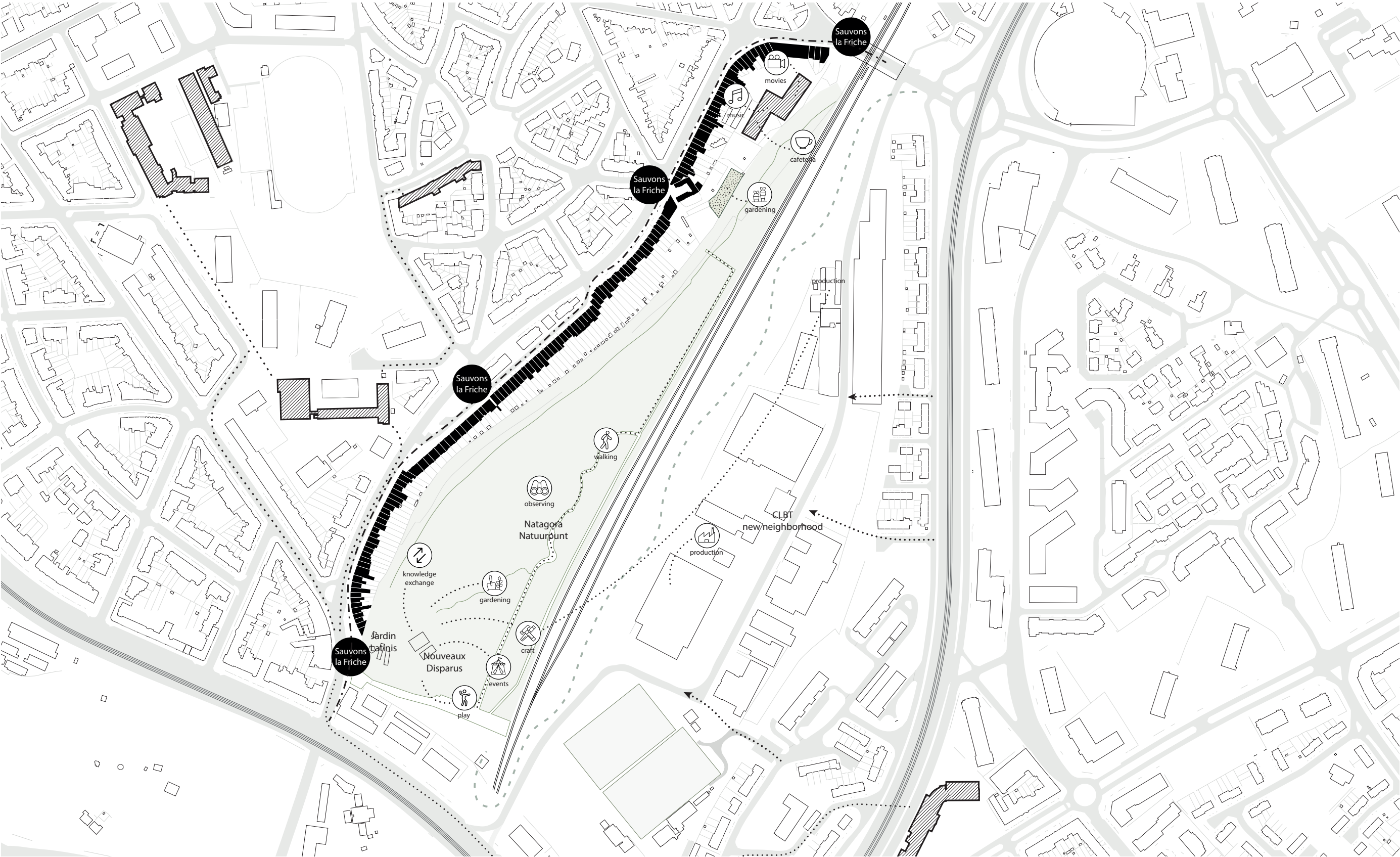
Horror Vacui by Alejandro Almanza Pereda

What is my role as an architect?

How to work with empathy to space, humans and non-humans?

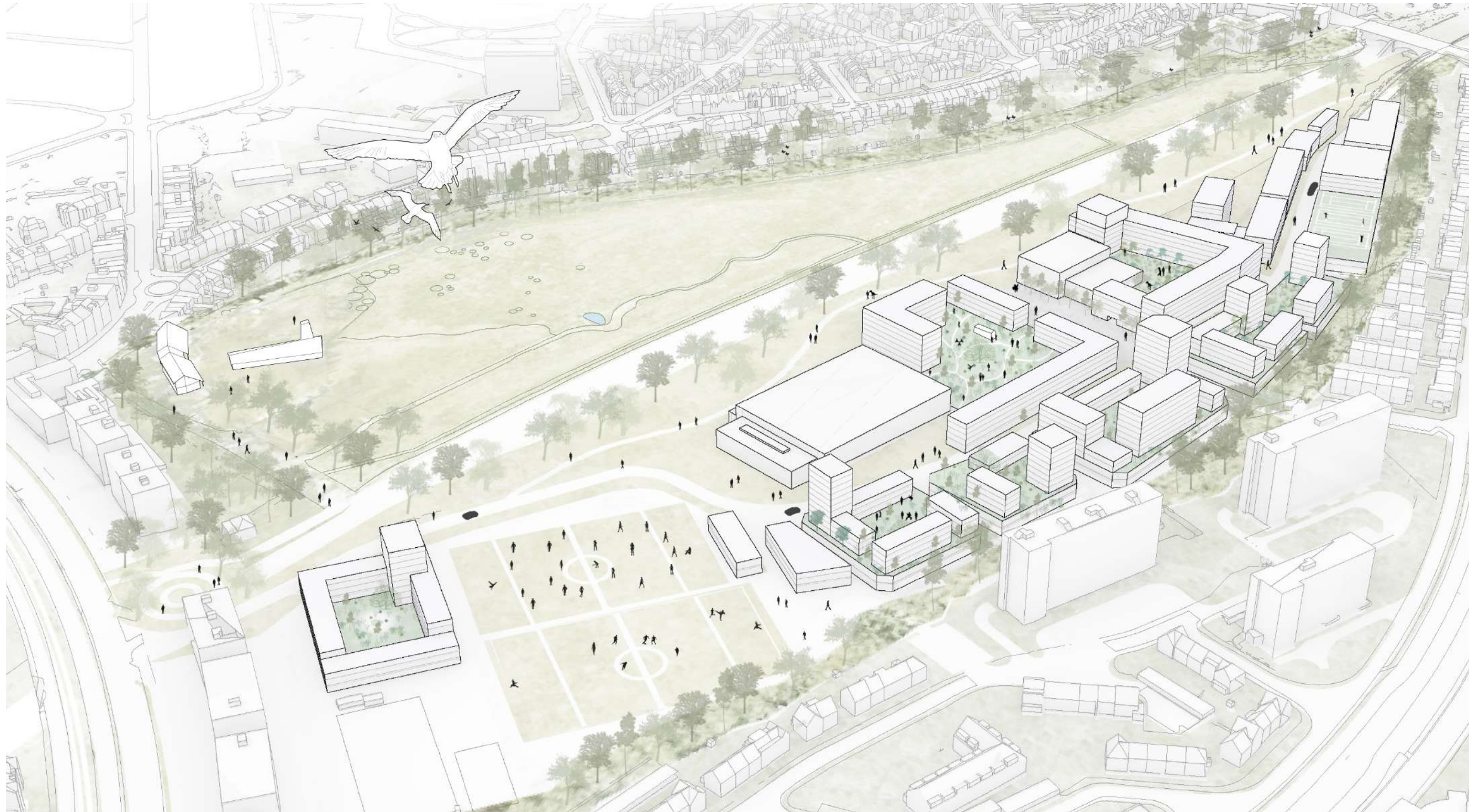
Actor network

Existing connections on the site



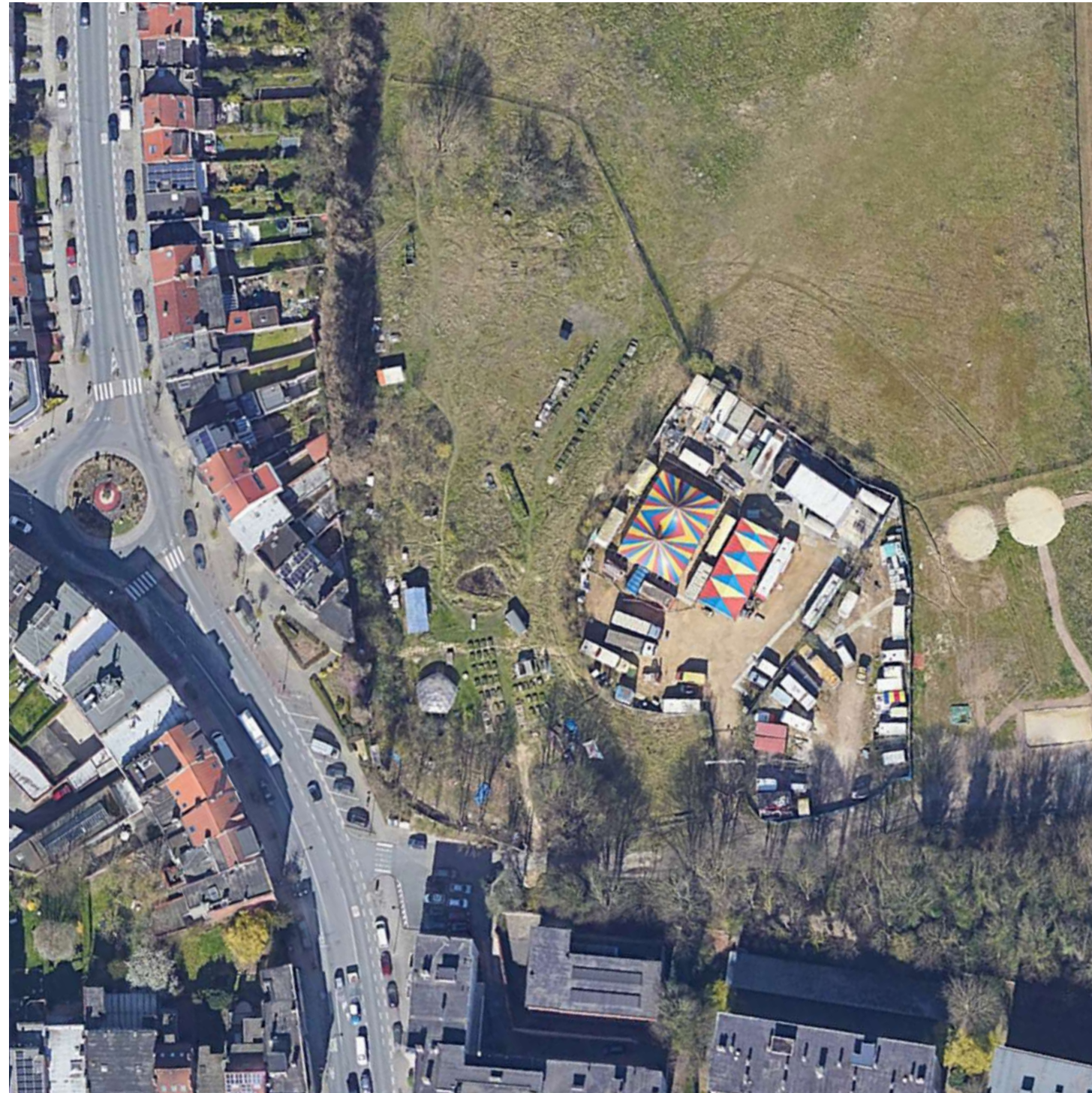
Masterplan

Transition between City and Nature



Designing on the edge

Transition between City and Nature



"Empathic connection is always a bridge across difference."

Susane Lanzoni, *Empathy*

Designing on the edge

Respecting urban fabric



Designing on the edge

Respecting nature



Designing on the edge

Bridging the views



Learning center

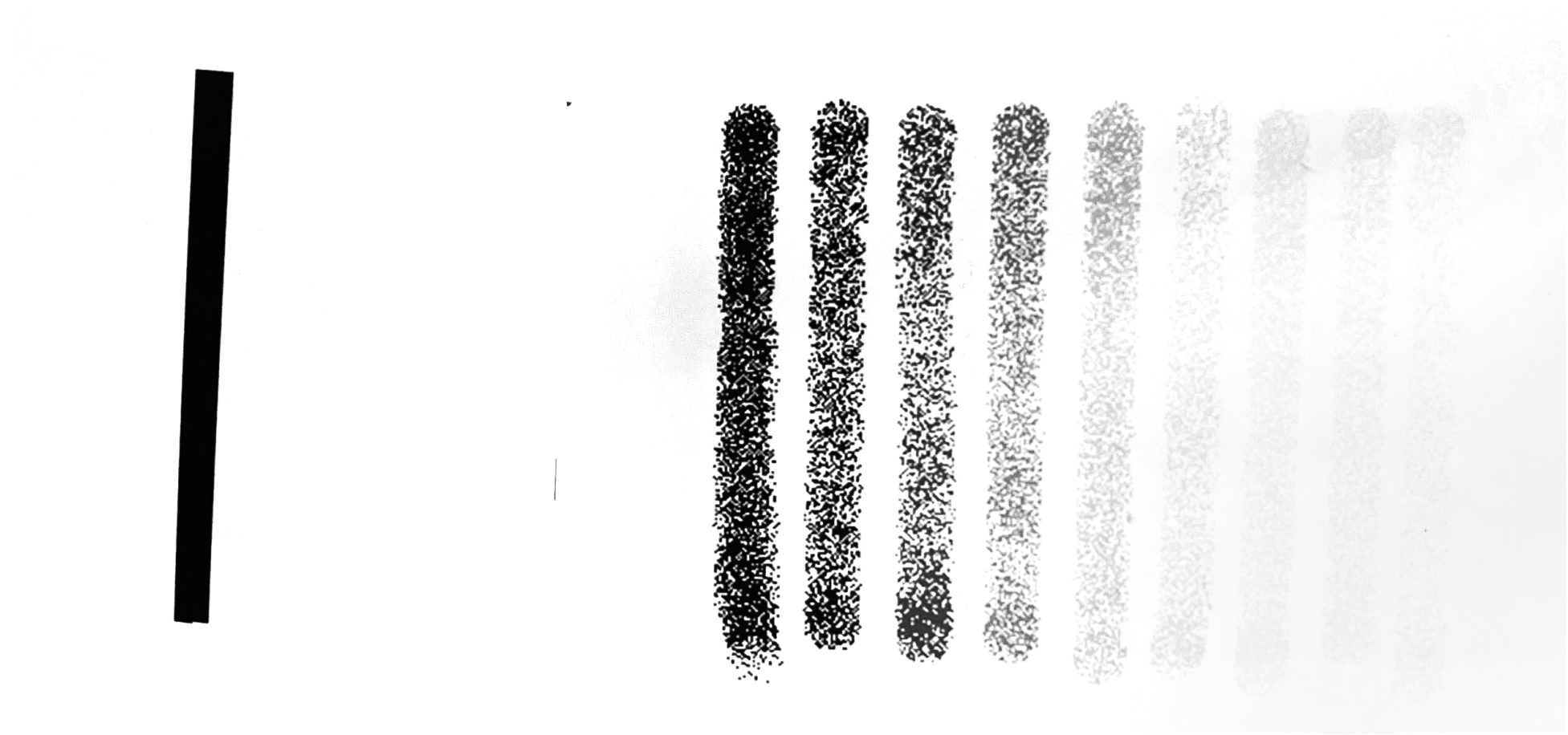
To raise the awareness about flora and fauna



Transition

How do bridge differences

To erect the wall is to bisect a space into 0 and 1.

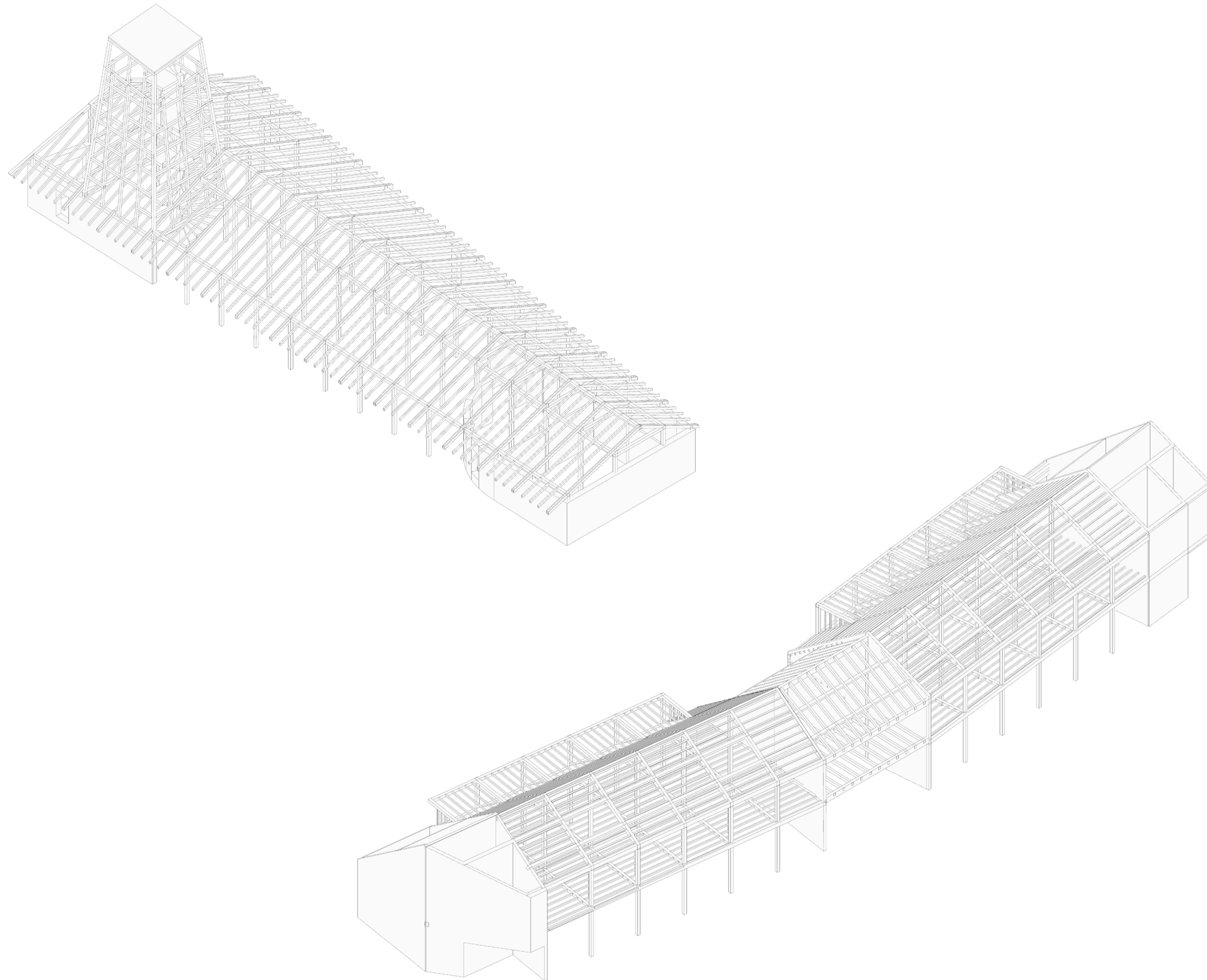


However, a space must have intrinsically had rich graduation between 0 and 1

- Fujimori Terunobu

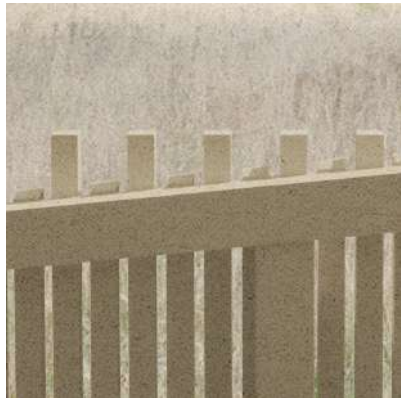
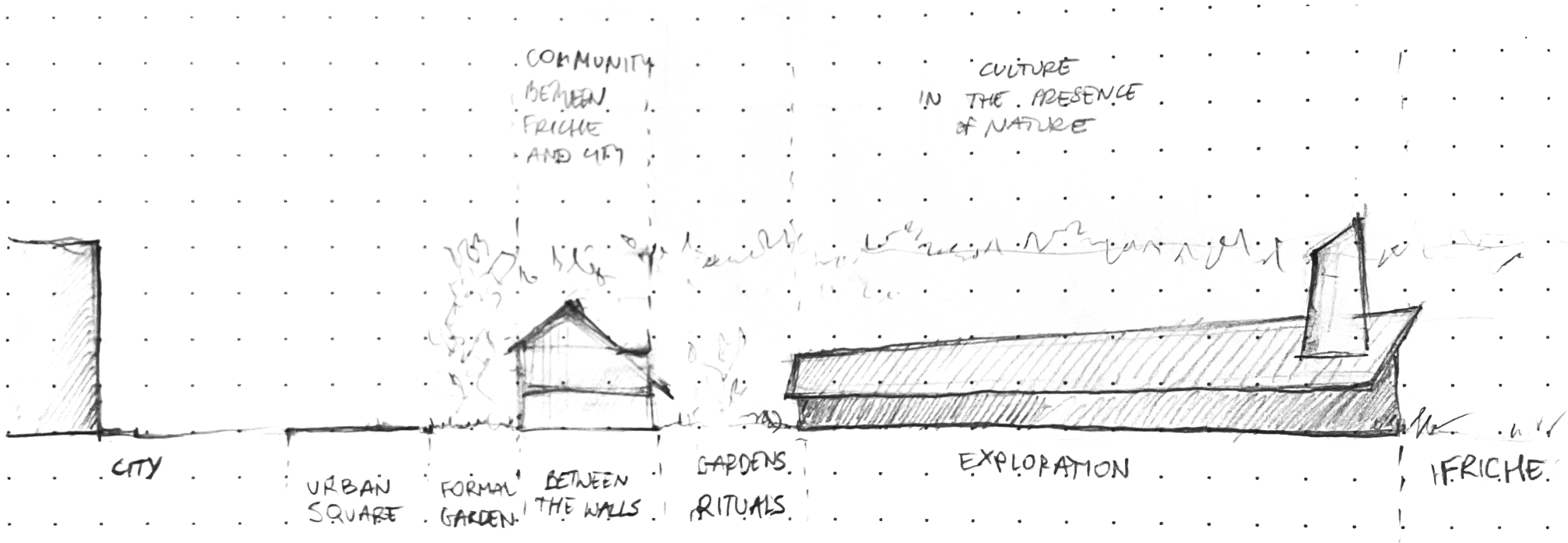
Transition

Porosity and solidity in structure



Materiality and textures

A story about a path bridging city and nature



Transition

Spatial levels of interactions

Natural



Where nature took over
a man-made land

Appreciation



Where humans can observe and meet nature
without imposing their presence

Care



Where humans meet nature with
care to nourish and maintain

Meet



Where structure supports human
and non-human experience

Invite



Where the skin invites
non-humans to accommodate

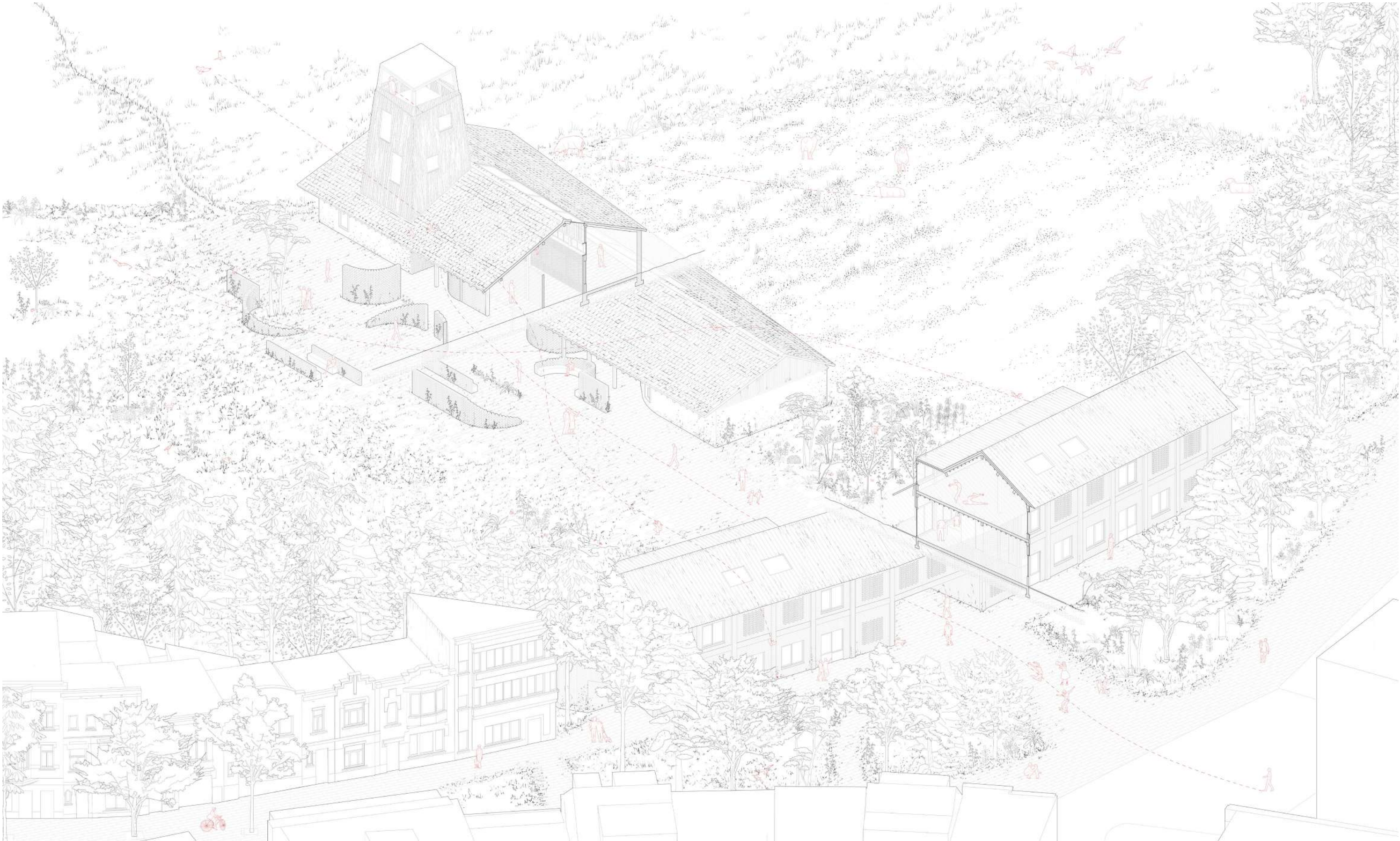
Protect



Where structure supports human
comfort and space experience

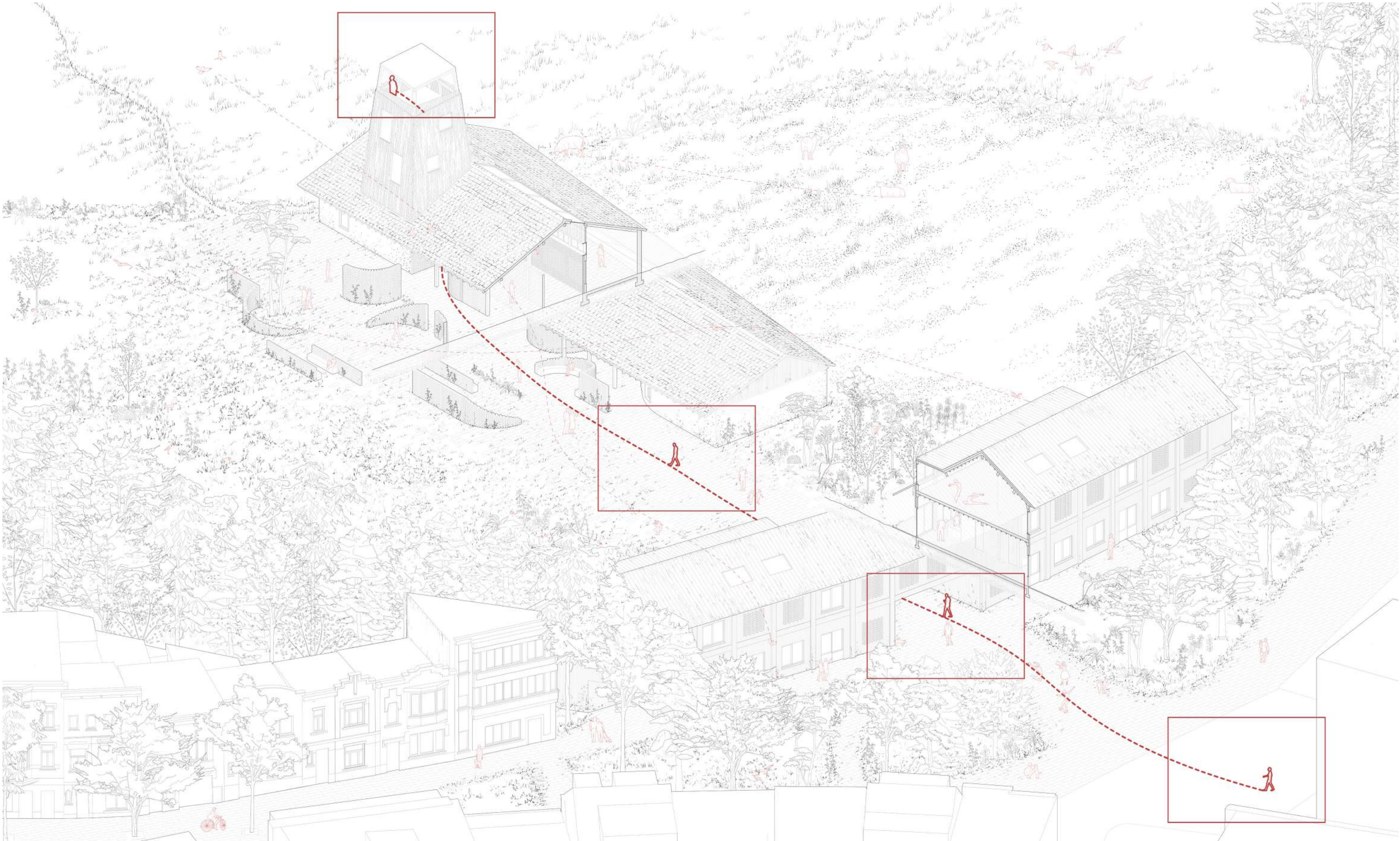
Mediation space

From City to Friche, from Friche to the City



Human path

A journey from the city



Human perspective

Invitation



Human perspective

In between



Human perspective

Landscape Reflection



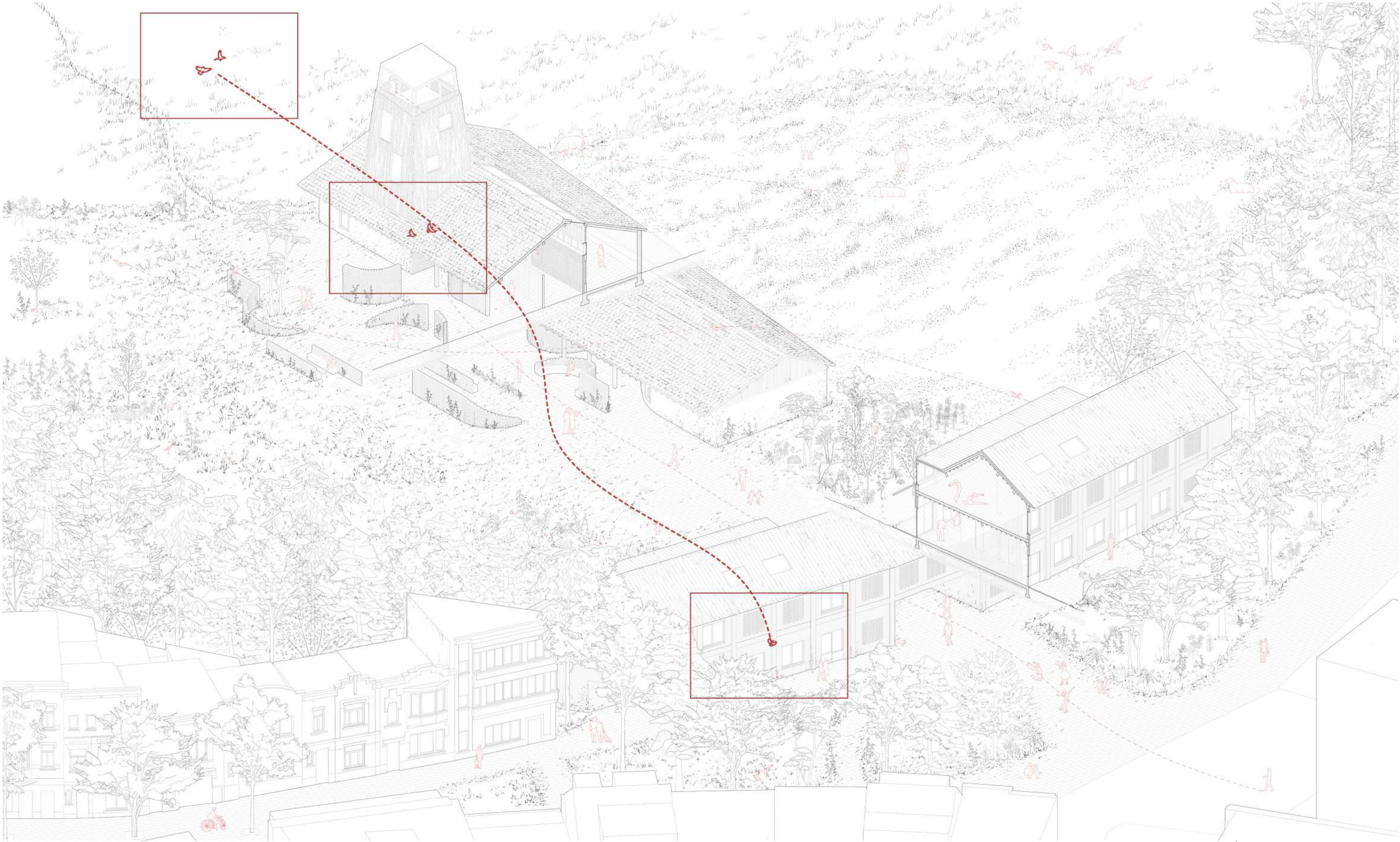
Human perspective

Individual contemplation



Bird path

A journey from the Friche



Bird perspective

Coming from above



Bird perspective

Spotting gaps



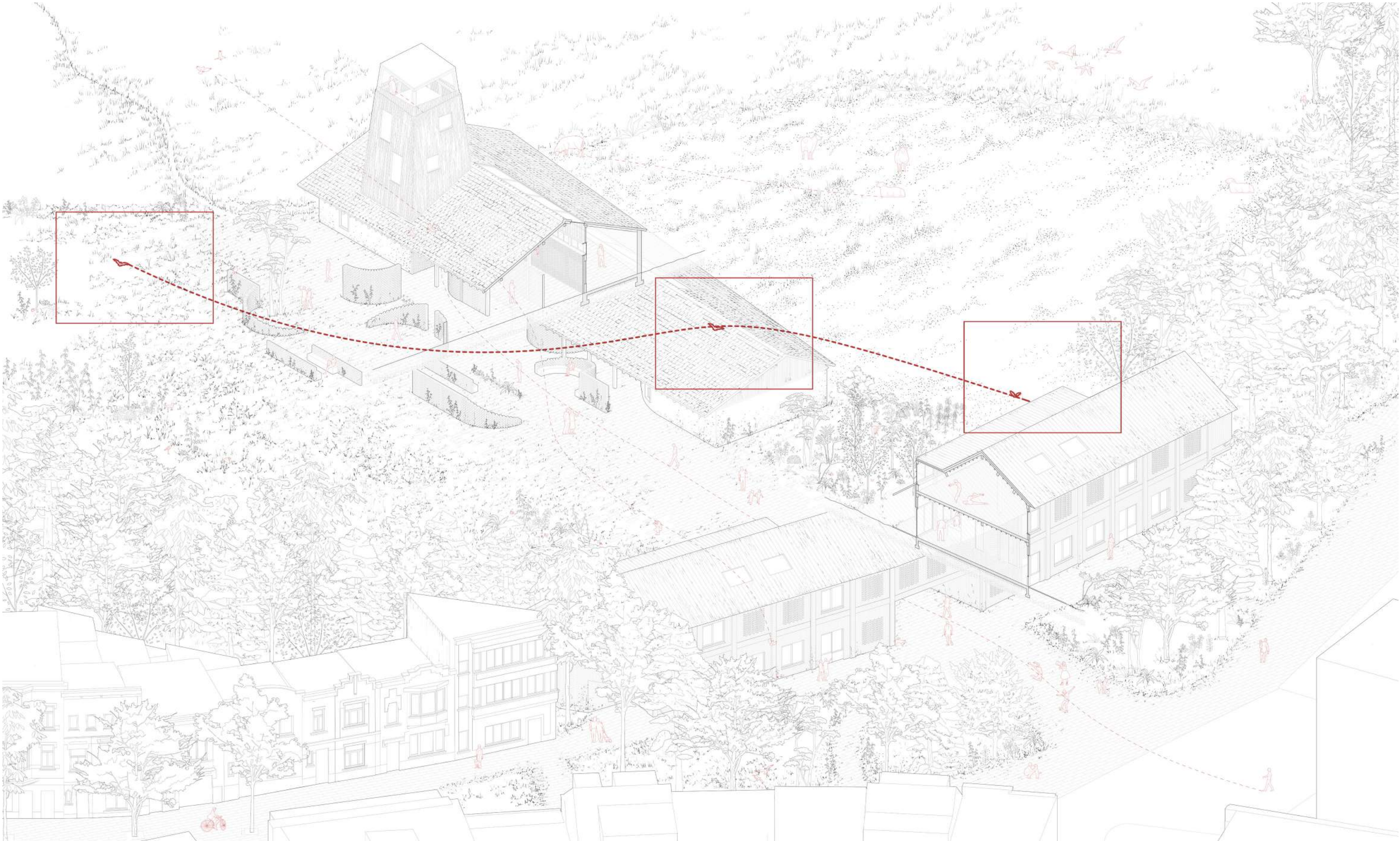
Bird perspective

Spotting nesting spaces



Bat path

A night journey from Friche



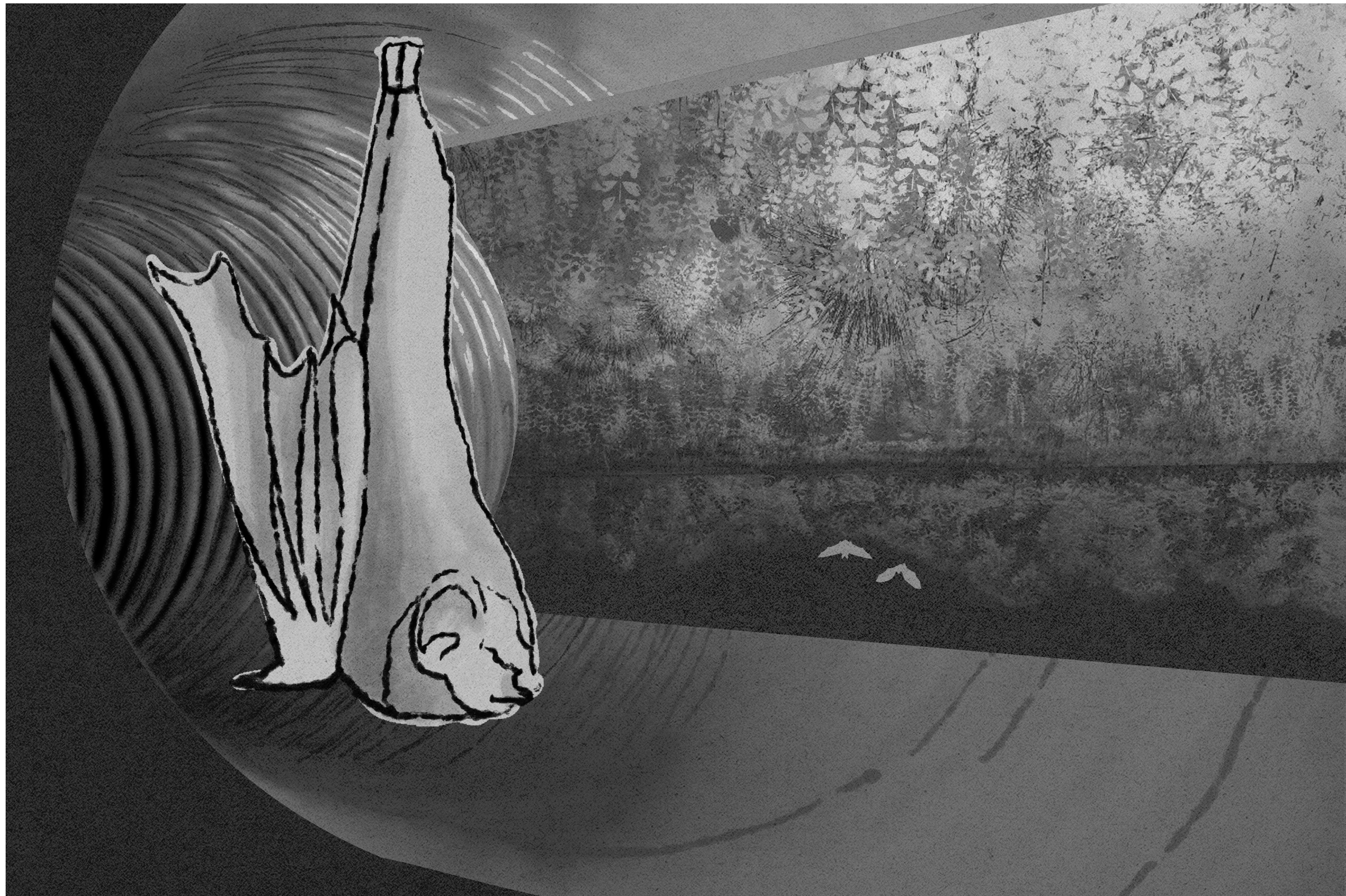
Bat perspective

Looking through echolation



Bat perspective

Seeing upside down



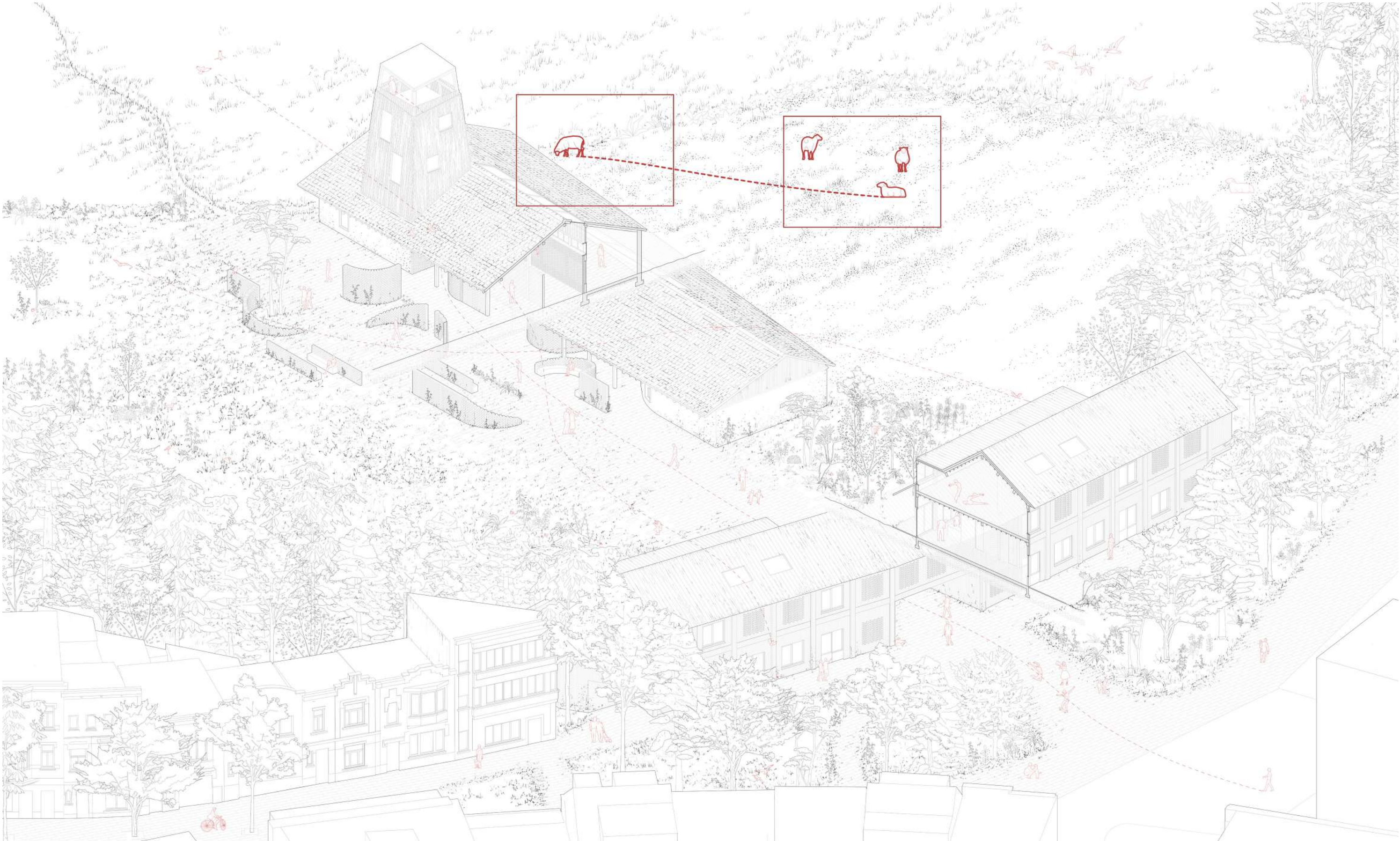
Bat perspective

Roosting under the roof



Sheep perspective

How the world is seen by those grazing the land



Sheep perspective

Blurred edges



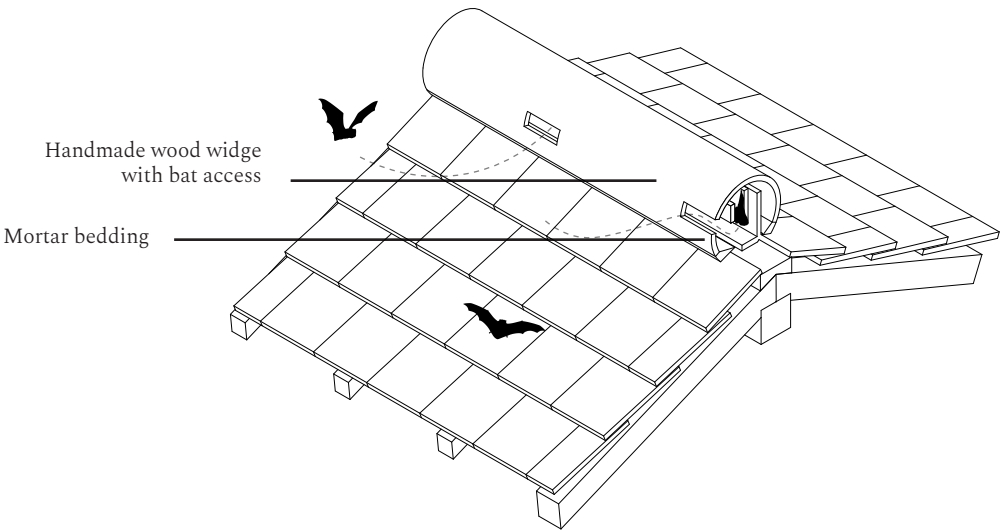
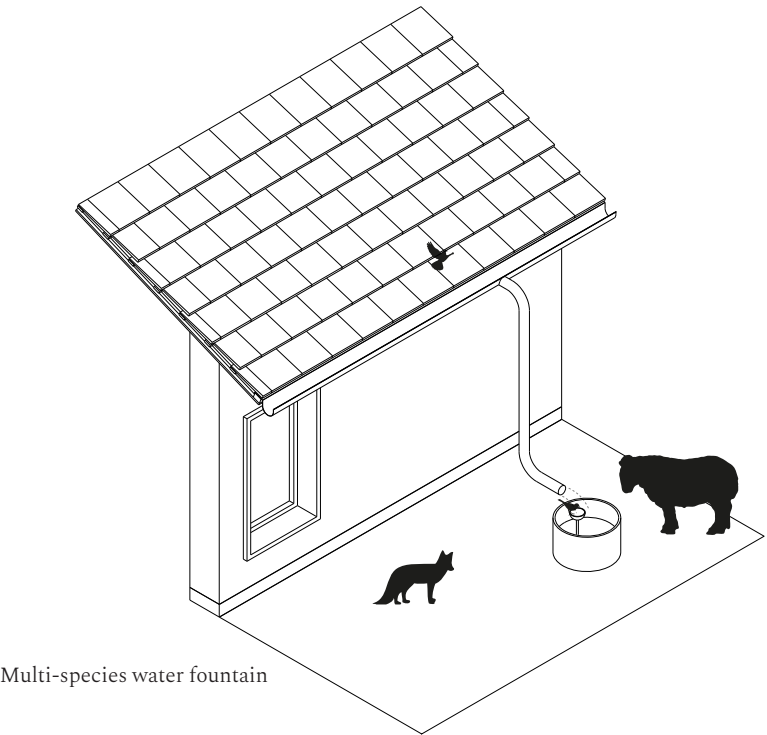
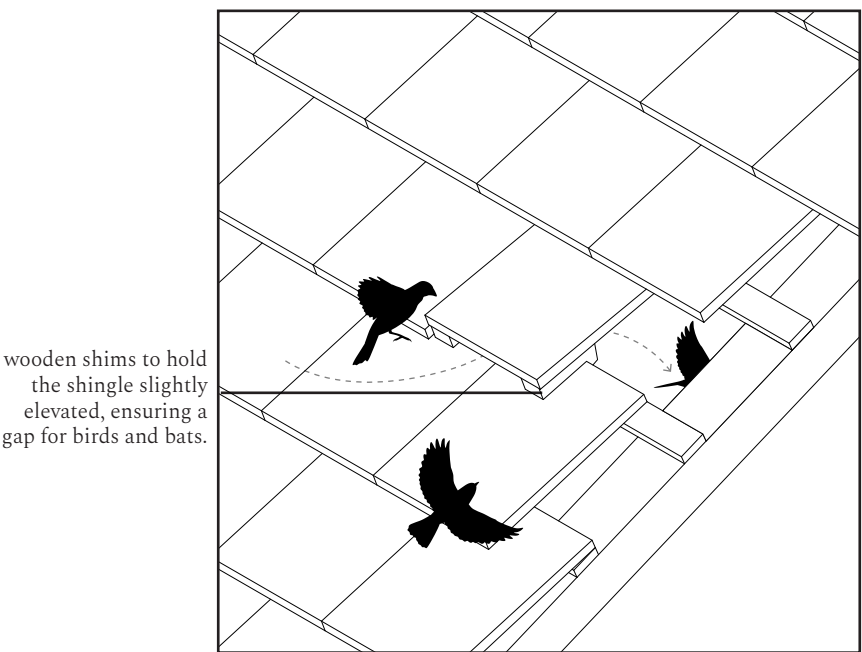
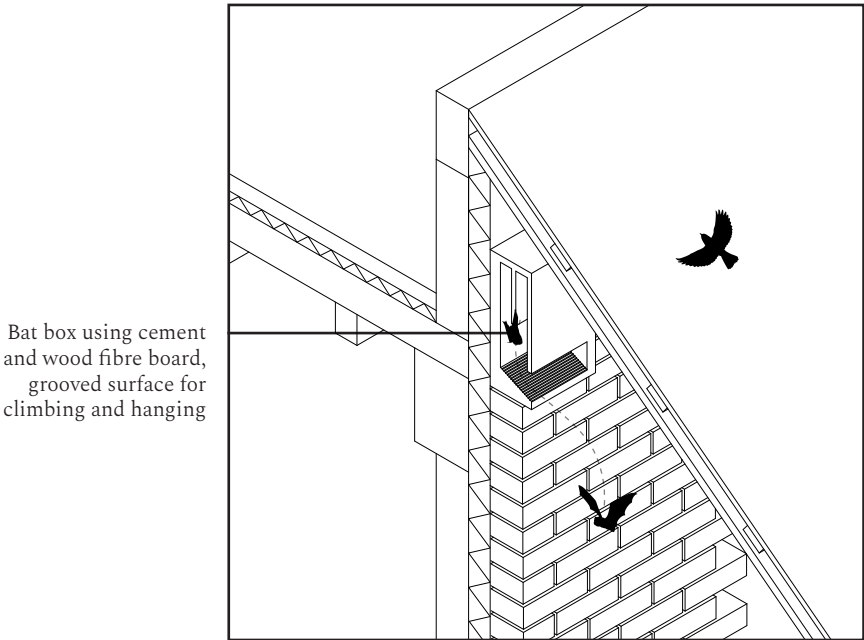
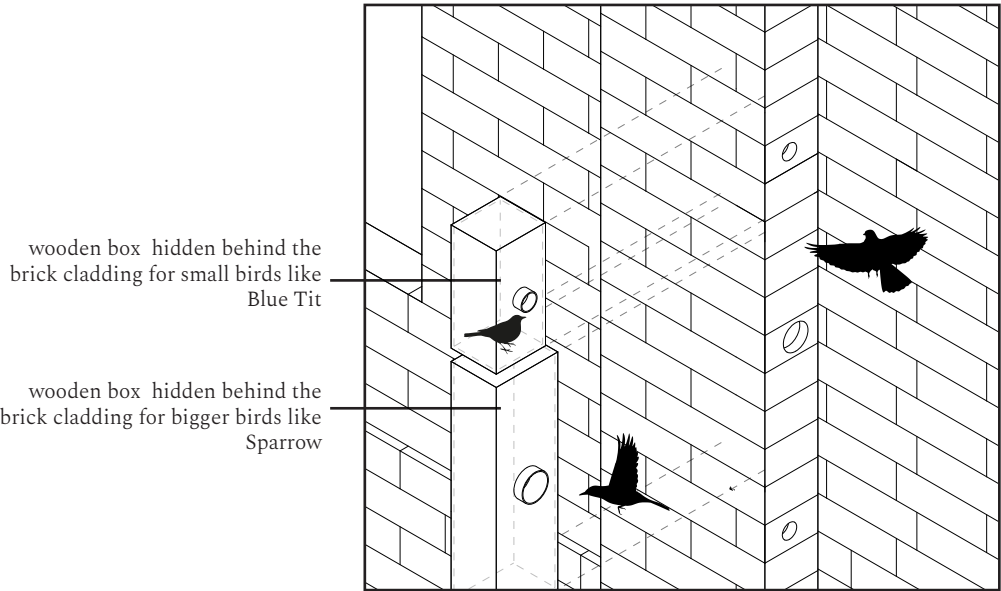
Sheep perspective

Finding spot to drink



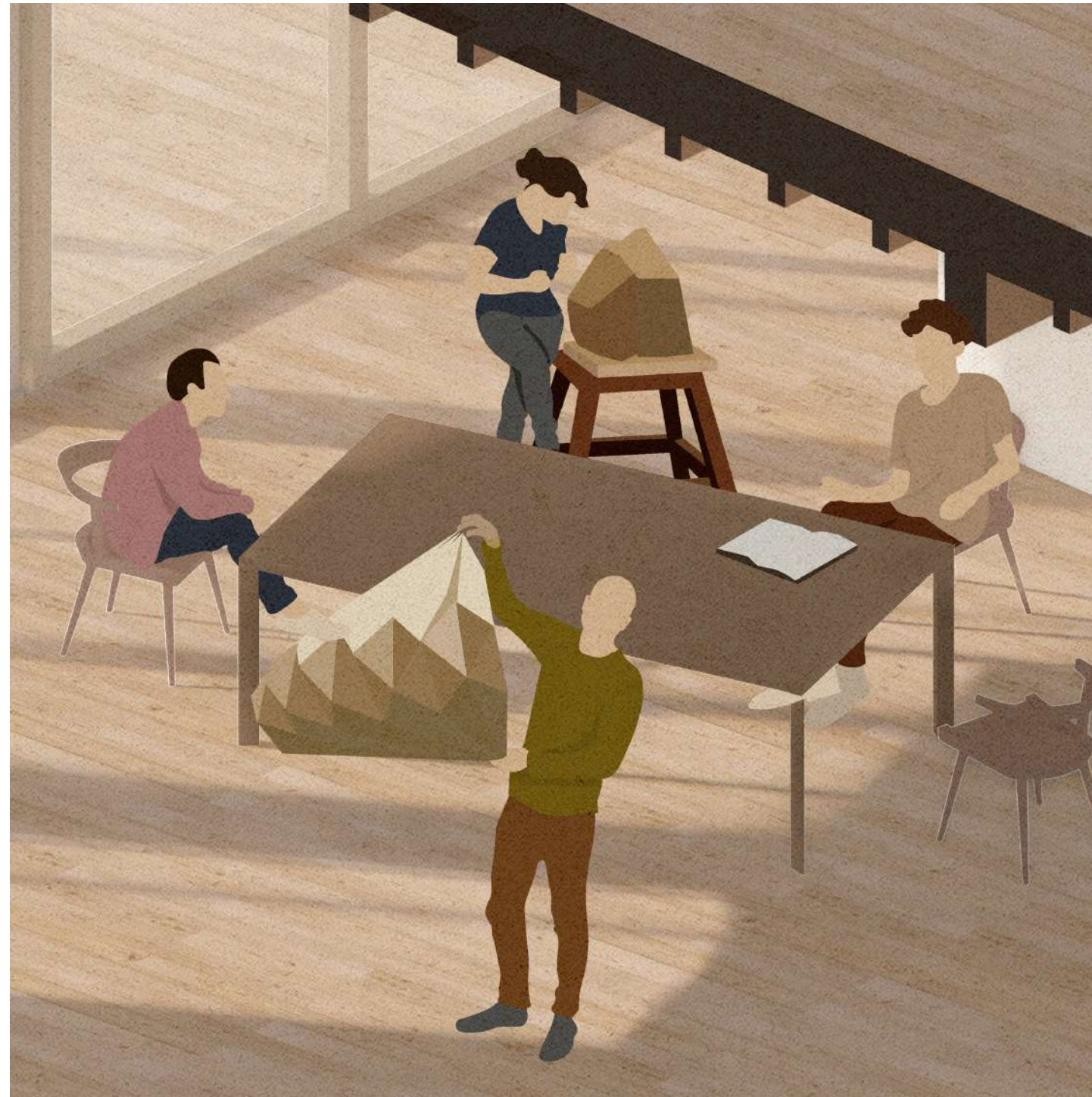
Details matter

How non-humans use the buildings



Moments of interactions

And where to keep the distance



Protected space - for human collaboration

Moments of interactions

And where to keep the distance



Care - Gardening

Together with sheep, people can collaborate and maintain their part of land

Moments of interactions

And where to keep the distance



Appreciation Space

Where humans can observe and meet nature without imposing their presence

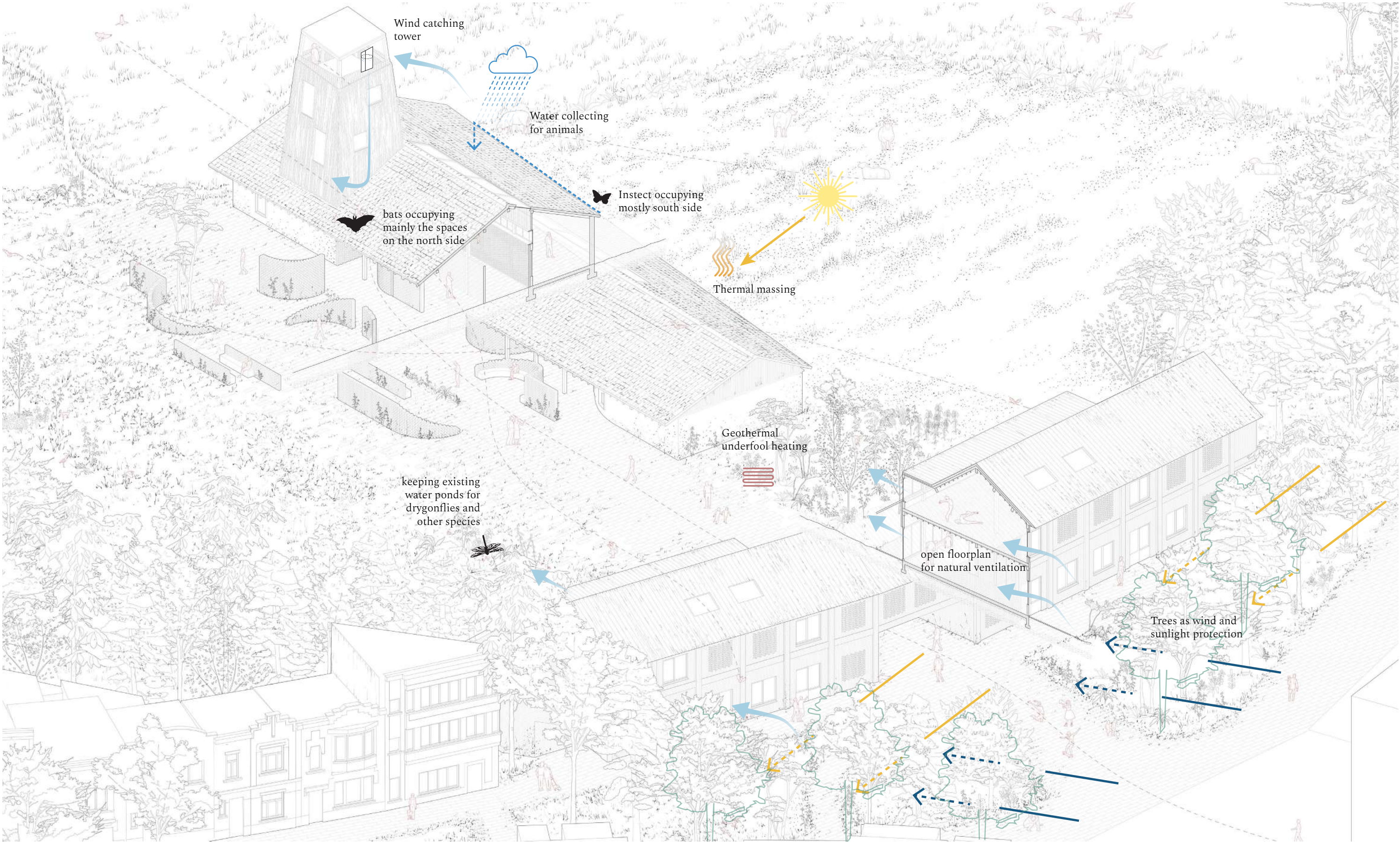
Moments of interactions

And where to keep the distance



Meeting space - unexpected moments of meeting different species

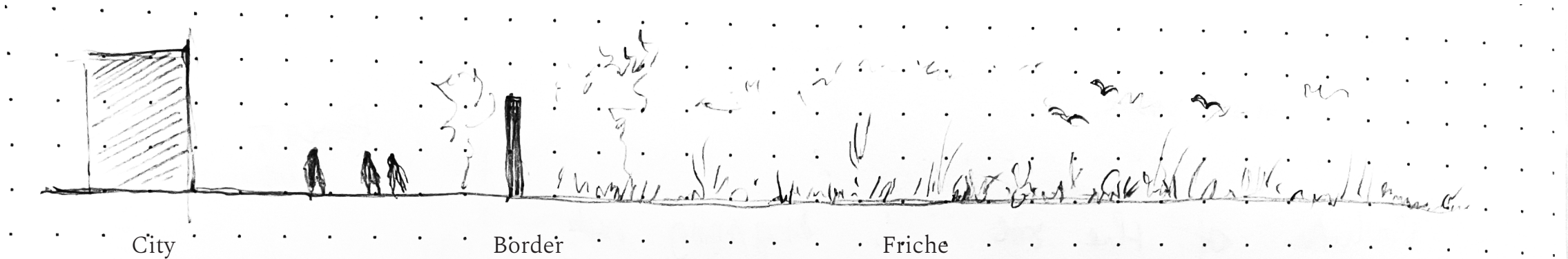
Using nature for climate purpose



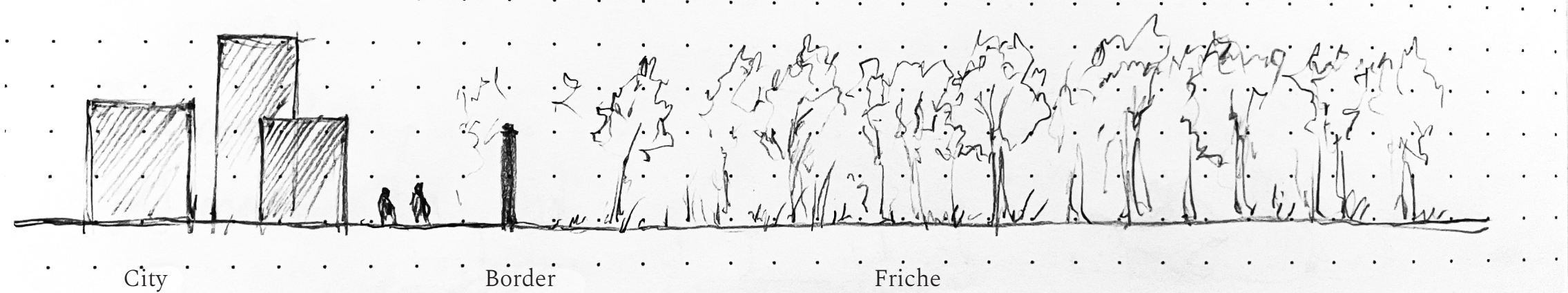
Maintaining the biodiversity

Evolution of the site

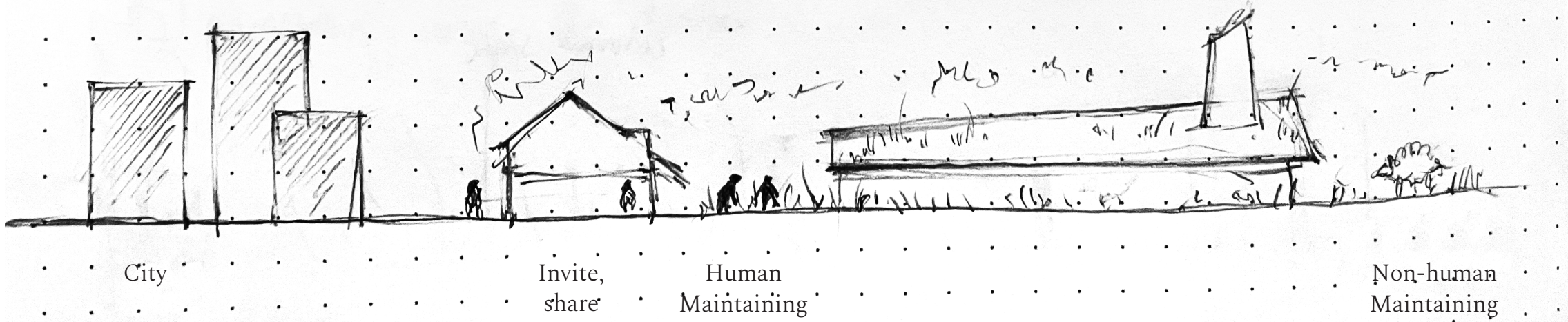
Current state



+20 y without intervention



+20 y with intervention

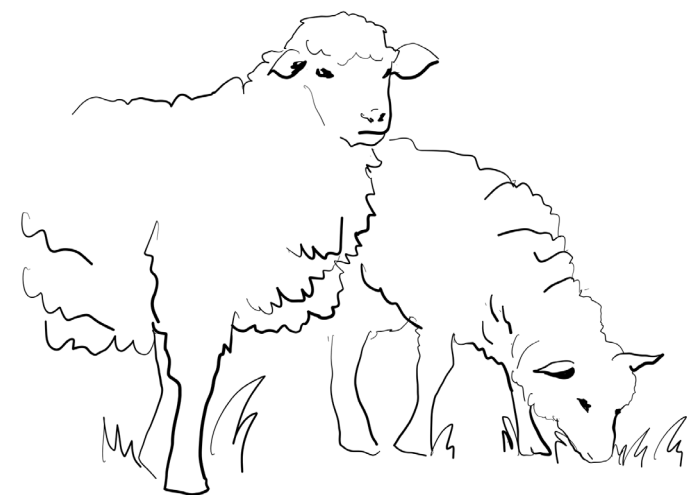


Keeping the balance

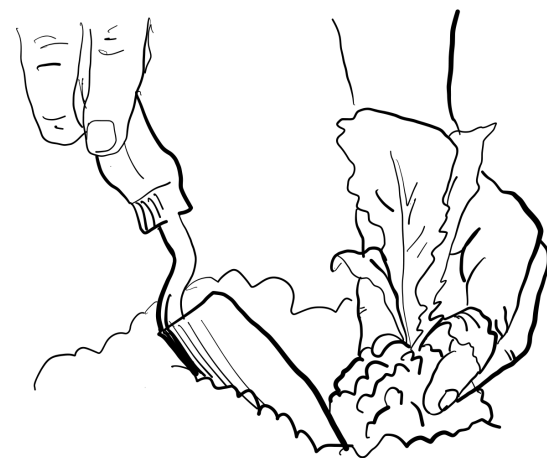
The beauty of care and collaboration



Repairing workshop



Sheep grazing the land



Gardening to feed people and animals



Share the resources provided by nature

Thank you