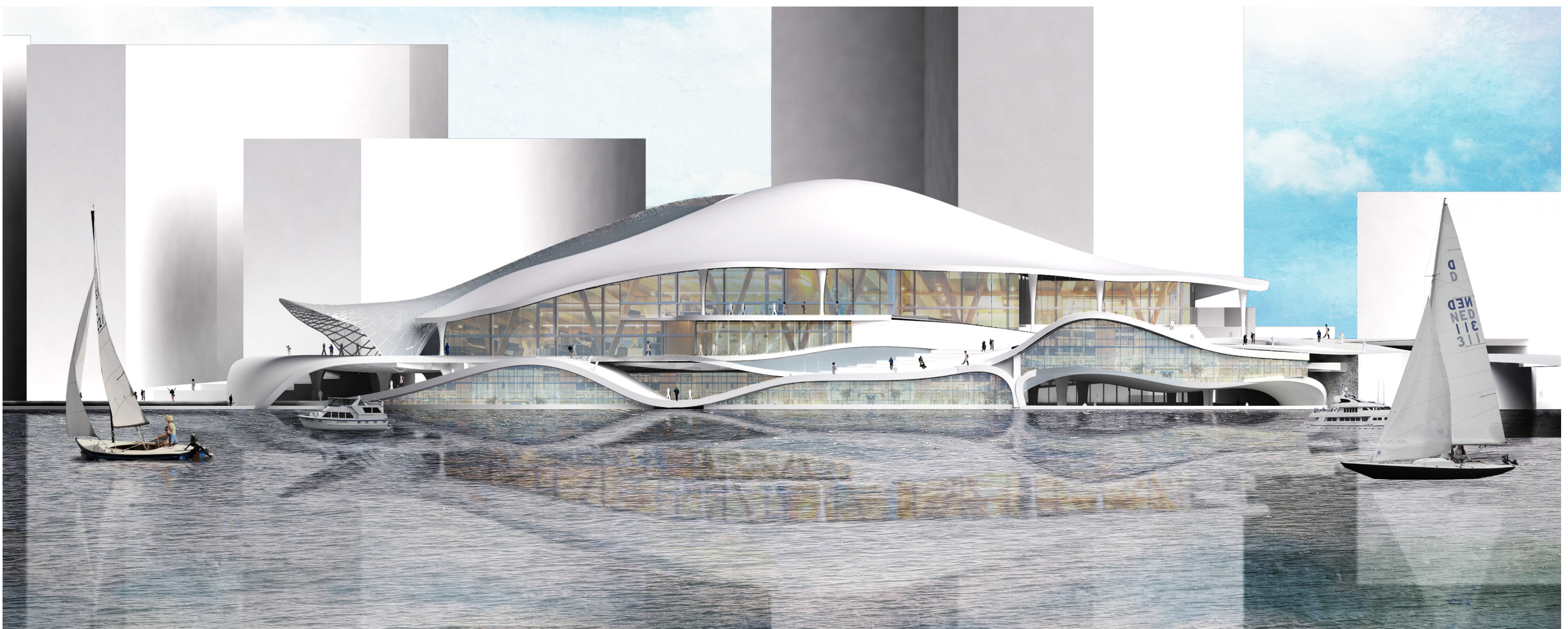


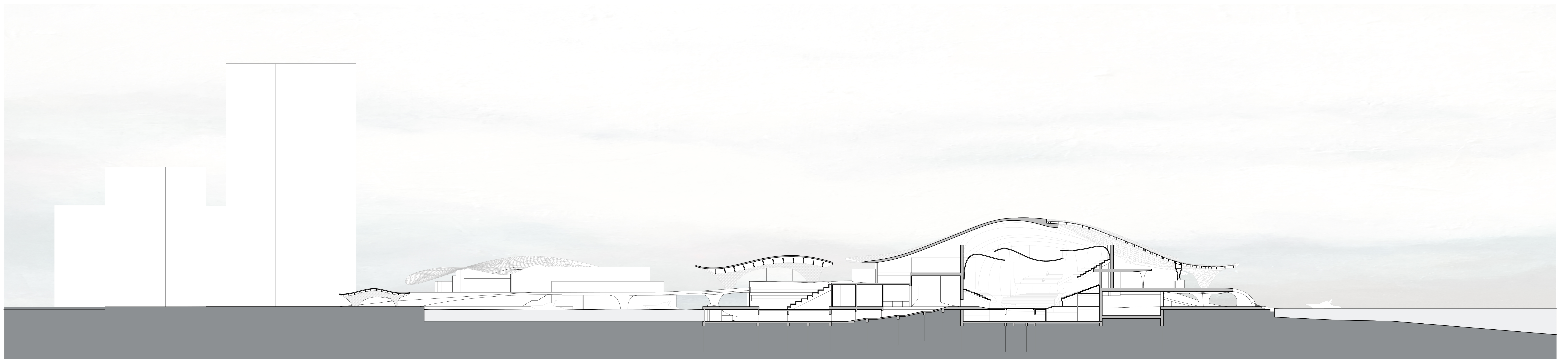


EVENT PLATFORM

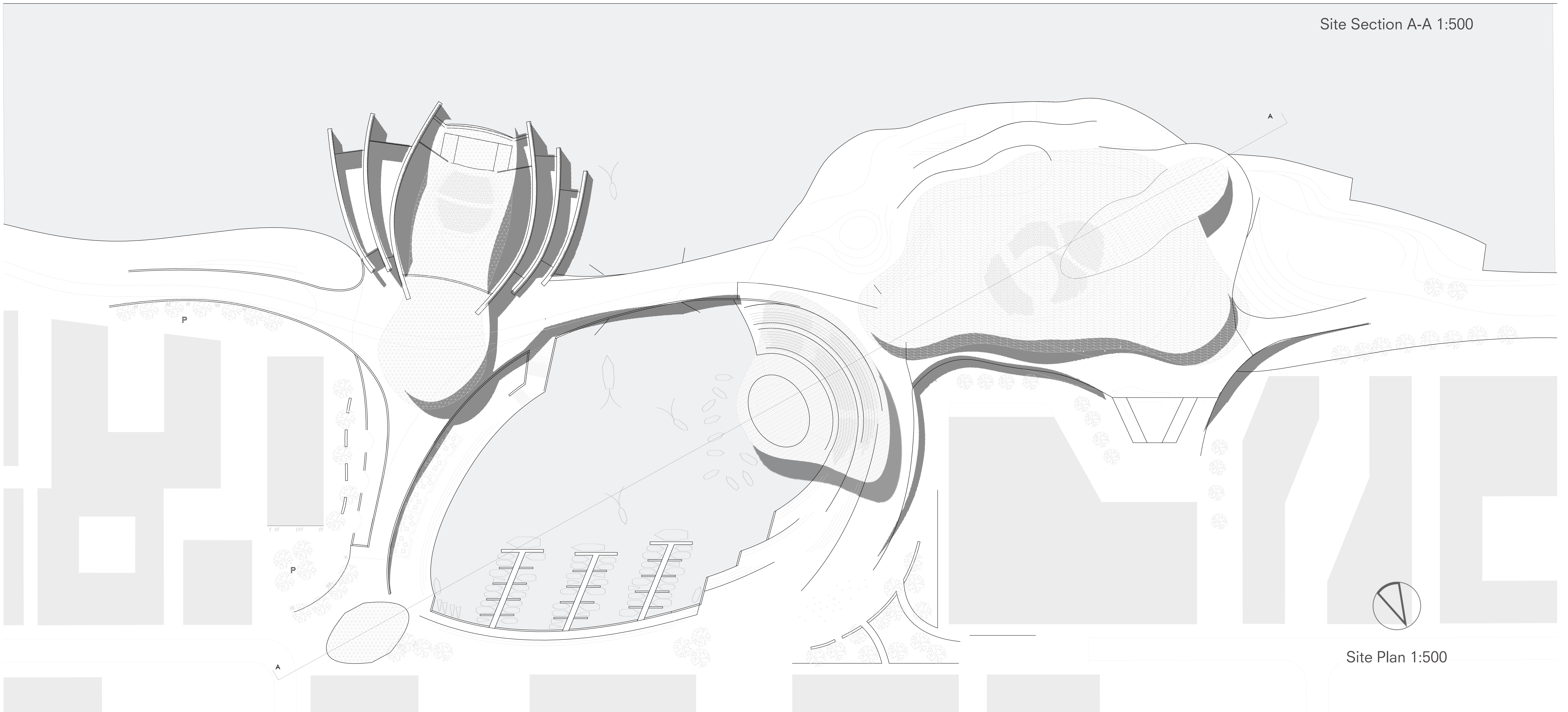
Waterfront re-imagined

| Complex Projects | Amsterdam 2050 |
Andris Otisons

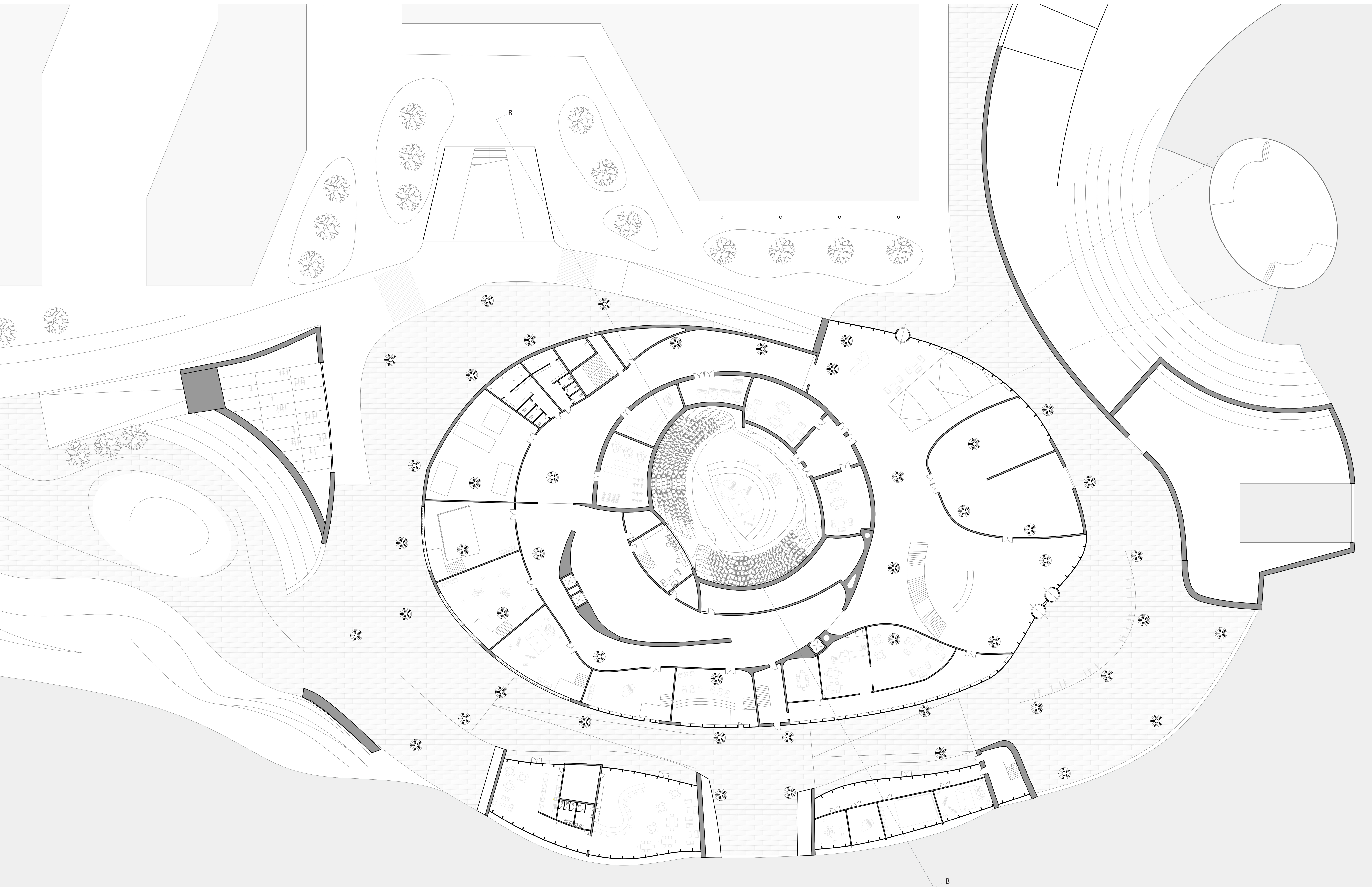




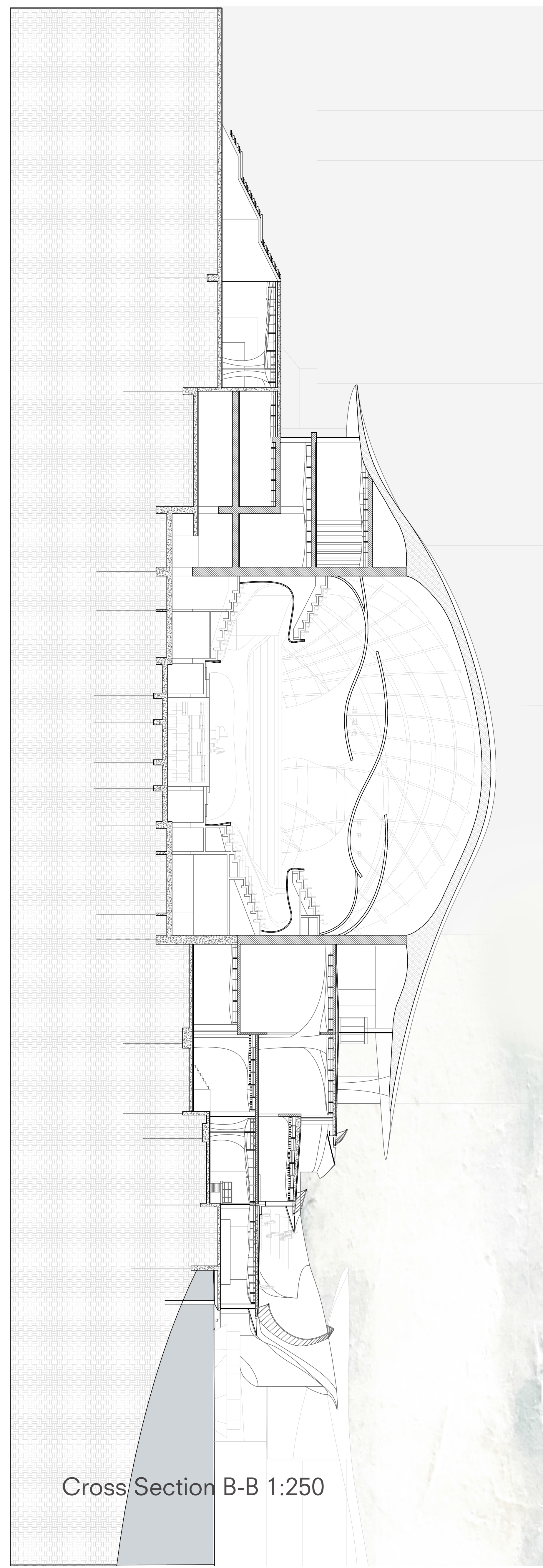
Site Section A-A 1:500



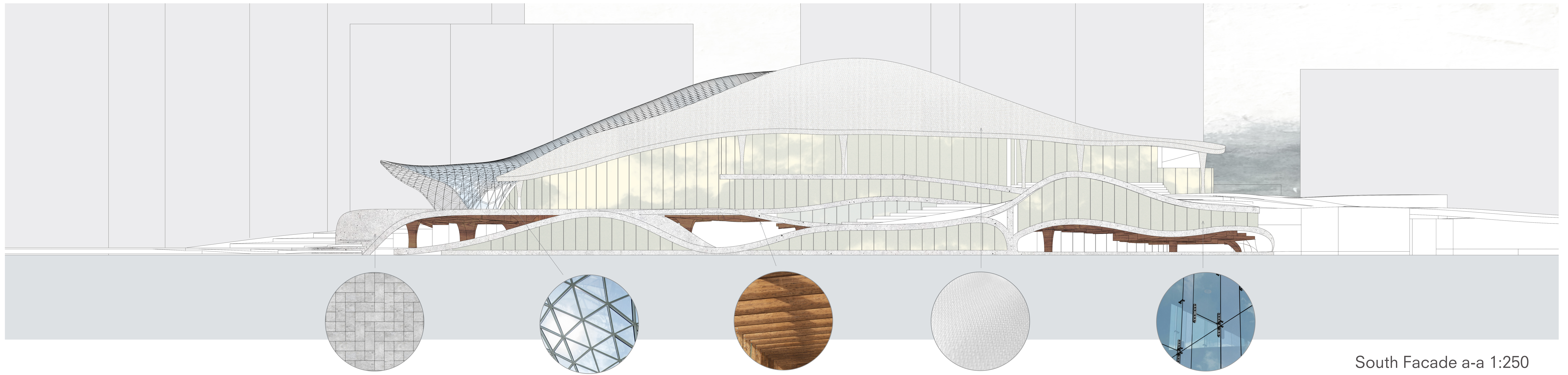
Site Plan 1:500



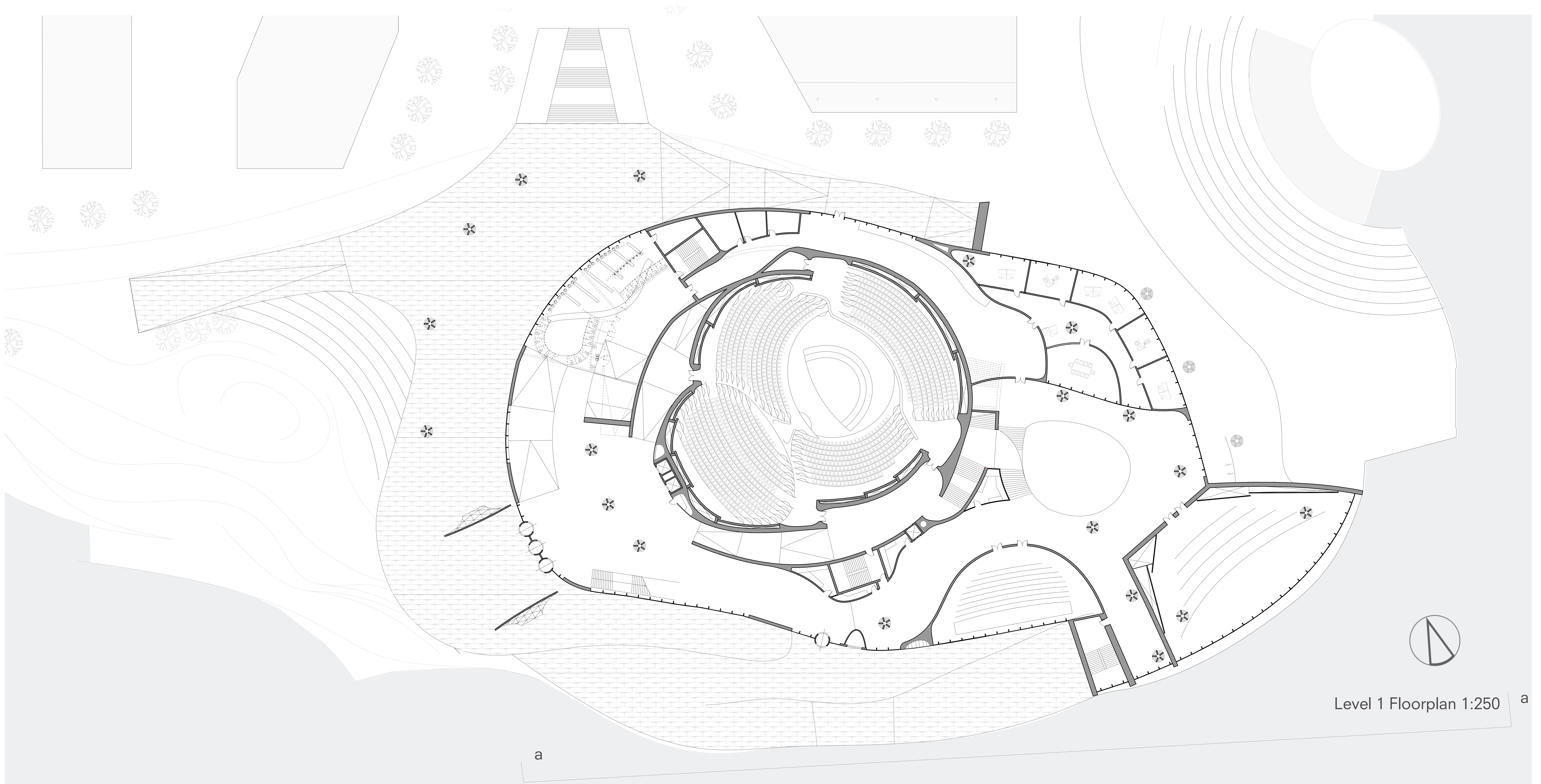
Ground Level Floorplan 1:250



Cross Section B-B 1:250

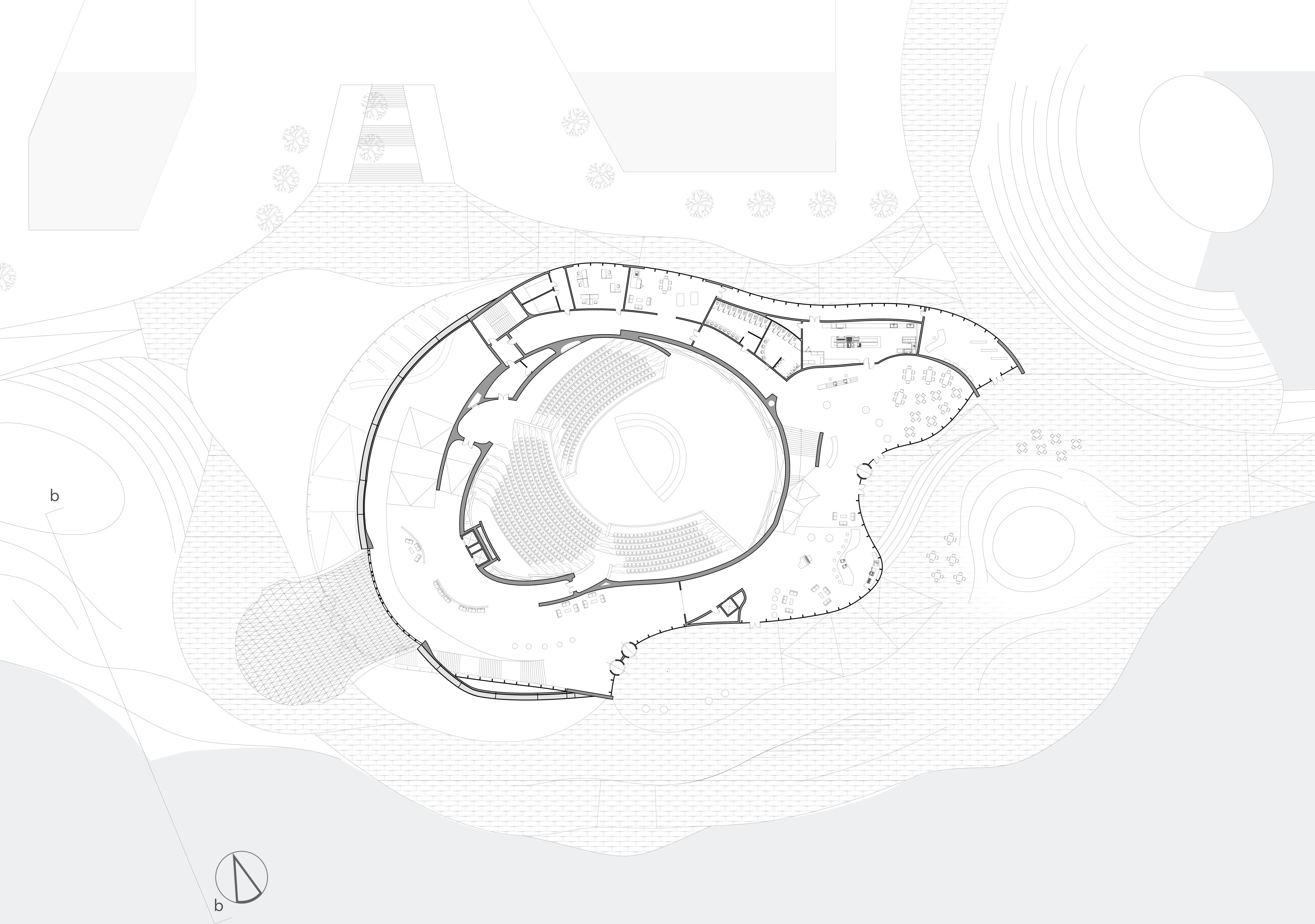


South Facade a-a 1:250

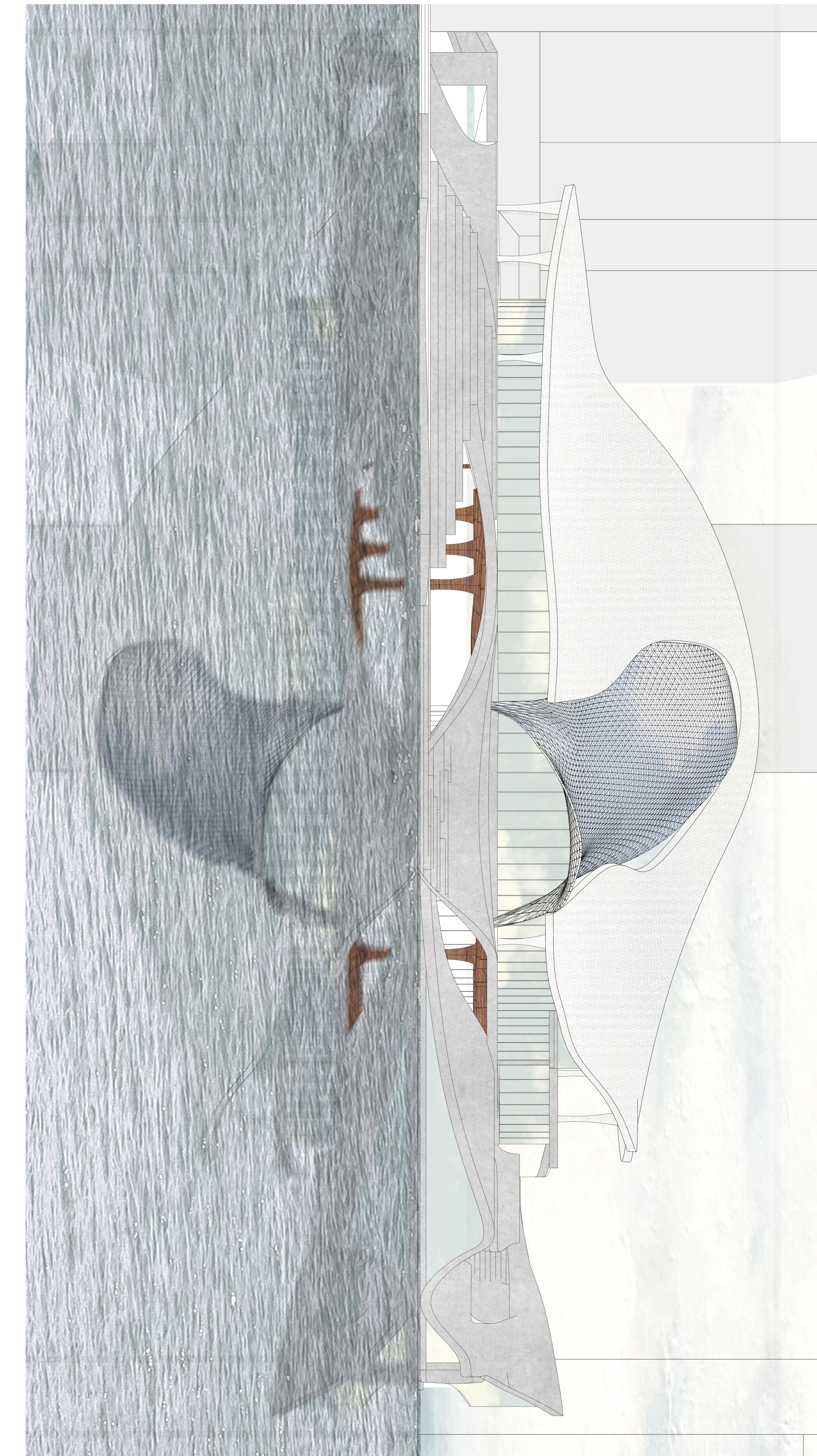


Level 1 Floorplan 1:250

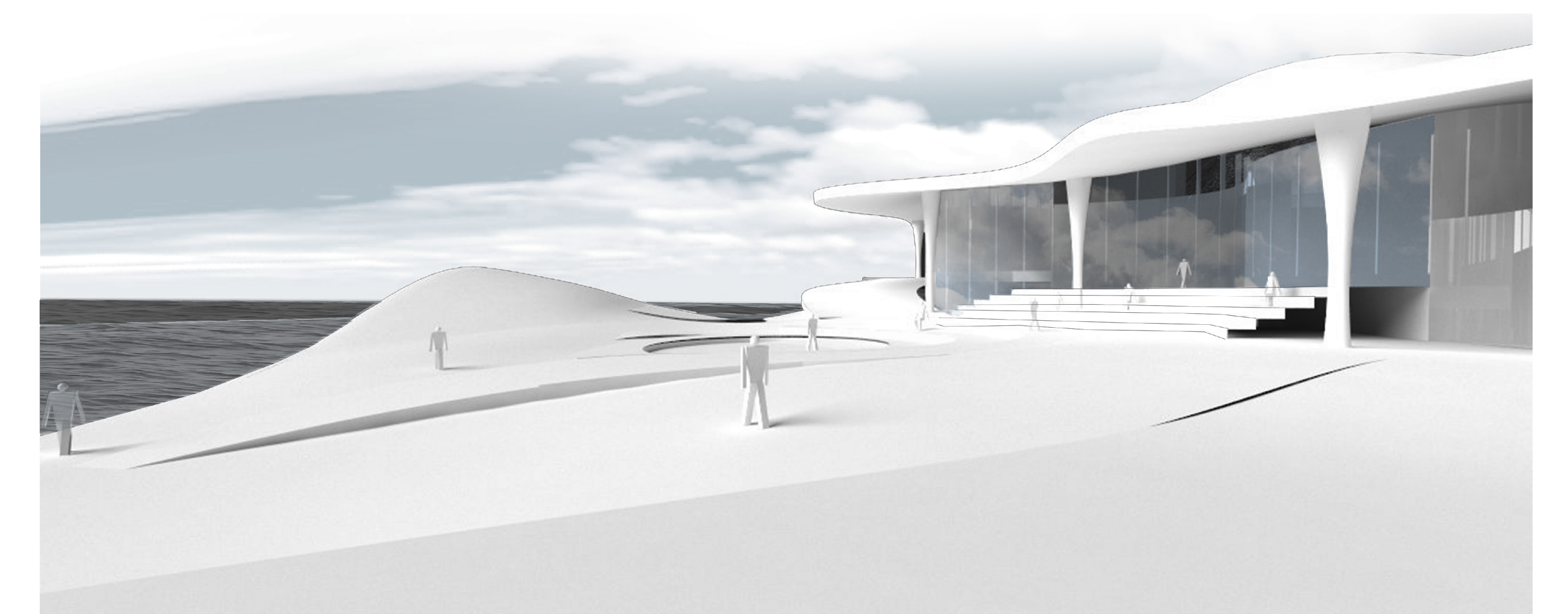
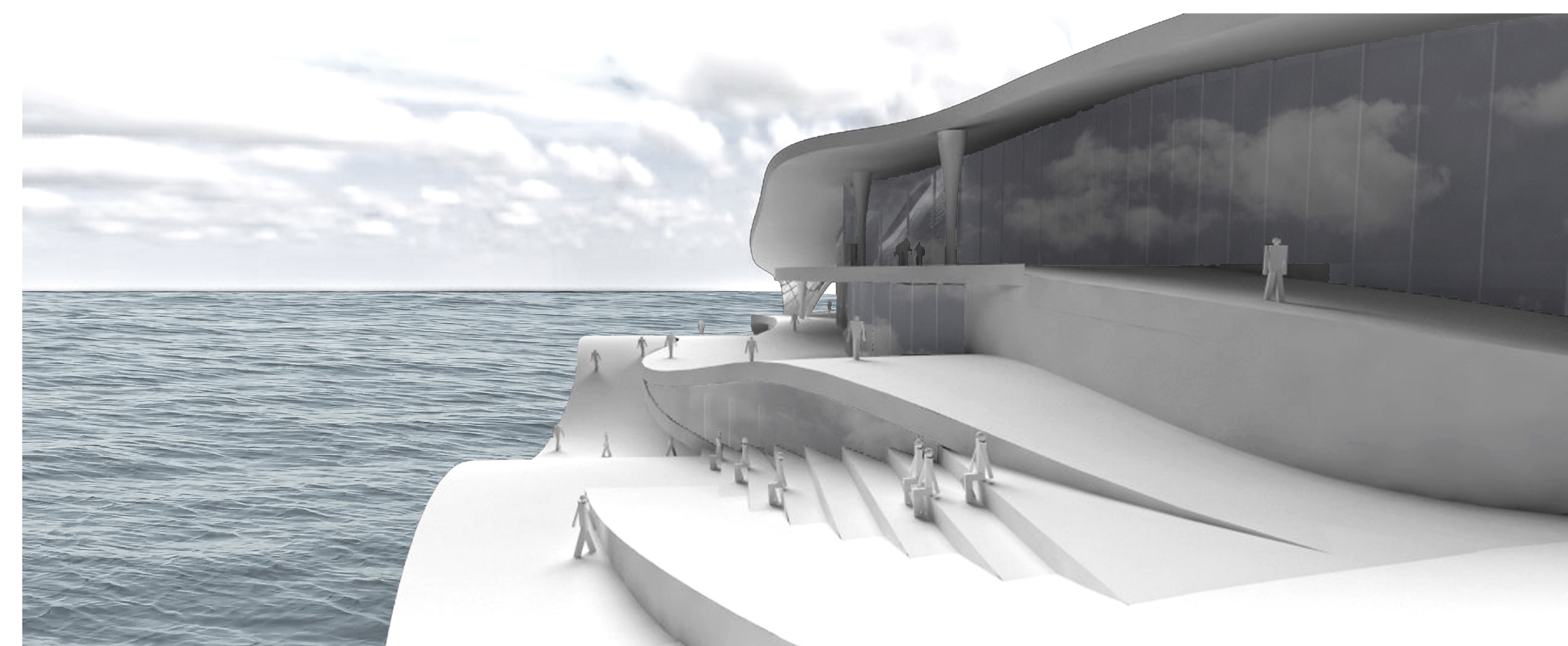
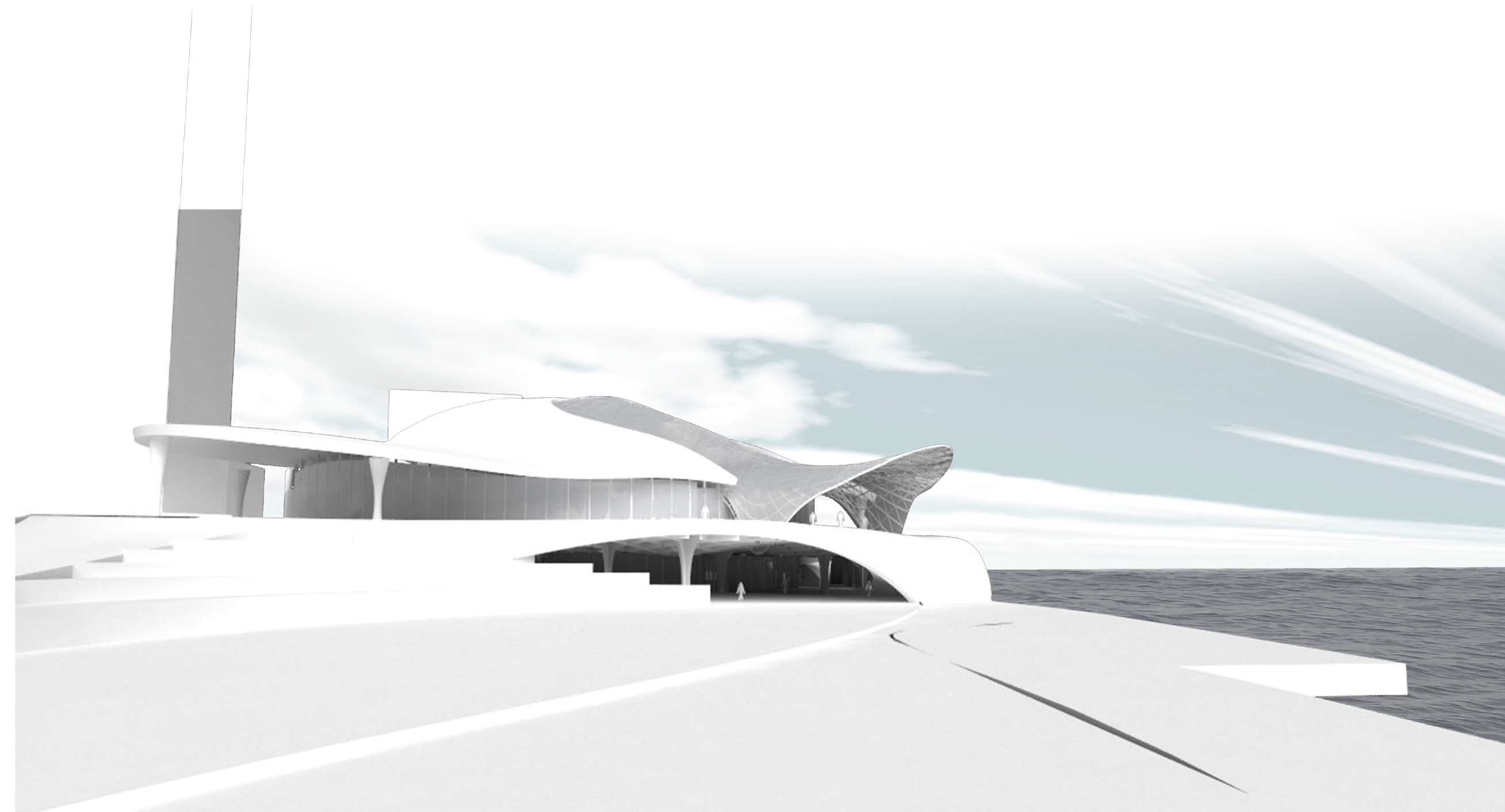
a

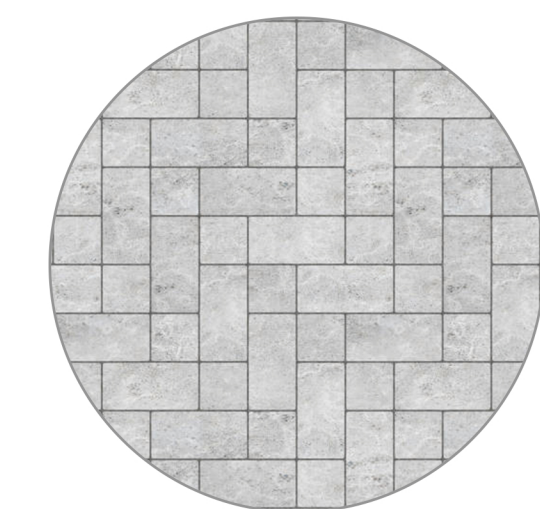
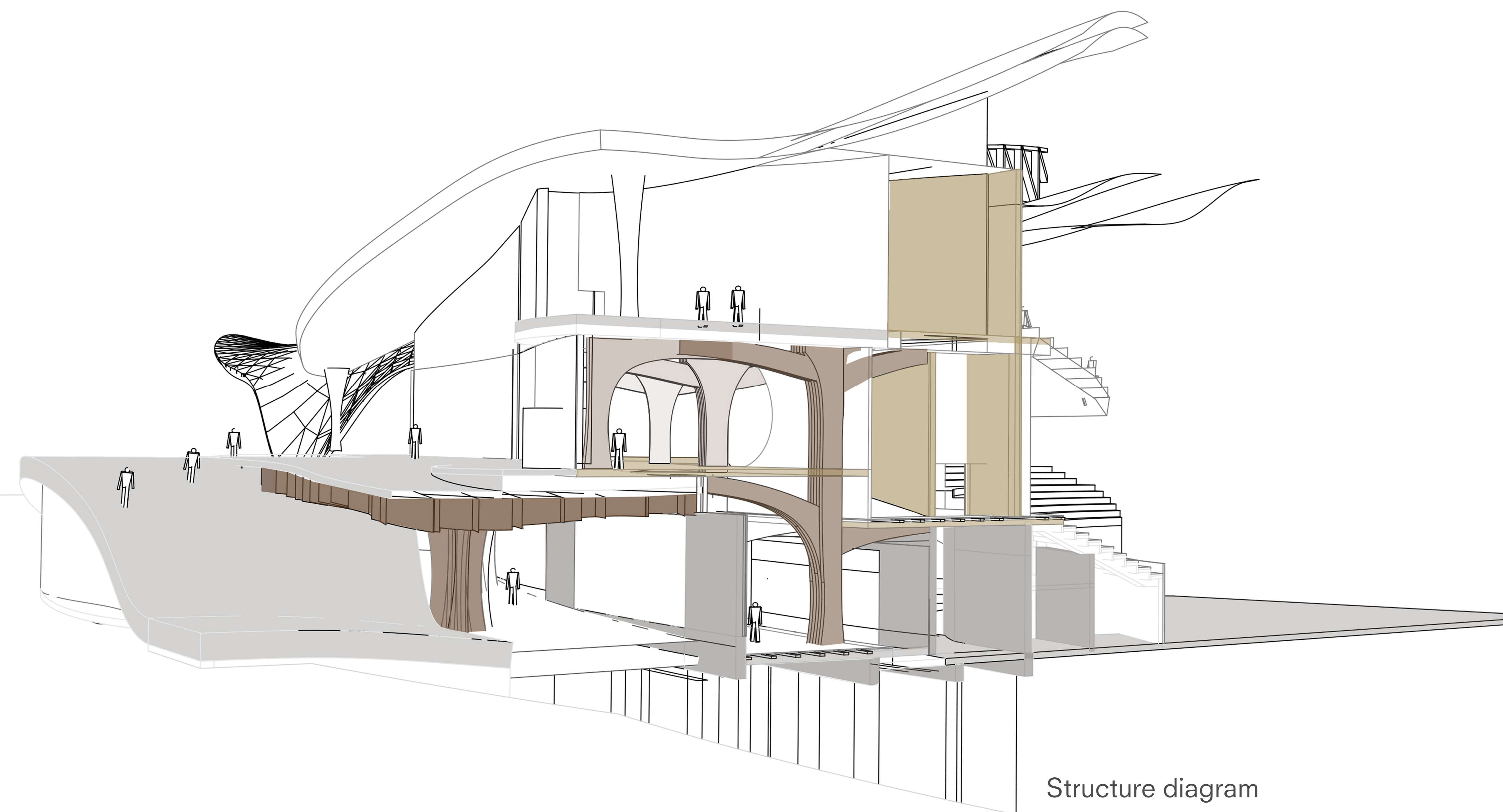
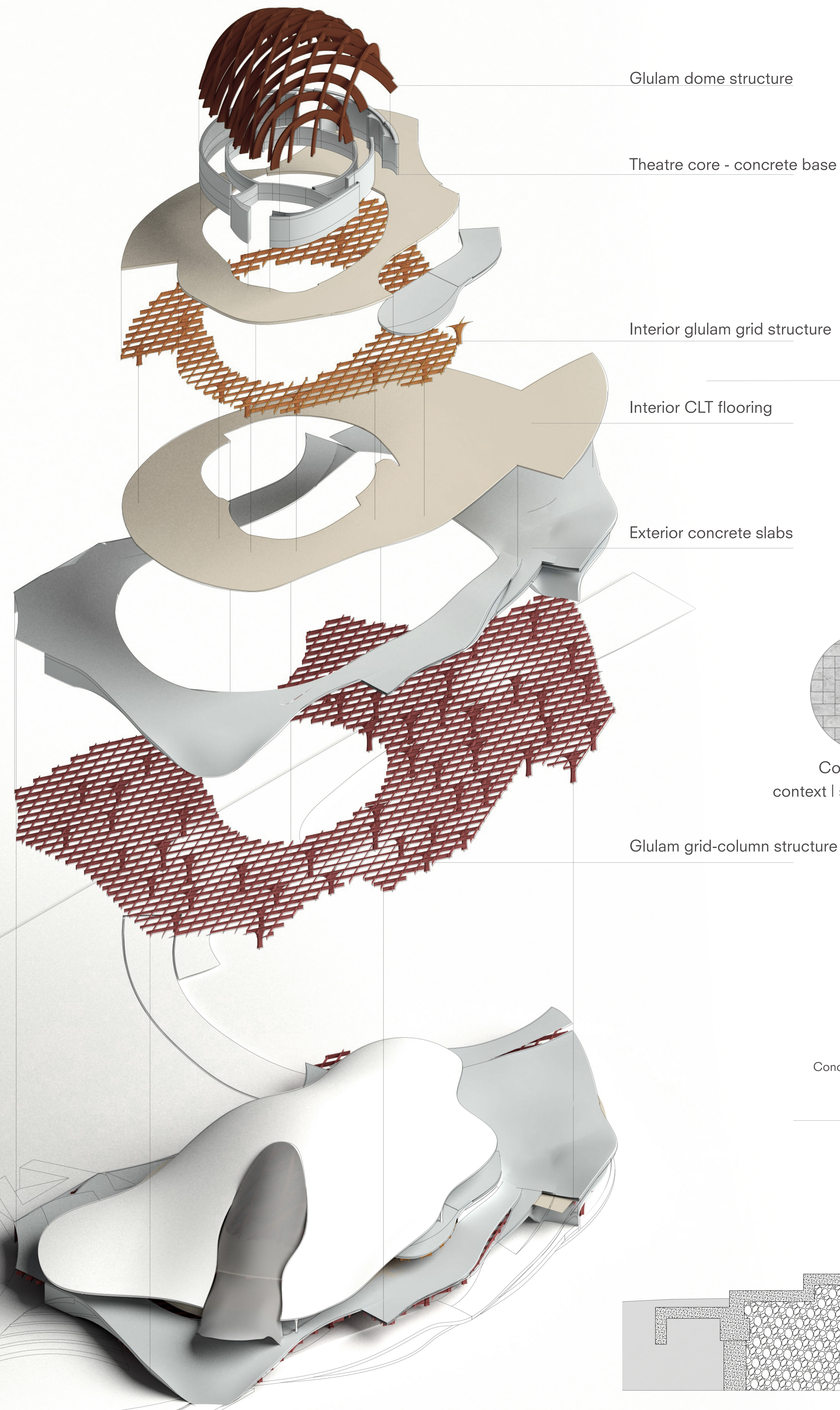


Level 2 (roof level) Floorplan 1:250

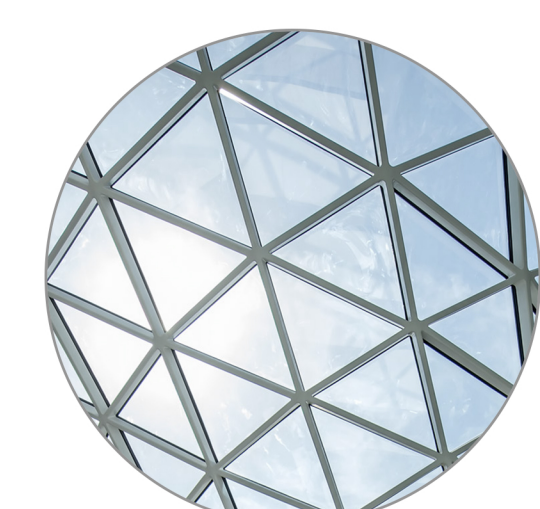


West Facade b-b 1:250





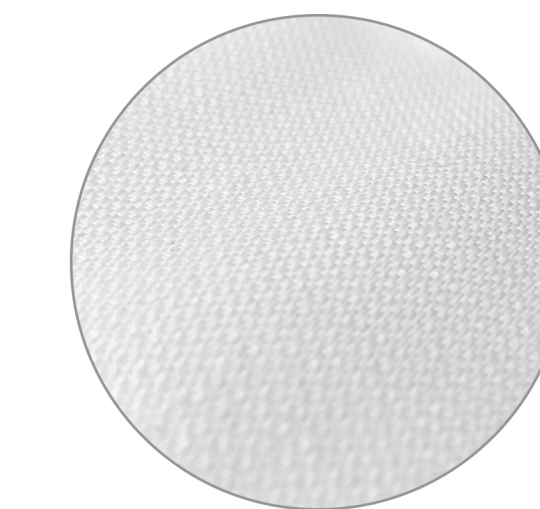
Concrete tiles
context | scale | fabrication



Glass-steel structure
freeform | view



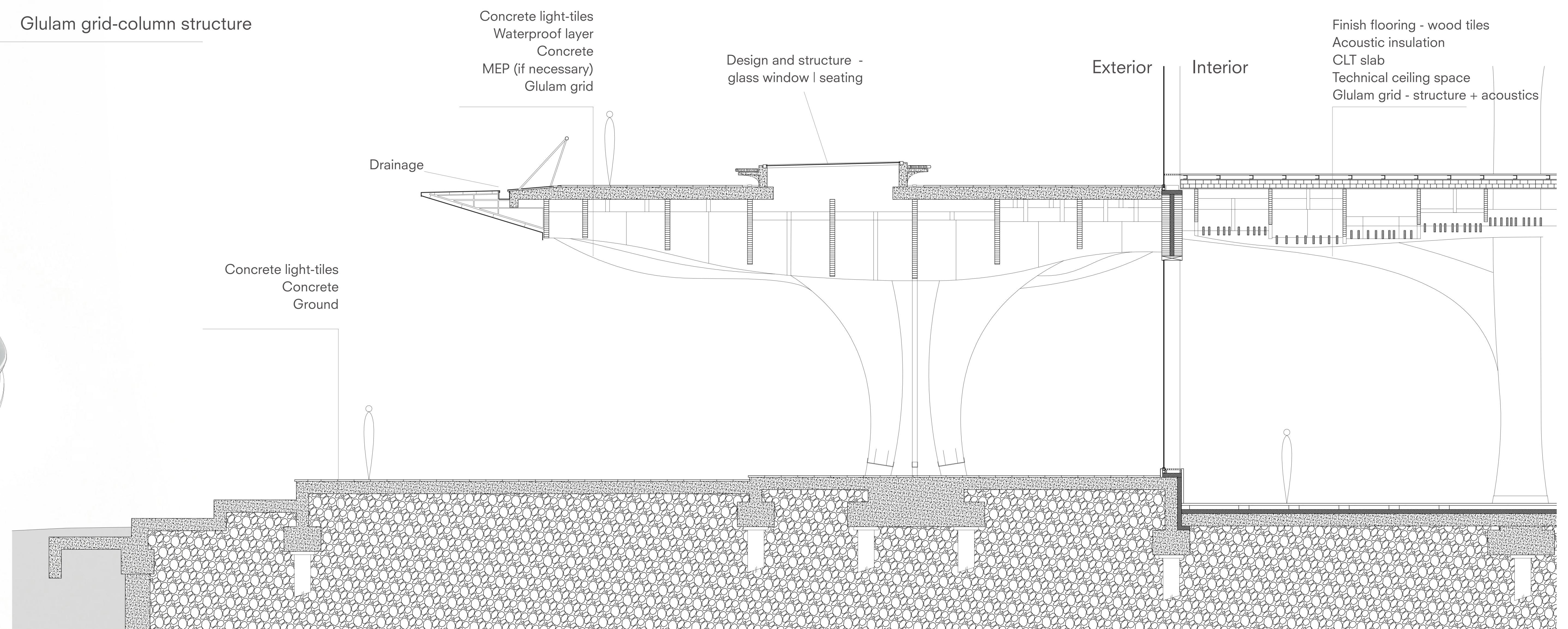
Glulam beams and columns
sustainability | quality | fabrication

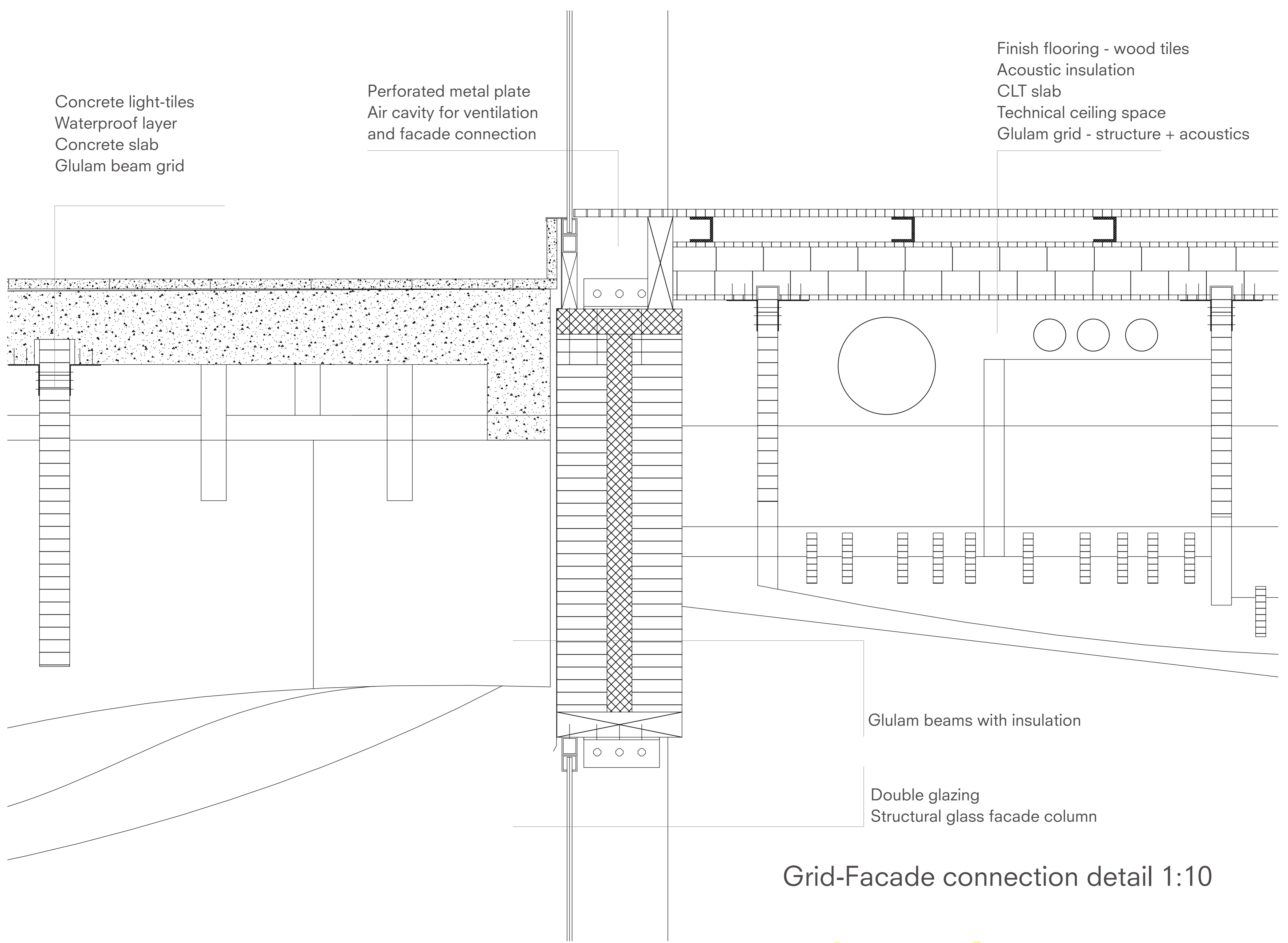


'Smart' membrane | PTFE 2050
lightweight | light | technology

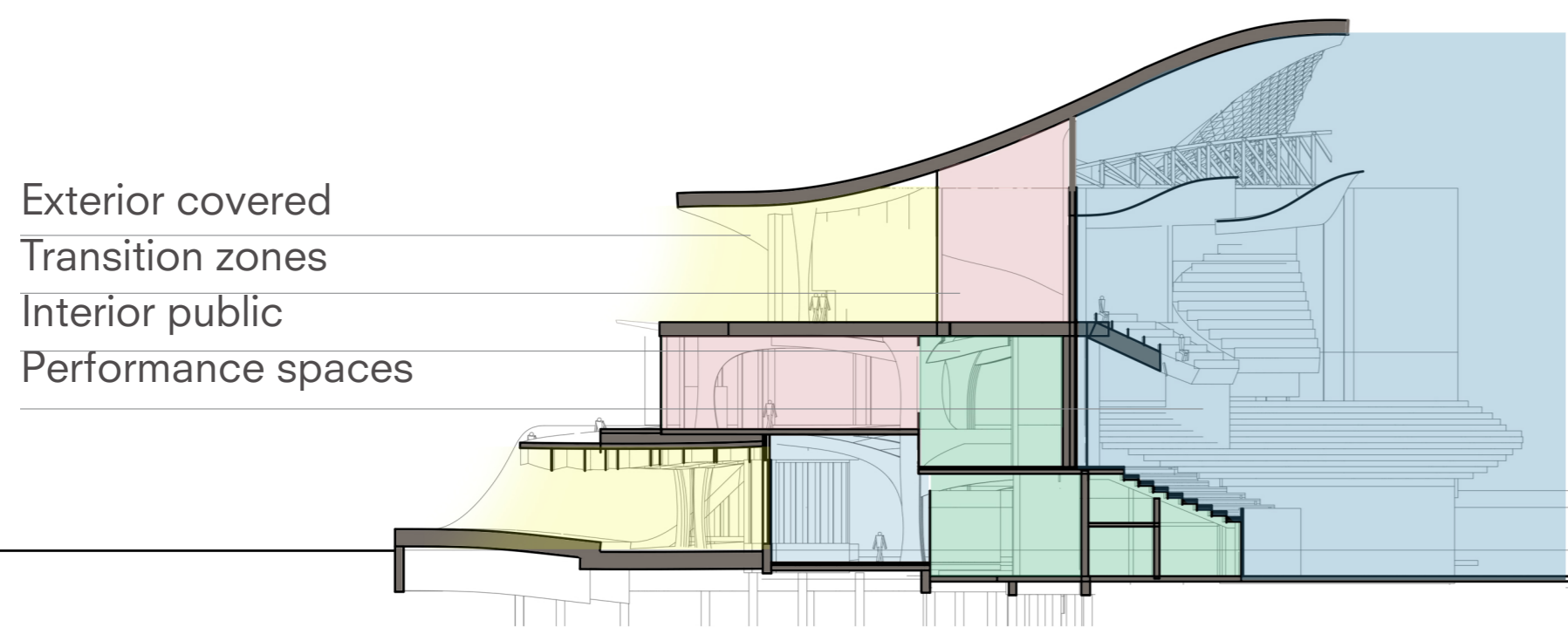


Structural glass fins
stability | view

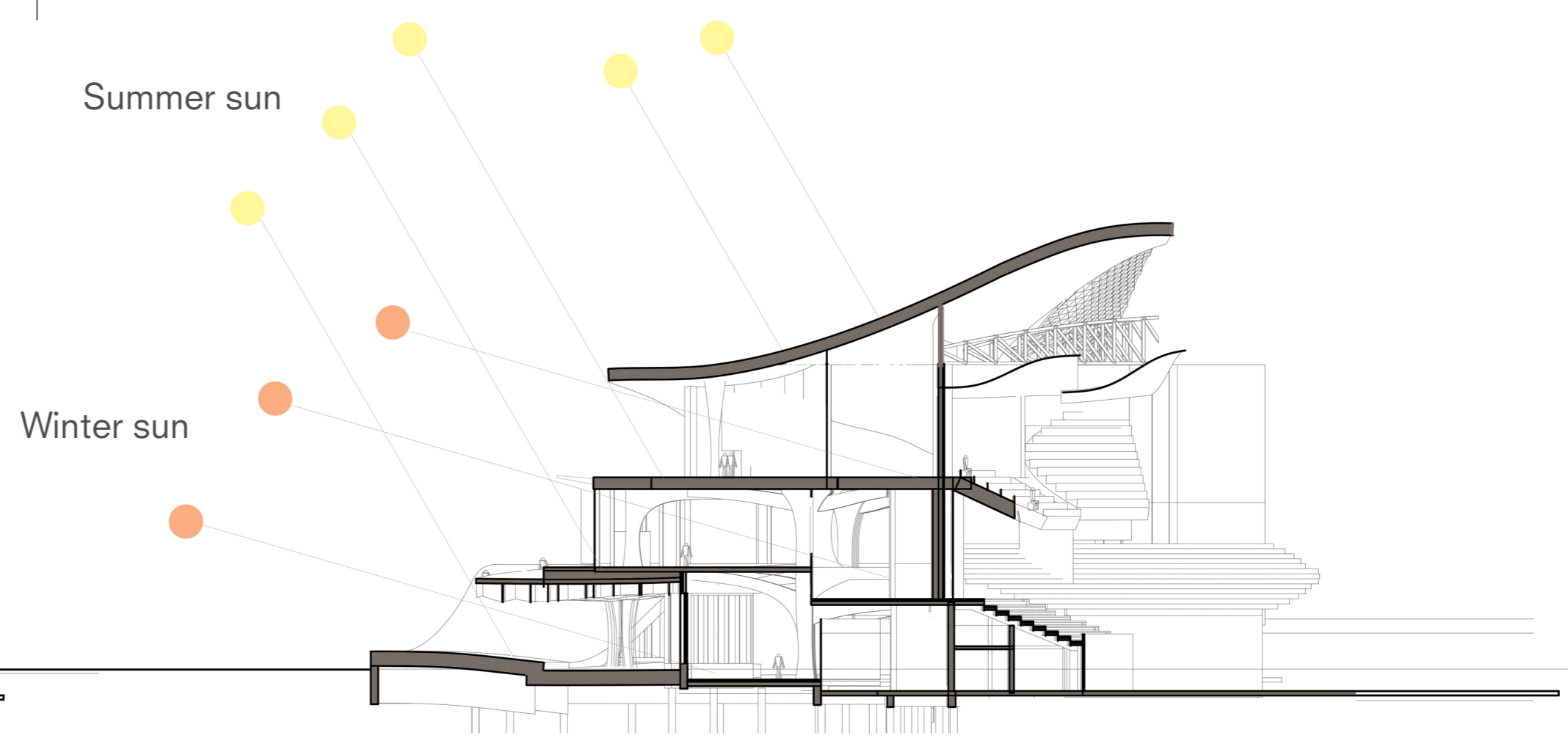




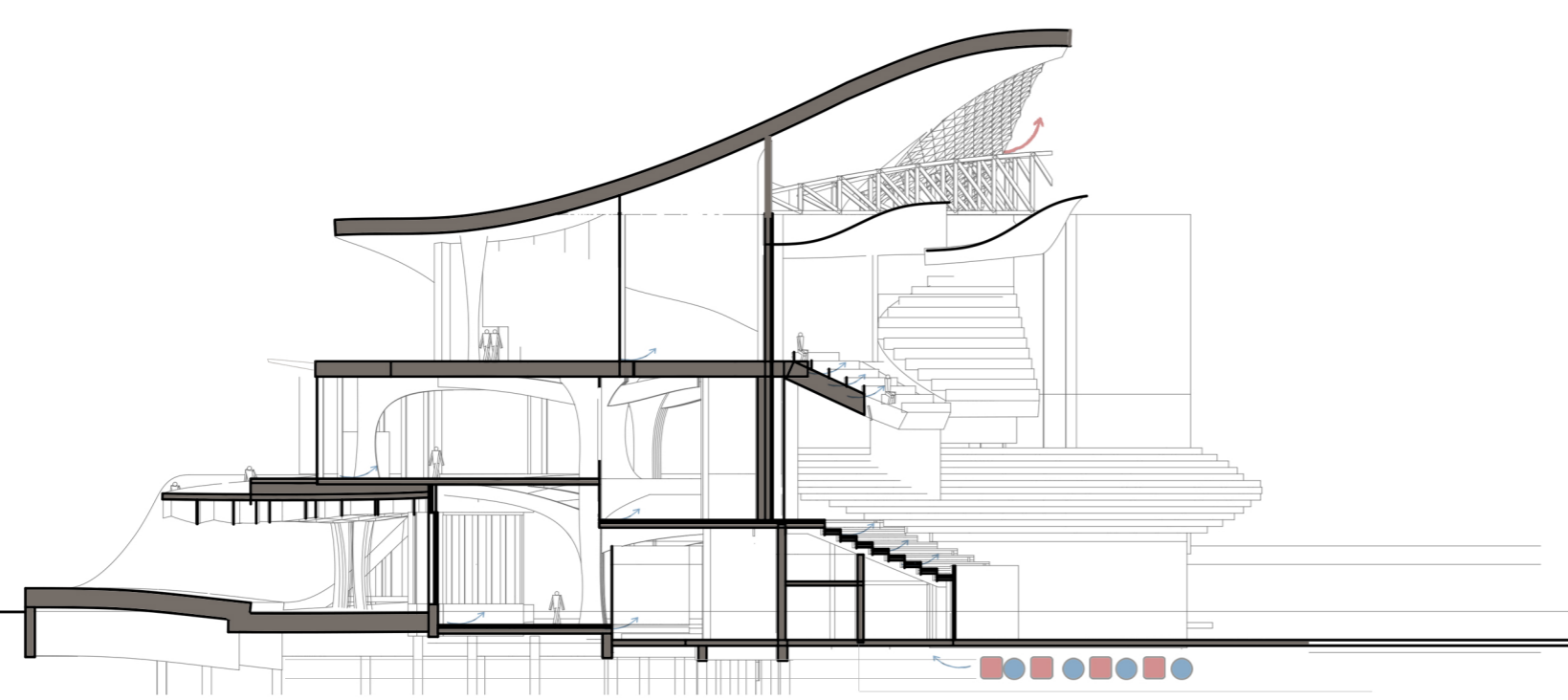
Grid-Facade connection detail 1:10



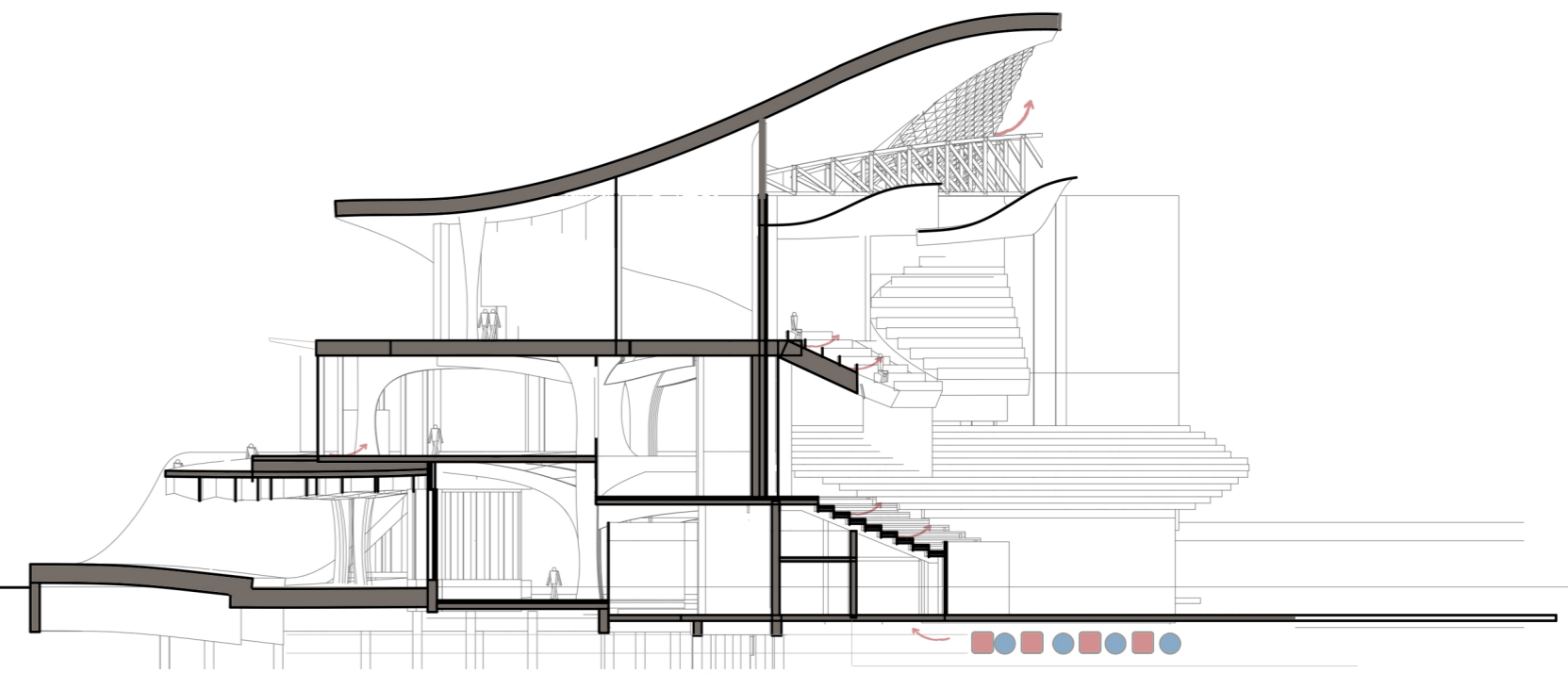
Climate zones



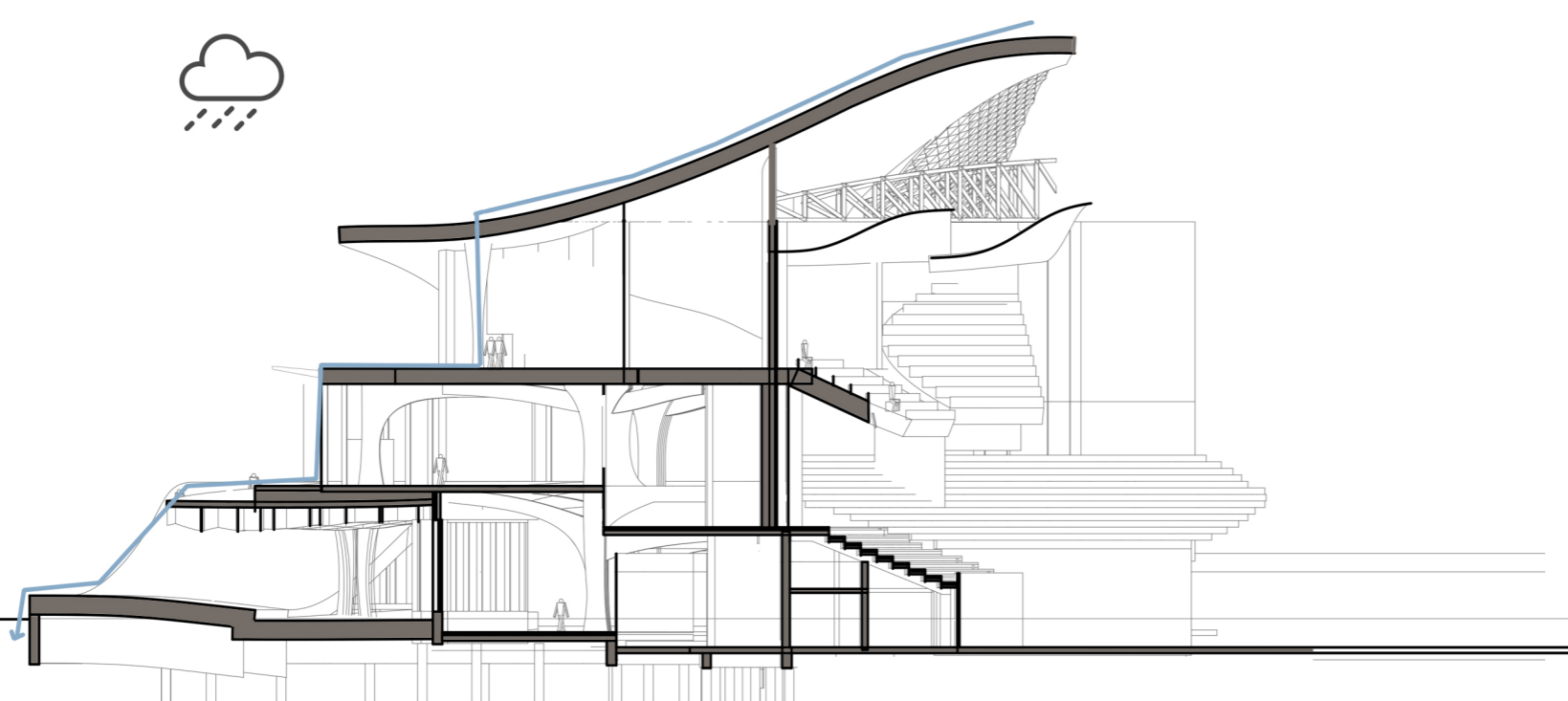
Shading scheme



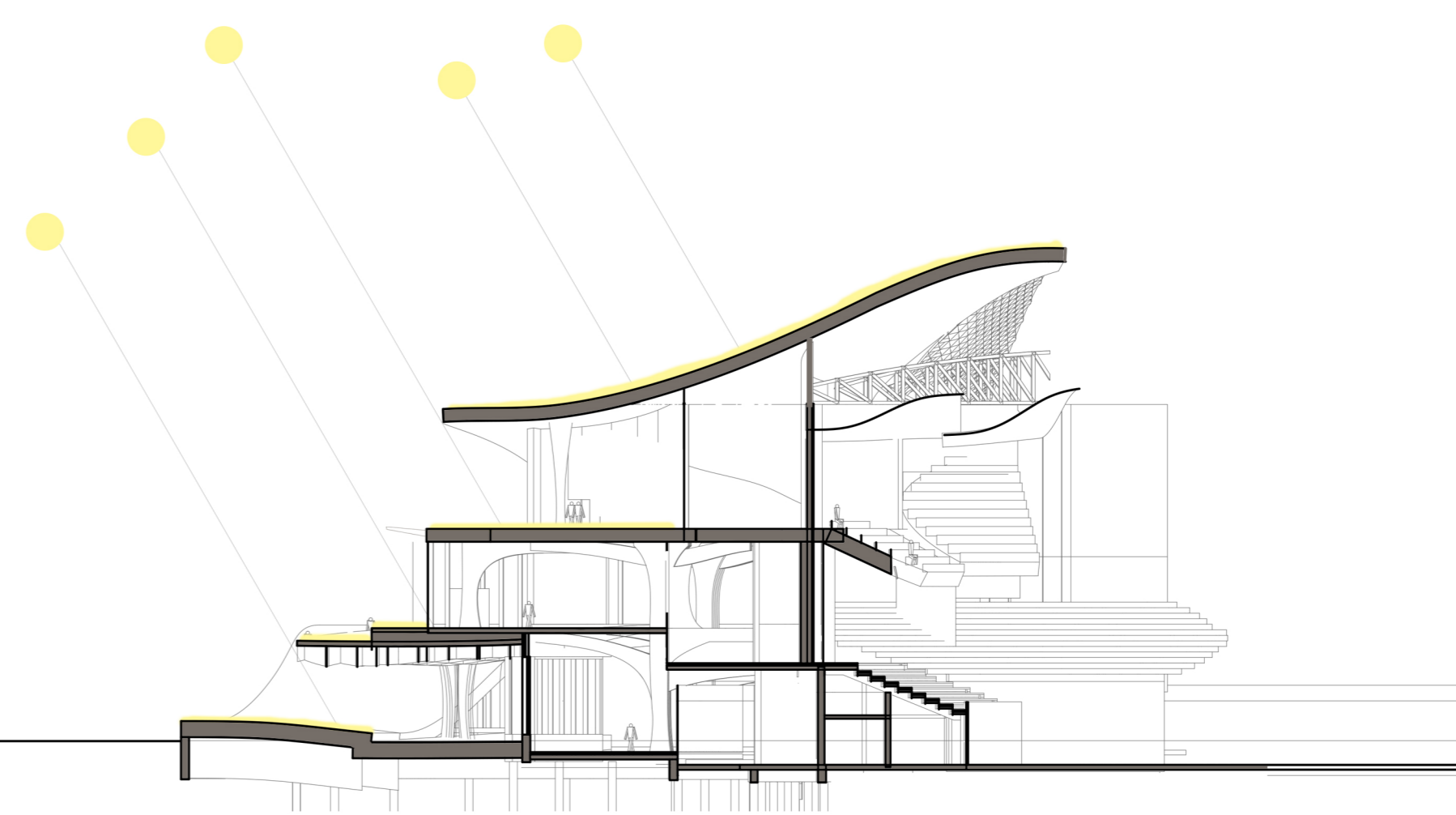
Ventilation - summer cooling (earth-to-air exchanger)



Ventilation - winter pre-heating (earth-to-air exchanger)



Rain water drainage



Solar energy (2050 'smart' materials)