

CASE STUDIES BOOKLET

FROM SKATESPOTS TO SKATEPARKS: SELECTED RELEVANT CASE STUDIES



Pura-pura skatepark, La Paz, bolivia

MATTEO BIELLA

4330757

biellaram@hotmail.com

Department of Architecture
Architectural Engineering studio 13

JANUARY 6th, 2015

INDEX

1.0 SKATESPOTS

- | | | |
|---|-----|--------------------|
| 1 | 1.1 | Obstacles |
| | | China Banks |
| | | Parallel |
| 2 | 1.2 | Banks |
| | | Brooklin Banks |
| | | South Bank London |
| 3 | 1.3 | Transitions |
| | | Potenza Bridge |
| | | Landzhausplatz |
| 4 | 1.4 | Gaps |
| | | Wallenberg |
| | | Macba |

2.0 RELEVANT SKATEPARKS

- | | | |
|----|-----|-------------------------------------|
| | 2.1 | D.I.Y. |
| 5 | | Burnside |
| 6 | | CONS space Berlin |
| | 2.2 | Multi-funcions |
| 7 | | Daybreak |
| 8 | | Edgemont |
| | 2.3 | Re-use of discarded material |
| 9 | | Land of marble |
| 10 | | Steel park |
| | 2.4 | Other reasons: |
| 11 | | Woodward snakerun |
| 12 | | Die welle |

3.0 IMPLEMENTATION OF WOOD

- | | | |
|----|-----|------------------------|
| 13 | 3.1 | Casa Pas |
| 15 | 3.2 | The Pinch library |
| 17 | 3.3 | Yokohama port terminal |
| 19 | 3.4 | Bastard bowl |

SKATESPOT

Parallel (Barcelona)



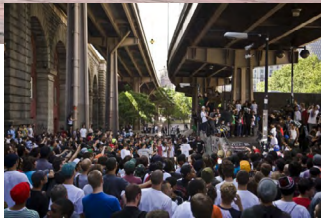
SKATESPOT

China Banks (San Francisco)



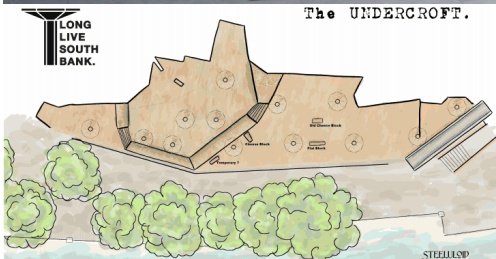
SKATESPOT

Brooklyn banks (New York)



SKATESPOT

South Bank (London)



SKATESPOT

Potenza bridge (Potenza)



SKATESPOT

Landzhausplatz (Innsbruck)





SKATESPOT

Wallenberg (San Francisco)



SKATESPOT

Macba (Barcelona)





BOWLPARK

Concrete / D.I.Y.

Burnside (Oregon)







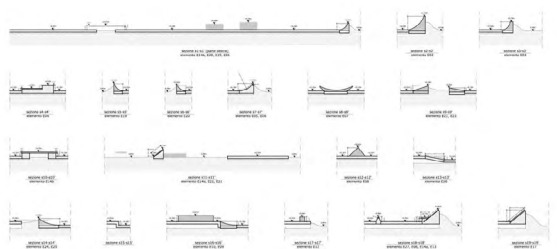
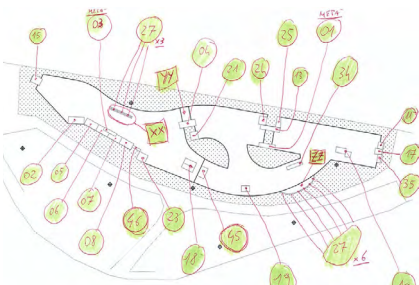


MINIRAMP

Concrete
2 functions: Ditch + Miniramp

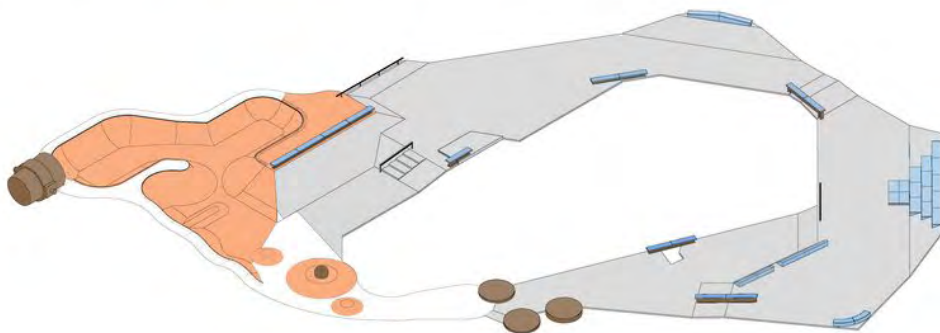
Edgemont
(New Mexico)



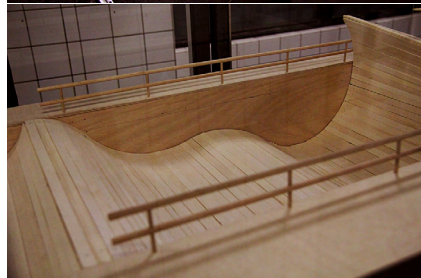
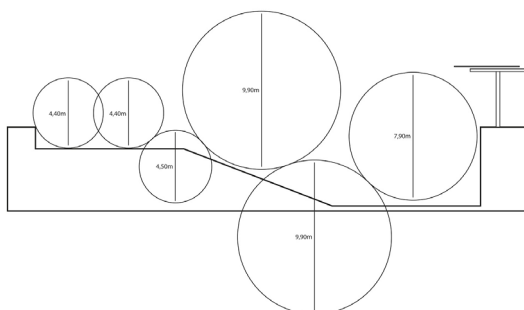
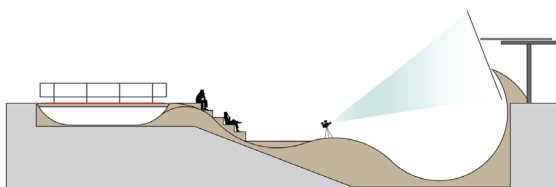
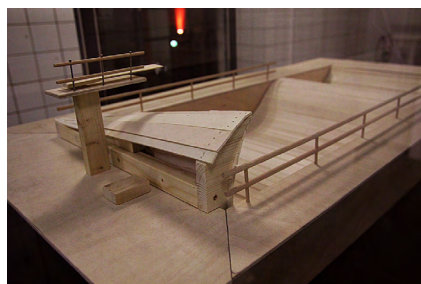
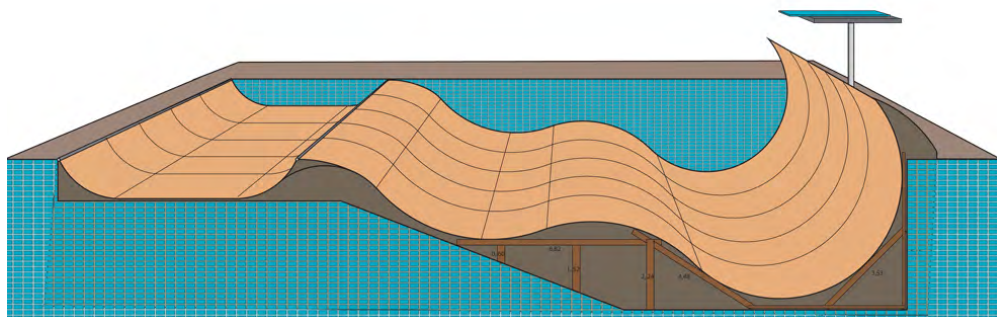




STEEL PARK LULEÅ



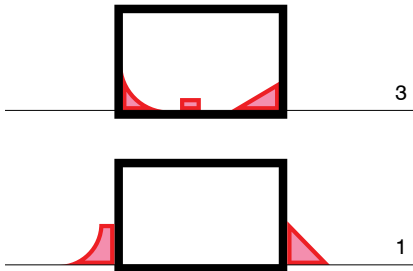




WOOD

Casa Pas
Malibu, California
(Francois Perrin/Gil Lebon Delapointe)
2012

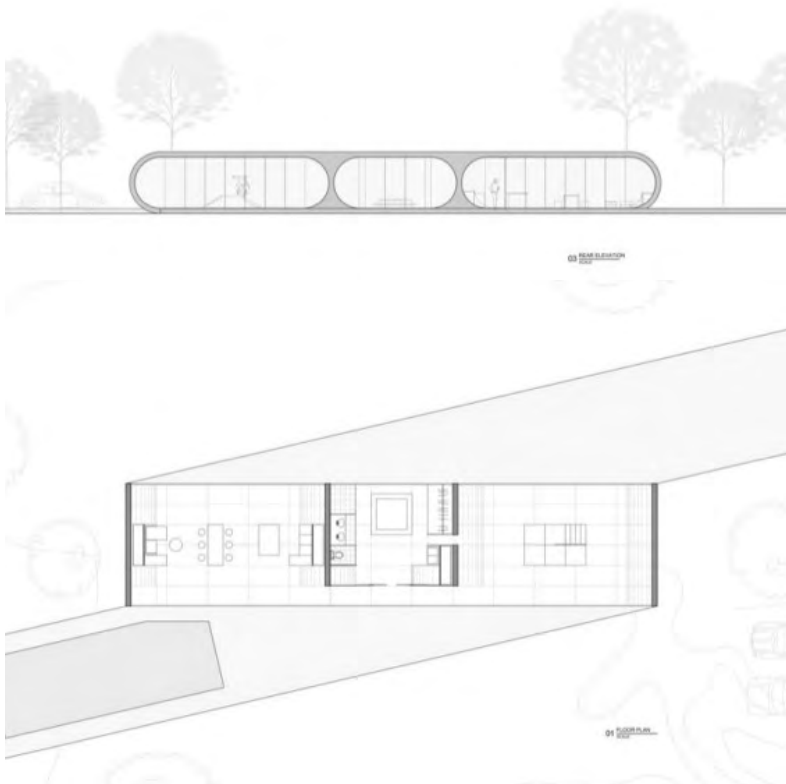
TYPE OF MERGING:



RELEVANCE:

- Valuable interior design project dealing with the merging of a skatepark into an architectural solution (a house)
- Interesting use of the profile-building construction technique
- Added architectural value

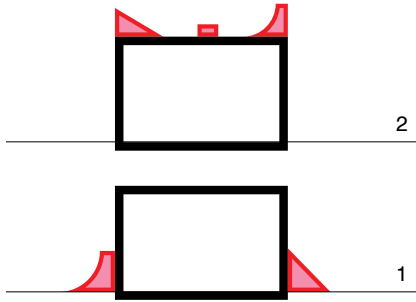




WOOD

The Pinch library
Yunnan, China
(John Lin + Olivier Ottevaere)
2014

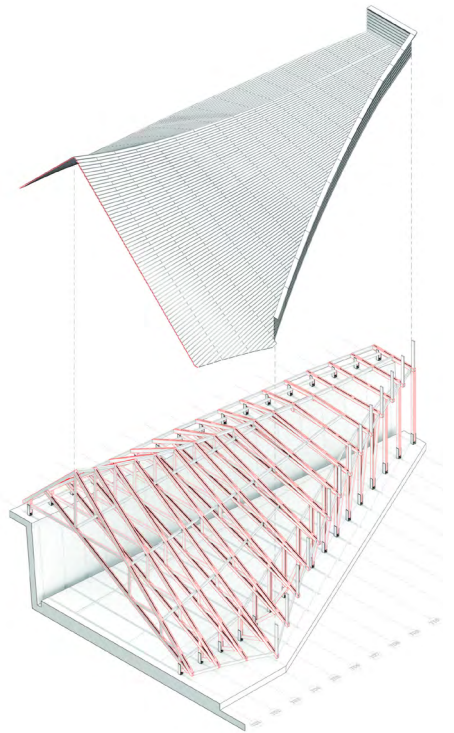
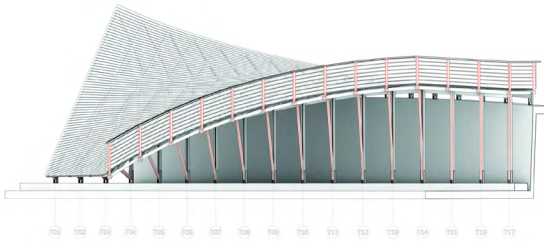
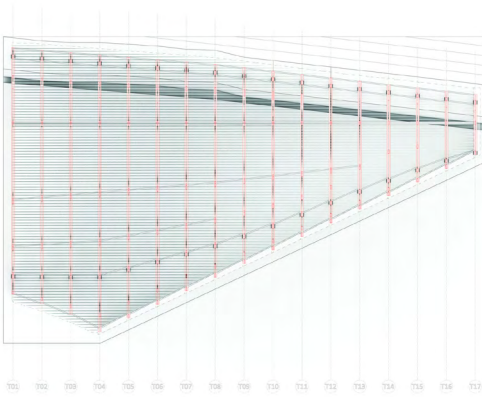
TYPE OF MERGING:



RELEVANCE:

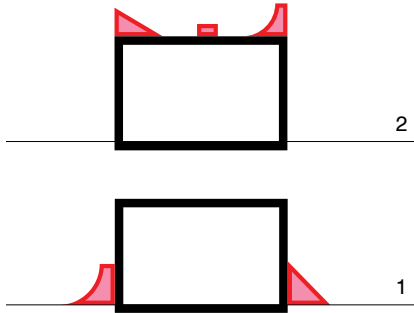
- Double curved surface created entirely with wood
- A clear example of merging of a (possible) skatepark into a building with totally different function
 - Interesting/flexible truss construction technique
- Good architectural exploitation of the natural context constraints: back wall, split level.





WOOD

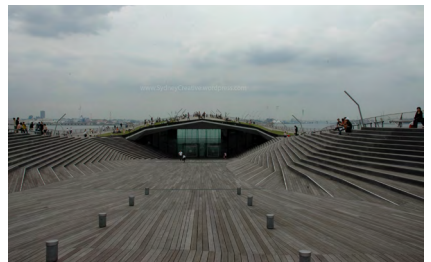
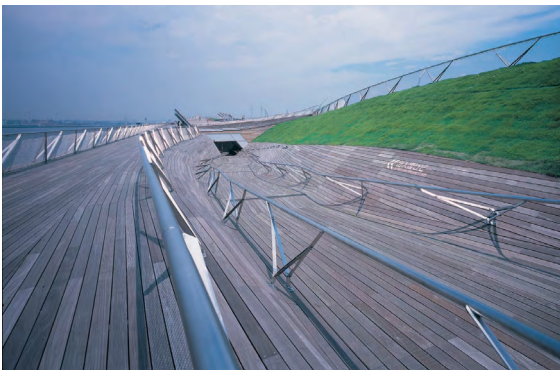
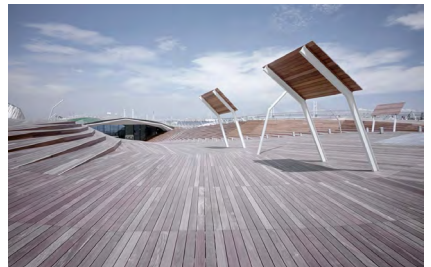
TYPE OF MERGING:

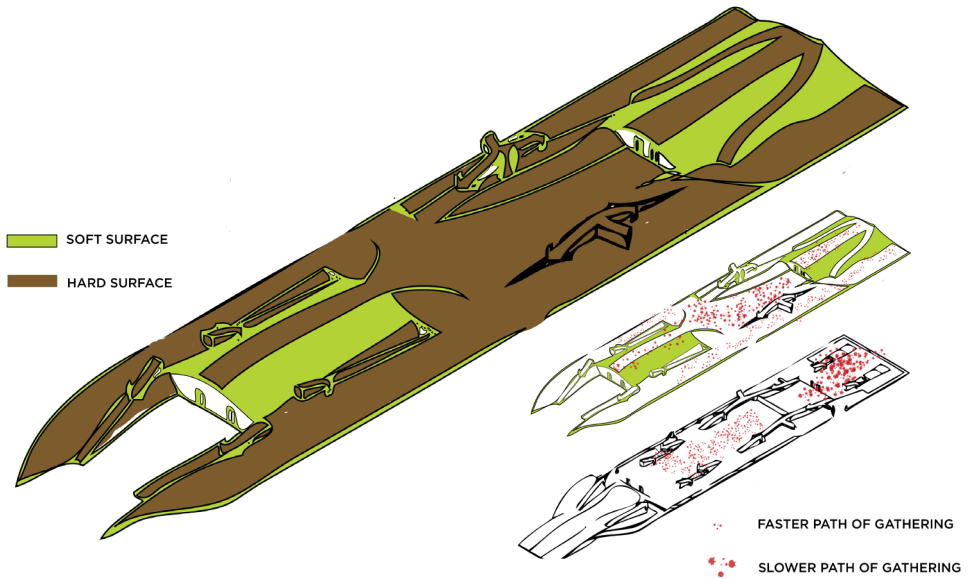
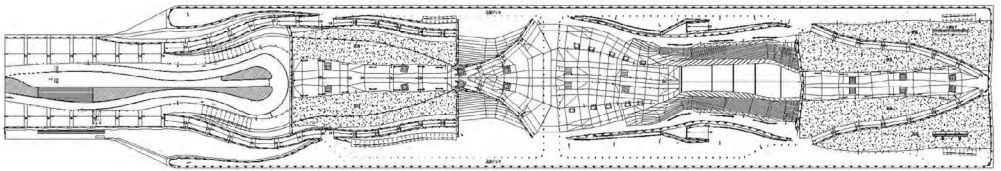
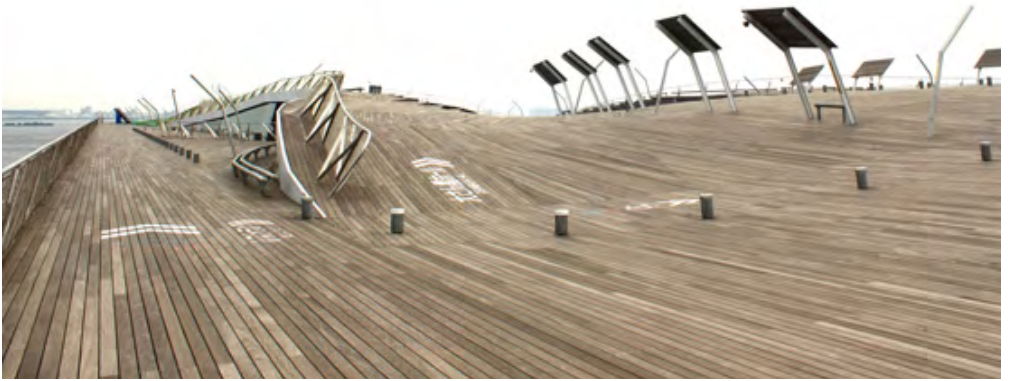


Yokohama int. passenger terminal
Yokohama, Tokio, Japan
Foreign Office Architects (FOA)
1995

RELEVANCE:

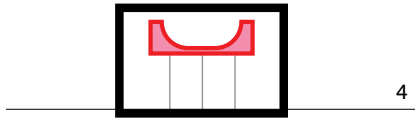
- Wood facilitates skateboarding flow
- A good example of a project that blends flatground and walls into a skateable surface
 - Use of local hardwood as an outdoor material





WOOD

TYPE OF MERGING:



Bastard bowl
Milan, Italy
Studiometrico
2009

RELEVANCE:

- Wood exploited as a lightweight material in an ambitious project
- Interesting/unique case of merging
- Forced exploitation of frame-building construction technique as the only possible solution
- Rehabilitation of an old-cinema through an innovative architectural concept related to skateboarding

