

SITE PLAN &  
TECHNICAL DETAILS



Living • Creating • Enjoying

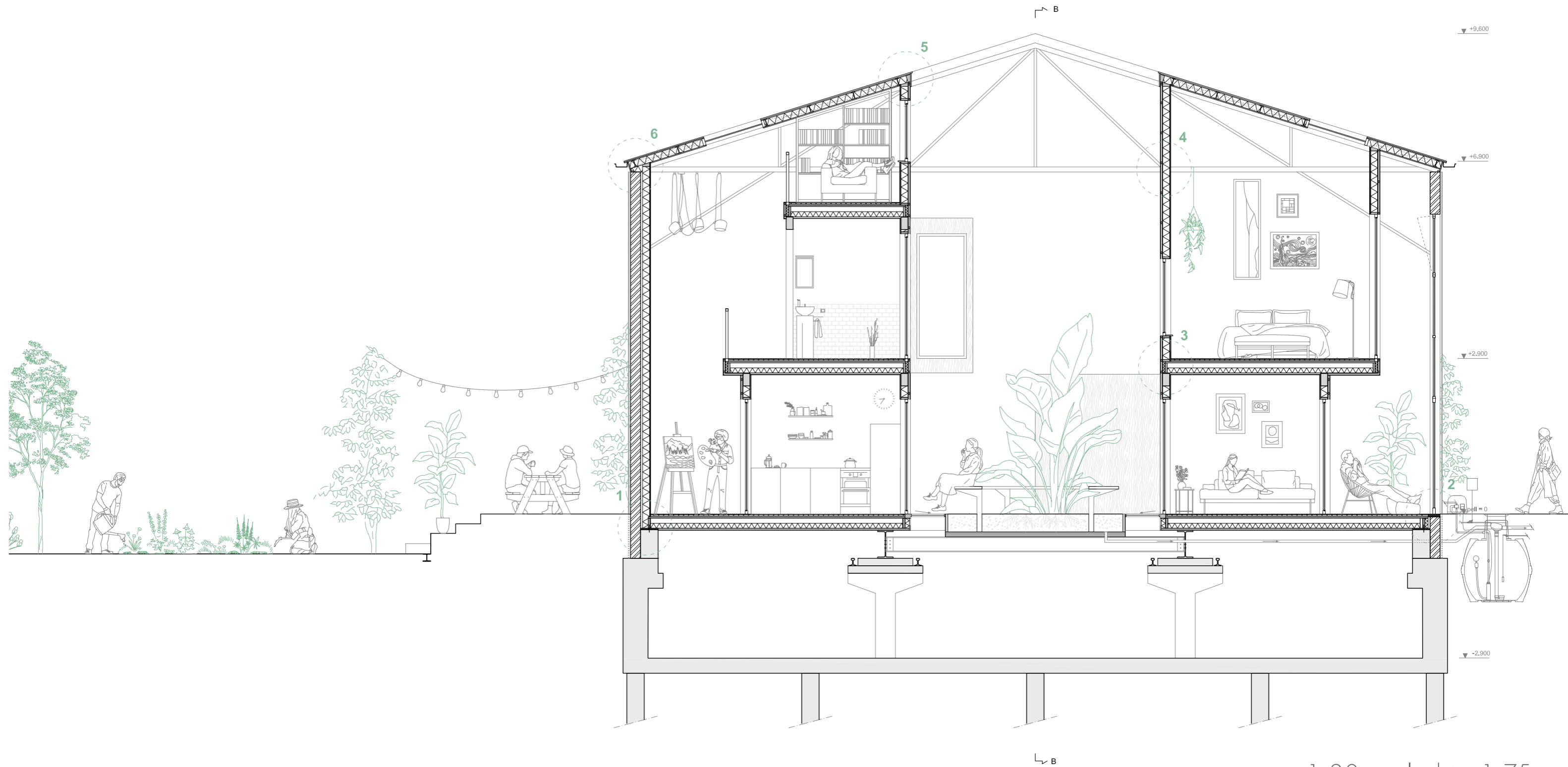
Along the North



1:1000

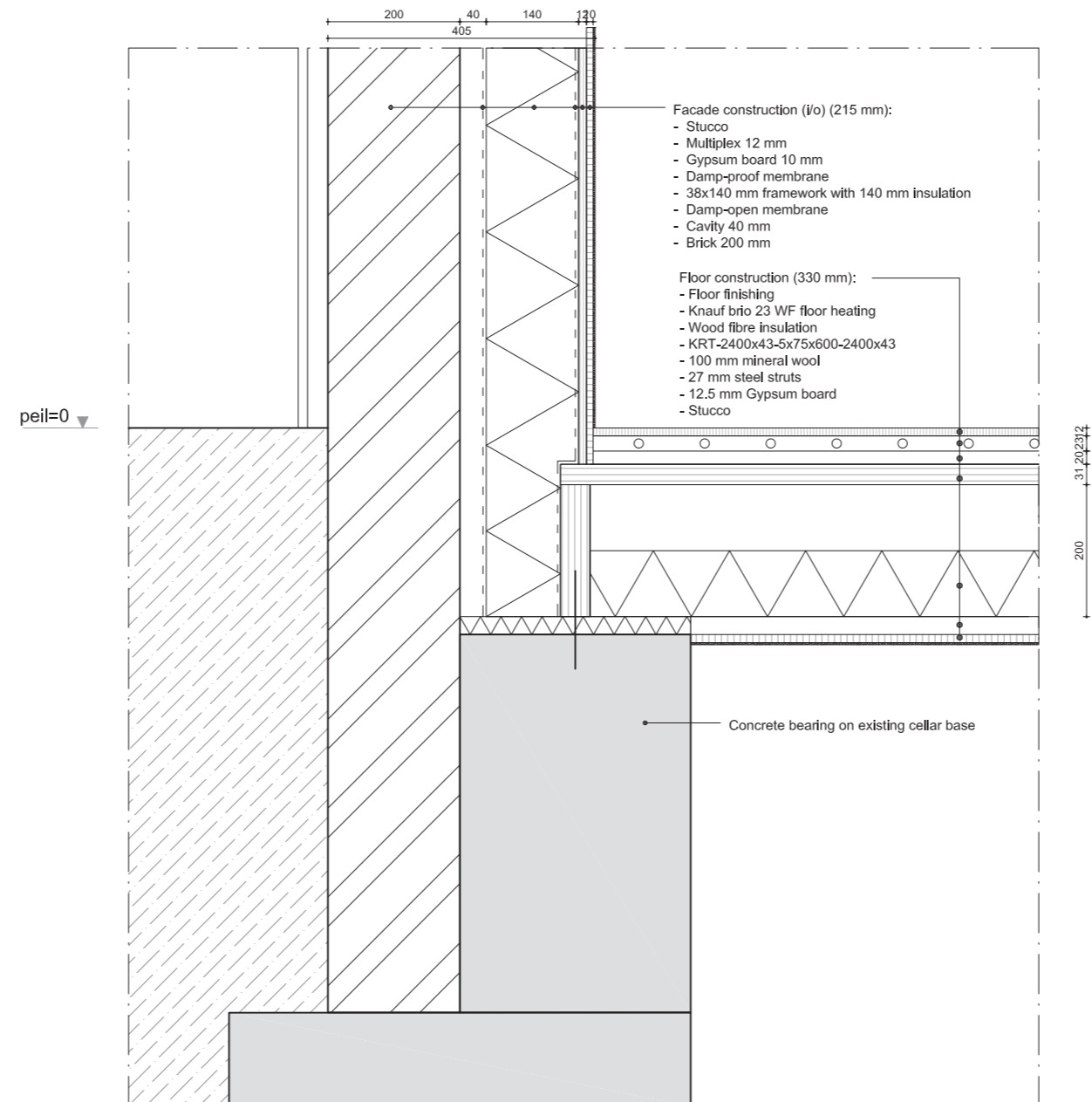
# Building Technology

## Section AA

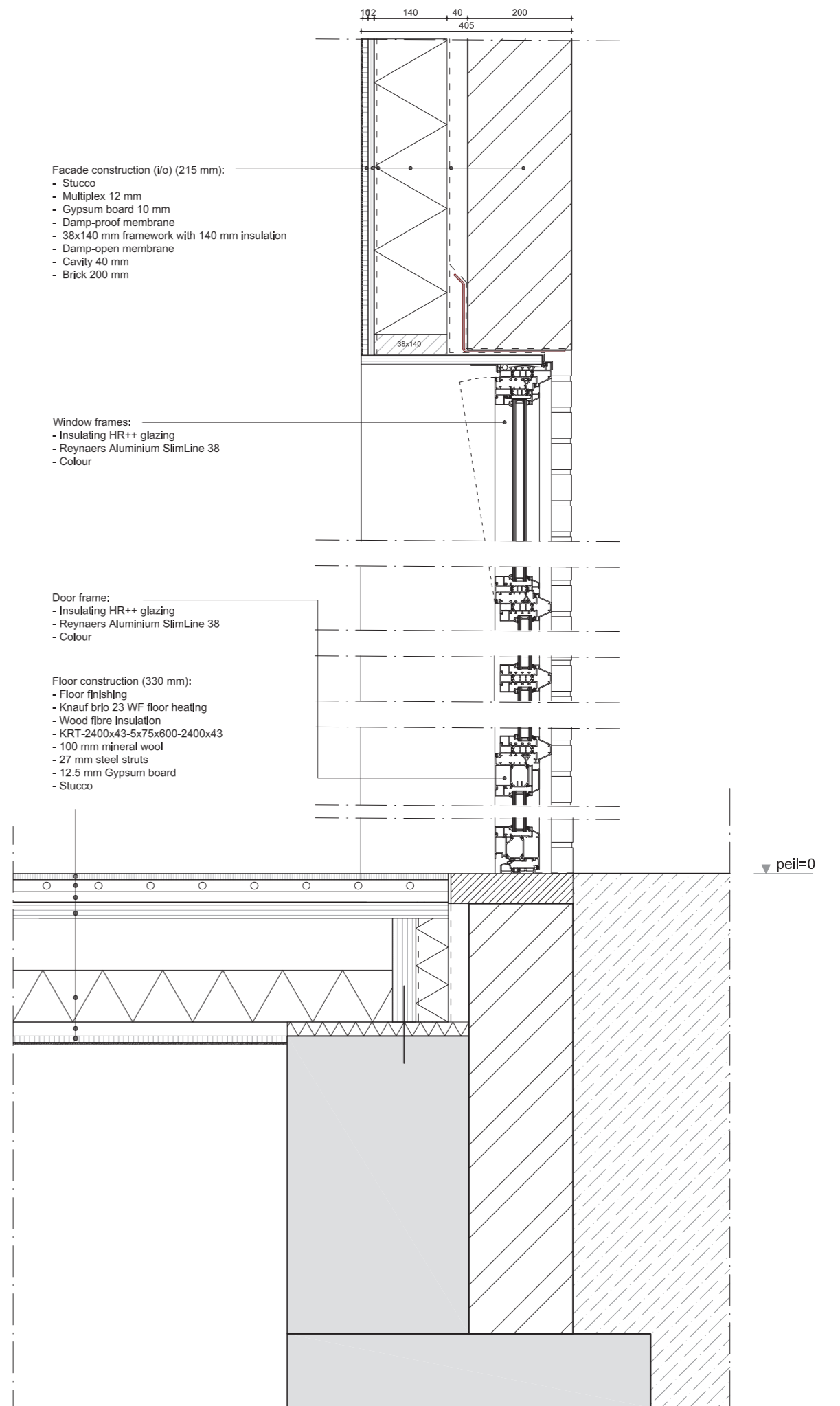
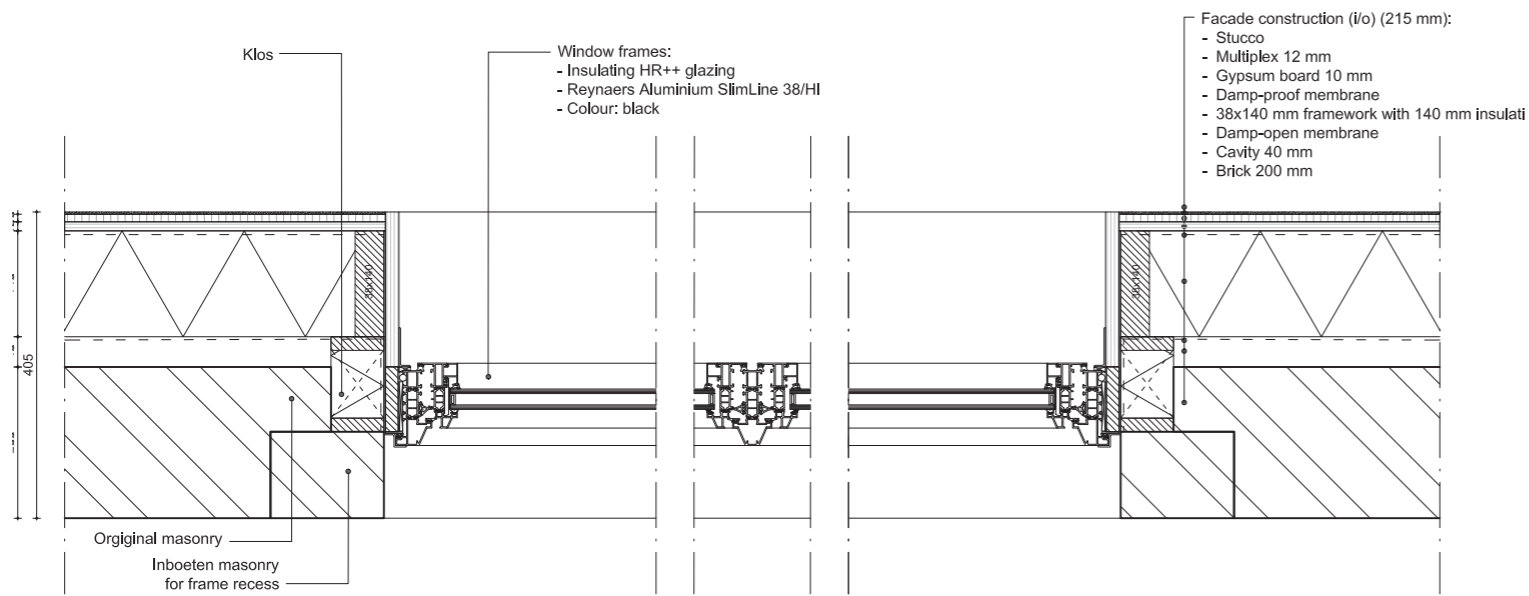
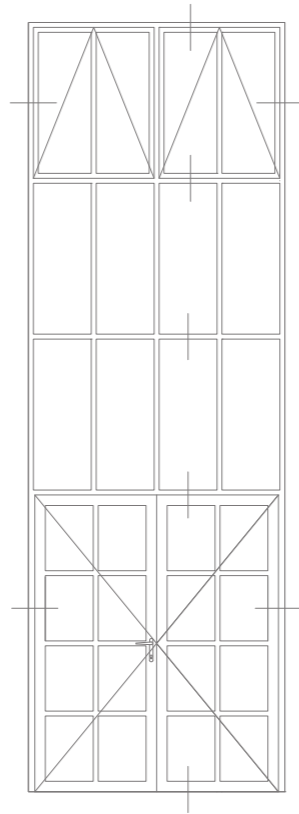


1:20 scaled to 1:75

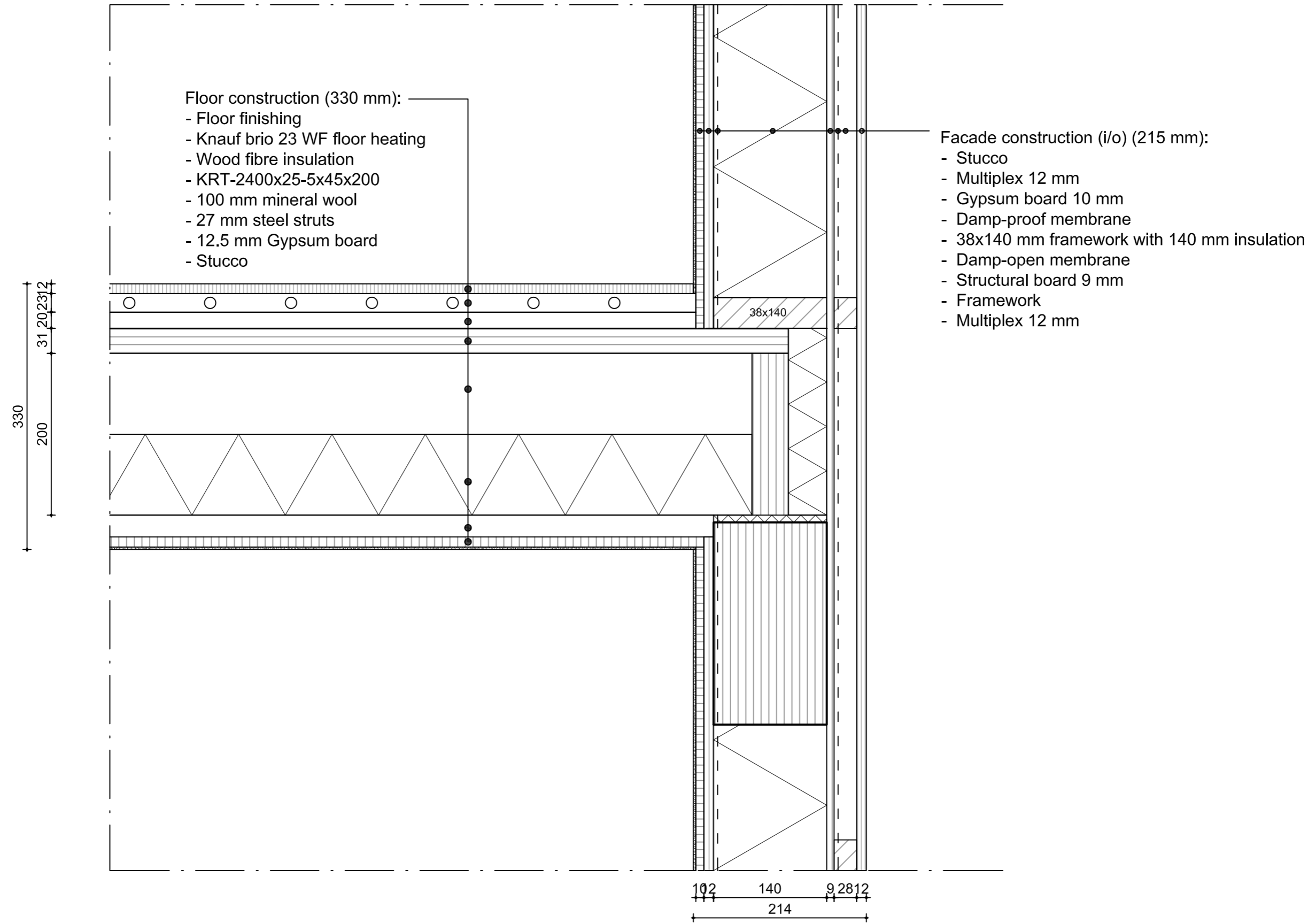
# Detail 1. Foundation 1:10



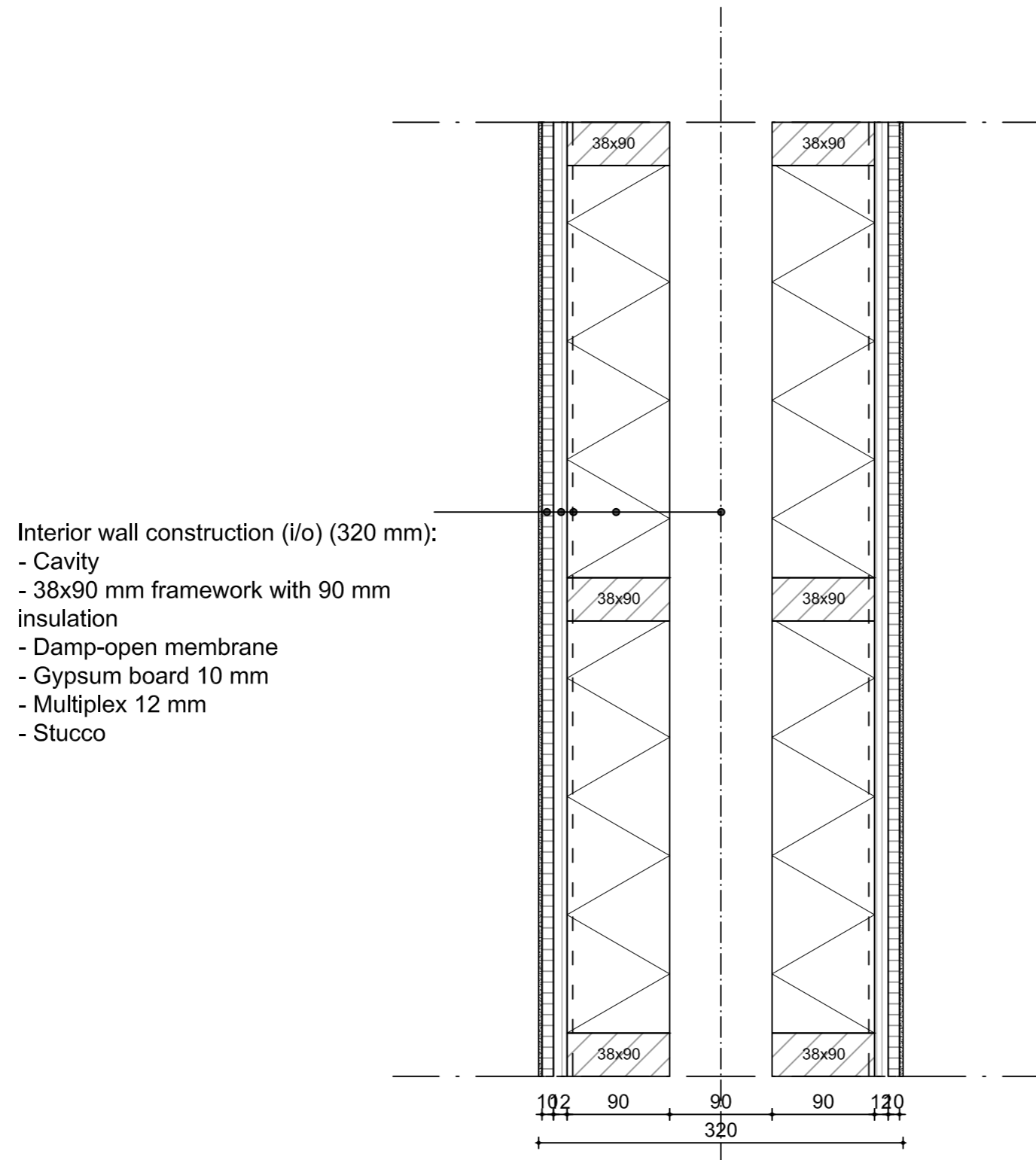
## Detail 2. Windows 1:10



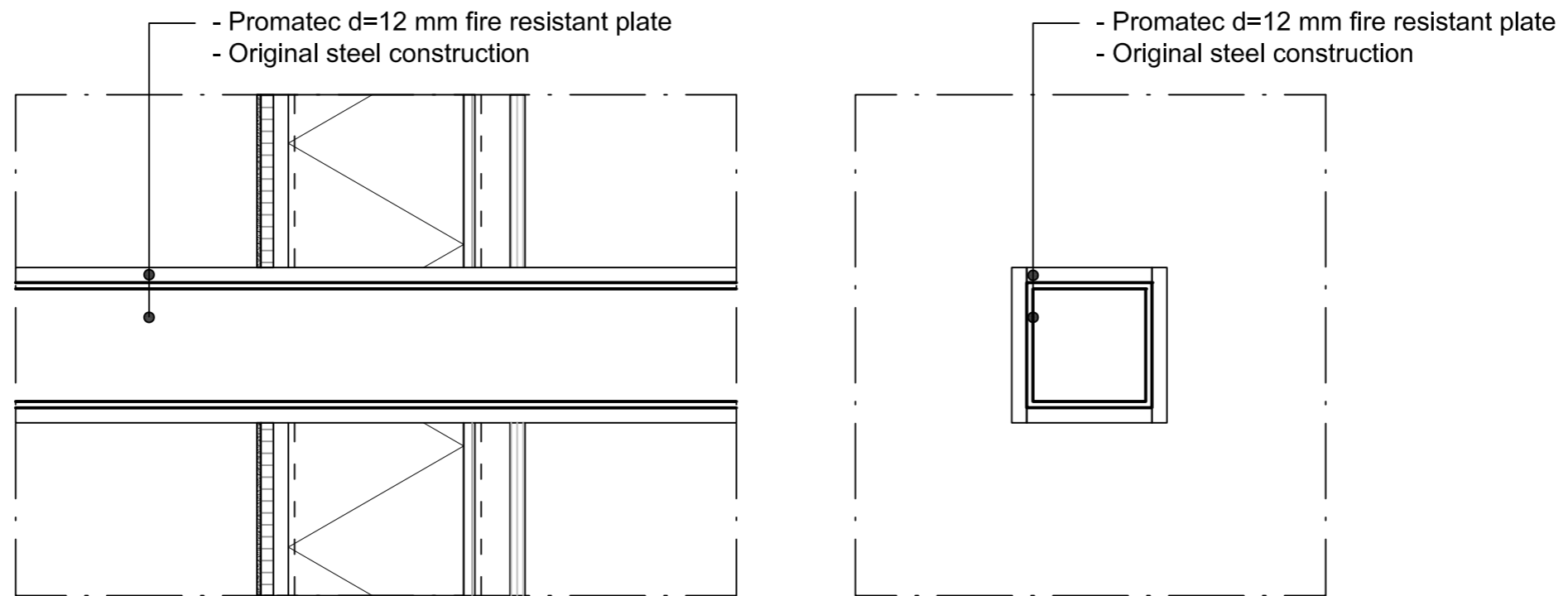
### Detail 3. Modules 1:5



### Detail 3. Modules separation wall 1:5

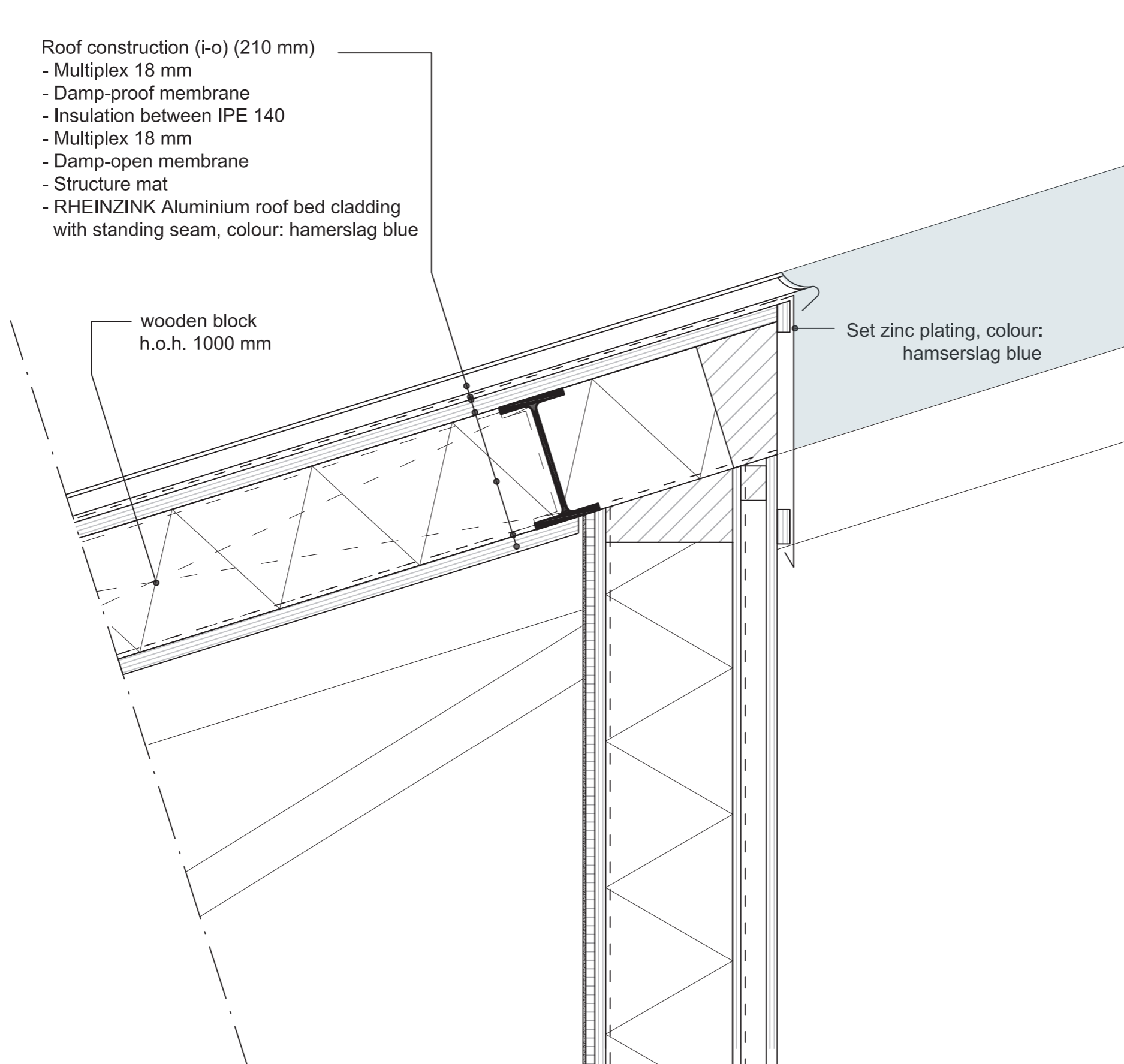


## Detail 4. Trusses 1:10





## Detail 5. Patio 1:5

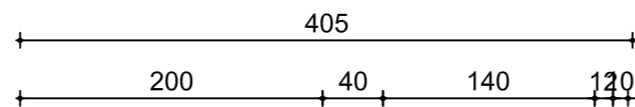
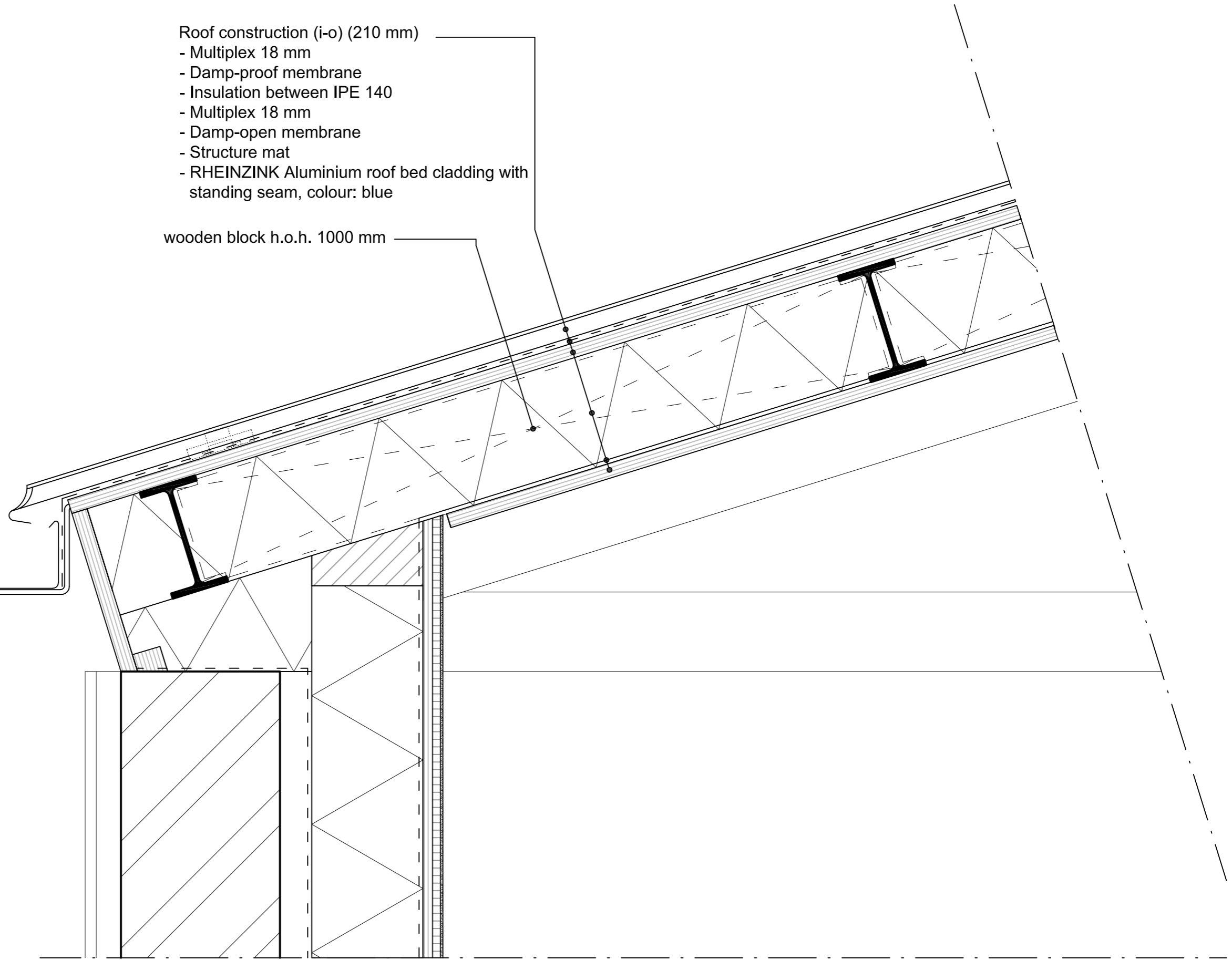


### Detail 6. Roof 1:5

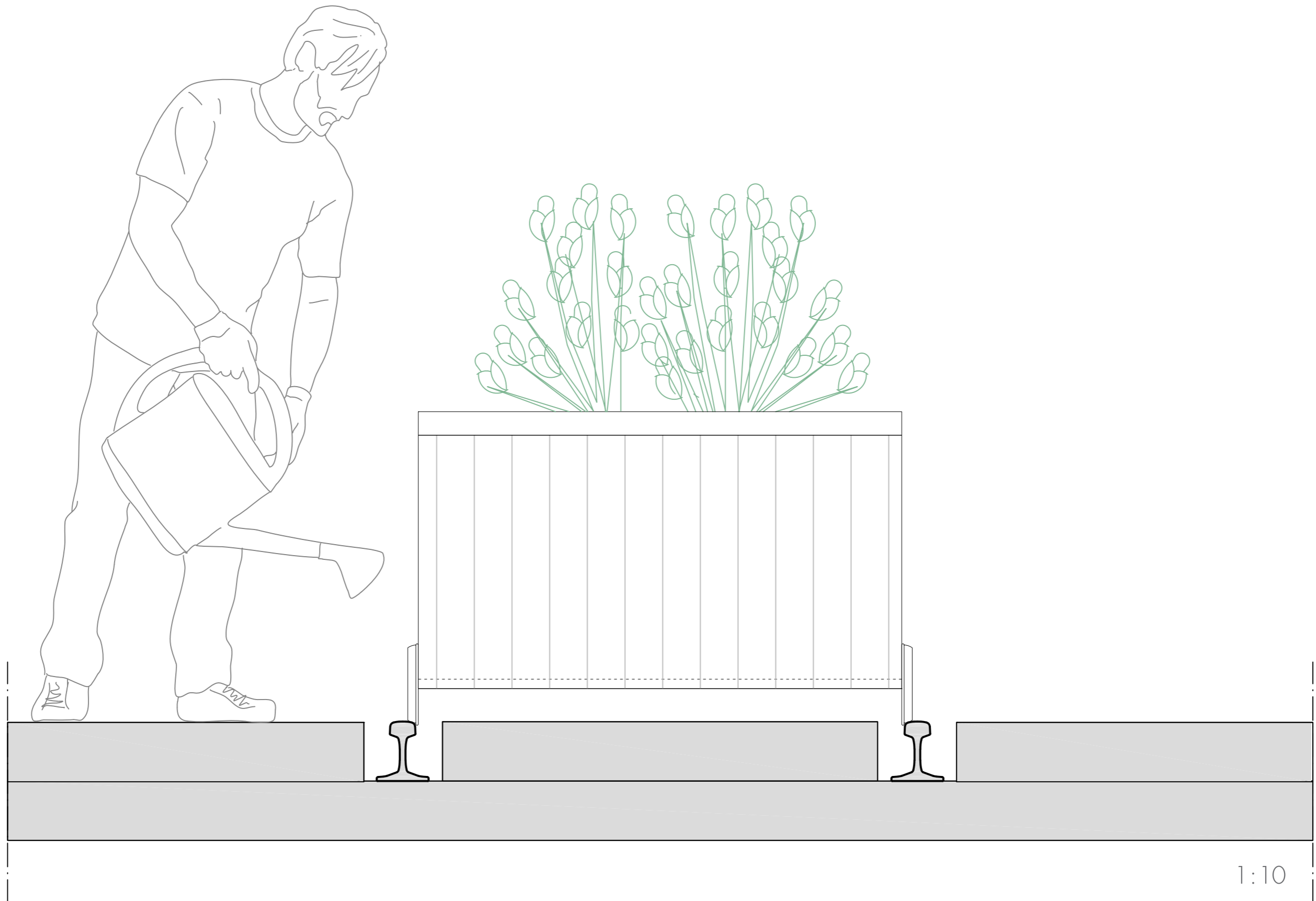
- Roof construction (i-o) (210 mm)
  - Multiplex 18 mm
  - Damp-proof membrane
  - Insulation between IPE 140
  - Multiplex 18 mm
  - Damp-open membrane
  - Structure mat
  - RHEINZINK Aluminium roof bed cladding with standing seam, colour: blue

wooden block h.o.h. 1000 mm

+7.000  
c roof trim



Detail 7. Greenhouse 1:10



1:10

## Detail 8. Café 1:20

