

## Hydrophobin gene deletion and environmental growth conditions impact mechanical properties of mycelium by affecting the density of the material

Appels, Freek V. W.; Dijksterhuis, Jan; Lukasiewicz, Catherine E.; Jansen, Kaspar; Wösten, Han A.B.; Krijgsheld, Pauline

**DOI**

[10.1038/s41598-018-23171-2](https://doi.org/10.1038/s41598-018-23171-2)

**Publication date**

2018

**Document Version**

Final published version

**Published in**

Scientific Reports

**Citation (APA)**

Appels, F. V. W., Dijksterhuis, J., Lukasiewicz, C. E., Jansen, K., Wösten, H. A. B., & Krijgsheld, P. (2018). Hydrophobin gene deletion and environmental growth conditions impact mechanical properties of mycelium by affecting the density of the material. *Scientific Reports*, *8*(1), 1-7. Article 4703. <https://doi.org/10.1038/s41598-018-23171-2>

**Important note**

To cite this publication, please use the final published version (if applicable). Please check the document version above.

**Copyright**

Other than for strictly personal use, it is not permitted to download, forward or distribute the text or part of it, without the consent of the author(s) and/or copyright holder(s), unless the work is under an open content license such as Creative Commons.

**Takedown policy**

Please contact us and provide details if you believe this document breaches copyrights. We will remove access to the work immediately and investigate your claim.

# SCIENTIFIC REPORTS



OPEN

## Hydrophobin gene deletion and environmental growth conditions impact mechanical properties of mycelium by affecting the density of the material

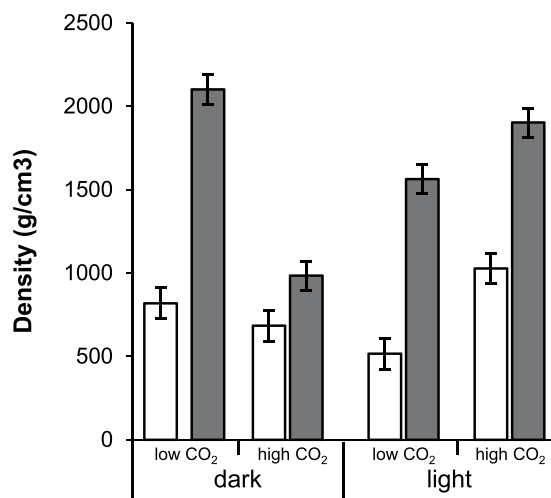
Freek V. W. Appels<sup>1</sup>, Jan Dijksterhuis<sup>2</sup>, Catherine E. Lukasiewicz<sup>1</sup>, Kaspar M. B. Jansen<sup>3</sup>, Han A. B. Wösten<sup>1</sup> & Pauline Krijgsheld<sup>1</sup>

Filamentous fungi colonize substrates by forming a mycelium. This network of hyphae can be used as a bio-based material. Here, we assessed the impact of environmental growth conditions and deletion of the hydrophobin gene *sc3* on material properties of the mycelium of the mushroom forming fungus *Schizophyllum commune*. Thermogravimetric analysis showed that  $\Delta sc3$  mycelium retained more water with increasing temperature when compared to the wild type. The Young's modulus (E) of the mycelium ranged between 438 and 913 MPa when the wild type strain was grown in the dark or in the light at low or high CO<sub>2</sub> levels. This was accompanied by a maximum tensile strength ( $\sigma$ ) of 5.1–9.6 MPa. In contrast, E and  $\sigma$  of the  $\Delta sc3$  strain were 3–4-fold higher with values of 1237–2727 MPa and 15.6–40.4 MPa, respectively. These values correlated with mycelium density, while no differences in chemical composition of the mycelia were observed as shown by ATR-FTIR. Together, genetic modification and environmental growth conditions impact mechanical properties of the mycelium by affecting the density of the mycelium. As a result, mechanical properties of wild type mycelium were similar to those of natural materials, while those of  $\Delta sc3$  were more similar to thermoplastics.

The use of bio-based materials is part of the conversion to a circular economy. These materials are derived from molecules or structures of microbes, plants, macro-algae, and animals. Plant-derived thermoplastic starch<sup>1</sup>, bacterial-derived polyhydroxyalkanoic acid<sup>2</sup>, and fungal mycelium<sup>3–6</sup> are examples of bio-based materials. Fungal mycelia consist of hyphae that grow at their tips and branch subapically. The internal turgor pressure and the rigid cell walls enable hyphae to penetrate organic material such as plant waste. Secreted enzymes degrade polymers in the substrate into molecules that can be taken up to serve as nutrients. Fungal mycelia can cover huge areas, in particular those of mushroom forming fungi. For instance, the mycelium of an *Armillaria* individual had colonized almost 10 km<sup>2</sup> of forest<sup>7</sup>.

*Schizophyllum commune* is a model for mushroom forming fungi<sup>8</sup>. Germination of its basidiospores results in a vegetative mycelium that colonizes fallen branches and logs of hardwood. Fusion of two individuals with compatible mating type loci results in a fertile mycelium. Fruiting is induced upon exposure to blue light and ambient CO<sub>2</sub> (i.e. 400 ppm). The outer layer of the *S. commune* cell wall consists of a water-soluble mucilage of (1,3)(1,6)- $\beta$ -glucan<sup>9</sup>. This so called schizophyllan is also secreted into the culture medium. A (1,3)- $\alpha$ -linked glucan is located beneath the mucilage, while the inner layer of the cell wall consists of chitin cross-linked to a highly branched (1,3)(1,6)- $\beta$ -glucan<sup>9,10</sup>. The SC3 hydrophobin impacts cell wall composition of *S. commune*. In the absence of this cell wall protein the amount of schizophyllan is increased, while the amount of glucan that is cross-linked to chitin is reduced<sup>11</sup>. SC3 also attaches hyphae to hydrophobic surfaces<sup>12</sup>, mediates escape of hyphae from the aqueous environment into the air<sup>13</sup>, and makes aerial structures hydrophobic<sup>14,15</sup>. The latter is illustrated

<sup>1</sup>Microbiology, Department of Biology, Utrecht University, Padualaan 8, 3584 CH, Utrecht, The Netherlands. <sup>2</sup>Westerdijk Fungal Biodiversity Institute, Uppsalalaan 8, 3584 CT, Utrecht, The Netherlands. <sup>3</sup>Emerging Materials, Department of Design Engineering, Delft University of Technology, Landbergstraat 15, 2628 CE, Delft, The Netherlands. Correspondence and requests for materials should be addressed to H.A.B.W. (email: [H.A.B.Wosten@uu.nl](mailto:H.A.B.Wosten@uu.nl))



**Figure 1.** Density of mycelia of liquid static cultures of wild type (non-shaded bars) and  $\Delta sc3$  (grey shaded bars) grown in the dark or light at 400 or 70,000 ppm  $CO_2$ . Different letters indicate significant differences (two-tailed independent-sample  $t$ -test,  $n = 15$ ,  $p < 0.05$ ).

Strain	Growth condition	E (mPa)	$\sigma$ (mPa)	$\epsilon$ (%)	Density ( $kg\ m^{-3}$ )
Wild type	Dark, low $CO_2$	749 $\pm$ 49	9.6 $\pm$ 1.1	1.2 $\pm$ 0.1	819 $\pm$ 18
	Dark, high $CO_2$	550 $\pm$ 48	6.5 $\pm$ 0.3	1.4 $\pm$ 0.1	683 $\pm$ 17
	Light, low $CO_2$	438 $\pm$ 40	5.1 $\pm$ 0.4	1.3 $\pm$ 0.1	515 $\pm$ 10
	Light, high $CO_2$	913 $\pm$ 69	9.5 $\pm$ 0.6	1.3 $\pm$ 0.1	1026 $\pm$ 46
$\Delta sc3$	Dark, low $CO_2$	2523 $\pm$ 184	33.9 $\pm$ 2.8	1.7 $\pm$ 0.2	2101 $\pm$ 18
	Dark, high $CO_2$	1237 $\pm$ 108	15.6 $\pm$ 2.3	1.9 $\pm$ 0.1	984 $\pm$ 36
	Light, low $CO_2$	1914 $\pm$ 156	22.3 $\pm$ 1.5	1.8 $\pm$ 0.1	1562 $\pm$ 56
	Light, high $CO_2$	2727 $\pm$ 95	40.4 $\pm$ 2.5	2.6 $\pm$ 0.5	1902 $\pm$ 38

**Table 1.** Young's modulus (E), maximum tensile strength ( $\sigma$ ), elongation at breaking ( $\epsilon$ ), and density of mycelium of wild type and  $\Delta sc3$  *S. commune* strains grown in the light or in the dark at 400 or 70,000 ppm  $CO_2$ .  $n = 5$ ; average  $\pm$  SEM.

by the fact that wild type mycelium has a water contact angle of 115 degrees, being similar to the highly hydrophobic surface of Teflon, while water immediately soaks into the mycelium of the  $\Delta sc3$  strain<sup>15</sup>.

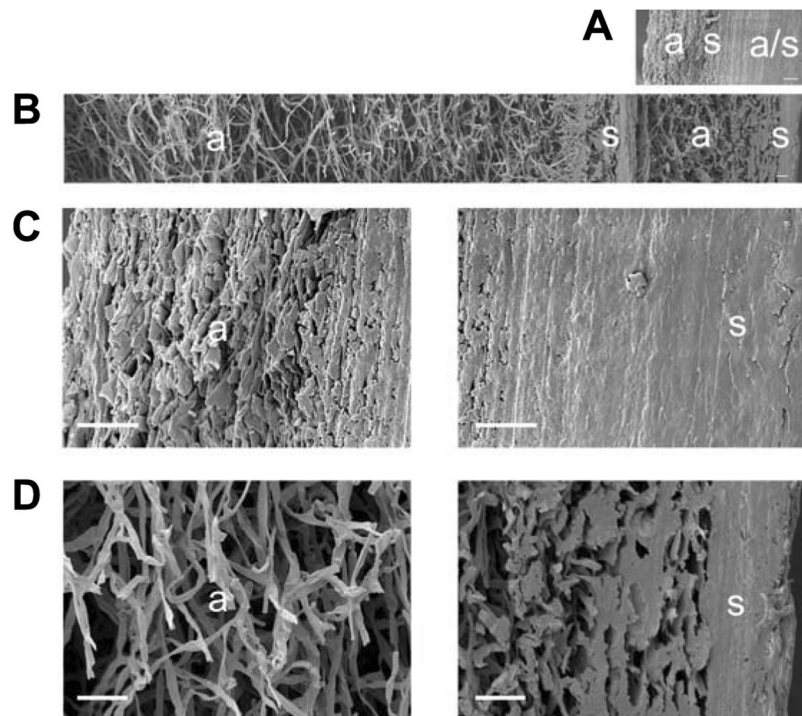
Here, we assessed properties of wild type and  $\Delta sc3$  mycelium of *S. commune* grown in the light or in the dark at 400 or 70,000 ppm  $CO_2$ . Mycelium of strain  $\Delta sc3$  retained more water with increasing temperature when compared to that of the wild type. Both the absence of SC3 and environmental conditions affected mechanical properties of the mycelium, which can be explained by changes in the density in the mycelium. Together, genetic modification and environmental growth conditions can be used to create a palette of mycelium materials.

## Results and Discussion

**Environmental conditions and deletion of  $sc3$  impact the density of mycelium.** Mycelium of the wild type and the hydrophobin deletion strain  $\Delta sc3$  was grown as a liquid static culture (see Material and Methods) in the light or in the dark at 400 ppm (low) or 70,000 ppm (high)  $CO_2$ . Density of wild type mycelium grown at low  $CO_2$  in the dark or at high  $CO_2$  in the light was similar (819–1026  $kg\ m^{-3}$ ; Fig. 1, Table 1). Lower densities were obtained after growing at high  $CO_2$  in the dark (683  $kg\ m^{-3}$ ) and at low  $CO_2$  in the light (515  $kg\ m^{-3}$ ). The relation between mycelium density,  $CO_2$ , and light is not clear yet. Possibly, it results from interacting signaling pathways that respond to light and  $CO_2$ .

Density of  $\Delta sc3$  mycelium resulting from the different growth conditions followed a similar trend as the wild type, but was in all conditions 1.4–3 fold higher (Fig. 1; Table 1). As expected<sup>13</sup>, scanning electron microscopy revealed that  $\Delta sc3$  mycelium lacked the thick layer of aerial hyphae observed in the wild type that is characterized by a low hyphal density (Fig. 2). Lower density of the wild type mycelium is also explained by the fact that hyphae of  $\Delta sc3$ , but not those of wild type, were embedded in a mucilage. This mucilage is most probably schizophyllan that is abundantly released by strain  $\Delta sc3$ <sup>11</sup>.

**Environmental conditions and deletion of  $sc3$  impact mechanical properties of mycelium.** Mechanical properties were determined of wild type and  $\Delta sc3$  mycelium grown in liquid static cultures in the light or in the dark at high or low  $CO_2$ . The Young's modulus (E) of the wild type strain grown in the light



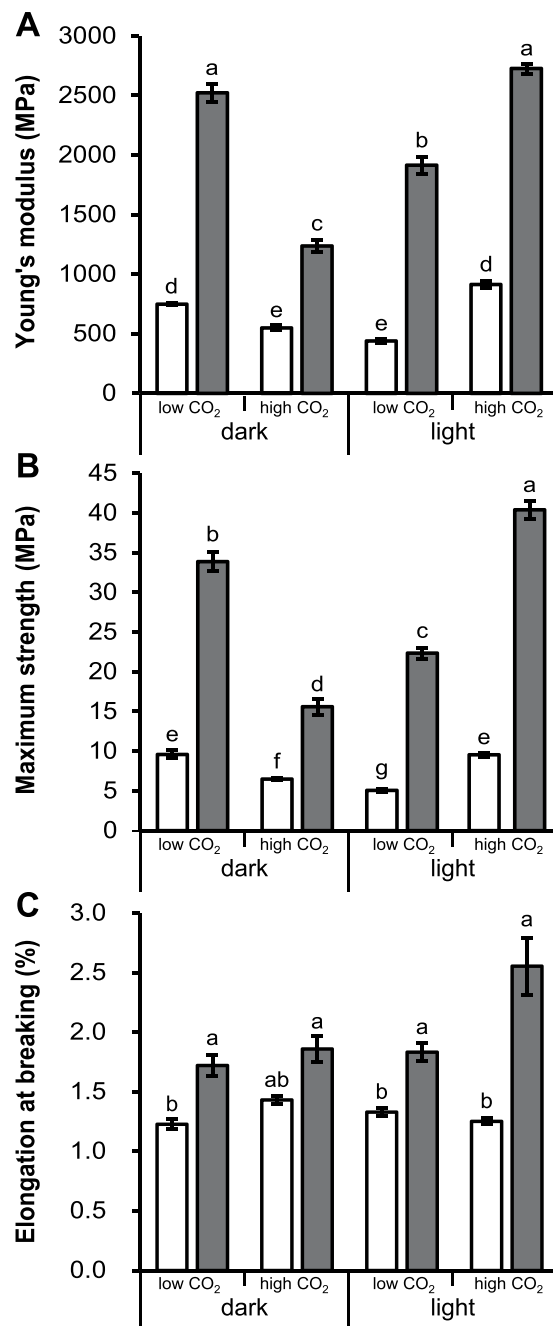
**Figure 2.** Cryo-SEM microscopy showing an overview (A,B) and detailed morphology (C,D) of two mycelium layers of *S. commune*  $\Delta sc3$  (A,C) and wild type (B,D) that had been grown in light and low  $CO_2$  and that had been dried on top of each other (this was required to enable mechanical analysis of strain  $\Delta sc3$ ). a indicates air exposed sites of the mycelium during culturing, while s indicates substrate exposed sites. Bar represents 10  $\mu m$ .

increased from 438 to 913 MPa as a result of increased  $CO_2$  levels (Fig. 3A, Table 1). In contrast, high  $CO_2$  in the dark resulted in a lower E when compared to low  $CO_2$  levels (550 to 749 MPa). Similar results were obtained with the maximum strength (Fig. 3B, Table 1). Mycelium of the wild type grown in the dark at high and low  $CO_2$  had a maximum strength ( $\sigma$ ) of 6.5 and 9.6 MPa, respectively. These values were 9.5 and 5.1 MPa, respectively, when wild type mycelium was grown in the light. The elongation at breaking of wild type mycelia was between 1.2 and 1.4% and was not affected by the growth conditions (Fig. 3C; Table 1). Mycelium of  $\Delta sc3$  had a higher E and  $\sigma$  when compared to wild type under all growth conditions (Fig. 3AB; Table 1). E of  $\Delta sc3$  grown in the light increased from 1914 MPa to 2727 MPa as a result of increased  $CO_2$  levels (Fig. 3A; Table 1). In contrast, an increase in  $CO_2$  in the dark resulted in a decrease of the Young's modulus from 2523 MPa to 1237 MPa. Similar results were obtained with  $\sigma$  (Fig. 3B; Table 1). Mycelium of  $\Delta sc3$  grown in the dark at high  $CO_2$  had a  $\sigma$  of 15.6 MPa, while mycelium grown at low  $CO_2$  had a  $\sigma$  of 33.9 MPa. These values were 40.4 and 22.3 MPa, respectively, when mycelium was grown in the light. Elongation of  $\Delta sc3$  mycelia at breaking was not affected by the environmental conditions (Fig. 3C; Table 1), but it was higher than wild type in dark and low  $CO_2$  (1.7 vs 1.2%), light and low  $CO_2$  (1.8 vs 1.3%), and light and high  $CO_2$

(2.6 vs 1.3%). Reintroducing *sc3* in strain  $\Delta sc3$  restored E,  $\sigma$ , and elongation at breaking to wild type levels (data not shown), showing that the differences in properties between wild type and  $\Delta sc3$  is due to the absence of SC3. Interestingly, E and  $\sigma$  correlated with the density of the mycelium ( $R^2 = 0.91$  ( $p < 0.01$ ),  $R^2 = 0.83$  ( $p < 0.01$ )), respectively. This is generally observed with natural composites and polymers<sup>16</sup>. Together, both wild type and  $\Delta sc3$  mycelium behaved as rigid and brittle materials, also indicated by their typical stress strain curves (Supplementary Figure 2). Notably, E and  $\sigma$  of *S. commune* mycelium were up to 227 and 37-fold stronger when compared to *Pleurotus ostreatus* and *Ganoderma lucidum*<sup>4</sup>. However, elongation at breaking was higher for the latter species being up to 13-fold in the case of *G. lucidum*.

#### Mycelia of wild type and $\Delta sc3$ have a similar chemical composition as indicated by ATR-FTIR.

Chemical composition of the mycelia was determined with attenuated total reflectance Fourier-transform infrared spectroscopy (ATR-FTIR). Spectra of wild type and  $\Delta sc3$  were similar and also did not change with the different environmental conditions (Fig. 4; Supplementary Figure 1; Table 2; Supplementary Table S1). As expected<sup>9</sup>, signals originating from lipids and protein were low, while those of carbohydrate were high. Previously, it was shown that  $\Delta sc3$  has an increased amount of schizophyllan and a reduced amount of glucan cross-linked to chitin<sup>11</sup>. ATR-FTIR spectra indicate that the amount of glucan produced by wild type and  $\Delta sc3$  was similar but that the wild type has a higher degree of cross-linking. These results and the correlation between E and  $\sigma$  with density of the mycelium show that differences in mechanical properties between mycelia of wild type and  $\Delta sc3$  grown at different environmental conditions can be solely explained by the density of the mycelium.

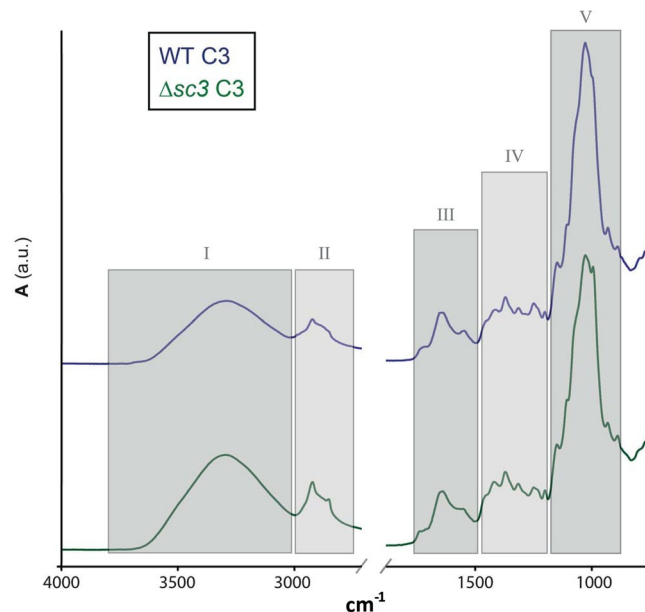


**Figure 3.** Young's modulus (A), maximum tensile strength at breaking (B), and elongation at breaking (C) of mycelia of liquid static cultures of wild type (non-shaded bars) and  $\Delta sc3$  (grey shaded bars) grown in the dark or light at high or low CO<sub>2</sub>. Different letters indicate significant differences (two-tailed independent sample *t*-test, *n* = 15, *p* < 0.05).

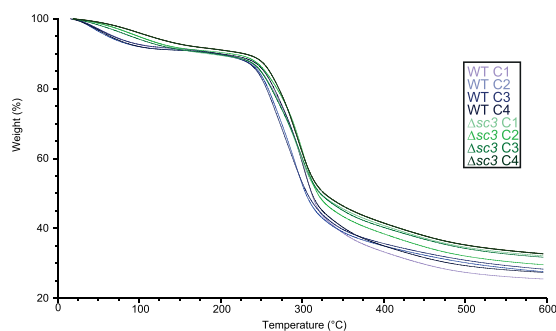
**Thermogravimetric analysis of mycelial films.** Thermogravimetric analysis revealed that thermal degradation of wild type and  $\Delta sc3$  was most pronounced between  $\pm 225$  and 300 °C (Fig. 5), being similar to *P. ostreatus* and *G. lucidum*<sup>4</sup>. Notably, weight loss at 100 °C differed between wild type and  $\Delta sc3$  irrespective of the growth conditions (7.5% vs 5.0%, respectively, *p* < 0.001, data not shown). This indicates that the absence of SC3 leads to a higher water activity. This is in line with the hydrophilicity of the mycelium of the deletion strain, which is in contrast with the hydrophobic nature of the wild-type hyphae that are in contact with air<sup>14,15</sup>.

## Conclusions

Fungal mycelium offers an attractive bio-based material because of its mechanical properties and by the fact that it grows on low quality waste streams such as straw and sawdust. We here showed that mechanical properties of mycelium of *S. commune* can be changed by adapting environmental conditions and by inactivating the *sc3* hydrophobin gene. *E* and  $\sigma$  of the deletion strain were 3–4-fold higher when compared to the wild type. Notably,



**Figure 4.** ATR-FTIR spectra of liquid static cultures of *S. commune* wild type and  $\Delta sc3$  grown in light and low  $CO_2$ . Similar absorption peaks were observed between strains, indicating that the mycelia had a similar chemical composition. Definition of wavenumber regions I-V can be found in Table 2. Spectra were obtained in quadruple.



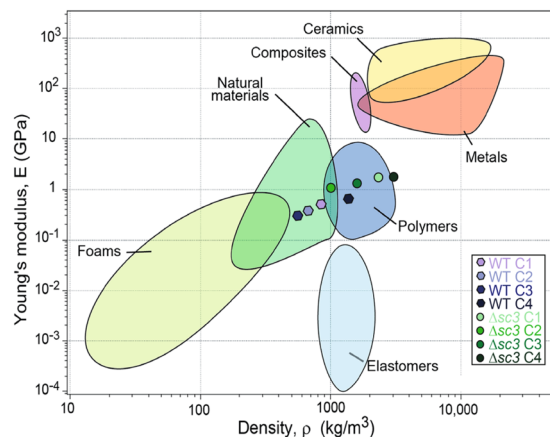
**Figure 5.** Thermogravimetric analysis of mycelia of *S. commune* wild type and  $\Delta sc3$  grown in the dark at low (C1) and high (C2)  $CO_2$  and in the light at low (C3) and high (C4)  $CO_2$ . Experiments were performed in duplicate.

Symbol	$\tilde{\nu}$ ( $cm^{-1}$ )	Macromolecule	Assignment
I	3700–2996	various	O-H, N-H
II	2996–2800	lipid	C-H
III	1800–1485	protein	Amide I + II
IV	1485–1185	Protein, lipid, phosphate compound	$CH_2$ , $CH_3$ , P=O
V	1185–900	Polysaccharide	C-O-C, C-O-P

**Table 2.** Wavenumber regions in ATR-FTIR spectral windows and their dominating chemical compounds (linked macromolecules), and functional group assignments. Adapted from Naumann<sup>21</sup>.

they were up to 227- and 37-fold higher, respectively, when compared to mycelium of *P. ostreatus* and *G. lucidum*. Yet, the latter species formed a more elastic mycelium<sup>4</sup>. Both  $CO_2$  and light affected material properties of *S. commune*. For instance, wild type mycelium showed a 1.7-fold higher E in light compared to dark when grown at high  $CO_2$ . Conversely, E was 2.1-fold higher when light-grown wild type was cultivated at low and high  $CO_2$ . Differences in E and  $\sigma$  between the different strains and culture conditions were shown to be caused by differences in density of the mycelium and not by differences in chemical composition.





**Figure 6.** Material family chart of the Young's modulus ( $E$ ) (GPa) vs density ( $\text{kg m}^{-3}$ ). Mycelium of wild type *S. commune* has properties similar to those of natural materials, while  $\Delta sc3$  mycelium behaves like polymers. Figure adapted from<sup>16</sup>.

The mechanical properties of wild type are similar to those of plant materials (e.g. wood, cork, bamboo) and animal material (leather), while those of  $\Delta sc3$  are more similar to thermoplastics (e.g. polyethylene, polypropylene, polyvinyl chloride). This is mainly caused by increased density and not by increased strength of the material (Fig. 6). The palette of fungal materials can be further diversified by treating mycelium chemically or physically.

## Methods

**Strains and culture conditions.** *S. commune* wild type strain 4–39 (CBS 341.81) and its derivative  $\Delta sc3^{17}$  were used in this study. A quarter of a 7-day-old colony grown on agar minimal medium (MM)<sup>18</sup> was homogenized in 50 ml MM for 30 s at low speed using a Waring Blender (Waring Laboratory, Torrington, England). The homogenate was grown for 24 h at 200 rpm and 30 °C, after which the culture was homogenized. Static liquid cultures were inoculated by taking up 600 mg wet weight mycelial homogenate in a volume of 6 mL MM and spreading it in a 9 cm Petri dish. Cultures were grown at 30 °C in the light (2000 Lux from 5 W LED spot lights, Calex, Rotterdam, the Netherlands) or in the dark at 400 or 70,000 ppm  $\text{CO}_2$ . After 3 days, 30 mL MM was applied underneath the mycelial mat<sup>19</sup> and growth was prolonged for 5 days at 30 °C.

**Complementation of the  $\Delta sc3$  strain.** The coding sequence of *sc3* with 995 bp upstream and 301 bp downstream flanking sequences was amplified by PCR using High-Fidelity Phusion polymerase (NEB, Ipswich, USA). The PCR fragment was cloned into plasmid pUC20Nour that consists of a nourseothricin resistance cassette in a pUC20 backbone<sup>20</sup>. The resulting vector pUC20sc3Nour was introduced into  $\Delta sc3$  as described<sup>20</sup>. A first selection was performed using  $8 \mu\text{g mL}^{-1}$  nourseothricin (Jena Biosciences, Jena, Germany) and  $500 \mu\text{g mL}^{-1}$  caffeine (Sigma, St Louis, MO, USA). Nourseothricin resistant colonies were transferred to a 2<sup>nd</sup> selection plate containing  $20 \mu\text{g mL}^{-1}$  nourseothricin. Colonies were screened by immunodetection using SC3-antiserum<sup>15</sup>. To this end, transformants were grown for 3 days at 30 °C on perforated polycarbonate (PC) membranes (Maine Manufacturing, Sanford, ME, USA; pore size  $0.1 \mu\text{m}$ ) on MM agar. The colonies with the underlying PC membrane were transferred for 1 h to a fresh MM agar plate on which a PVDF membrane was placed. Immunodetection of SC3 on the PVDF membranes was performed as described<sup>15</sup>.

**Tensile measurements.** Mycelium of two liquid static cultures was dried on top of each other at room temperature. Thickness of the mycelium was measured by a high accuracy length gauge (Heidenhain MT1281, Traunreut, Germany). Tensile measurements of 3 mycelium rectangular specimen ( $18 \times 4 \text{ mm}$ ) of 5 biological replicas were performed using the Dynamic Mechanical Analyzer Q800 (TA Instruments, New Castle, DE, USA) equipped with an 18 N capacity load cell. The Young's modulus ( $E$ ) was obtained by taking the stress/strain slope in the 0.10% to 0.15% strain range. The maximum strength ( $\sigma$ ) was obtained from force per unit area, while elongation at breaking point ( $\epsilon$ ) was obtained by determining the strain (in mm) at the moment of breaking.

**Thermogravimetric analysis.** Thermogravimetric analysis was performed with a TGA Q50 (TA Instruments, New Castle, DE, USA). Measurements were performed with 25–30 mg of mycelium in a platinum pan under a constant flow of nitrogen gas ( $60 \text{ mL min}^{-1}$ ). Temperature increased from 20 to 600 °C with a rate of  $10 \text{ °C min}^{-1}$ . Each experiment was performed using biological duplicates.

**Chemical analysis of mycelial films with ATR-FTIR spectroscopy.** Spectra of mycelia were recorded using a PerkinElmer ATR-FTIR spectrometer with a diamond/ZnSe crystal (PerkinElmer, Waltham, MA, USA). Each spectrum was measured between  $4000 \text{ cm}^{-1}$  to  $650 \text{ cm}^{-1}$  and compiled from 10 accumulated scans. Four samples were measured per strain per growth condition. Mycelium was placed with their bottom side facing the crystal.

**Scanning Electron microscopy.** Mycelium of two liquid static cultures was dried on top of each other at room temperature. Small rectangles (3 × 3 mm) were cut with a scalpel and attached with a 2 mm piece of Scotch tape in a 1 cm ø copper cup. After snap-freezing with liquid nitrogen, samples were transferred to a JEOL 5600 LV scanning electron microscope (JEOL, Tokyo, Japan) by the use of an Oxford CT1500 Cryostation. Ice was removed from the sample by sublimation at −85 °C. Gold was sputter coated for 2 min, after which micrographs were acquired at an acceleration voltage of 5 kV.

**Statistical analysis.** Statistical analysis was performed with the software package IBM SPSS statistics 22.0 (IBM Corporation, Armonk, New York) using two-tailed independent-samples *t*-Tests and Pearson correlation analysis ( $p \leq 0.05$ ).

## References

1. Averous, L., Moro, L., Dole, P. & Fringant, C. Properties of thermoplastic blends: starch–polycaprolactone. *Polymer* **41**, 4157–4167 (2000).
2. Babu, R. P., O'connor, K. & Seeram, R. Current progress on bio-based polymers and their future trends. *Prog. Biomater.* **2**, 8 (2013).
3. Holt, G. A. *et al.* Fungal mycelium and cotton plant materials in the manufacture of biodegradable molded packaging material: Evaluation study of select blends of cotton byproducts. *J. Biobased Mater. Bioenerg.* **6**, 431–439 (2012).
4. Haneef, M. *et al.* Advanced Materials From Fungal Mycelium: Fabrication and Tuning of Physical Properties. *Sci. Rep.* **7**, 41292 (2017).
5. Islam, M. R., Tudryn, G., Bucinell, R., Schadler, L. & Picu, R. C. Morphology and mechanics of fungal mycelium. *Sci. Rep.* **7**, 13070 (2017).
6. Yang, Z., Zhang, F., Still, B., White, M. & Amstislavski, P. Physical and Mechanical Properties of Fungal Mycelium-Based Biofoam. *J. Mater. Civ. Eng.* **29**, 04017030 (2017).
7. Ferguson, B. A., Dreisbach, T. A., Parks, C. G., Filip, G. M. & Schmitt, C. L. Coarse-scale population structure of pathogenic *Armillaria* species in a mixed-conifer forest in the Blue Mountains of northeast Oregon. *Can. J. For. Res.* **33**, 612–623 (2003).
8. Ohm, R. A. *et al.* Genome sequence of the model mushroom *Schizophyllum commune*. *Nat. Biotechnol.* **28**, 957–963 (2010).
9. Sietsma, J. H. & Wessels, J. G. H. Chemical analysis of the hyphal wall of *Schizophyllum commune*. *Biochim. Biophys. Acta* **496**, 225–239 (1977).
10. Sietsma, J. H. & Wessels, J. G. H. Solubility of (1–3)- $\beta$ -D/(1–6)- $\beta$ -D-glucan in fungal walls: Importance of presumed linkage between glucan and chitin. *J. Gen. Microbiol.* **125**, 209–212 (1981).
11. van Wetter, M. A., Wösten, H. A. B., Sietsma, J. H. & Wessels, J. G. H. Hydrophobin gene expression affects hyphal wall composition in *Schizophyllum commune*. *Fungal Genet. Biol.* **31**, 99–104 (2000).
12. Wösten, H. A. B., Schuren, F. H. J. & Wessels, J. G. H. Interfacial self-assembly of a hydrophobin into an amphipathic protein membrane mediates fungal attachment to hydrophobic surfaces. *EMBO J.* **13**, 5848–5854 (1994).
13. Wösten, H. A. B. *et al.* How a fungus escapes the water to grow into the air. *Curr. Biol.* **9**, 85–88 (1999).
14. Wösten, H. A. B., de Vries, O. M. H. & Wessels, J. G. H. Interfacial self-assembly of a fungal hydrophobin into a hydrophobic rodlet layer. *Plant Cell* **5**, 1567–1574 (1993).
15. Wösten, H. A. B., Asgeirsdóttir, S. A., Krook, J. H., Drenth, J. H. & Wessels, J. G. H. The fungal hydrophobin Sc3p self-assembles at the surface of aerial hyphae as a protein membrane constituting the hydrophobic rodlet layer. *Eur. J. Cell Biol.* **63**, 122–129 (1994).
16. Ashby, M.F. *Materials selection in mechanical design* (3<sup>rd</sup> ed). Elsevier Butterworth-Heinemann, Burlington, MA (2005).
17. van Wetter, M. A., Schuren, F. H. J., Schuurs, T. A. & Wessels, J. G. H. Targeted mutation of the SC3 hydrophobin gene of *Schizophyllum commune* affects formation of aerial hyphae. *FEMS Microbiol. Lett.* **140**, 265–269 (1996).
18. Dons, J. J., de Vries, O. M. H. & Wessels, J. G. H. Characterization of the genome of the basidiomycete *Schizophyllum commune*. *Biochim. Biophys. Acta* **563**, 100–112 (1979).
19. Lugones, L. G. *et al.* The SC15 protein of *Schizophyllum commune* mediates formation of aerial hyphae and attachment in the absence of the SC3 hydrophobin. *Mol. Microbiol.* **53**, 707–716 (2004).
20. van Peer, A. F., de Bekker, C., Vinck, A., Wösten, H. A. B. & Lugones, L. G. Phleomycin increases transformation efficiency and promotes single integrations in *Schizophyllum commune*. *Appl. Environ. Microbiol.* **75**, 1243–1247 (2009).
21. Naumann, A. A novel procedure for strain classification of fungal mycelium by cluster and artificial neural network analysis of Fourier transformed infrared (FTIR) spectra. *Analyst* **134**, 1215–1223 (2009).

## Acknowledgements

This work is part of the research program Creative Industry, which is financed by the Netherlands Organization for Scientific Research (NWO).

## Author Contributions

C.E.L., J.D., P.K. and F.V.W.A. performed the experiments. P.K., F.V.W.A., J.D., K.M.B.J. and H.A.B.W. designed the experiments, interpreted results, and wrote the manuscript.

## Additional Information

**Supplementary information** accompanies this paper at <https://doi.org/10.1038/s41598-018-23171-2>.

**Competing Interests:** The authors declare competing interests. Utrecht University collaborates with the company Mogu.

**Publisher's note:** Springer Nature remains neutral with regard to jurisdictional claims in published maps and institutional affiliations.



**Open Access** This article is licensed under a Creative Commons Attribution 4.0 International License, which permits use, sharing, adaptation, distribution and reproduction in any medium or format, as long as you give appropriate credit to the original author(s) and the source, provide a link to the Creative Commons license, and indicate if changes were made. The images or other third party material in this article are included in the article's Creative Commons license, unless indicated otherwise in a credit line to the material. If material is not included in the article's Creative Commons license and your intended use is not permitted by statutory regulation or exceeds the permitted use, you will need to obtain permission directly from the copyright holder. To view a copy of this license, visit <http://creativecommons.org/licenses/by/4.0/>.

© The Author(s) 2018