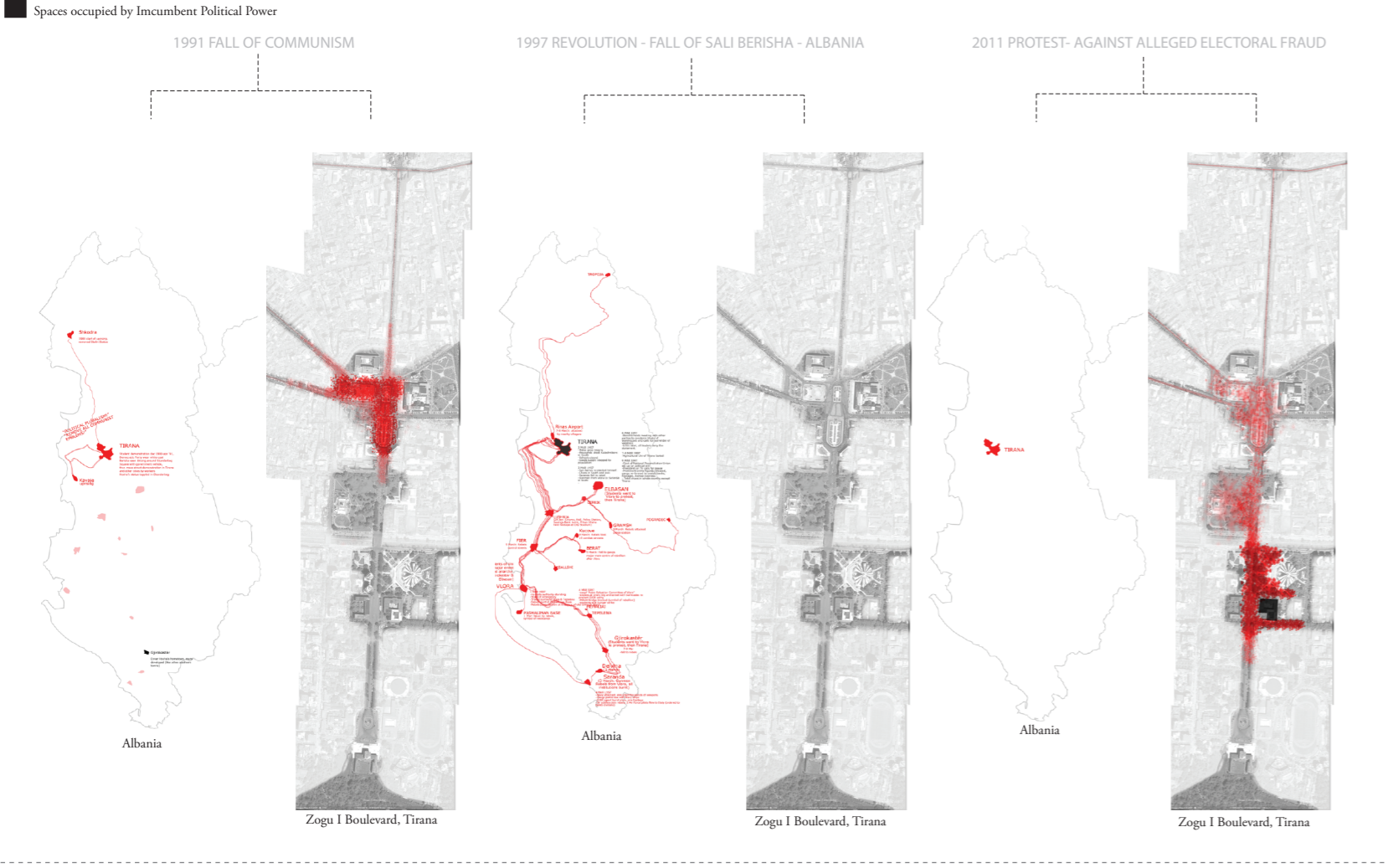


A. RESEARCH / RECENT CIVIL RESISTANCES IN ALBANIA



**1991 FALL OF COMMUNISM - ALBANIA**

1991 - Act of occupying the plaza and taking down Statue of Communist Leader Enver Hoxha as an emblematic act of victory against an era of political terror. Albanians from different regions of opposition traveled to Tirana to reoccupy the streets that once belonged to them.

"In the perception of opposition advocates, Albania remained a country during most of the communist period, a little town and isolated state, cut off from the outside world by political, social and geographical conditions."

"On 20 March in Skenderbeg Square the Democratic Party held a huge rally as the climax of its election campaign. It looks like a crowd estimated at 100,000 urging them to unite for real democracy."

"The state has been stealing from us for 45 years. Now it's our turn to steal it all back from the state."

**1997 REVOLUTION - FALL OF SALLBERSHA - ALBANIA**

1997 - Incumbent government undermined the importance of keeping Tirana out of chaos during the anarchy. The protection of the capital is both physical and ideological.

"International community rejected the objective difficulties facing the country and instead put forward a perspective of capitalist modernization, where a market economy & institutions could be built by neglect of real problems."

"In the perception of foreigners, all this was subsumed under the banner of 'anarchy', whereas in fact the main issue was the need to establish a democratic stage in the country. Leaders of opposition formed under communism the 'strong', with an emphasis on respect for popular empowerment, & the 'weakness' of the government by President Berisha & his government."

"New foreigners realized, either the degree of reversal of an extreme nationalist ideology from the right, or the national consequences, & it took little for the result against the excessive & corruption of previous bank operators to become a result of rebels against the practice of corruption."

"The main issue of opposition activists & protest leaders was if they would remain free at all: if they would get a free lunch from 'opposition'."

"Albanians need not be instructed on popular community defence; it has been rinned into them during fourty period (civilian military education)."

**PROTEST AGAINST ALLEGED ELECTORAL FRAUD - TIRANA**

2011 - Citizens react to power establishments accordingly. The fall of a statue marks the end of an era in the past. Recent protest gather around the cabinet office in the boulevard of Tirana instead. New media is used more than before. Diversification of civil resistances both in the real and virtual realm created another complexity in the relationship between resistance and space.

C. VIDEO MAPPING // RESISTANCE TIRANA - SELF EXPRESSION, APPROPRIATION, OCCUPATION

video mapping A: passive to active resistances in the axis of TIRANA #01\_self-expression  
video mapping A: passive to active resistances in the axis of TIRANA #02\_appropriation  
video mapping A: passive to active resistances in the axis of TIRANA #03\_occupation

#01\_self-expression\_Tirana\_41:19:52:79,19:49:04:78  
#02\_appropriation\_Tirana\_41:19:52:79,19:49:04:78  
#03\_occupation\_Tirana\_41:20:12:79,19:49:53:78

B. SITE RESEARCH

**(NAVIGATION & INVENTORY) route A: take video by car along boulevard (power)**  
**route B: take stills off the boulevard (resistance)**

**QUESTIONS ON-SITE**

- What are the civil resistances observed on-site?
- What are the power structures that causes resistances?
- How do these resistances impact the urban space?
- Which method of navigation, inventory and mapping fits this topic?

**Mode of Mapping**

Video  
Why?  
then the mode of mapping plays an important role as well.

The time-based medium is apt in showing a time-based interpretation: conditions from passive to active everyday resistance.

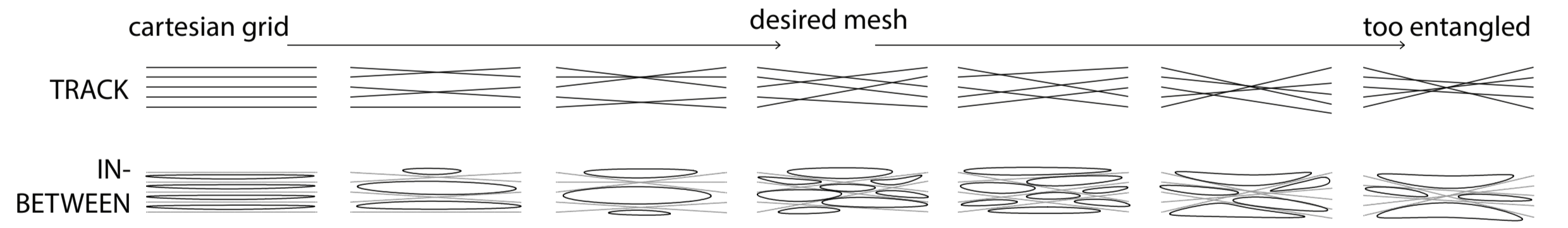
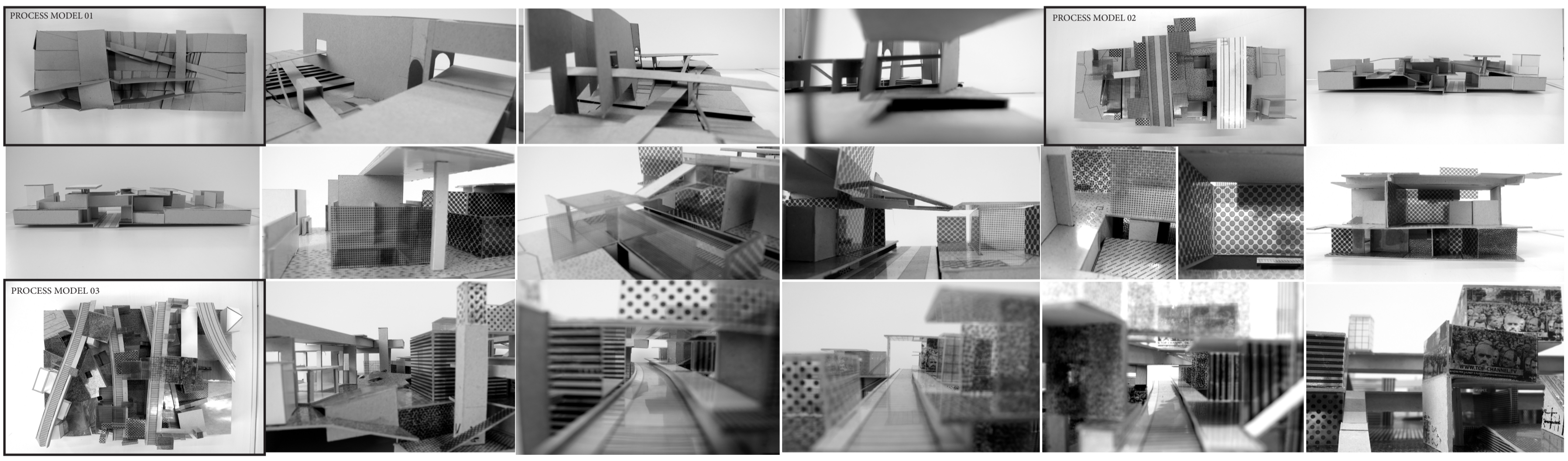
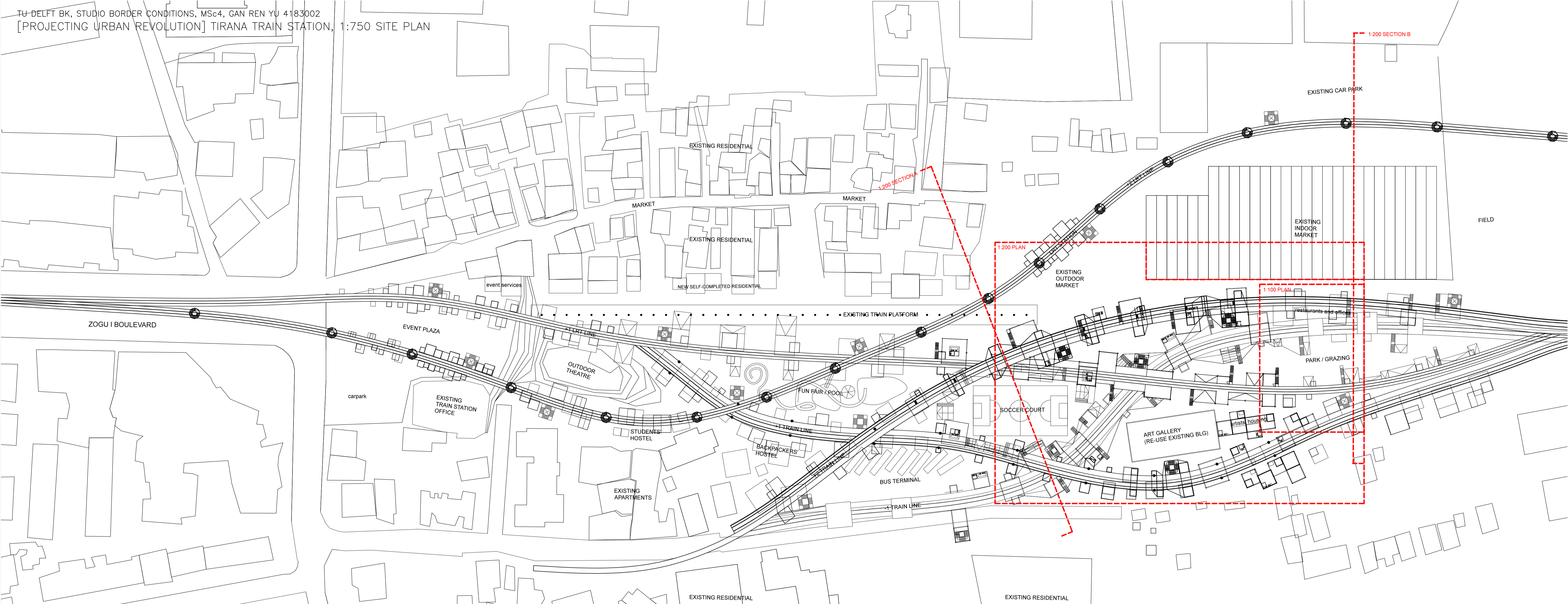
**SELF-EXPRESSION**  
Virtual world consensus on social networks  
Community Conversation  
Business strategies & tactics  
gathering intelligence by spying  
influence through conversations in social settings  
personal ideological connections to reject the system  
read or act in real space  
social news website  
the protest broadcasting on social websites  
set up online shop

**APPROPRIATION**  
graffiti  
public spaces  
painting bright colours on communist buildings  
mural in public  
painting bright colours on concrete  
temporarily fences & boundaries  
honouring the dead / mock funeral  
burning  
open letter of opposition  
print media reports  
prisoners feed  
cycling without cycling tracks

**OCCUPATION**  
appropriating urban furniture to sell fruit, vegetables, toys, magazines  
sitting on the ground  
homeless sleeping in the parks  
main physical interventions in the public space  
self-made benches on public land  
protest camp  
operating at communal area (parking)  
constructing without license on public land

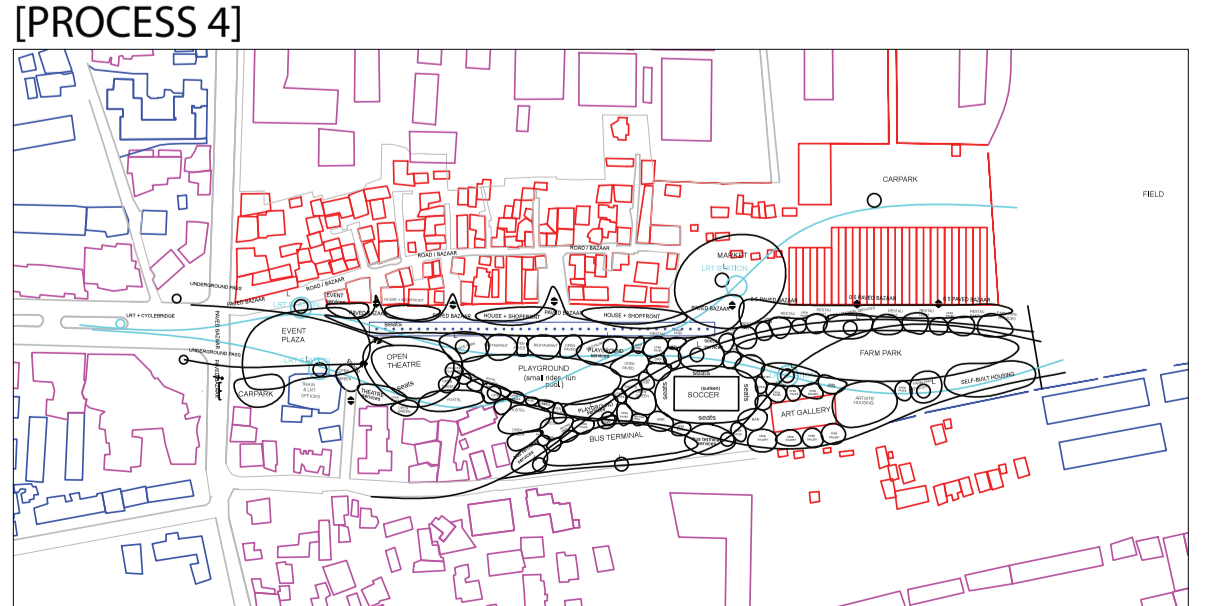
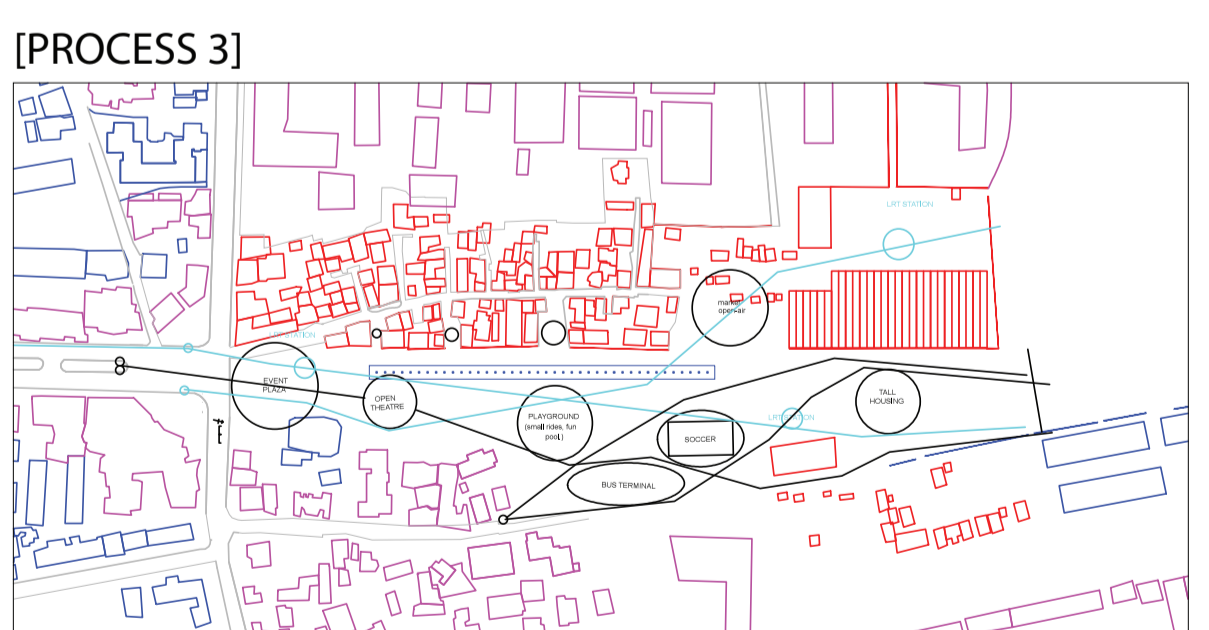
abstracted mapping C: passive to active resistances in the axis of TIRANA #01+#02+#03

part of abstracted mapping C: passive to active resistances in the axis of TIRANA #01+#02+#03



**[PROJECTING URBAN REVOLUTION] The Accumulation of Resistances @ Tirana V.4**

Programs	Power (AS2)	Resistance (BREK)	Social (Media) Tools	Architectural Tools
<b>Train station</b> (existing, temporary, permanent) 1. 4x20m platform 2. Ticket machines 3. Baggage trolleys 4. Visual information content*	Efficiency Landmark City Image	Slowing down Multiplicity People's Image	Personalisation Mark-up Arbitrarily constructed typological content according to personalised experience or desire?	Arbitrary circulation 1. Multiple choices of routes to take for users 2. Breaking linearity of axis 3. Breaking single viewpoint of axis 4. Spatial tactics against anti-resistances 5. Age-oriented spaces 6. Surface-oriented spaces 7. Break away from simple axial and scalar orientation
<b>Track / Platform</b>	Mono-functional	Multi-functional		
<b>LRT station</b> (new, everyday, permanent)	Train + shops = train station (unoccupied during off-peak or mid-peak; dispensing spaces to be closed off)	Add housing (24hr program) Add night life (theatre performances, restaurants, bars)	Physical participation	Choice of program
<b>Informal activities</b> (existing, everyday)	Corporate Businesses	Micro Businesses	Archive	Spatial Connection to Bazaar Retain existing train station as spatial connection of past power Interface Extend spaces for informal activities as interface between existing and new.
<b>Art Spaces</b> (new, everyday, permanent)	Rental, production costs and livelihood issues for artists	Classification of identities of people with scale of spaces they live in, wealth, class, etc.	Classification of identities	Choice of program
<b>Artists' Co-operative:</b> Live & work in territory	Lower costs: Merge circulation with exhibition. Go digital / mobile / display at facade / entry fees for some performances	Virtual world evaluation of online news done by various sources of news stations	Virtualisation of Moral Sphere	Choice of program
<b>Physical / Virtual participation</b>	Habitats Identification of scale for different systems in residential or industrial	Wall / Surface as key description of territory	Virtualisation of Moral Sphere	Choice of program
<b>Choice of program</b>	Gallery spaces integrated with circulation for travellers and residents.	Wall / Surface as key description of territory	Virtualisation of Moral Sphere	Choice of program
<b>QR Code</b>	code sufficient.	Start-up include rental space costs	Start-up and expand business online	Scale of shop is not equivalent to type or quantity of objects sold. Flattening of shop front with QR
<b>New Media Programs:</b> Cyberactivation (new, everyday, permanent, virtual)	Marginalisation of non-capitalists	News incorporating viewers' reactions	Start-up and expand business online	Choice of program
<b>New Media Programs:</b> Social News Website Company (new, everyday)	Government Internet Censorship / Firewall Arrestment of hackers	News incorporating viewers' reactions	Start-up and expand business online	Choice of program
<b>New Media Programs:</b> Online Shops (new, everyday)	Internet Censorship Circumvention	News incorporating viewers' reactions	Start-up and expand business online	Choice of program
<b>New Media Programs:</b> Online Shops (new, everyday)	Internet Censorship Circumvention	News incorporating viewers' reactions	Start-up and expand business online	Choice of program
<b>New Media Programs:</b> Online Shops (new, everyday)	Internet Censorship Circumvention	News incorporating viewers' reactions	Start-up and expand business online	Choice of program



NEW POWER OLD POWER EXISTING RESISTANCE INTERVENTION

\* **Avatar** - A content module contains multiple types of media drawn from pre-existing content to create a new work. Digital reshapes data (individuals or businesses) to create new pieces of content by combining multiple online content sources. The most characteristics of reshaping are construction, manipulation, and aggregation. It is important to note existing data (news articles, for personal and professional use).  
 \*\* **Avatar** - A template is an address or URL of a particular post within a blog or website.  
 \*\*\* **Avatar** - A content module contains multiple types of media drawn from pre-existing content to create a new work. Digital reshapes data (individuals or businesses) to create new pieces of content by combining multiple online content sources. The most characteristics of reshaping are construction, manipulation, and aggregation. It is important to note existing data (news articles, for personal and professional use).  
 \*\*\*\* **Avatar** - A template is an address or URL of a particular post within a blog or website.

# BACKPACKER

gan ren yu  
GROUND PLAN 1:200  
N

...walked down the bazaar and found the open market and some restaurants, had

# house-owner

...decides to make some extra cash by setting up stalls on Sunday at her house. She likes to walk to the park and chat to the shop-owners nearby.

# PERSON ON DAY-OFF

...who lives in the city centre comes here by LRT, saw the media gallery, went down to the soccer field to meet his friends for a match. Went to the bar after the match and took a bus home at night.

# bus driver

...is tired after a long drive from Skopje. He bought some drinks from the shops, took a short nap at the soccer park before going down the basement track.

# gallery visitor

...who lives in the periphery took the LRT to the bazaar, did some shopping at the street market before walking towards the park. She saw a barter market at the event space and stayed for a while. Then heads towards the bus public galleries below the train track before going to the biggest mall. Meets a friend for dinner, then took

# graffiti artist

... has been eyeing the many blank walls at the train platforms. He preferred places where his work can be seen, especially from the CCTV.



# STUDENT

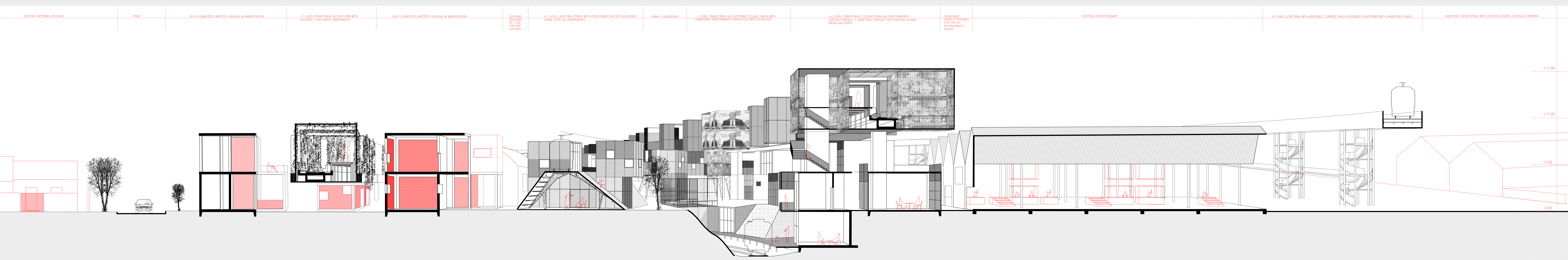
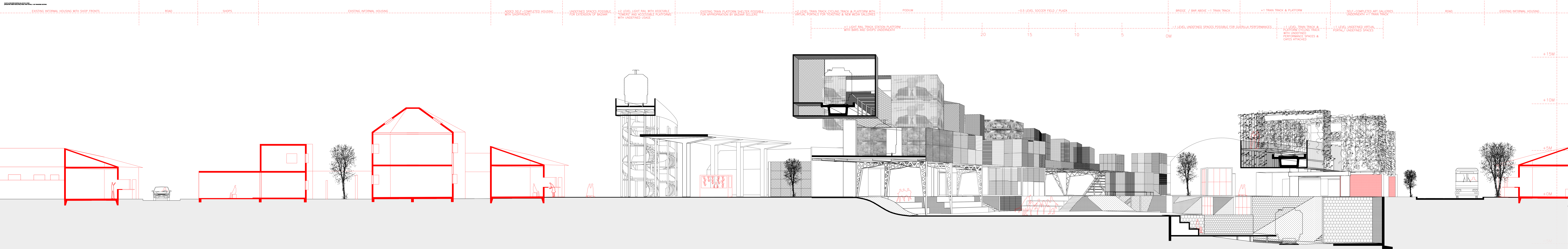
...who lives in the periphery cycles through this underground train platform daily to get to the university at the other end of the boulevard. It ramps up to the ground level at the end of the train platform.

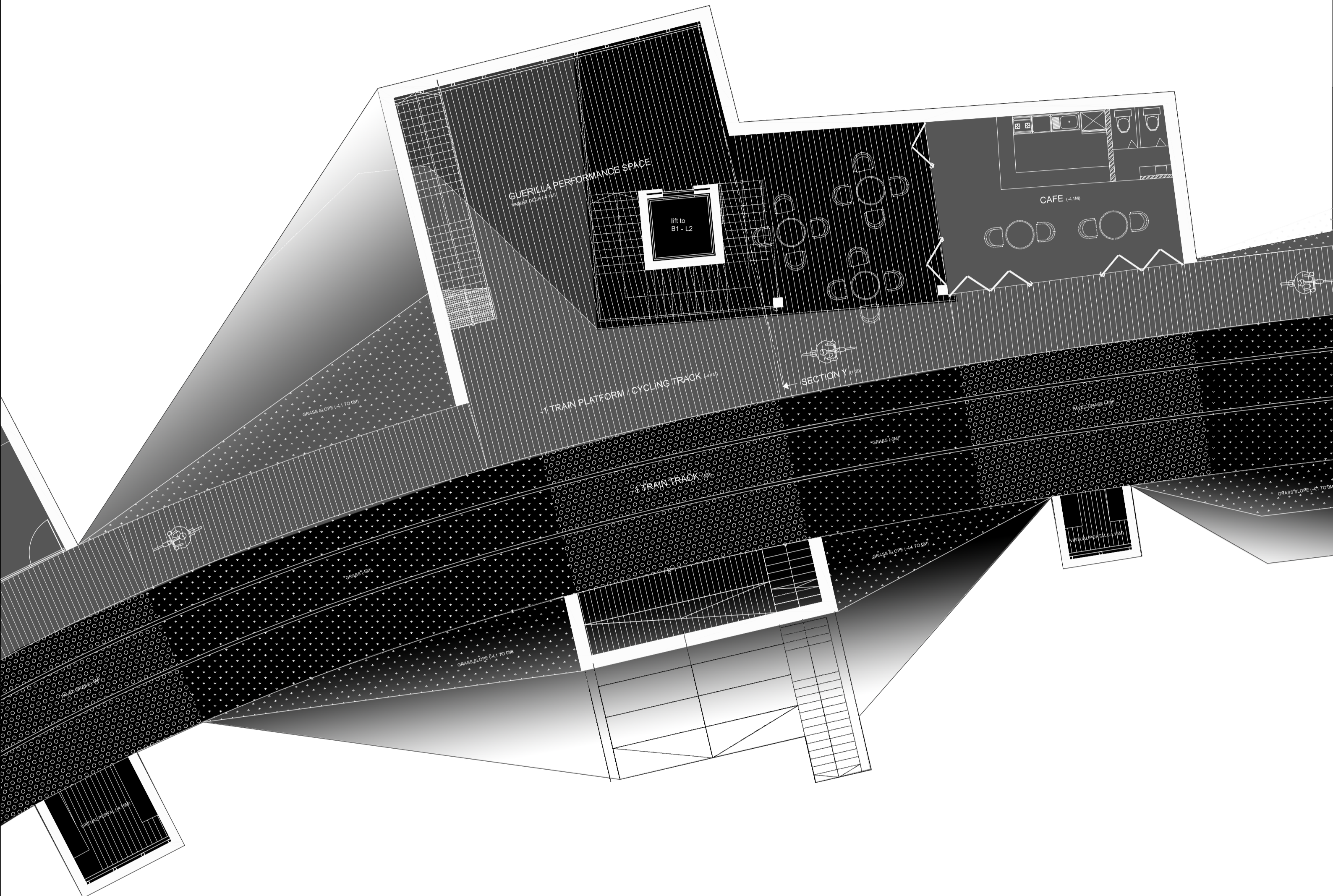
# ARTIST

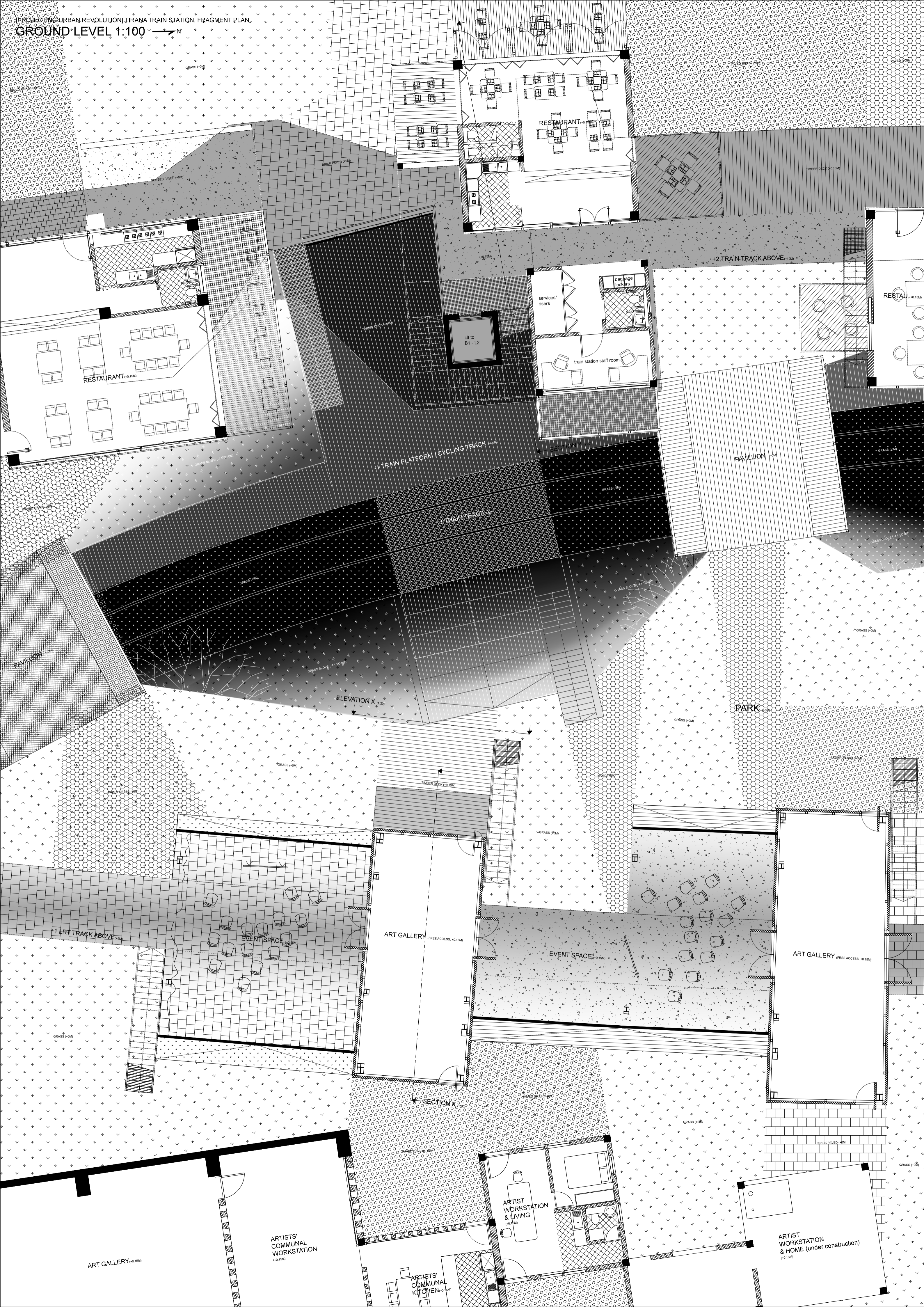
works at home and communal work space in the gallery. He controlled through the open markets, stopped at the bar for a drink with a friend before going up to the LRT platform. The LRT brings him away from the city centre to get some materials.

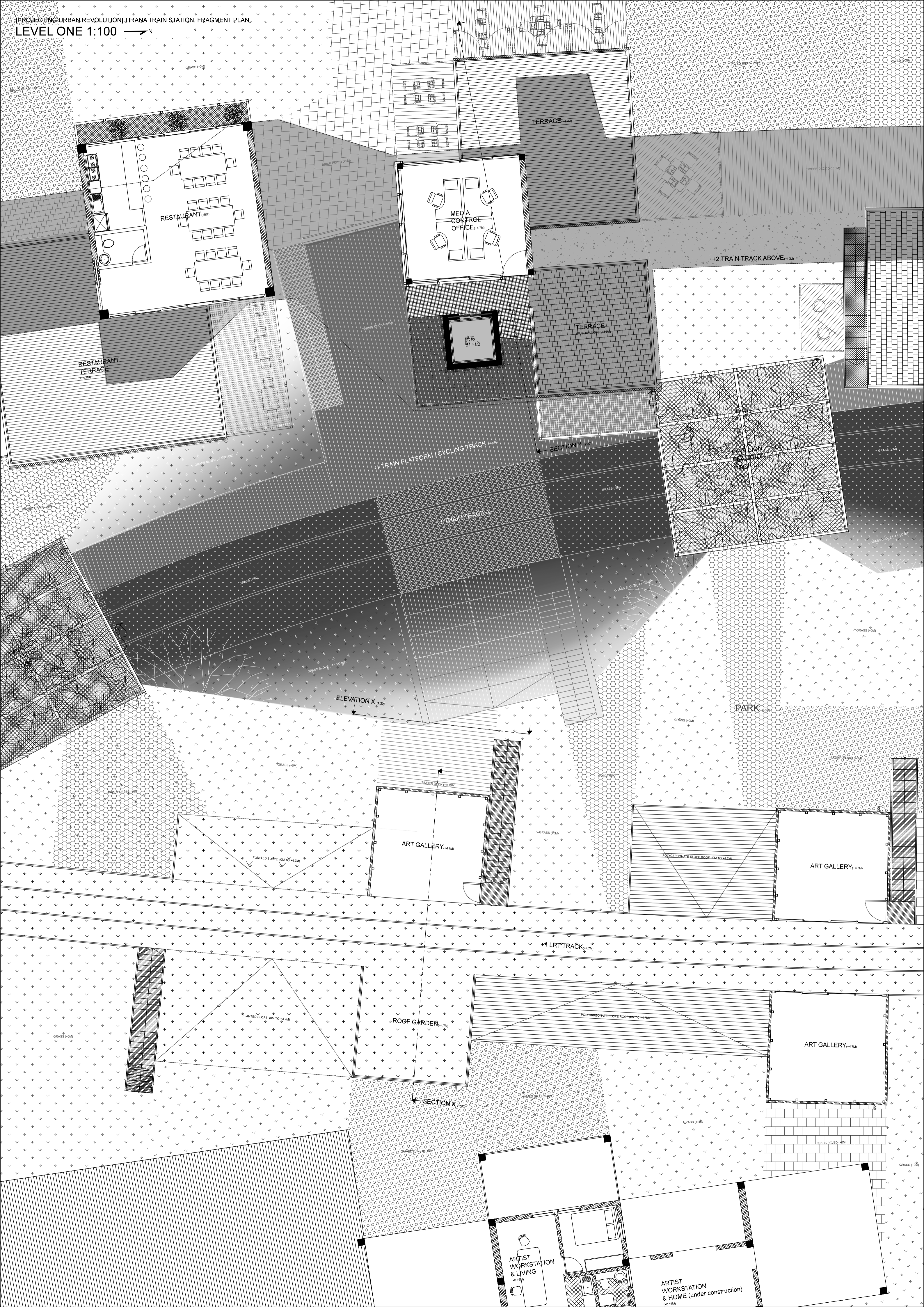
# TOURIST

took a train from Vjosa to Tirana. He navigated his way being the virtual portals and media gallery porches. Arrived by the market street to some empty stalls and before heading to a hotel via the boulevard towards the centre.









RESTAURANT (+0.0)

MEDIA CONTROL OFFICE (+4.7M)

TERRACE (+4.2M)

RESTAURANT TERRACE (+4.7M)

TERRACE (+4.2M)

+2 TRAIN TRACK ABOVE (+1.2M)

STAIR B1-L2

-1 TRAIN PLATFORM / CYCLING TRACK (+4.0M)

SECTION Y (+4.0)

-1 TRAIN TRACK (+4.0M)

ELEVATION X (+1.20)

PARK (+0.0)

ART GALLERY (+4.7M)

ART GALLERY (+4.7M)

+1 LRT TRACK (+4.7M)

ROOF GARDEN (+4.7M)

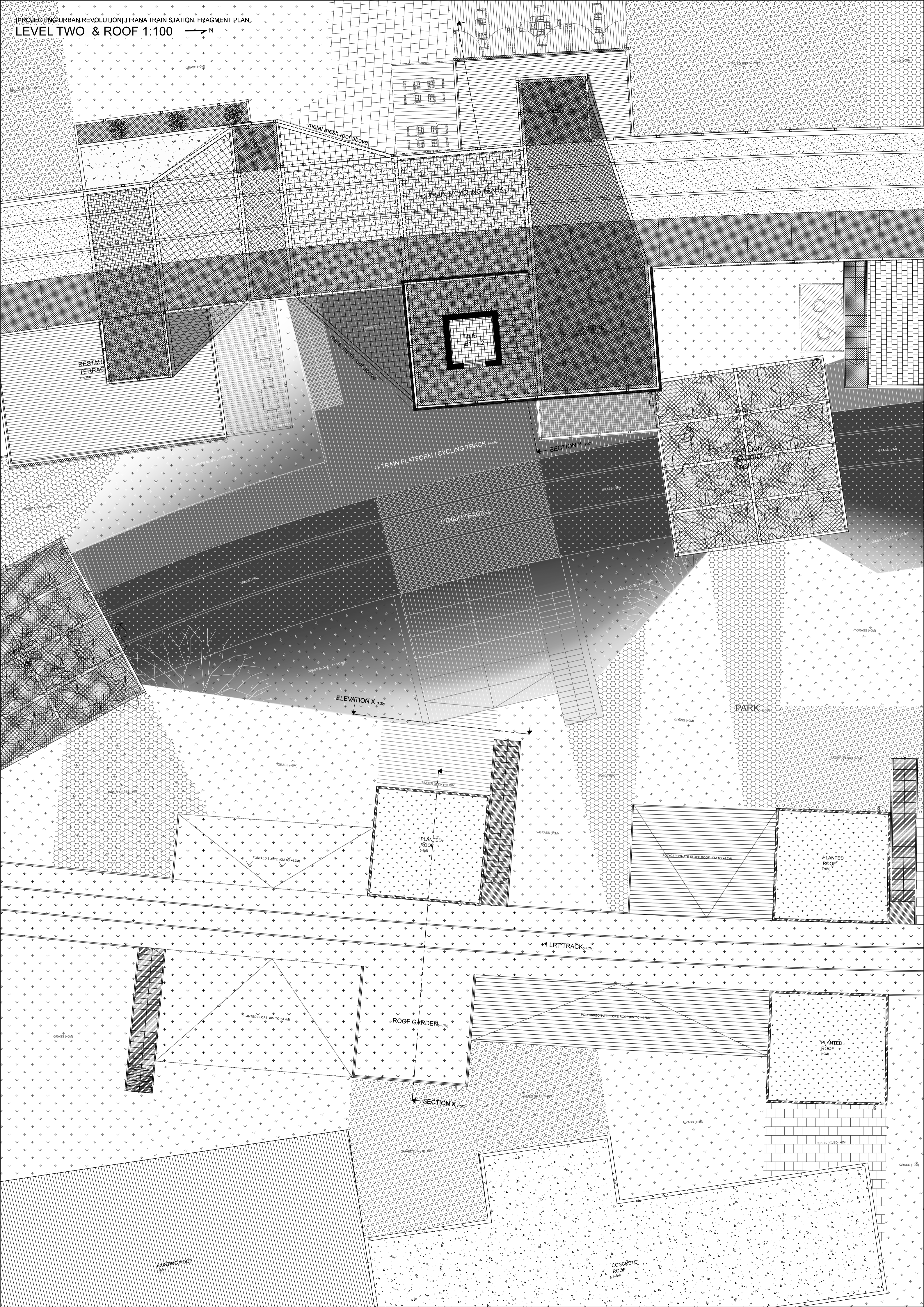
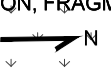
ART GALLERY (+4.7M)

SECTION X (+1.20)

ARTIST WORKSTATION & LIVING (+0.15M)

ARTIST WORKSTATION & HOME (under construction) (+0.15M)

[PROJECTING URBAN REVOLUTION] TIRANA TRAIN STATION, FRAGMENT PLAN,  
LEVEL TWO & ROOF 1:100



RESTAURANT TERRACE

metal mesh roof above

2 TRAIN & CYCLING TRACK

IRIG B L2

PLATFORM

metal mesh roof above

1 TRAIN PLATFORM / CYCLING TRACK

SECTION Y

1 TRAIN TRACK

ELEVATION X

PARK

TIMBER DECK

PLANTED ROOF

POLYCARBONATE SLOPE ROOF

PLANTED ROOF

1 LR TRACK

ROOF GARDEN

POLYCARBONATE SLOPE ROOF

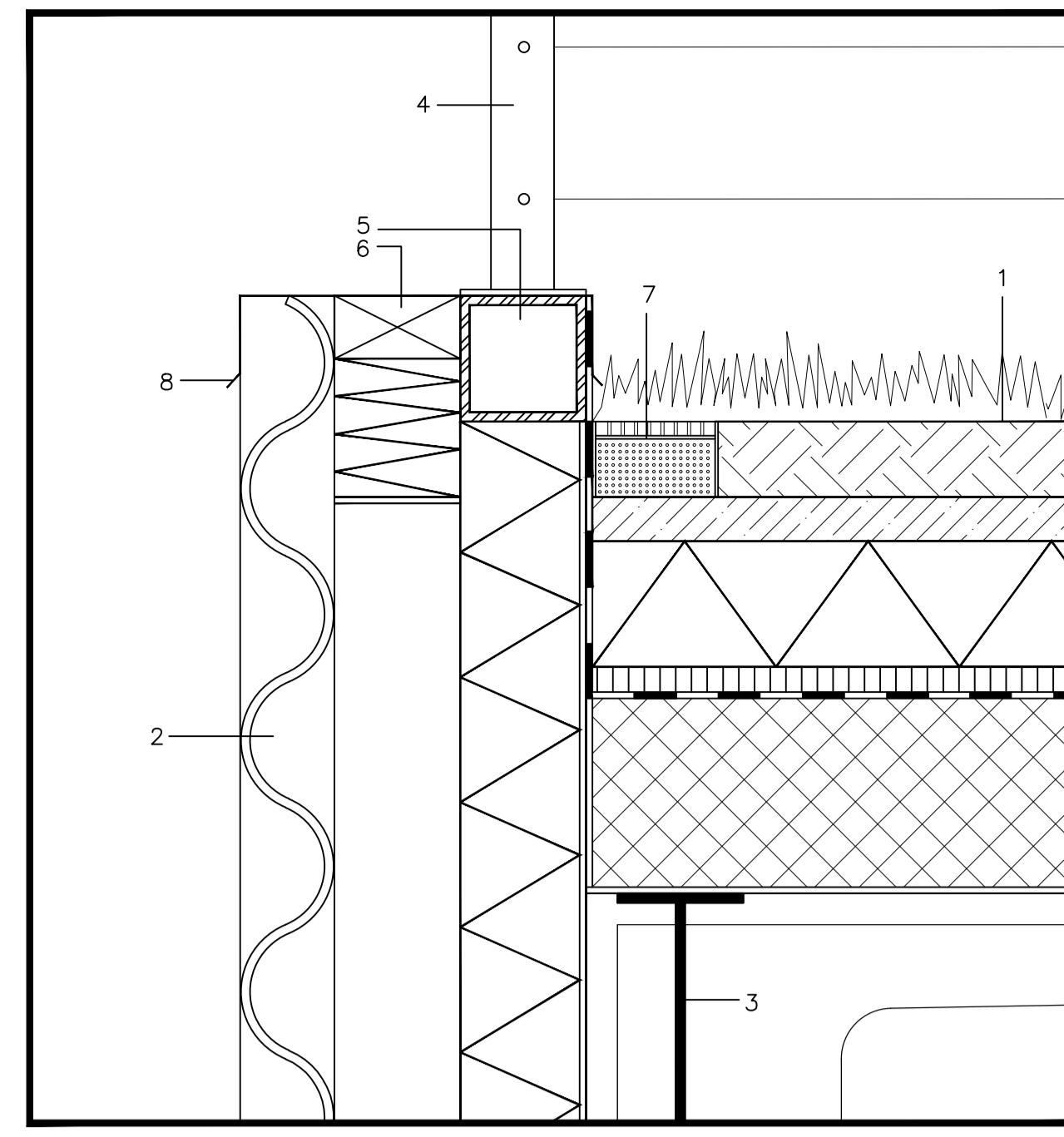
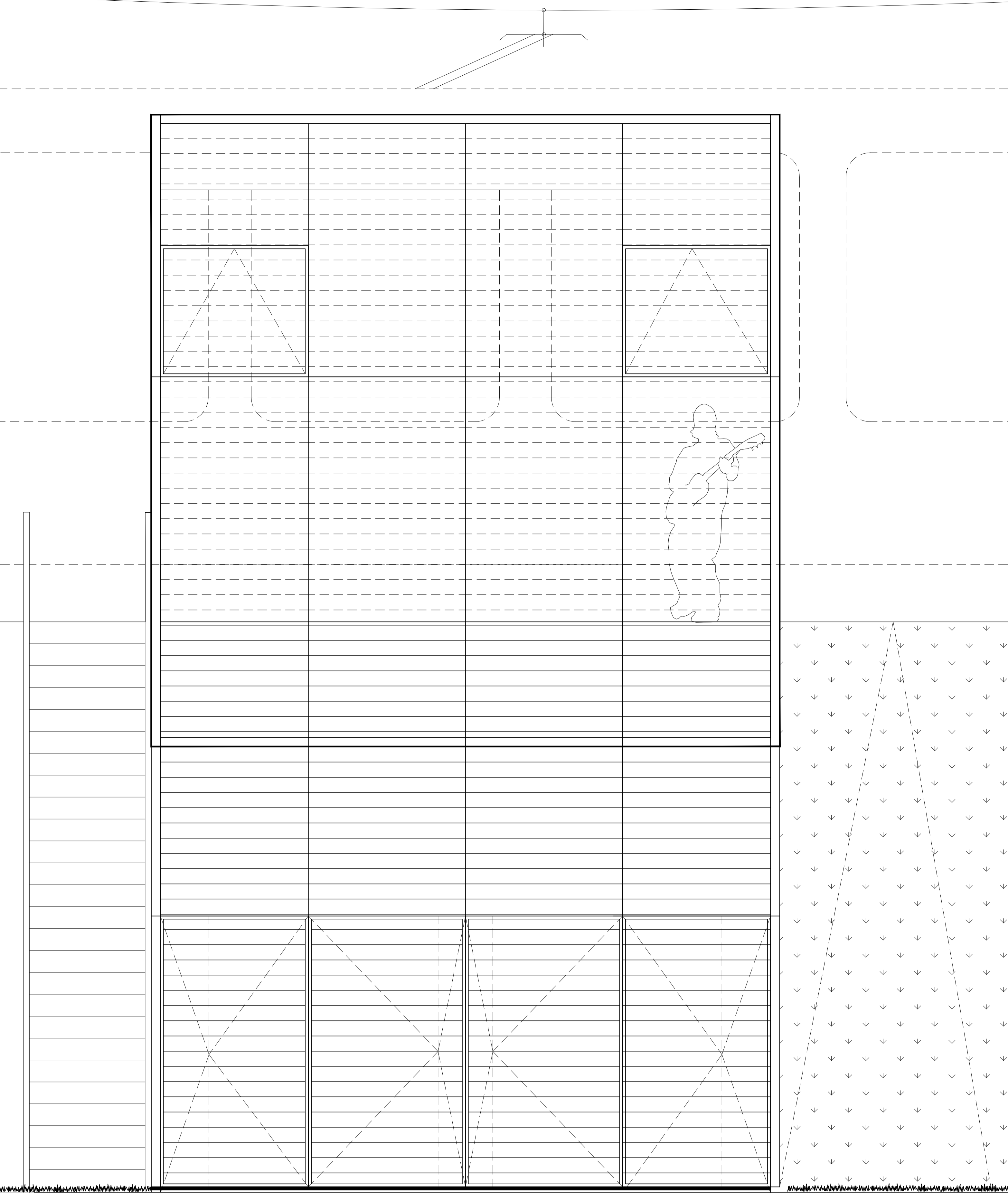
PLANTED ROOF

SECTION X

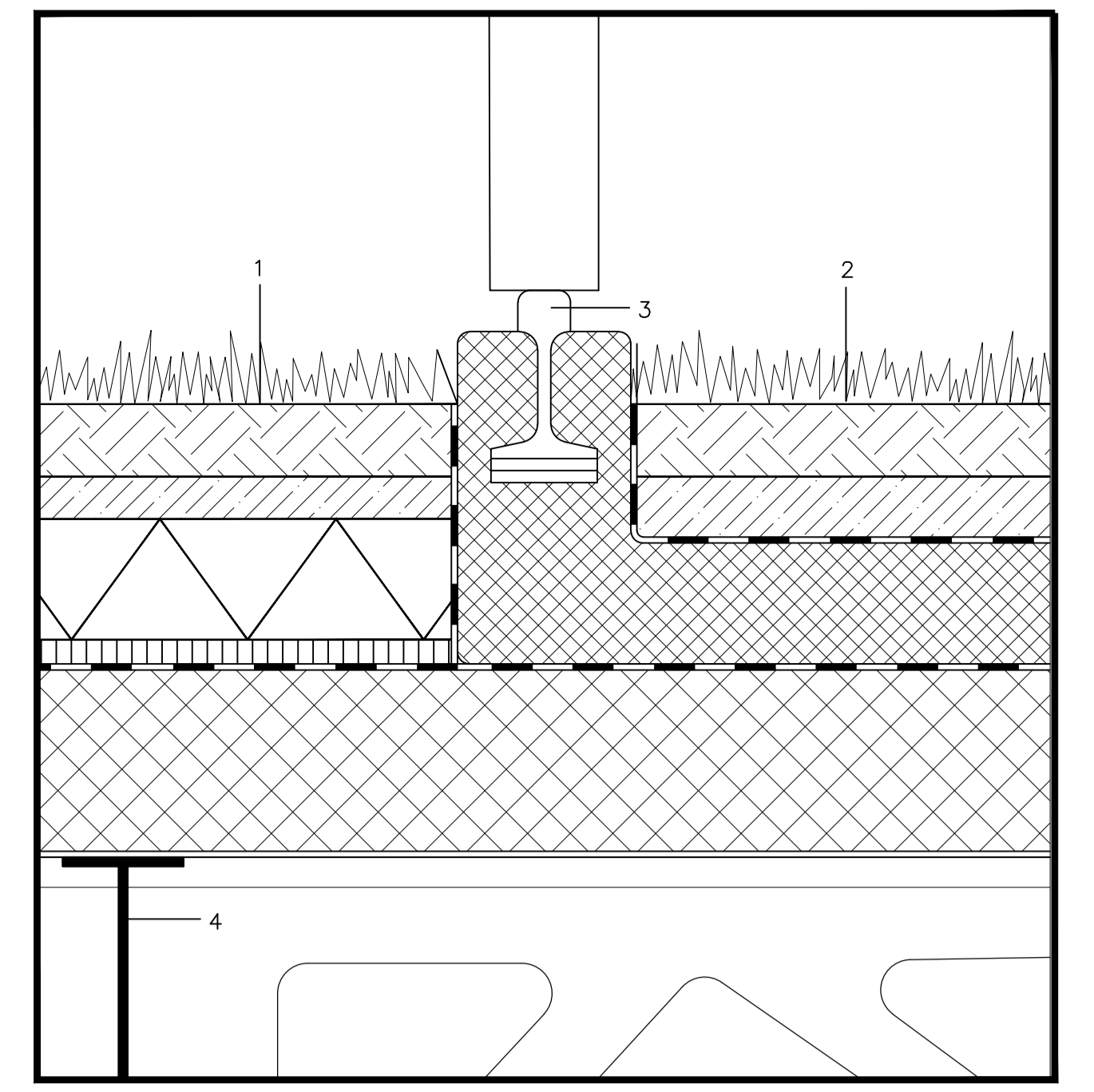
EXISTING ROOF

CONCRETE ROOF

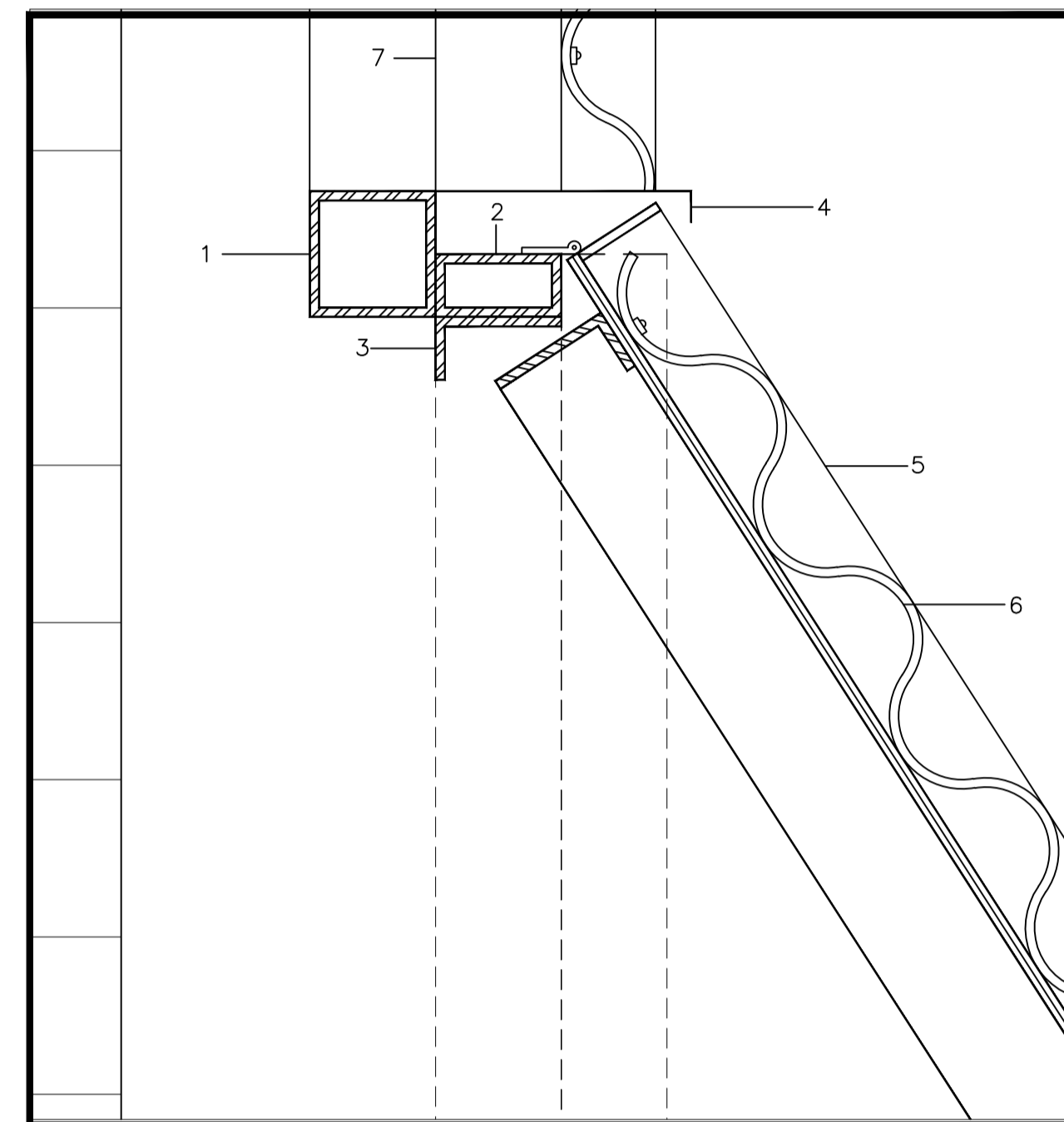




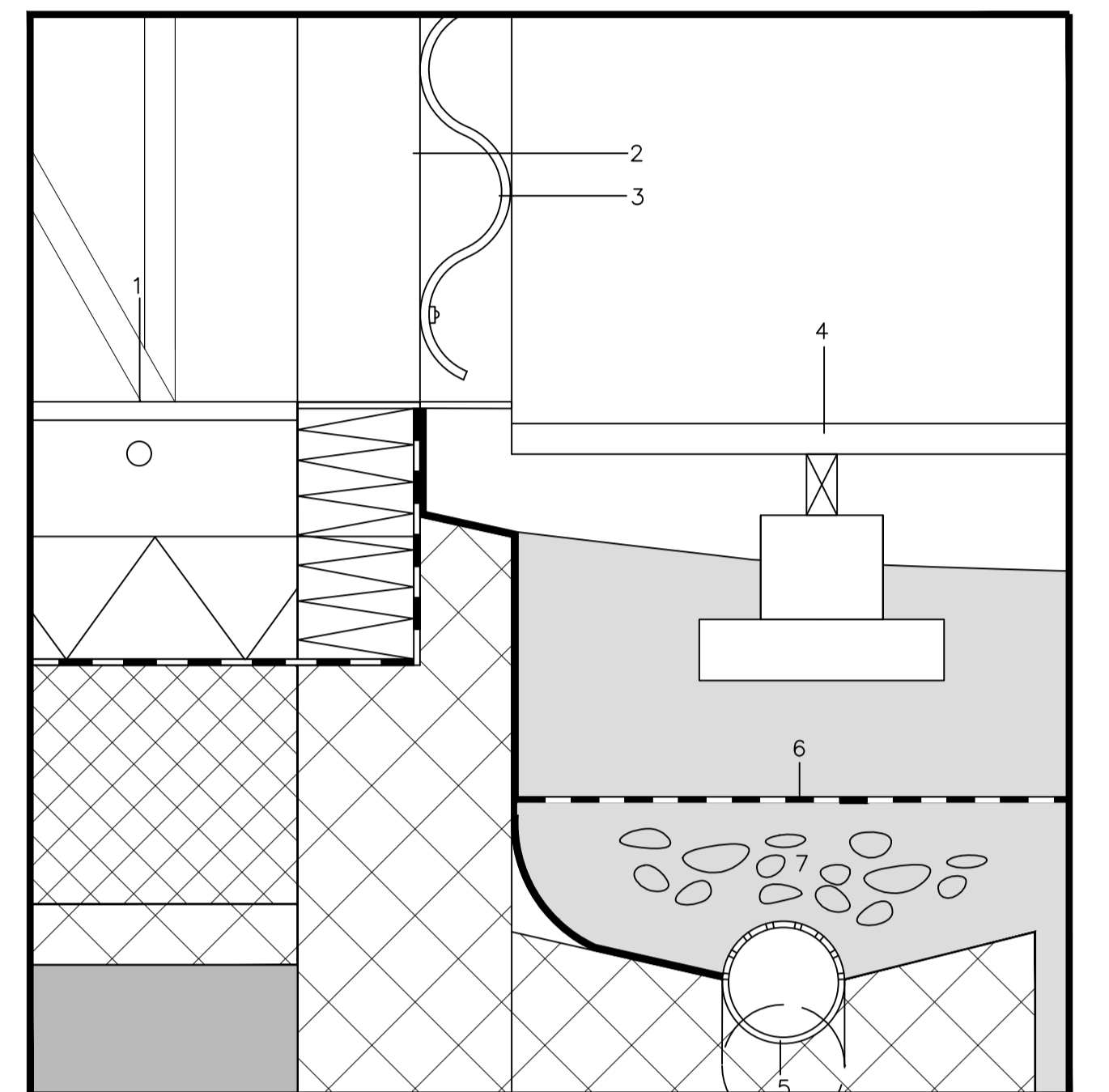
- 1:5 DETAIL A - PLANTED TERRACE**
- 1. ROOF CONSTRUCTION (from top)**
    - topsoil 60mm
    - drainage/protection mat, 35mm galvanized roofing
    - thermal insulation 100mm
    - impact sound insulation 20mm
    - vapour barrier
    - reinforced concrete topping 150mm
    - profiled metal sheeting 5mm
  - 2. FACADE CONSTRUCTION**
    - translucent polycarbonate corrugated sheets with UV-resistant coating, fixed with screws
    - steel rectangular hollow section, 100x100mm
    - 100mm thermal insulation, rigid extruded polystyrene foam waterproofing
    - 13mm plasterboard
  - steel I-section beam 300x150mm
  - steel balustrade
  - steel rectangular hollow section, 100x100mm
  - timber packing, 50x100mm
  - perforated gully
  - steel sheet flashing, galvanised



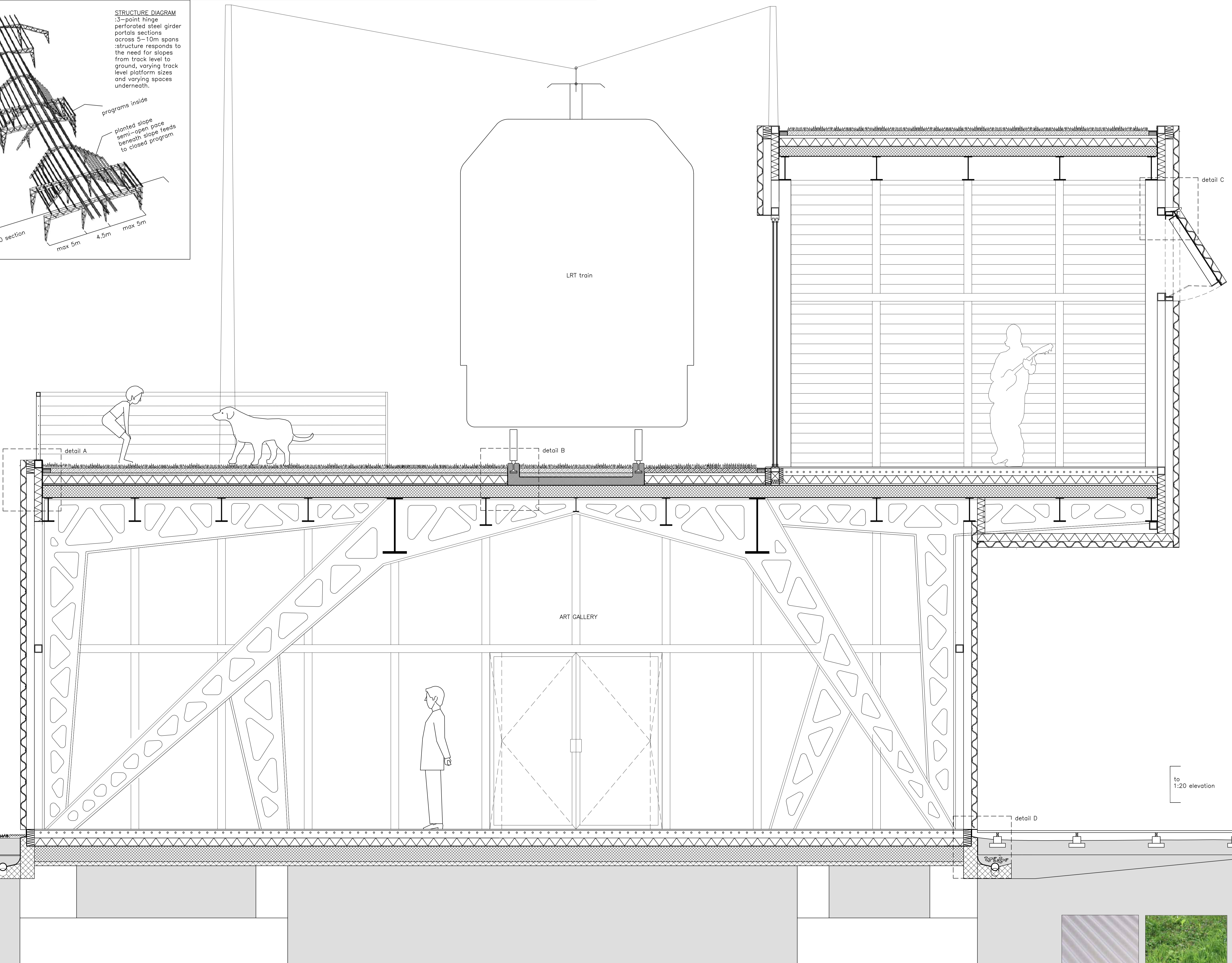
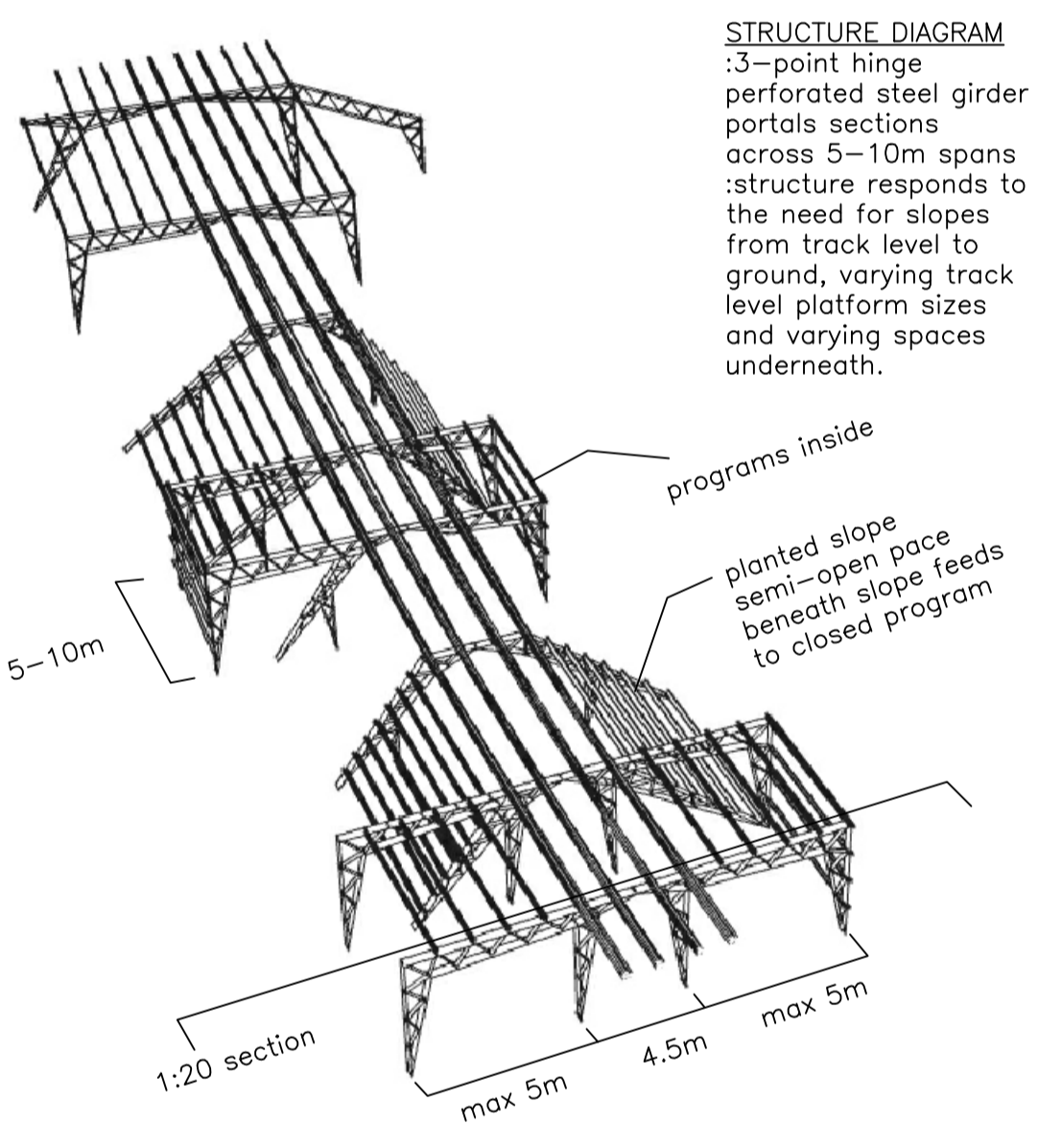
- 1:5 DETAIL C - ROOF WITH LRT TRACK**
- 1. ROOF CONSTRUCTION without LRT track (from top)**
    - topsoil 60mm
    - drainage/protection mat, 35mm galvanized roofing
    - thermal insulation 100mm
    - impact sound insulation 20mm
    - vapour barrier
    - reinforced concrete topping 150mm
    - profiled metal sheeting 5mm
  - 2. ROOF CONSTRUCTION with LRT track (from top)**
    - topsoil 60mm
    - drainage/protection mat, 50 galvanized roofing
    - pre-fabricated concrete rail sleepers longitudinal
    - vapour barrier
    - reinforced concrete topping 150mm
    - profiled metal sheeting 5mm
  - embedded LRT track to industrial detail
  - steel I-section beam 300x150mm

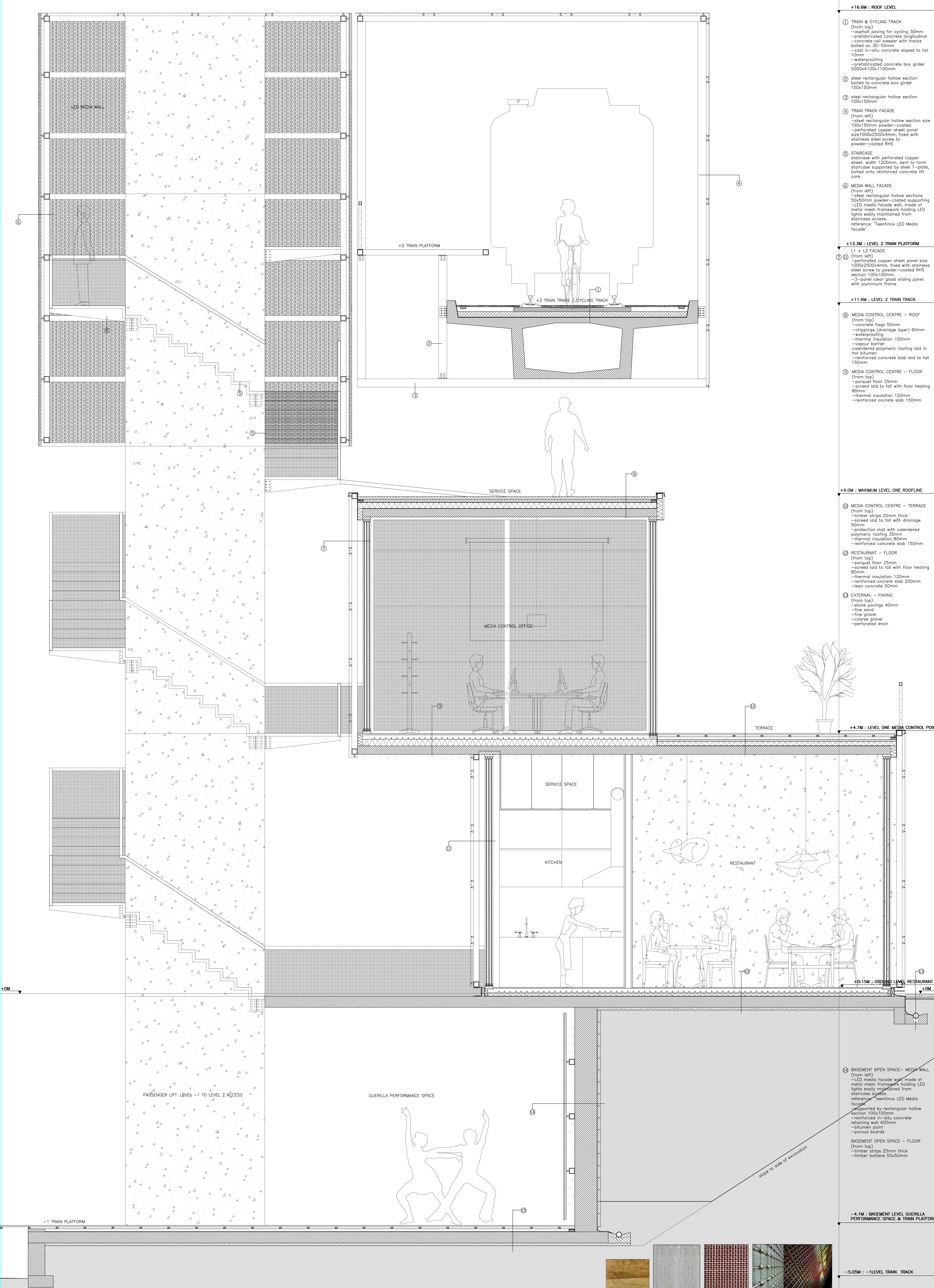


- 1:5 DETAIL C - WINDOW**
- rectangular hollow section 100x100mm
  - rectangular hollow section 100x50mm
  - angle steel plate
  - steel sheet flashing, galvanised
  - steel angle frame 50x50mm
  - transparent polycarbonate with UV-resistant coating
  - rectangular hollow section behind 100x100mm



- 1:5 DETAIL D - PLINTH**
- 1. GROUND FLOOR CONSTRUCTION**
    - floor covering 15mm
    - screed with underfloor heating 80mm
    - thermal insulation 100mm
    - waterproof layer
    - reinforced concrete cast in-situ 200mm
    - lean concrete 50mm
  - rectangular hollow section 100x100mm
  - translucent polycarbonate corrugated sheets with UV-resistant coating, fixed with screws
  - timber decking 25mm on concrete footing 200x200mm
  - perforated drainage
  - geotextile mat, fleece
  - coarse gravel





- +16.6M : ROOF LEVEL**
- ① TRAIN & CYCLING TRACK (from top)
    - asphalt paving for cycling 30mm
    - prefabricated concrete longitudinal
    - concrete rail sleeper with tracks bolted on 30-50mm
    - cast in-situ concrete sloped to fall 10mm
    - waterproofing
    - prefabricated concrete box girder 500x410x110mm
  - ② steel rectangular hollow section bolted to concrete box girder 150x150mm
  - ③ steel rectangular hollow section 150x150mm
  - ④ TRAIN TRACK FACADE (from left)
    - steel rectangular hollow section size 150x150mm powder-coated
    - perforated copper sheet panel size 1000x2500x4mm, fixed with stainless steel screw to powder-coated RHS
  - ⑤ STAIRCASE
    - staircase with perforated copper sheet, width 1200mm, bent to form staircase supported by steel T-plate, bolted onto reinforced concrete lift core.
  - ⑥ MEDIA WALL FACADE (from left)
    - steel rectangular hollow sections 50x50mm powder-coated supporting
    - LED media facade wall, made of metal mesh framework holding LED lights easily maintained from staircase access.
    - reference: 'Twintinox LED Media facade'
- +13.3M : LEVEL 2 TRAIN PLATFORM**
- L1 + L2 FACADE (from left)
    - ⑦ ⑧ -perforated copper sheet panel size 1000x2500x4mm, fixed with stainless steel screw to powder-coated RHS section 100x100mm.
    - 3-panel clear glass sliding panel with aluminium frame
- +11.6M : LEVEL 2 TRAIN TRACK**
- ⑨ MEDIA CONTROL CENTRE - ROOF (from top)
    - concrete flag 50mm
    - chippings (drainage layer) 60mm
    - waterproofing
    - thermal insulation 100mm
    - vapour barrier
    - coloured polymeric roofing laid in hot bitumen
    - reinforced concrete slab laid to fall 150mm
  - ⑩ MEDIA CONTROL CENTRE - FLOOR (from top)
    - parquet floor 25mm
    - screed laid to fall with floor heating 80mm
    - thermal insulation 120mm
    - reinforced concrete slab 150mm
- +9.0M : MAXIMUM LEVEL ONE ROOFLINE**
- ⑪ MEDIA CONTROL CENTRE - TERRACE (from top)
    - timber strips 25mm thick
    - screed laid to fall with drainage 50mm
    - protection mat with colored polymeric roofing 35mm
    - thermal insulation 80mm
    - reinforced concrete slab 150mm
  - ⑫ RESTAURANT - FLOOR (from top)
    - parquet floor 25mm
    - screed laid to fall with floor heating 80mm
    - thermal insulation 120mm
    - reinforced concrete slab 200mm
    - lean concrete 50mm
  - ⑬ EXTERNAL - PAVING (from top)
    - stone pavings 40mm
    - fine sand
    - fine gravel
    - course gravel
    - perforated drain
- +4.7M : LEVEL ONE MEDIA CONTROL POINT**
- +0.15M : GROUND LEVEL RESTAURANT**
- ⑭ BASEMENT OPEN SPACE - MEDIA WALL (from left)
    - LED media facade wall, made of metal mesh framework holding LED lights easily maintained from staircase access.
    - reference: 'Twintinox LED Media facade'
    - supported by rectangular hollow section 100x100mm
    - reinforced in-situ concrete retaining wall 400mm
    - bitumen point
    - porous boards
  - BASEMENT OPEN SPACE - FLOOR (from top)
    - timber strips 25mm thick
    - timber battens 50x50mm
- 4.1M : BASEMENT LEVEL GUERRILLA PERFORMANCE SPACE & TRAIN PLATFORM**
- 5.05M : -1 LEVEL TRAIN TRACK**

