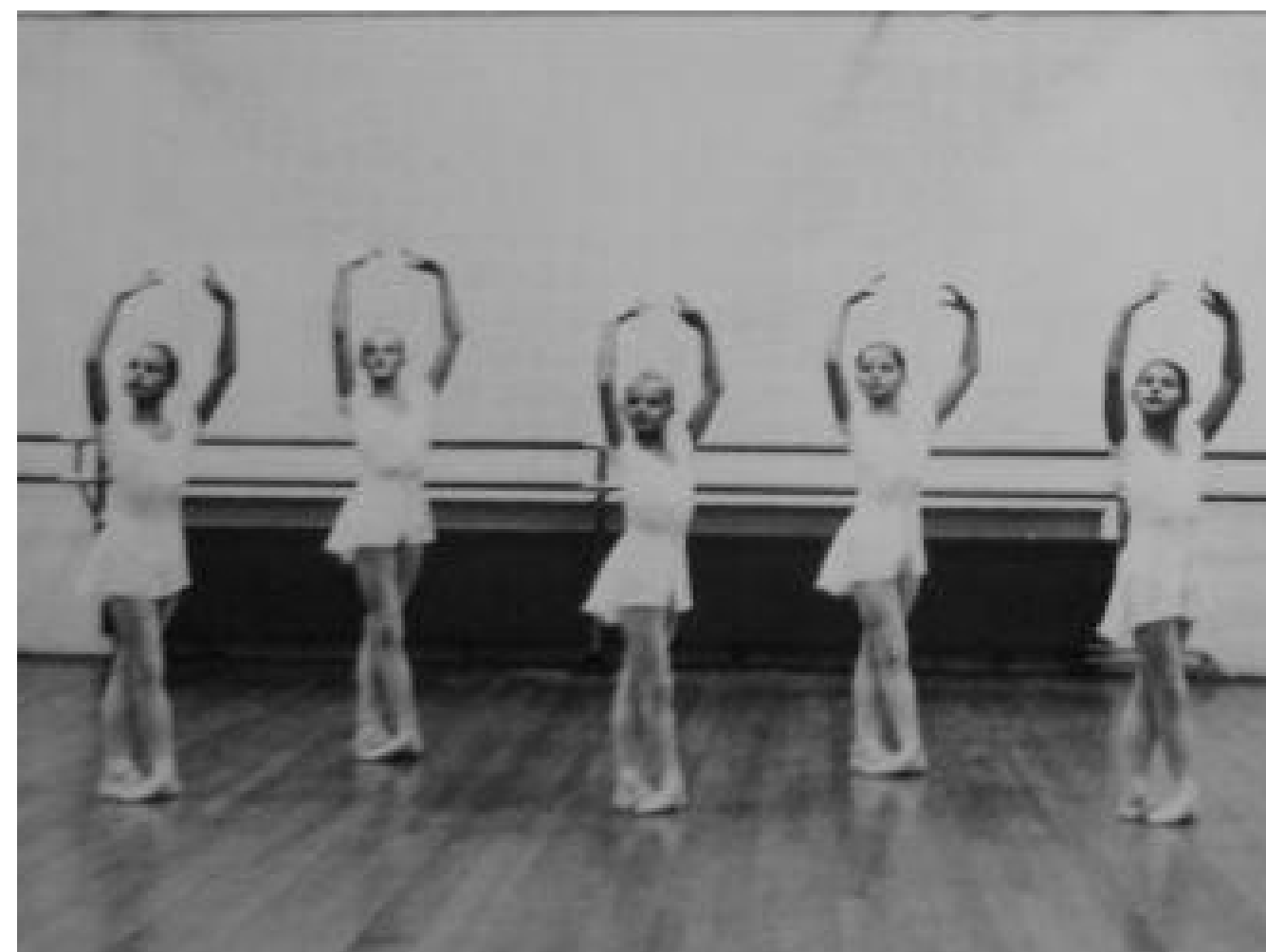




Royal Ballet School of Antwerp

P5 Presentation

27.06.2019







Picture by Anna Grundmann



Picture by Anna Grundmann



ROYAL BALLET SCHOOL ANTWERP | **BALLET STUDIO** | EXISTING BUILDING | Use of space



Picture by Anna Grundmann

ROYAL BALLET SCHOOL ANTWERP | **BALLET STUDIO** | Existing studio



Ballet Rehearsal by Edgar Degas (1873)



Picture by Anna Grundmann



Intimacy

.....

Location

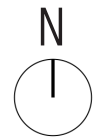
Intimacy



Drukbevolkt Hollands straatje bij namiddagzon
Willem Koekkoek
Amsterdam 1839-1895 Nieuwer-Amstel

What does intimacy mean?

What does intimacy mean?
Why is a ballet school intimate?



PROJECT LOCATION

1951

1952

.....2012

1964

'Prins Dries'

.....**Current - Primary Ballet School**

.....1974

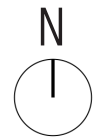
.....1958

1980

Stadsschouwburg

Current location

.....1964



PROJECT LOCATION

1951

1952

.....2012

1964

'Prins Dries'

.....**Current - Primary Ballet School**

.....1974

.....1958

1980

Stadsschouwburg

Current location

.....1964



Project location



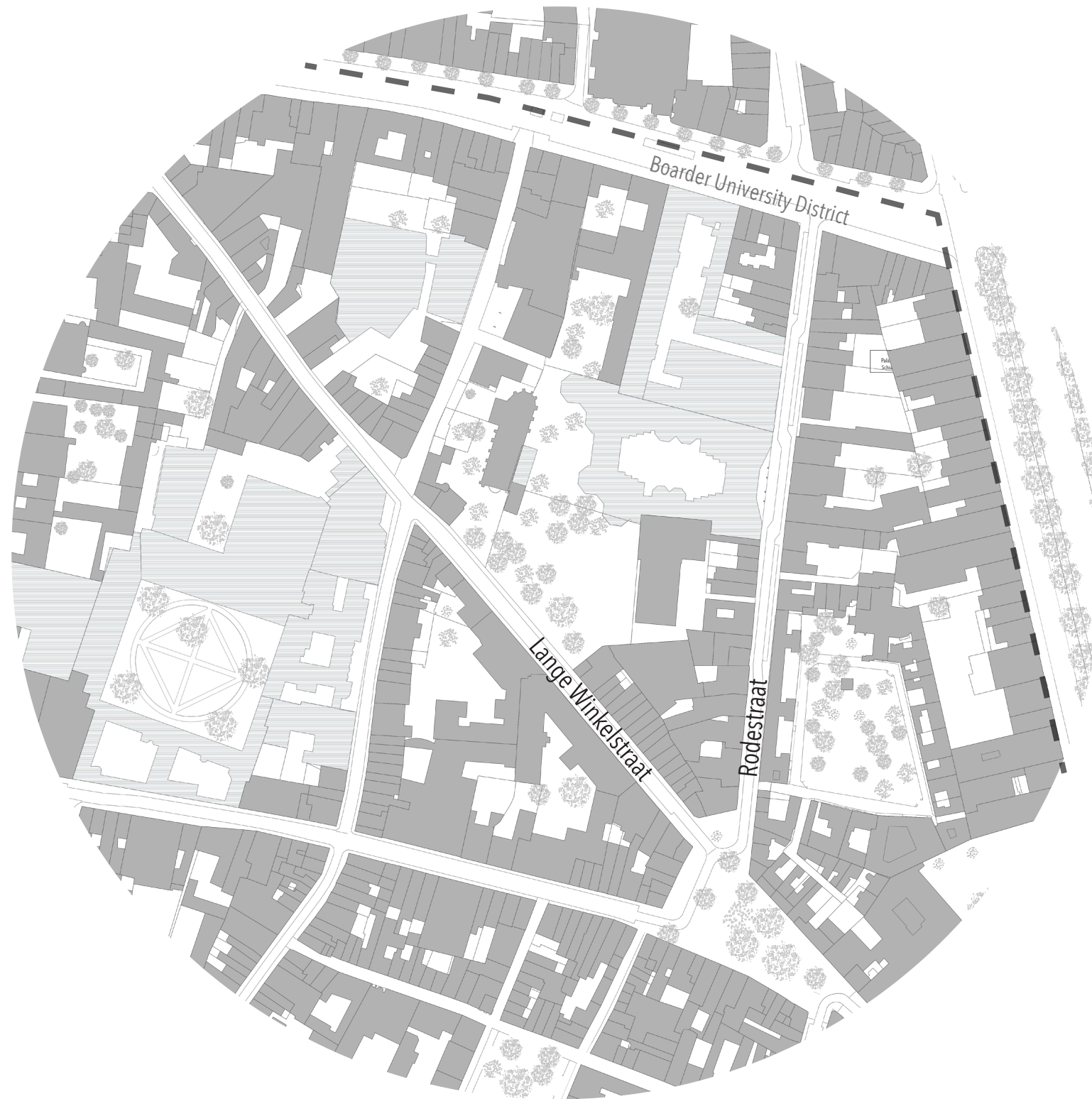


'Prins Dries'
Primary Ballet School



'Jeanne Brabants Internaat'
Boarding House Ballet School

0 10 20 50 100



 University Building

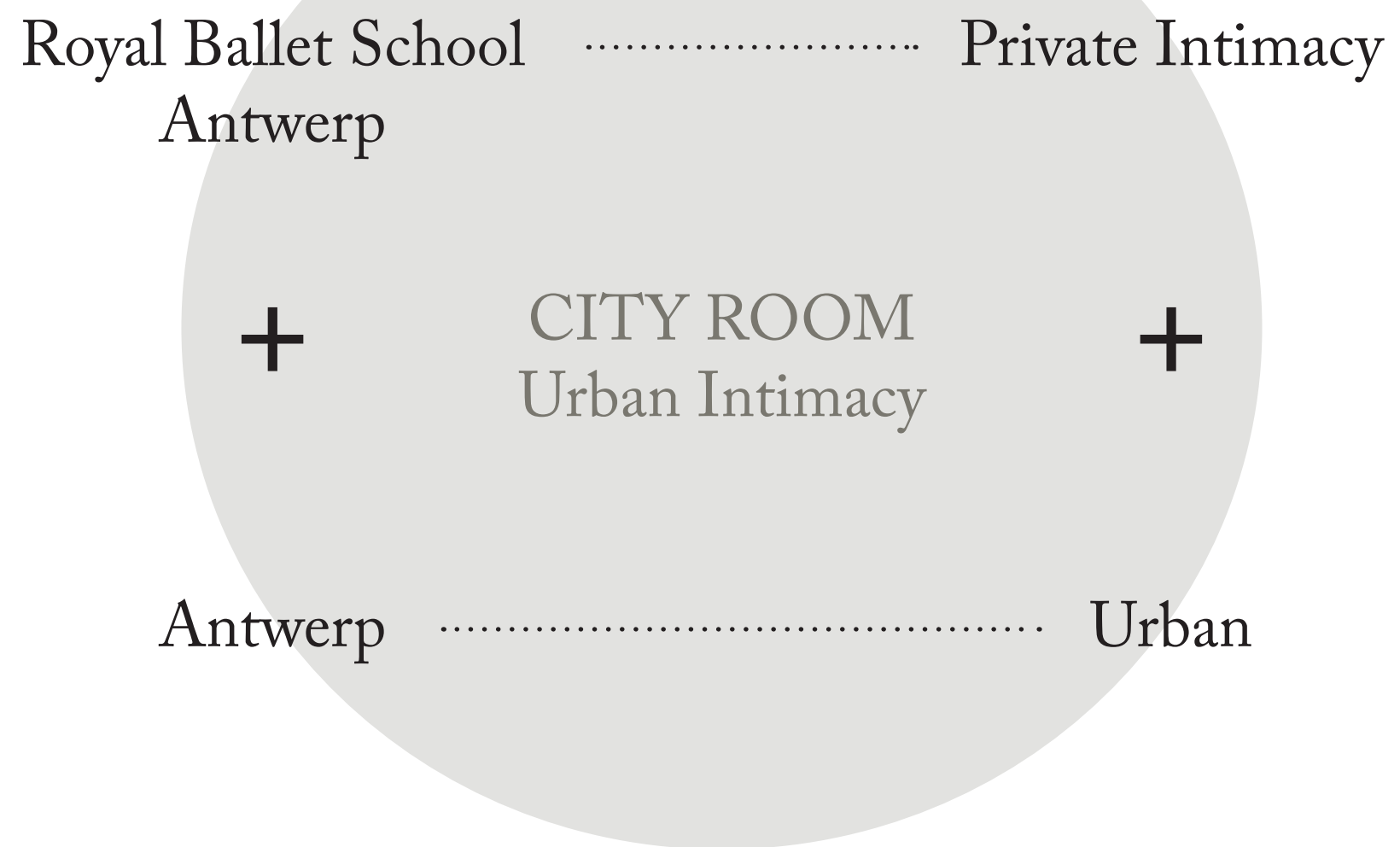
What does intimacy mean?
Why is a ballet school intimate?
How can there be a relation between the urban and
private intimacy?

Royal Ballet School Private Intimacy
Antwerp

+

+

Antwerp Urban



What does intimacy mean?
Why is a ballet school intimate?
How can there be a relation between the urban and
private intimacy?
What is a 'city room'?



Drukbevolkt Hollands straatje bij namiddagzon
Willem Koekkoek
Amsterdam 1839-1895 Nieuwer-Amstel

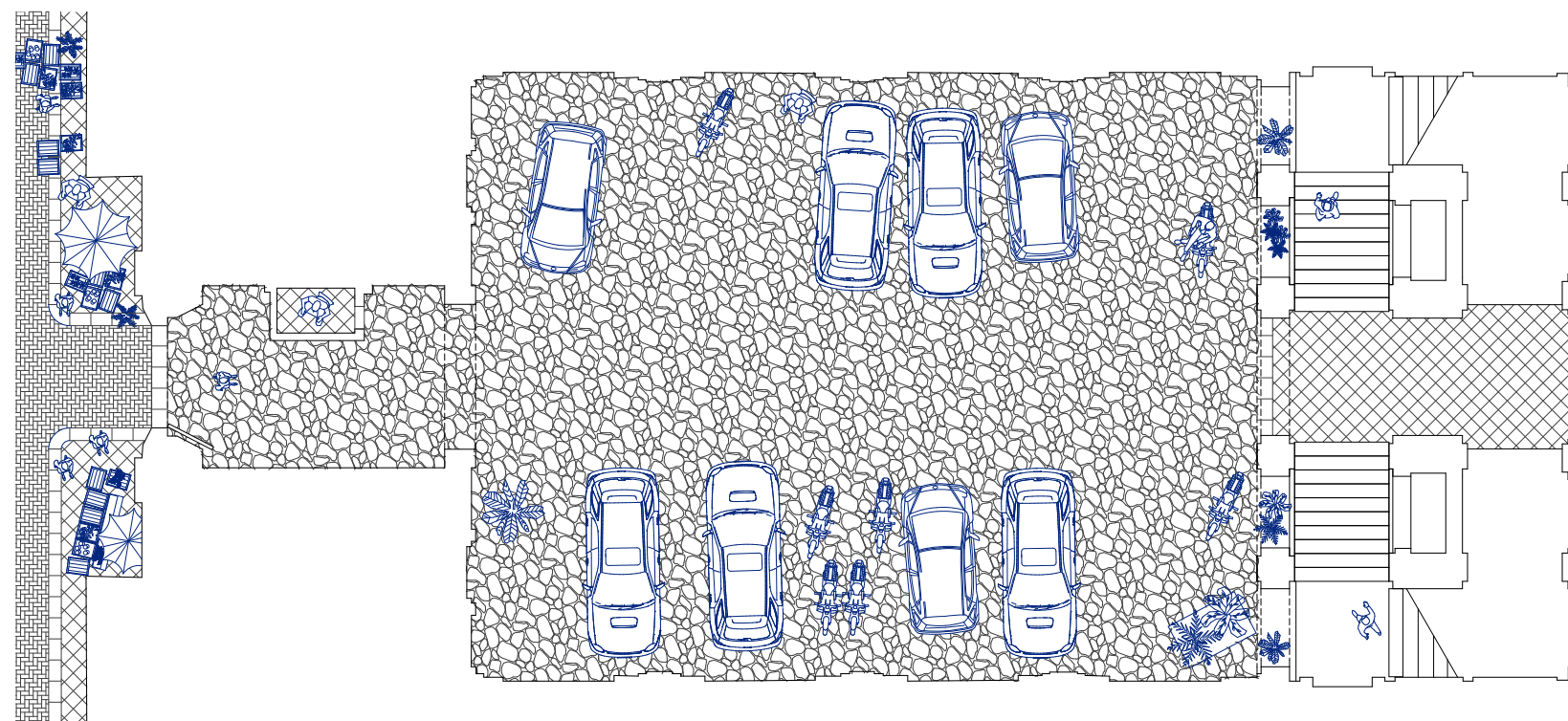




PUBLIC

TRANSITION

SEMI-PUBLIC



“The whole city is perceived as made of different interiors: public or private are fused together in a spectrum of different degrees of permeability, but are almost felt as if they were interiors.”

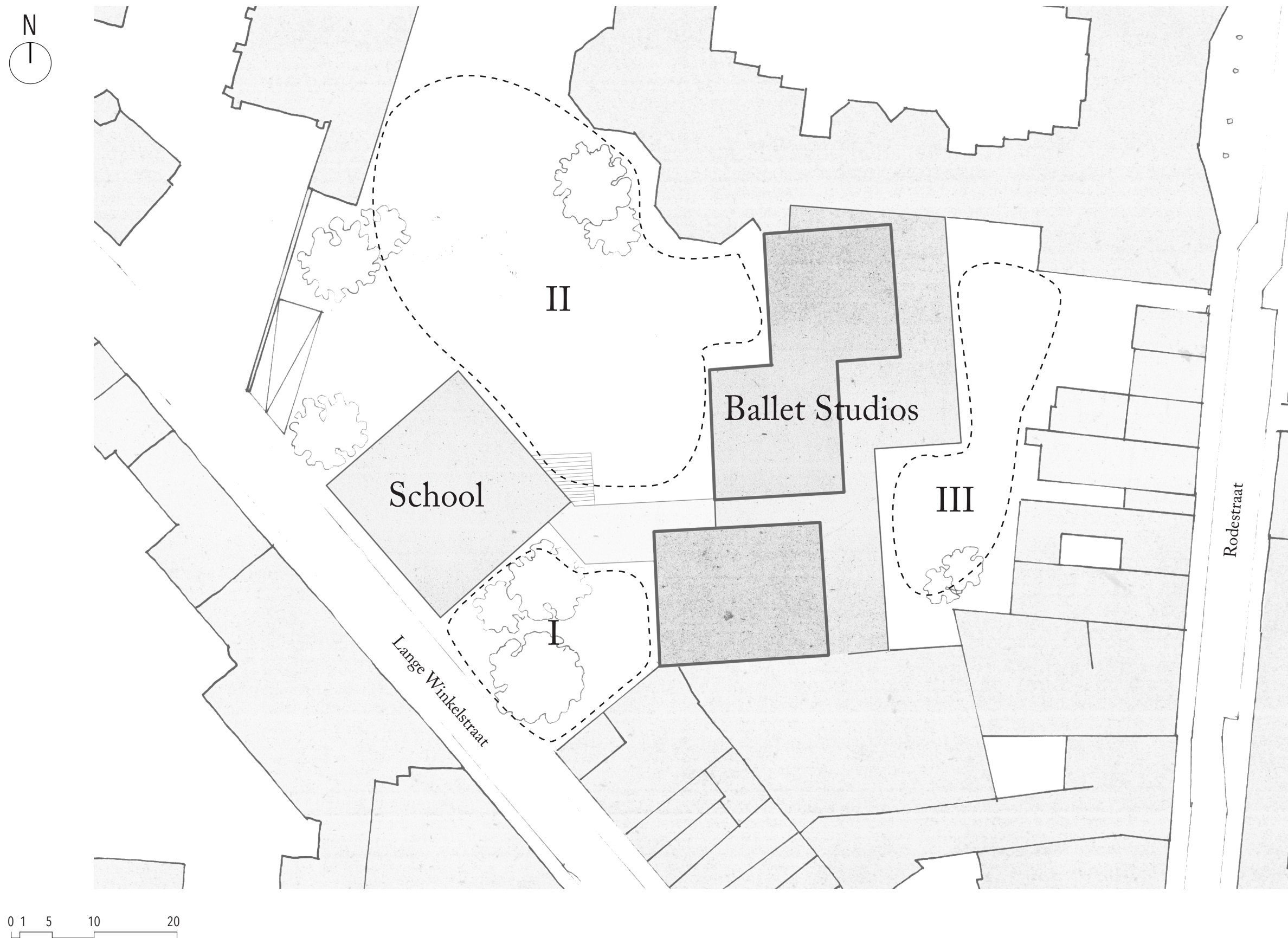
- Walter Benjamin, Naples (1924).

“Whenever we construct a barrier, we have to equally make the barrier porous; the distinction between inside and outside has to be breachable, if not ambiguous.”

- Richard Sennet, The open City (2006).



ROYAL BALLET SCHOOL ANTWERP | **CITY ROOM** | AMBIGUOUS SPACE



What does intimacy mean?
Why is a ballet school intimate?
How can there be a relation between the urban and
private intimacy?
What is a 'city room'?

What does intimacy mean?
Why is a ballet school intimate?
How can there be a relation between the urban and
private intimacy?
What is a 'city room'?
How does my idea of a 'city room' apply in Antwerp?



GATE 15



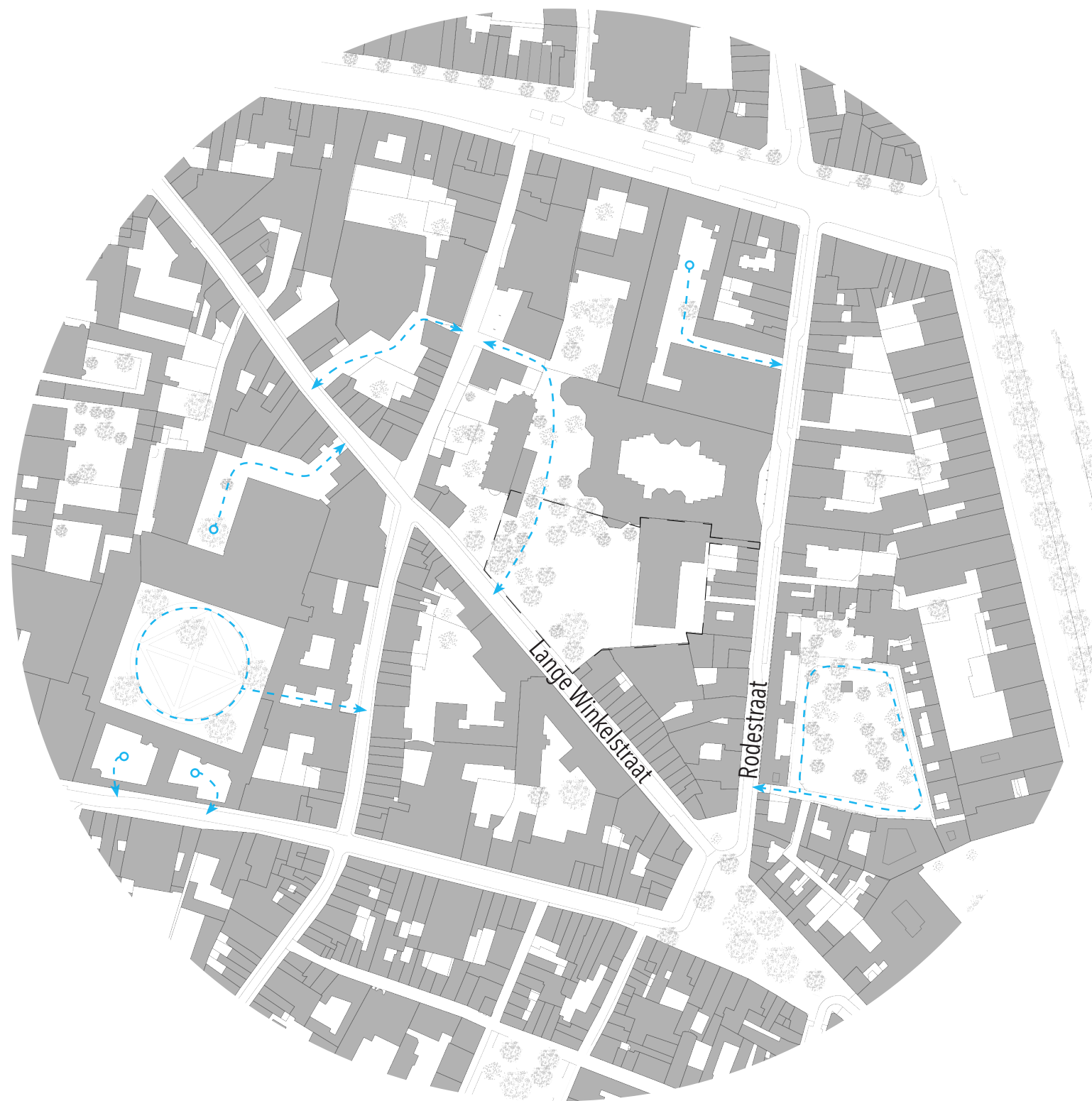
0 10 20 50 100

— — — Big building blocks
===== Regular building blocks



0 10 20 50 100

Big building blocks
Regular building blocks

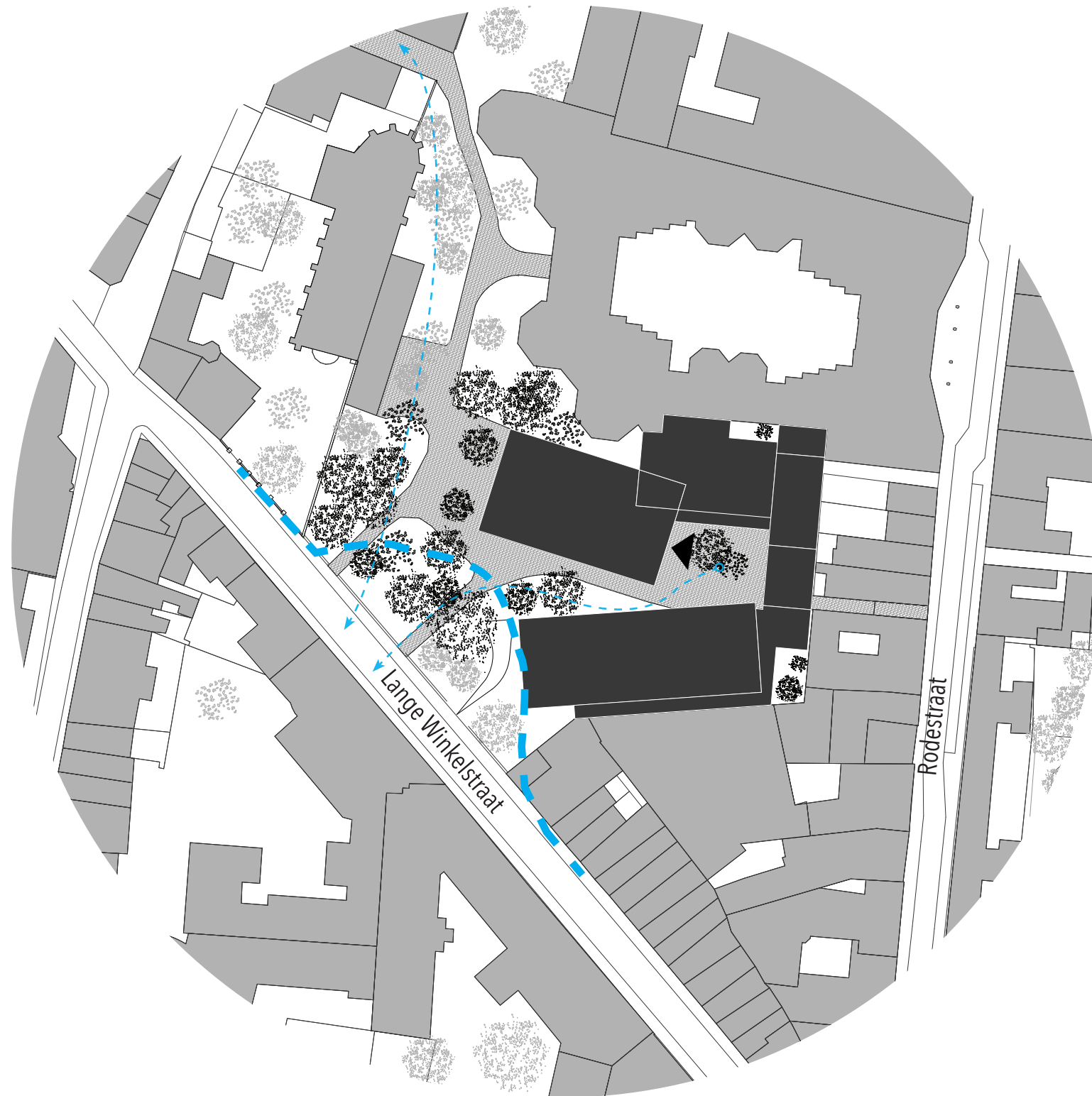


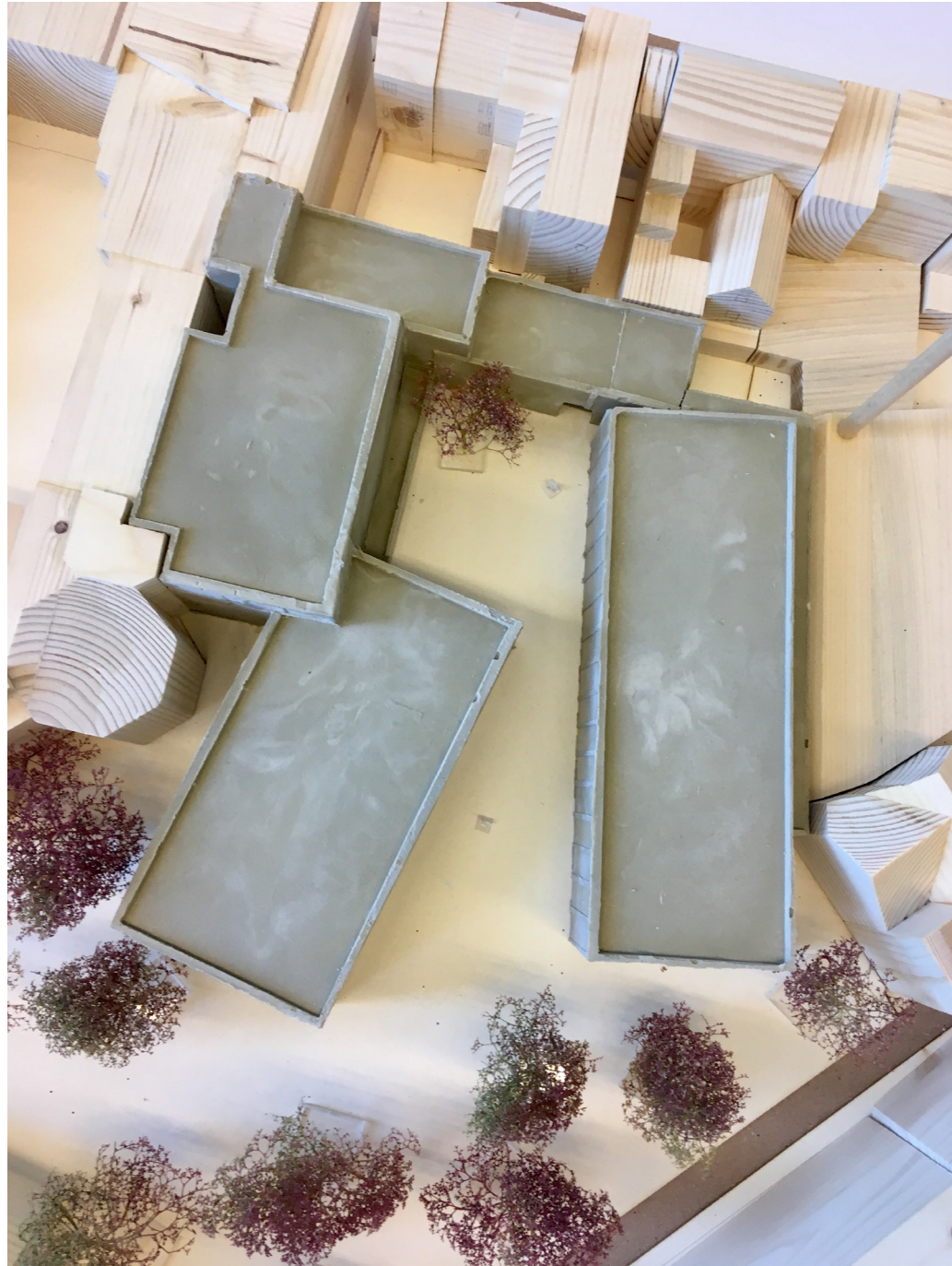
0 10 20 50 100

- ← - - - → Route
- ← - - - ○ Accessible space
- ← - - - ○ Circulation space

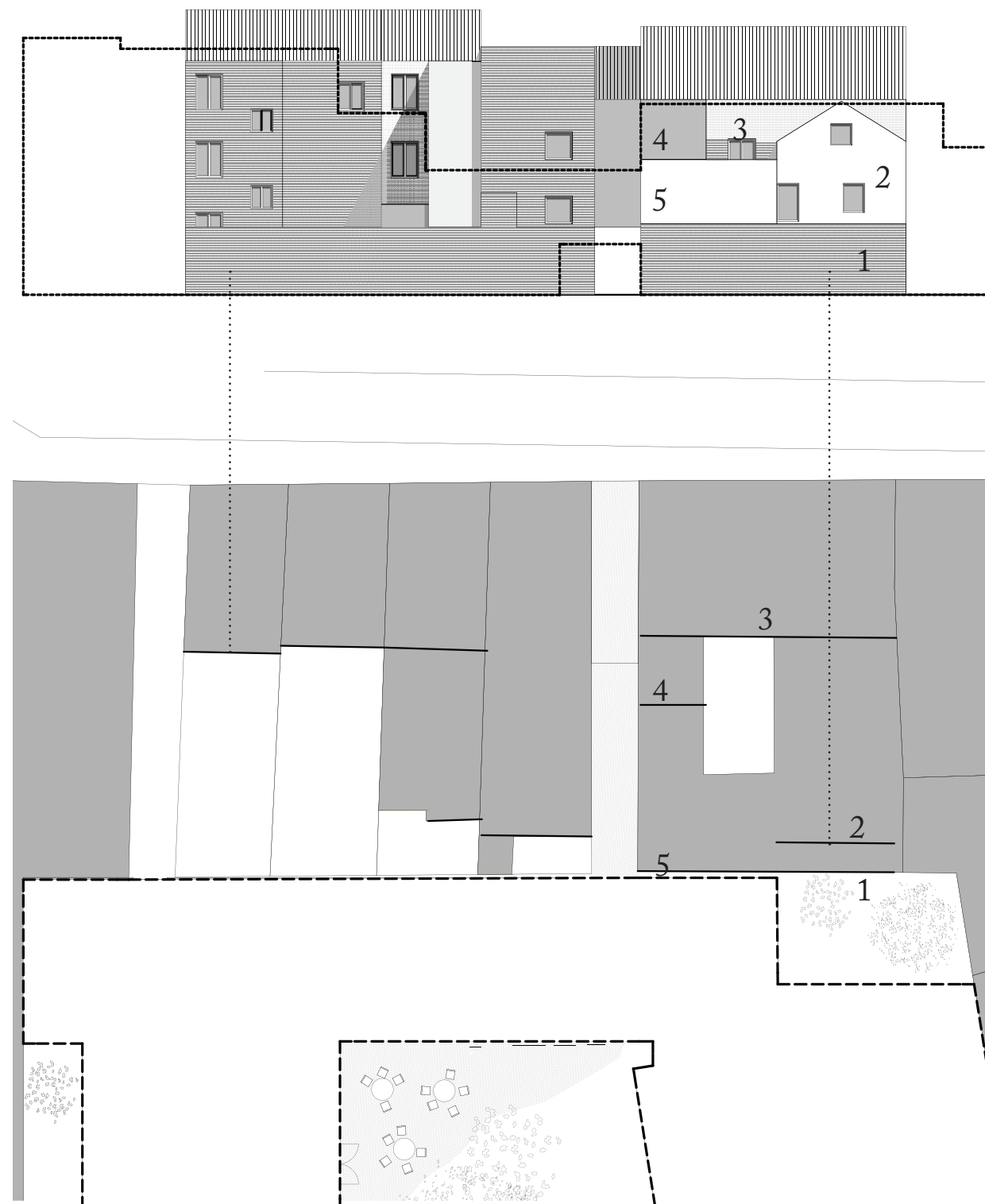




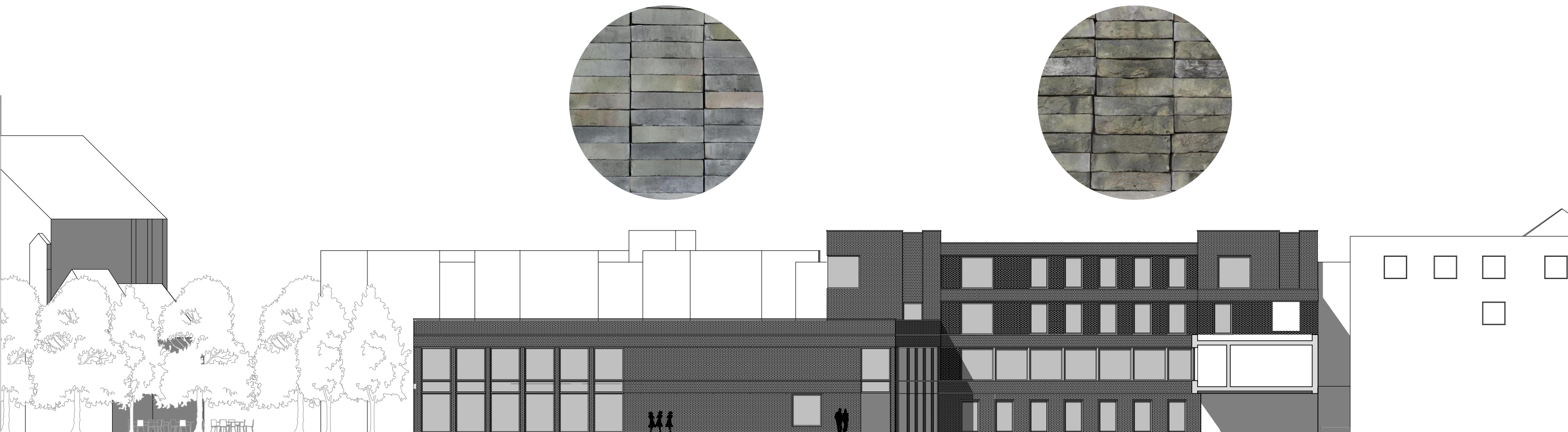






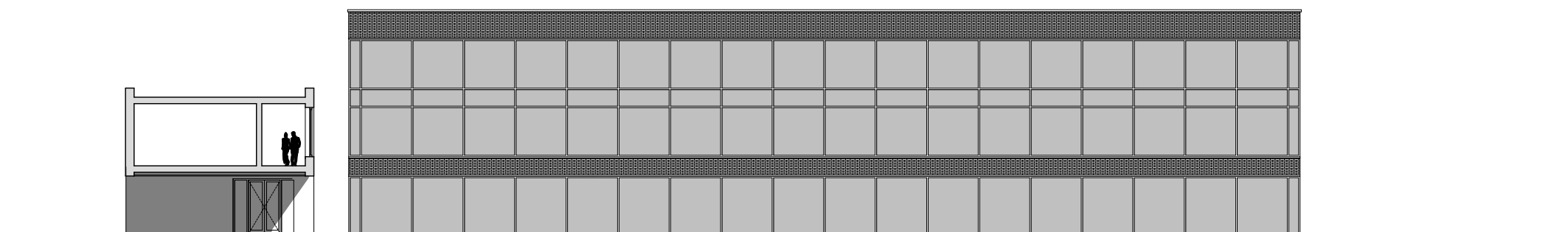






PERFORMANCE HALL

EDUCATION



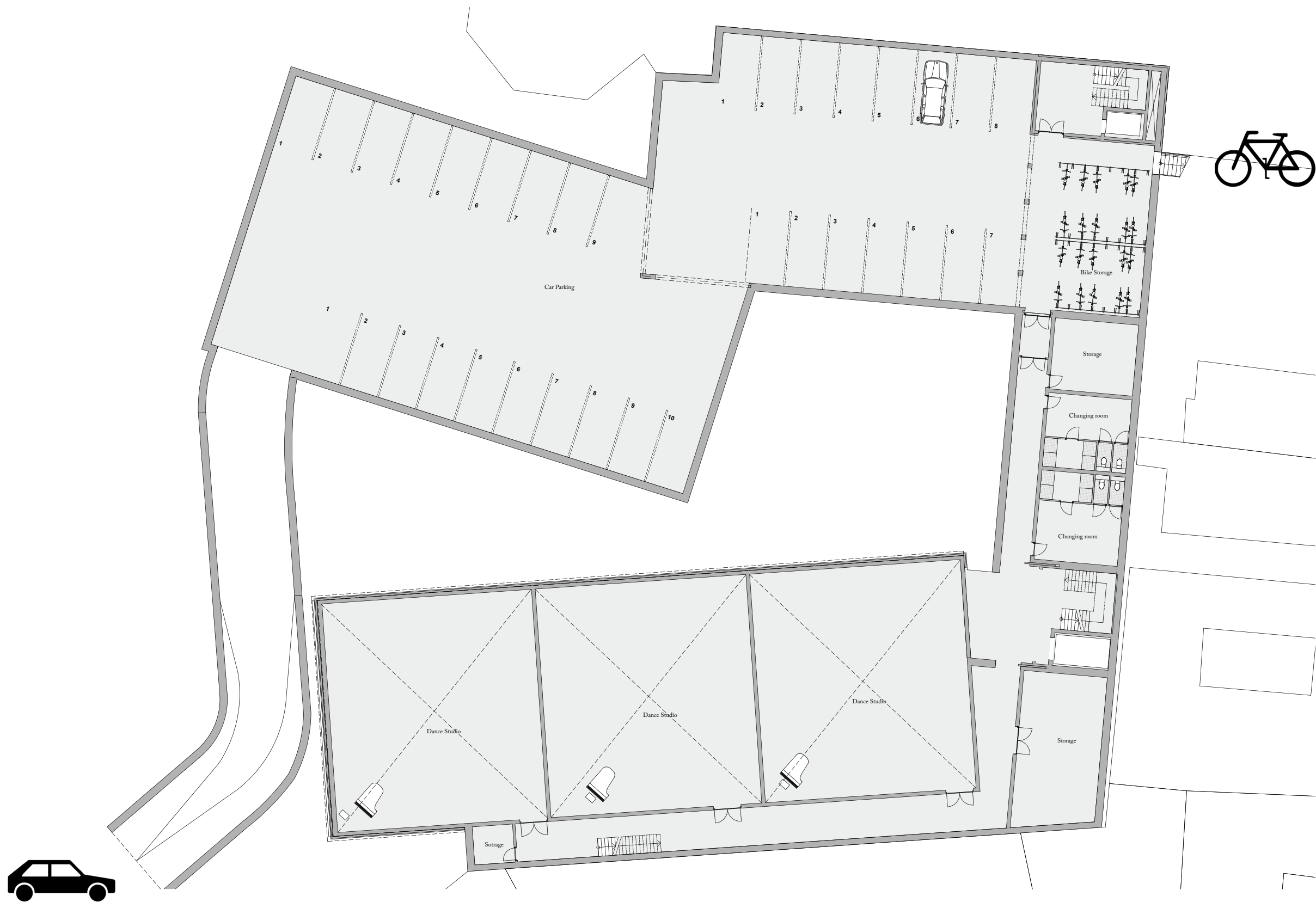
BALLET STUDIOS







ROYAL BALLET SCHOOL ANTWERP | **DESIGN** | ENTRANCES TO THE PLOT | Car & bike



Floor -1



ROYAL BALLET SCHOOL ANTWERP | **DESIGN** | ENTRANCES TO THE PLOT | Pedestrian



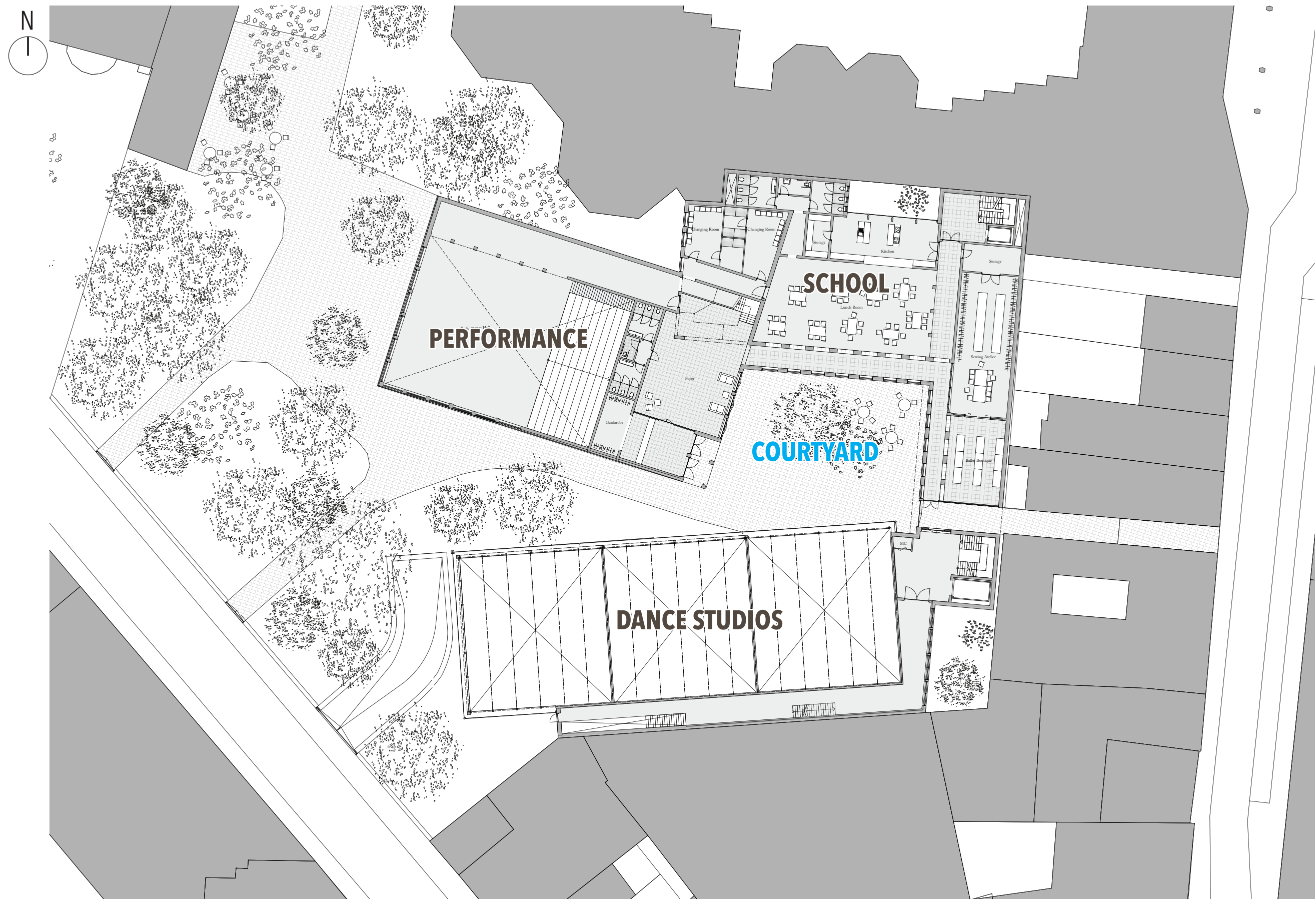
ROYAL BALLET SCHOOL ANTWERP | **DESIGN** | ENTRANCES TO THE PLOT | Pedestrian

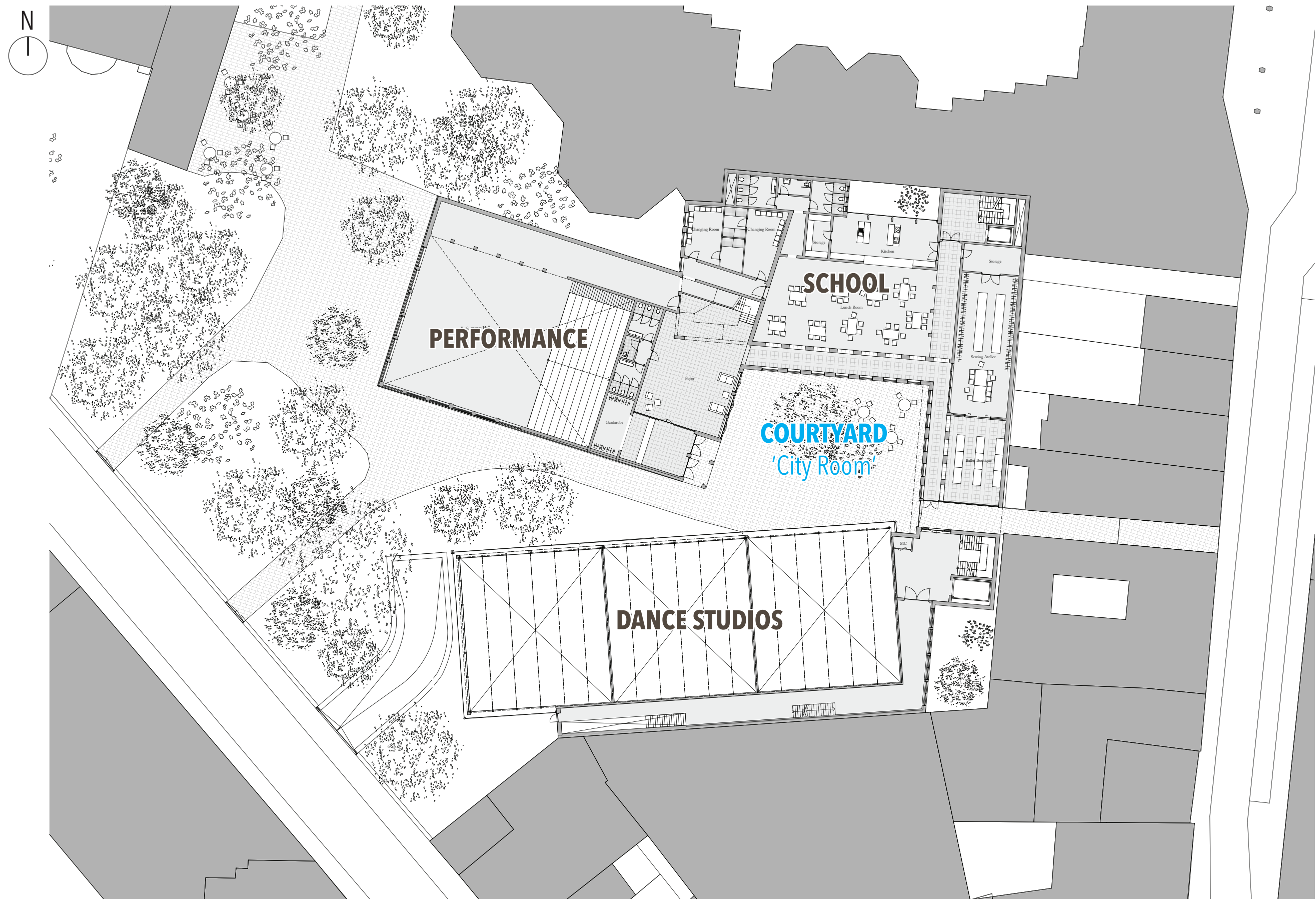


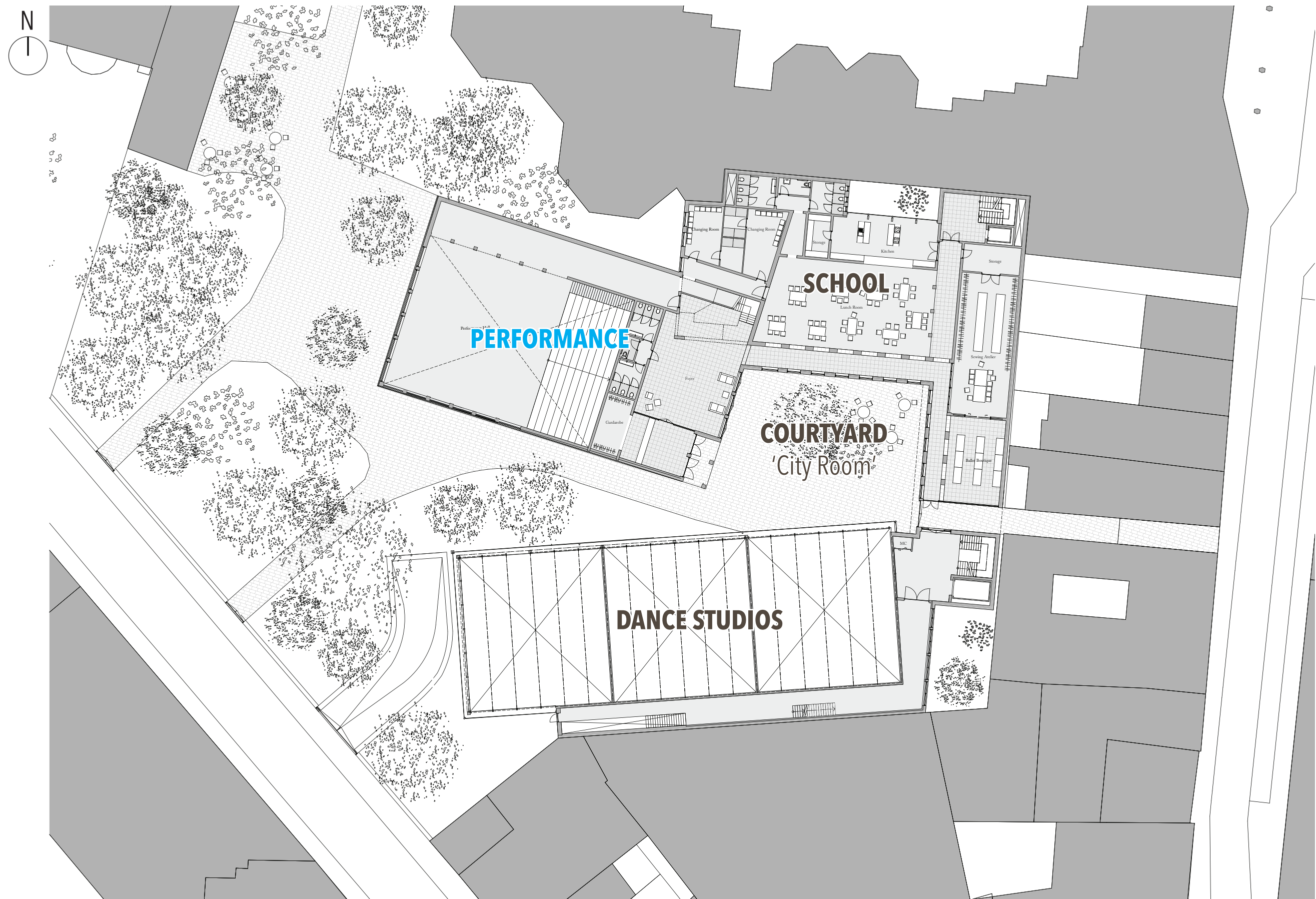
ROYAL BALLET SCHOOL ANTWERP | **DESIGN** | ENTRANCES TO THE PLOT | Pedestrian



ROYAL BALLET SCHOOL ANTWERP | **DESIGN** | ENTRANCES TO THE PLOT | Pedestrian









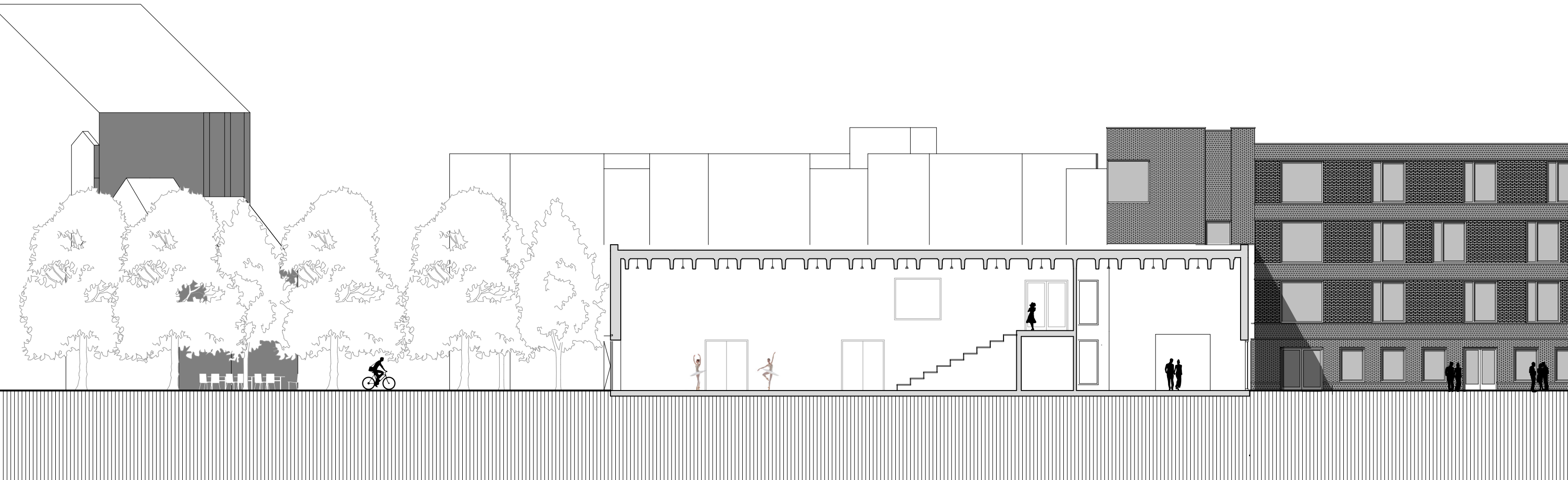
ROYAL BALLET SCHOOL ANTWERP | **DESIGN** | PERFORMANCE HALL / FOYER



ROYAL BALLET SCHOOL ANTWERP | **DESIGN** | FOYER



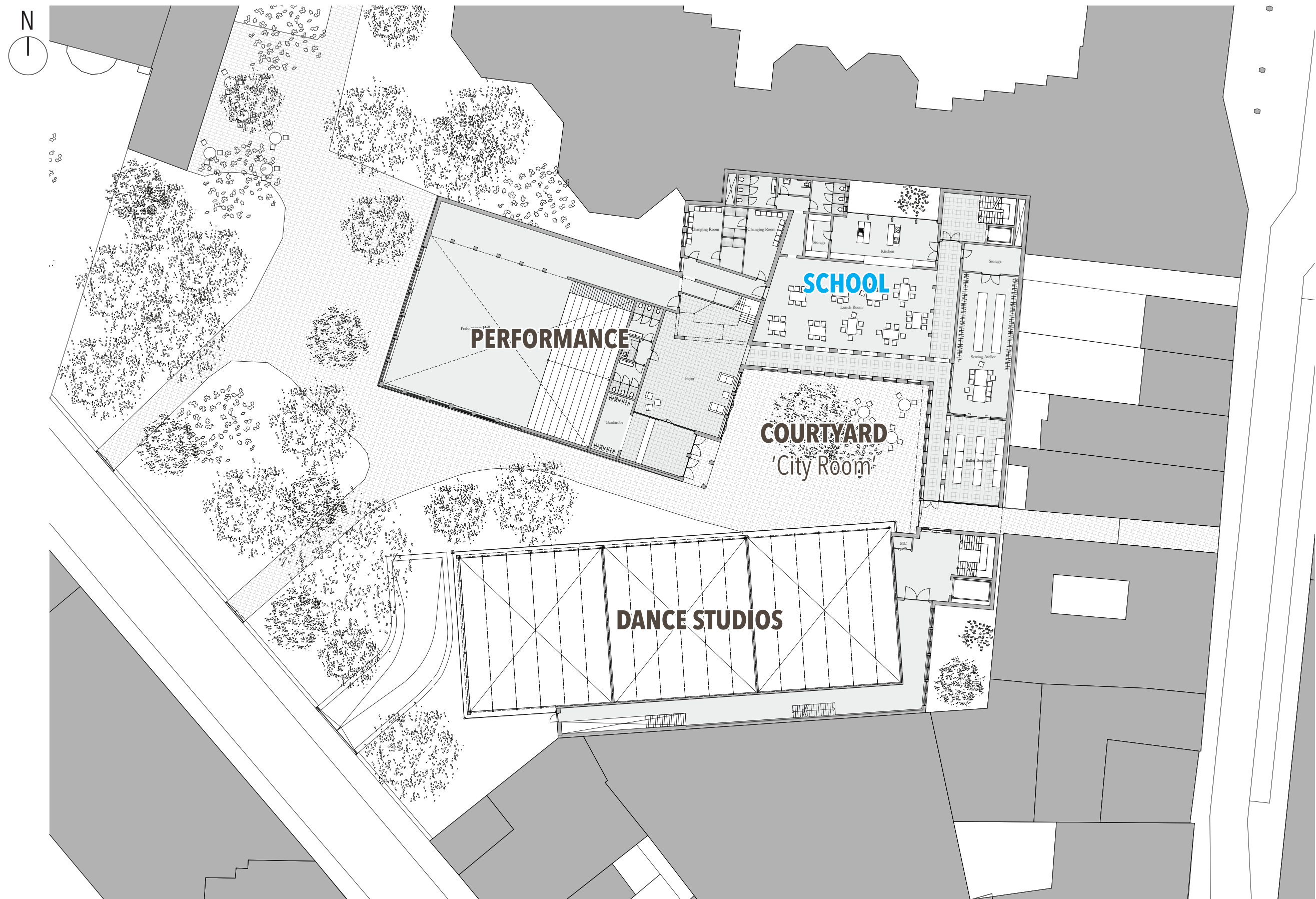
ROYAL BALLET SCHOOL ANTWERP | **DESIGN** | PERFORMANCE HALL / FOYER



ROYAL BALLET SCHOOL ANTWERP | **DESIGN** | PERFORMANCE HALL | SECTION



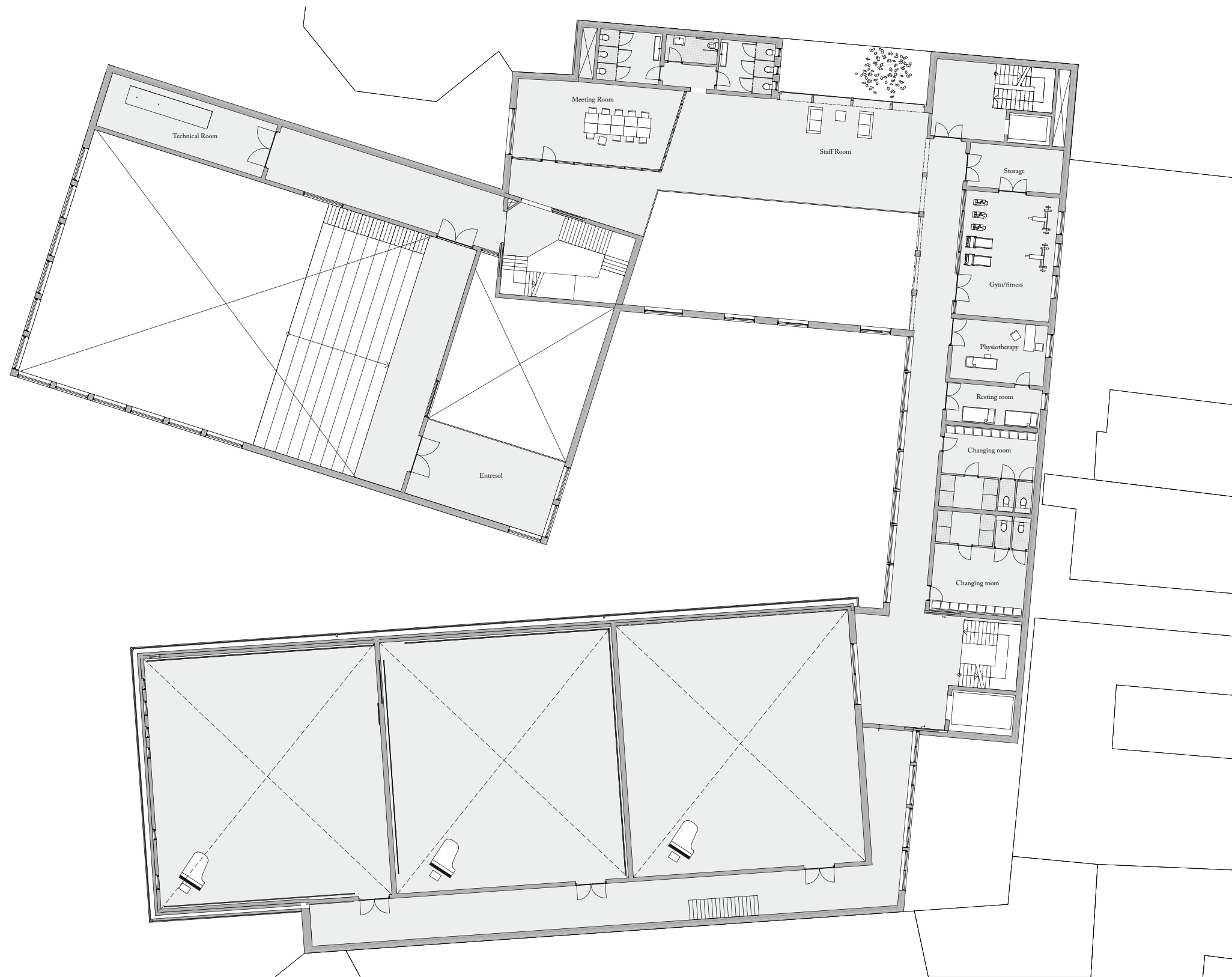
Blauwe Zaal | Stadsschouwburg Utrecht





ROYAL BALLET SCHOOL ANTWERP | **DESIGN** | PERFORMANCE HALL / FOYER



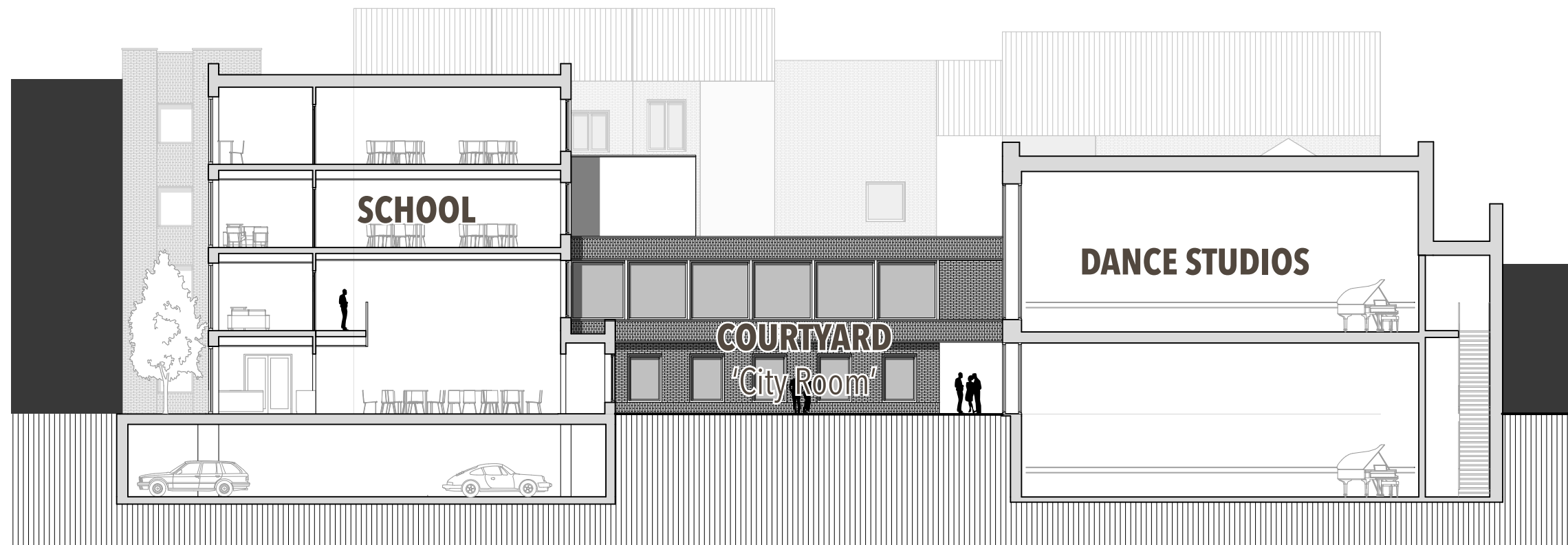


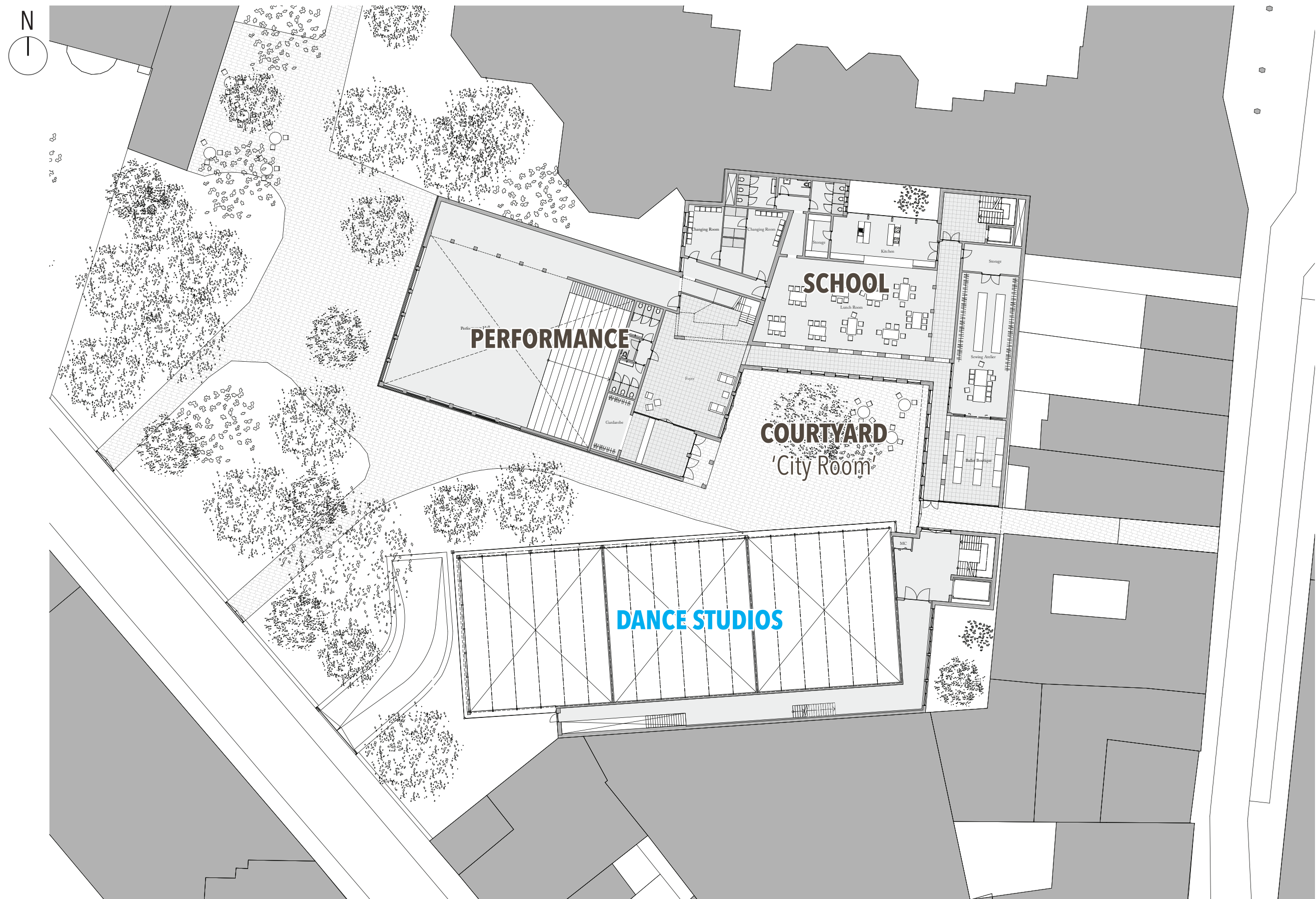


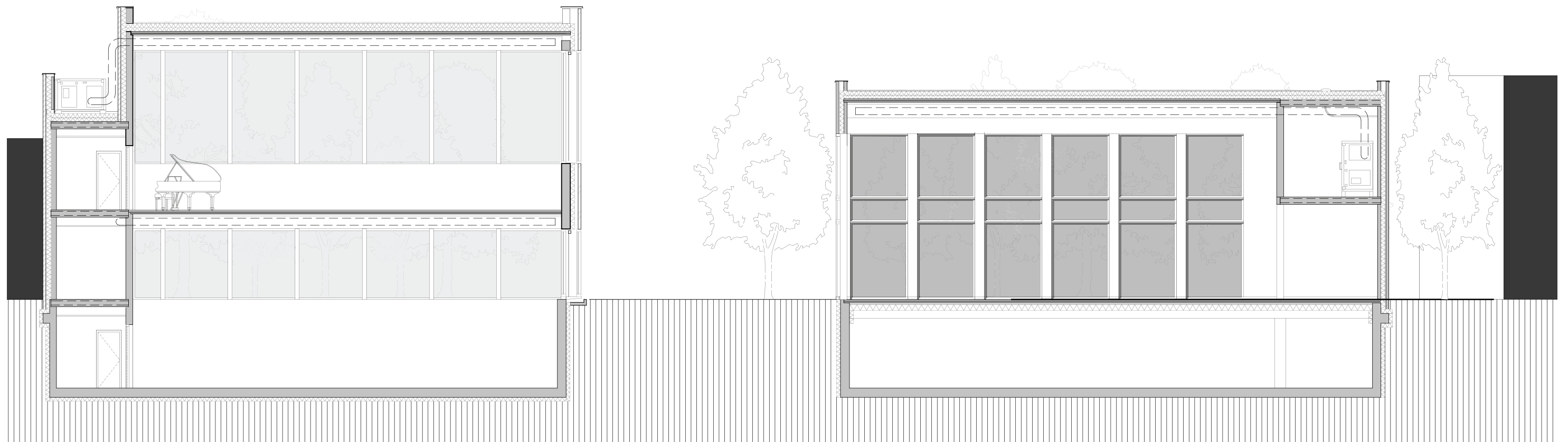




ROYAL BALLET SCHOOL ANTWERP | **DESIGN** | FACADE SCHOOL

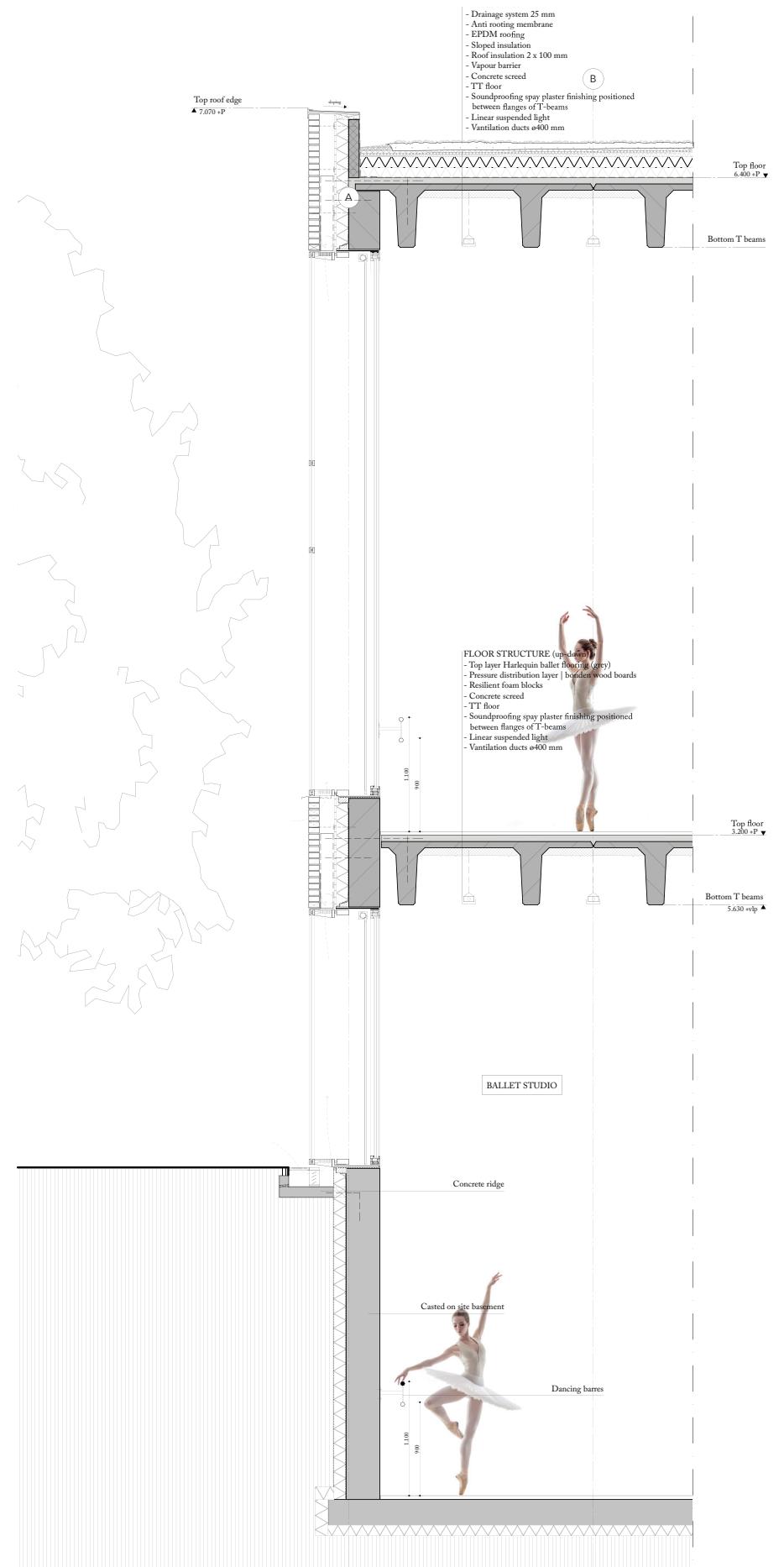


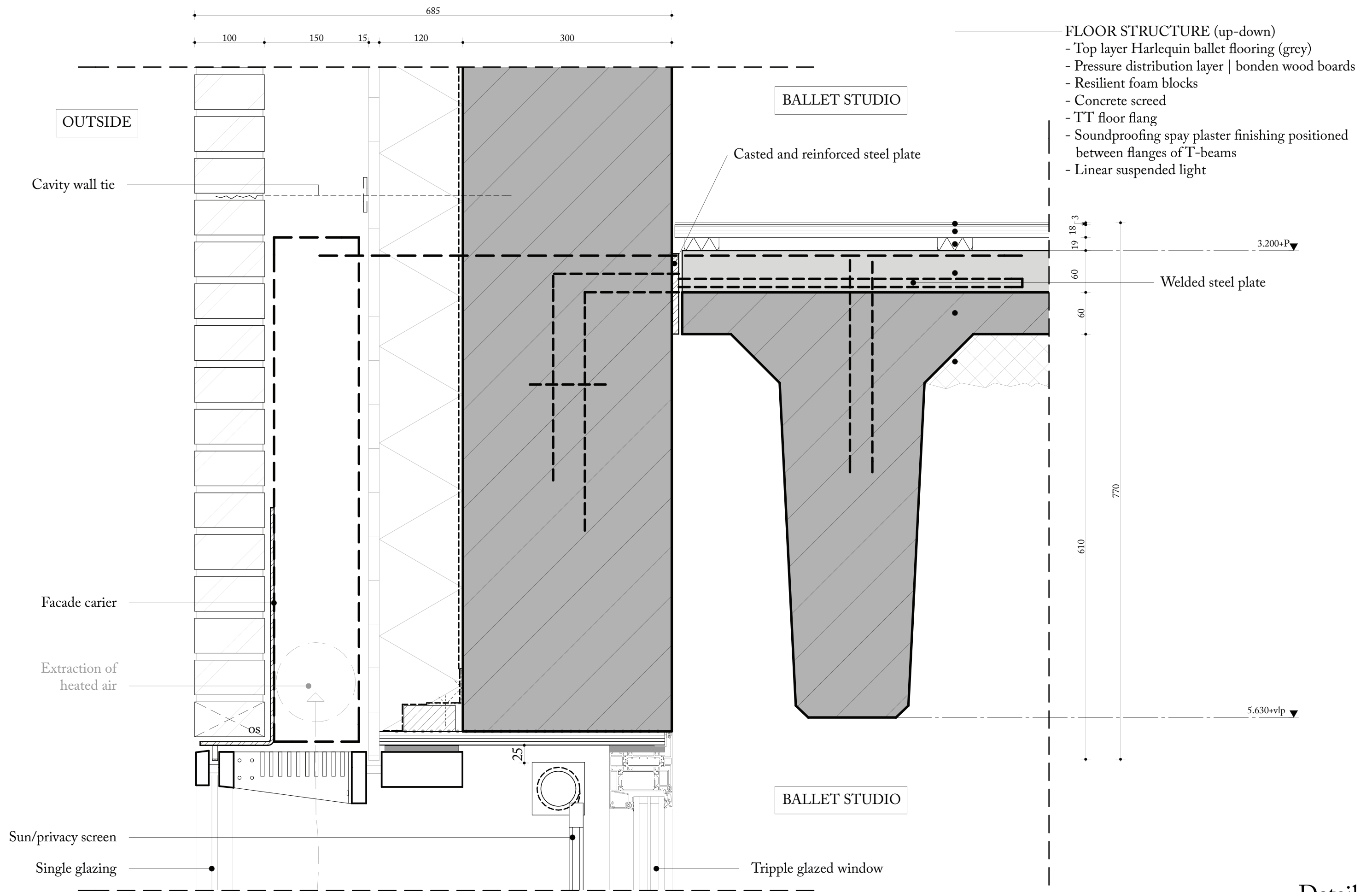




Dance Studios

Performance







Gallery of Crematorium Siesegem | KAAN Architecten







Thank you!