

AR3MET100

Methods and Analysis Graduation Studio: Positions in Practice (2016-2017)



Power and domination

An open eye on the 21st century's urban conflicts in Central Bogotá.

FROM THE PAST AND THROUGH THE PRESENT



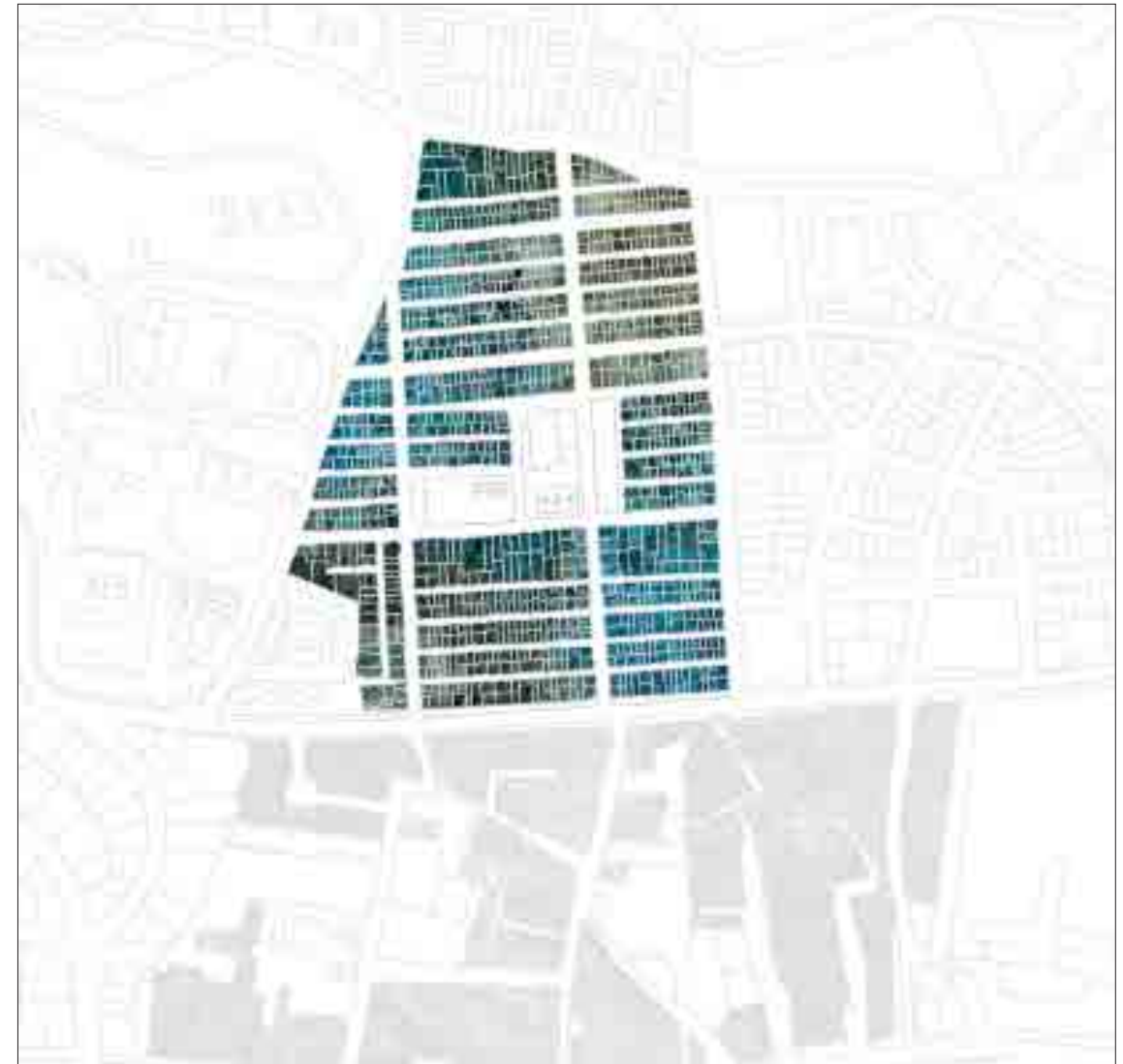
CENTRAL BOGOTÀ



LA PERSEVERANCIA, BARRIO OBRERO DE BOGOTÁ



Positioning of the barrio in the area of central Bogotá



Bird-eye photograph

HISTORICAL ANALYSIS

PHASE 1 1912 - 1950s ■

La Perseverancia, first configuration



■ PHASE 2 1950s - 1990s

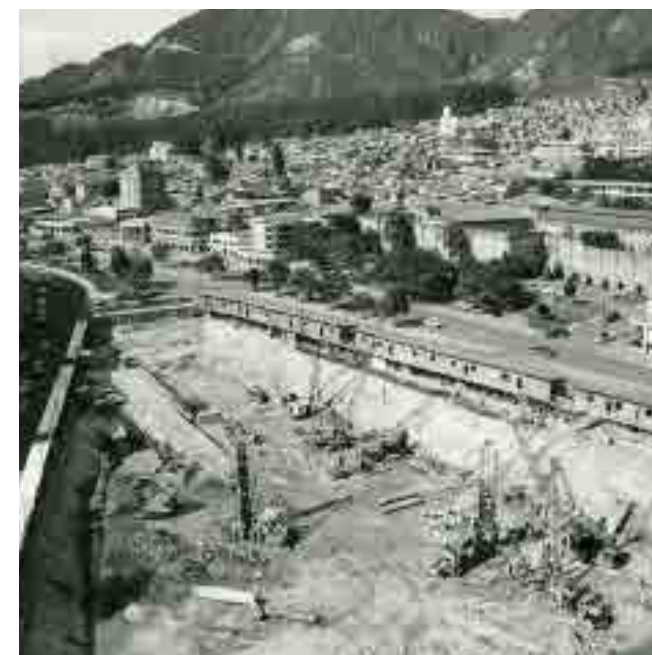
New bourgeois residential units



Bavaria Brewery



International centre, construction site



UNIÓN OBRERA - FOUNDED IN 1912



Map of Bogotá, 1933

source: claudiasegura.com/Derivas urbanas con Marlon de Azambuja



Brewery Bavaria at the beginning of the 20th century

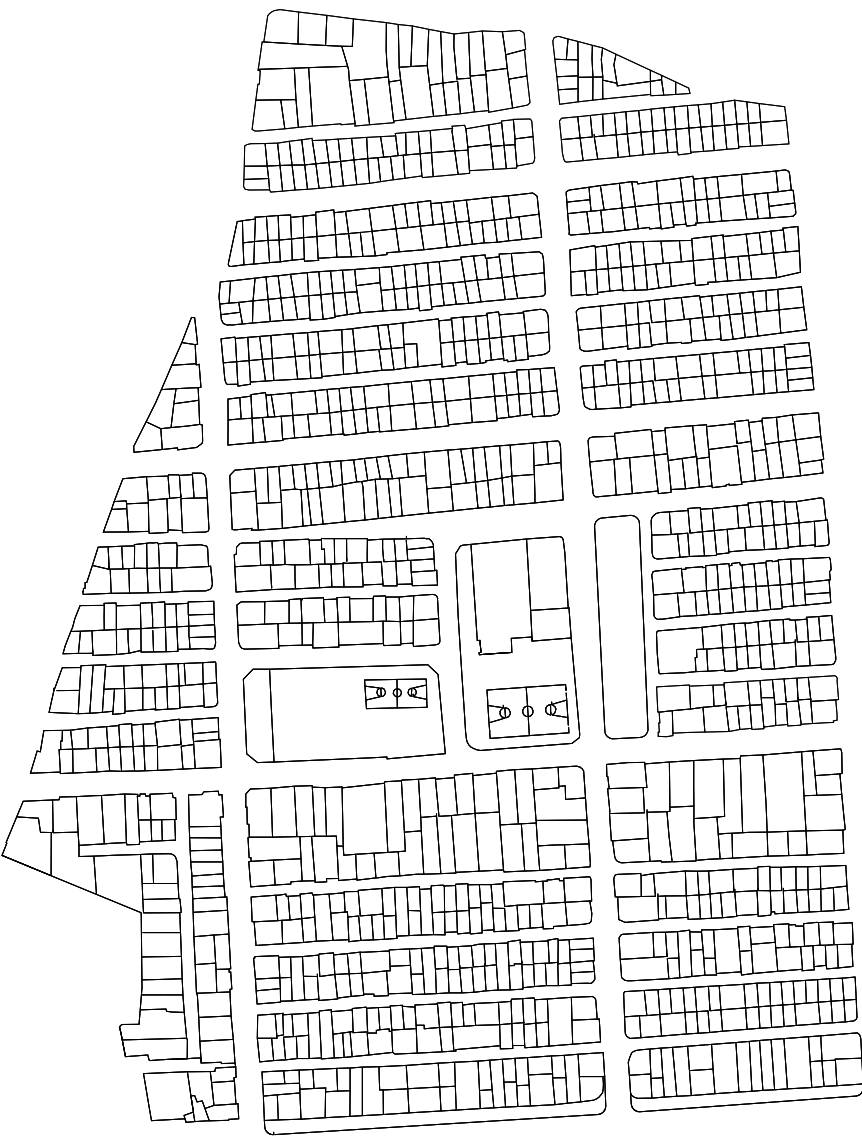
source: Liliana Ruiz Gutiérrez and
Esteban Cruz Niño, *La Perseverancia, barrio obrero de Bogotá*



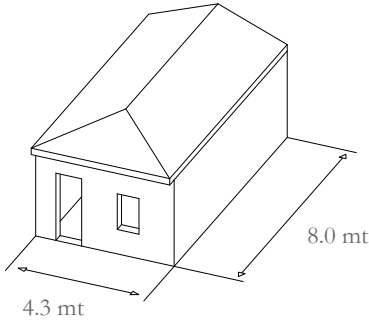
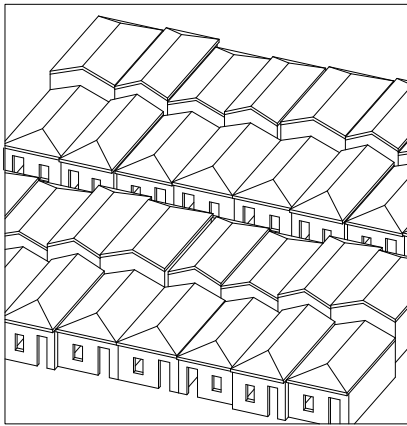
Barrio la Perseverancia in 1933

The overall configuration did not change in over 80 years

PLAN OF LA PERSEVERANCIA



Grid configuration
Maximum efficiency
Homogeneity
Streets' width between 8.5 mt 3.5 mt



La Micromanzana
Minimum dwelling
Poor material: Adobe



DEVELOPMENT OF THE AREA OF CENTRAL BOGOTÀ DURING THE 60s

source: clucolombia-ph.com/historiadeledificio

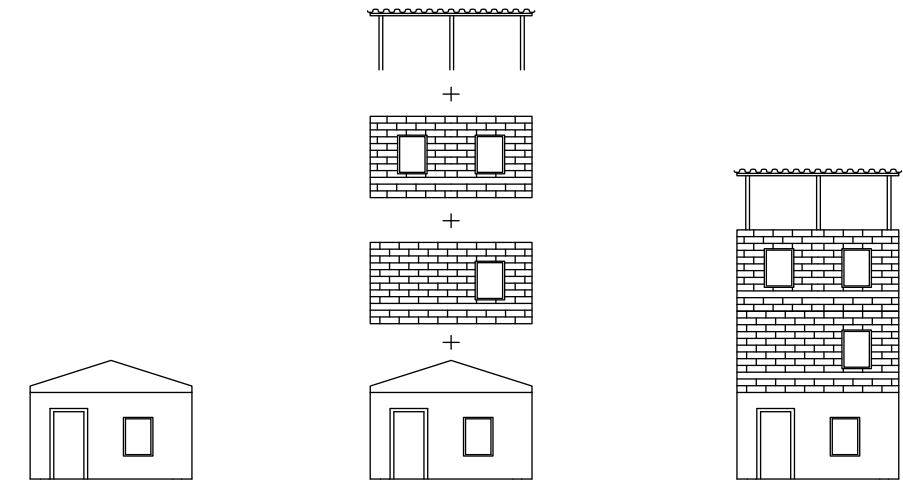




Advanced level of decay spread over the entire neighbourhood

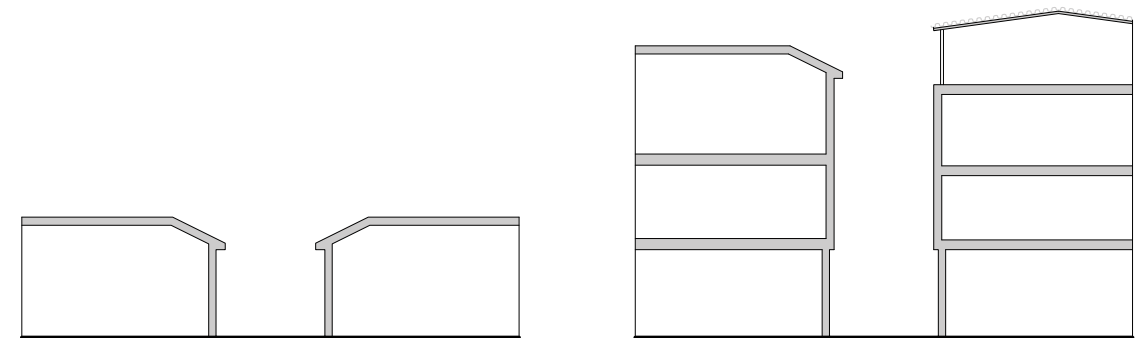


Complete impenetrability of the houses from the exterior, windows with iron grating and barbed wire fences



Housing units' self constructed expansion:

Methodologies of superimposition



Spatial implications:

No scalar proportion between the element of this urban fabric

LA PERSEVERANCIA, A CONTAINER OF REACTIONS



‘No nation can now afford to miss out on the global unification game and hope to survive’

FROM WOODS LEBBEUS,. ANARCHITECTURE. 1ST ED. LONDON: ACADEMY EDITIONS, 1992. PP. 17



URBAN ENVIRONMENTS POPULATED BY IMPOSITIONS





The reasons:

- Strategic location (real estate objective)
- Low economic level of its population (obstacle to the system)

How gentrification performs:

- Systematic abandonment of the administration
- Progressive deterioration
- Gradual expulsion of its inhabitants

Social implications:

- Replacement of the lower-income inhabitant with middle-upper class

Cultural implications:

- Cancellation of local identity
- Overriding the sense of belonging of a territory



LA PERSE'S REACTIONS

LA CHICHA FESTIVAL.

Cultural practices - A defensive Instrument

Chicha, Corn and Happiness Festival - Founded in 1988





CHICHA “la cerveza andina”

A drink with a long history in working class cultural identity.

"In those days, the workers brewed beer, but were drunk with Chicha"

source: Liliana Ruiz Gutiérrez and
Esteban Cruz Niño, *La Perseverancia*, barrio obrero de Bogotá



- Rediscovery of a traditional drink
- Psychological revenge over history's cultural oppression
and
- Over economic-driven abuses of power



SOCIAL COHESION AND ECONOMIC BENEFITS

- 3 - 4 months of preparation
- Over 250 families are involved
- The sales constitute a relevant part of the domestic income
- Reduction of lawless activities

CURRENT STATE OF LA CHICHA'S PRODUCTION SPACES

- Private houses
- Disorganisation



THE PROGRAM | PRELIMINARY STRATEGY OF INTERVENTION

PROGRAMME

PRODUCTION OF CHICHA

as medium for:

Activate

SELF-MANAGEMENT

processes

Intensify the community

COHESION

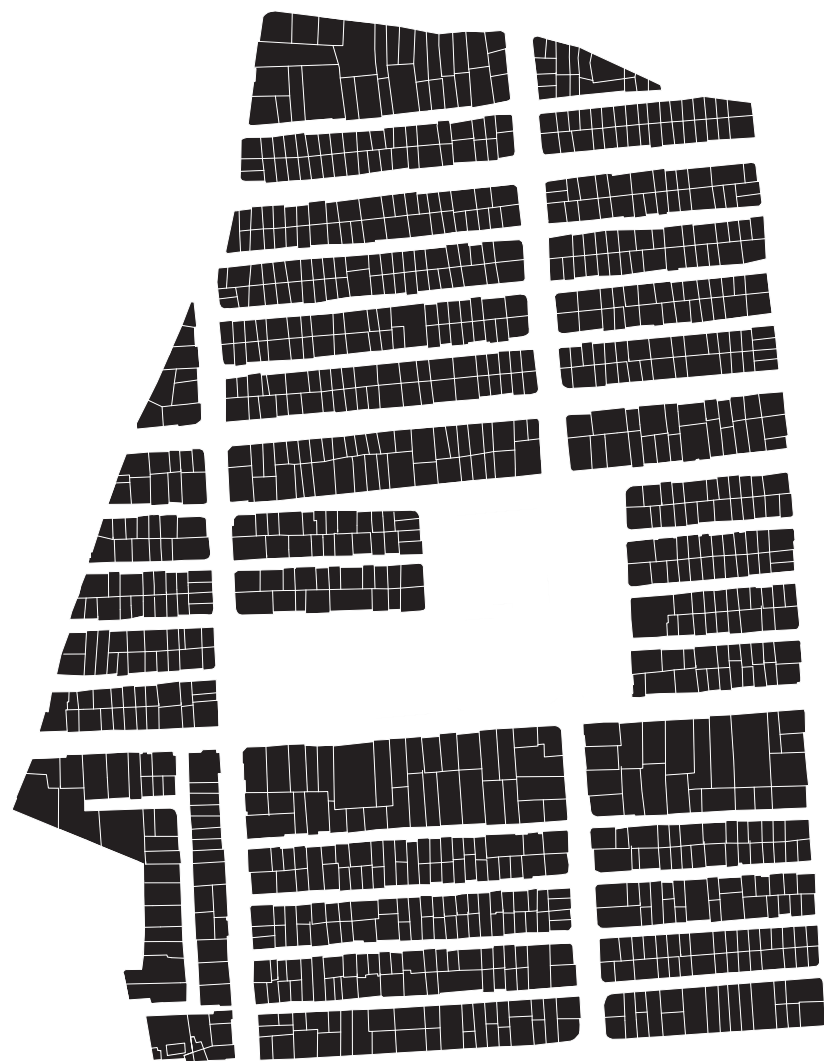
Strengthen cultural

IDENTITY

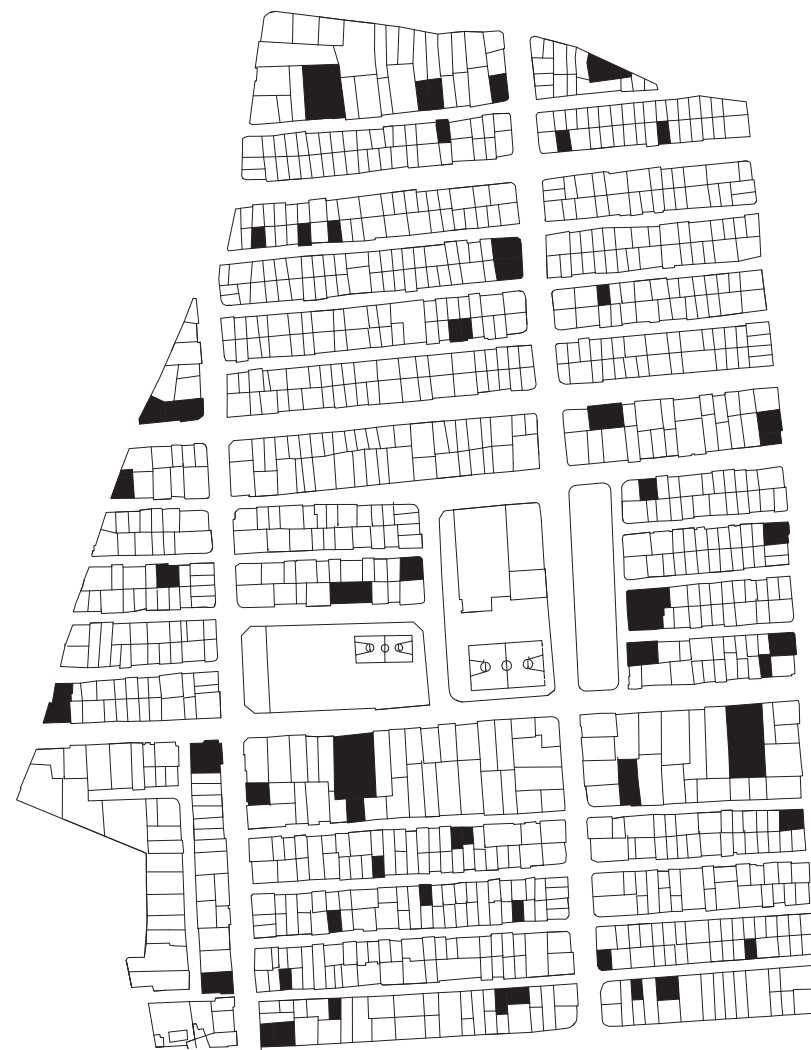
Restore the

REPUTATION

of the barrio

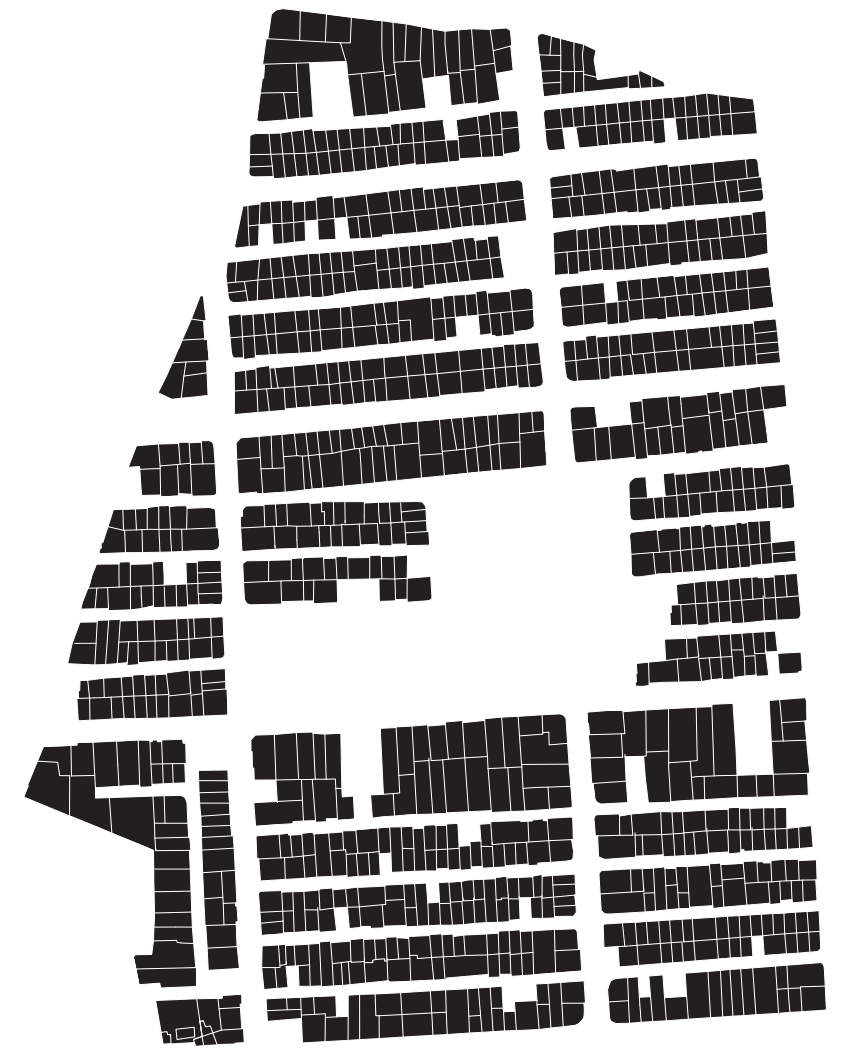


CURRENT RIGID CONFIGURATION



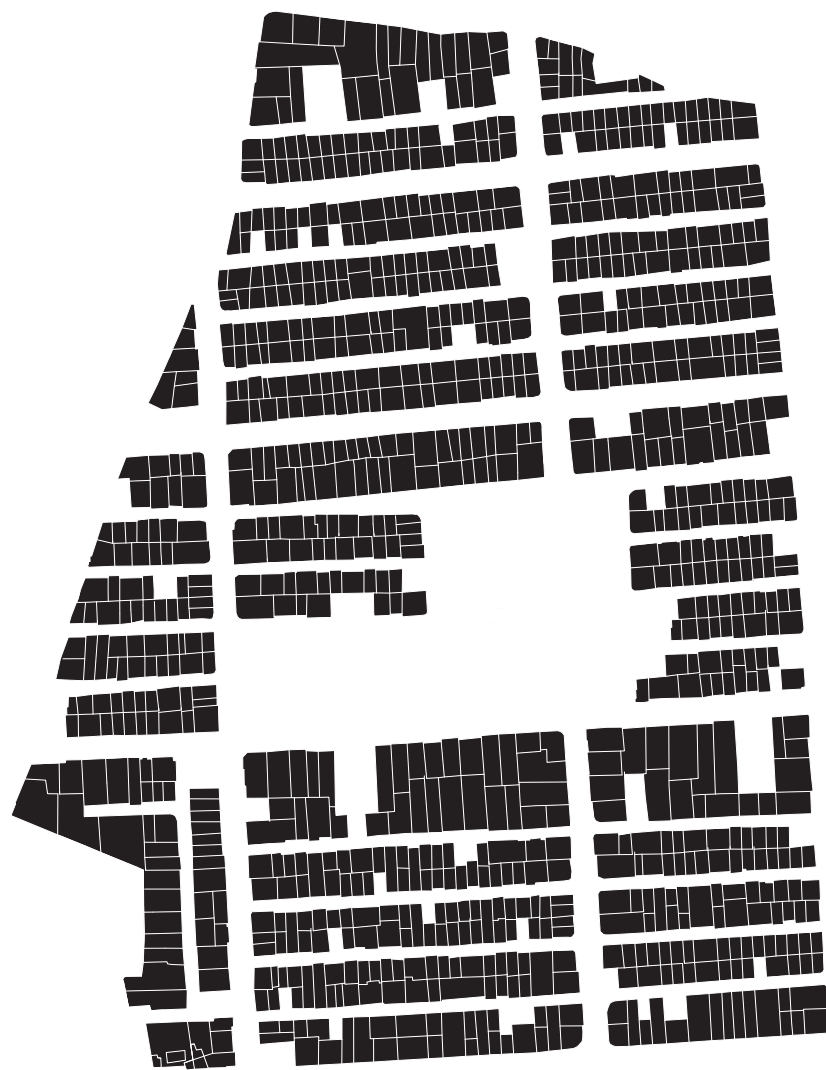
DERELICT CONSTRUCTIONS

Individuation of the unused and
derelict constructions



DEMOLITION

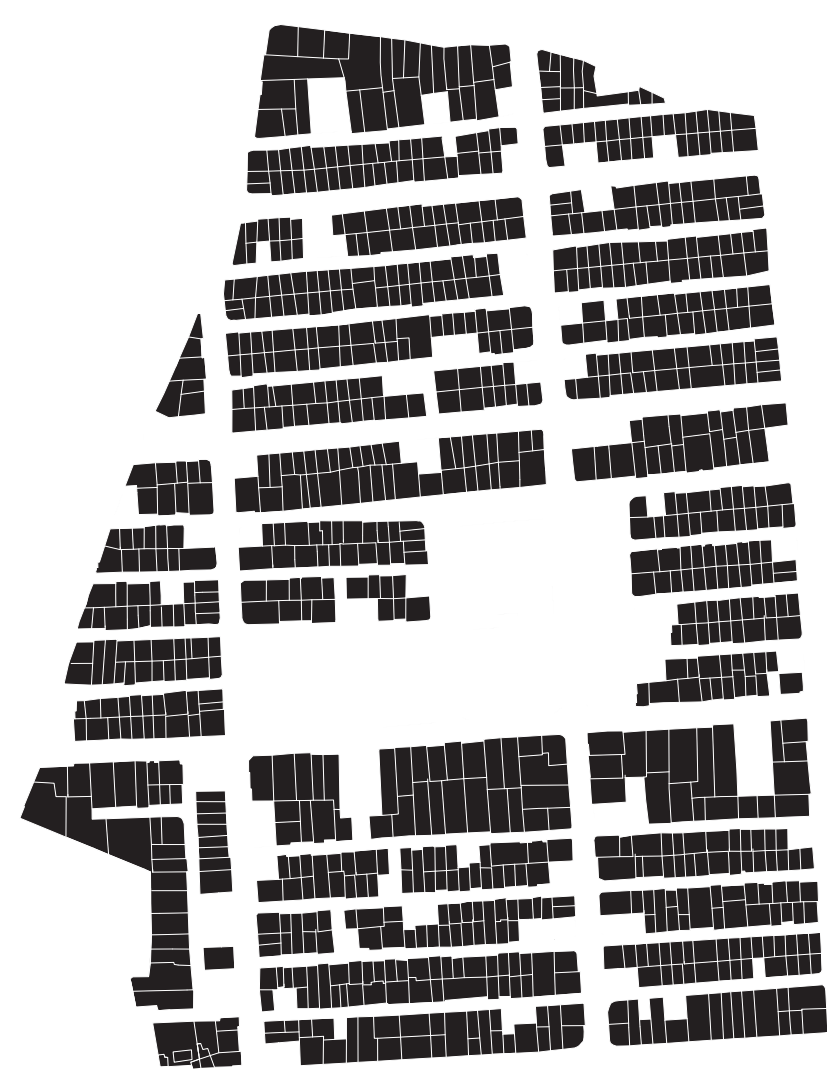
Demolition as necessary operation
for a change of image



DEMOLITIONS OUTCOME

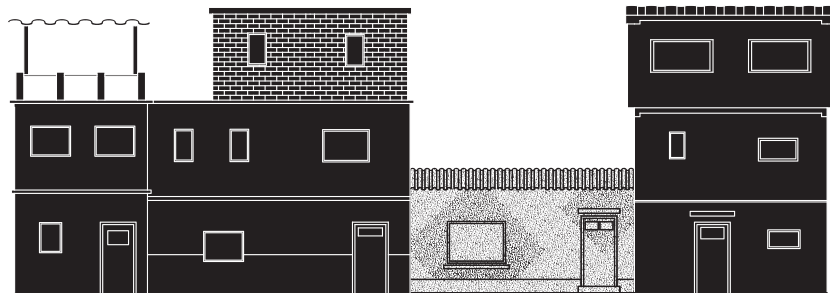


STRATEGICAL PLOTS

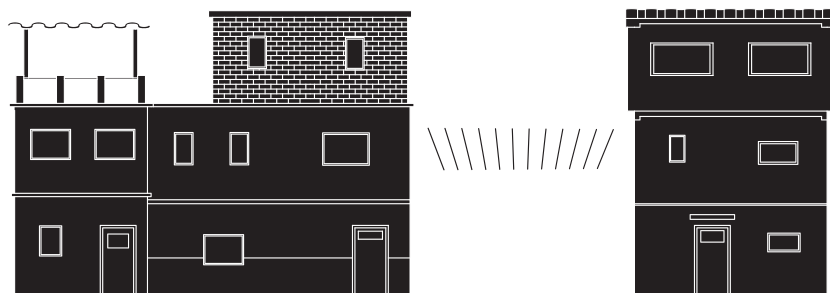


NEW COLLECTIVE SPACES

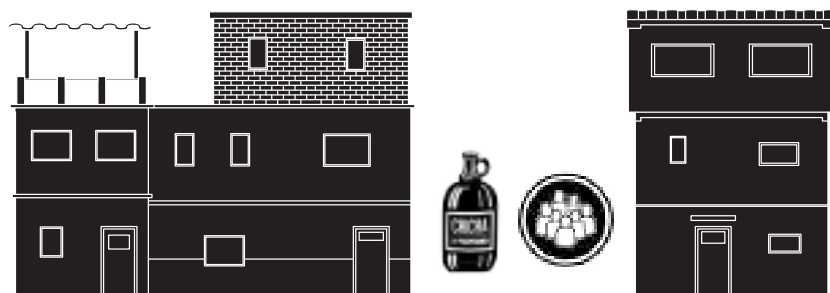
How to:



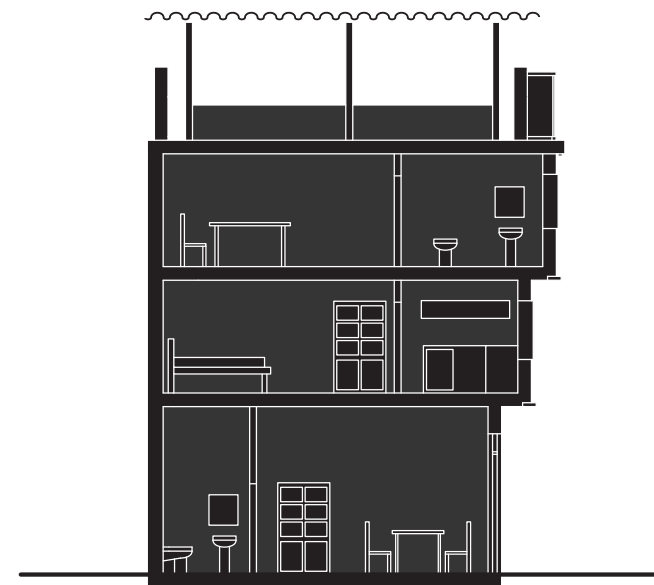
Demolition



Creation of space



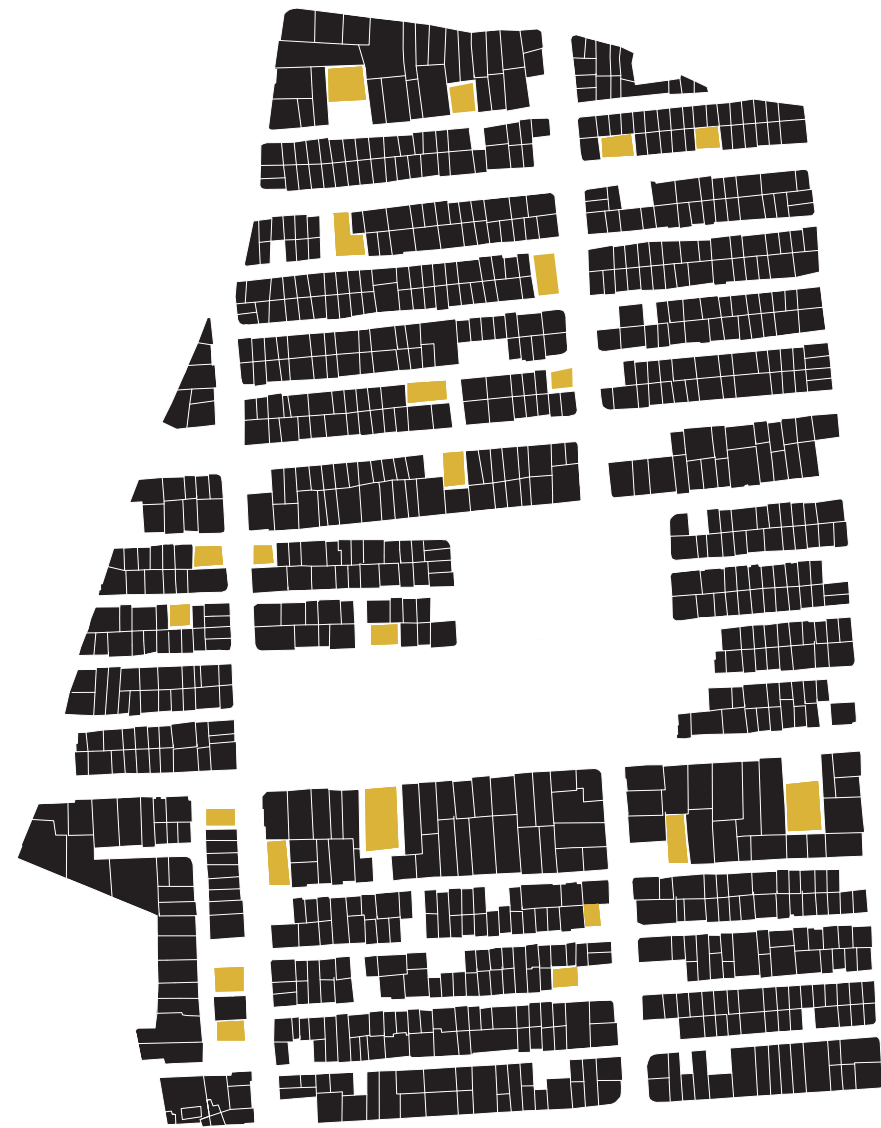
Employment of the new space to organise the production of Chicha and for collective use



Emptying-out and Opening of private properties ground level.



Employment of the new space to organise the production of Chicha



PRODUCTION AREAS

La Chicha micro-areas of production
scattered over the entire neighbourhood

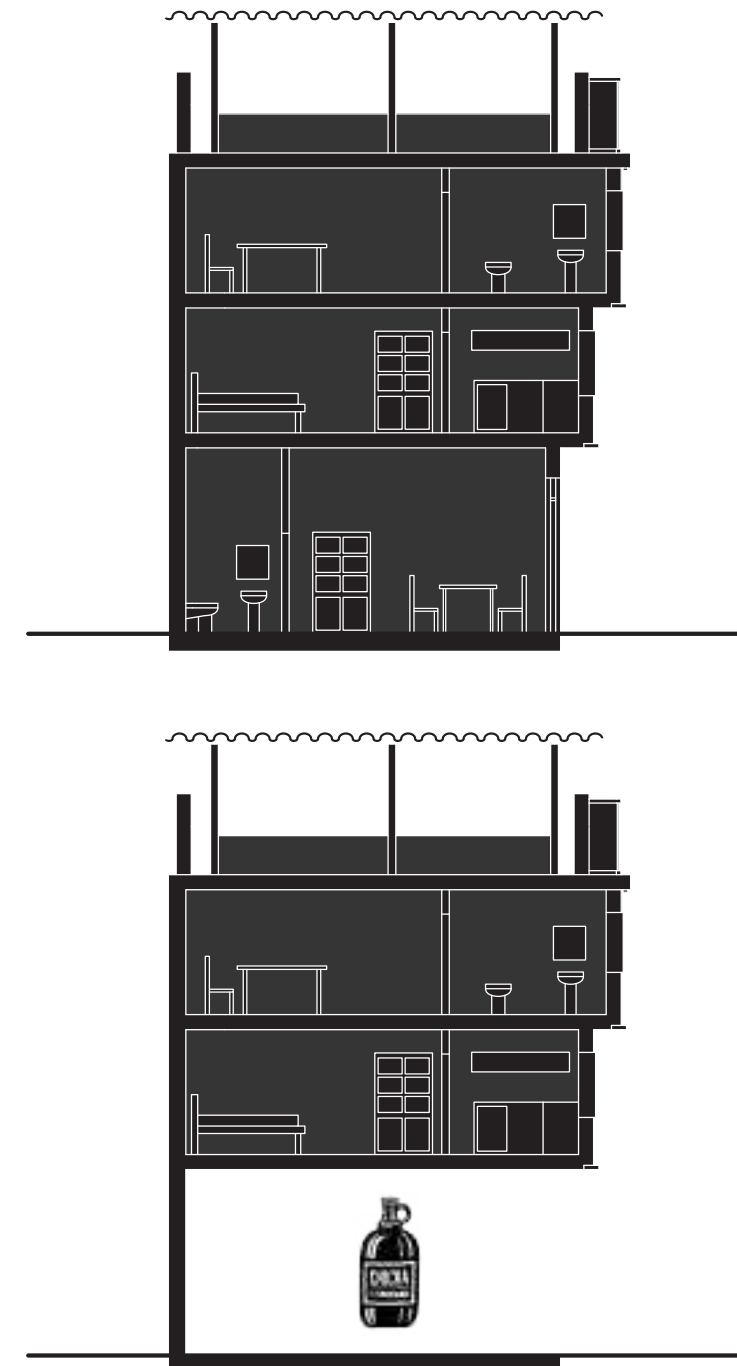
NEW CONCEPT OF FACTORY

The inhabitants became owners of their own activity

The entire community becomes simultaneously employer and employ

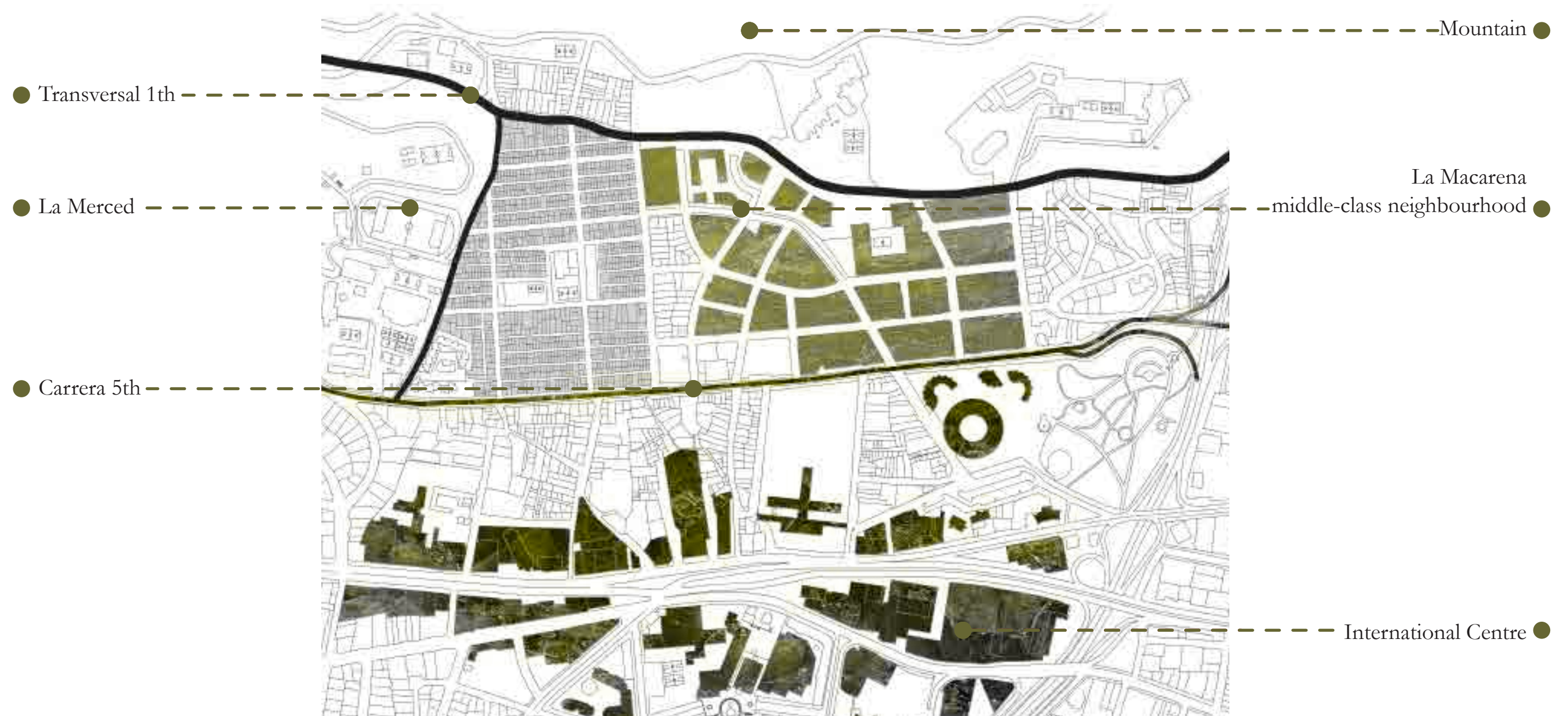
No longer a proletarian neighbourhood

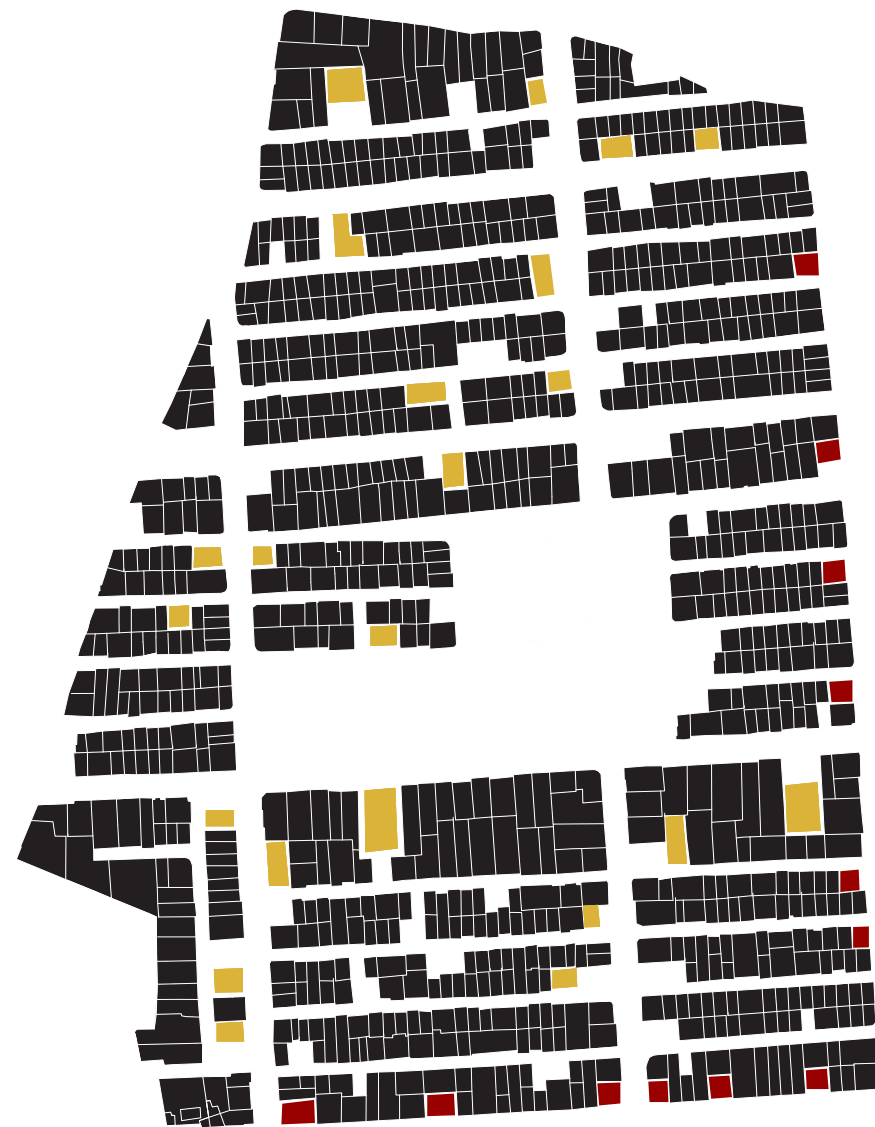
TRADING DOMESTIC SPACE FOR INCOME IN COLOMBIA



LA PERSEVERANCIA AND ITS SURROUNDING

Individuation of the weak edges





LA CHICHA'S POINTS OF SALE

Element of contact with the city controlled and run community

Management on the entire production-distribution loop

THE DESIGN PROCESS

RESOURCE: COMMUNITY'S KNOWLEDGE ON SELF-CONSTRUCTION

ARCHITECTURAL PROBLEMS:

TOTALISING UNIFORMITY

FACTORS: ■ GRID

■ DENSITY

■ LACK OF OPEN SPACES

■ NO TYPOLOGICAL VARIETY

■ CLOSENESS

■ SCALE

■ CHAOS (NON REGULATED SELF-CONSTRUCTED DEVELOPMENT)

ARCHITECTURAL AIMS:

- INTRODUCING MORE TYPOLOGICAL AND FUNCTIONAL VARIETY
- INTRODUCING A NEW SCALE
- PROVIDING PUBLIC SPACES
- CREATING SPACE AT THE GROUND FLOOR
- INTRODUCING TYPES OF SPACES THAT ESTABLISH DIFFERENT PATTERNS OF OWNERSHIP

EVERYTHING HAPPENS BEHIND A WALL

TRANSFORMATION PUSHED BY INDIVIDUAL INTERESTS

UNSATISFACTORY RESULT IN TERMS OF SPACE FOR THE COMMUNITY

SWITCH IN THE ATTITUDE FROM INDIVIDUAL TO COLLECTIVE

PROCESS OF DE-PRIVATISATION

CHARACTERISTIC SPOTS

■ CROSSROADS



■ WIDE STREET



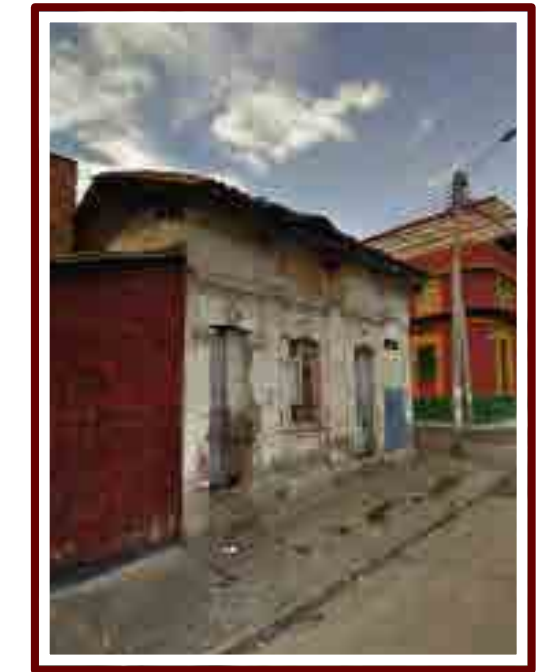
■ NARROW STREET



■ TRANSVERSAL AXIS



■ THE EDGE



SEQUENCE OF OPERATIONS

- FREEING OF SPACE THROUGH DEMOLITIONS AND OPENINGS AT THE GROUND FLOOR IN PRIVATE PROPERTIES
- REORGANISE PRIVATE AND PUBLIC CIRCULATION
- DEFINITION OF PRELIMINARY SPATIAL INTENTIONS.



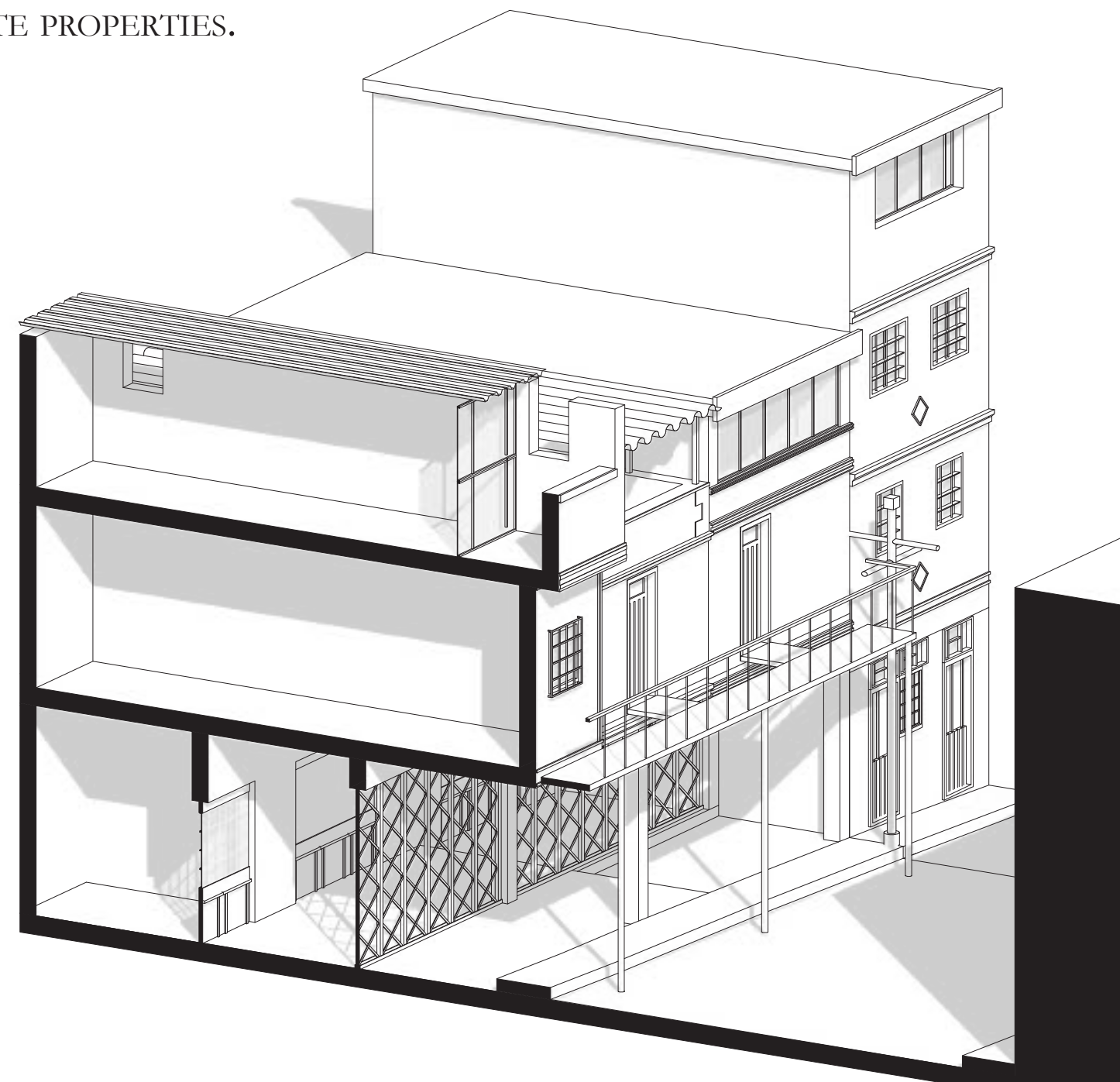
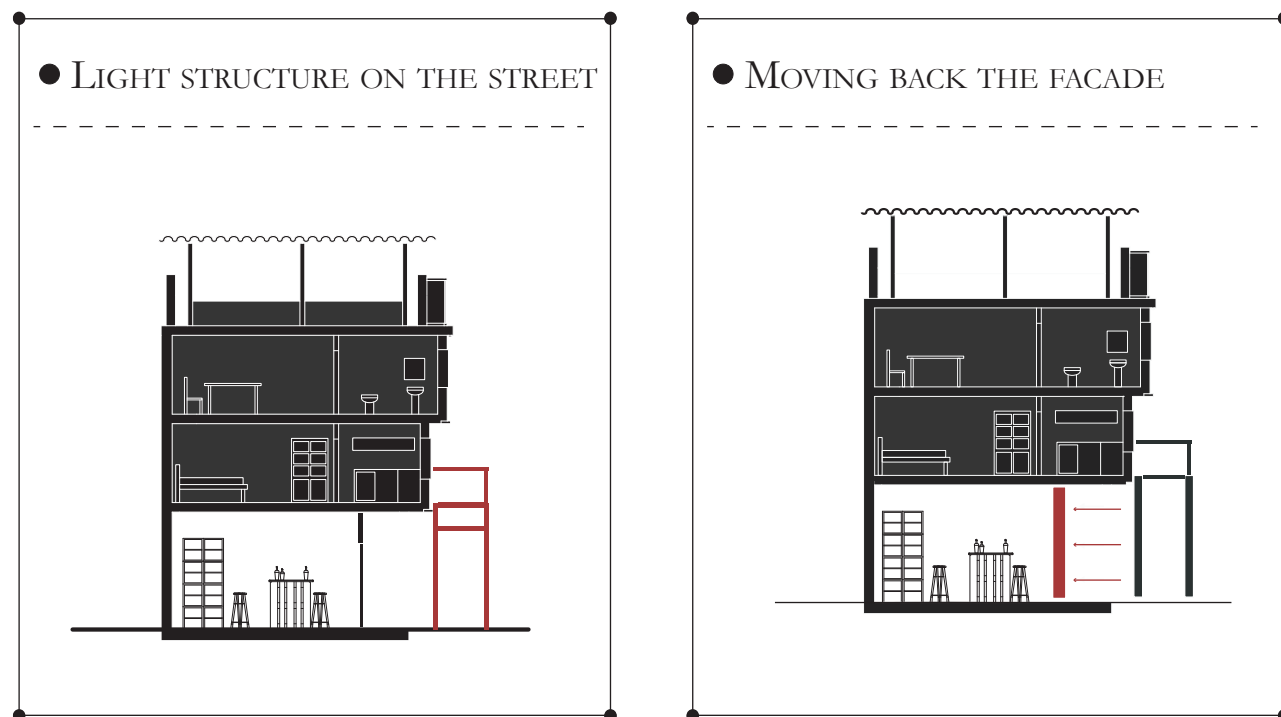
ARCHITECTURAL INTERVENTIONS:

- BREAKING THE RIGIDITY OF THE GRID DISSOLVING THE CONTINUOUS FACADE.
- FOCUSING AT LEVEL OF THE GROUND FLOOR.
- PARTIAL DISSOLUTION THE HEAVINESS THAT CHARACTERISED THE AREA.
- COMBINING ACCESSES TO HOUSES AND PUBLIC SPACES WHEN BENEFICIAL FOR MY INTENTS.



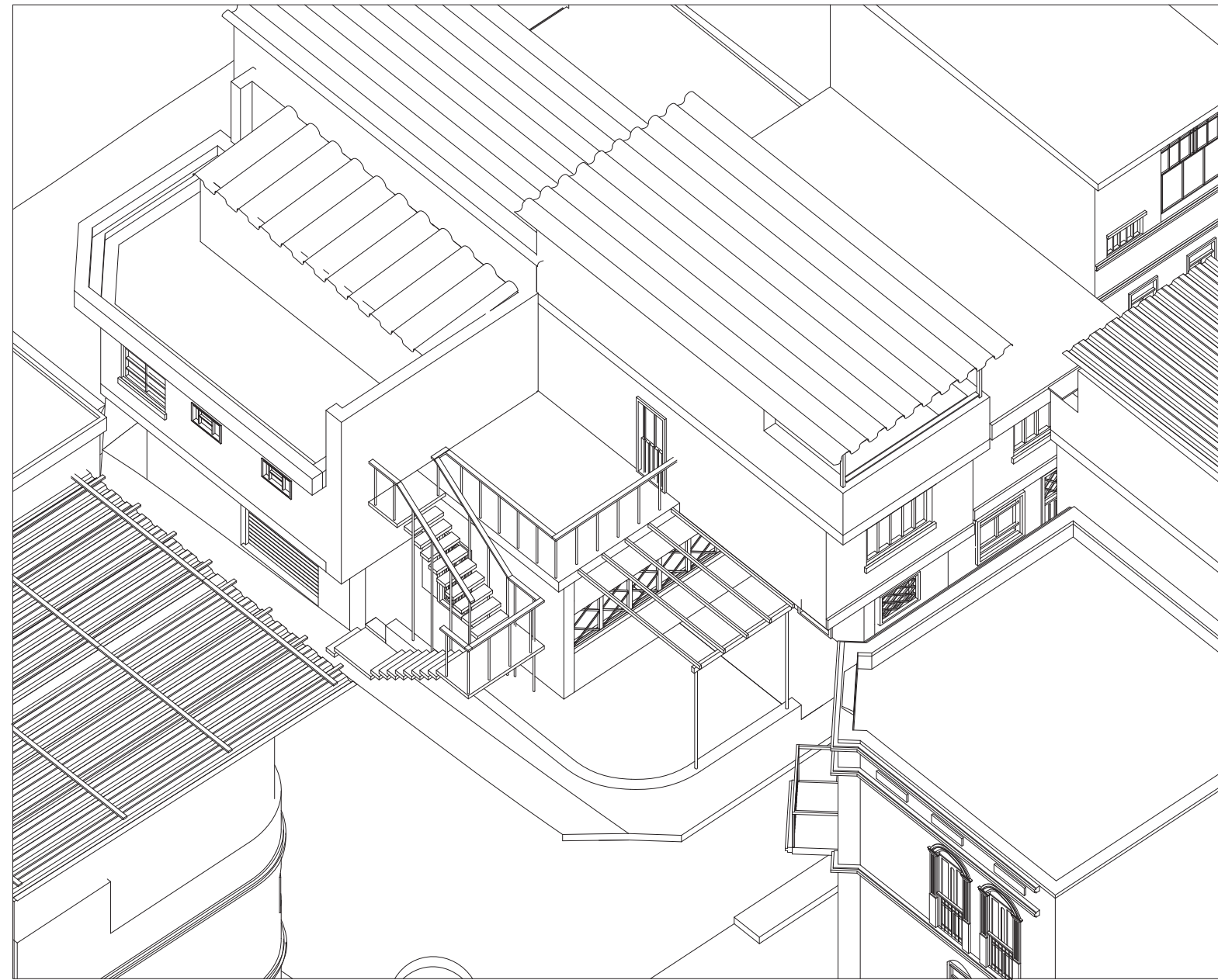
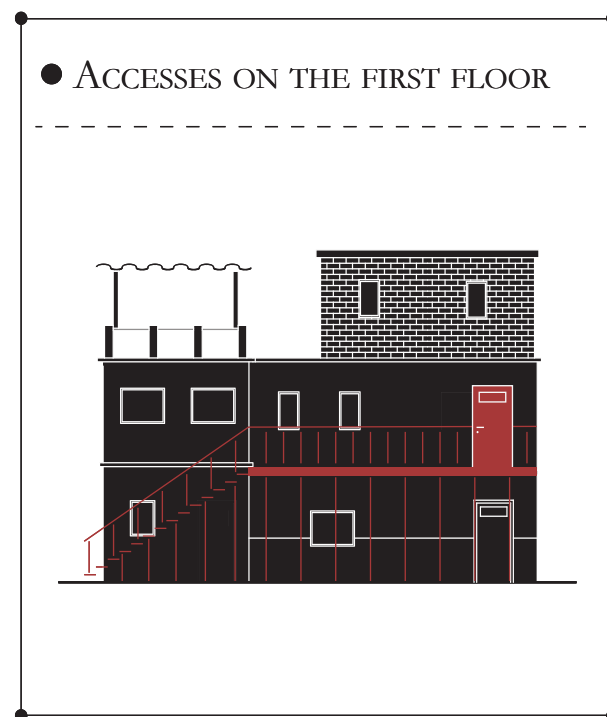
ABSTRACT PRINCIPLES:

- MOVING OUT TOWARDS THE STREET WITH LIGHT STRUCTURE.
- COMPENSATE FOR THE SPACE TAKEN GIVING OUT SPACE FROM PRIVATE PROPERTIES.



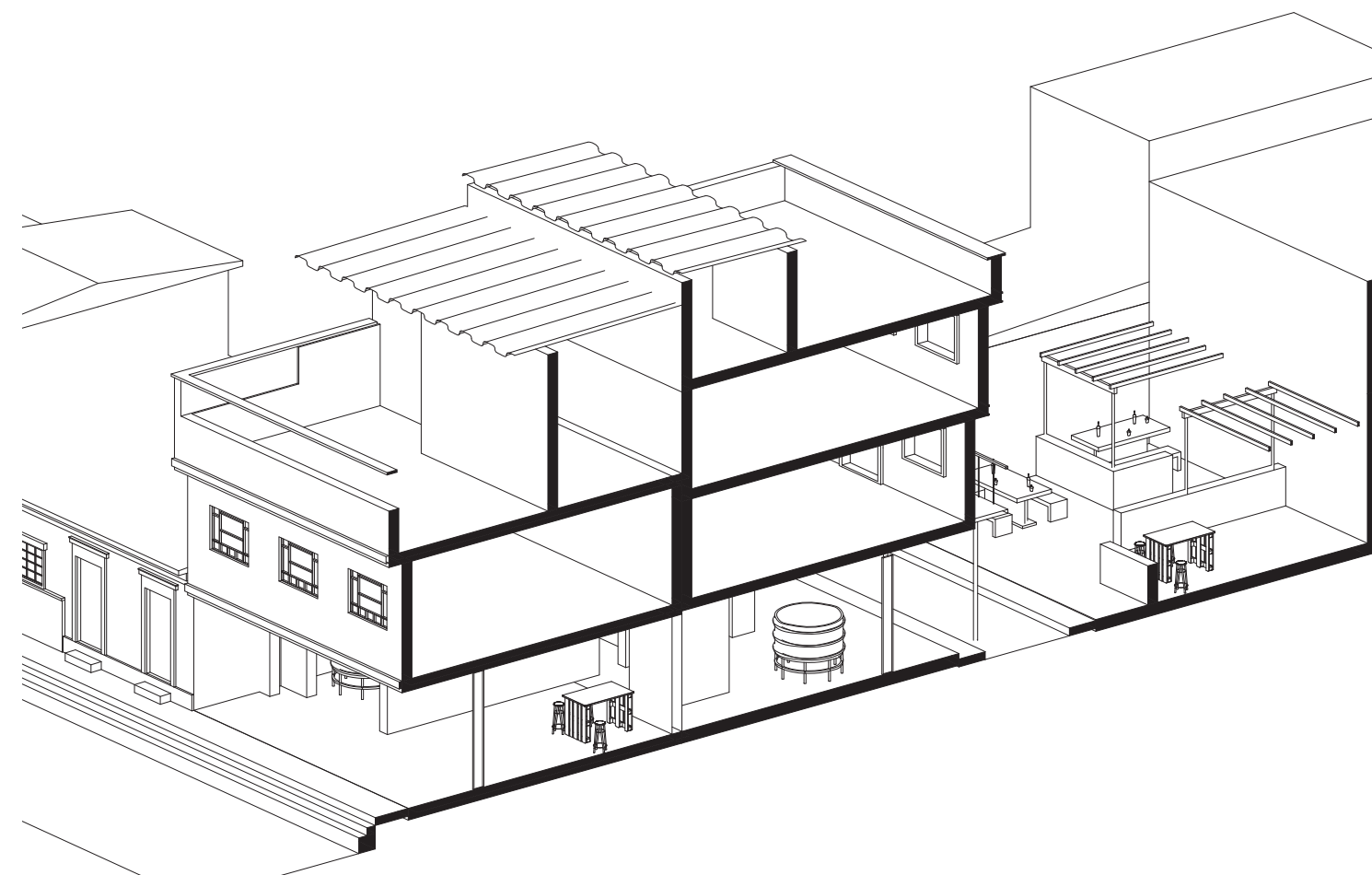
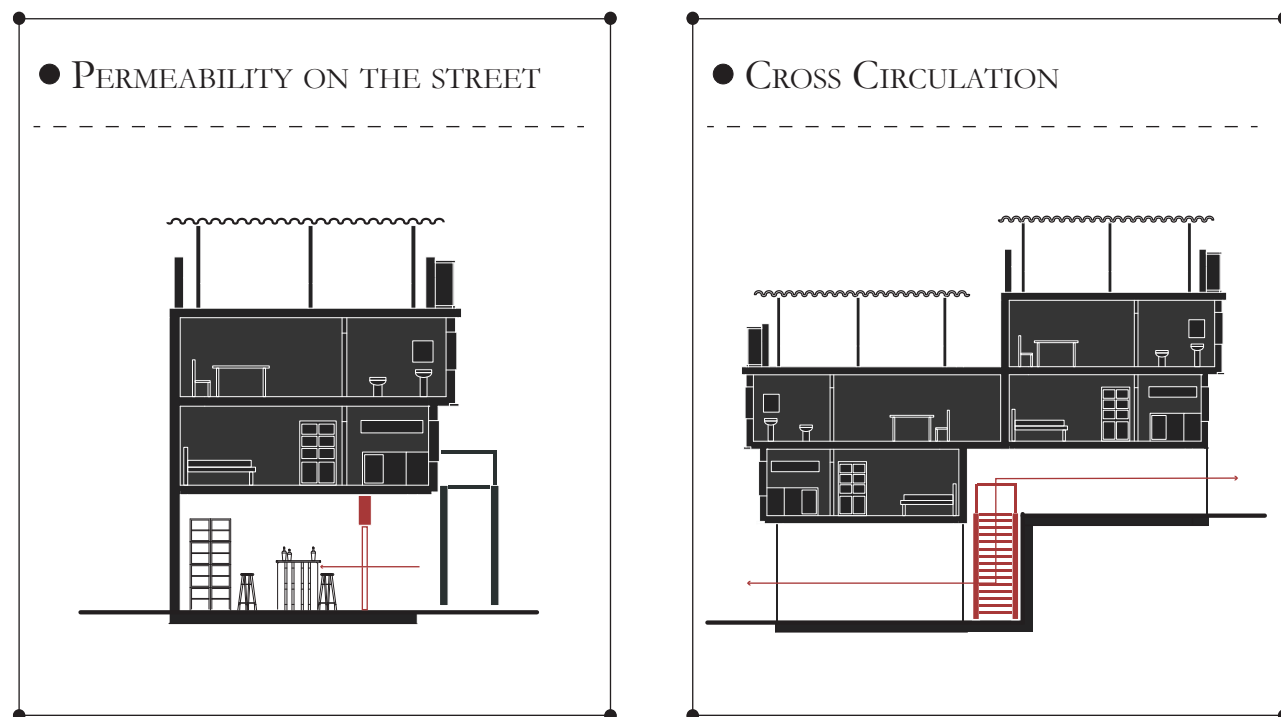
ABSTRACT PRINCIPLES:

■ CREATING ACCESSES ON THE FIRST FLOOR



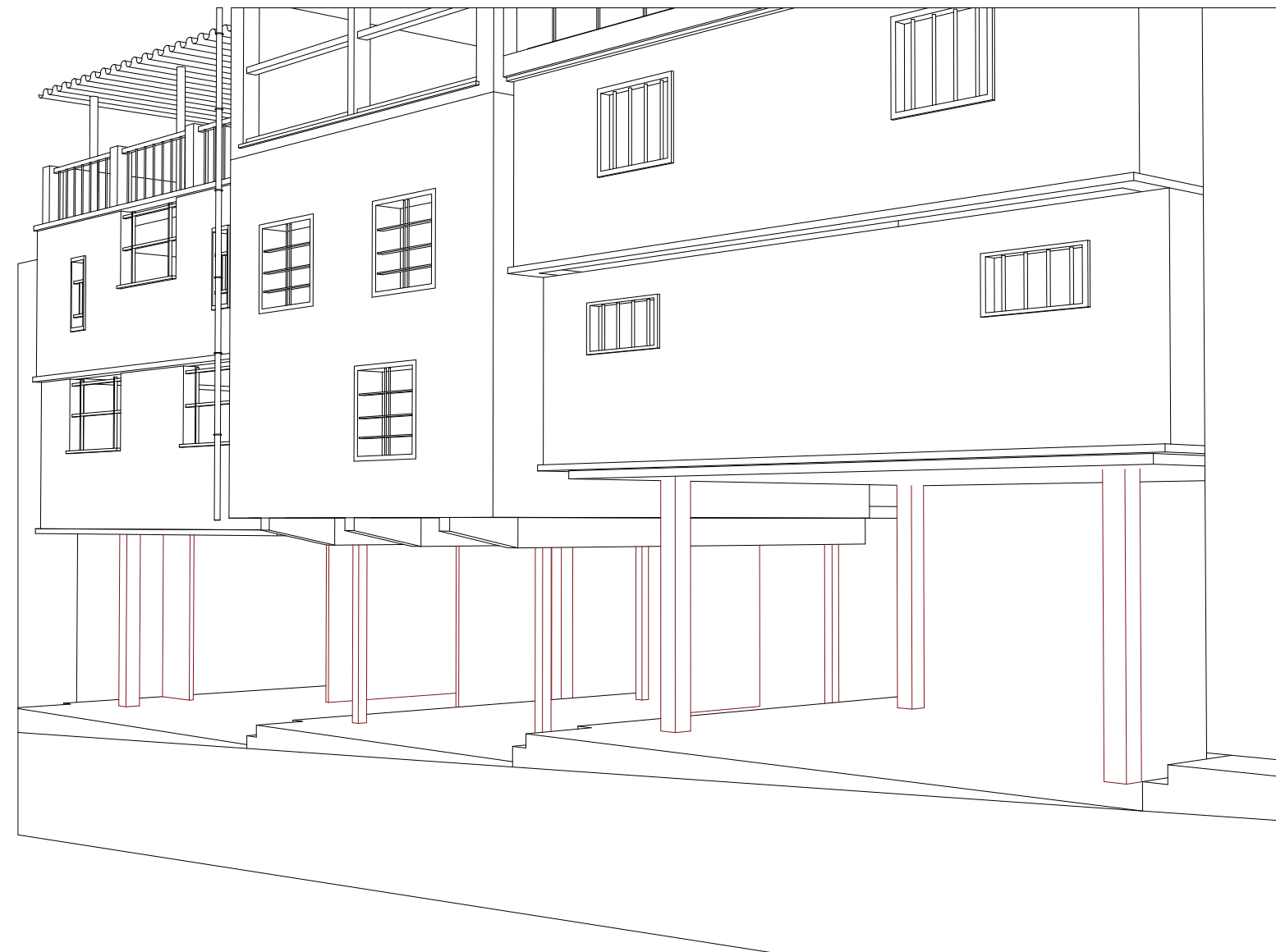
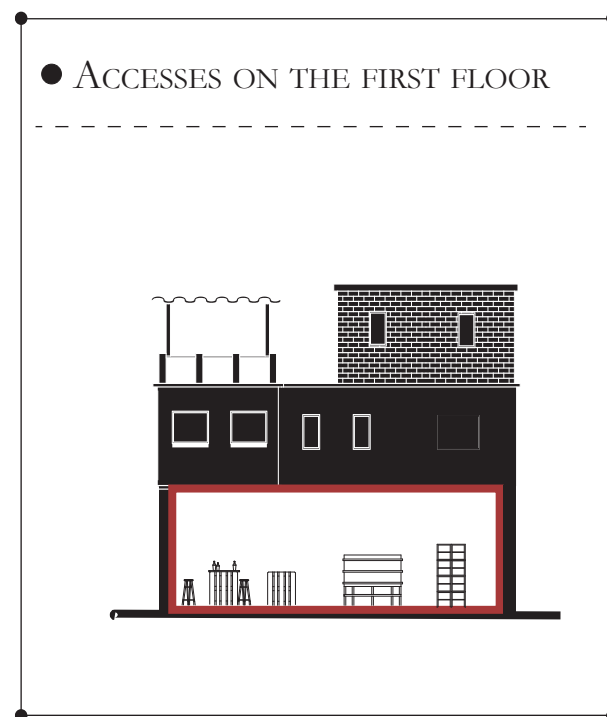
ABSTRACT PRINCIPLES:

- PERMEABILITY ON THE GROUND FLOOR.
- INTRODUCING PERPENDICULAR CIRCULATION TO THE STREET.



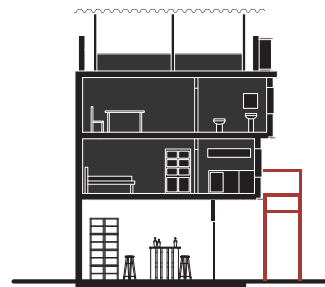
ABSTRACT PRINCIPLES:

- UNIFY GROUND FLOOR SPACES OF PREVIOUSLY SEPARATED PROPERTIES.

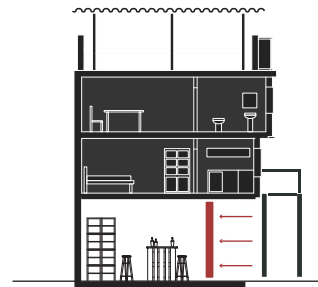


ABSTRACT PRINCIPLES:

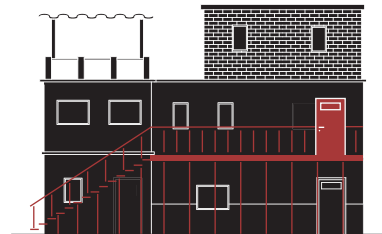
● LIGHT STRUCTURE ON THE STREET



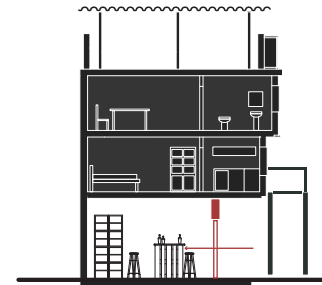
● MOVING BACK THE FACADE



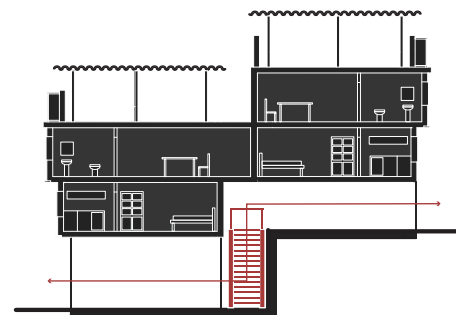
● ACCESSES ON THE FIRST FLOOR



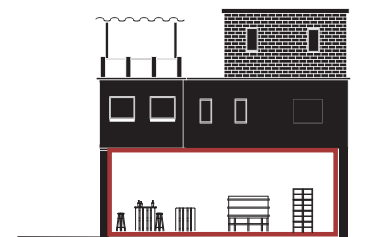
● PERMEABILITY ON THE GROUND FLOOR



● CIRCULATION CROSSING THE BLOCK



● UNIFYING PRIVATE PROPERTIES



Qualities	Quantity	Round Sharp	Steep Shallow	Turning Straight	Form
Envelope	Transparent surface (glass)	Open	Full	Clayton	
Structure (space limit)	Columns	Low wall	Thin	Water massive	
Floor (Concept of a floor)	As it is (if found)	Smooth	Rough	Var.	

When we have this catalogue you can come back to it

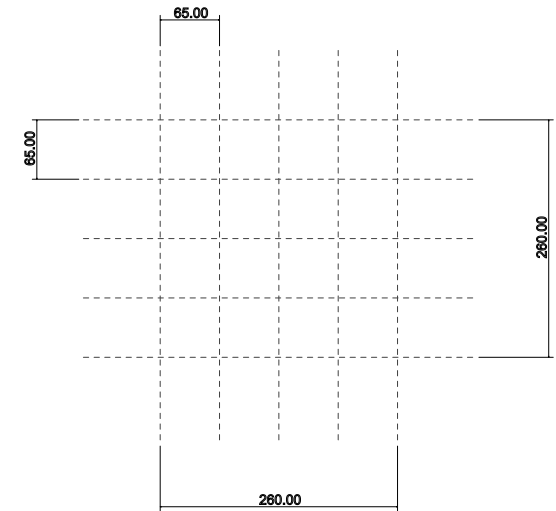
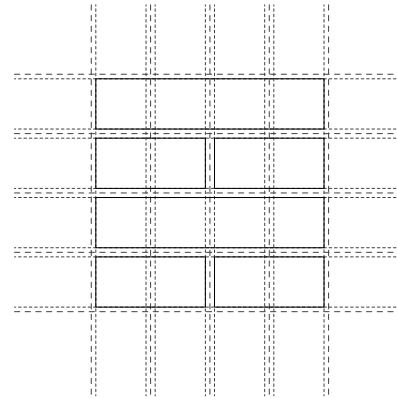
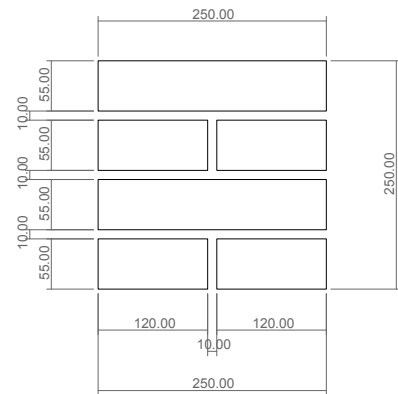
CONFIGURATION APPROACH

NOT SPECIFIC FORM (CLOSE SYSTEM)

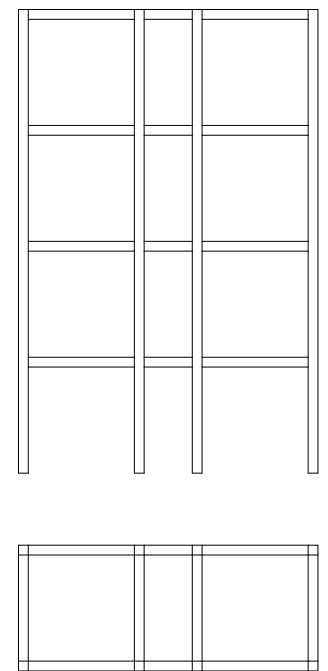
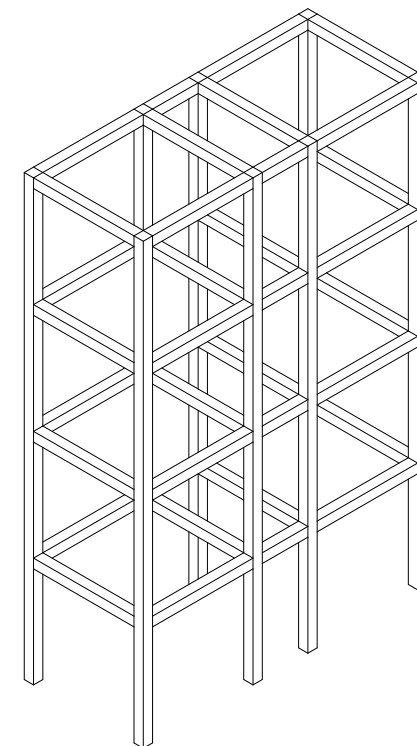
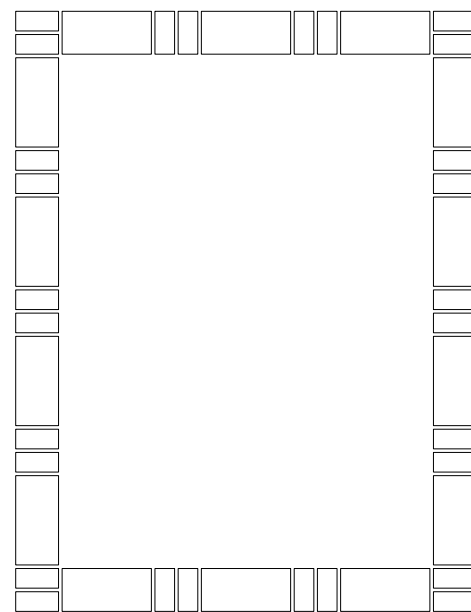
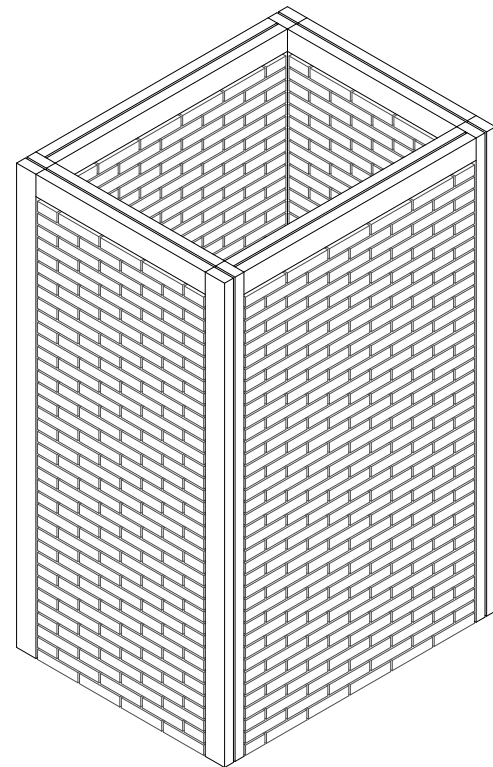
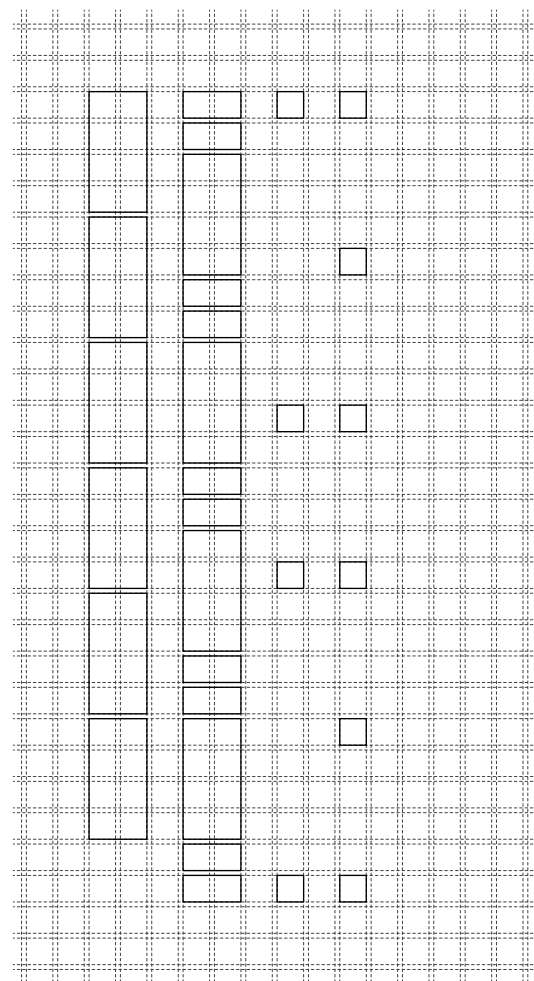
APPROACH BASED ON THE DEFINITION OF PRINCIPLES

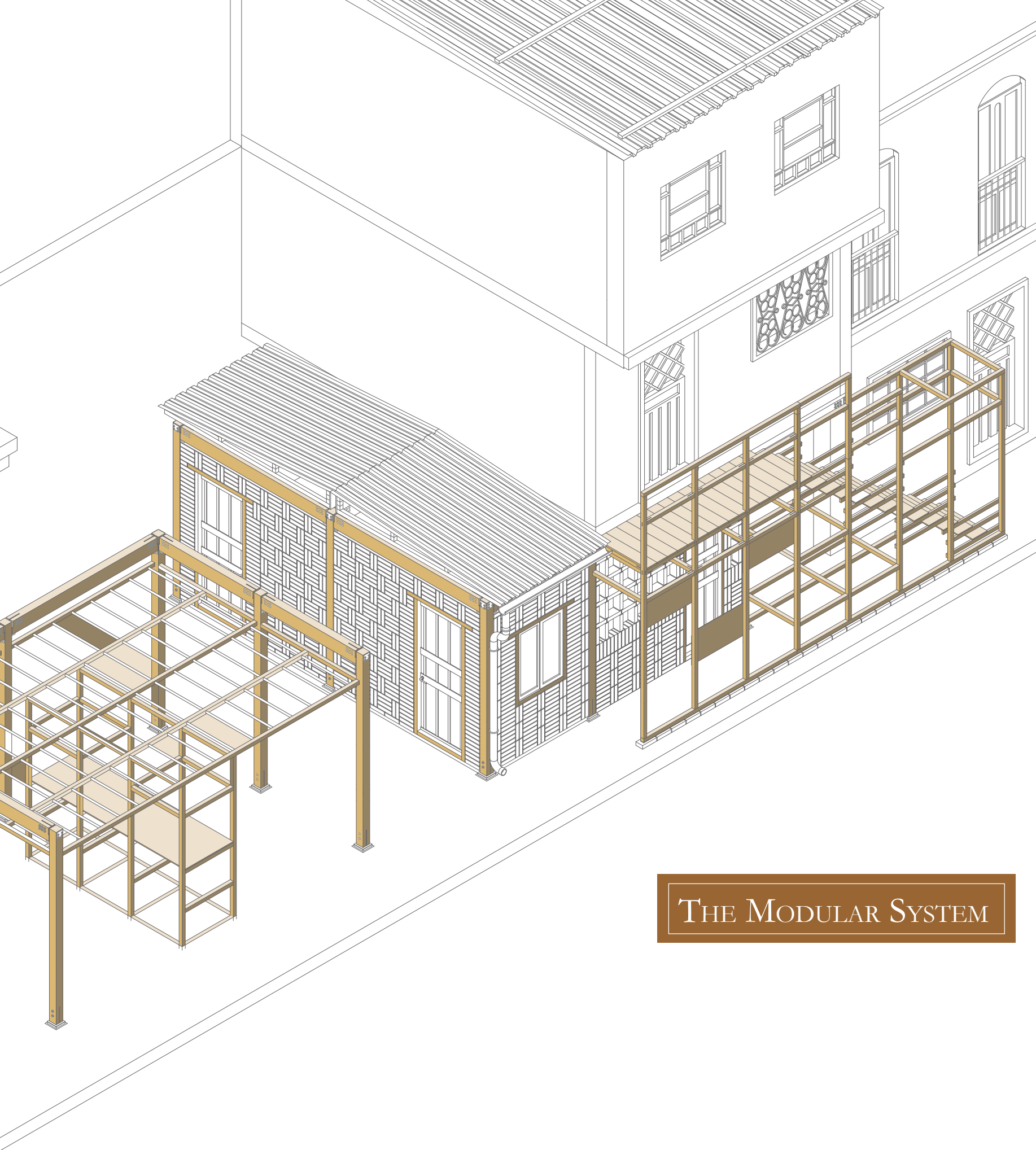
THE MODULAR SYSTEM

THE MODULE



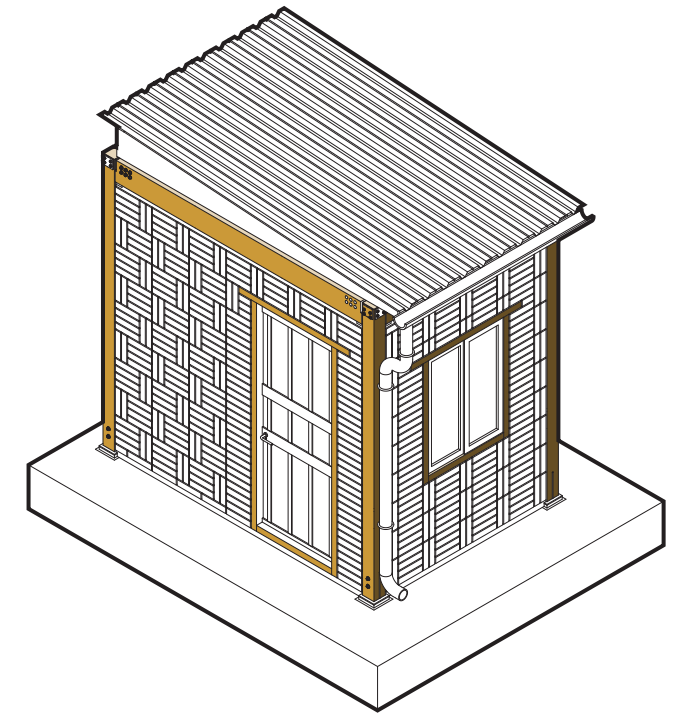
MODULARITY WOULD PROVIDE FOR: FLEXIBILITY ORDER AND COHERENCE



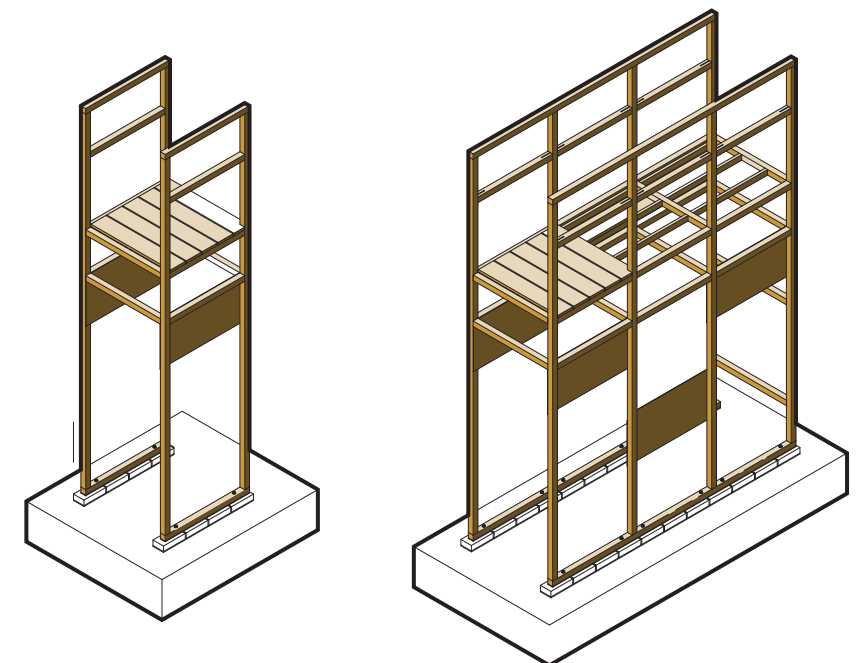


THE MODULAR SYSTEM

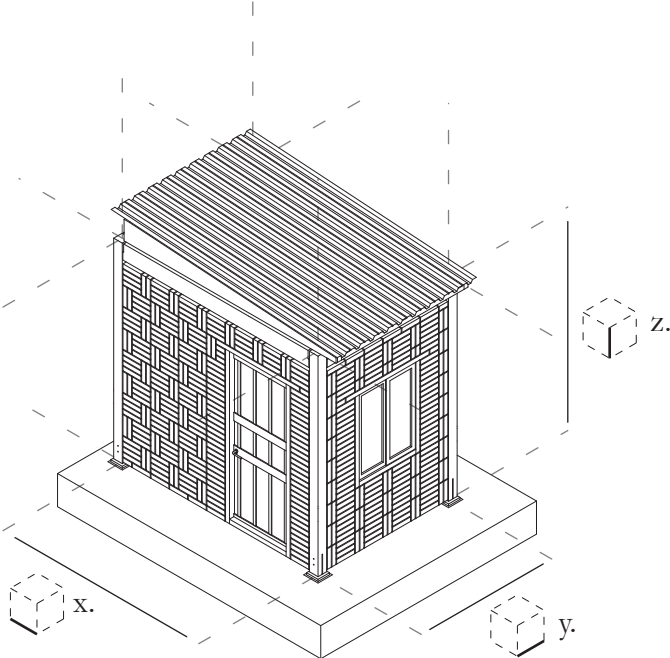
THE HEAVY MODULE - PERMANENT
- MAIN FUNCTIONS



THE LIGHT MODULE - OUTDOOR SPACES
- VERTICAL CIRCULATION



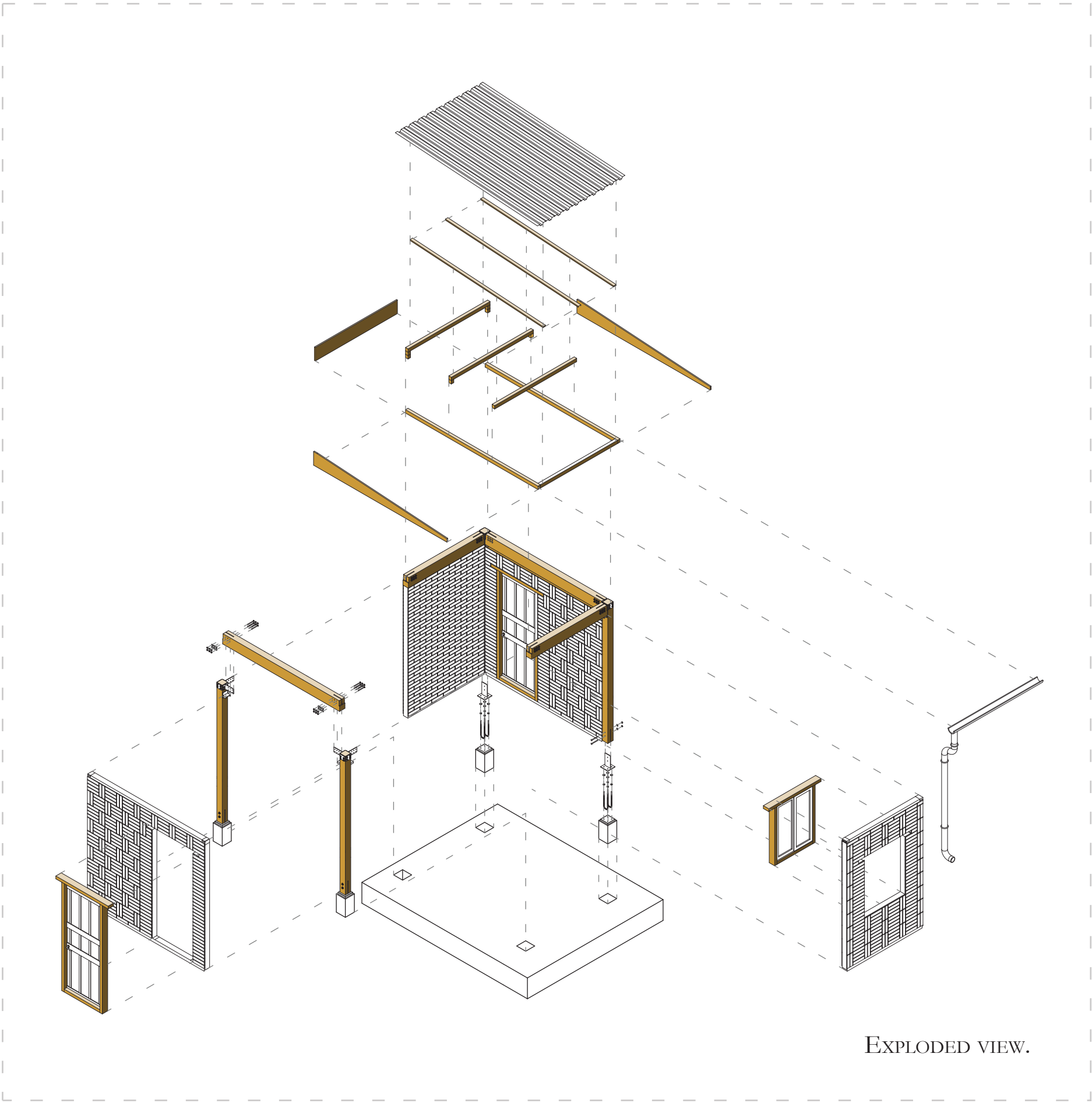
THE HEAVY MODULE



x. 2700 mm

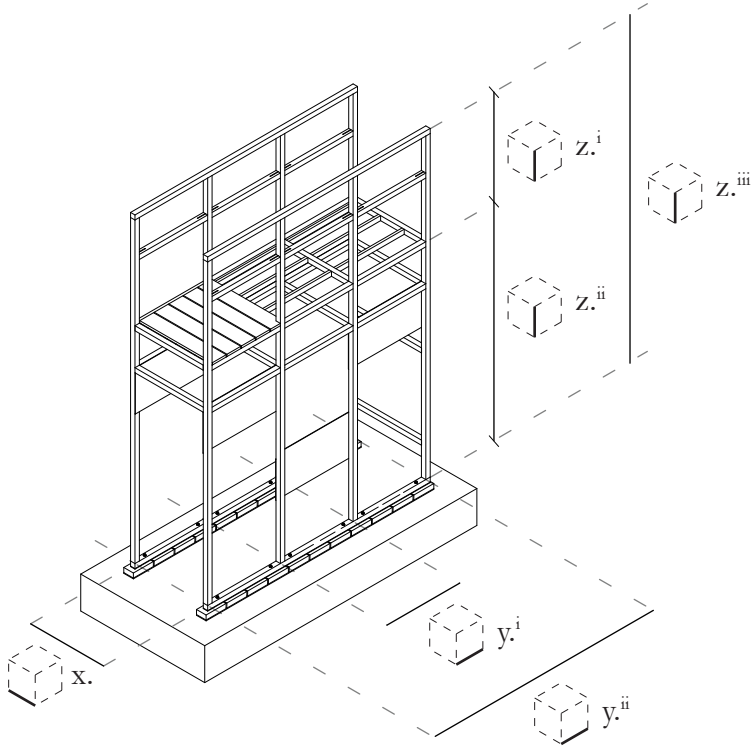
y. 1800 mm


z. 2500 | ... | 3200 mm





EXPLODED VIEW.

THE HEAVY MODULE



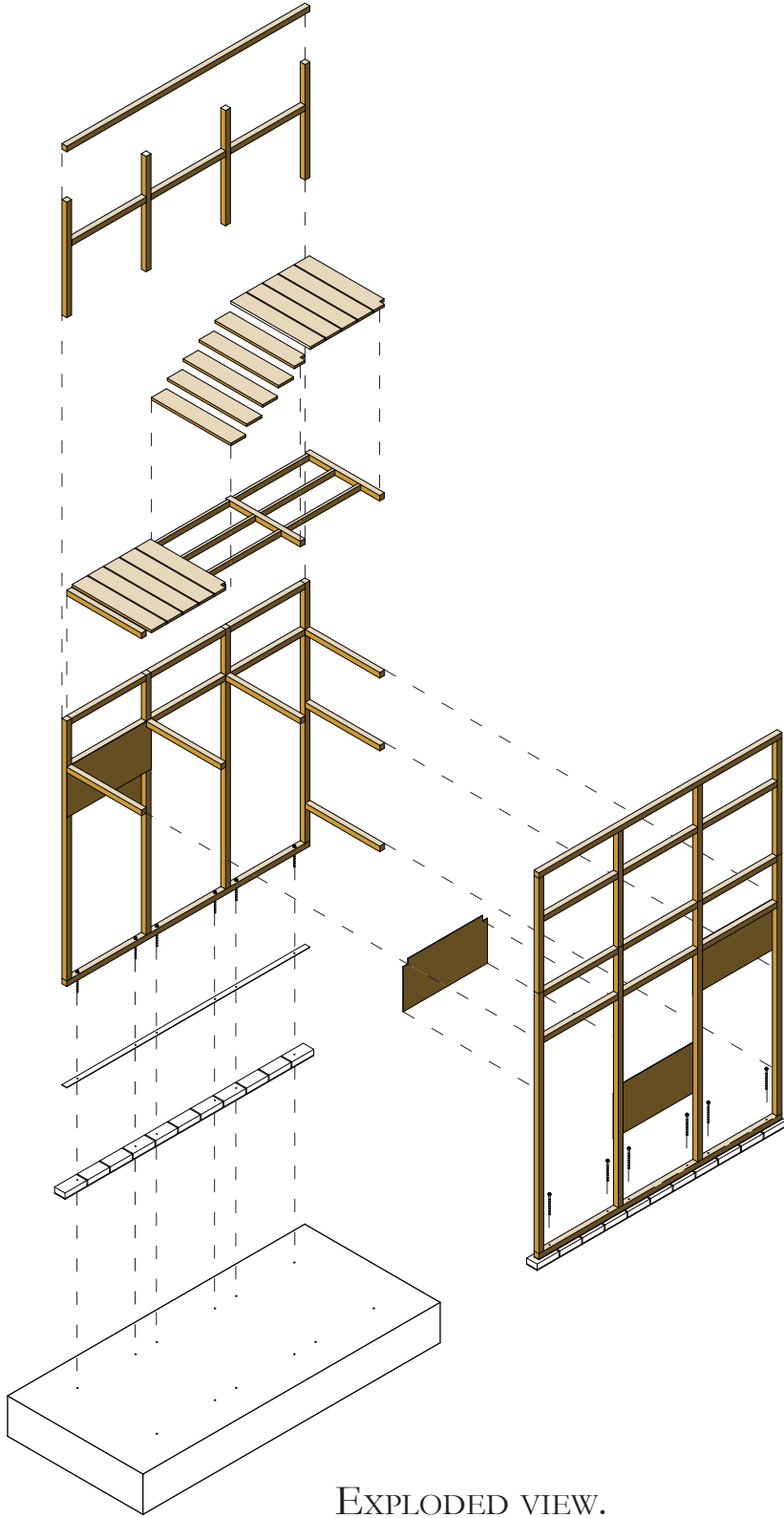
 $x. = y.^I$ ____ 910 MM

 $y.^{II}$ ____ 2700 MM

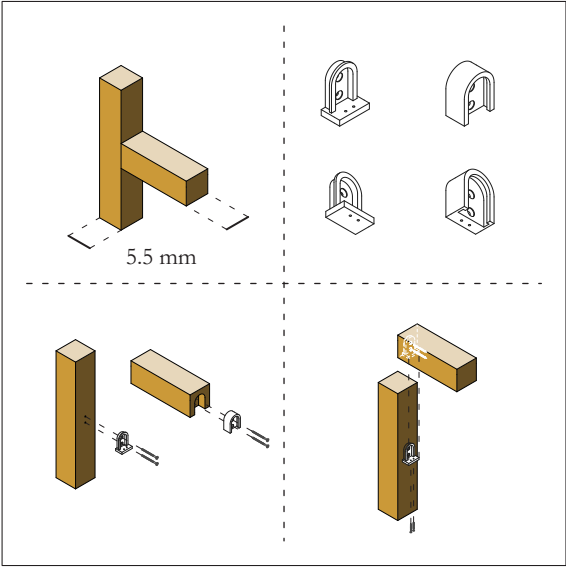
 $z.^I$ ____ 1200 MM

 $z.^{II}$ ____ 2500 | ... | 2800 MM

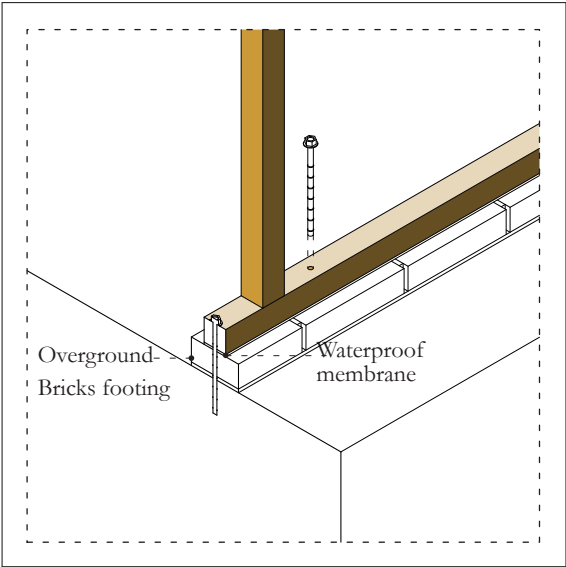
 $z.^{III}$ ____ 3700 | ... | 4000 MM



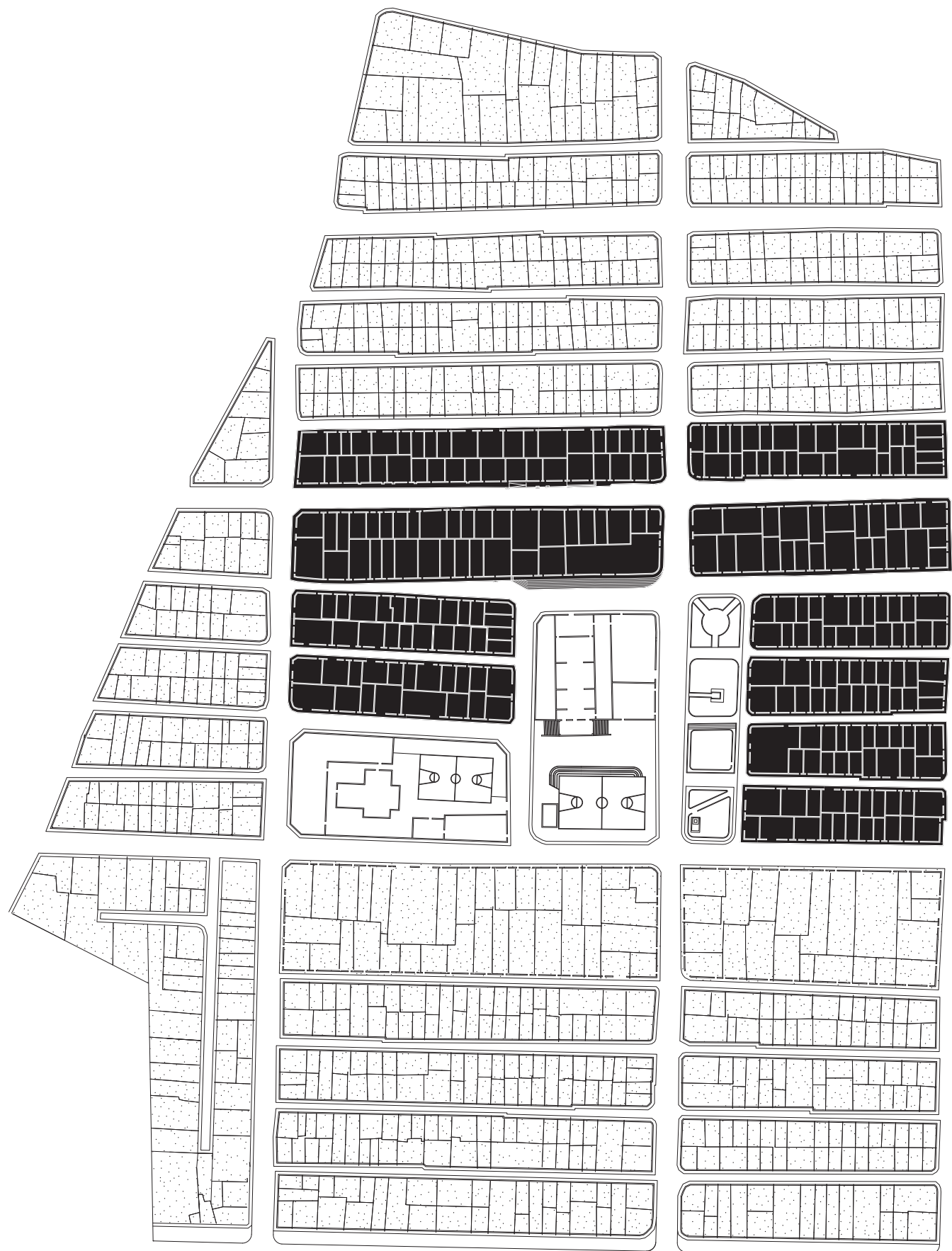
JOINT DETAIL



BOTTOM CONNECTION DETAIL



FINAL OUTCOMES

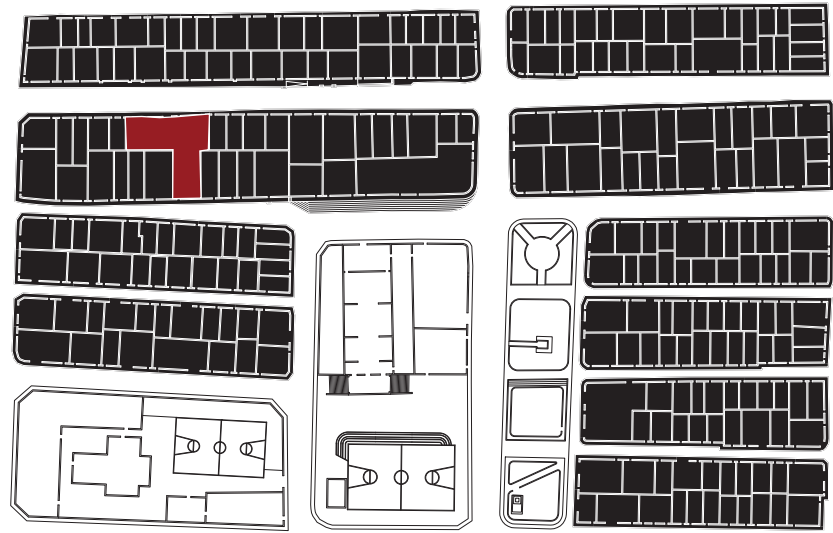


X - BLOCKS

TEN BLOCKS USED TO TEST THE MODULAR SYSTEM

INTERVENTION I

LOCATION OF THE INTERVENTION WITHIN THE BARRIO



DESIGN PRINCIPLES APPLIED

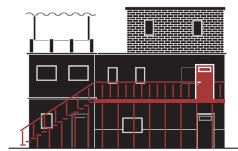
● LIGHT STRUCTURE ON THE STREET



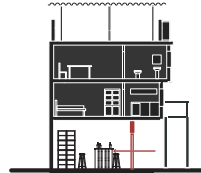
● MOVING BACK THE FACADE



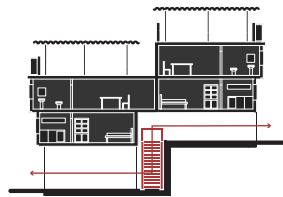
● ACCESSES ON THE FIRST FLOOR



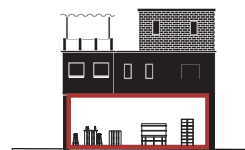
● PERMEABILITY ON THE GROUND FLOOR



● CIRCULATION CROSSING THE BLOCK



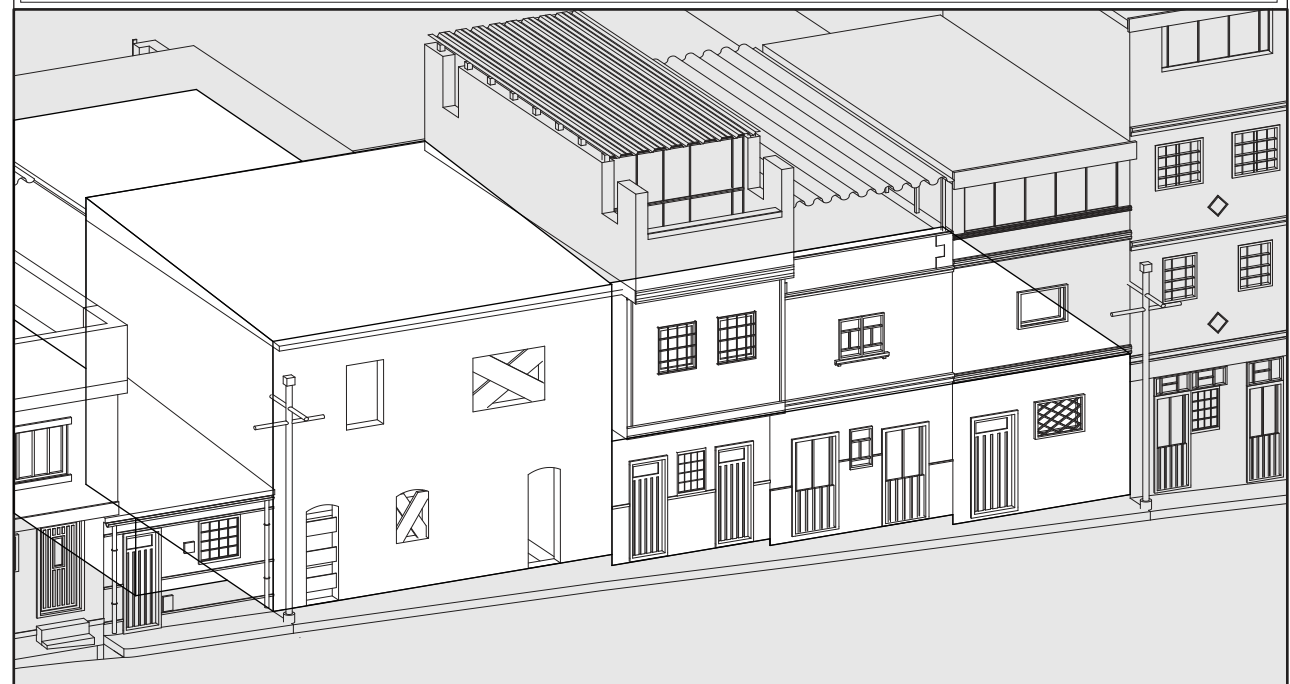
● UNIFYING PRIVATE PROPERTIES



CURRENT STATE



DEMOLISHING OPERATIONS





INTERVENTION I

CHICHA'S PRODUCTION AREA ■

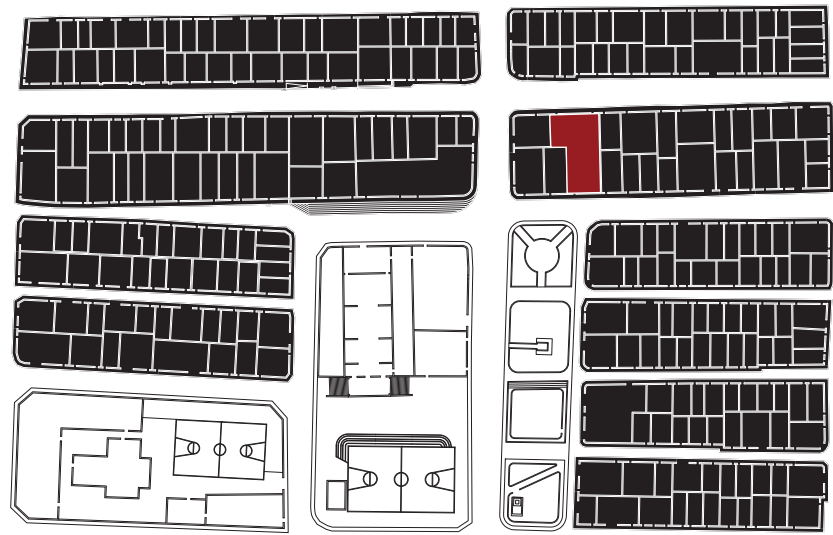
PUBLIC SPACE ■





INTERVENTION II

LOCATION OF THE INTERVENTION WITHIN THE BARRIO



DESIGN PRINCIPLES APPLIED

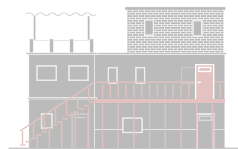
● LIGHT STRUCTURE ON THE STREET



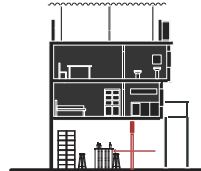
○ MOVING BACK THE FACADE



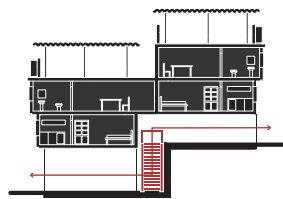
○ ACCESSES ON THE FIRST FLOOR



● PERMEABILITY ON THE GROUND FLOOR



● CIRCULATION CROSSING THE BLOCK



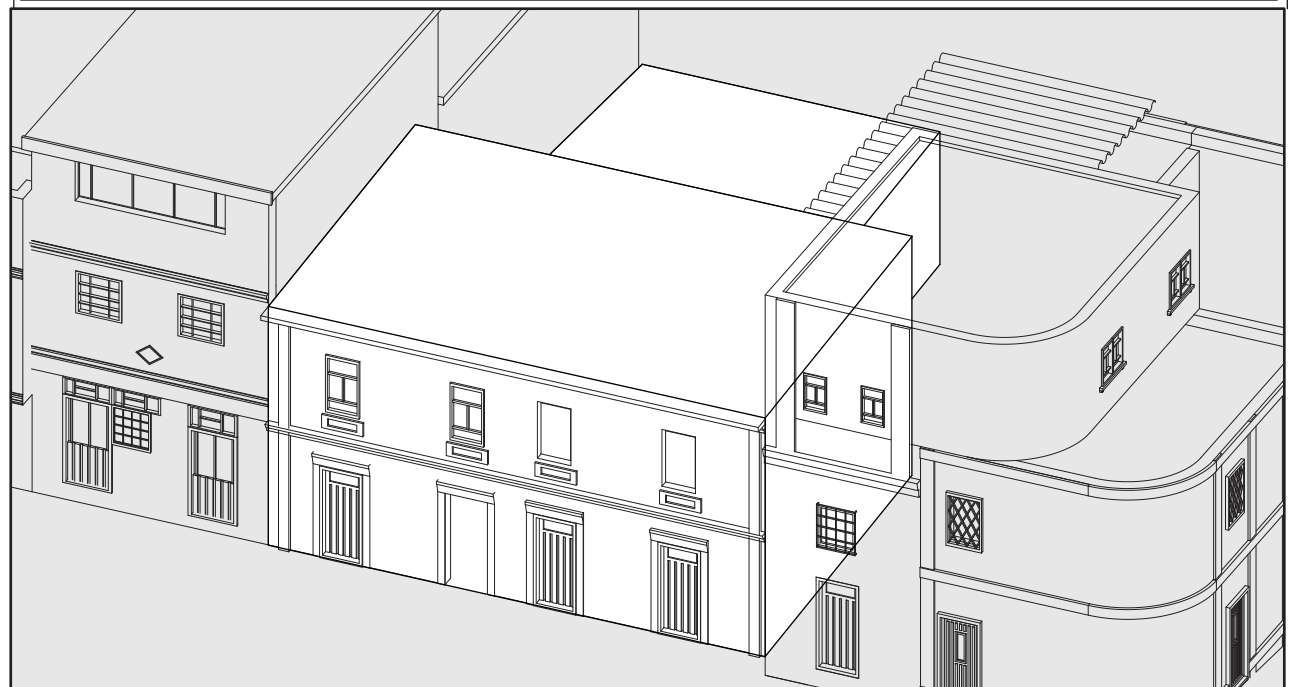
○ UNIFYING PRIVATE PROPERTIES

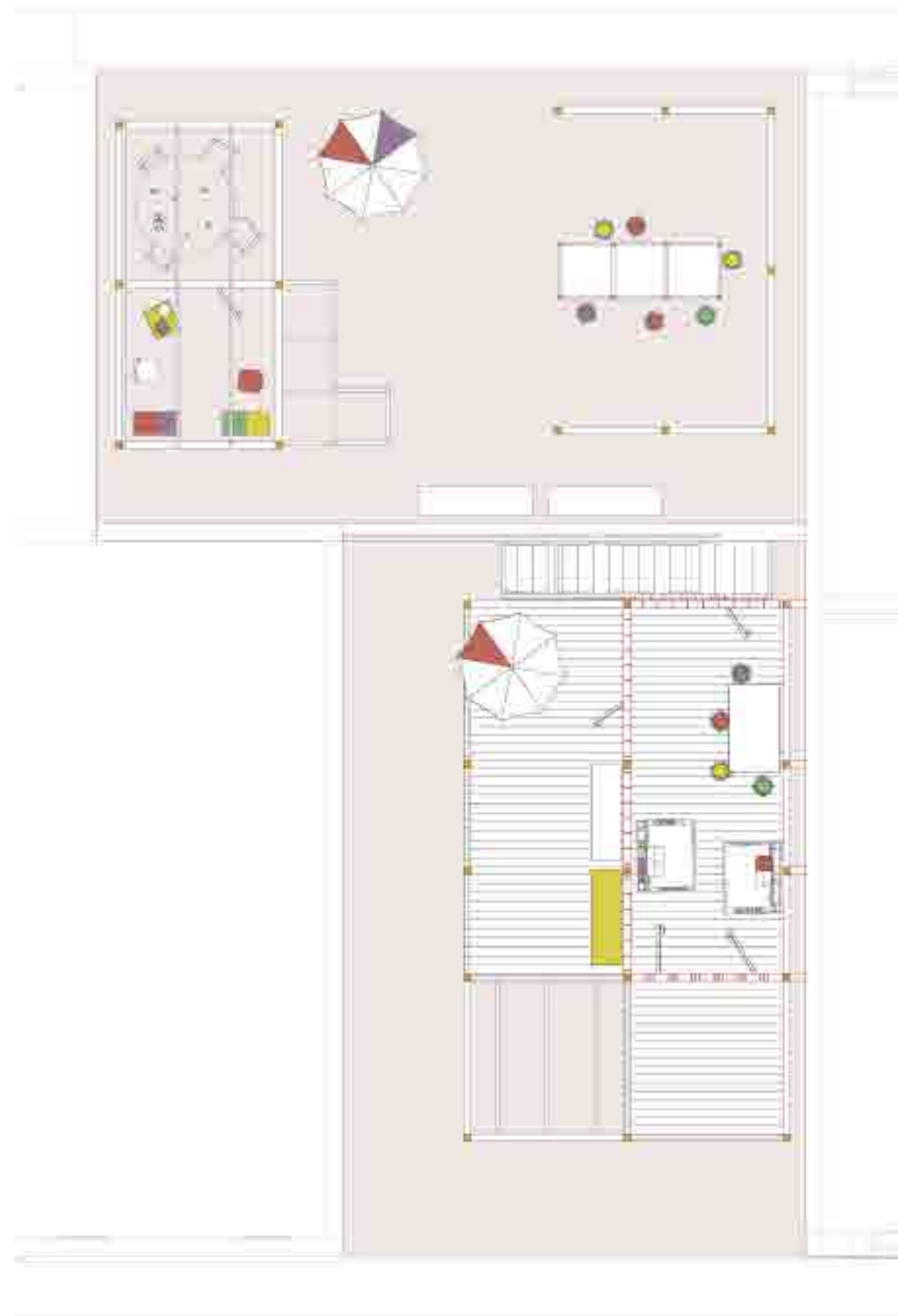


CURRENT STATE



DEMOLISHING OPERATIONS





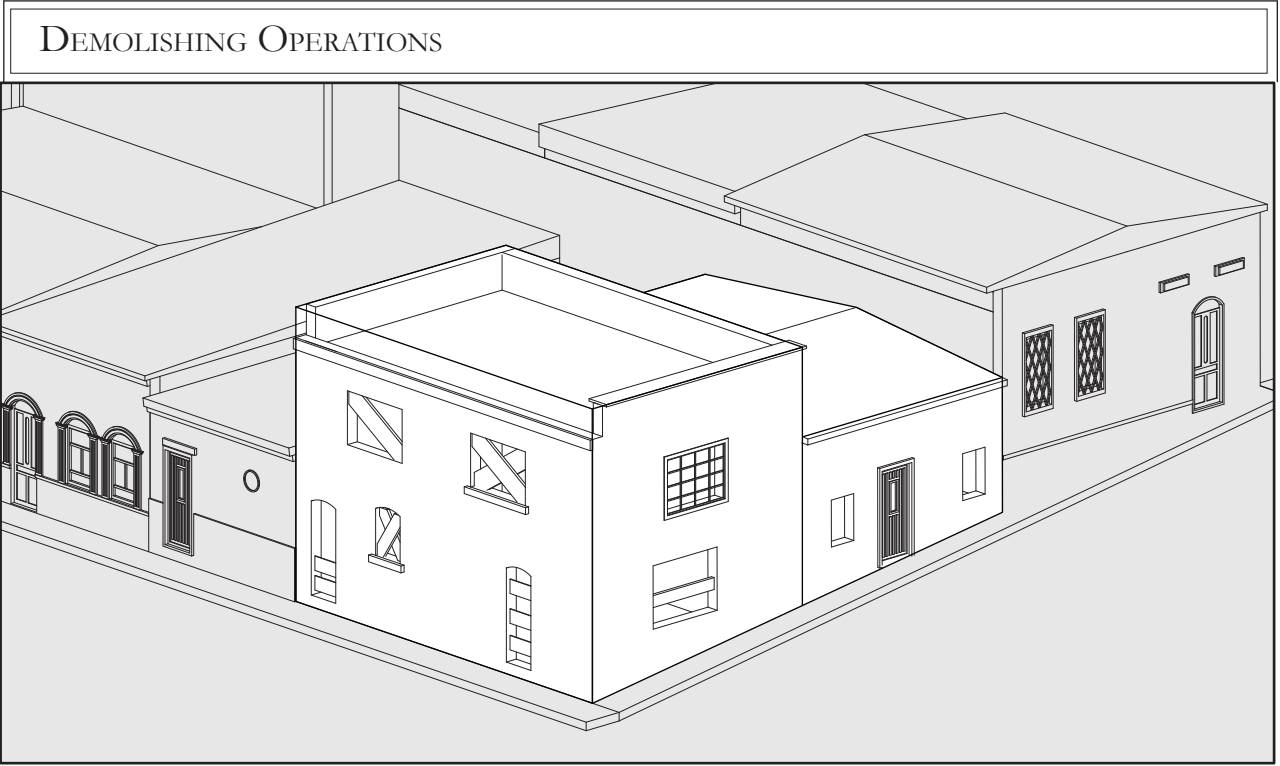
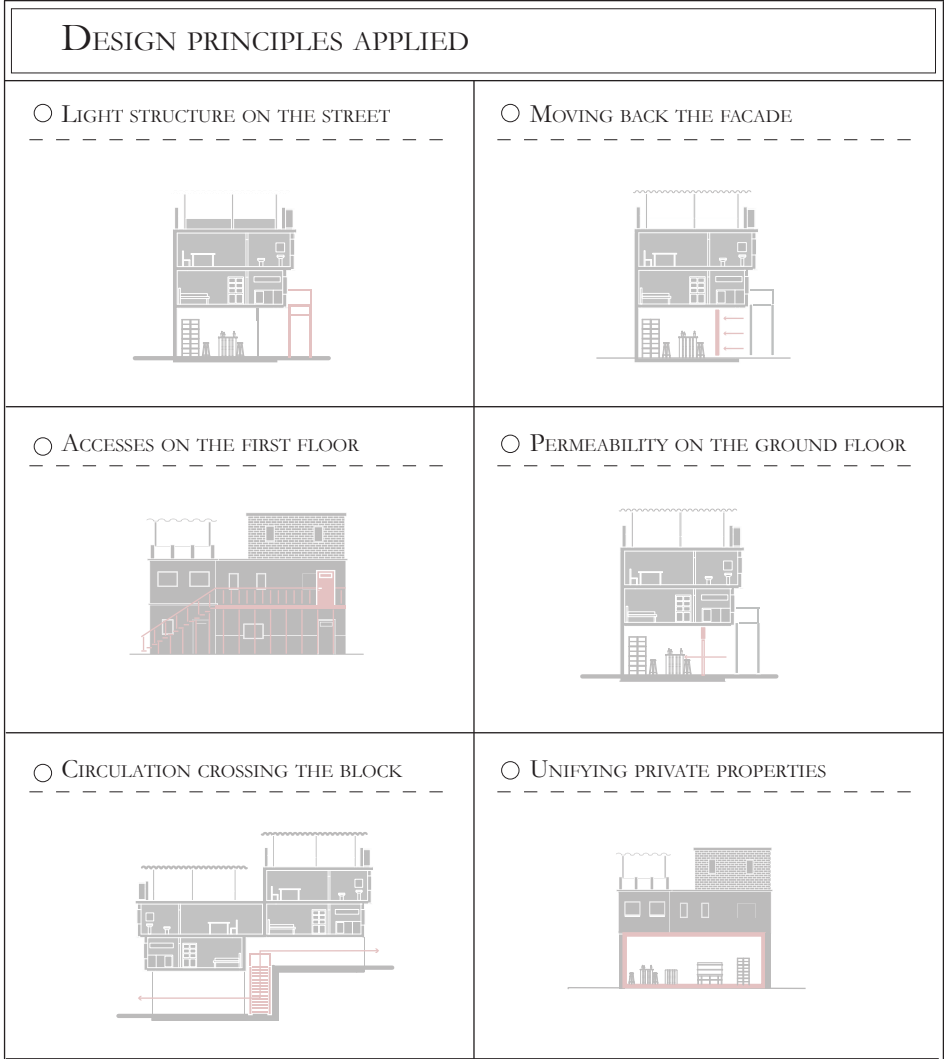
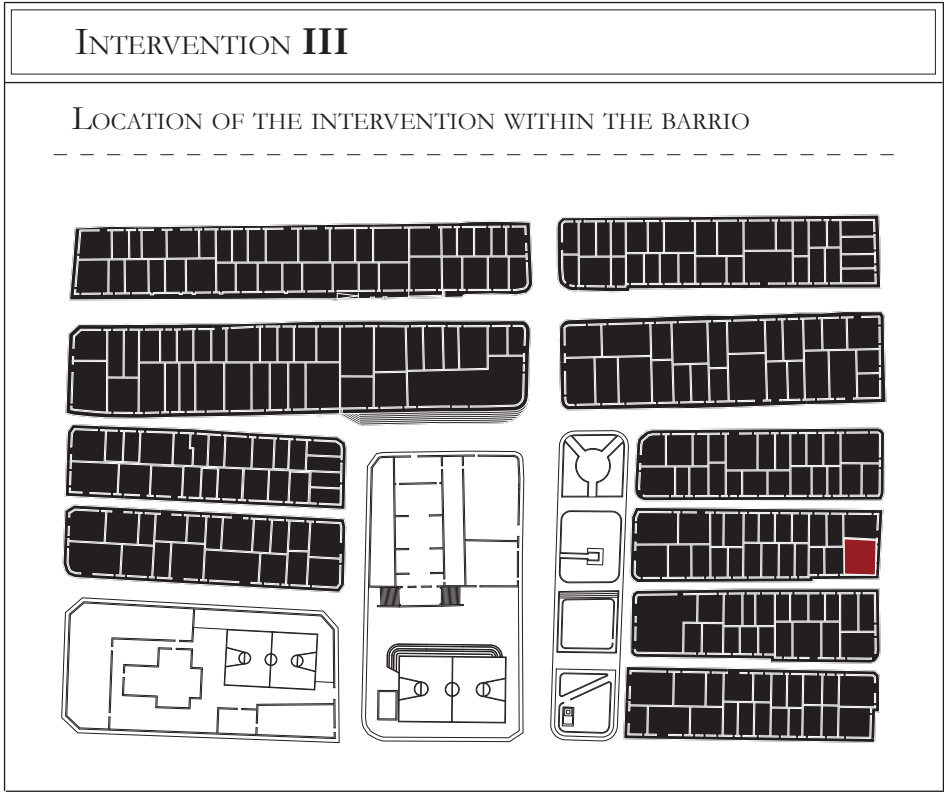
INTERVENTION II

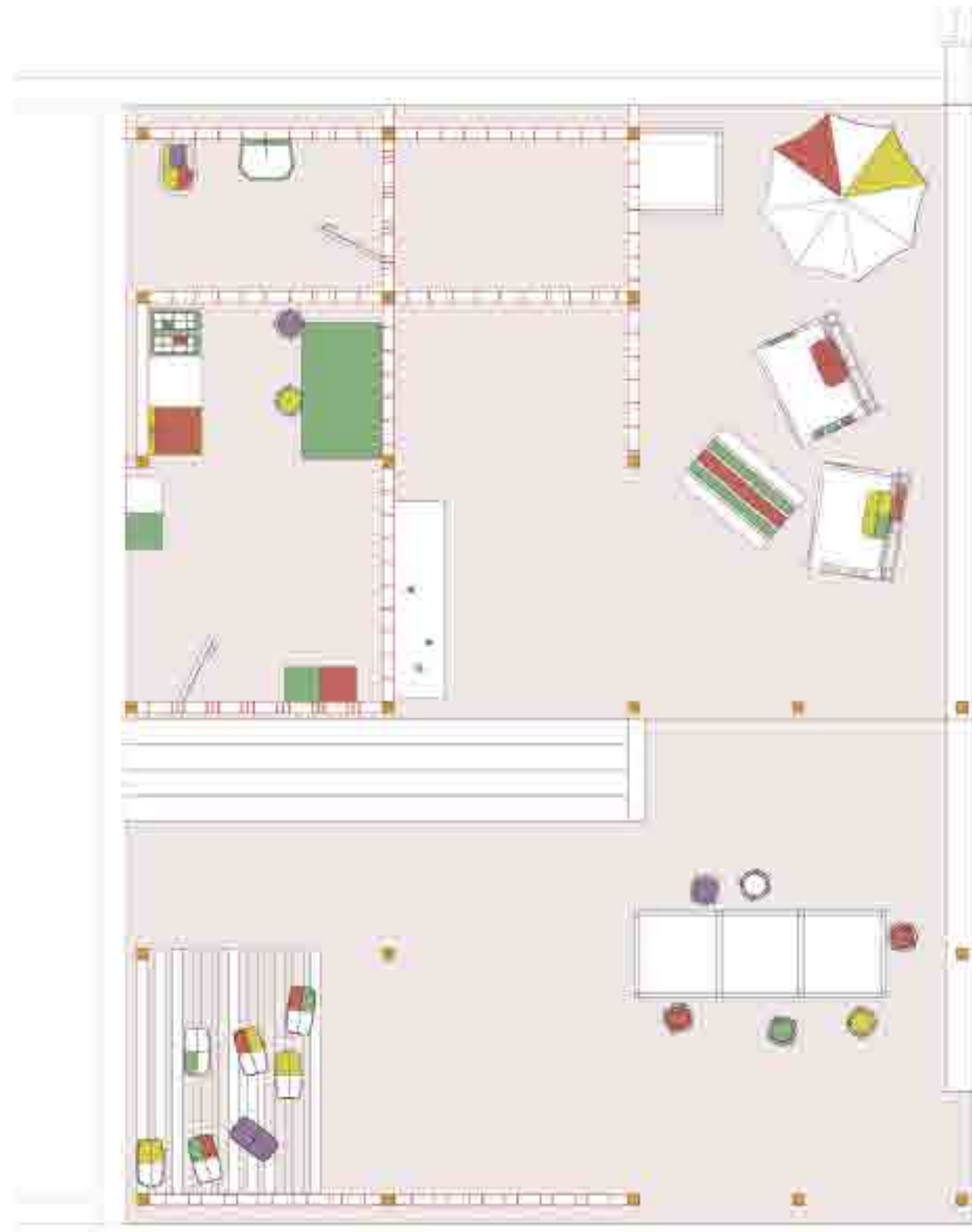
CHICHA'S PRODUCTION AREA ■

PUBLIC SPACE ■





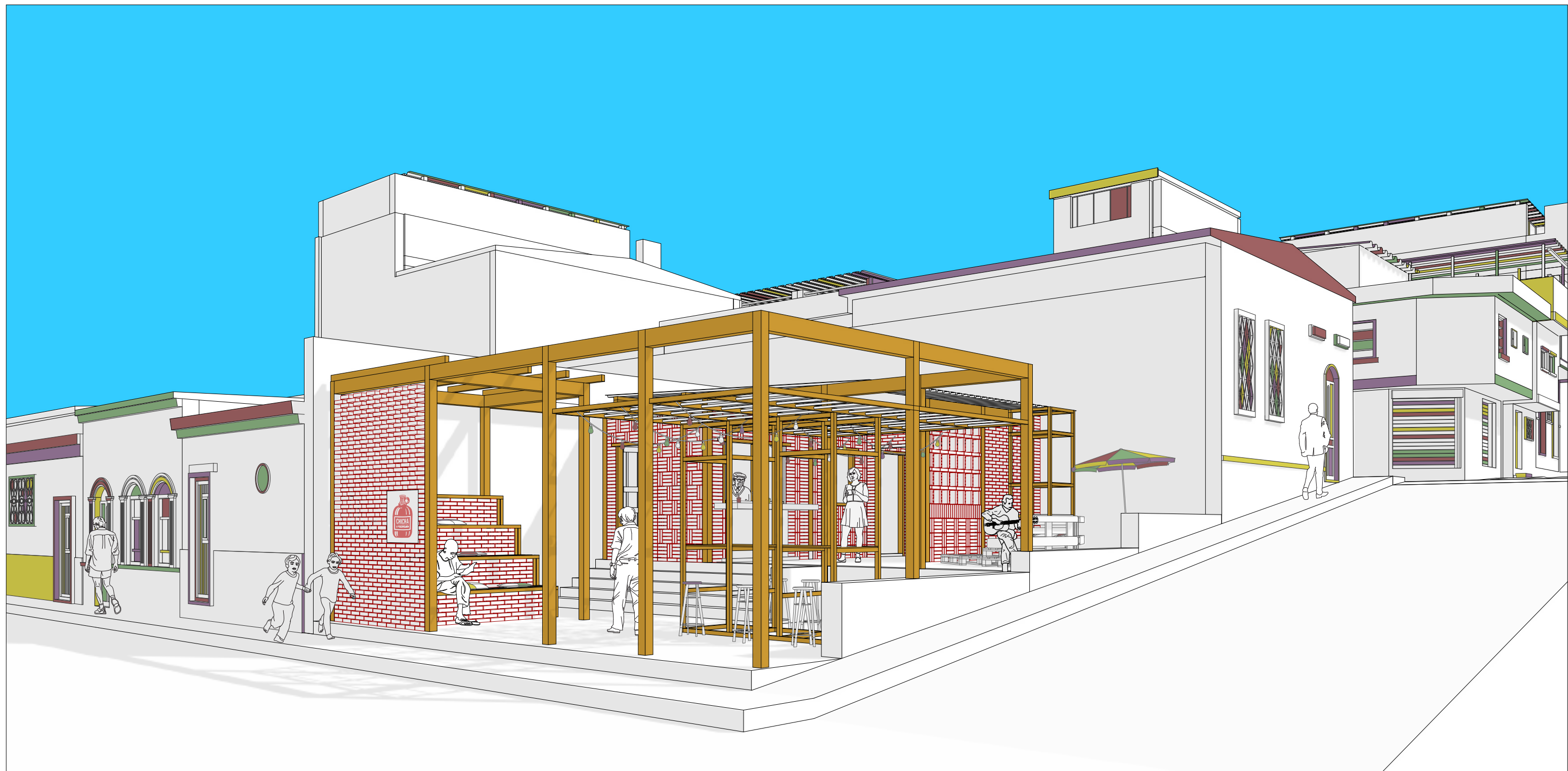




INTERVENTION III

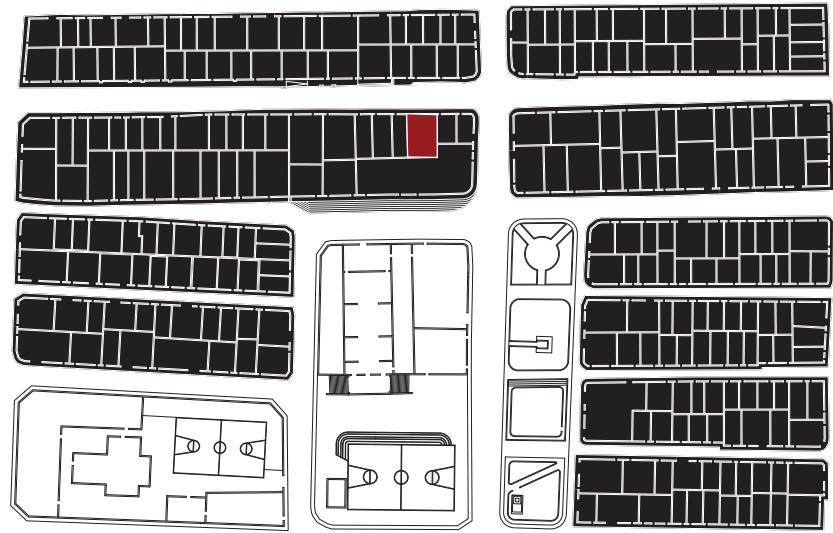
CHICHA'S DISTRIBUTION AREA ■

PUBLIC SPACE ■



INTERVENTION IV

LOCATION OF THE INTERVENTION WITHIN THE BARRIO



DESIGN PRINCIPLES APPLIED

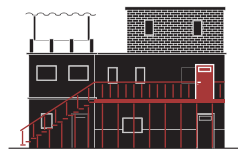
● LIGHT STRUCTURE ON THE STREET



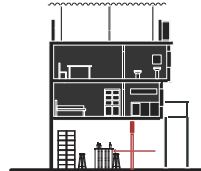
● MOVING BACK THE FACADE



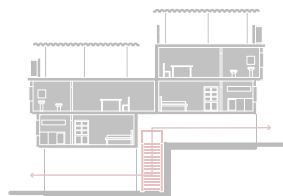
● ACCESSES ON THE FIRST FLOOR



● PERMEABILITY ON THE GROUND FLOOR



○ CIRCULATION CROSSING THE BLOCK



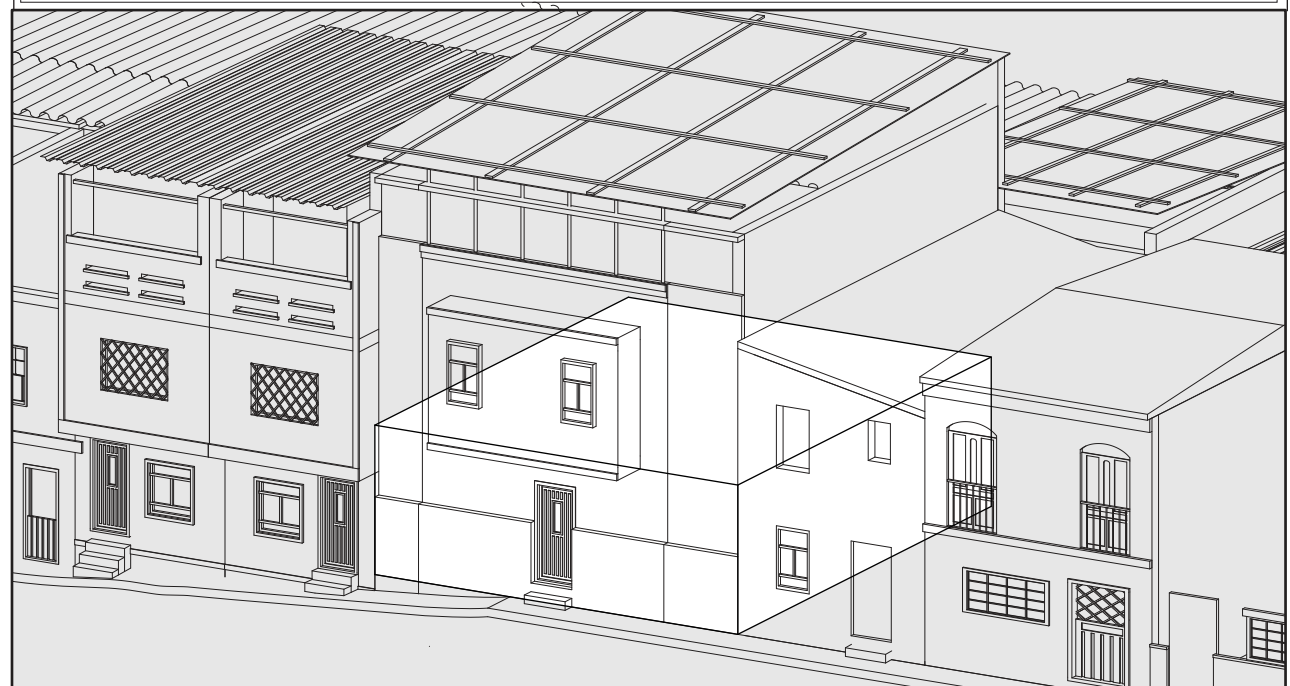
○ UNIFYING PRIVATE PROPERTIES



CURRENT STATE



DEMOLISHING OPERATIONS





INTERVENTION II

CONSTRUCTION MATERIALS' PRODUCTION AREA ■

PUBLIC SPACE ■





