

# beirut house of fashion

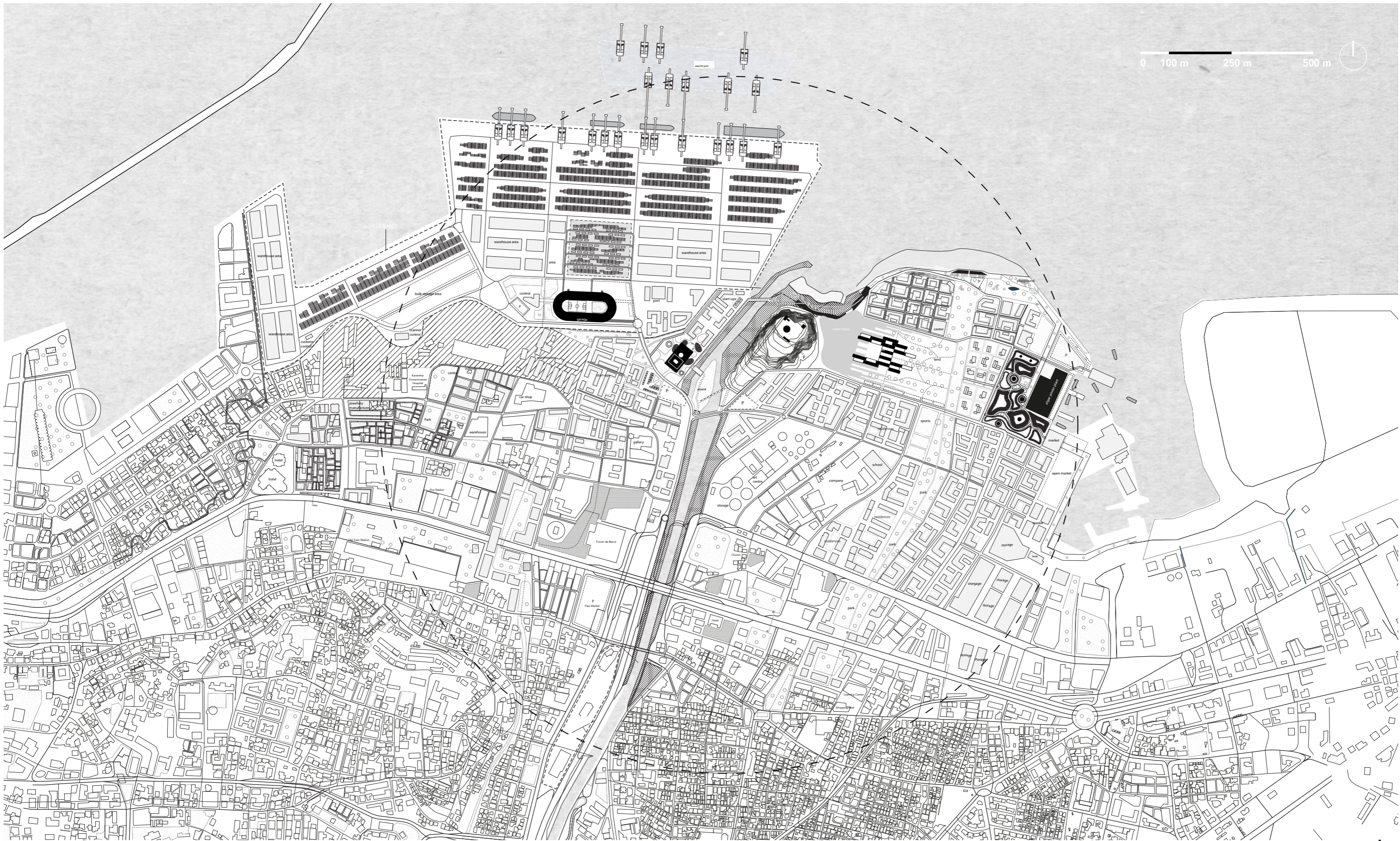
fashion creation office

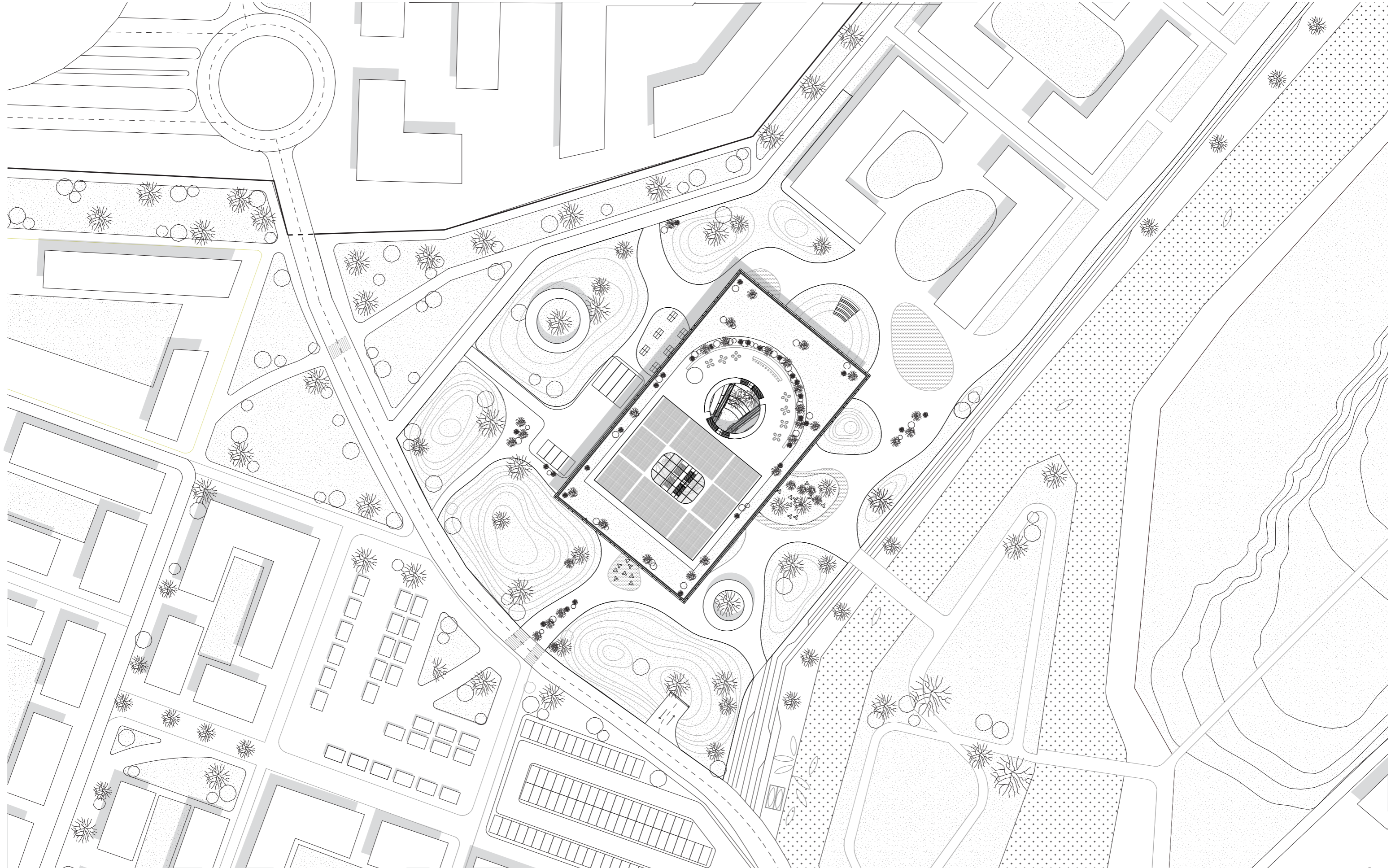
MASTER THESIS - DRAWING SET

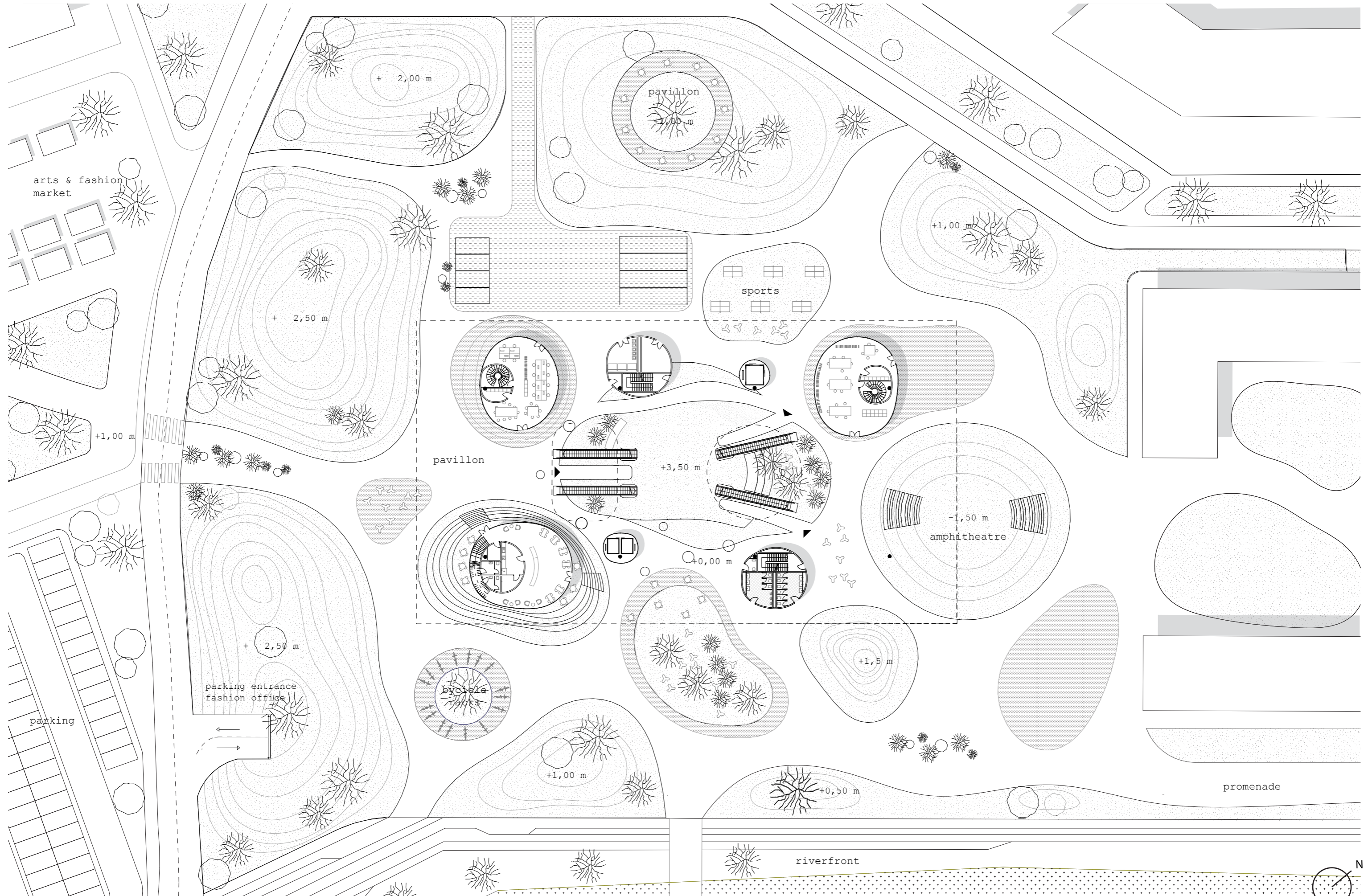
**gina goedert**

COMPLEX PROJECTS

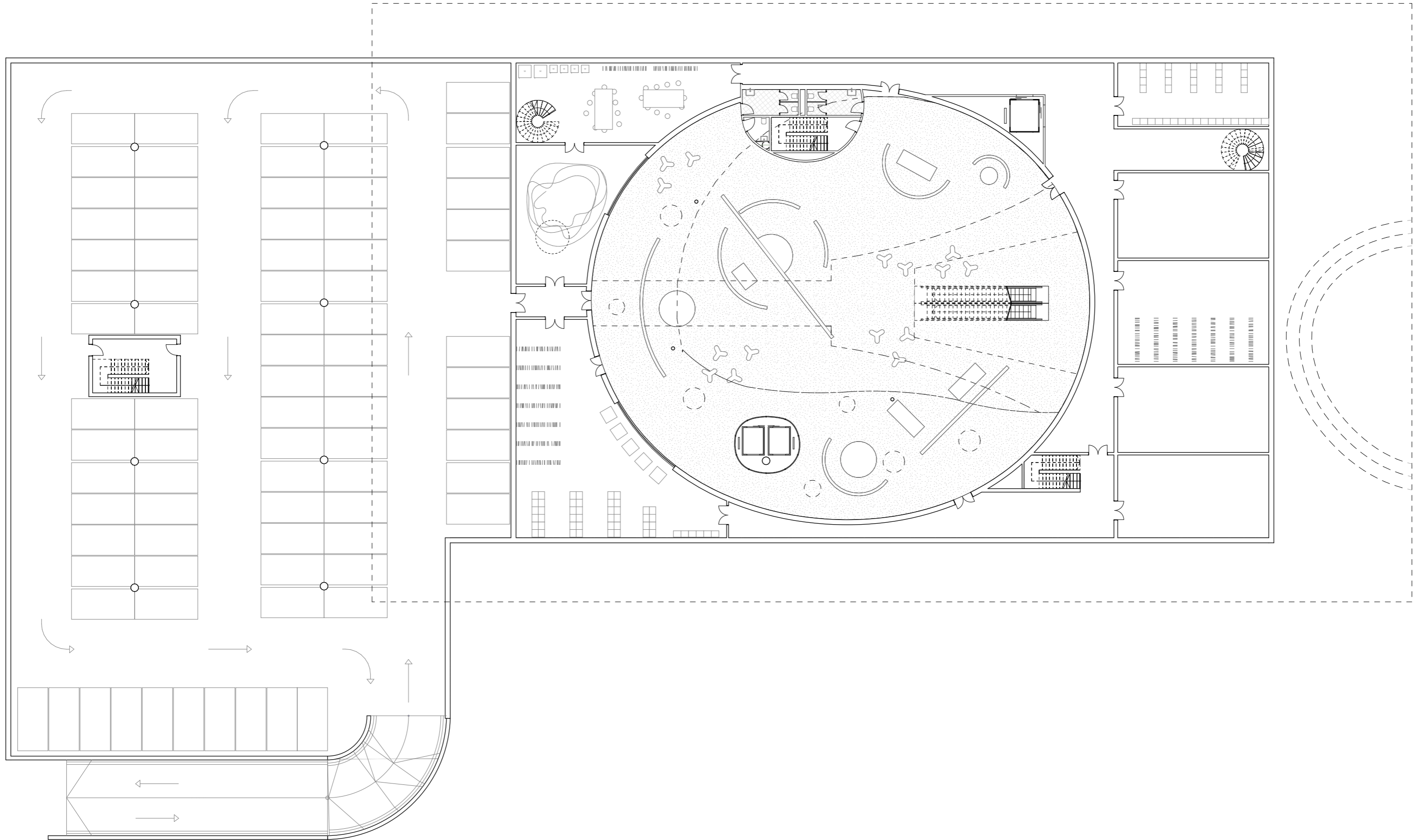


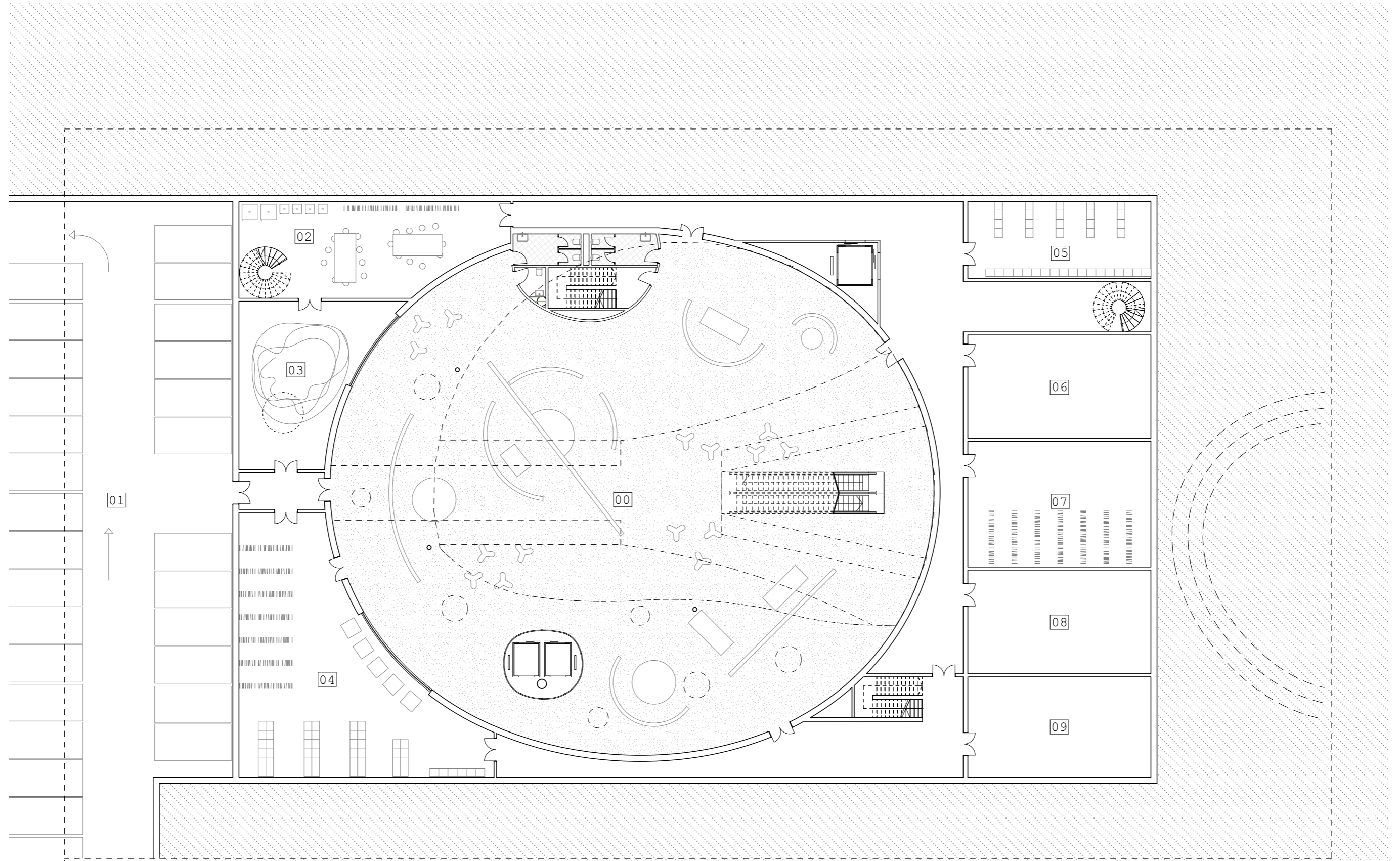






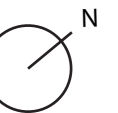
underground floor 1:300

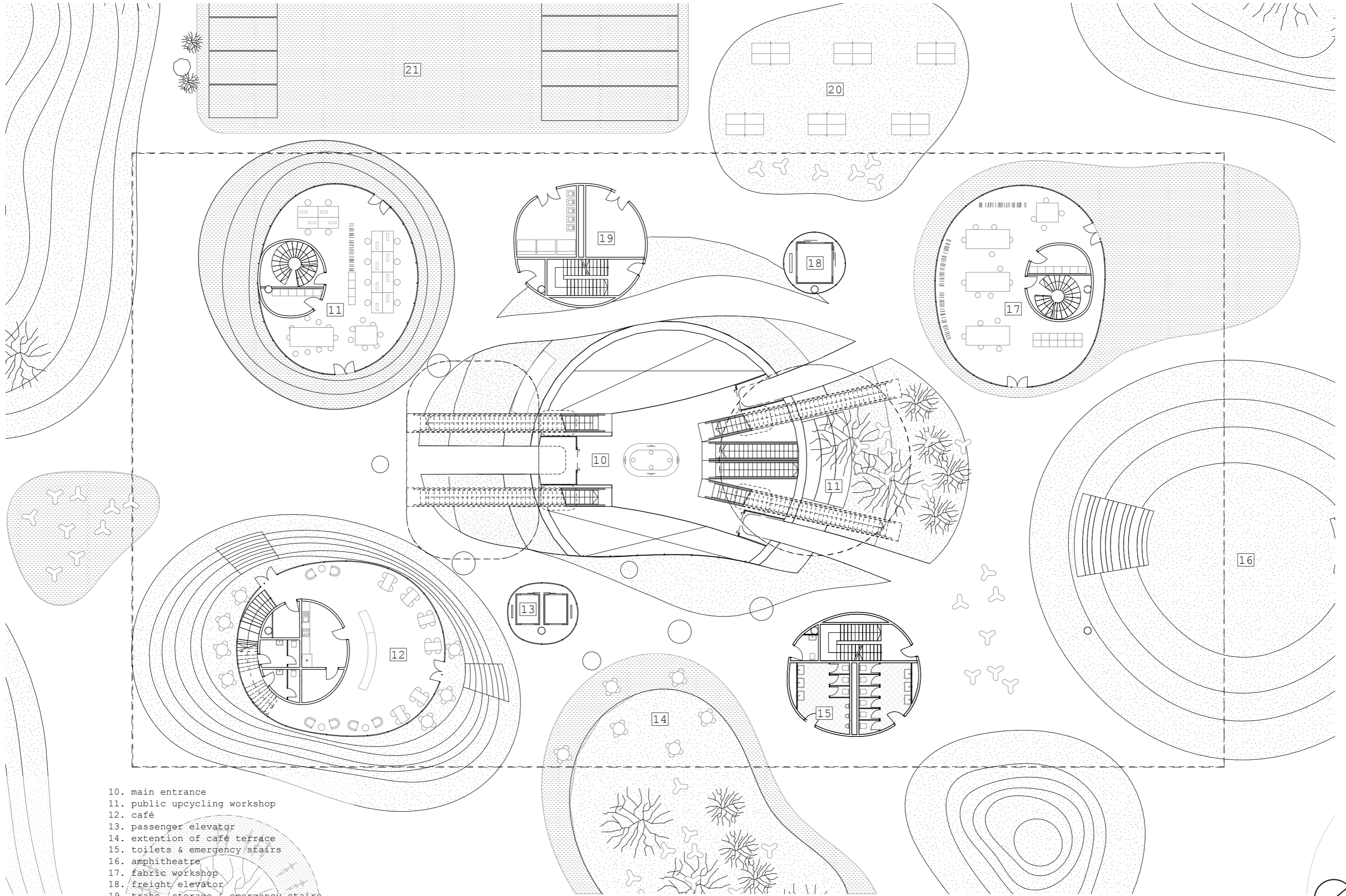




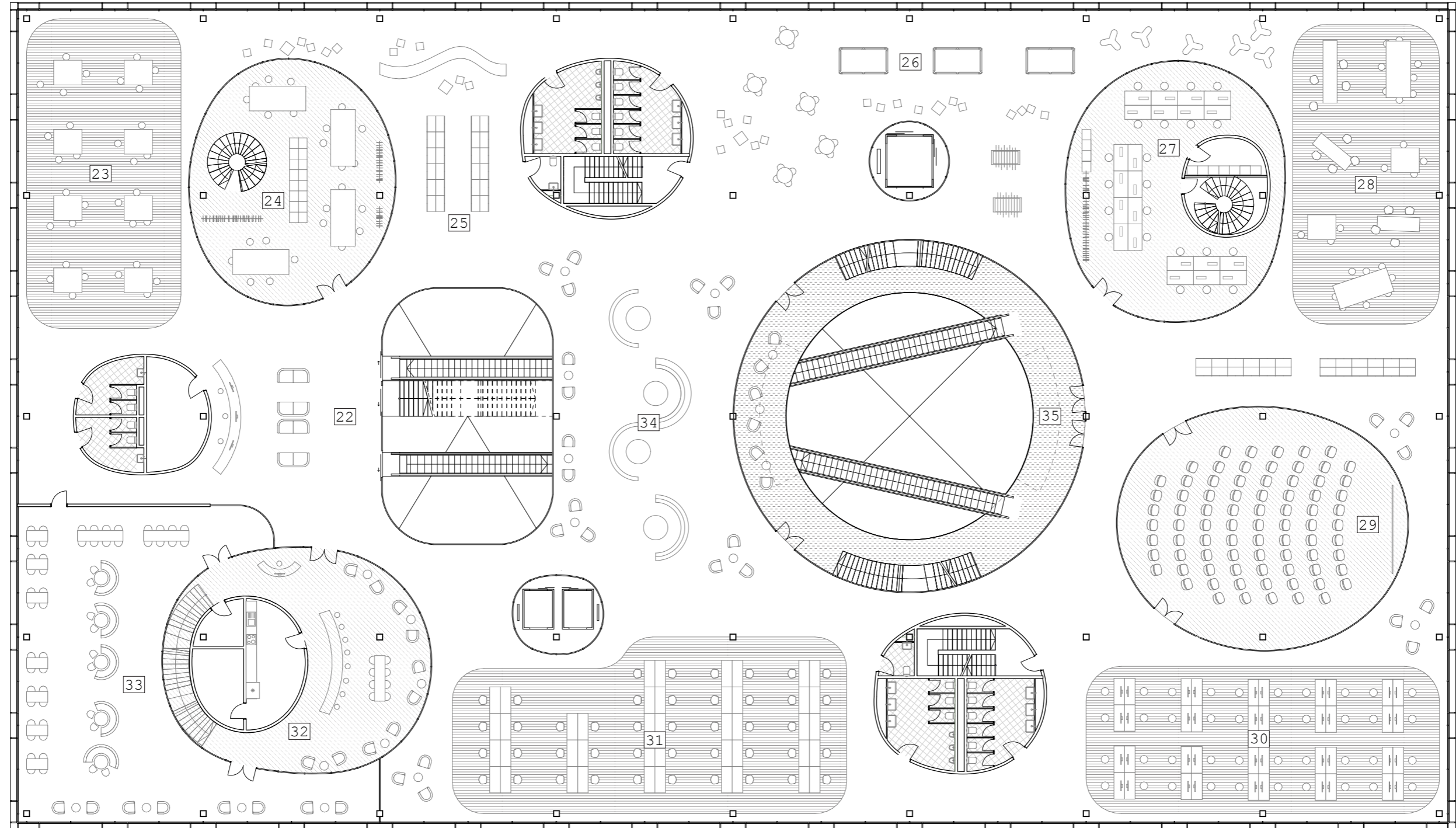
- 00. exhibition space
- 01. parking garage
- 02. recycled clothes sorting & washing
- 03. used clothes drop-off & storage
- 04. fashion archive
- 05. fabric storage
- 06. event material storage
- 07. garment storage
- 08. office material storage
- 09. building technical room

fashion creation office

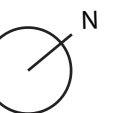




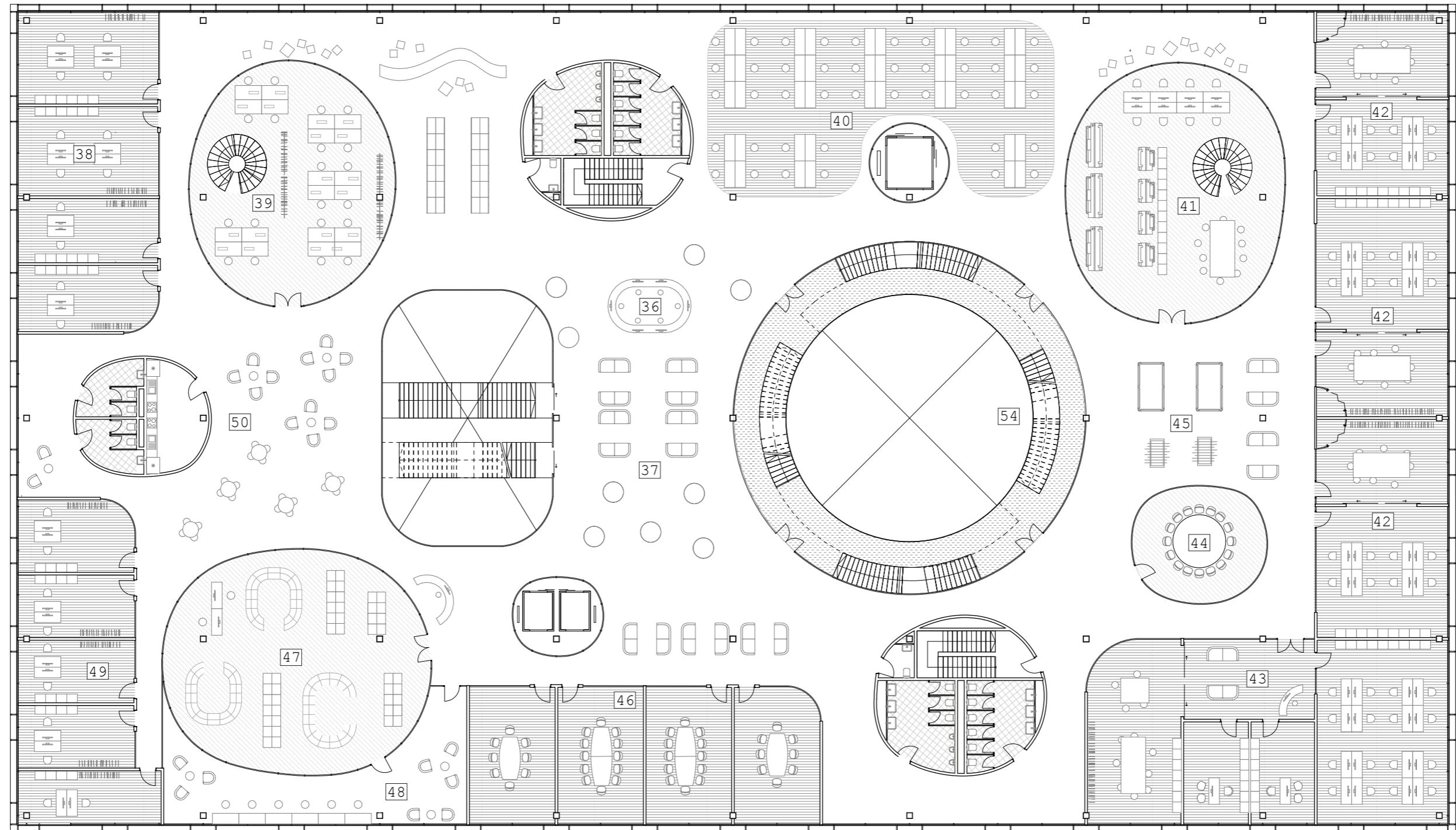
- 10. main entrance
- 11. public upcycling workshop
- 12. café
- 13. passenger elevator
- 14. extension of café terrace
- 15. toilets & emergency stairs
- 16. amphitheatre
- 17. fabric workshop
- 18. freight elevator
- 19. trahs, storage & emergency stairs
- 20. sports facilities
- 21. parking & truck unloading area



- |                                    |                              |
|------------------------------------|------------------------------|
| 22. entrance & reception           | 31. individual workspaces    |
| 23. group workspaces               | 32. restaurant bar & kitchen |
| 24. upcycling accessories workshop | 33. restaurant               |
| 25. user storage                   | 34. exhibition area          |
| 26. recreational area              | 35. second entrance & atrium |
| 27. sewing workshop                |                              |
| 28. group workspaces               |                              |
| 29. auditorium                     |                              |
| 30. computer workspaces            |                              |

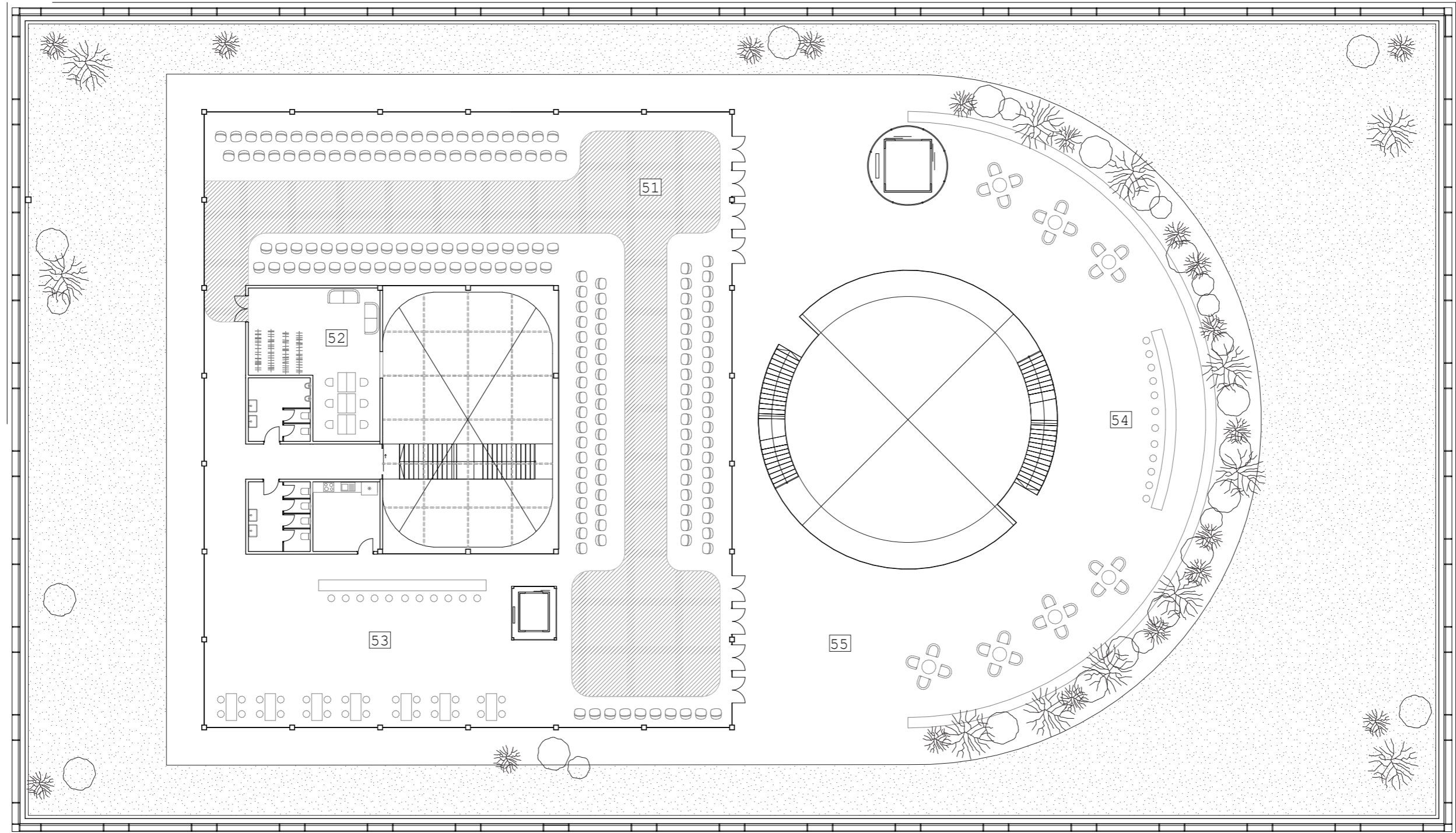




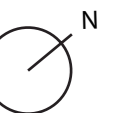


- |   |                            |
|---|----------------------------|
| 36. reception   | 44. meeting room           |
| 37. client lounge & exhibition                            | 45. recreational area      |
| 38. rentable start-up offices small                       | 46. meeting rooms          |
| 39. upcycling sewing workshop                             | 47. library                |
| 40. individual workspaces                                 | 48. reading area           |
| 41. digital workshop                                      | 49. rentable offices small |
| 42. fashion start-up offices with creative & fitting area |                            |
| 43. Lebanese fashion federation HQ                        |                            |

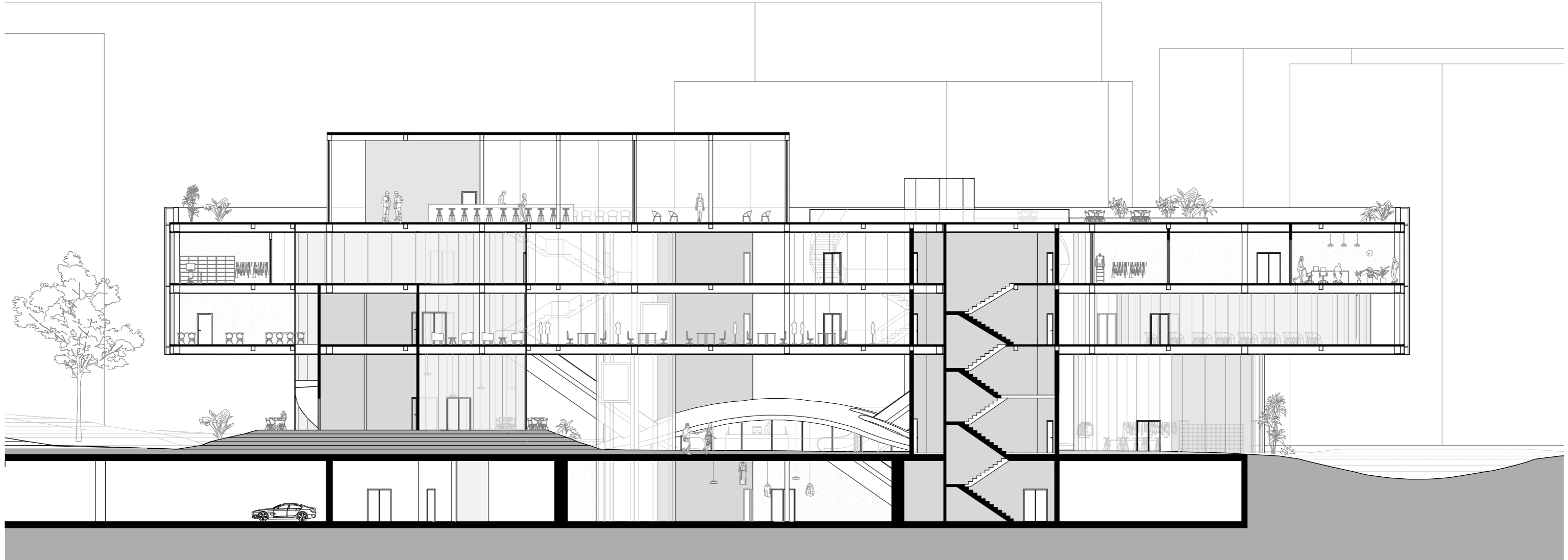




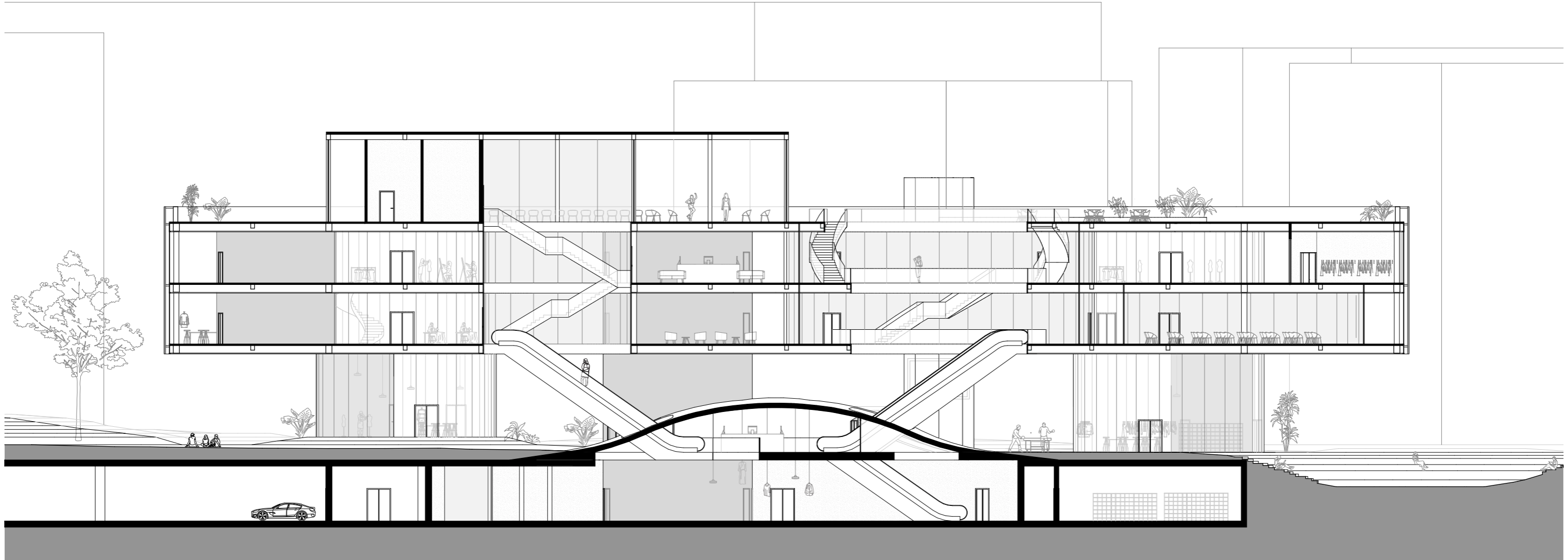
- 51. catwalk (or showroom area)
- 52. backstage area
- 53. event bar
- 54. outside bar
- 55. outside event location



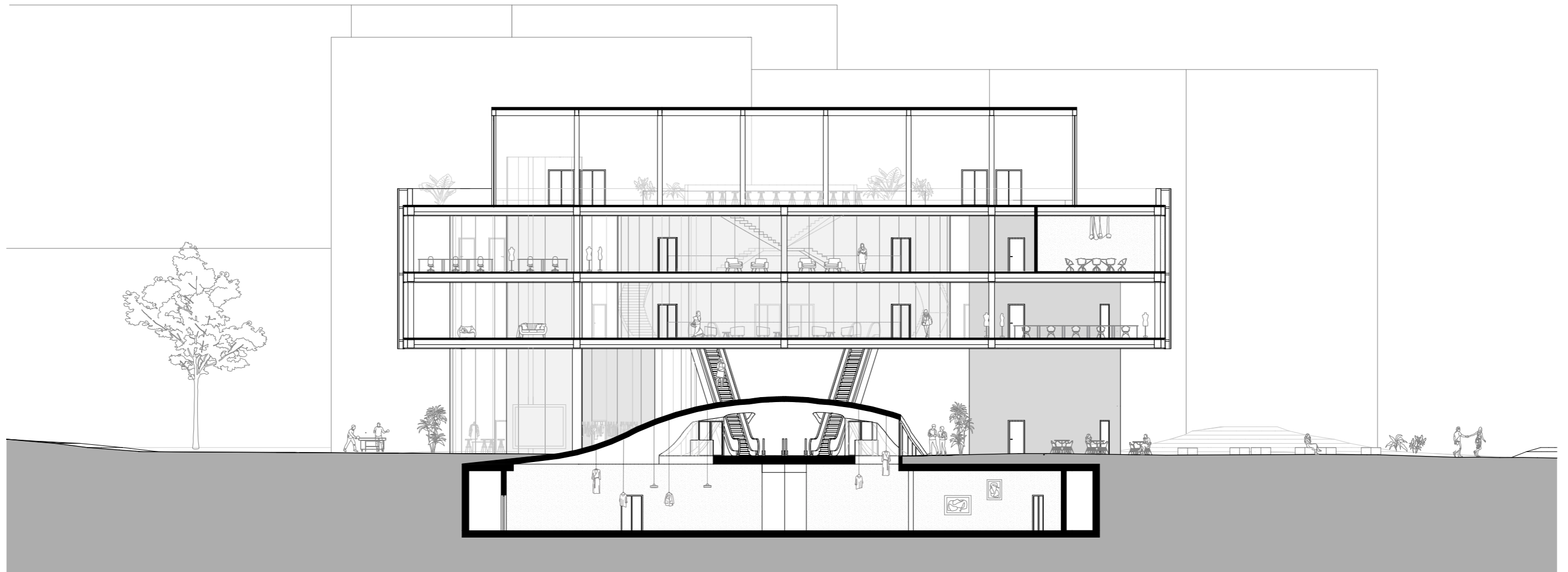
longitudinal section 1 1:250

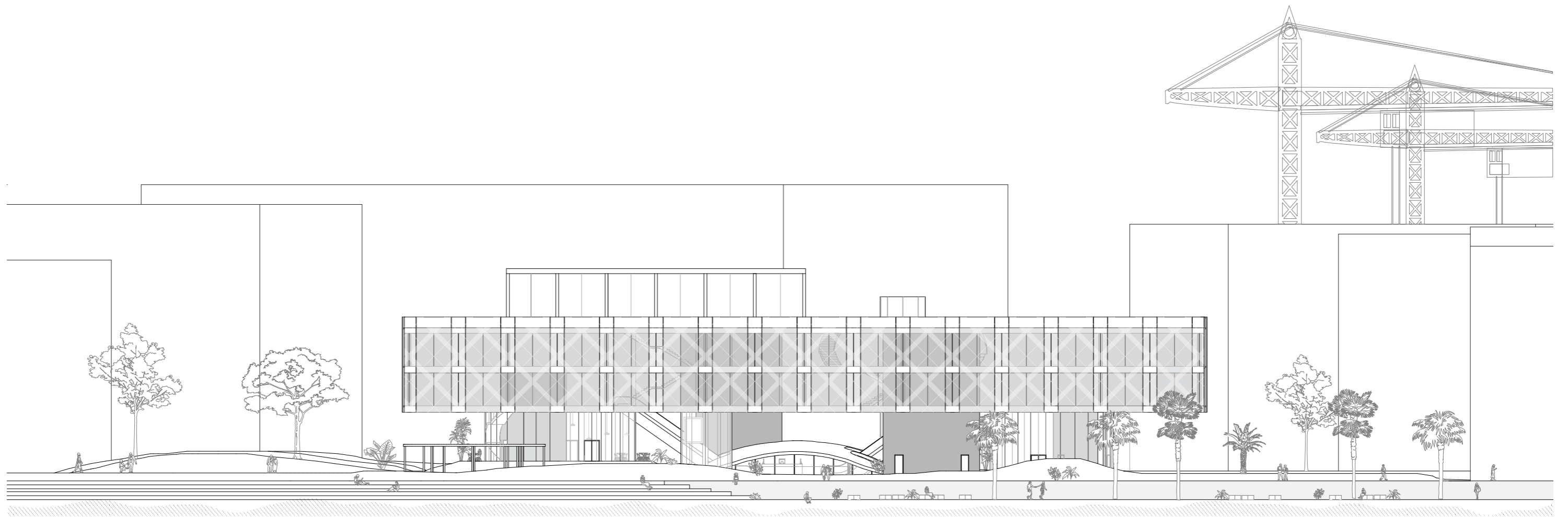


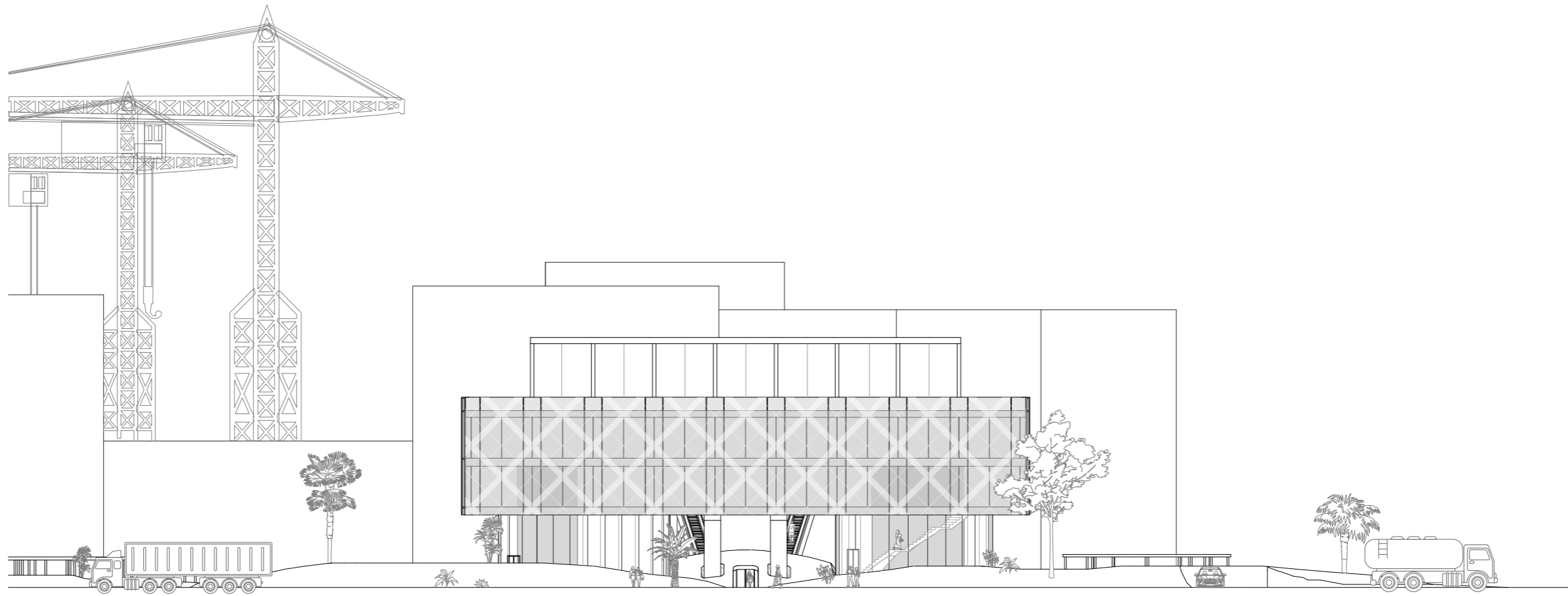
longitudinal section 2 1:250



cross section 1:250

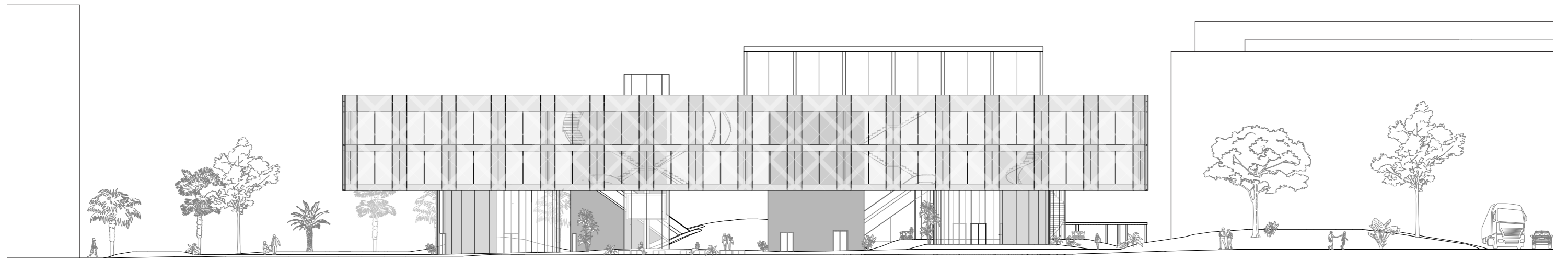






west section 1:400

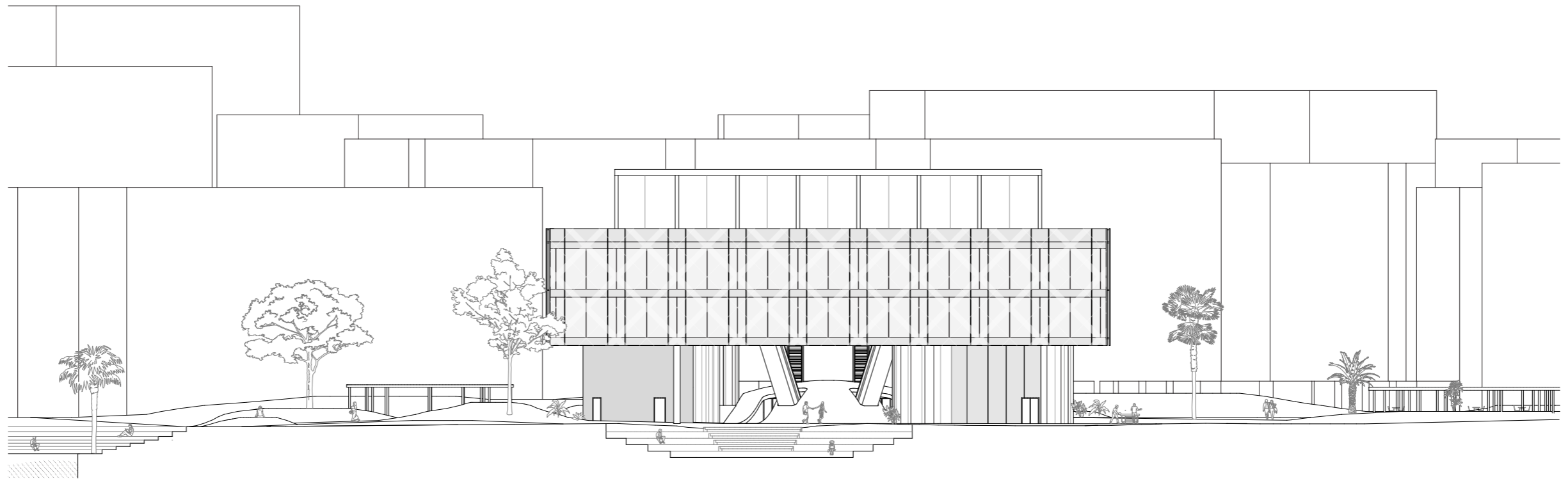
---





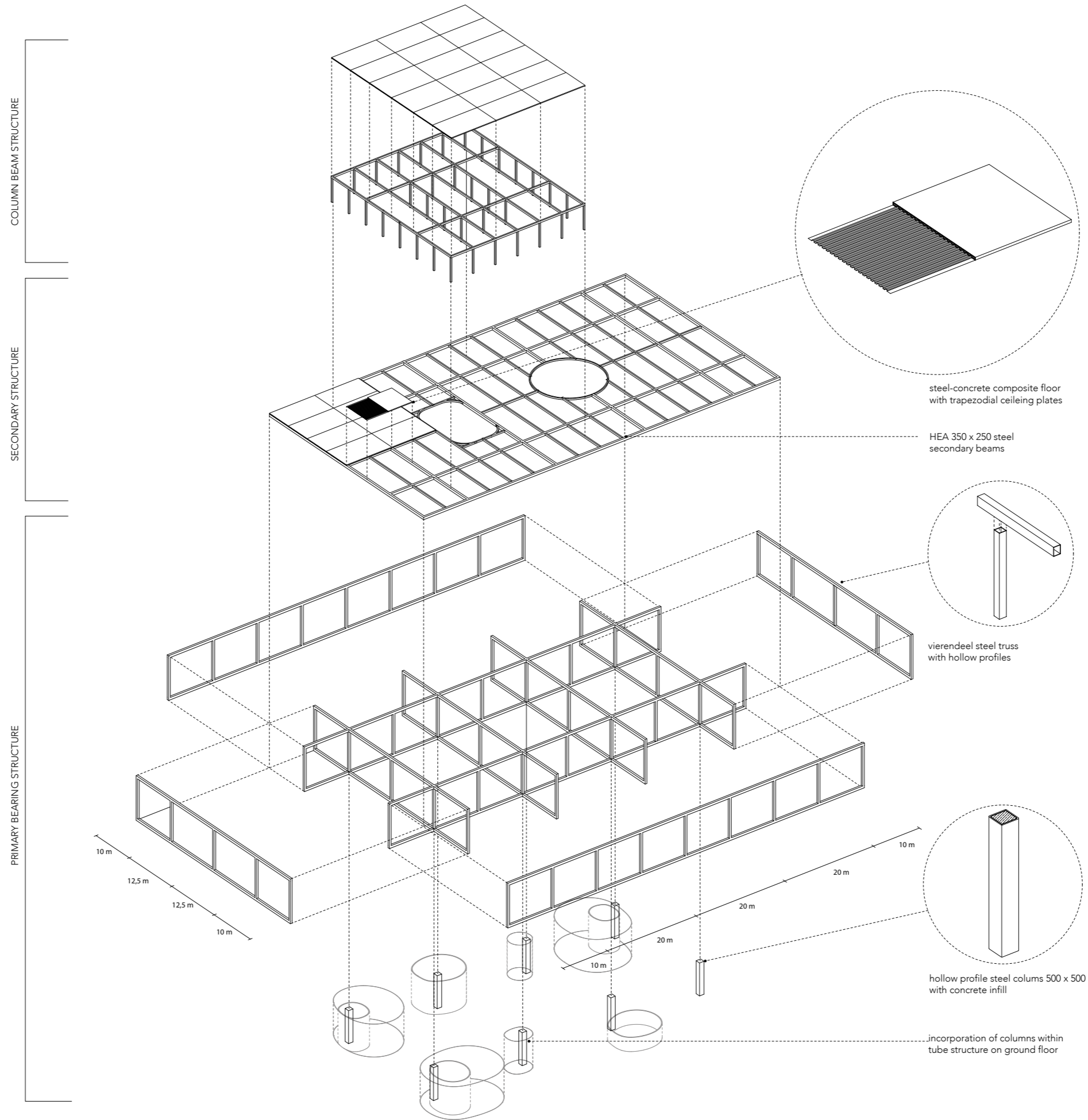
north section 1:400

---



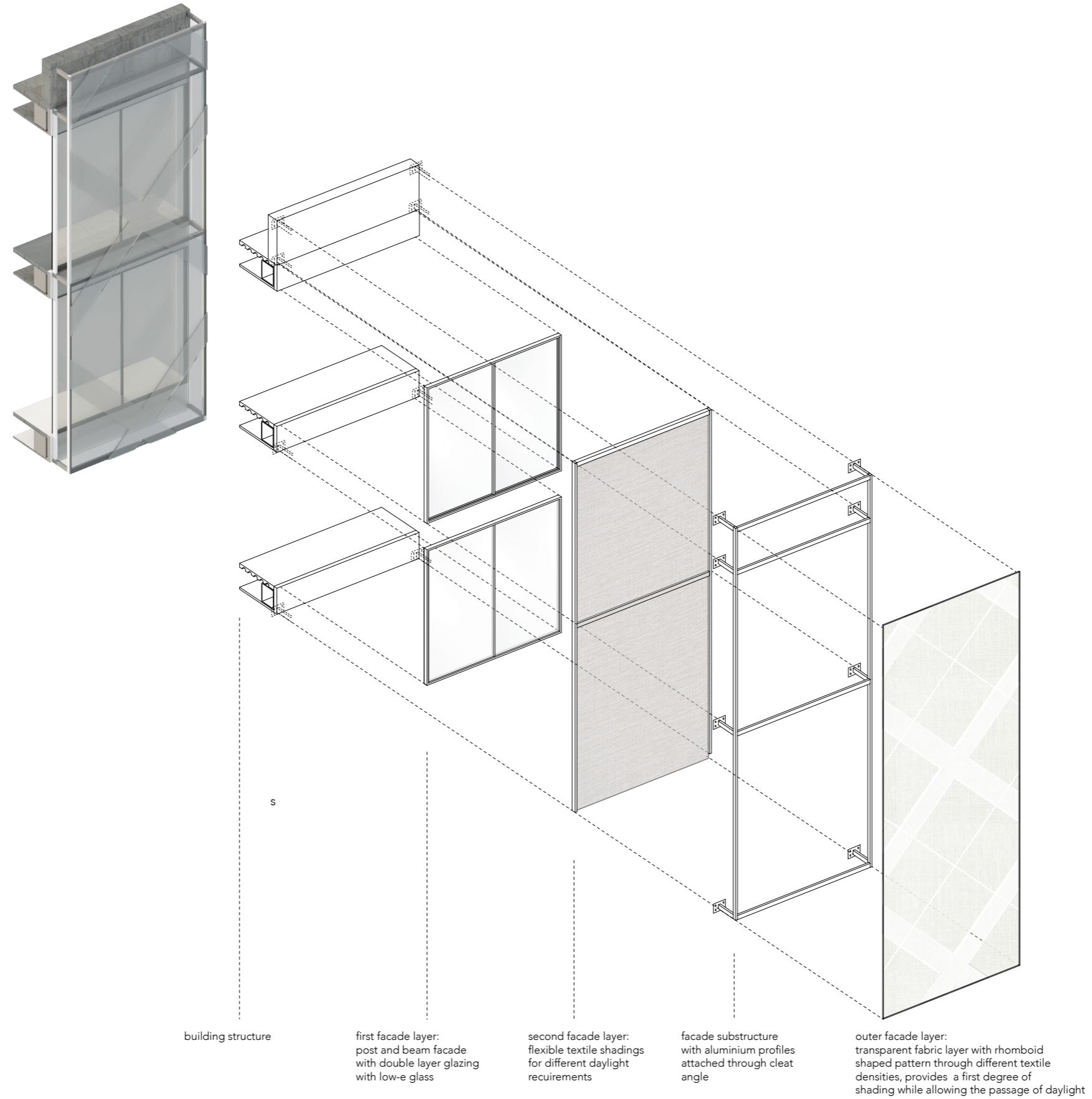


building construction



fashion creation office

facade structure



building structure

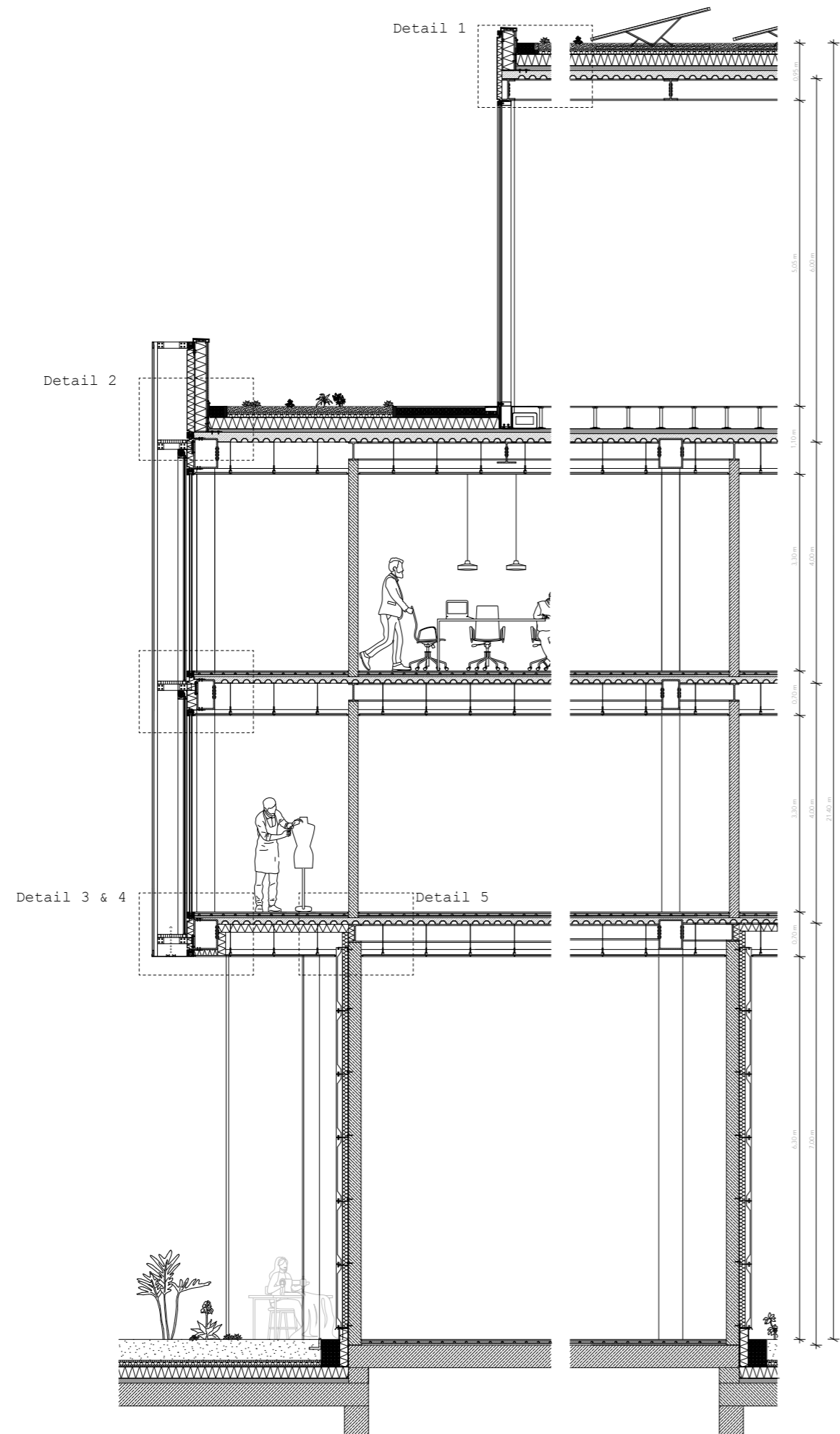
first facade layer:  
post and beam facade  
with double layer glazing  
with low-e glass

second facade layer:  
flexible textile shadings  
for different daylight  
requirements

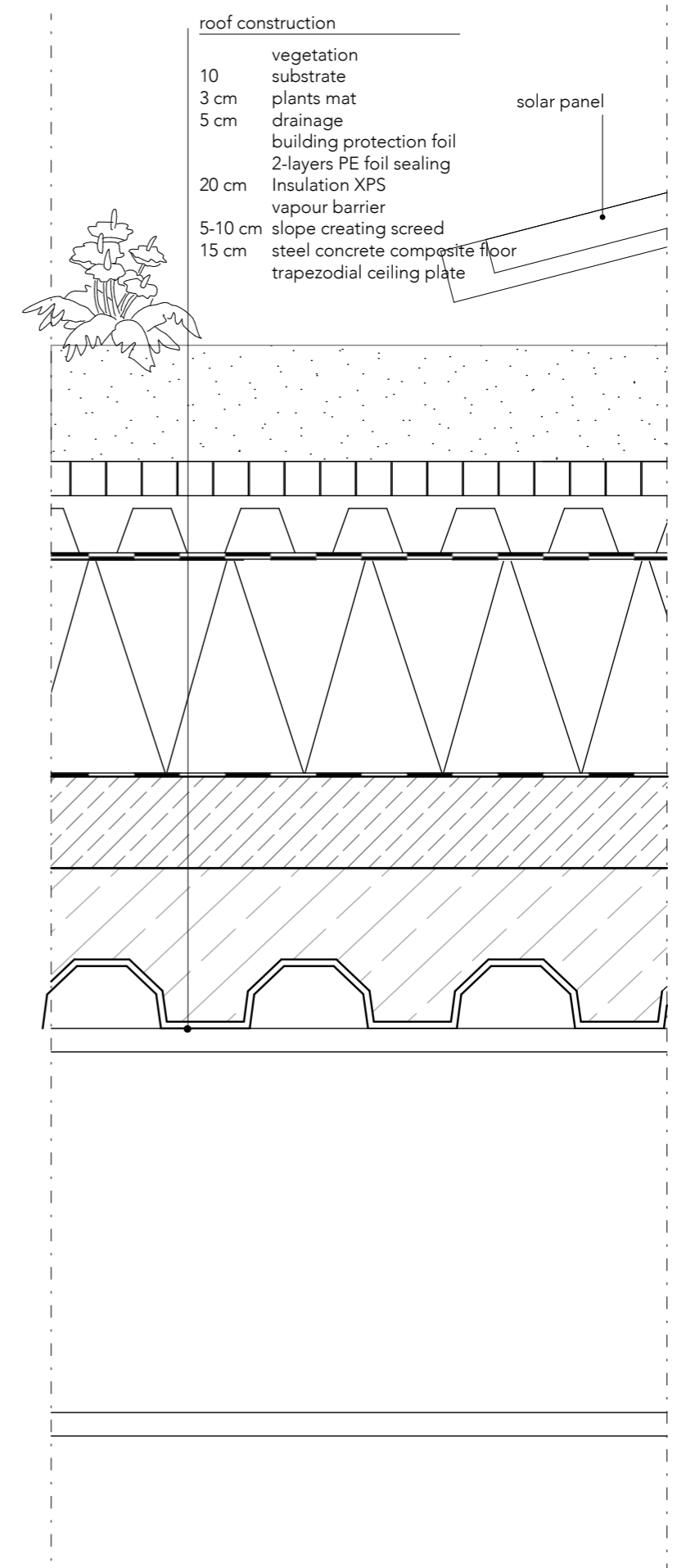
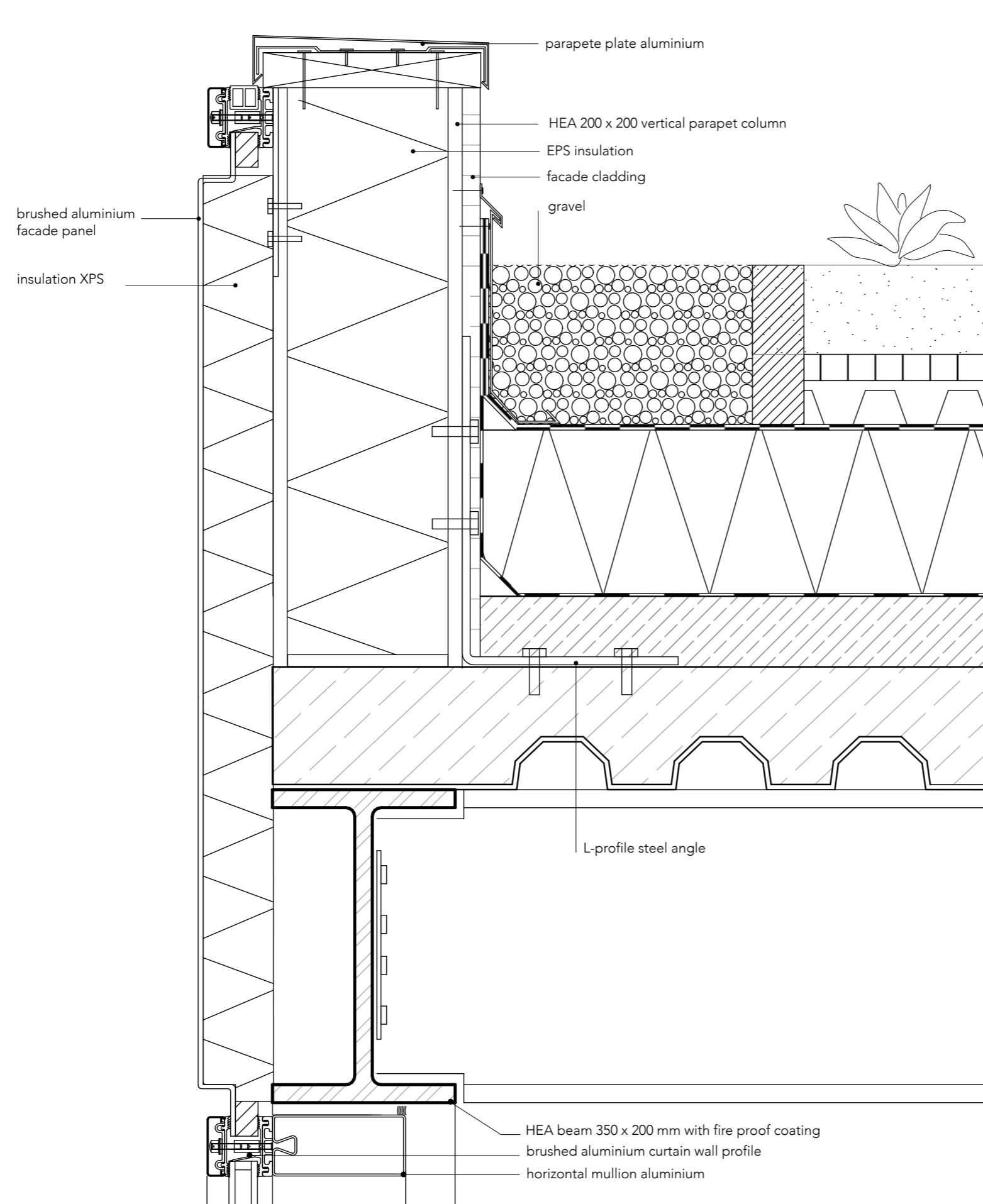
facade substructure  
with aluminium profiles  
attached through cleat  
angle

outer facade layer:  
transparent fabric layer with rhomboid  
shaped pattern through different textile  
densities, provides a first degree of  
shading while allowing the passage of daylight

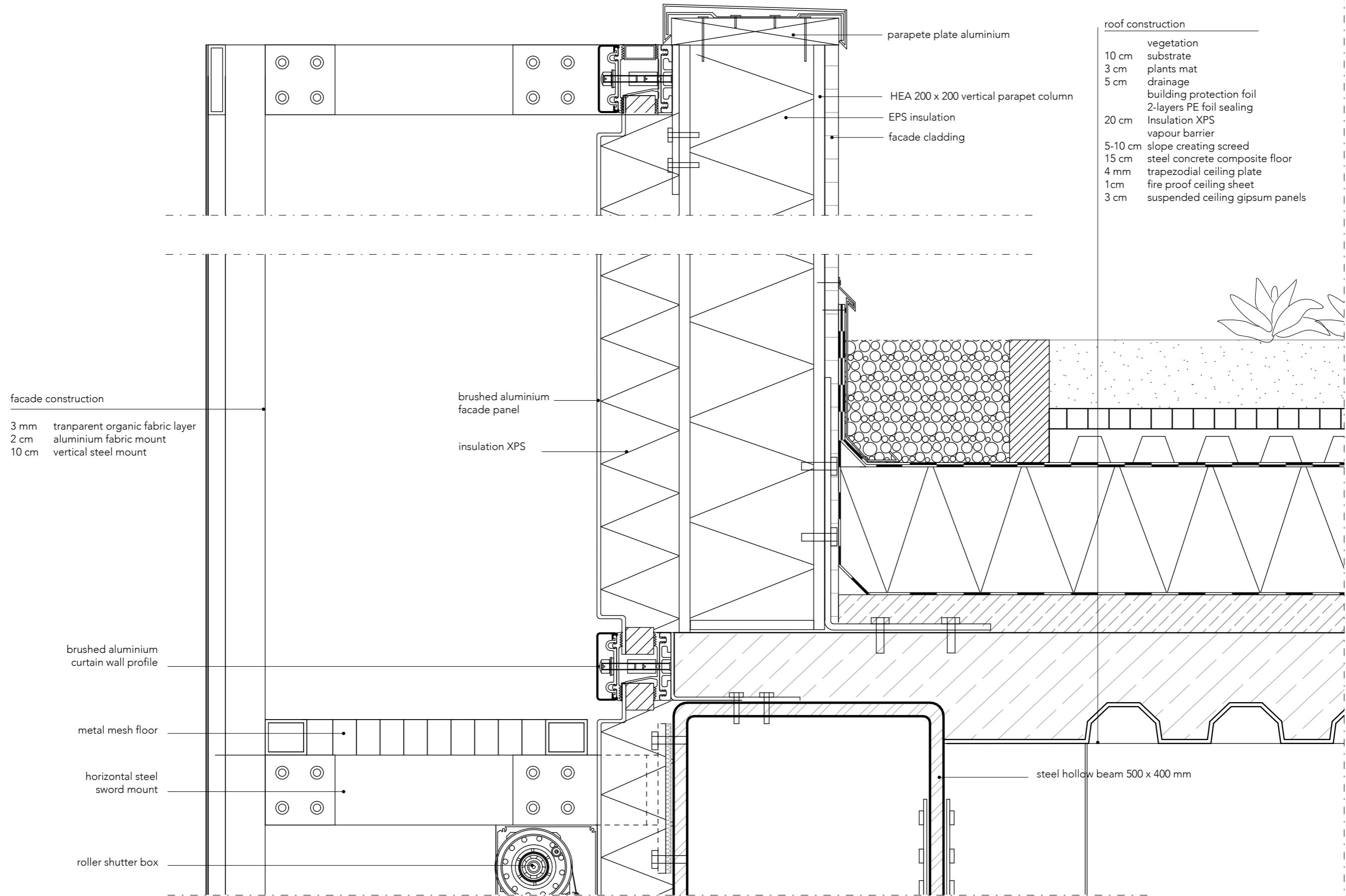
envelope fragment 1:20

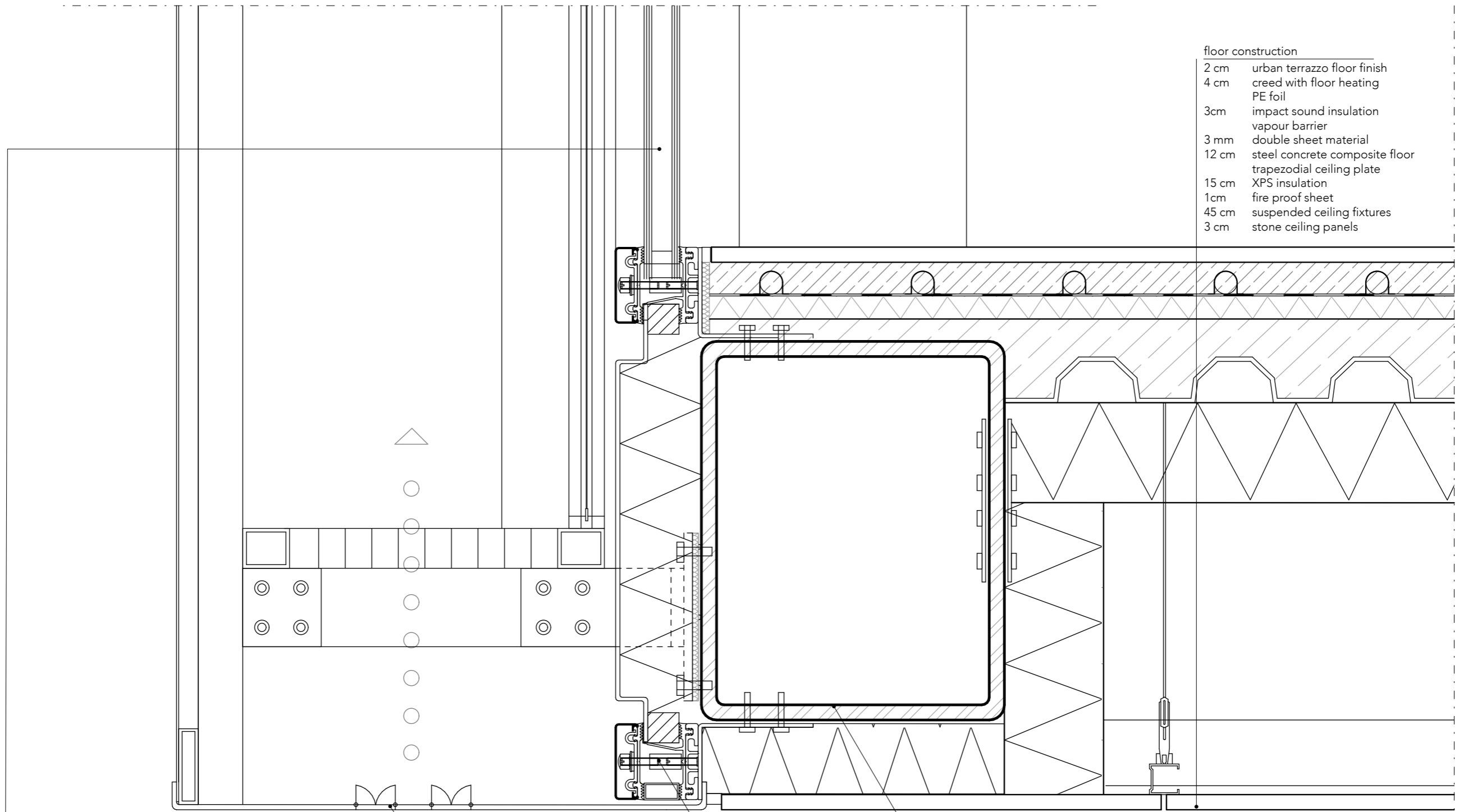


detail 1 1:5



detail 2 1:5





floor construction

- 2 cm urban terrazzo floor finish
- 4 cm creed with floor heating  
PE foil
- 3cm impact sound insulation  
vapour barrier
- 3 mm double sheet material
- 12 cm steel concrete composite floor  
trapezoidal ceiling plate
- 15 cm XPS insulation
- 1cm fire proof sheet
- 45 cm suspended ceiling fixtures
- 3 cm stone ceiling panels

facade construction

- 3 mm transparent organic fabric layer
- 2 cm aluminium fabric mount
- 10 cm vertical steel mount
- 50 cm metal mesh floor
- 3 mm semi-transparent organic fabric shutters
- ESG tempered glass, double glazing, low-e coating

openings for ventilation

brushed aluminium curtain wall profile

steel hollow beam 500 x 400 mm



detail 4 1:5

