

HUMAN NATURE

P5 Presentation

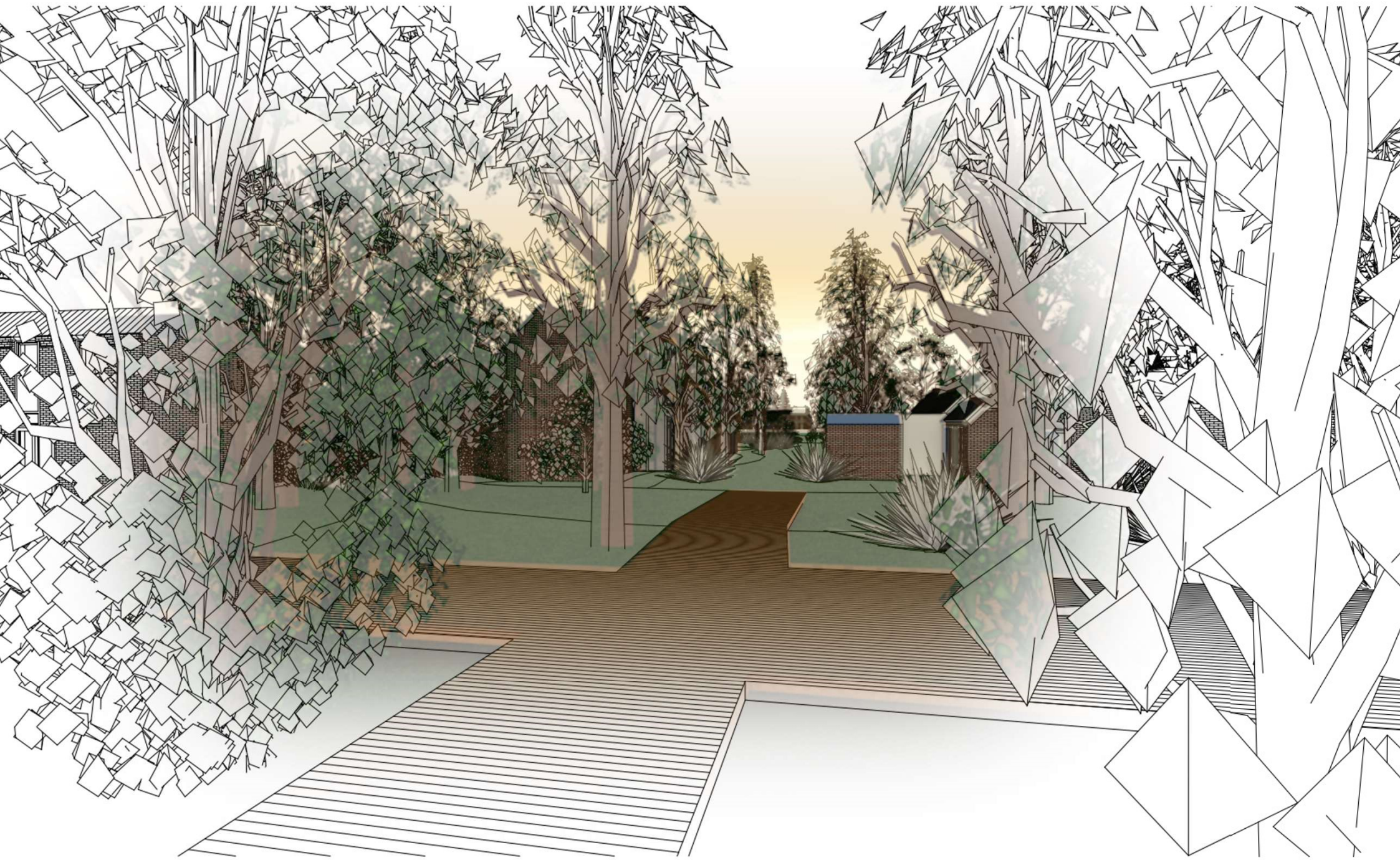
Leila van Coeverden

06/07/20

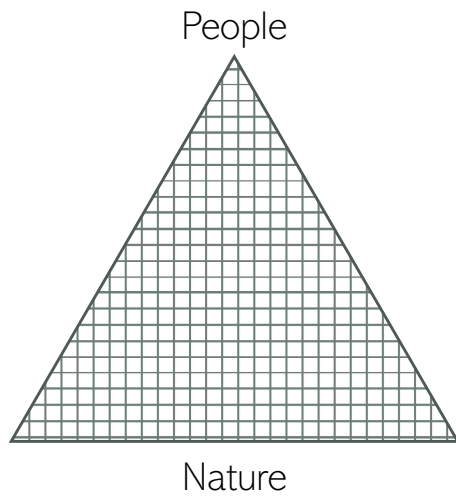


Nature as a way of living

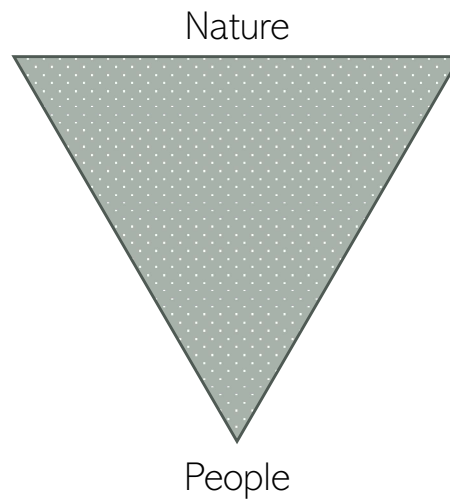
*Not living **on** nature but living **with** nature*



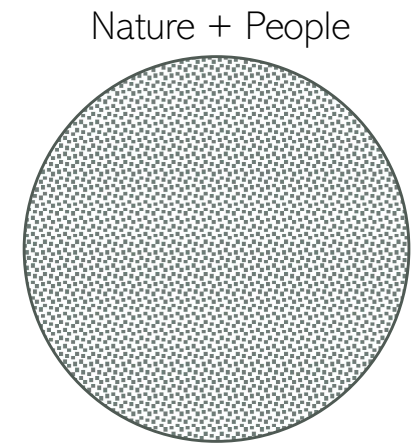
Traditional



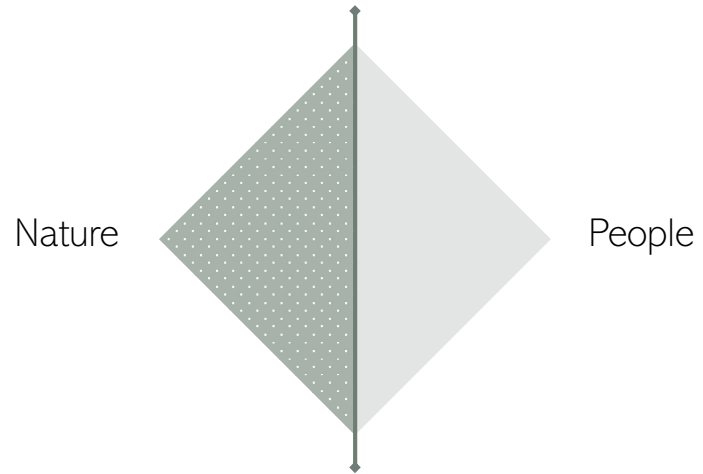
Approach/goal



Ambition



Perspective



Challenge of this project

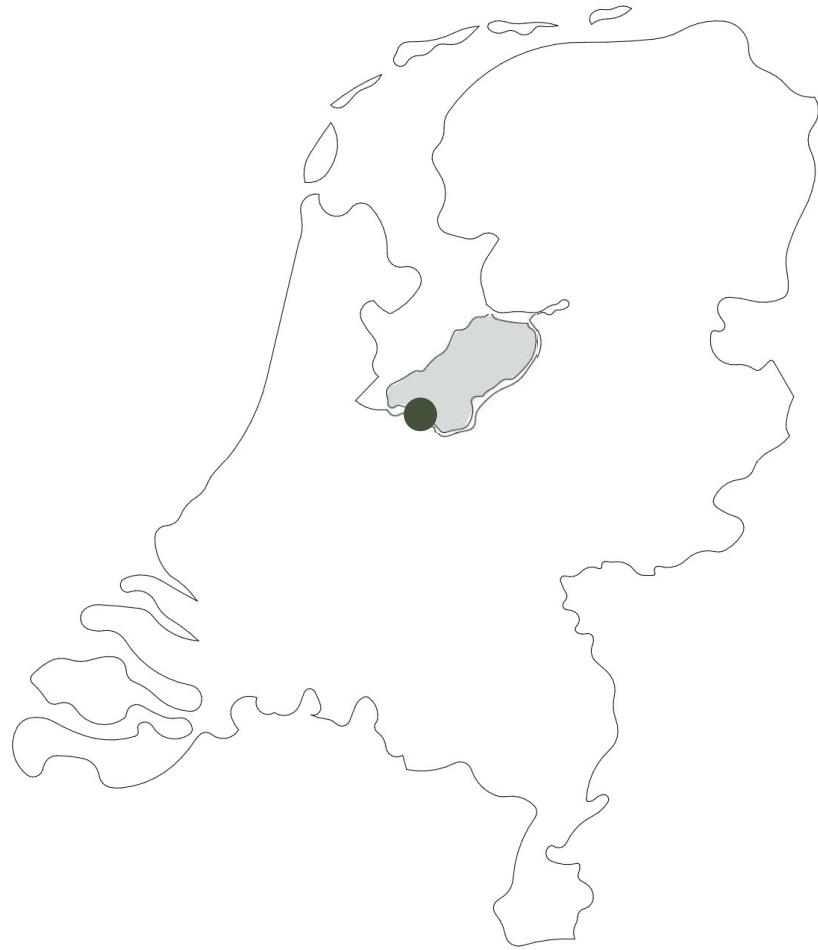
The utopian dream vs the reality











The Netherlands

Flevoland

Almere-Haven



Almere-Haven 1974



Almere-Haven 1977



De Werven 1977





Visionary sketch about de Werven by Van Stigt - 1974

Garden city concept
1902

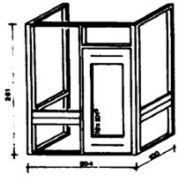
Cauliflower neighbourhood concept
1970

Architect Joop van Stigt
1934 - 2011

Finishing construction
1979

- Uniform appearances
- Element combinations
- Greenconcept





Use + historical value

Attribute Modular kit of housing typologies



Historical value

Attribute Garden city urban principle



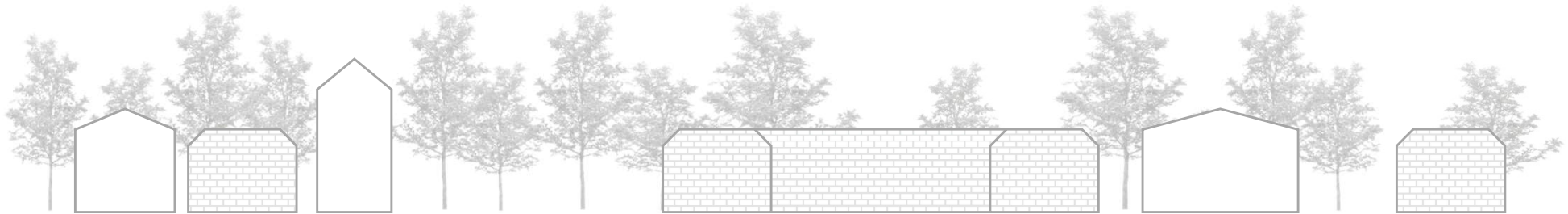
Social value: community

Attribute "Gewoon Haven"

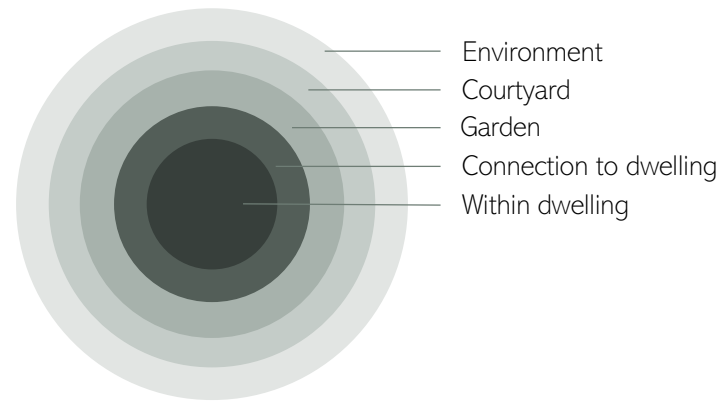
Densification question

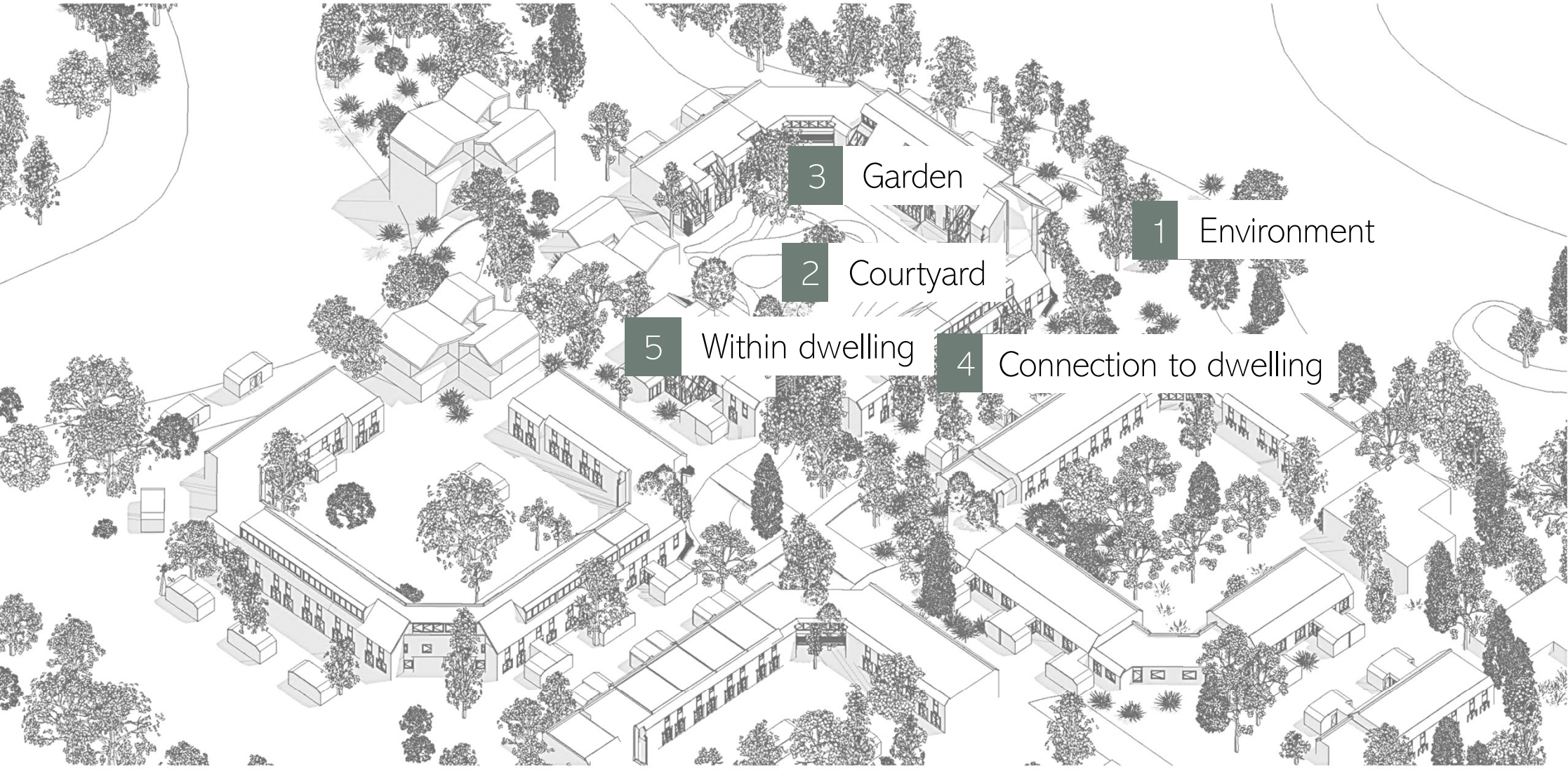
Increasing the biodiversity
More nature experience

Realism/reality



How to provide a synergy between people and nature within an existing environment?





3

Garden

1

Environment

2

Courtyard

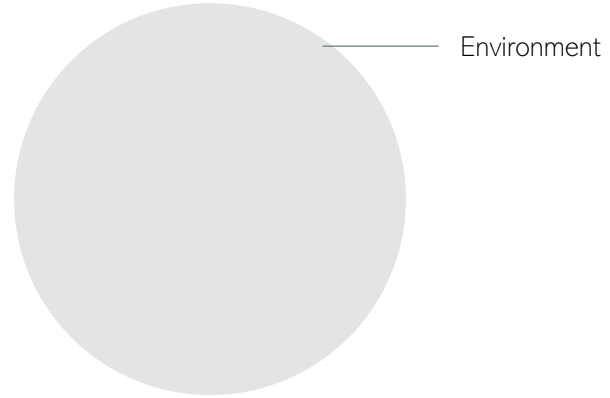
5

Within dwelling

4

Connection to dwelling

Existing / New



Existing environment

Green area

Buslane

Bikingroute

Slow traffic

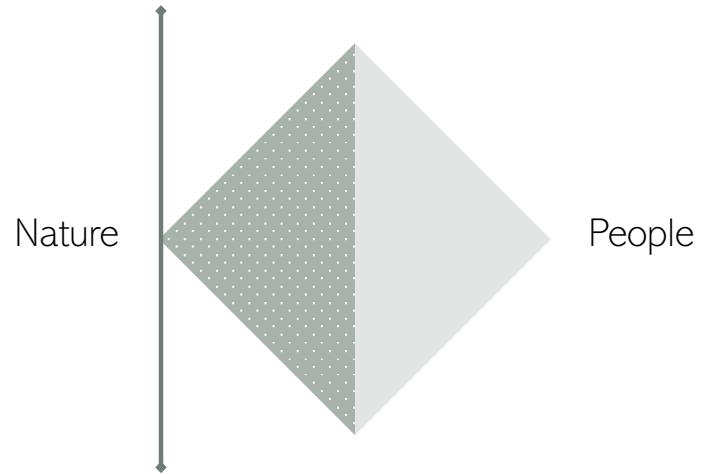




Historical value

Attribute **Garden city urban principle**
Strategy **Radicalize**

Perspective



New design

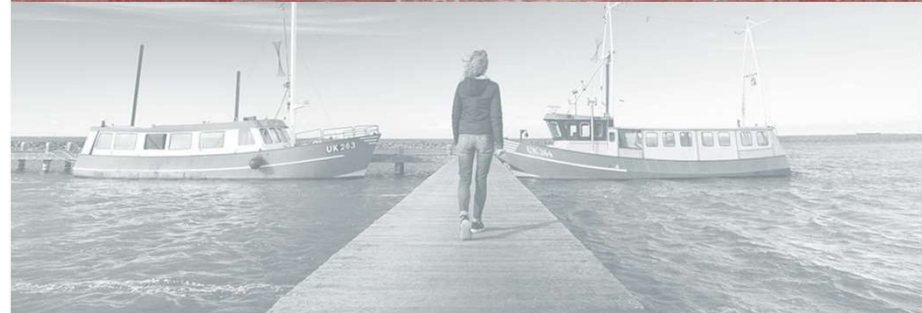
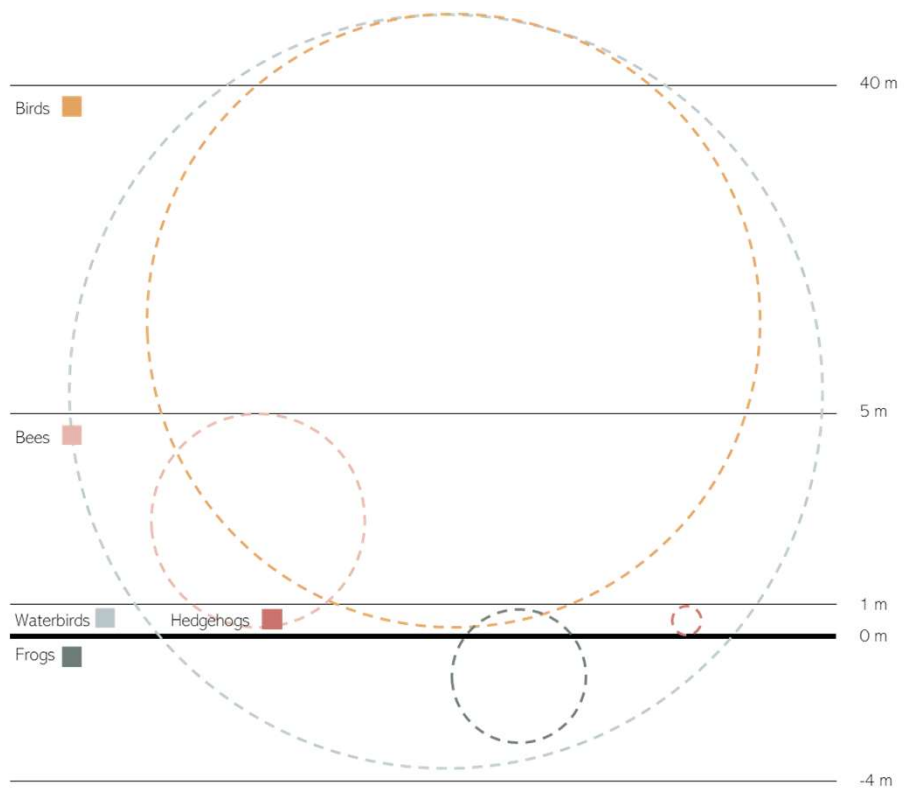
Waterconcept

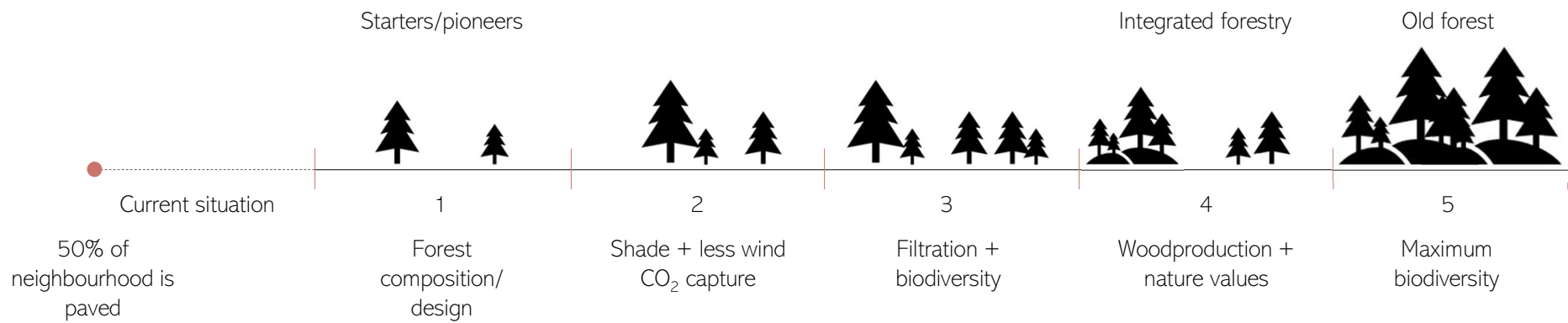
Fauna-concept

Flora-concept

Area saved for parking concept





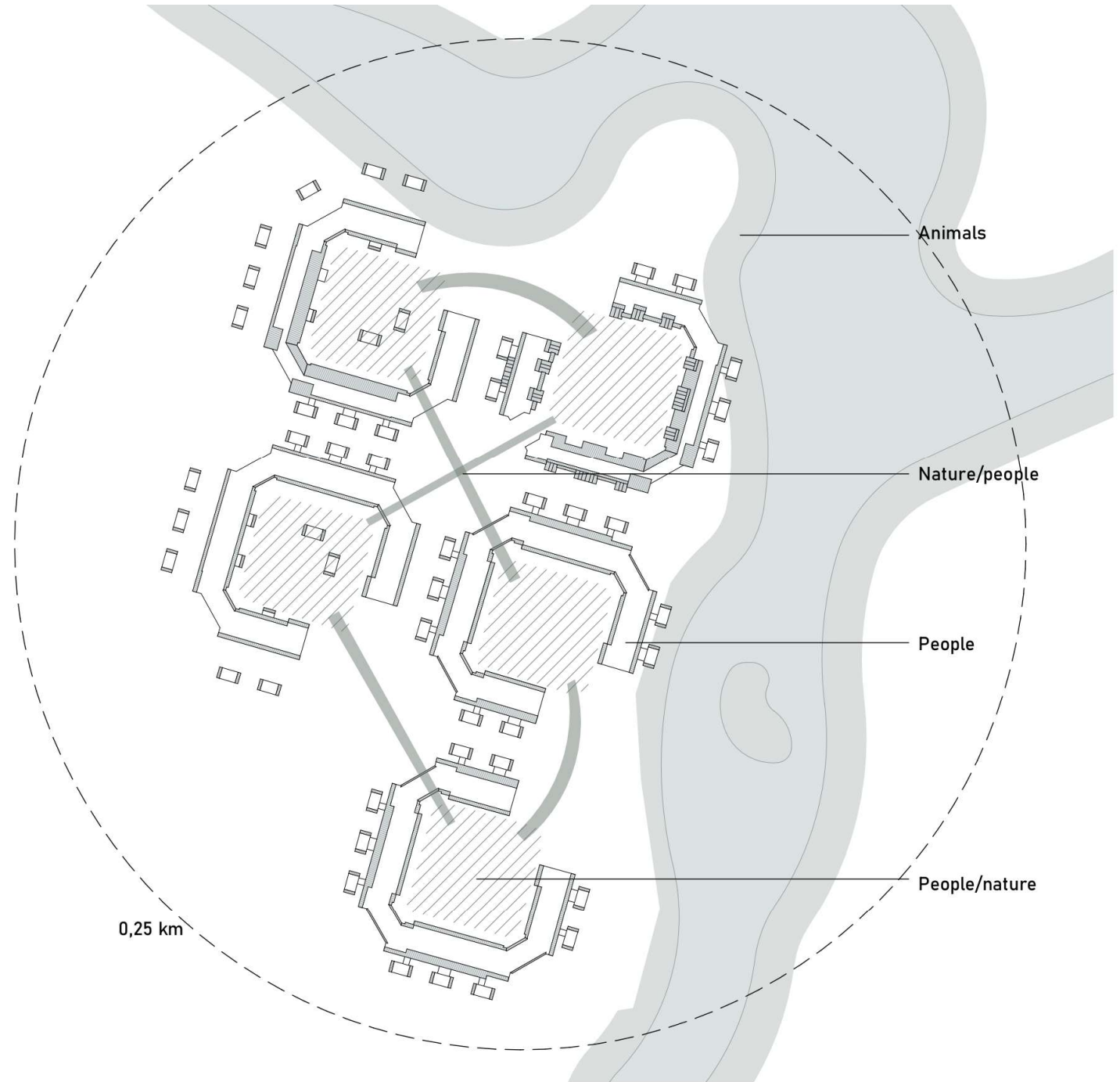


Density and composition of existing forest

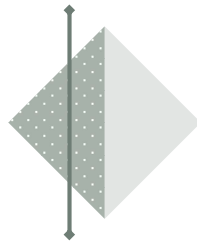
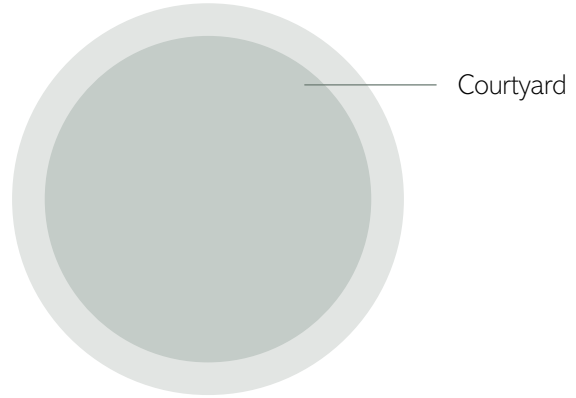
Transitional zones

Birdisland





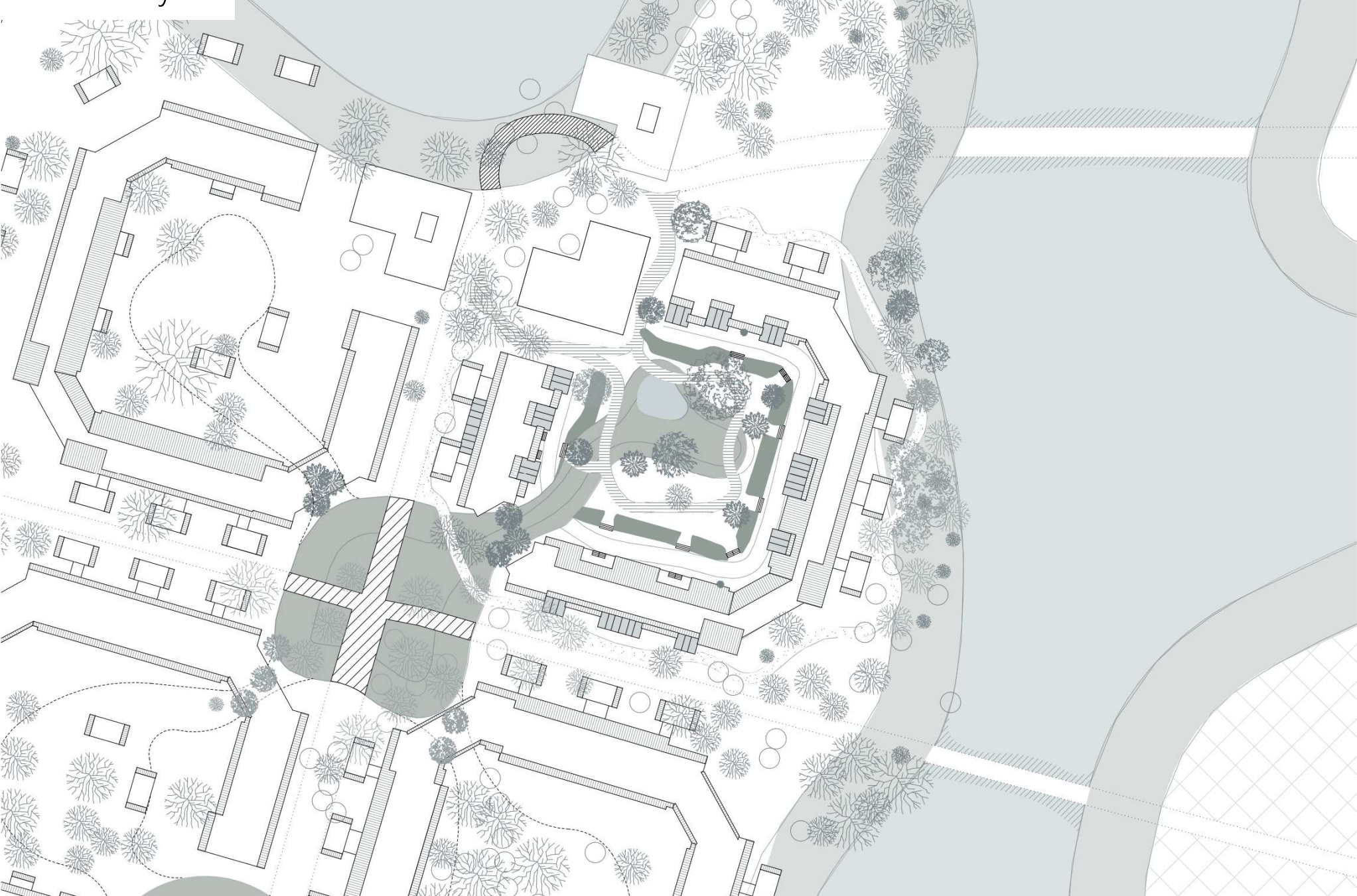




Existing courtyard



New courtyard

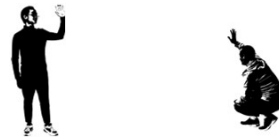




A new landscape

Opening up the gardens

Reinterpreted courtyard



Social value: community

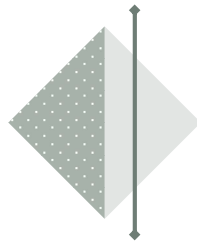
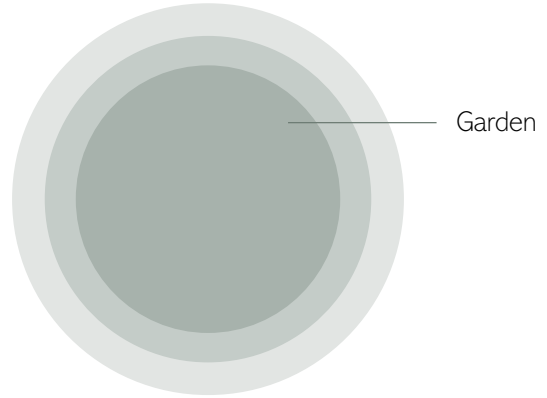
Attribute 'Gewoon Haven'
Strategy Conserve

Considering the existing residents:
"Geen verplichting, wel belang"

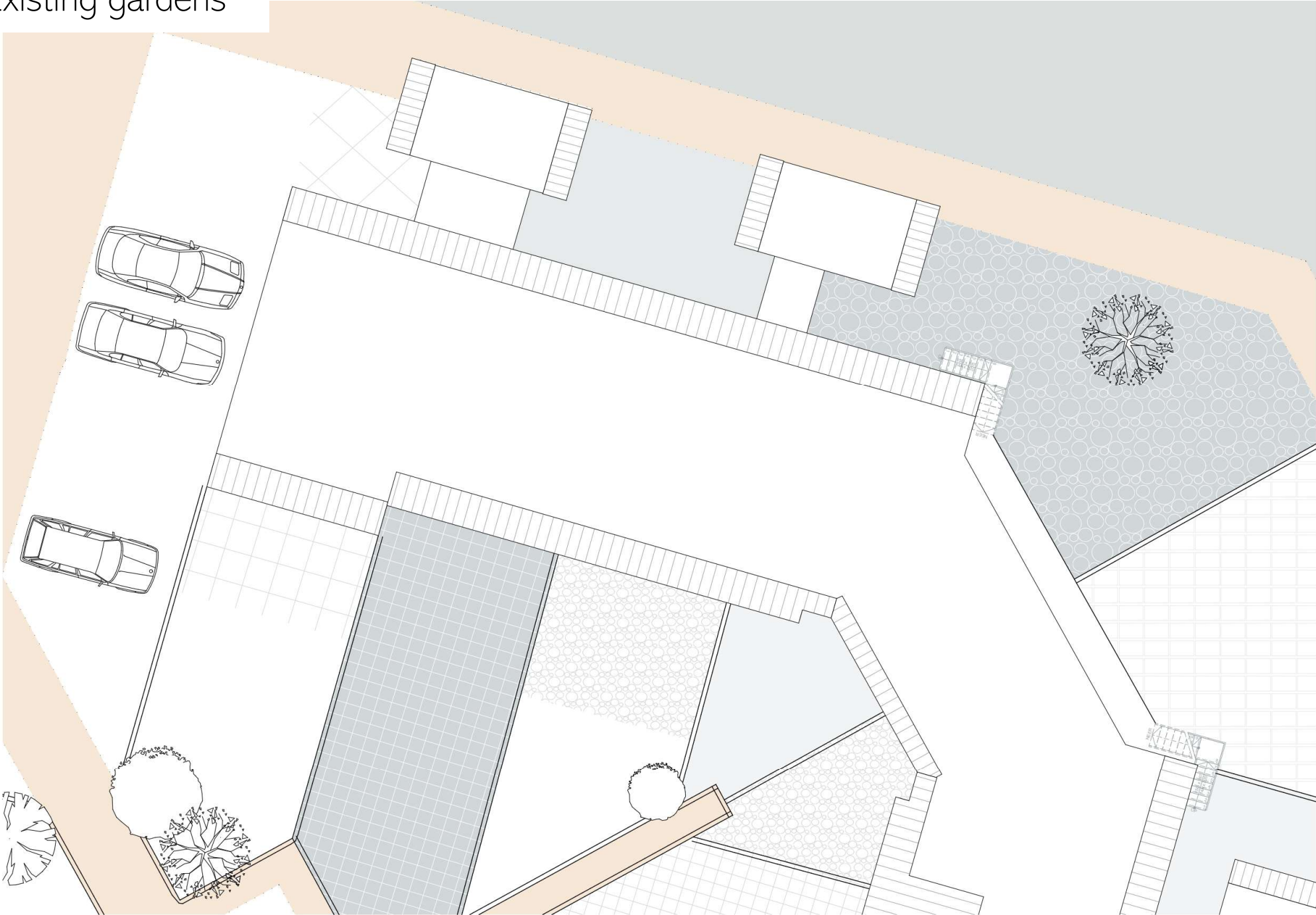




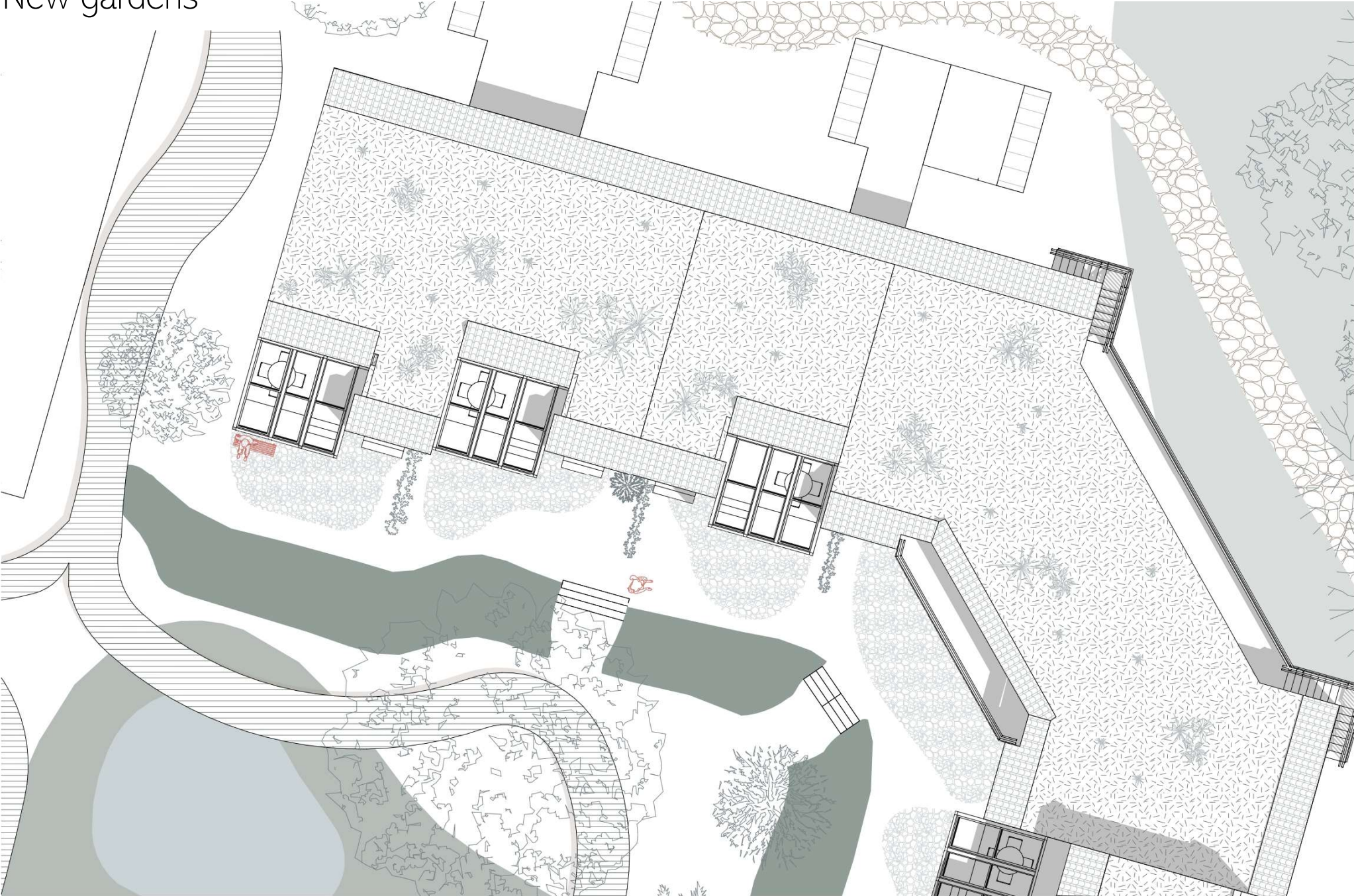




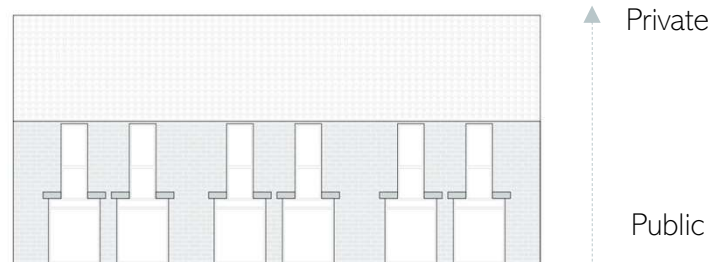
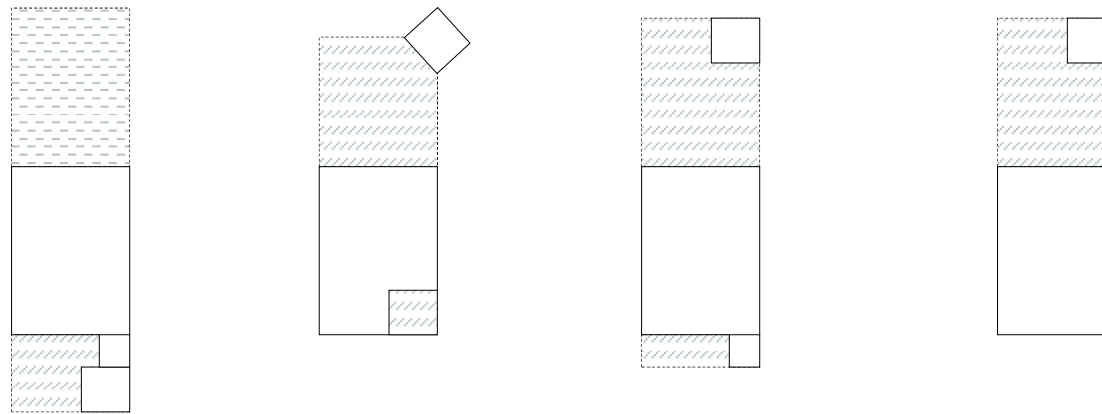
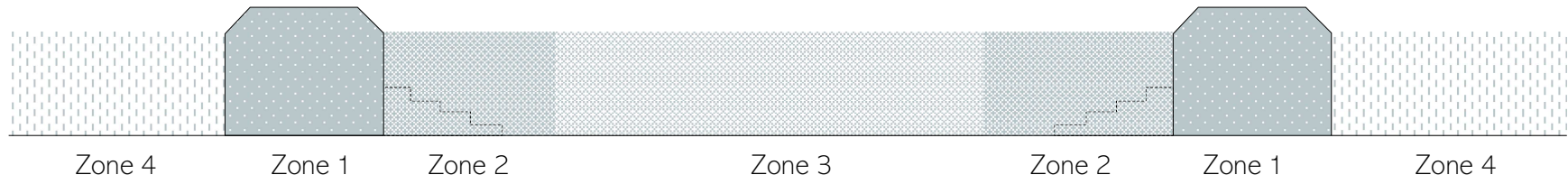
Existing gardens

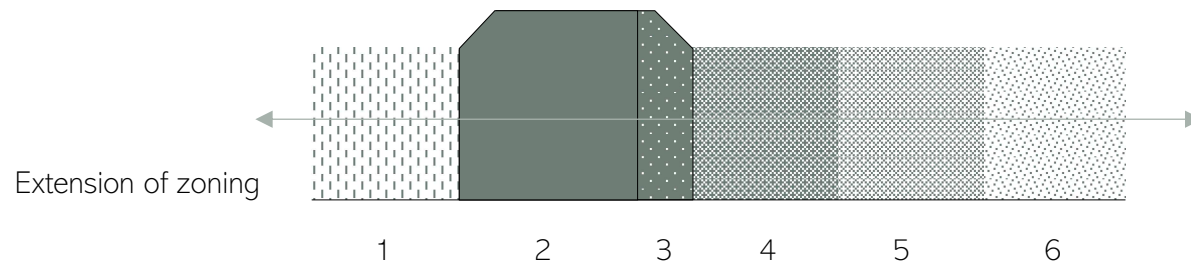
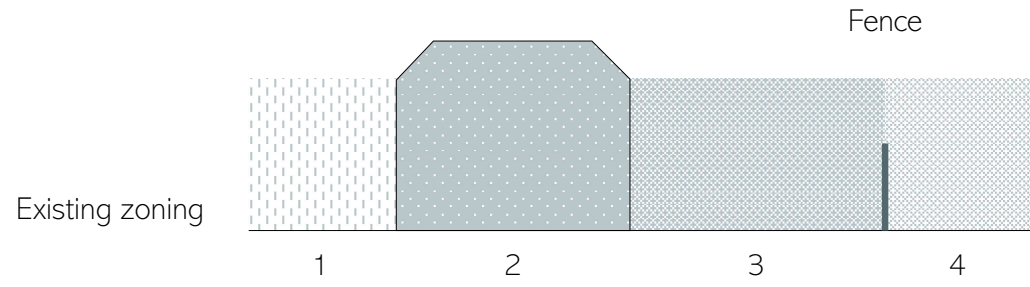


New gardens



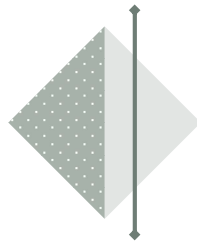
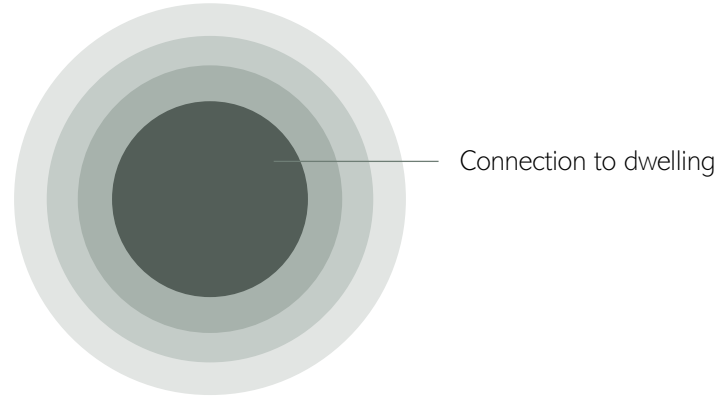






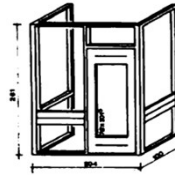






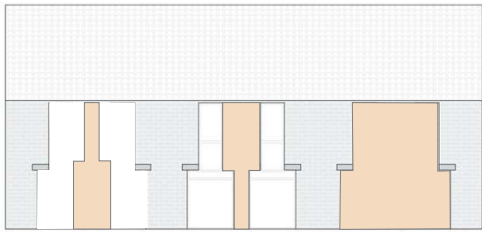
Existing elevation





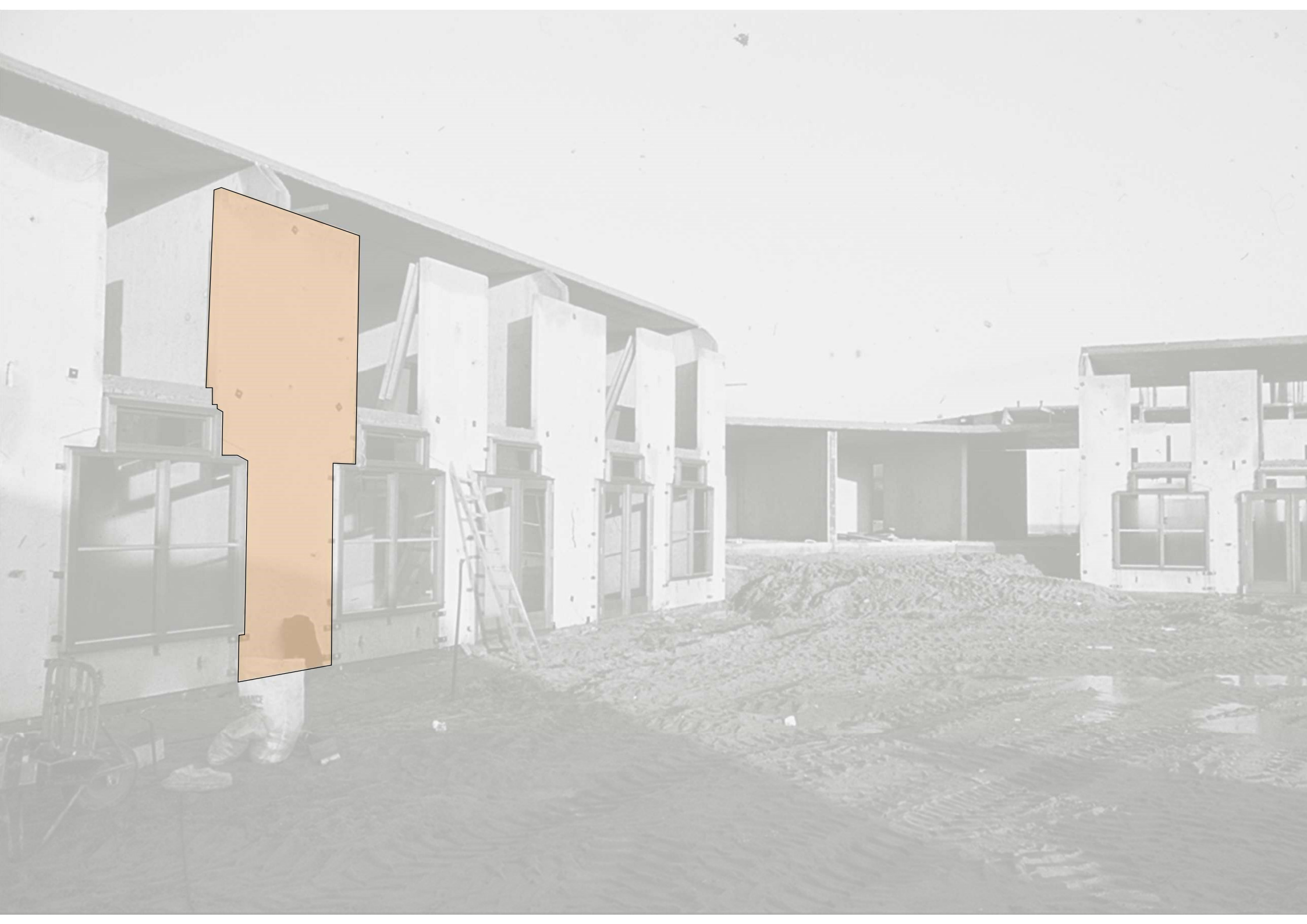
Use and Historical value

Attribute Modular kit of housing typologies
Strategy Reuse concept/reinvent



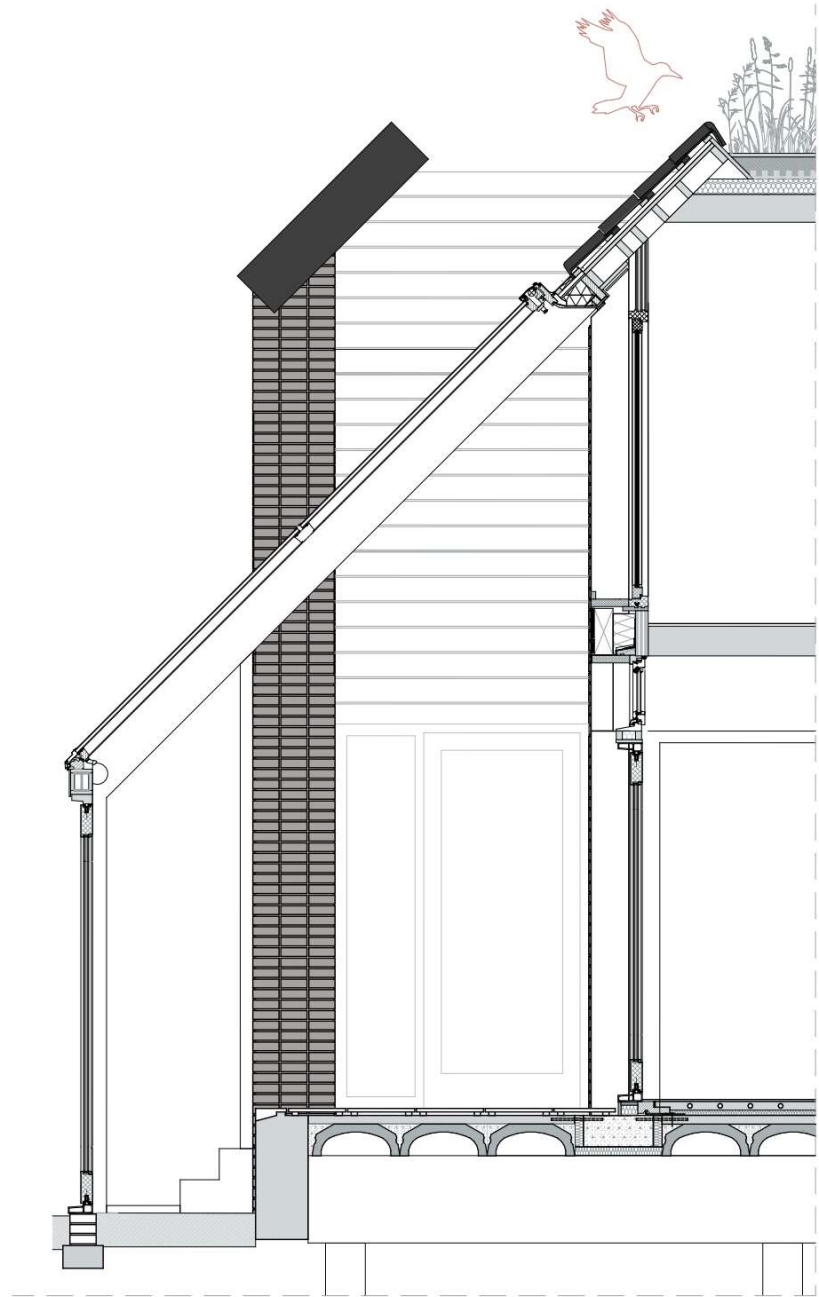
Moving the elements of van Stigt

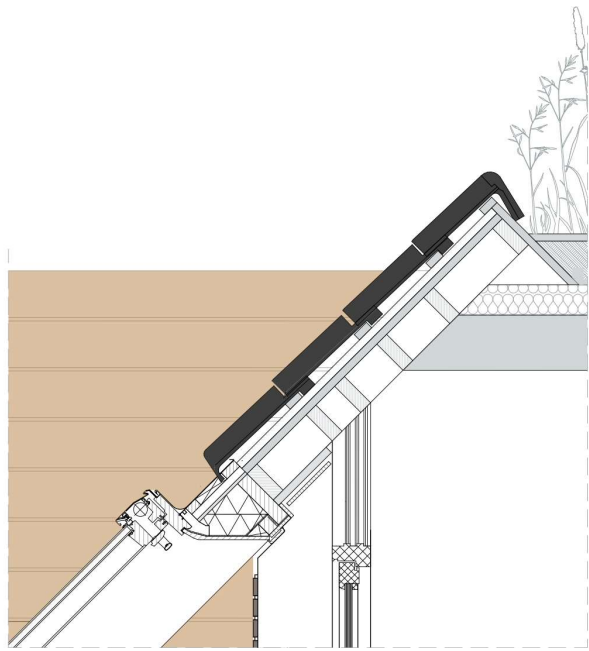
Conserving the characteristics



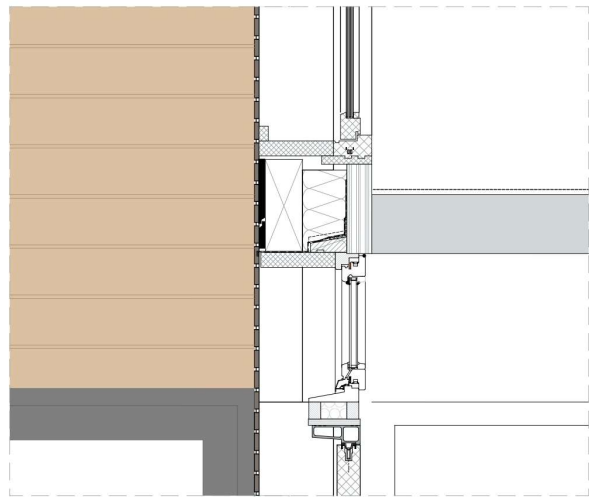
New elevation



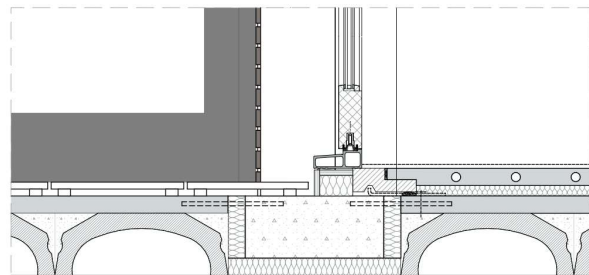




Roof detail



First floor detail



Floorconnection



New brickwork

Existing brickwork

With sunroom

Wood finishing to bring nature feeling inside the sunroom



Brick as consistent material in the neighbourhood

Accumulating capacity for efficiency sunroom

Without sunroom



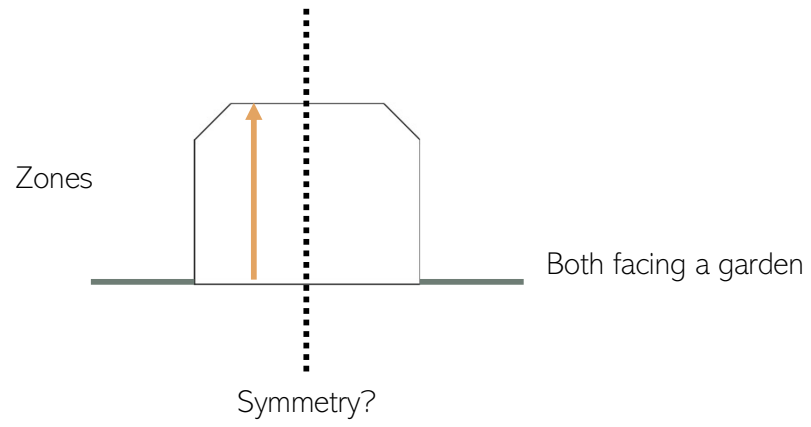
Gutters

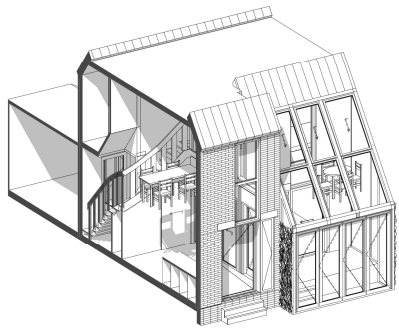
Window composition

Stairs

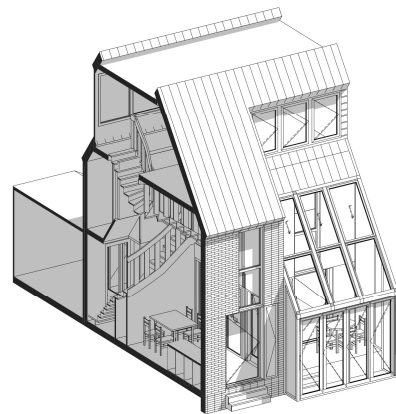
Finishing of the sunroom



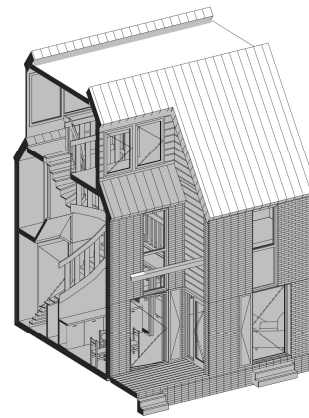




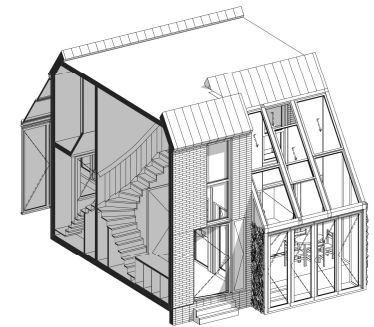
Housing type A



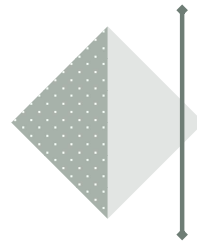
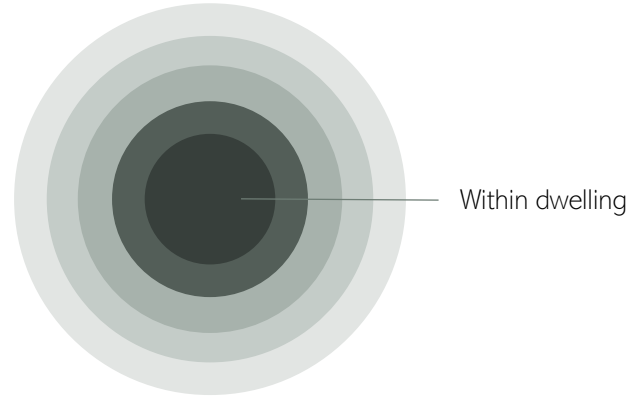
Housing type B



Housing type C

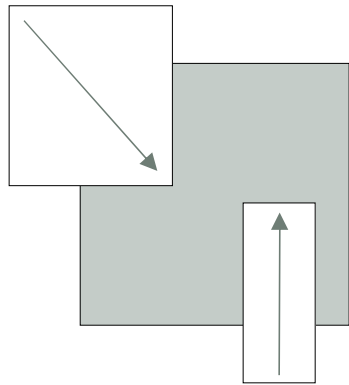


Housing type A
Splitted



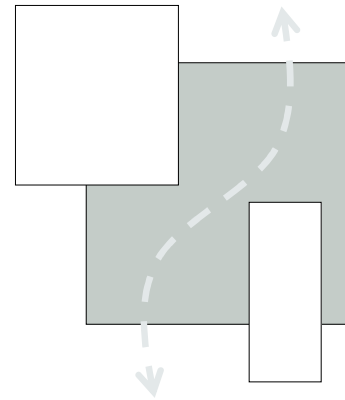
Future perspective

Built environment vs nature

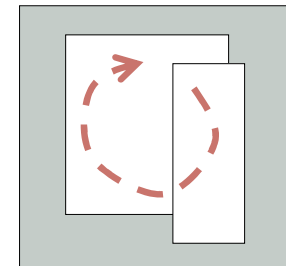


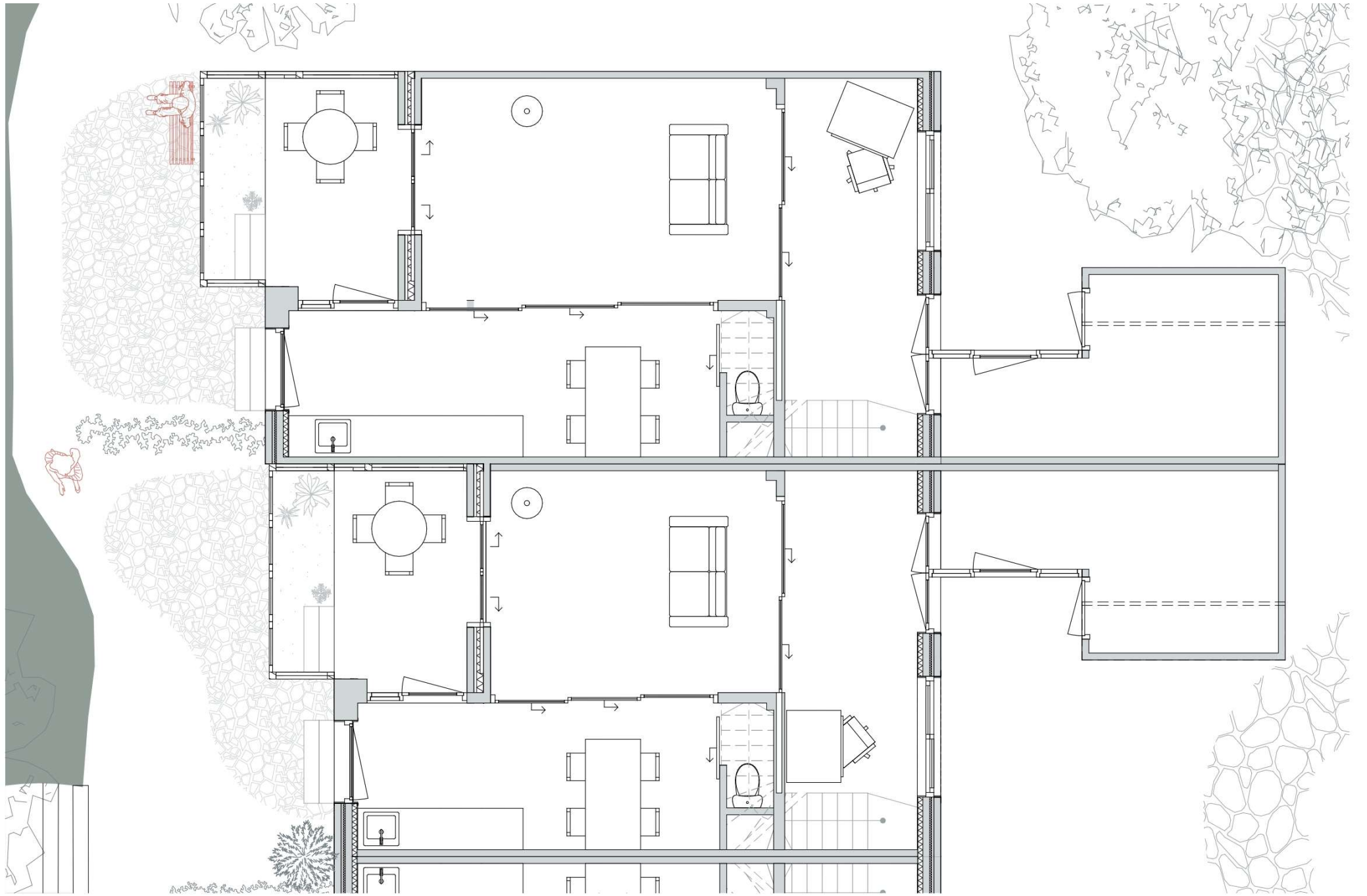
Future of the built environment

Summer
Wide and airy



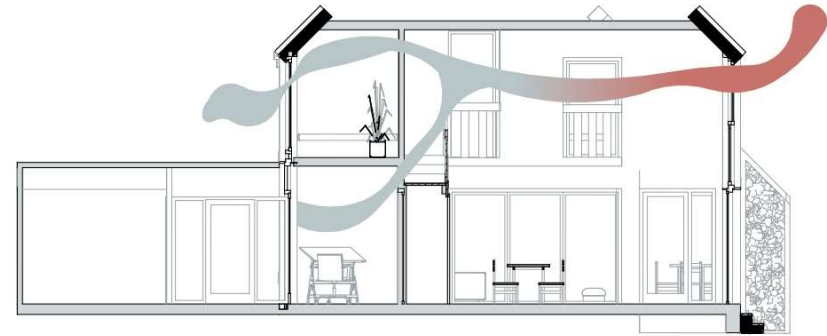
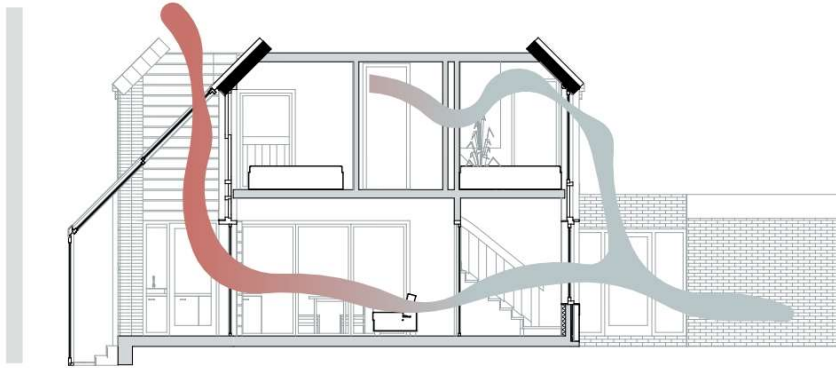
Winter
Warm and compact





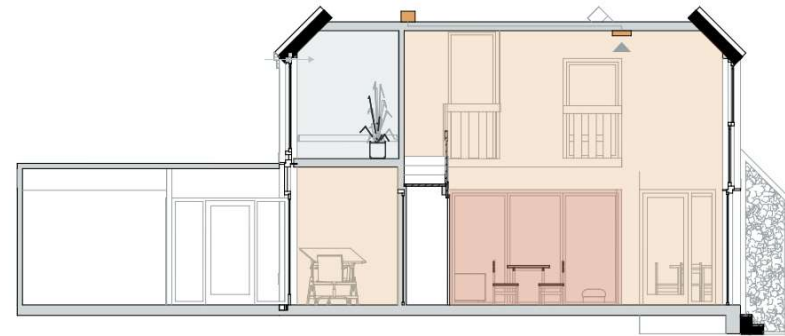
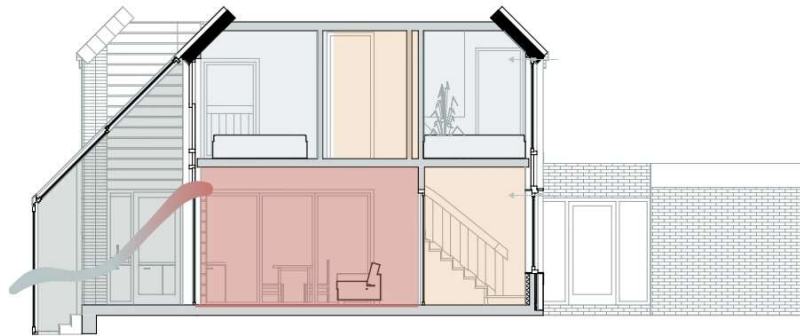
Summer situation

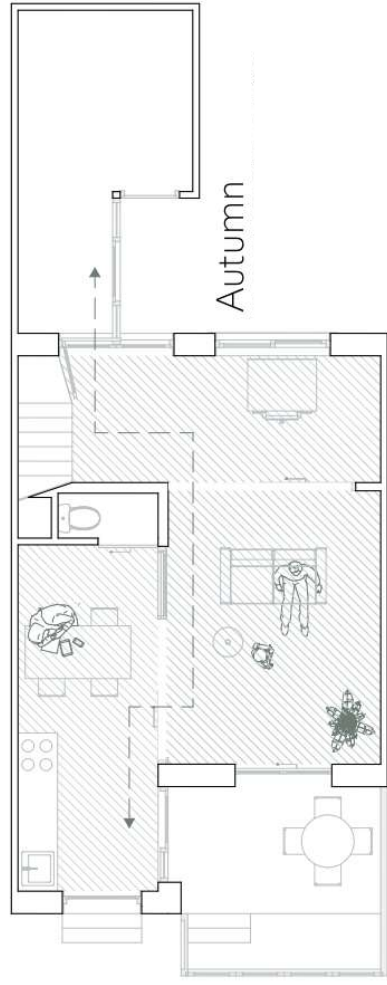
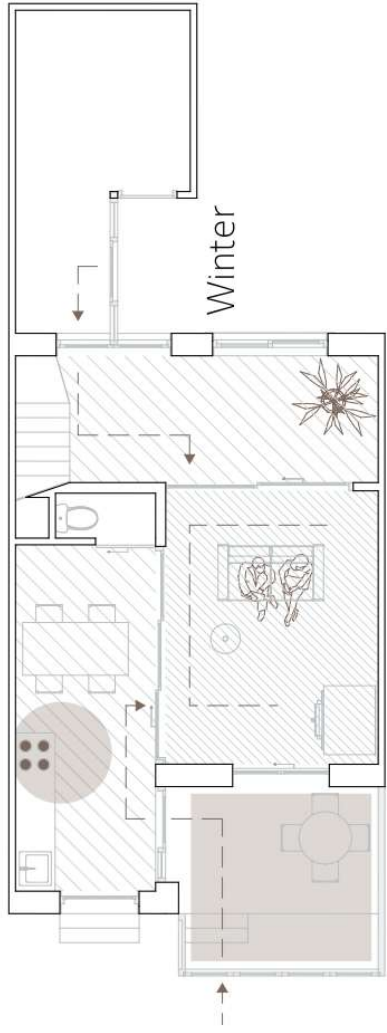
Cooling of the house by natural airflow



Winter situation

Warmth efficiency - working with zones - natural air inflow

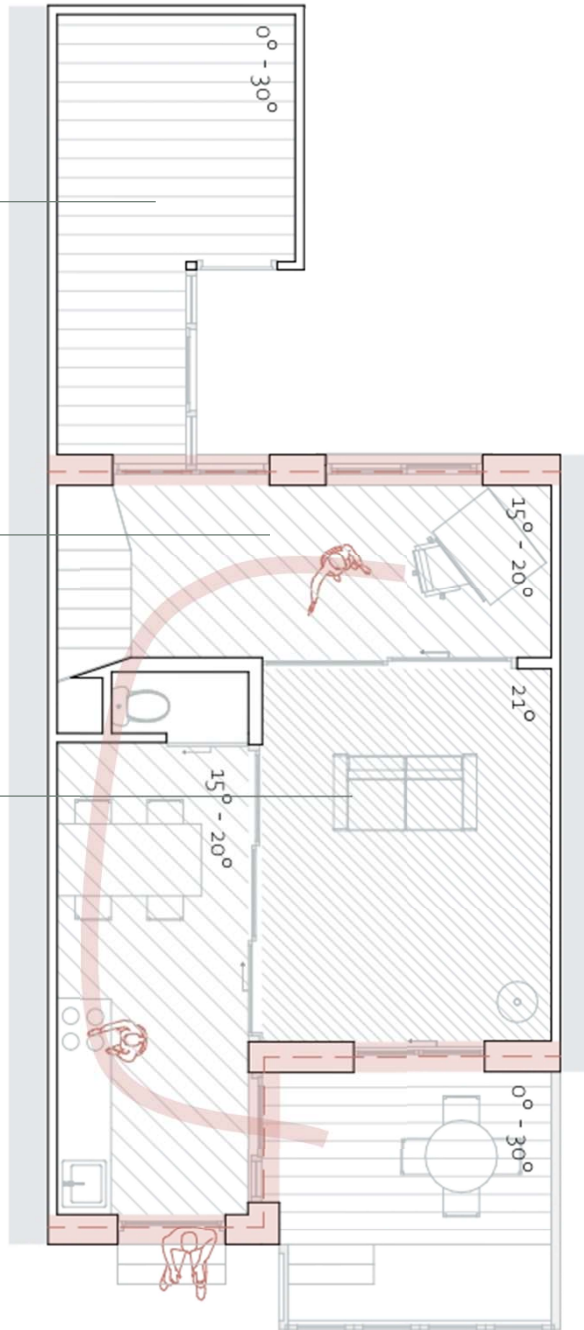




Temperature level 1

Temperature level 2

Temperature level 3

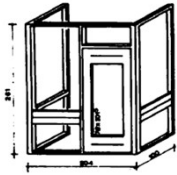


Phased plan

- 
1. Masterplan landscape
 2. Courtyard design - opening up the gardens
 3. Pushing back the facades
 4. Construction of the sunroom
 5. Interior alterations fitting to a new lifestyle (seasons)
 6. Splitting up the dwelling into two dwellings



Instrument



Use + historical value

Attribute Modular kit of housing typologies
Strategy Reuse concept/reinvent
Design New housing construction, based on modular kit

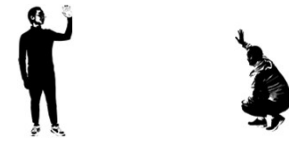
Utopia



Historical value

Attribute Garden city urban principle
Strategy Radicalize
Design Create natural environment, switch balance human-nature

Reality

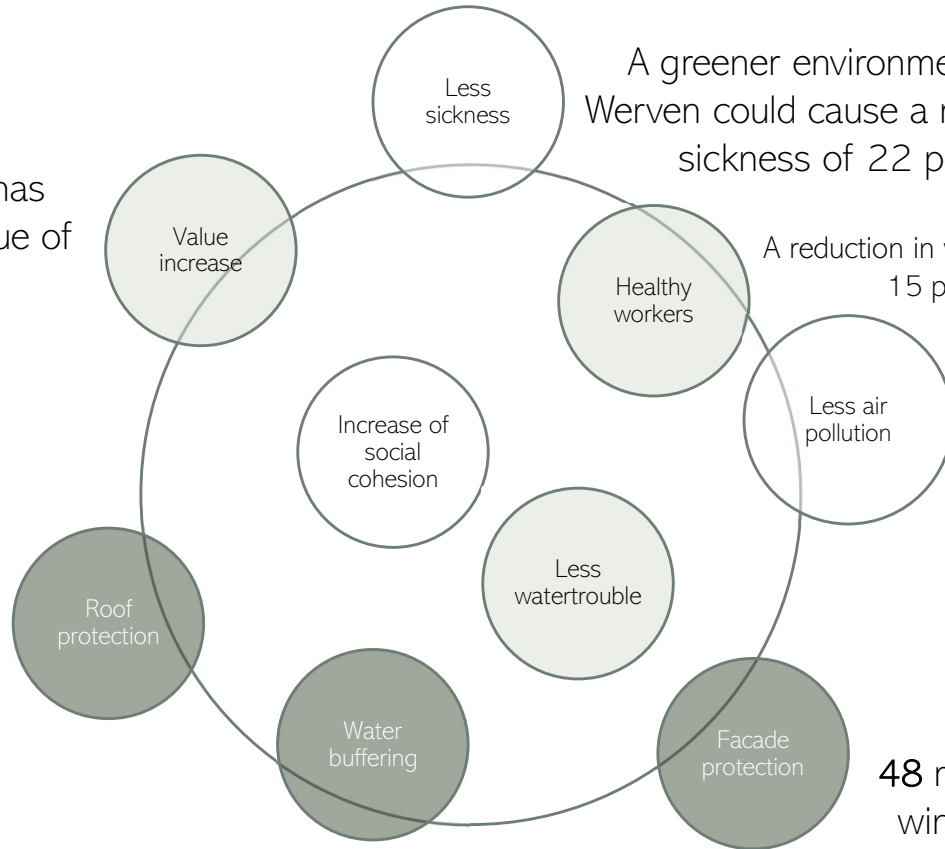


Social value: community

Attribute "Gewoon Haven"
Strategy Conserve
Design Keep small-scale, familiar housing

A greener environment has positive impact on the value of properties

80 m³ of gas can be saved by the insulation qualities of green roofs



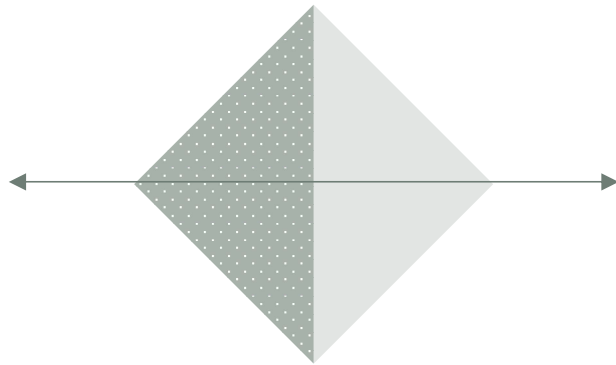
A greener environment in De Werven could cause a reduction in sickness of 22 people

A reduction in workabsence of 15 people

Trees can collect about 70 kg finedust

Green roofs can collect about 22 kg finedust

48 m³ of gas can be saved by the wind protection caused by trees



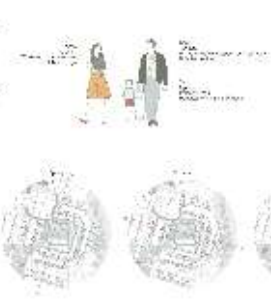


HIND KURE

THE HIND KURE IS A 100% RECYCLED PAPER PRODUCT. IT IS MADE FROM 100% RECYCLED PAPER AND IS 100% BIODEGRADABLE. IT IS A GREAT CHOICE FOR YOUR BUSINESS AND THE ENVIRONMENT.



THE HIND KURE IS A 100% RECYCLED PAPER PRODUCT. IT IS MADE FROM 100% RECYCLED PAPER AND IS 100% BIODEGRADABLE. IT IS A GREAT CHOICE FOR YOUR BUSINESS AND THE ENVIRONMENT.



THE HIND KURE IS A 100% RECYCLED PAPER PRODUCT. IT IS MADE FROM 100% RECYCLED PAPER AND IS 100% BIODEGRADABLE. IT IS A GREAT CHOICE FOR YOUR BUSINESS AND THE ENVIRONMENT.

THE HIND KURE IS A 100% RECYCLED PAPER PRODUCT. IT IS MADE FROM 100% RECYCLED PAPER AND IS 100% BIODEGRADABLE. IT IS A GREAT CHOICE FOR YOUR BUSINESS AND THE ENVIRONMENT.



THE HIND KURE IS A 100% RECYCLED PAPER PRODUCT. IT IS MADE FROM 100% RECYCLED PAPER AND IS 100% BIODEGRADABLE. IT IS A GREAT CHOICE FOR YOUR BUSINESS AND THE ENVIRONMENT.



