

The Stamp City

Community Complex at Sloterdijk City Centre
New-West, Amsterdam



Chunxu Jin

Complex Projects Graduation Studio
AMS Studio 2017-2018
Sloterdijk Group
Chunxu Jin
4614186

Tutor:
Stefan de Koning
Jelke D. Fokkinga

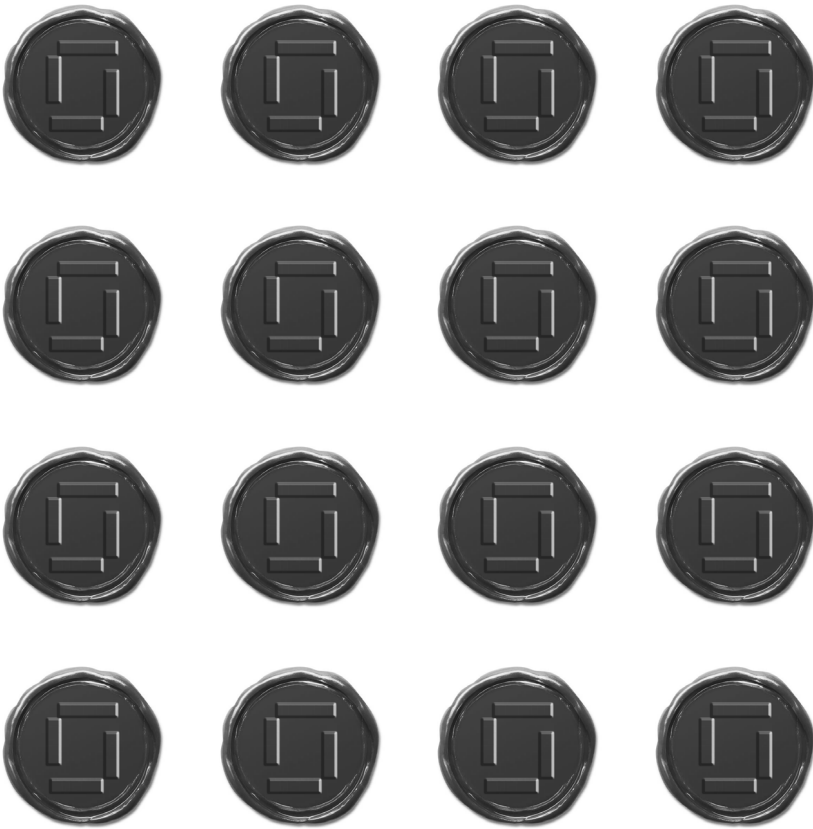
I	Research	4
II	Manifesto	30
III	Intervention	40
IV	Master Plan	46
V	Design Project	54



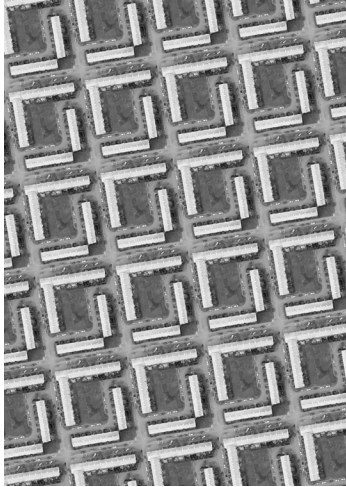
I. Research

Stamp Urban Block
in Amsterdam suburbs

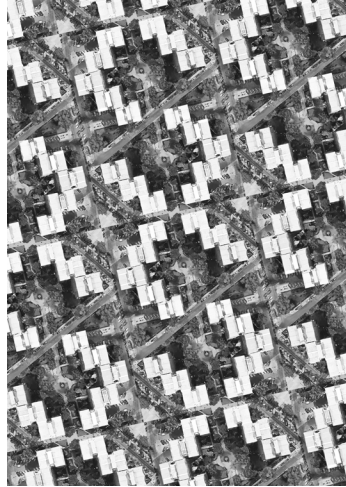
Sloter-Stamp



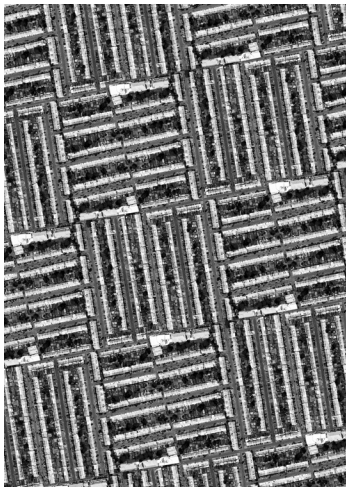
Urban Block Identity
in other European city suburbs



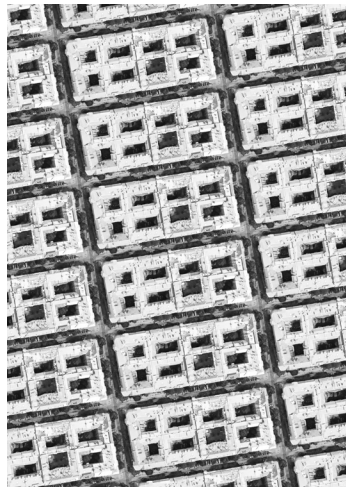
Amsterdam



Madrid

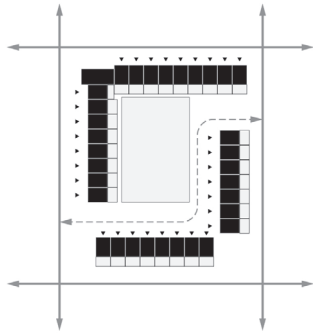


London

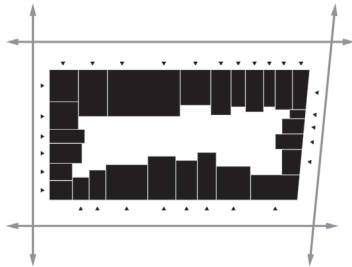
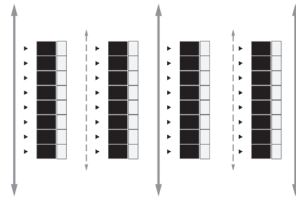


Berlin

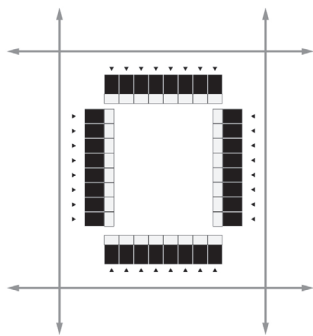
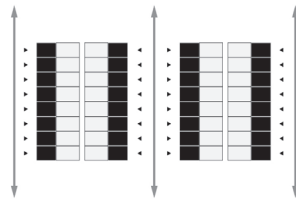
Urban Tissue
in Amsterdam



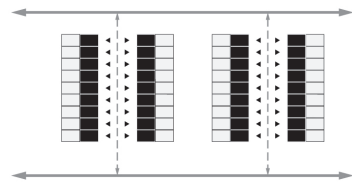
Stamp Urban Block

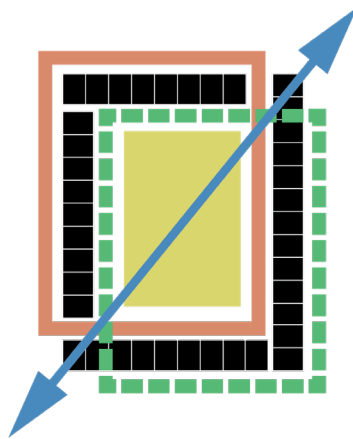


Comparison

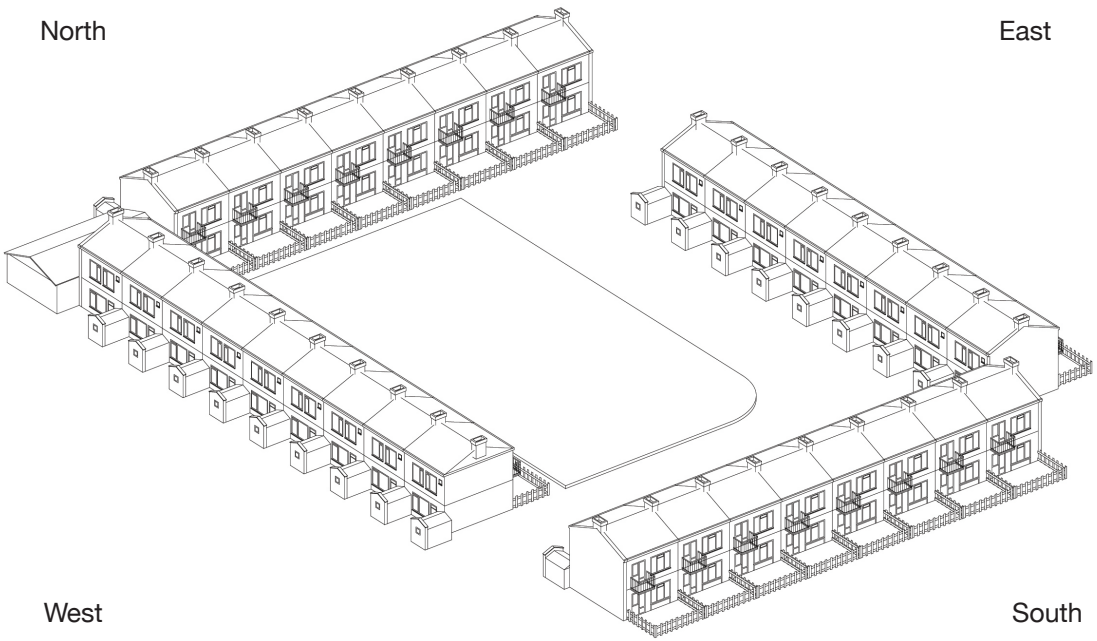


Comparison

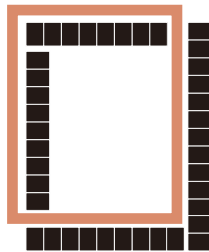




Diagram

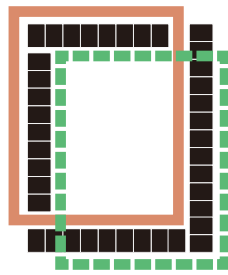


Stamp Uuban Block



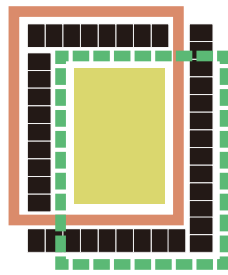
Asymmetrical Circulation





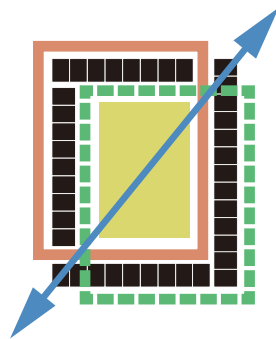
Private Garden





Communal Space

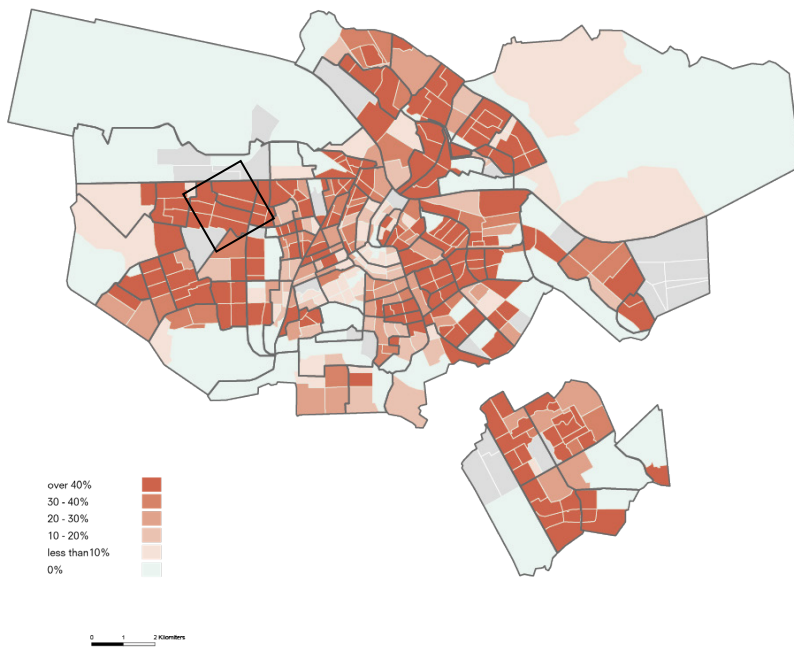


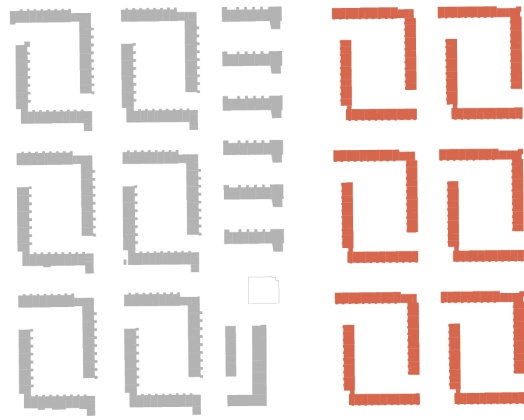


Urban Access



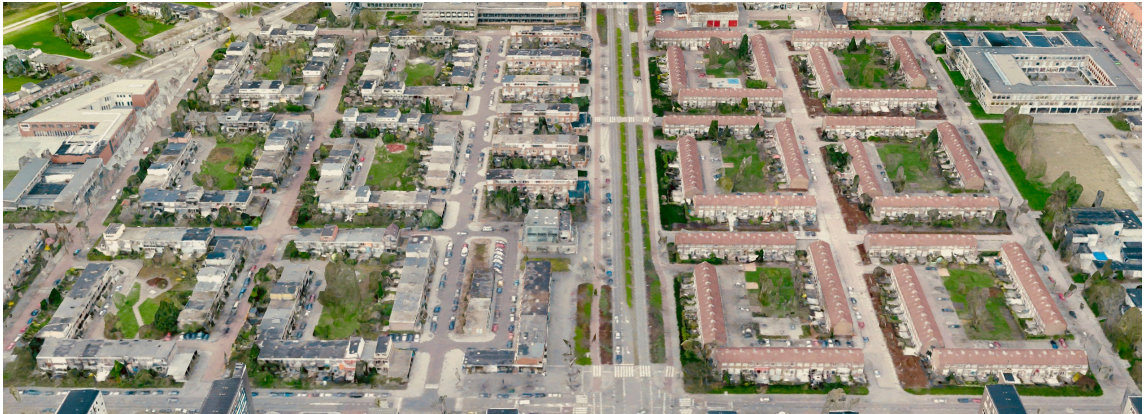
Corporation Housing (%)
in Amsterdam



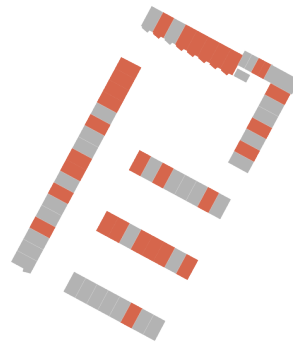


■ private

■ corporation



Segregated



■ private

■ corporation



Mixed



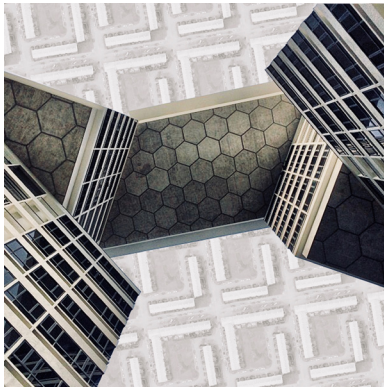
■ private

■ corporation

Owenship in Sloterdijk

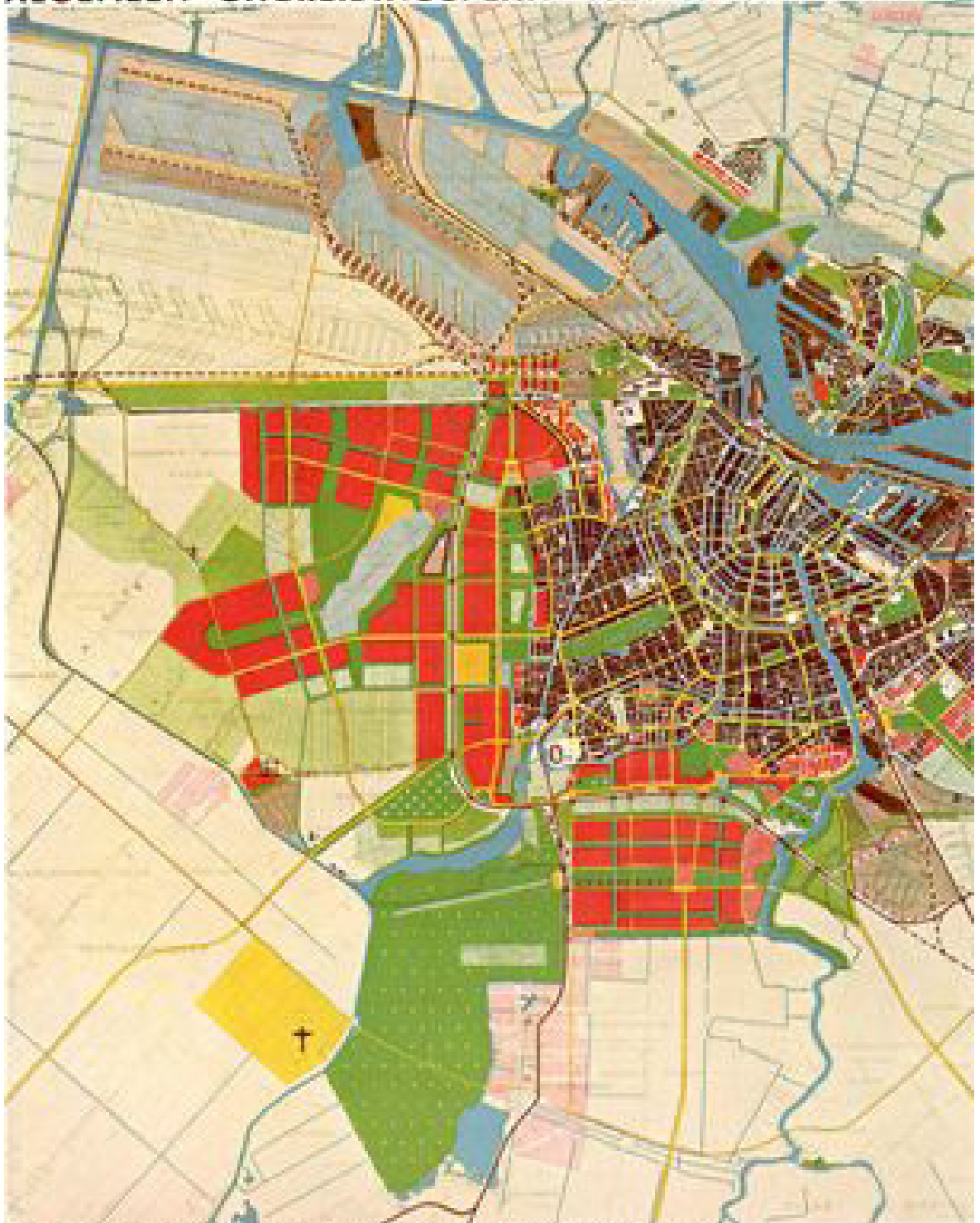


Mixed Ownership in Sloterdijk



II. Manifesto

ALGEMEEN UITBREIDINGSPLAN VAN AMSTERDAM.



BILAGE VAN HET BOUWKUNDIG WEEKBLAD ARCHITECTURA VAN 23 MAART 1935, N^o. 12.



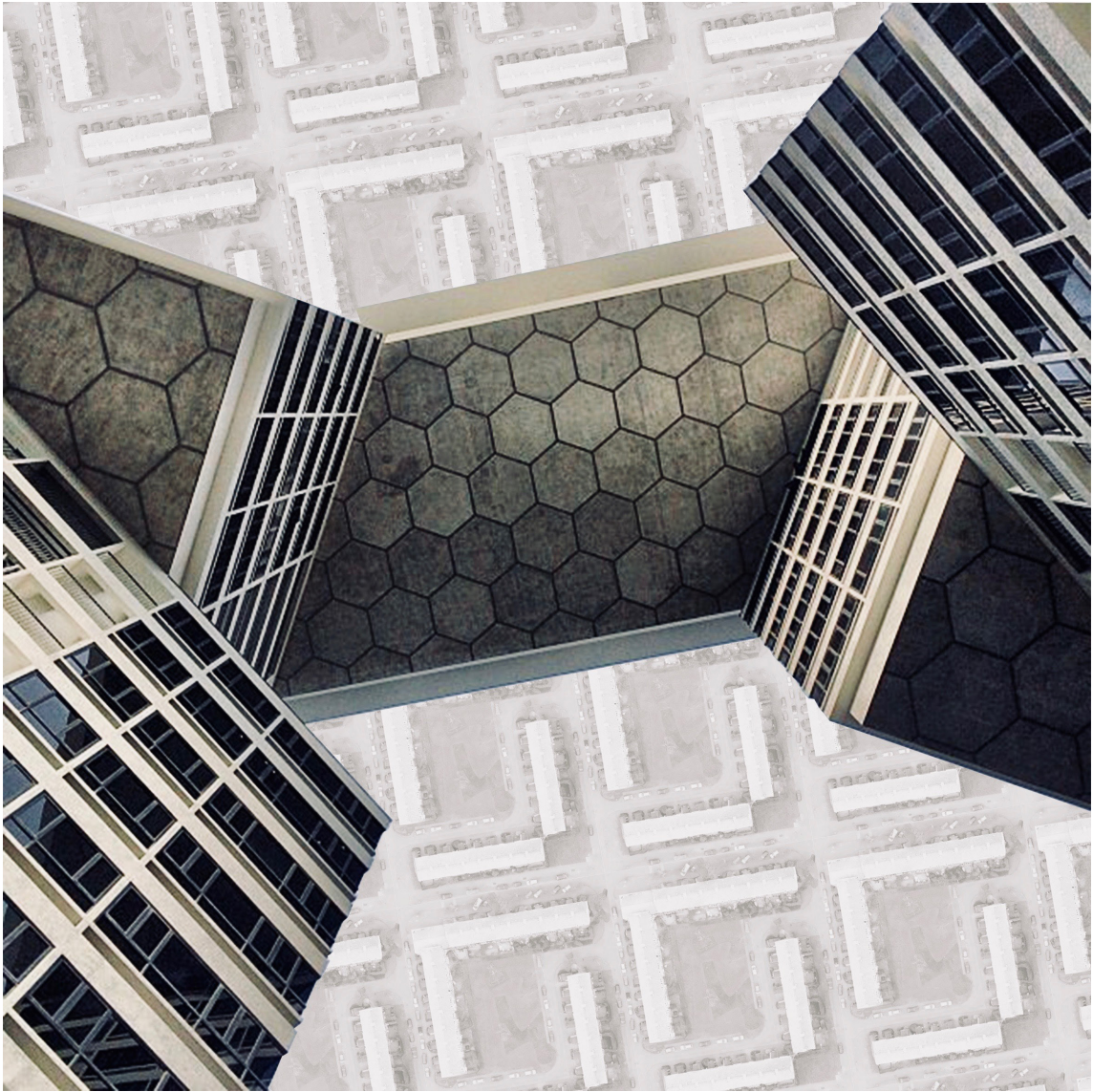


Amsterdam 2040

Deconstruction

by

Densification

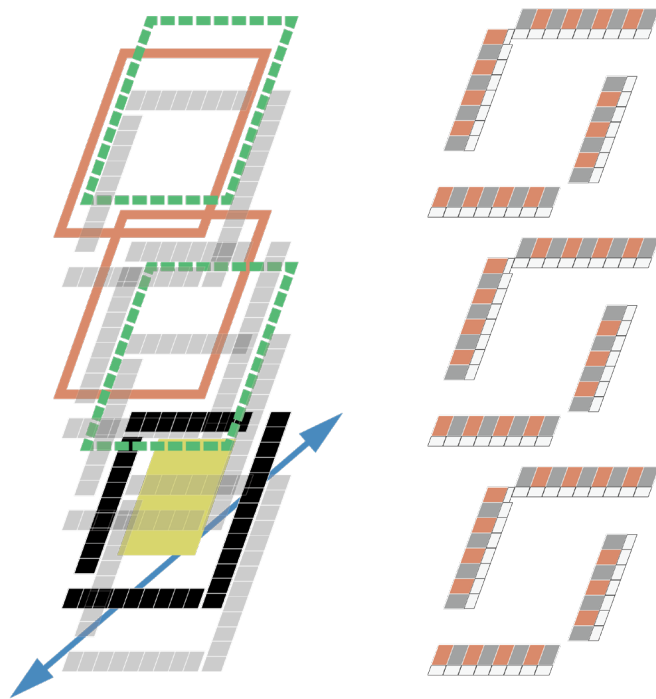


Developed

Layered

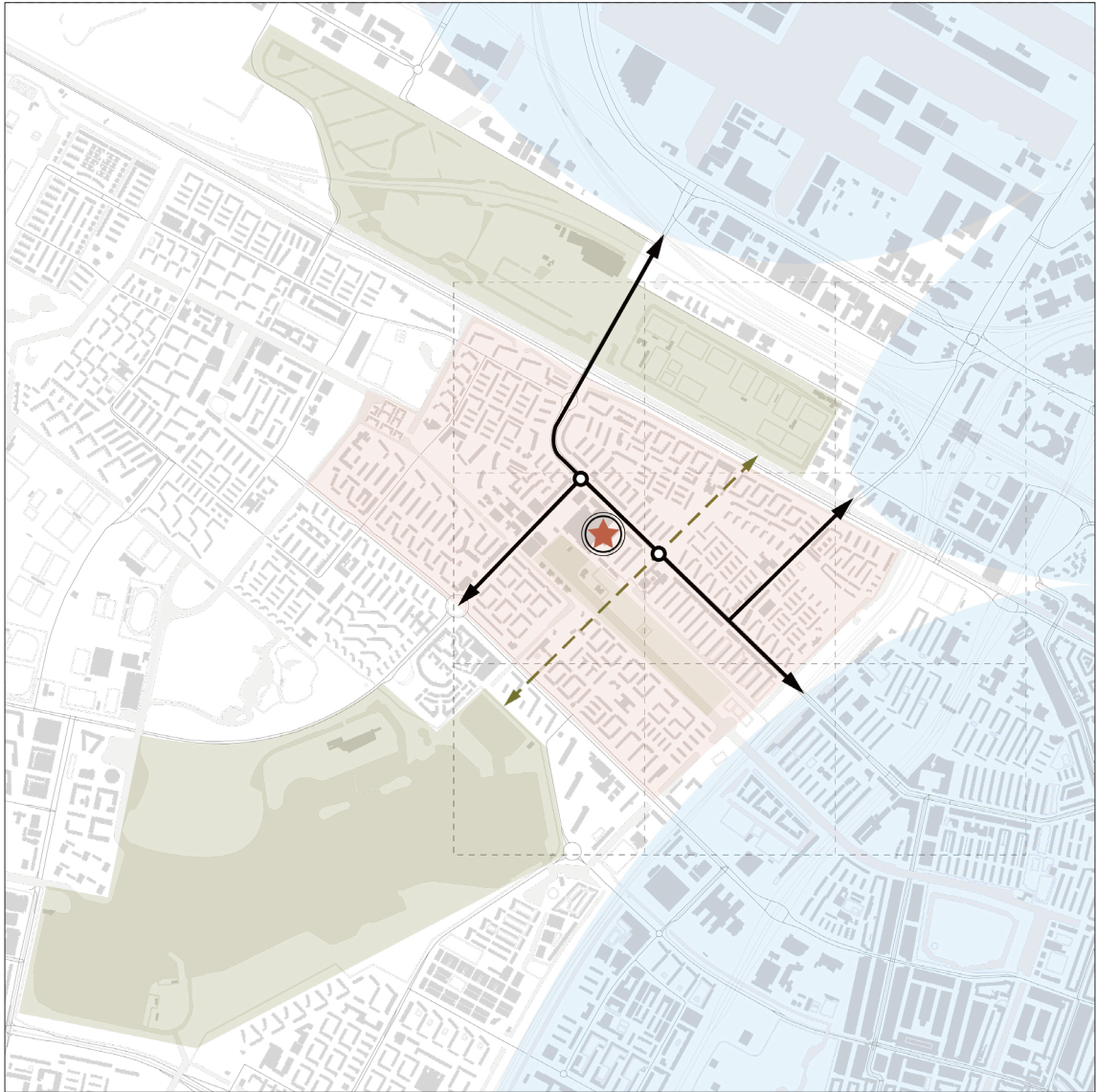
Densified

Mixed



III. Intervention

Site Chosen

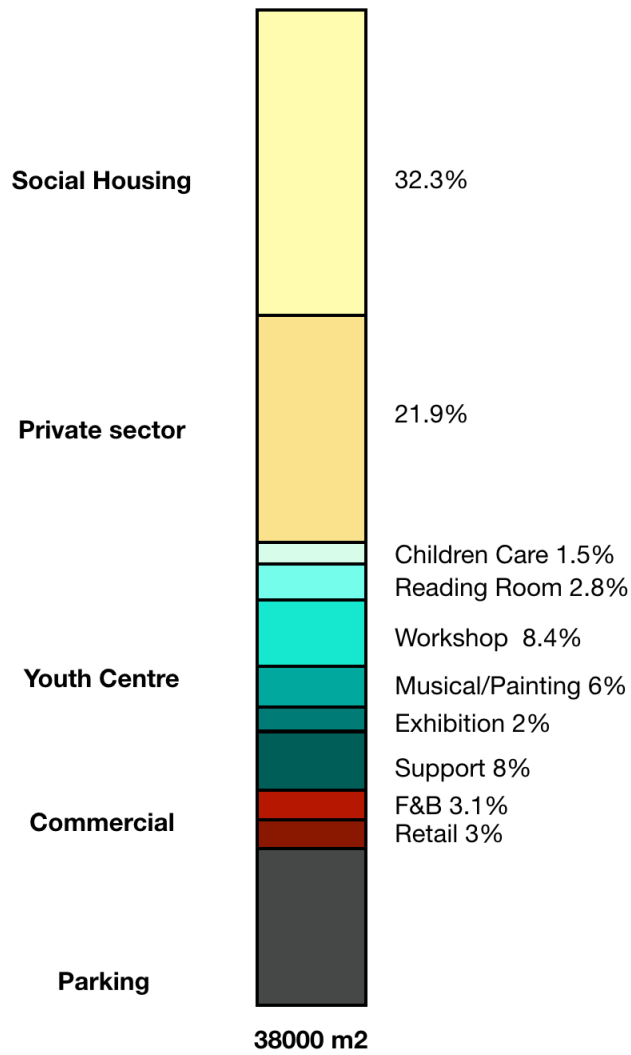


Green Space

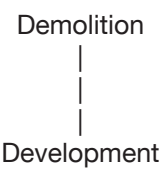
City

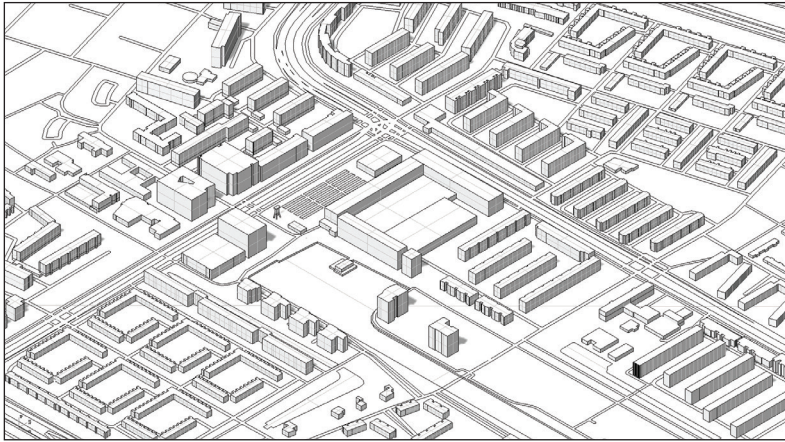
Work Place

Program Bar

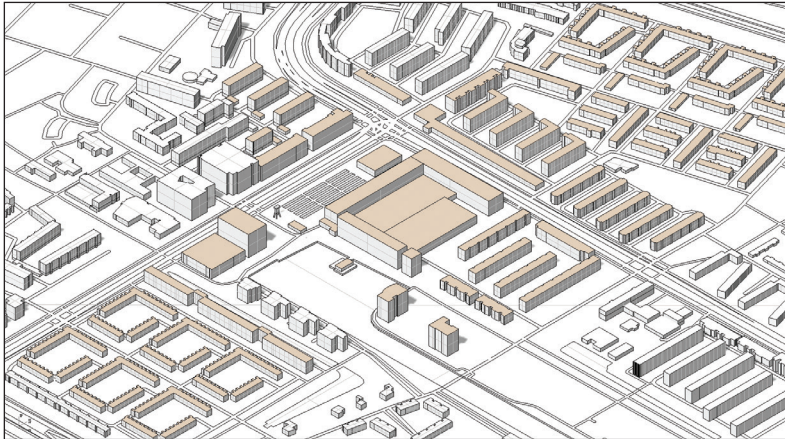


IV. Master Plan

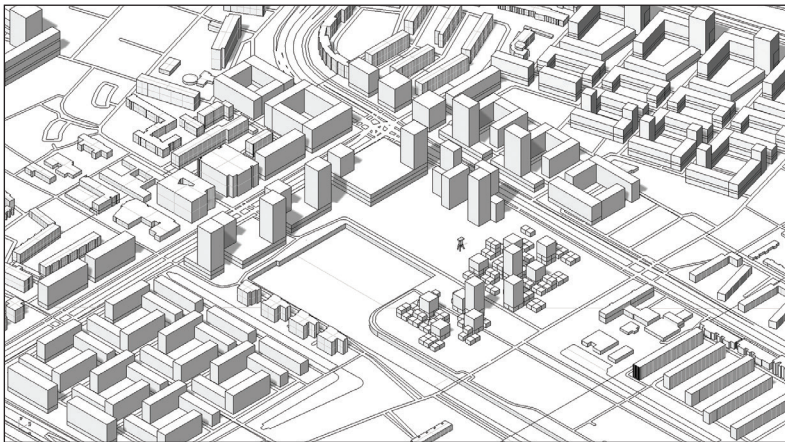




Current Situation

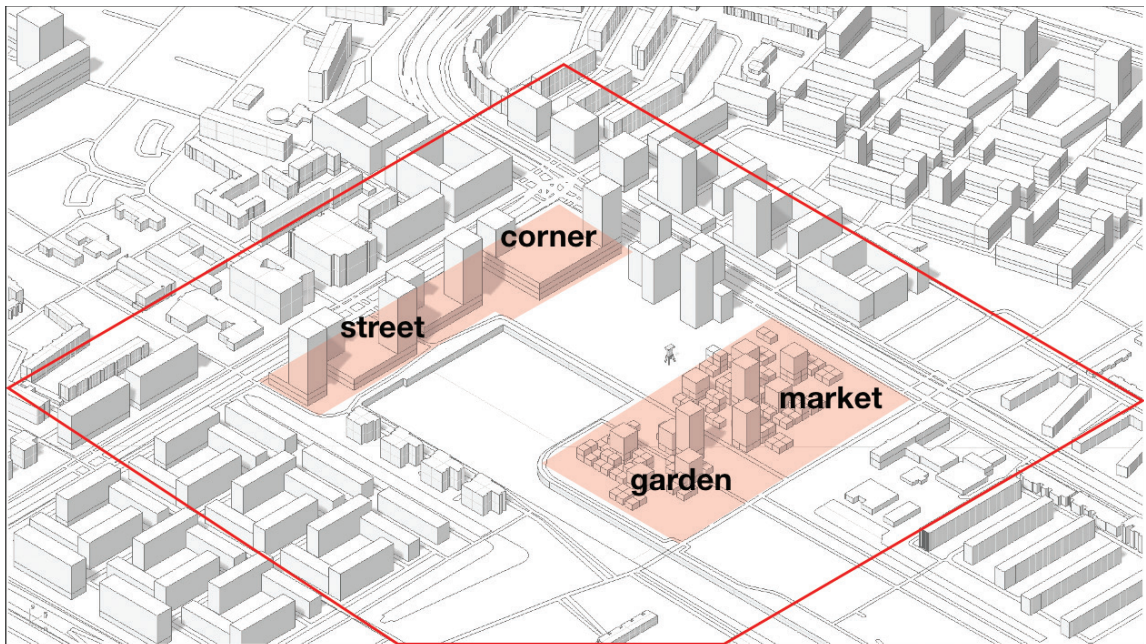
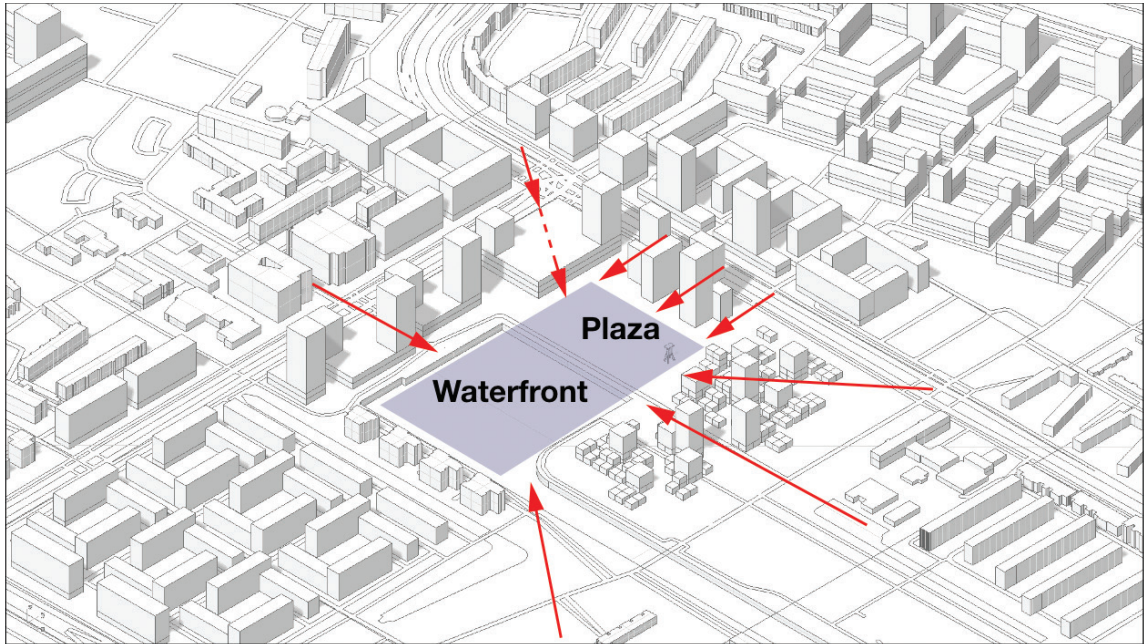


Demolition Plan



Development

City Centre
Development Plan

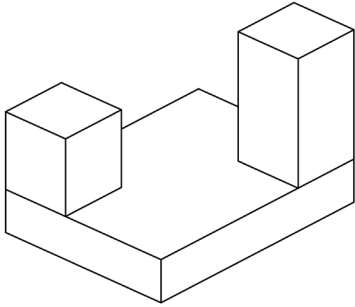




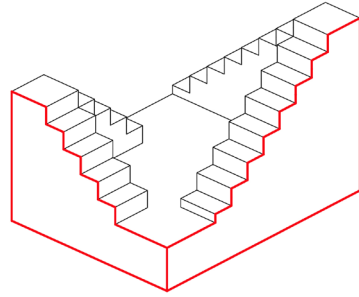


V. Design Project

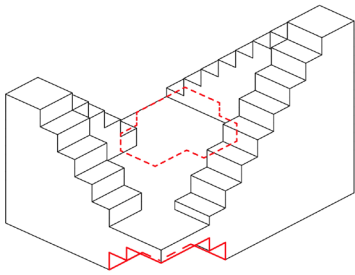
Formation Process



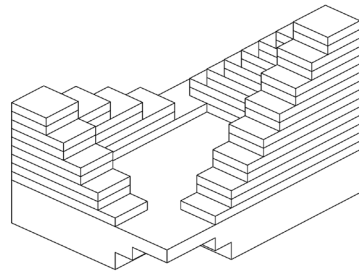
Block & Tower



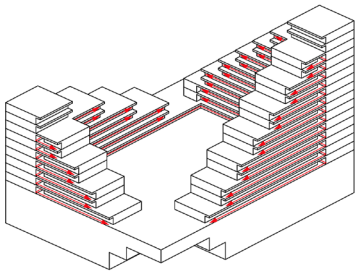
Block-Tower



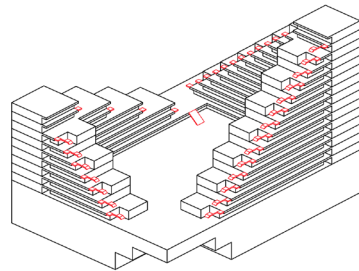
Lifted entrance



Optimized Upper Floor

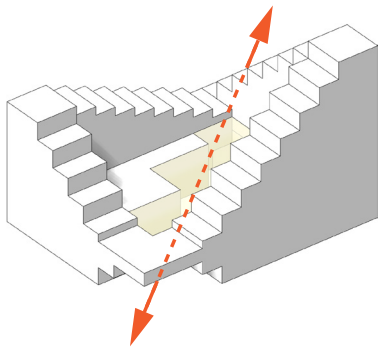


Asymmetrical Circulation

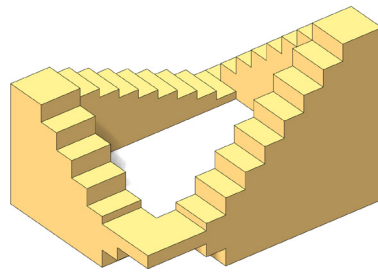


Roof Loop

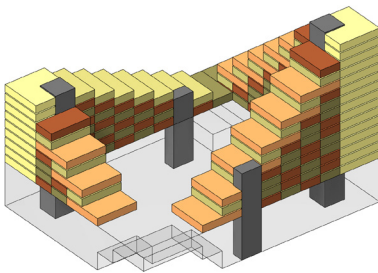
Concept Development



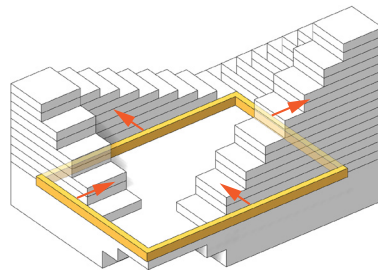
Urban Access



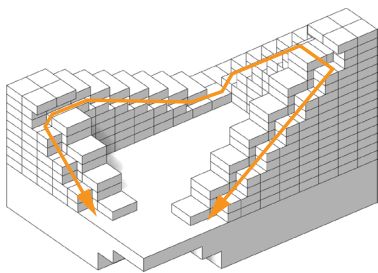
Block-Tower



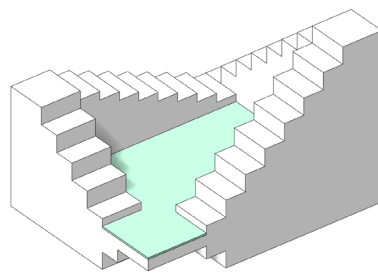
Mixed Ownership



Asymmetrical Circulation

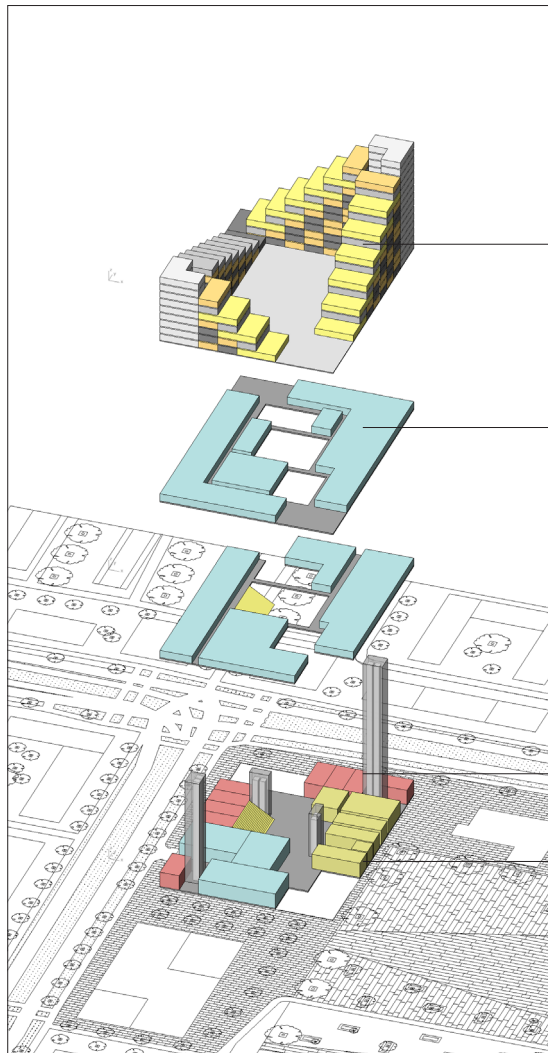


Roof Loop



Lifted Communal Space

Program Assignment



Housing

Youth Centre

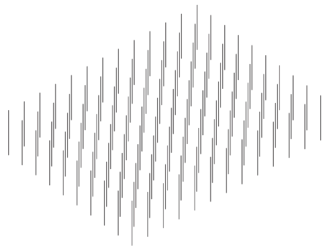
Retails

F&B

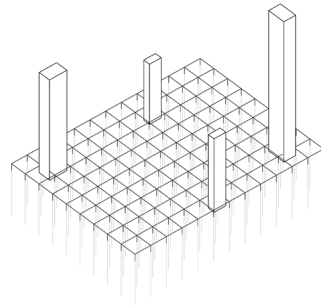
Model



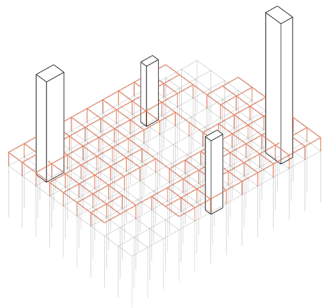
Structure System



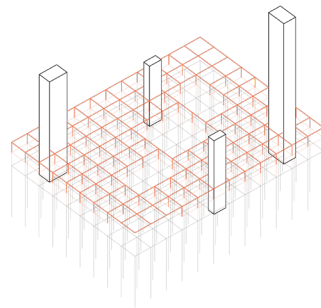
Foundation: Piles



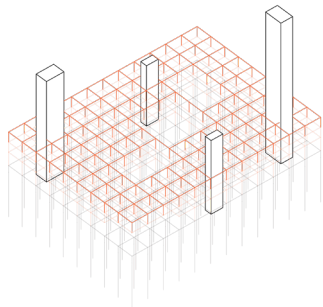
Basement: Concrete



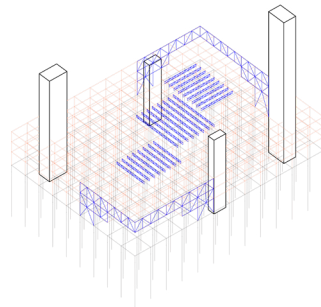
Ground Floor: Timber



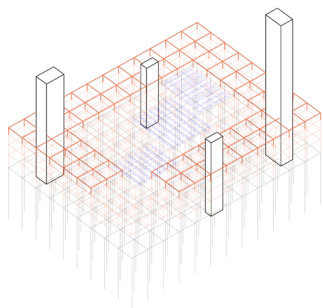
First Floor: Timber



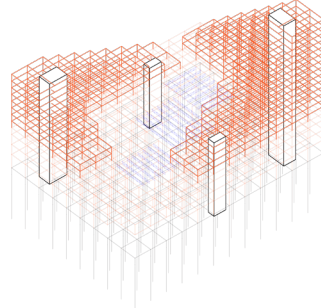
Second Floor: Timber



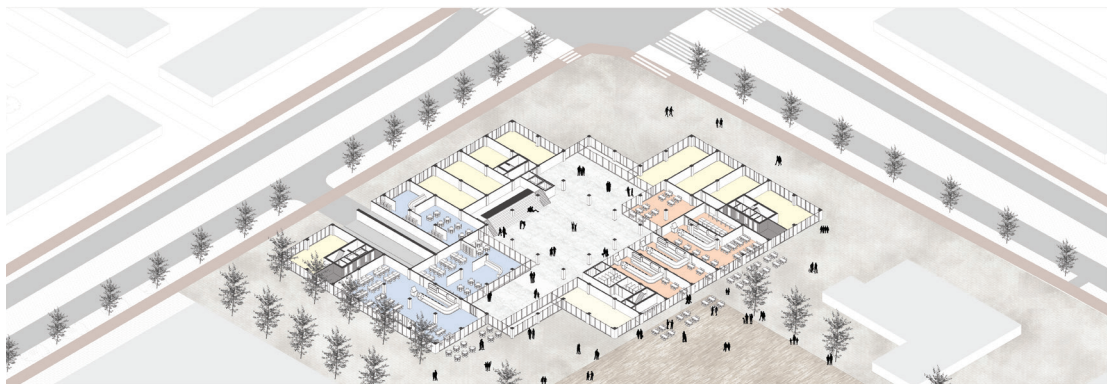
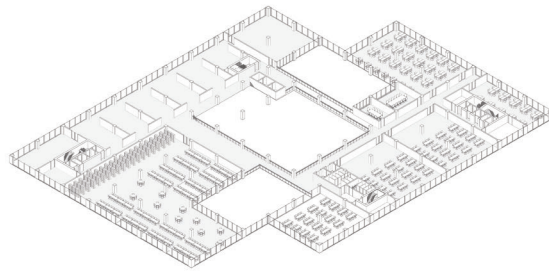
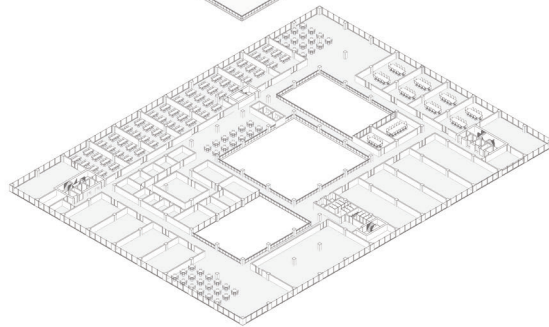
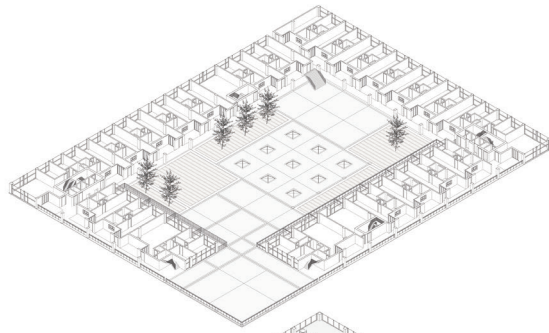
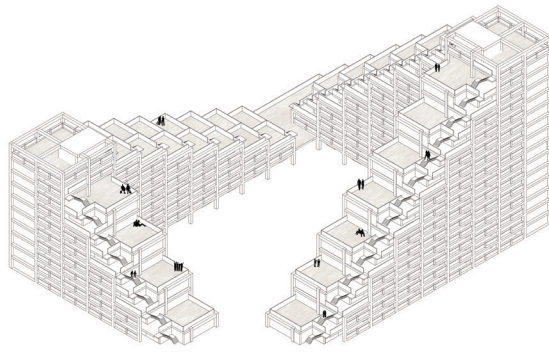
Trusses: Steel

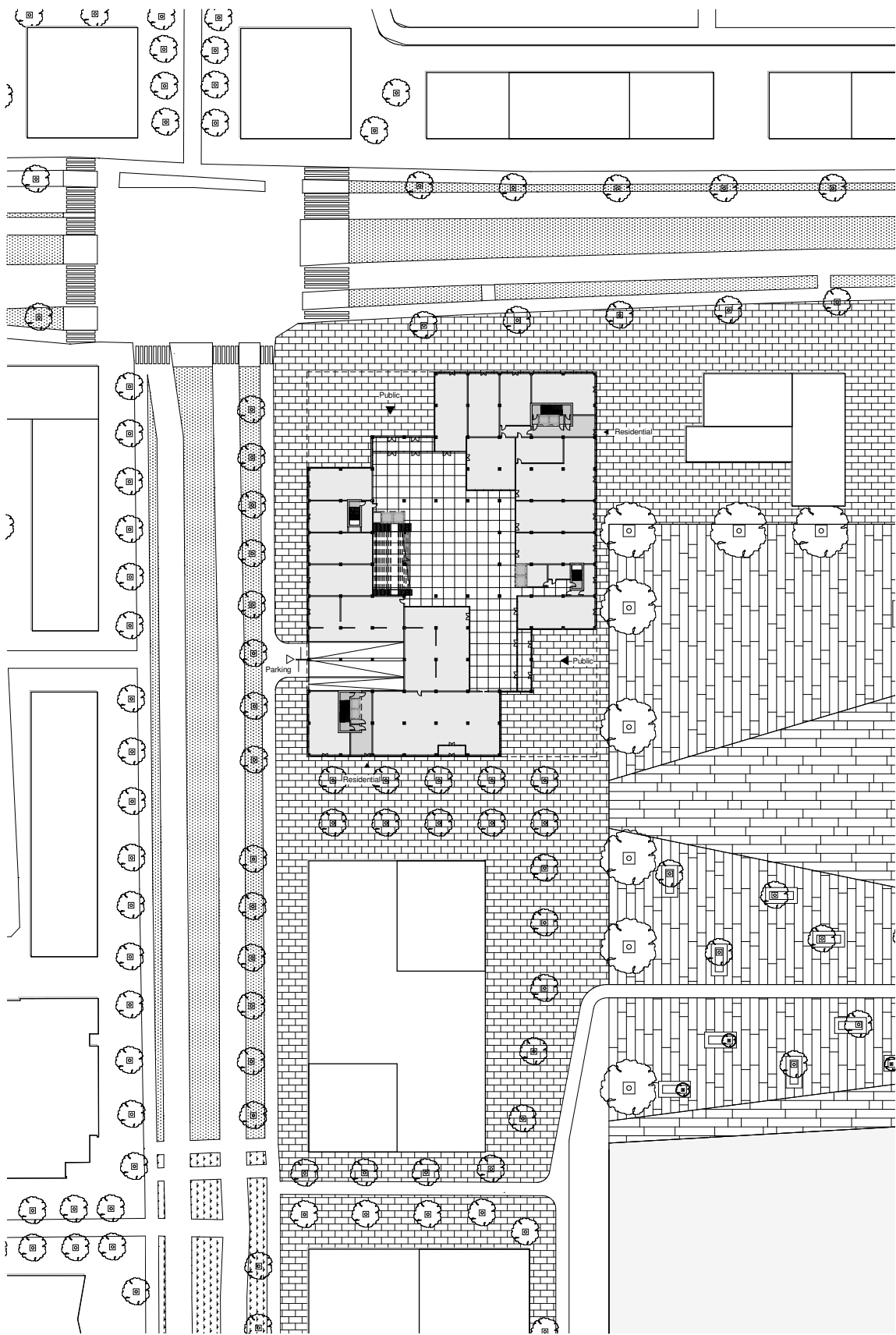


Third Floor: Timber



Upper Floors: Timber

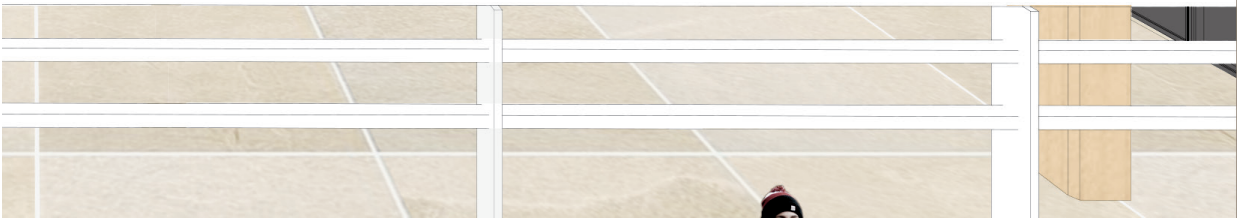
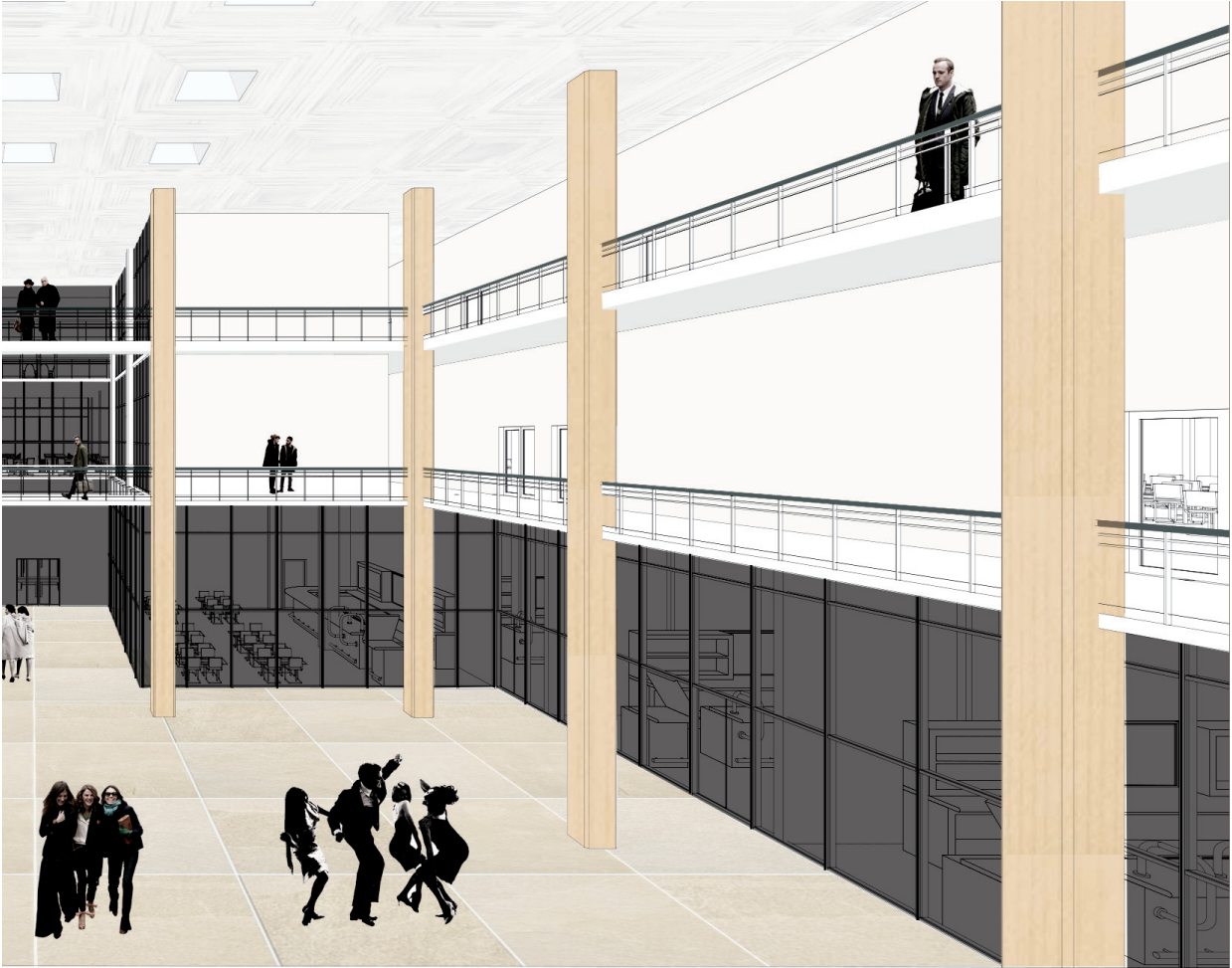


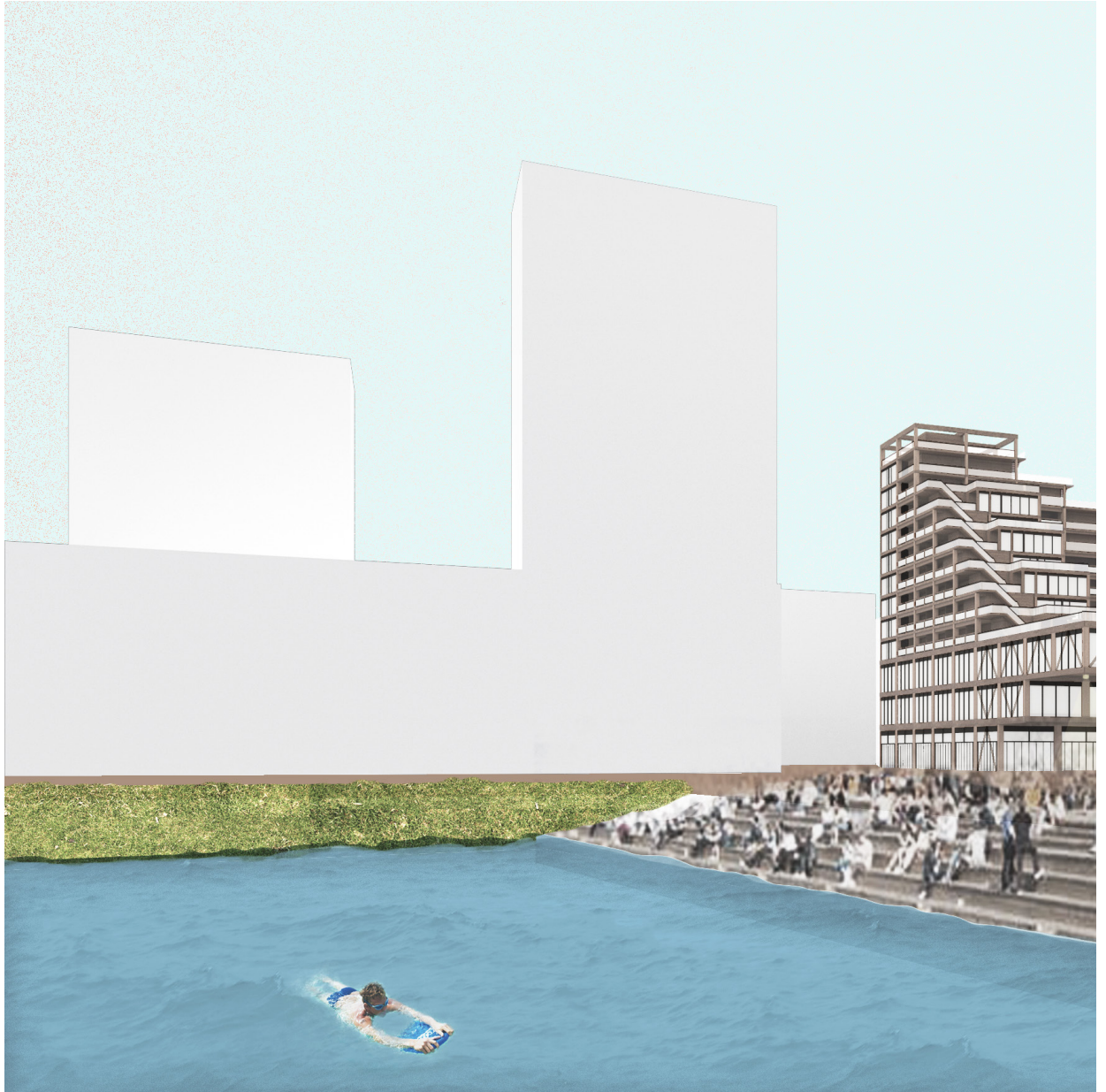








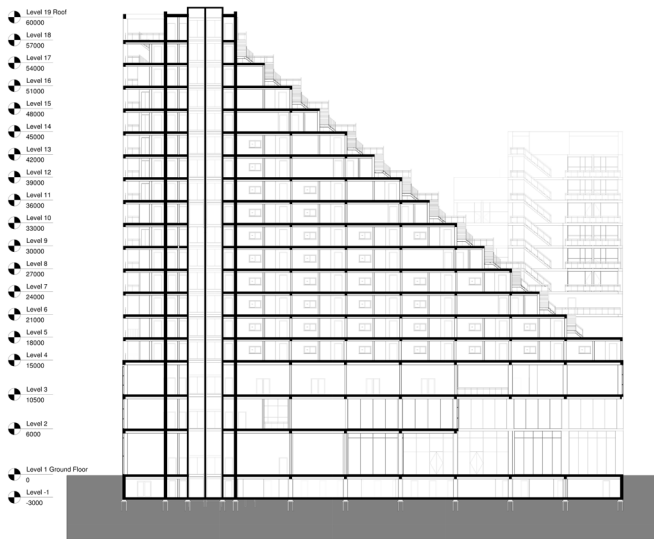




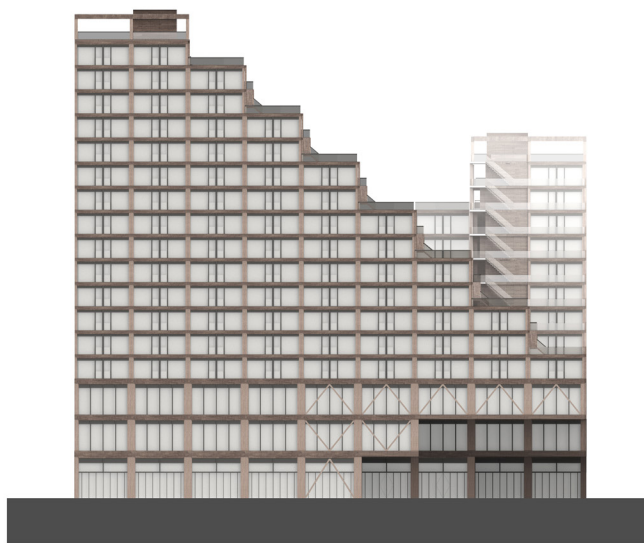




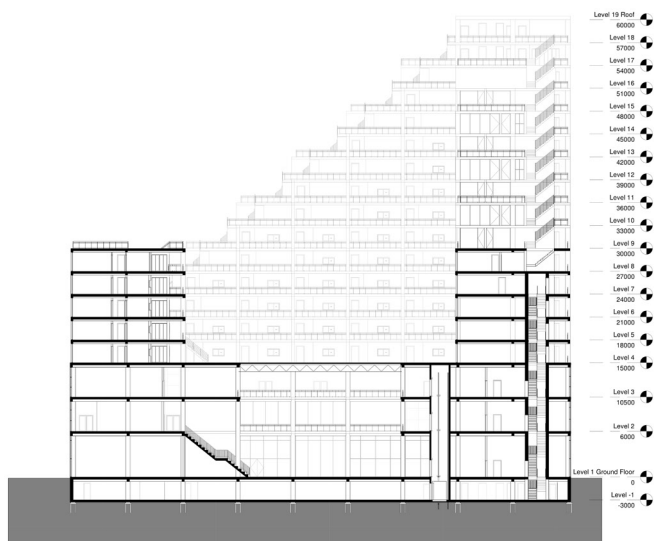




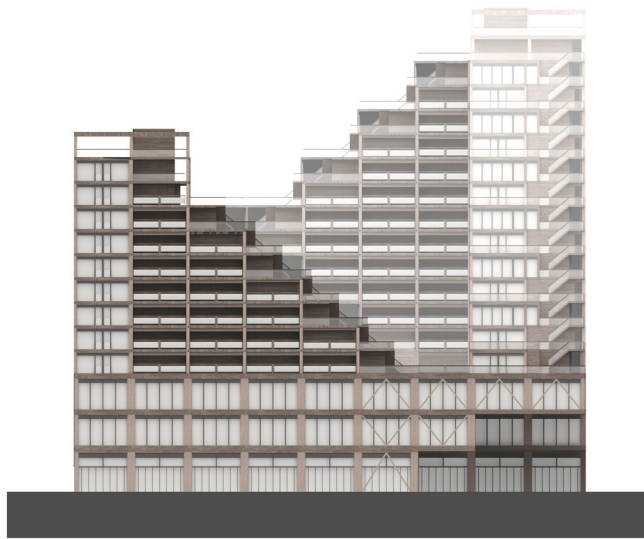
Section A 1:1000



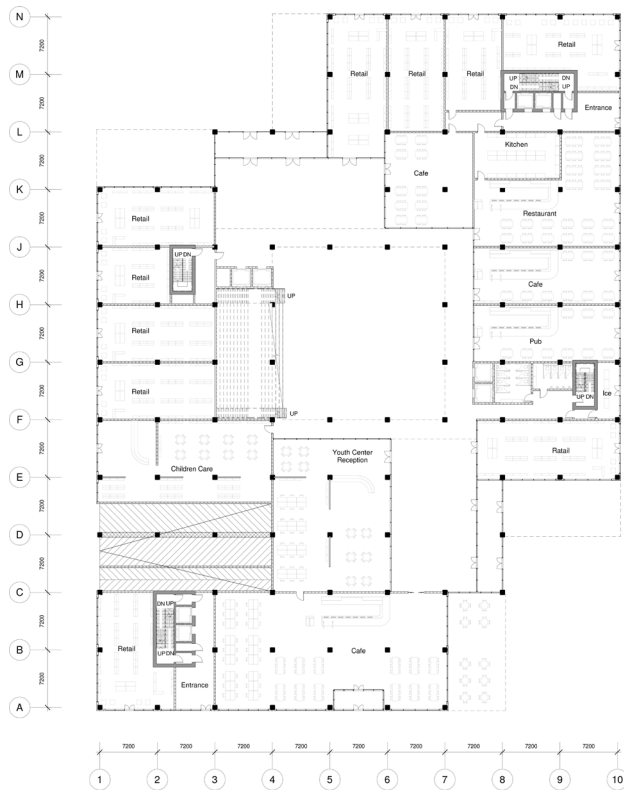
North Elevation 1:1000



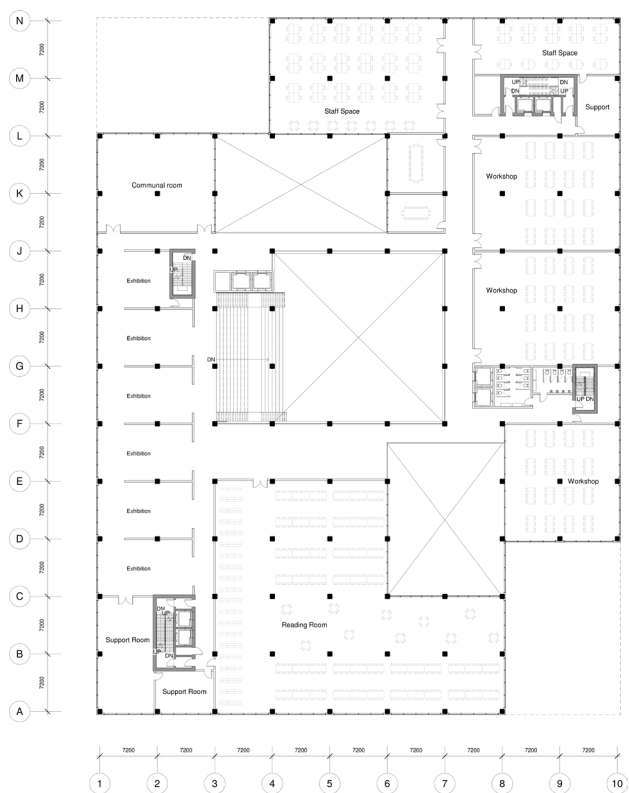
Section B 1:1000



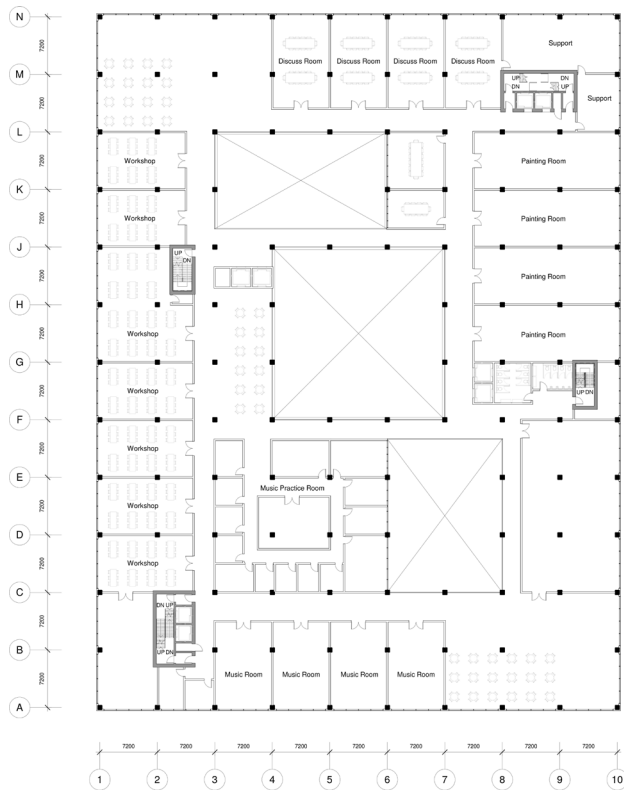
South Elevation 1:1000



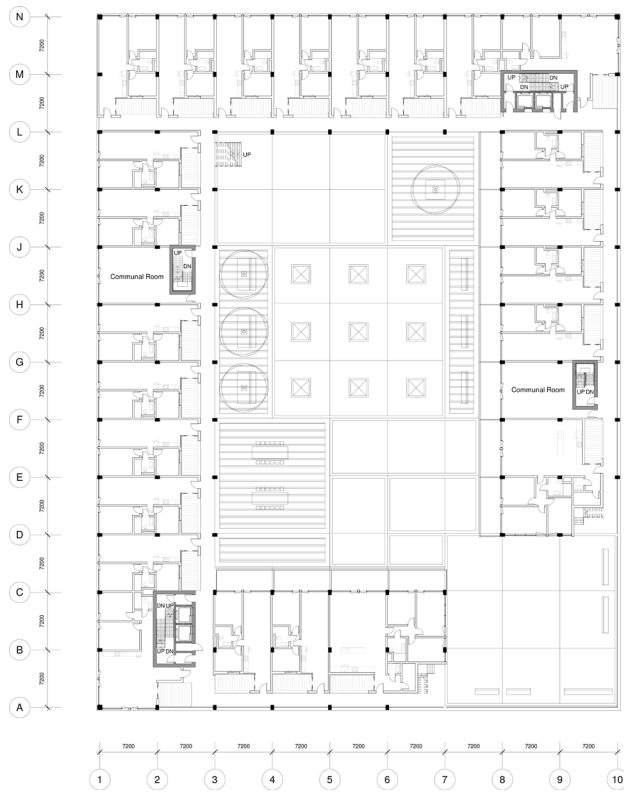
Ground Floor Plan 1:1000



First Floor Plan 1:1000



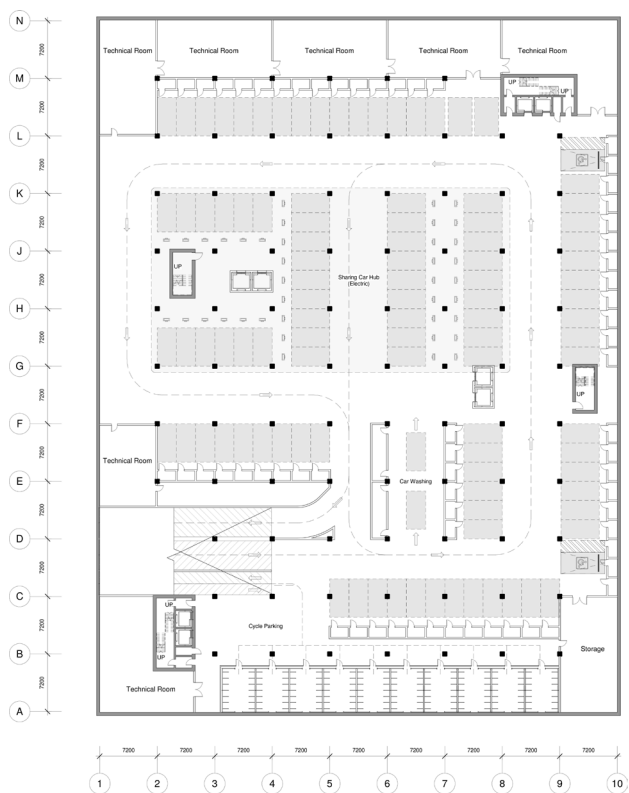
Second Floor Plan 1:1000



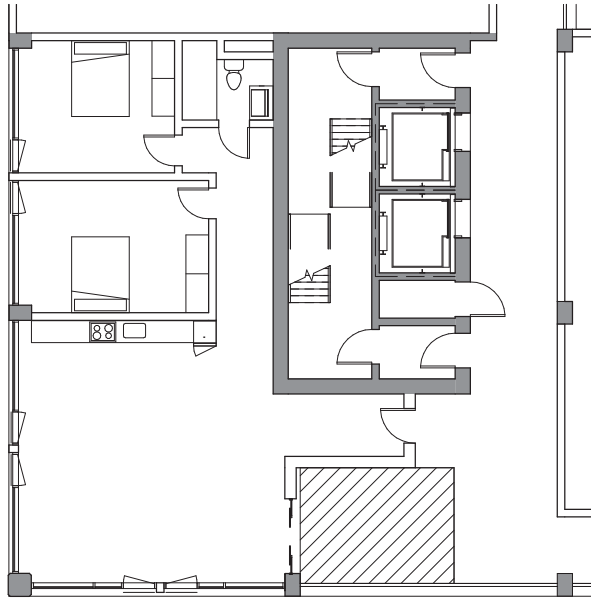
Third Floor Plan 1:1000



Seventh Floor Plan 1:1000



Basement Floor Plan 1:1000

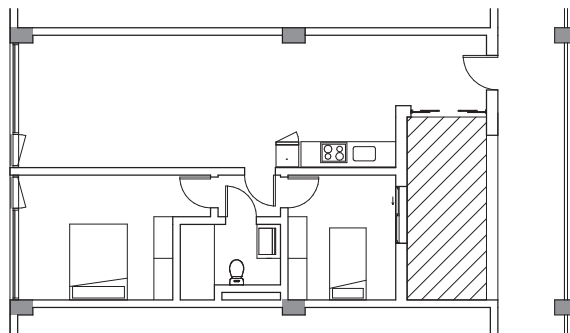


Private Sector - Landscape

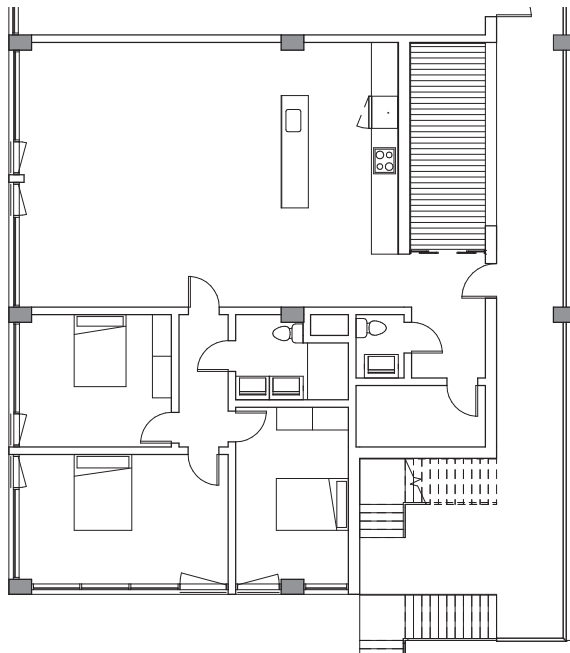
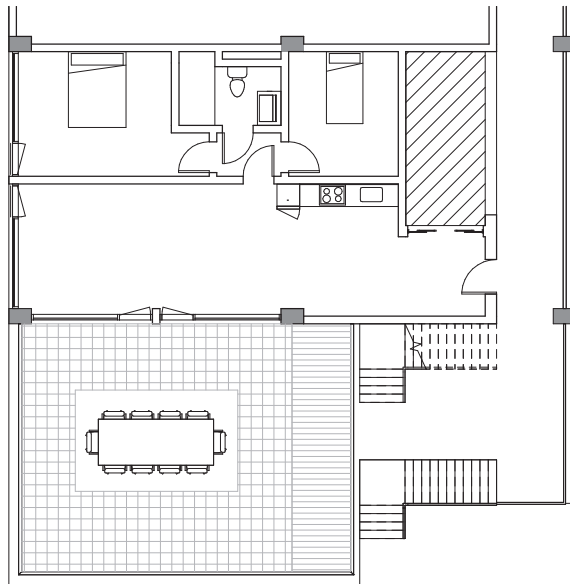
Private Sector - Garden

Private Sector - Economy
Social Sector - Small Family

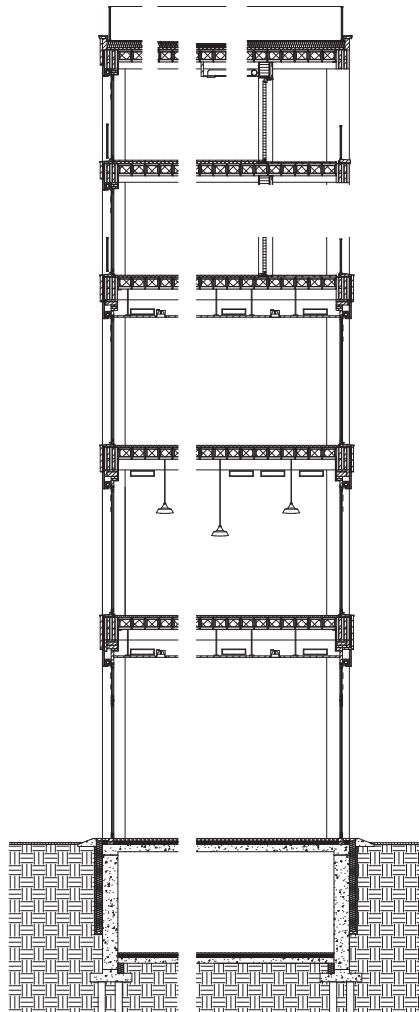
Social Sector - Large Family



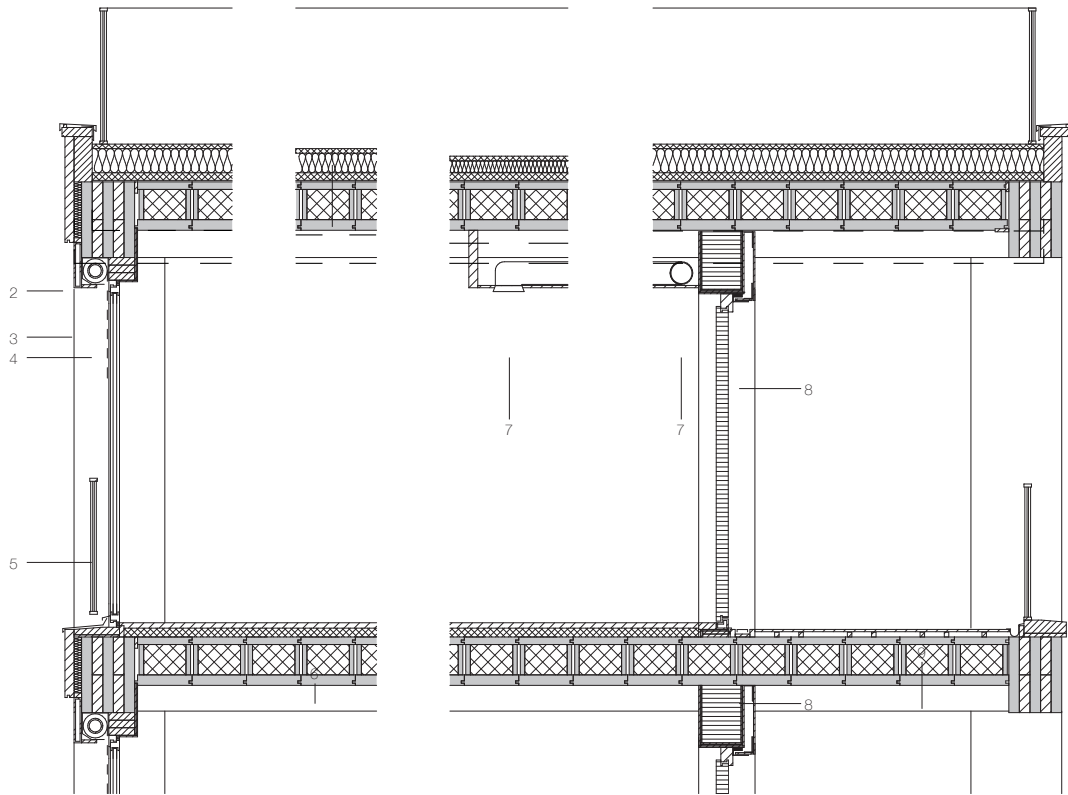
Housing Floor Plan 1:200



Housing Floor Plan 1:200



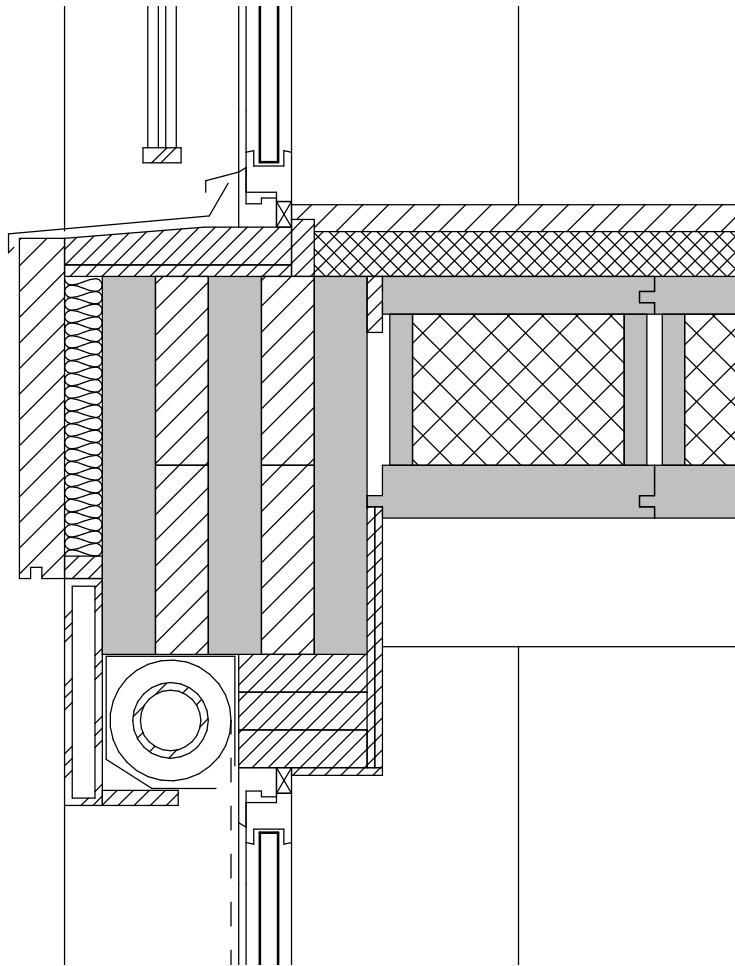
Facade/Section 1:200



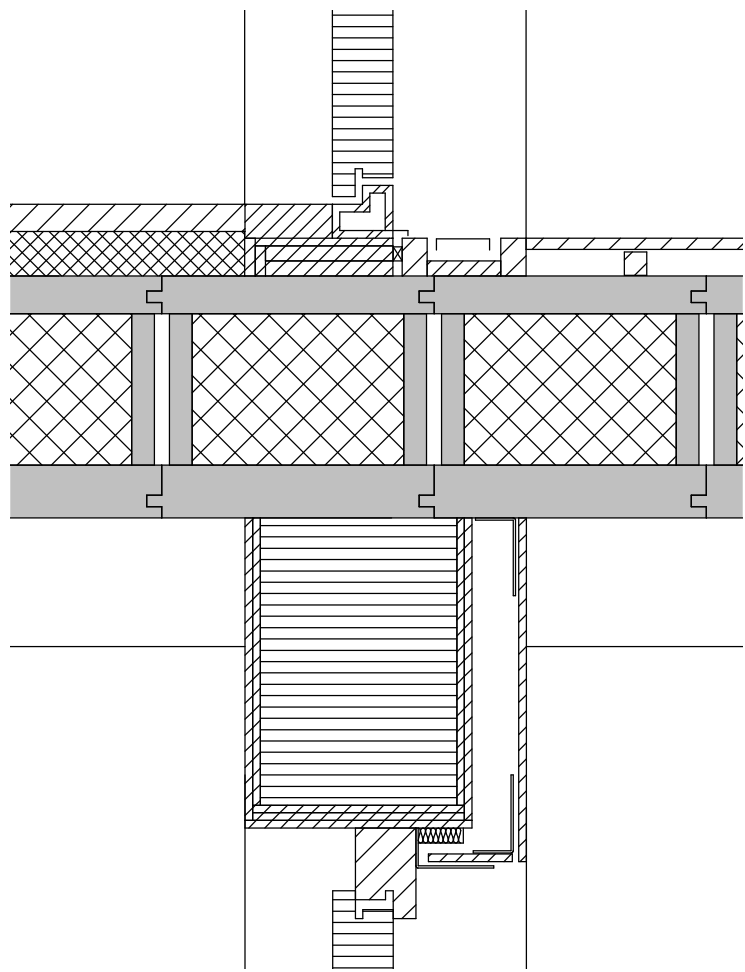
- 1 50 mm gravel
6 mm building protection mat
two-ply bitumen seal ,
80-120 mm EPS thermal insulation laid to falls +
60 mm PUR-rigid foam
vapour barrier (emergency seal),
320 mm cross laminated floor box, filled with cellulose
(exposed ceiling)
- 2 60 x 700 mm Accoya wood plate, dark brown
- 3 50 x 300 mm aluminium plate, dark grey
- 4 roller shutter box,
plastic louvers

- 5 steel rod railings, galvanized
- 6 2.5 mm linoleum on
2 mm levelling compound
50 mm cement screed
separating layer
60 mm mineral fibre footfall
sound insulation
320 mm cross laminated timber floor box
150 mm exhaust pipe
- 7 150 mm exhaust pipe
- 8 wood door frame

Detail 1:50

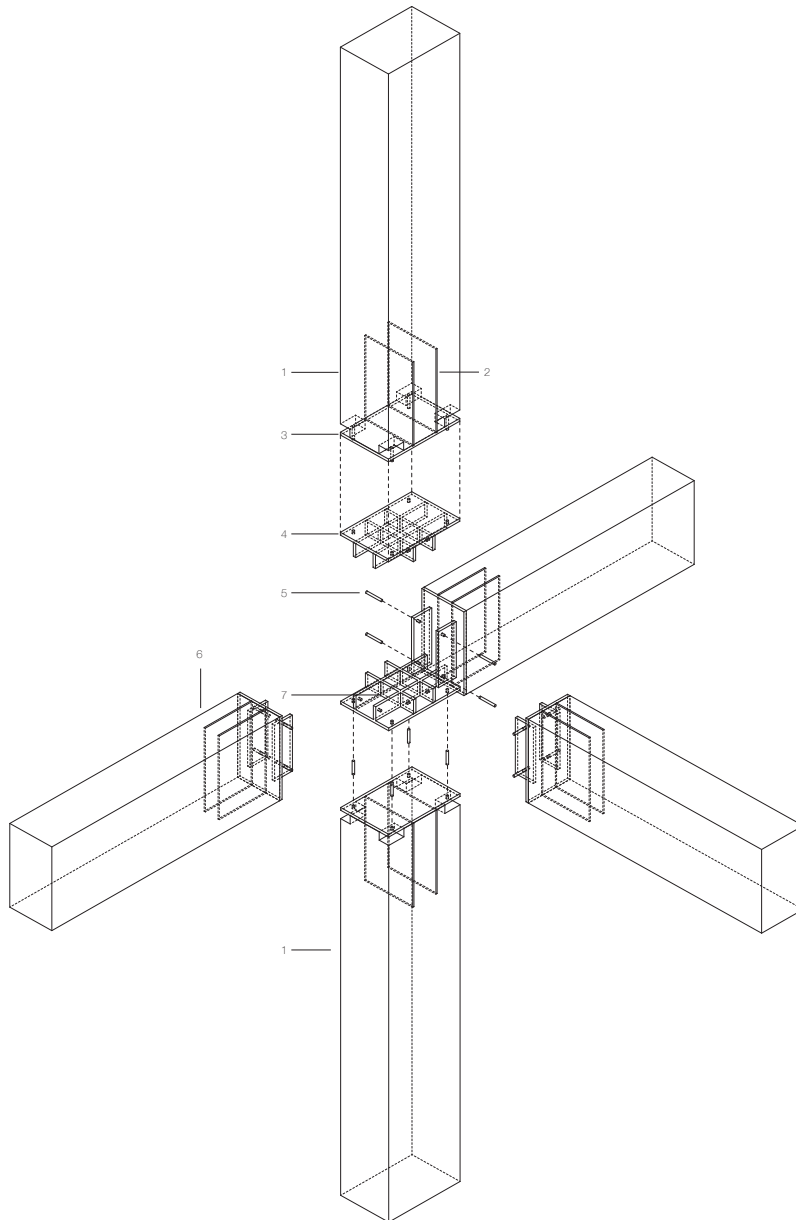


Detail 1:10



Detail 1:10

Timber Joint



- 1 400x600 CLT Column
- 2 4-16d Threaded rods epoxied into column
- 3 Steel plate 400x600
- 4 Steel plate connection, 400x600
- 5 12d Bolts
- 6 350x500 CLT Beam
- 7 Cross Shape, to make joint stiff

