

P5

A Nursing Home in Den Haag



Student: Yecheng Dong
Tutor: Jurjen Zeinstra
Mauro Parravicini
Laura Alvarez

Inspiration

The Nursing home in Den Haag Interior graduation project



Charater of Nursing Home



Venerable
Social activities
Outside activities

•
•
•
•
•

Safty
beautiful living environment



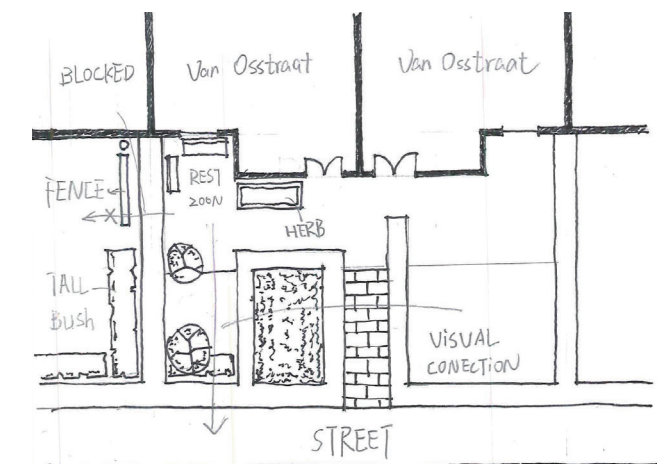
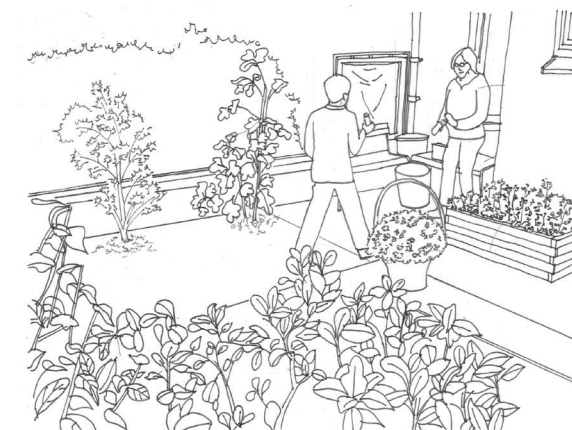
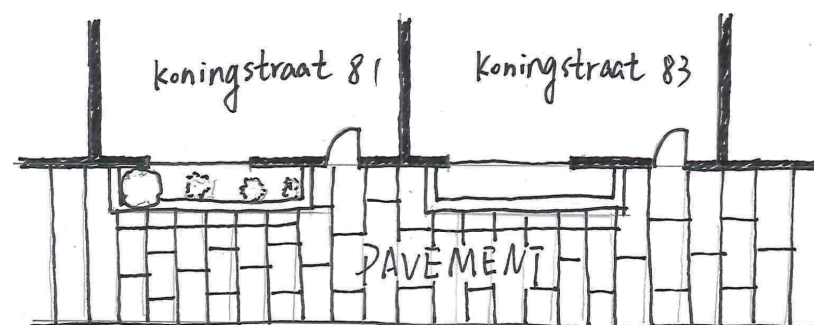
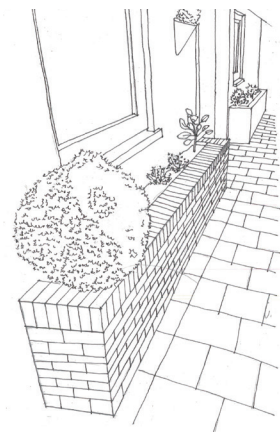
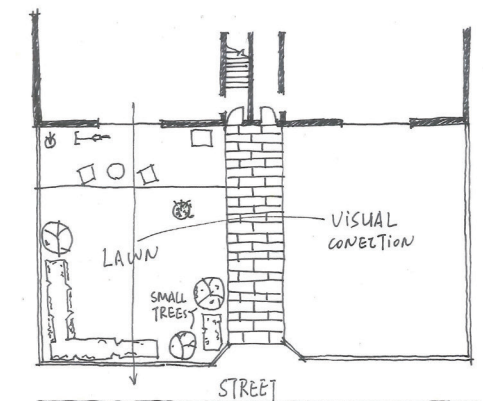
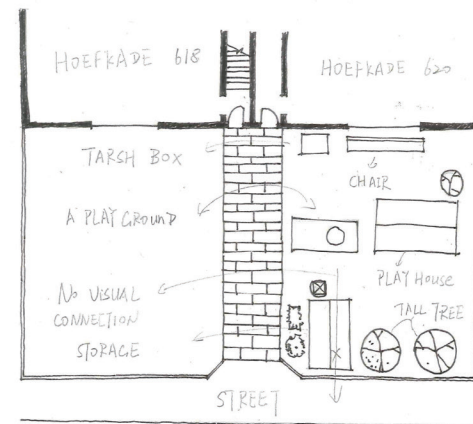
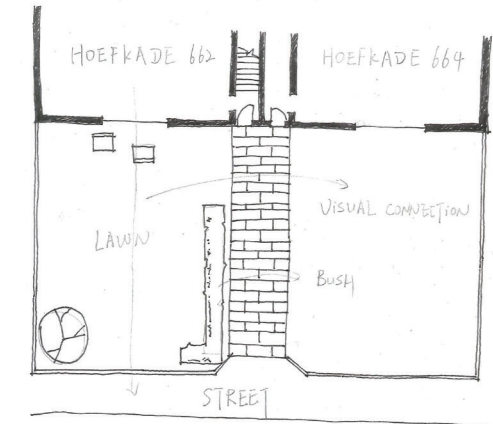
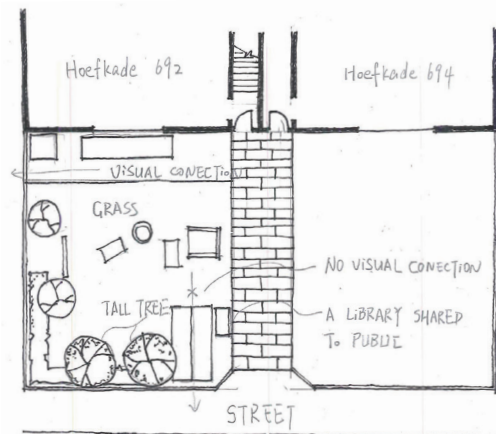
Group living building
Sharing

•
•
•
•

Transition and Relation
between
Public and private

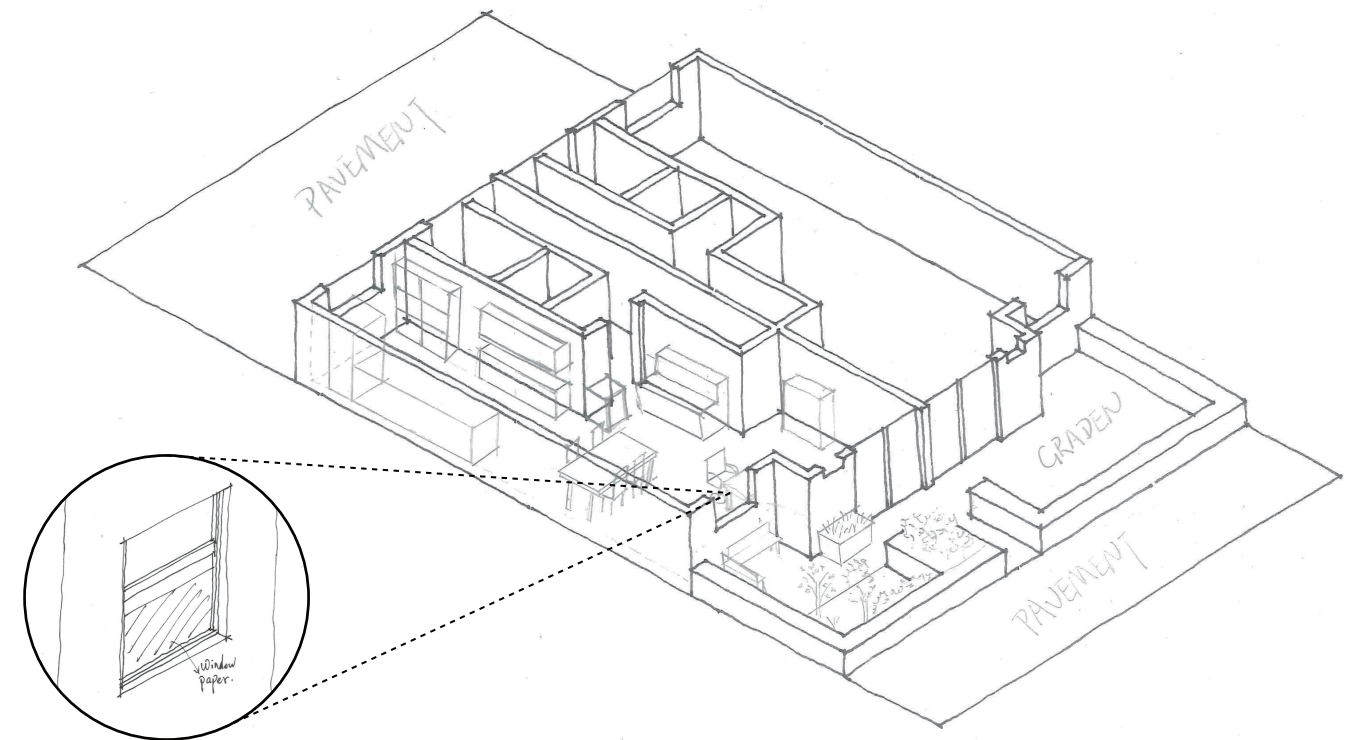
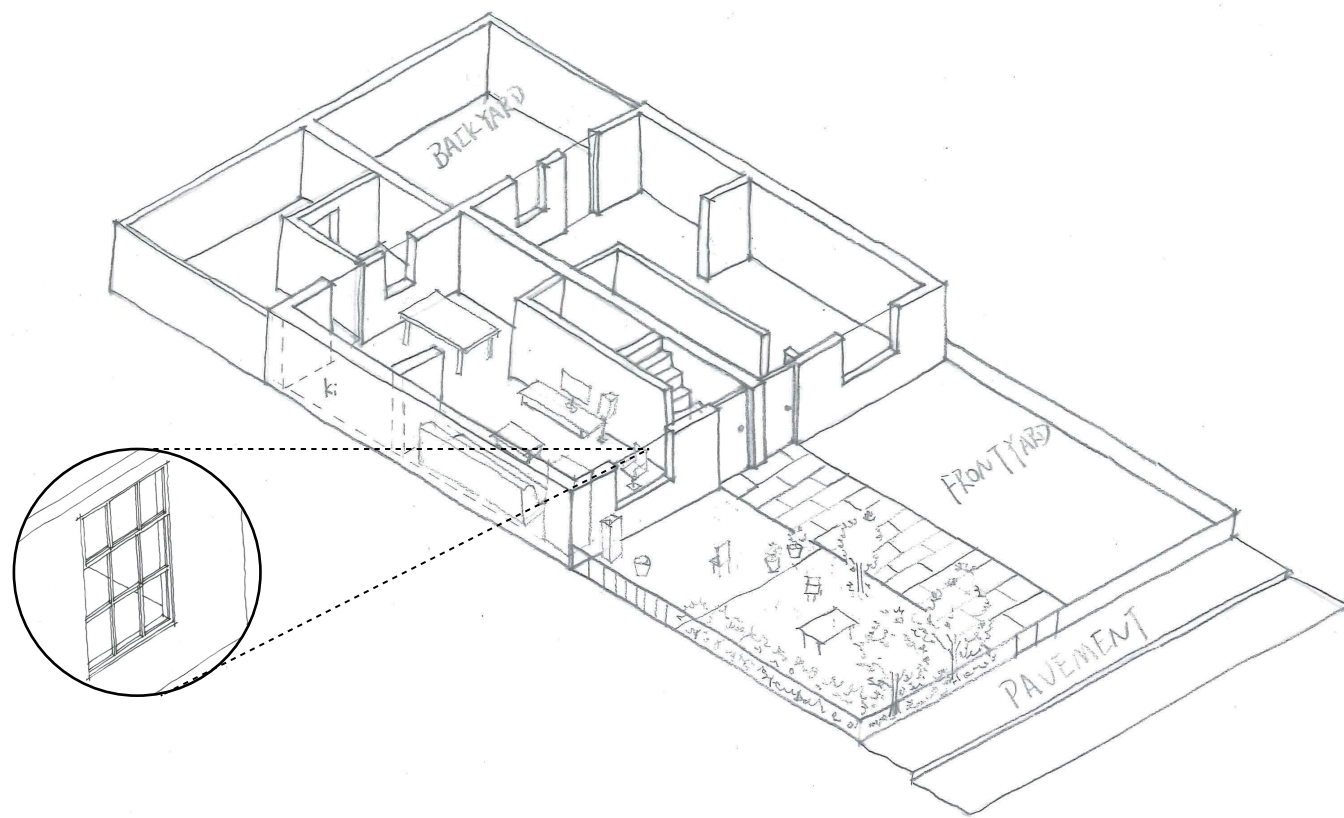
Reaserch: The Front Garden

The Nursing home in Den Haag Interior graduation project



Reaserch: The Front Garden

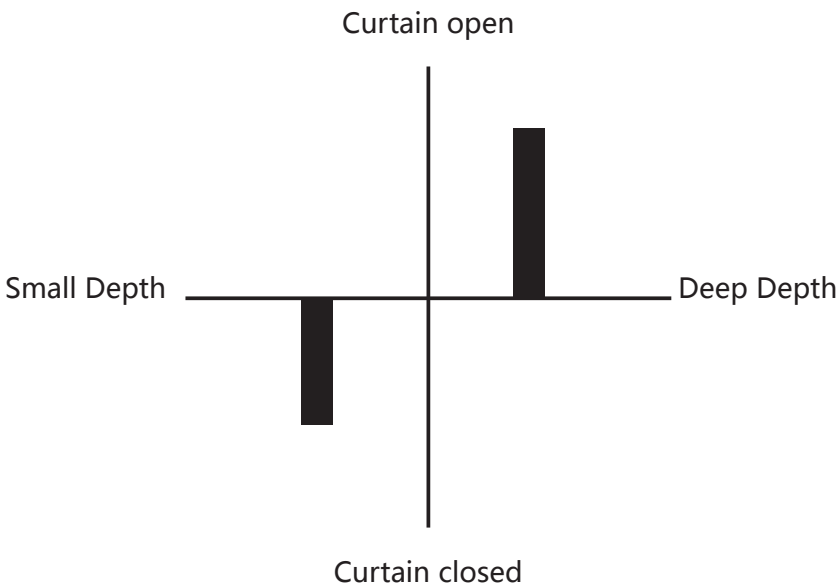
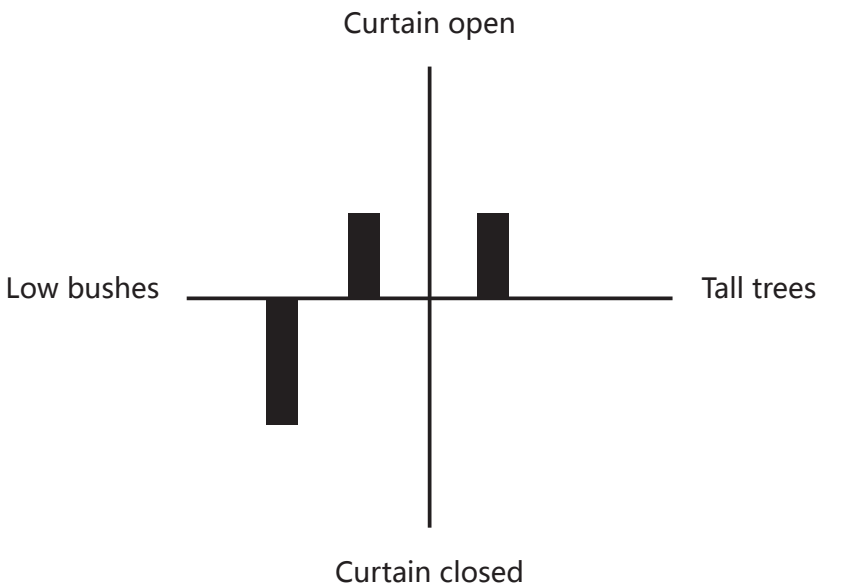
The Nursing home in Den Haag Interior graduation project



Reaserch: The Front Garden

	Hoefkade 1	Koningstraat	Van Osstraat	Naaldwijksestraat
Size(weight*depth)	4.5 *7.2	2.4*0.5	5 *3.8	5 *2.5
Streetside	Tall trees	Low bushes	Small plants	Low bushes
Curtain	With curtain, open	With window paper, close	With curtain, close	With curtain, close
Extra information	Without trees maybe put a low curtain in front of the window.	Sometimes open when not at home	Window paper on the lower part of the window	Usually always close
Reason	Want to see the garden having sunshine	Priviate issuu	Priviate issuu	Priviate issuu

	Hoefkade 1	Hoefkade 2	Hoefkade 3	Hoefkade 4
Size(weight*depth)	4.5 *7.2	4.5 *7.2	4.5 *7.2	4.5 *7.2
Streetside	Tall trees	Low bushes	Tall trees	Low bushes
Curtain	With curtain, open	With curtain, open	With curtain, open	With curtain, open
Extra information	Without trees maybe put a low curtain in front of the window.	always open	always open	always open
Reason	Want to see the garden having sunshine	Want to watch outside	Watch for the kids	Want the sunshine



The front garden has a **social function** in people's lives

The front garden encourage people to stay outside and enrich their opportunities to meet with neighbours.

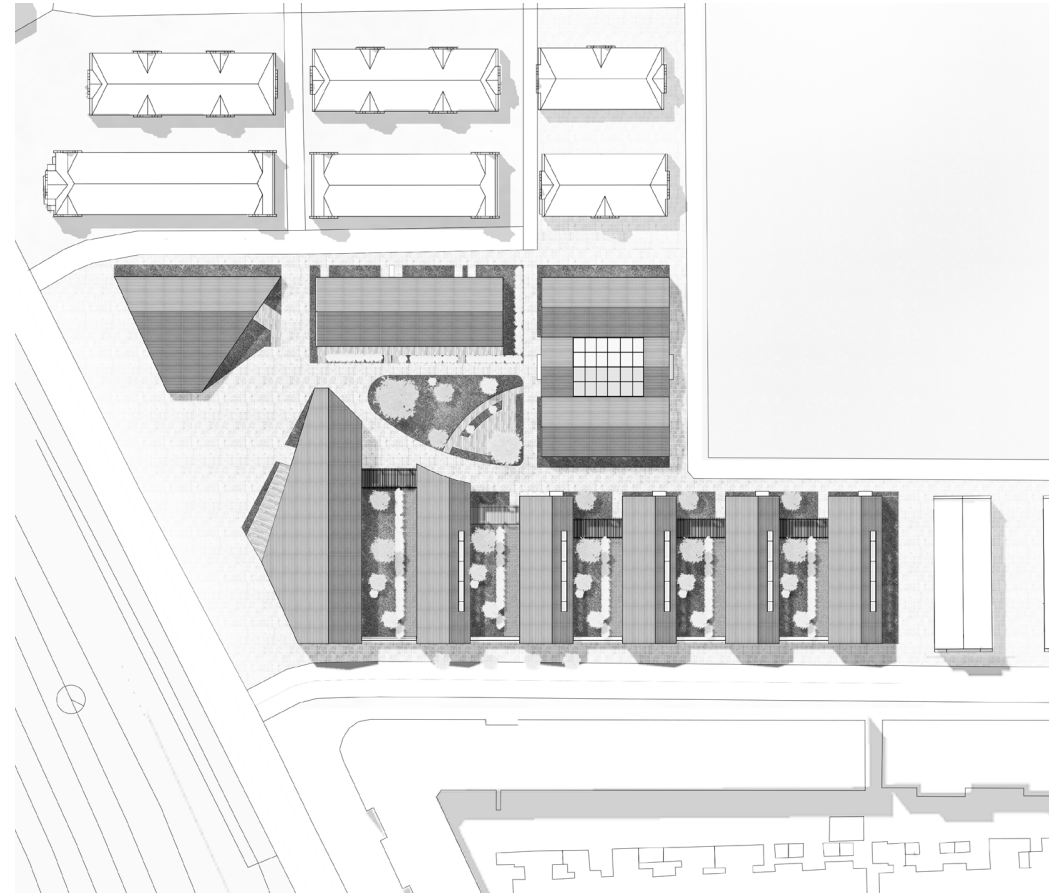
The front garden also works as a **privacy buffer**

Most people do not want a direct visual connection to the street, and the front garden keeps them a distance from the sidewalk.

The Size of the garden has a strong impact on its social function and private function

Below 1.3M the social function will lose.

Above 8M people usually don't close their curtains.

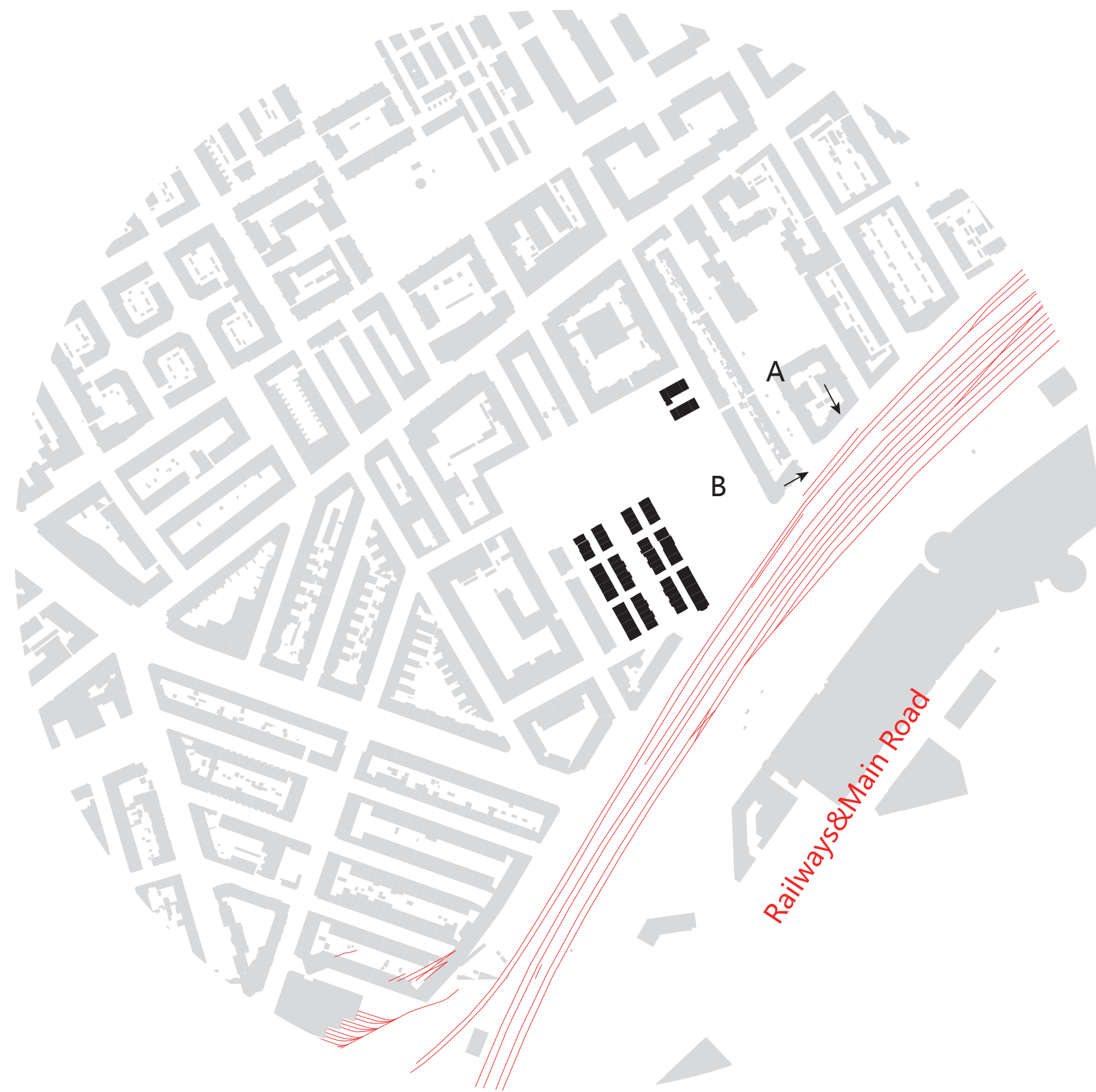


A Peaceful Land in the Urban Rush

The Site



Urban Context



The Nursing home in Den Haag Interior graduation project



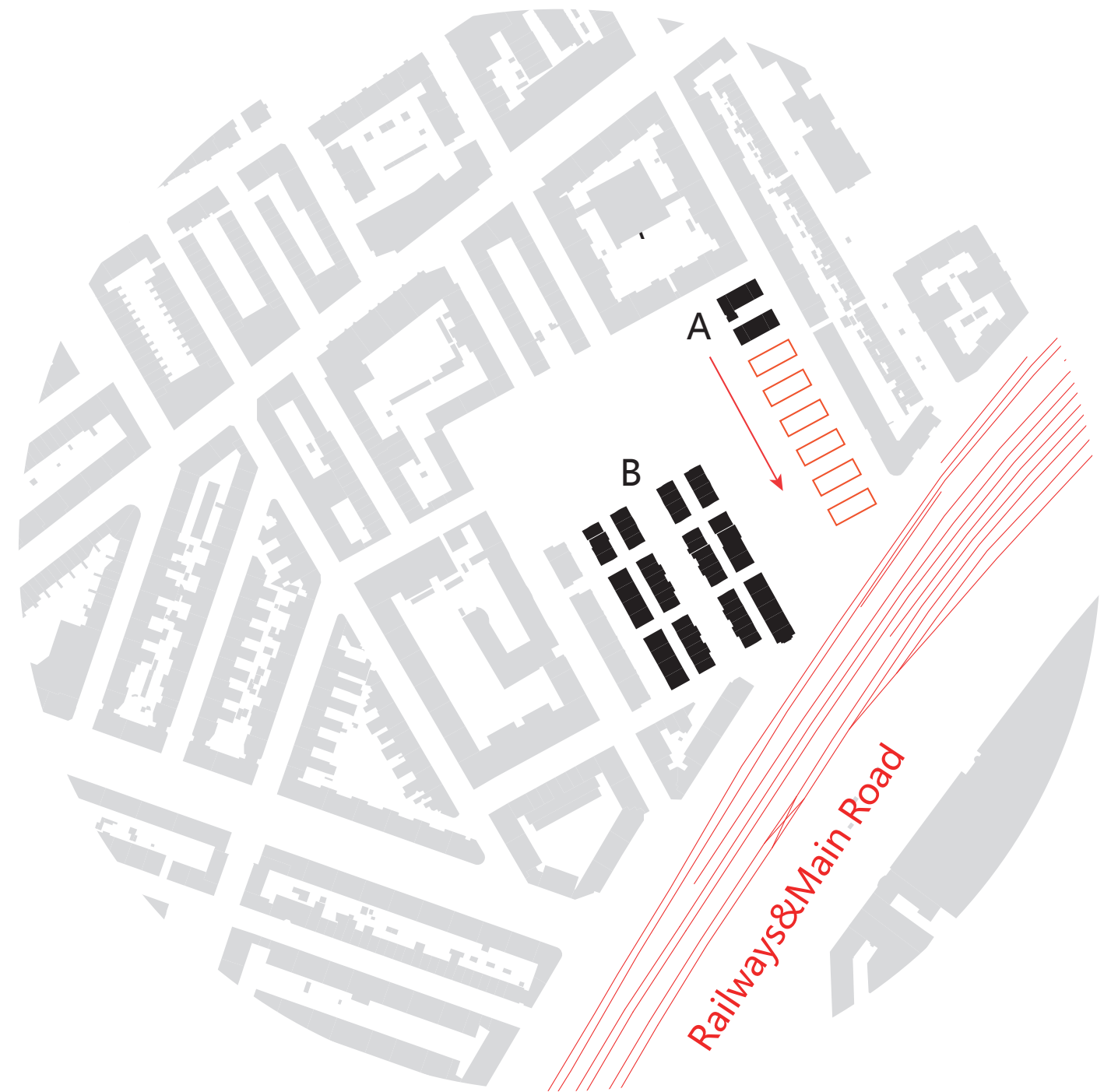
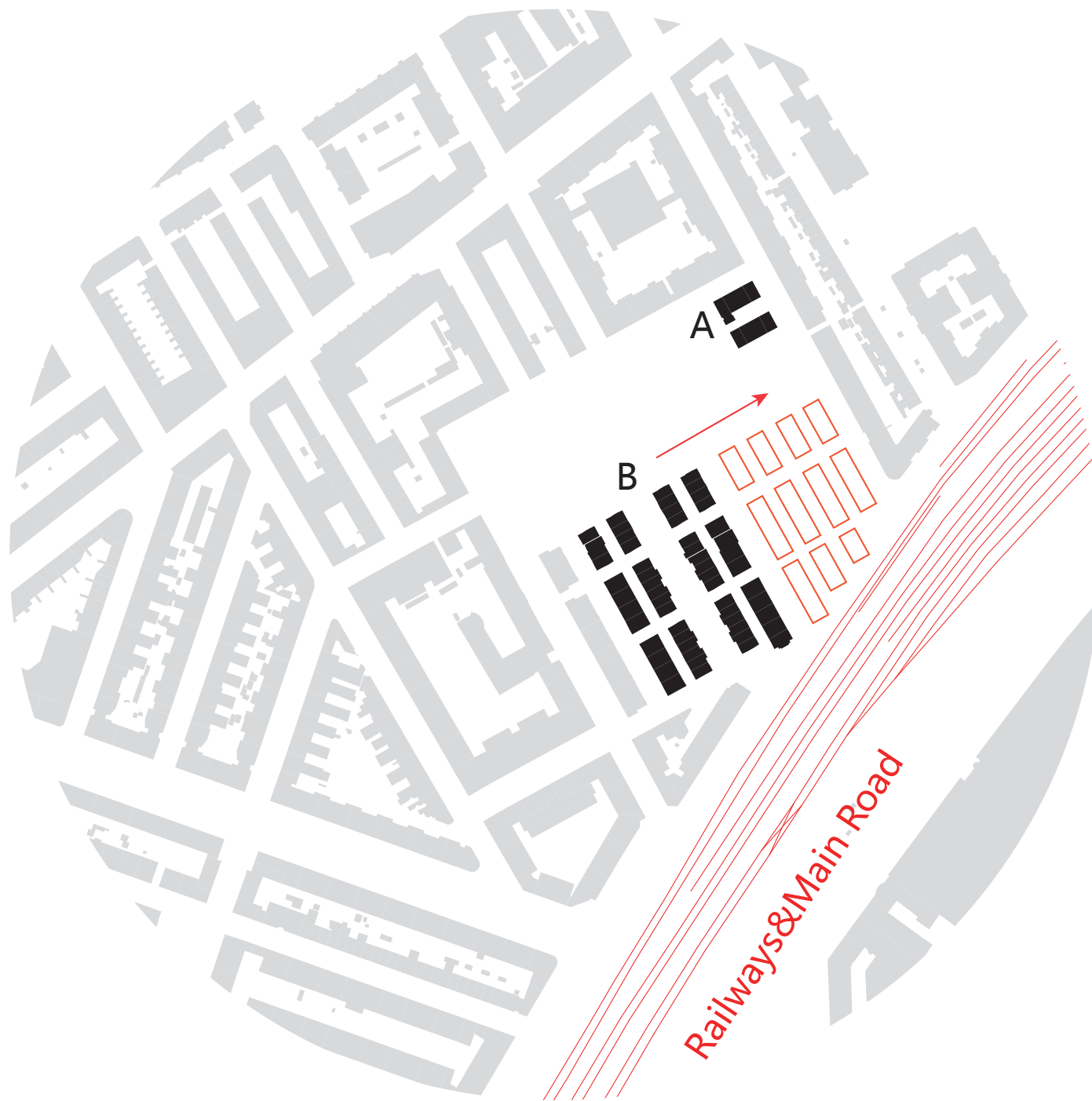
A



B

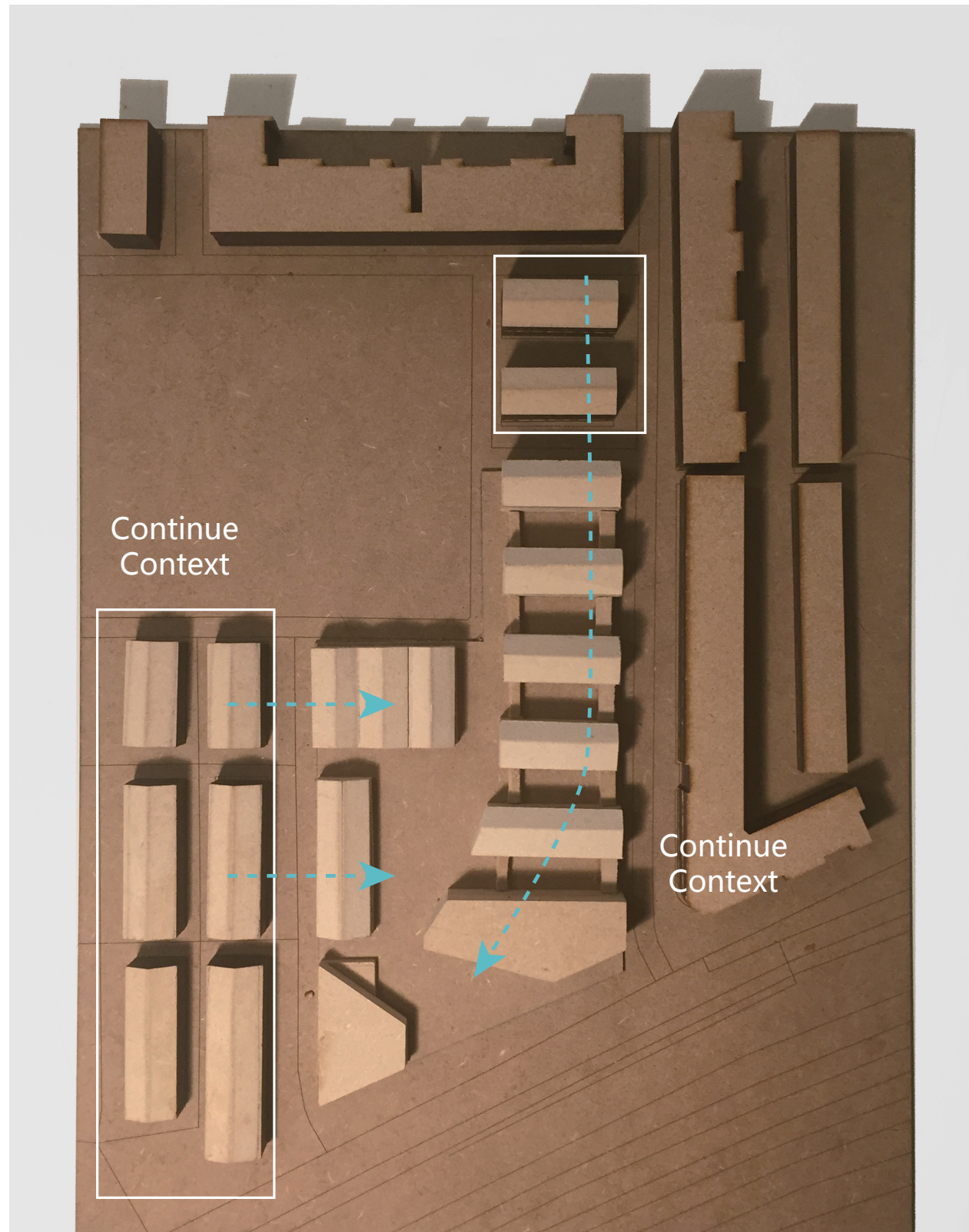
Urban Context

The Nursing home in Den Haag Interior graduation project

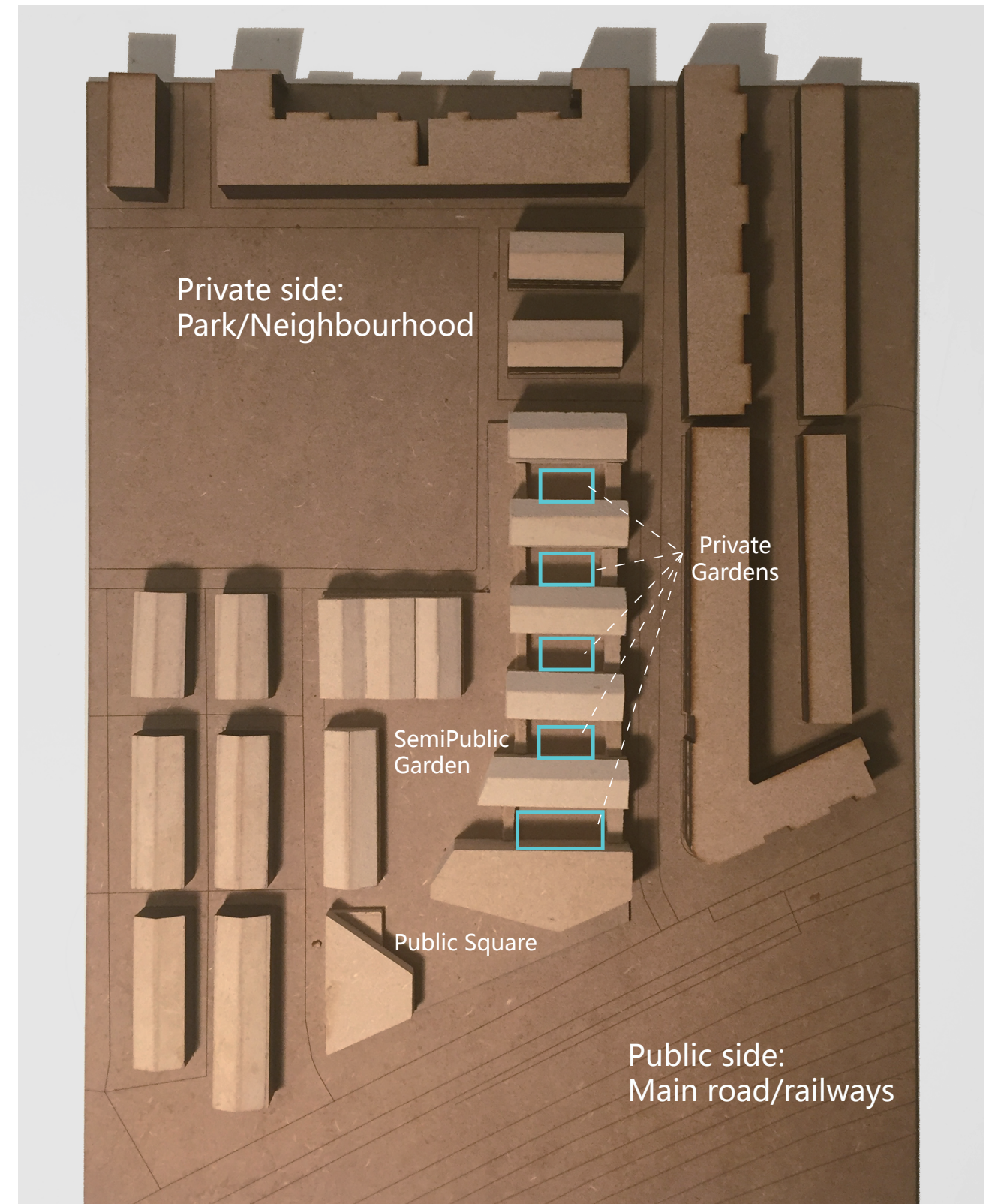


Proposal

The Nursing home in Den Haag Interior graduation project



Continue the context



Private and Public Side

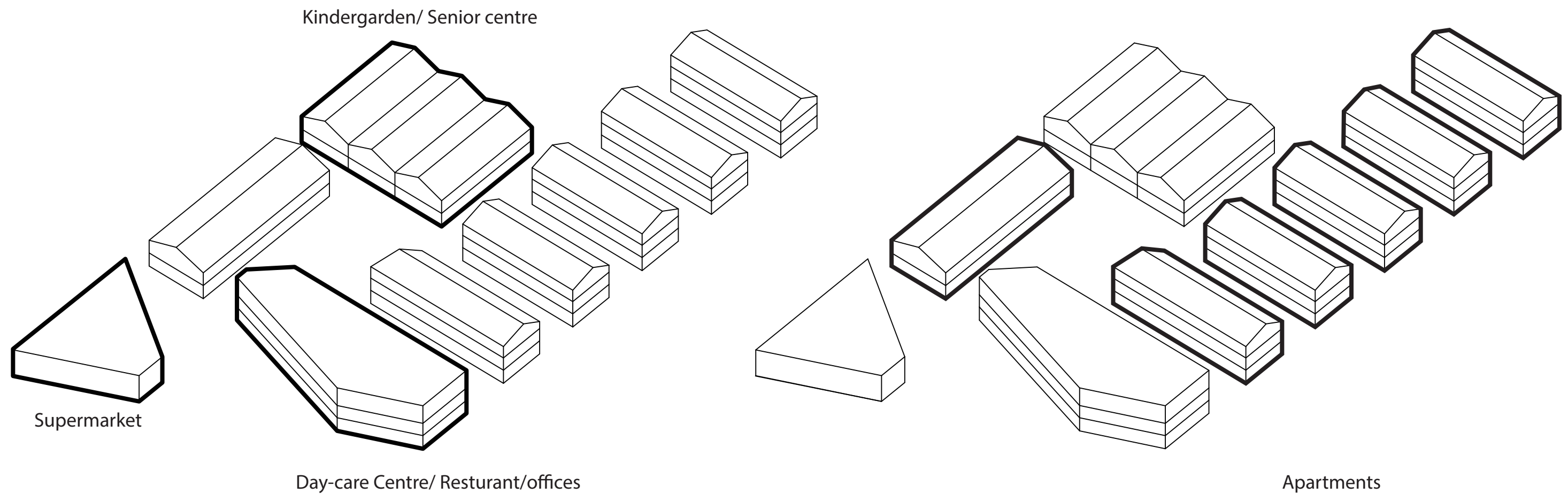
Three Different Level of Private Outside Space

The Nursing home in Den Haag Interior graduation project



Functions in the Building Complex

The Nursing home in Den Haag Interior graduation project

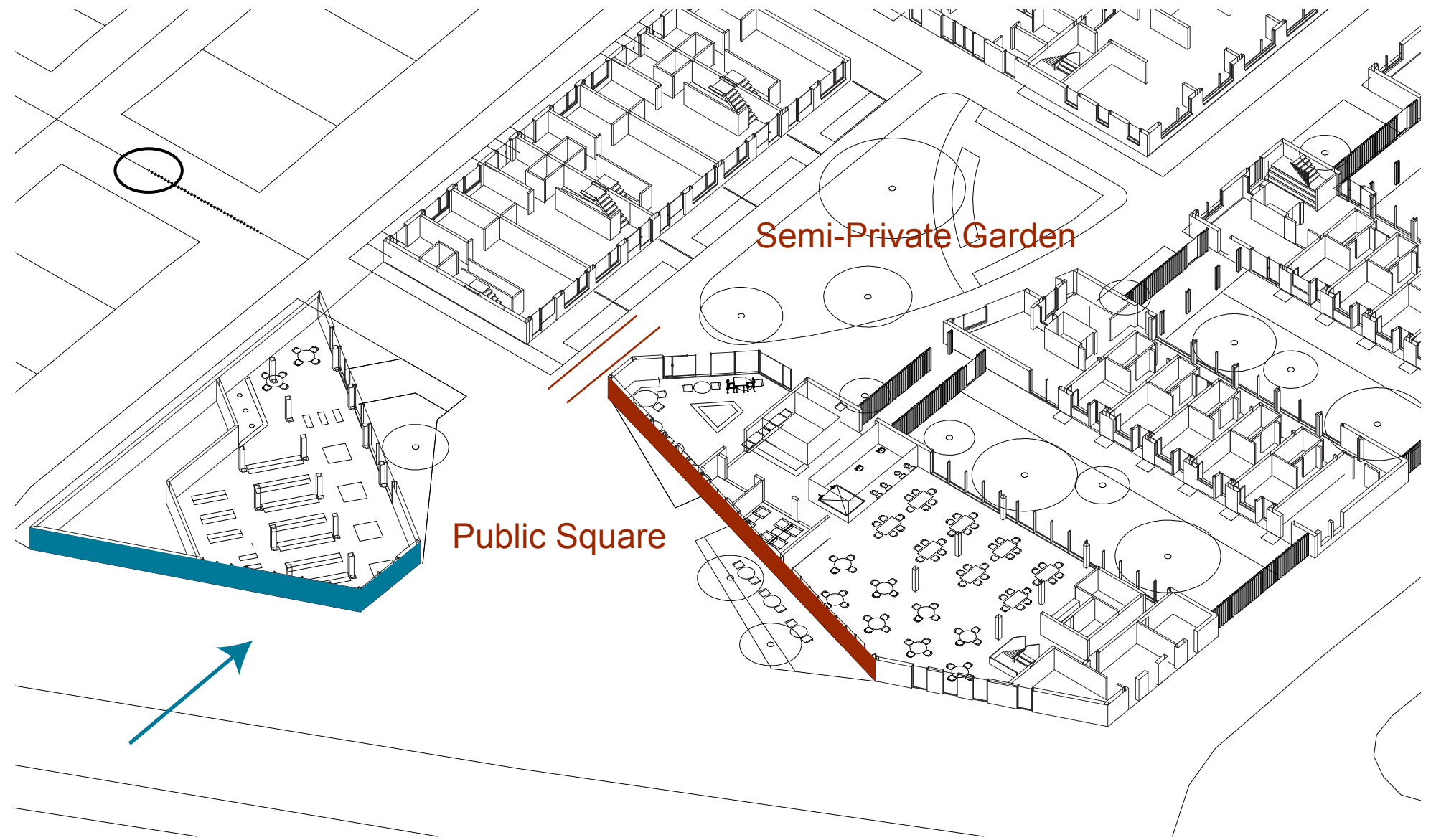




The Public Square

The Public Square

The Nursing home in Den Haag Interior graduation project

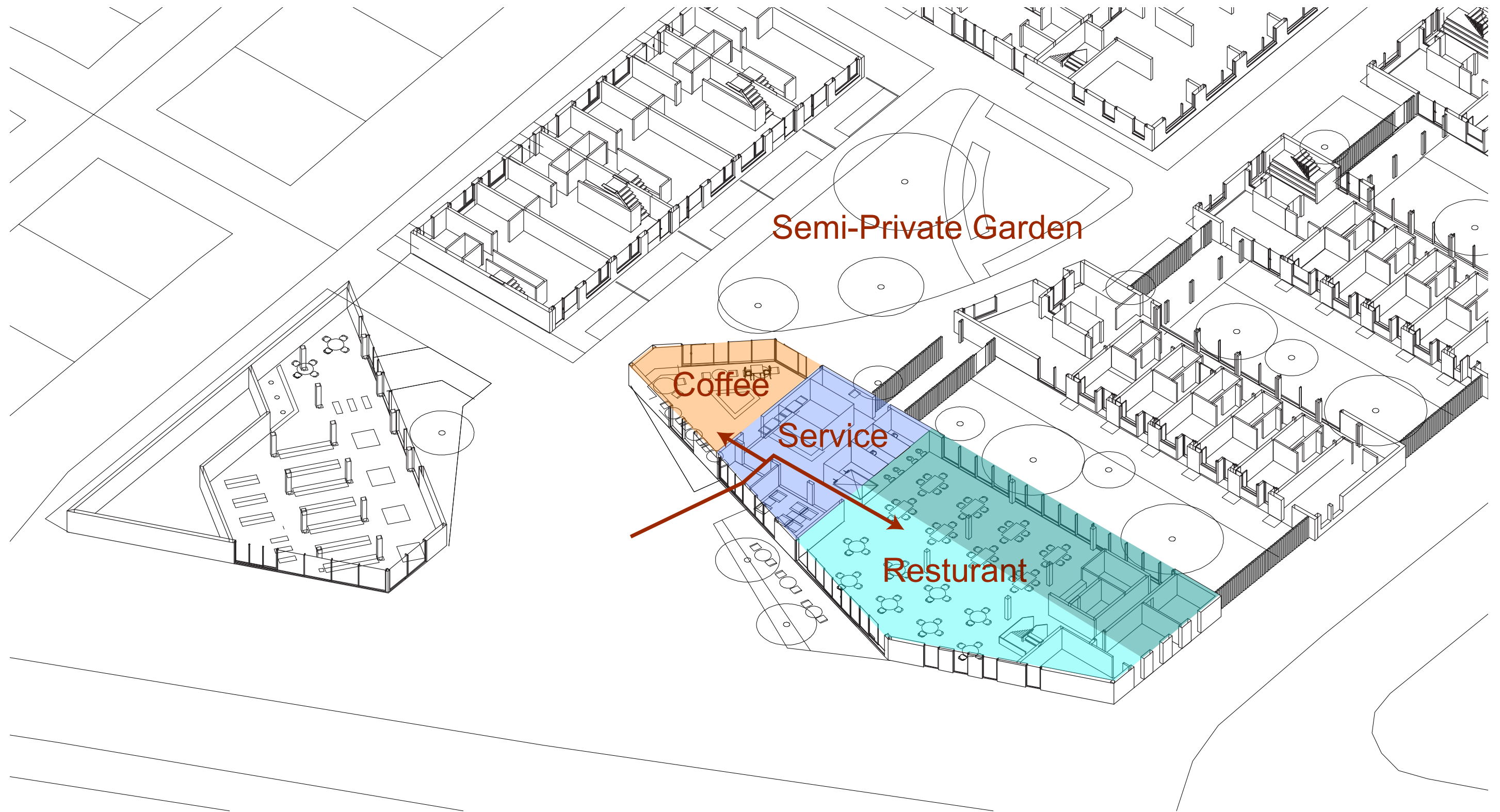






The Day Care Center

The Nursing home in Den Haag Interior graduation project



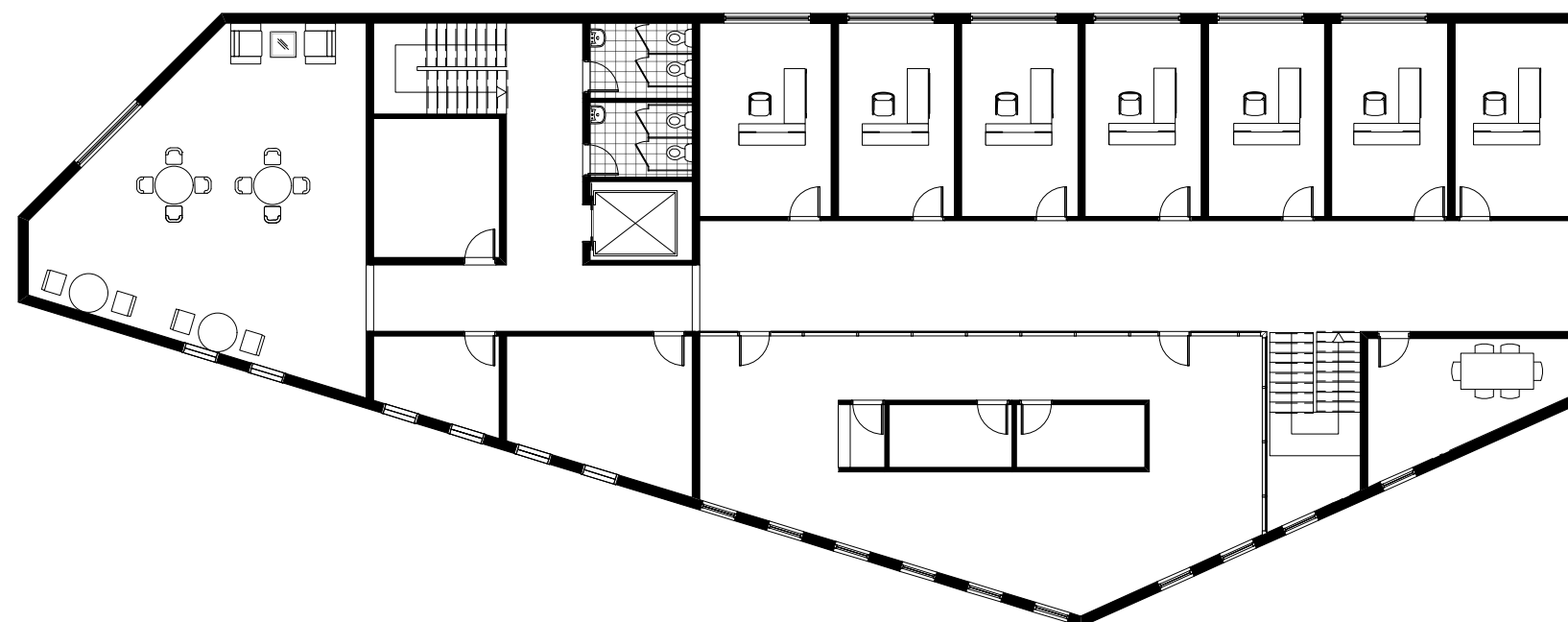
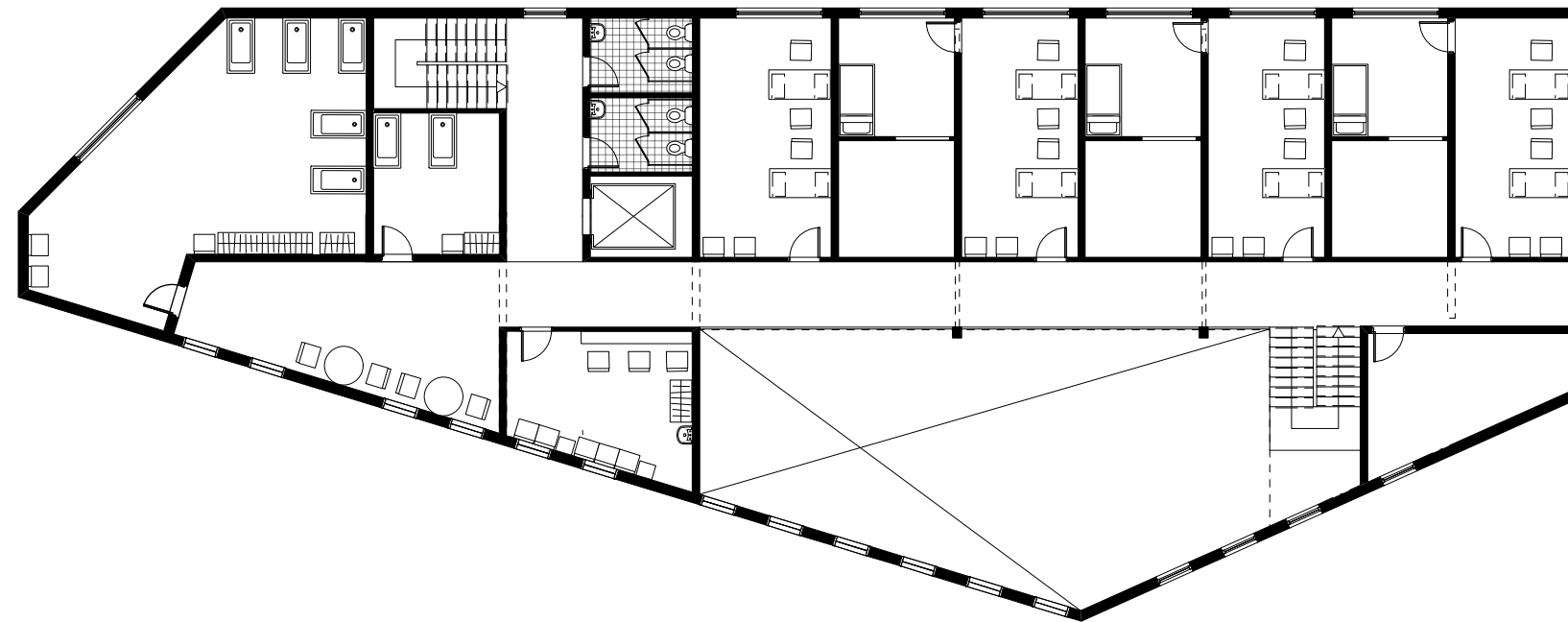






The Day Care Center

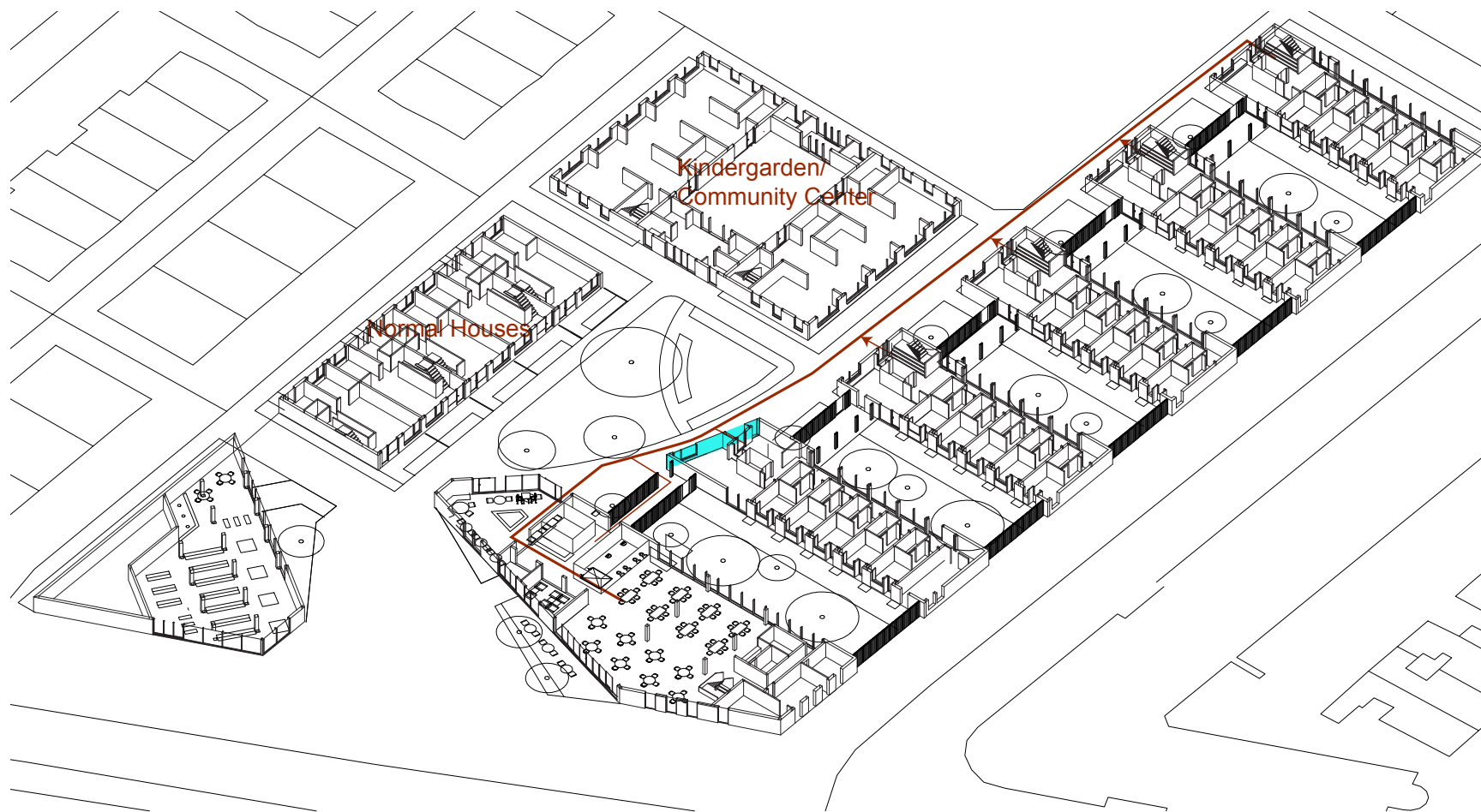
The Nursing home in Den Haag Interior graduation project



The Semi-Private Garden

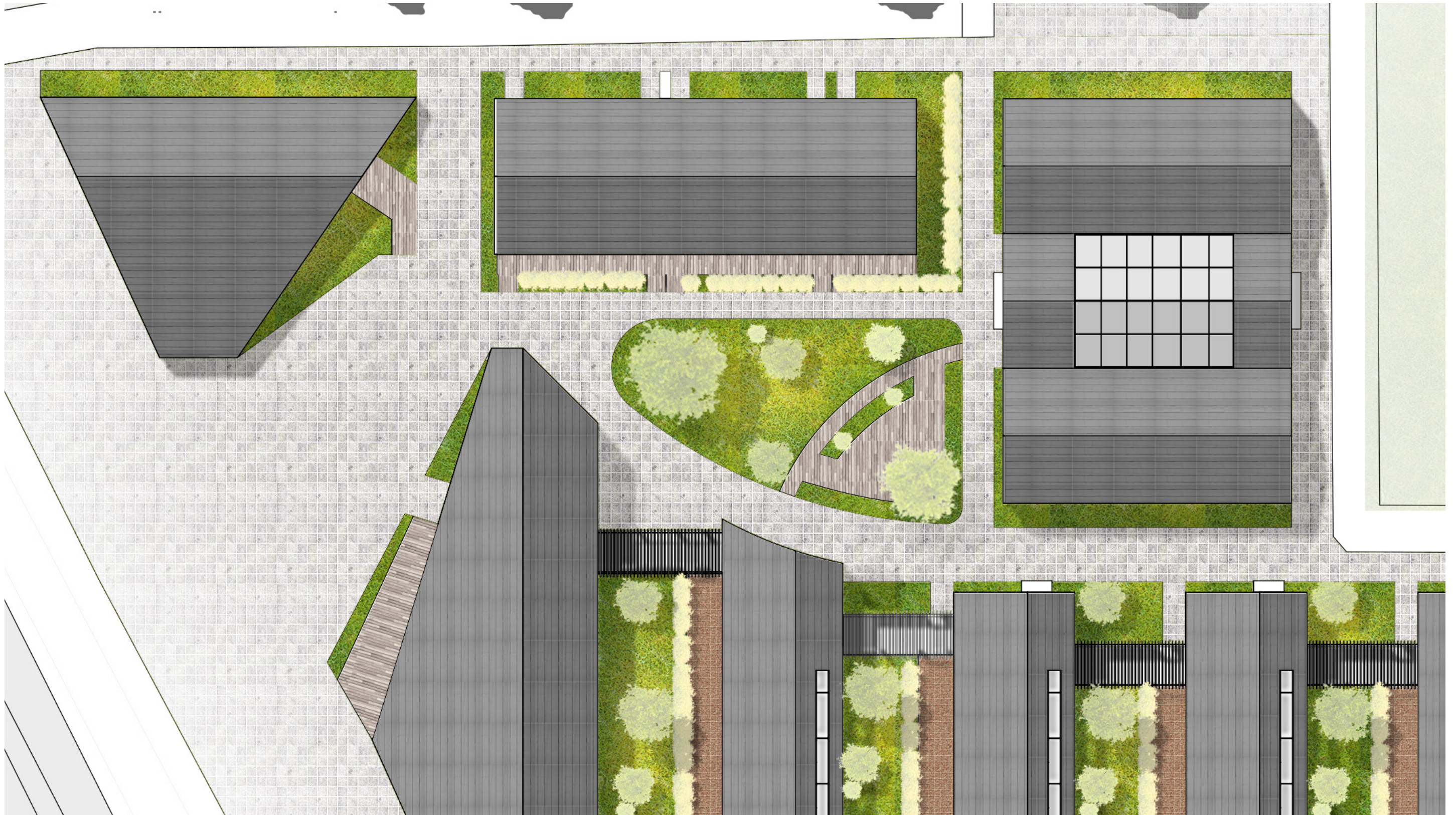
The Semi-Private Garden

The Nursing home in Den Haag Interior graduation project



The Semi-Private Garden

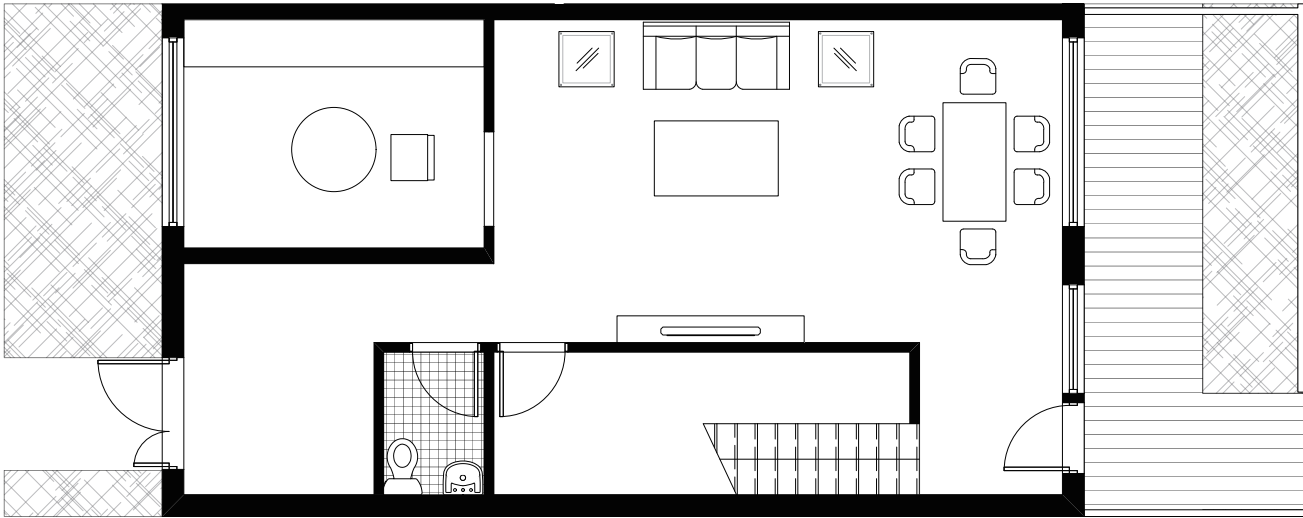
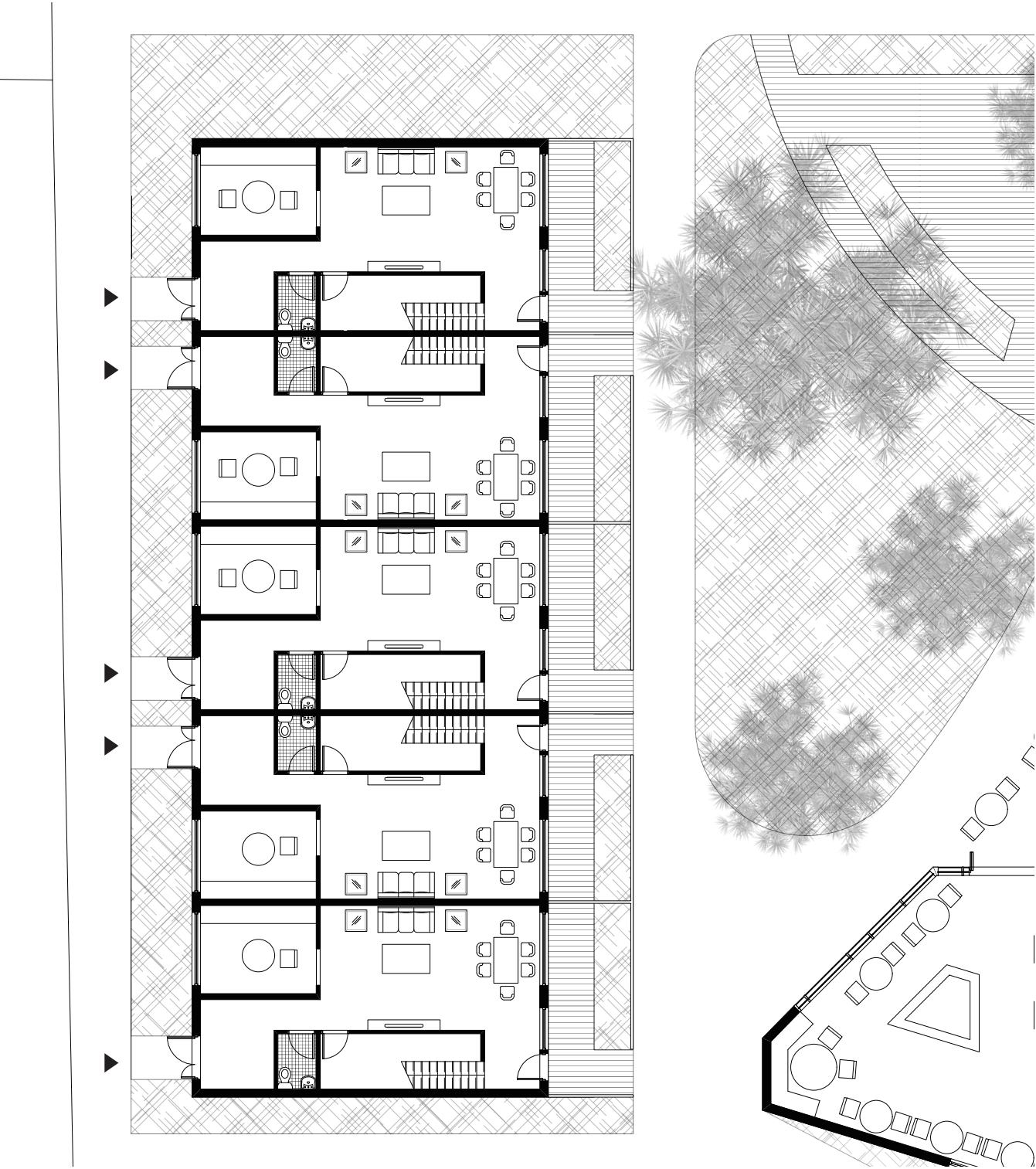
The Nursing home in Den Haag Interior graduation project



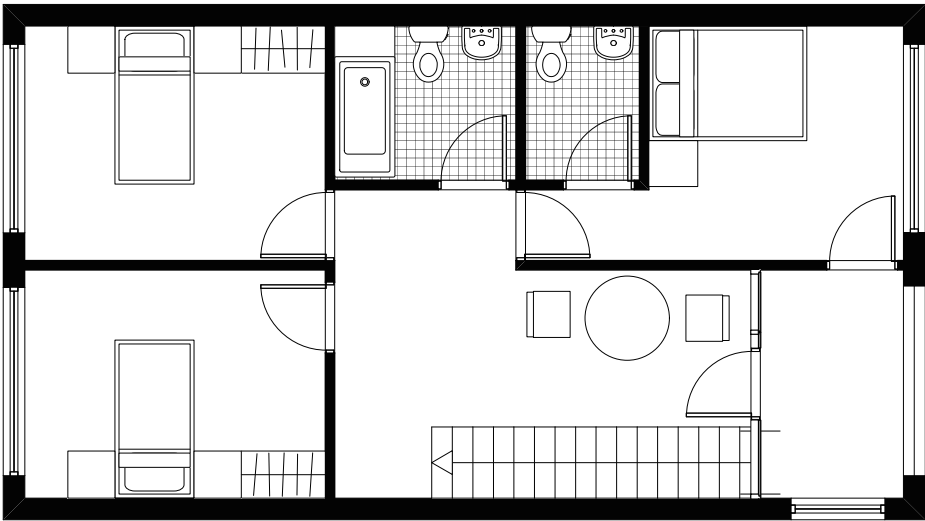




Houses



Groundfloor



Firstfloor





Kindergarden/Community Center

The Nursing home in Den Haag Interior graduation project



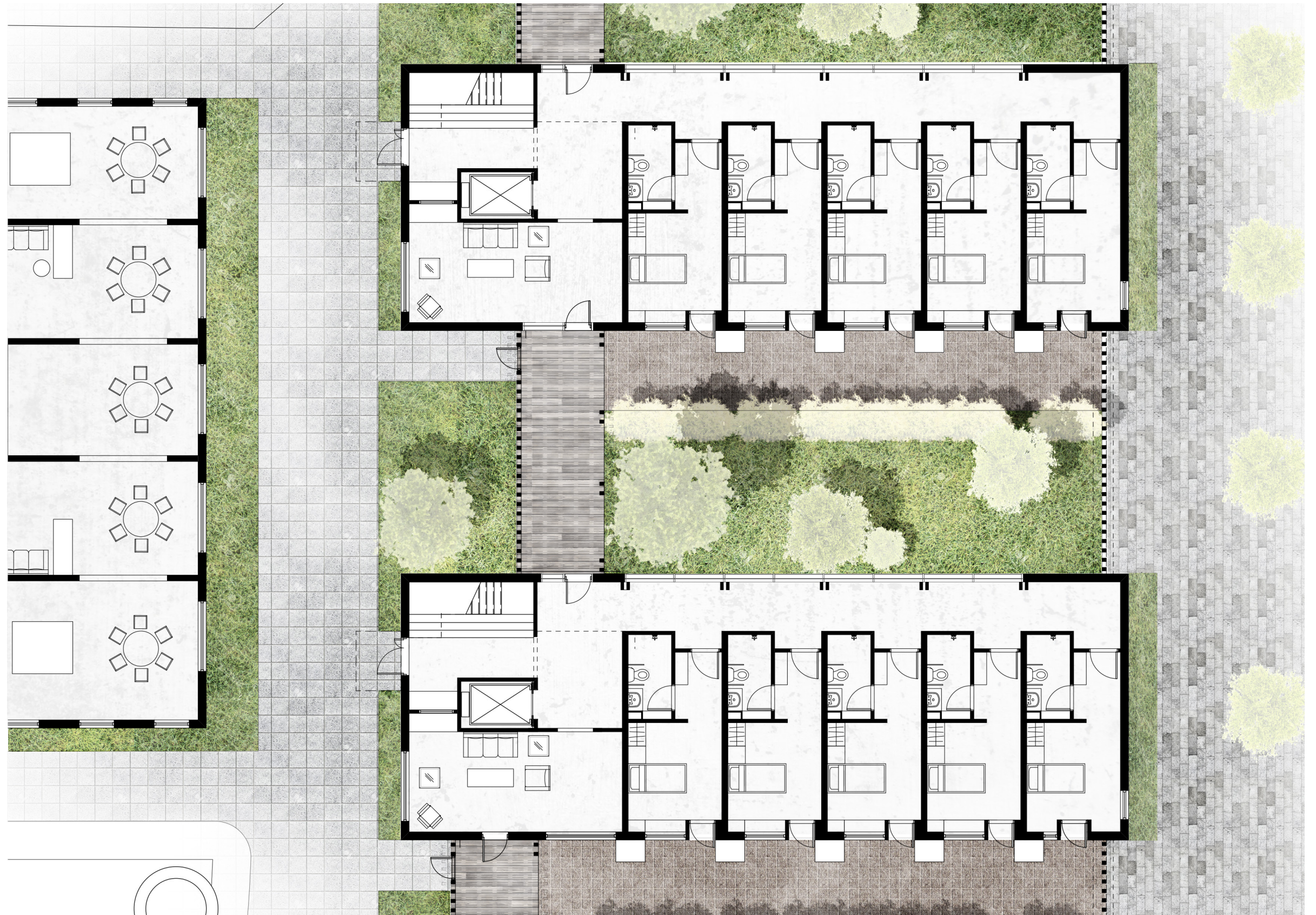




The Private Garden

The Private Garden

The Nursing home in Den Haag Interior graduation project



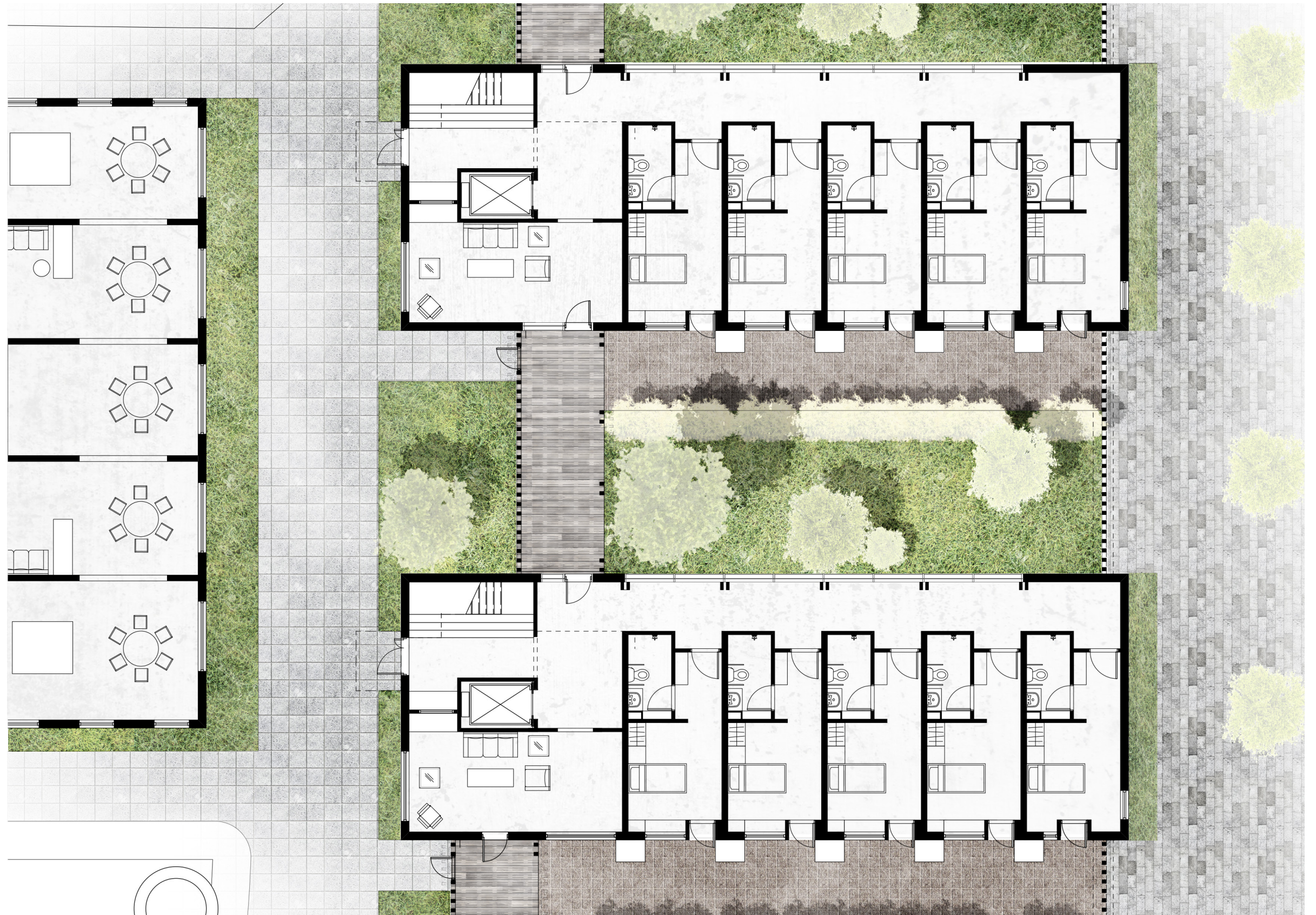


The Private Garden



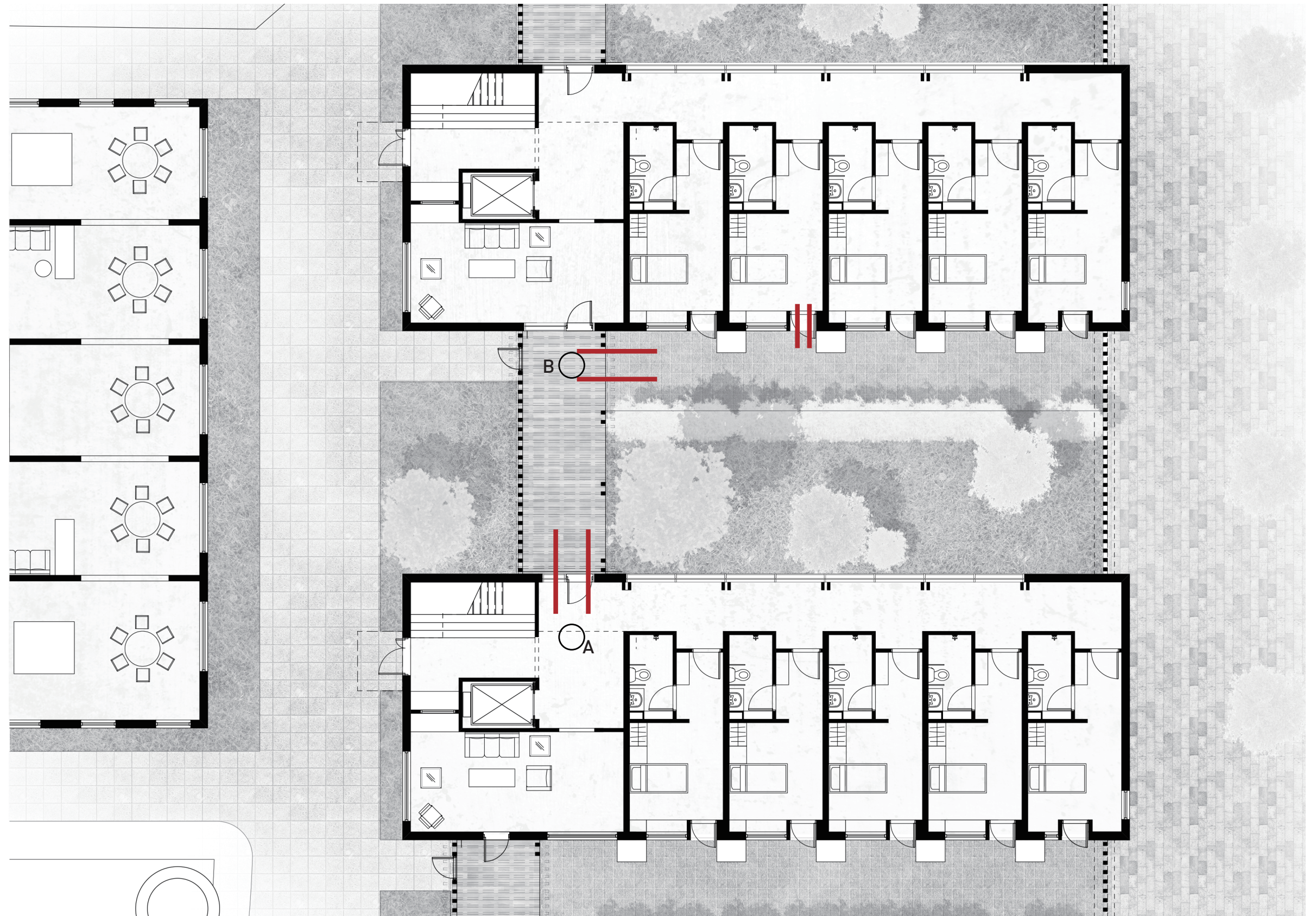
The Dementia

The Nursing home in Den Haag Interior graduation project



The Transition from Inside to Outside

The Nursing home in Den Haag Interior graduation project







The Position of The Living Block

The Nursing home in Den Haag Interior graduation project

Indepentent block with its own facilities:

Gardens

Common room

Balcony

Elevator

Target grounp:

Single old people

The Relation with the Surrounding

The Nursing home in Den Haag Interior graduation project



The Variation of the Shape





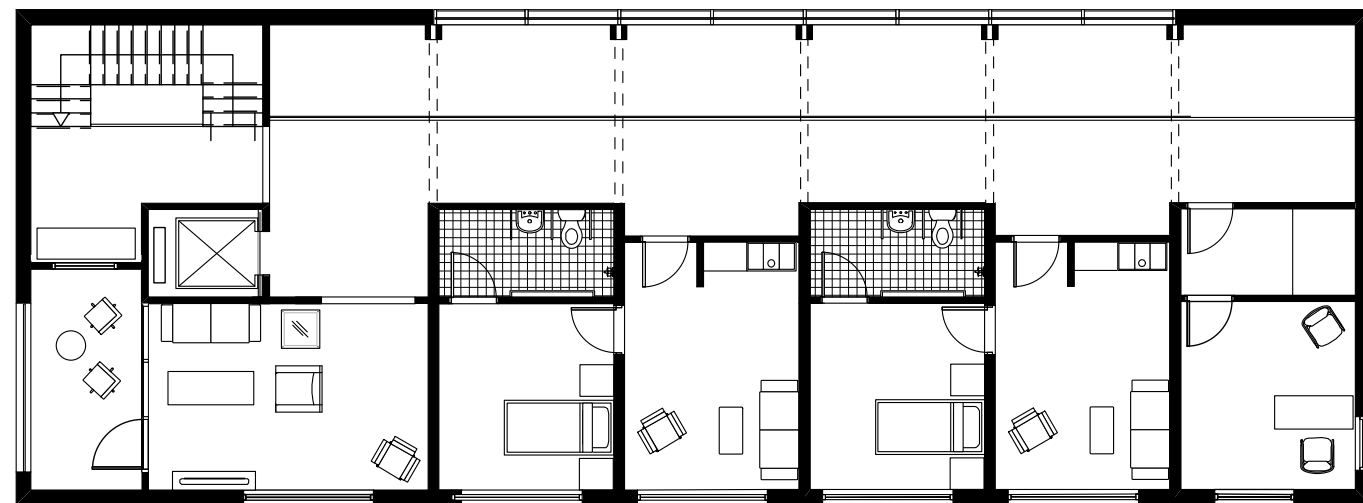
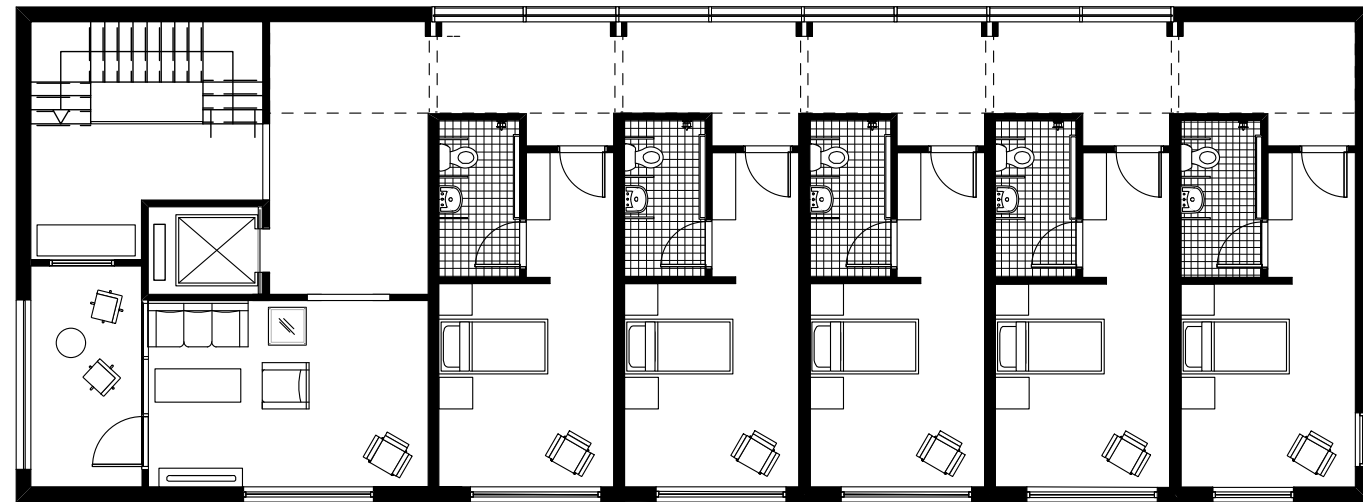
The Organization of The Block

The Nursing home in Den Haag Interior graduation project



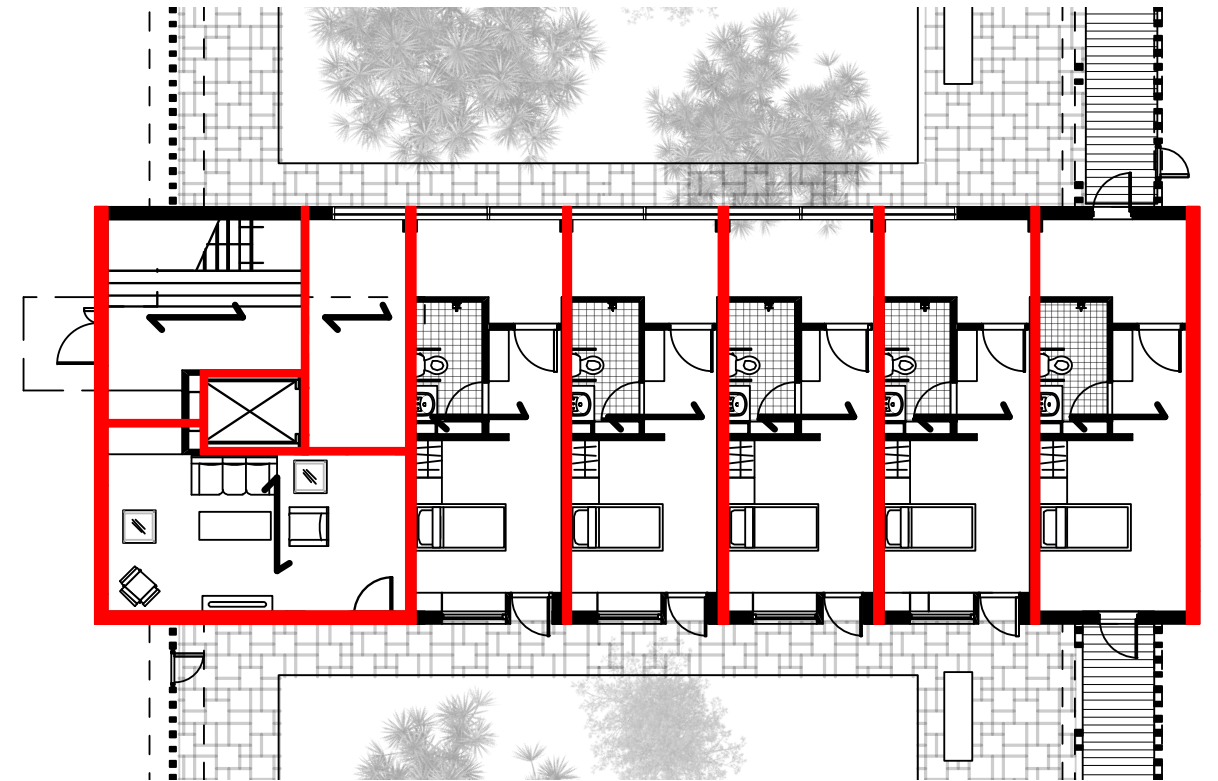
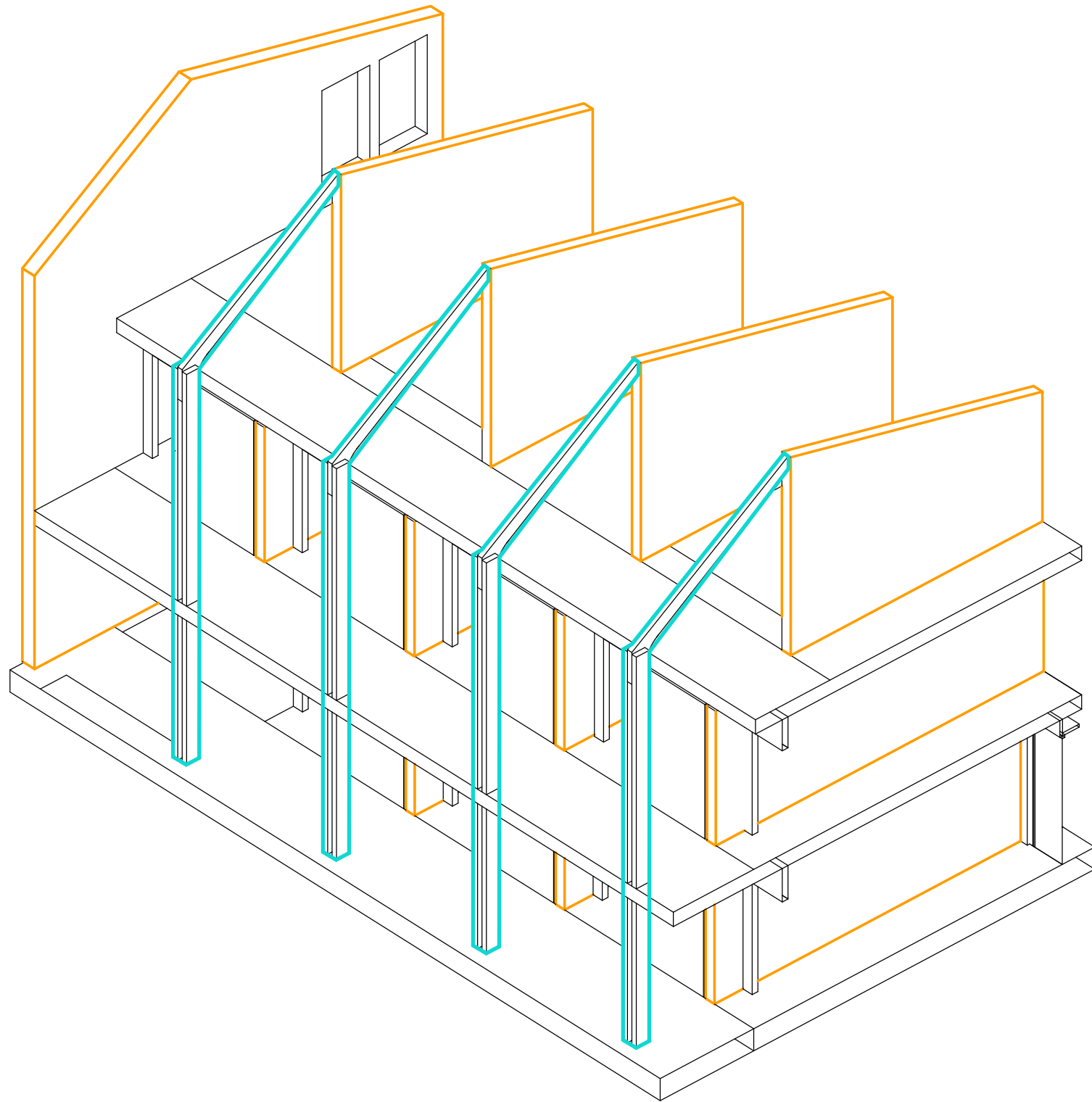
The Organization of The Block

The Nursing home in Den Haag Interior graduation project



Construction

The Nursing home in Den Haag Interior graduation project

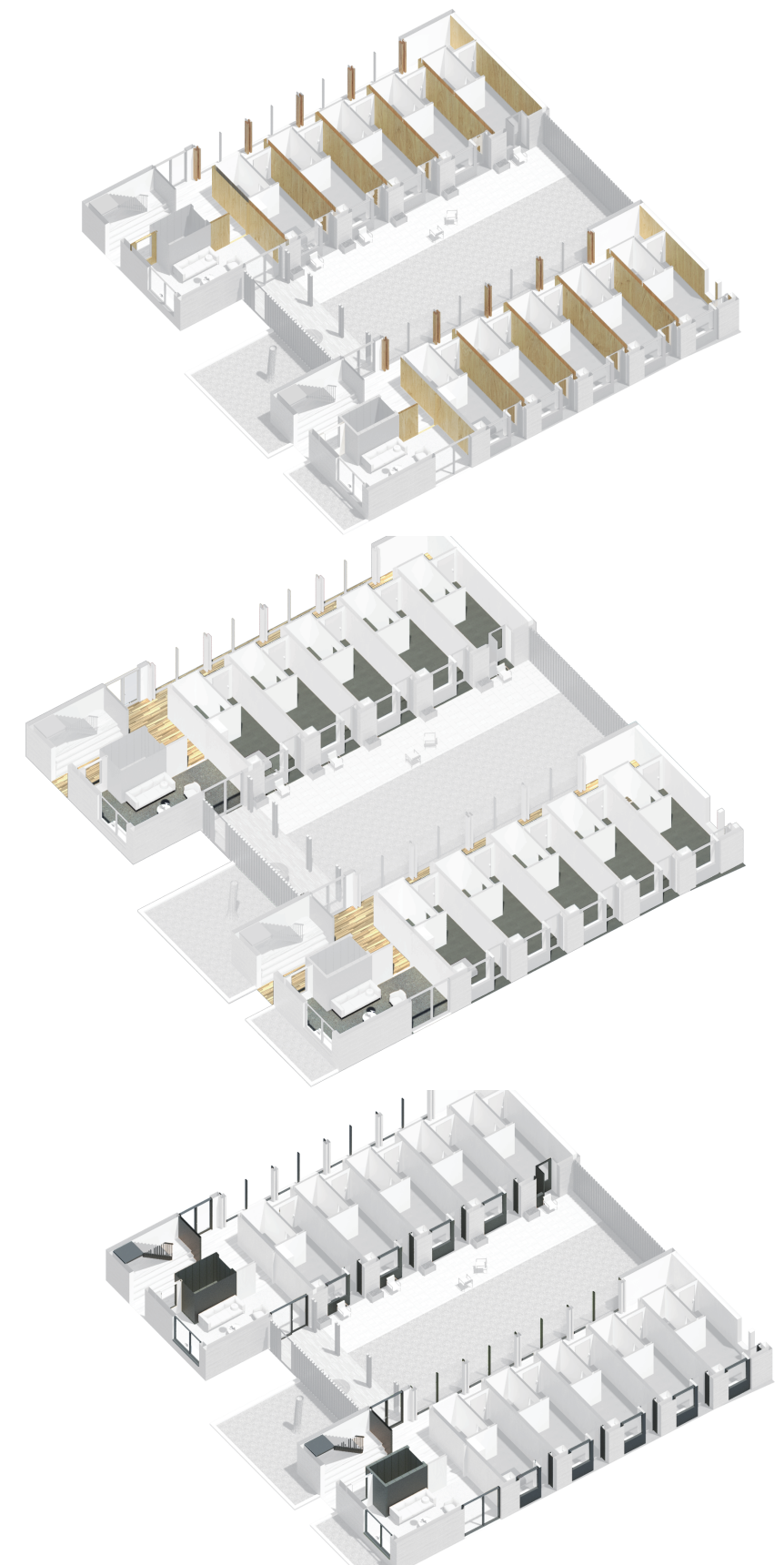


Construction And Interior

The Nursing home in Den Haag Interior graduation project

Interior Principles:

1. Express the logic of the construction in the interior
2. The pavements indicate the different function of the space
3. Only two different material are used in the interior in order to create a simple result.



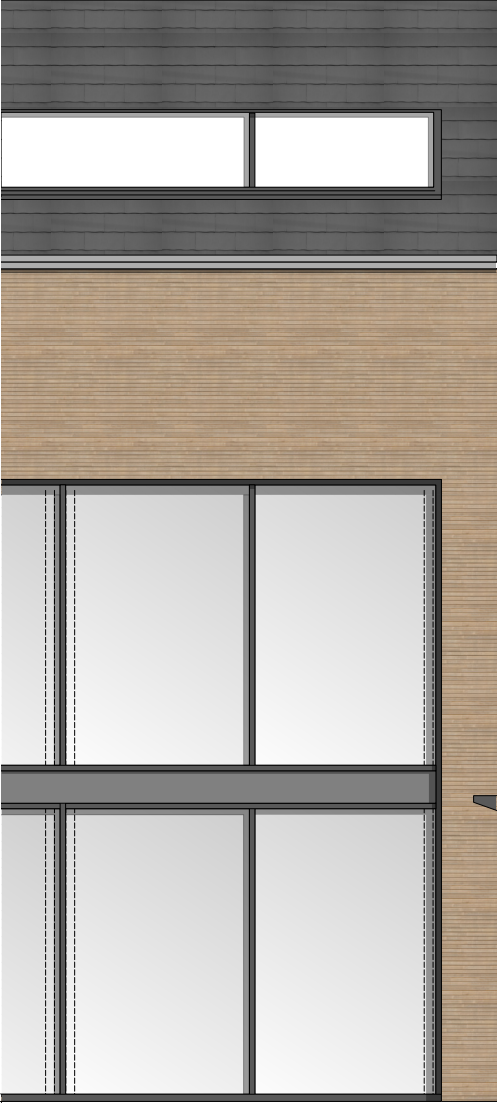
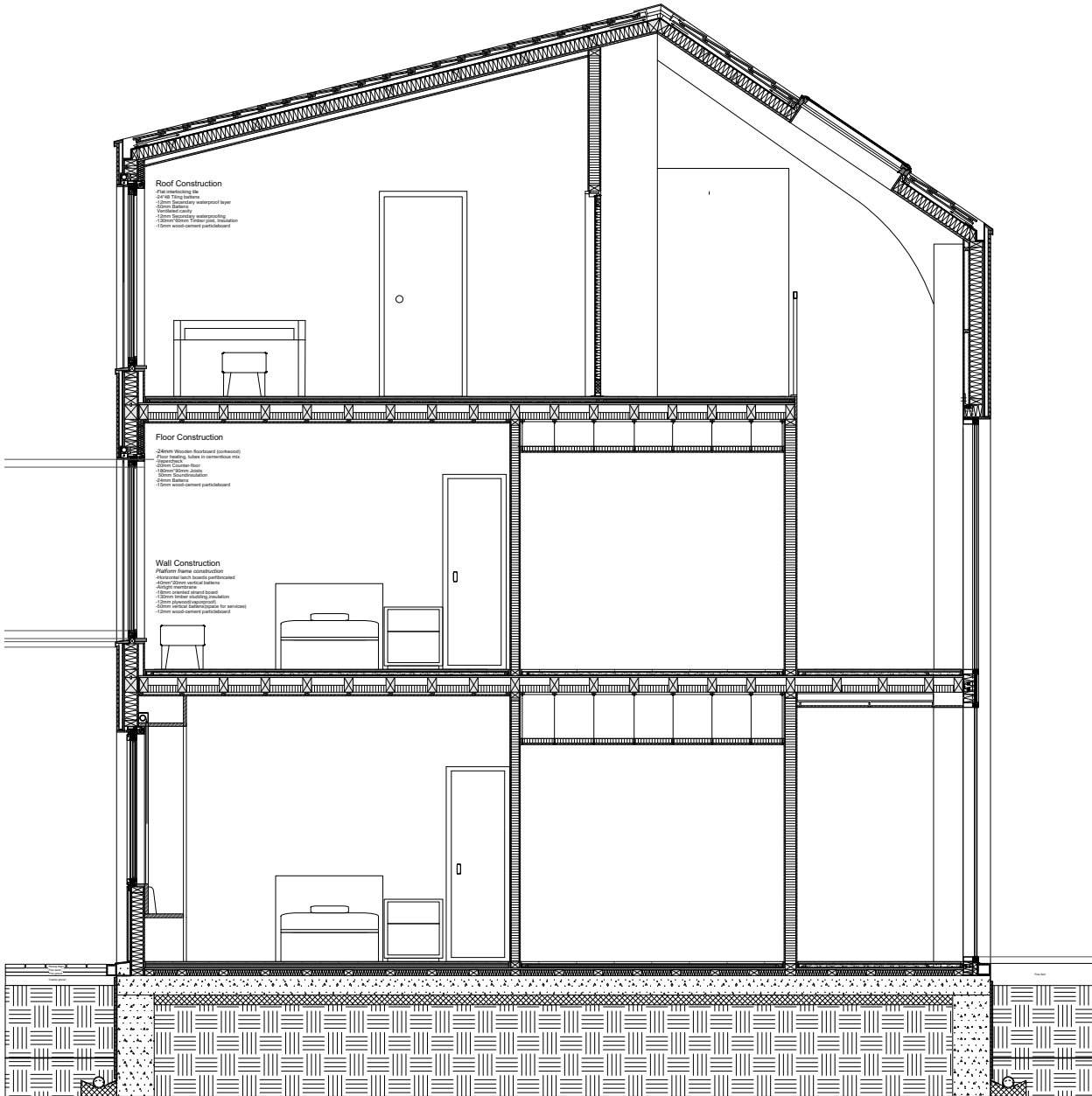




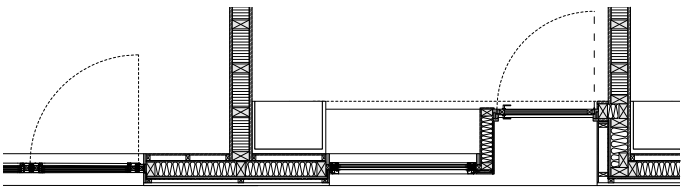
Facade



Southfacade 1:20

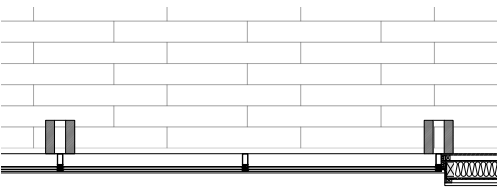


North Facade 1:20



Plan 1:20

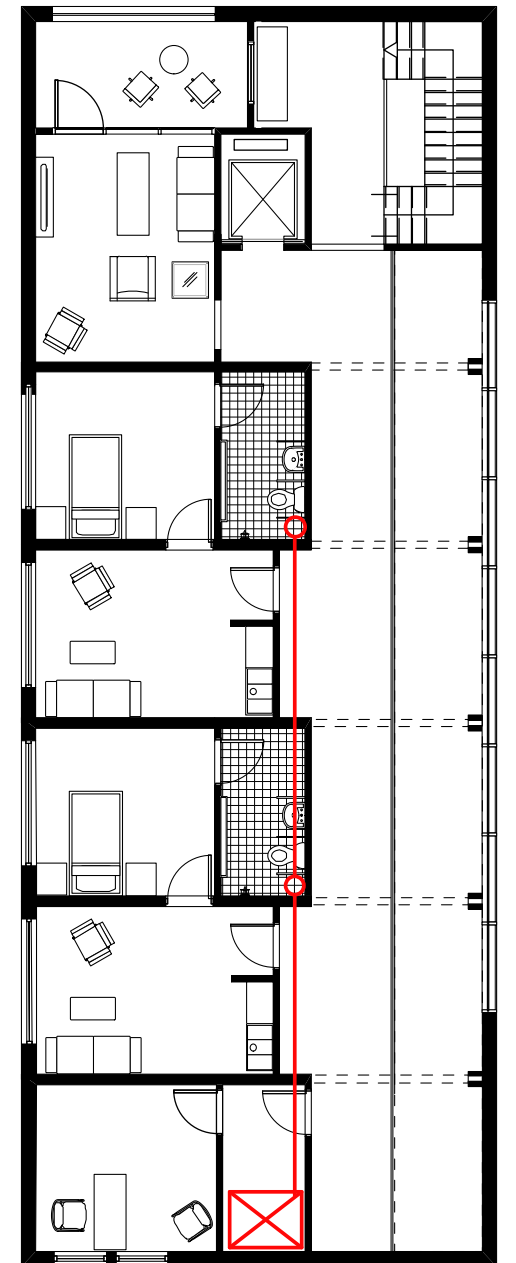
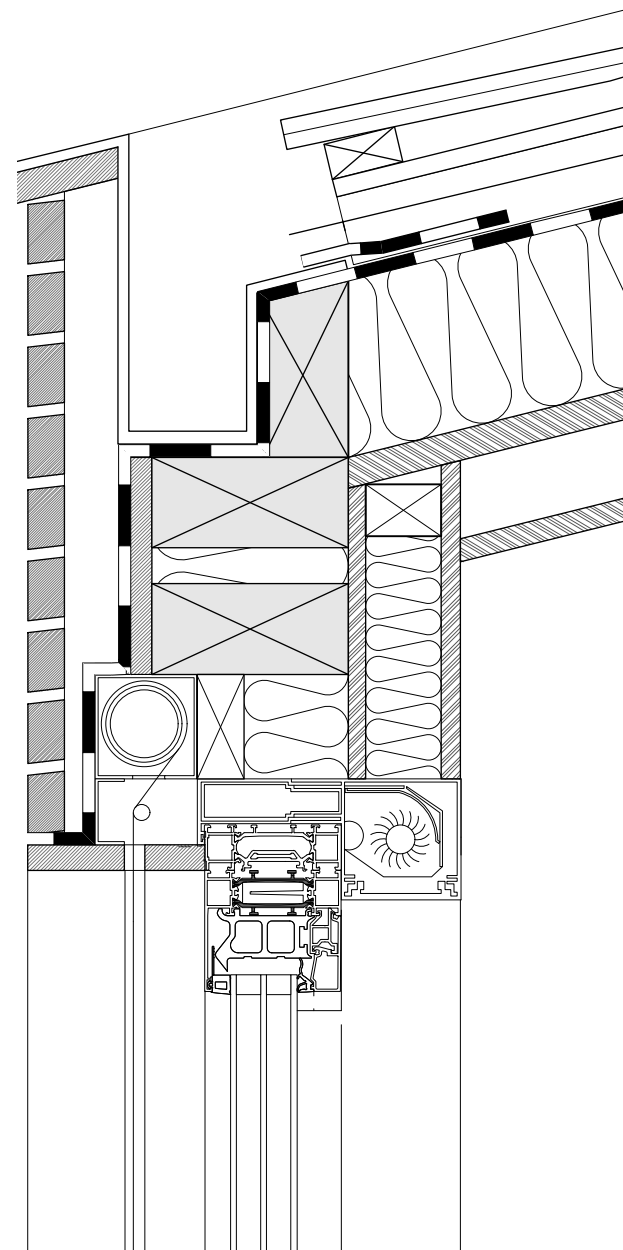
Section A-A 1:20



Plan 1:20

Ventilation

The Nursing home in Den Haag Interior graduation project

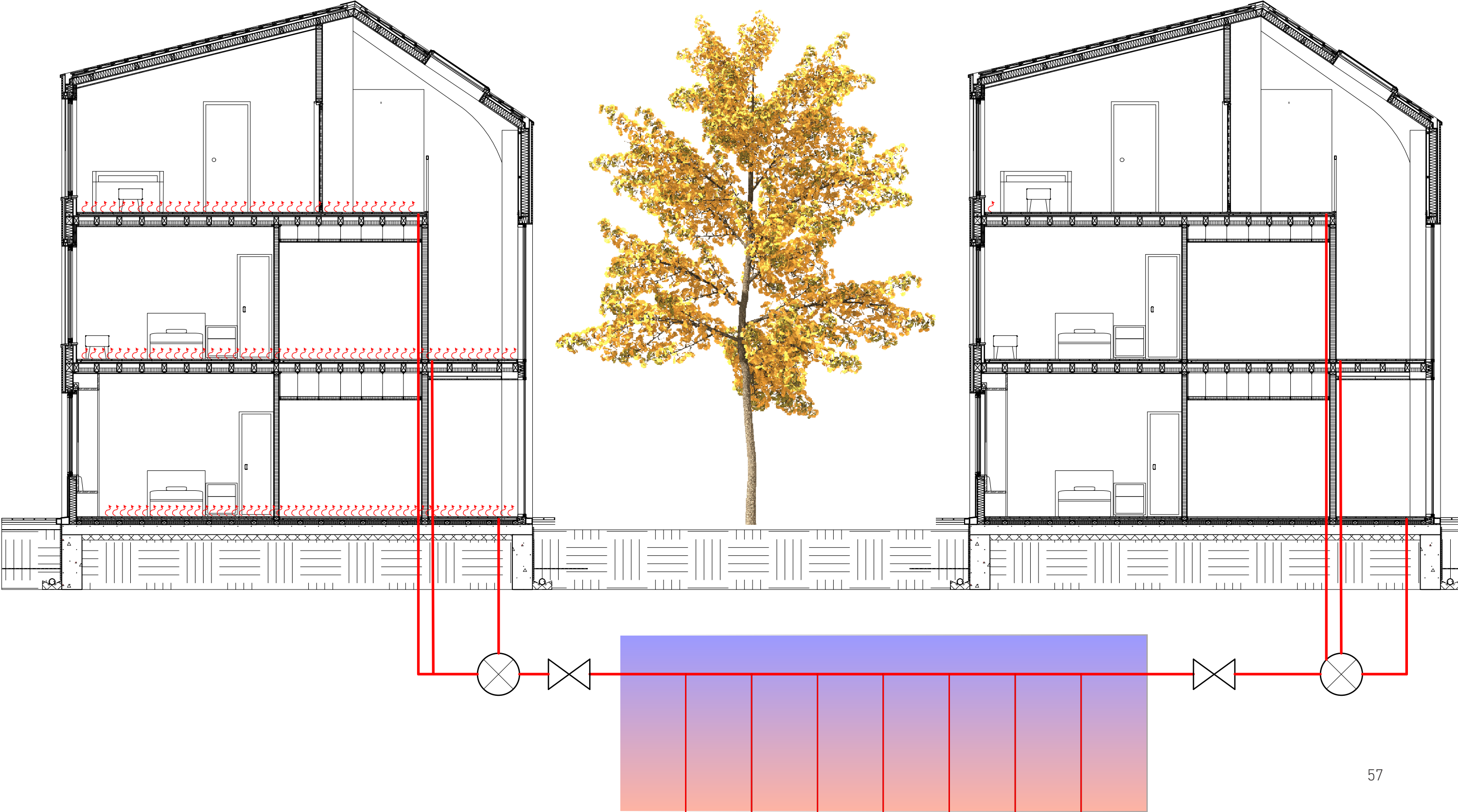


Ventilation

The Nursing home in Den Haag Interior graduation project

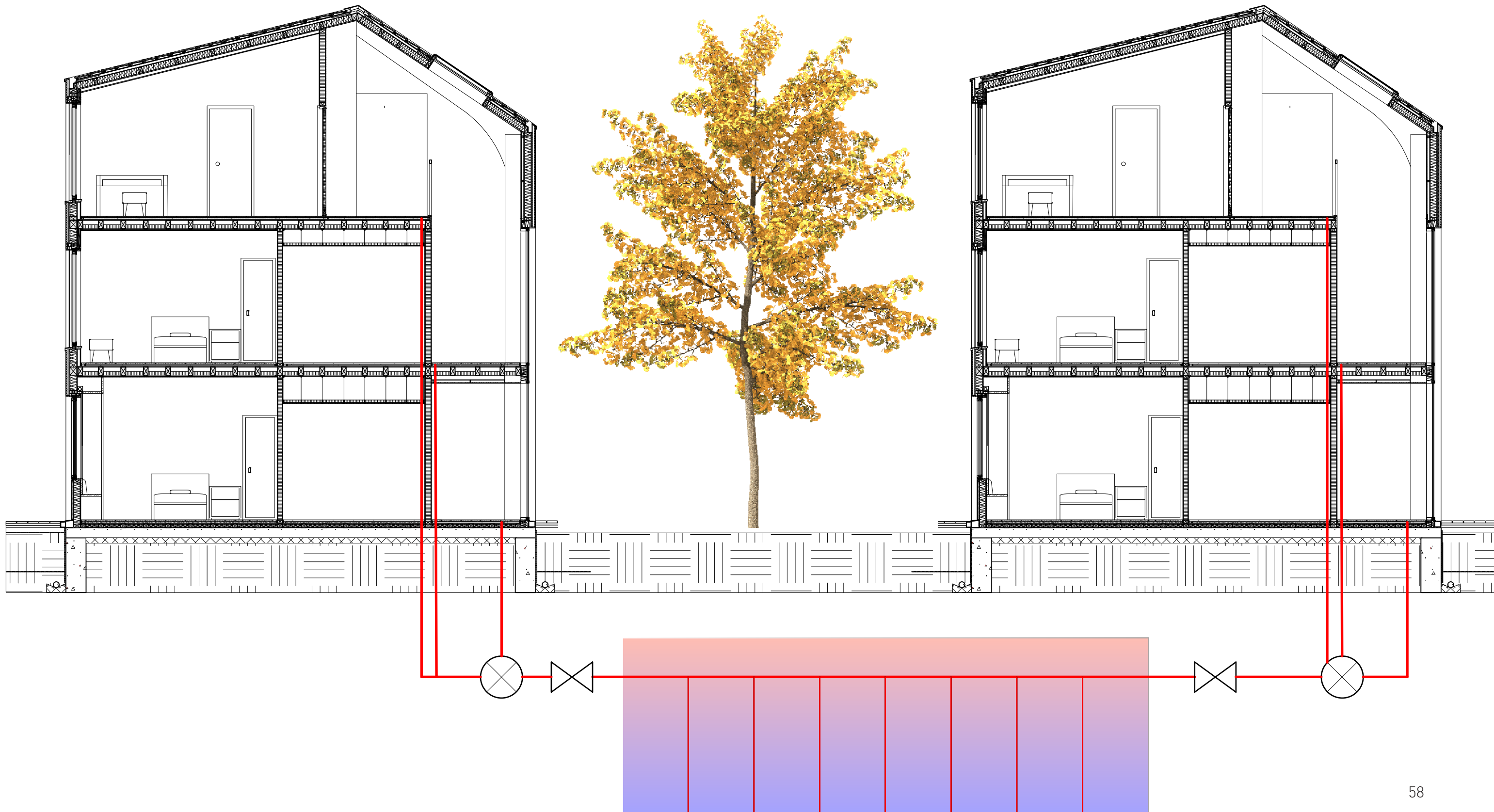


Heating

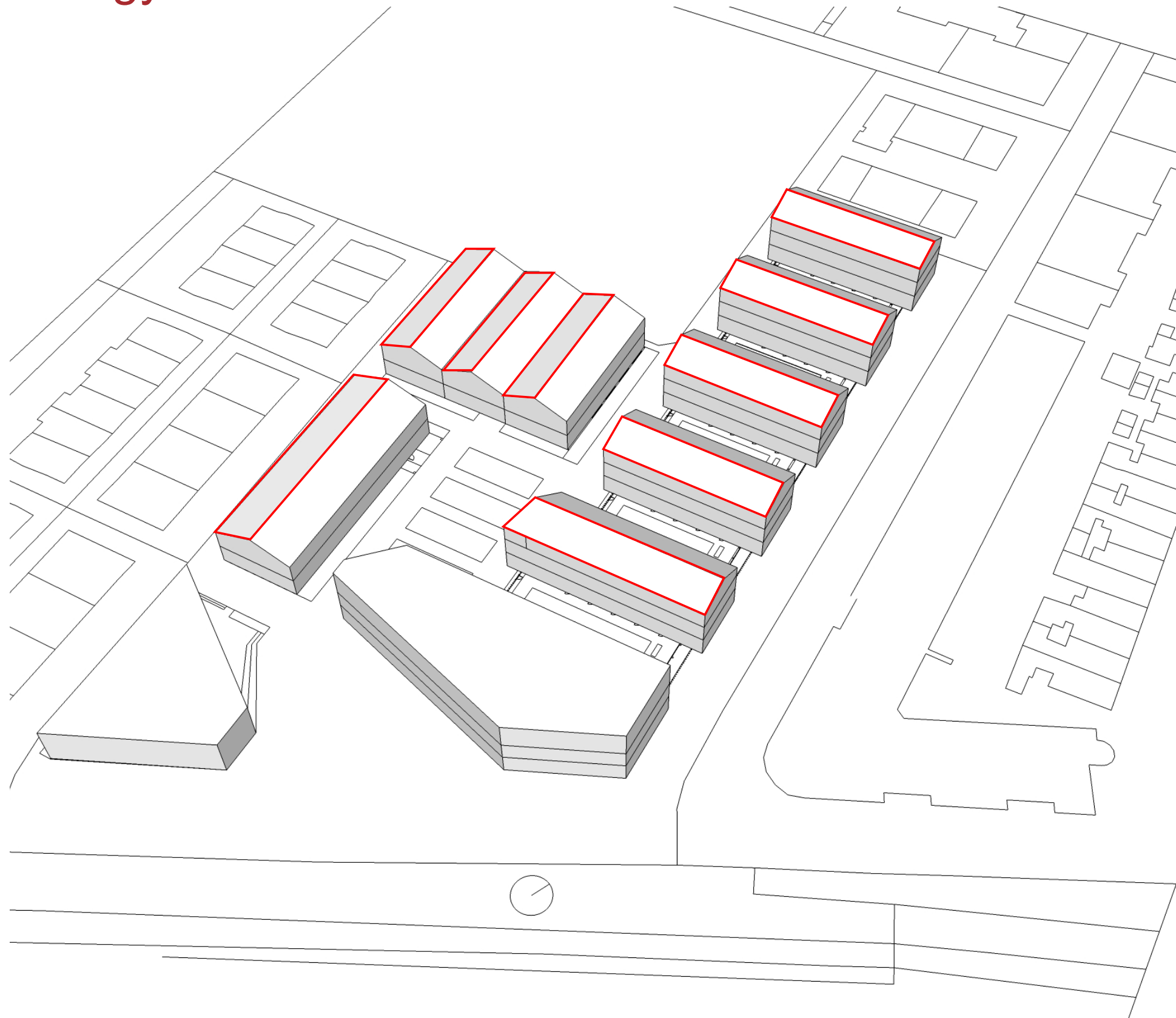


Cooling

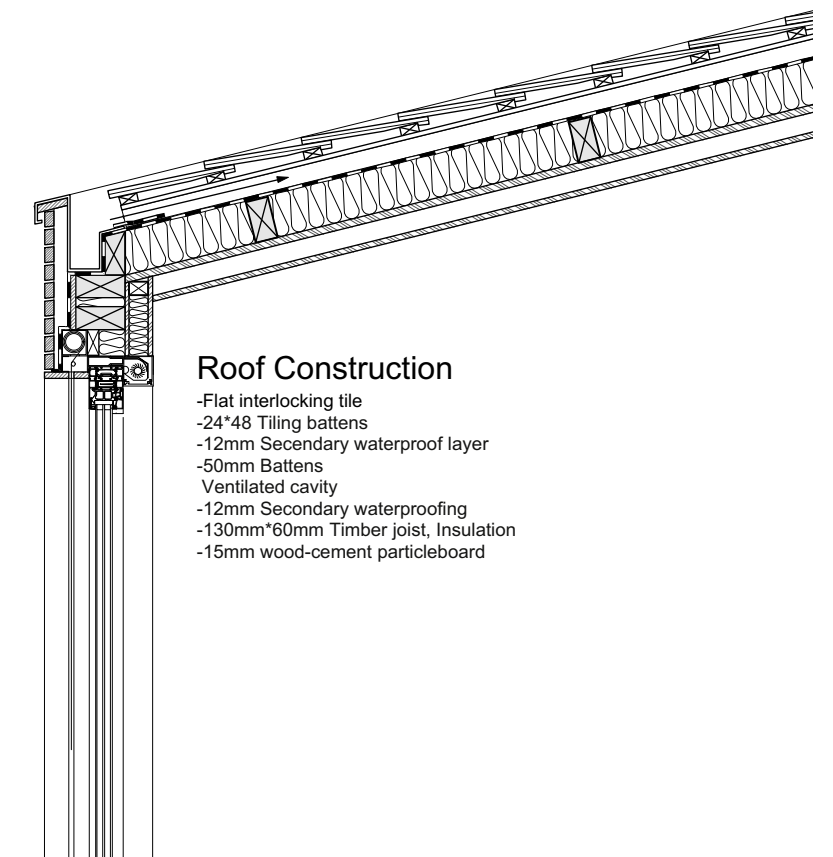
The Nursing home in Den Haag Interior graduation project



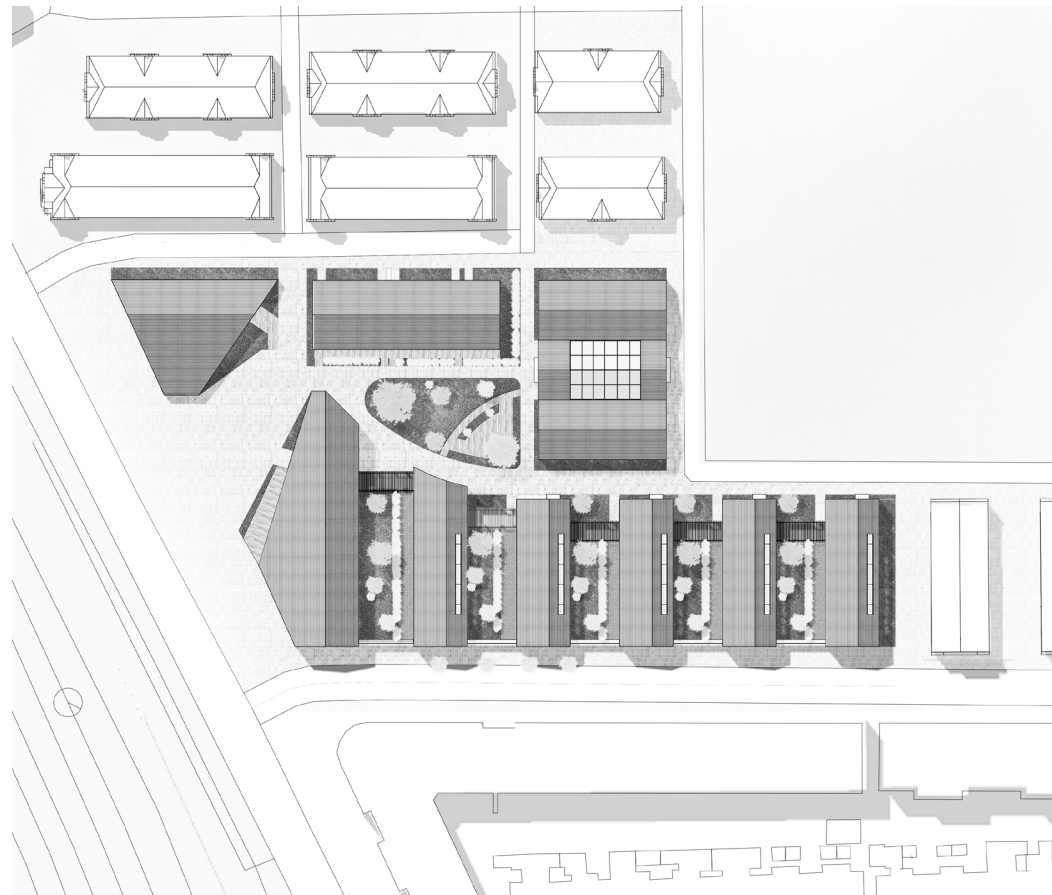
Energy



The Nursing home in Den Haag Interior graduation project



Reflection



A Peaceful Land in the Urban Rush







Thank You!

